

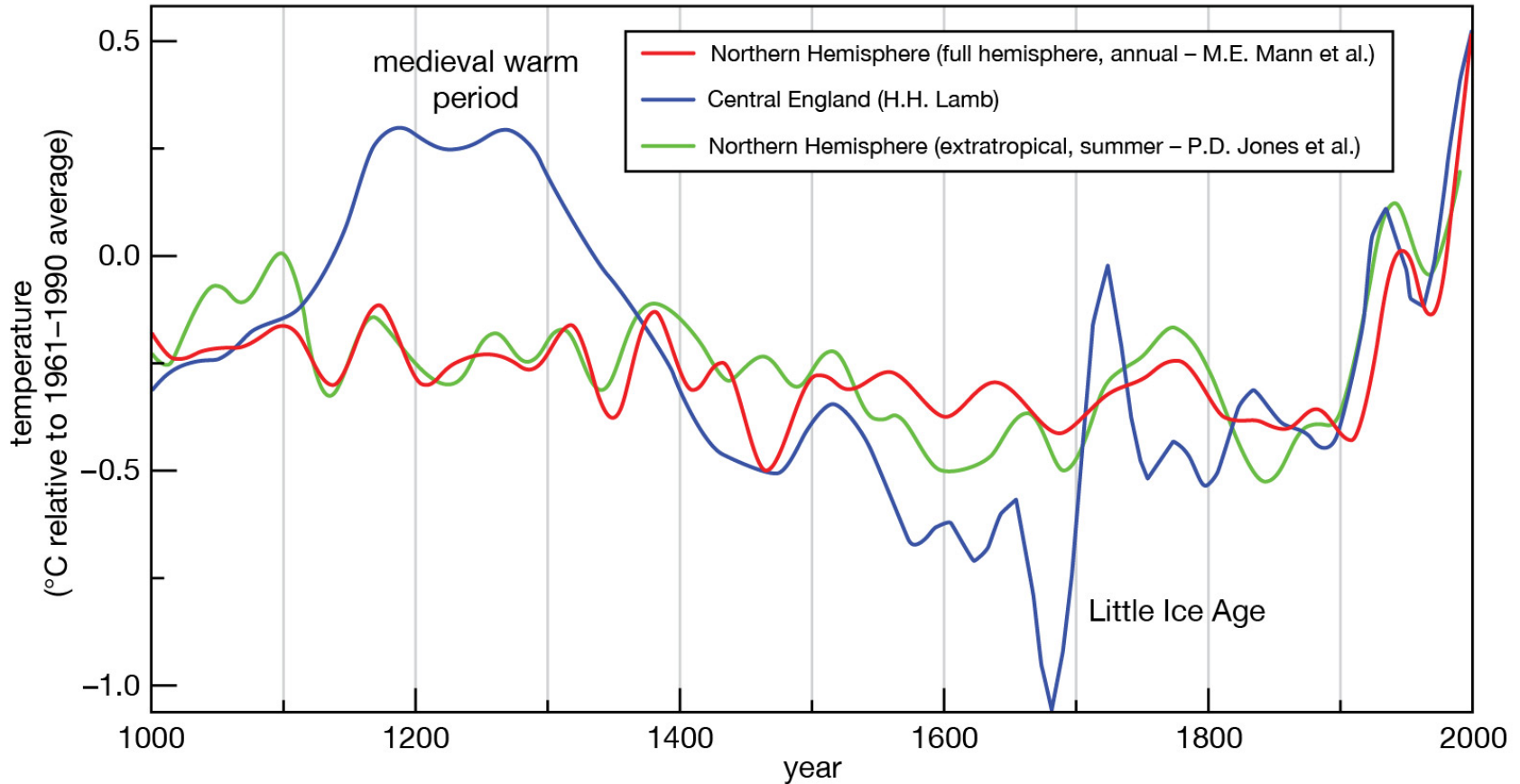
hlador 1315-1322

Důvody

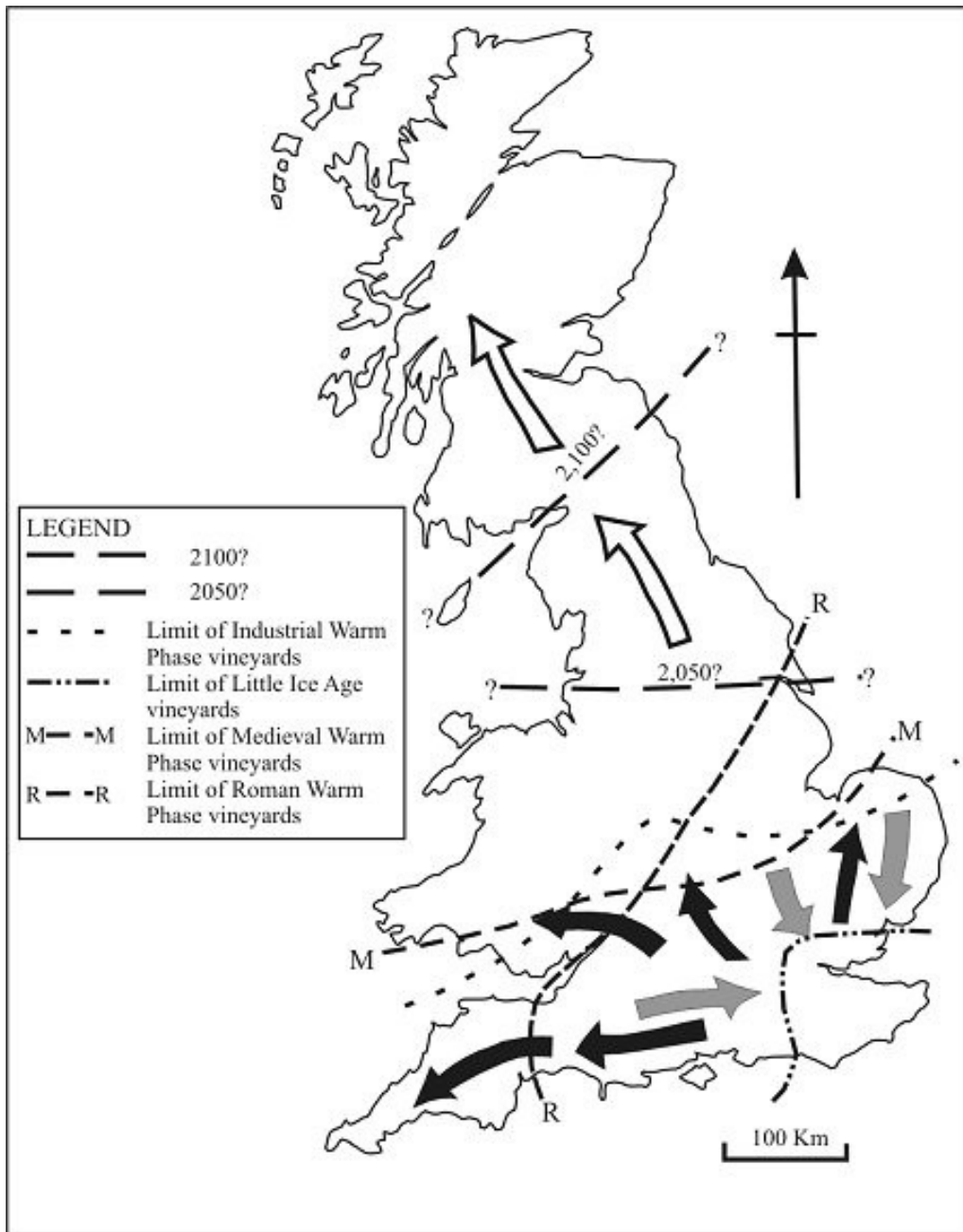
- Mathusianská katastrofa?
- Špatné počasí:
 - kruté, dlouhé zimy
 - deštivá léta
- Epizootie dobytku: 1314-1325



Malá doba ledová



Sources: M.E. Mann et al., "Northern Hemisphere Temperatures During the Past Millennium: Inferences, Uncertainties, and Limitations," *Geophysical Research Letters*, 26:759-762 (1999); P.D. Jones et al., "High-resolution Palaeoclimatic Records for the Last Millennium: Interpretation, Integration, and Comparison with General Circulation Model Control Run Temperatures," *Holocene*, 8:477-483 (1998); H.H. Lamb, "The Early Medieval Warm Epoch and Its Sequel," *Palaeogeography, Palaeoclimatology, Palaeoecology*, 1:13-37 (1965).



vinice v Anglii

Temperature and precipitation anomalies
extreme events (floods, droughts, windstorms etc.)



Biophysical impacts: lower yield and lesser nutritional value (e.g. losses from mould and insects in storage etc.)



Economic impacts: prices of food, animal feed and fire-wood



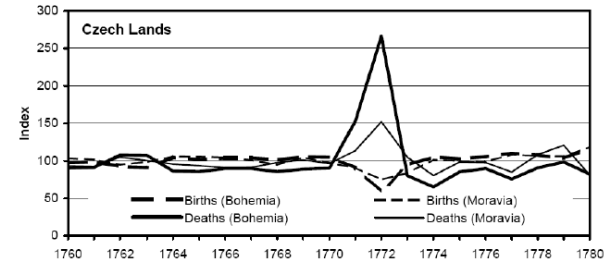
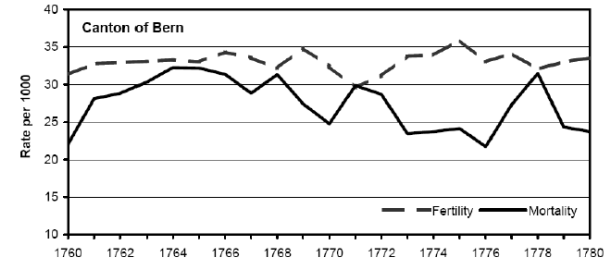
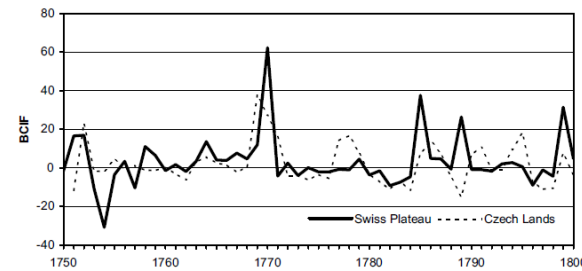
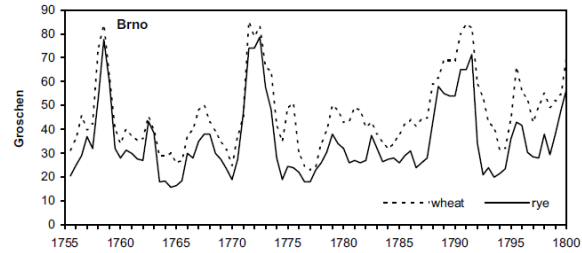
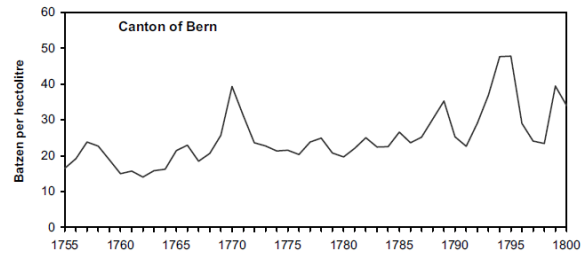
Demographic and social impacts: malnutrition, drop in birth-rate, rise in death-rate, social disruption and food-migration (*subsistence crises*)



* * *



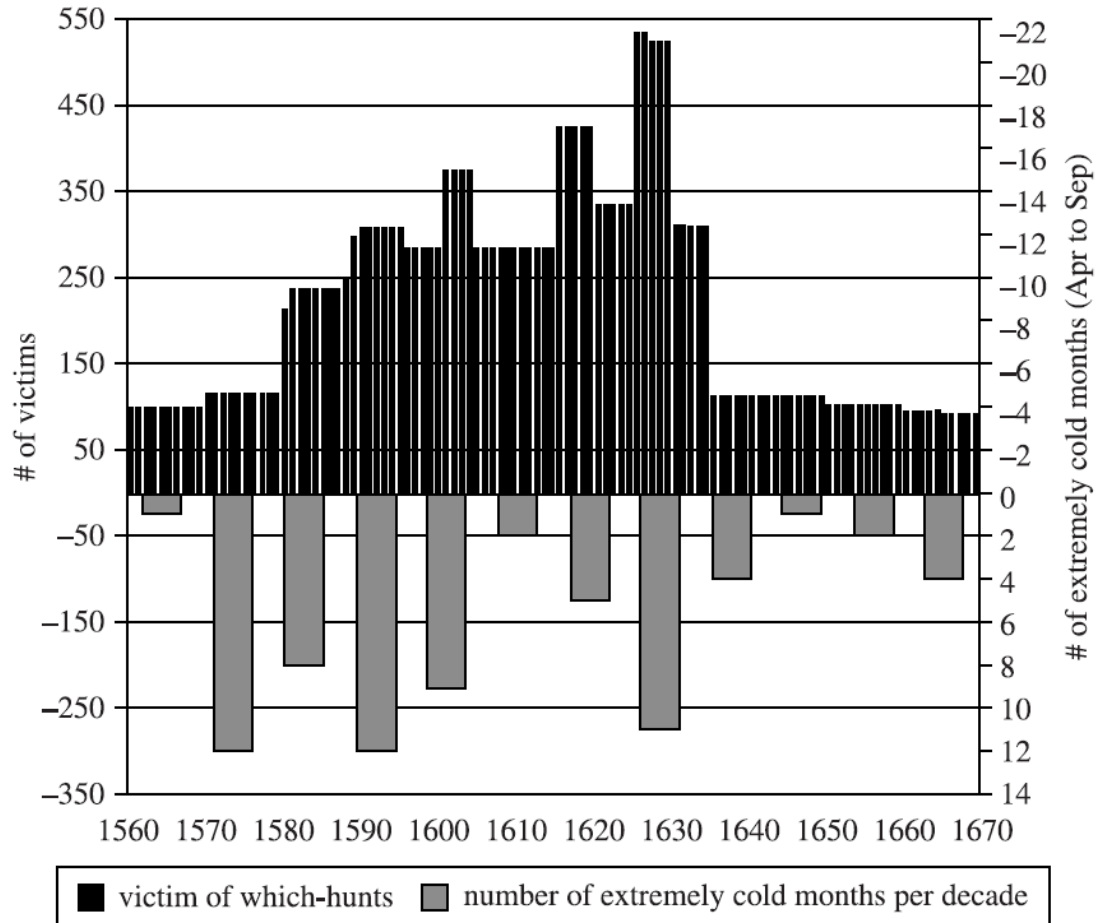
Severity of climate impact compared to buffering and adaptation



Biophysical Climate Impact Factors (BCIF) on the Swiss Plateau and for the Czech Lands in the period 1750–1800.

Figure 10

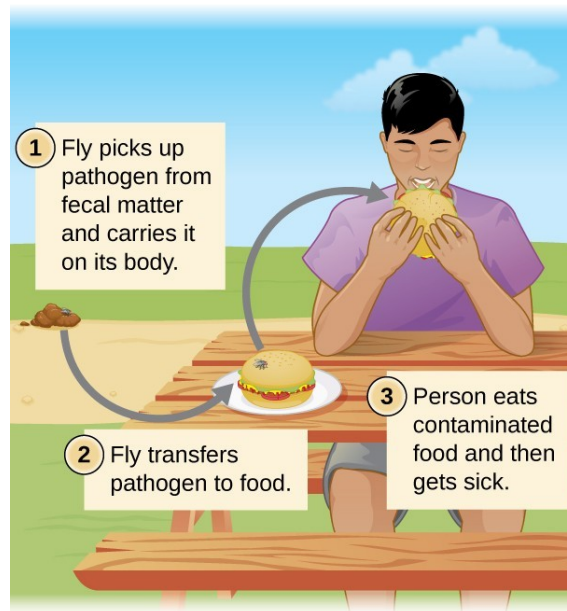
Average Number of Burnt Witches and Number of Cold Anomalies per Decade in the Summer Half Year (April to September) in Central Europe, 1560–1670



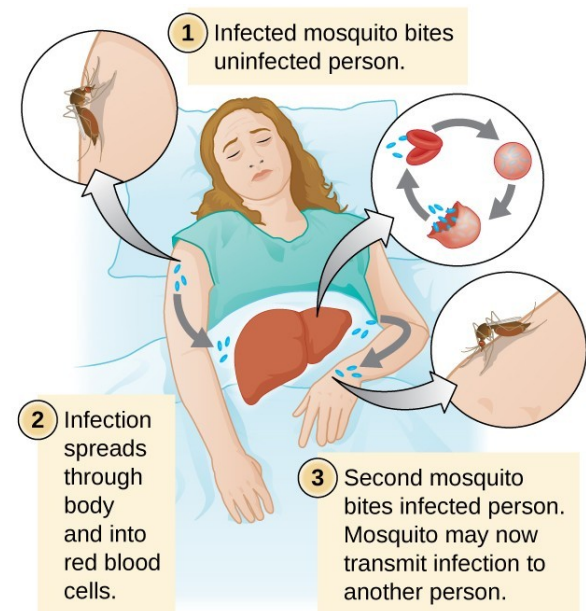


Choroby

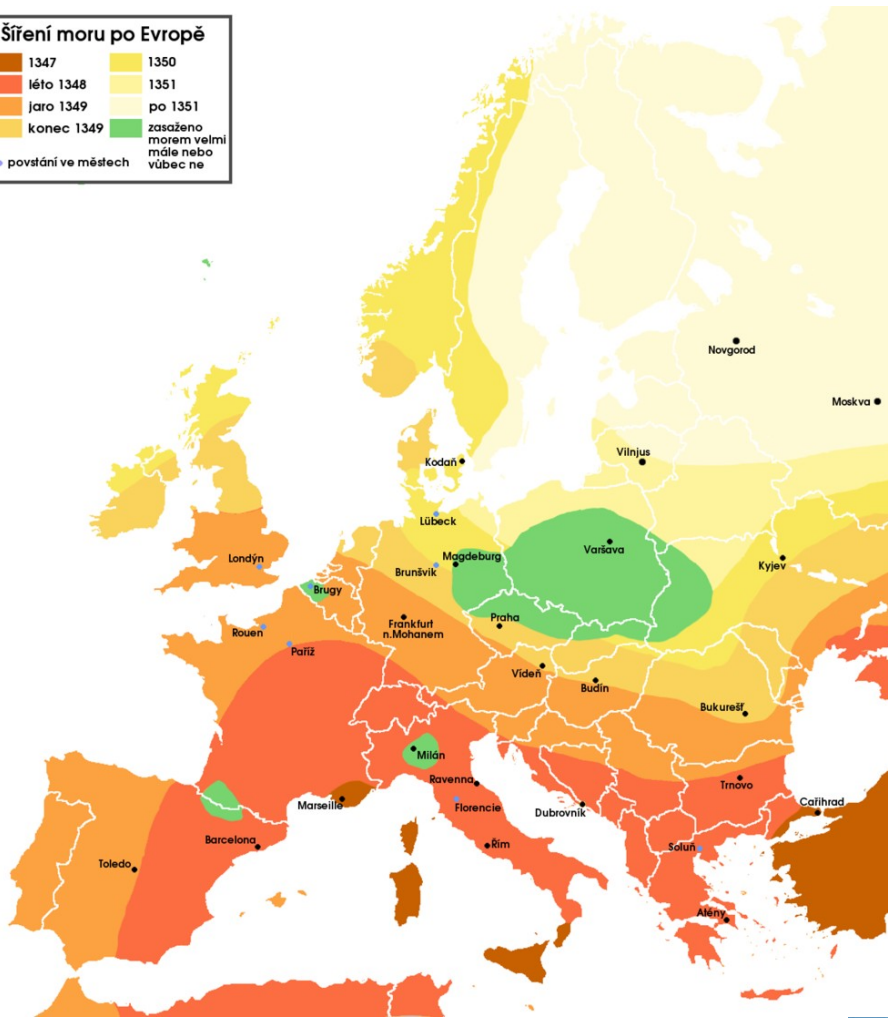
- akutní vs. chronická
- endemická vs. epidemická
- nakažlivá (HIV)
- “nosné medium” (tuberkulóza)
- “vektor” (mechanický: a, biologický: b)



(a)



(b)



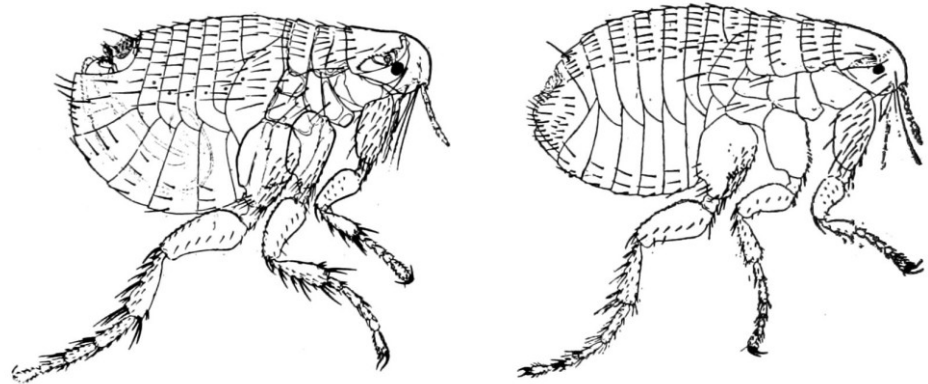
Approximate border between the Principality of Kiev and the Golden Horde - passage prohibited for Christians.
 Land trade routes
 Maritime trade routes



Alexandre Yersin (1863-1943)



Rattus rattus – krysa obecná



blecha morová

Xenopsylla cheopis, the oriental rat flea; male, left; female, right.



