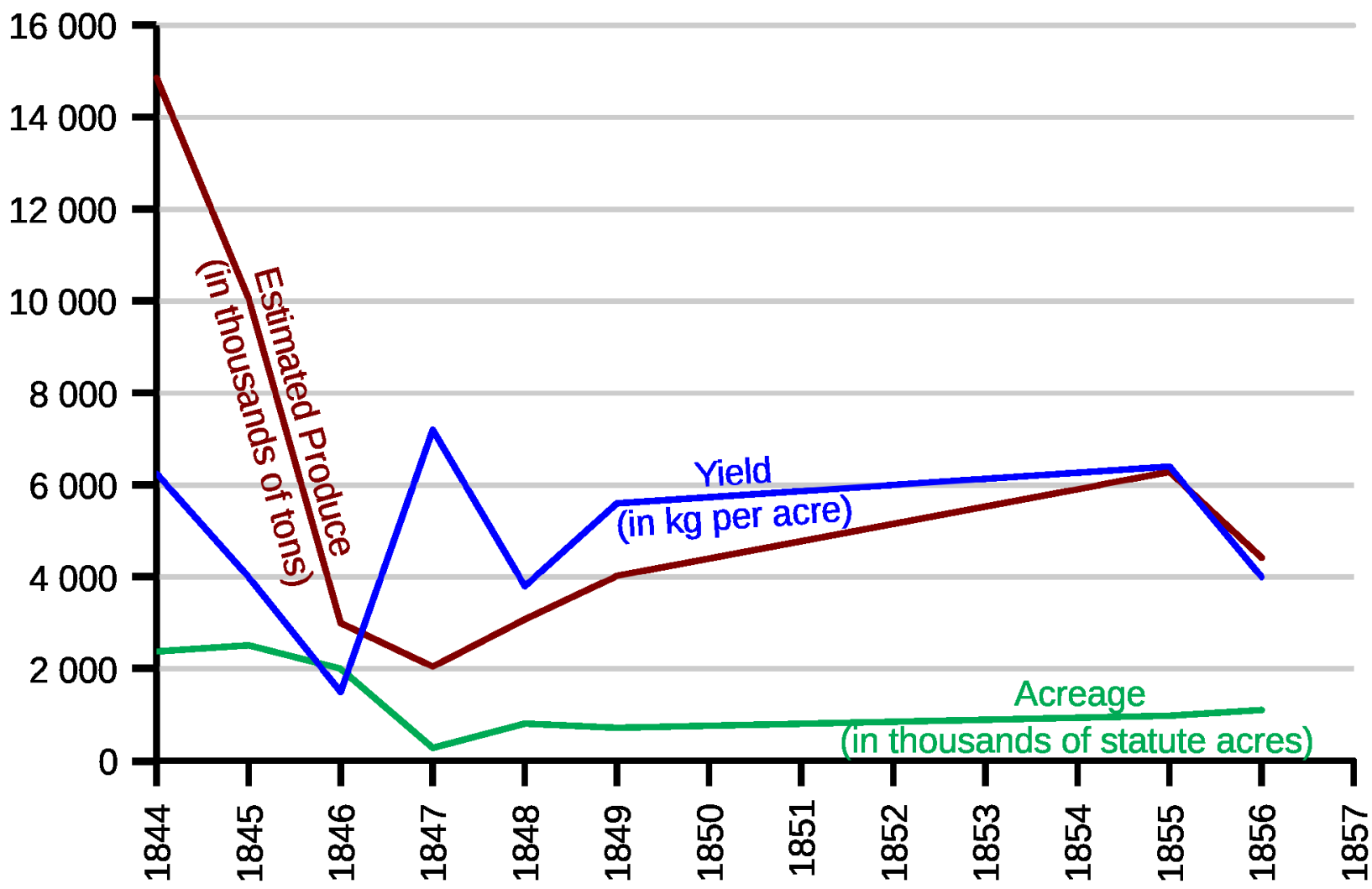


Zemědělství a hospodářský rozvoj – historická lekce

Rozvoj 2018

	Ireland	England
1841	???	13.66
1961	2.82	41.16
2017	4.79	55.62

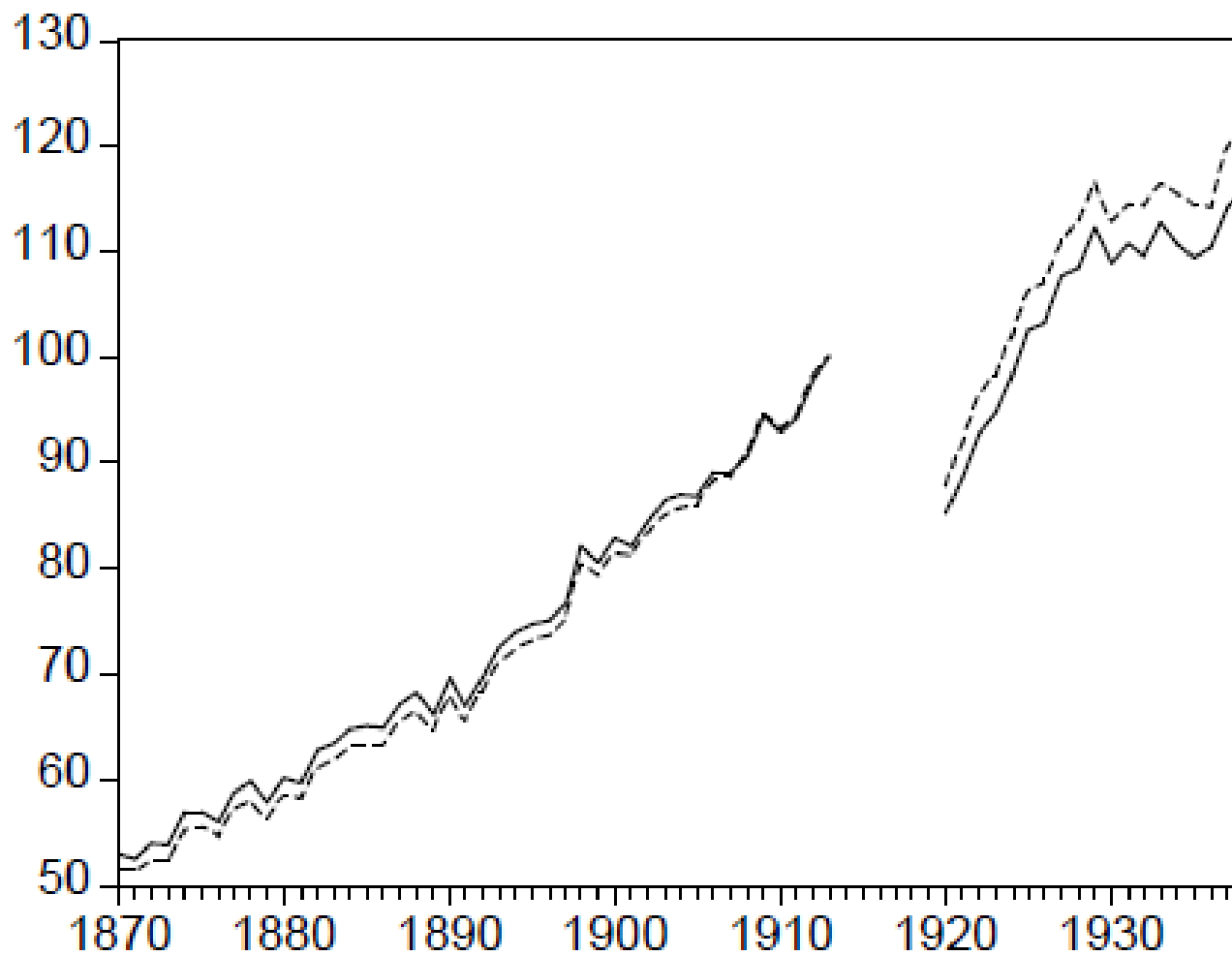






	Exporty	HNP	Průmysl	Zemědělství	Populace
Obchodní politiky – Evropa					
Protekcionalismus: 1830-1844/1846	3,5	1,7	2,7	0,8	0,6
Britský liberalizmus: 1844/1846-1858/1860	6,0	1,5	2,3	0,9	0,7
Evropský liberalizmus: 1858/1860-1877/1879	3,8	1,7	1,8	0,5	0,8
Nástup protekcionalismu: 1877/1879–1890/1892	2,9	1,2	2,2	0,9	0,9
Protekcionalismus: 1890/1892-1913	3,5	2,4	3,2	1,8	1,0
Hospodářská období - kontinentální Evropa					
Období růstu: 1829/1831–1868/1870	4,3	1,8	2,0	1,0	0,7
Deprese: 1868/1870–1891/1893	2,9	1,0	2,0	0,8	0,9
Období rychlého růstu: 1891/1893-1911/1913	4,0	2,6	3,8	1,5	1,1

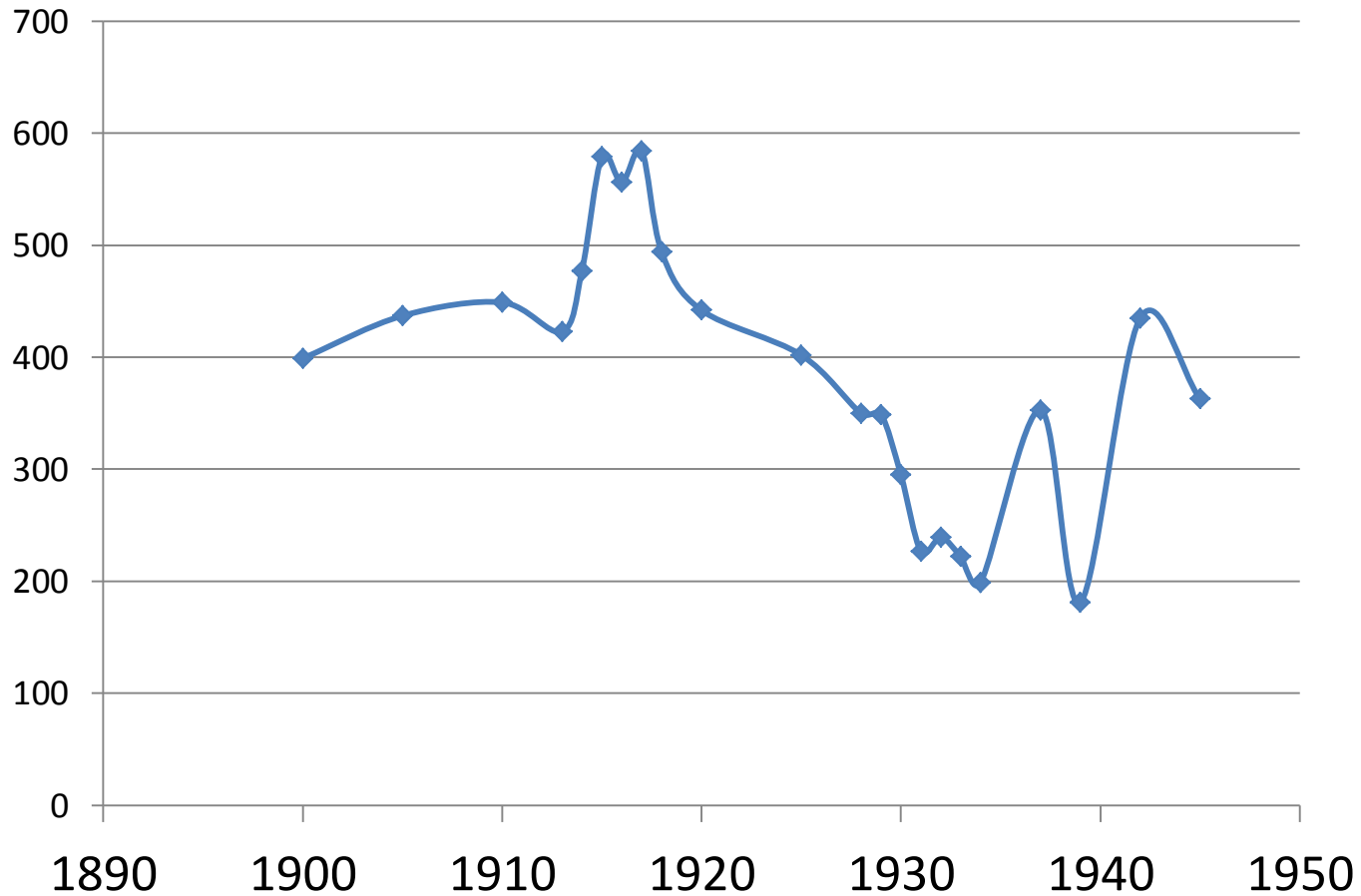
Agricultural production



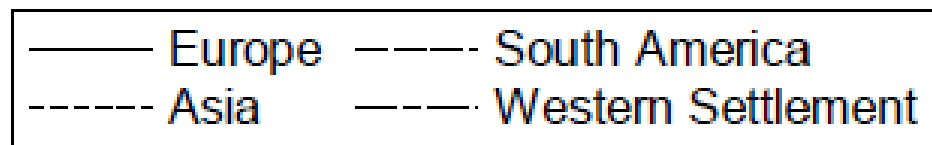
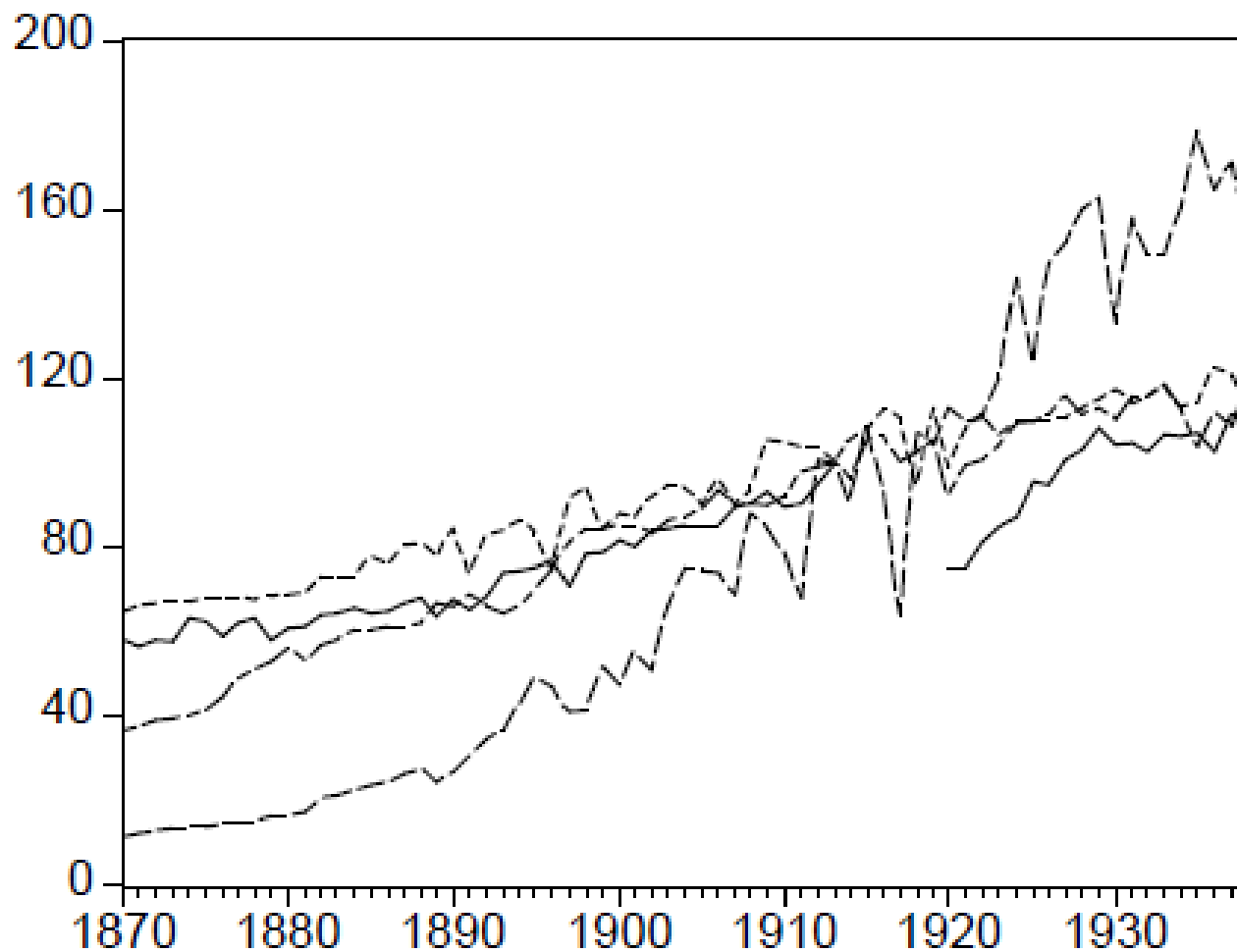
— GDP - - - GSP

Wheat - world price

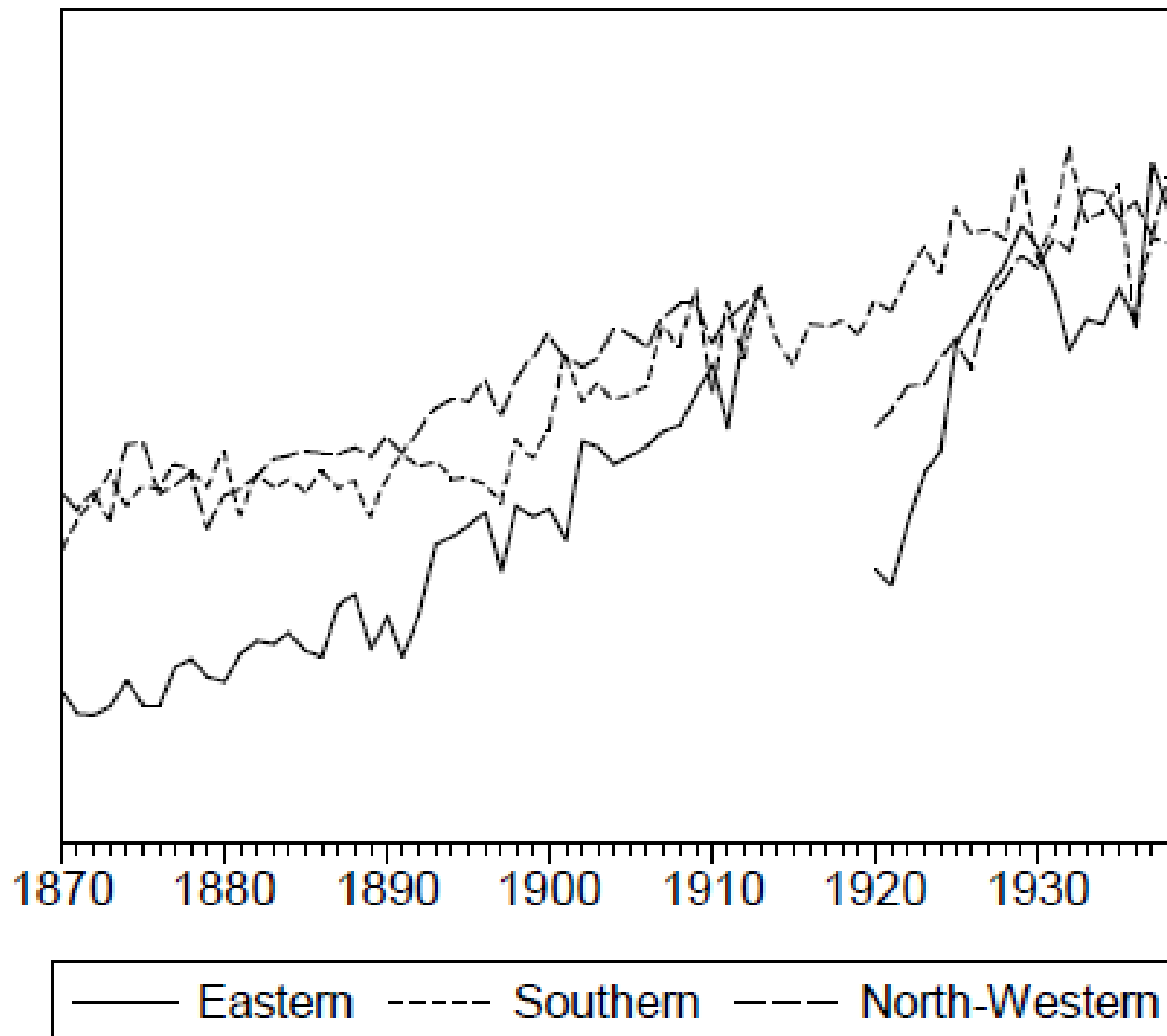
(1996 GBP)



Agricultural output, by continent



Agricultural output, Europe



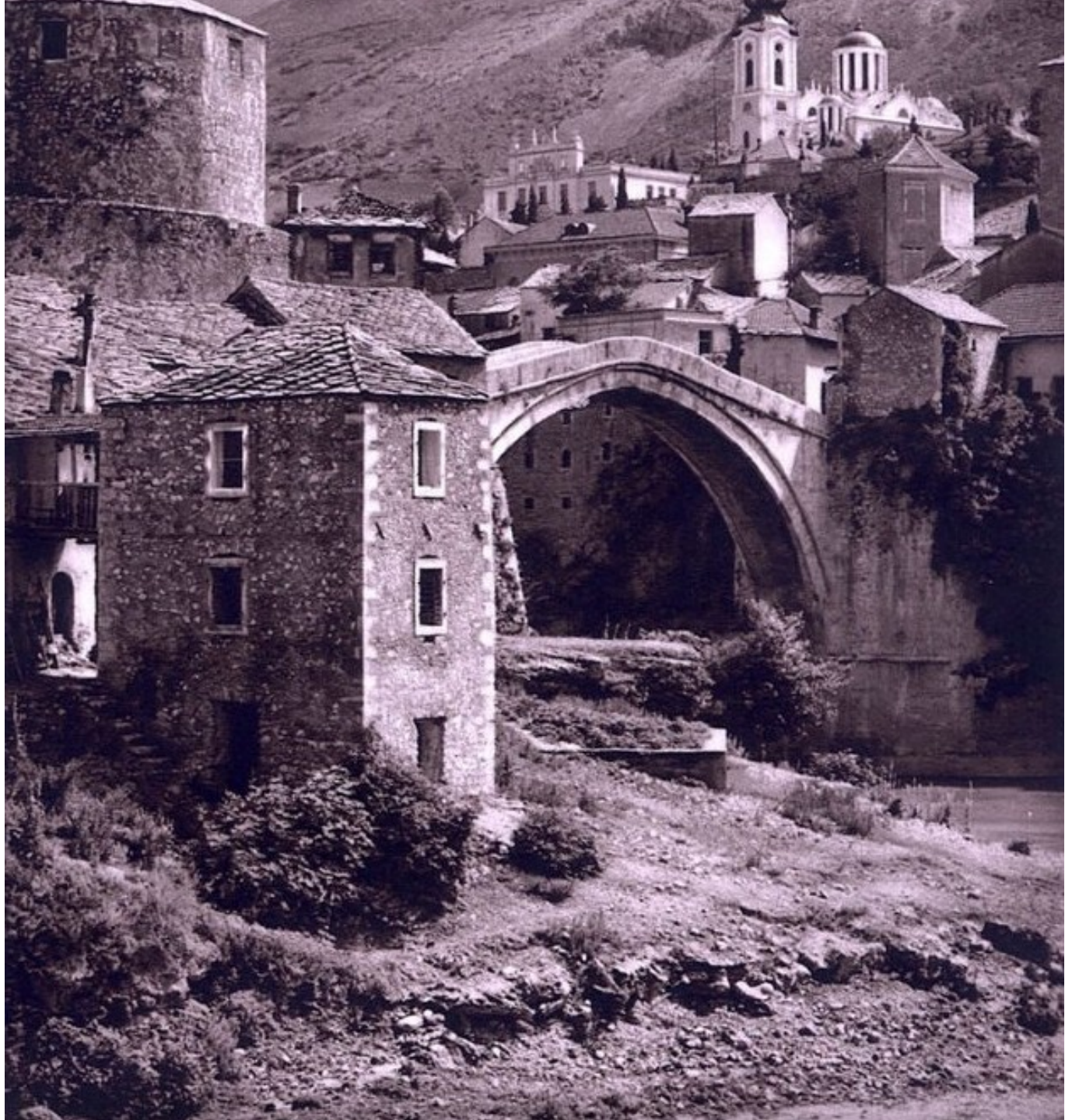
Wheat production – average yield

	tons/ha
CS	1.50
Europe	1.26
US	0.98
Canada	1.34
Australia	0.80
Argentina	0.66
Poland	1.24
Hungary	1.26
Romania	1.29
Bulgaria	1.06
Serbia	0.88

Agriculture in EE

	employed 1920 (%)	GDP 1920 (%)	GDP 1938 (%)	exports 1938 (%)	1930s yields as % of E	land per tractor	surplus labor WE tech
CSR	28	33	23.2	72in	113	920	+5
POL	72	-	39.0	28.5	74	8400	51
HUN	56	41.8	36.5	55.3	85	830	22
BUL	80	71.4	63.3	31.4	74	1430	53
YUG	79	58	53.6	49.7	70	3430	61
ROM	78	60.2	53.2	33.8	63	2490	51

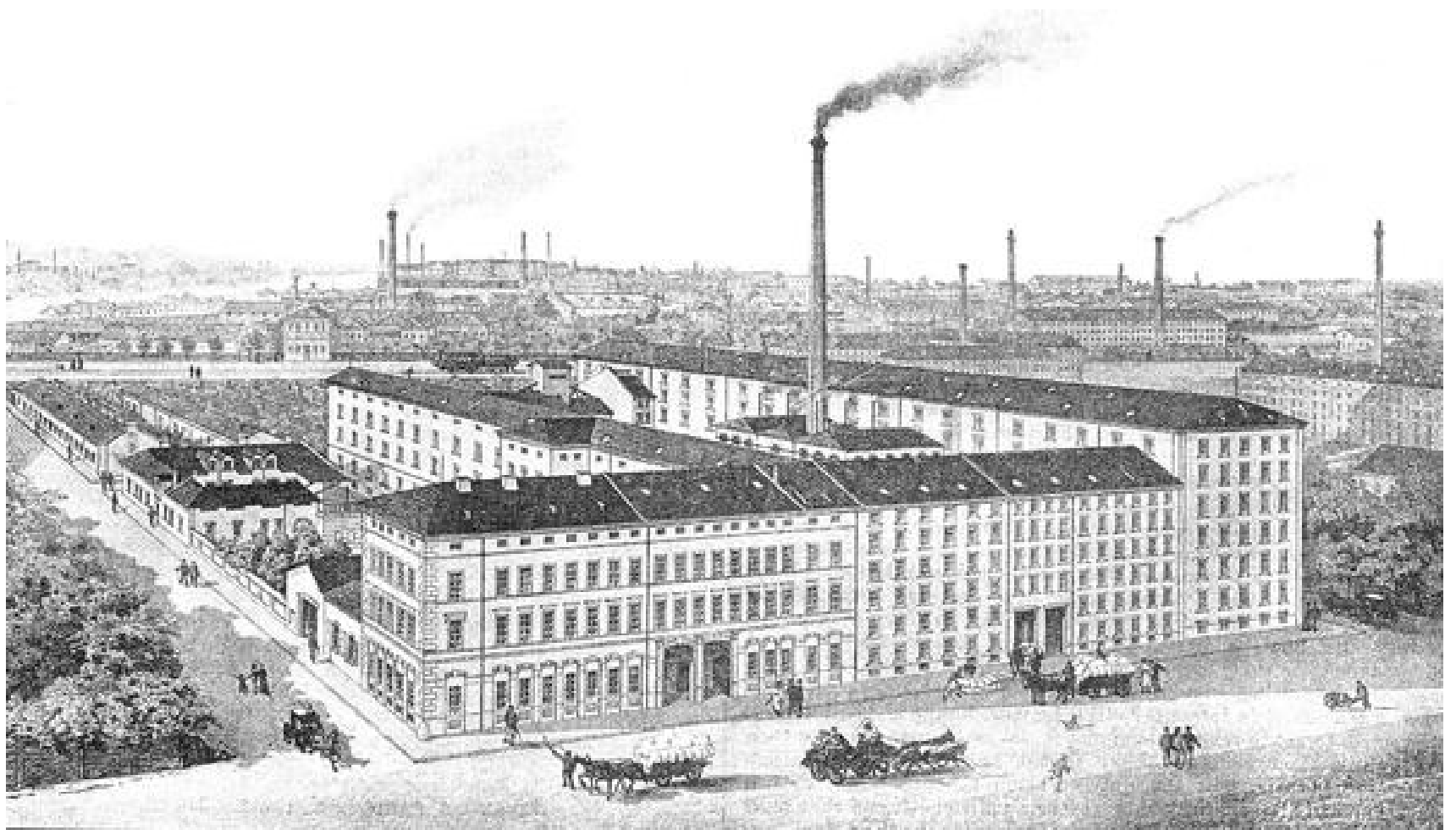


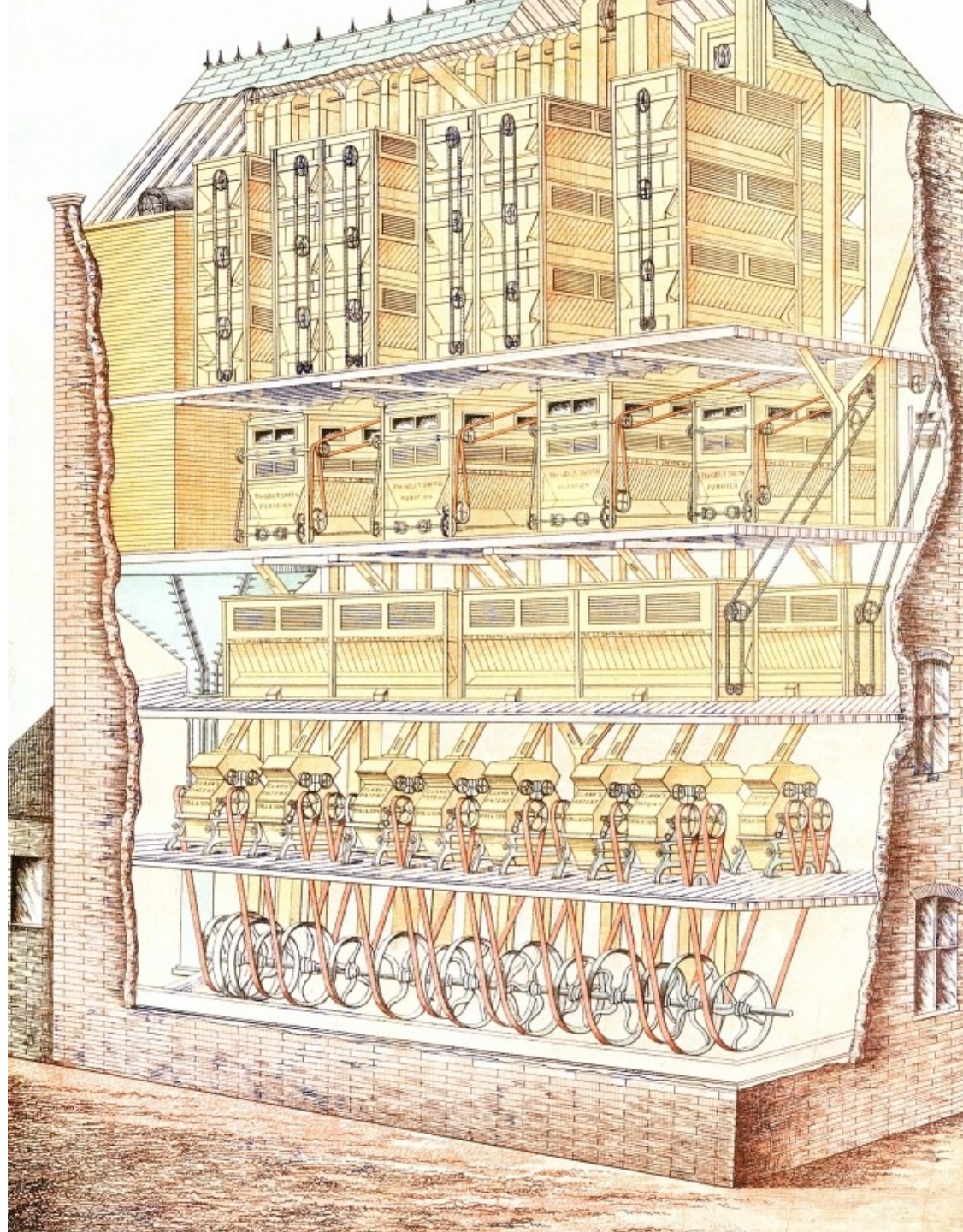












**Redistribution as a result of CSR 1925-26 tariff –
wheat and wheat flour (bill. mill. of CSK; thous. of tons)**

	1924	1926	1927	1929
domestic producers' revenue (bil. CSK) (without tariff in parentes)	1.949	2.390 (2.063)	2.549 (2.202)	2.083 (0.897)
foreign producer's revenue (bil. CSK)	1.082	0.703 (1.091)	1.361 (1.220)	0.126 (1.615)
consumption (thous.tons)	1,562,322	1,412,362	1,649,783	1.598.236
consumers expenses (bil. CSK)	3.031	3.093	3.910	2.829
extra producers' surplus (mil. CSK)	-	319.8	320.9	268.0
consumers' loss (mil. CSK)	-	454.5	495.4	496.2
government revenue (mil. CSK)	-	96.3	172.3	126.4
dead weight loss (mil. CSK)	-	38.5	2.2	101.6



Ploughing by Steam, Canada's Western Prairies.

