

New materialism

Petr Ocelík

MEB401 / MEB427 / ESS427

13th December 2018

Outline

- New materialism (NM): assumptions
- Actor-Network Theory (ANT)

New materialism: assumptions

- **Reaction to predominance of cultural and discursive approaches**
- Trans-disciplinary enterprise

- Materialism
- Empiricism
- Relational perspective

Materialism

- *“Truth and falsehood. Large and small. Agency and structure. Human and non-human. Before and after. Knowledge and power. Context and content. Materiality and sociality. Activity and passivity...all of these divides have been rubbished in work undertaken in the name of actor-network theory.”* (Law 1999: 3)
- NM rejects Cartesian dualism between social and natural world
- Physical **things are central to our identities** which are practiced through objects we use
- The world is a **socio-material construction**



Empiricism

- **NM rejects abstract theory and the imposition of general categories upon the empirical data**
- *“The task of the researcher is no to impose order, limit the range of acceptable entities or add reflexivity to [actors’] practice. But follow the actors, their wild innovations, methods, and accounts.” (Latour 2005: 11)*
- **NM uses rather an ethnographic research approach that allows to unfold the story in its complexity**

Relational perspective

- The world is full of **hybrid entities** containing both human and non-human elements that **are mutually related**

→ Social world is created by **entanglements** (Actor-Networks, assemblages) **of human and non-human actors**



Human actors vs. non-human actants

- **Agency:** capacity of a thing or person **to impact its surroundings (no intentionality needed)**
- Human actors and **non-human actants**
- **Actants:** anything that “...*modify other actors through a series of...*” actions (Latour 1999: 75)
- If the entity modifies other entities, contributes something new to the entanglement that cannot be reduced to the other entities, then it is an actant

Actor-Network Theory

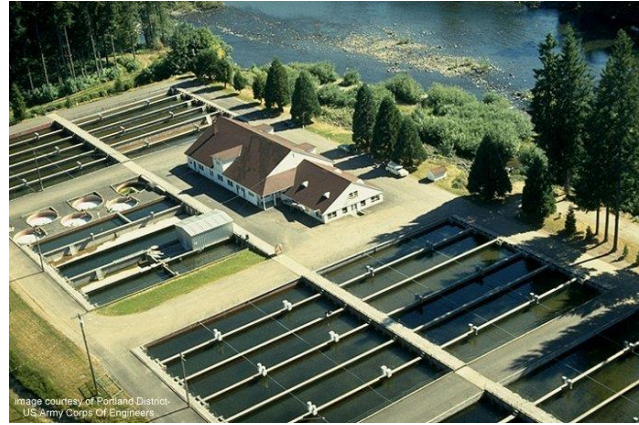
- ANT mostly connected with a French philosopher and sociologist **Bruno Latour (1947 -)**
- It is rather a **research methodology**
- The central concept: **Actor-Network** that mediates interactions between people (and other entities)
- **ANT focuses on how**, rather than why, are certain Actor-Networks formed, maintained, and destroyed



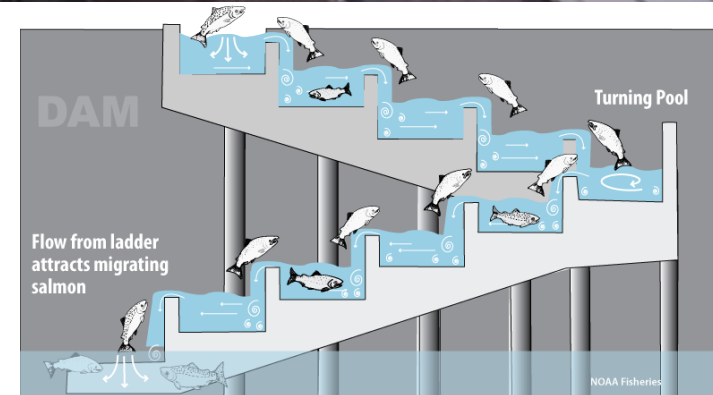
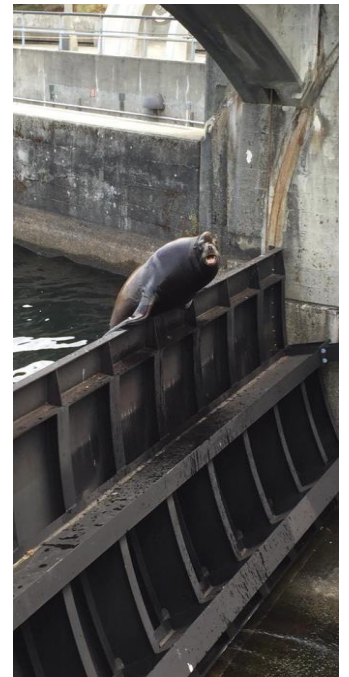
ANT in energy studies

[Actor-Network Theory] can be noteworthy, then, for de-centering the technological artefact as the object of inquiry and expanding scholastic focus on 'technology' to include the vast social and cultural networks that surround it... By focusing on the relational aspects among engineers, inventors, analysts, politicians, artifacts, manufacturing techniques, marketing strategies, historical context, economics, and social and cultural factors, ANT highlights that technology emerges through a seamless web of material objects and immaterial epistemologies. This situates energy technologies as neither inevitable nor static. Instead, energy technologies are the product of a complex power play between divergent actors and their interests.

National geographic - Salmon Documentary - BBC wildlife animal documentary



www.agefotostock.com
ALK-015SB-CY0010D001-M



Panopticon



Translation

- *“I use translation to mean displacement, drift, invention, mediation, the creation of a link that did not exist before and that to some degree modifies two elements of agents.” (Latour 1994: 32)*
- Translation focuses on **the manner in which actors’ interests and goals are represented, simplified, and transformed** into construction of an Actor-Network
- Often, few actors become spokespersons for many of other by **defining and linking identities of others** in increasingly simplified and fixed ways (e.g. “we - as a nation - are threatened and need to be protected”)

Conclusions

- NM (ANT) allows **to accommodate and focus on non-social, non-cultural entities** that populate the world and integrate them with the social ones
- It moves **away from abstract thinking and anthropocentrism**
- The **entanglements are seen as provisional and historically contingent** (room for intervention)