

Social constructivism

Petr Ocelík

MEBn4001 / MEBn5001 / MEB427

31th October 2019

Outline

- Constructivism as a social theory
- The construction of social reality (John Searle)

- Discourse
- Frame
- Some examples

Constructivism as a social theory

- **Idealism:** social world is primarily created and driven by ideas
- **Interpretativism:** social phenomena do not exist independently of our interpretations of them
 - disputed whether this rules out causal explanations or not
- Thus: social world **is being constructed**
- Social constructivism is **not an IR theory**
- It is a **social theory** that provides an explanation or understanding of social organization as such

Strong vs. weak constructivism

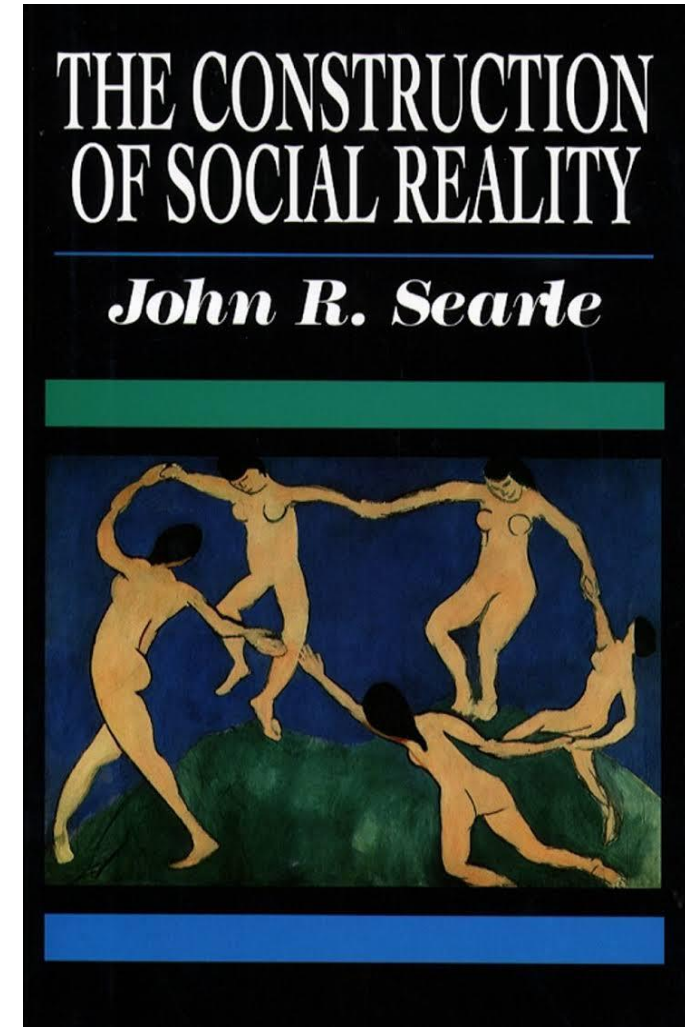
- Weak constructivism:
 - Allows causal explanations
 - Allows objective knowledge
 - (Differentiates between brute and social facts)

- Strong constructivism:
 - Rejects the concept of causality
 - Rejects the possibility of objective knowledge
 - (There are only social facts)



John Searle: The Construction of Social Reality

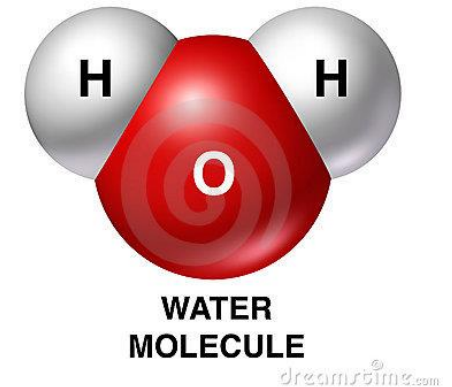
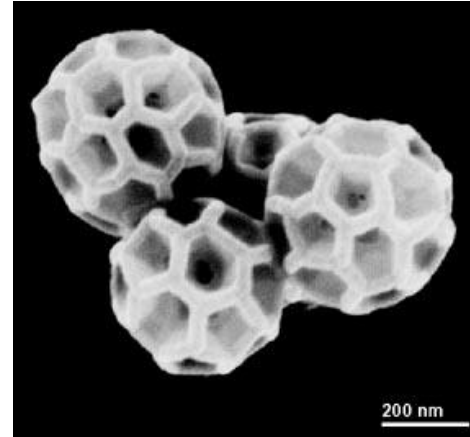
- Brute vs. **social/institutional facts**
- **Function assignment**
- Individual vs. **collective intentionality**
(~ subjectivity vs. **intersubjectivity**)
- Regulatory vs. **constitutive rules**



Brute vs. social facts

- **Brute facts:**

- Mind-independent
- Independent on other facts



- **Social facts:**

- Mind-dependent
- Dependent on social context, i.e. language, actions etc.



BERTRAND RUSSELL
LUDWIG WITTGENSTEIN



THE FIRST RULE OF PHILOSOPHY CLUB IS THAT RULES, INsofar AS THEY CAN BE UNDERSTOOD, CAN ONLY BE UNDERSTOOD BY HOW THE COMMUNITY OF RULE FOLLOWERS PARTICIPATES IN THE ACTIVITIES INVOLVED IN THE RULE.



SHOULDN'T THE FIRST RULE OF PHILOSOPHY CLUB BE TO RIGOROUSLY GROUND THE RULES IN PURE, FORMAL LOGIC, TO AVOID ANY AMBIGUITIES?

THAT'S EXACTLY WHAT I'M SAYING, CAN'T HAPPEN, RUSSELL. ANY CONCEPTION OF A TRANSCENDENT RULE IS A MISUNDERSTANDING OF LANGUAGE.



Social and institutional facts

- **Social facts:**

- Facts by agreement
- Depend on **collective intentionality**

“...any case of collective intentionality involving two or more animals.” (Searle 2003)

- **Institutional facts:**

- A subset of social facts
- Collective intentionality + **function assignment**



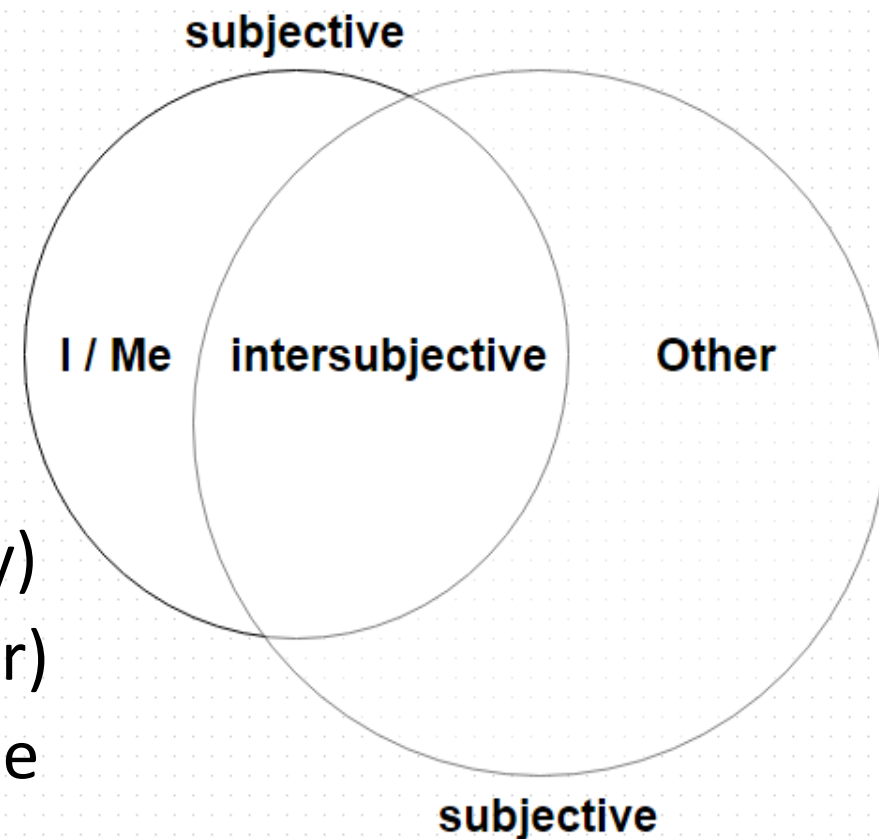
Collective intentionality / intersubjectivity

- The **intersubjectivity** is established through convergence of expectations about self and Others

→ social facts always exceed individual level

→ social facts are always intersubjective

- **E.g.:** I can really play ice hockey (I) only if we have shared understandings (intersubjectivity) of my role (Me) as well as of role of others (Other) in the game and about what constitutes the game



First encounter: “Temba, his arms wide”



Star Trek: Next Generation
S05, E02 “Darmok” (1991)

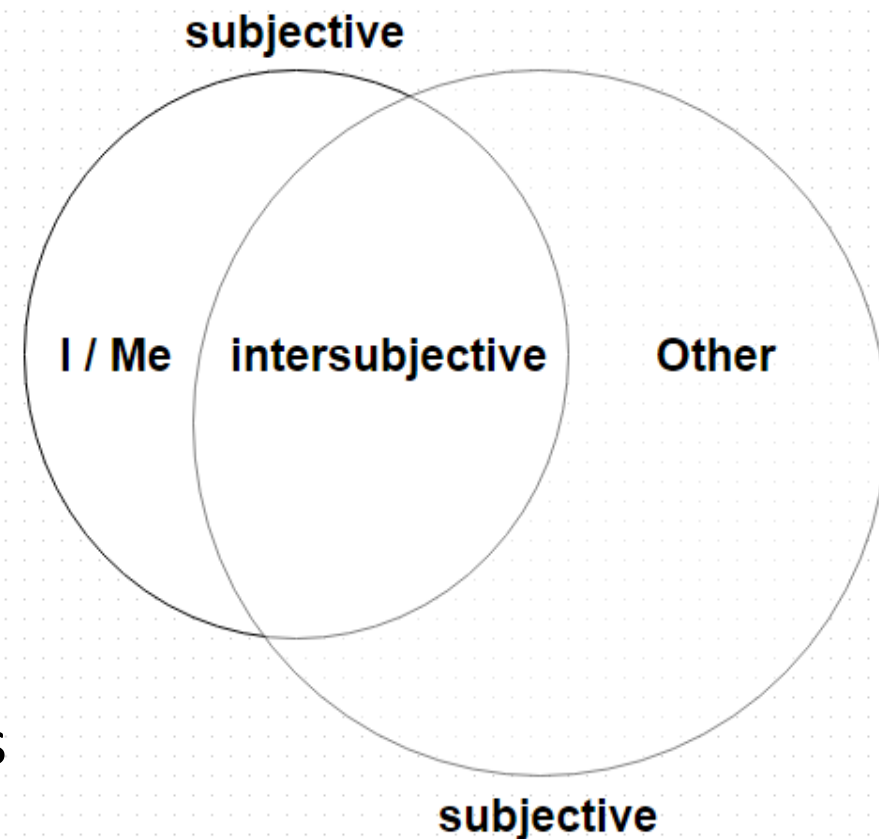
Collective intentionality / intersubjectivity

- The **intersubjectivity** is established through convergence of expectations about self and Others

→ social facts always exceed individual level

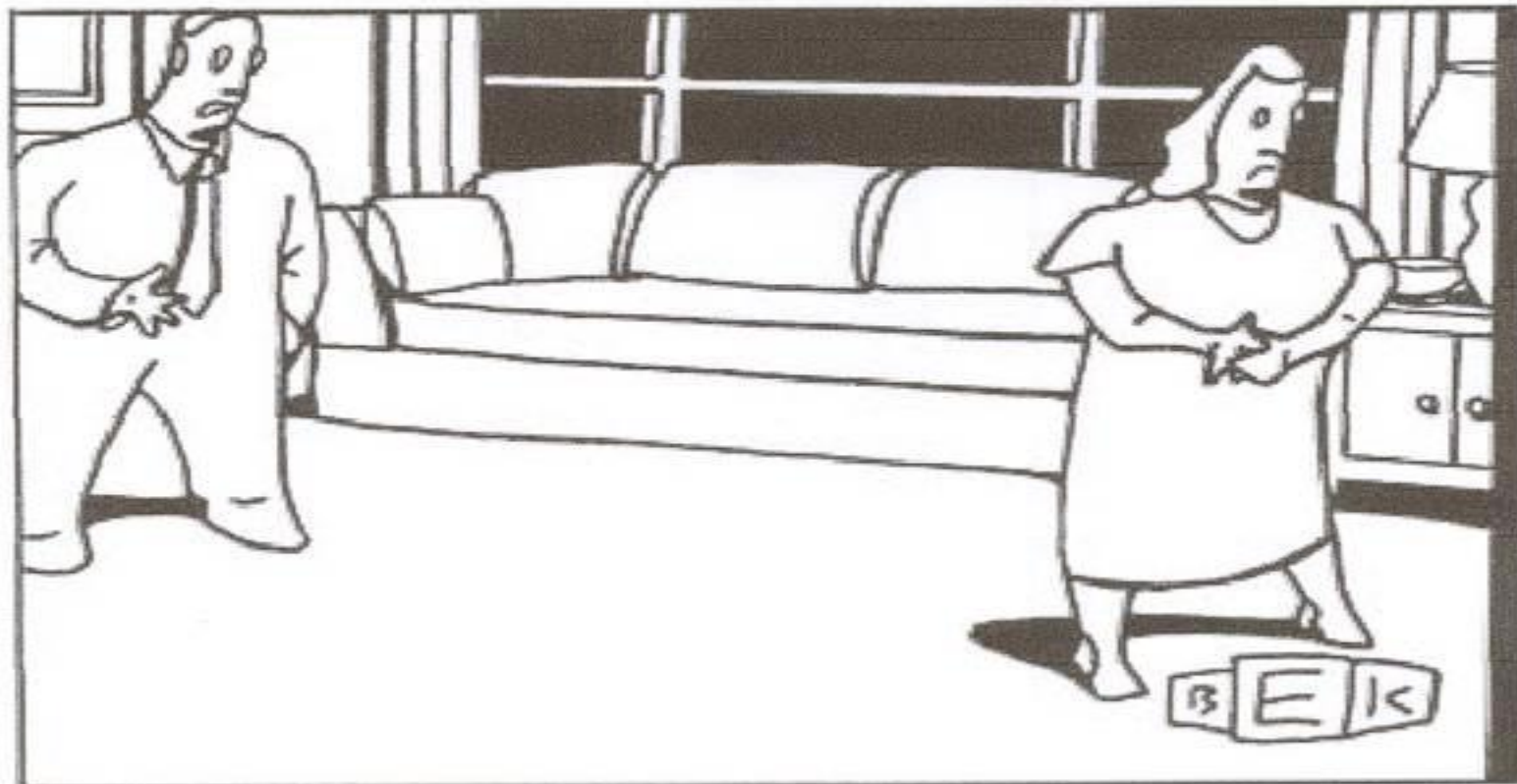
→ social facts are always intersubjective

- **E.g.:** State can engage in int. negotiations (I) only if it has shared understanding (intersubjectivity) of its role (Me) as well as of role of others (Other) in the negotiations and about the negotiations' rules



Levels of Dyadic Intersubjectivity

Bruce Eric Kaplan, *New Yorker* (10/26/1998)



“Of course I care about how you imagined I thought you perceived I wanted you to feel.”

Function assignment

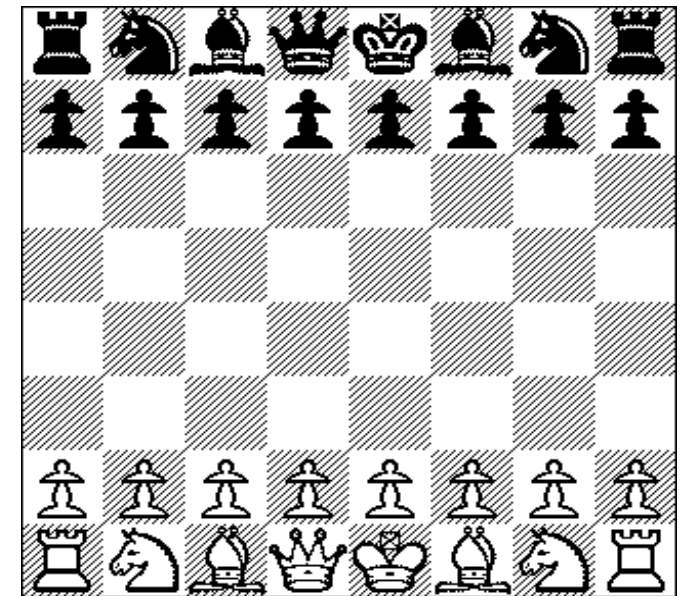
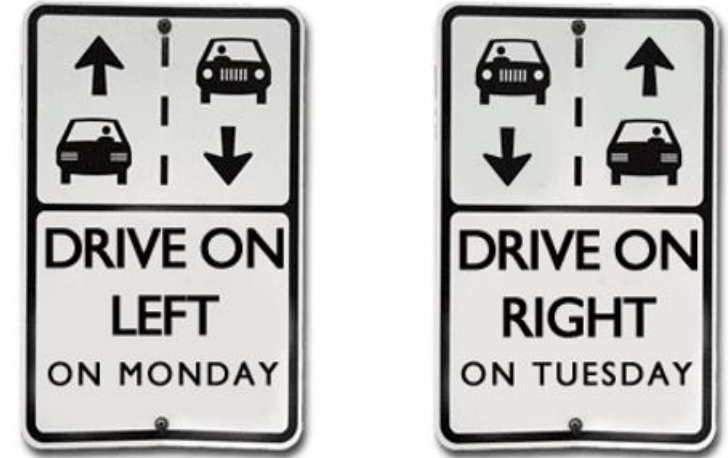
- The **function of a given object is not inherent**, it is assigned to the object by its use
- A parallel with Wittgenstein's "tool theory of meaning"
- **General form** of a status function:
X counts as Y in context of Z
- **E.g.:** boots (X) count as goal posts (Y) while playing ice hockey at a pond (Z)





Regulatory vs. constitutive rules

- **Regulatory rules** govern existing activities
→ activities do not depend on them
- **Constitutive rules** not only regulate, but also create/constitute given activities
→ activities do depend on (are made of) them
- Any **examples** of constitutive rules in international politics?



Social construction (vs. recall Schelling's segregation model)



Sovereignty as a social construction



Sovereignty as a social construction



Discourse

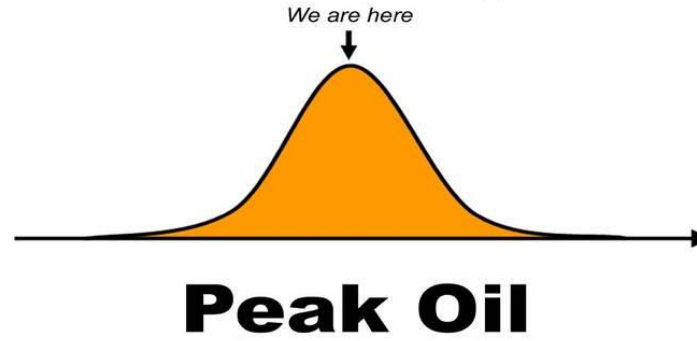
Discourse

- Discourse: **an institutionalized use of language** and other meaning systems (images, gestures etc.)
- Discourse provides, more or less, **coherent account of some issue**
- It shapes how we speak and think about the issue
 - **power is exerted and maintained through discursive operations**
- We are embedded in a **plurality of overlapping discourses**

Malthusian discourse



Wake up!!!



OVERPOPULATION

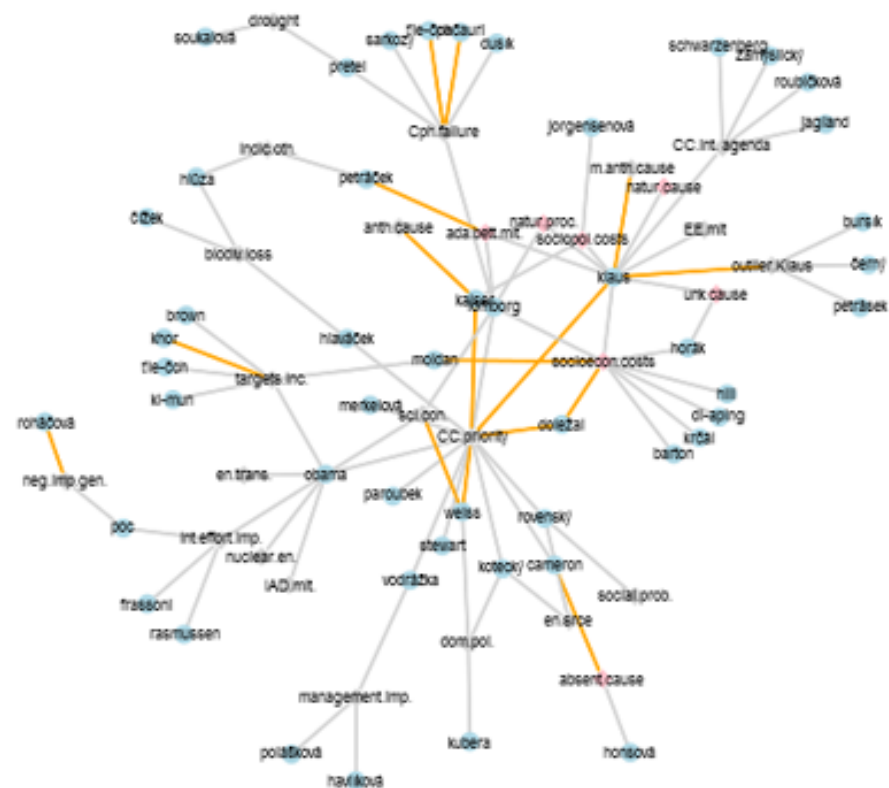


2009

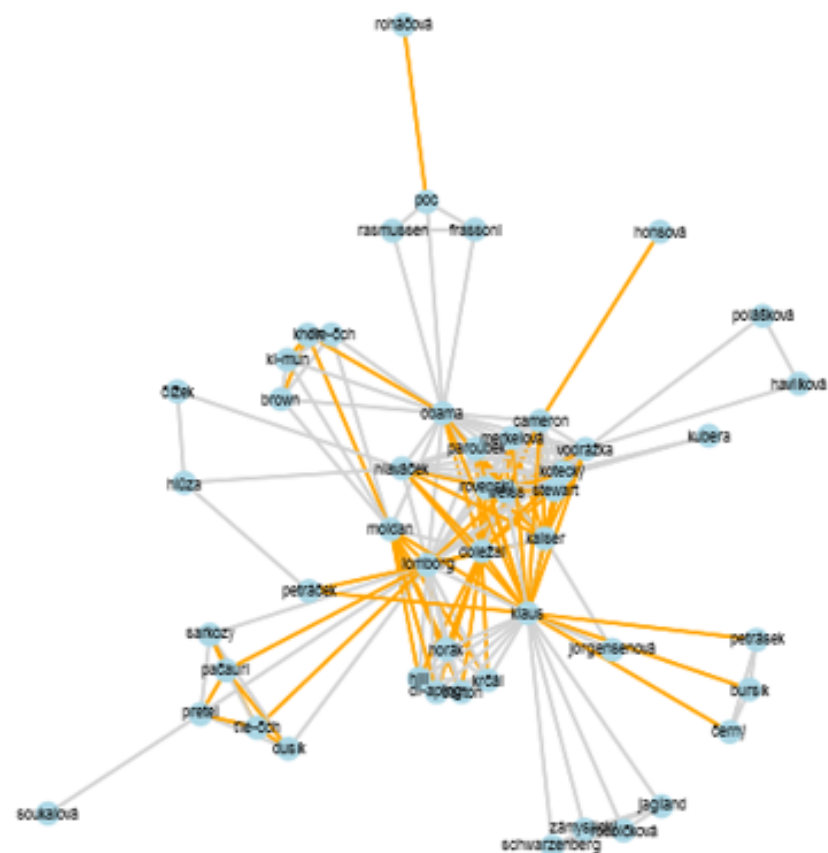
actors x concepts subtract network LC

TOP10 concepts frequencies (N = 168)

actors congruence network LC



CC priority agenda	16
sociopol. threats	16
socioecon. costs	14
int. negotiations	11
dev. countries fund	9
Klaus as outlier	8
int. efforts crucial	8
mitigation necessary	7
higher targets	6
Copenh. failure	4



Frame / framing

- Frame: a **shared interpretative scheme** through which actors understand and promote certain version of reality (Entman 1993)
- Actors – via framing – **strategically** emphasize or suppress certain aspects of a given issue
- The purpose of framing: **promote own interpretation of the issue → make it hegemonic** (critically unquestioned)

Framing: climate change



Framing: climate change

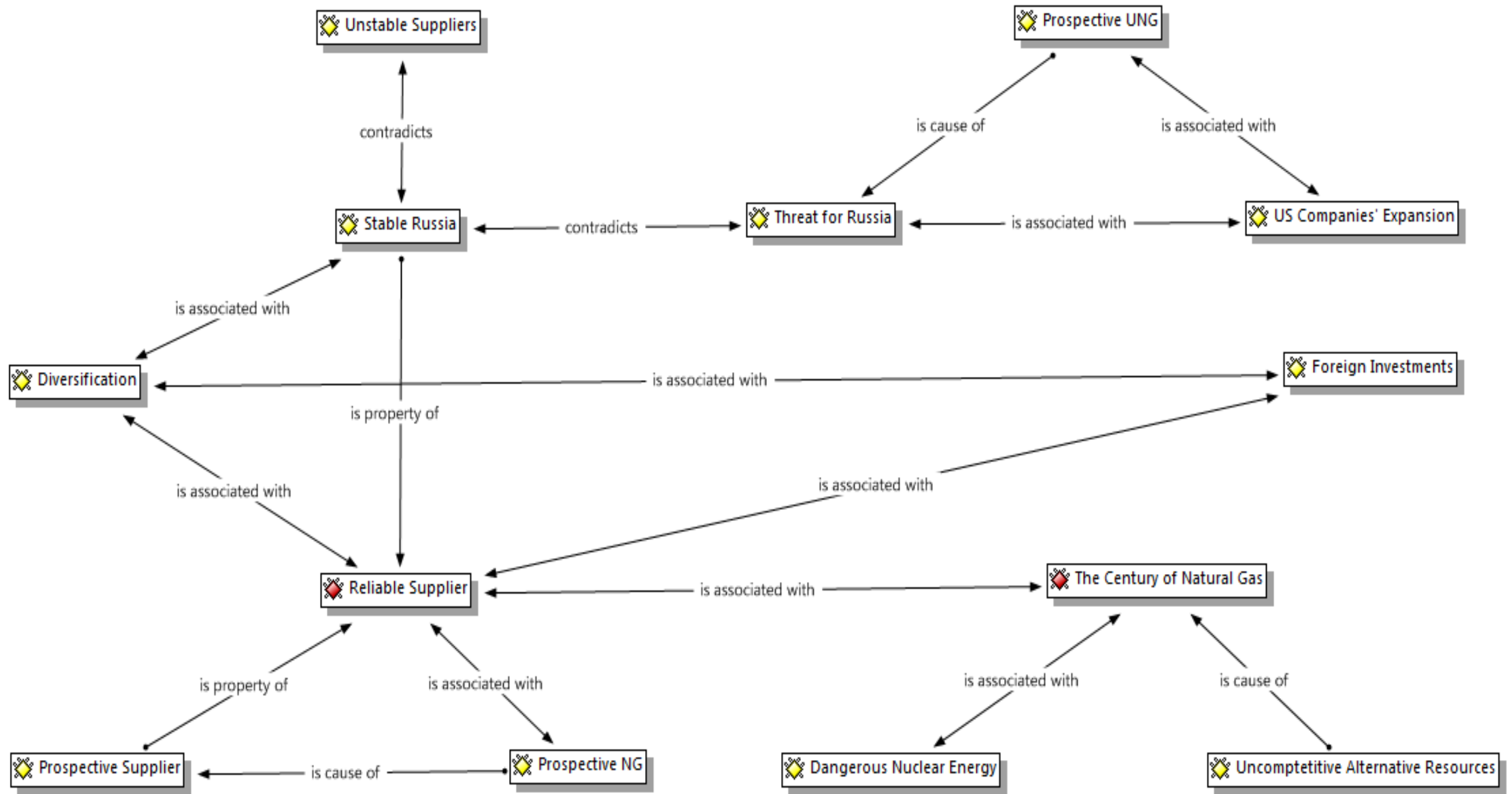


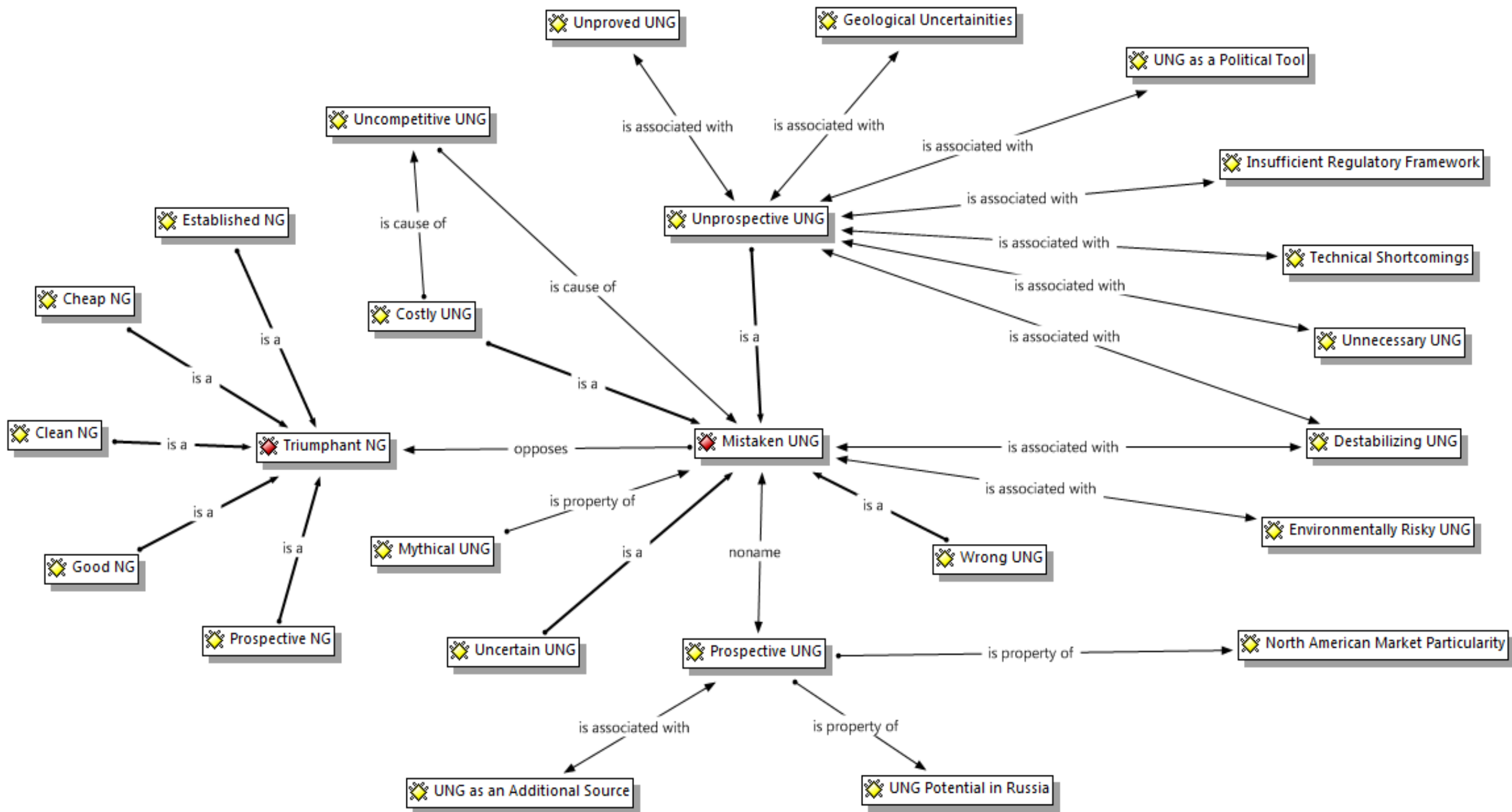
(Counter)framing: climate change



Constructivist analysis: mini-case

- Framing of unconventional natural gas resources (UNG) in Russian foreign policy in 2009 - 2011
- **RQ:** how is the meaning of UNG constructed? Through which frames it is promoted?
- For details:
<http://www.sciencedirect.com/science/article/pii/S0301421514002171>





Concluding remarks

- Constructivism **challenges materialism and essentialism**
- Every institution is **historically and socially conditioned**
→ **subversive potential**
- Constructivism **links the use of language with power relationships**
→ **emancipatory potential**
- Constructivism accepted as a (mainly) ontological framework by many post-rationalist approaches (critical approaches, post-structuralism, to some extent New materialism)