

# Social constructivism

Petr Ocelík

ESSn4007 / MEBn4001

21<sup>th</sup> October 2021

# Outline

- Constructivism as a social theory
- The construction of social reality (John Searle)
  
- Discourse
- Frame
- Mini-case study

# Constructivism as a social theory

- **Idealism:** social world is primarily created and driven by ideas
- **Interpretativism:** social phenomena do not exist independently of our interpretations of them
- Thus: social world **is being constructed**
- Social constructivism is **not an IR theory**
- It is a **social theory** that provides an explanation or understanding of social organization as such

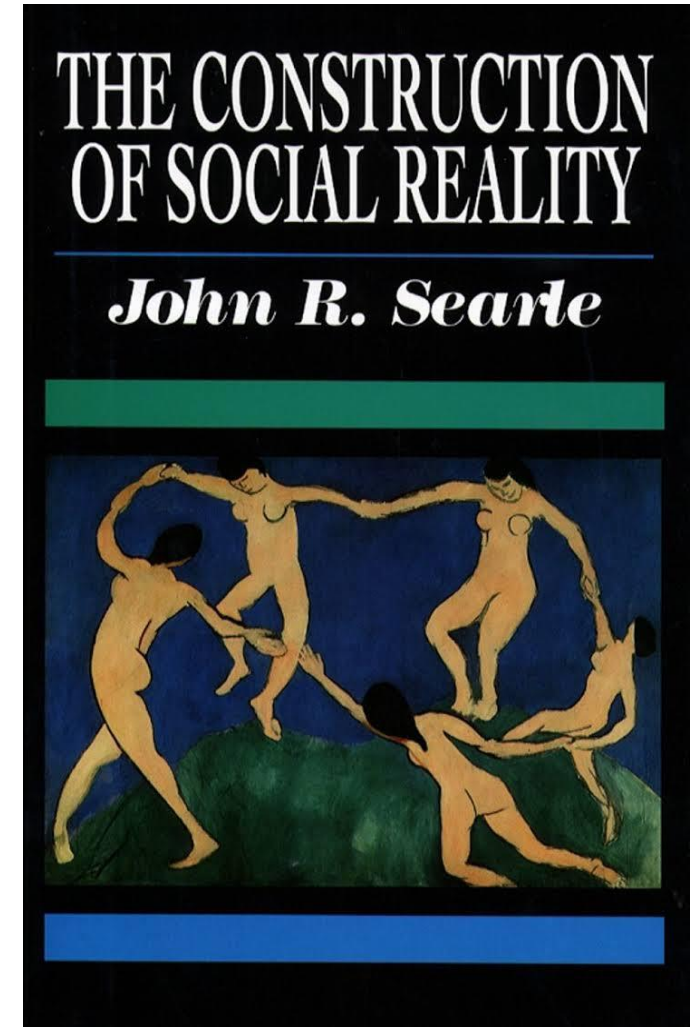
# Strong vs. weak constructivism

- Weak constructivism:
  - Allows causal explanations
  - Allows objective knowledge
  - (Differentiates between brute and social facts)
  
- Strong constructivism:
  - Rejects the concept of causality
  - Rejects the possibility of objective knowledge
  - (There are only social facts)



# John Searle: The Construction of Social Reality

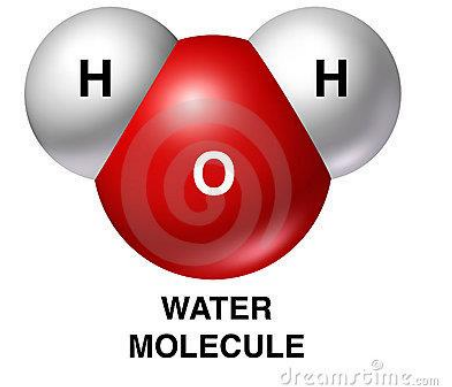
- Brute vs. **social/institutional facts**
- **Function assignment**
- Individual vs. **collective intentionality**  
(~ subjectivity vs. **intersubjectivity**)
- Regulatory vs. **constitutive rules**



# Brute vs. social facts

- **Brute facts:**

- Mind-independent
- Independent on other facts



- **Social facts:**

- Mind-dependent
- Dependent on social context, i.e. language, actions etc.



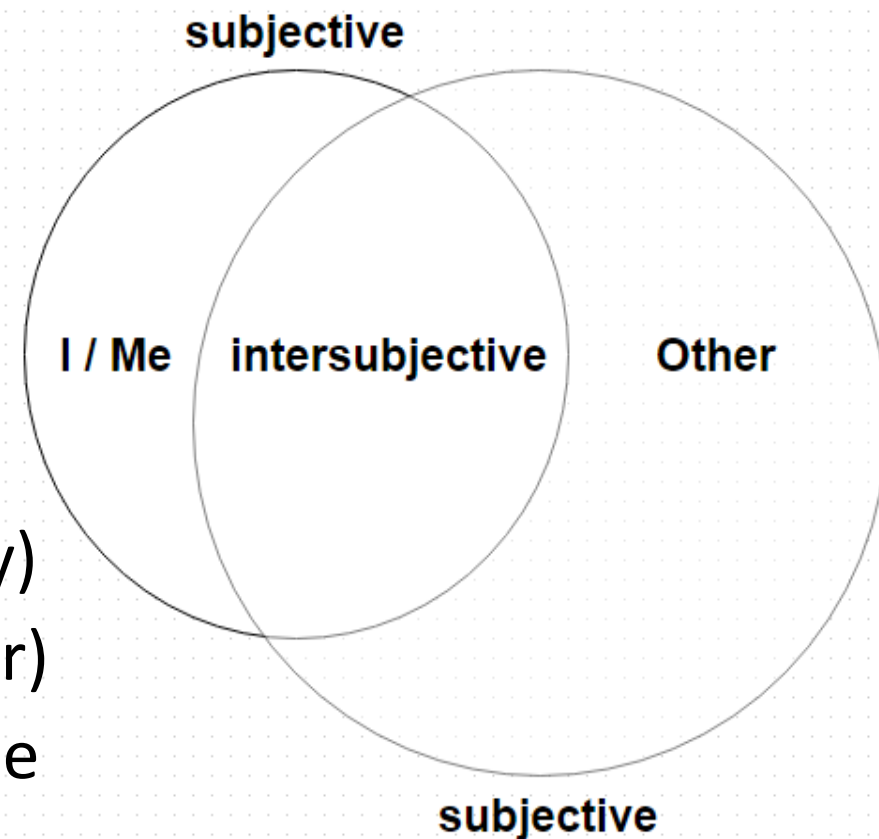
# Collective intentionality / intersubjectivity

- The **intersubjectivity** is established through convergence of expectations about self and Others

→ social facts always exceed individual level

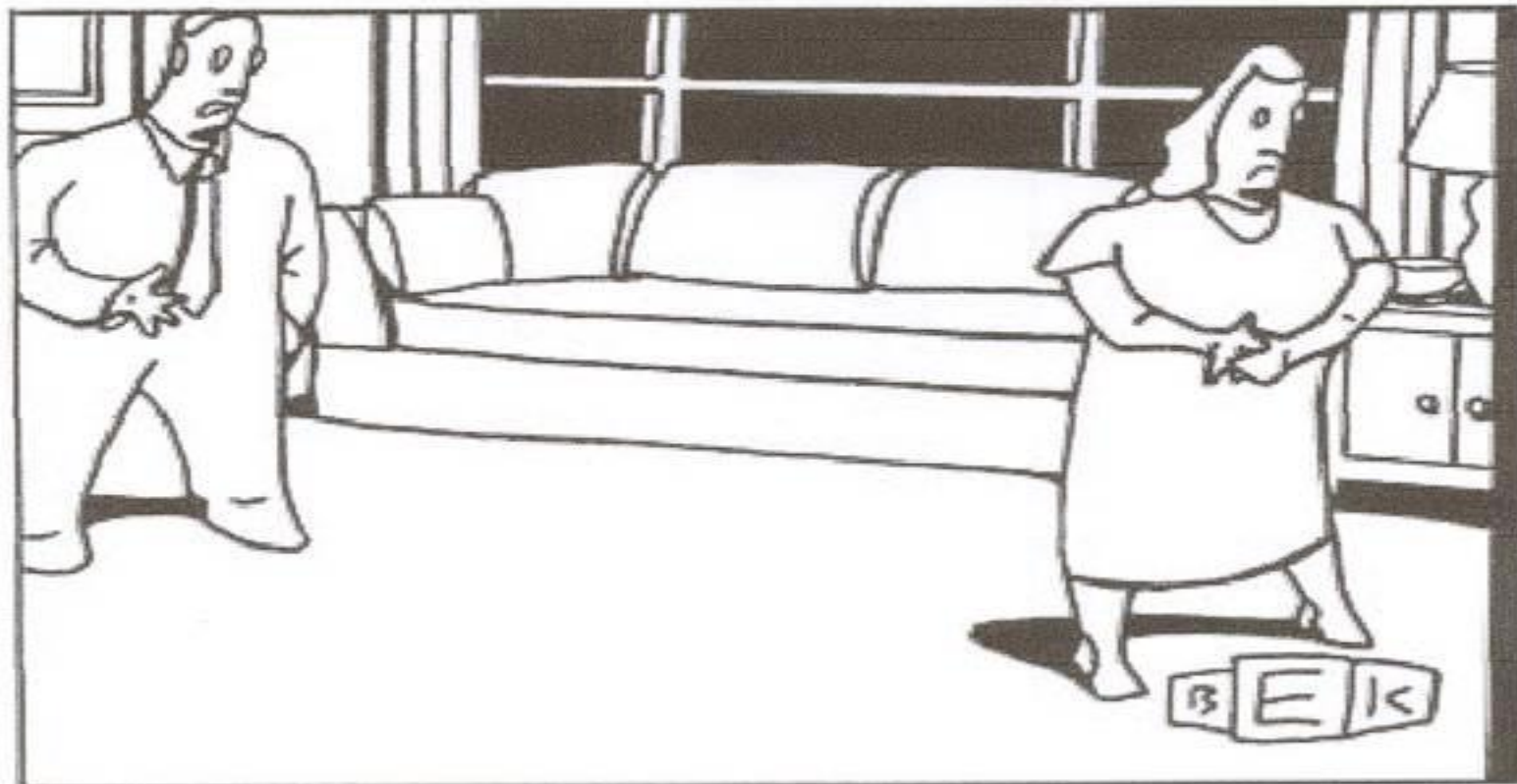
→ social facts are always intersubjective

- **E.g.:** I can really play ice hockey (I) only if we have shared understandings (intersubjectivity) of my role (Me) as well as of role of others (Other) in the game and about what constitutes the game



# Levels of Dyadic Intersubjectivity

Bruce Eric Kaplan, *New Yorker* (10/26/1998)



*“Of course I care about how you imagined I thought you perceived I wanted you to feel.”*



# Function assignment

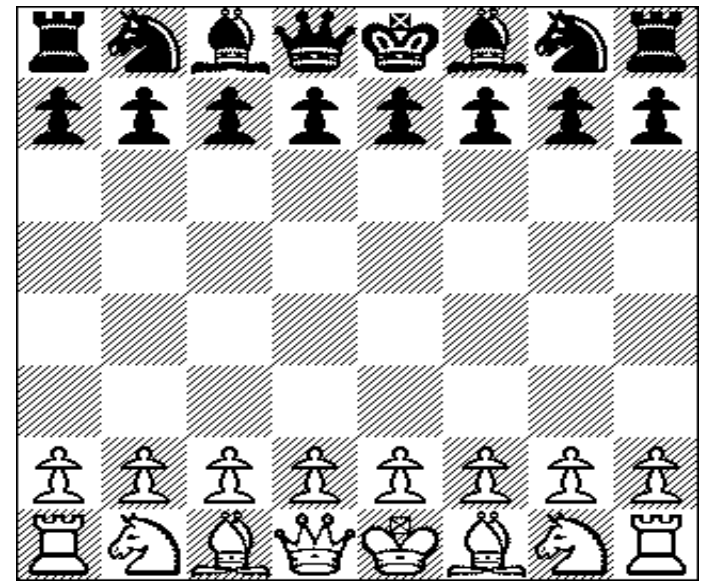
- The **function of a given object is not inherent**, it is assigned to the object by its use
- A parallel with Wittgenstein's "tool theory of meaning"
- **General form** of a status function:  
*X counts as Y in context of Z*
- **E.g.:** boots (X) count as goal posts (Y) while playing ice hockey at a pond (Z)



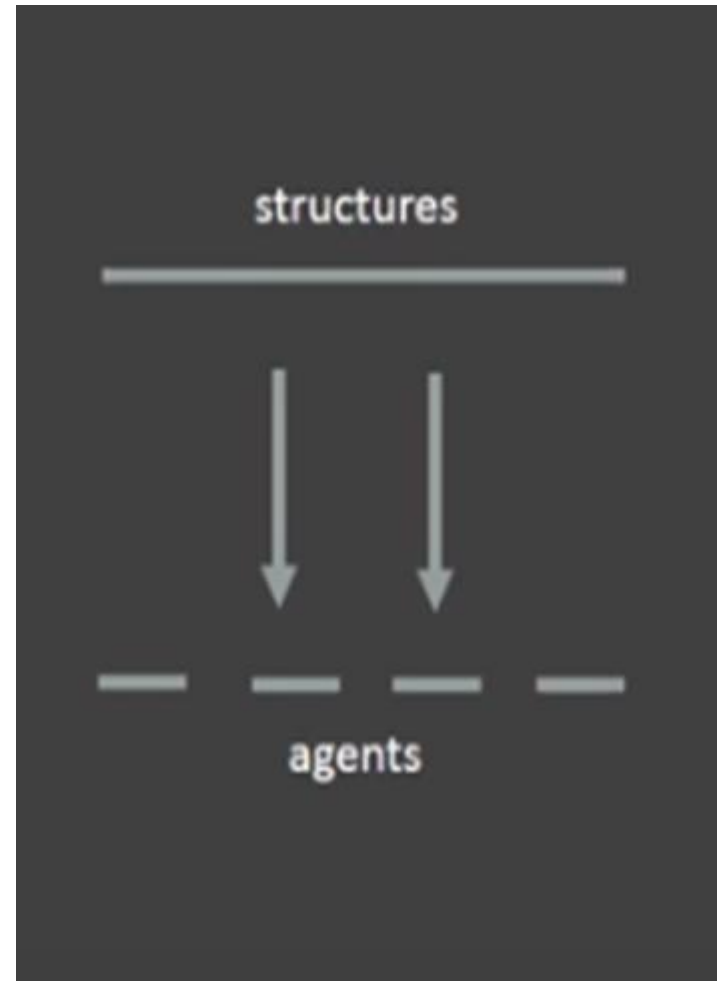
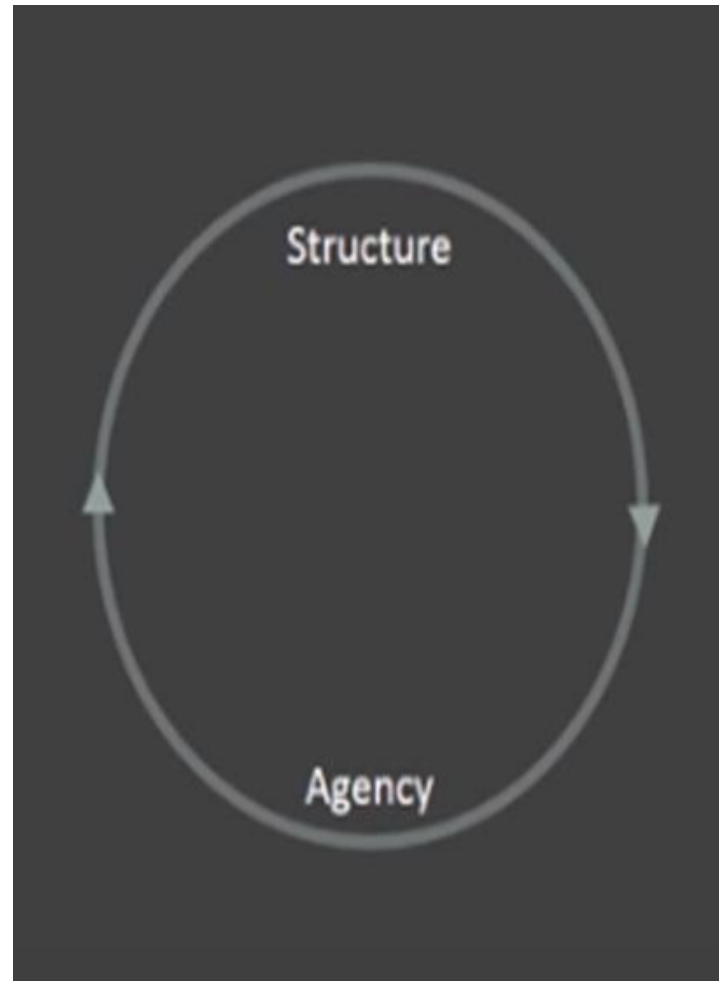
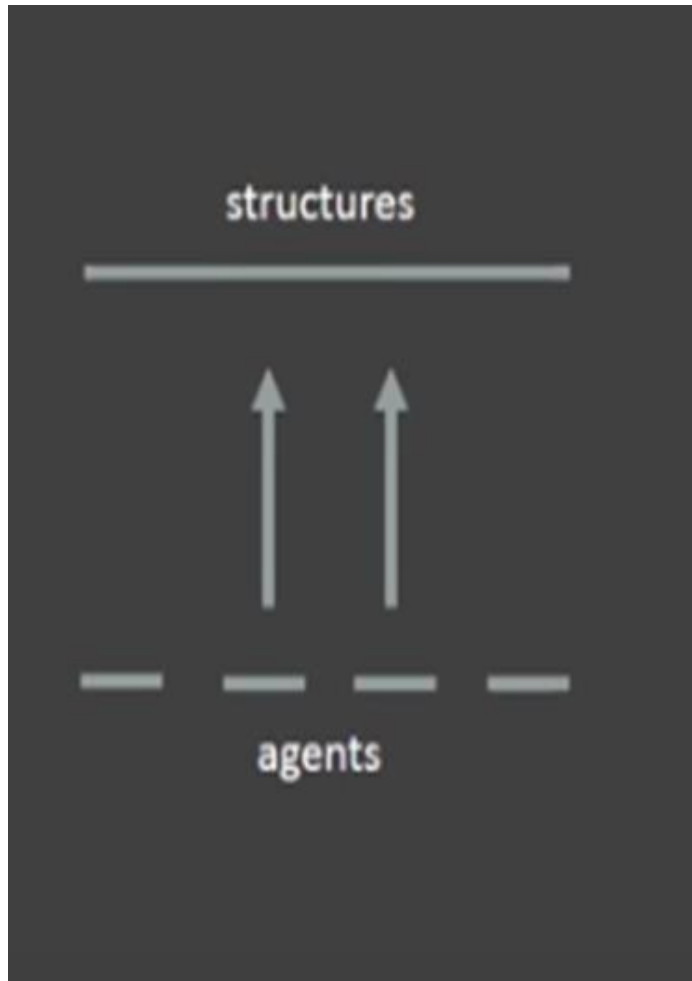


# Regulatory vs. constitutive rules

- **Regulatory rules** govern existing activities  
→ activities do not depend on them
- **Constitutive rules** not only regulate, but also create/constitute given activities  
→ activities do depend on (are made of) them

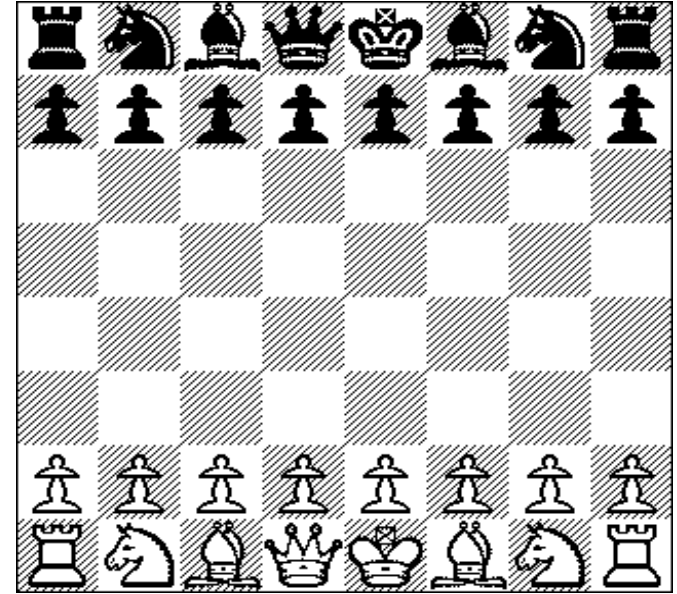


# Social construction: a mutually constitutive relationship



# Mutual constitution and socialization

- **Constitutive rules** not only regulate, but also create/constitute given activities  
→ activities do depend on (are made of) them
- By following and reproducing constitutive rules, actors are being **socialized**
- Any **examples** of constitutive rules in international politics?



# Sovereignty as a social construction



# Sovereignty as a social construction



# Discourse

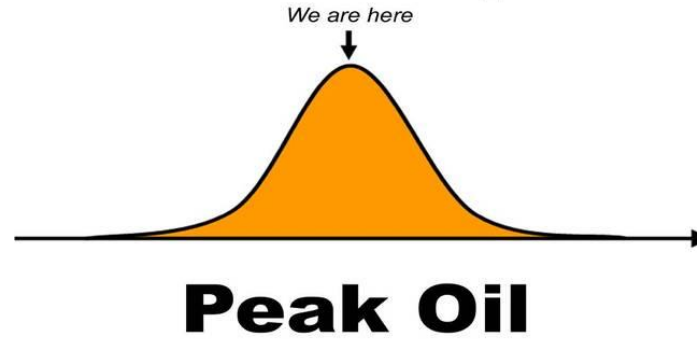
- Discourse: **an institutionalized use of language** and other meaning systems (images, gestures etc.)
- Discourse provides, more or less, **coherent account of some issue**
- It shapes how we speak and think about the issue
  - **power is exerted and maintained through discursive operations**
- We are embedded in a **plurality of overlapping discourses**



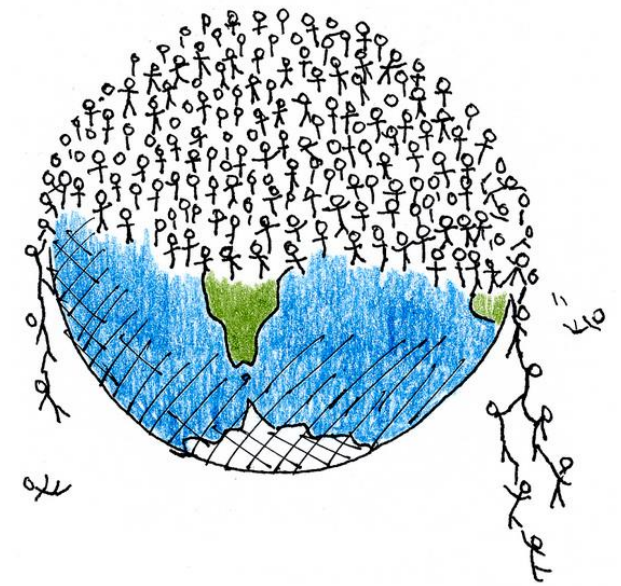
# Malthusian discourse



## Wake up!!!



## OVERPOPULATION



# Frame / framing

- Frame: a **shared interpretative scheme** through which actors understand and promote certain version of reality
- Actors – via framing – **strategically** emphasize or suppress certain aspects of a given issue
- The purpose of framing: **promote own interpretation of the issue → make it hegemonic** (critically unquestioned)

# Framing: climate change



# Framing: climate change



# (Contra)framing: climate change

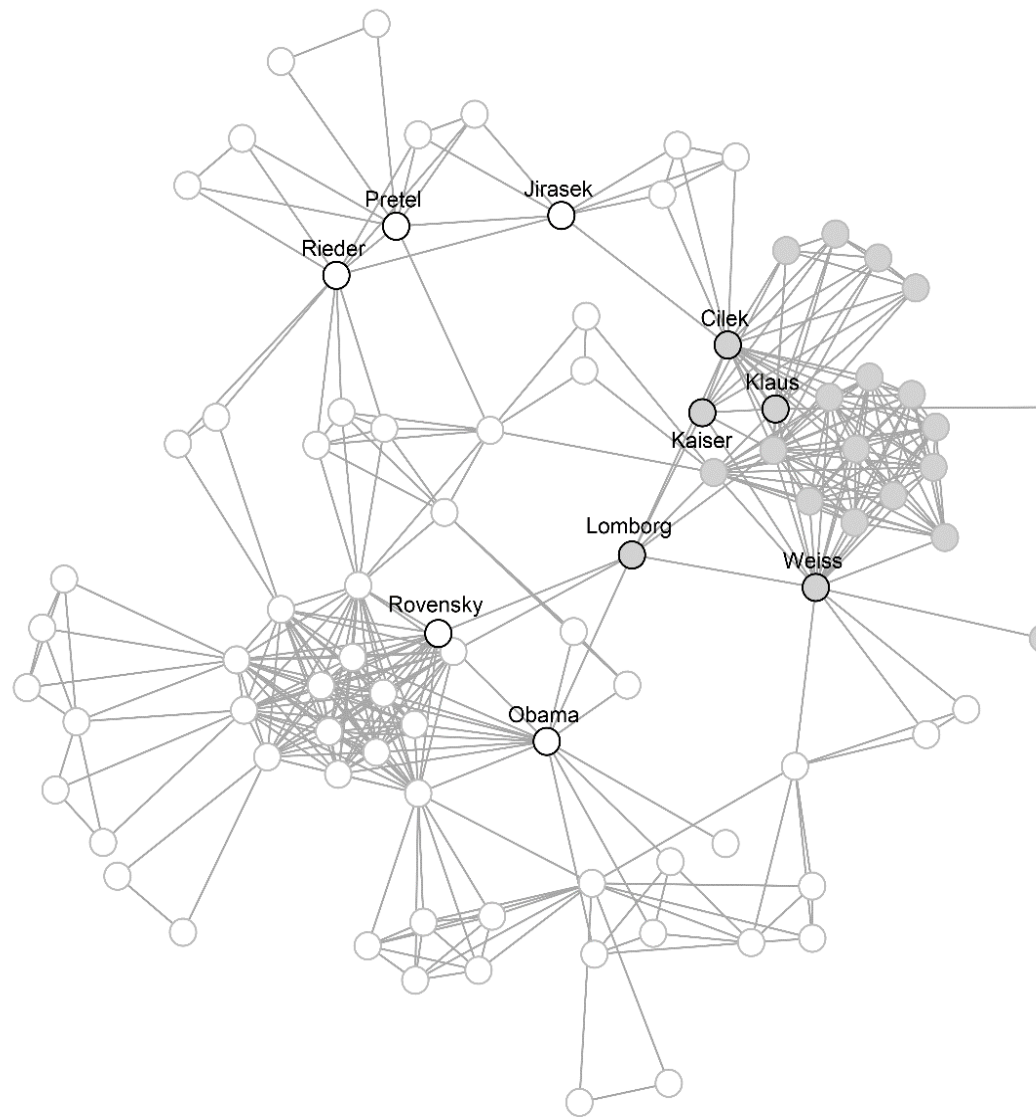


# Constructivist analysis: mini-case

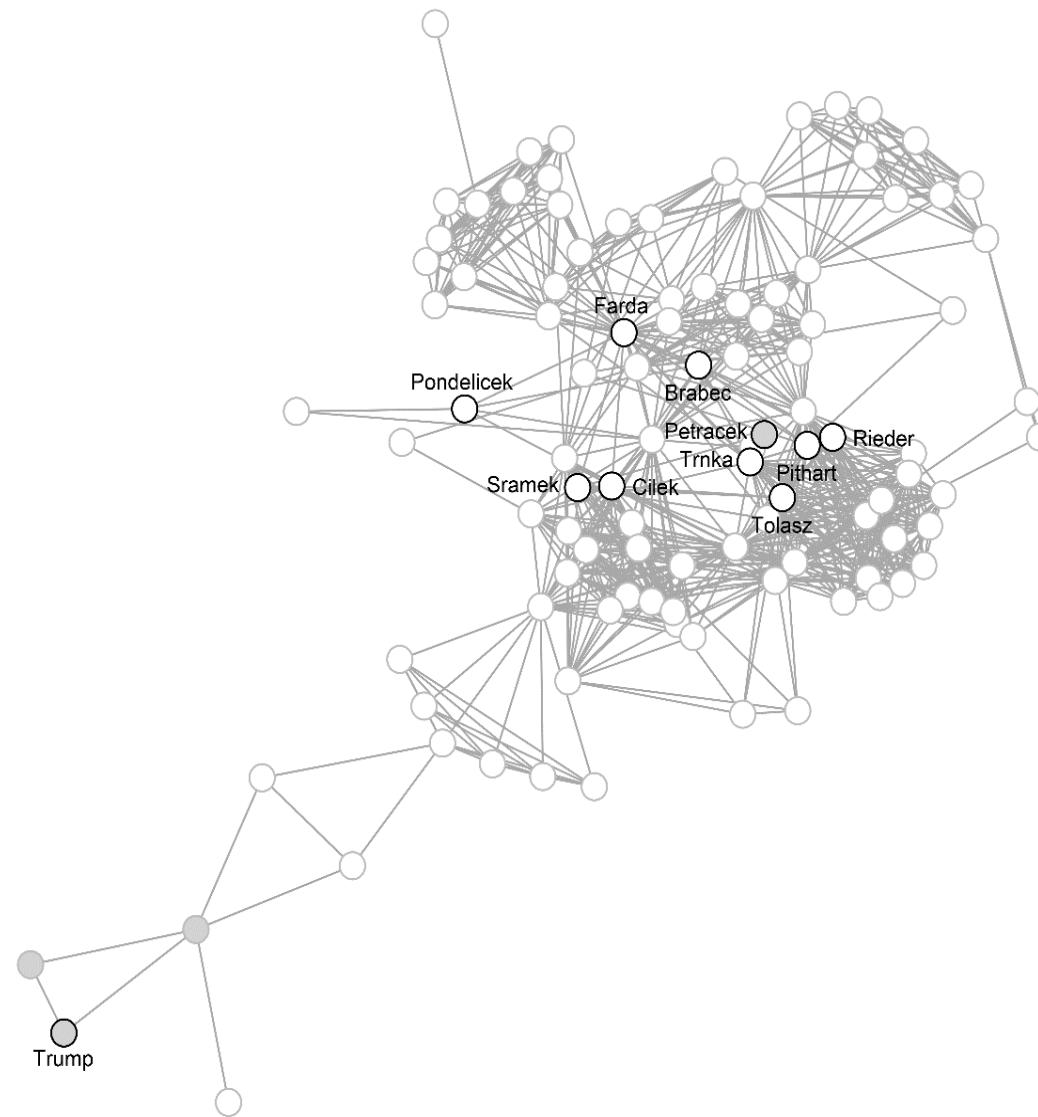
Ocelík, P. (n.d.). Climate change scepticism in the Czech newspaper front-page coverage: A one man show. In D. B. Tindall, M. C. J. Stoddart, & R. E. Dunlap (Eds.), *Handbook of Anti-Environmentalism (accepted for publication)*. Edward Elgar.

- **RQ:** *What has been the prevalence of climate change scepticism in 2009-2018?*

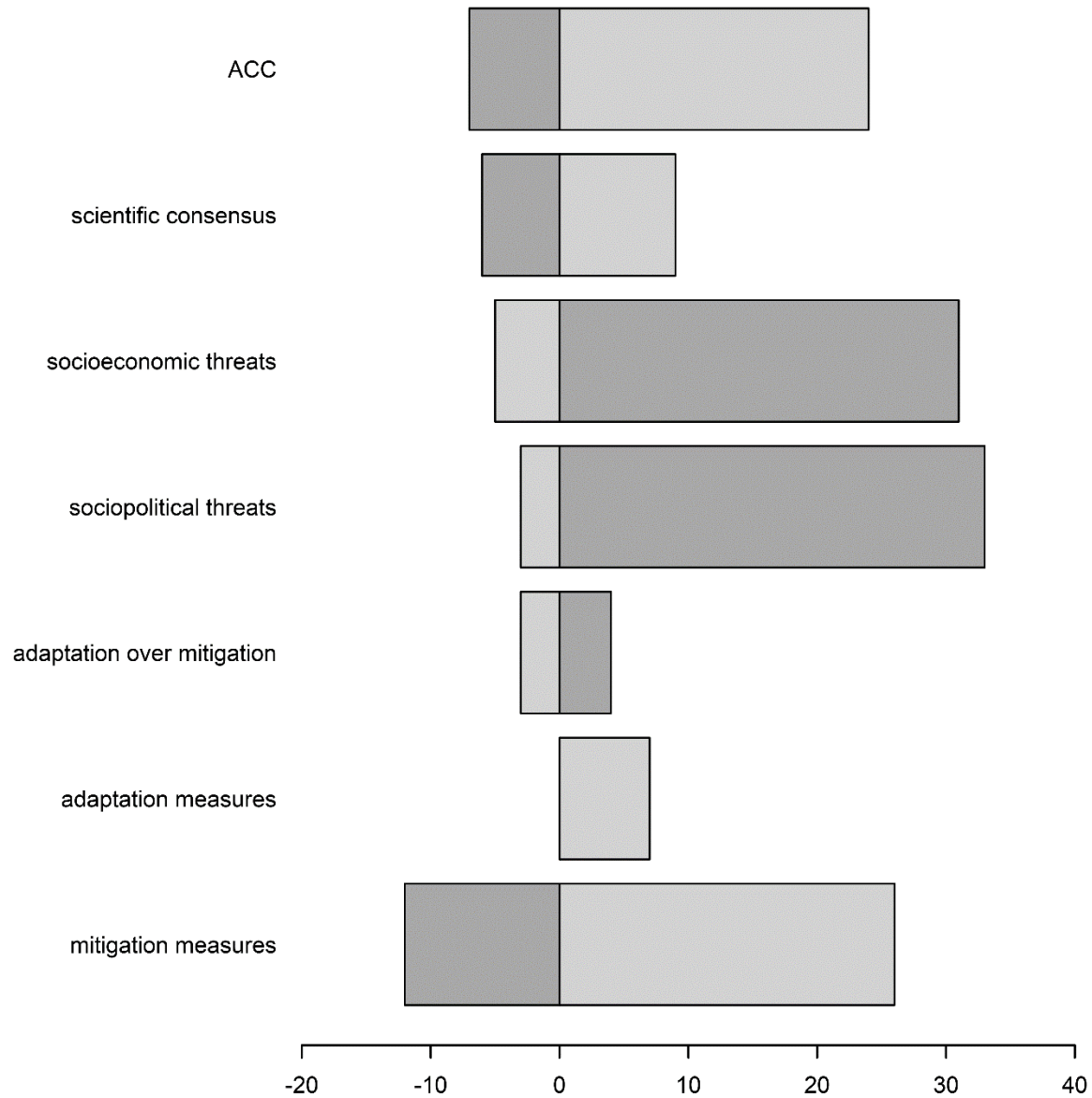
Normalized actor congruence network (w > 1), 2009–2013



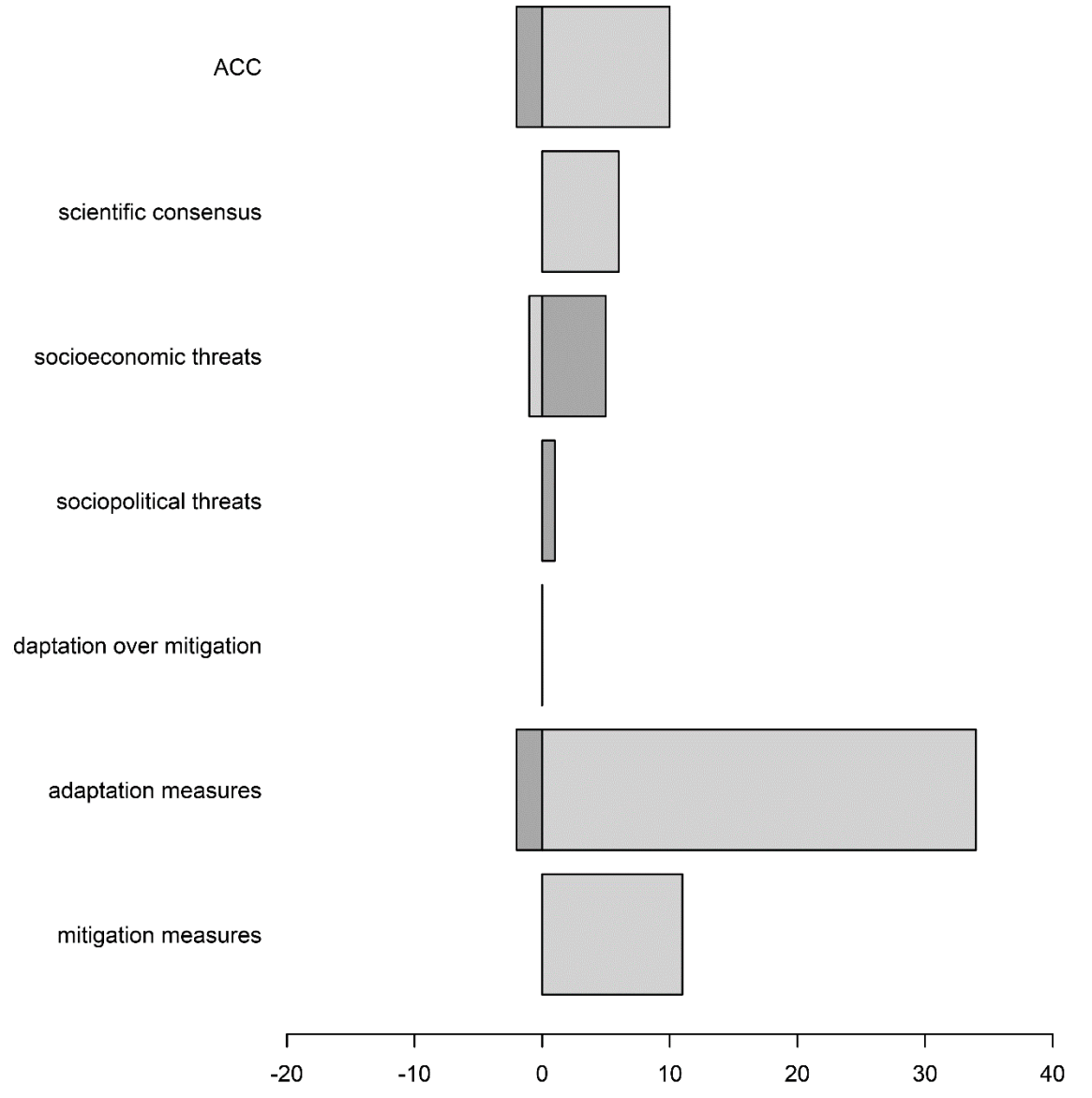
Normalized actor congruence network (w > 1), 2014–2018



**Distribution of dis/agreements on selected topics (2009–2013)**



**Distribution of dis/agreements on selected topics (2014–2018)**





# Concluding remarks

- Constructivism **challenges materialism and essentialism**
- Every institution is **historically and socially conditioned**  
→ **subversive potential**
- Constructivism **links the use of language with power relationships**  
→ **emancipatory potential**
- Constructivism accepted as a (mainly) ontological framework by many post-rationalist approaches (critical approaches, post-structuralism, to some extent New materialism)