

# SEXUAL VIOLENCE AGAINST WOMEN IN NEW DELHI

## Delhi - The rape capital of the world

A woman or girl is raped every five hours in Delhi

Conviction rate for rape cases has dropped in past thirty years

### 20%

No. of rape cases pending in courts

### 90%

EVENTS

PATTERNS

UNDERLYING STRUCTURES

MENTAL MODELS

**Poverty**  
1.7 million people live below the poverty line

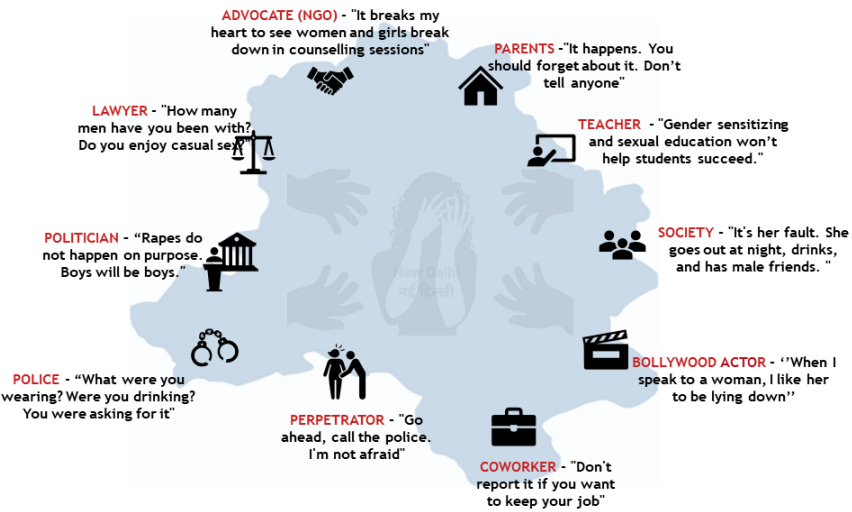
**Corruption**  
81st most corrupt country

**Caste System**  
4 Dalit women are raped every day in India

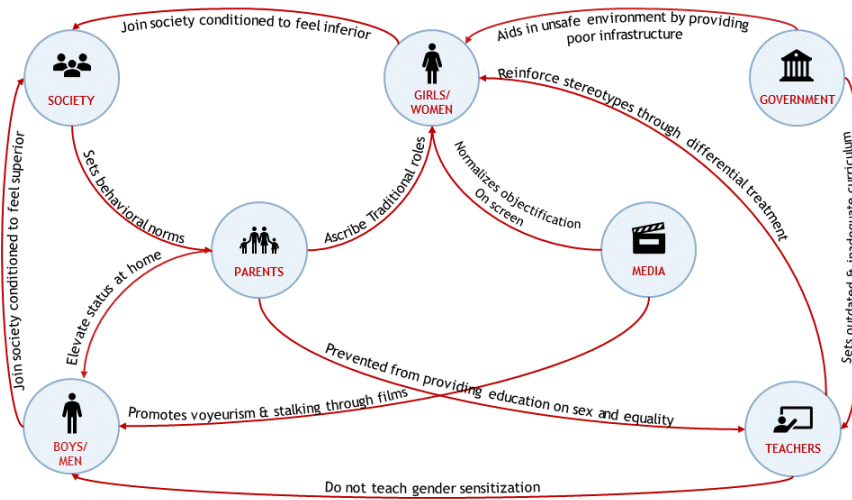
**Patriarchy: Perception of women as inferior**  
6/70 seats in Delhi MLA are held by women

**Pre-defined roles in society for both men and women**  
Women form only 12.19% of the city's workforce

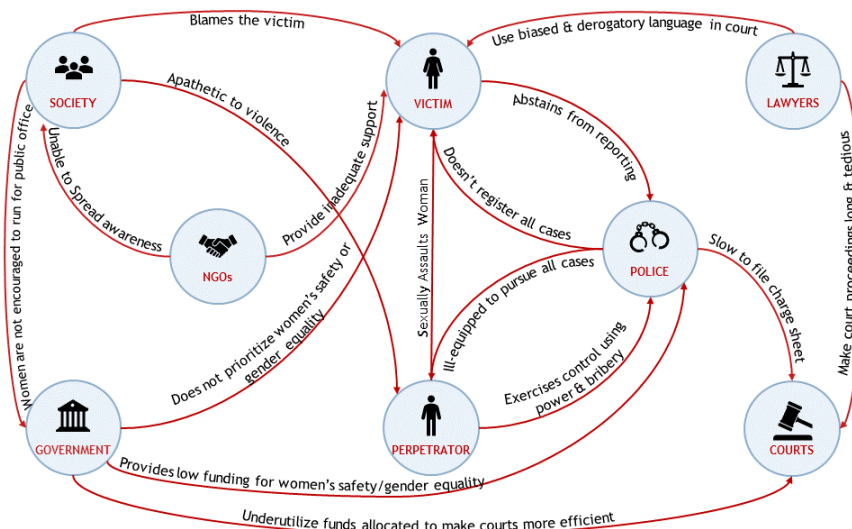
## STAKEHOLDER PERSPECTIVES: SETTING THE NARRATIVE



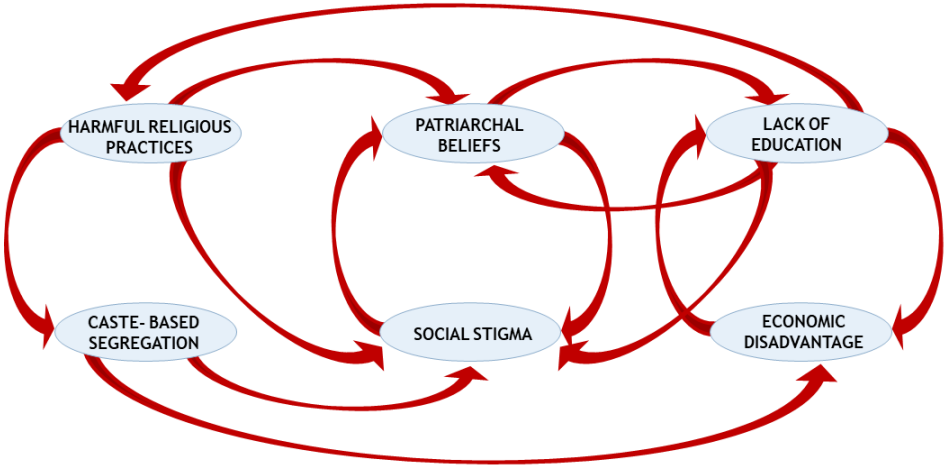
## A SYSTEM THAT PROMOTES GENDER INEQUALITY



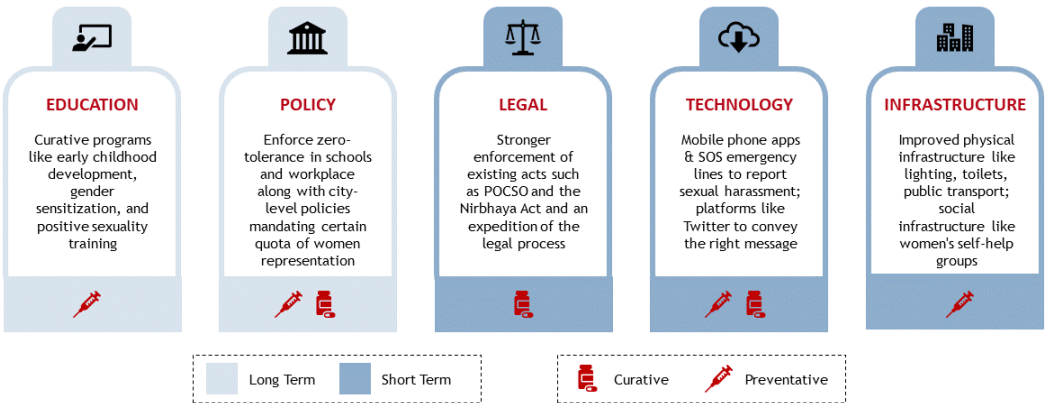
## A SYSTEM THAT NORMALIZES SEXUAL ASSAULT



## THE MENTAL MODELS SUPPORTING THE SYSTEM



## THE SOLUTIONS LANDSCAPE



## GAPS AND LEVERS OF CHANGE

SOLUTIONS

GAPS

LEVERS OF CHANGE



Lack of Prioritization & Implementation

Prioritize Gender Equality Through Different Media



Lack of Sensitivity & Support

Create a Safe & Reliable Space for Women to Fight Against Assault



Shortfalls in Staffing & Representation

Increase the Agency & Representation of Women Across Sectors



Lack of Knowledge, Awareness, & Accessibility

Develop Effective Campaigns for Information Dissemination