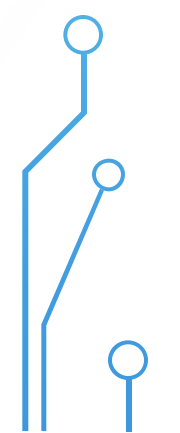
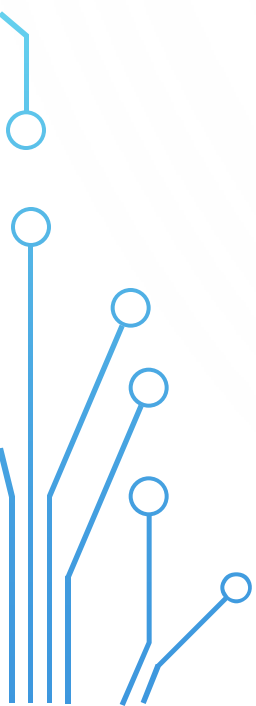
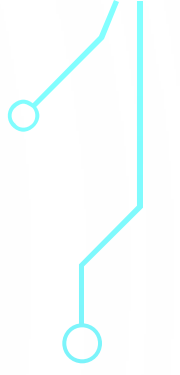
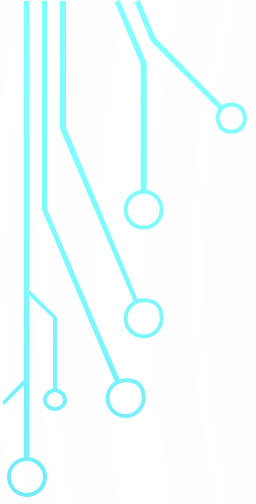
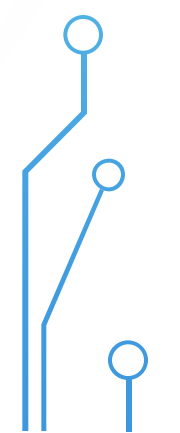
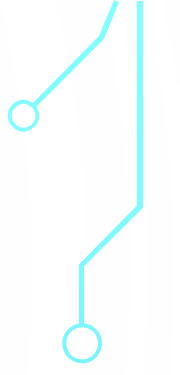
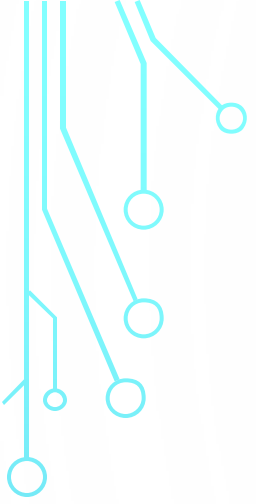


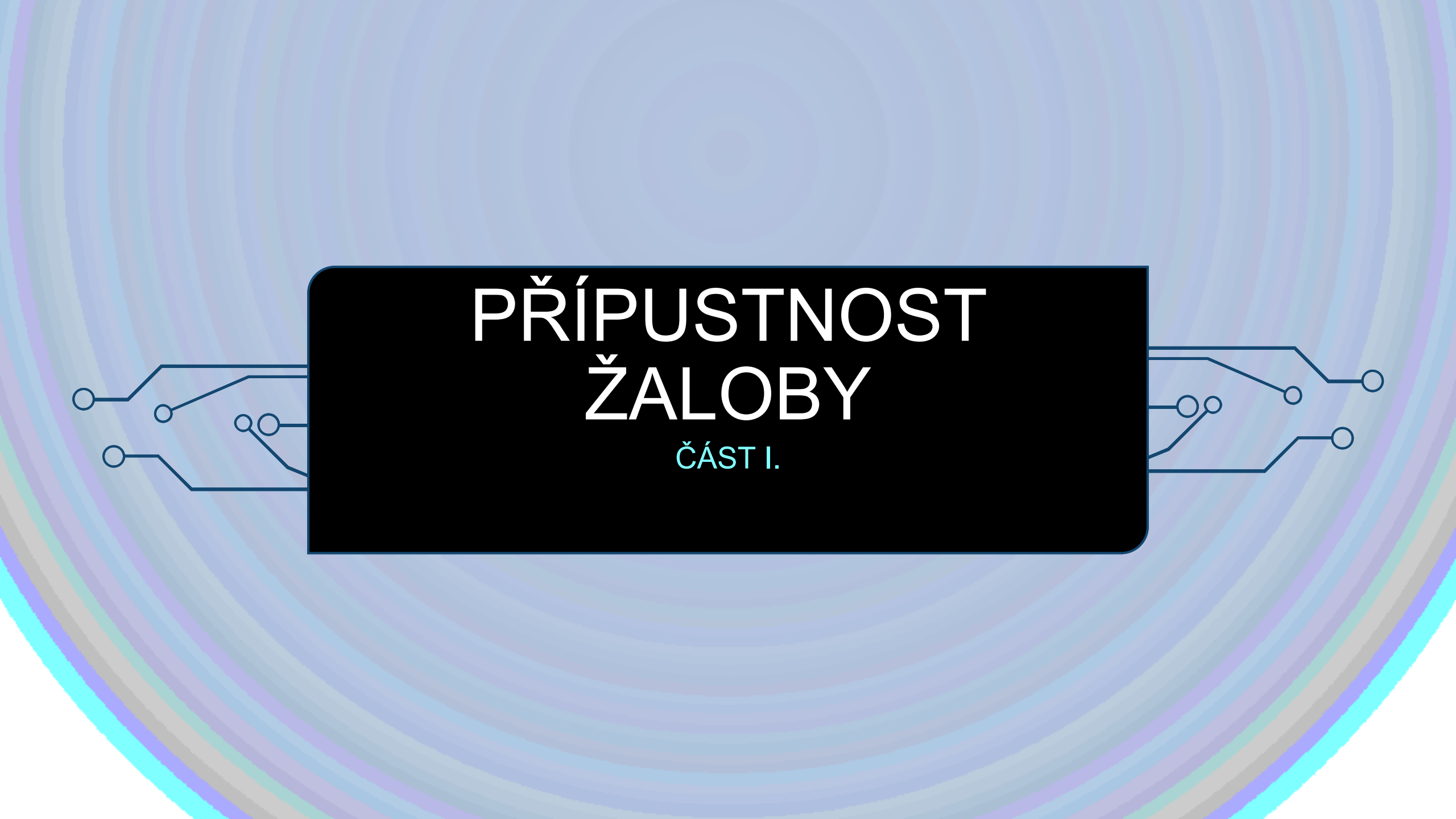
ŽALOBA NA OBNOVU ŘÍZENÍ A PRO ZMATEČNOST

MGR. MILOSLAV HRDLIČKA



KLERSIAK

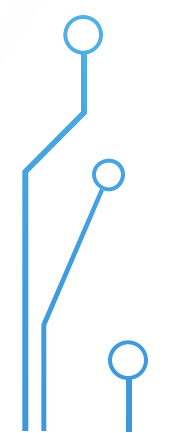
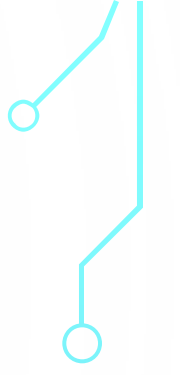
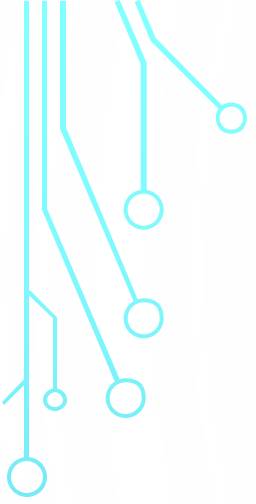


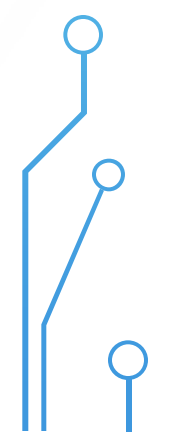
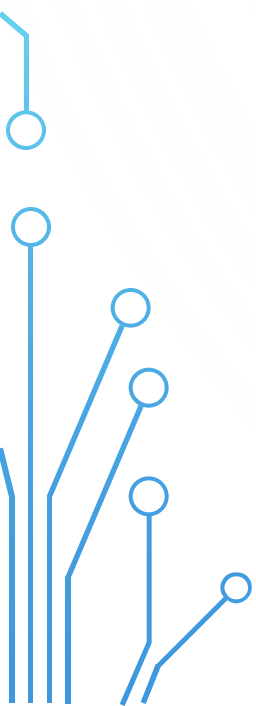
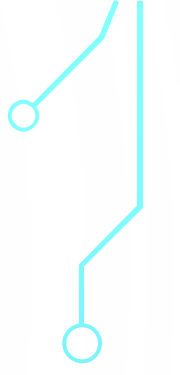
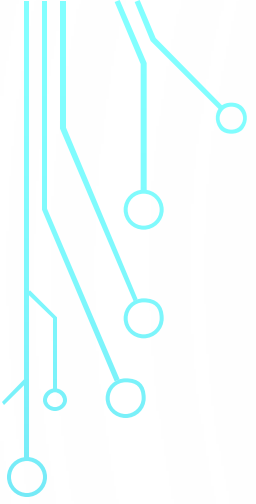


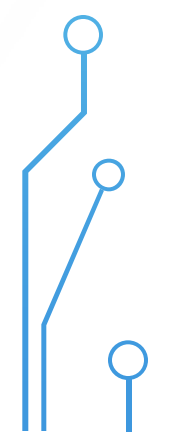
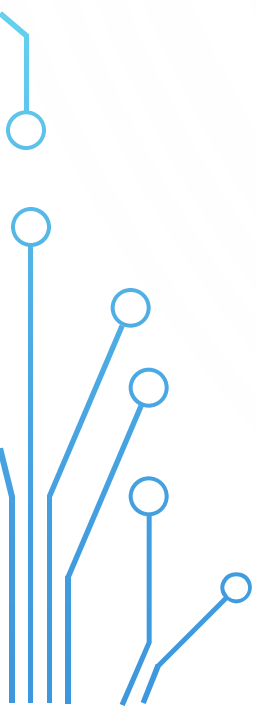
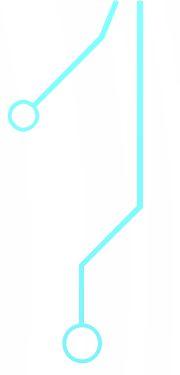
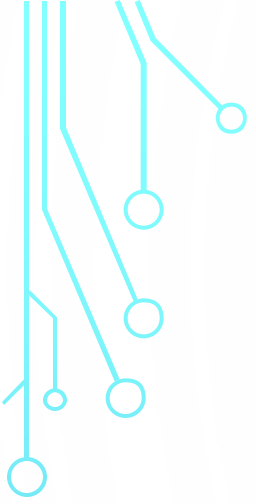
PŘÍPUSTNOST ŽALOBY

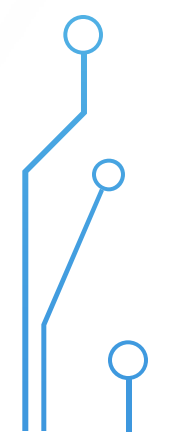
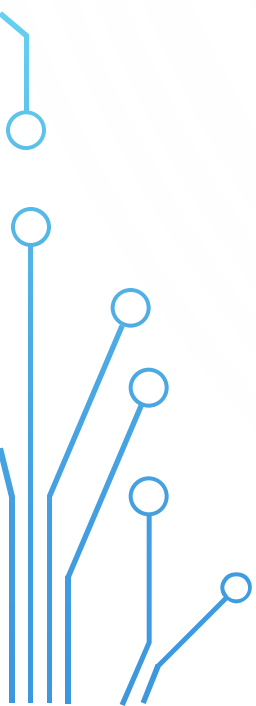
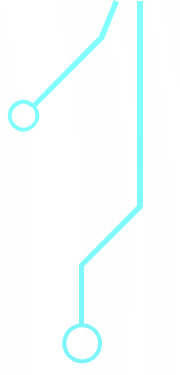
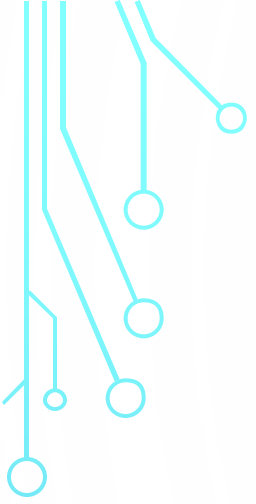
ČÁST I.











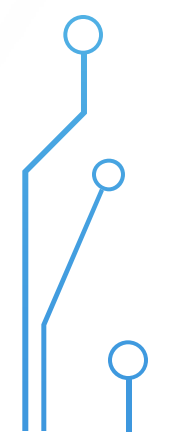
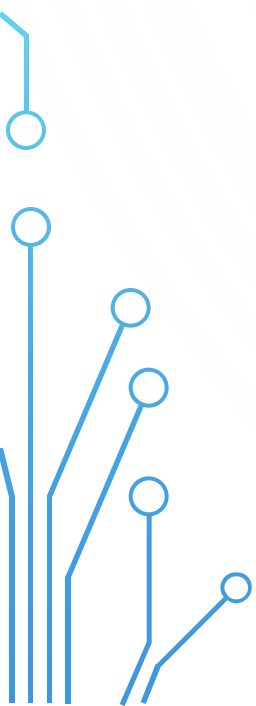
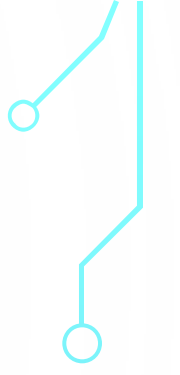
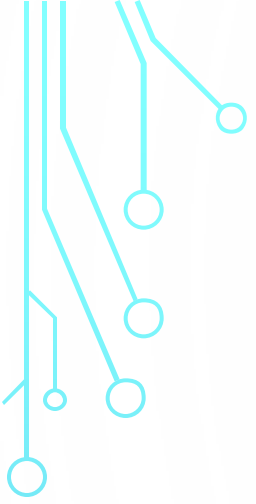






DŮVODY OBNOVY

ČÁST II.














DŮVODY ZMATEČNOSTI

ČÁST III.



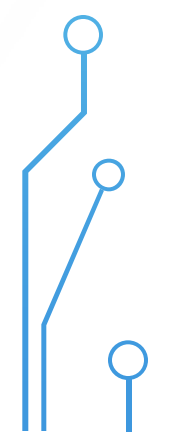
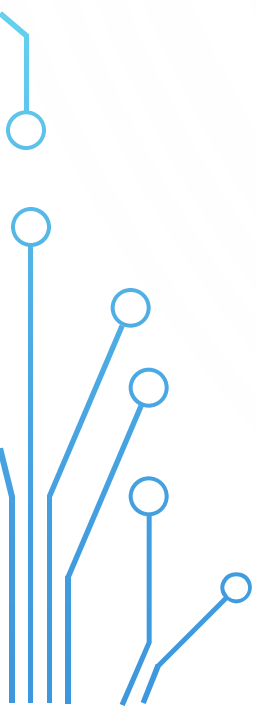
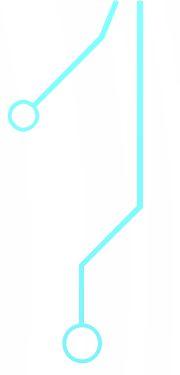
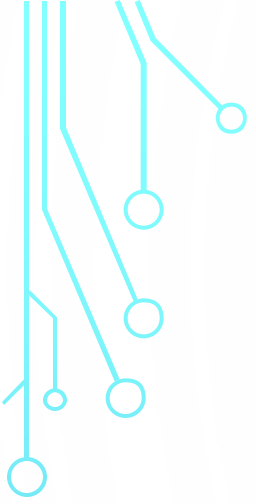


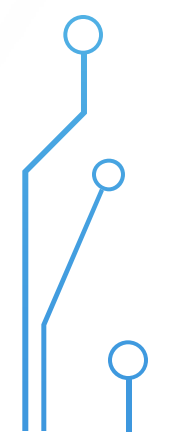
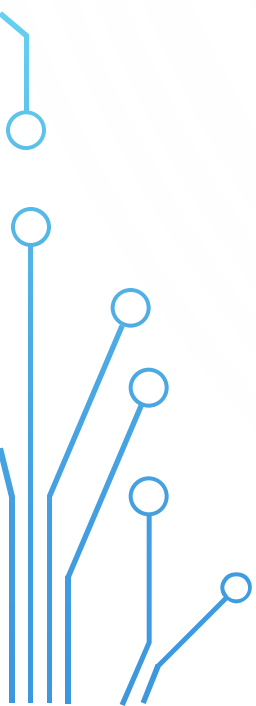
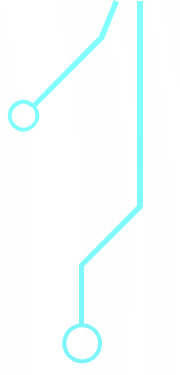
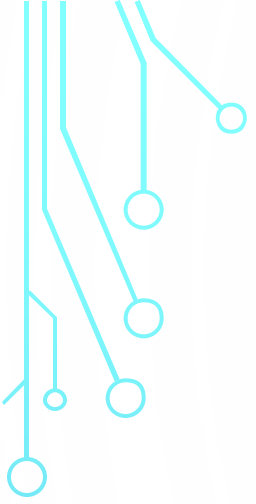


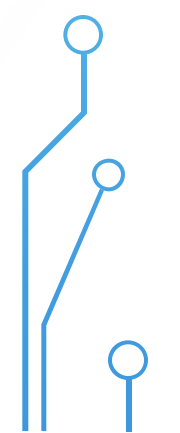
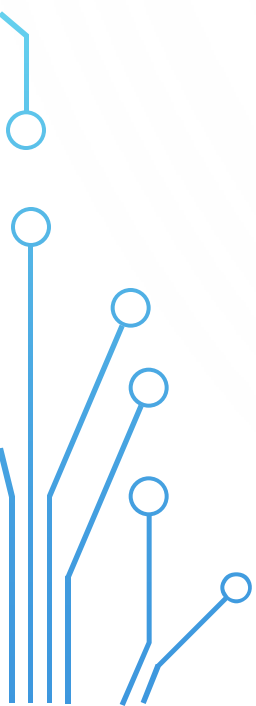
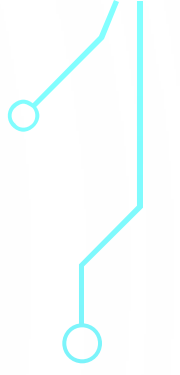
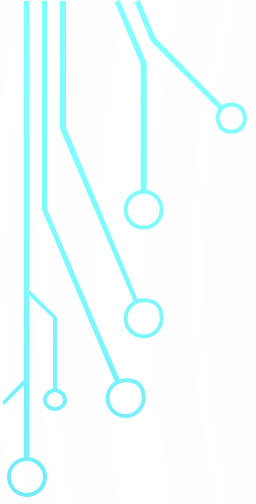


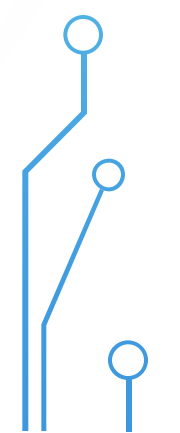
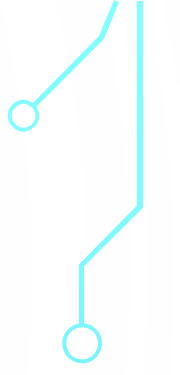
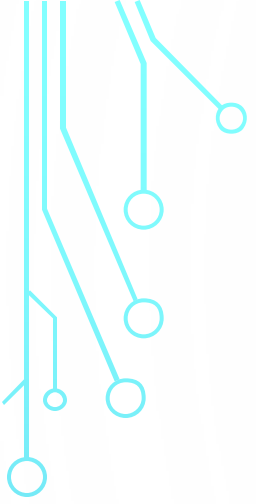


SECRET







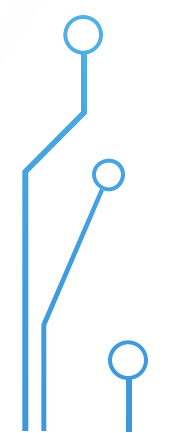
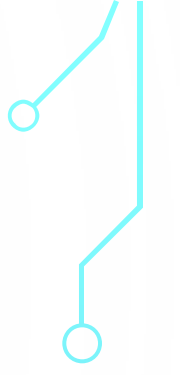
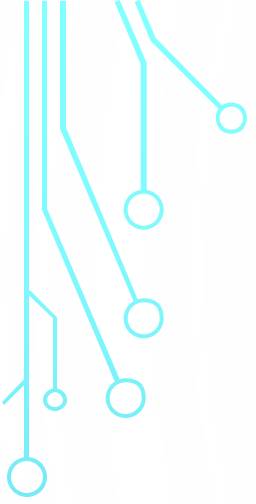


The background features a series of concentric circles in shades of blue, purple, and cyan. Overlaid on this are stylized circuit board traces in a light blue color, extending from the left and right sides towards a central black box.

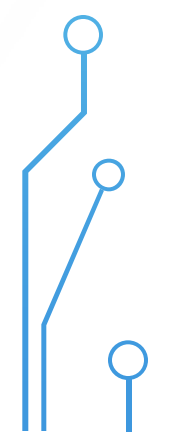
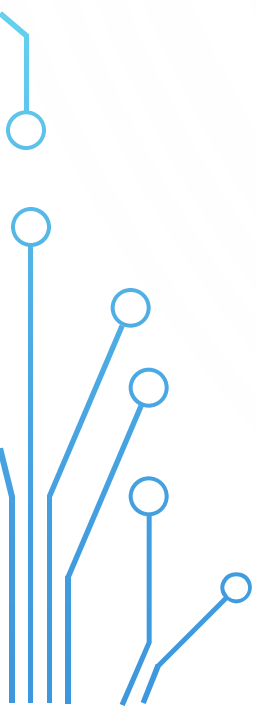
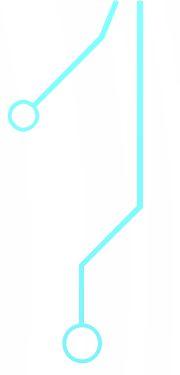
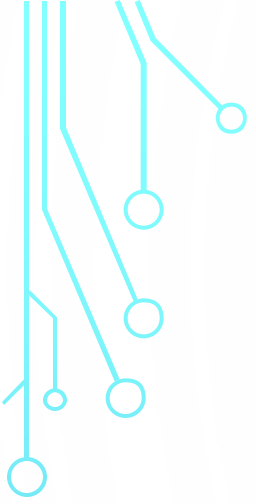
NÁLEŽITOSTI, LHŮTA A PODÁNÍ ŽALOBY

ČÁST IV.











ŘÍZENÍ O ŽALOBĚ

ČÁST V.

