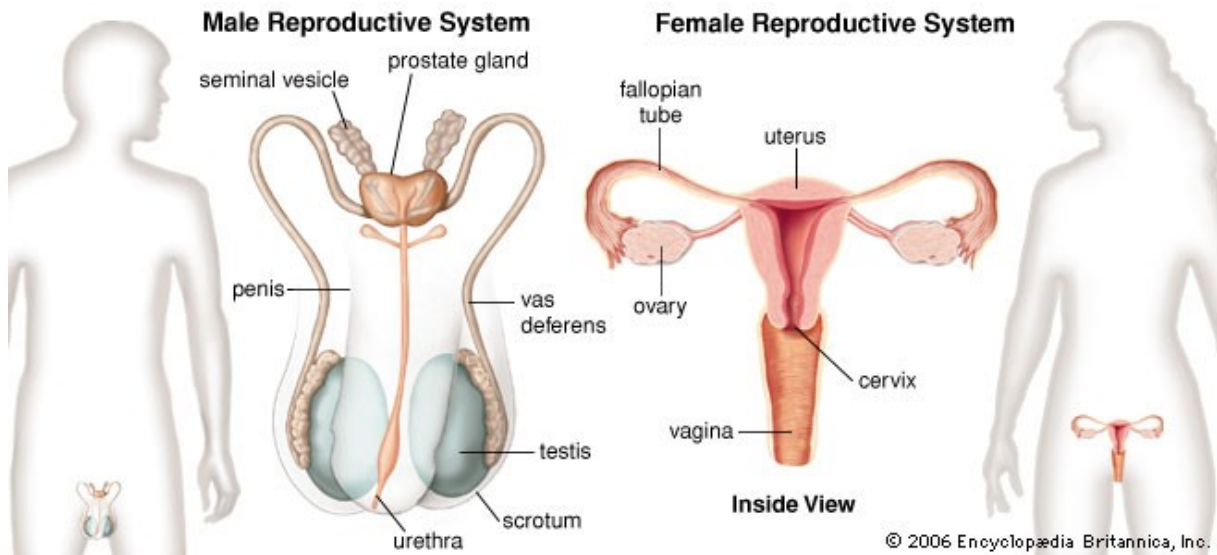
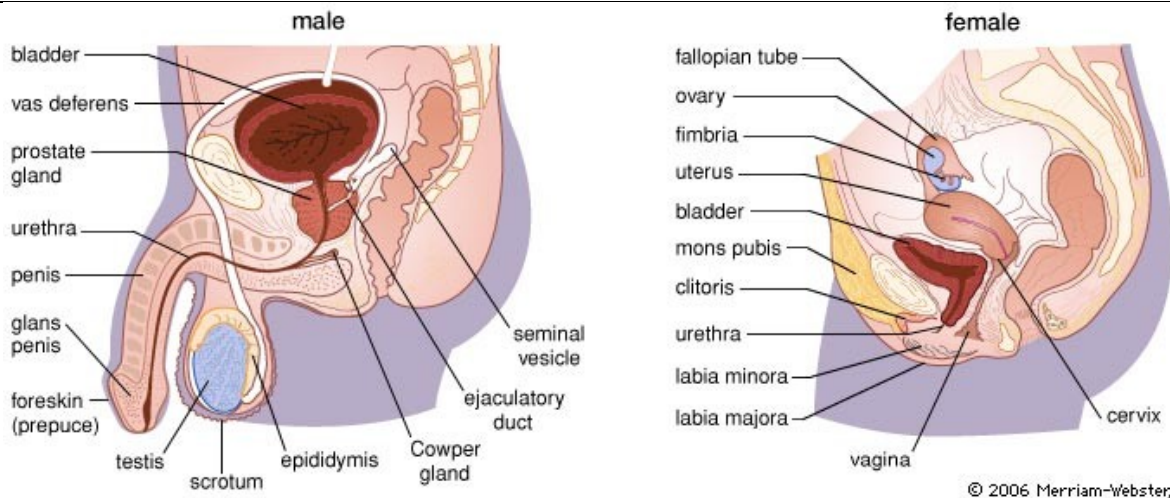
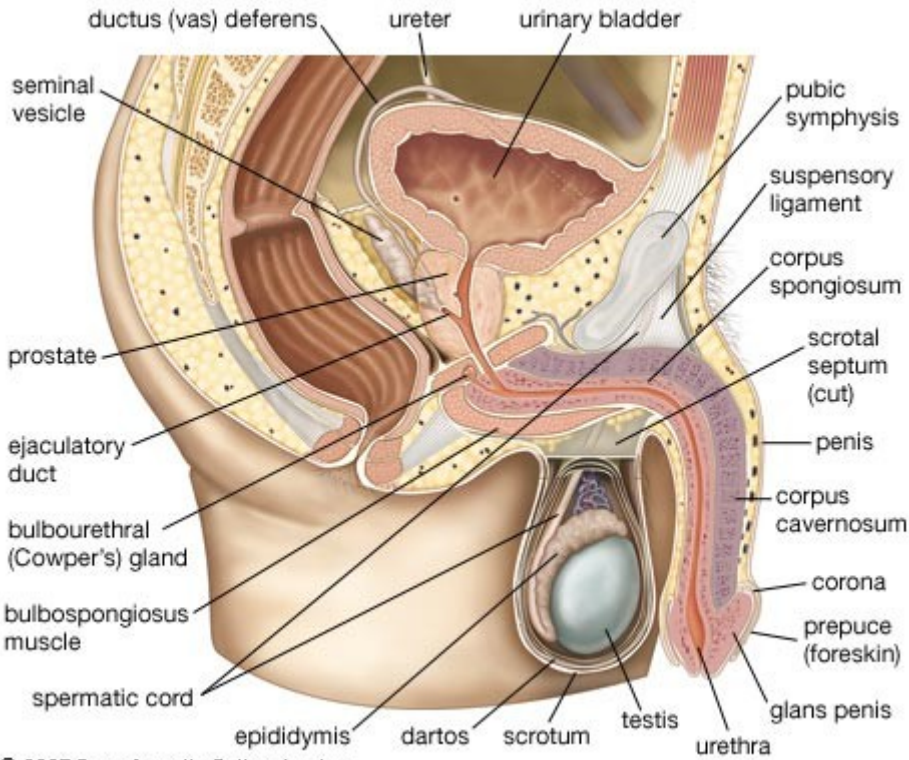
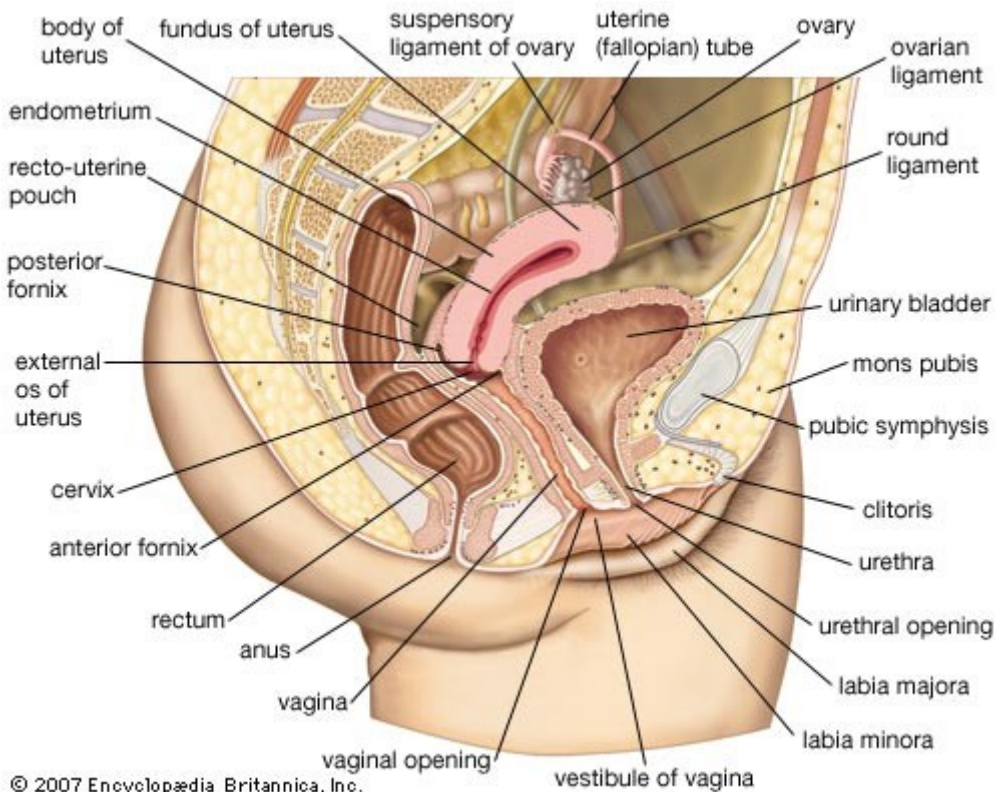


## MALE AND FEMALE GENITAL TRACT – BASIC CONCEPTS





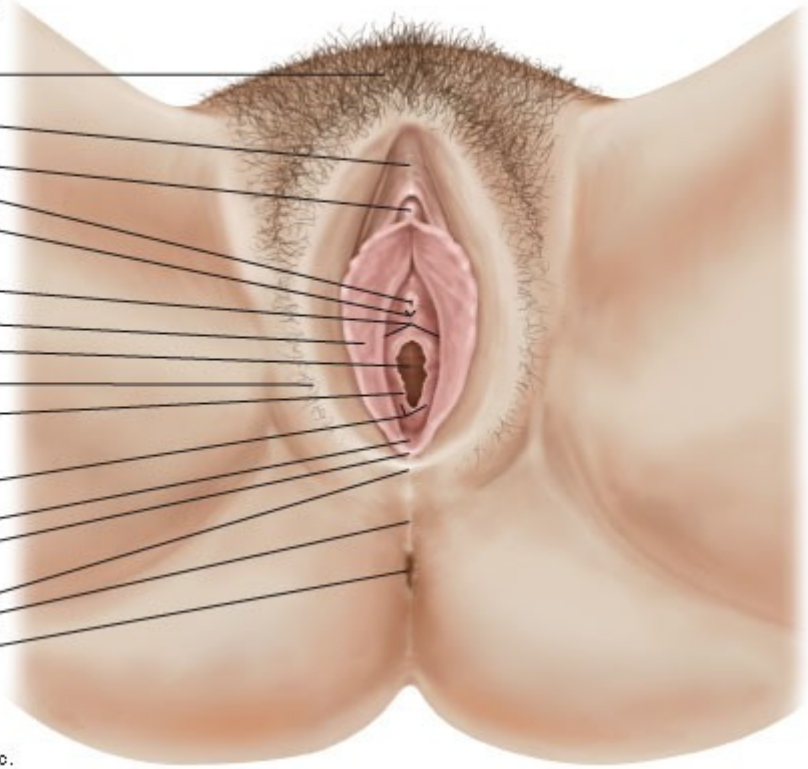
© 2007 Encyclopædia Britannica, Inc.



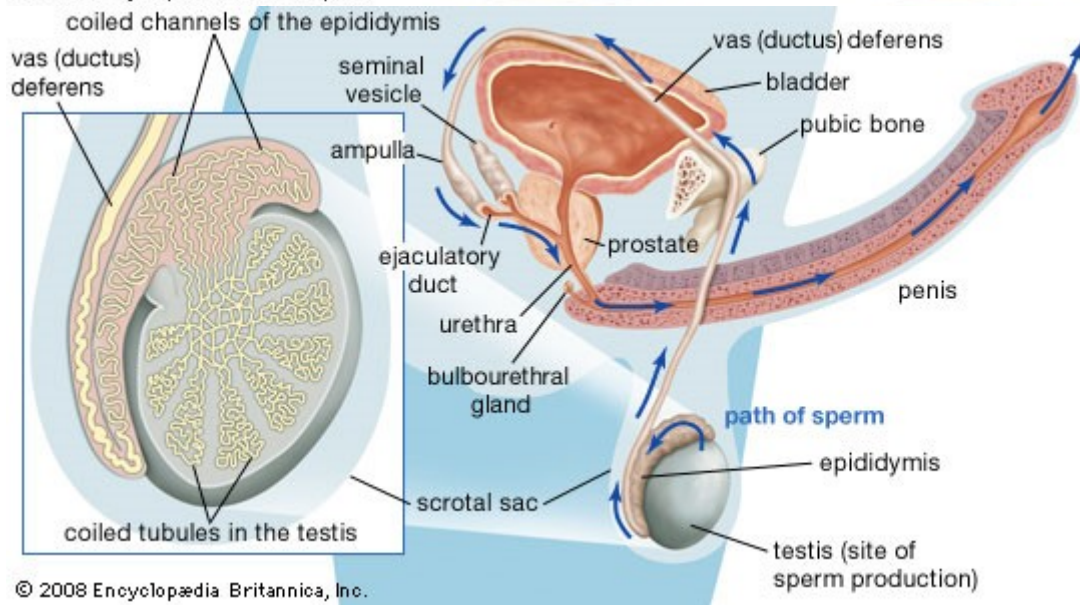
© 2007 Encyclopædia Britannica, Inc.

**Female external genitalia**

- mons pubis
- prepuce of clitoris
- glans of clitoris
- urethral opening (meatus)
- openings of paraurethral (Skene) ducts
- vestibule of vagina
- labium minus
- vaginal opening
- labium majus
- hymenal caruncle
- opening of greater vestibular (Bartholin) gland
- vestibular (navicular) fossa
- frenulum of labium
- posterior labial commissure
- perineal raphe
- anus



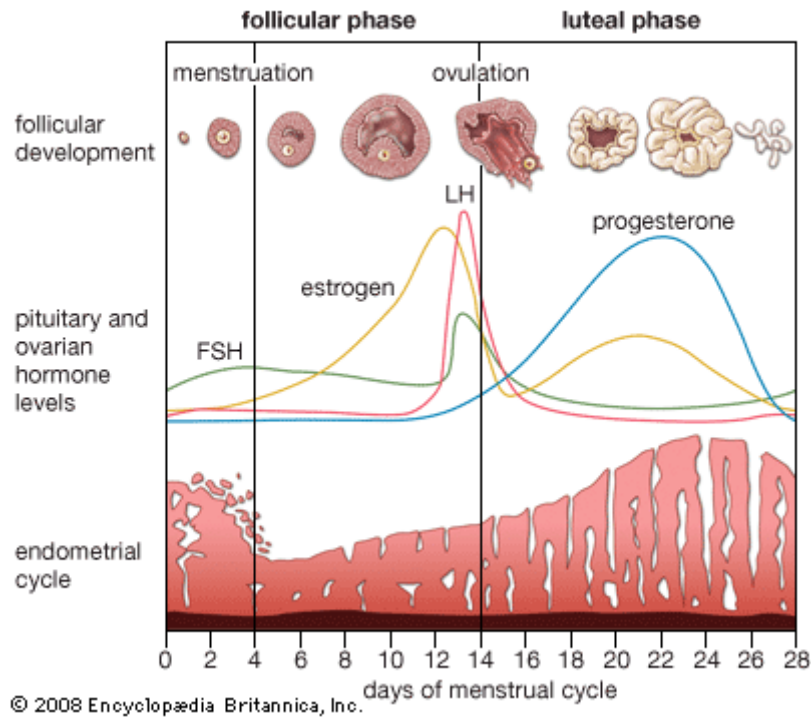
© 2009 Encyclopædia Britannica, Inc.



© 2008 Encyclopædia Britannica, Inc.



## The menstrual cycle



## **URINARY SYSTEM – BASIC CONCEPTS**

USE THE FOLLOWING LINK TO ENCYCLOPAEDIA BRITANNICA  
<http://www.britannica.com/EBchecked/topic/497969/renal-system>

in case the link does not work, google „britannica renal system“ and click on little pictures on the left in the screen