



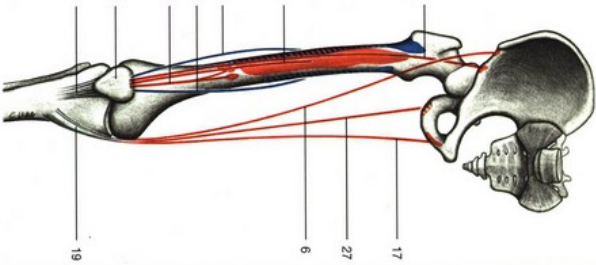
**Extensor and adductor muscles of thigh, right thigh (anterior aspect).**

- 1 Anterior superior iliac spine
- 2 Inguinal ligament
- 3 Iliopsoas muscle
- 4 Femoral artery
- 5 Tensor fasciae latae muscle
- 6 Rectus femoris muscle
- 7 Iliofemoral tract
- 8 Vastus lateralis muscle
- 9 Vastus medialis muscle
- 10 Patella
- 11 Patellar ligament
- 12 Aponeurosis of external abdominal oblique muscle
- 13 Spermatic cord
- 14 Femoral vein



**Quadriceps muscle and superficial layer of adductor muscles, right thigh (anterior aspect). The sartorius muscle has been divided.**

- 2 Sartorius muscle
- 3 Vastus lateralis muscle
- 4 Vastus medialis muscle
- 5 Vastus intermedius muscle
- 6 Vastus anterior muscle
- 7 Sartorius muscle
- 8 Sartorius muscle
- 9 Sartorius muscle
- 10 Sartorius muscle
- 11 Sartorius muscle
- 12 Sartorius muscle
- 13 Sartorius muscle
- 14 Sartorius muscle
- 15 Pectineus muscle
- 16 Adductor longus muscle
- 17 Gracilis muscle
- 18 Vastus medialis muscle
- 19 Common tendon of sartorius, gracilis, and semitendinosus muscles (ops aneurismus)
- 20 Adductor brevis muscle
- 21 Femoral artery
- 22 Femoral vein
- 23 Saphenous nerve
- 24 Fascia of adductor canal
- 25 Vastus intermedius muscle
- 26 Articularis genu muscle
- 27 Semitendinosus muscle

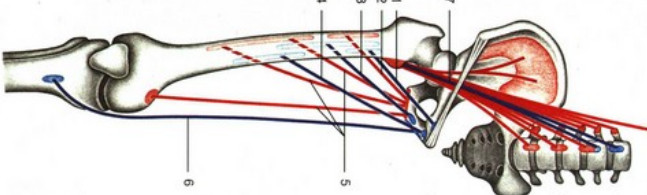


**Course of extensor muscles of thigh and muscles inserting with common tendon on tibia.**



**Deep layer of adductor muscles. Adductor magnus muscle (anterior aspect). Pectineus, adductor longus and brevis muscles have been divided.**

- 1 Anterior superior iliac spine
- 2 Inguinal ligament
- 3 Iliopsoas muscle
- 4 Sartorius muscle
- 5 Obturator externus muscle
- 6 Tensor fasciae latae muscle
- 7 Rectus femoris muscle
- 8 Iliofemoral tract
- 9 Adductor longus muscle (divided)
- 10 Vastus lateralis muscle
- 11 Vastus medialis muscle
- 12 Pectineus muscle (divided)
- 13 Adductor minimus muscle
- 14 Adductor brevis muscle (cut)



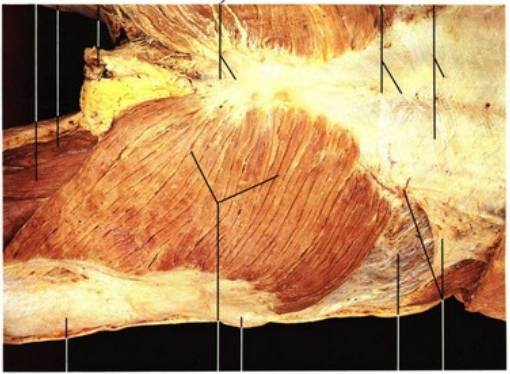
**Course of adductor muscles. (Schematic drawing.)**

- 1 Pectineus muscle (blue)
- 2 Adductor minimus muscle (red)
- 3 Adductor brevis muscle (blue)
- 4 Adductor longus muscle (blue)
- 5 Adductor magnus muscle (red)
- 6 Gracilis muscle (blue)
- 7 Iliopsoas muscle (red/blue)

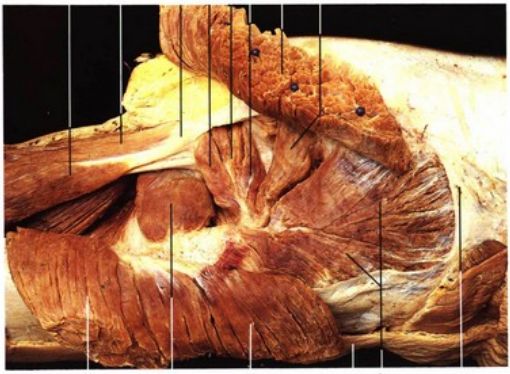


**Hip and adductor muscles: deepest layer (anterior aspect). Pectineus, adductor longus and brevis, rectus femoris muscles have been divided.**

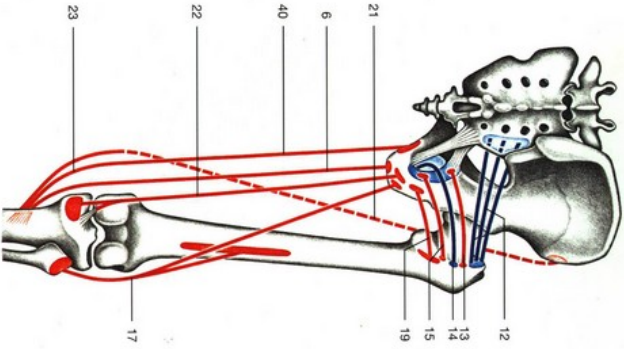
- 7 Adductor magnus
- 8 Gracilis muscle
- 9 Adductor hiatus
- 10 Vastoductor membrane
- 11 Diaphragm
- 12 Quadratus lumborum muscle
- 13 Iliacus muscle
- 14 Vastus intermedius muscle
- 15 Aorta in aortic hiatus
- 16 Twelfth rib
- 17 Psoas minor muscle
- 18 Psoas major muscle
- 19 Psoas major muscle
- 20 Iliopsoas muscle
- 21 Iliopsoas muscle
- 22 Iliopsoas muscle
- 23 Iliopsoas muscle
- 24 Iliopsoas muscle
- 25 Iliopsoas muscle
- 26 Iliopsoas muscle
- 27 Iliopsoas muscle



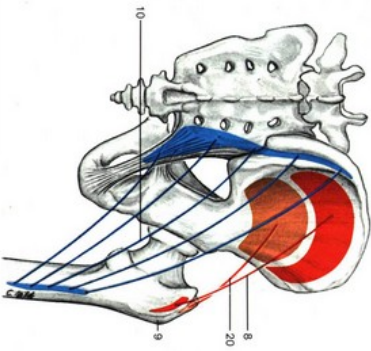
Gluteal muscles, superficial layer (posterior aspect).



Gluteal muscles, deeper layer (posterior aspect).



Course of gluteal muscles (deeper layer) and of ischiofemoral muscles (posterior aspect). Sartorius muscle is indicated by dotted line (schematic drawing).



Course of gluteal muscles (posterior aspect; schematic drawing).

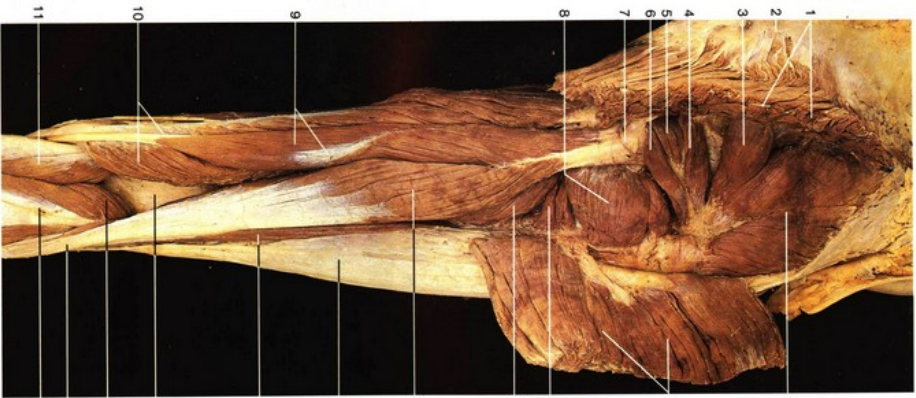


Flexors of the right thigh, superficial layer (dorsal aspect).

- 1 Thoracolumbar fascia
- 2 Spinous processes of lumbar vertebrae
- 3 Coccyx
- 4 Anus
- 5 Adductor magnus muscle
- 6 Semitendinosus muscle
- 7 Iliac crest
- 8 Gluteus medius muscle
- 9 Greater trochanter
- 10 Gluteus maximus muscle
- 11 Iliofemoral tract
- 12 Piriformis muscle
- 13 Superior gemellus muscle
- 14 Obturator internus muscle
- 15 Inferior gemellus muscle
- 16 Ischial tuberosity
- 17 Biceps femoris muscle
- 18 Tensor fasciae latae muscle
- 19 Quadratus femoris muscle
- 20 Gluteus minimus muscle
- 21 Sartorius muscle
- 22 Semimembranosus muscle
- 23 Tendon of gracilis muscle
- 24 Tibial nerve
- 25 Medial head of gastrocnemius muscle
- 26 Common peroneal nerve
- 27 Tendon of biceps femoris muscle
- 28 Lateral head of gastrocnemius muscle
- 29 Rectus femoris muscle
- 30 Vastus medialis muscle
- 31 Vastus intermedius muscle
- 32 Vastus lateralis muscle
- 33 Sciatic nerve
- 34 Gluteus maximus muscle (insertion)
- 35 Great saphenous vein
- 36 Femoral artery
- 37 Femoral vein
- 38 Adductor longus muscle
- 39 Femur
- 40 Gracilis muscle
- 41 Septum between semitendinosus and semimembranosus muscles



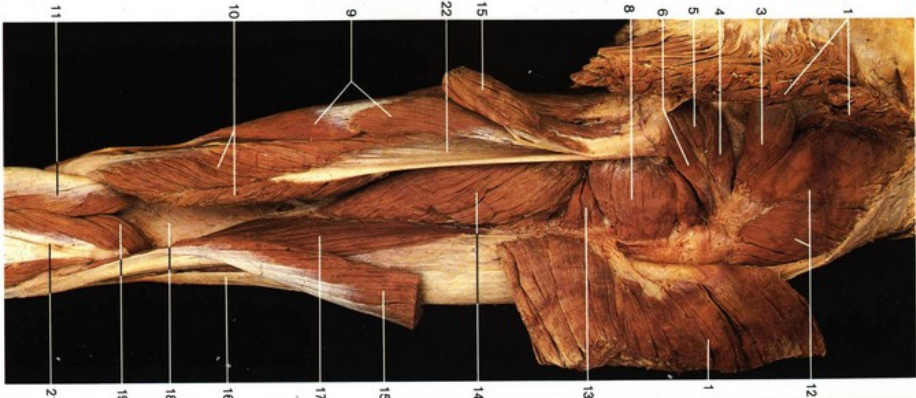
Cross section of right thigh (inferior aspect). Anterior side on top.



**Dorsal muscles of right thigh (posterior aspect).**  
The gluteus maximus muscle has been cut and reflected.

- 1 Gluteus maximus muscle (divided)
- 2 Position of coccyx
- 3 Piriformis muscle
- 4 Superior gemelli muscle
- 5 Obturator internus muscle
- 6 Inferior gemelli muscle
- 7 Ischial tuberosity
- 8 Quadratus femoris muscle

- 9 Semitendinosus muscle with intermediate tendon
- 10 Semimembranosus muscle
- 11 Medial head of gastrocnemius muscle
- 12 Gluteus medius muscle
- 13 Adductor minimus muscle
- 14 Adductor magnus muscle
- 15 Long head of biceps femoris muscle
- 16 Iliotibial tract



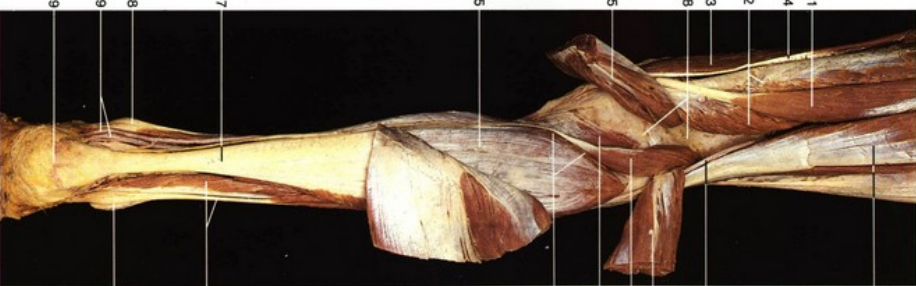
**Dorsal muscles of right thigh (posterior aspect).**  
The gluteus maximus muscle and the long head of biceps femoris muscle have been cut and displaced.

- 17 Short head of biceps femoris muscle
- 18 Popliteal surface of femur
- 19 Plantaris muscle
- 20 Tendon of biceps femoris muscle
- 21 Lateral head of gastrocnemius muscle
- 22 Membranous part of semimembranosus muscle



**Flexor muscles of right leg (posterior aspect).**

- 1 Semitendinosus muscle
- 2 Semimembranosus muscle
- 3 Sartorius muscle
- 4 Tendon of gracilis muscle
- 5 Medial head of gastrocnemius muscle
- 6 Common tendon of gracilis, sartorius and semitendinosus muscles
- 7 Calcaneal or Achilles tendon
- 8 Medial malleolus

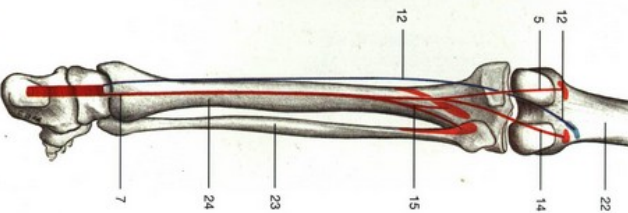


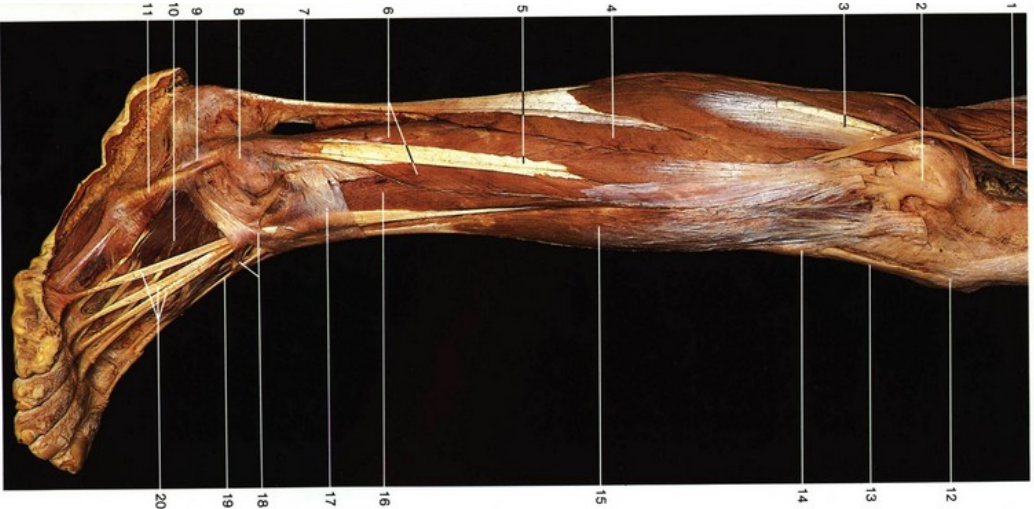
**Flexor muscles of right leg (posterior aspect).** Both heads of the gastrocnemius muscle have been cut and reflected.

- 9 Calcaneal tuberosity
- 10 Tibial nerve
- 11 Biceps femoris muscle
- 12 Plantaris muscle
- 13 Common peroneal nerve
- 14 Lateral head of gastrocnemius muscle
- 15 Soleus muscle
- 16 Peroneus longus and brevis muscles
- 17 Lateral malleolus

- 18 Popliteal fossa
- 19 Tibial nerve and posterior tibial artery
- 20 Popliteus muscle
- 21 Tendonous arch of soleus muscle
- 22 Femur
- 23 Fibula
- 24 Tibia

**Flexor muscles of the leg (right side).**





Muscles of right leg and foot (lateral aspect).

- 1 Common peroneal nerve
- 2 Head of fibula
- 3 Lateral head of gastrocnemius muscle
- 4 Soleus muscle
- 5 Peroneus longus muscle
- 6 Calcaneal or Achilles tendon
- 7 Lateral malleolus muscle
- 8 Tendon of peroneus longus muscle
- 9 Extensor digitorum brevis muscle
- 10 Tendon of peroneus brevis muscle
- 11 Parsella
- 12 Parsella ligament
- 13 Tuberosity of tibia
- 14 Tibialis anterior muscle
- 15 Extensor digitorum longus muscle
- 16 Superior extensor retinaculum
- 17 Inferior extensor retinaculum
- 18 Tendon of extensor hallucis longus muscle
- 19 Tendon of extensor digitorum longus muscle
- 20 Common synovial sheath of extensor digitorum longus muscle
- 21 Tendon of peroneus tertius muscle to the lateral margin of foot
- 22 Tendons of extensor digitorum brevis muscle
- 23 Medial malleolus
- 24 Synovial sheath of tendon of tibialis anterior muscle
- 25 Synovial sheath of tendon of extensor hallucis longus muscle

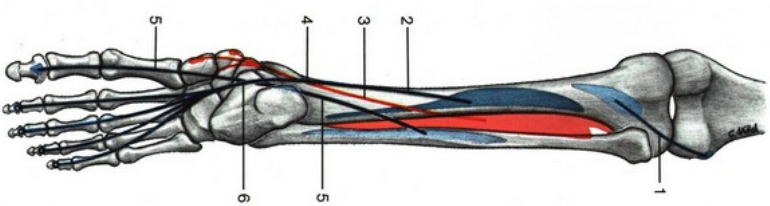


Right foot with synovial sheaths of extensor muscles (dorsal aspect). The synovial sheaths have been injected with blue solution.



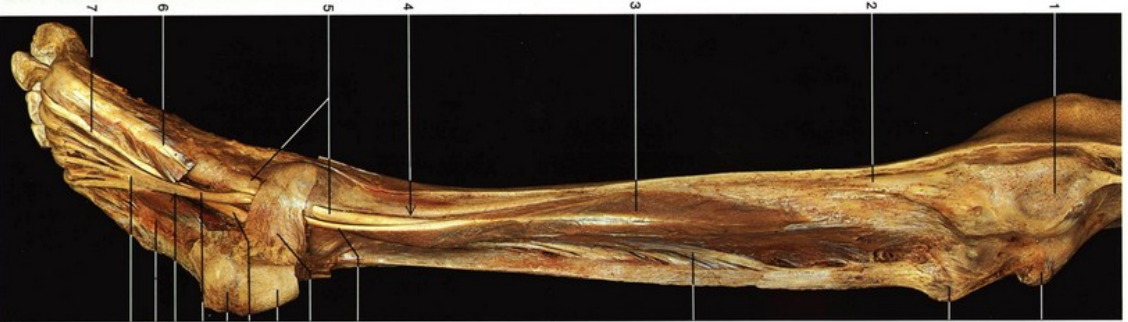
Deep flexor muscles of right leg (posterior aspect).

- 1 Medial condyle of femur
- 2 Popliteus muscle
- 3 Flexor digitorum longus muscle
- 4 Crossing of tendons in leg
- 5 Tendon of fibularis posterior muscle
- 6 Tendon of flexor digitorum longus muscle
- 7 Medial malleolus
- 8 Lateral condyle of femur
- 9 Head of fibula
- 10 Tibialis posterior muscle
- 11 Flexor hallucis longus muscle
- 12 Peroneus longus muscle
- 13 Peroneus brevis muscle
- 14 Tendon of flexor hallucis longus muscle
- 15 Calcaneal tendon (divided)
- 16 Lateral malleolus



Course of deep flexor muscle of leg. (Schematic drawing.)

- 1 Popliteus muscle (blue)
- 2 Flexor digitorum longus muscle (blue)
- 3 Tibialis posterior muscle (red)
- 4 Crossing of tendons in leg
- 5 Flexor hallucis longus muscle (blue)
- 6 Crossing of tendons in sole

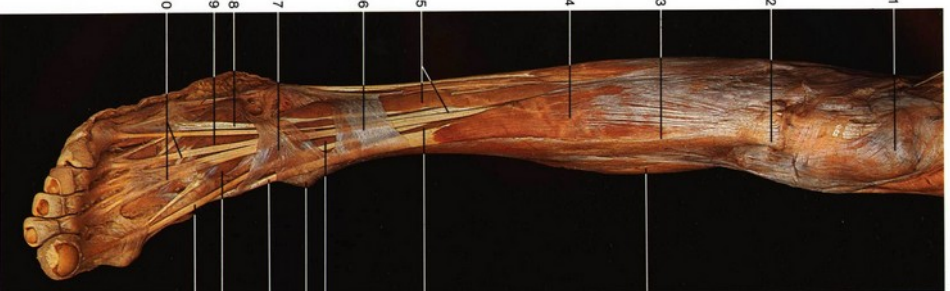


- 1 Medial condyle of femur
- 2 Tibia
- 3 Flexor digitorum longus muscle
- 4 Crossing of tendons in leg
- 5 Tendon of tibialis posterior muscle
- 6 Abductor hallucis muscle
- 7 Tendon of flexor hallucis longus muscle
- 8 Lateral condyle of femur
- 9 Head of fibula
- 10 Tibialis posterior muscle
- 11 Tendon of flexor digitorum longus muscle
- 12 Flexor retinaculum
- 13 Calcaneal tendon
- 14 Calcaneal tuberosity
- 15 Crossing of tendons in sole
- 16 Quadratus plantae muscle
- 17 Tendon of flexor digitorum longus muscle
- 18 Tendon of tibialis anterior muscle
- 19 Area of insertion of tibialis posterior muscle
- 20 Lumbrical muscles
- 21 Flexor hallucis longus muscle

**Deep flexor muscles of right leg and foot** (posterior oblique medial aspect). Flexor digitorum brevis and flexor hallucis longus muscles have been removed.

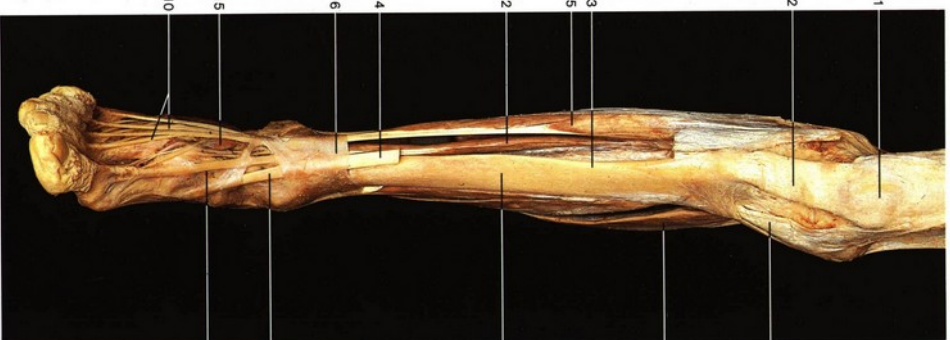


**Sole of foot; tendons of long flexor muscles** (oblique medial and inferior aspect).



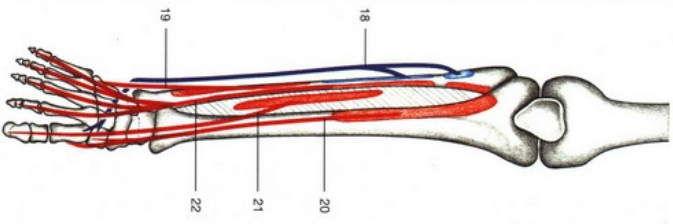
- 1 Patella
- 2 Patellar ligament
- 3 Anterior margin of tibia
- 4 Tibialis anterior muscle
- 5 Extensor digitorum longus muscle
- 6 Superior extensor retinaculum
- 7 Inferior extensor retinaculum
- 8 Tendon of peroneus tertius muscle
- 9 Extensor digitorum brevis muscle
- 10 Tendons of extensor digitorum longus muscle
- 11 Soleus
- 12 Extensor hallucis longus muscle
- 13 Medial malleolus

**Extensor muscles of right leg and foot** (oblique anterolateral aspect).



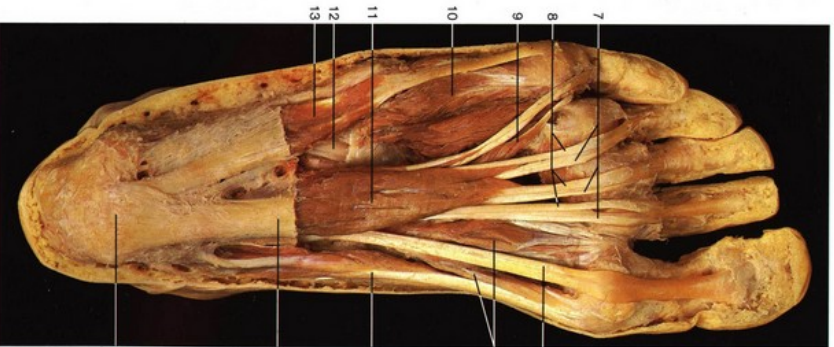
- 14 Tendon of tibialis anterior muscle
- 15 Extensor hallucis brevis muscle
- 16 Tendon of extensor hallucis longus muscle
- 17 Common tendon of gracilis, semitendinosus and sartorius muscles
- 18 Tibia

**Extensors of the right leg and foot** (anterior aspect). Part of the tibialis anterior muscle has been removed.



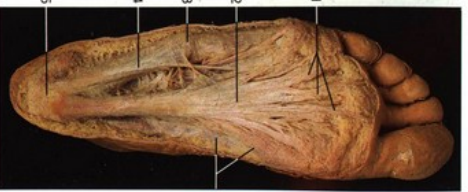
**Extensor muscles of the leg**  
(right side).

- 1 Longitudinal bands of plantar aponeurosis
- 2 Plantar aponeurosis
- 3 Position of tuberosity of 5th metatarsal bone
- 4 Muscles of 5th toe with fascia
- 5 Calcaneal tuberosity
- 6 Muscles of great toe with fascia
- 7 Tendons of flexor digitorum longus muscle
- 8 Tendons of flexor digitorum brevis muscle
- 9 Lumbrical muscle
- 10 Flexor digiti minimi brevis muscle
- 11 Flexor digitorum brevis muscle

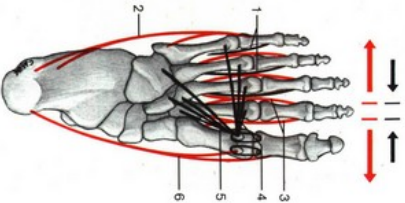


**Sole of foot, first layer of muscles** (from below).  
The plantar aponeurosis and the fasciae of the superficial muscles have been removed.

- 12 Tendon of peroneus longus muscle
- 13 Abductor digiti minimi muscle
- 14 Tendon of flexor hallucis longus muscle
- 15 Flexor hallucis brevis muscle
- 16 Abductor hallucis muscle
- 17 Plantar aponeurosis (cut)
- 18 Peroneus longus muscle
- 19 Peroneus brevis muscle
- 20 Tibialis anterior muscle
- 21 Extensor hallucis longus muscle
- 22 Extensor digitorum longus muscle

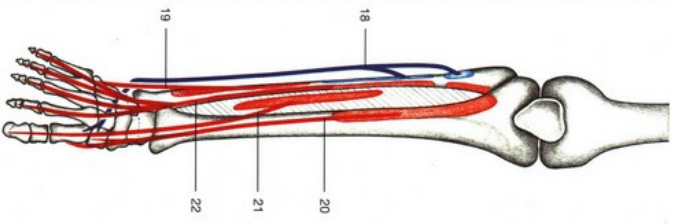


**Sole of foot, plantar aponeurosis** (from below).



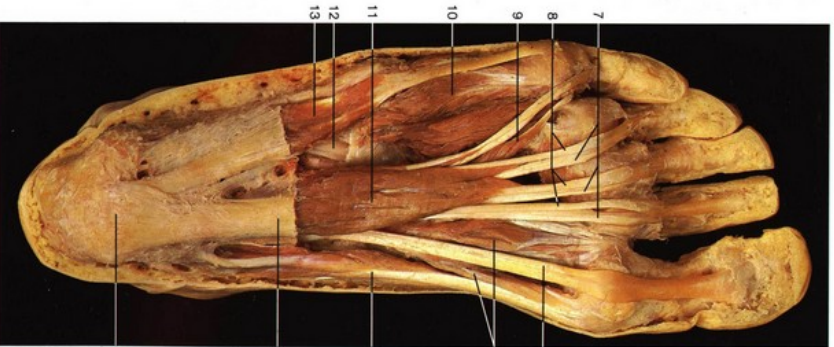
**Course of abductor and adductor muscles of foot.** (Schematic drawing.)

- Red arrows = abduction.  
Black arrows = adduction.
- 1 Plantar interossei muscles (black)
  - 2 Abductor digiti minimi muscles (red)
  - 3 Dorsal interossei muscle (red)
  - 4 Transverse head of adductor muscle (black)
  - 5 Oblique head of adductor muscle (black)
  - 6 Abductor hallucis muscle (red)



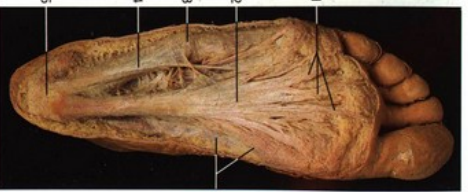
**Extensor muscles of the leg**  
(right side).

- 1 Longitudinal bands of plantar aponeurosis
- 2 Plantar aponeurosis
- 3 Position of tuberosity of 5th metatarsal bone
- 4 Muscles of 5th toe with fascia
- 5 Calcaneal tuberosity
- 6 Muscles of great toe with fascia
- 7 Tendons of flexor digitorum longus muscle
- 8 Tendons of flexor digitorum brevis muscle
- 9 Lumbrical muscle
- 10 Flexor digiti minimi brevis muscle
- 11 Flexor digitorum brevis muscle

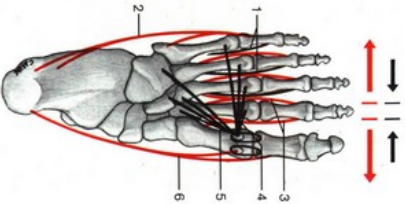


**Sole of foot, first layer of muscles** (from below).  
The plantar aponeurosis and the fasciae of the superficial muscles have been removed.

- 12 Tendon of peroneus longus muscle
- 13 Abductor digiti minimi muscle
- 14 Tendon of flexor hallucis longus muscle
- 15 Flexor hallucis brevis muscle
- 16 Abductor hallucis muscle
- 17 Plantar aponeurosis (cut)
- 18 Peroneus longus muscle
- 19 Peroneus brevis muscle
- 20 Tibialis anterior muscle
- 21 Extensor hallucis longus muscle
- 22 Extensor digitorum longus muscle

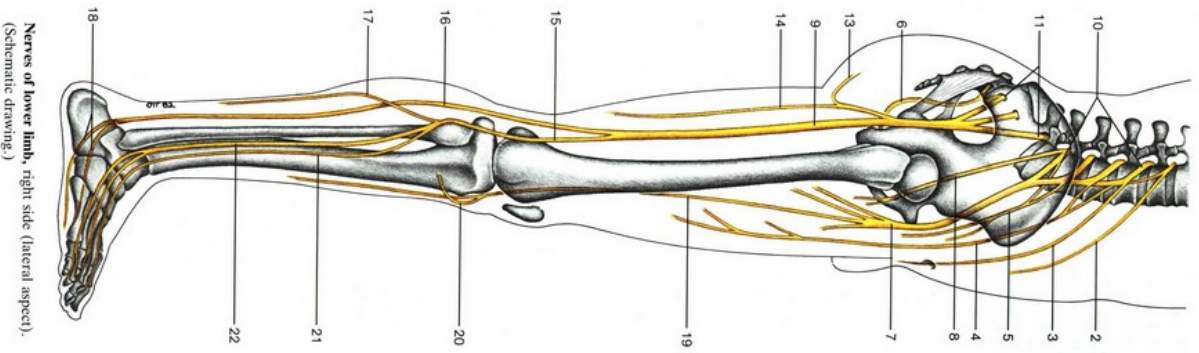


**Sole of foot, plantar aponeurosis** (from below).



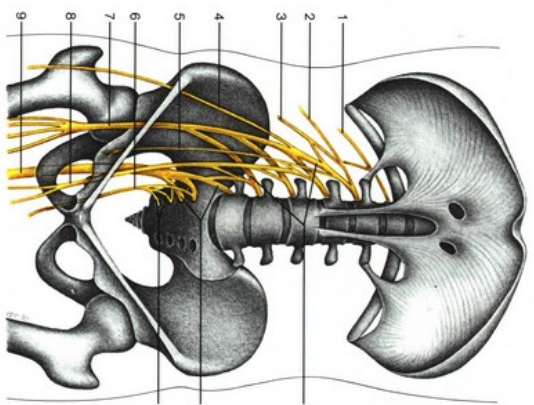
**Course of abductor and adductor muscles of foot.** (Schematic drawing.)

- Red arrows = abduction.  
Black arrows = adduction.
- 1 Plantar interossei muscles (black)
  - 2 Abductor digiti minimi muscles (red)
  - 3 Dorsal interossei muscle (red)
  - 4 Transverse head of adductor muscle (black)
  - 5 Oblique head of adductor muscle (black)
  - 6 Abductor hallucis muscle (red)



Nerves of lower limb, right side (lateral aspect).  
(Schematic drawing.)

- 1 Subcostal nerve
- 2 Iliohypogastric nerve
- 3 Ilioinguinal nerve
- 4 Lateral femoral cutaneous nerve
- 5 Genitofemoral nerve
- 6 Pudendal nerve
- 7 Femoral nerve
- 8 Obturator nerve
- 9 Sciatic nerve
- 10 Lumbar plexus (L<sub>1</sub>-L<sub>4</sub>)
- 11 Sacral plexus (L<sub>4</sub>-S<sub>5</sub>)
- 12 Pudendal plexus (S<sub>2</sub>-S<sub>4</sub>)
- 13 Inferior clunial nerve
- 14 Posterior femoral cutaneous nerve
- 15 Common peroneal nerve
- 16 Tibial nerve
- 17 Lateral sural cutaneous nerve
- 18 Medial and lateral plantar nerves
- 19 Saphenous nerve
- 20 Infrapatellar branch of saphenous nerve
- 21 Deep peroneal nerve
- 22 Superficial peroneal nerve



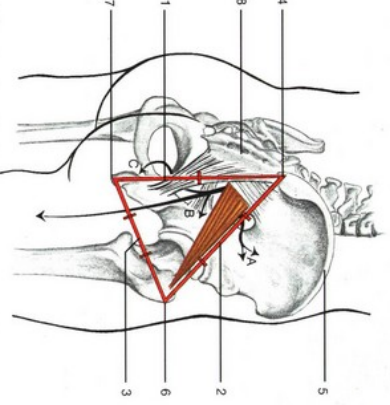
Main branches of lumbo-sacral plexus (ventral aspect).  
(Schematic drawing.)



Gluteal region, right side (posterior aspect).

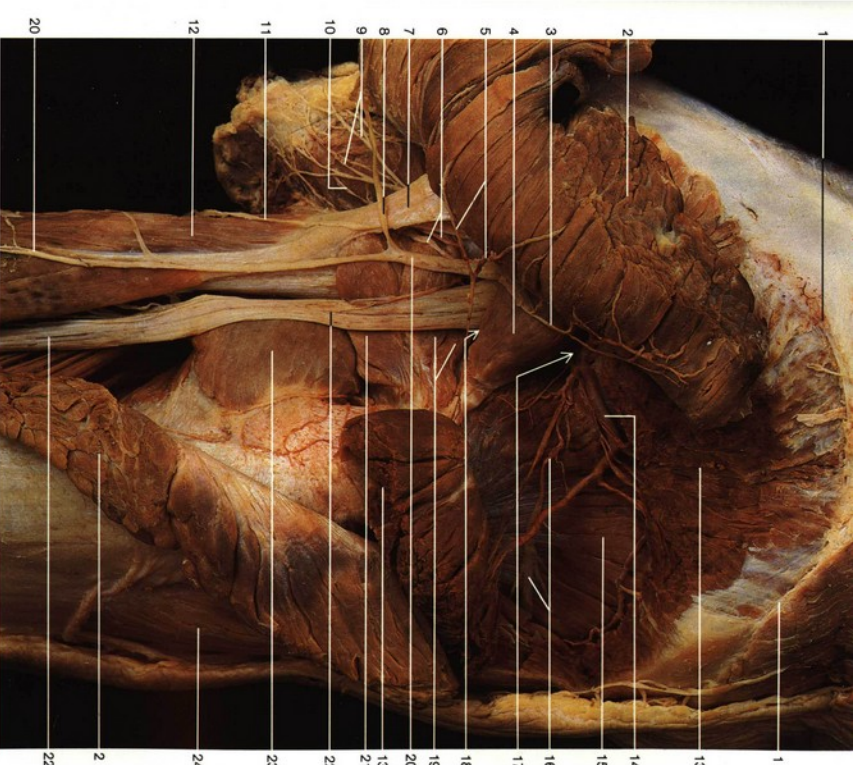
- 1 Iliac crest
- 2 Gluteus maximus muscle
- 3 Middle clunial nerves
- 4 Anococcygeal nerves
- 5 Perineal branch of posterior femoral cutaneous nerve
- 6 Adductor magnus muscle
- 7 Superior clunial nerves
- 8 Position of greater trochanter
- 9 Inferior clunial nerves
- 10 Semitendinosus muscle
- 11 Posterior femoral cutaneous nerve
- 12 Long head of biceps femoris muscle

<p><b>A Suprapiriform foramen</b> of greater sciatic foramen Superior gluteal artery, vein and nerve</p>
<p><b>B Infrapiriform foramen</b> of greater sciatic foramen Sciatic nerve Inferior gluteal artery, vein and nerve Posterior femoral cutaneous nerve Internal pudendal artery and vein Pudendal nerve</p>
<p><b>C Lesser sciatic foramen</b> Pudendal nerve Internal pudendal artery and vein</p>



Gluteal region, right side (posterolateral aspect). Location of sciatic foramina in relation to the bones.  
(Schematic drawing.)

- 1 **Kid lines**
  - 2 **Spine-tuber line.**  
In the middle of this line the infrapiriform foramen is situated
  - 3 **Spine-trochanter line.**  
In the upper third the suprapiriform foramen is located
  - 4 **Tuber-trochanter line.**  
Between the middle and posterior third, the ischiadic nerve can be found
- Other structures**
- 4 Posterior superior iliac spine
  - 5 Iliac crest
  - 6 Greater trochanter
  - 7 Isehial tuberosity
  - 8 Sacrum



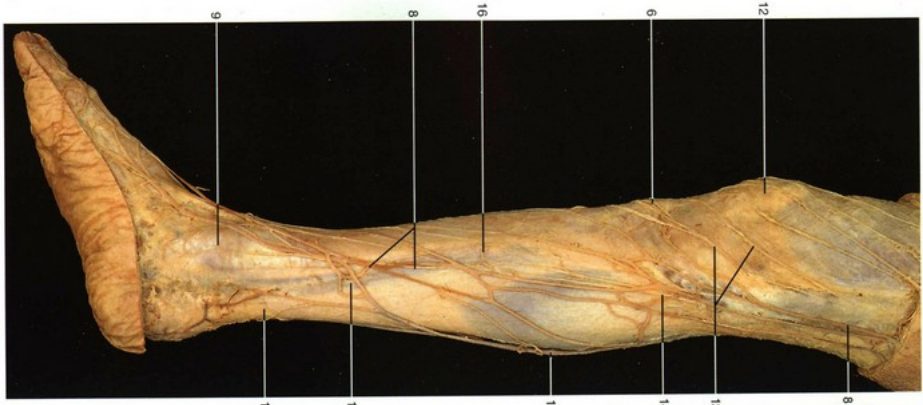
**Gluteal region, right side (dorsal aspect).** The gluteus maximus and gluteus medius muscles have been divided and reflected. Notice the position of the foramina above and below piriformis muscles and the lesser sciatic foramen.

- 1 Iliac crest
- 2 Gluteus maximus muscle (cut)
- 3 Inferior gluteal nerve
- 4 Piriformis muscle
- 5 Muscular branches of inferior gluteal artery
- 6 Pudendal nerve and internal pudendal artery within the lesser sciatic foramen (entrance to the pudendal canal)
- 7 Sacrotuberous ligament
- 8 Inferior cluneal nerve
- 9 Inferior rectal nerves
- 10 Inferior rectal arteries
- 11 Perforating cutaneous nerve
- 12 Long head of biceps femoris muscle
- 13 Gluteus medius muscle (cut)
- 14 Deep branch of superior gluteal artery
- 15 Gluteus minimus muscle
- 16 Superior gluteal nerve
- 17 Suprapiriform foramen
- 18 Intrapiriform foramen } greater sciatic foramen
- 19 Tendon of obturator internus and superior gemellus muscles
- 20 Posterior femoral cutaneous nerve
- 21 Inferior gemellus muscle
- 22 Sciatic nerve
- 23 Quadratus femoris muscle
- 24 Tensor fasciae latae muscle



**Right leg and foot, anterior crural region and dorsum of foot; cutaneous nerves and veins (anterior aspect).**

- 1 Superficial crural fascia
- 2 Medial cutaneous branch of superficial peroneal nerve
- 3 Lateral malleolus
- 4 Lateral cutaneous branch of superficial peroneal nerve
- 5 Cutaneous branch of sural nerve
- 6 Position of tuberosity of tibia
- 7 Anterior margin of tibia
- 8 Great saphenous vein
- 9 Medial malleolus



**Right leg and foot; cutaneous nerves and veins (medial aspect).**

- 9 Deep peroneal nerve
- 10 Venous arch of dorsum of foot
- 11 Position of patella
- 12 Intrapatellar branches of saphenous nerve
- 13 Saphenous nerve
- 14 Small saphenous vein
- 15 Perforating vein
- 16 Calcaneal tendon



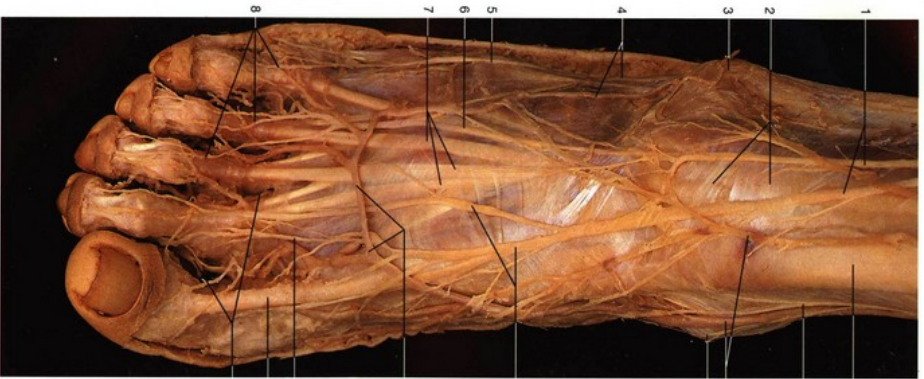


**Right popliteal fossa, middle layer** (posterior aspect).  
The cutaneous veins and nerves have been removed.



**Right popliteal fossa, deep layer** (posterior aspect).  
The medial head of gastrocnemius muscle has been divided and reflected.

- 1 Semimembranosus muscle
- 2 Semitendinosus muscle
- 3 **Popliteal vein**
- 4 Popliteal artery
- 5 **Tibial nerve**
- 6 Small saphenous vein (cut)
- 7 Muscular branch of tibial nerve
- 8 Medial head of gastrocnemius muscle
- 9 Tendon of plantaris muscle
- 10 **Posterior tibial artery**
- 11 Medial malleolus
- 12 Biceps femoris muscle
- 13 Common peroneal nerve
- 14 **Sural arteries**
- 15 Plantaris muscle
- 16 Lateral head of gastrocnemius muscle
- 17 Soleus muscle
- 18 Calcaneal tendon
- 19 Lateral malleolus
- 20 Calcaneal tuberosity
- 21 Sartorius muscle
- 22 **Popliteal artery**
- 23 Tendinous arch of soleus muscle
- 24 Flexor digitorum longus muscle
- 25 Flexor retinaculum
- 26 **Peroneal artery**
- 27 Soleus muscle
- 28 Flexor hallucis longus muscle
- 29 **Anterior tibial artery**
- 30 Muscular branches of tibial nerve
- 31 Tibialis posterior muscle
- 32 Communicating branch of peroneal artery
- 33 Tendon of tibialis anterior muscle
- 34 Tibia
- 35 Tendon of extensor hallucis longus muscle
- 36 Tendons of extensor digitorum longus muscle
- 37 Anterior tibialis artery
- 38 Fibula
- 39 Tendons of peroneus longus and brevis muscles



**Dorsum of the right foot, superficial layer (anterior aspect).**

- 1 Superficial peroneal nerve
- 2 Superior extensor retinaculum
- 3 Lateral malleolus
- 4 Venous network of lateral malleolus and tributaries of small saphenous vein
- 5 Lateral dorsal cutaneous nerve (branch of sural nerve)
- 6 Intermedial dorsal cutaneous nerve
- 7 Tendons of extensor digitorum longus muscle
- 8 Dorsal digital nerves



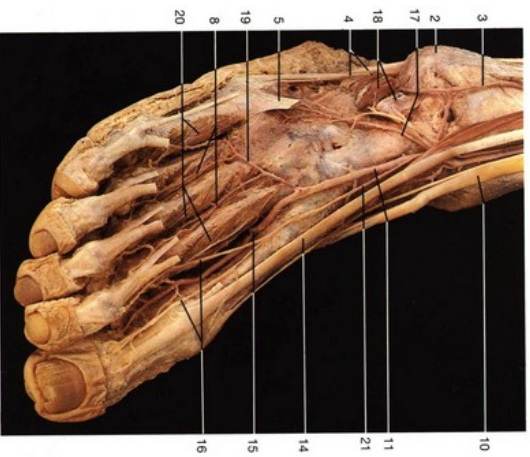
**Dorsum of the right foot, superficial layer. The fascia of the dorsum has been removed.**

- 9 Tendon of tibialis anterior muscle
- 10 Saphenous nerve
- 11 Venous network of medial malleolus and tributaries of great saphenous vein
- 12 Medial malleolus
- 13 Medial dorsal cutaneous nerves
- 14 Dorsal venous arch
- 15 Dorsal digital nerve (of deep peroneal nerve)
- 16 Tendon of extensor hallucis longus muscle
- 17 Dorsal digital arteries
- 18 Peroneal muscles
- 19 Deep plantar branch of dorsalis pedis artery anastomosing with plantar arch
- 20 Extensor digitorum longus muscle
- 21 Extensor hallucis longus muscle
- 22 Inferior extensor retinaculum
- 23 Extensor hallucis brevis muscle

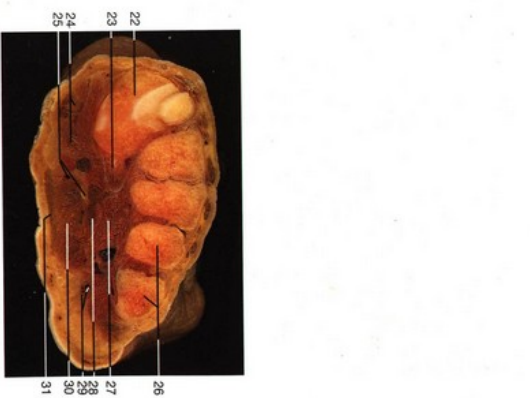


**Dorsum of right foot, middle layer (anterior lateral aspect). The cutaneous nerves have been removed.**

- 1 Extensor retinaculum
- 2 Lateral malleolus
- 3 Lateral anterior malleolar artery
- 4 Tendons of Peroneus tertius muscle
- 5 Tendon of Peroneus brevis muscle
- 6 Extensor digitorum brevis muscle
- 7 Tendons of extensor digitorum longus muscle
- 8 Dorsal metatarsal arteries
- 9 Medial malleolus
- 10 Dorsalis pedis artery
- 11 Tendon of tibialis anterior muscle
- 12 Deep peroneal nerve (on dorsum of foot)
- 13 Extensor hallucis brevis muscle
- 14 Tendon of extensor hallucis longus muscle
- 15 Dorsalis pedis artery with deep plantar branch to the plantar arch
- 16 Dorsal digital nerves (terminal branches of deep peroneal nerve)
- 17 Lateral tarsal artery
- 18 Extensor digitorum brevis muscle (divided)
- 19 Arcuate artery
- 20 Dorsal interosseous muscles
- 21 Deep peroneal nerve
- 22 Medial cuneiform and 1st metatarsal bone
- 23 Tendon of peroneus longus muscle
- 24 Abductor hallucis and flexor hallucis brevis muscles
- 25 Medial plantar artery, vein and nerve
- 26 Fourth and fifth metatarsal bone
- 27 Adductor hallucis (oblique head)
- 28 Tendons of flexor digitorum longus muscle
- 29 Lateral plantar artery, vein and nerve
- 30 Flexor digitorum brevis muscle
- 31 Plantar aponeurosis



**Dorsum of right foot, deep layer (anterior lateral aspect). The extensor digitorum and hallucis brevis muscles have been removed.**



**Cross-section of the right foot at the level of the metatarsal bones (posterior aspect).**

- 22
- 23
- 24
- 25
- 26
- 27
- 28
- 29
- 30
- 31