

# Gastrointestinal infections



Prof. MUDr. Petr Husa, CSc.

Klinika infekčních chorob LF MU a FN Brno



## Global significance of GI infections

- Estimates are that over 1.8 million children still die each year ( more than 6000/day)
- The second most common infections in developed countries (after respiratory infections)



## Gastrointestinal infections in CR 2006-2012

	<b>2006</b>	<b>2007</b>	<b>2008</b>	<b>2009</b>	<b>2010</b>	<b>2011</b>	<b>2012</b>
salmonella	25 102	18 204	11 009	10805	8622	8752	10507
shigella	289	349	229	178	450	164	266
campylobacter	22 713	24 254	20 175	20371	21164	18811	18412
bacterial oth.	2 471	2831	3 305	3178	3343	4607	5168
viral	5 597	6 025	6 639	6066	8517	9955	6877
food poisoning	48	70	84	106	100	381	14
unknown agent	3223	3316	2883	884	3168	3199	2634

# Gastrointestinal infections

- bacterial
- viral
- parasitic

# Bacterial GI infections

- transmission of pathogenic microbes
  - zoonosis
  - human
- food-poisoning (toxins in food)

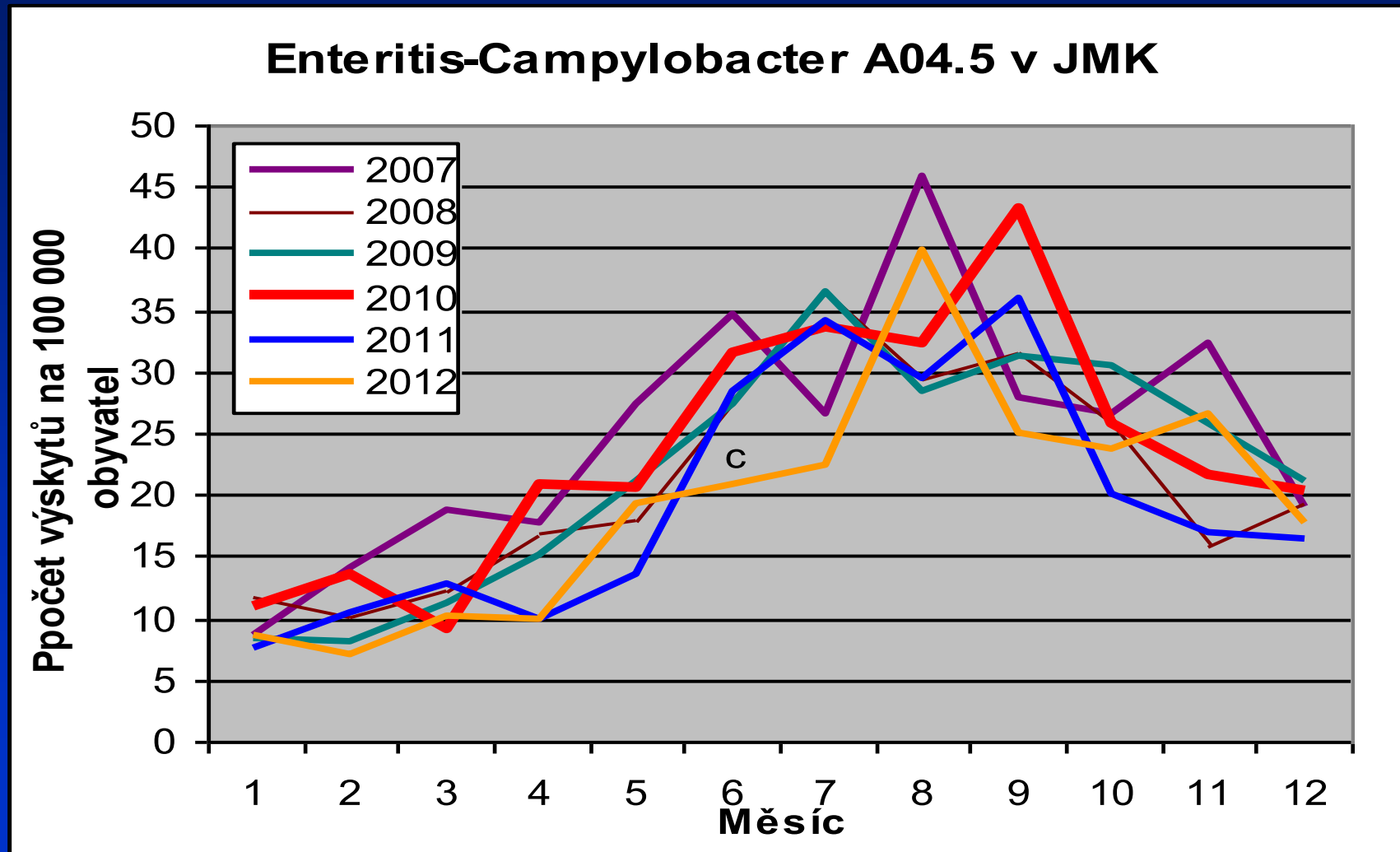
# Zoonosis

- salmonellosis (*S. Enteritidis*)
- campylobacteriosis (*C. jejuni*)
- yersiniosis (*Y. enterocolitica*)
- EHEC (*E. coli*)

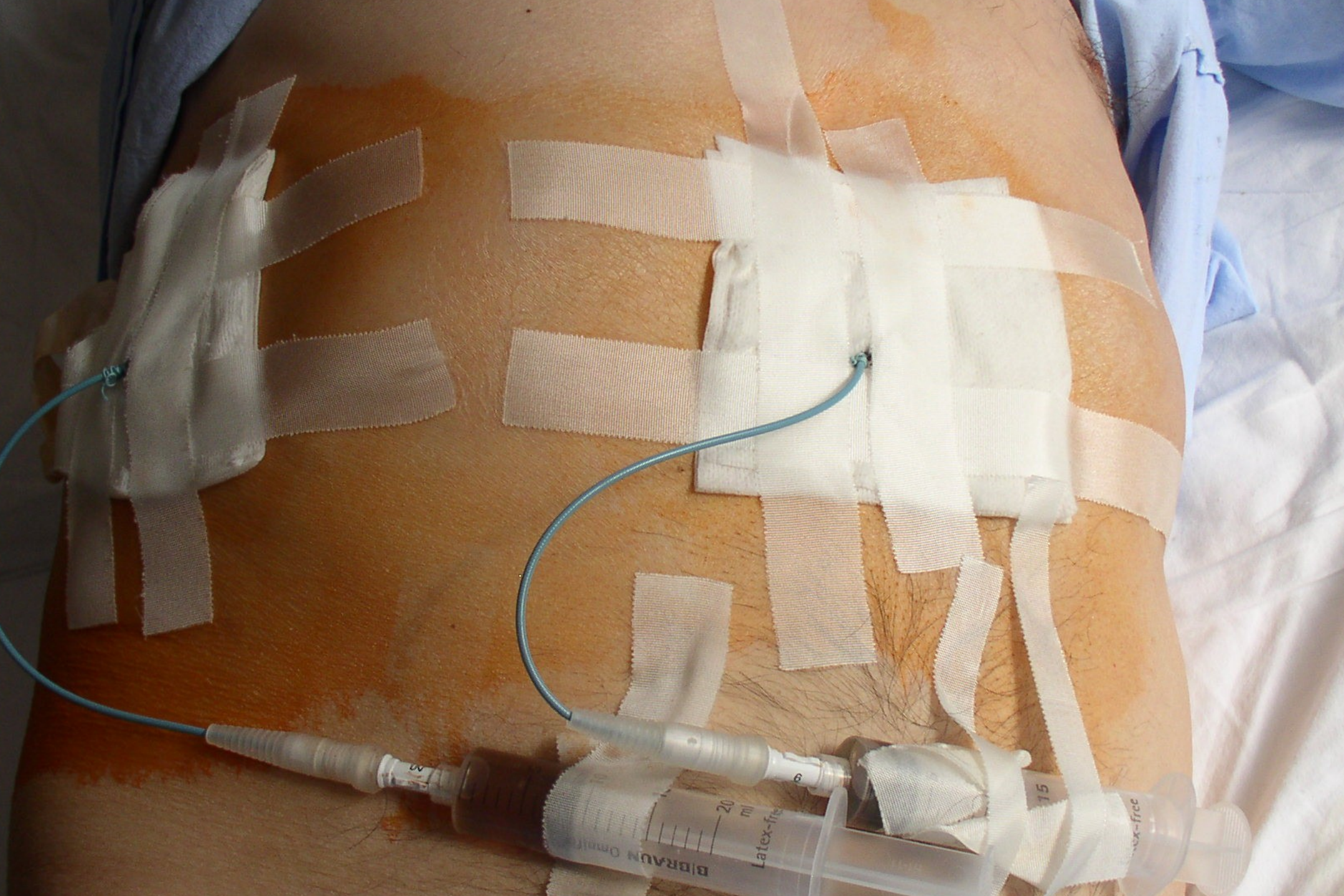
# Campylobacteriosis

- now the most common zoonosis in CR a many other European countries (especially undercooked poultry)
- *Campylobacter jejuni*
- clinical course – from inaparent to serious acute enterocolitis with right lower abdominal quadrant pain, fever, and bloody diarrhoea
- sepsis is possible in IS patients
- reactive arthritis, erythema nodosum – possible immune-mediated complications
- rehydration, diet, complicated forms: macrolides

# Campylobacteriosis in Southern Moravia









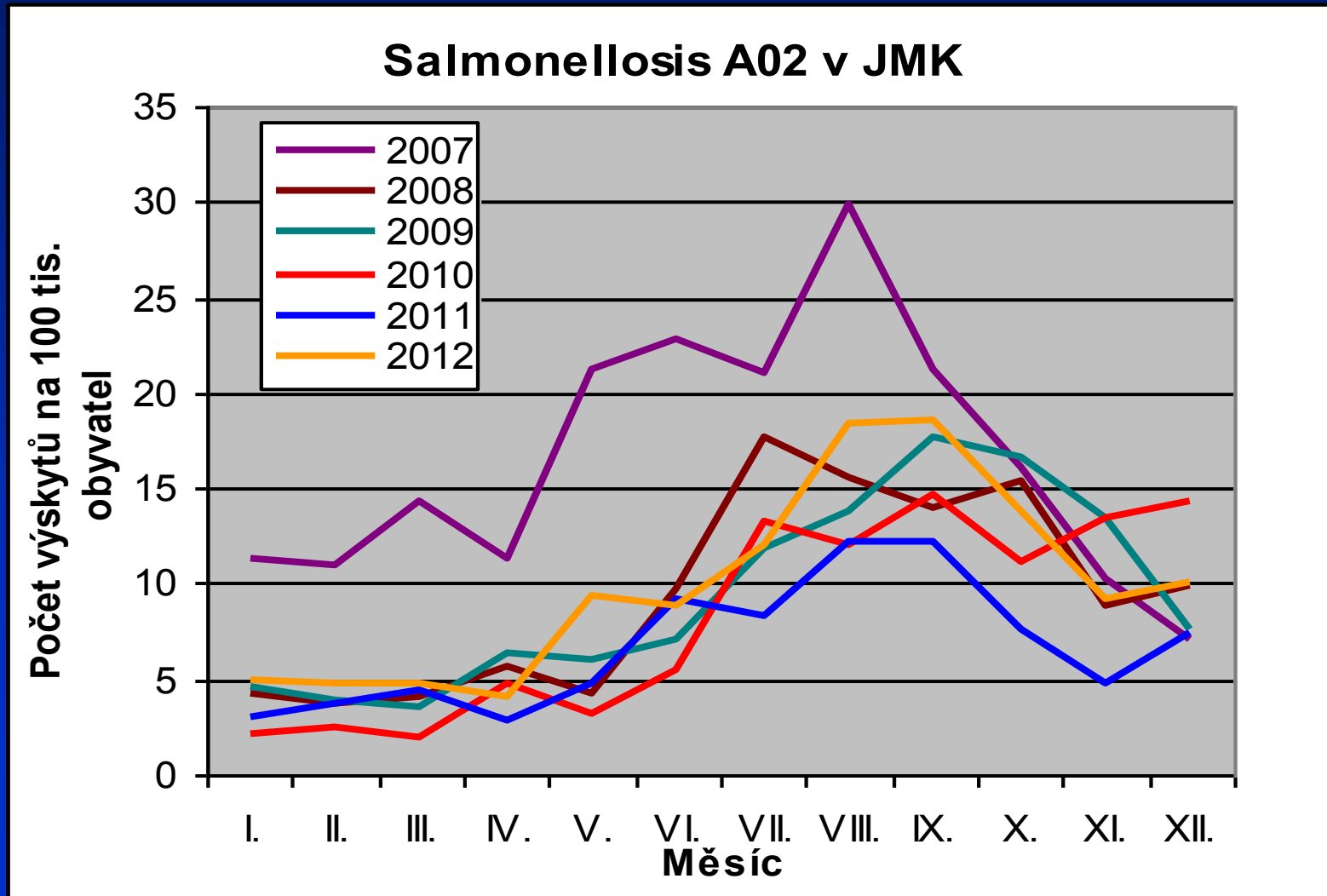
ANA  
05496

20  
ml  
0.2  
ml

# Salmonellosis

- the second most common zoonosis in CR and most European countries
- at present in CR minimally 90 % cases caused by *S. Enteritidis*, rarely *S. Typhimurium*
- gastroenteritidis
- enterotoxin production and active penetration into intestinal epithel
- septic form (extraintestinal abscesses) in IS patients
- reactive arthritis, erythema nodosum – possible immune-mediated complications
- rehydration, diet, complicated forms: fluoroquinolones, co-trimoxazol, ampicilin, chloramphenicol

# Salmonellosis in Southern Moravia



# Yersiniosis

- worldwide zoonosis, relatively more common in Northern Europe
- *Yersinia enterocolitica*
- more often in winter
- fever, diarrhea, often bloody, syndrome of the lower right quadrant (mesenteric lymphadenitis)
- complication: sepsis, metastatic abscesses (esp. liver)
- reactive arthritis, erythema nodosum - possible immune-mediated complications
- rehydration, diet, complicated forms: fluoroquinolones, co-trimoxazol, ampicillin, chloramphenicol

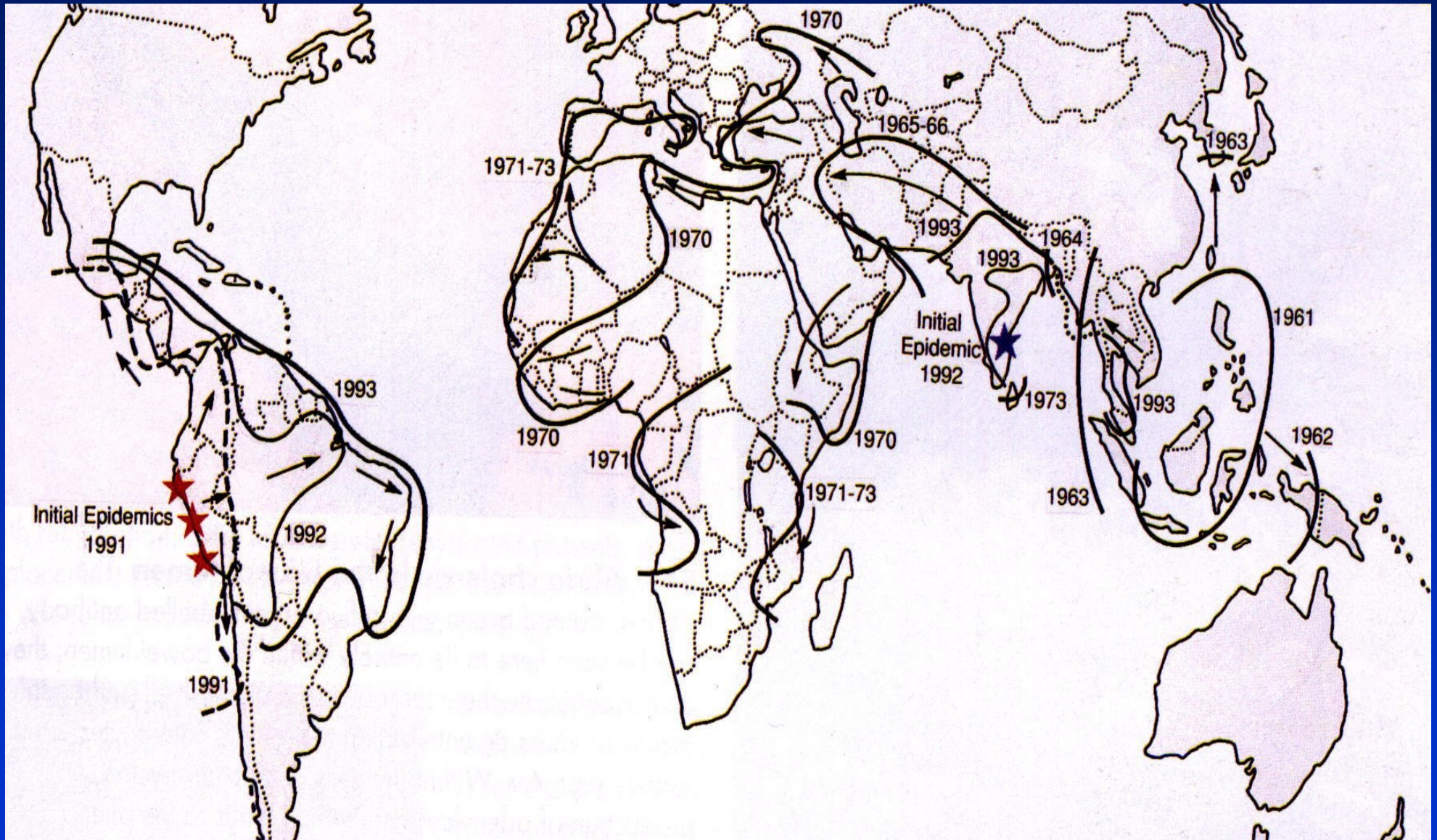
# Human bacterial infections

- cholera
- shigellosis
- *E.coli* enterocolitis (except for EHES – zoonosis)
- *Clostridium difficile* infection

# Cholera

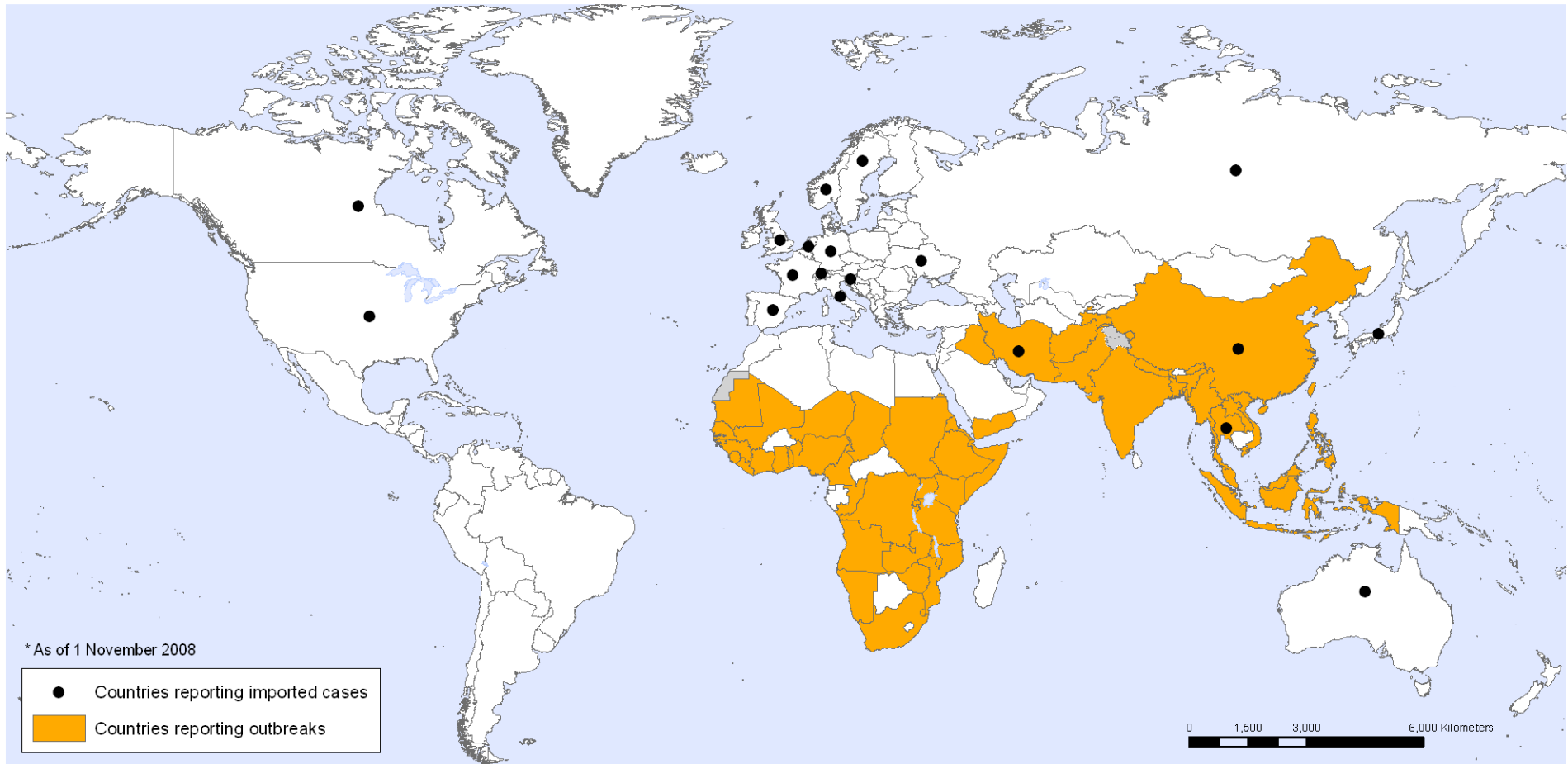
- endemic in South and South-East India
- *Vibrio cholerae* faecally contaminated water – drinking water, undercooked animals from this water
- boiling destroys this bacteria
- at least 7 cholera pandemics worldwide during last 200 years
- 1st-6th pandemics - classic type (1817-1923)
- 7th pandemic - biotyp El Tor (since 1960s)
- 8th pandemic - O139 Bengal (since 1992)

# Cholera – 7th and 8th pandemics





## Cholera, countries reporting outbreaks and imported cases, 2006–2008\*



The boundaries and names shown and the designations used on this map do not imply the expression of any opinion whatsoever on the part of the World Health Organization concerning the legal status of any country, territory, city or area or of its authorities, or concerning the delimitation of its frontiers or boundaries. Dotted lines on maps represent approximate border lines for which there may not yet be full agreement.

Data Source: World Health Organization  
Map Production: Public Health Information  
and Geographic Information Systems (GIS)  
World Health Organization

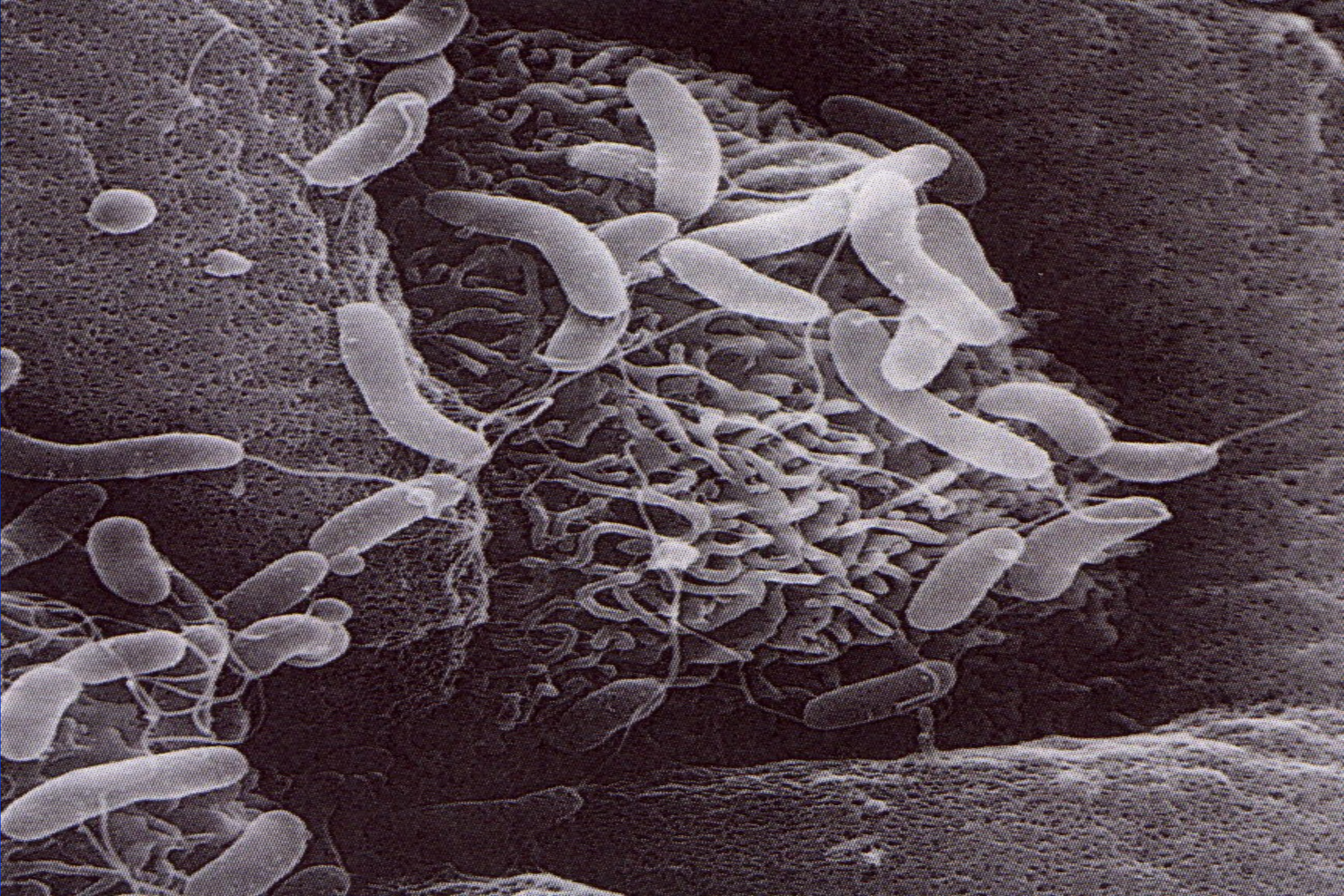


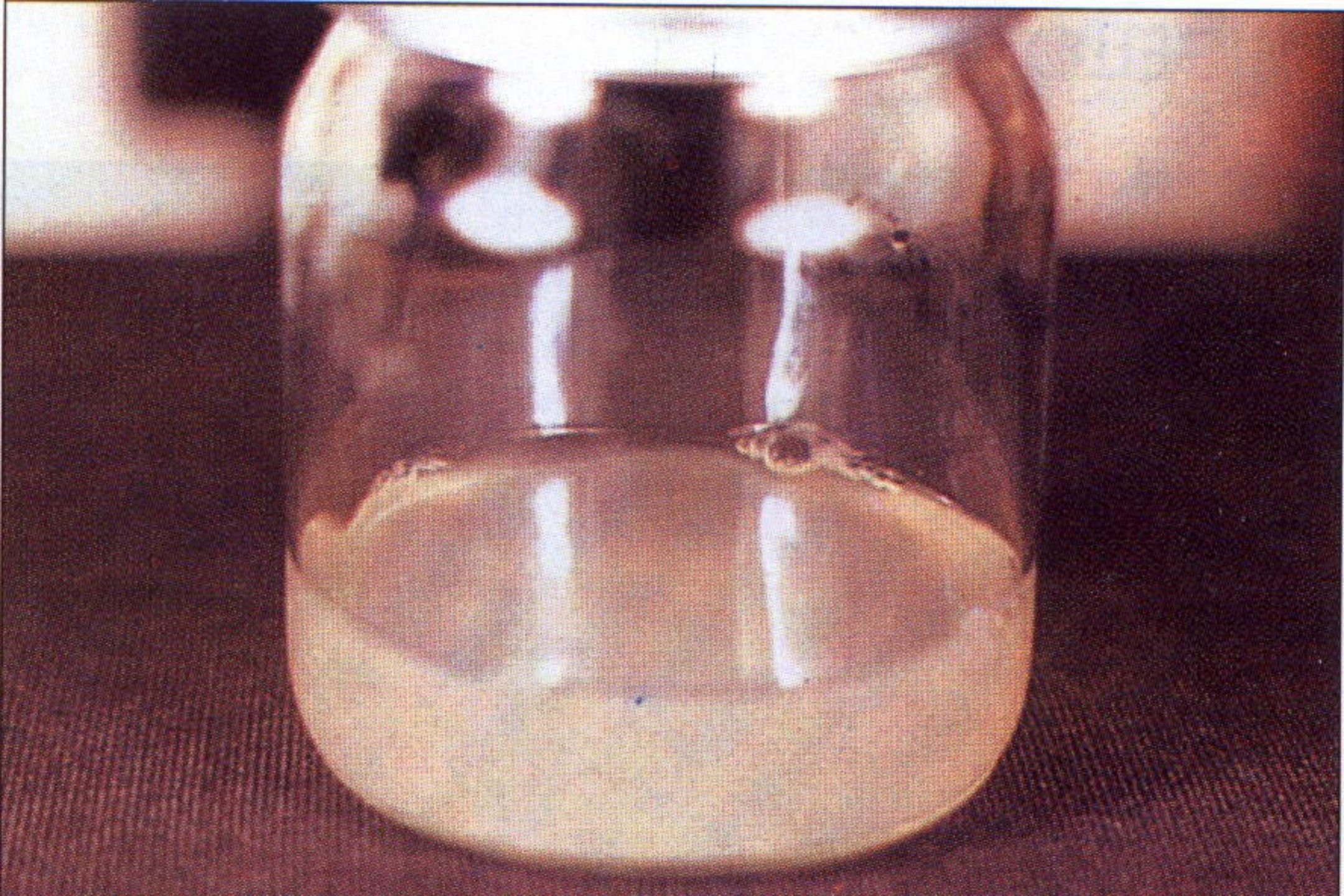
© WHO 2008. All rights reserved



# Cholera

- enterotoxin production - profuse diarrhea, vomiting and rapid dehydration (especially when is the infection caused by classic type)
- the collection of stool by special swabs and culture
- the necessity of quick rehydration
- antibiotics – above all epidemiological significance (fluroquinolones, co-trimoxazol, doxycycline, chloramphenicol)
- vaccination available (combined vaccine with ETEC), not generally recommended – low efficacy, short duration of protection









# Shigellosis

- one of the most contagious intestinal infections
- associated with poor hygiene conditions – war conflicts, natural catastrophes
- *Shigella sonnei*, *S. flexneri*
- colitis (tenesmus, often mucus, pus, and blood in stool)
- rehydration, diet, complicated forms: fluoroquinolones, co-trimoxazol, ampicilin, chloramphenicol



# *E. coli* enterocolitis

- Enterotoxigenic - ETEC
- Enteroinvasive - EIEC
- Enteropathogenic - EPEC
- Enterohemorrhagic - EHEC
- Enteroagregative - EAEC
- Difuse adherent

# *Clostridium difficile* infection (CDI)

- *C. difficile* - G<sup>+</sup> anaerobic spore-forming bacteria
- spores survive for many months outside an organism – extremely resistant
- common nosocomial infections in developed countries
- development of vegetative forms in the colon
- production of exotoxins (usually both at once)
  - toxin A (enterotoxin – nekrotic)
  - toxin B (cytotoxin)
  - binary toxin (unknown mechanism)



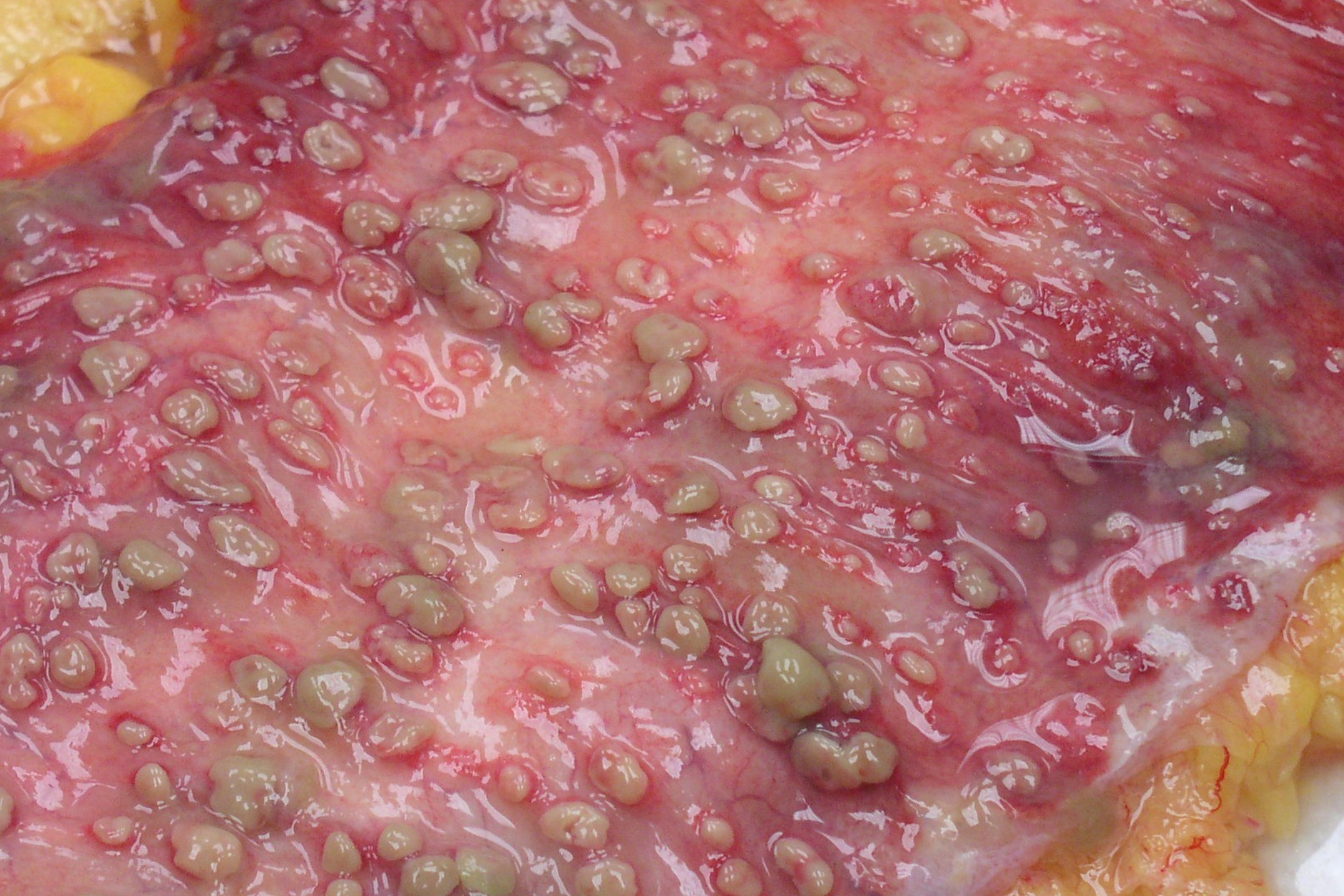
# Important factors for CDI

- presence of toxigenic strain of *C.difficile*
- antibiotic treatment – aminopenicilins, cephalosporins, lincosamides...
- less frequently without antibiotic treatment – oncologic patients
- age  $\geq$  65 years, comorbidities, IS
- function of GI tract – peristalsis, only perenteral nutrition, disturbances of mucous immunity

# CDI – clinical forms

- a) asymptomatic carriers (2-3 % of adults, in children much more, prevalence is increasing with the length of hospitalization - 10-25 % or more)
- b) uncomplicated colitis (diarrhea, fever, no pseudomembranes)
- c) pseudomembranous colitis - PMC (sepsis, leucocytosis, abdominal pain, and bloody stool)
- d) toxic megacolon (paresis and necrosis of the gut, possible perforation, infectious shock)

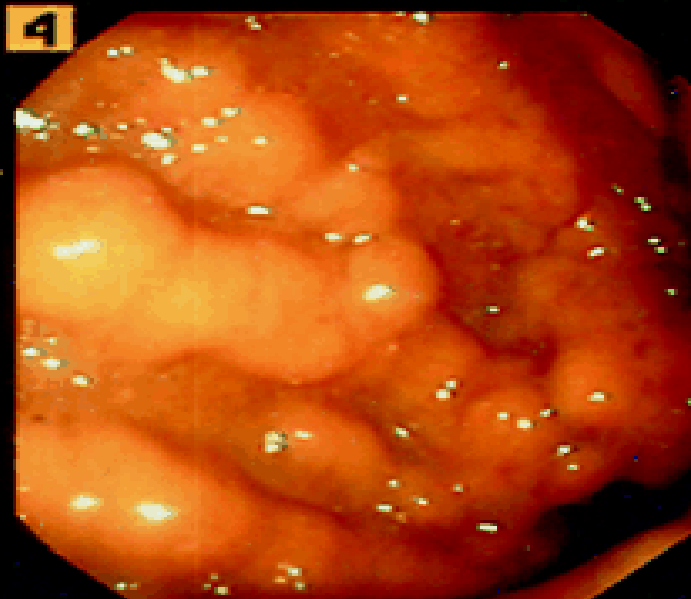
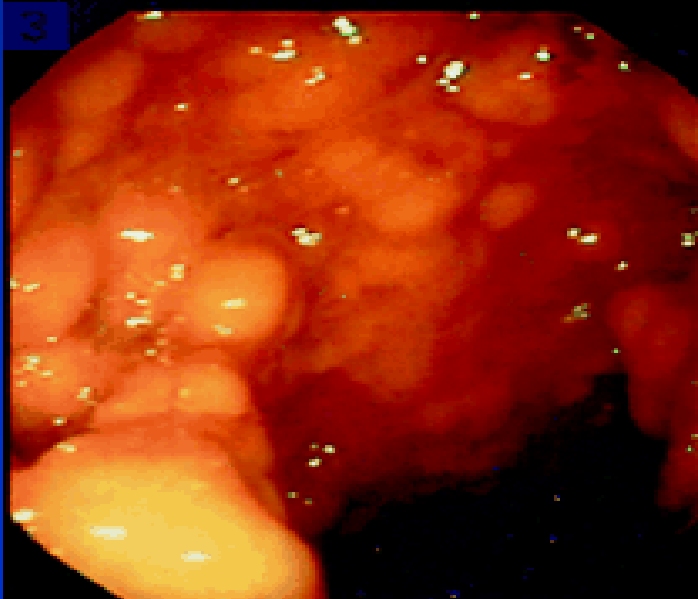
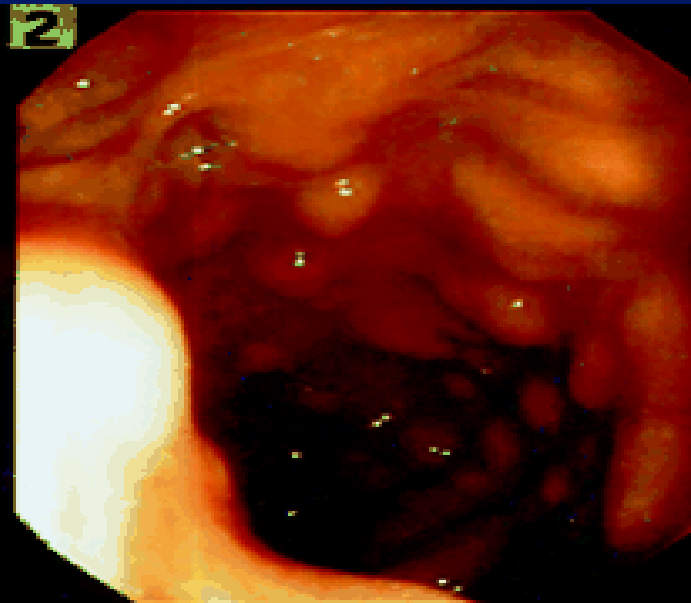




# Diagnosis of CDI

- antibiotics in history
- clinical findings
- microbiological testing – detection of toxins (ELISA), specific antigen (GDH), culture, cytotoxic test, PCR
- coloscopy (pseudomembranes)
- ultrasound, CT – auxilliary methods





# CDI therapy

- termination of ATB therapy
- colitic diet, rehydration, rehabilitation
- do not use antimotility drugs - danger of toxic megacolon
- pharmacotherapy – 10-14 days
  - metronidazol 3 × 500 mg oral or intravenous
  - vancomycin 4 × 125 mg oral
  - fidaxomicin 2 × 200 mg oral
- colectomy

# Food poisoning

- **with short incubation period** (1-6 hours)-thermostable toxins –  
nausea, vomiting

*Staphylococcus aureus*

*Bacillus cereus*

- **with long incubation period** (6-18 hours)- termolabile toxins -  
diarrhea

*Bacillus cereus*

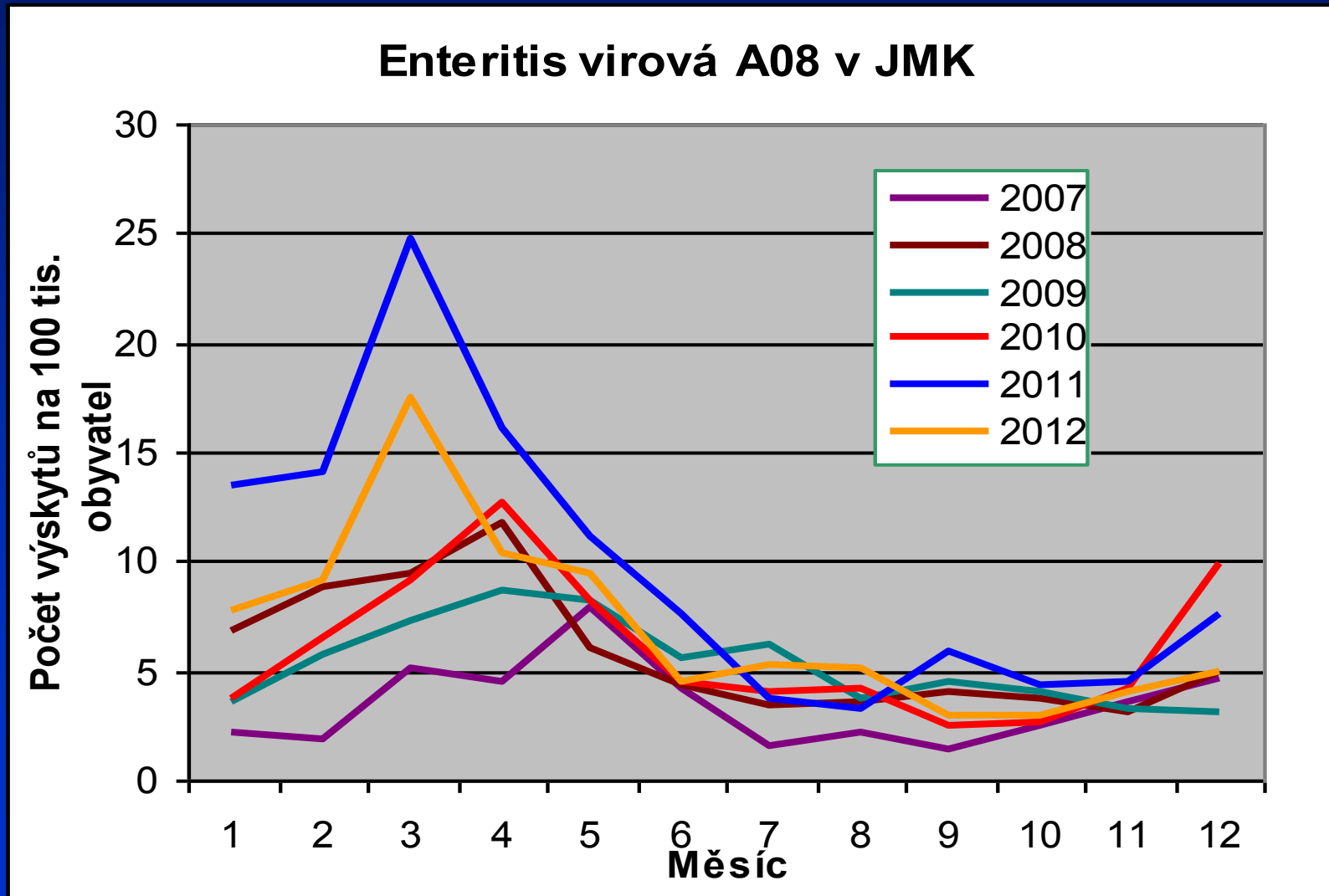
*Clostridium perfringens A*

- absence of fever, outbreaks
- rehydration, diet

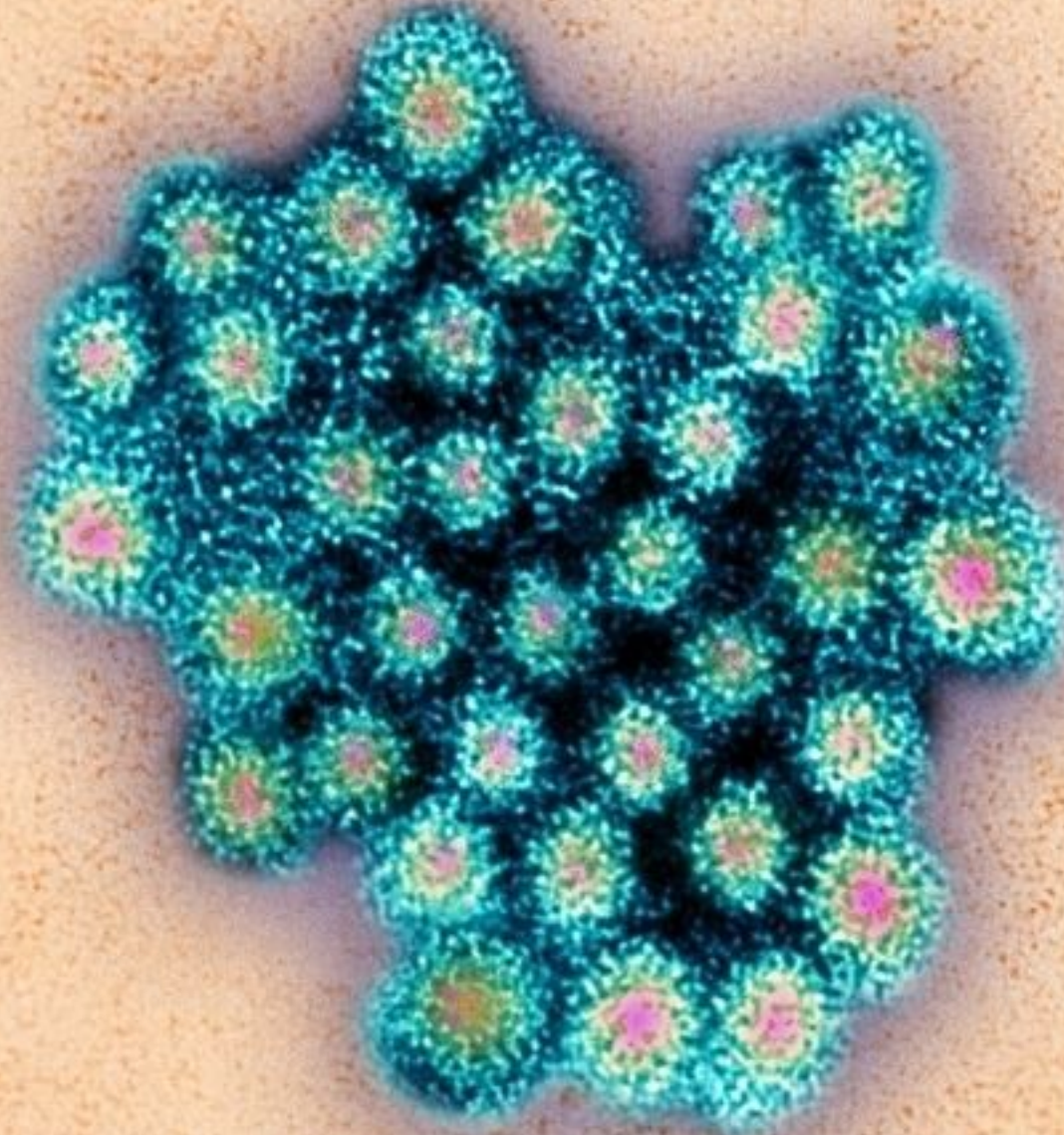
# Viral gastroenteritis

- noroviruses (Norwalk, Norwalk-like virus) – older children, adults
  - rotaviruses (small children- 6-24 months, seniors) – fecal-oral, airborne infection, vaccine available
  - adenoviruses
  - astroviruses
  - coronaviruses
- 
- symptomatic therapy

# Viral GI infections in Southern Moravia



# Norovirus



# Incubation periods of GI infections

<b>Patogen</b>	<b>Inkubační doba</b>
kampylobakter	1–7 dnů
salmonela	6–48 hodin
yersinie	4–10 dnů
shigela	1–5 dnů
<i>Clostridium difficile</i>	3–30 dnů
<i>Staphylococcus aureus</i>	1–6 hodin
<i>Bacillus cereus</i> (dle toxinu)	1–6 hodin či 8–16 hodin
<i>Clostridium perfringens</i> typu A	8–16 hodin
rotavirus	1–2 dny
adenovirus	1–2 dny
norovirus	18–72 hodin

# Parasitic infection of GI tract

- protozoal
- helminthic
- fungal



# Protozoal infections

## Human

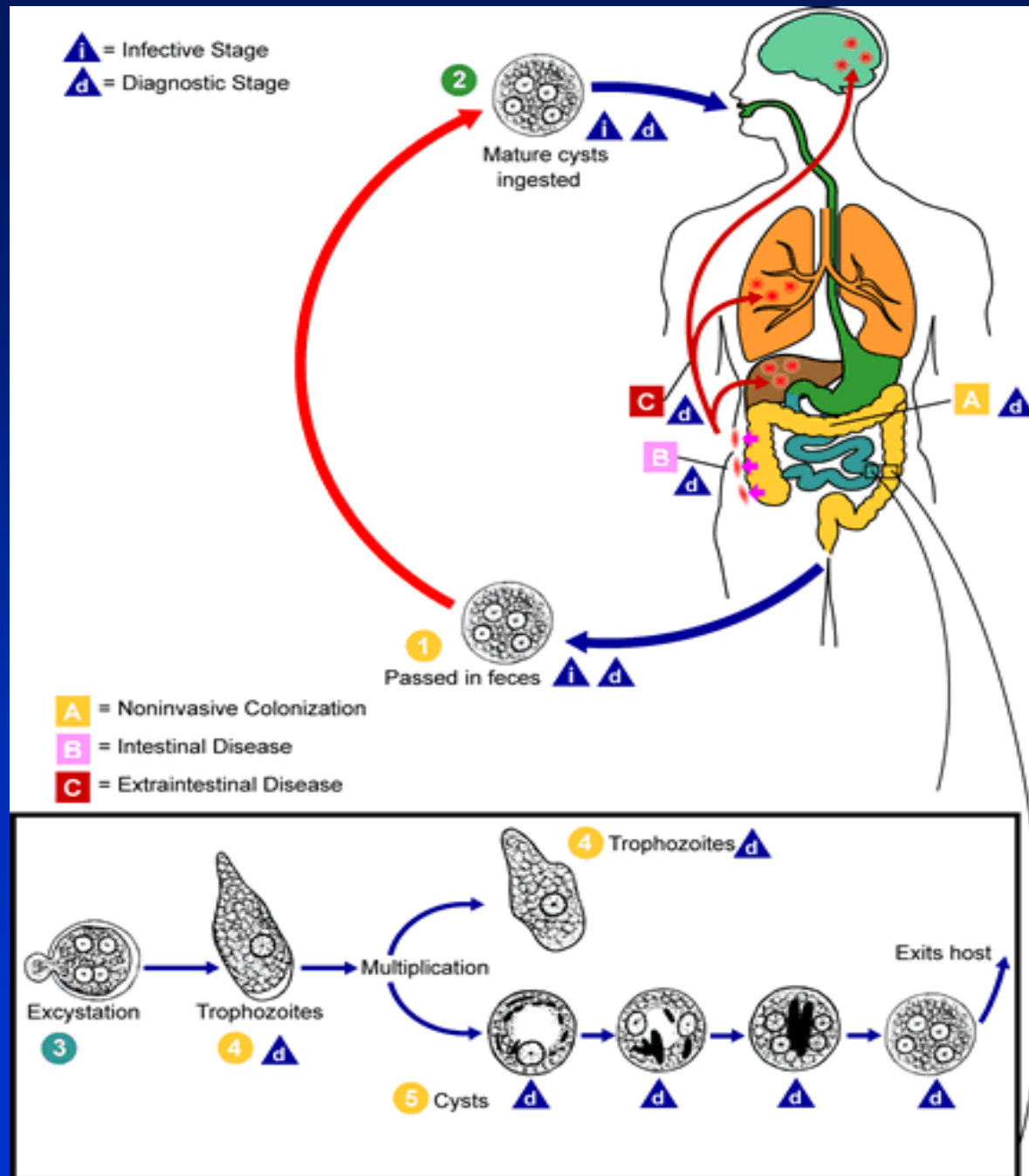
- Amebiasis (*Entamoeba histolytica*)
- Lambliasis = giardiasis (*L.*, *G. intestinalis*)

## Zoonotic

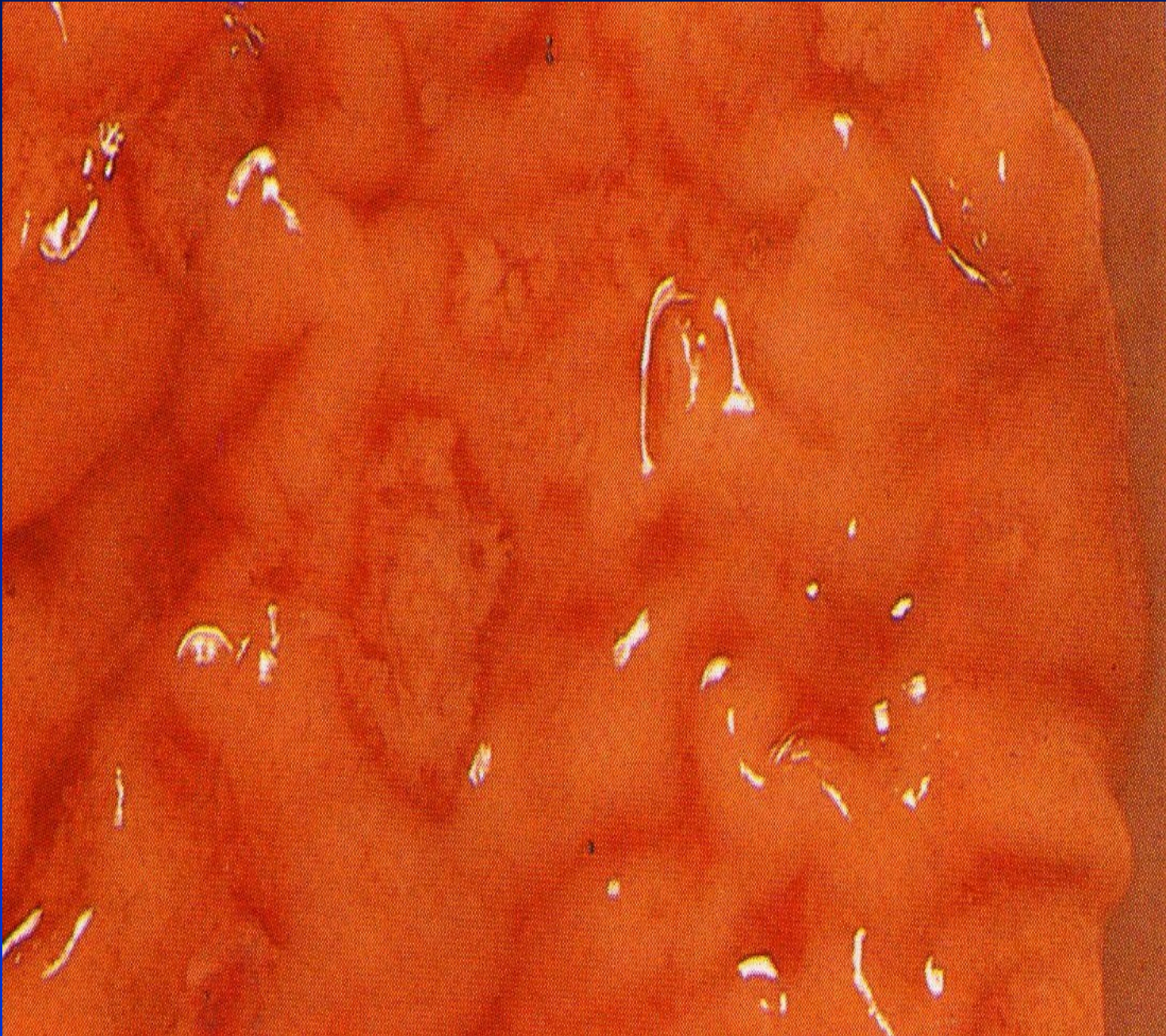
- cryptosporidiosis (*Cryptosporidium parvum*)
- isosporosis (*Isospora belli*)
- microsporidiosis (*Enterocytozoon bineusi*)
- cyclosporiasis (*Cyclospora cayetanensis*)

# Amebiasis

*Entamoeba histolytica*



Amebic colitis



Amebic abscess



CT – day 0

Amebic abscess



CT – drainage of 2 abscesses – day 2

Map 3  
150dB/C3  
Persist Med  
Fr Rate Med  
2D Opt:Gen

ATL

D X

5.76cm

US - day 0



Map 3  
150dB/C3  
Persist Med  
Fr Rate Med  
2D Opt:Gen

ATL

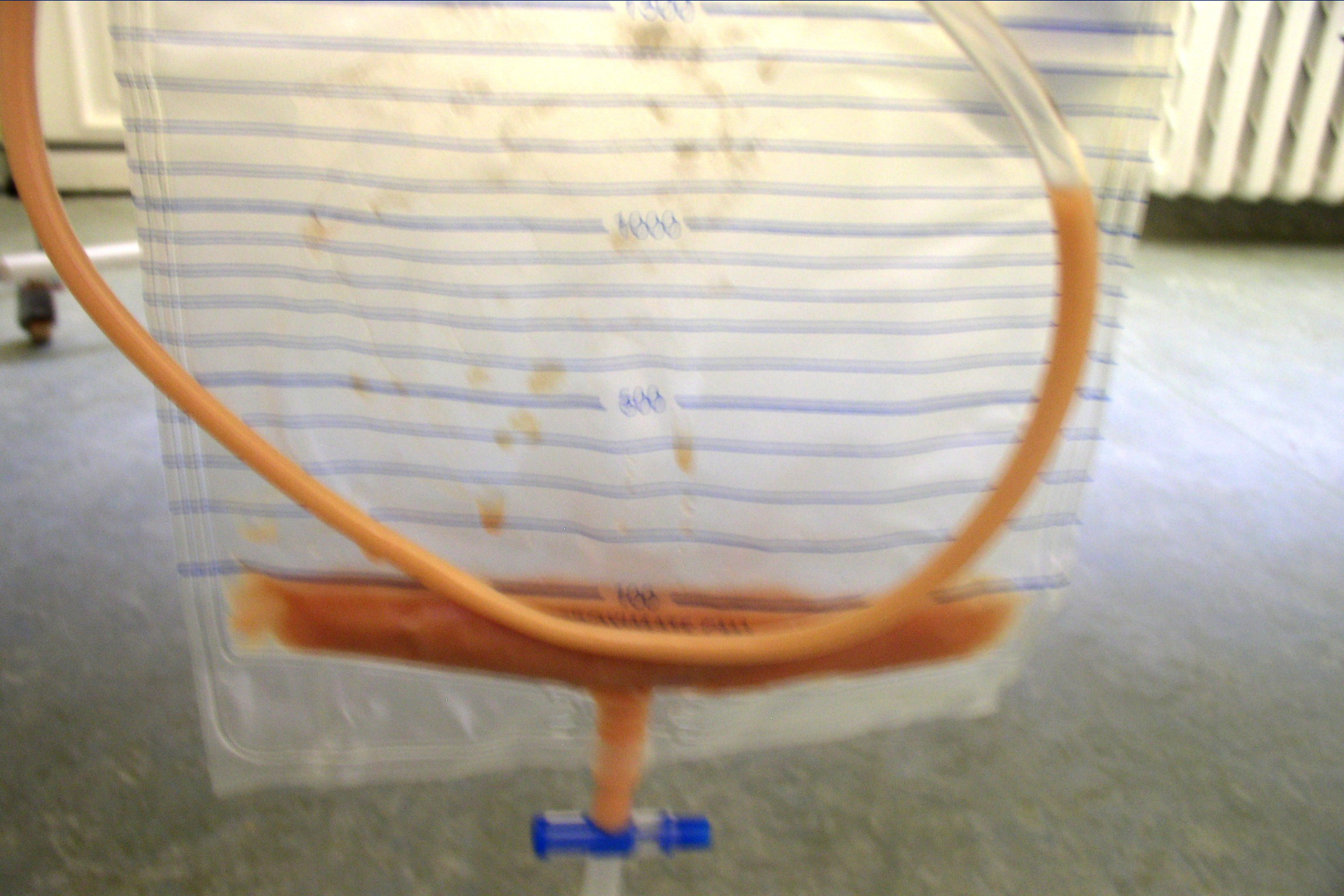


+ 4.23cm  
x 2.98cm

US – day 5







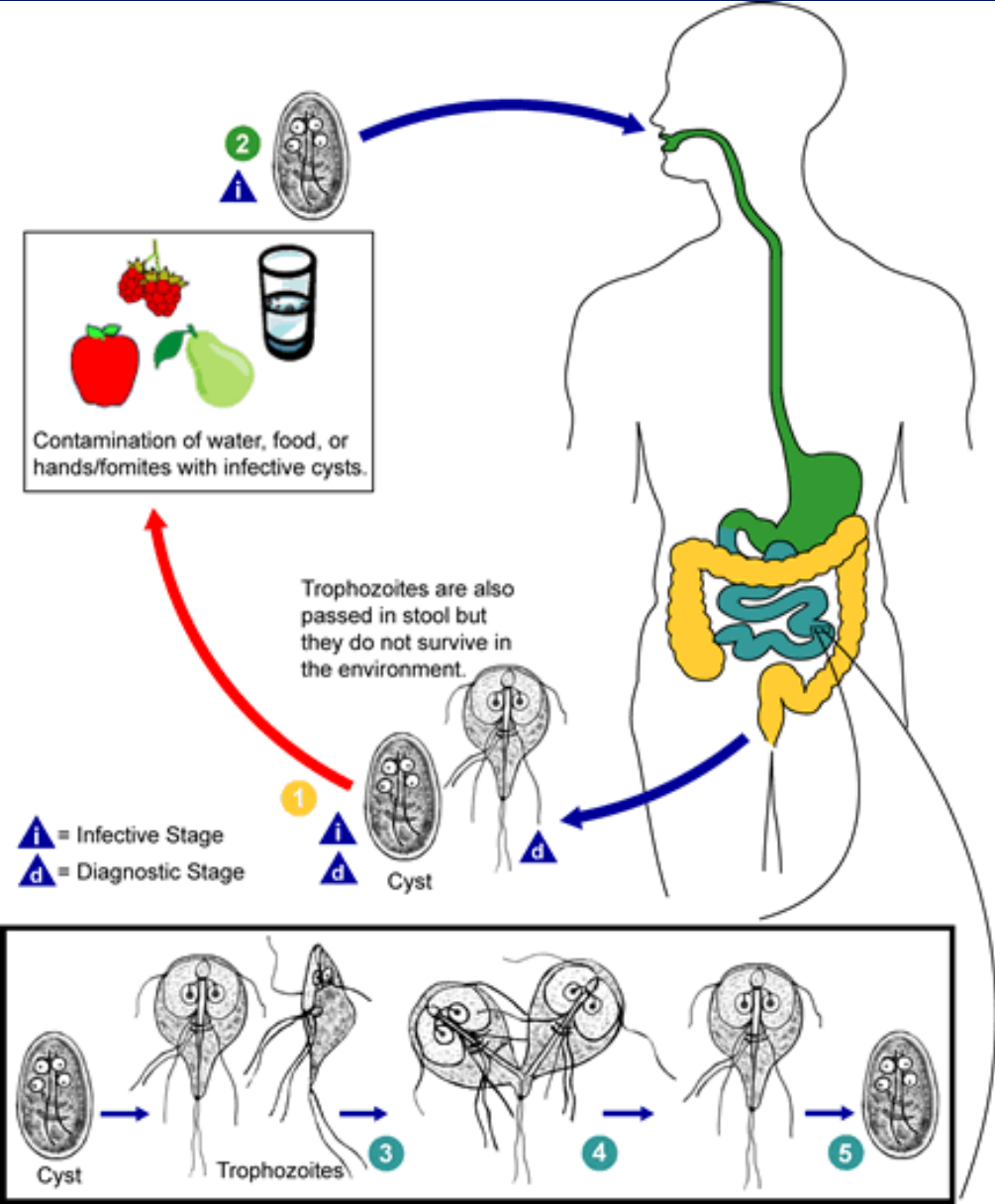


Amebic abscess –  
trancutaneous punction

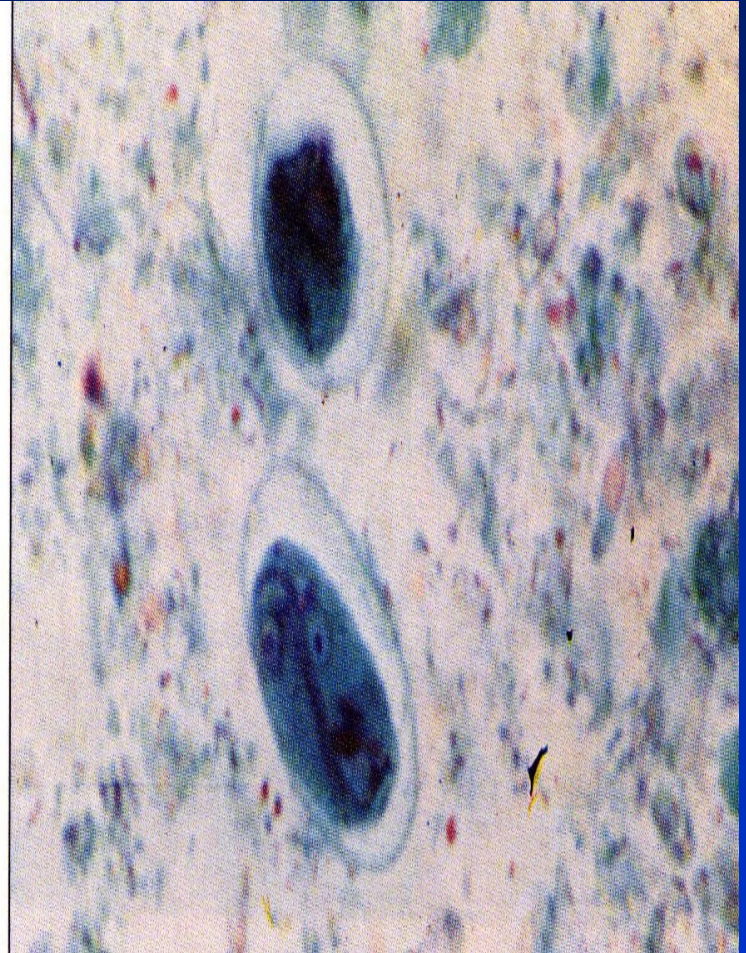


# Lambliasis, girardiasis

*Lamblia, Giardia  
intestinalis*



Lamblasis  
microskopy



Lambliasis  
scan



# Helminthic GI infections

- **Roundworms (Nematodes)** - ascariasis, enterobiosis=oxyuriasis, trichuriasis
- **Tapeworms (Cestodes)** - teniasis, diphylobotriosis, hymenolepsiosis, echinococcosis, alveococcosis
- **Flukes (Trematodes)** - schistosomiasis

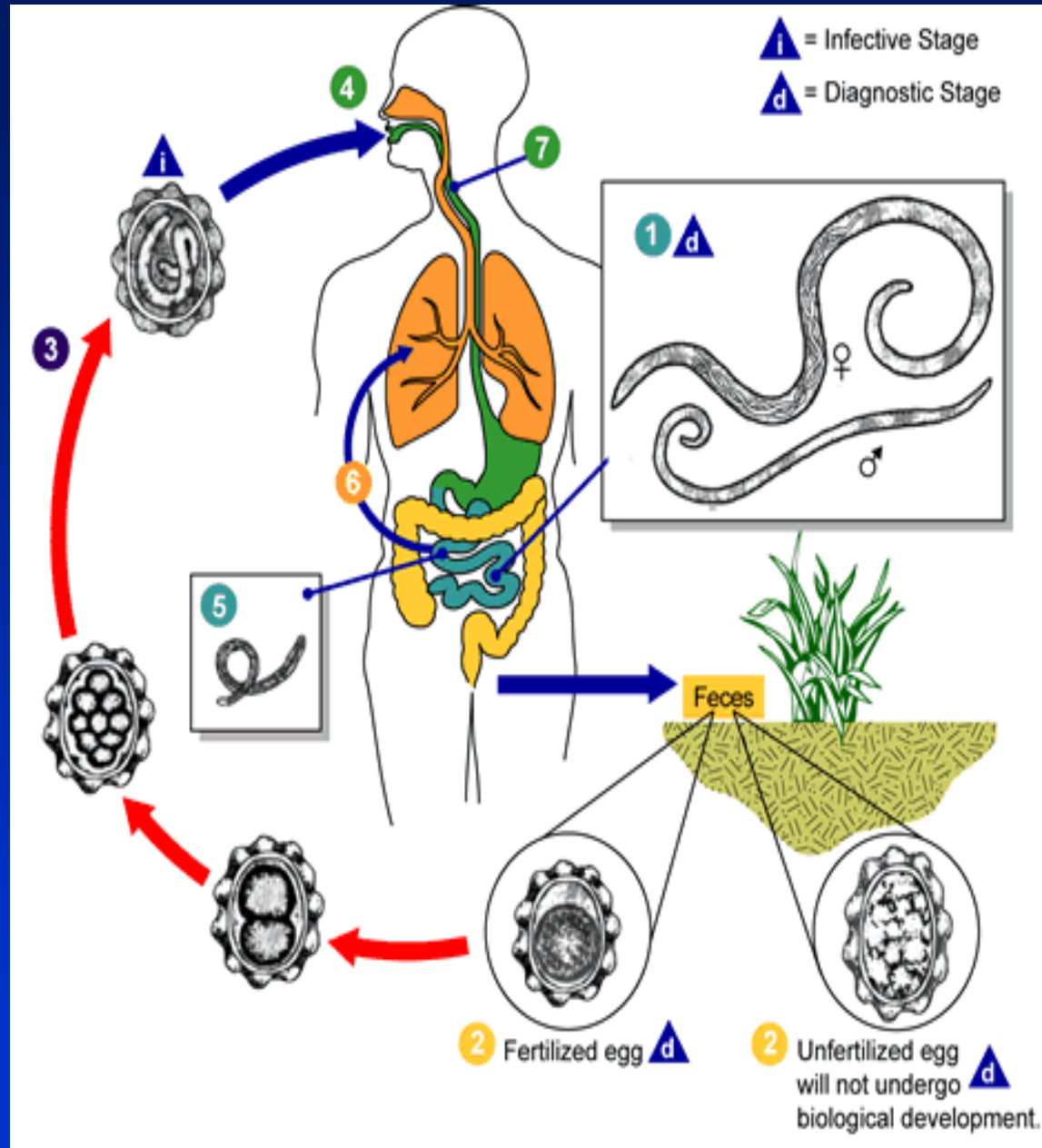
# Roundworms (Nematodes)

- *Ascaris lumbricoides*
- *Enterobius, Oxyuris vermicularis*
- *Trichuris trichiura*

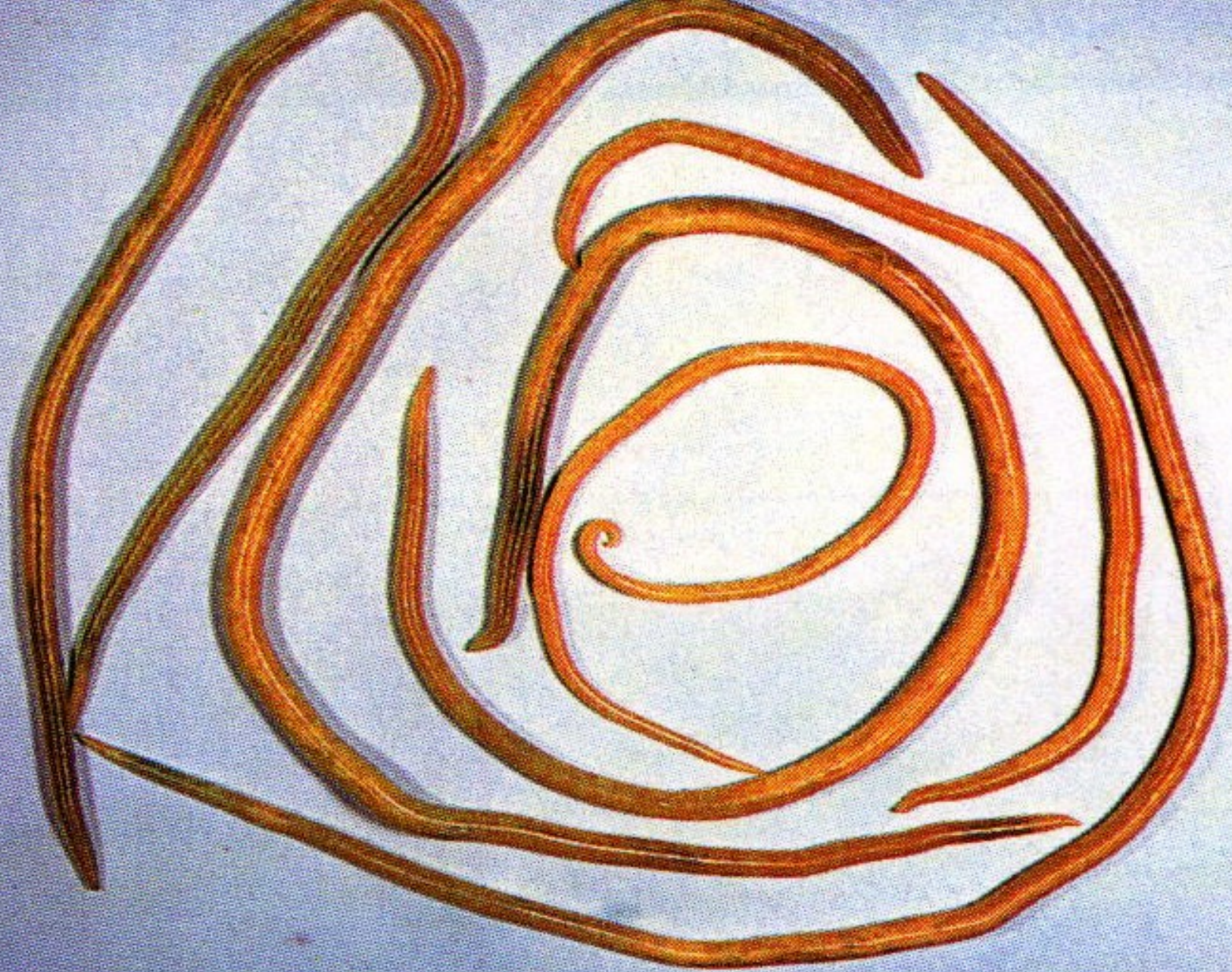




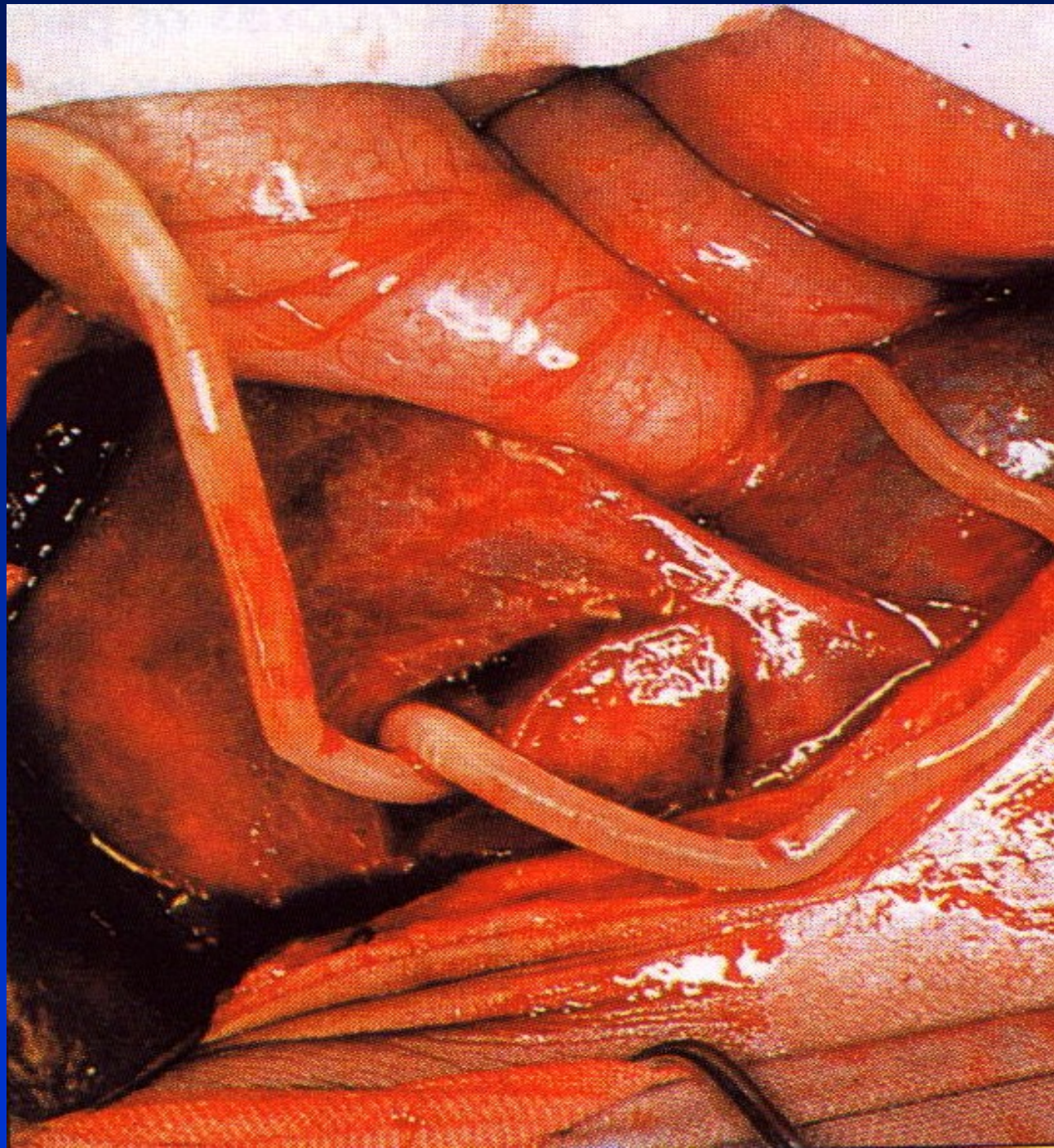
# Ascariasis



*Ascaris lumbricoides*

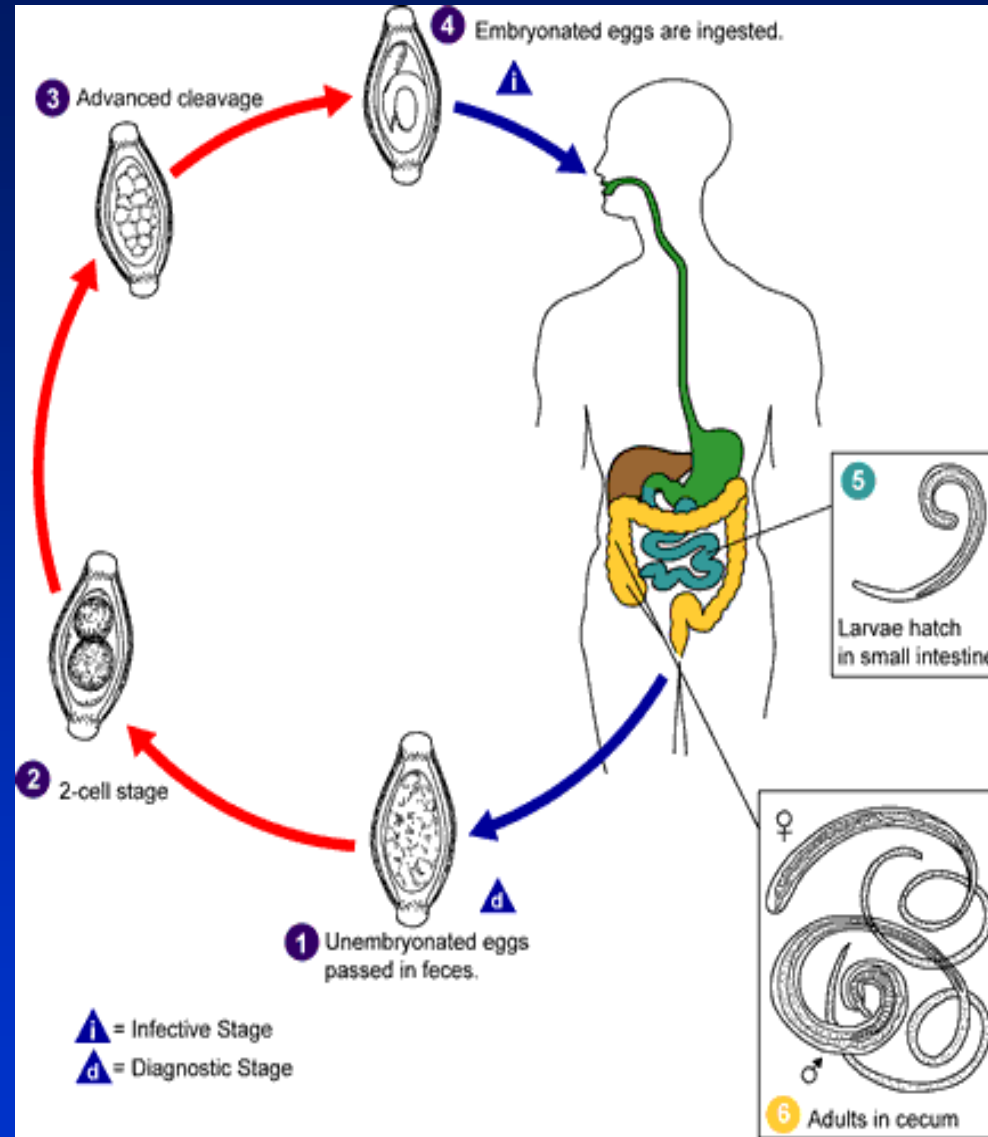




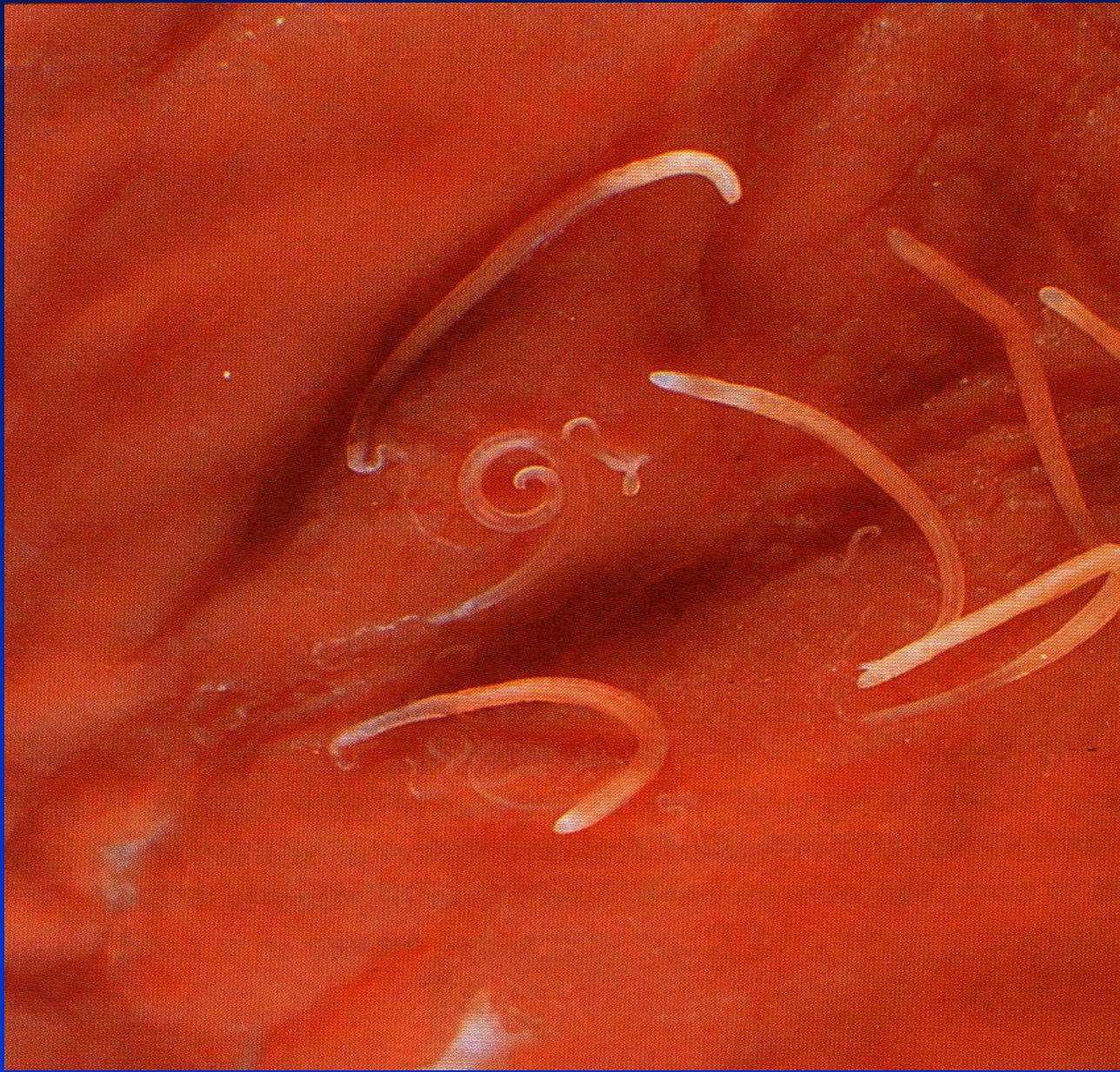




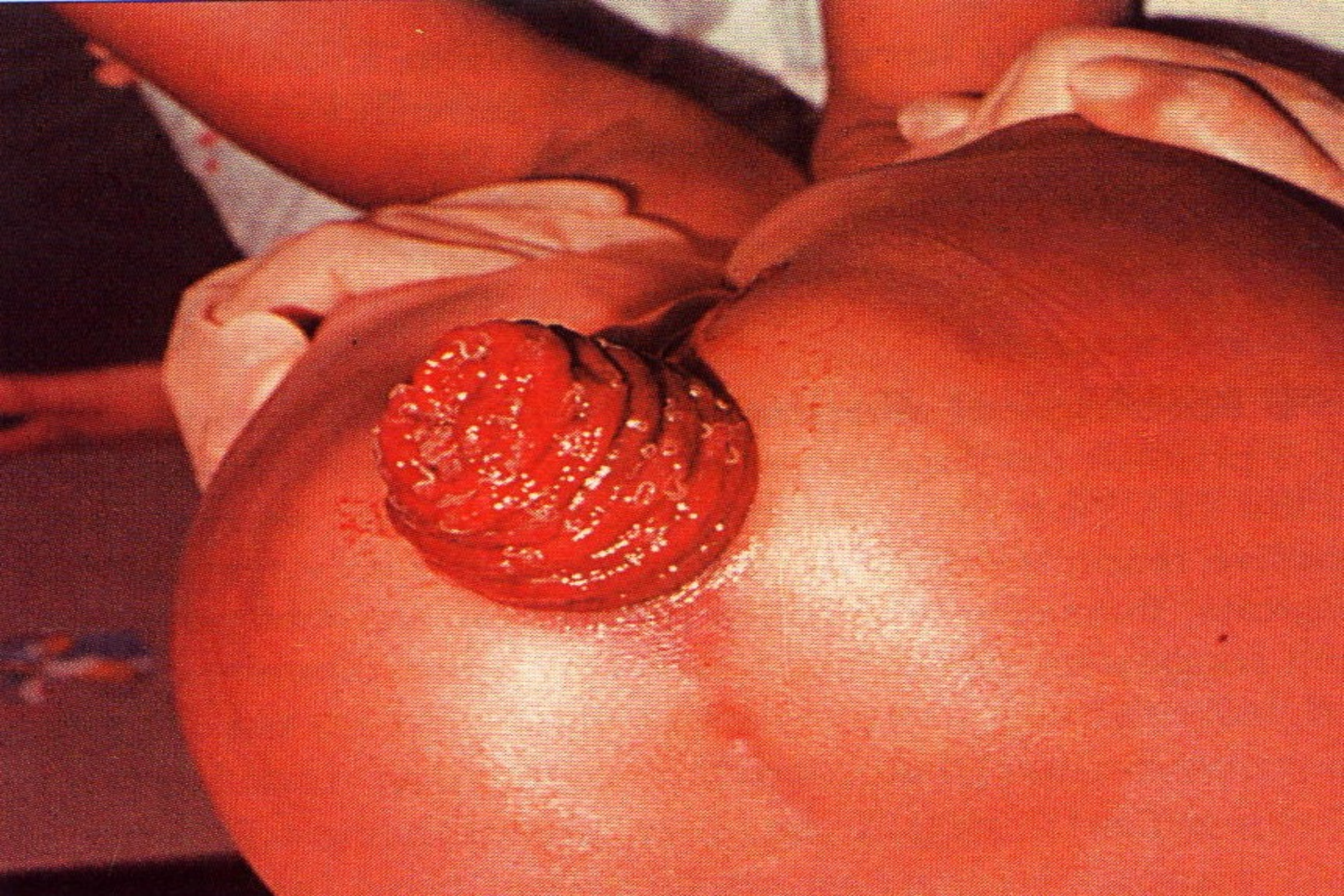
# Trichuriasis



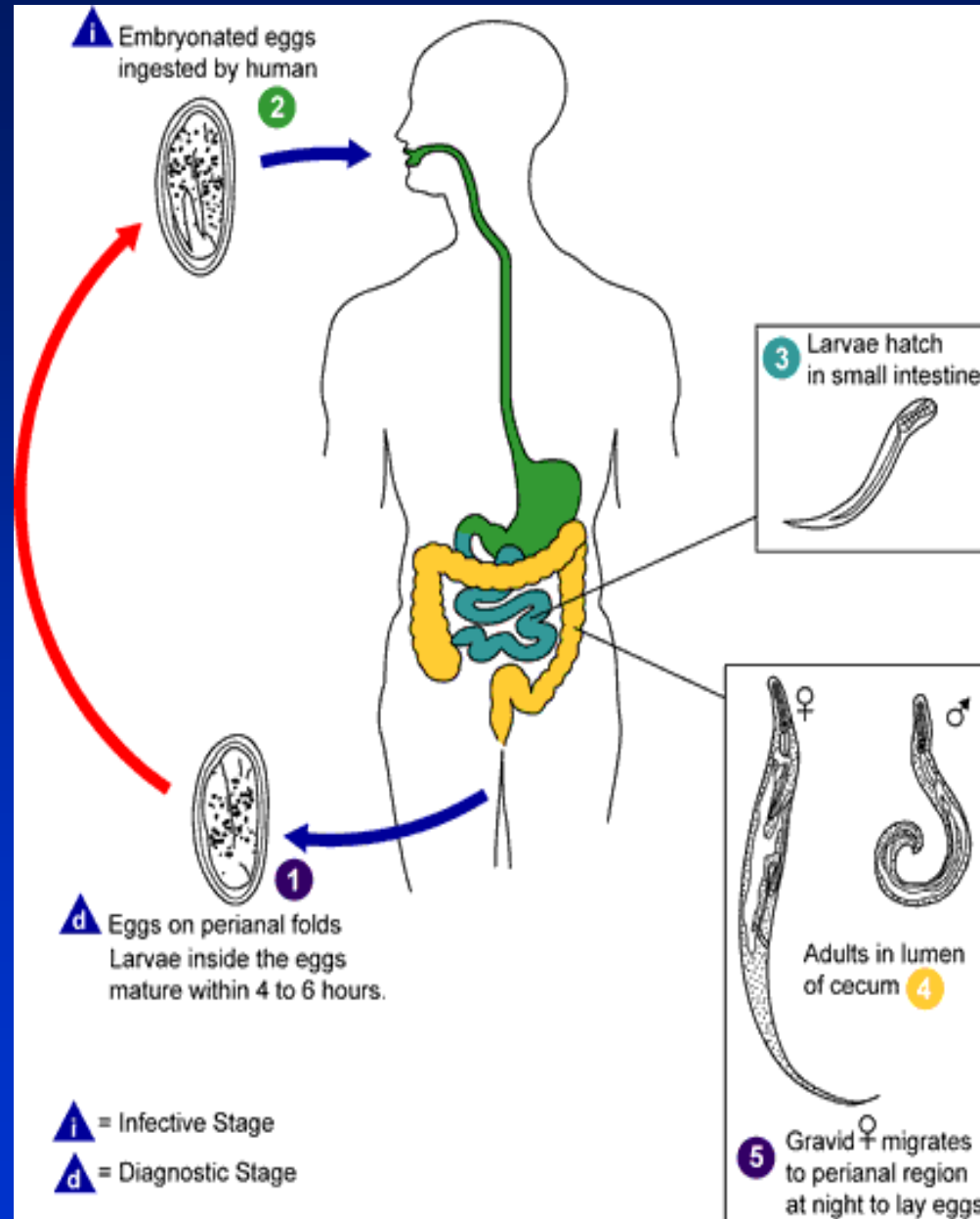
*Trichuris trichiura*





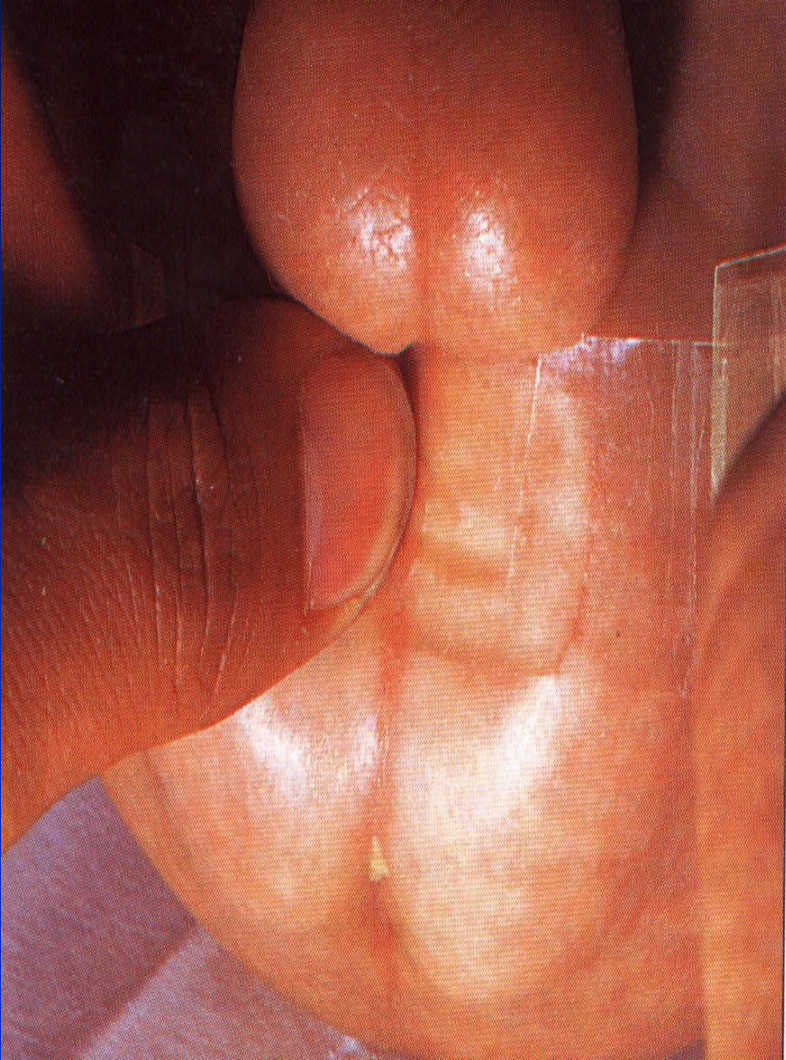


# Enterobiosis, oxyuriasis



*Enterobius, Oxyuris  
vermicularis*

**Enterobiosis,  
oxyuriasis**



# Tapeworms (Cestodes)

## Man as final host

- *Taenia saginata*
- *Taenia solium*
- *Diphyllobotrium latum* , *D. pacificum*
- *Hymenolepsis nana*

## Animal as final host

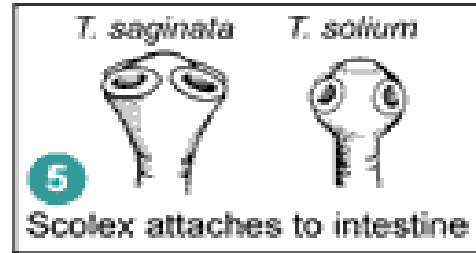
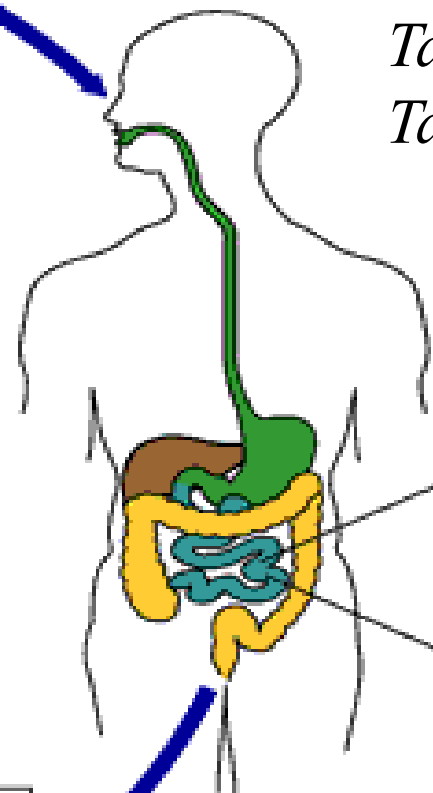
- *Echinococcus granulosus*
- *Echinococcus (Alveococcus) multilocularis*

**i** Oncospheres develop into cysticerci in muscle



**4** Humans infected by ingesting raw or undercooked infected meat

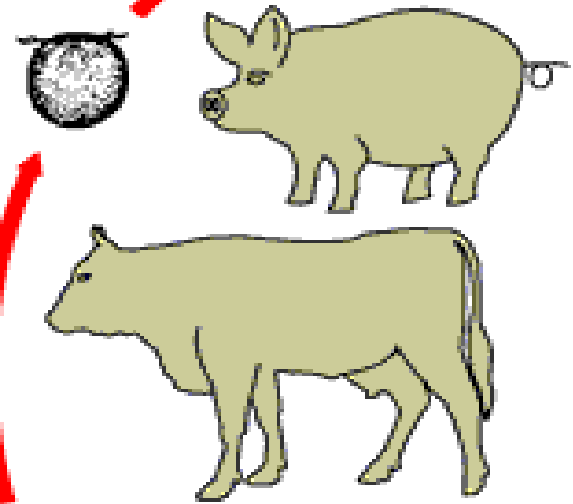
*Taenia saginata*  
*Taenia solium*



**i** = Infective Stage  
**d** = Diagnostic Stage

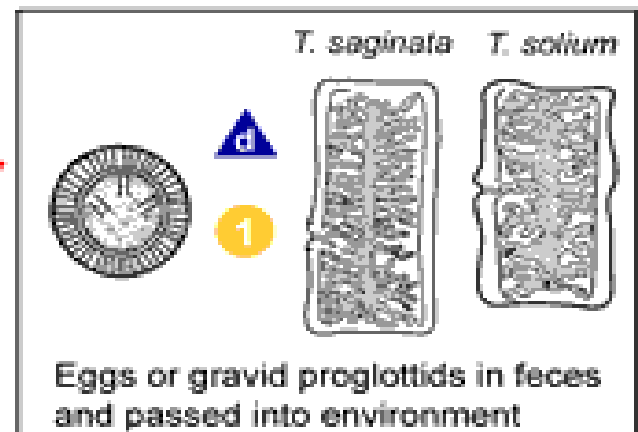
Oncospheres hatch, penetrate intestinal wall, and circulate to musculature

**3**



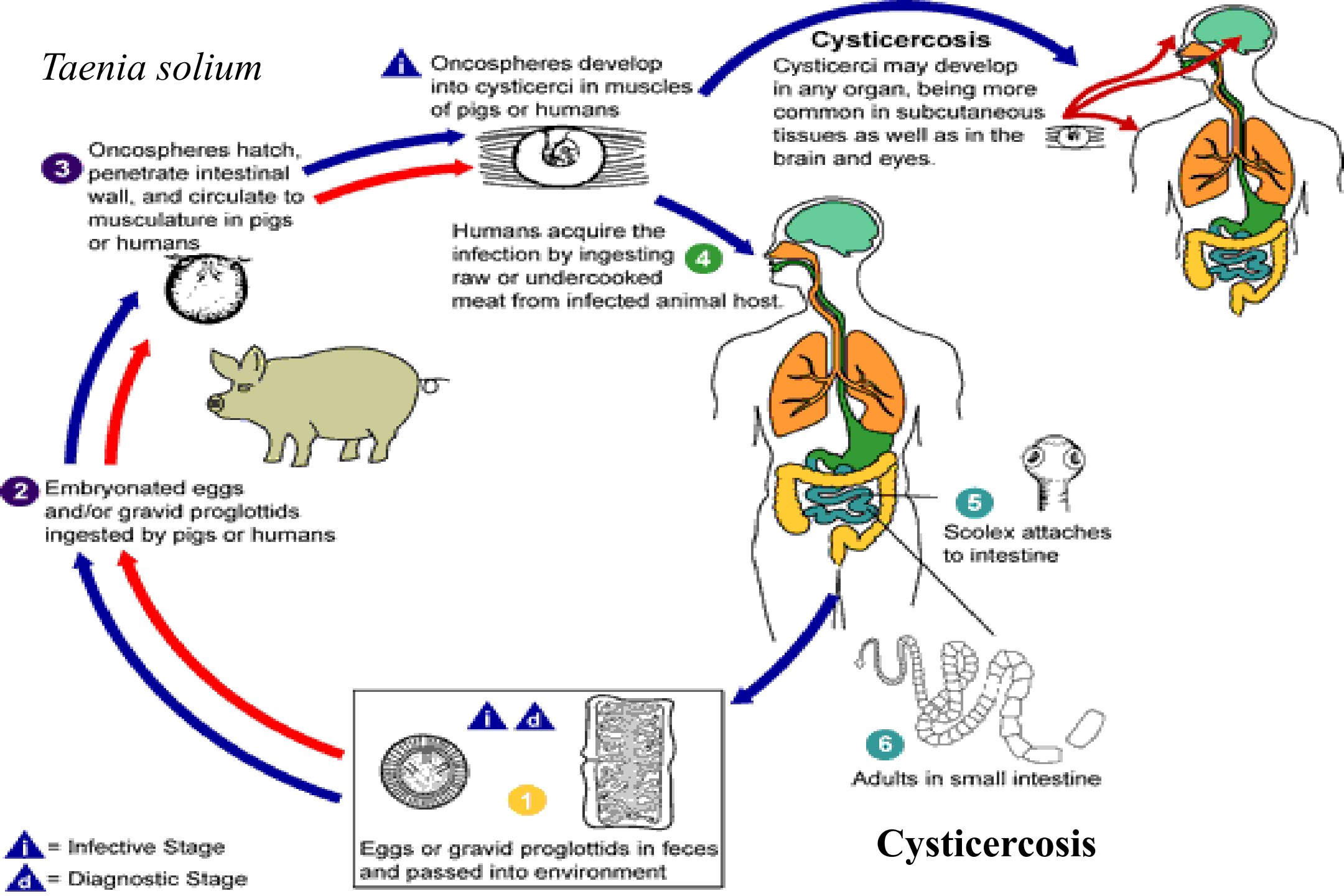
**2**

Cattle (*T. saginata*) and pigs (*T. solium*) become infected by ingesting vegetation contaminated by eggs or gravid proglottids



# Taeniosis

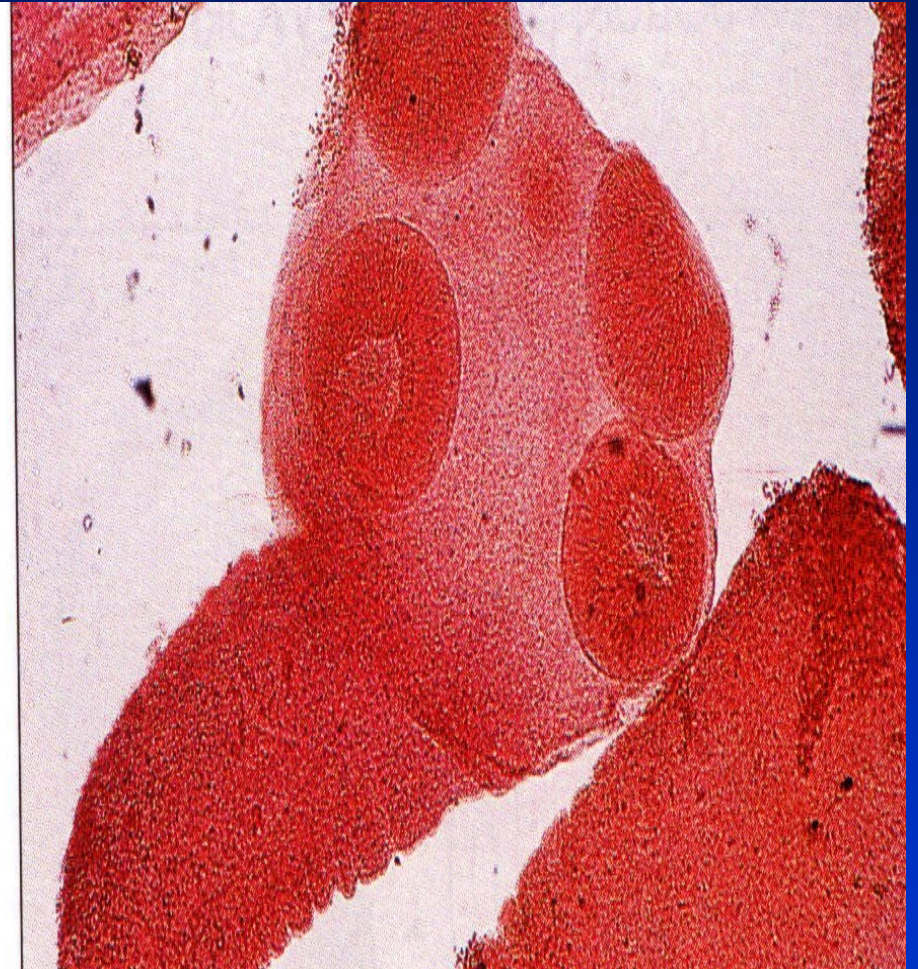
# Taenia solium



*Taenia solium*



*Taenia saginata*

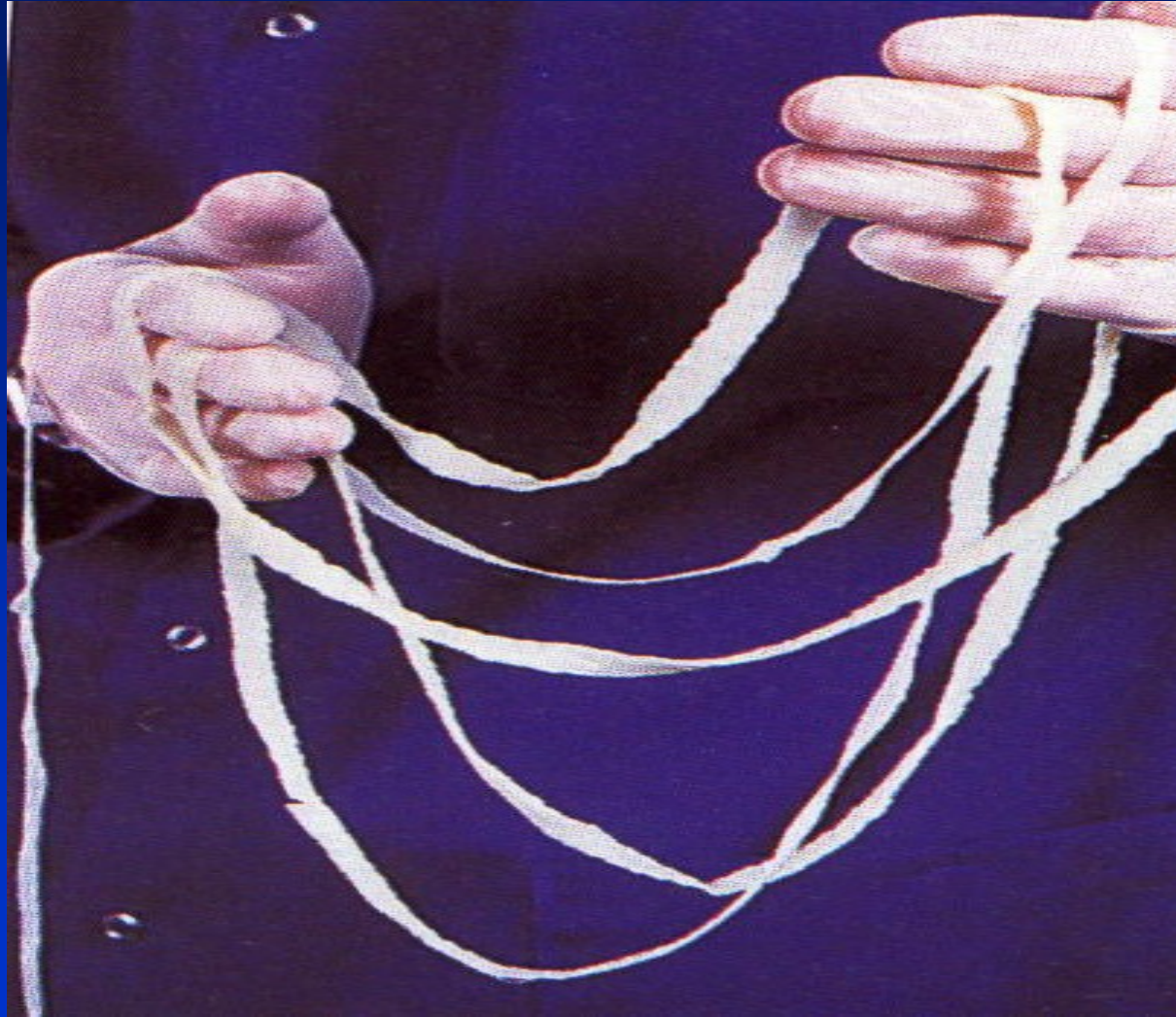


*Taenia solium*





*Taenia saginata*



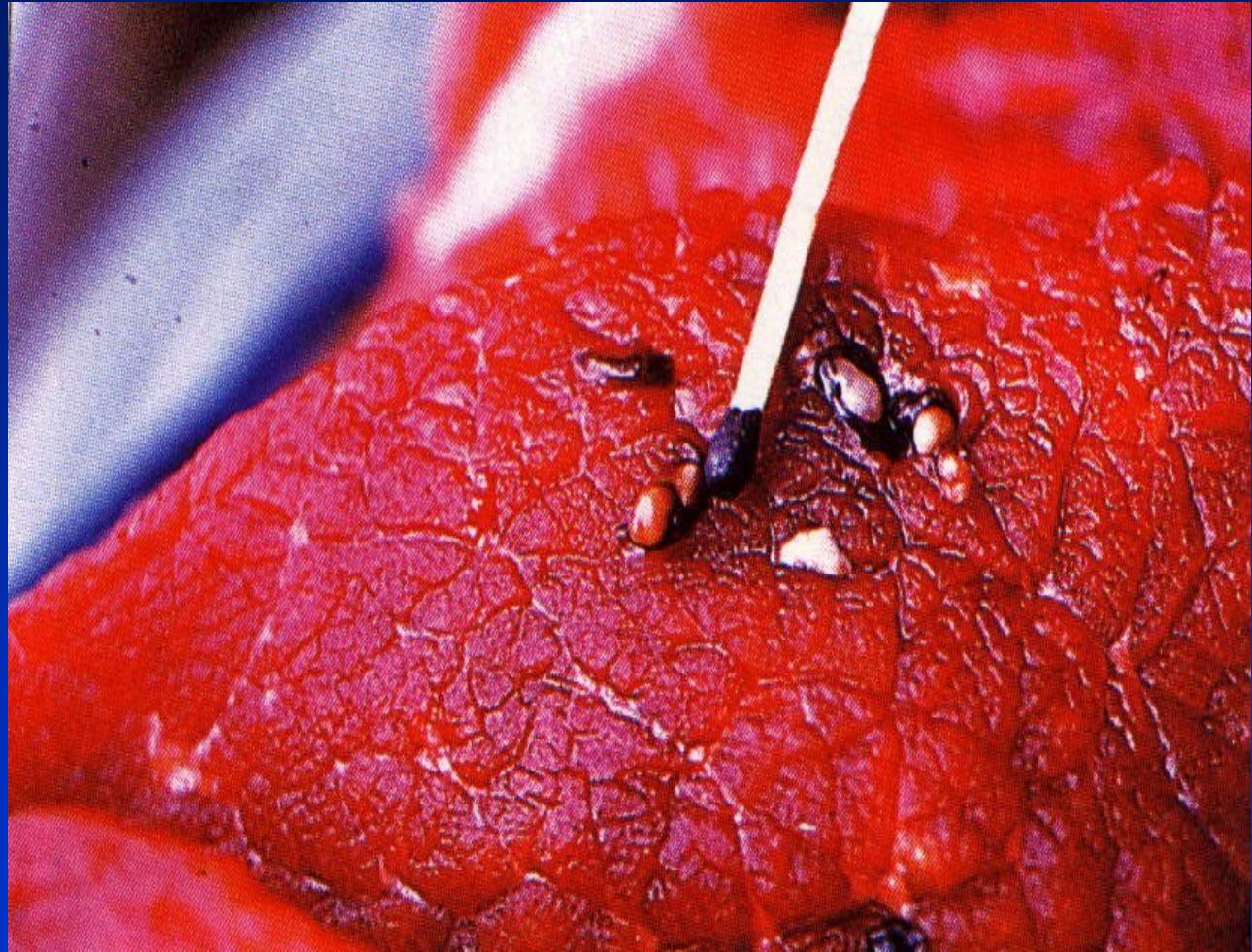
# Cysticercosis (pig)

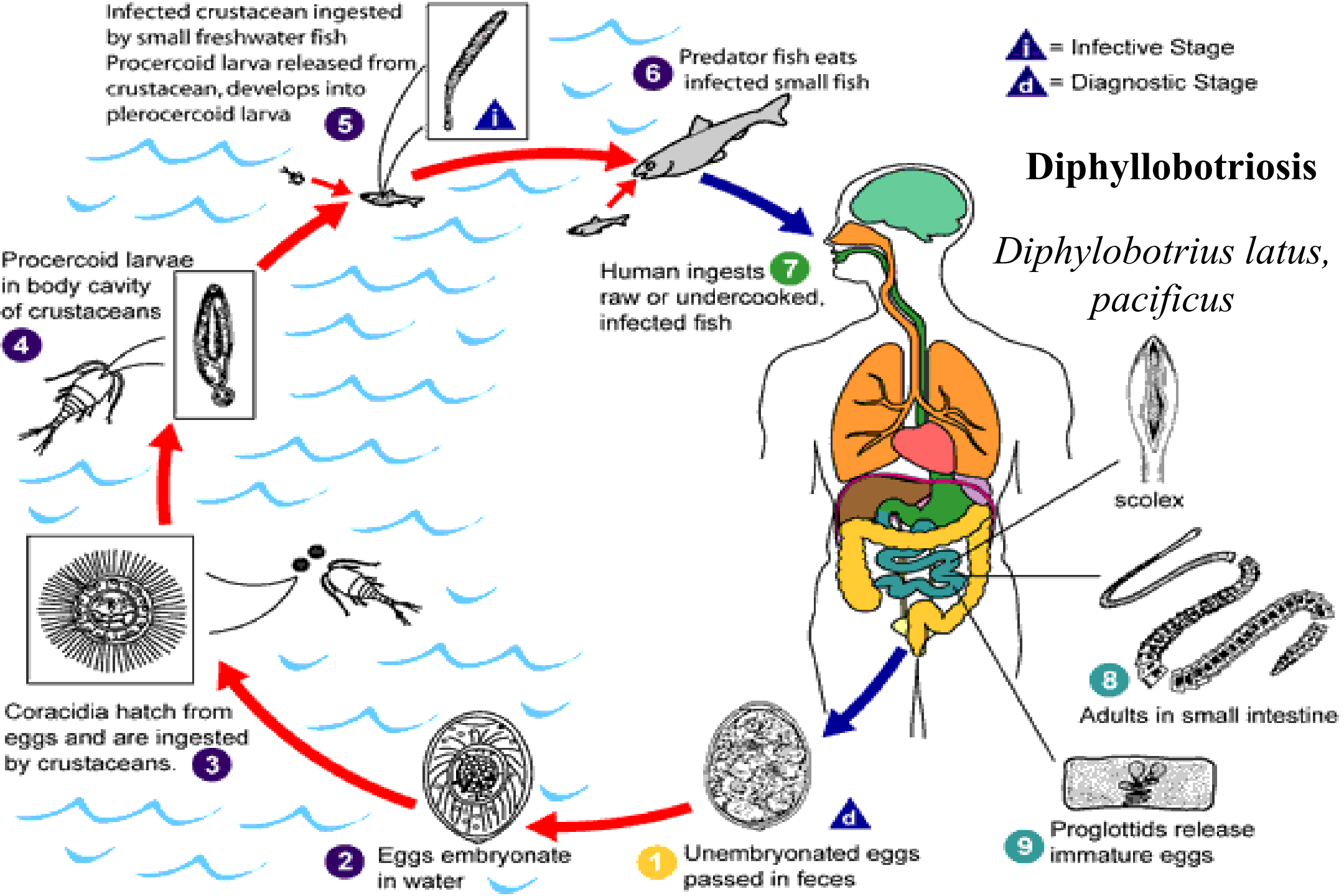


# Cysticercosis (man)

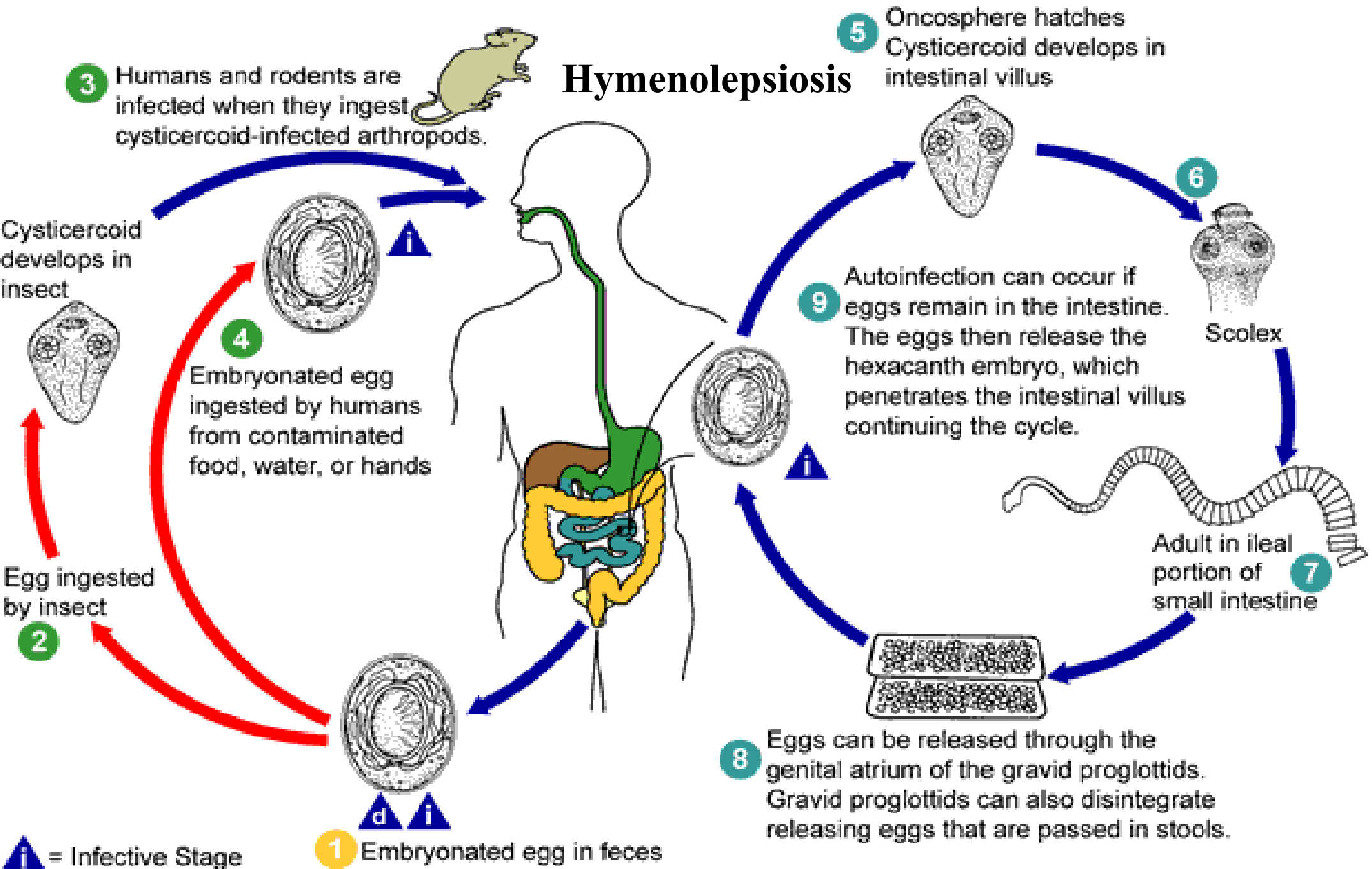


# Cysticercosis (cow)





# Hymenolepsis

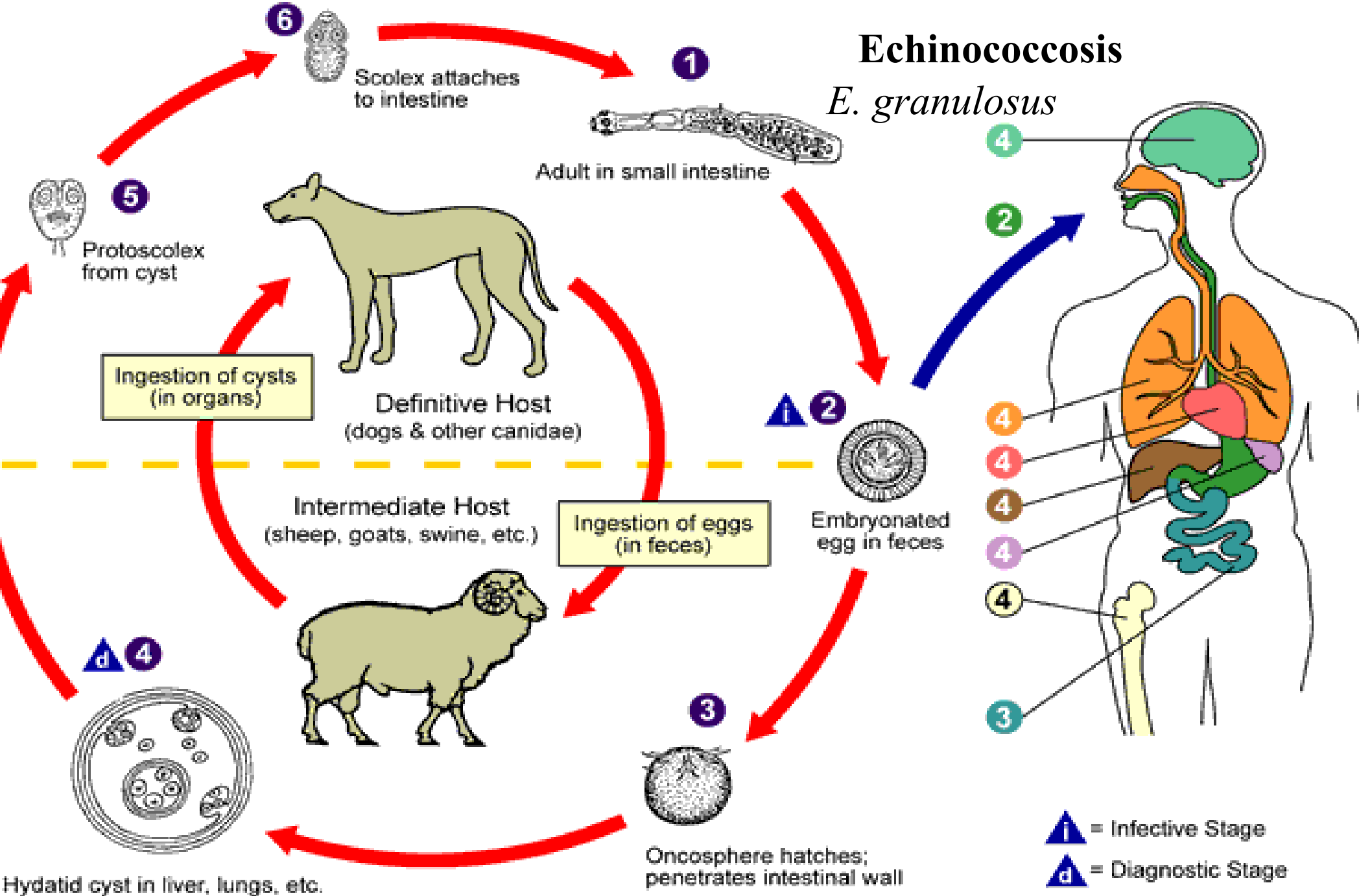


**i** = Infective Stage  
**d** = Diagnostic Stage

*Hymenolepsis nana*

# Echinococcosis

*E. granulosus*

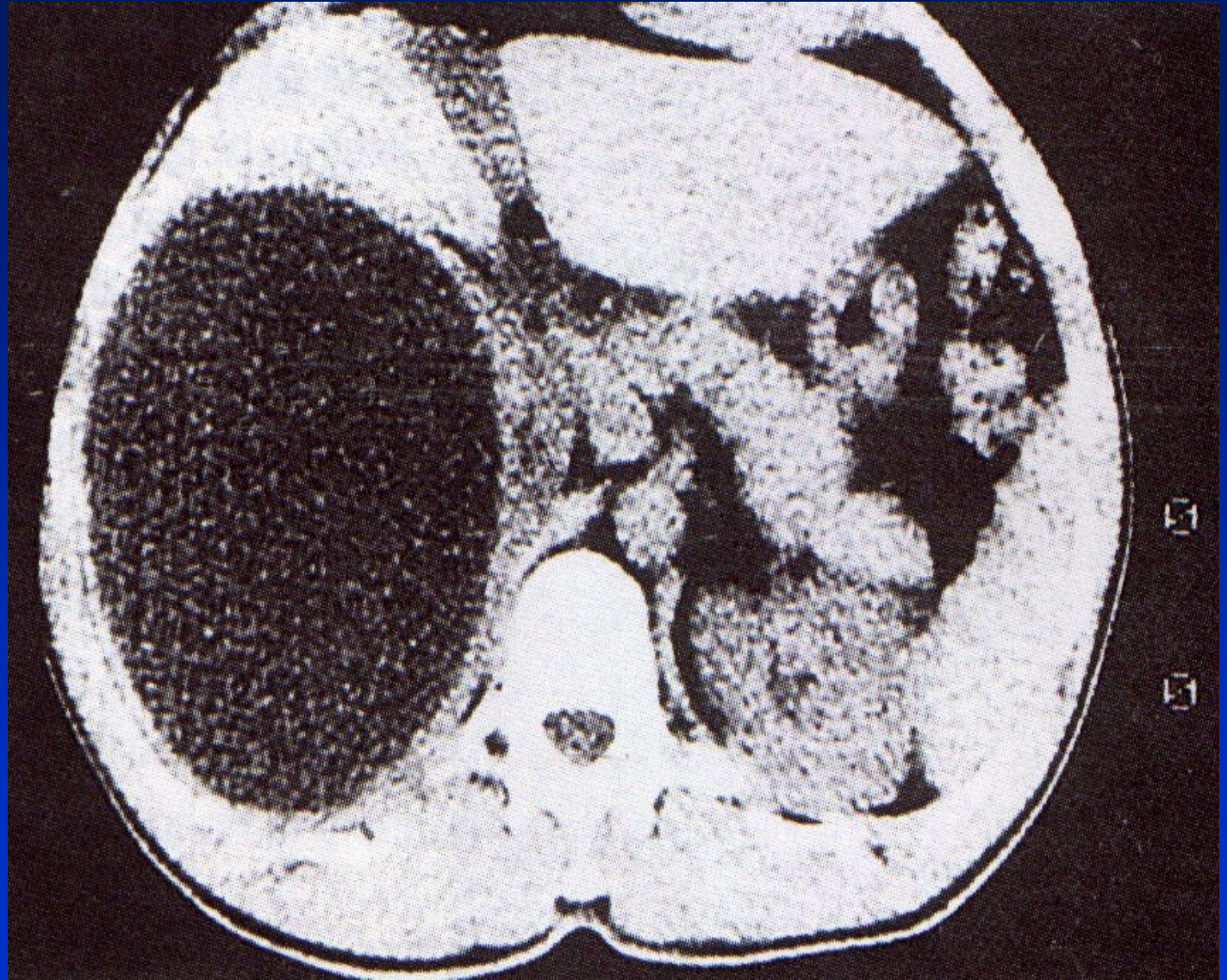


*Echinococcus*  
*granulosus*  
(dog)





*Echinococcus granulosus* – liver cysts  
(man)



*Echinococcus  
granulosus* – liver cysts  
(man)

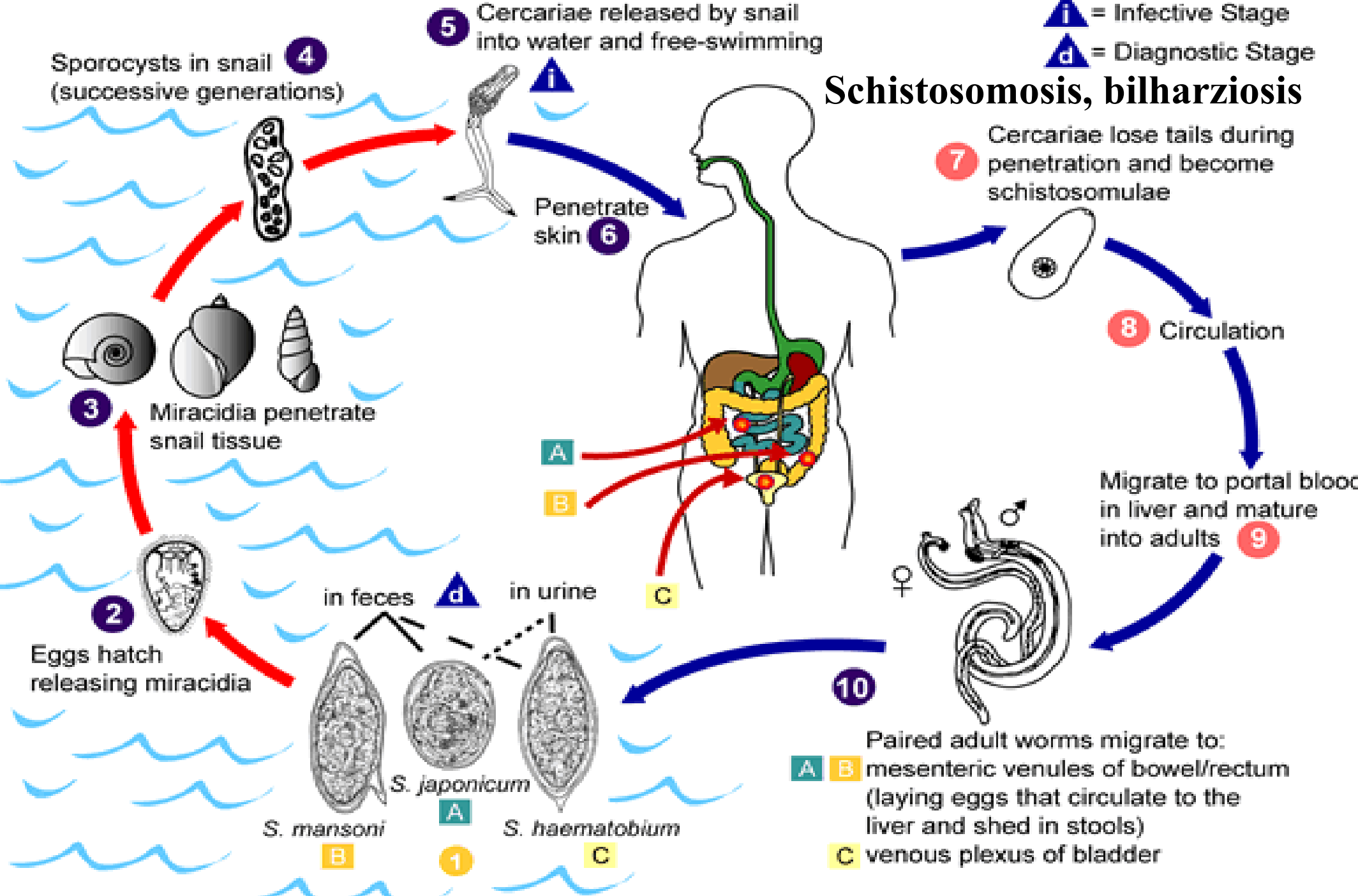


# Flukes (Trematodes)

- schistosomiasis (bilharsiasis)
  - ✓ *S. hematobium*
  - ✓ *S. intestinalis (mansoni)*
  - ✓ *S. japonicum*
  - ✓ *S. mekongi*

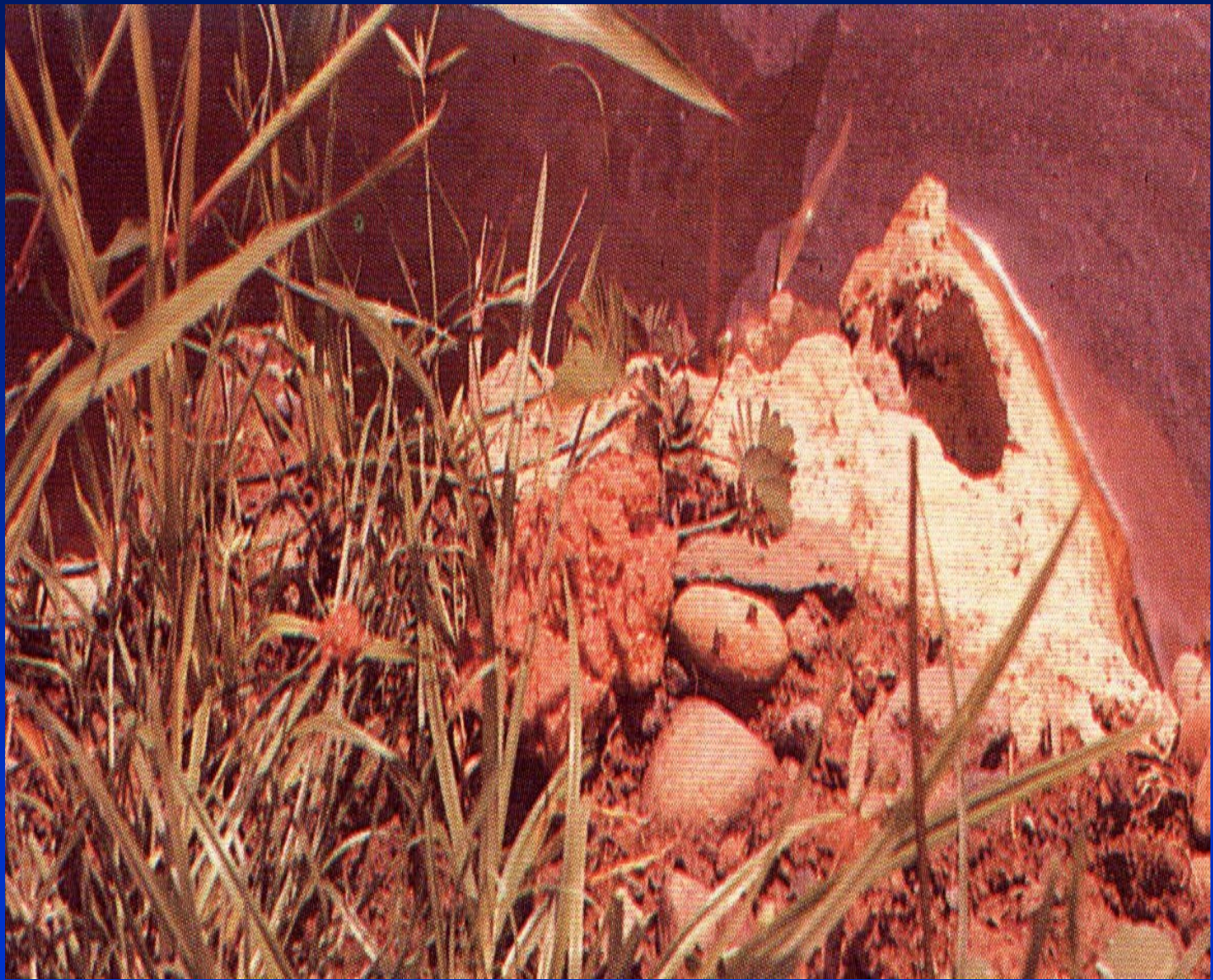
**i** = Infective Stage  
**d** = Diagnostic Stage

# Schistosomosis, bilharziosis





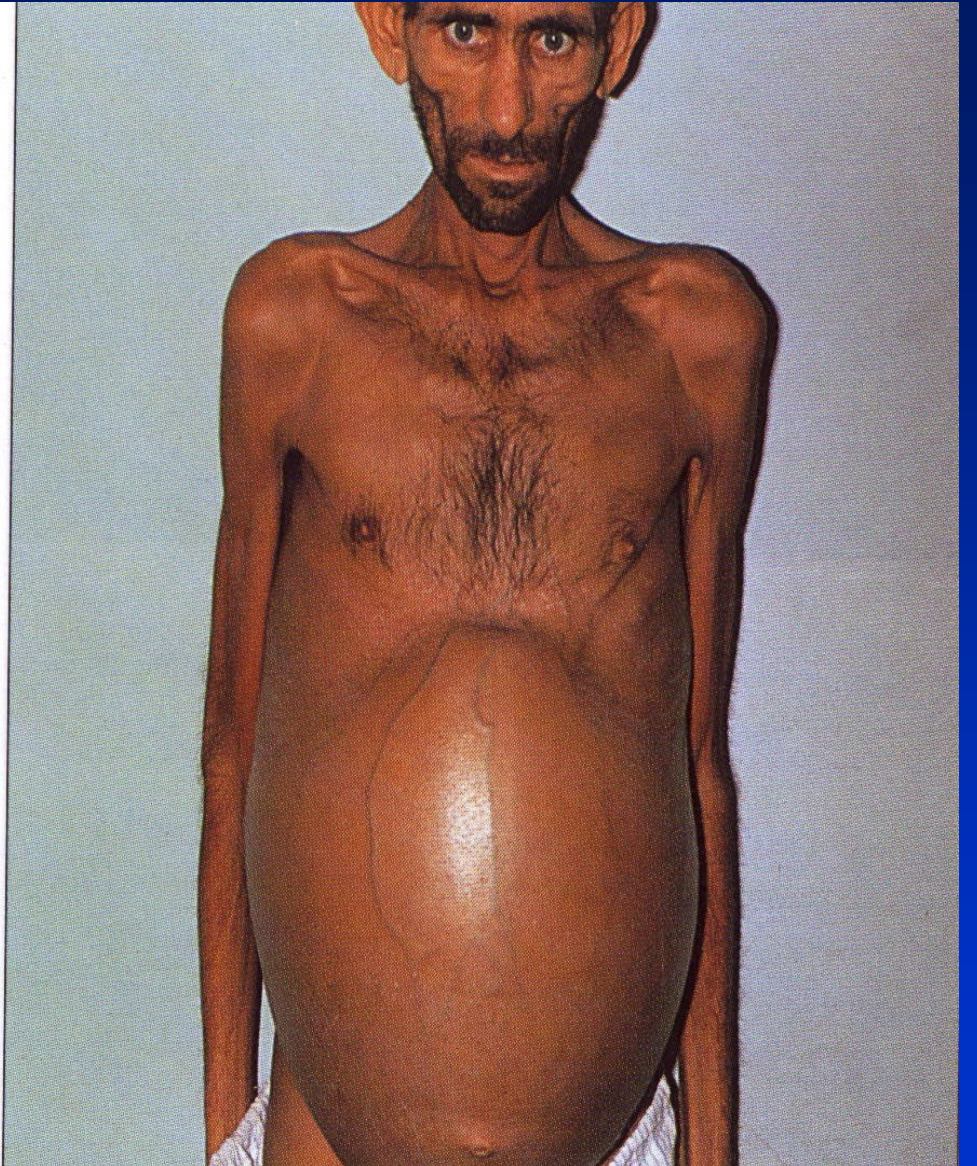
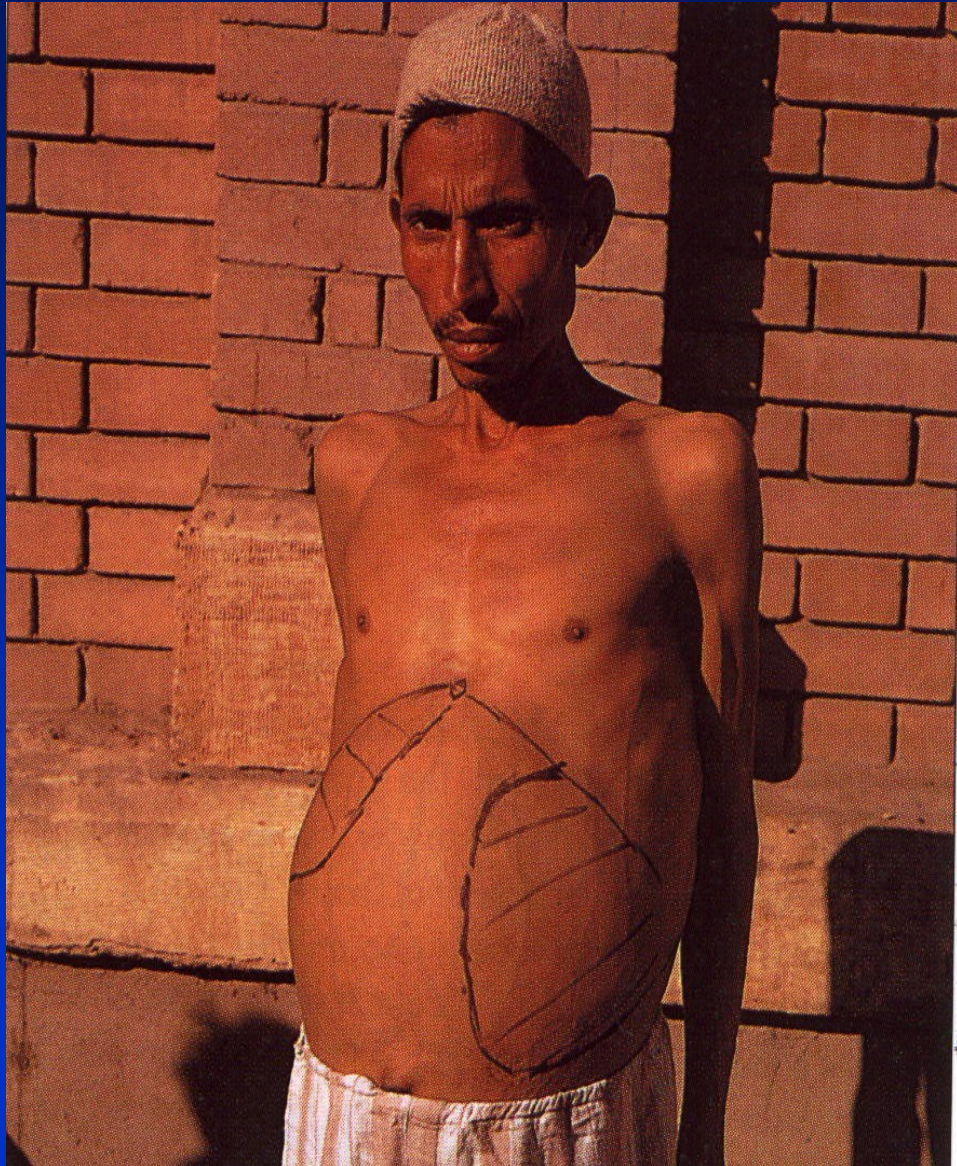














# Fungal GI infections

- about all candidiasis
- different members of *Candida* sp. (mostly *C.albicans*)
- mouth cavity, oesophagus, anorectal
- mostly IS patients
- fluconazol, itraconazol, ketoconazol, amphotericin B



***Thank you for your attention!***

***phusa@fnbrno.cz***