

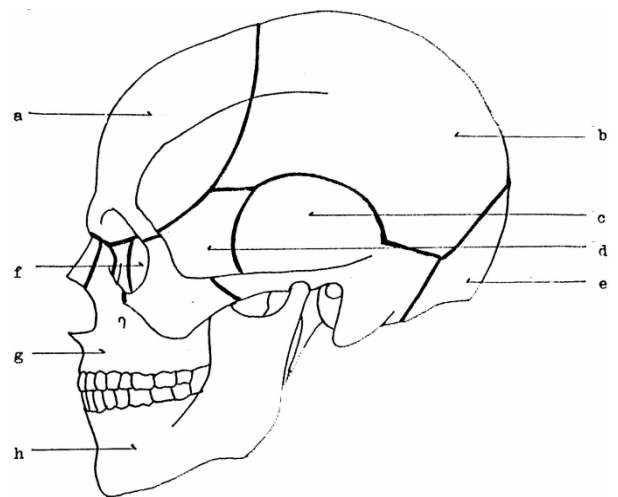
NAME ALL THE BASIC PLANES OF THE BODY AND EXPLAIN HOW THEY DIVIDE IT.

NAME AND EXPLAIN AT LEAST FOUR DIRECTIONAL TERMS AND GIVE EXAMPLES USING ORGANS OR PARTS OF THE BODY.

DESCRIBE THE MOST SERIOUS INJURY THAT YOU (OR SOMEBODY YOU KNOW) HAVE EVER SUFFERED FROM. INCLUDE DETAILS (HOW, WHEN, WHERE, TREATMENT, ETC.)

NAME ALL THE BASIC CAVITIES IN THE HUMAN BODY AND NAME THE ORGANS WHICH THEY CONTAIN.

Describe the picture:



DESCRIBE THE MOST SERIOUS DISEASE THAT YOU (OR SOMEBODY YOU KNOW) HAVE HAD. INCLUDE DETAILS (TREATMENT, MEDICINE, ETC.)

EXPLAIN WHY YOU DECIDED TO STUDY AT THE MEDICAL FACULTY, WHAT SPECIALIZATION YOU WANT TO HAVE, WHERE YOU WOULD LIKE TO WORK, ETC.

DESCRIBE HOW YOUR STUDY PROGRAMME IS STRUCTURED. ARE THERE ANY ADVANTAGES? ANY DISADVANTAGES?

ARE PLANNING ON IMPROVING YOUR ENGLISH IN THE FUTURE?  
HOW?  
WHERE?

EXPLAIN IN DETAIL WHAT HAPPENS WHEN YOU ARE AT THE DOCTOR'S, what is a REFERRAL? What EXAMINATIONS are likely to happen?

EXPLAIN THE DIFFERENCE:  
• BETWEEN ARTERIES, VEINS AND CAPILLARIES;  
• BETWEEN PULMONARY AND SYSTEMIC CIRCULATIONS

EXPLAIN THE DIFFERENCE BETWEEN:  
• HYPERTENSION AND HYPOTENSION

WHAT DO THESE NUMBERS  
REFER TO IN MUSCULAR  
AND SKELETAL SYSTEM:

206  
33-34  
7  
12  
5

EXPLAIN THE DIFFERENCE  
BETWEEN:

- A SPLINT AND A  
SPLINTER
- PLASTER AND A PLASTER
- DIARRHOEA AND  
CONSTIPATION

EXPLAIN THE DIFFERENCE  
BETWEEN:

- TACHYCARDIA AND  
BRADYCARDIA
- THROMBUS AND  
EMBOLISM

WHAT DO THE FOLLOWING  
SUFFIXES MEAN?

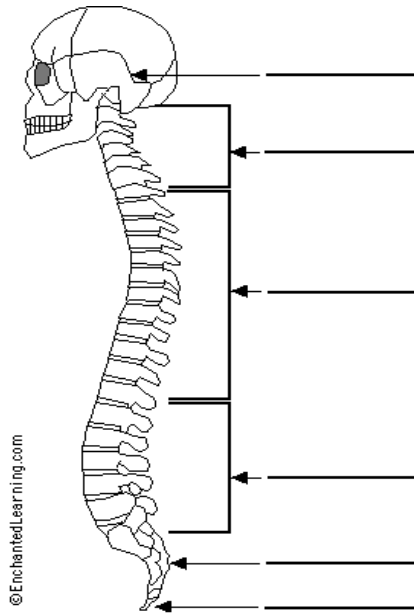
(give examples)

- -ITIS
- - ECTOMY
- - PATHY

DESCRIBE YOUR TYPICAL  
DAY AT SCHOOL

WHAT ARE THE MOST  
COMM ON DISEASES  
AFFECTING THE HUMAN  
ORAL CAVITY?

WHAT ARE THE SEGMENTS  
OF THE SPINE CALLED?



IS THERE ANY GUIDANCE  
AS TO THE CORRECT WAY  
OF TOOTHBRUSHING?

DESCRIBE BLOOD  
CIRCULATION BETWEEN THE  
HEART AND THE LUNGS.

NAME THE BASIC  
COMPONENTS OF HUMAN  
BLOOD.