

**FEMALE GENITAL ORGANS
(ORGANA GENITALIA
FEMININA)**

Organa genitalia interna:

Ovarium

Tuba uterina (Fallopian tube)

Uterus

Vagina

Organa genitalia externa:

Mons pubis

Labia majora pudendi

Labia minora pudendi

Clitoris

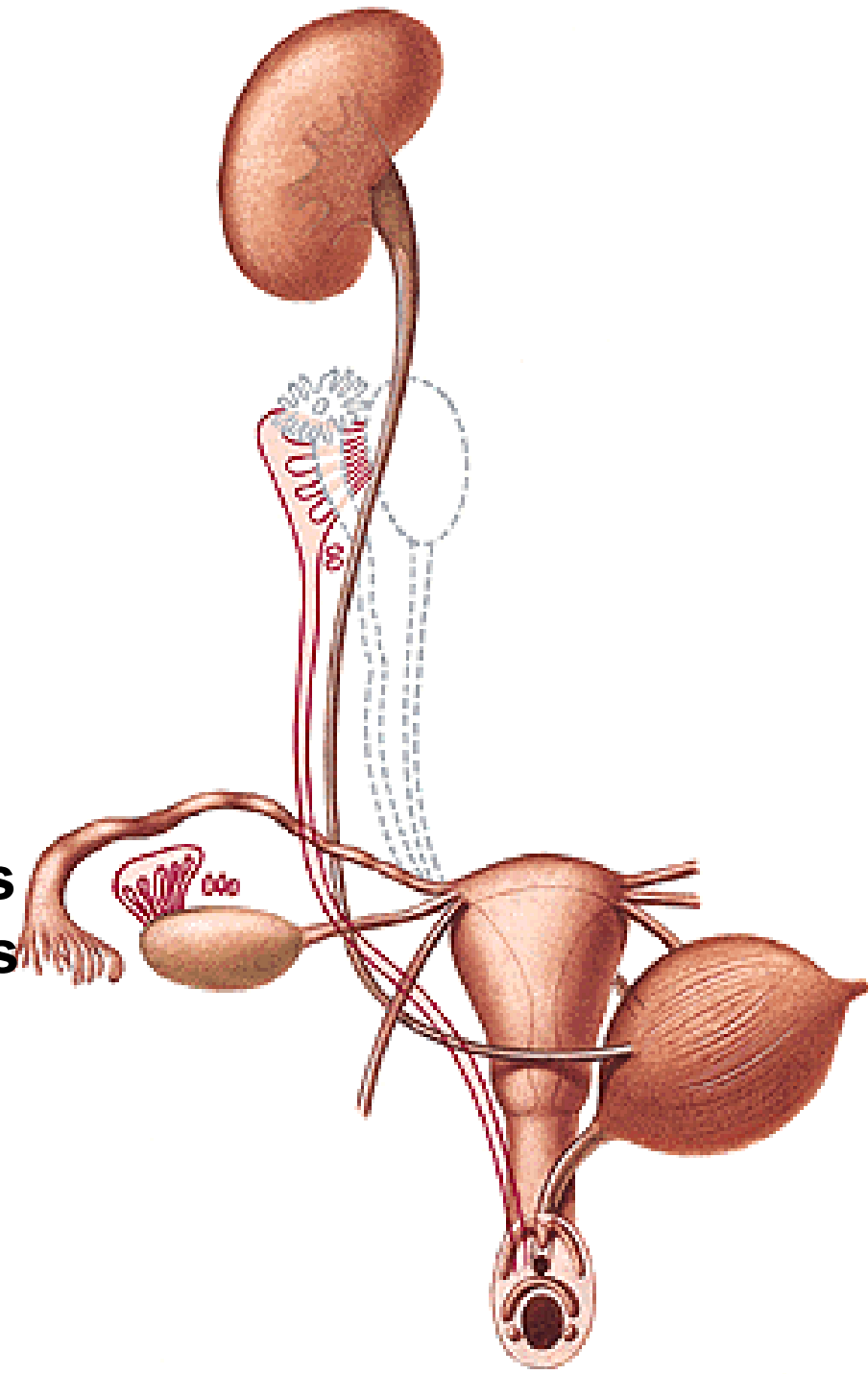
Glandulae vestibulares majores

Glandulae vestibulares minores

Bulbi vestibuli

Ductus Mülleri, plica genitalis

Torus genitalis



OVARIUM

Extremitas tubaria et uterina

Lig. suspensorium ovarii

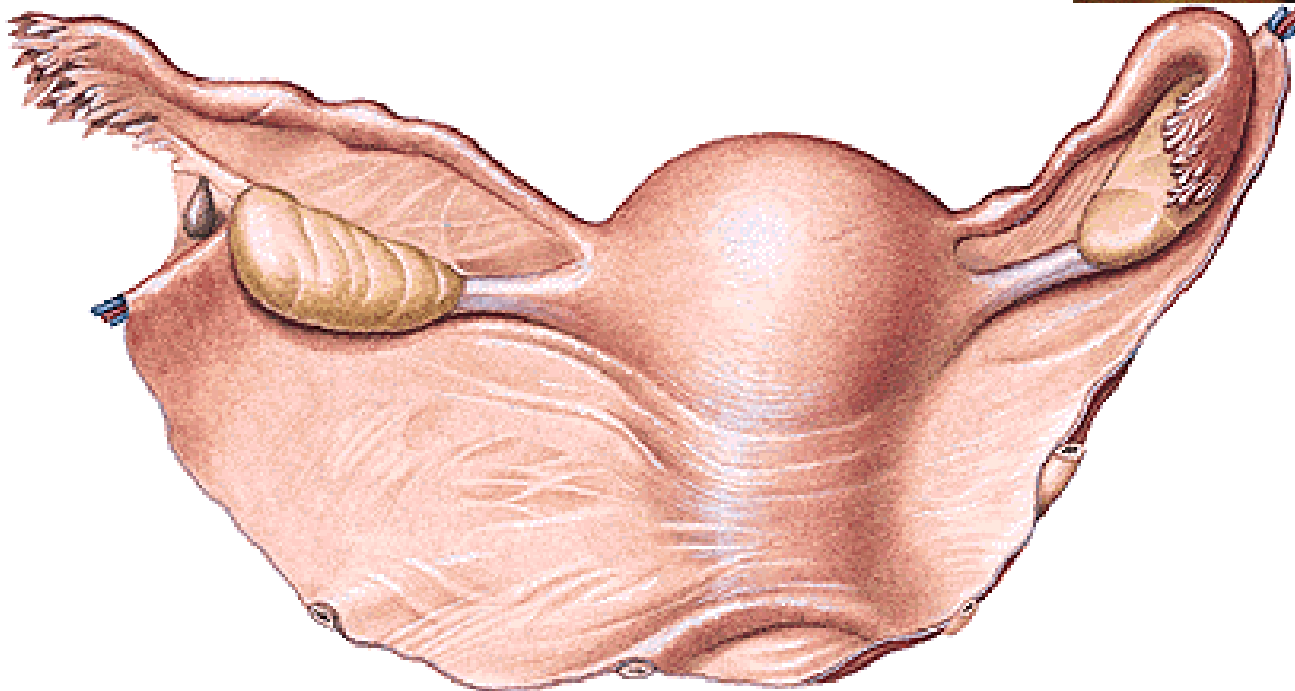
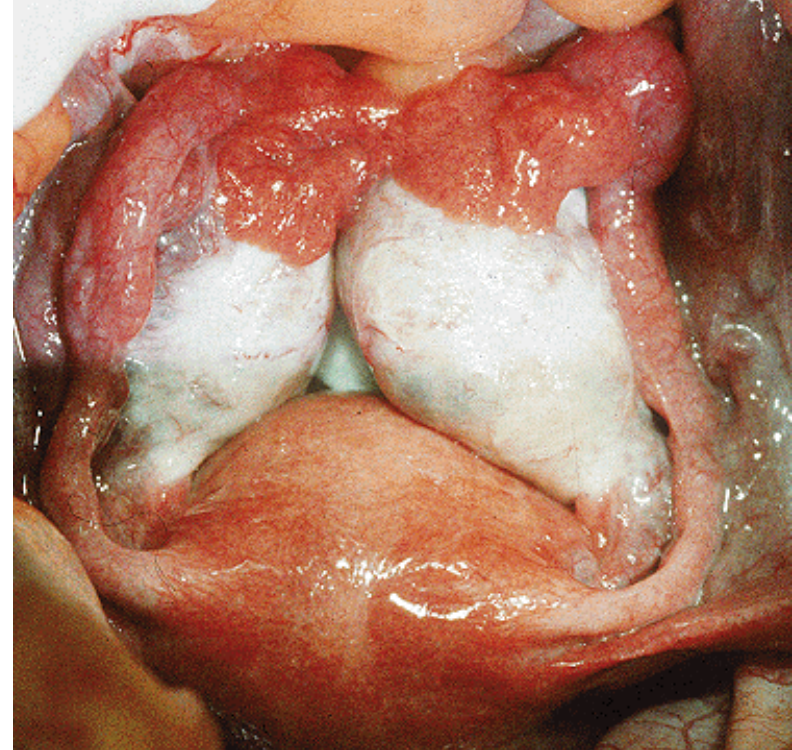
**Lig. ovarii proprium
(gubernaculum)**

Facies medialis et lateralis

Margo liber et mesovaricus

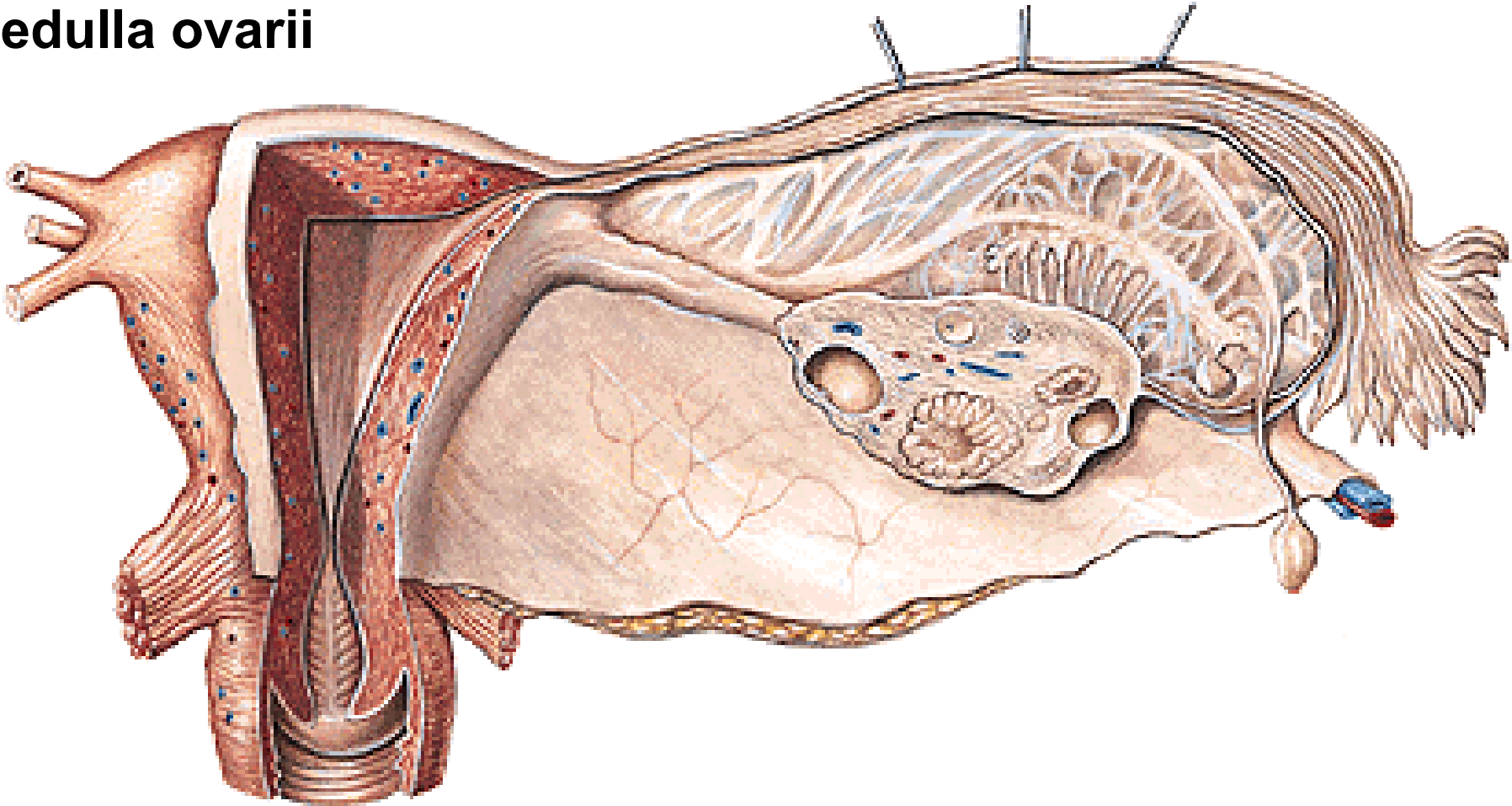
Hilum ovarii

Mesovarium – lig. latum uteri



Tunica albuginea
Cortex ovarii
- folliculi ovarii
- corpora lutea
Medulla ovarii

Epoophoron
Apendix vesiculosa epoophori
Paroophoron
Gartner's canal



Folliculi ovarici primarii

Folliculus ovaricus vesiculosus (Graaf)

- Ovum (120 μ m)
- Antrum folliculi
- Liquor folliculi
- Membrana granulosa
- Cumulus oophorus

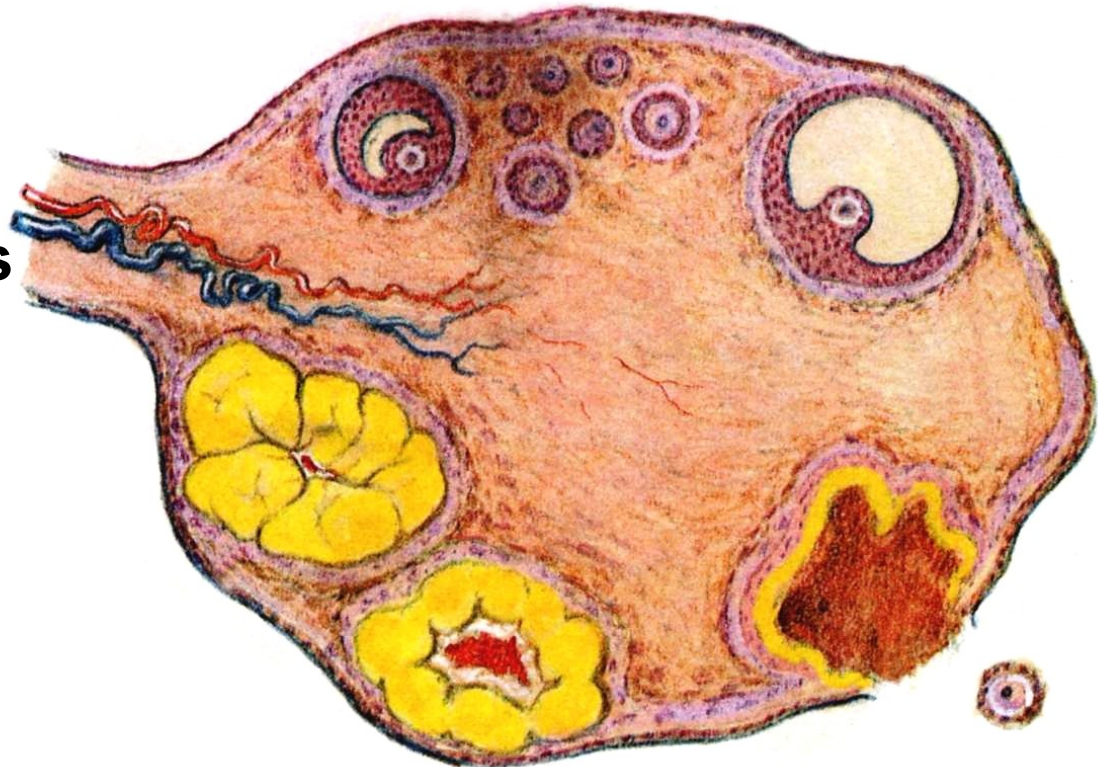
Ovulation

Corpus rubrum

Corpus luteum

Corpus luteum graviditatis

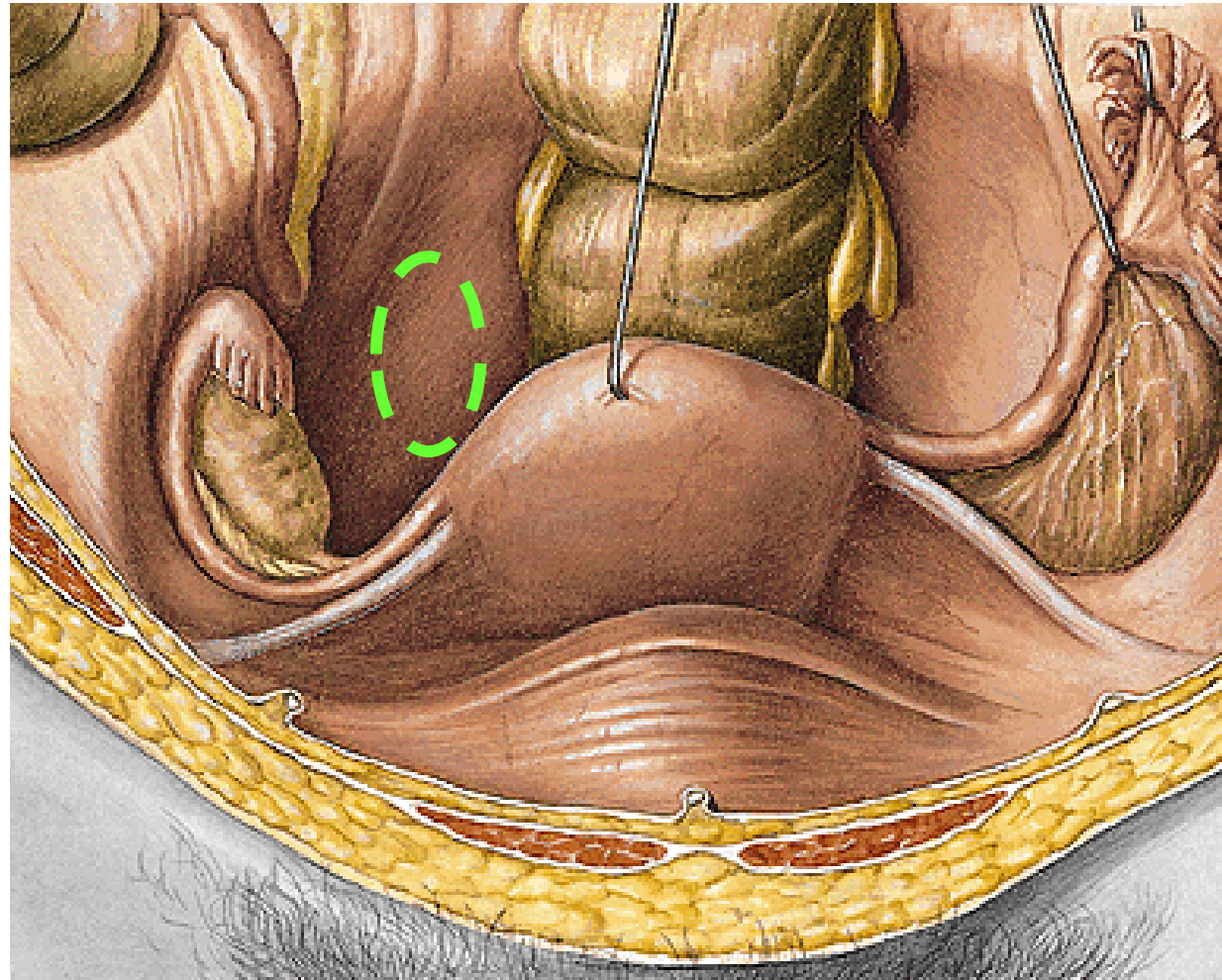
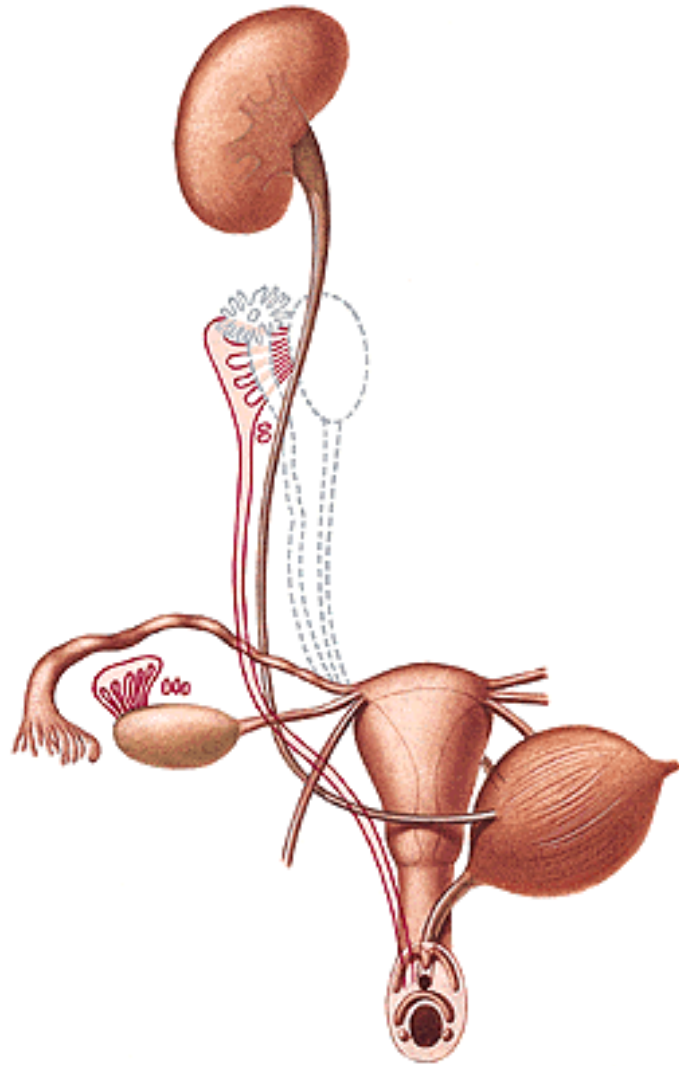
Corpus albicans

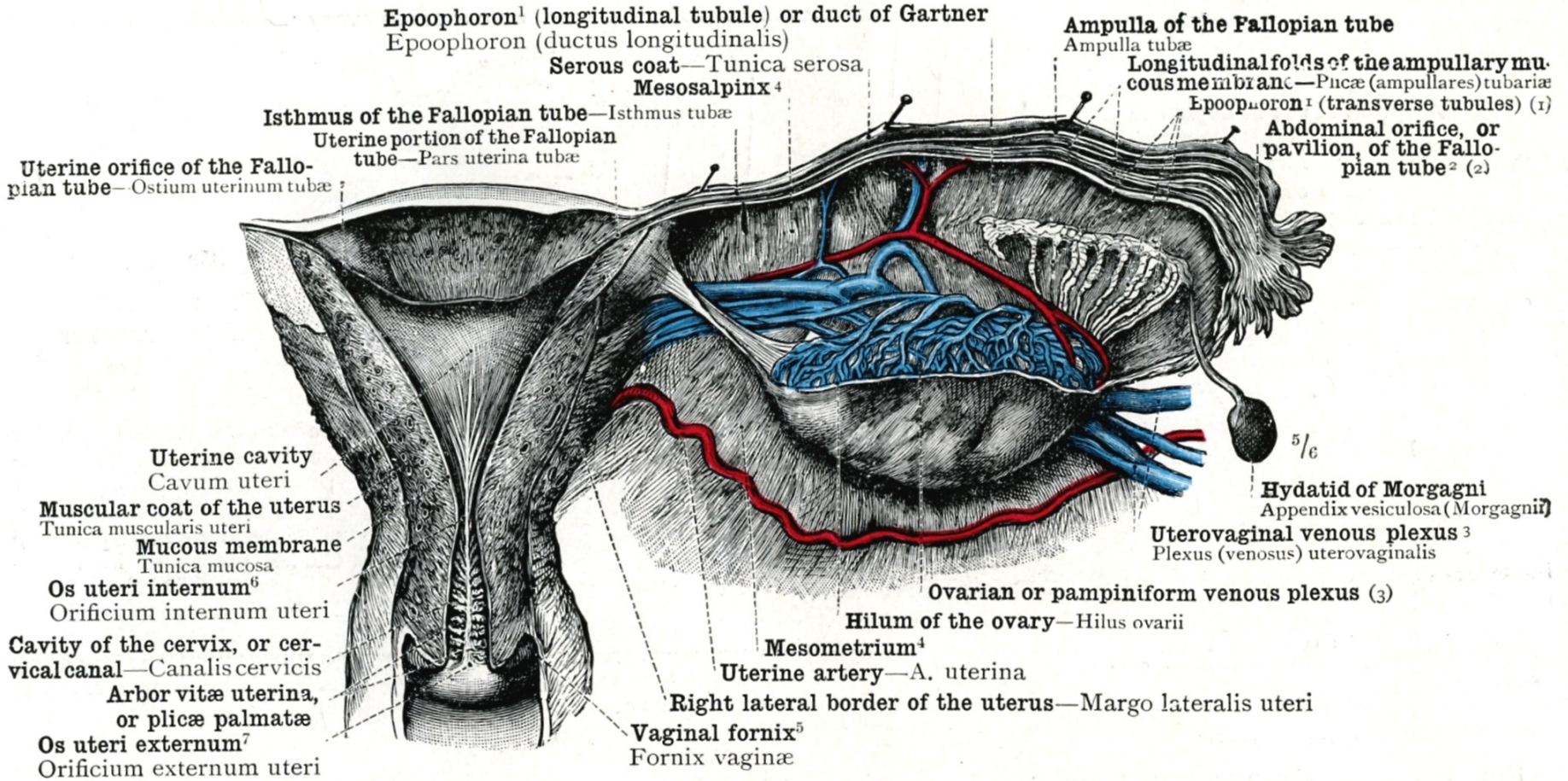


Plica genitalis – gubernaculum

Nullipara – fossa ovarica

Multipara – fossa of Claudius





(1) Epoophoron (ductuli transversi) (2) Ostium abdominale tubæ (3) Plexus (venosus) ovaricus

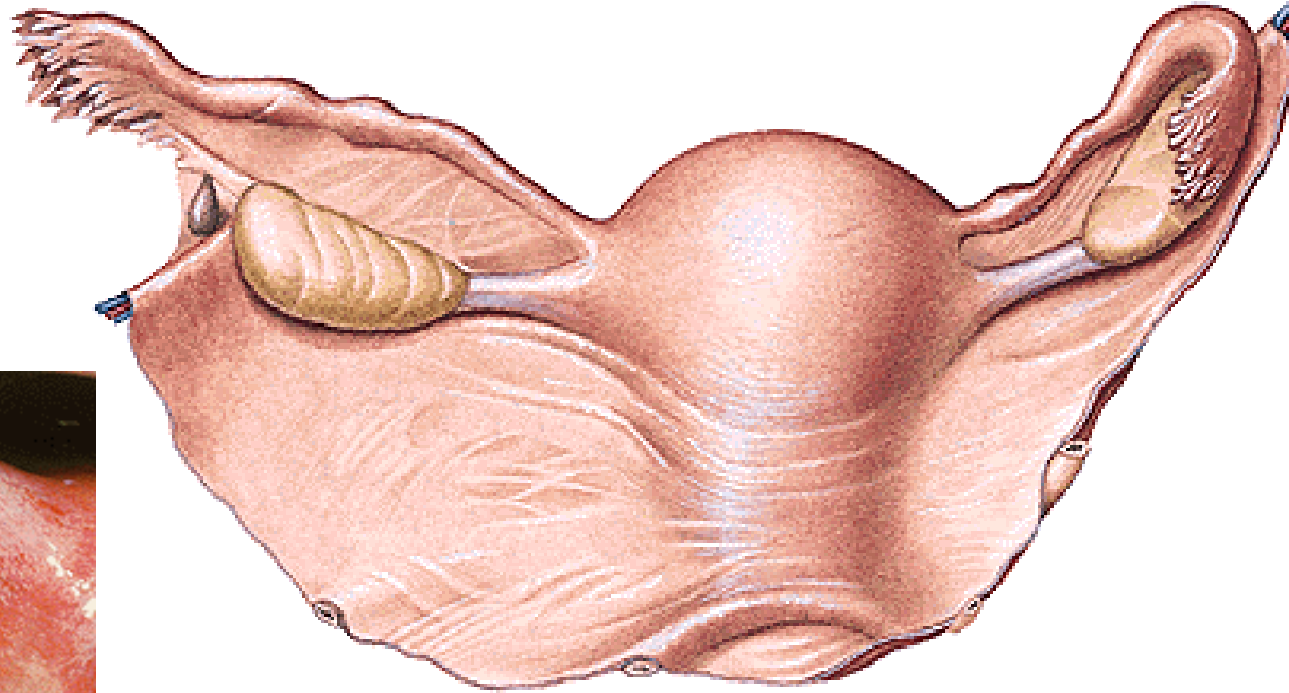
TUBA UTERINA (FALLOPIAN TUBE)

Infundibulum

Ostium abdominale

Fimbriae

Fimbria ovarica



Ampulla

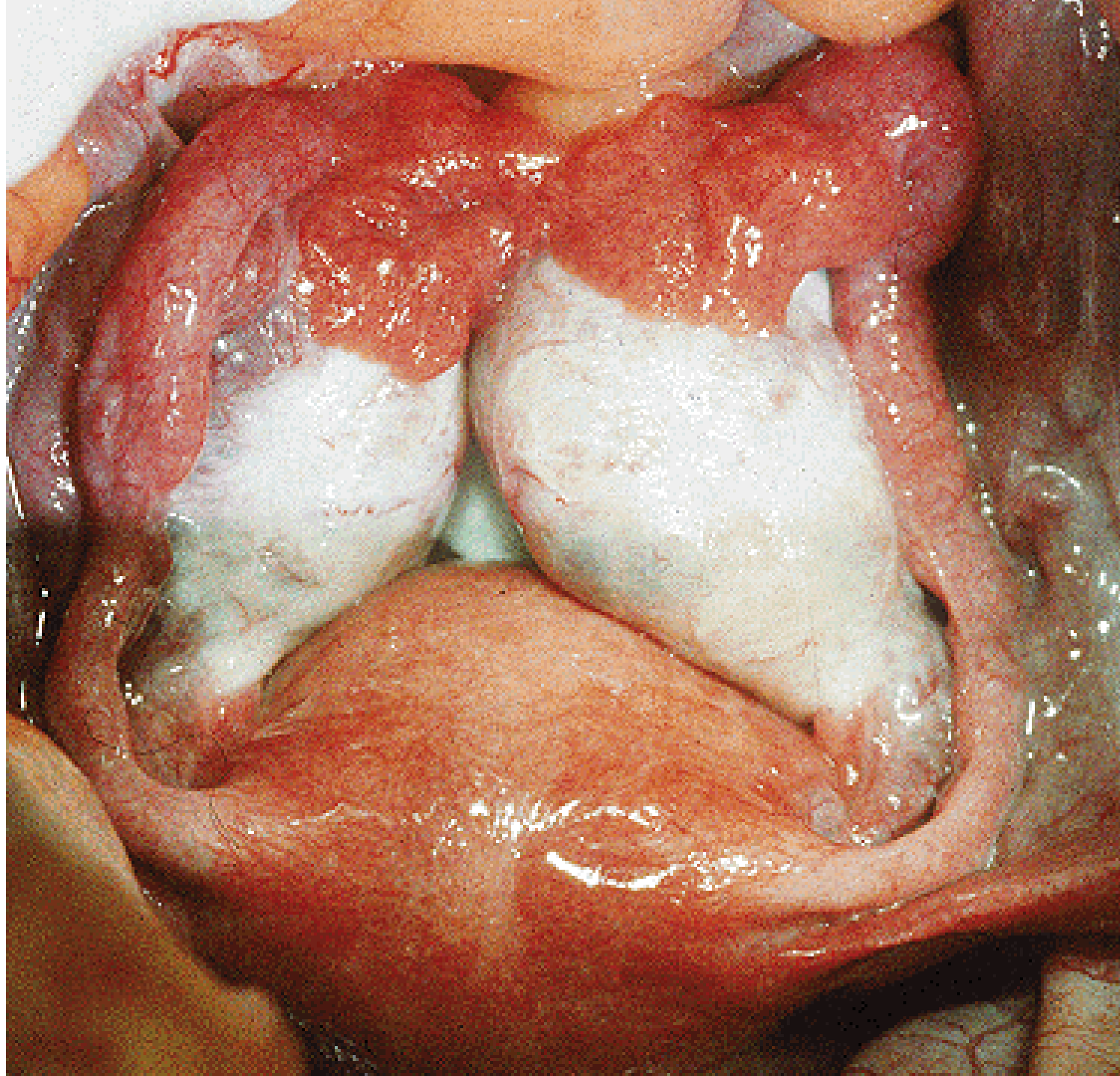
Isthmus

Pars uterina – ostium uterinum

Mesosalpinx

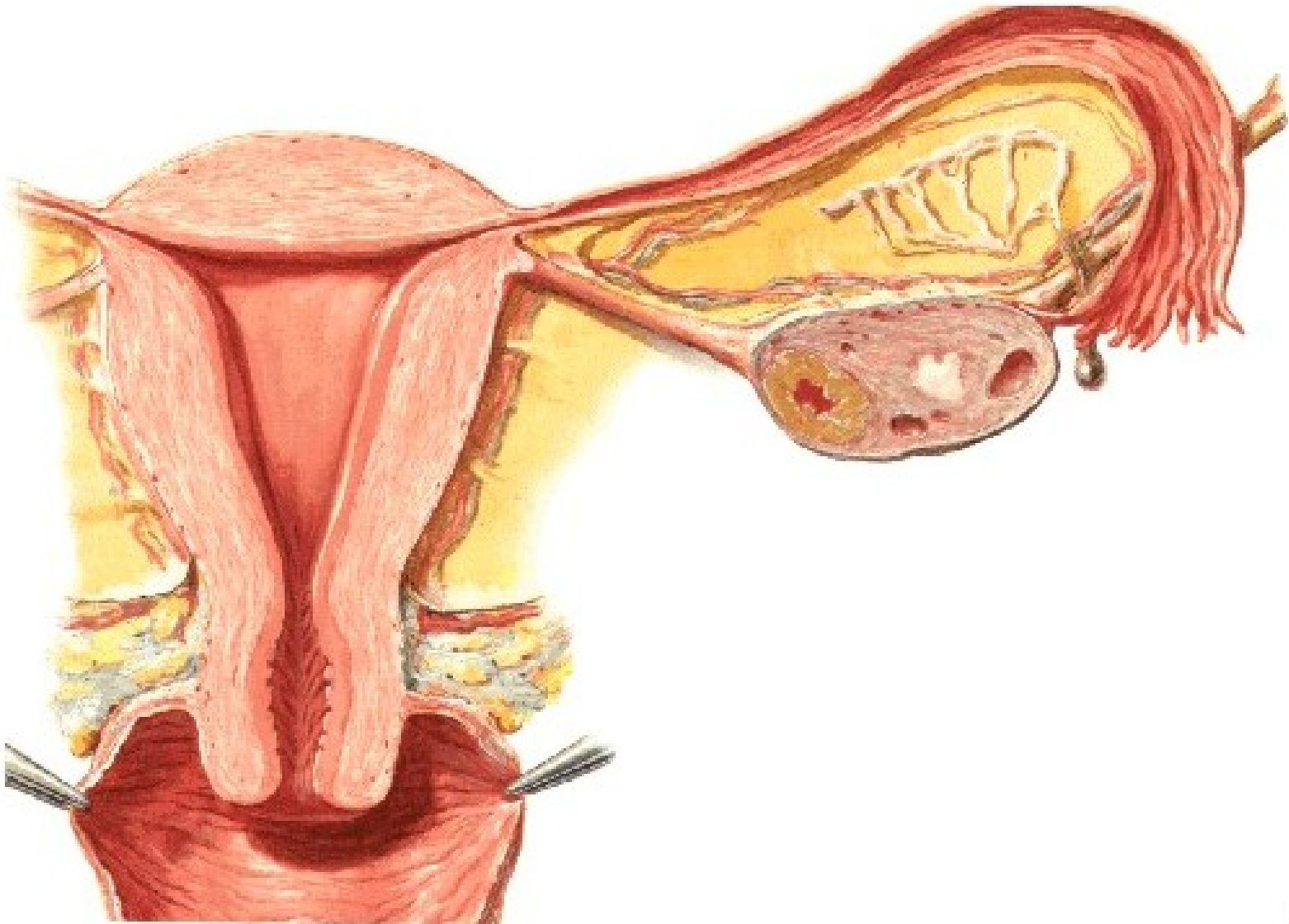
OSTIUM ABDOMINALE TUBAE UTERINAE



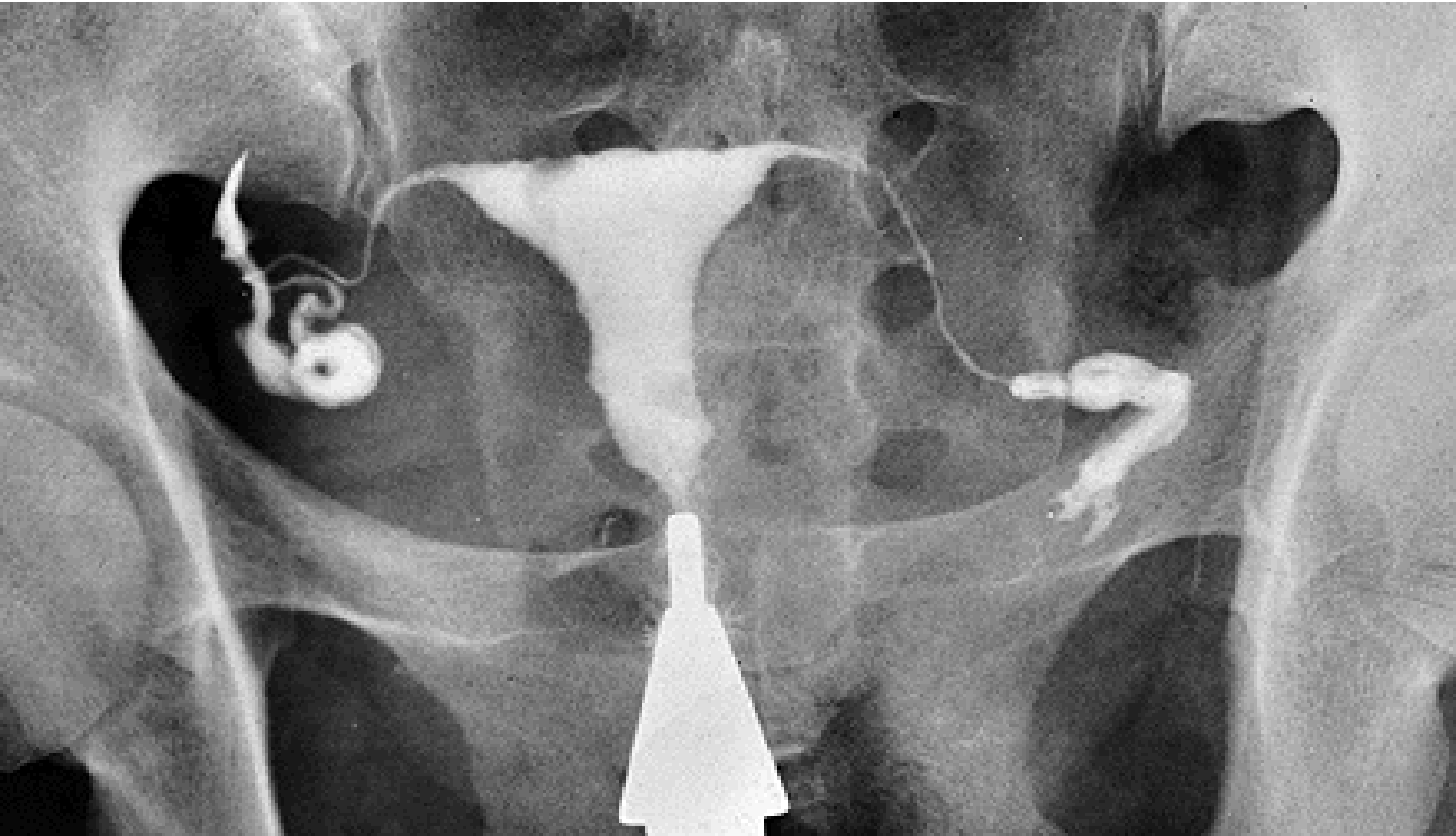


Plicae tubariae

Ectopic tubal pregnancy



HYSTEROSALPINGOGRAPHY



UTERUS (HYSTERA, METRA)

Corpus

Isthmus

Cervix - portio vaginalis

- portio supravaginalis

Fundus

Facies vesicalis

Facies intestinalis

Cornu dextrum et sinistrum

Margo dexter et sinister

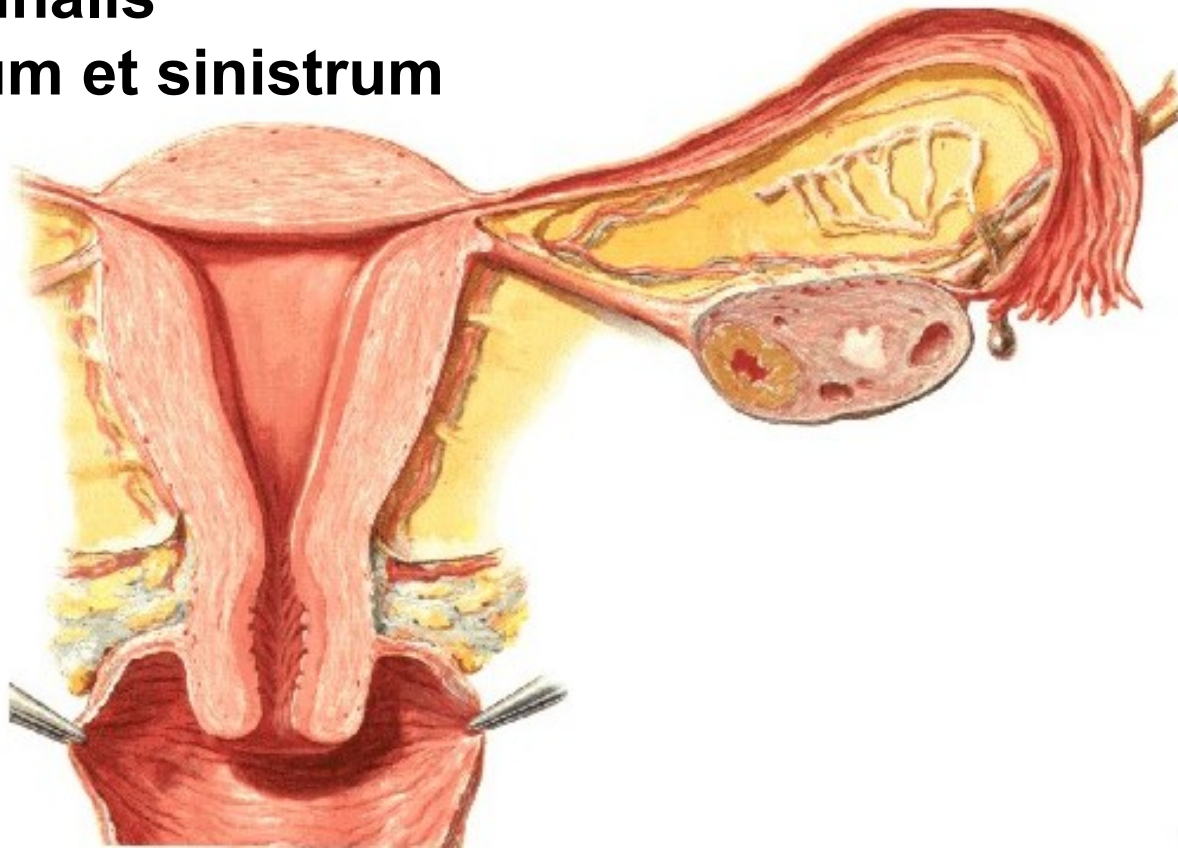
Cavum uteri

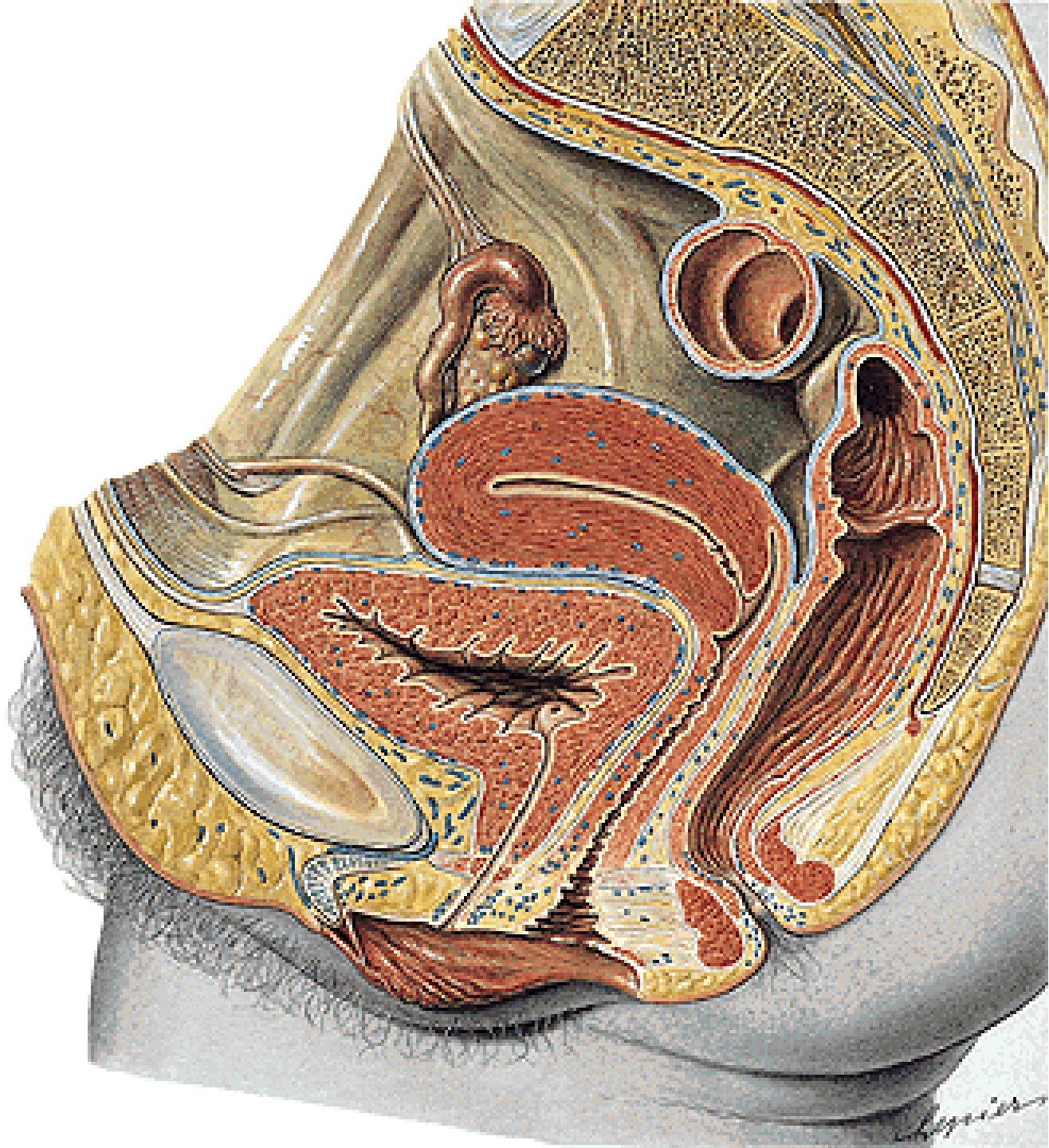
Canalis isthmi

Canalis cervicis

Plicae palmatae

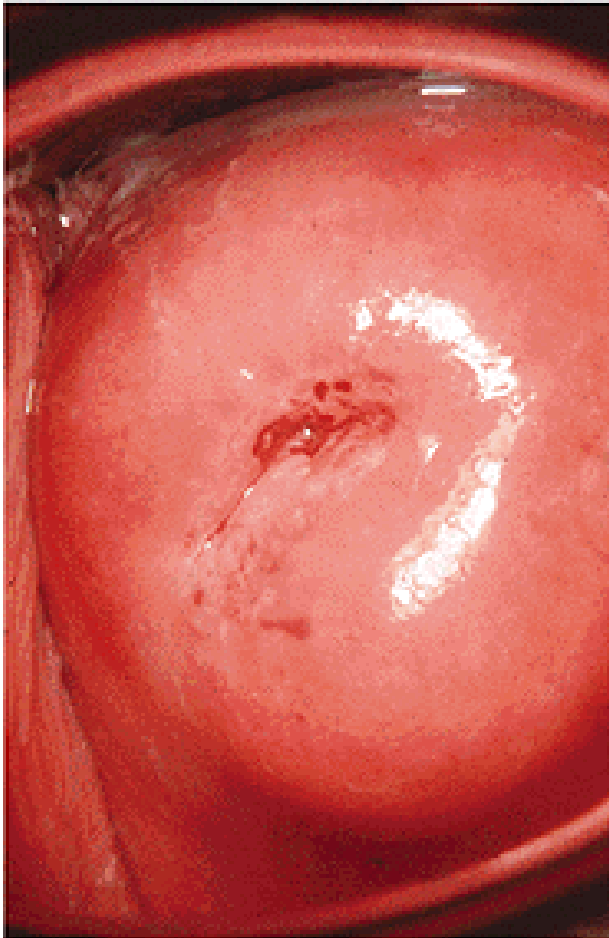
Ostium uteri





OSTIUM UTERI

NULLIPARA



MULTIPARA



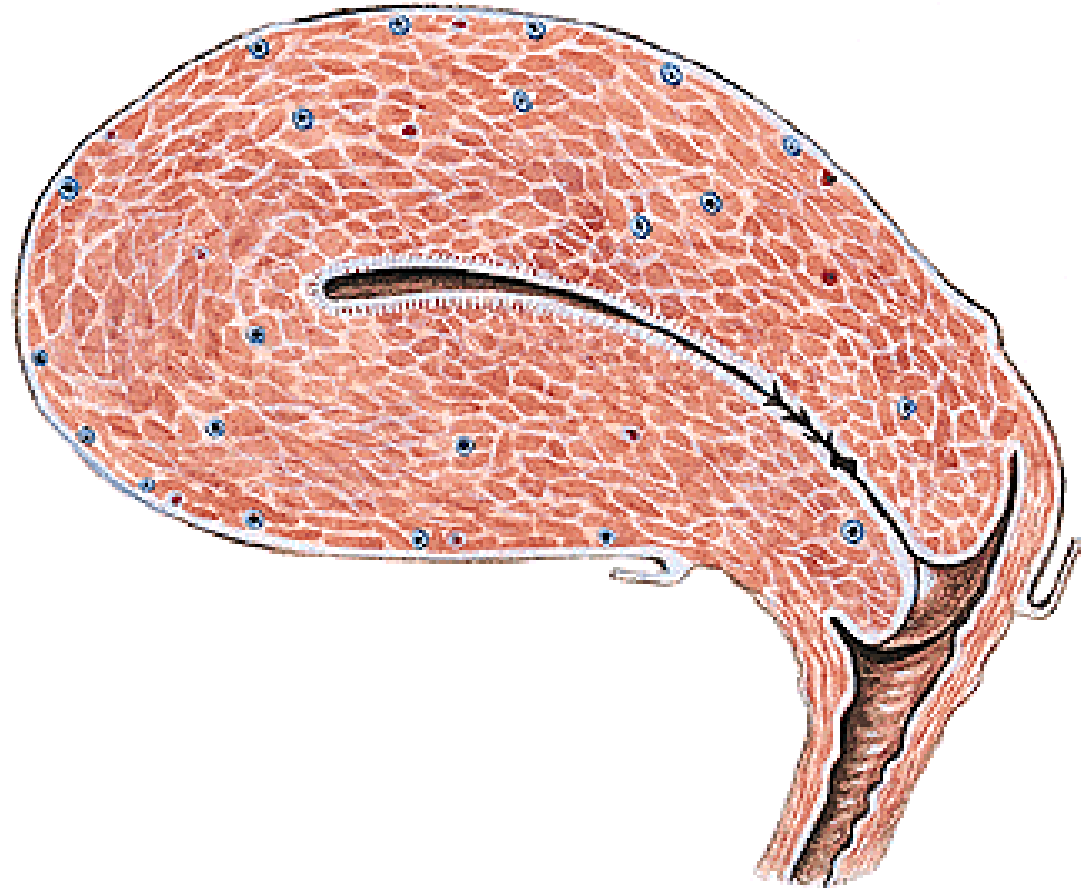
Endometrium - zona basalis
- zona functionalis

Glandulae uterinae

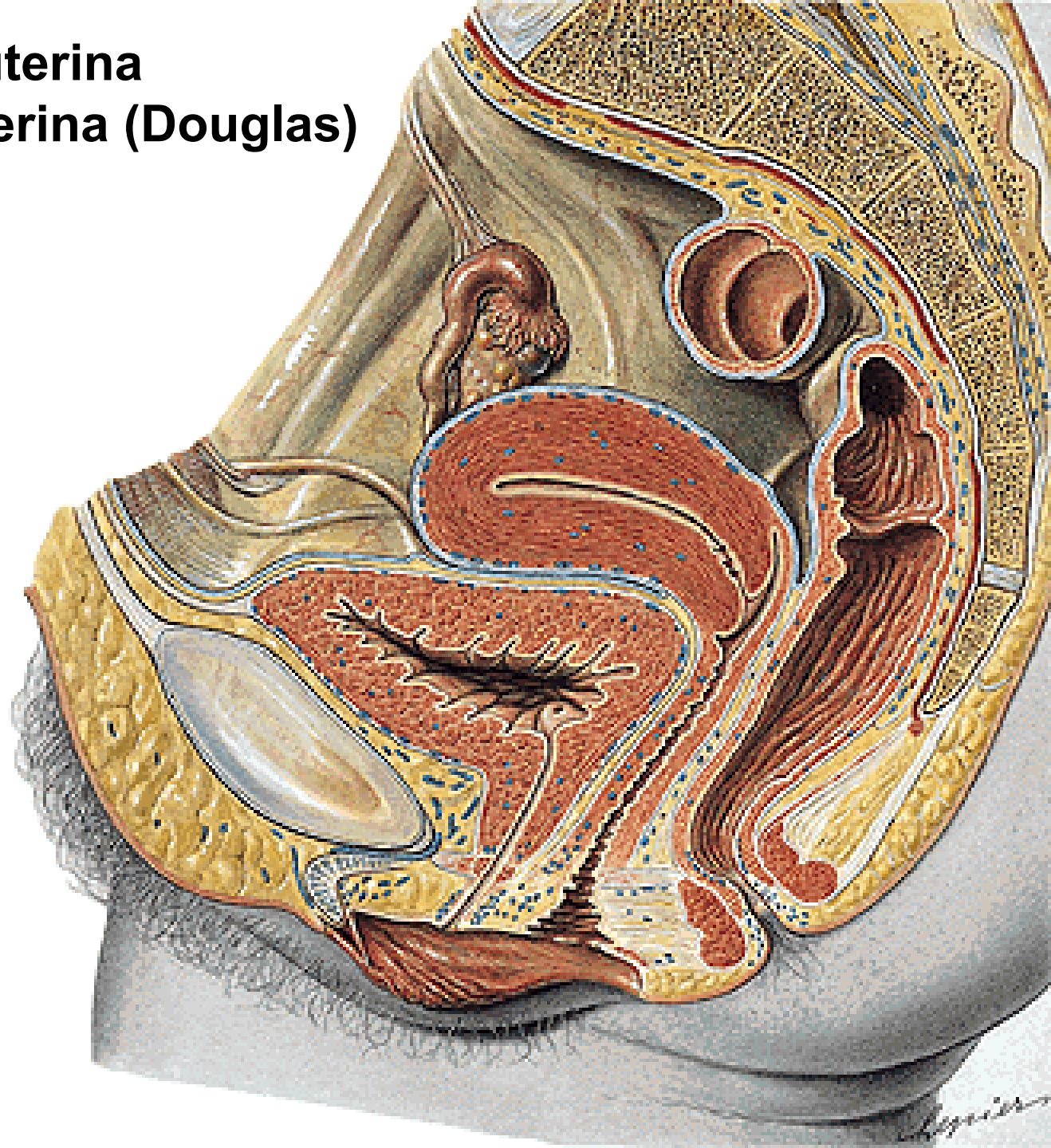
Glandulae cervicales

Myometrium

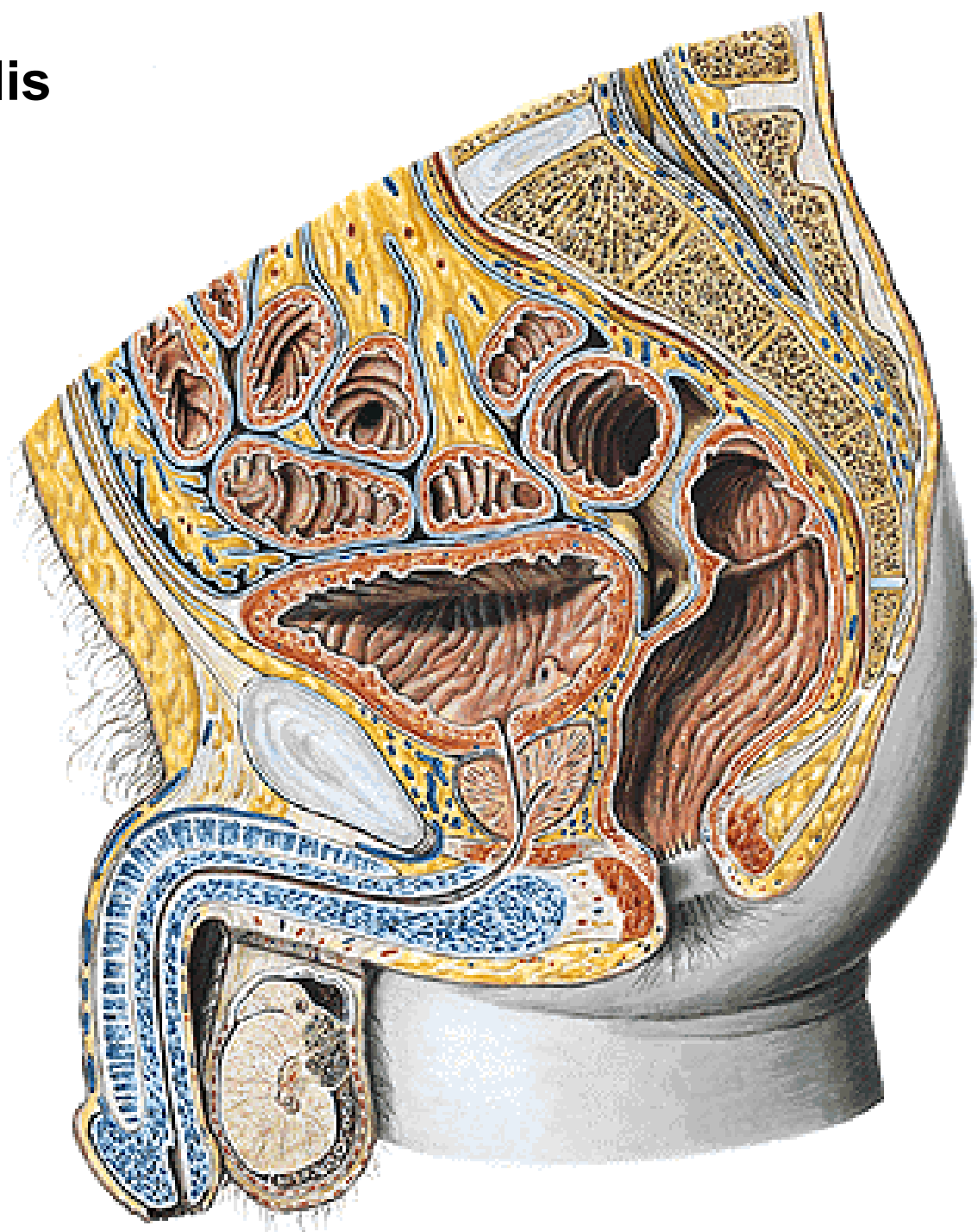
Perimetrium



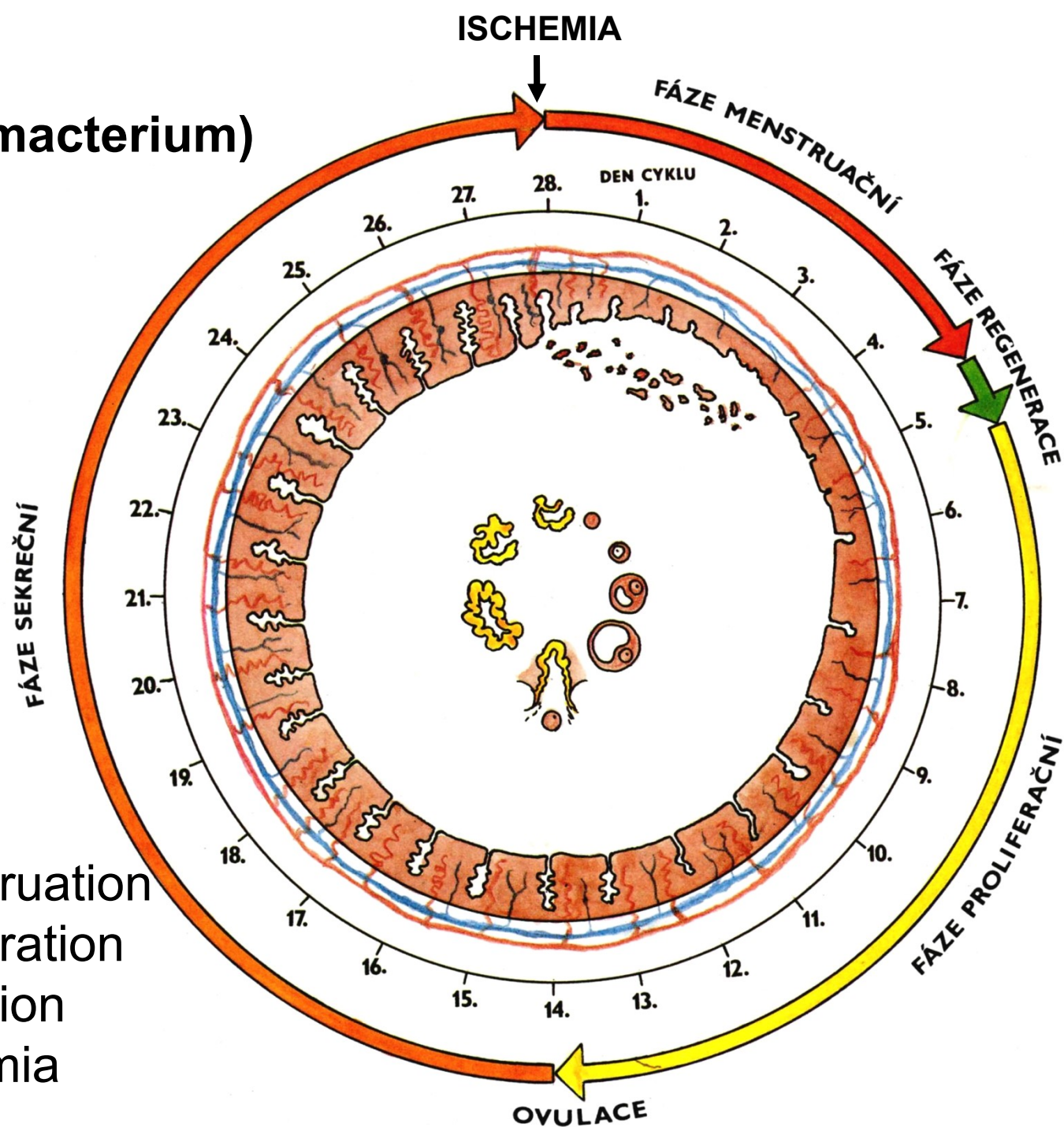
Excavatio vesicouterina
Excavatio rectouterina (Douglas)



Excavatio rectovesicalis



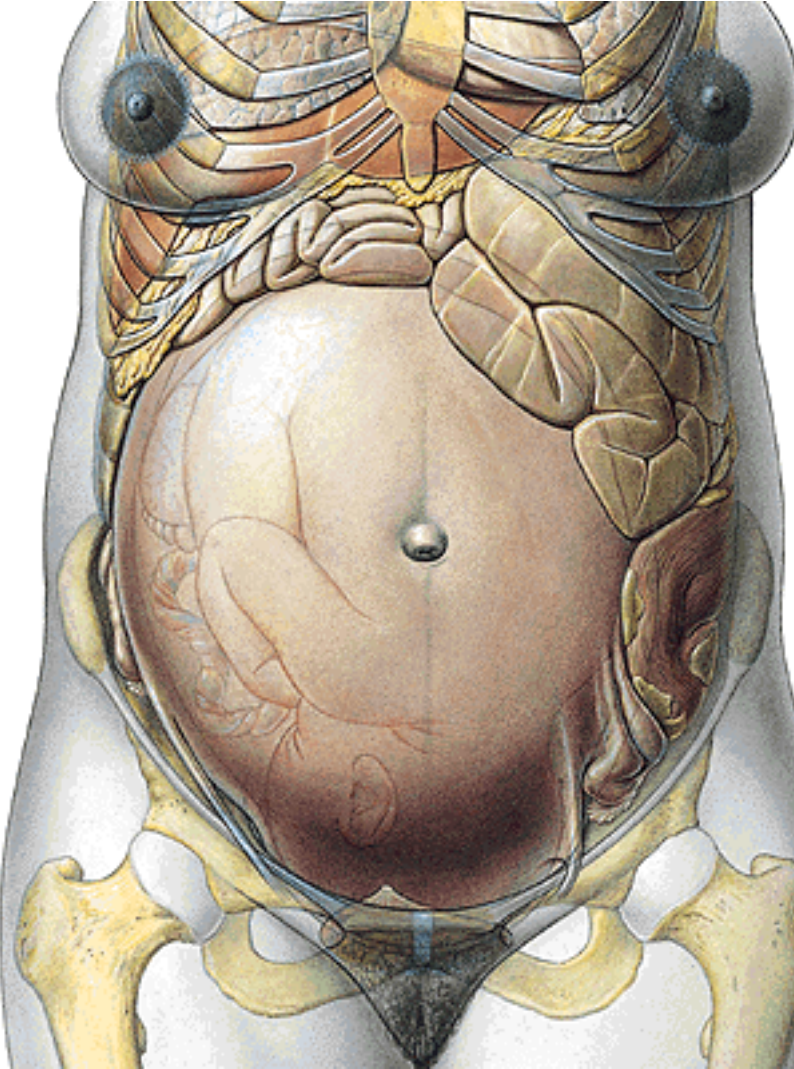
Menarche
Menopause (climacterium)

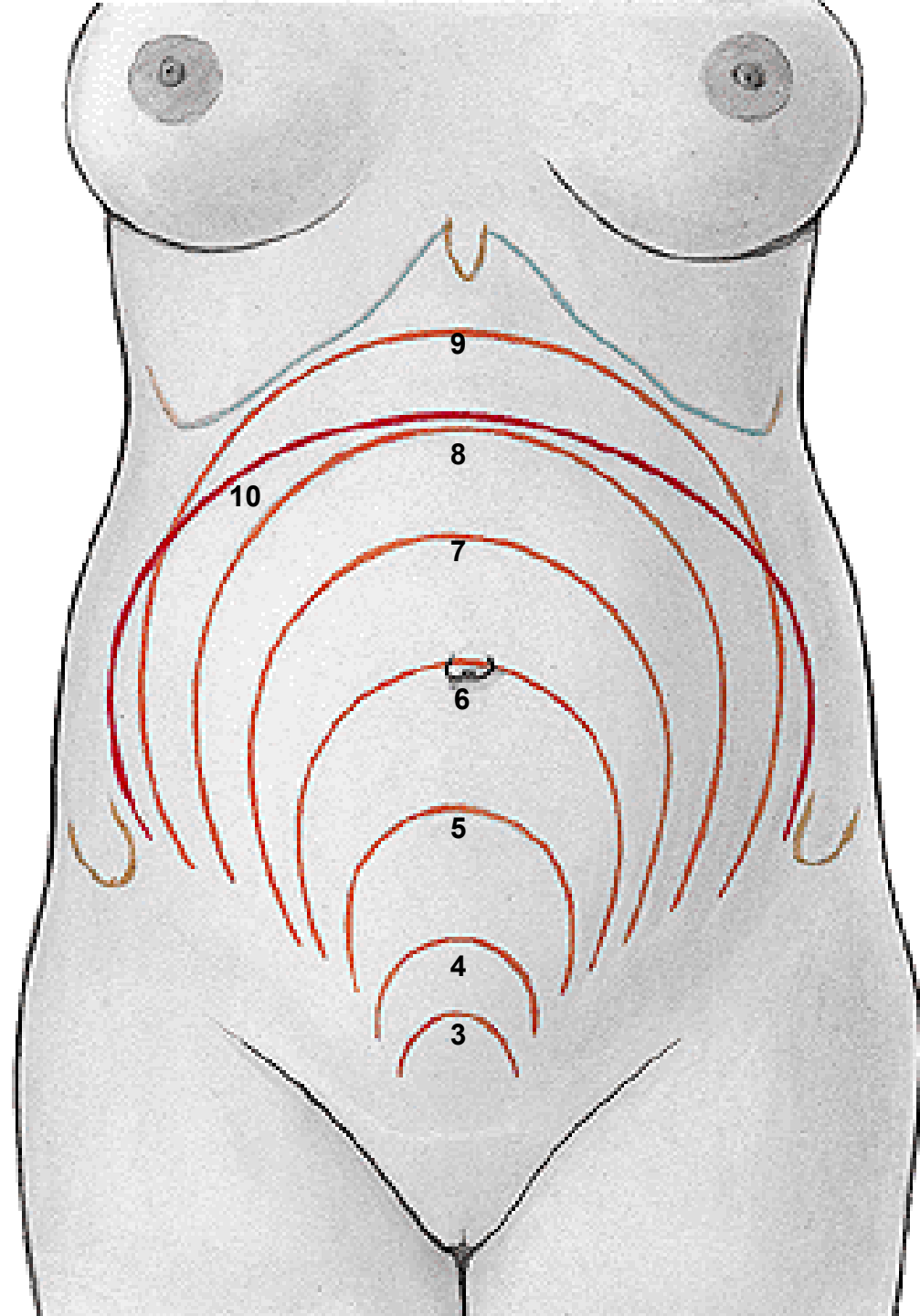


Menstrual cycle:

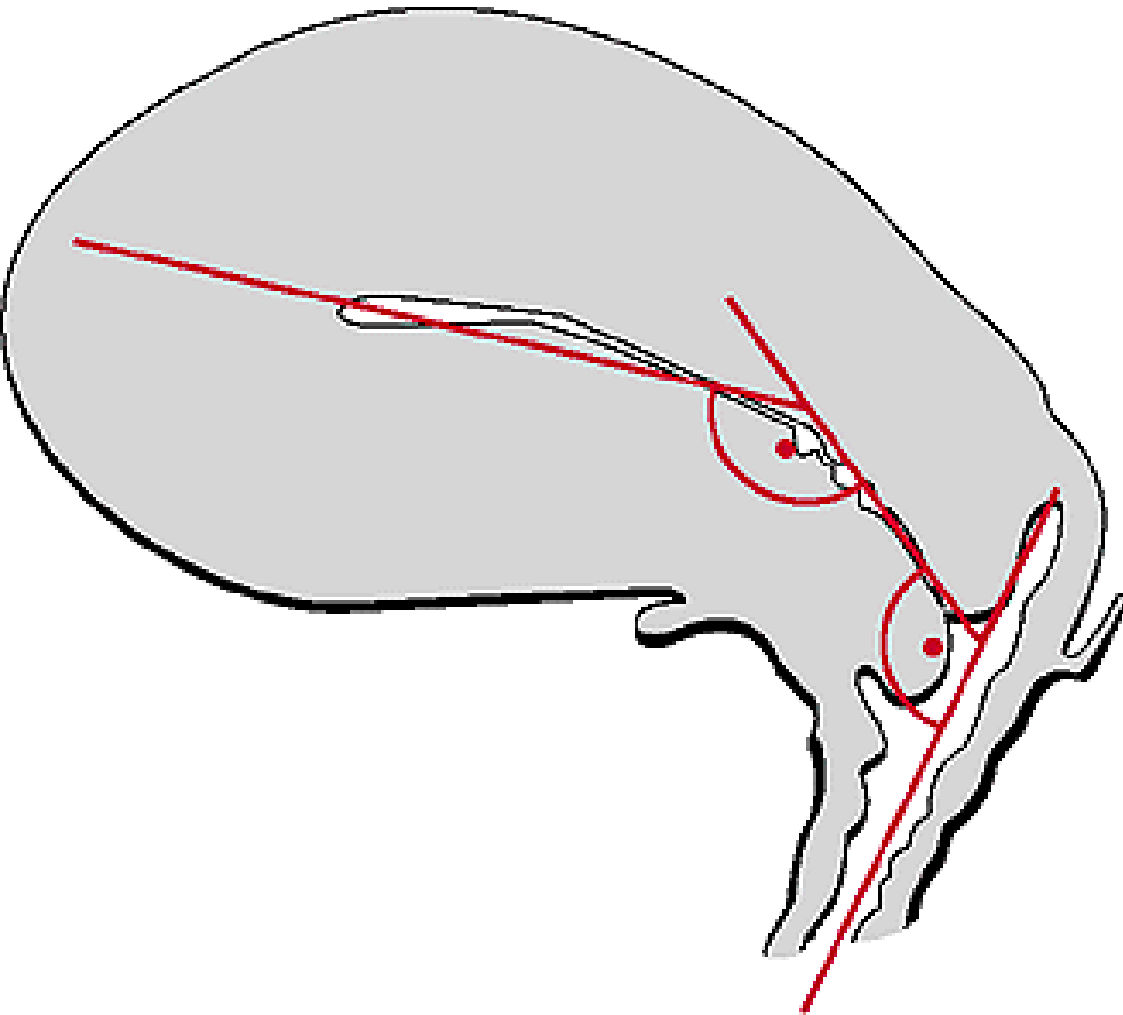
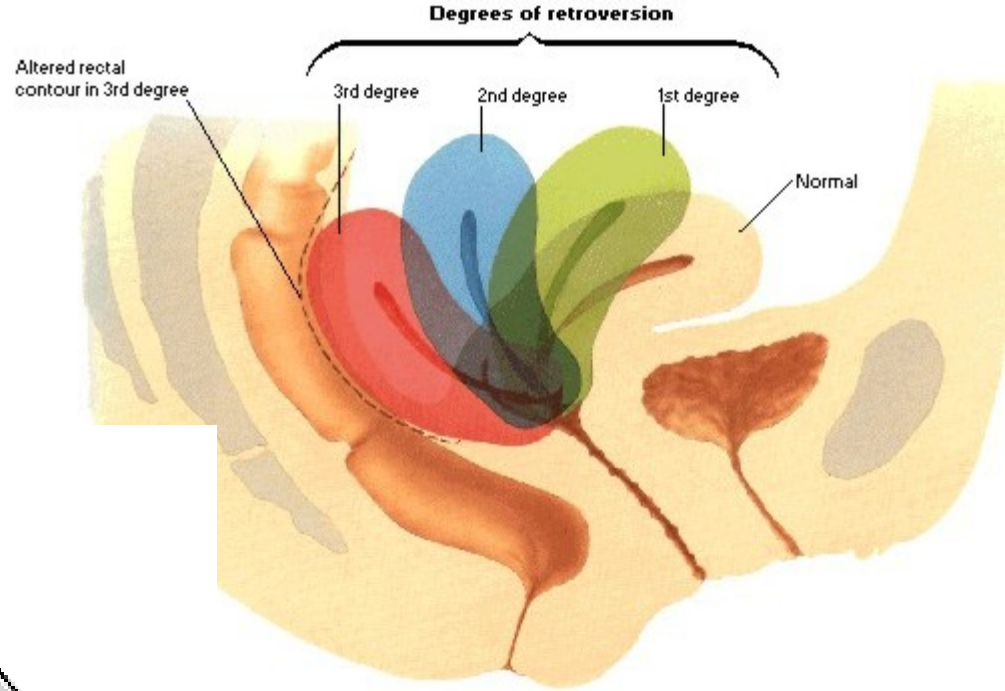
1. Phase of menstruation
2. Phase of proliferation
3. Phase of secretion
4. Phase of ischemia

GRAVIDITAS





Anteversio Anteflexio



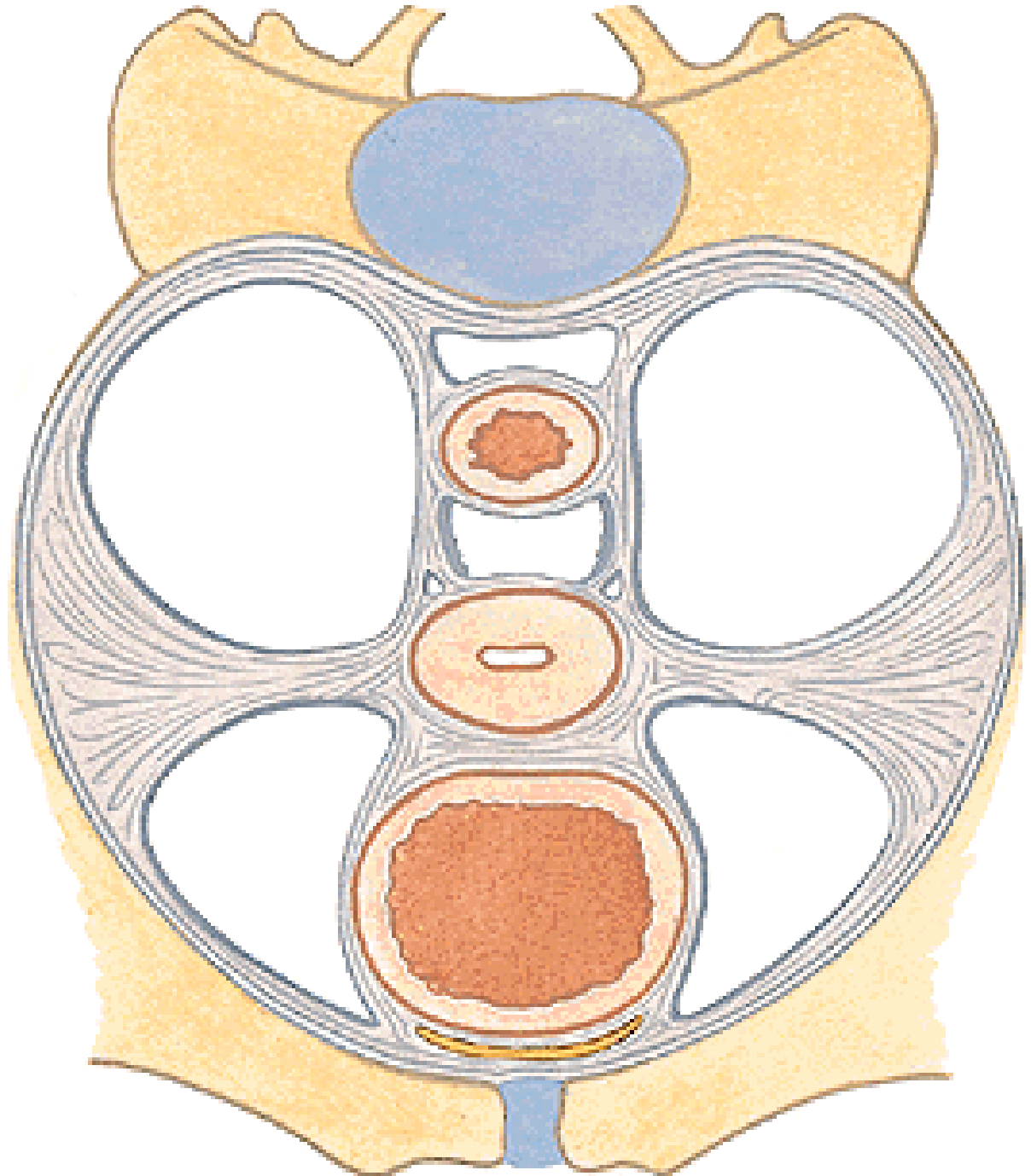
PARAMETRIUM

**Lig. sacrouterinum
(m. rectouterinus)**

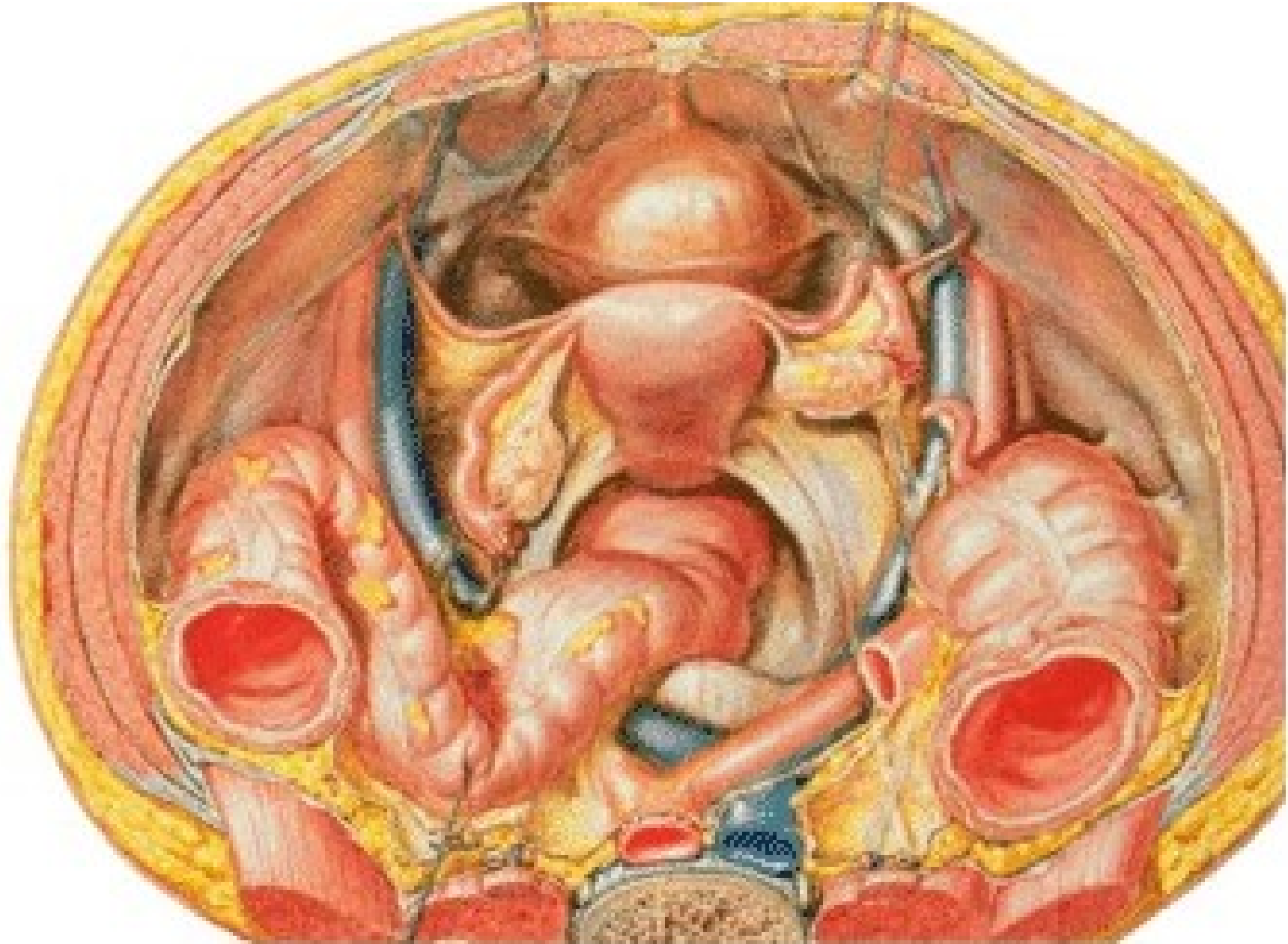
Lig. cardinale uteri

Lig. vesicouterinum

Lig. pubovesicale



Plica sacrouterina
Lig. teres uteri



A. uterina x ureter

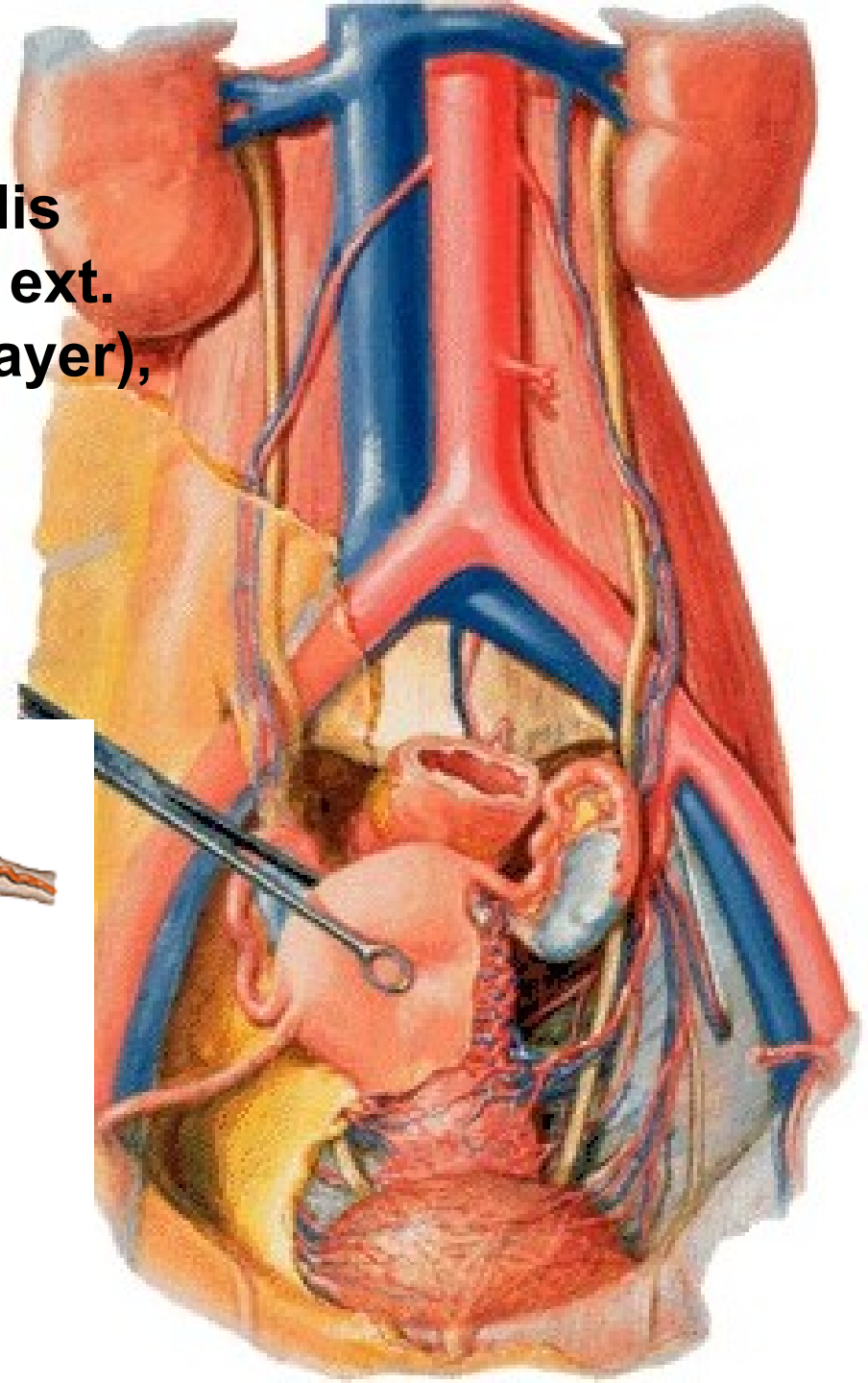
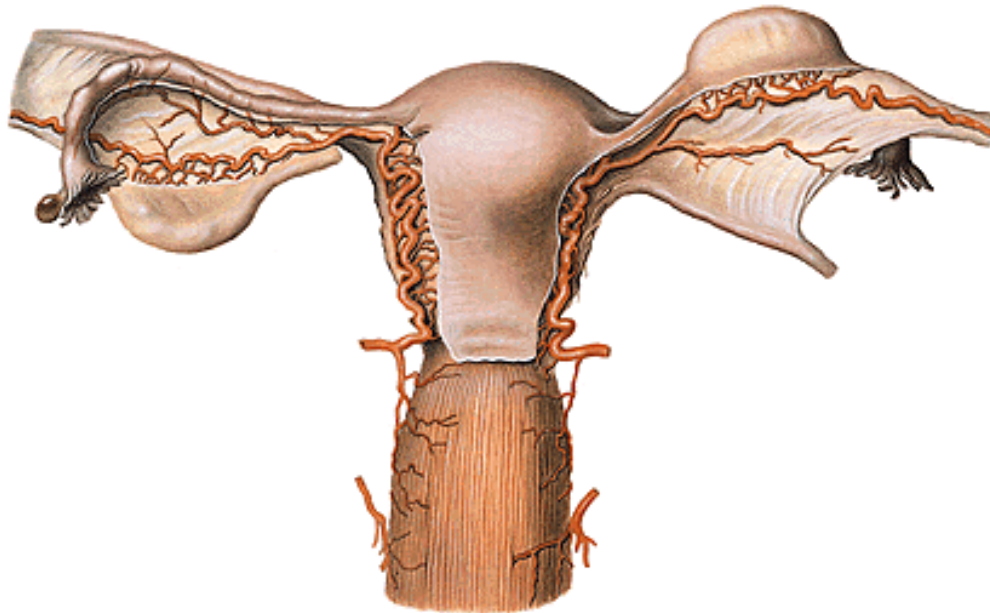
Plexus venosus uterovaginalis

Nll. lumbales, iliaci int., iliaci ext.

nodus lymph.uterinus (Bayer),

inguinales spf., sacrales

Plexus uterovaginalis



VAGINA (COLPOS)

Ostium vaginae

Vestibulum vaginae

Paries anterior

Paries posterior

Rugae vaginales

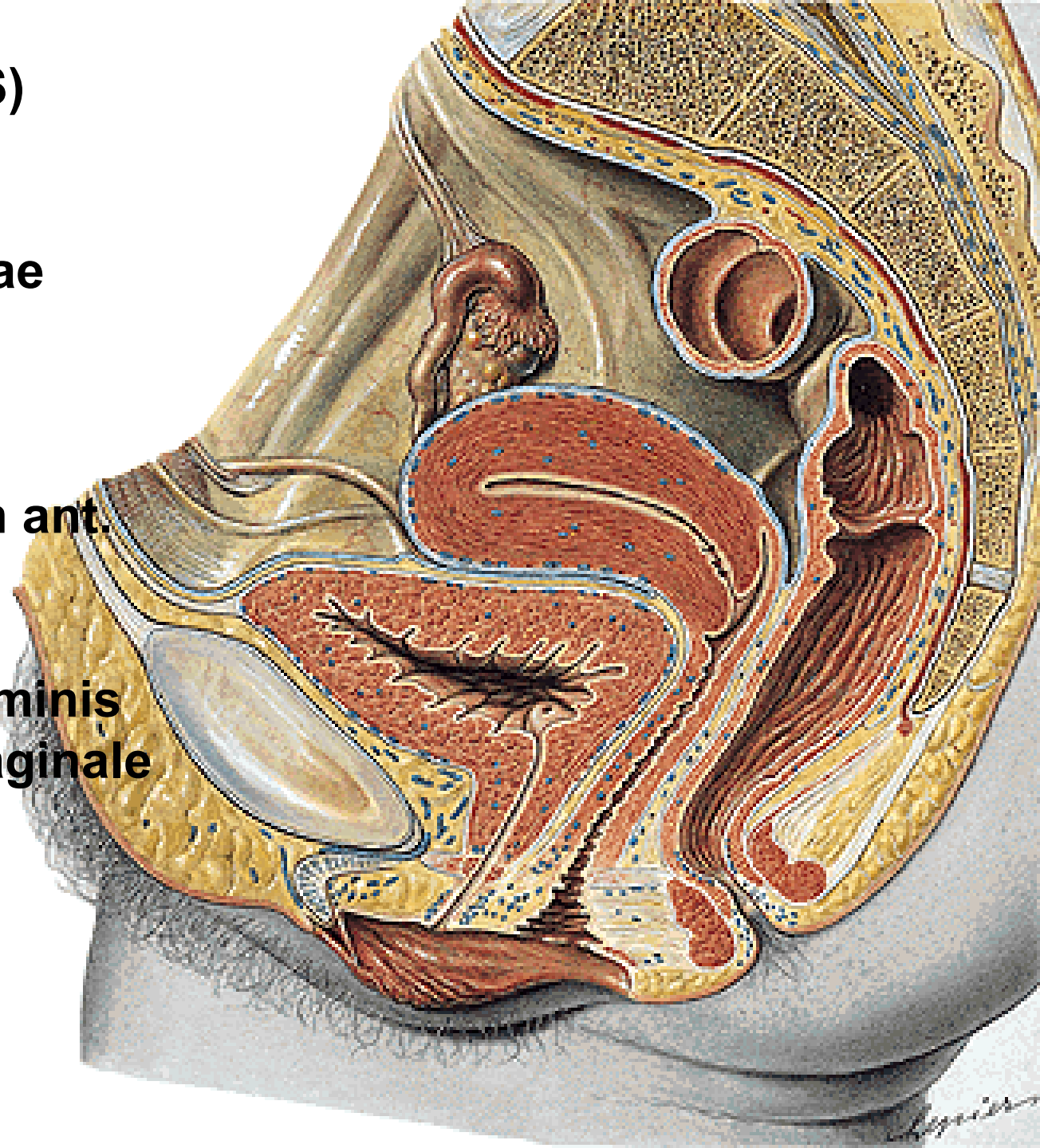
Columna rugarum ant.
et posterior

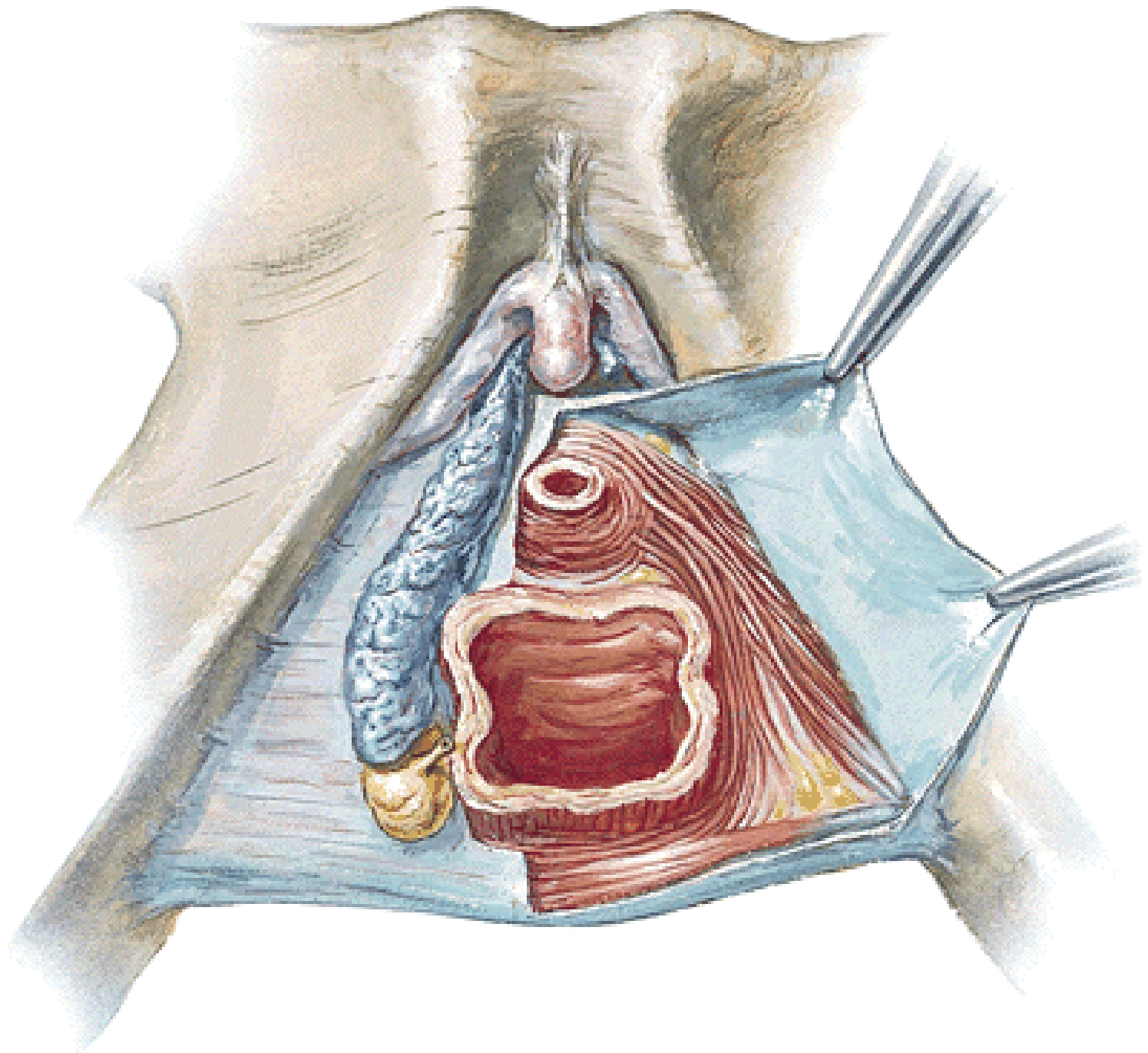
Fornix

Receptaculum seminis

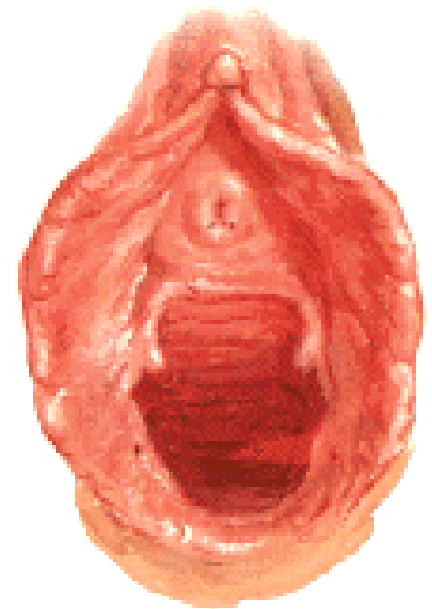
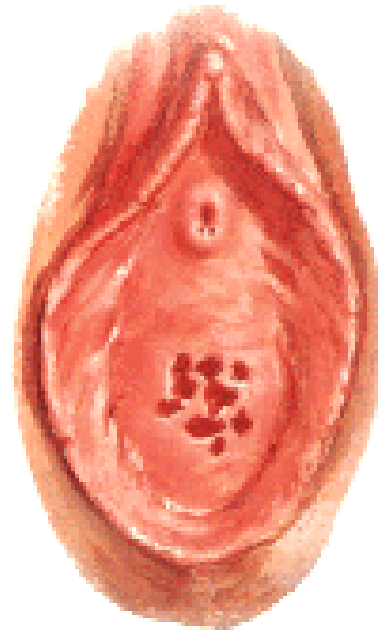
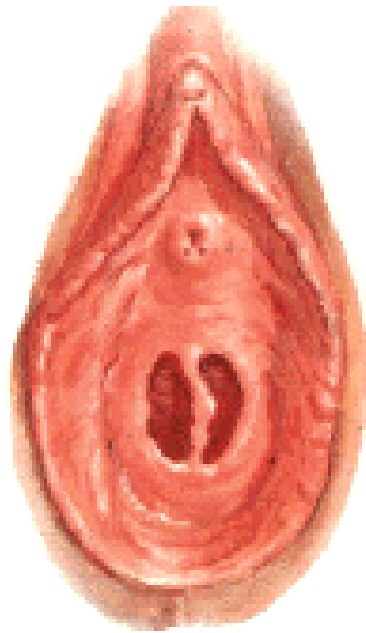
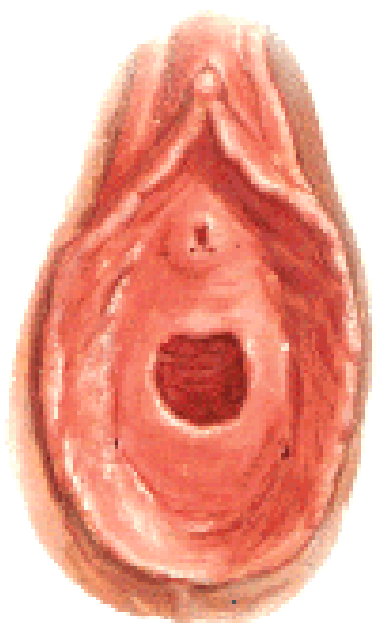
Septum urethrovaginale

Carina urethralis





Ostium vaginae:
Hymen
Defloratio
Carunculae hymenales



A. uterina

- a. vaginalis

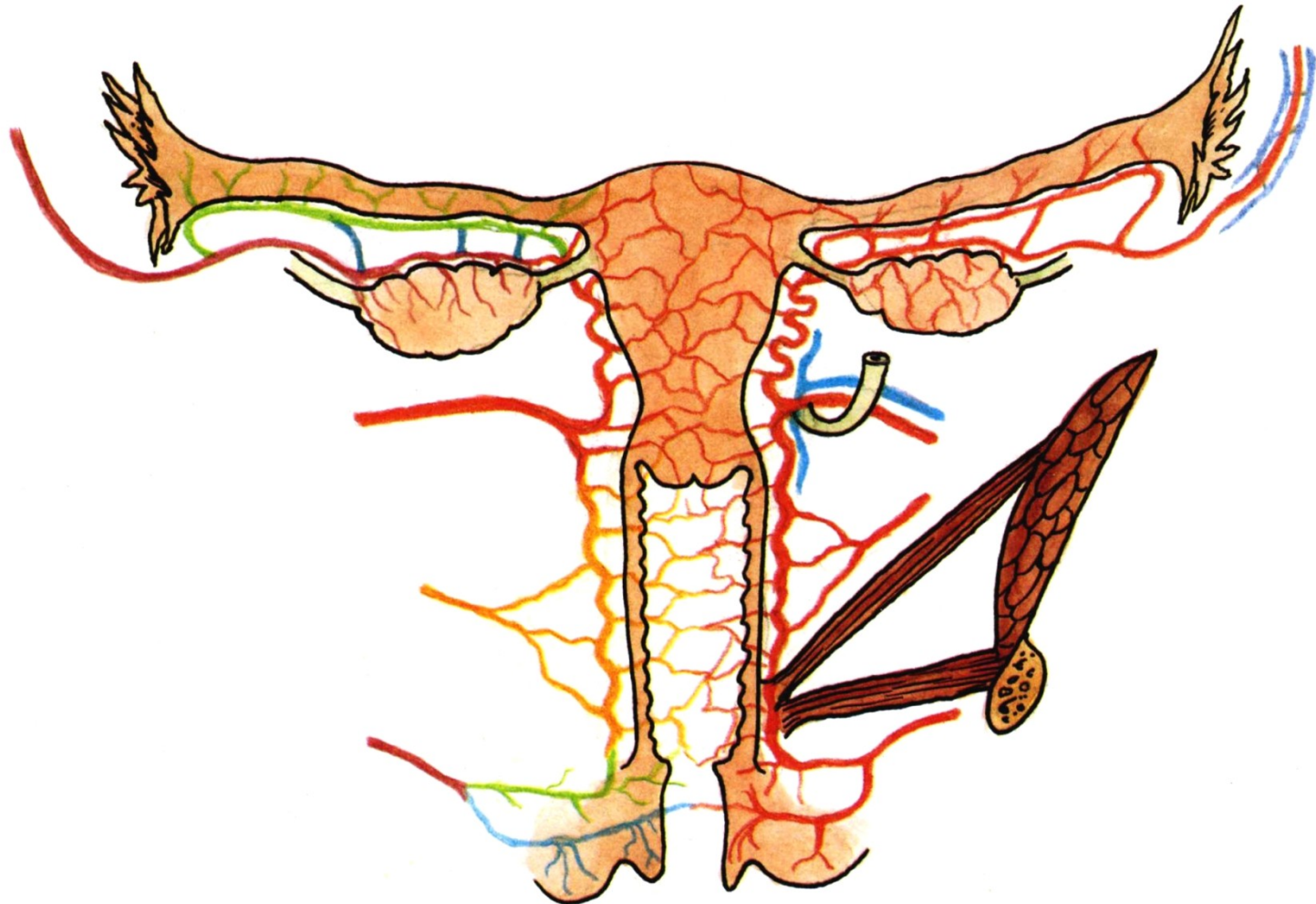
A. rectalis media

A. pudenda int.

Plexus venosus uterovaginalis

Nll. iliaci int., ext, inguinales spf.

Plexus uterovaginalis, n. pudendus



ORGANA GENITALIA EXTERNA (PUDENDUM/VULVA)

Mons pubis – pubes

Labium majus pudendi – commissura labiorum ant. et post.

Rima pudendi

Sulcus genitofemoralis

Sulcus interlabialis



Labium minus pudendi

- praeputium clitoridis

- frenulum clitoridis

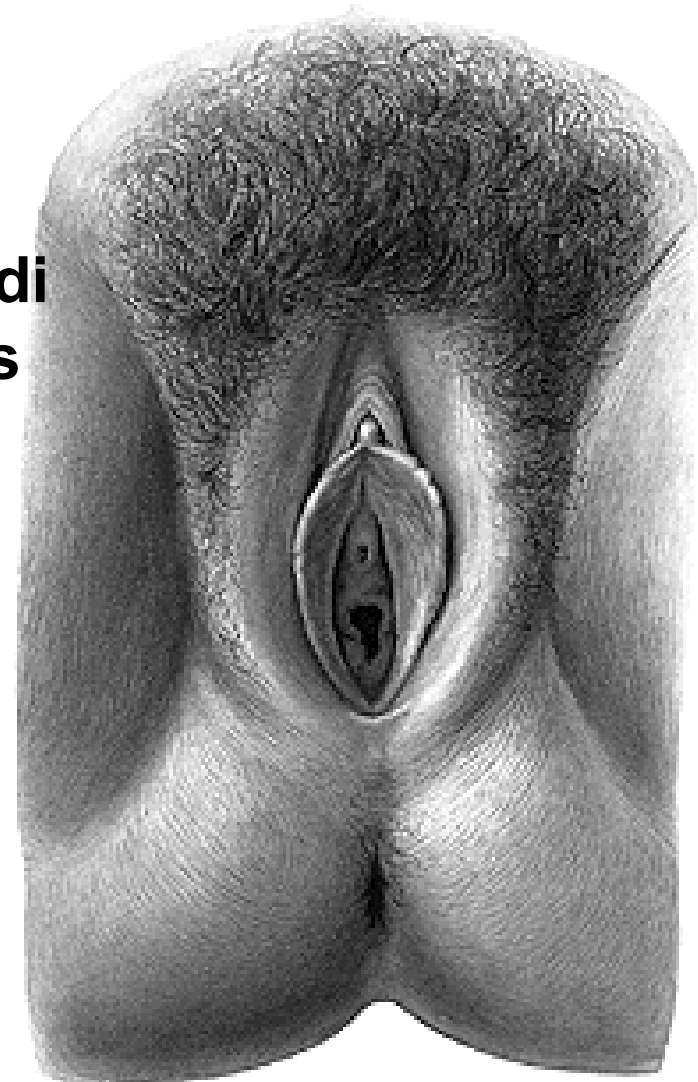
- frenulum labiorum

Vestibulum vaginae

Smegma

Perineum

Raphe perinei



CLITORIS

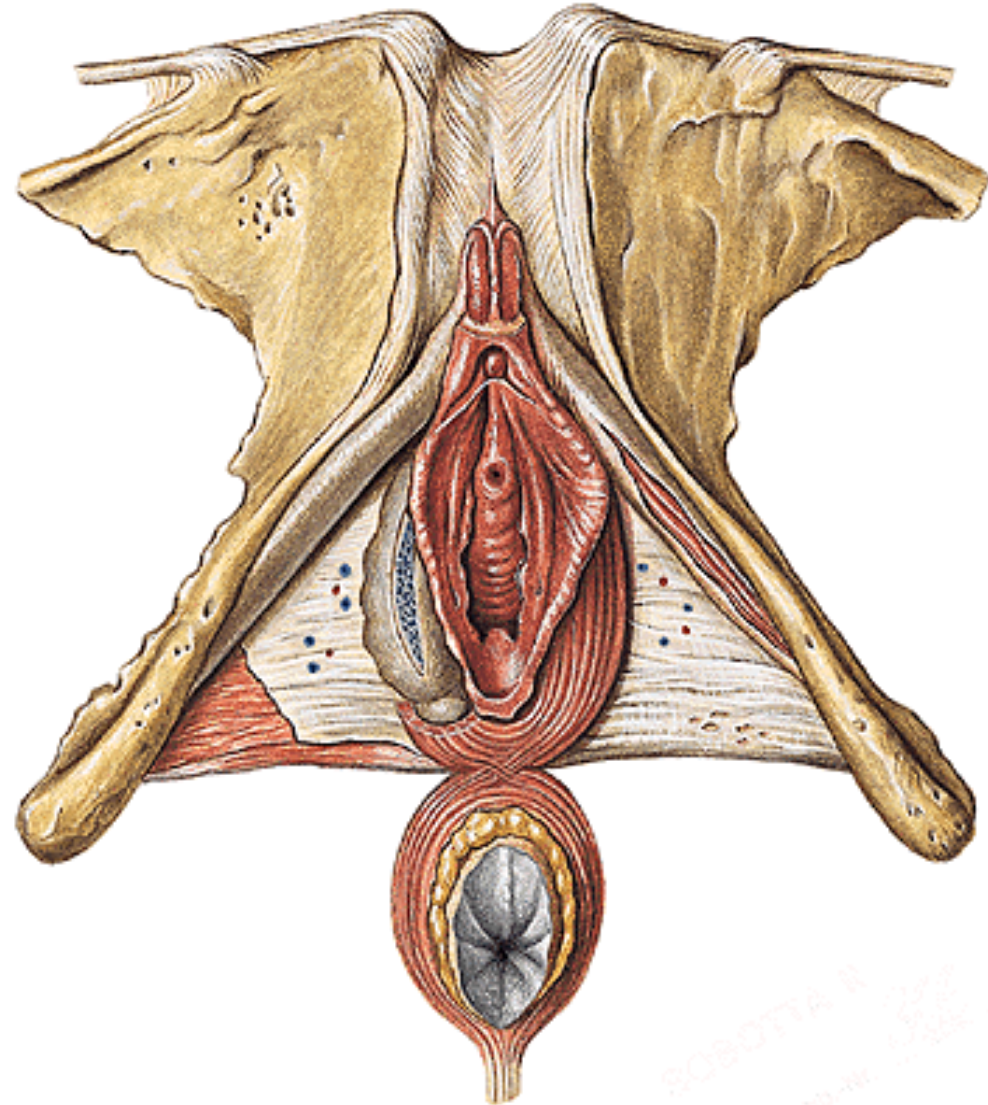
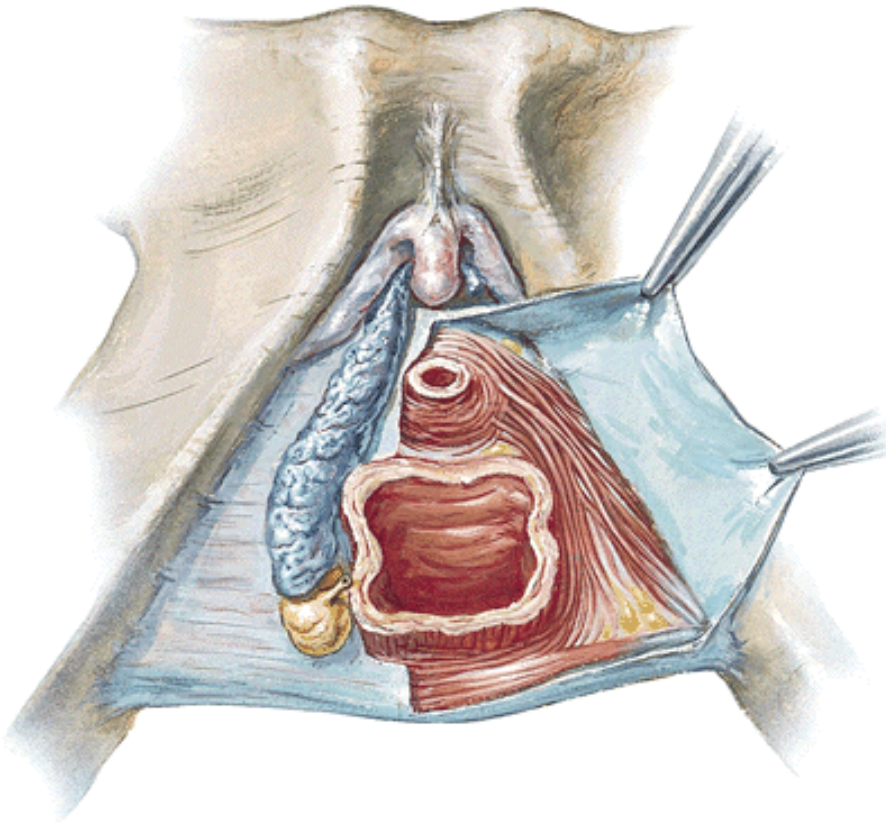
Crura clitoridis

Corpus clitoridis

Glans clitoridis

Lig. fundiforme

Lig. suspensorium

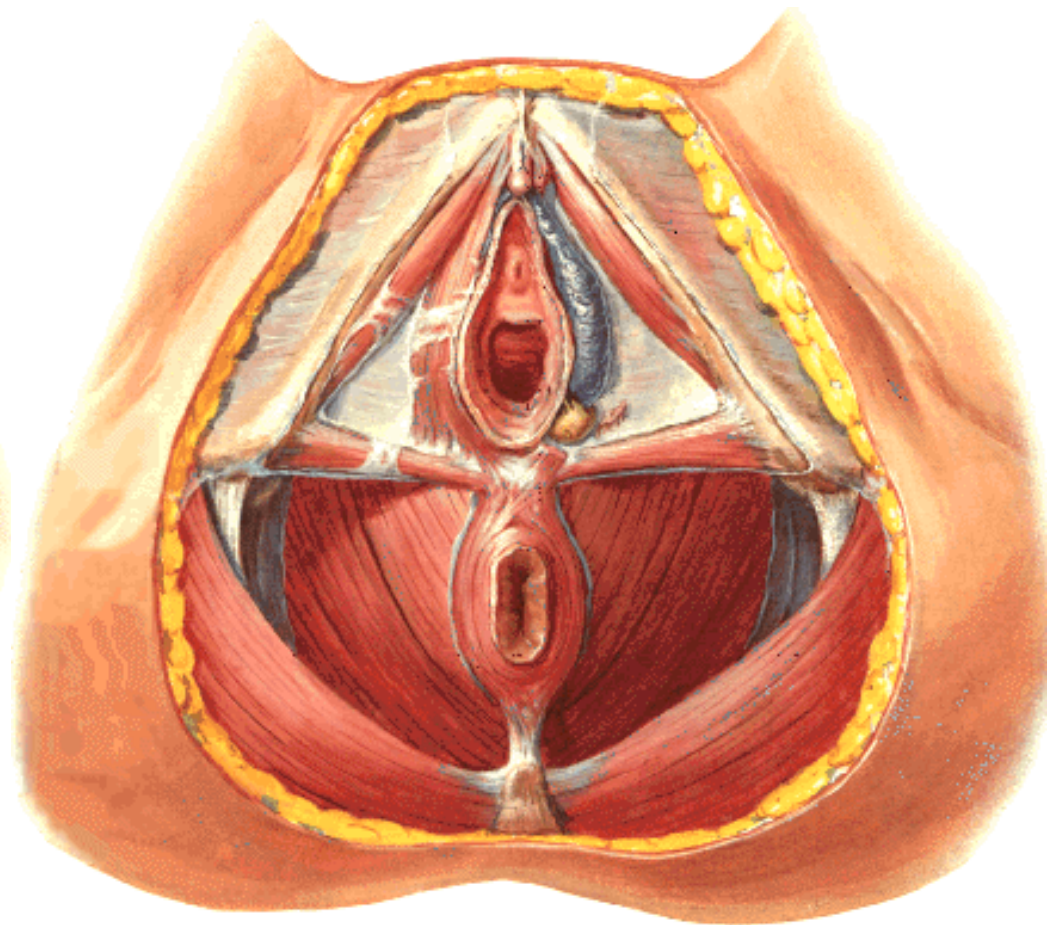


ROBERTA S. S. S.
1800-1810

BULBI VESTIBULI

GLANDULAE VESTIBULARES MAJORES (BARTHOLIN)

GLANDULAE VESTIBULARES MINORES

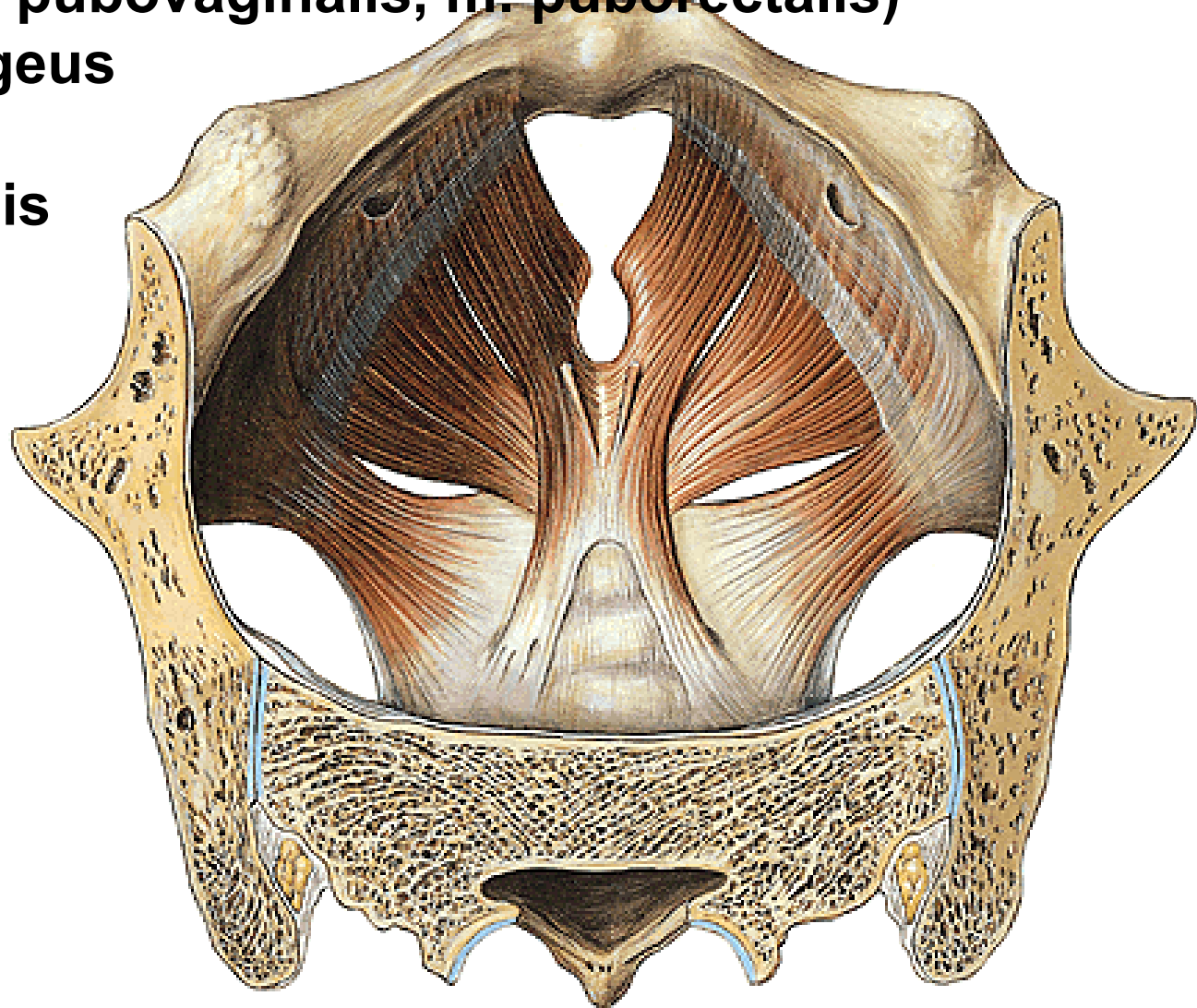


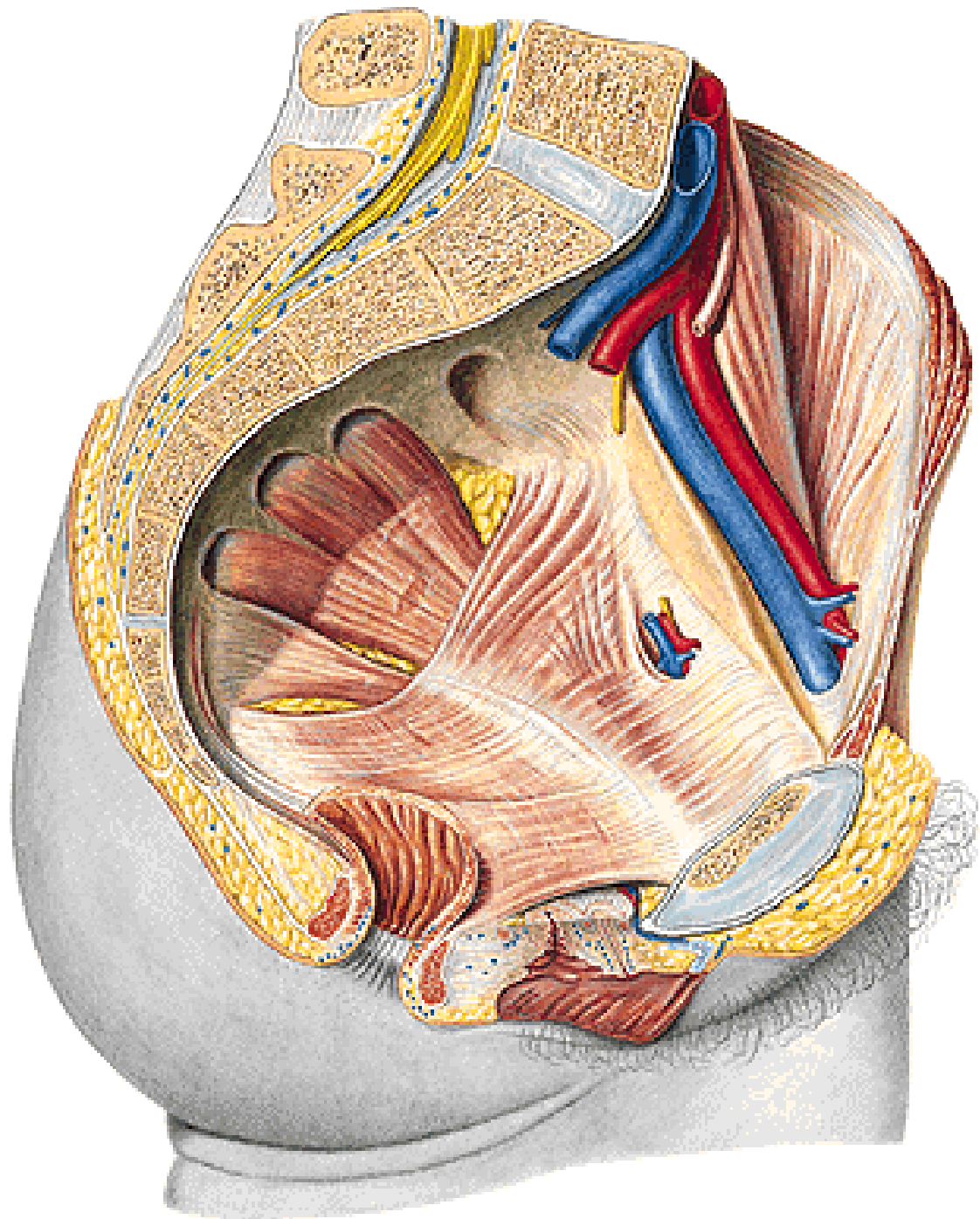
DIAPHRAGMA PELVIS

M. levator ani – pars iliaca (m. iliococcygeus)
– pars pubica (m. pubococcygeus)
(m. pubovaginalis, m. puborectalis)

M. (ischio)coccygeus

Hiatus urogenitalis



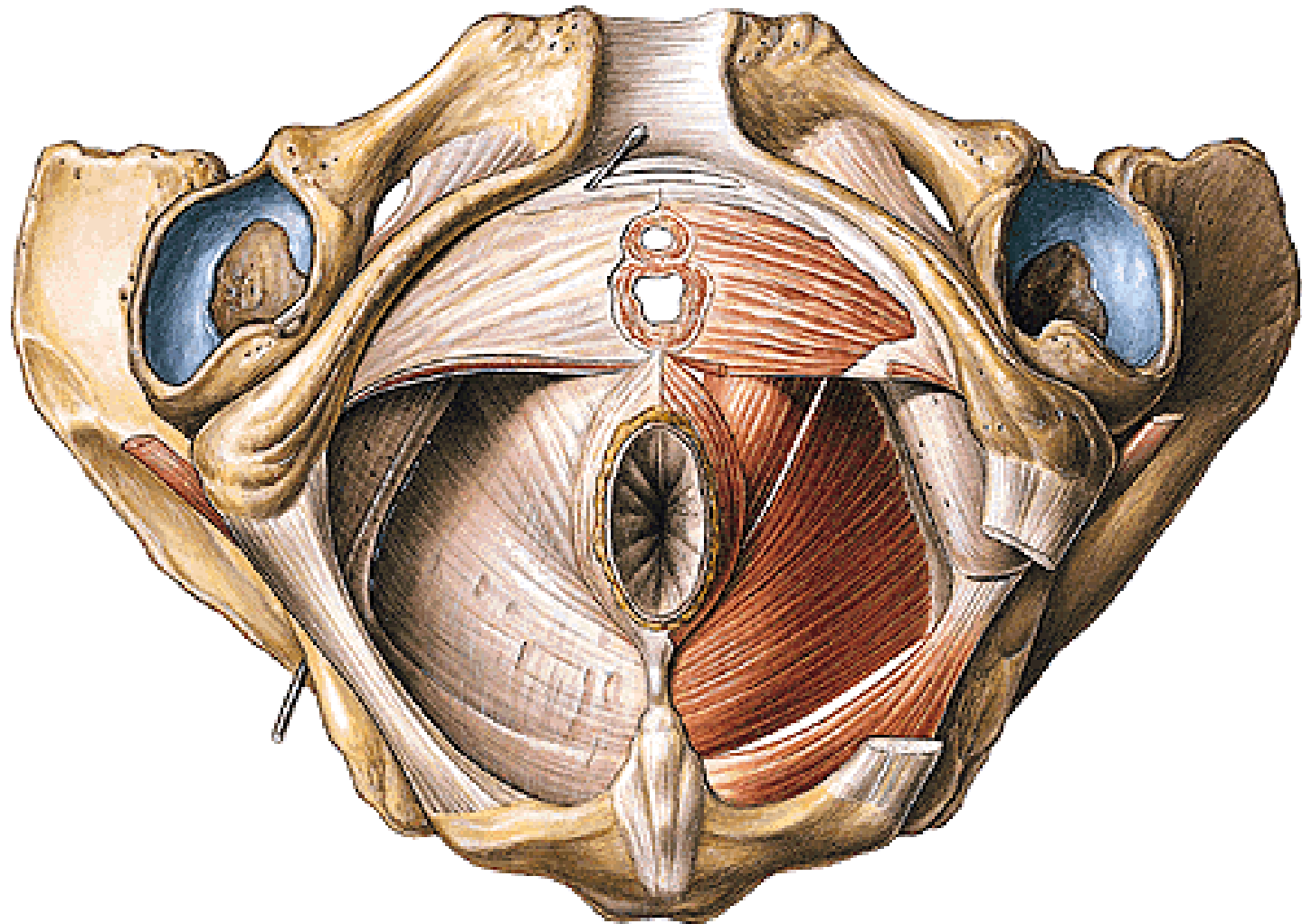


SACCUS PROFUNDUS PERINEI/DIAPHRAGMA UROGENITALE

M. transversus perinei profundus – centrum perineale

M. sphincter urethrae, m. compressor urethrae

Lig. transversum perinei



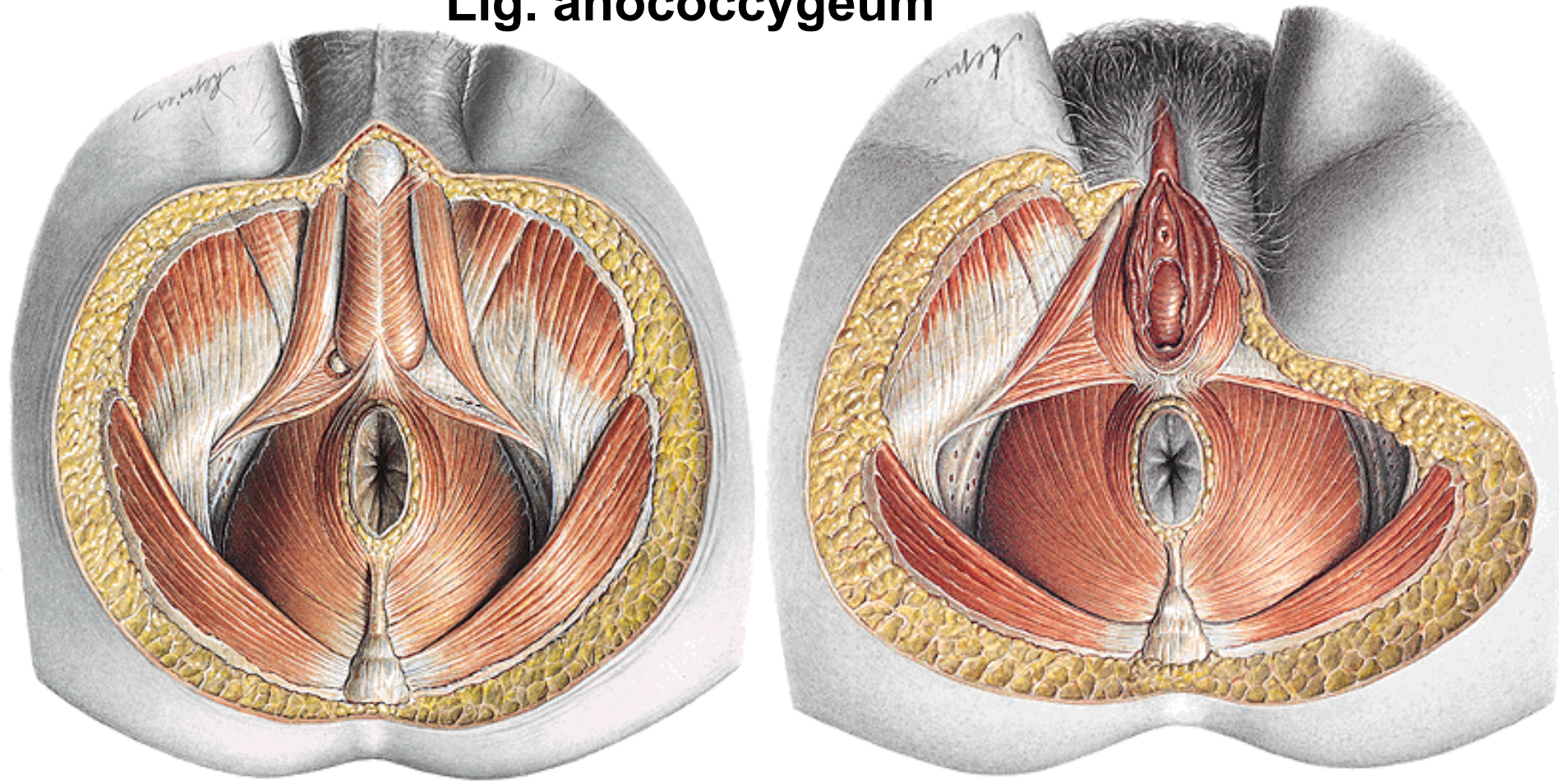
M. ischiocavernosus

M. bulbospongiosus

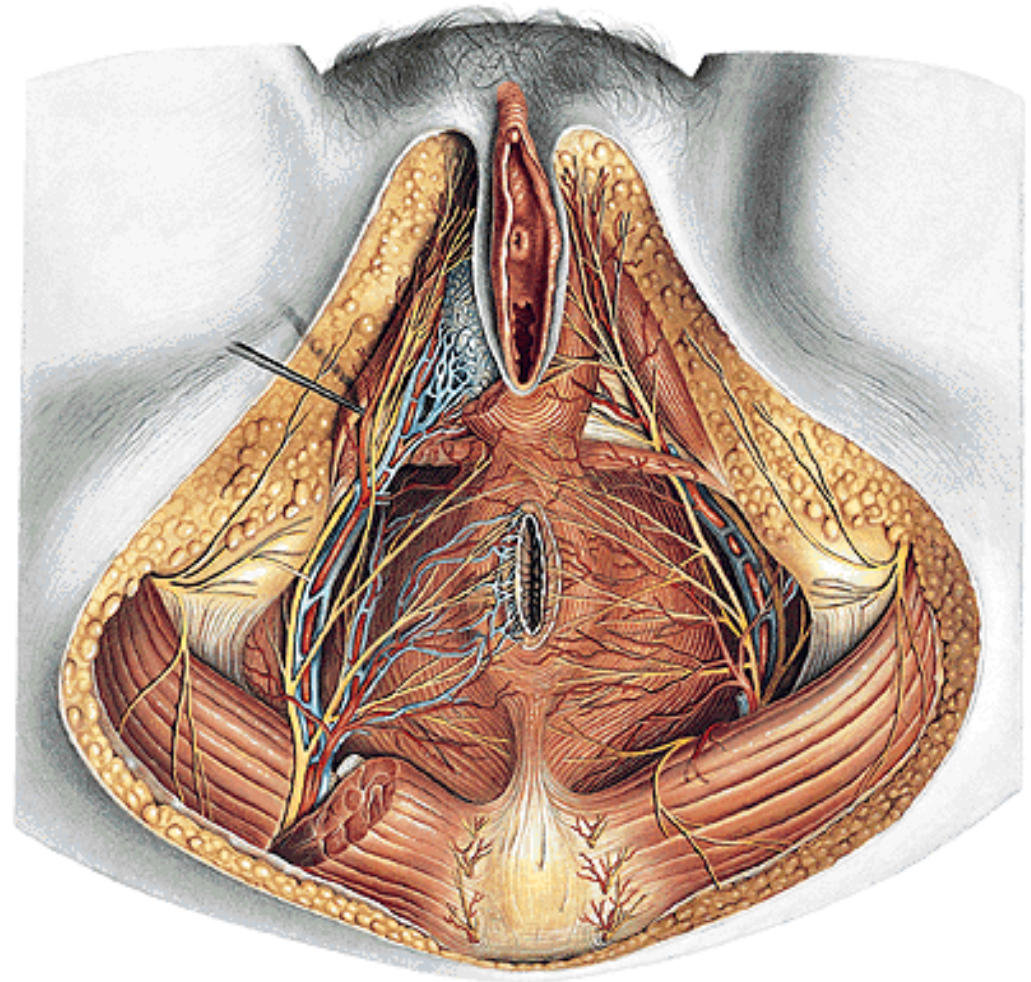
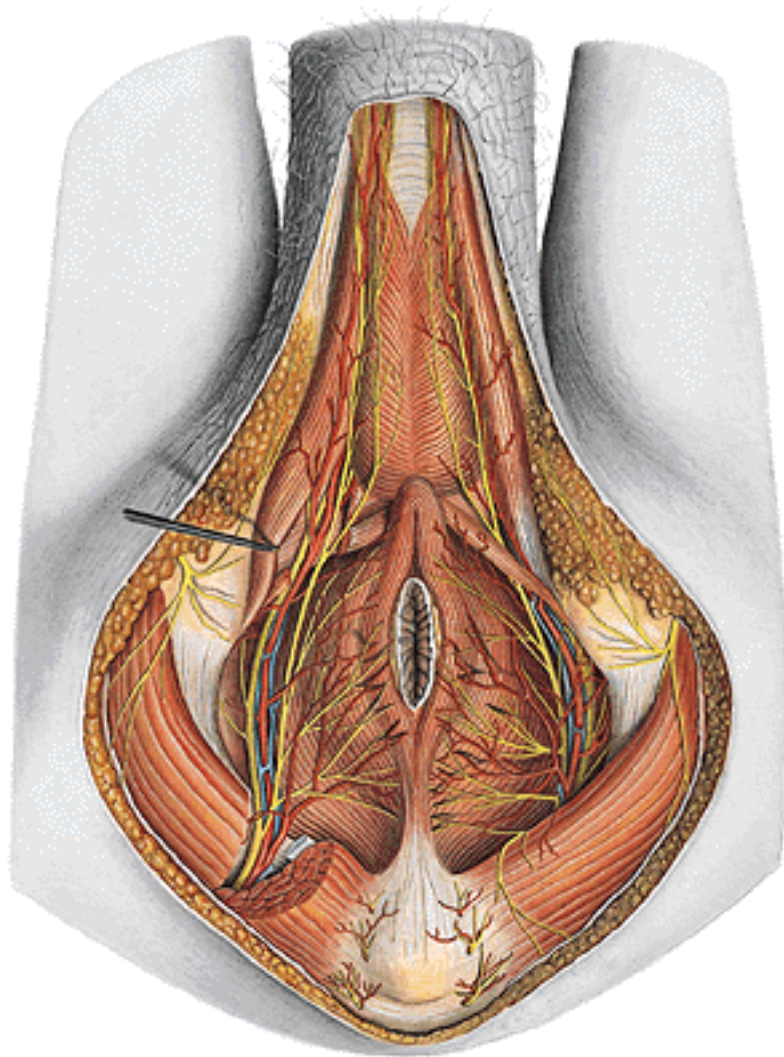
M. transversus perinei superficialis

M. sphincter ani externus

Lig. anococcygeum



FOSSA ISCHIORECTALIS – recessus pubicus
a. et v. pudenda interna, n. pudendus – canalis pudendalis
aa., vv. et nn. rectales inf.



A.,v. et n. perinealis

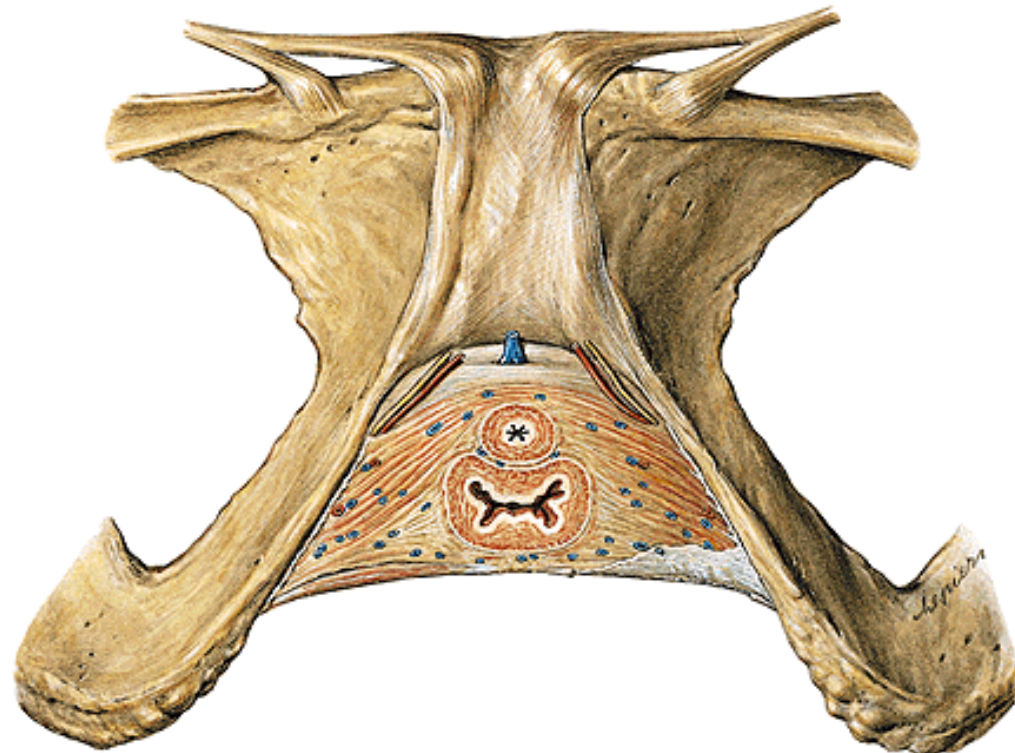
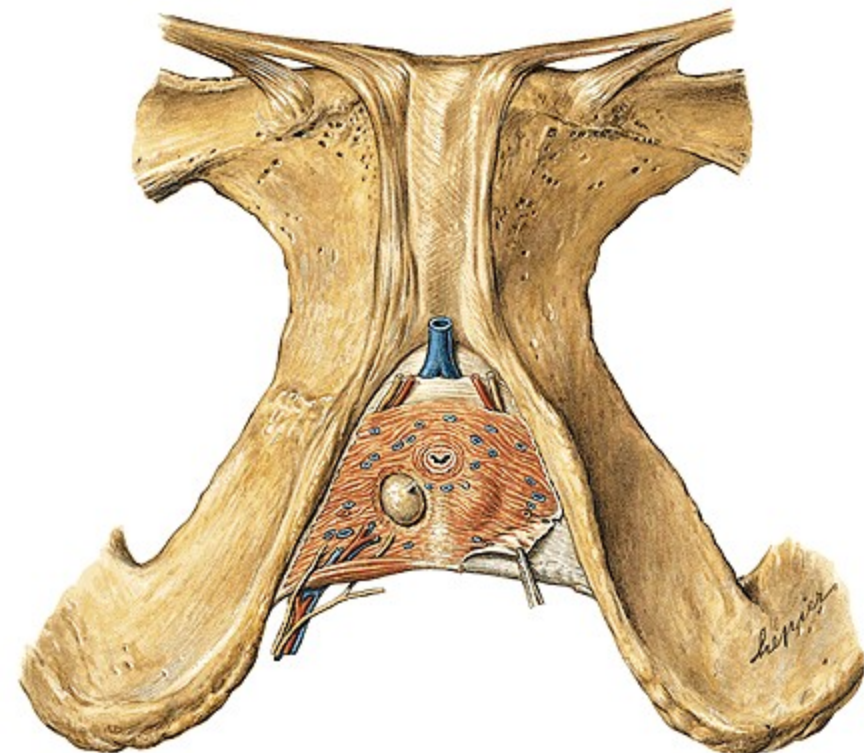
**A. et v. penis (clitoridis) – a. dorsalis penis (clitoridis)
– a. profunda penis (clitoridis)**

V. dorsalis penis (clitoridis) spf. – vv. pudendae ext.

V. dorsalis penis (clitoridis) profunda – vv. pudendae int.

N. dorsalis penis (clitoridis)

Gl. bulbourethralis



Fascia obturatoria
Canalis pudendalis
(Alcock)
Fascia sup.
diaphragmatis pelvis
Fascia inf.
diaphragmatis pelvis
Fossa ischioanalis/-rectalis



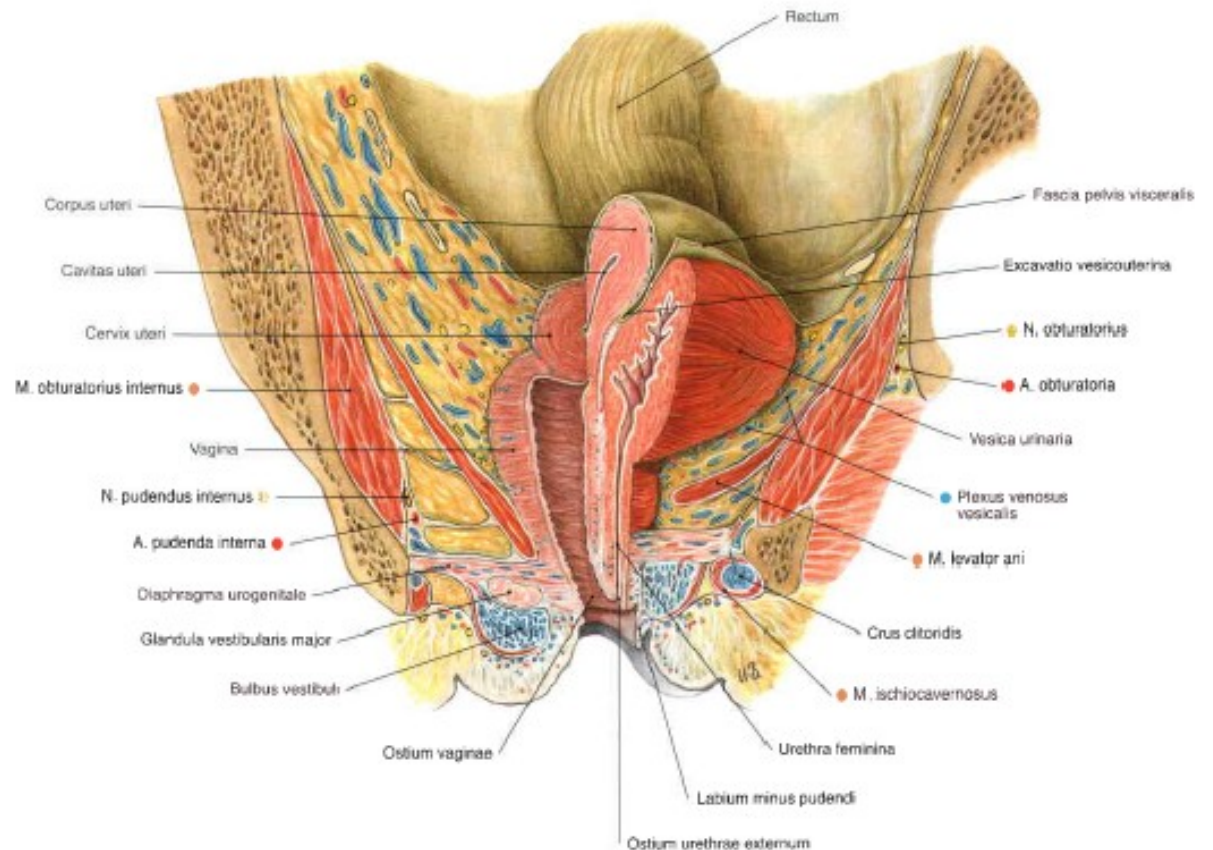
Recessus pubicus fossae ischioanalis/-rectalis

Saccus perinei profundus

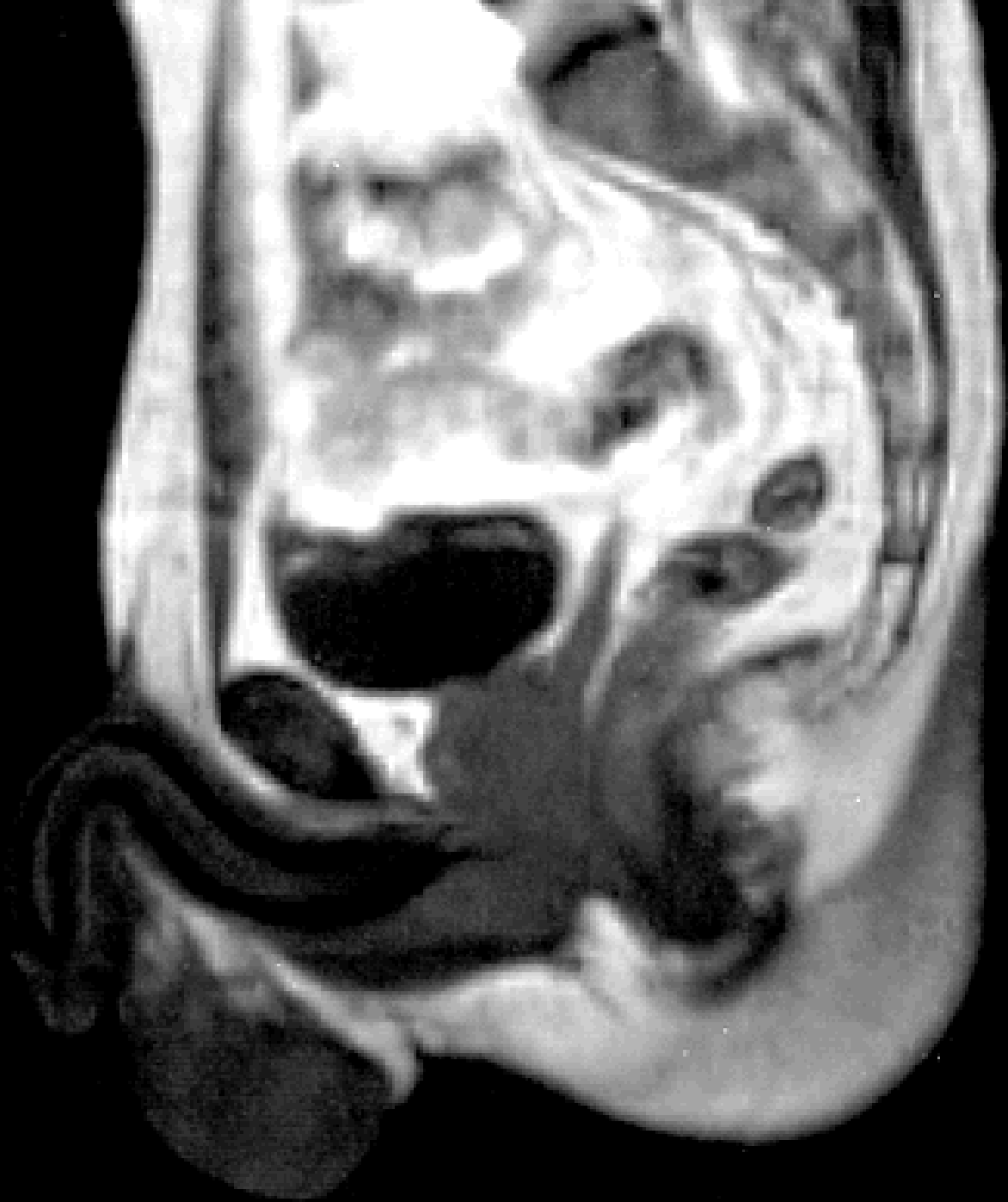
Membrana perinealis/Fascia inf.diaphragmatis urogenitalis

Spatium perinei spf.

Fascia perinei spf.







Illustrations and photographs were copied from:
Atlas der Anatomie des Menschen/Sobotta.
Putz,R., und Pabst,R. 20. Auflage. München:
Urban & Schwarzenberg, 1993
Netter: Interactive Atlas of Human Anatomy.
Windows Version 2.0
Čihák R: Anatomie 2 (Splanchnologia). Avicenum,
zdravotnické nakladatelství, Praha, 1988.