

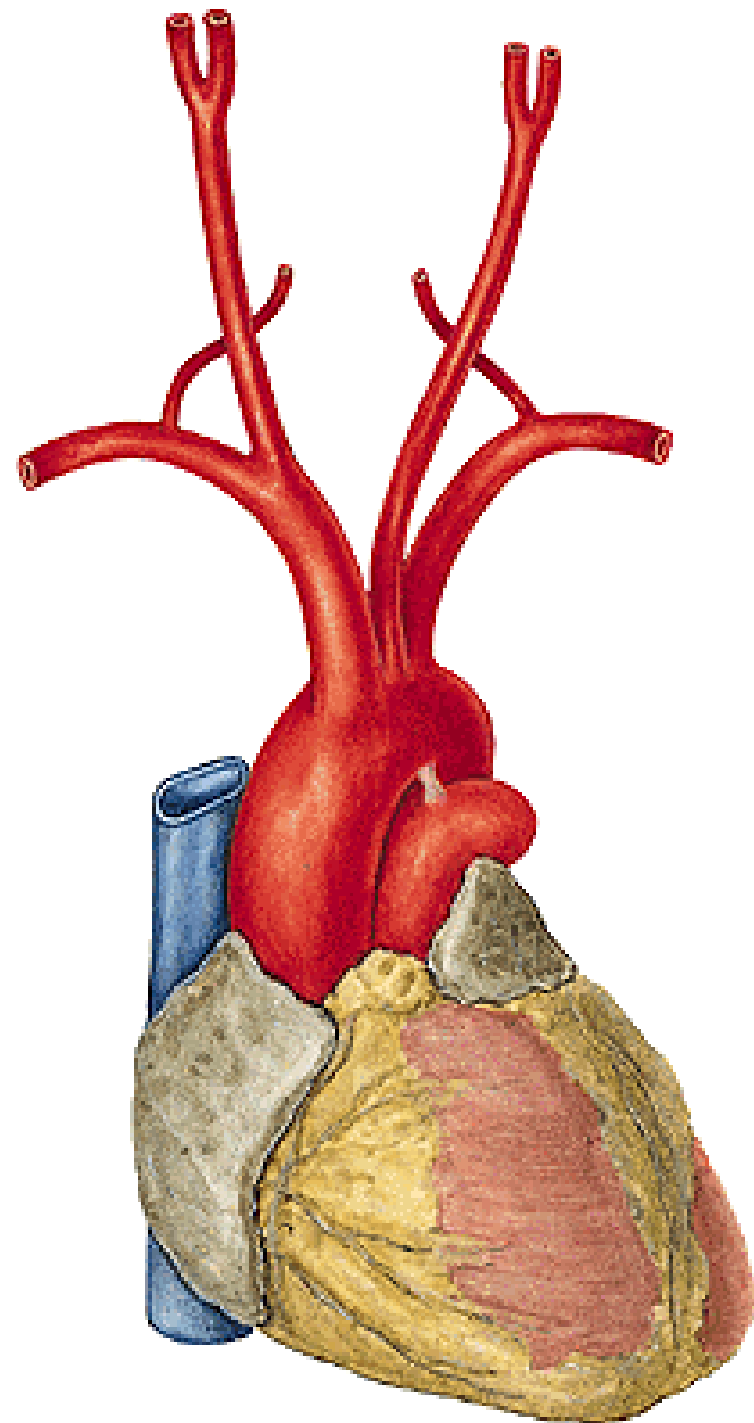
ARTERIES OF THE UPPER LIMB

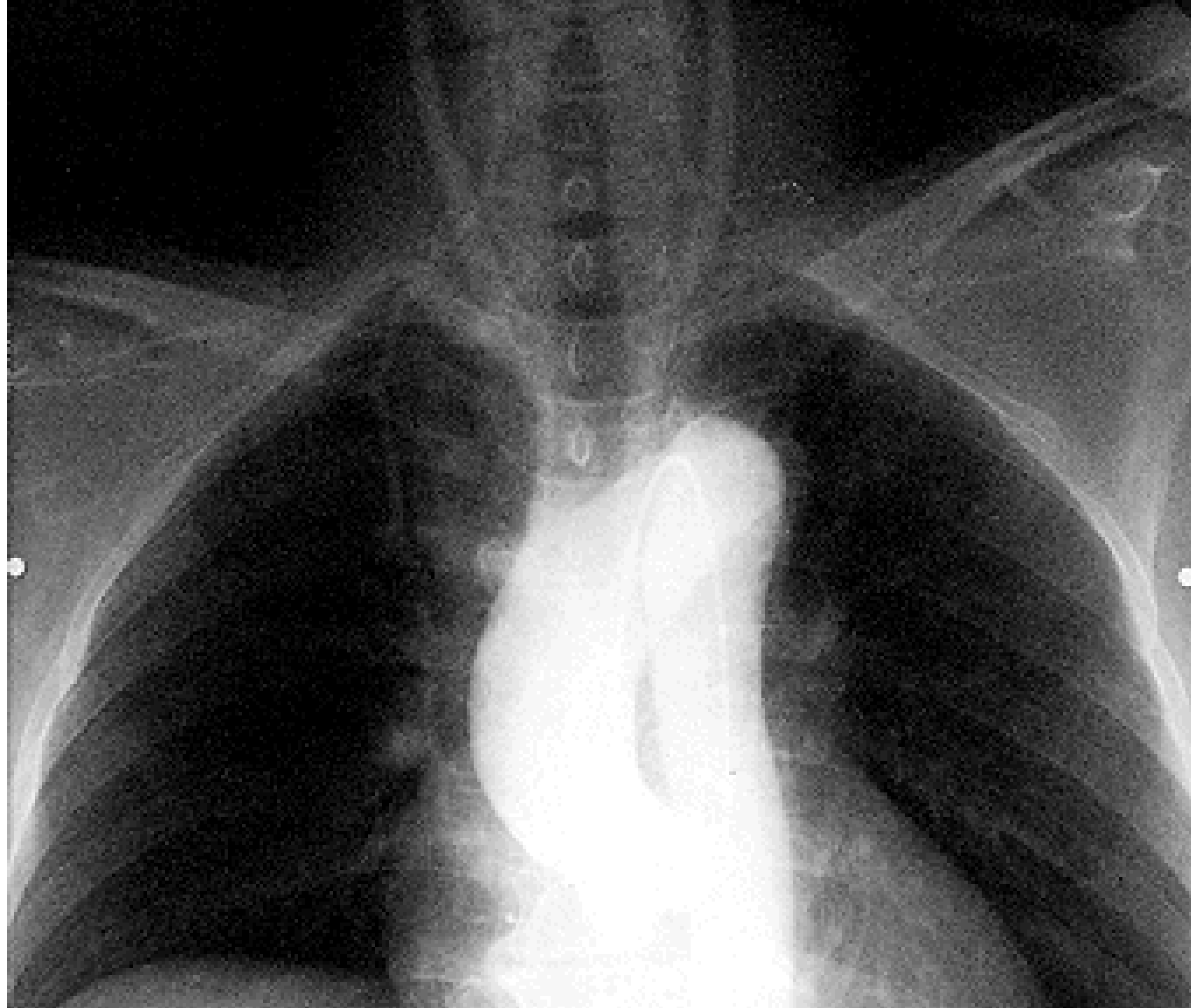
ARCUS AORTAE

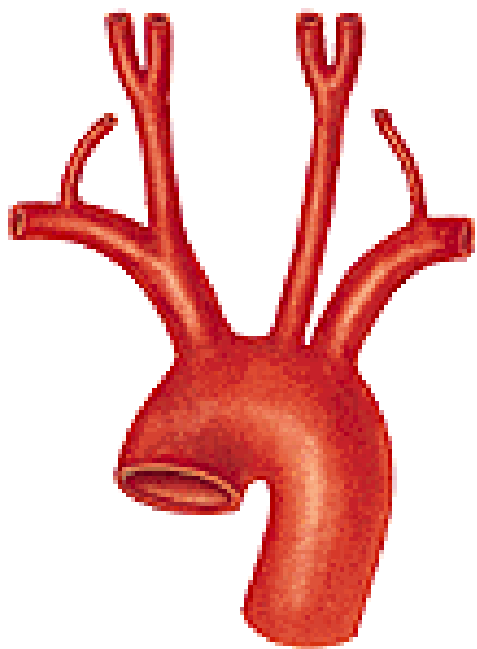
- **truncus brachiocephalicus**
- **a. carotis communis sinistra**
- **a. subclavia sinistra**

Truncus brachiocephalicus

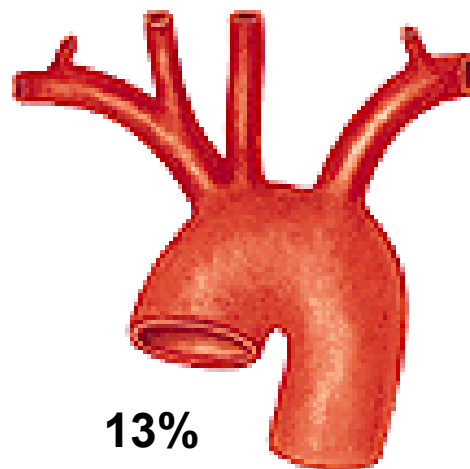
- **a. carotis communis dextra**
- **a. subclavia dextra**



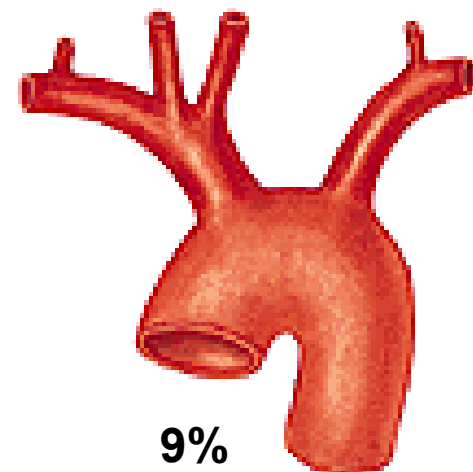




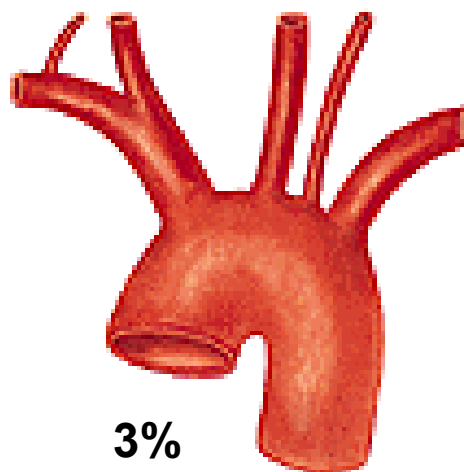
70%



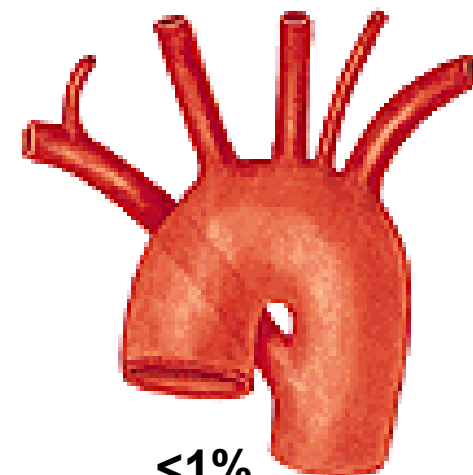
13%



9%

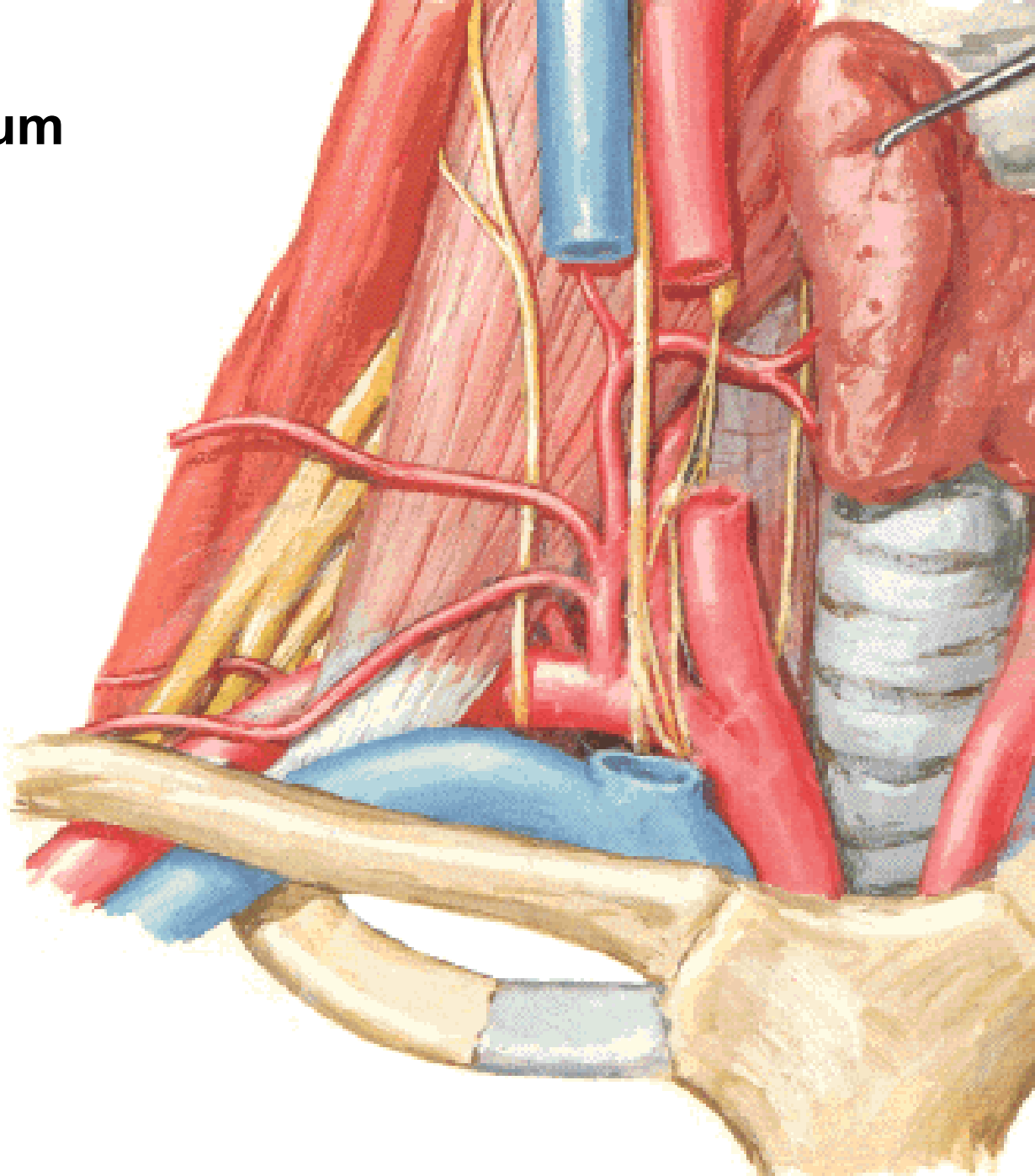


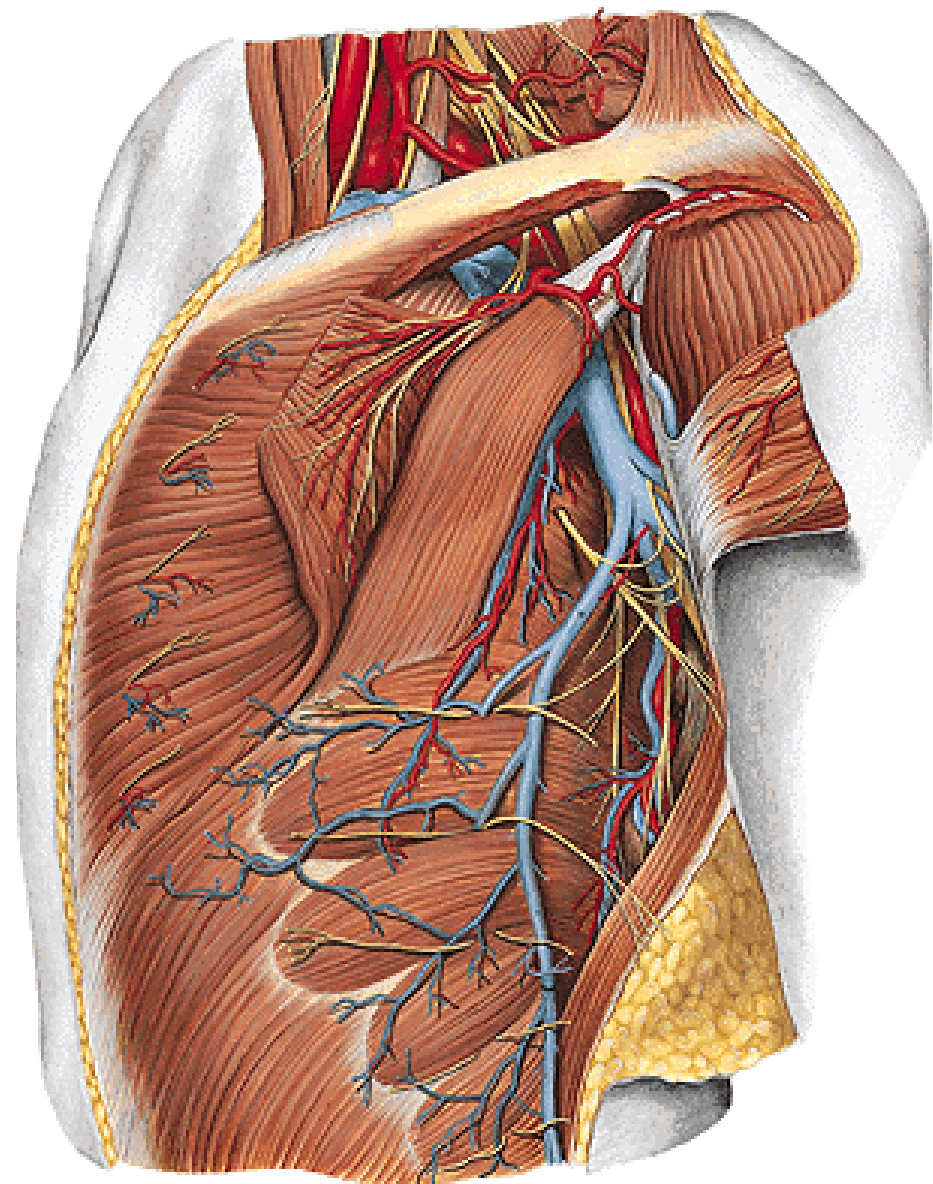
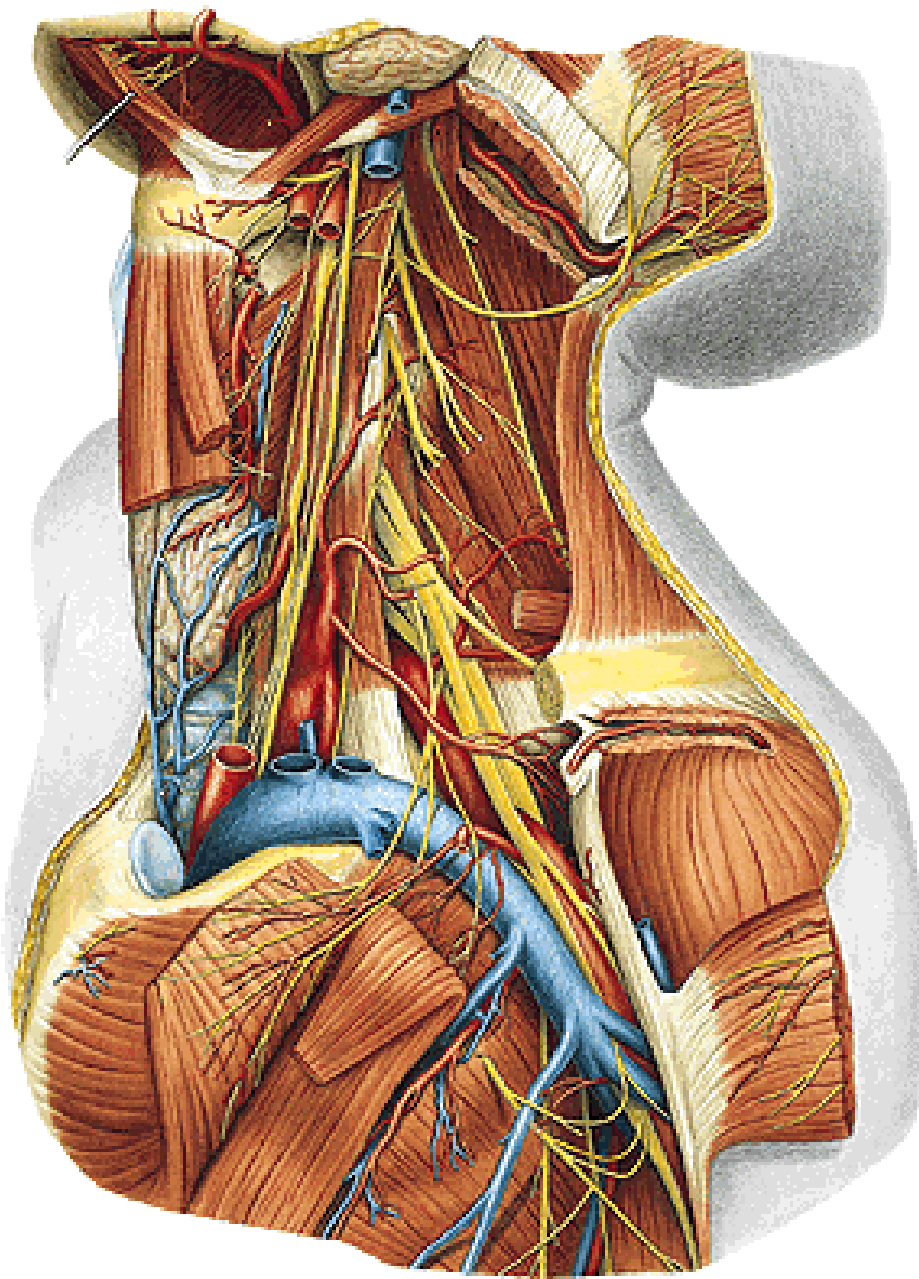
3%



<1%

Cupula pleurae
Fissura scalenorum

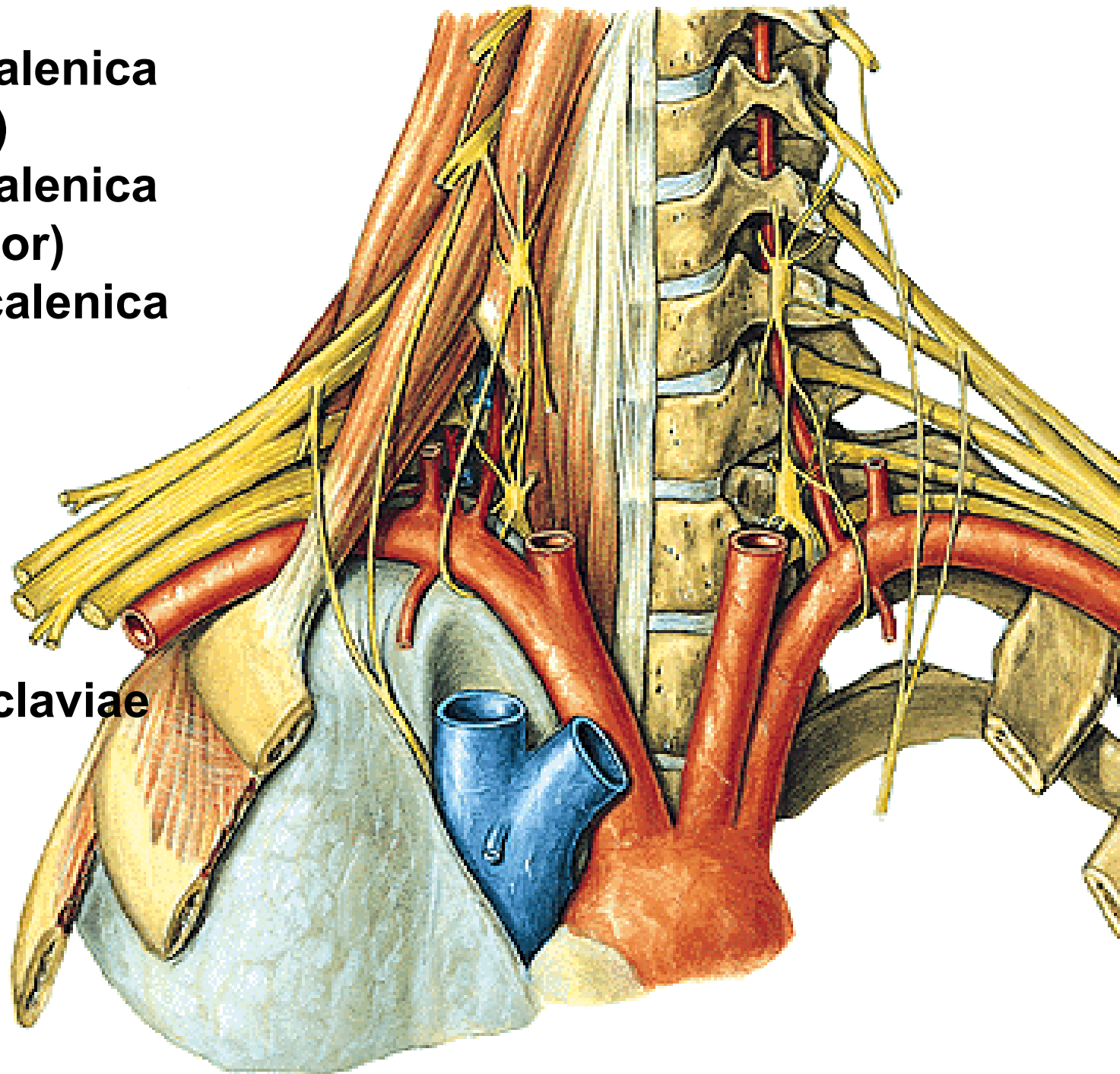




**Pars intrascalenica
(medial)**

**Pars interscalenica
(posterior)**

**Pars extrascalenica
(lateral)**



Sulcus a. subclaviae

A. SUBCLAVIA

Pars intrascalenica:

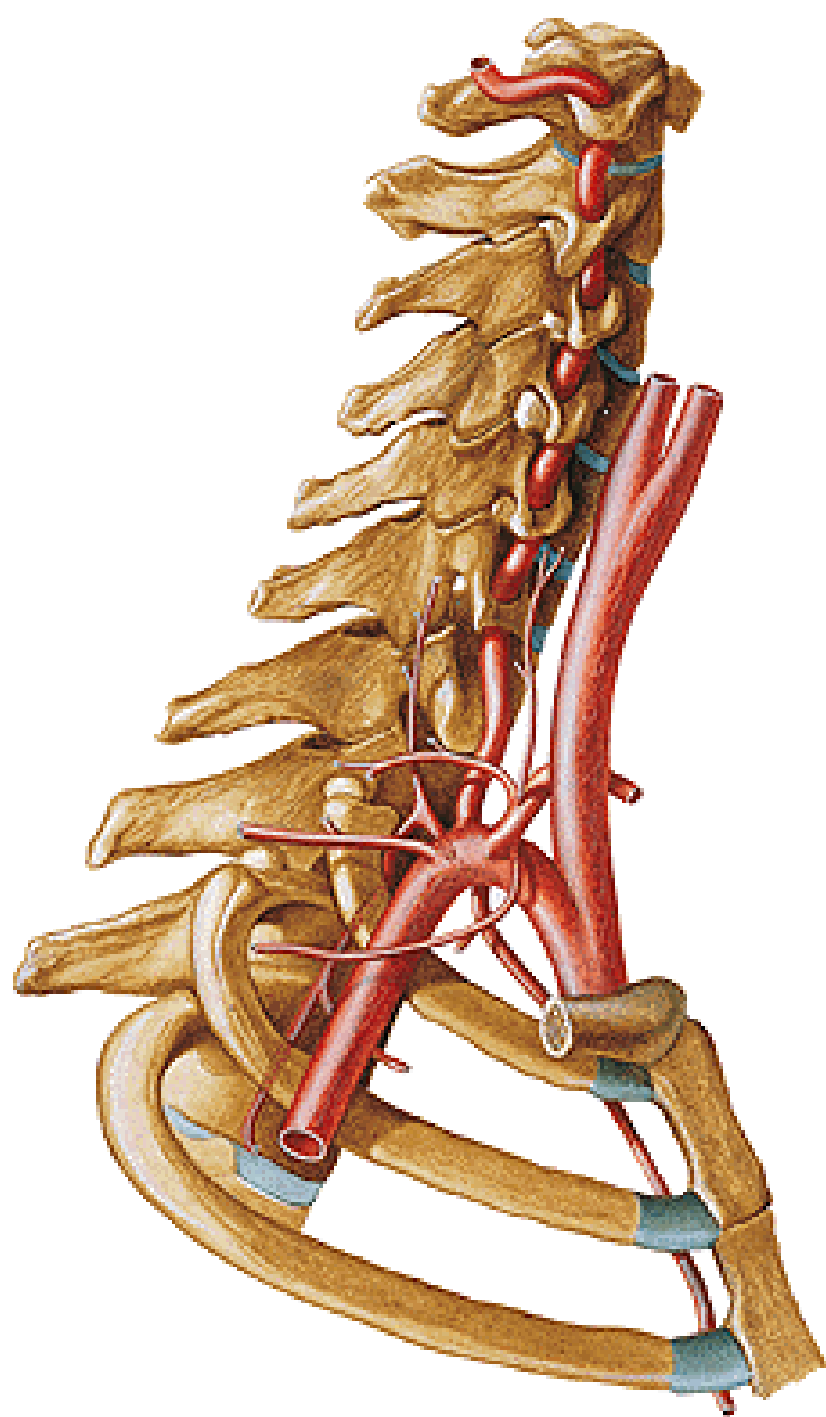
- a. vertebralis
- a. thoracica interna
- tr. thyreocervicalis

Pars interscalenica:

- tr. costocervicalis

Pars extrascalenica:

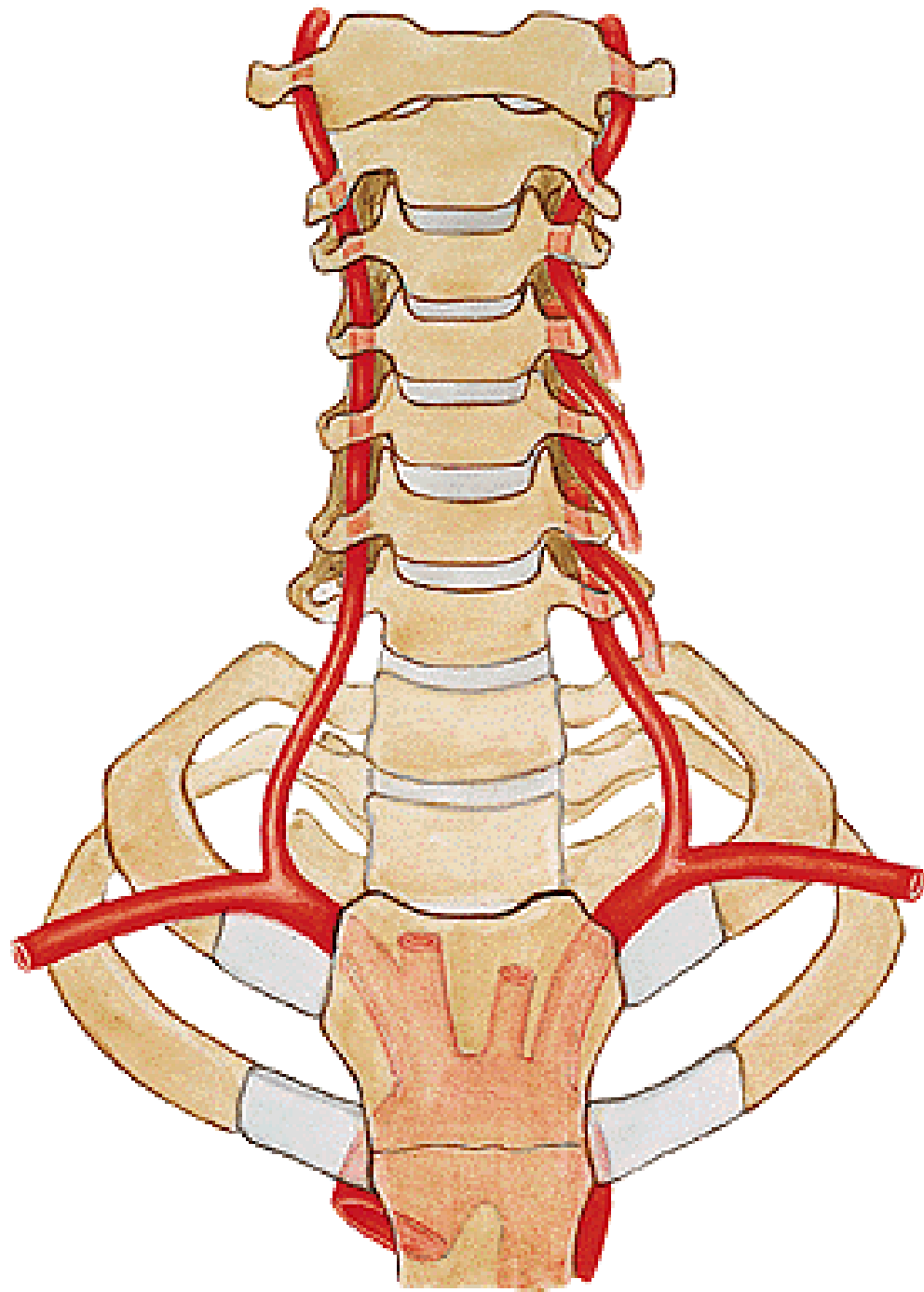
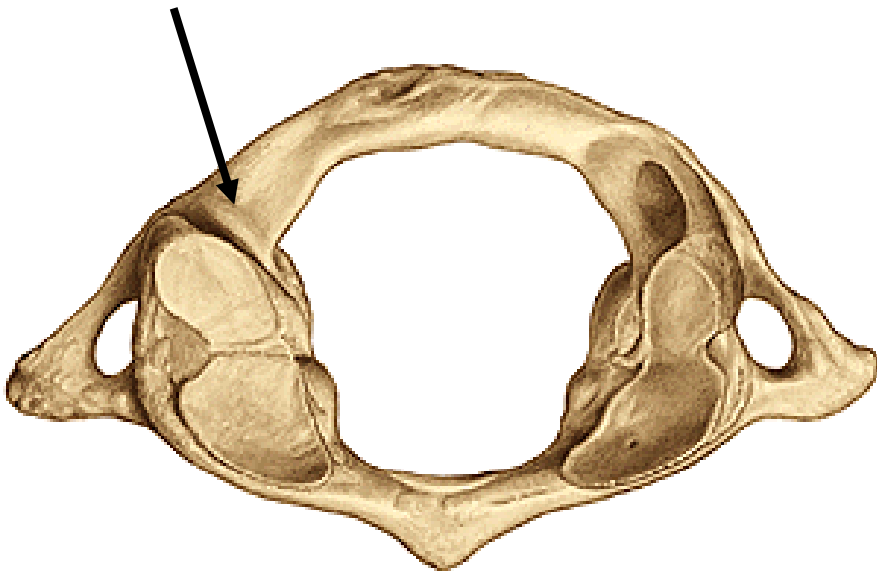
- a. transversa colli



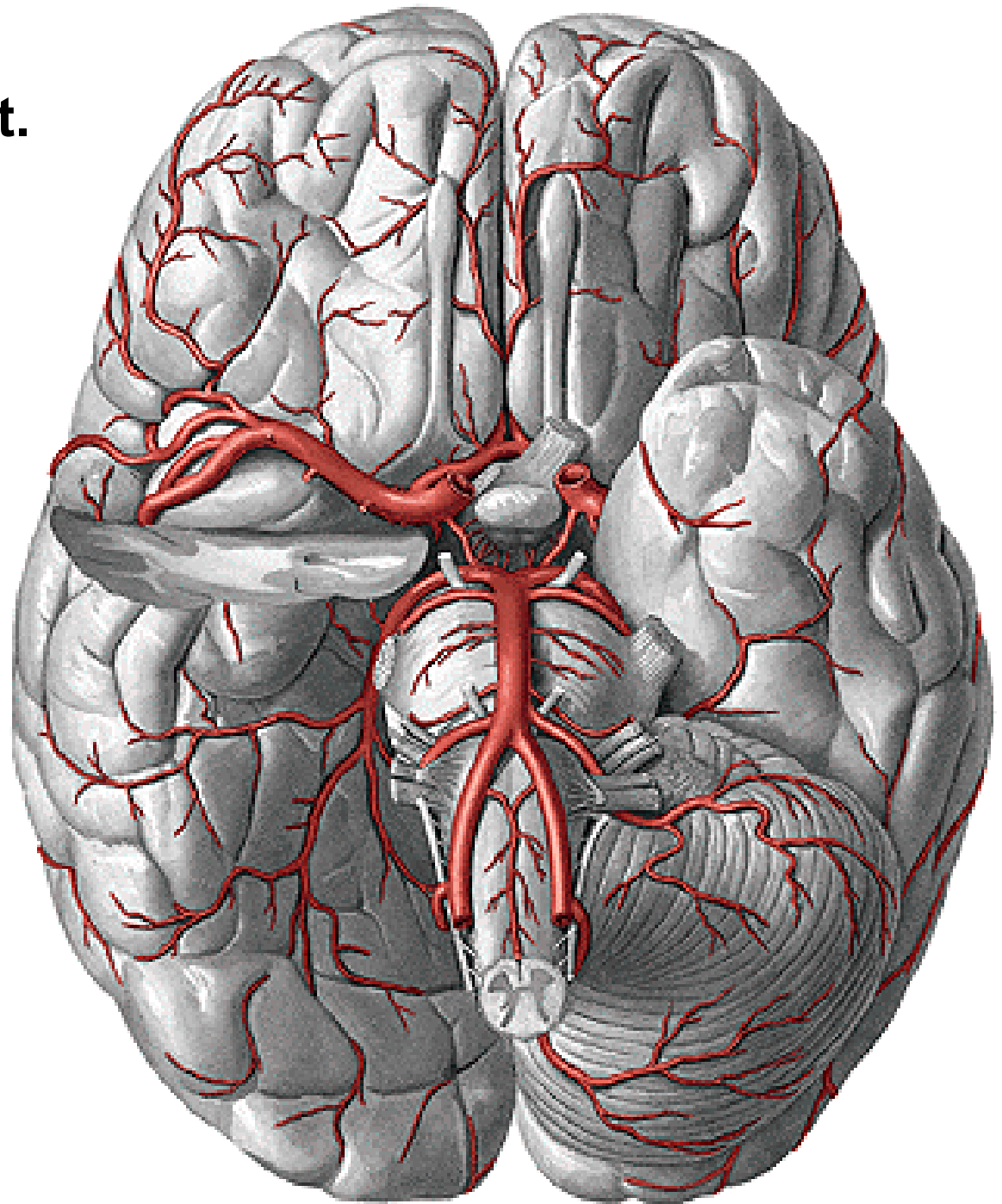
A. VERTEBRALIS

- rr. spinales
- rr. musculares

Sulcus a. vertebralis

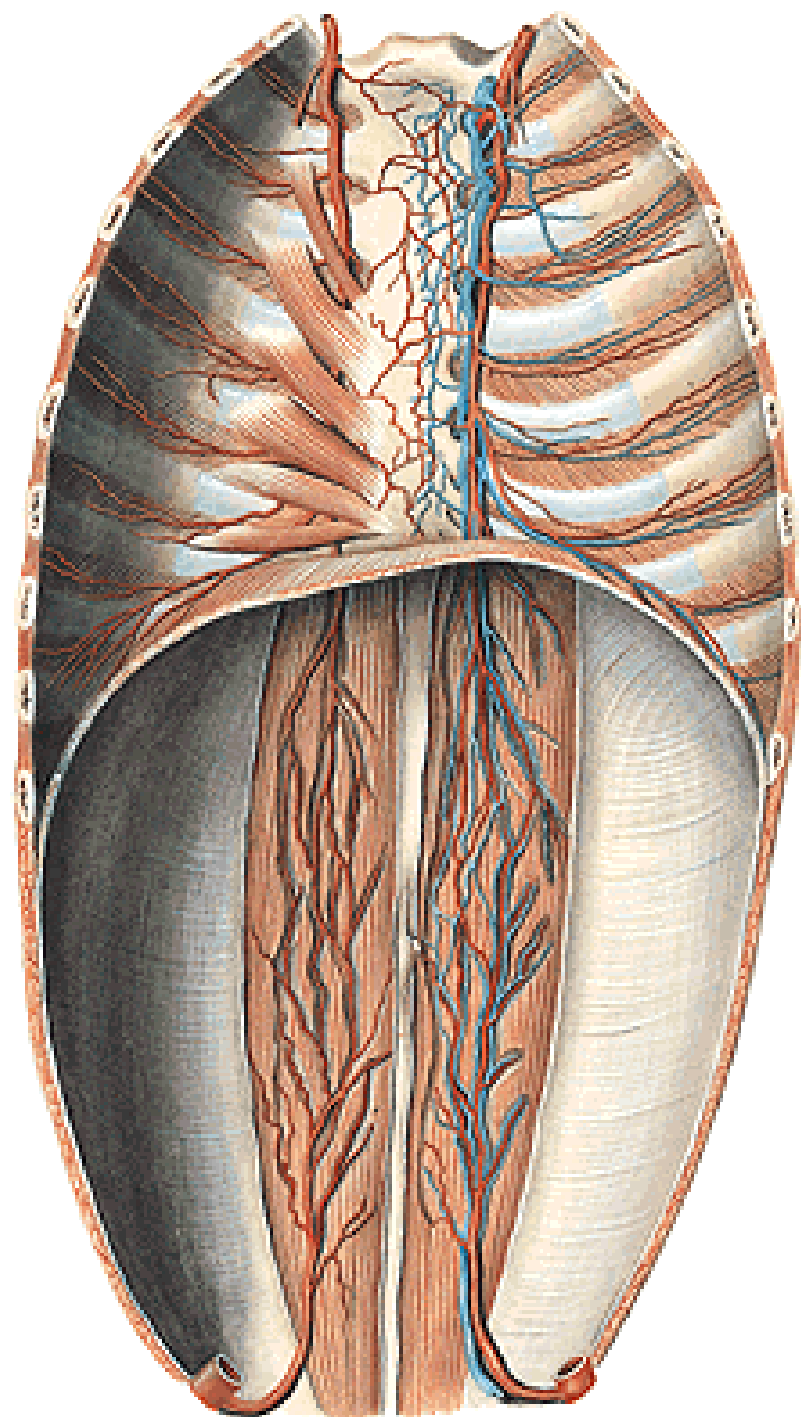


- a. cerebelli inf. post.
- a. basilaris

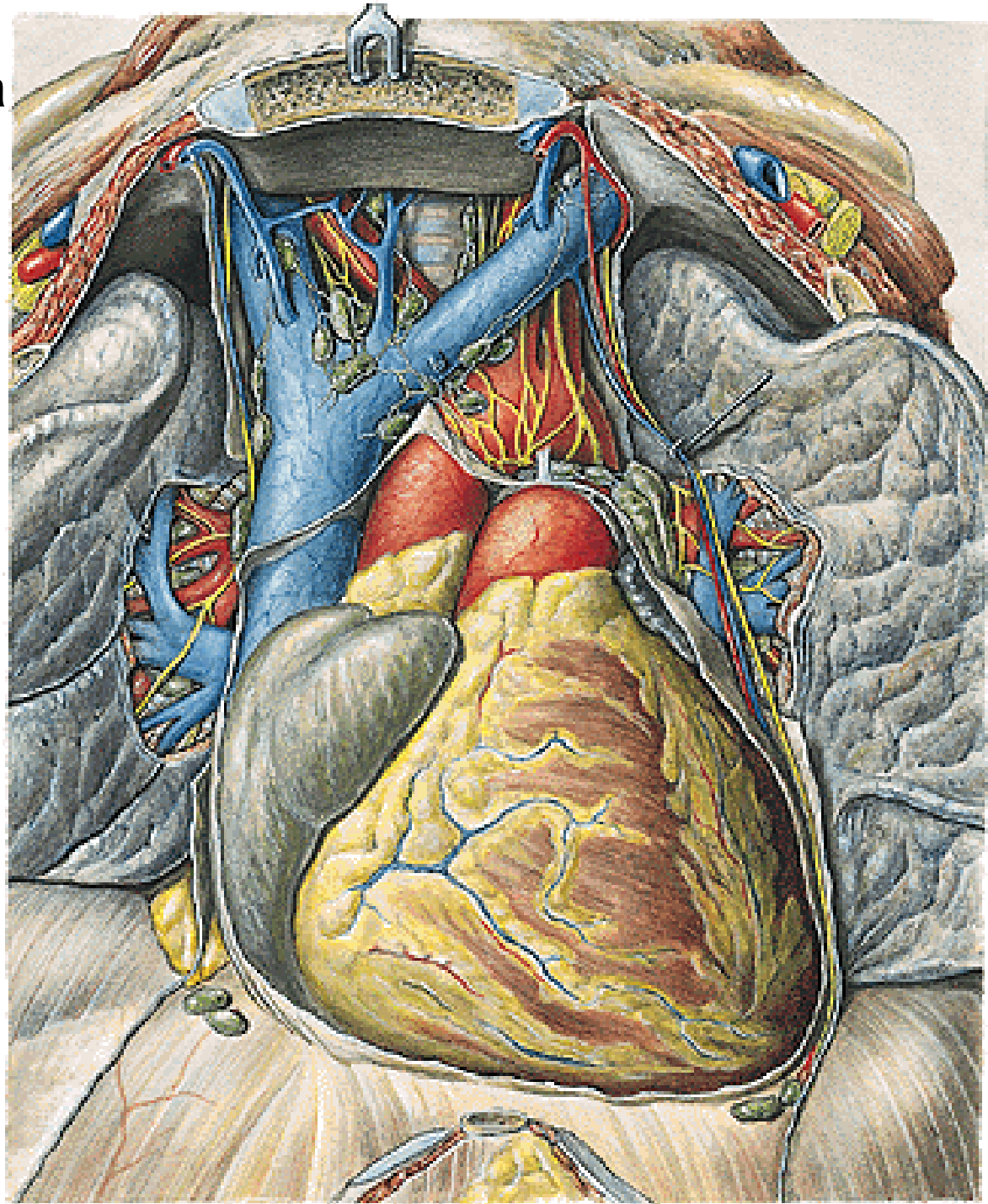


A. THORACICA INTERNA

- rr. mediastinales
- rr. thymici
- rr. bronchiales
- a. pericardiophrenica
- rr. sternales
- rr. perforantes – rr. mammarii
- rr. intercostales ant.
- a. musculophrenica
 - rr. intercostales ant.
- a. epigastrica sup.

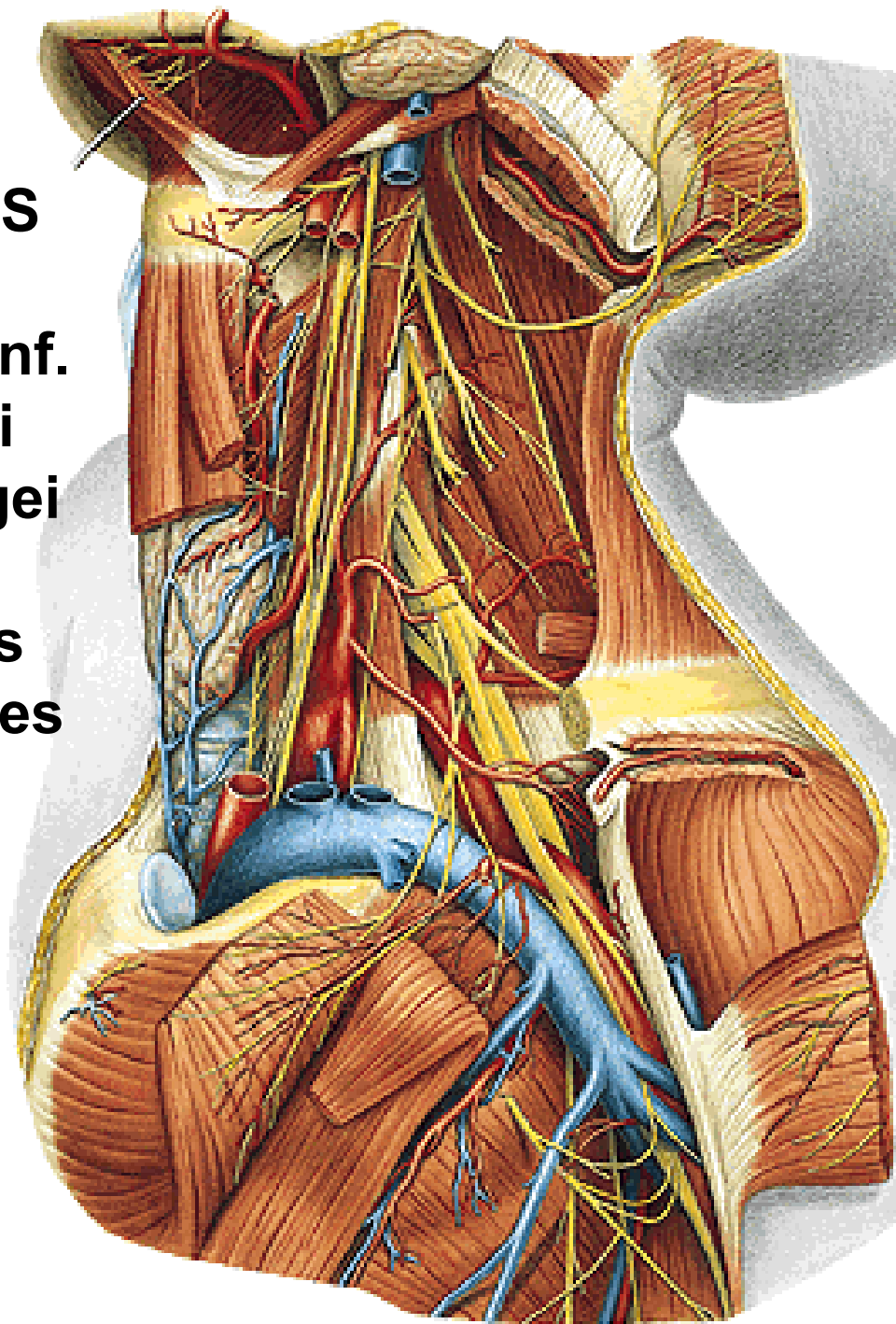


A. pericardiacophrenica

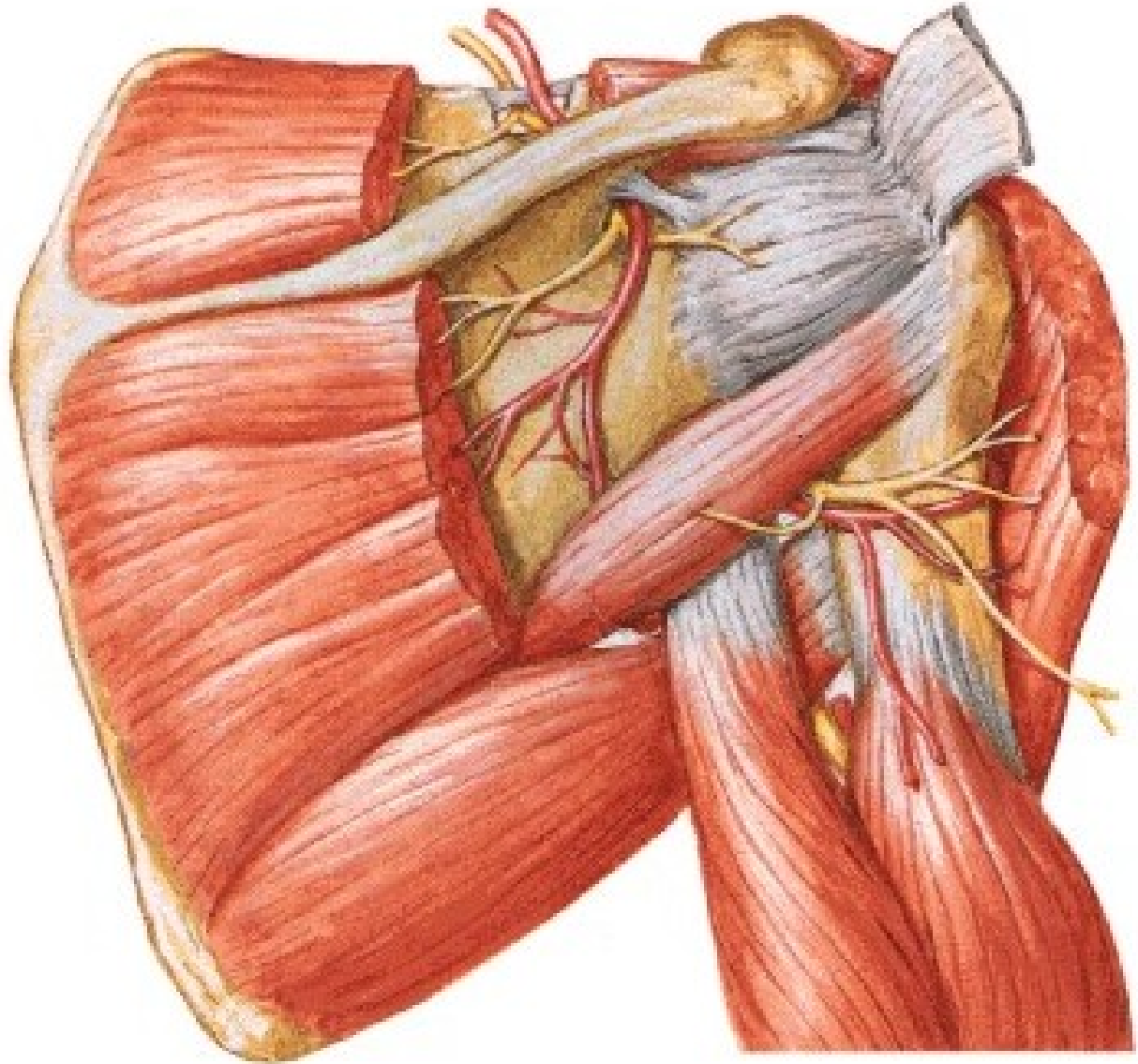


TRUNCUS THYREOCERVICALIS

- a. thyroidea inf. - a. laryngea inf.
- rr. pharyngei
- rr. oesophagei
- rr. thymici
- rr. tracheales
- rr. glandulares
- a. cervicalis ascendens
- a. cervicalis spf.
- a. suprascapularis

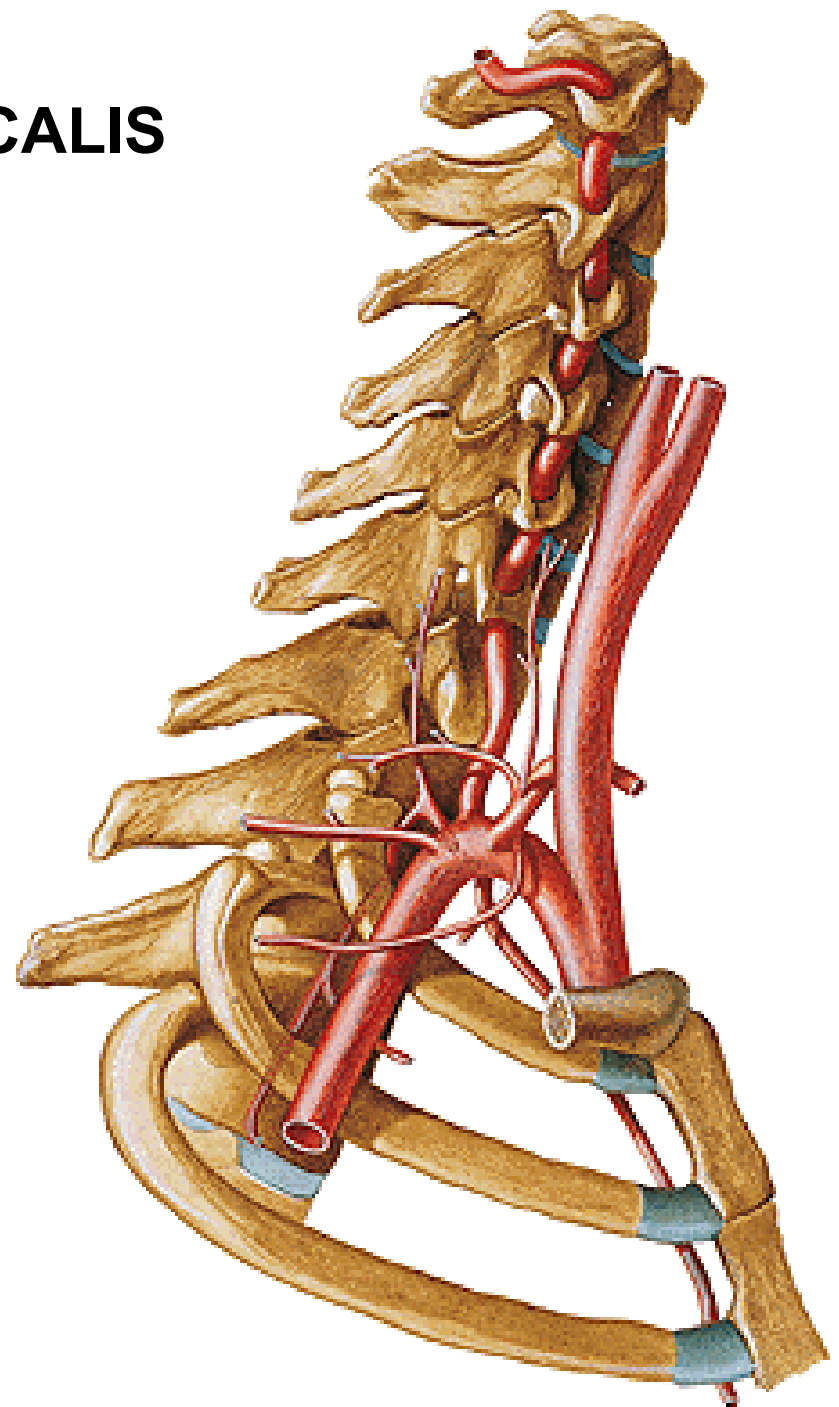


A. suprascapularis



TRUNCUS COSTOCERVICALIS

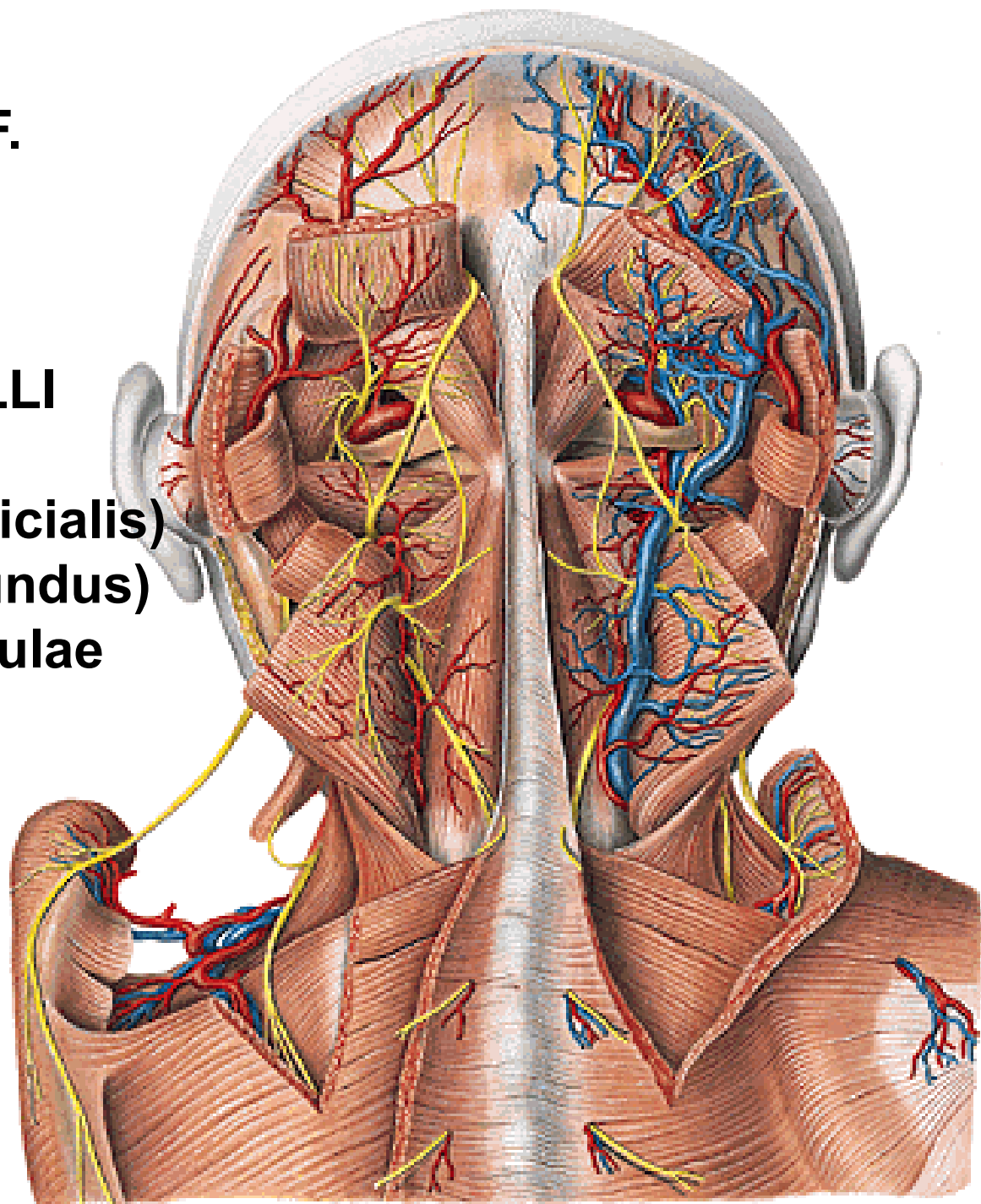
- a. cervicalis prof.
- a. intercostalis suprema



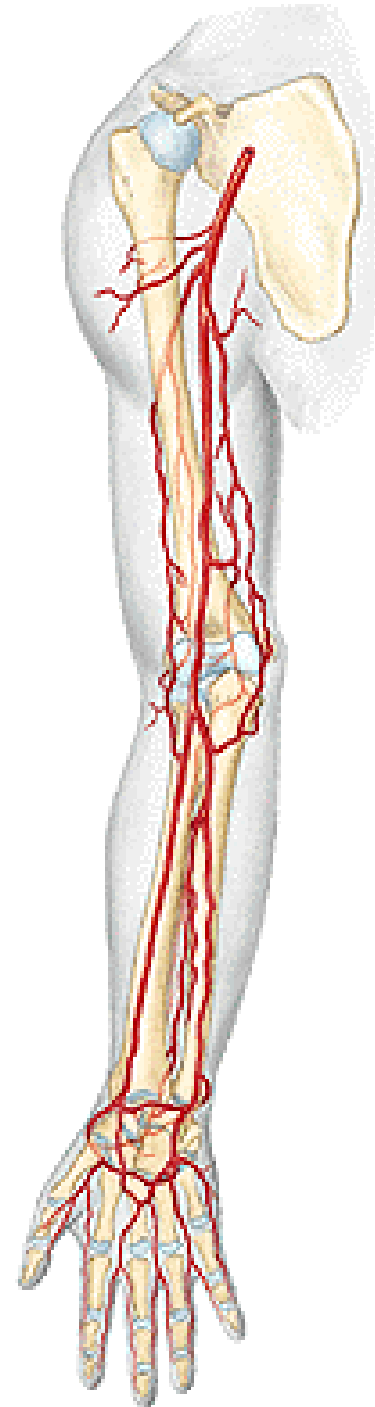
A. CERVICALIS PROF.

A. TRANSVERSA COLLI

- r. ascendens (superficialis)
- r. descendens (profundus)
= a. dorsalis scapulae

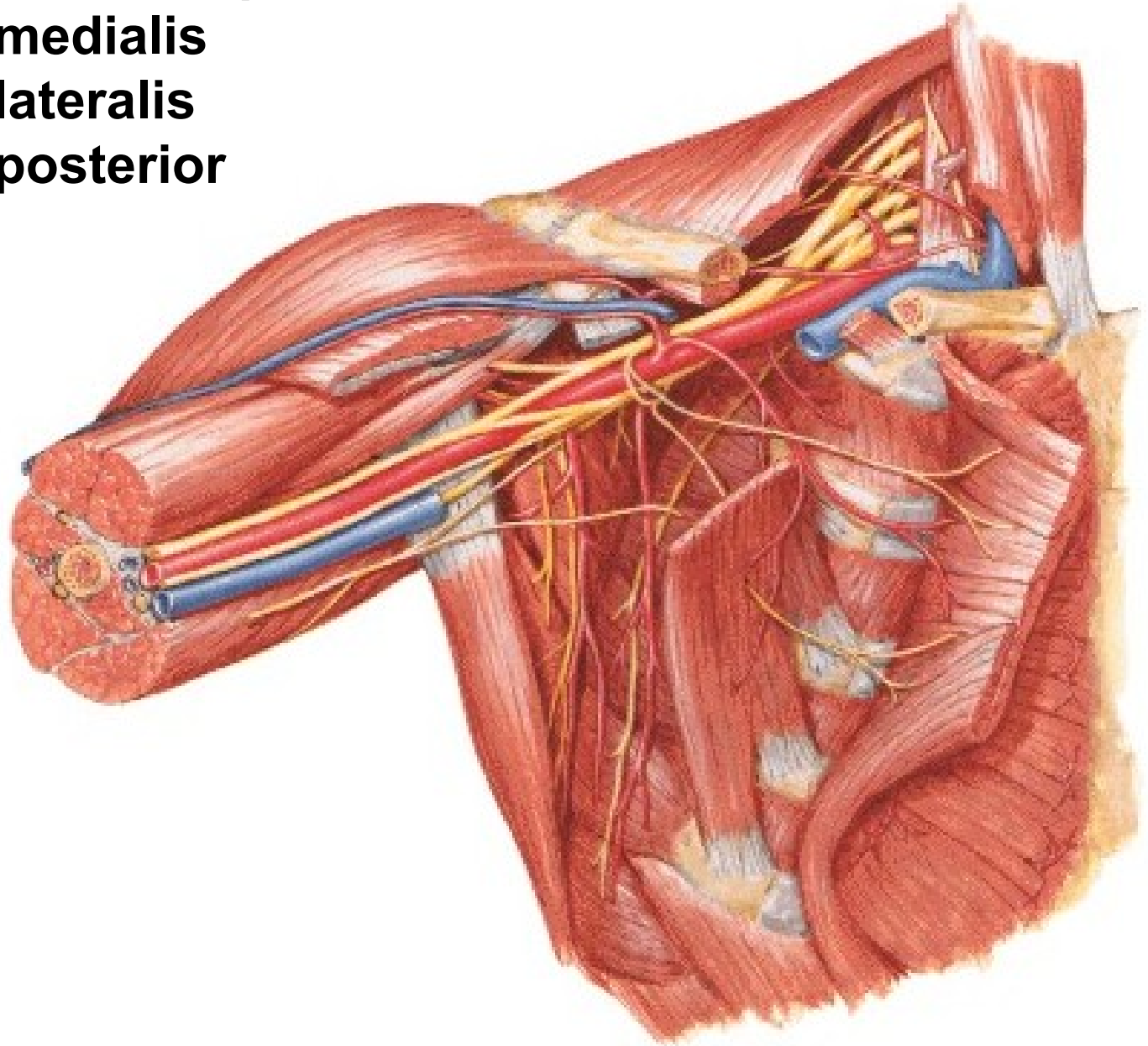


**A. axillaris – a. brachialis –
a. radialis + a. ulnaris**



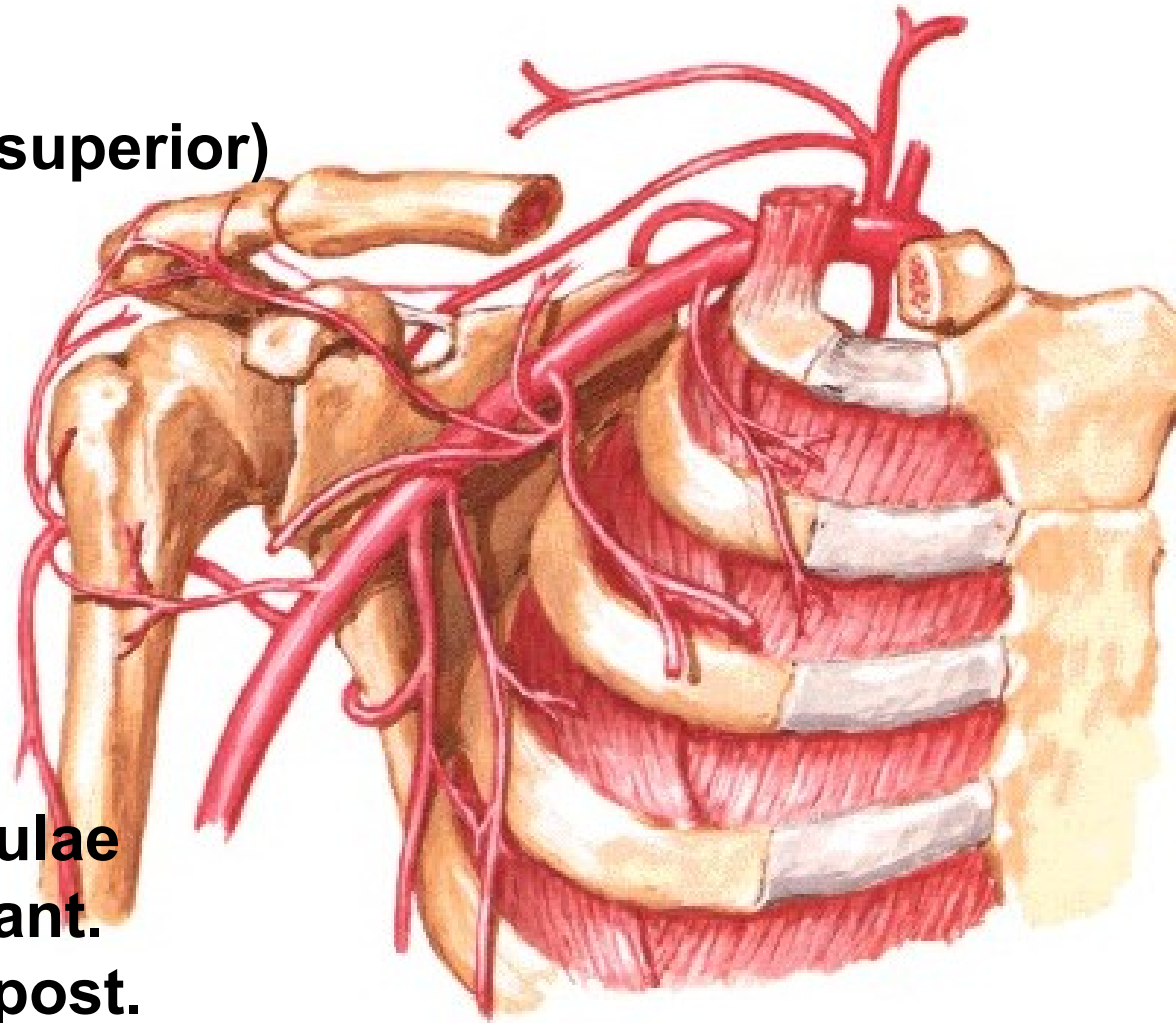
Pars infraclavicularis plexus brachialis

- fasciculus medialis**
- fasciculus lateralis**
- fasciculus posterior**



A. AXILLARIS

- rr. subscapulares
- a. thoracica suprema (superior)
- a. thoracoacromialis
 - r. deltoideus
 - r. acromialis
 - rr. pectorales
- a. thoracica lateralis
 - rr. mammarii lat.
- a. subscapularis
 - a. thoracodorsalis
 - a. circumflexa scapulae
- a. circumflexa humeri ant.
- a. circumflexa humeri post.

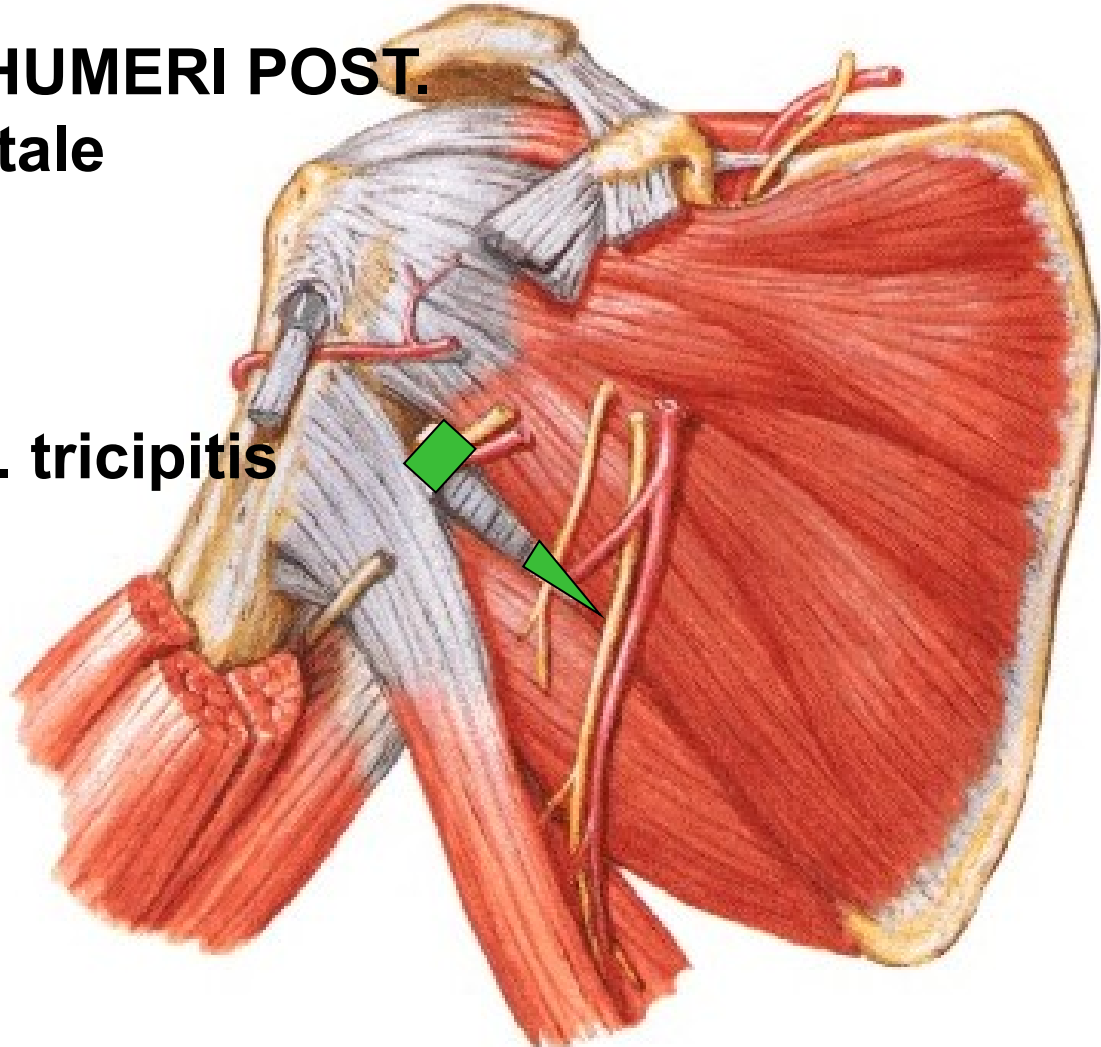


A. CIRCUMFLEXA SCAPULAE

- foramen omotricipitale (trilaterum):** m. teres minor
m. teres major
caput longum m. tricipitis

A. CIRCUMFLEXA HUMERI POST.

- for. humerotricipitale (quadrilaterum):**
m. teres minor
m. teres major
caput longum m. tricipitis
humerus

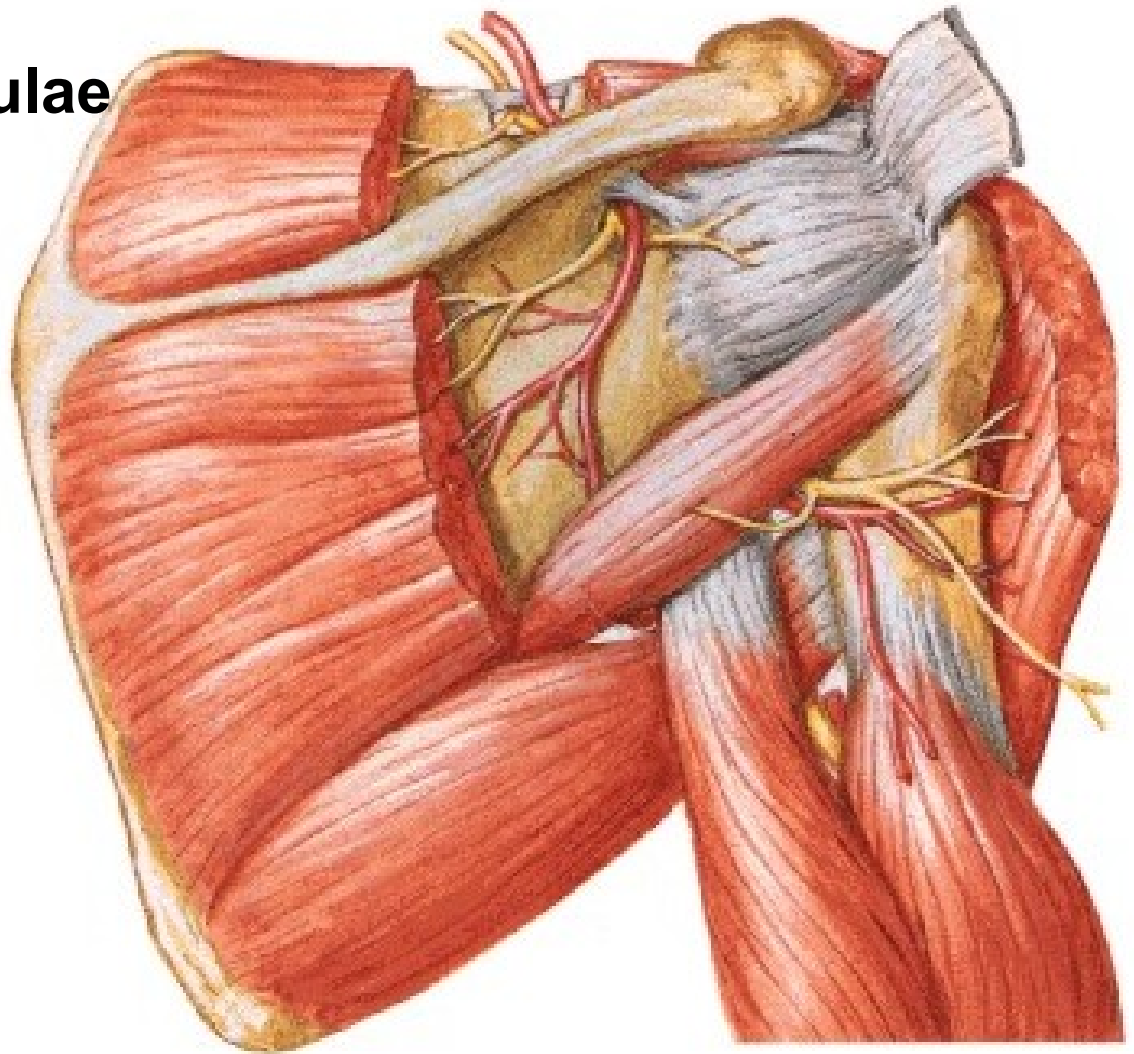


Fossa infraspinata:

anastomosis

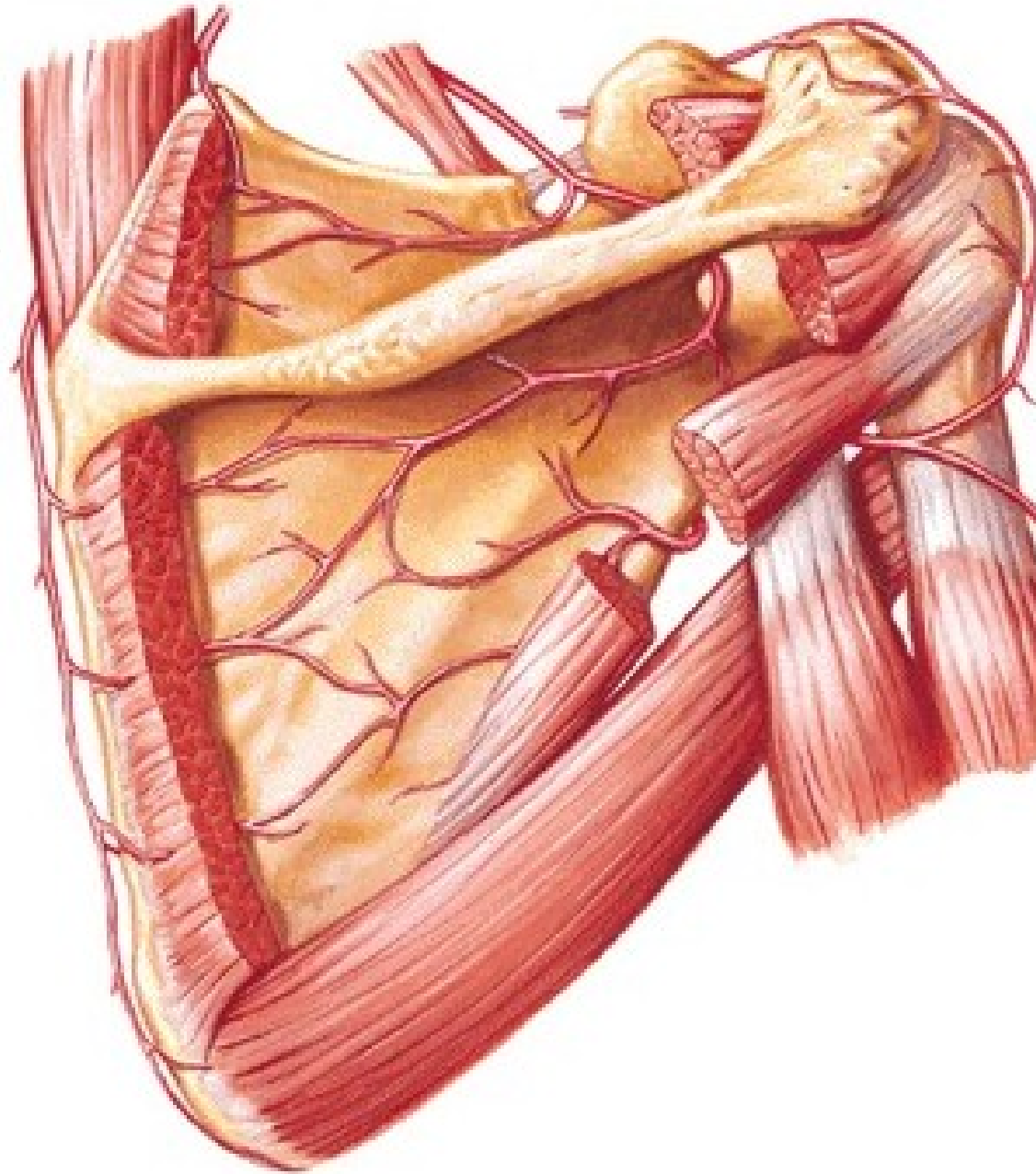
a. suprascapularis

+ a. circumflexa scapulae



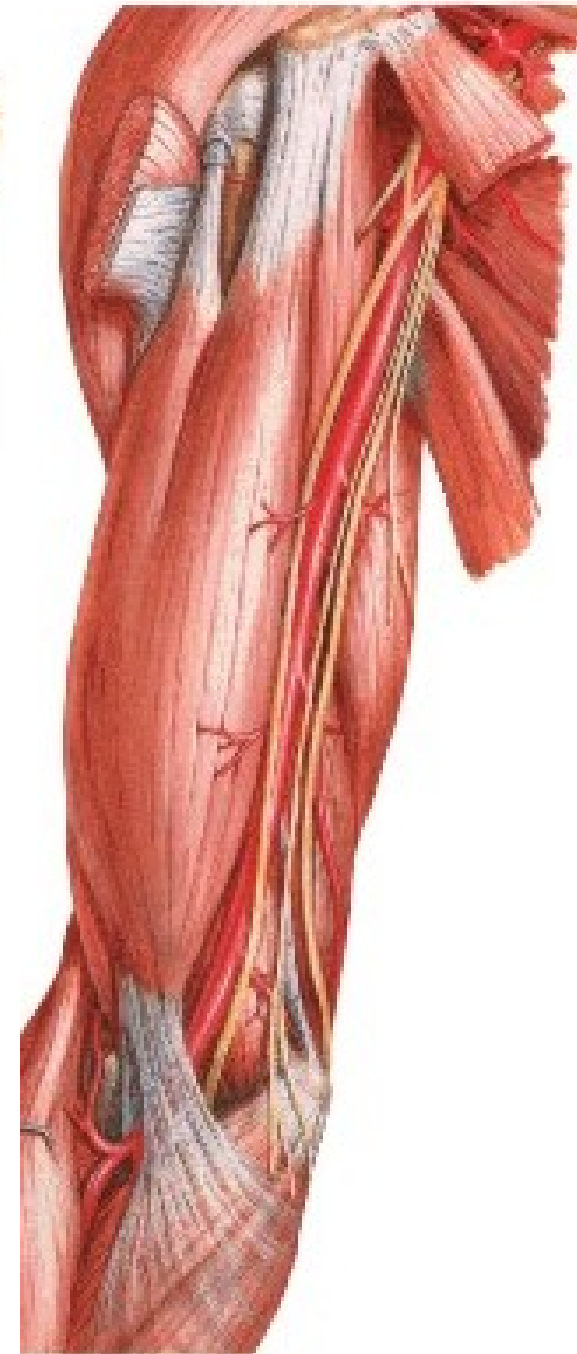
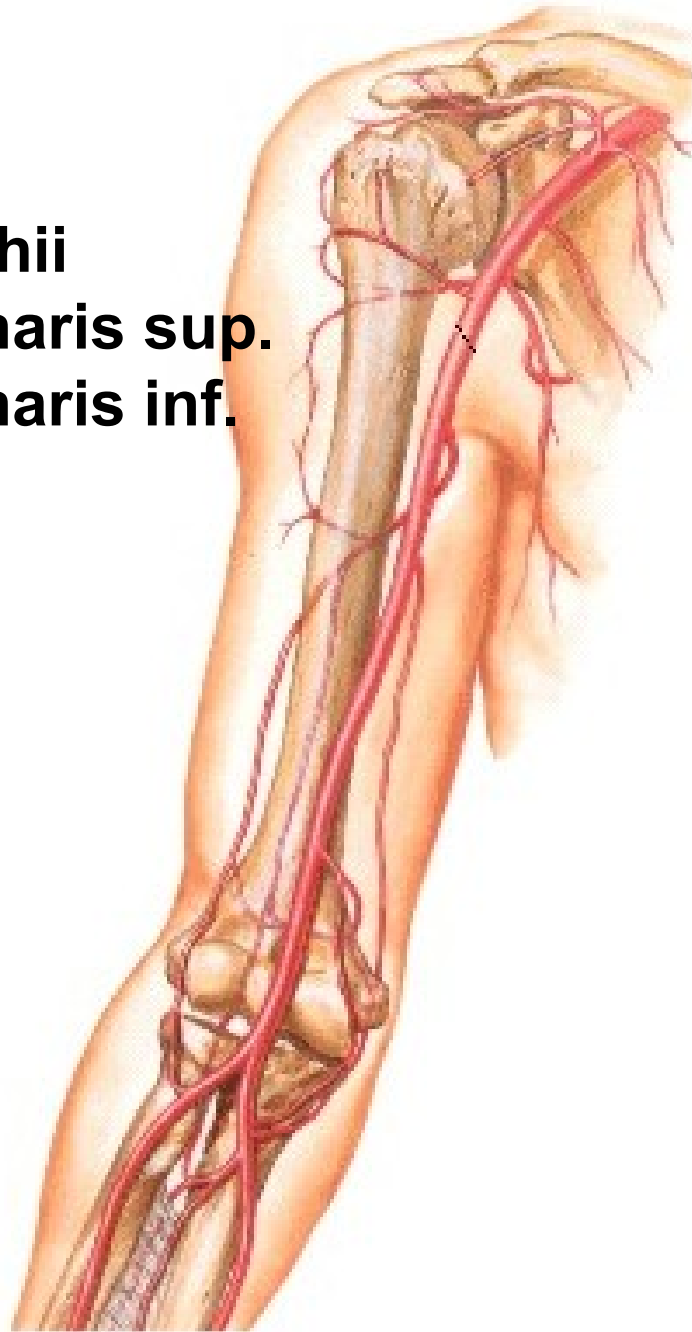
ARTERIAL ANASTOMOSES AROUND THE SCAPULA

- A. transversa colli**
- A. suprascapularis**
- A. circumflexa scapulae**
- Aa. intercostales**



A. BRACHIALIS

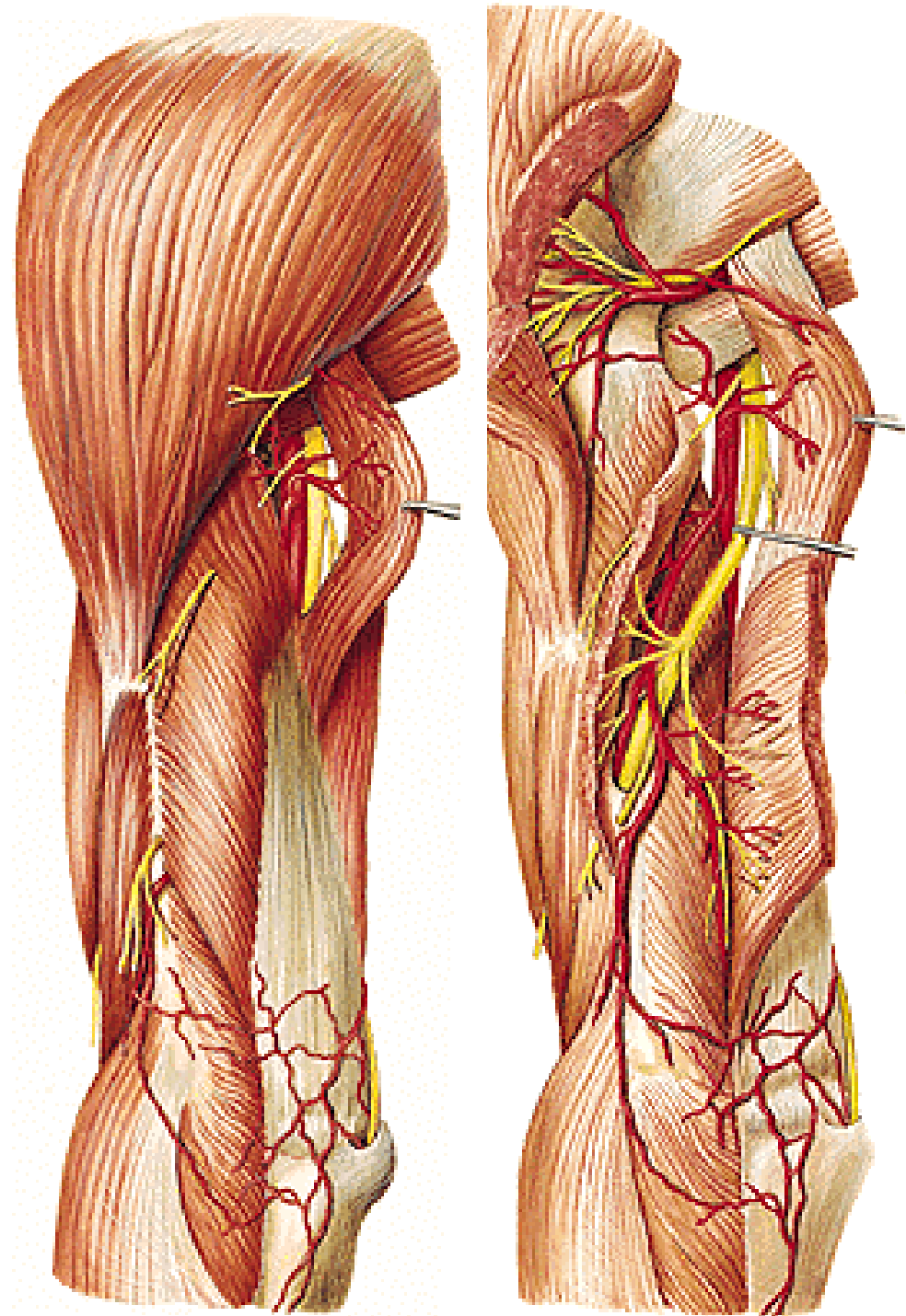
- a. profunda brachii
- a. collateralis ulnaris sup.
- a. collateralis ulnaris inf.
- a. radialis
- a. ulnaris



A. PROFUNDA BRACHII

- r. deltoideus**
- a. nutricia humeri**
- a. collateralis media**
- a. collateralis radialis**

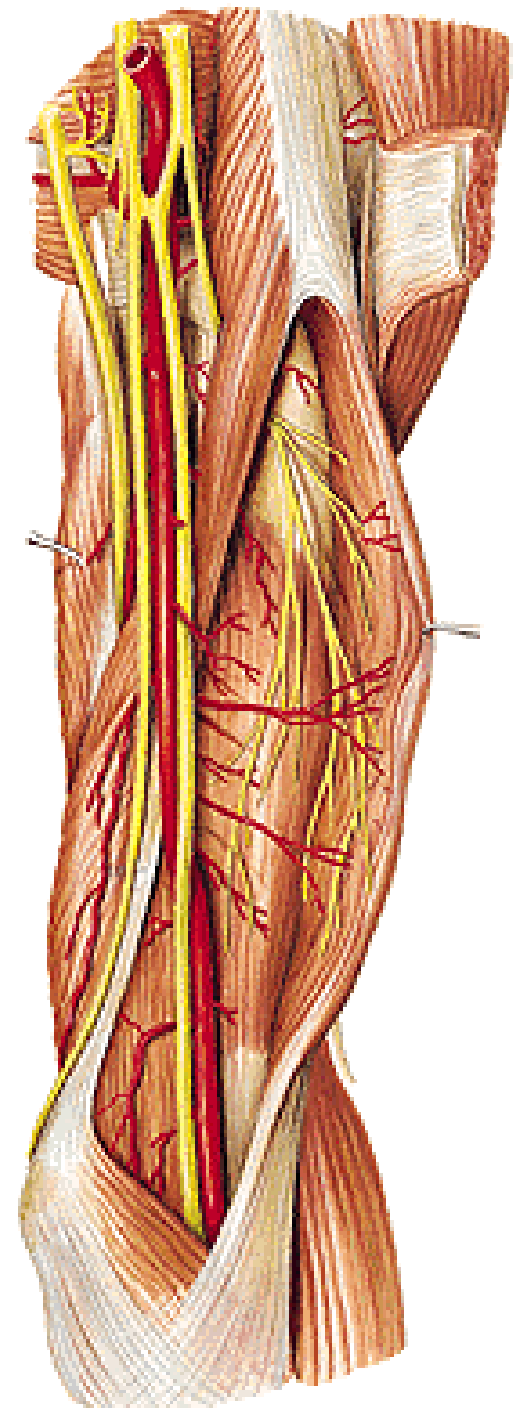
Rete articulare cubiti



A. collateralis ulnaris sup.

A. collateralis ulnaris inf.

Rete articulare cubiti



Sulcus bicipitalis medialis

- a. brachialis
- vv. brachiales
- n. medianus
- v. basilica
- n. cutaneus antebrachii med.
- a. collateralis ulnaris sup.
- vv. coll. ulnares sup.
- n. ulnaris

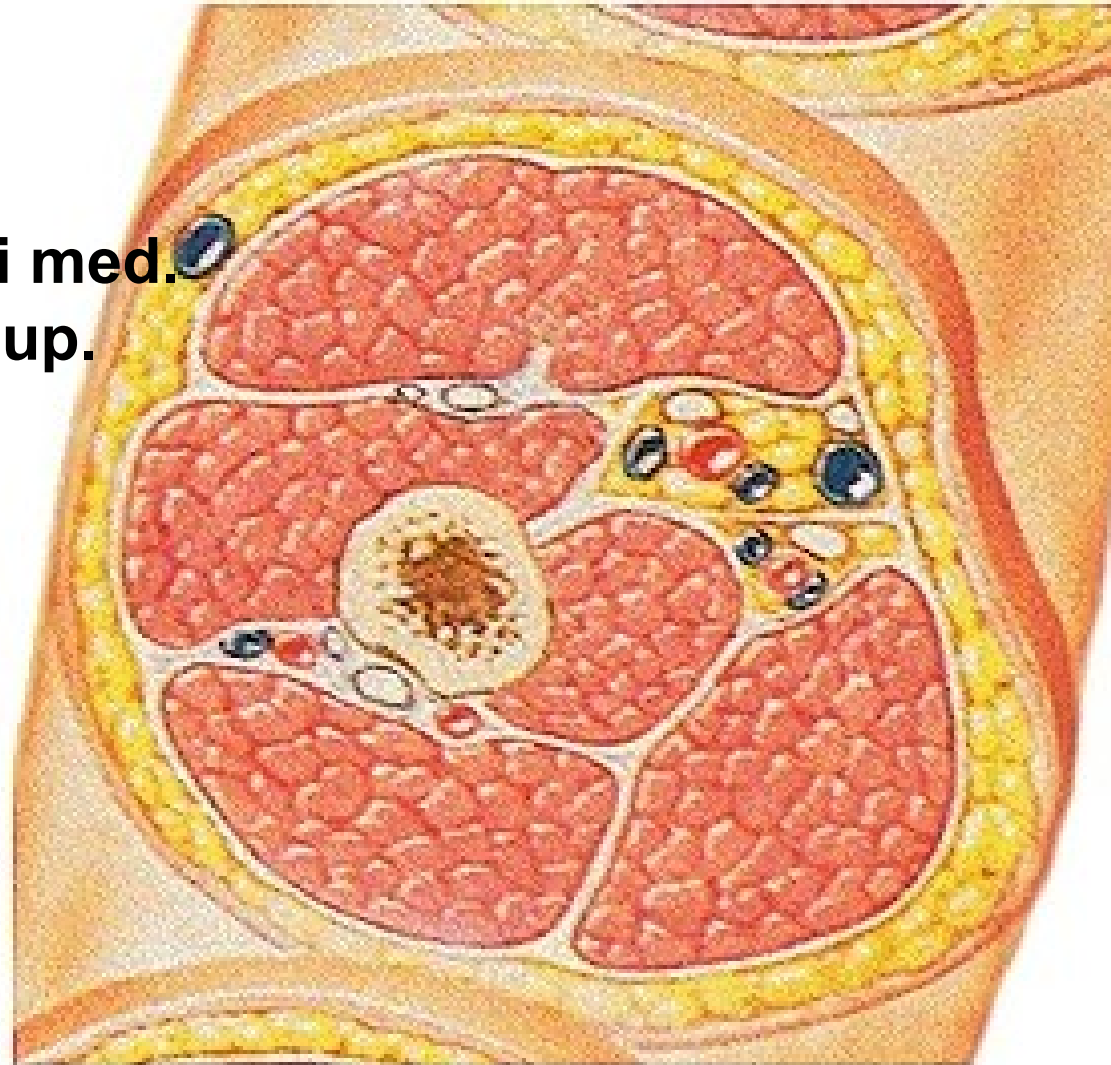
N. musculocutaneus

N. radialis

A. profunda brachii

V. profunda brachii

A. coll. media



Illustrations and photographs were copied from:
Atlas der Anatomie des Menschen/Sobotta.
Putz,R., und Pabst,R. 20. Auflage. München:
Urban & Schwarzenberg, 1993