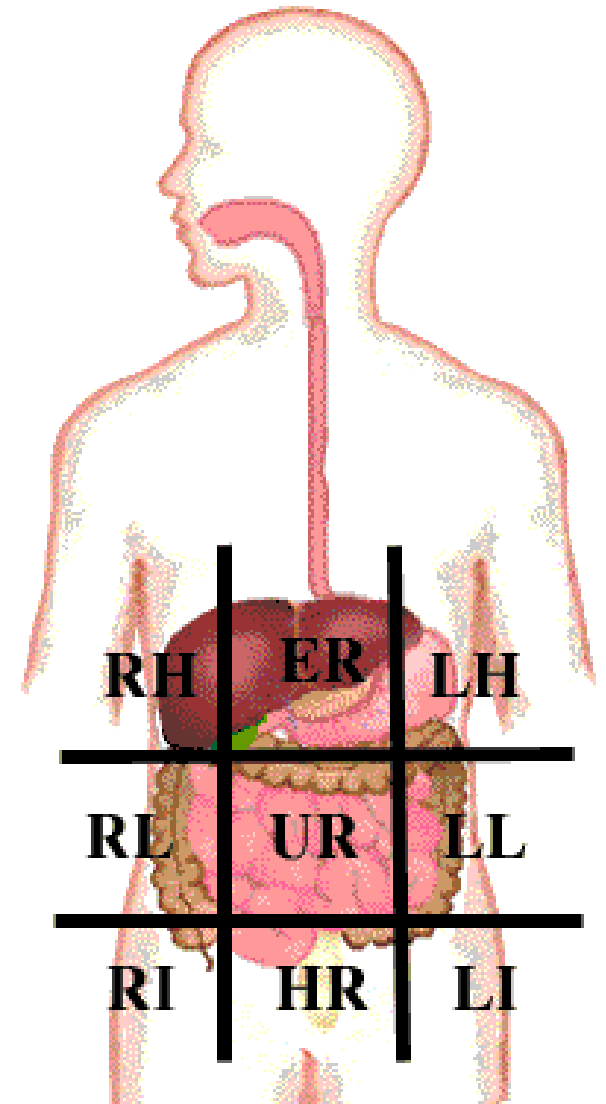


DIGESTIVE SYSTEM III.

Liver

Regio hypochondriaca dx. + regio epigastrica



HEPAR (IECUR)

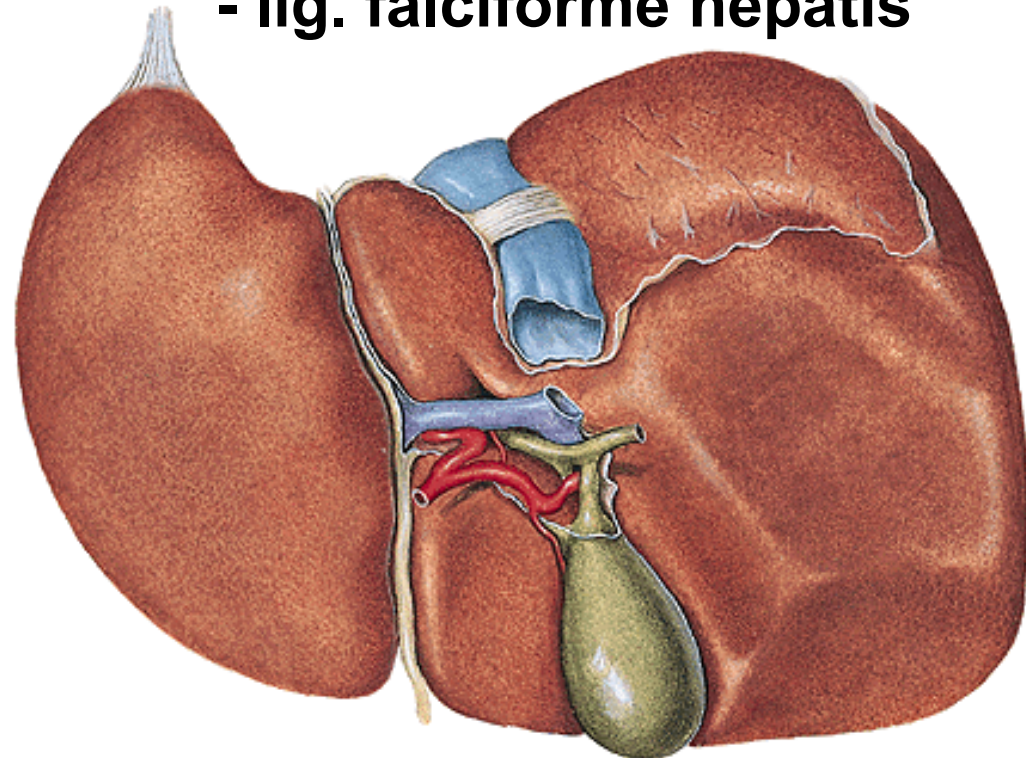
Facies diaphragmatica

- pars superior (area nuda)
- pars anterior
- lig. coronarium
- lig. triangulare dextrum
- lig. triangulare sinistrum
- appendix fibrosa hepatis
- lig. falciforme hepatis

Facies visceralis

Fissura sagittalis sinistra

- lig. teres hepatis
- lig. venosum



Fissura sagittalis dextra

- fossa vesicae biliaris
- sulcus v. caevae inferioris (lig. venae caevae)

Lobus dexter

sinister (tuber omentale)

caudatus

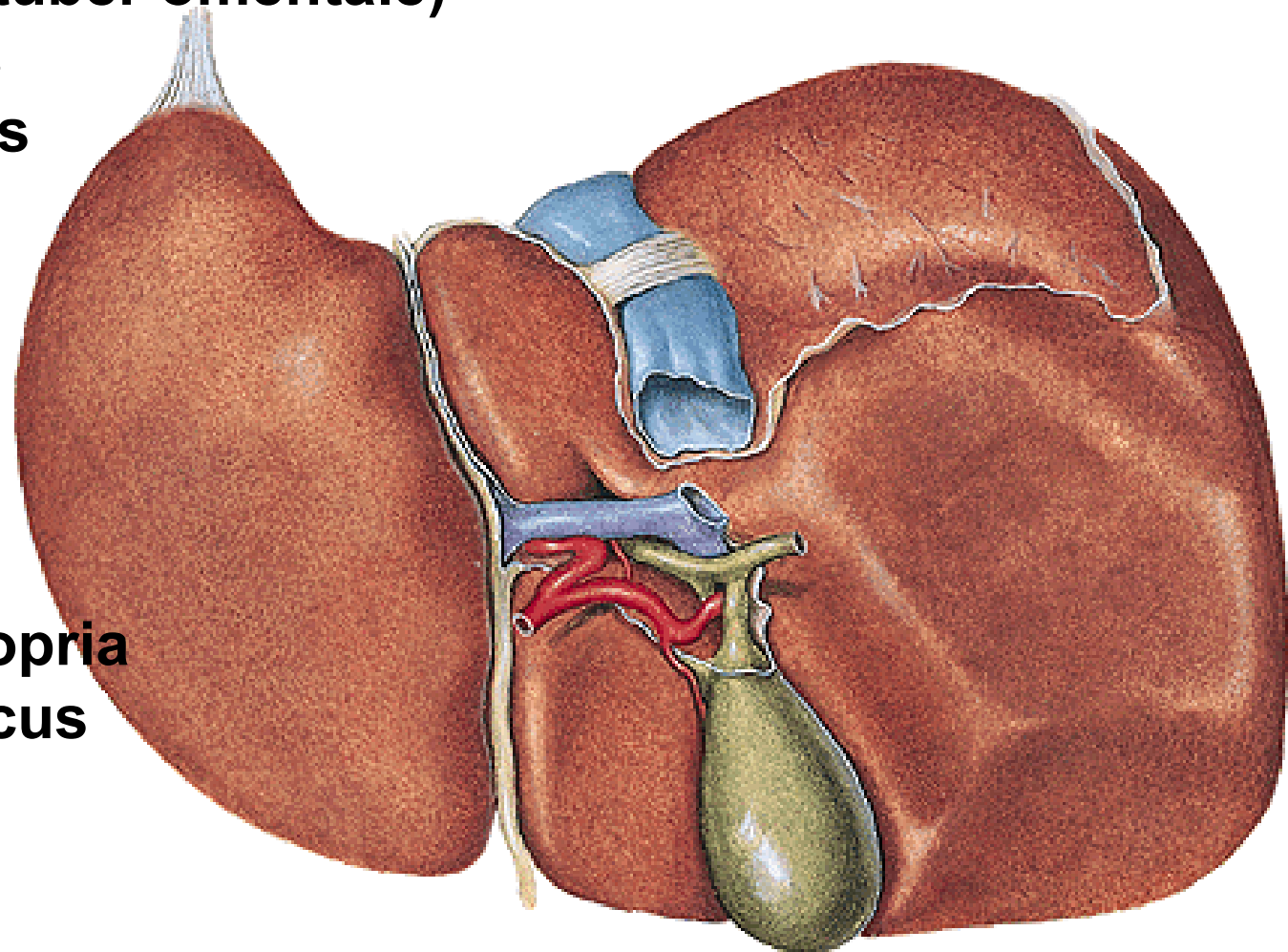
quadratus

Processus

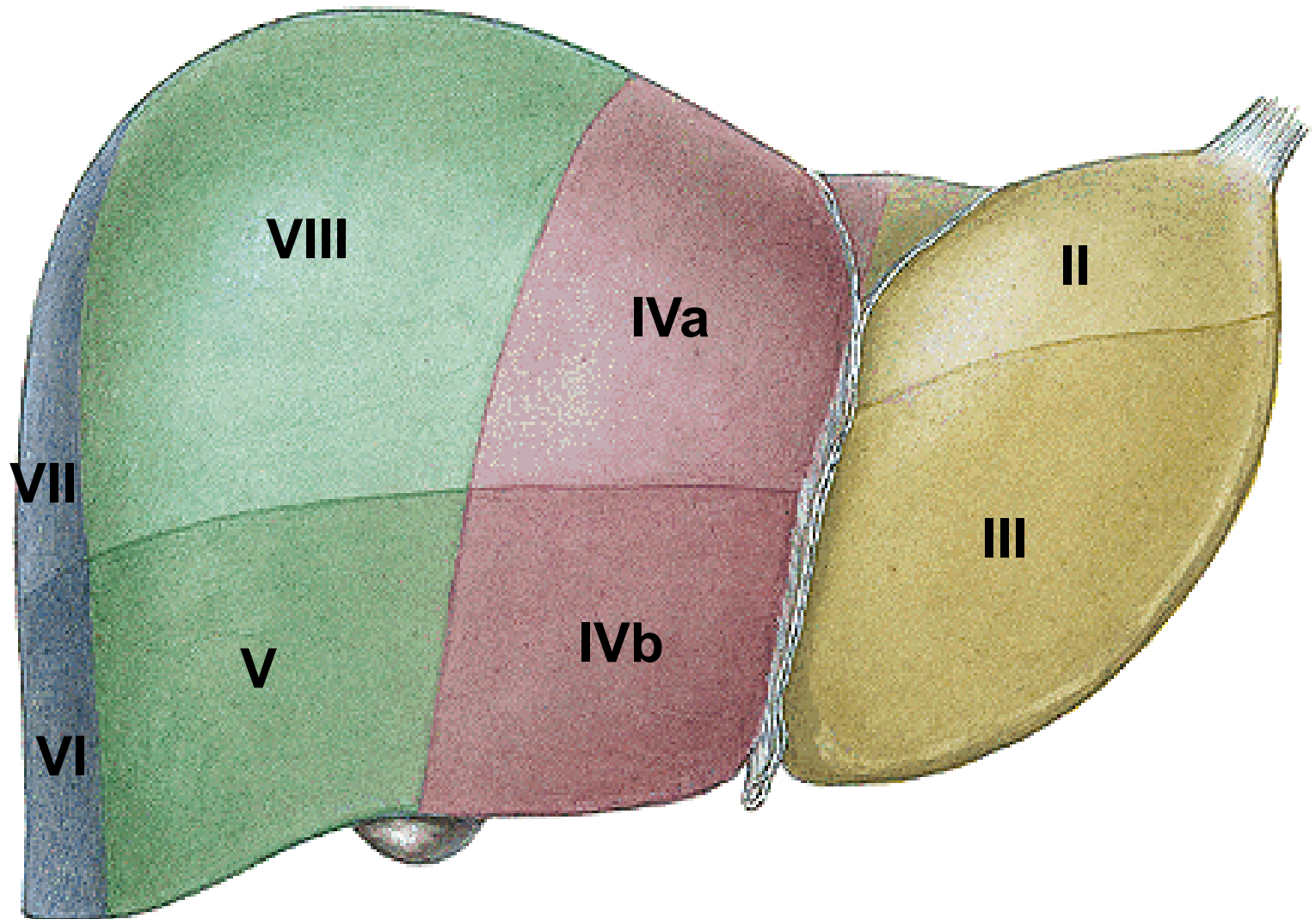
**caudatus,
papillaris**

Porta hepatis

- vena portae
- a. hepatica propria
- ductus hepaticus
communis
(portal triad)



Hepatic segments

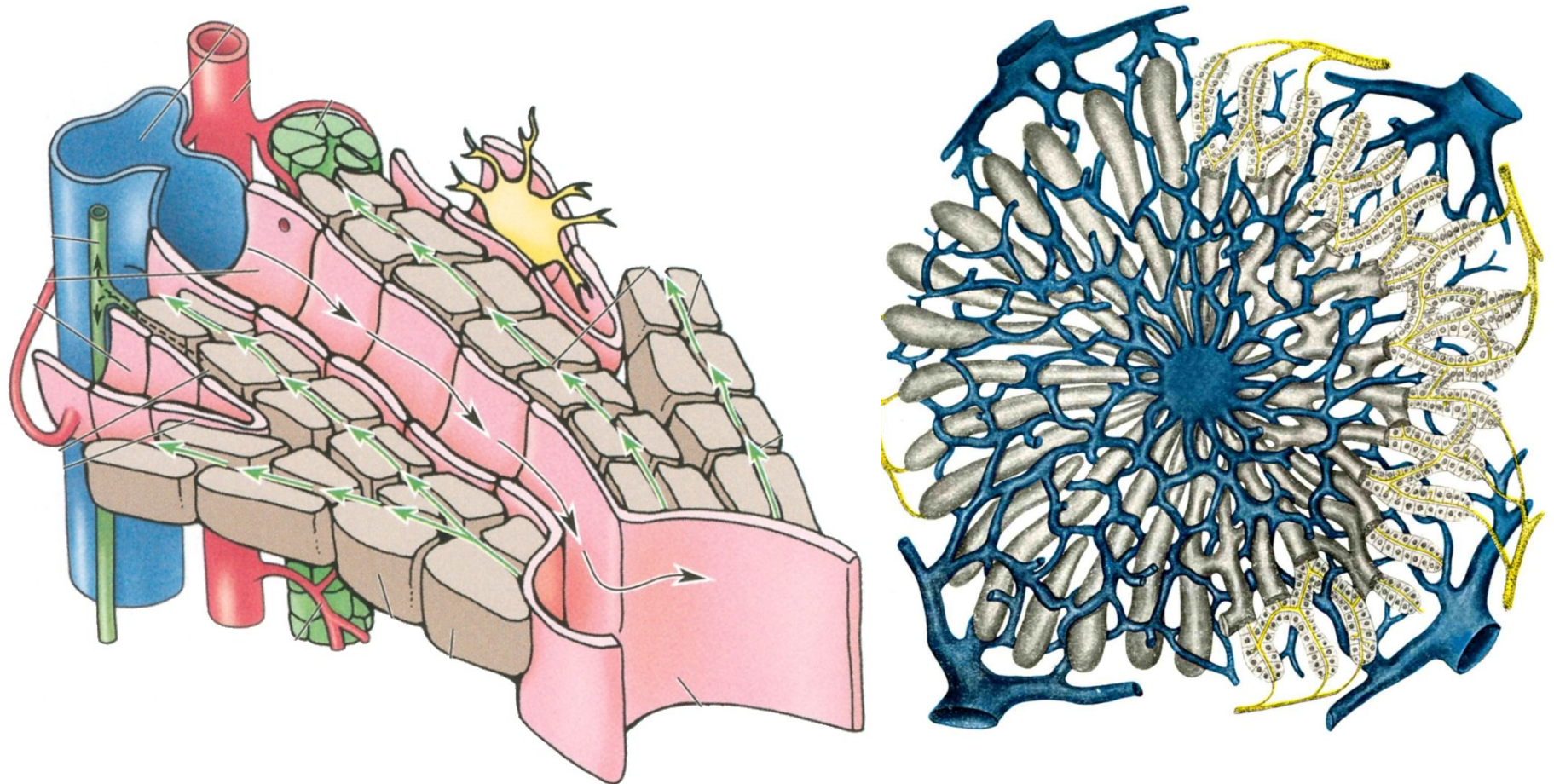


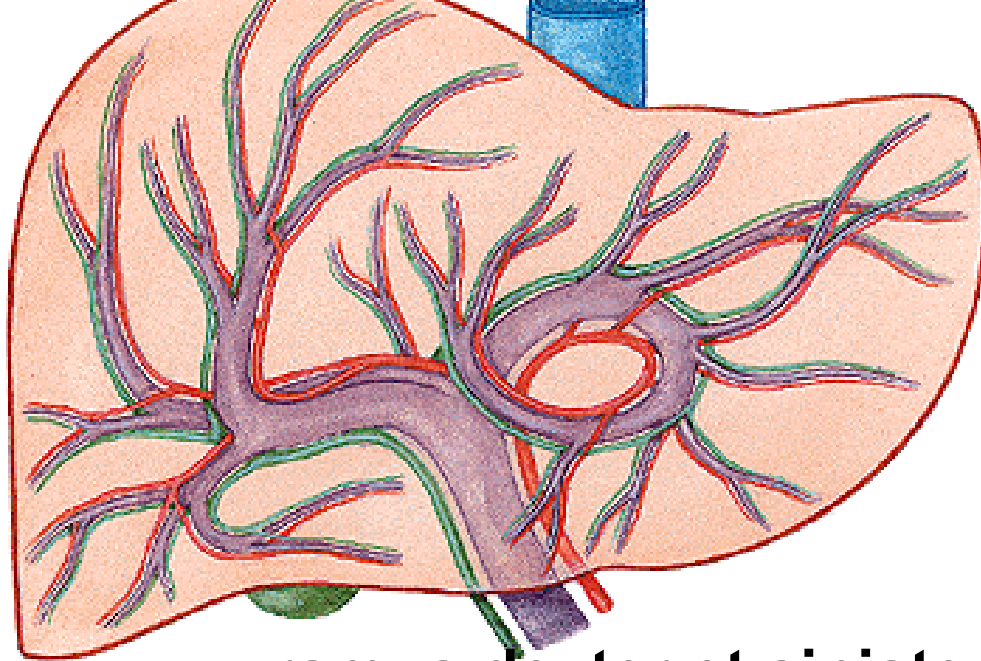
Capsula fibrosa – capsula fibrosa perivascularis

- **v. interlobularis**, **a. interlobularis**, **ductus interlobularis**

→ **sinusoids** → **v. centralis**

Lobulus venae centralis





V. PORTAE

(v. mesenterica sup.
+ v. lienalis)

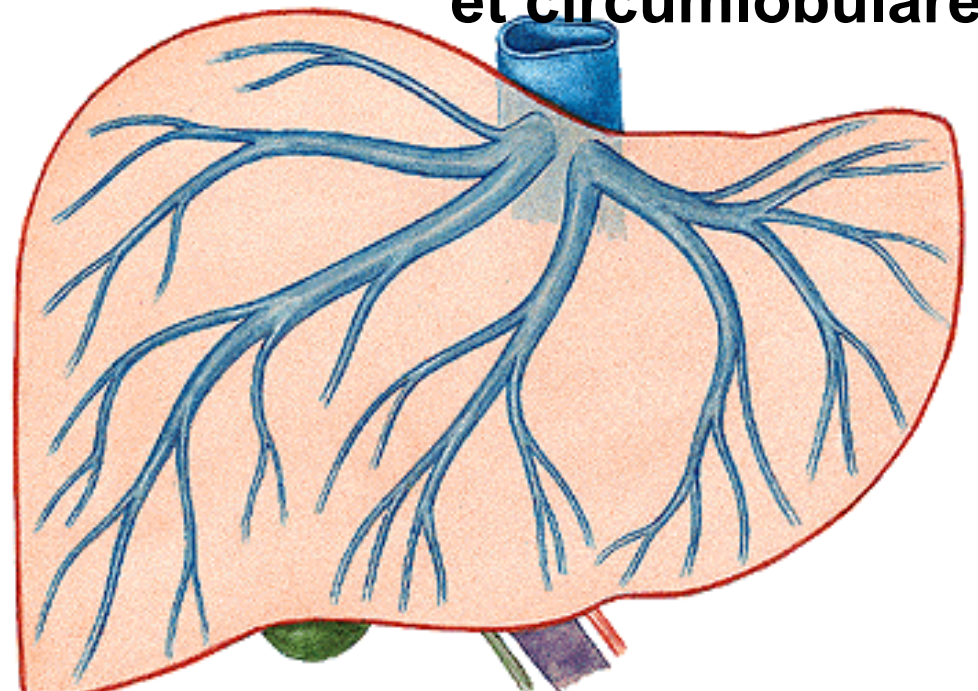
A. HEPATICA PROPRIA

- ramus dexter et sinister..... aa. et vv. interlobulares
et circumlobulares

→ sinusoids → v. centralis

→ vv. sublobulares

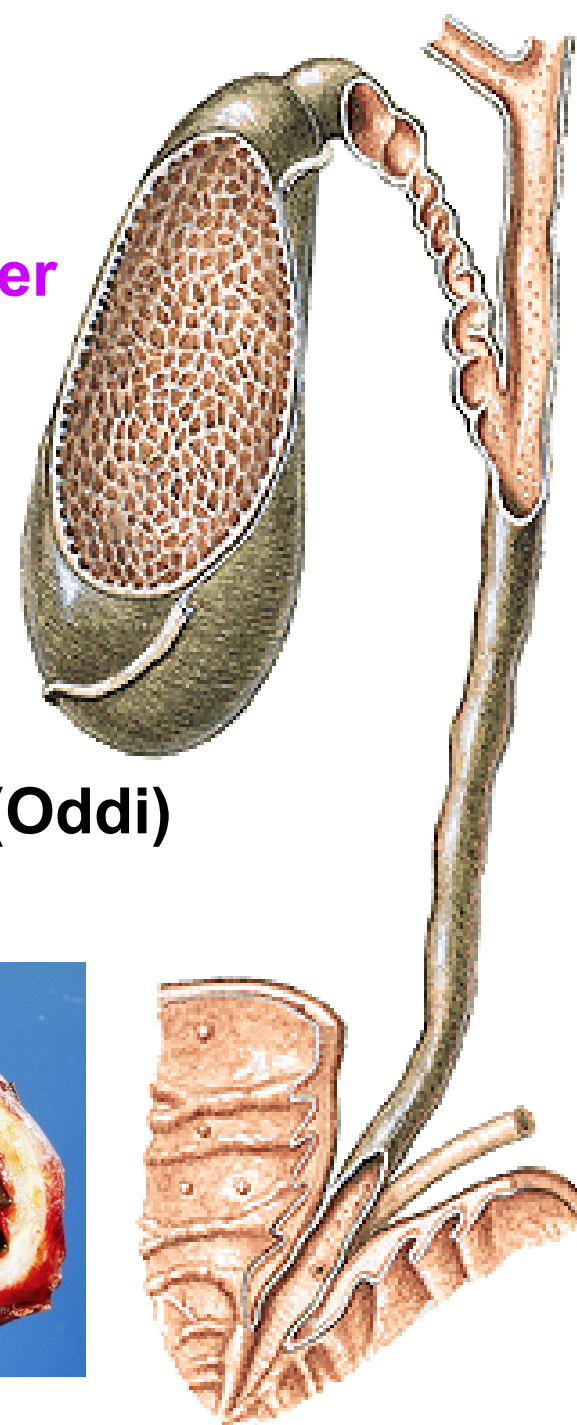
→ VV. HEPATICAE

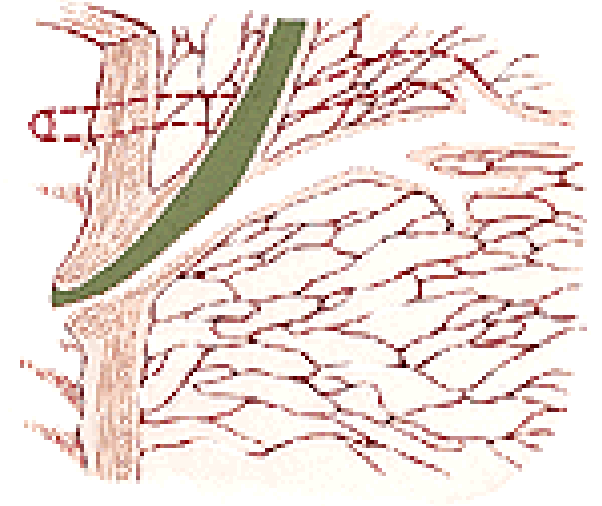
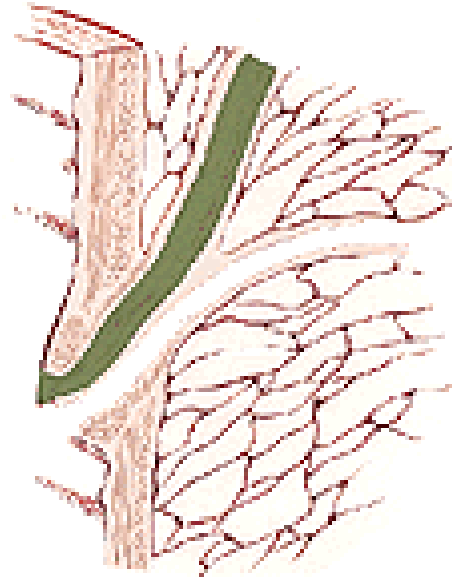
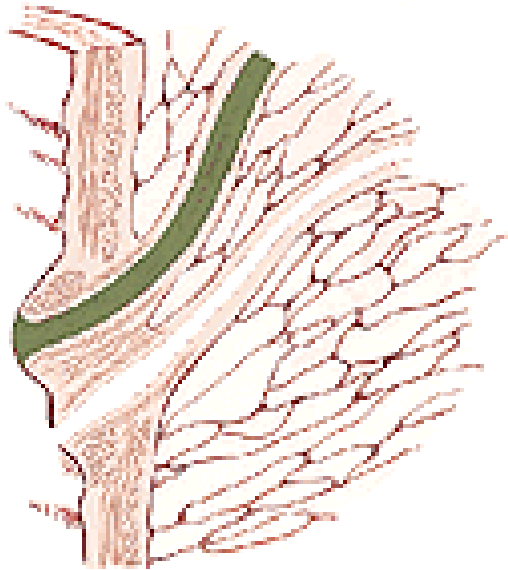
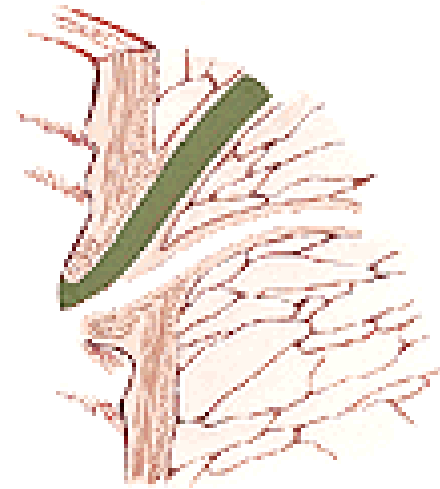
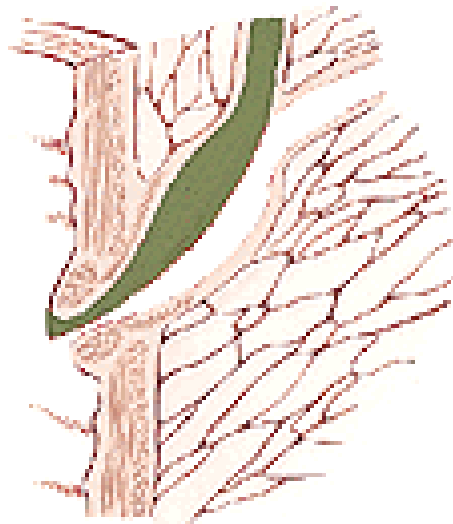
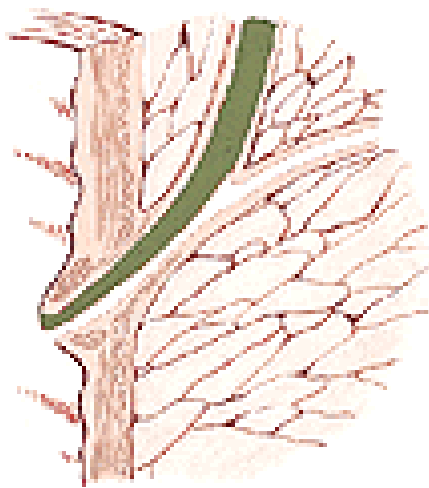


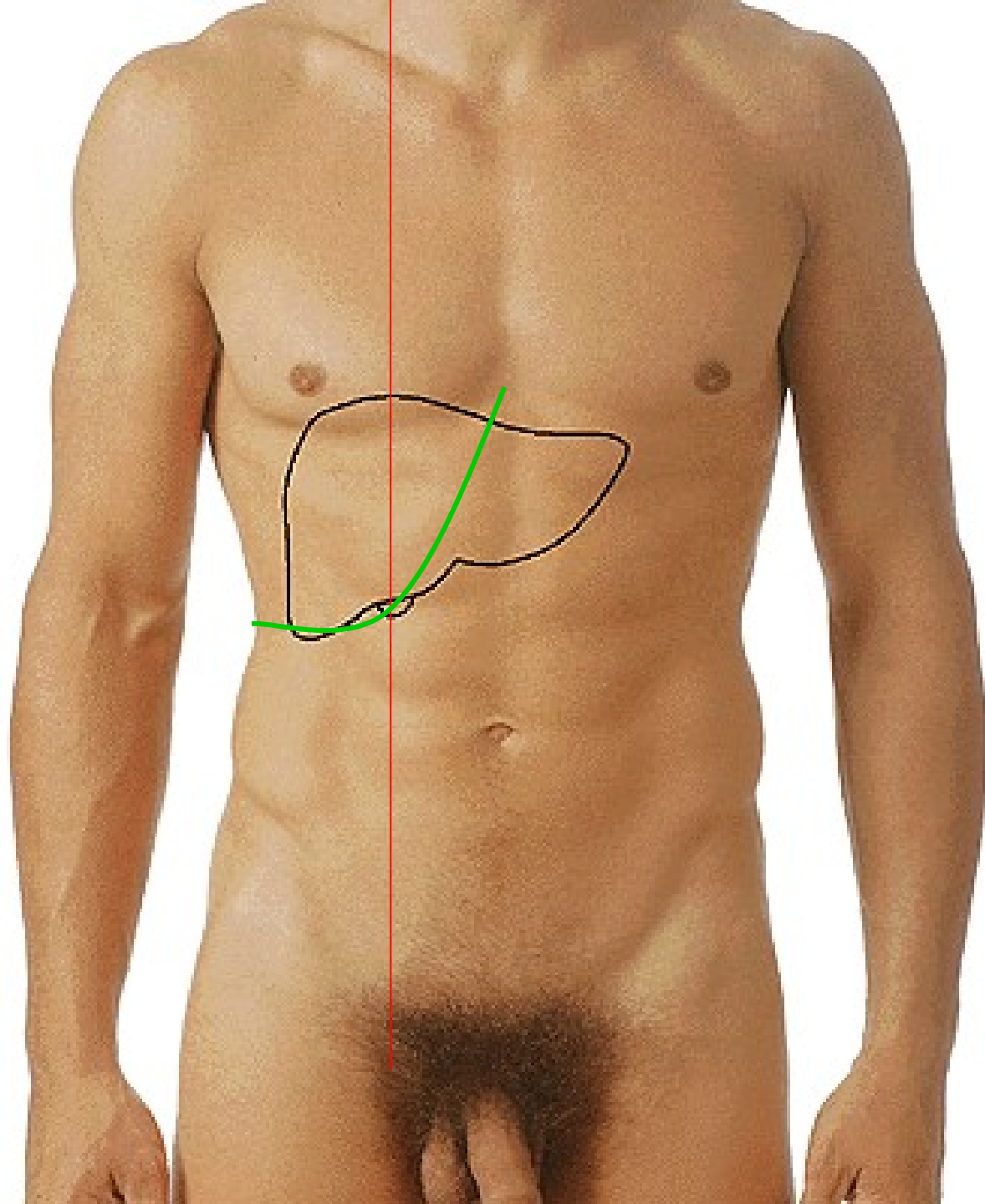
Canaliculus bilifer – ductulus bilifer
– **ductus bilifer interlobularis**
– **collecting ducts** → **ductus hepaticus dexter**
et sinister – ductus hepaticus communis
+ ductus cysticus = ductus choledochus

Plica longitudinalis duodeni
Ampulla hepatopancreatica
M. sphincter ampullae hepatopancreaticae (Oddi)
Papilla duodeni major (Vater)

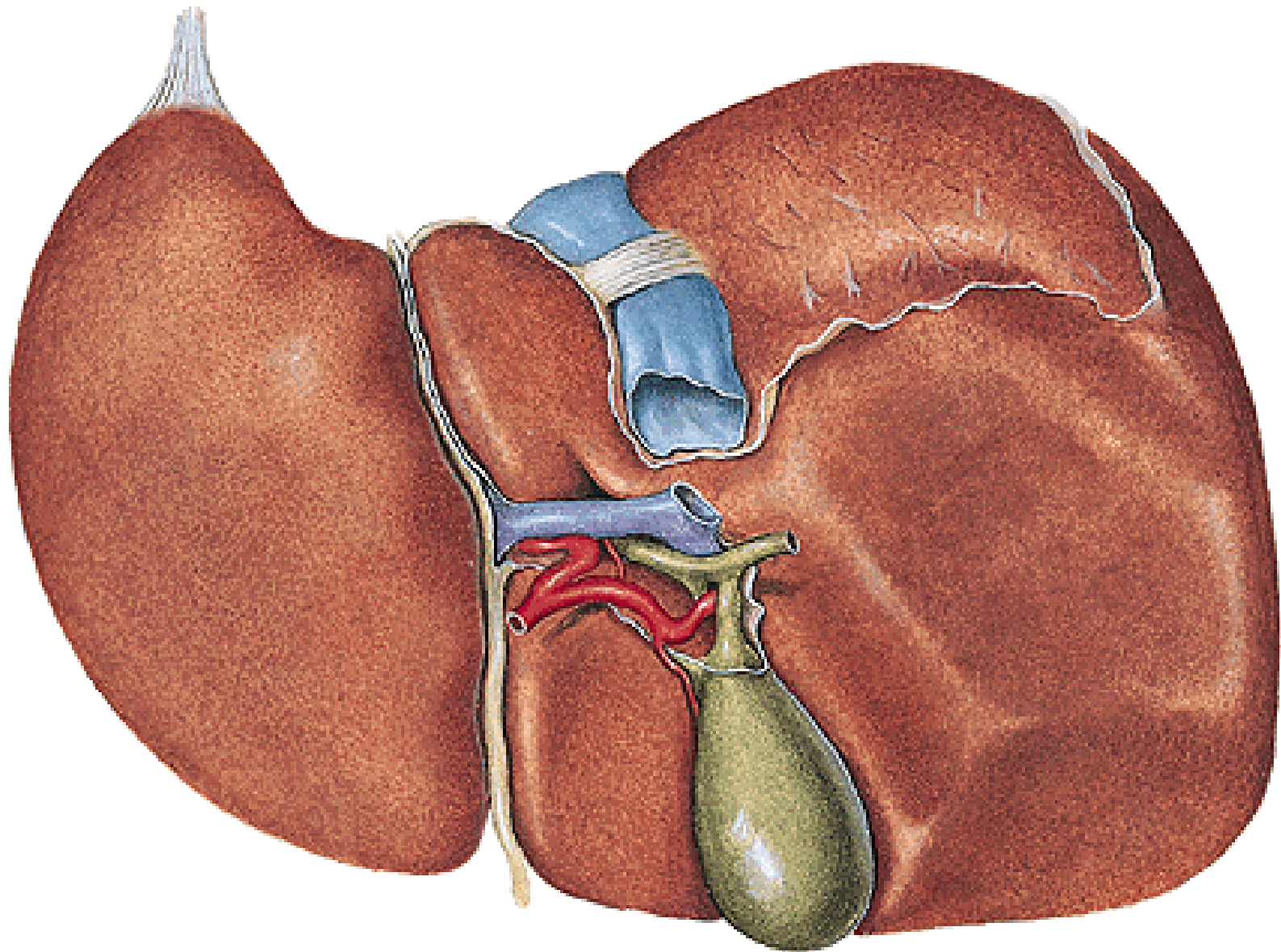
Vesica biliaris (fellea)
– **fundus, corpus,**
collum - plica spiralis



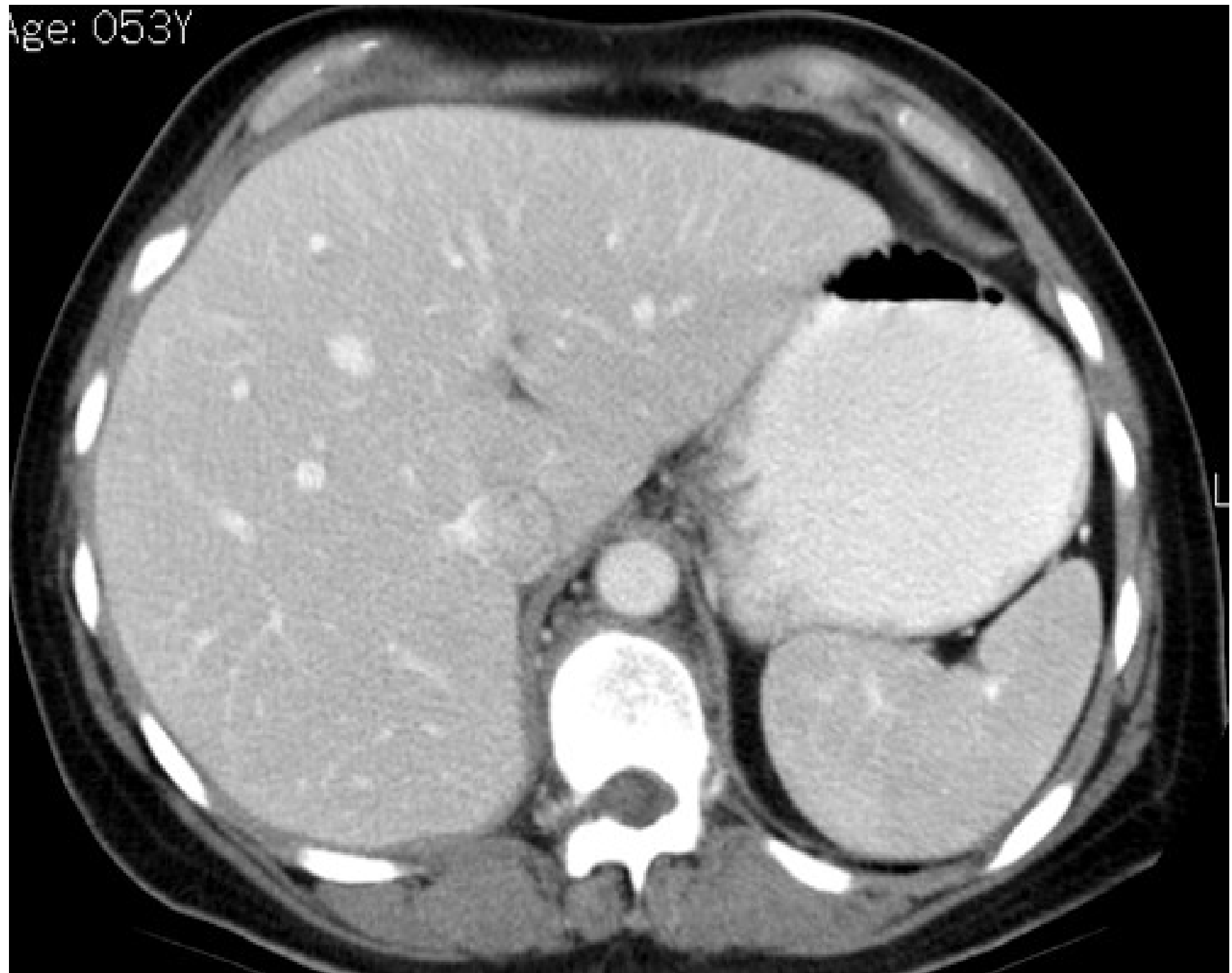




Impressio renalis. suprarenalis, duodeni, colica
Impressio oesophagea, gastrica



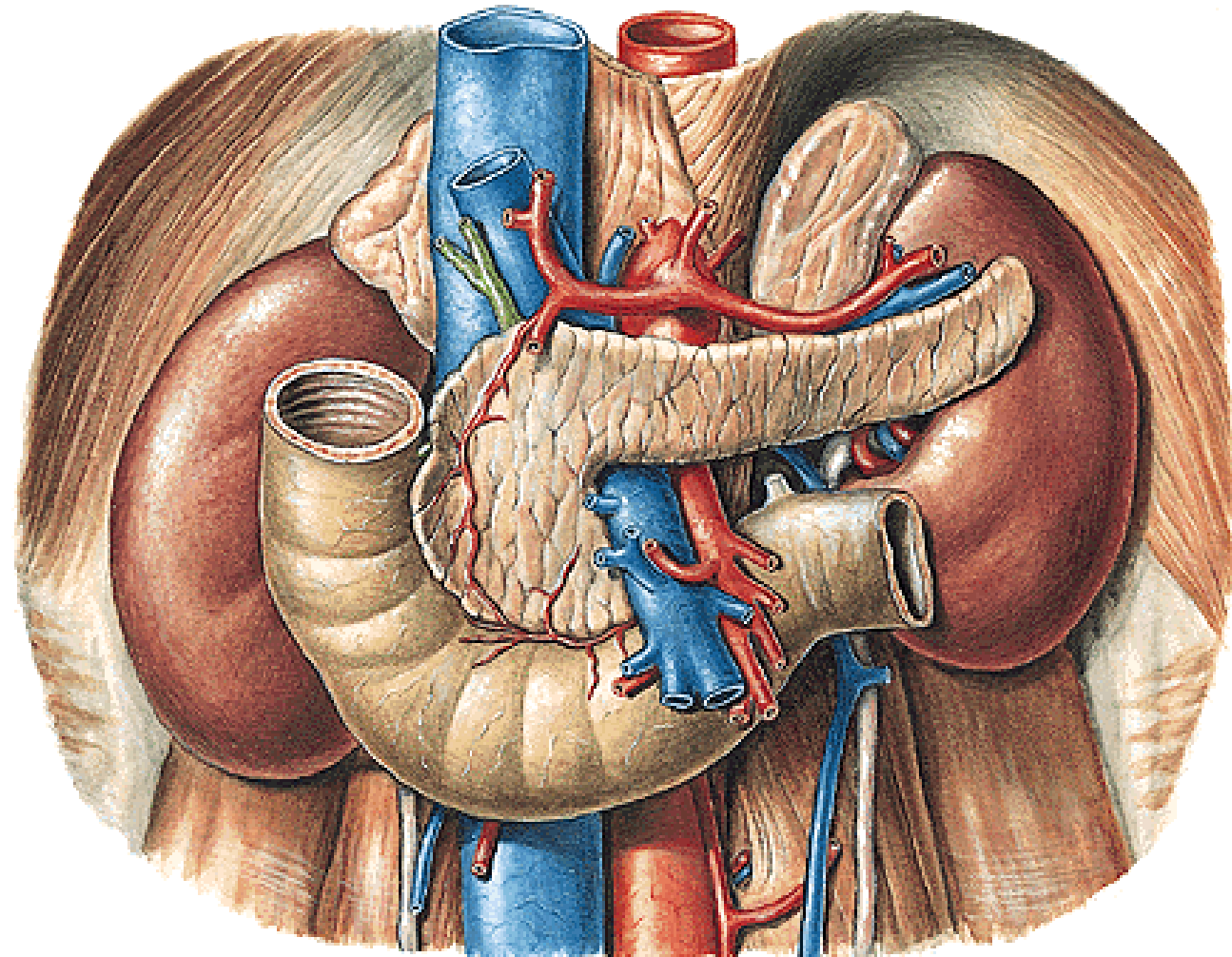
Age: 053Y



PANCREAS

caput, corpus, cauda
incisura pancreatis
processus uncinatus
facies anterior
facies posterior
facies inferior
margo superior
margo anterior
margo inferior

membrana retropancreatica (Treitz)
tuber omentale



Exocrine pancreas:

capsula pancreatis

succus pancreaticus

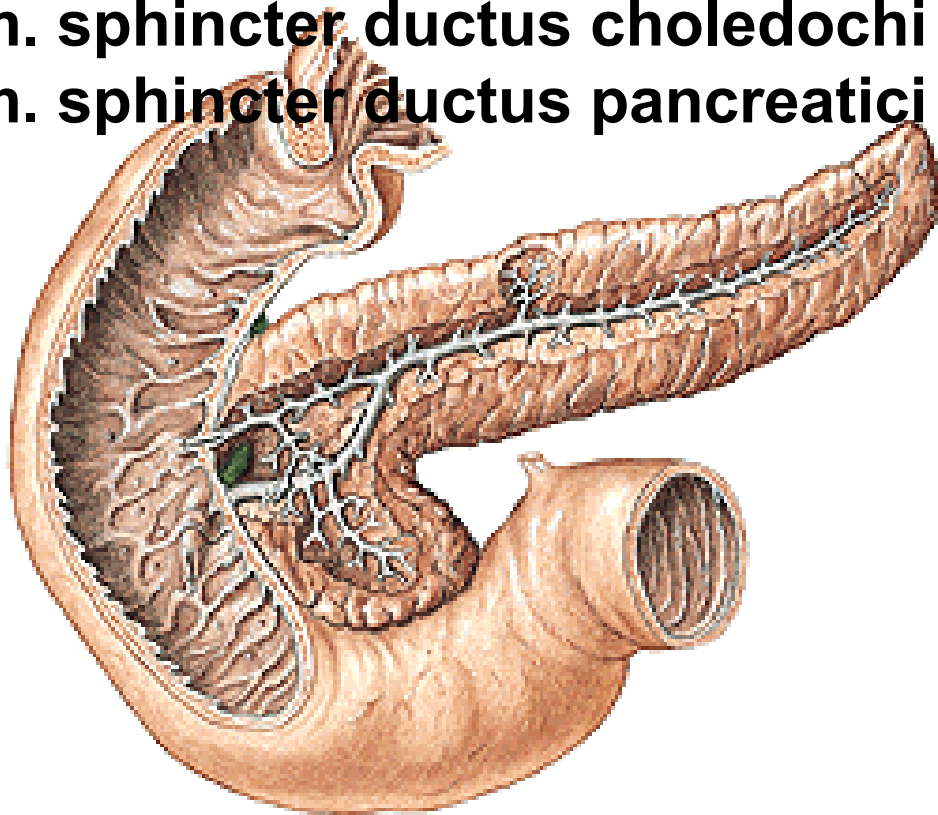
ductus pancreaticus

ductus pancreaticus accessorius

m. sphincter ampullae hepatopancreatice

m. sphincter ductus choledochi

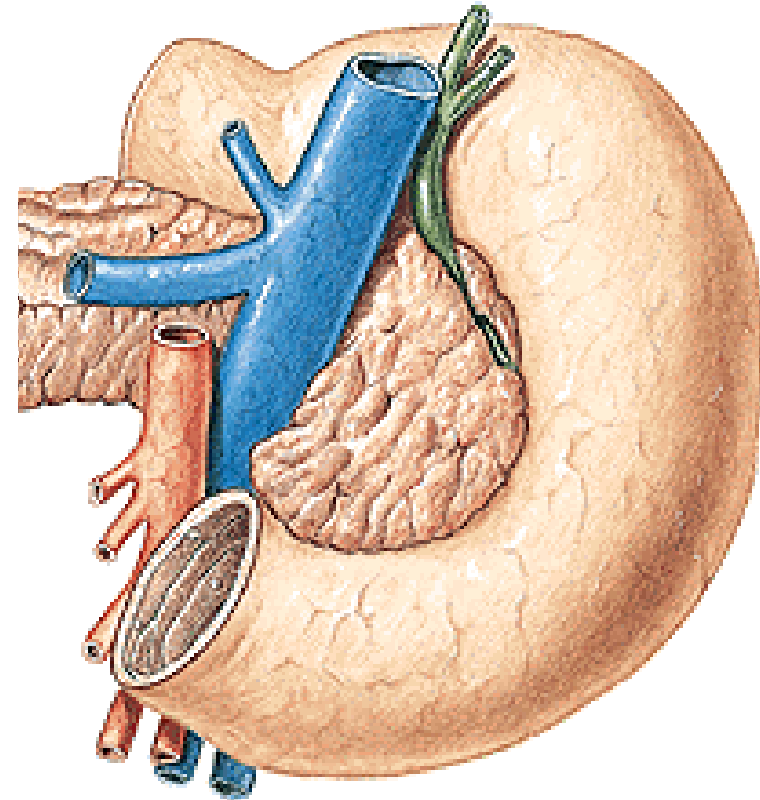
m. sphincter ductus pancreatici



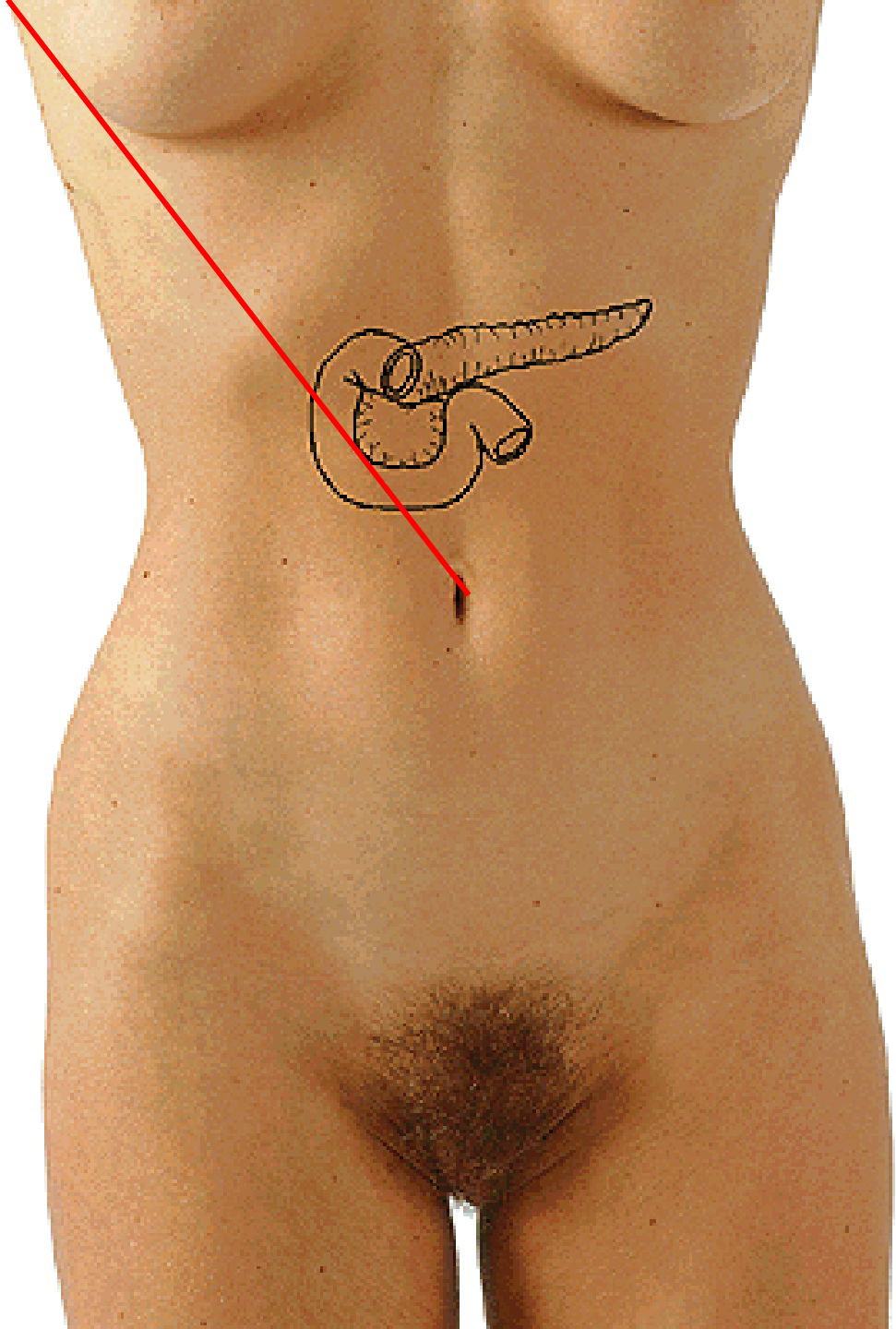
Endocrine pancreas:

islets of Langerhans

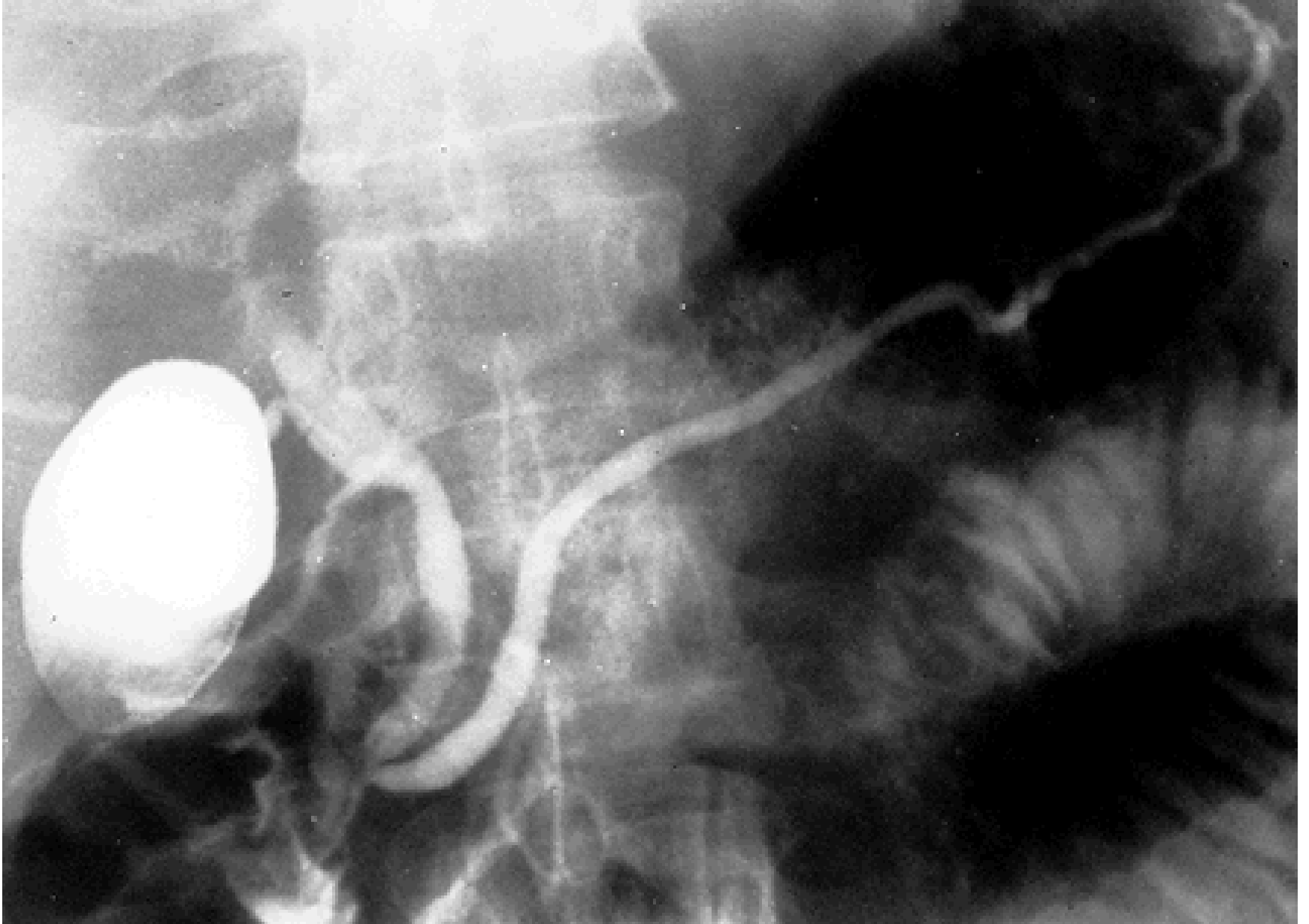
insulin, glucagon

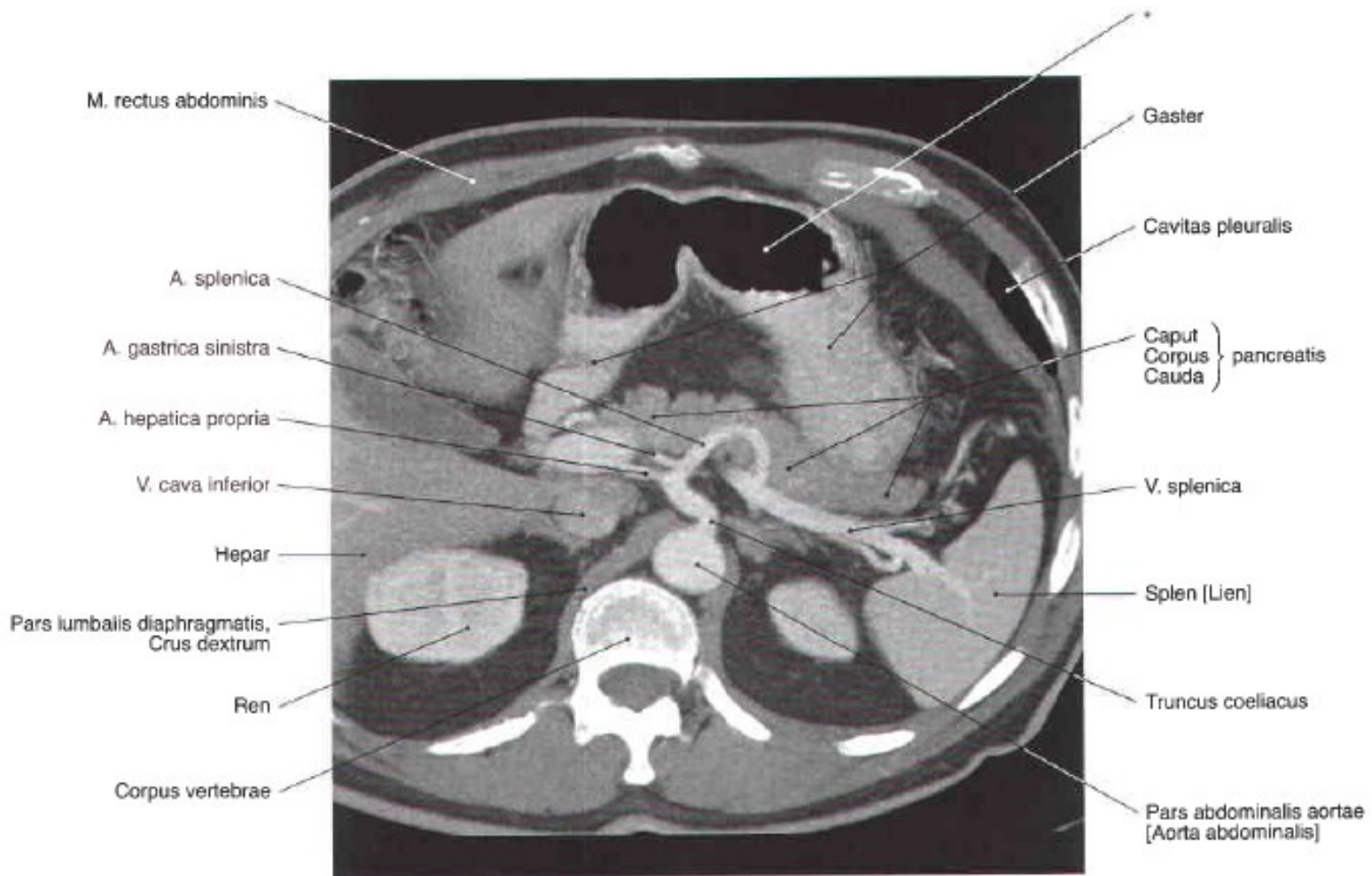


Umbilico-axillary line
- point of Desjardin



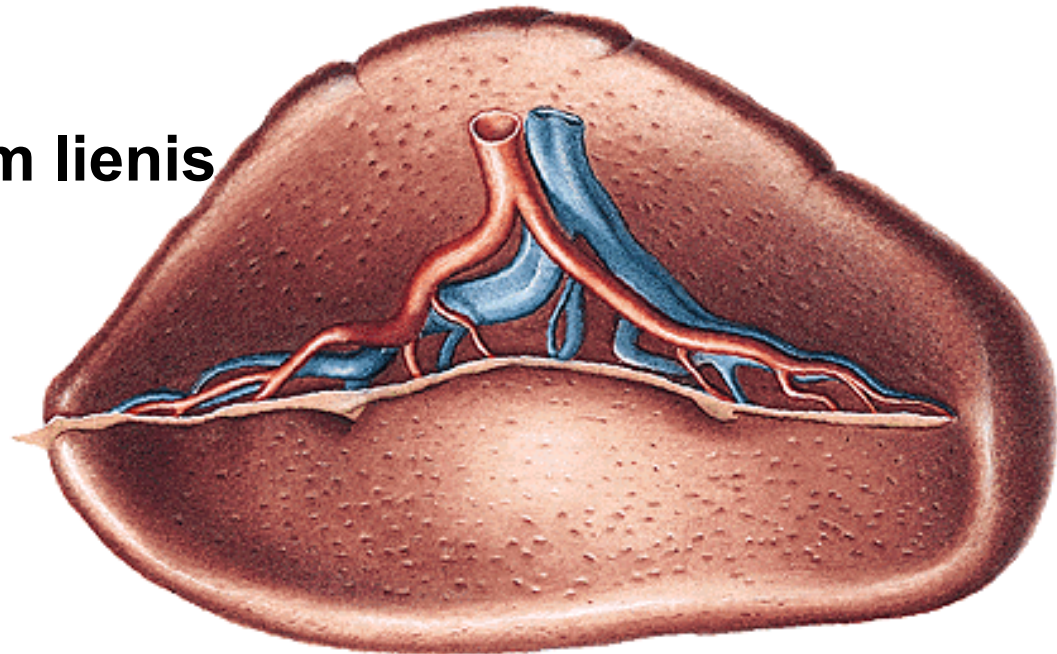
ERCP – endoscopic retrograde cholangiopancreatography

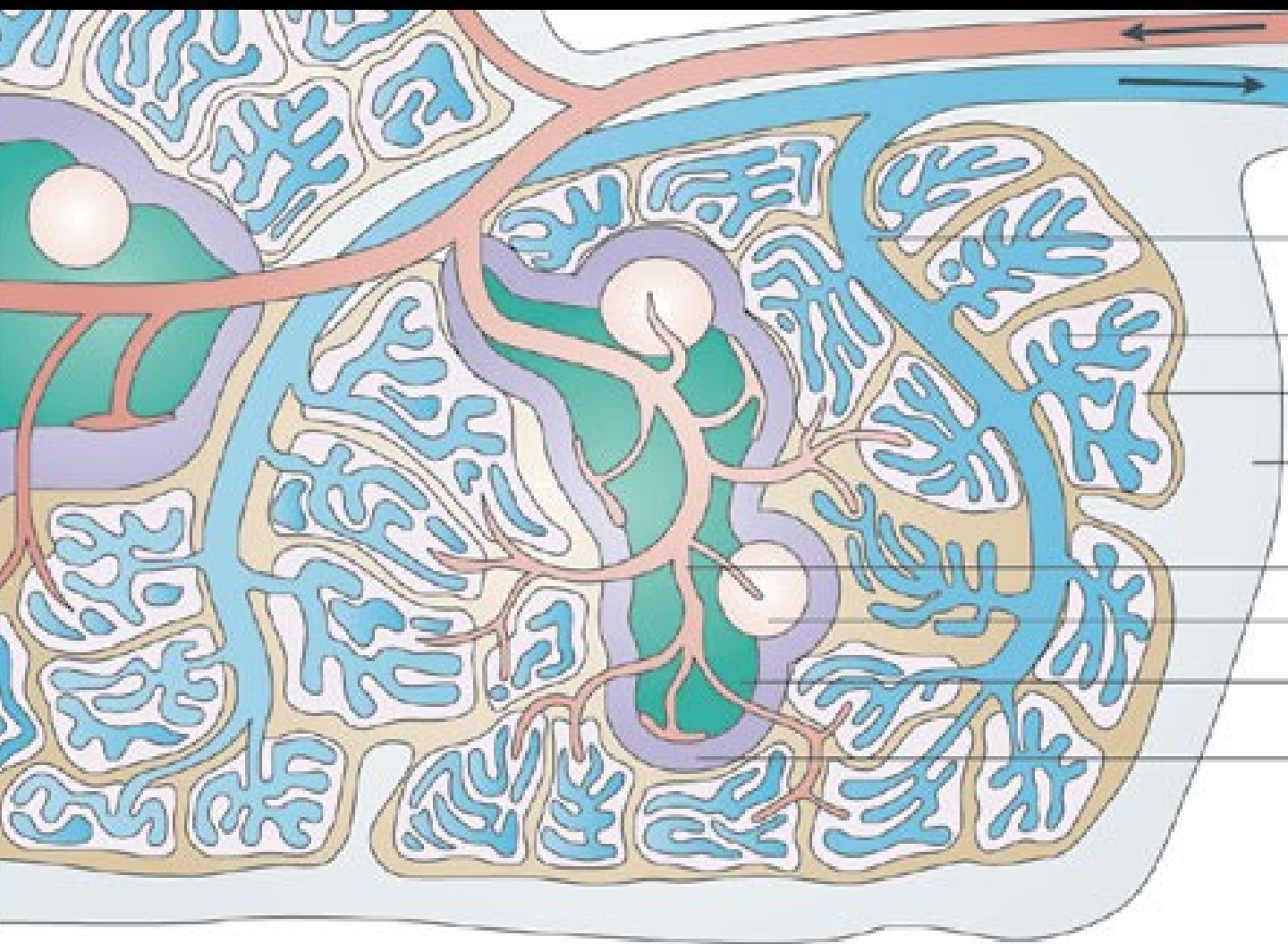




LIEN, SPLEN

- **extremitas anterior**
- **extremitas posterior**
- **margo superior – crenae lienis**
- **margo inferior**
- **facies diaphragmatica**
- **facies visceralis – hilum lienis**
- **capsula lienis**





Afferent splenic artery

Collecting vein

Venous sinus

Cords

Outer capsule with trabeculae

Central arteriole

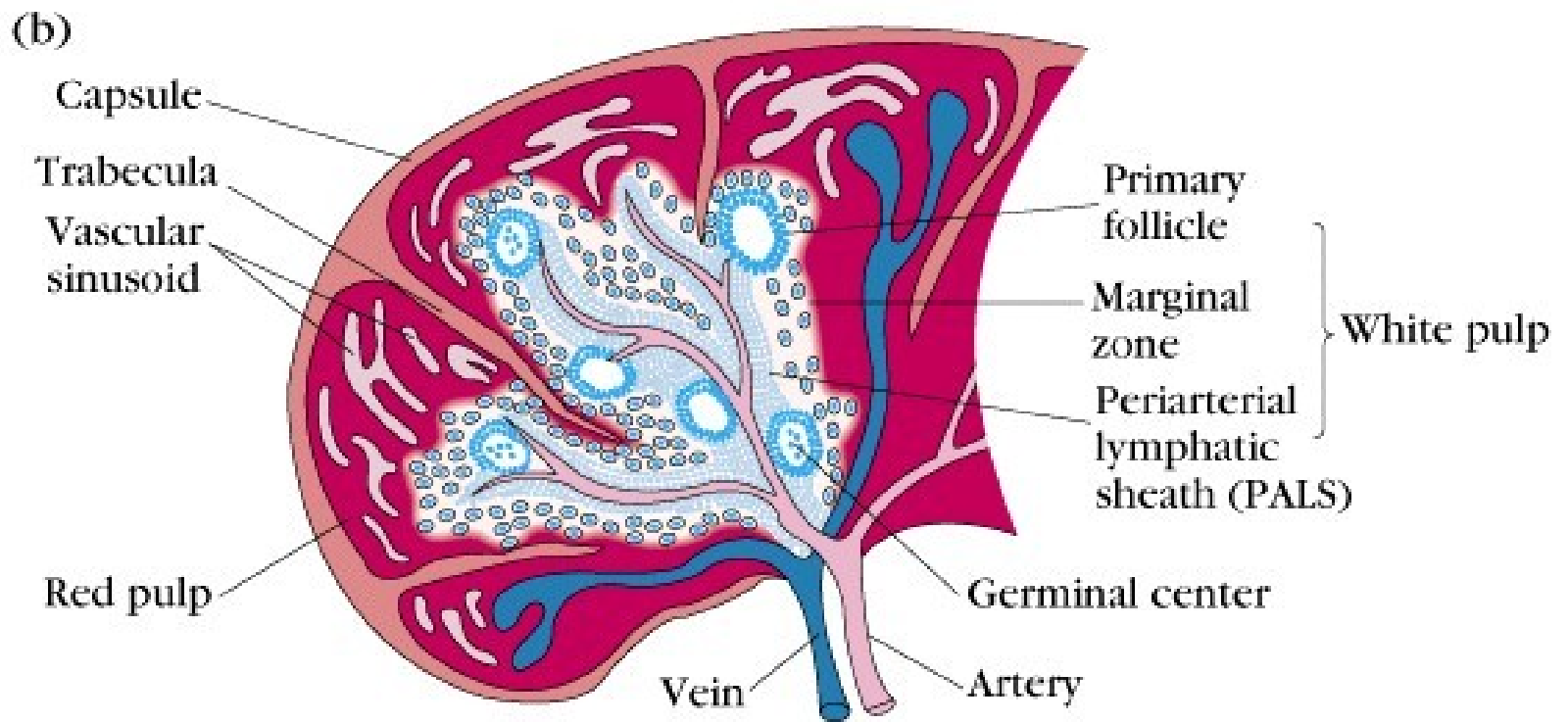
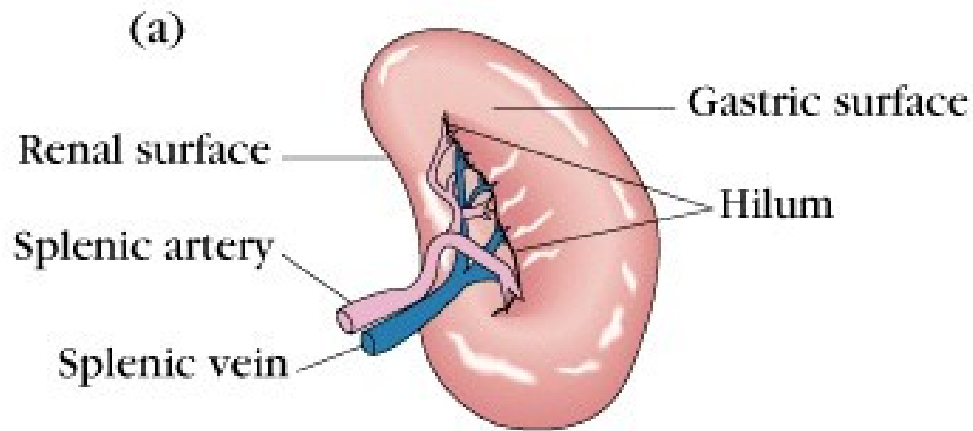
Follicle

T-cell zone

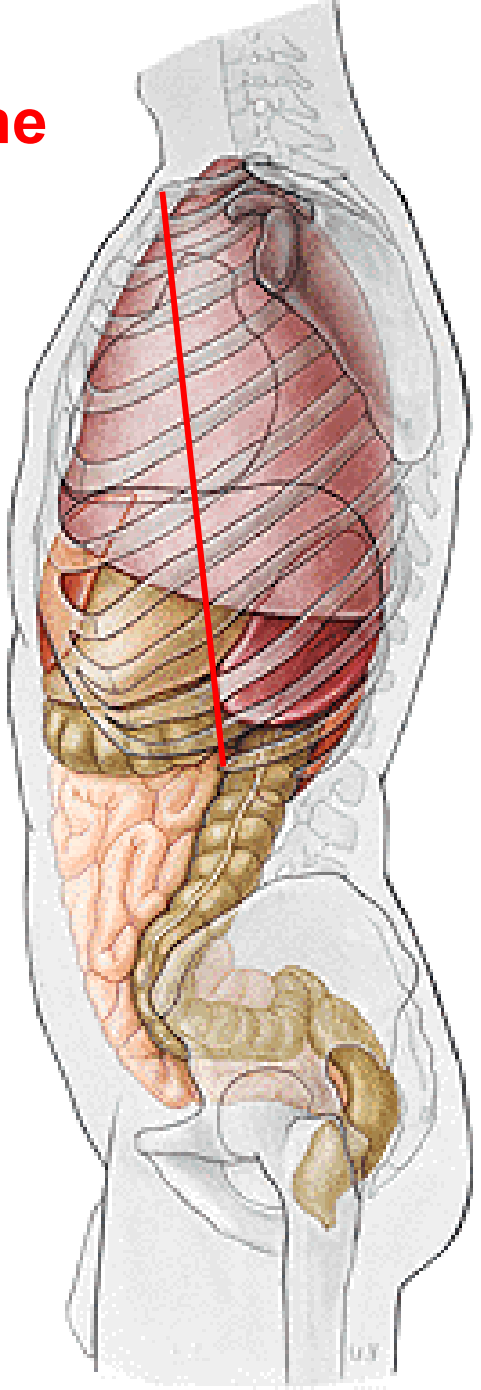
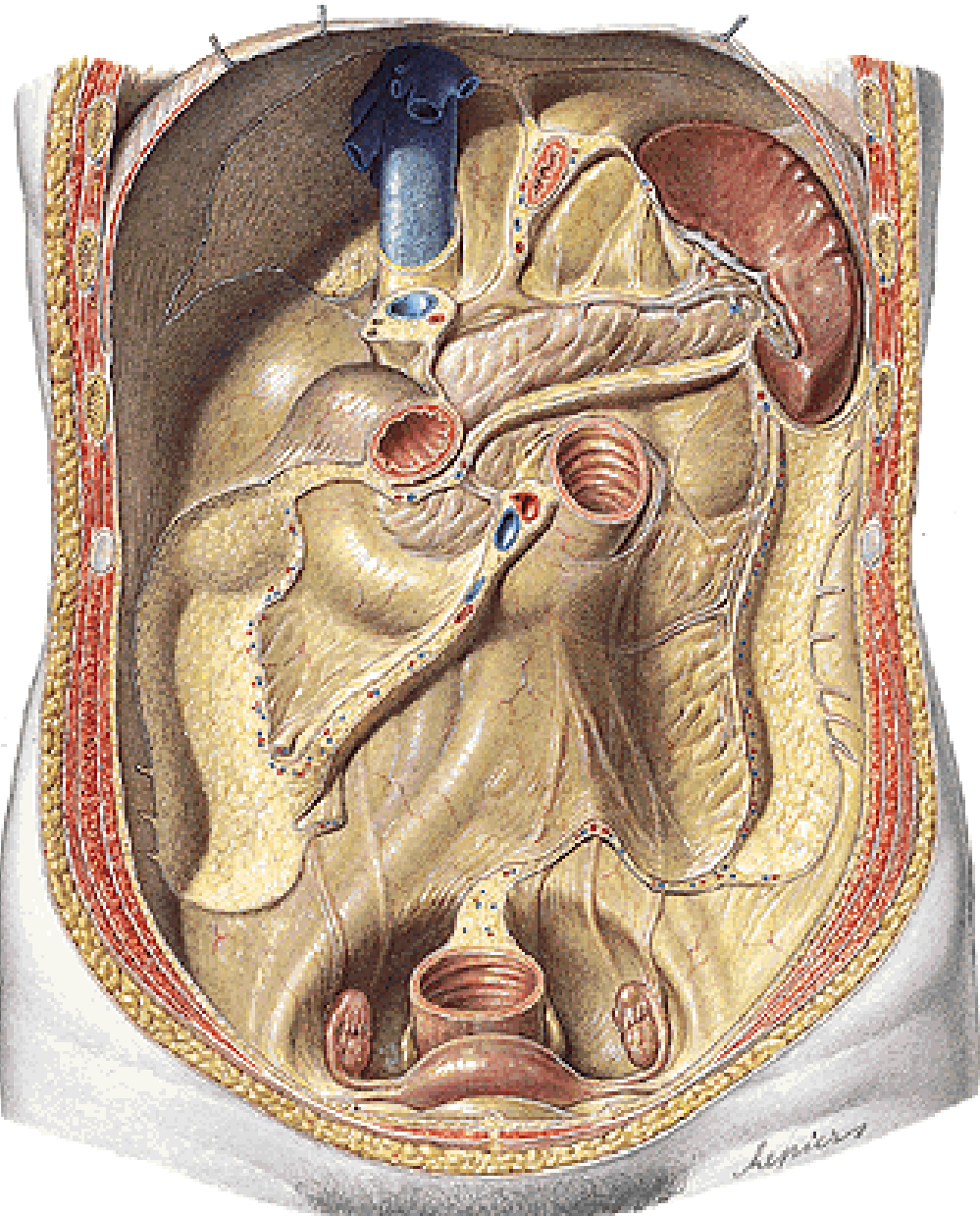
Marginal zone

White pulp, red pulp

Splenectomy



Costoarticular line



CAVITAS ABDOMINALIS

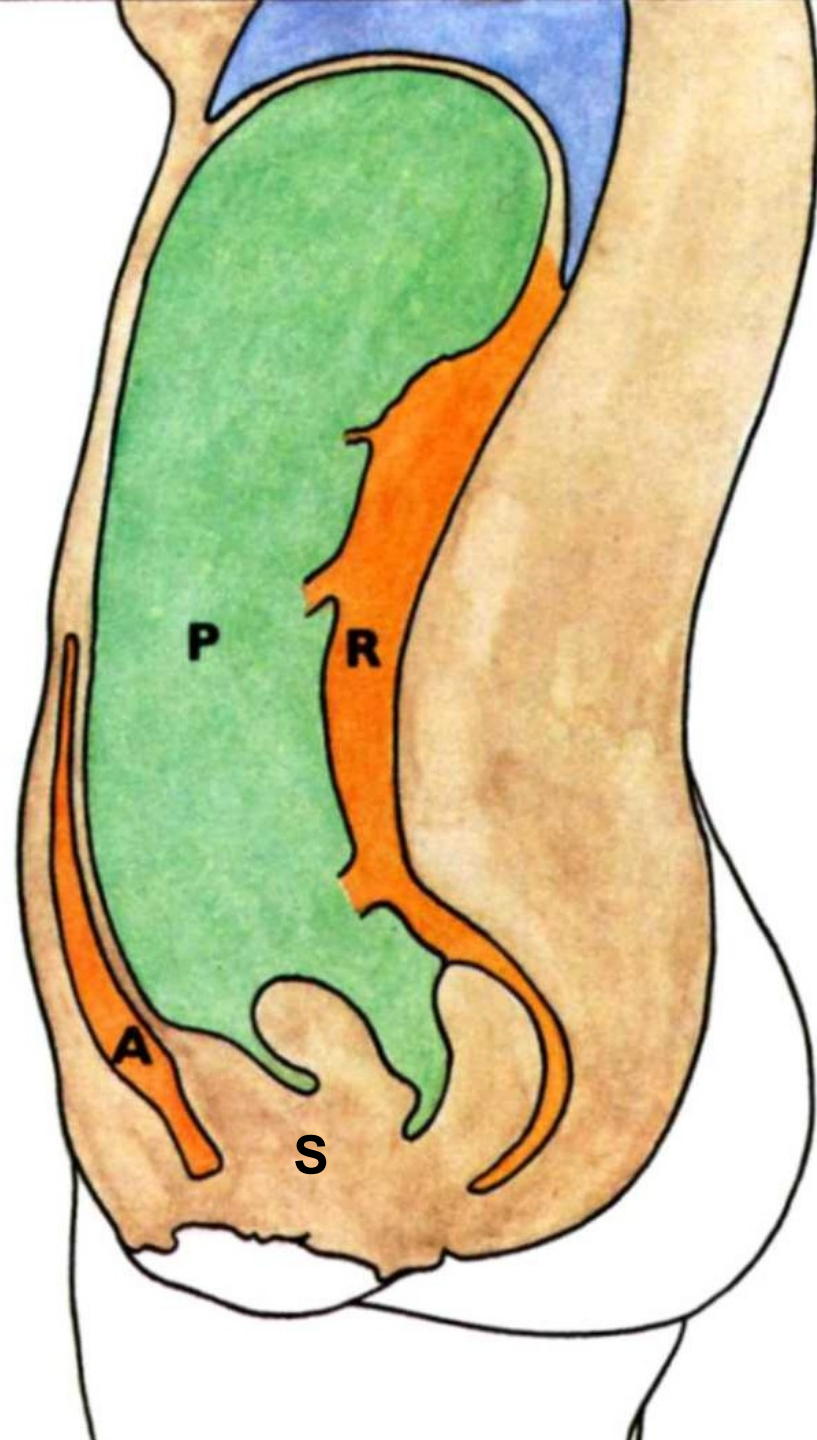
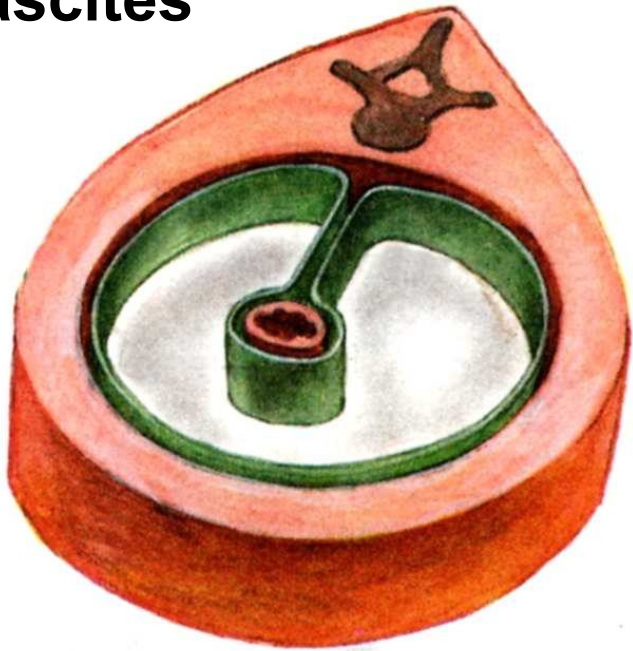
P – cavitas peritonealis

A – spatium preperitoneale

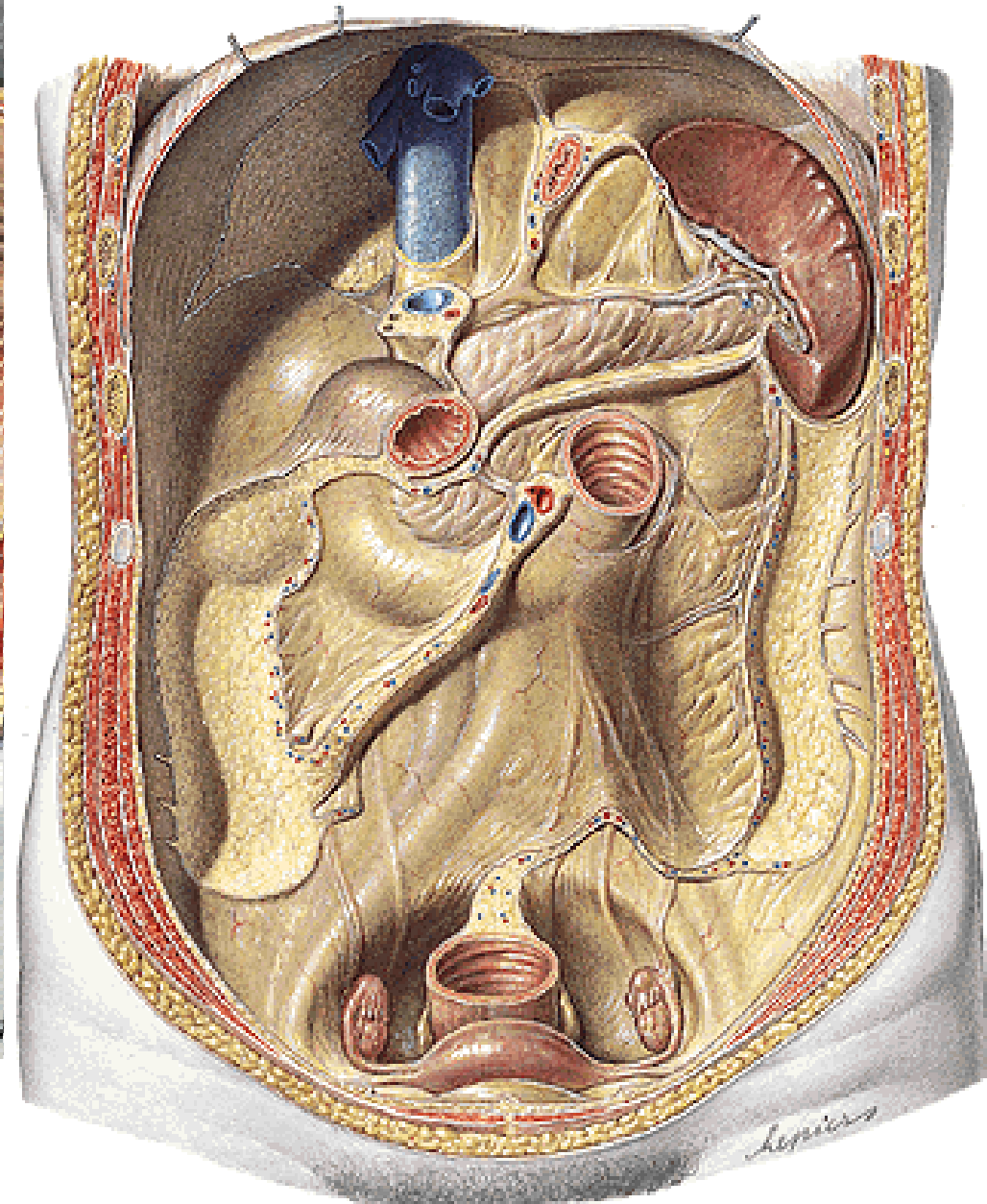
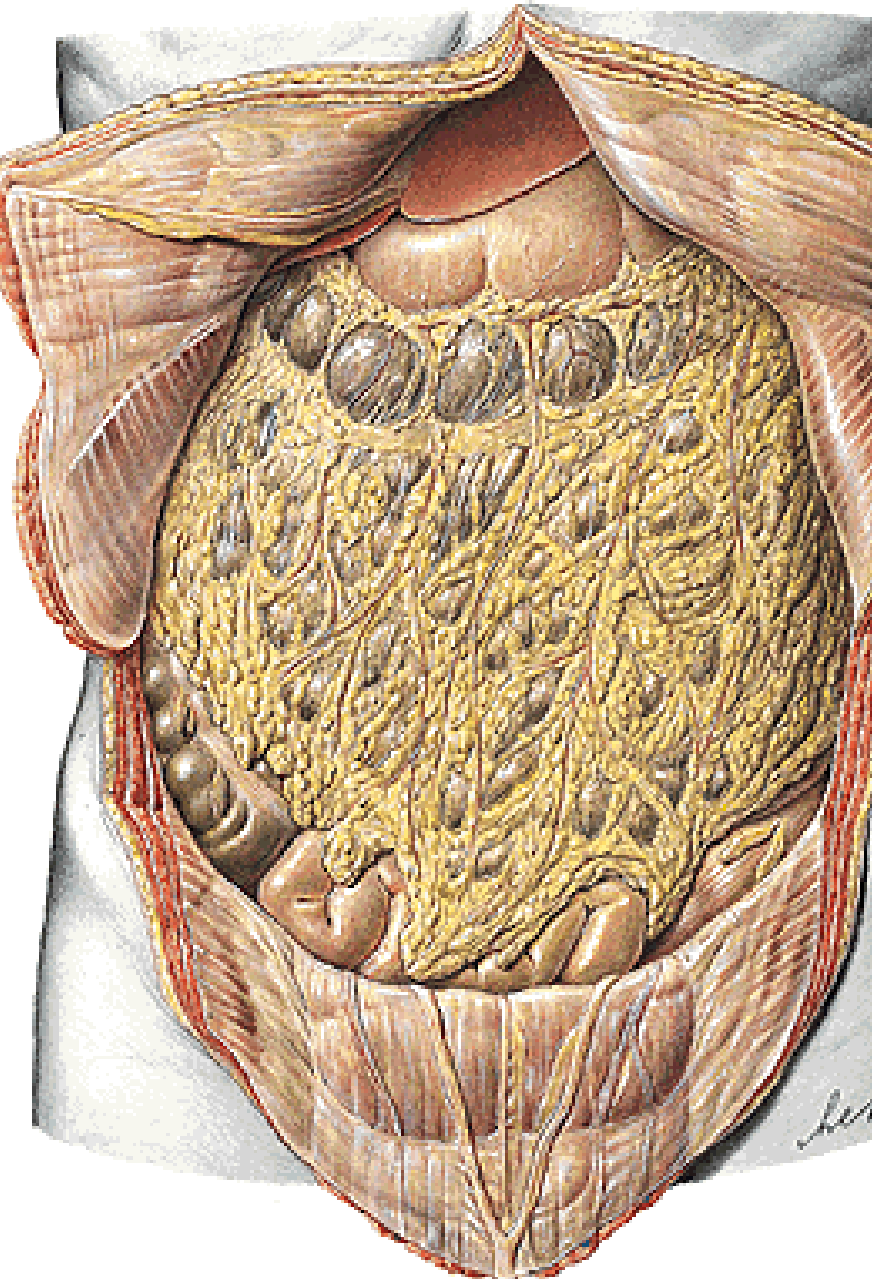
R – spatium retroperitoneale

**S – spatium subperitoneale
(infraperitoneale)**

ascites

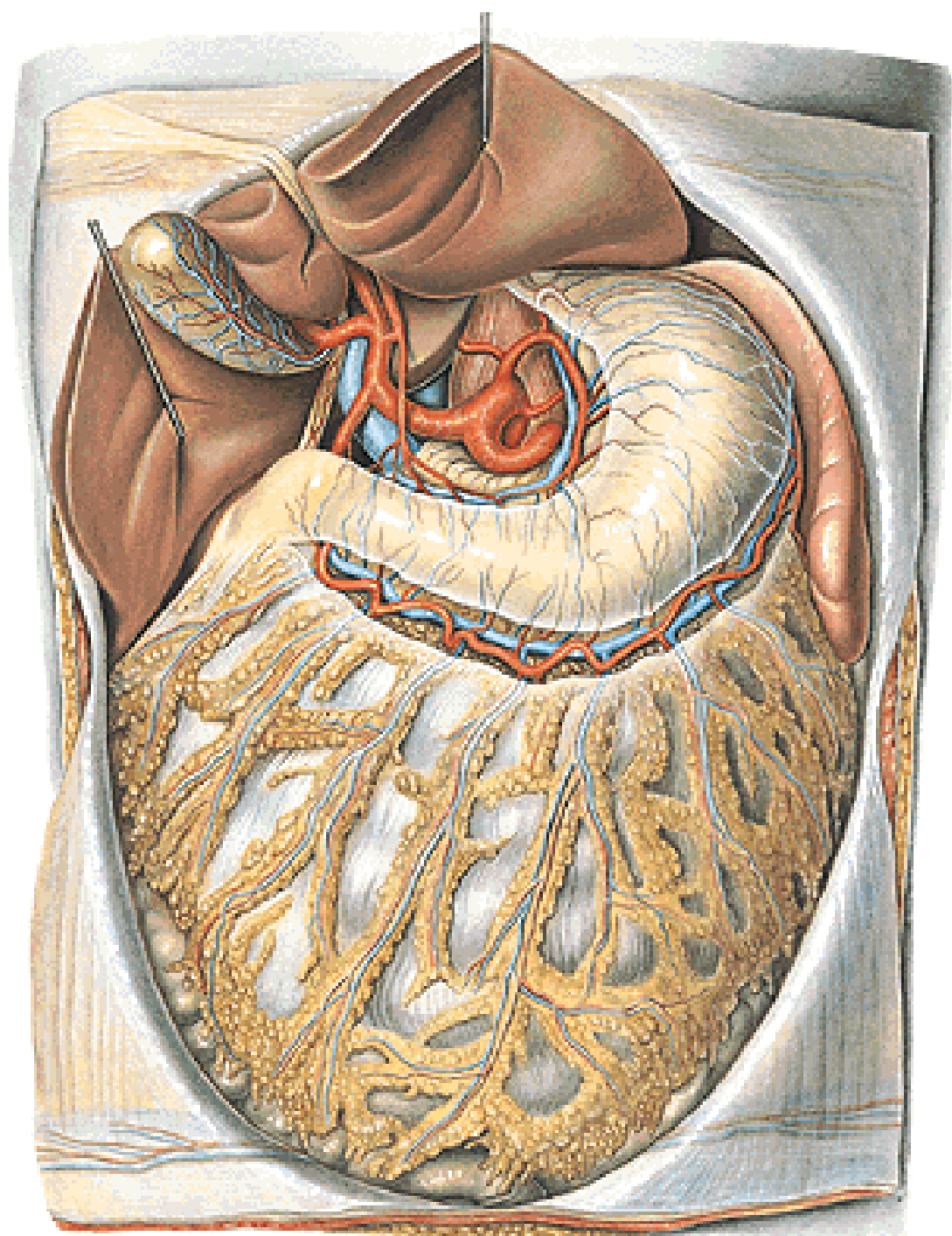


Cavitas peritonealis - pars supramesocolica, inframesocolica



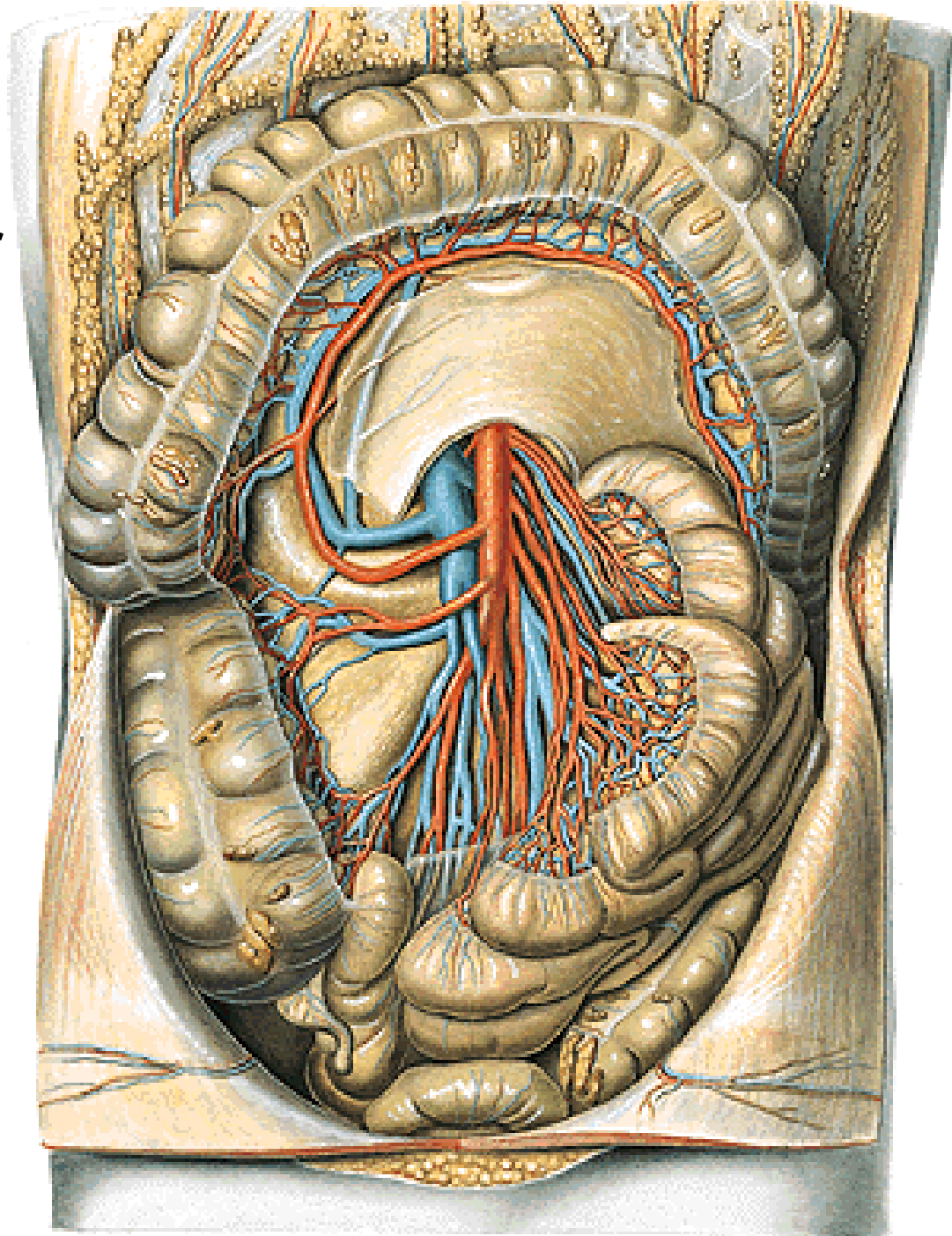
Pars supramesocolica

Truncus coeliacus



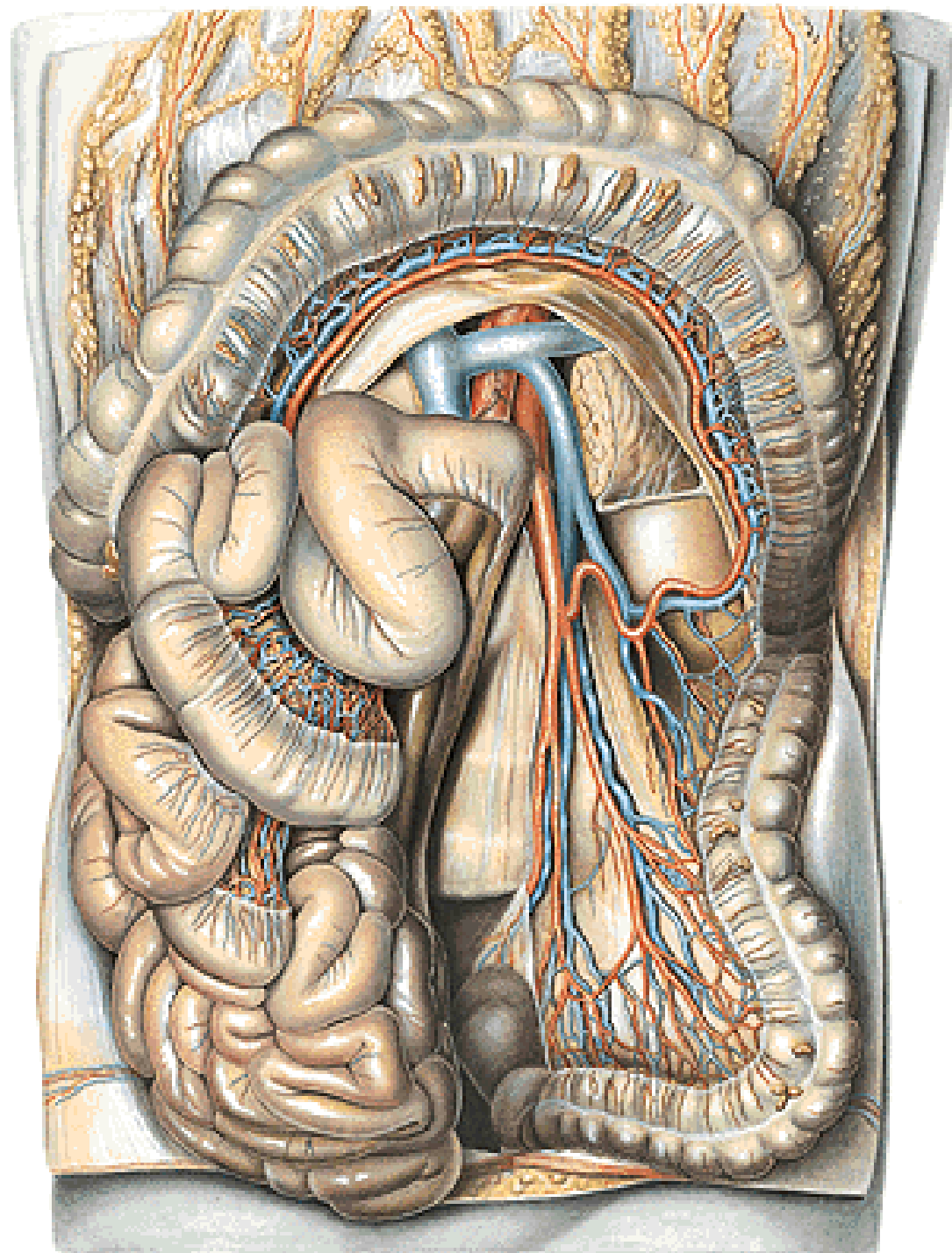
Pars inframesocolica

A. mesenterica superior



Pars inframesocolica

A. mesenterica inferior



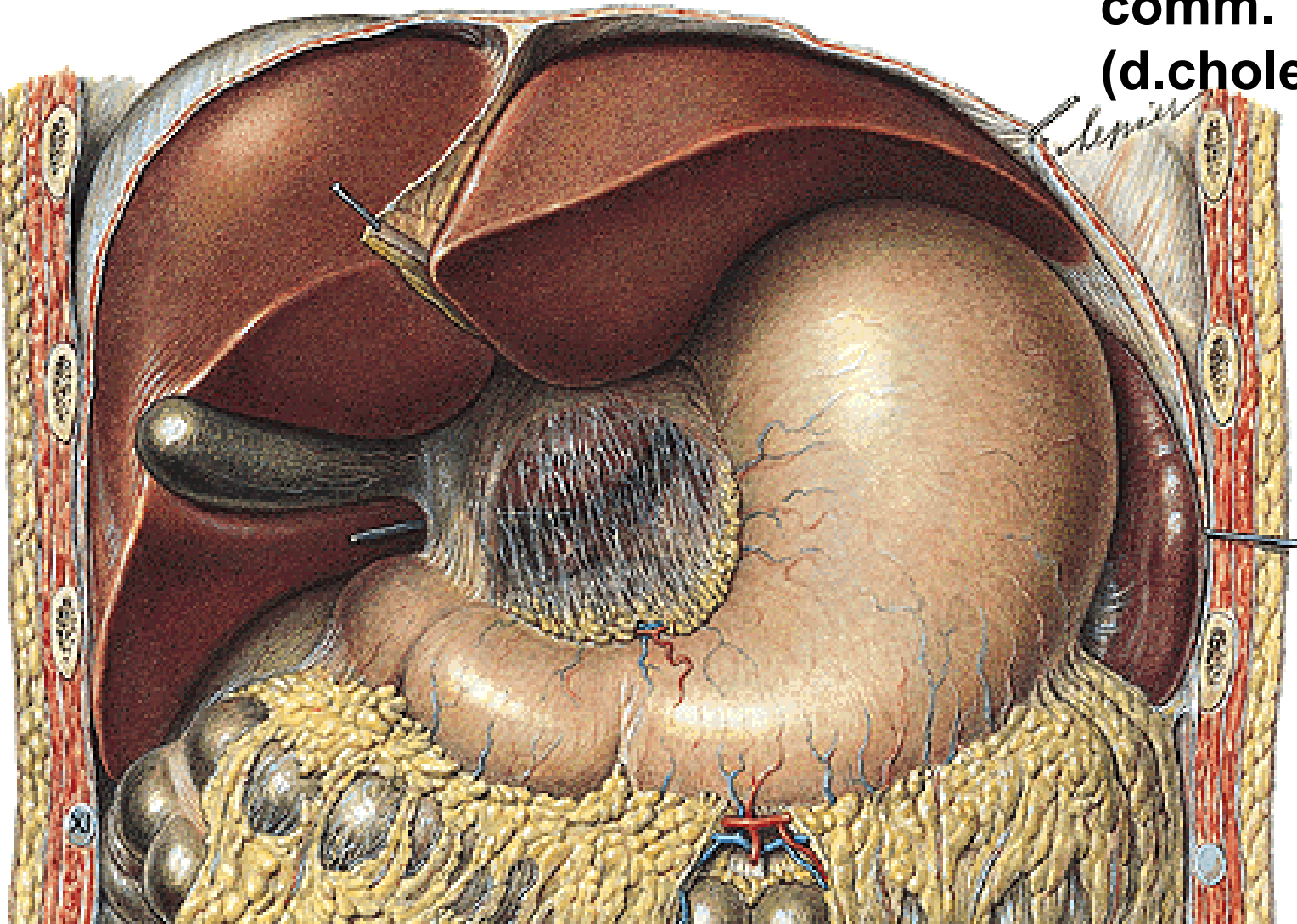
Omentum minus - lig. hepatogastricum

- lig. hepatoduodenale - a. hepatica propria

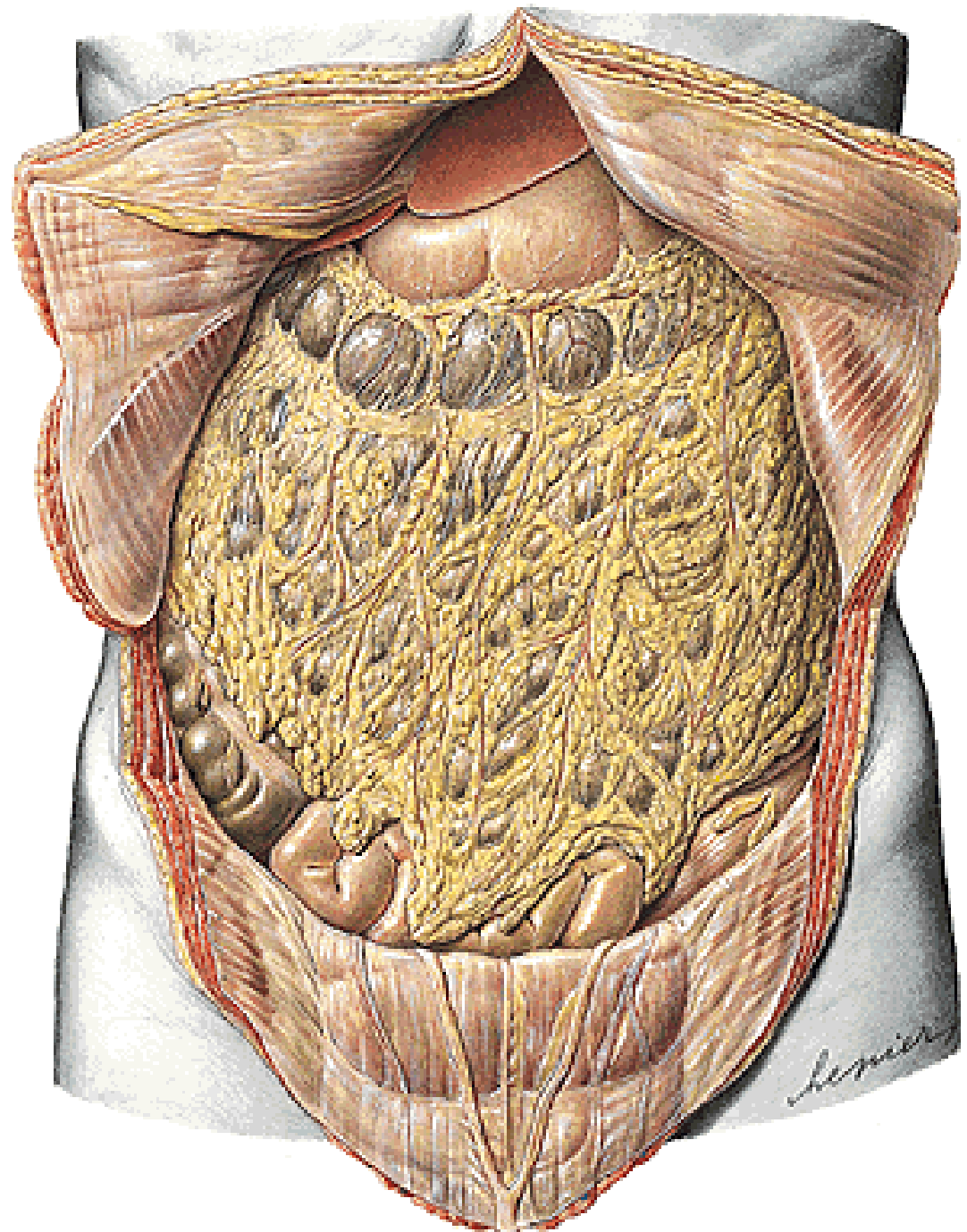
- v. portae

**- ductus hepaticus
comm.**

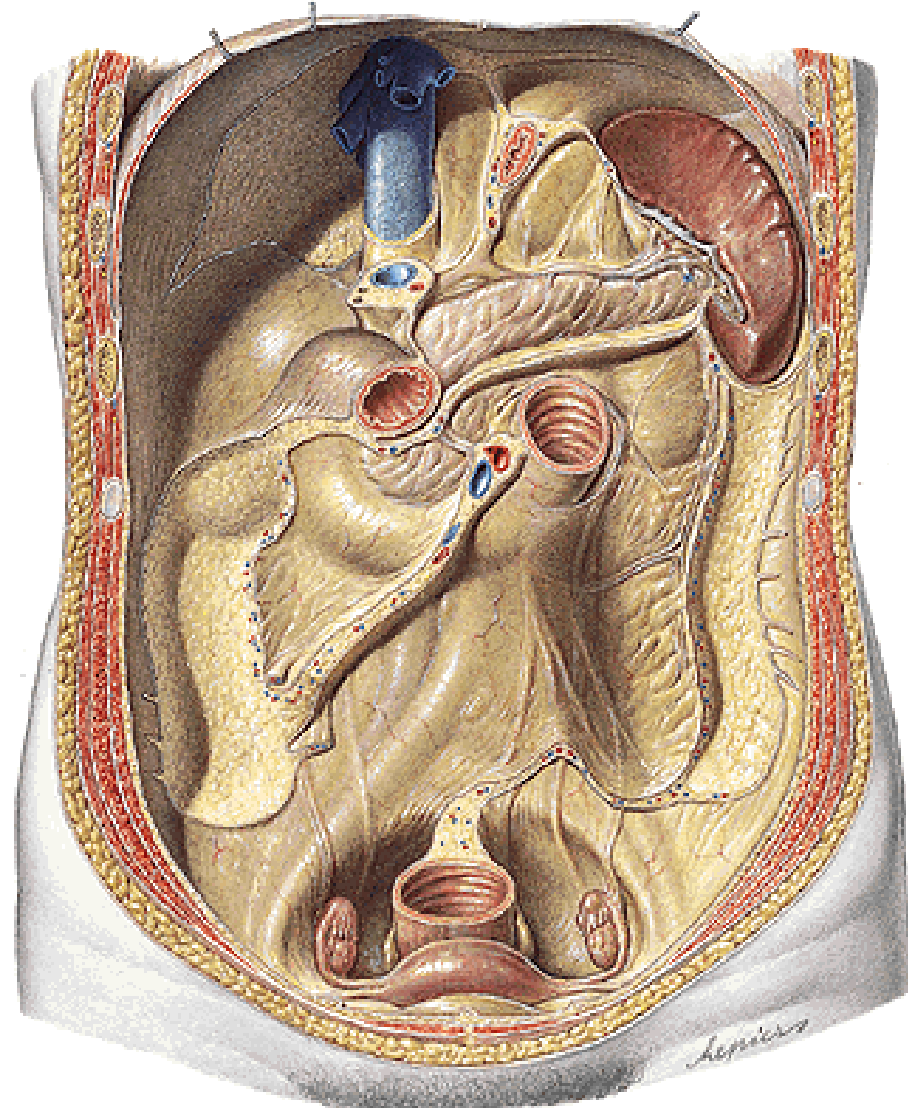
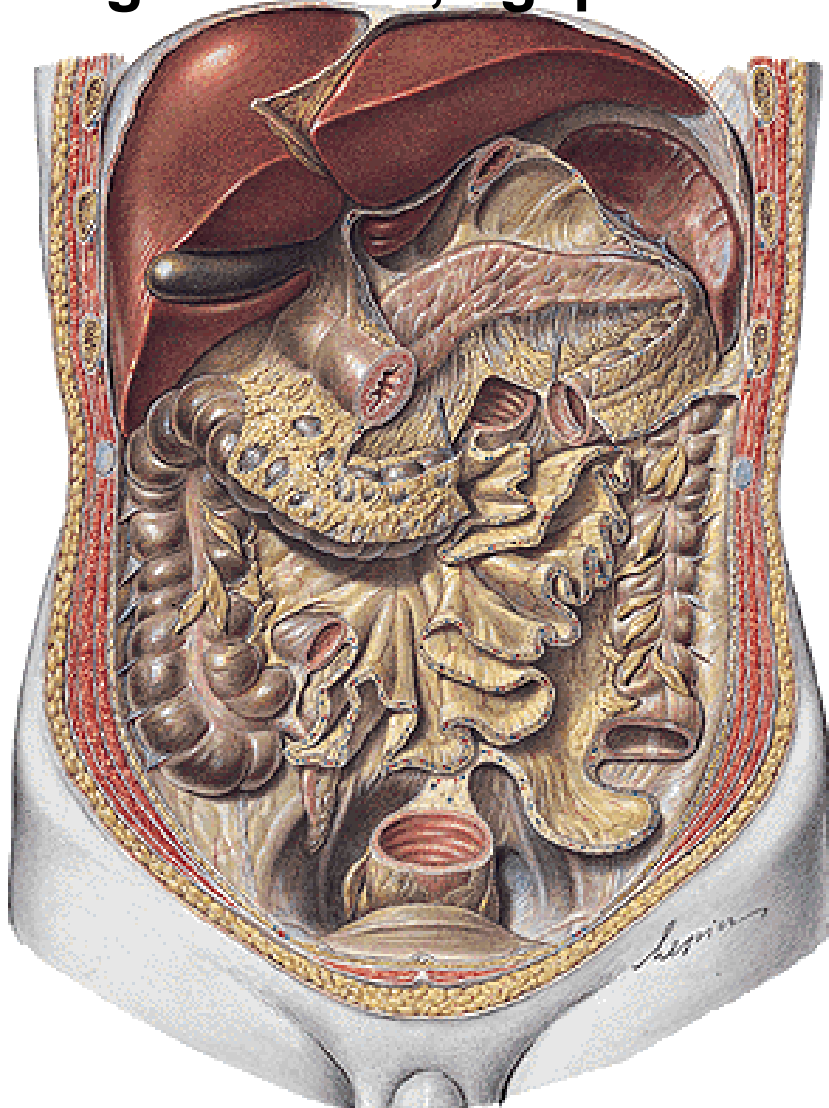
(d.choledochus)



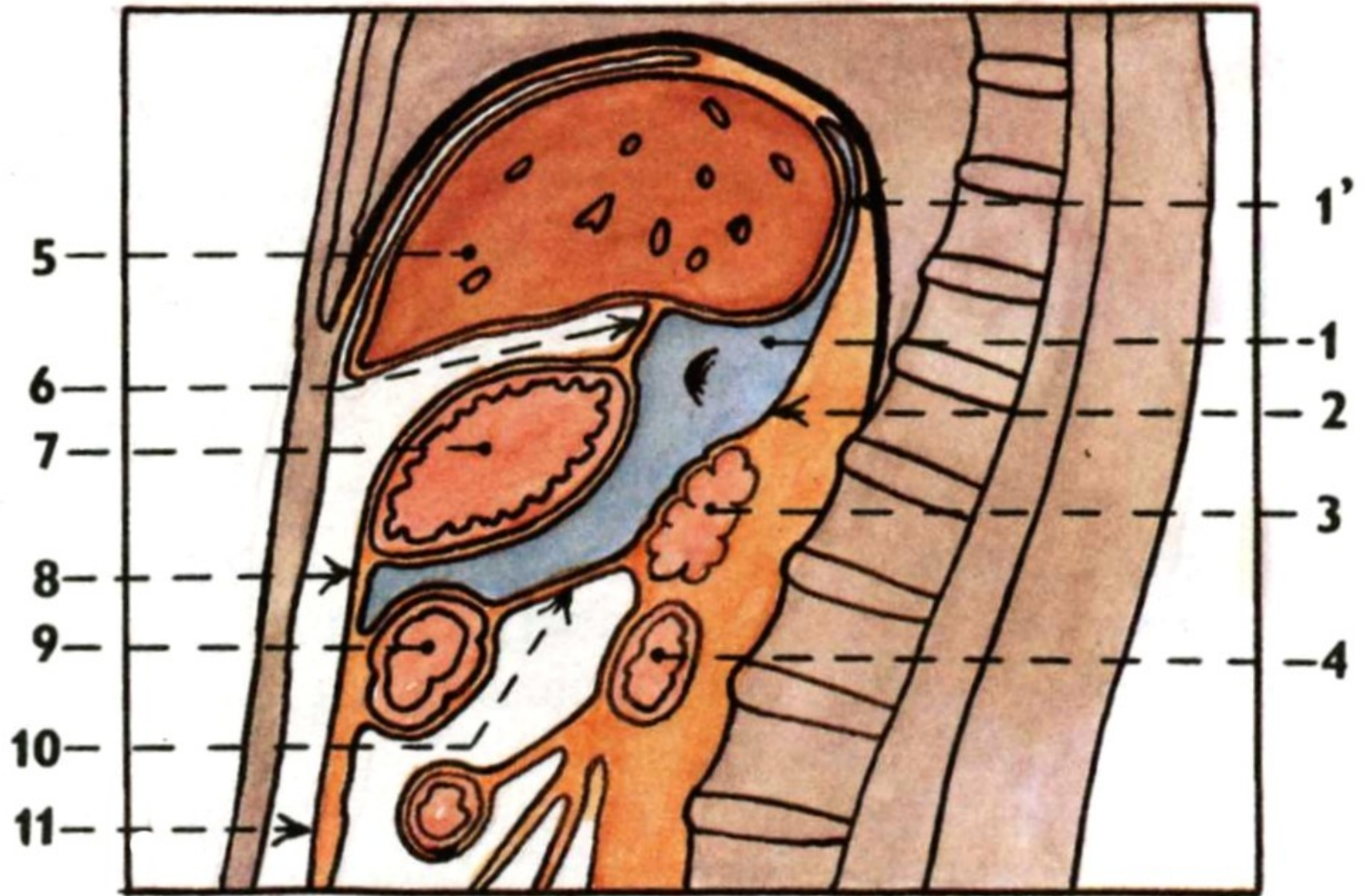
Omentum majus
- lig. gastrocolicum



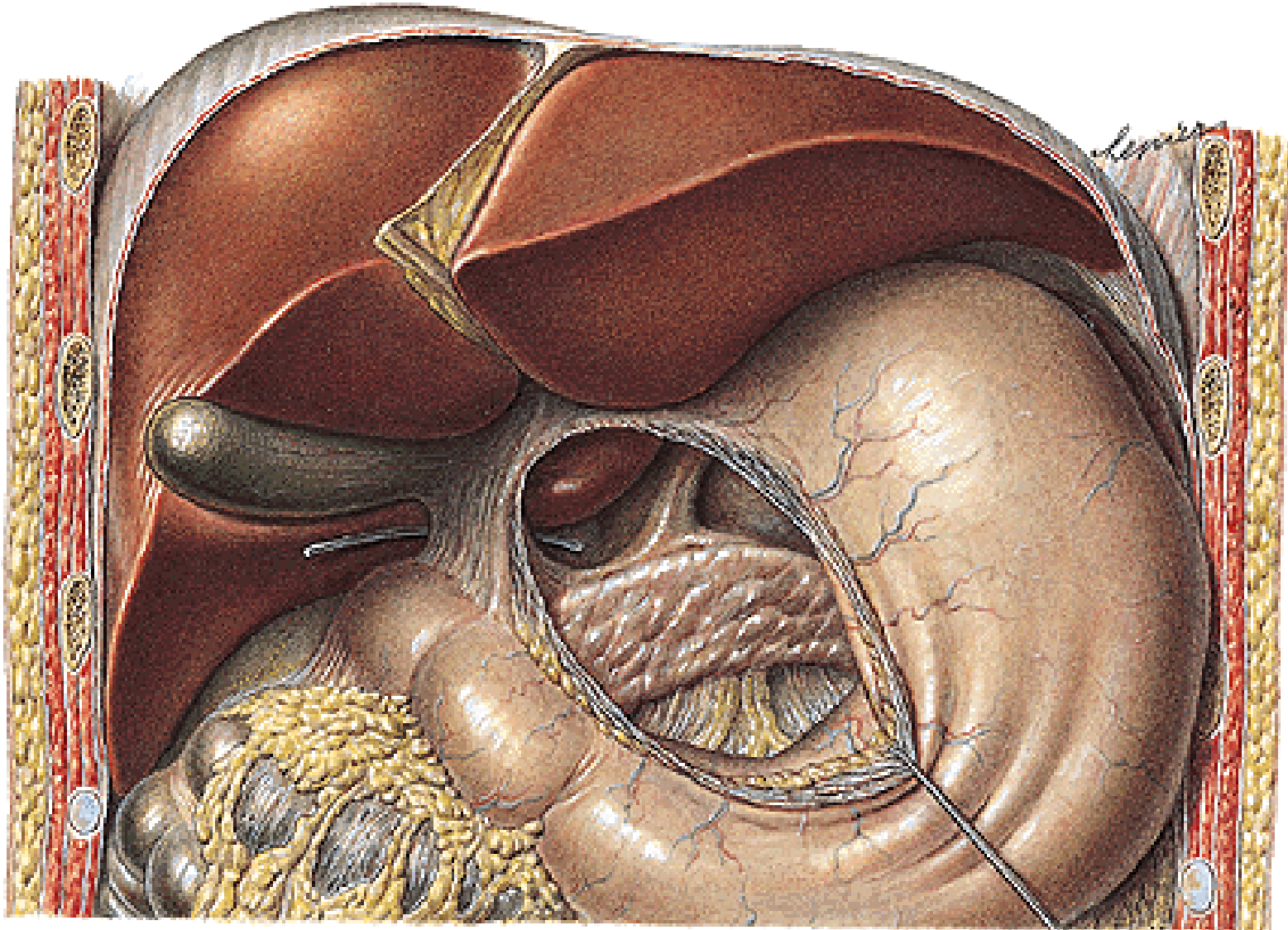
Lig. gastrosplenicum, phrenicosplenicum, splenorenale
Mesenterium – radix mesenterii
Mesocolon transversum, mesoappendix, mesocolon
sigmoideum, lig. phrenicocolicum



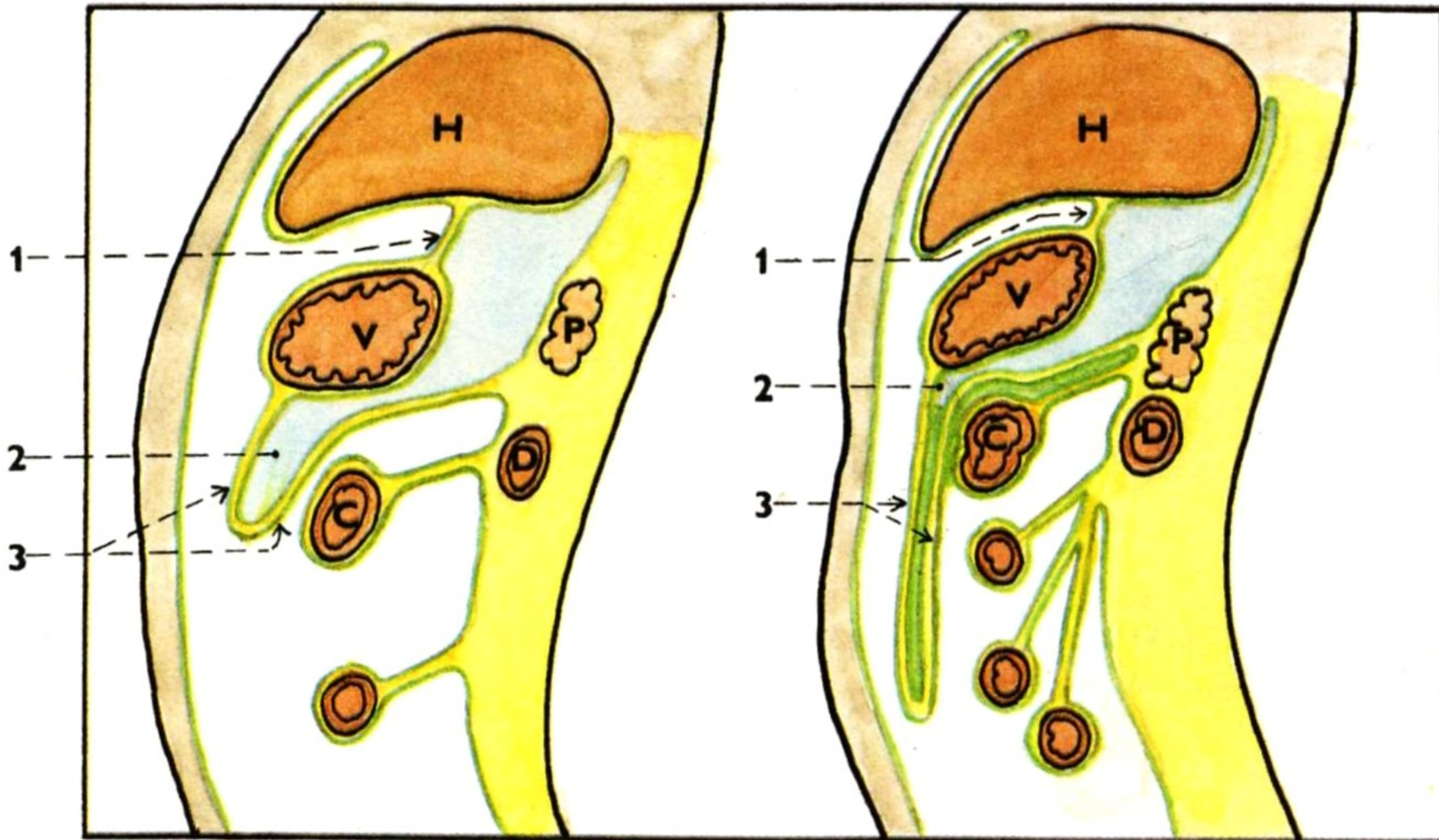
Bursa omentalis



**Foramen epiploicum/omentale (Winslow)
Recessus sup., splenicus, inf.**

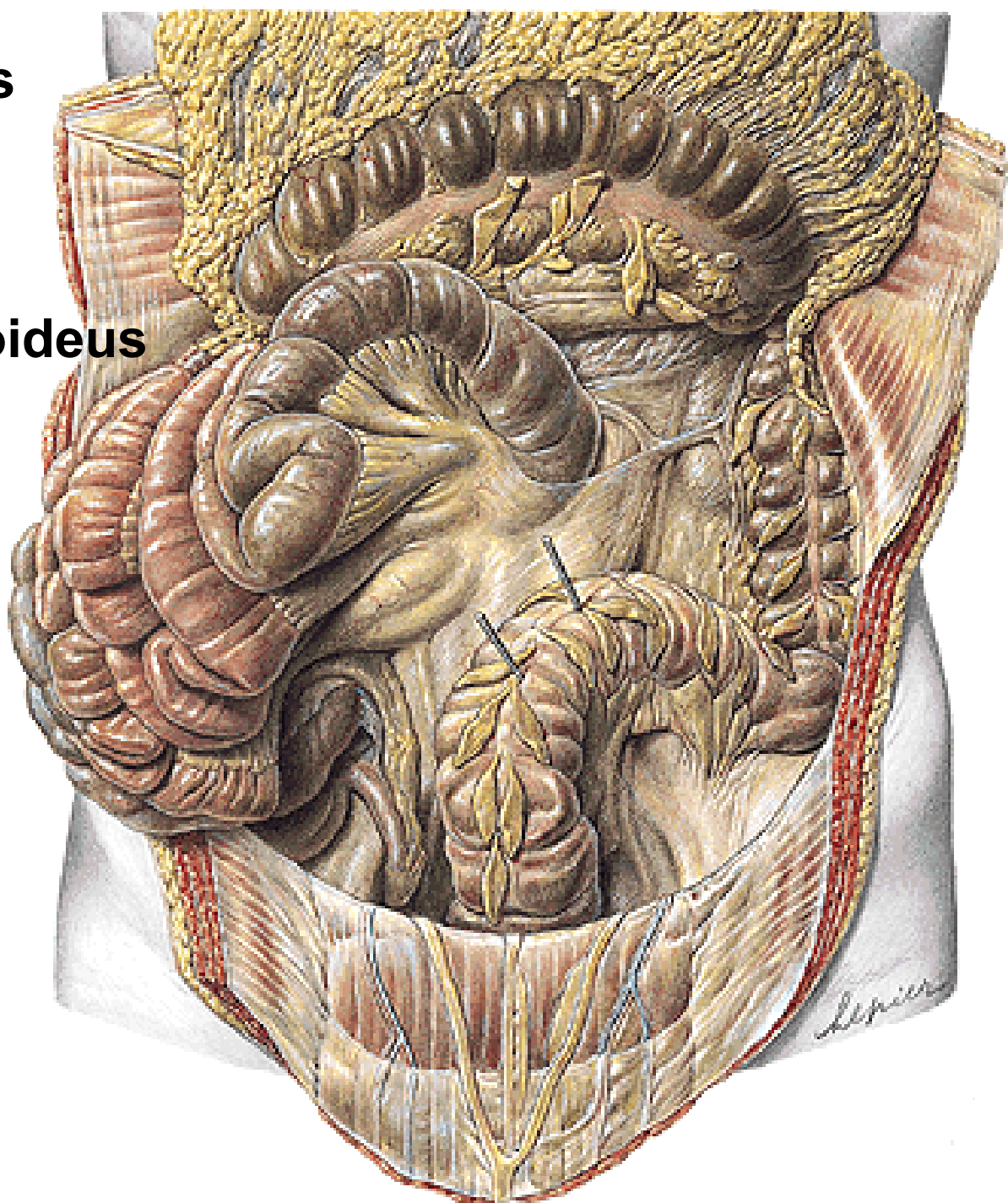


Recessus inferior bursae omentalis



**Recessus duodenalis
sup., inf., sinister,
retroduodenalis**

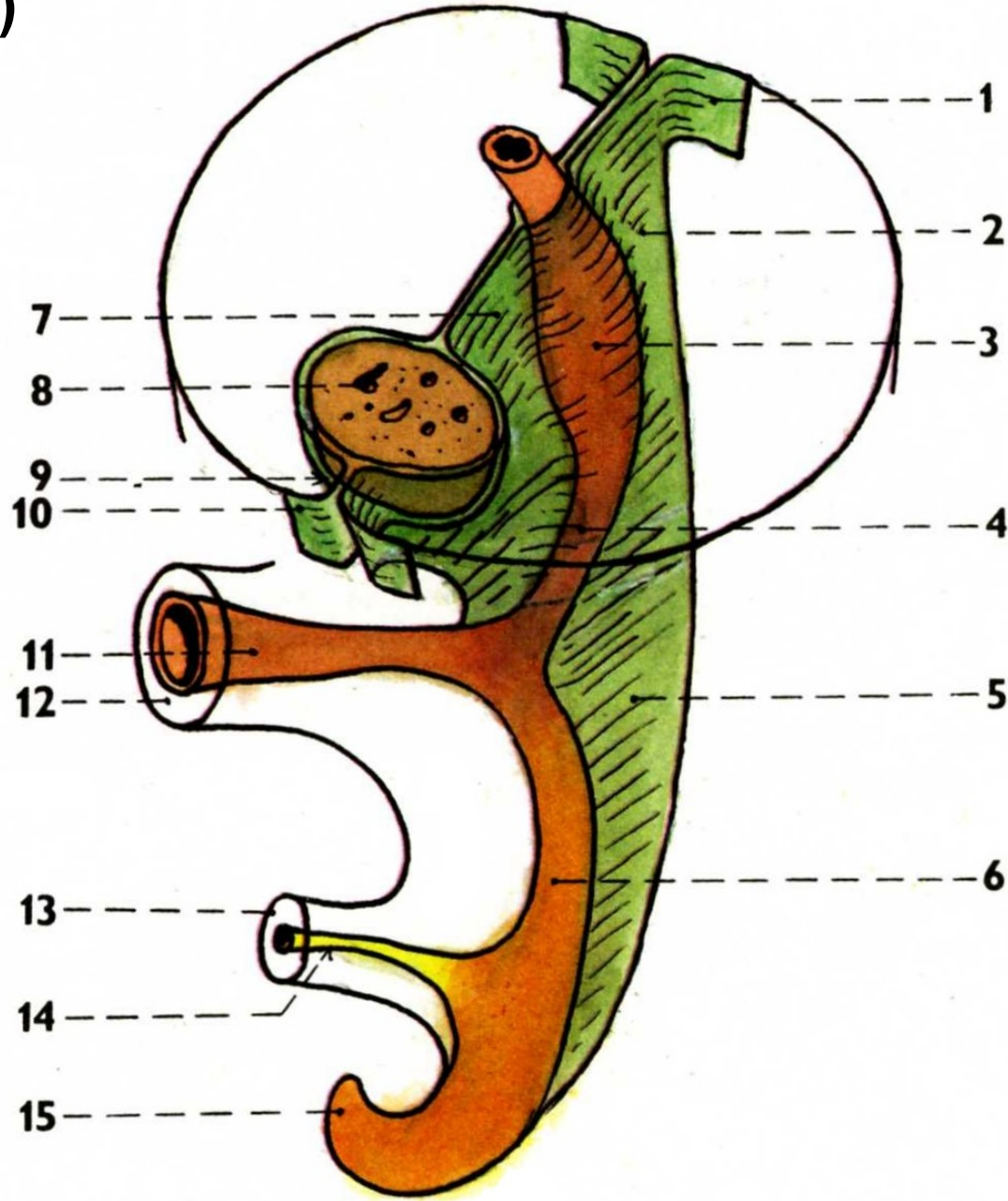
Recessus intersigmoideus



Ductus omphaloentericus
Ileal diverticulum (Meckel)

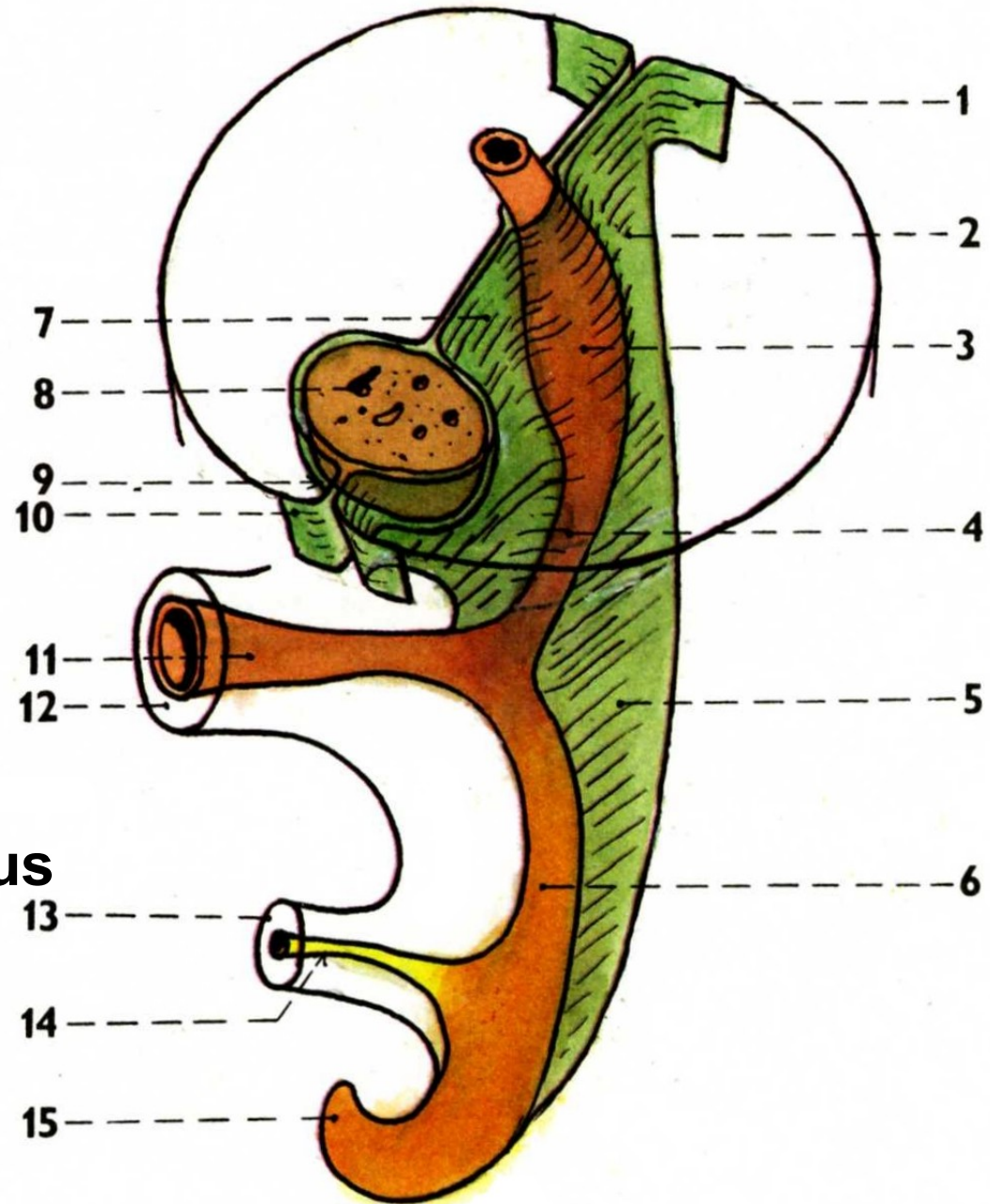


Mesenterium dorsale
Septum transversum
Mesogastrium ventrale



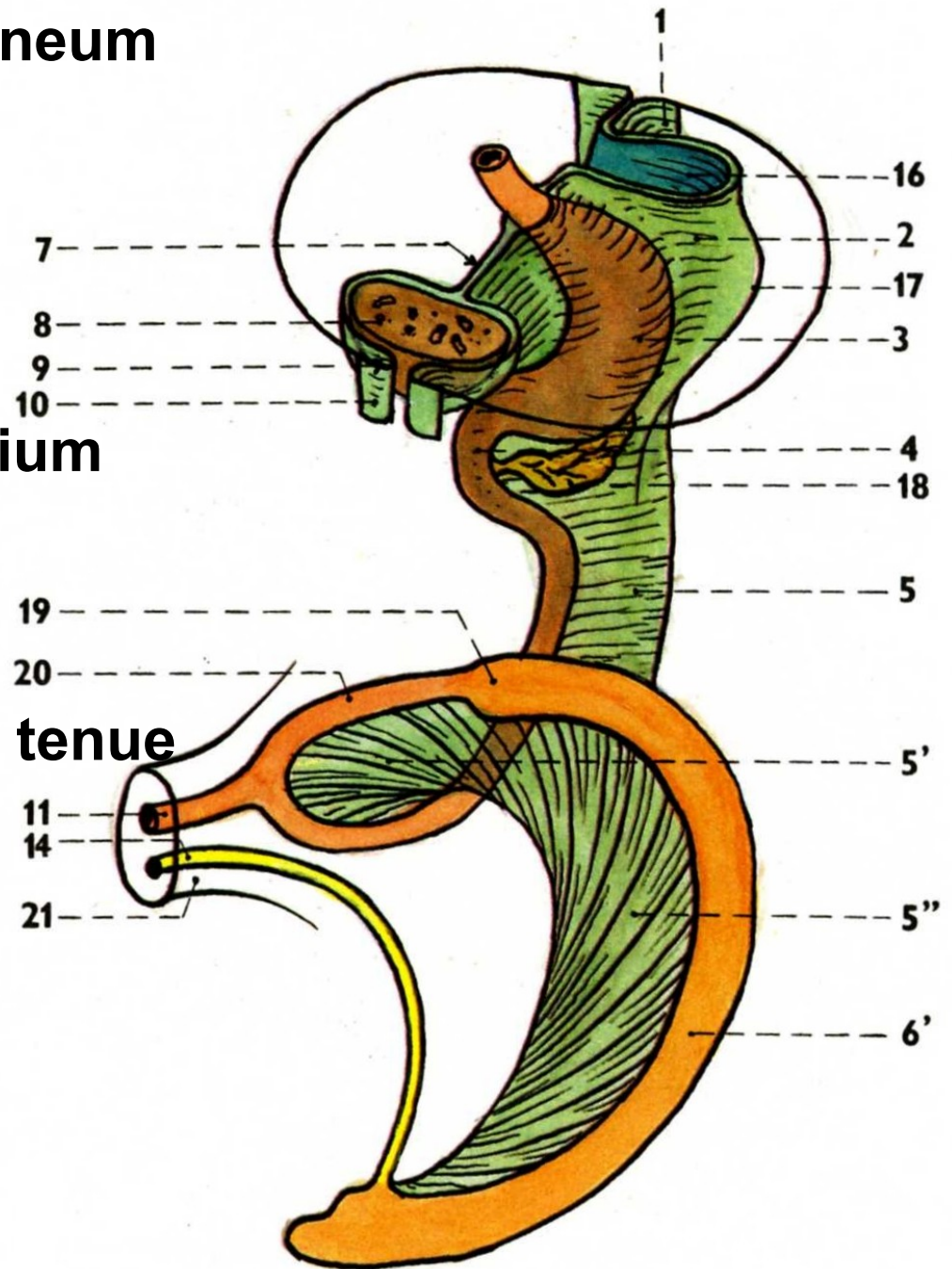
Development of the peritoneum

1. peritoneum parietale
2. mesogastrium dorsale
3. anlage of the stomach
4. anlage of the duodenum
5. mesenterium
6. hindgut
7. mesogastrium ventrale
8. liver
9. mesogastrium ventrale
10. peritoneum parietale
11. ductus omphaloentericus
12. umbilicus
13. connecting stalk
14. allantois
15. hindgut



Development of the peritoneum

- 16.anlage of the bursa omentalis
- 17.spleen in the mesogastrium dorsale
- 18.anlage of the pancreas
- 19.anlage of the caecum
- 20.anlage of the intestinum tenue
- 21.umbilicus



Development of the peritoneum

2'. lig. phrenicolienale

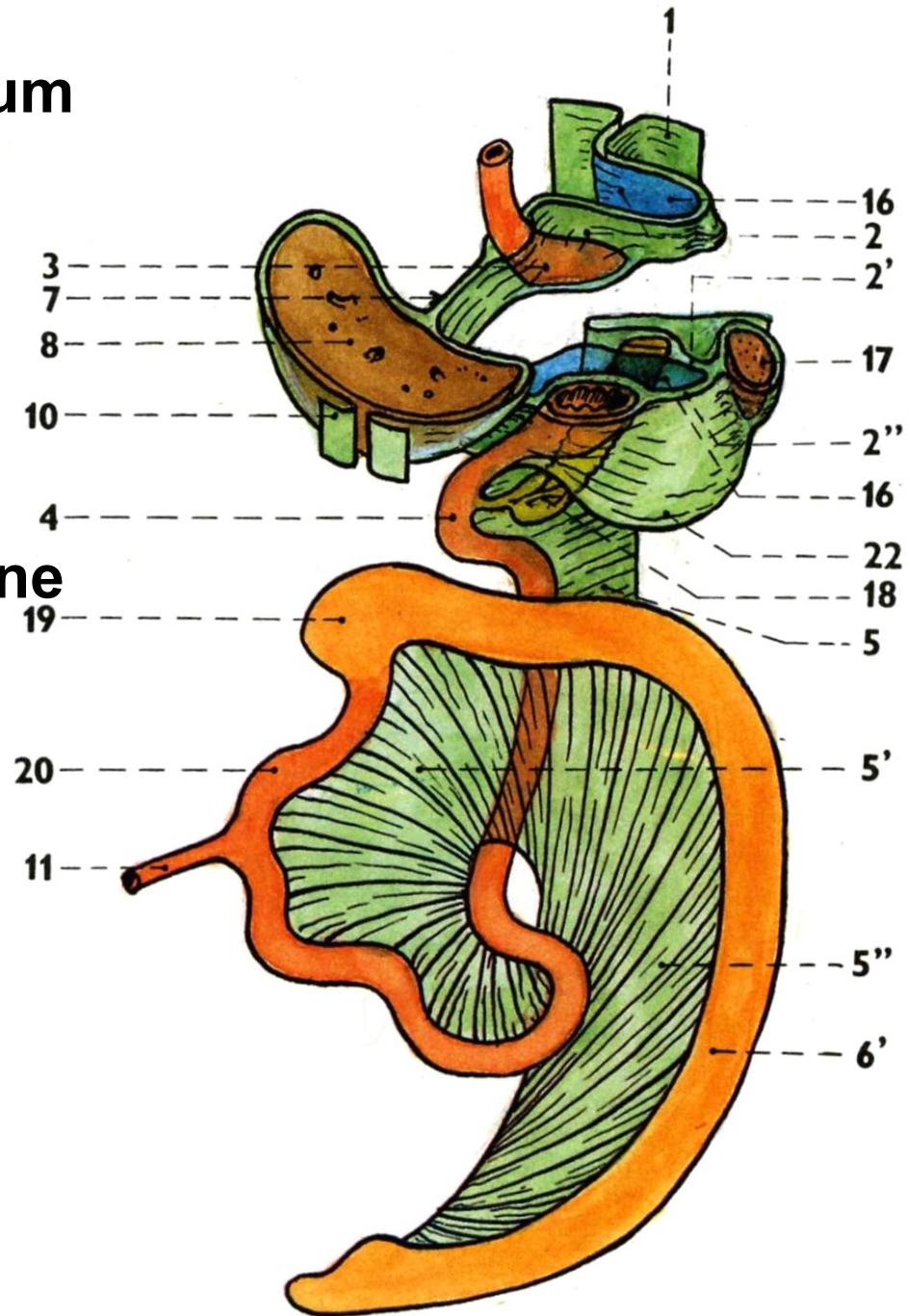
2''. lig. gastrolienale

5'. mesenterium

5''. mesocolon

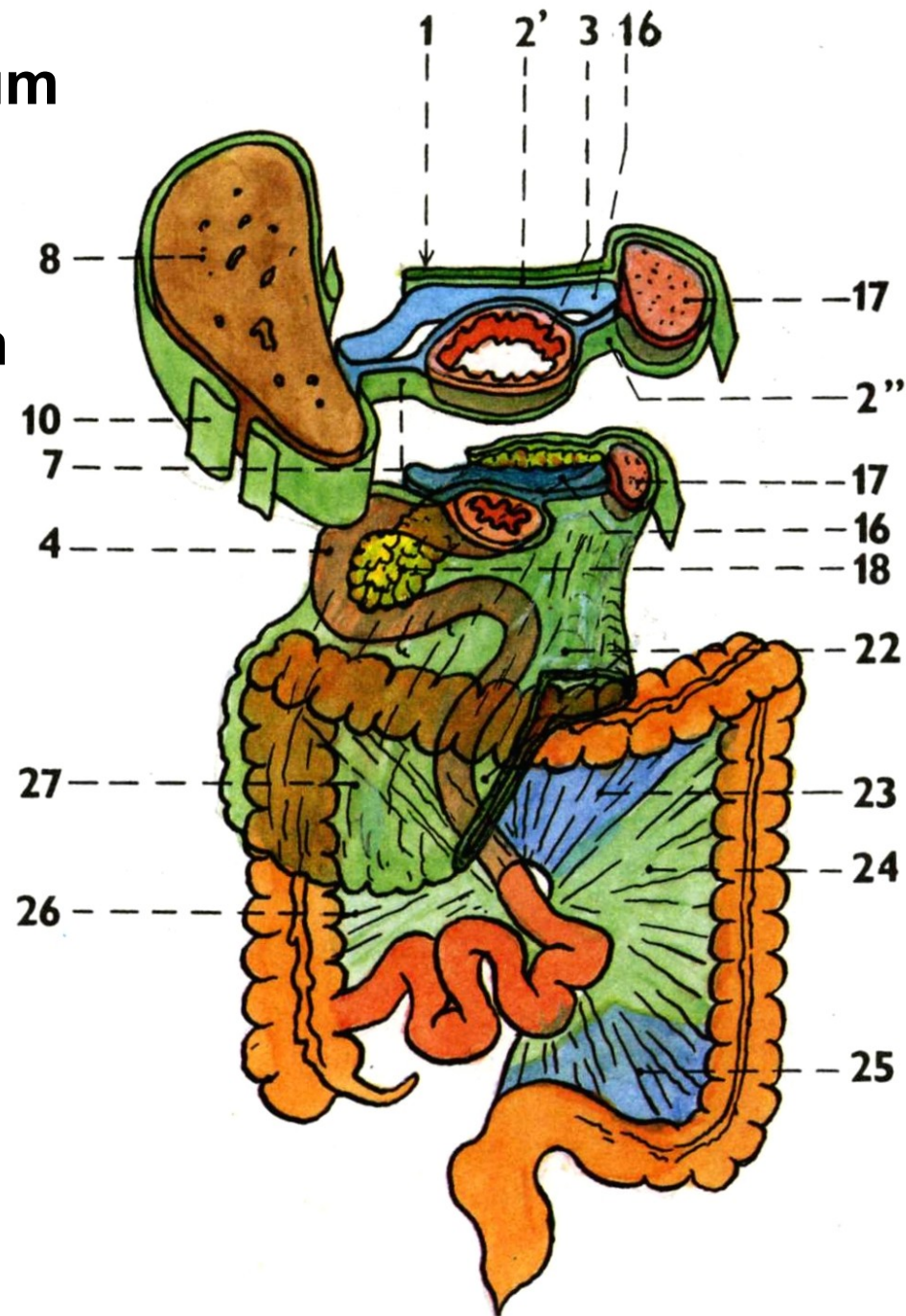
6'. anlage of the large intestine

22. omentum majus



Development of the peritoneum

- 23. mesocolon transversum
- 24. mesentery of the colon descendens
- 25. mesocolon sigmoideum
- 26. mesentery of the colon ascendens
- 27. omentum majus



Illustrations 34, 43,45,47-49 were copied from:
**Čihák R: Anatomie 2 (Splanchnologia). Avicenum,
zdravotnické nakladatelství, Praha, 1988.**

Remaining illustrations, photographs, and radiographs were
copied from:

**Atlas der Anatomie des Menschen/Sobotta.
Putz,R., und Pabst,R. 20. Auflage. München:
Urban & Schwarzenberg, 1993**