

**MALE GENITAL ORGANS
(ORGANA GENITALIA
MASCULINA)**

Organa genitalia interna:

Testis

Epididymis

Ductus deferens

Urethra masculina

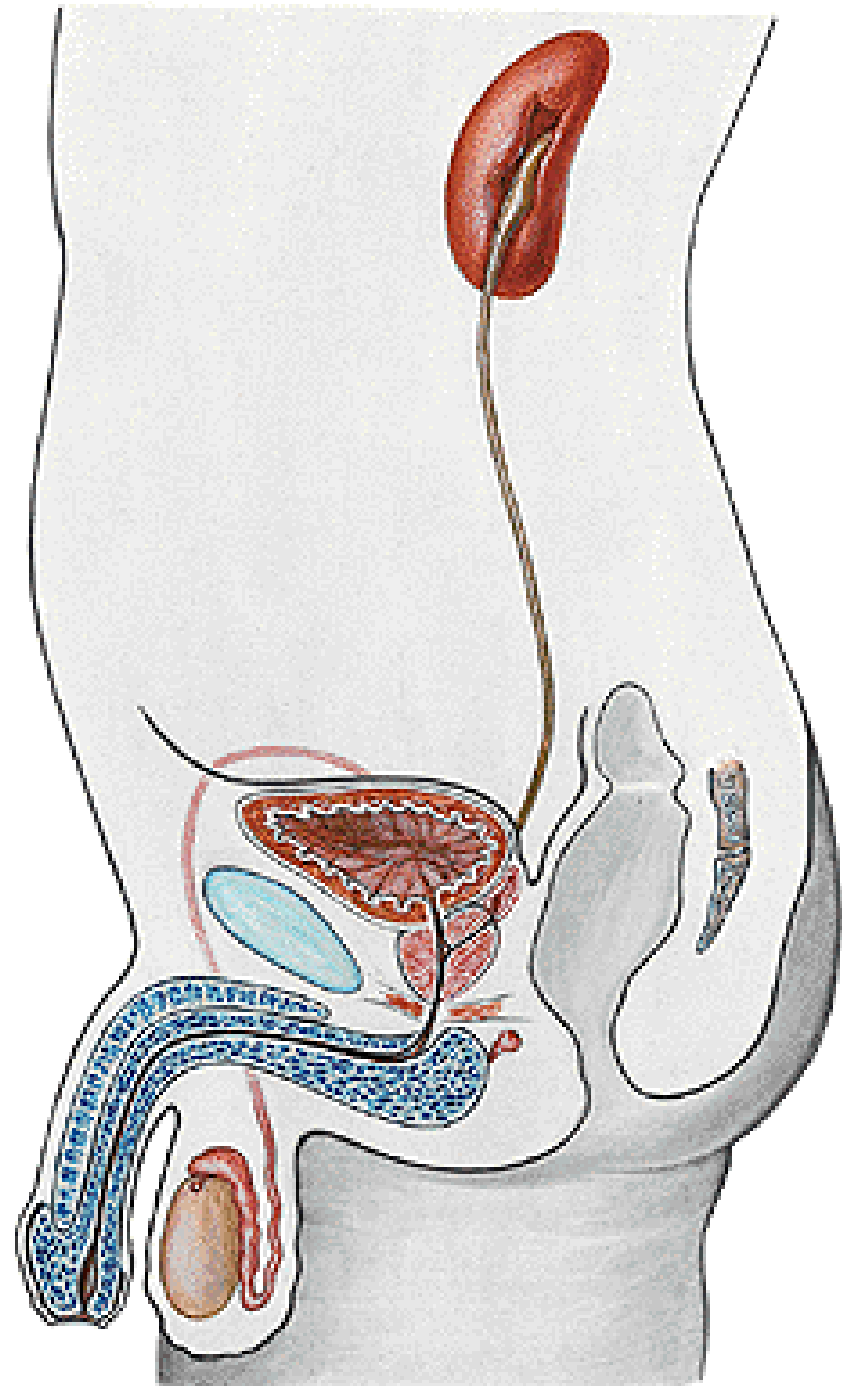
Vesicula seminalis

Prostata

Organa genitalia externa:

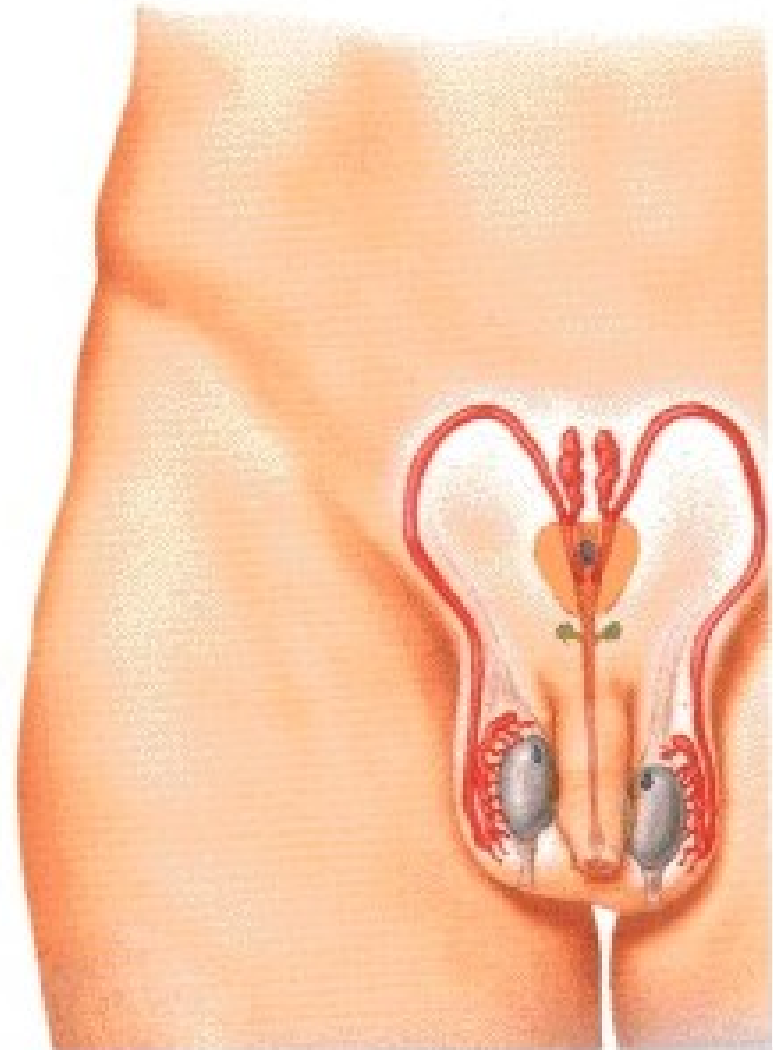
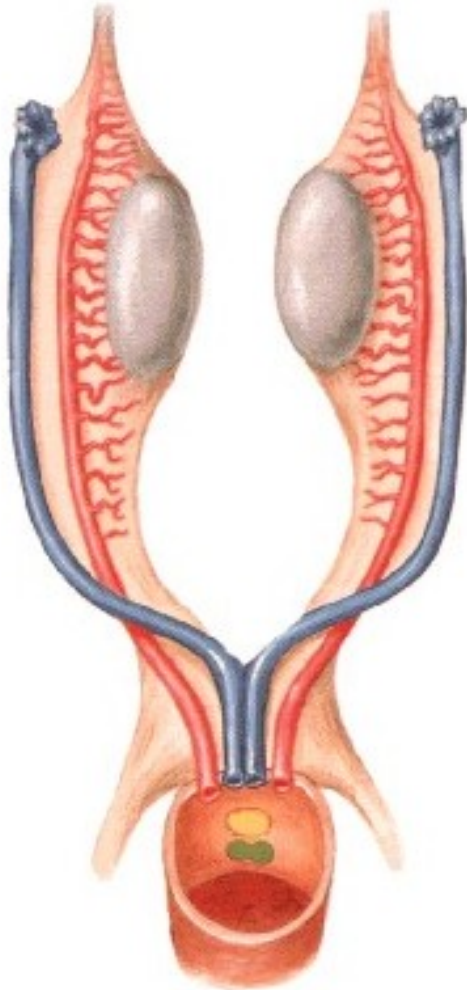
Penis

Scrotum



Development: Wolffian ducts Müllerian ducts

Undifferentiated Stage



TESTIS

Facies medialis

Facies lateralis

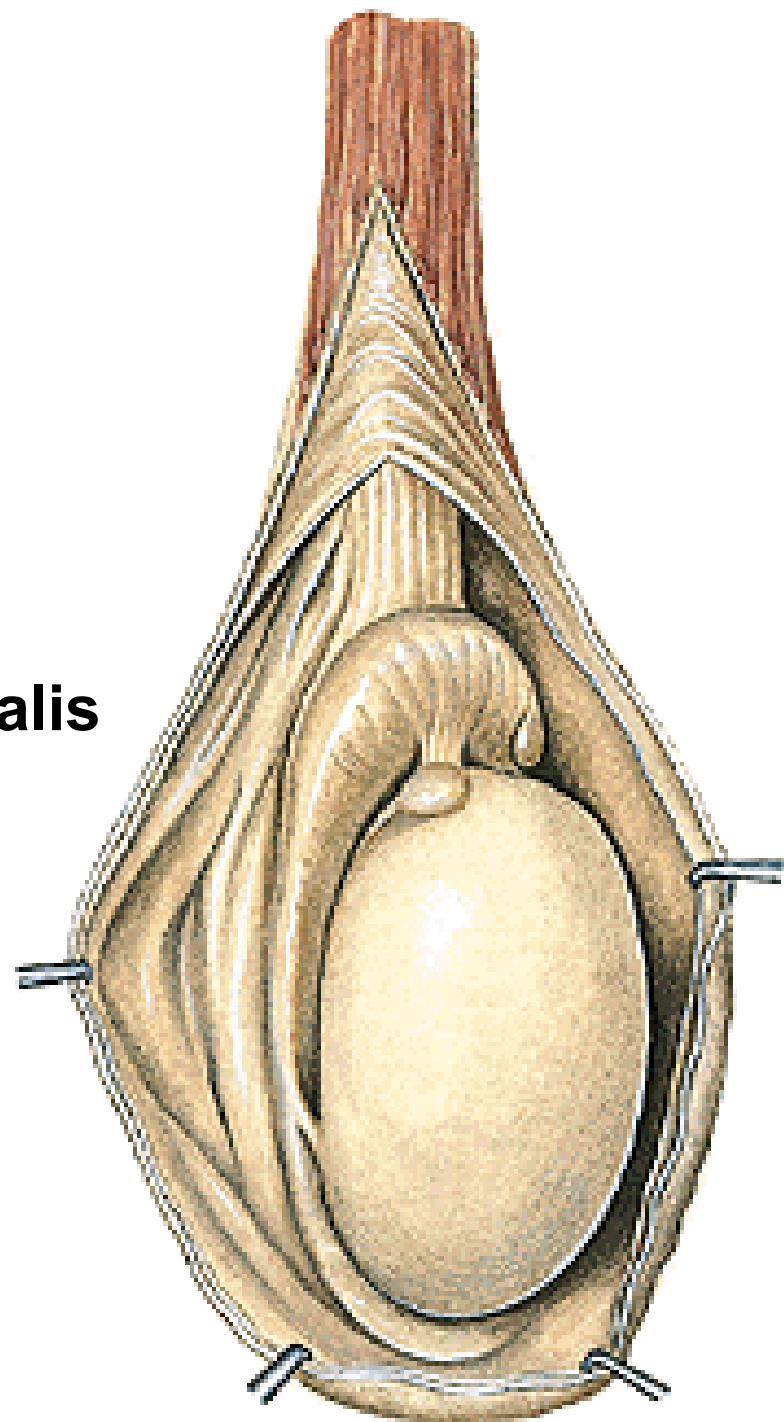
Extremitas superior

Extremitas inferior

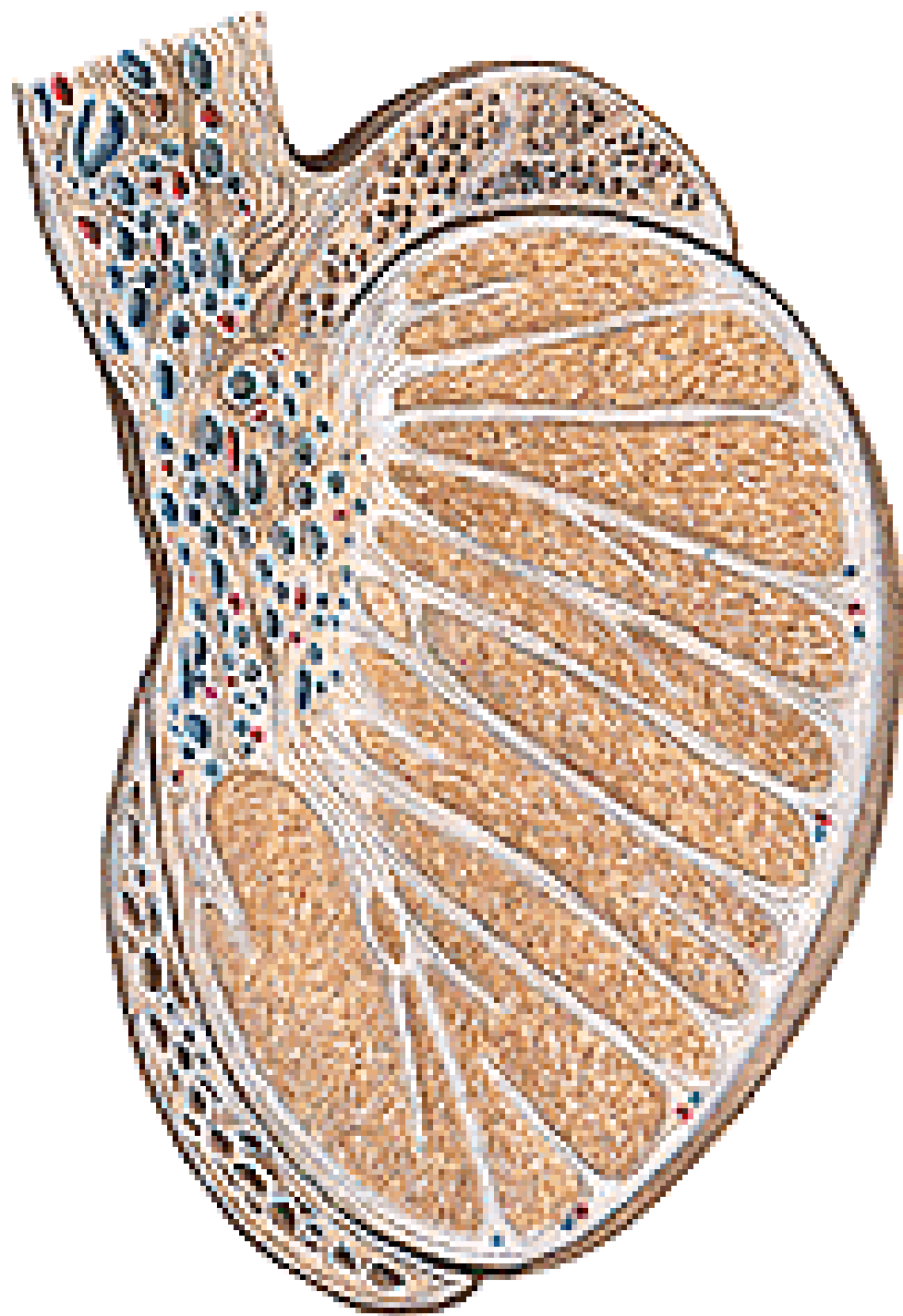
Margo anterior

Margo posterior

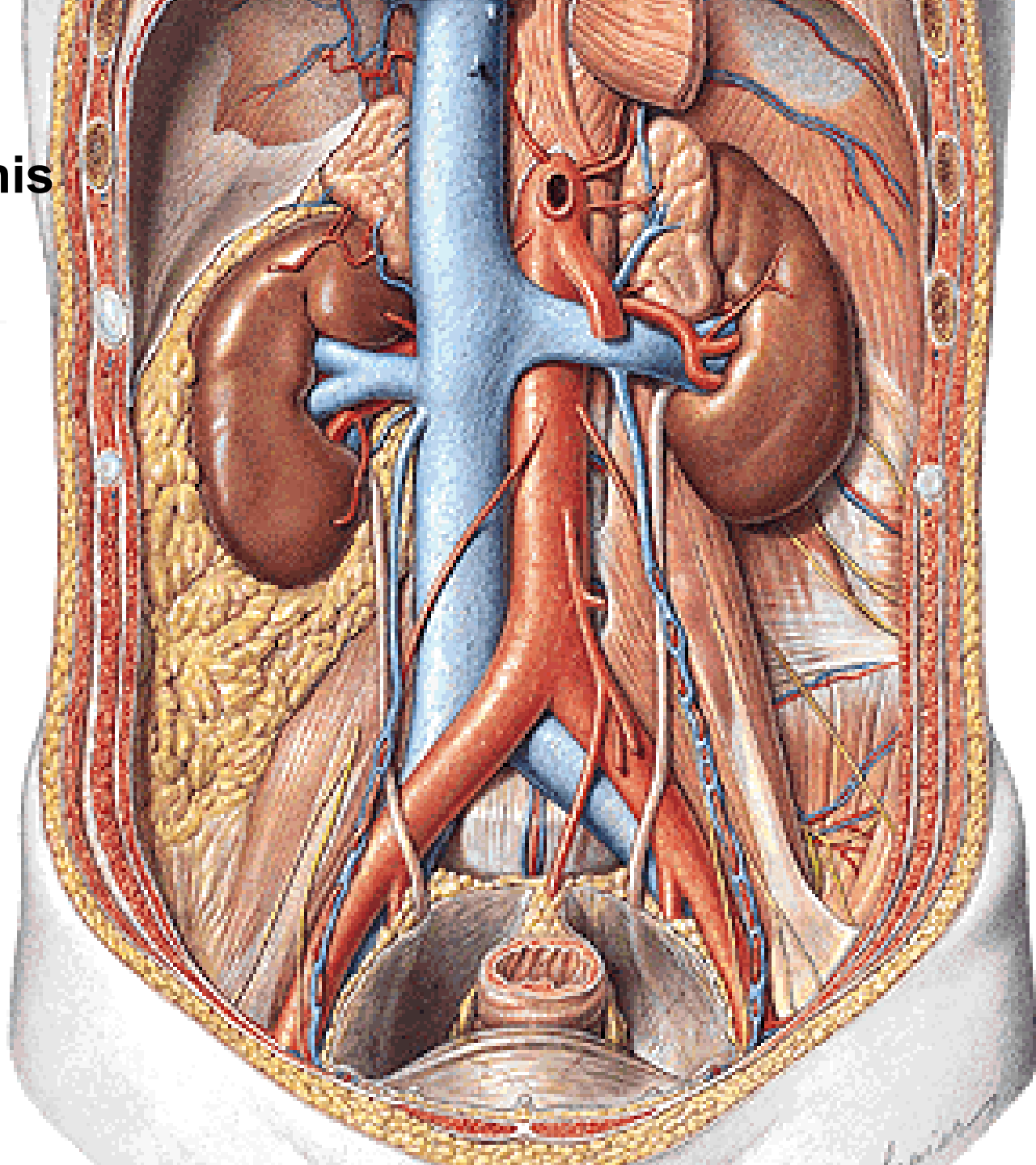
**Lamina visceralis tunicae vaginalis
(Epiorchium)**



Tunica albuginea
Mediastinum testis
Septula testis
Lobuli testis
Hilum testis
Tubuli seminiferi contorti
Spermatozoa
Supporting cells of Sertoli
Interstitial cells of Leydig
Tubuli seminiferi recti
Rete testis
Ductuli efferentes testis



A. testicularis
Plexus pampiniformis
- vv. testiculares
NII. lumbales



EPIDIDYMIS

Caput epididymidis

Corpus epididymidis

Cauda epididymidis

Sinus epididymidis

Lig. epididymidis sup. et inf.

Lig. scrotale

(Gubernaculum testis)

Lobuli epididymidis

Ductus epididymidis

A. testicularis

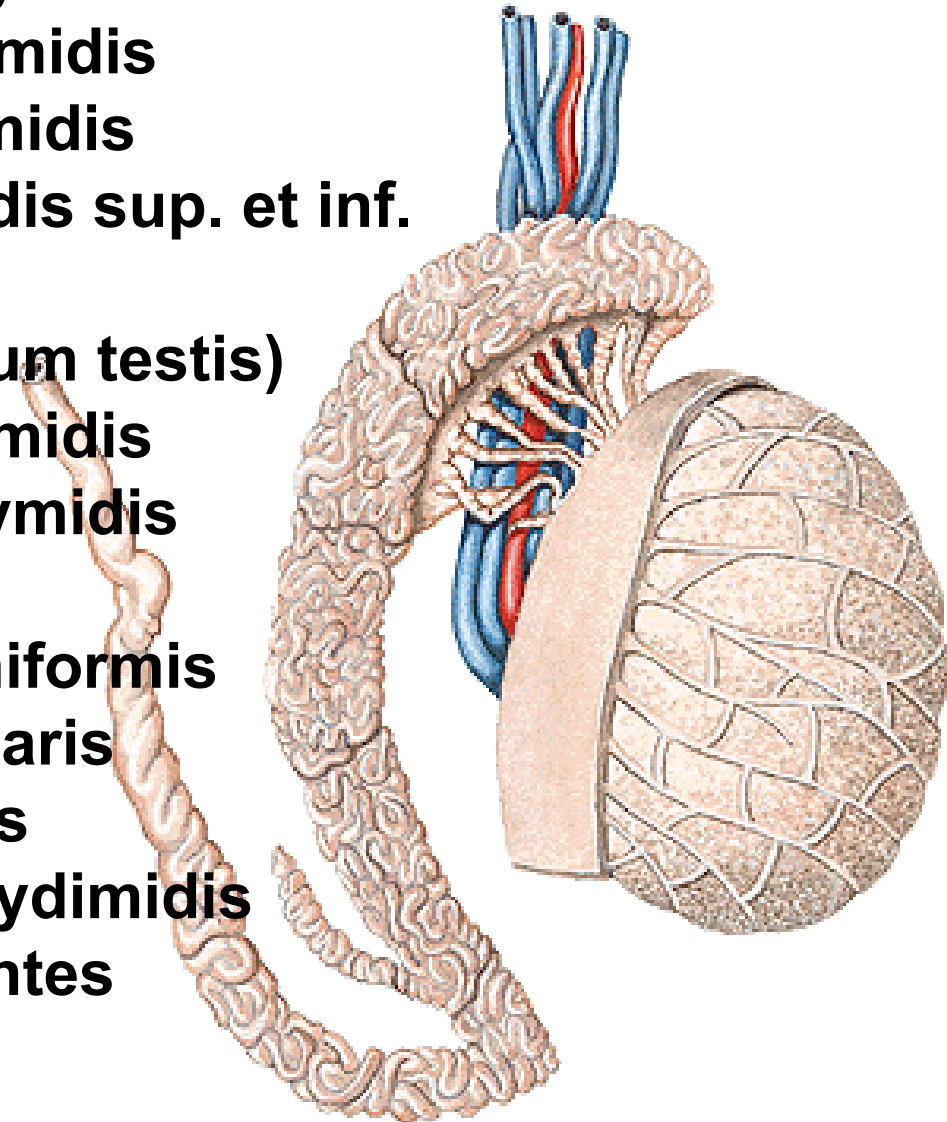
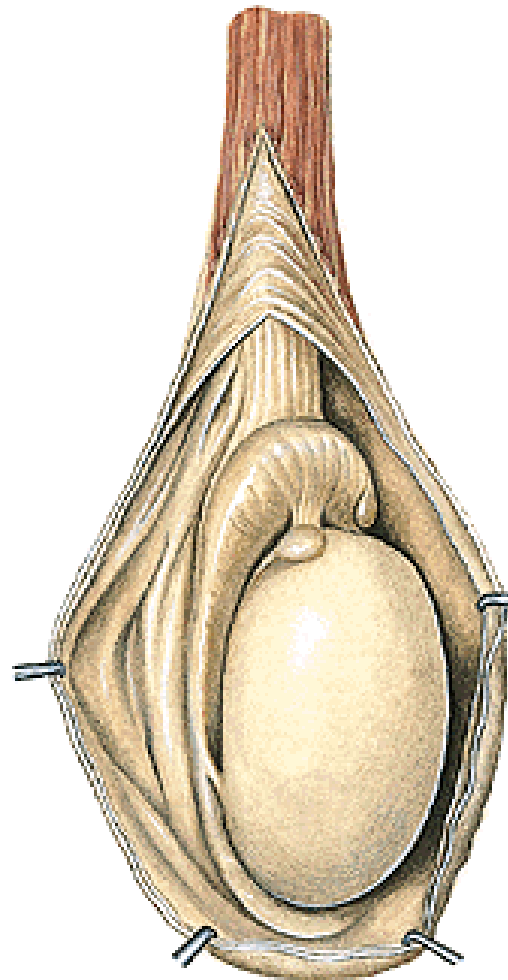
Plexus pampiniformis

Plexus testicularis

Appendix testis

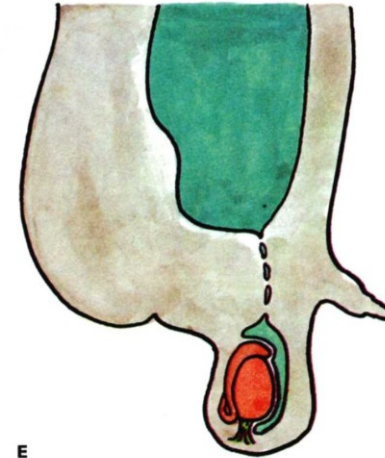
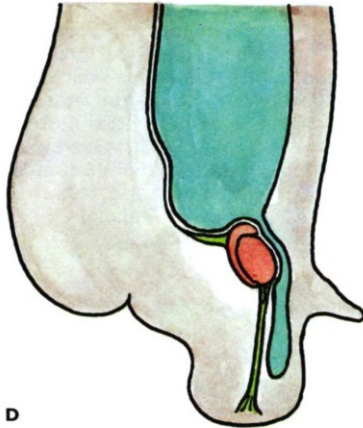
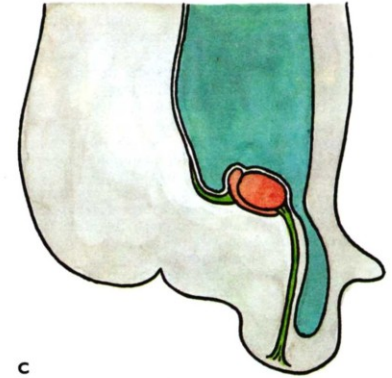
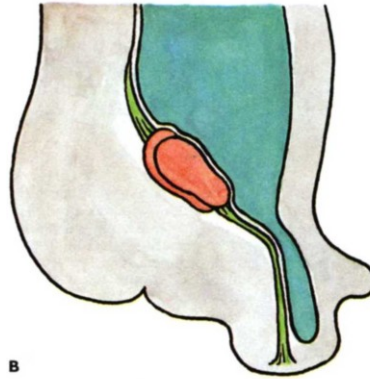
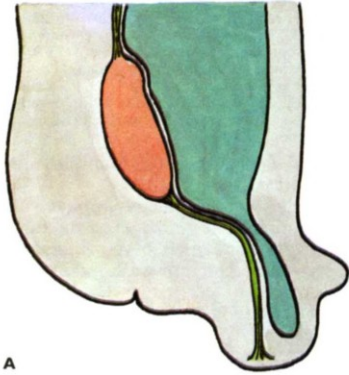
Appendix epididymidis

Ductuli aberrantes



DESCENSUS TESTIUM

Gubernaculum testis → Lig. scrotale
Processus vaginalis → Tunica vaginalis
Lig. vaginale



Retentio testis (cryptorchidism). Ectopia testis.

DUCTUS DEFERENS (VAS DEFERENS)

Pars epididymica

Pars funicularis

Pars inguinalis

Pars pelvina

Ampulla ductus deferentis - diverticula ampullae

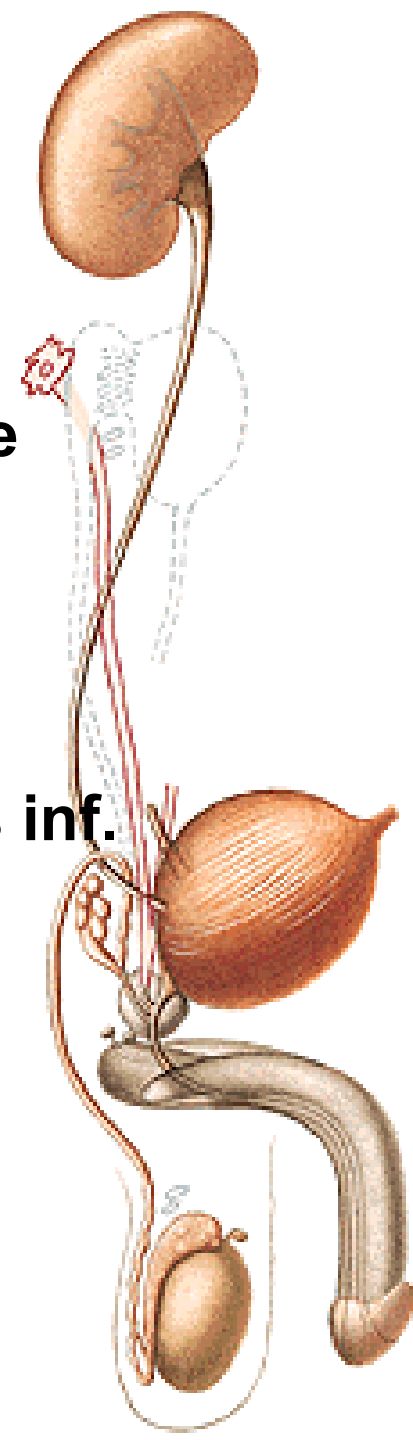
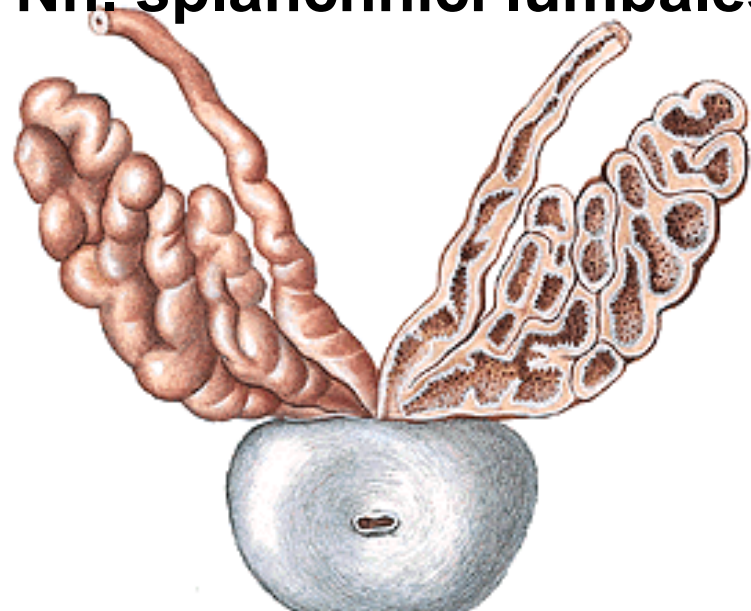
Ductus ejaculatorius – colliculus seminalis

A. ductus deferentis

Plexus pampiniformis et vesicalis

Nll. iliaci int. et ext.

Nn. splanchnici lumbales, plexus hypogastricus inf.



FUNICULUS SPERMATICUS: Ductus deferens

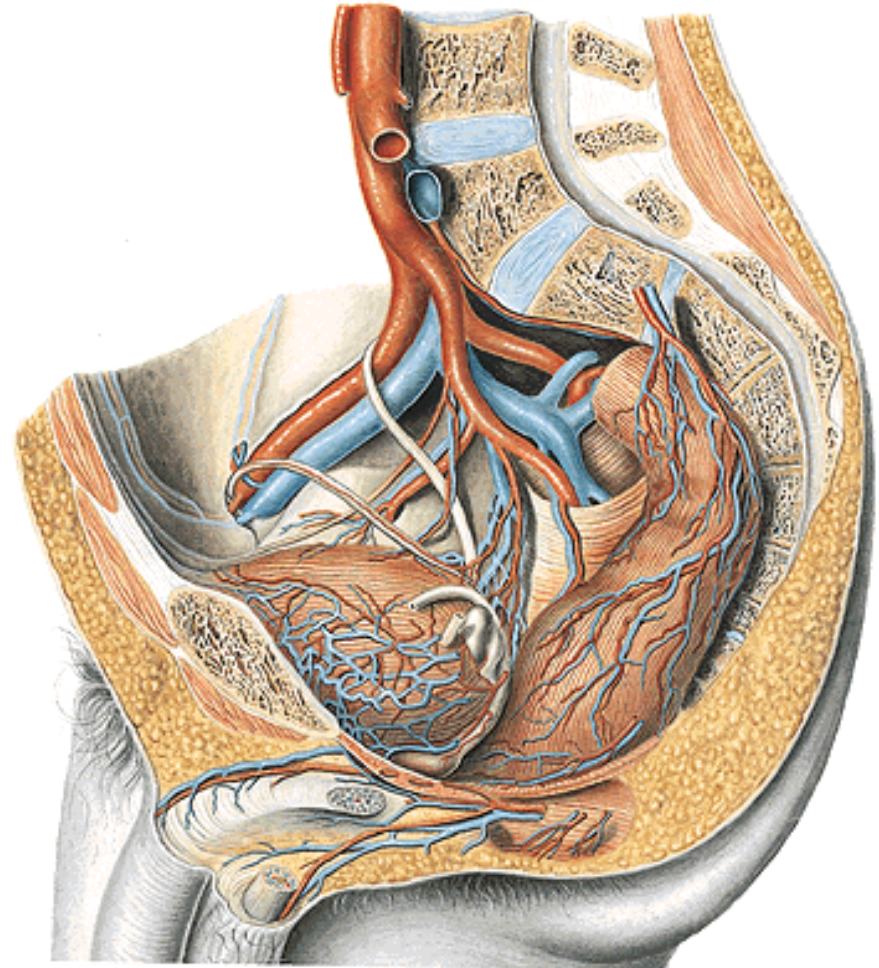
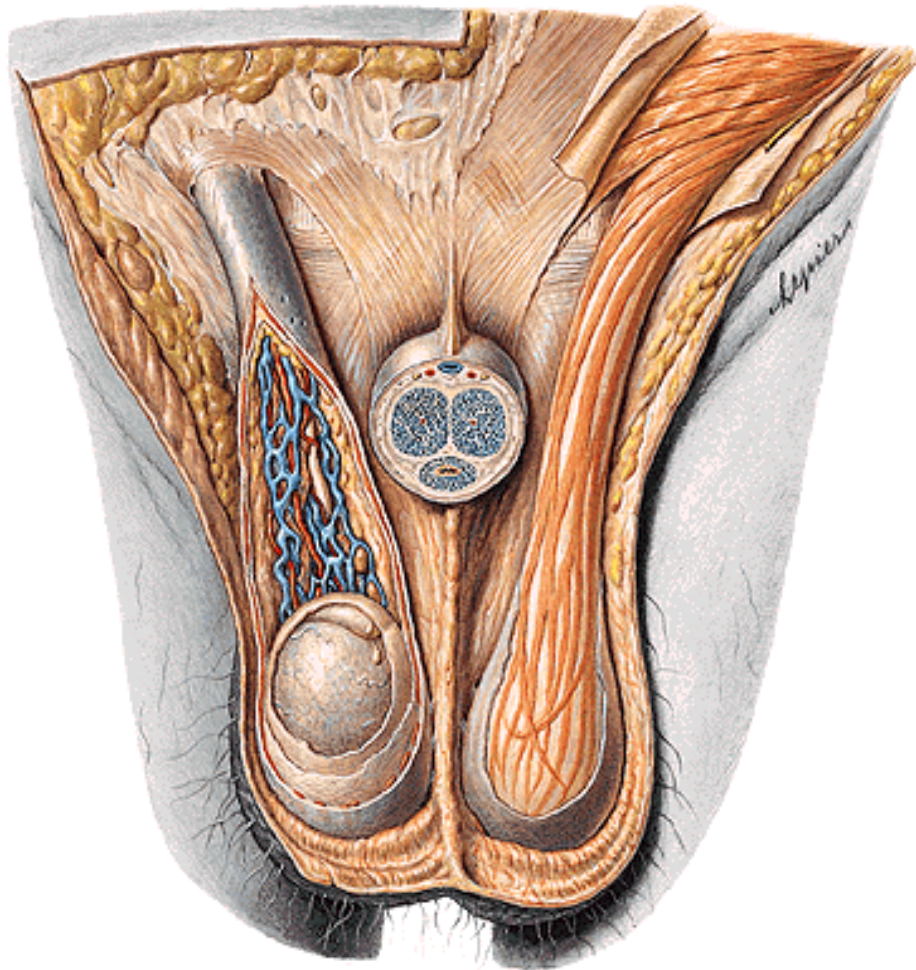
A. ductus deferentis

A. testicularis

Plexus pampiniformis

Plexus testicularis

Plexus deferentialis

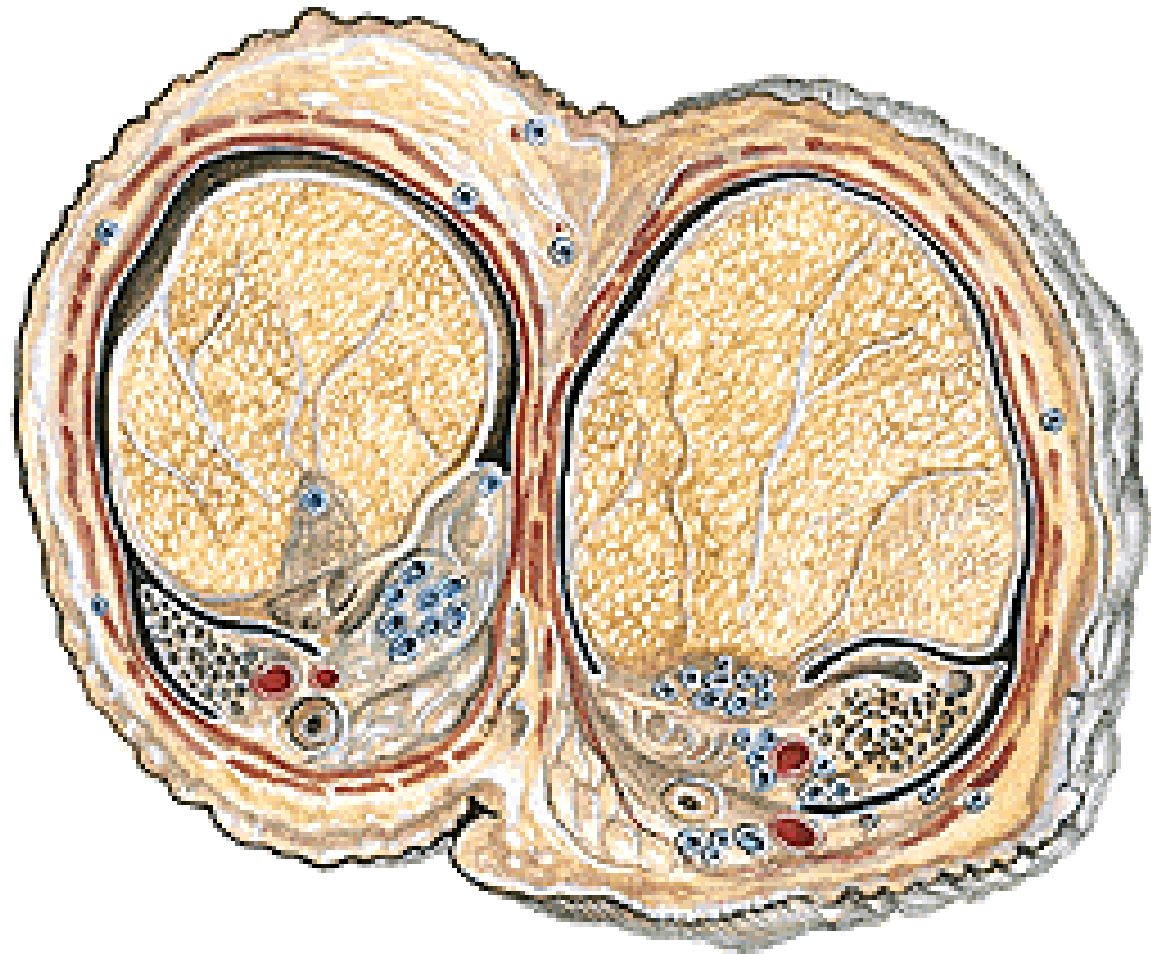


COVERINGS OF THE TESTIS, EPIDIDYMIS AND SPERMATIC CORD

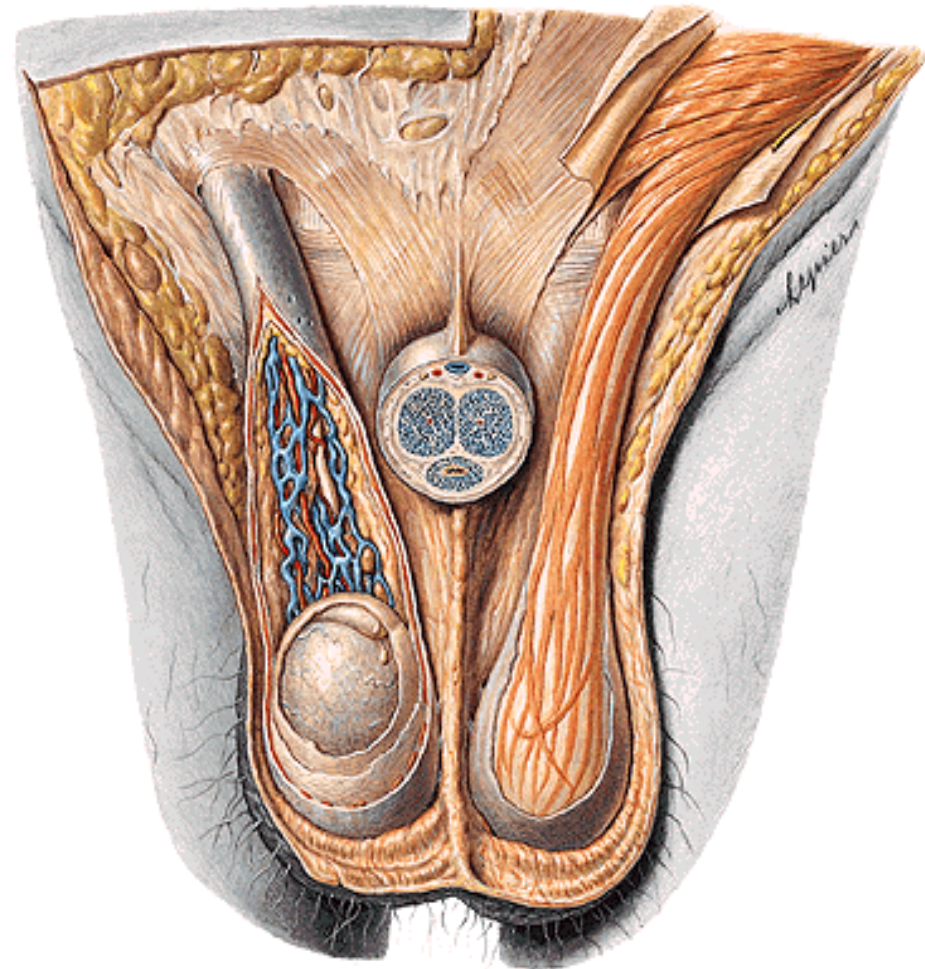
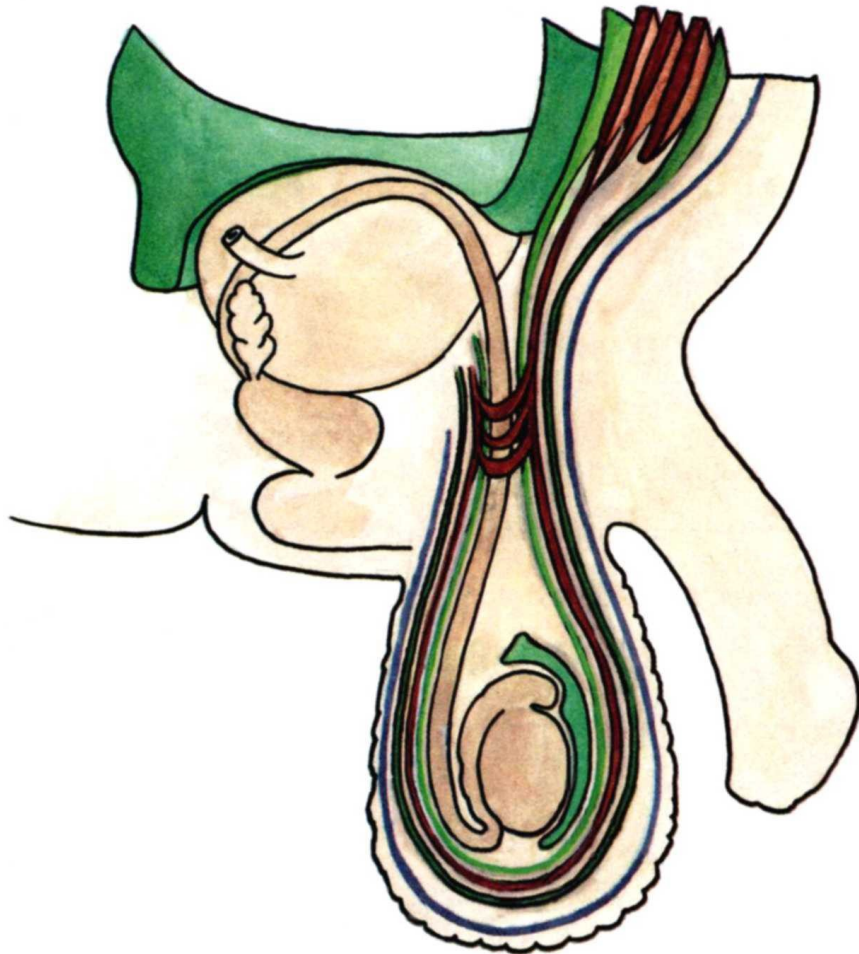
Epiorchium (Lamina visceralis tunicae vaginalis)

Periorchium (Lamina parietalis tunicae vaginalis)

Cavum serosum scroti



Fascia spermatica interna (Fascia transversalis)
Fascia cremasterica - M. cremaster
(M. obliquus abdominis internus, M. transversus abdominis)
Fascia spermatica externa (Fascia abdominis superficialis)



CANALIS INGUINALIS

Posterior wall:

Fascia transversalis:

Falx inguinalis

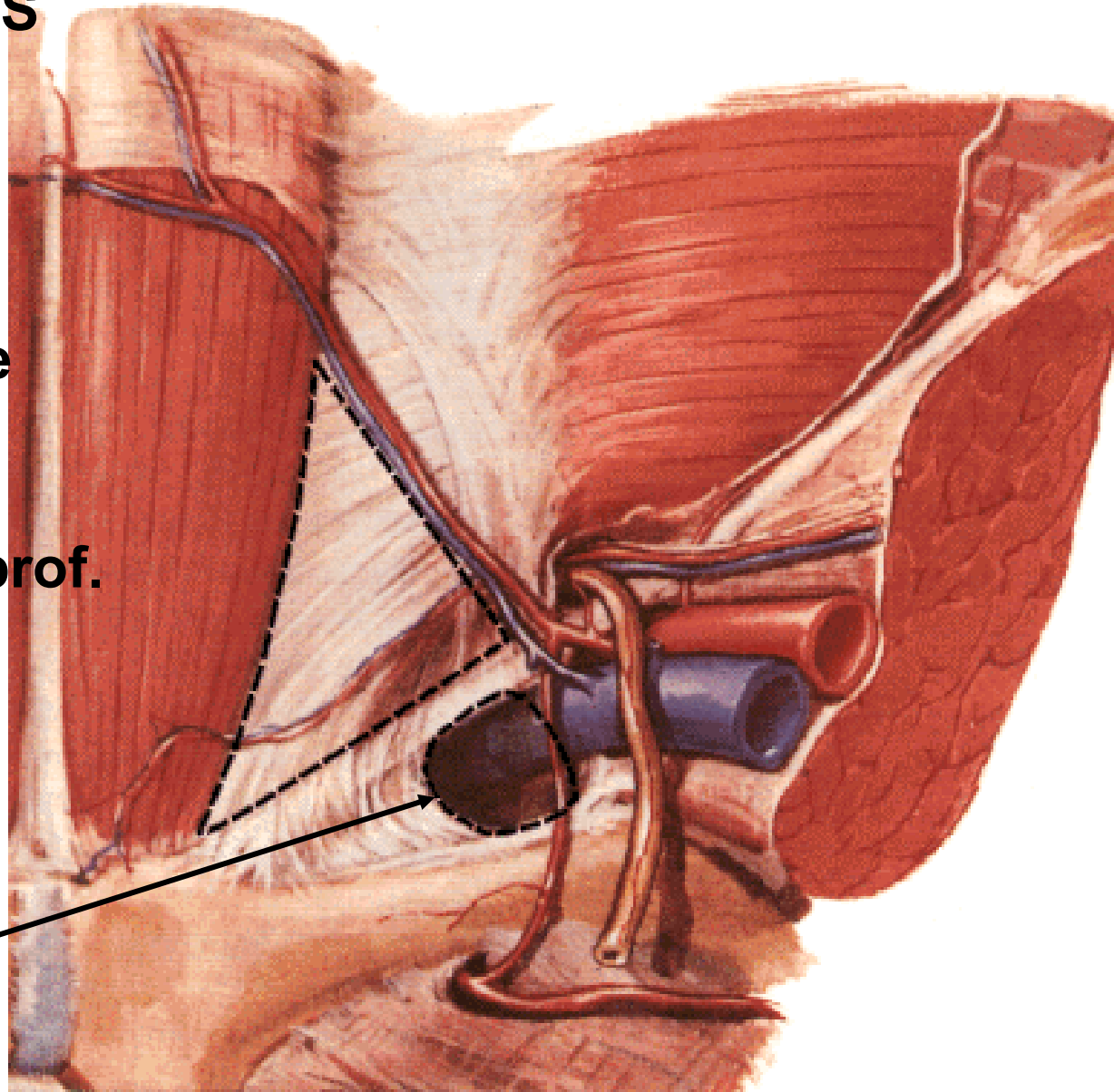
**Trigonum inguinale
(Hesselbachi)**

Lig. interfoveolare

Anulus inguinalis prof.

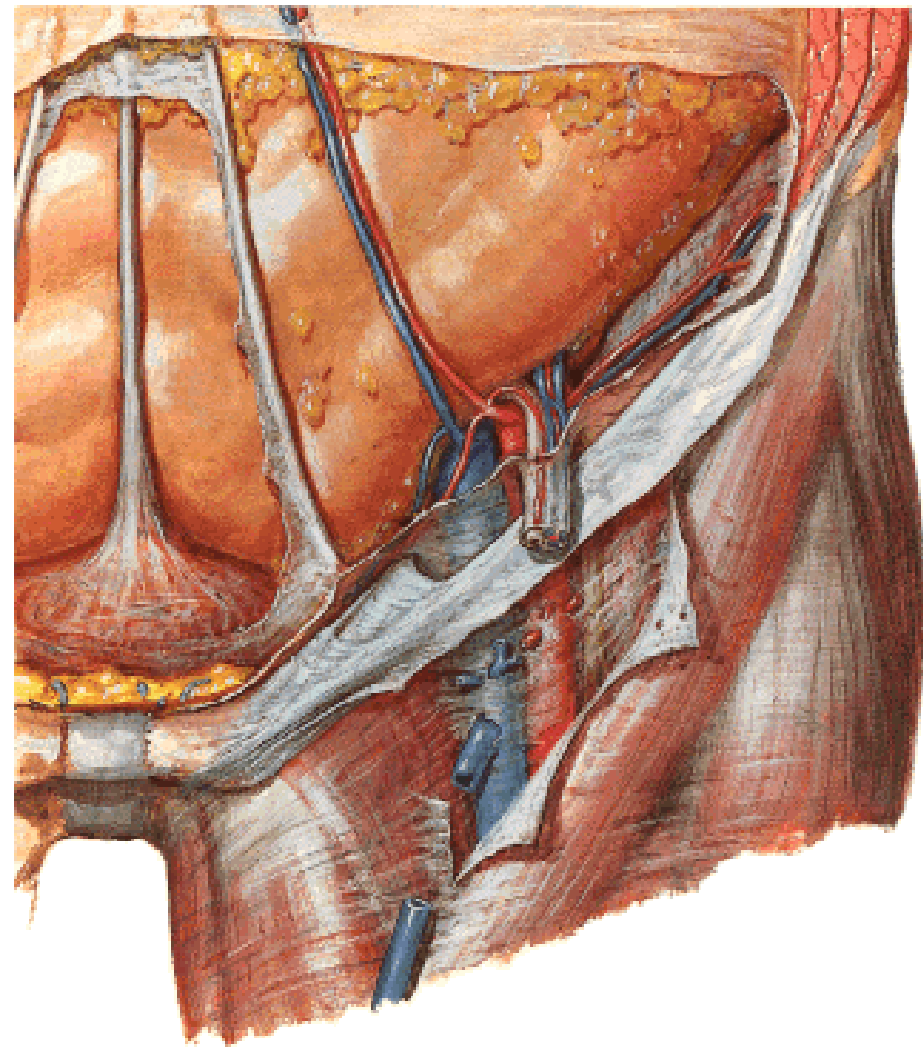
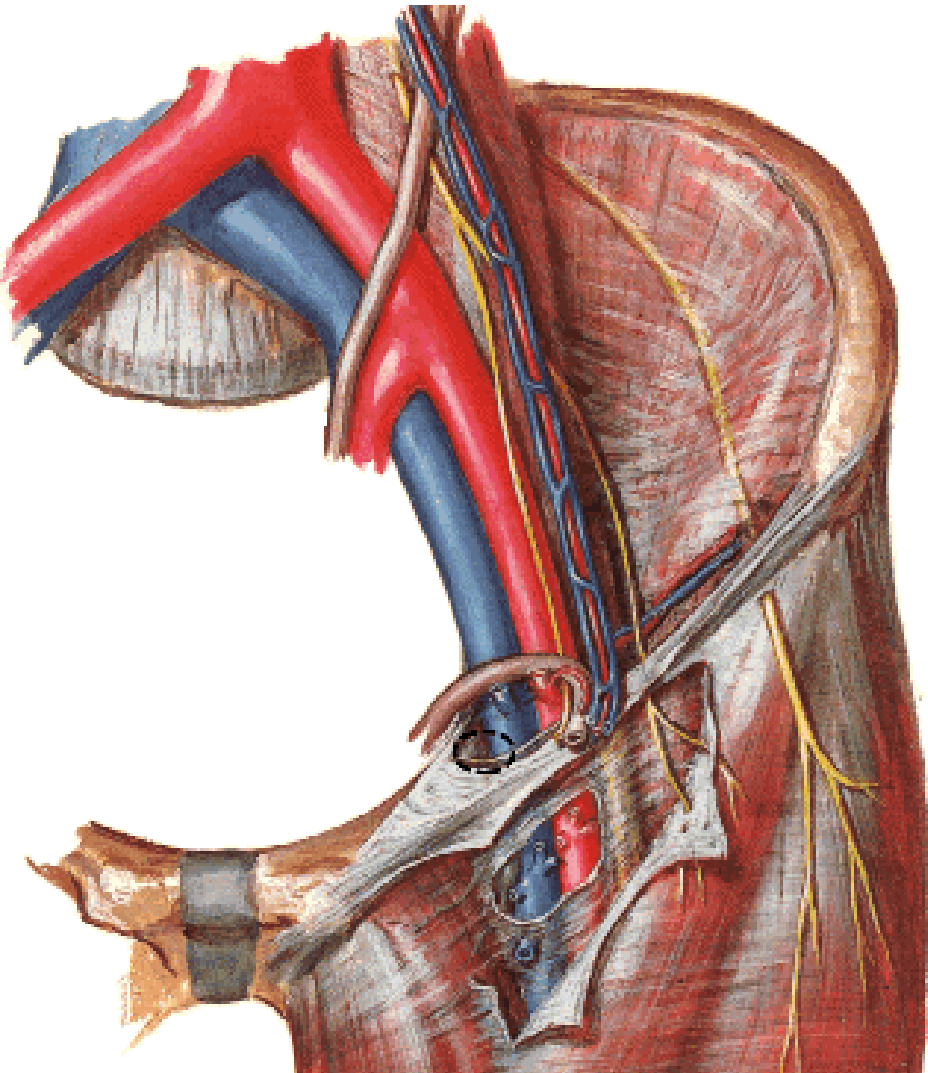
Tractus iliopubicus

Anulus femoralis



CANALIS INGUINALIS

Inferior wall:
Lig. inguinale



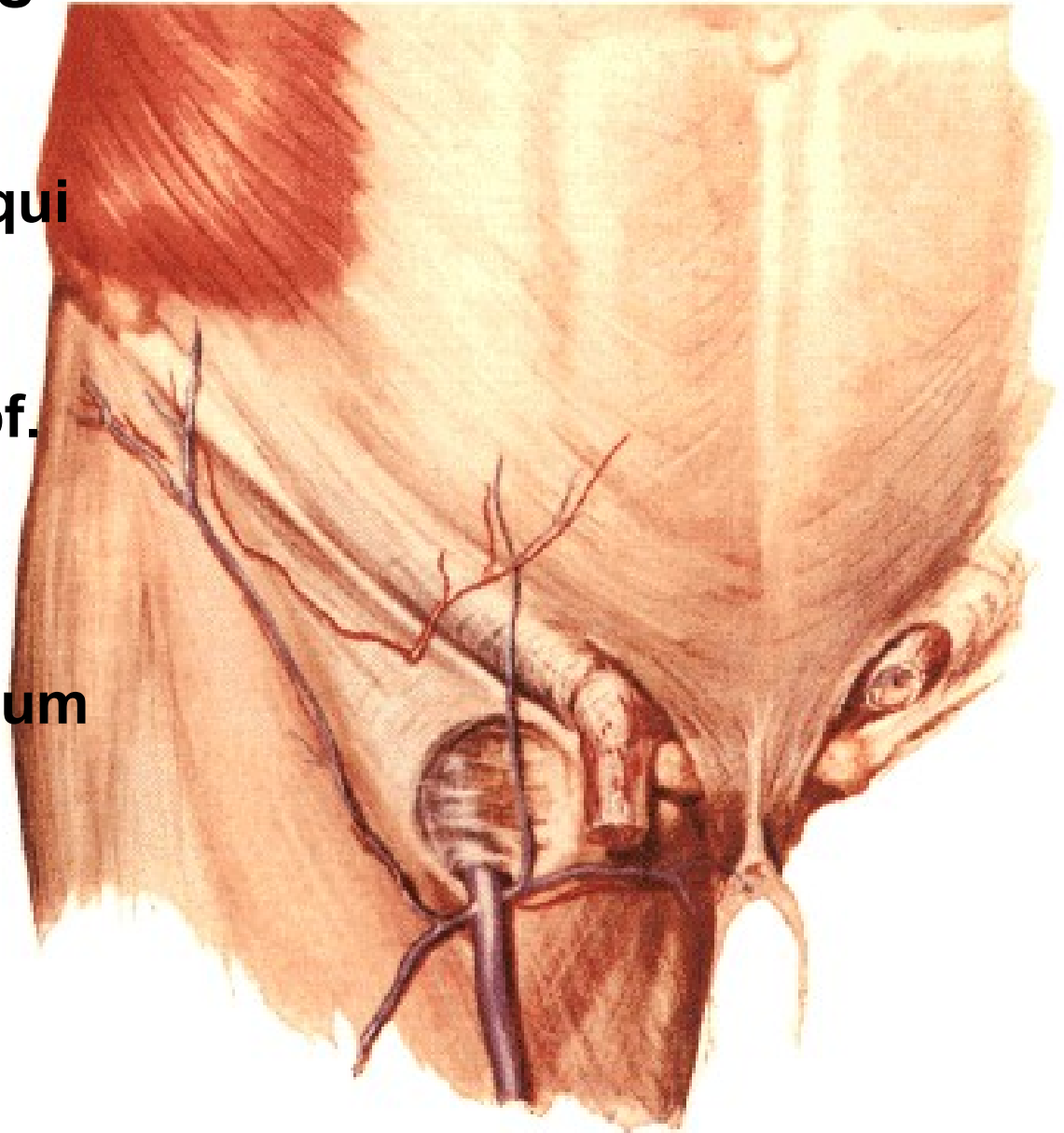
CANALIS INGUINALIS

Anterior wall:

**Aponeurosis m. obliqui
externi abdominis**

Anulus inguinalis spf.

- **crus mediale**
- **crus laterale**
- **fibrae intercrurales**
- **lig. inguinale reflexum**



Plica umbilicalis mediana
- lig. umbilicale medianum

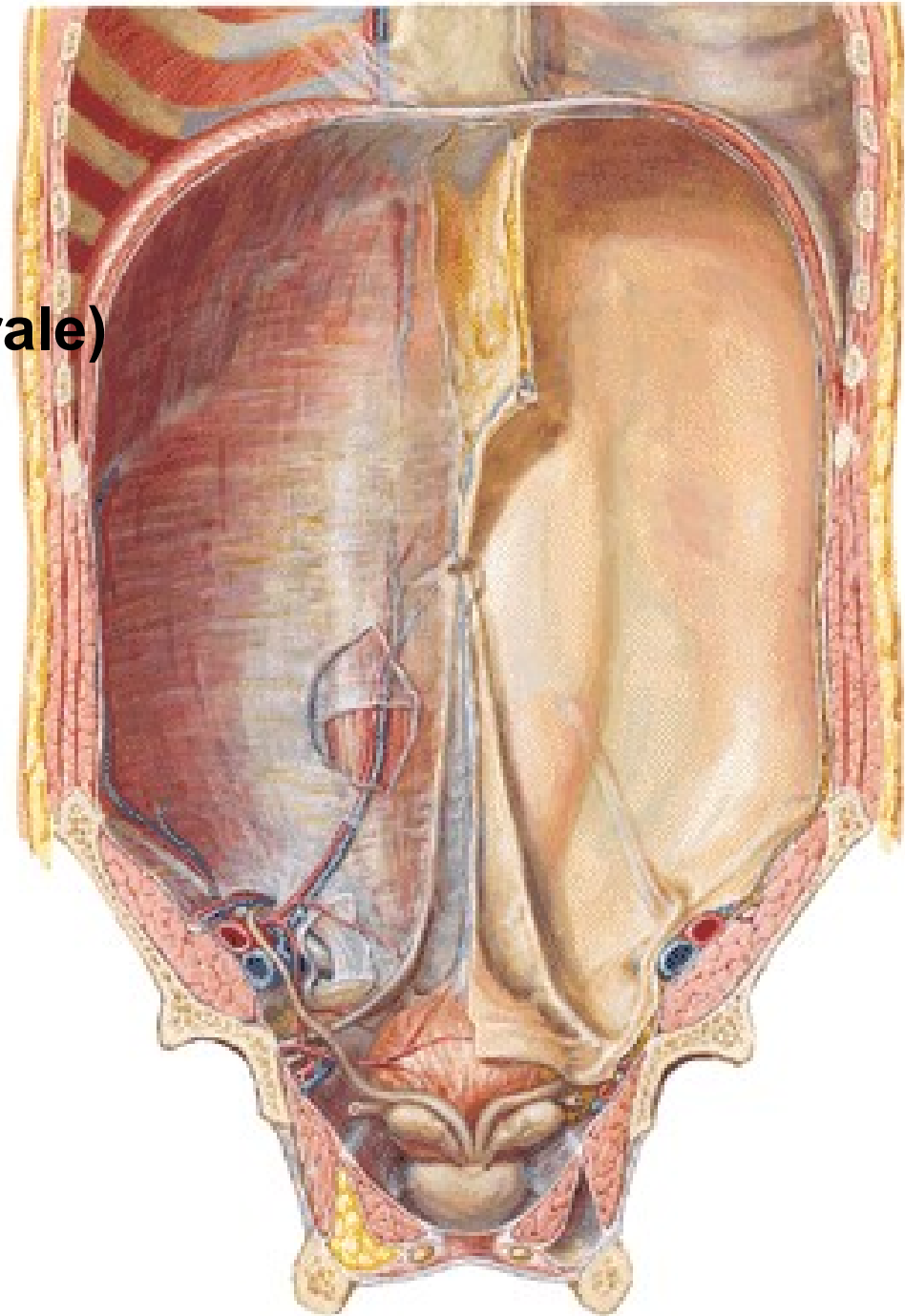
Plica umbilicalis medialis
- lig. umbilicale mediale (laterale)
(pars occlusa a. umbilicalis)

Plica umbilicalis lateralis
- vasa epigastrica inf.

Fossa supravesicalis

Fossa inguinalis medialis
(trig. Inguinale)

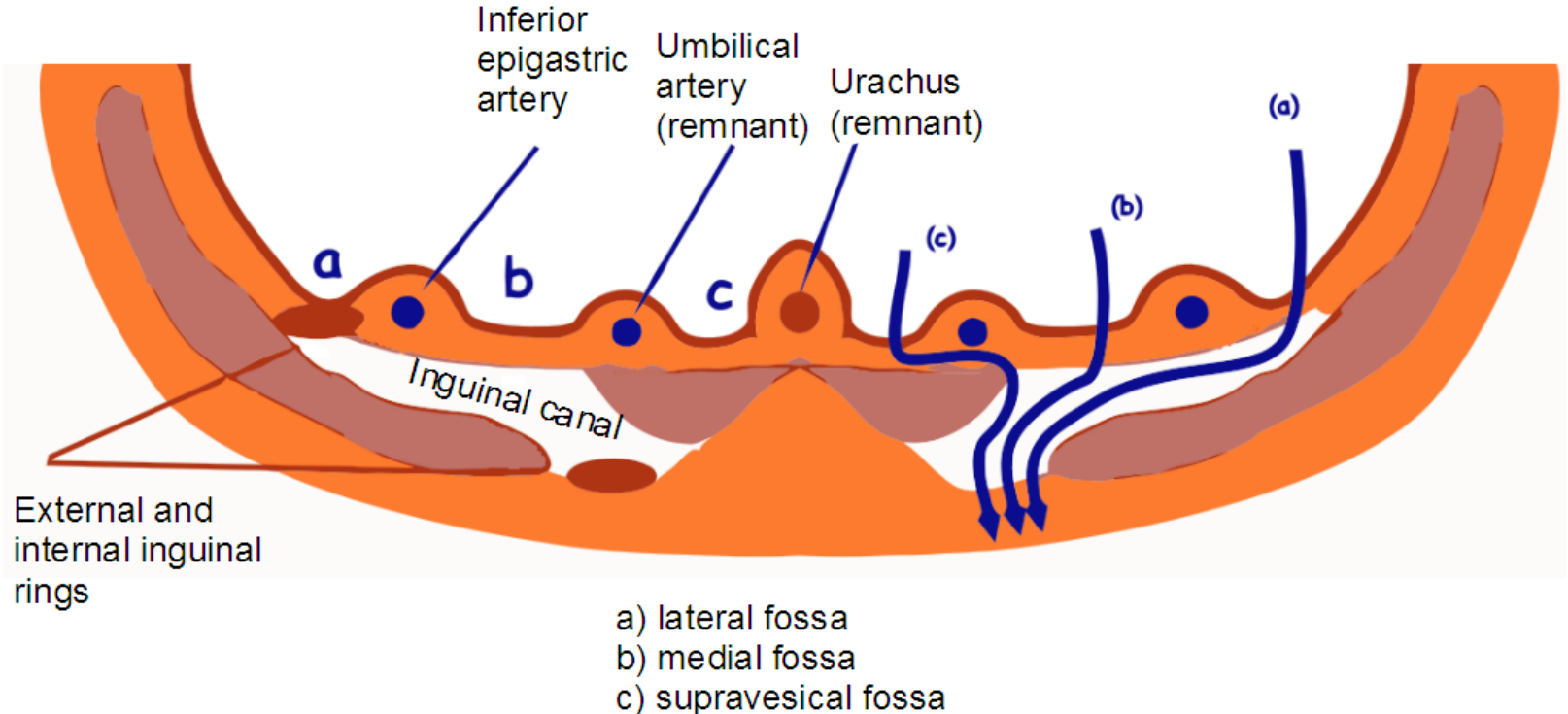
Fossa inguinalis lateralis
(anulus inguinalis prof.)



Fossa supravesicalis
- hernia supravesicalis (c)

Fossa inguinalis medialis
- hernia inguinalis directa (b)

Fossa inguinalis lateralis
- hernia inguinalis indirecta (a)



VESICULA SEMINALIS

Ductus excretorius

Ductus ejaculatorius

PROSTATATA

Basis

Apex

Facies anterior

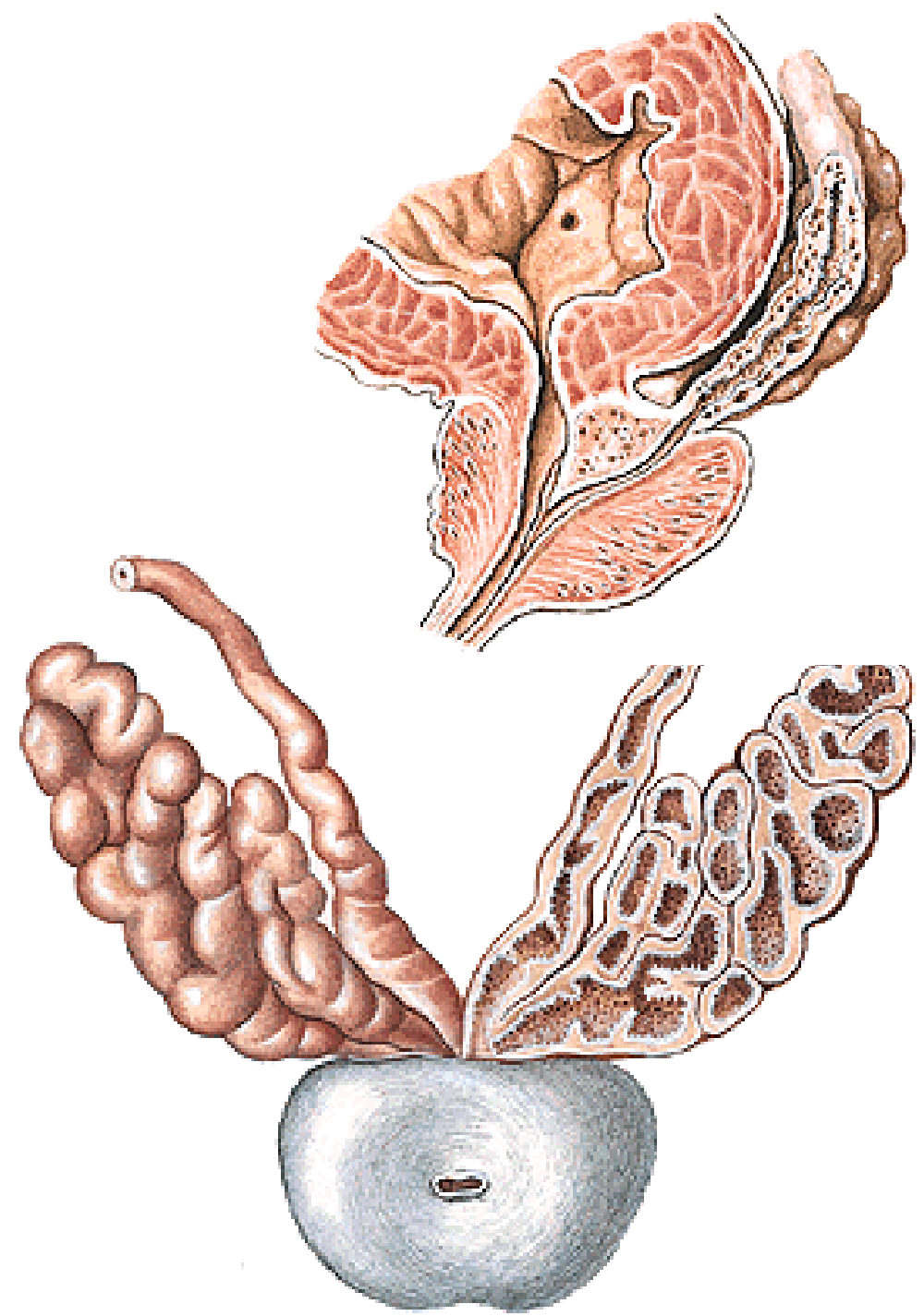
Facies posterior

Facies inferolaterales

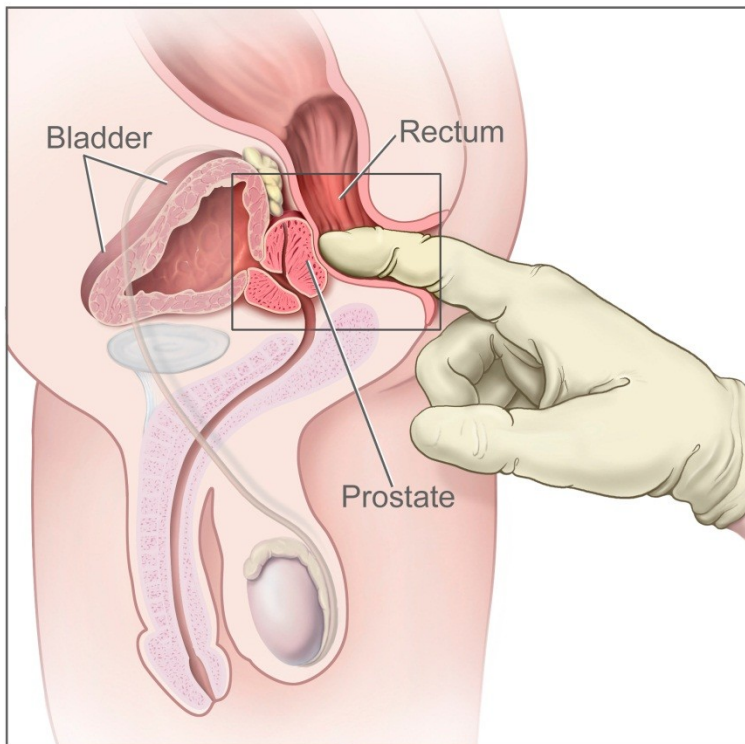
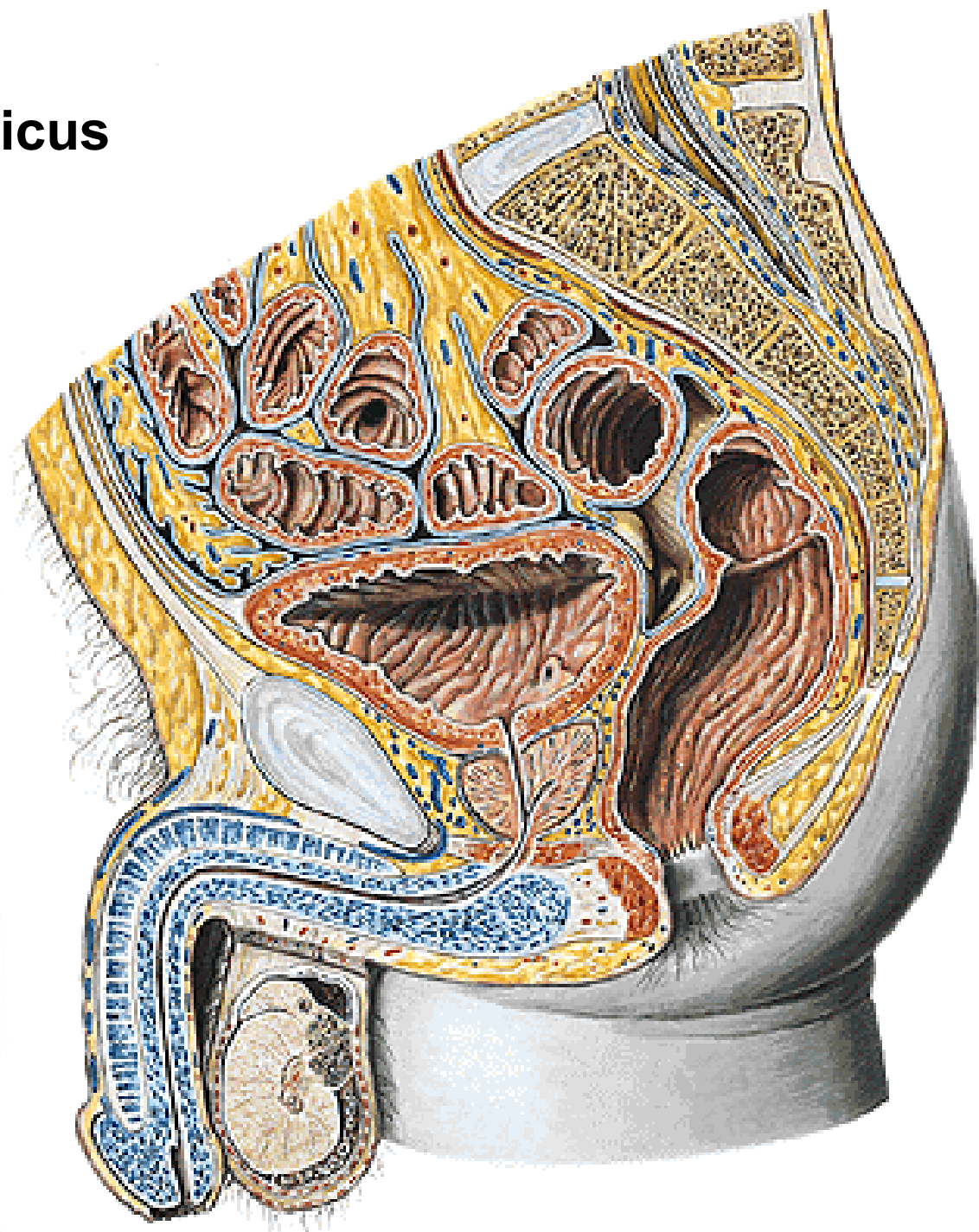
Lobus medius

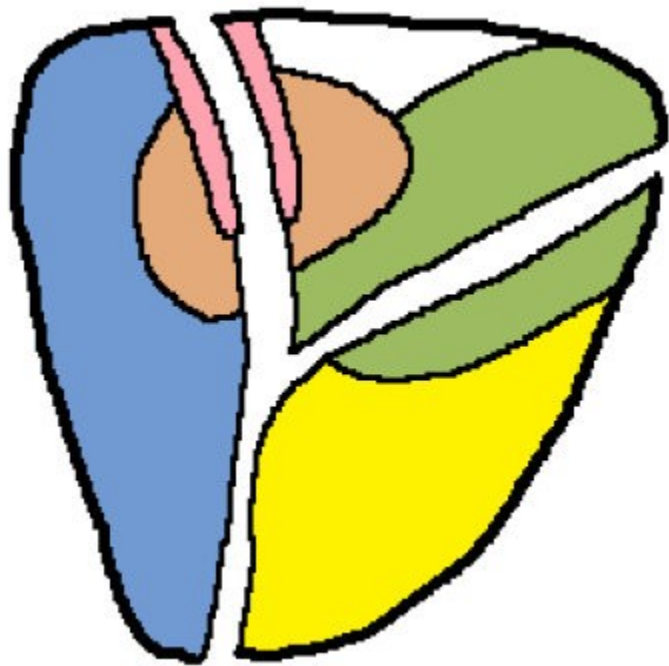
Lobus dexter et sinister






Isthmus

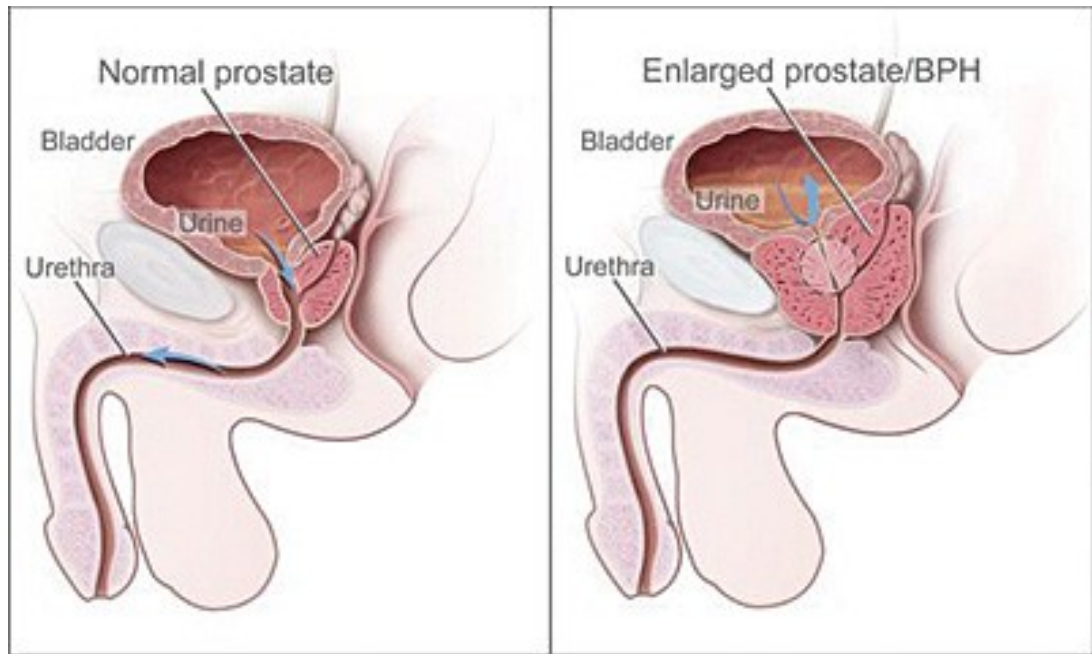


Capsula propria
Plexus venosus prostaticus
Fascia periprostatica
Lig. puboprostaticum
Lig. sacrogenitale
Septum rectovesicale
(Denonvilliers' fascia)



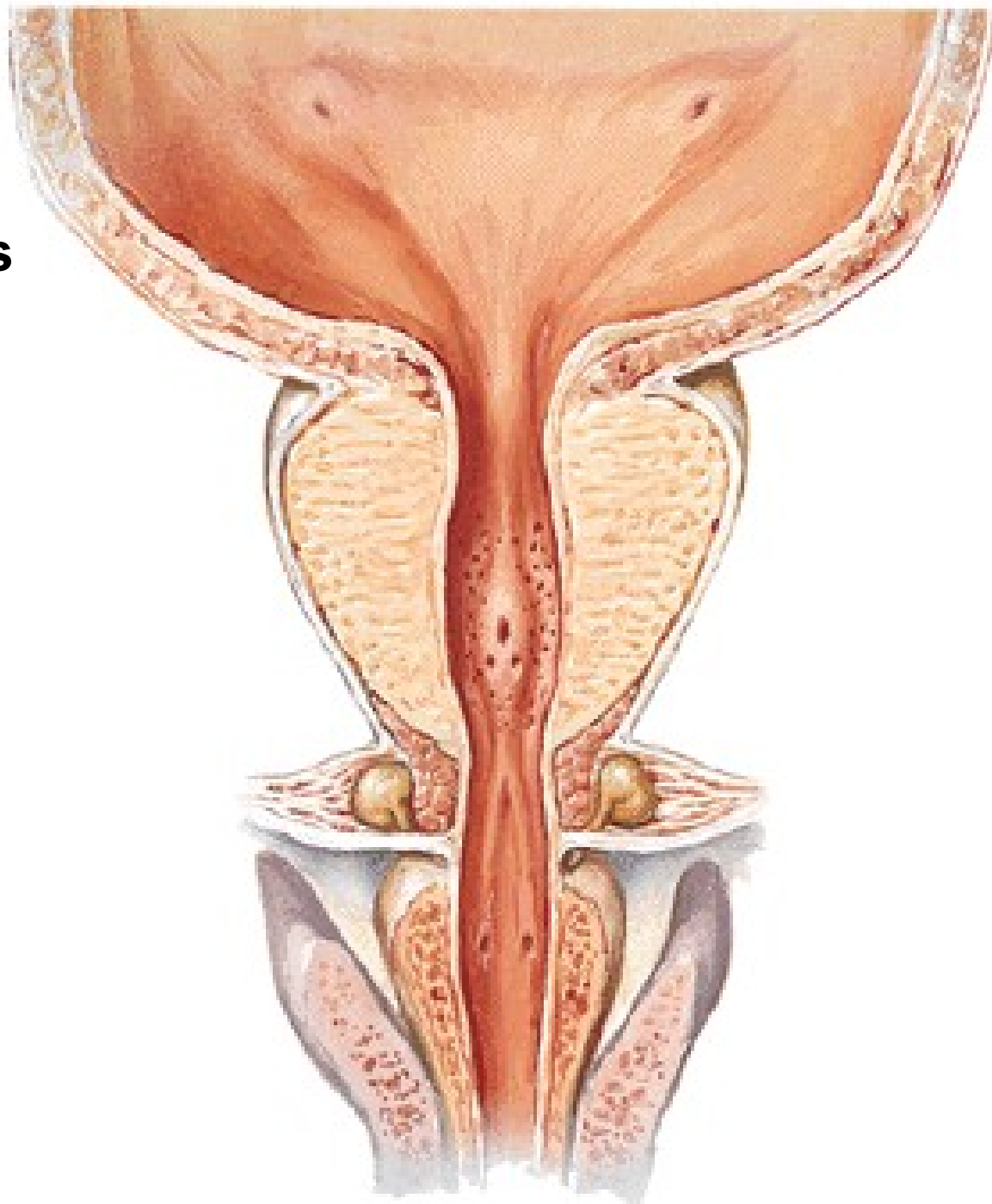


	Anterior Fibromuscular Zone
	Preprostatic Sphincter
	Transitional Zone
	Central Zone
	Peripheral Zone



Prostate Illustration courtesy MaleCare.com

Crista urethralis
Colliculus seminalis
Utriculus prostaticus
Ductus ejaculatorii
Sinus prostatici



GLANDULAE BULBOURETHRALES

Ductus gl. bulbourethralis

URETHRA MASCULINA

Ostium urethrae internum

Ostium urethrae externum

Pars intramuralis – M. sphincter vesicae

Pars prostatica

Pars membranacea – M. sphincter urethrae

Pars spongiosa – Ampulla urethrae

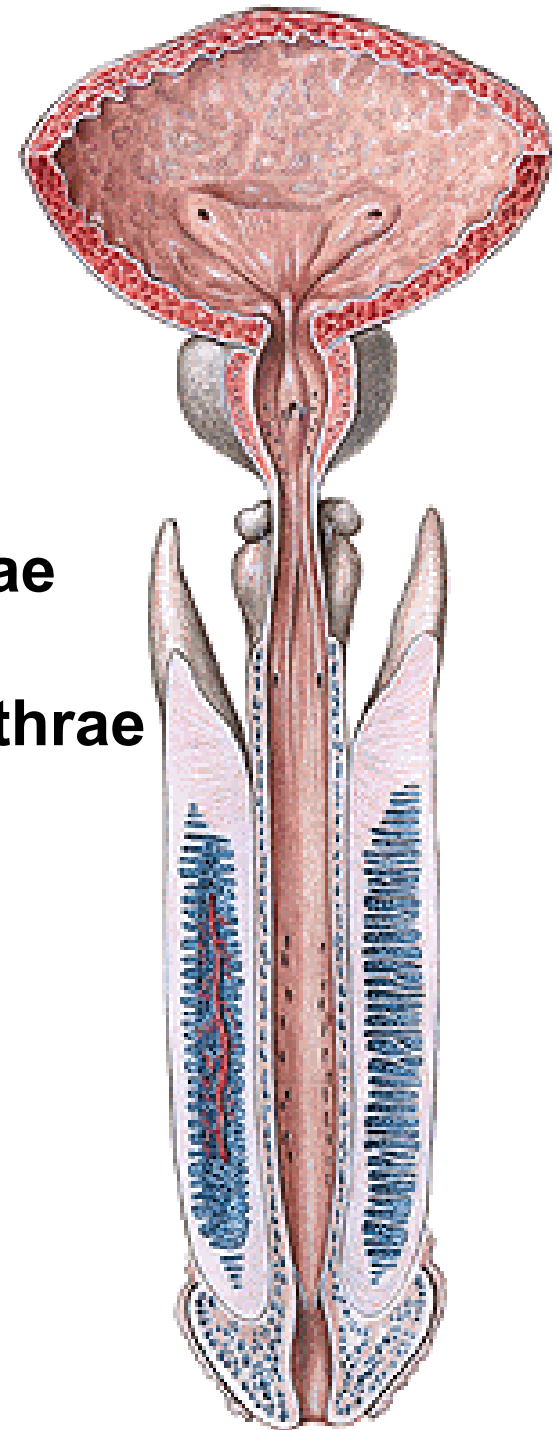
Corpus spongiosum penis

Fossa navicularis

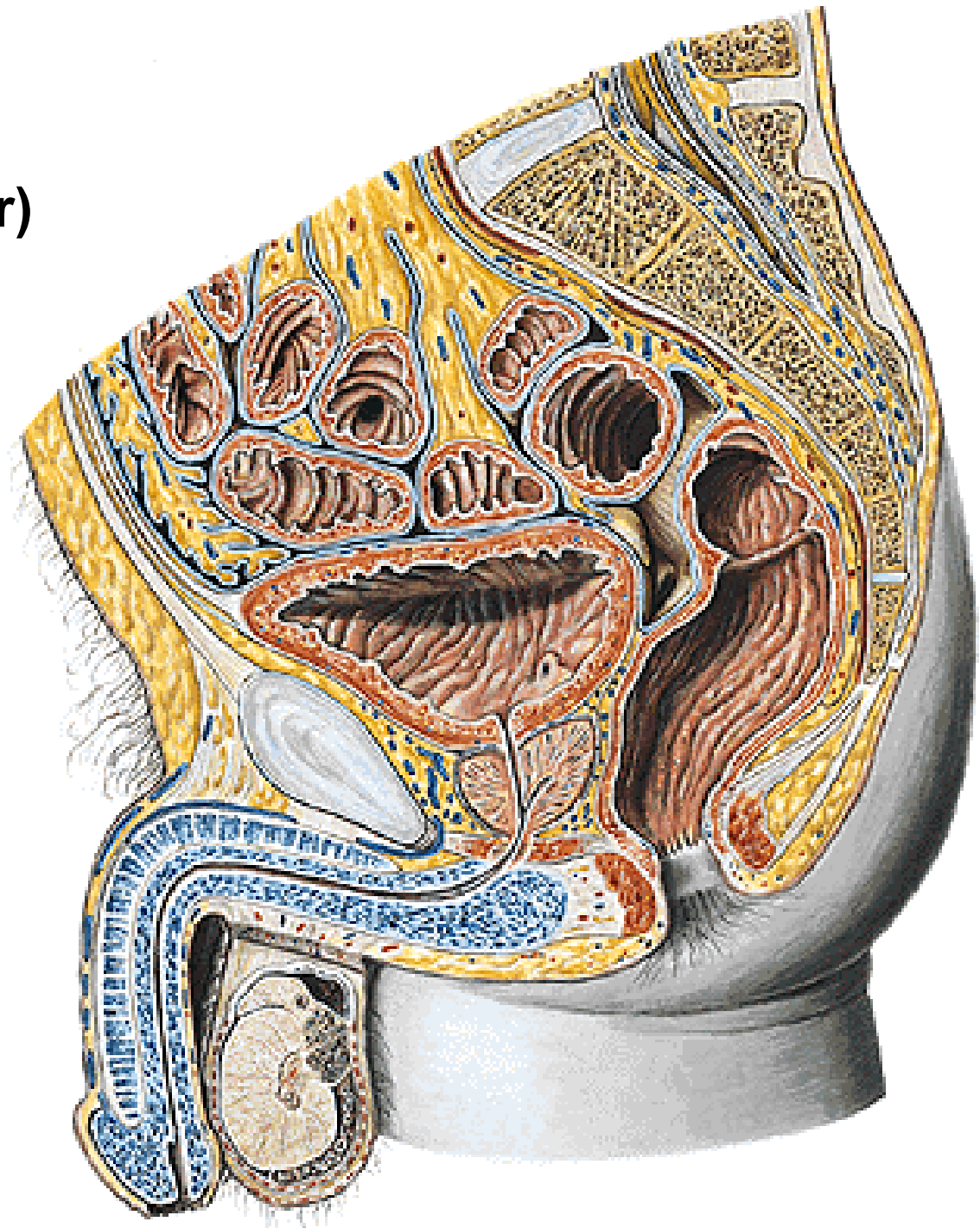
Valvula fossae navicularis

Glandulae urethrales

Lacunae urethrales



Curvatura subpubica
Curvatura praepubica
Urethra mobilis (anterior)
Urethra fixa (posterior)



EXTERNAL GENITAL ORGANS

PENIS: Radix

Corpus

Glans

Praeputium

SCROTUM



PENIS

Glans penis

Collum glandis

Corona glandis

Dorsum penis

Facies urethralis

Raphe penis

Praeputium

Ostium praeputii

Glandulae praeputiales

Smegma praeputii

Frenulum praeputii

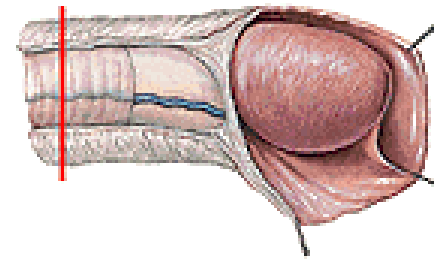
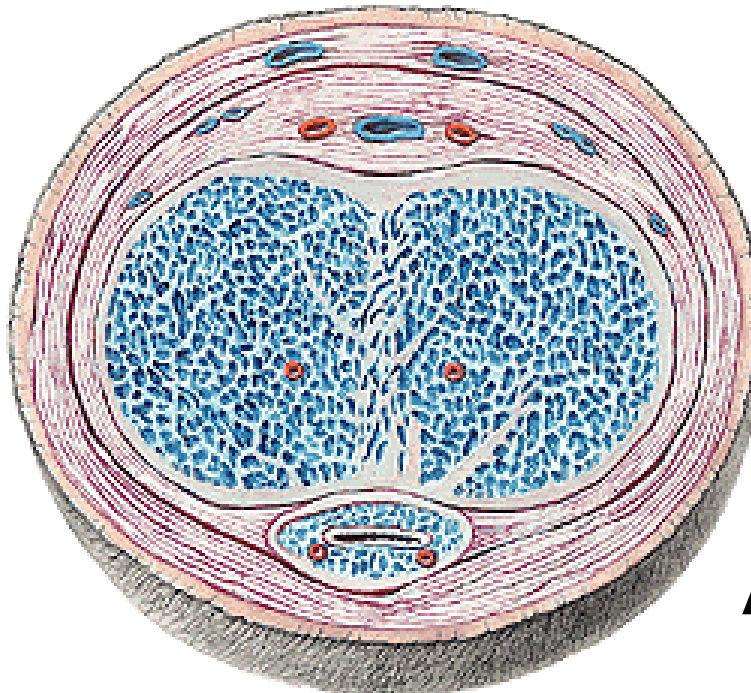
Corpus cavernosum

Corpus spongiosum

Tunica albuginea

Trabeculae

Cavernae

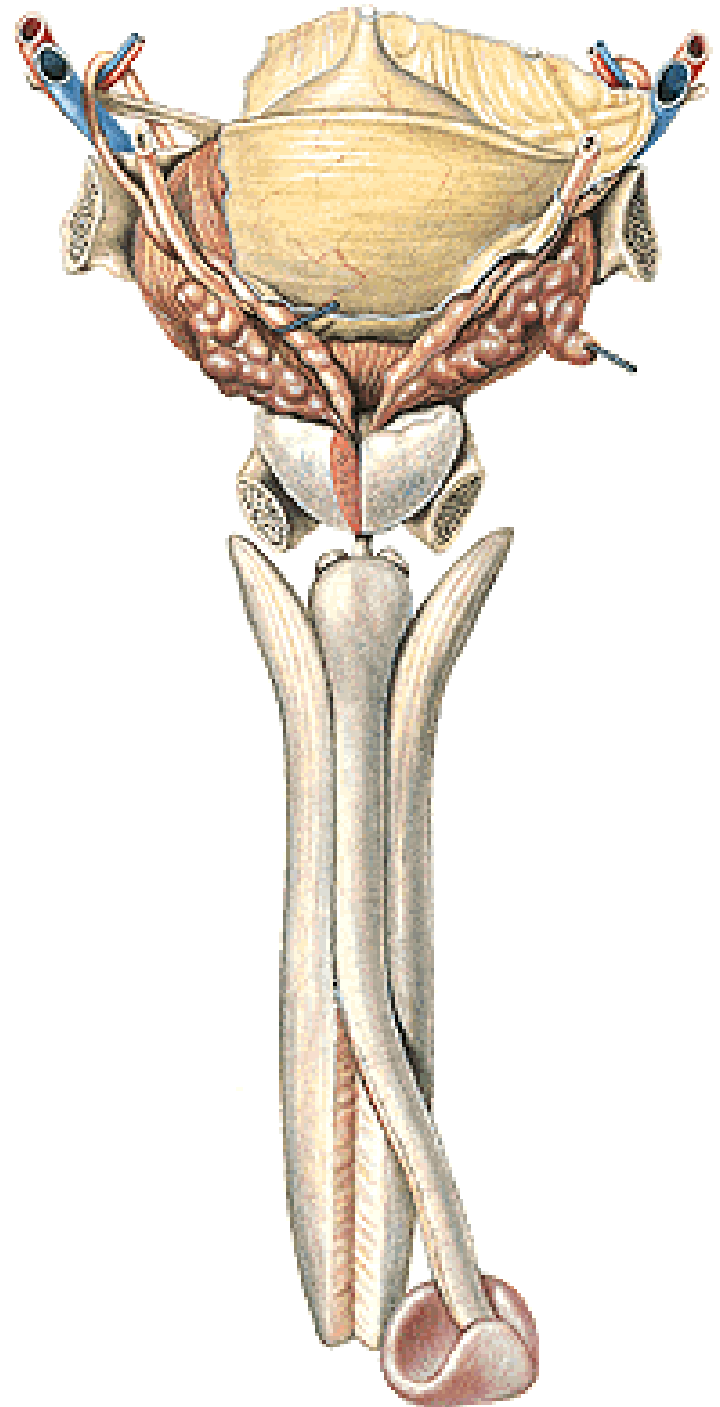


A. penis prof. → aa. helicinae

Corpus cavernosum
- crura penis - crista phallica

Corpus spongiosum
- bulbus penis

Glandulae bulbourethrales



COVERINGS OF PENIS:

Fascia penis profunda

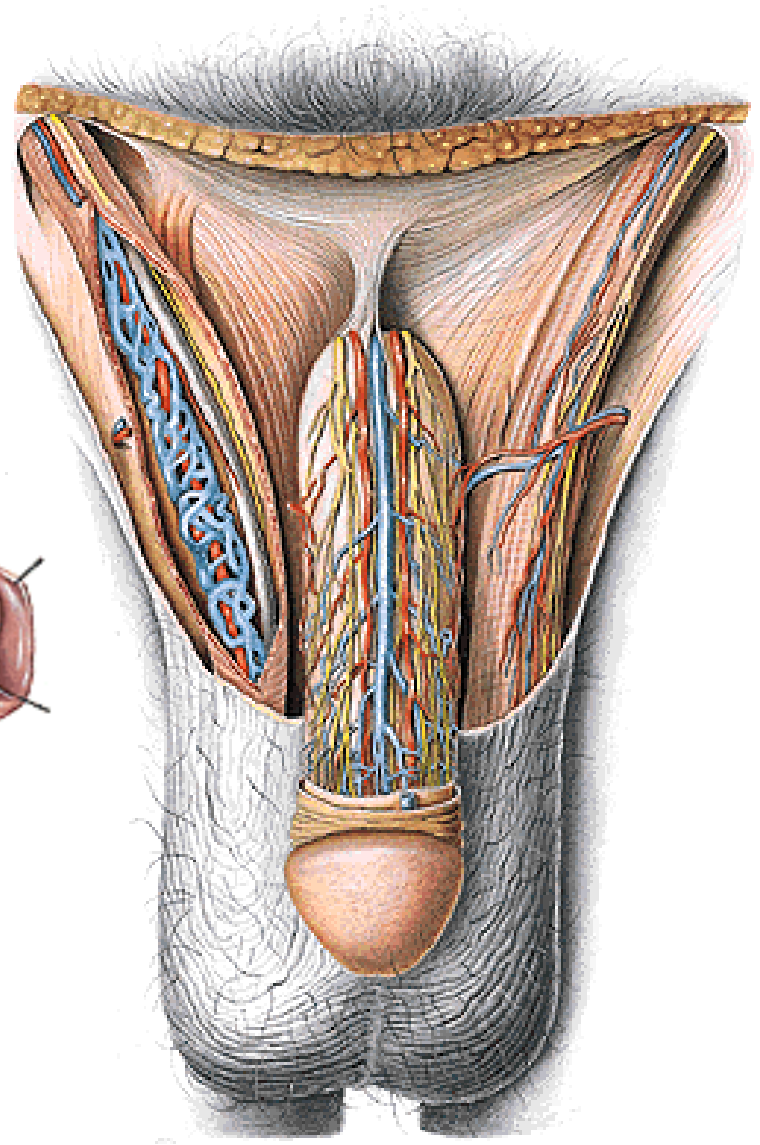
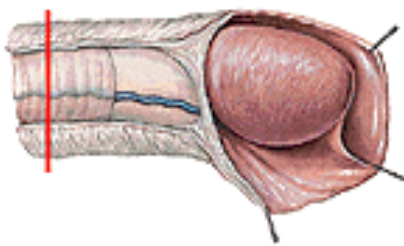
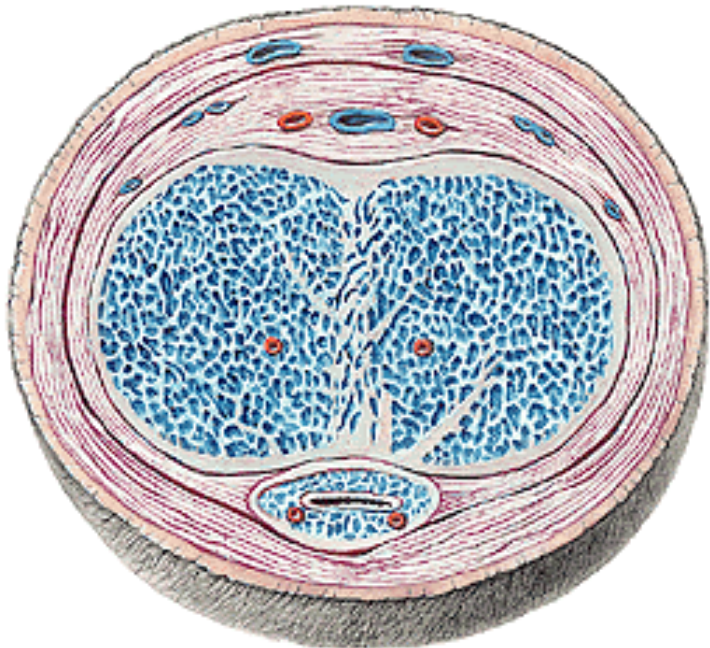
(Aa., Nn. dorsales penis, V. dorsalis penis profunda)

Fascia penis superficialis

(Vv. dorsales penis spf.)

Lig. fundiforme penis

Lig suspensorium penis



SCROTUM

Raphe scroti

Pubes

Tunica dartos scroti

Septum scroti

Cavitas scroti

A. pudenda ext.

A. pudenda int.

V. femoralis

V. pudenda int.

Nll. inguinales spf.

N. genitofemoralis

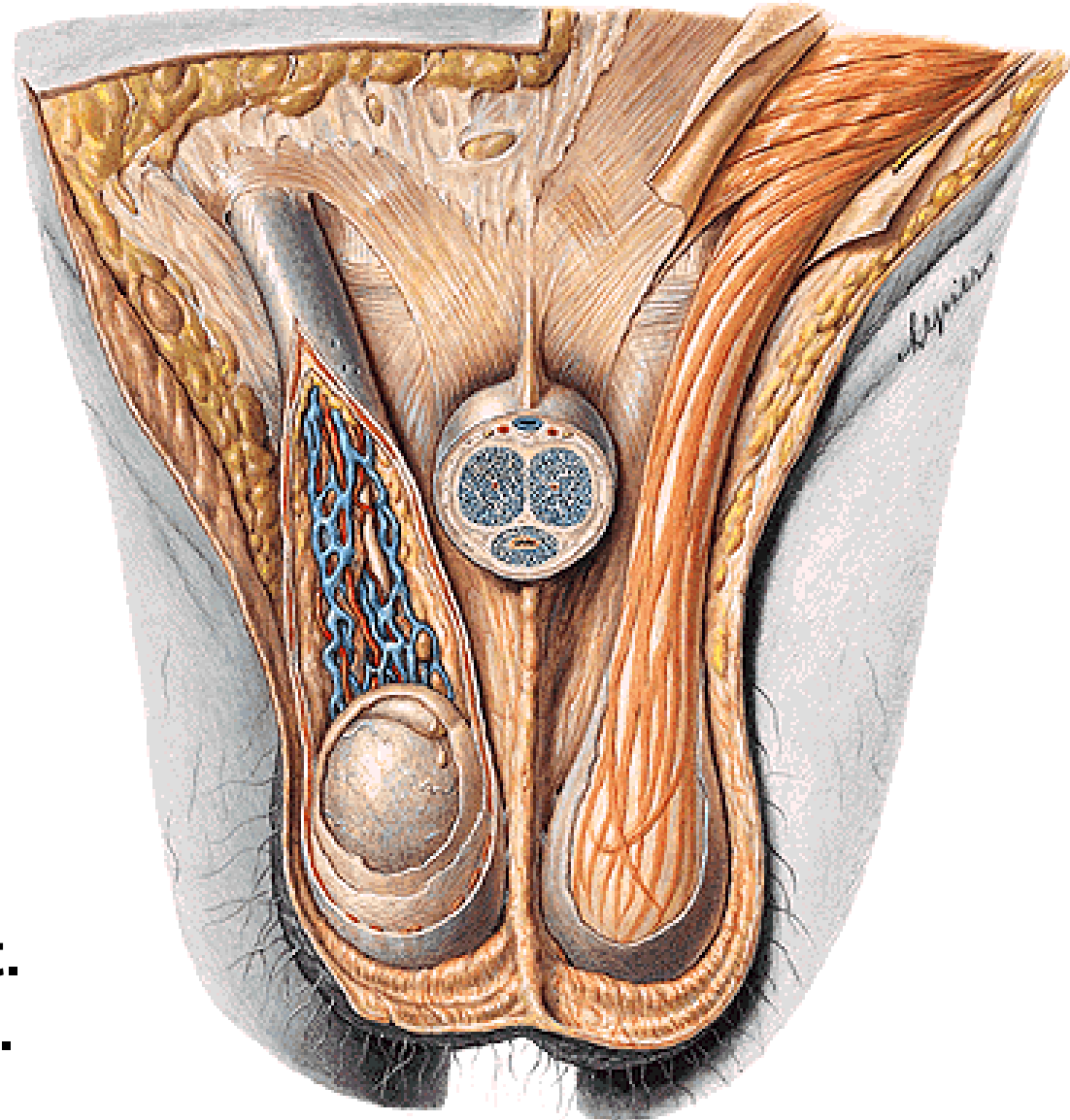
N. ilioinguinalis

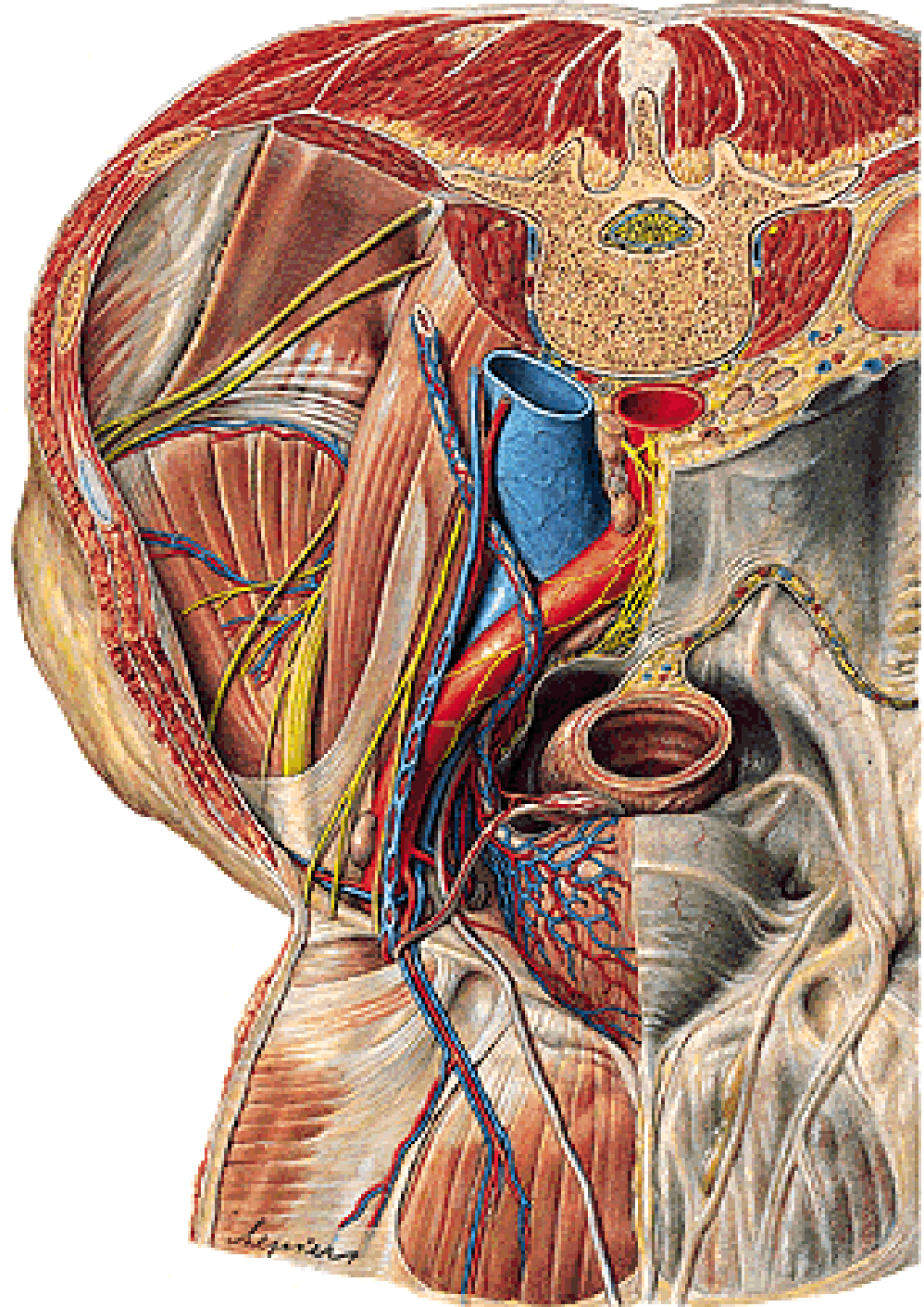
N. pudendus

N. cutaneus femoris post.

Plexus hypogastricus inf.

Hydrocele, varicocele





ANATOMICAL BASIS OF ERECTION

Parasympathetic stimulation

- relaxation of smooth muscle in cavernae and aa. helicinae, compression of venous plexuses by bulbospongiosus and ischiocavernosus muscles → erection**

Sympathetic stimulation

- contraction of smooth muscle of aa. helicinae, relaxation of bulbospongiosus and ischiocavernosus muscles, drainage of blood into v. dorsalis penis prof. → detumescence**

EJACULATION OF THE SEMEN

- 1. Emission of sperms and genital glands secretion
- sympathetic stimulation**
- 2. Expulsion of the semen from the spongy urethra (ejaculation) – parasympathetic stimulation**

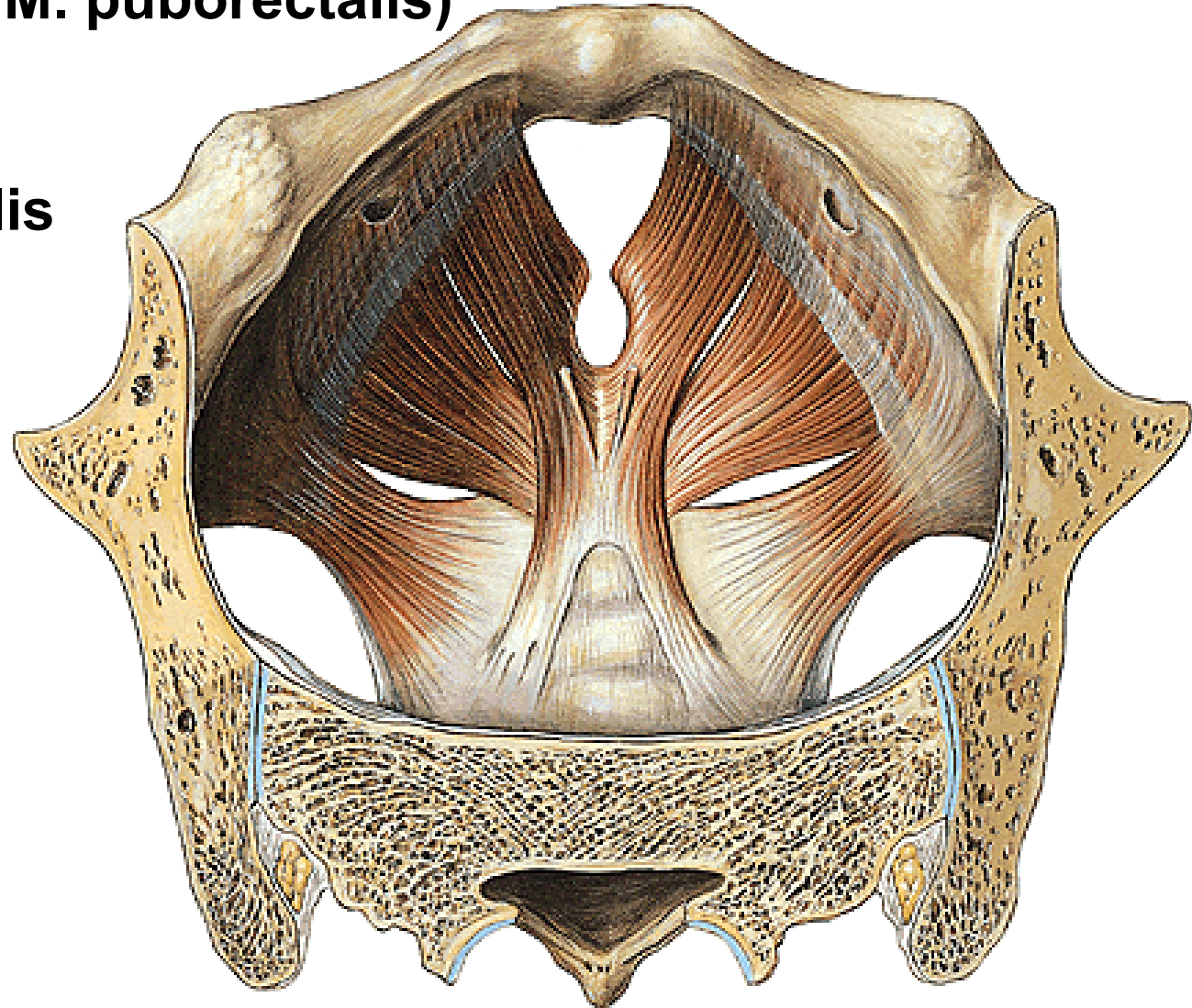
DIAPHRAGMA PELVIS

M. levator ani – pars iliaca (M. iliococcygeus)

**- pars pubica (M. pubococcygeus)
(- M. puborectalis)**

M. coccygeus

Hiatus urogenitalis



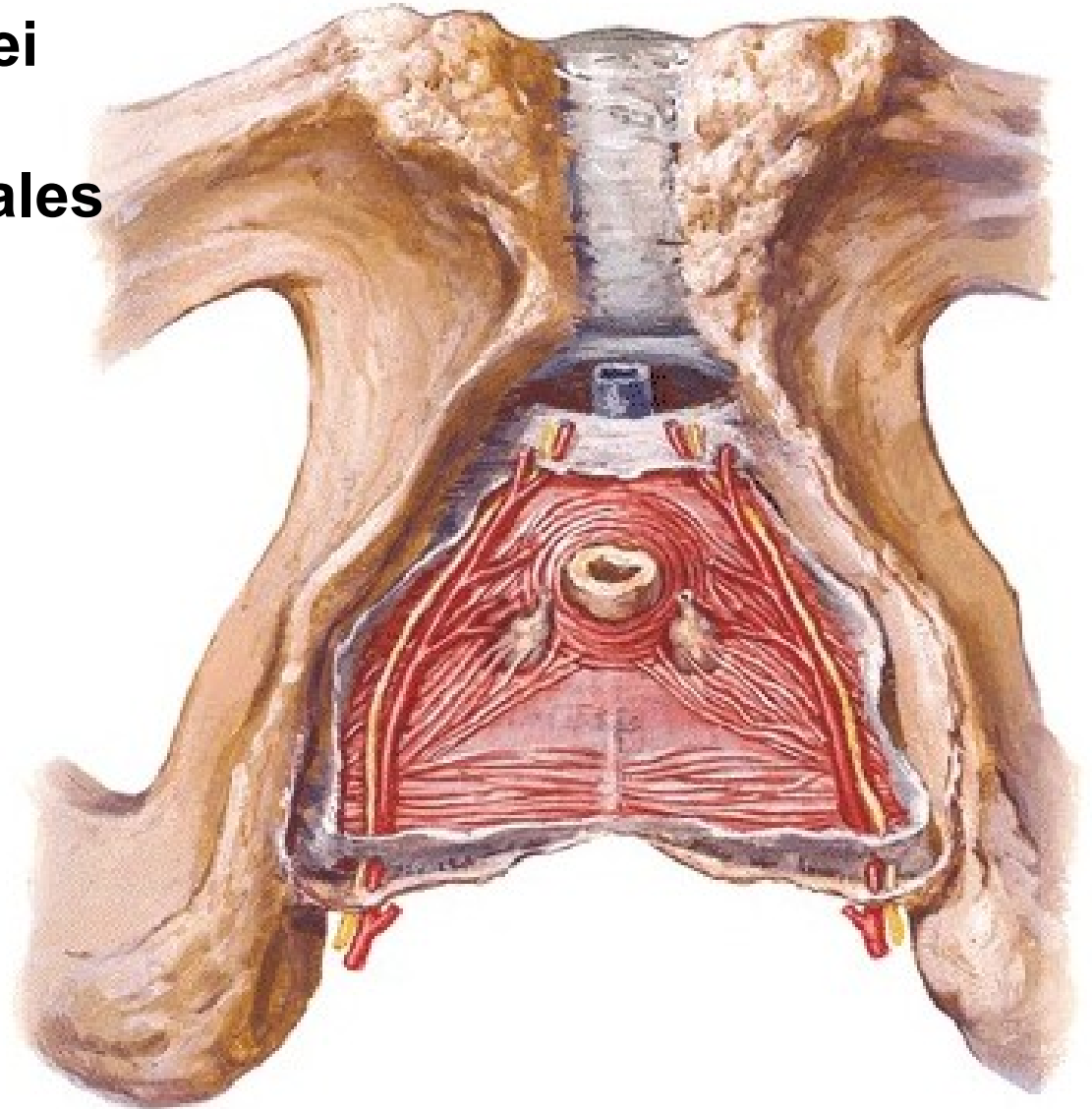
SACCUS PROF. PERINEI/DIAPHRAGMA UROGENITALE

M. transversus perinei profundus – Centrum perineale

M. sphincter urethrae

Lig. transversum perinei

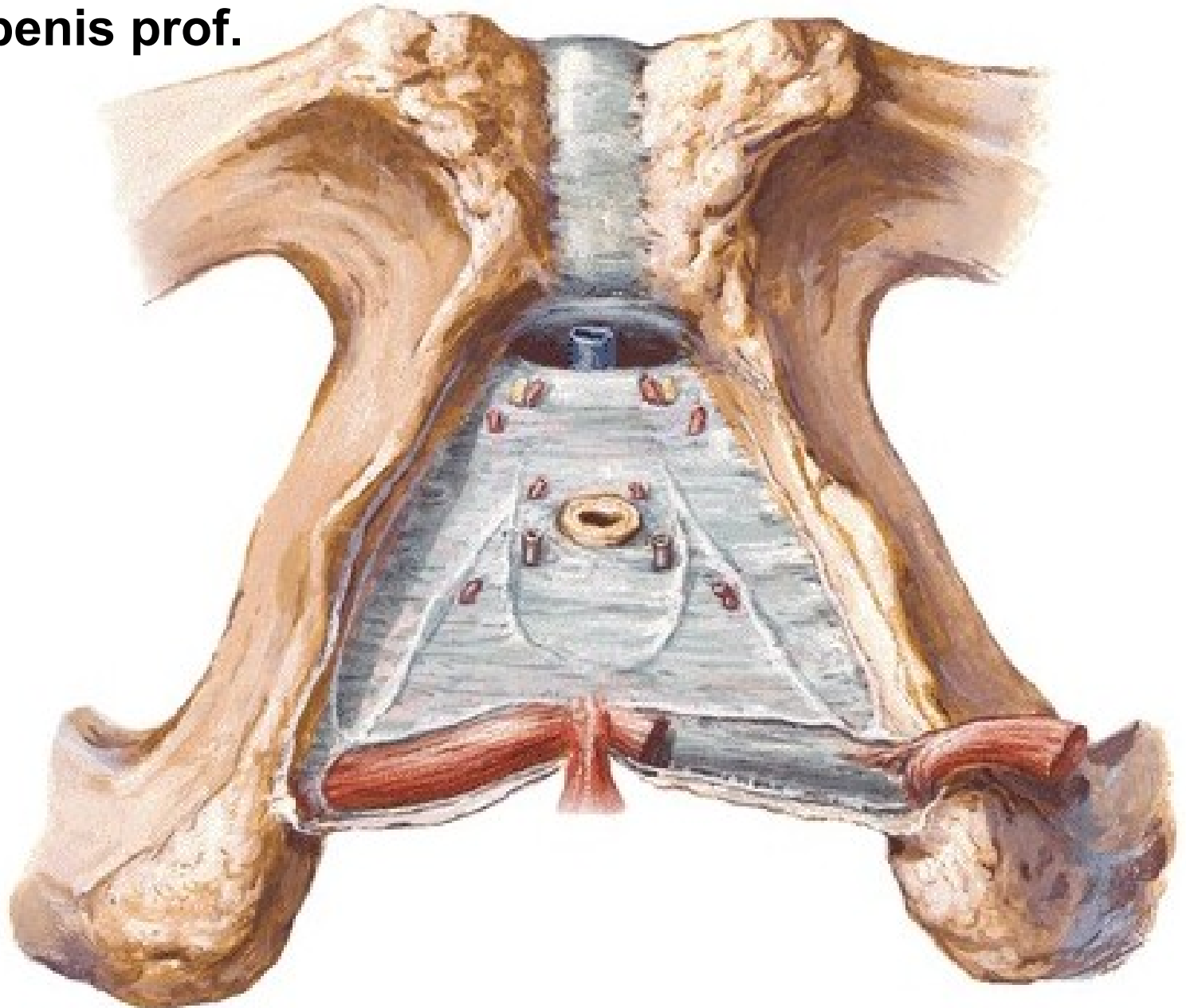
Glandulae bulbourethrales



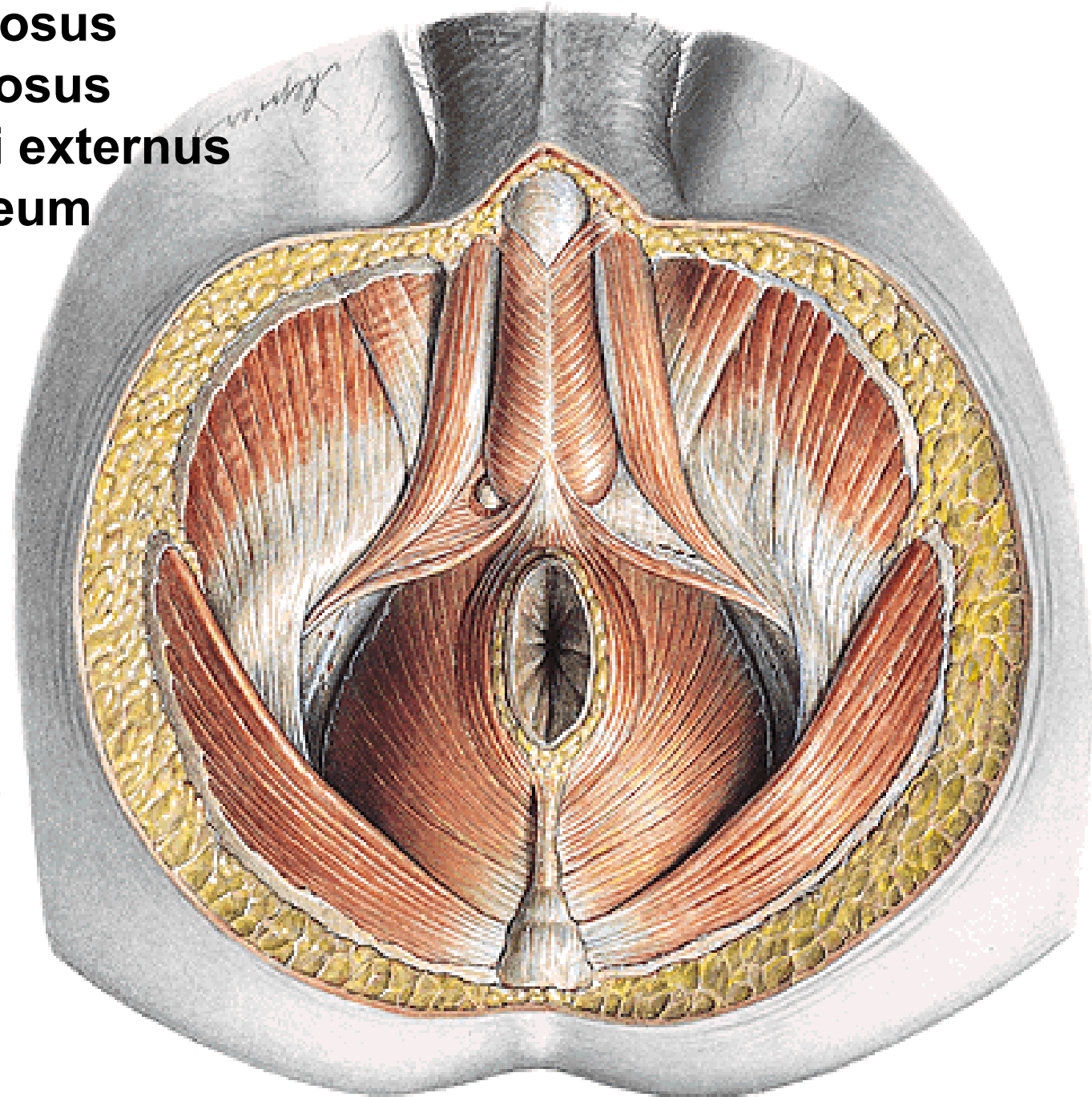
M. transversus perinei spf.

Membrana perinei/Fascia inf. diaphragmatis urogenitalis

V. dorsalis penis prof.



M. ischiocavernosus
M. bulbospongiosus
M. sphincter ani externus
Lig. anococcygeum



Fascia obturatoria
Canalis pudendalis
(Alcock)

Fascia sup. diaphragmatis
pelvis

Fascia inf. diaphragmatis
pelvis

Fossa ischiorectalis



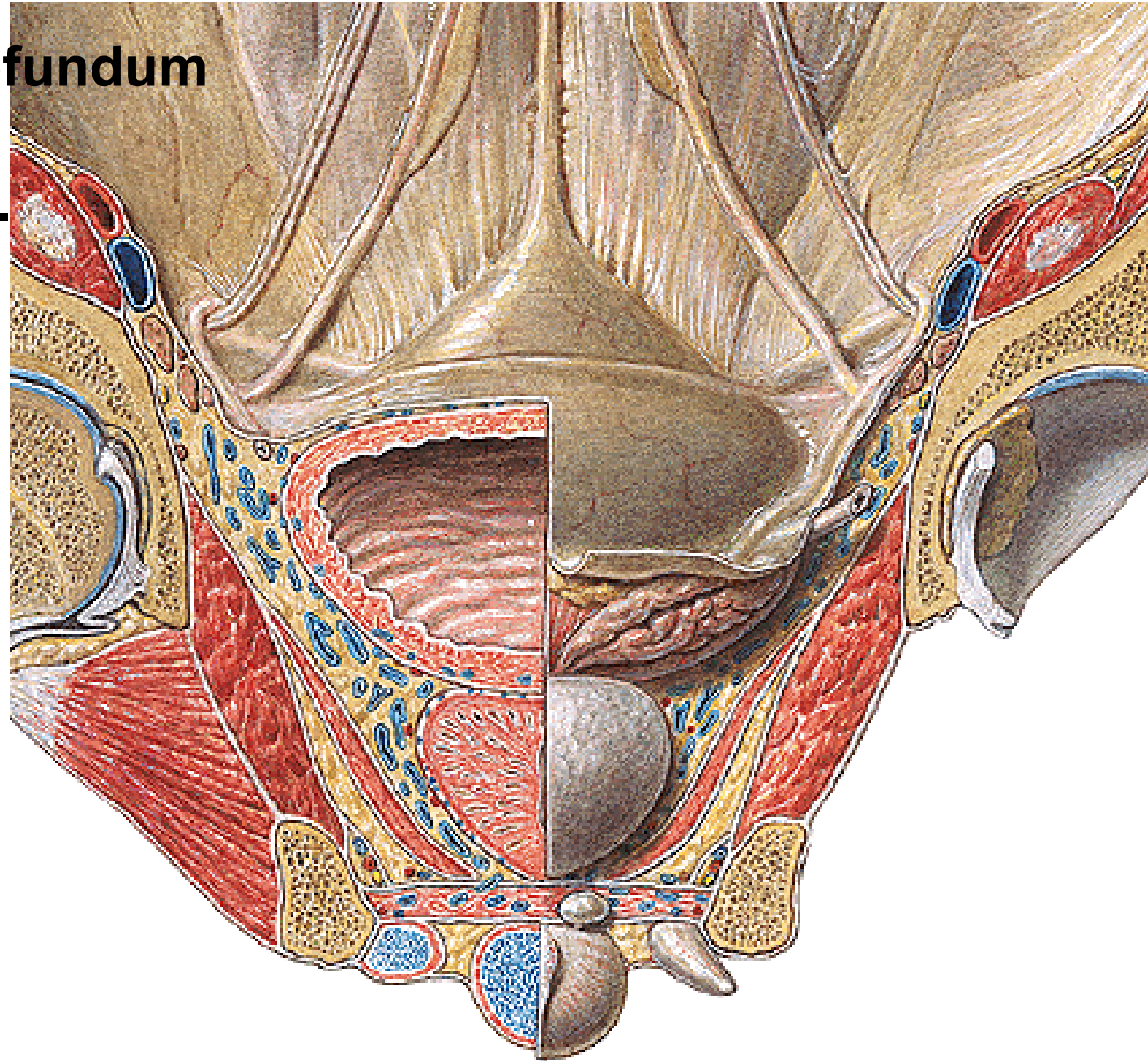
**Recessus pubicus
fossae ischio-
rectalis**

Spatium perinei profundum

Membrana perinei

Spatium perinei spf.

Fascia perinei spf.



Illustrations were copied from:

**Atlas der Anatomie des Menschen/Sobotta.
Putz,R., und Pabst,R. 20. Auflage. München:
Urban & Schwarzenberg, 1993)**

**Netter: Interactive Atlas of Human Anatomy.
Windows Version 2.0**

**Čihák R: Anatomie 2 (Splanchnologia). Avicenum,
zdravotnické nakladatelství, Praha, 1988.**