

# **REGIONAL ANATOMY OF THE BACK**

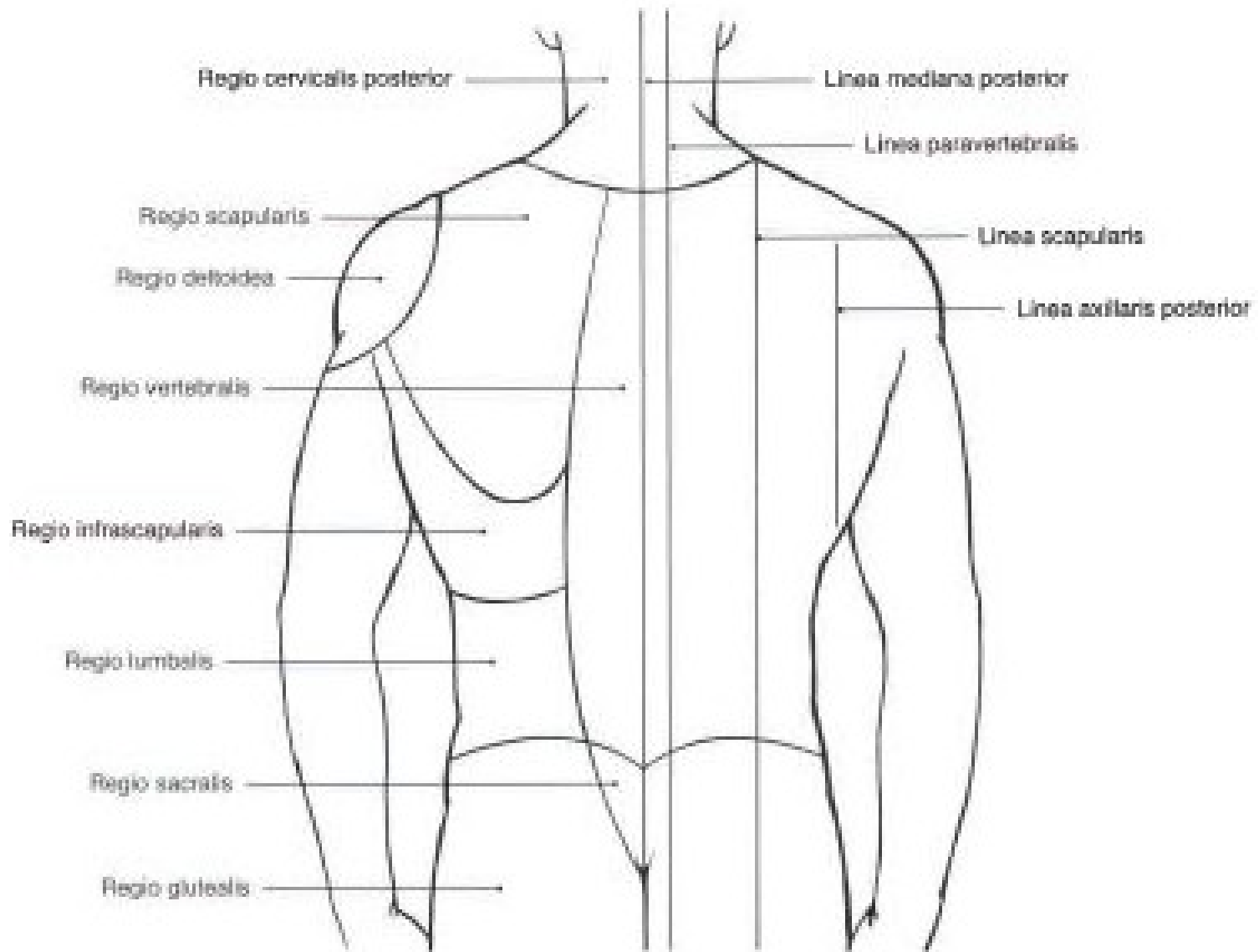
A

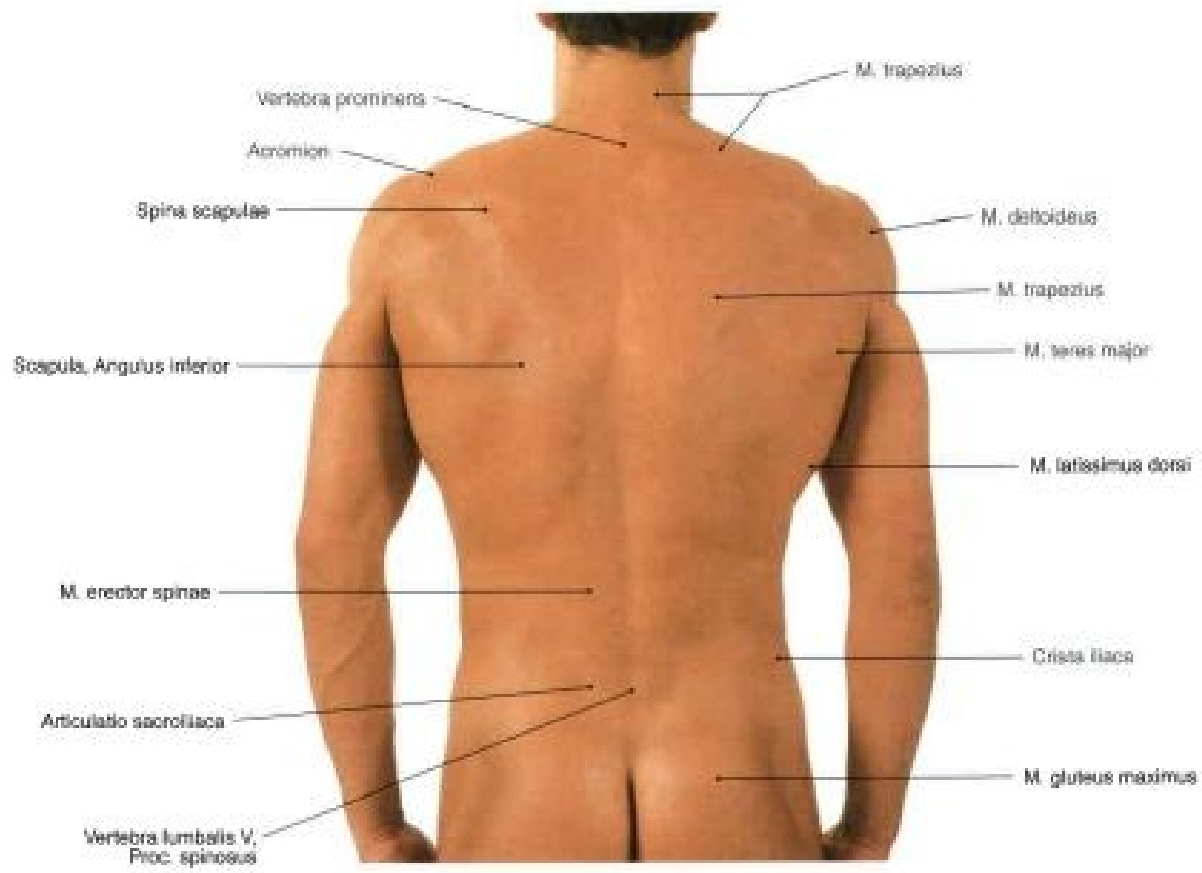
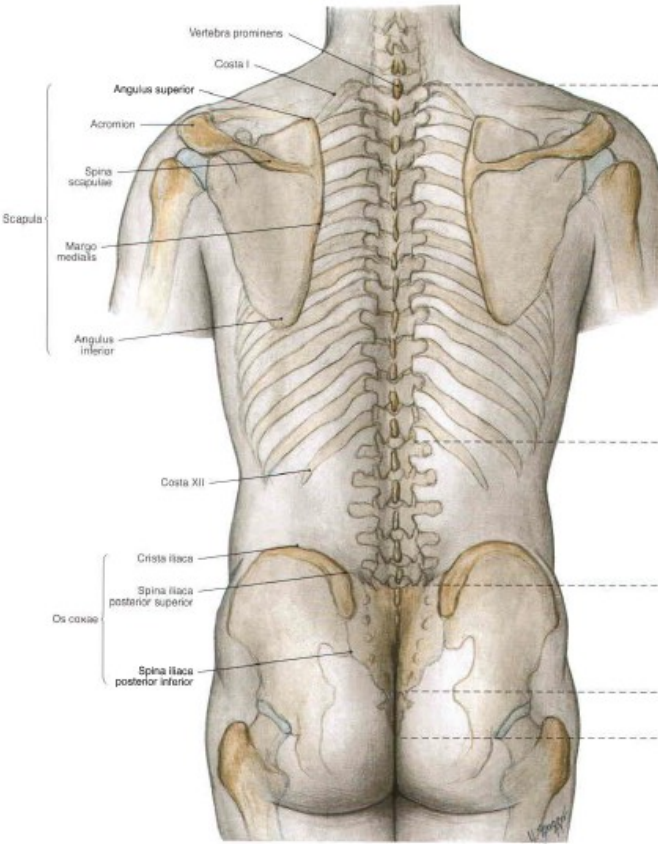


B

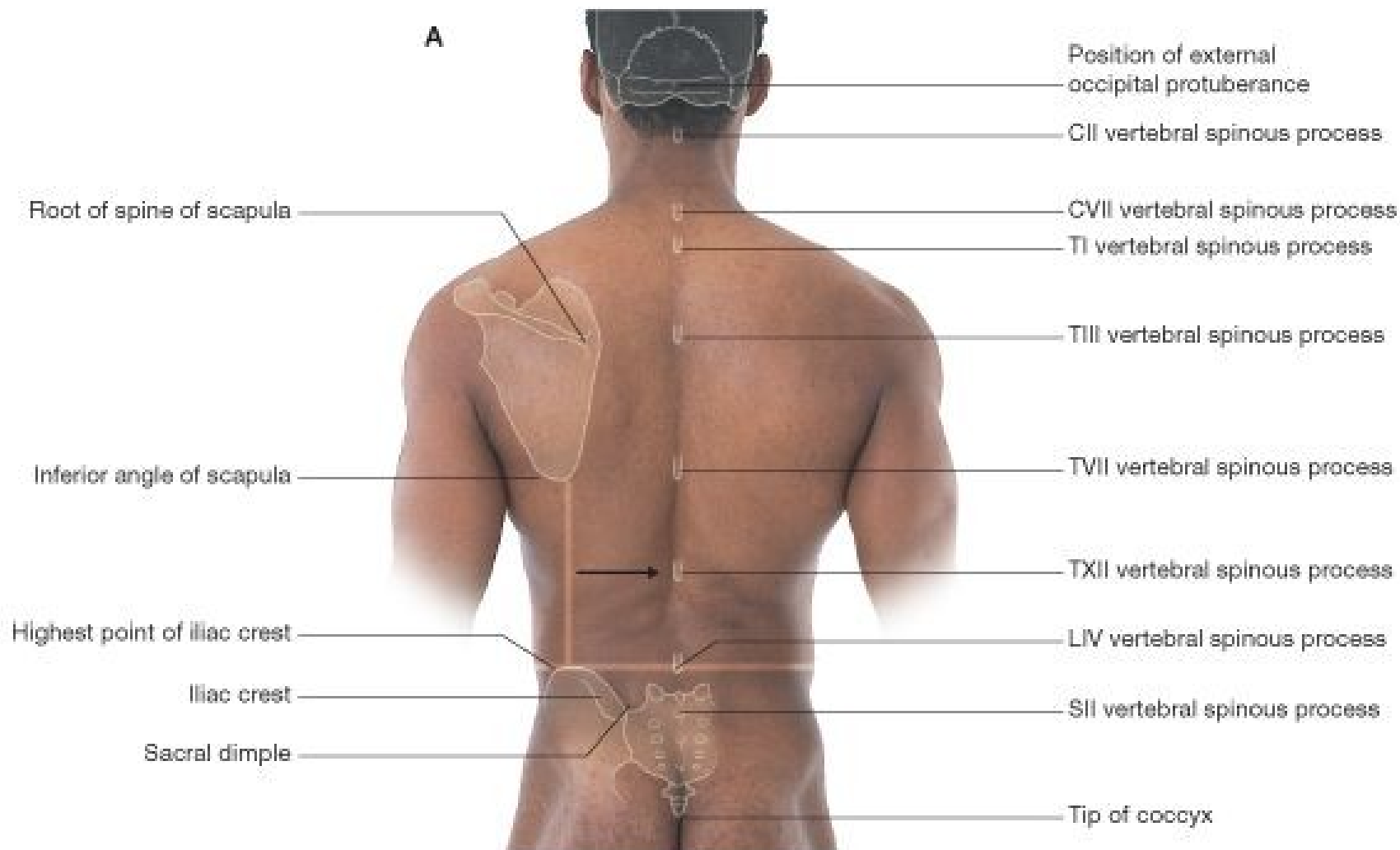


# Regiones dorsii

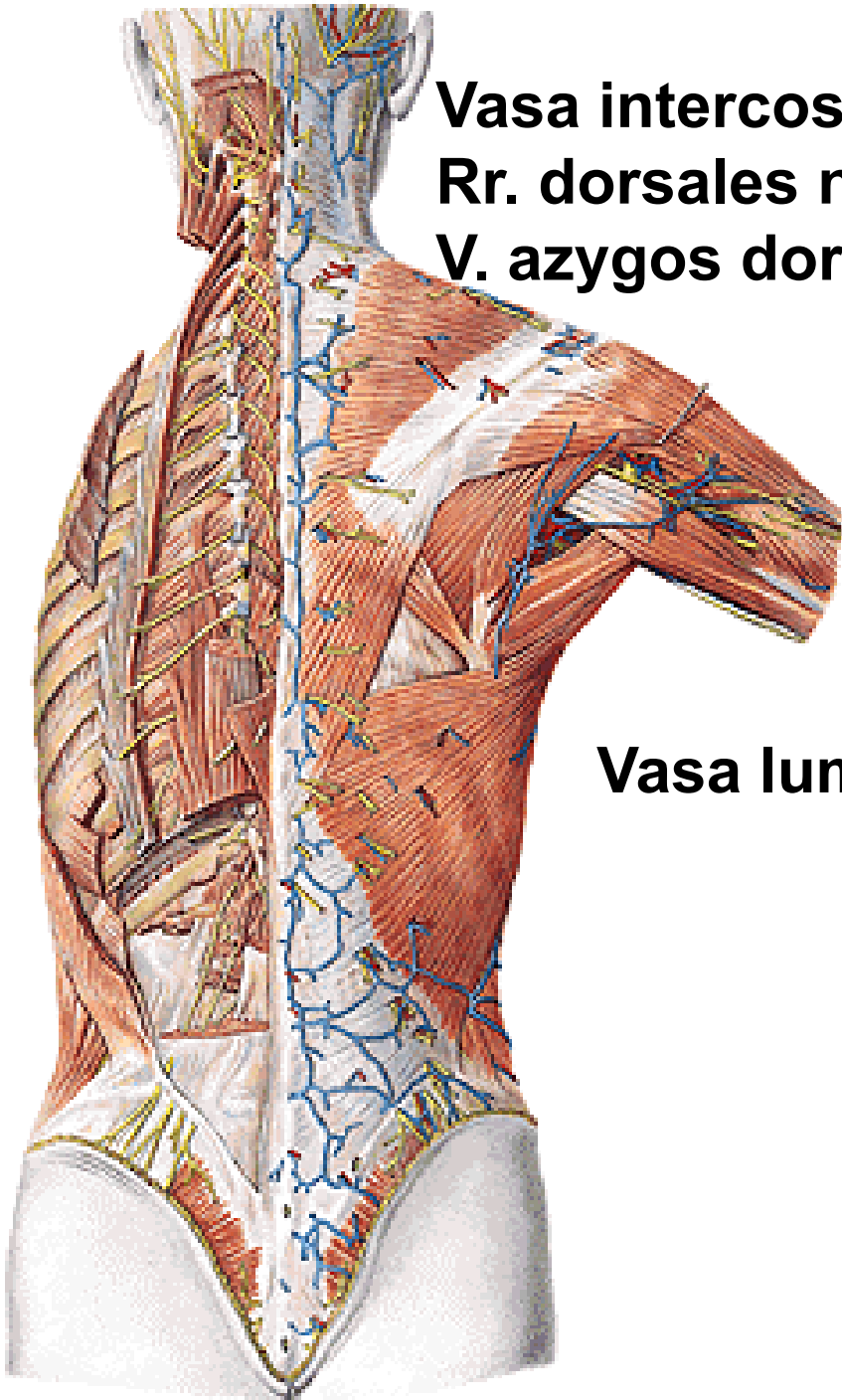




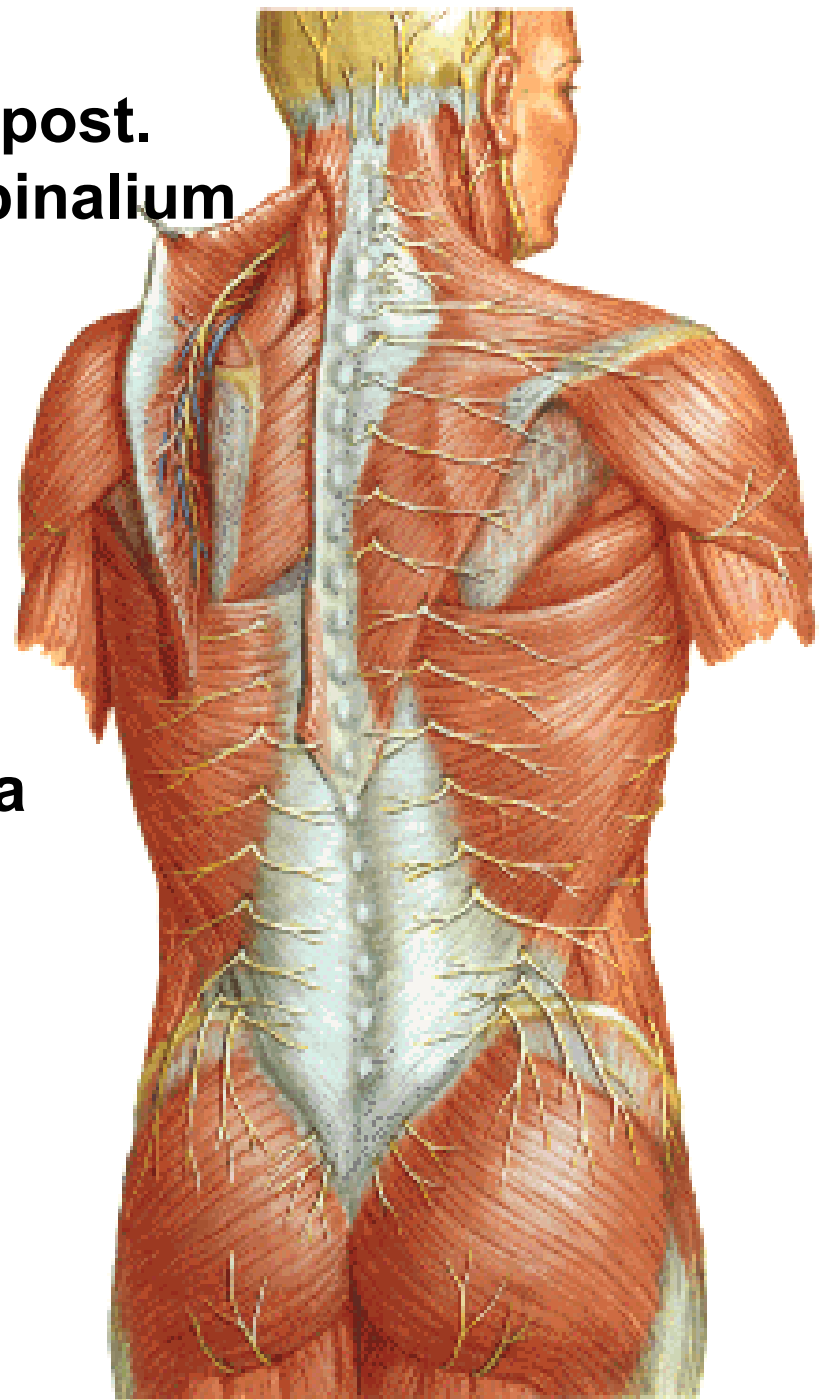
# Identification of vertebral spinal processes



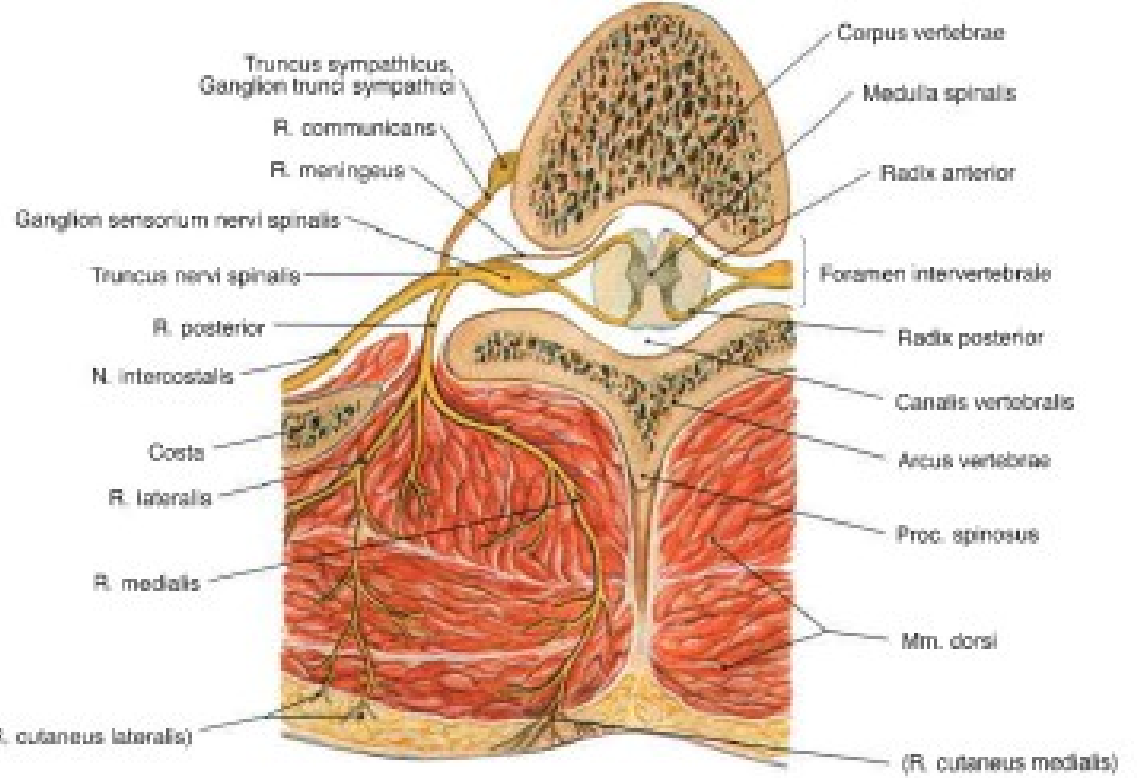
**Vasa intercostalia post.**  
**Rr. dorsales nn. spinalium**  
**V. azygos dorsi**

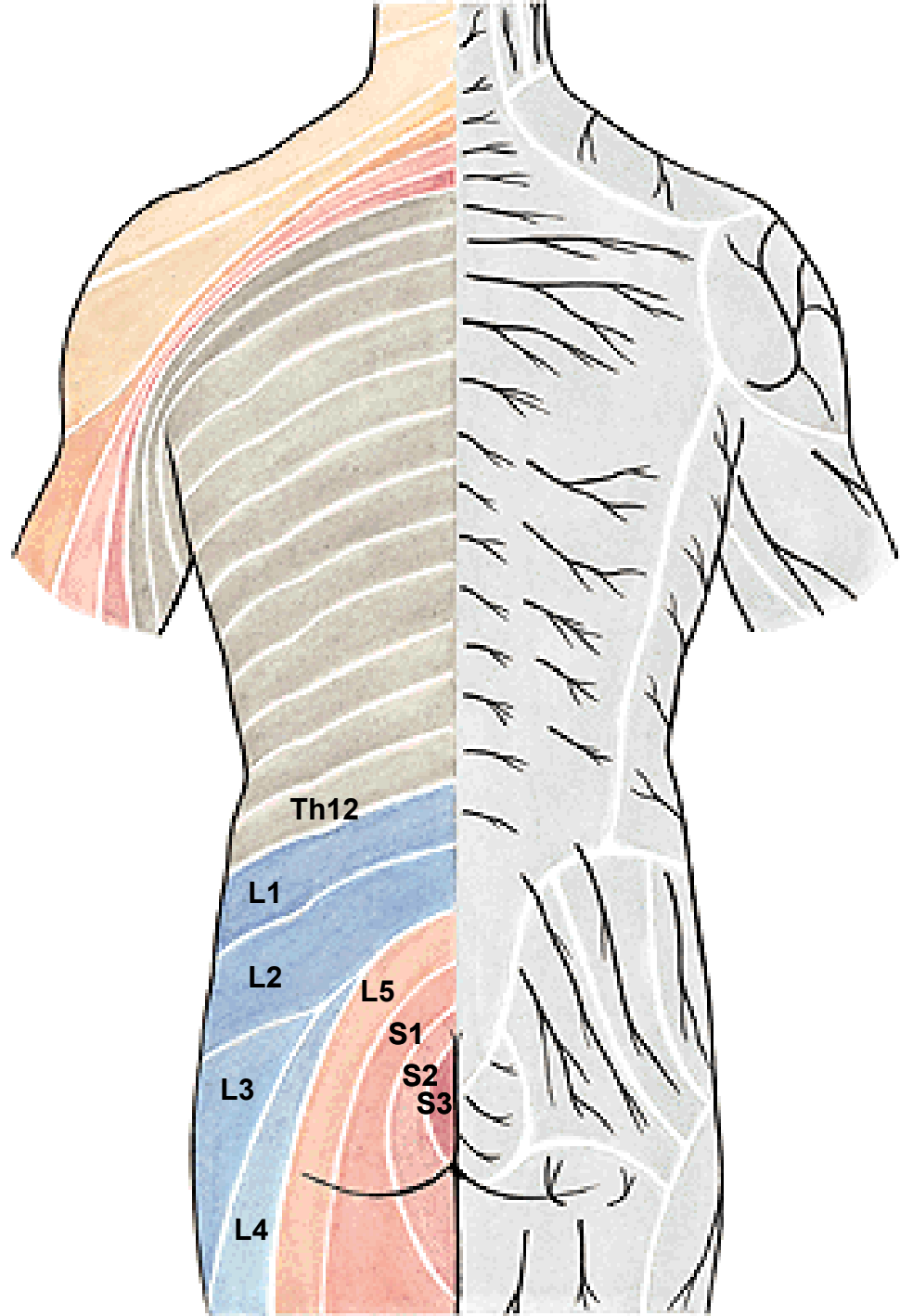


**Vasa lumbalia**



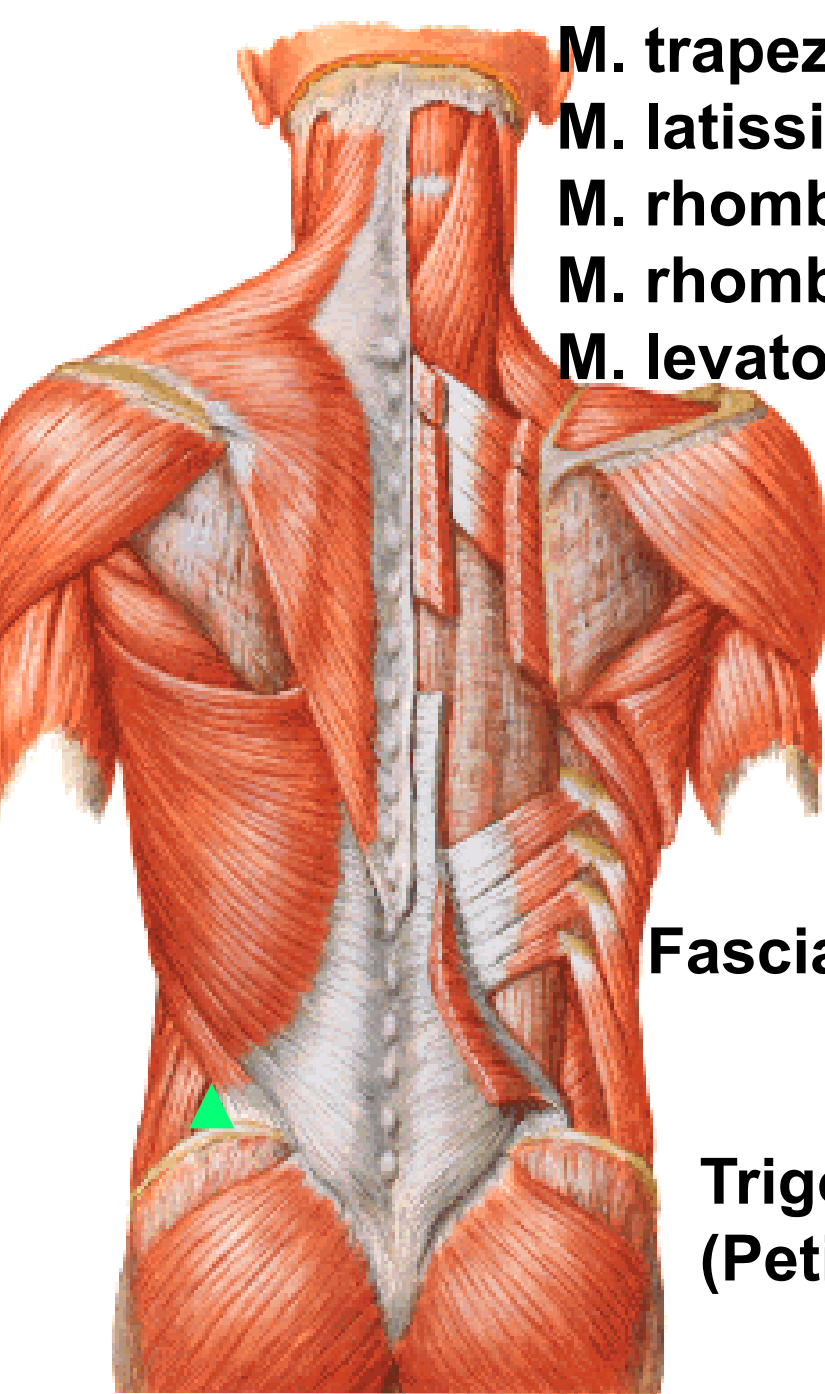
# N. spinalis











**M. trapezius**

**M. latissimus dorsi**

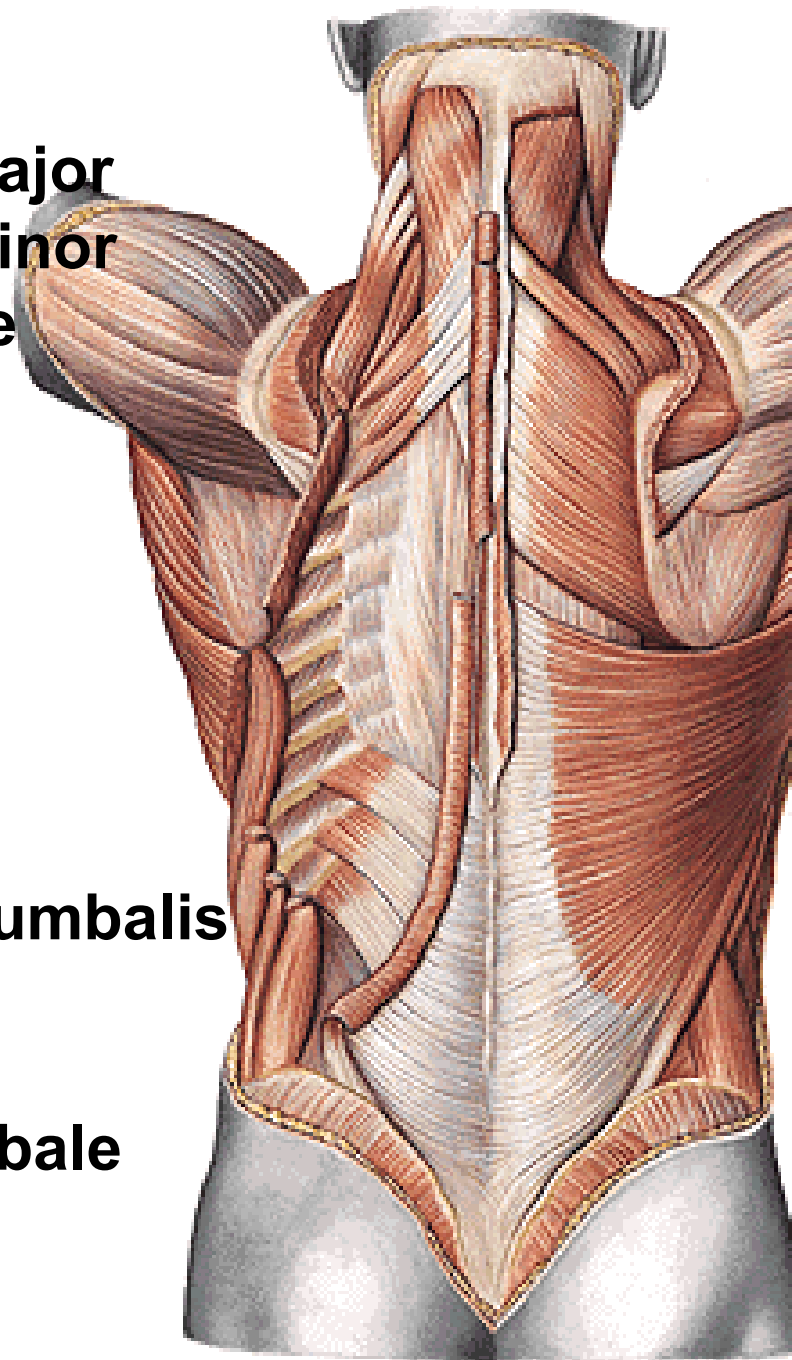
**M. rhomboideus major**

**M. rhomboideus minor**

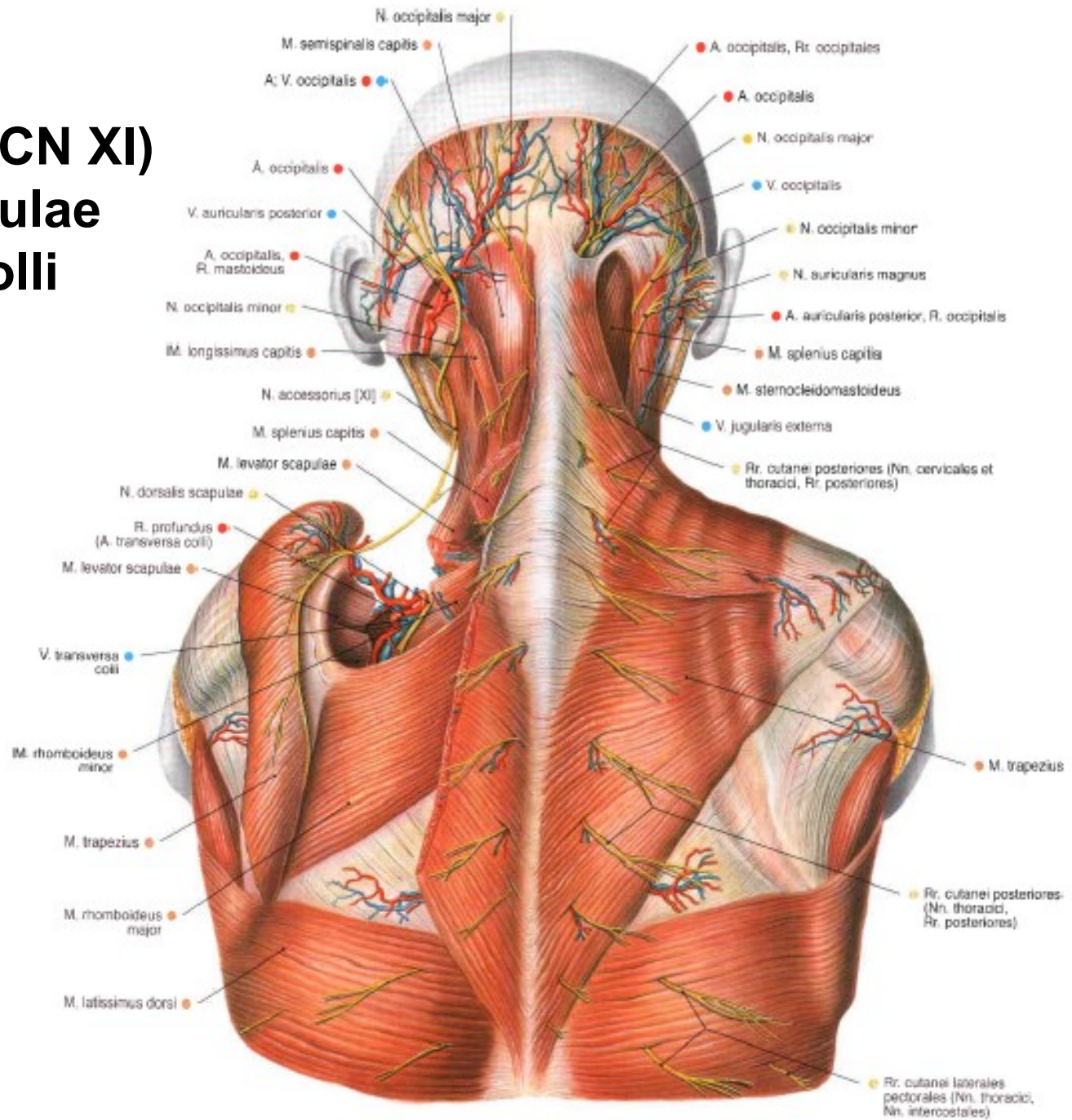
**M. levator scapulae**

**Fascia thoracolumbalis**

**Trigonum lumbale  
(Petit)**

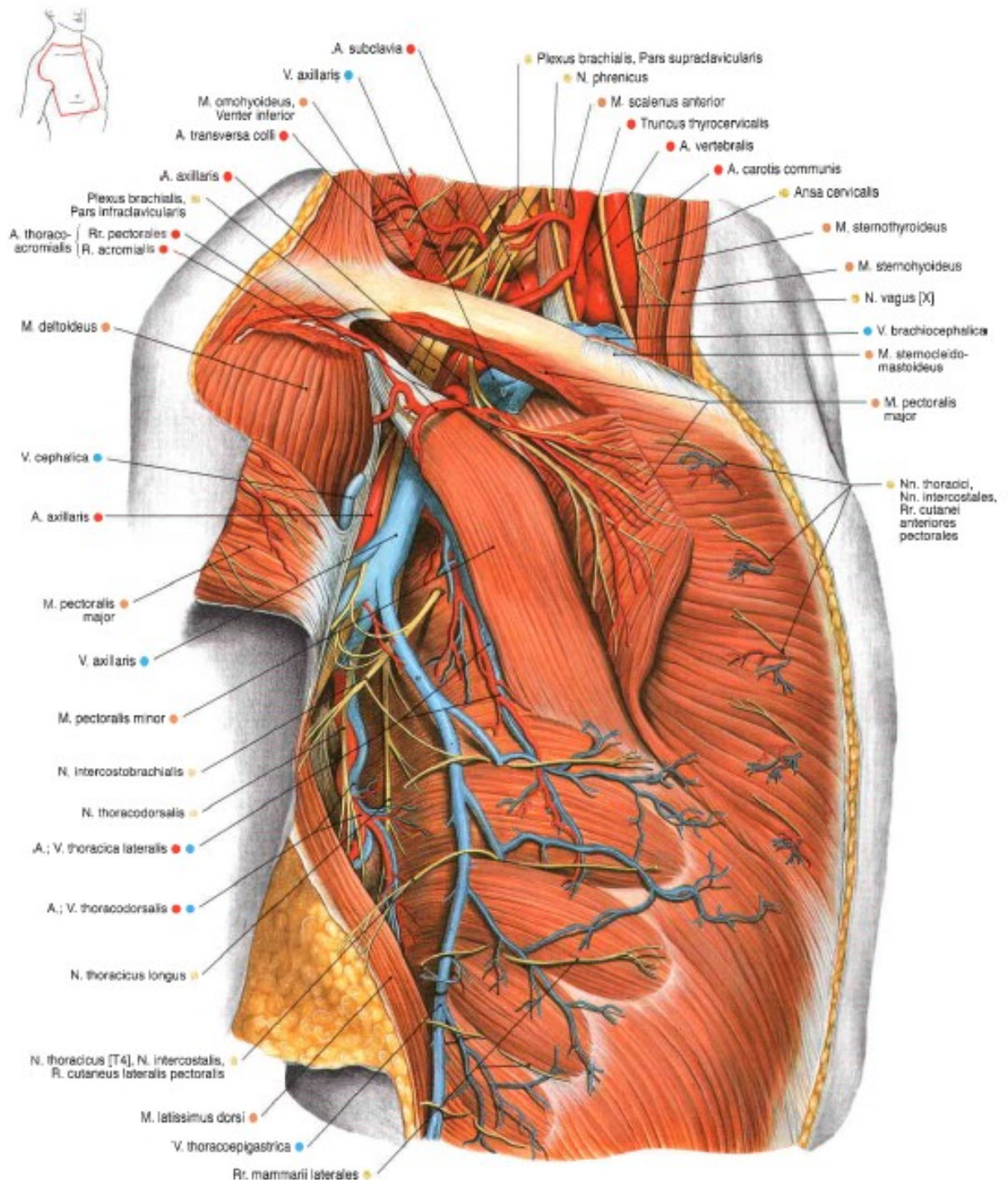


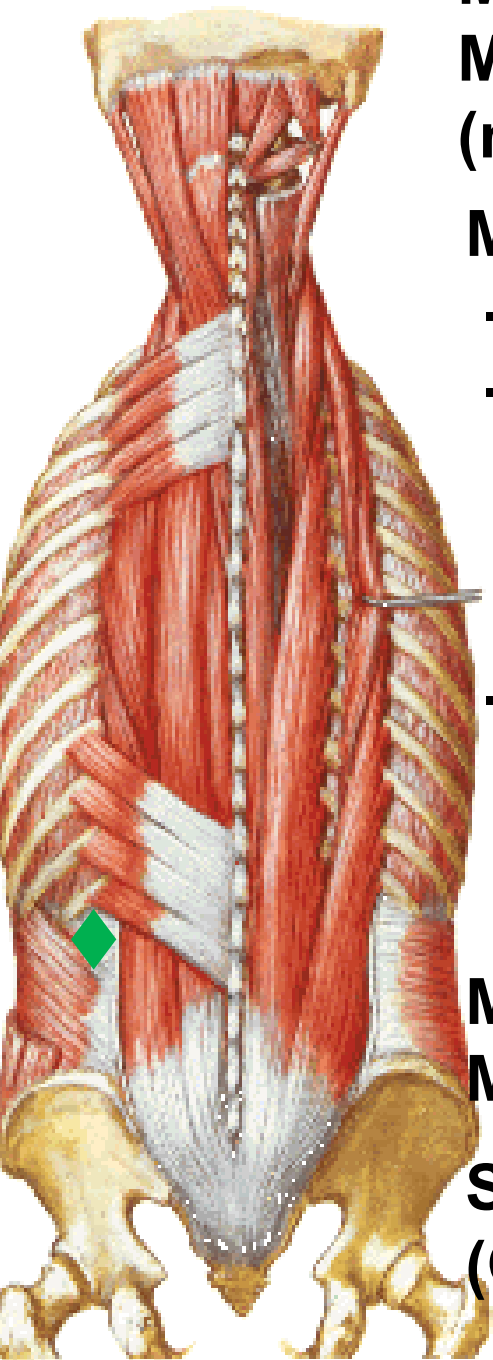
**N. accessorius (CN XI)**  
**N. dorsalis scapulae**  
**A. transversa colli**  
**(a. subclavia)**





# A. thoracodorsalis (a. subscapularis) V. thoracodorsalis N. thoracodorsalis





**M. serratus post. sup.**

**M. serratus post. inf.**

**(nn. intercostales)**

**M. erector spinae**

- **m. spinalis**

- **m. longissimus**

**(thoracis**

**cervicis**

**capitis)**

- **m. iliocostalis**

**(lumborum**

**thoracis**

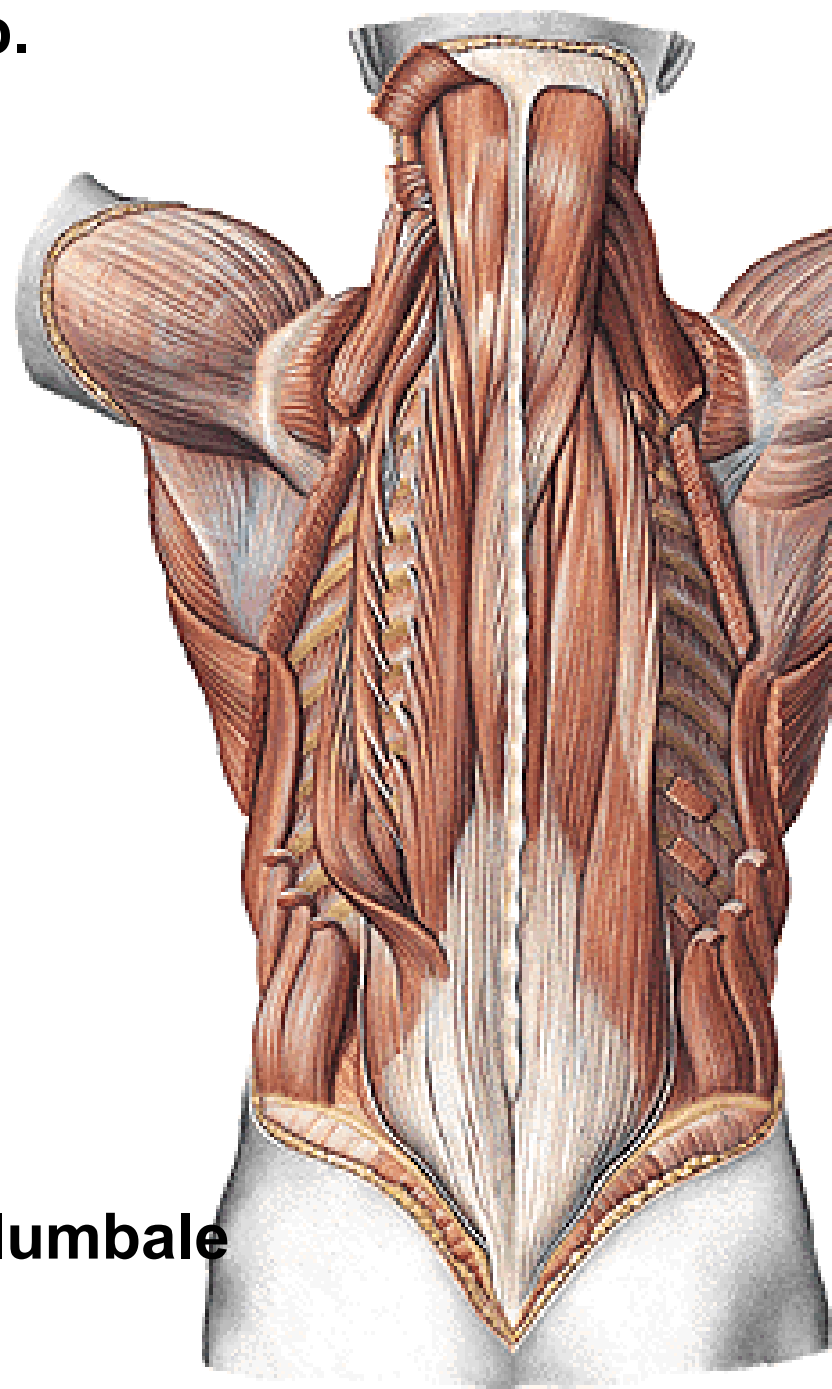
**cervicis**

**M. splenius capitis**

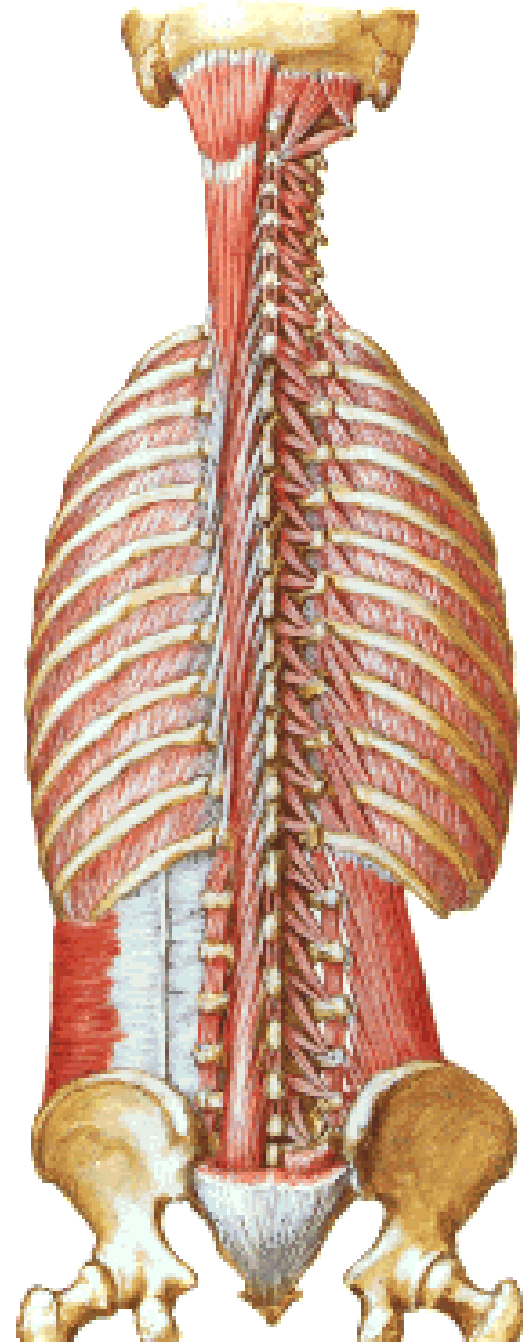
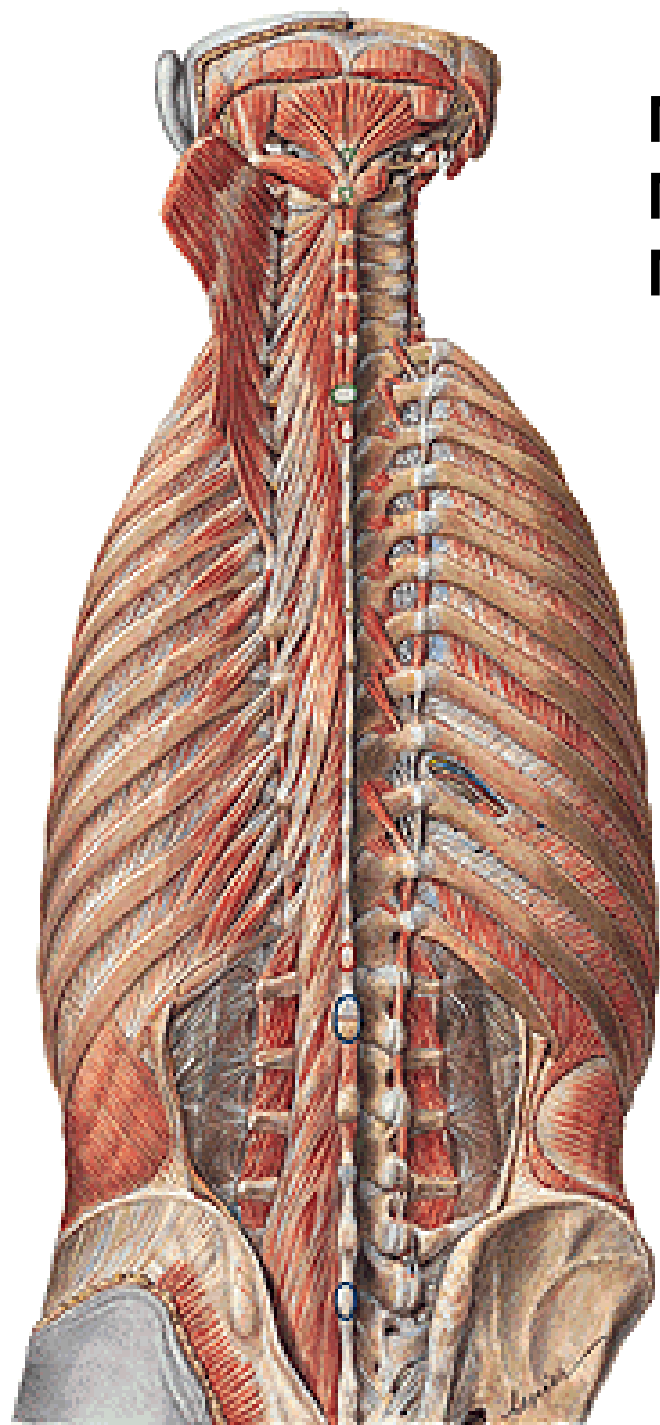
**M. splenius cervicis**

**Spatium tendineum lumbale**

**(Grynfelt, Krause)**



**Mm. semispinales**  
**Mm. multifidi**  
**Mm. rotatores**

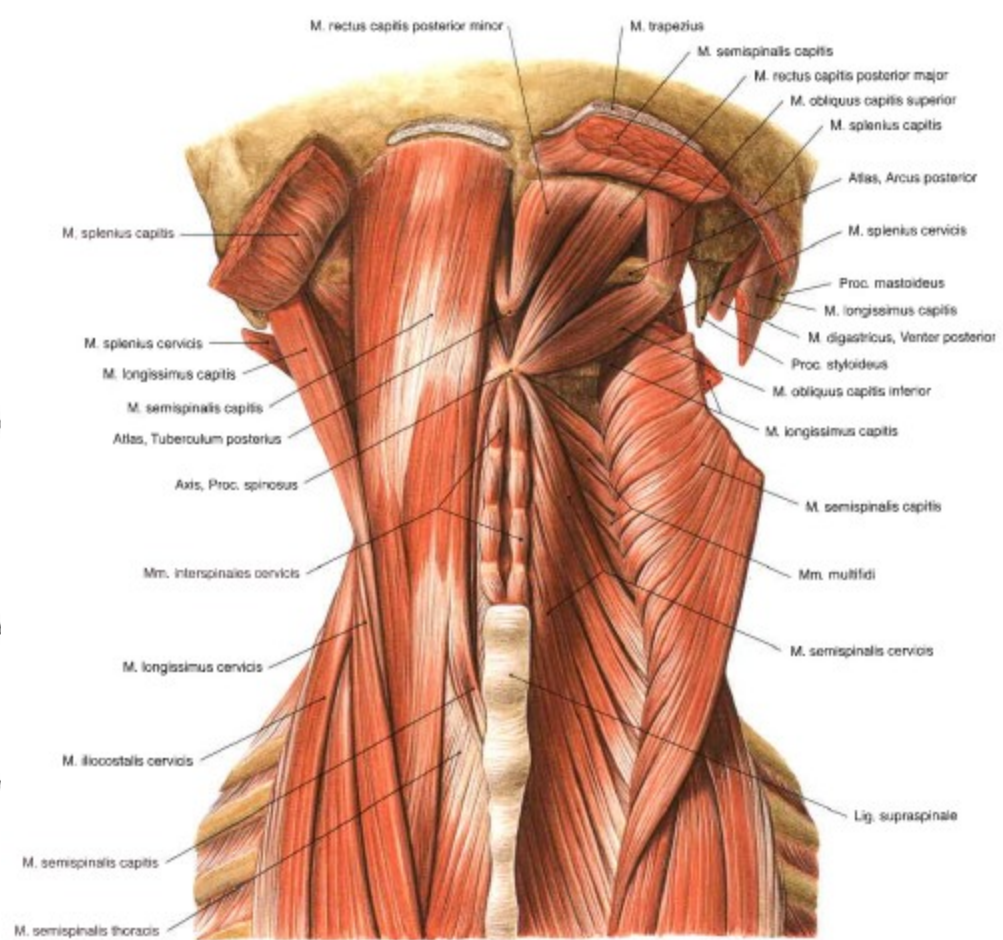
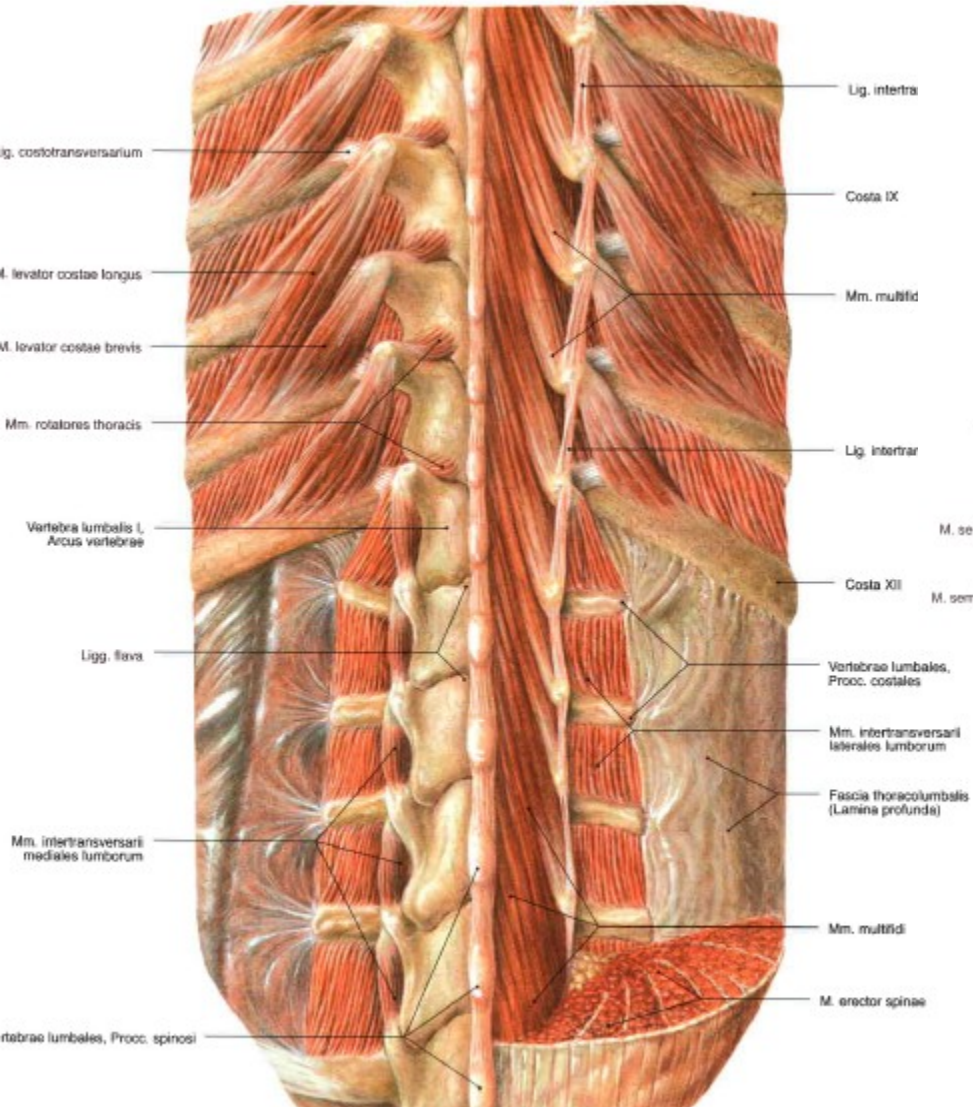




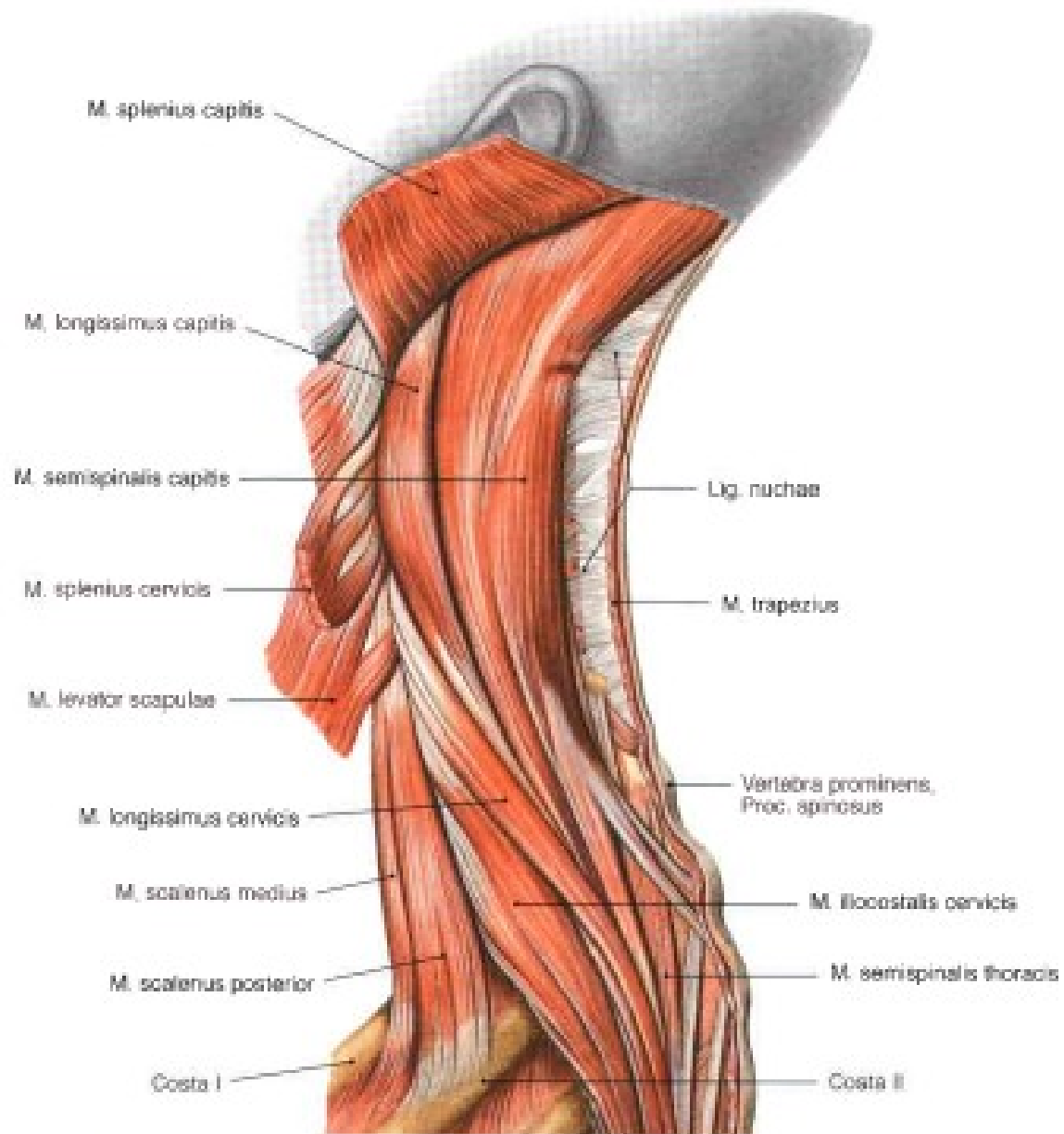
# Mm. intertransversarii

# Mm. interspinales

# Mm. levatores costarum

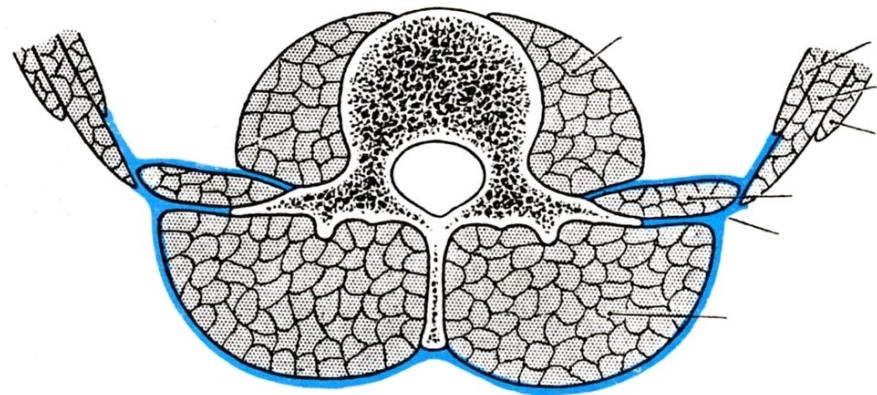


# Lig. nuchae

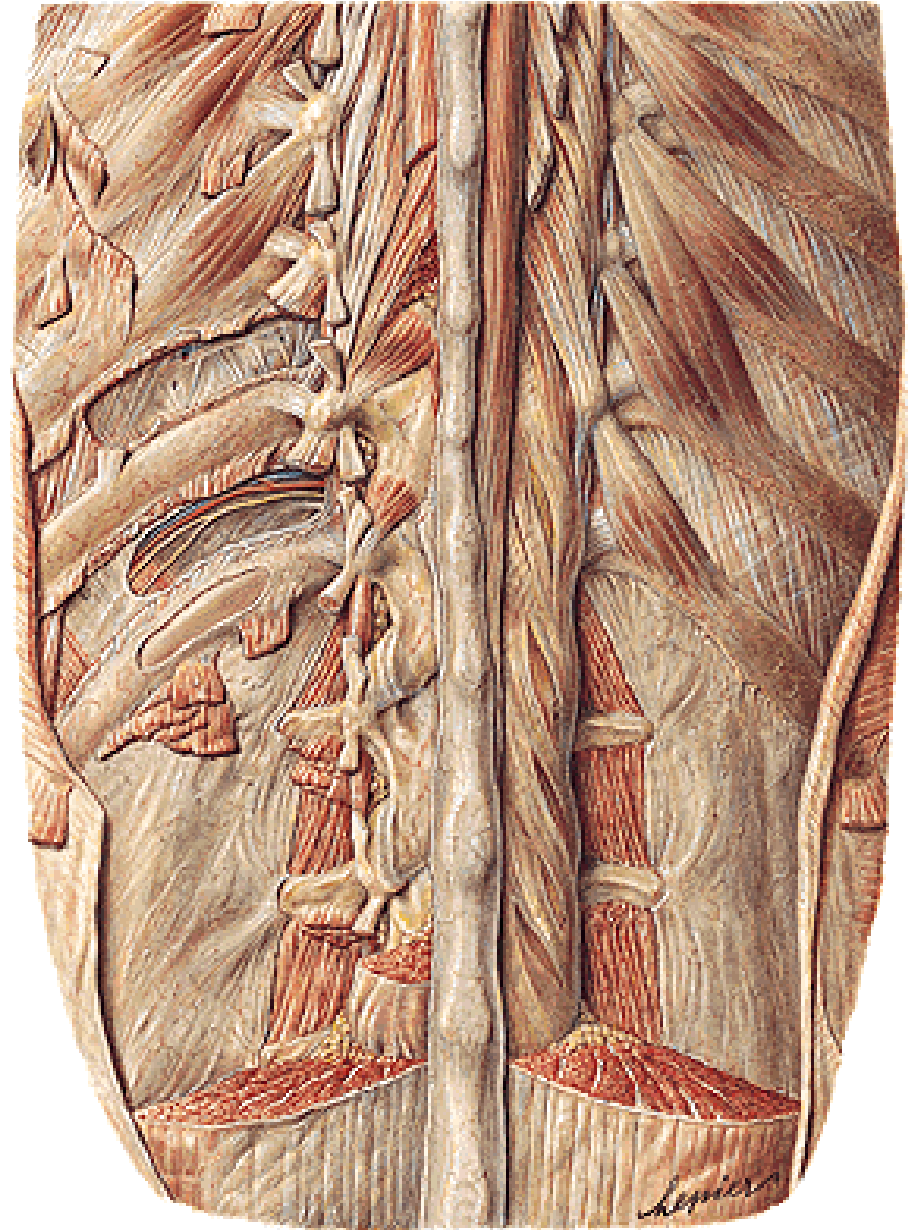




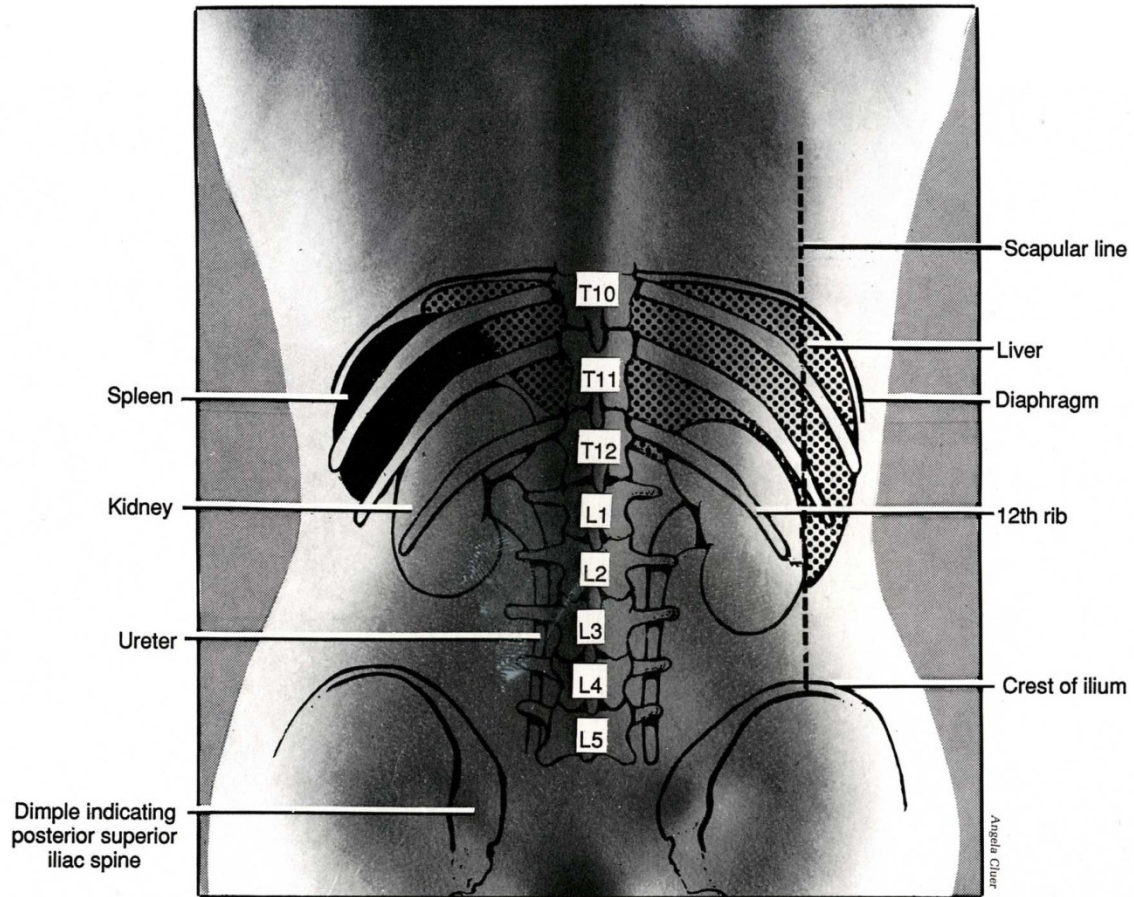
# Fascia thoracolumbalis

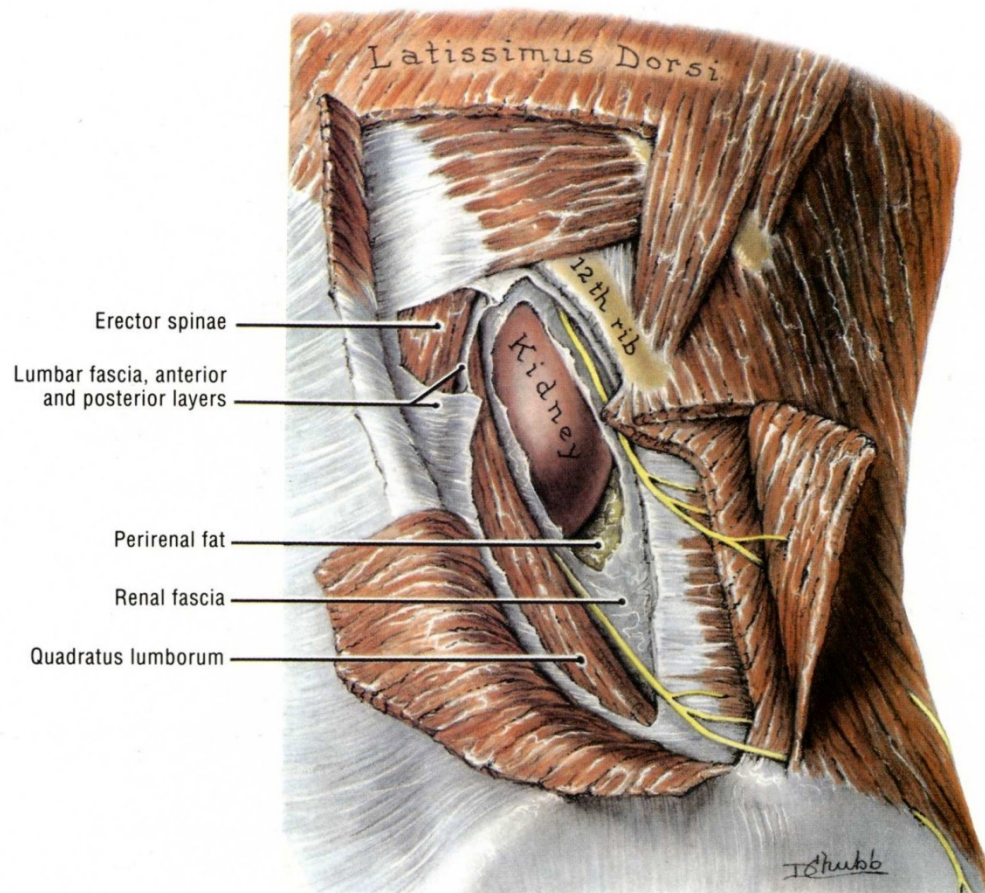


# Aponeurosis lumbalis

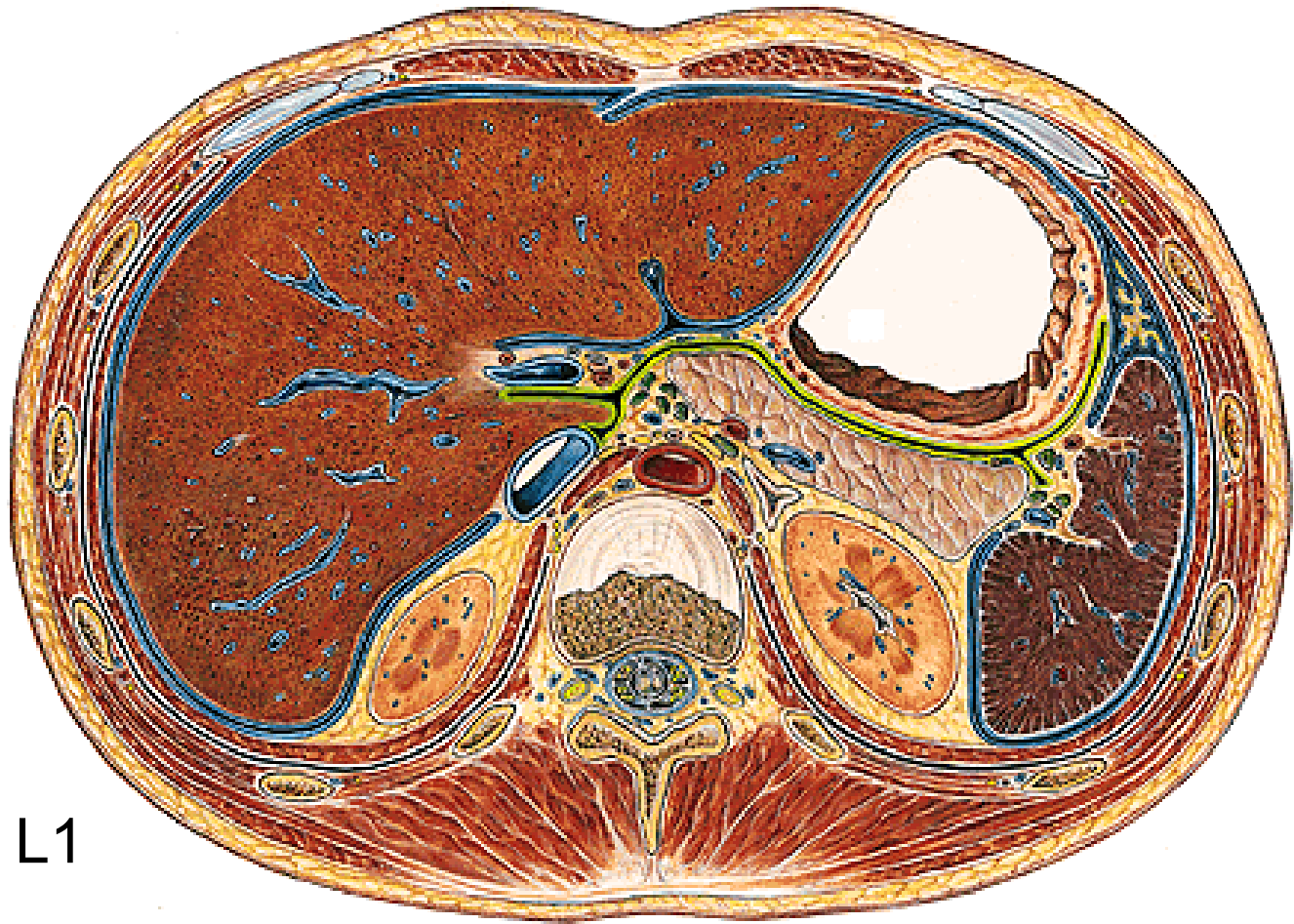






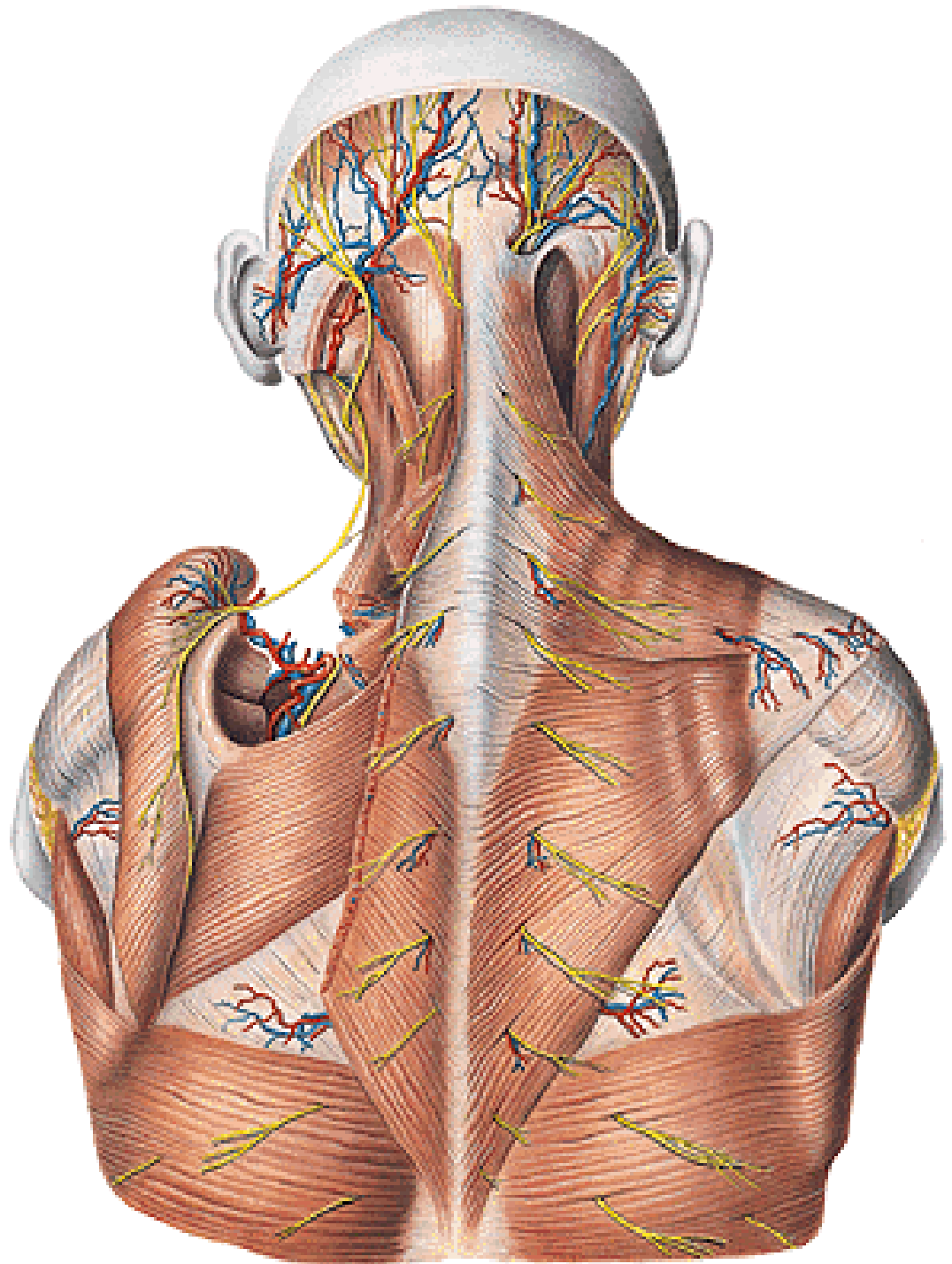






L1

**N. occipitalis major**  
**N. occipitalis minor**  
**N. occipitalis tertius**  
**A. et v. occipitalis**



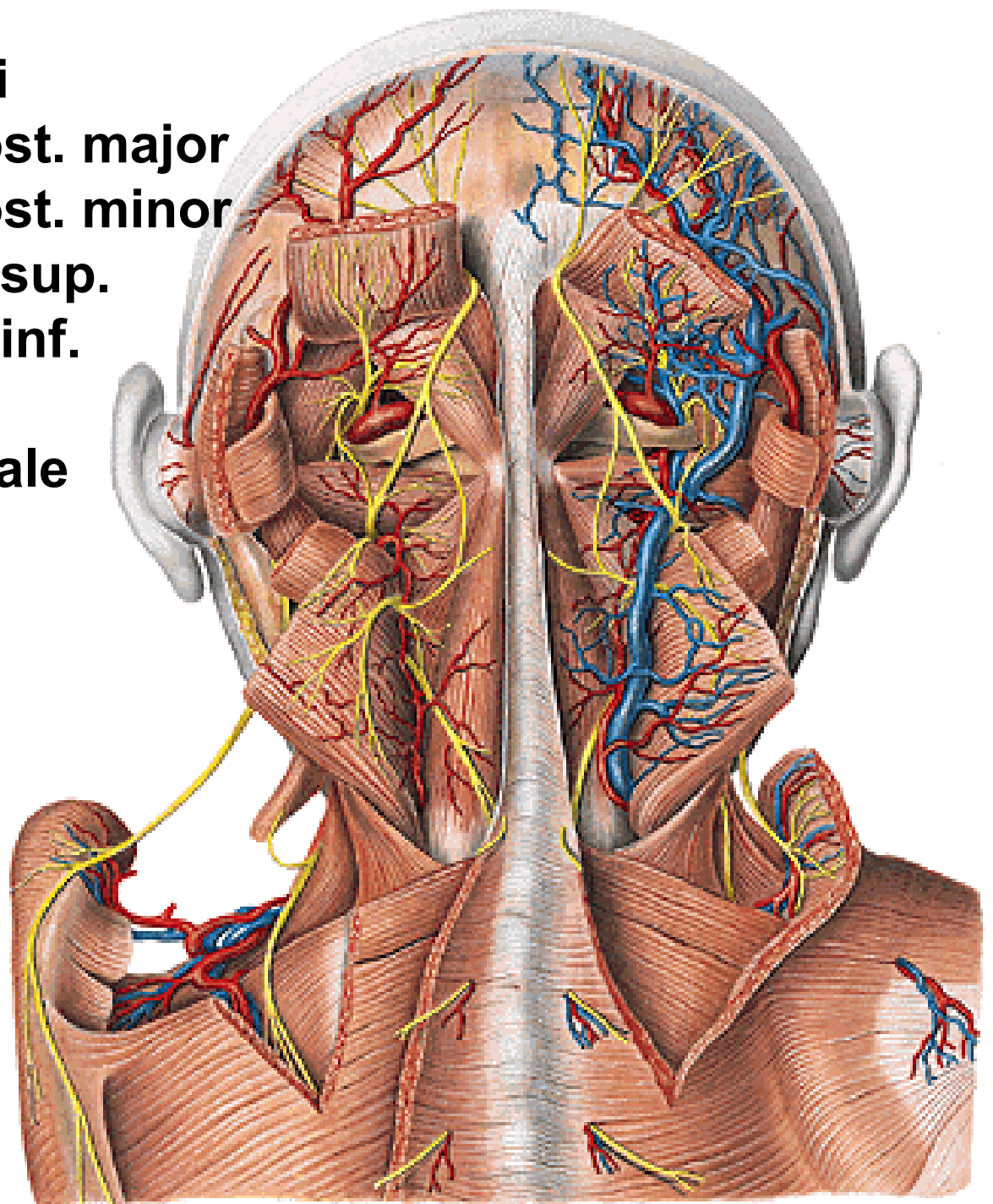
## **Mm. nuchae profundi**

- m. rectus capitis post. major
- m. rectus capitis post. minor
- m. obliquus capitis sup.
- m. obliquus capitis inf.

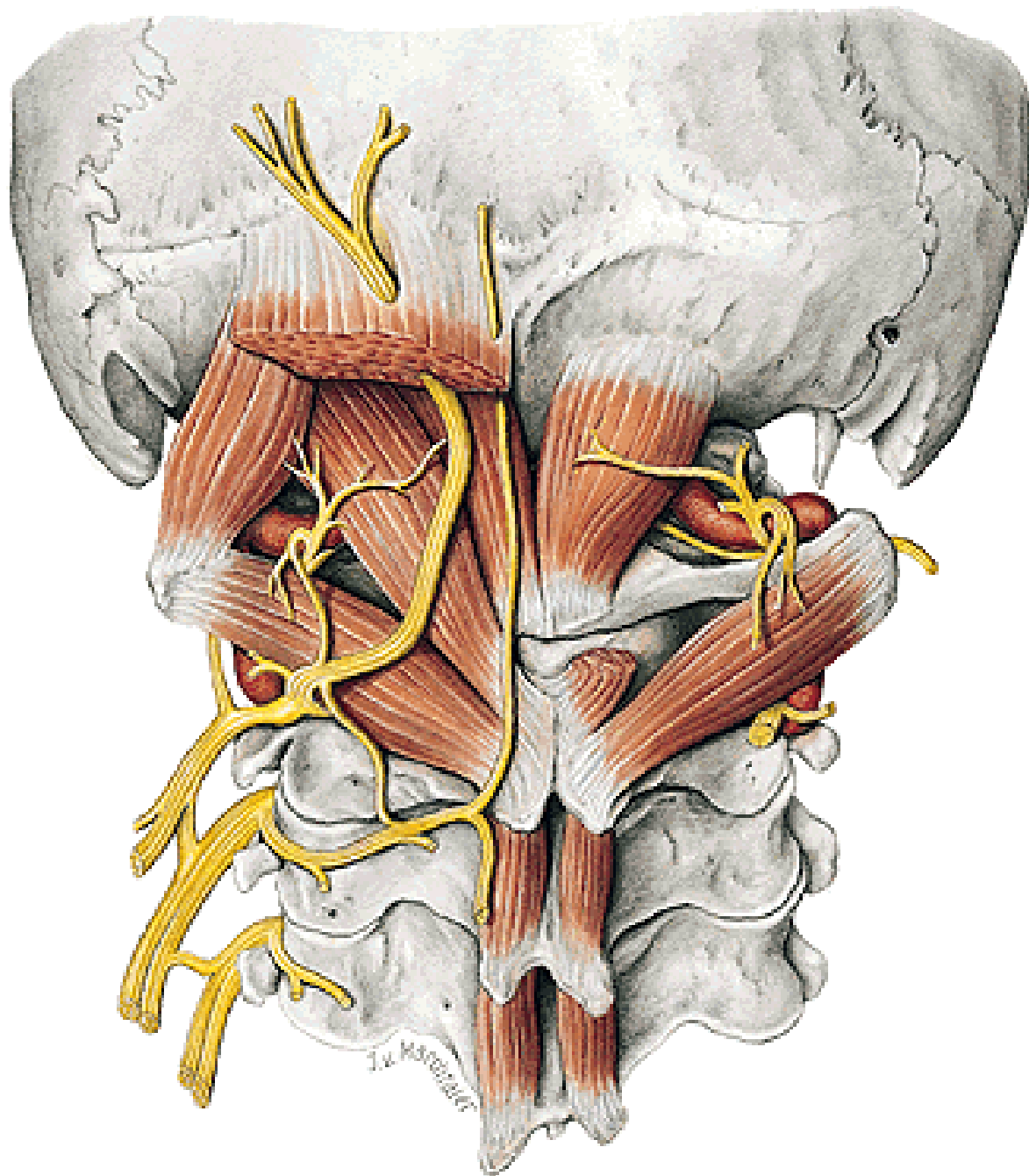
## **Trigonum suboccipitale**

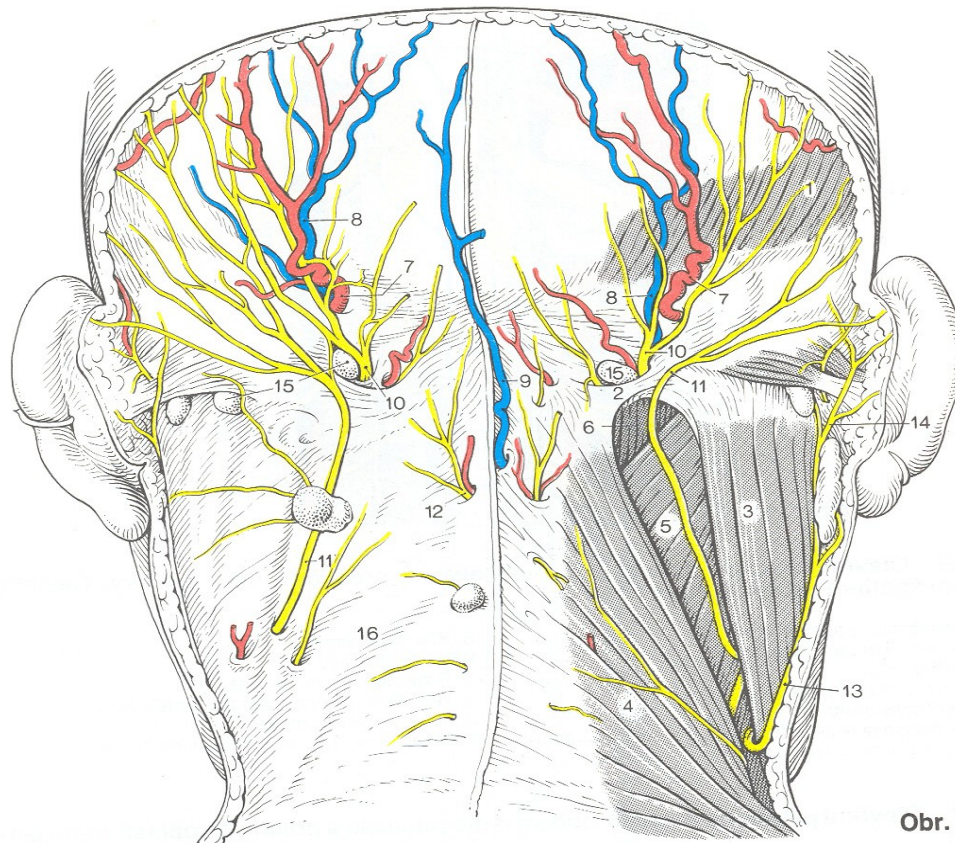
- n. suboccipitalis
- a. vertebralis
- arcus post. atlantis

## **Vasa cervicalia prof.**

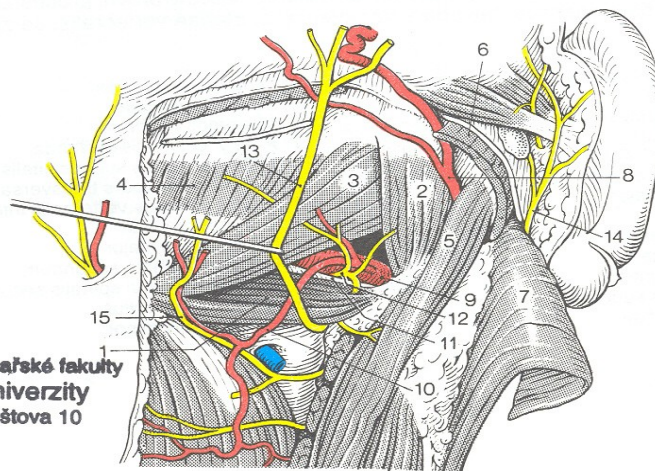








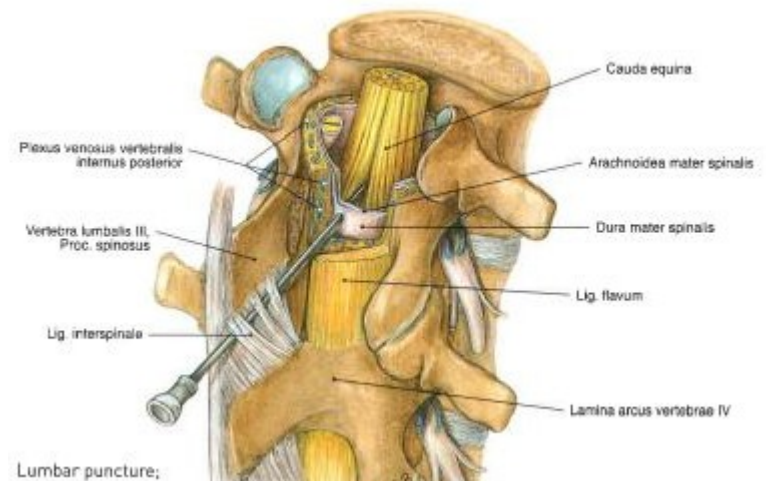
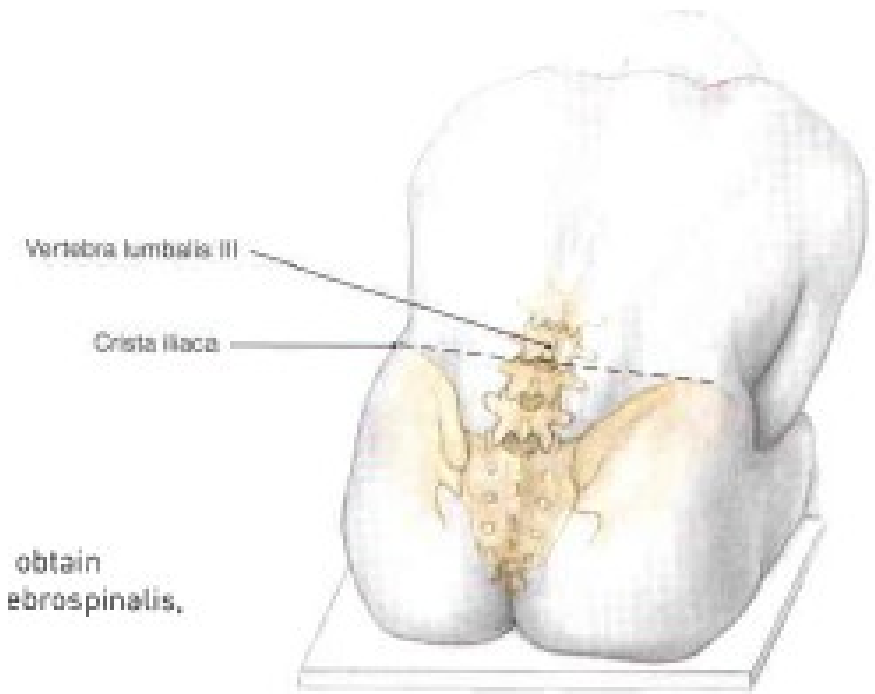
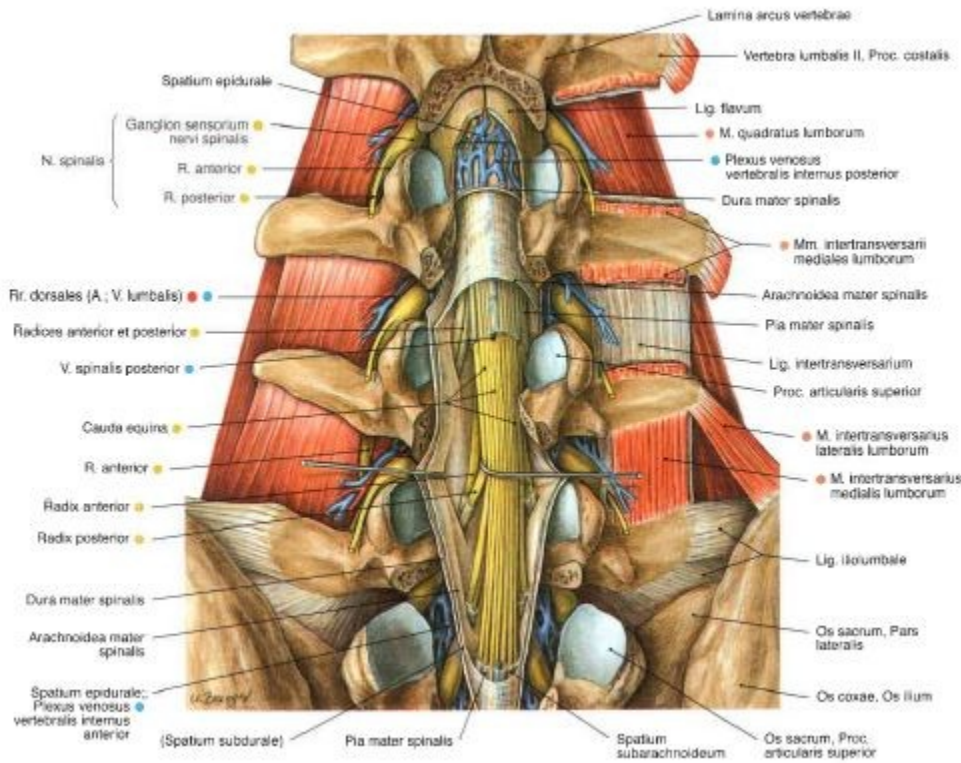
Obr. 14



Ústřední knihovna lékařské fakulty  
 Masarykovy univerzity  
 662 43 BRNO, Joštova 10

Obr. 15

# Lumbar puncture



Illustrations and photographs were copied from:  
**Atlas der Anatomie des Menschen/Sobotta.**  
**Putz,R., und Pabst,R. 20. Auflage. München:**  
**Urban & Schwarzenberg, 1993**  
**Netter: Interactive Atlas of Human Anatomy.**  
**Windows Version 2.0**