

# **ARTERIES**

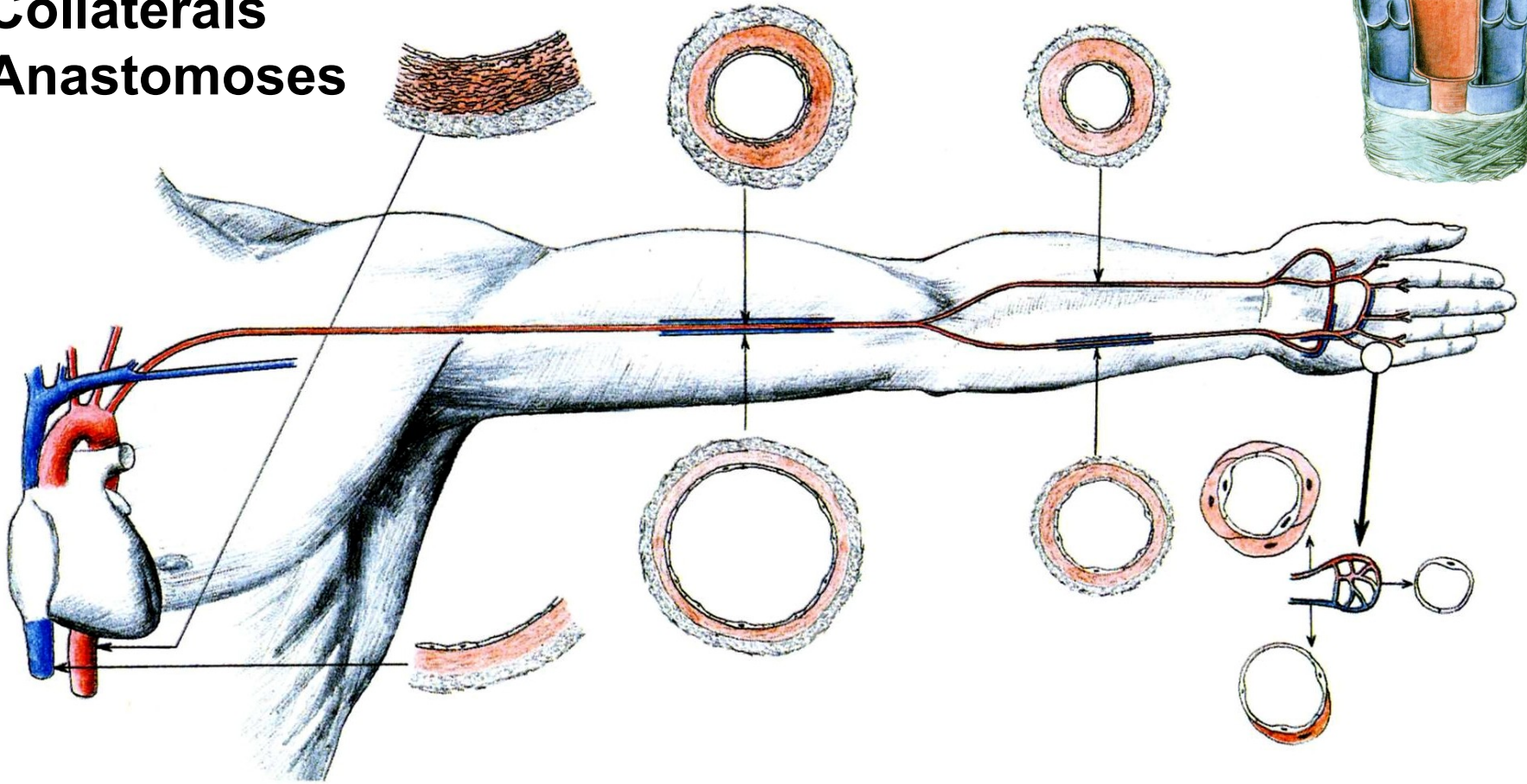
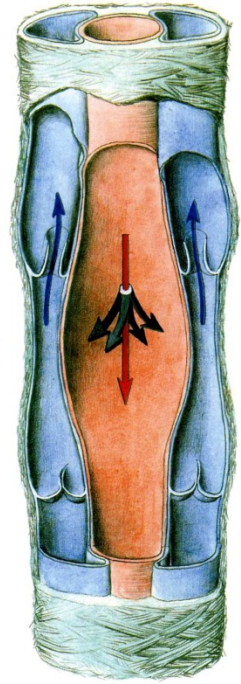
**Arteriae**  
**Arteriolae**  
**Vasa capillaria**  
**(sinusoids)**

**Venulae**  
**Venae**

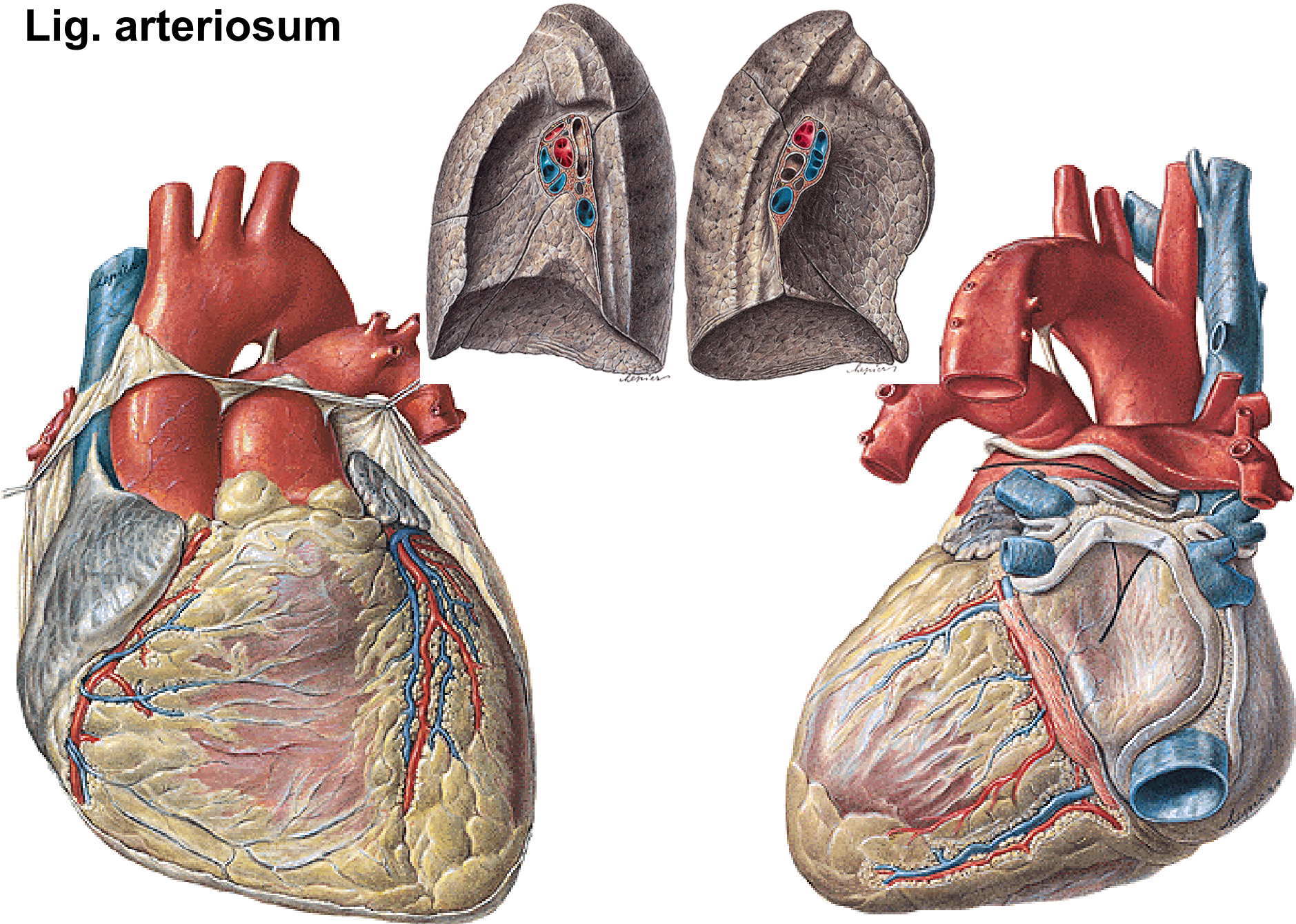
**Tunica intima**  
**Tunica media**  
**Tunica adventitia**

**Vasa vasorum**

**Collaterals**  
**Anastomoses**

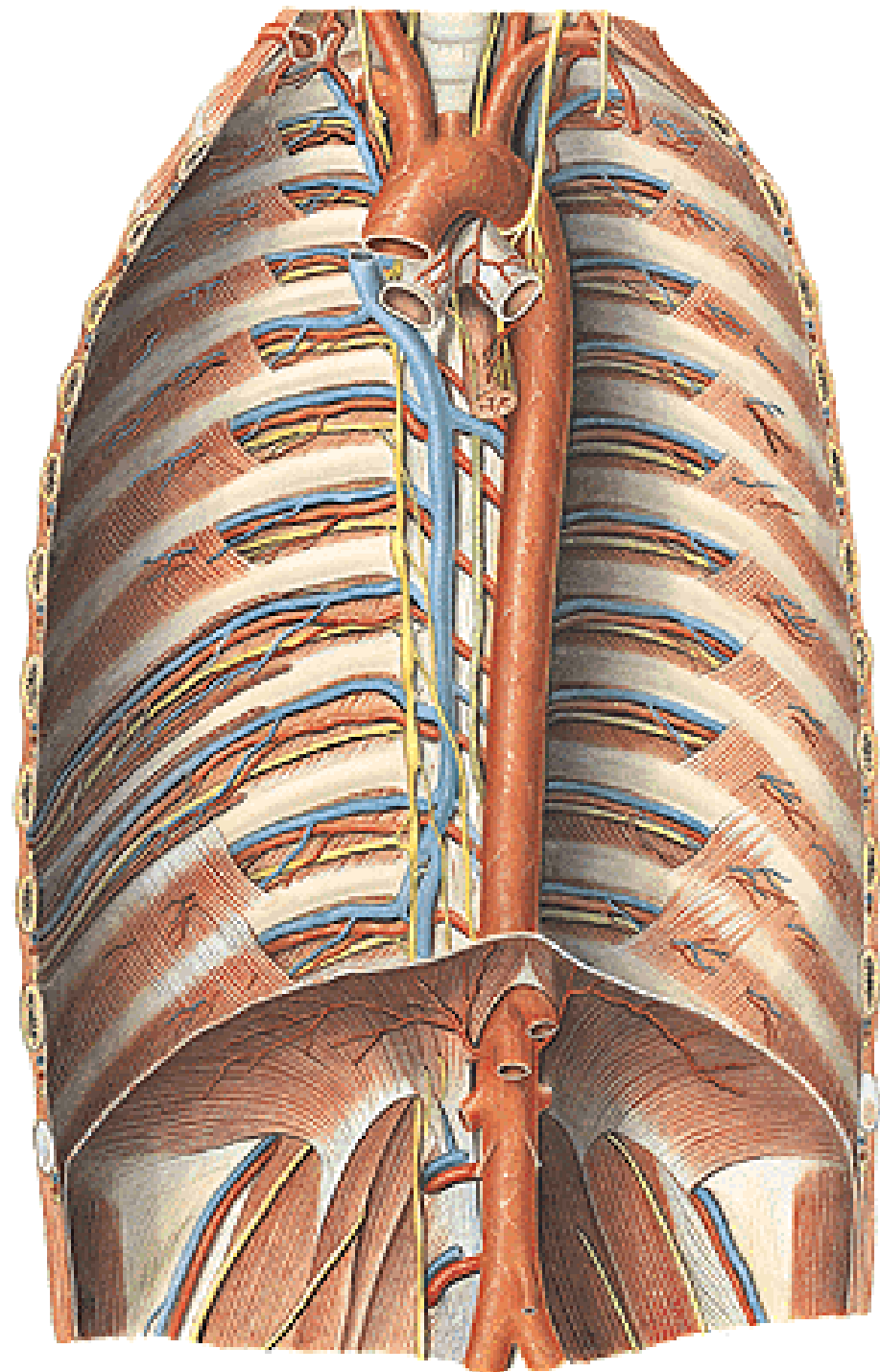


# TRUNCUS PULMONALIS – a. pulmonalis dx. et sin. Lig. arteriosum



# AORTA

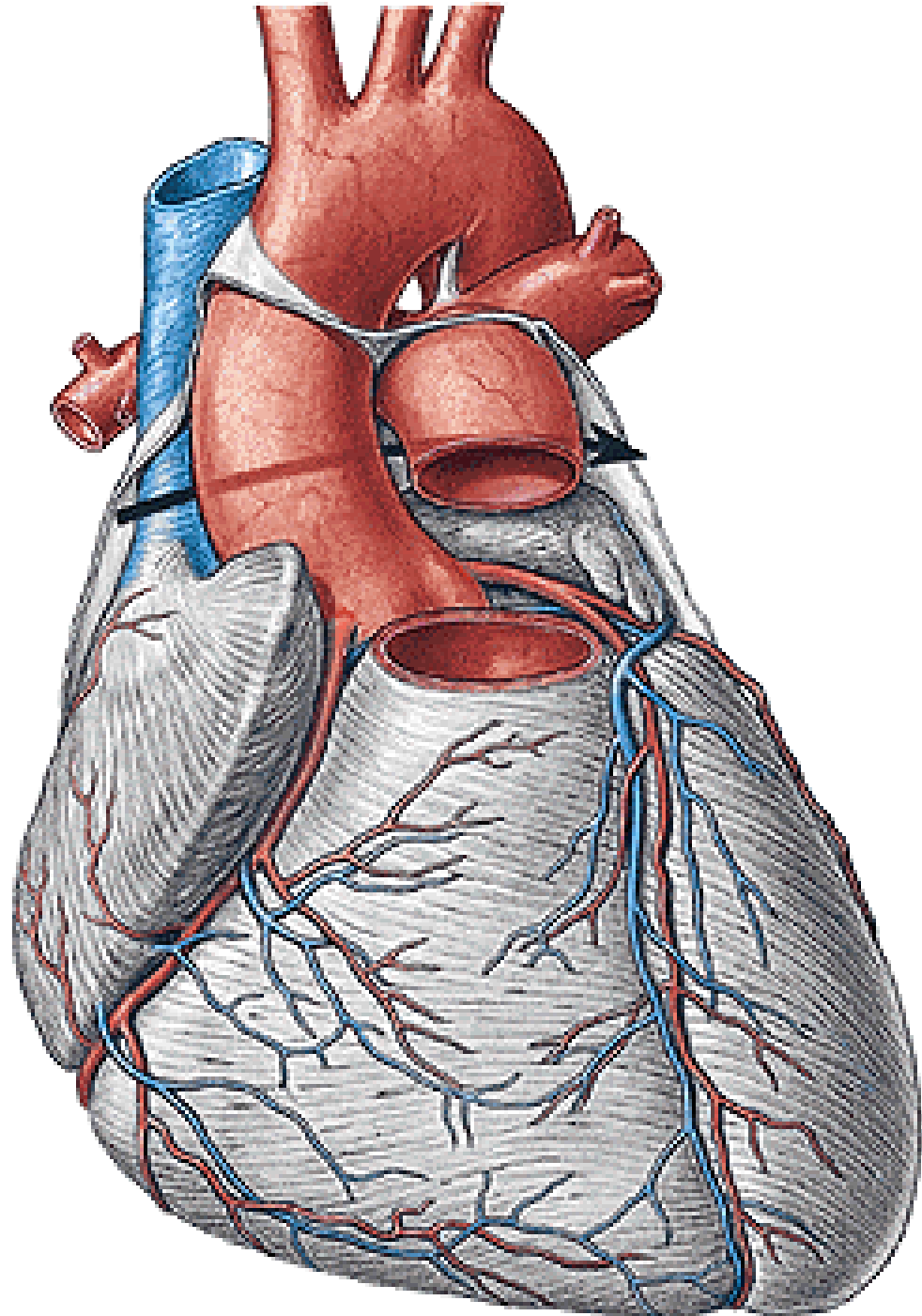
- AORTA ASCENDENS
- ARCUS AORTAE
- AORTA DESCENDENS
  - Aorta thoracica
  - Aorta abdominalis



# AORTA ASCENDENS

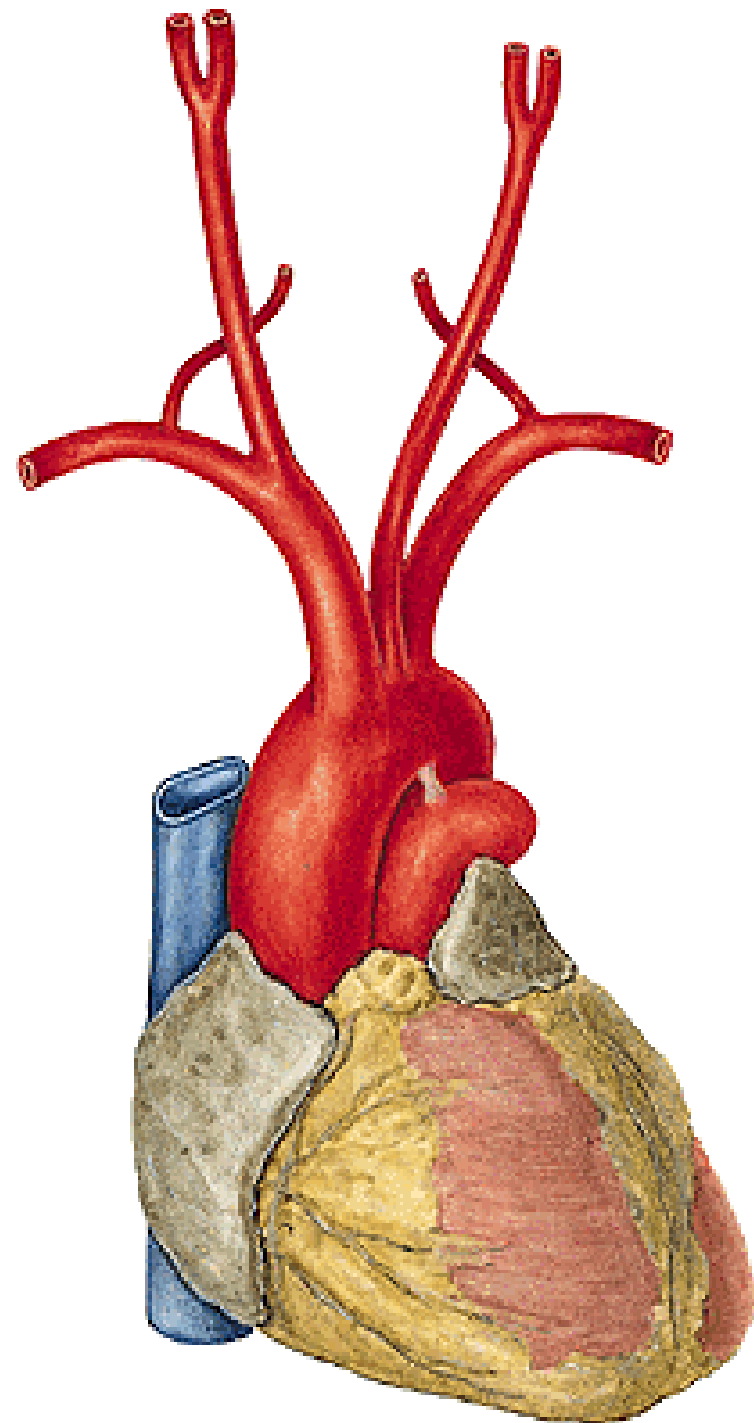
## Bulbus aortae

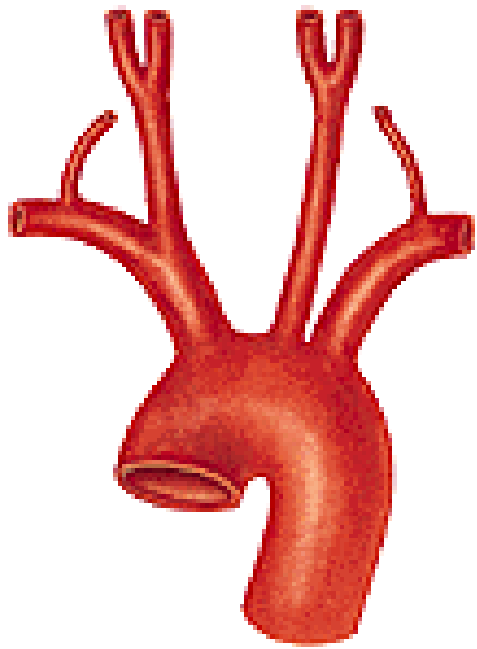
- a. coronaria cordis dx.
- a. coronaria cordis sin.



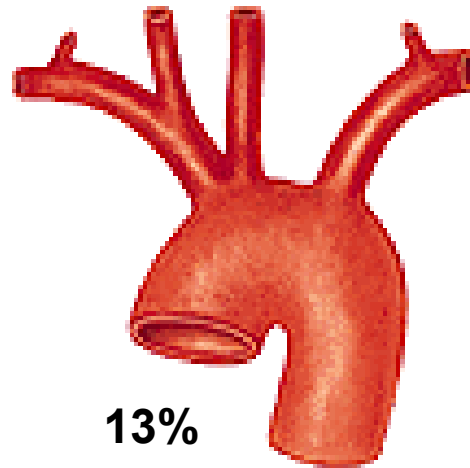
# ARCUS AORTAE

- truncus brachiocephalicus
- a. carotis communis sin.
- a. subclavia sin.

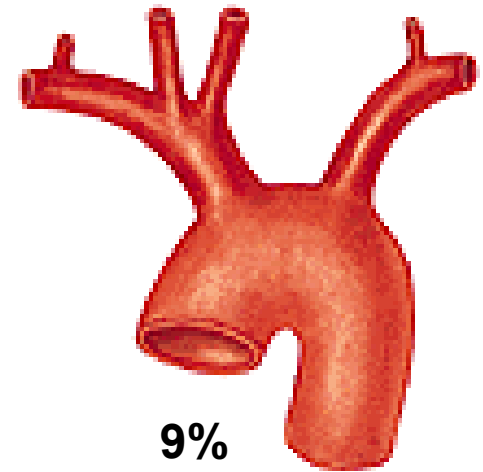




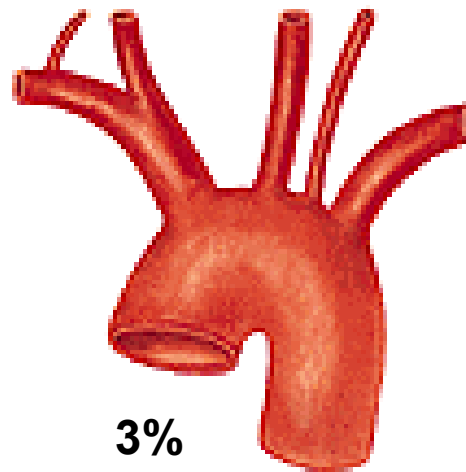
**70%**



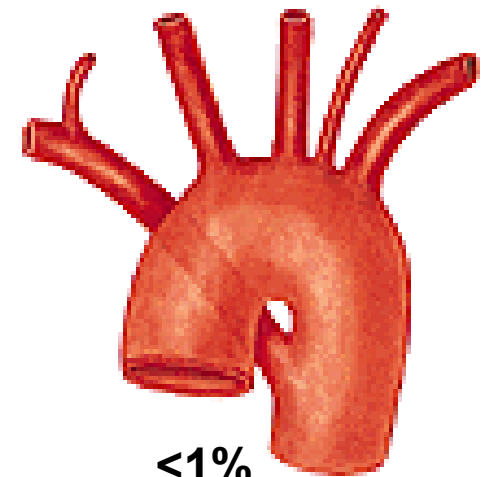
**13%**



**9%**



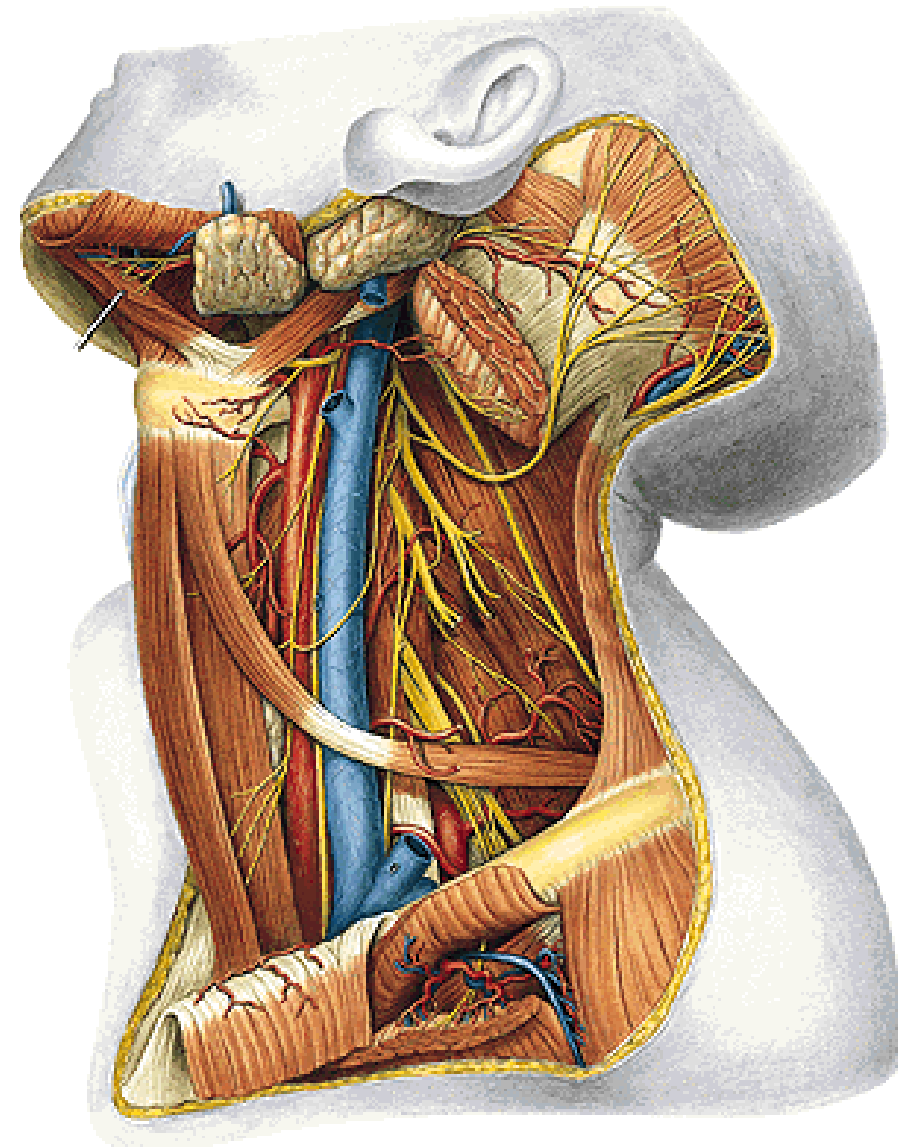
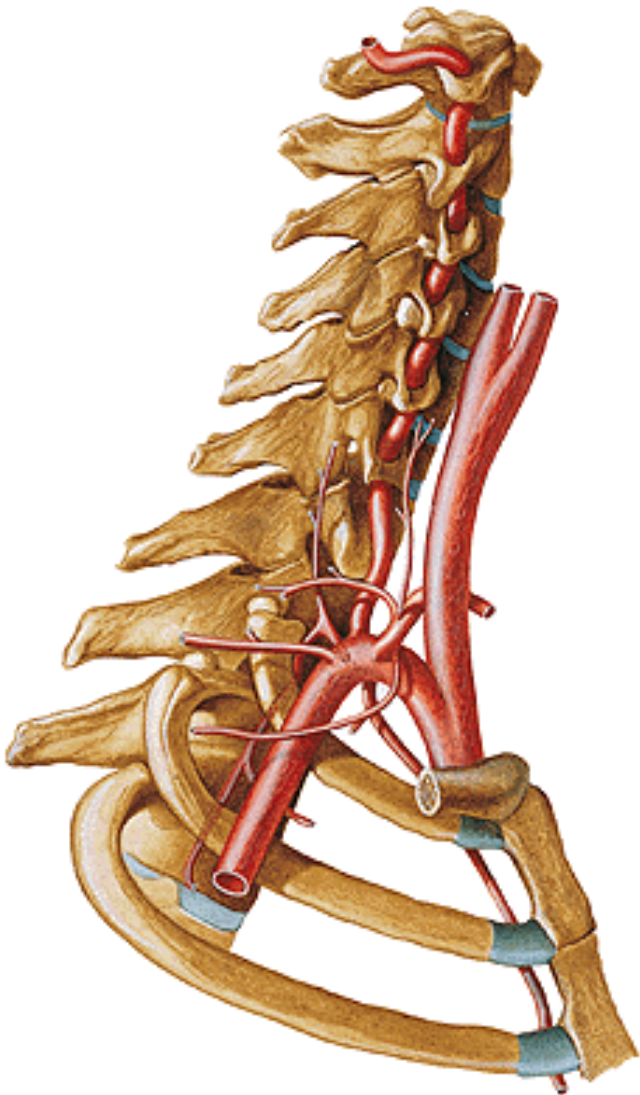
**3%**



**<1%**



# A. CAROTIS COMMUNIS – a. carotis interna et externa





## **A. CAROTIS EXTERNA:**

### ***ventral branches:***

- a. thyroidea sup.
- a. lingualis
- a. facialis

### ***dorsal branches:***

- a. occipitalis
- a. auricularis post.

### ***medial branch:***

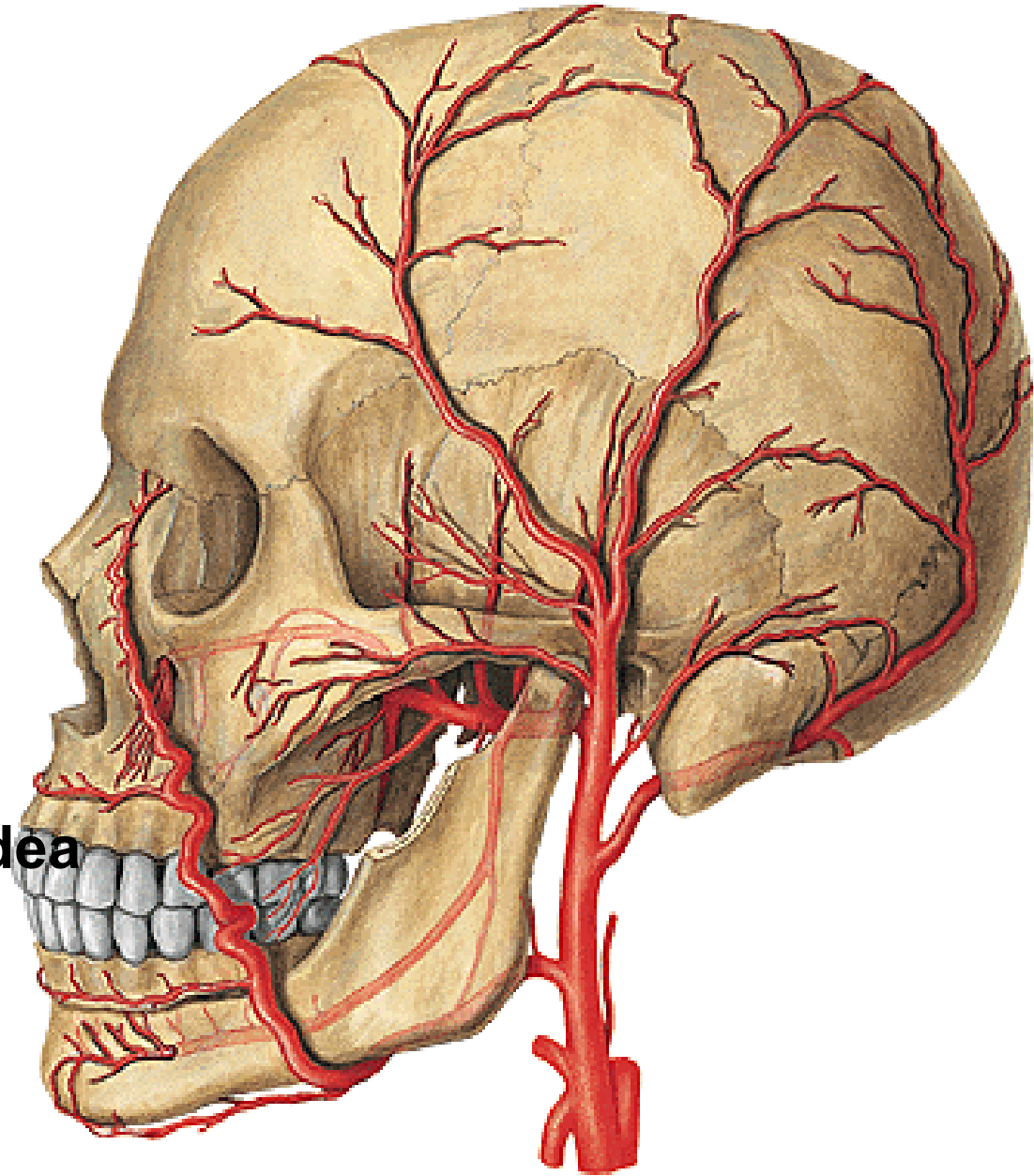
- a. pharyngea asc.

### ***lateral branch:***

- a. sternocleidomastoidea

### ***terminal branches***

- a. maxillaris
- a. temporalis spf.

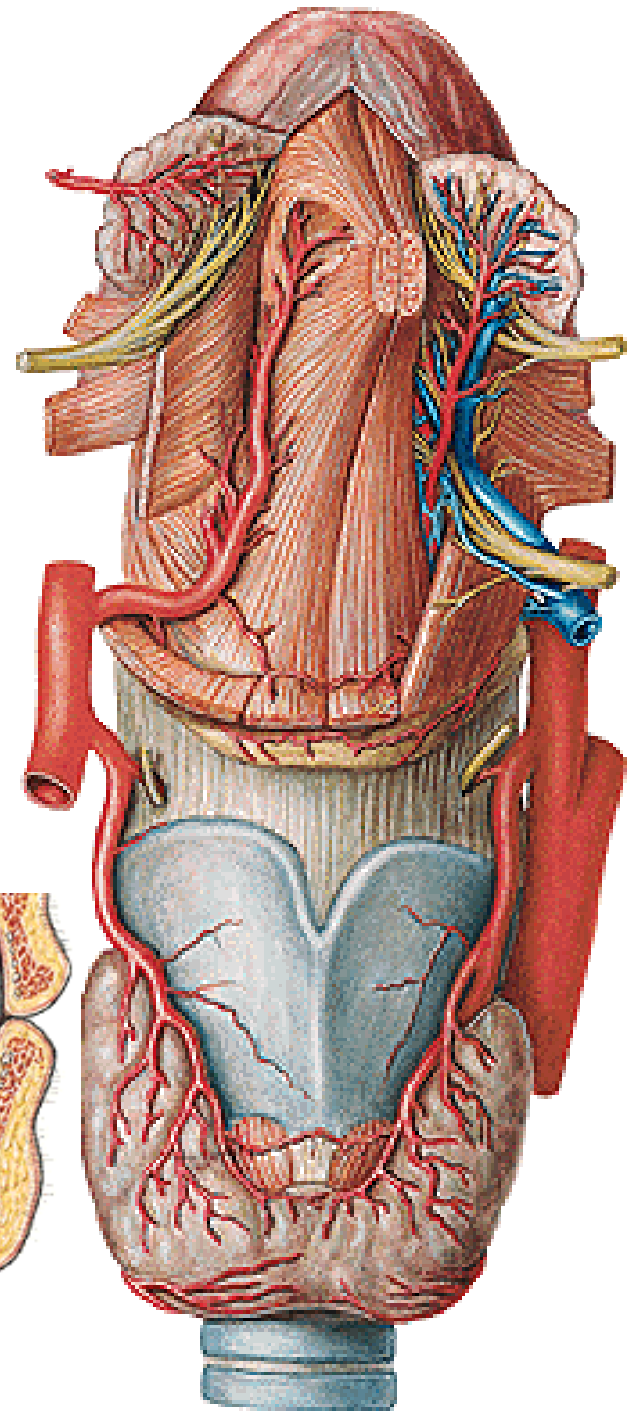
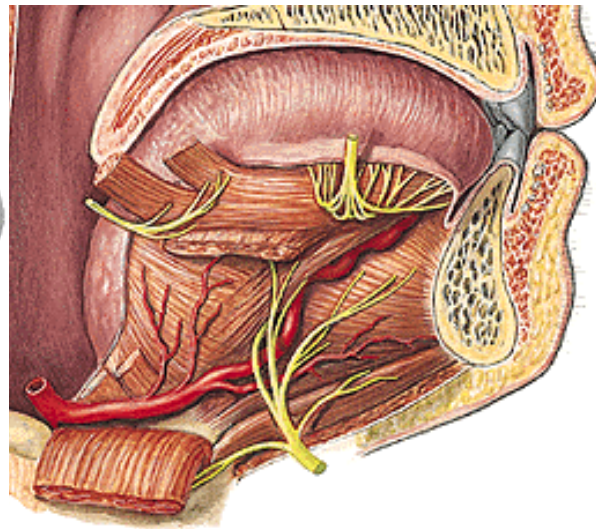
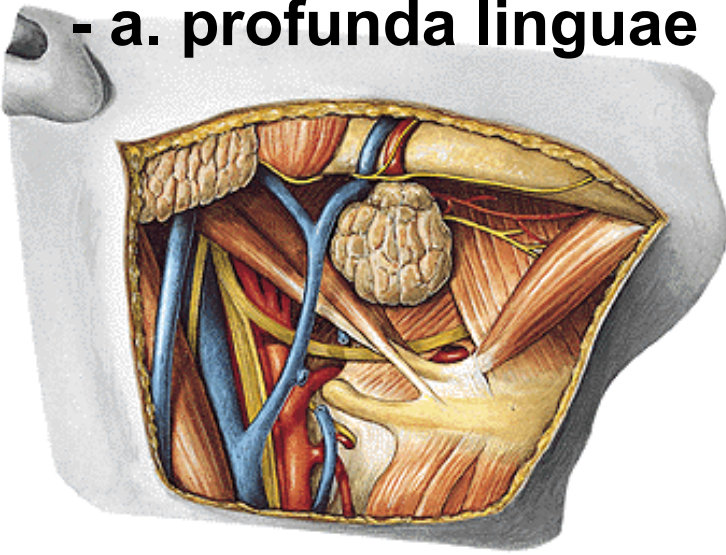


## A. THYROIDEA SUP.:

- a. laryngea sup.
- r. cricothyroideus
- r. infrahyoideus
- r. sternocleidomastoideus
- rr. glandulares

## A. LINGUALIS: (Béclard's angle Pirogov's triangle)

- r. suprahyoideus
- a. sublingualis
- rr. dorsales linguae
- a. profunda linguae

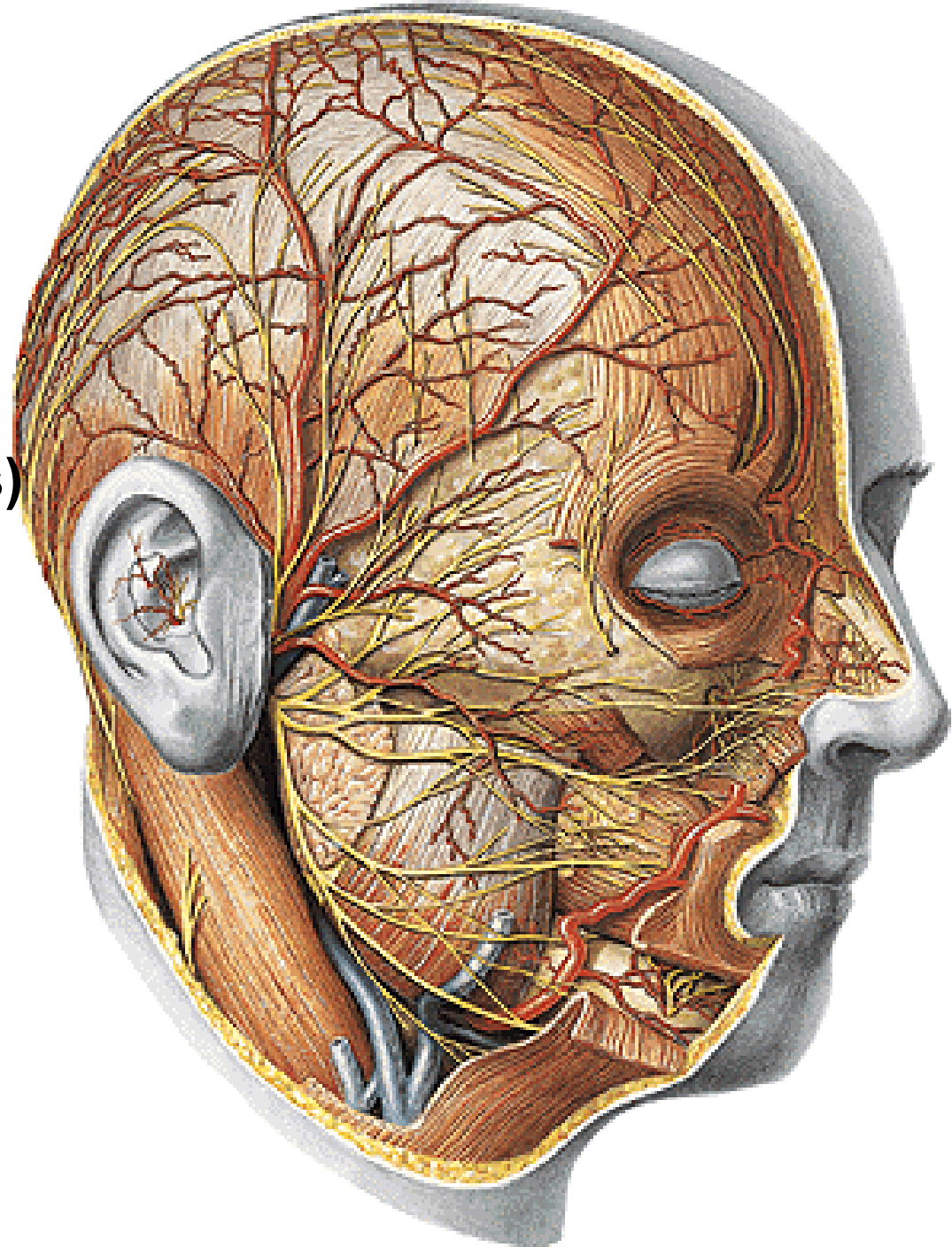


## **A. FACIALIS:**

- a. palatina ascendens
- r. tonsillaris
- a. submentalis
- rr. glandulares
- a. labialis sup. et inf.  
(circulus arteriosus oris)
- a. alaris nasi
- a. angularis

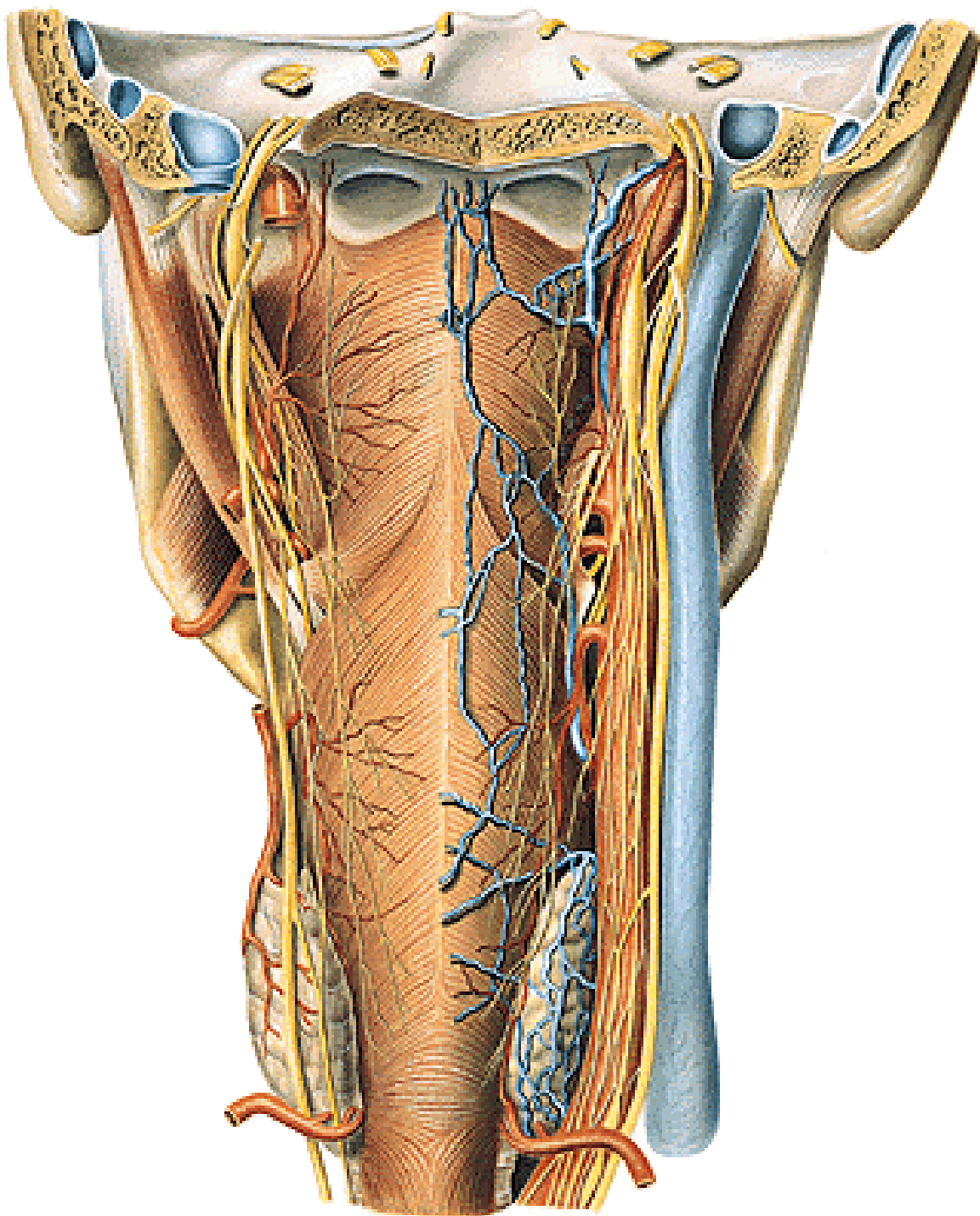
## **A. TEMPORALIS SPF.:**

- rr. parotidei
- a. transversa faciei
- rr. auriculares ant.
- a. zygomaticoorbitalis
- a. temporalis media
- r. frontalis
- r. parietalis



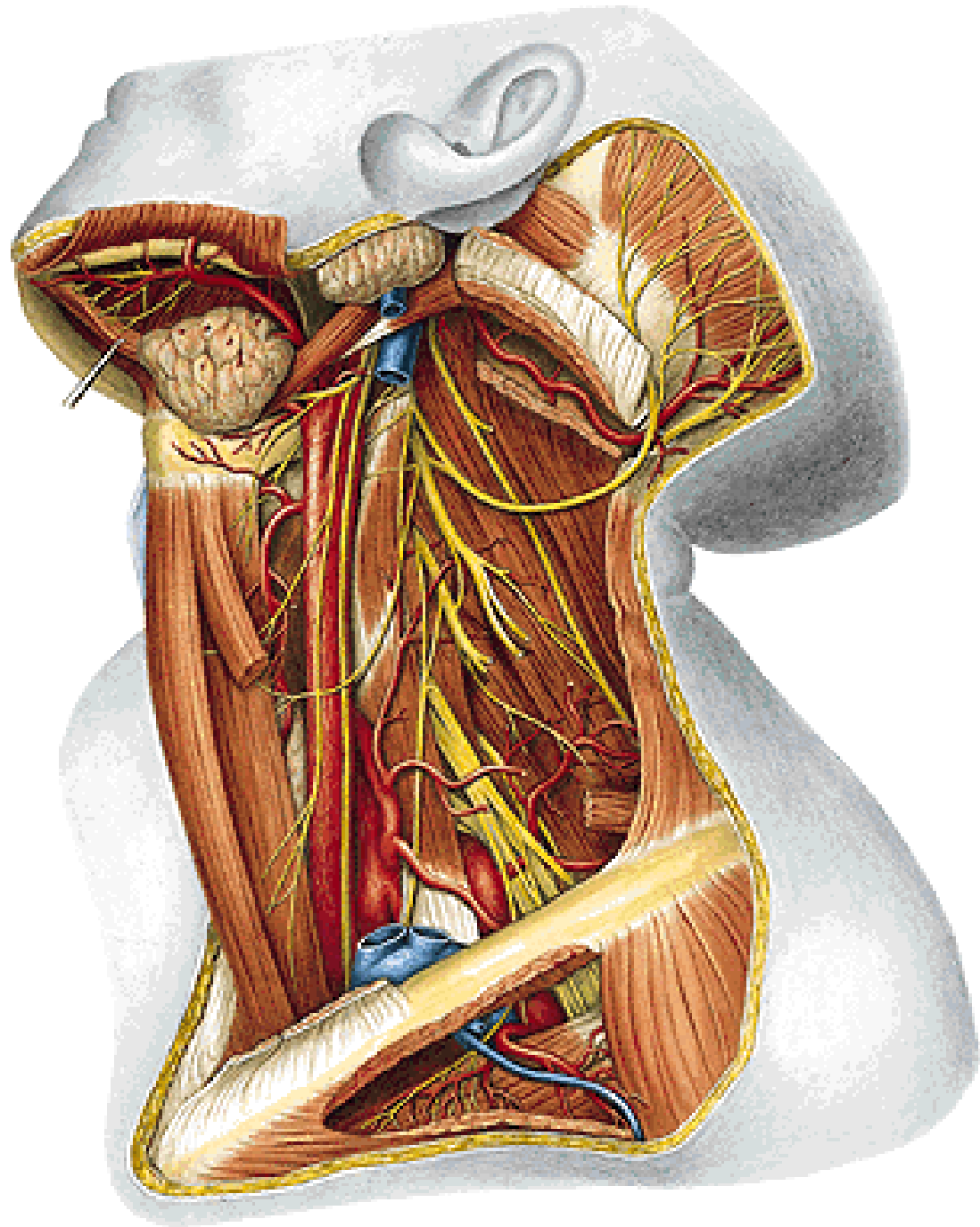
## A. PHARYNGEA ASC.:

- rr. pharyngei
- a. meningea post.
- a. tympanica inf.



## A. OCCIPITALIS:

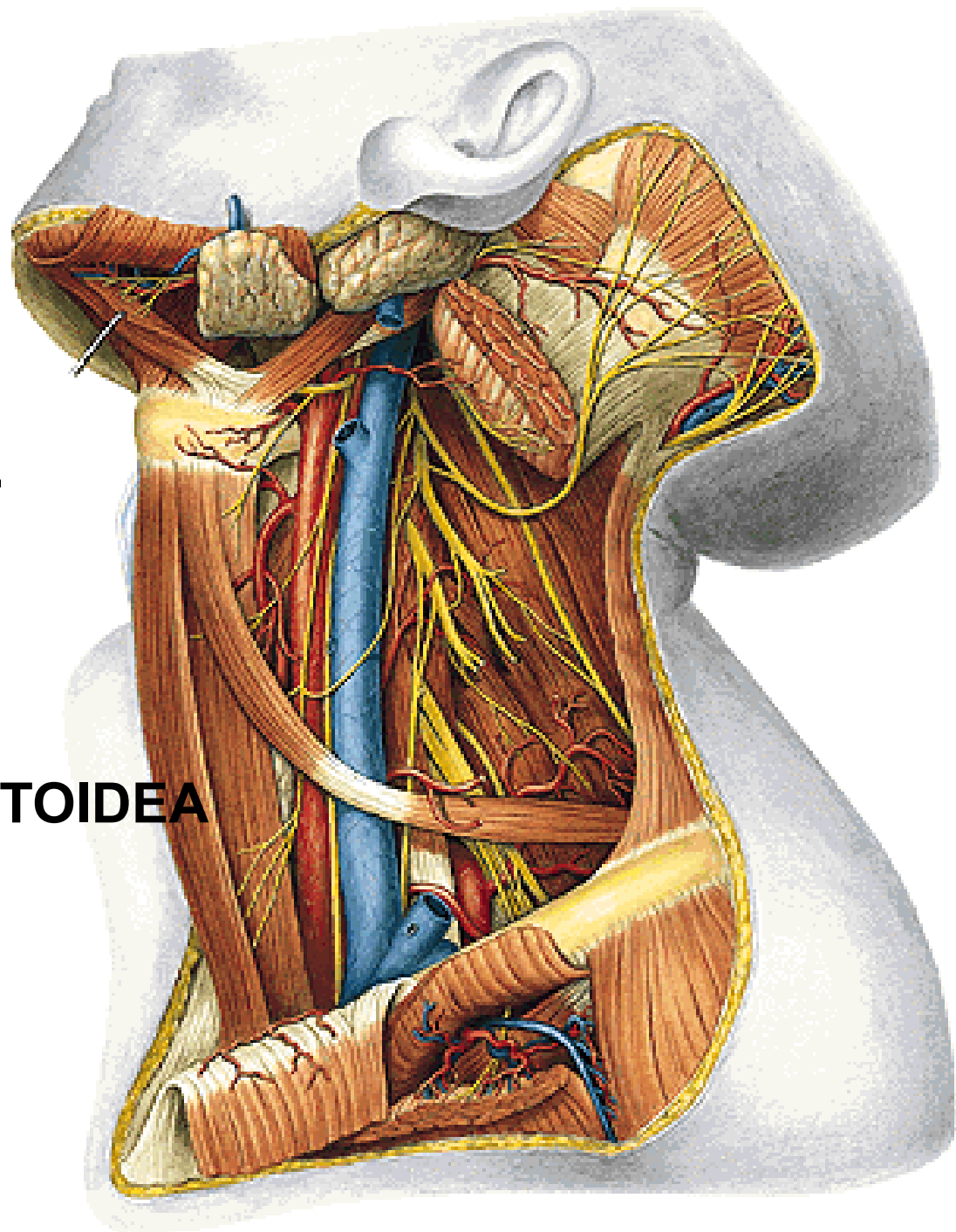
- rr. musculares
- r. auricularis
- r. mastoideus
- rr. occipitales



## A. AURICULARIS POST.:

- rr. musculares
- rr. glandulares
- r. auricularis
- a. stylomastoidea
  - a. tympanica post.
  - rr. mastoidei
  - r. stapedialis
- r. occipitalis

## A. STERNOCLEIDOMASTOIDEA



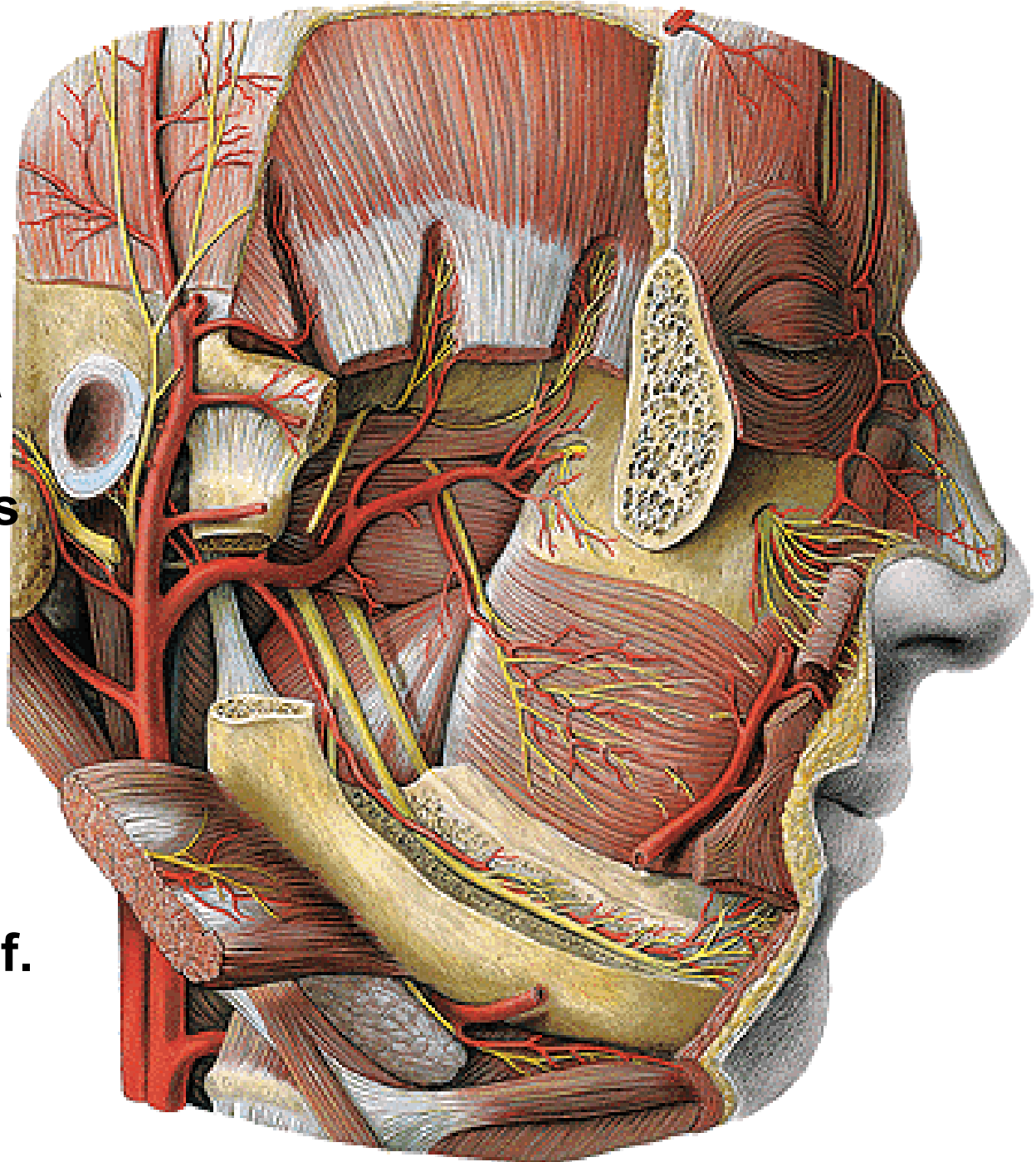
## **A. MAXILLARIS:**

### ***Pars mandibularis:***

- a. auricularis prof.
- a. tympanica ant.
- a. meningea media
- a. alveolaris inf.
  - r. mylohyoideus
  - rr. dentales
  - rr. gingivales
  - a. mentalis

### ***Pars pterygoidea:***

- a. masseterica
- aa. temporales prof.
- rr. pterygoidei
- a. bucalis

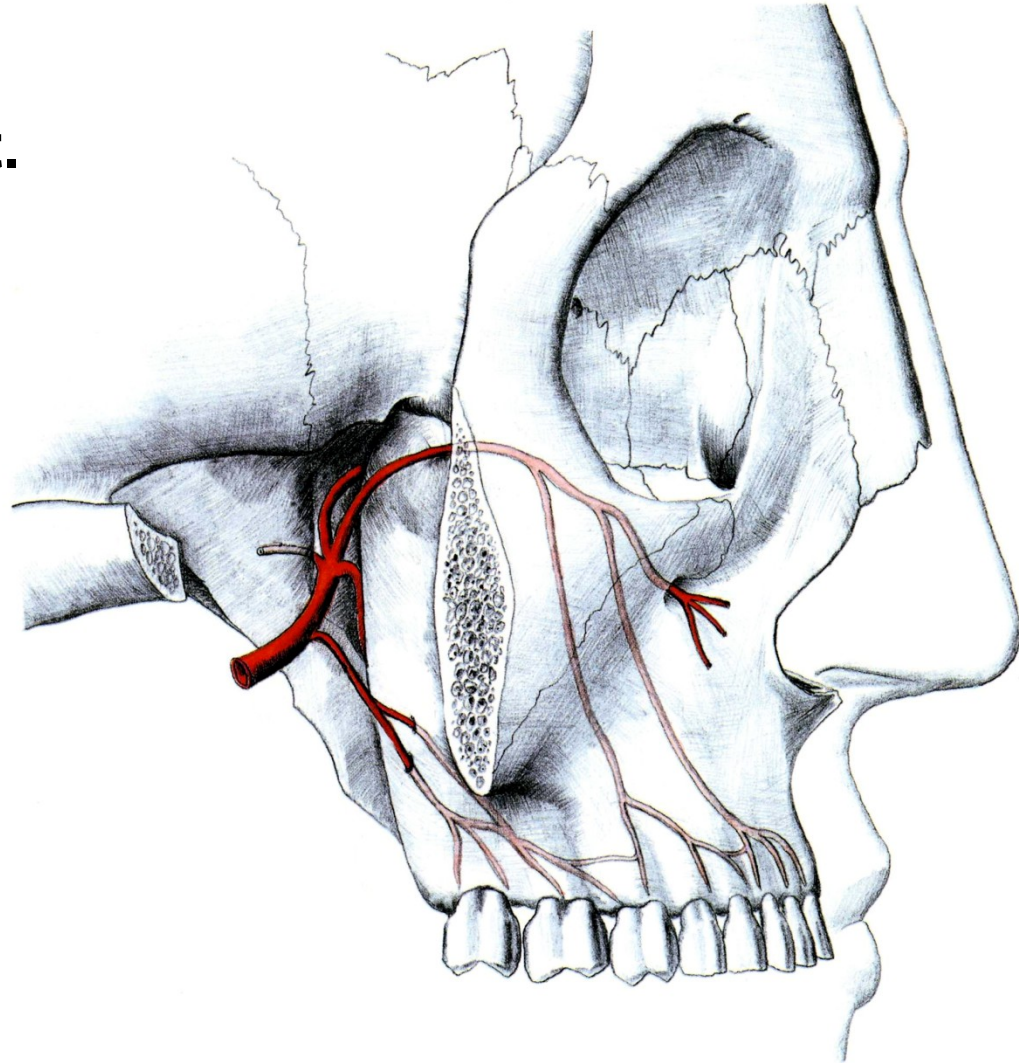




## A. MAXILLARIS (continuation):

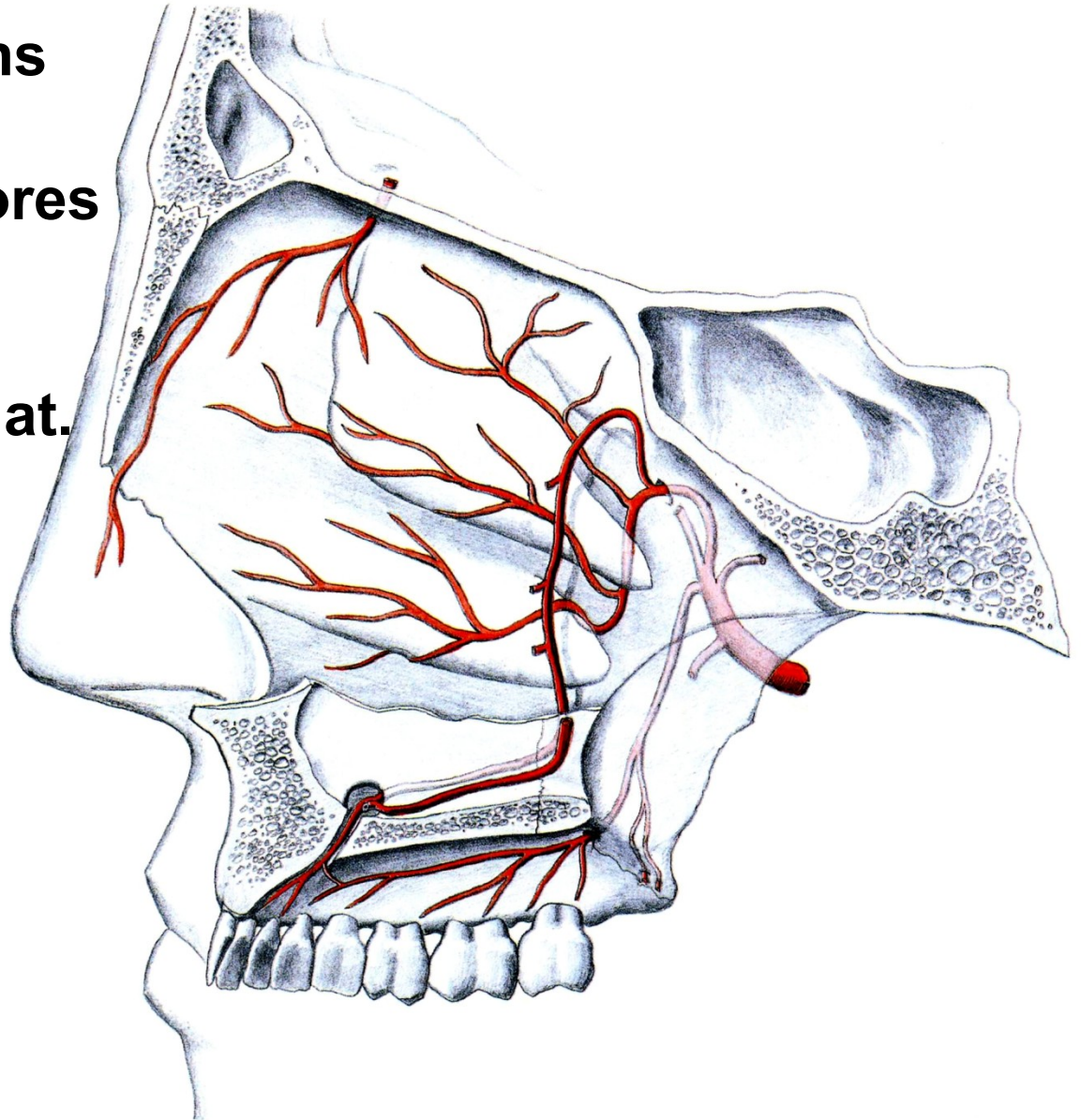
### *Pars pterygopalatina:*

- a. infraorbitalis
  - aa. alveolares sup. ant.
  - rr. dentales
  - rr. gingivales
- a. alveolaris sup. post.
  - rr. dentales
  - rr. gingivales



## A. MAXILLARIS (continuation):

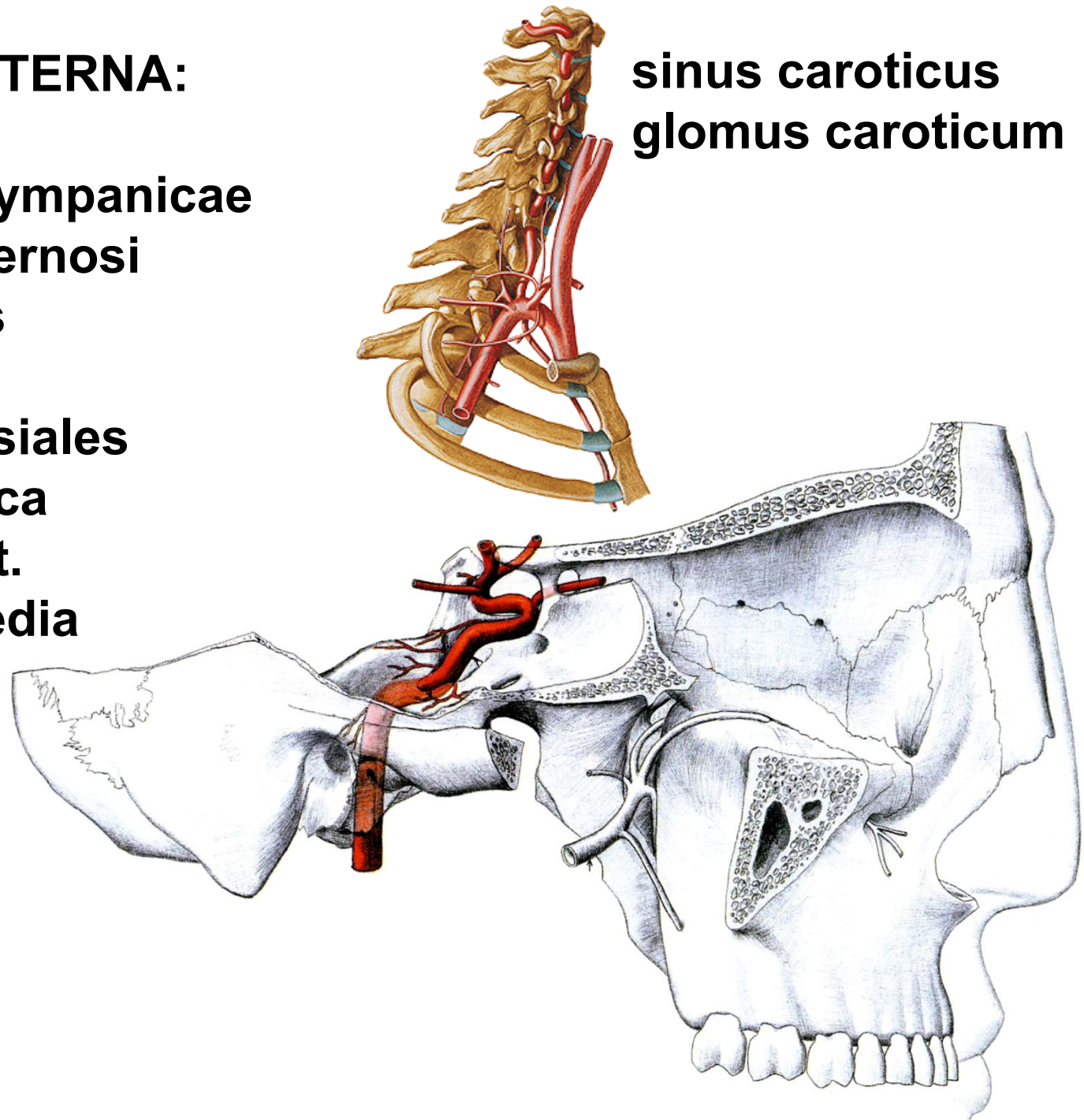
- a. palatina descendens
  - a. palatina major
  - aa. palatinae minores
- a. canalis pterygoidei
- a. sphenopalatina
  - aa. nasales post. lat. et septi



## A. CAROTIS INTERNA:

- aa. caroticotympanicae
- rr. sinus cavernosi
- r. meningeus
- rr. tentorii
- aa. hypophysiales
- a. ophthalmica
- a. cerebri ant.
- a. cerebri media

**sinus caroticus**  
**glomus caroticum**

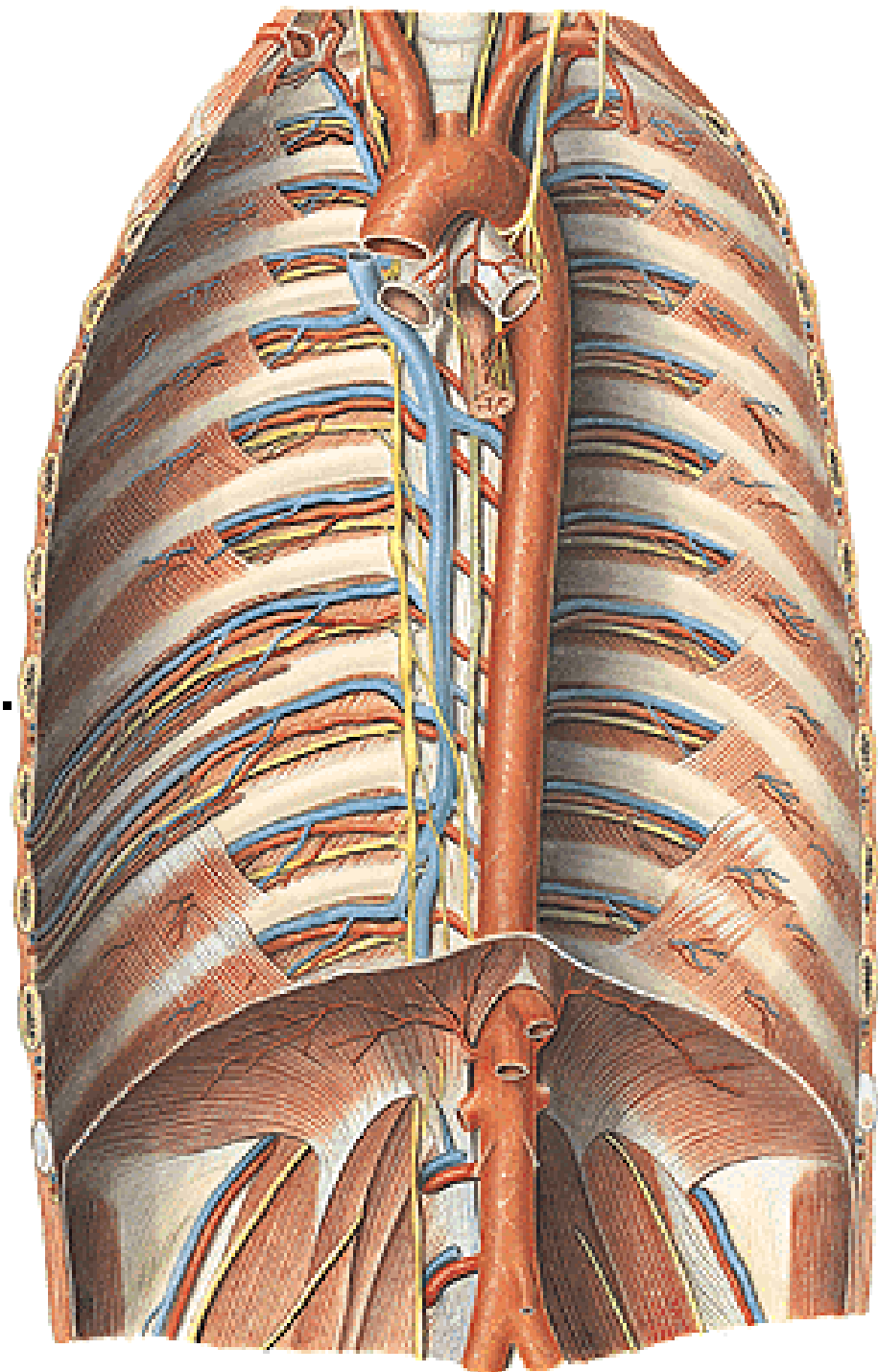




# AORTA THORACICA

## *Parietal branches:*

- aa. intercostales post. (9)
  - r. dorsalis
    - rr. musculares
    - r. spinalis
    - rr. cutanei med. et lat.
  - rr. musculares
  - r. collateralis
  - r. cutaneus lat.
    - rr. mammarii lat.
- a. subcostalis
- a. phrenica sup.

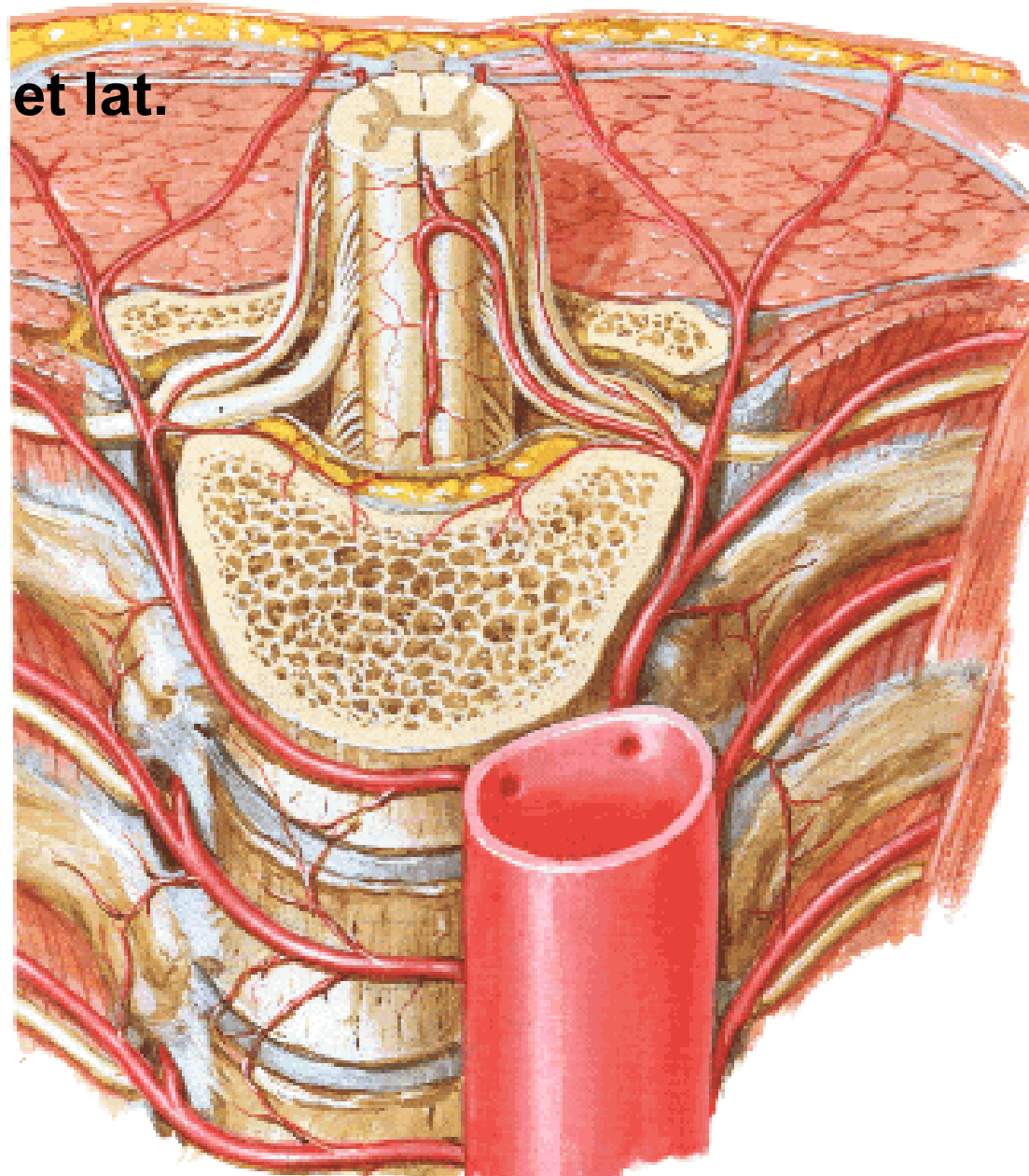


- r. dorsalis

- rr. musculares

- r. spinalis

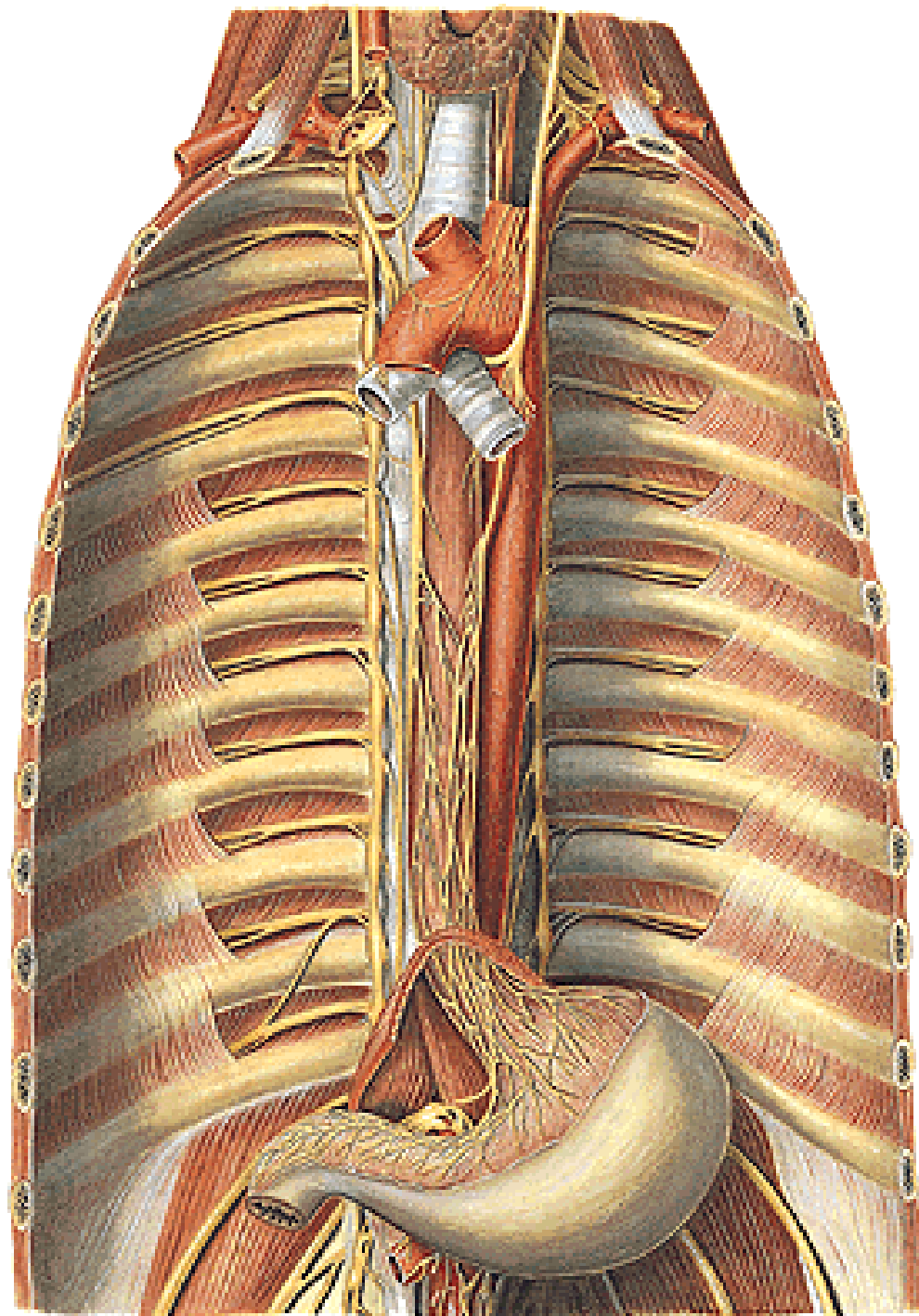
- rr. cutanei med. et lat.



# AORTA THORACICA

## *Visceral branches:*

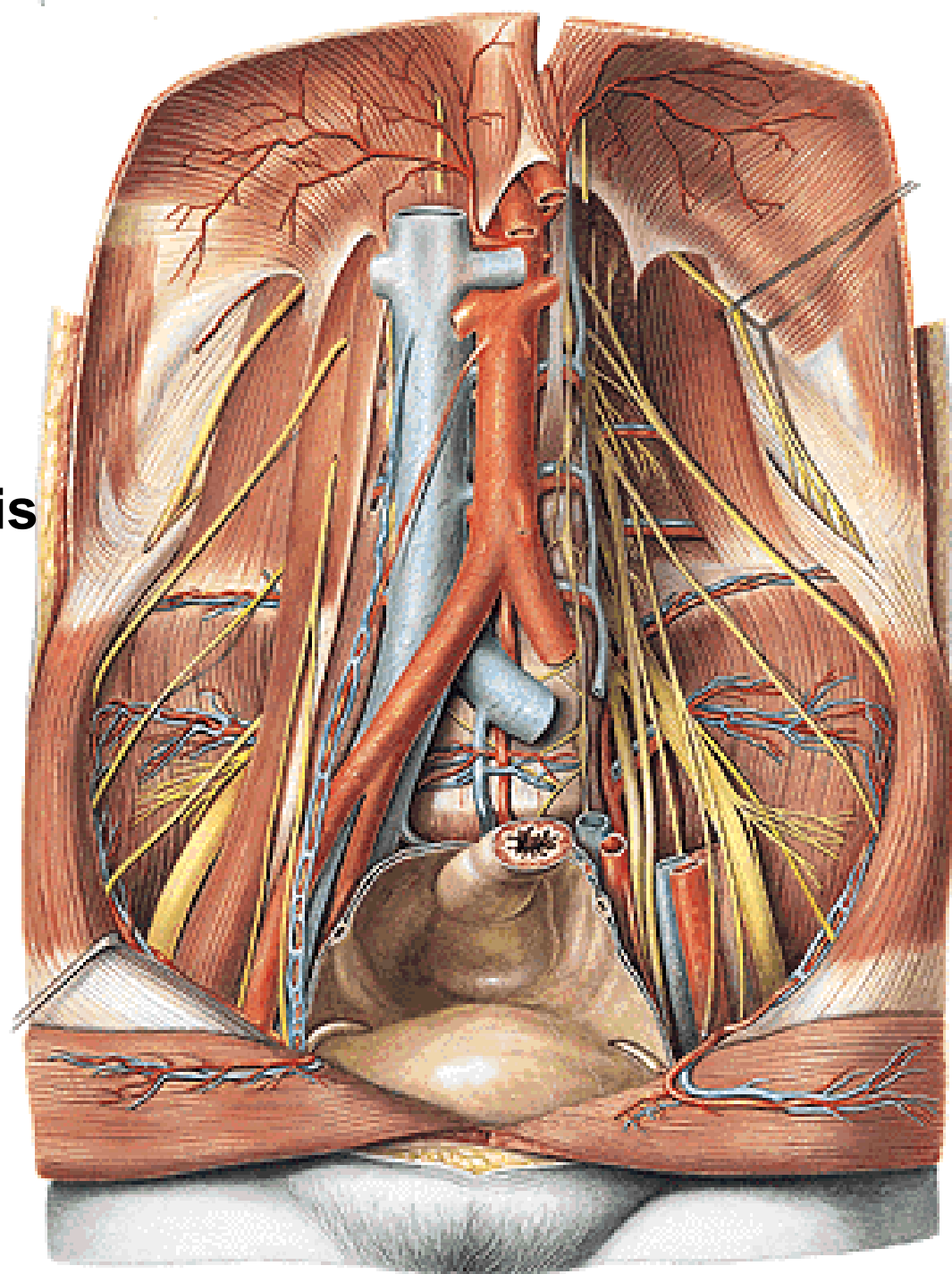
- rr. bronchiales
- rr. oesophagei
- rr. pericardiaci



# AORTA ABDOMINALIS

## *Parietal branches*

- a. phrenica inf.
  - a. suprarenalis sup.
- aa. lumbales (4)
  - r. dorsalis – r. spinalis

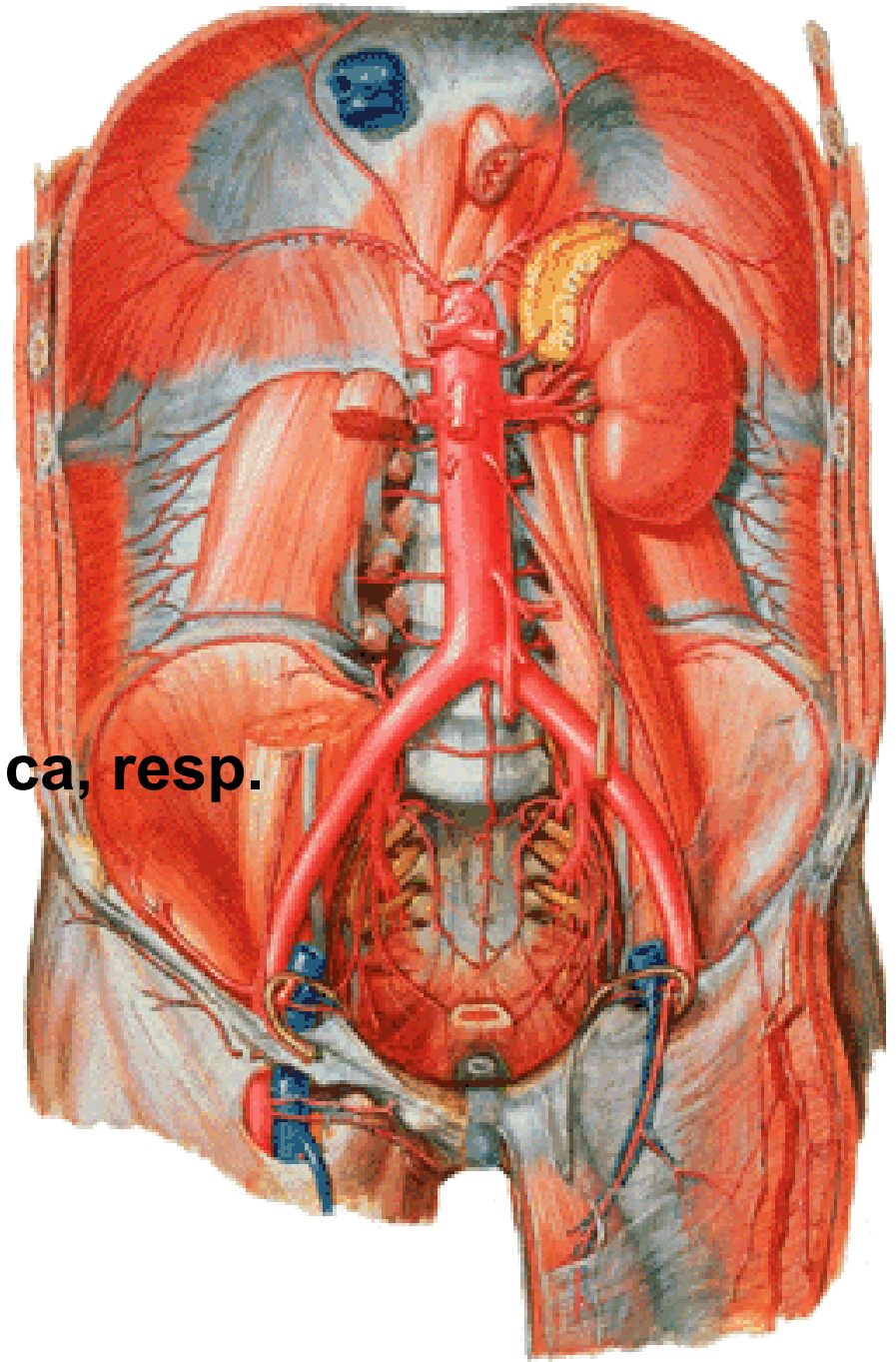




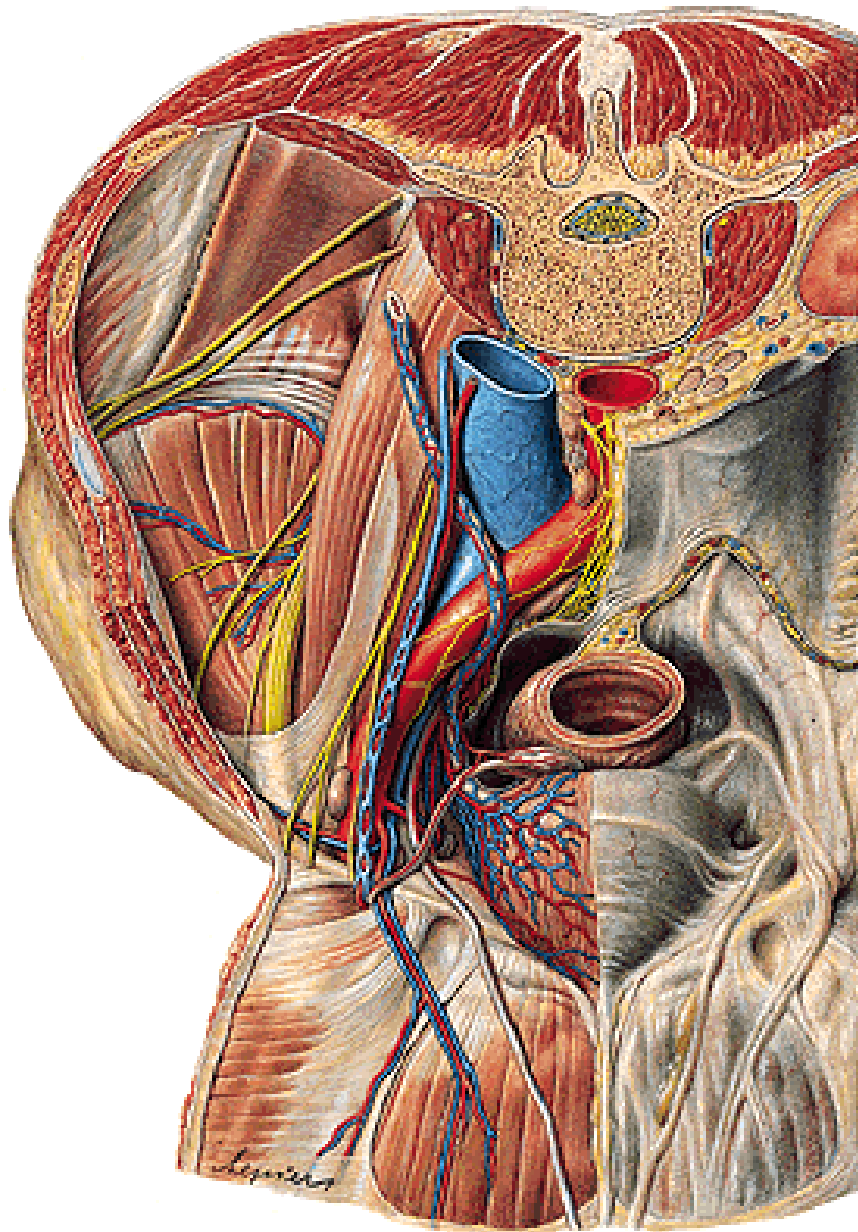
# AORTA ABDOMINALIS

## *Visceral branches - paired*

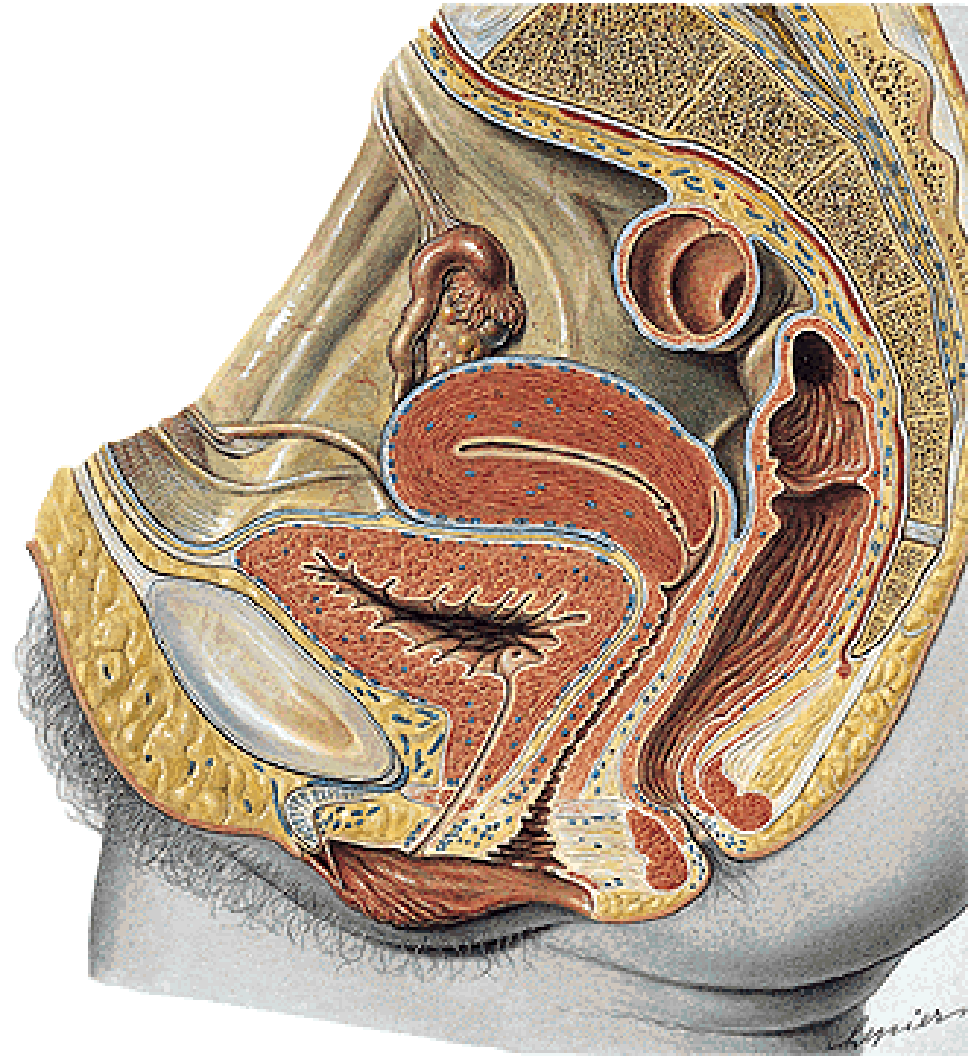
- a. suprarenalis media
- a. renalis
  - r. uretericus
  - a. suprarenalis inf.
  - rr. praepelvici
  - r. retropelvicus
- a. testicularis and a. ovarica, resp.
  - rr. ureterici
  - r. tubarius



## A. testicularis



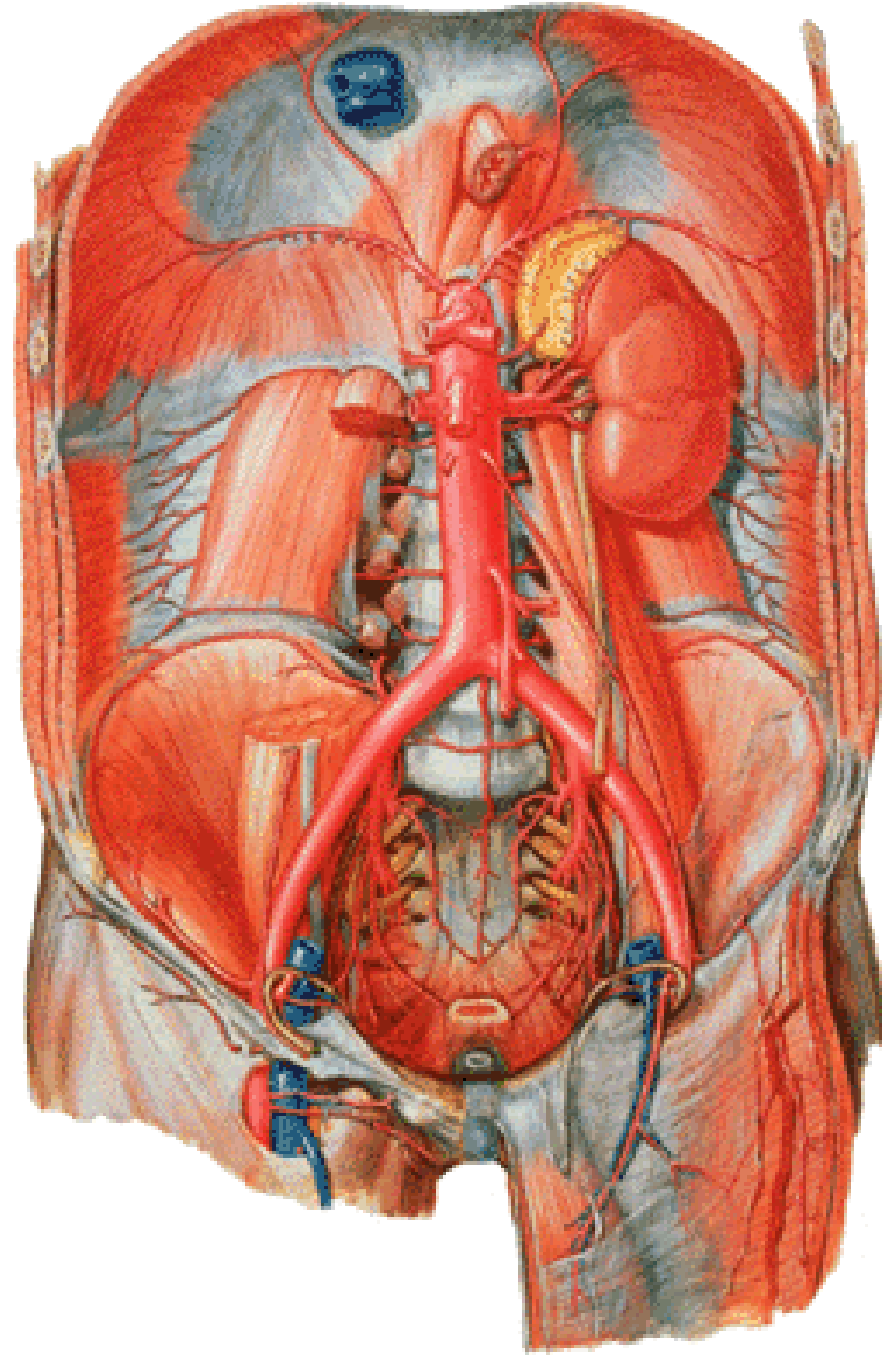
## A. ovarica



## AORTA ABDOMINALIS – cont.

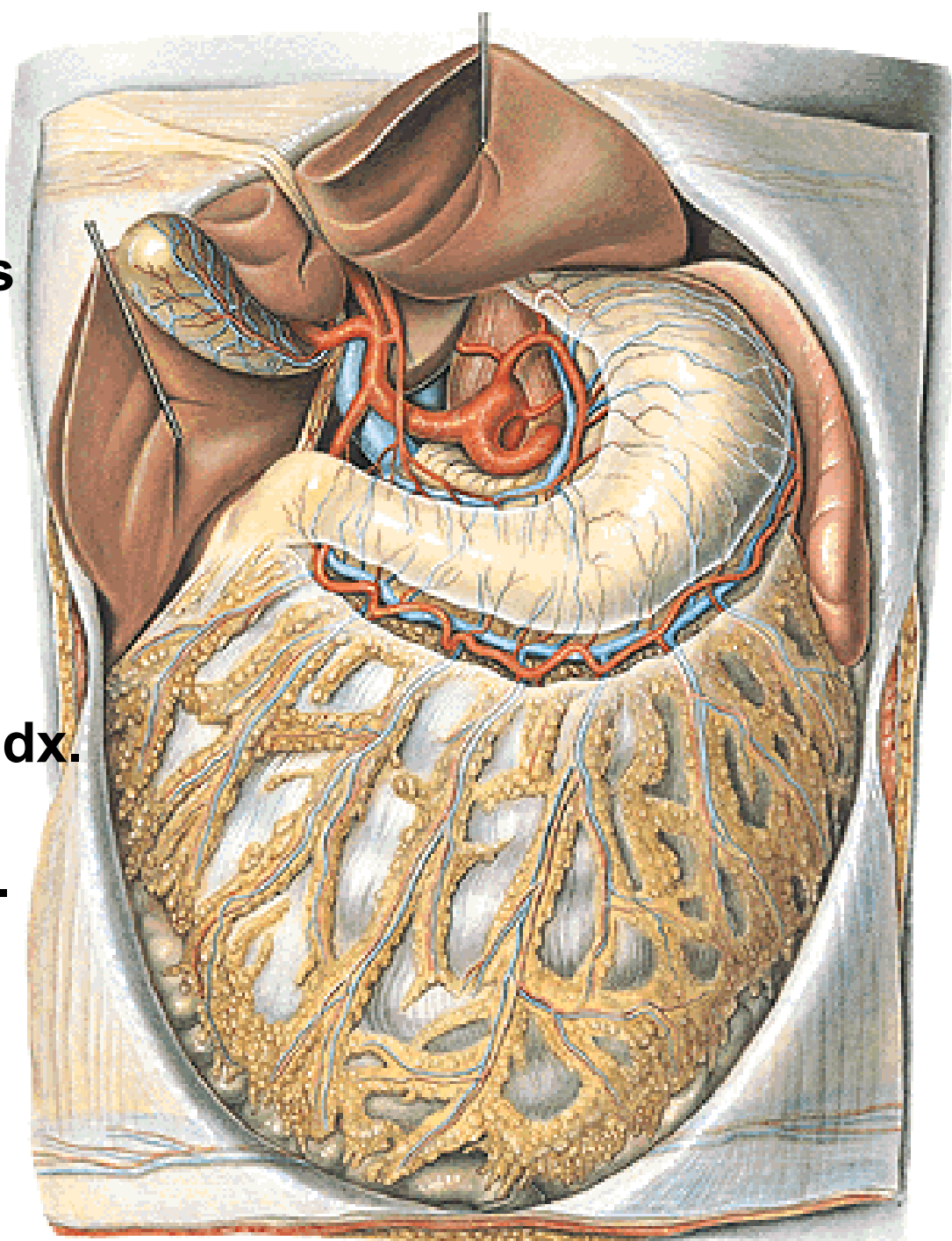
### *Visceral branches – unpaired*

- truncus coeliacus
- a. mesenterica sup.
- a. mesenterica inf.



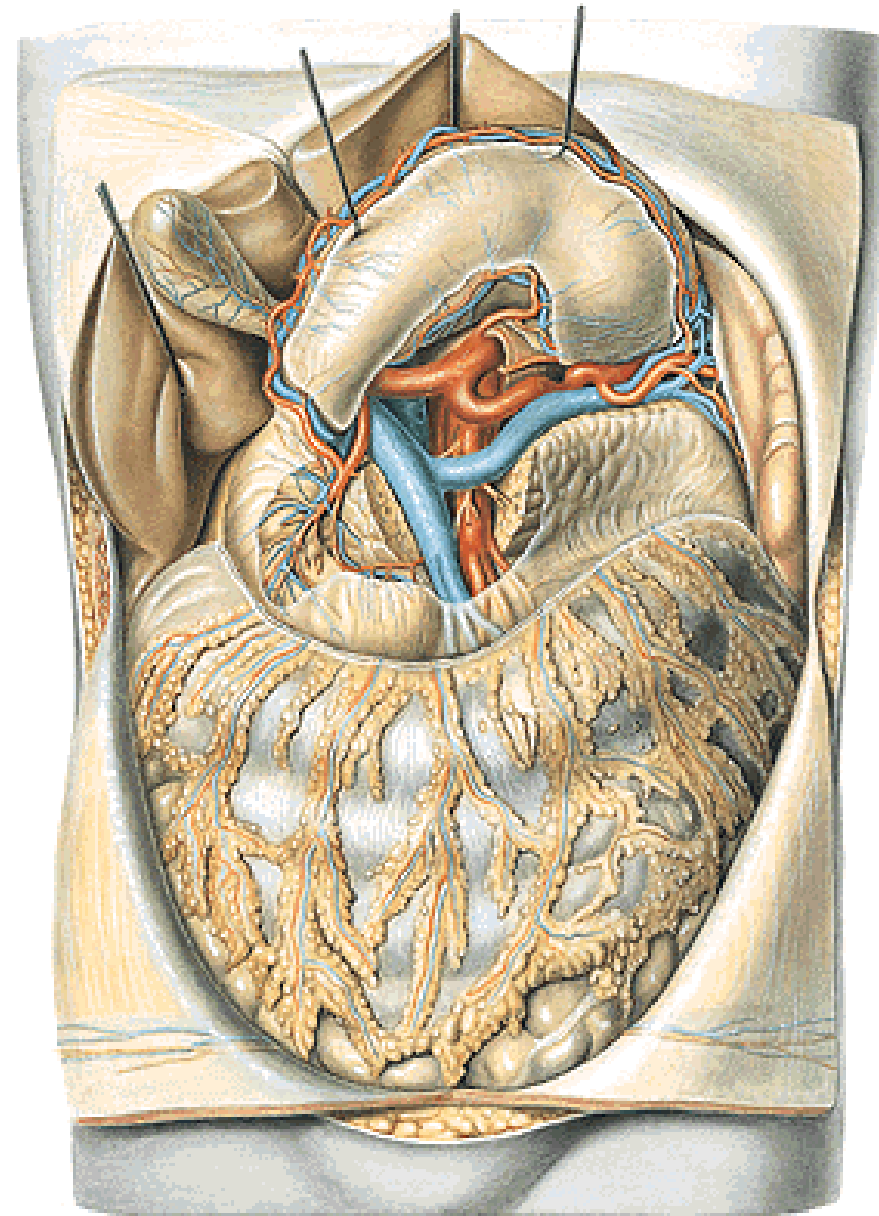
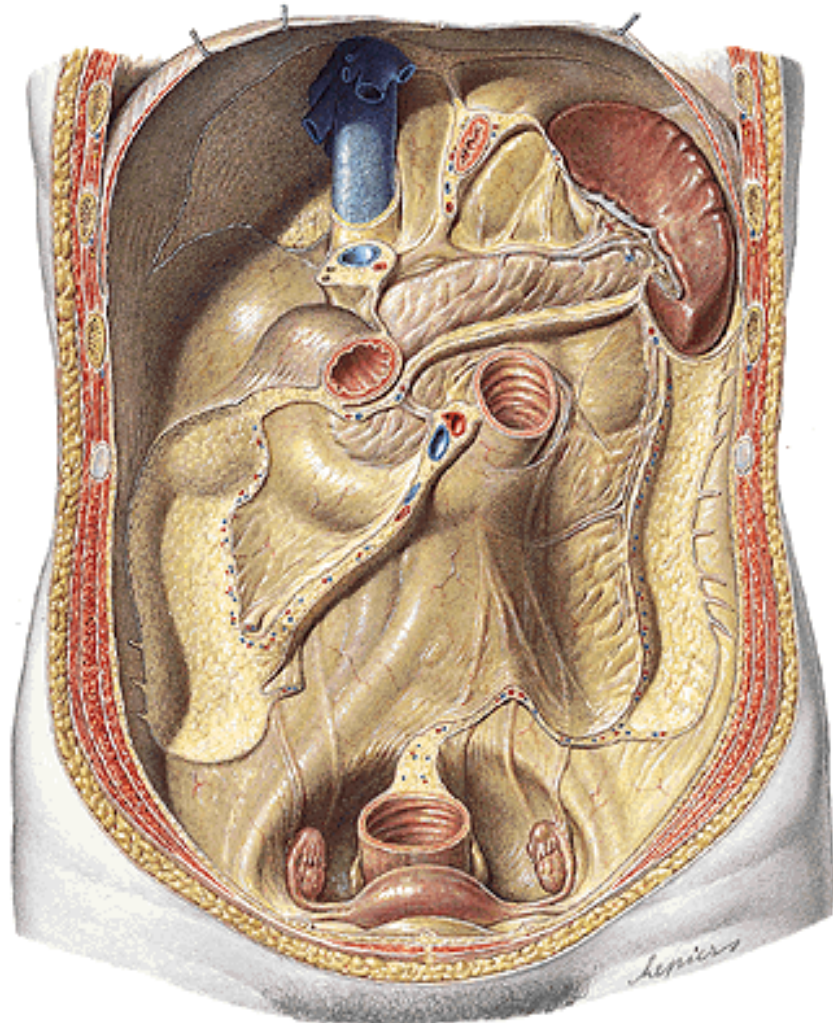
# TRUNCUS COELIACUS

1. a. gastrica sin.
  - rr. oesophagei
2. a. hepatica communis
  - a. hepatica propria
  - a. gastrica dx.
  - r. dexter
    - a. cystica
  - r. sinister
  - a. gastroduodenalis
    - a. gastroepiploica dx.
    - a. pancreatico-duodenalis. sup.
3. a. lienalis



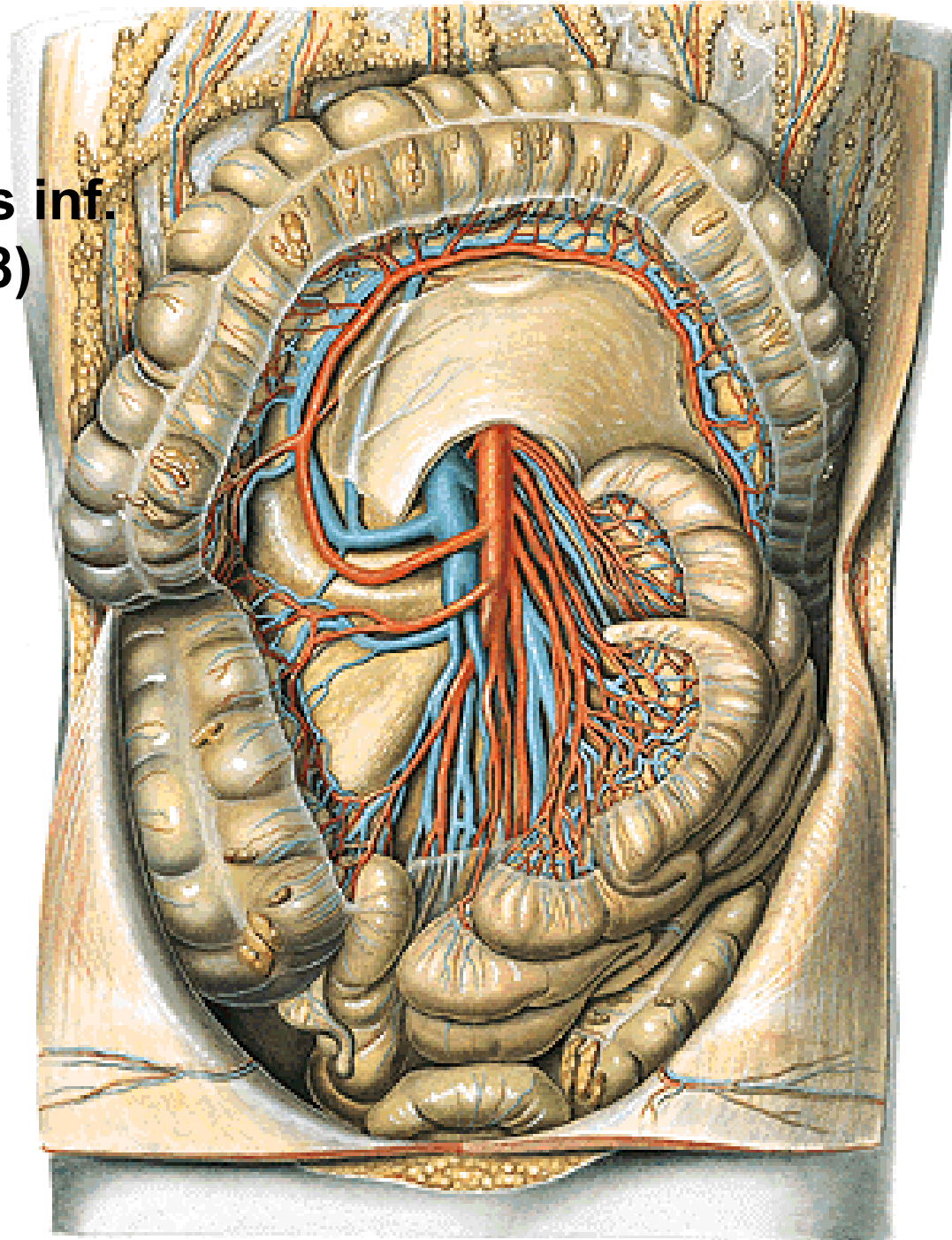
## A. LIENALIS

- rr. pancreatici
- a. gastroepiploica sin.
- aa. gastricae breves
- rr. lienales



## **A. MESENTERICA SUP.**

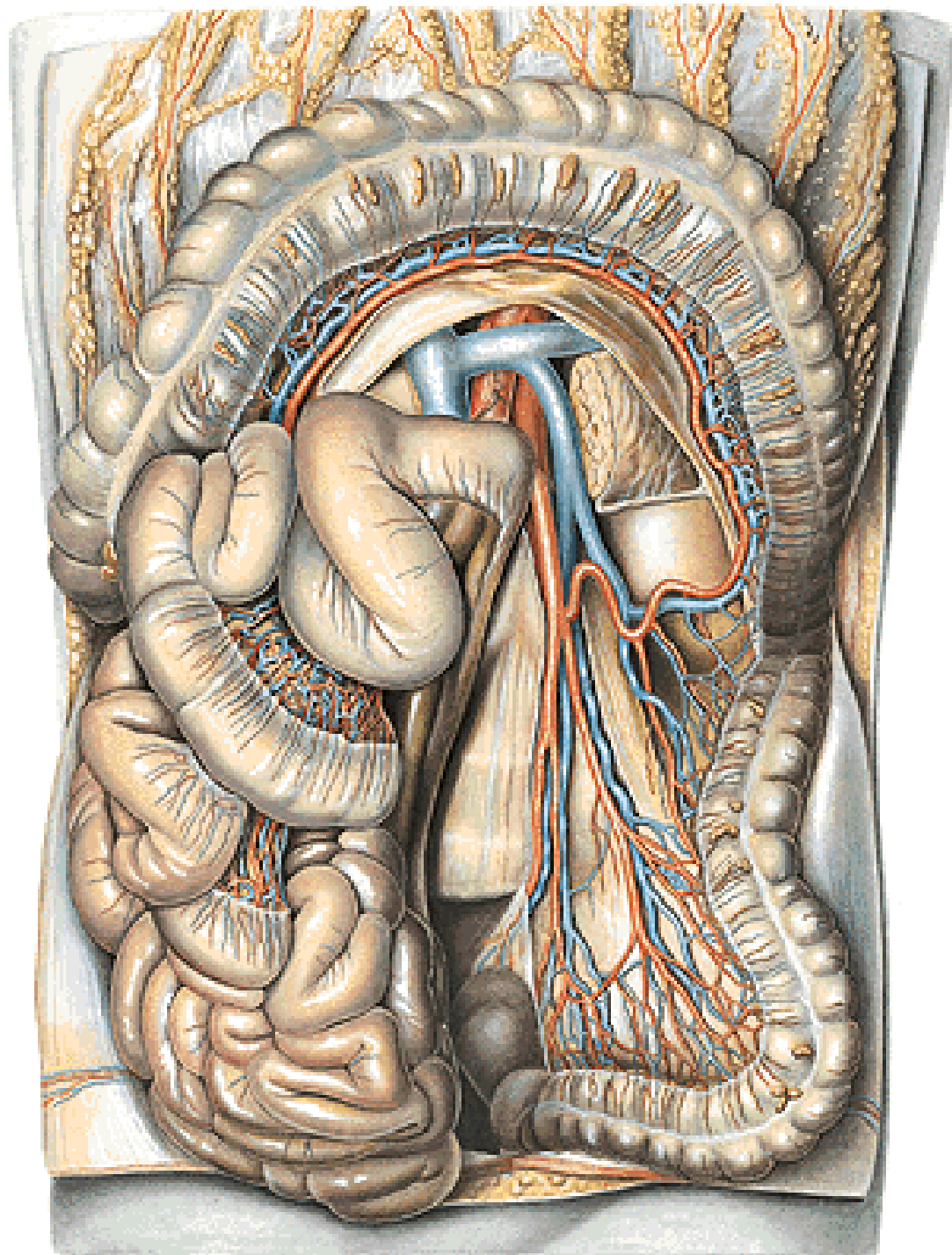
- a. pancreaticoduodenalis inf.
- aa. jejunales et ilei (10-18)
- a. ileocolica
  - r. ileus
  - r. colicus
  - r. appendicularis
- a. colica dx.
- a. colica media





## A. MESENTERICA INF.

- a. colica sinistra
- aa. sigmoideae
- a. rectalis sup.

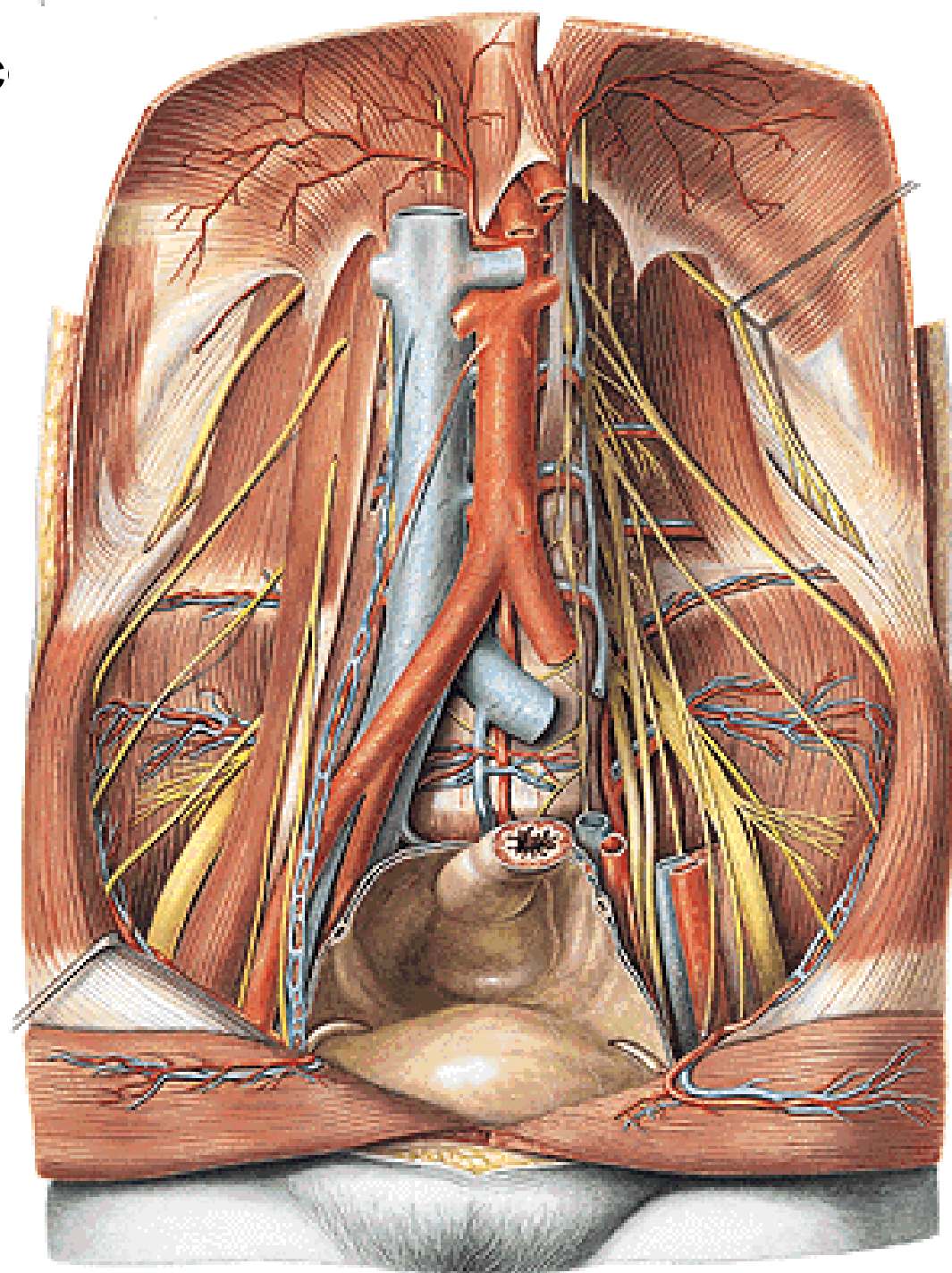




# AORTA ABDOMINALIS – c

## *Terminal branches*

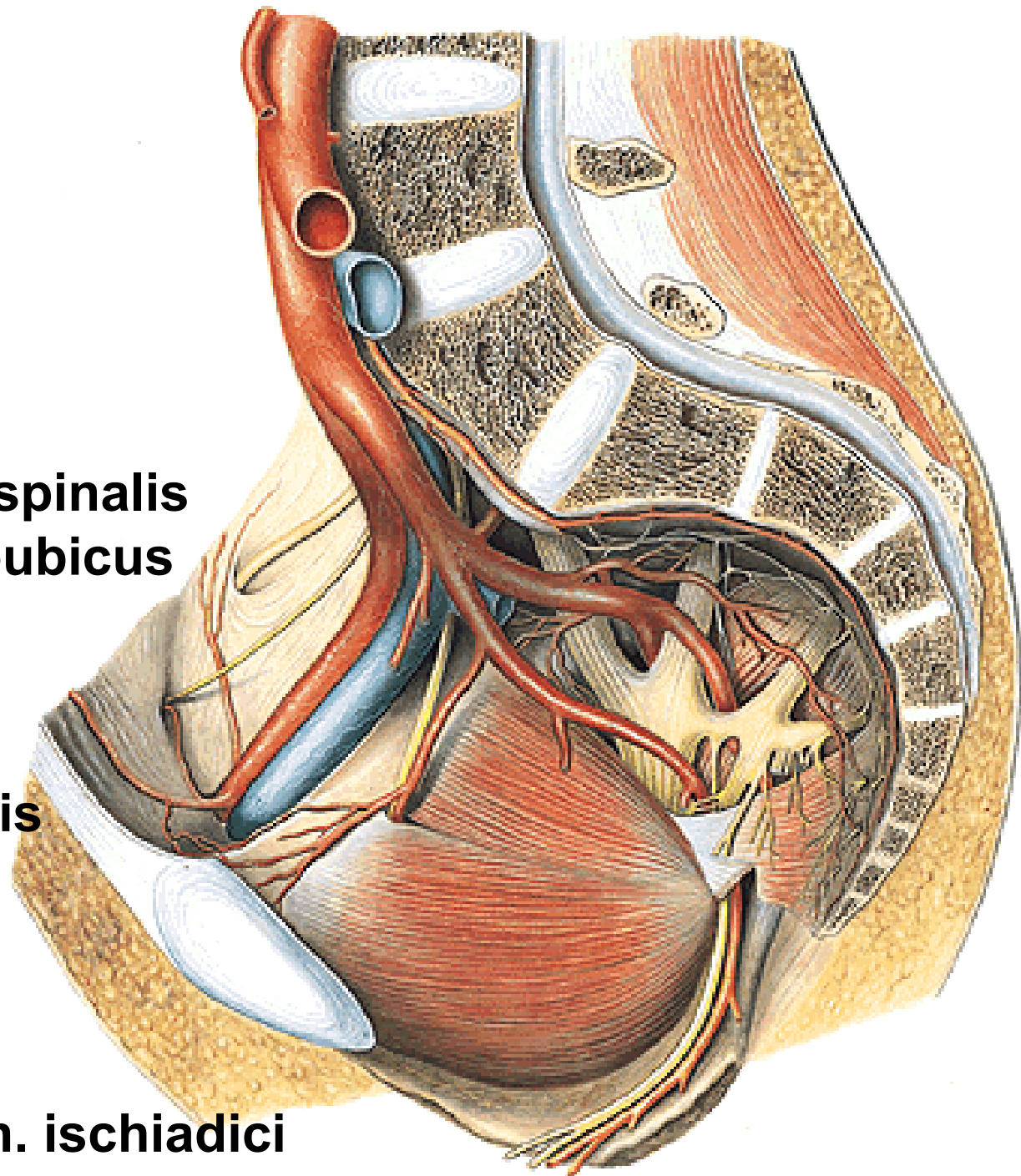
- a. sacralis mediana
- a. lumbalis ima
- rr. sacrales  
(glomus coccygeum)
- aa. iliacae communes
- a. iliaca externa
- a. iliaca interna



# A. ILIACA INTERNA

## *Parietal branches*

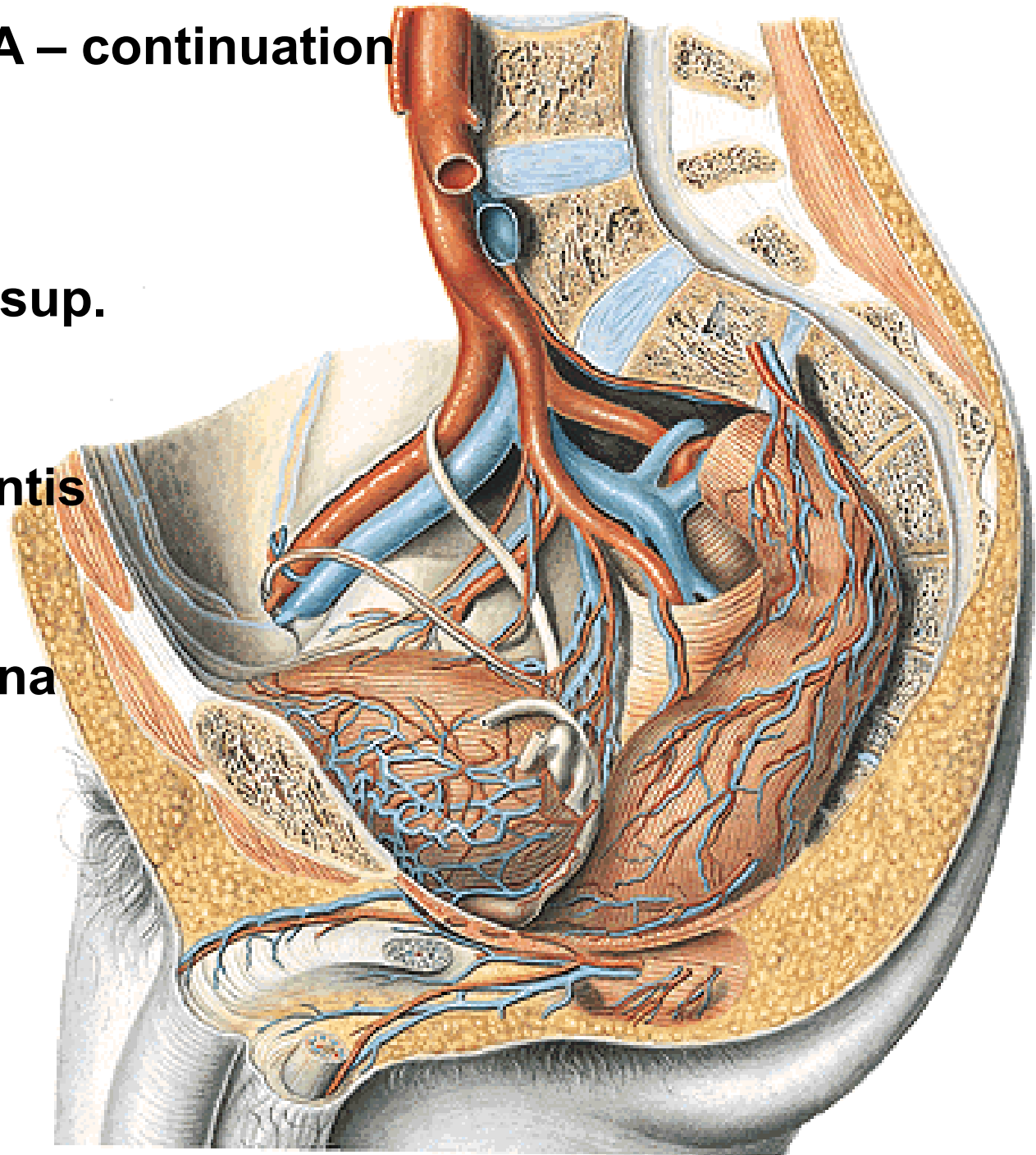
- a. iliolumbalis
  - r. iliacus
  - r. lumbalis
  - r. sacralis
- a. sacralis lat. – a. spinalis
- a. obturatoria – r. pubicus (corona mortis)
  - r. anterior
  - r. posterior
    - r. acetabularis
- a. glutea sup.
  - r. superficialis
  - r. profundus
- a. glutea inf.
  - a. commitans n. ischiadici



## A. ILIACA INTERNA – continuation

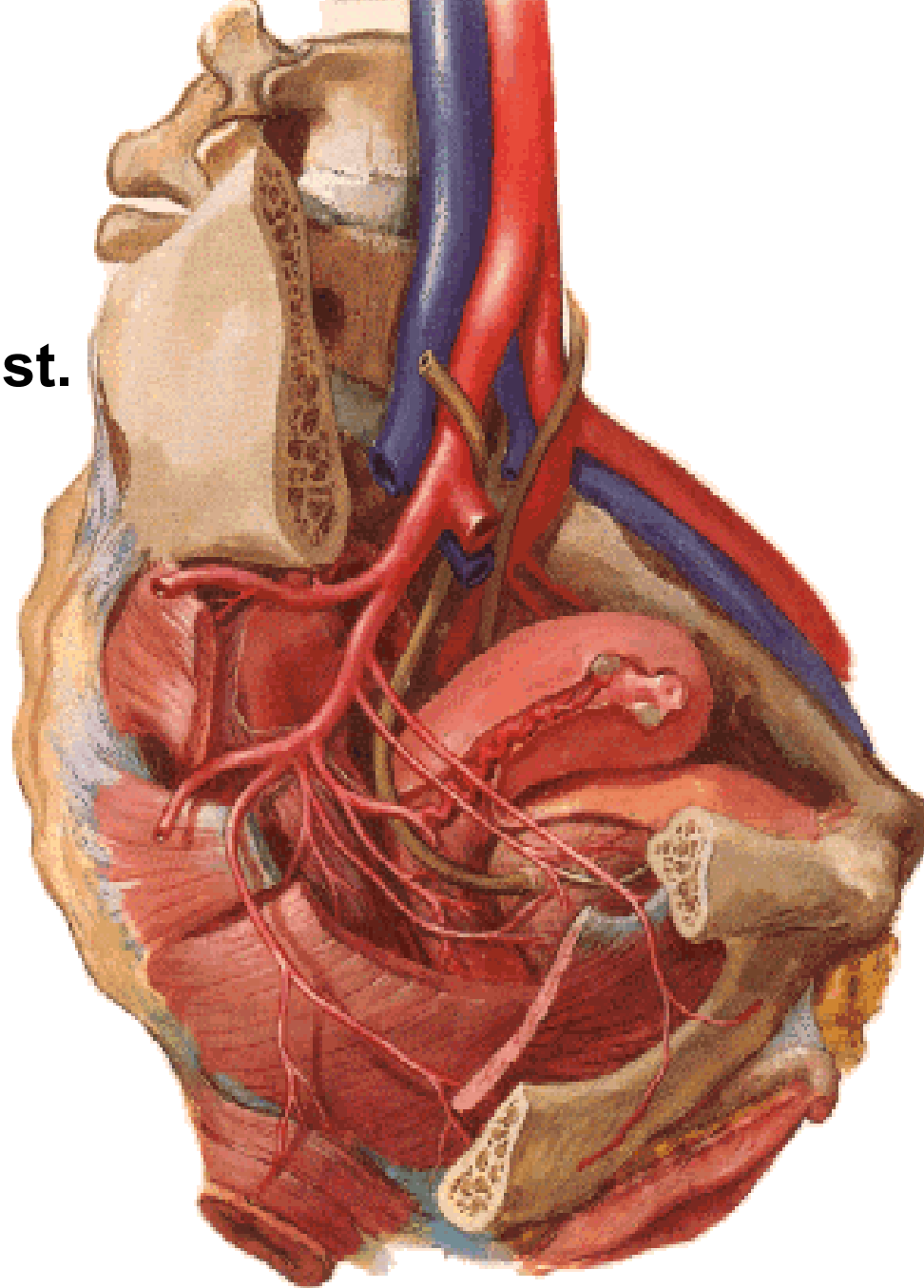
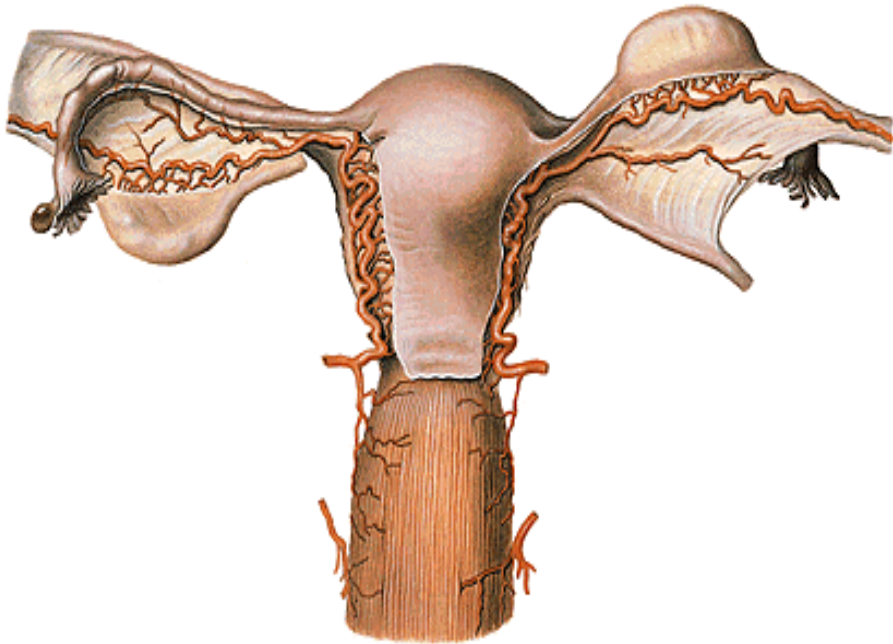
### *Visceral branches*

- a. umbilicalis
  - aa. vesicales sup.
- a. vesicalis inf.
- a. rectalis media
- a. ductus deferentis
  - r. uretericus
- (- a. uterina)
- a. pudenda interna



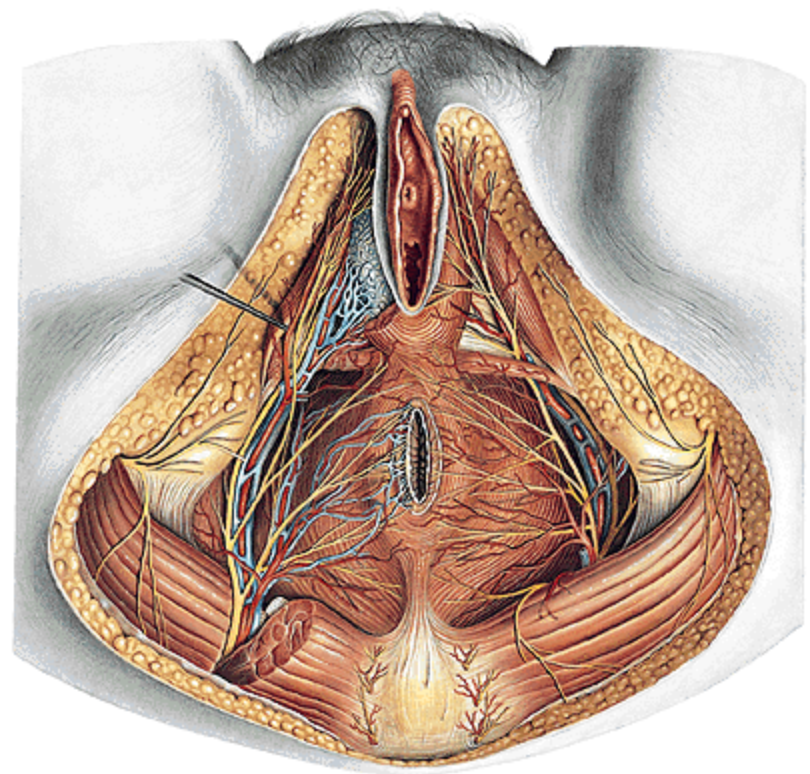
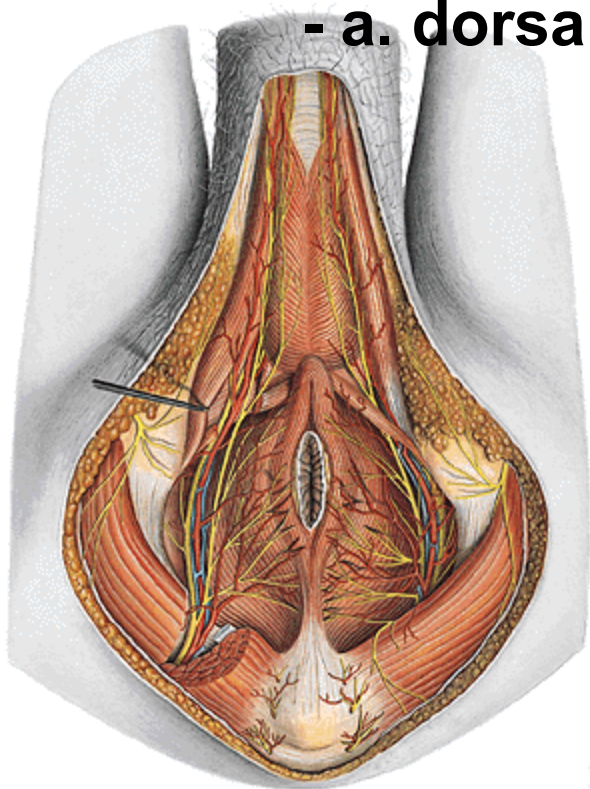
## A. UTERINA

- r. uretericus
- a. vaginalis ant. et post.
- rr. uterini
- r. tubarius
- r. ovaricus



# A. PUDENDA INTERNA

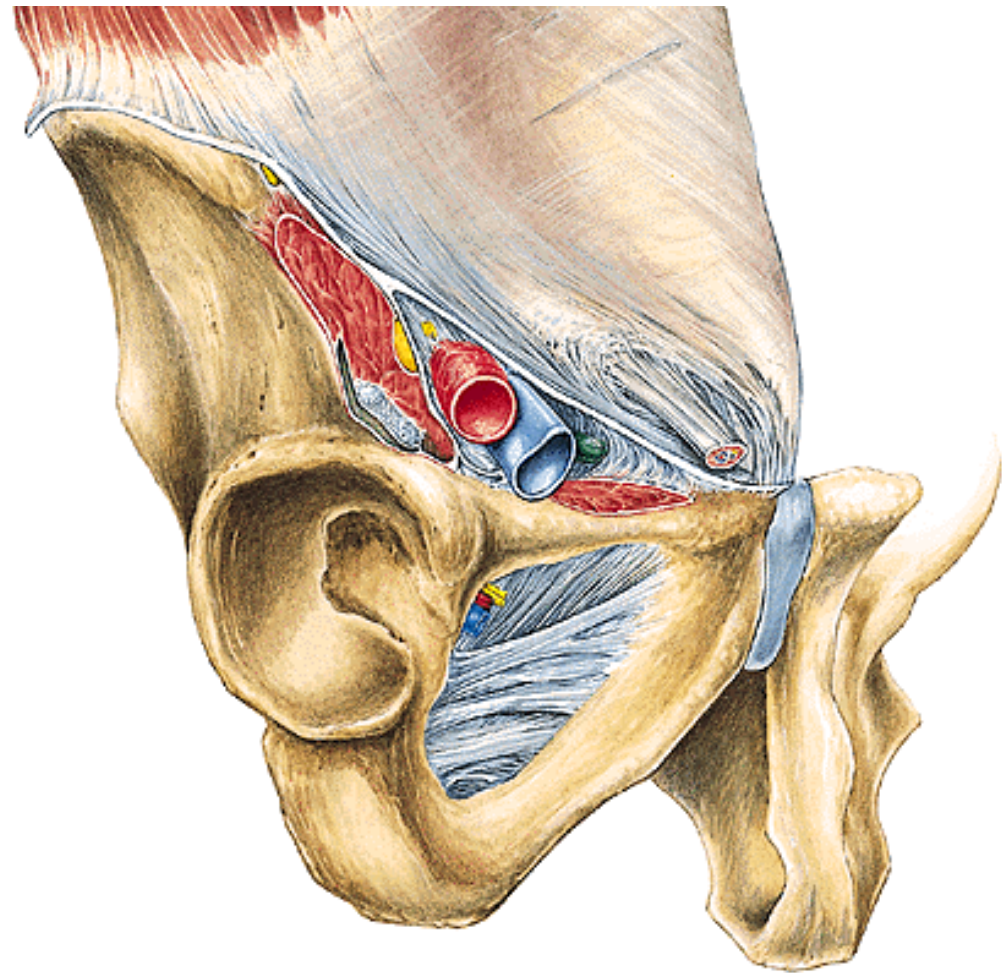
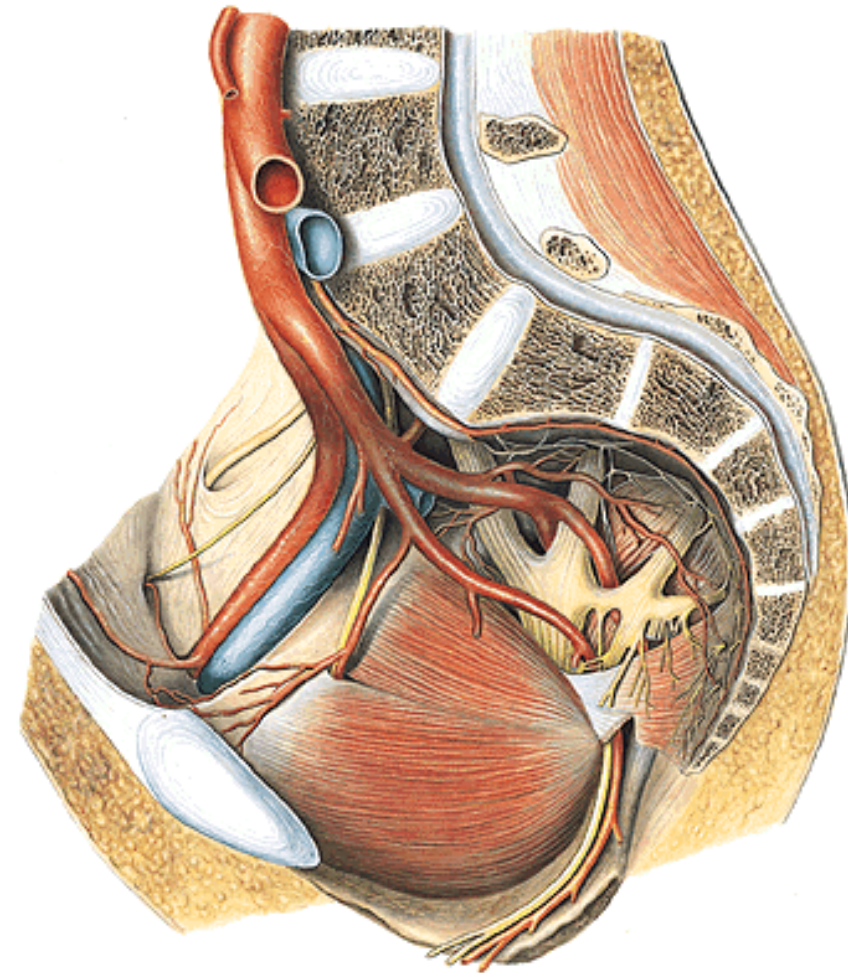
- a. rectalis inf.
- a. perinealis – rr. scrotales (labiales) post.
- a. penis
  - a. bulbi penis
  - a. urethralis
  - a. profunda penis
    - aa. helicinae
  - a. dorsalis penis
- (a. clitoridis
  - a. bulbi vestibuli
  - a. profunda clitoridis
  - a. dorsalis clitoridis)





## A. ILIACA EXTERNA

- a. epigastrica inf.
- r. pubicus
- a. cremasterica (a. ligamenti teretis)
- a. circumflexa ilium profunda



Illustrations were copied from:

**Atlas der Anatomie des Menschen/Sobotta.  
Putz,R., und Pabst,R. 20. Auflage. München:  
Urban & Schwarzenberg, 1993)**

**Netter: Interactive Atlas of Human Anatomy.  
Windows Version 2.0**

**Čihák R: Anatomie 2 (Splanchnologia). Avicenum,  
zdravotnické nakladatelství, Praha, 1988.**