

**RAMI VENTRALES
NERVORUM THORACICORUM
(T1 – T12)**

N. INTERCOSTALIS:

rr. musculares

r. collateralis

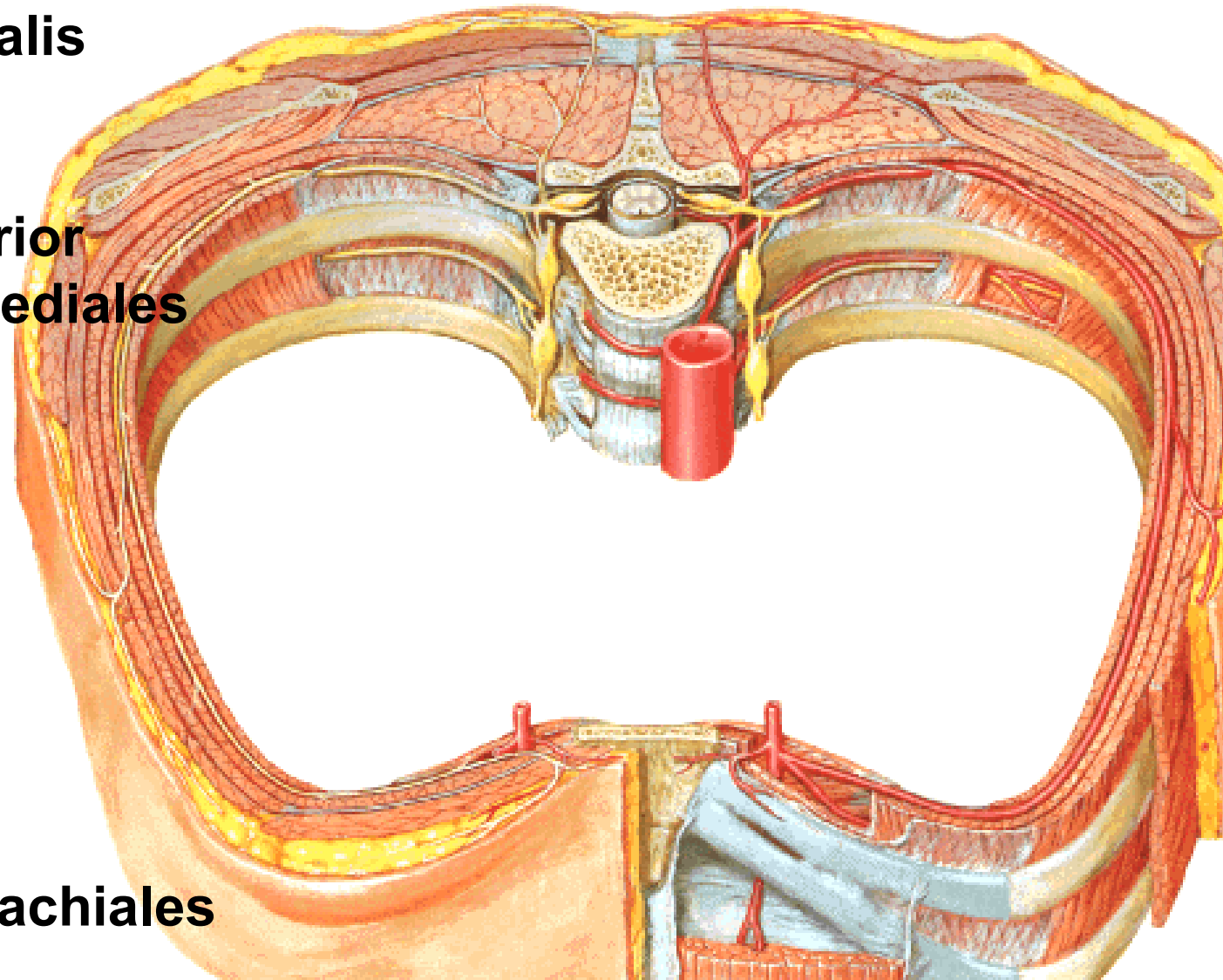
r. cutaneus lateralis

- **r. anterior**

- **r. posterior**

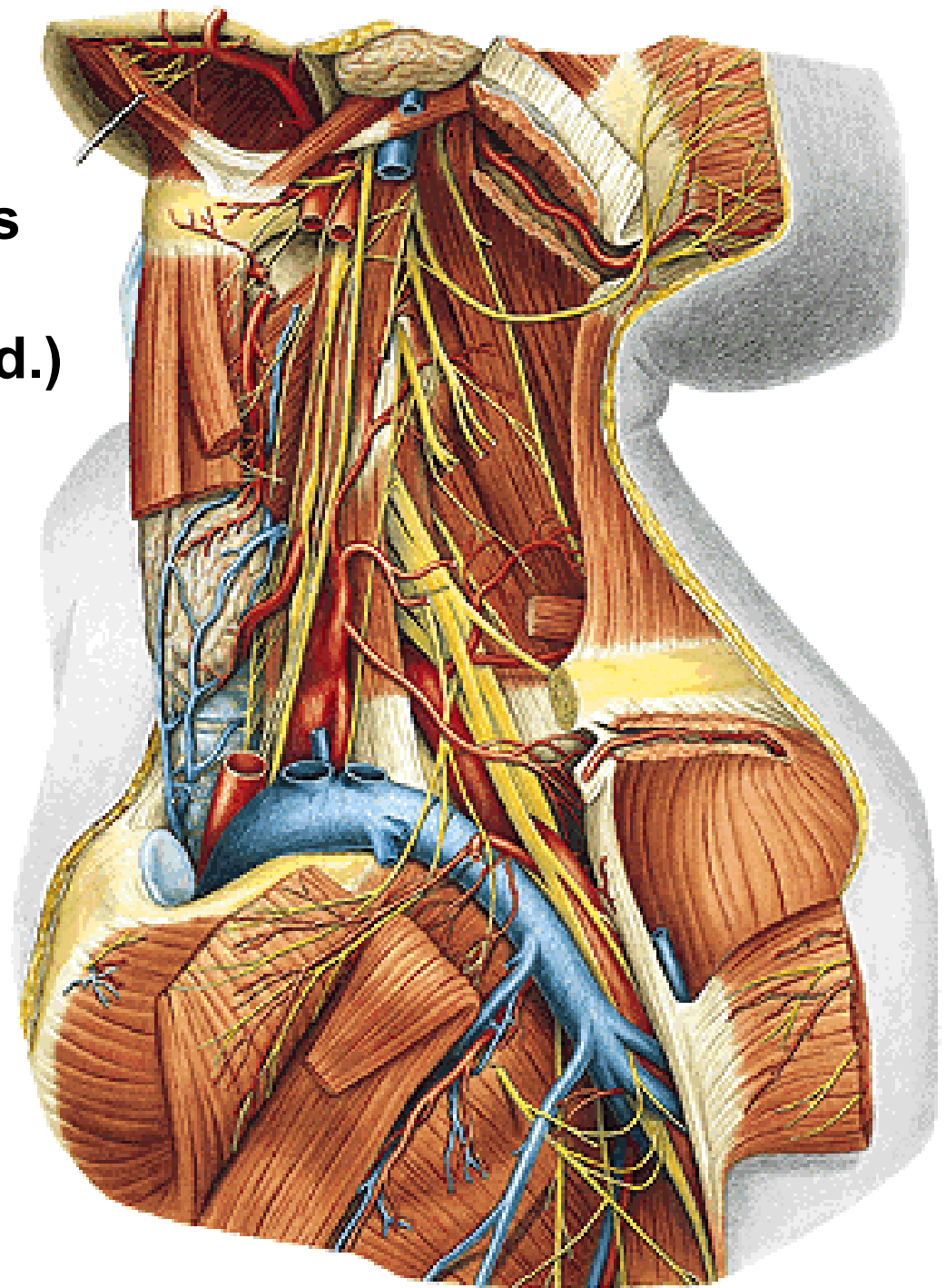
r. cutaneus anterior

- **rr. mammarii mediales**

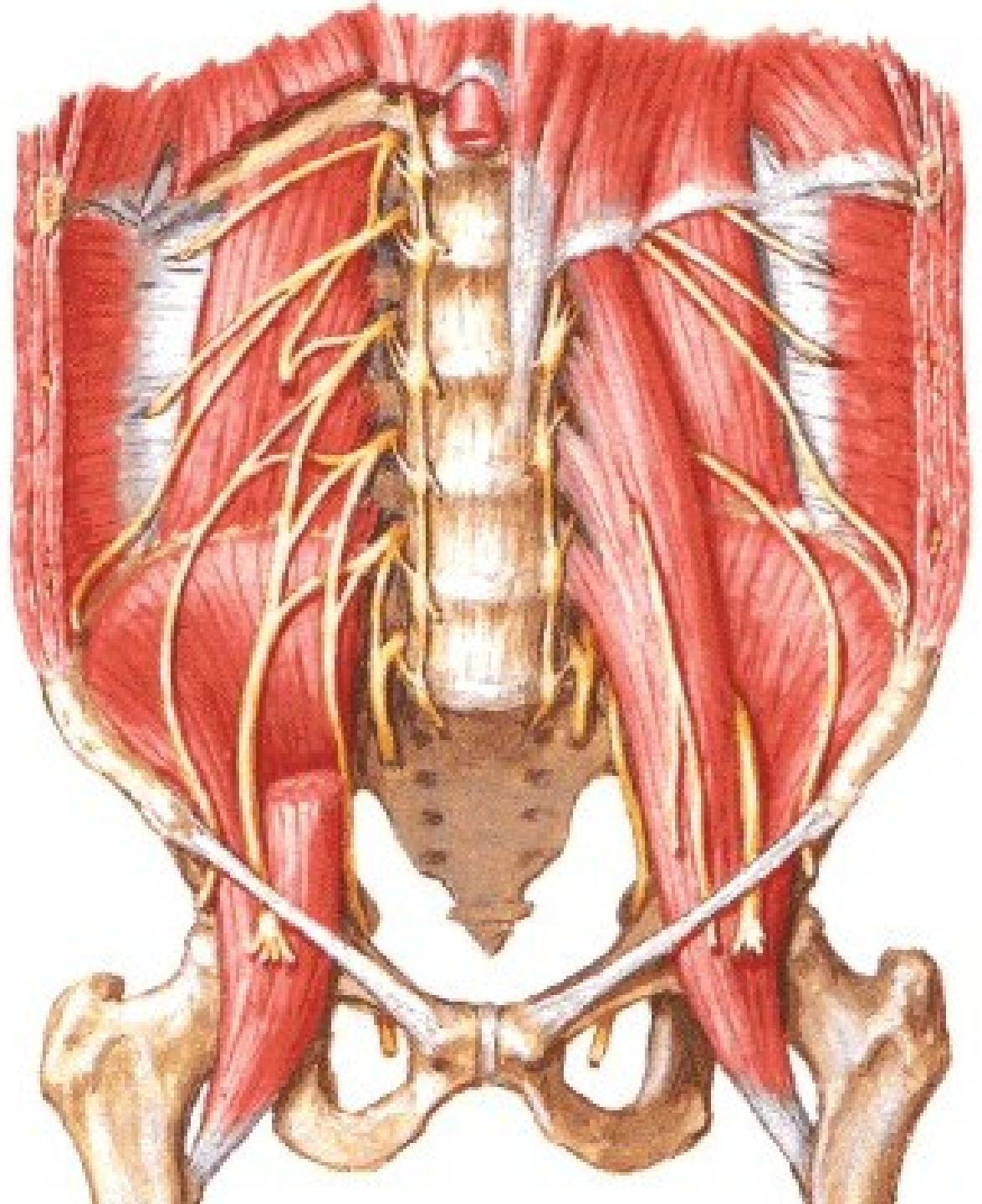


Nn. intercostobrachiales

Nn. intercostobrachiales
(n. cutaneus brachii med.)

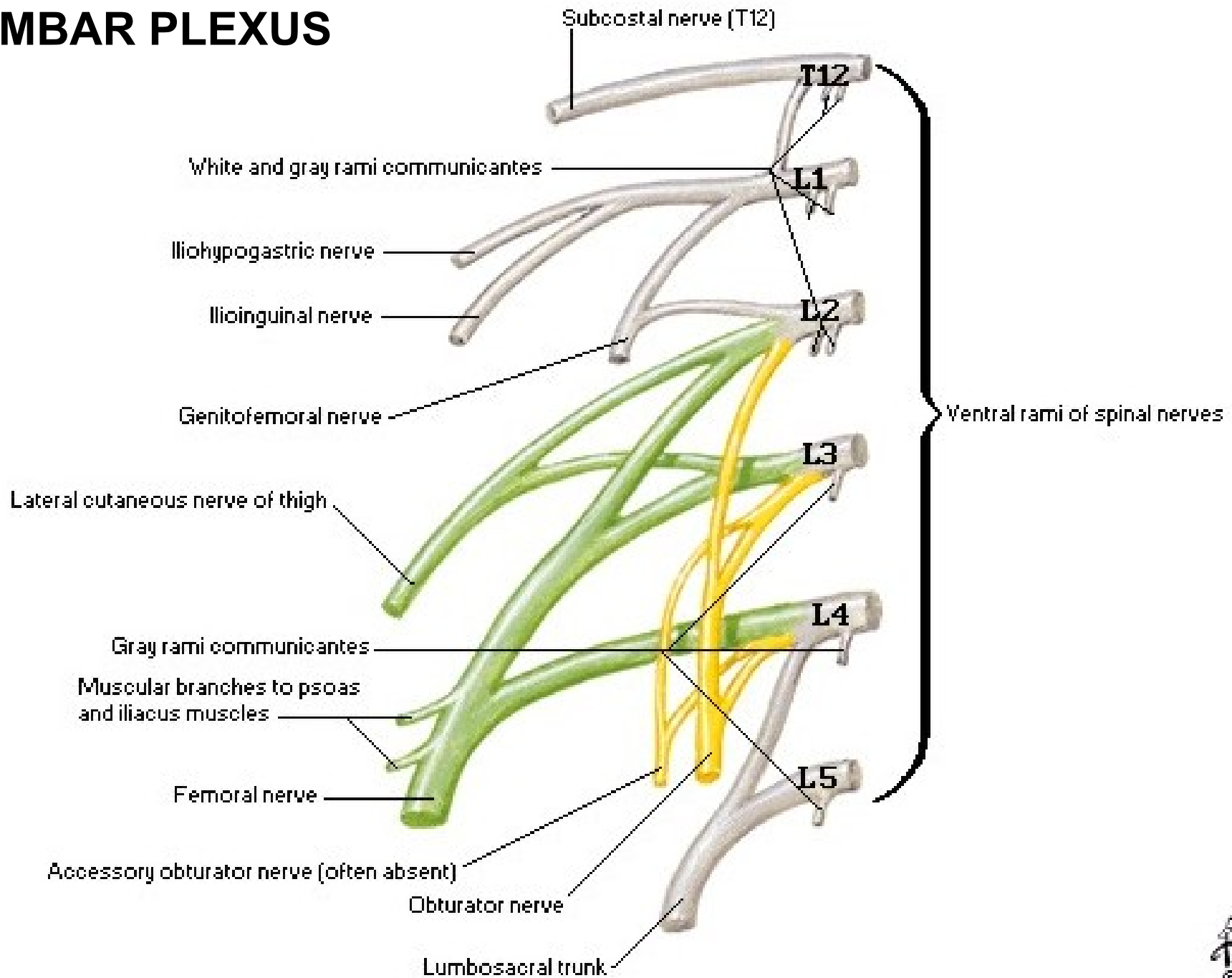


N. SUBCOSTALIS



PLEXUS LUMBALIS (T12 – L4)

LUMBAR PLEXUS



PLEXUS LUMBALIS

Rr. musculares

N. iliohypogastricus

N. ilioinguinalis

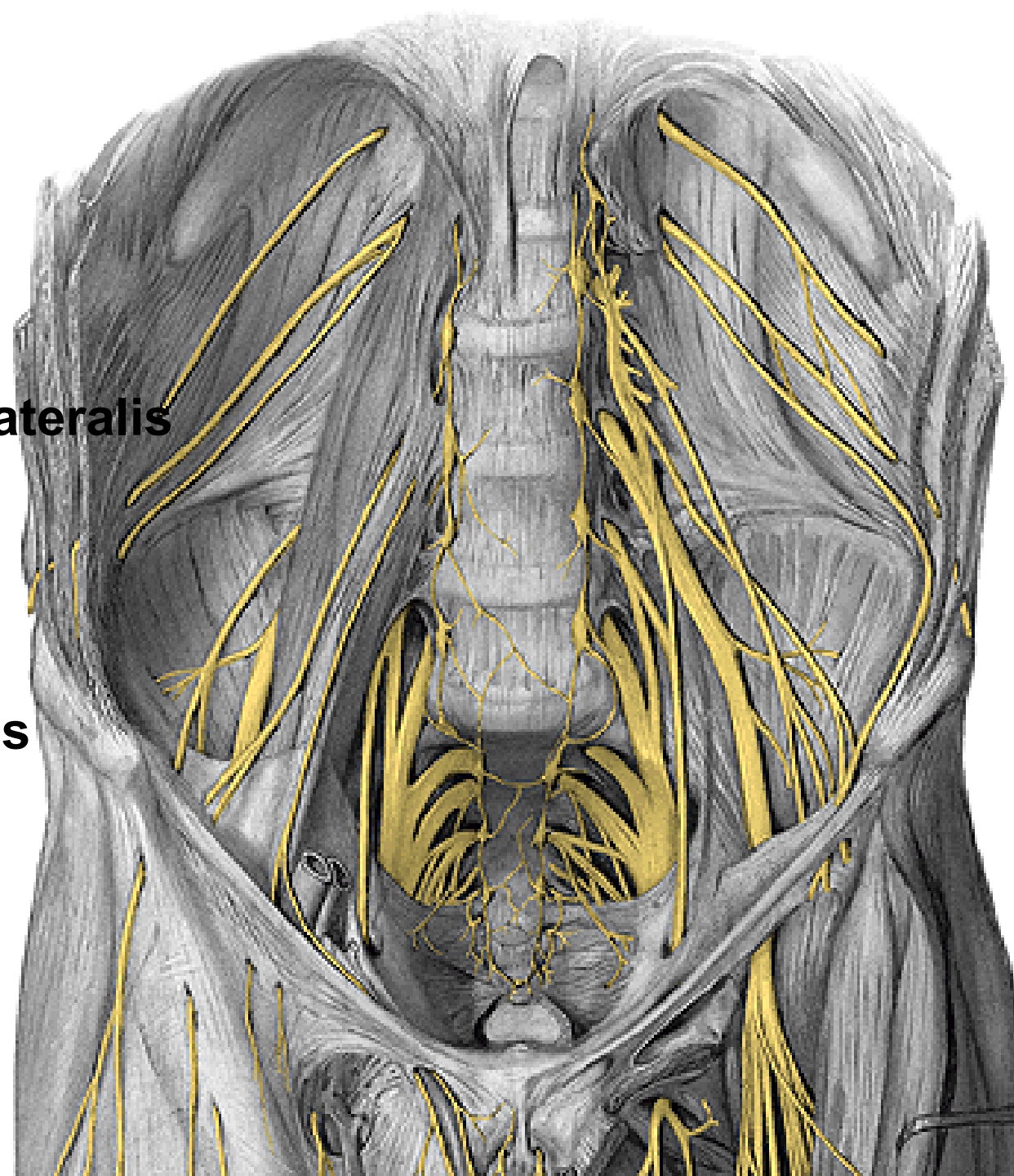
N. genitofemoralis

N. cutaneus femoris lateralis

N. femoralis

N. obturatorius

Truncus lumbosacralis

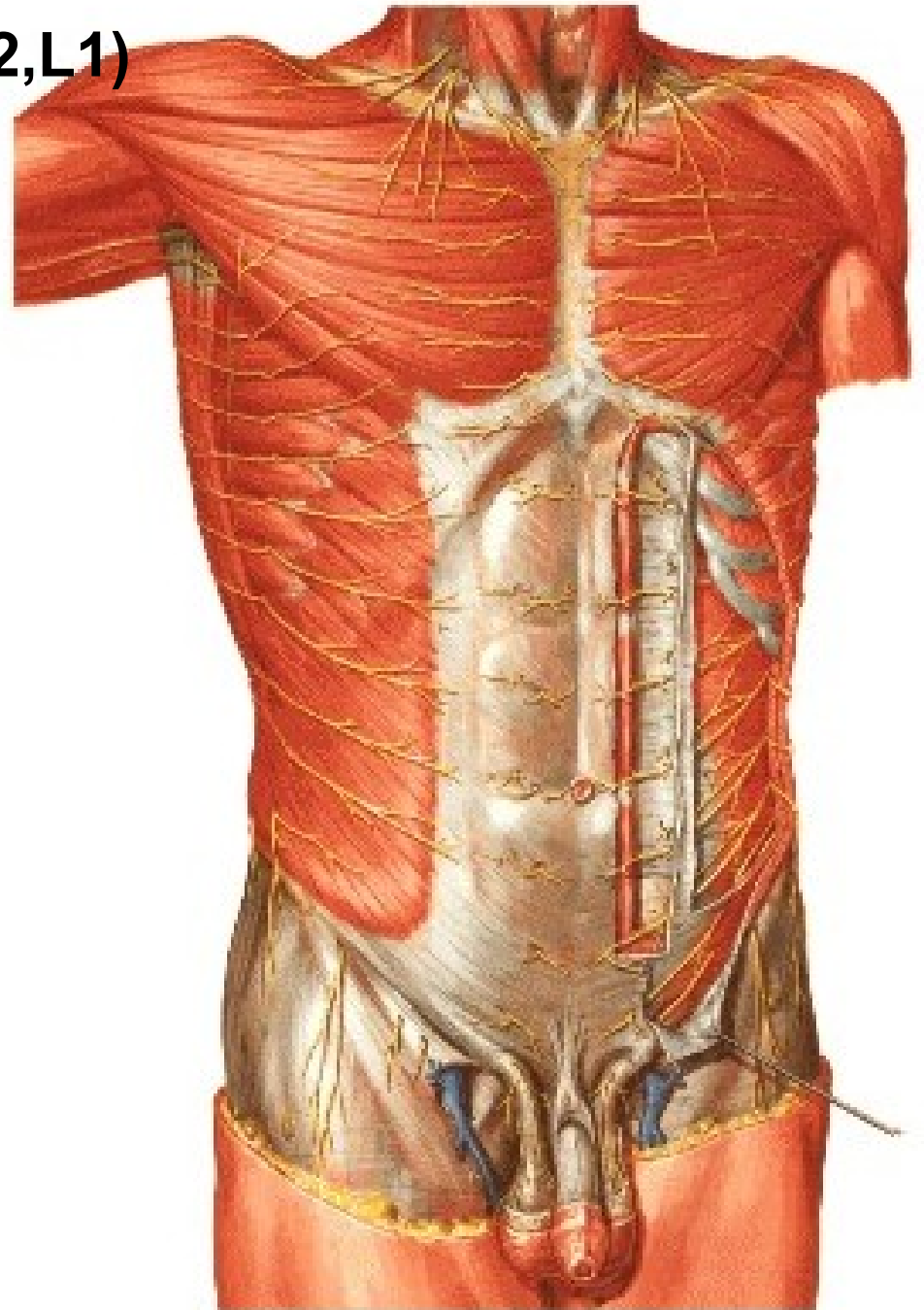


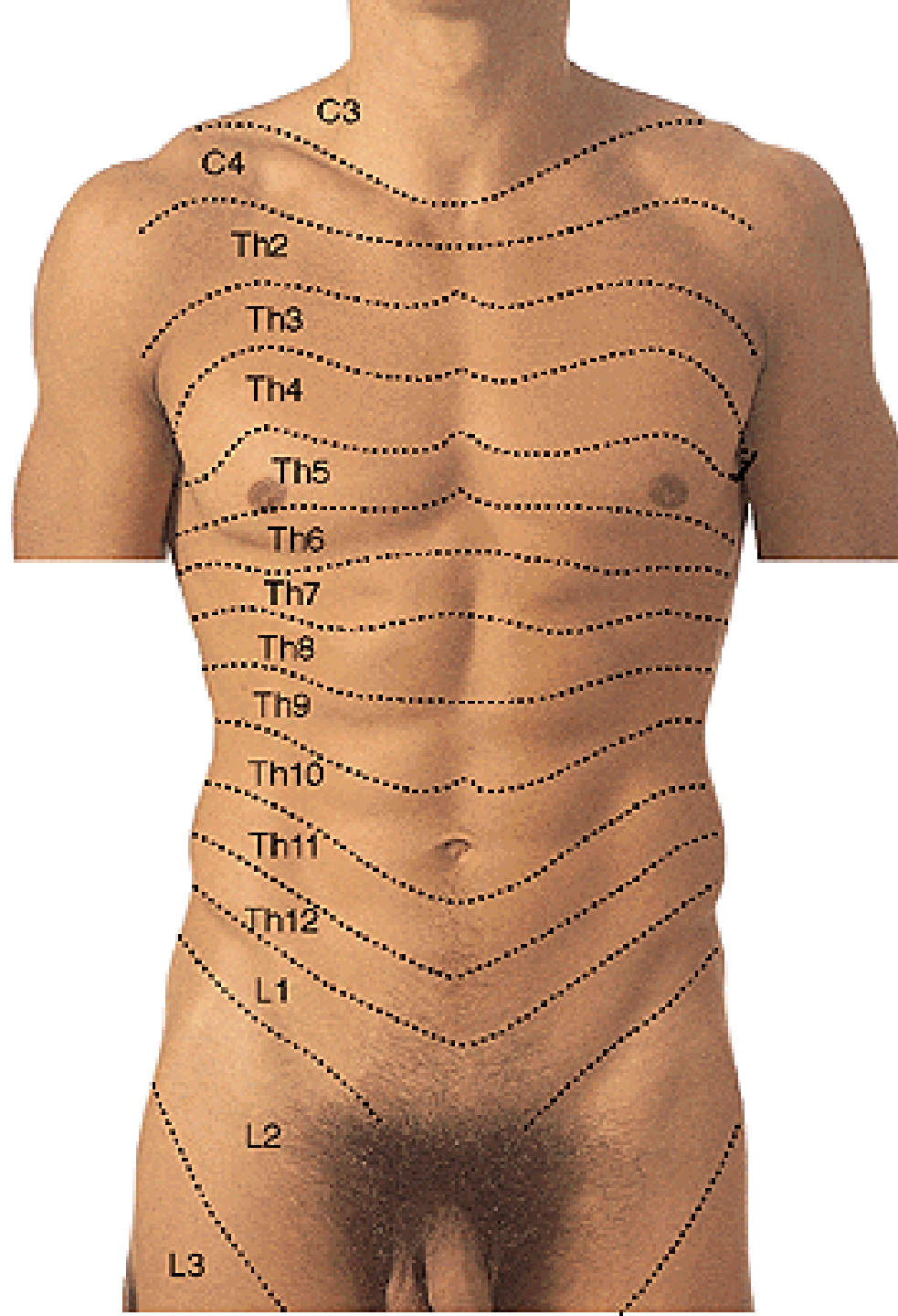
N. ILIOHYPOGASTRICUS (T12,L1)

- rr. musculares
- r. cutaneus lateralis
- r. cutaneus medialis

N. ILIOINGUINALIS (L1)

- rr. scrotales (labiales)





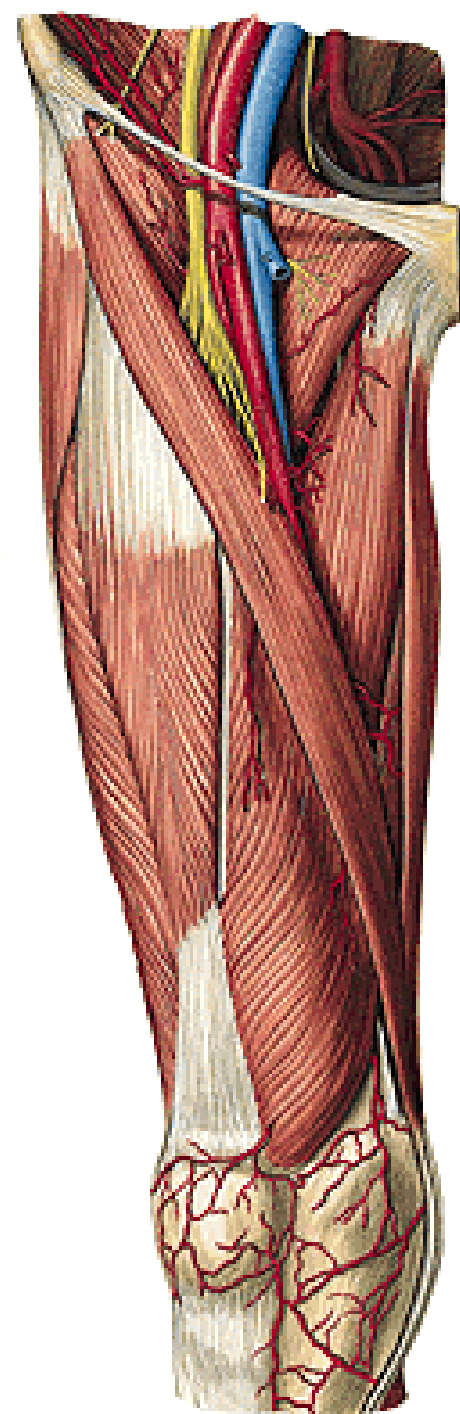
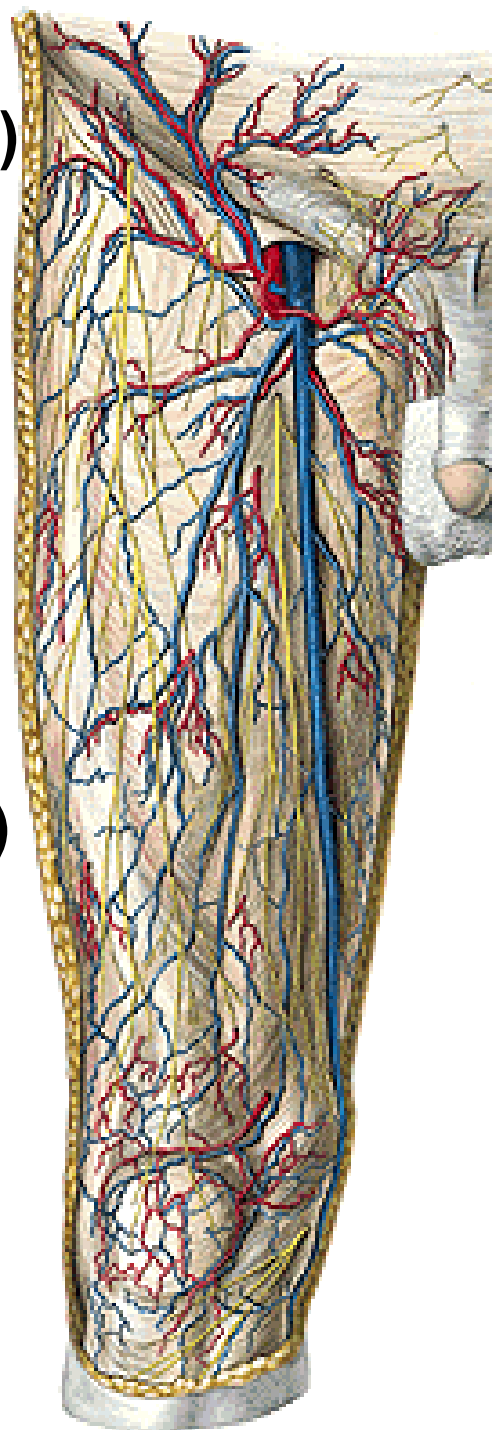
N. GENITOFEMORALIS (L1,L2)

- r. genitalis
- r. femoralis

N. CUTANEUS FEMORIS LATERALIS (L2,L3)

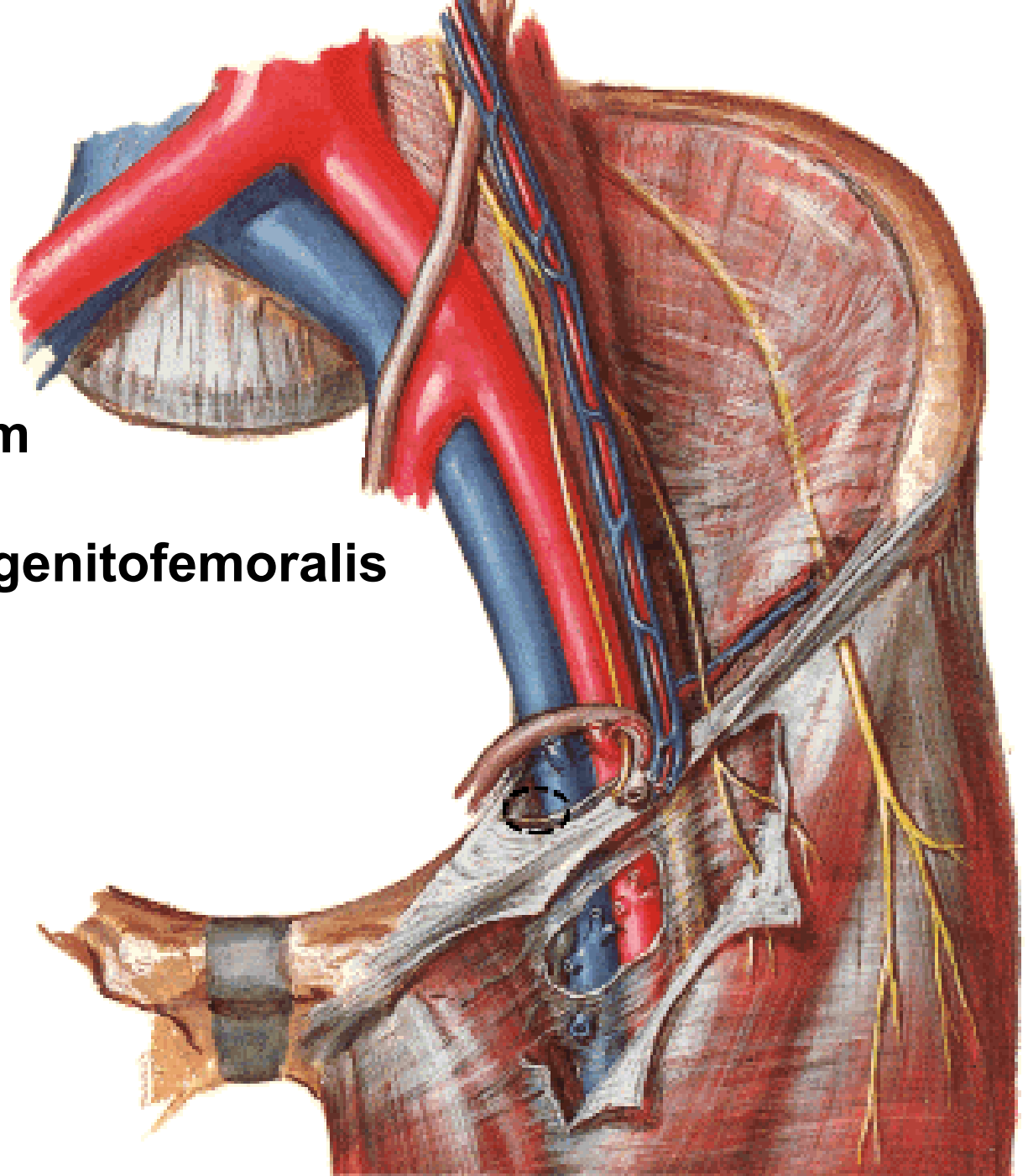
N. FEMORALIS

- rr. cutanei anteriores (L2-L4)



Lacuna vasorum

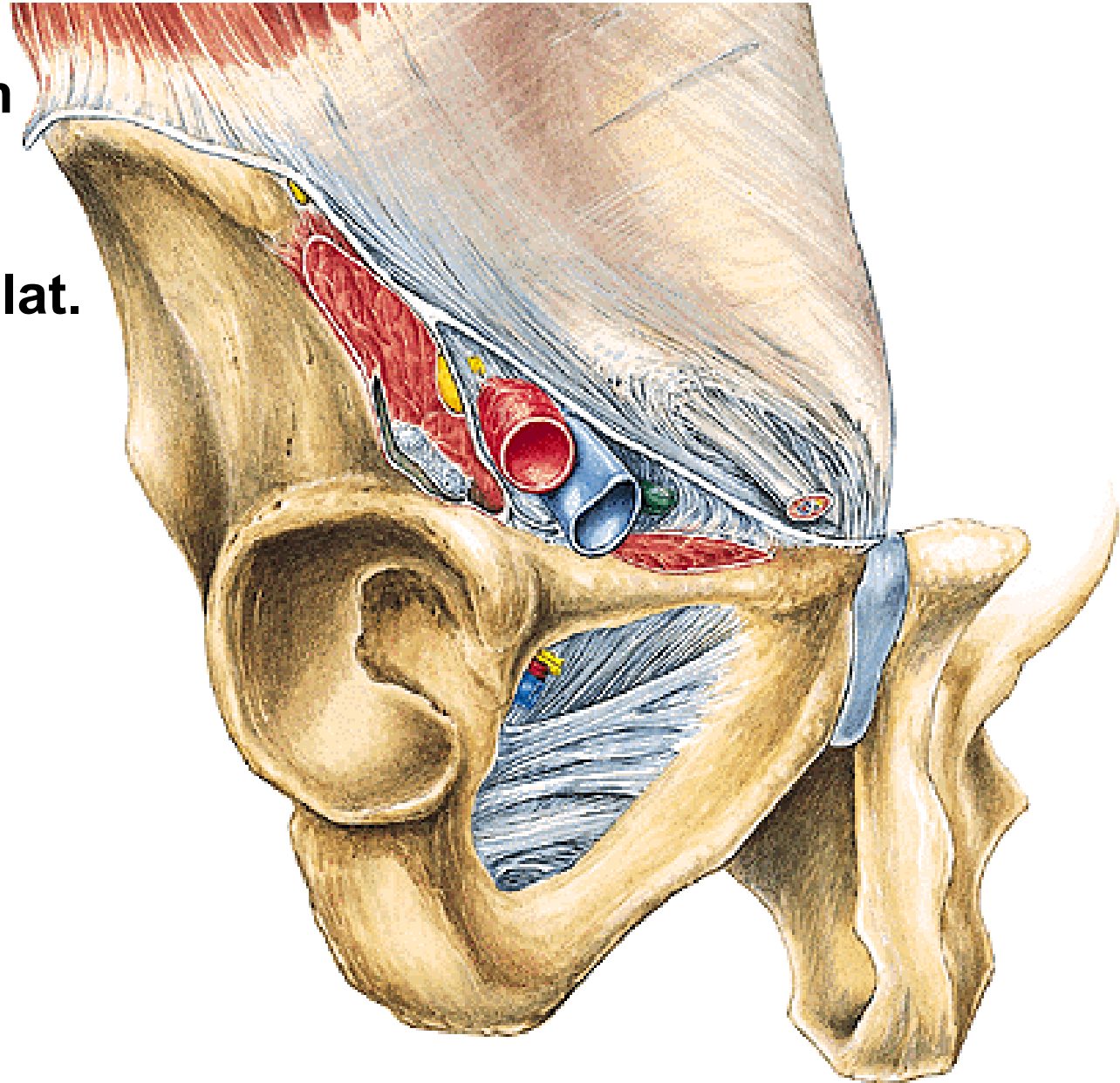
R. femoralis n. genitofemoralis



Lacuna musculorum

N. femoralis

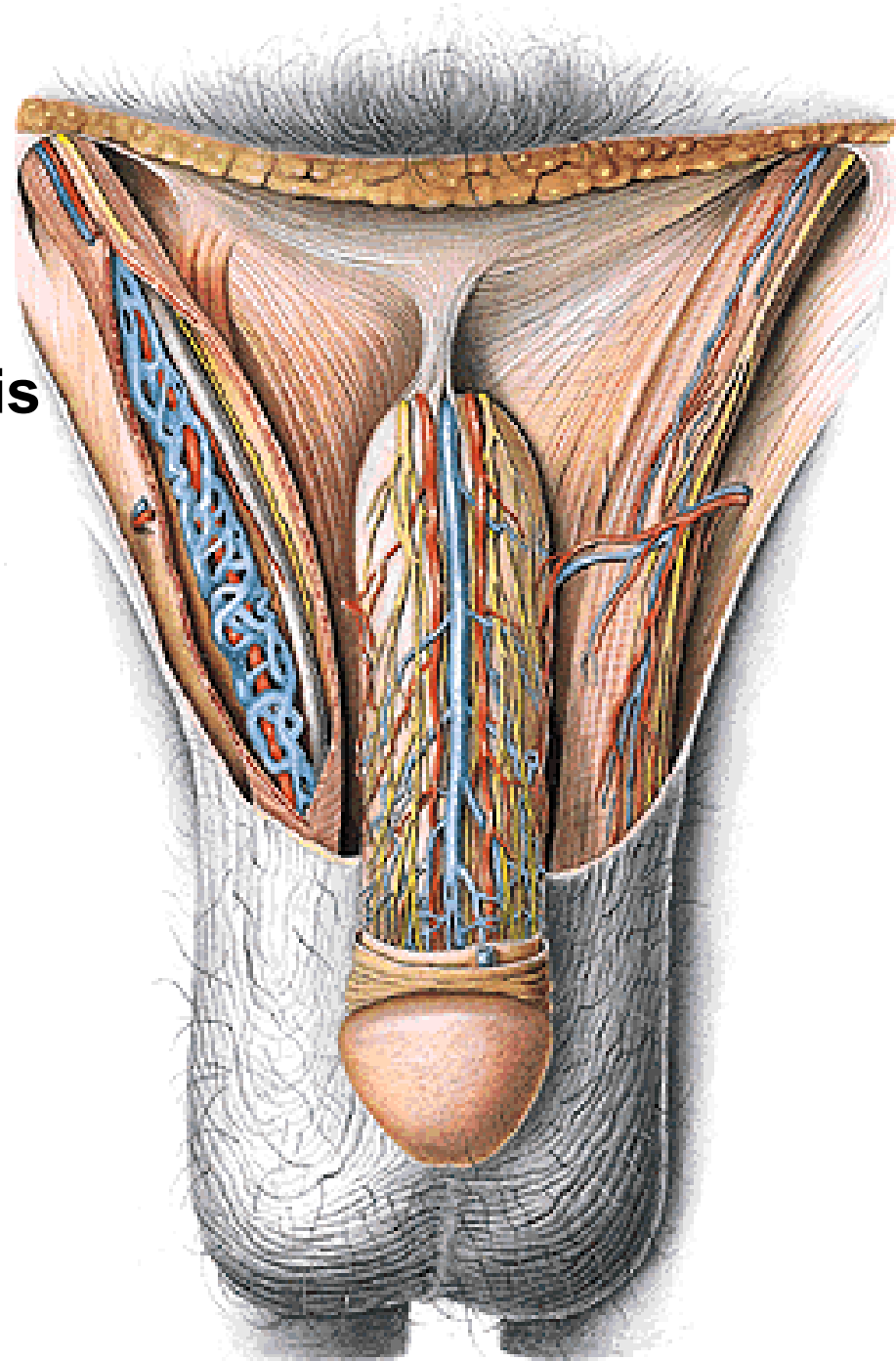
N.cutaneus femoris lat.

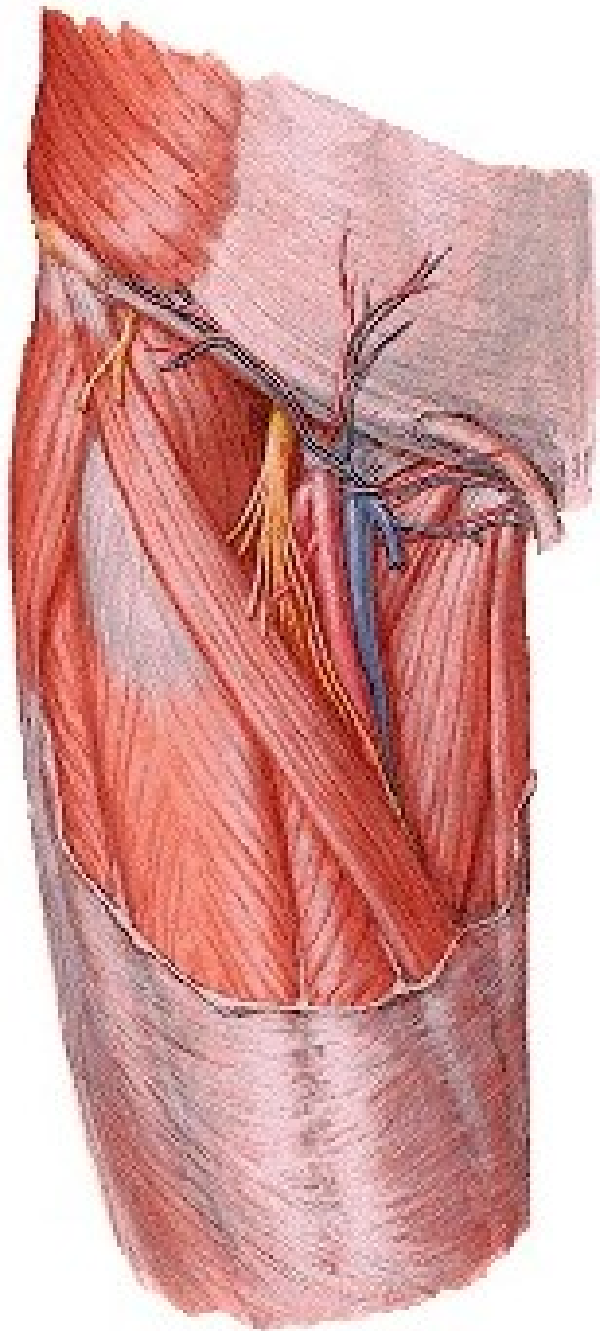


Canalis inguinalis

N. ilioinguinalis

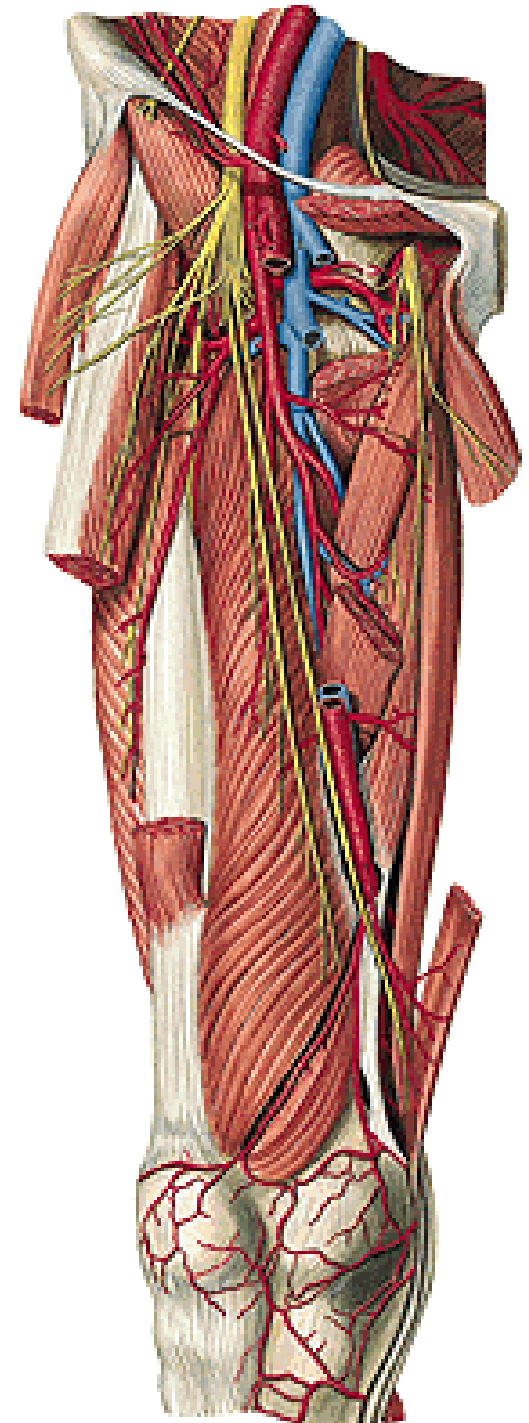
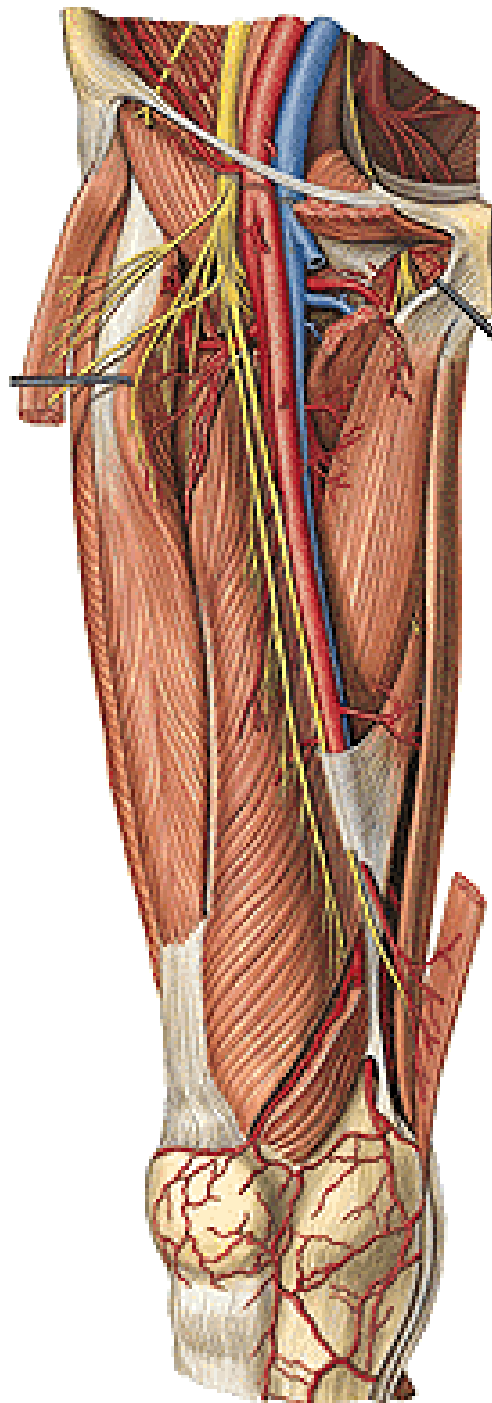
R. genitalis n. genitofemoralis

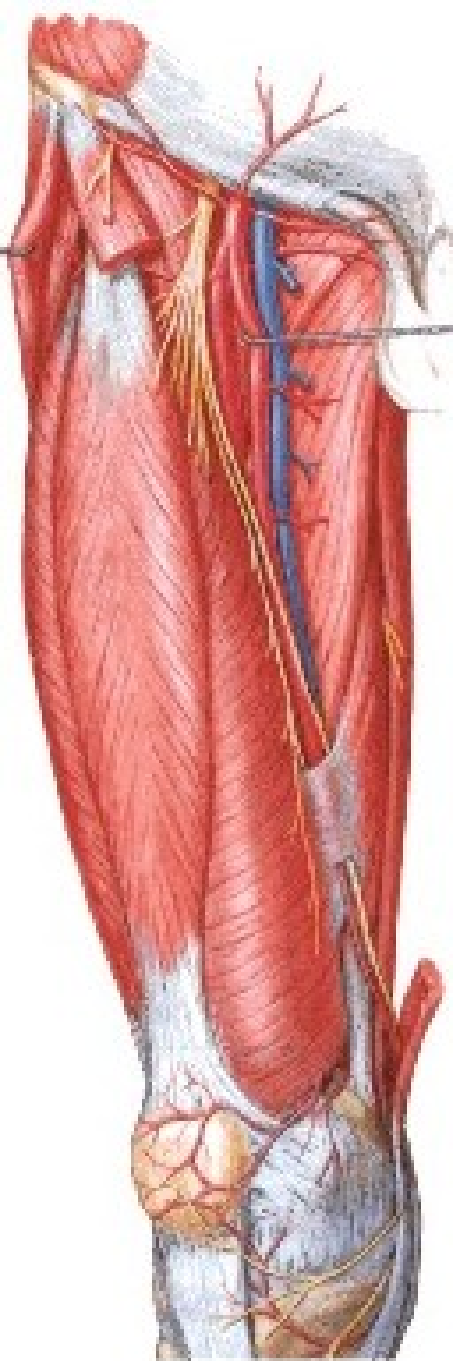




N. FEMORALIS

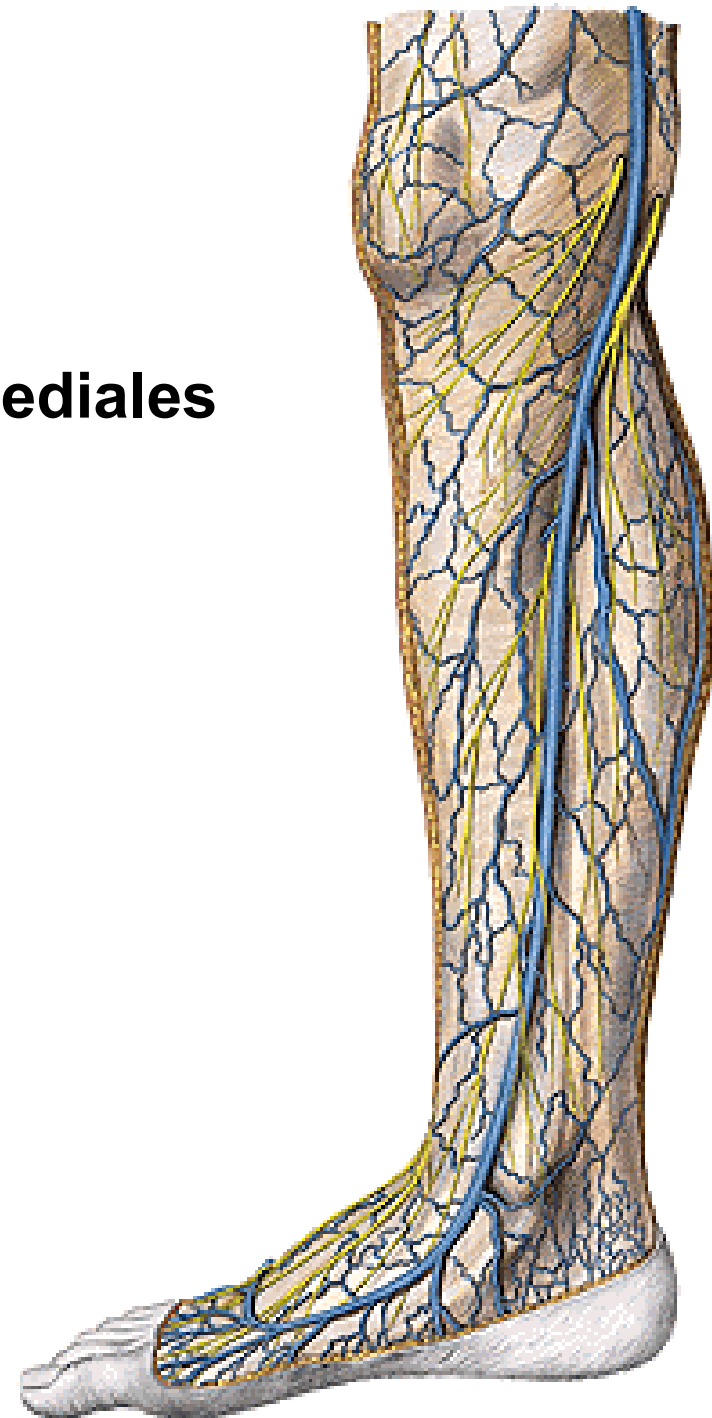
- rr. musculares
- n. saphenus





N. saphenus

- r. infrapatellaris
- rr. cutanei cruris mediales





N. cutaneus femoris lat.
N. femoralis

N. OBTURATORIUS (L2-L4)

- r. anterior – r. cutaneus
- r. posterior – r. articularis

