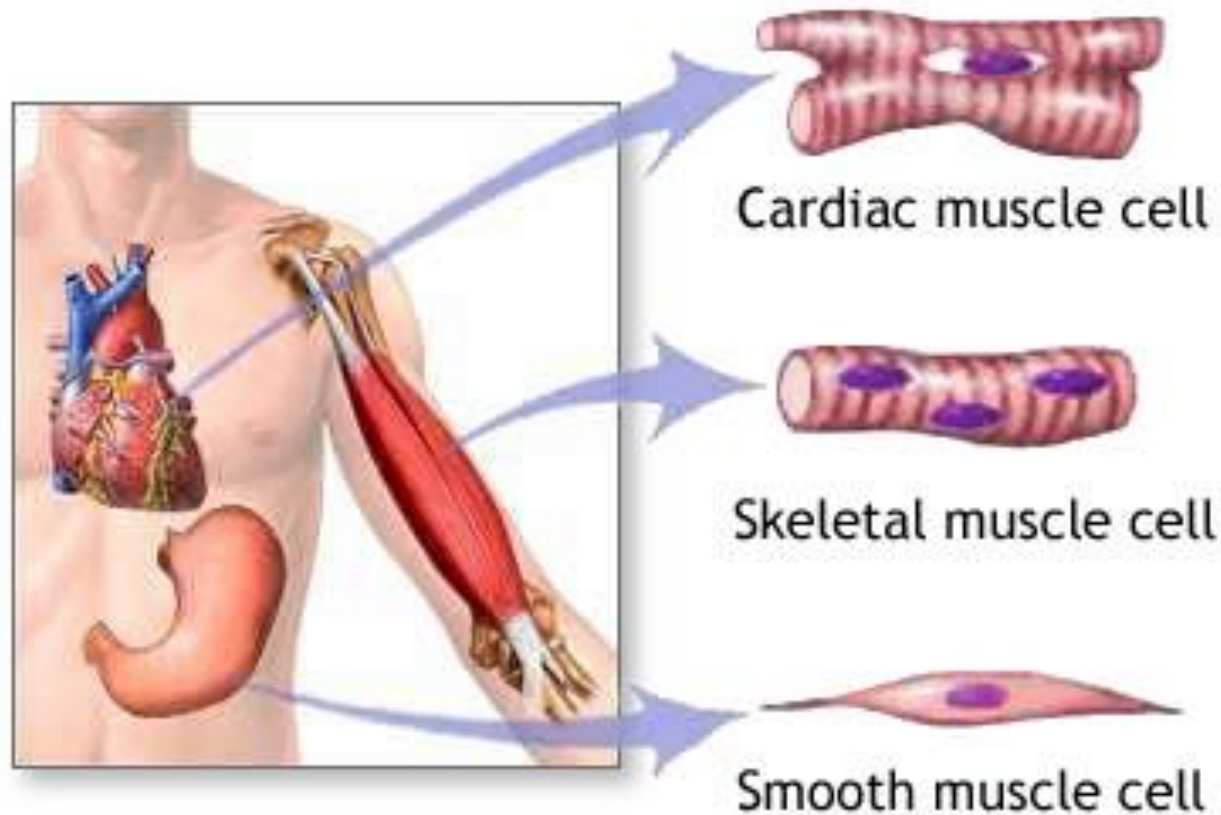
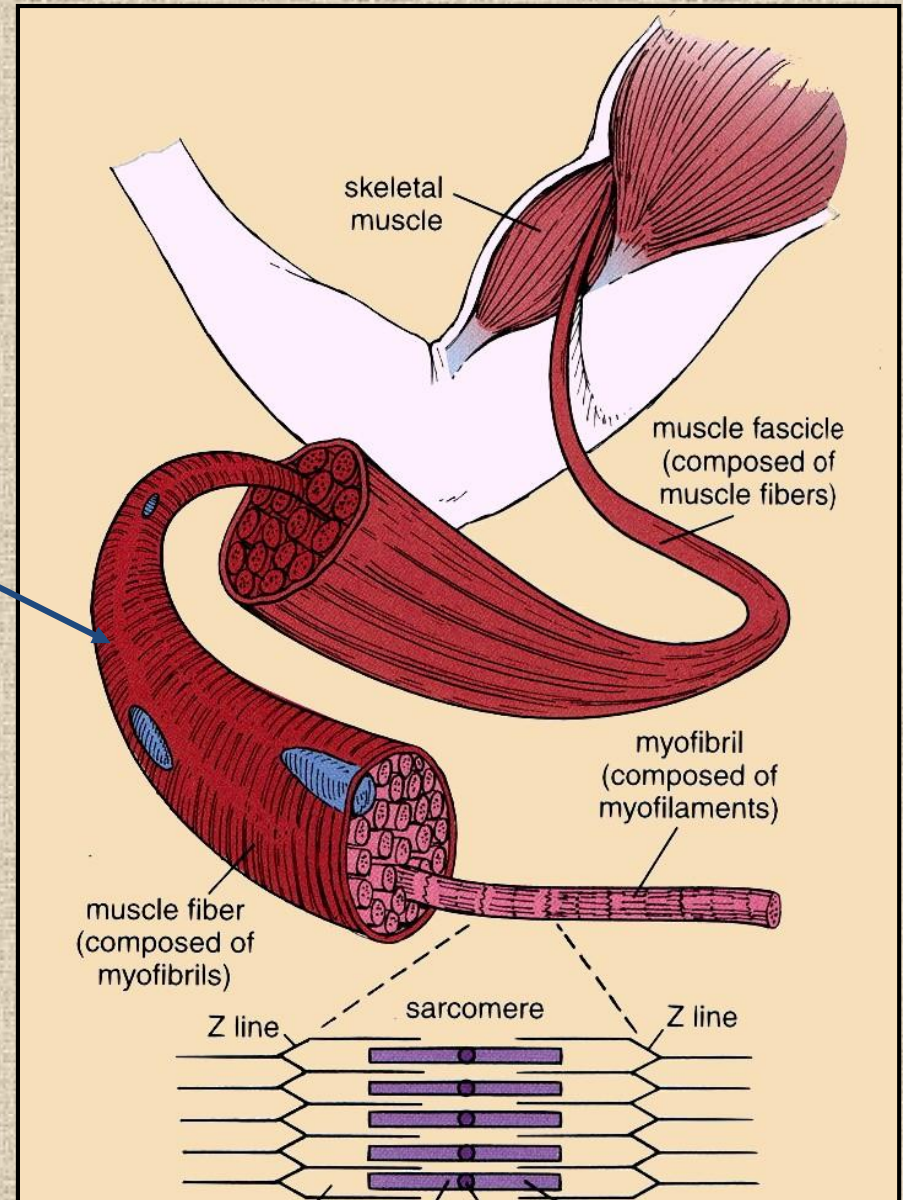


Svalová tkáň



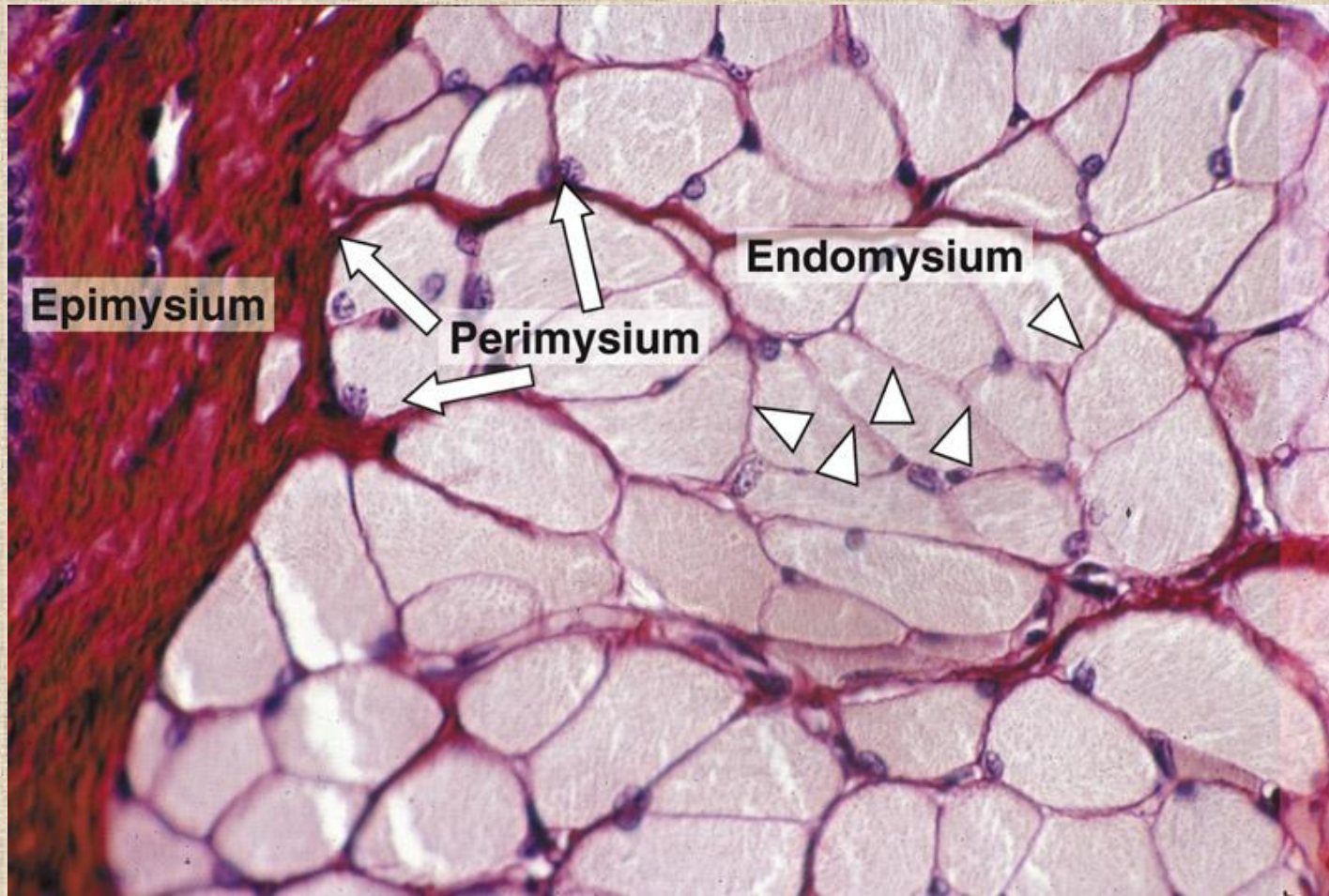
Kosterní svalová tkáň

- sval
- fasciculus – svalový snopec – svazek vláken
- **svalové vlákno = rhabdomyocyt**
 - l:1-30cm,tl:10-100 μm
 - obrovská mnohojaderná buňka – syncytium
 - obsahuje **myofibrily**

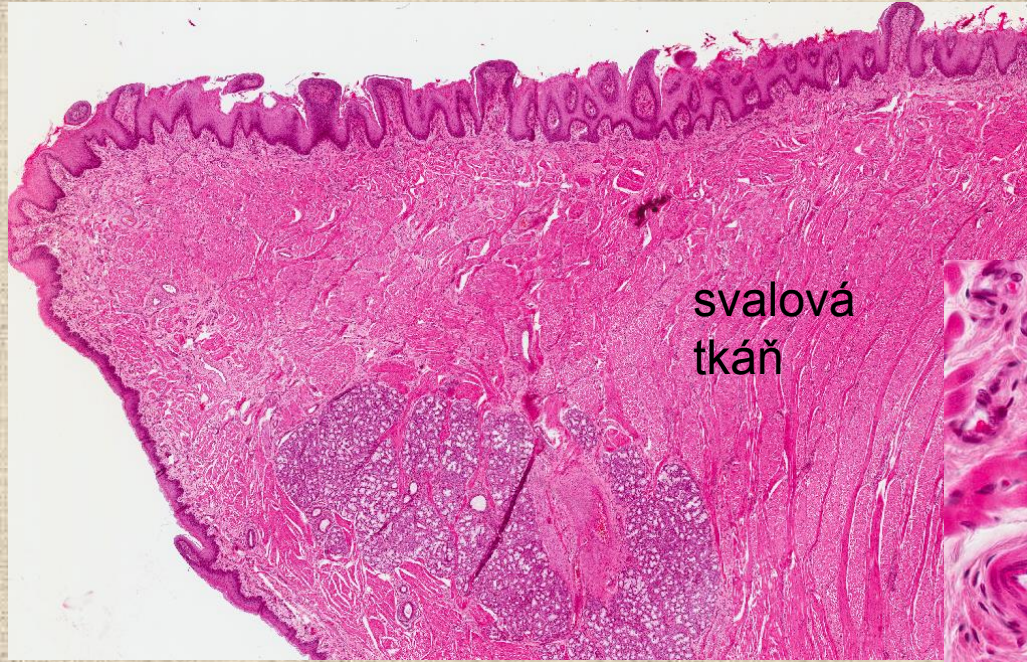


Kosterní svalová tkáň

- vazivo
 - epimysium – husté kolagenní vazivo, obaluje sval
 - perimysium – řídké kolagenní kolem sval. fasciculů
 - endomysium – jemná retikulární síť kolem rhabdomyocytů

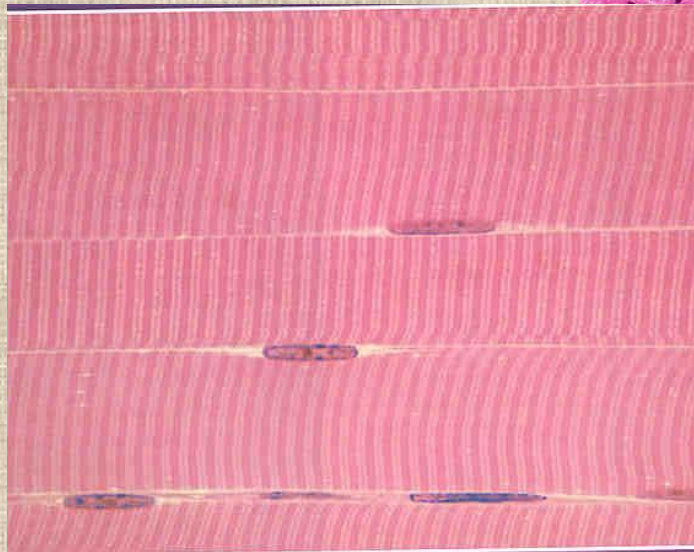
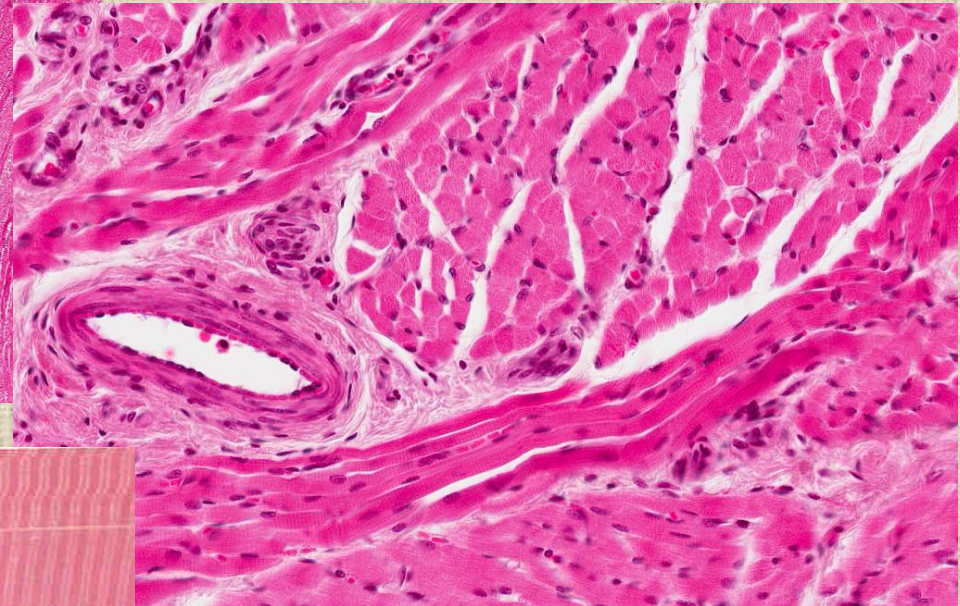


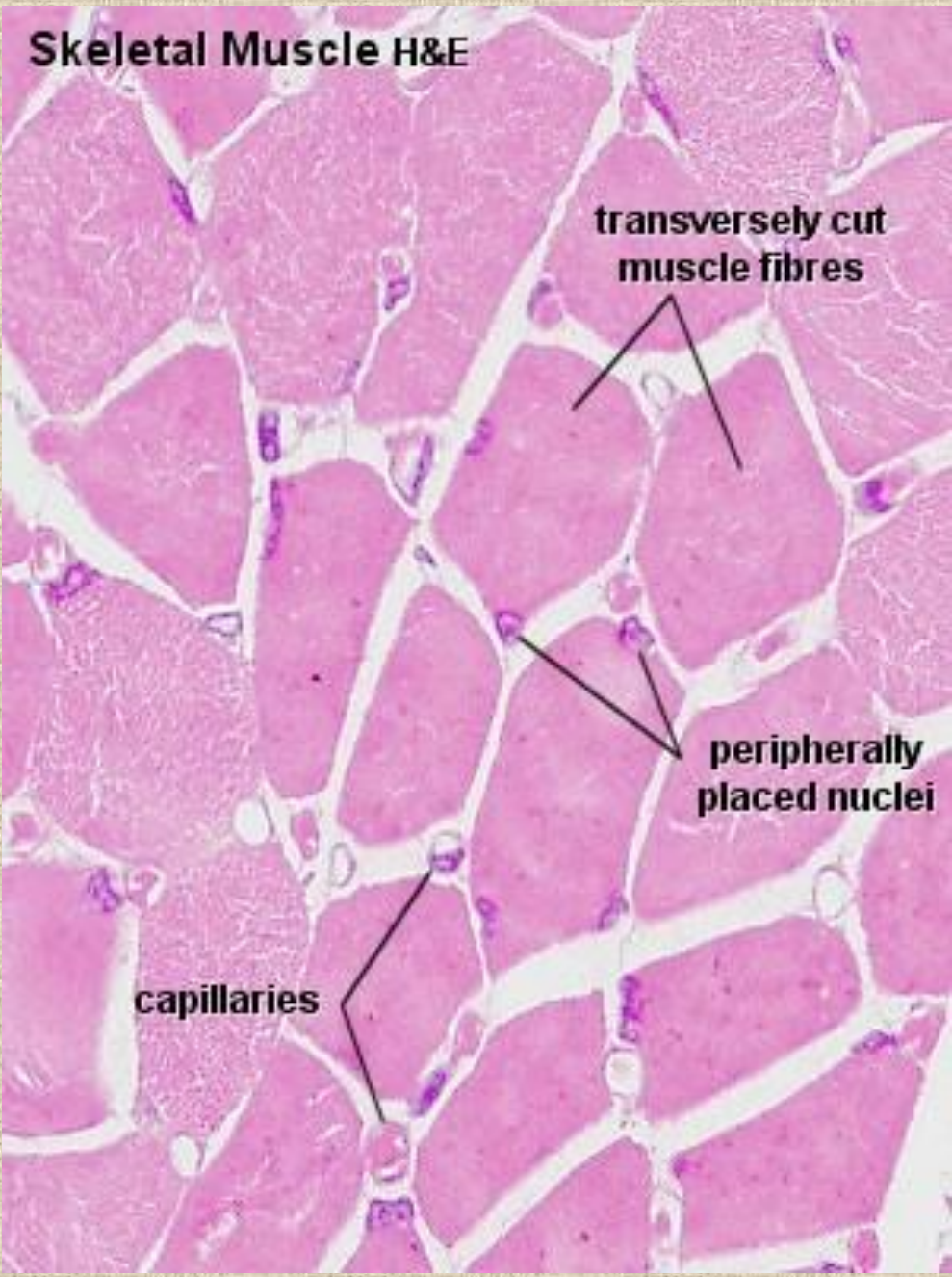
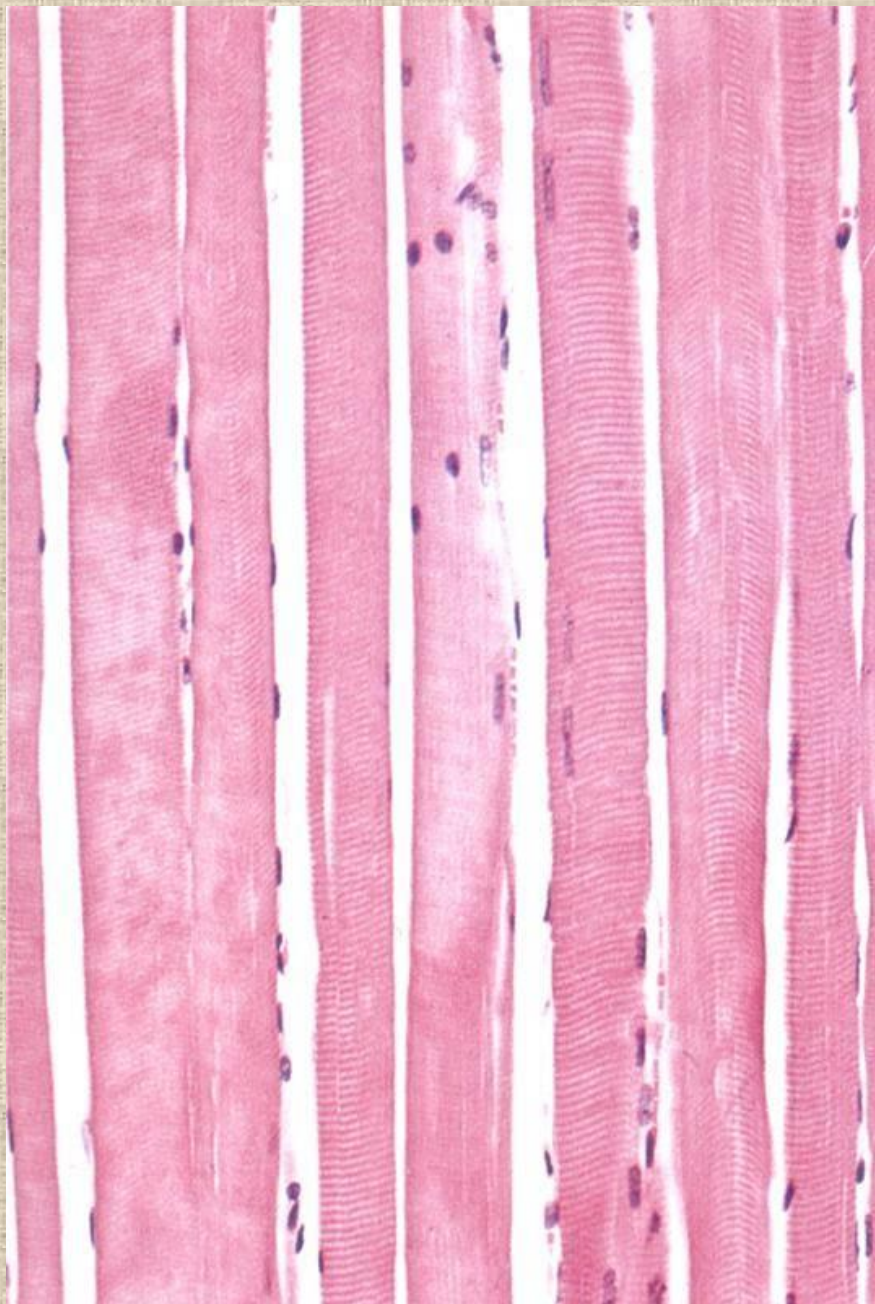
Kosterní svalová tkáň



svalová
tkáň

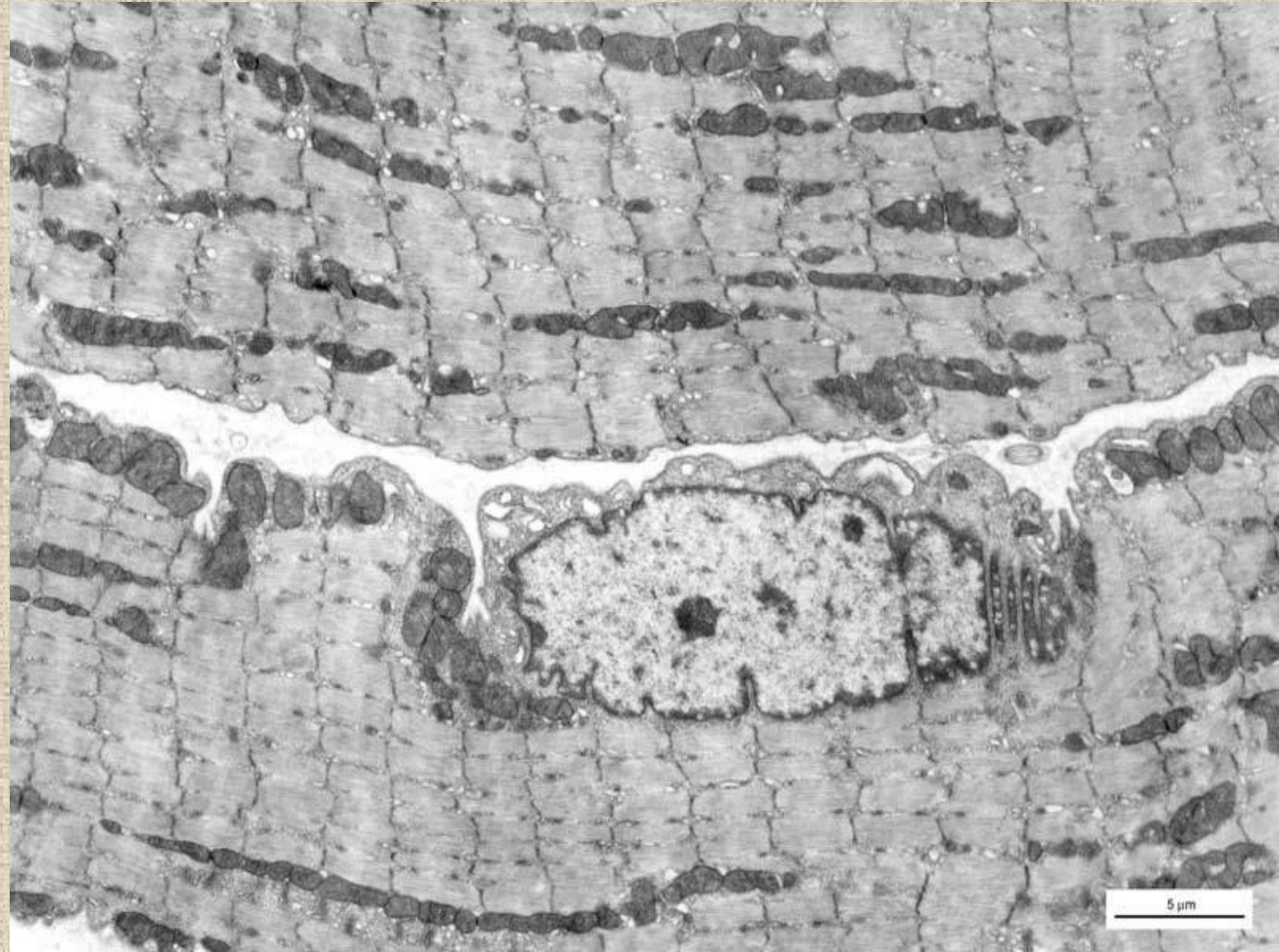
apex
linguae





Stavba svalového vlákna

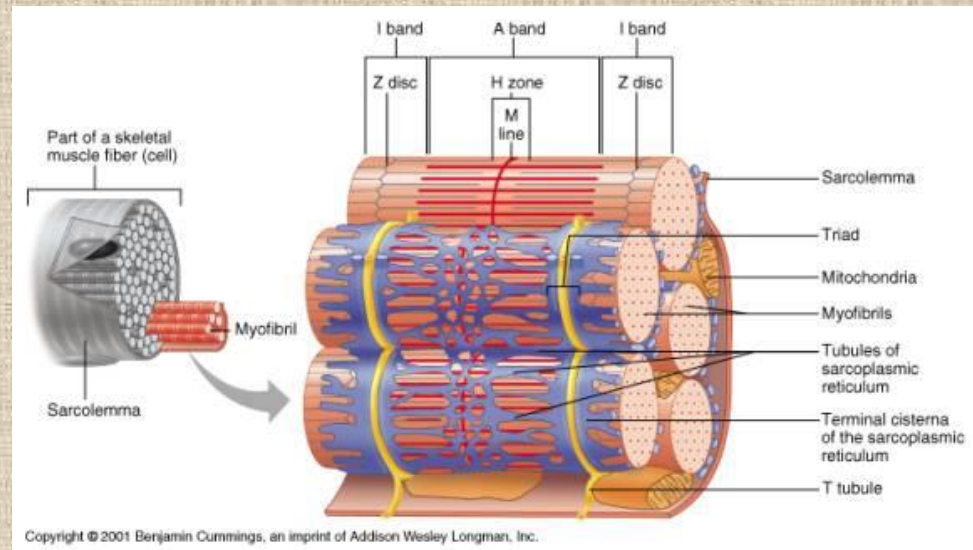
- Sarkolema, T-tubuly
- Sarkoplazma
- **Jádra**
 - hned pod sarkolemou, na 1mm vlákna: 20-45 jader
- SR – AER
- **Myofibrily**
 - vlákna tlustá 1-2 μm
- Mitochondrie, GA, glykogen, lipidové kapky, myoglobin



Stavba svalového vlákna



Myofibrily
Sarkoplazmatické
retikulum
Triády
T-tubuly

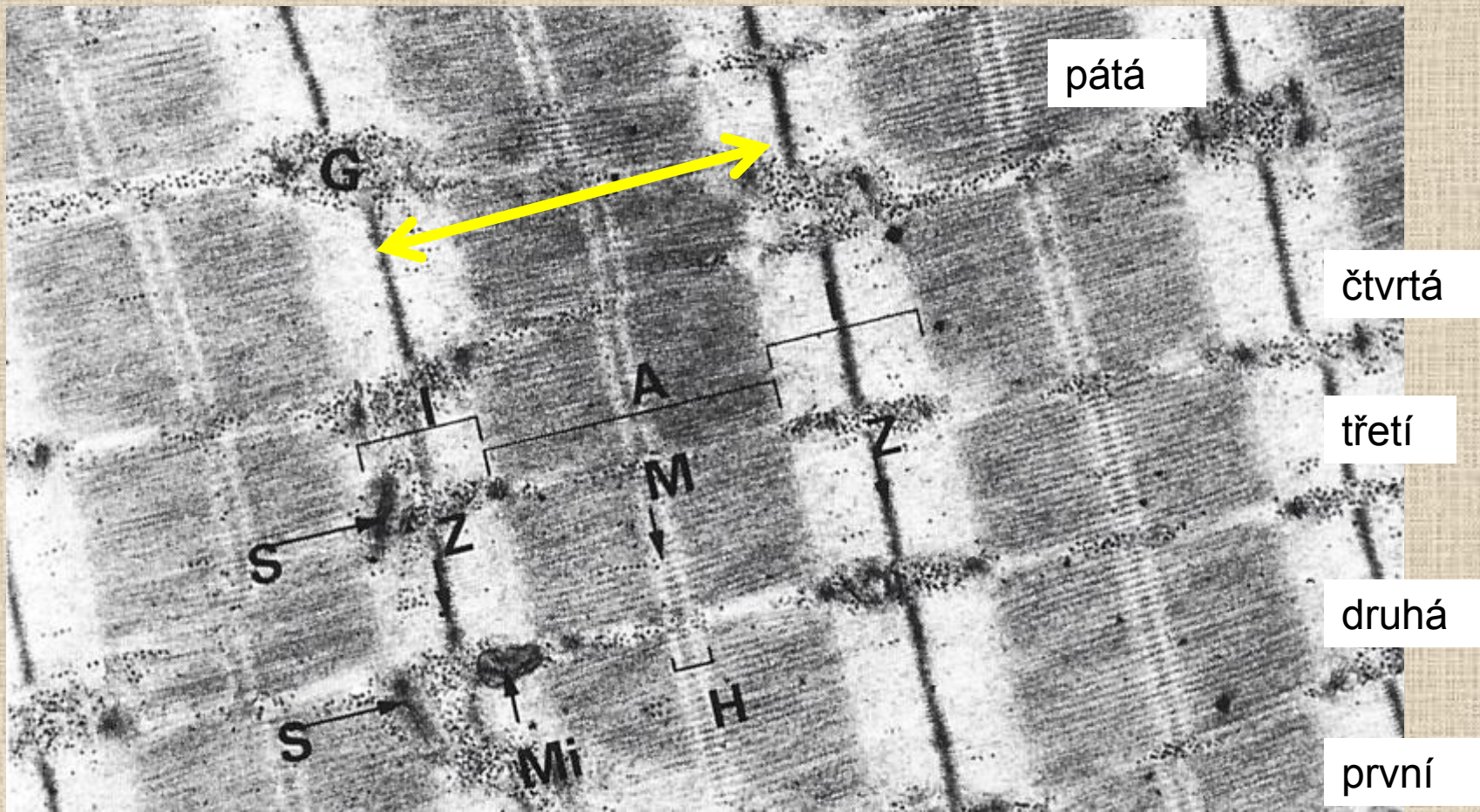


Copyright © 2001 Benjamin Cummings, an imprint of Addison Wesley Longman, Inc.

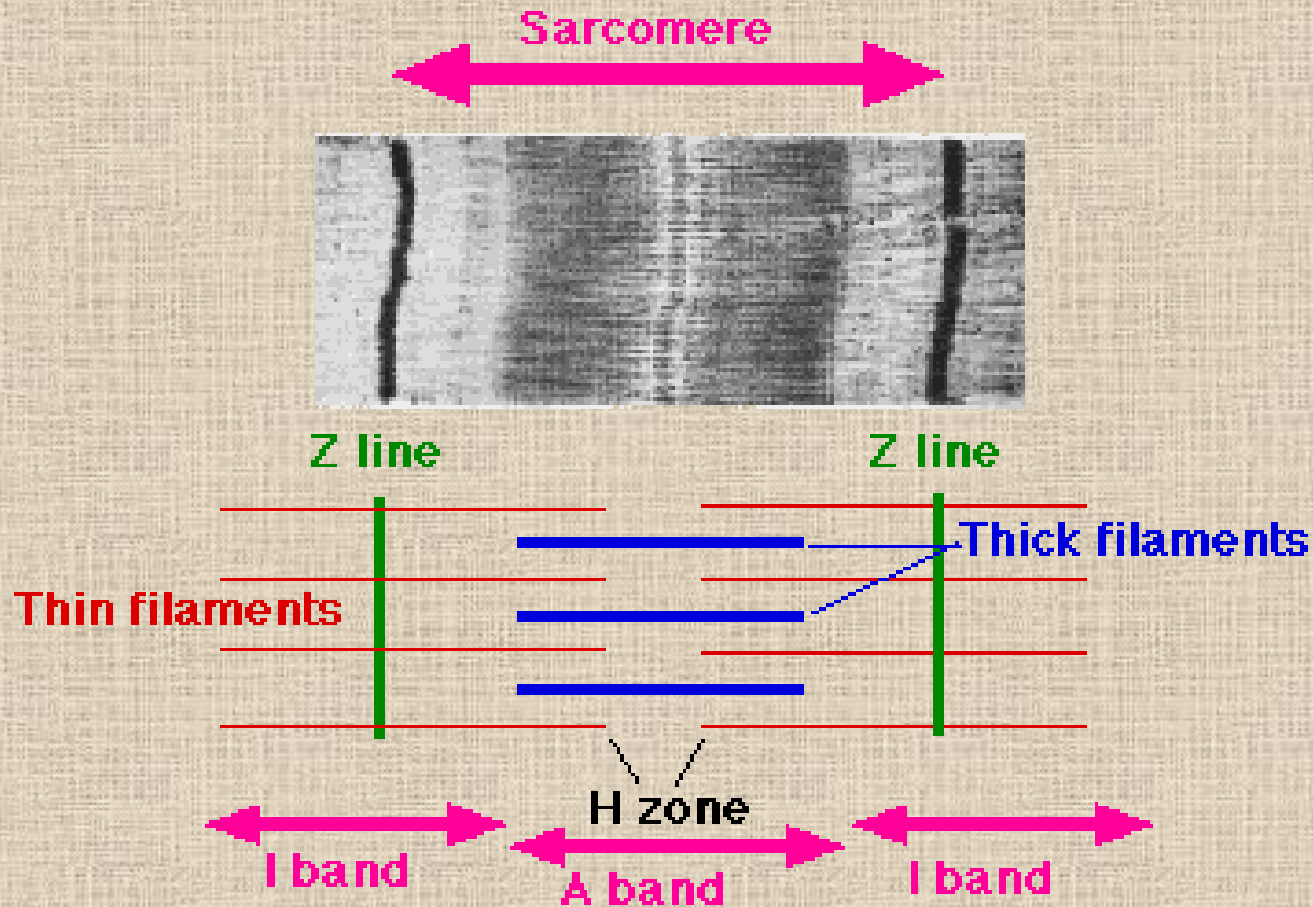
triáda

Myofibrila, sarkomera

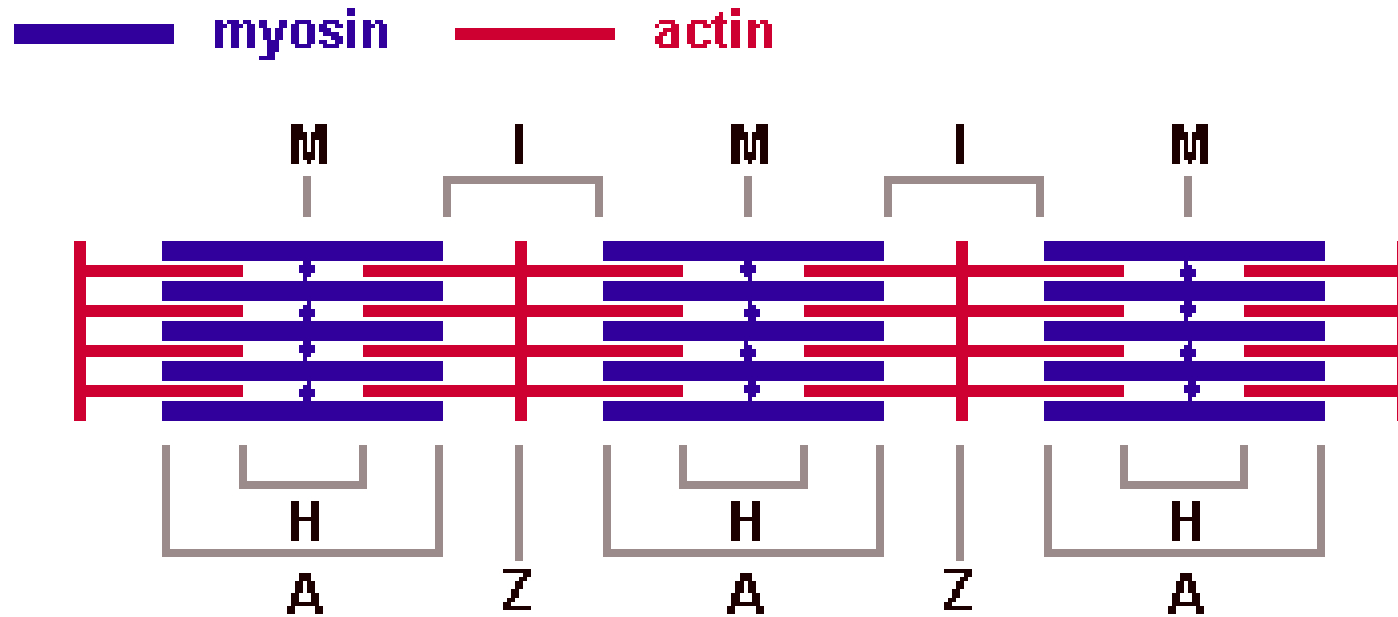
- Každá **myofibrila** se skládá z pravidelně se střídajících světlejších a tmavších úseků, které se odlišují barvitelností a lomem.



Myofibrila, sarkomera

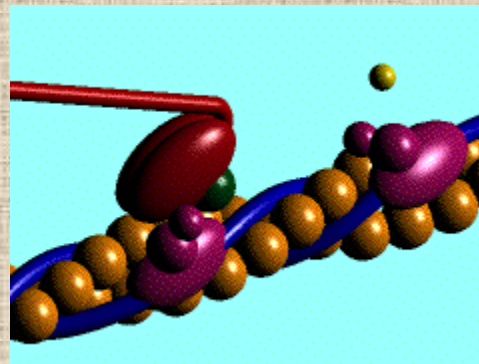
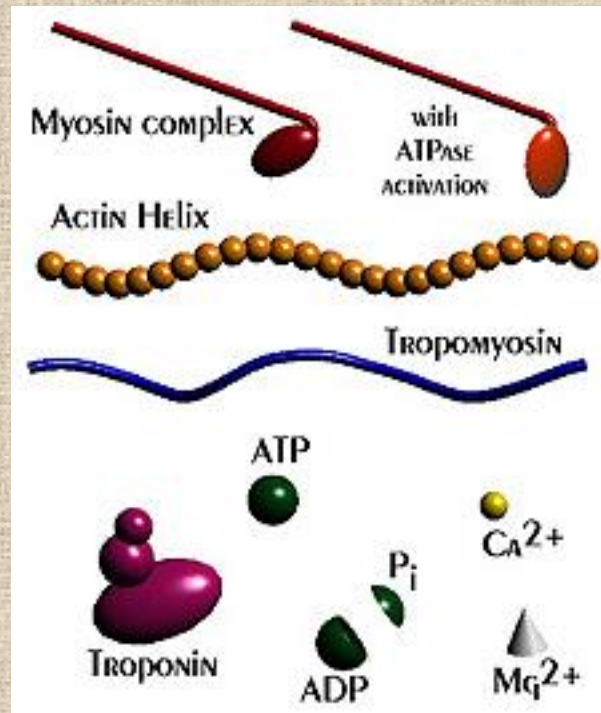


Mechanismus svalové kontrakce

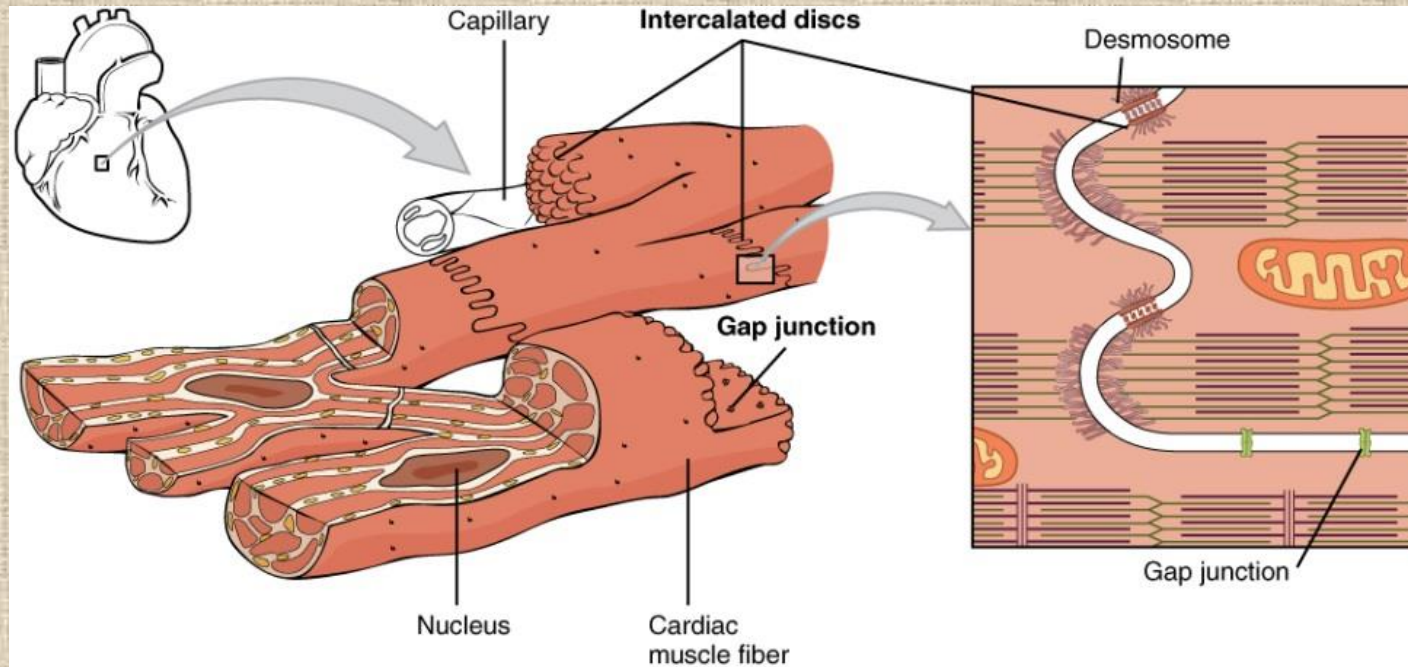


Bands and lines in the contractile apparatus of skeletal muscle

Mechanismus svalové kontrakce

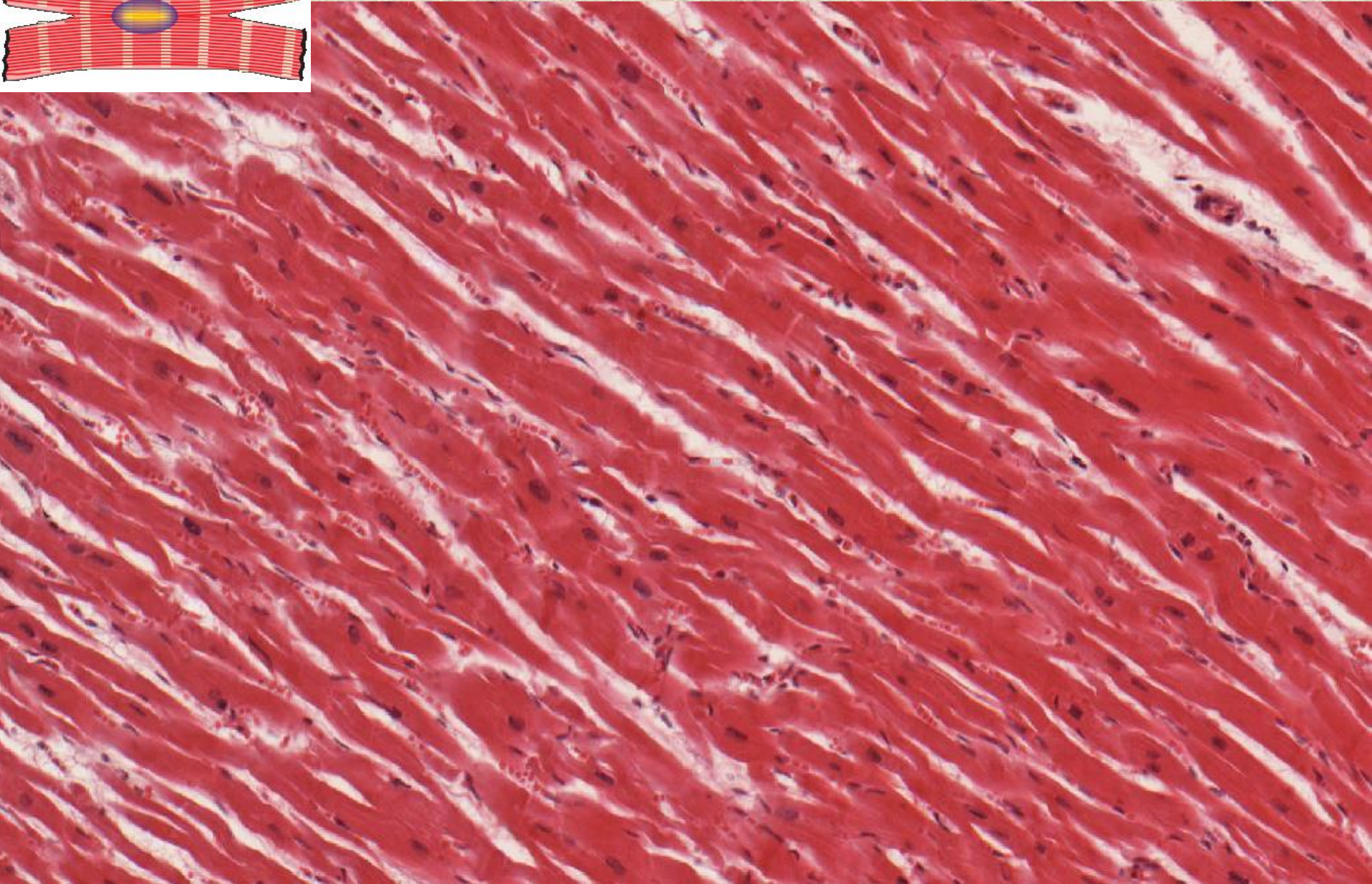
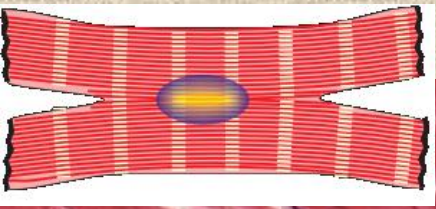


Srdeční svalová tkáň

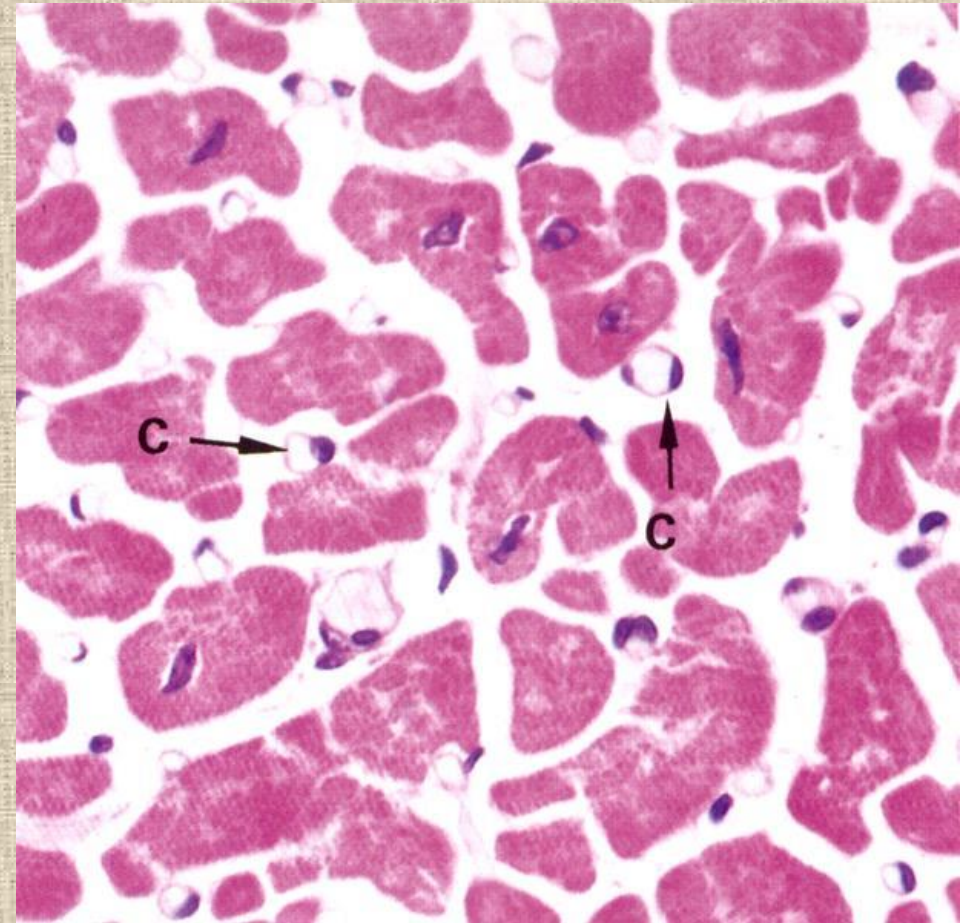
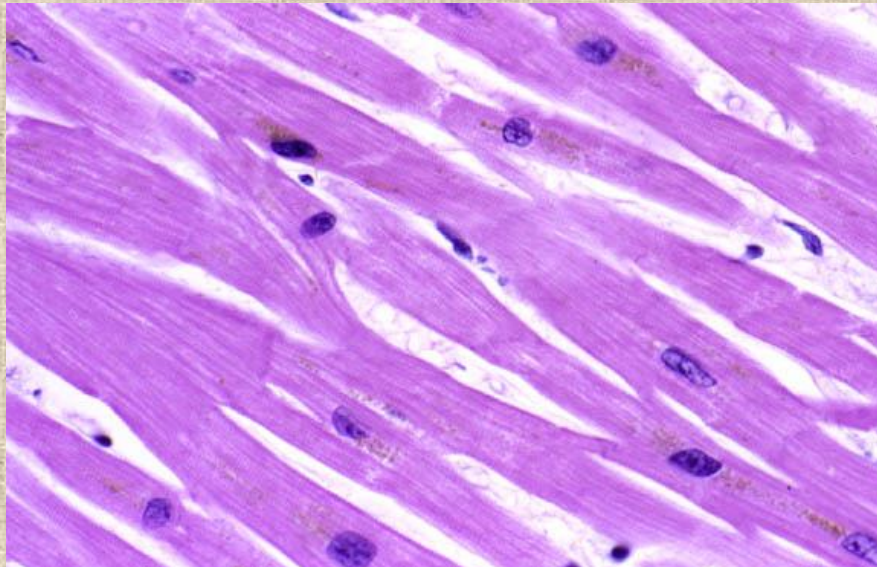
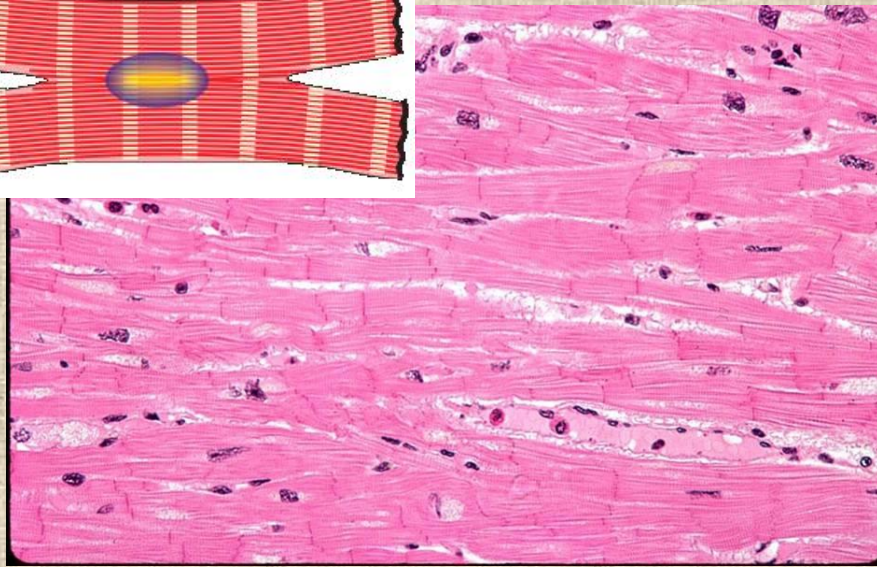
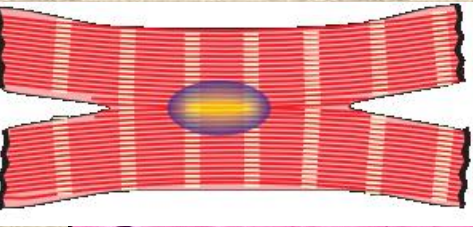


- **kardiomyocyty pracovní** - tl:10-15 μm , l:85-100 μm a **vzrušivé**
- válcovitý nebo s výběžky /Y/
- 1 oválné jádro uprostřed s 1 nebo 2 jadérky
- sarkolema + lamina basalis
- **myofibrily** – žíhané /kratší sarkomery, sousední myofibrily sdílejí myofilamenta/
- hojné **mitochondrie**
- GA, glykogen, lipofuscin, lipidy
- kardiomyocyty síní – aurikulin /ANF/
- SR - diády

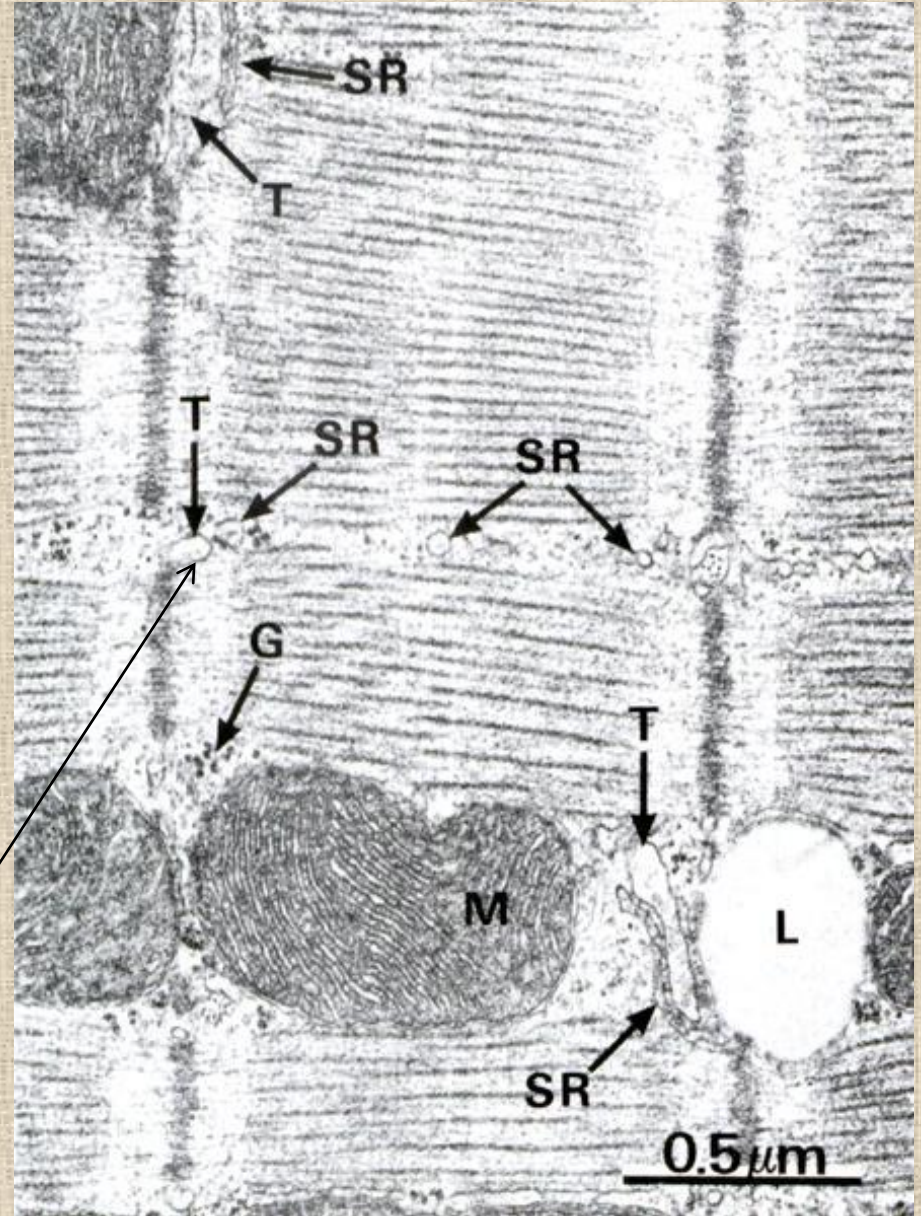
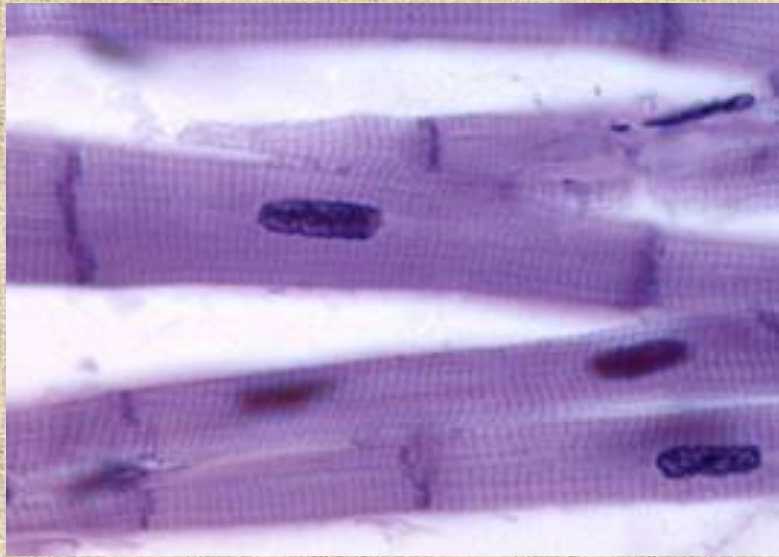
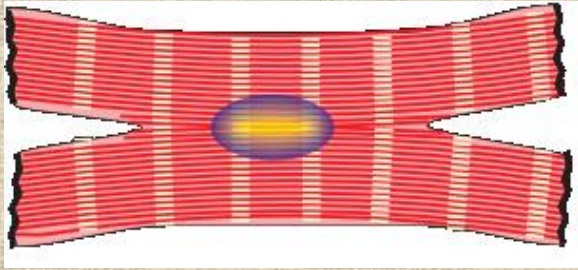
Srdeční svalová tkáň



Srdeční svalová tkáň

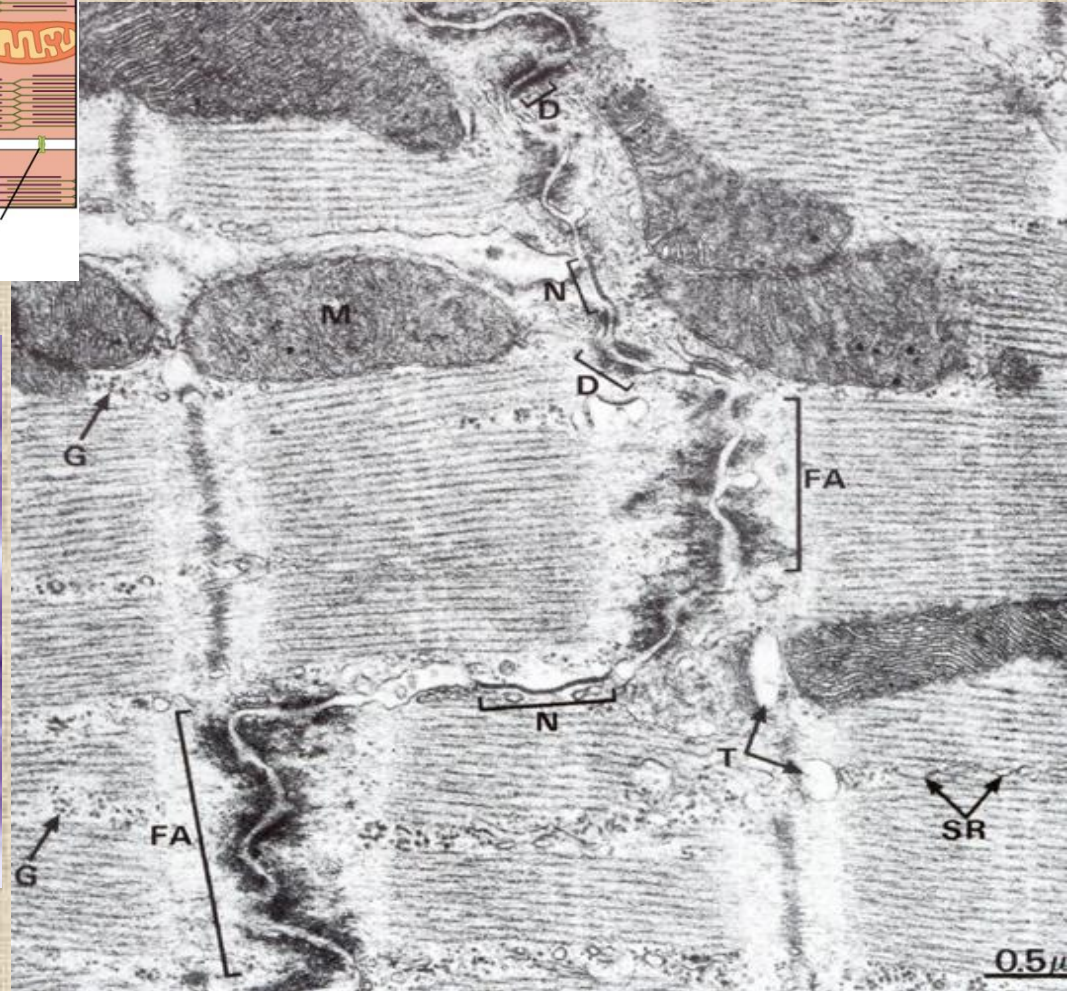
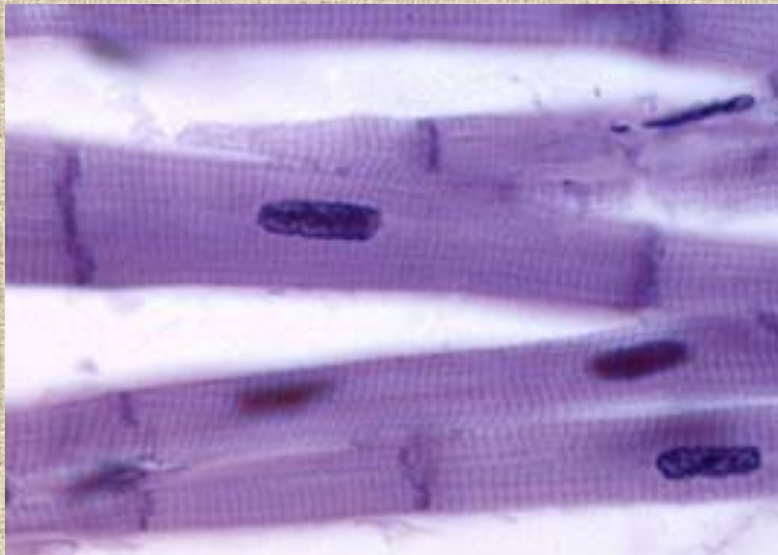
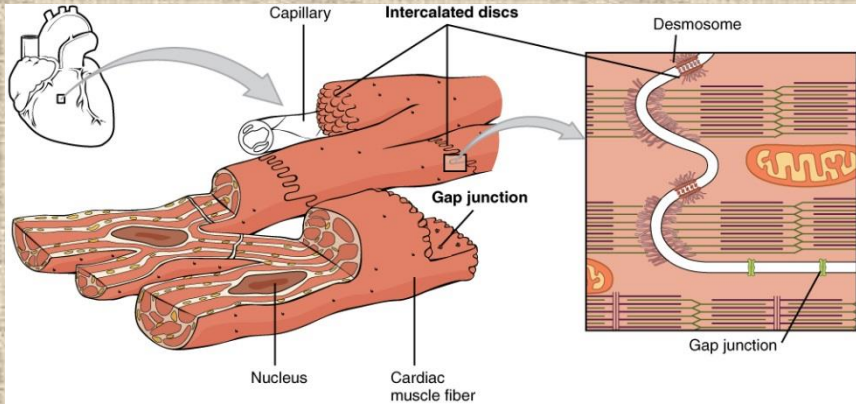


Kardiomyocyt

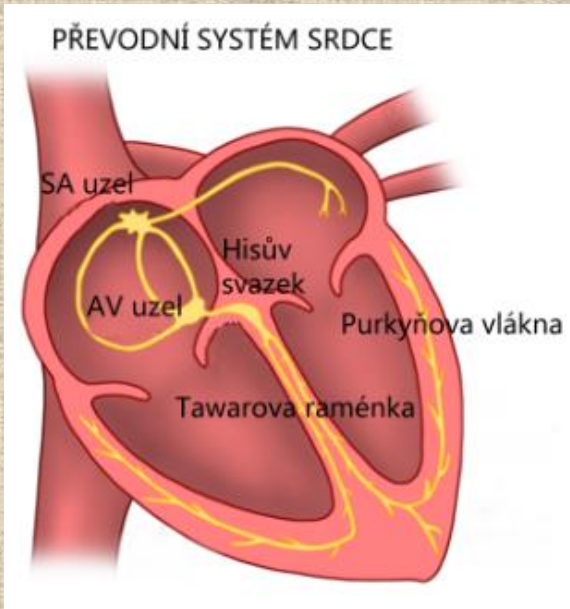


diády

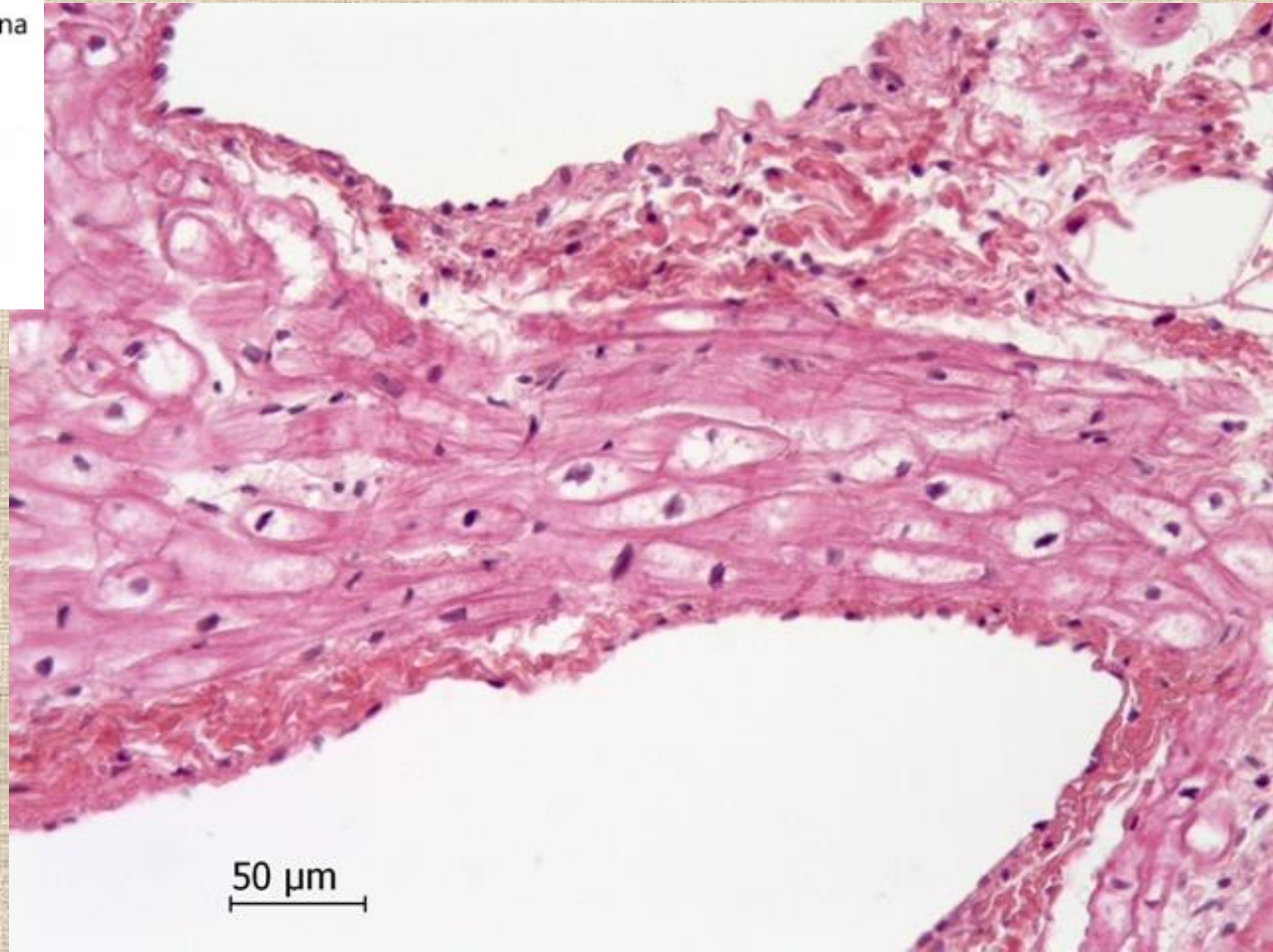
Kardiomyocyty - interkalární disky



Kardiomyocyty – vzrušivé



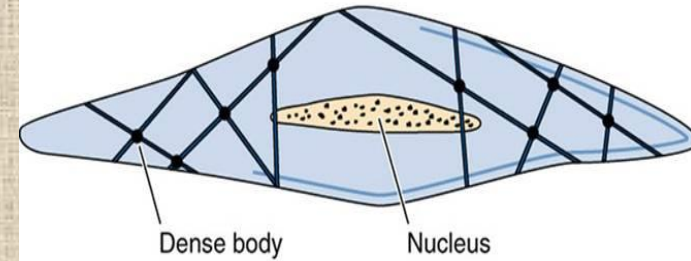
SA-uzel 60 – 80/min
AV-uzel 30 – 40/min
Hisův svazek
Tawarova raménka
Purkyňova vlákna



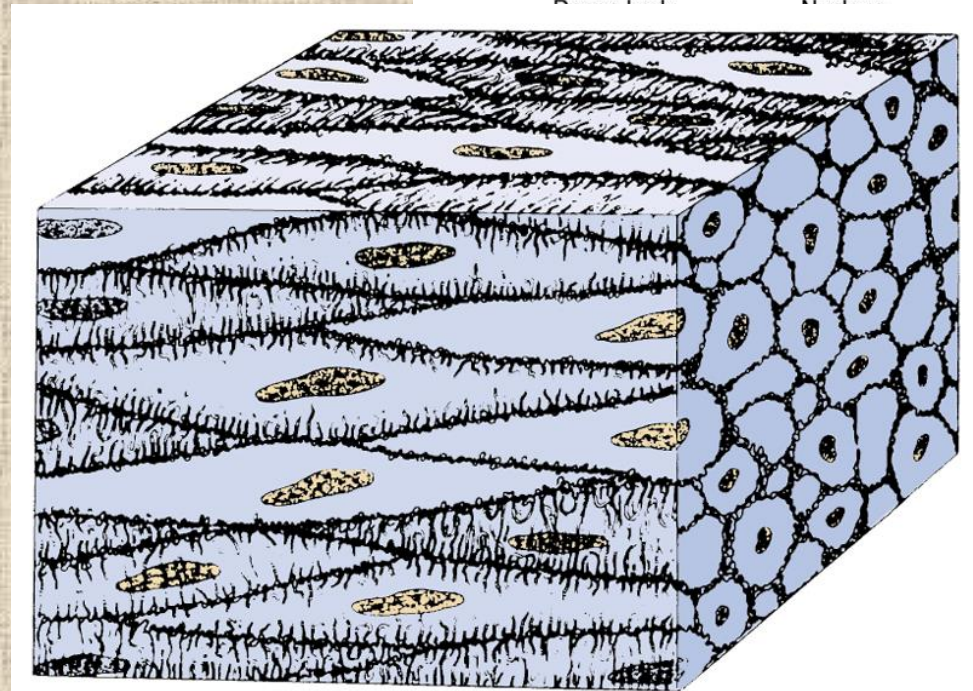
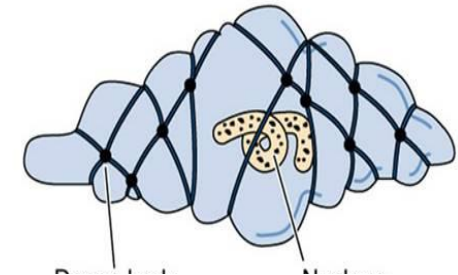
Hladká svalová tkáň

- **leiomyocyt** – buňka vřetenovitého tvaru s 1 tyčinkovitým jádrem /a několika jadérky/
- l:20-500 μm , tl.:3-10 μm
- cytoplazma bez žíhání
- typické organely, jen málo SR
- kaveoly – vesikulární invaginace sarkolemy
- **myofilamenta** – A+M /více aktinu/, tvoří prostorovou síť, místo troponinu kalmodulin
- **denzní tělíska** – slouží k úponu filament
- spoje typu nexusů

Relaxed smooth muscle cell

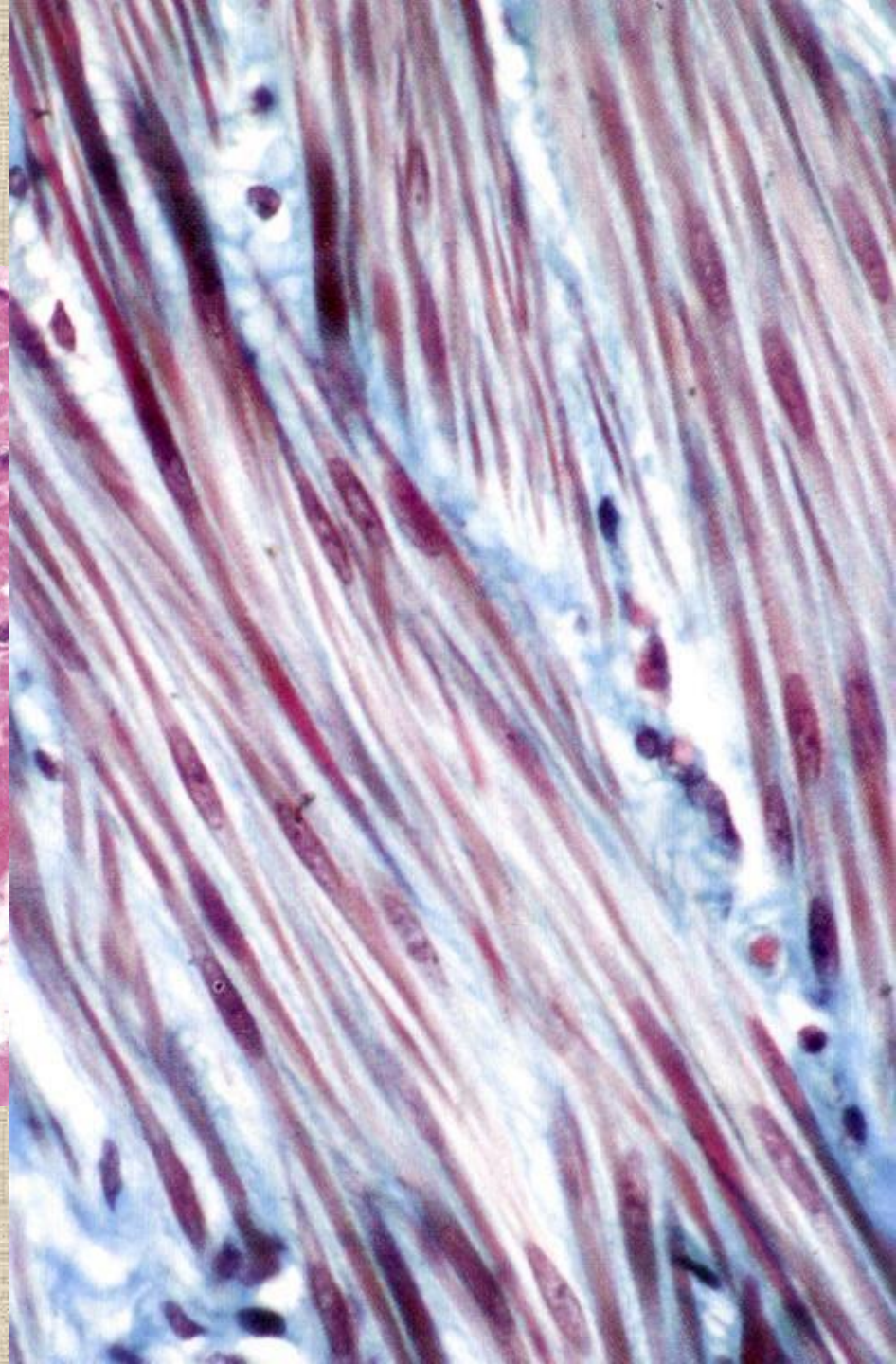
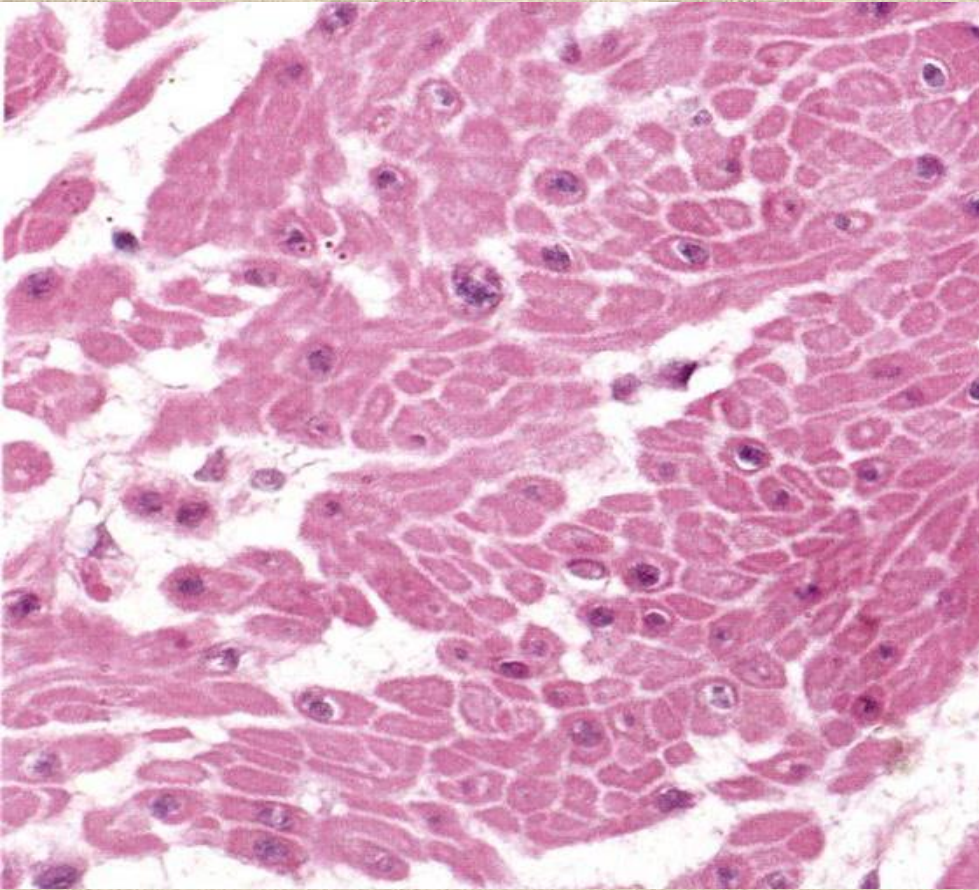


Contracted smooth muscle cell

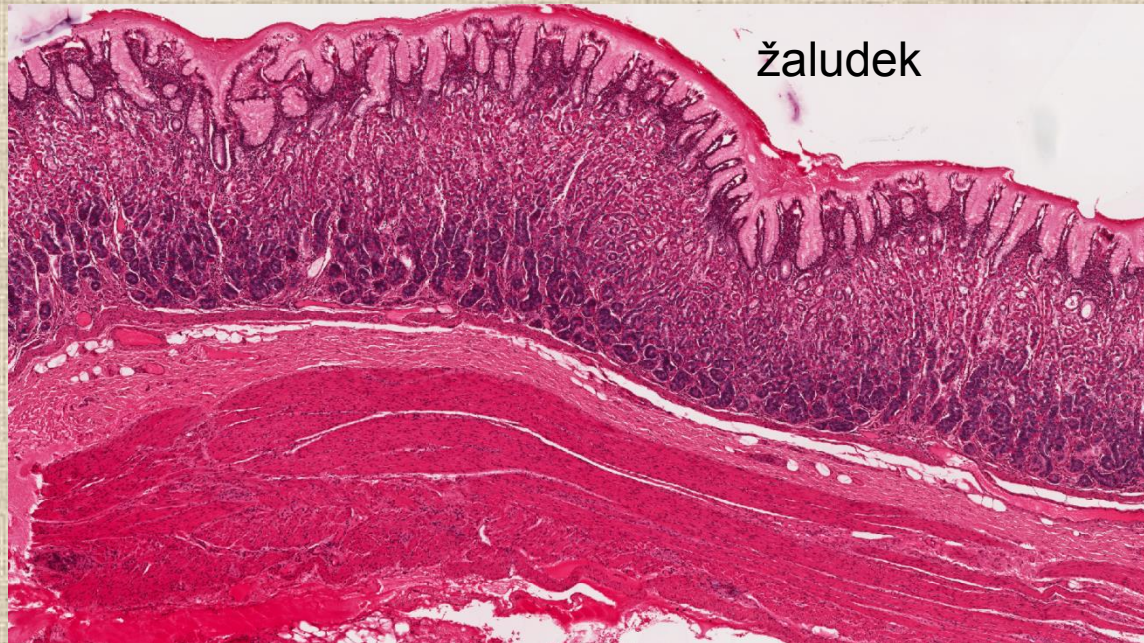
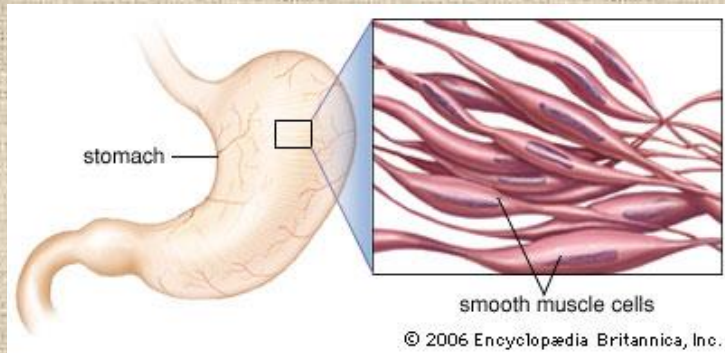


Mezi buňkami - jemná retikulární vlákna.

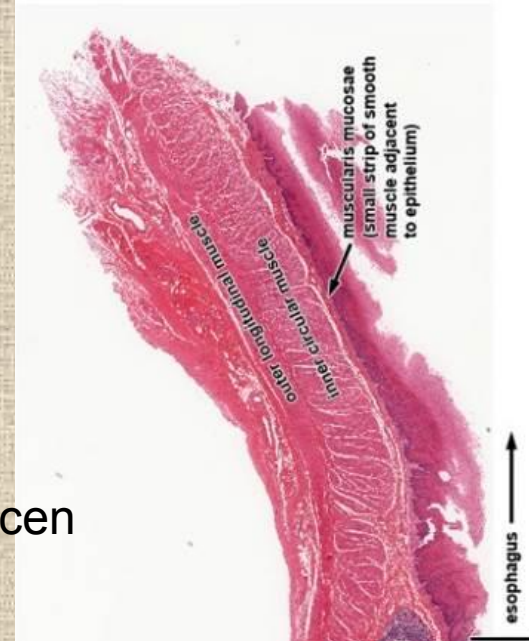
Hladká svalová tkáň



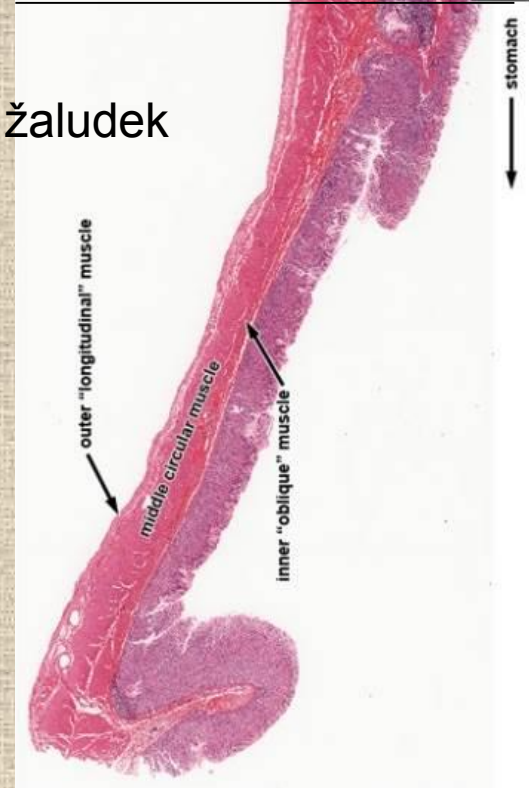
Hladká svalová tkáň



jícen



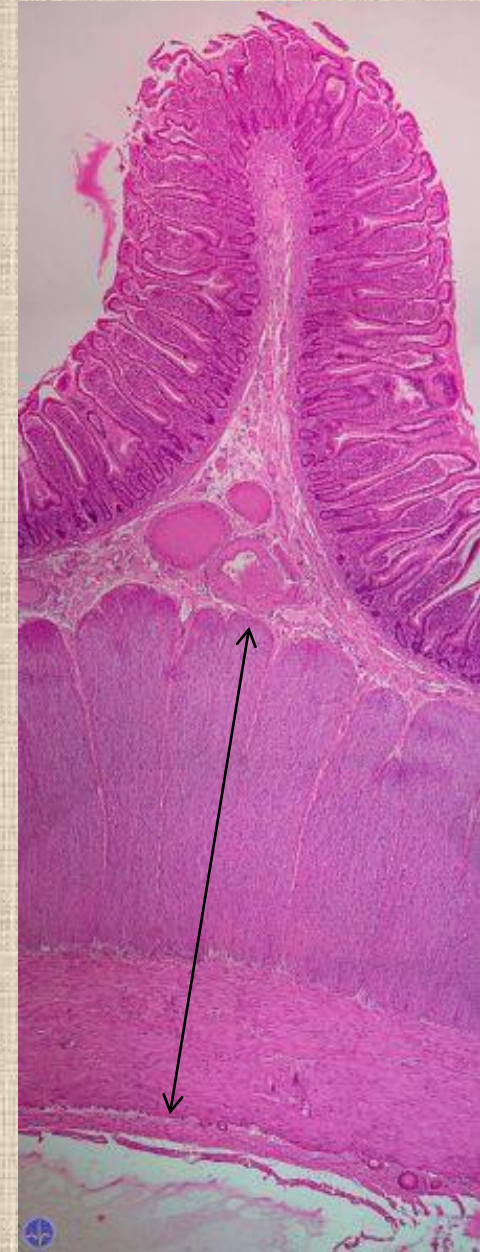
žaludek



Hladká svalová tkáň



tenké střevo



Základní typy svalové tkáně

- **Kontrakce**

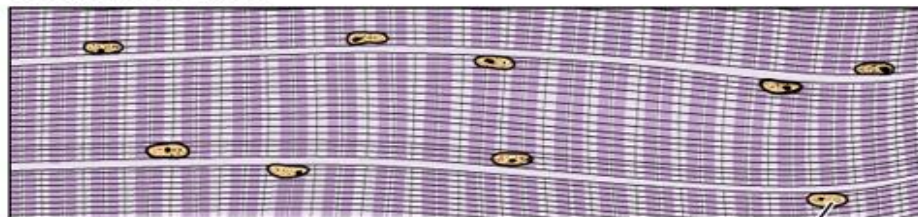
- Rychlá, ovládaná vůlí
- Rychlá autonomní
- Pomalá autonomní

- **Původ**

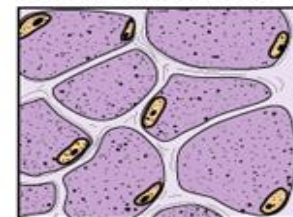
- Mesoderm /myotomy/
- Mesoderm /kardiogenní ploténka/
- Mezenchym

Muscle types

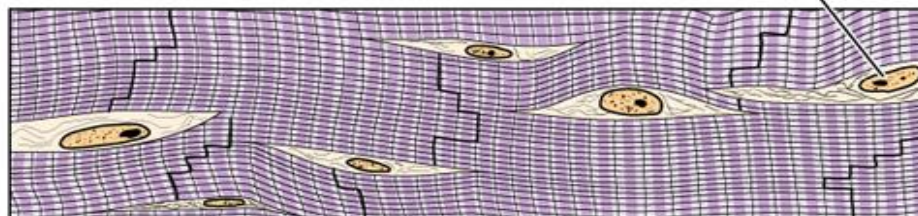
Skeletal muscle



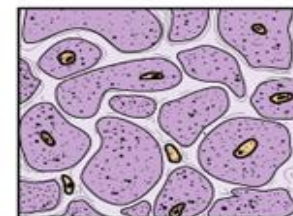
Cross sections



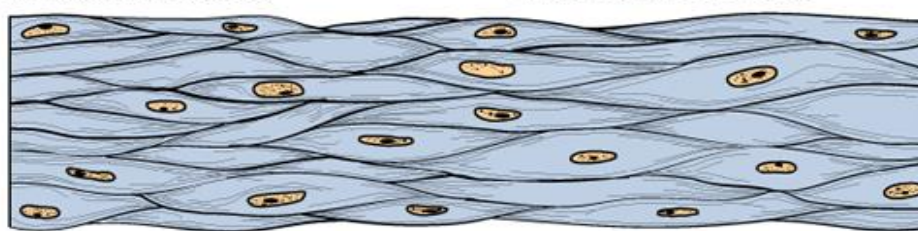
Cardiac muscle



Nuclei



Smooth muscle



Intercalated disks

