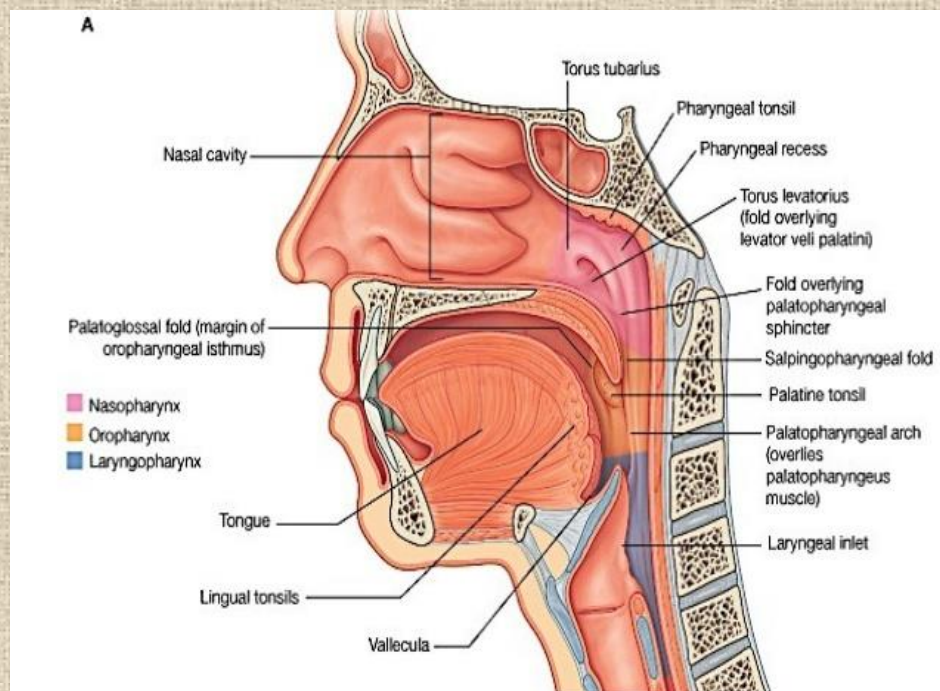


Trávicí systém I

Dutina ústní

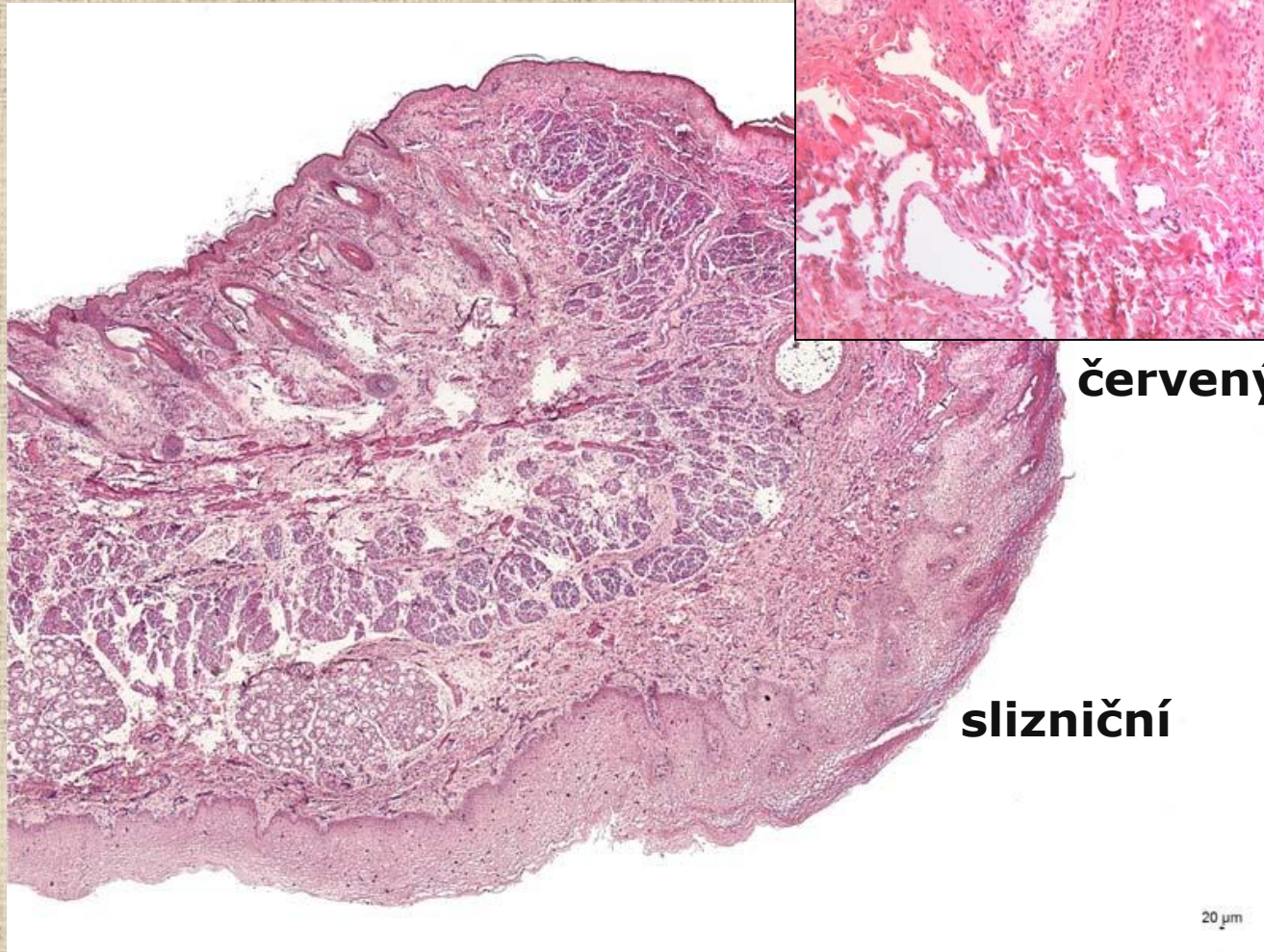
- stěny
 - rty
 - tváře
 - tvrdé a měkké patro
 - spodina dutiny ústní
- obsah
 - jazyk
 - zuby
 - dásěň
 - mandle
- slinné žlázy



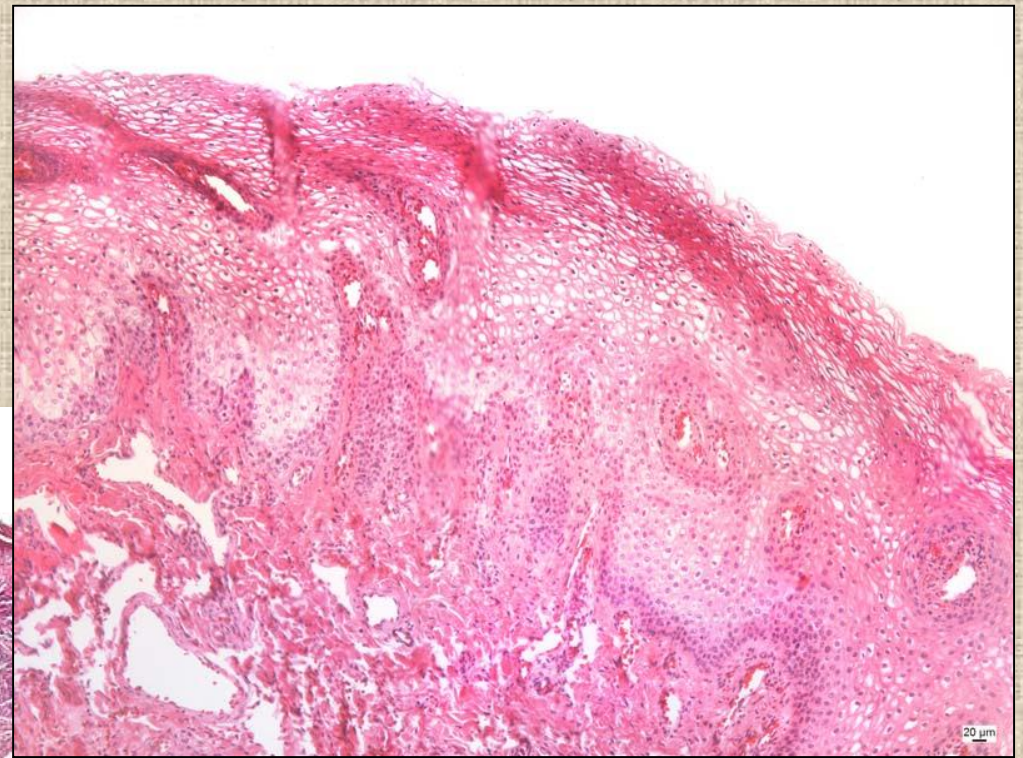
Hltan (pharynx)
Jícen (oesophagus)

Labium oris

kožní



slizniční

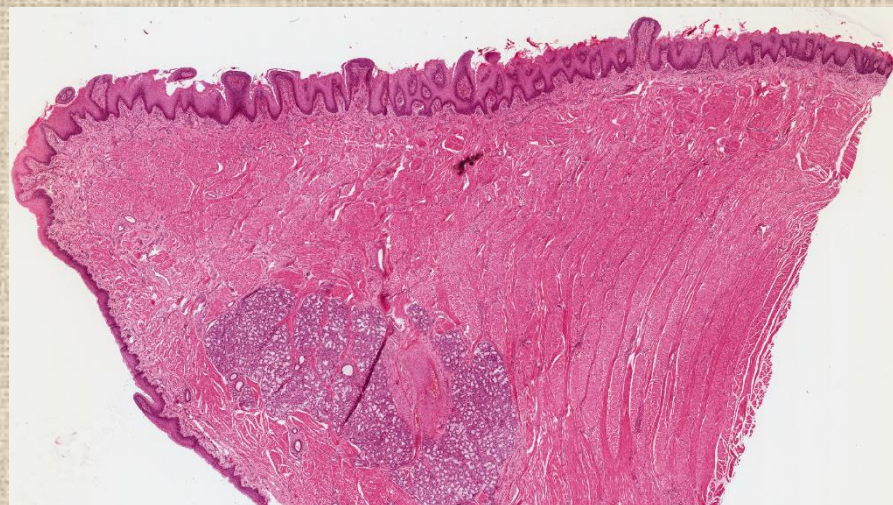
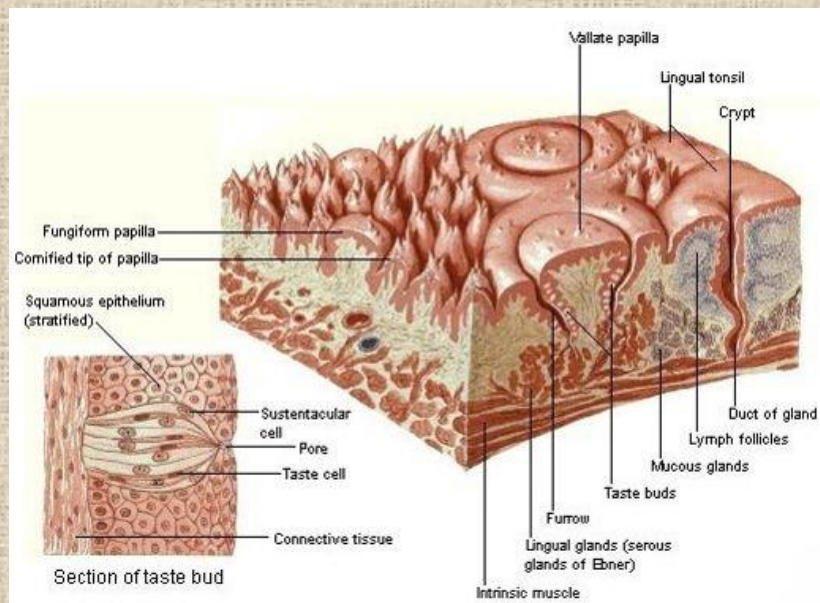
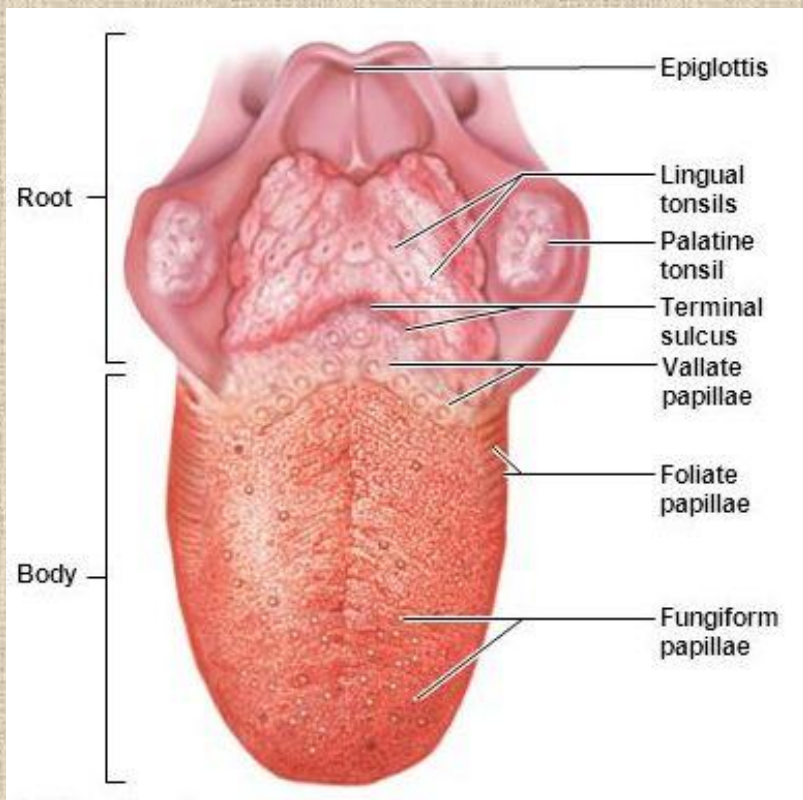


červený lem rtu

sliznice=tunica mucosa
-lamina epithelialis
-lamina propria
-(lamina muscularis)

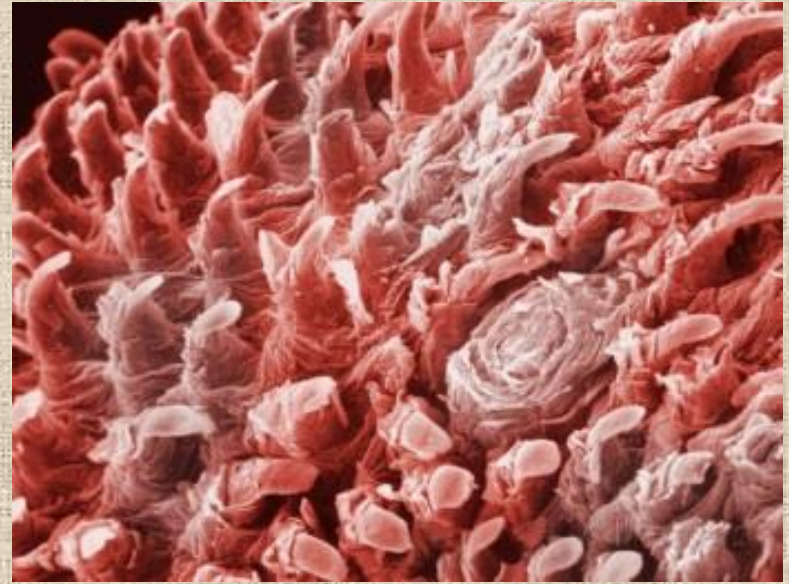
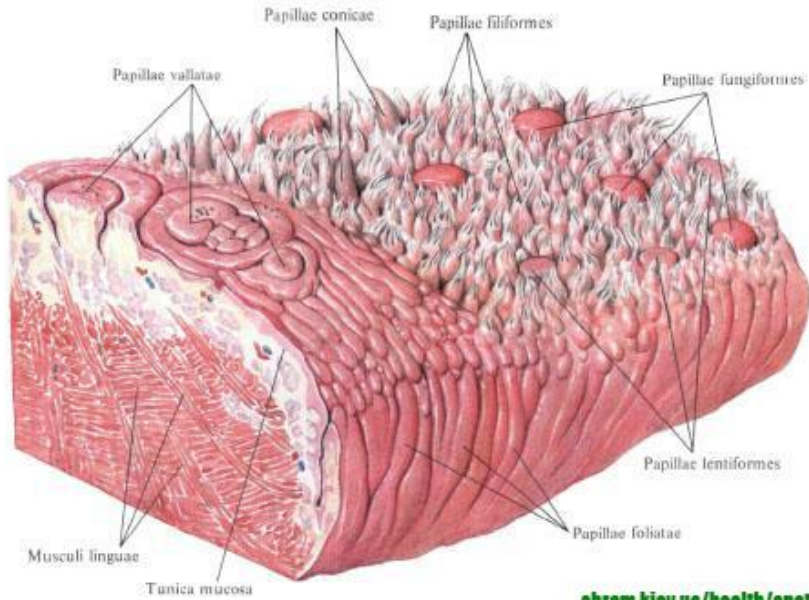
20 µm

Jazyk (lingua)



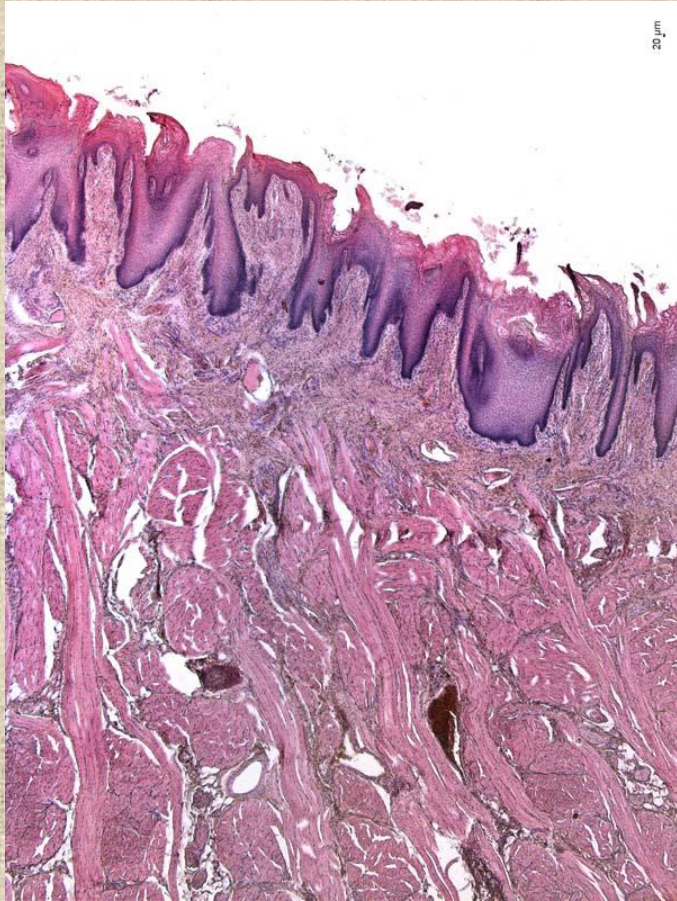
apex linguae

Dorsum linguae



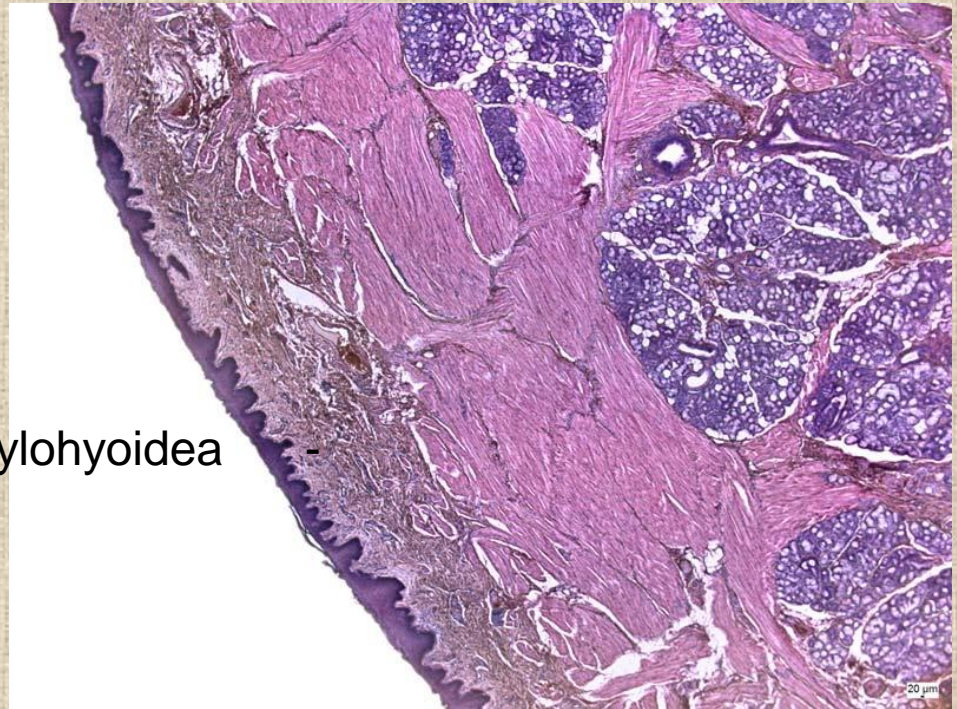
papillae filiformes
papillae fungiformes
papillae foliatae
papillae vallatae

Apex linguae



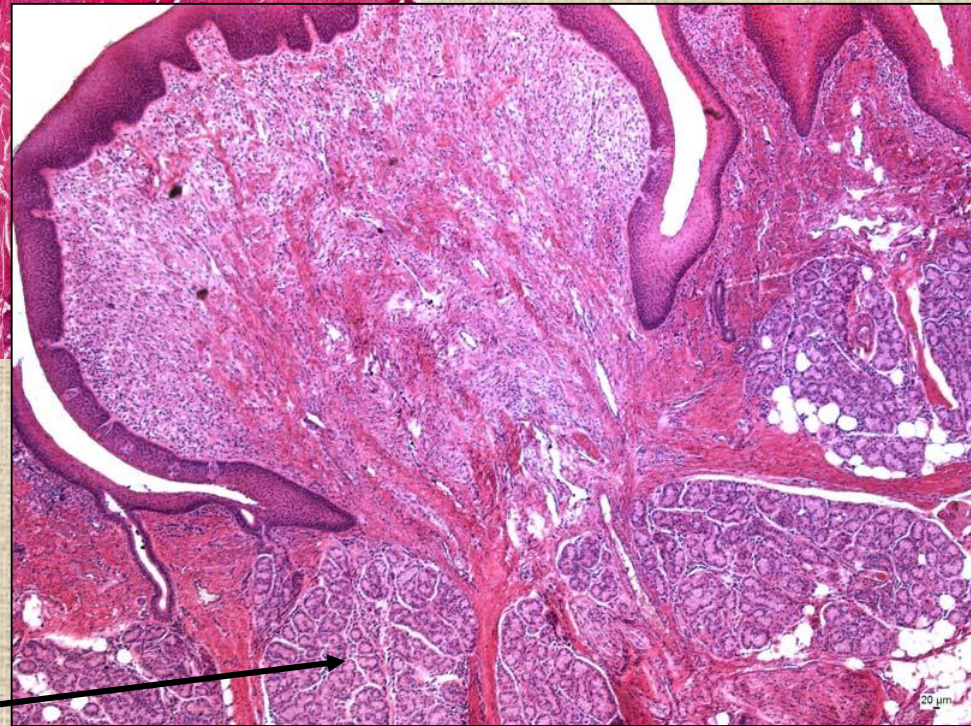
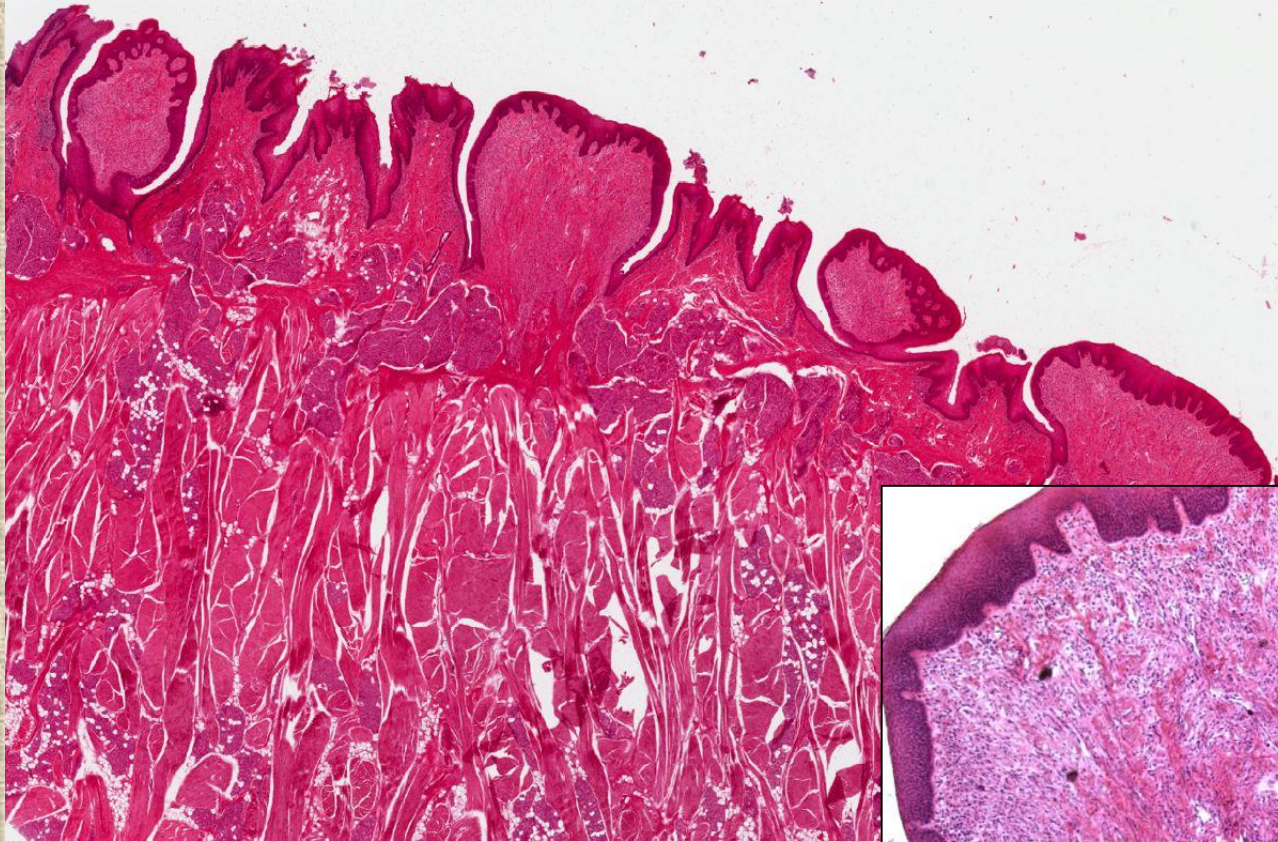
sliznice=tunica mucosa
-lamina epithelialis
-lamina propria
-(lamina muscularis)

gll. apicis linguae - Blandini



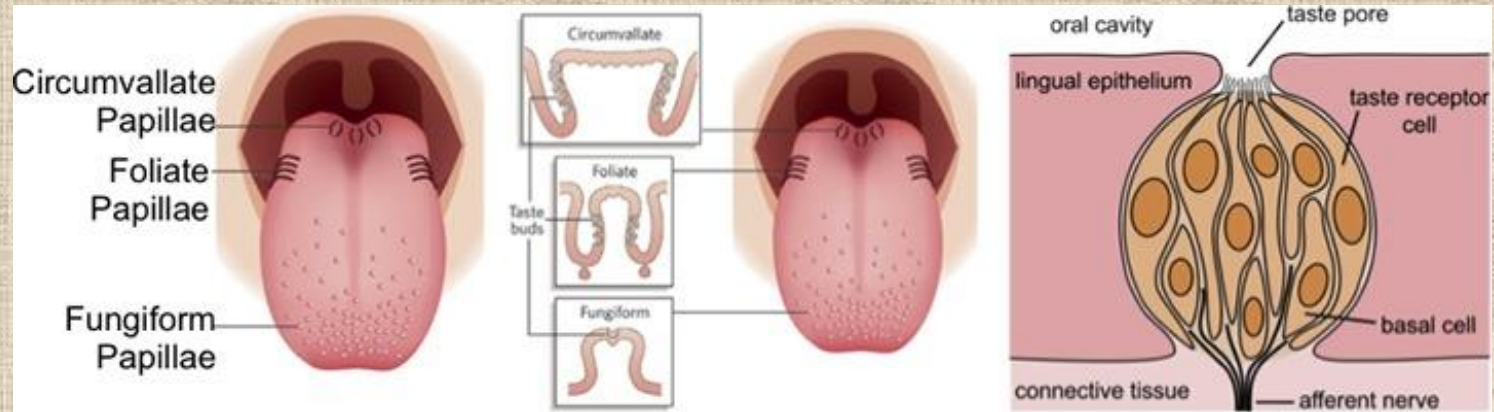
facies mylohyoidea
inferior

Papilla vallata



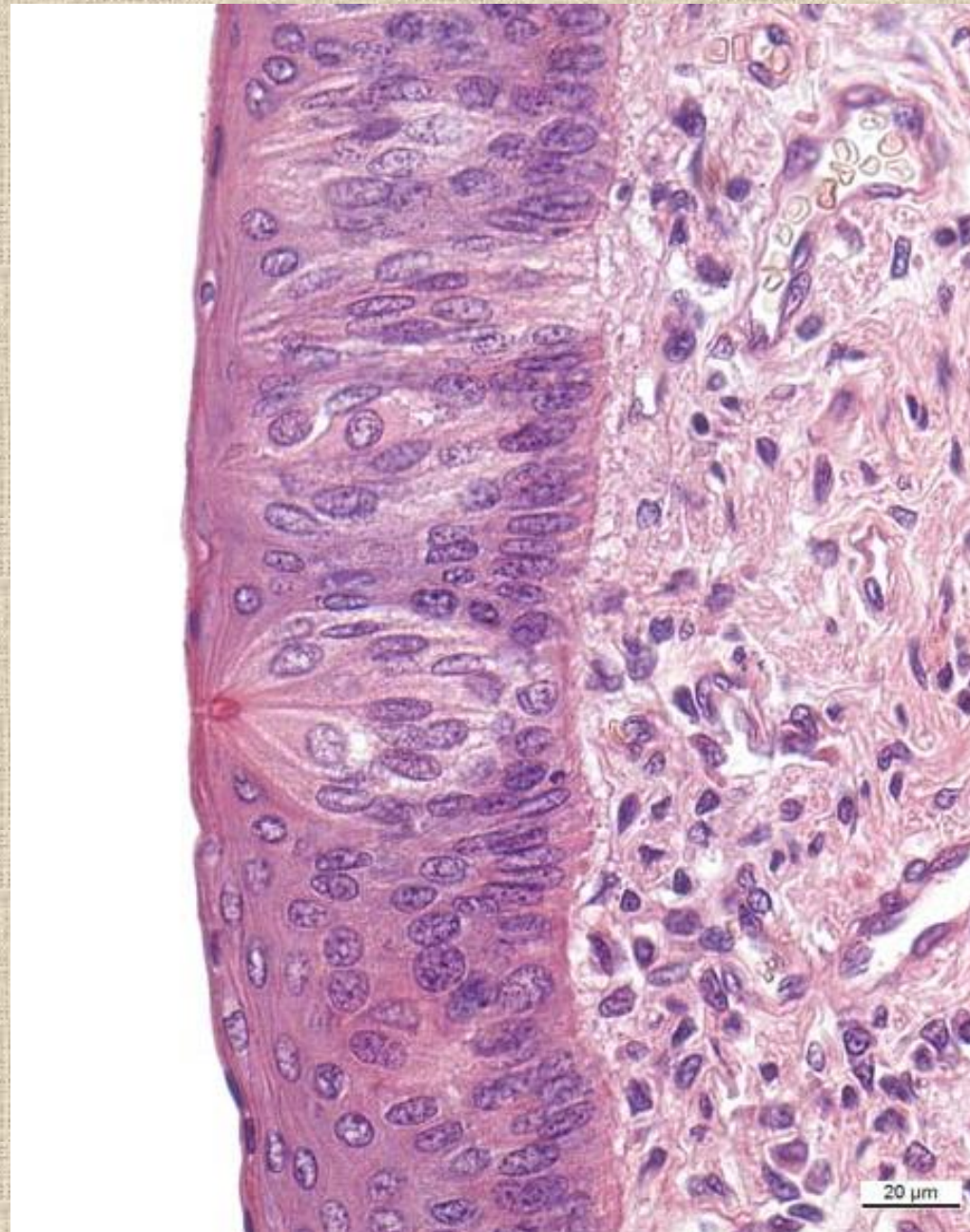
**Ebnerovy
žlázy**

Chuťové pohárky

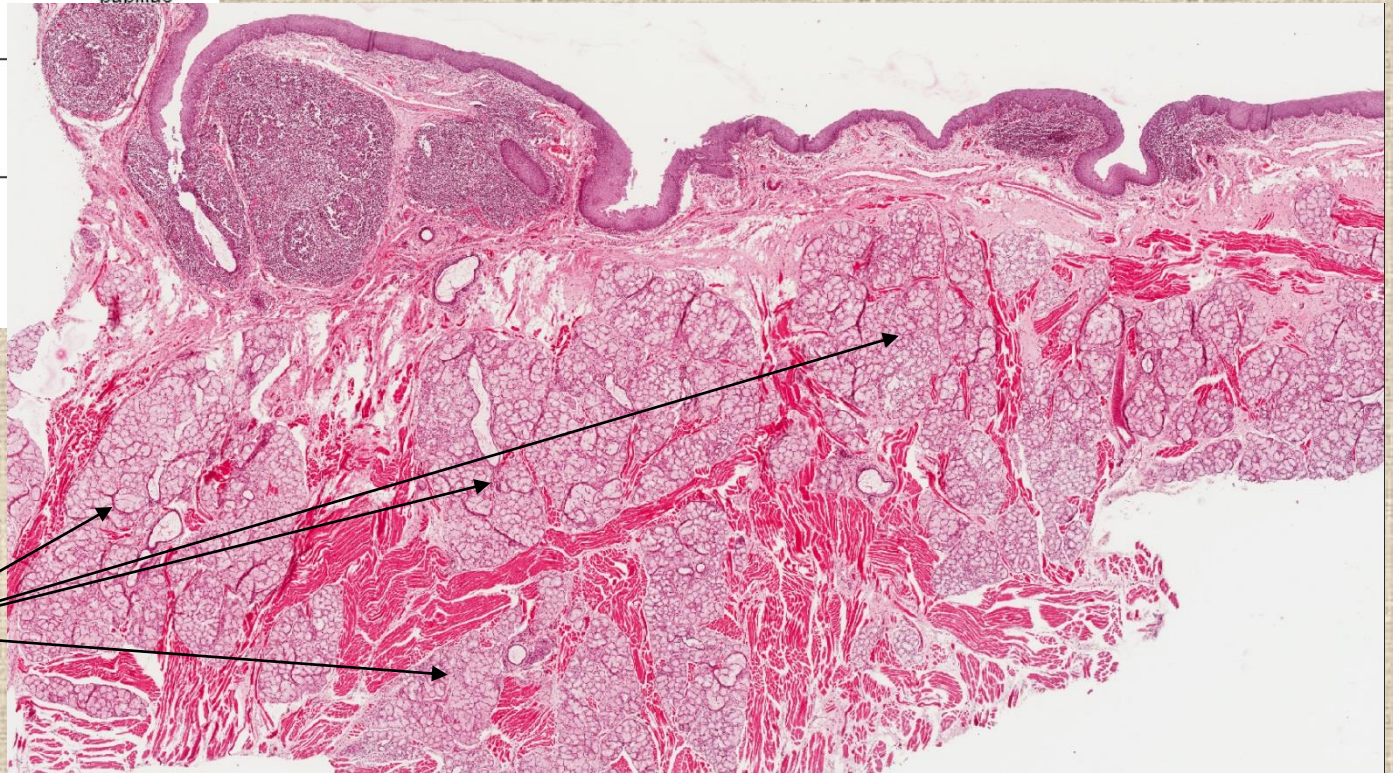
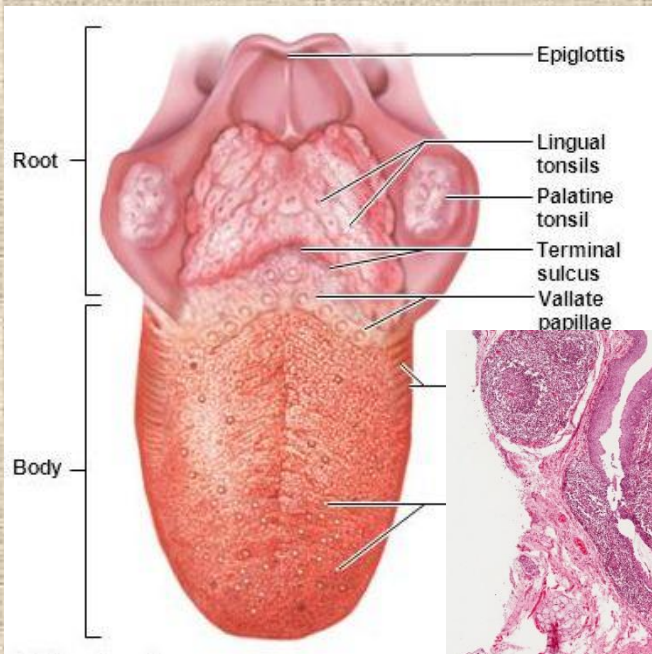


Chuťové pohárky

- ve vrstevnatém dlaždicovém epitelu sliznici dutiny ústní a hltanu, v epitelu papil jazyka
- soudečkovité endoepitelové útvary, štíhlé buňky nedosahují úplně k povrchu epitelu → *porus gustatorius*
- smyslový epitel (primární nebo sekundární??)
- 3 typy buněk
 - smyslové
 - podpůrné /2 typů/
 - bazální

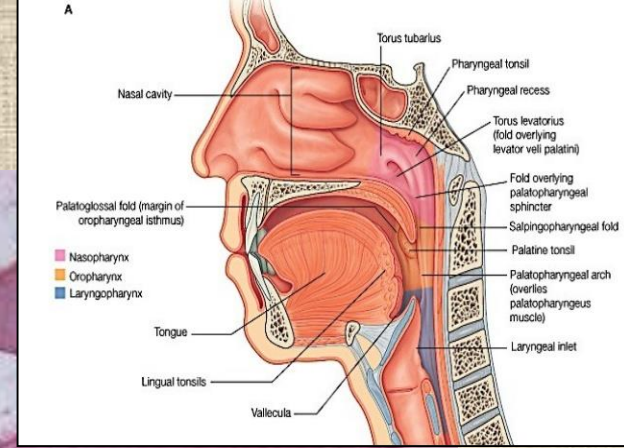
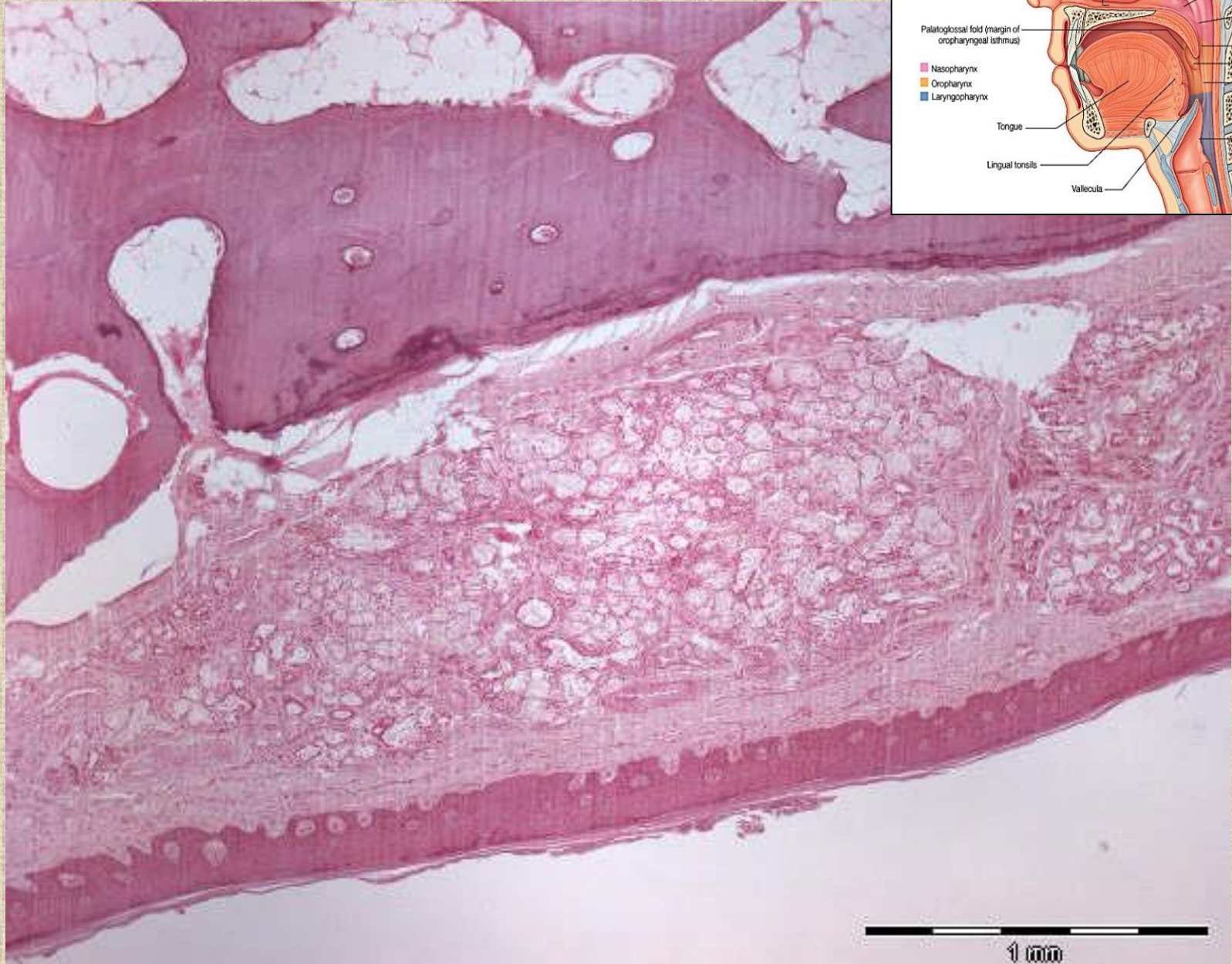


Radix linguae – tonsilla lingualis

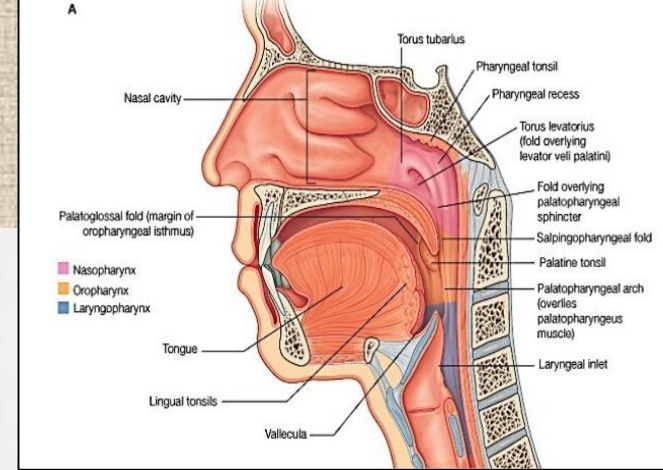
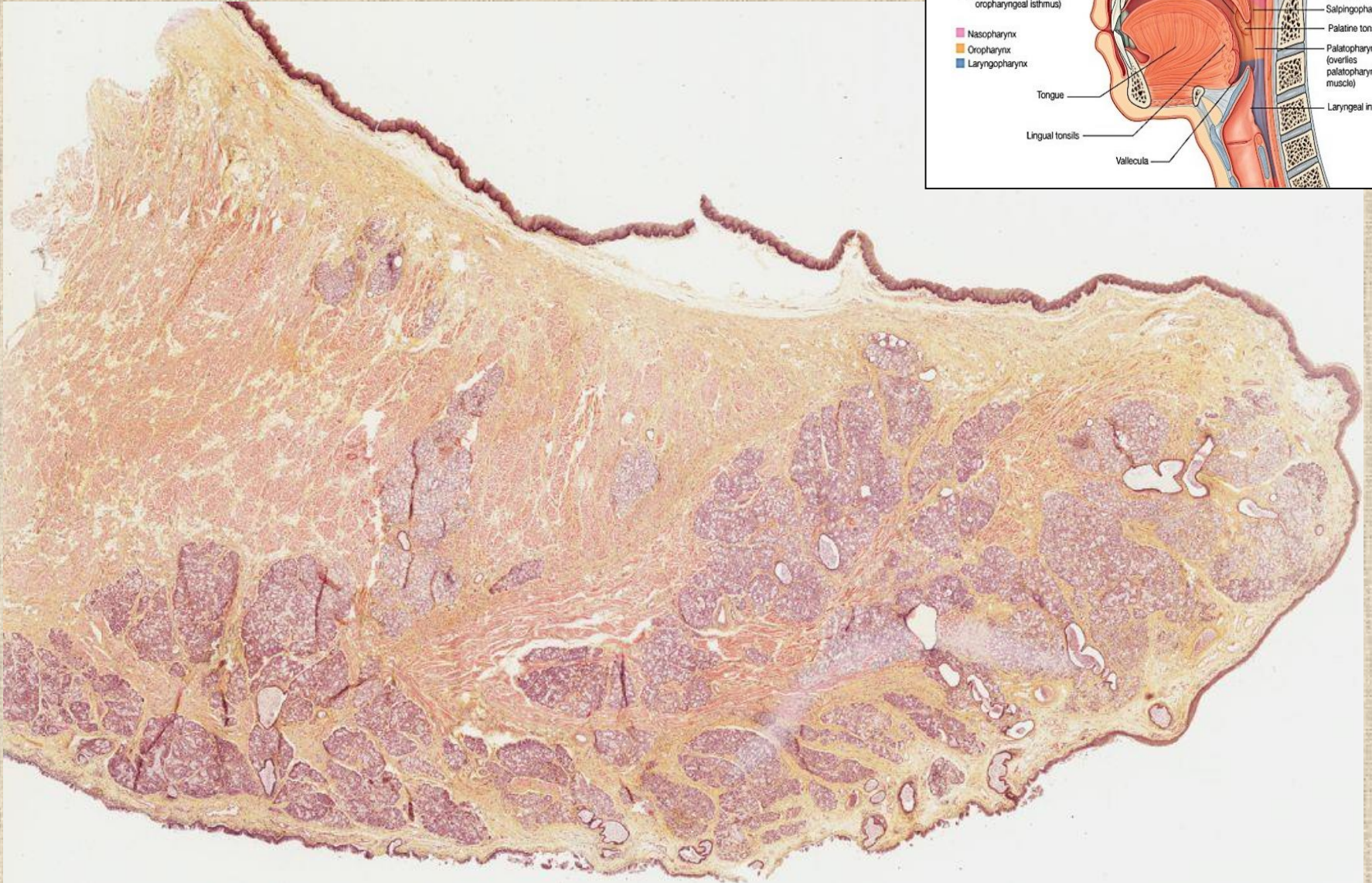


Weberovy
žlázy

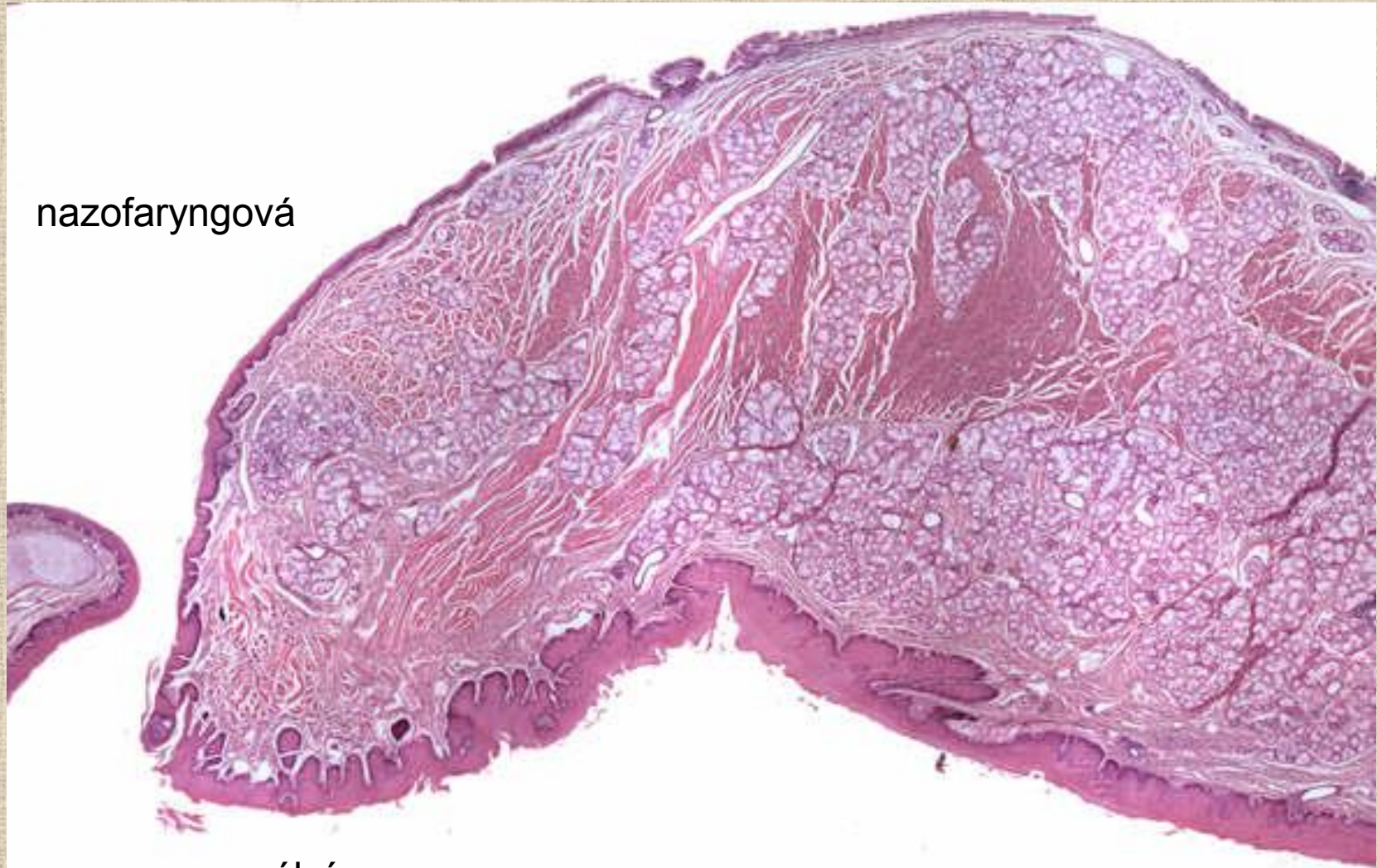
Palatum durum



Palatum molle



Palatum molle

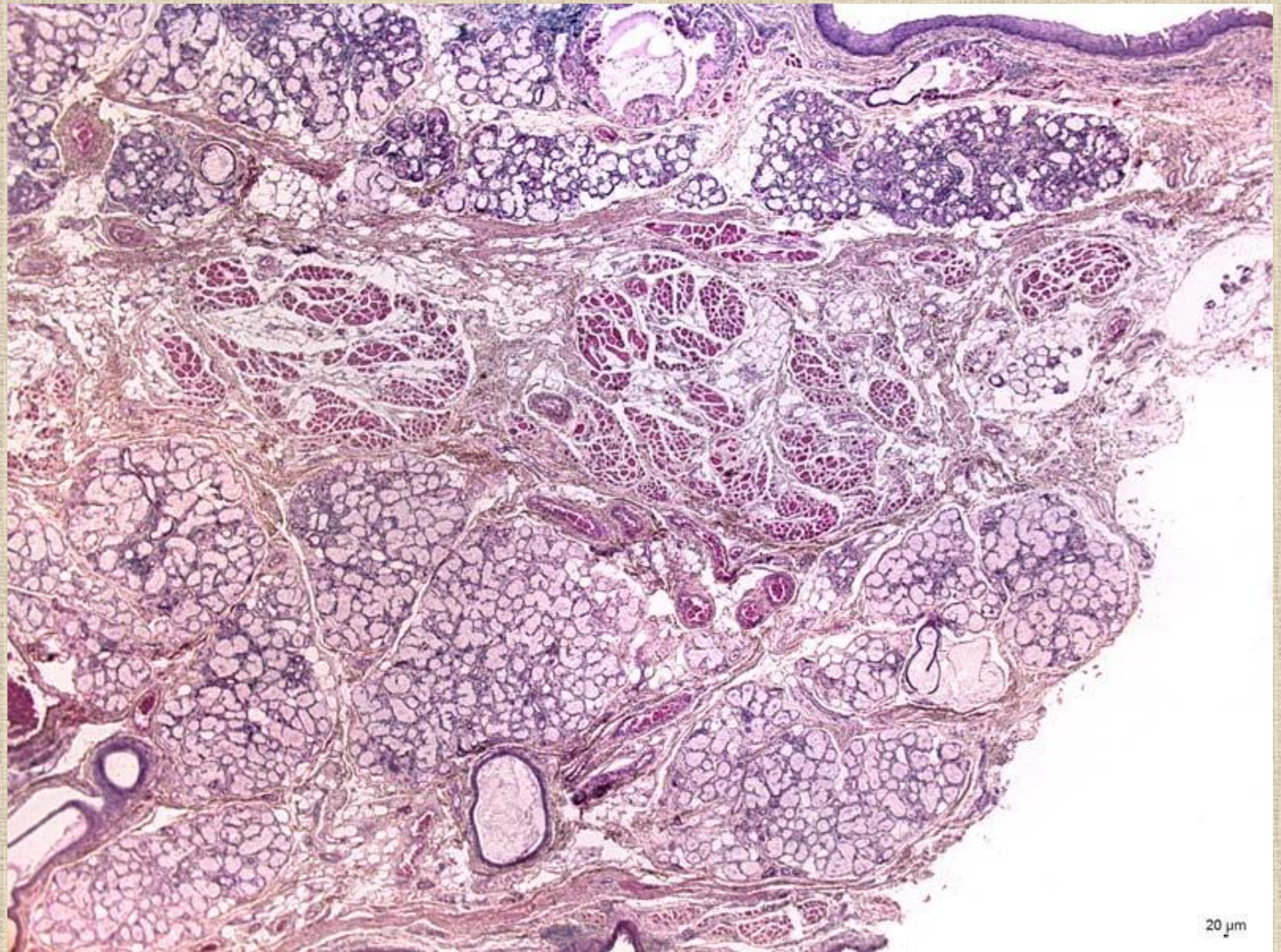


nazofaryngová

orální

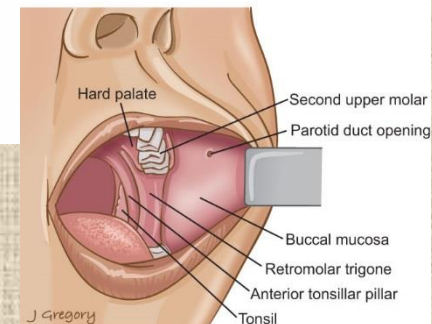
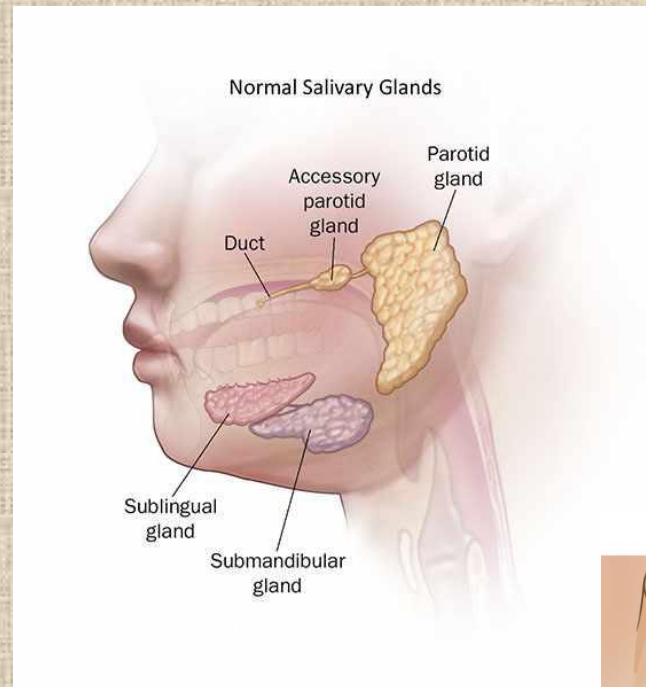
2 mm

Palatum molle



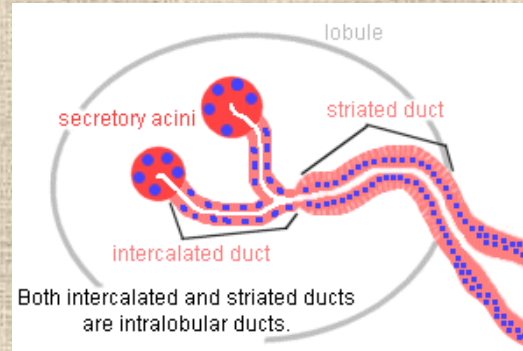
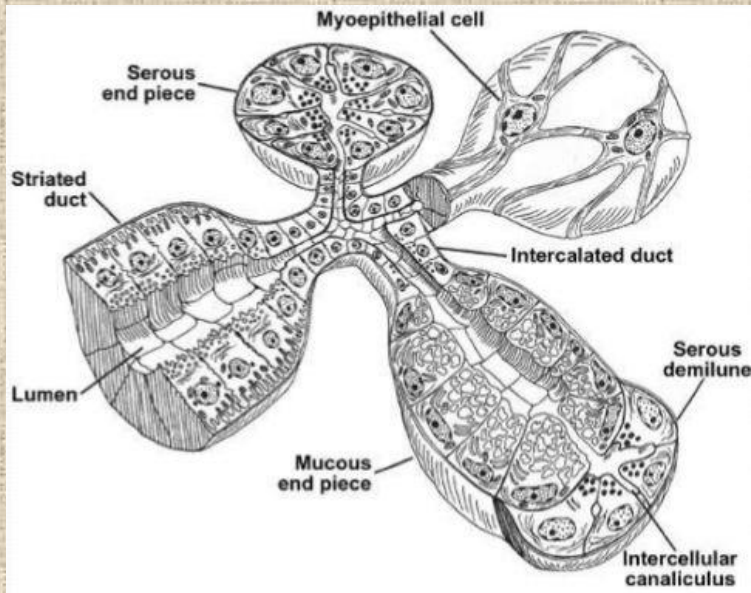
Slinné žlázy

- velké a malé (gll. labiales, buccales, molares, palatinae, linguales)
- vazivová složka
 - pouzdro
 - septa /lalůčky/
- žláзовý parenchym /epitel/
 - sekreční oddíly
 - serózní
 - mucinózní
 - smíšené
 - žláзовé vývody



gll. linguales – 3 typy, labiales – smíšené, buccales – smíšené, molares – smíšené, gll. palatinae (palatum durum i palatum molle) - mucinózní

Slinné žlázy

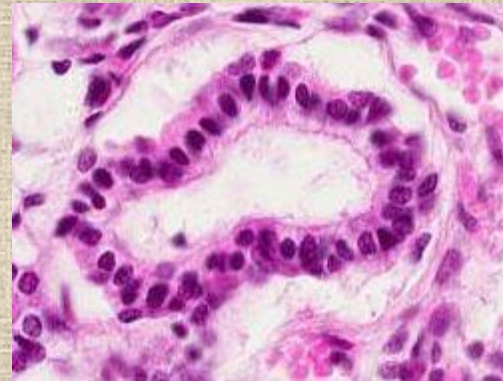
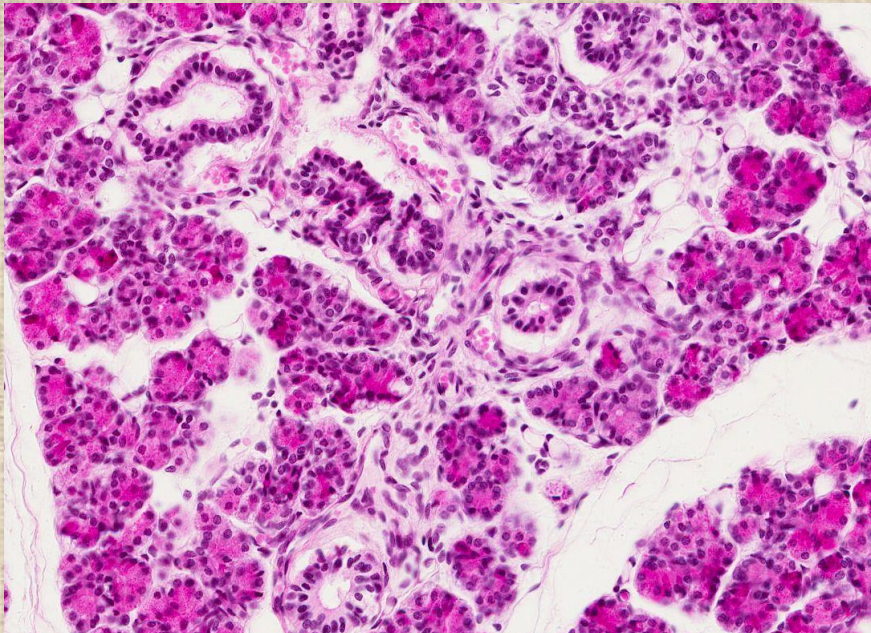
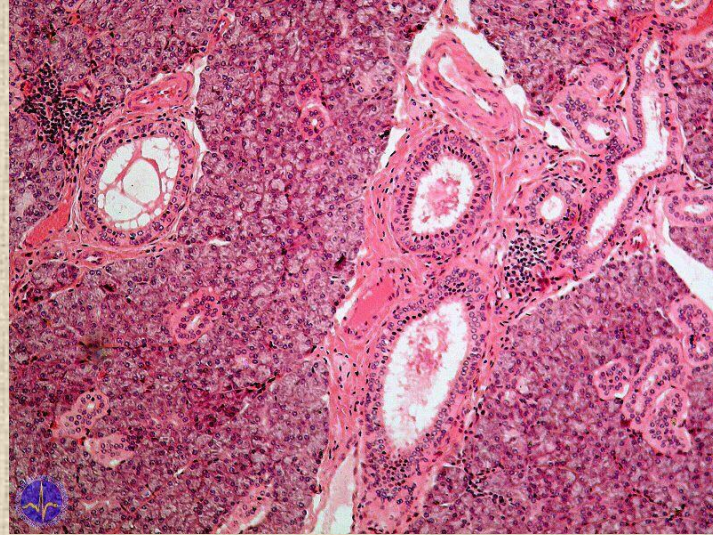
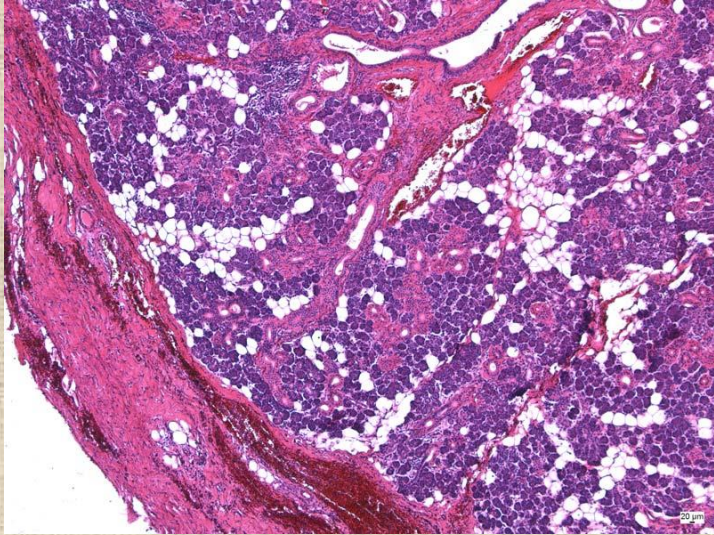


Slinné žlázy

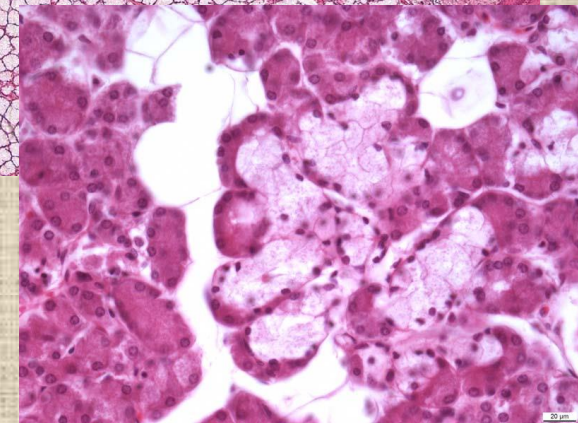
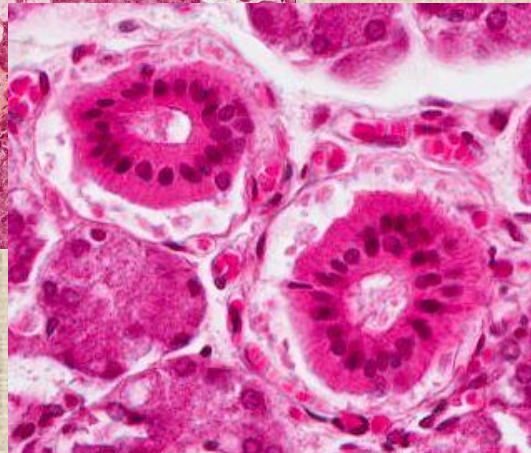
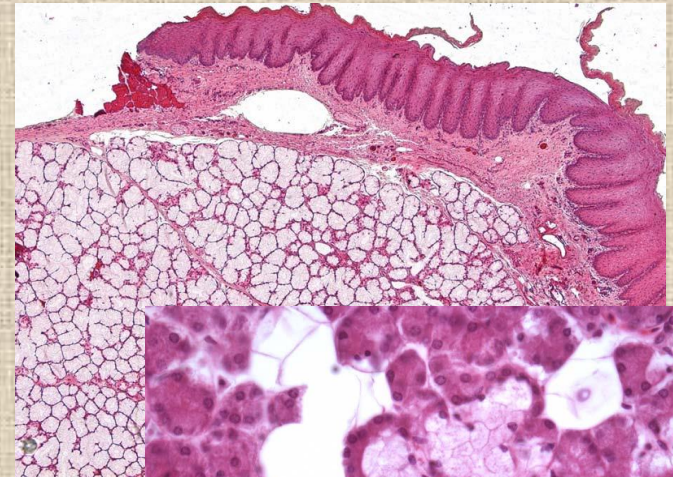
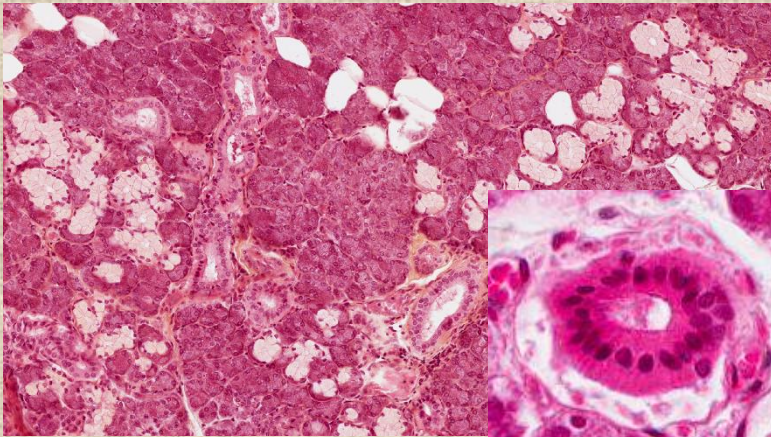
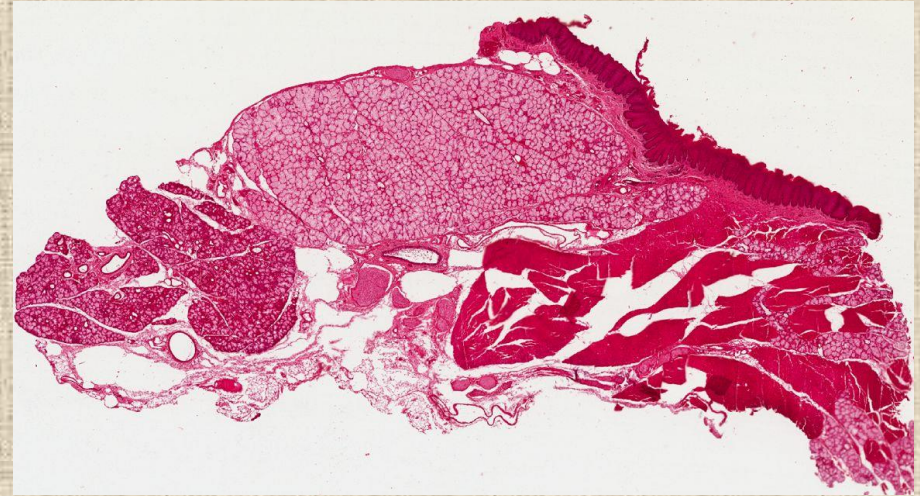
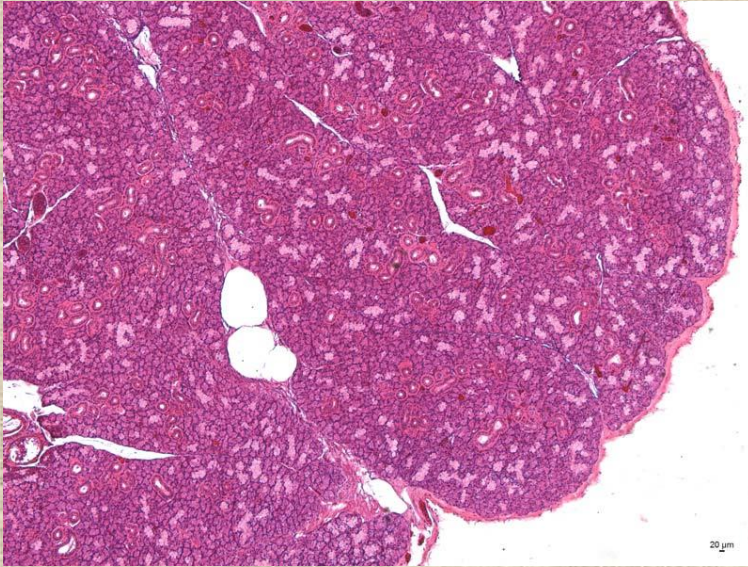
- vývodní systém
 - vsunutý (spojovací)
 - žíhaný
 - interlobulární
 - hlavní



Glandula parotis

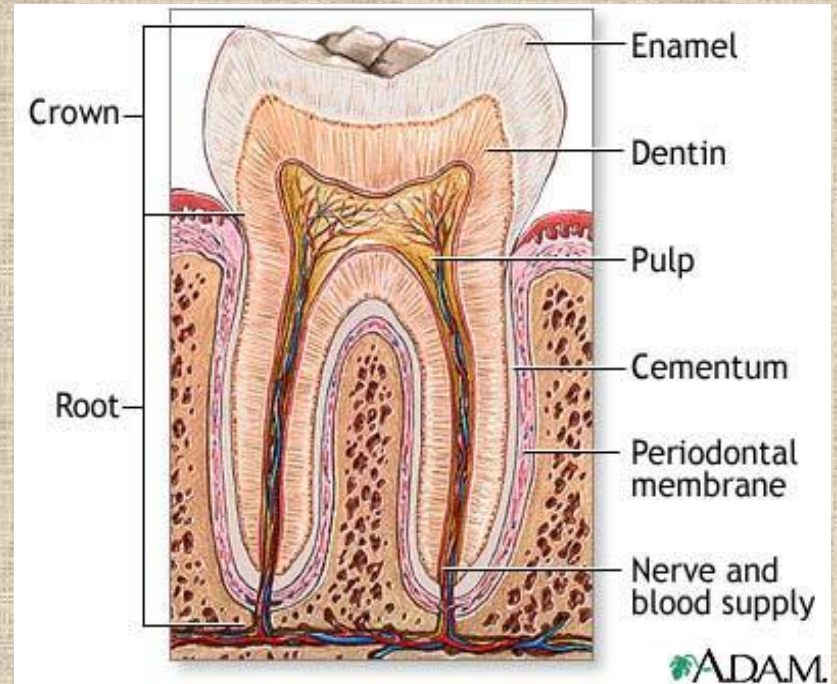


Glandula submandibularis a sublingualis

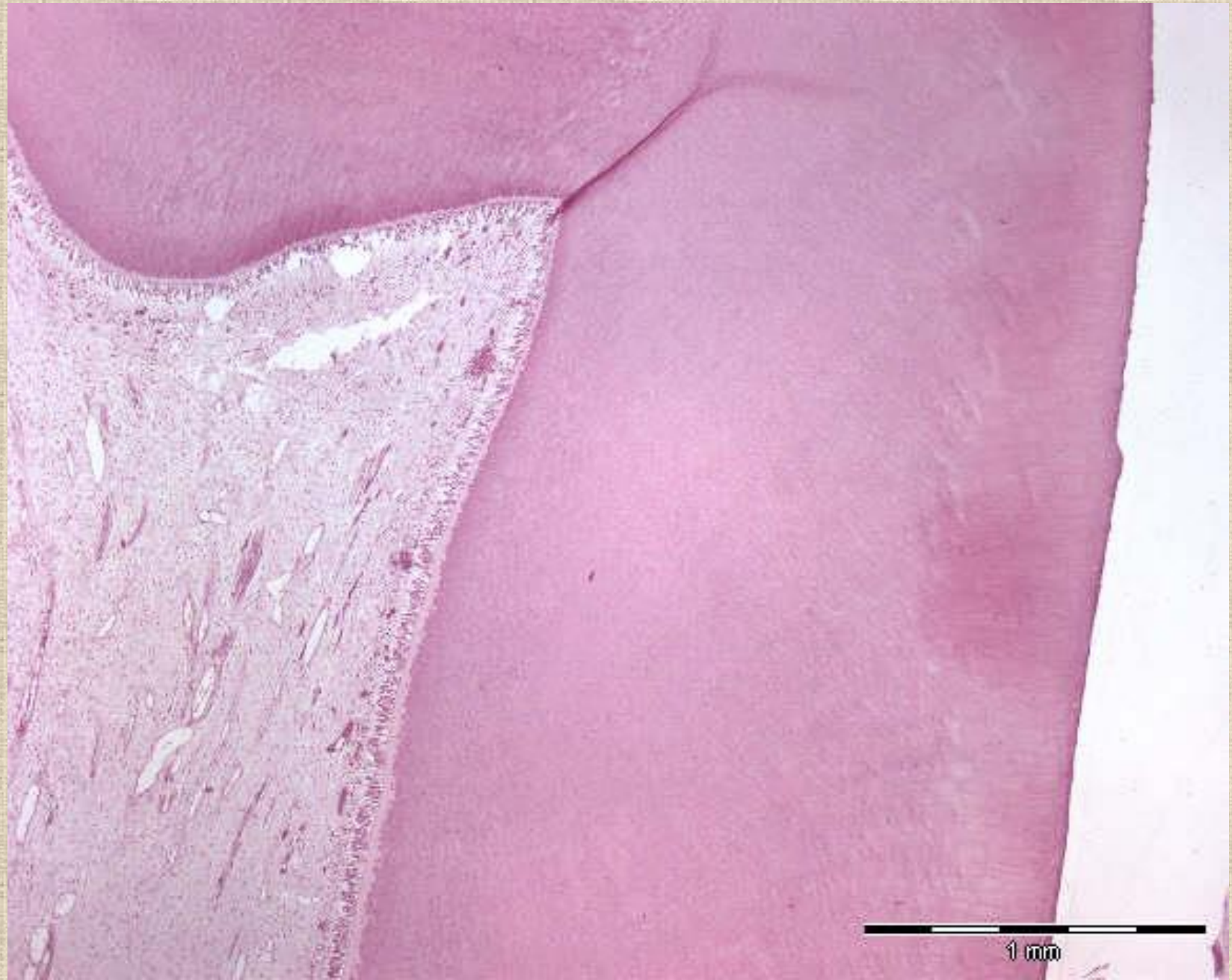


Zub

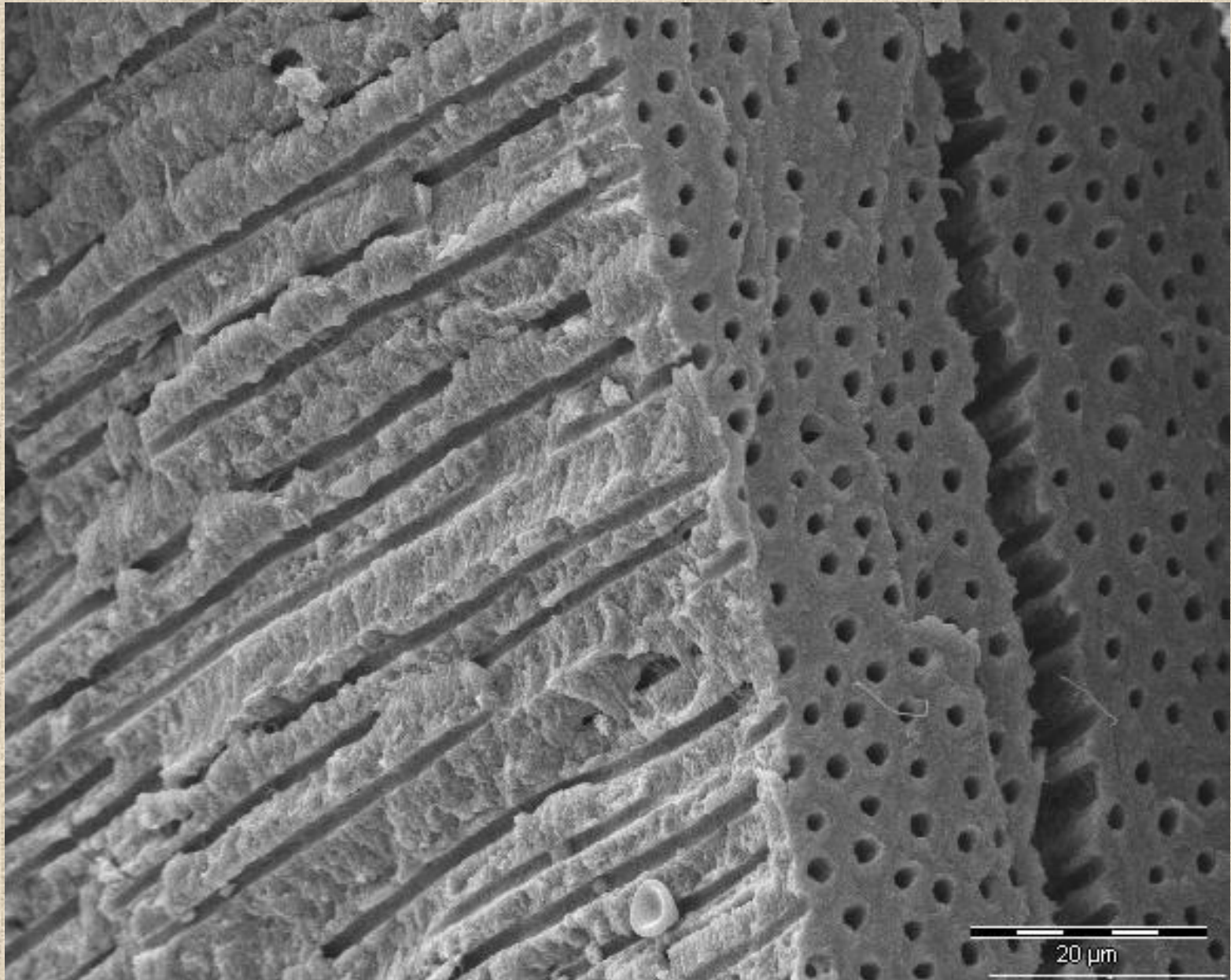
- email
 - nejtvrdší **substance** lidského těla, t: → 2.5 mm, 95.5% anorg. solí
- dentin
 - je modifikovaná kostní tkáň, kalcifikovaná – 70% anorg. solí
 - **výběžky odontoblastů** – Tomesova vlákna /lokalizovaná v **dentinových kanálcích**/ a dentinová matrix /kolagenní vlákna + interfibrilární matrix/
- pulpa s **odontoblasty**
 - rosolovité vazivo
 - plexus subodontoblasticus Raschkowi
- cement
 - kostní tkáň vláknitého typu
 - cementocyty /primární a sekundární cement/



Zub - korunka



Dentin – dentinové kanálky



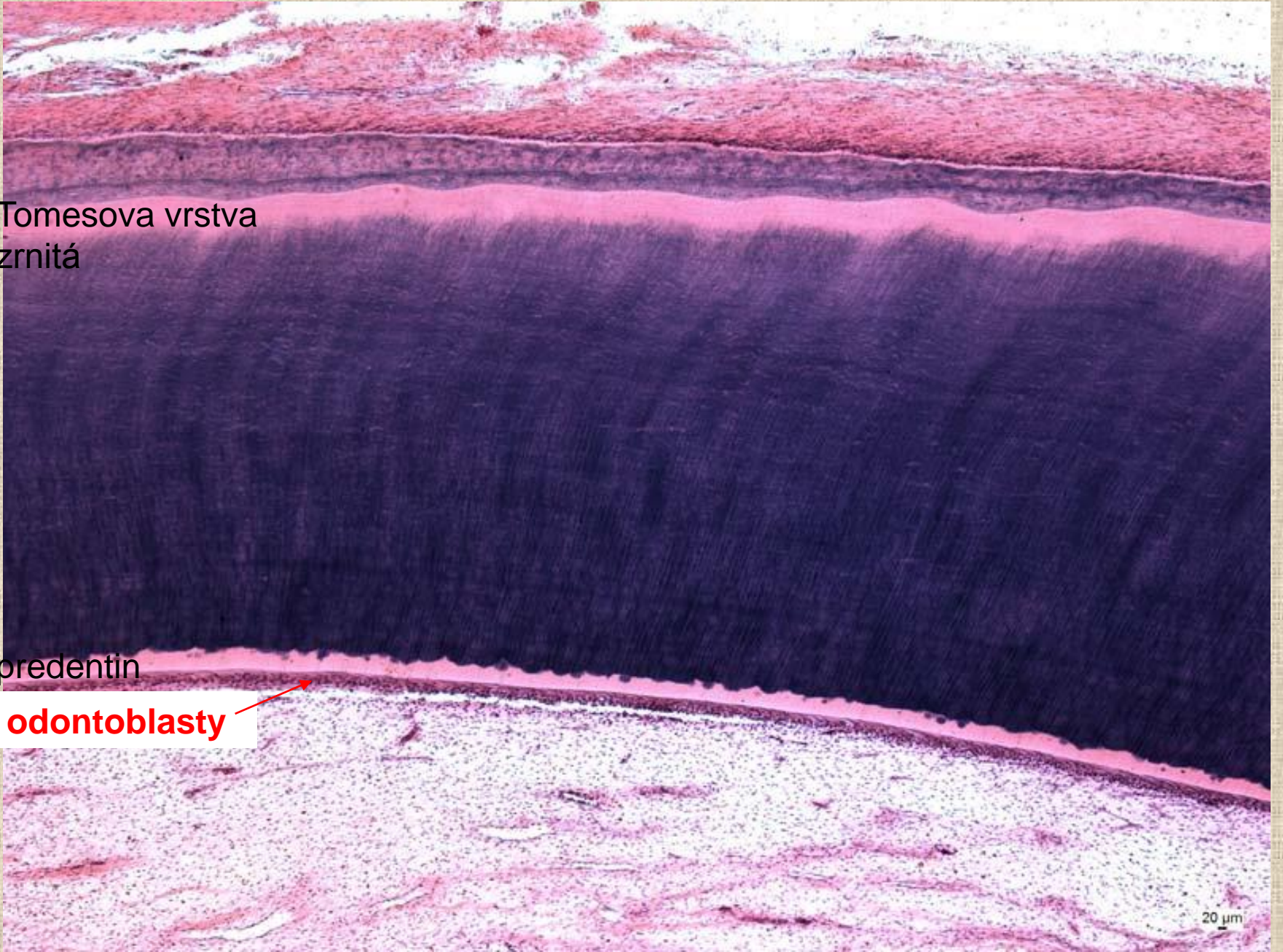
Zub - kořen

Tomesova vrstva
zrnitá

pre dentin

odontoblasty

20 μ m



zub a dásen

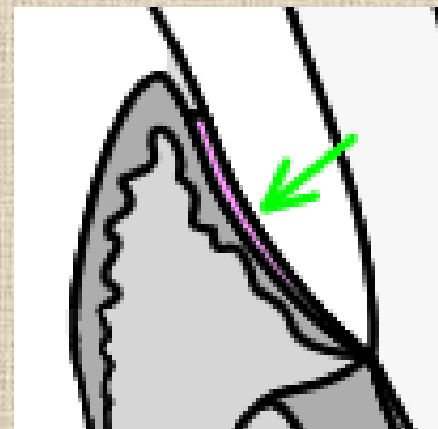


sulcus gingivalis

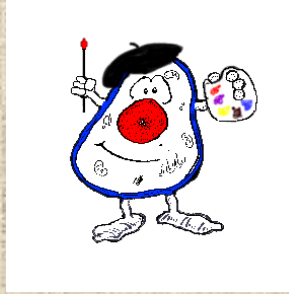
gingiva libera

gingiva affixa

Gottliebova těsnící
epitelová manžeta



Trávicí systém I



- 1. Labium oris
- 2. Apex linguae
- 3. Papilla circumvallata
- 5. Palatum molle
- 7. Zub
- 8. Glandula parotis
- 9. Glandula submandibularis
- 10. Glandula sublingualis