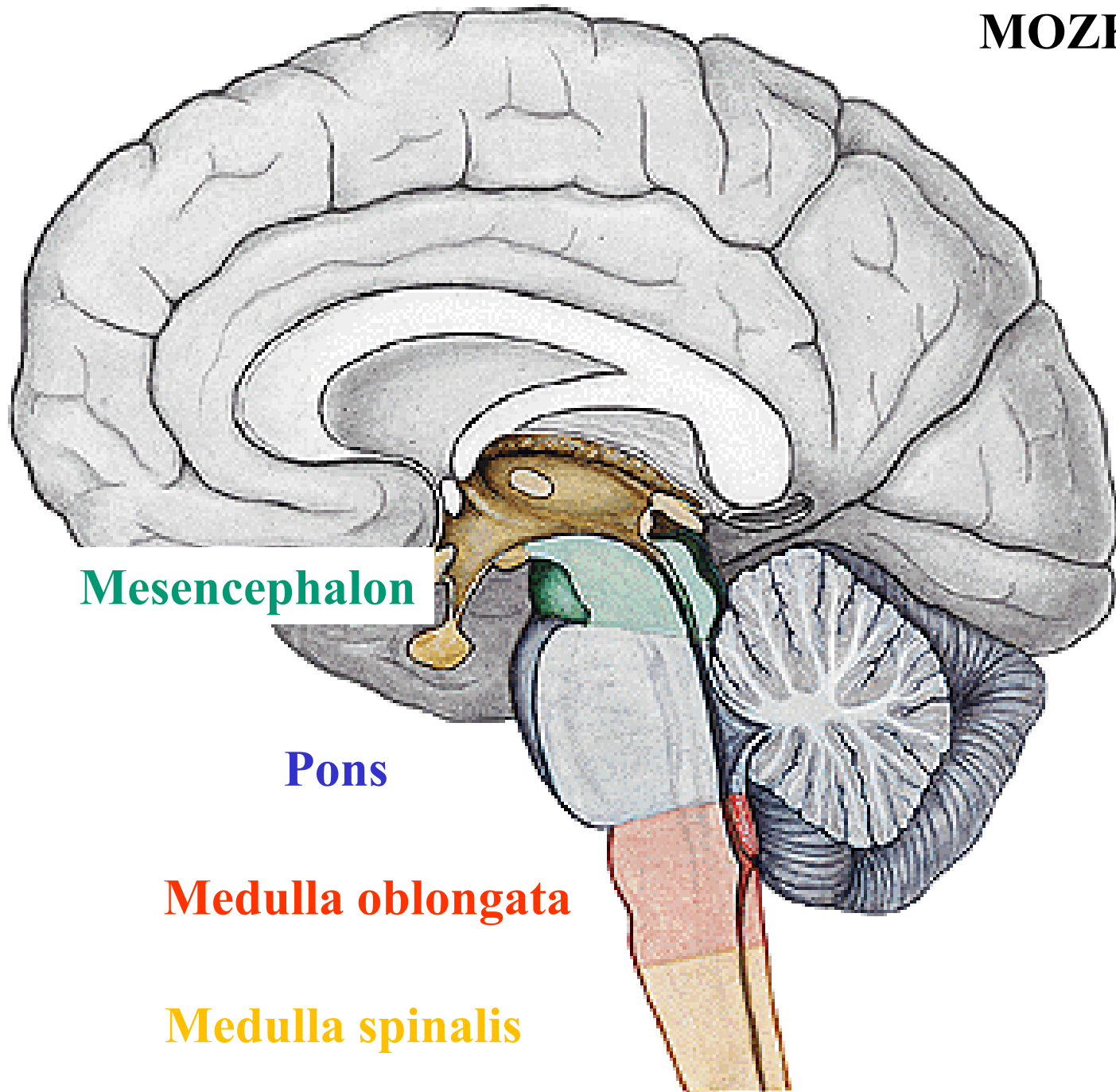




„Tohle je, chlapče, mozek.  
Ten dělá s lidmi hrozně věci.“

# MOZKOVÝ KMEN

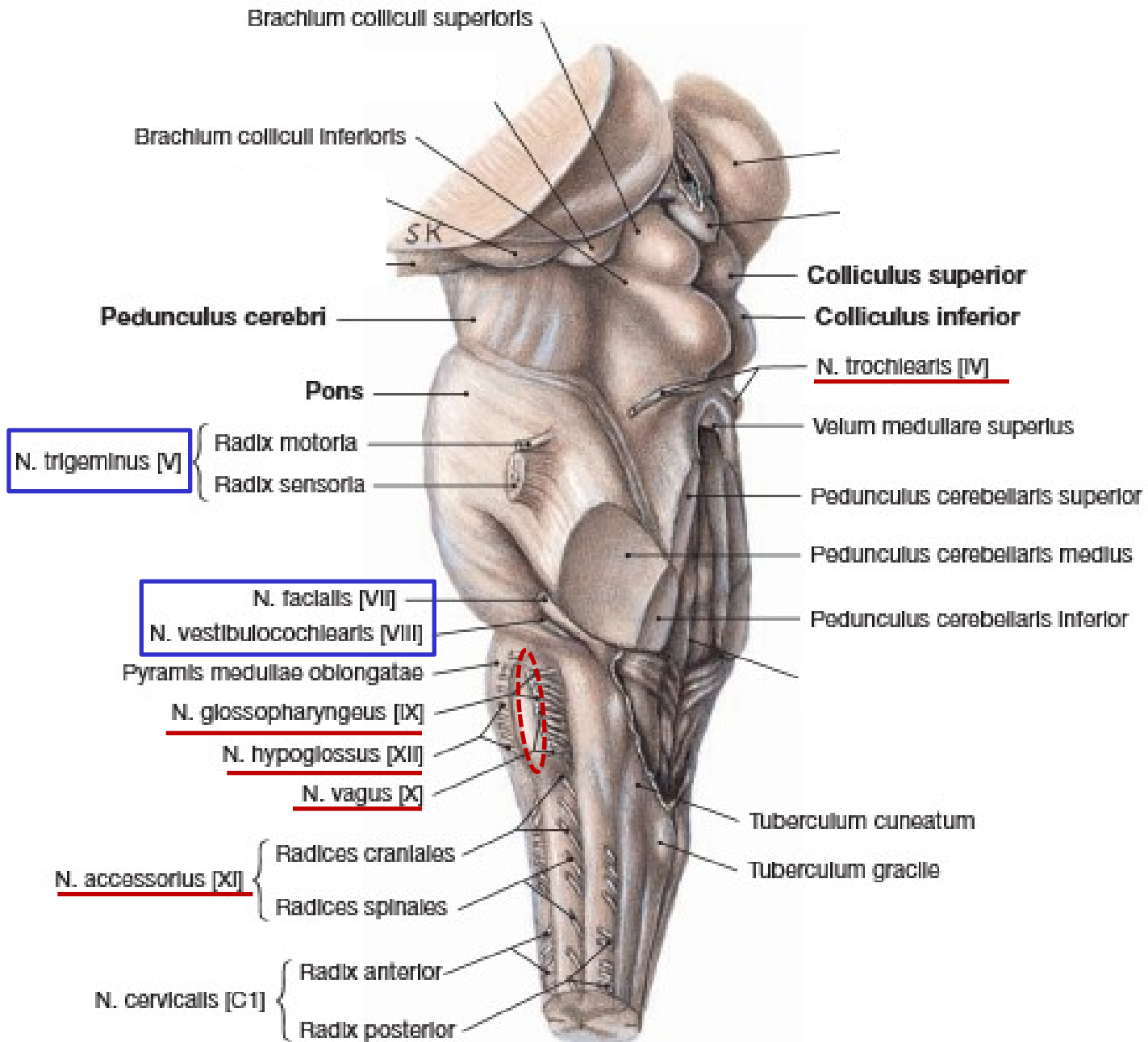


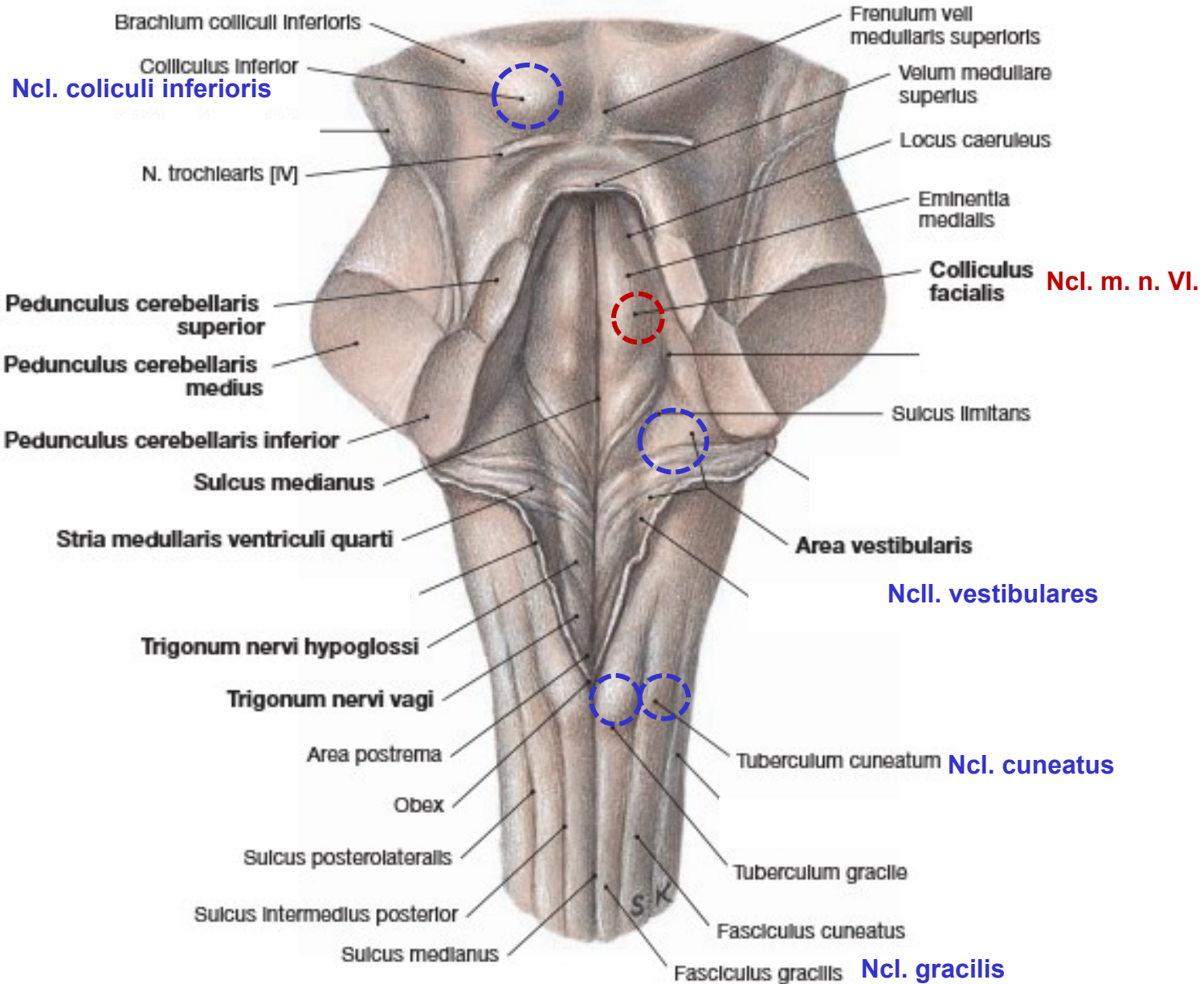
Mesencephalon

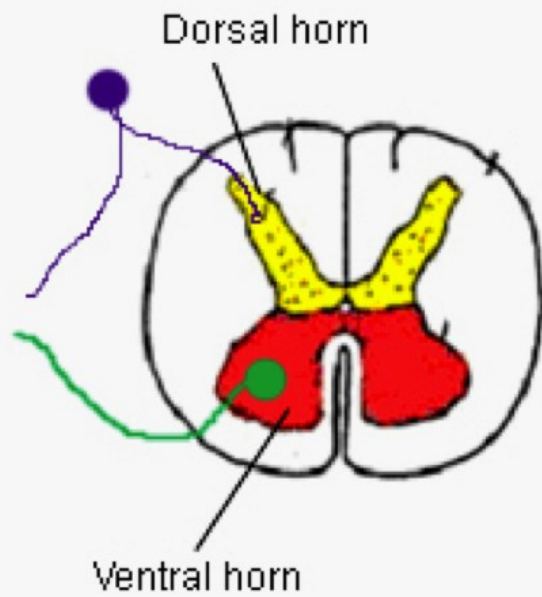
Pons

Medulla oblongata

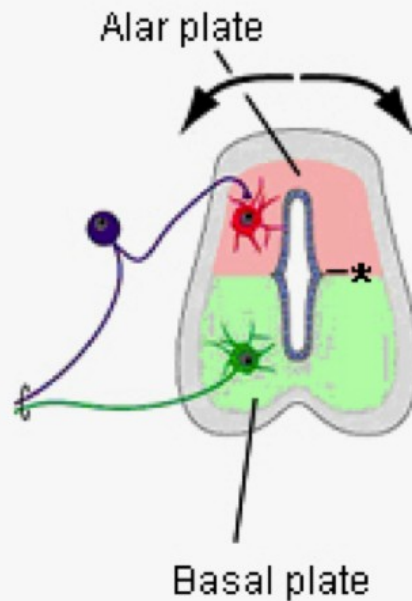
Medulla spinalis



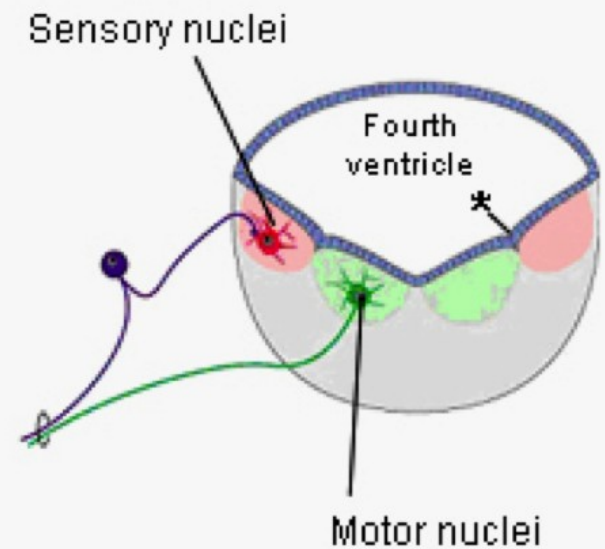




**Spinal cord**

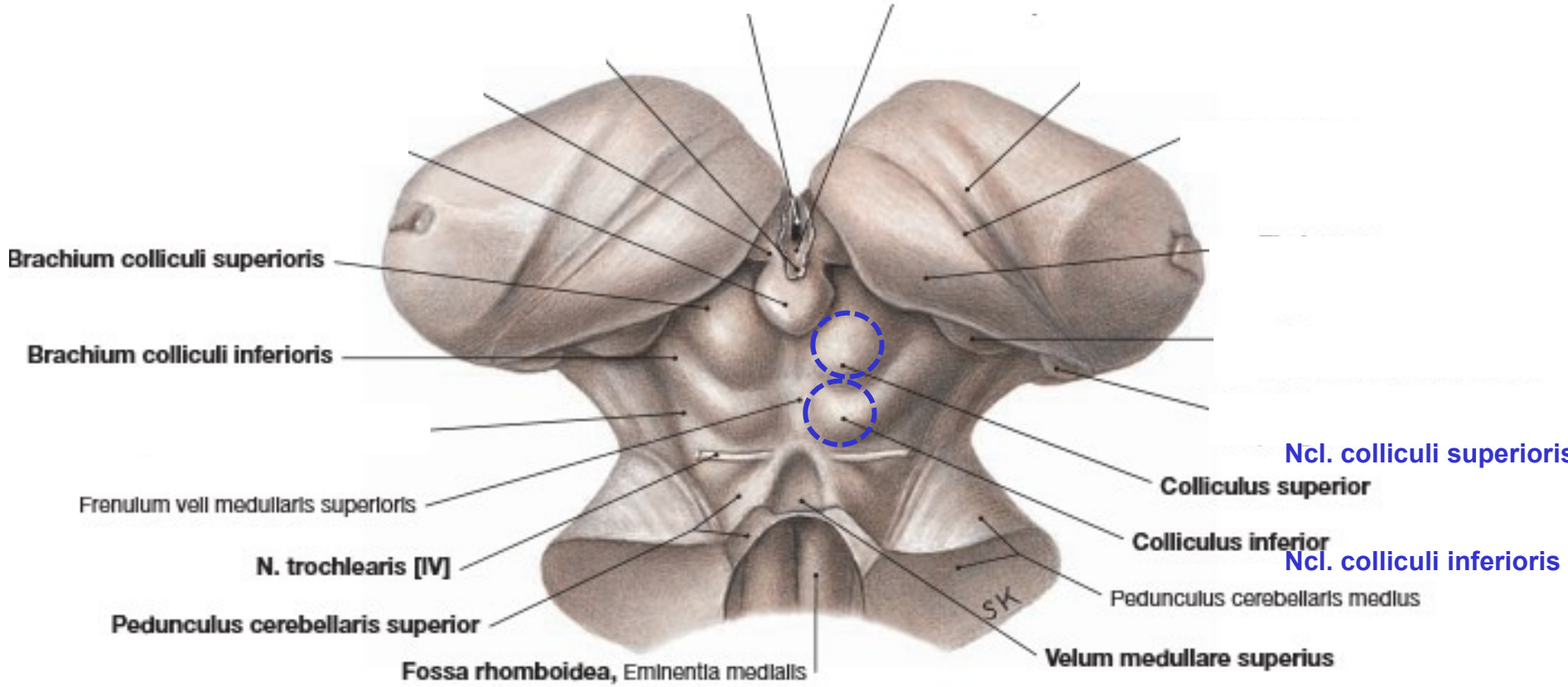


**Neural tube**



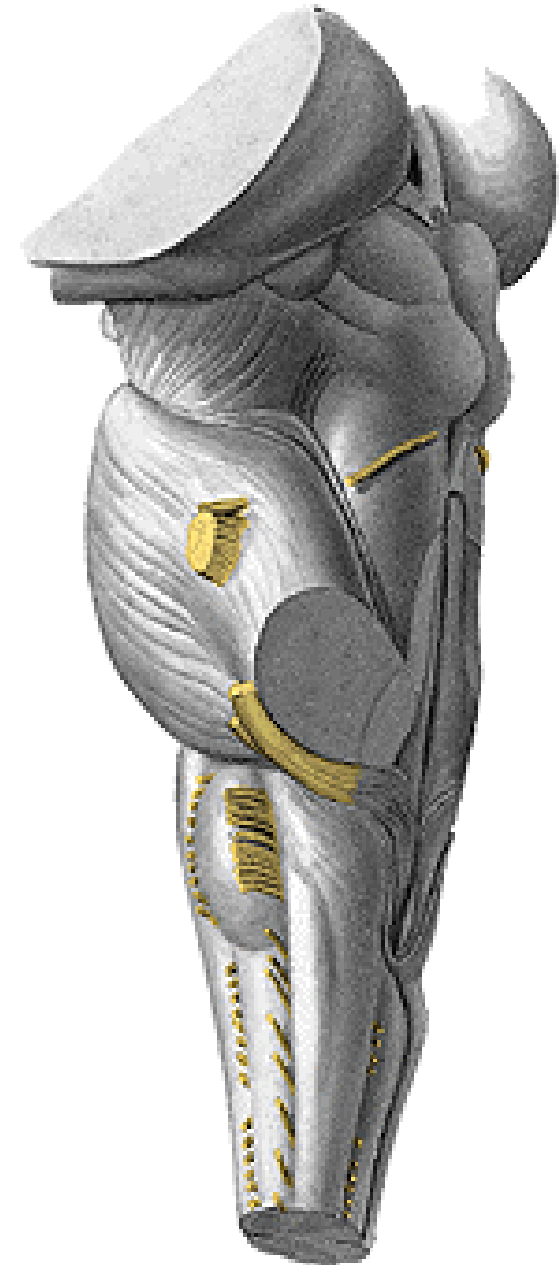
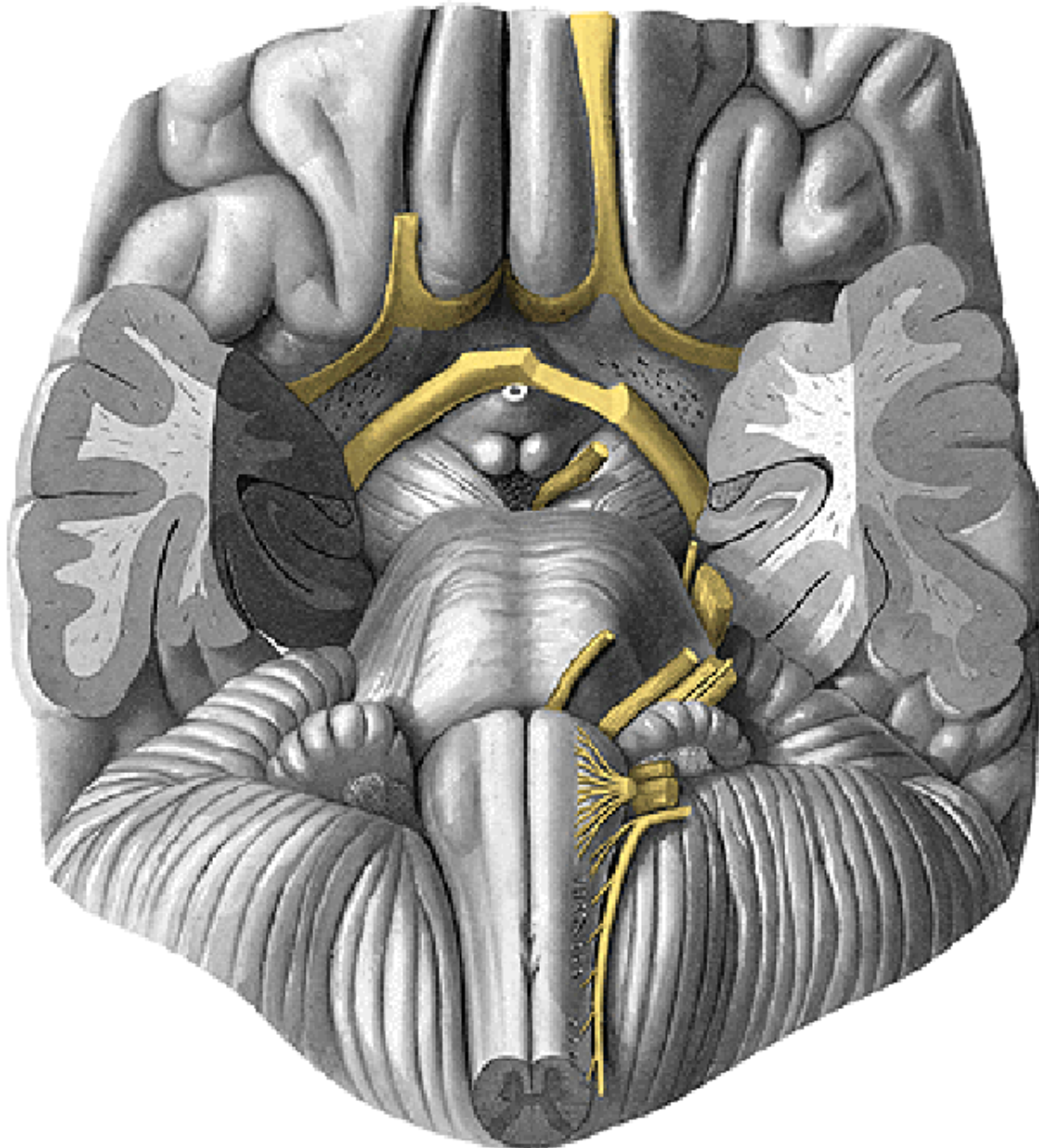
**Brainstem**

\* sulcus limitans

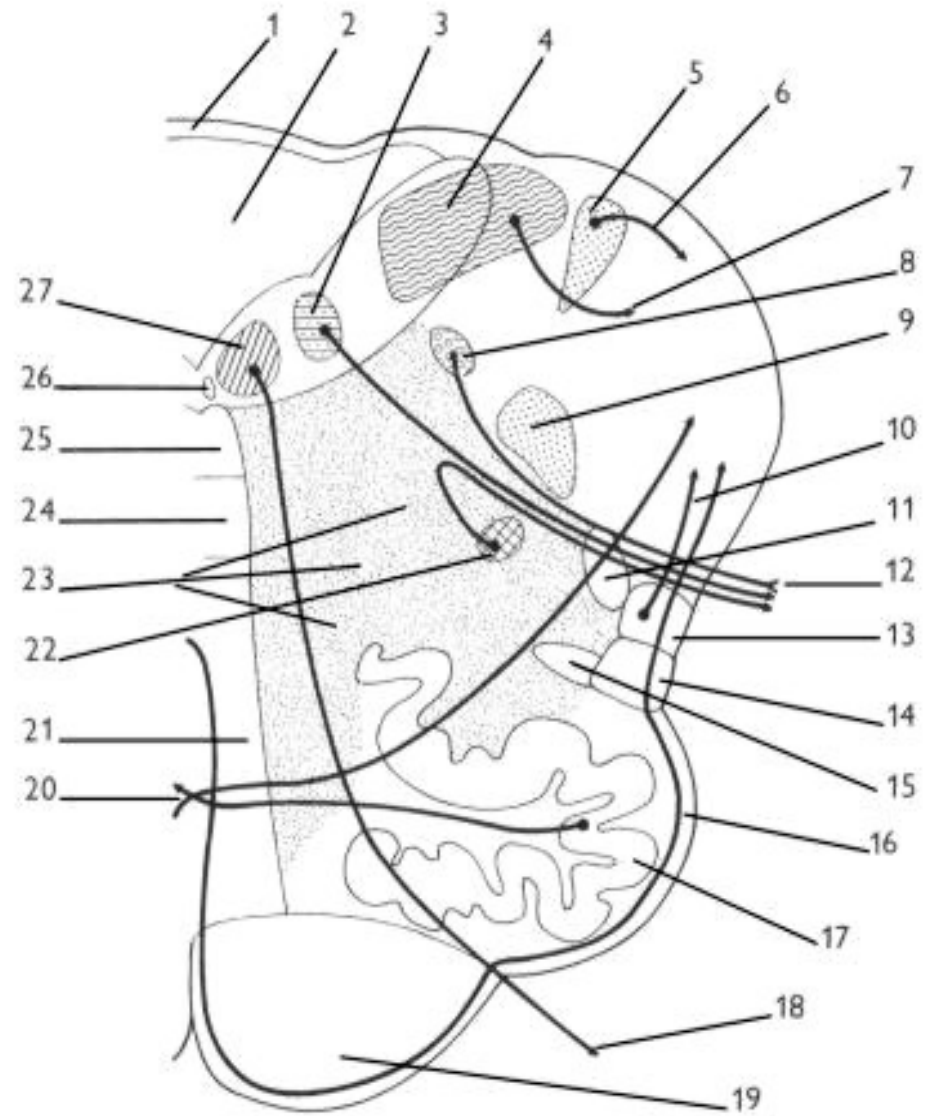
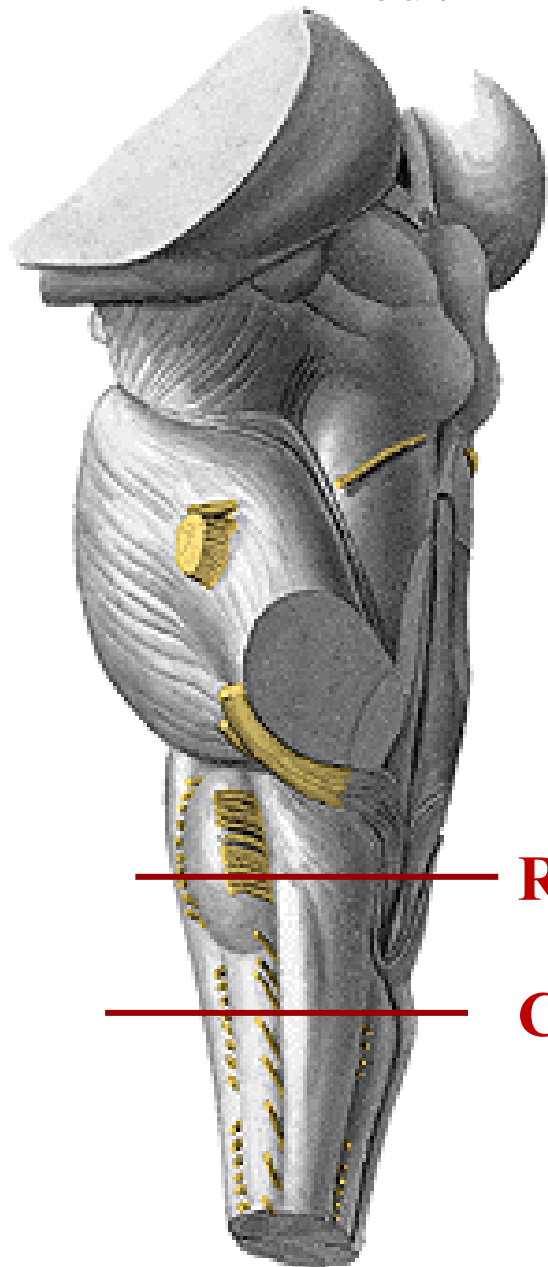


SK

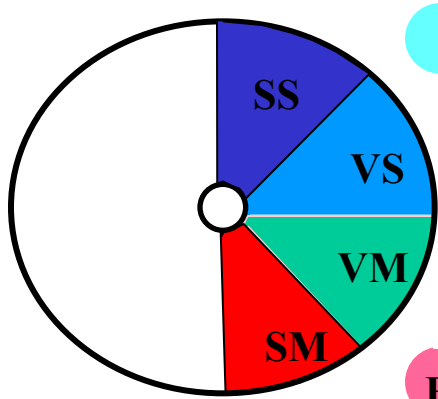
# MOZKOVÝ KMEN – Odstupy hlavových nervů



# Medulla oblongata – representativní řezy







ncl. et tr. solitarius

ncl. parasymp. n. X

BM

ncl. originis n. XII

22

20

FR

18

1

2

3

4

5

6

tr. spino-c.post.

tr.cortico-spinalis lat.

tr. spino-c.ant.

tr.rubro-spinalis

tr.spino-th.

tr.ret.-spinalis

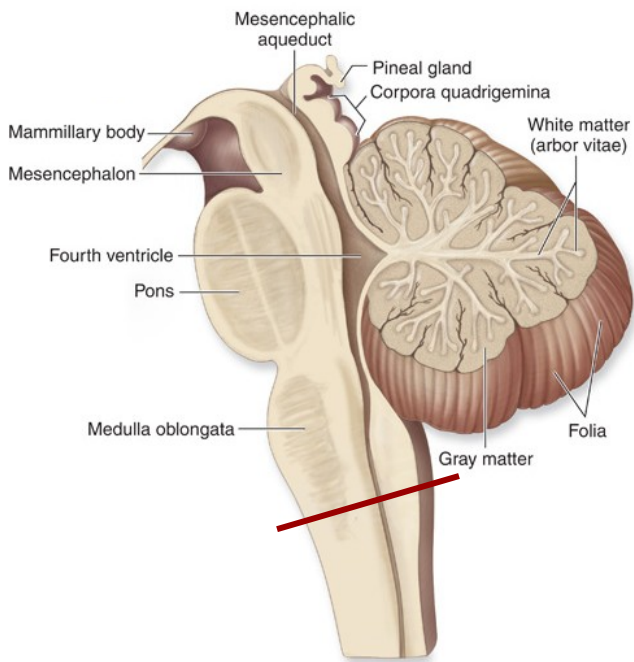
tr.vest.-spinalis

ncl. originis n. XI

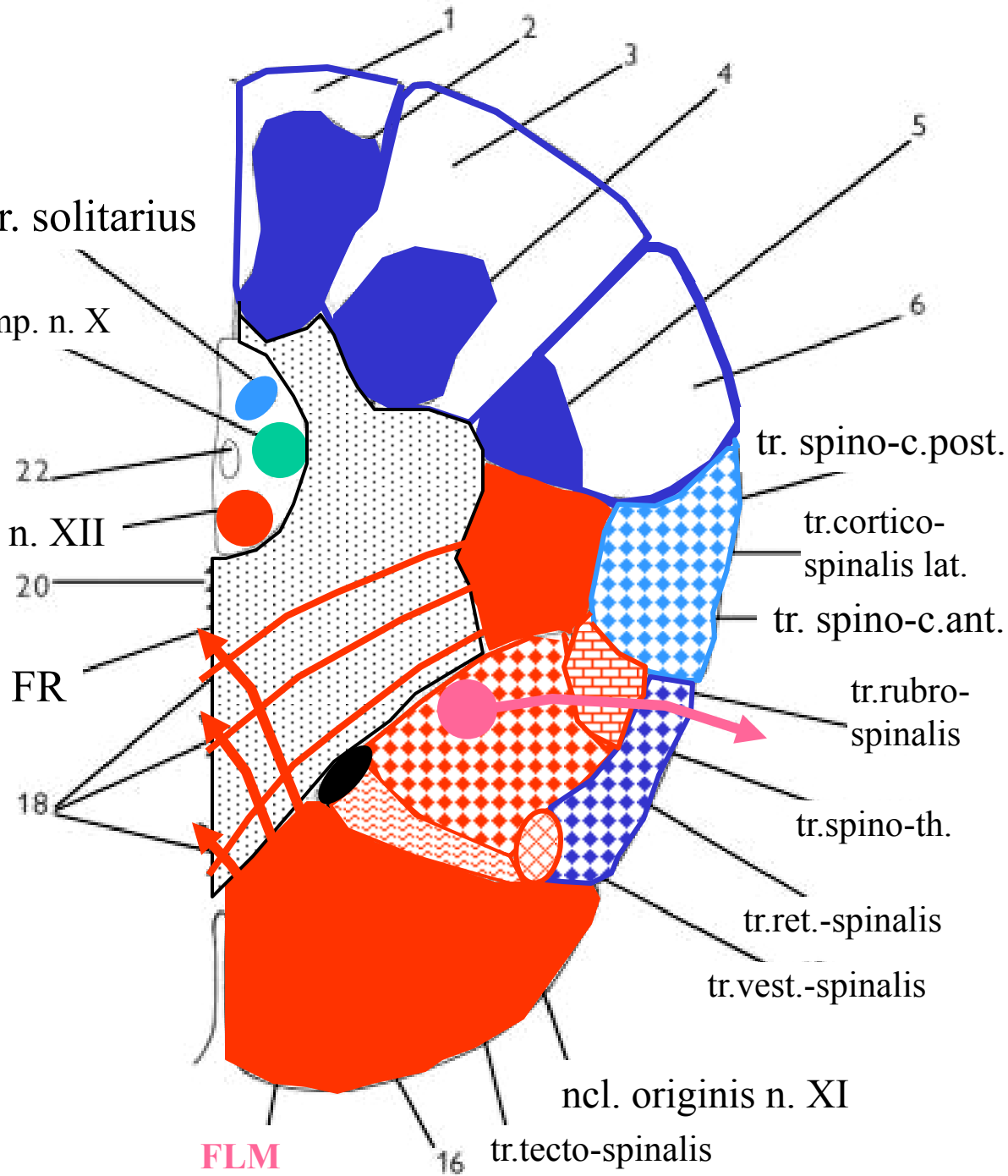
FLM

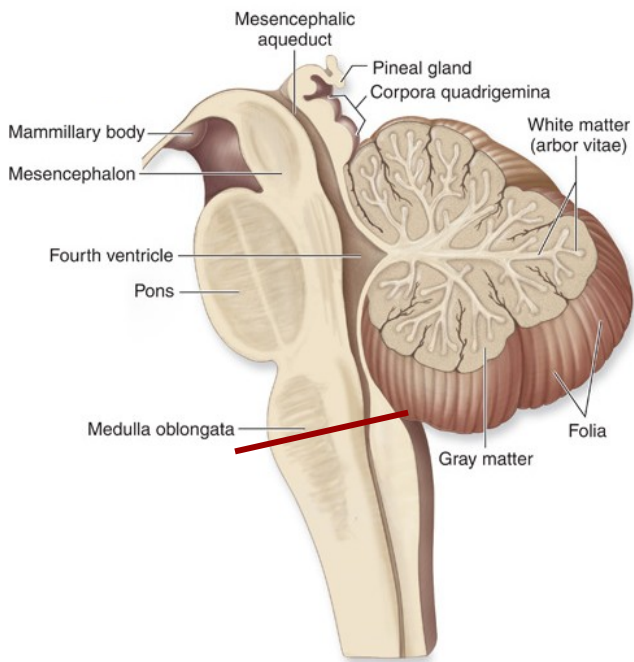
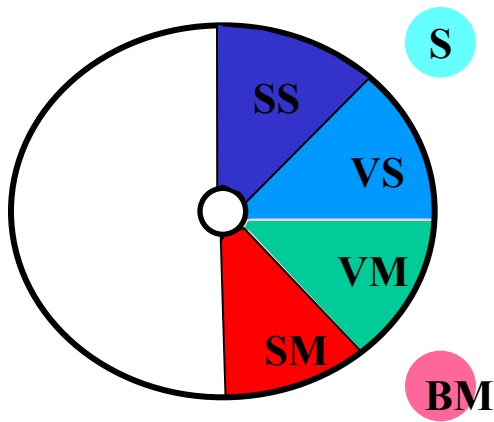
16

tr.tecto-spinalis

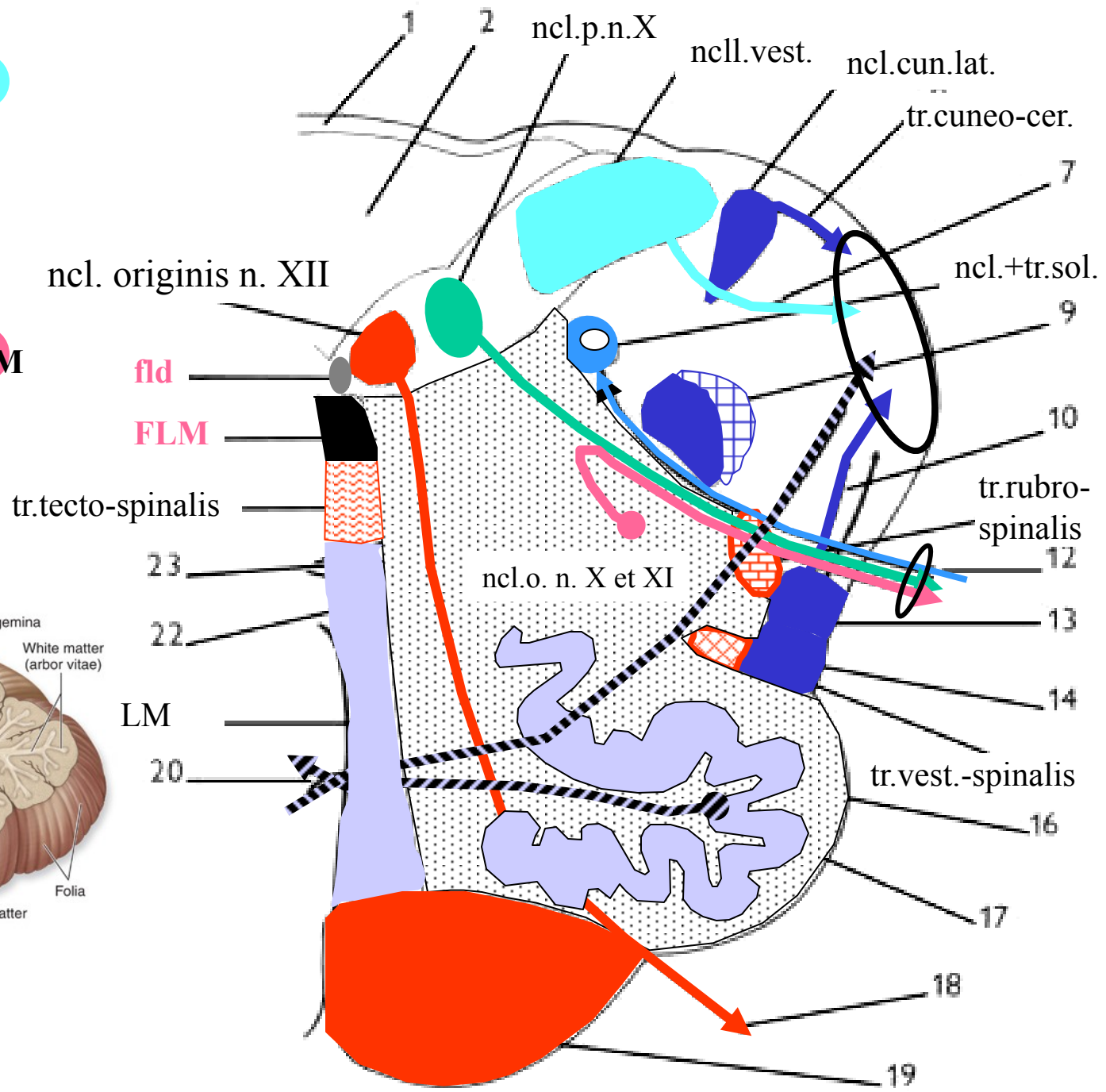


(a) Midsagittal section

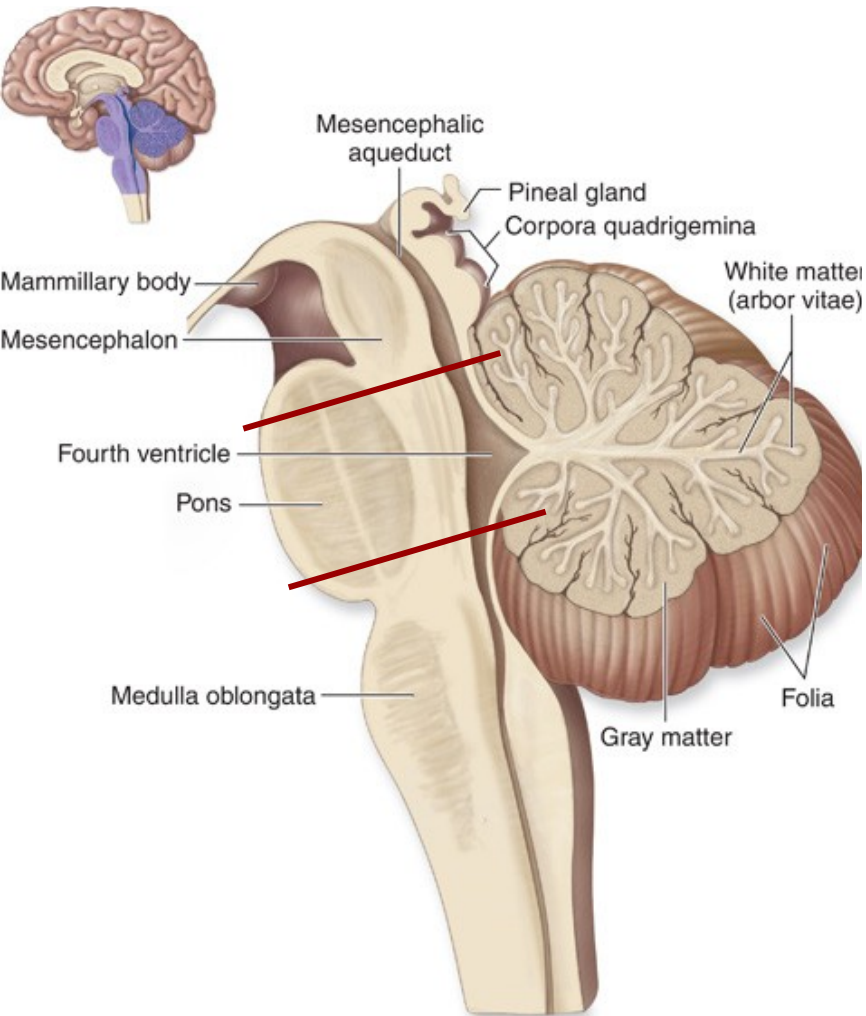




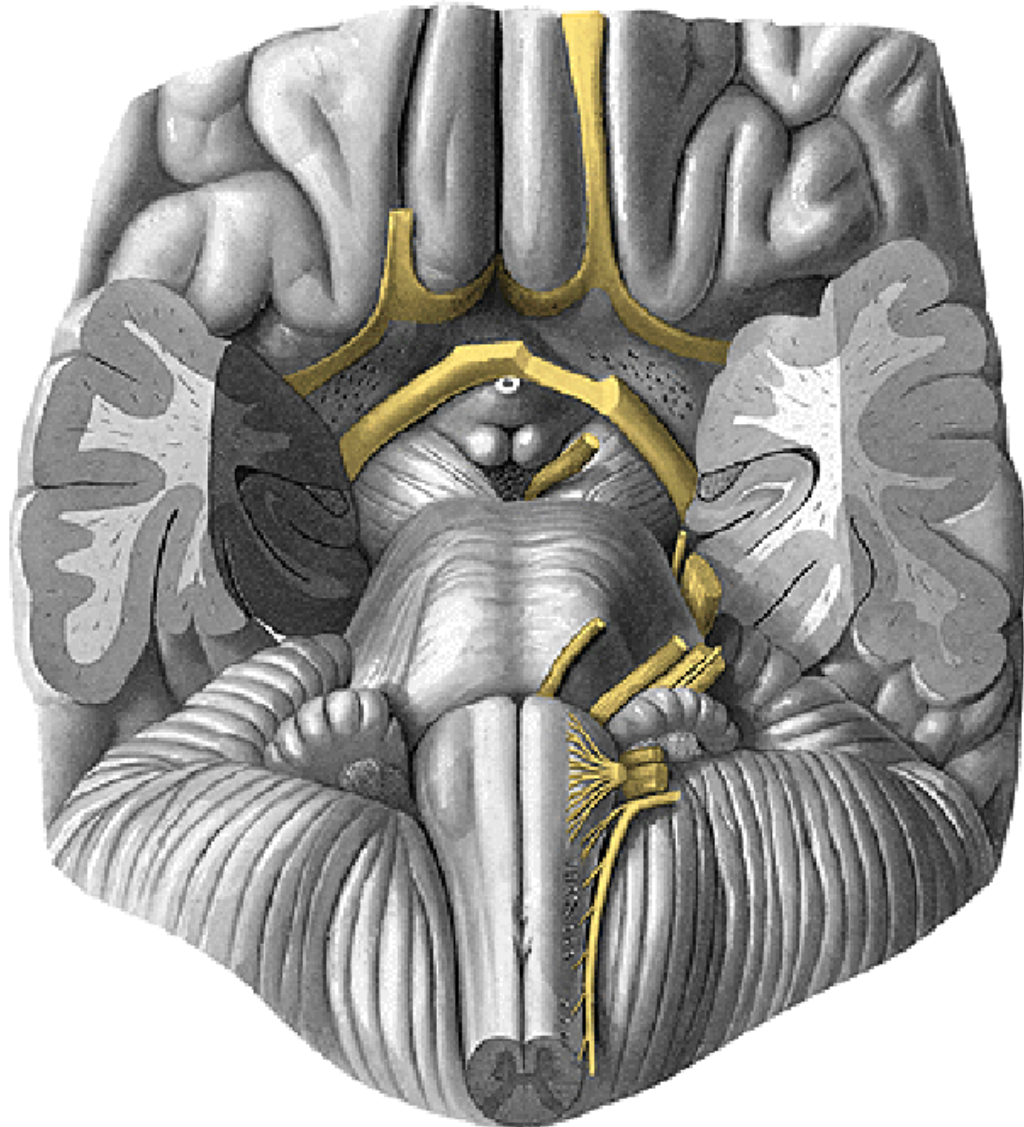
(a) Midsagittal section



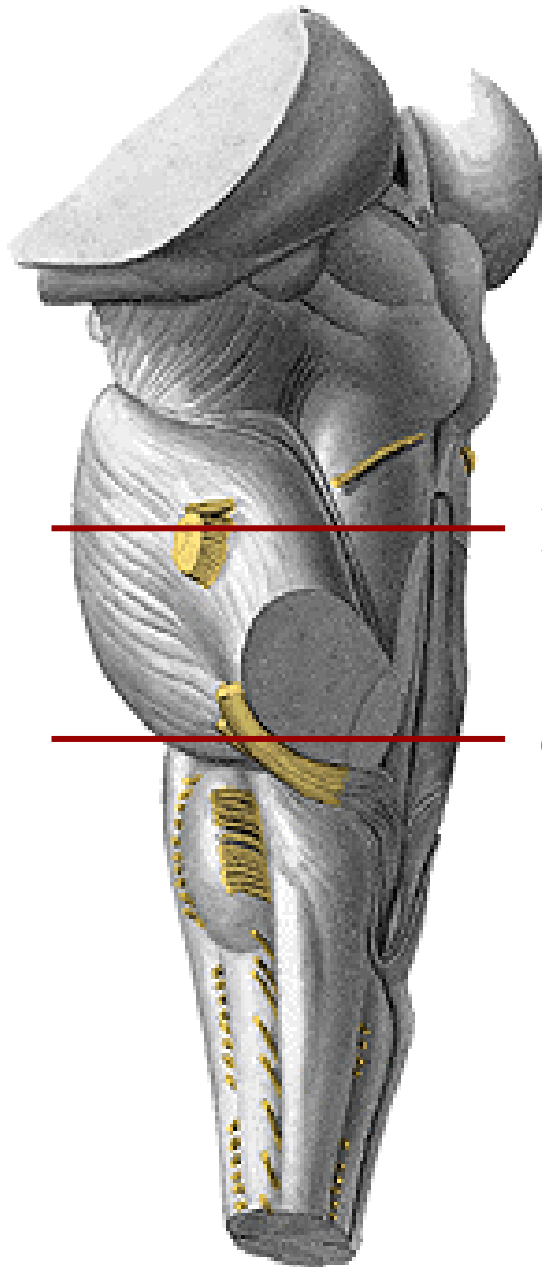
# MOZKOVÝ KMEN - Pons



(a) Midsagittal section

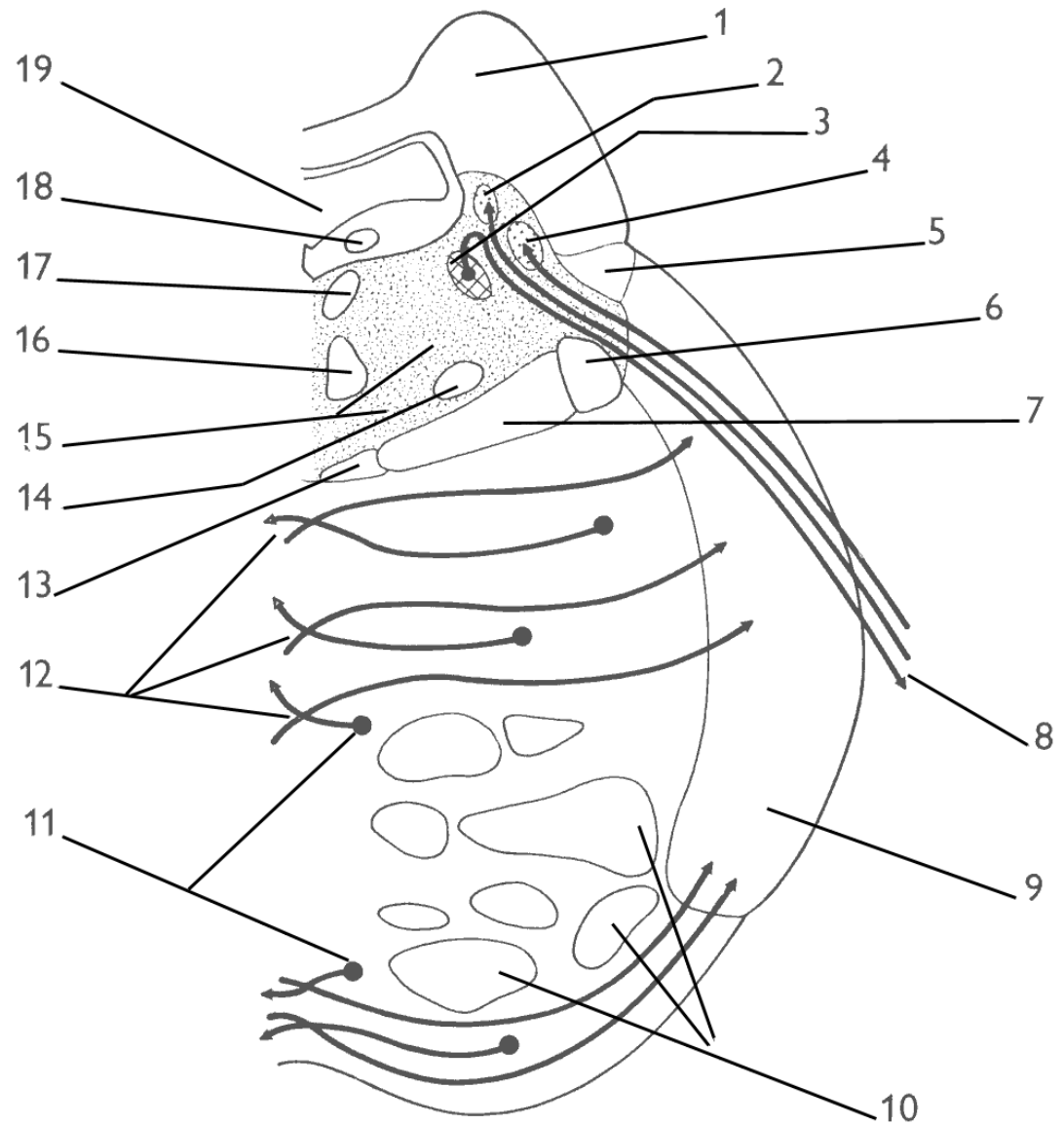


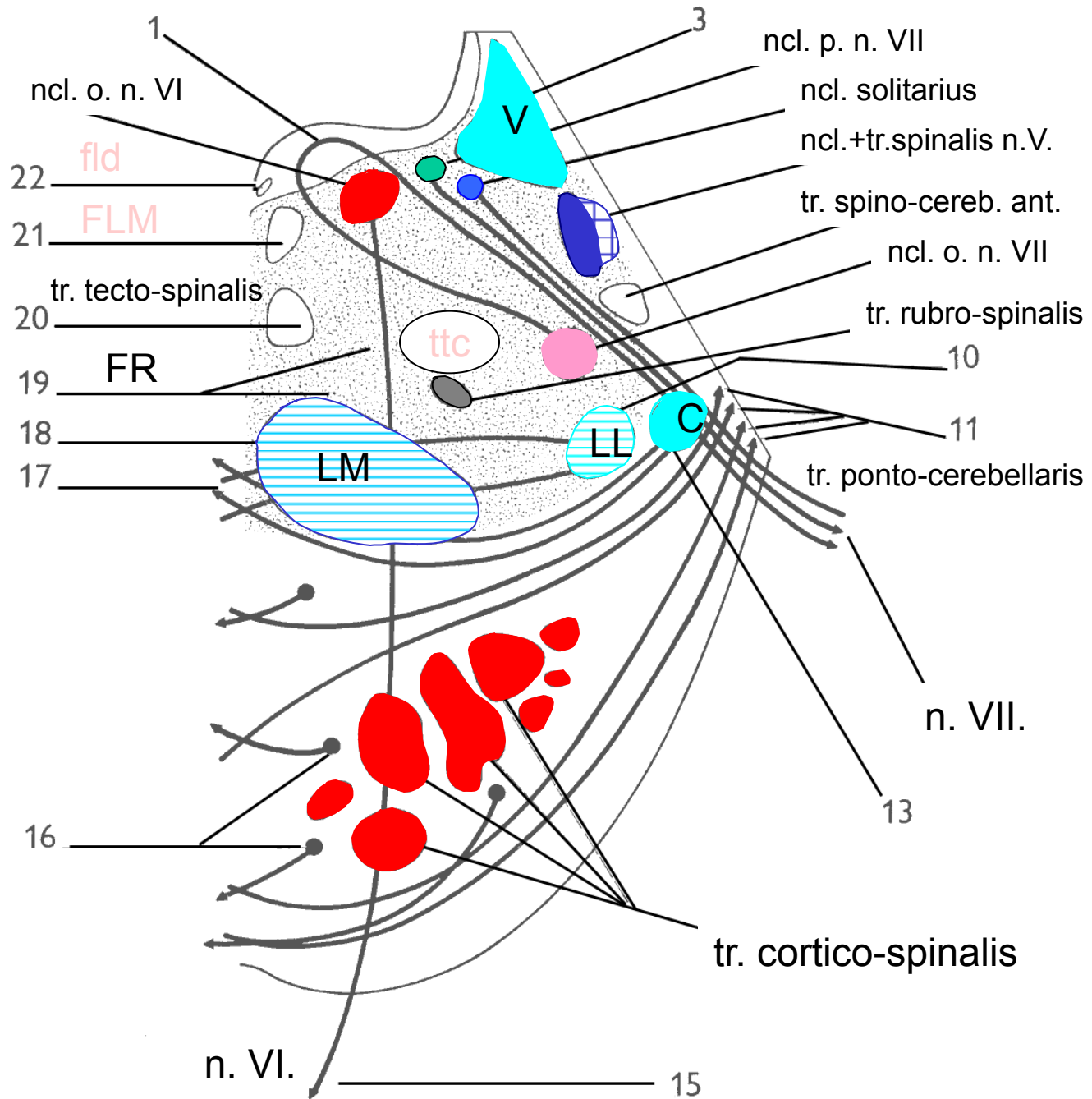
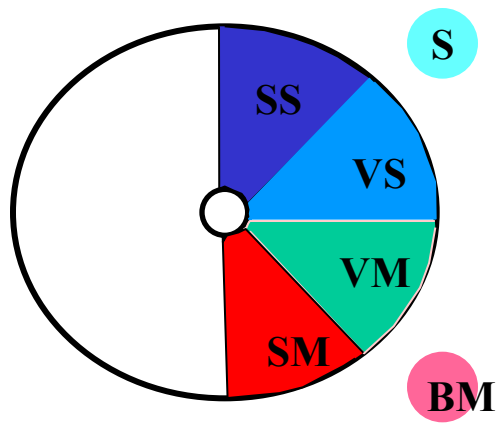
# Pons – representativní řezy

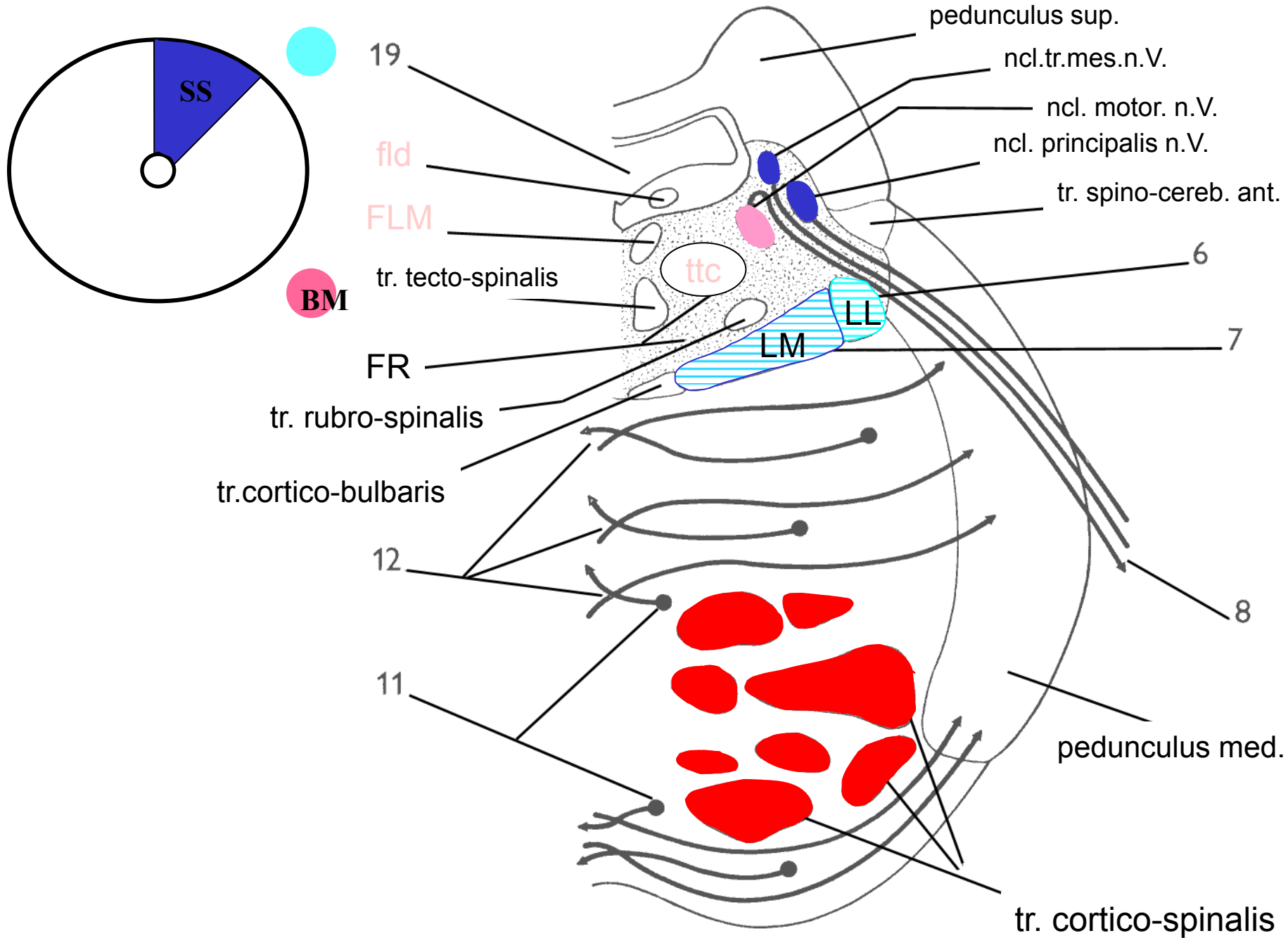


**R**

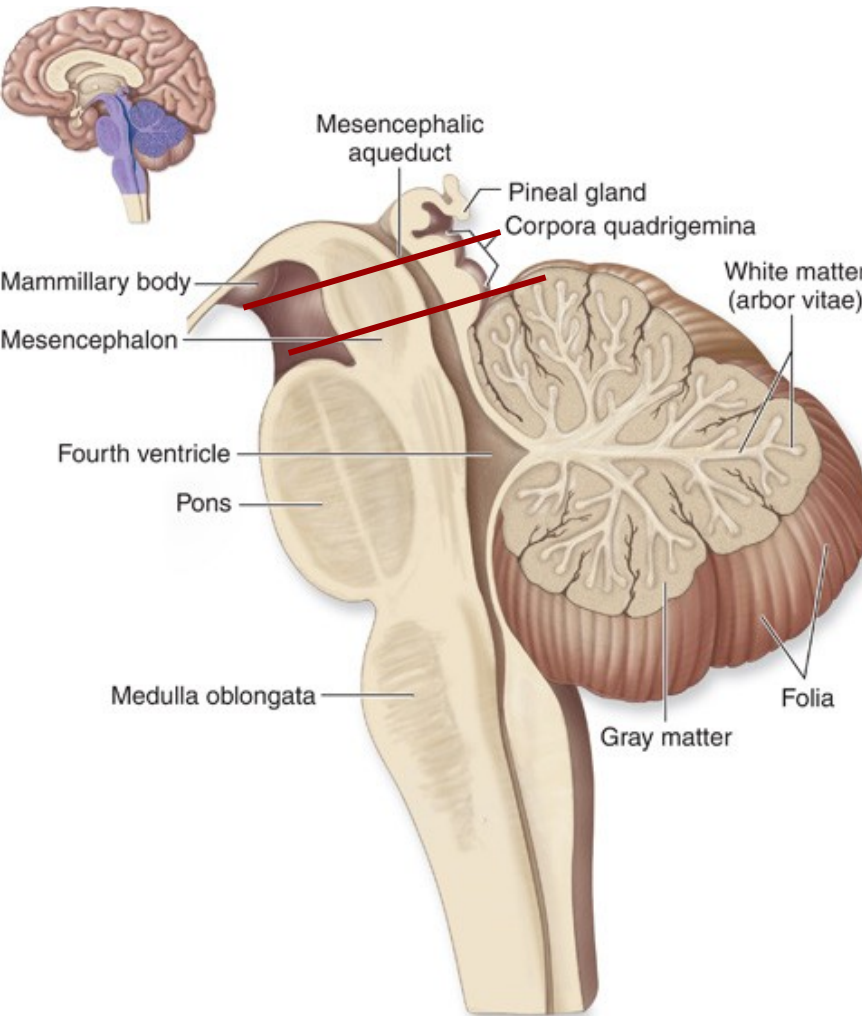
**C**



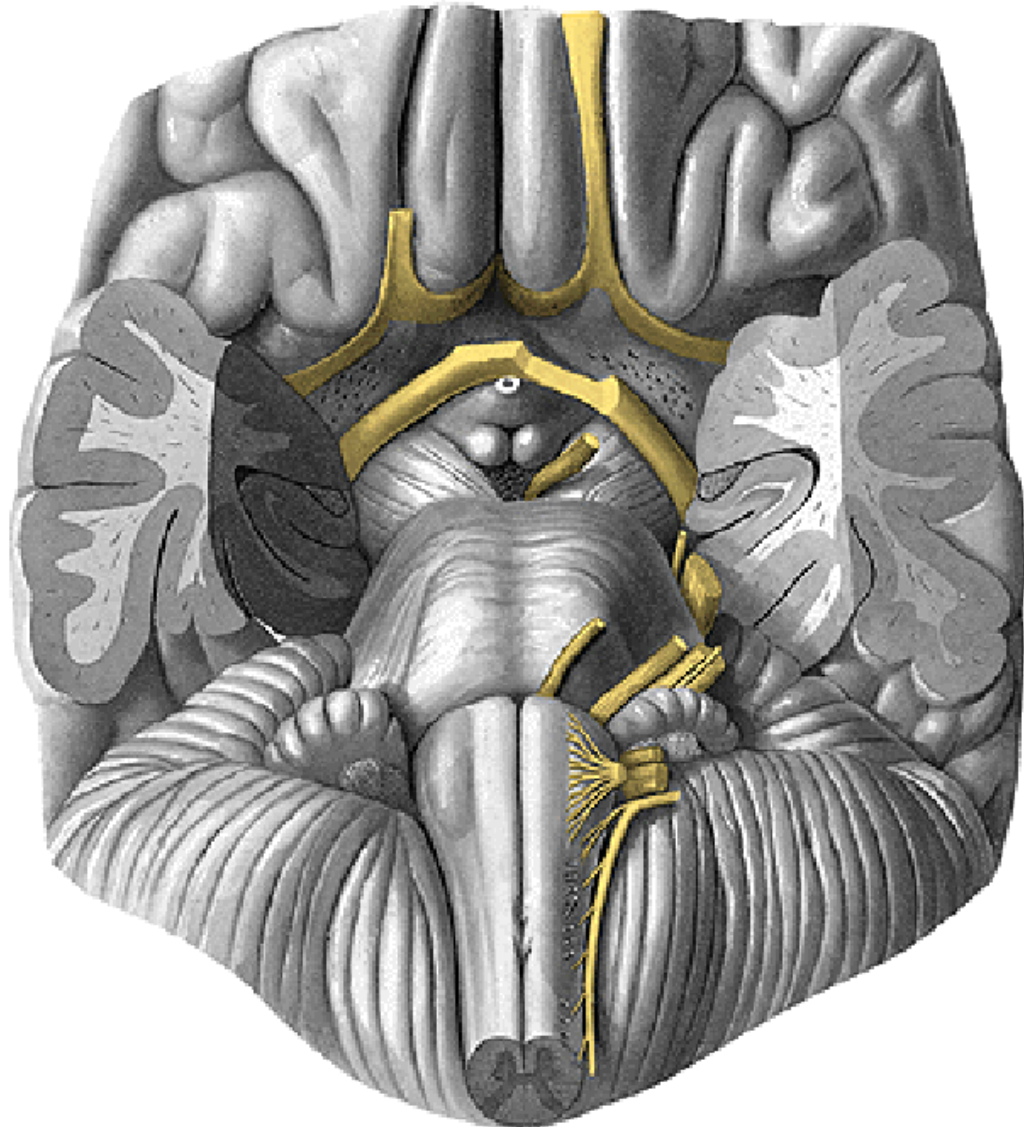




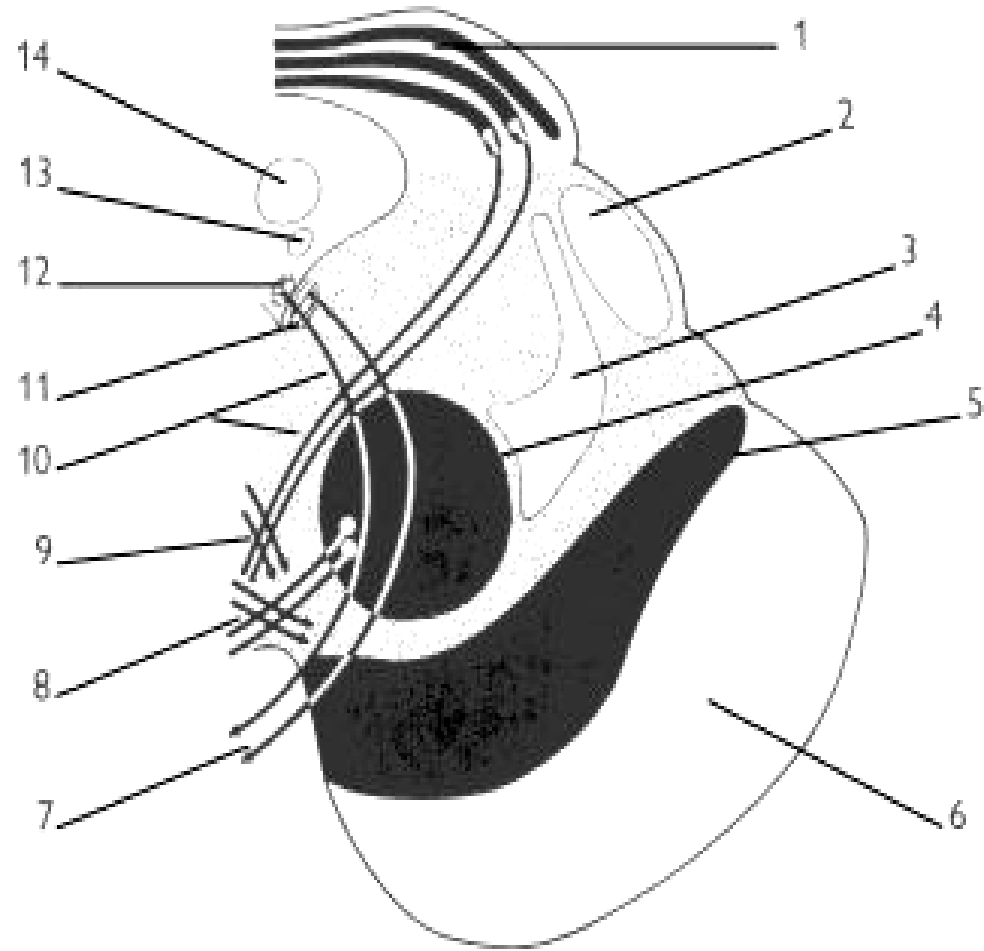
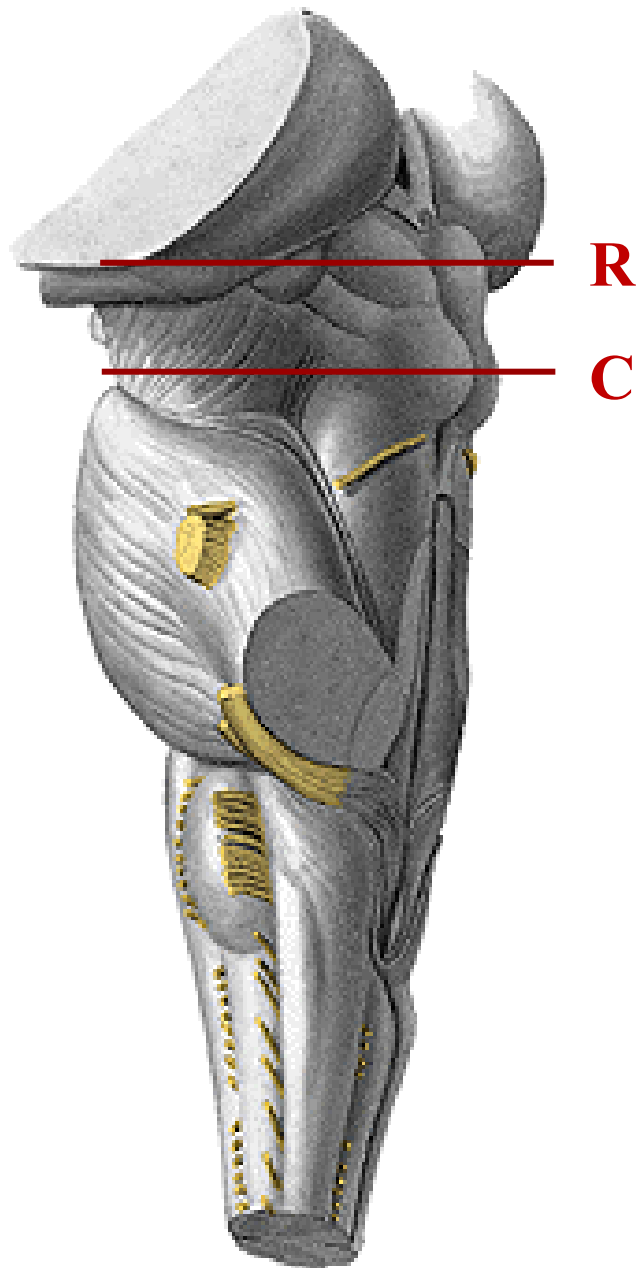
# MOZKOVÝ KMEN – Mesencephalon



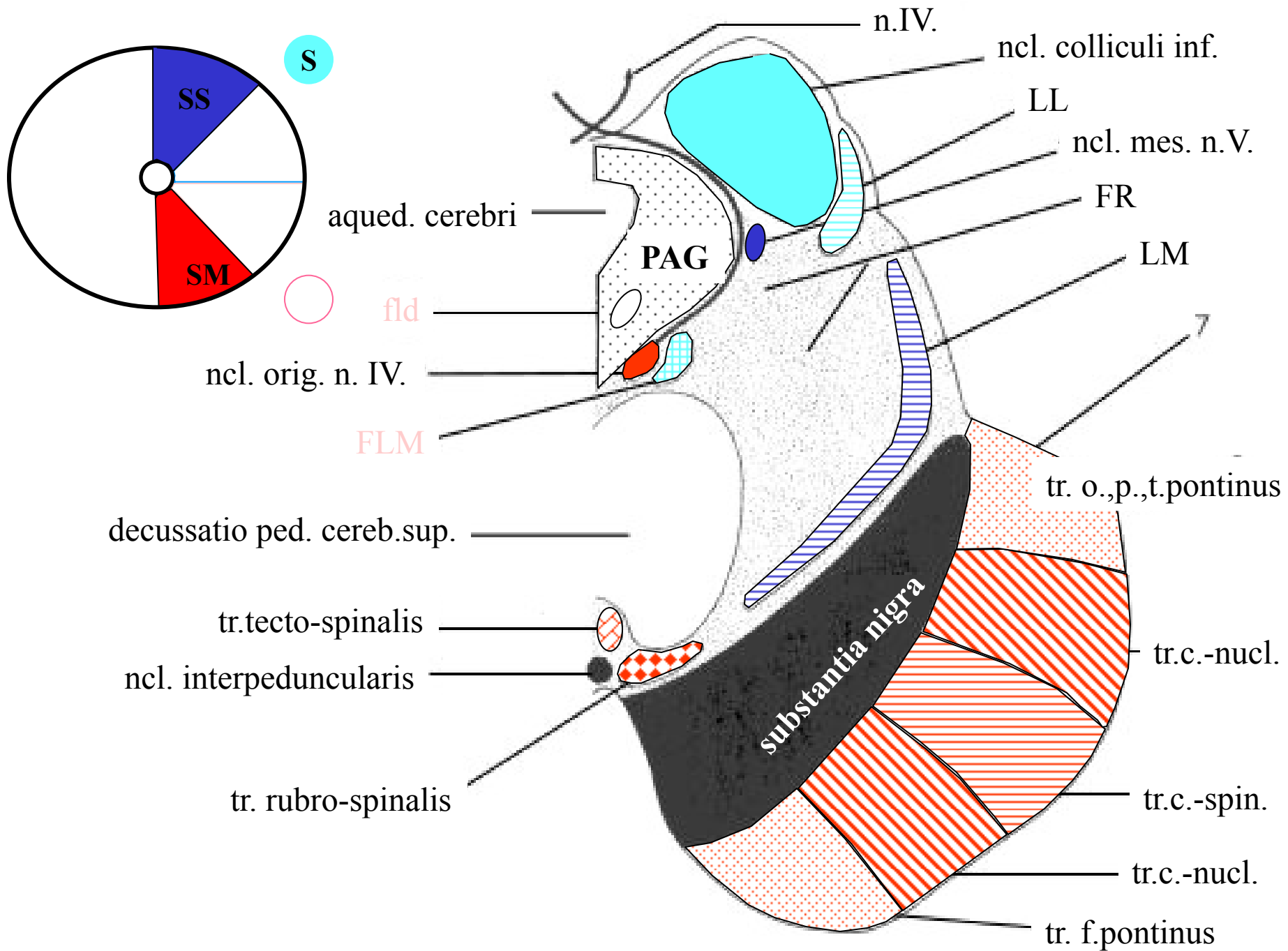
(a) Midsagittal section

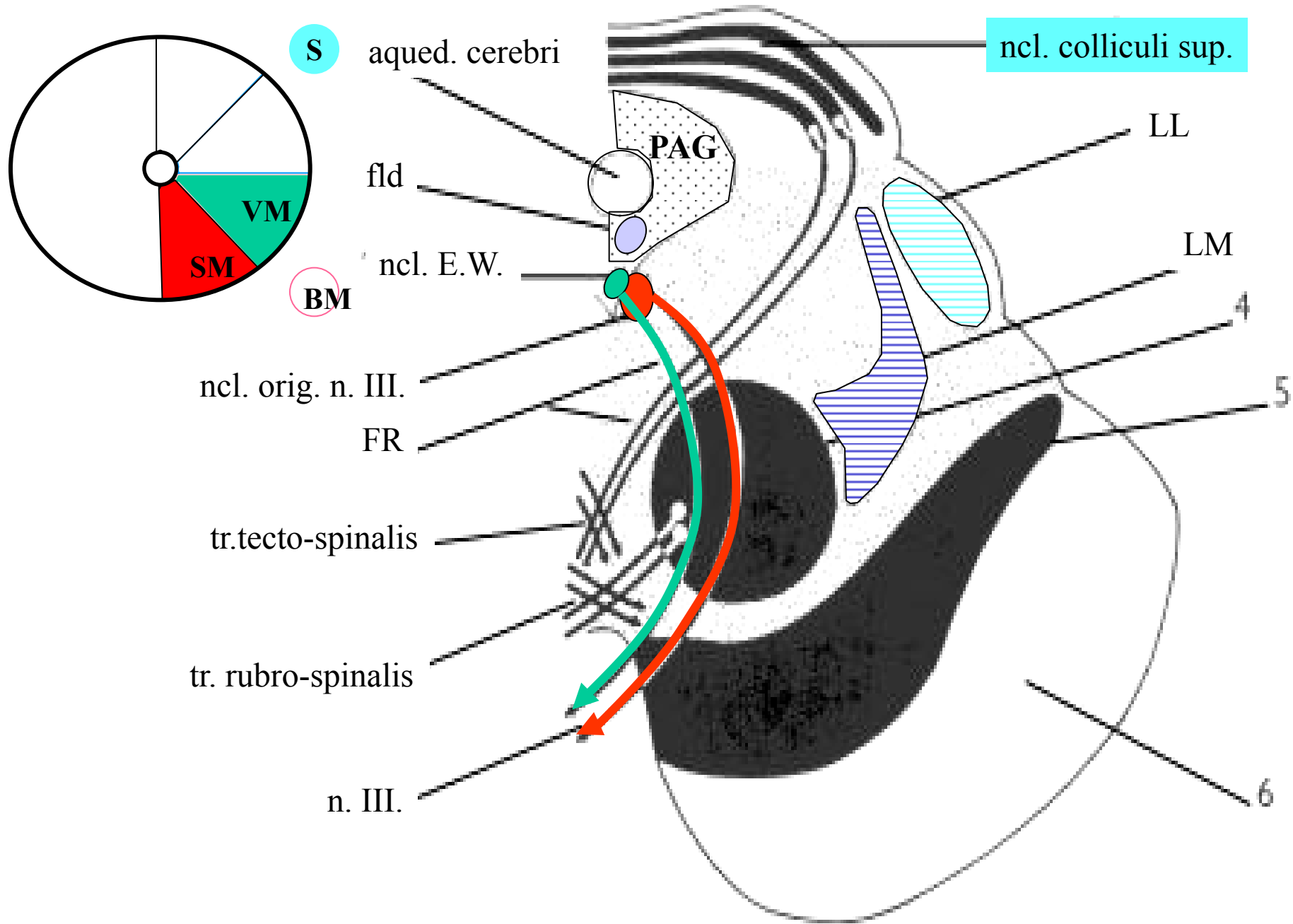


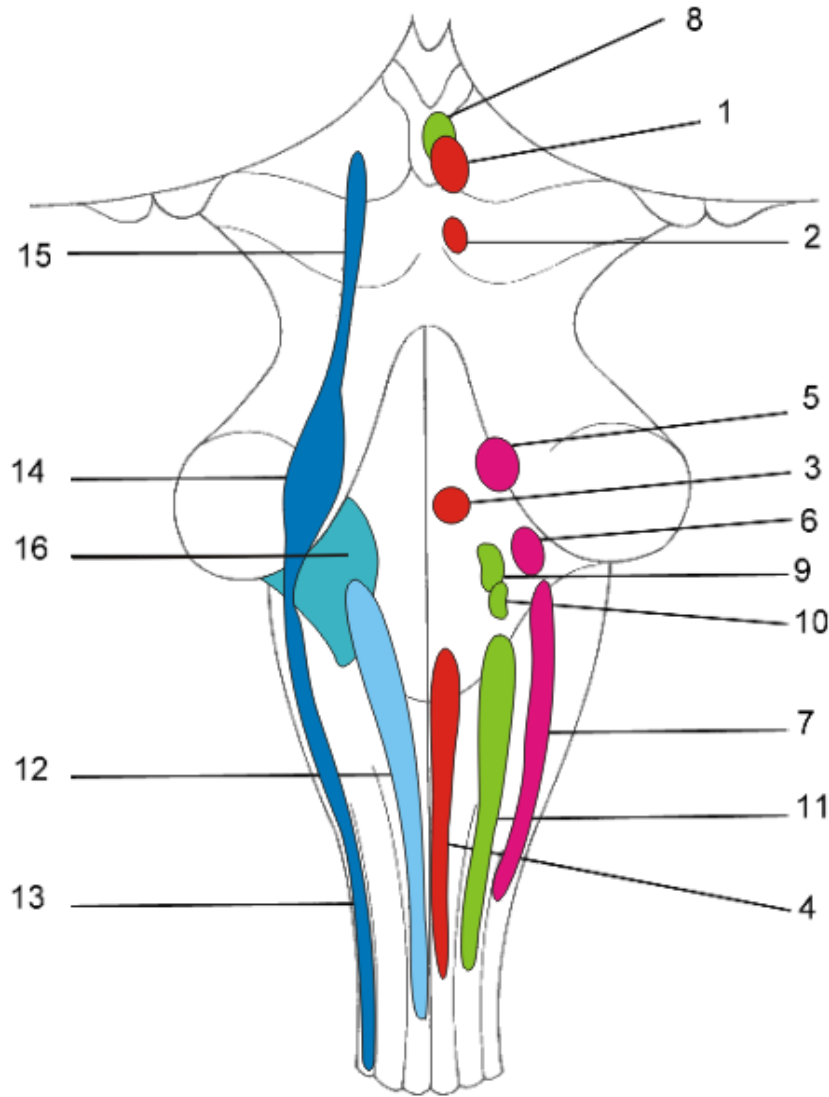
# Mesencephalon – representativní řezy











- 1 - ncl. motorius (originis) n. III.
- 2 - ncl. motorius (originis) n. IV.
- 3 - ncl. motorius (originis) n. VI.
- 4 - ncl. motorius (originis) n. XII.
- 5 - ncl. motorius (masticatorius) n. V.
- 6 - ncl. motorius (originis) n. VII.
- 7 - ncl. motorius (originis) n. IX., X., et XI.  
(ncl. ambiguus)
- 8 - ncl. parasympathicus n. III (ncl. E.W.)
- 9 - ncl. parasympathicus n. VII.
- 10 - ncl. parasympathicus n. IX.
- 11 - ncl. parasympathicus n. X.
- 12 - ncl. solitarius
- 13 - ncl. spinalis n. V.
- 14 - ncl. principalis n. V.
- 15 - ncl. mesencephalicus n. V.
- 16 - ncll. cochleares et vestibulares