

ORGANUM VESTIBULOCOCHLEARE

Auris externa, media et interna

Auris externa

Auricula
Meatus acusticus externus
Membrana tympani

Auris media

Cavitas tympani
Ossicula auditus
Tuba auditiva

Auris interna

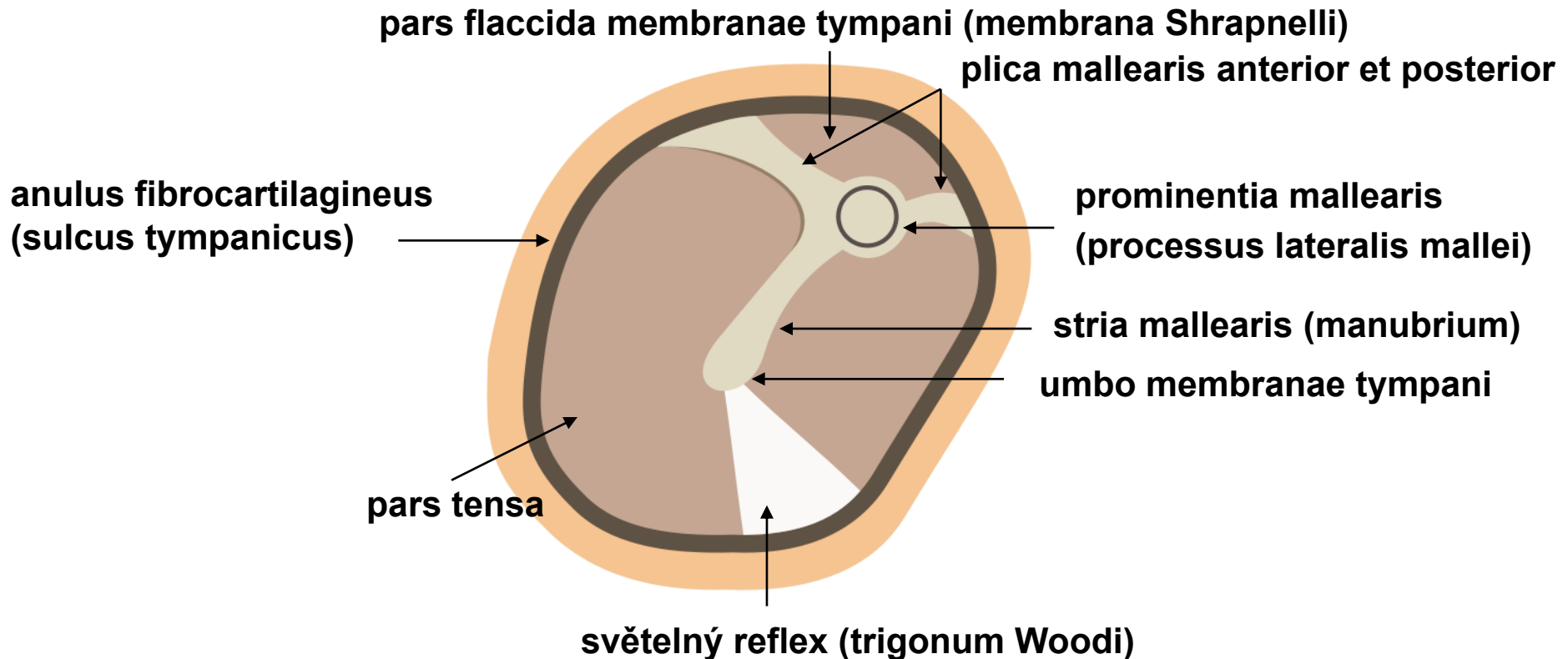
Labyrinthus osseus
Labyrinthus membranaceus

MEMBRANA TYMPANI

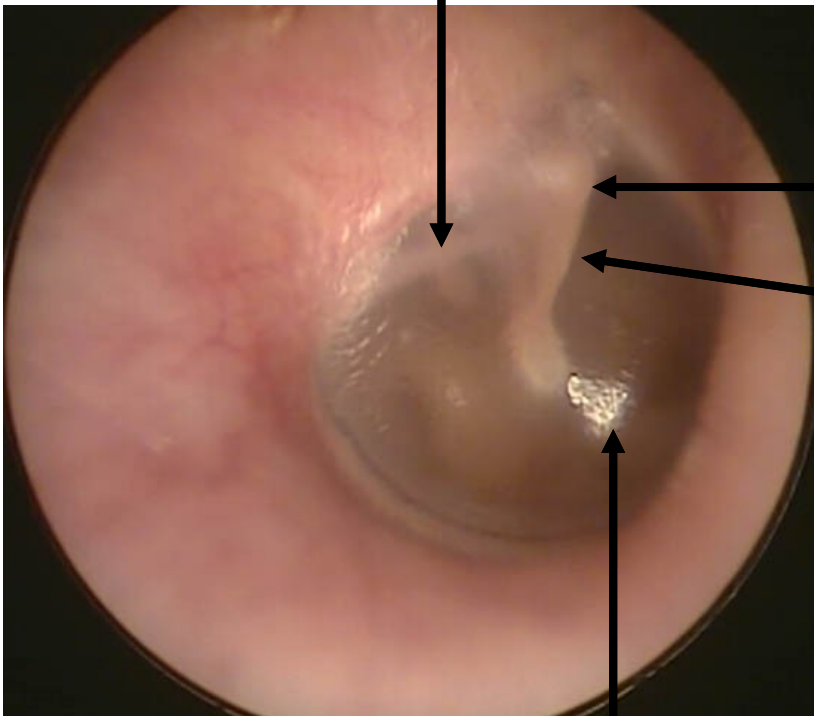
střední vazivová vrstva – stratum membranaceum

zevní vrstva - stratum cutaneum

vnitřní vrstva - stratum mucosum



plica mallearis posterior



**prominentia mallearis
(processus lateralis mallei)**

stria mallearis (manubrium)

světelný reflex (trigonum Woodi)



CAVITAS TYMPANI

paries membranaceus

- bubínek

paries labyrinthicus

- promontorium
- fenestra vestibuli
- fenestra cochleae

paries jugularis

- apertura externa canaliculi tympanici

paries tegmentalis

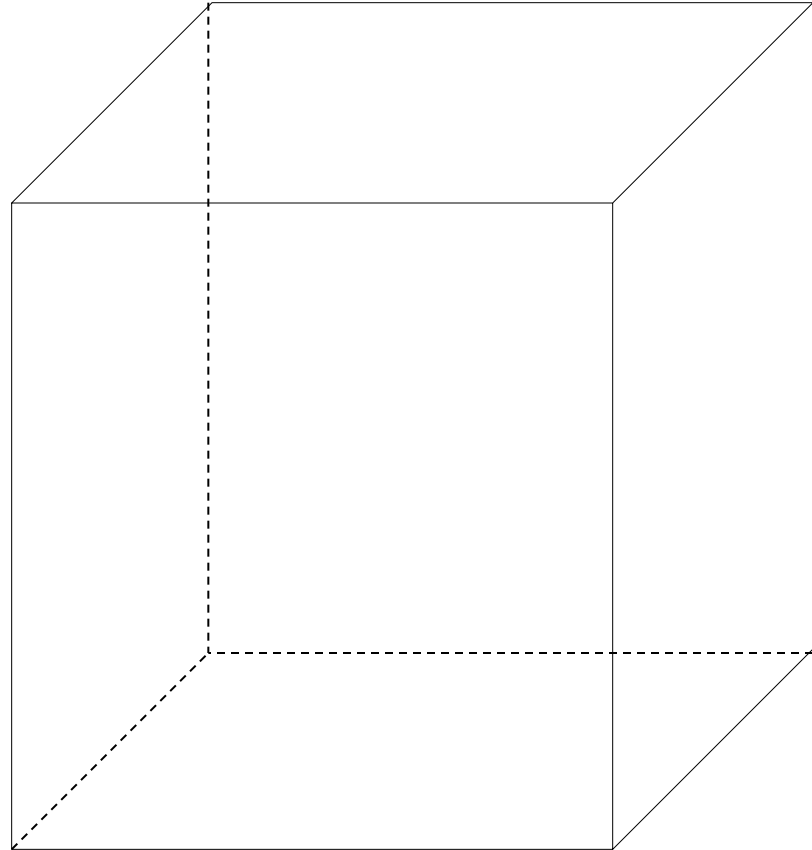
- hiatus canalis nervi petrosi minoris

paries caroticus

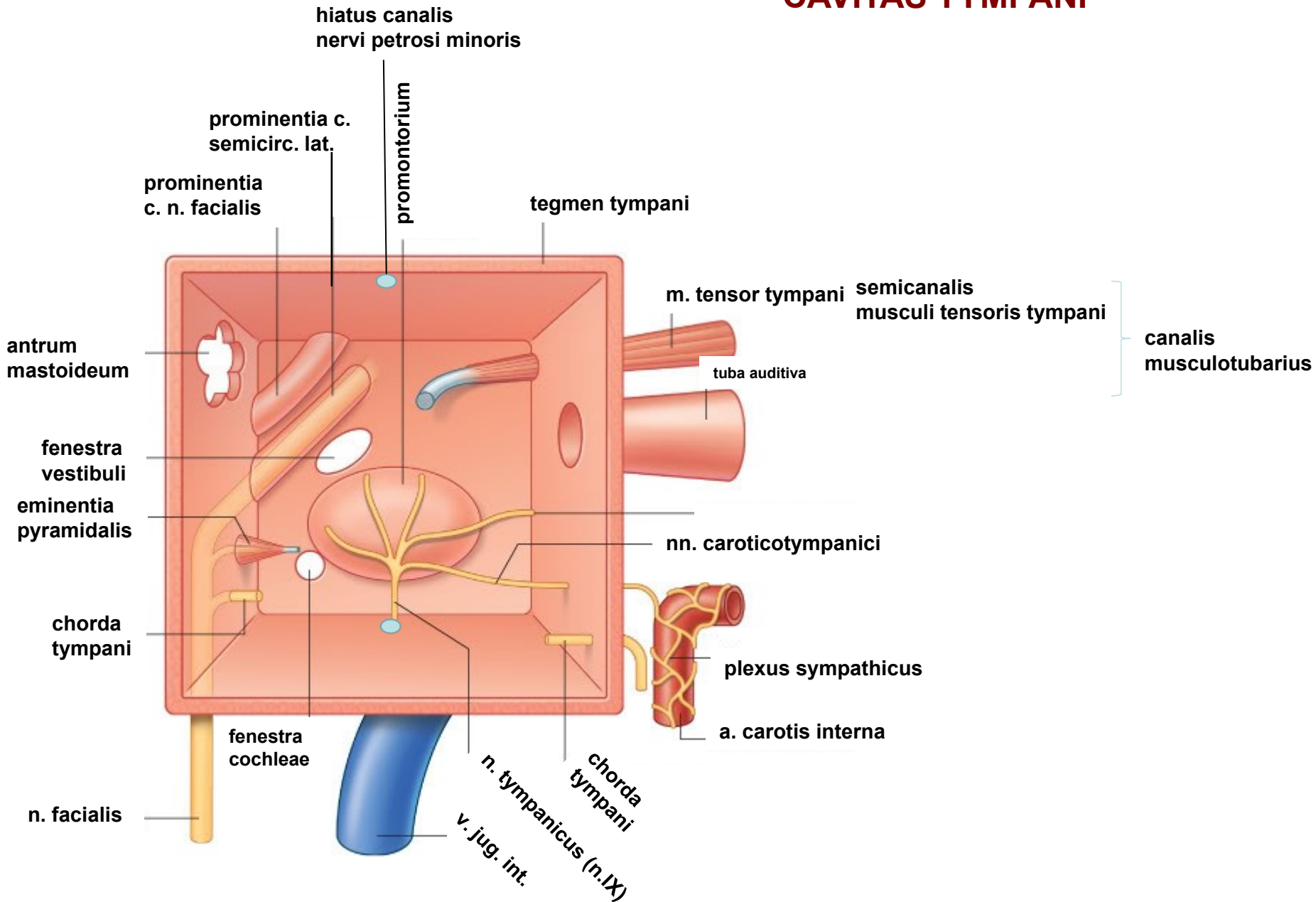
- canaliculi caroticotympanici
- canalis musculotubarius
 - semicanalis musculi tensori tympani*
 - semicanalis tubae auditivae*

paries mastoideus

- antrum mastoideum



CAVITAS TYMPANI



OSSICULA AUDITUS

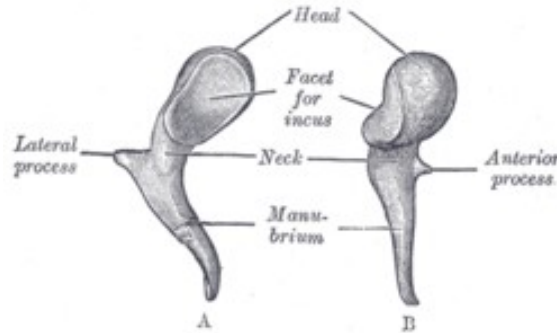
Malleus

Caput mallei

Manubrium mallei

Processus lateralis

Processus anterior



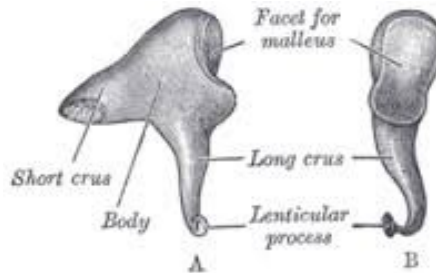
Art. incudomallearis

Incus

Corpus incudis

Crus longum

Crus breve



Art. incudostapedialis

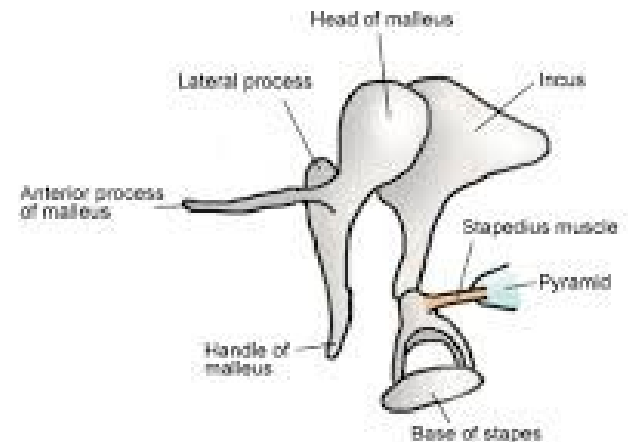
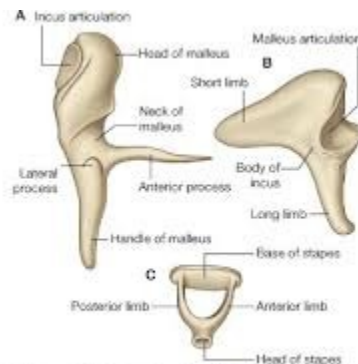
Stapes

Caput stapedis

Crus anterius

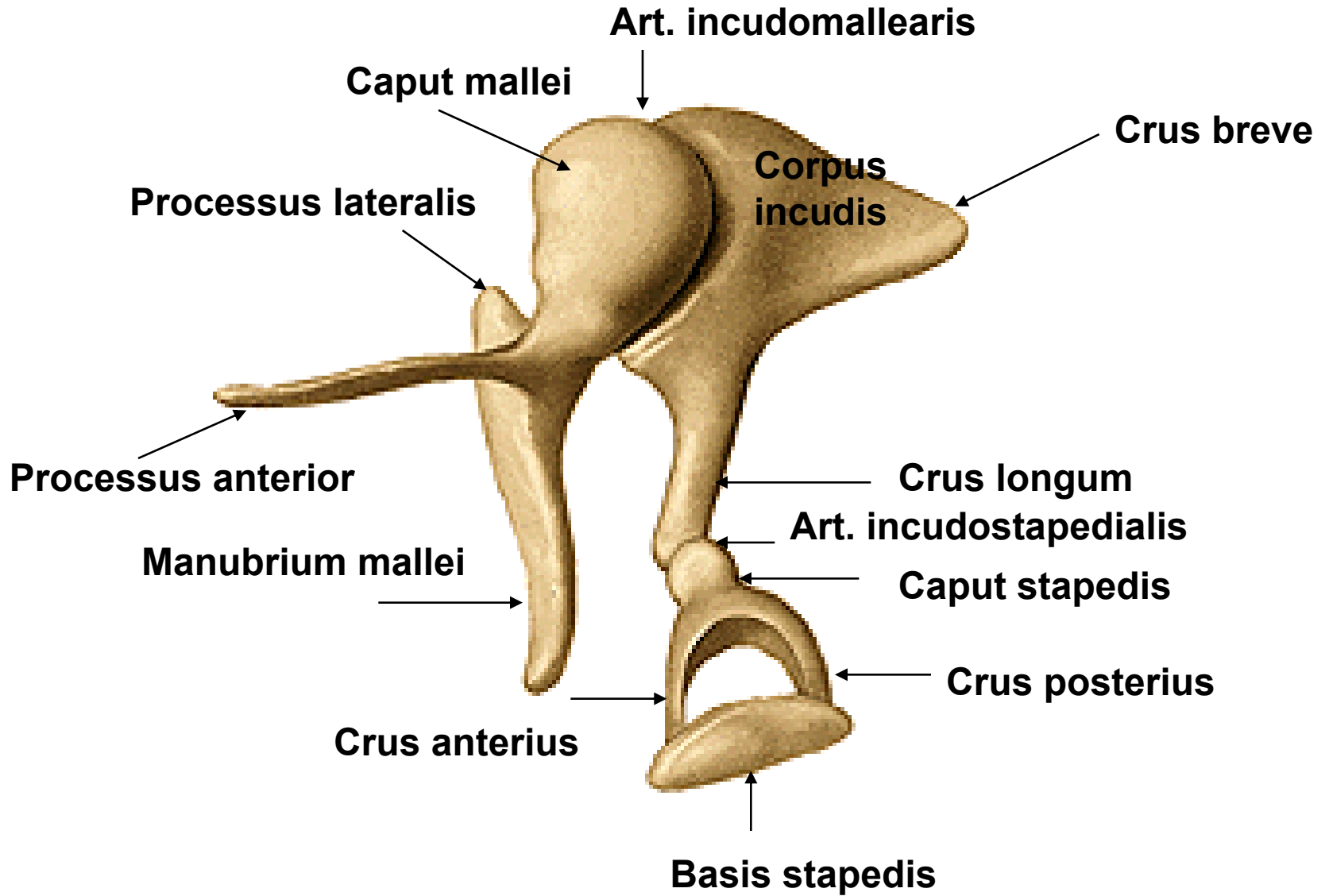
Crus posterius

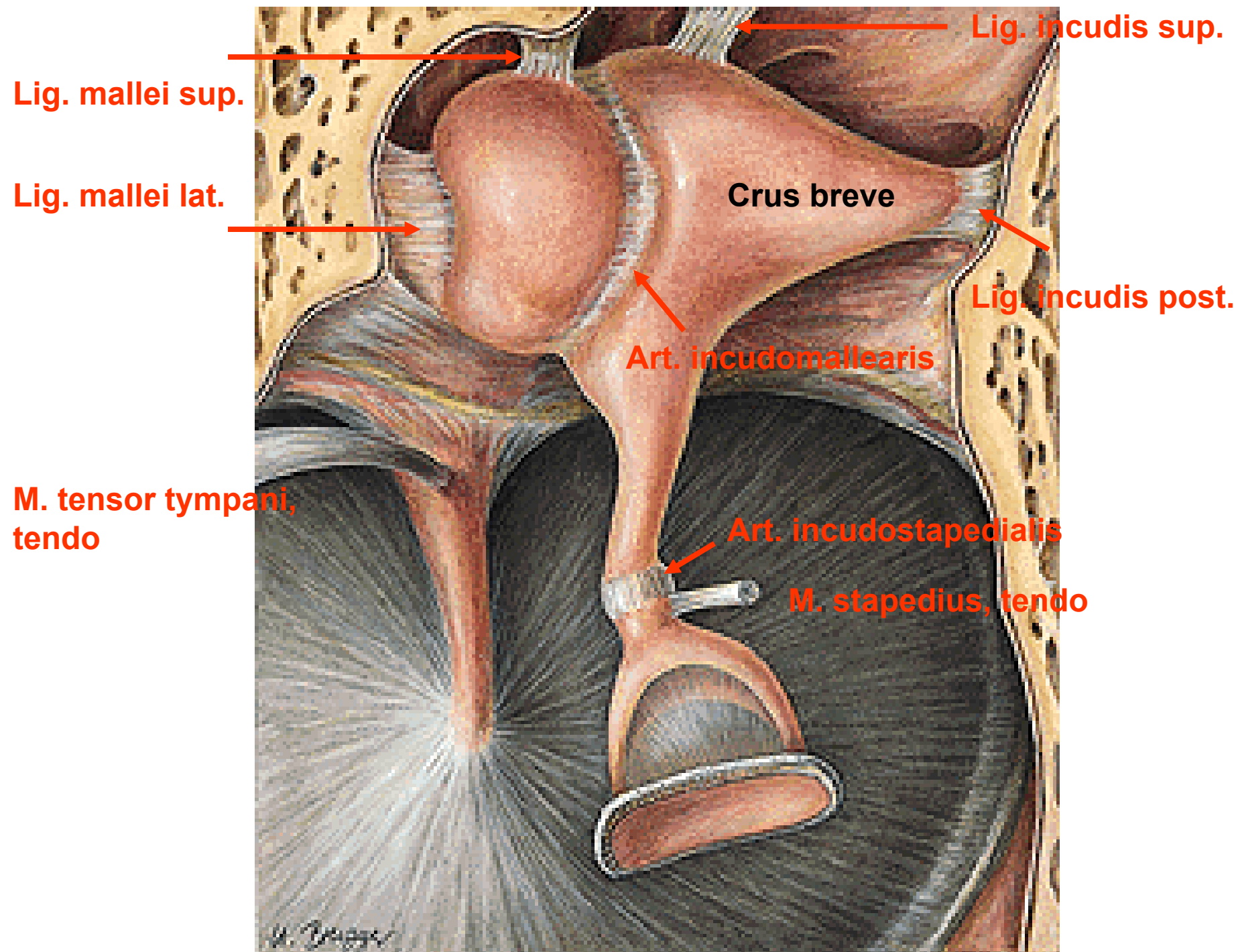
Basis stapedis

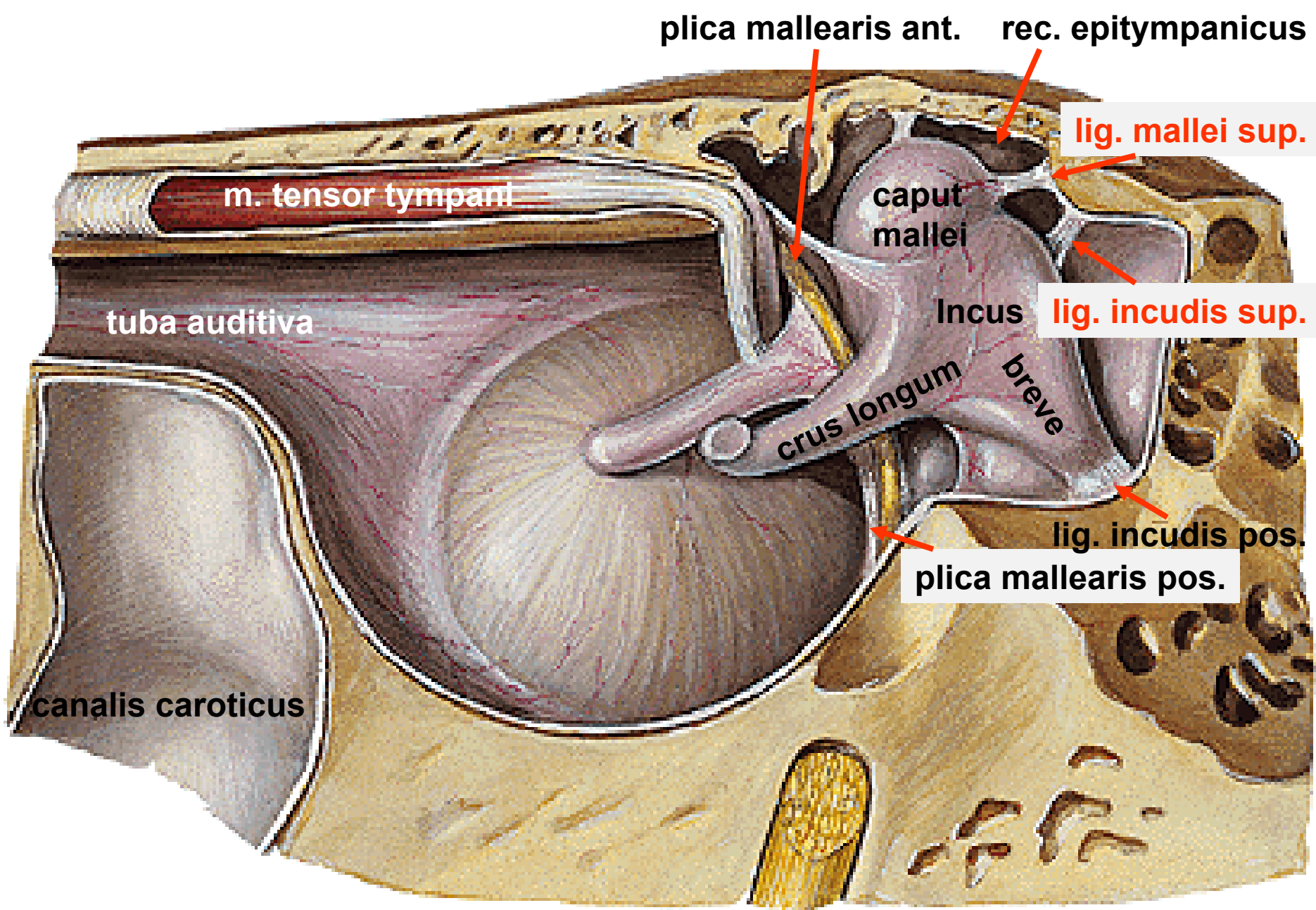


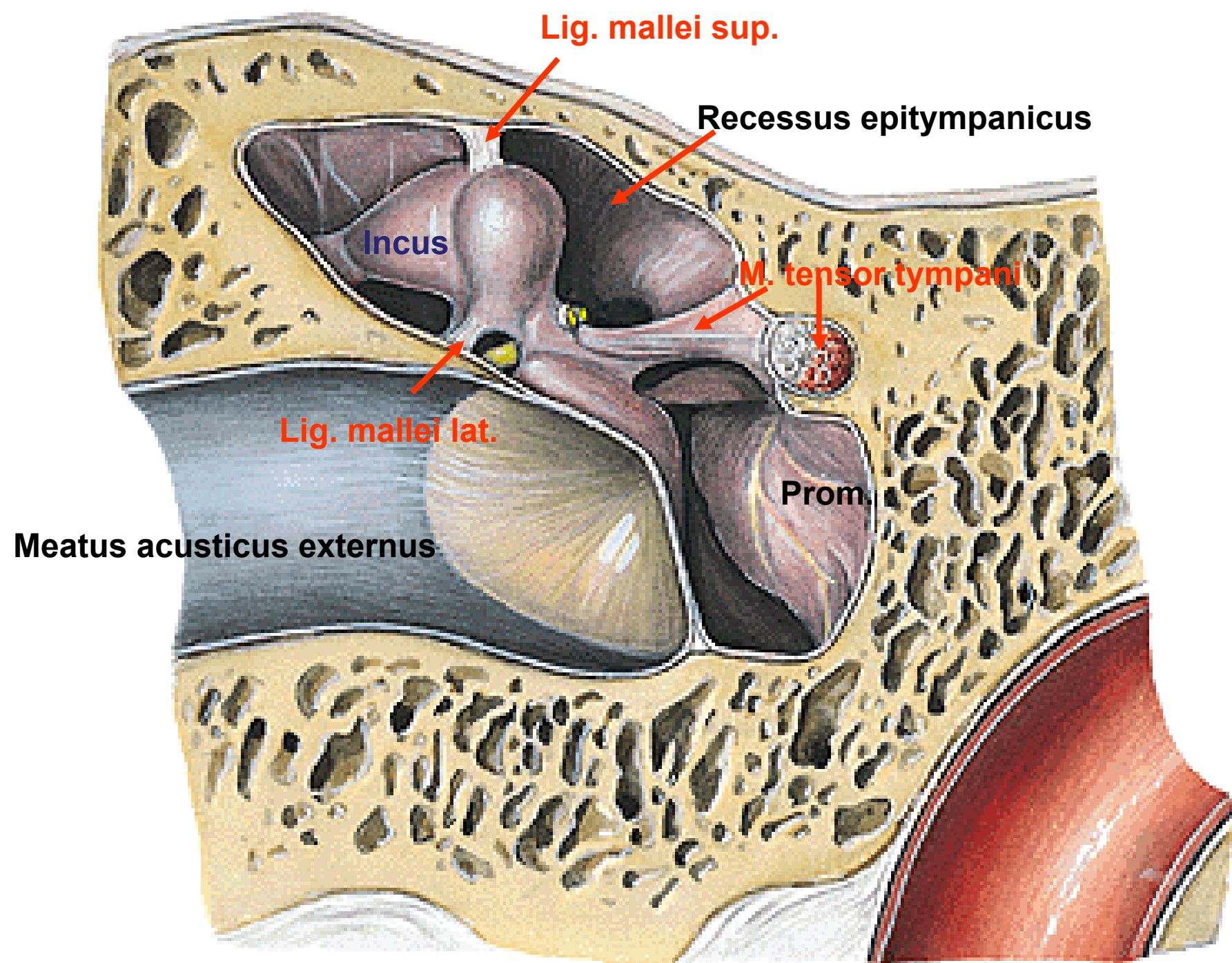
© 2008 St. George's, University of London

OSSICULA AUDITUS









TUBA AUDITIVA, SLUCHOVÁ (EUSTACHOVA) TRUBICE

pars ossea tubae auditivae (10mm)

ostium tympanicum tubae auditivae

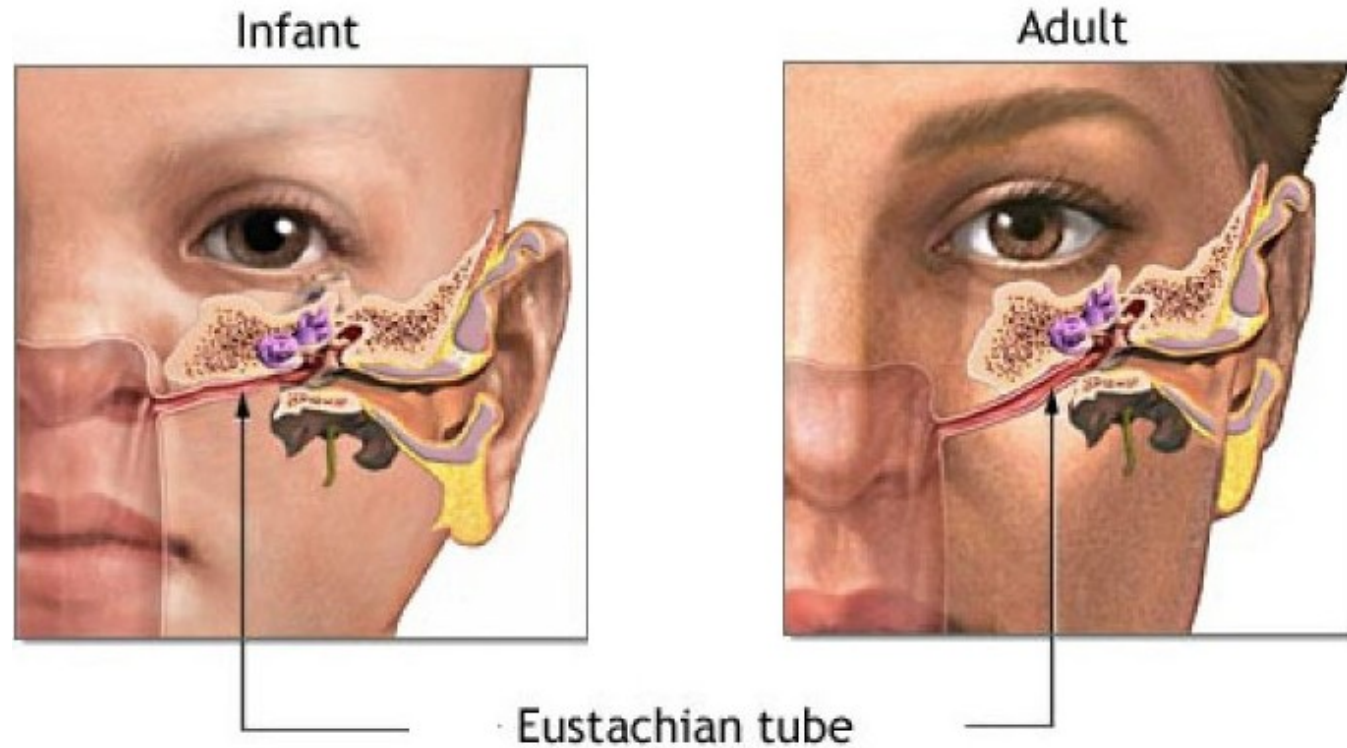
pars cartilaginea tubae auditivae (25 mm)

lamina medialis et lateralis

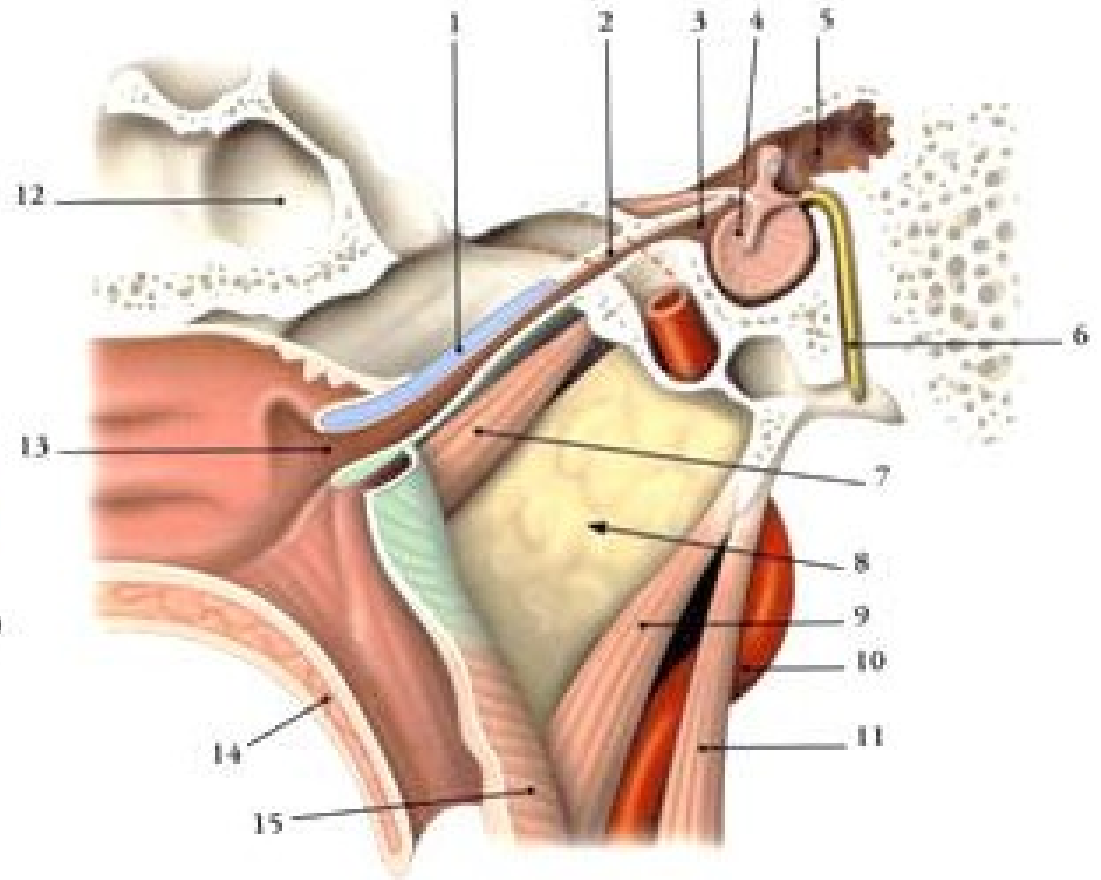
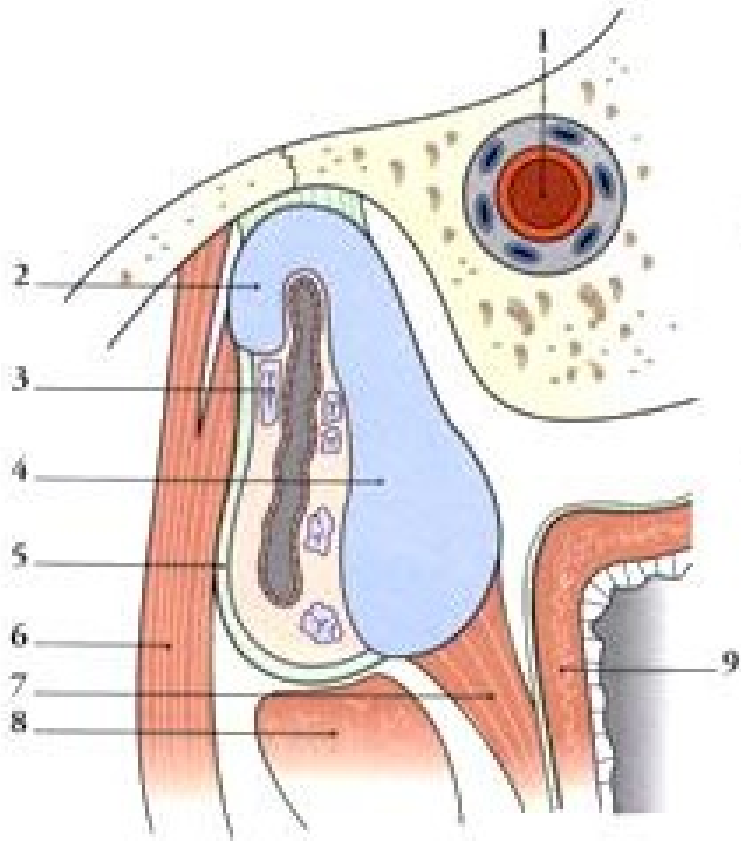
ostium pharyngeum tubae auditivae

torus tubarius

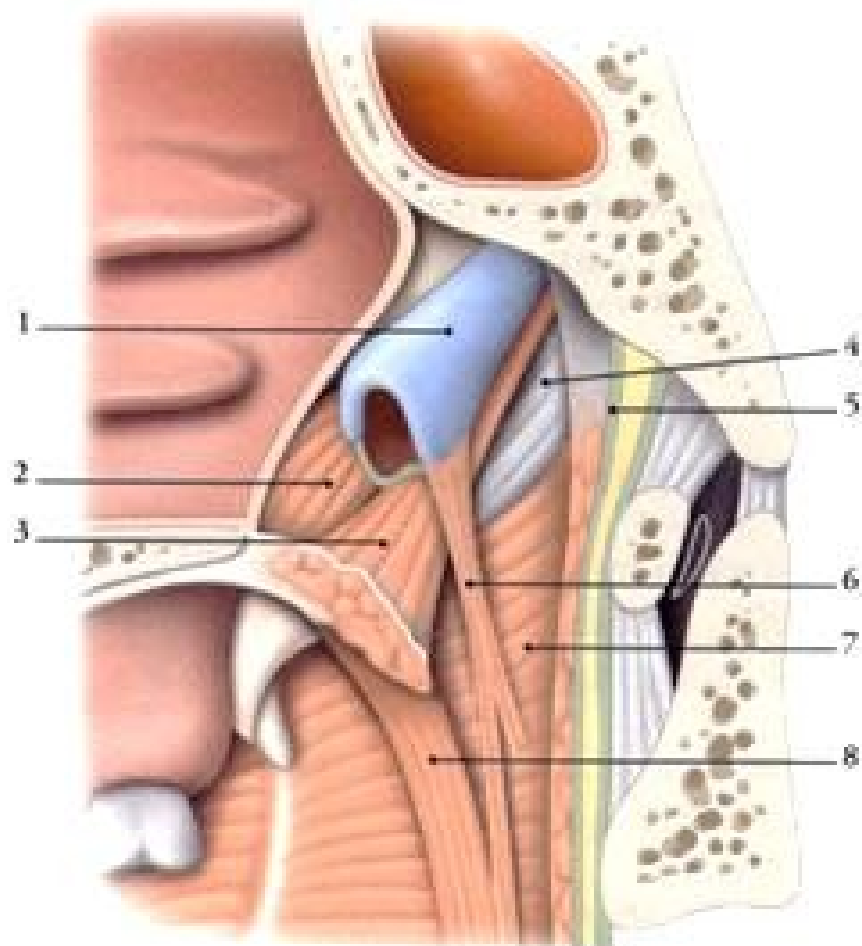
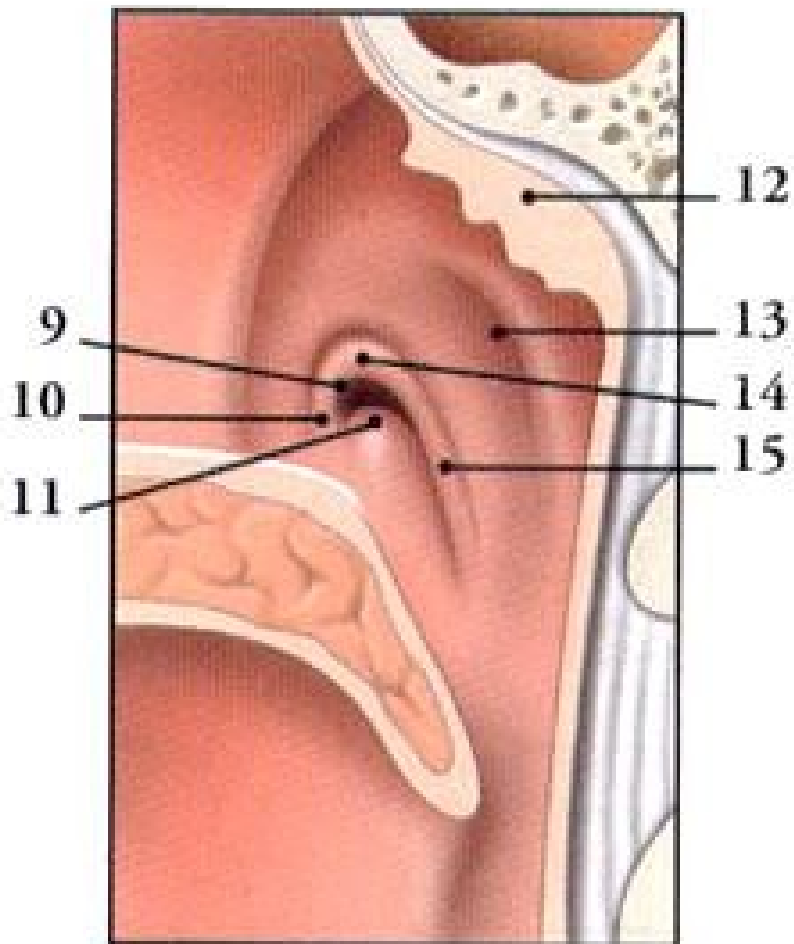
lymfatická tkáň (tonsilla tubaria)



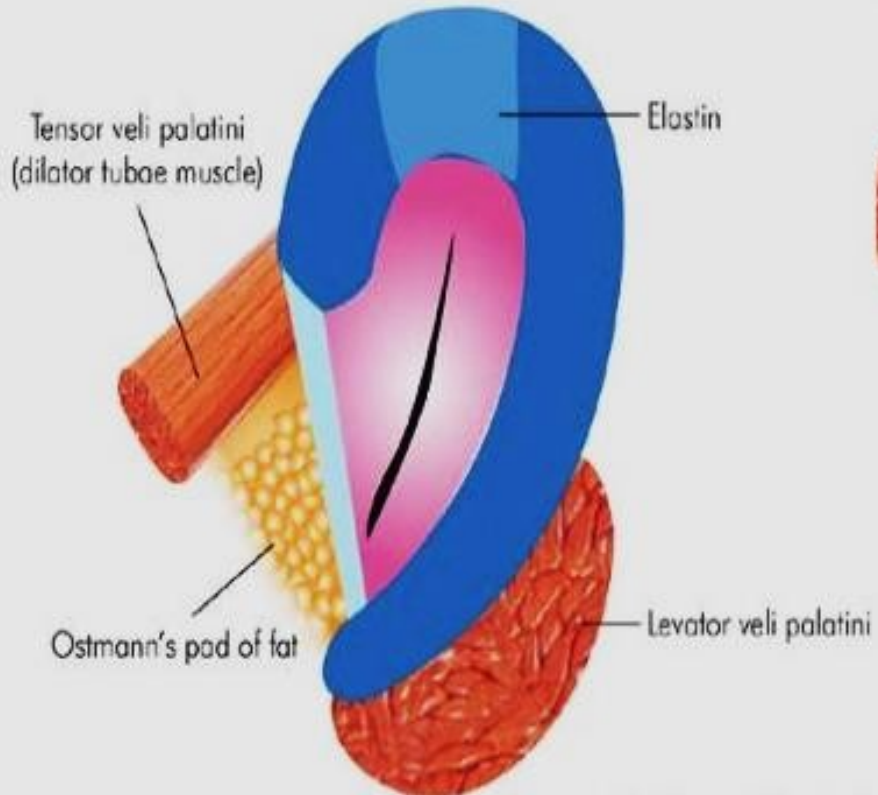
TUBA AUDITIVA, SLUCHOVÁ (EUSTACHOVA) TRUBICE



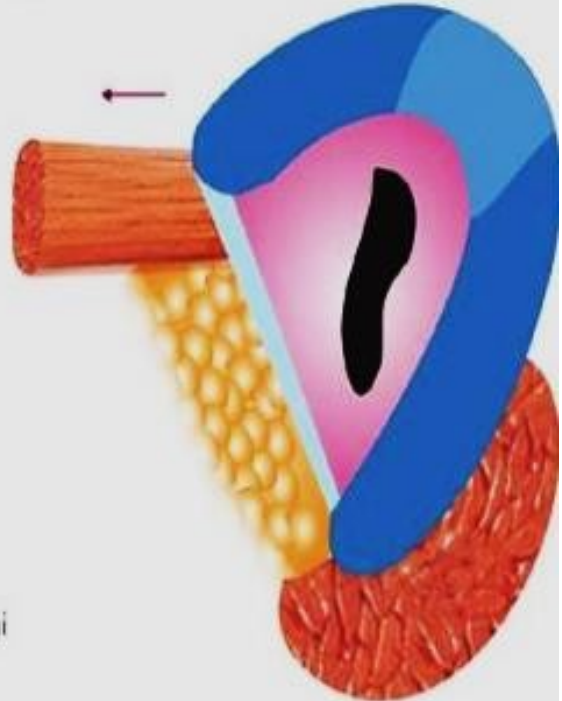
TORUS TUBARIUS, torus levatorius, plica salpingopharyngea



A

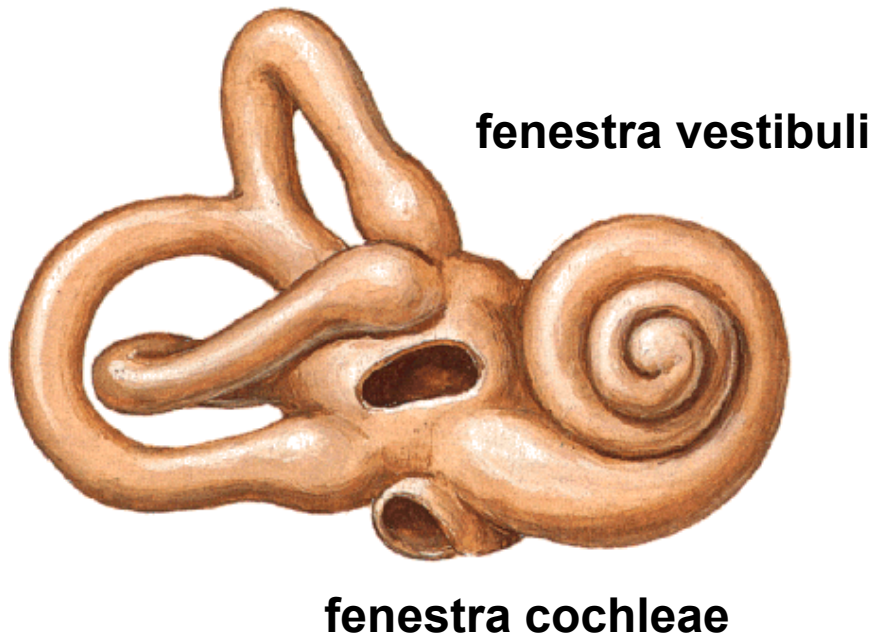


B



AURIS INTERNA - LABYRINTHUS OSSEUS

Right Osseous Labyrinth
Anterolateral View



- vestibulum

-canales semicirculares ossei

anterior

posterior

crus communae
ampulla ossea

lateralis

crus simplex

- cochlea

COCHLEA (KOSTĚNÝ HLEMÝŽŤ)

modiolus

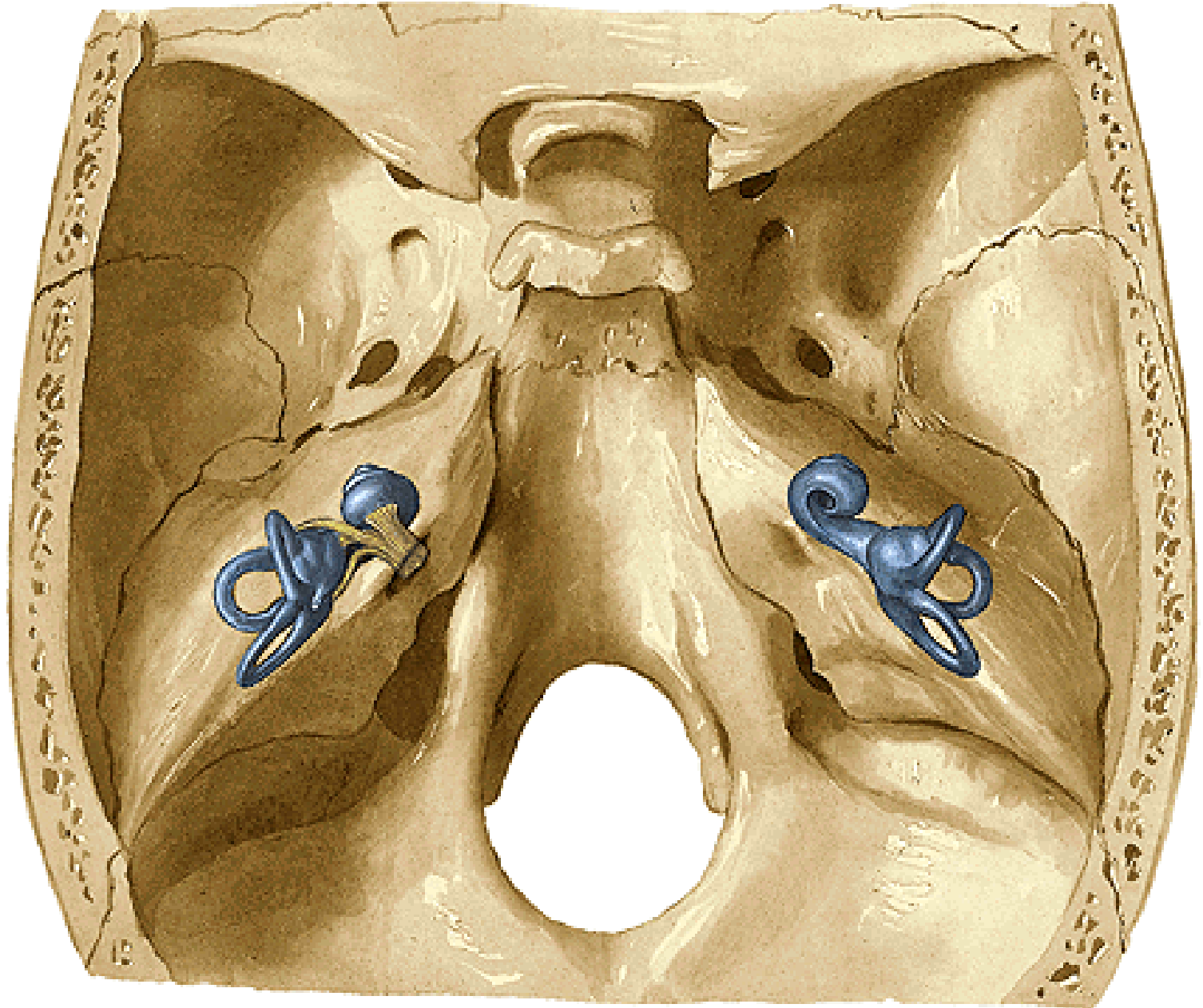
lamina spiralis ossea

canalis spiralis osseus

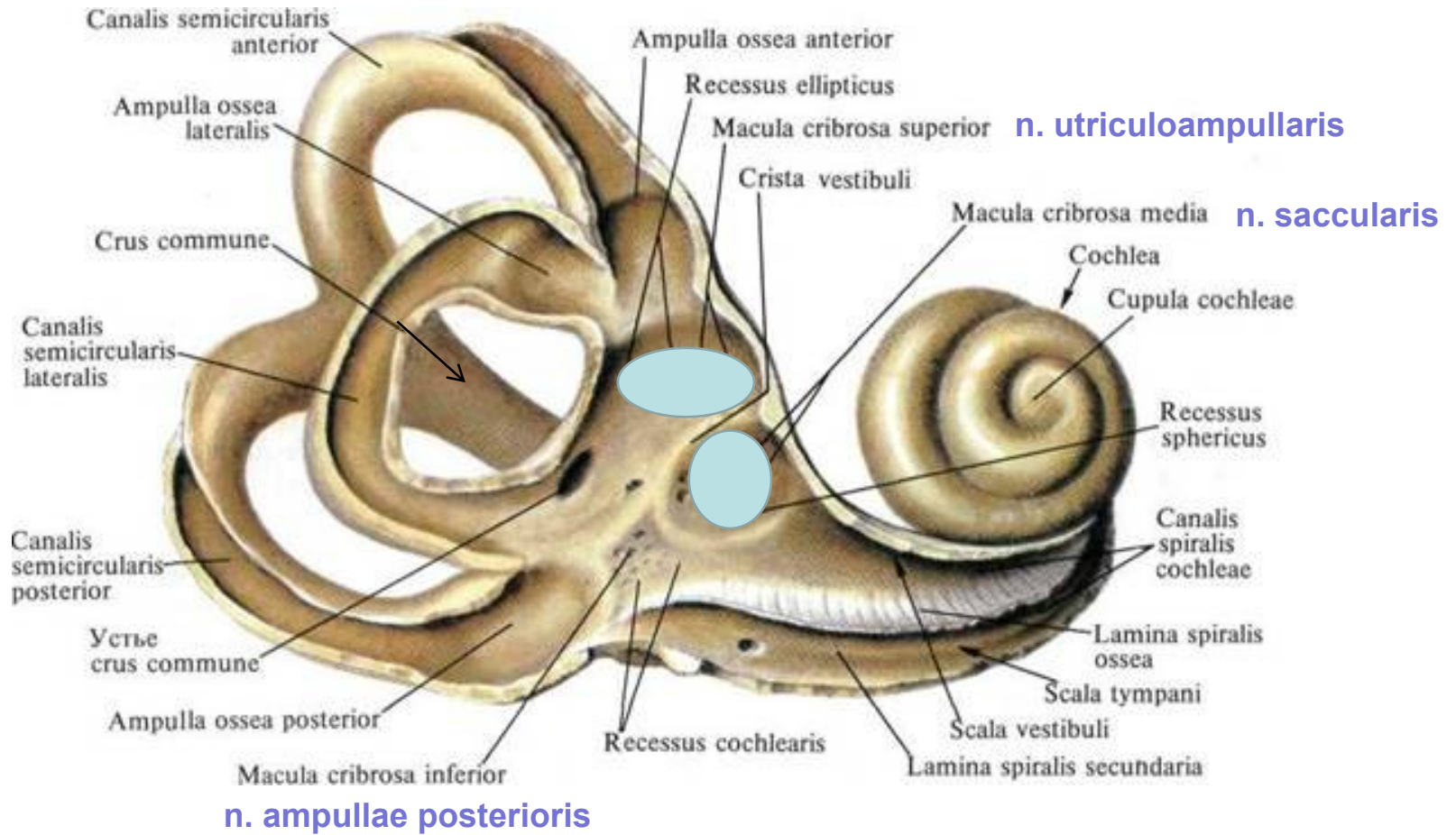
canales longitudinales

tractus spiralis foraminosus

AURIS INTERNA



VESTIBULUM



LABYRINTHUS MEMBRANACEUS

labyrinthus vestibularis

- utriculus et sacculus
- d. utriculosaccularis → d. endolymphaticus (aqueductus vestibuli) → saccus endolymph.
- ductus semicirculares

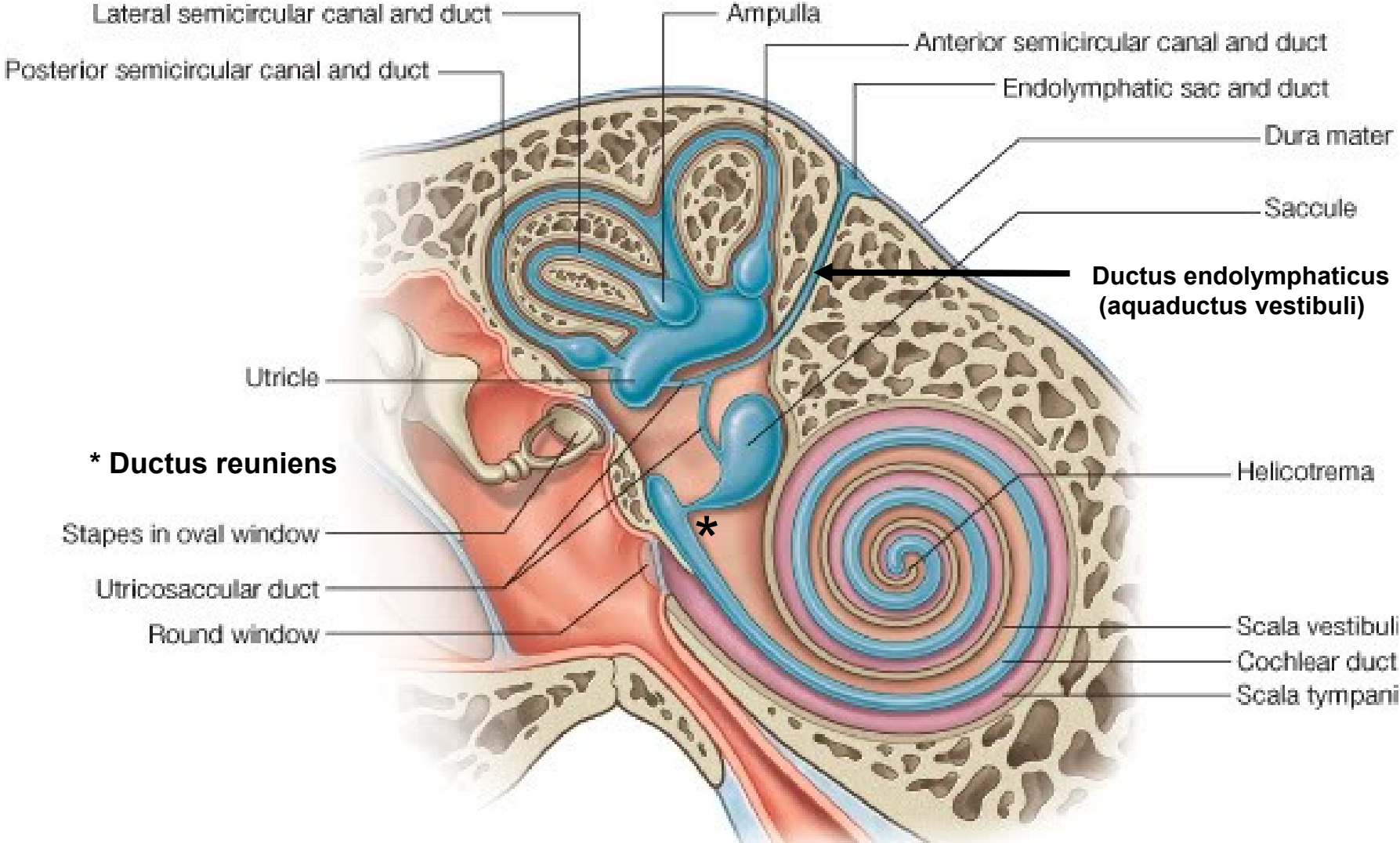
macula statica utriculi et sacculi
cristae ampullares

labyrinthus cochlearis

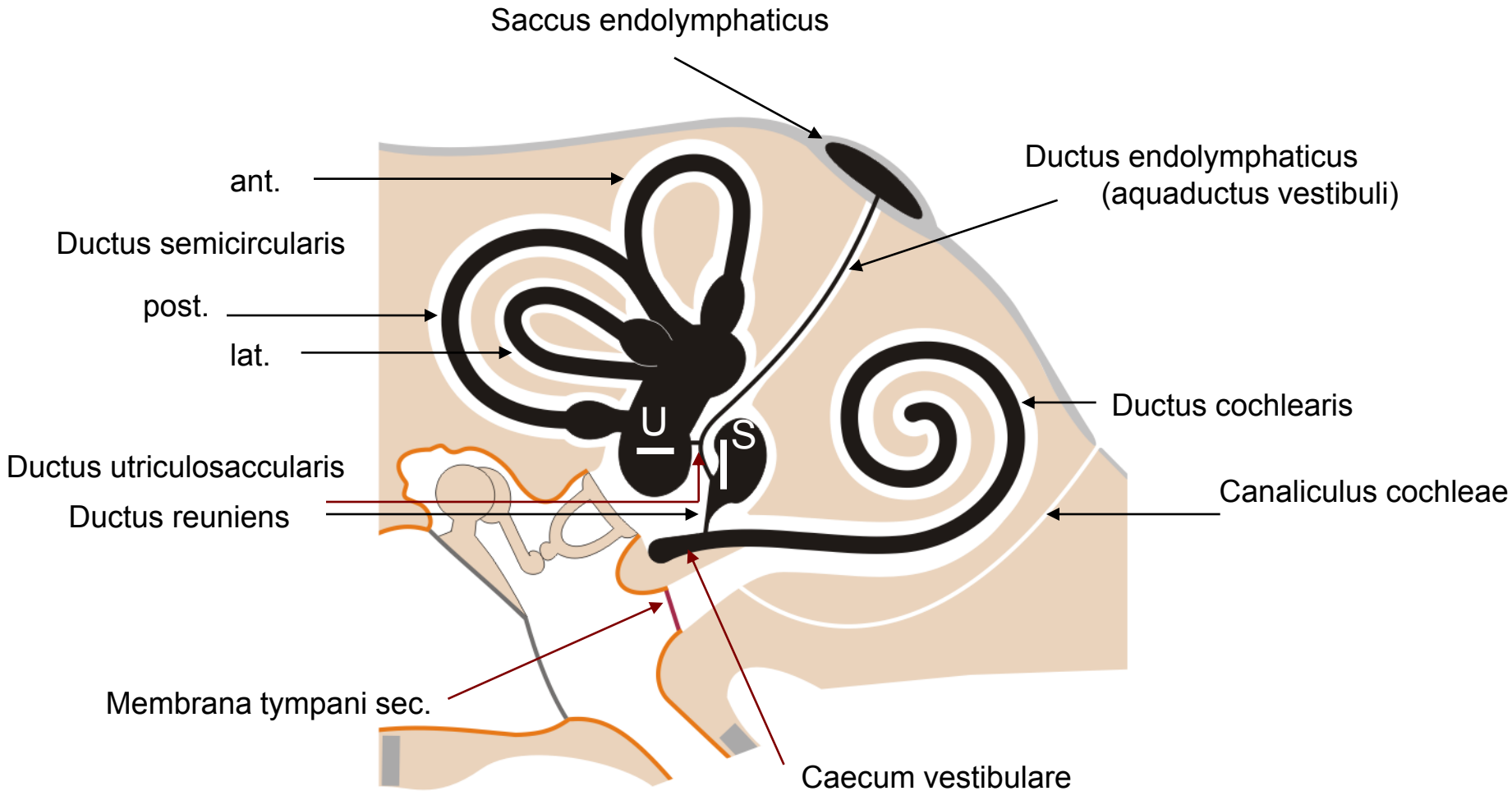
- ductus cochlearis *lamina basilaris*
 membrana vestibularis Reissneri
 stěna kostěného kanálku

organum spirale Corti *membrana tectoria*

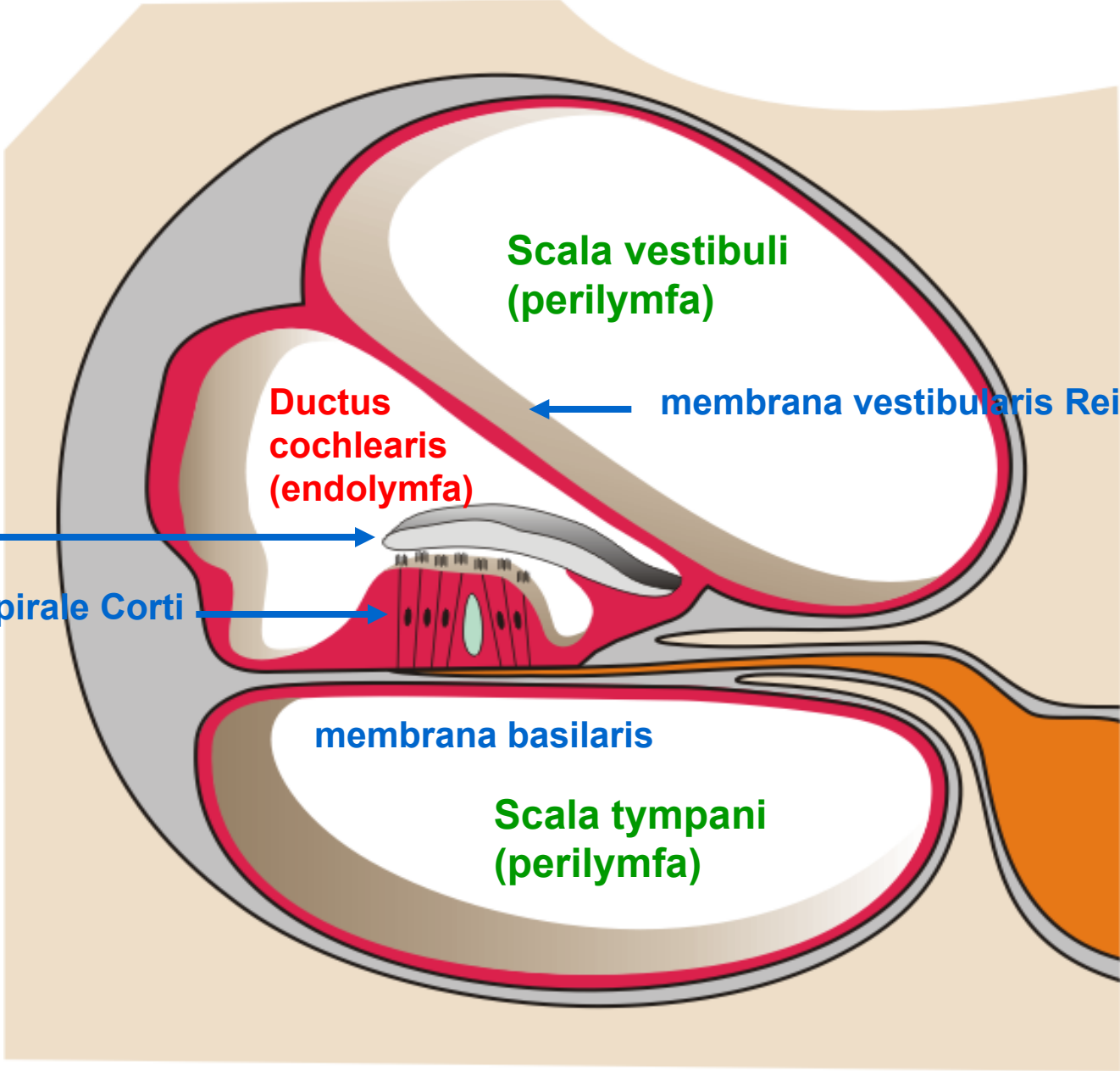
LABYRINTHUS MEMBRANACEUS



LABYRINTHUS MEMBRANACEUS



DUCTUS COCHLEARIS



Scala vestibuli
(perilymfa)

Ductus
cochlearis
(endolymfa)

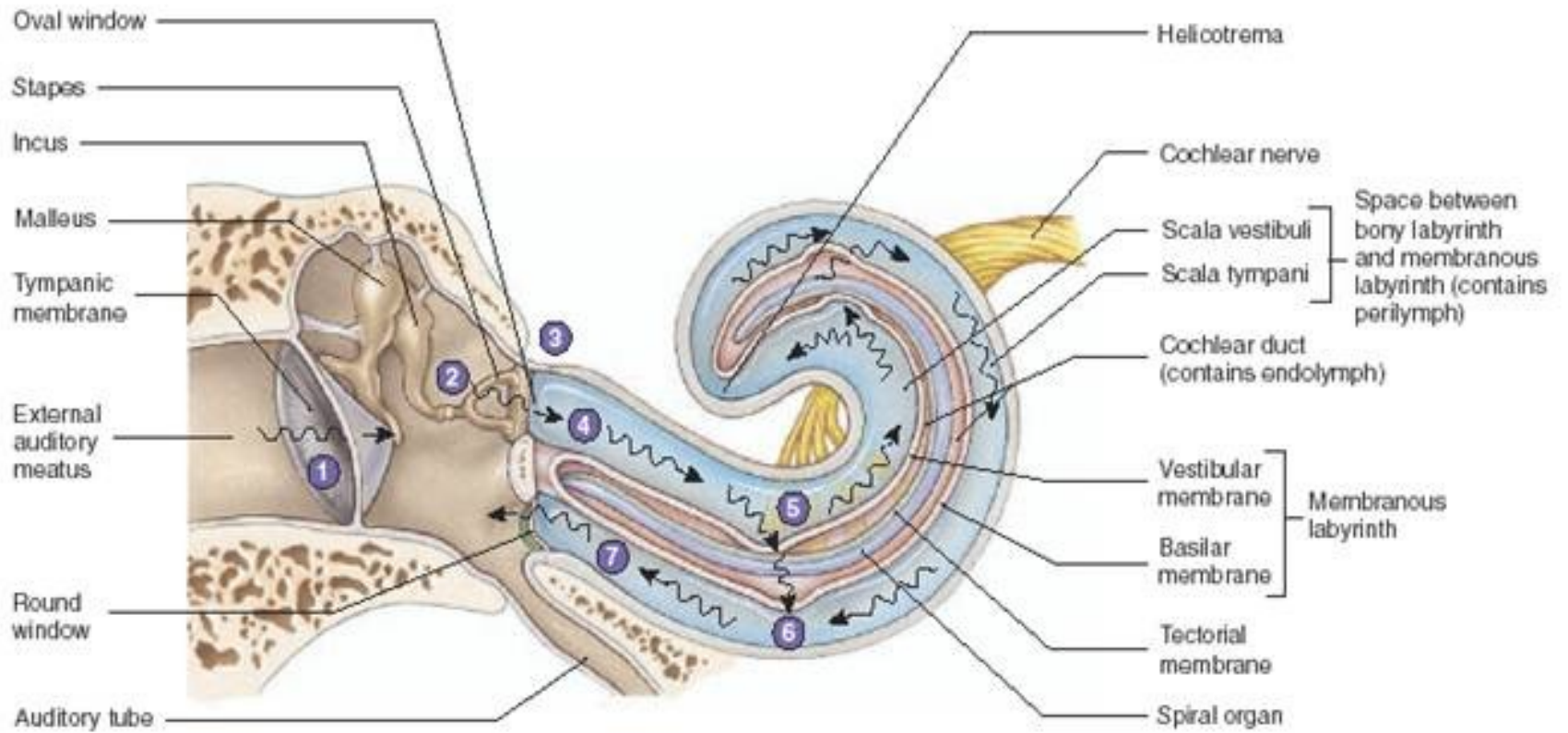
membrana vestibularis Reissneri

membrana
tectoria

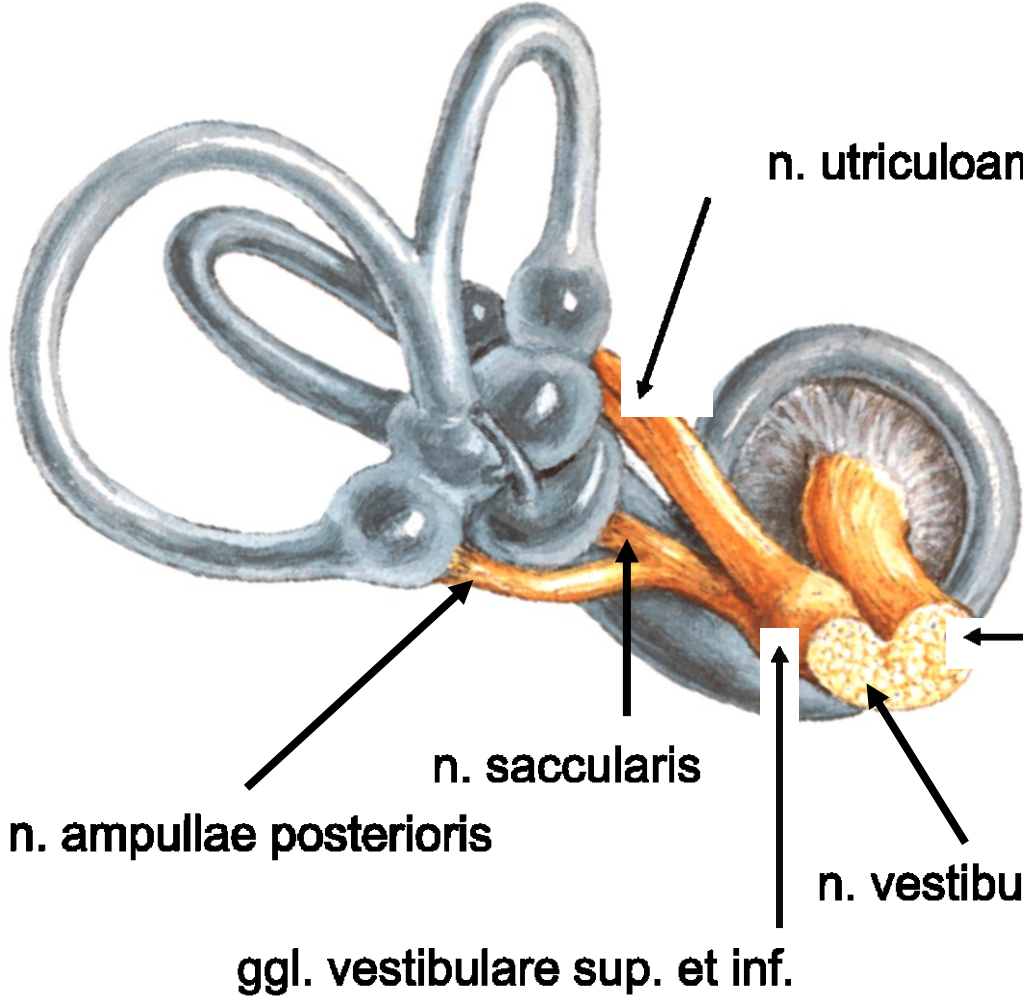
organum spirale Corti

membrana basilaris

Scala tympani
(perilymfa)



LEARIS



n. utriculoampullaris

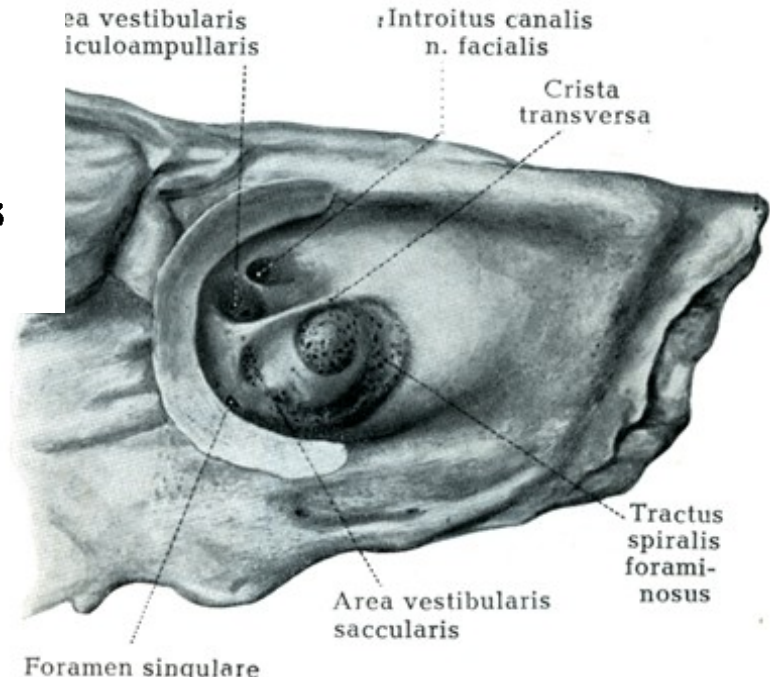
n. cochlearis

n. saccularis

n. ampullae posterioris

n. vestibularis

ggl. vestibulare sup. et inf.



Area vestibularis utriculoampullaris

Introitus canalis n. facialis

Crista transversa

Tractus spiralis foraminosus

Area vestibularis saccularis

Foramen singulare