



Nervová tkáň

- Neurony

- Gliové buňky

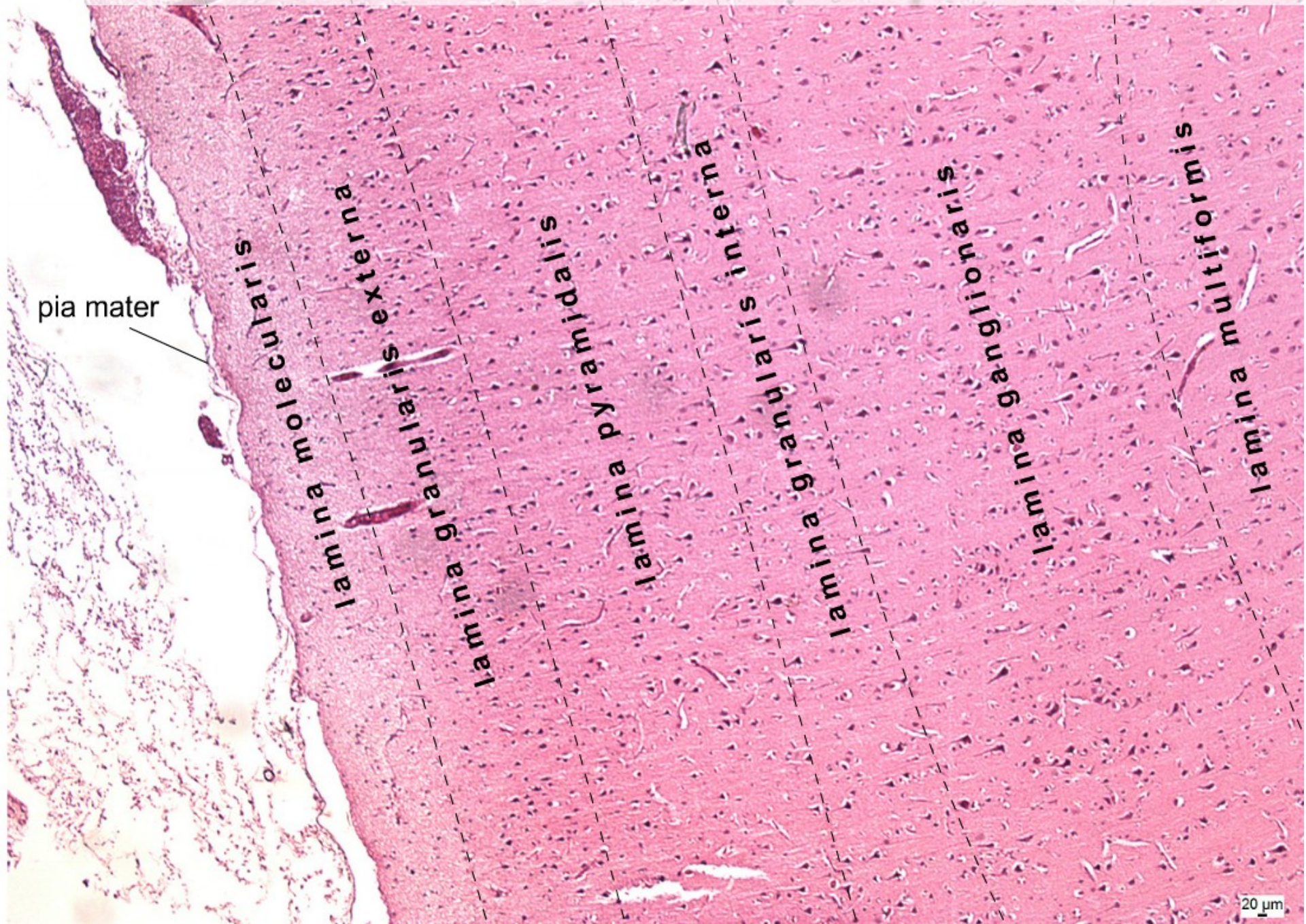
CNS: oligodendrocyty, astrocyty,
ependymové buňky, mikroglie

PNS: satelitové (plášťové) buňky,
Schwannovy buňky

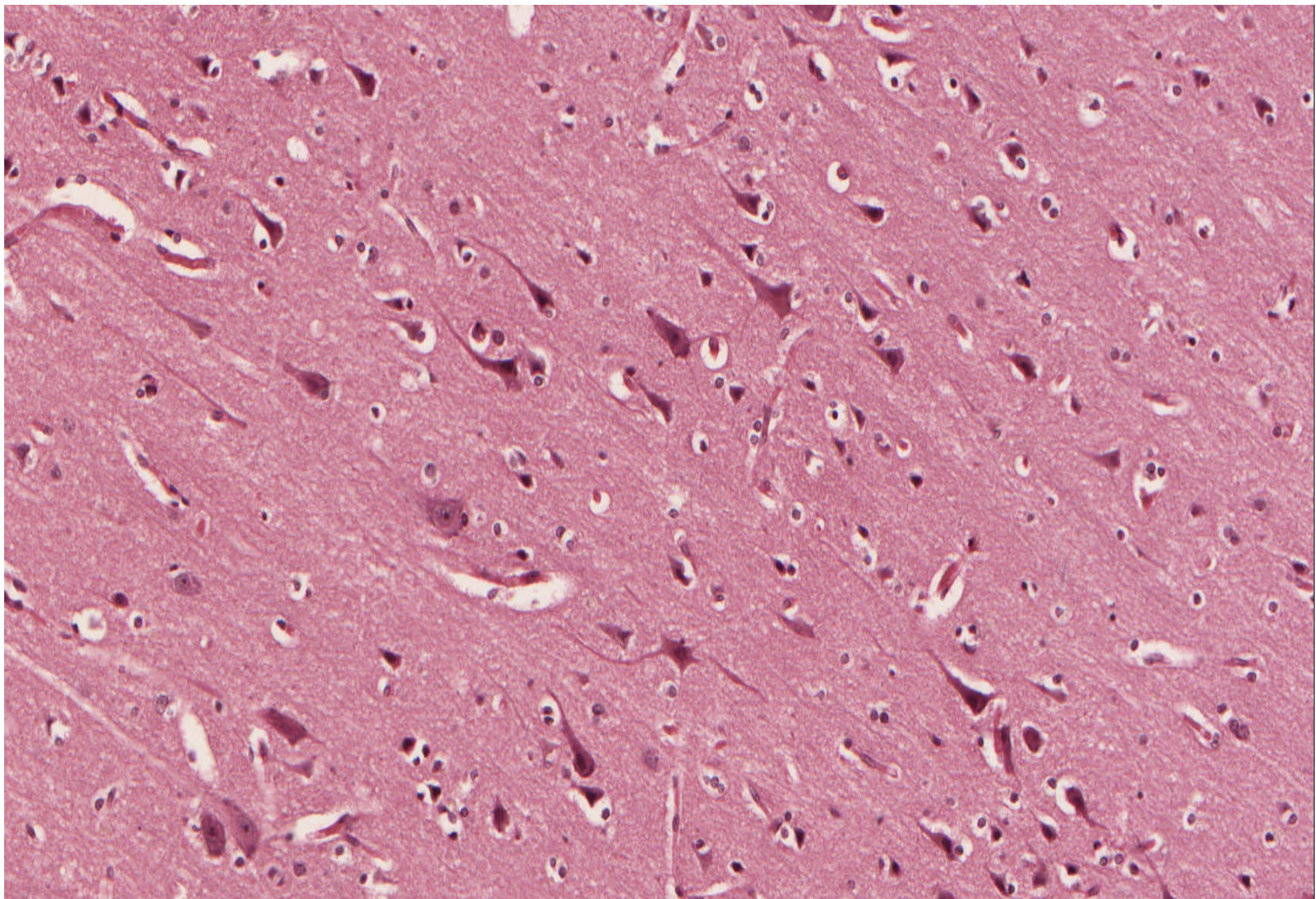
Synapse

Myelinizace

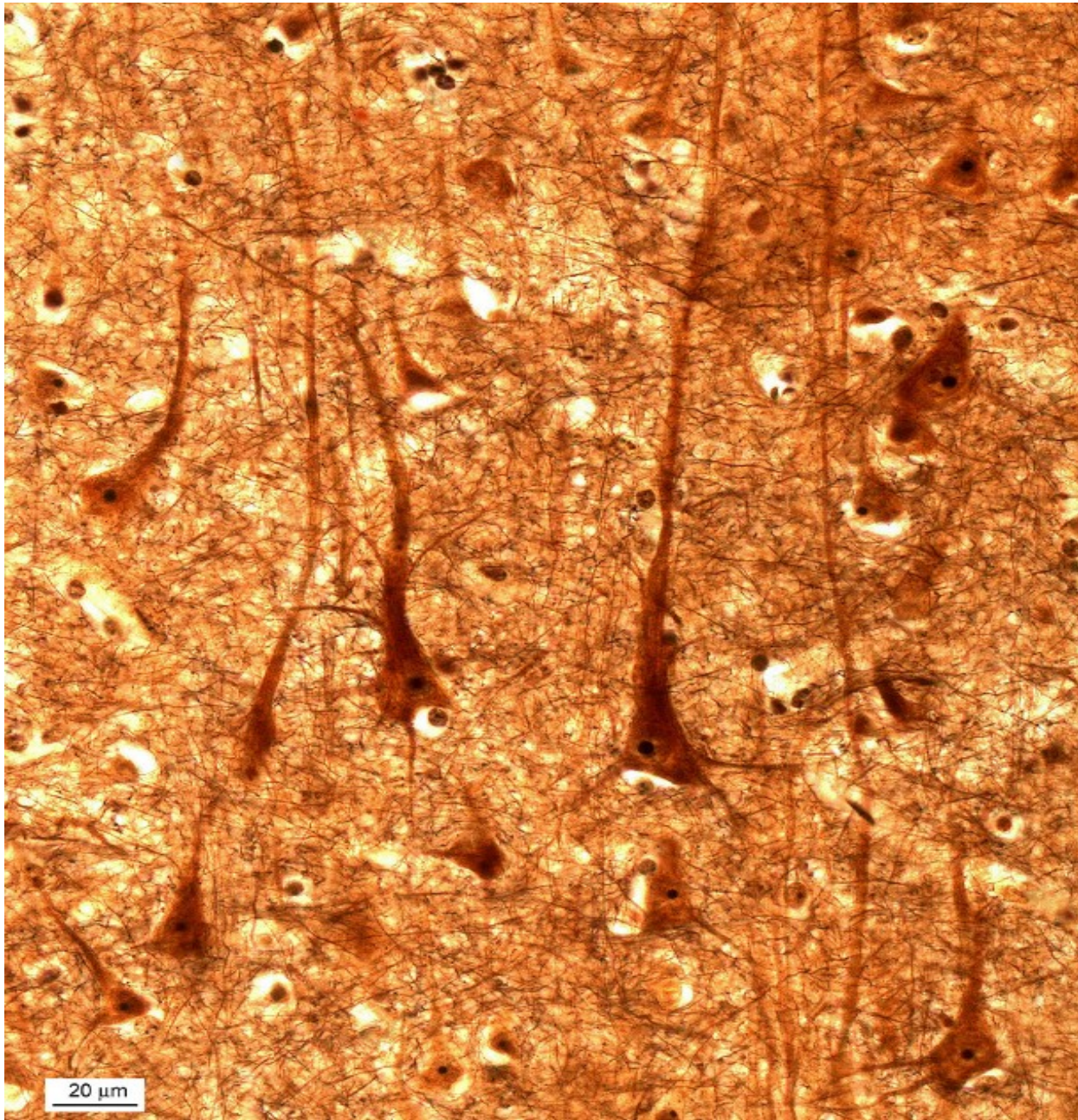
Cortex cerebri – přehled, (HE), objektiv 5×



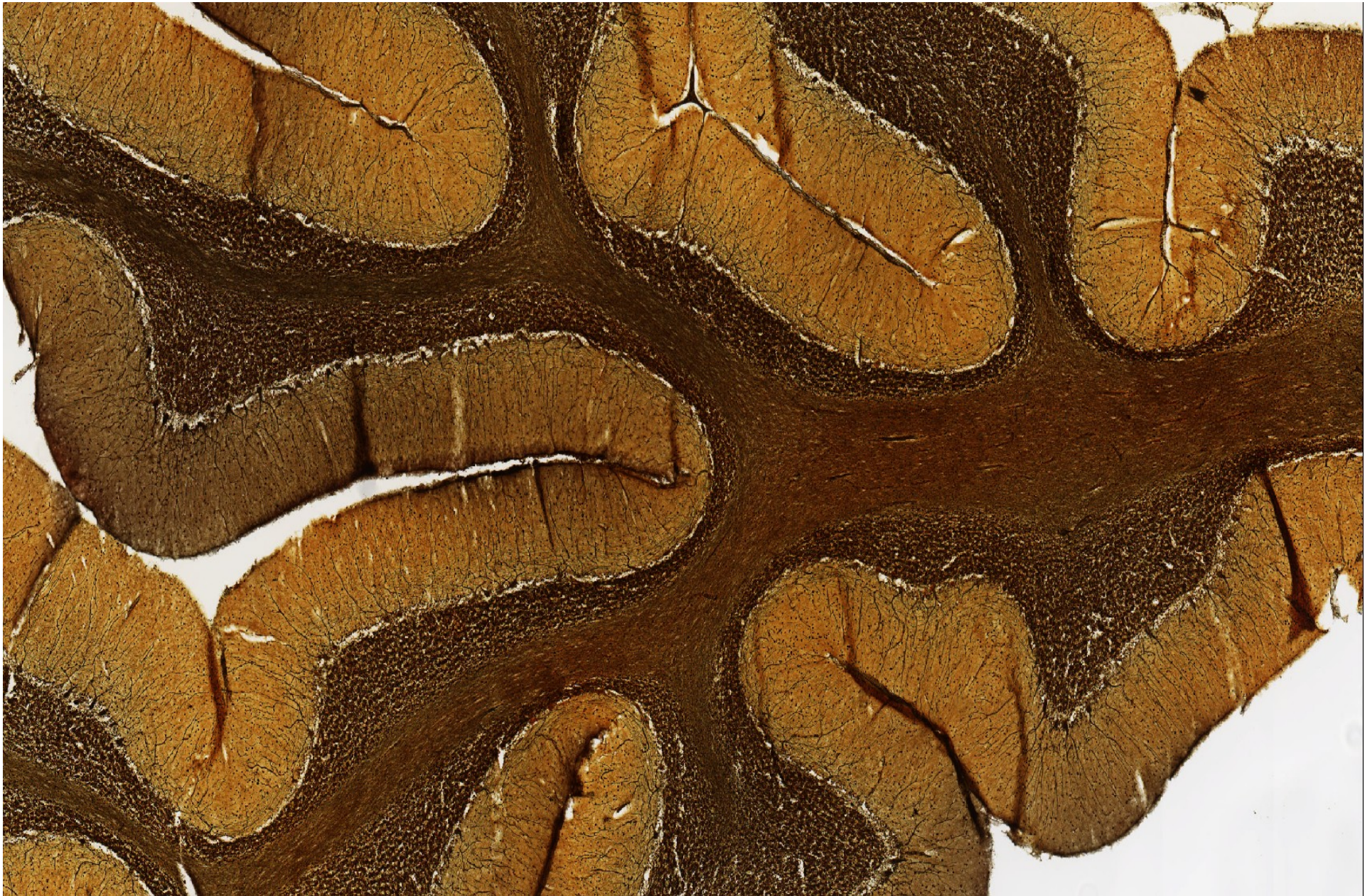
Cortex cerebri – Pyramidové buňky – multipolární neurony



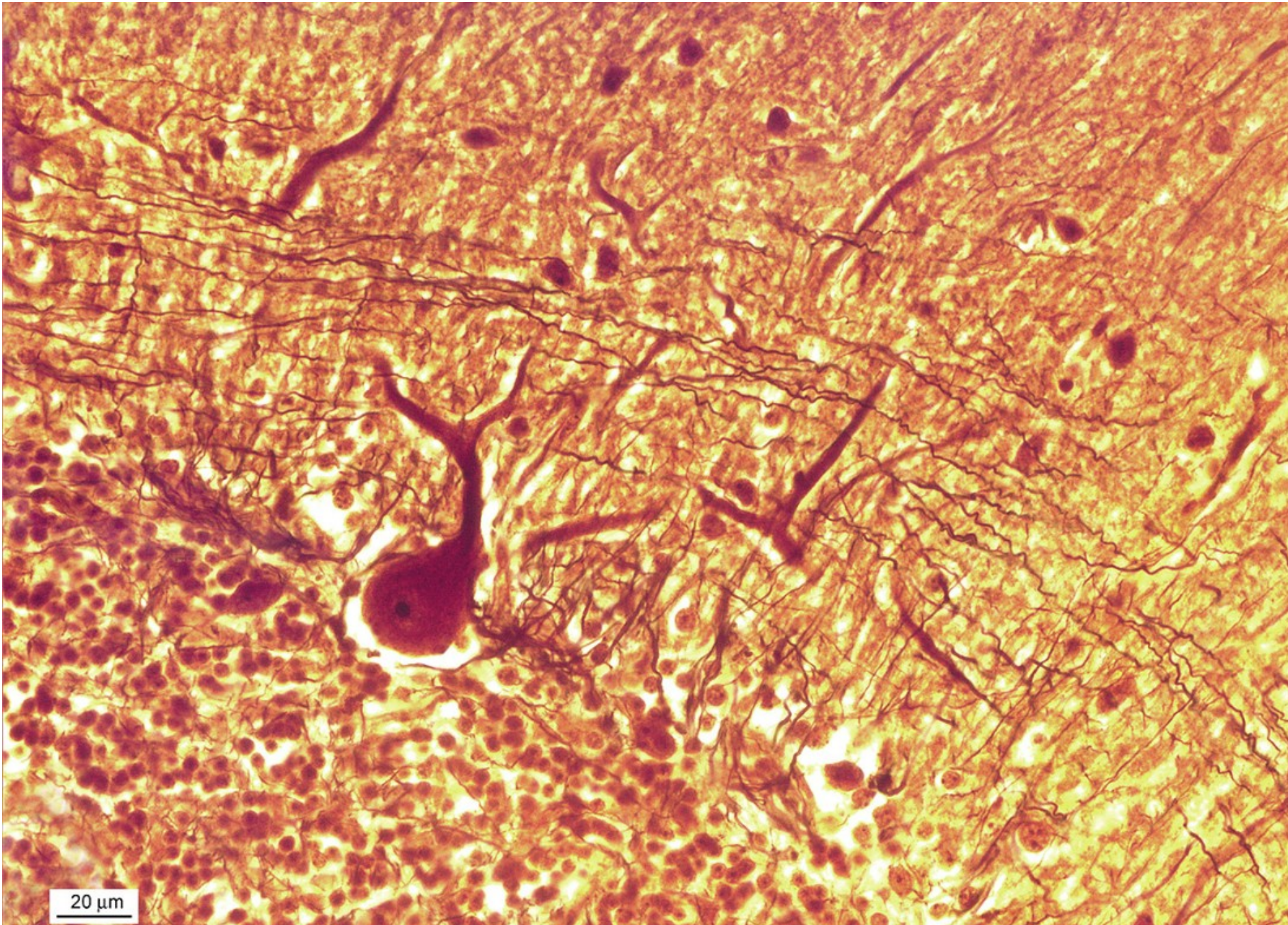
Cortex cerebri – Pyramidové buňky – multipolární neurony



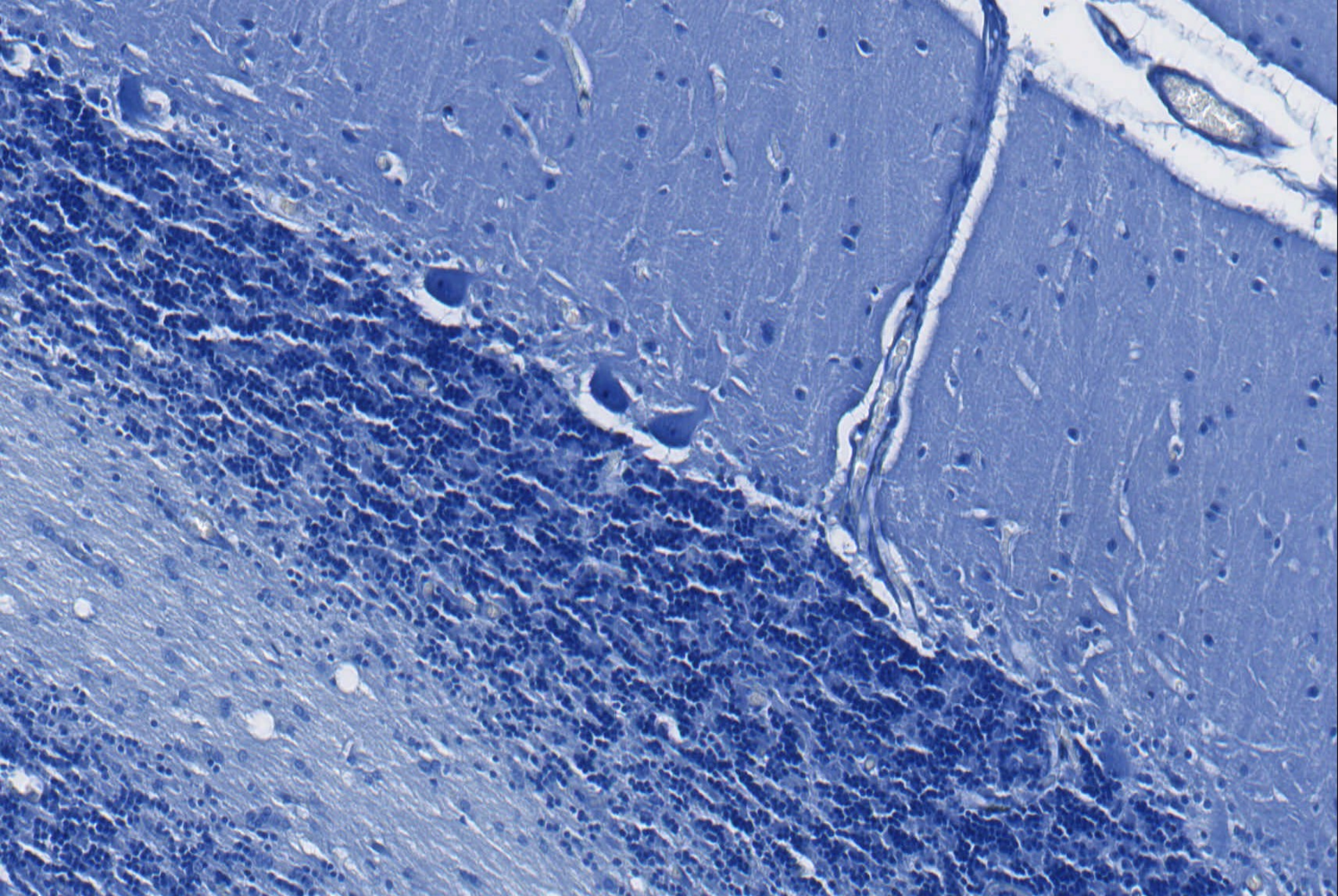
Cerebellum



Cerebellum - Purkyňova buňka



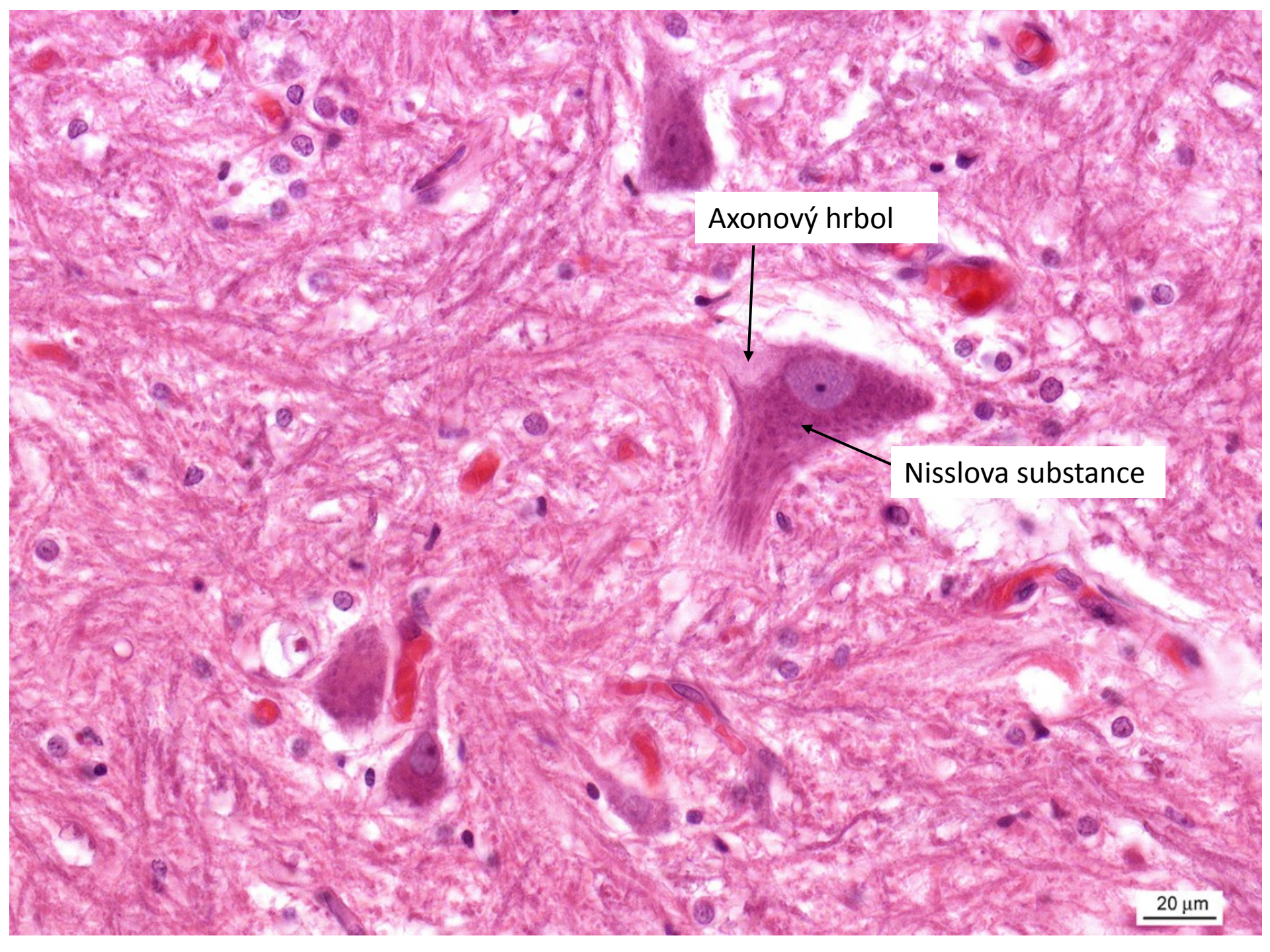
Cerebellum - Nisslova substance



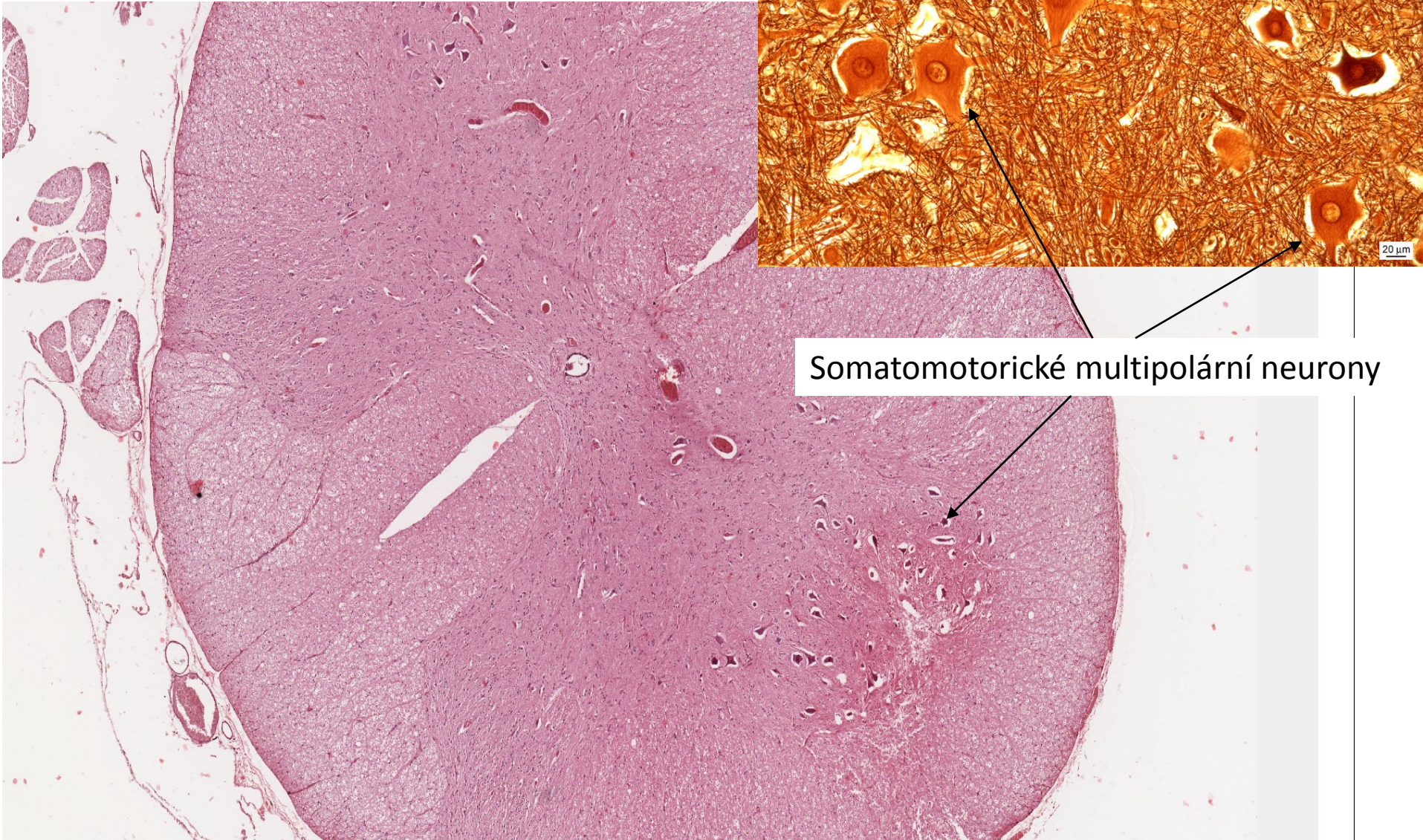
Axonový hrbol

Nisslova substance

20 μm



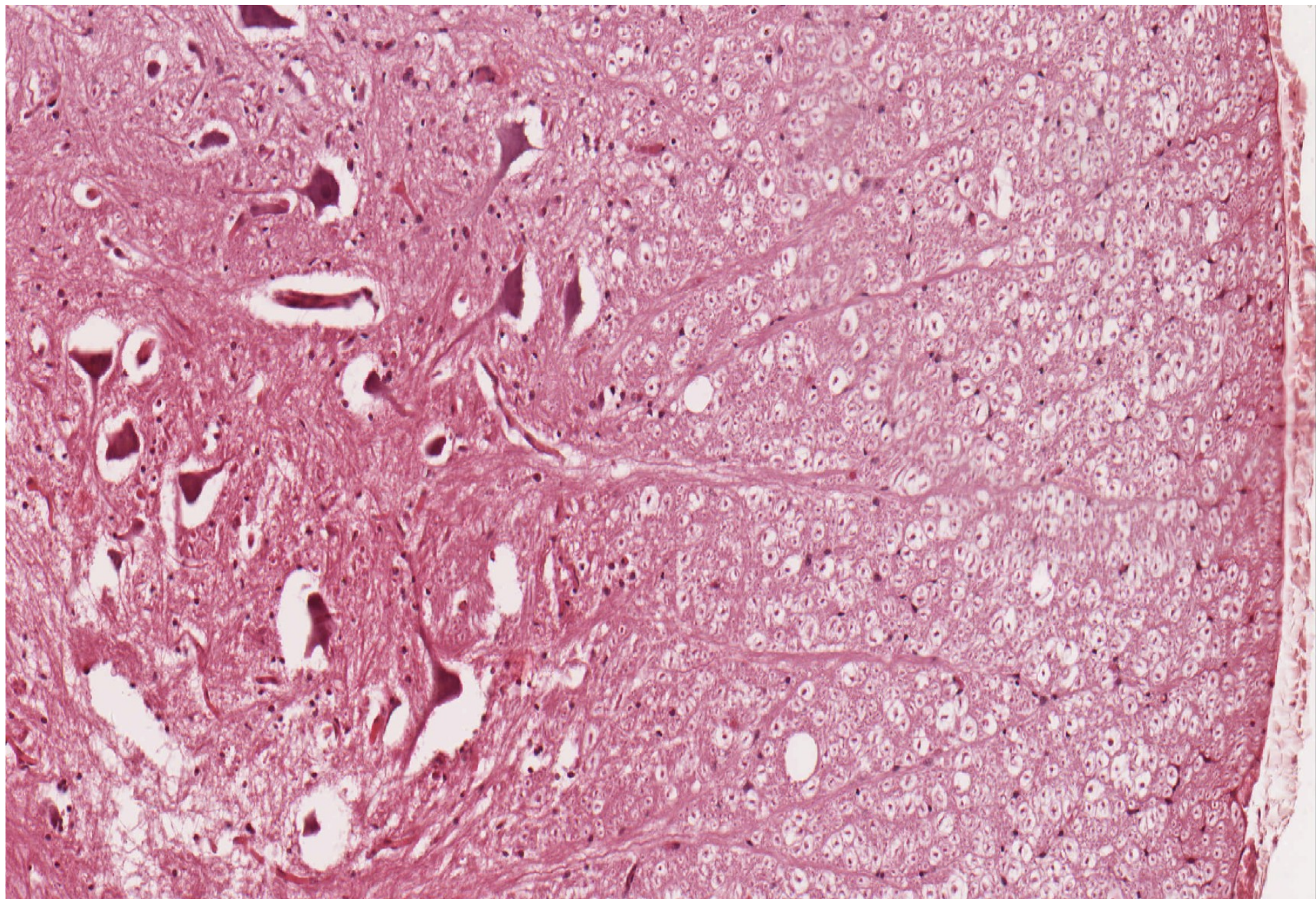
Medulla spinalis



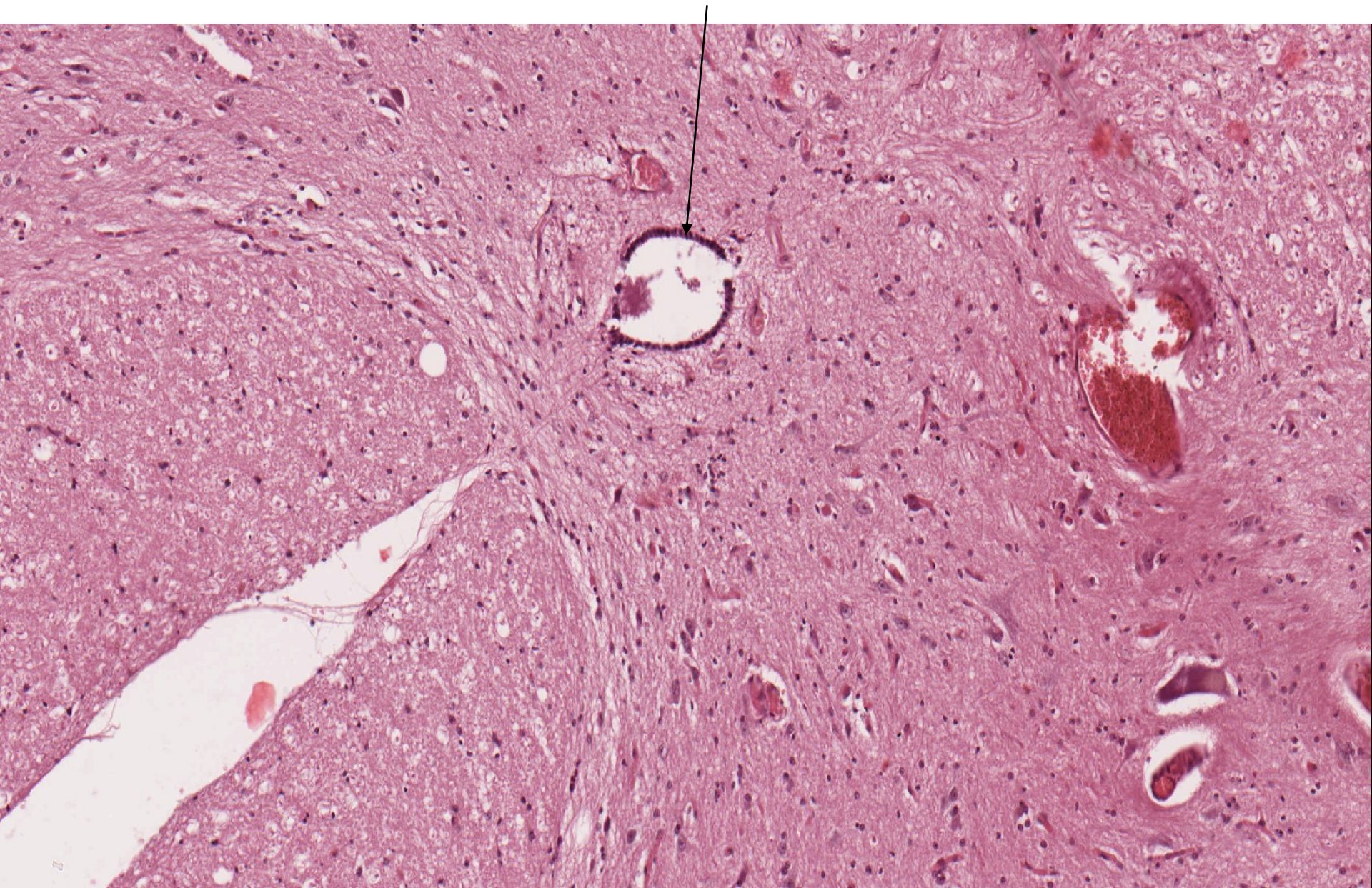
Somatomotorické multipolární neurony

Somatomotorické multipolární neurony

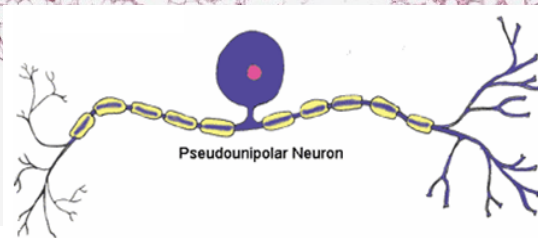
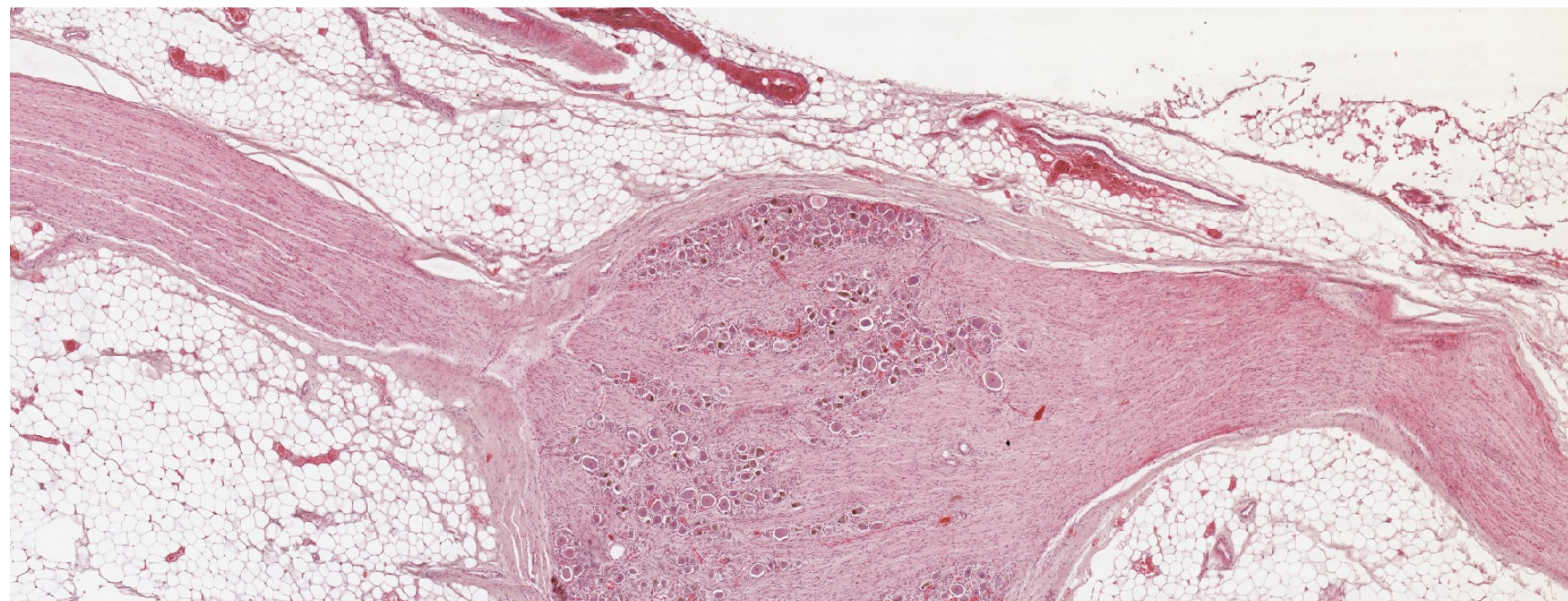
Myelinizované axony



Medulla spinalis – ependymové buňky

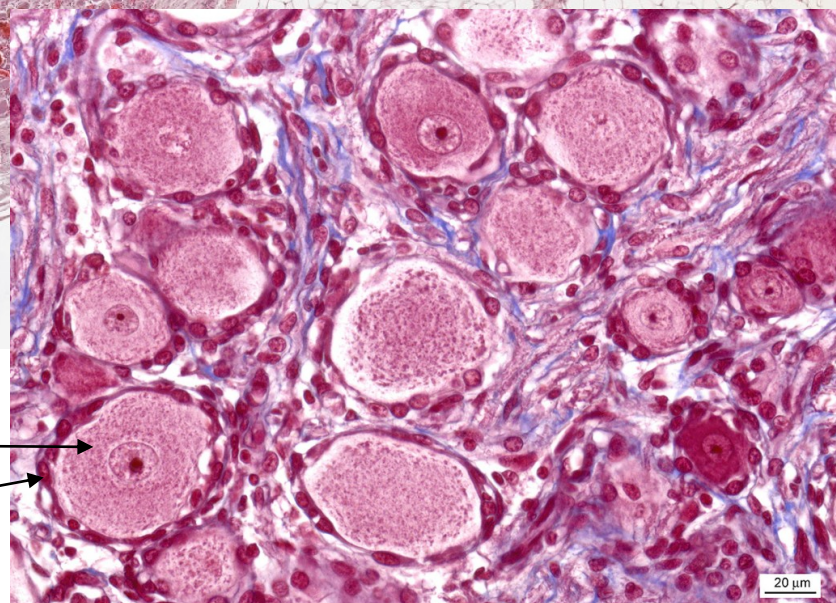


Ganglion spinale

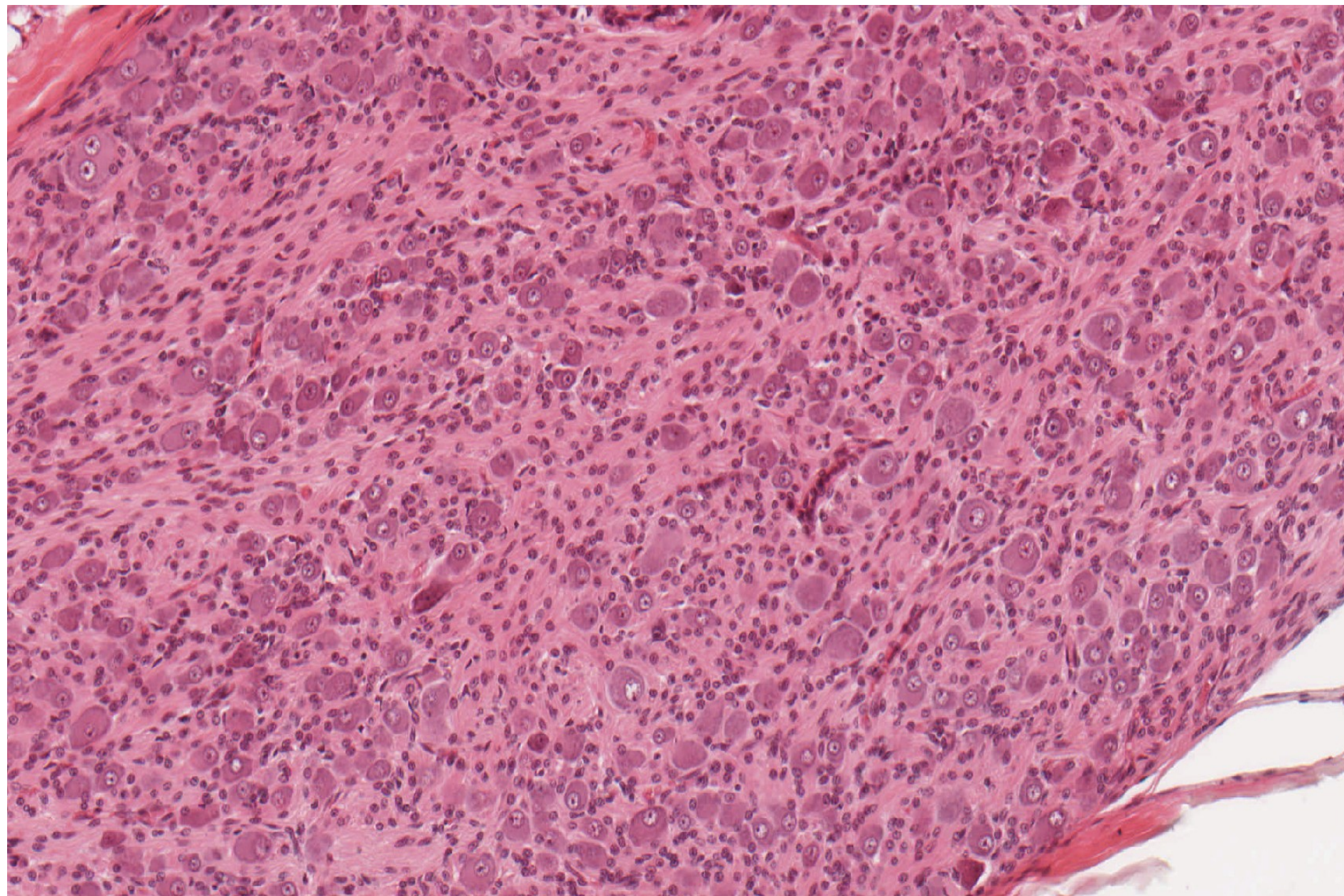


Pseudounipolární neurony

Satelitové buňky



Vegetativní ganglion – gangliové buňky (multipolární neurony), satelitové buňky



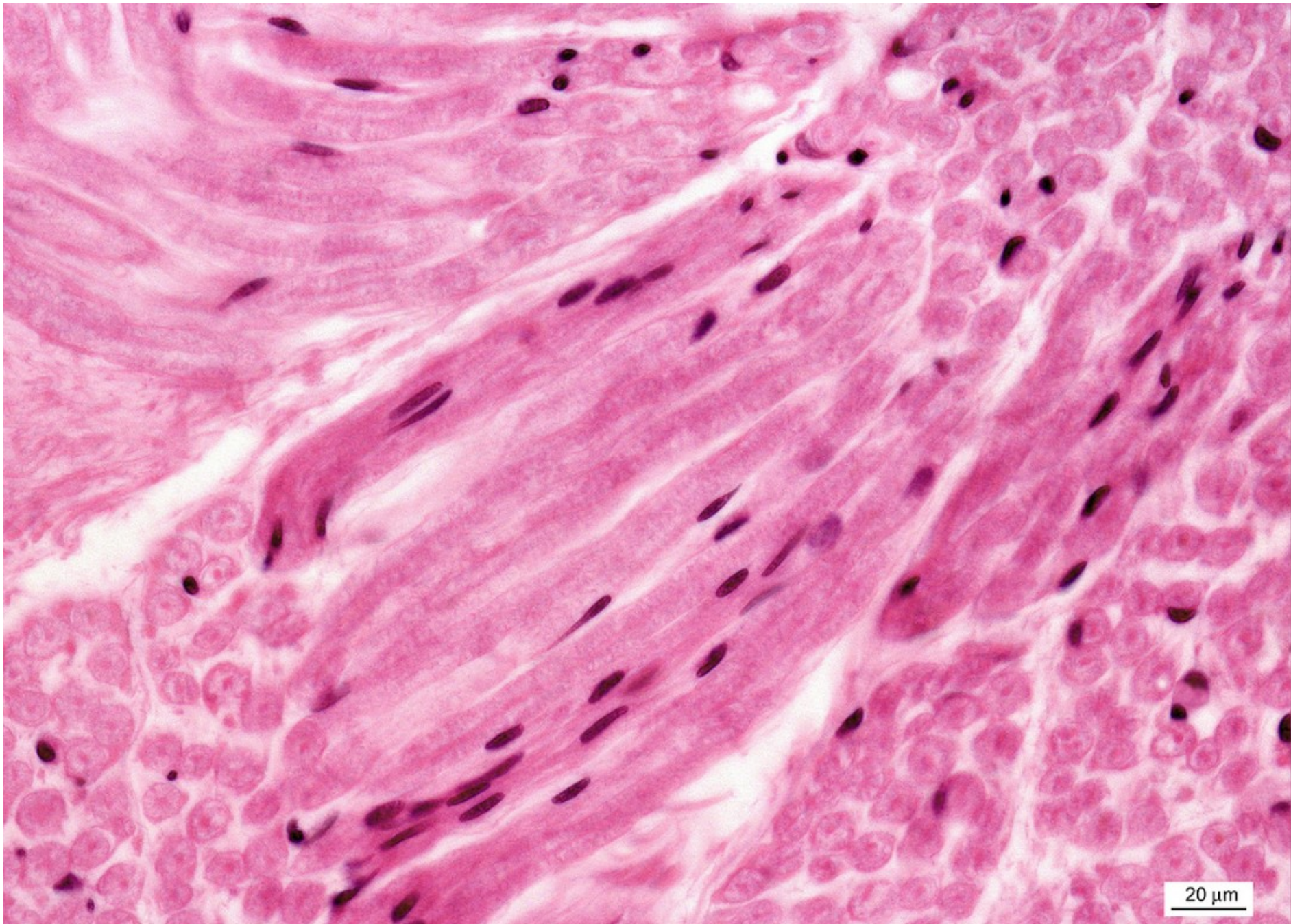


A histological micrograph showing a dense population of cells, likely ganglion cells, stained with hematoxylin and eosin (H&E). The cells are characterized by large, pale nuclei and prominent, dark, granular inclusions within the cytoplasm, which are identified as lipofuscin granules. The tissue has a pinkish-purple hue. Three black arrows point from a central text box to specific cells. A scale bar is located in the bottom right corner.

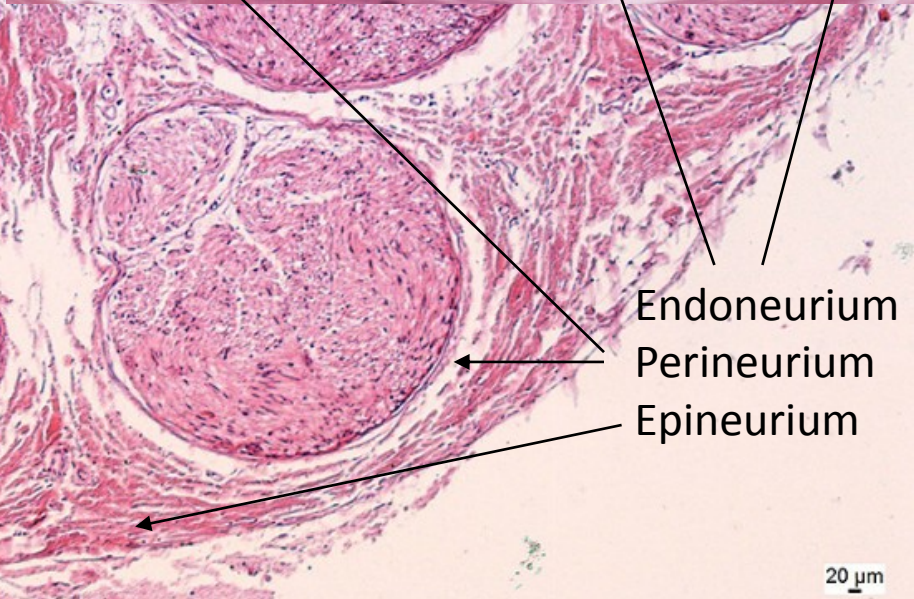
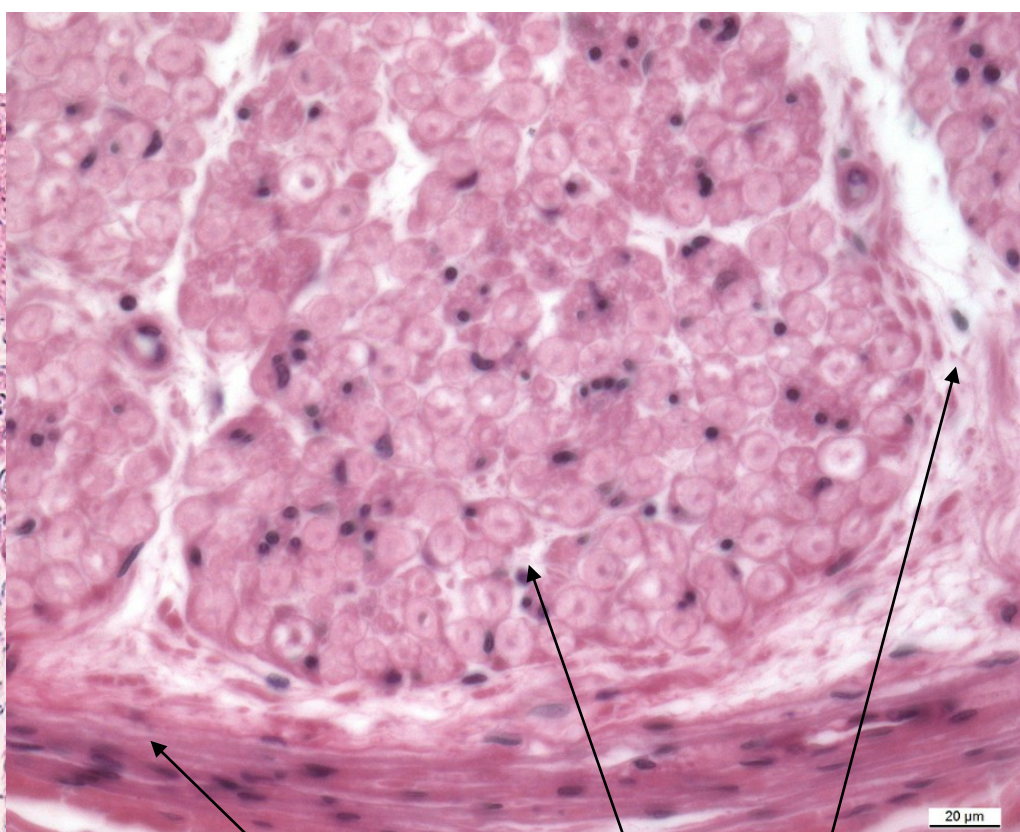
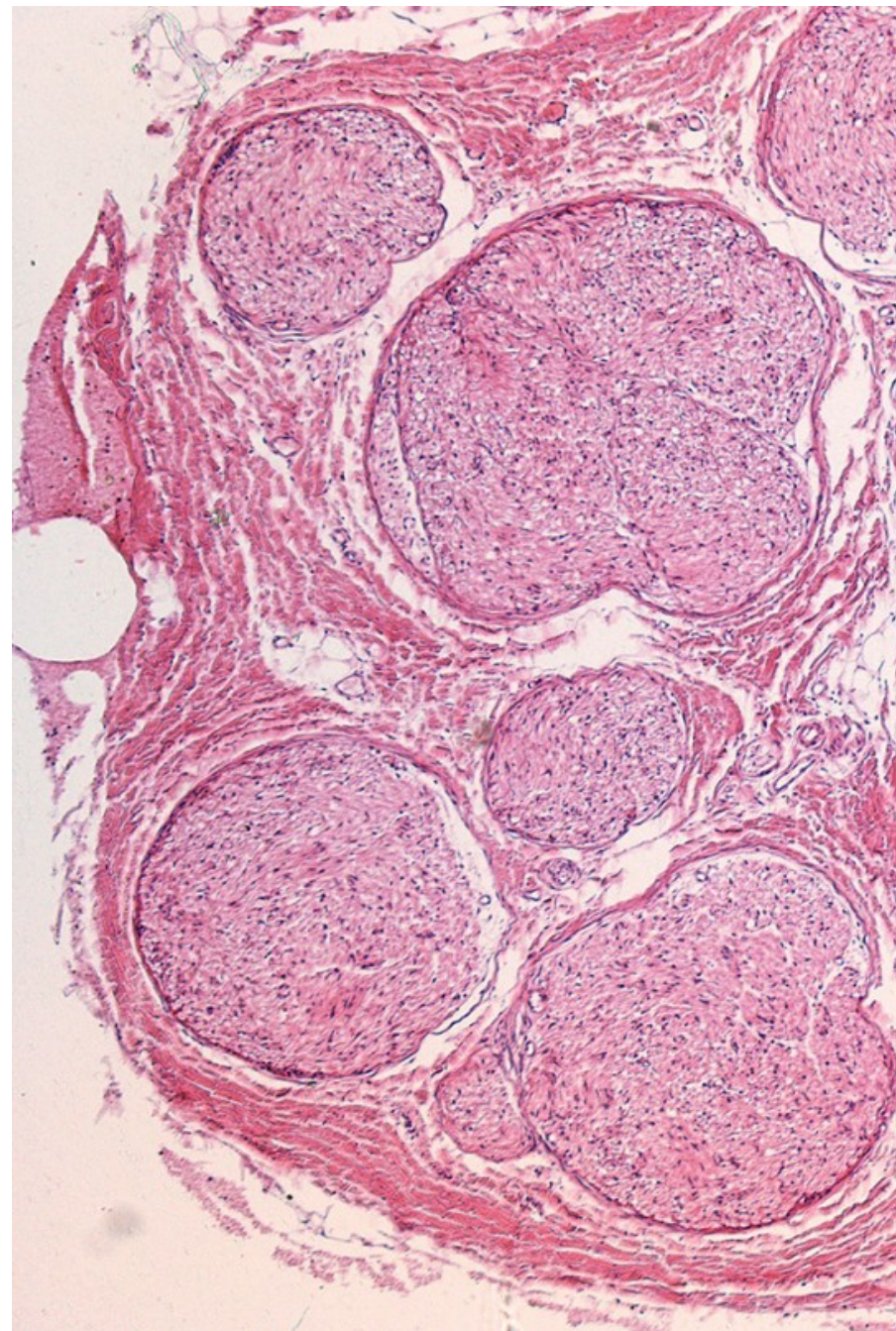
Gangliové buňky s lipofuscinem

20 μ m

Periferní nerv



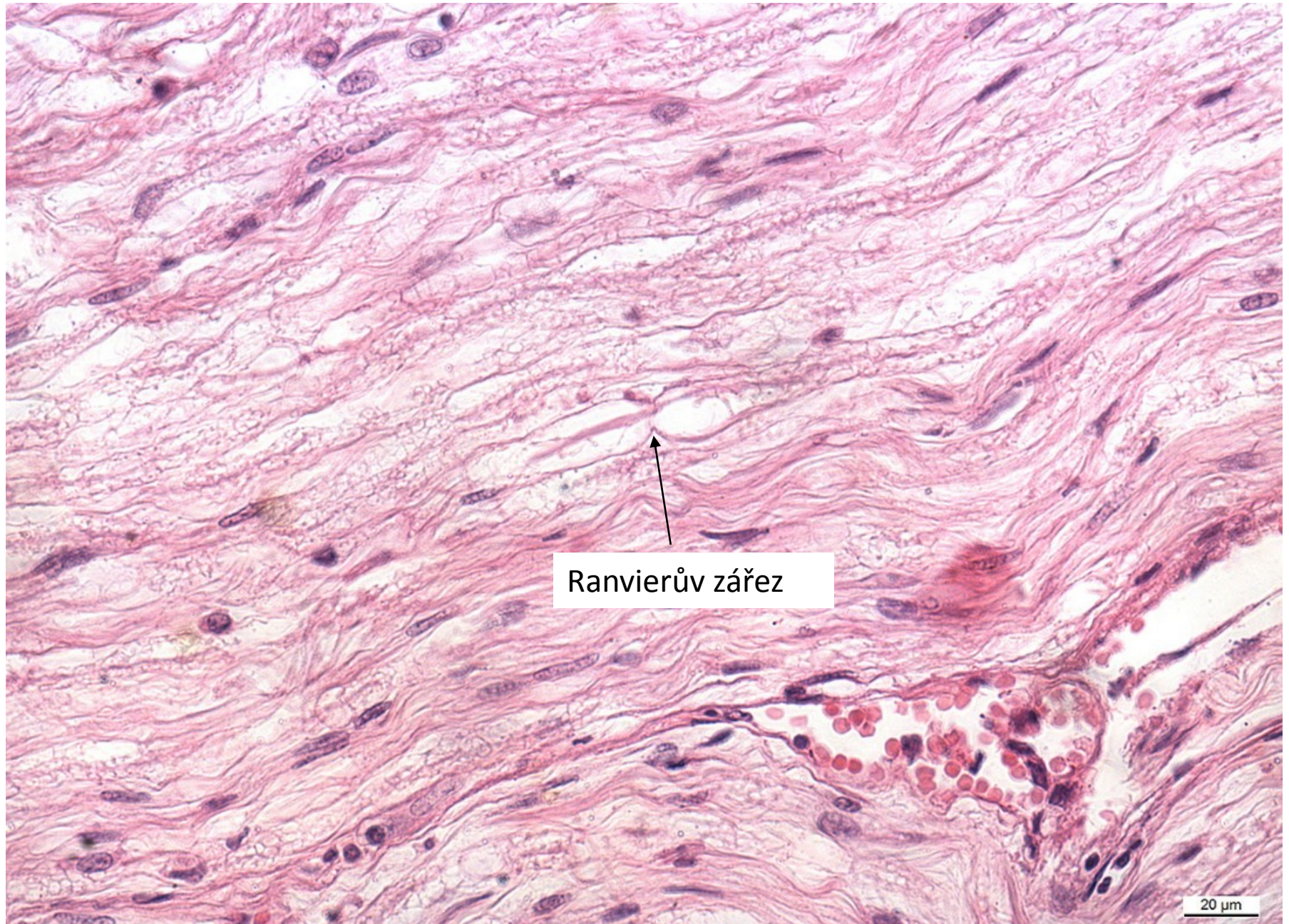
Periferní nerv - vazivo



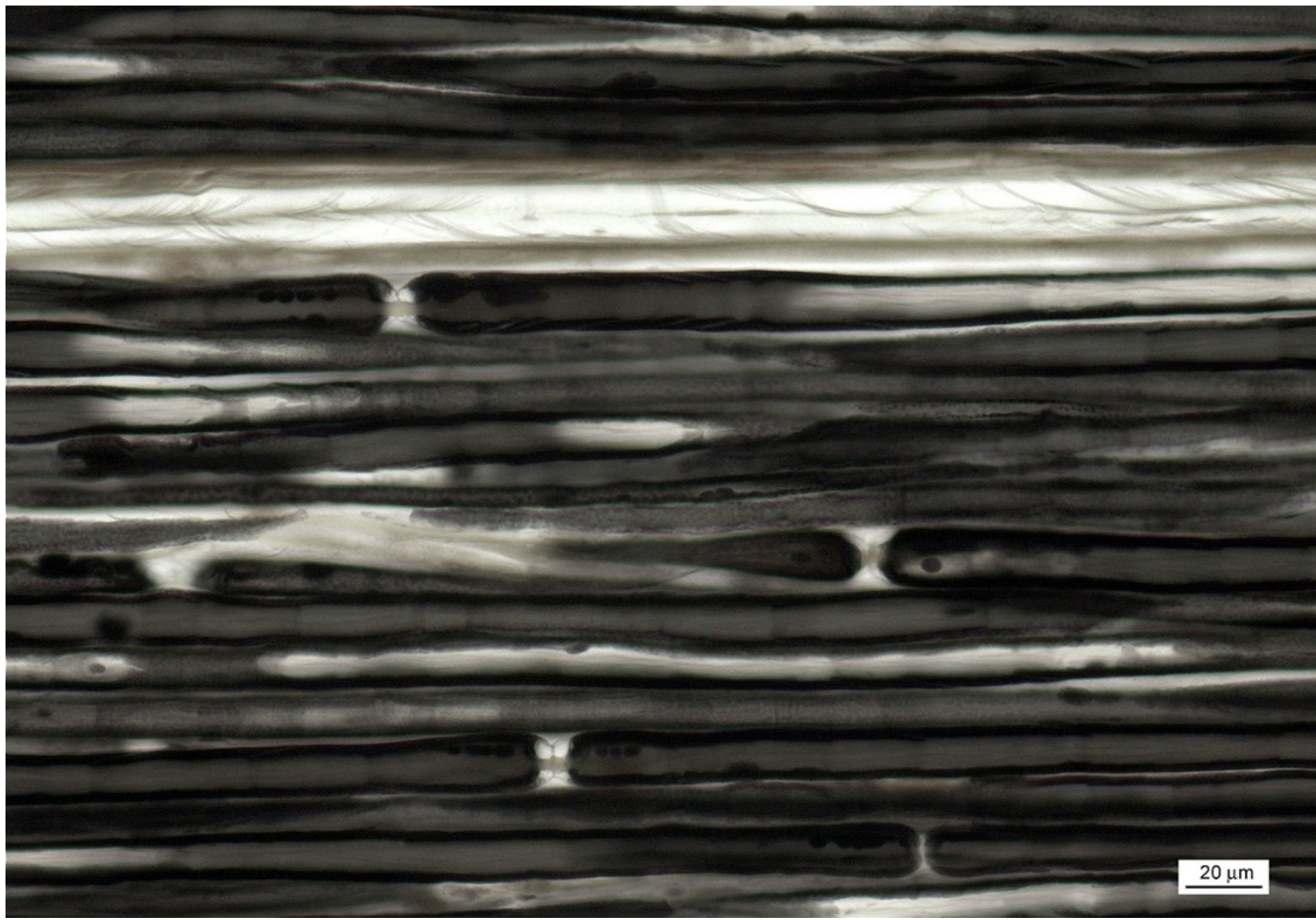
Endoneurium
Perineurium
Epineurium

20 μm

Periferní nerv - podélně



Myelinová pochva s Ranvierovými zářezy – periferní nerv (OsO₄)



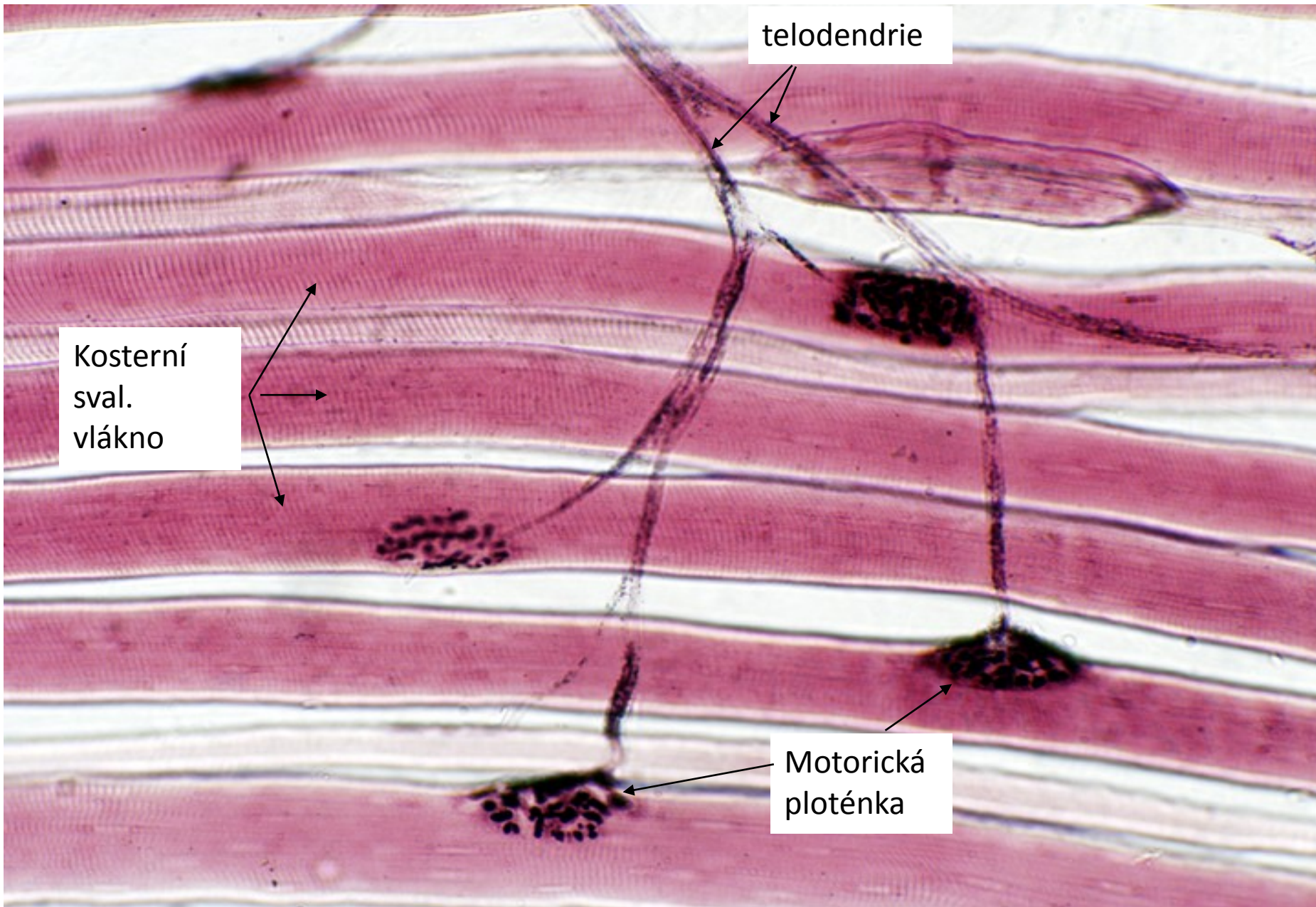
20 μm

Motorické ploténky v motorické jednotce

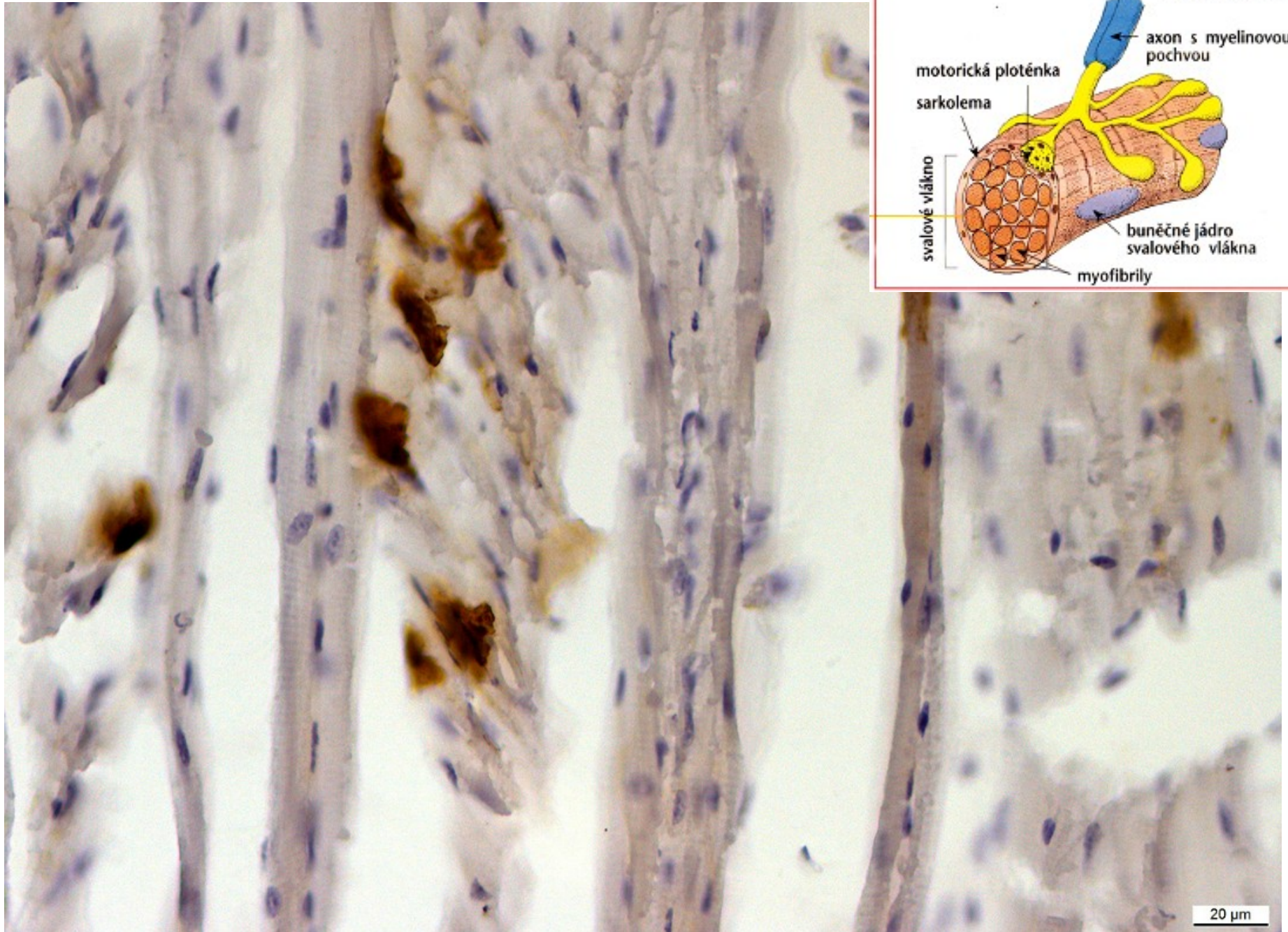
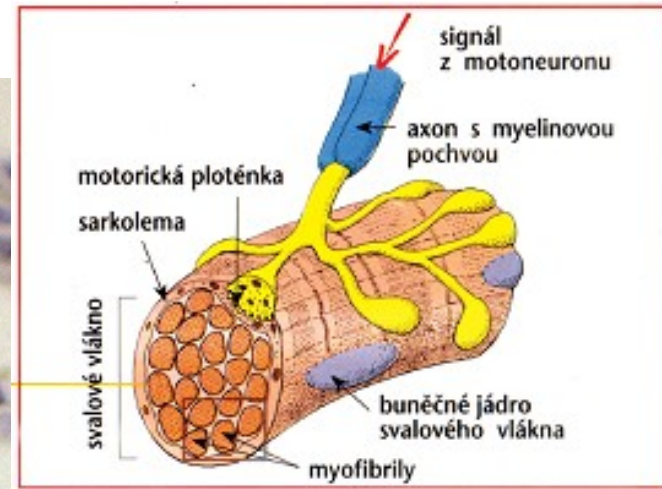
telodendrie

Kosterní
sval.
vlákno

Motorická
ploténka

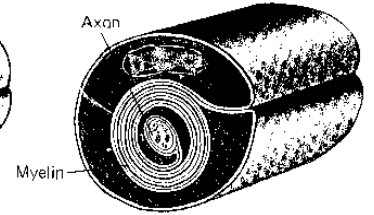
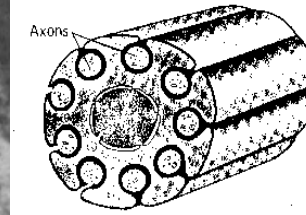
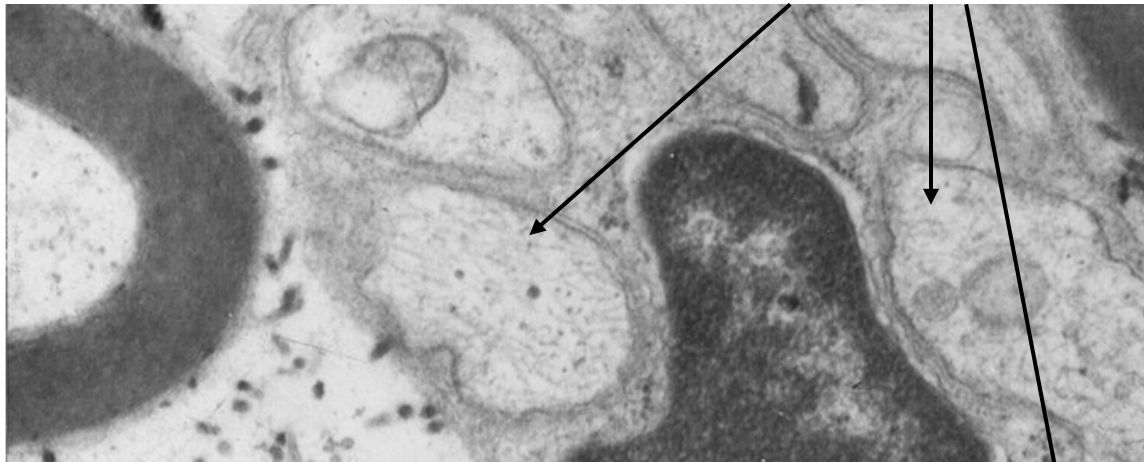


Motorická ploténka (detekce acetylcholinesterázy)

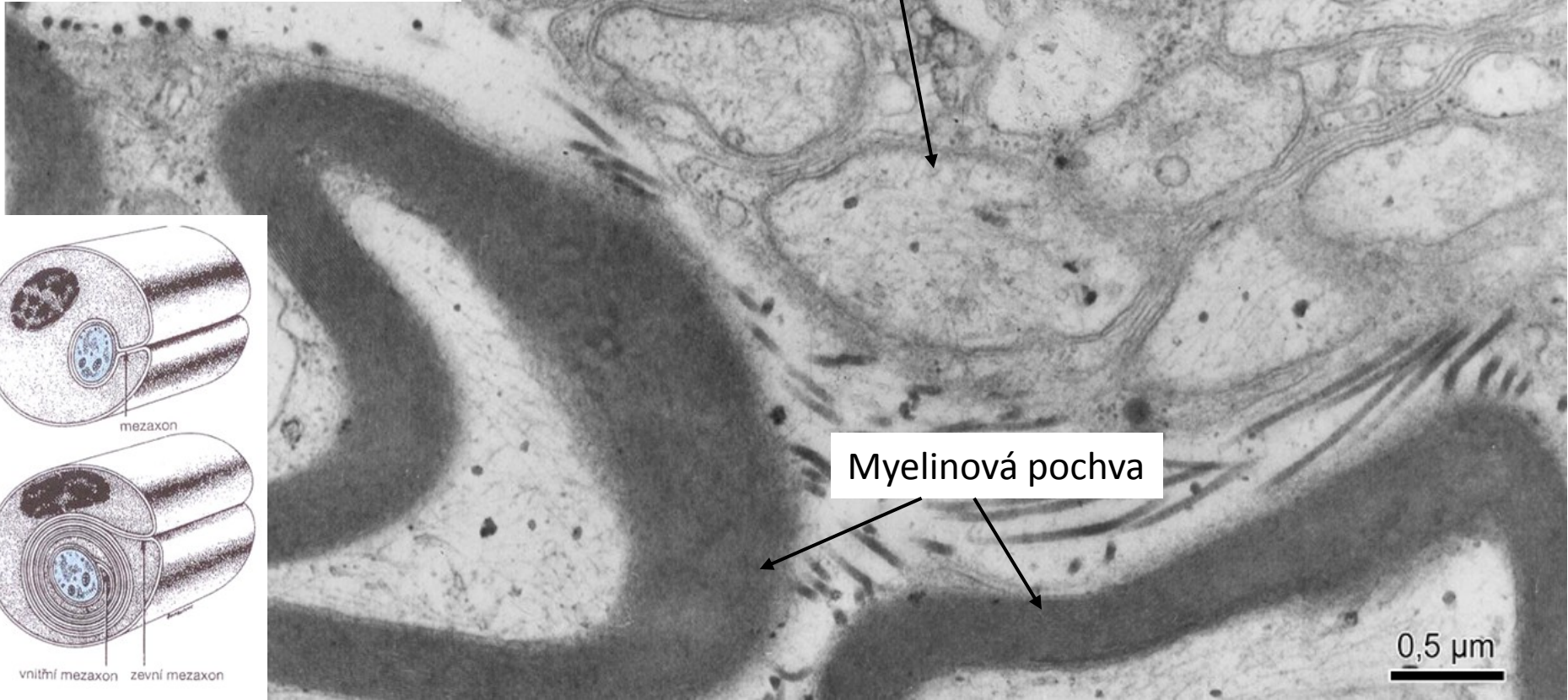


20 μm

Axony se Schwanovou pochvou

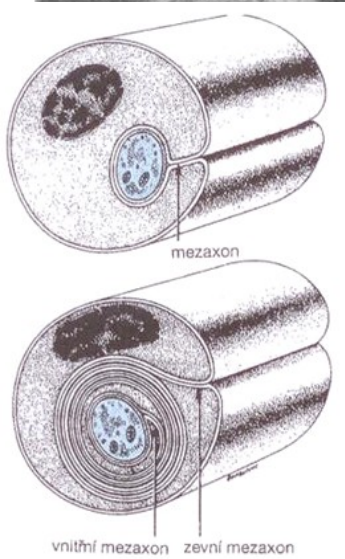


Jádro Schwannovy buňky

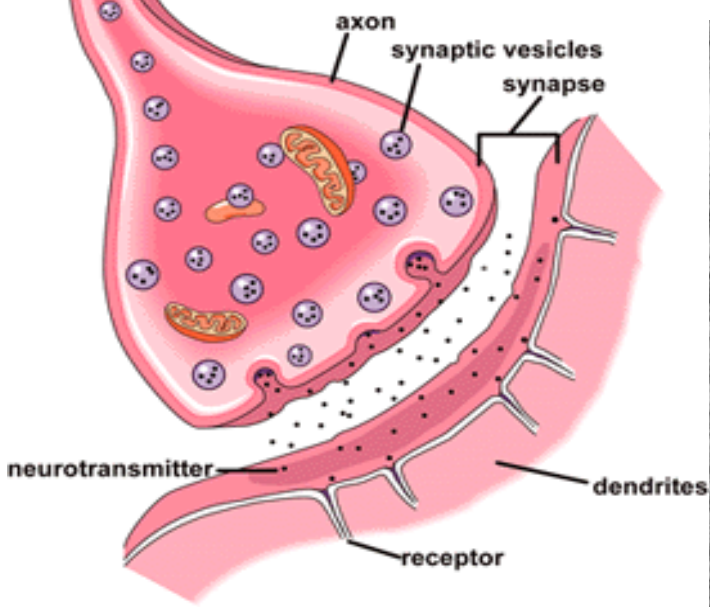


Myelinová pochva

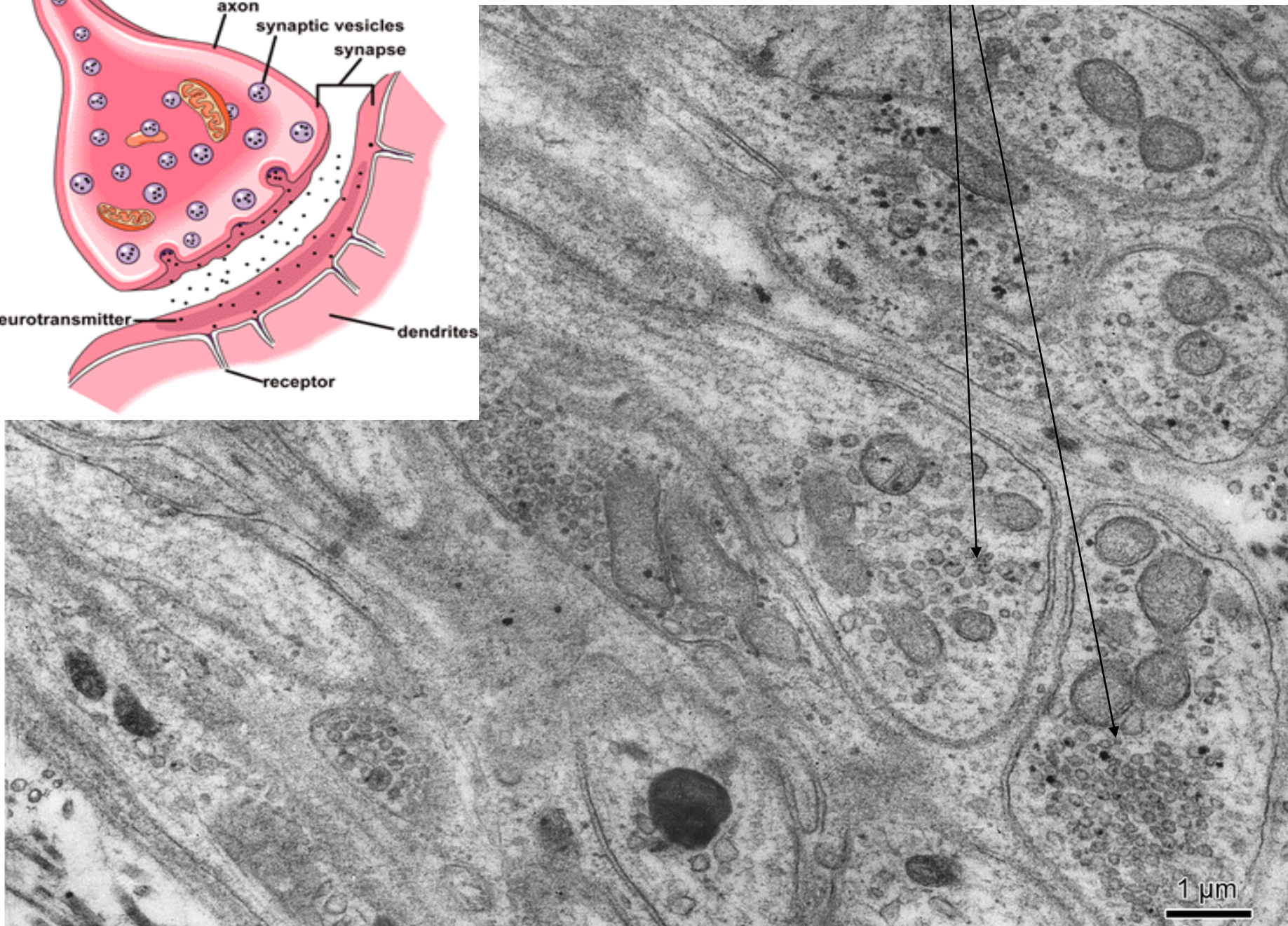
0,5 μm



Synapse



Presynaptické zakončení



NERVOVÁ TKÁŇ

Preparáty:

Pyramidová buňka (75, 76. Cortex cerebri)

Purkyňova buňka (77. Cerebellum)

Nisslova substance (78. Cerebellum)

Somatomotorický multipolární neuron (79. Medulla spinalis)

Pseudounipolární neuron (81. Ganglion spinale)

Axon s myelinovou a Schwannovou pochvou (84, 86. Periferní nerv)

Myelinová pochva (87. Periferní nerv)

Motorická ploténka (detekce acetylcholinesterázy)

Atlas EM:

Jádro (3) a cytoplazma neuronu (55)

Axony s obaly (56, 58)

Presynaptické zakončení (57)