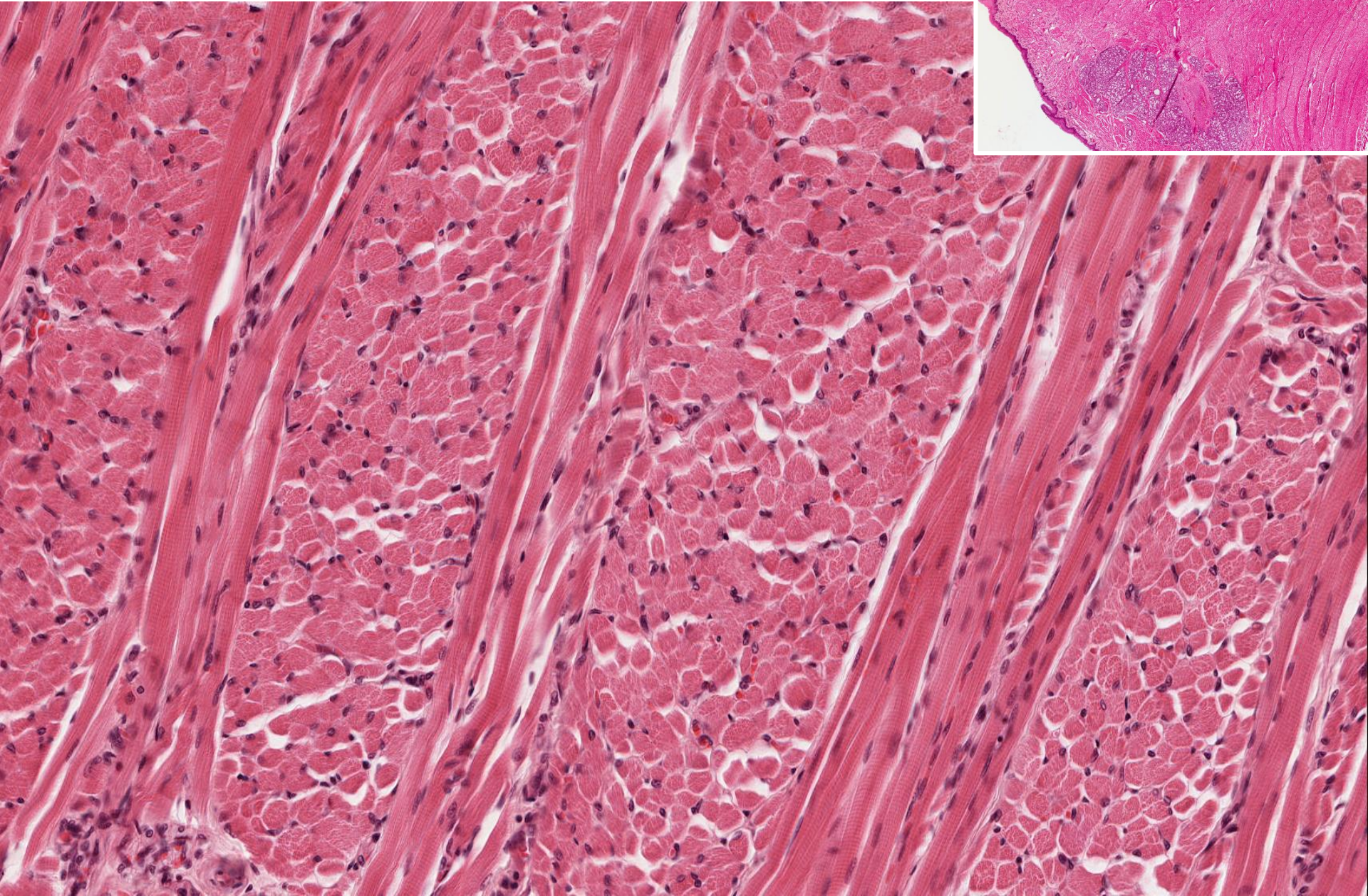




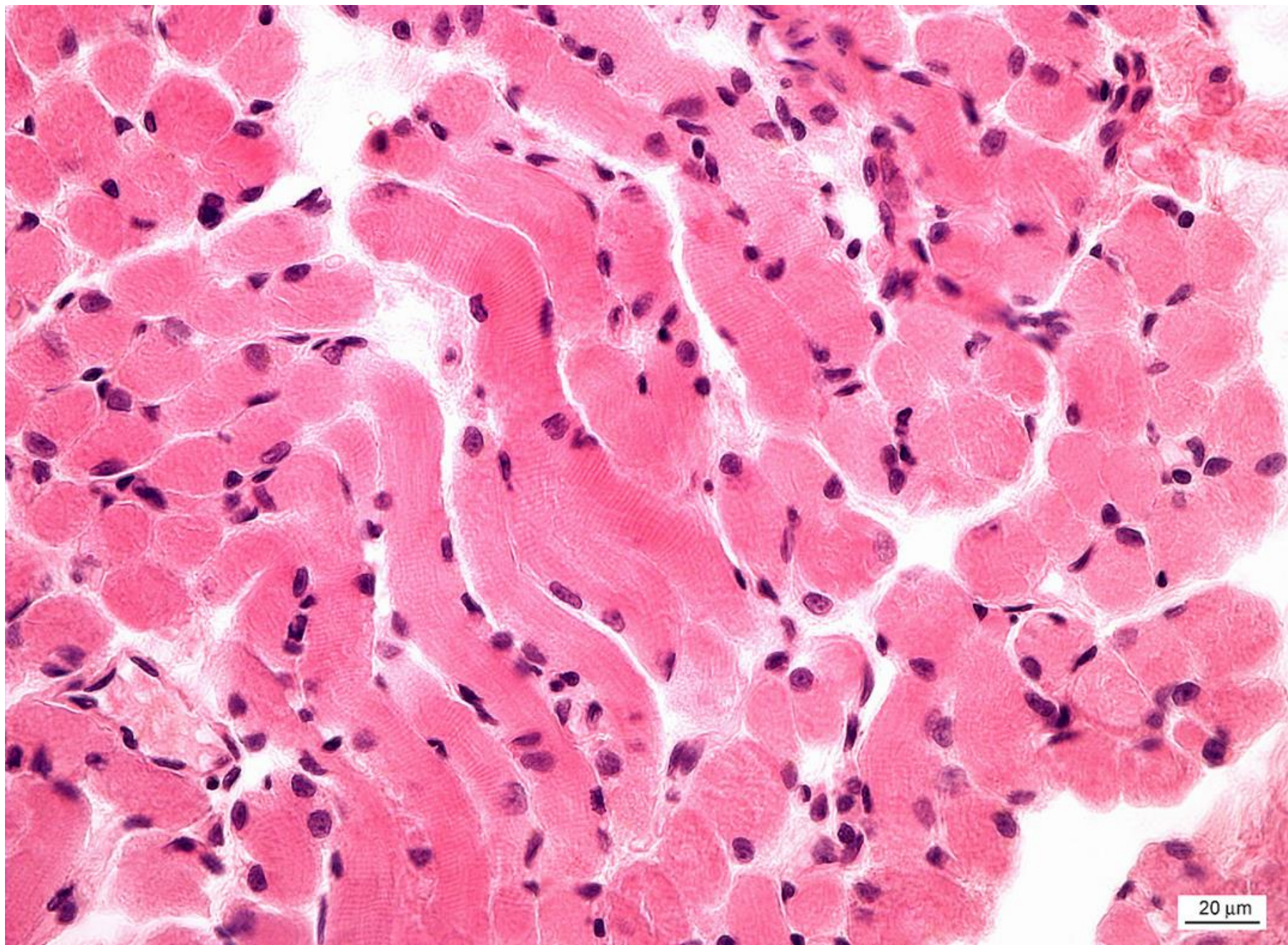
Svalová tkáň

- Kosterní svalovina - rhabdomyocyty
- Hladká svalovina - leiomyocyty
- Srdeční svalovina - kardiomyocyty

Kosterní svalová tkáň – Apex linguae



Kosterní svalová tkáň - rhabdomyocyty



Rhabdomyocyty podél - okohybné svaly potkana, transmisní elektronový mikroskop

mitochondrie

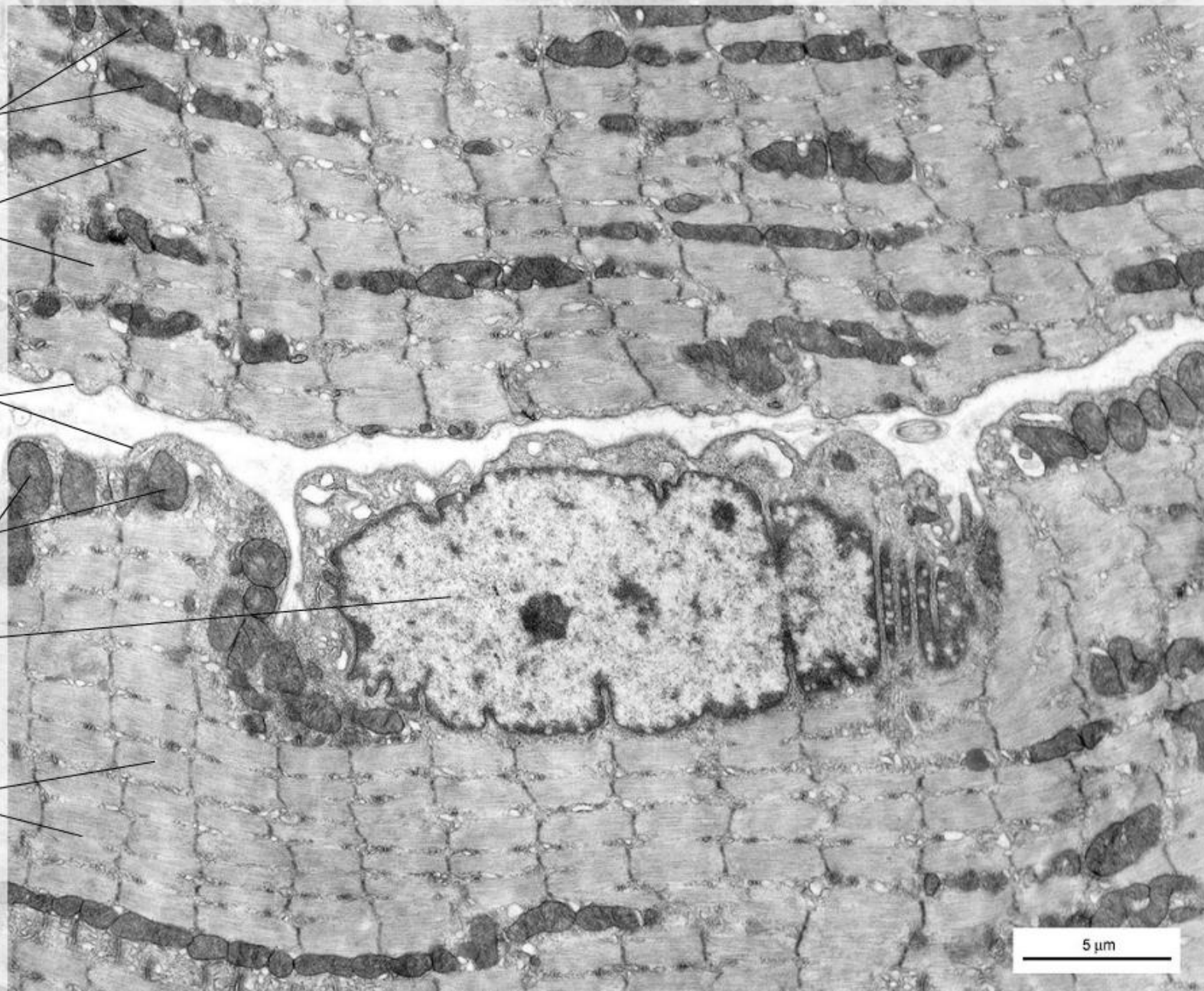
myofibrily

sarkolema s
lamina basalis

mitochondrie

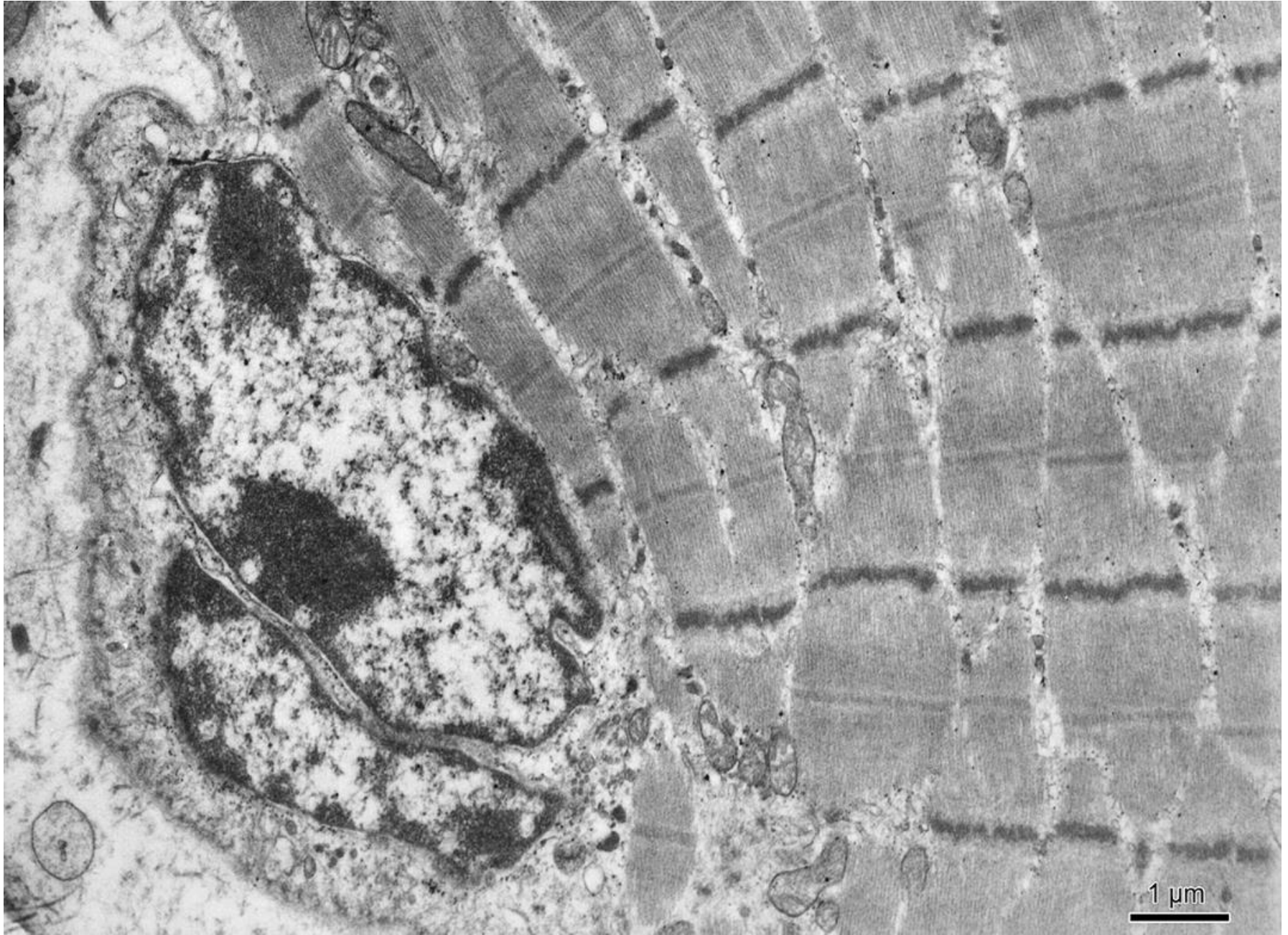
jádro

myofibrily

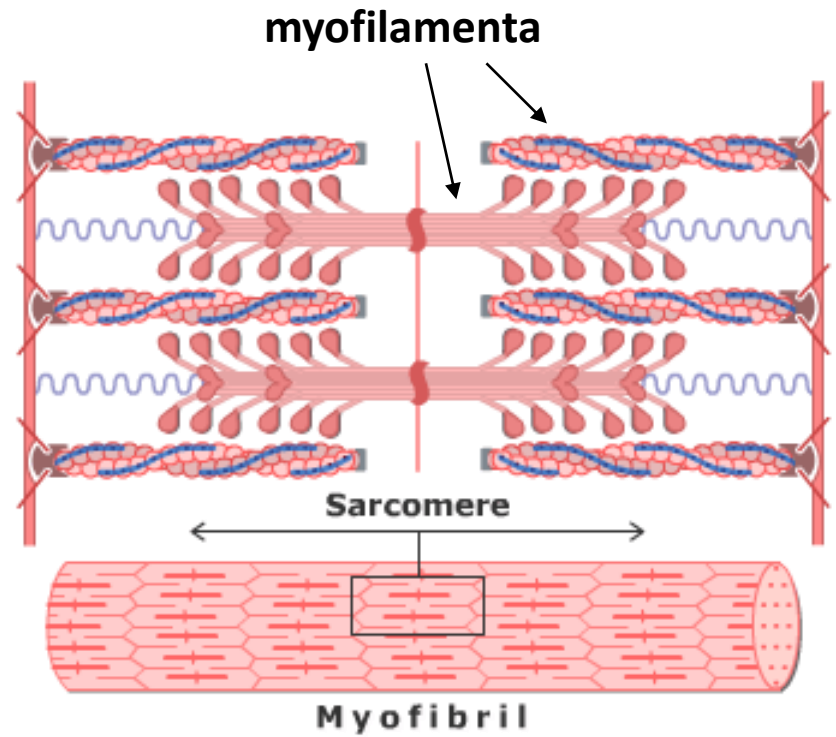
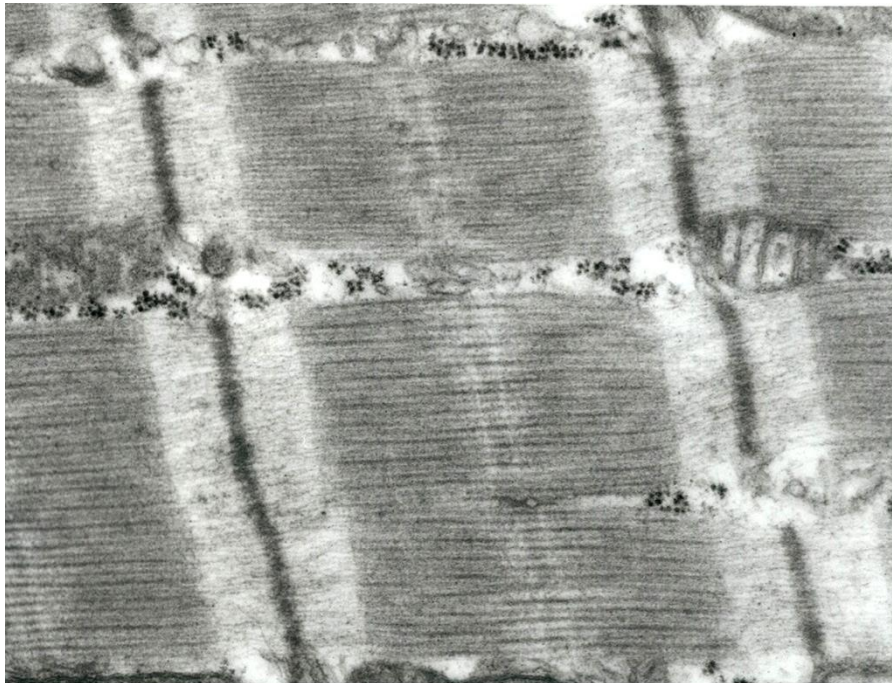
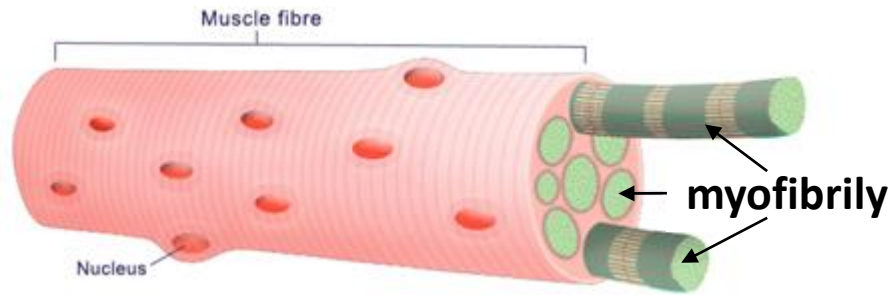


5 μ m

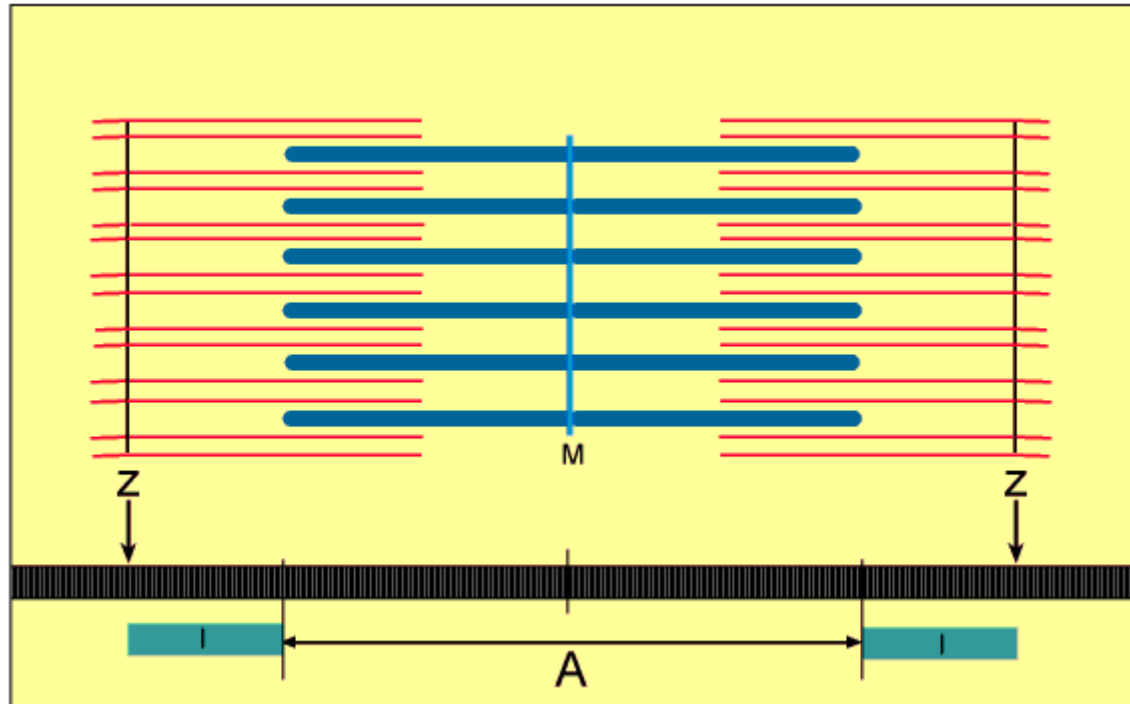
Rhabdomyocyt (TEM)



Rhabdomyocyt



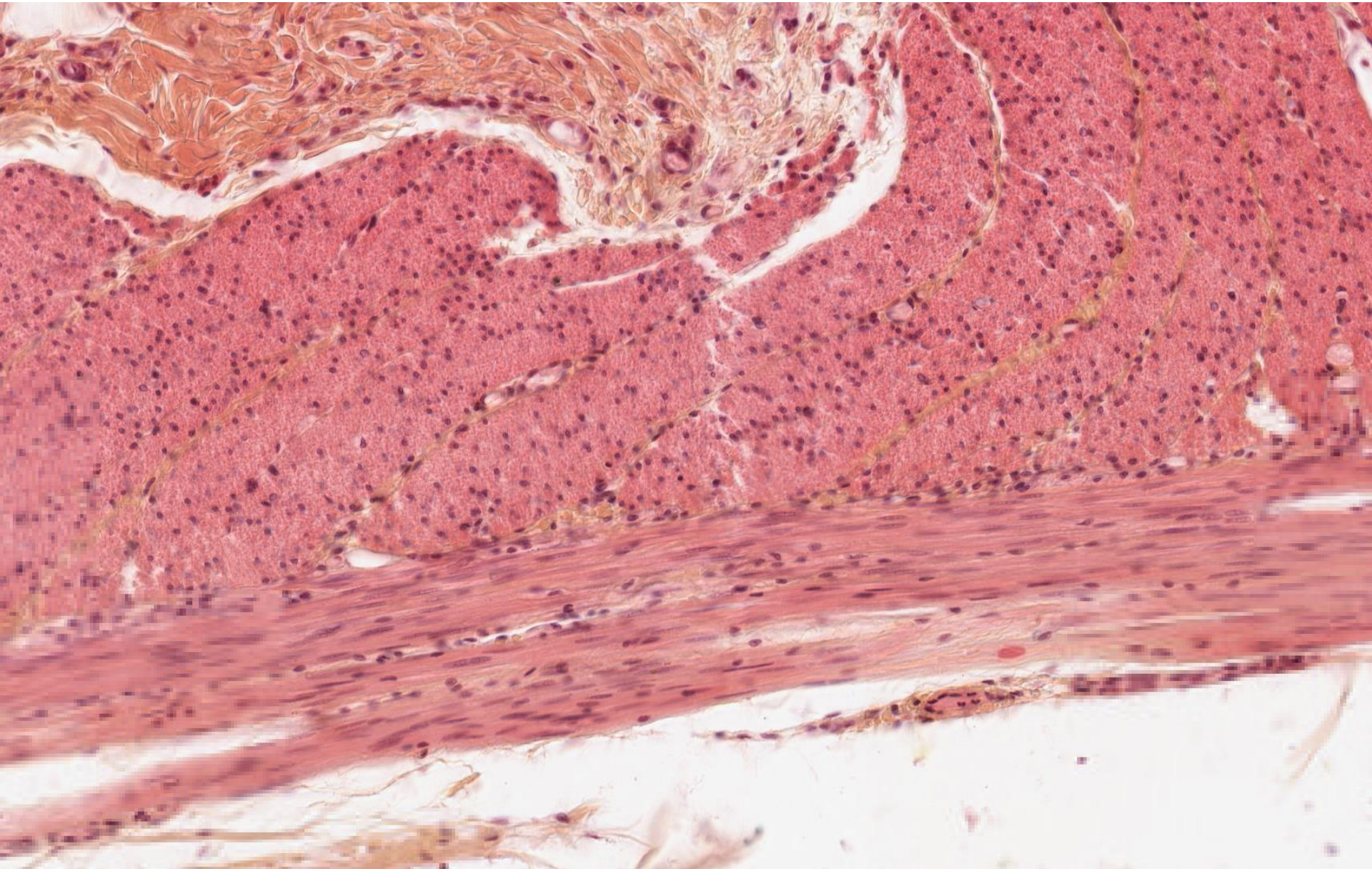
Rhabdomyocyt



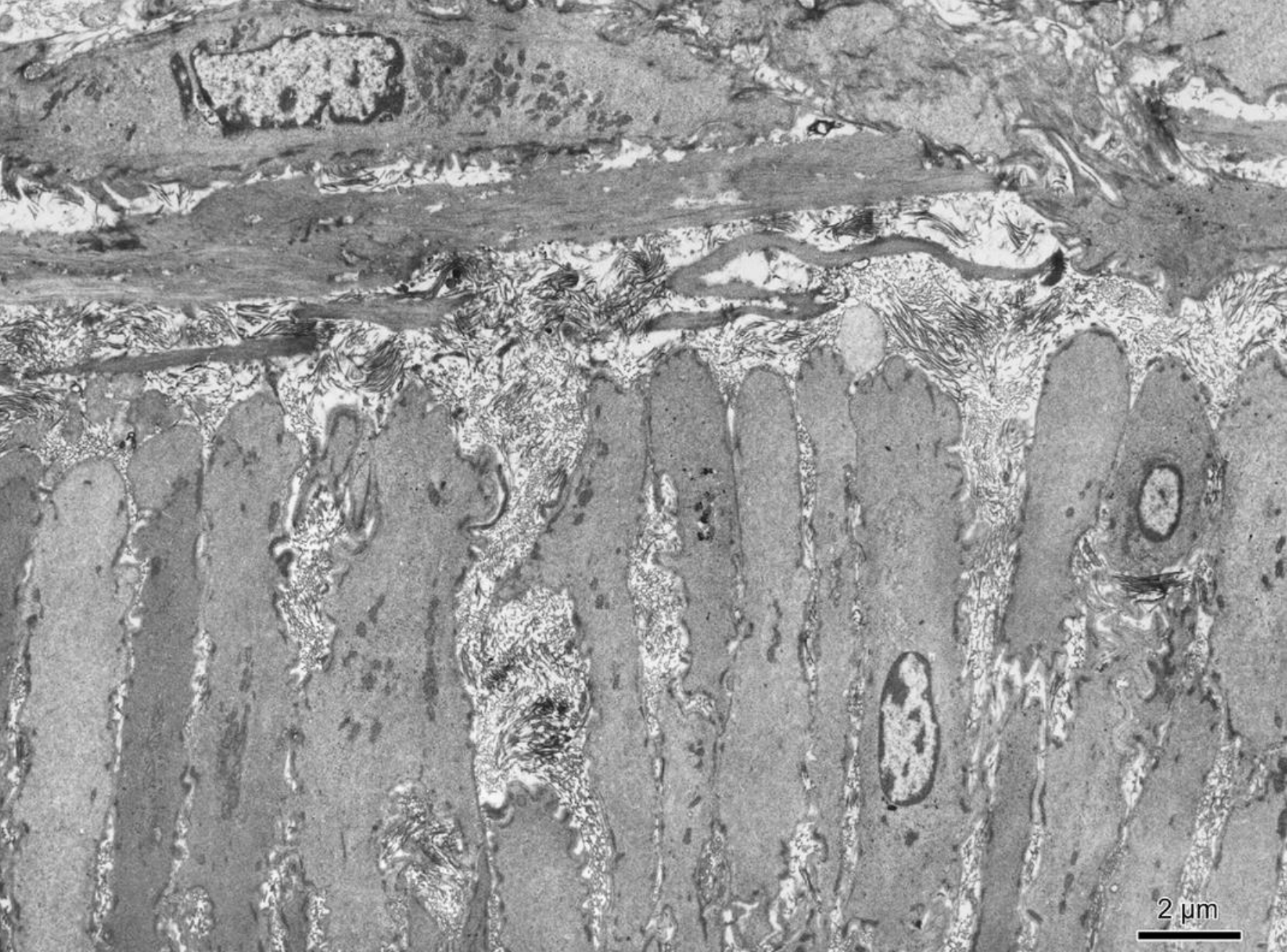
Hladká svalová tkáň – Intestinum tenue (HE)



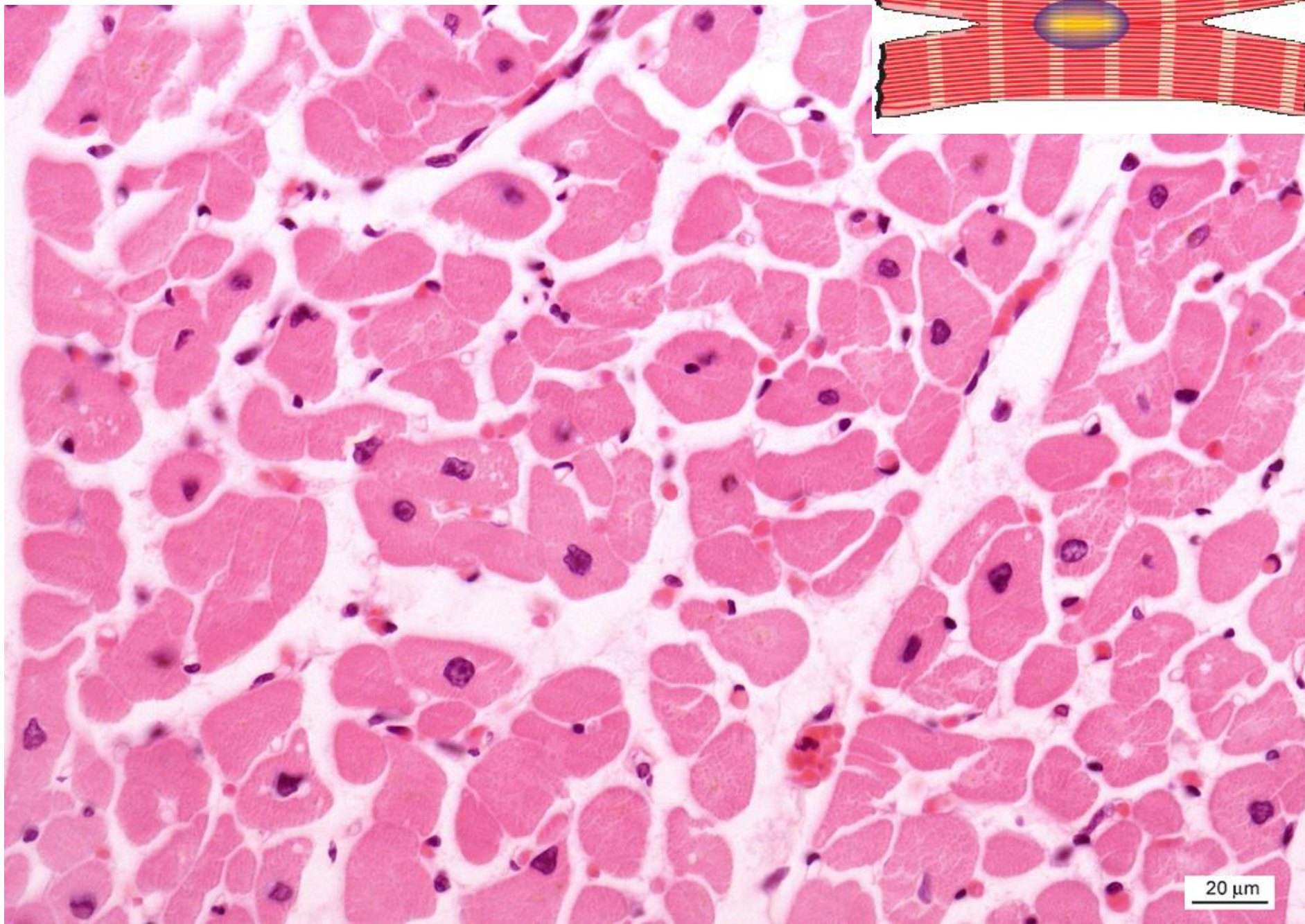
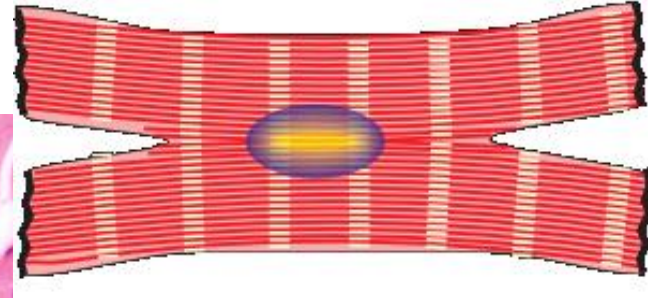
Hladká svalová tkáň – Intestinum tenue (HEŠ)



Leiomyocyt (TEM)

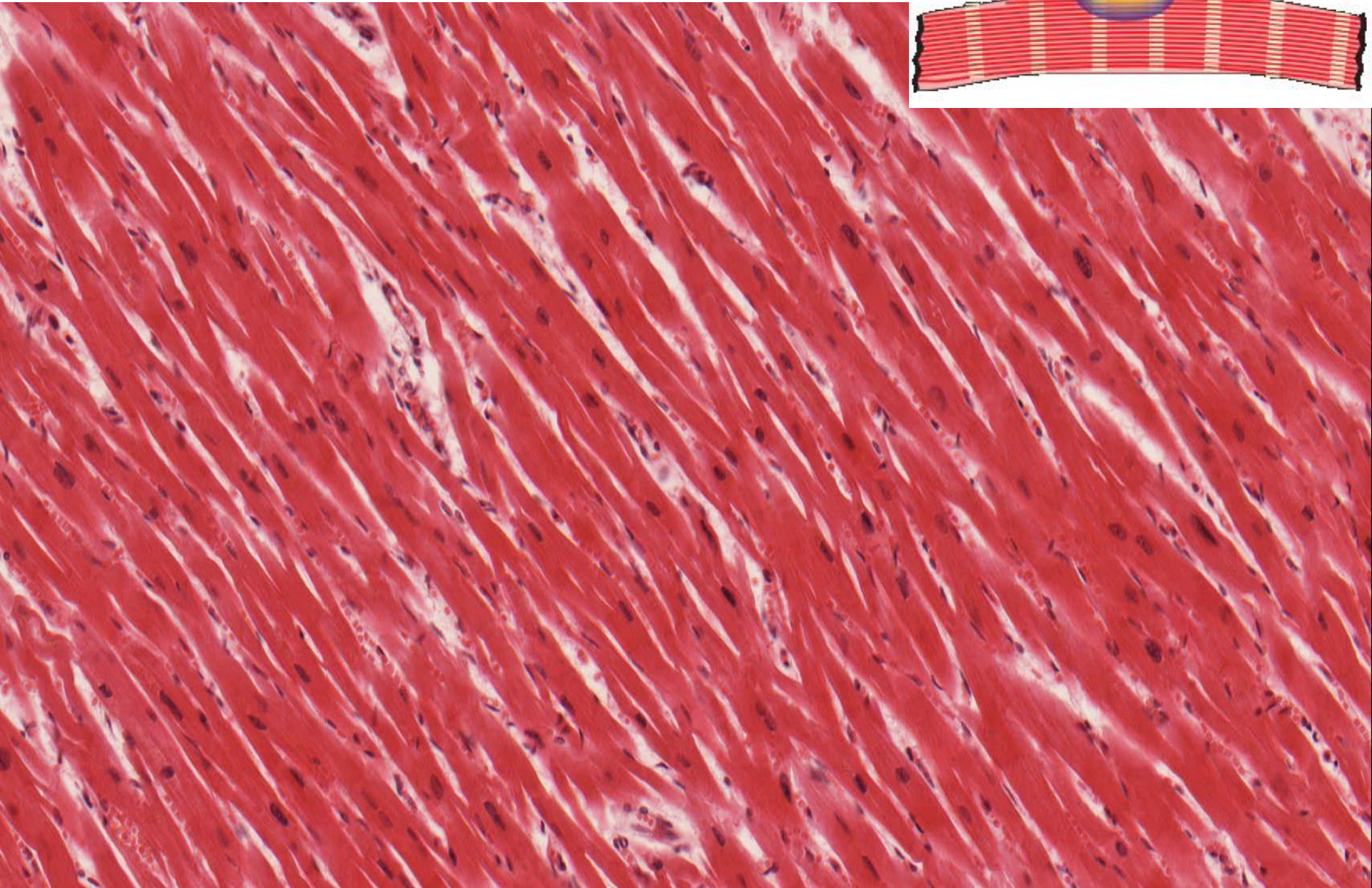
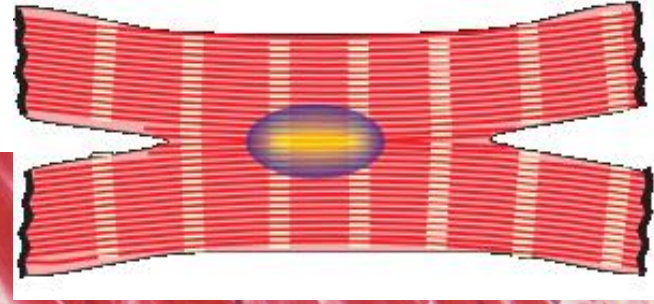


Srdeční svalová tkáň (HE) - příčně

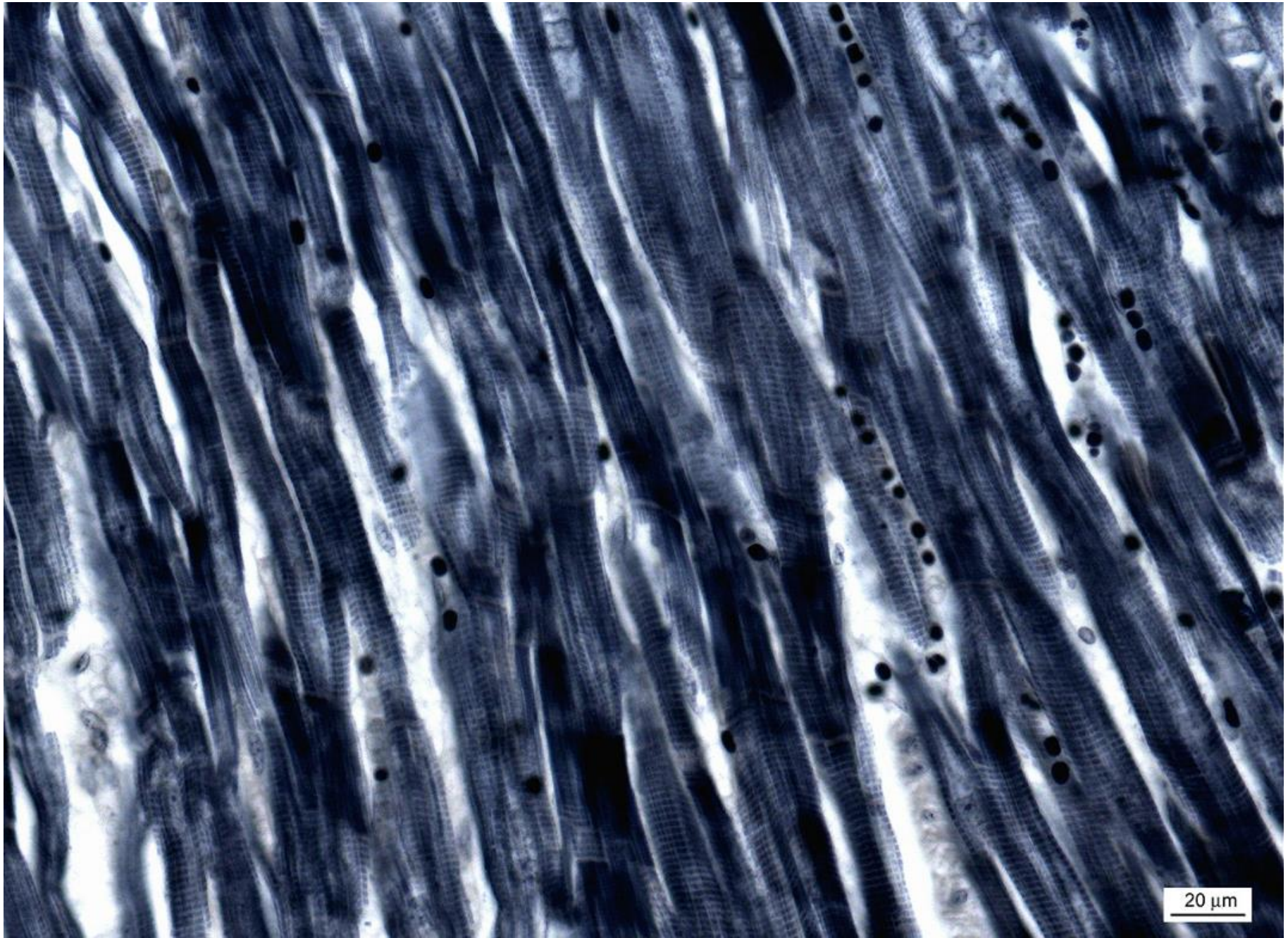


20 μm

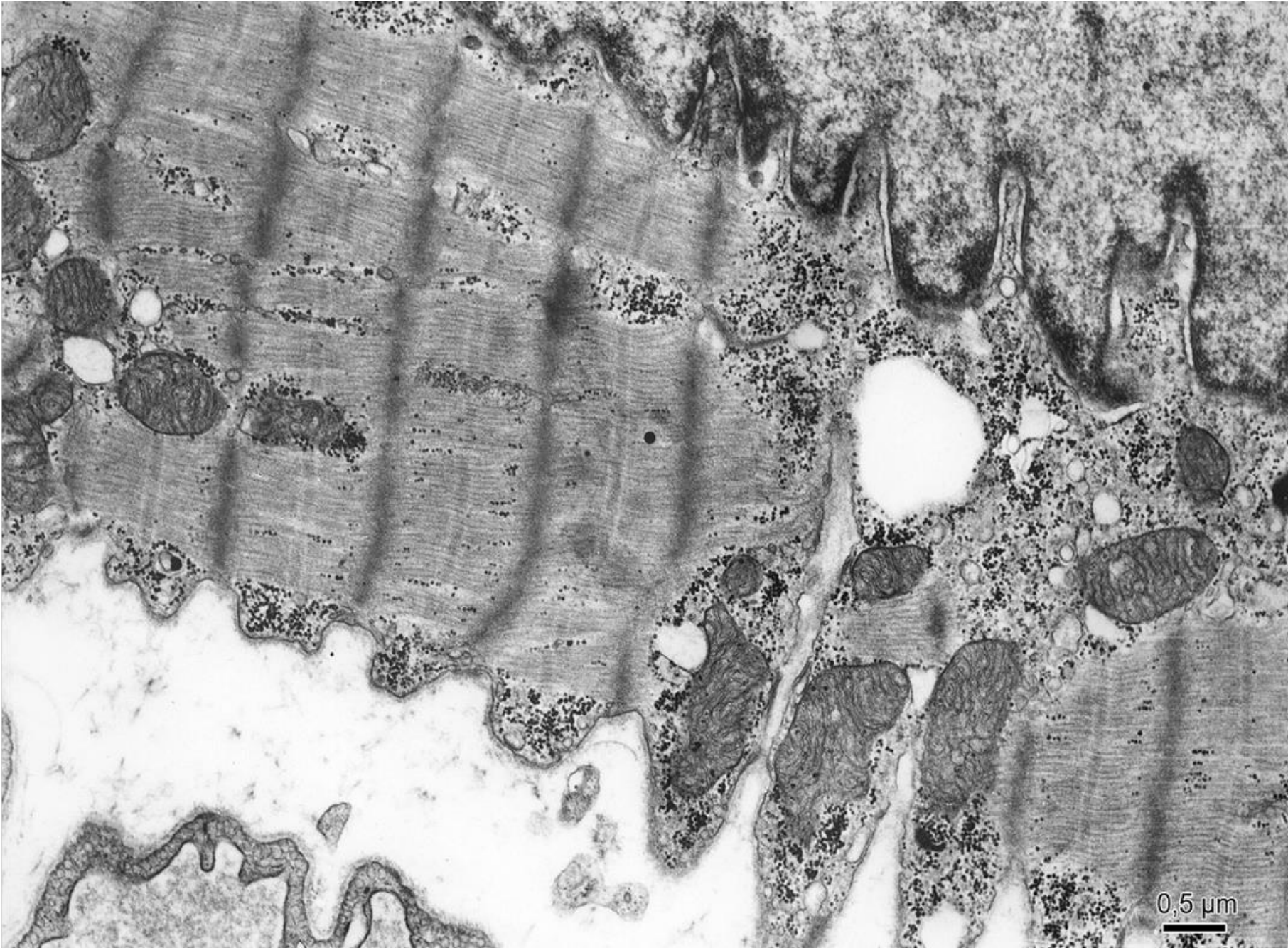
Srdeční svalová tkáň (HE) - podélně



Srdeční svalová tkáň (Heidenhein)



Kardiomyocyt (TEM)



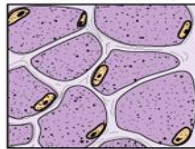
Svalová tkáň

Muscle types

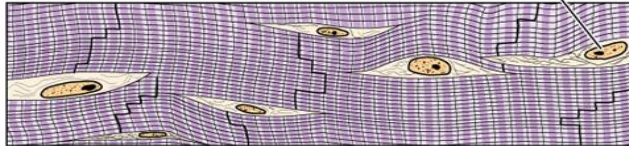
Skeletal muscle



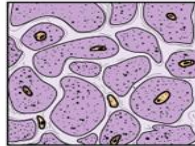
Cross sections



Cardiac muscle

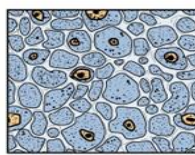
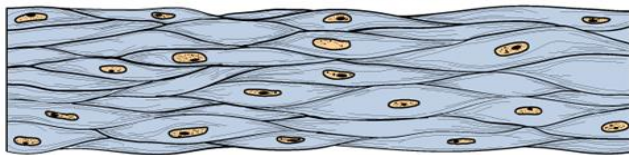


Nuclei



Smooth muscle

Intercalated disks



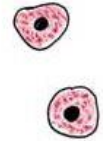
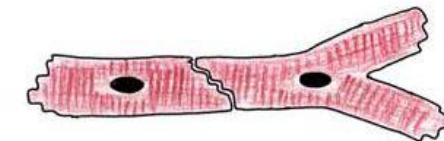
Podélný řez



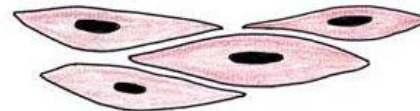
Příčný řez



A



B



C

Svalová tkáň

Preparáty:

Kosterní svalová tkáň (2. Apex linguae)

Hladká svalová tkáň (16. Intestinum tenue, 17. Intestinum crassum)

Srdeční svalová tkáň (64, 65. Myokard)

Atlas EM:

Rhabdomyocyt (52)

Leiomyocyt (54)

Kardiomyocyt (22, 53)