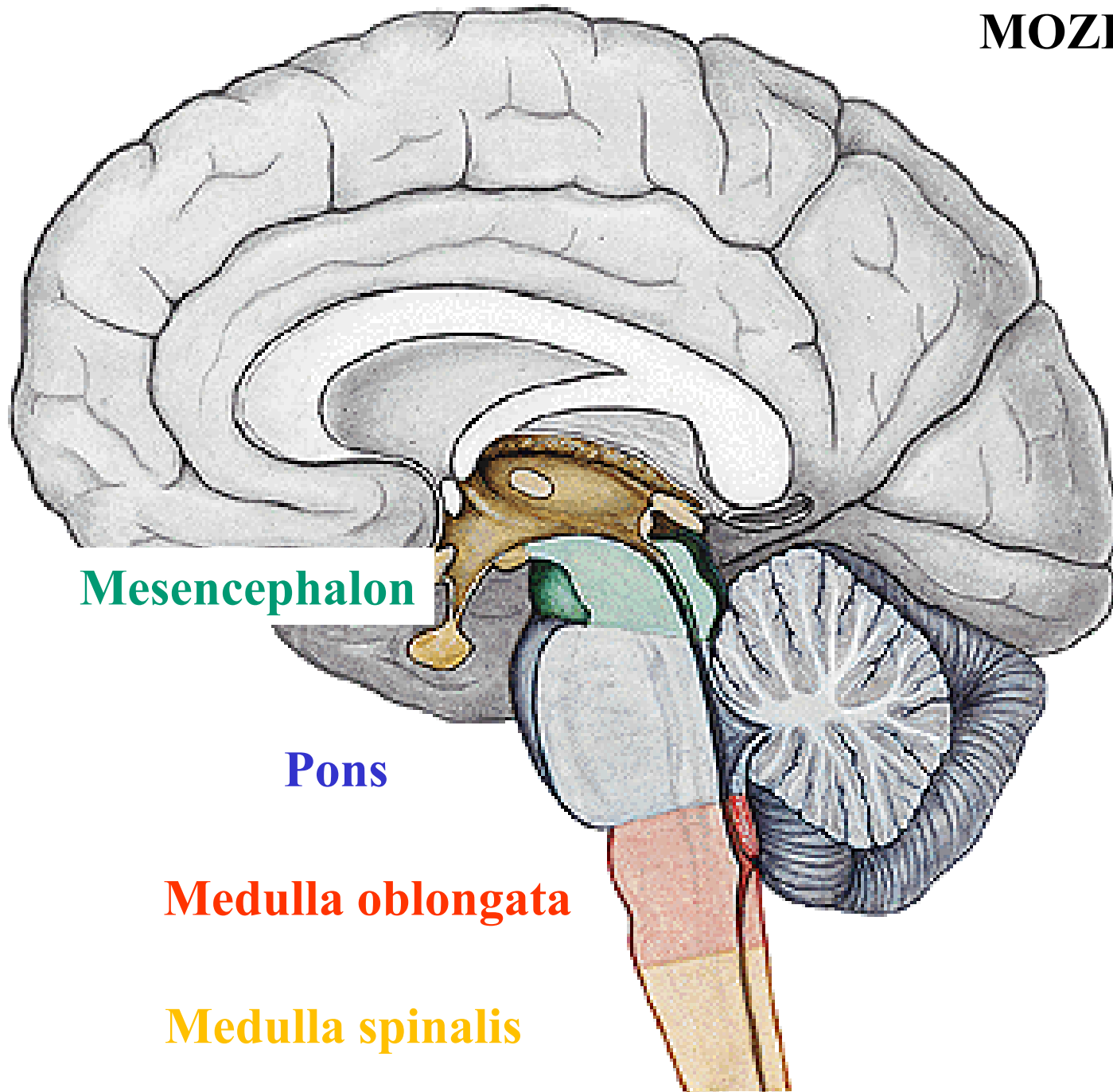




„Tohle je, chlapče, mozek.
Ten dělá s lidmi hrozně věci.“

MOZKOVÝ KMEN

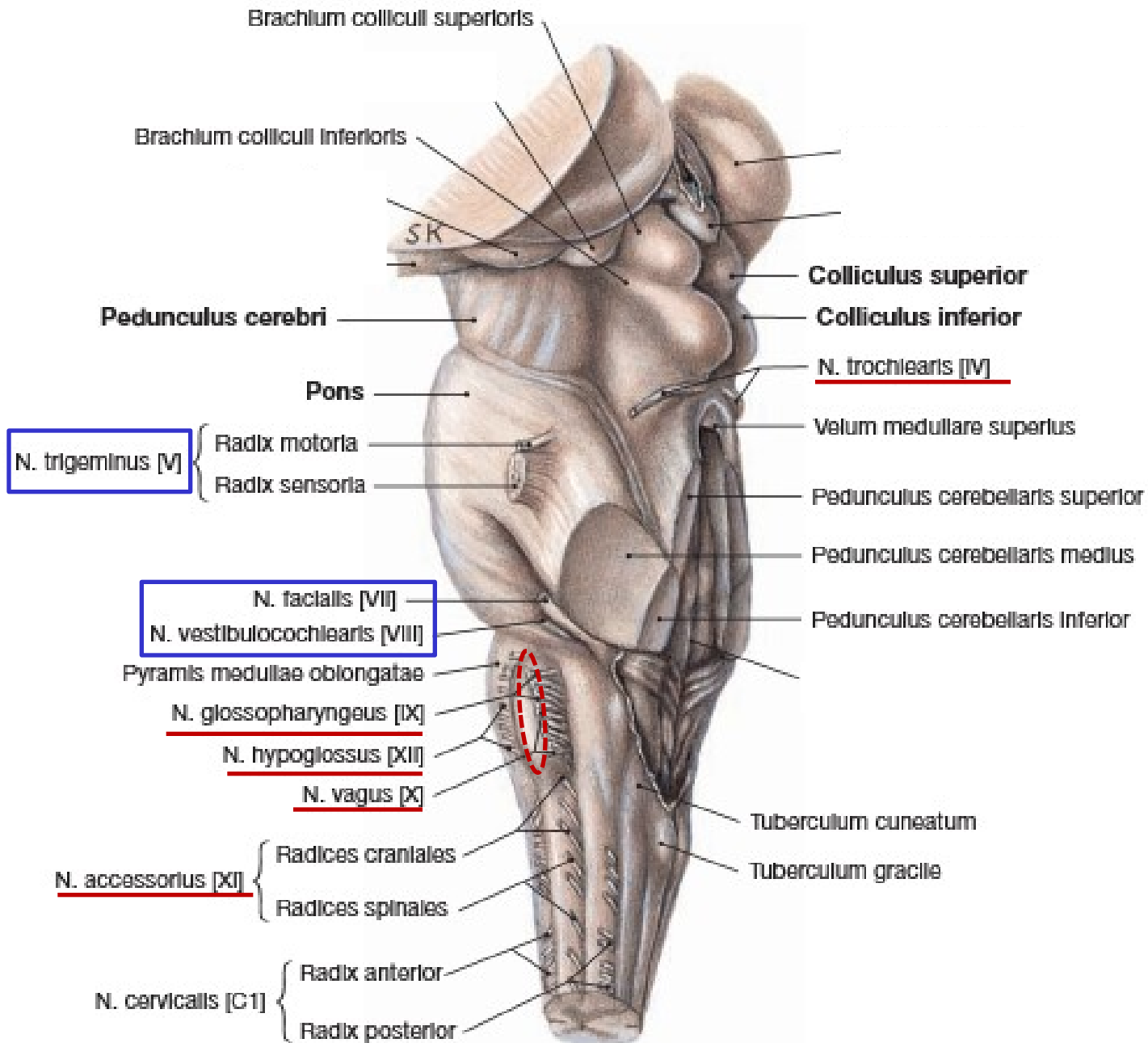


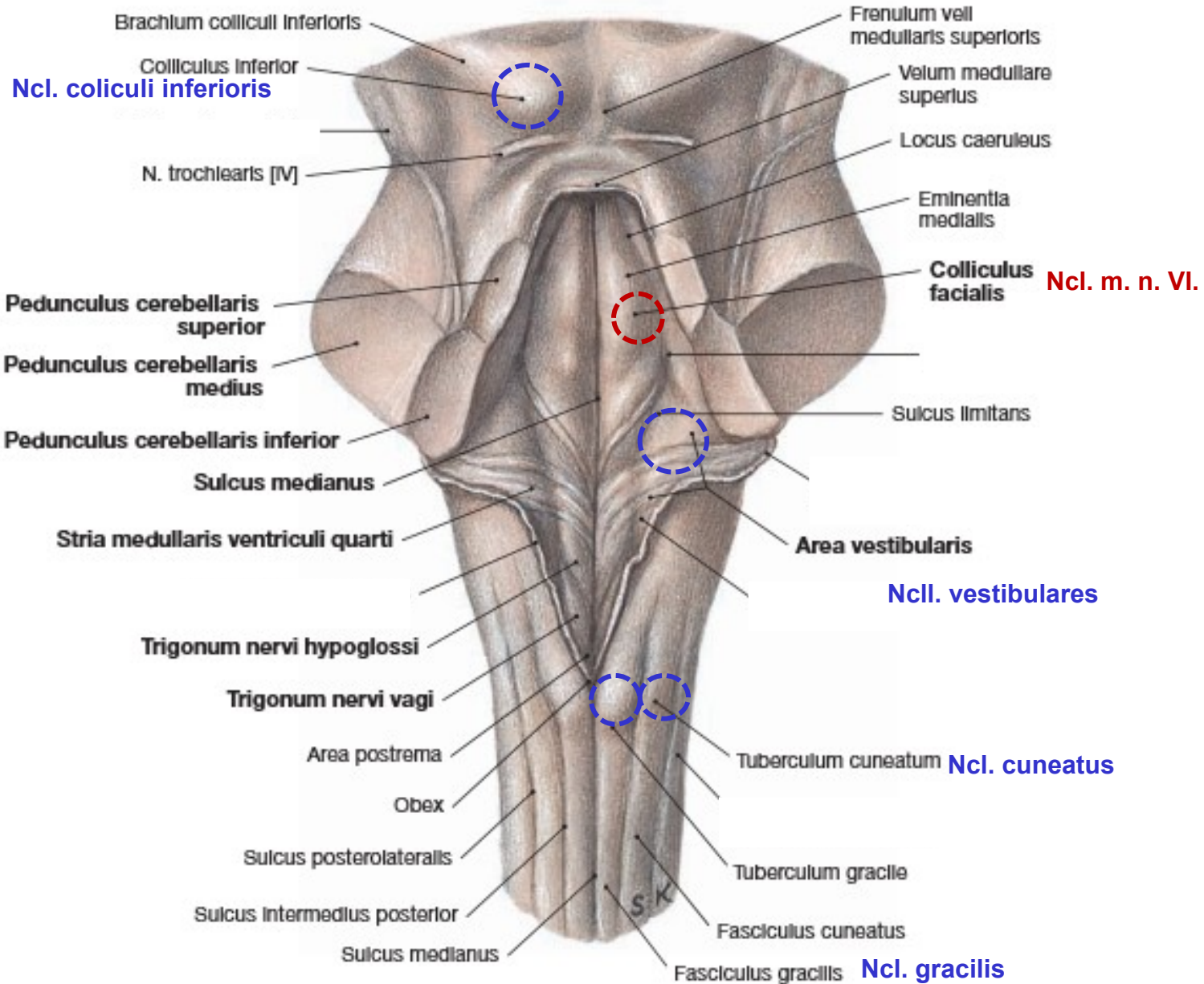
Mesencephalon

Pons

Medulla oblongata

Medulla spinalis





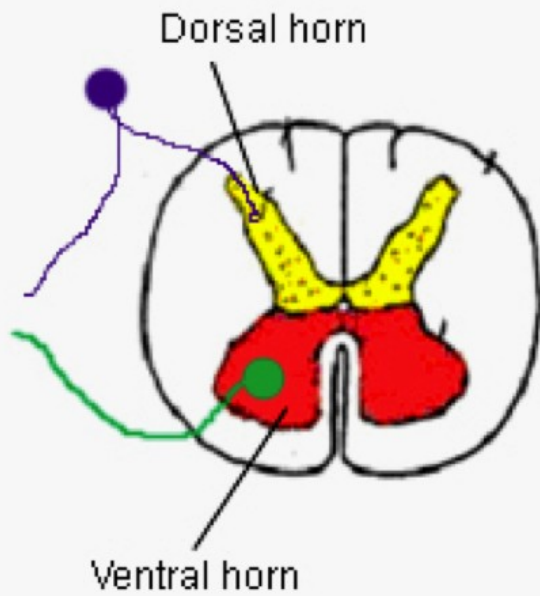
Ncl. colliculi inferioris

Ncl. m. n. VI.

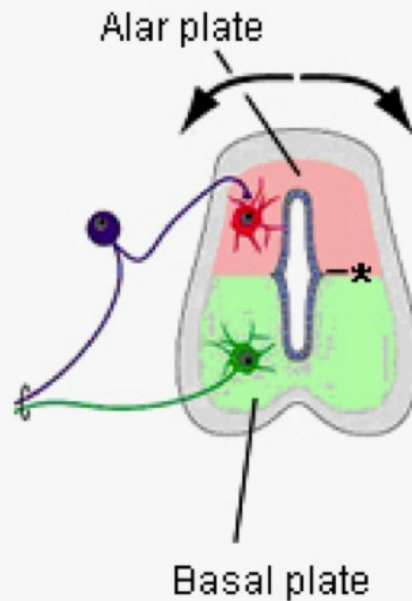
Ncll. vestibulares

Ncl. cuneatus

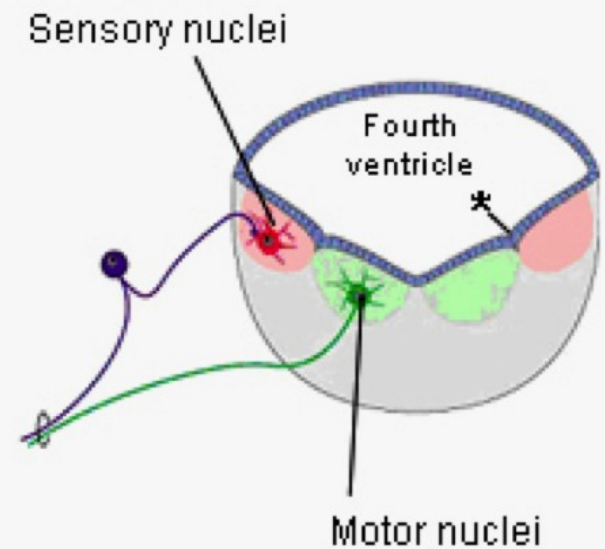
Ncl. gracilis



Spinal cord

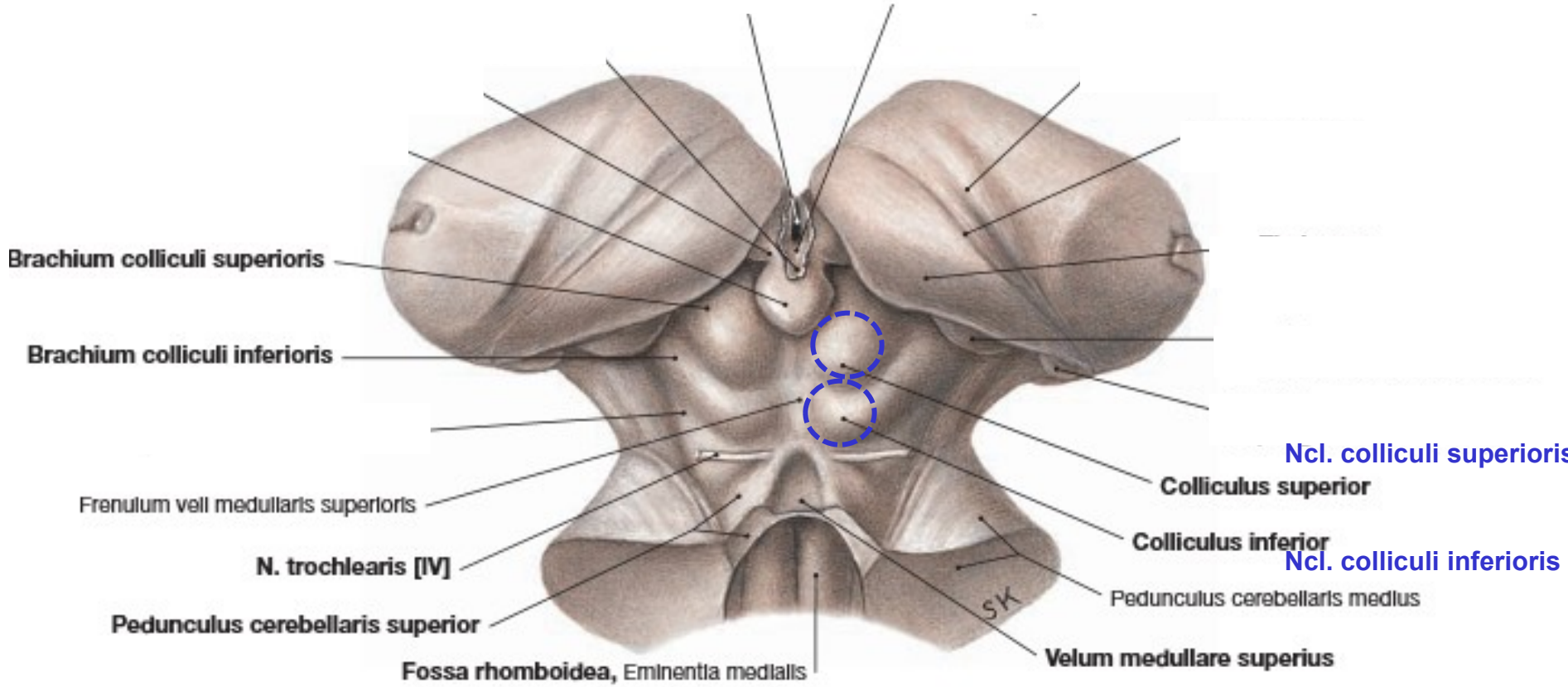


Neural tube

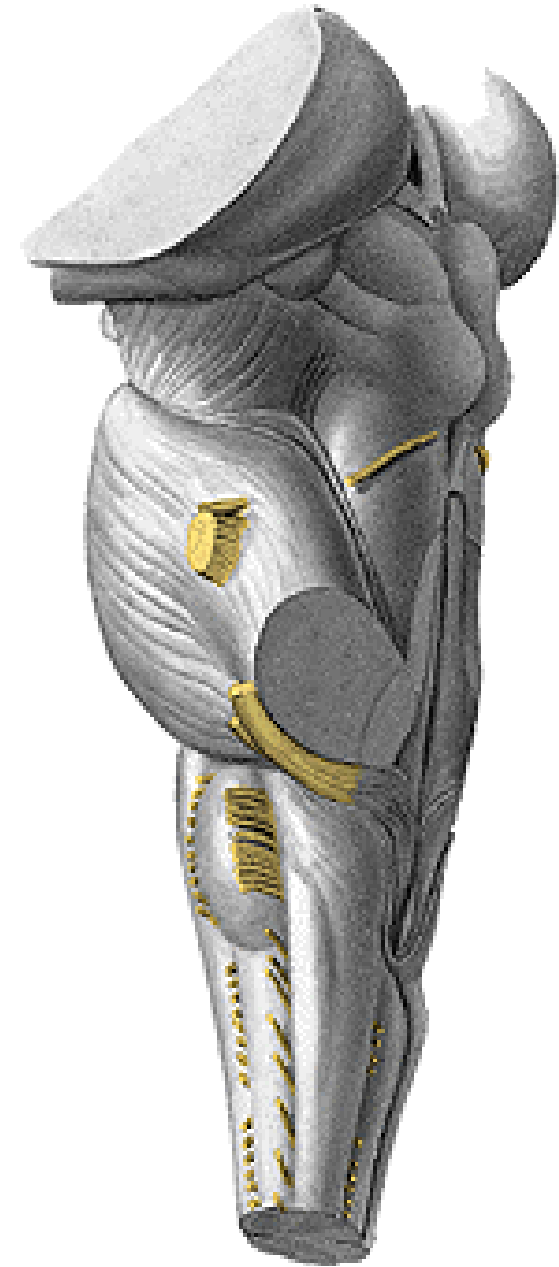
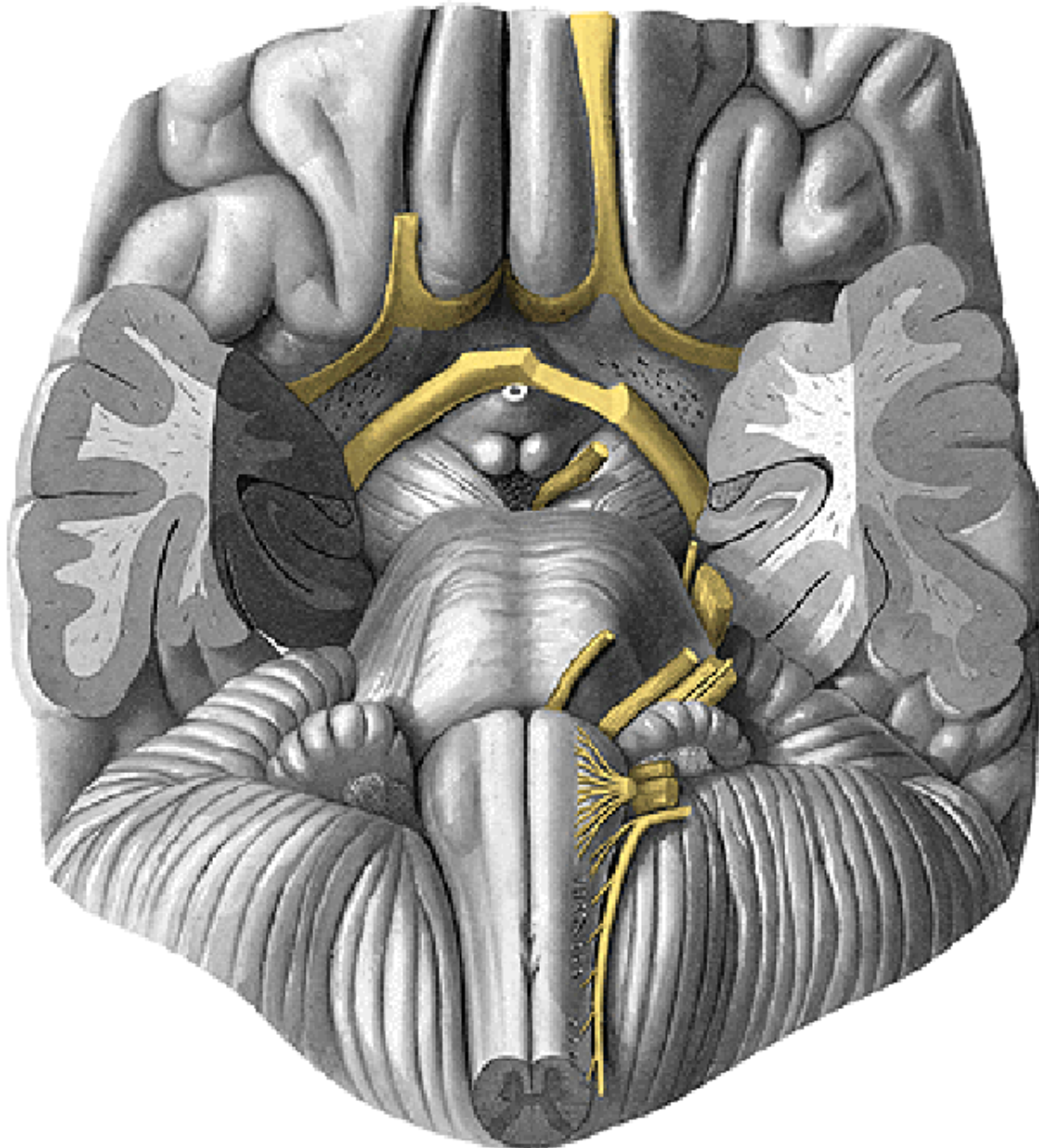


Brainstem

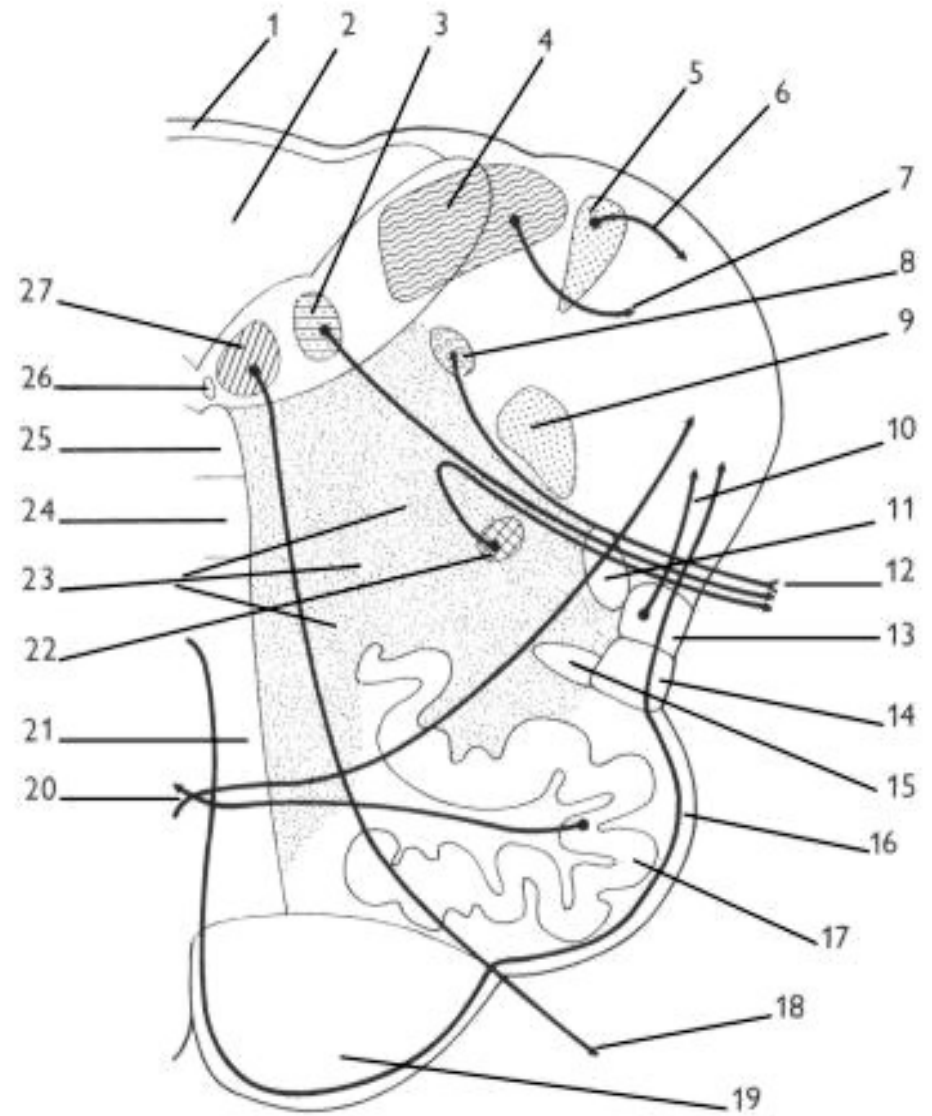
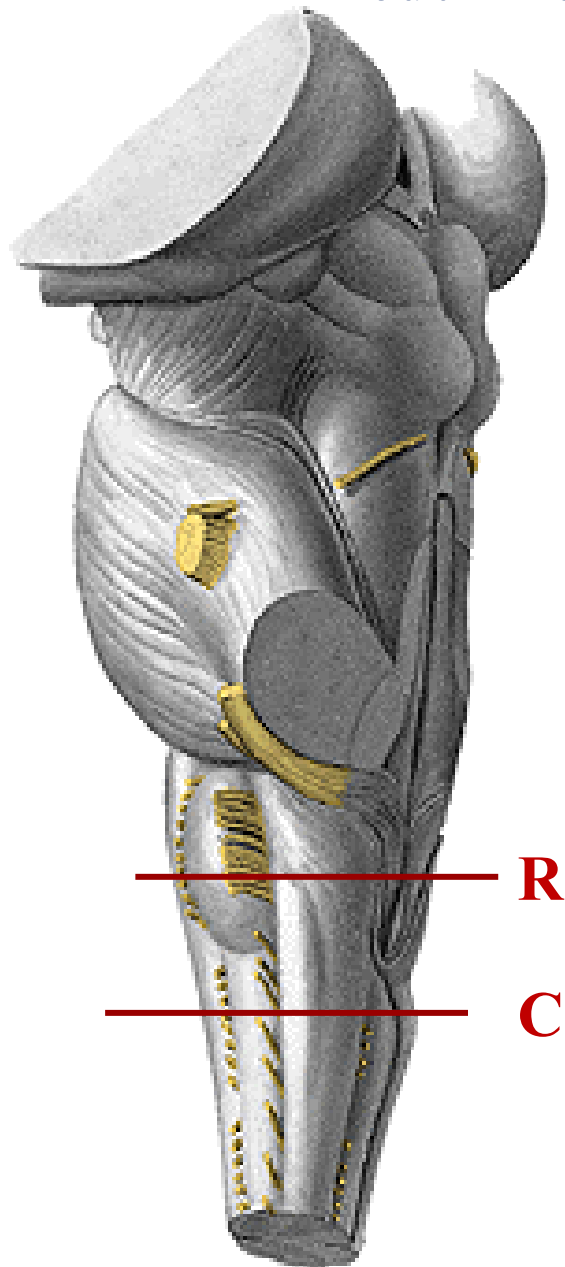
* sulcus limitans

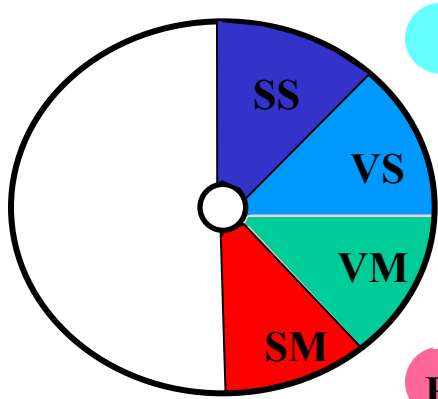


MOZKOVÝ KMEN – Odstupy hlavových nervů



Medulla oblongata – representativní řezy





ncl. et tr. solitarius

ncl. parasymp. n. X

BM

ncl. originis n. XII

22

20

FR

18

1

2

3

4

5

6

tr. spino-c.post.

tr.cortico-
spinalis lat.

tr. spino-c.ant.

tr.rubro-
spinalis

tr.spino-th.

tr.ret.-spinalis

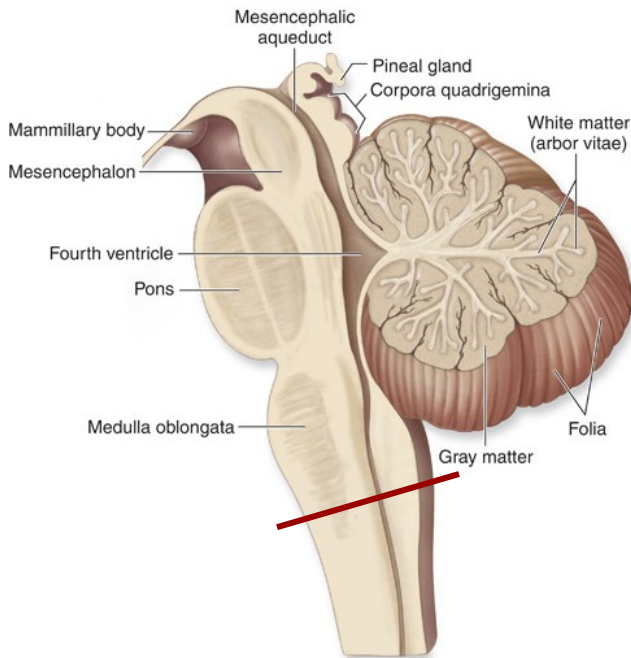
tr.vest.-spinalis

ncl. originis n. XI

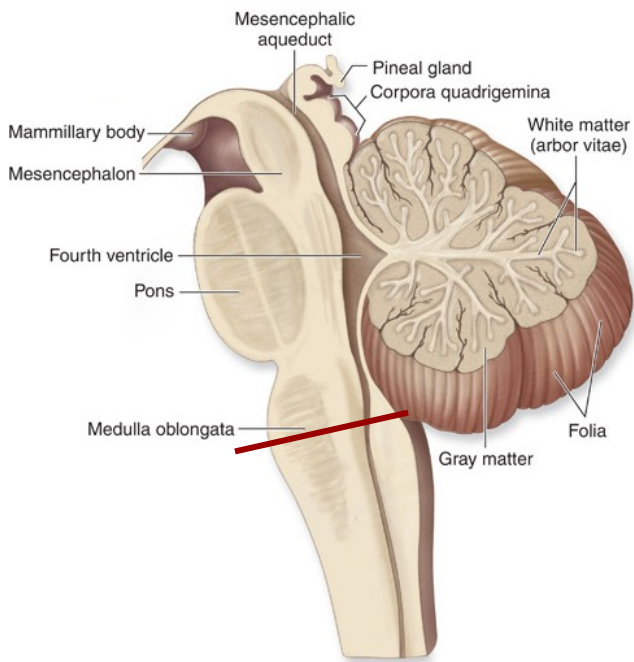
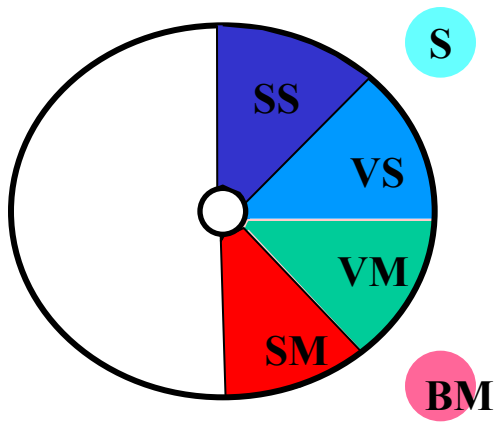
FLM

16

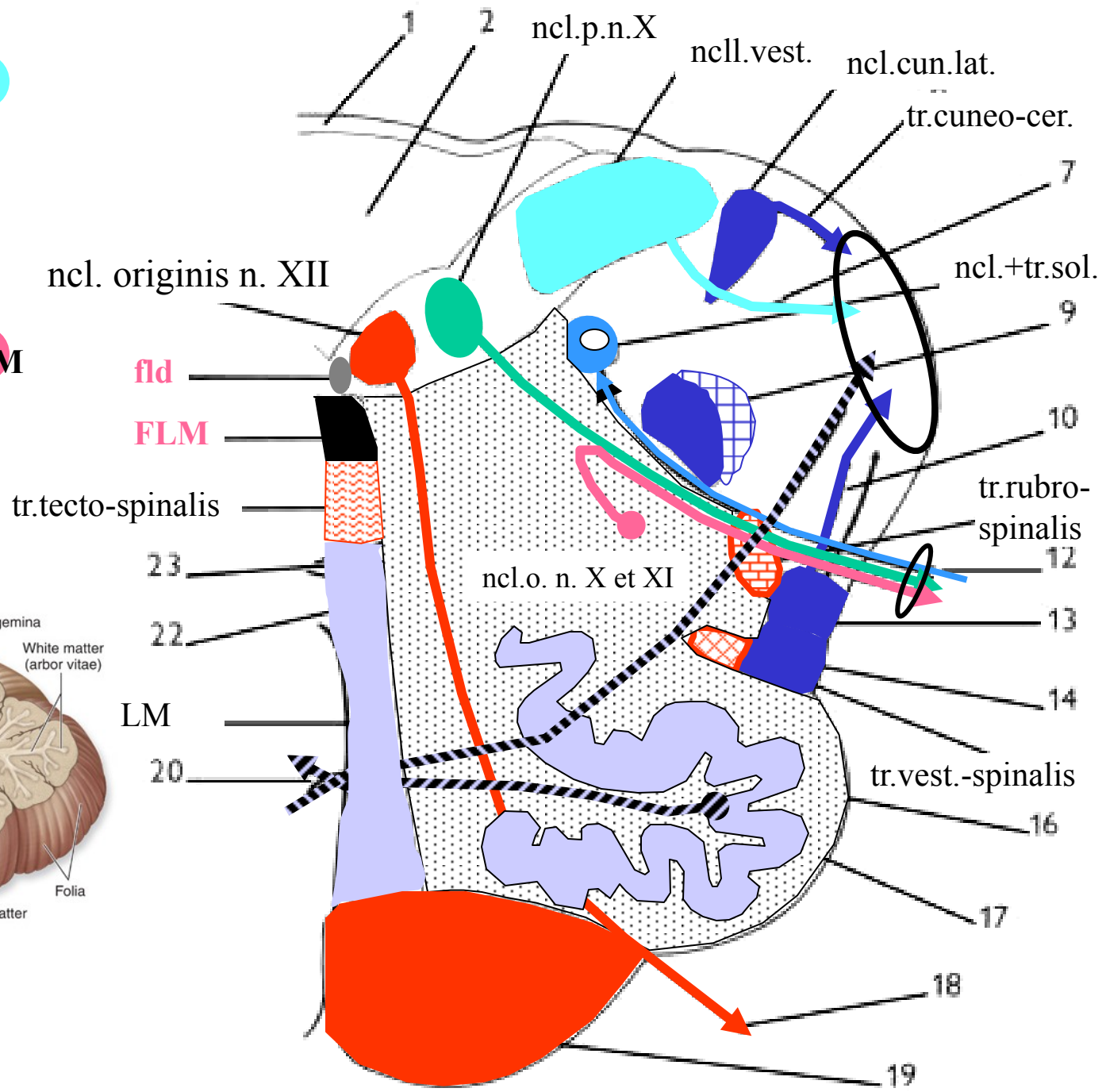
tr.tecto-spinalis



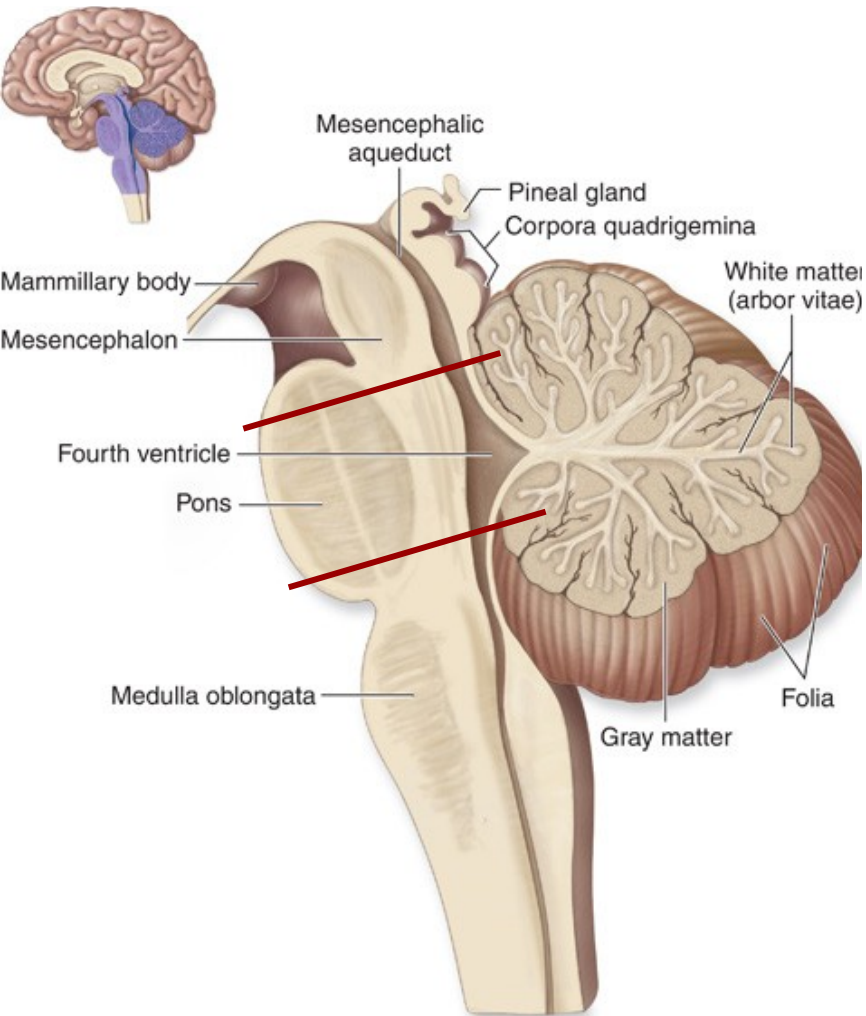
(a) Midsagittal section



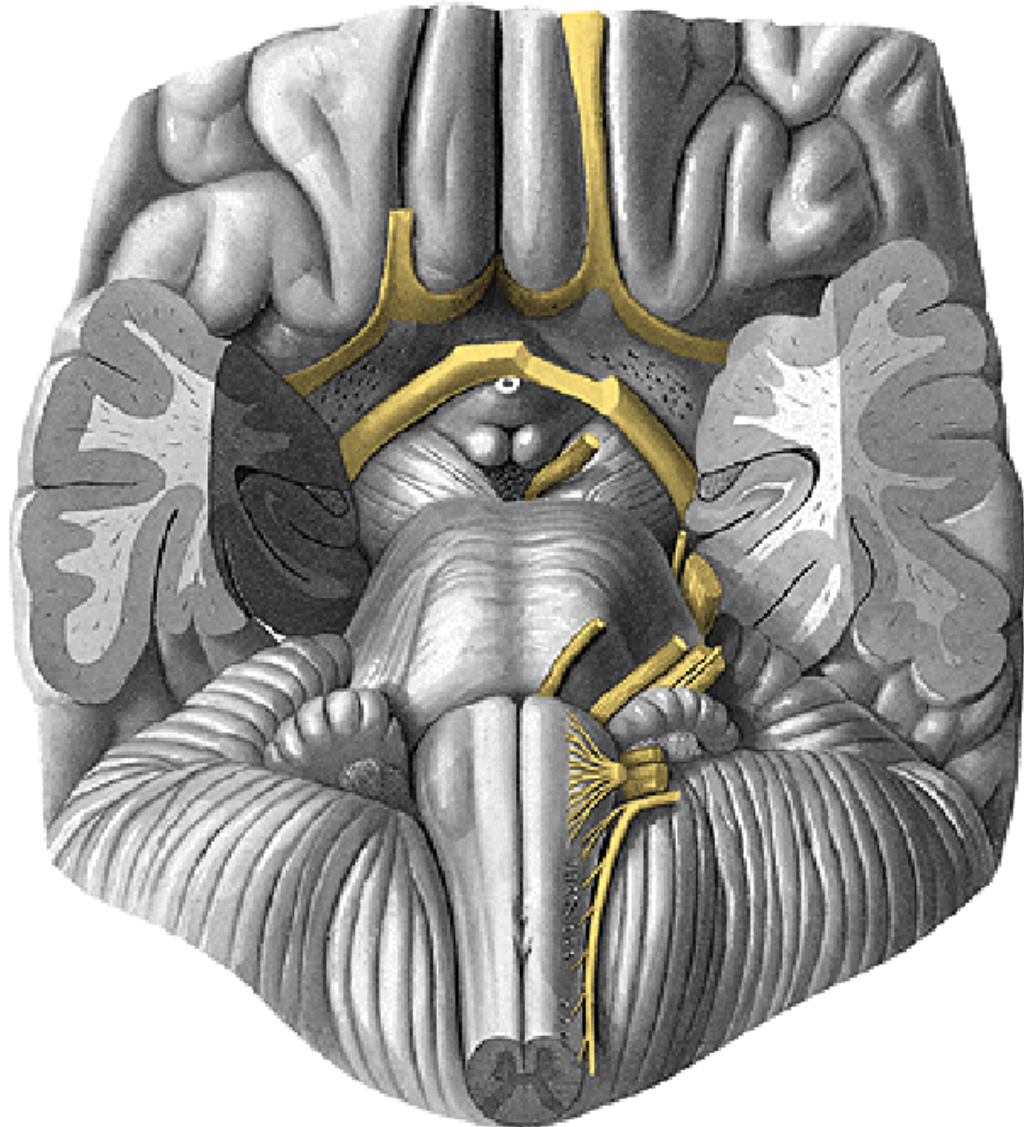
(a) Midsagittal section



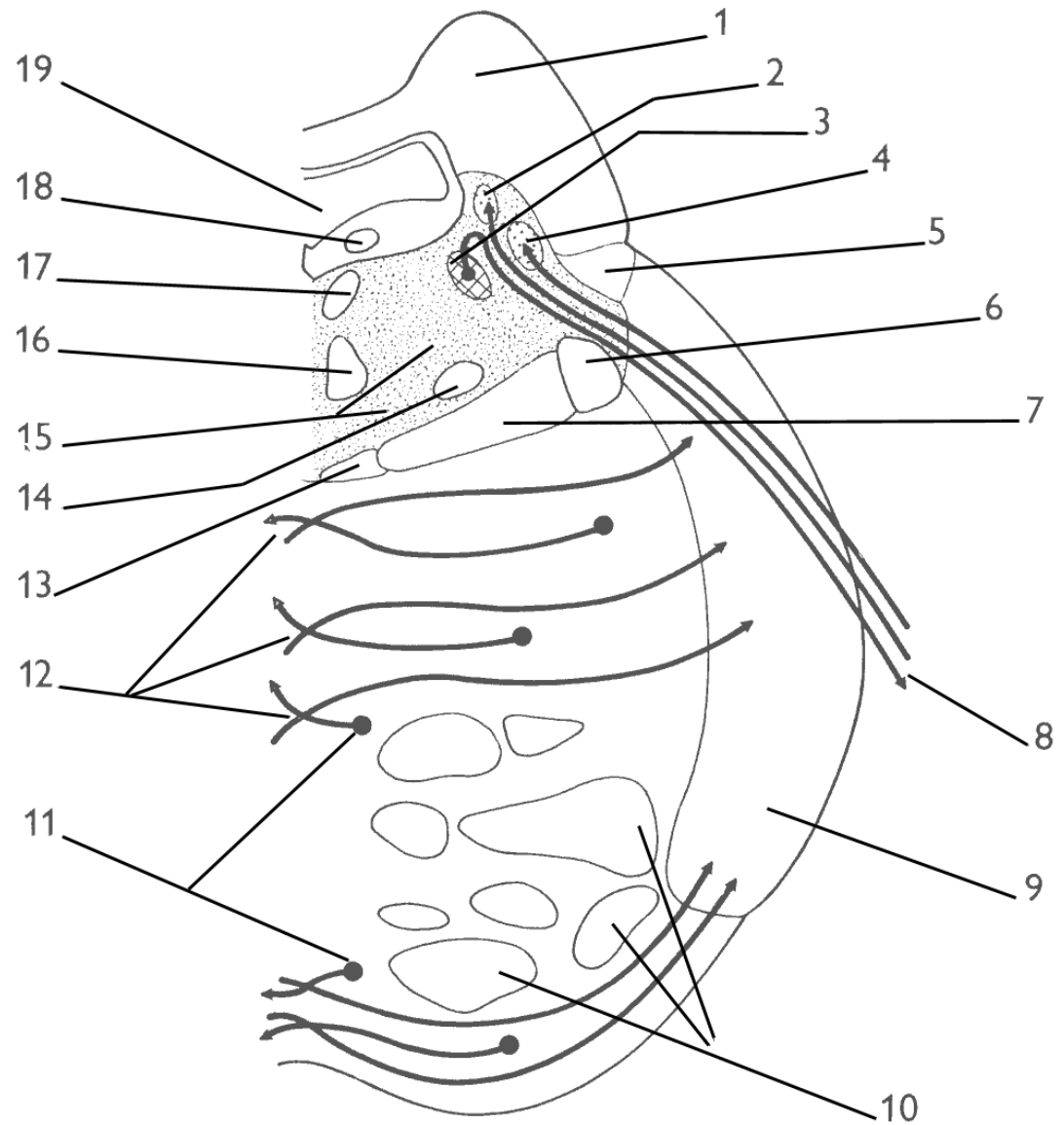
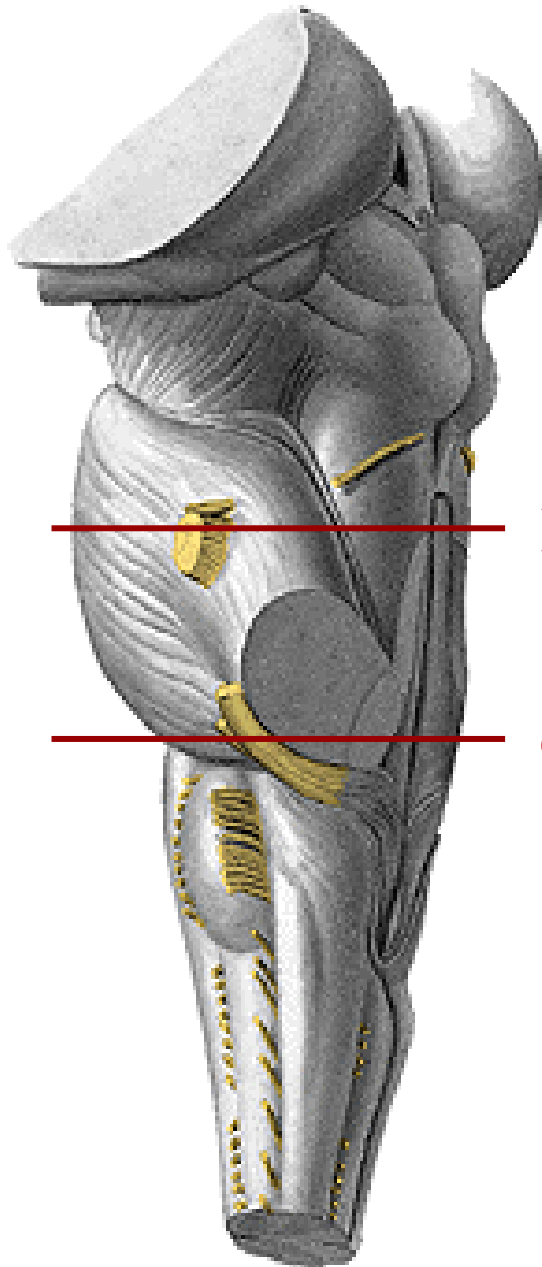
MOZKOVÝ KMEN - Pons

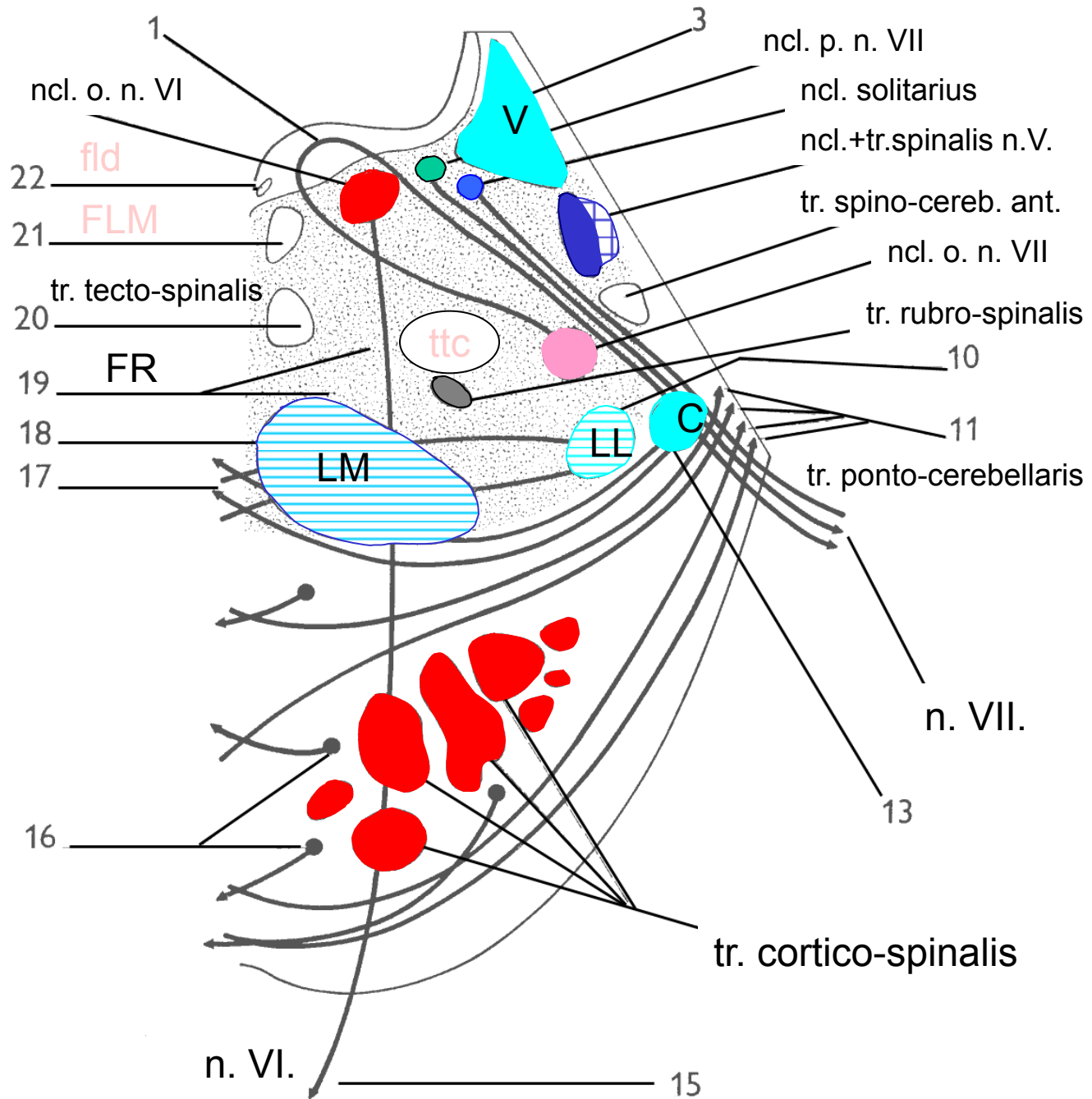
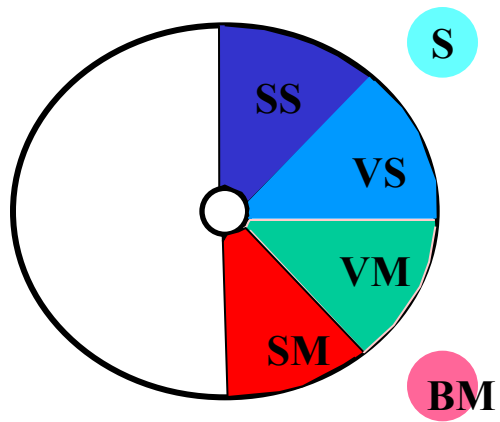


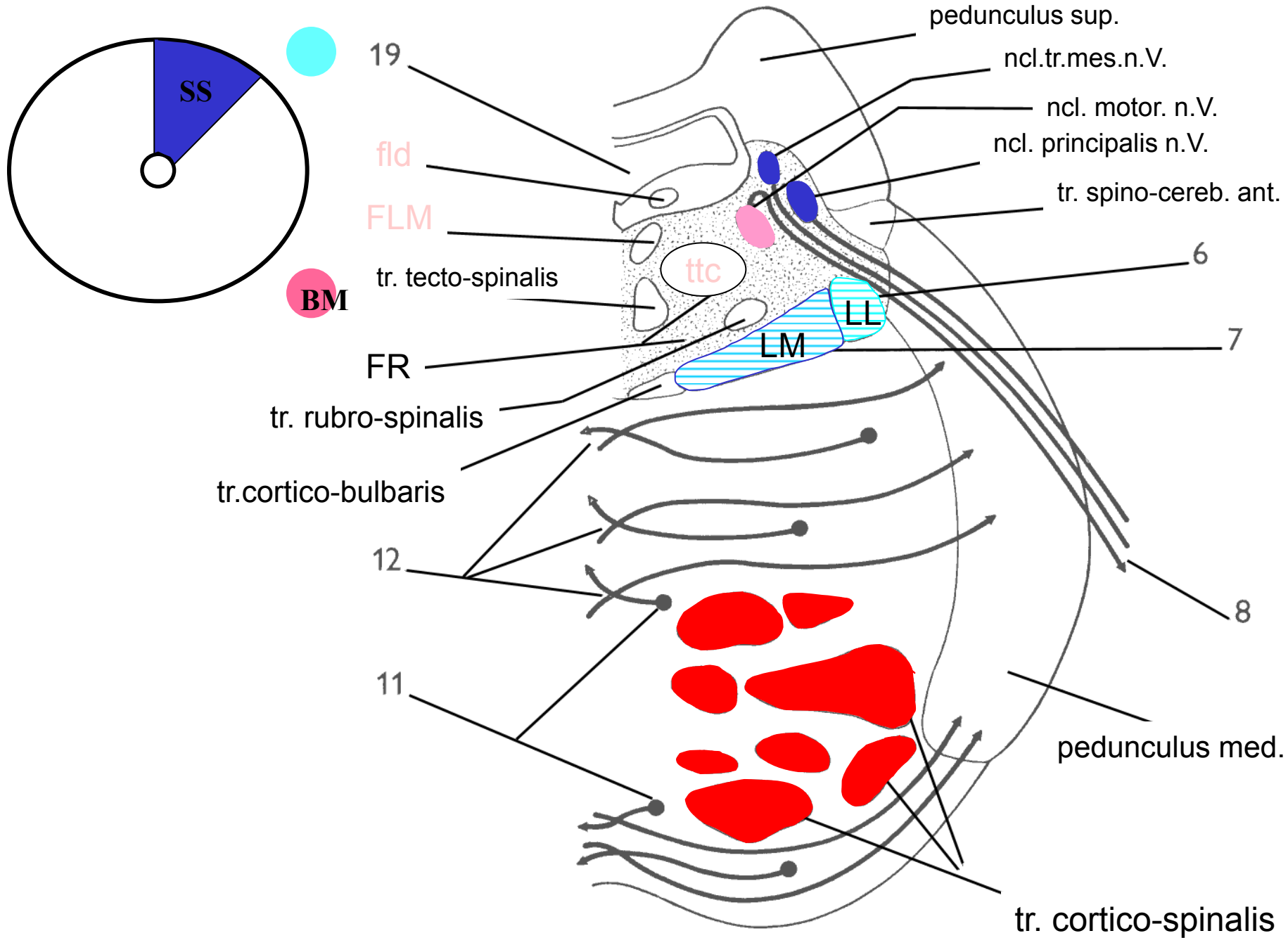
(a) Midsagittal section



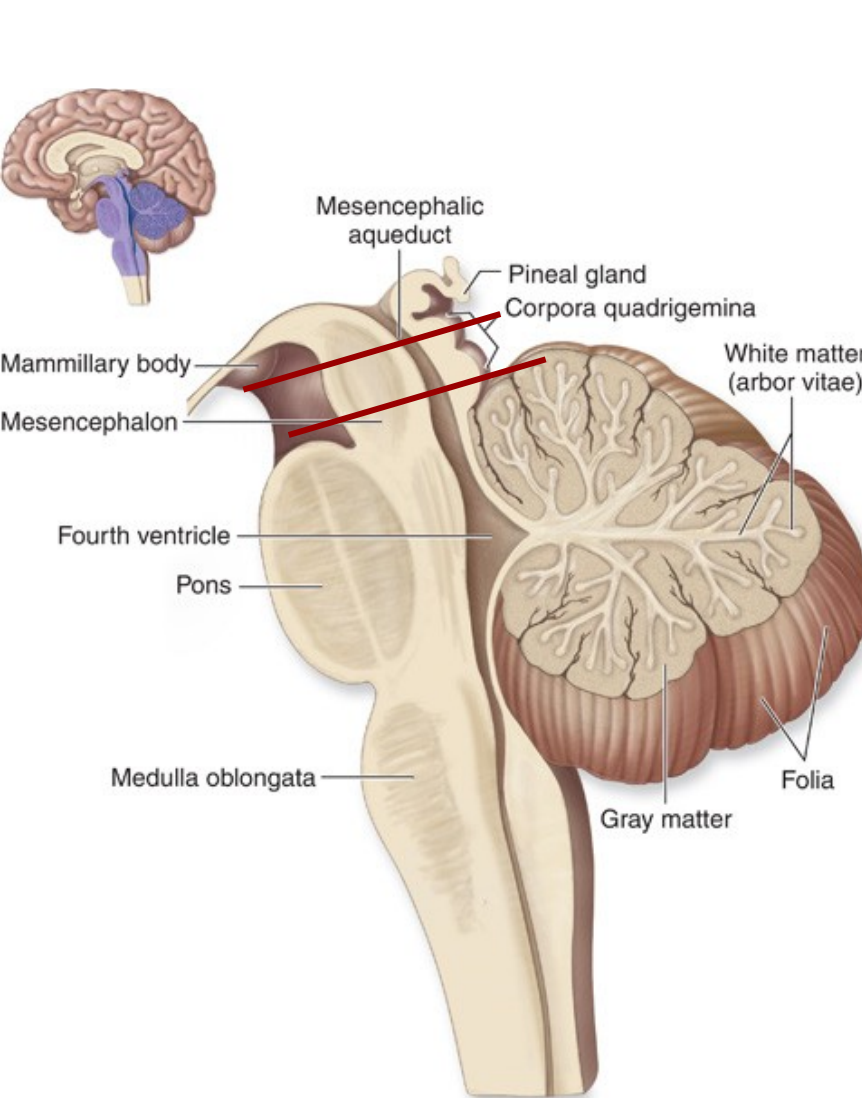
Pons – representativní řezy



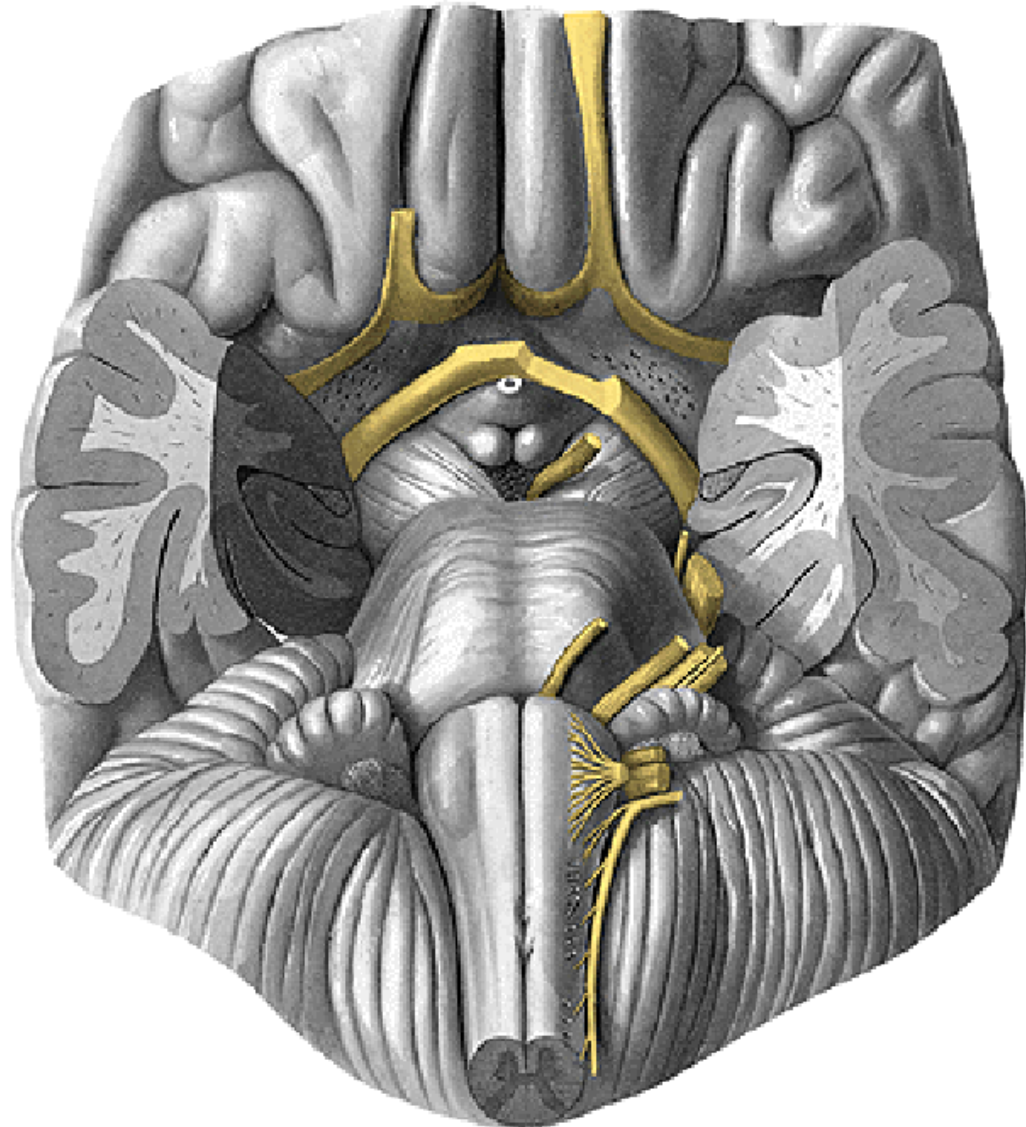




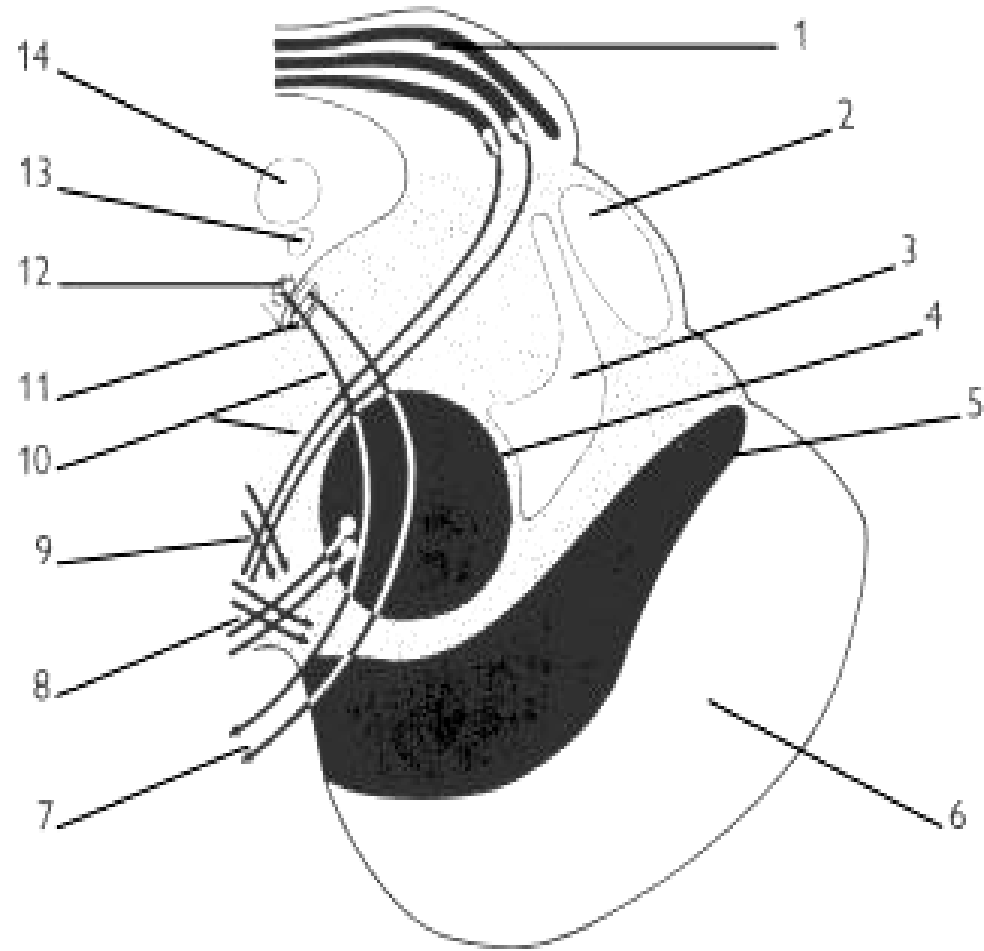
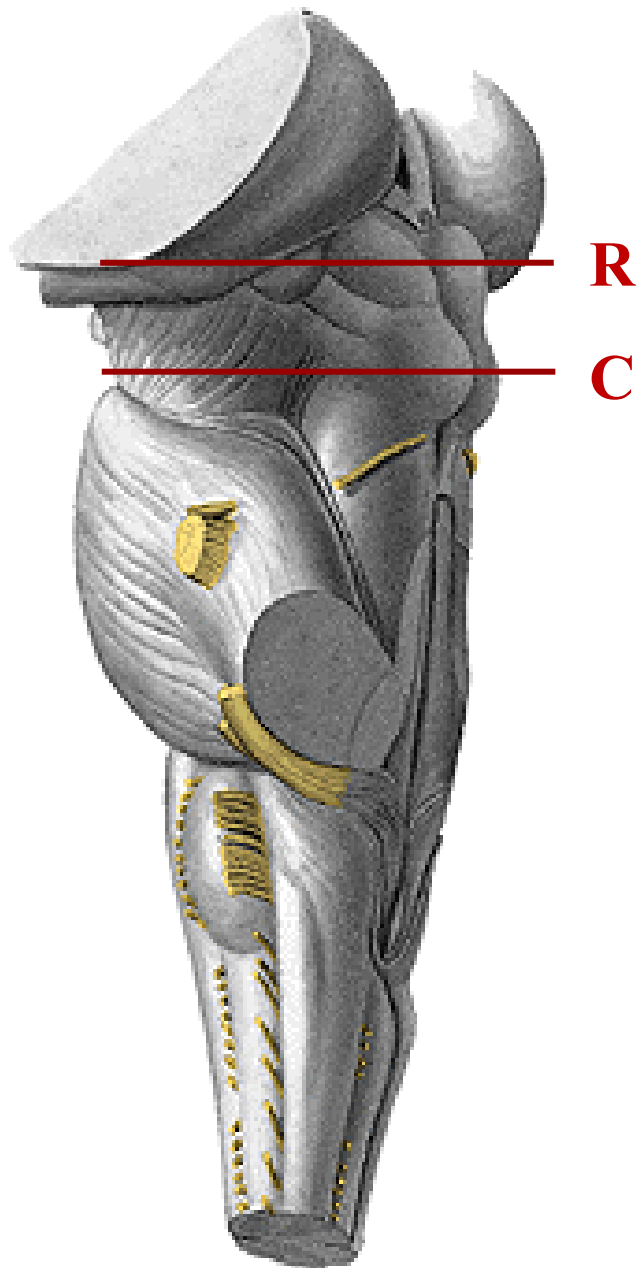
MOZKOVÝ KMEN – Mesencephalon

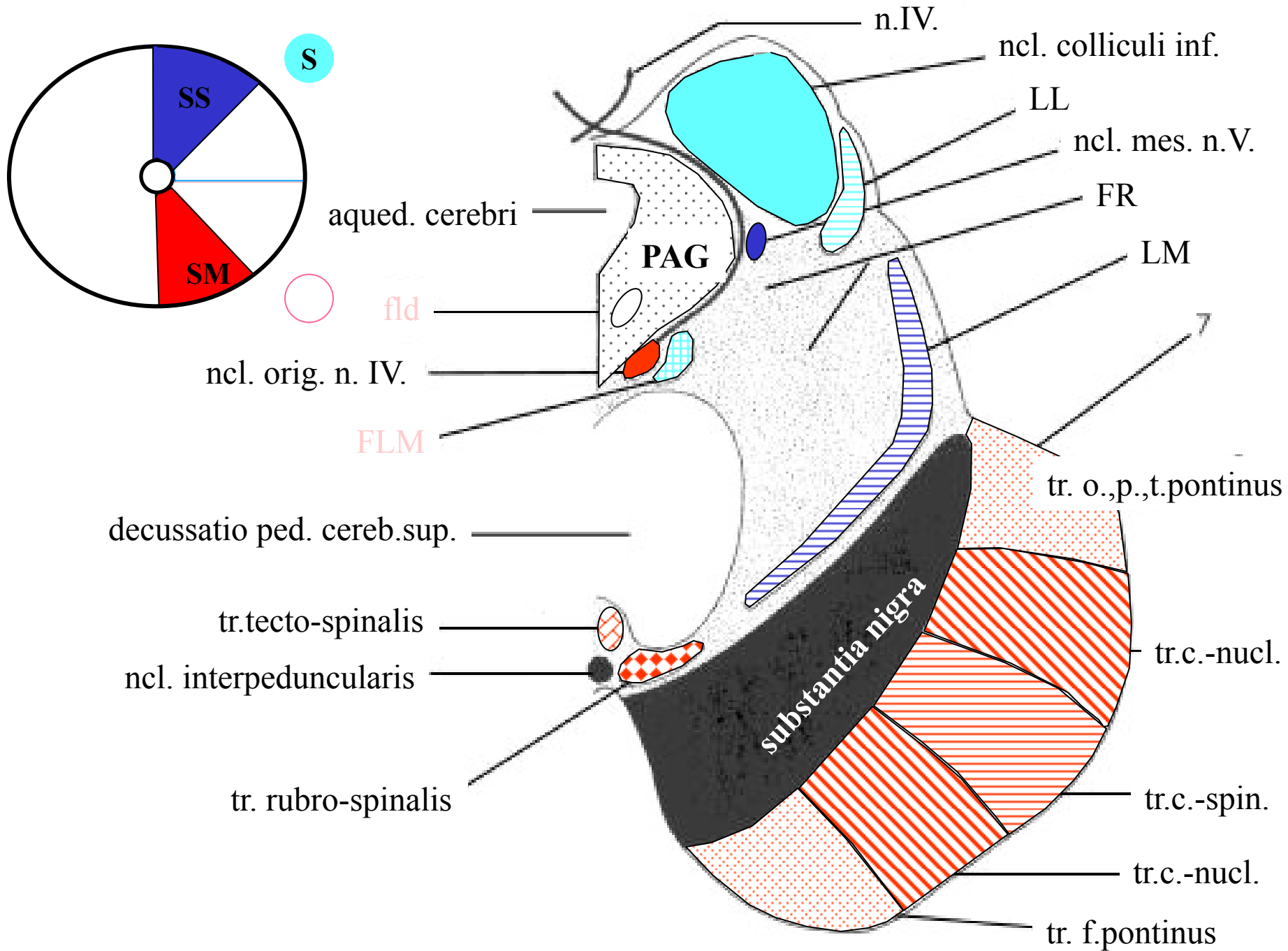


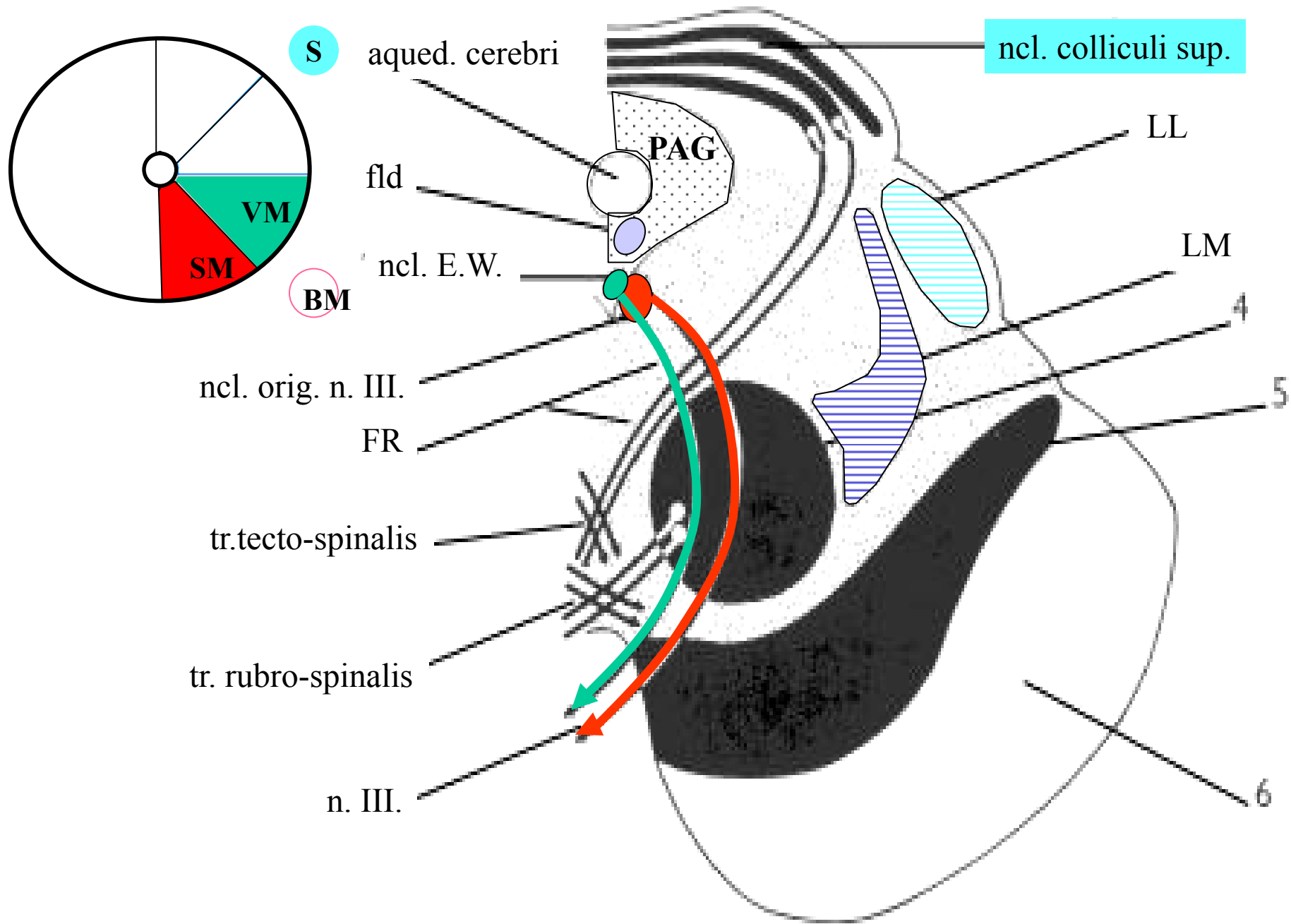
(a) Midsagittal section

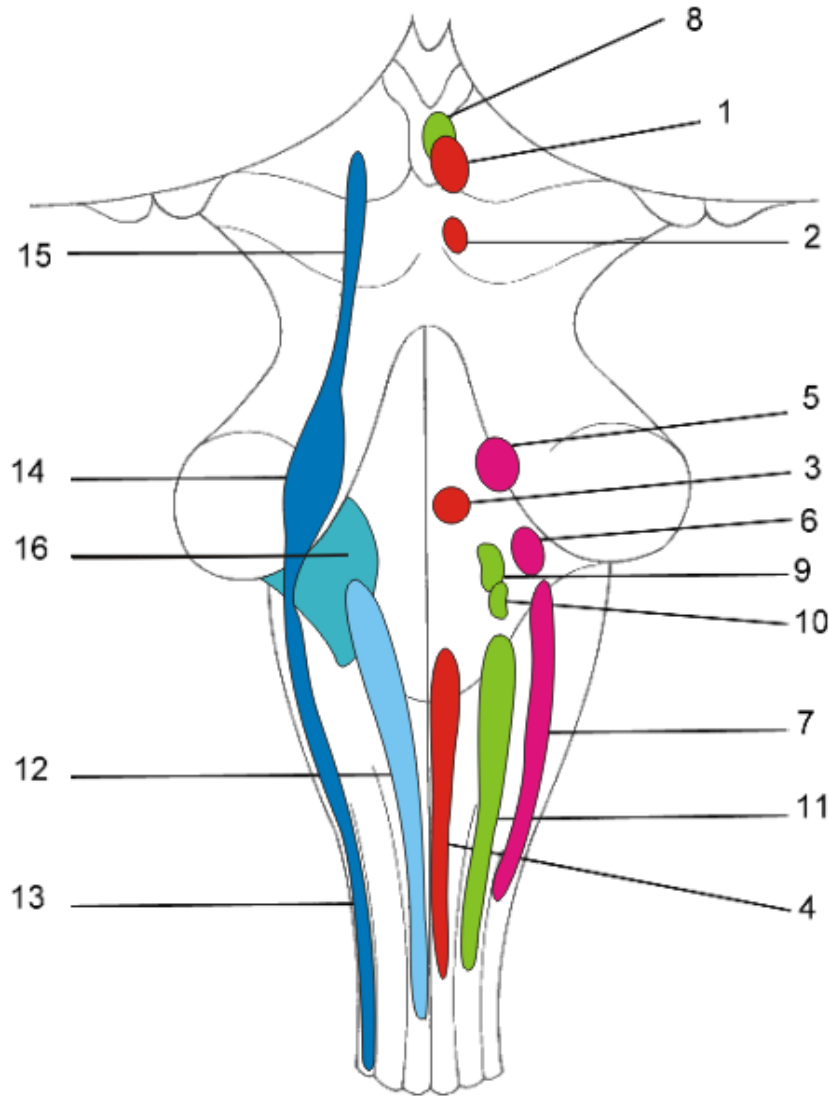


Mesencephalon – representativní řezy









- 1 - ncl. motorius (originis) n. III.
- 2 - ncl. motorius (originis) n. IV.
- 3 - ncl. motorius (originis) n. VI.
- 4 - ncl. motorius (originis) n. XII.
- 5 - ncl. motorius (masticatorius) n. V.
- 6 - ncl. motorius (originis) n. VII.
- 7 - ncl. motorius (originis) n. IX., X., et XI.
(ncl. ambiguus)
- 8 - ncl. parasympathicus n. III (ncl. E.W.)
- 9 - ncl. parasympathicus n. VII.
- 10 - ncl. parasympathicus n. IX.
- 11 - ncl. parasympathicus n. X.
- 12 - ncl. solitarius
- 13 - ncl. spinalis n. V.
- 14 - ncl. principalis n. V.
- 15 - ncl. mesencephalicus n. V.
- 16 - ncll. cochleares et vestibulares