

# ORGANUM VISUS (ZRAKOVÉ ÚSTROJÍ)

## TUNICA FIBROSA BULBI

- bělima (sclera) zadní 5/6 oka
- rohovka (cornea) přední 1/6

## Tunica

- fibrosa bulbi
- vasculosa bulbi
- interna bulbi

## Sclera (poloměr 11-12 mm)

lamina cribrosa sclerae

fascia bulbi (Tenoni) → spatium episclerale

spatium perichoroideum

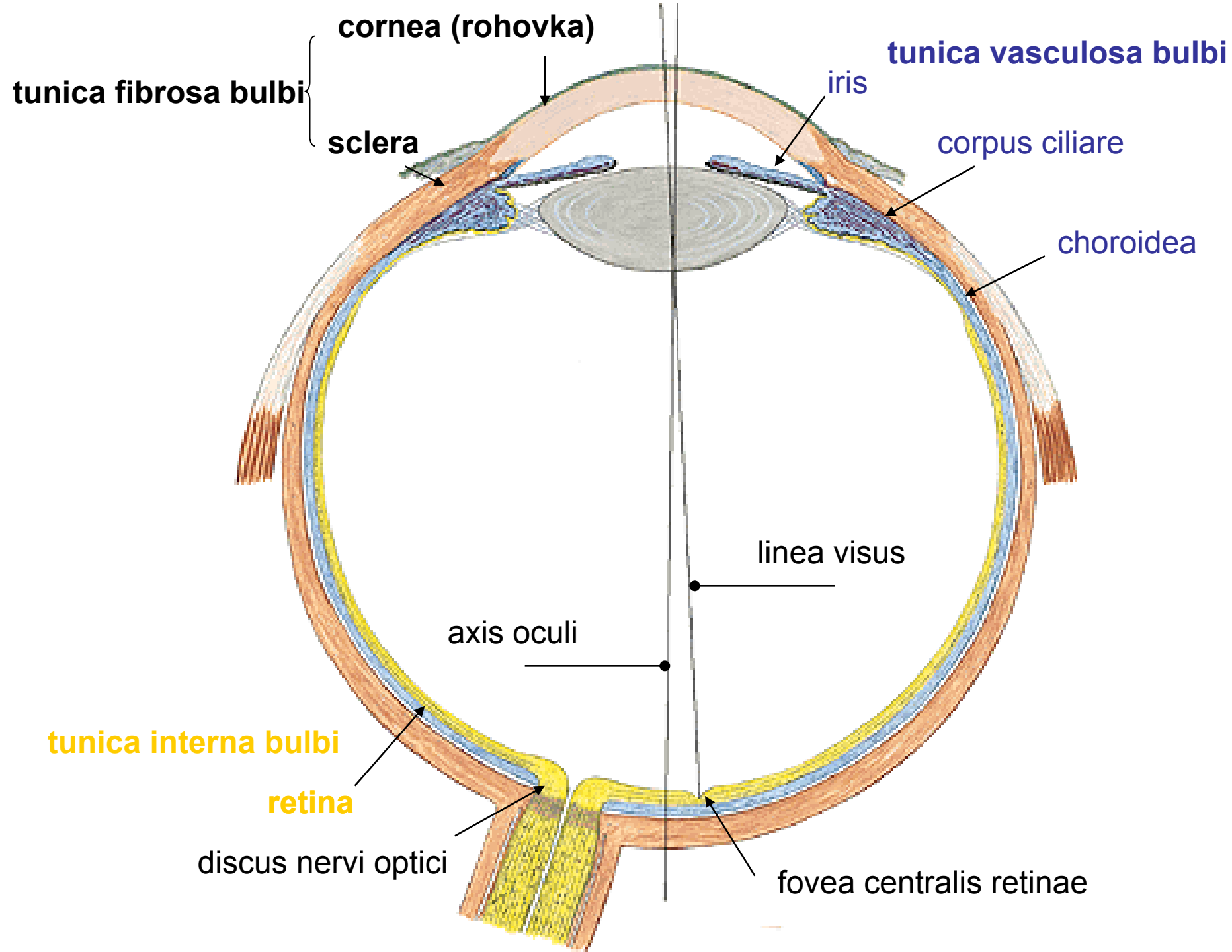
## Cornea (poloměr 7-8 mm)

facies anterior et posterior corneae

limbus corneae

sklerokorneálního spojení - sulcus sclerae

- žilní splav sinus venosus sclerae (canalis Schlemmi)



## TUNICA VASCULOSA BULBI

**choroidea** (cévnatka)

**corpus ciliare** (řasnaté těleso)

**iris** (duhovka)

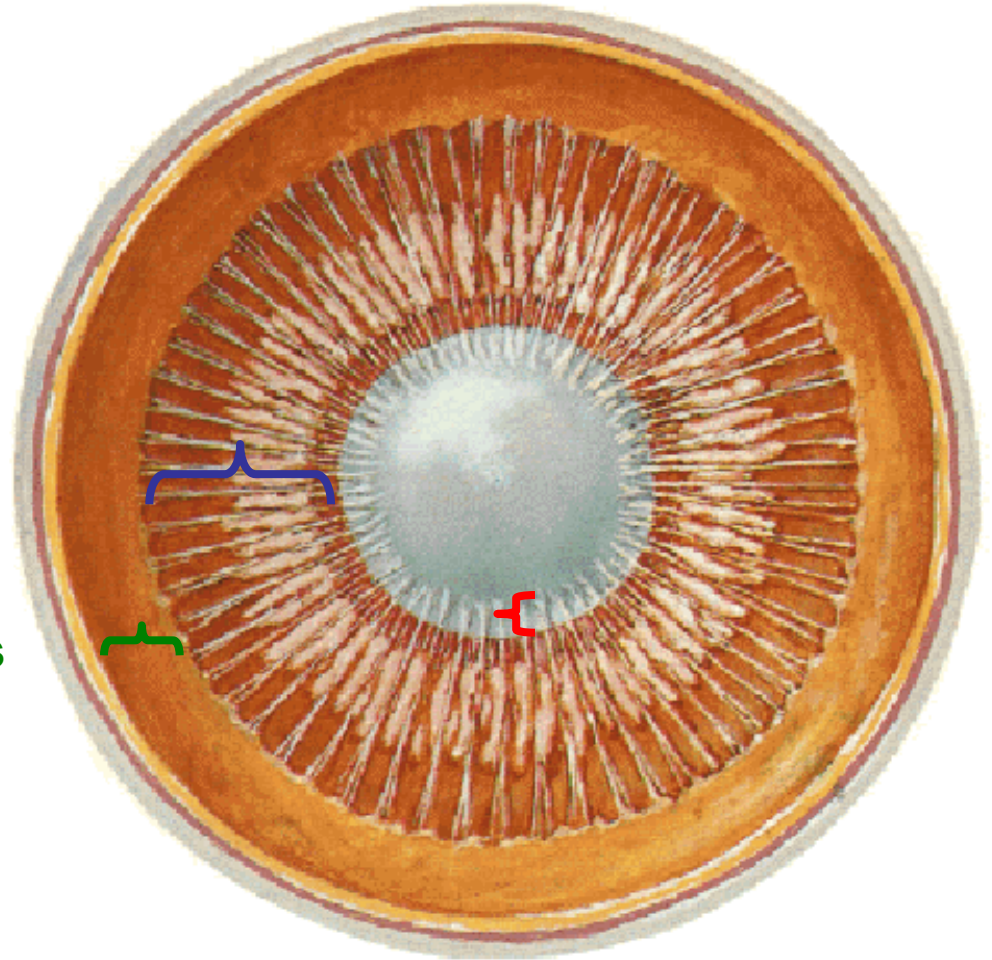
### CORPUS CILIARE

**m. ciliaris**    fibrae meridionales  
                  fibrae circulares

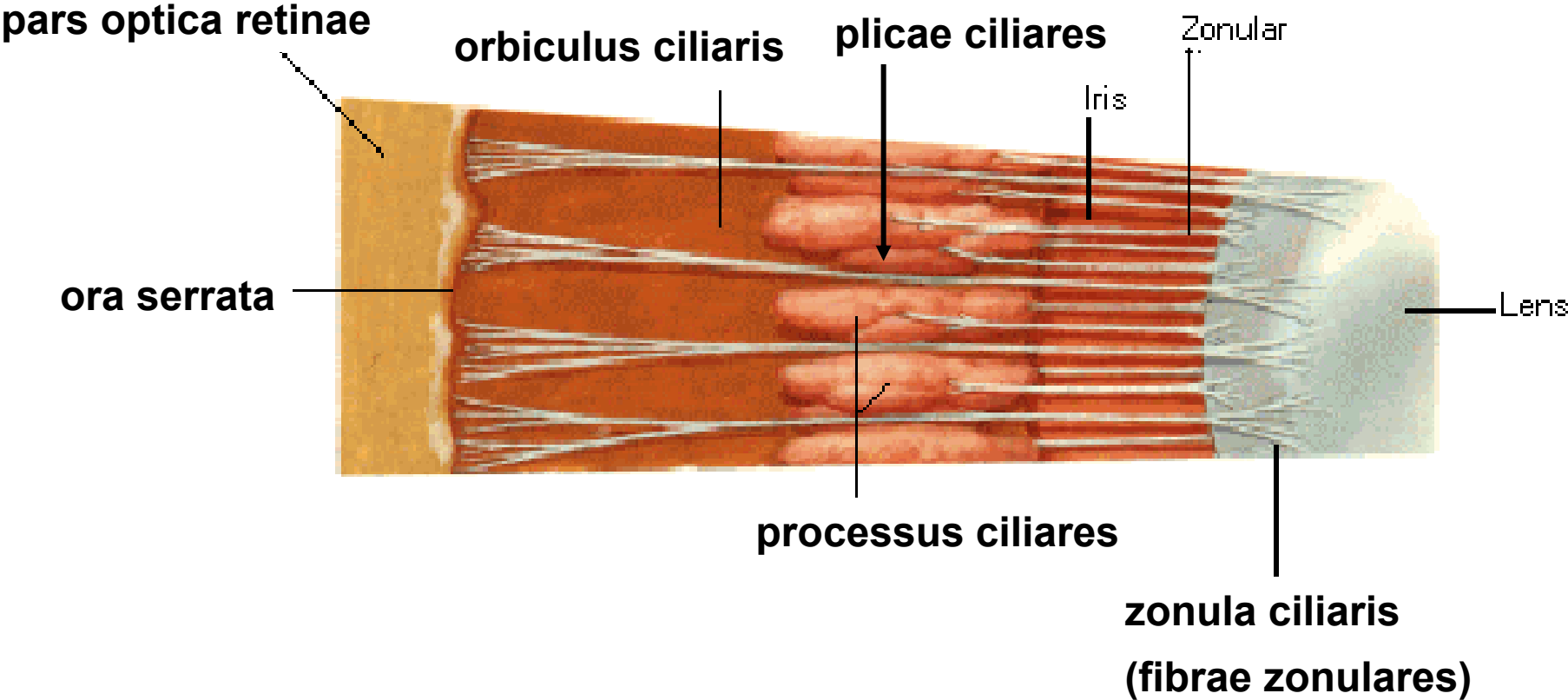
**processus ciliares** }  
**plicae ciliares**        } **corona ciliaris**

**orbiculus ciliaris**

**fibrae zonulares**    **zonula ciliaris**



# CORPUS CILIARE



## **IRIS (DUHOVKA)**

**margo pupillaris**

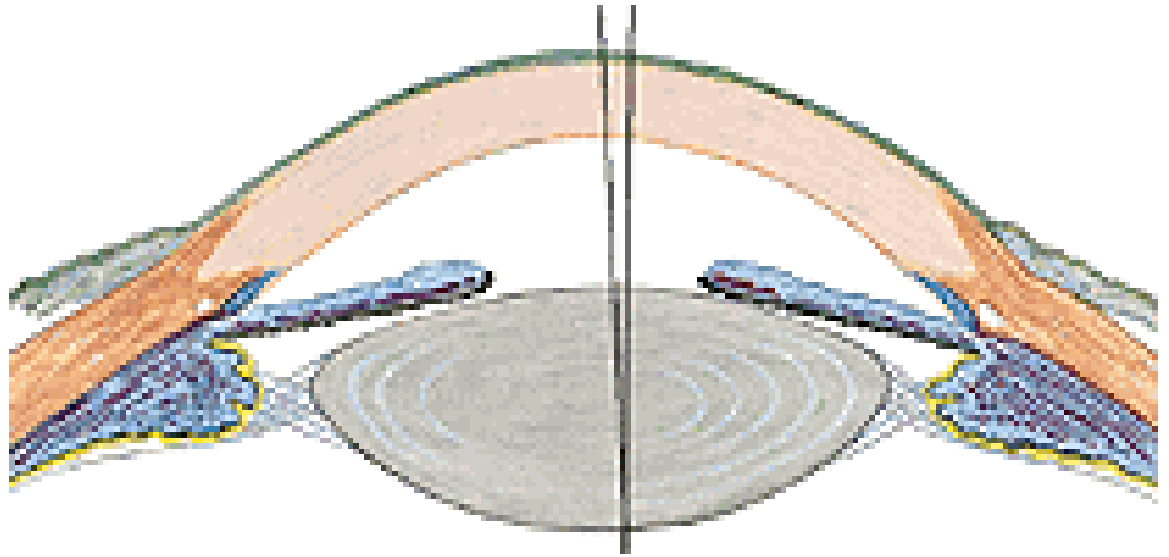
**margo ciliaris**

**facies anterior et posterior iridis**

**m. sphincter pupillae - parasymptikus - miosis**

**m. dilatator pupillae – sympatikus - mydriasis**

**angulus iridocornealis → reticulum trabeculare**



## **TUNICA INTERNA BULBI    *RETINA***

**pars optica retinae**

**pars caeca retinae (pars ciliaris retinae, pars iridica retinae)**

**ora serrata**

**pars optica retinae**

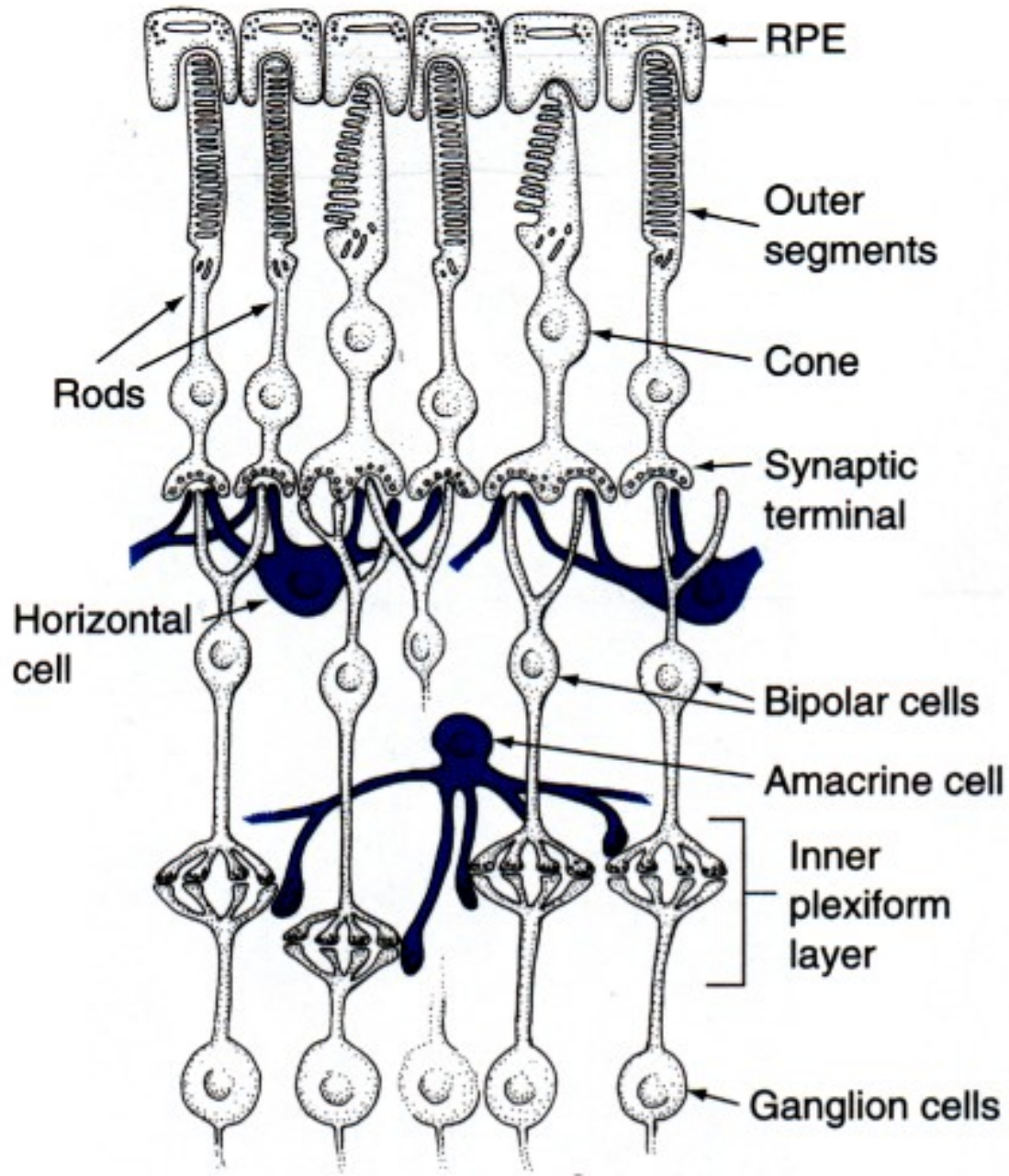
**stratum pigmenti retinae**

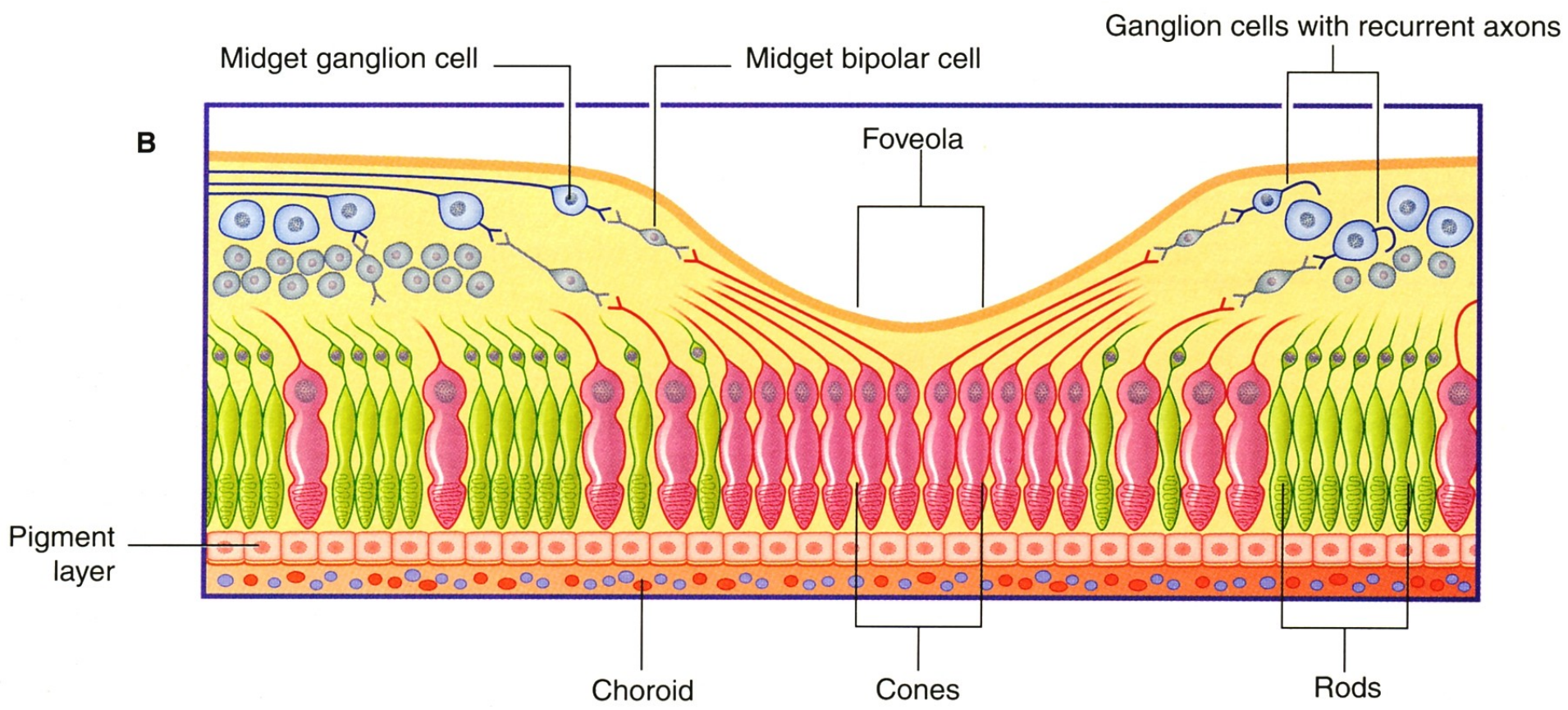
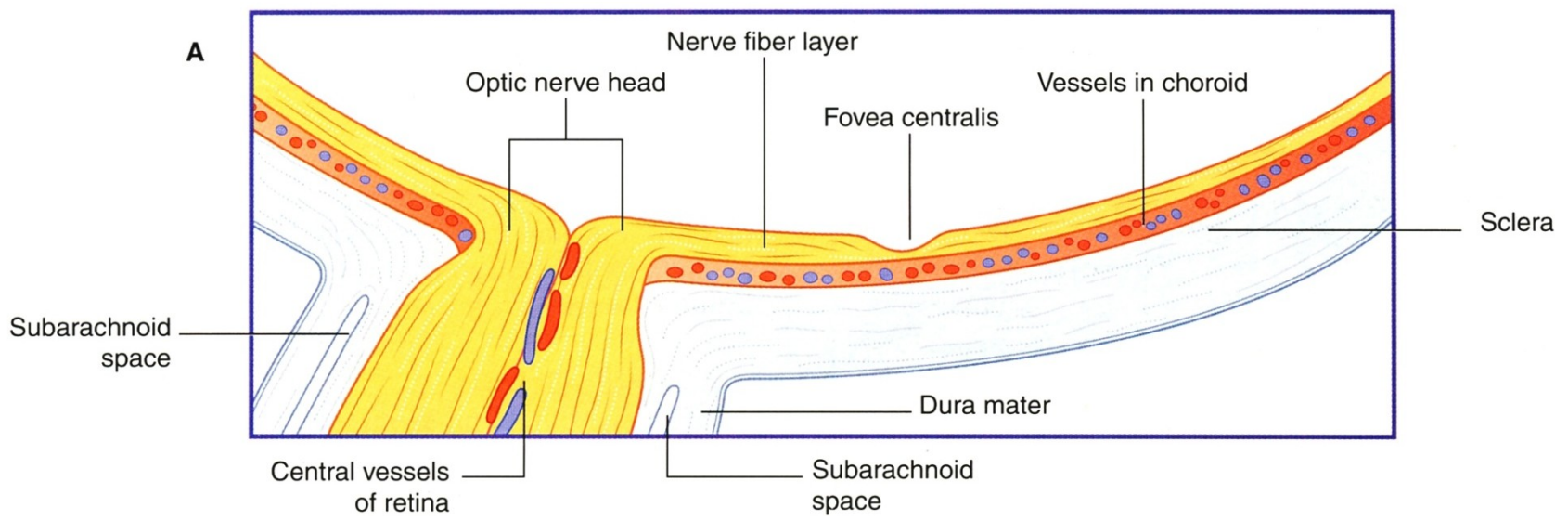
**stratum neuroepitheliale (vrstva tyčinek/120mil a čípků/6mil)**

**stratum ganglionare retinae**

**stratum ganglionare nervi optici**

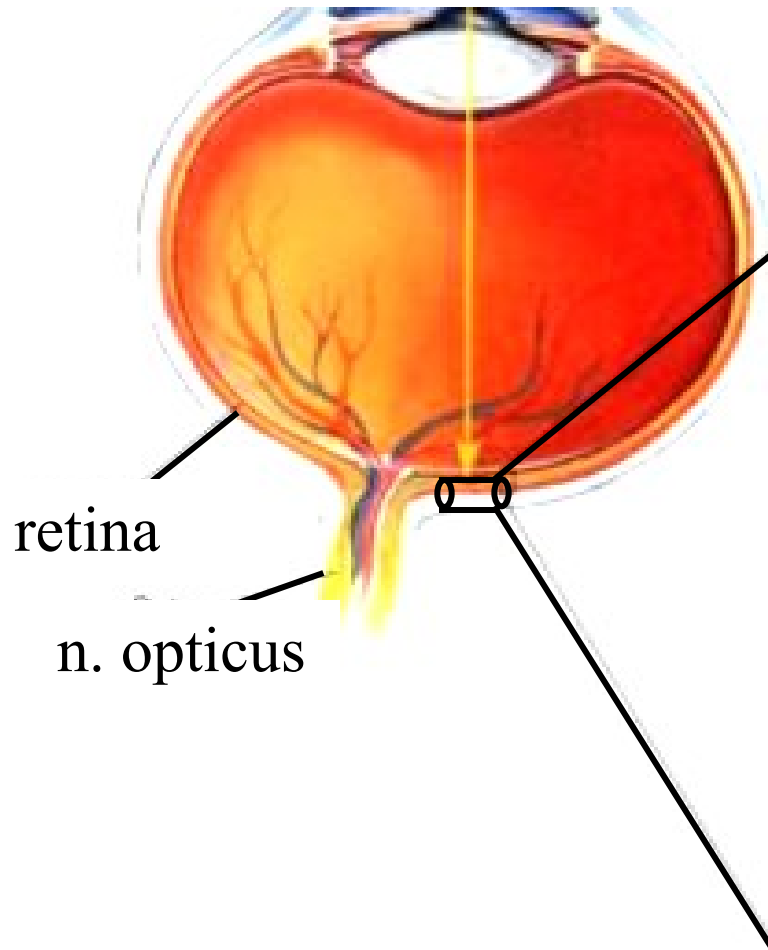
# NEURONY SÍTNICE







# Schéma spojení neuronů sítnice



temporální retina

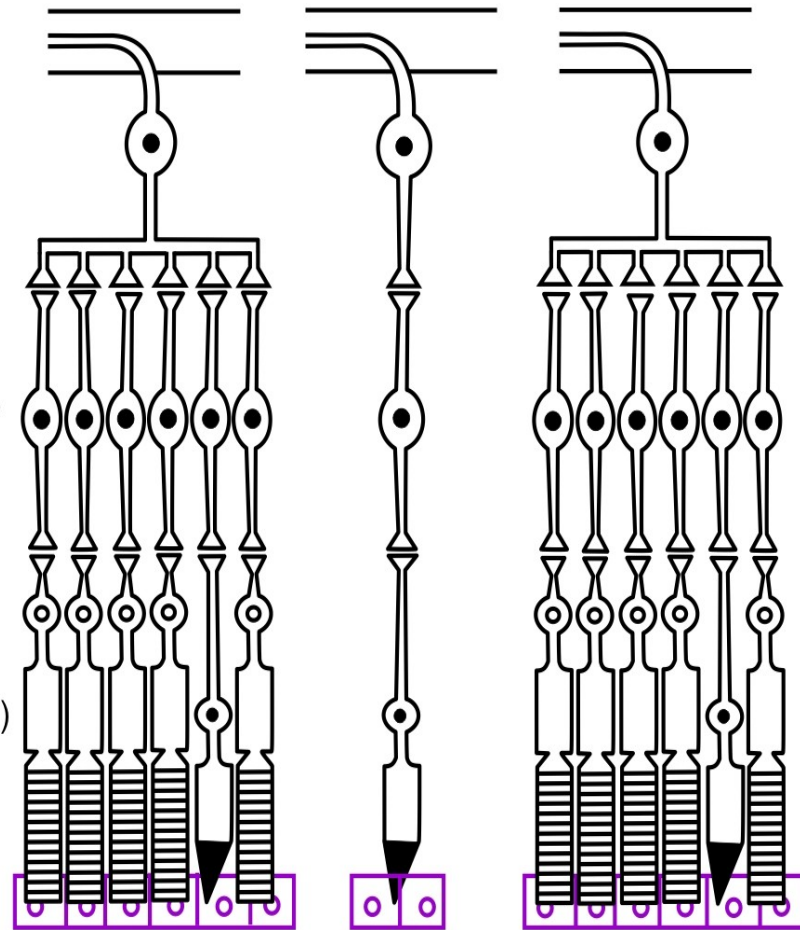
nazální retina

N. opticus

Multipolární neurony  
(stratum ganglionare  
n. optici)

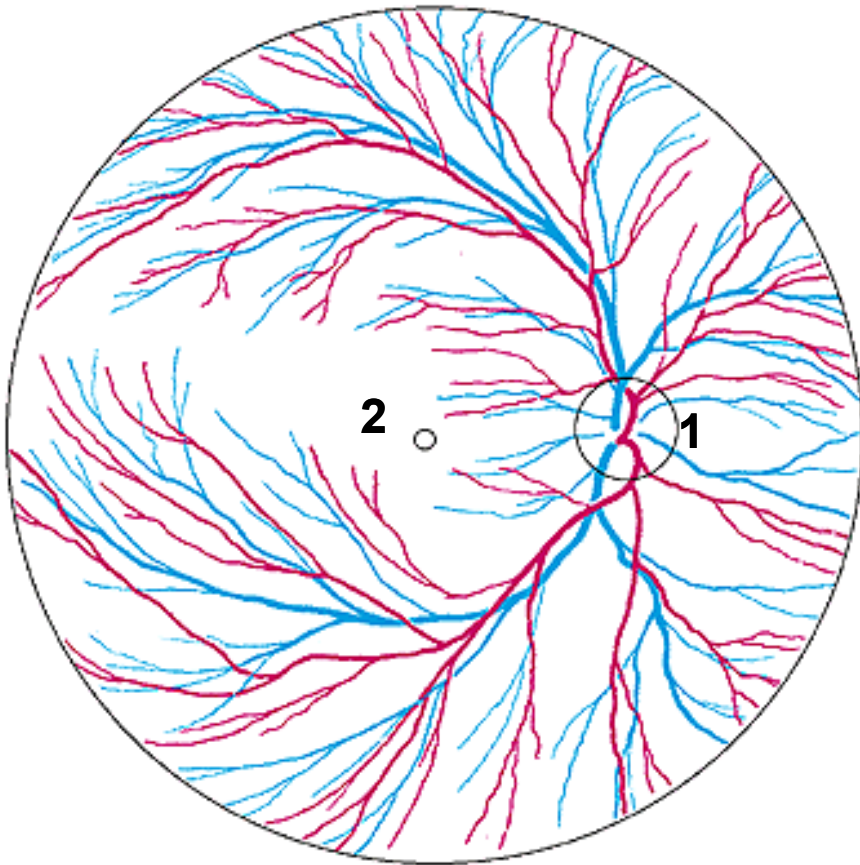
Bipolární neurony  
(stratum ganglionare  
retinae)

Fotoreceptory  
(primární smyslové bb.)



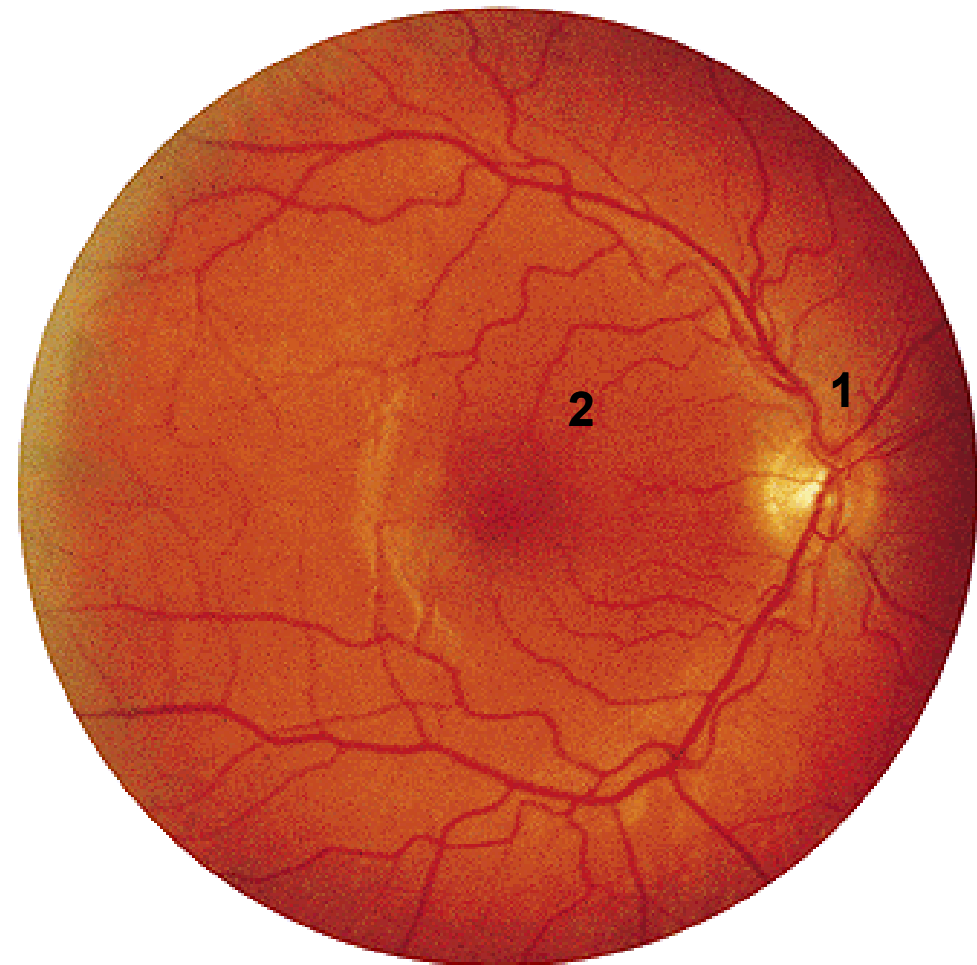
Fovea  
centralis

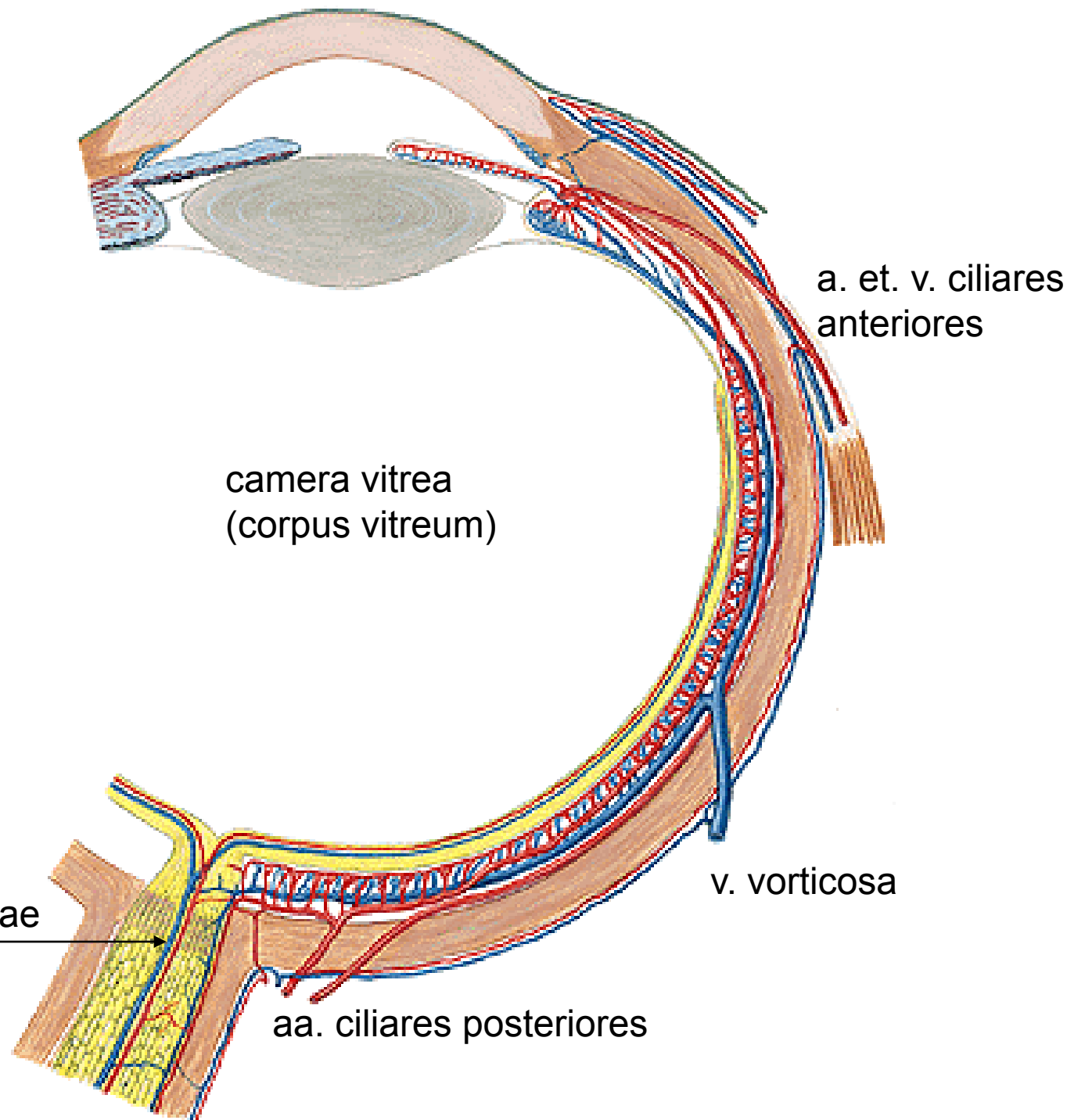
větve  
a. et v. centralis retinae



**1. discus nervi optici - excavatio disci**

**2. macula lutea - fovea centralis**





a. et. v. ciliares anteriores

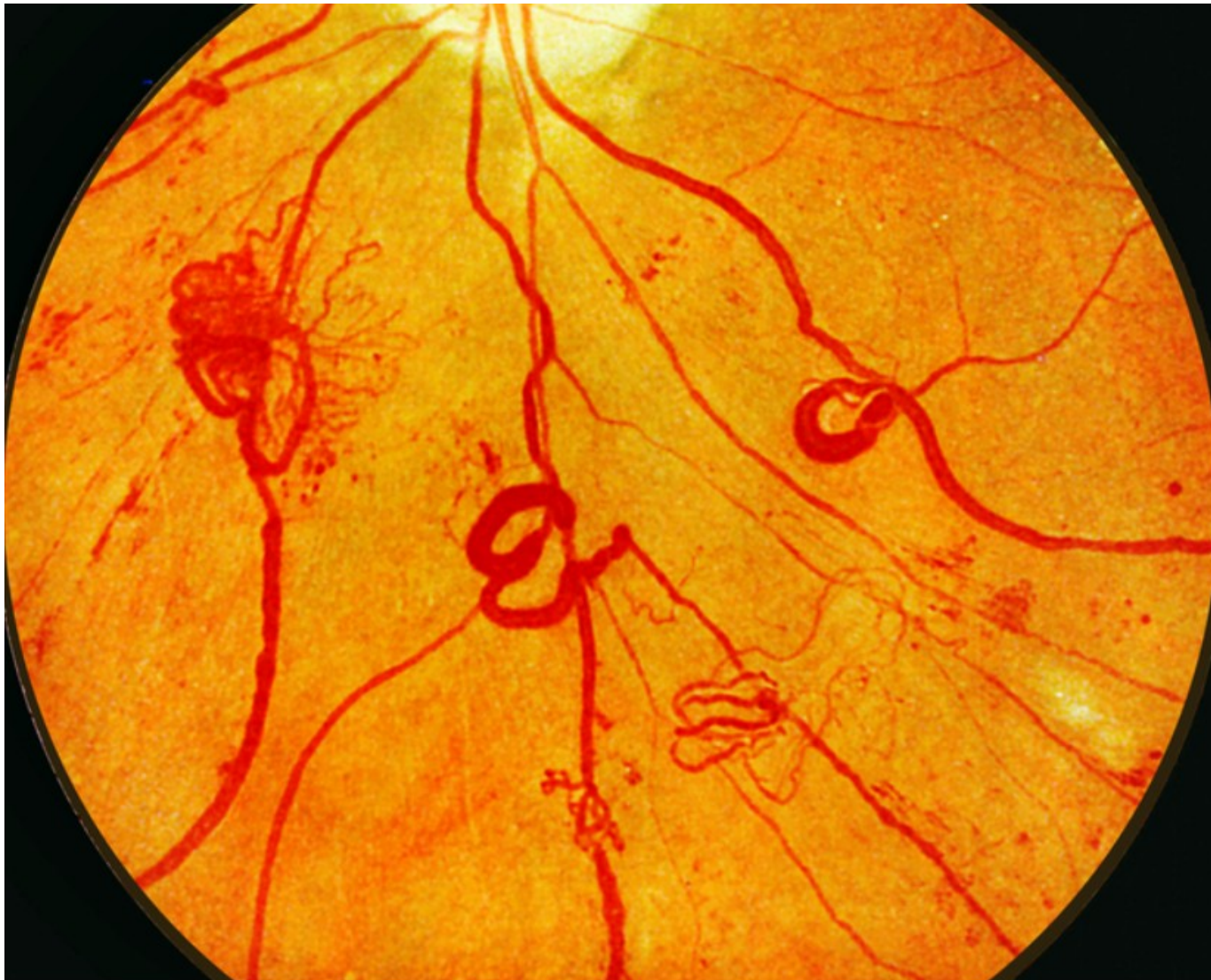
camera vitrea  
(corpus vitreum)

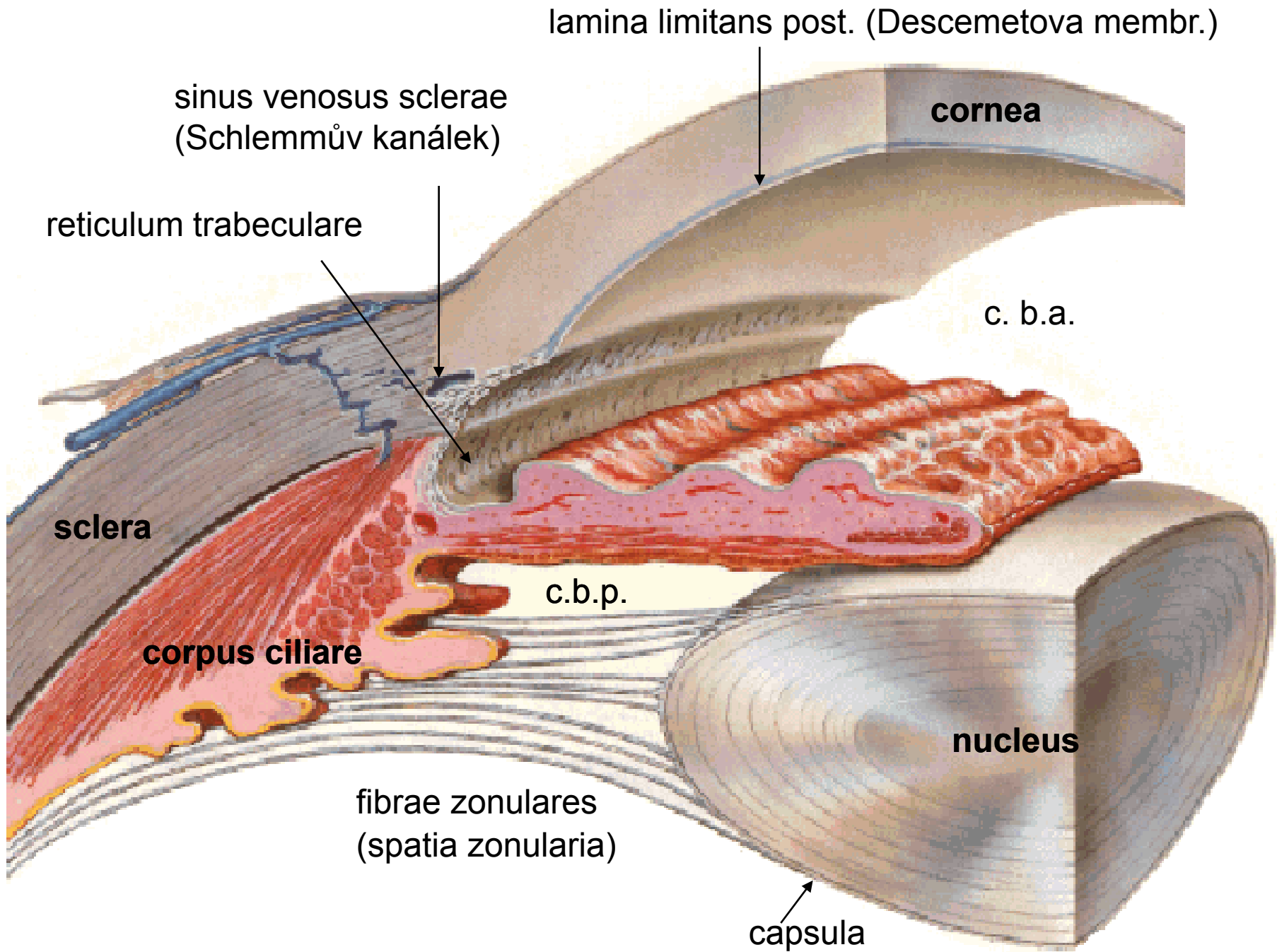
v. vorticosa

a. et v. centralis retinae

aa. ciliares posteriores

# Diabetická retinopatie





lamina limitans post. (Descemetova membr.)

sinus venosus sclerae  
(Schlemmův kanálek)

**cornea**

reticulum trabeculare

c. b.a.

**sclera**

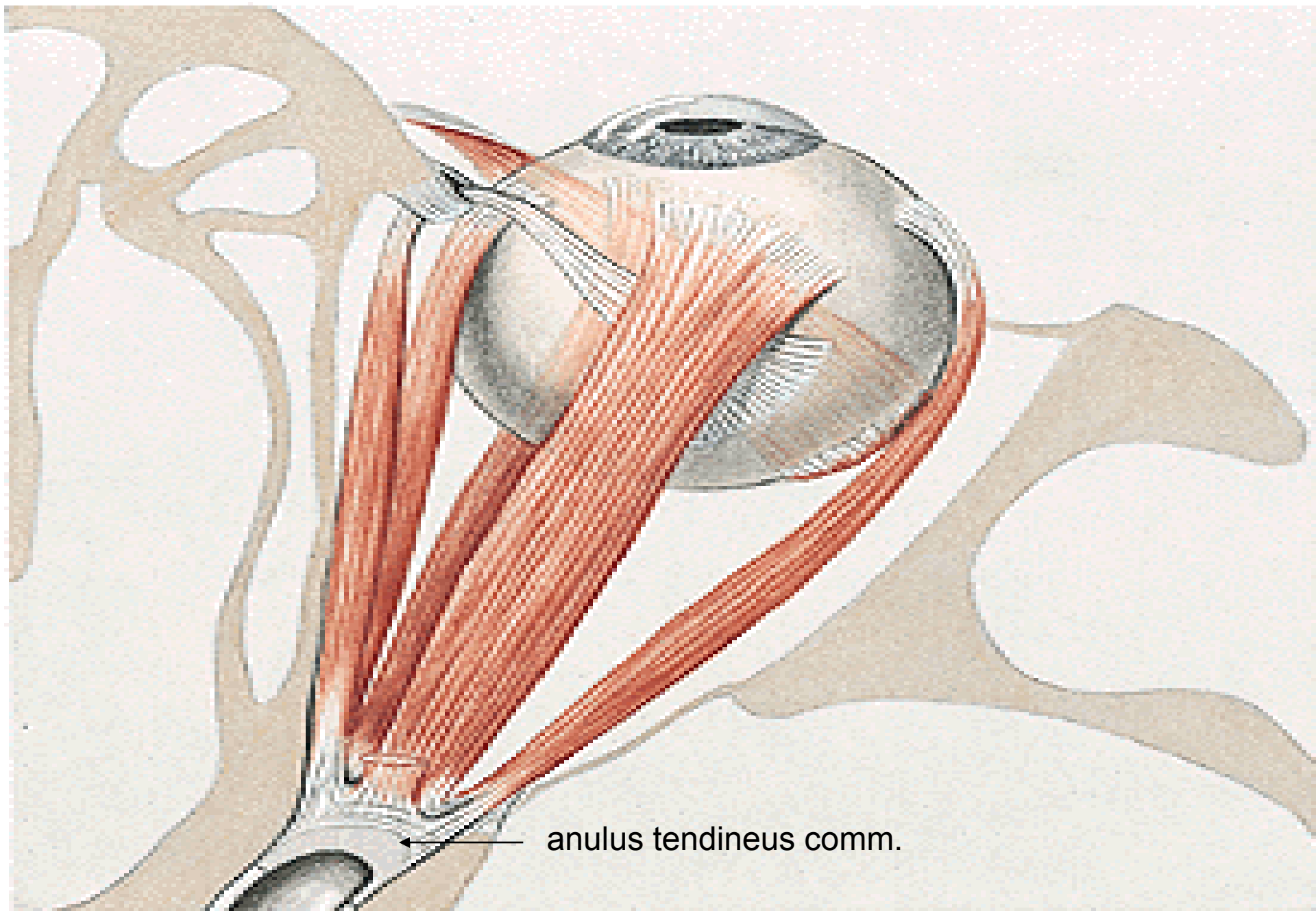
c.b.p.

**corpus ciliare**

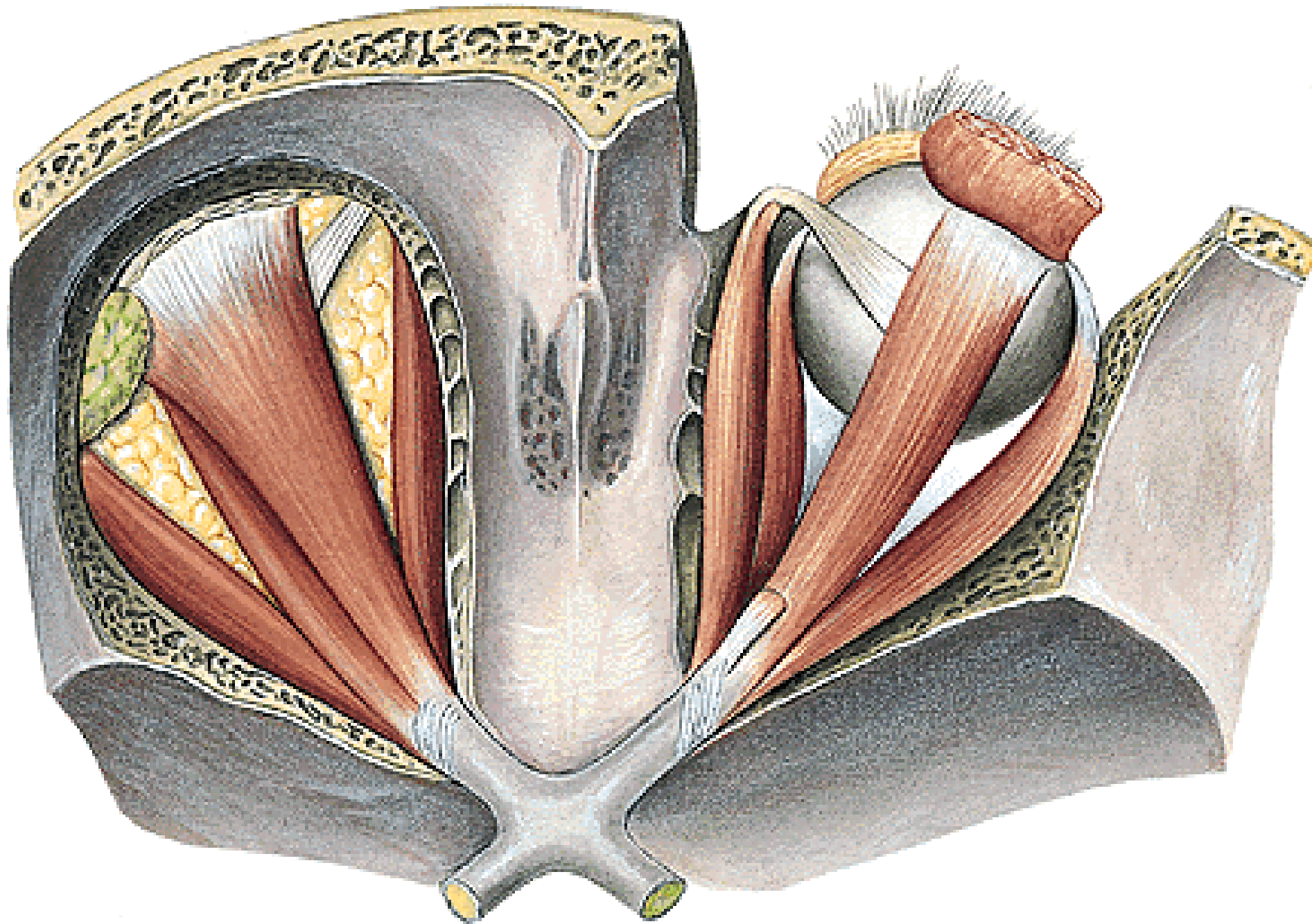
**nucleus**

fibrae zonulares  
(spatia zonularia)

capsula

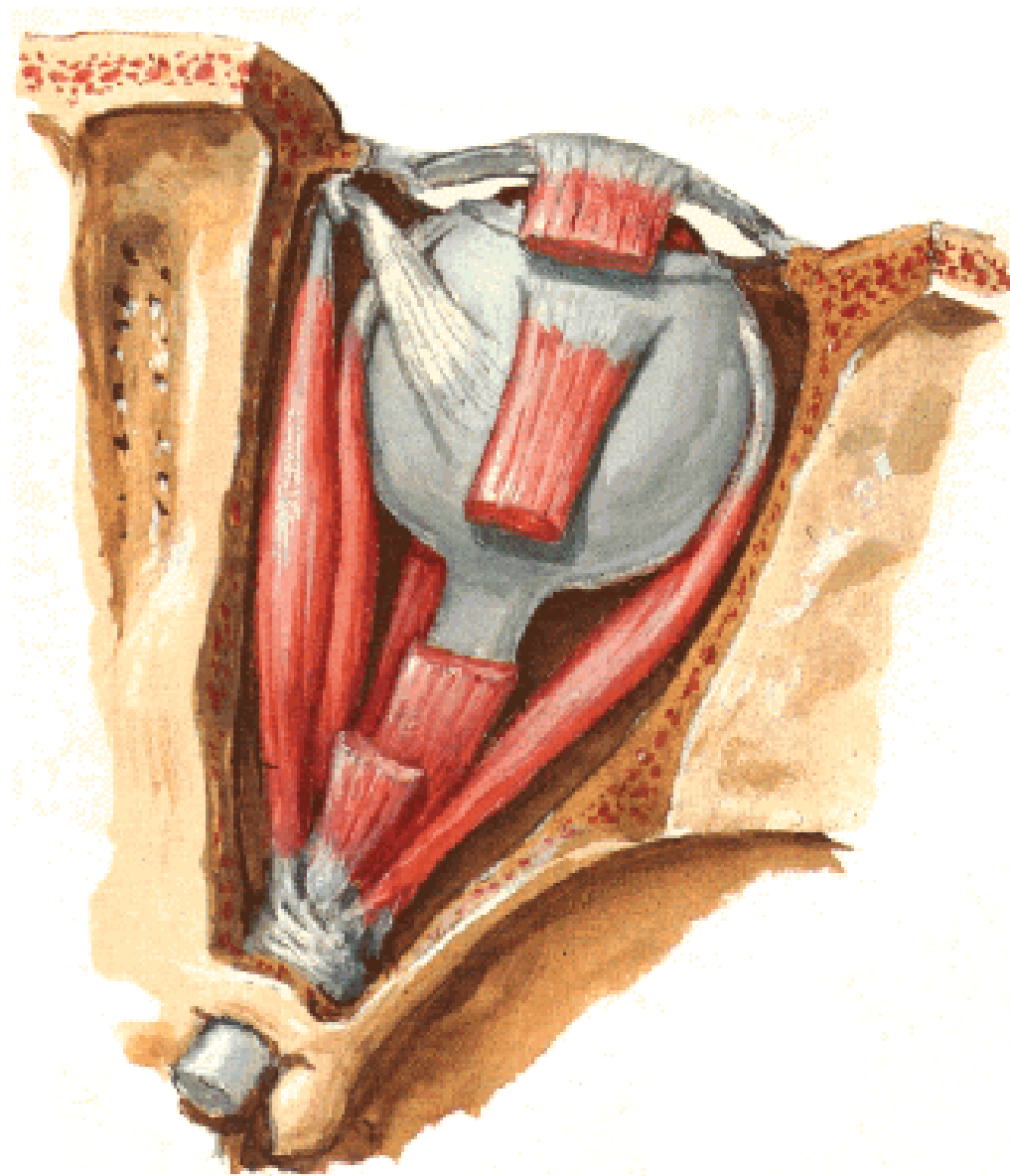


anulus tendineus comm.



# Extrinsic Eye Muscles

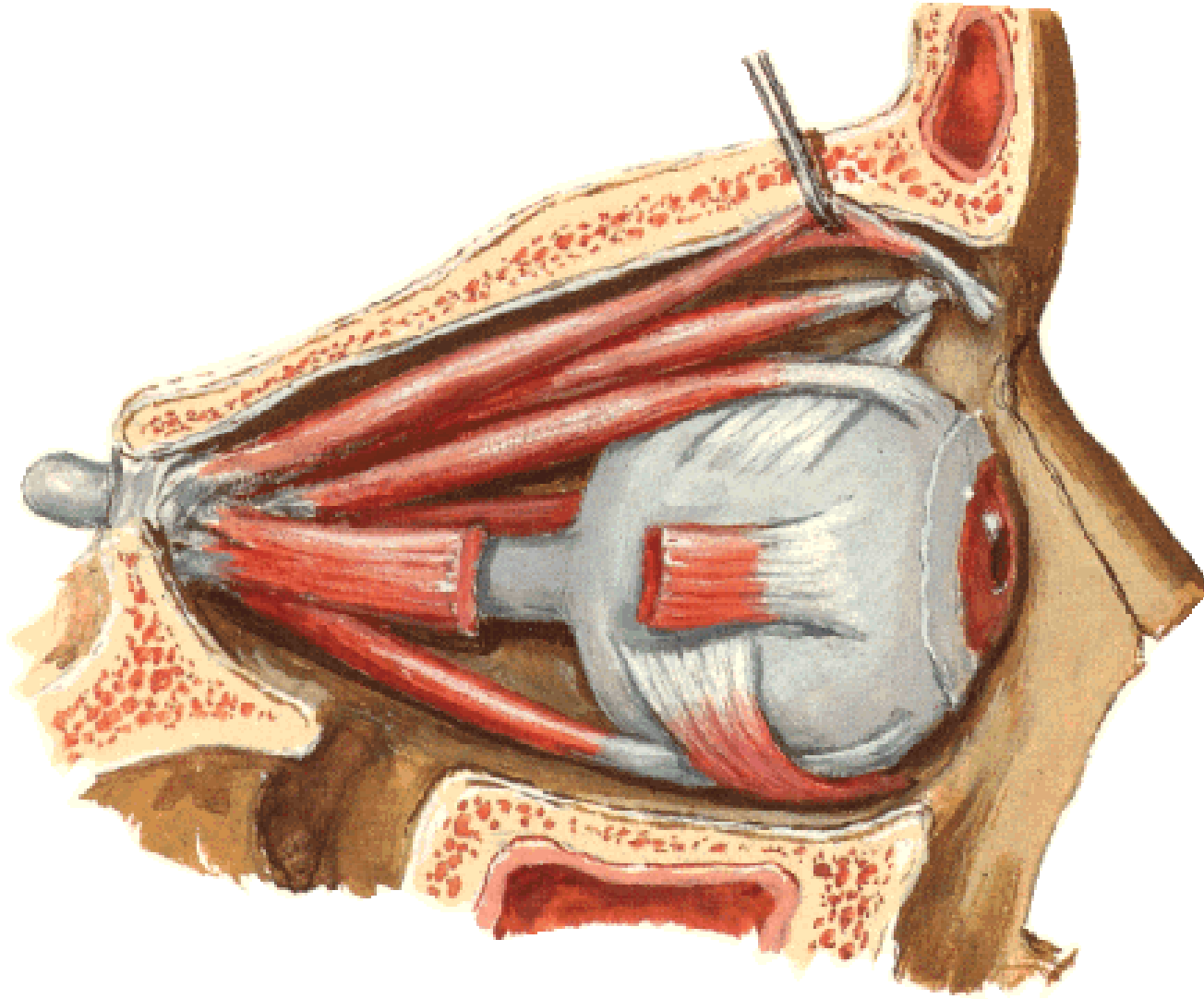
## Superior View





# Extrinsic Eye Muscles

## Right Lateral View

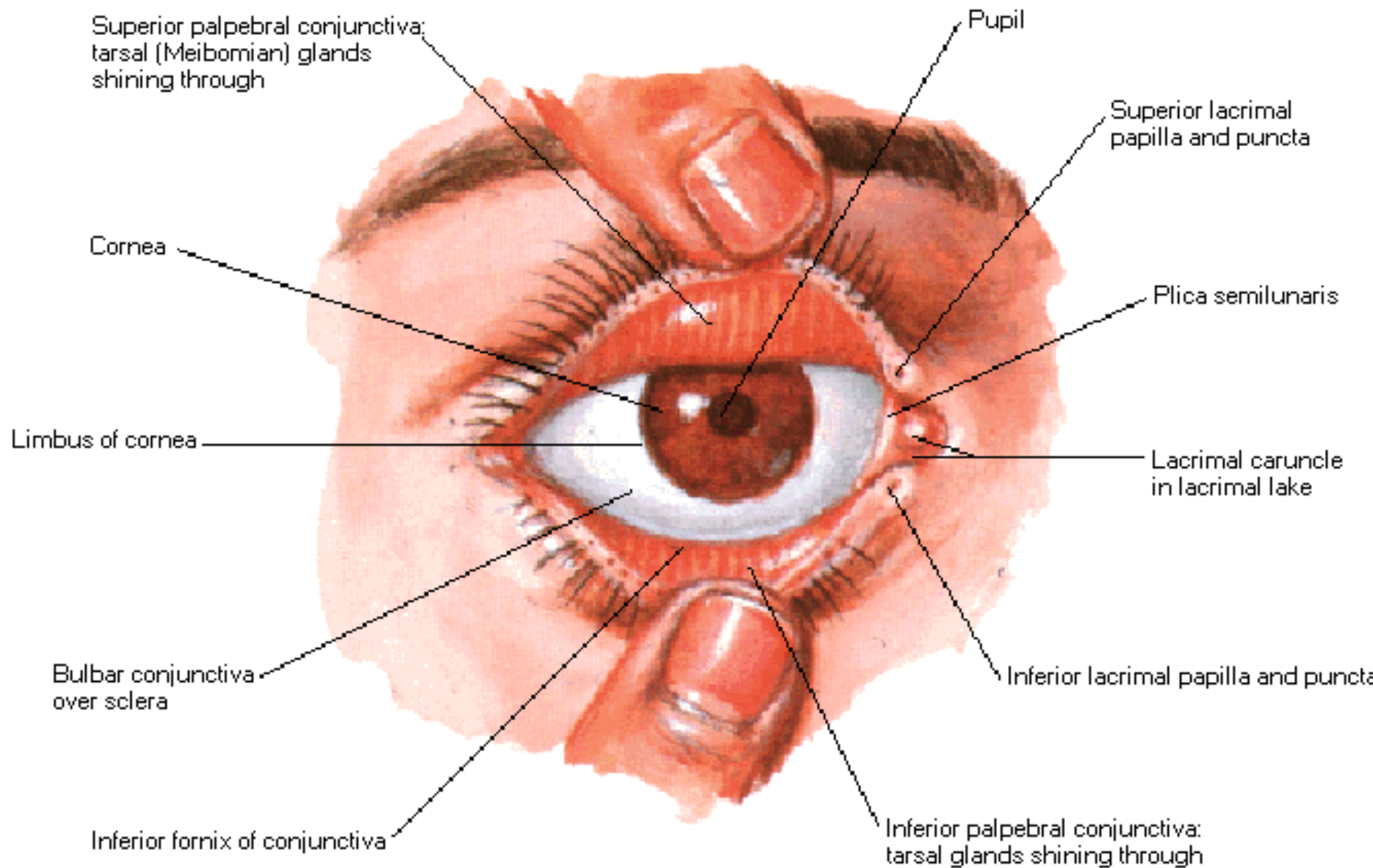


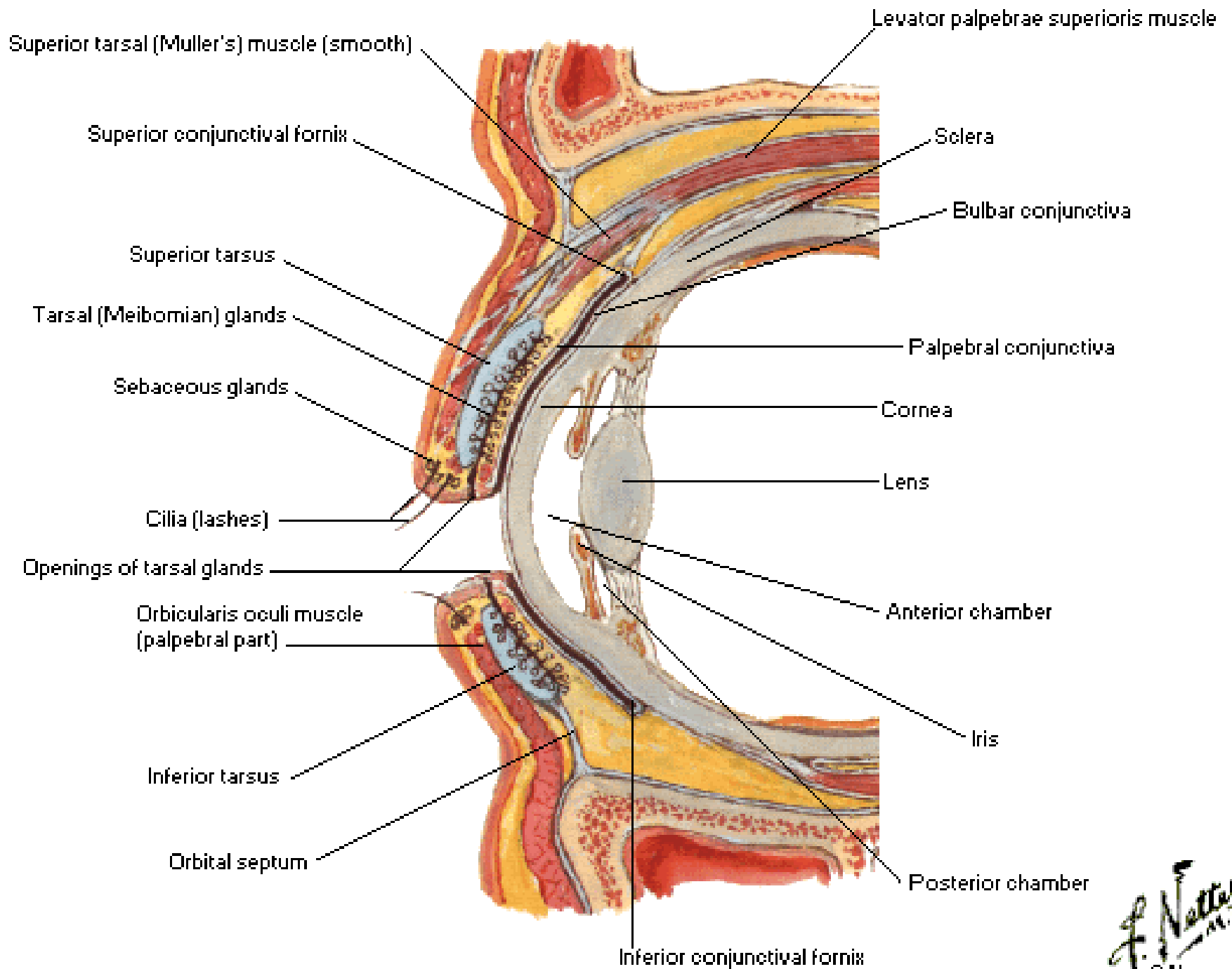
## **Tunica conjunctiva - spojivka**

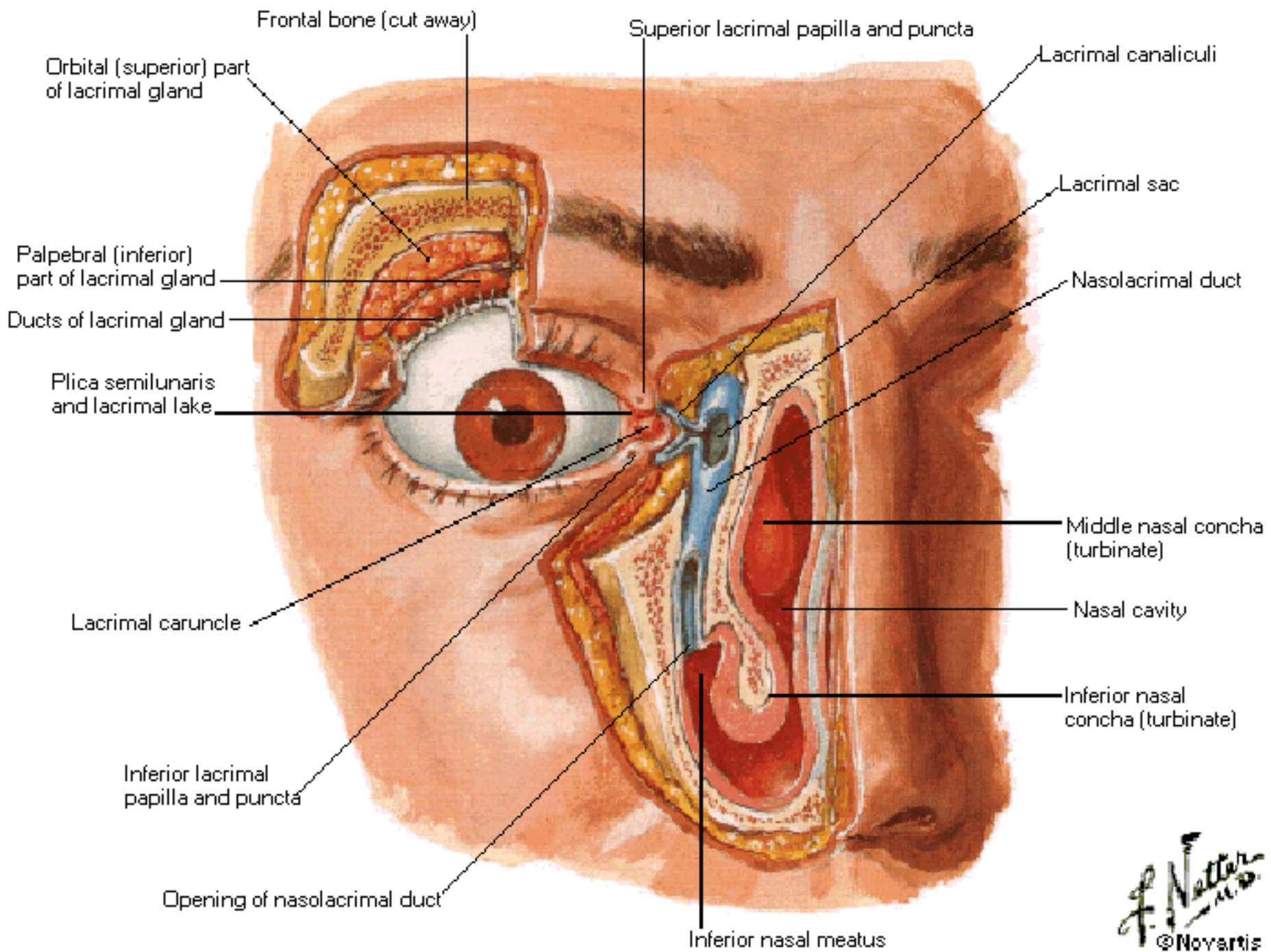
tunica conjunctiva bulbi et palpebrarum  
fornix conjunctivae sup. et inf.

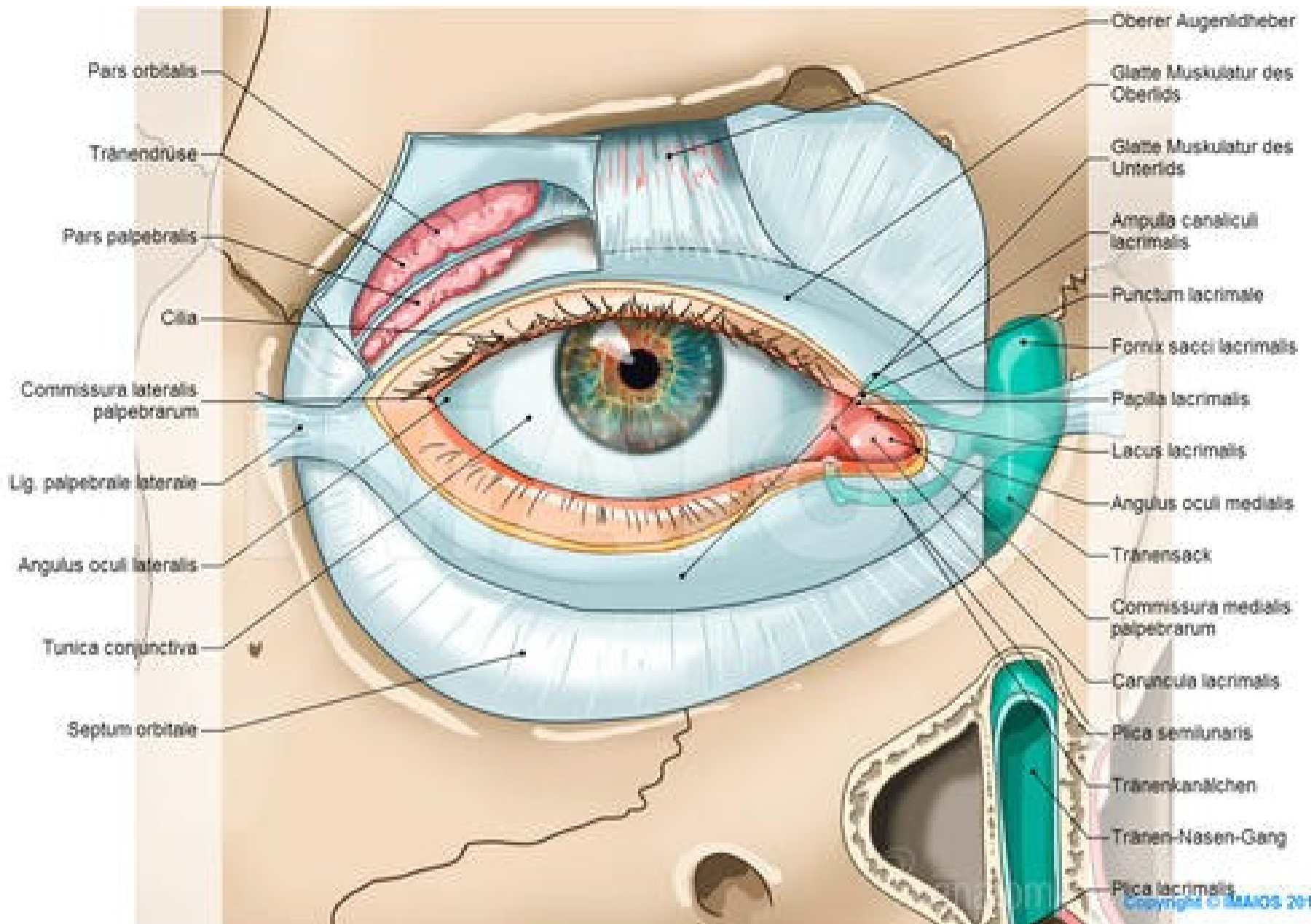
## **Palpebrae – oční víčka**

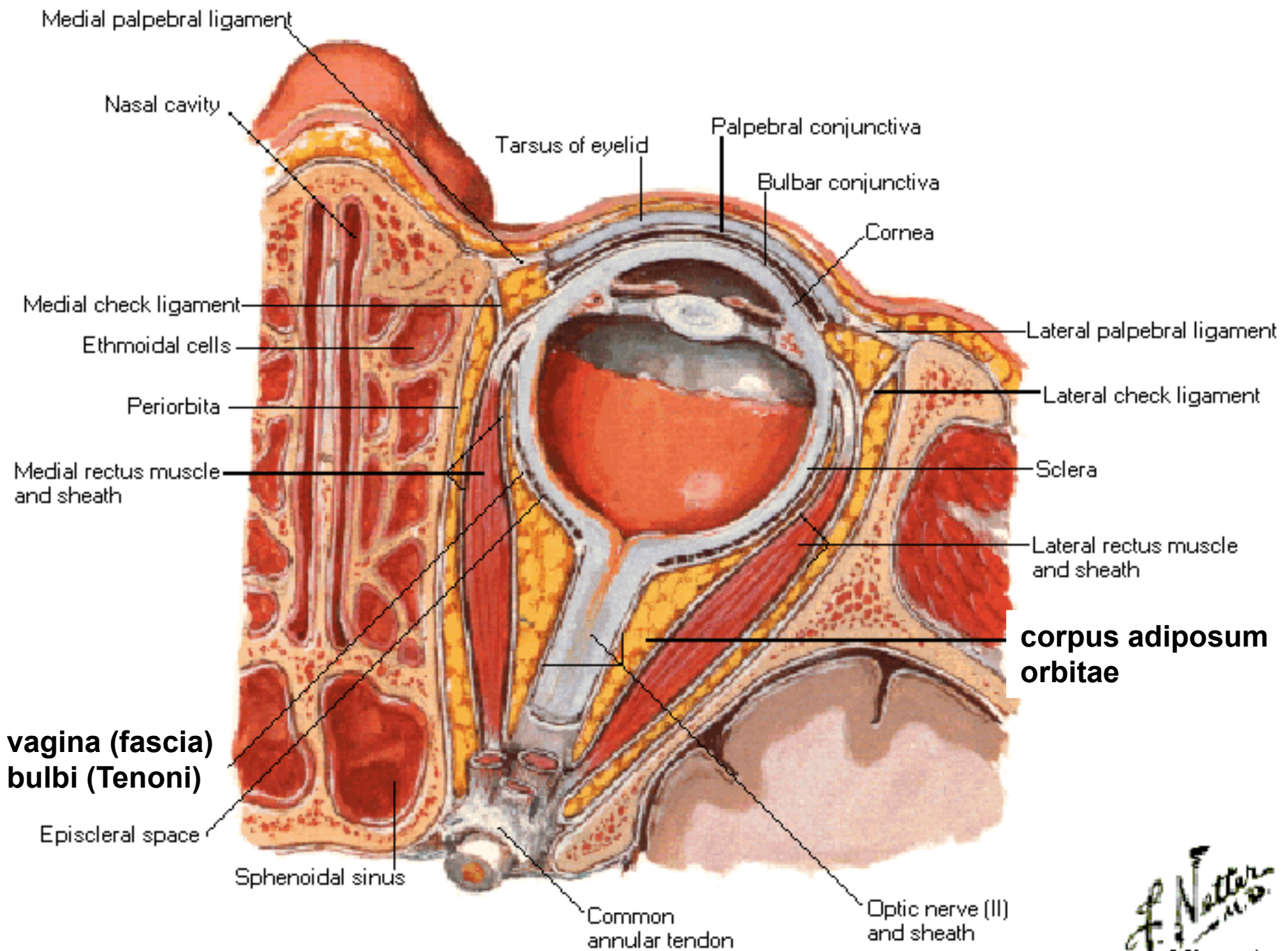
- tarsus sup. et inf.
- lig. palpebrale med. et lat.
- rima palpebrarum
- rivus lacrimalis
- angulus oculi medialis et lateralis
- gll. tarsales (Meibomi) – vyústění na rima (mazové)
- gll. ciliares (Molli) – vázány na rima et cilie (apokrinní potní)
- gll. sebaceae (Zeisi) – vázány na cilie (holokrinní mazové) - hordeolum

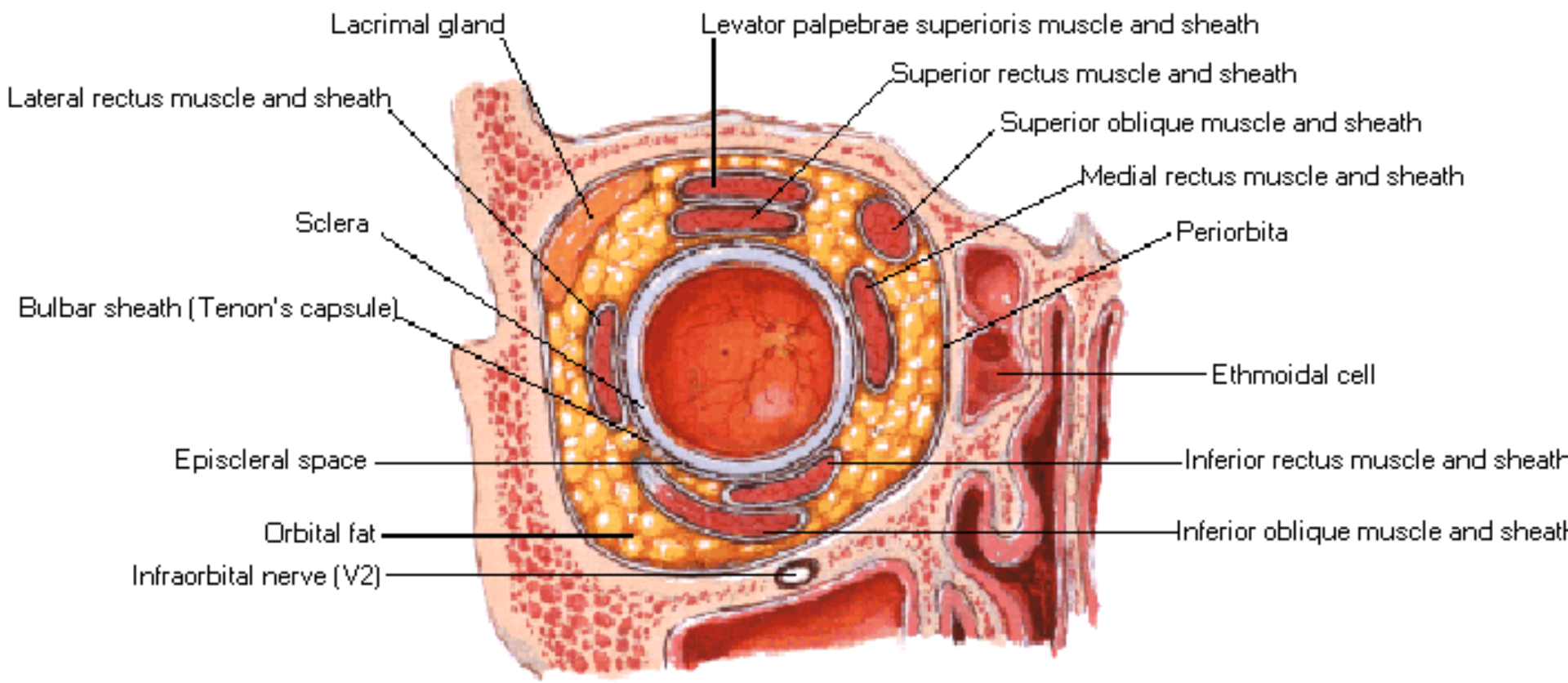














# M. orbitalis

