

FEMALE GENITAL ORGANS

Internal female genital organs:

Ovarium

Tuba uterina (Fallopian tube)

Uterus

Vagina

External female genital organs:

Mons pubis

Labia majora pudendi

Labia minora pudendi

Clitoris

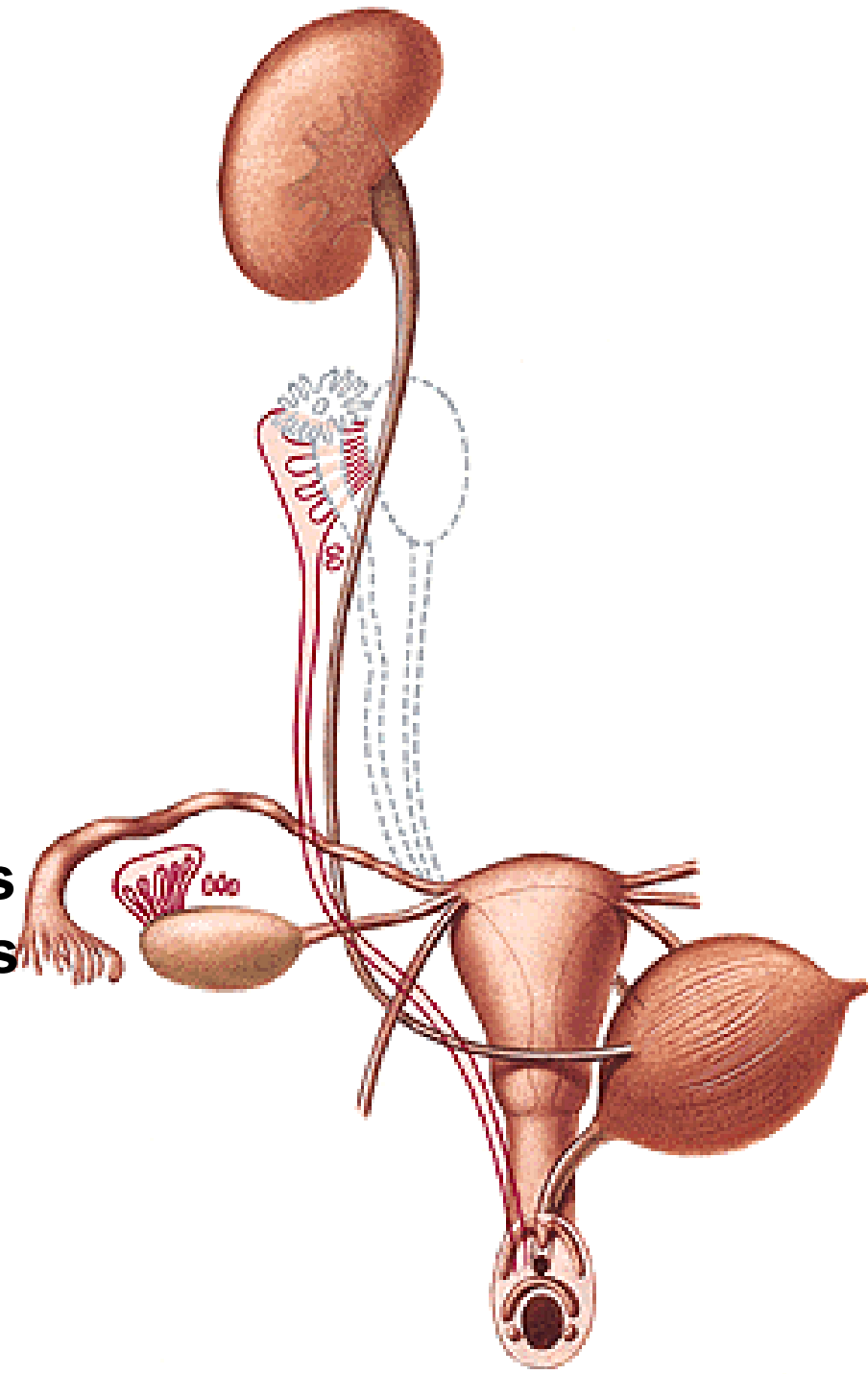
Glandulae vestibulares majores

Glandulae vestibulares minores

Bulbi vestibuli

Ductus Mülleri, plica genitalis

Torus genitalis



OVARIUM

Extremitas tubaria et uterina

Lig. suspensorium ovarii

Lig. ovarii proprium

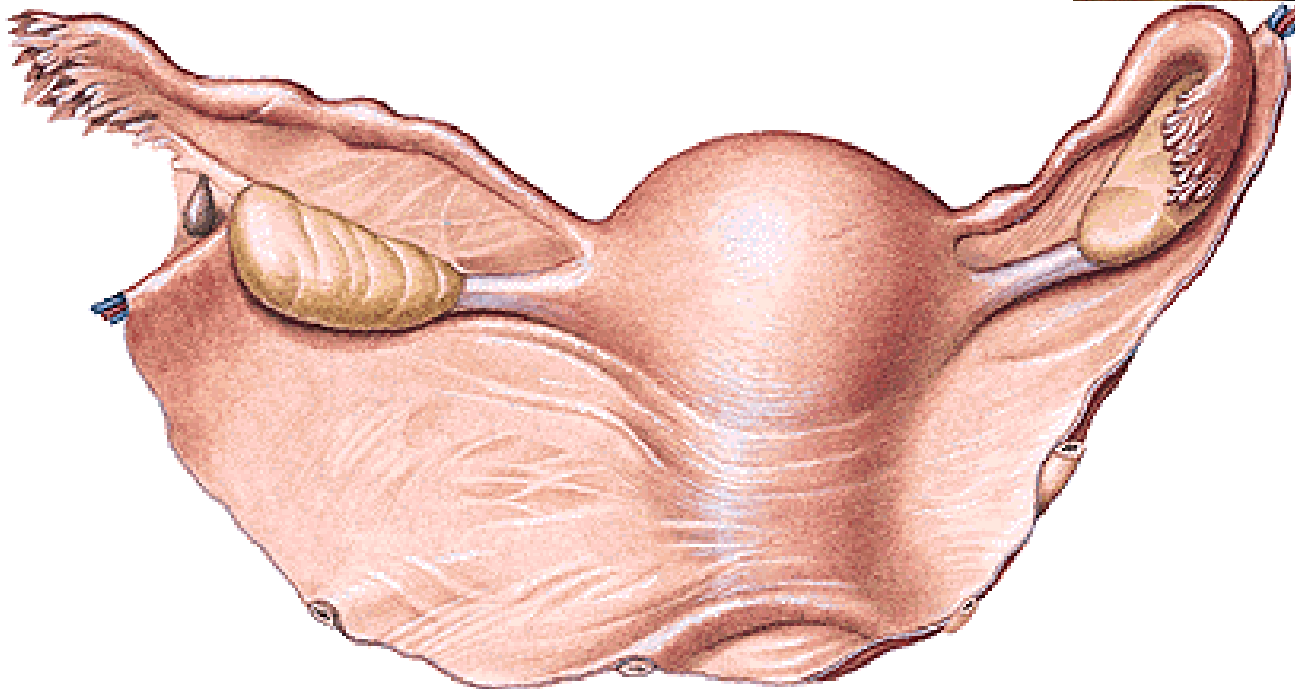
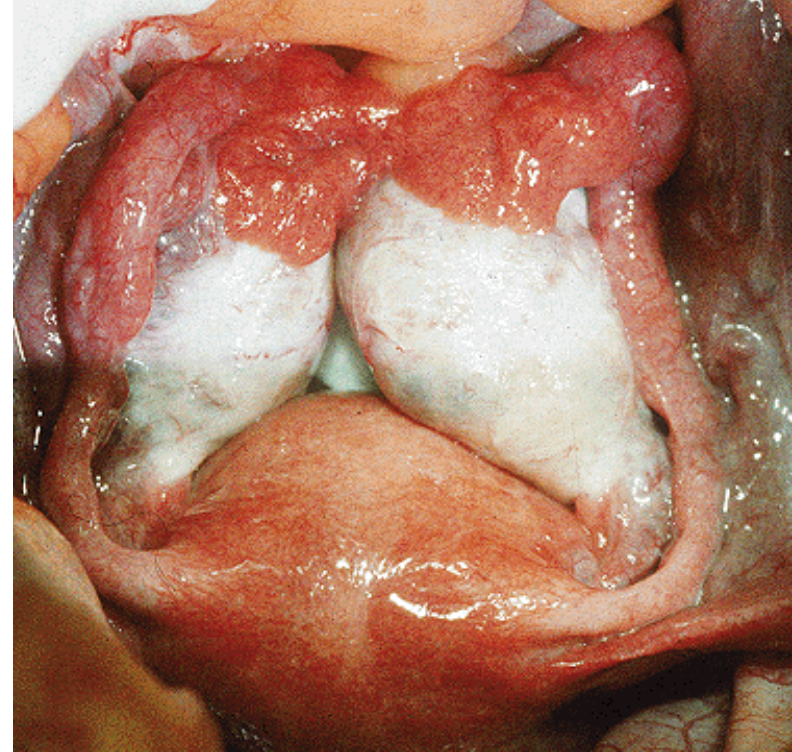
Facies medialis et lateralis

Margo liber et mesovaricus

Hilum ovarii

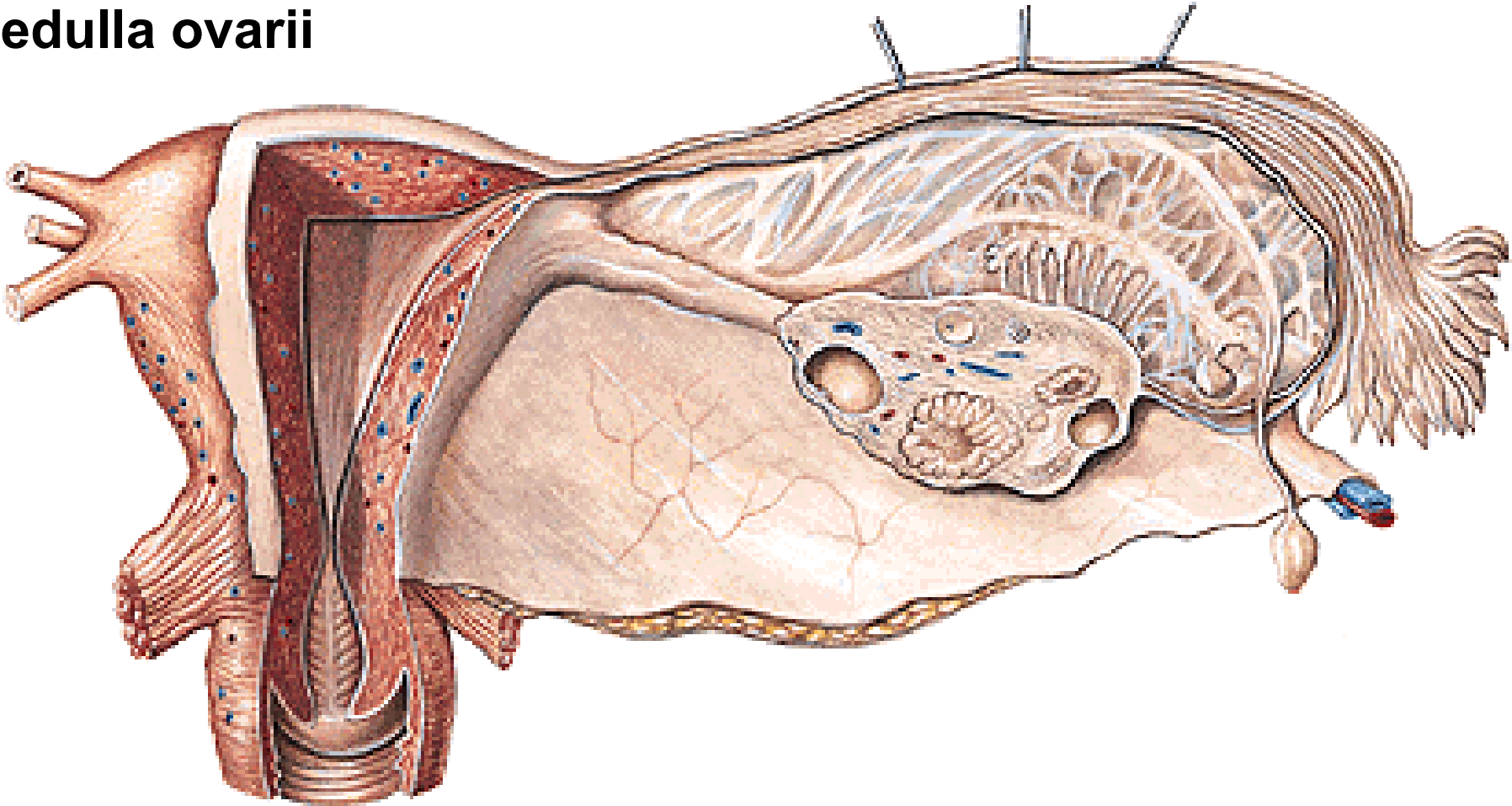
Mesovarium – lig. latum uteri

Parametrium



Tunica albuginea
Cortex ovarii
- folliculi ovarii
- corpora lutea
Medulla ovarii

Epoophoron
Apendix vesiculosa epoophori
Paroophoron
Gartner's canal



Folliculi ovarici primarii

Folliculus ovaricus vesiculosus (Graaf)

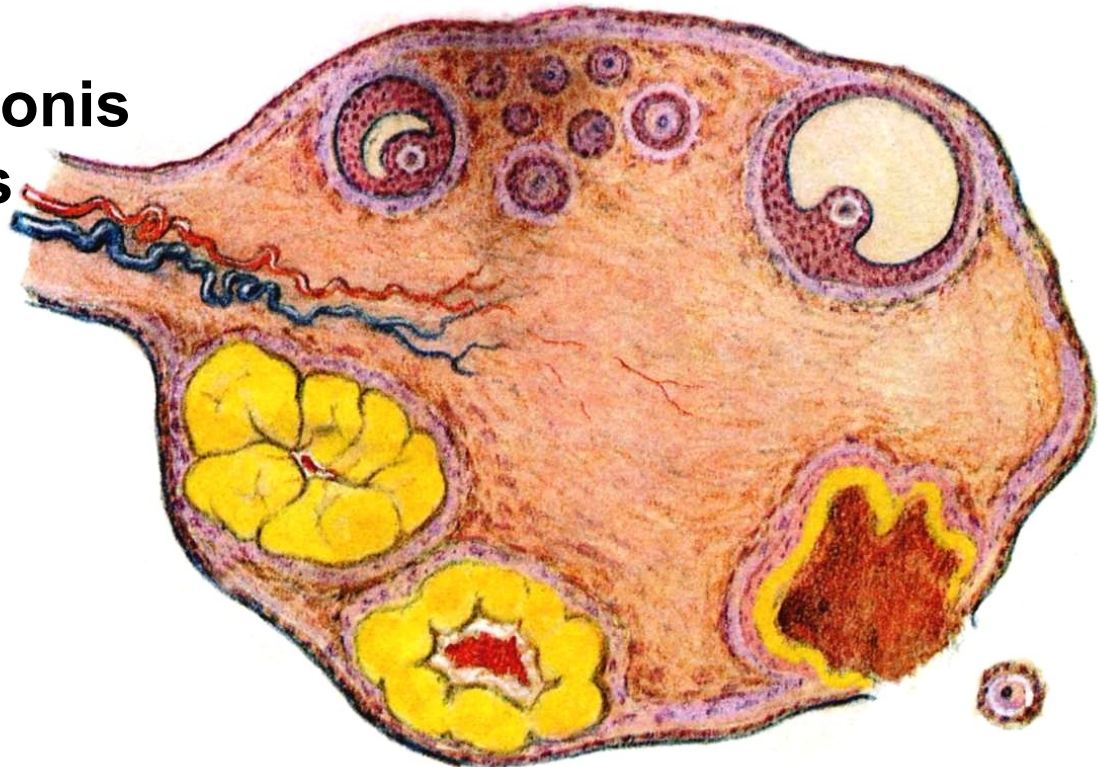
- Ovum
- Antrum folliculi
- Liquor folliculi
- Membrana granulosa
- Cumulus oophorus

Ovulation

Corpus luteum menstruationis

Corpus luteum graviditatis

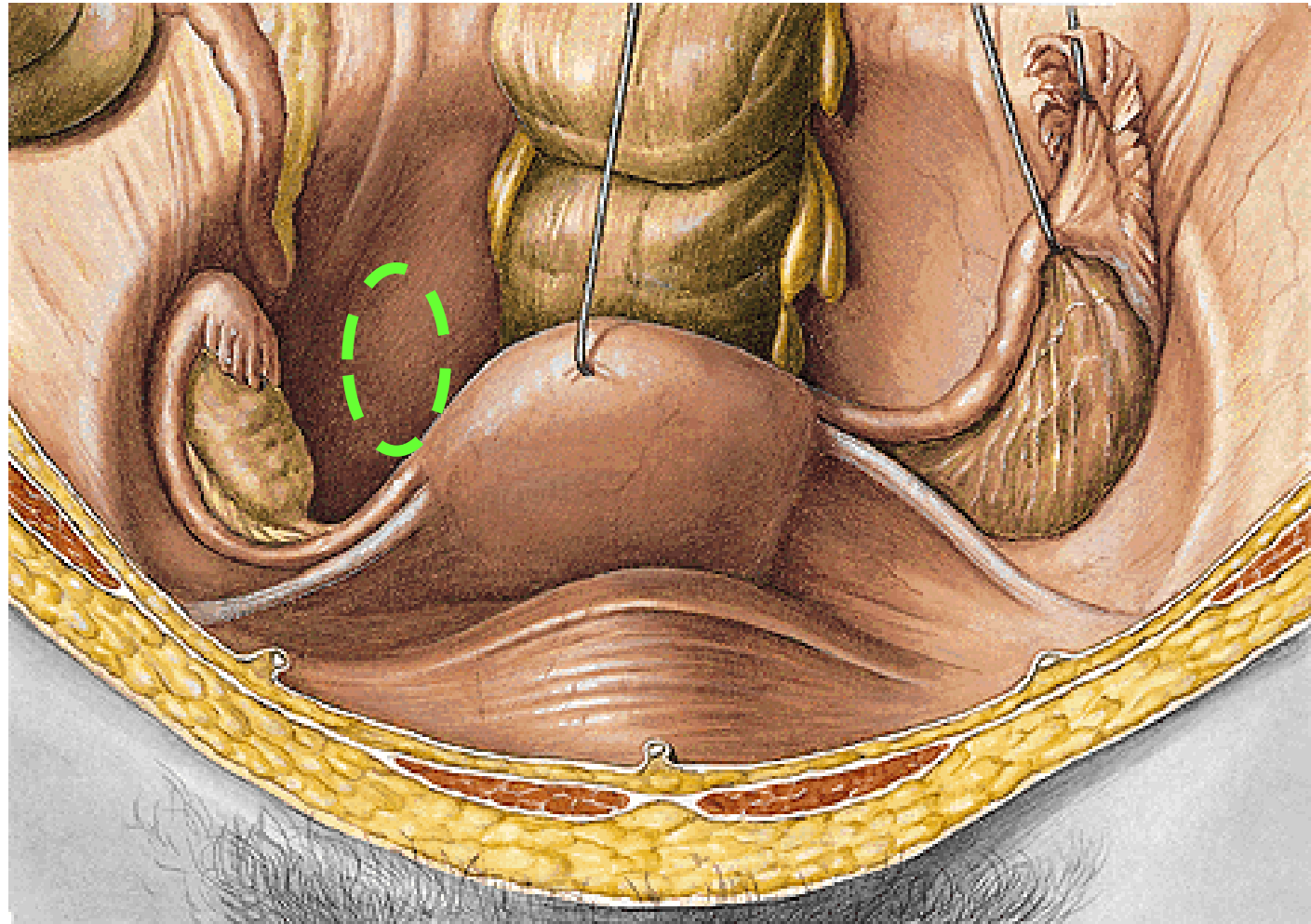
Corpus albicans

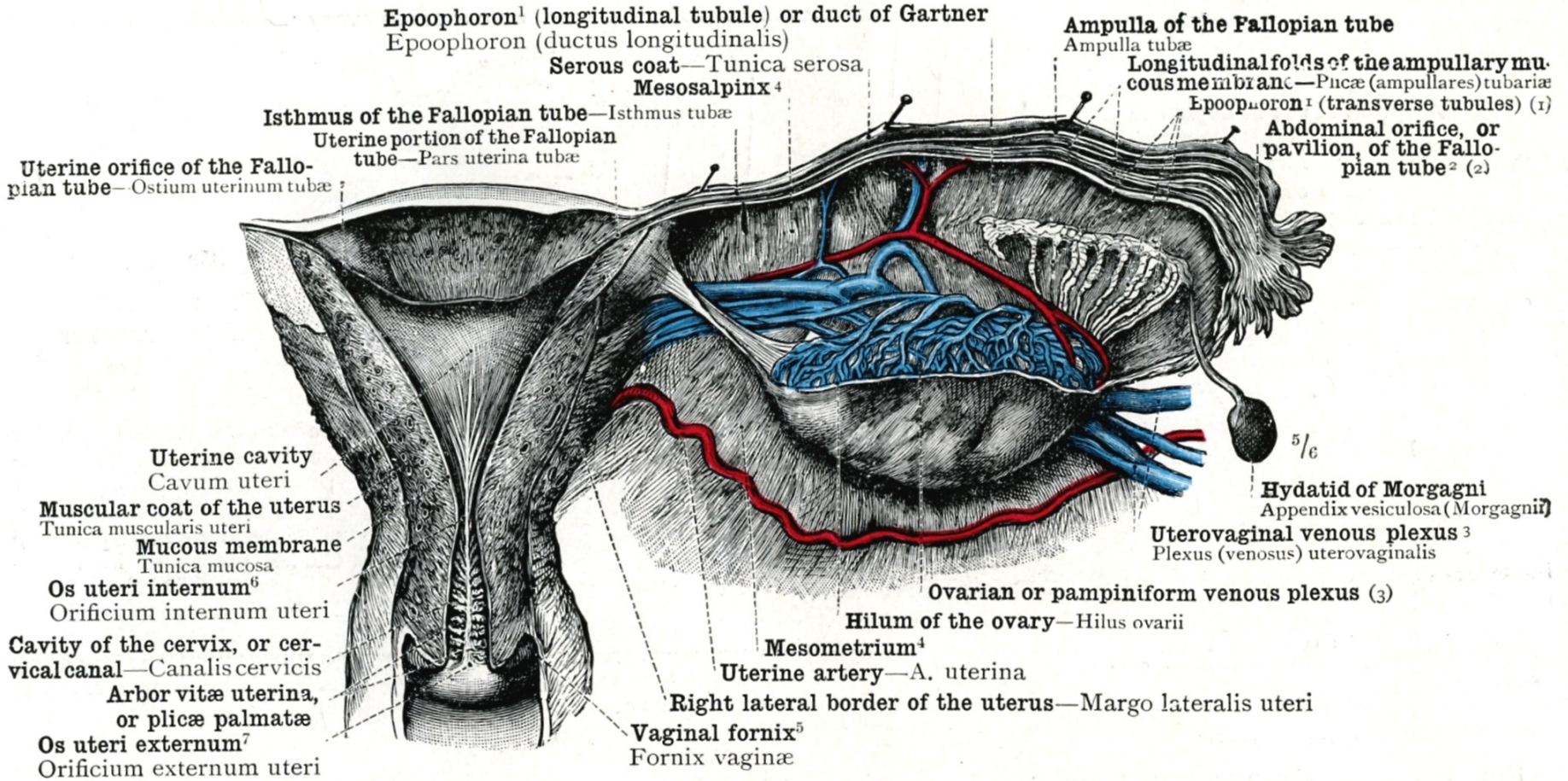


Plica genitalis – gubernaculum

Nullipara – fossa ovarica

Multipara – fossa of Claudius





(1) Epoophoron (ductuli transversi) (2) Ostium abdominale tubæ (3) Plexus (venosus) ovaricus

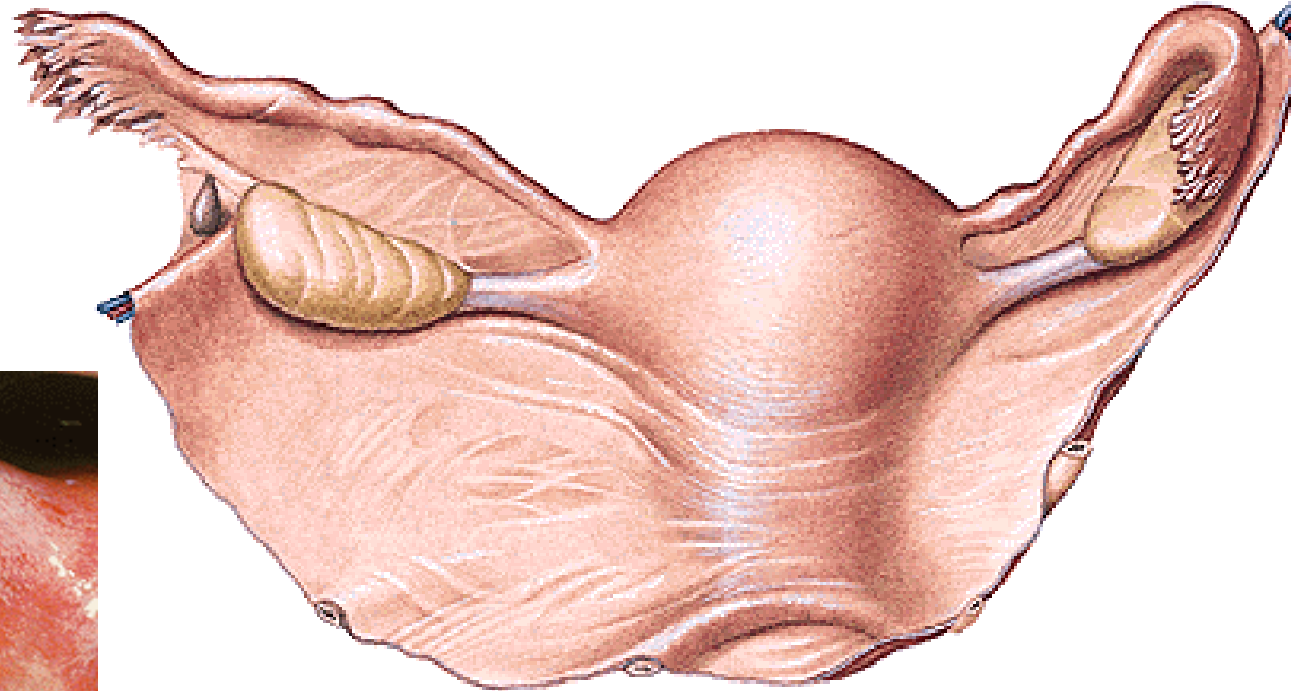
TUBA UTERINA (FALLOPIAN TUBE)

Infundibulum

Ostium abdominale

Fimbriae

Fimbria ovarica



Ampulla

Isthmus

Pars uterina – ostium uterinum

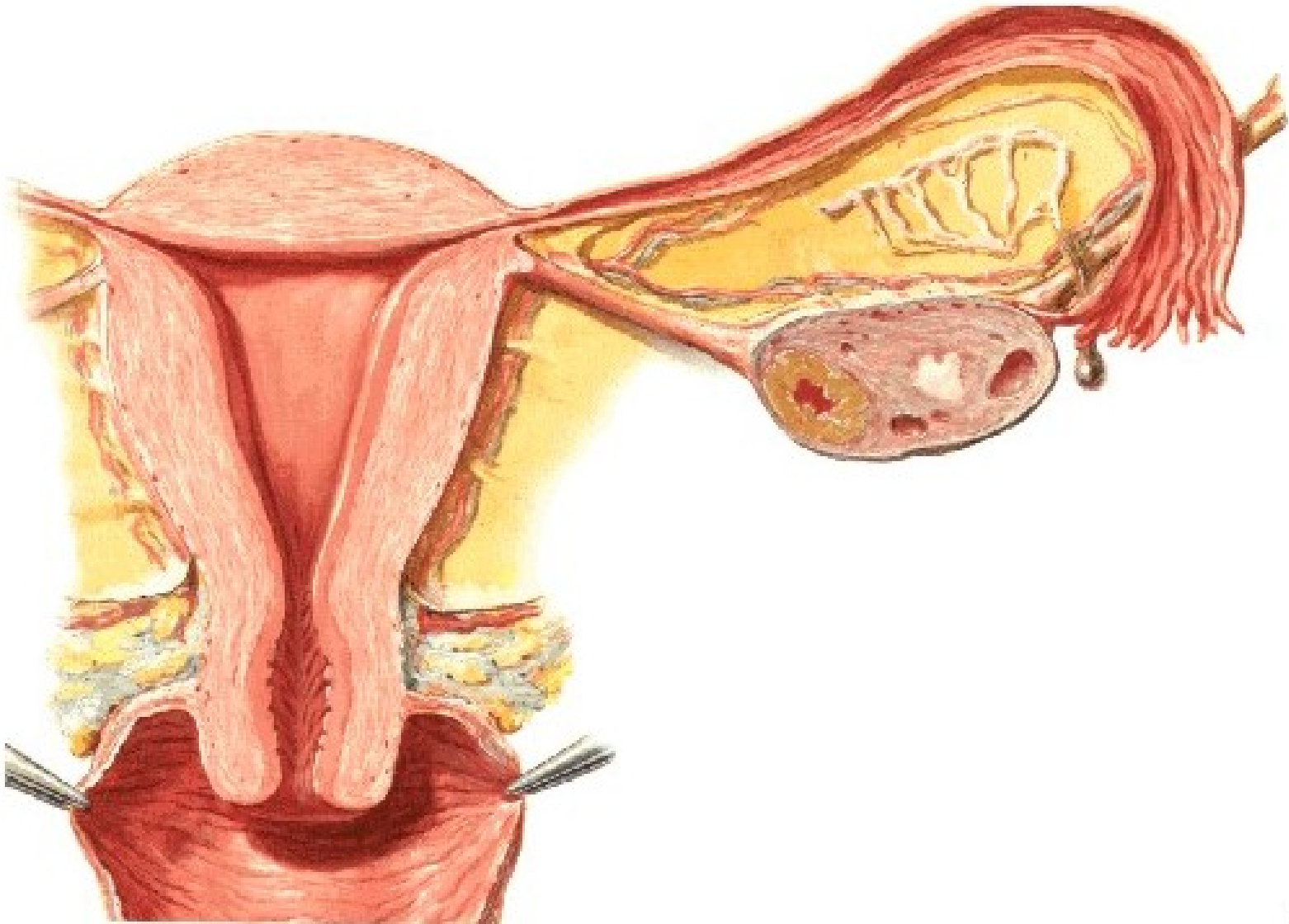
Mesosalpinx

OSTIUM ABDOMINALE TUBAE UTERINAE

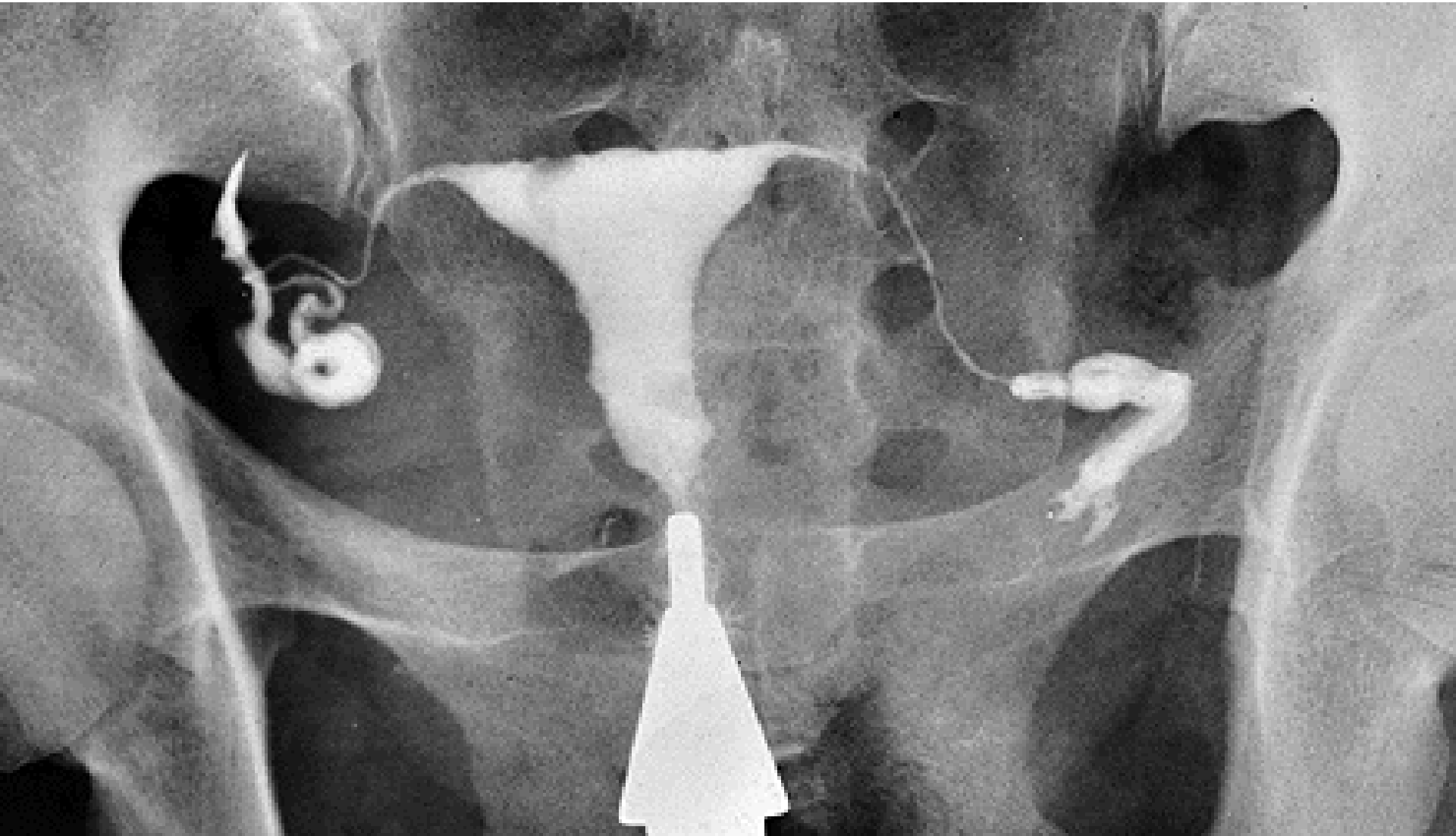


Plicae tubariae

Ectopic tubal pregnancy



HYSTEOSALPINGOGRAPHY



UTERUS (HYSTERA, METRA)

Corpus

Isthmus

Cervix - portio vaginalis
- portio supravaginalis

Fundus

Facies vesicalis

Facies intestinalis

Cornu dextrum et sinistrum

Margo dexter et sinister

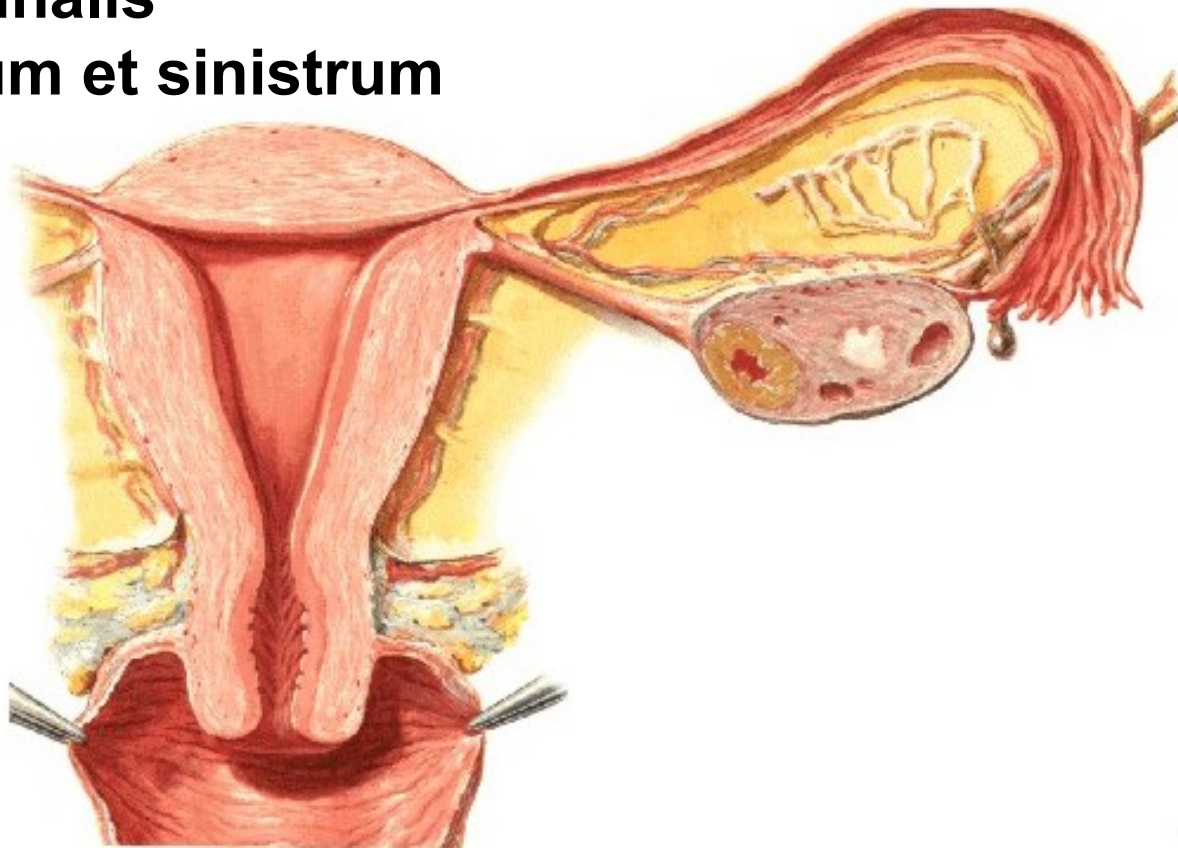
Cavum uteri

Canalis isthmi

Canalis cervicis

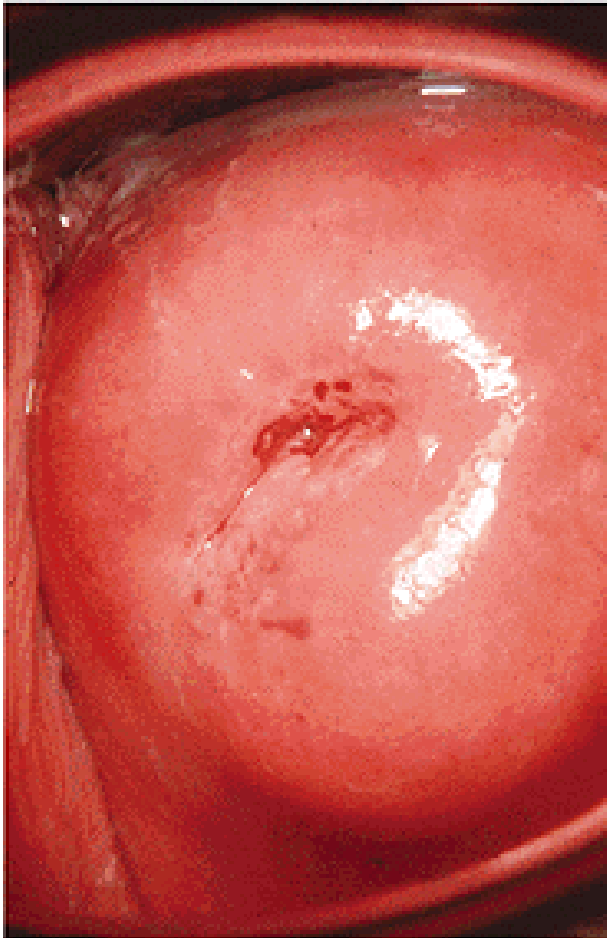
Plicae palmatae

Ostium internum canalis
cervicis



OSTIUM UTERI EXTERNUM

NULLIPARA



MULTIPARA



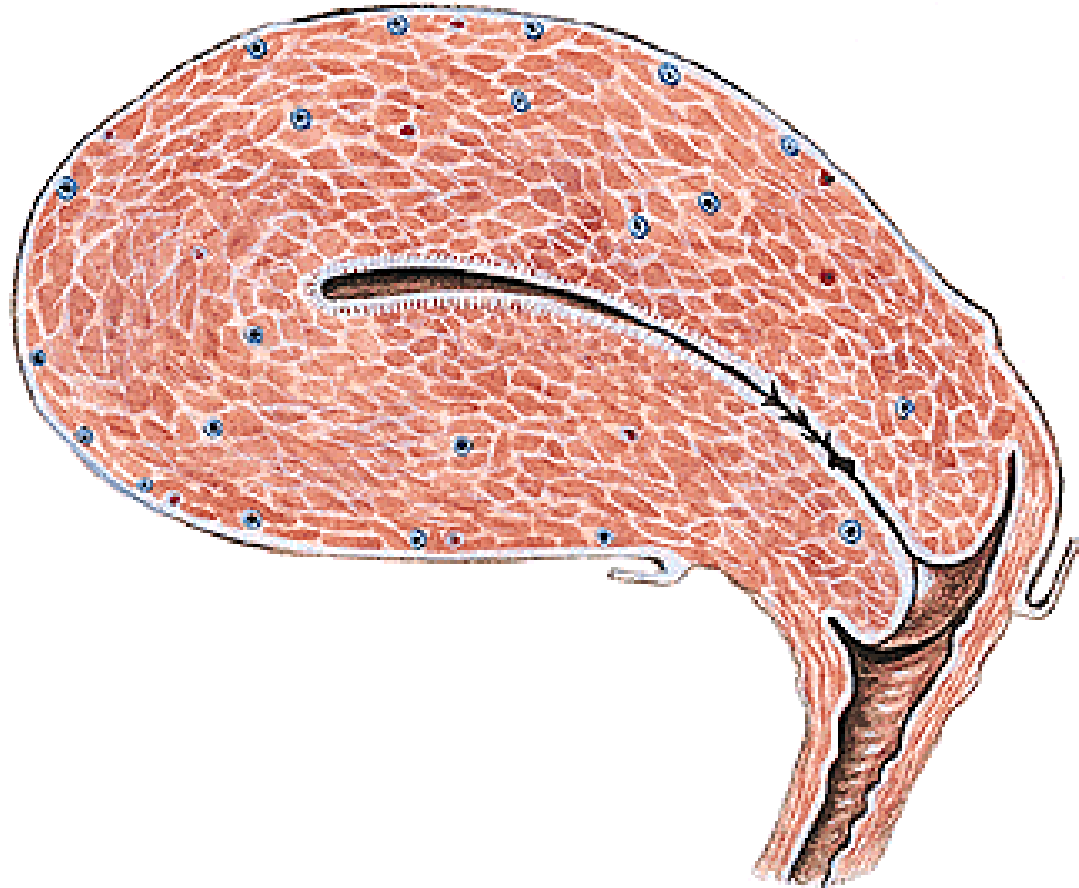
Endometrium - zona basalis
- zona functionalis

Glandulae uterinae

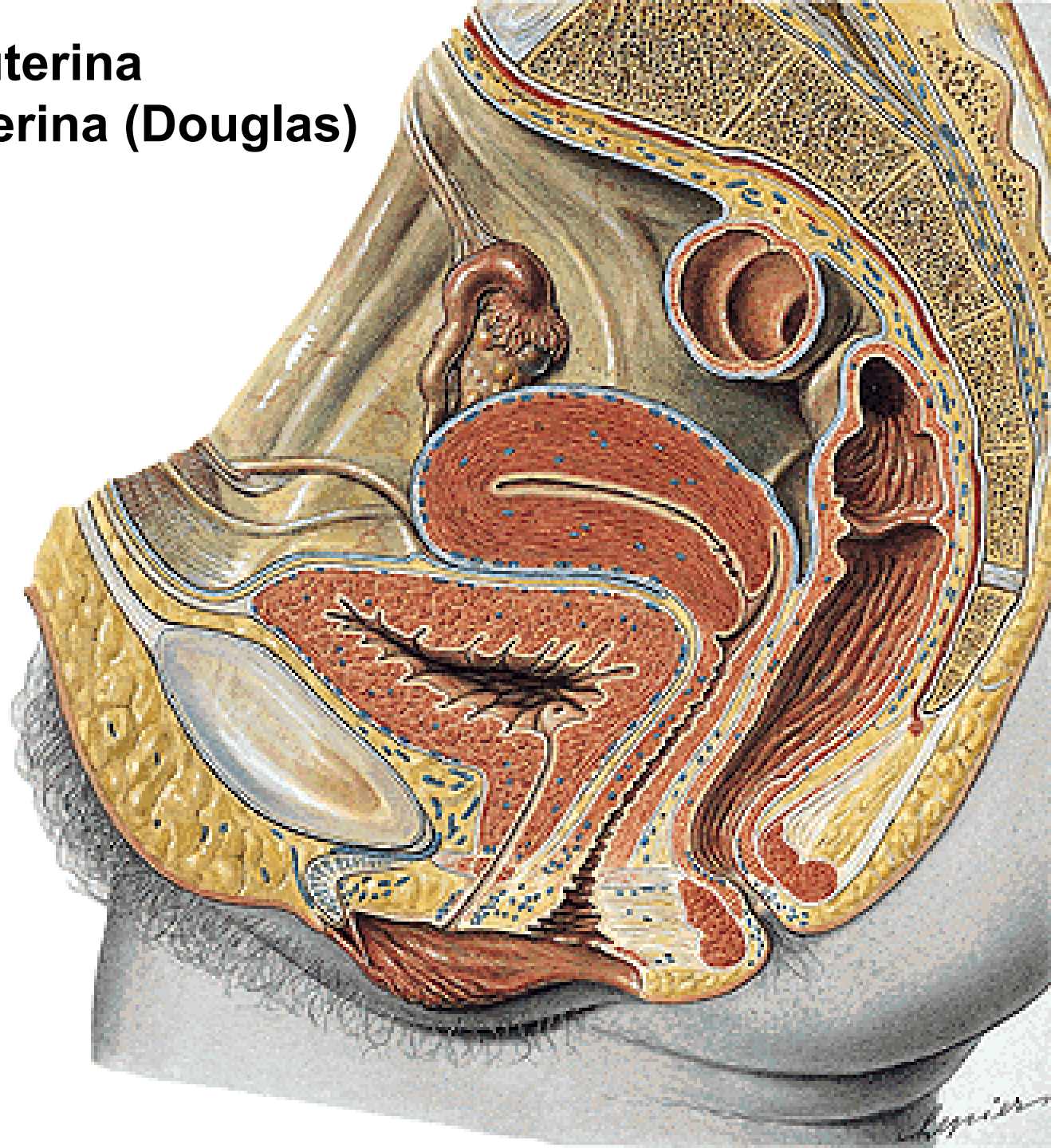
Glandulae cervicales

Myometrium

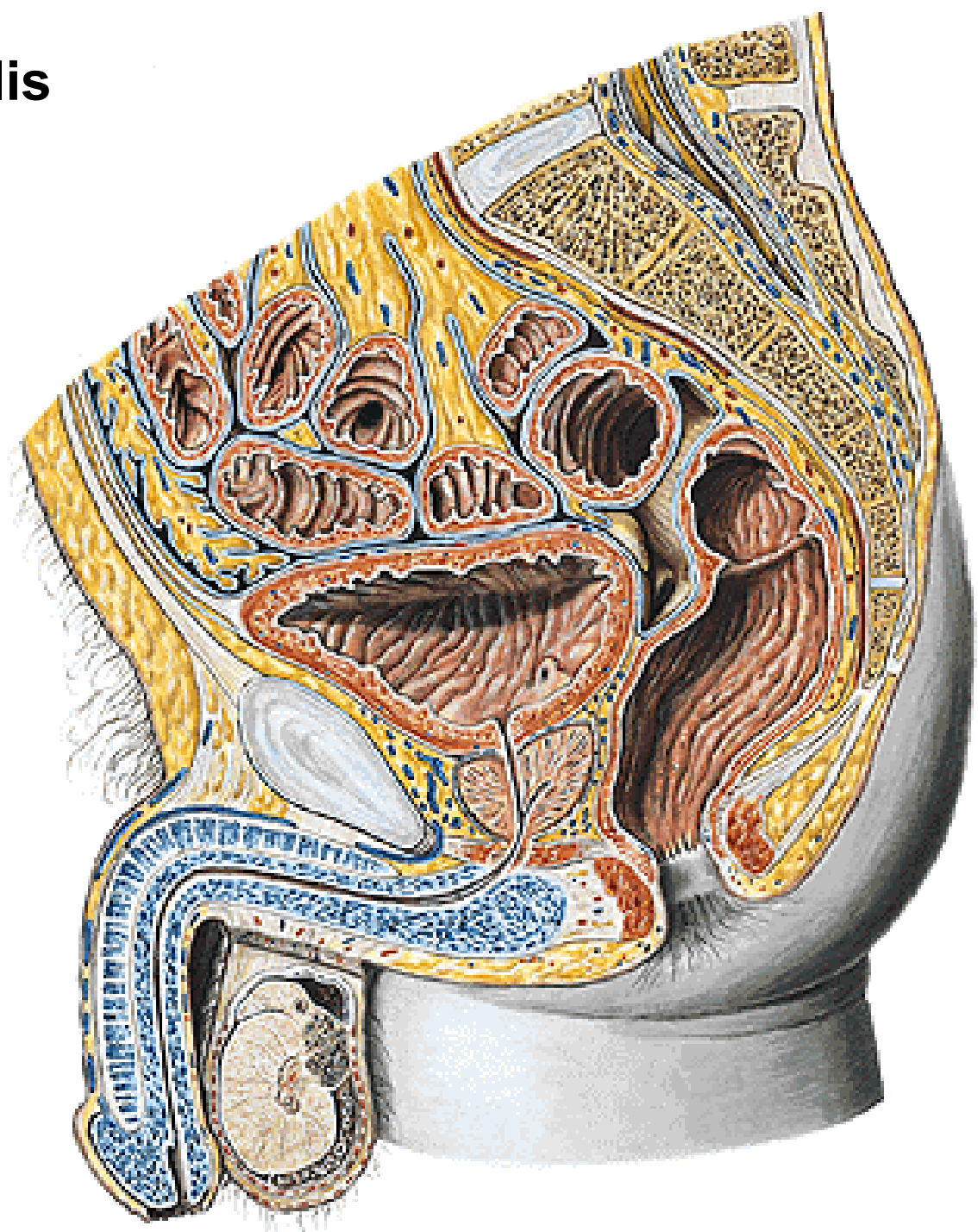
Perimetrium



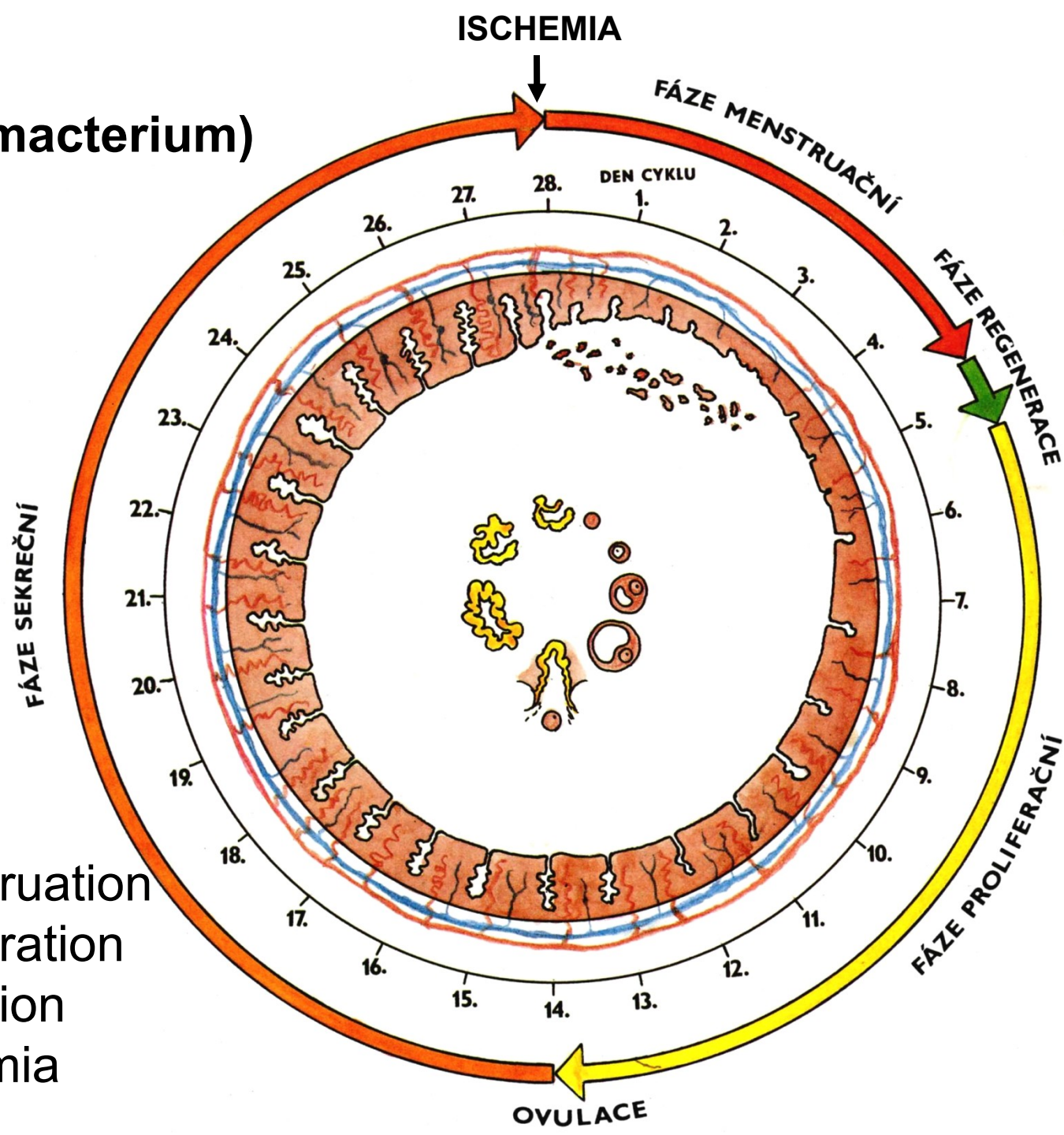
Excavatio vesicouterina
Excavatio rectouterina (Douglas)



Excavatio rectovesicalis



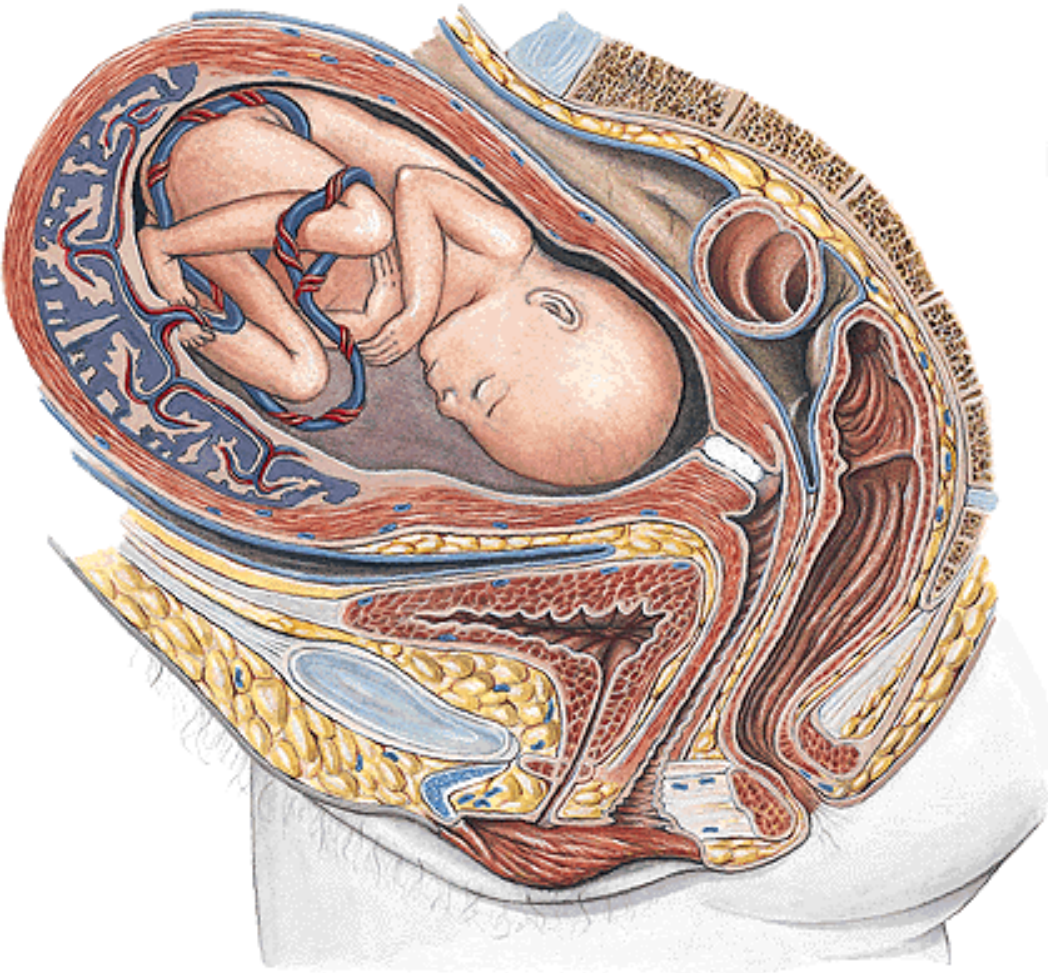
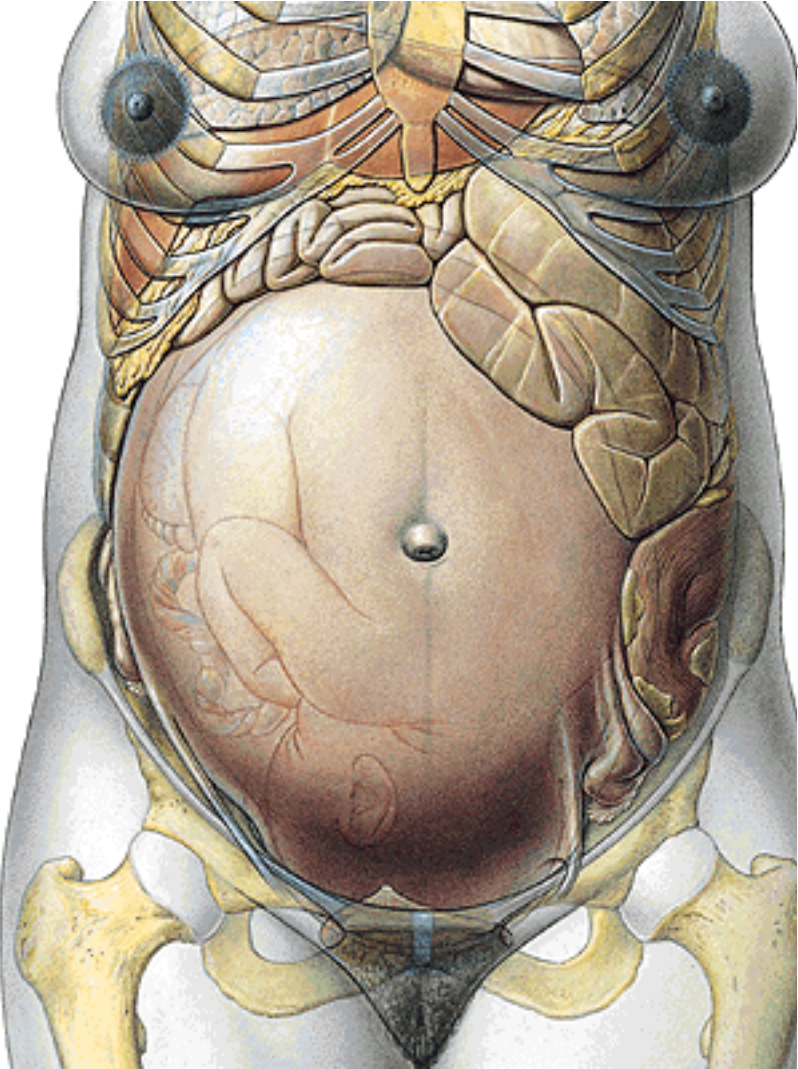
Menarche
Menopause (climacterium)

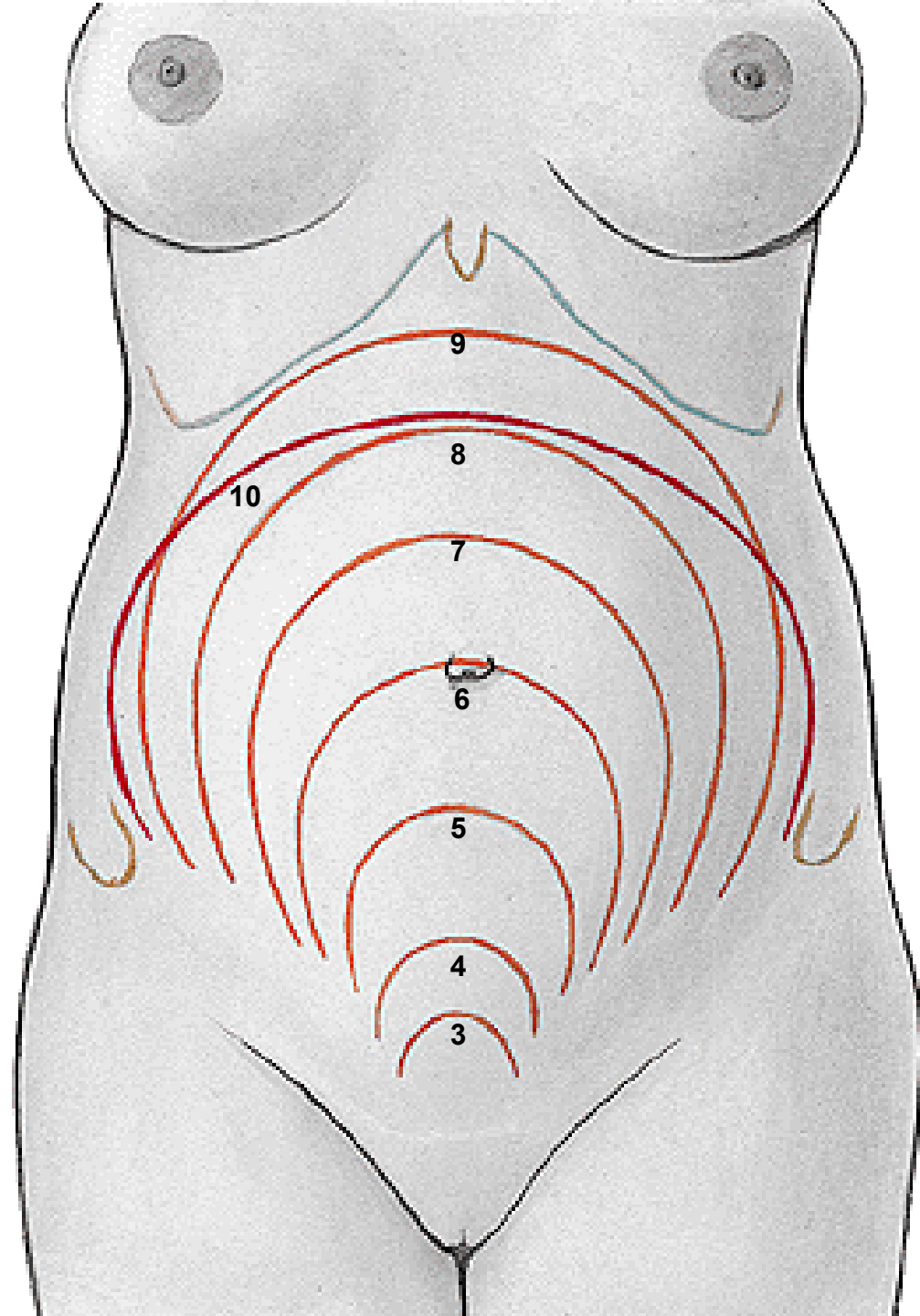


Menstrual cycle:

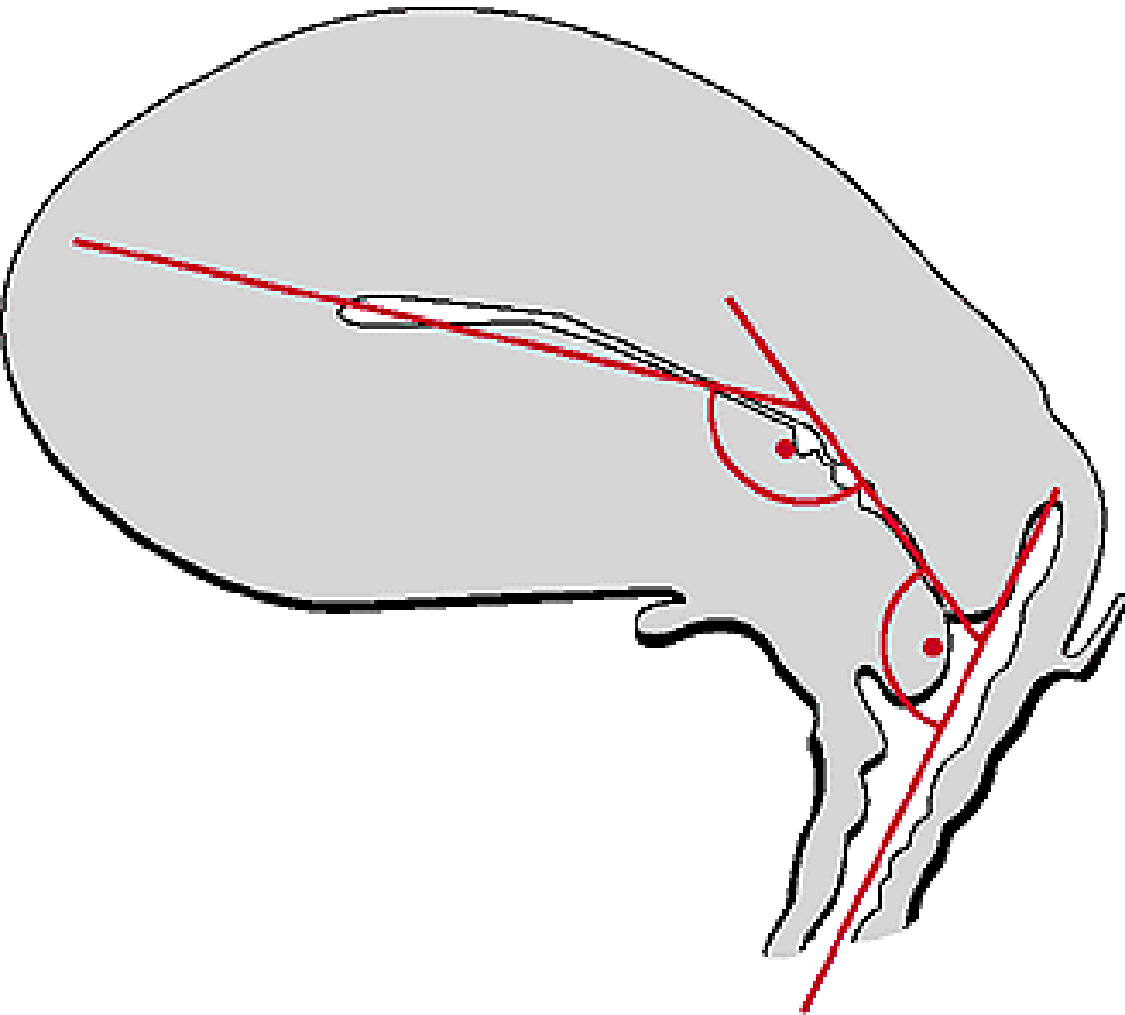
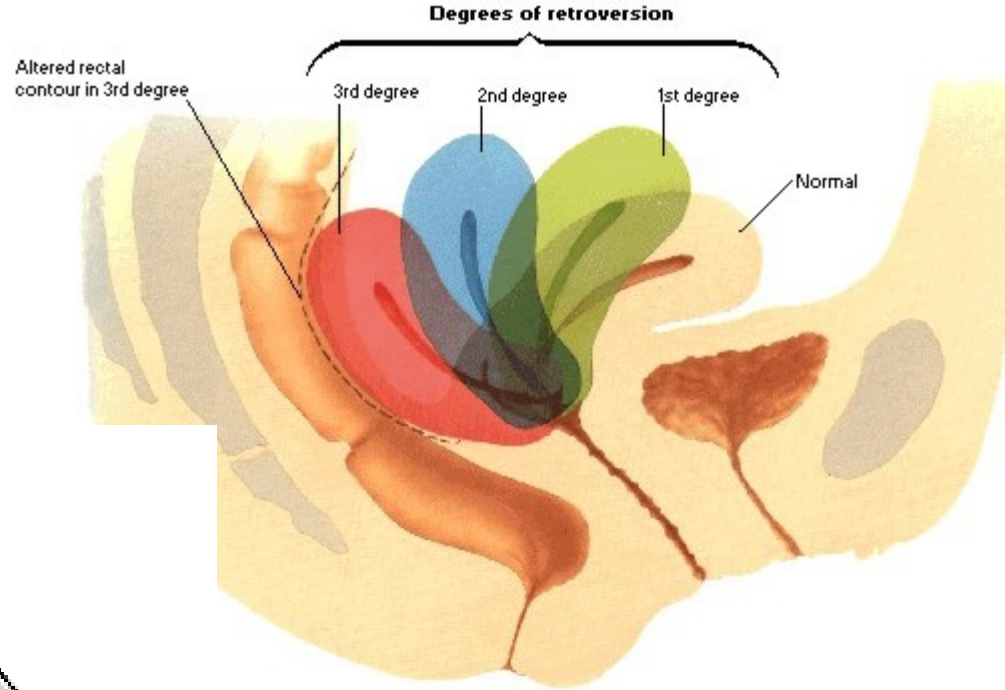
1. Phase of menstruation
2. Phase of proliferation
3. Phase of secretion
4. Phase of ischemia

GRAVIDITAS





Anteversio Anteflexio



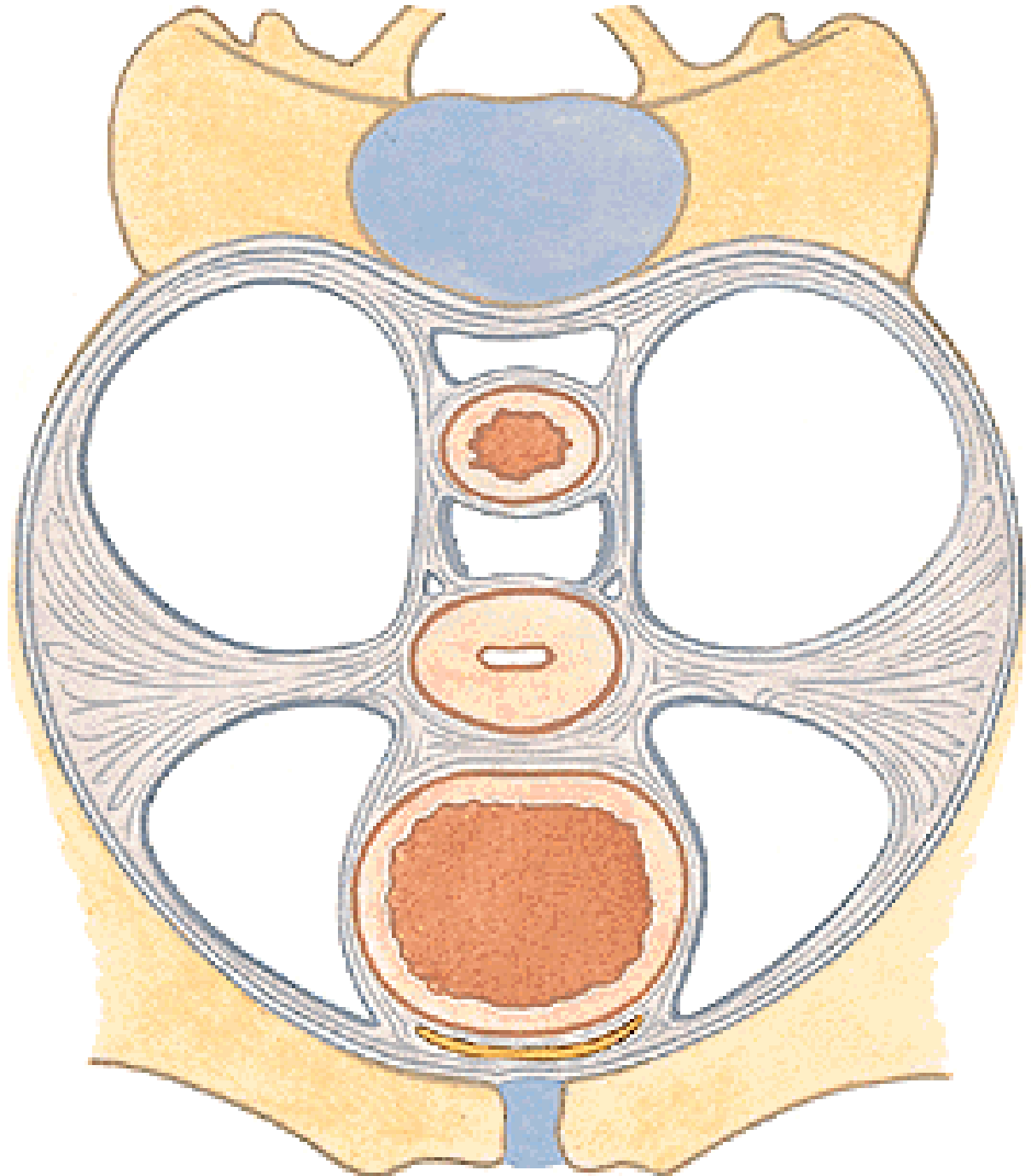
PARAMETRIUM

**Lig. sacrouterinum
(m. rectouterinus)**

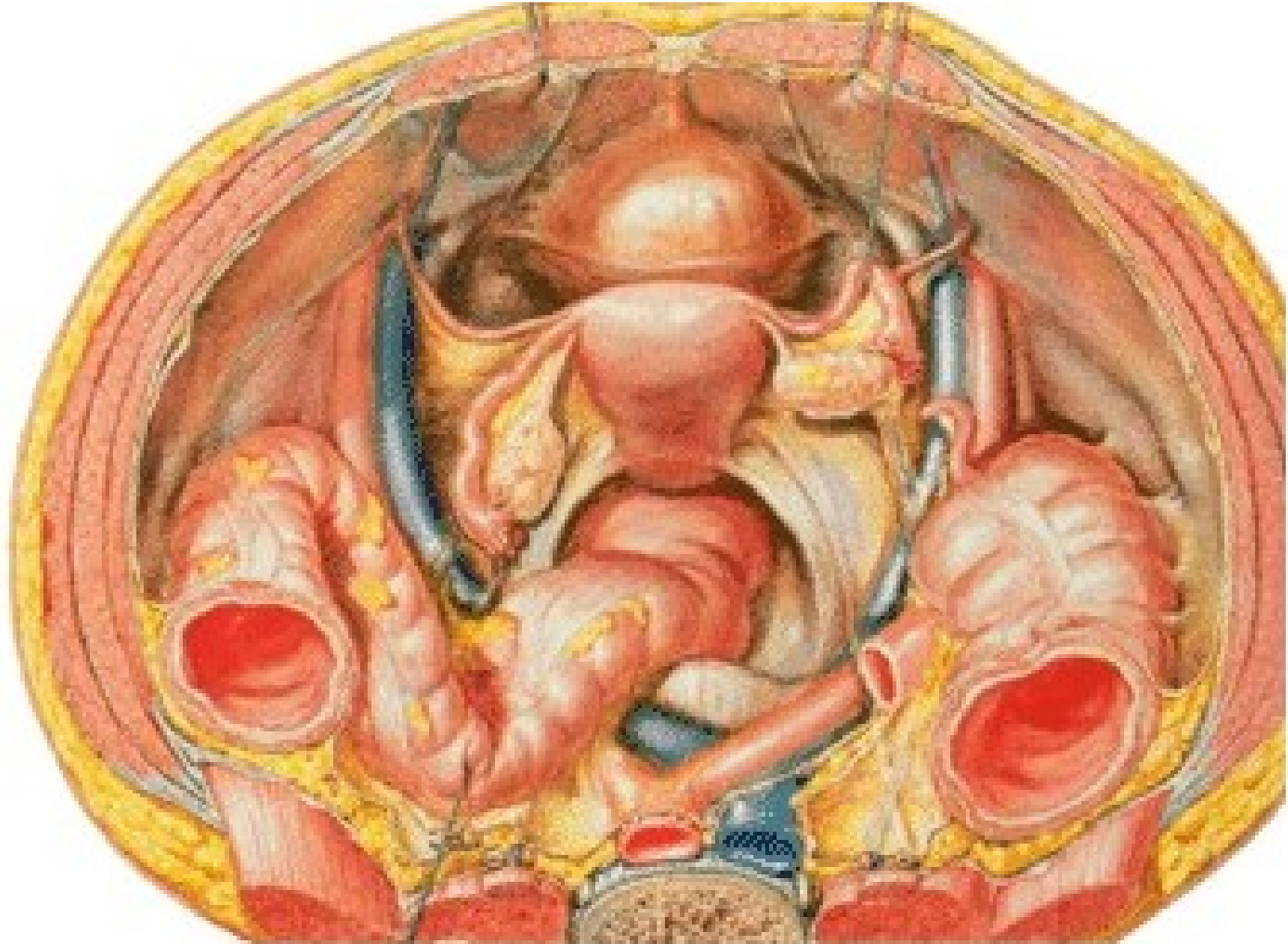
Lig. cardinale uteri

Lig. vesicouterinum

Lig. pubovesicale



Plica sacrouterina
Lig. teres uteri



A. uterina x ureter

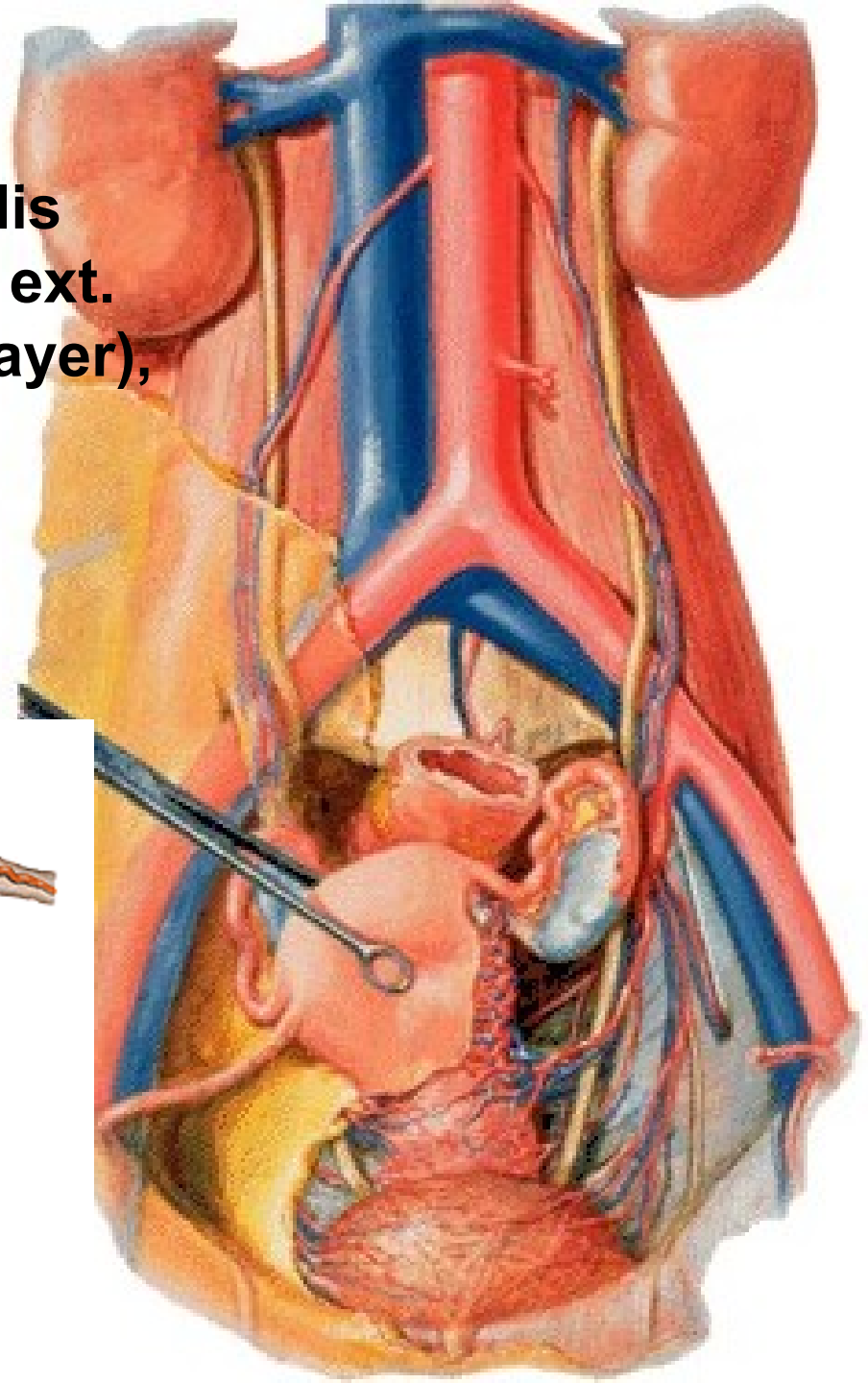
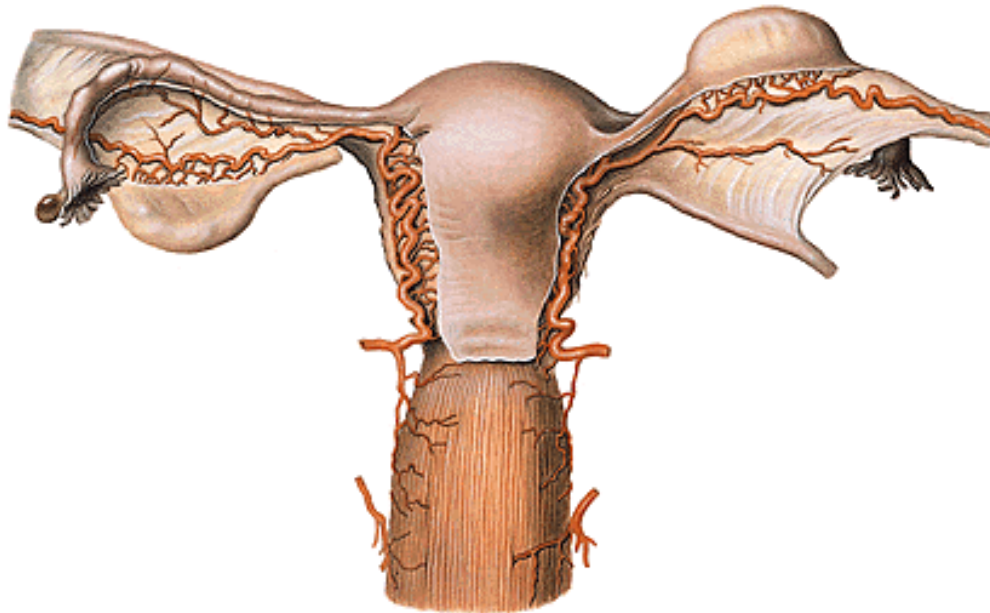
Plexus venosus uterovaginalis

Nll. lumbales, iliaci int., iliaci ext.

nodus lymph.uterinus (Bayer),

inguinales spf., sacrales

Plexus uterovaginalis



VAGINA (COLPOS)

Ostium vaginae

Vestibulum vaginae

Paries anterior

Paries posterior

Rugae vaginales

Columna rugarum ant.

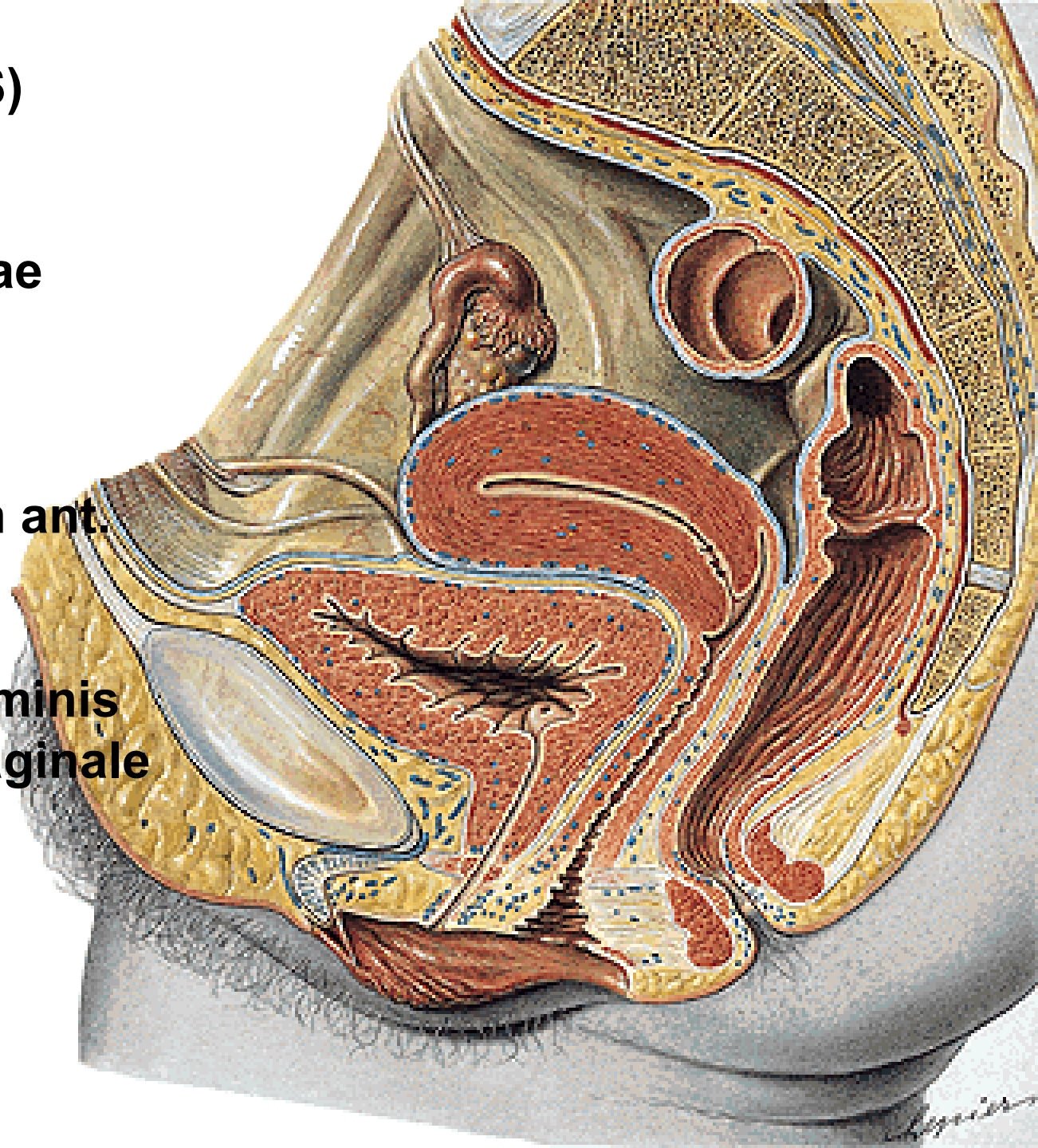
et posterior

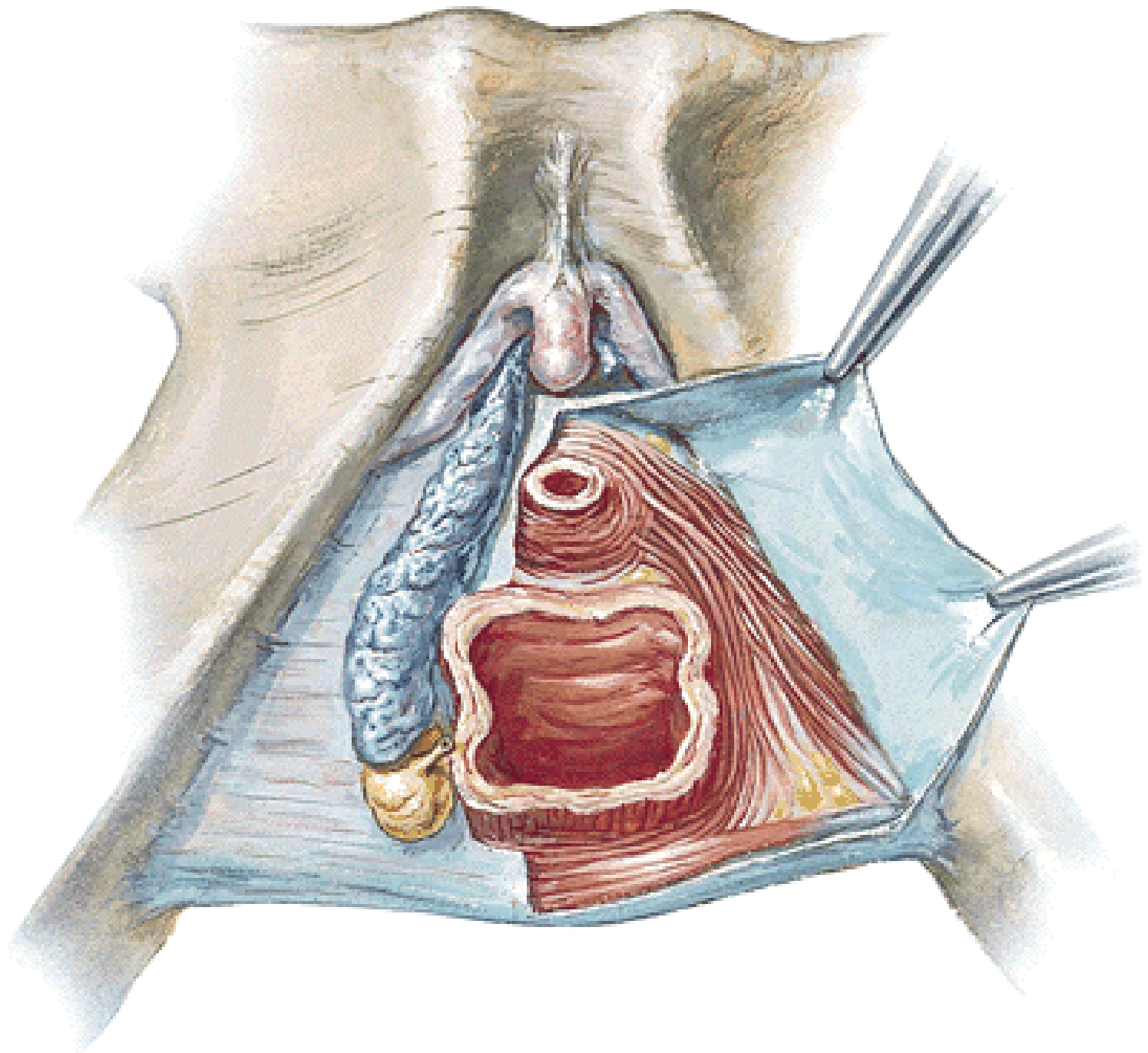
Fornix

Receptaculum seminis

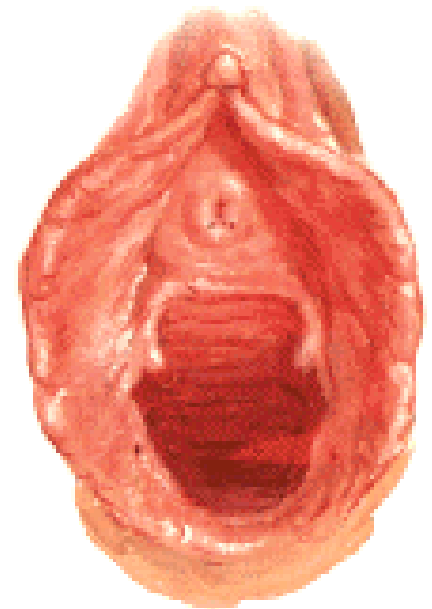
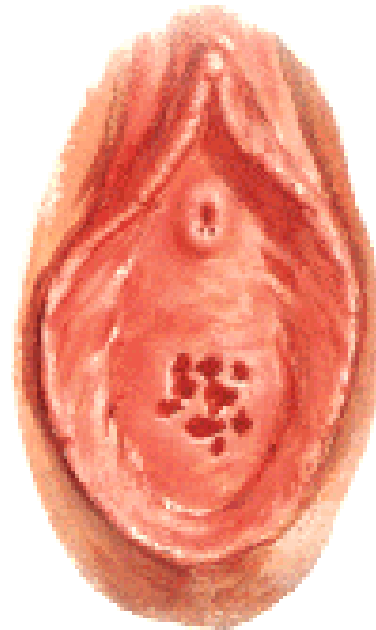
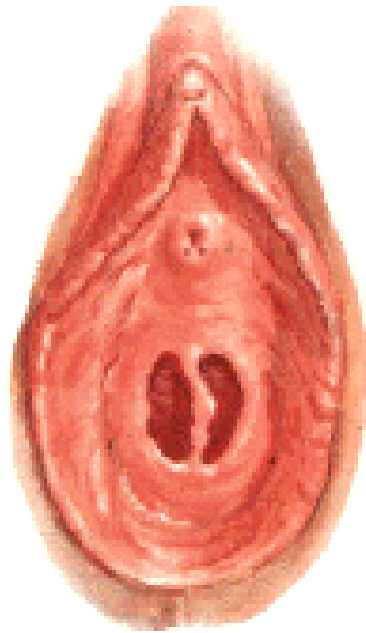
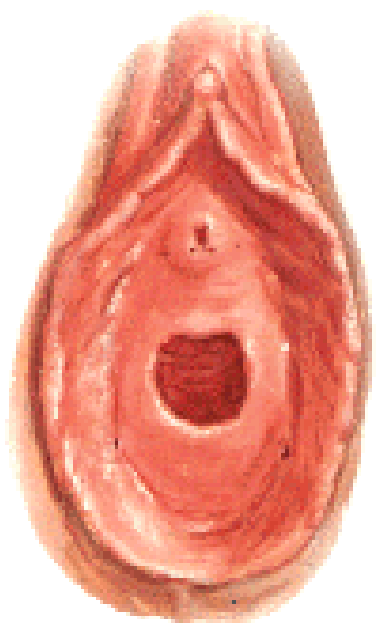
Septum urethrovaginale

Crista urethralis





Ostium vaginae:
Hymen
Defloratio
Carunculae hymenales



A. uterina

- a. vaginalis

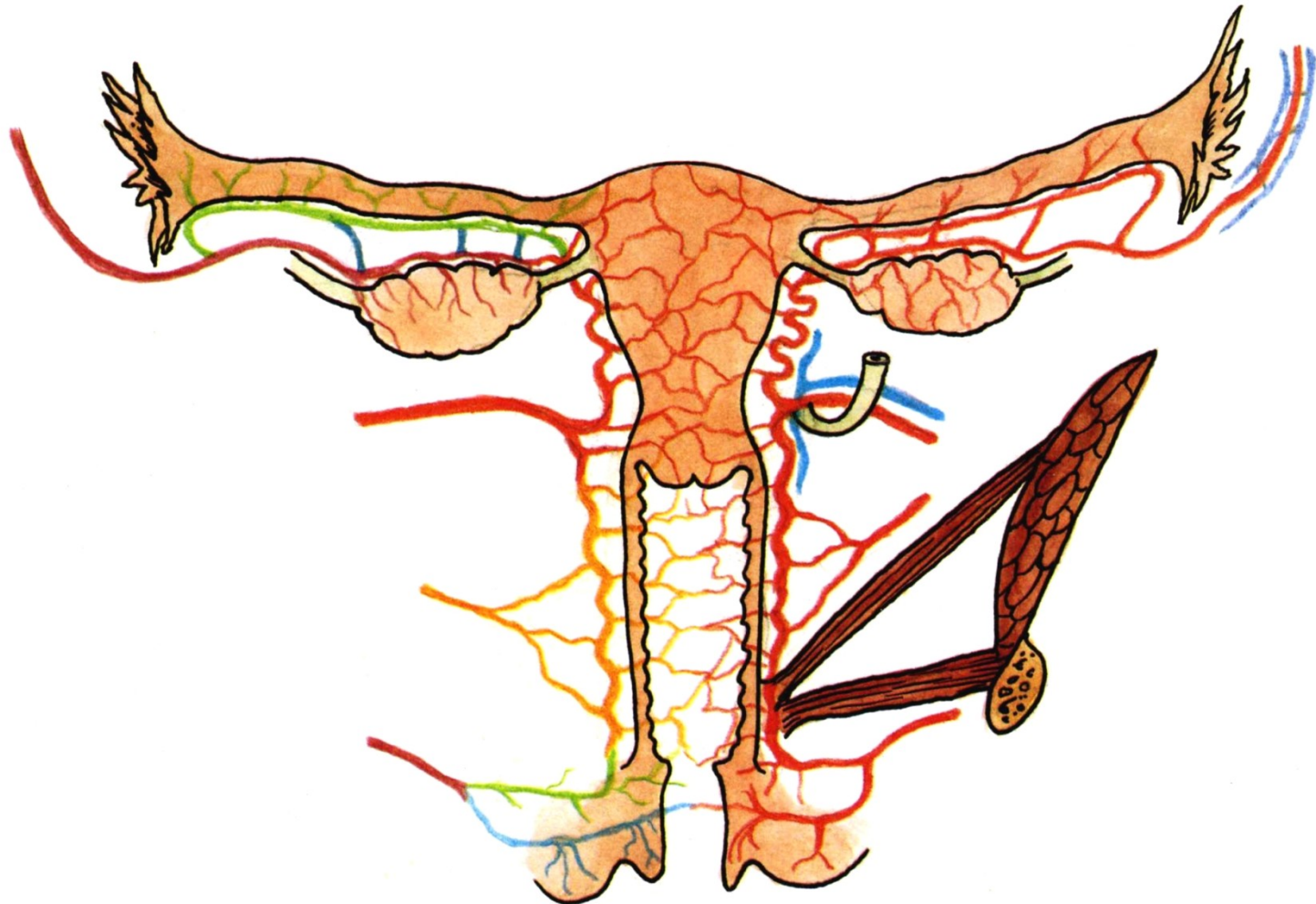
A. rectalis media

A. pudenda int.

Plexus venosus uterovaginalis

Nll. iliaci int., ext, inguinales spf.

Plexus uterovaginalis, n. pudendus



ORGANA GENITALIA EXTERNA

Mons pubis – pubes

Labia majora pudendi – commissura labiorum ant. et post.

Labia minora pudendi - praeputium et frenulum clitoridis
- frenulum labiorum

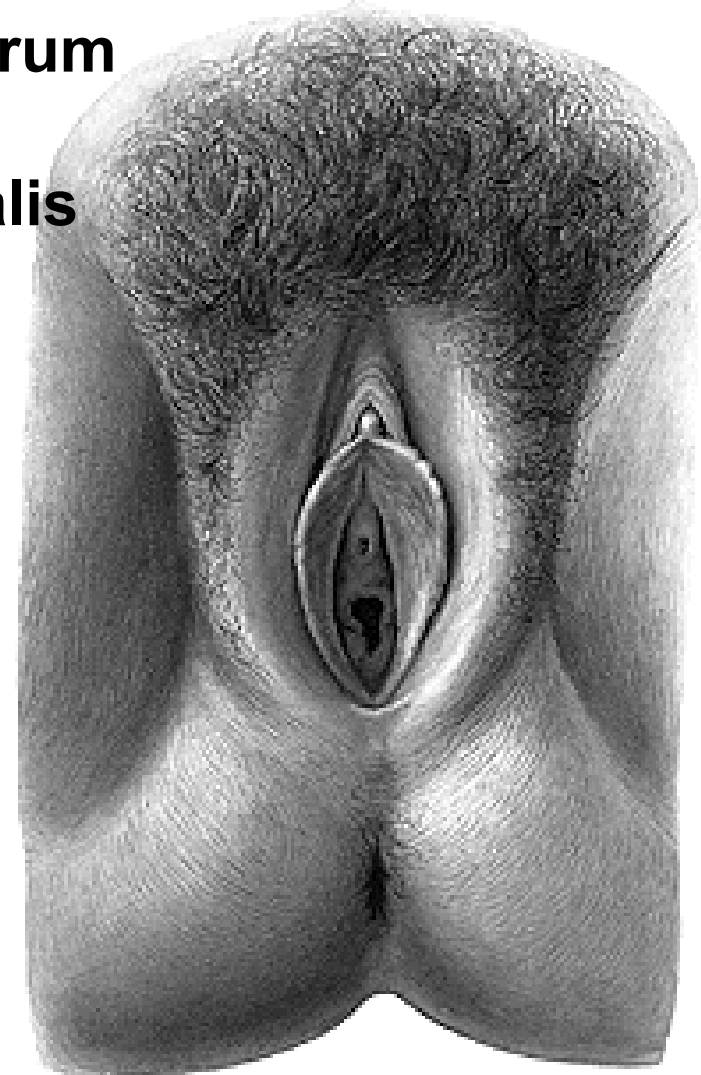
Smegma



Sulcus genitofemoralis

Sulcus interlabialis

Rima pudendi



CLITORIS

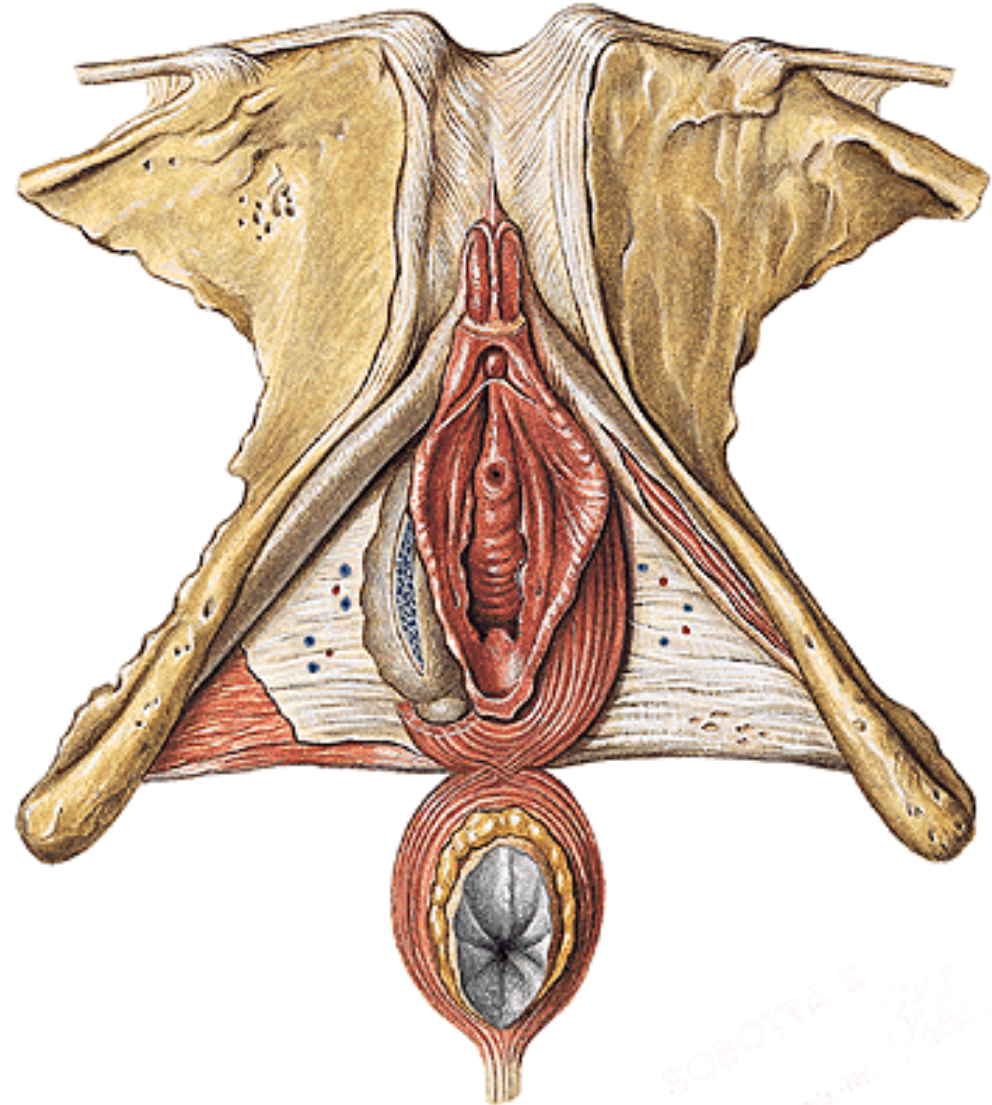
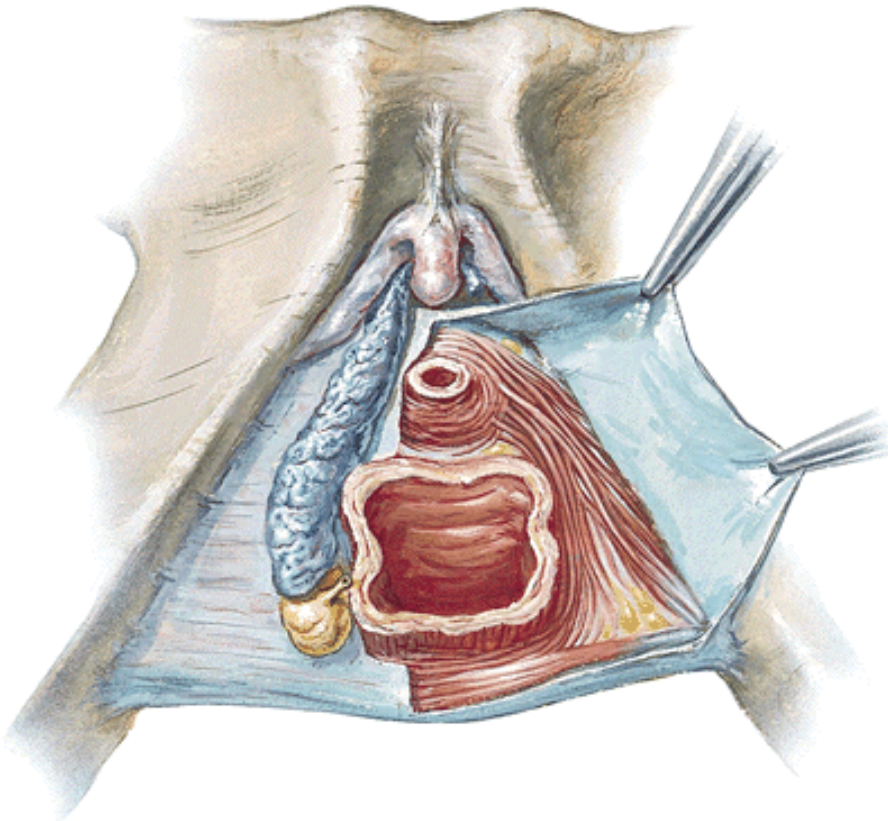
Crura clitoridis – crista phallica

Corpus clitoridis

Glans clitoridis

Lig. fundiforme

Lig. suspensorium

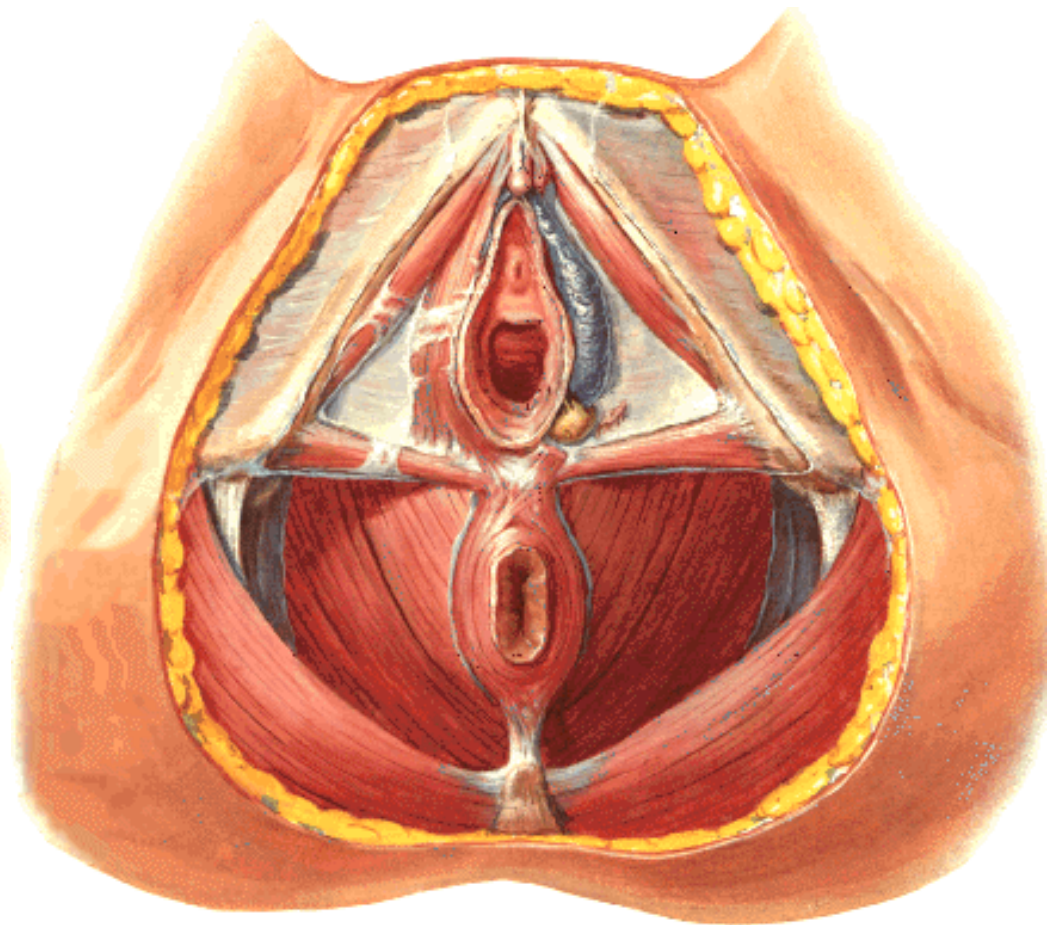


ROBERTA S. S. S.
www.roberta.com

BULBI VESTIBULI

GLANDULAE VESTIBULARES MAJORES (BARTHOLIN)

GLANDULAE VESTIBULARES MINORES



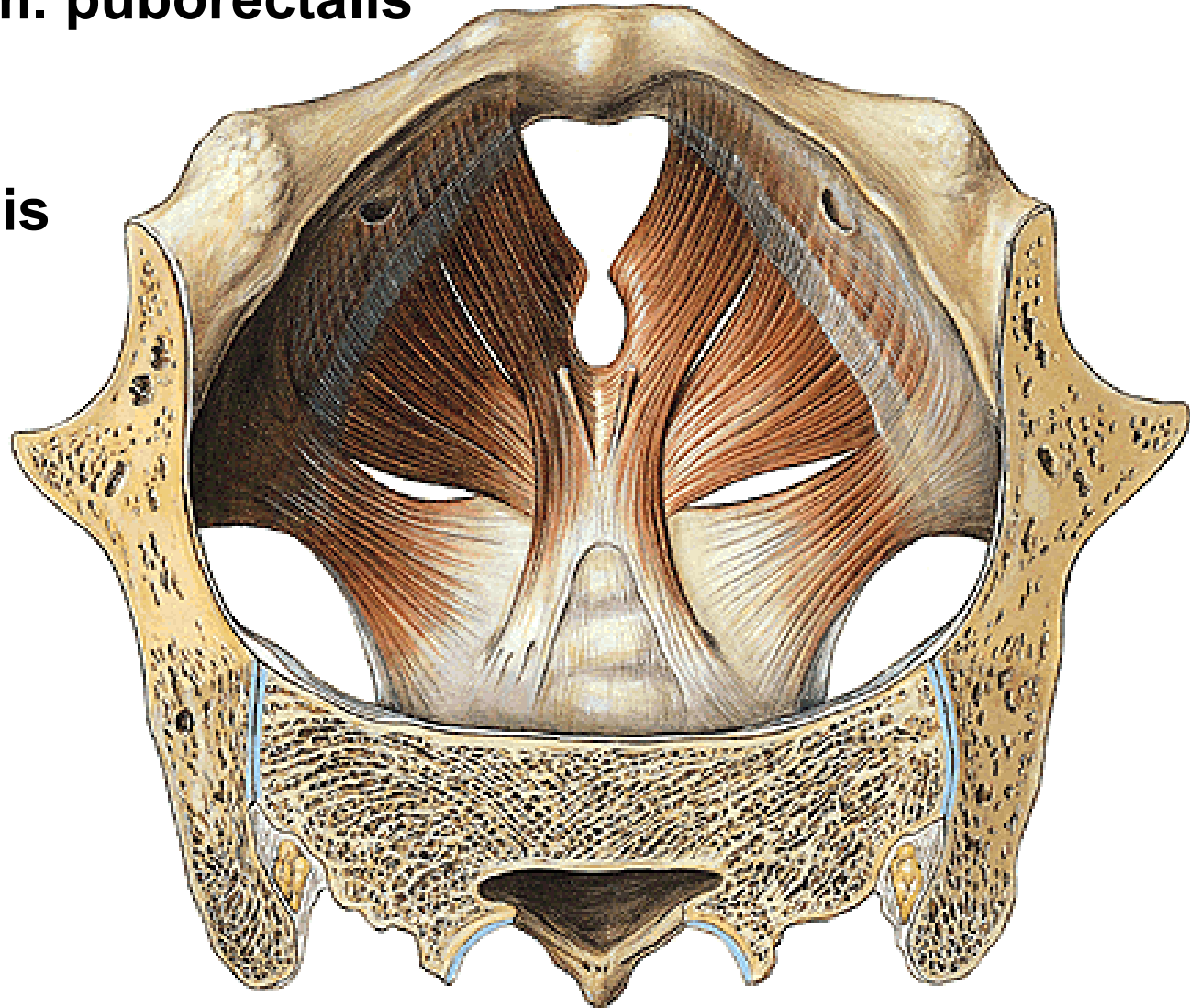
DIAPHRAGMA PELVIS

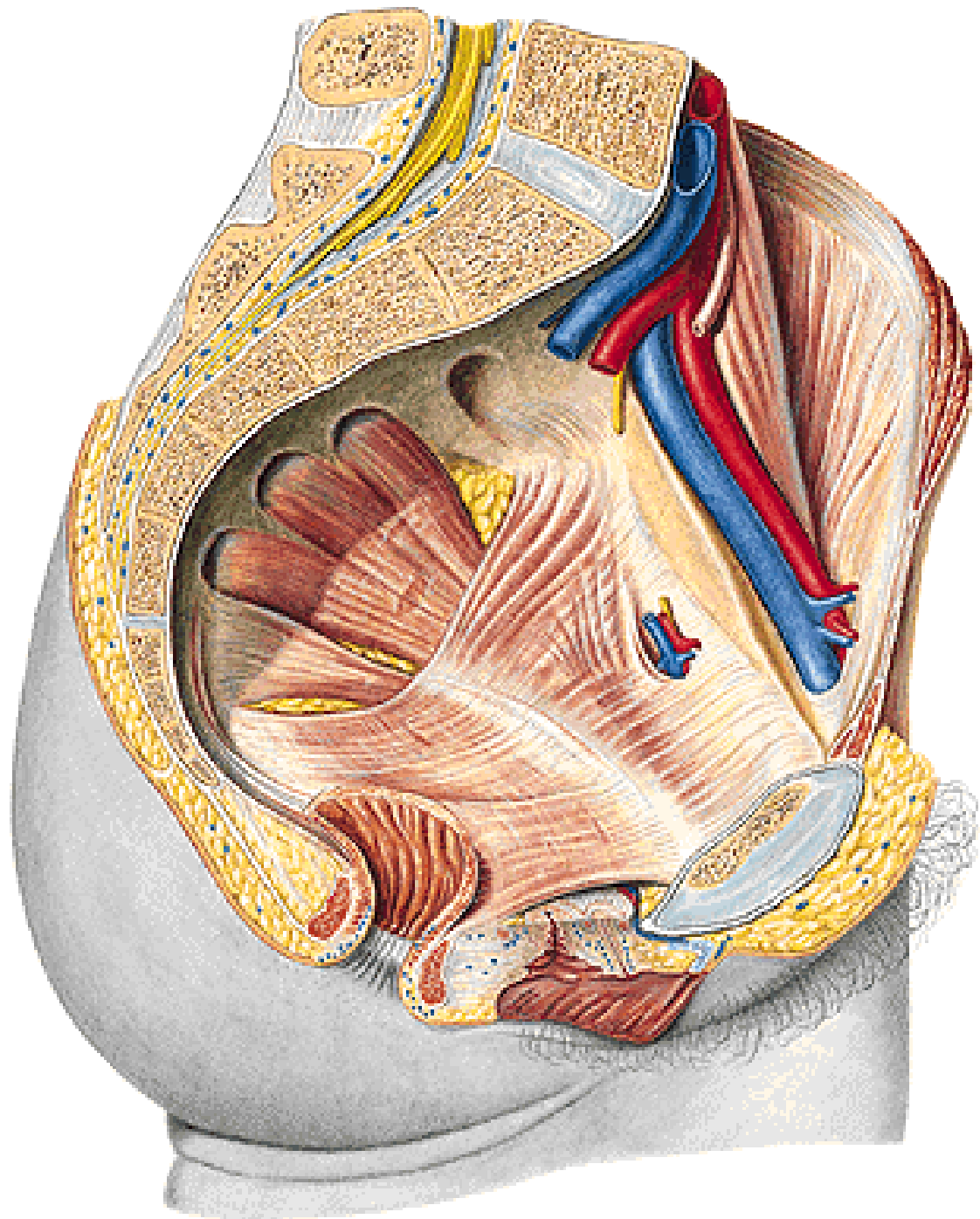
M. levator ani – pars iliaca (m. iliococcygeus)

- **pars pubica (m. pubococcygeus)**
- **m. puborectalis**

M. coccygeus

Hiatus urogenitalis





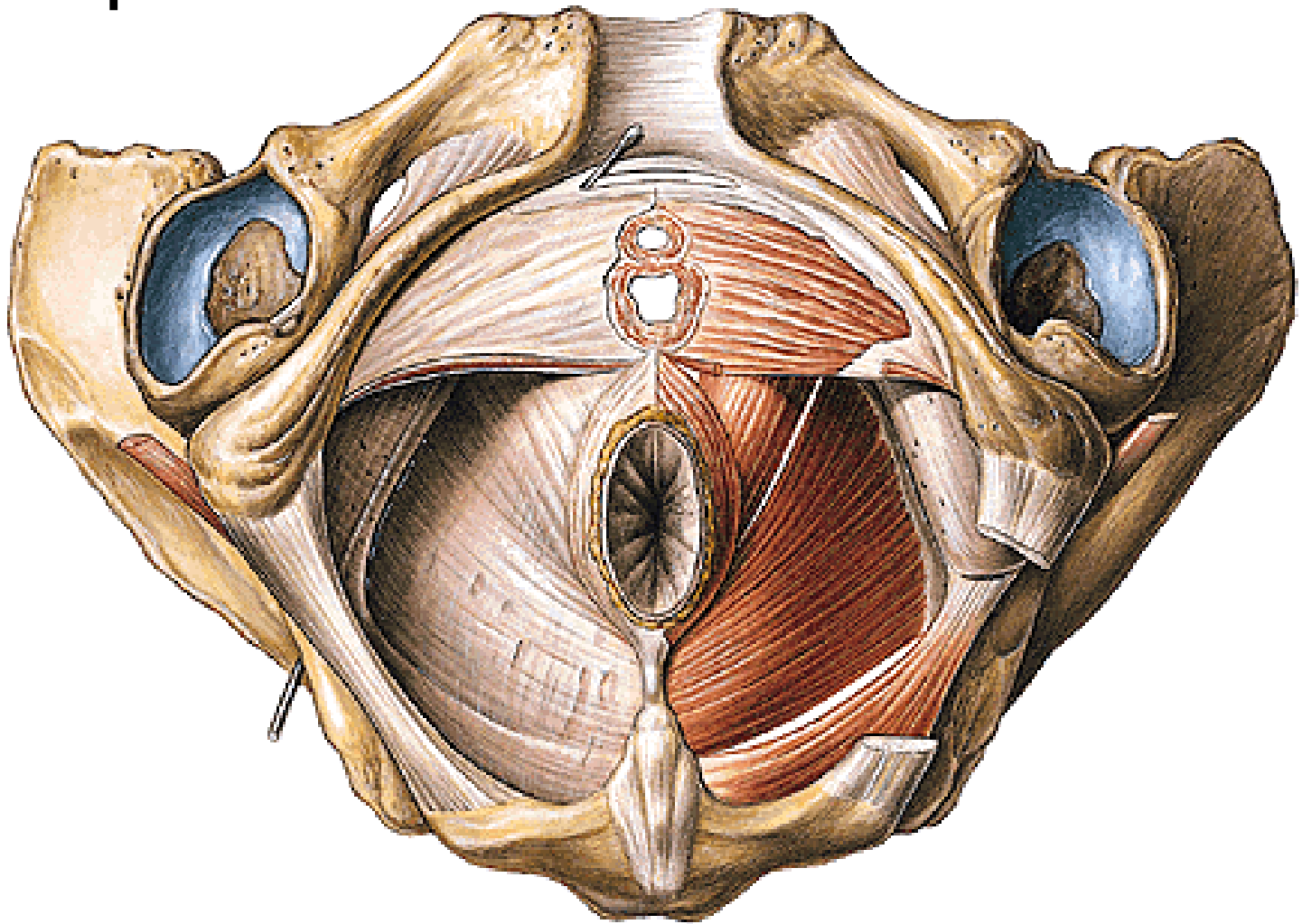
DIAPHRAGMA UROGENITALE

M. transversus perinei profundus – centrum perineale

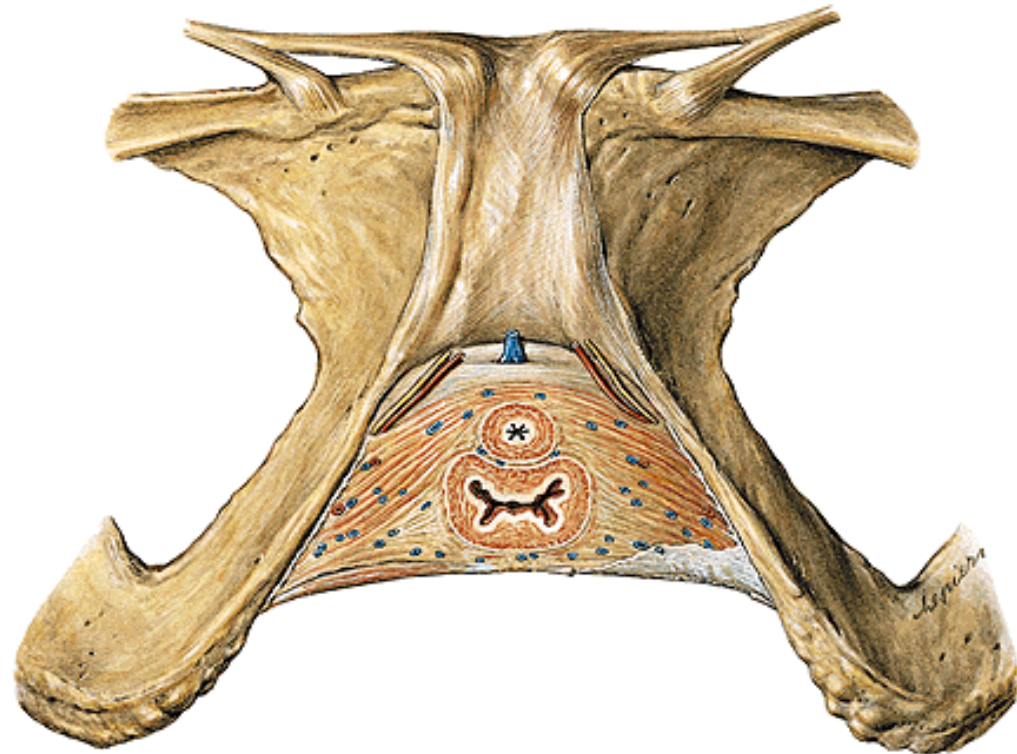
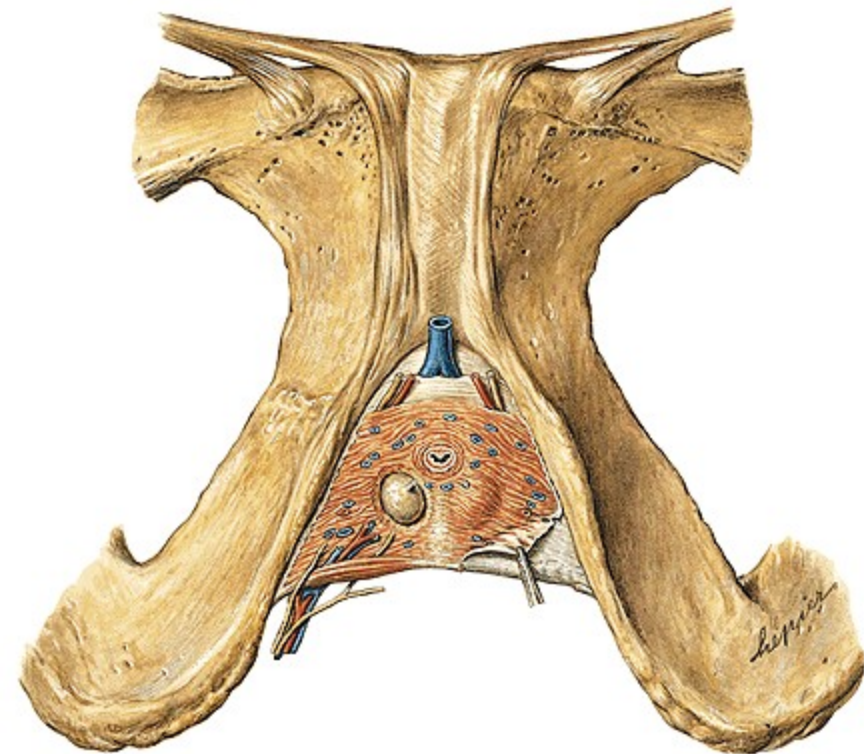
M. sphincter urethrae

M. transversus perinei superficialis

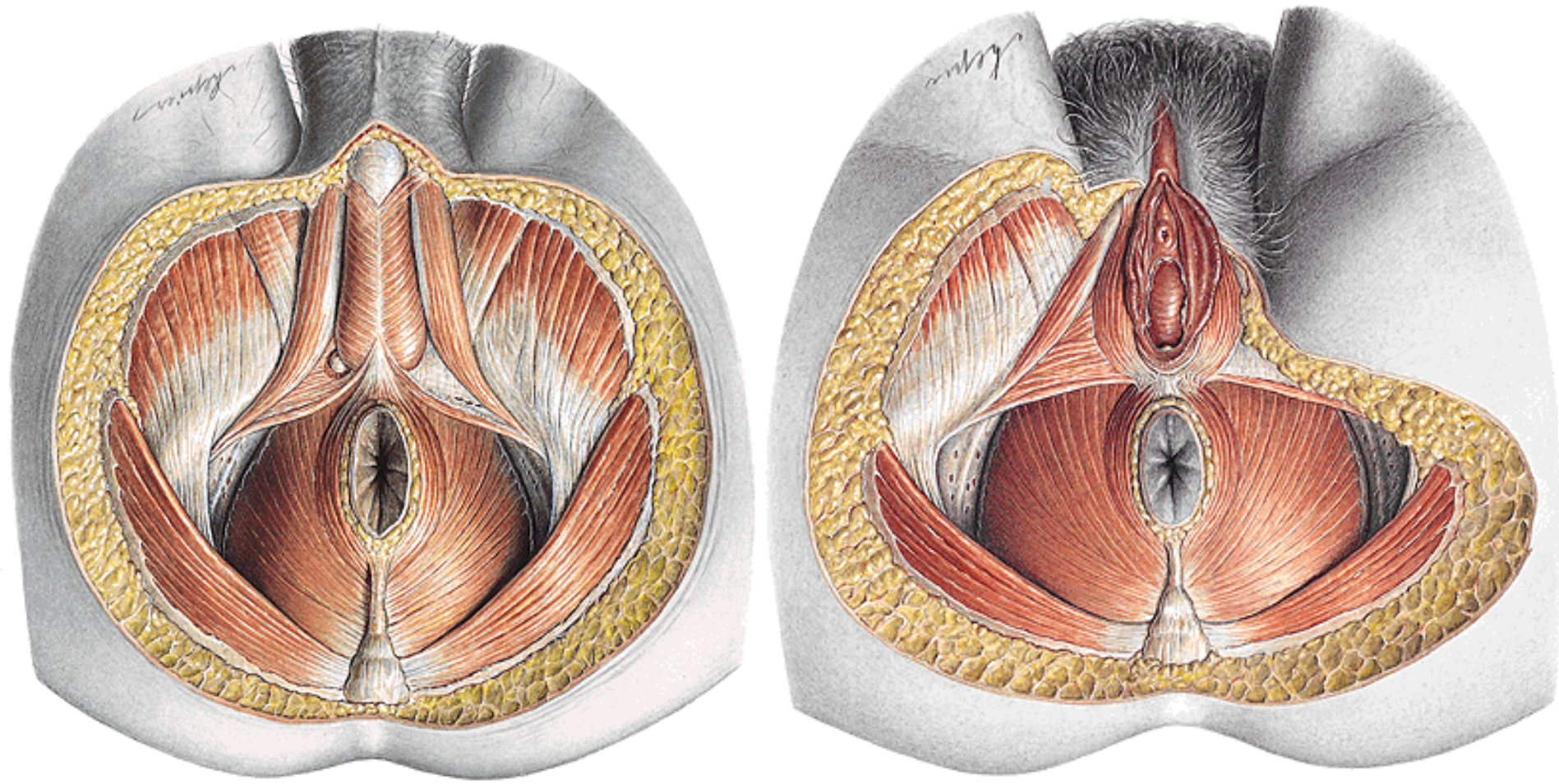
Lig. transversum perinei



A. dorsalis penis (clitoridis)
N. dorsalis penis (clitoridis)
V. dorsalis penis (clitoridis) profunda
A.,v. et n. perinealis
Gl. bulbourethralis



M. ischiocavernosus
M. bulbospongiosus (M. constrictor cunni)
M. sphincter ani externus
Lig. anococcygeum



Fascia obturatoria
Canalis pudendalis
(Alcock)
Fascia diaphragmatis
pelvis sup.
Fascia diaphragmatis
pelvis inf.
Fossa ischiorectalis



Fascia diaphragmatis urogenitalis sup. et inf.

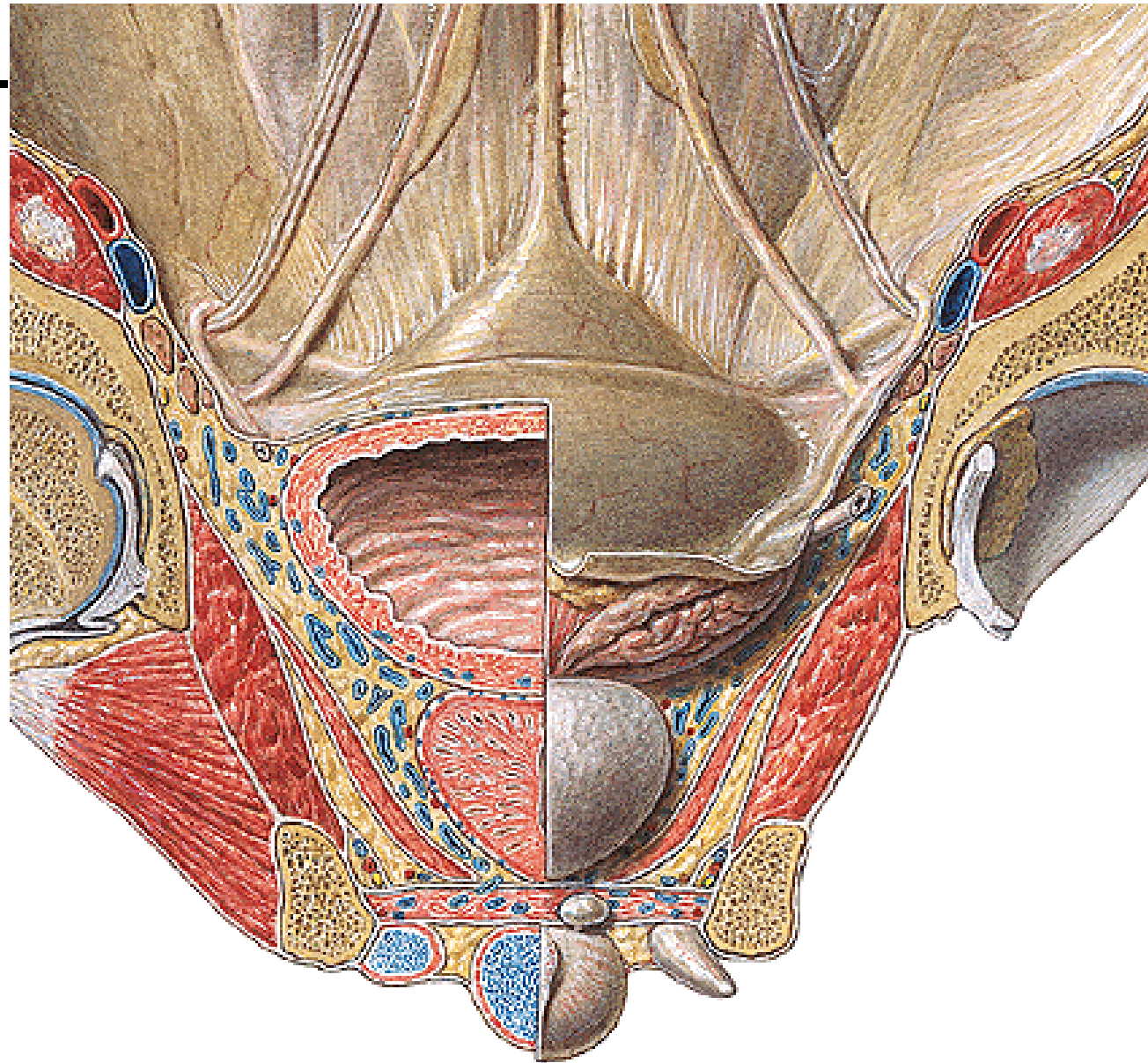
Spatium perinei profundum

Fascia perinei spf.

Spatium perinei spf.

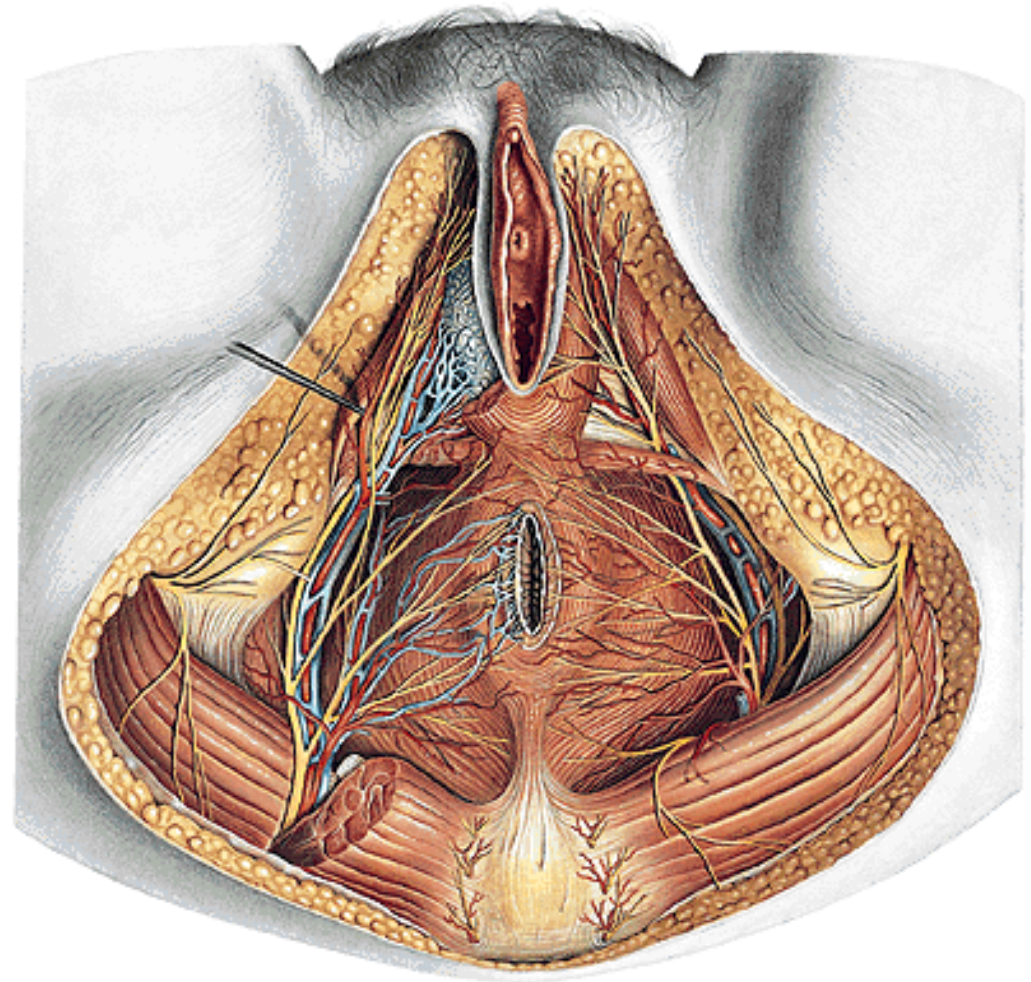
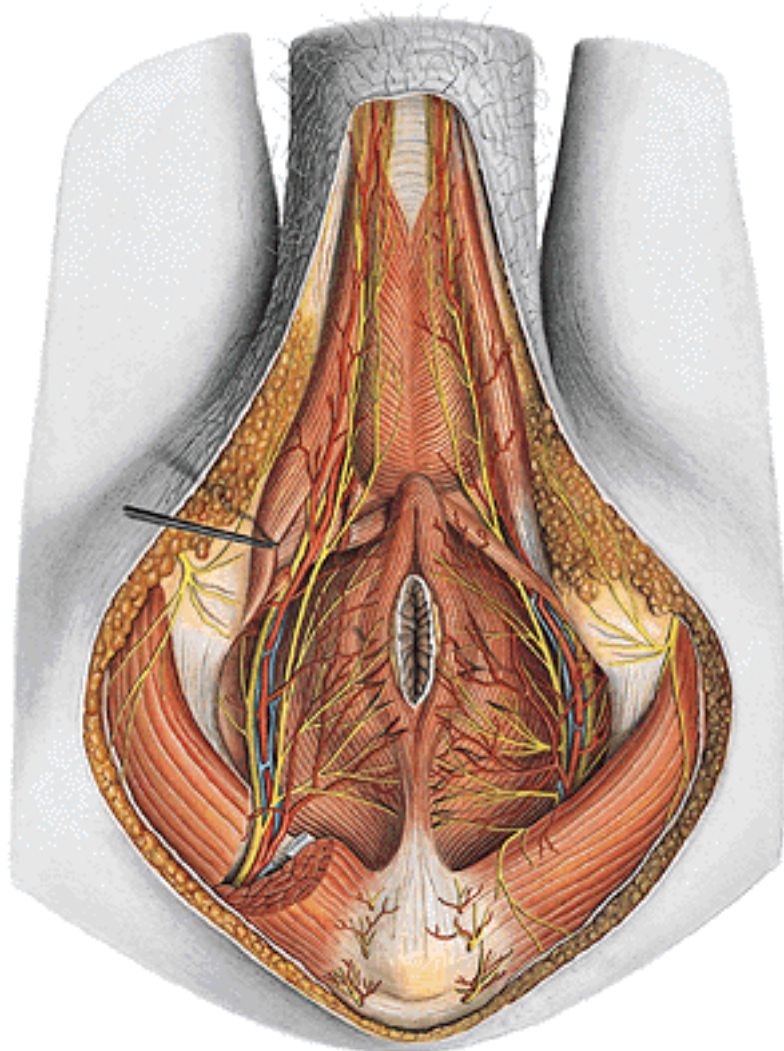
Recessus pubicus

**fossae ischio-
rectalis**

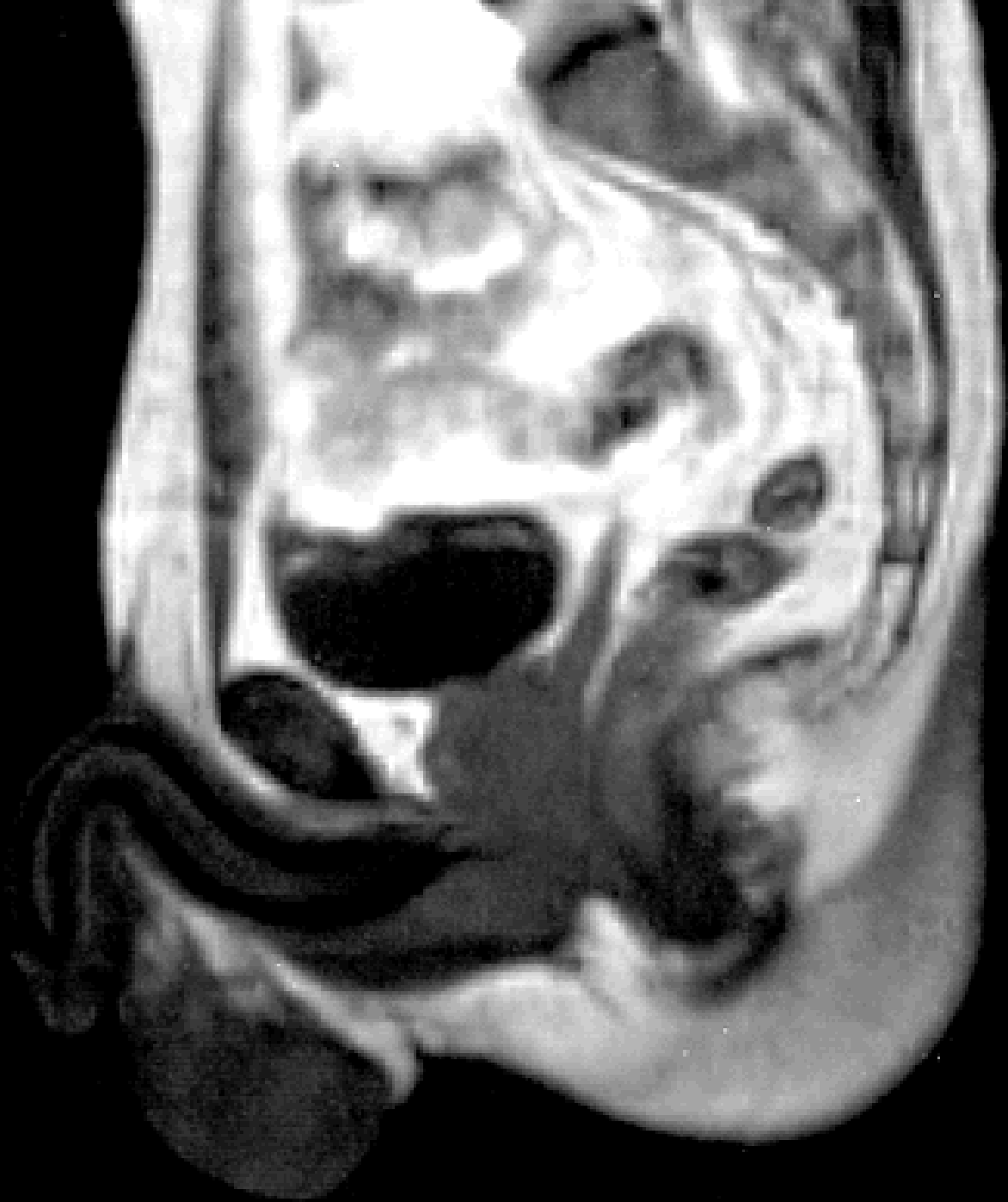


FOSSA ISCHIORECTALIS – recessus pubicus

- et v. pudenda interna, n. pudendus – canalis pudendalis
- Aa., vv. et nn. rectales inf.







Illustrations and photographs were copied from:
Atlas der Anatomie des Menschen/Sobotta.
Putz,R., und Pabst,R. 20. Auflage. München:
Urban & Schwarzenberg, 1993
Netter: Interactive Atlas of Human Anatomy.
Windows Version 2.0
Čihák R: Anatomie 2 (Splanchnologia). Avicenum,
zdravotnické nakladatelství, Praha, 1988.