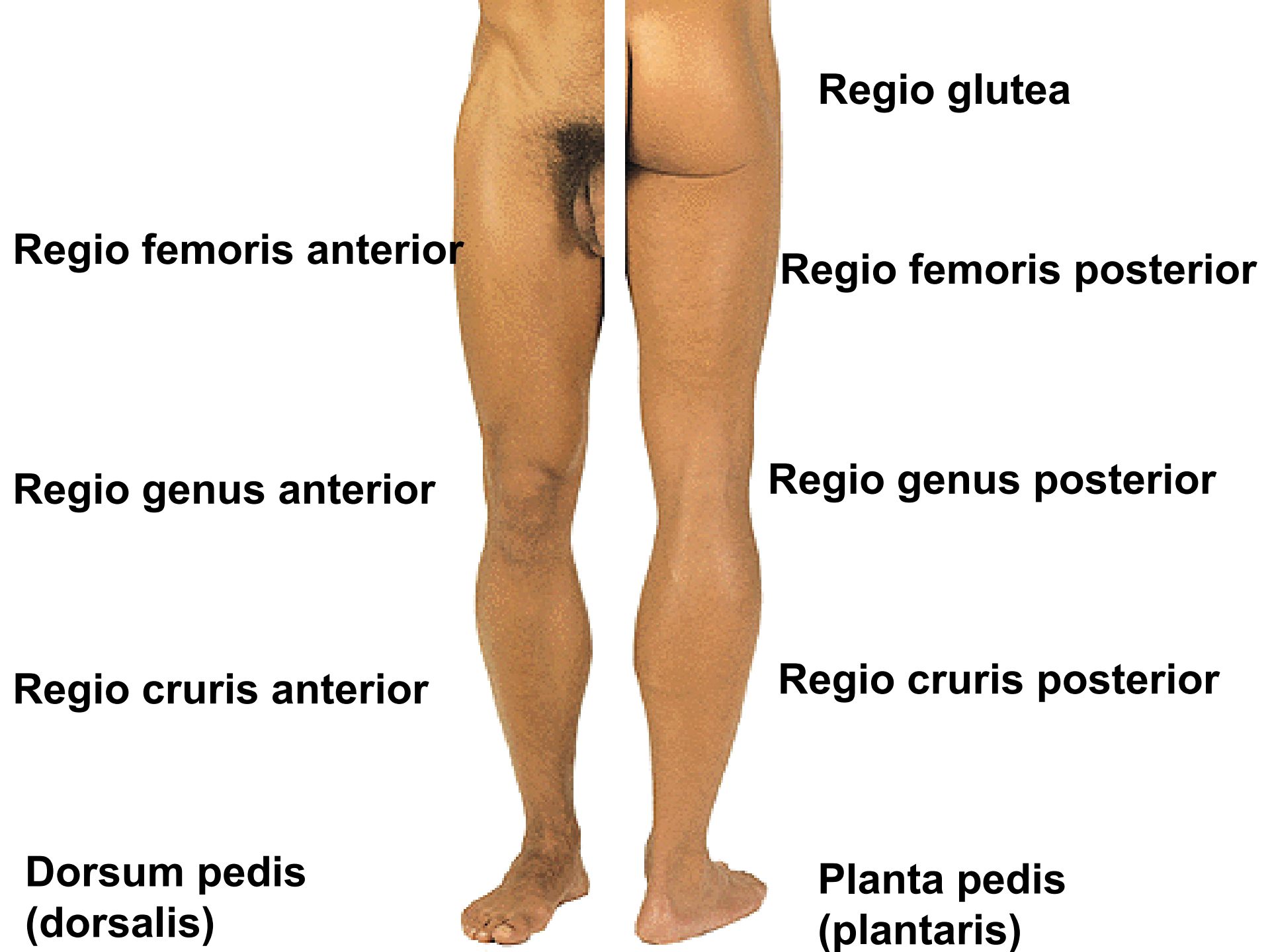


# **Regional anatomy of the lower limb**



**Regio glutea**

**Regio femoris anterior**

**Regio femoris posterior**

**Regio genus anterior**

**Regio genus posterior**

**Regio cruris anterior**

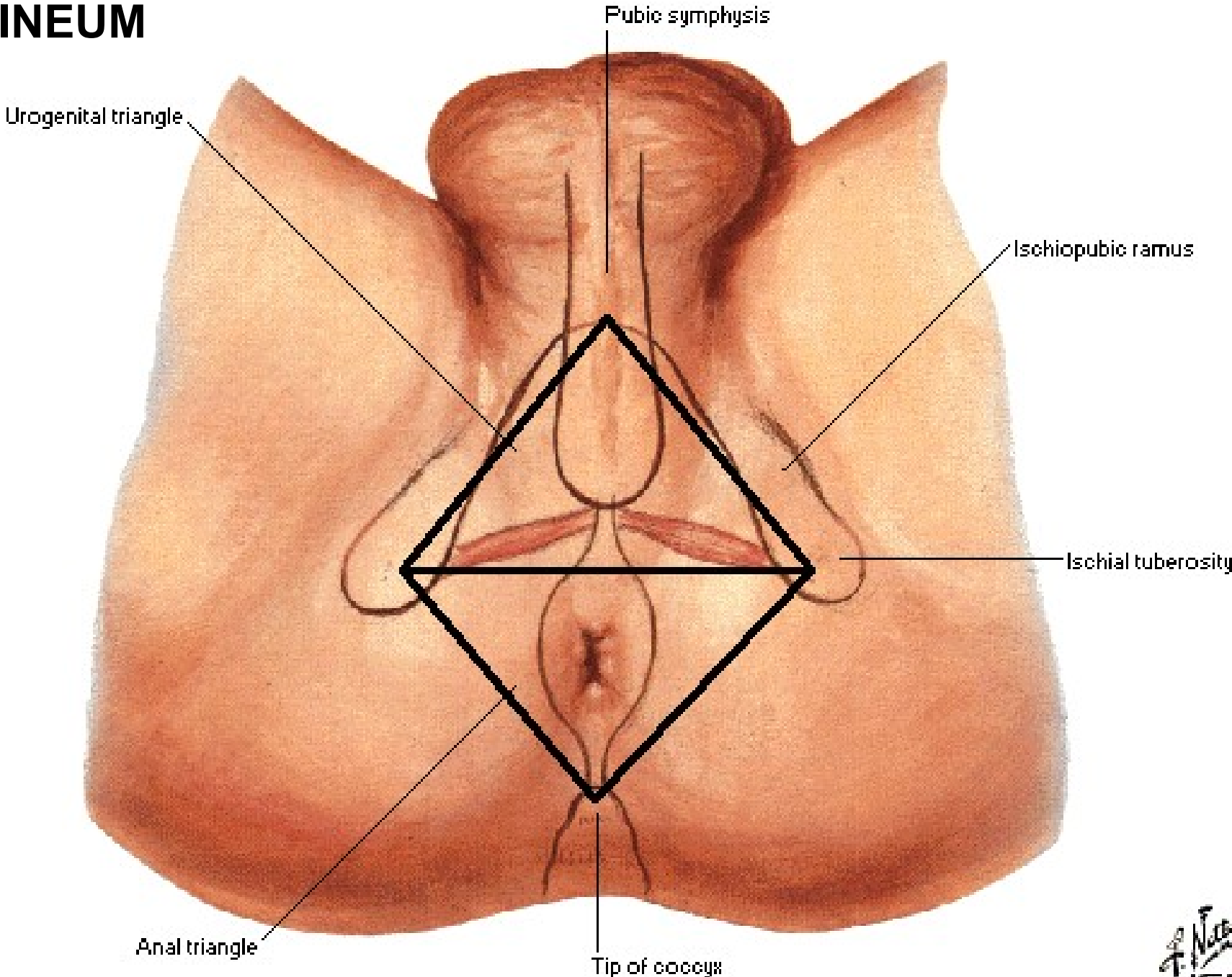
**Regio cruris posterior**

**Dorsum pedis  
(dorsalis)**

**Planta pedis  
(plantaris)**



# PERINEUM



# **REGIO GLUTEA**

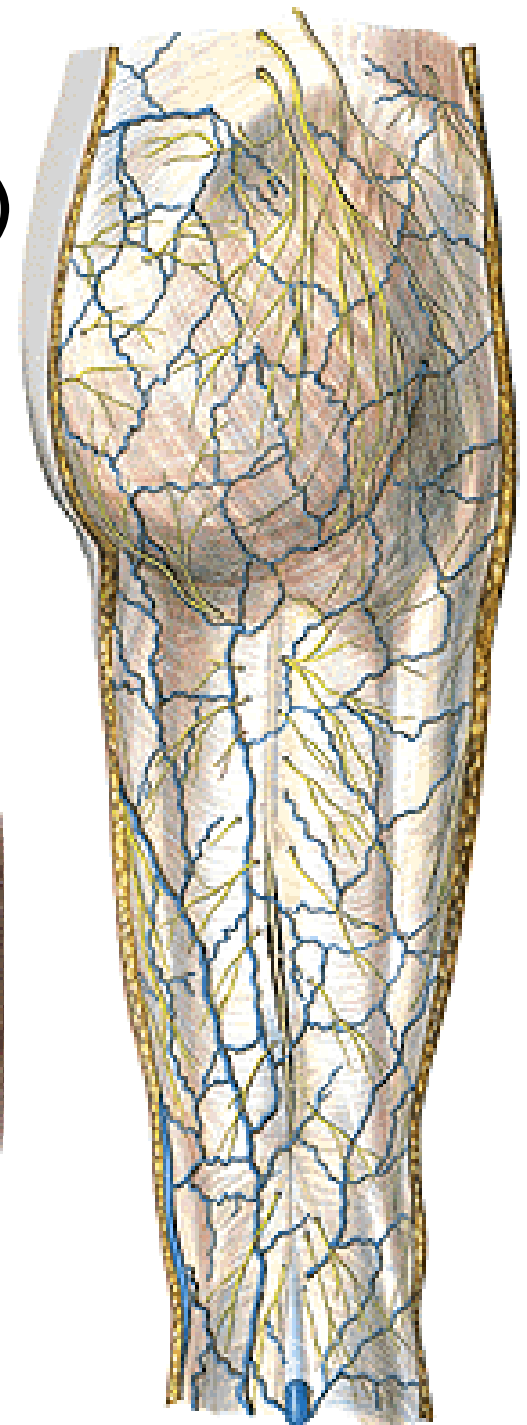
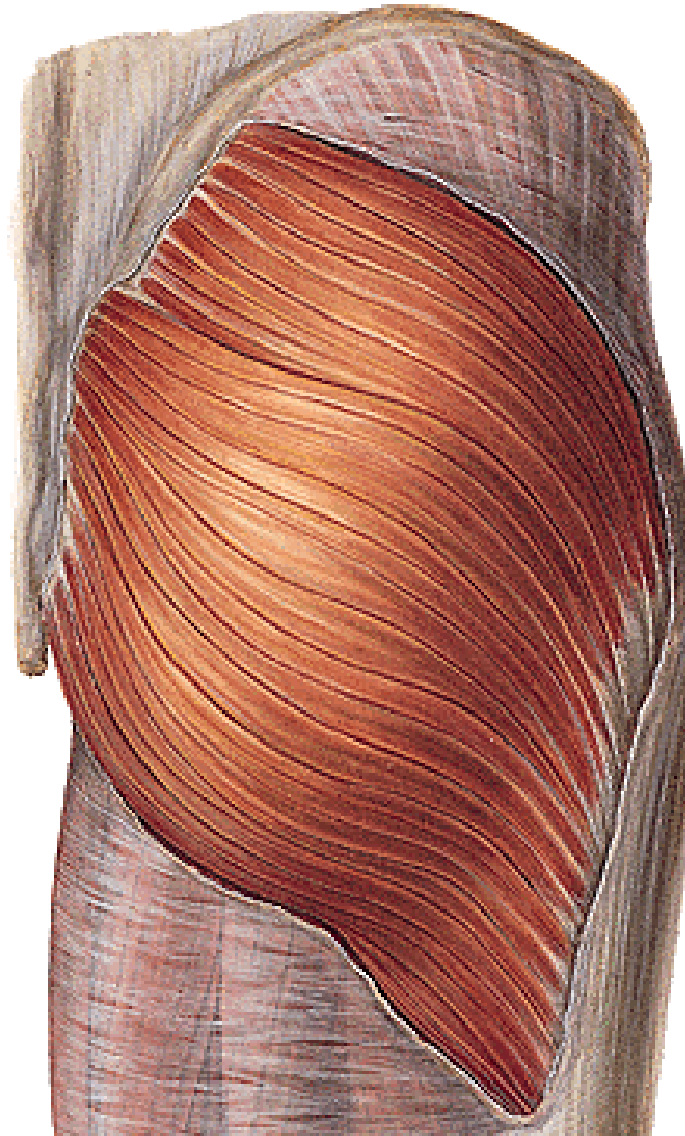


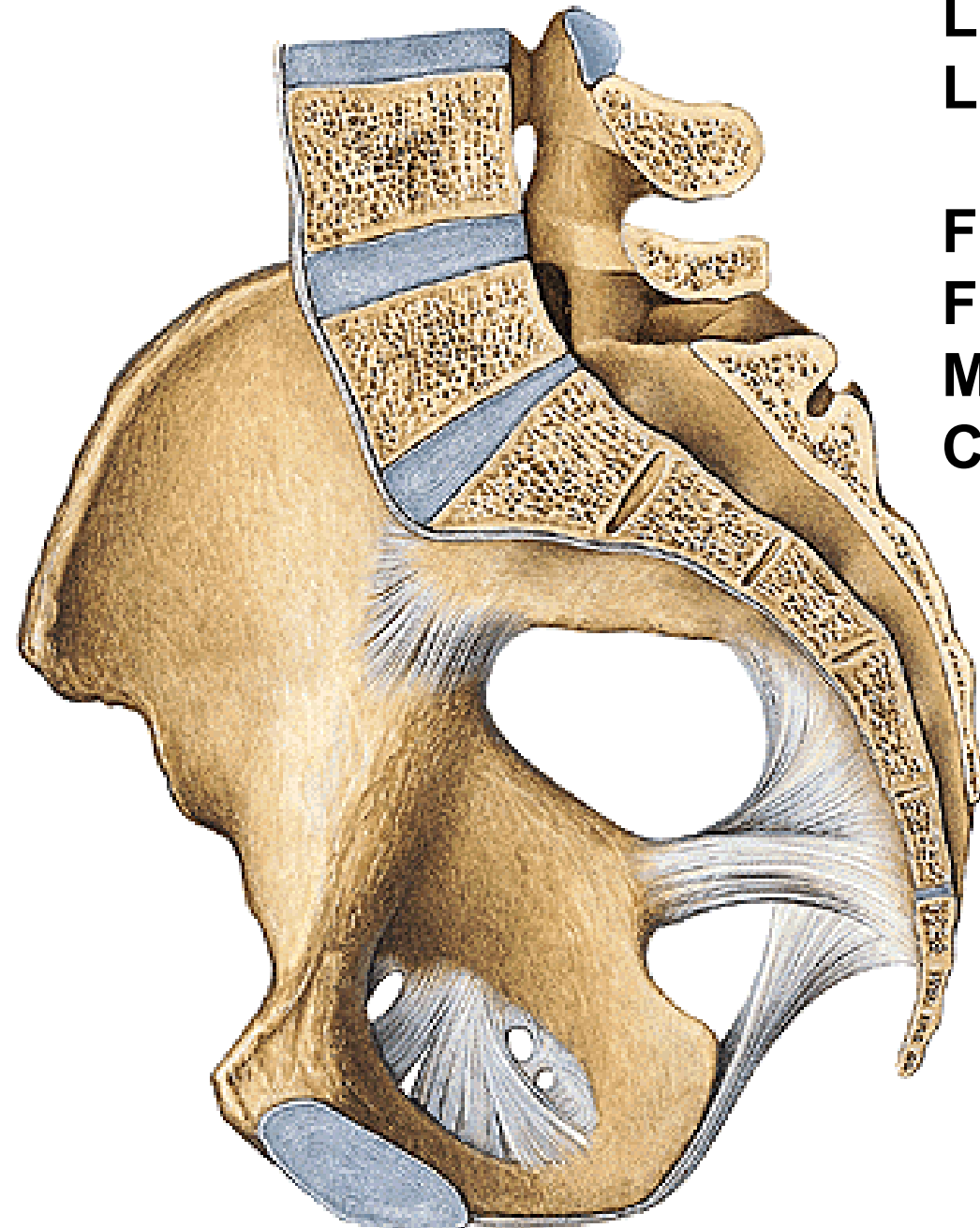
**Nn. clunium sup. (rr. dors.L1-L3)**

**Nn. clunium medii (rr. dors.S1-S3)**

**Nn. clunium inf. (N. cutaneus femoris post.)**

**M. gluteus maximus**





**Ligamentum sacrospinale**

**Lig. sacrotuberale**



**Foramen ischiadicum majus**

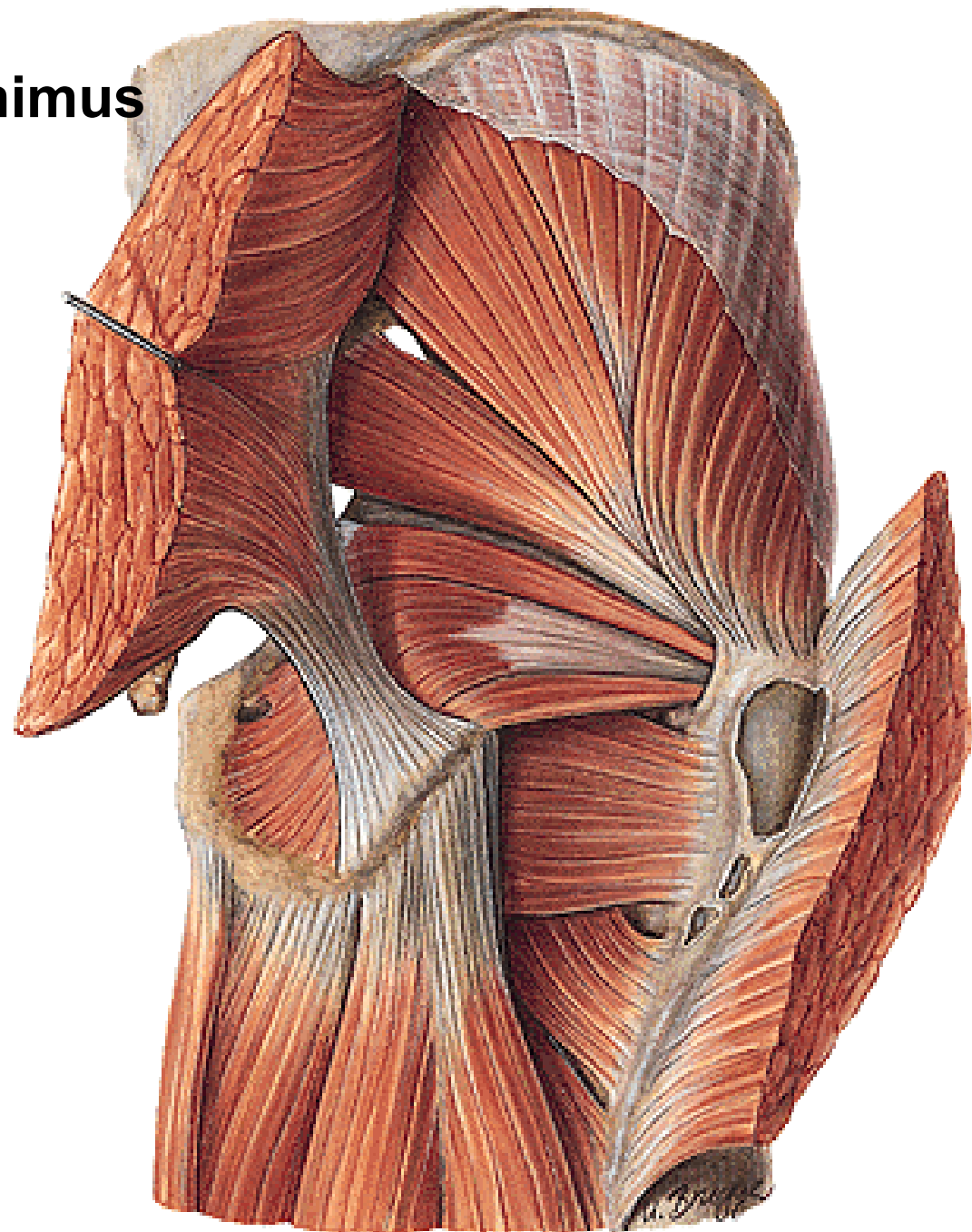
**For. ischiadicum minus**

**Membrana obturatoria**

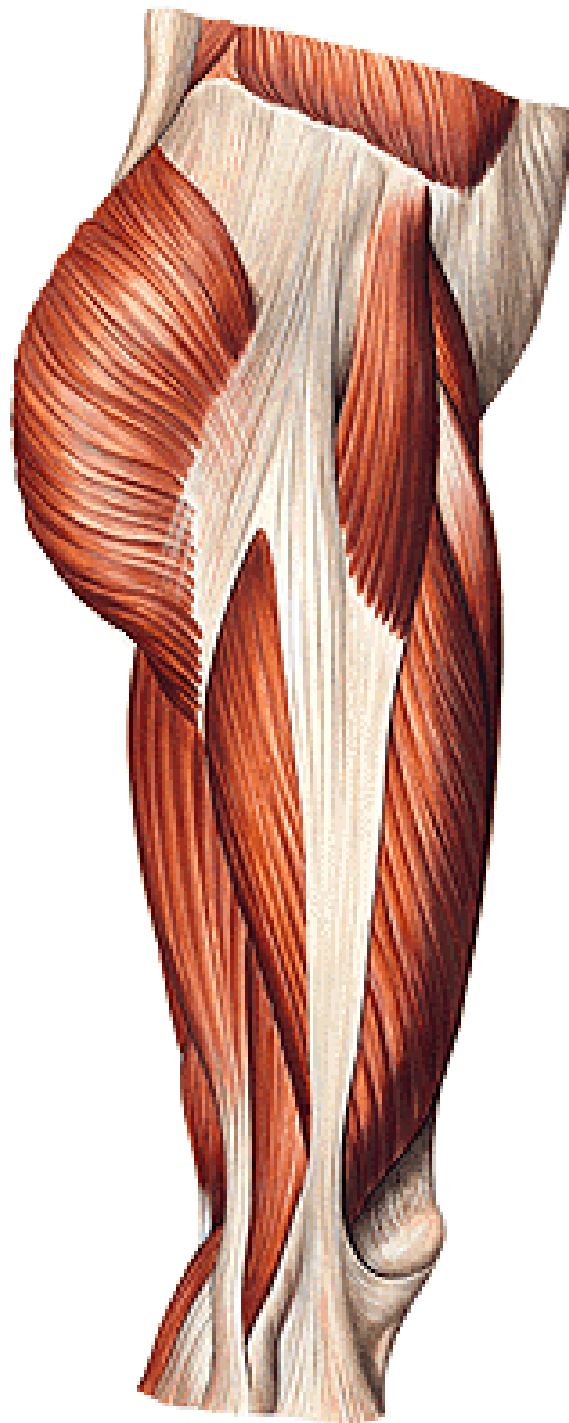
**Canalis obturatorius**



**M. gluteus medius et minimus**  
**M. piriformis →**  
**Foramen suprapiriforme**  
**Foramen infrapiriforme**  
**M. obturatorius internus**  
**M. gemellus superior et inferior**  
**M. quadratus femoris**

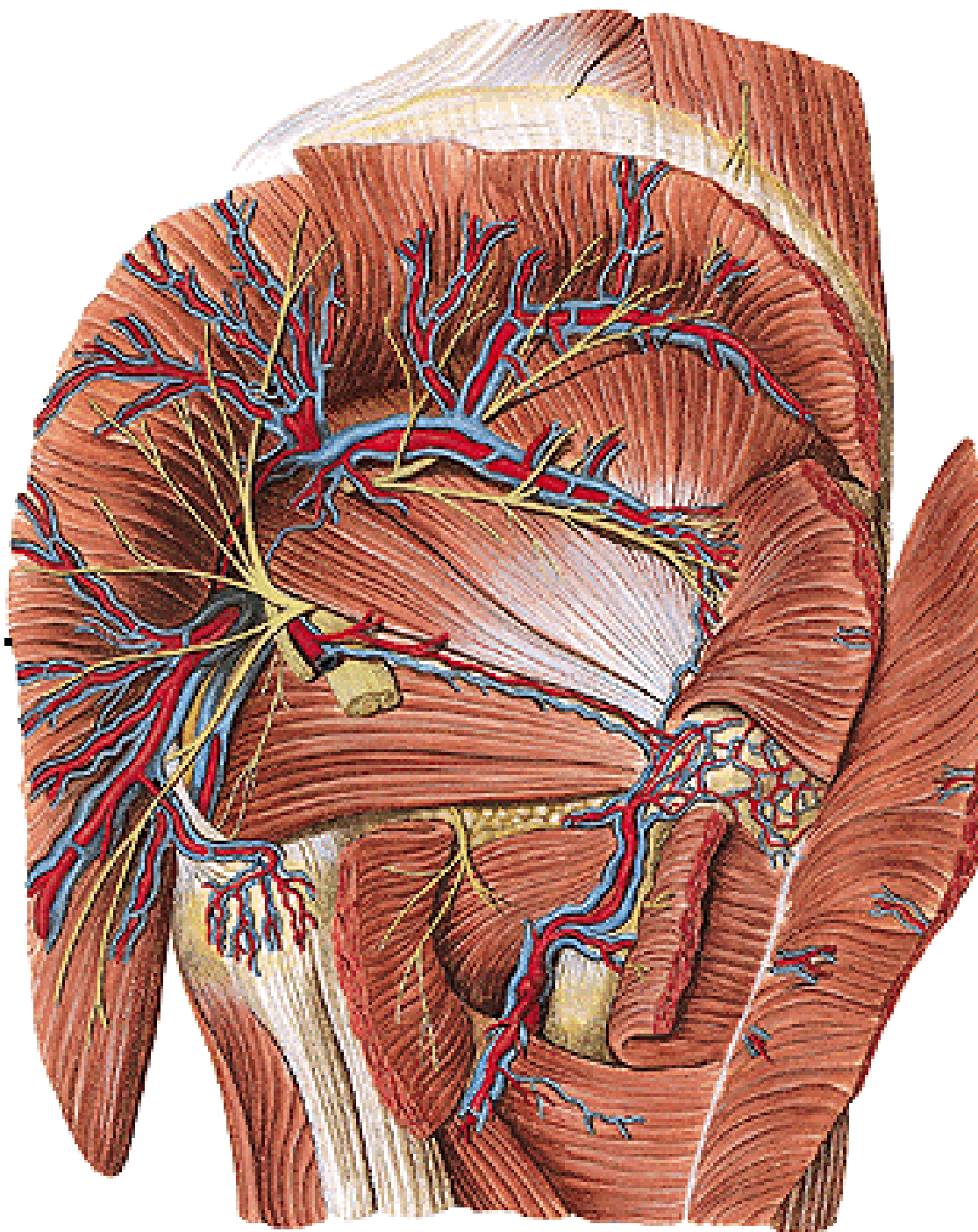


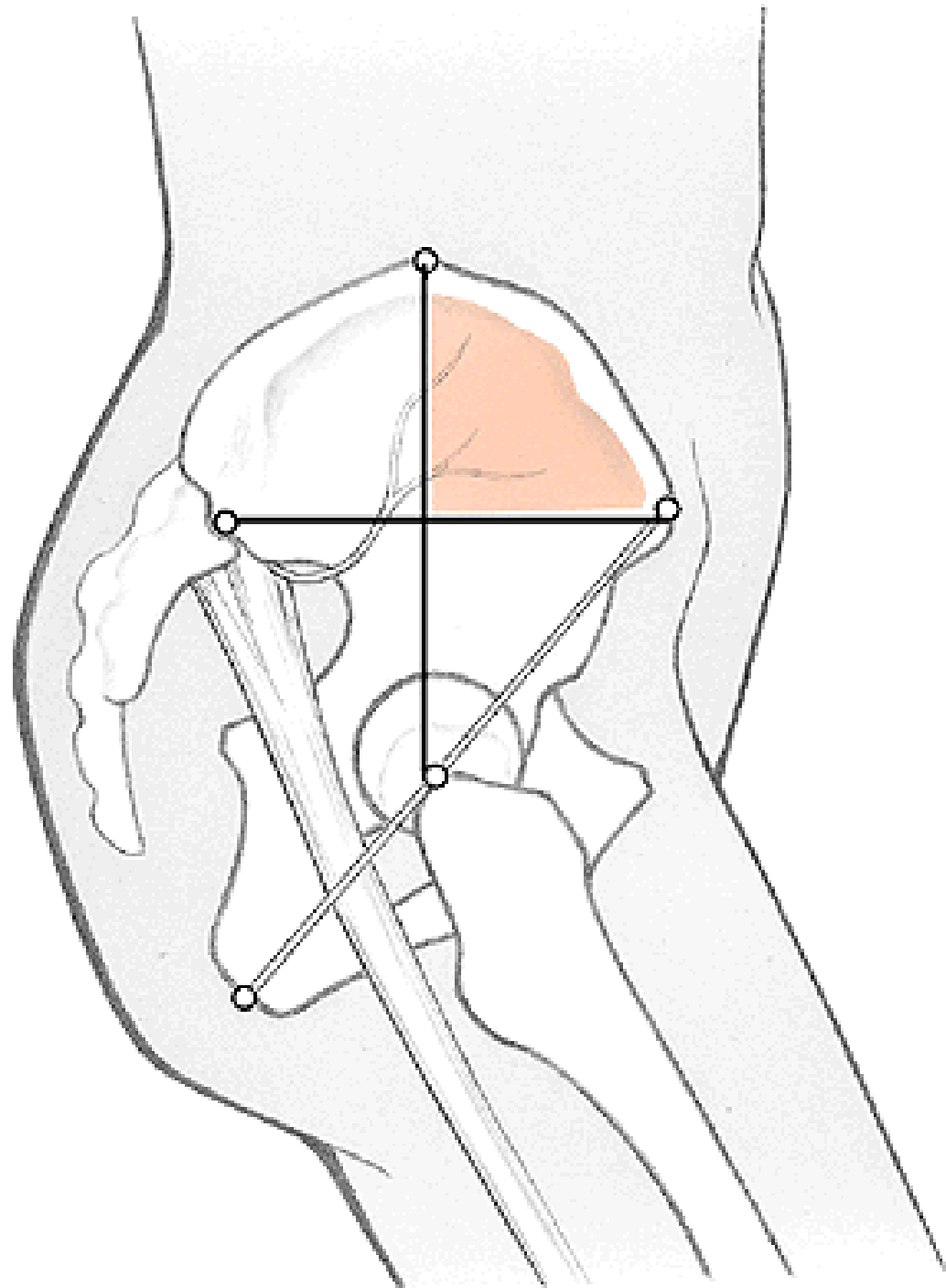
**M. tensor fasciae latae**  
**Tractus iliotibialis**



**For. suprapiriforme:  
Nn. et vasa glutea sup.  
(m. gluteus medius,  
m. gluteus minimus)**

**For. infrapiriforme:  
Nn. et vasa glutea inf.  
N. ischiadicus  
N. cutaneus femoris post.  
N. pudendus  
Vasa pudenda interna**





# **REGIO FEMORIS ANTERIOR**

**Rr. anteriores n. femoralis**

**N. cutaneus femoris lat.**

**N. ilioinguinalis**

**N. genitofemoralis**

**N. obturatorius**

**A. femoralis – a. epigastrica spf.**

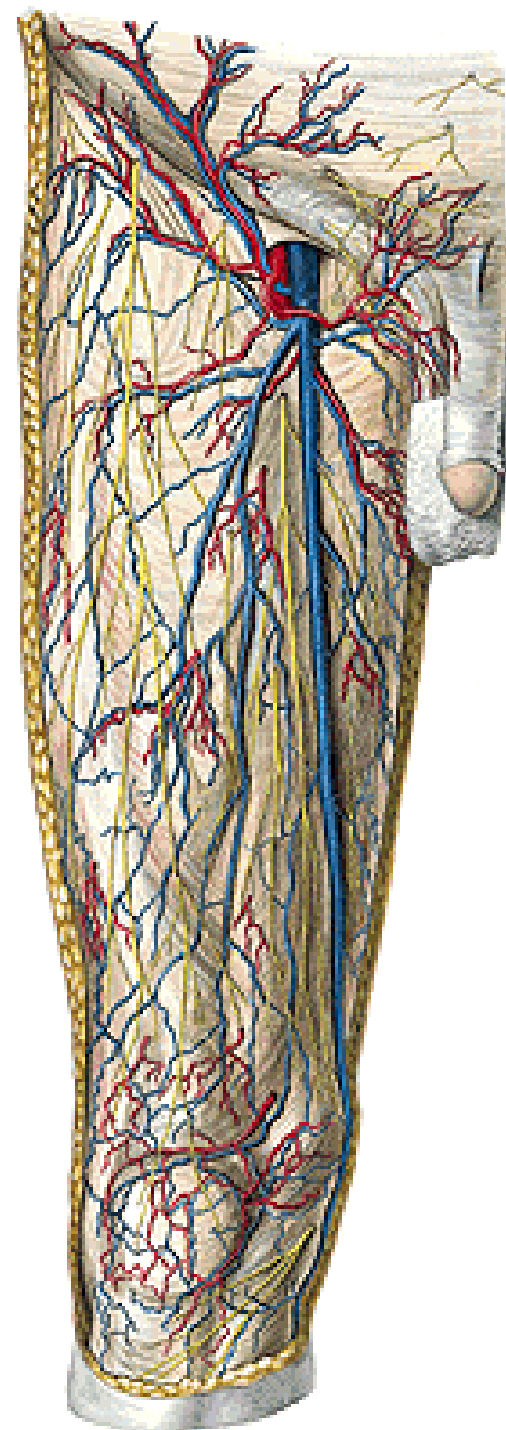
- a. circumflexa ilium spf.

- aa. pudendae externae

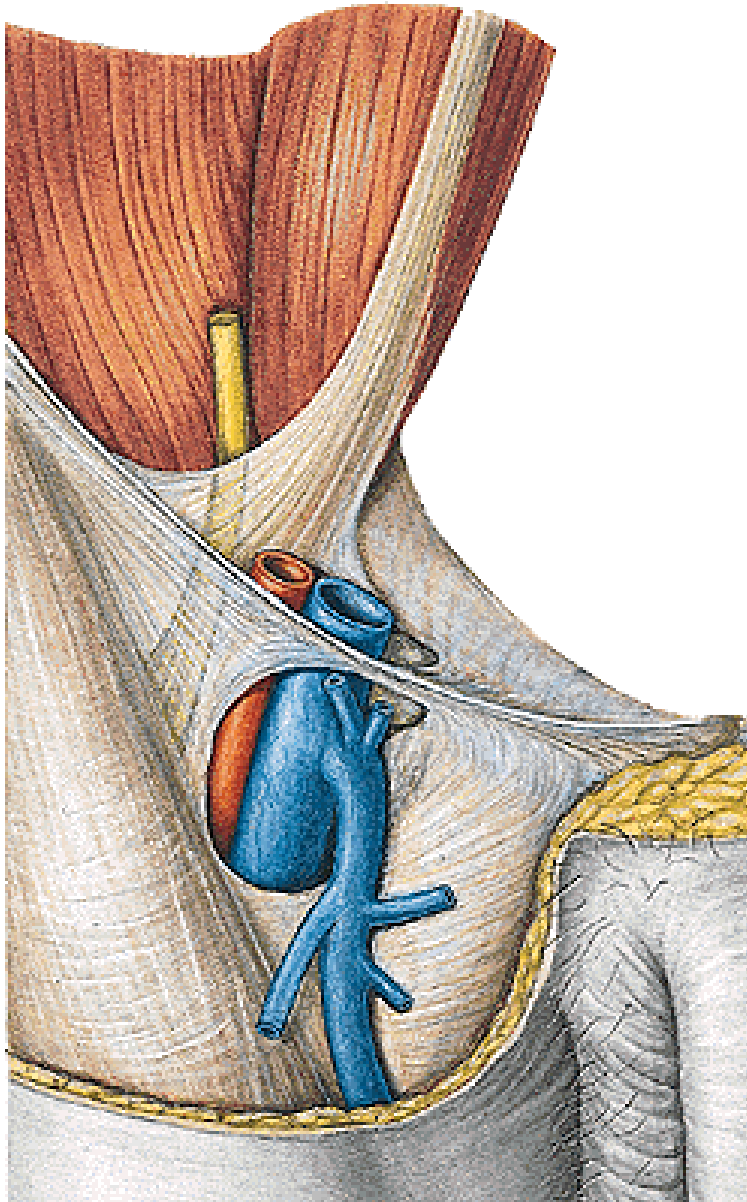
- rr. scrotales (labiales) ant.

**V. saphena magna – v. saphena access.  
lat. et med.**

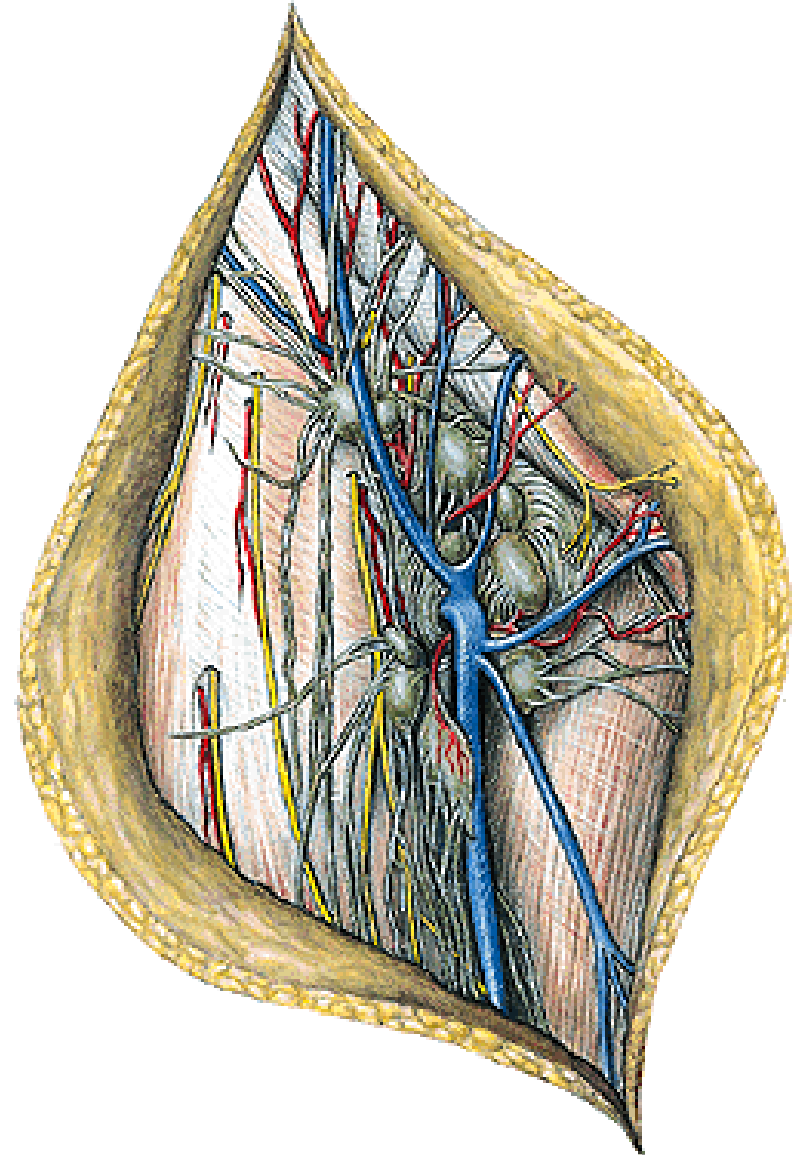
**Fascia lata – hiatus saphenus**



**Hiatus saphenus – margo  
falciformis**



**Nodi lymph. inguinales spf.  
→ nll. iliaci externi**



**M. iliopsoas**

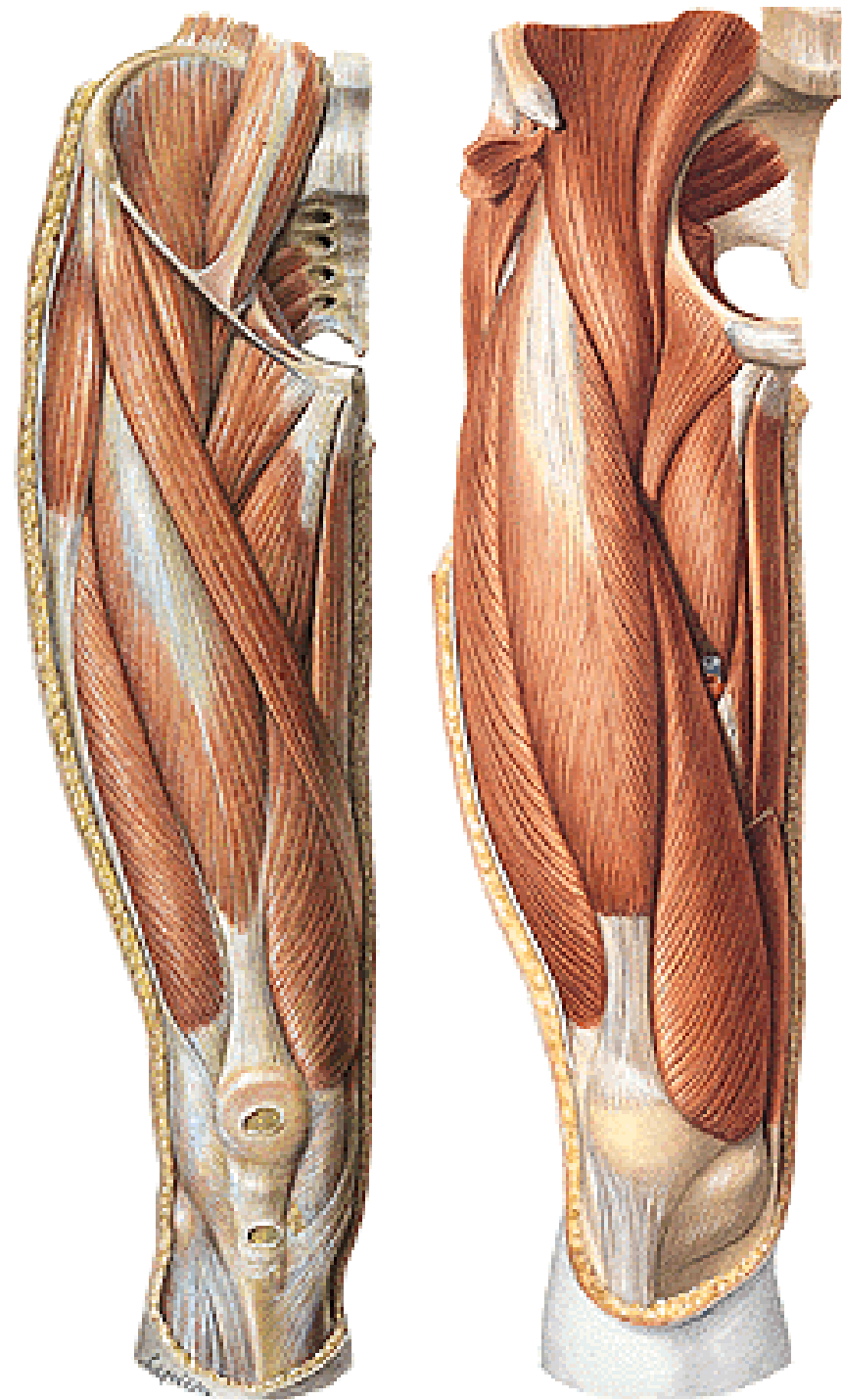
- M. iliacus
- M. psoas major
- M. psoas minor

**M. sartorius**

**M. quadriceps femoris:**

**M. rectus femoris**

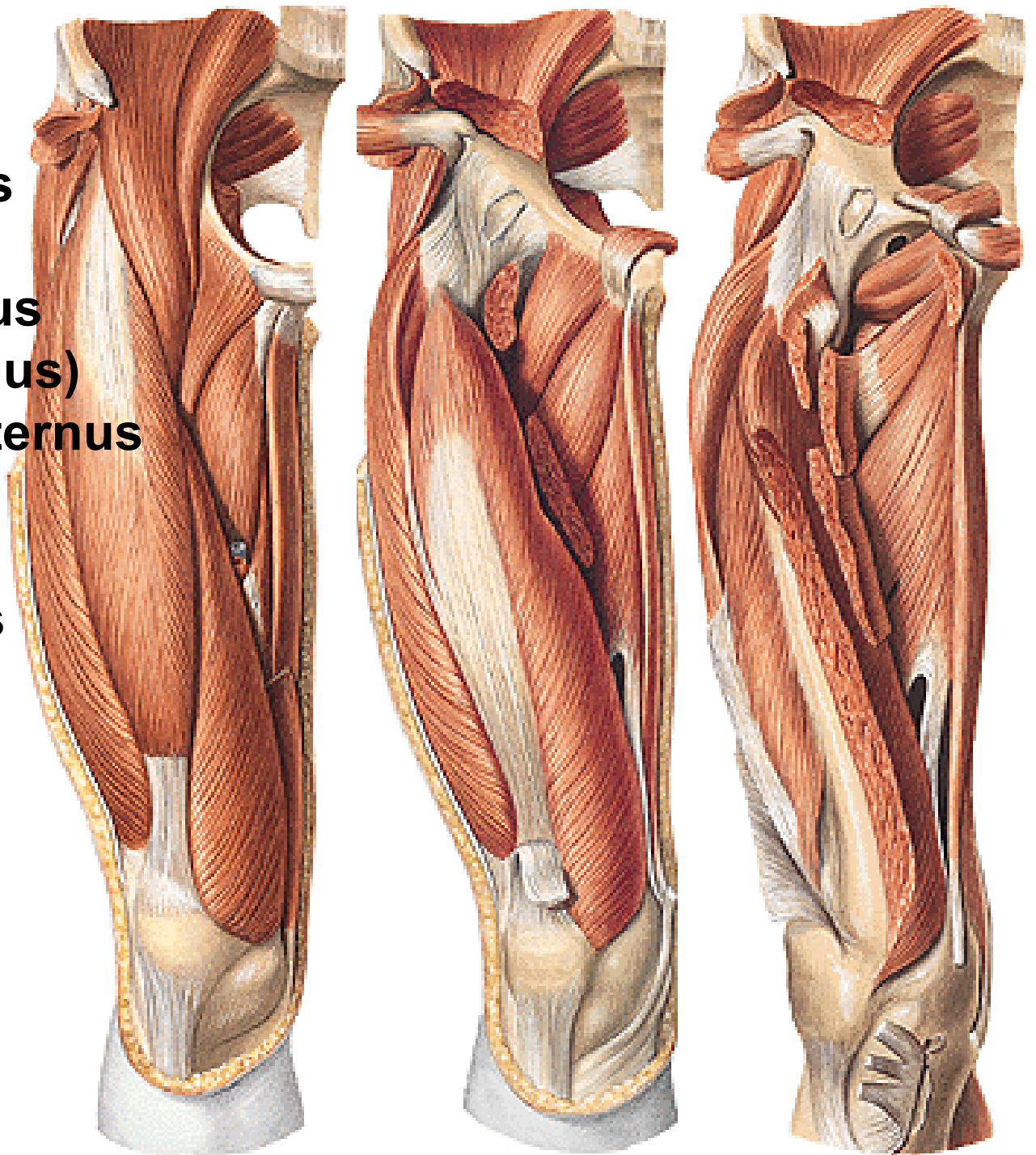
**M. vastus med., lat.,  
intermedius**



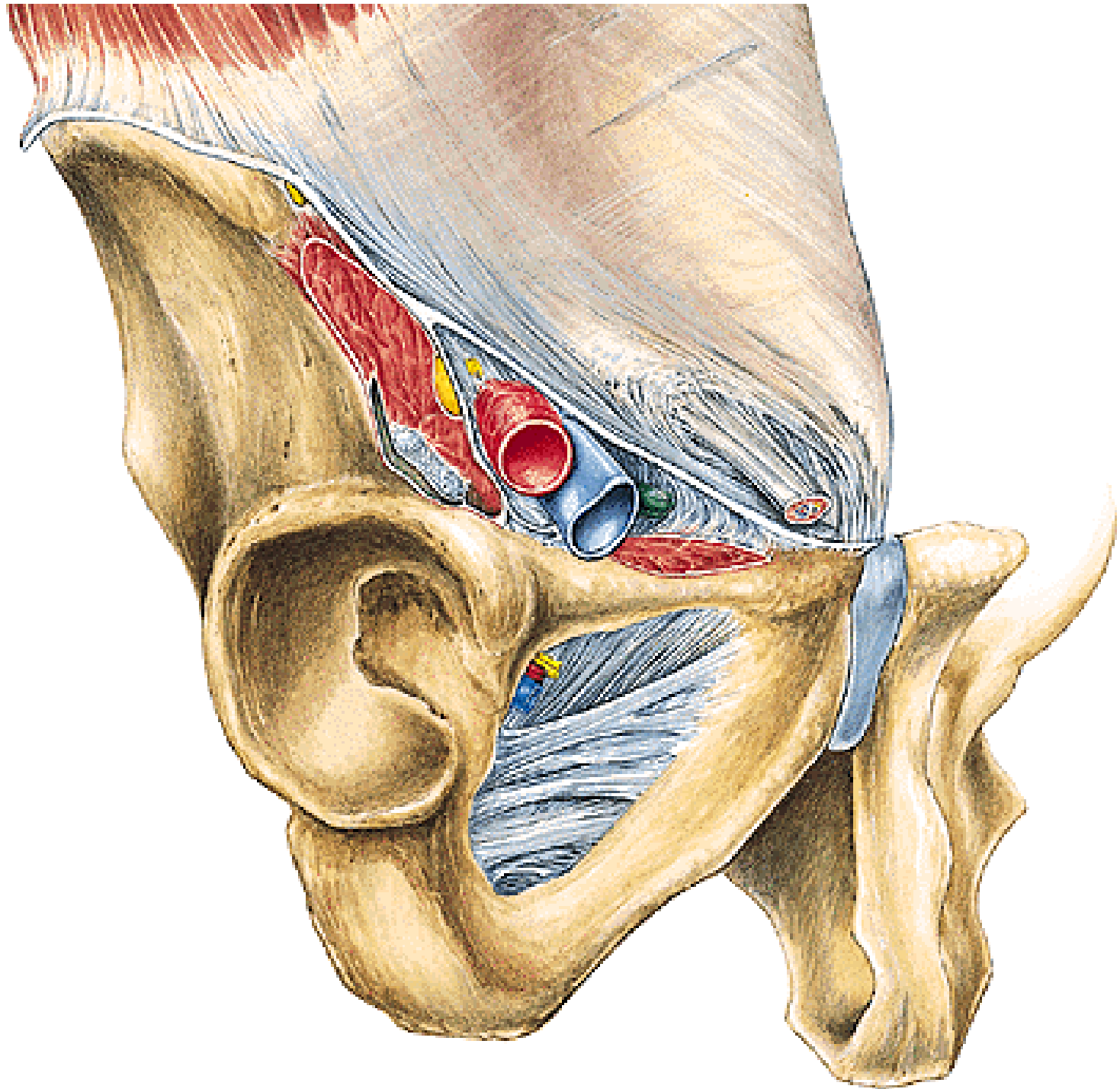


**M. pectineus**  
**M. adductor longus**  
**M. adductor brevis**  
**M. adductor magnus**  
**(m.adductor minimus)**  
**M. obturatorius externus**  
**M. gracilis**

**Hiatus adductorius**





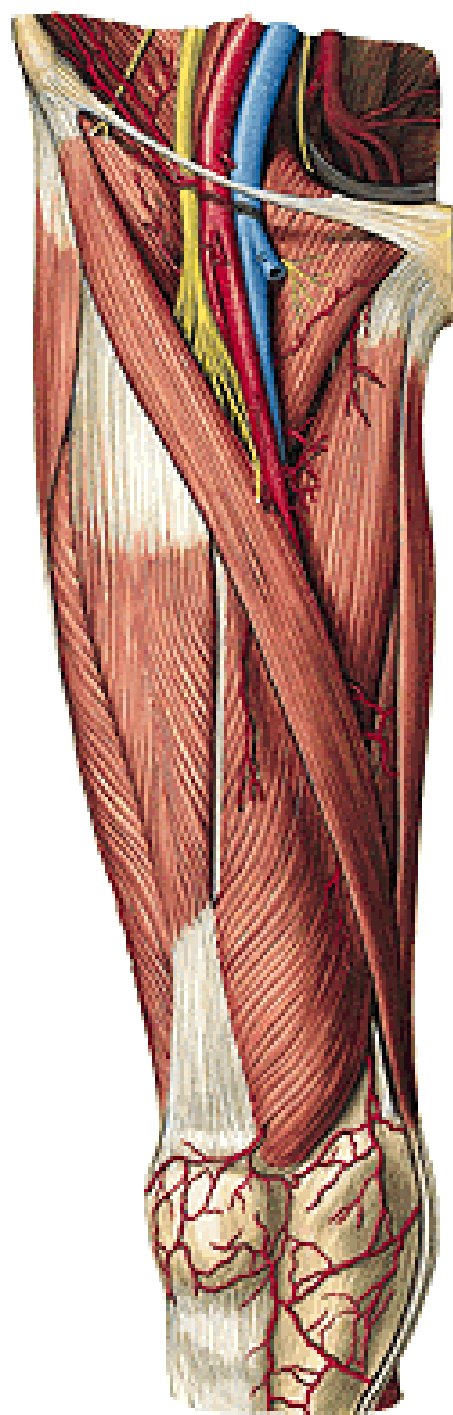


## Trigonum femorale

- A. et v. femoralis
- N. femoralis

## Fossa iliopectinea

- A. et v. femoralis prof.



**Canalis adductorius**  
**Lamina vastoadductoria**  
**Hiatus tendineus/  
adductorius**

**N. saphenus**

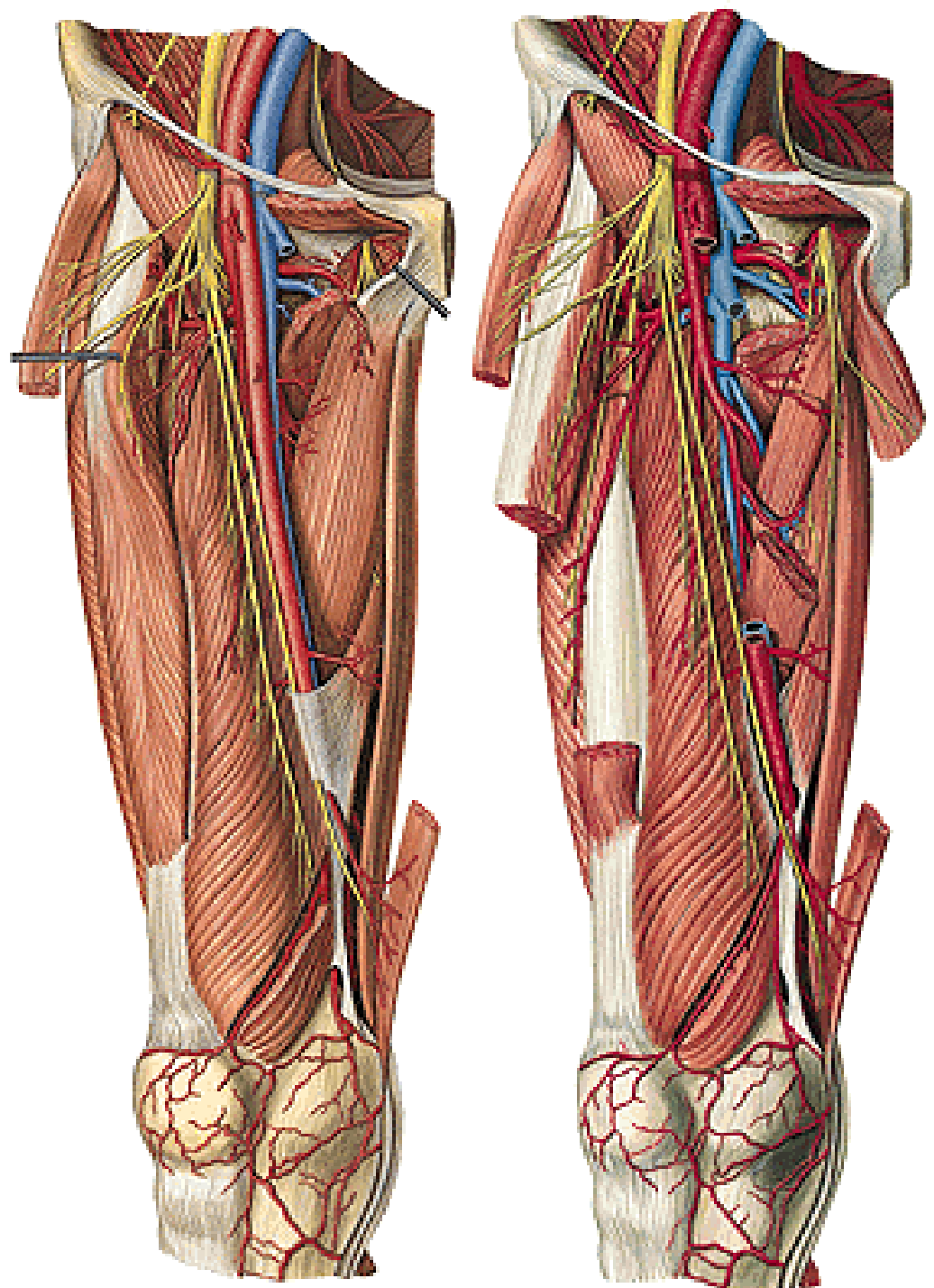
**A. genus descendens**

**N. obturatorius**

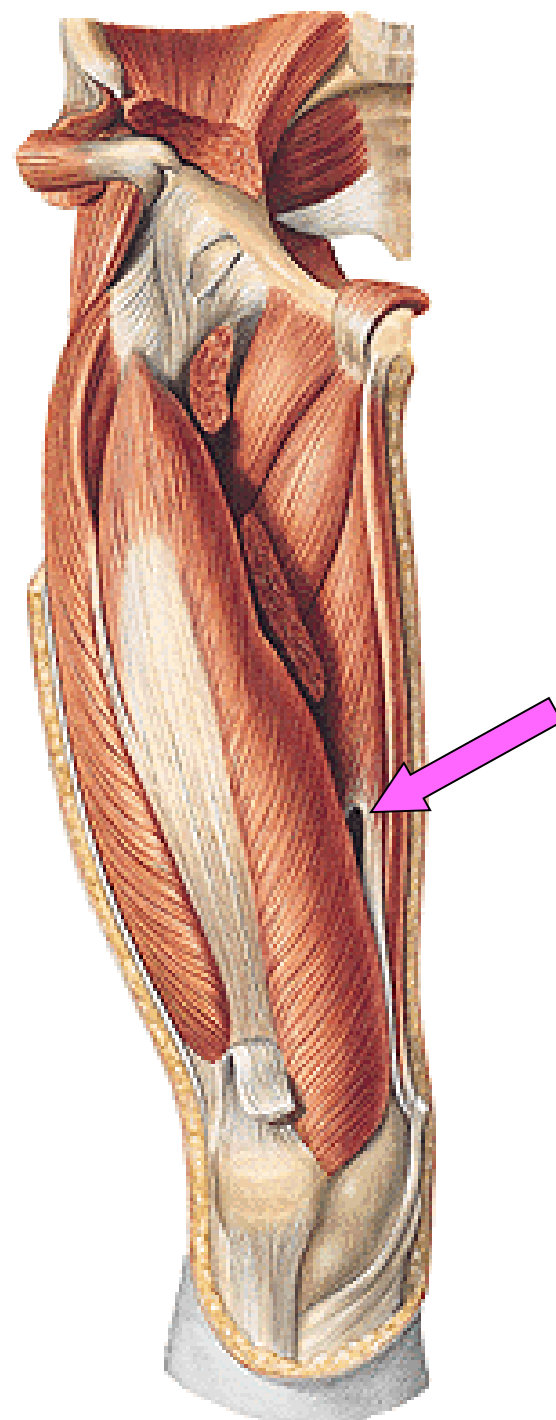
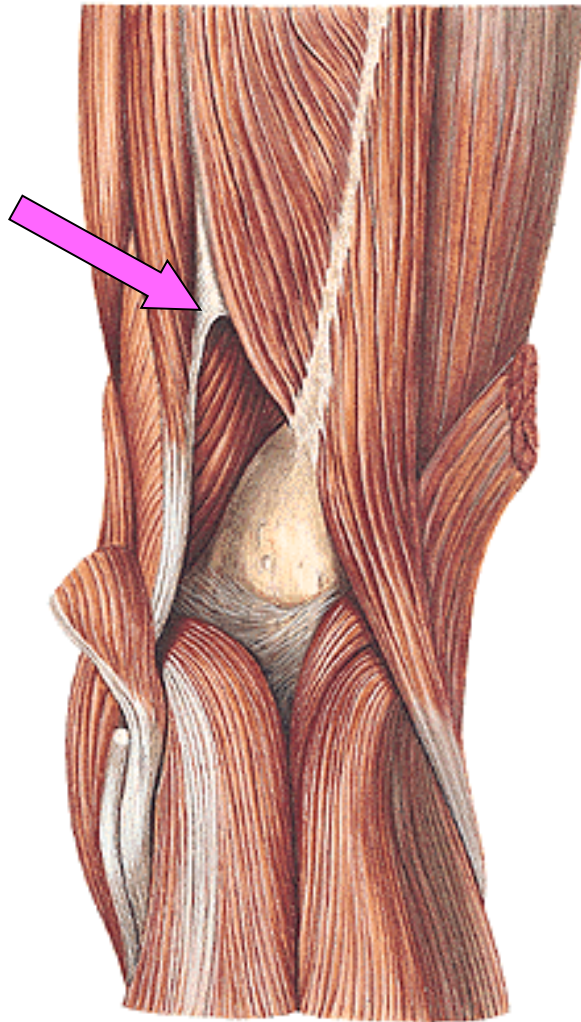
- r. anterior
- r. posterior

**A. et v. obturatoria**

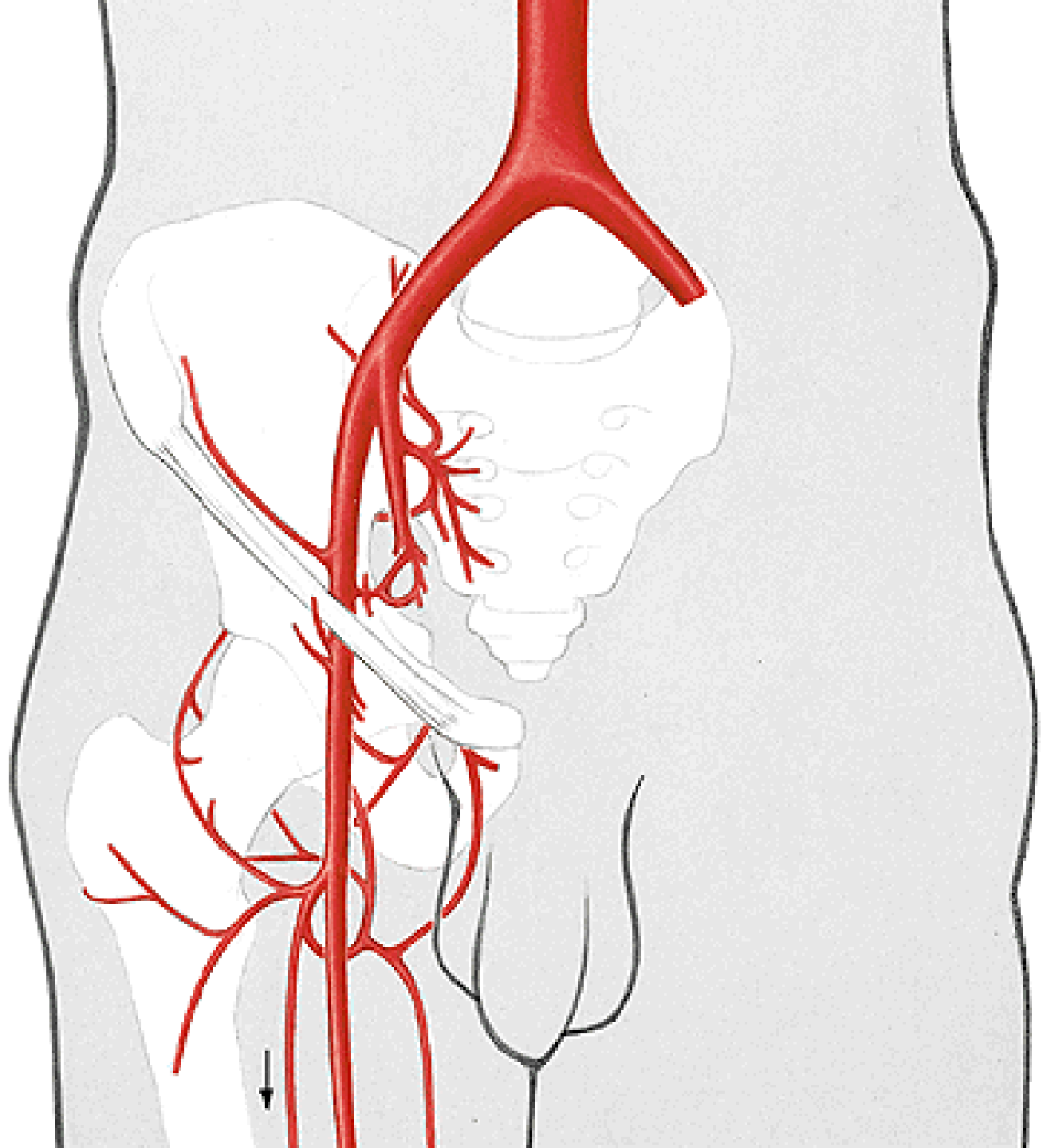
- r. anterior
- r. posterior
- r. acetabularis



# Hiatus tendineus/adductorius (Hunter)



**A. iliaca externa**  
**A. femoralis**



**A. profunda femoris**  
**Rr. musculares**  
**A. genus descendens**

**A. PROFUNDA FEMORIS:**

**A. circumflexa femoris  
medialis**

- r. acetabularis
- r. transversus
- r. ascendens

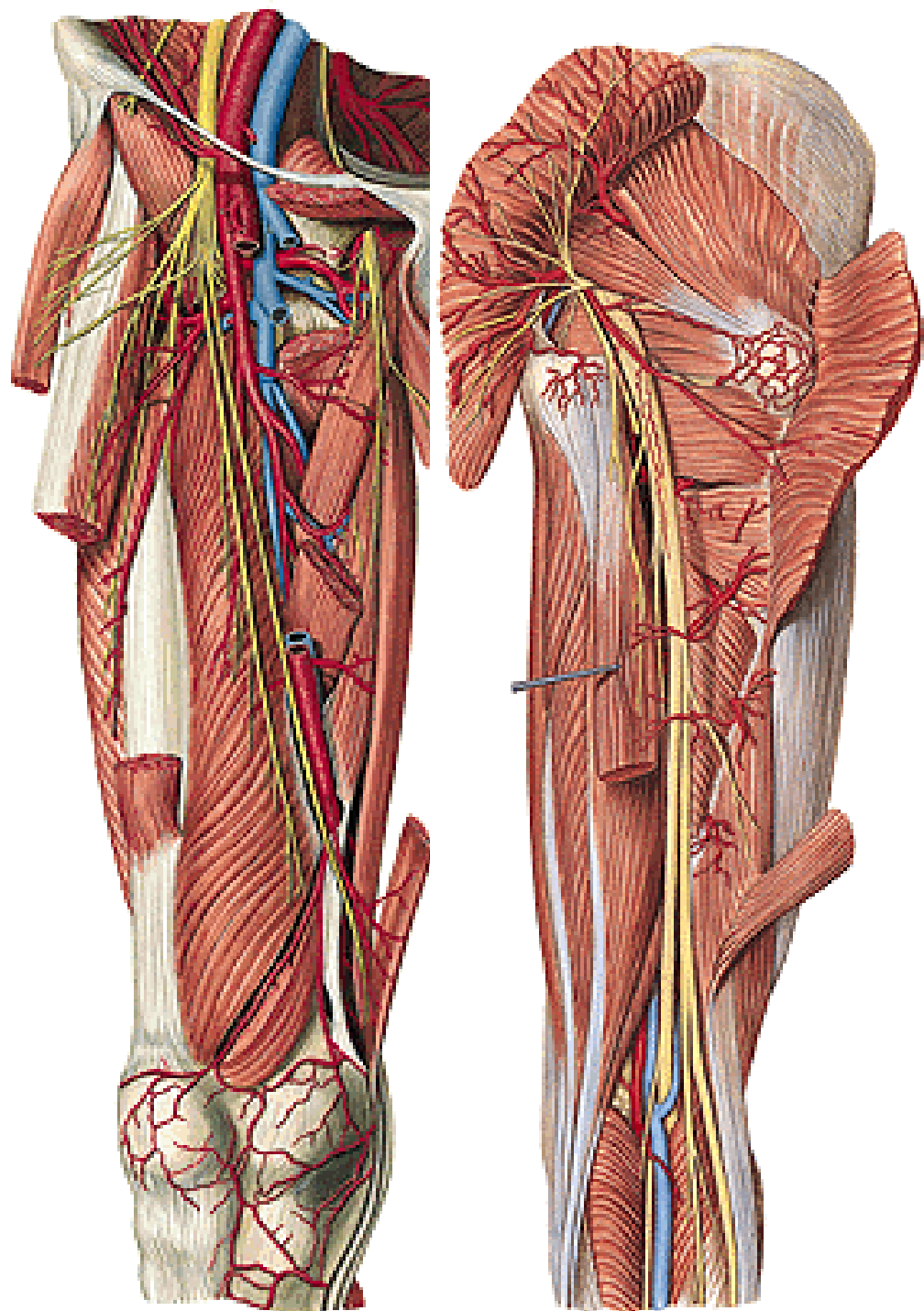
**A. circumflexa femoris lat.**

- r. ascendens
- r. descendens
- r. transversus

**A. perforans prima**

**A. perforans secunda**

**A. perforans tertia**





# **REGIO FEMORIS POSTERIOR**

# REGIO FEMORIS POSTERIOR

**N. cutaneus femoris post.**

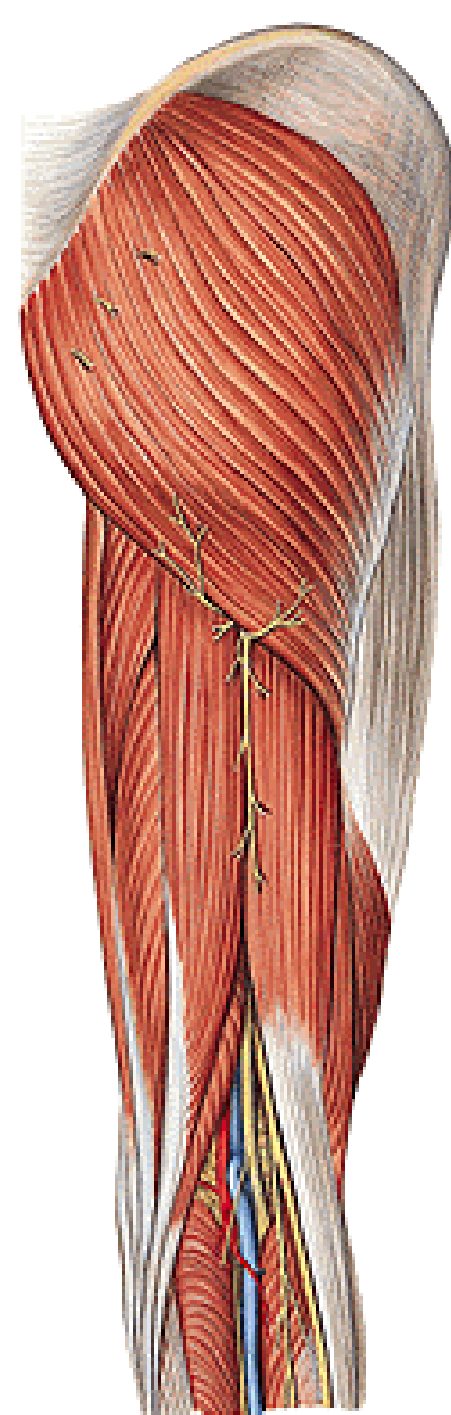
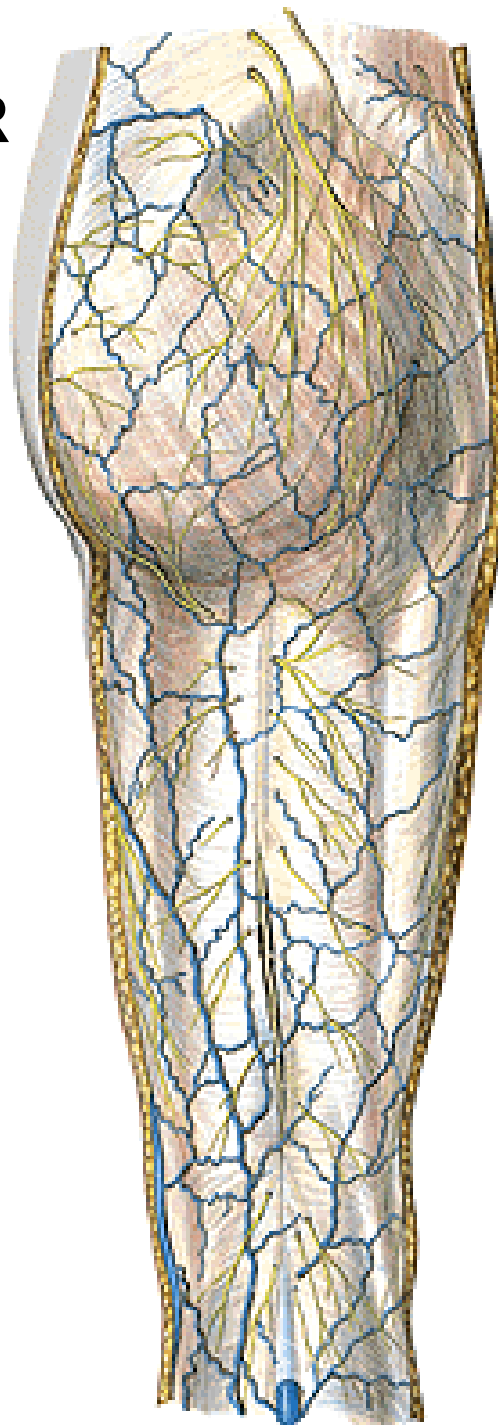
**V. femoropoplitea**

**M. biceps**

**M. semitendinosus**

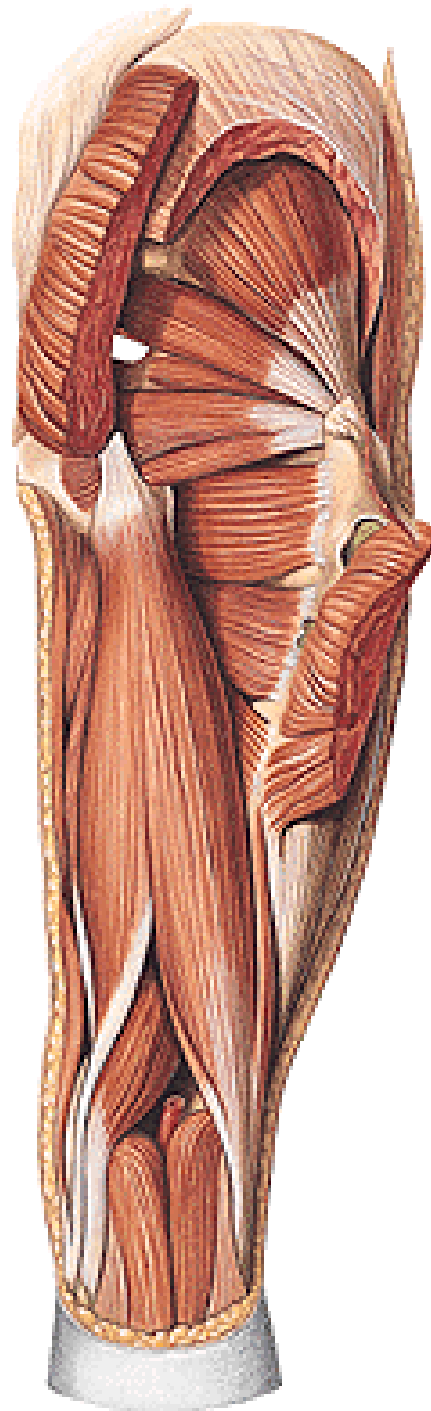
**M. semimembranosus**

**(hamstrings)**



**Hamstrings**

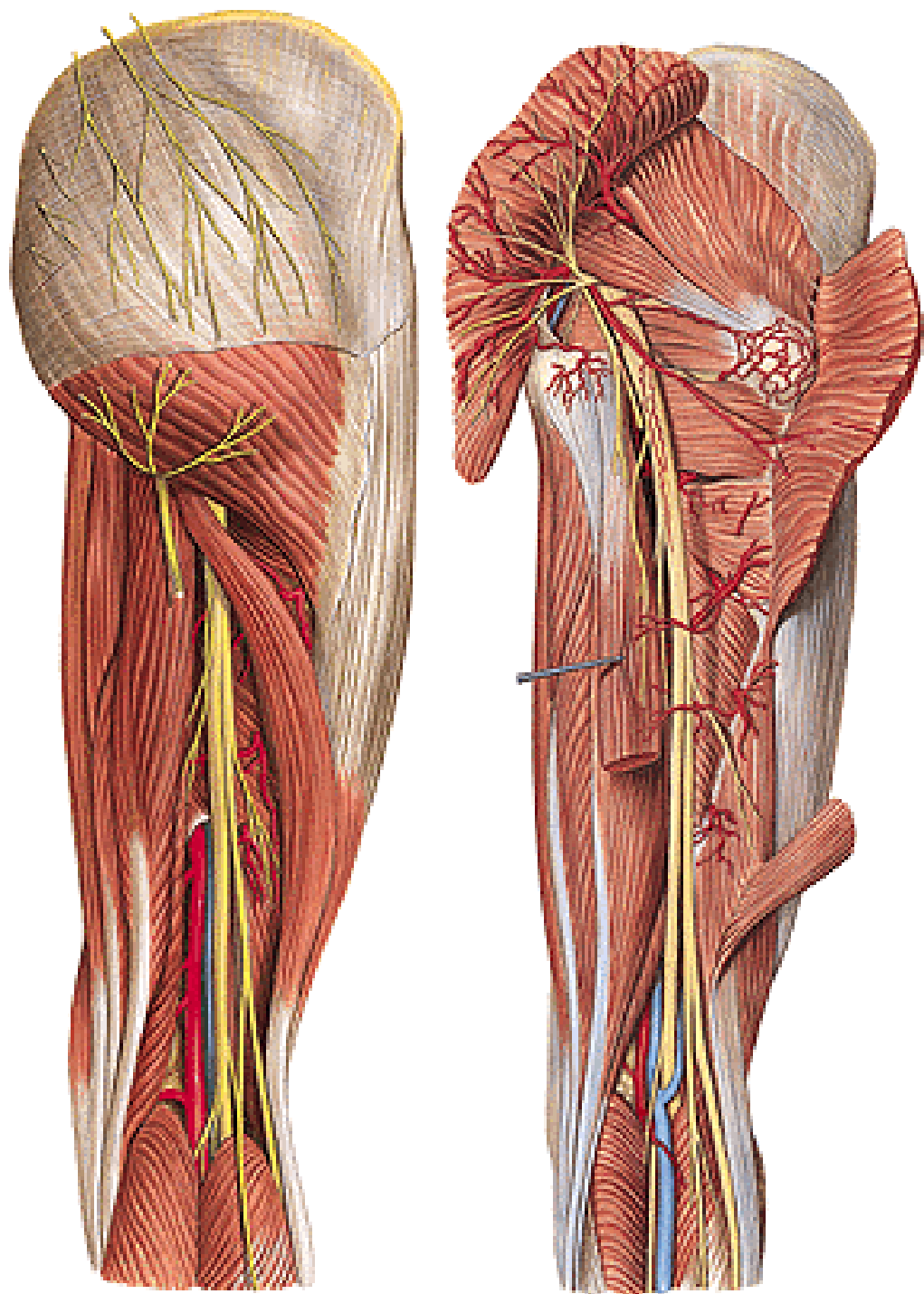
**Pes anserinus**



**N. ischiadicus**  
– n. tibialis  
- n. fibularis/  
peroneus communis

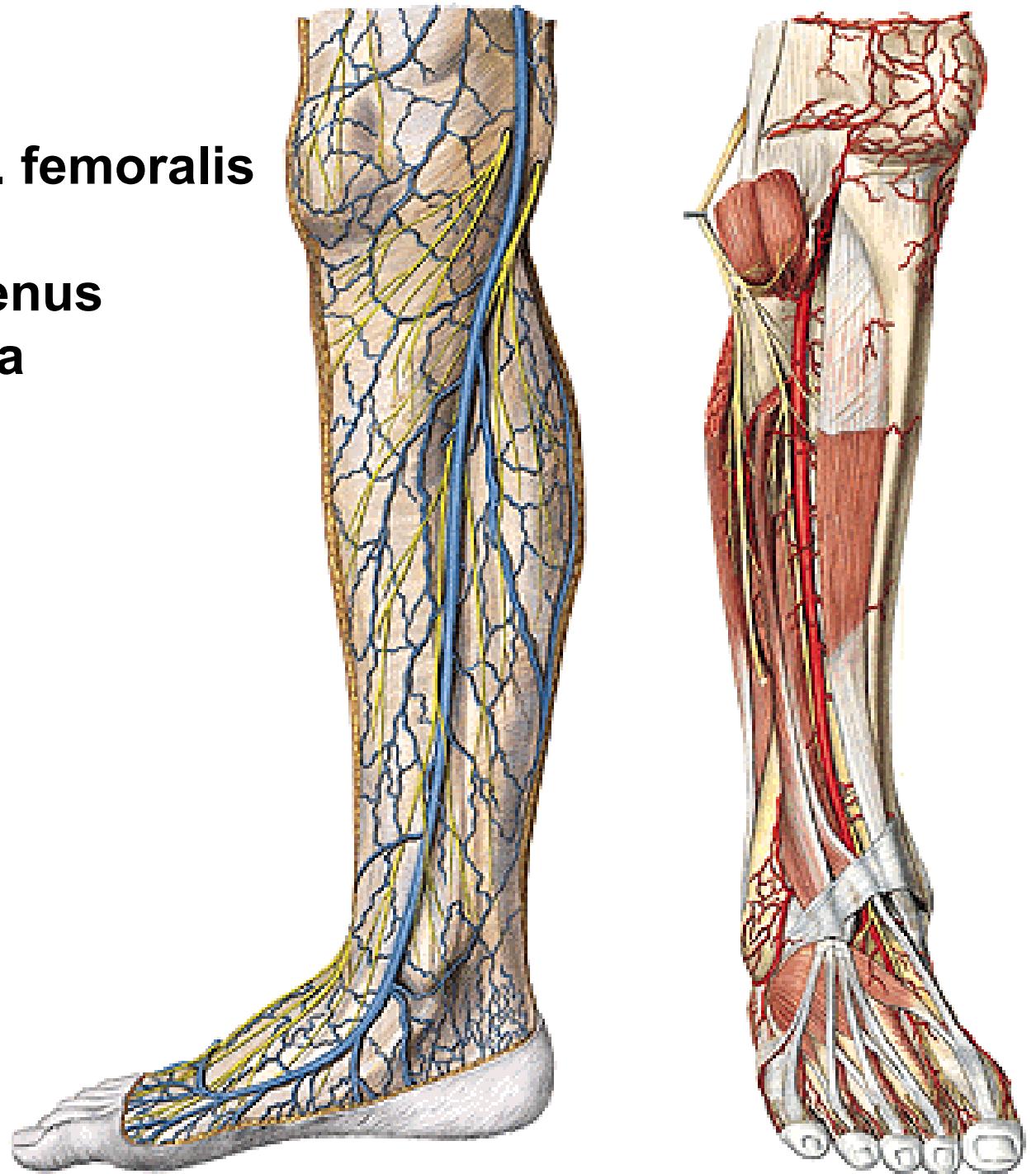
**A. comitans n. ischiadici**

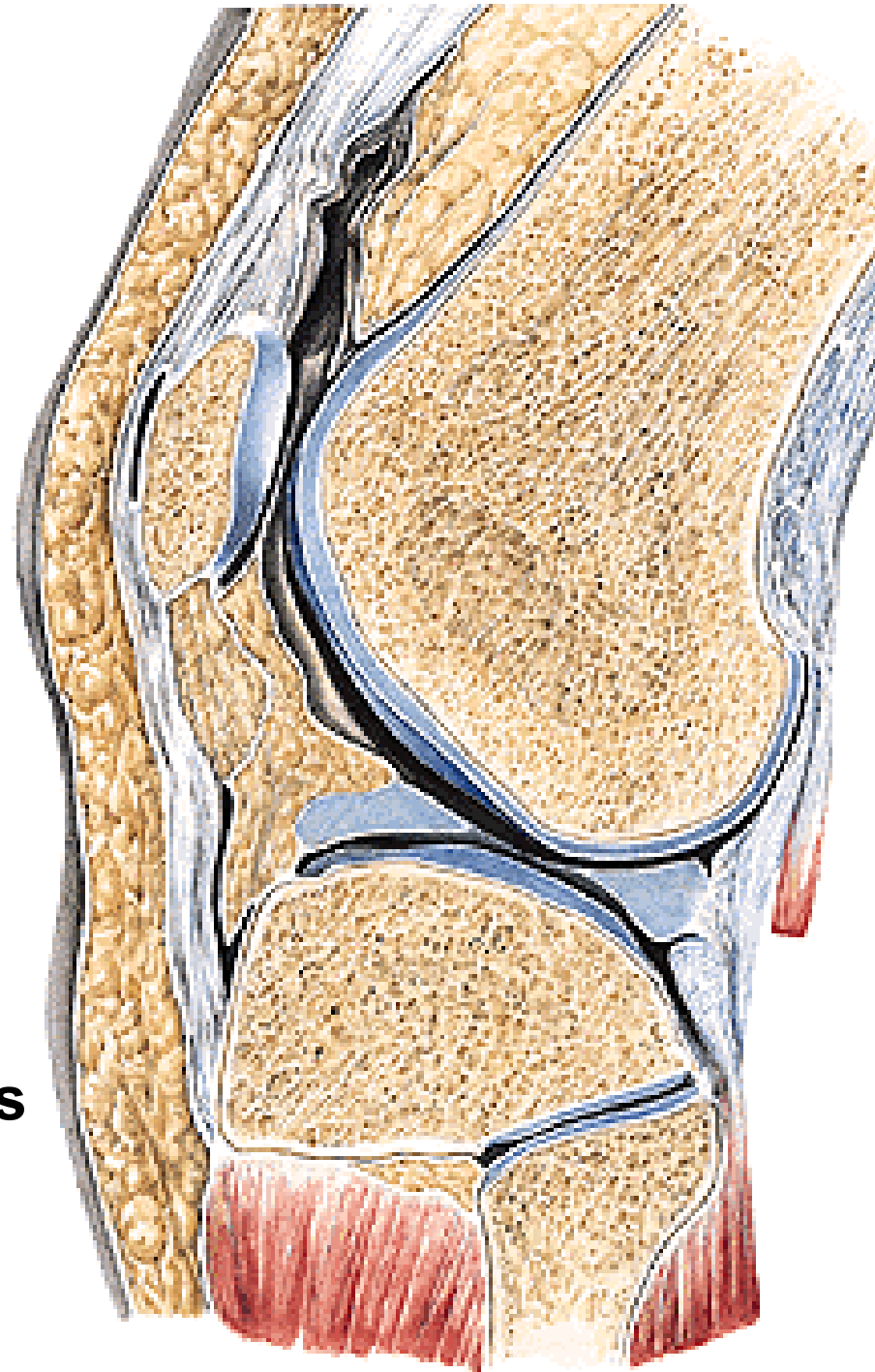
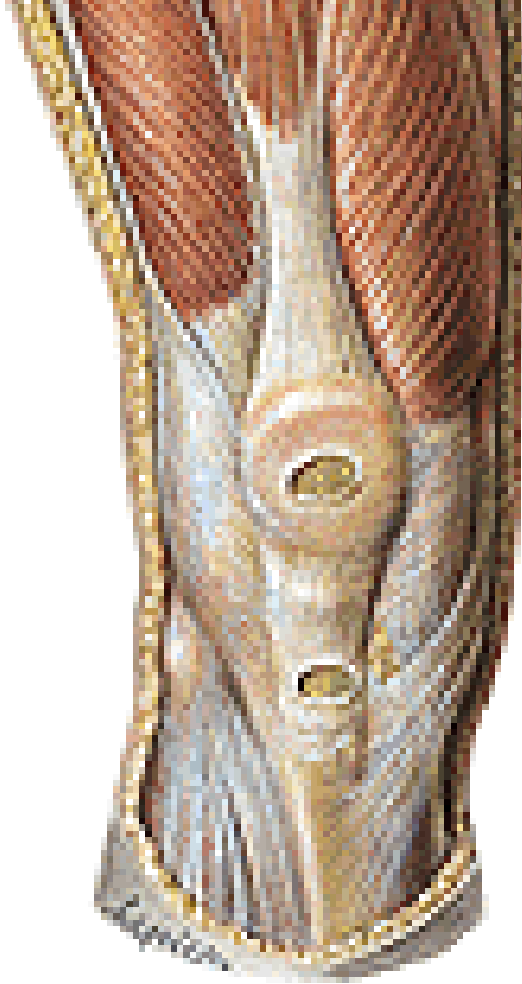
**Aa. perforantes**



# **REGIO GENUS ANTERIOR**

**Rr. cutanei ant. n. femoralis**  
**R. infrapatellaris**  
**Rete articulare genus**  
**V. saphena magna**





**Bursa subcutanea prepatellaris**  
**Bursa subcutanea infrapatellaris**  
**Bursa infrapatellaris profunda**  
**Bursa suprapatellaris**

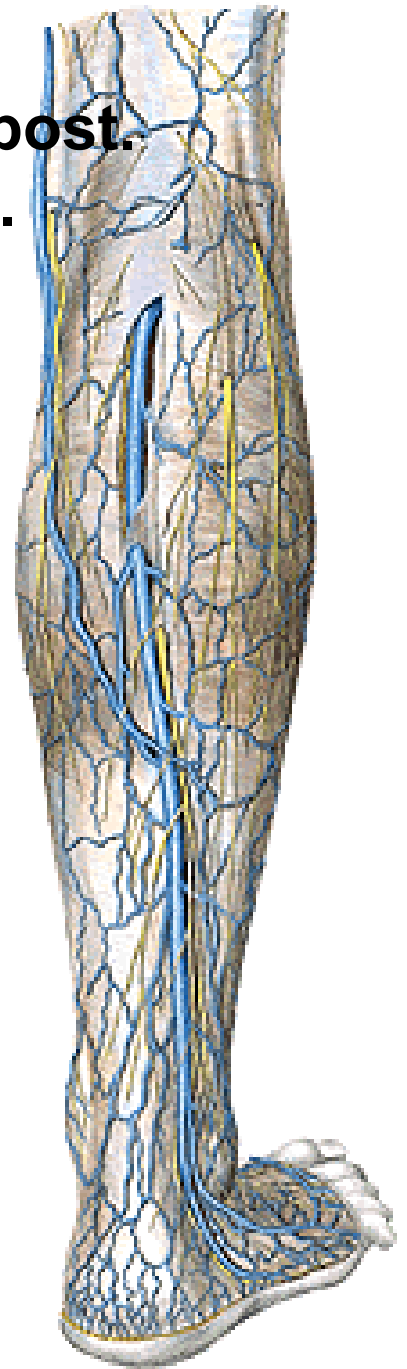
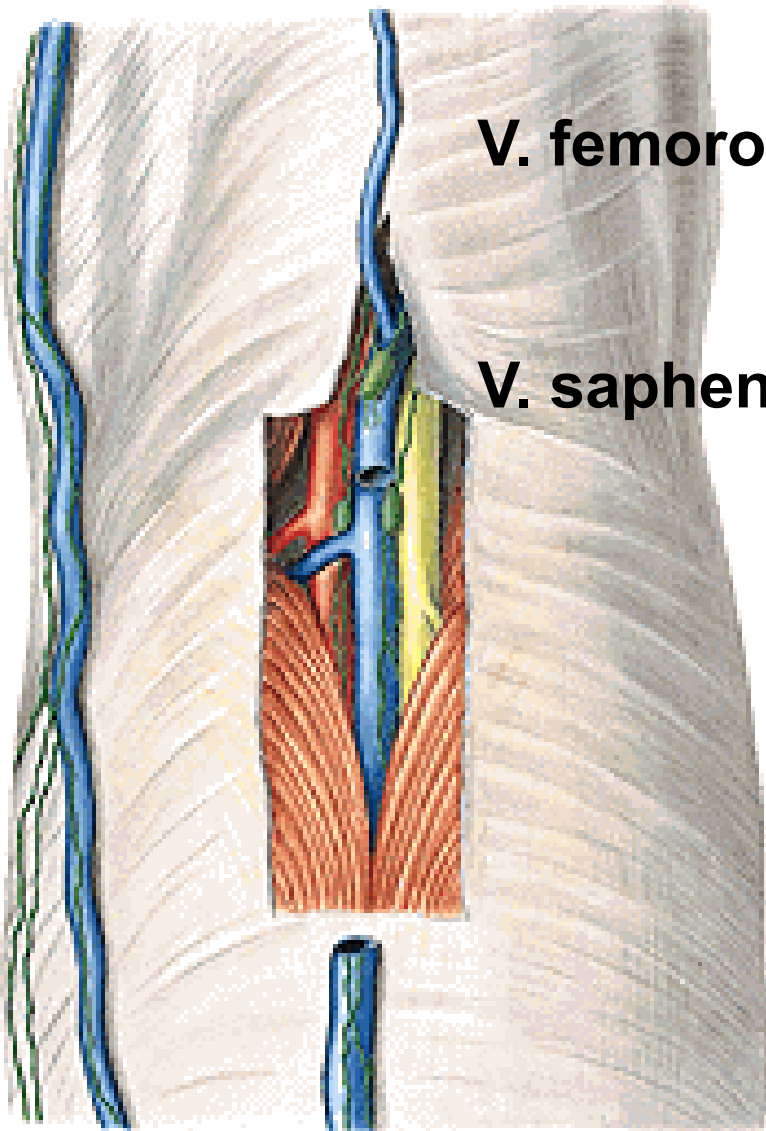
**REGIO GENUS POSTERIOR**



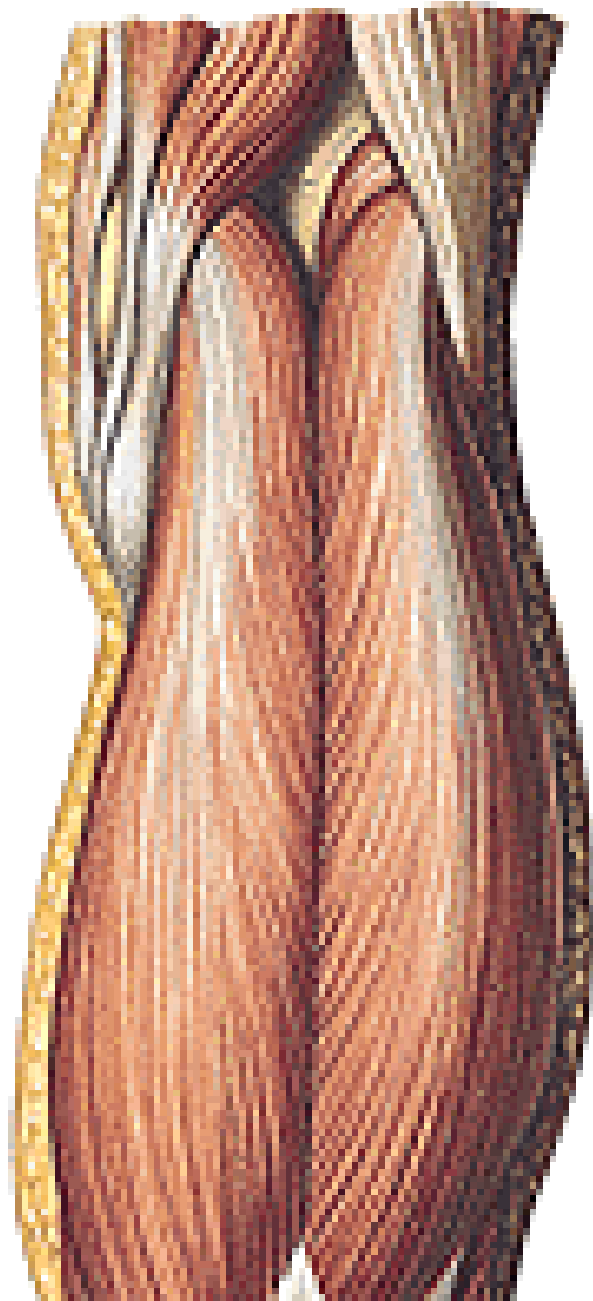
**N. cutaneus femoris post.**  
**N. cutaneus surae lat.**

**V. femoropoplitea**

**V. saphena parva**



# Fossa poplitea



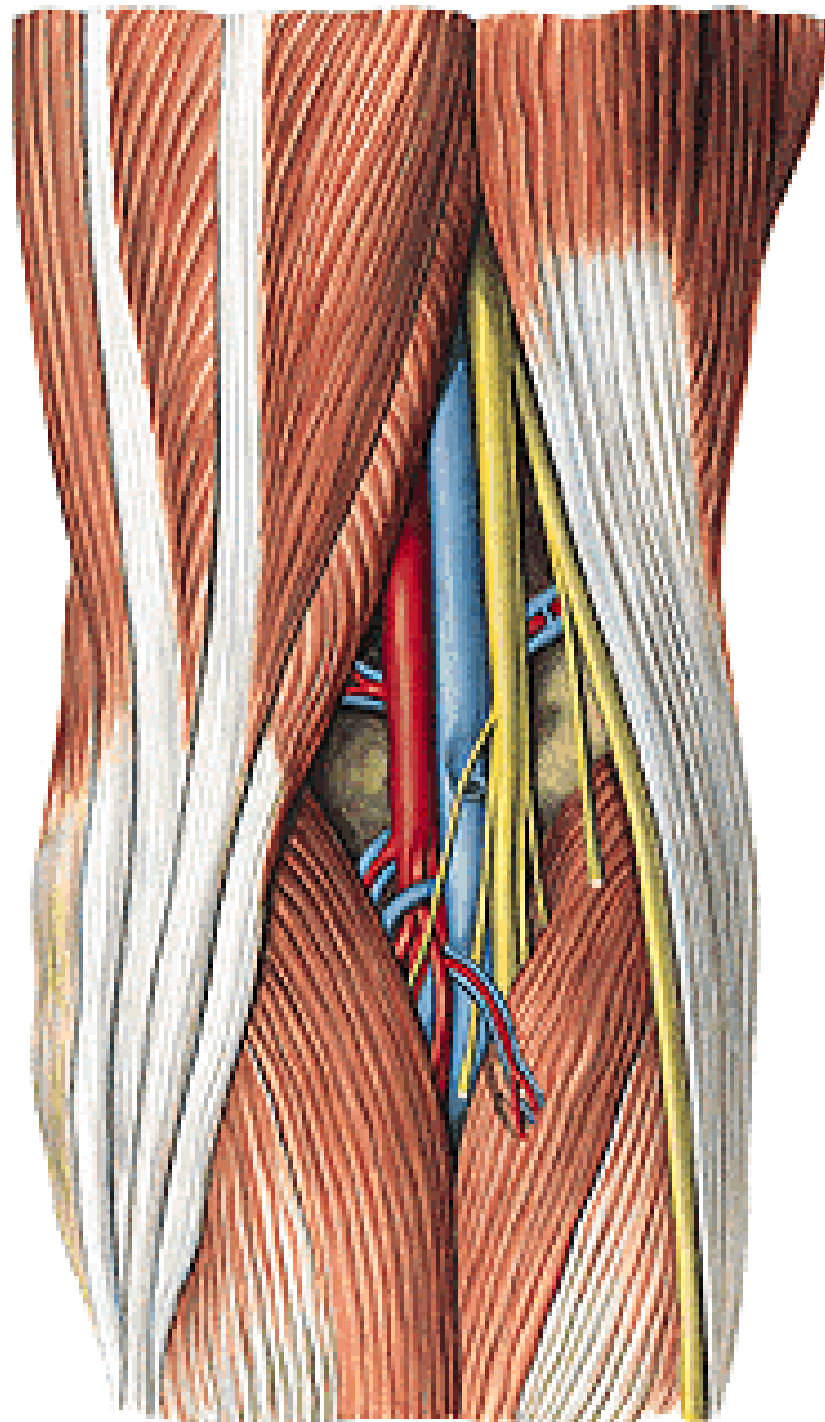
# Fossa poplitea

**A. poplitea**

**V. poplitea**

**N. tibialis**

**N. fibularis comm.**



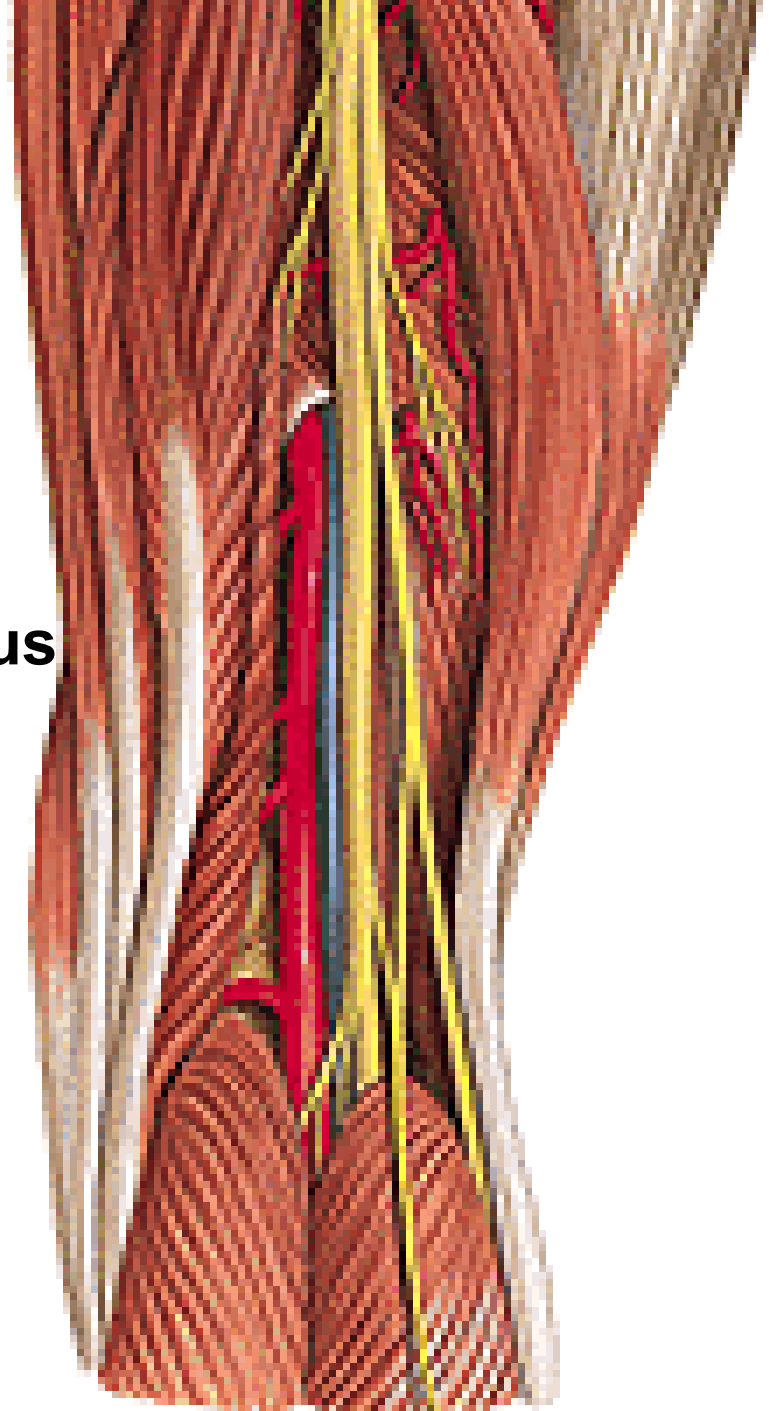
## **N. tibialis**

- n. cutaneus surae med.

## **N. fibularis/peroneus comm.**

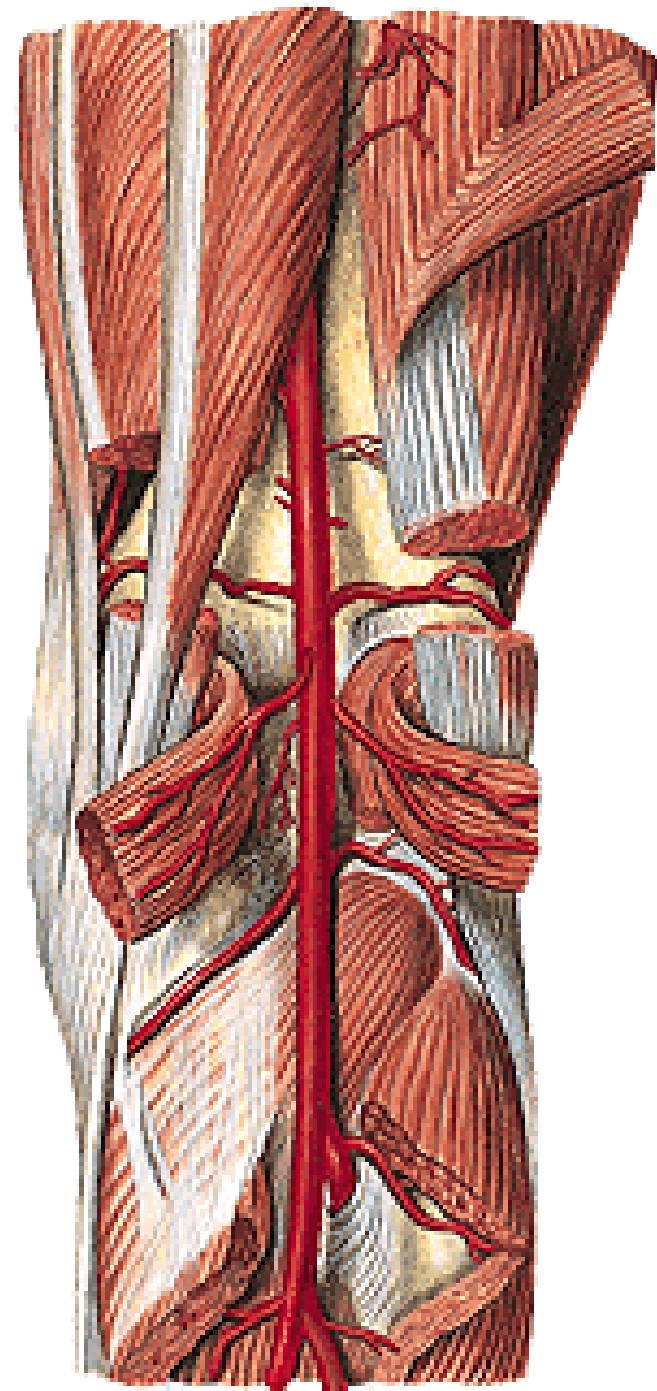
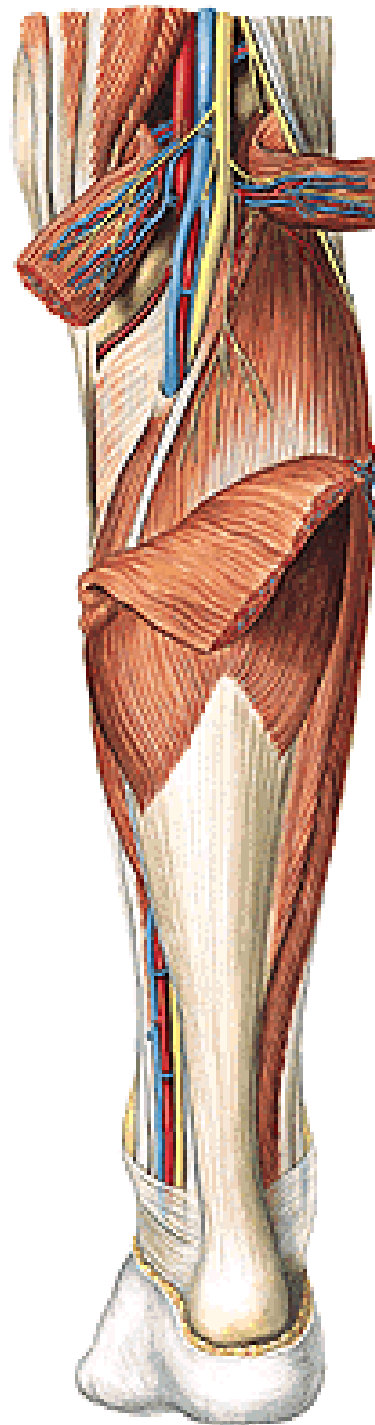
- n. cutaneus surae lat.
- r. communicans fibularis/peroneus

→ n. suralis



## A. poplitea

- aa. surales
- a. genus sup. med.
- a. genus sup. lat.
- a. genus media
- a. genus inf. med.
- a. genus inf. lat.
- a. tibialis post.
- a. tibialis ant.

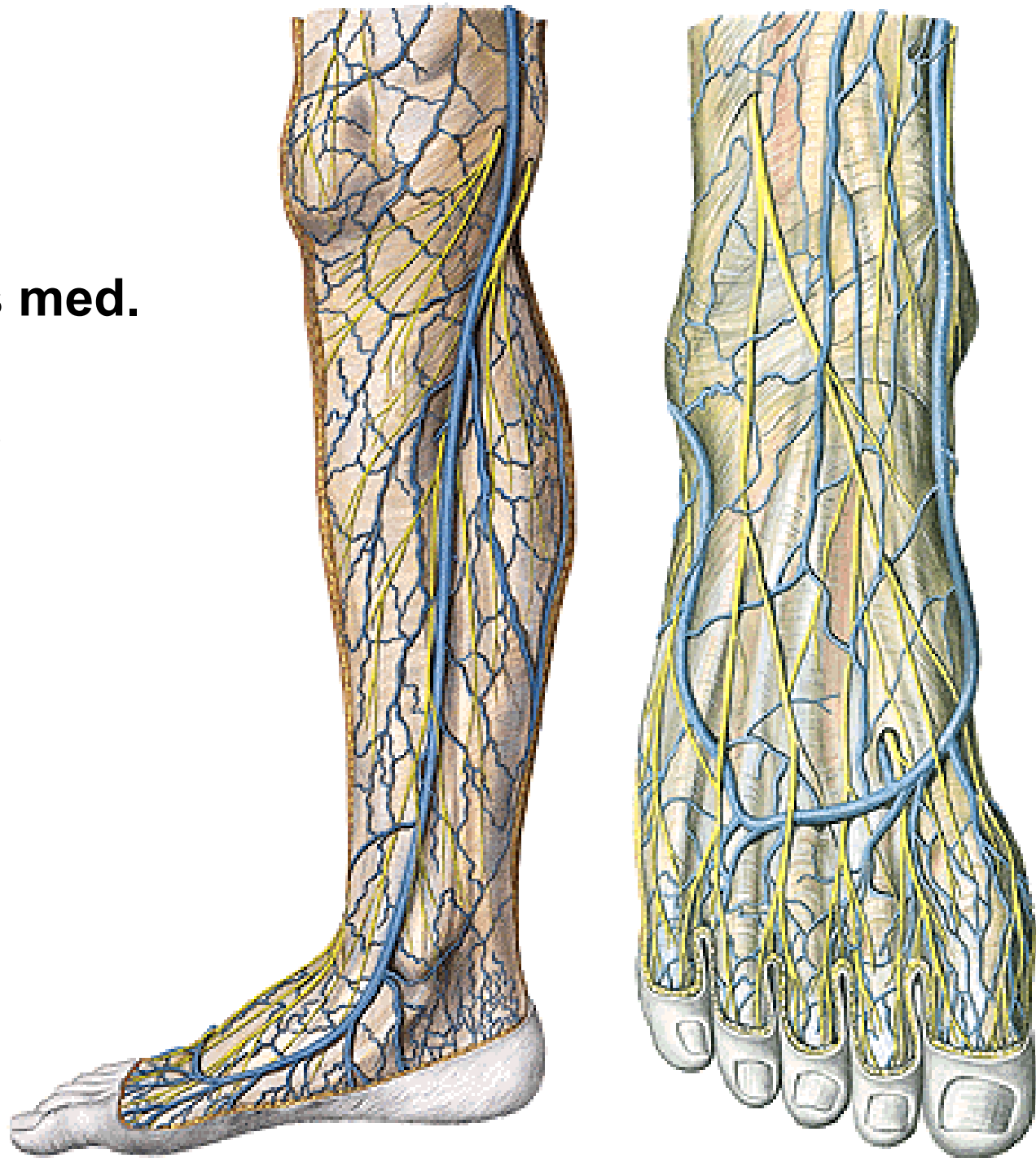


# **REGIO CRURIS ANTERIOR**

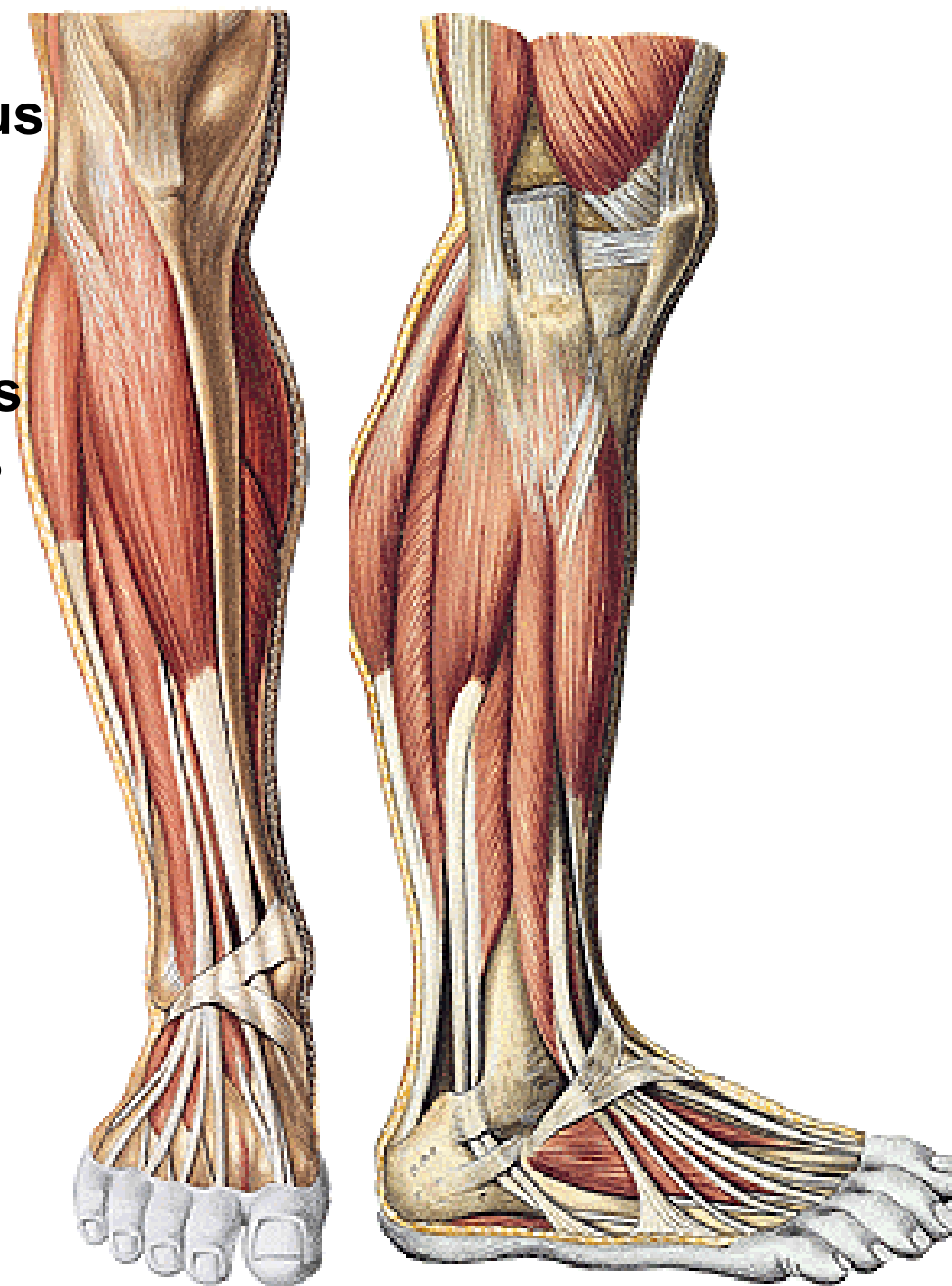
**N. saphenus**  
- r. infrapatellaris  
- rr. cutanei cruris med.

**V. saphena magna**

**N. fibularis spf.**



**M. tibialis ant.**  
**M. extensor digitorum longus**  
**(M. fibularis/per. tertius)**  
**M. extensor hallucis longus**  
**M. fibularis/peroneus longus**  
**M. fibularis/peroneus brevis**



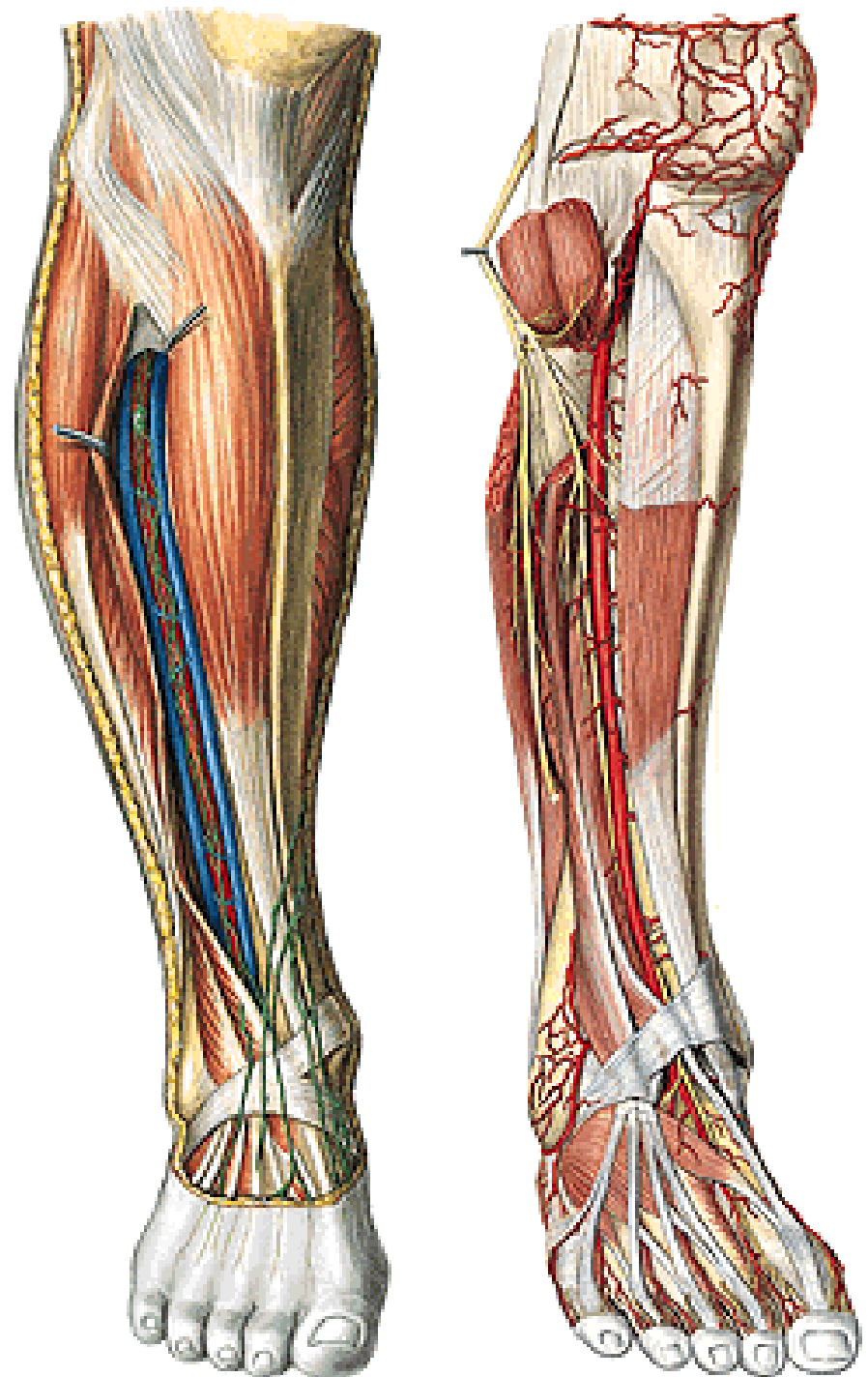


**N. fibularis comm.**

- n. fibularis prof.
- n. fibularis spf.

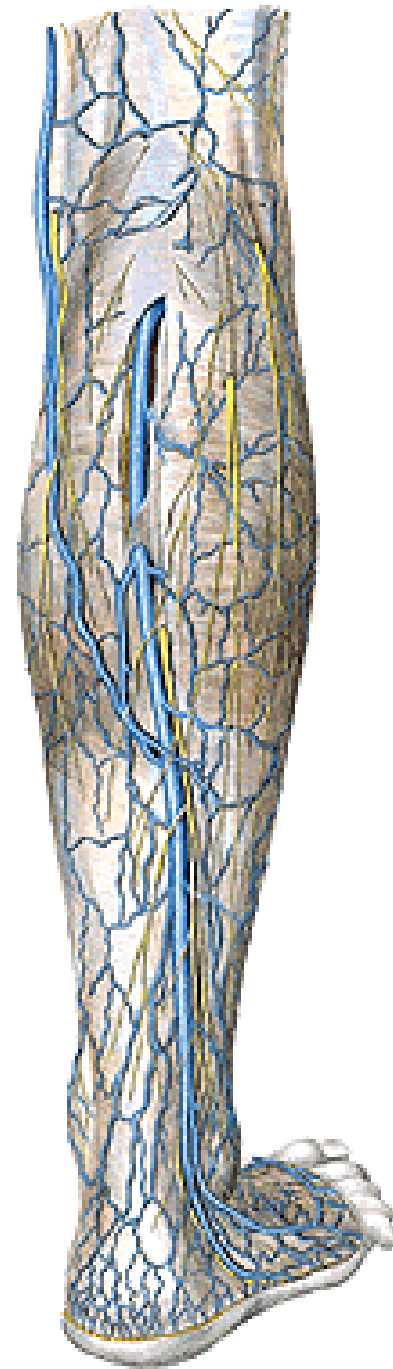
**A. tibialis ant.:**

- a. recurrens tibialis post.
- a. recurrens tibialis ant.
- rr. musculares
- a. malleolaris ant. med.
- a. malleolaris ant. lat.
- a. dorsalis pedis



**REGIO CRURIS POSTERIOR**

**V. saphena parva**  
**N. suralis**  
**N. cutaneus surae lat.**

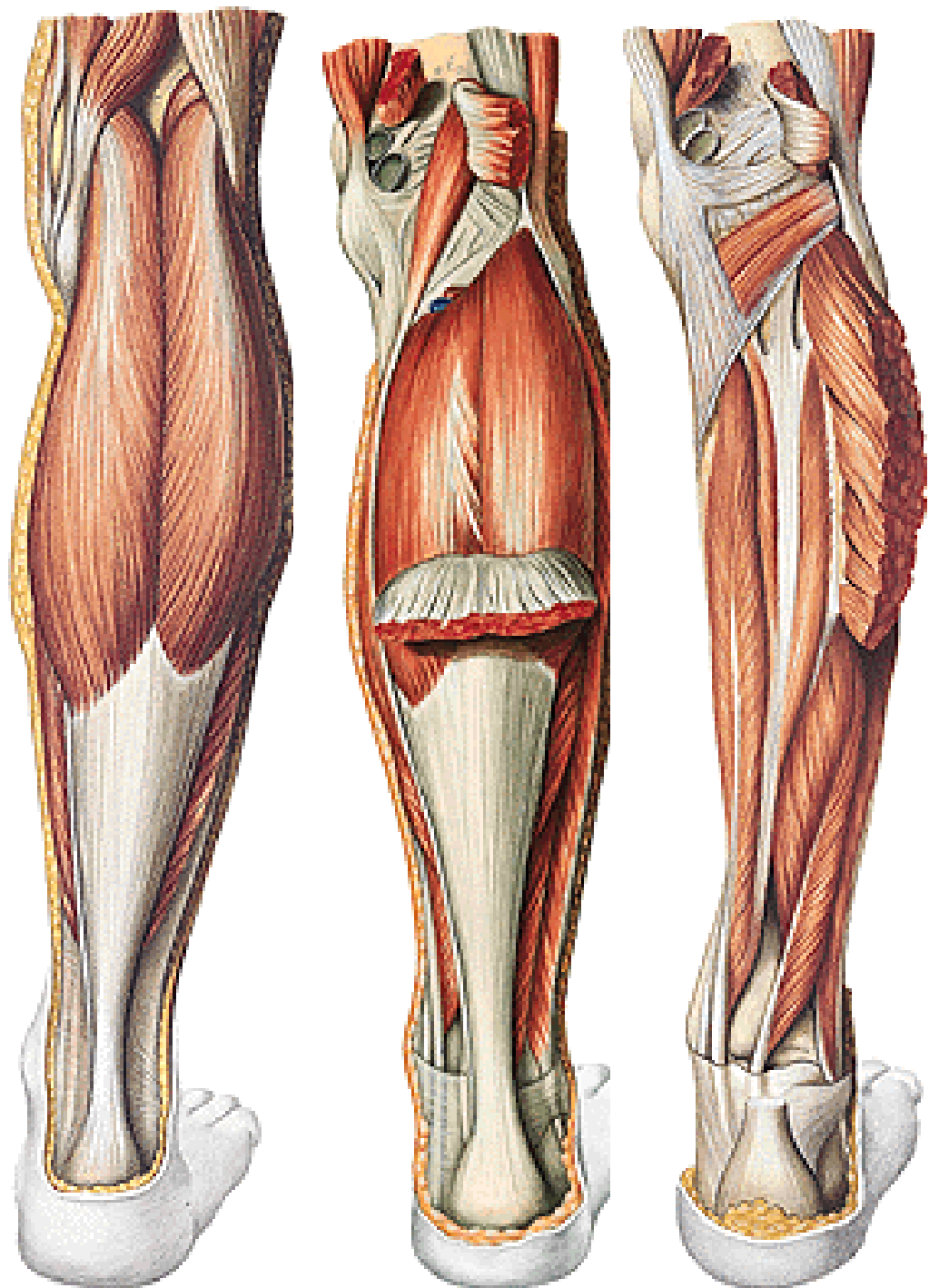


- M. triceps surae**
  - m. gastrocnemius
    - caput lat.
    - caput med.
  - m. soleus

**Arcus tendineus m. solei**

- M. plantaris**
- M. popliteus**

- M. flexor hallucis longus**
- M. flexor digitorum longus**
- M. tibialis post.**



## **A. tibialis post.**

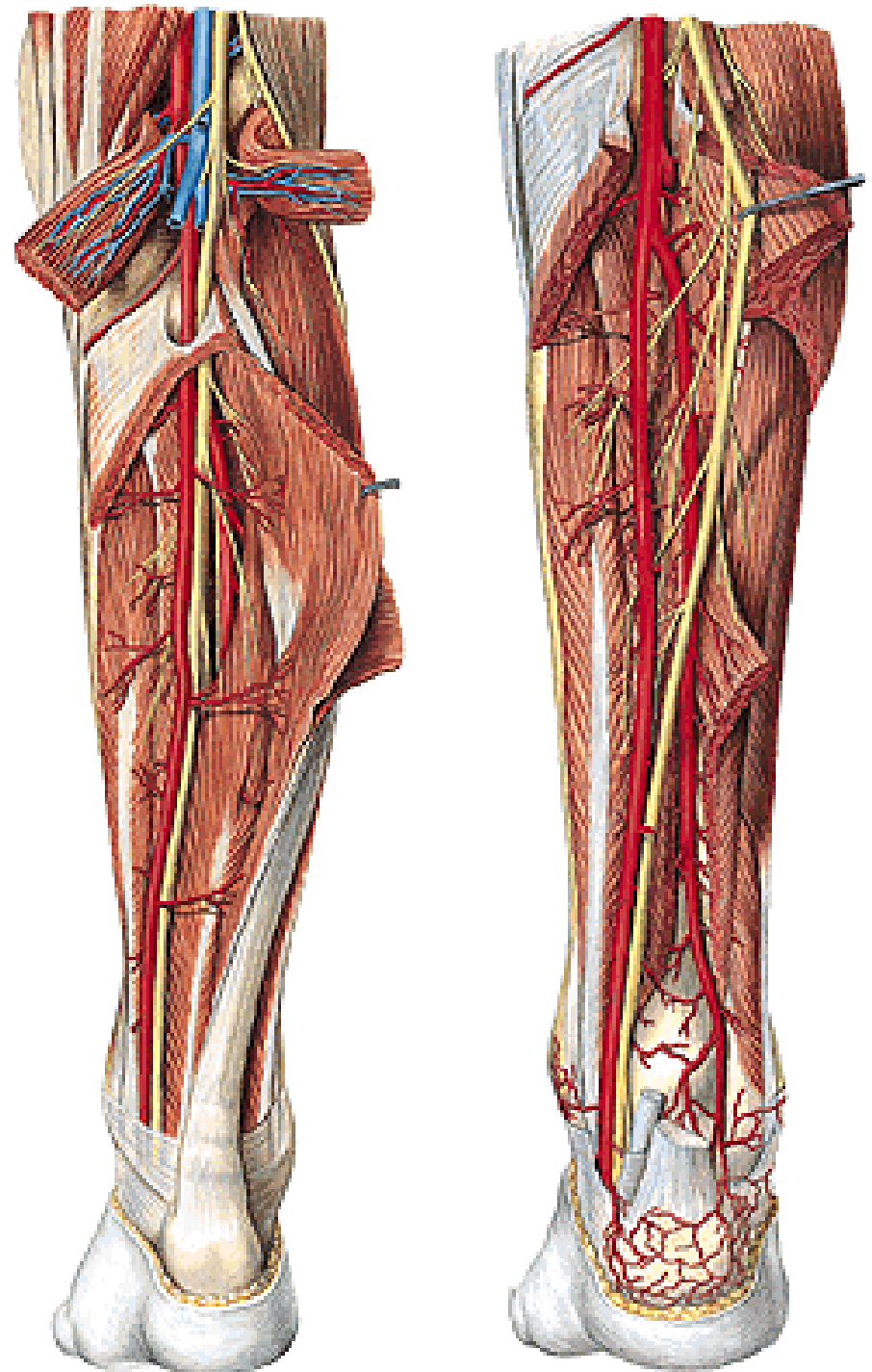
- rr. musculares
- r. circumflexus fibulae
- a. fibularis
- rr. malleolares med.
- rr. calcaneares
- a. plantaris med. et lat.

## **A. fibularis/peronea (canalis musculofibularis)**

- rr. musculares
- r. perforans
- rr. malleolares lat.
- rr. calcaneares

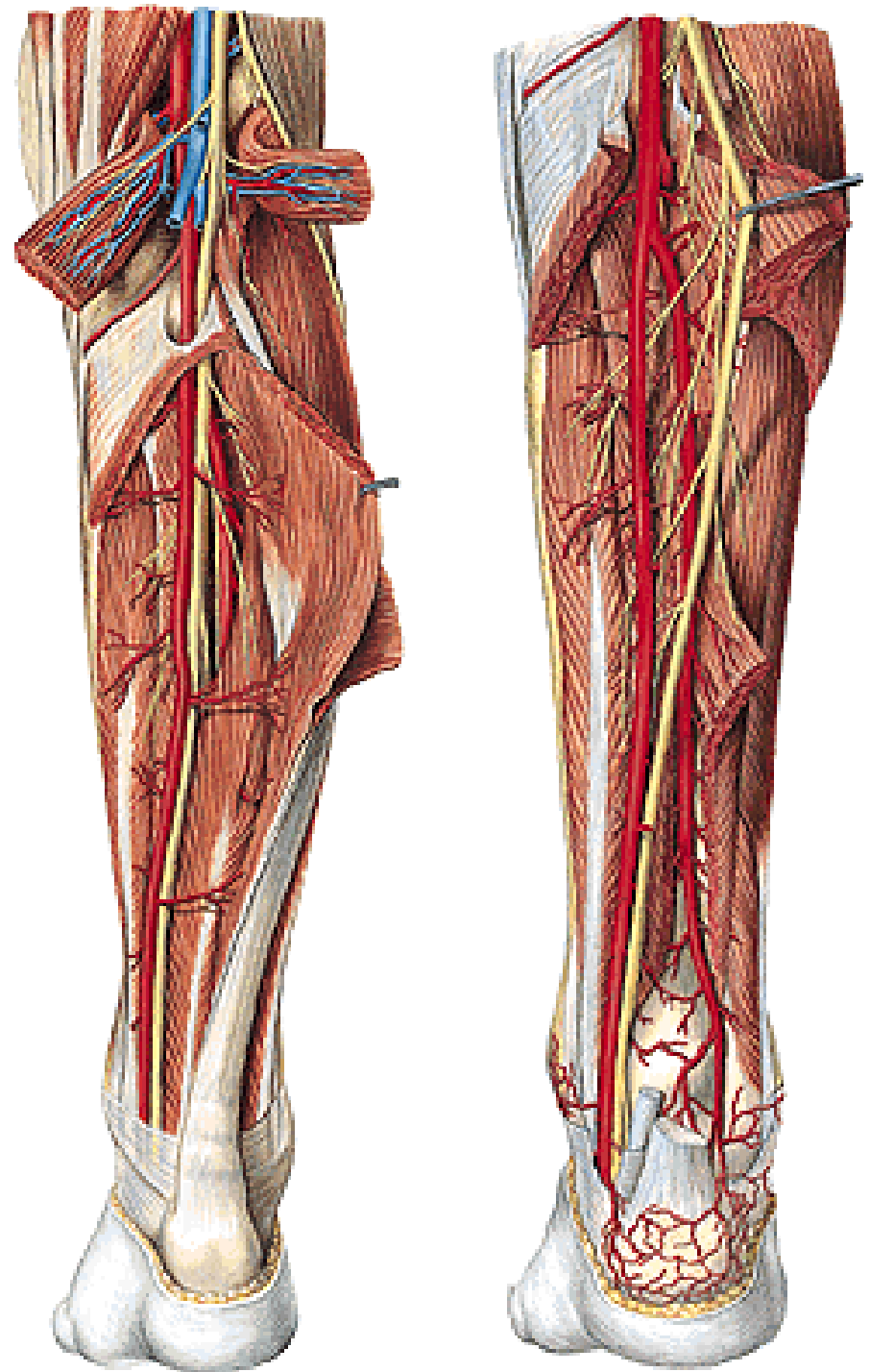
**Rete malleolare med. et lat.**

**Rete calcaneare**



## **N. tibialis**

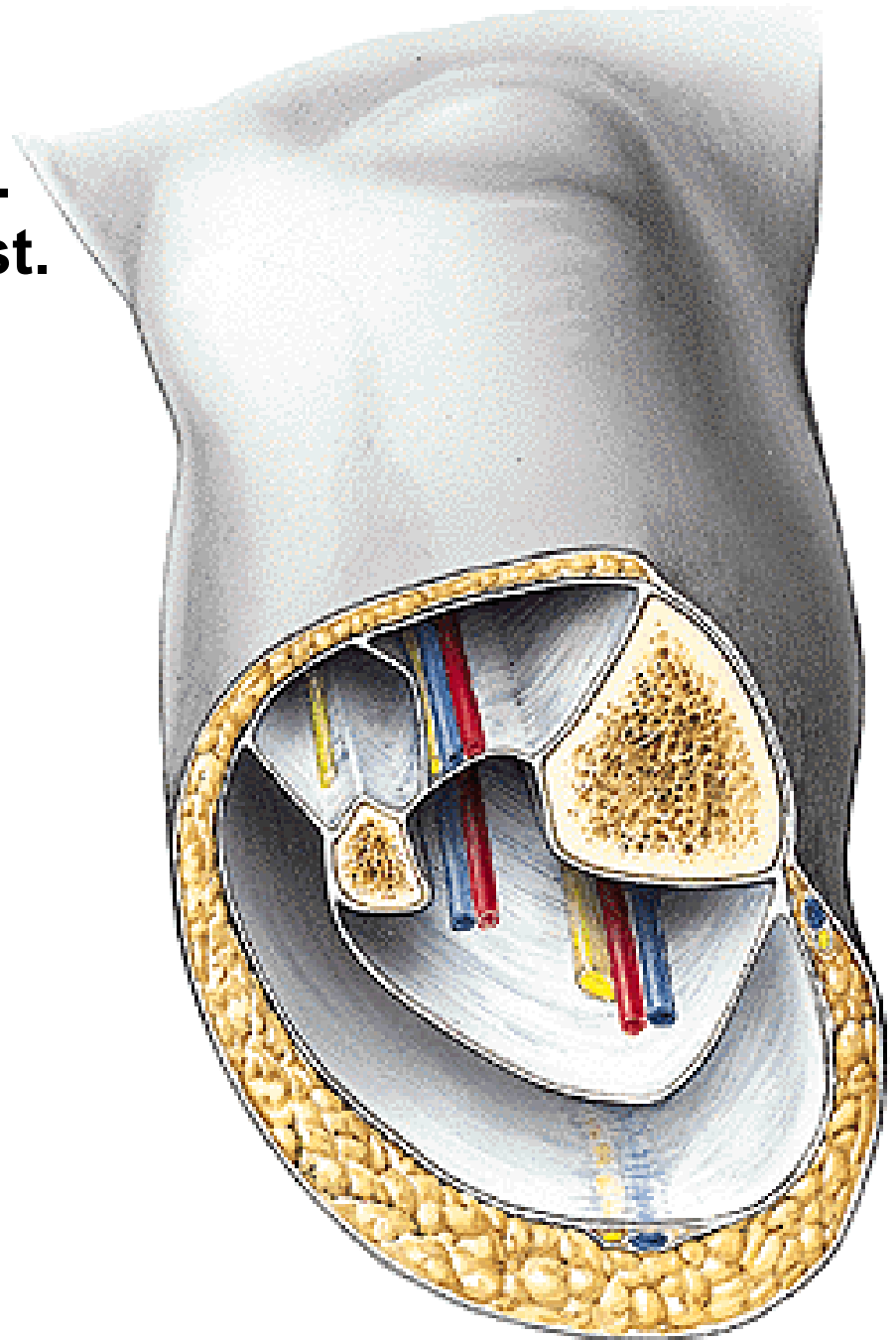
- rr. musculares
- n. interosseus cruris
- n. cutaneus surae med.
- rr. calcanei med.
- n. plantaris med. et lat.



**Fascia cruris**

**Septum intermusculare ant.**

**Septum intermusculare post.**



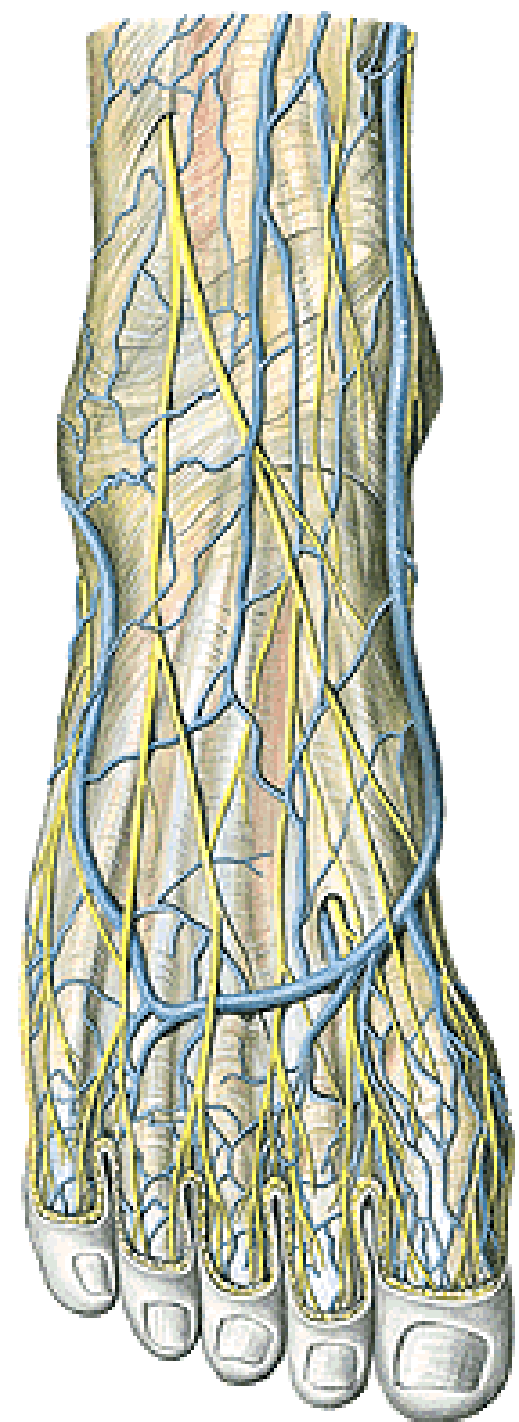
**DORSUM PEDIS**



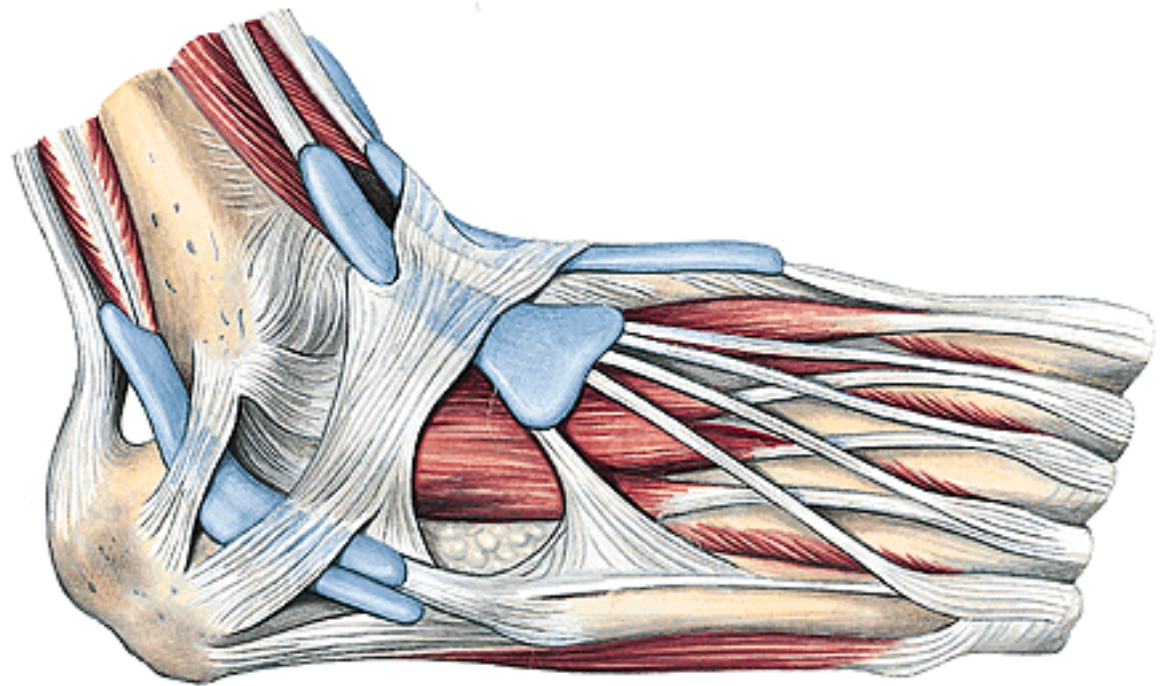
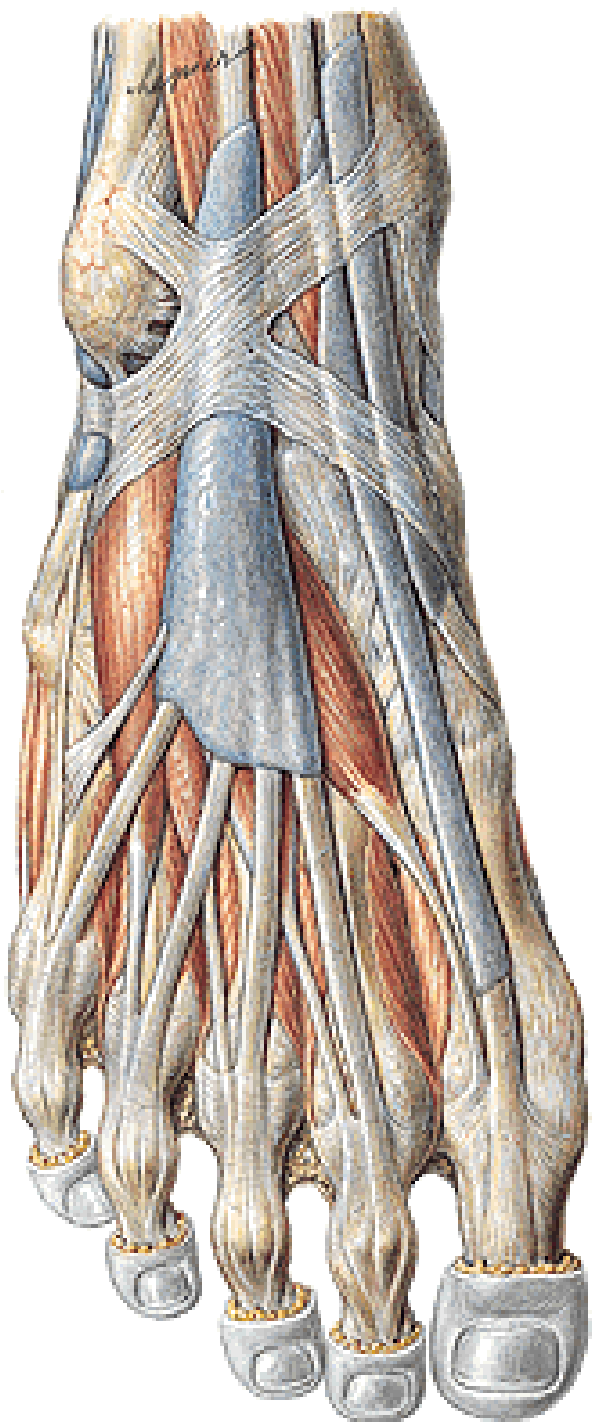
**Rete venosum dorsale pedis**  
**- v. marginalis med. et lat.**

**N. cutaneus dorsalis medialis**  
**et intermedius (n. fibularis/per. spf.)**  
**N. cutaneus dorsalis lat. (n. suralis)**

**Retinaculum extensorum sup. et inf.**



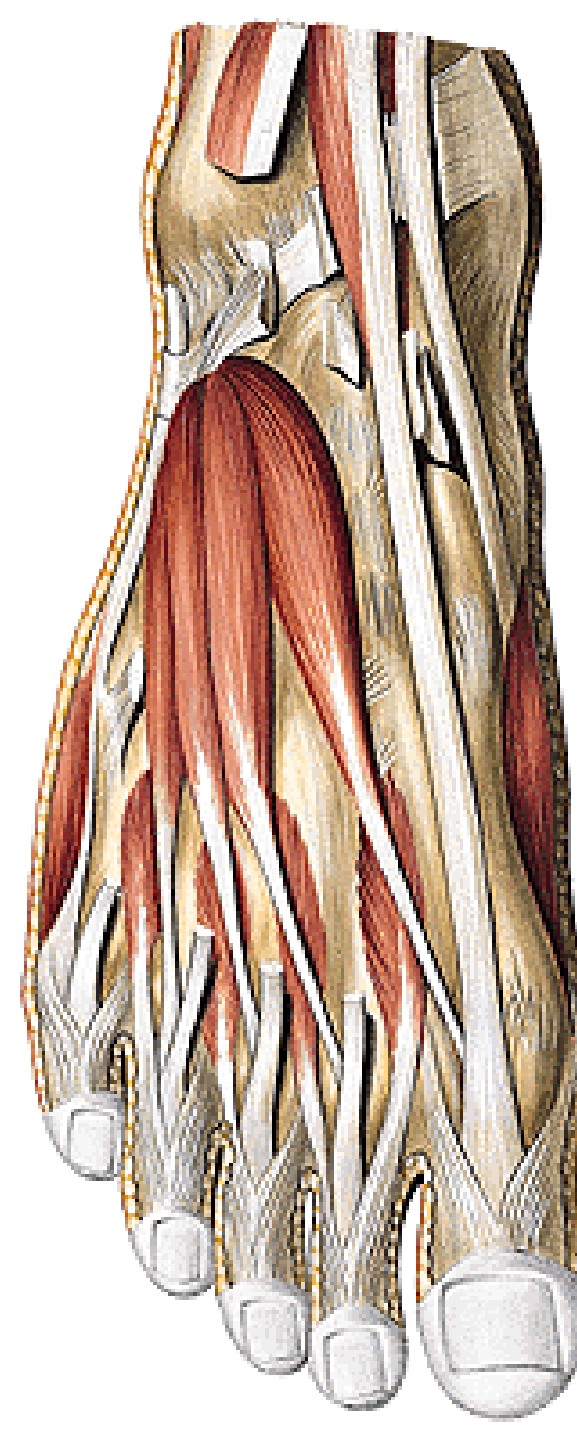
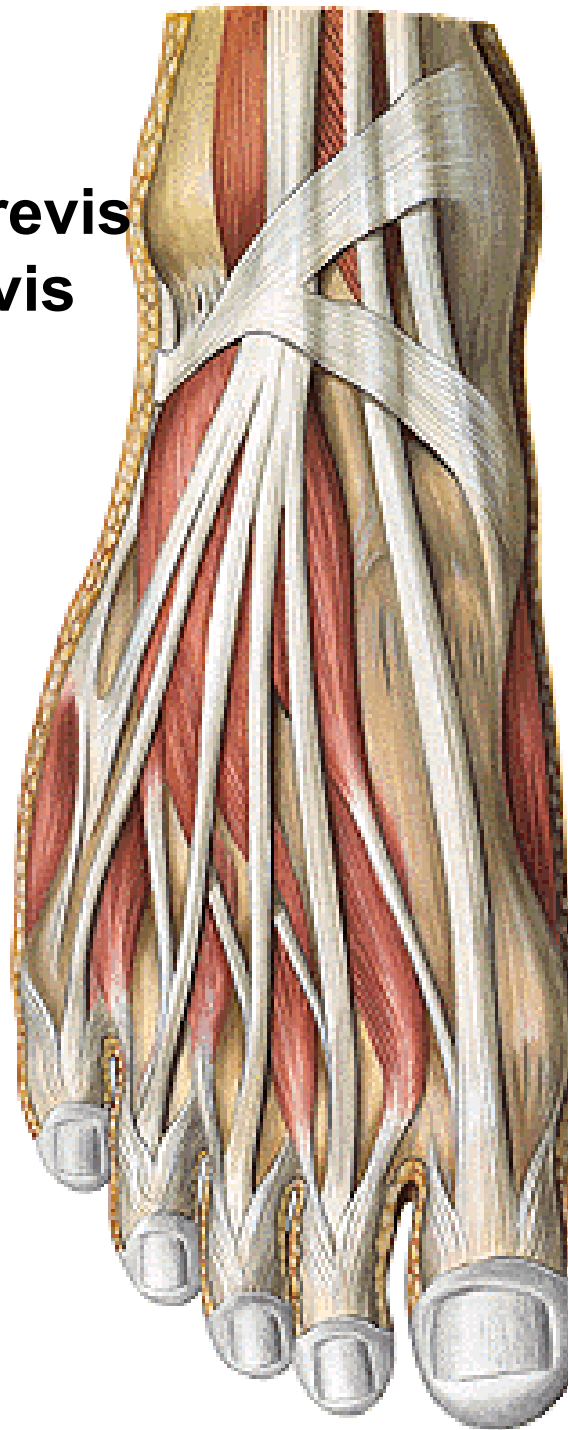
# Retinaculum peroneorum sup. et inf.



**M. extensor digitorum brevis**

**M. extensor hallucis brevis**

**Mm. interossei dorsales**

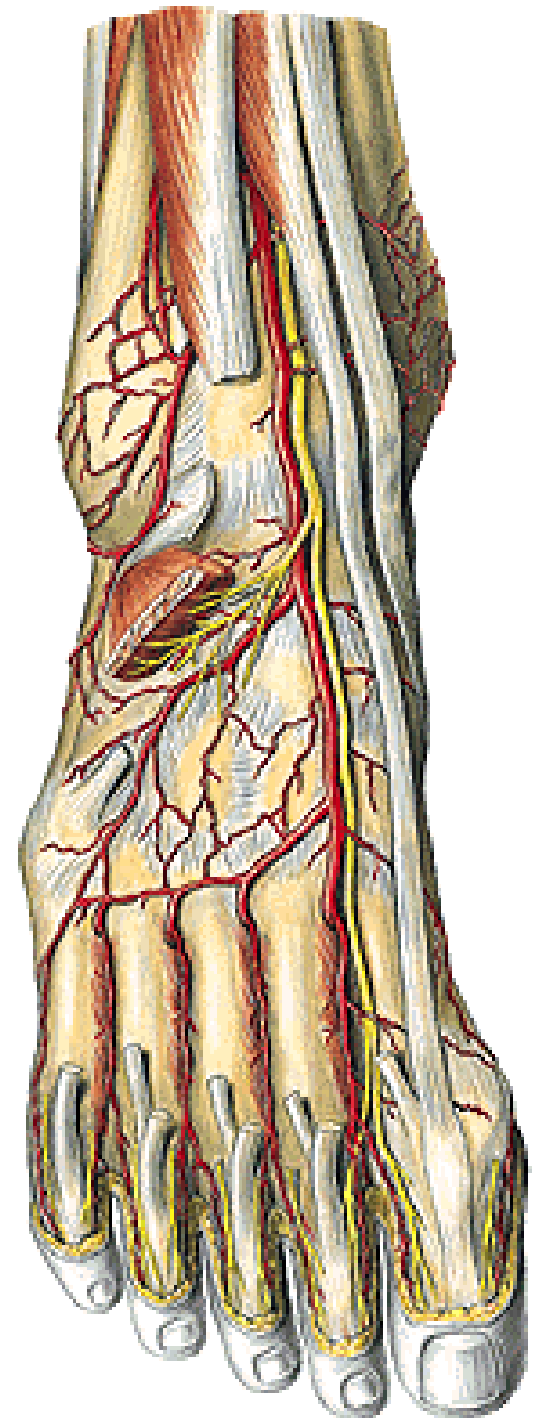


## **A. dorsalis pedis**

- a. tarsalis lat.
- aa. tarsales med.
- a. arcuata
  - aa. metatarsae dorsales
  - aa. digitales dorsales
- r. plantaris prof.

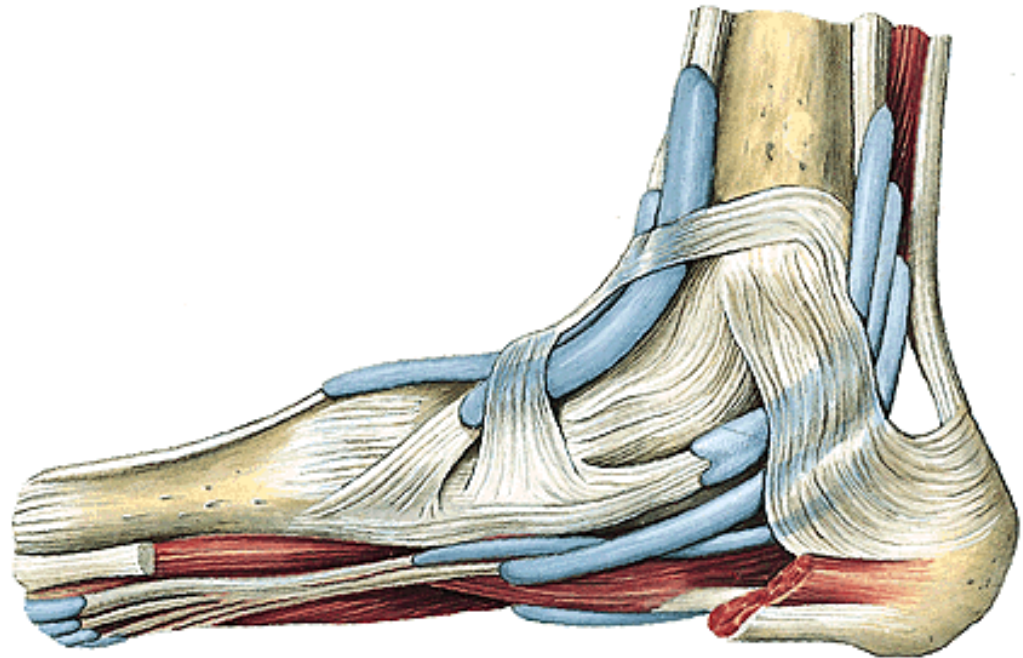
## **N. fibularis/per. prof.**

- rr. musculares
- nn. digitales dorsales

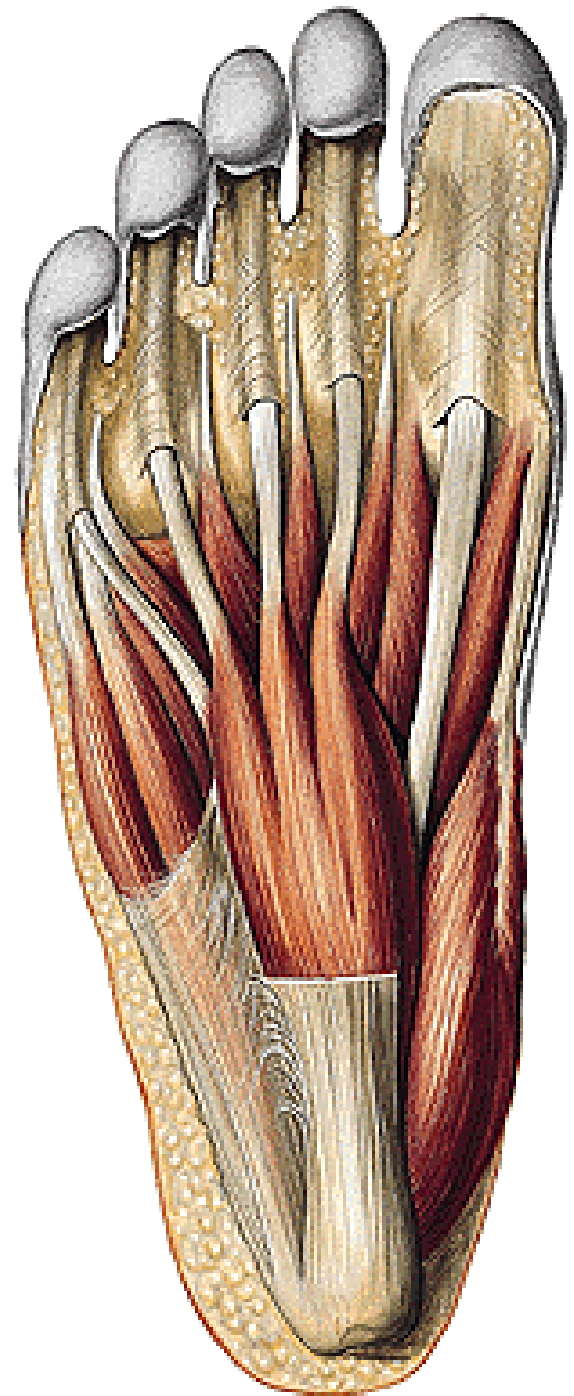


# **PLANTA PEDIS**

**Fascia plantae**  
**Aponeurosis plantaris**  
**Retinaculum flexorum**



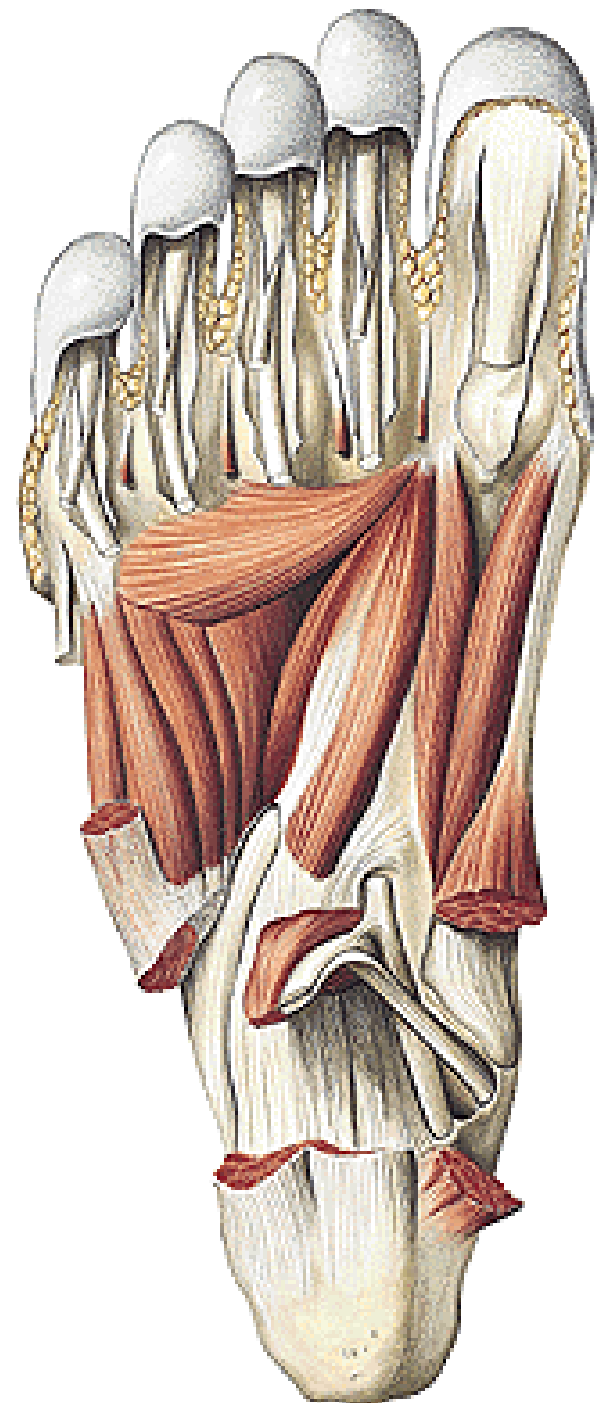
**M. abductor hallucis**  
**M. flexor digitorum brevis**  
**M. abductor digiti minimi**



**M. quadratus plantae**  
**Mm. lumbricales I.-IV.**

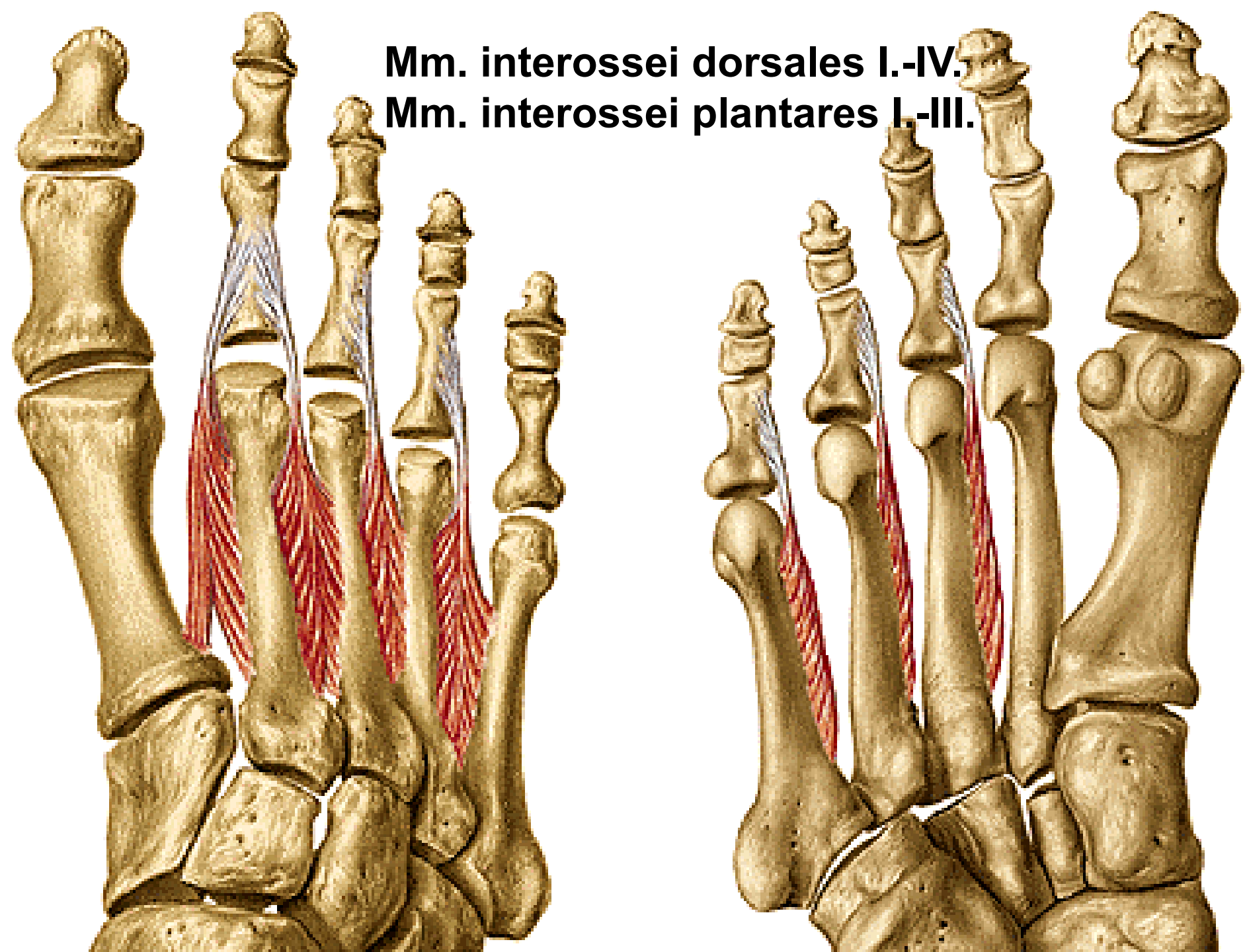
**M. flexor hallucis brevis**  
**M. adductor hallucis**  
- caput obliquum  
- caput transversum

**M. flexor digiti minimi brevis**  
**M. opponens digiti minimi**





**Mm. interossei dorsales I.-IV.**  
**Mm. interossei plantares I.-III.**

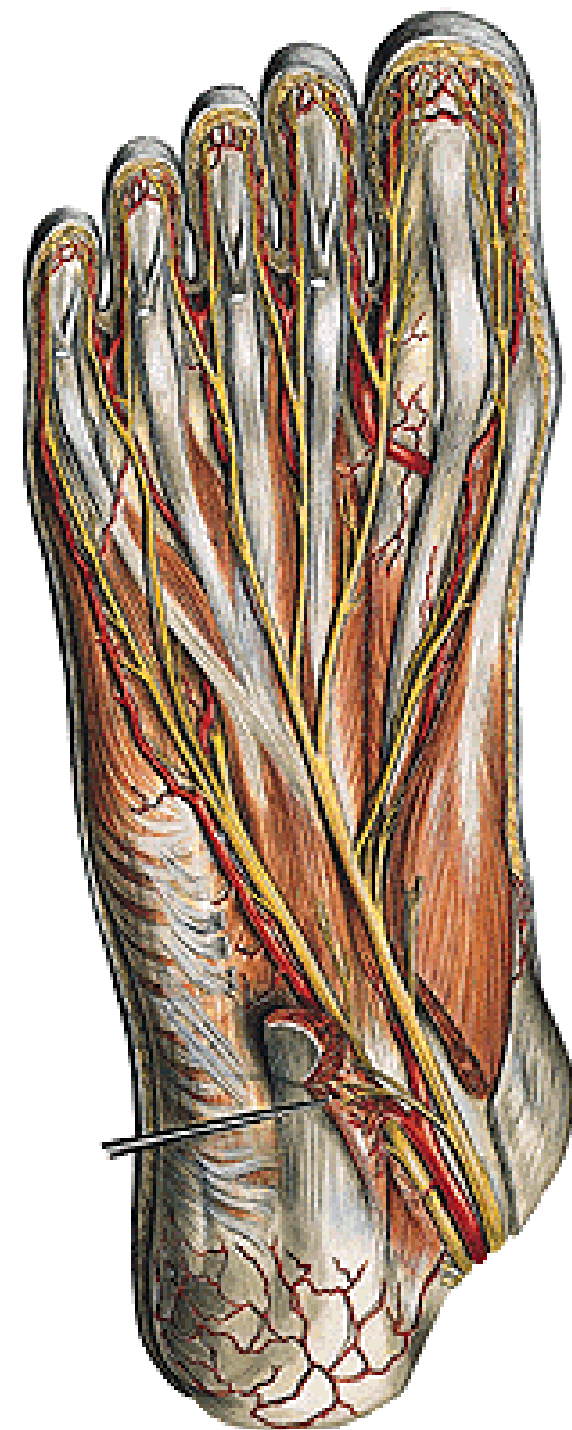
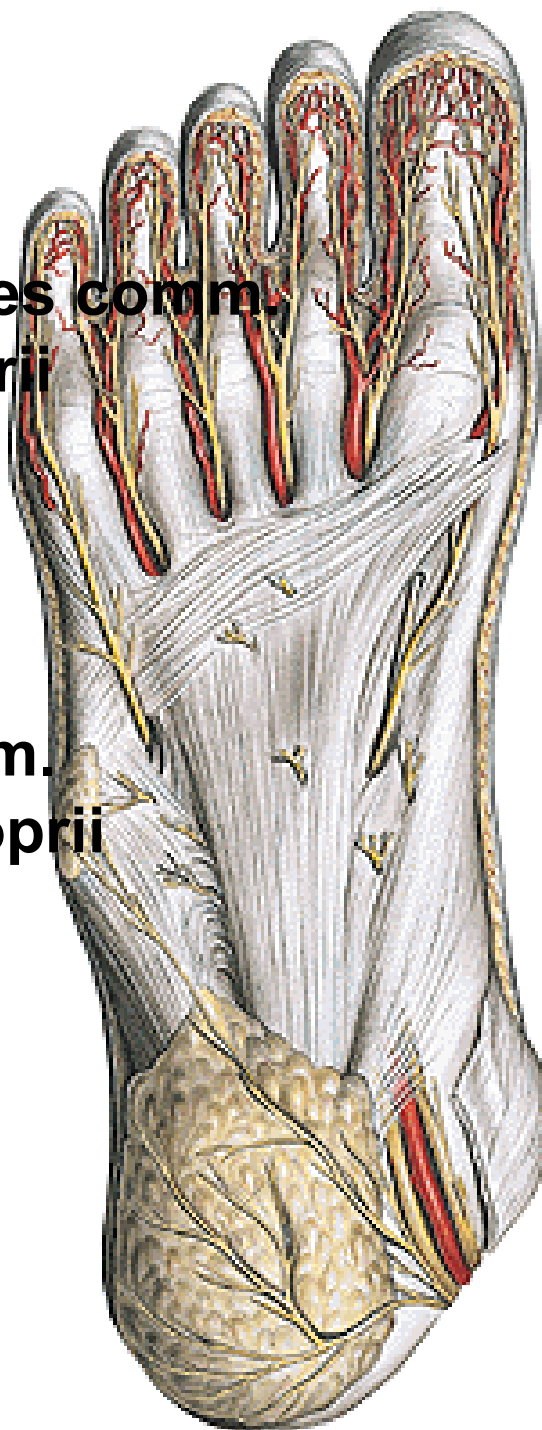


## **N. plantaris med.**

- rr. musculares
- nn. digitales plantares comm.
- nn. dig. plant. proprii

## **N. plantaris lat.**

- rr. musculares
- r. spf.
- nn. dig. plant. comm.
- nn. dig. plant. proprii
- r. prof.

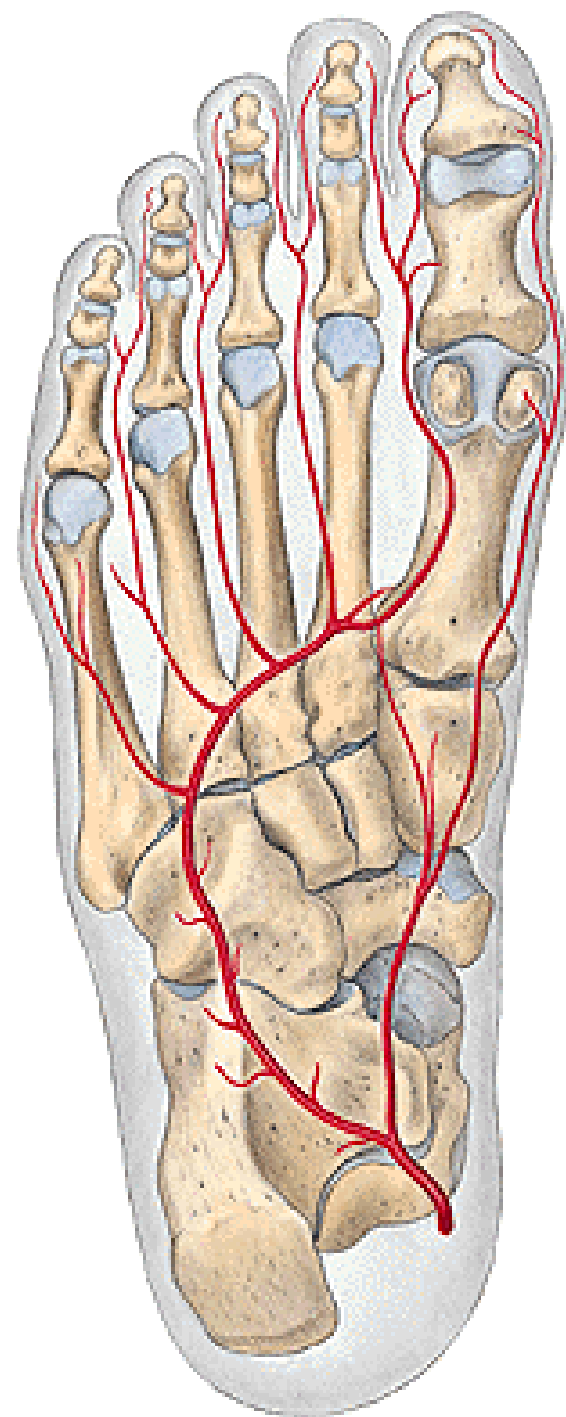
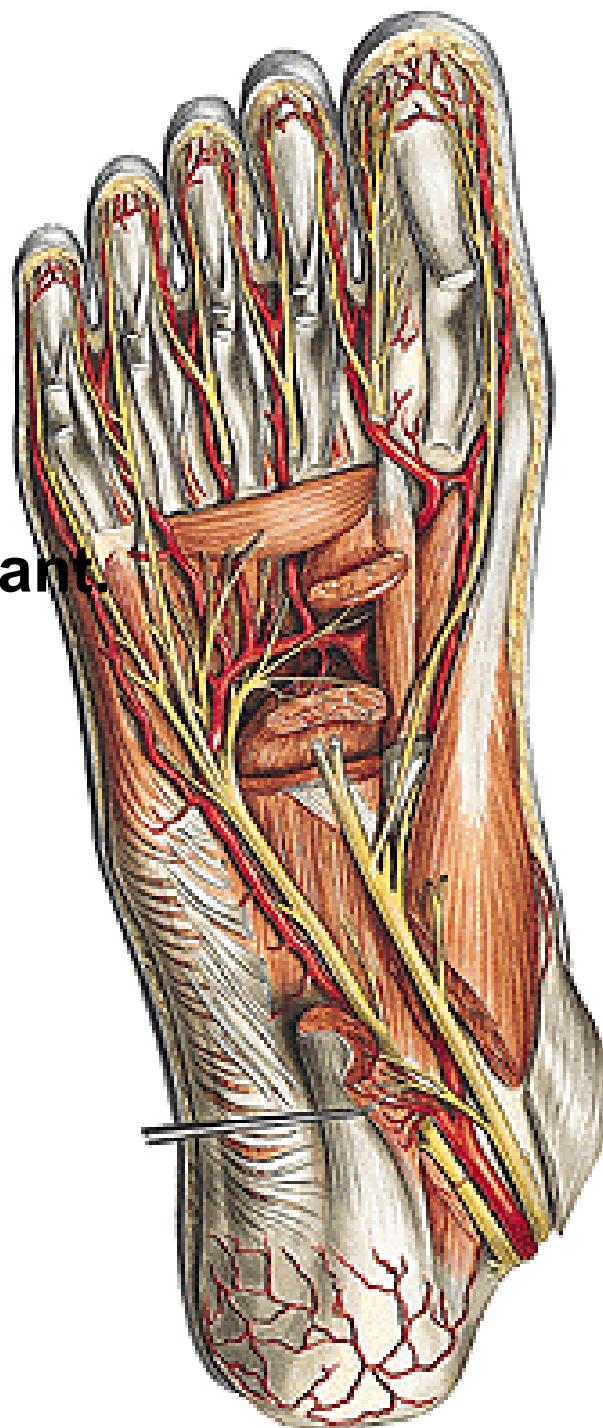


**A. plantaris med.**

- r. spf.
- r. prof.

**A. plantaris lat.**

- arcus plantaris
- aa. metatarsae plant.
- aa. dig. plantares



Illustrations were copied from:

**Atlas der Anatomie des Menschen/Sobotta.  
Putz,R., und Pabst,R. 20. Auflage. München:  
Urban & Schwarzenberg, 1993)**