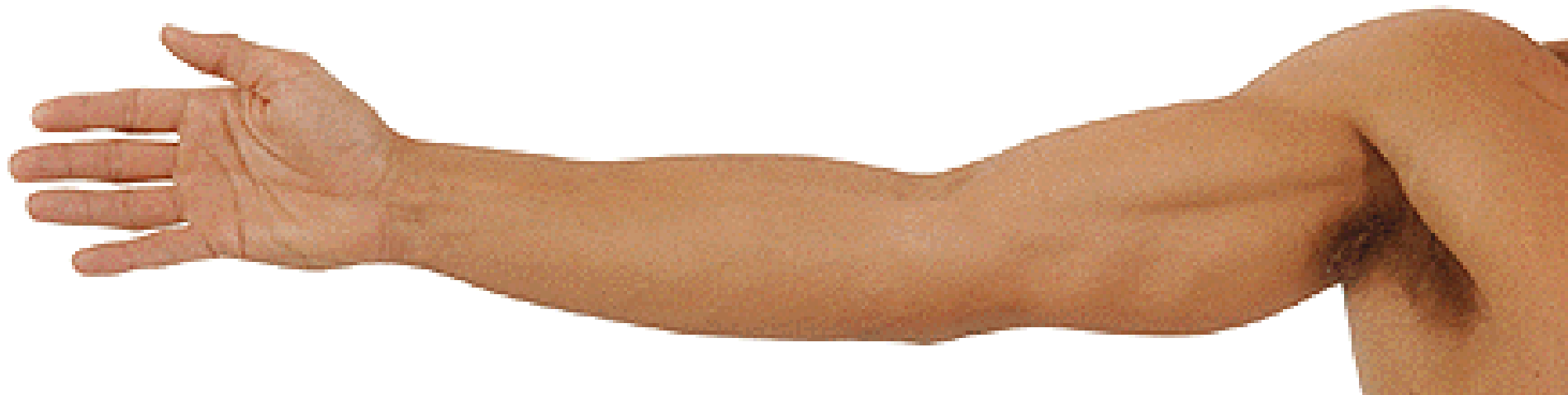
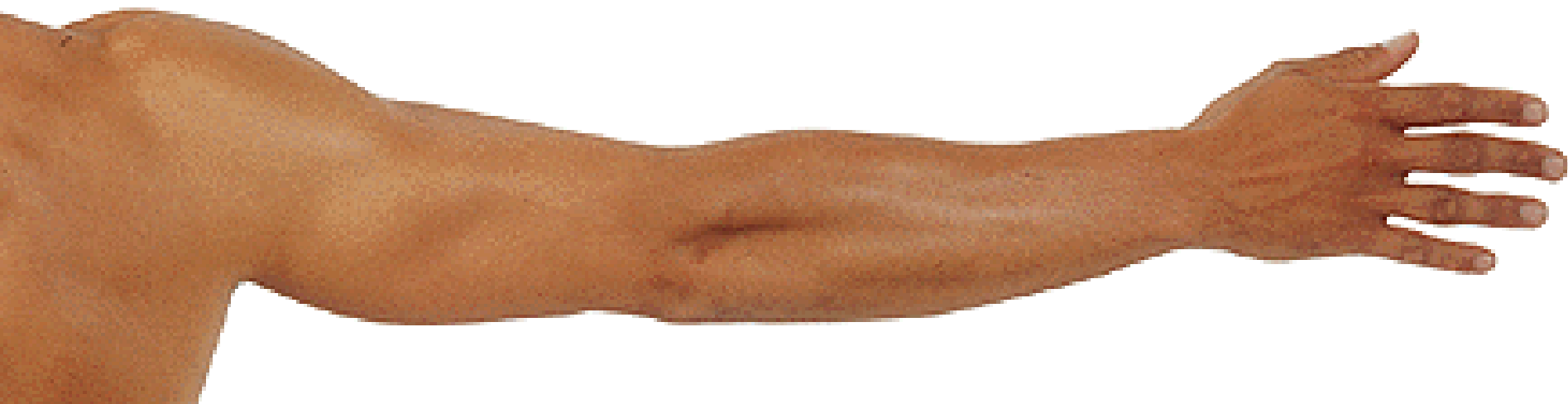


# **REGIONAL ANATOMY OF THE UPPER LIMB**



**Regio deltoidea, reg. axillaris, reg. brachii ant., reg. cubiti ant.,  
reg. antebrachii ant., palma manus**

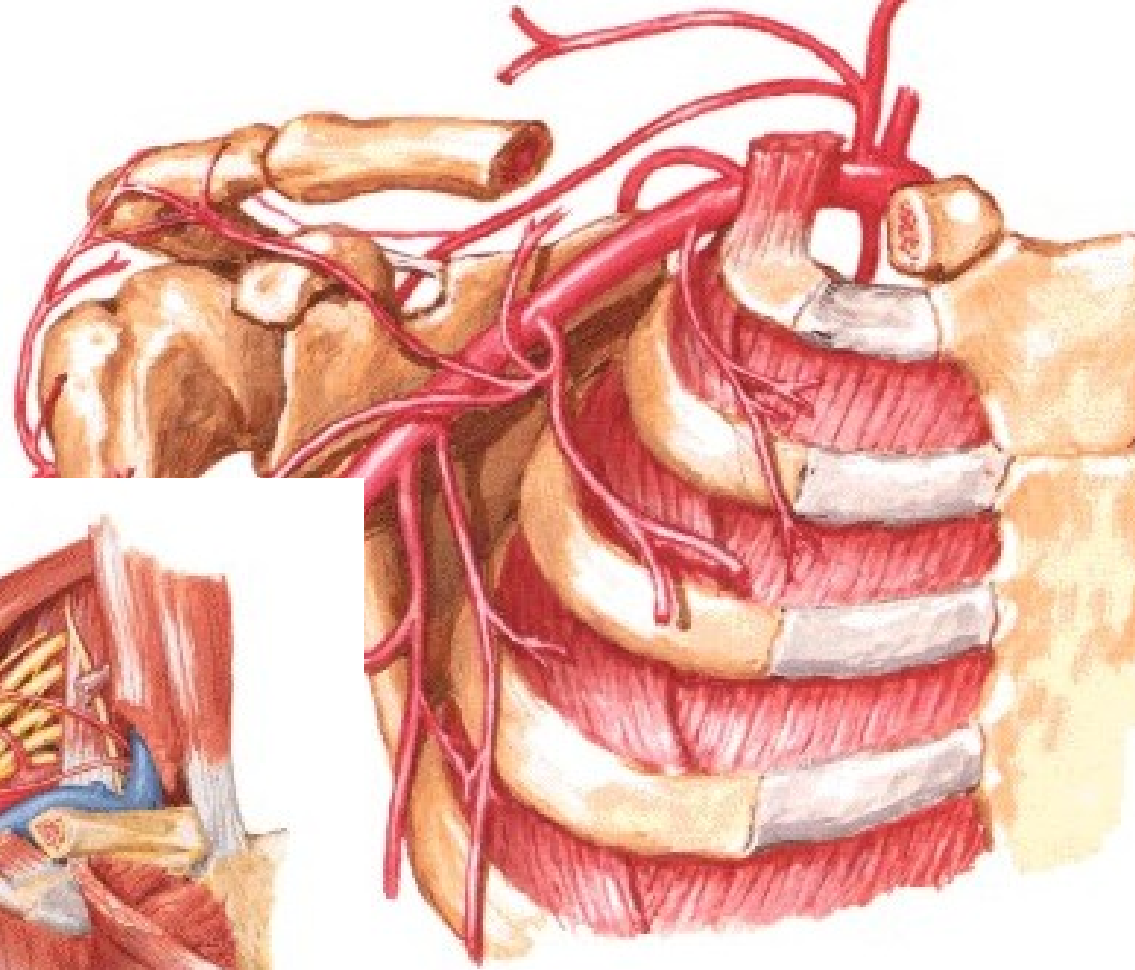
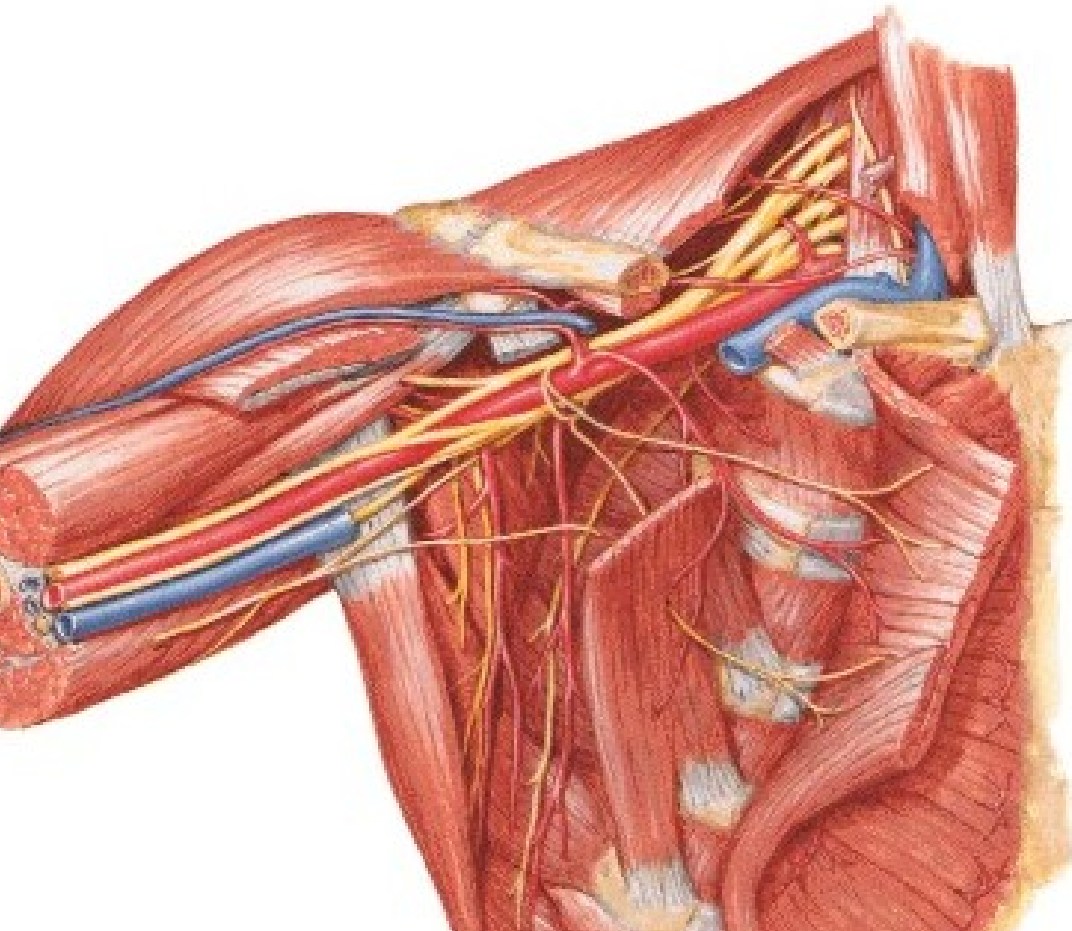


**Regio scapularis, reg. brachii post., reg. cubiti post.,  
reg. antebrachii post., dorsum manus**

# **Regio axillaris**

# AXILLA

- inlet
- 4 sides
- floor

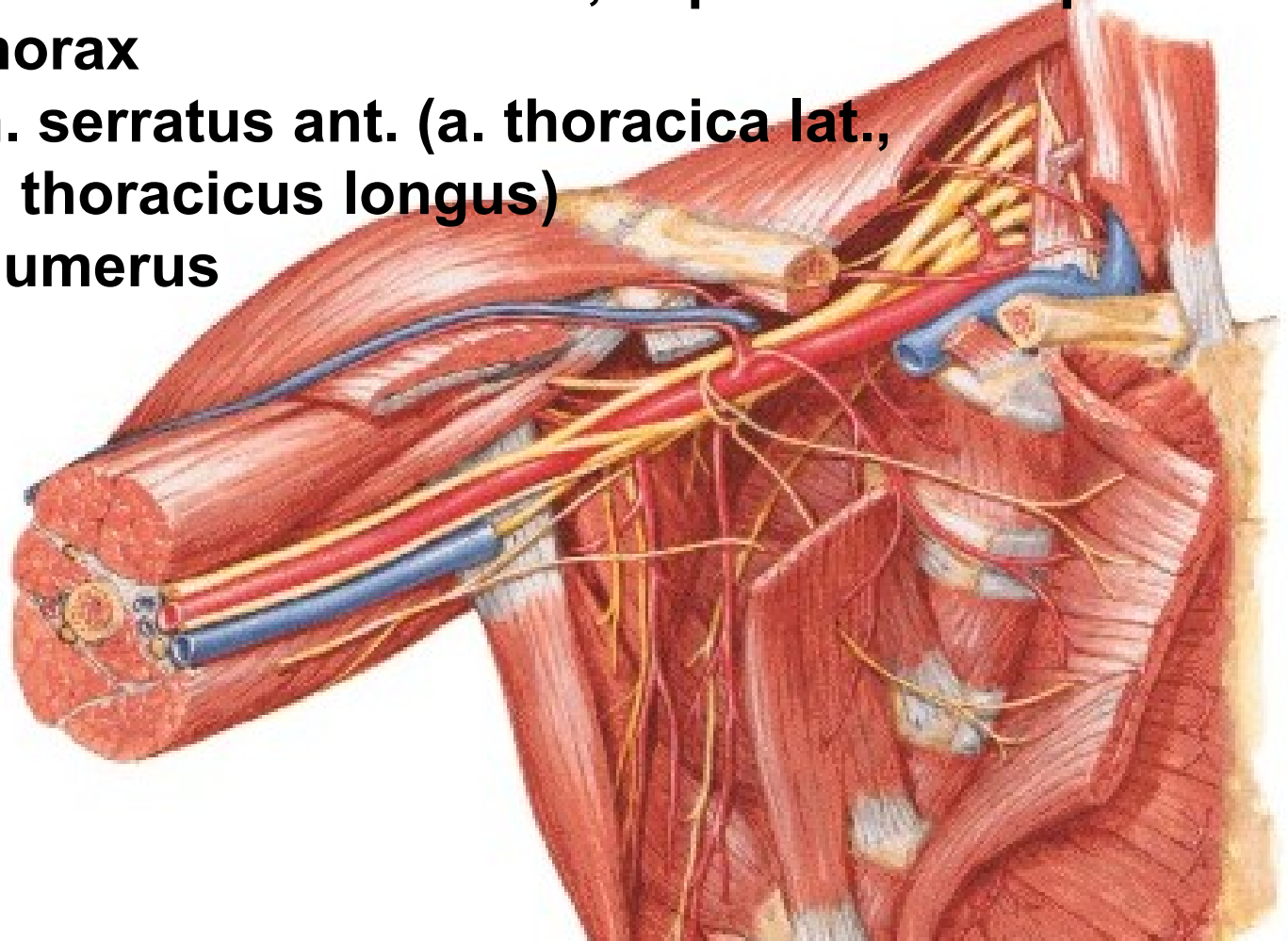


**Anterior wall:** m. pectoralis major (n. pectoralis med. et lat.)  
m. pectoralis minor (n. pectoralis med.)  
m. subclavius (n. subclavius)  
fascia clavipectoralis  
a. thoracoacromialis, a. pectoralis sup.

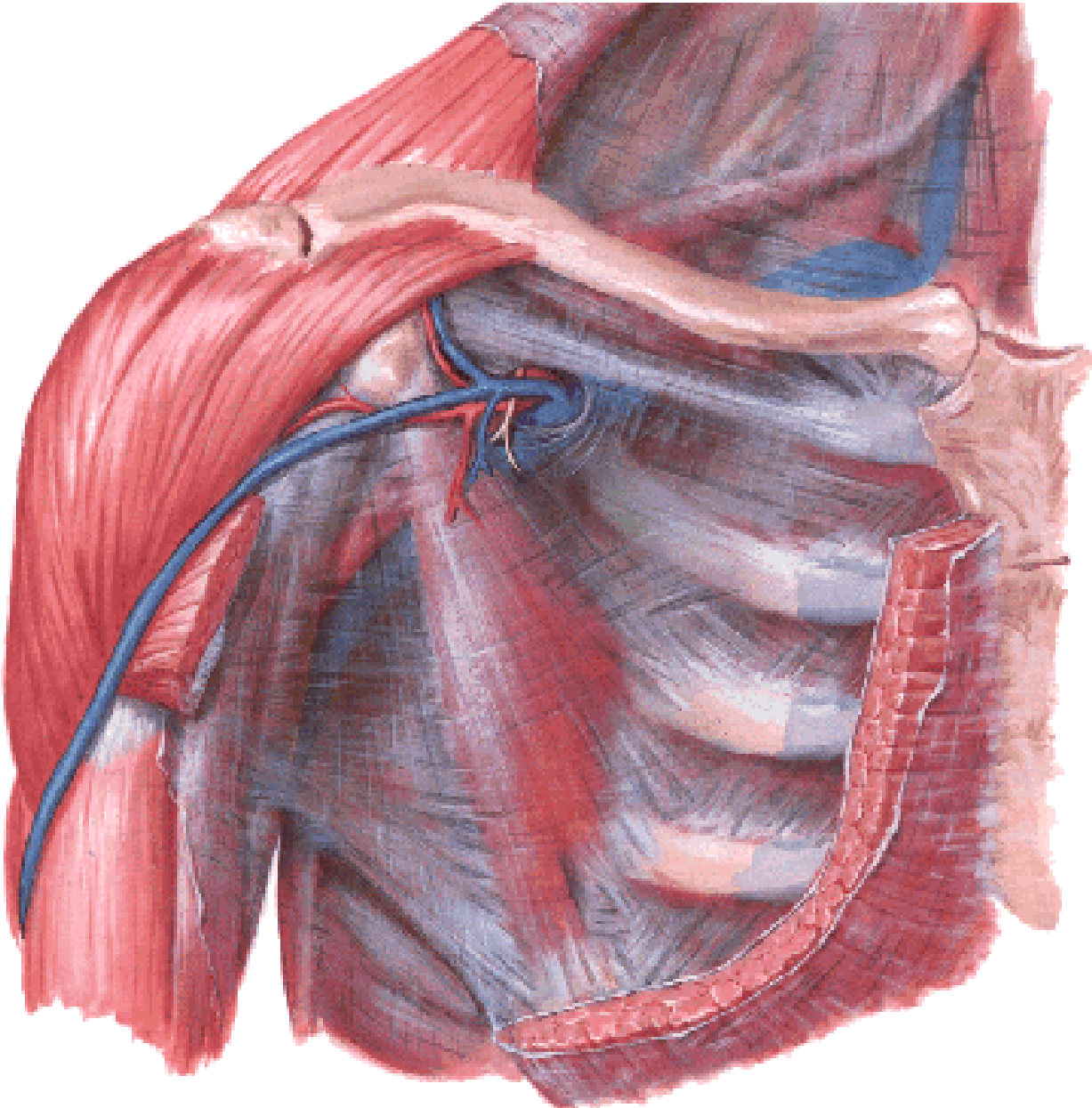
**Medial wall:** thorax

m. serratus ant. (a. thoracica lat.,  
n. thoracicus longus)

**Lateral wall:** humerus



# Fascia clavipectoralis



**Posterior wall: m. subscapularis, m. latissimus dorsi**

**– foramen omotricipitale (trilaterum):**

**m. teres minor**

**m. teres major**

**caput longum m. tricipitis**

**A. circumflexa scapulae**

**- foramen humerotricipitale**

**(quadrilaterum):**

**m. teres minor**

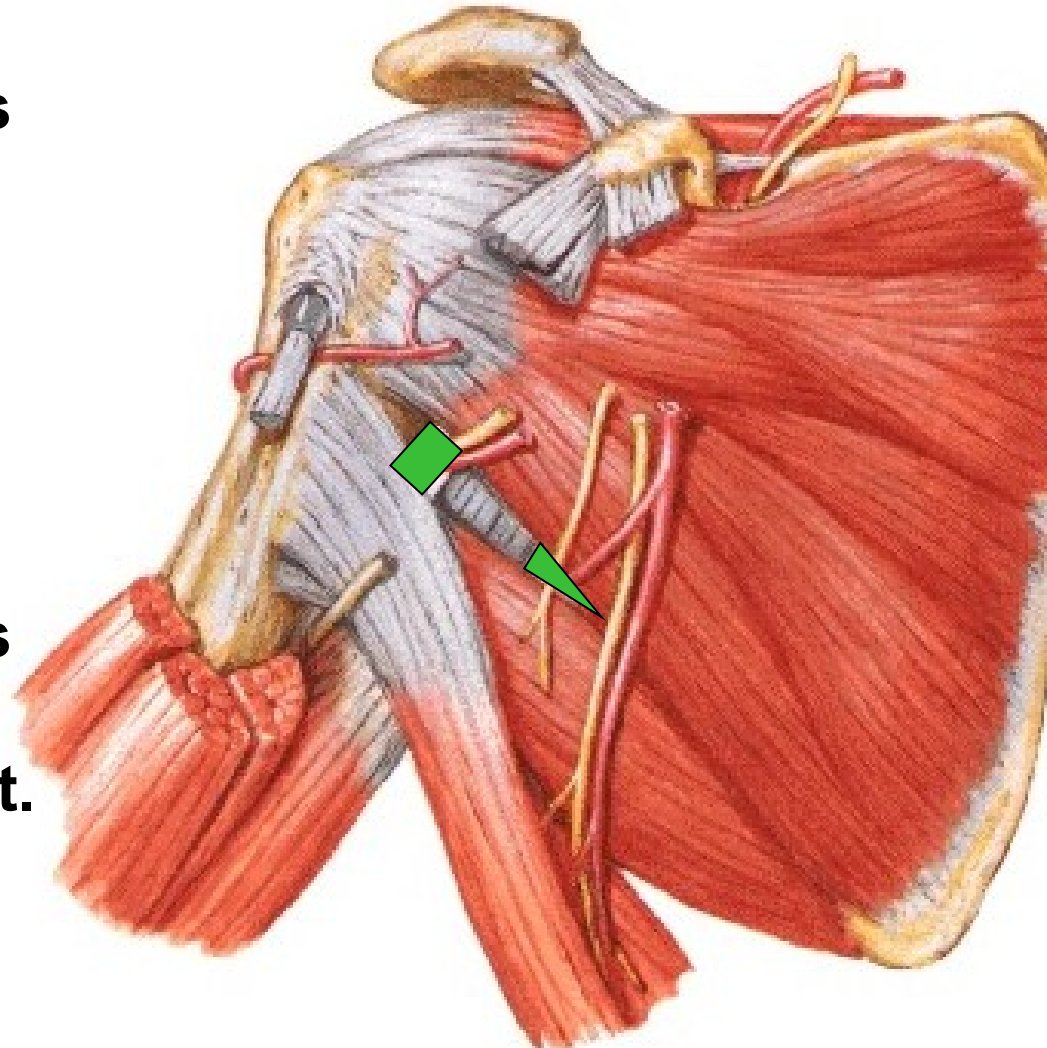
**m. teres major**

**caput longum m. tricipitis**

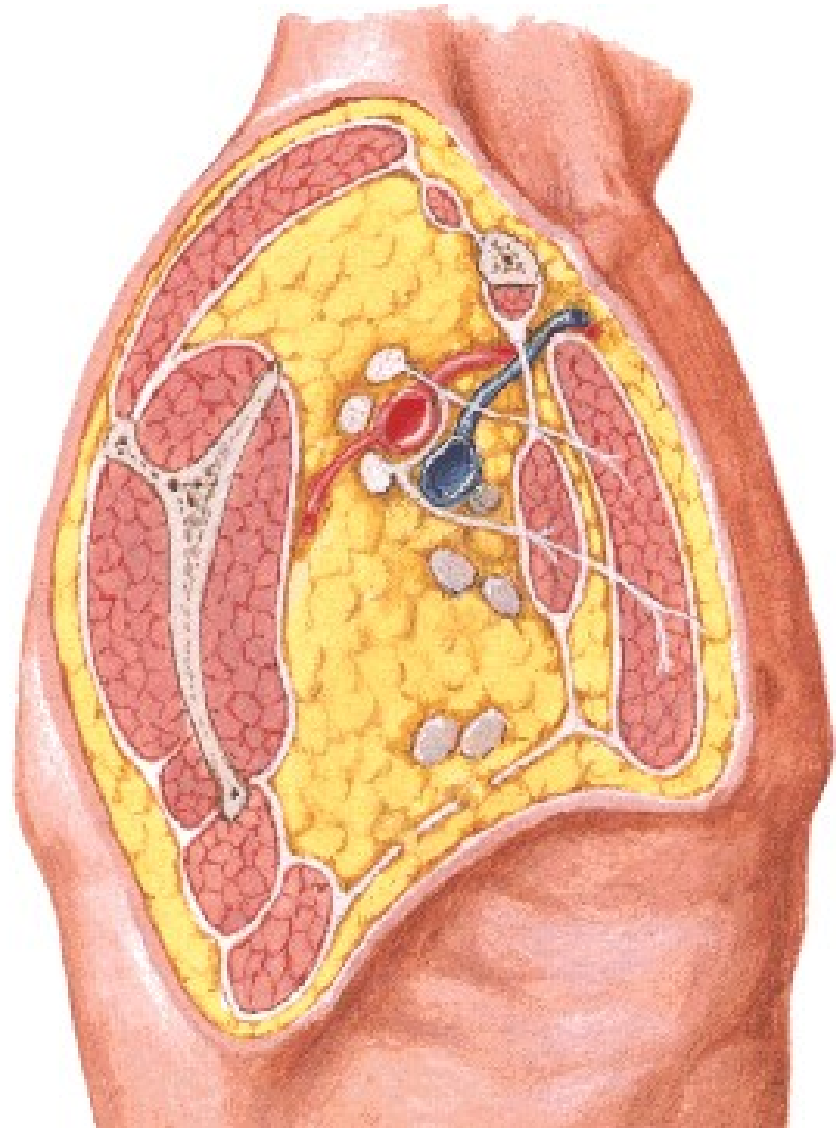
**humerus**

**A. circumflexa humeri post.**

**N. axillaris**



## Floor: Fascia axillaris

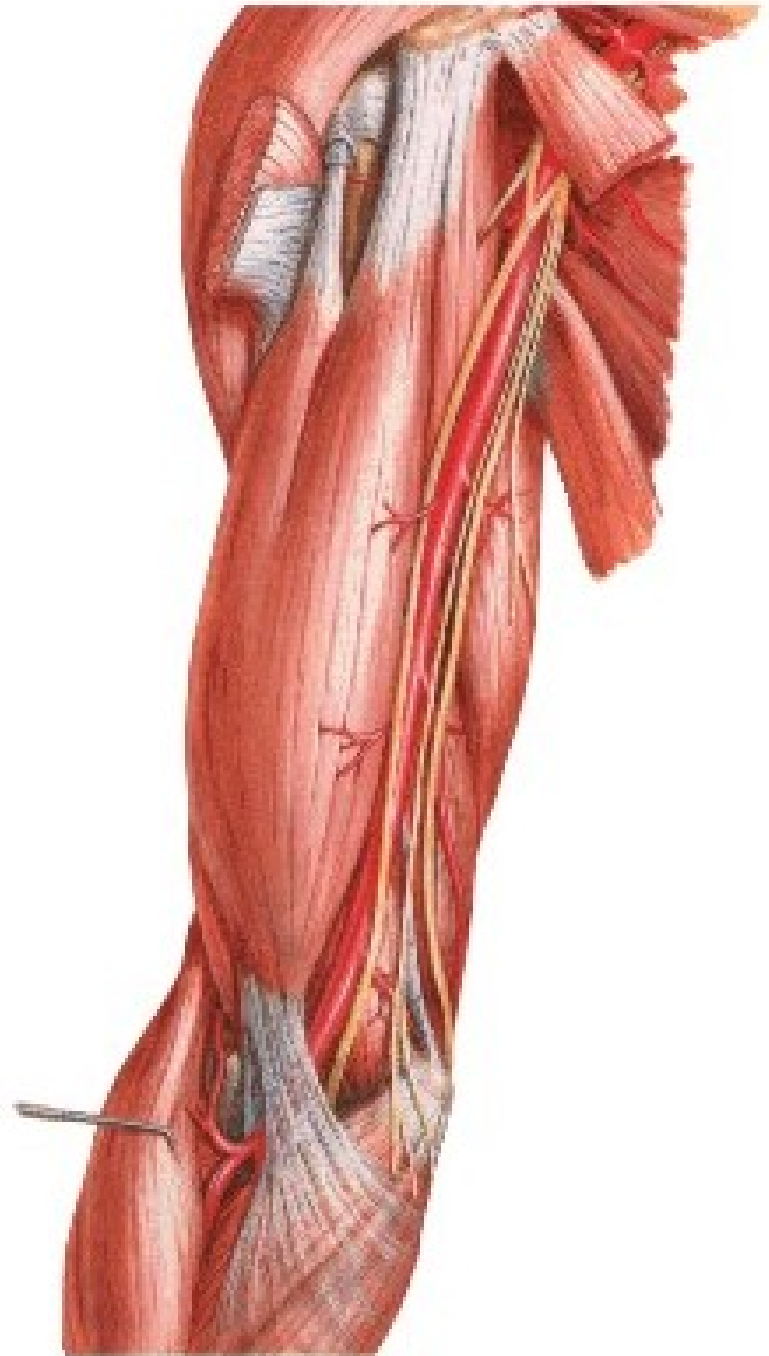




## **Contents:**

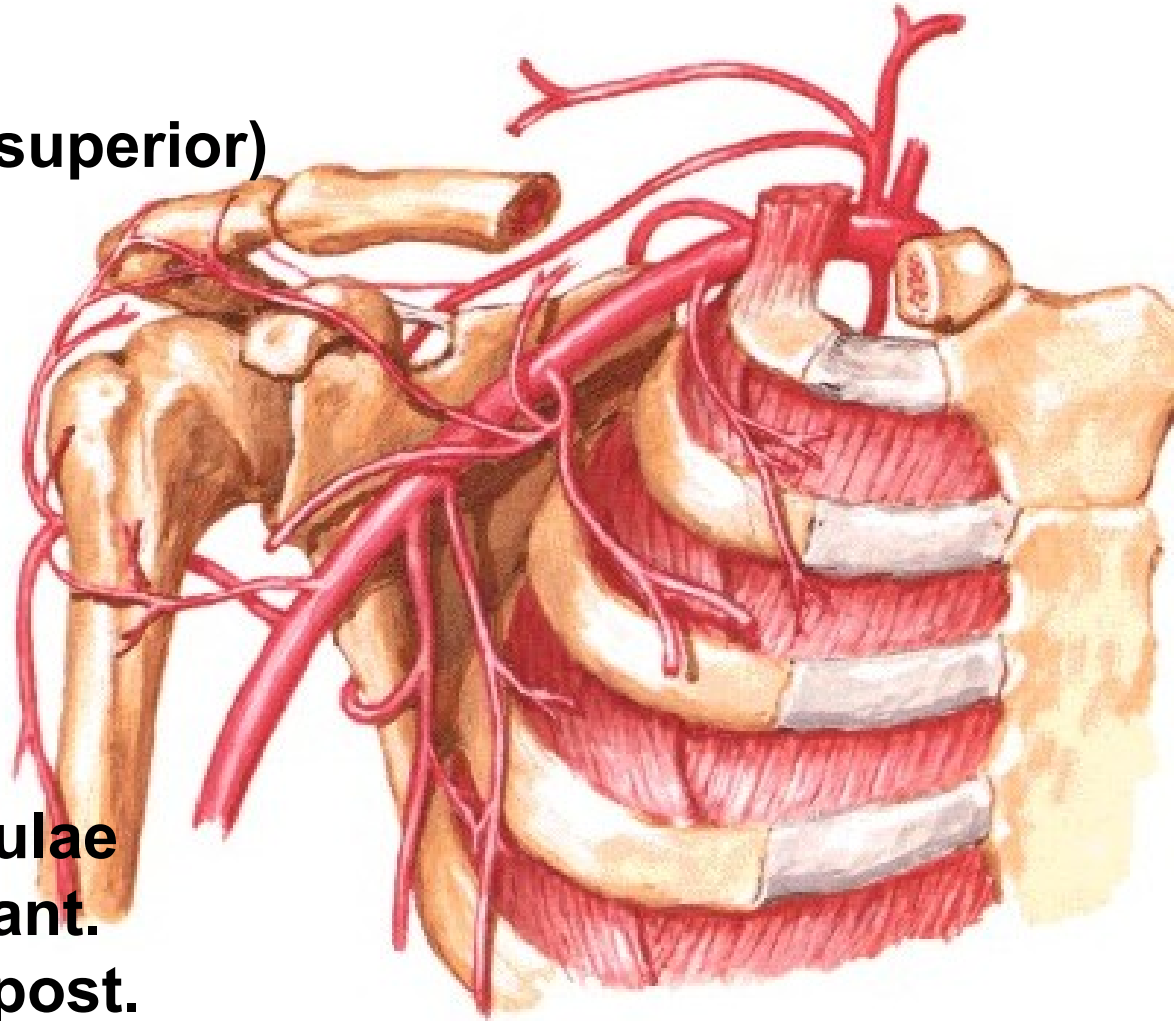
**M. biceps brachii**

**M. coracobrachialis**



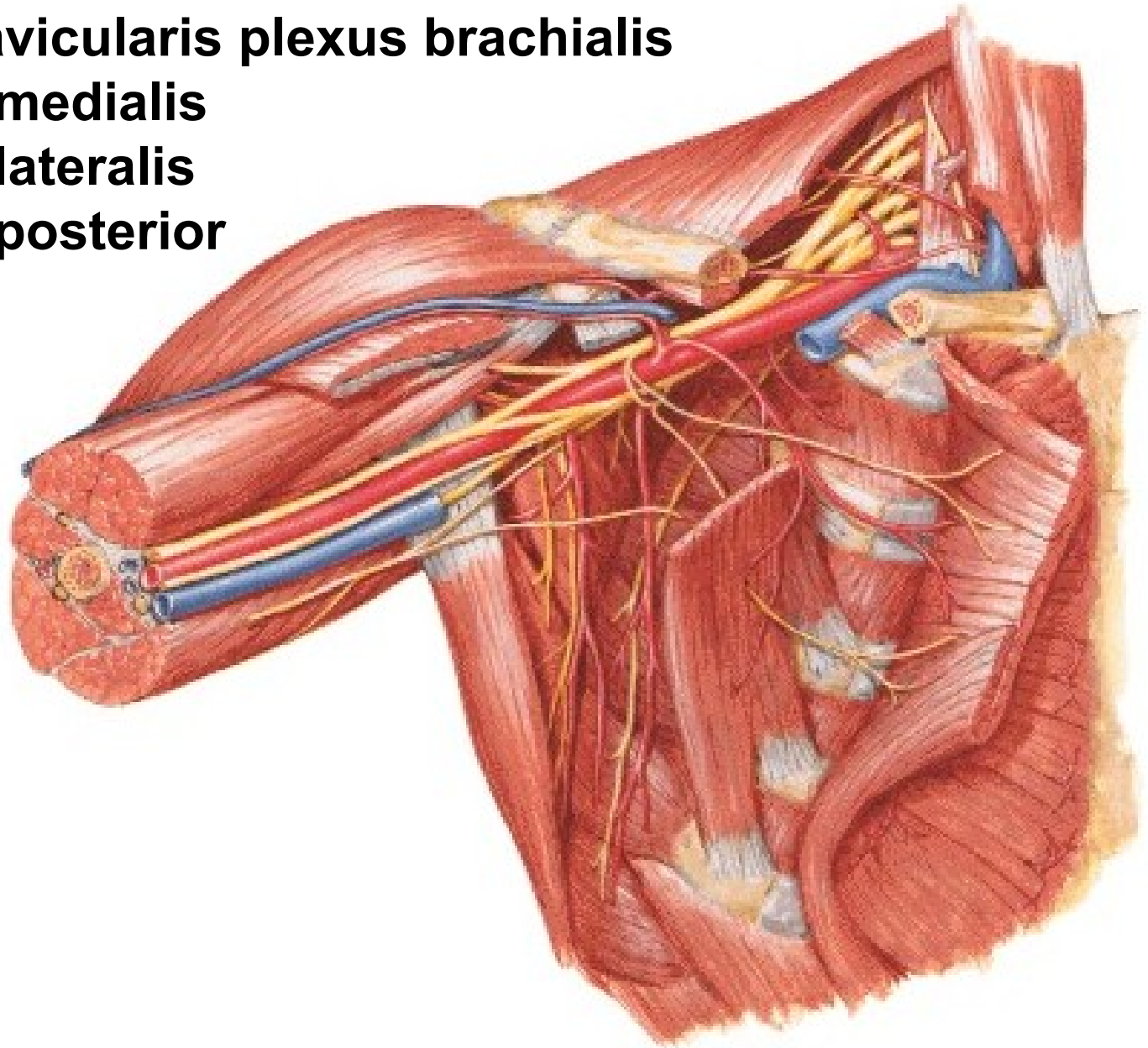
## **A. axillaris**

- rr. subscapulares
- a. thoracica suprema (superior)
- a. thoracoacromialis
  - r. deltoideus
  - r. acromialis
  - rr. pectorales
- a. thoracica lateralis
  - rr. mammarii lat.
- a. subscapularis
  - a. thoracodorsalis
  - a. circumflexa scapulae
- a. circumflexa humeri ant.
- a. circumflexa humeri post.



## **Pars infraclavicularis plexus brachialis**

- fasciculus medialis**
- fasciculus lateralis**
- fasciculus posterior**

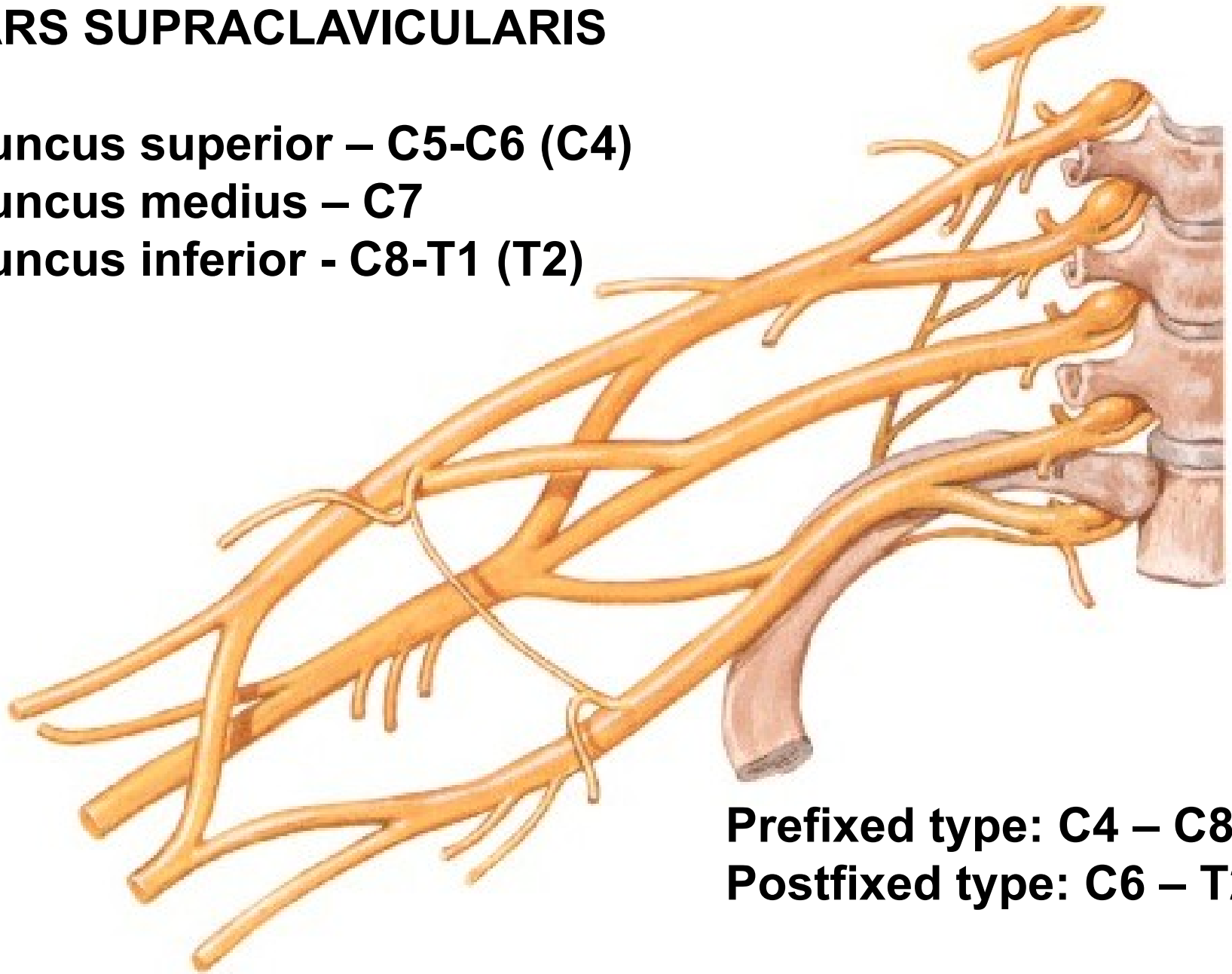


# PARS SUPRACLAVICULARIS

**Truncus superior – C5-C6 (C4)**

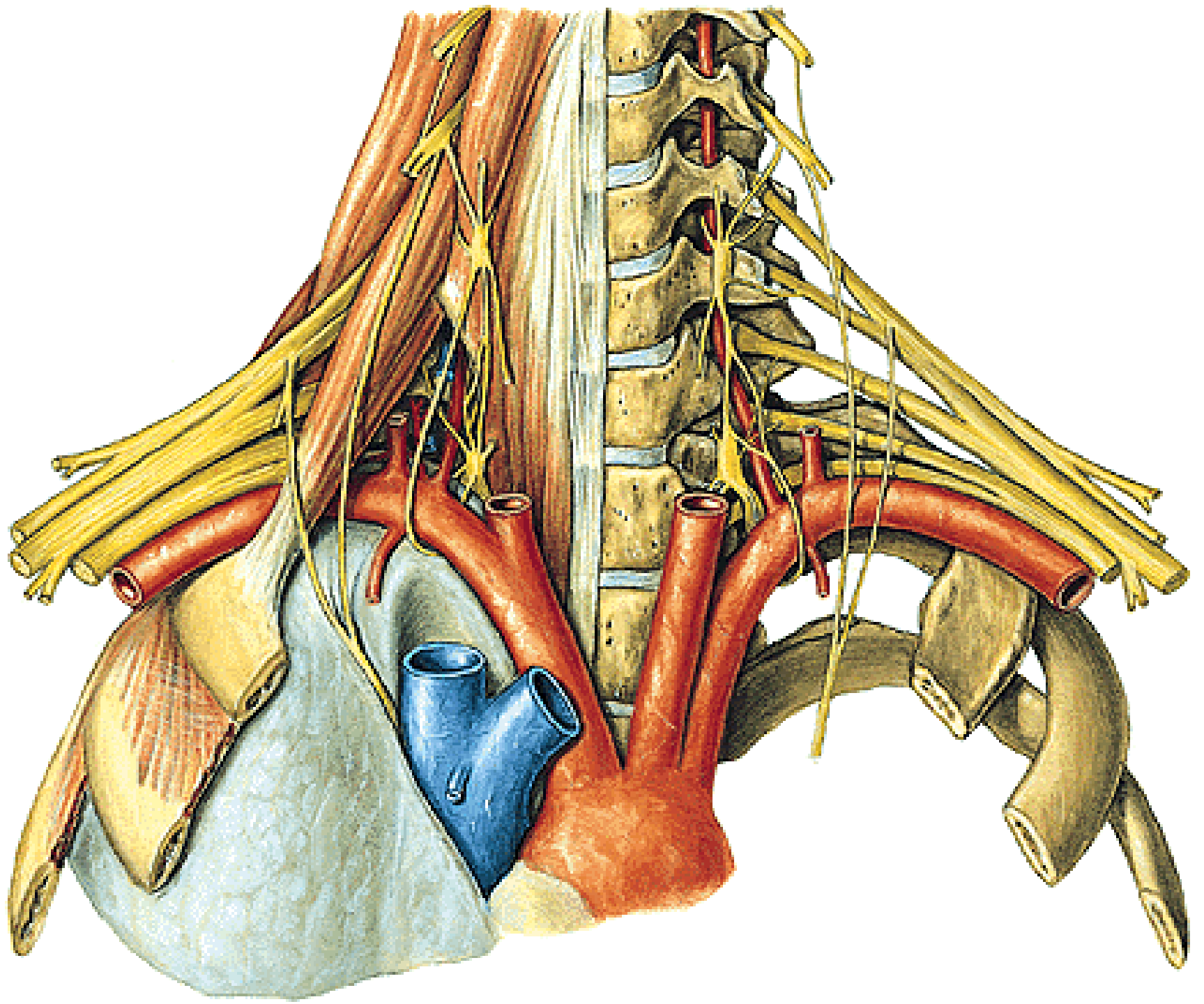
**Truncus medius – C7**

**Truncus inferior - C8-T1 (T2)**



**Prefixed type: C4 – C8**

**Postfixed type: C6 – T2**



# PARS SUPRACLAVICULARIS

**N. dorsalis scapulae (C4, C5)**

- mm. rhomboidei
- m. levator scapulae

**N. thoracicus longus (C5, C6, C7)**

- m. serratus ant.

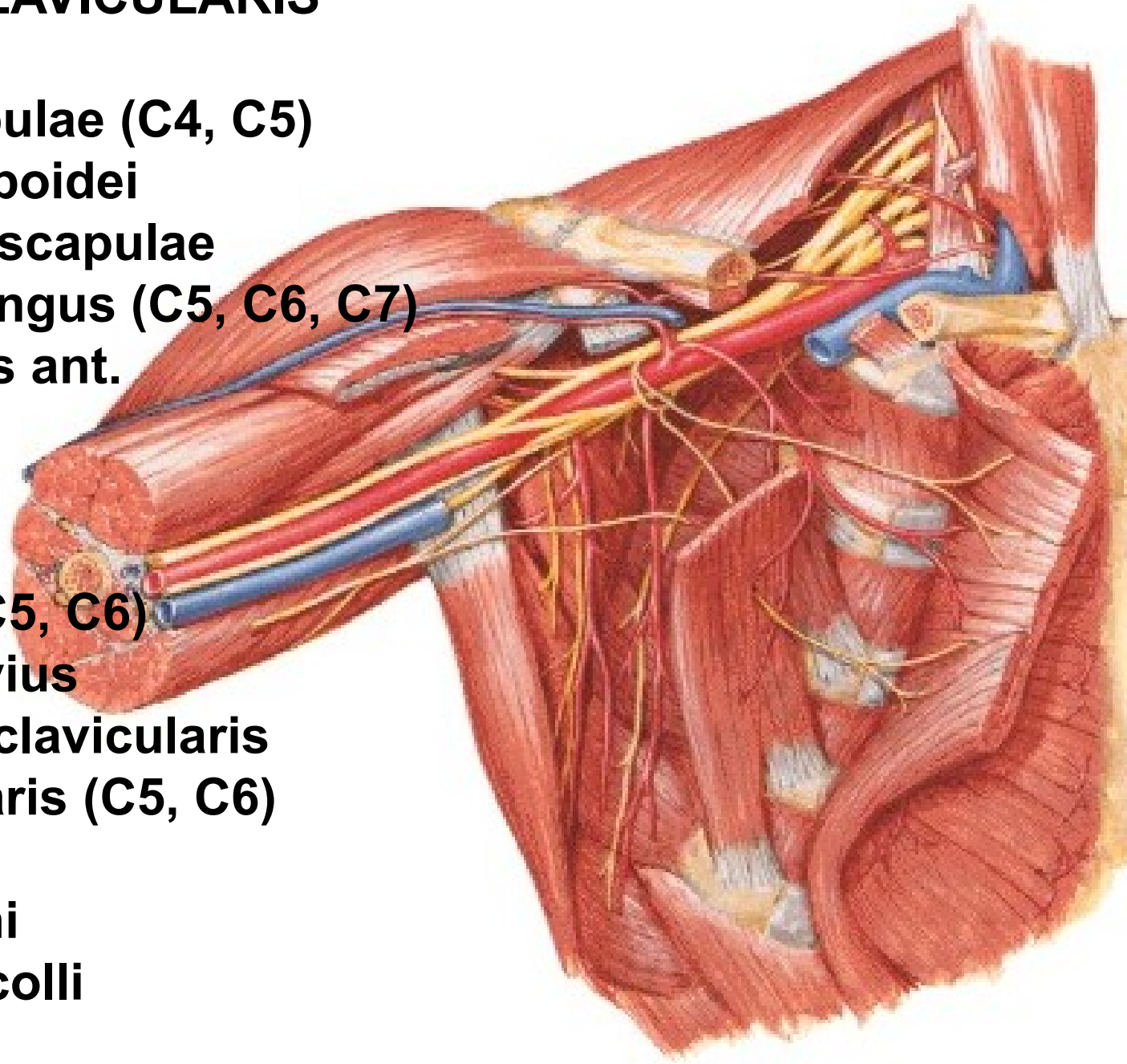
**N. subclavius (C5, C6)**

- m. subclavius
- art. sternoclavicularis

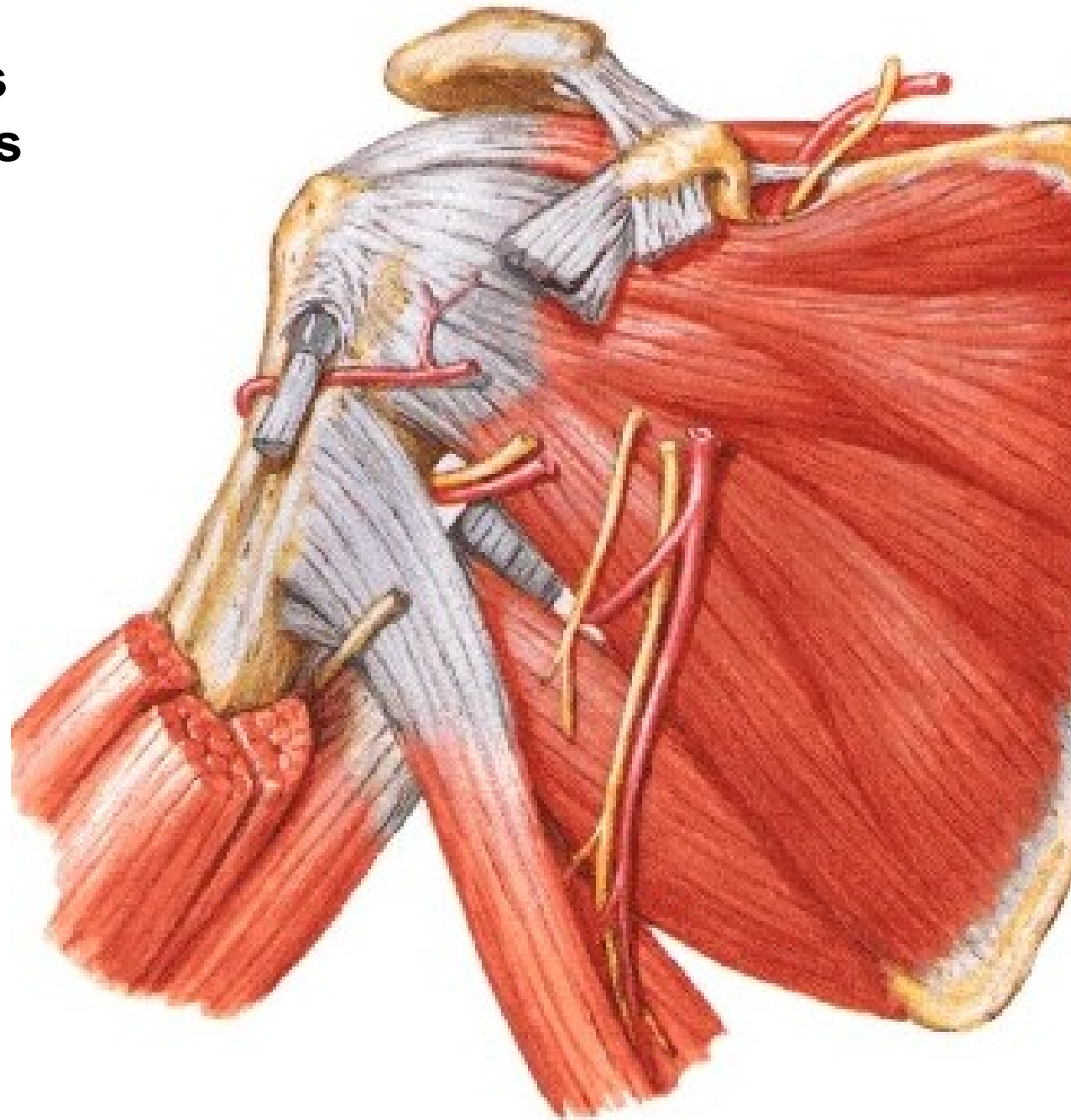
**N. suprascapularis (C5, C6)**

**Rr. musculares**

- mm. scaleni
- m. longus colli



**N suprascapularis**  
**A. suprascapularis**



**N. pectoralis lateralis (C5, C6, C7)**

- mm. pectorales

**N. pectoralis medialis (C8, T1)**

- mm. pectorales

**N. subscapularis sup. (C5)**

- m. subscapularis

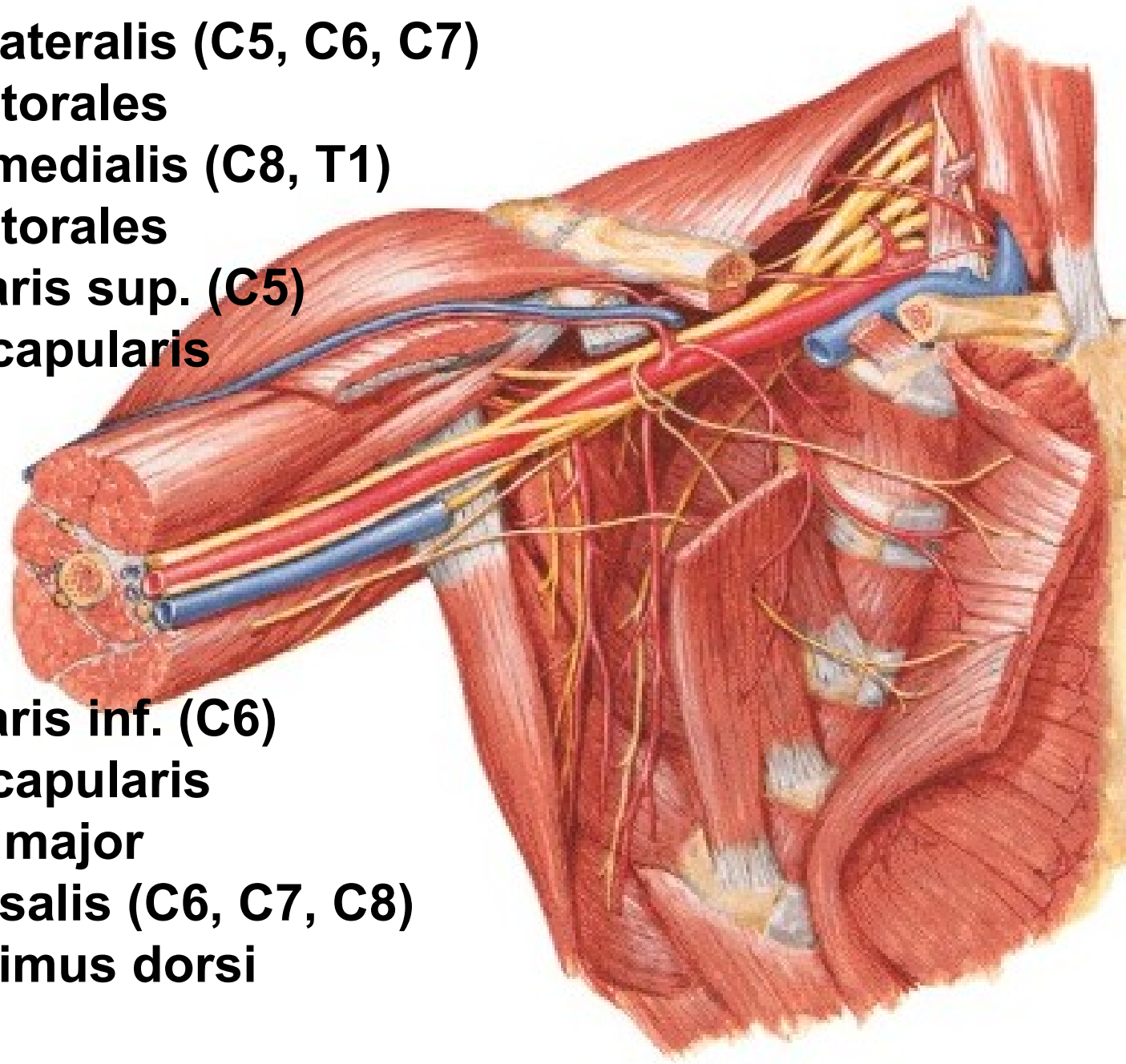
**N. subscapularis inf. (C6)**

- m. subscapularis

- m. teres major

**N. thoracodorsalis (C6, C7, C8)**

- m. latissimus dorsi





**PARS INFRACLAVICULARIS**  
(terminal branches)

**Fasciculus lateralis**

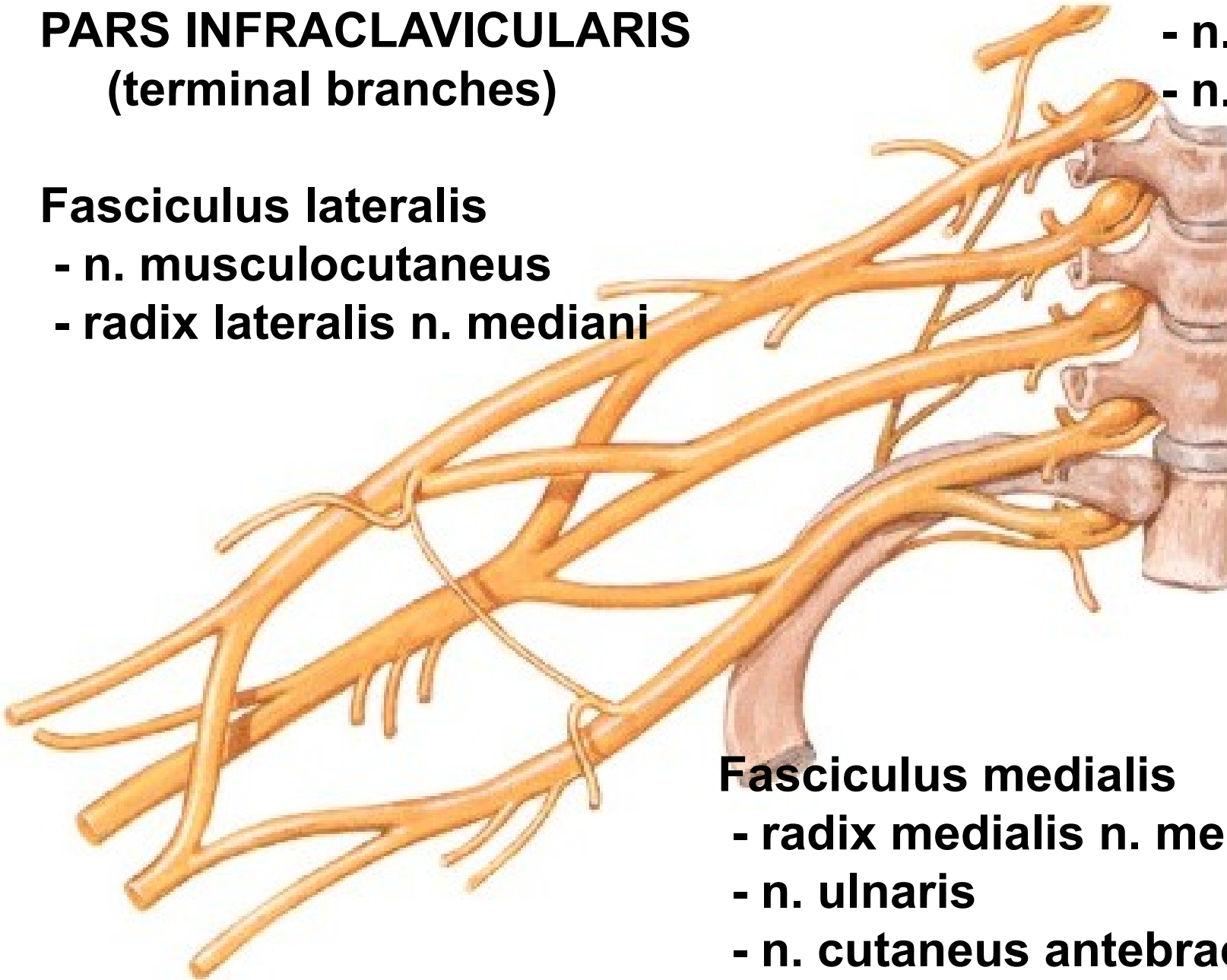
- n. musculocutaneus
- radix lateralis n. mediani

**Fasciculus posterior**

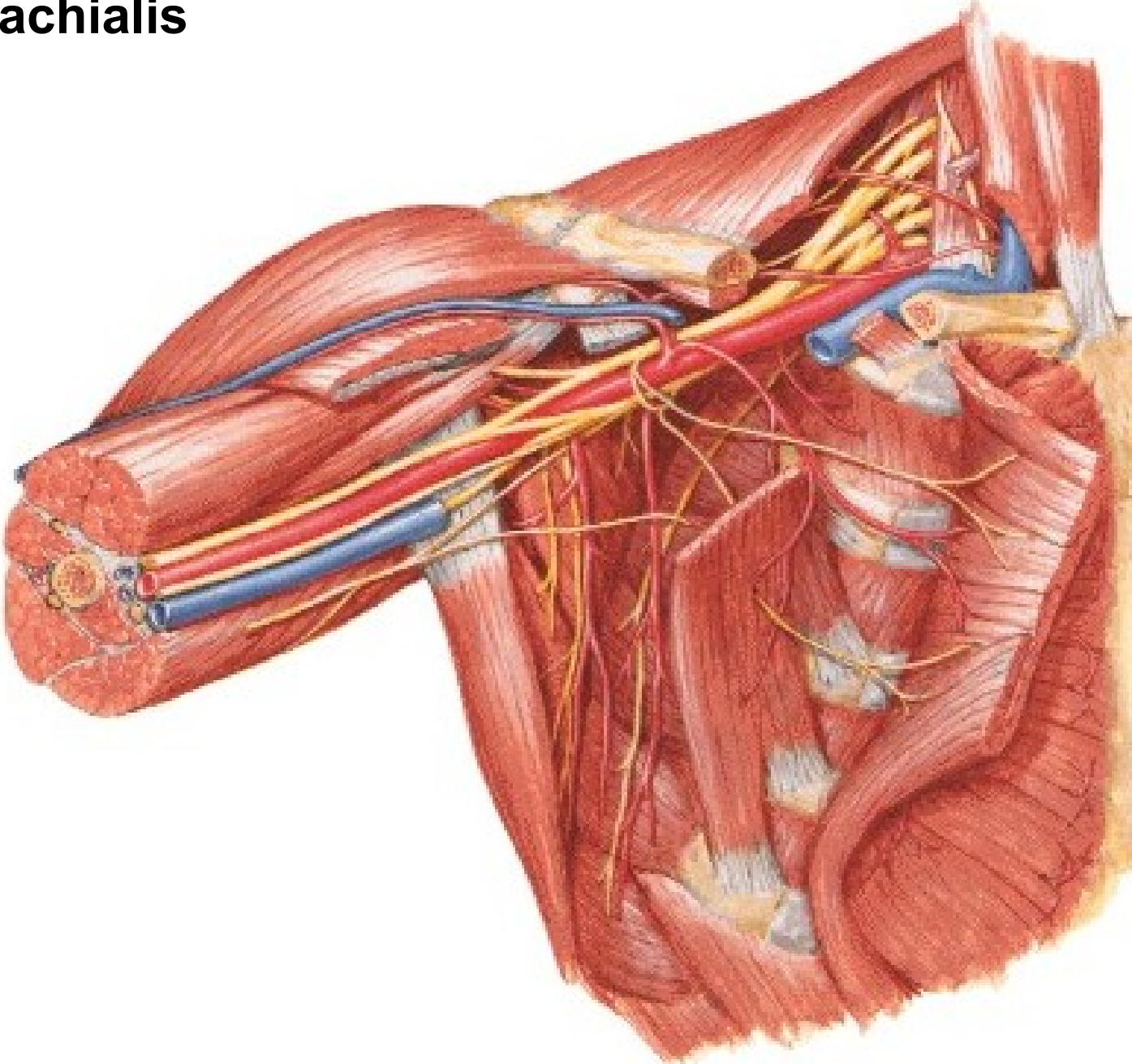
- n. axillaris
- n. radialis

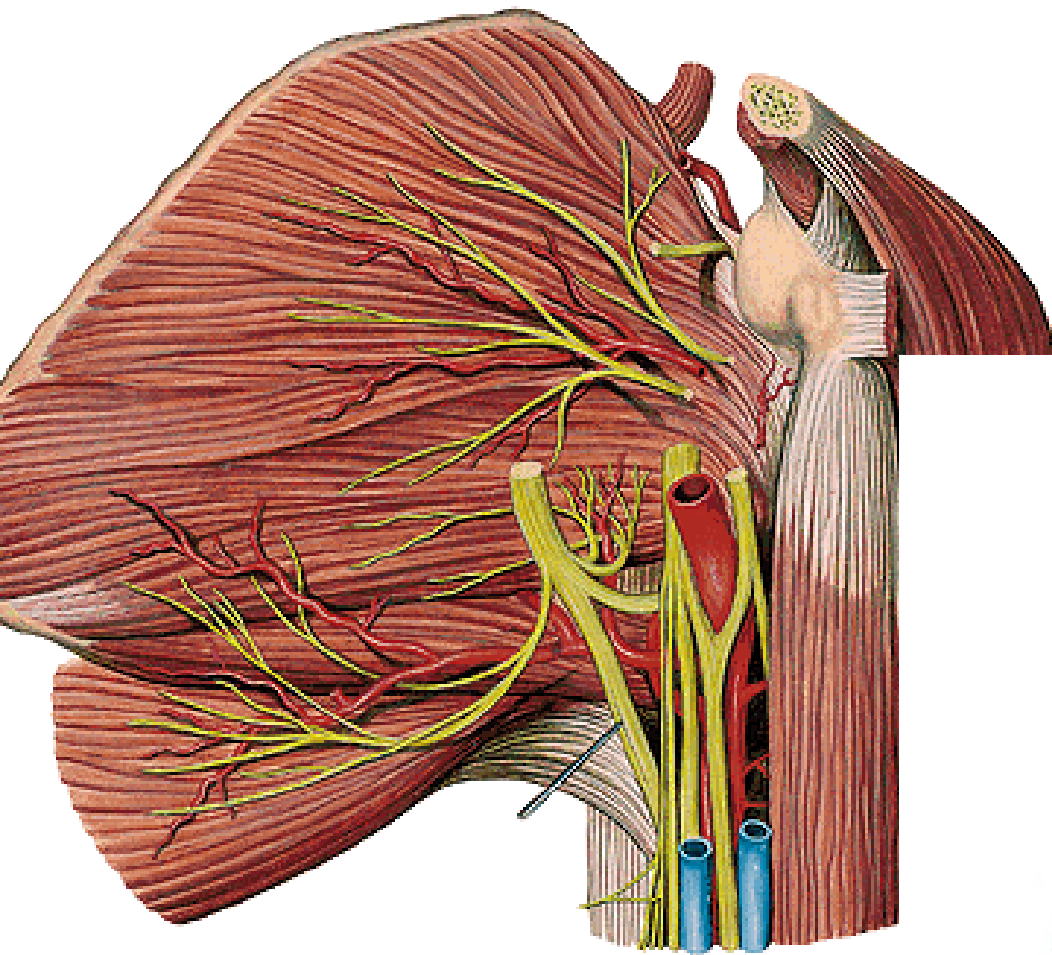
**Fasciculus medialis**

- radix medialis n. mediani
- n. ulnaris
- n. cutaneus antebrachii med.
- n. cutaneus brachii medialis

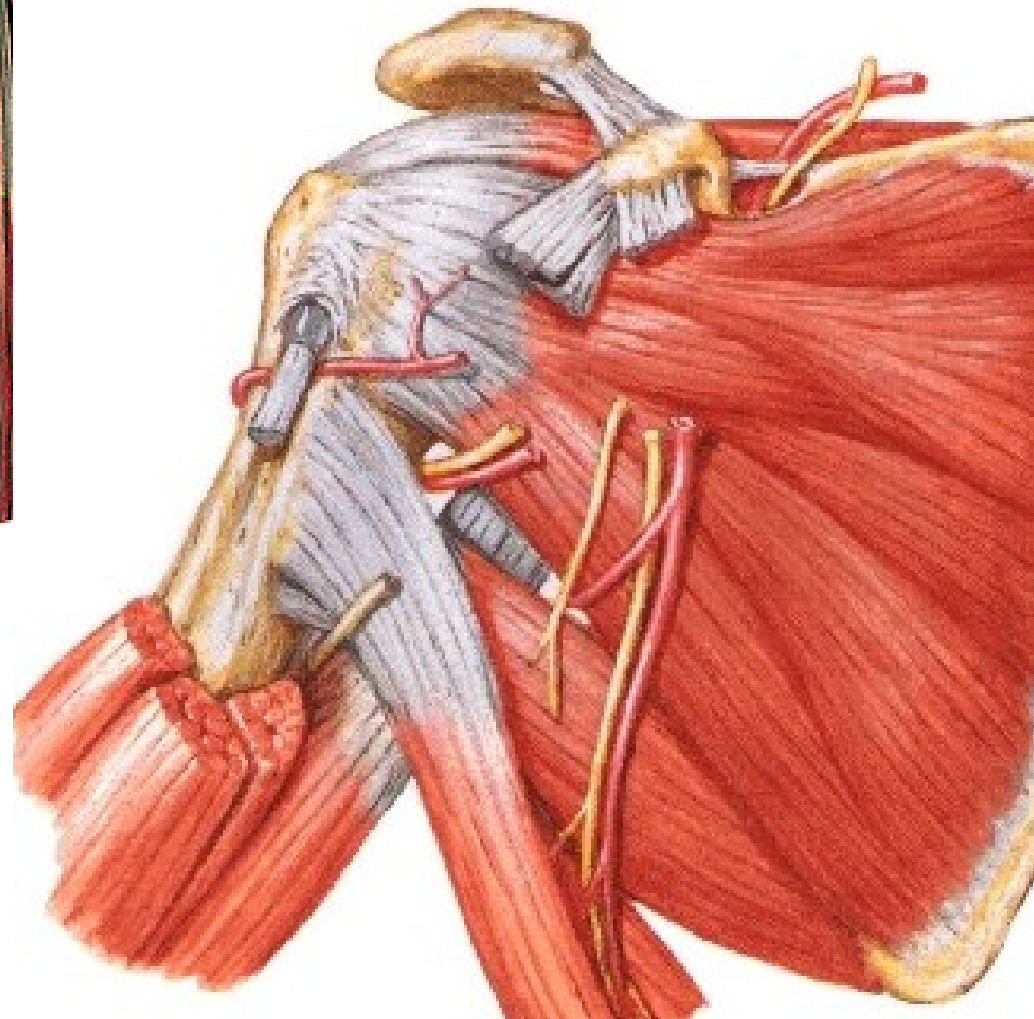


**N. intercostobrachialis**





**N. axillaris**

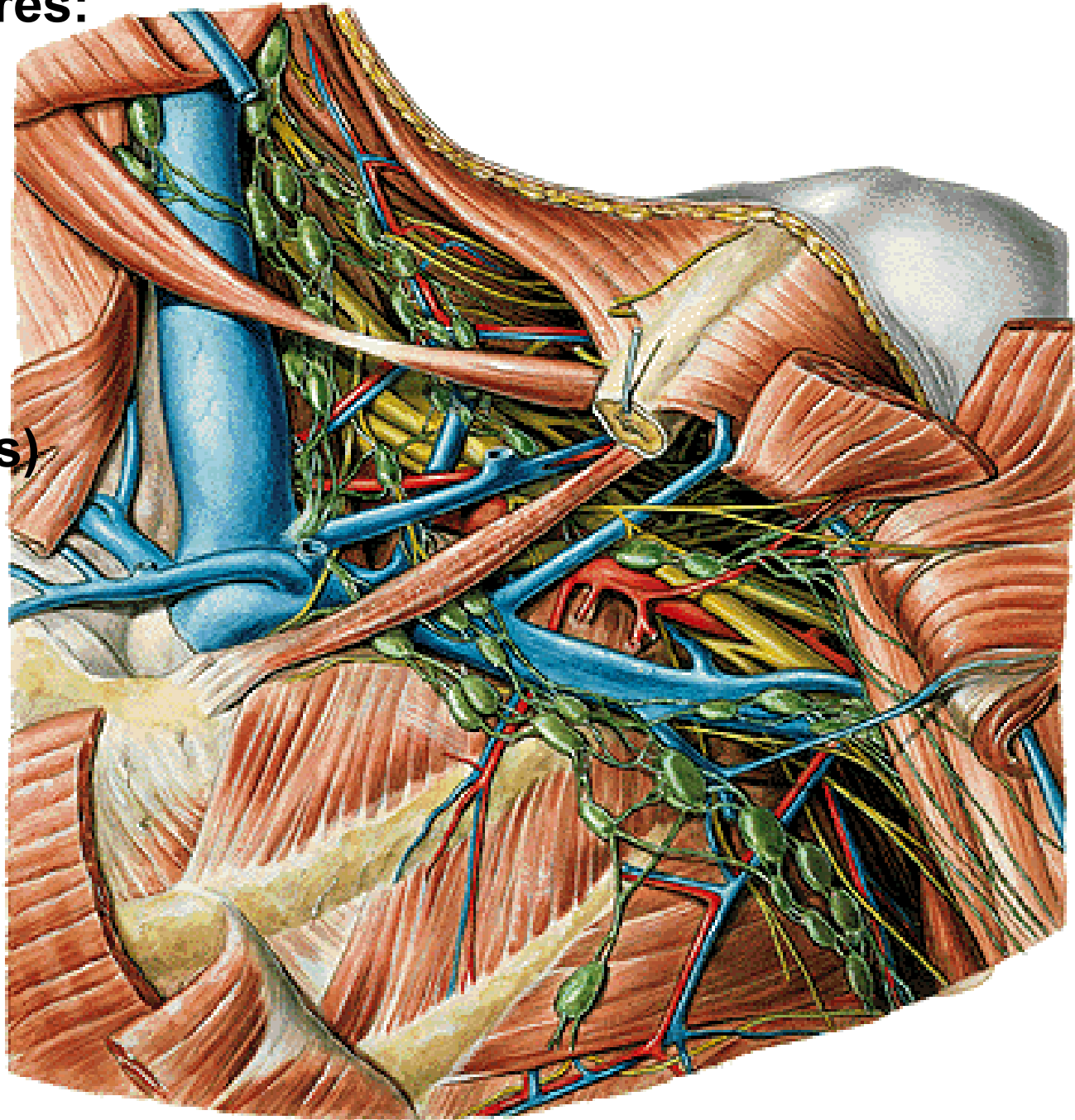


**N. radialis**

## **Nodi lymph. axillares:**

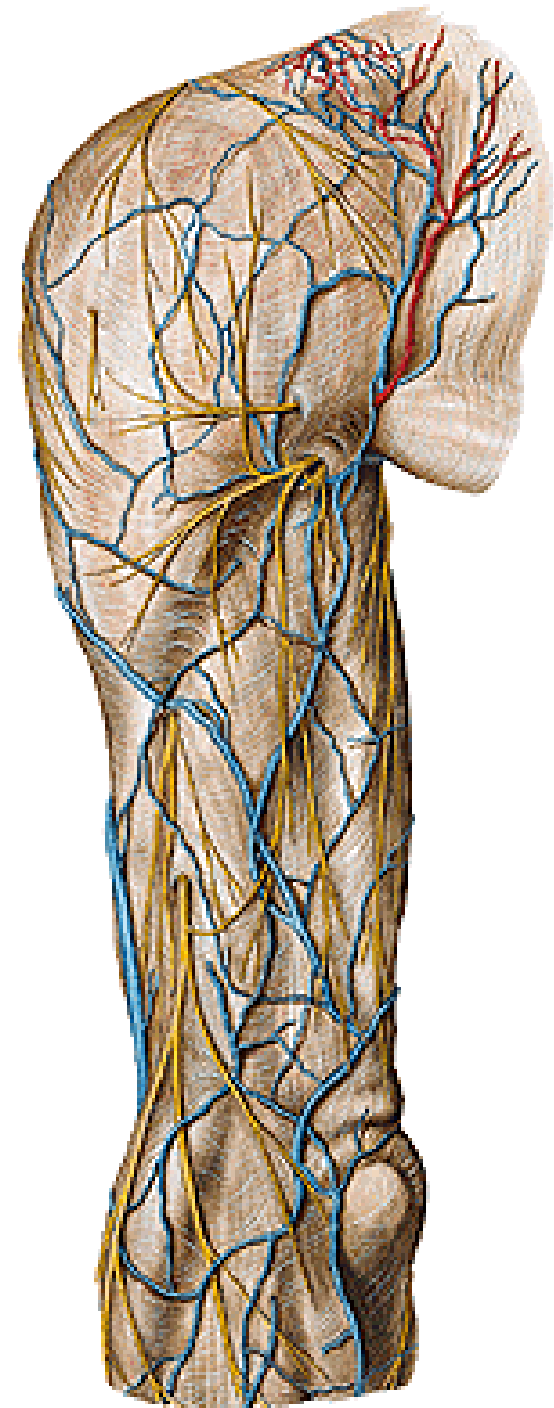
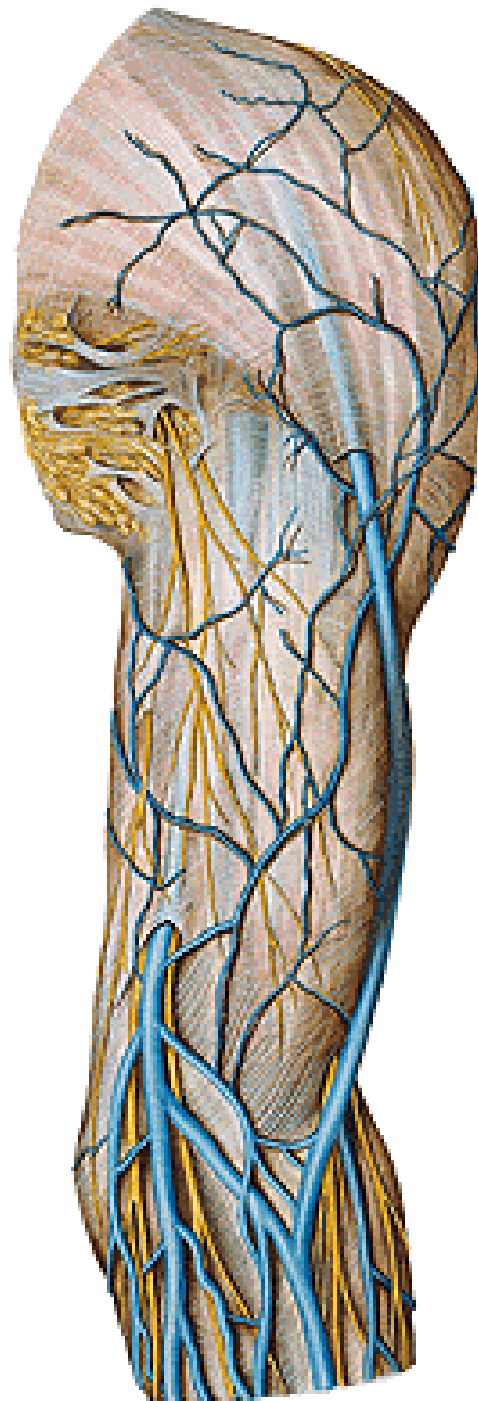
- laterales**
- pectorales (Sorgius)**
- subscapulares**
- centrales**
- apicales (infraclaviculares)**

**→ tr. subclavius**

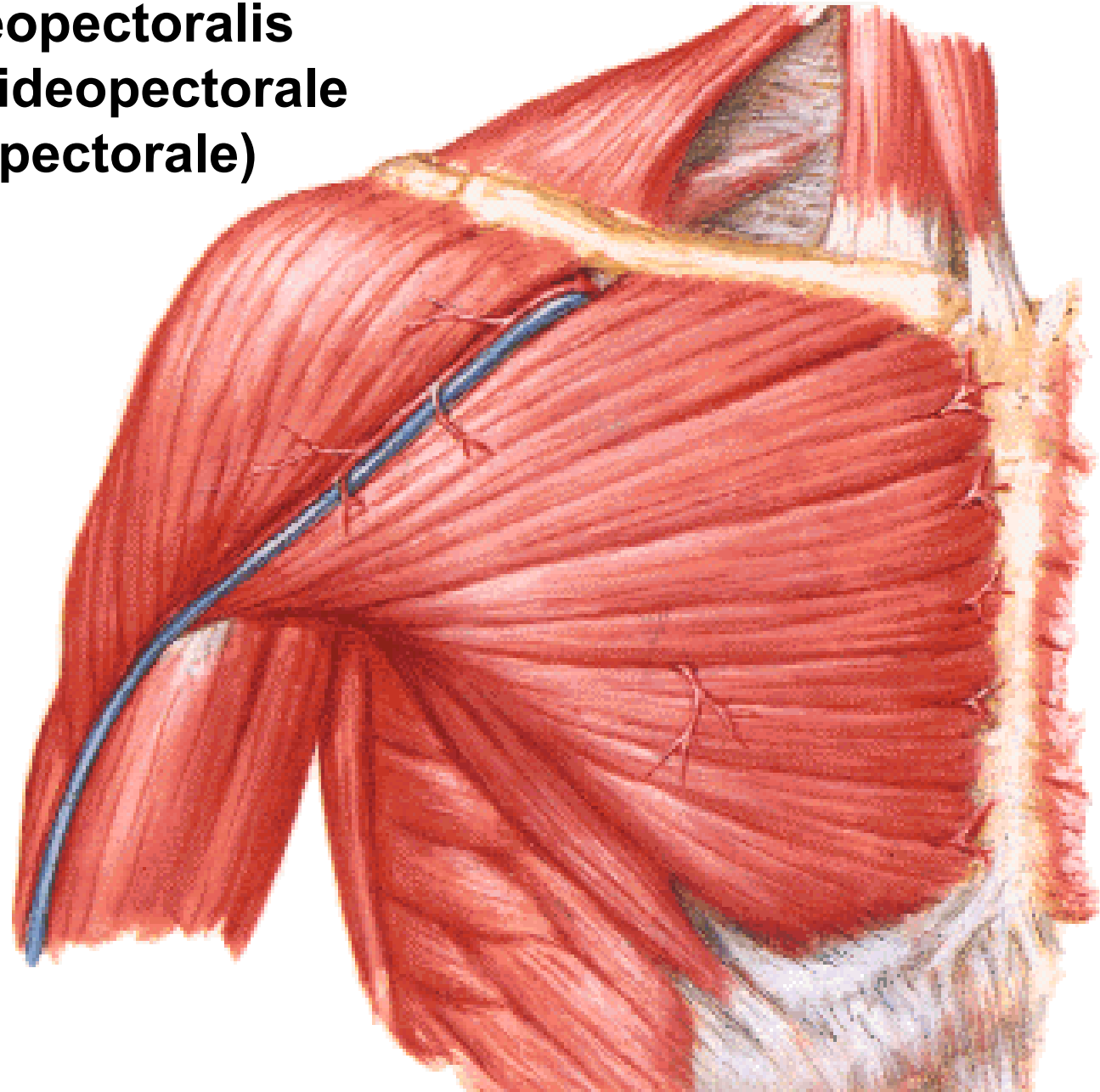


**Regio deltoidea**

**N. cut. brachii lat. sup.**  
**Nn. supraclaviculares**  
**V. cephalica**

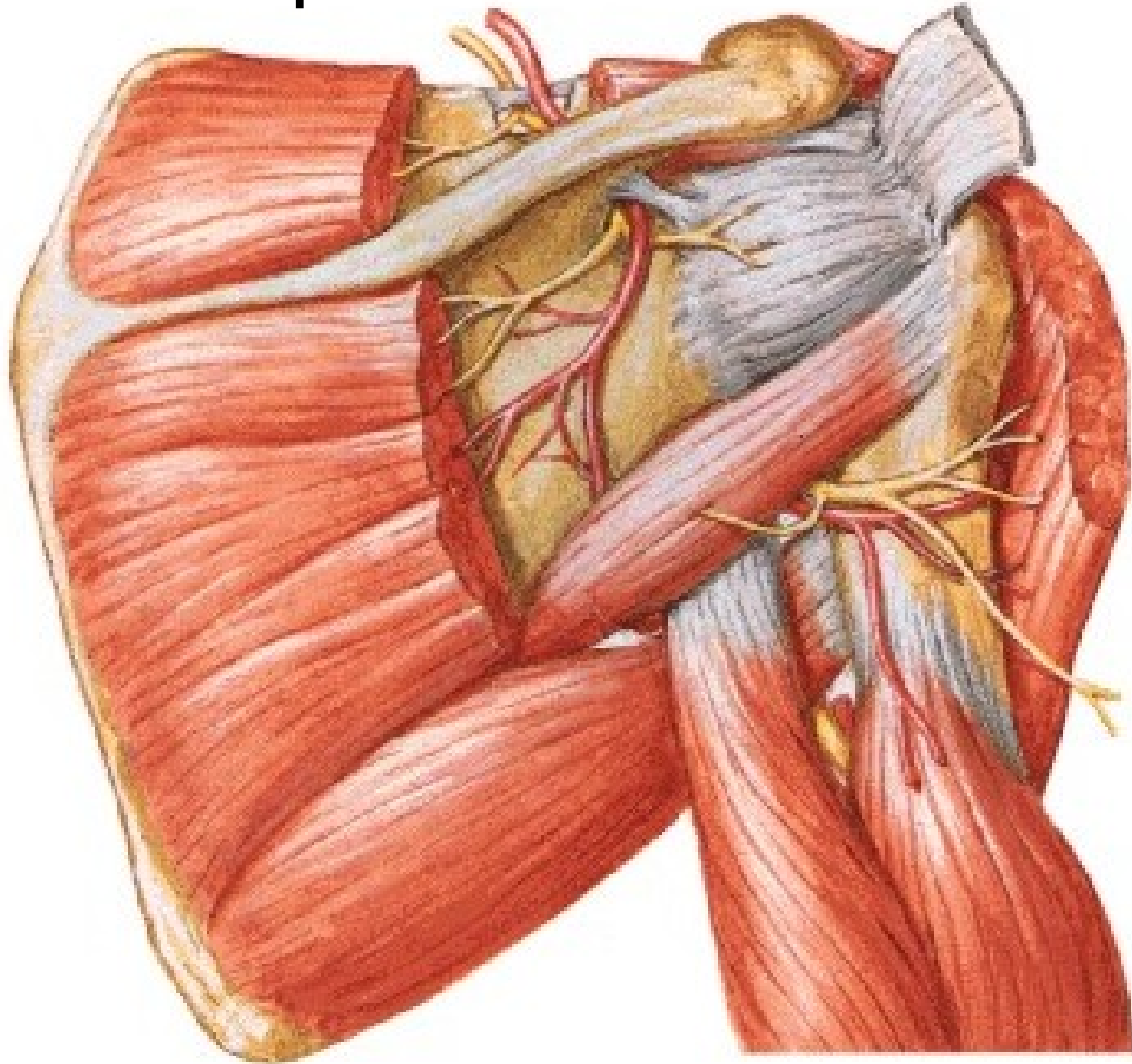


**Sulcus deltoideopectoralis**  
**Trigonum deltoideopectorale**  
**(clavipectorale)**



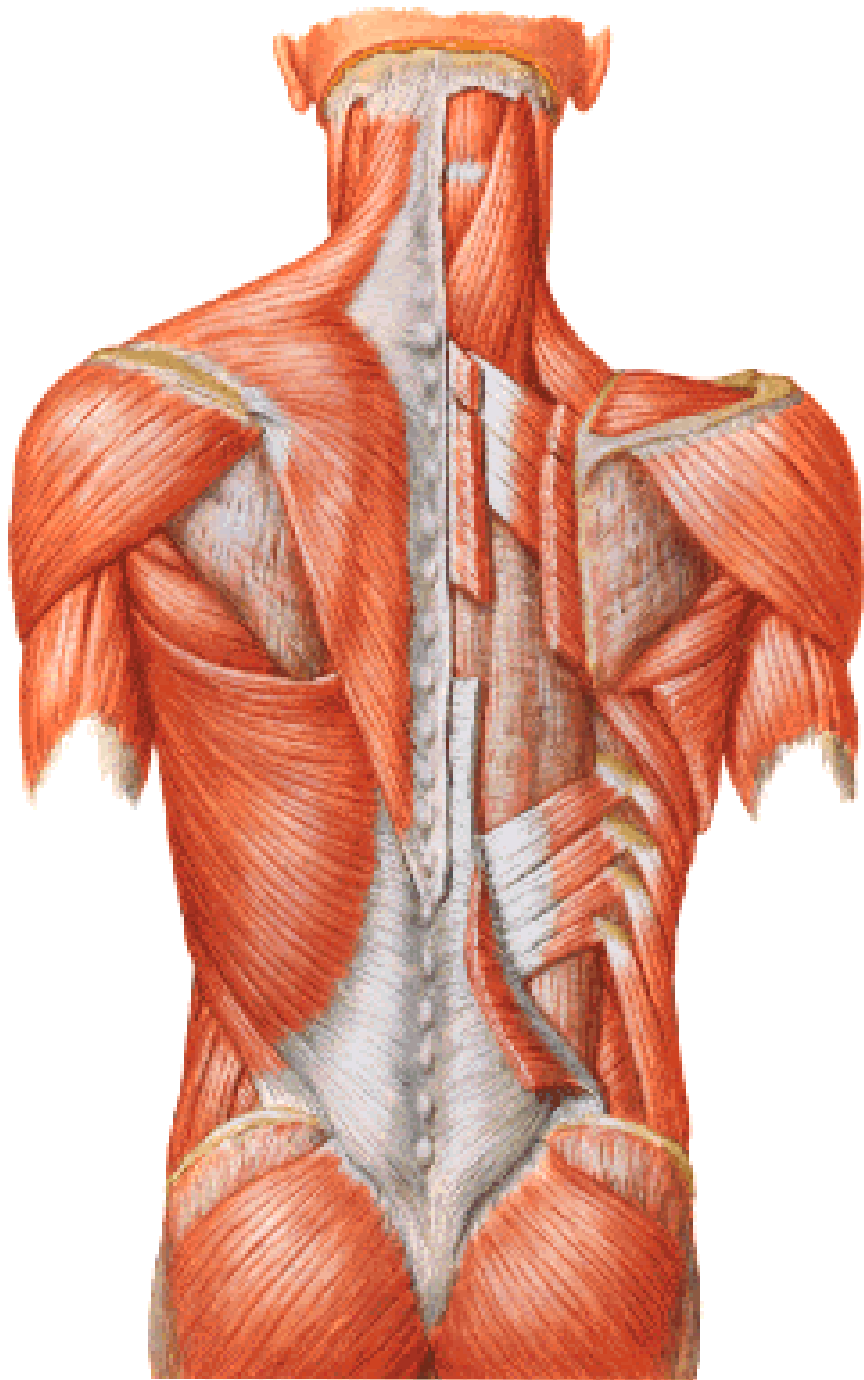
**M. deltoideus (n. axillaris)**

**A. circumflexa humeri post. et ant.**

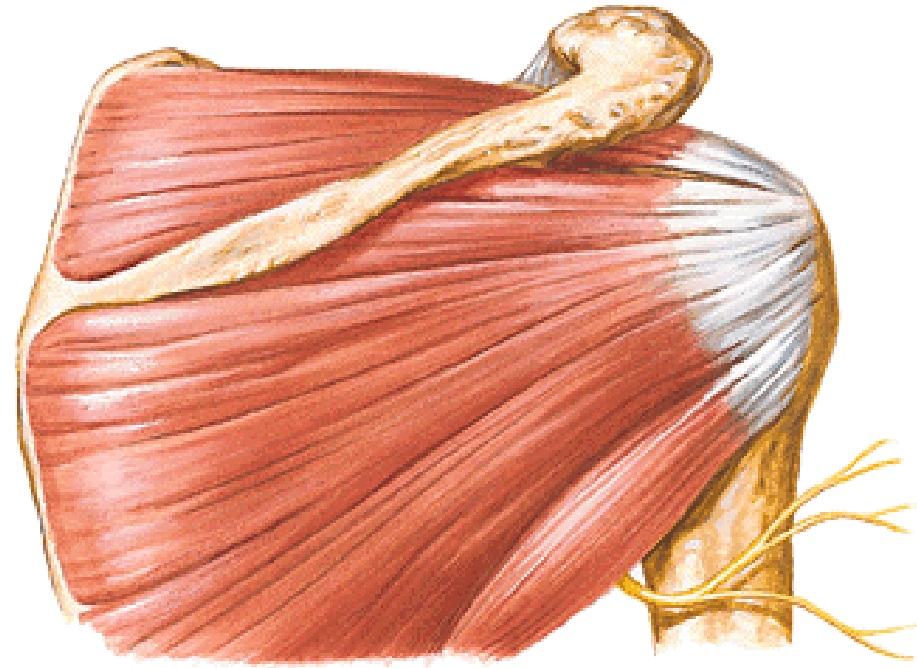




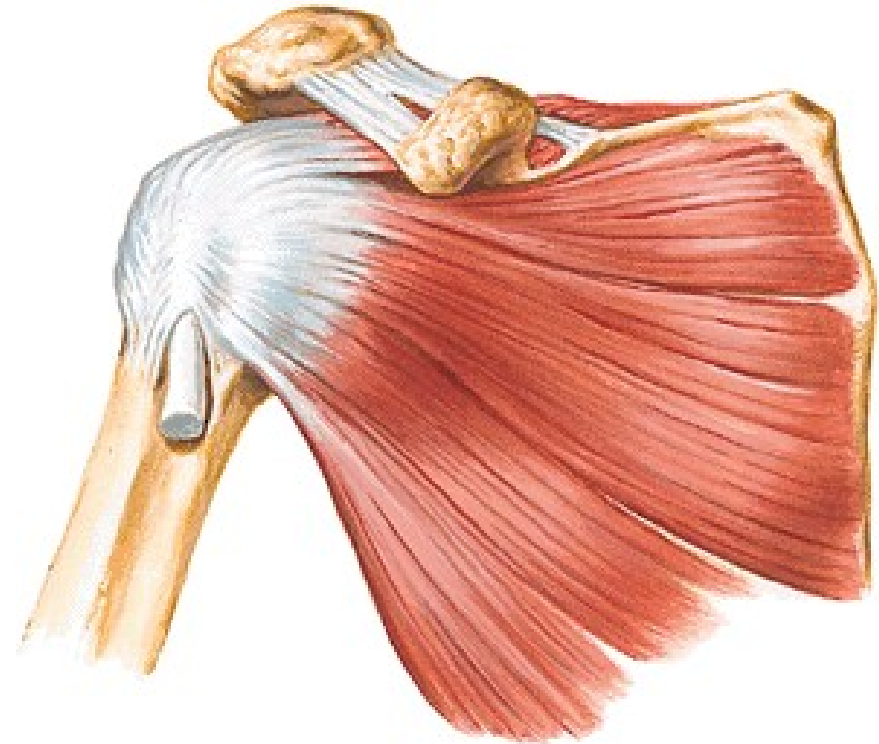
# **Regio scapularis**



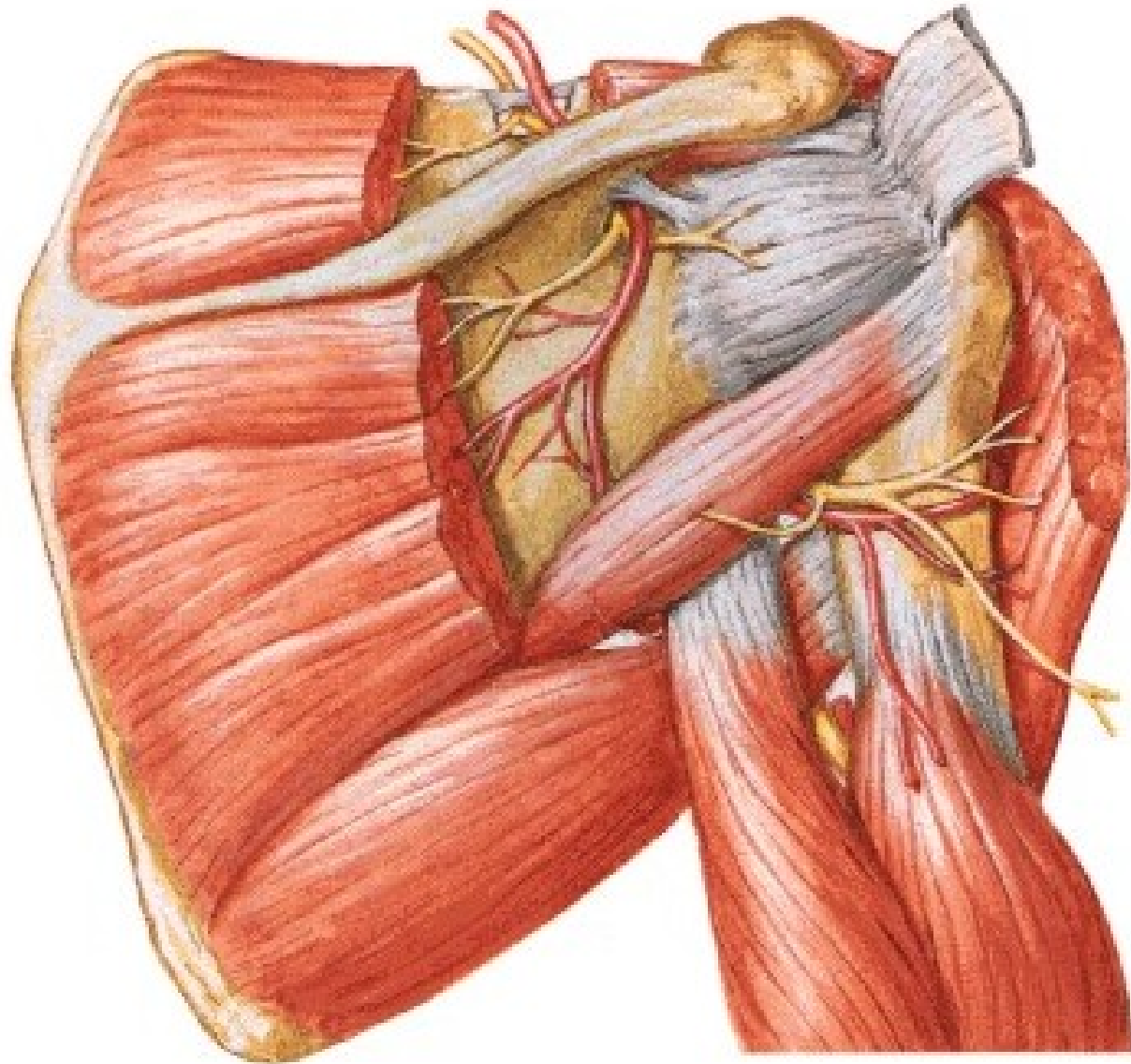
**M. supraspinatus**  
**M. infraspinatus**  
**M. teres minor**  
**M. teres major**



**M. subscapularis**

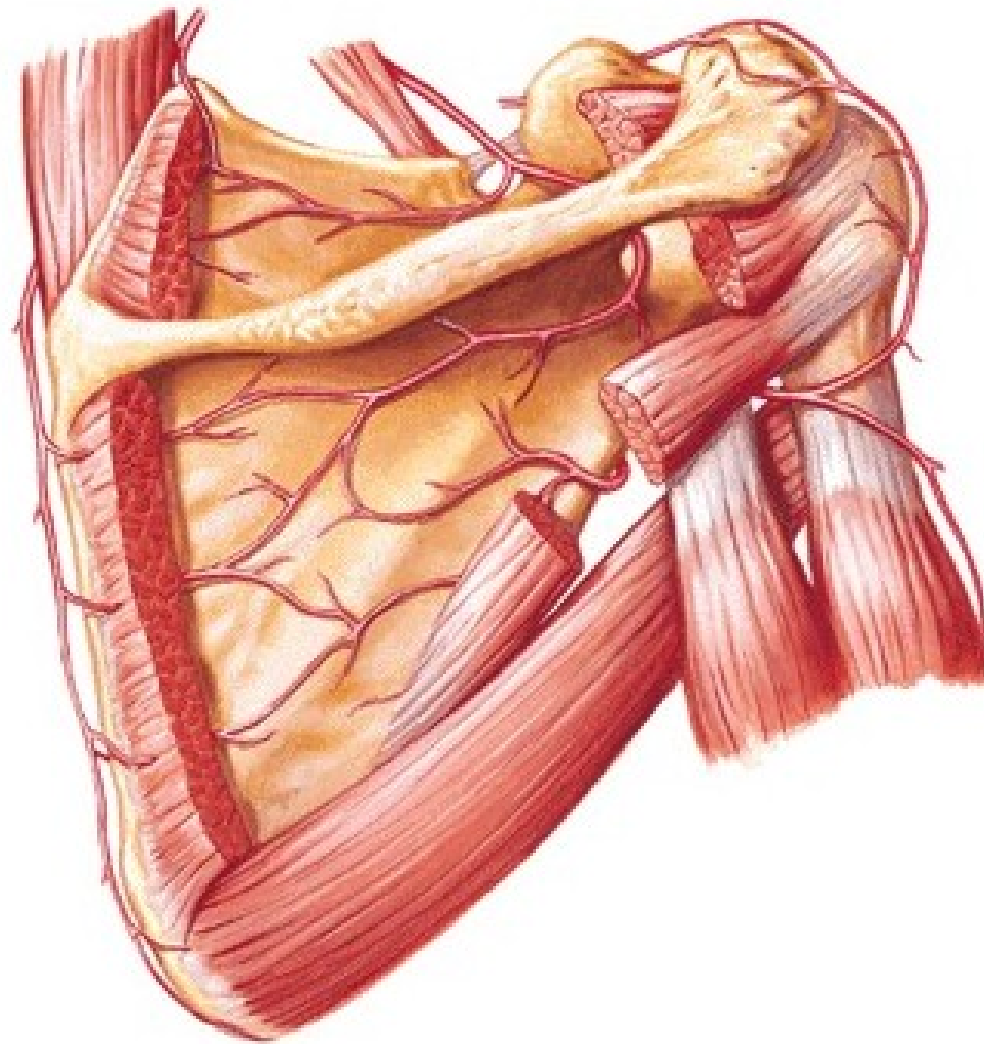
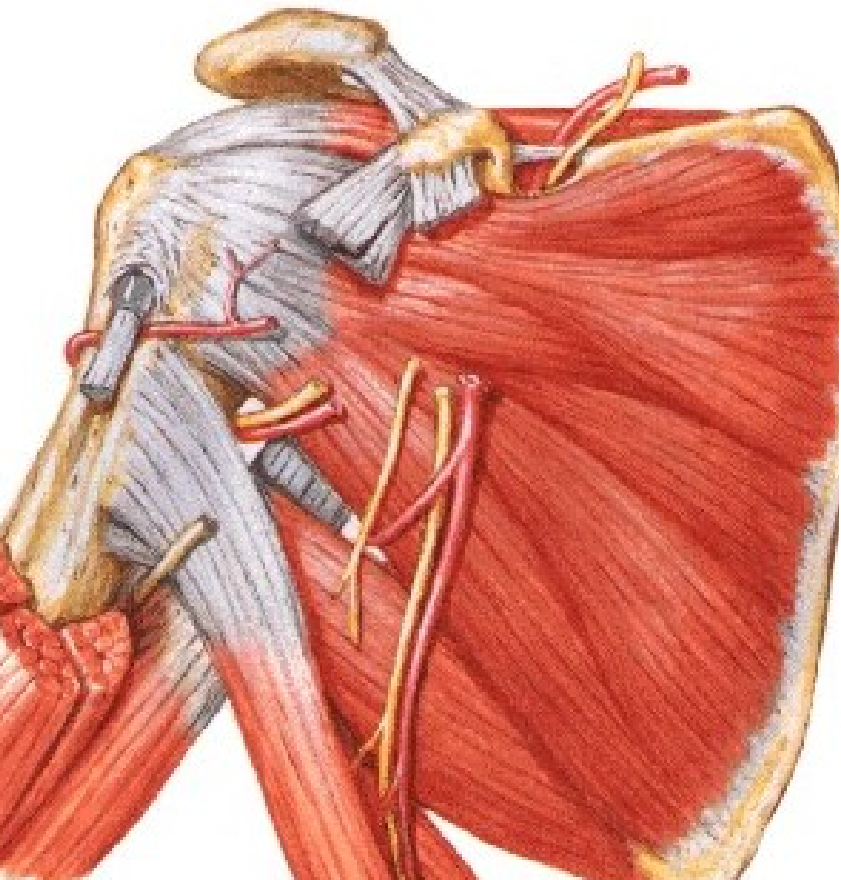


**N. suprascapularis**  
**N. axillaris**

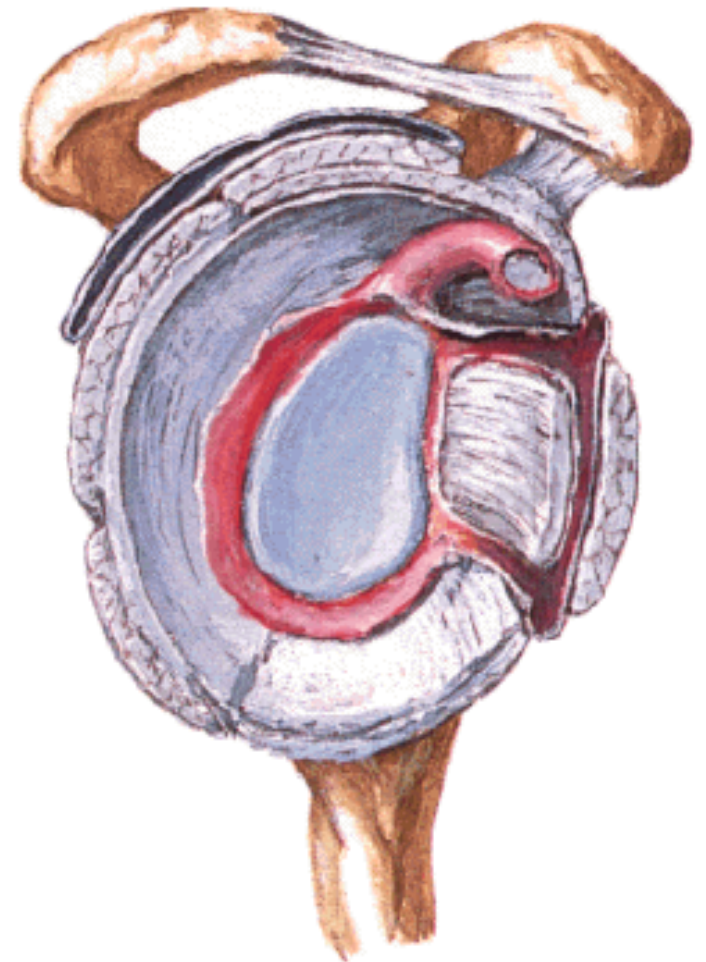
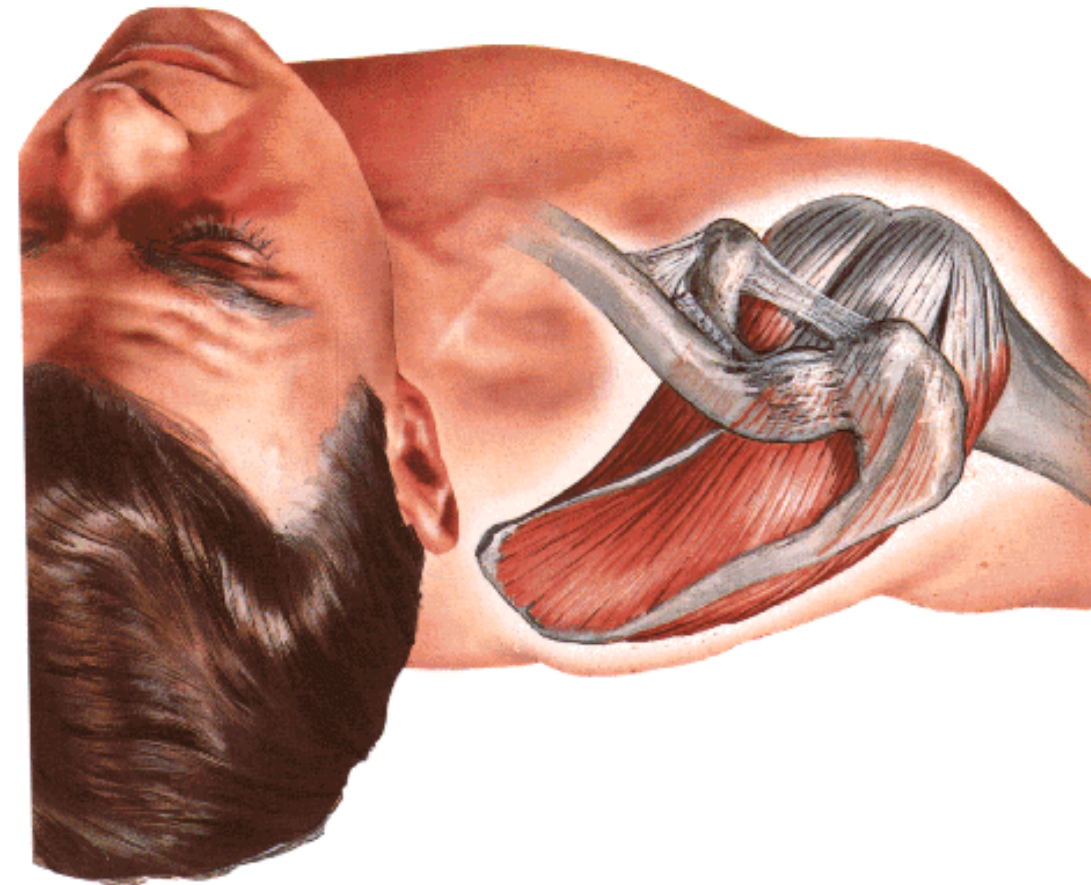


# ARTERIAL ANASTOMOSES AROUND THE SCAPULA

- A. transversa colli**
- A. suprascapularis**
- A. circumflexa scapulae**
- A. circumflexa humeri post.**

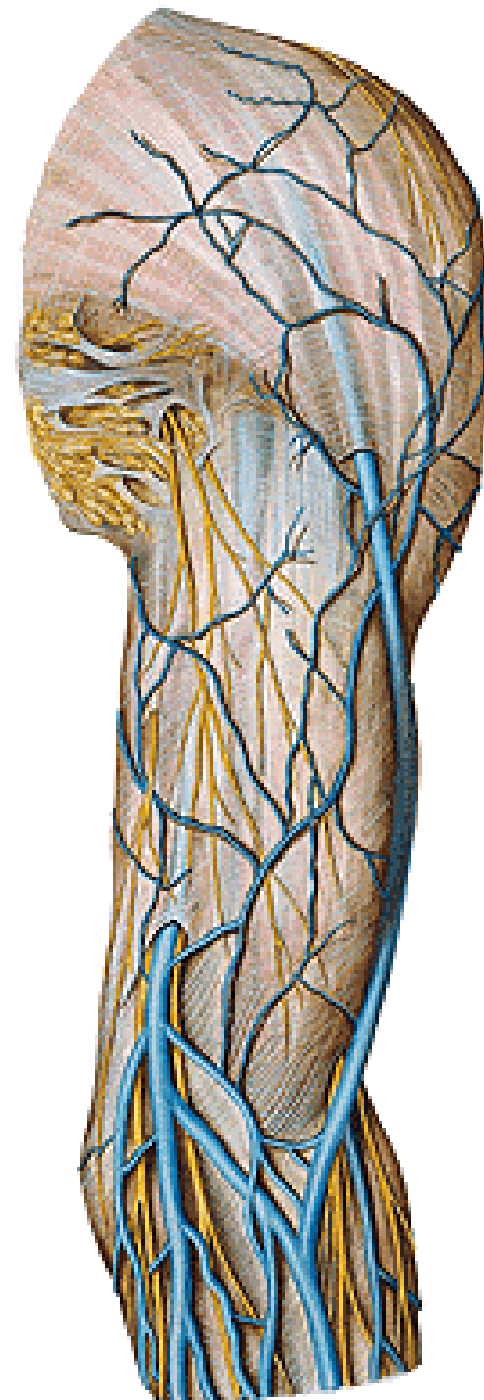


# Rotator cuff



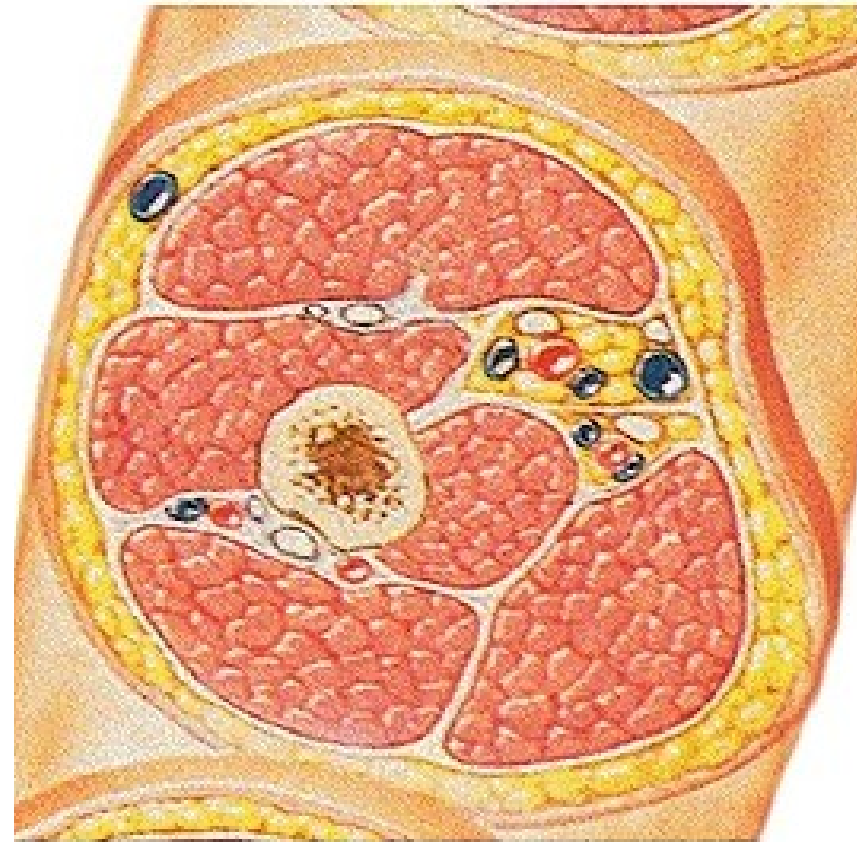
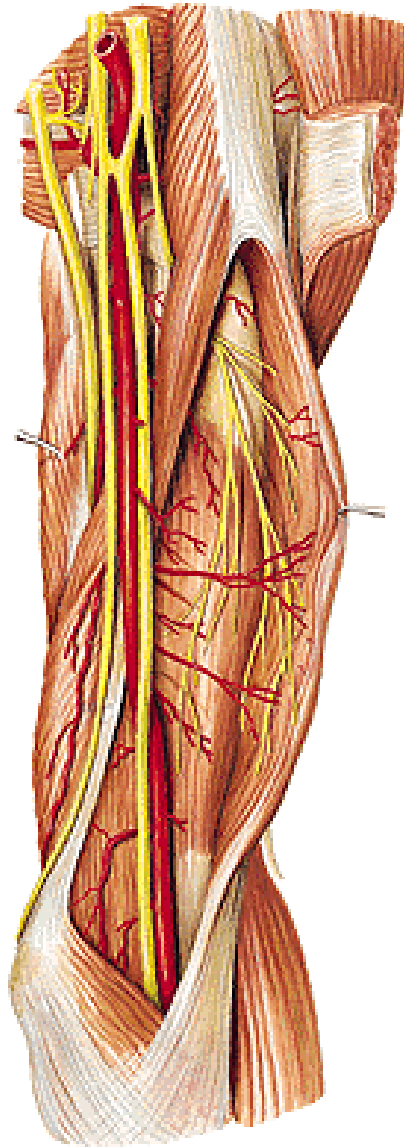
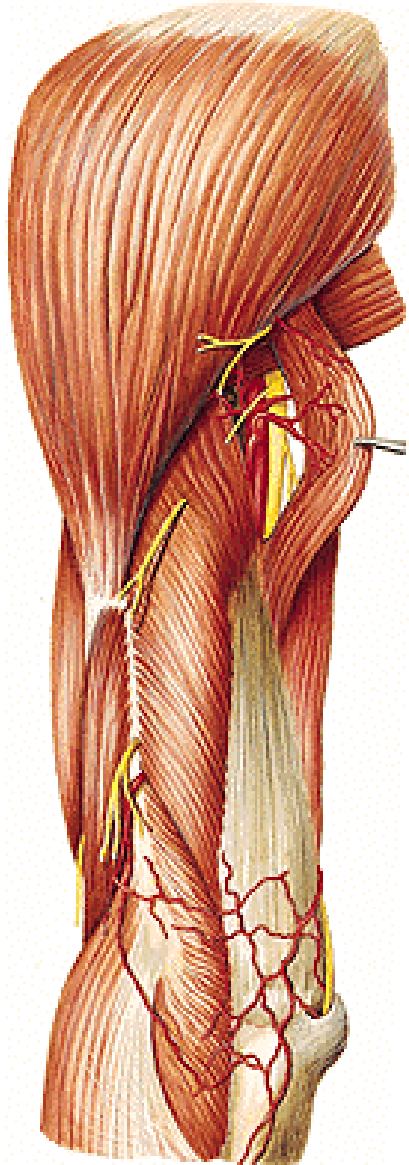
# **Regio brachii anterior**

**N. cut. brachii lat. inf.**  
**N. cut. brachii med.**  
**V. cephalica**  
**V. basilica – hiatus**  
**basilicus**





# Septum intermusculare mediale et laterale



## **Anterior group of muscles:**

**M. biceps brachii**

**caput longum**

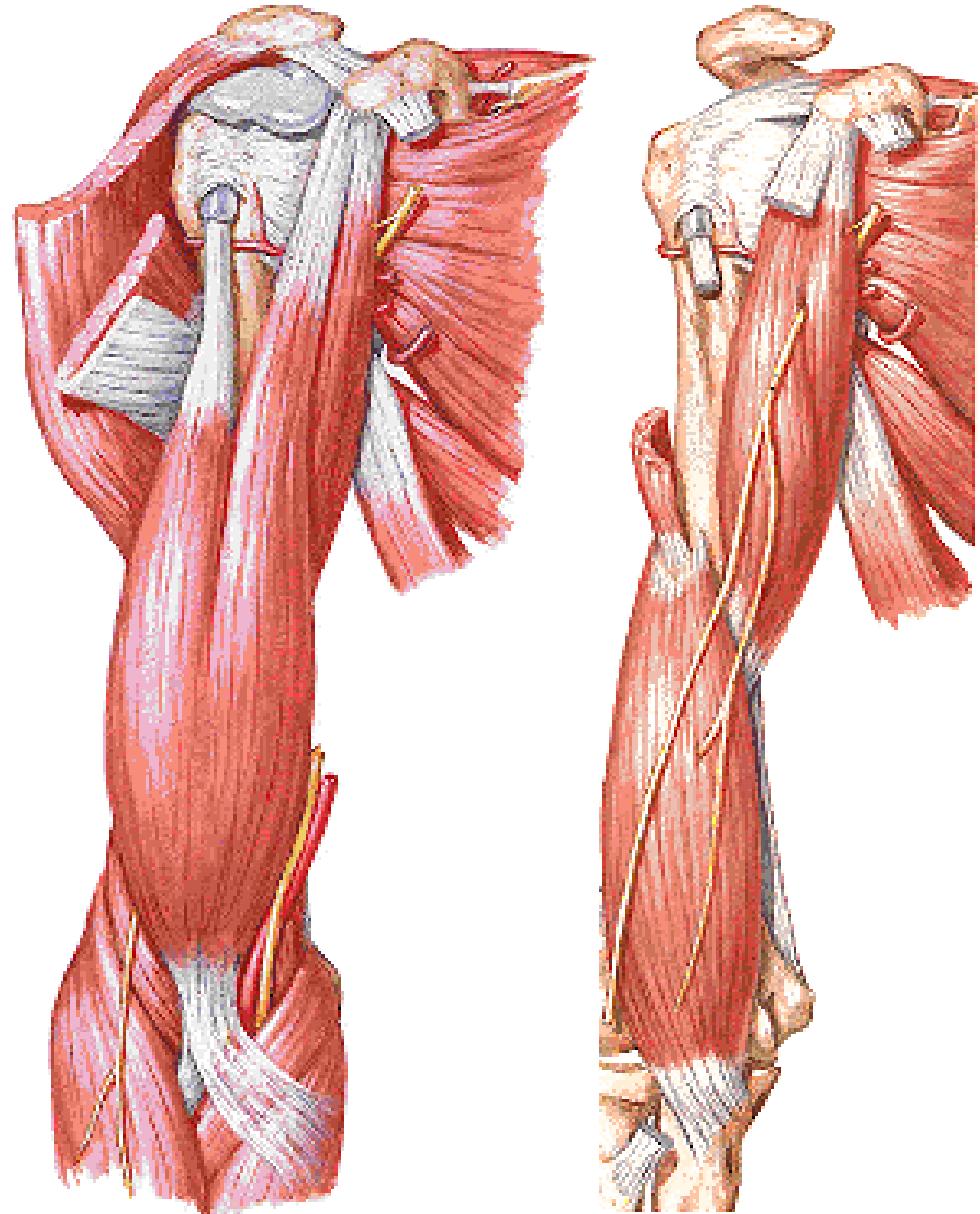
**caput breve**

**aponeurosis m. bicipitis**

**M. coracobrachialis**

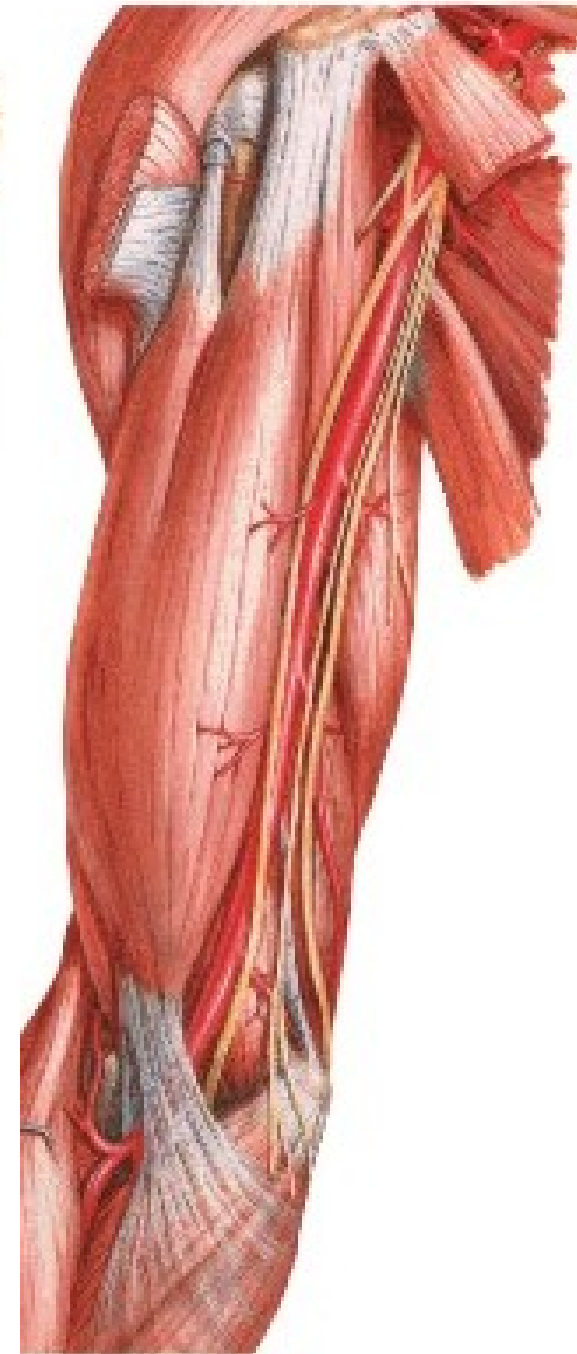
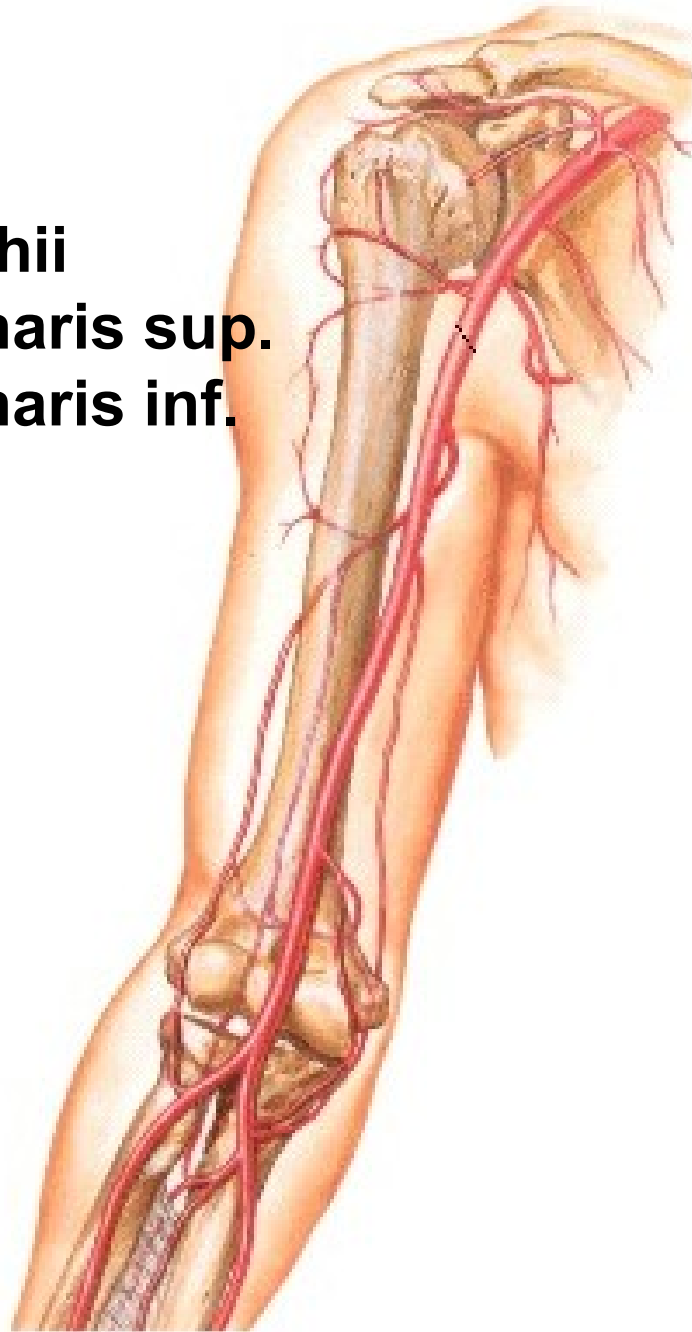
**M. brachialis**

**N. musculocutaneus**



## A. BRACHIALIS

- a. profunda brachii
- a. collateralis ulnaris sup.
- a. collateralis ulnaris inf.
- a. radialis
- a. ulnaris



# Sphygmomanometer

Every health care visit should include a blood pressure reading

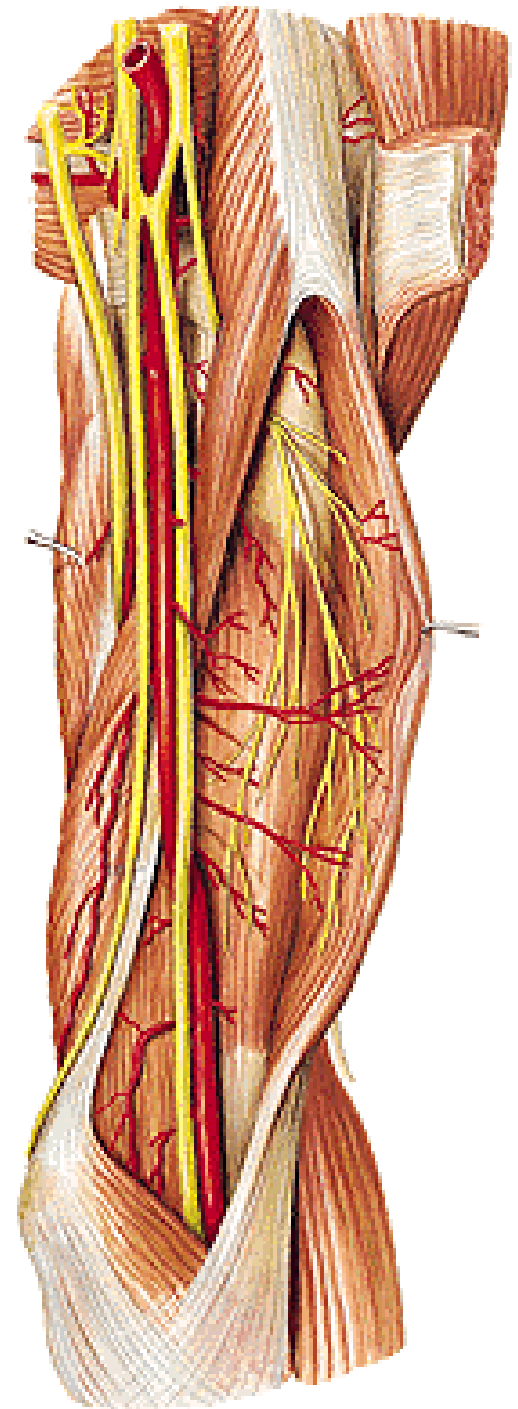


**A. collateralis ulnaris sup.**

**A. collateralis ulnaris inf.**

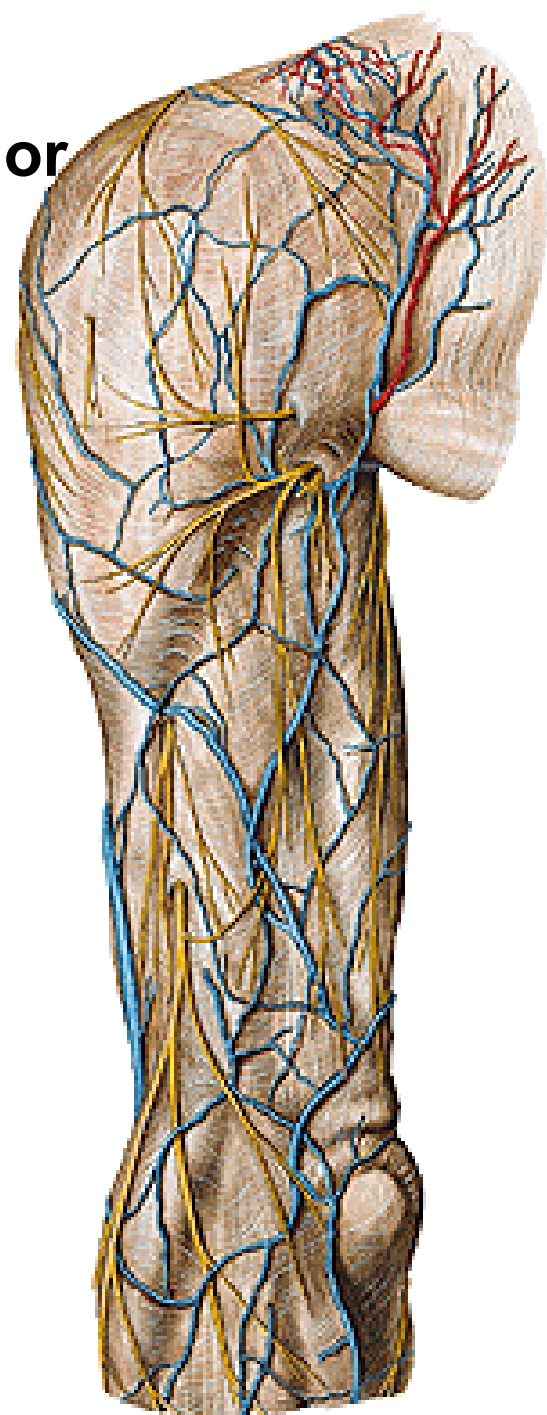
**N. medianus**

**N. ulnaris**



# **Regio brachii posterior**

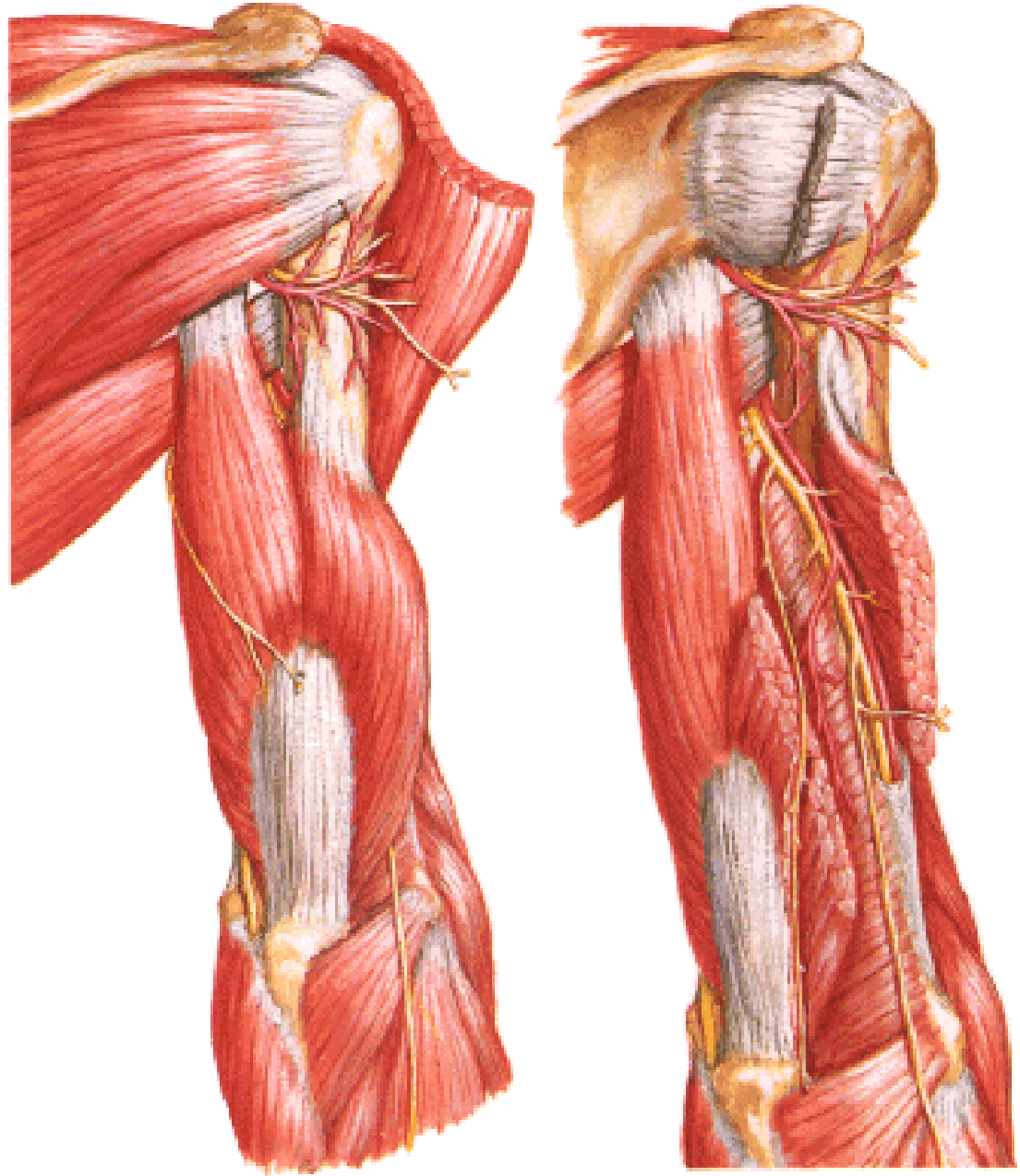
**N. cutaneus brachii lateralis inferior**  
**N. cutaneus brachii posterior**  
**N. cutaneus antebrachii post.**  
**(n. radialis)**



## Posterior group of muscles:

**M. triceps brachii**  
caput longum  
caput laterale  
caput mediale

**N. radialis**

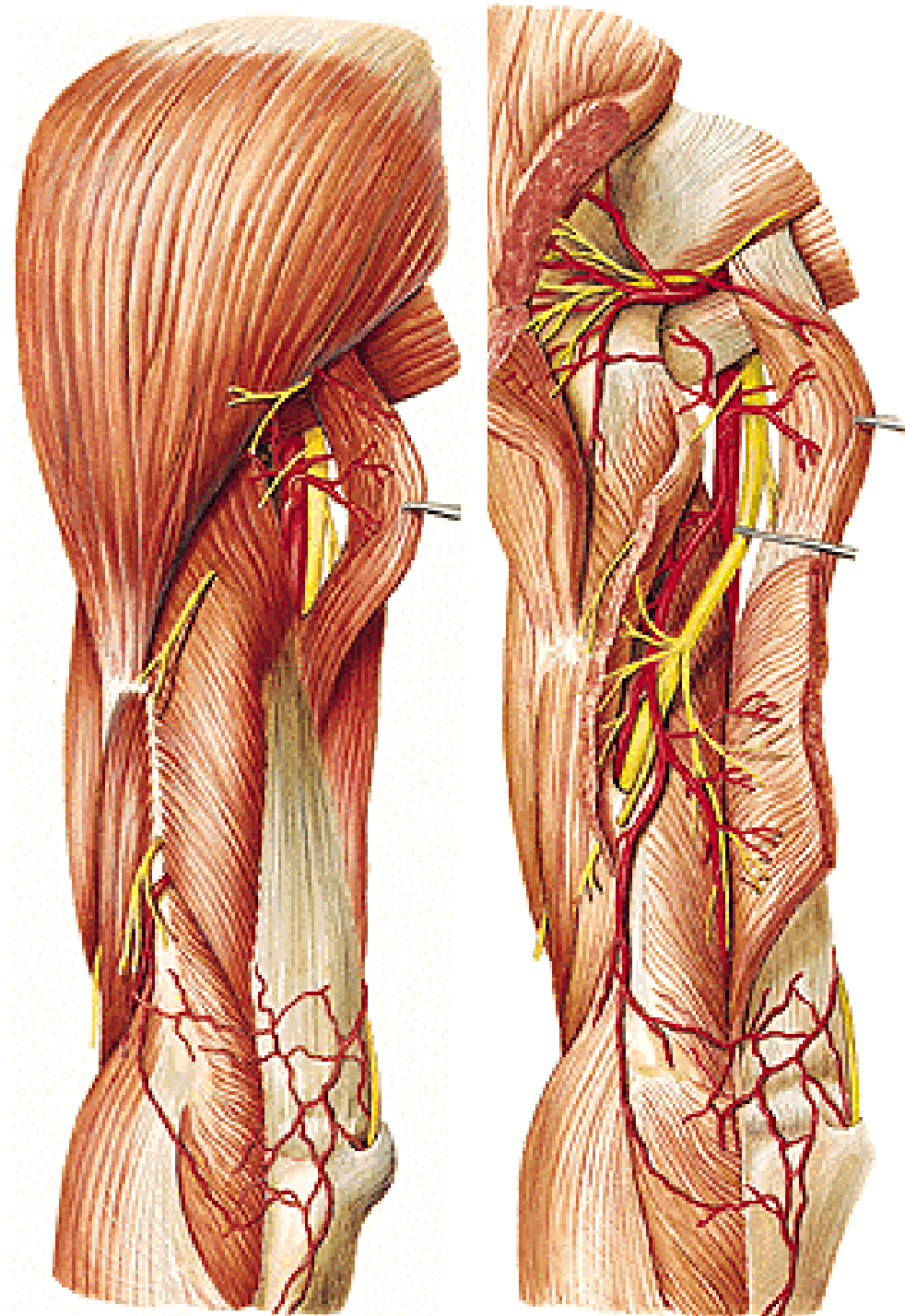




## A. PROFUNDA BRACHII

- r. deltoideus
- a. nutricia humeri
- a. collateralis media
- a. collateralis radialis

Rete articulare cubiti



## **Sulcus bicipitalis medialis**

- a. brachialis
- vv. brachiales
- n. medianus
- v. basilica
- n. cutaneus antebrachii med.
- a. collateralis ulnaris sup.
- vv. coll. ulnares sup.
- n. ulnaris

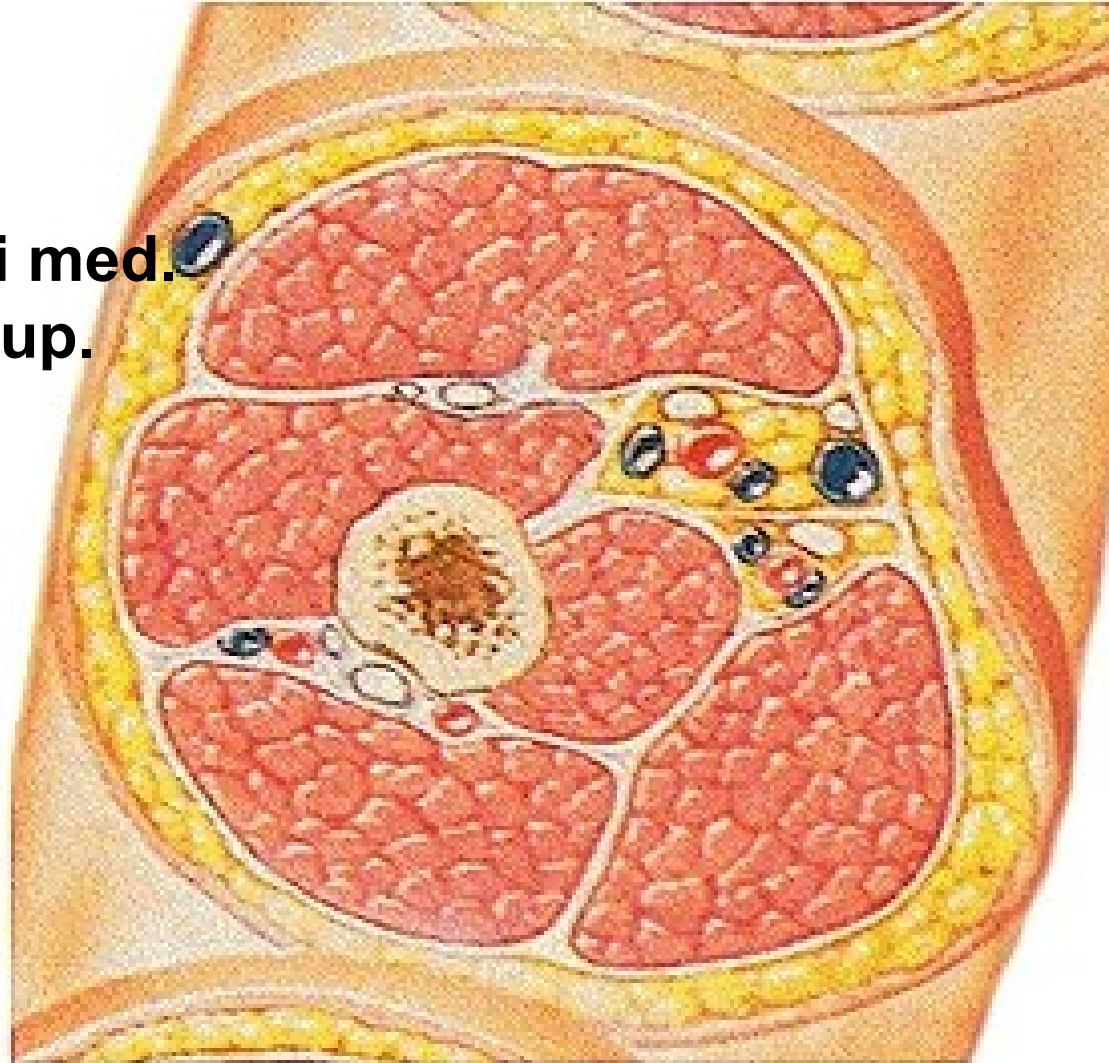
## **N. musculocutaneus**

### **N. radialis**

**A. profunda brachii**

**V. profunda brachii**

**A. coll. media**



# **Regio cubiti et antebrachii anterior**

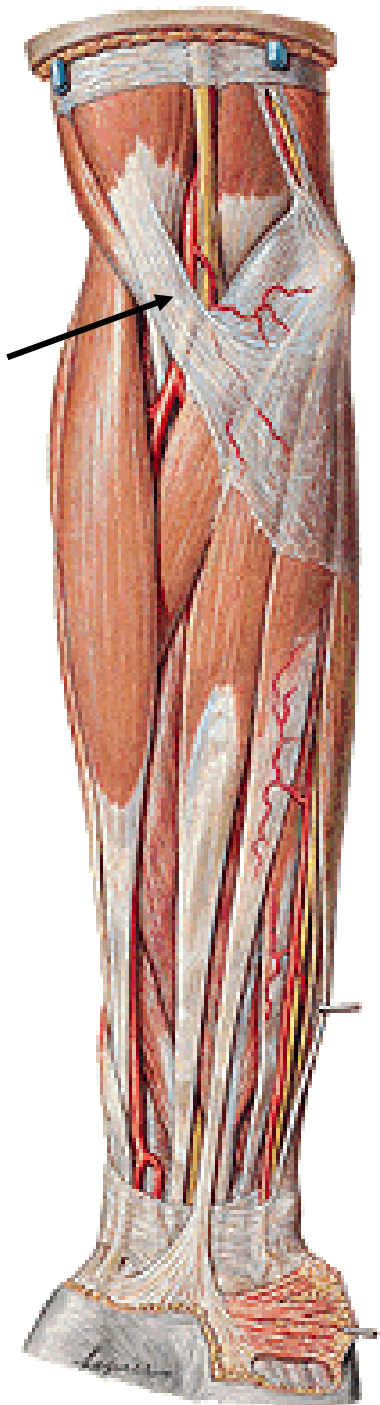
**N. cutaneus brachii med.**  
**N. cutaneus antebrachii med.**  
- r. anterior  
- r. posterior  
**N. cutaneus antebrachii lat.**  
(n. musculocutaneus)

**V. cephalica**  
**V. basilica**



- A. brachialis**  
- a. radialis  
- a. ulnaris

**aponeurosis m. bicipitis  
brachii**



## Anterior group of muscles:

**M. pronator teres**

**M. flexor carpi radialis**

**M. palmaris longus**

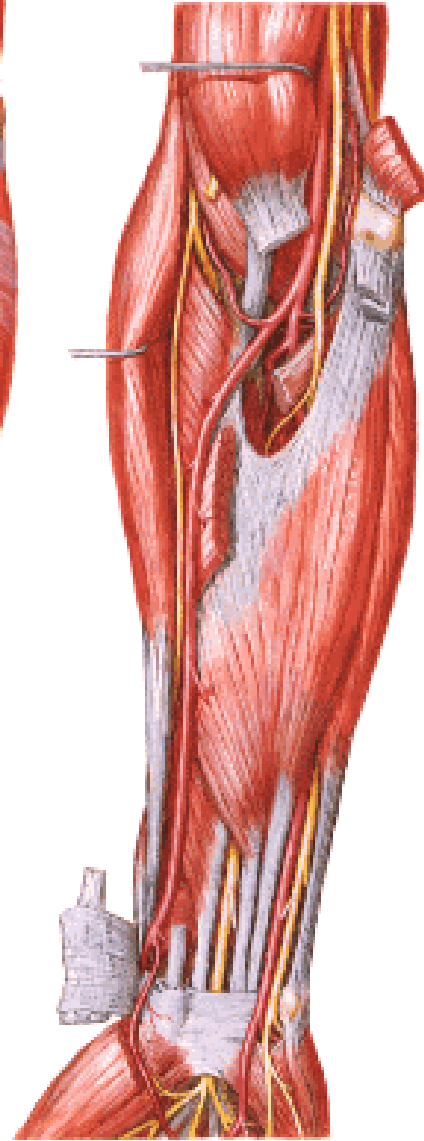
**M. flexor carpi ulnaris**

**M. flexor digitorum spf.**

**M. flexor pollicis longus**

**M. flexor digitorum prof.**

**M. pronator quadratus**



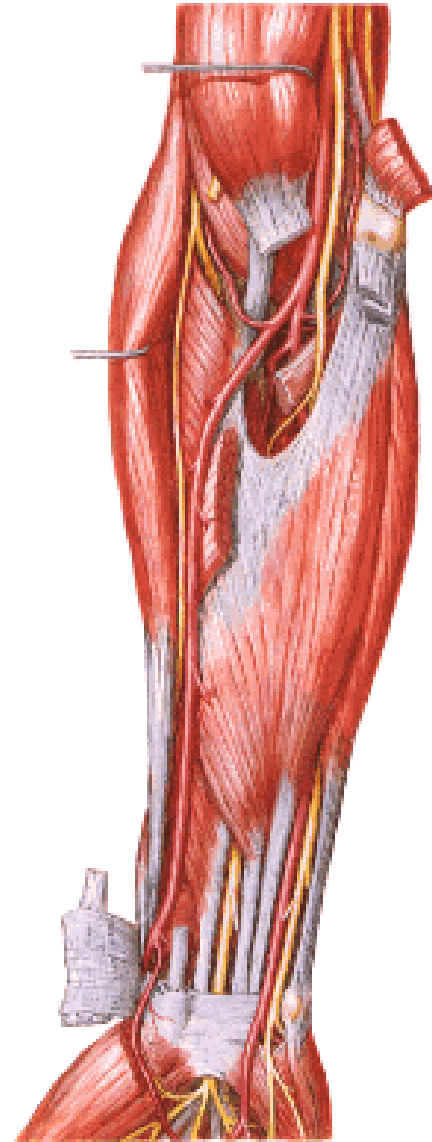
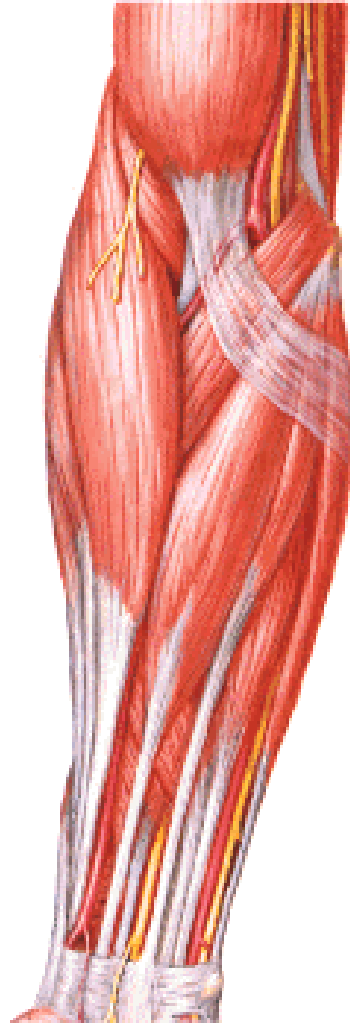
## Lateral group of muscles:

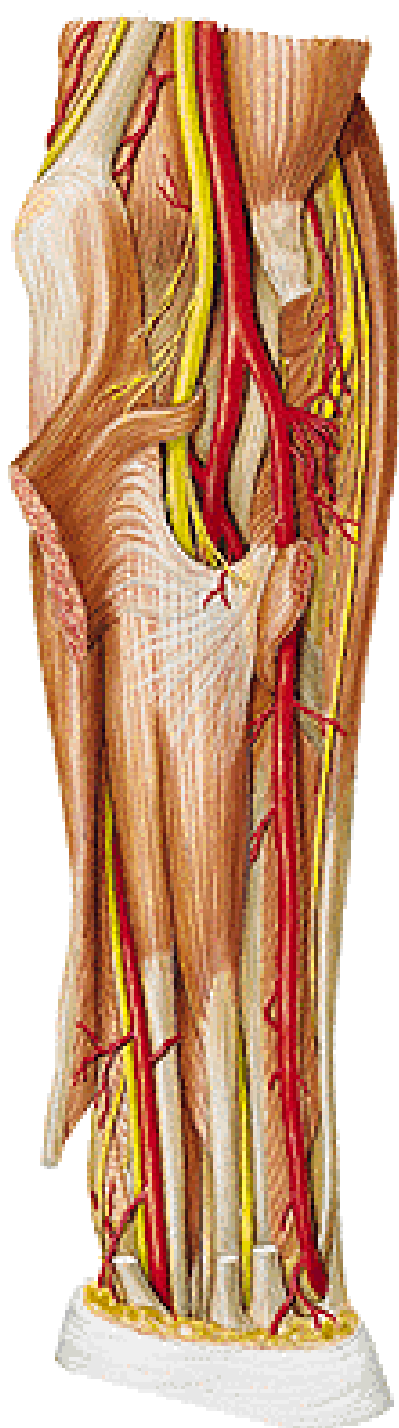
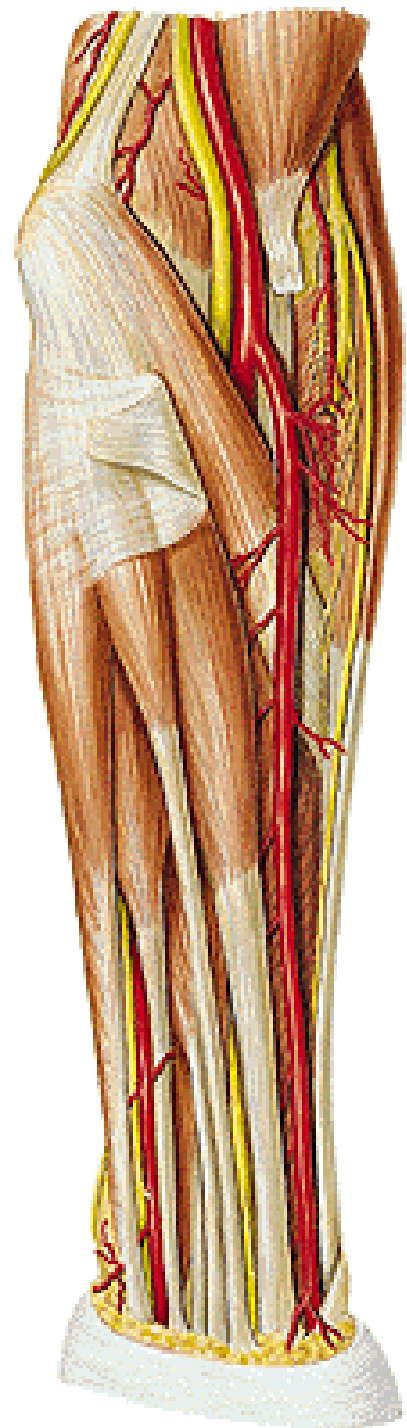
**M. brachioradialis**

**M. extensor carpi radialis longus**

**M. extensor carpi radialis brevis**

**M. supinator**





**A. radialis**

**- a. recurrens radialis**

**- rr. musculares**

**R. spf. n. radialis**

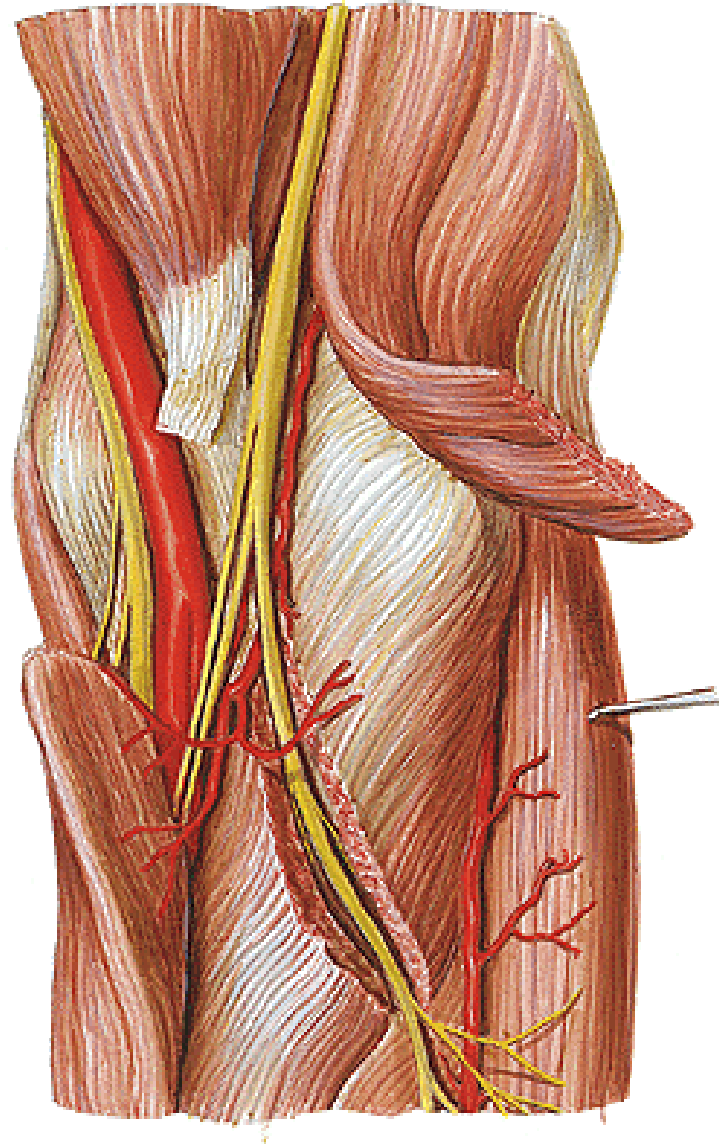
**N. medianus**

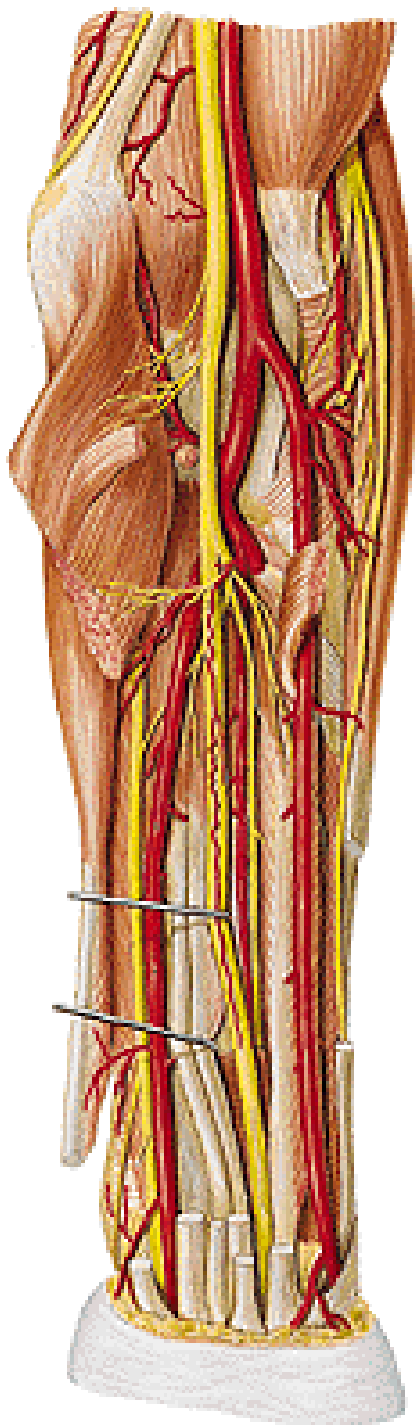
**A. ulnaris**

**N. ulnaris**



**N. radialis - r. spf.**  
**- r. prof.**  
**M. supinator**





## **N. medianus**

- rr. musculares
- n. interosseus ant.

## **A. ulnaris**

- a. recurrens ulnaris
- rr. musculares
- a. interossea communis
  - a. interossea ant.
  - a. interossea post.

# **Regio cubiti et antebrachii posterior**

**N. cutaneus antebrachii med.  
- r. posterior**

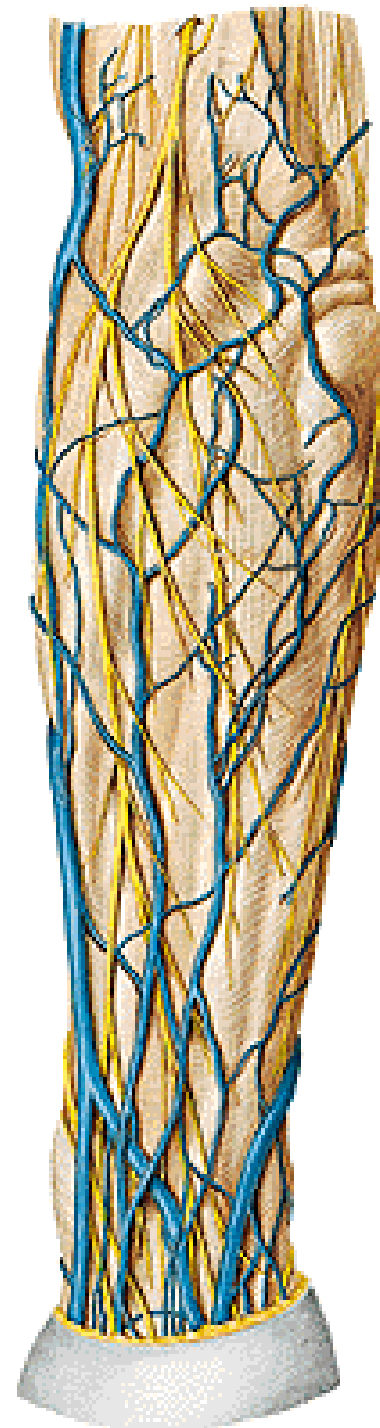
**N. cutaneus antebrachii post.  
(n. radialis)**

**R. superficialis n. radialis**

**R. dorsalis n. ulnaris**

**V. cephalica**

**V. basilica**



## Posterior group of muscles:

**M. anconeus**

**M. extensor digitorum**

**M. extensor digiti minimi**

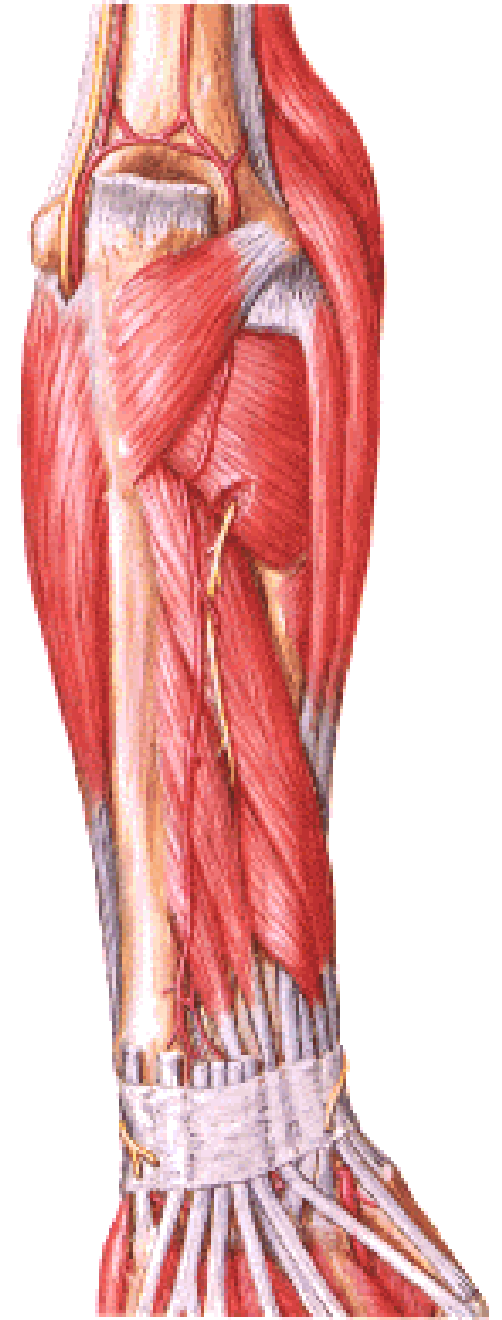
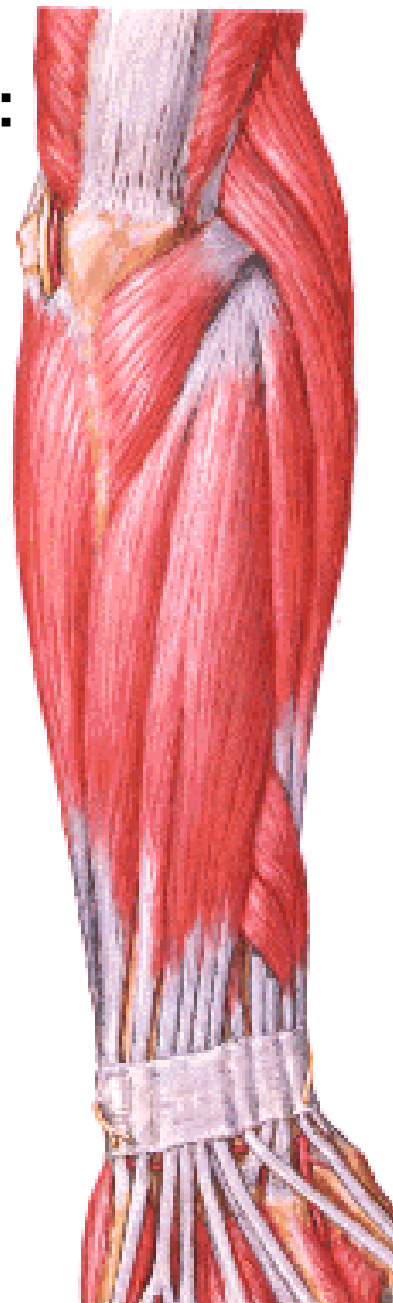
**M. extensor carpi ulnaris**

**M. abductor pollicis longus**

**M. extensor pollicis brevis**

**M. extensor pollicis longus**

**M. extensor indicis**



## **Rete articulare cubiti**

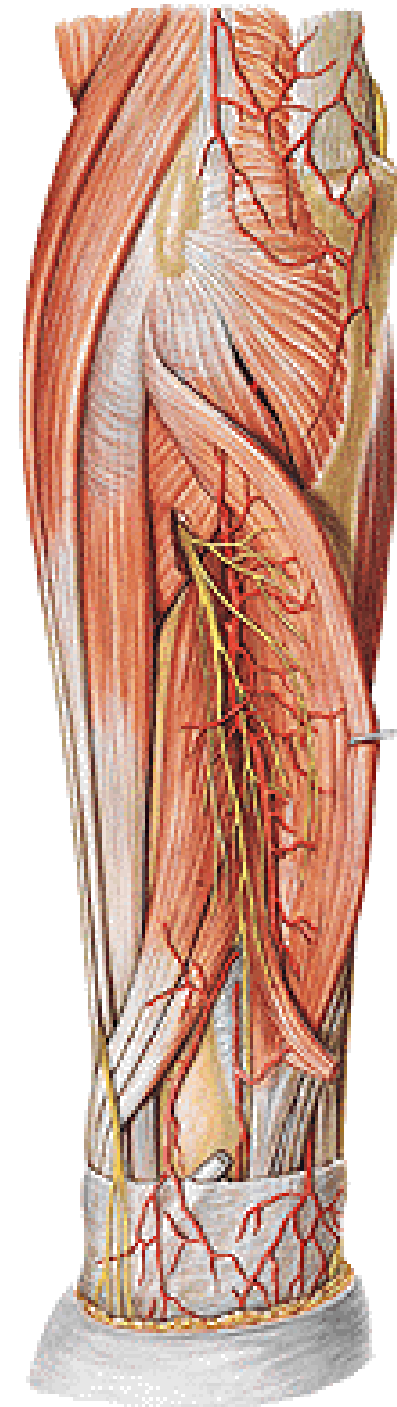
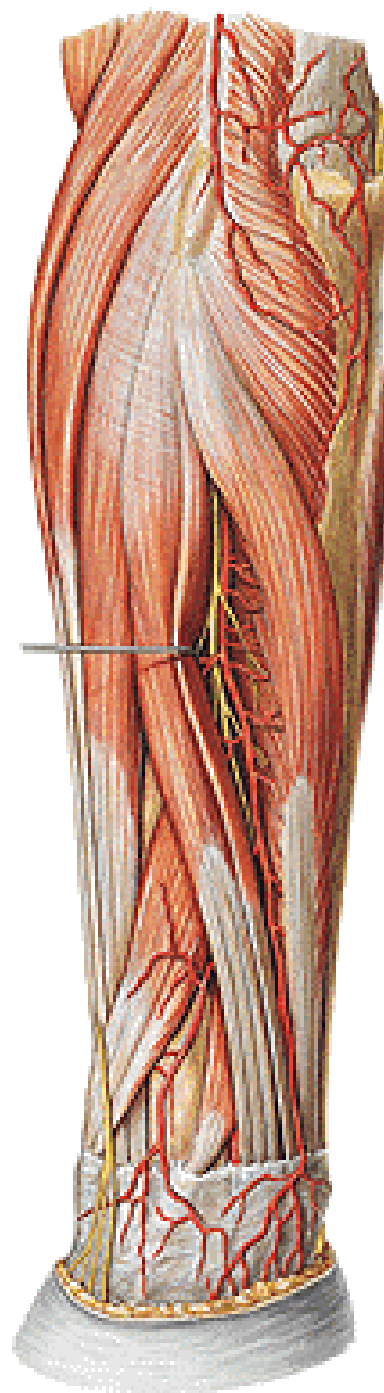
### **N. radialis**

- n. interosseus post.
- rr. musculares

### **A. interossea post.**

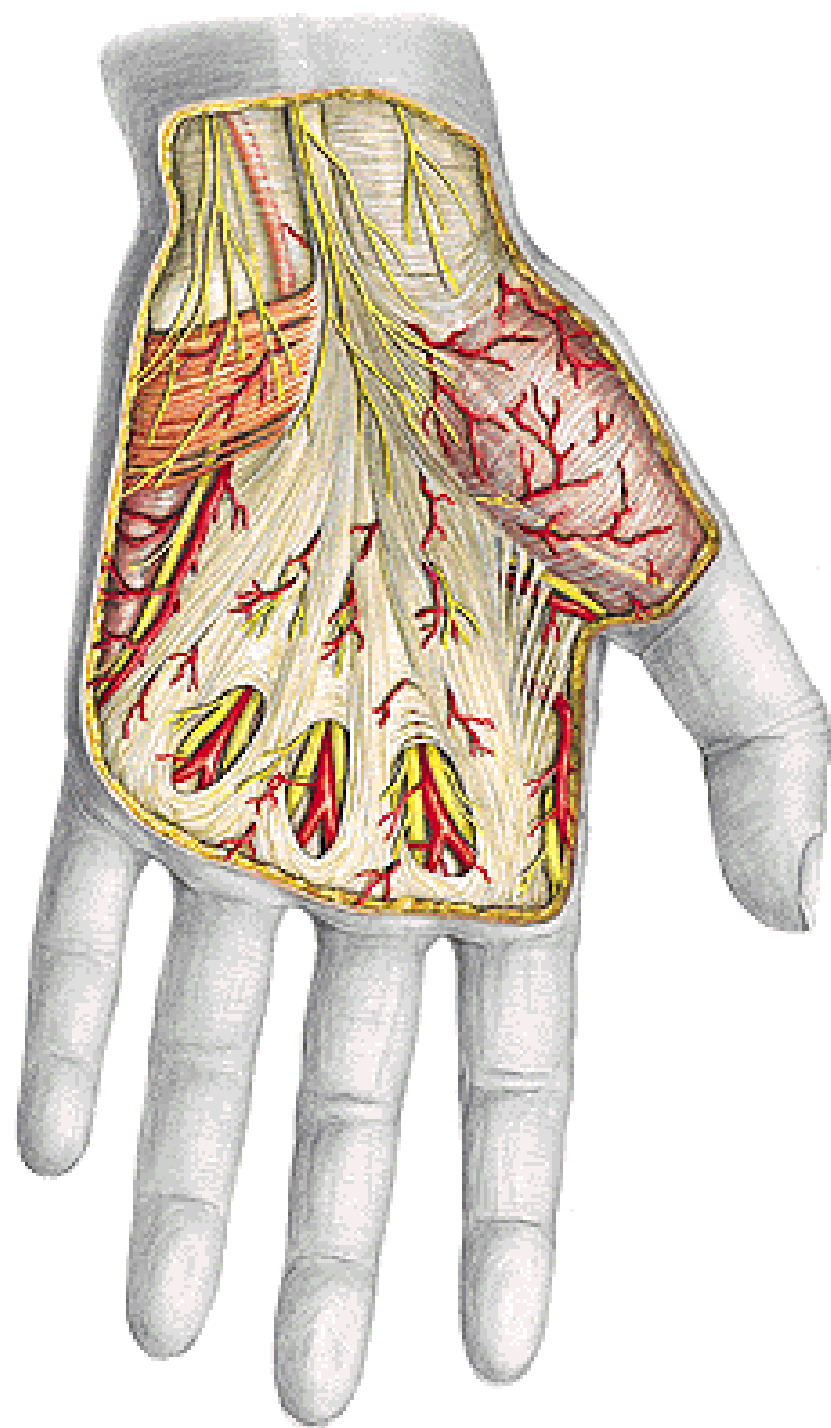
- a. recurrens interossea

### **A. interossea ant.**



# **Regio carpi palmaris et palma manus**

**N. ulnaris – r. palmaris**  
**N. medianus – rr. palmares**  
**M. palmaris brevis**  
**Aponeurosis palmaris**





**Retinaculum flexorum**

**Arcus palmaris spf.**

**- aa. digitales palmares  
communes et propriae**

**A. princeps pollicis**

**Nn. digitales palmares communes**

**Nn. digitales palmares proprii**

**M. abductor pollicis brevis**

**M. flexor pollicis brevis**

**M. opponens pollicis**

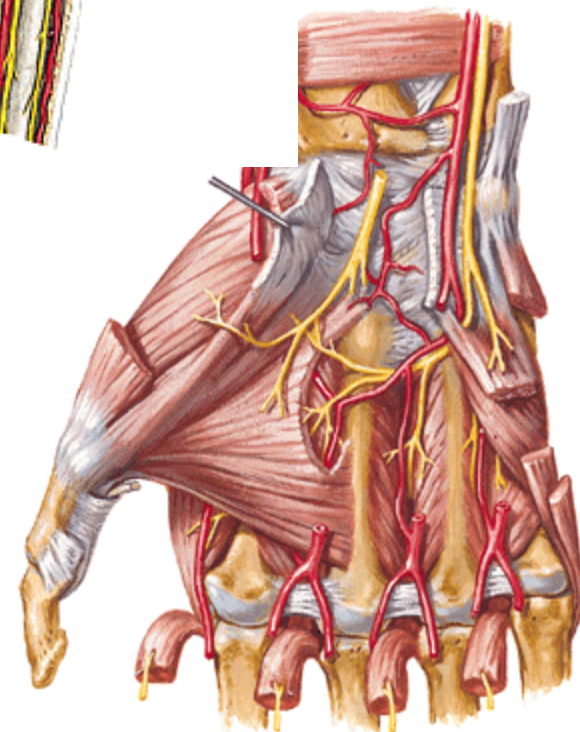
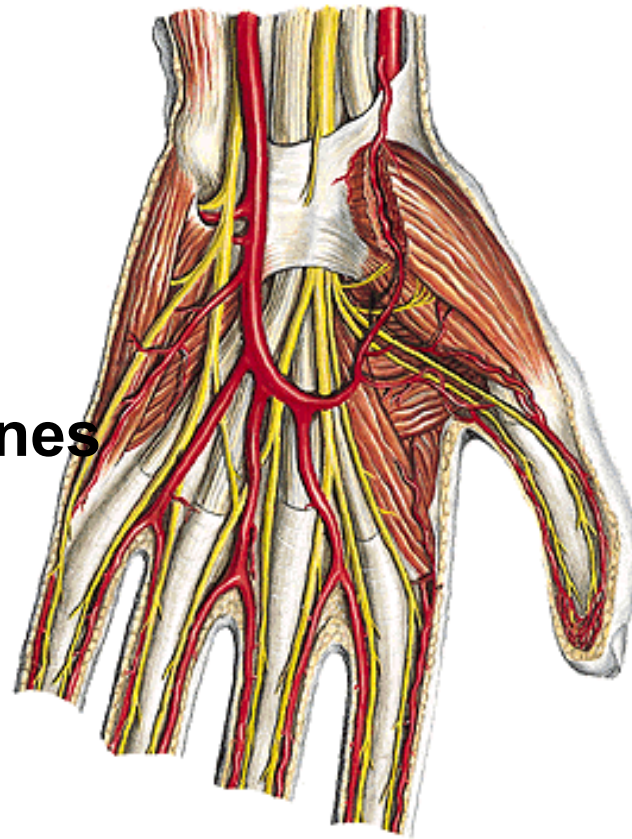
**M. adductor pollicis**

**Mm. lumbricales**

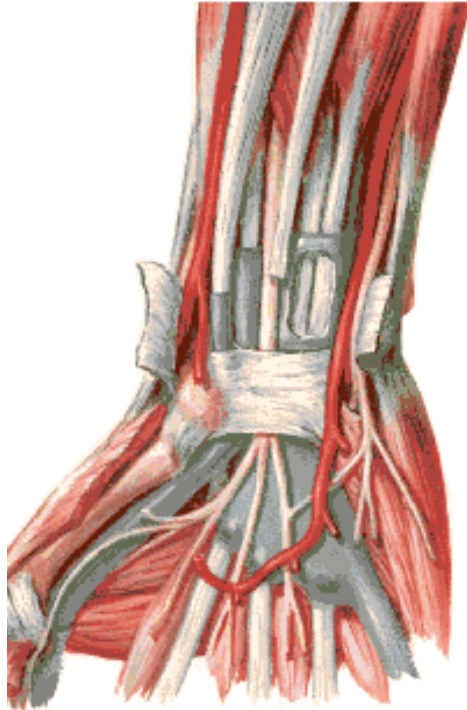
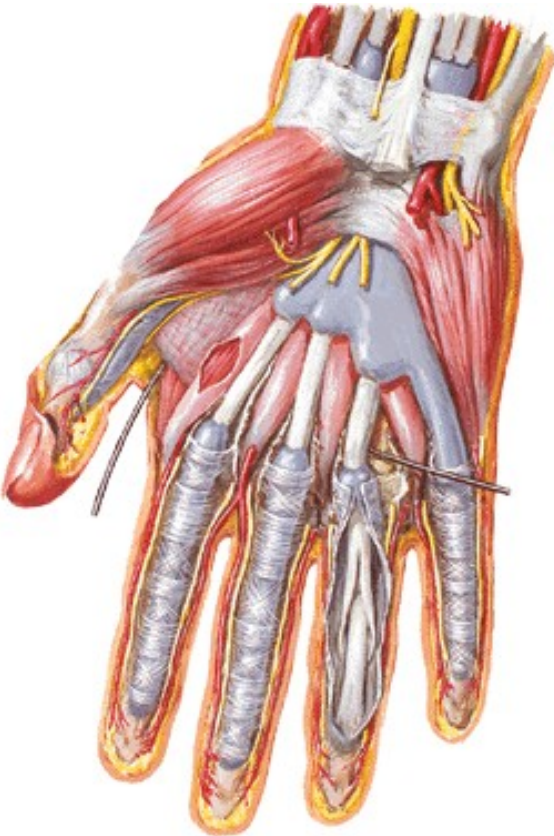
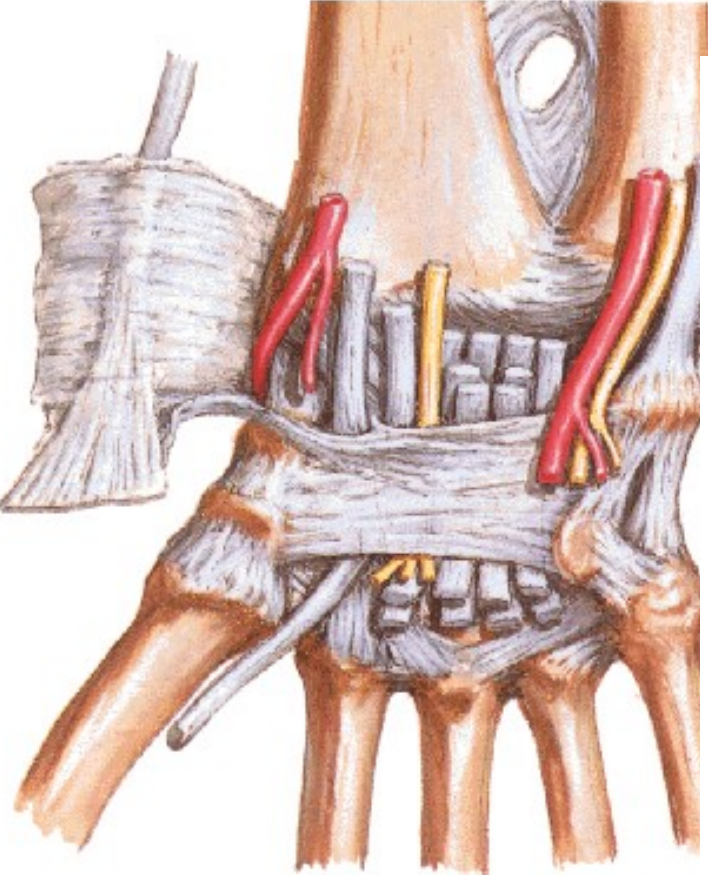
**M. abductor digiti minimi**

**M. flexor digiti minimi brevis**

**M. opponens digiti minimi**



# Canalis carpi



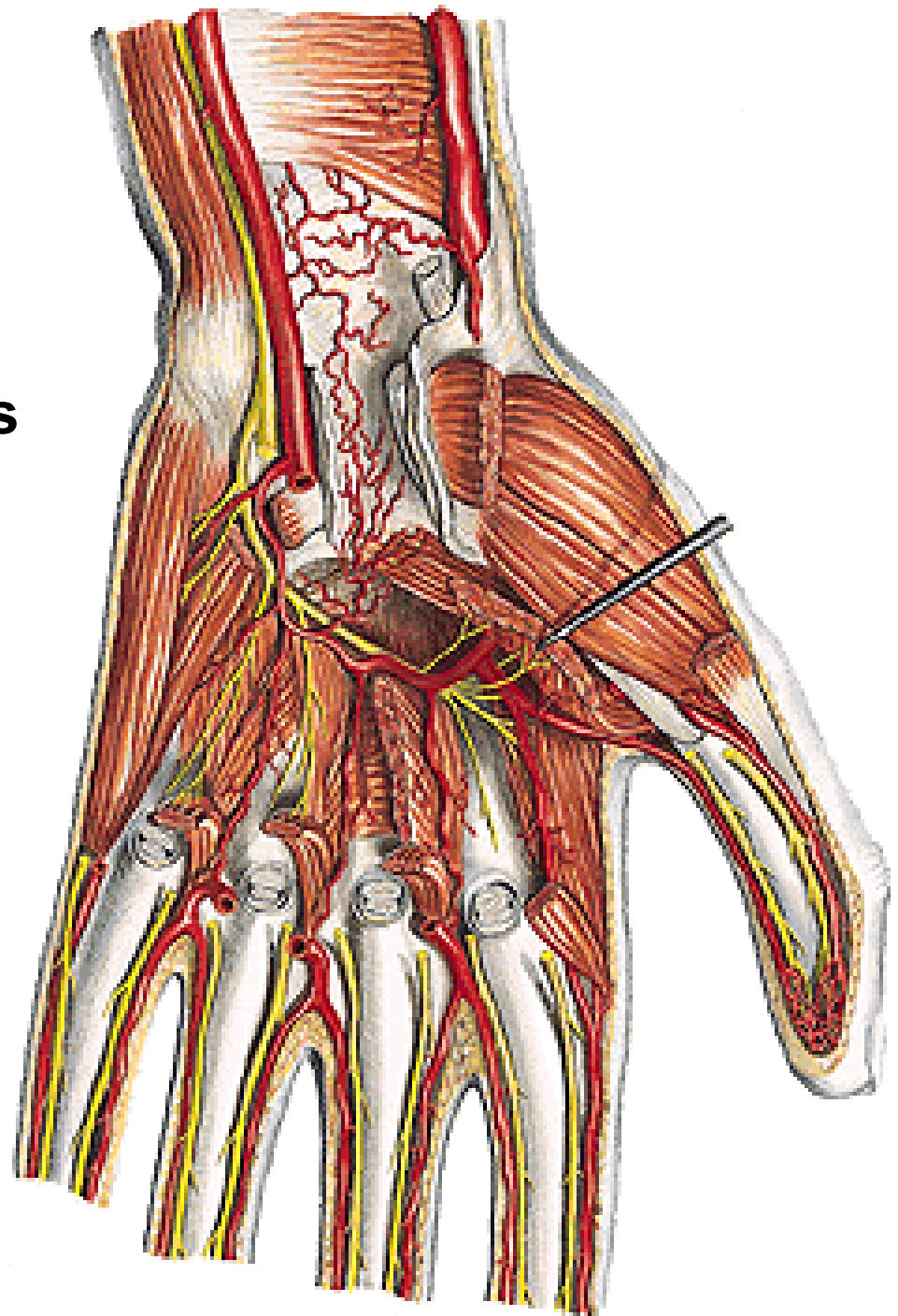
**Rete carpi palmare**

**Arcus palmaris prof.**

**- aa. metacarpeae palmares**

**R. prof. n. ulnaris**

**Mm. interossei palmares**



# **Regio carpi dorsalis et dorsum manus**

## **Rete venosum dorsale manus**

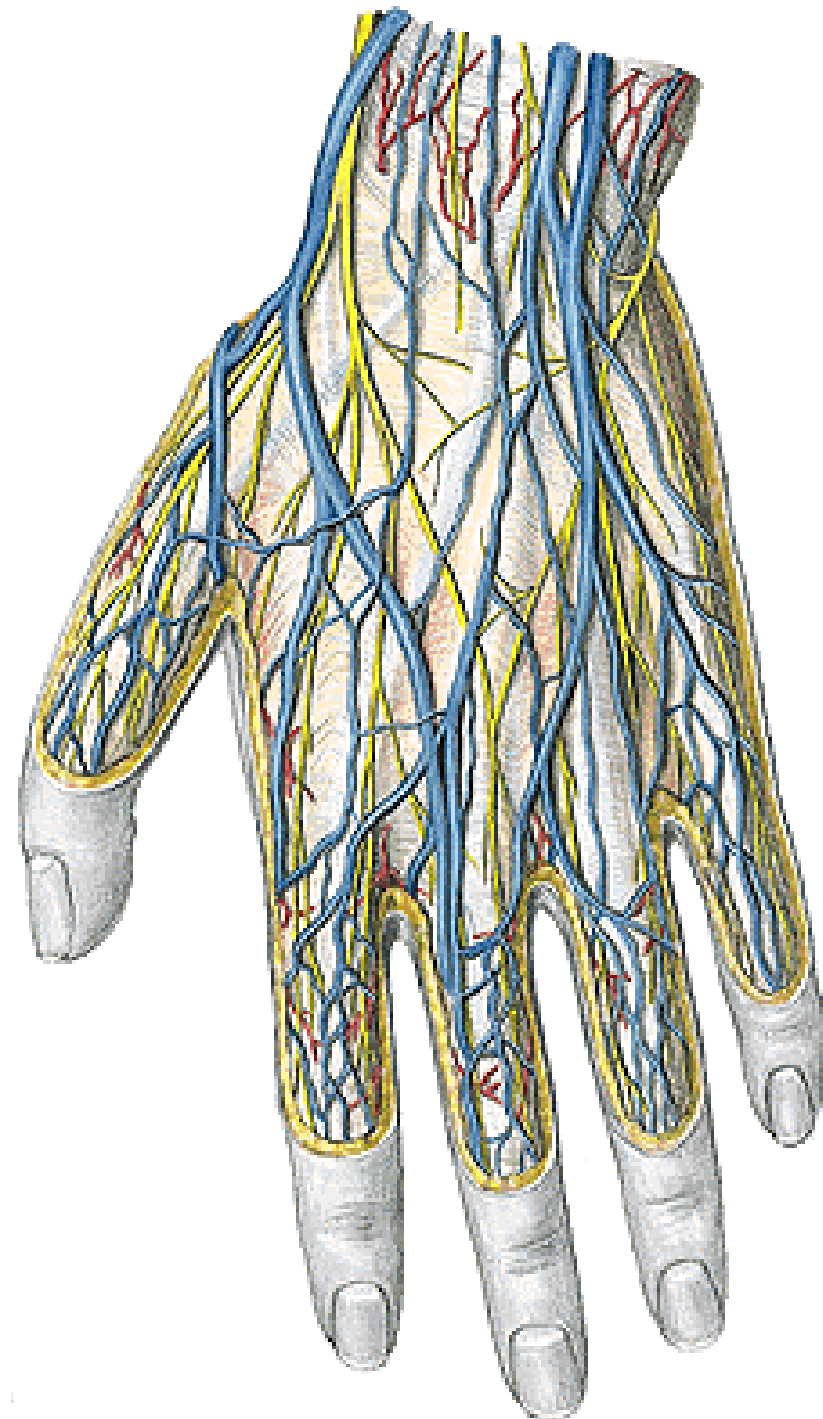
**R. spf. n. radialis**

**- nn. digitales dorsales**

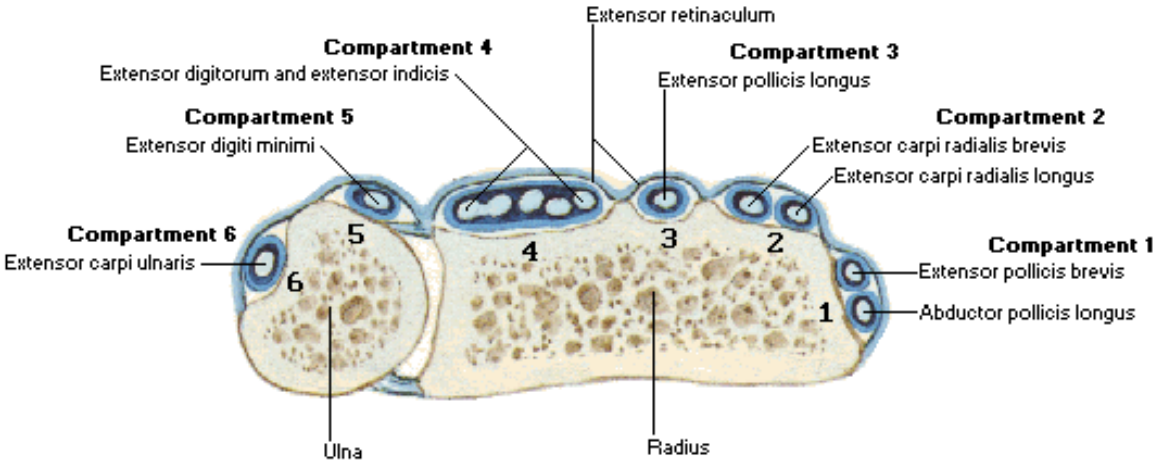
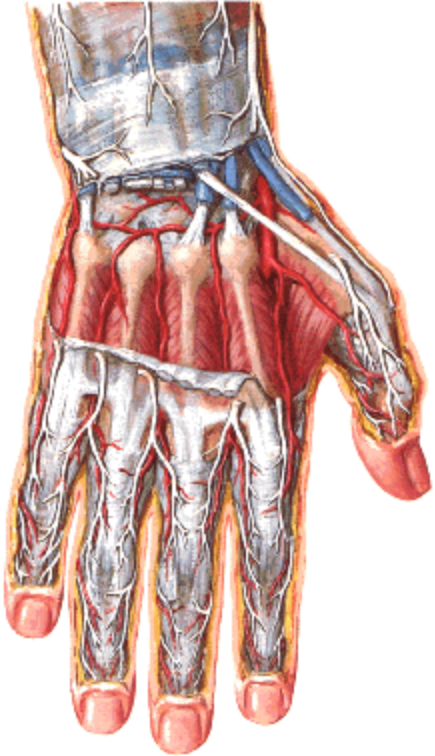
**R. dorsalis n. ulnaris**

**- nn. digitales dorsales**

**Retinaculum extensorum**



# Extensor compartments



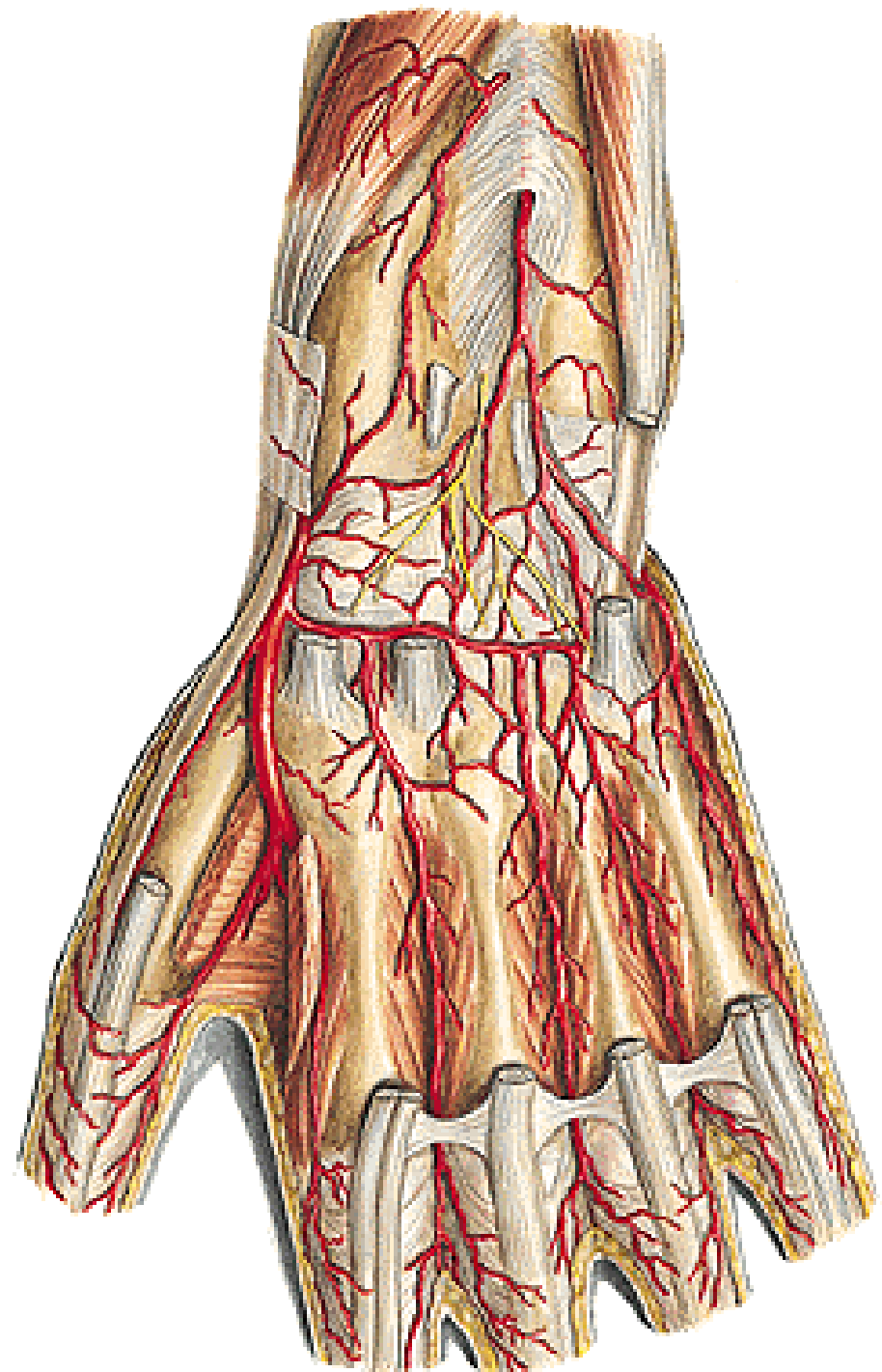
**Rete carpi dorsale**

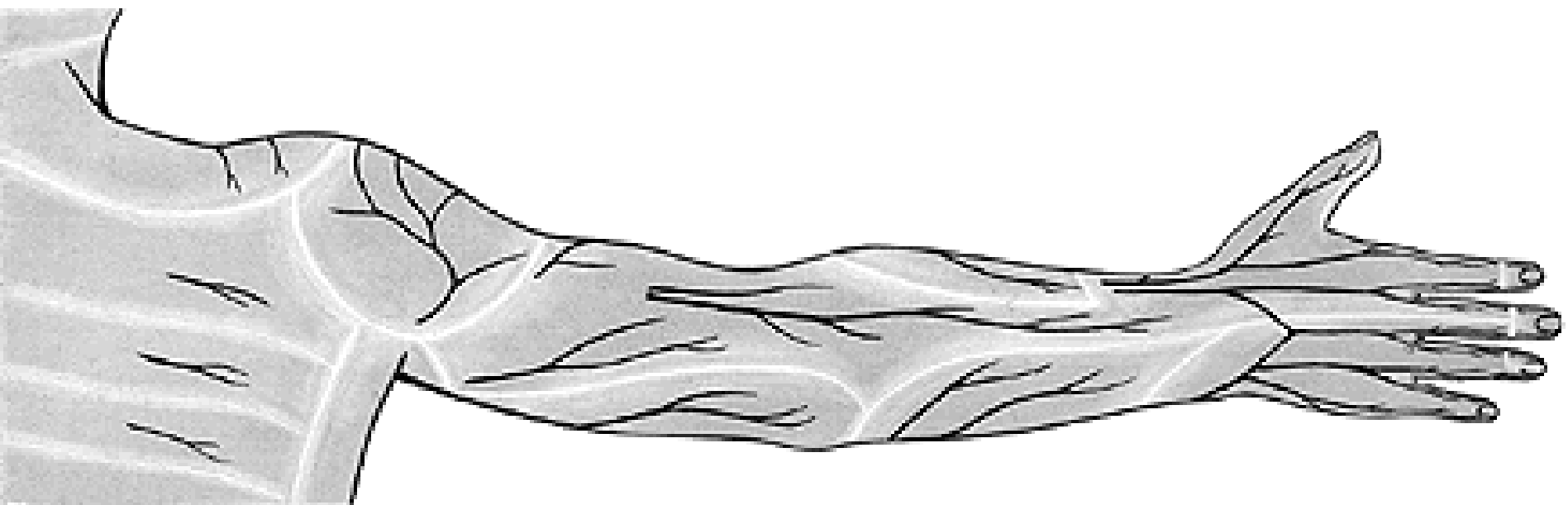
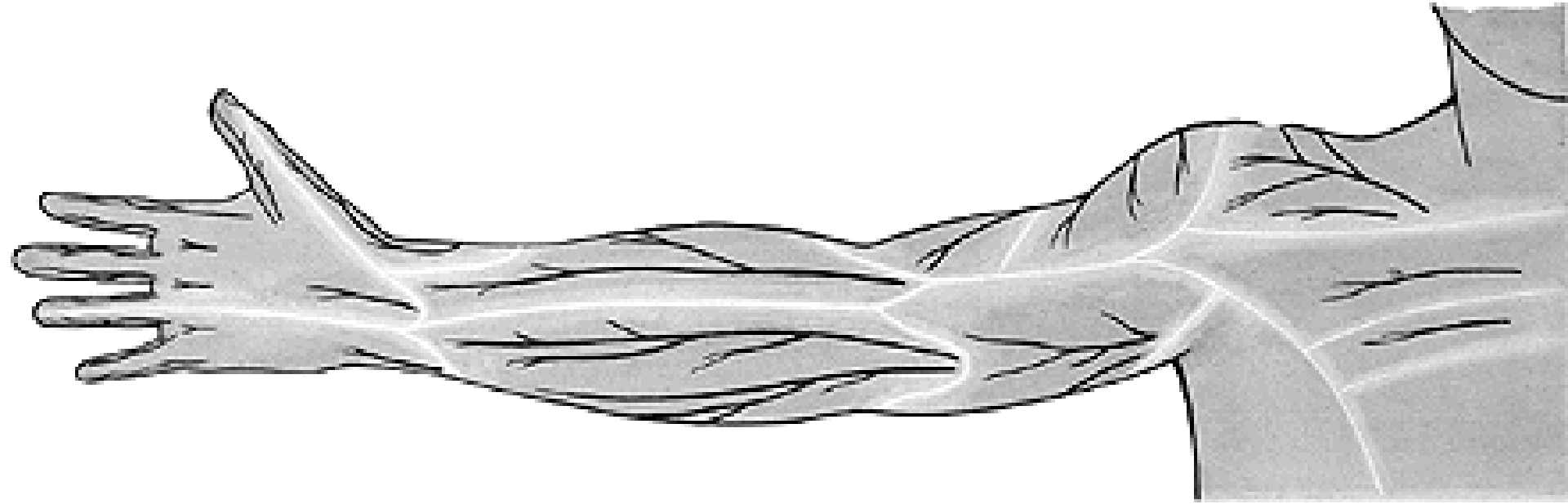
**Aa. metacarpeae dorsales**

- aa. digitales dorsales

**A. metacarpea dorsalis prima**

**Mm. interossei dorsales**







## **Innervation of upper limb muscles:**

**N. subscapulares – subscapularis, teres major**

**N. axillaris – deltoideus, teres minor**

**N. suprascapularis – supraspinatus et infraspinatus**

**N. musculocutaneus – anterior brachial group**

**N. radialis – posterior brachial group, posterior antebrachial group, lateral antebrachial group**

**N. ulnaris – flexor carpi ulnaris, medial half of flexor dig. prof., most of muscles of the hand**

**N. medianus – anterior antebrachial group (except 2 muscles innervated by ulnar nerve), abductor pollicis brevis, flexor pollicis brevis (superficial head), opponens pollicis, 2 medial lumbricals**

Illustrations and photographs were copied from:  
**Atlas der Anatomie des Menschen/Sobotta.**  
**Putz,R., und Pabst,R. 20. Auflage. München:**  
**Urban & Schwarzenberg, 1993**  
**Netter: Interactive Atlas of Human Anatomy.**  
**Windows Version 2.0**