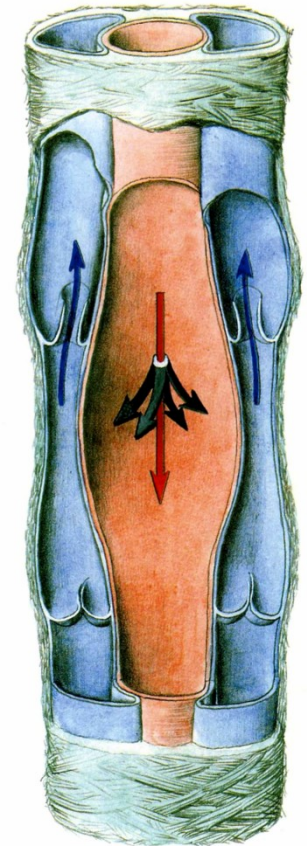
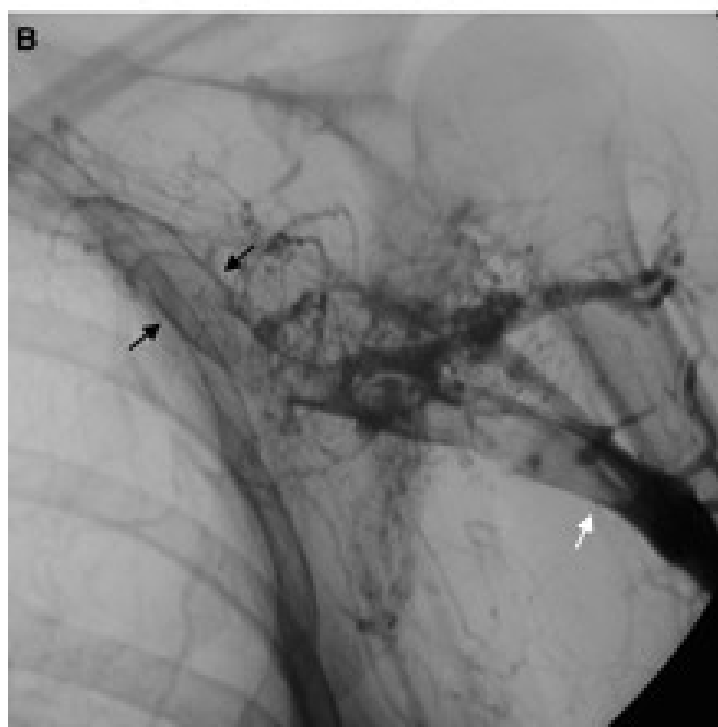


VEINS

- **CAPILLARIES, SINUSOIDS,
POSTCAPILLARY VENULES**
- **VENULES, VEINS**
- **TUNICA INTIMA, MEDIA, ADVENTITIA**
- **VASA, VASORUM, SYMPATHETIC AND
AFFERENT NERVES**
- **VALVES, SINUS, PHLEBOGRAPHY**
- **VENAE COMITANTES**

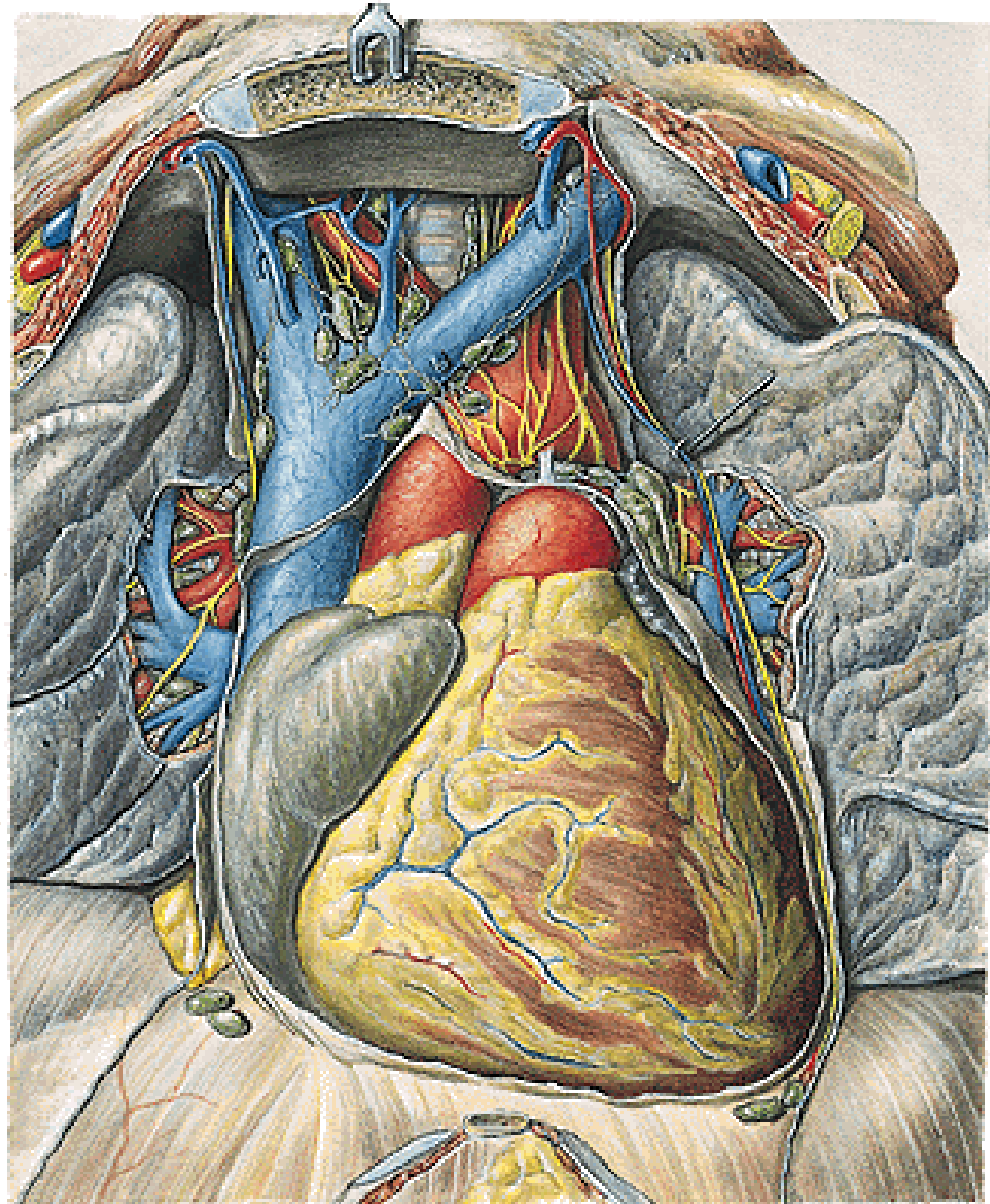


PHLEBOGRAPHY (VENOGRAPHY)



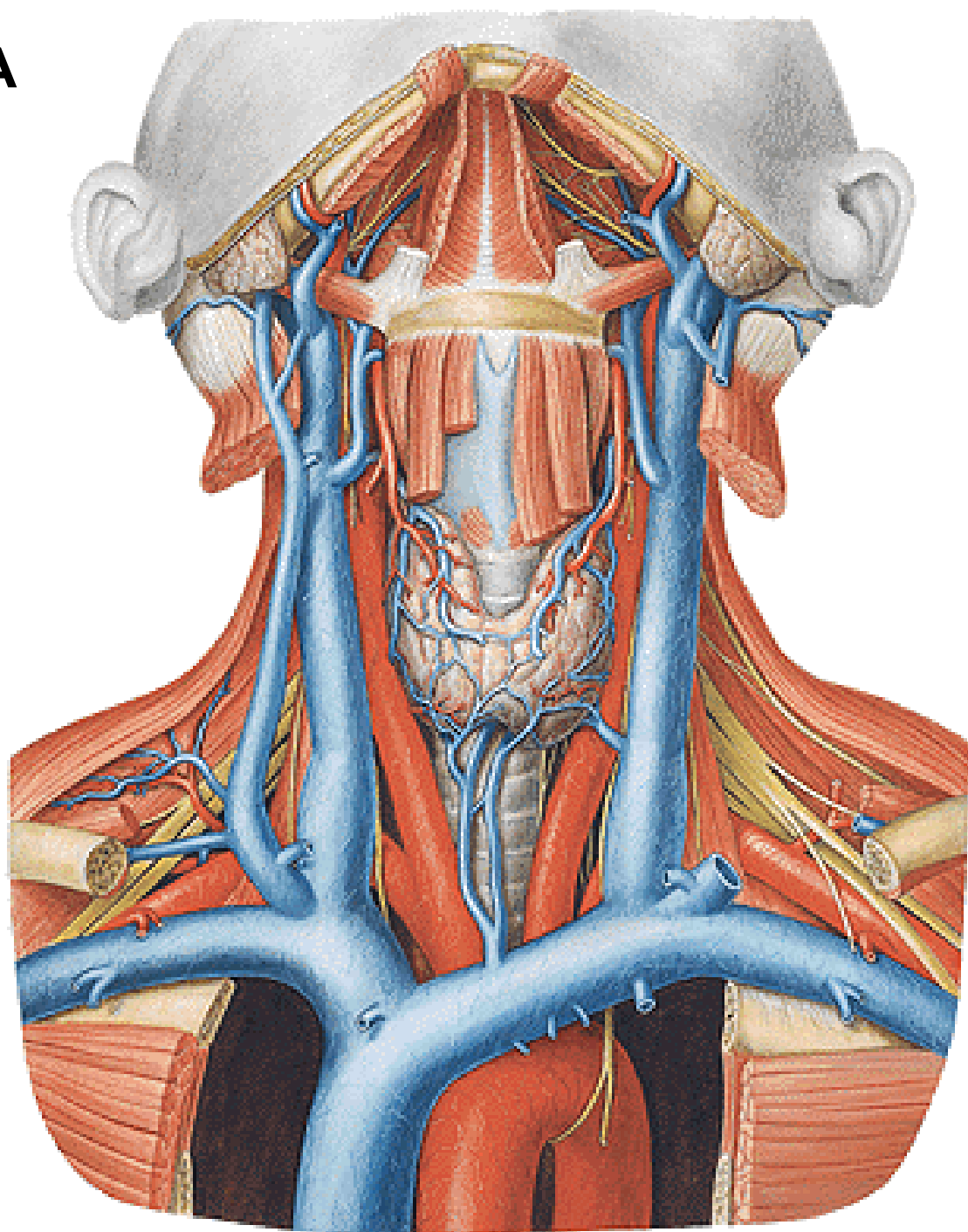
V. CAVA SUP.

- v. brachiocephalica dx. et sin.



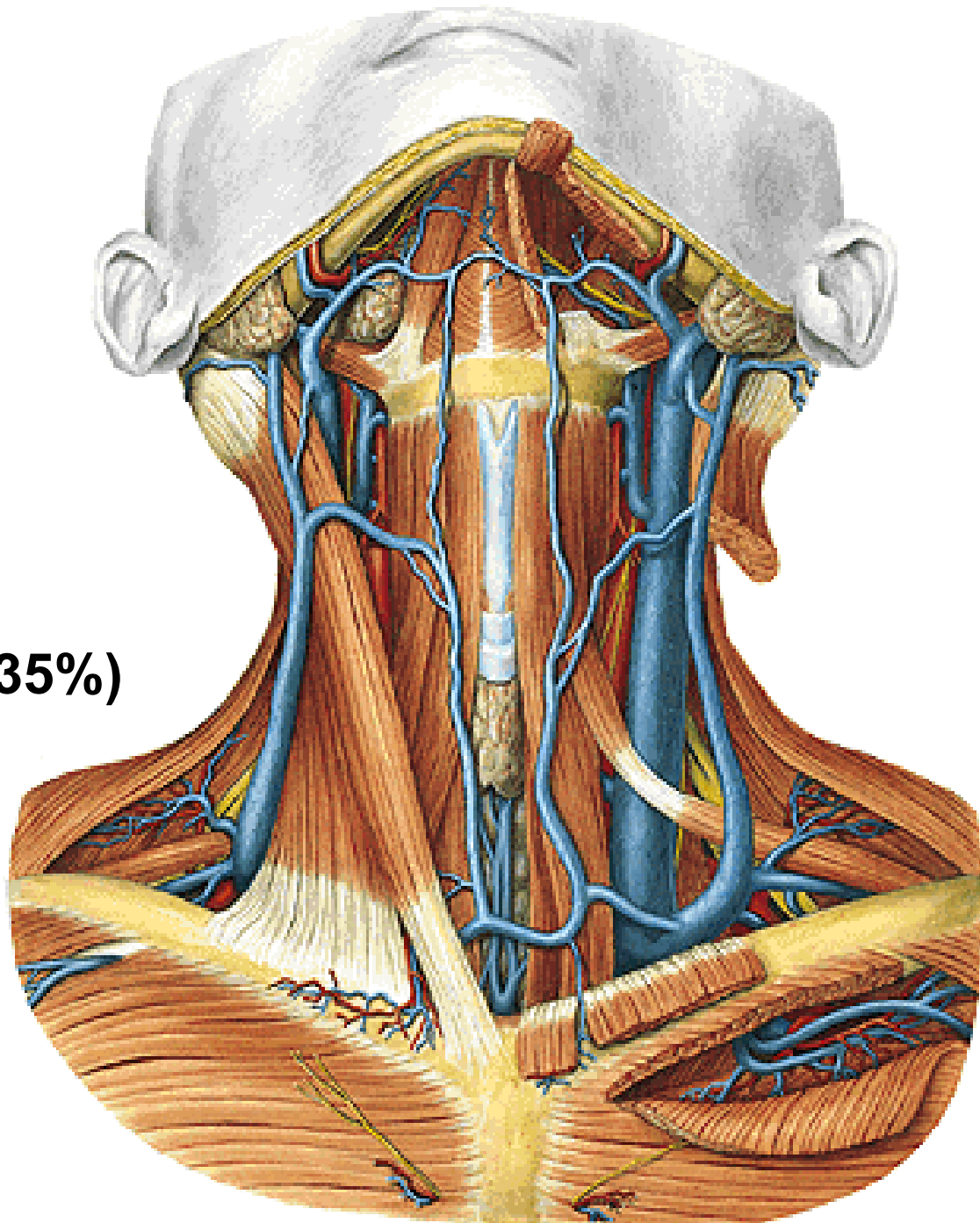
V. BRACHIOCEPHALICA

- v. jugularis int.
- v. subclavia
(angulus venosus)
- v. jugularis ext.
- vv. thyroideae inf.
(v. thyroidea ima)
- vv. thymicae
- vv. tracheales
- vv. mediastinales
- vv. bronchiales
- vv. pericardiacae
- v. vertebralis
- v. thoracica int.



V. JUGULARIS INT.

- sinus durae matris
- vv. pharyngeae
- v. facialis
- v. lingualis
- v. thyroidea sup.
(tr. thyrolingualis,
tr. thyrolinguofacialis)
- v. thyroidea media
- v. retromandibularis (35%)

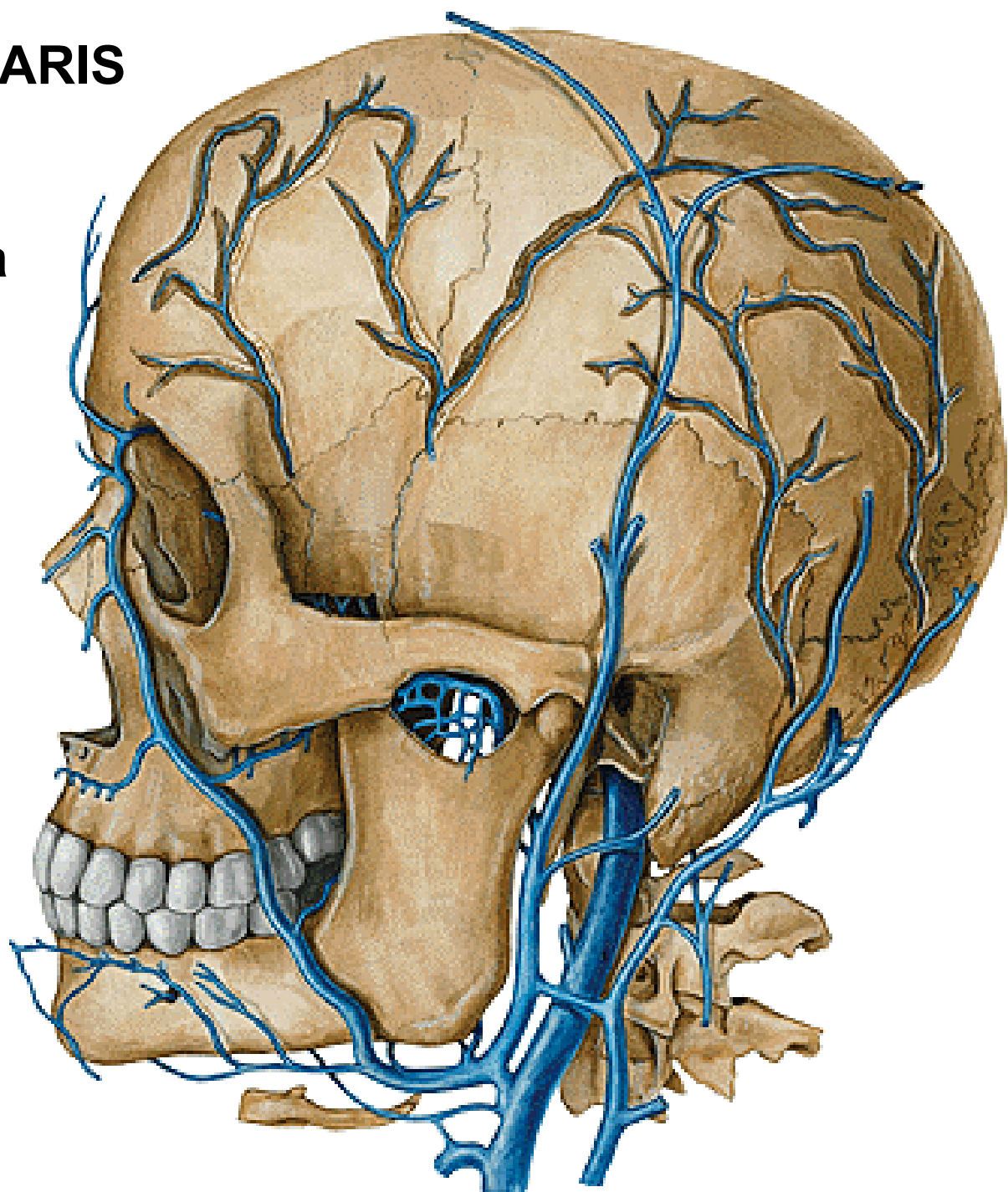


V. RETROMANDIBULARIS

- v. temporalis spf.
- v. maxillaris
- v. temporalis media
- v. transversa faciei

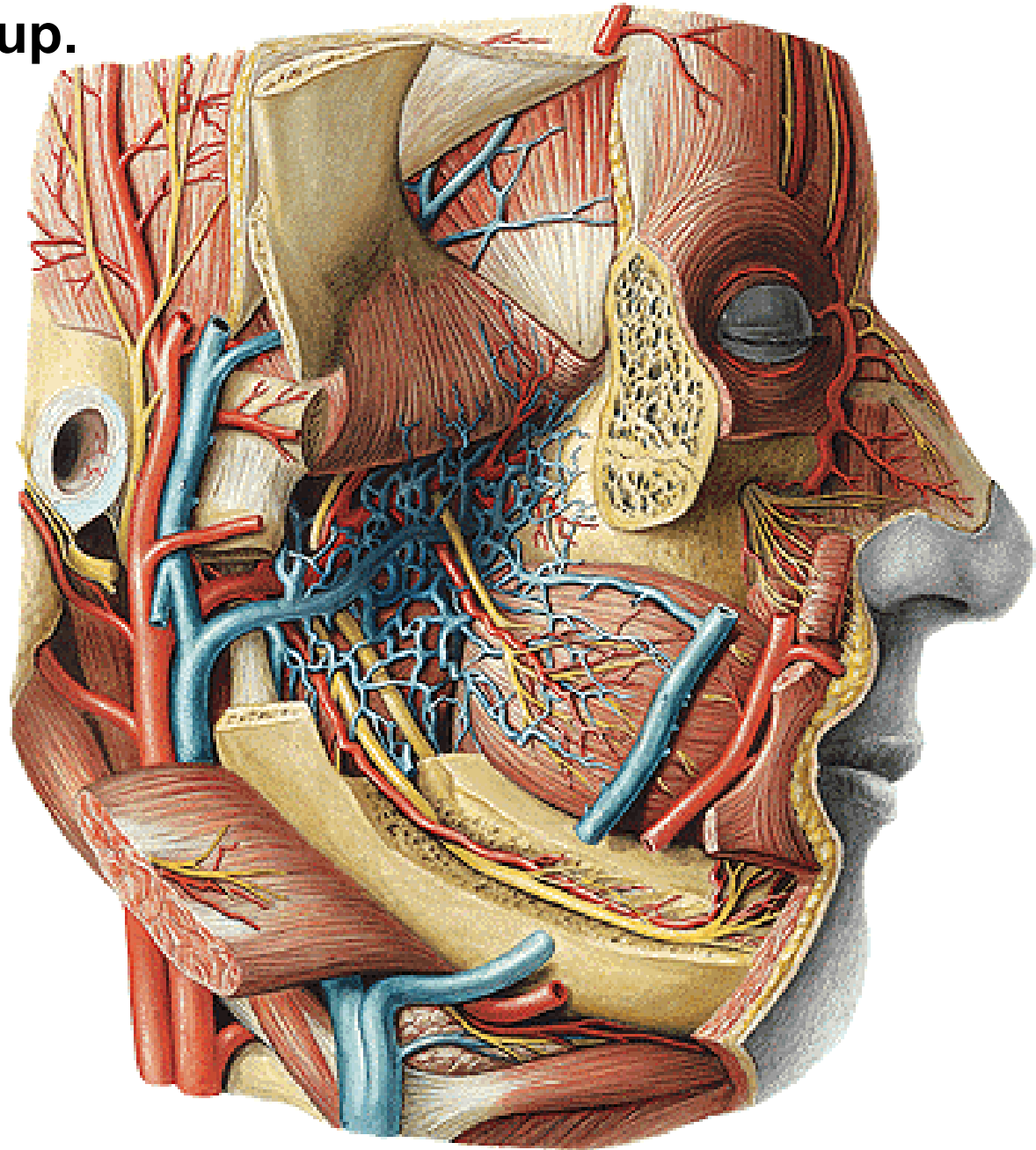
V. FACIALIS

- v. angularis
- v. prof. faciei
- v. palatina ext.



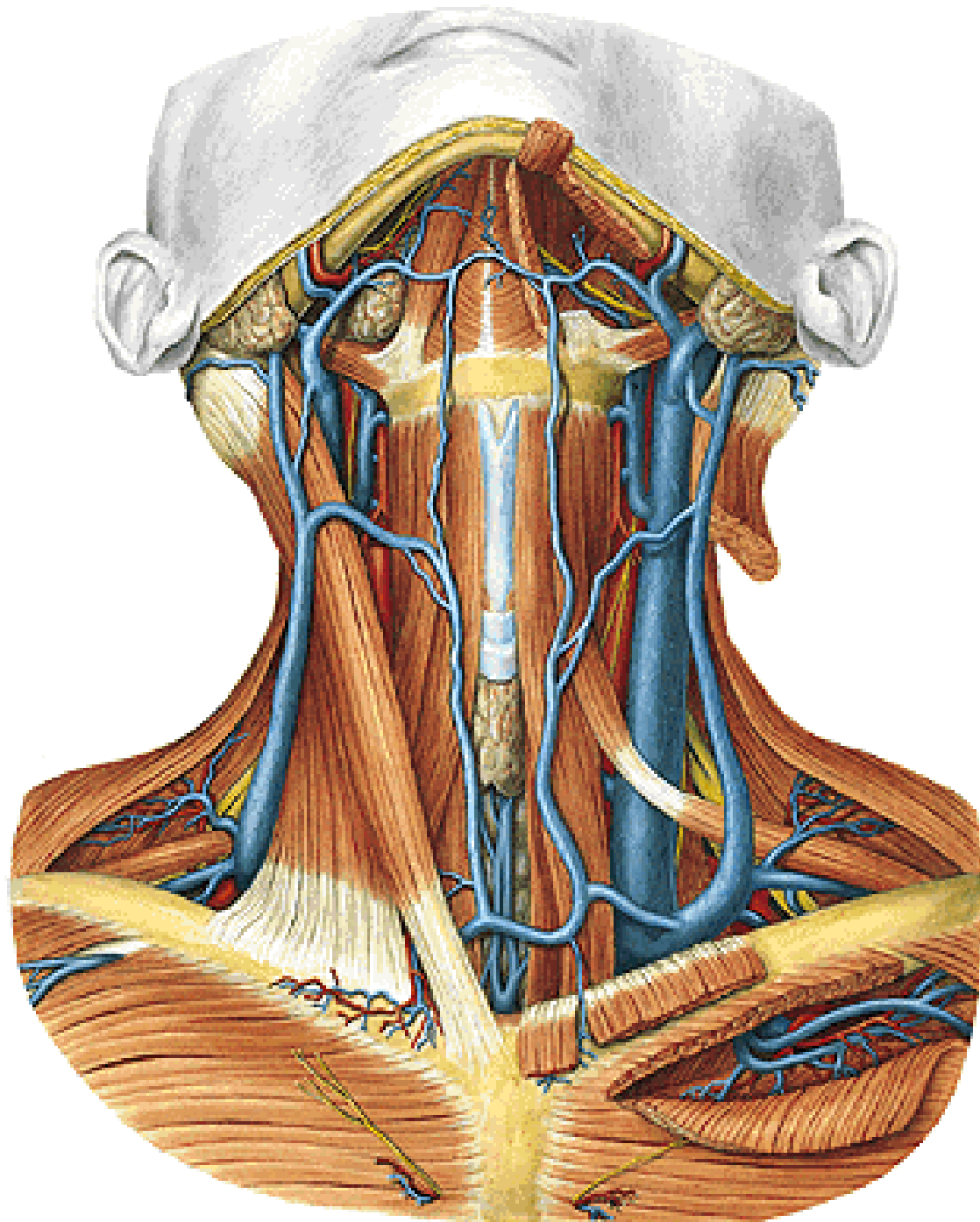
PLEXUS PTERYGOIDEUS

- v. alveolaris inf. et sup.
- v. sphenopalatina
- vv. palatinae



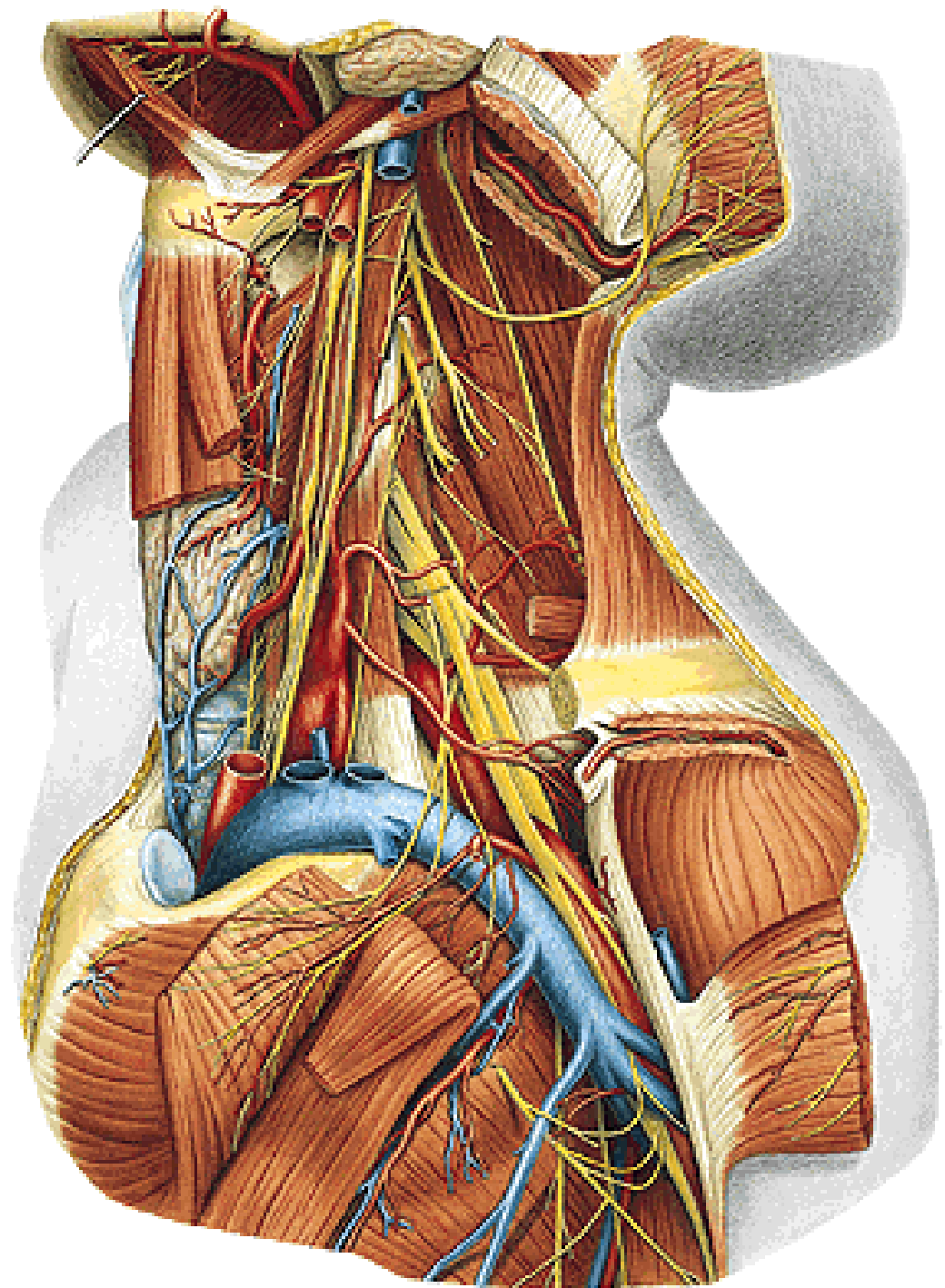
V. JUGULARIS EXT.

- v. retromandibularis
 - v. auricularis post.
 - v. occipitalis
 - v. jugularis ant.
- arcus venosus juguli**
(- v. mediana colli)
- v. transversa colli
 - v. suprascapularis



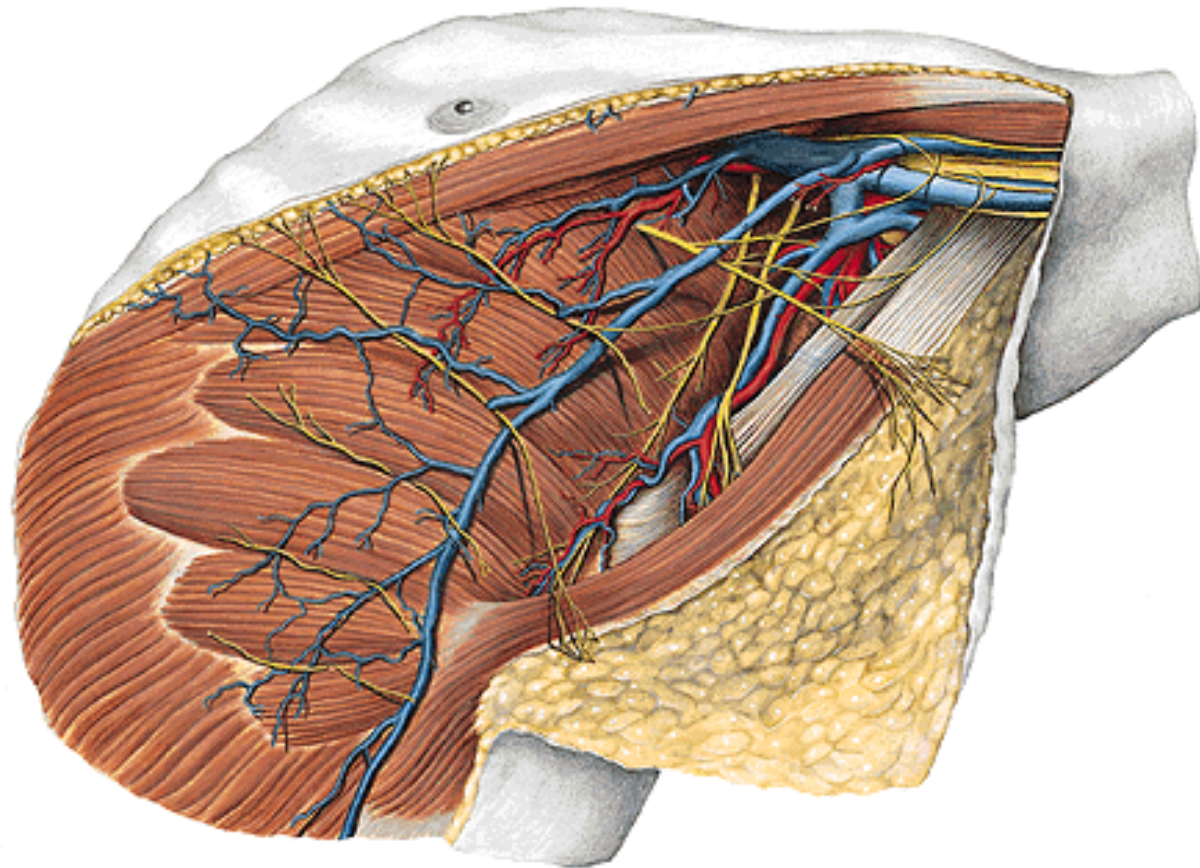
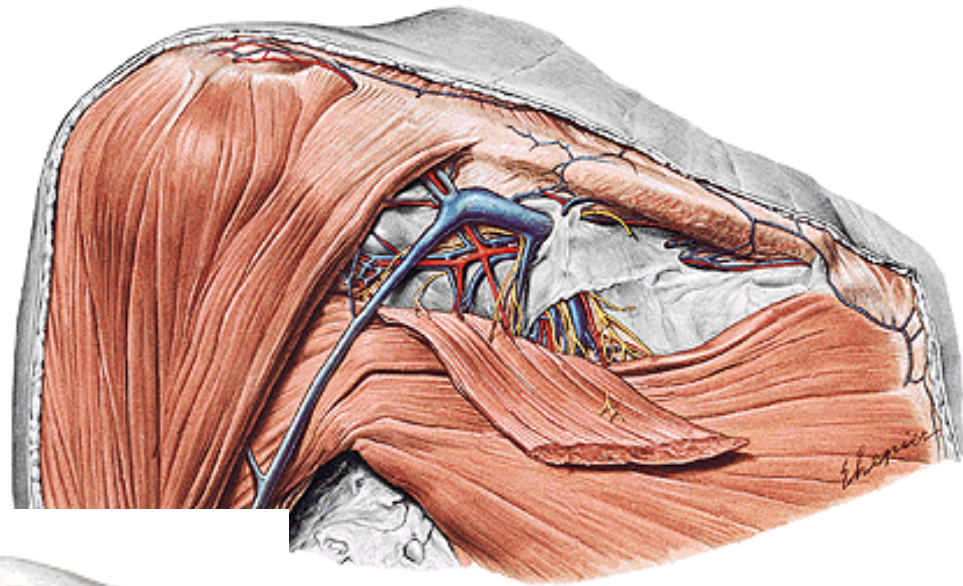
V. SUBCLAVIA

- v. axillaris
- v. transversa colli
- v. suprascapularis

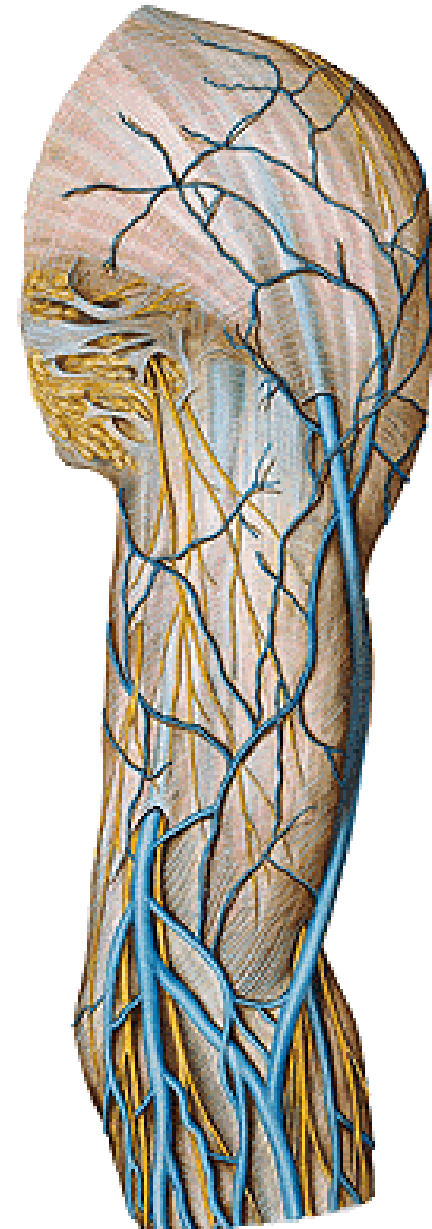
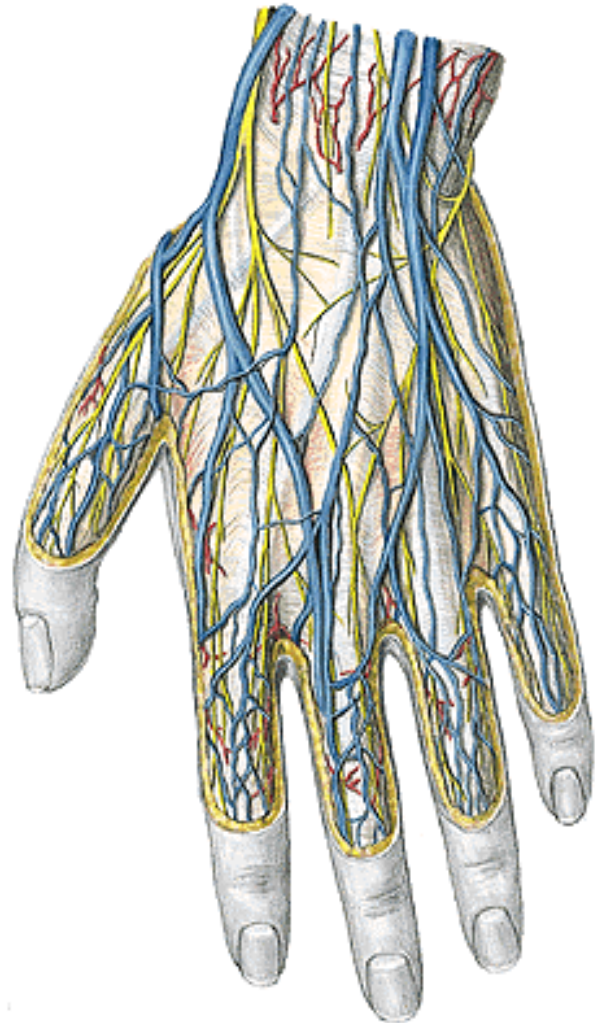


V. AXILLARIS

- vv. brachiales
- vv. thoracoepigastricae
- vv. costoaxillares
- v. cephalica

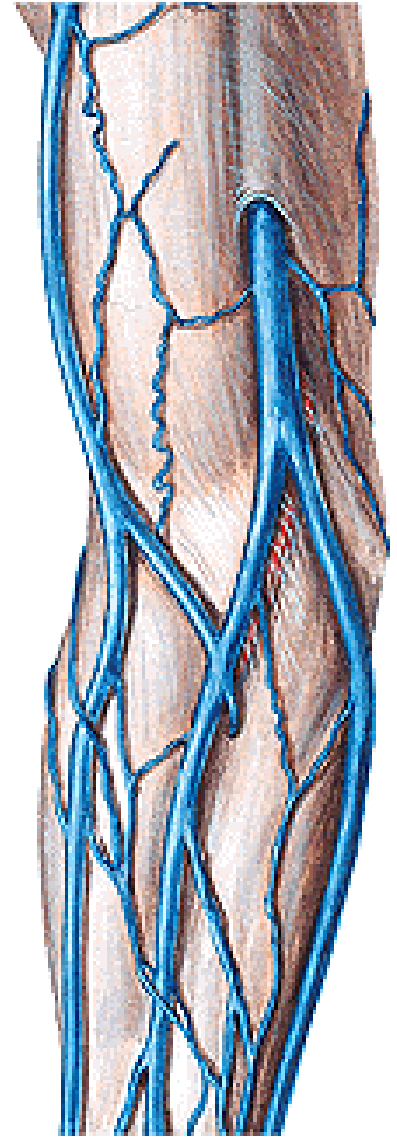
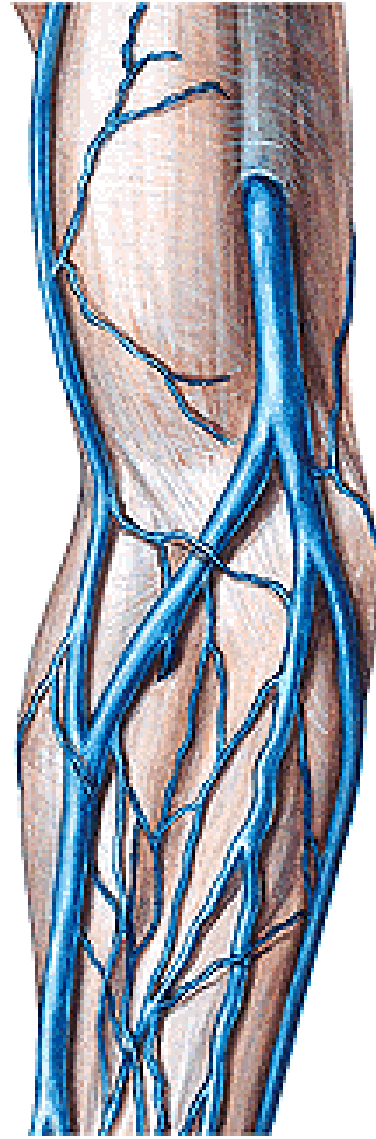


**Rete digitale dorsale – vv. metacarpeae dorsales – rete venosum dorsale manus (rete venosum palmare manus – vv. intercapitulares)
v. basilica (hiatus basilicus)
v. cephalica pollicis – v. cephalica**



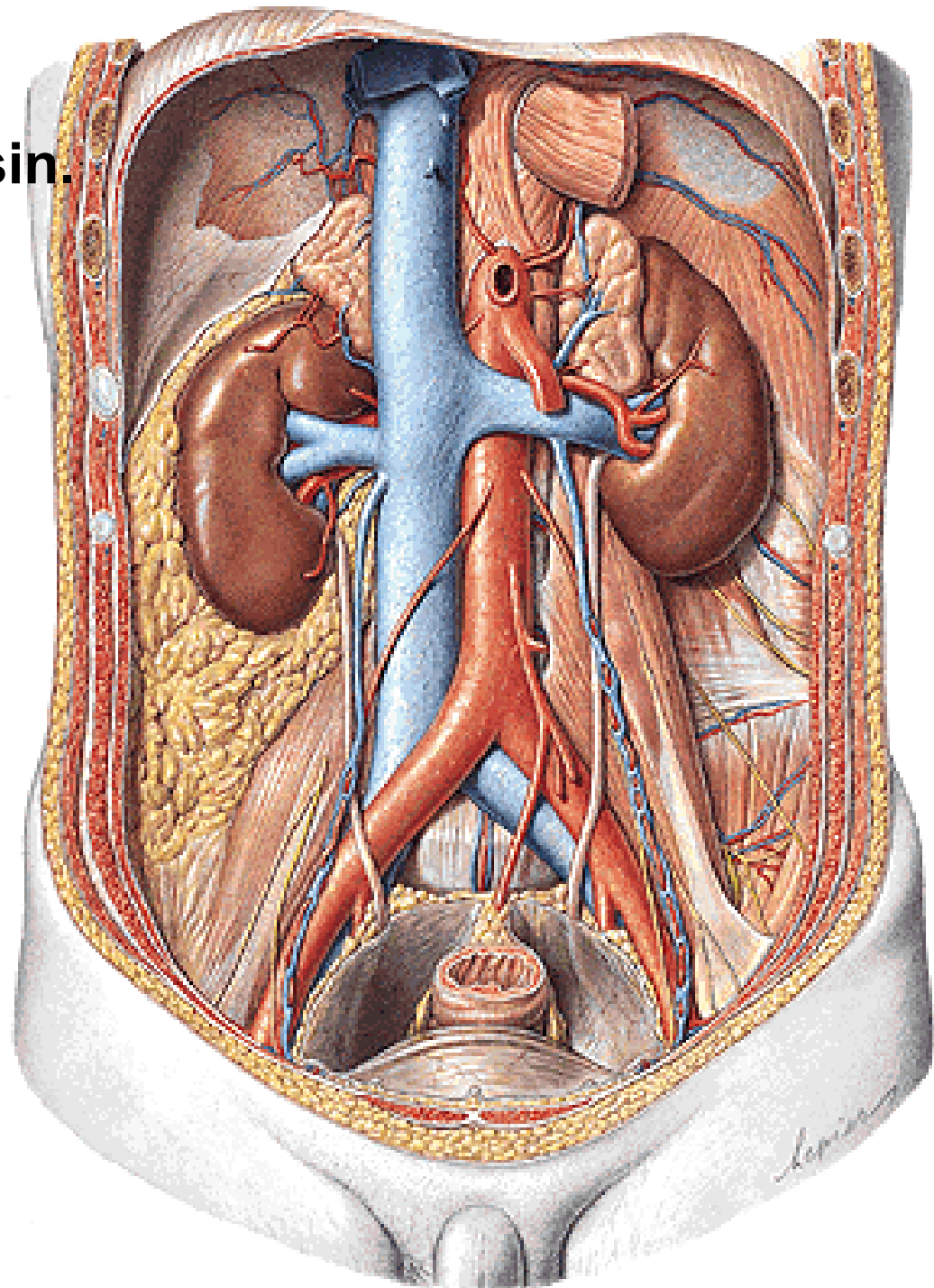
V. mediana cubiti

V. mediana antebrachii – v. mediana cephalica et basilica



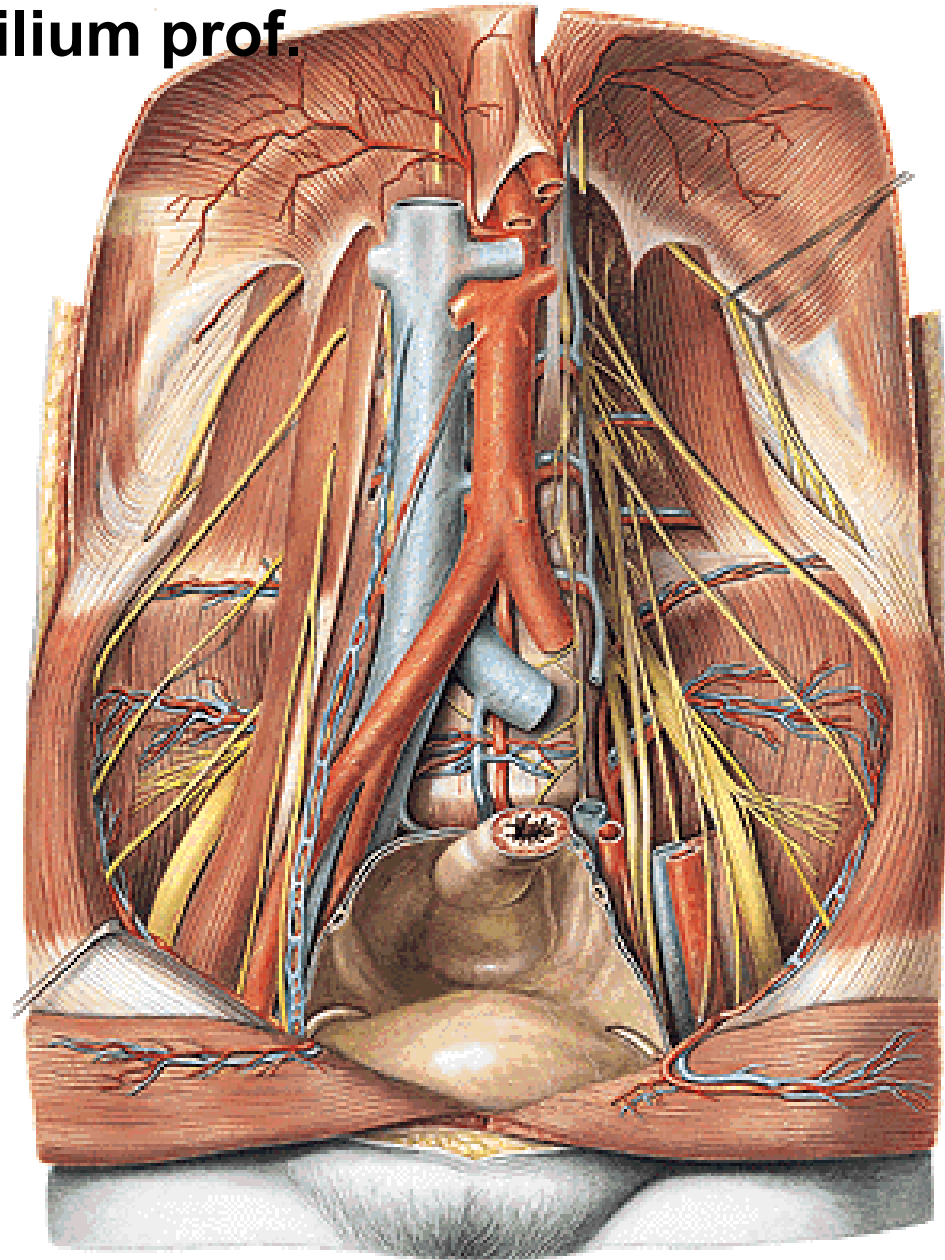
V. CAVA INF.

- v. iliaca communis dx. et sin.
- vv. lumbales
- vv. phrenicae inf.
- v. sacralis mediana
- v. testicularis dx.
(- v. ovarica dx.)
- vv. renales
- v. suprarenalis dx.
- vv. hepaticae



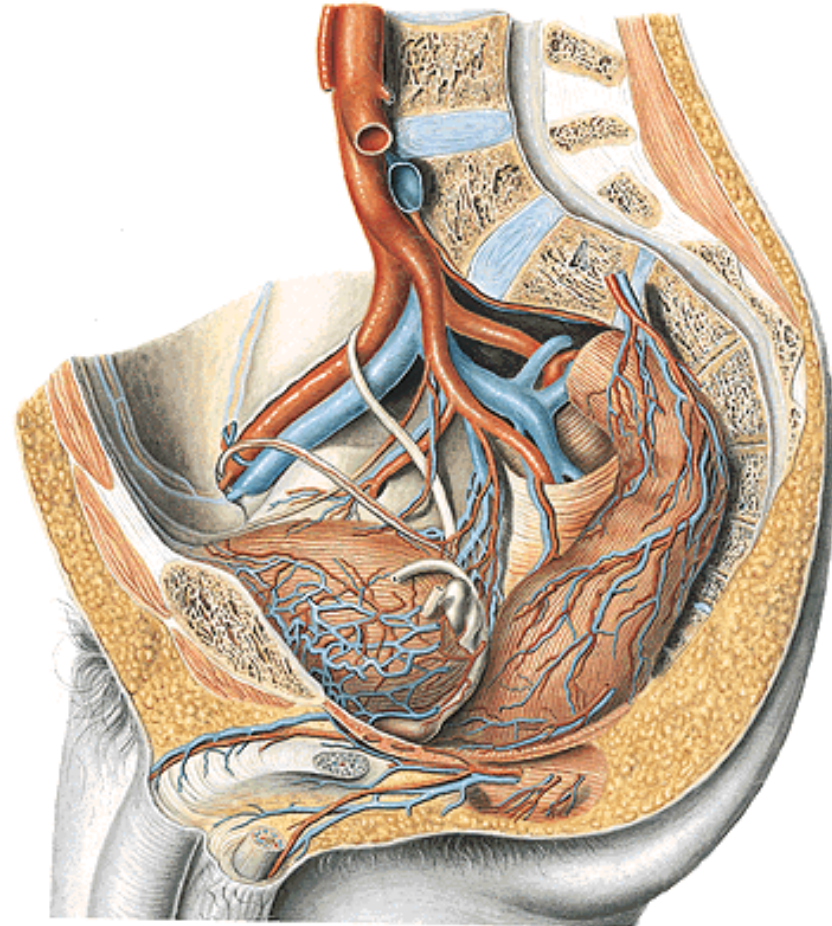
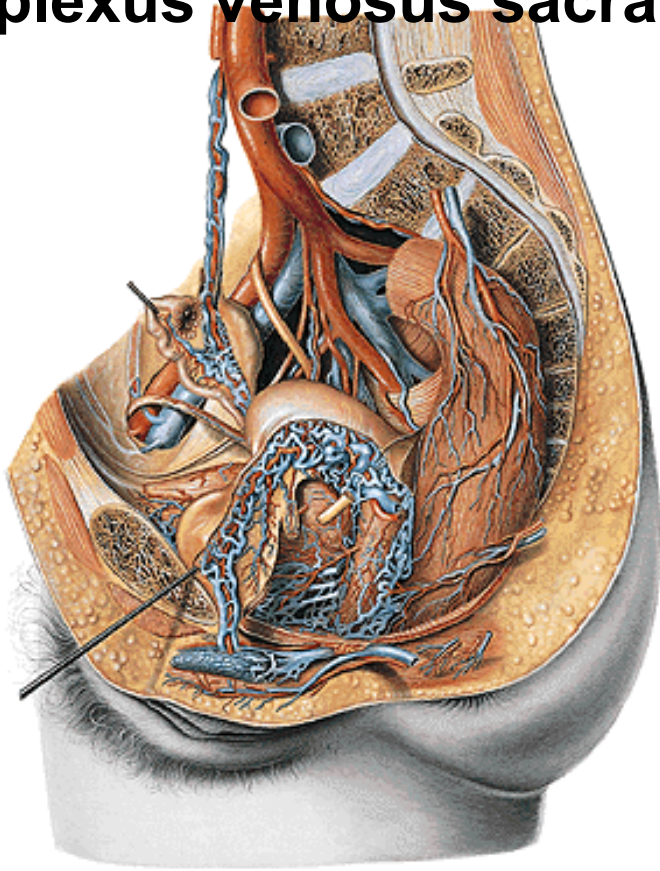
V. ILIACA COMM.

- v. iliaca ext - v. epigastrica inf.
- v. circumflexa ilium prof.
- v. iliaca int.



V. ILIACA INT.

- plexus venosus vesicalis
- plexus venosus prostaticus – v. dorsalis penis prof.
- (- plexus venosus vaginalis – v. dorsalis clitoridis prof., plexus venosus uterinus)
- plexus venosus rectalis
- plexus venosus sacralis



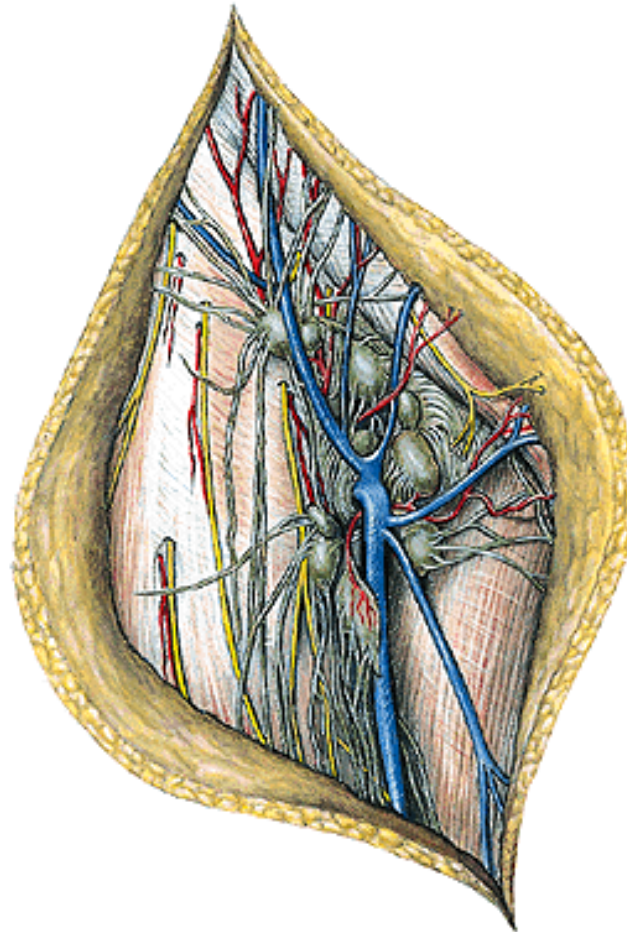
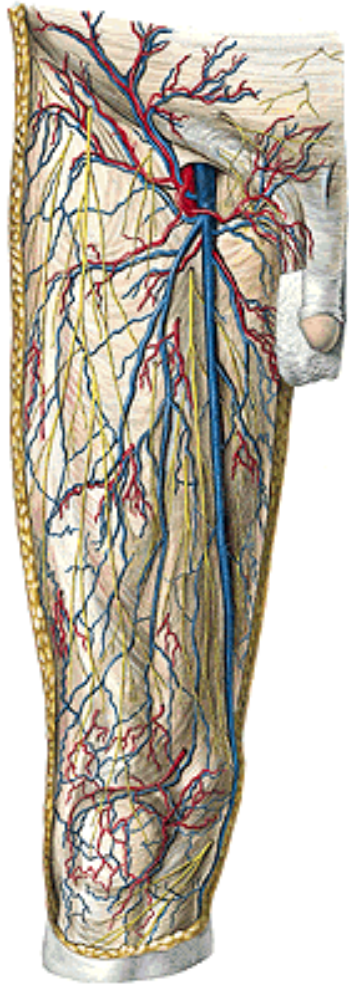
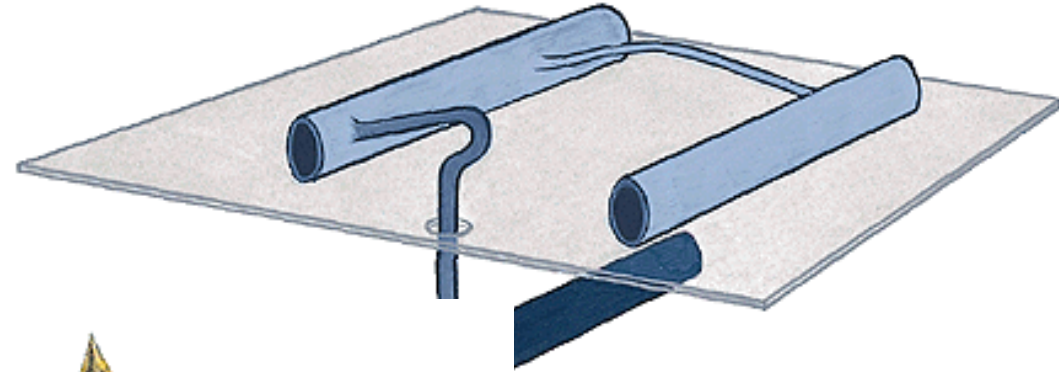
Vv. digitales dorsales – vv. metatarsae dorsales – rete venosum dorsale pedis, rete venosum plantare pedis – vv. intercapitales
v. marginalis med. – v. saphena magna
v. marginalis lat. – v. saphena parva (v. femoropoplitea)

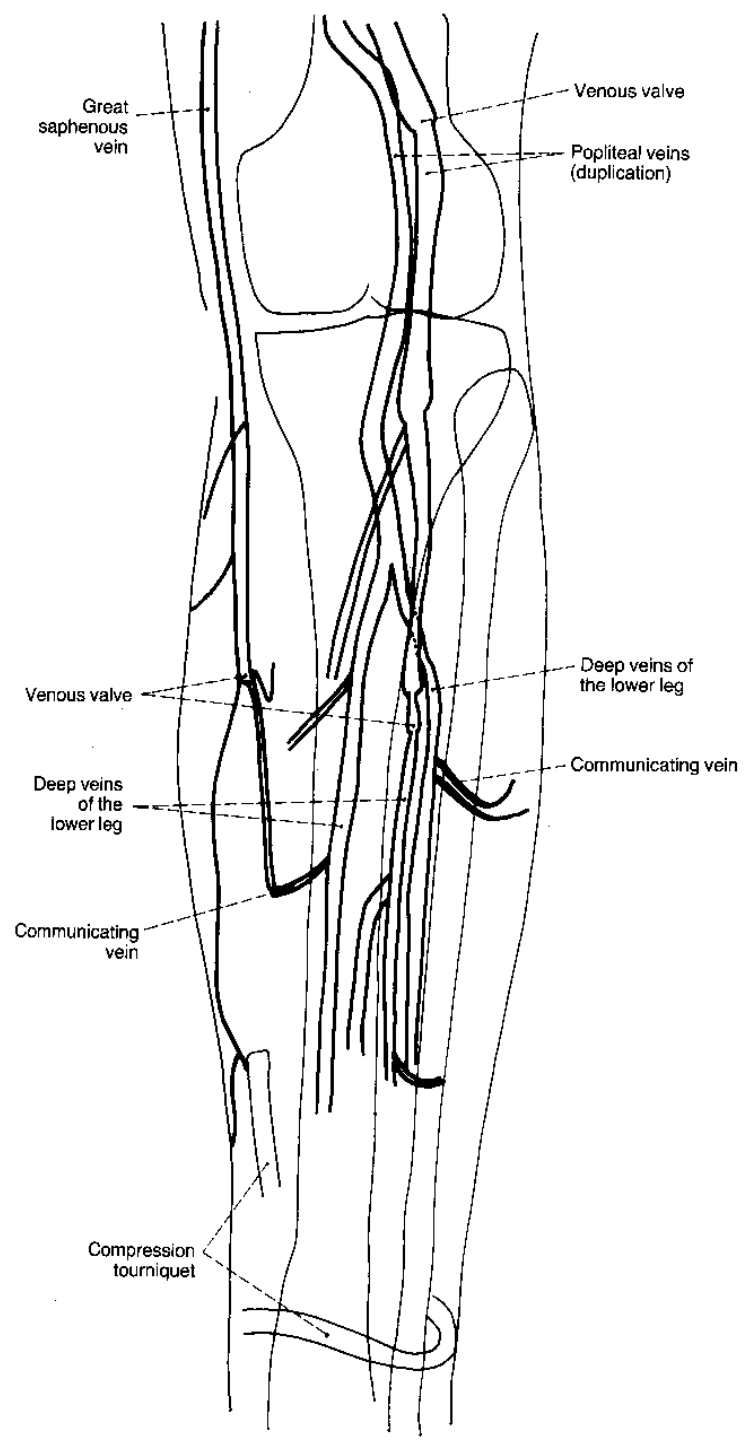
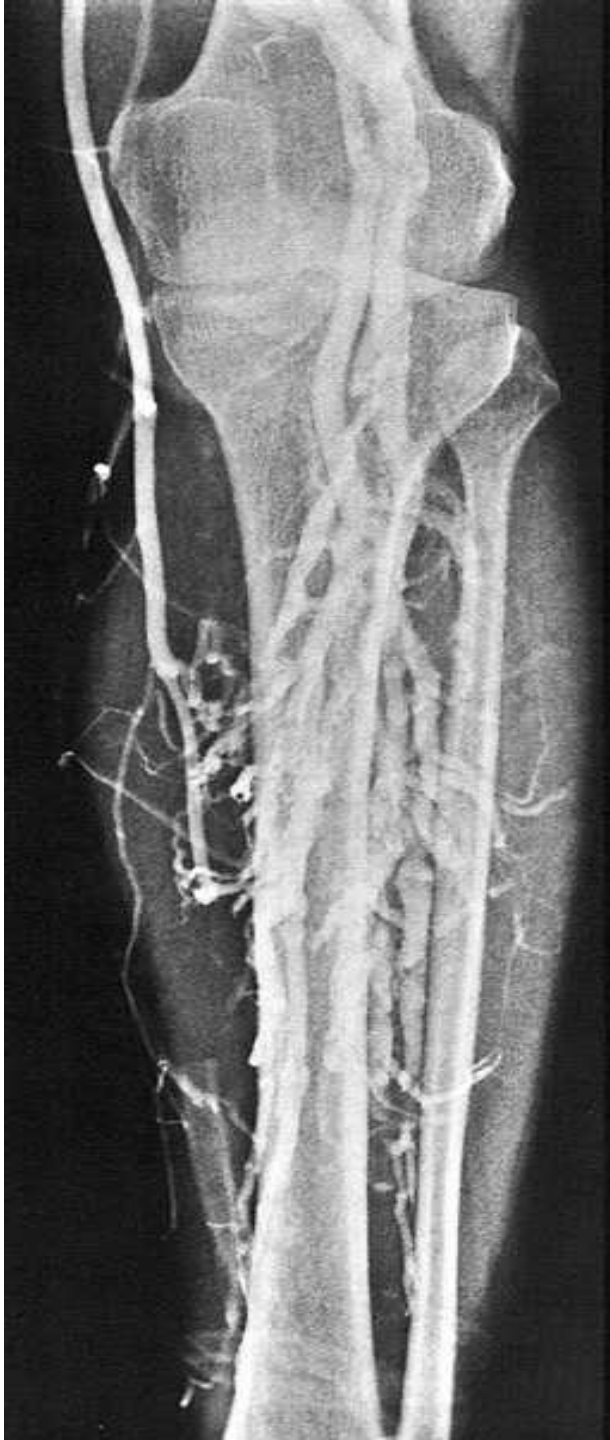


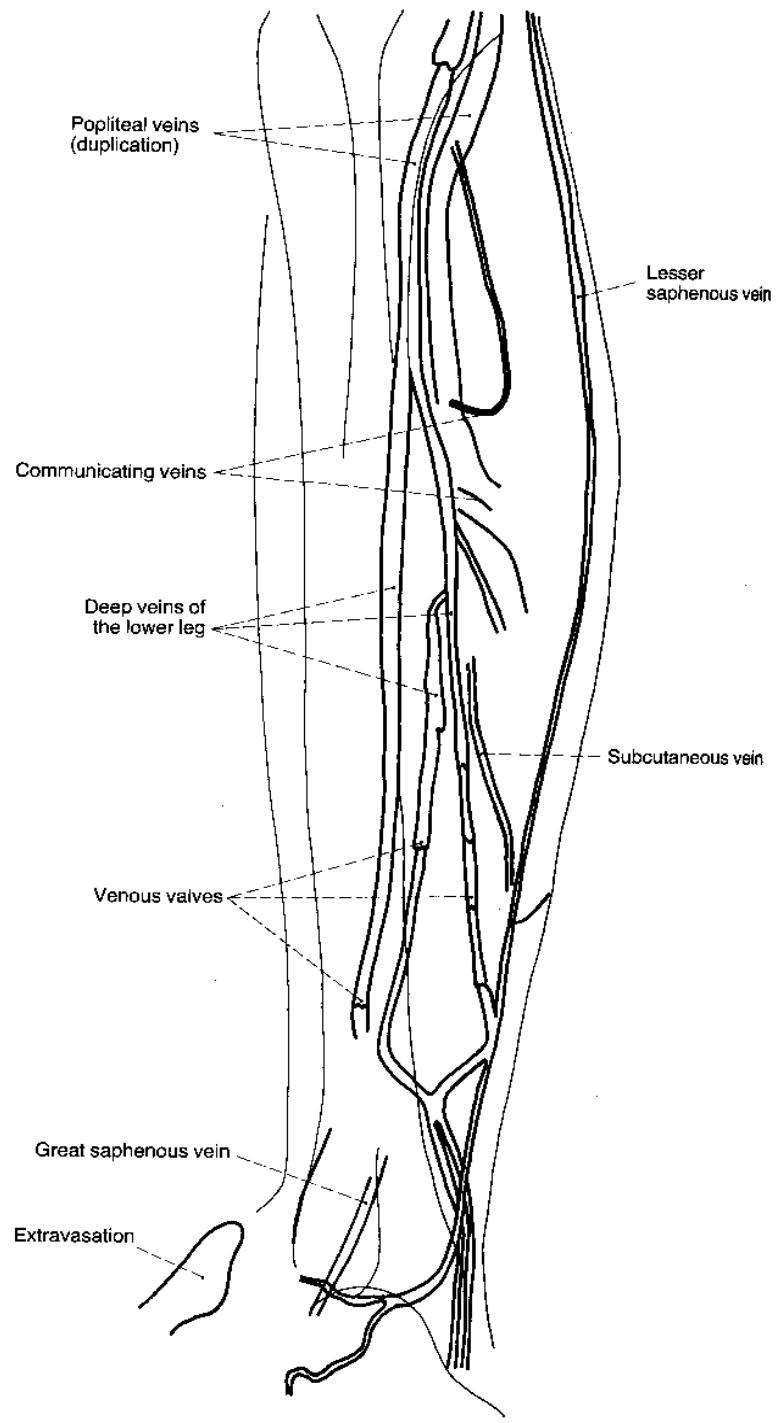
V. SAPHENA MAGNA

- v. saphena accessoria
- v. epigastrica spf.
- v. circumflexa ilium spf.
- vv. pudendae ext.

vv. perforantes







v. saphena magna

femur





ULCUS CRURIS

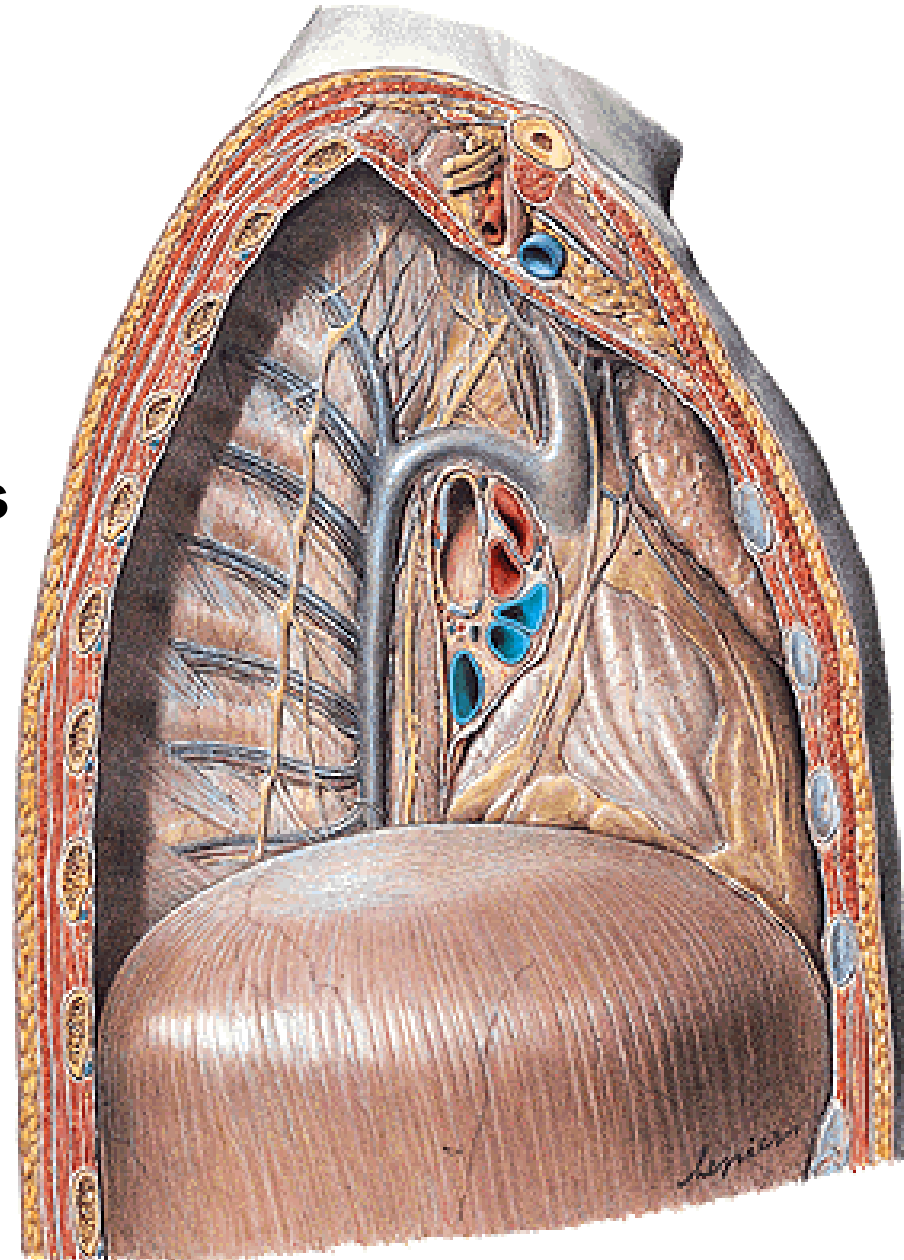
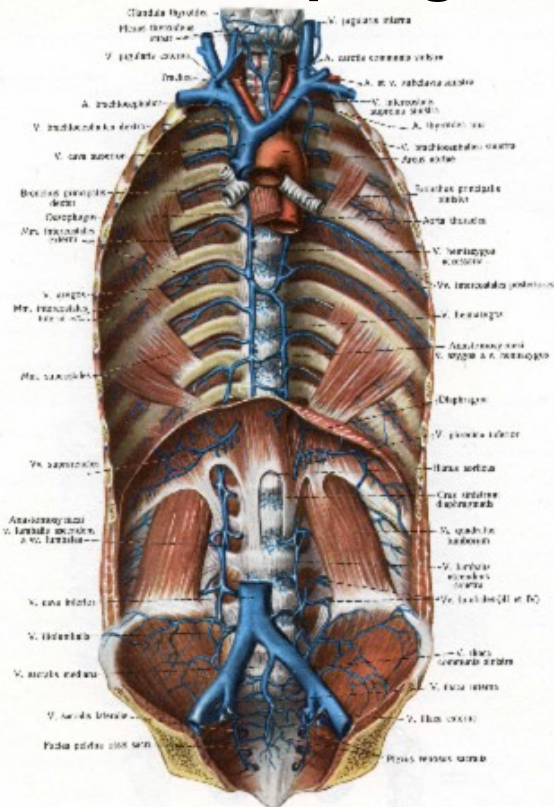




V. AZYGOS

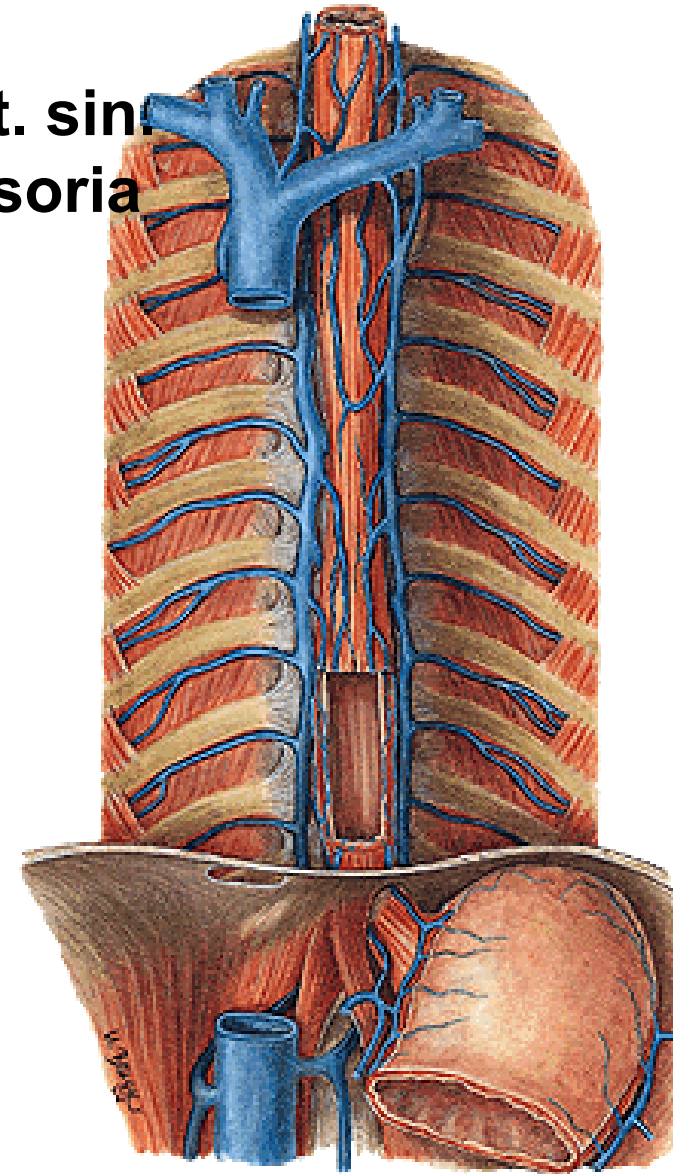
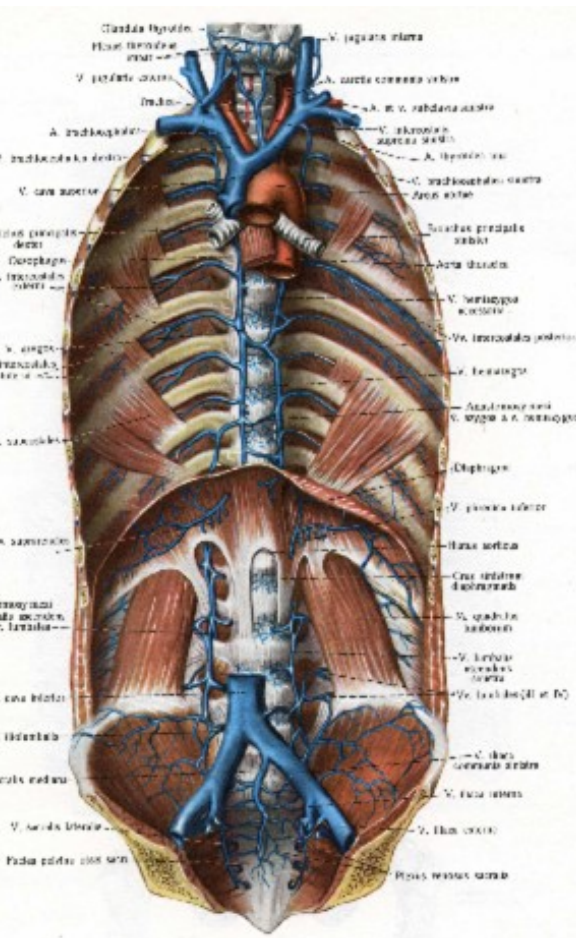
- v. lumbalis ascendens dx.
- vv. lumbales dx.
- v. subcostalis dx.
- vv. intercostales post. dx.
- v. intercostalis suprema dx.
- v. hemiazygos
- vv. oesophageae, bronchiales, mediastinales

- v. phrenica sup. dx.



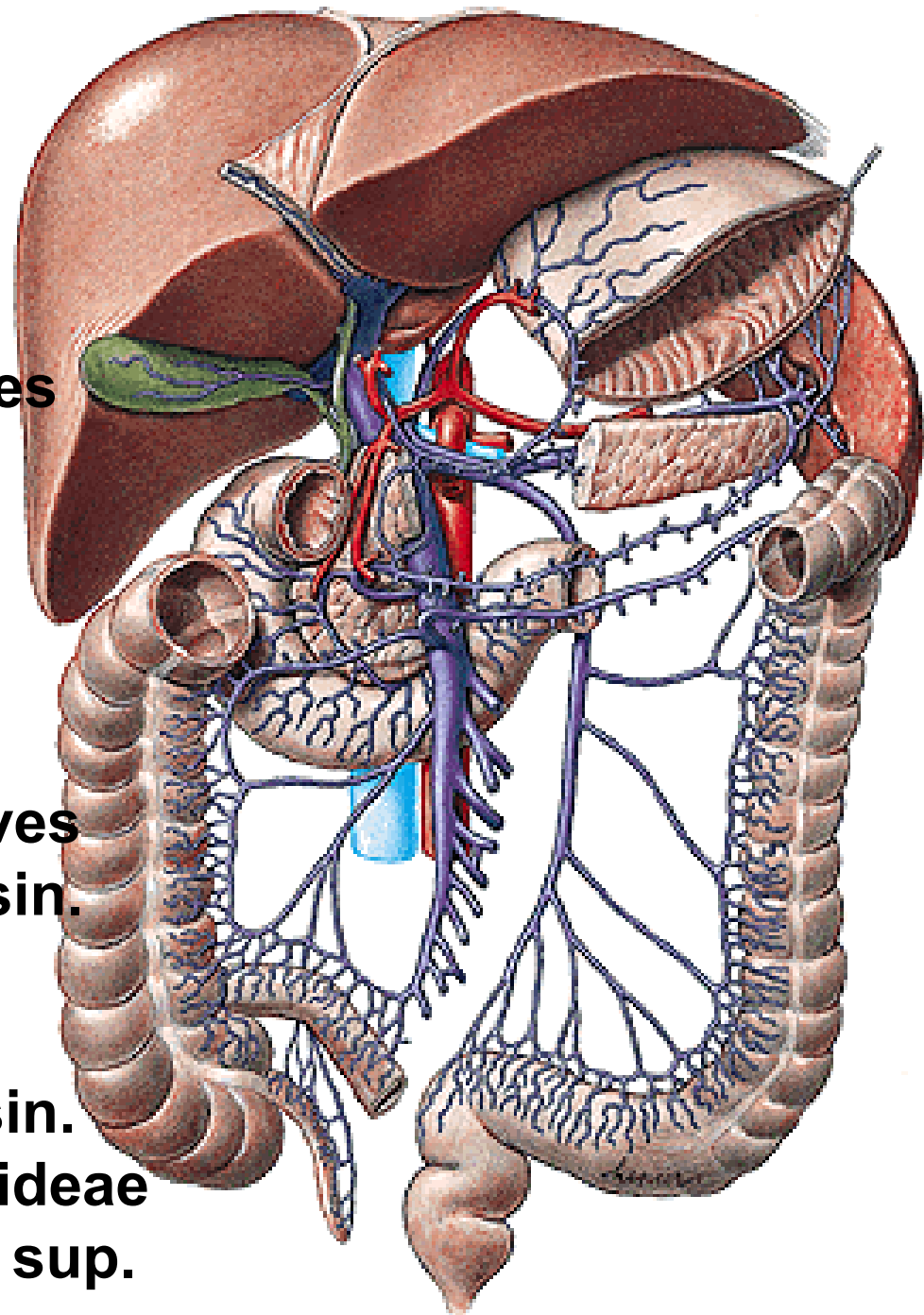
V. HEMIAZYGOS

- v. lumbalis ascendens sin.
- vv. lumbales sin.
- v. subcostalis sin.
- vv. intercostales post. sin.
- v. hemiazygos accessoria
 - v. intercostalis suprema sin.
- vv. oesophageae
- vv. bronchiales,
- vv. mediastinales
- v. phrenica sup. sin.



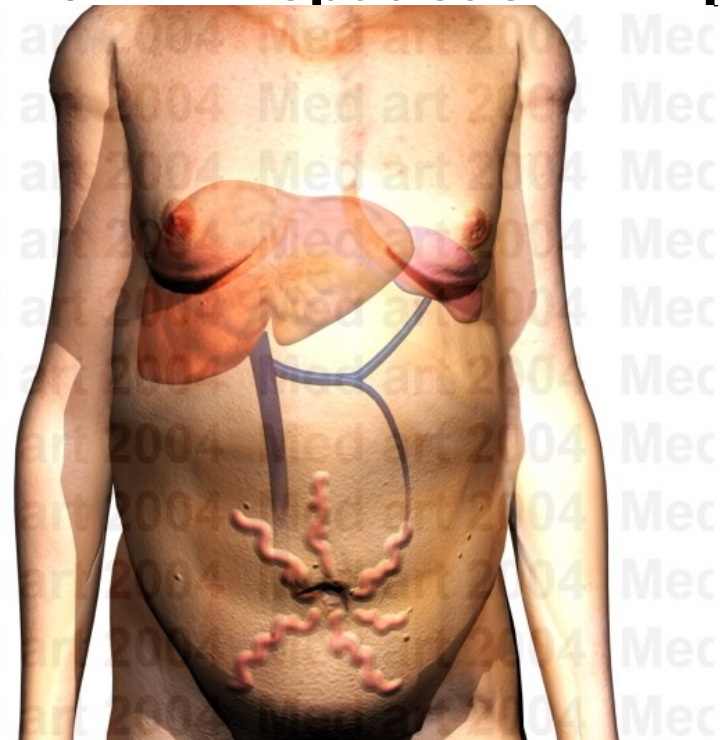
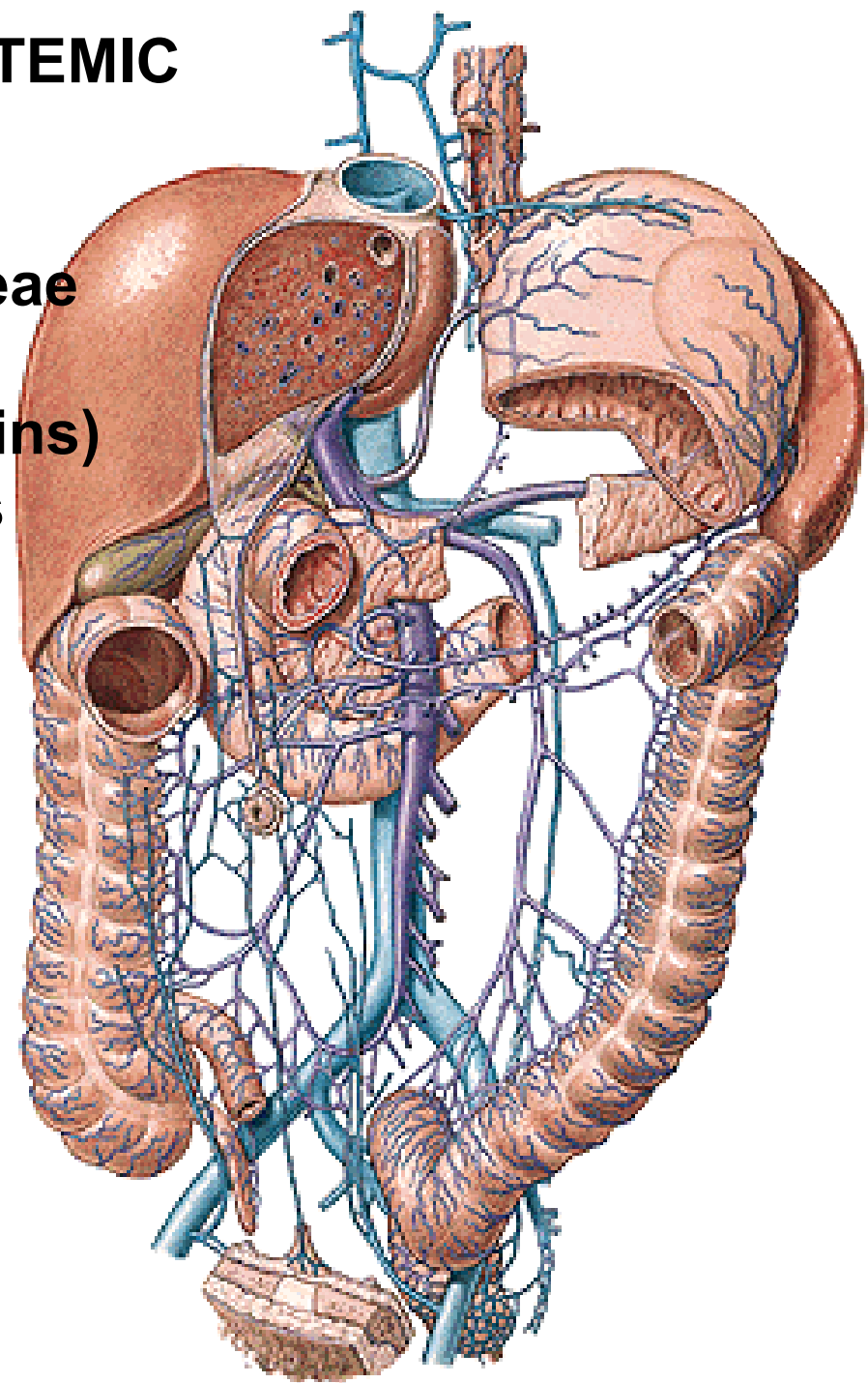
V. PORTAE

- vv. cysticae
- v. gastrica sin.
- v. gastrica dx.
- v. mesenterica sup.
 - vv. pancreaticoduodenales
 - vv. pancreaticae
 - v. gastroepiploica dx.
 - vv. jejunales et ileales
 - v. ileocolica
 - v. colica dx. et media
- v. lienalis- vv. gastricae breves
 - v. gastroepiploica sin.
 - vv. pancreaticae
 - v. mesenterica inf.
 - v. colica sin.
 - vv. sigmoideae
 - v. rectalis sup.



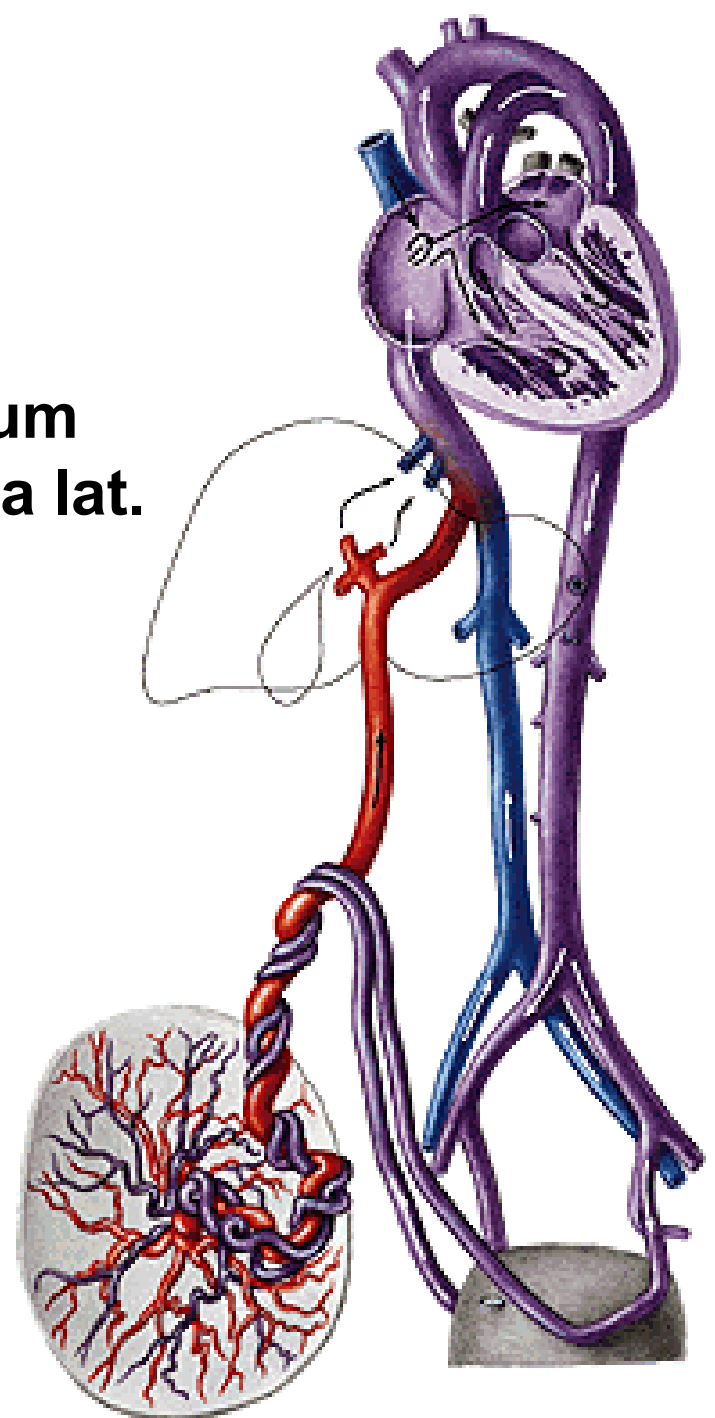
PORTAL-CAVAL / PORTAL-SYSTEMIC ANASTOMOSES

1. Vv. gastricae – vv. oesophageae
2. Vv. paraumbilicales
(caput Medusae, Burrow's veins)
3. Plexus rectalis - hemorrhoids
4. Retzius' veins
5. Vv. hepaticae – vv. phrenicae



FETAL CIRCULATION

- v. umbilicalis – lig. teres hepatis
- ductus venosus – lig. venosum
- foramen ovale – fossa ovalis
- ductus arteriosus – lig. arteriosum
- aa. umbilicales – ligg. umbilicalia lat.



Illustrations were copied from:

**Atlas der Anatomie des Menschen/Sobotta.
Putz,R., und Pabst,R. 20. Auflage. München:
Urban & Schwarzenberg, 1993)**