



# Nervová tkáň

- Neurony

- Gliové buňky

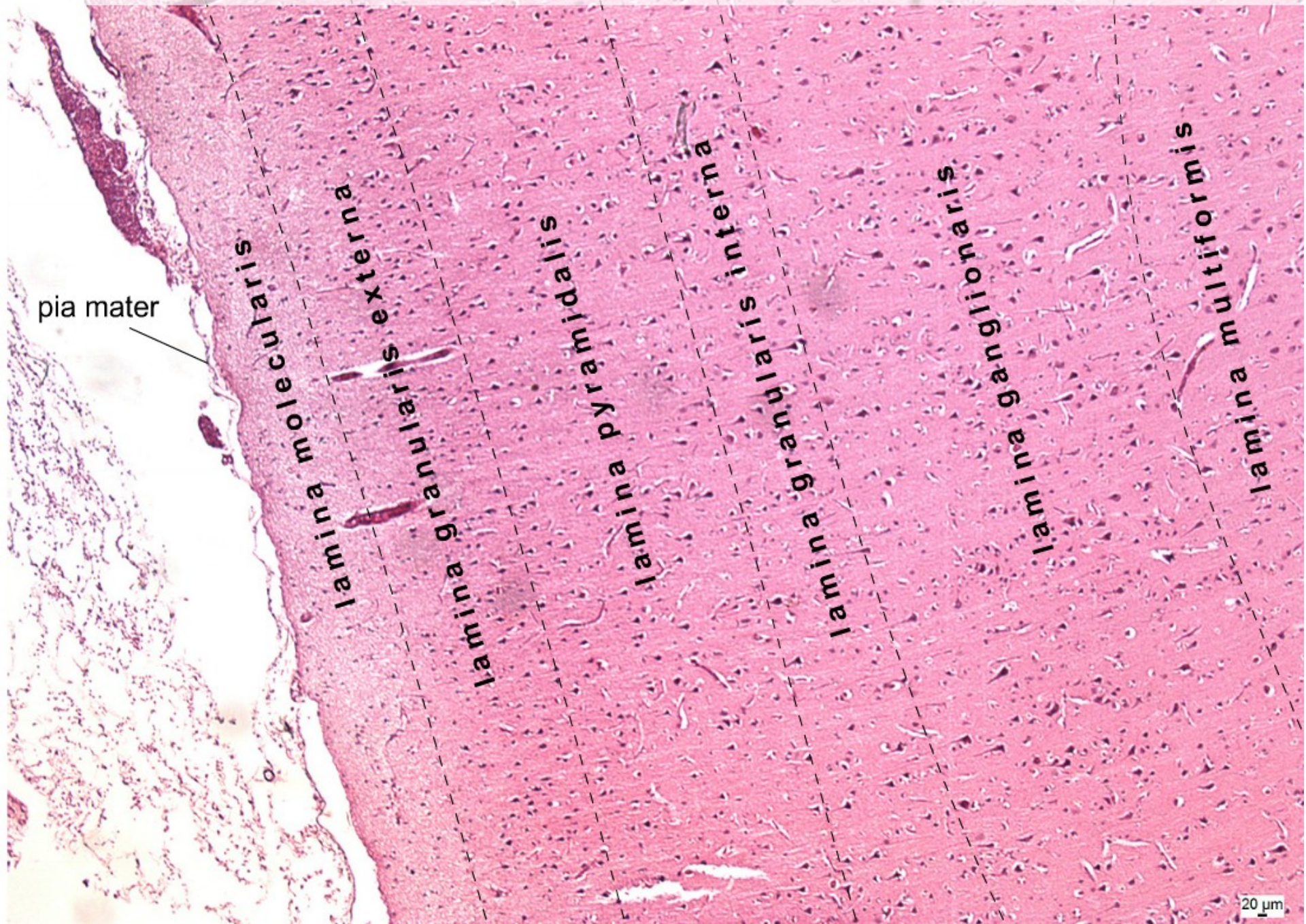
CNS: oligodendrocyty, astrocyty,  
ependymové buňky, mikroglie

PNS: satelitové (plášťové) buňky,  
Schwannovy buňky

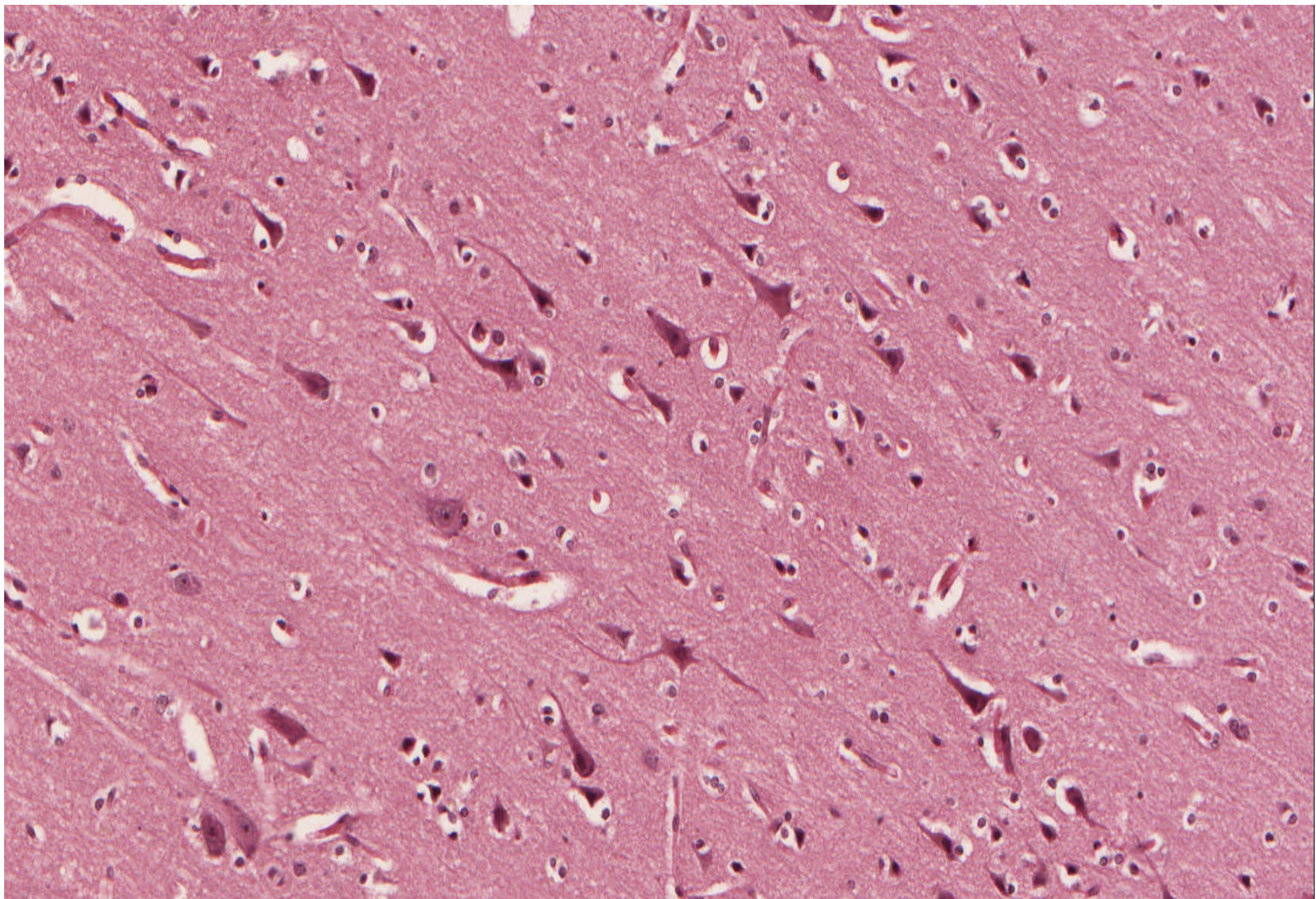
Synapse

Myelinizace

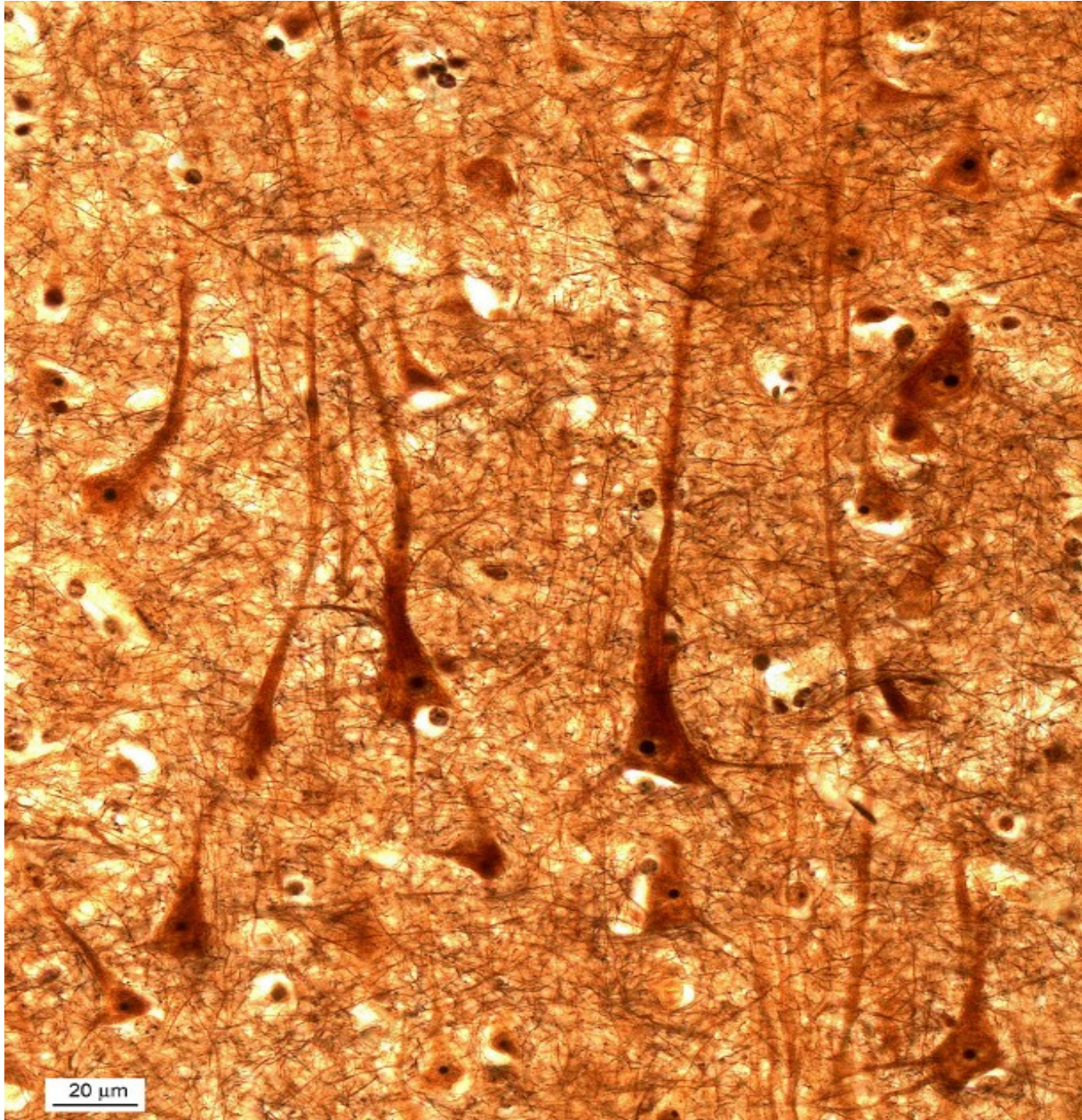
Cortex cerebri – přehled, (HE), objektiv 5×



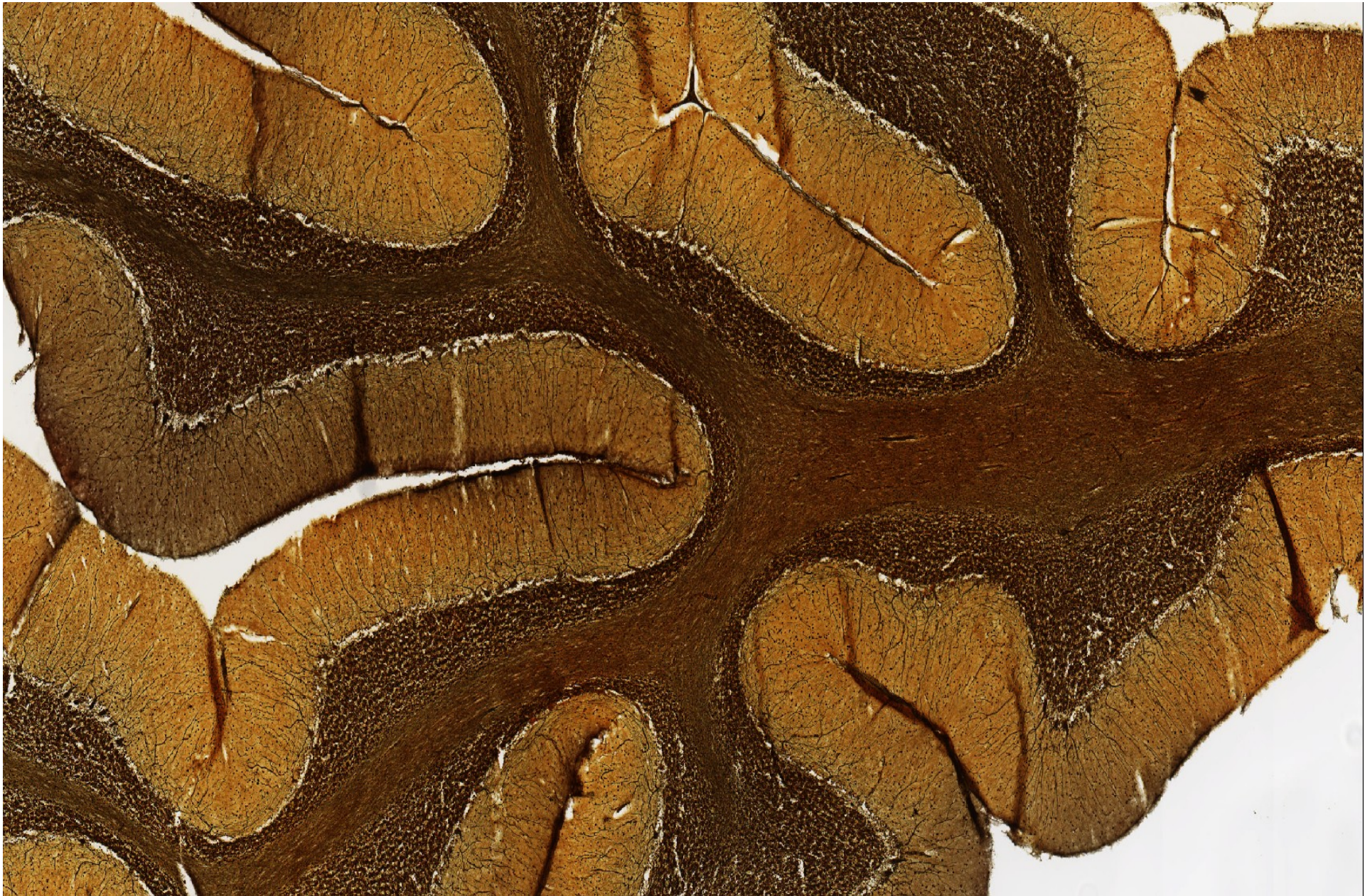
# Cortex cerebri – Pyramidové buňky – multipolární neurony



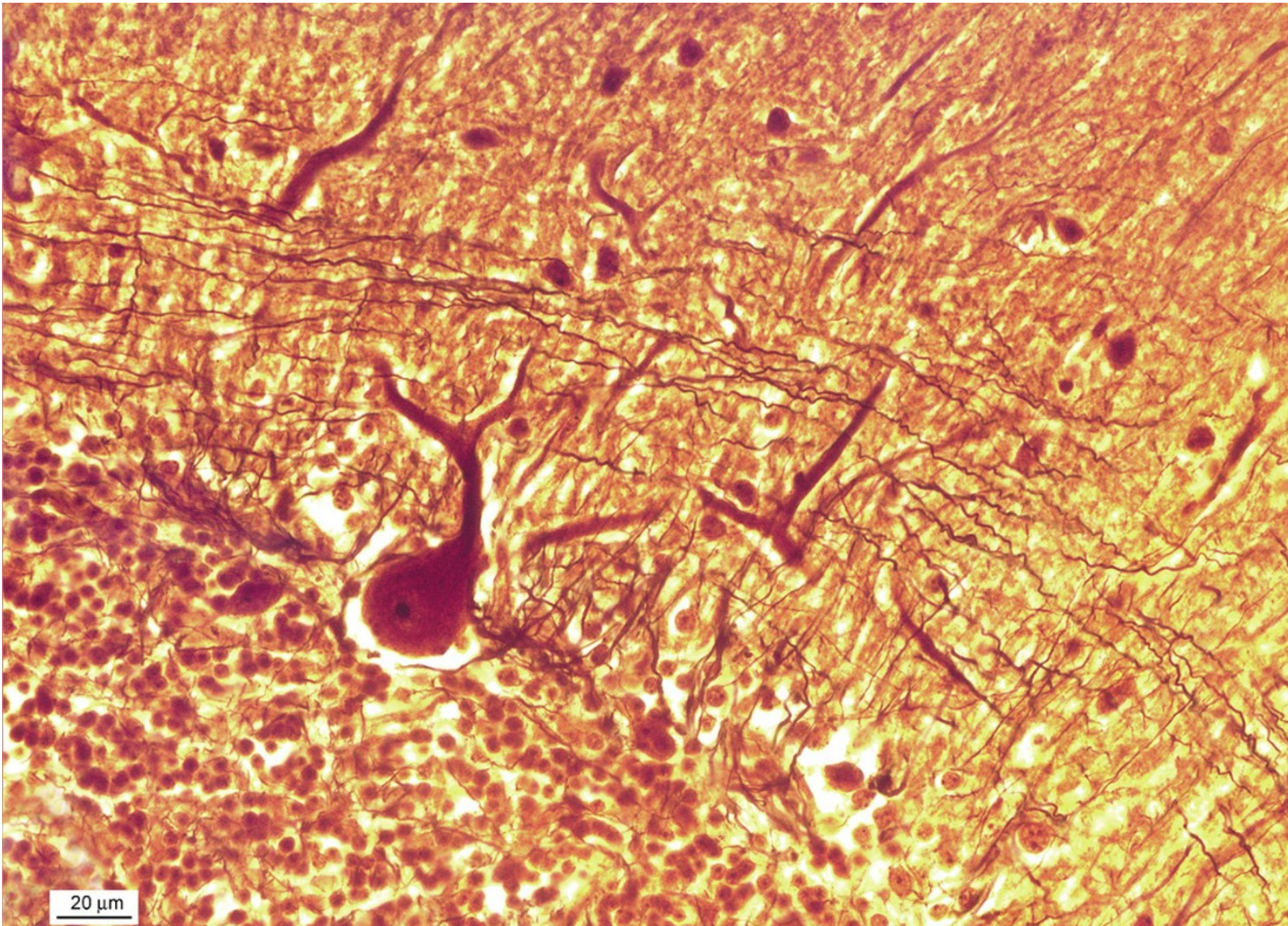
# Cortex cerebri – Pyramidové buňky – multipolární neurony



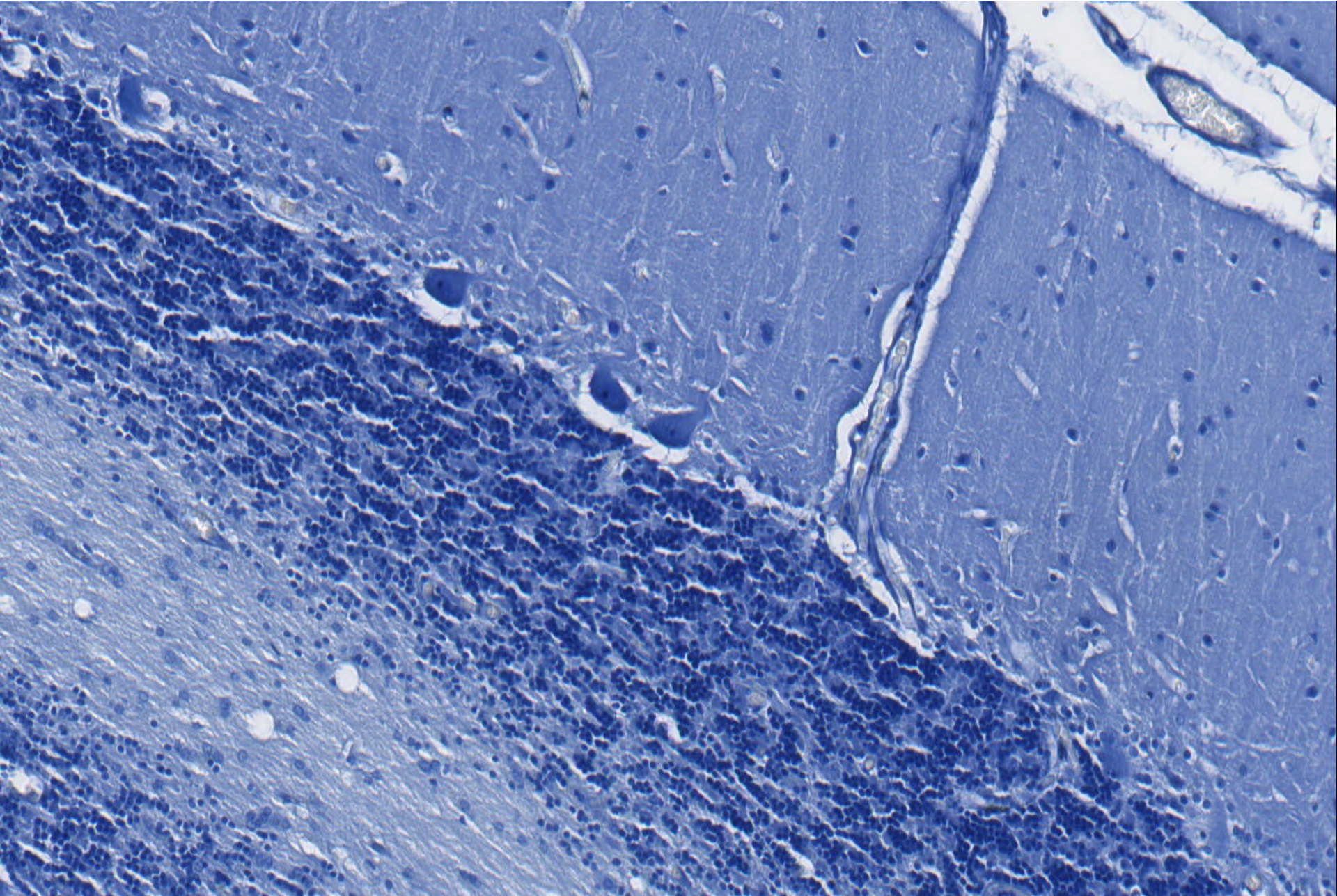
Cerebellum



Cerebellum - Purkyňova buňka



Cerebellum - Nisslova substance



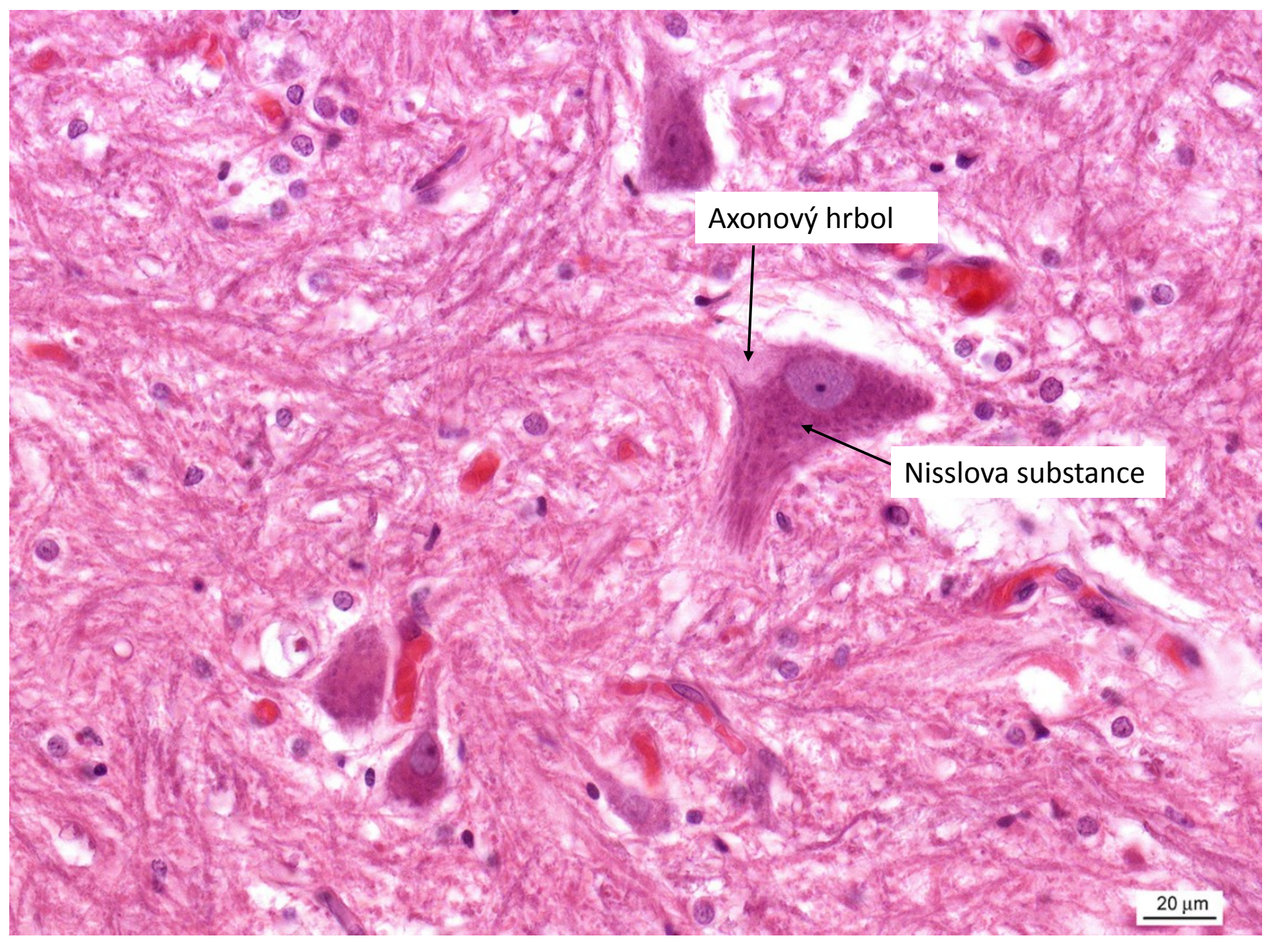
Axonový hrbol



Nisslova substance

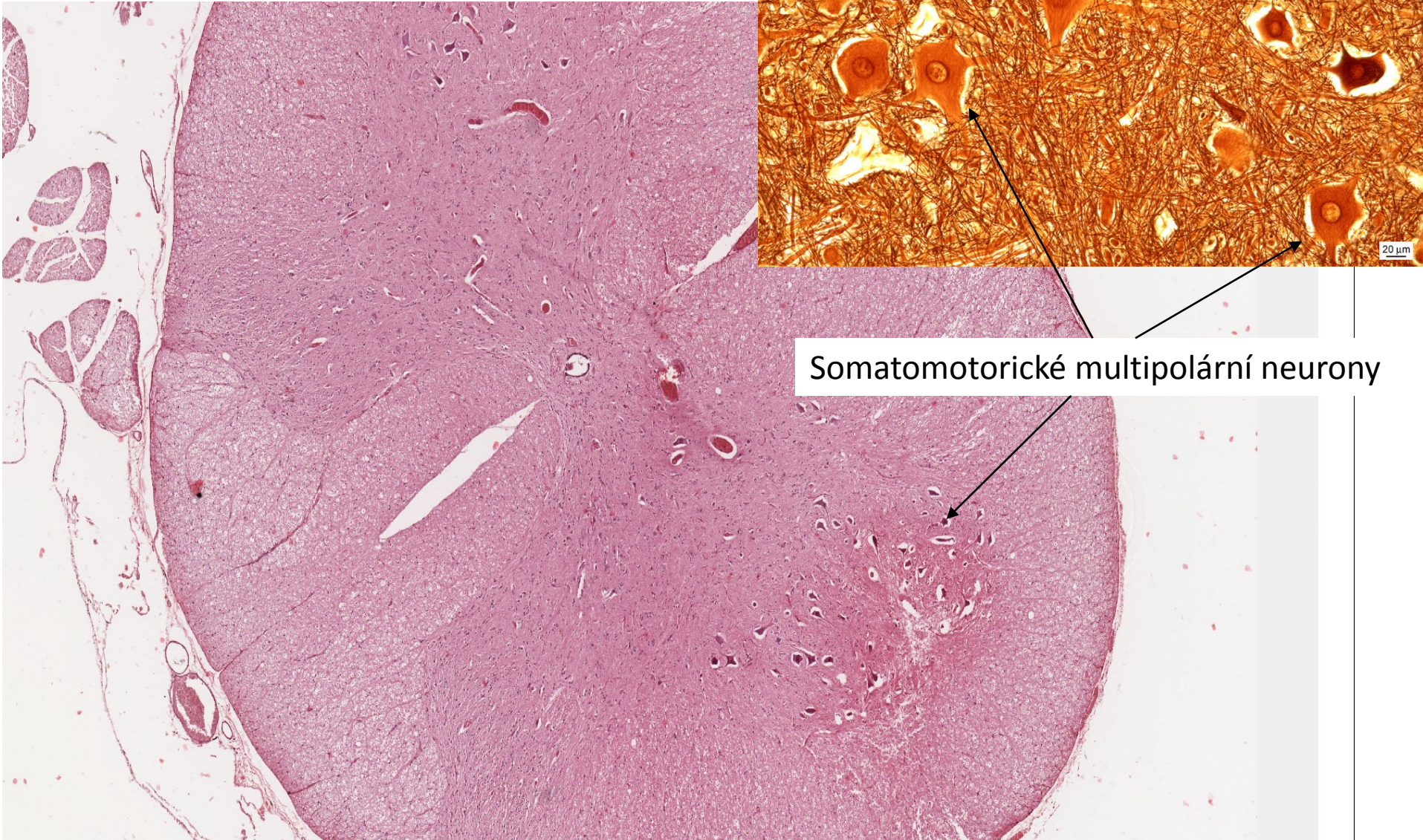


20 μm





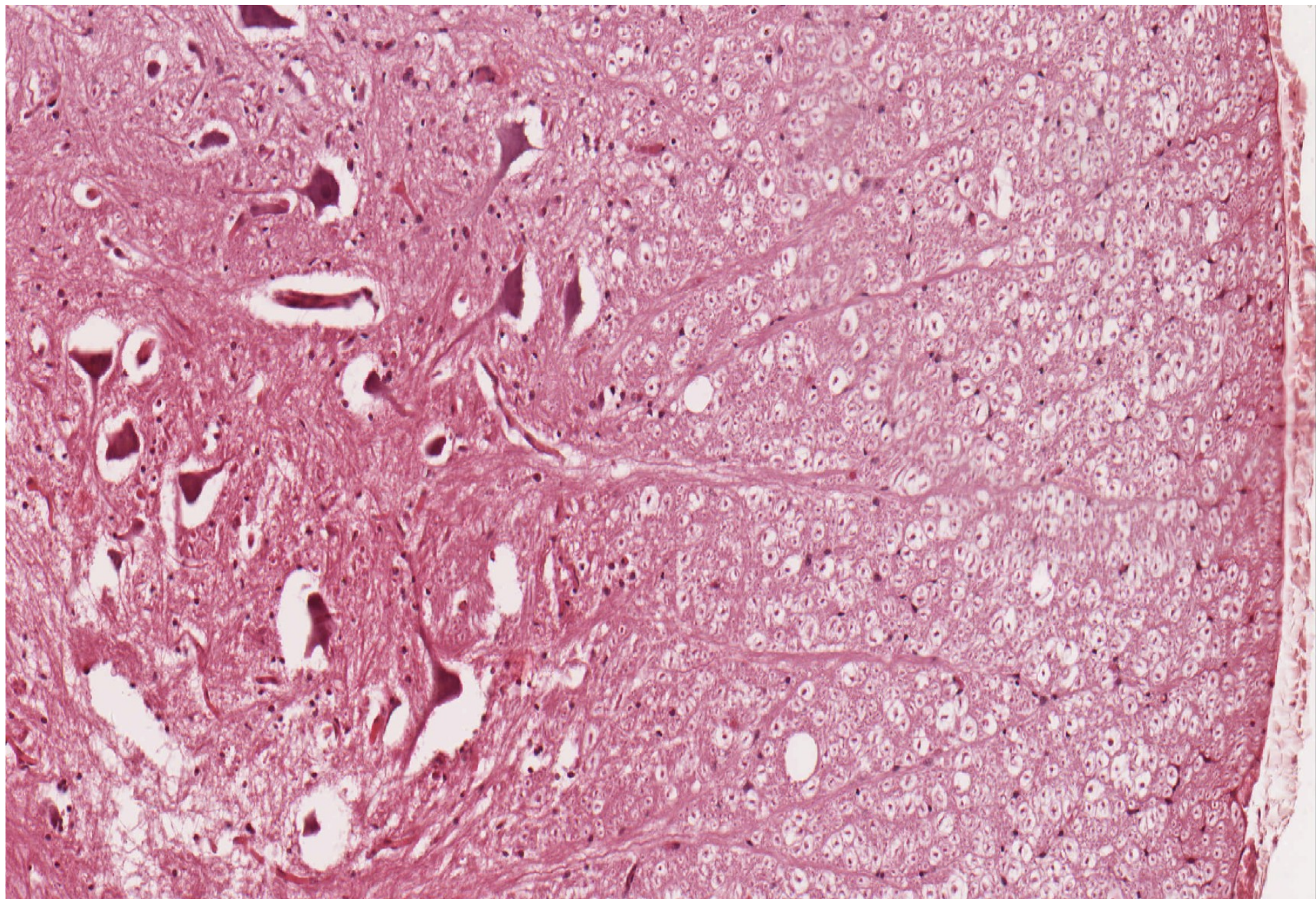
# Medulla spinalis



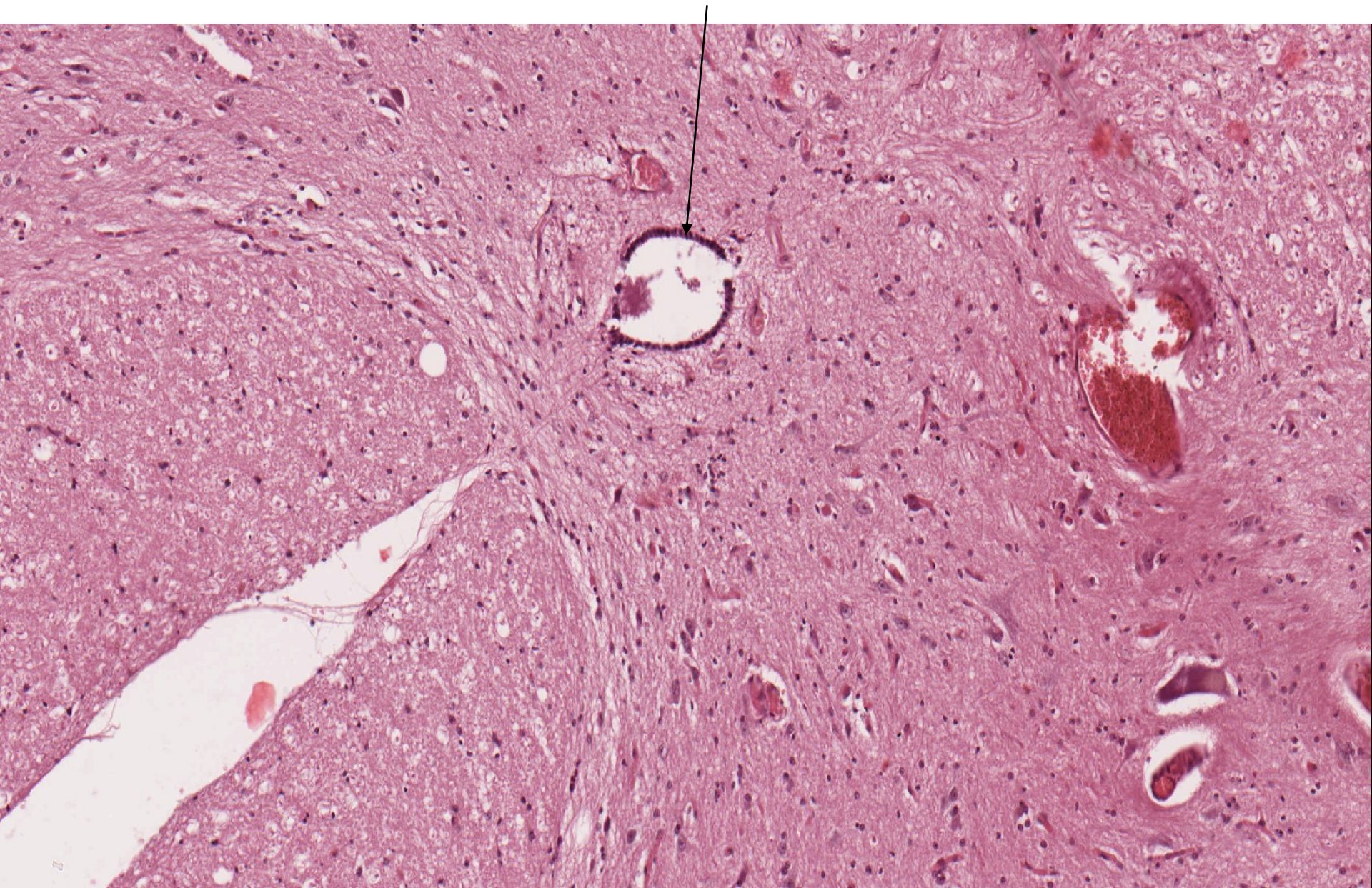
Somatomotorické multipolární neurony

Somatomotorické multipolární neurony

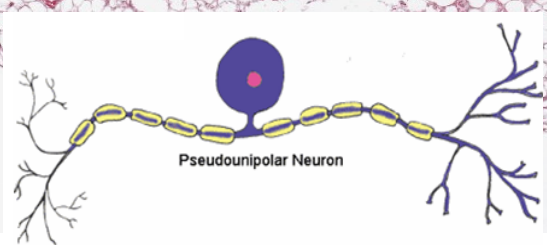
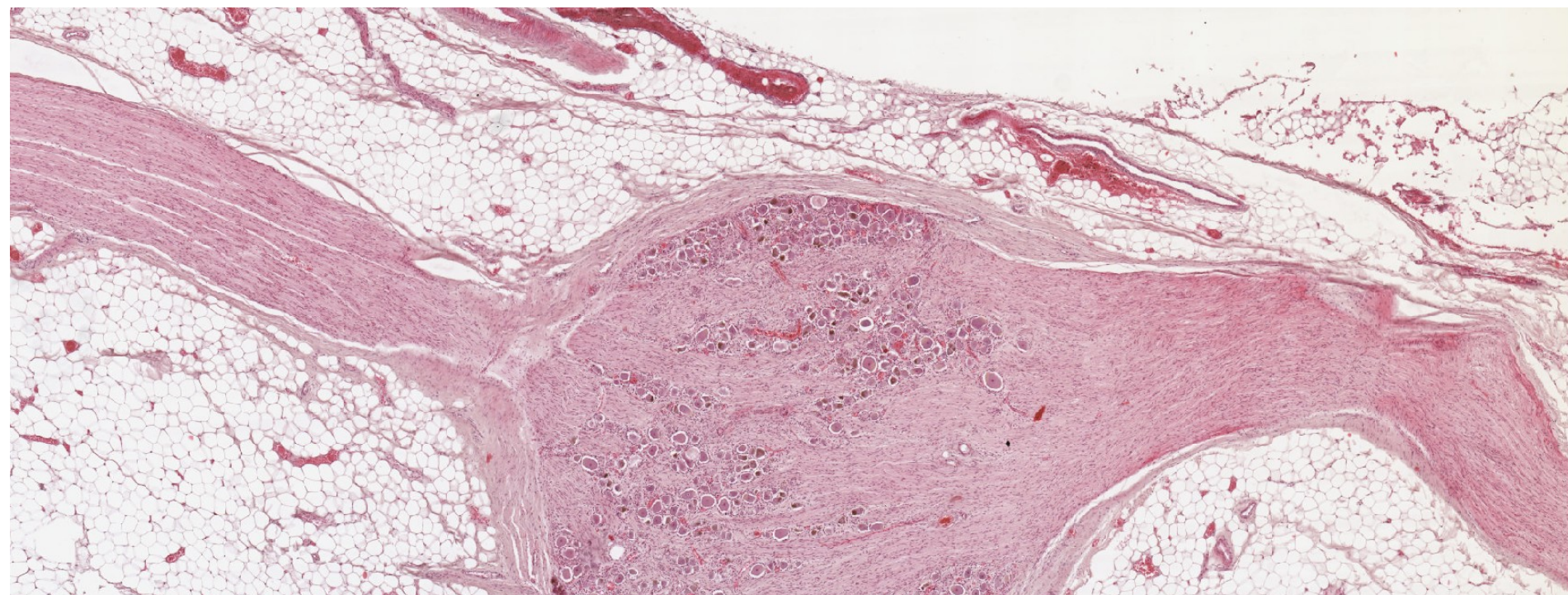
Myelinizované axony



# Medulla spinalis – ependymové buňky

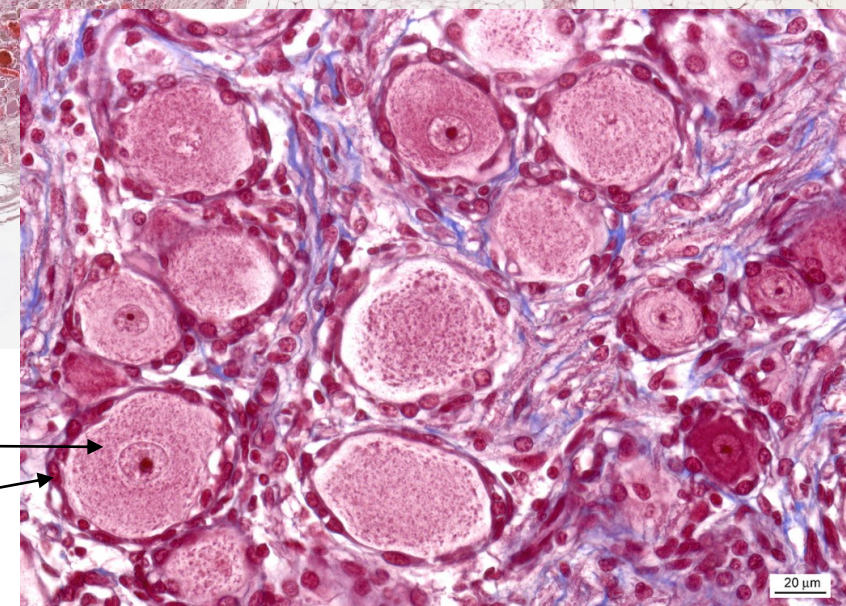


# Ganglion spinale

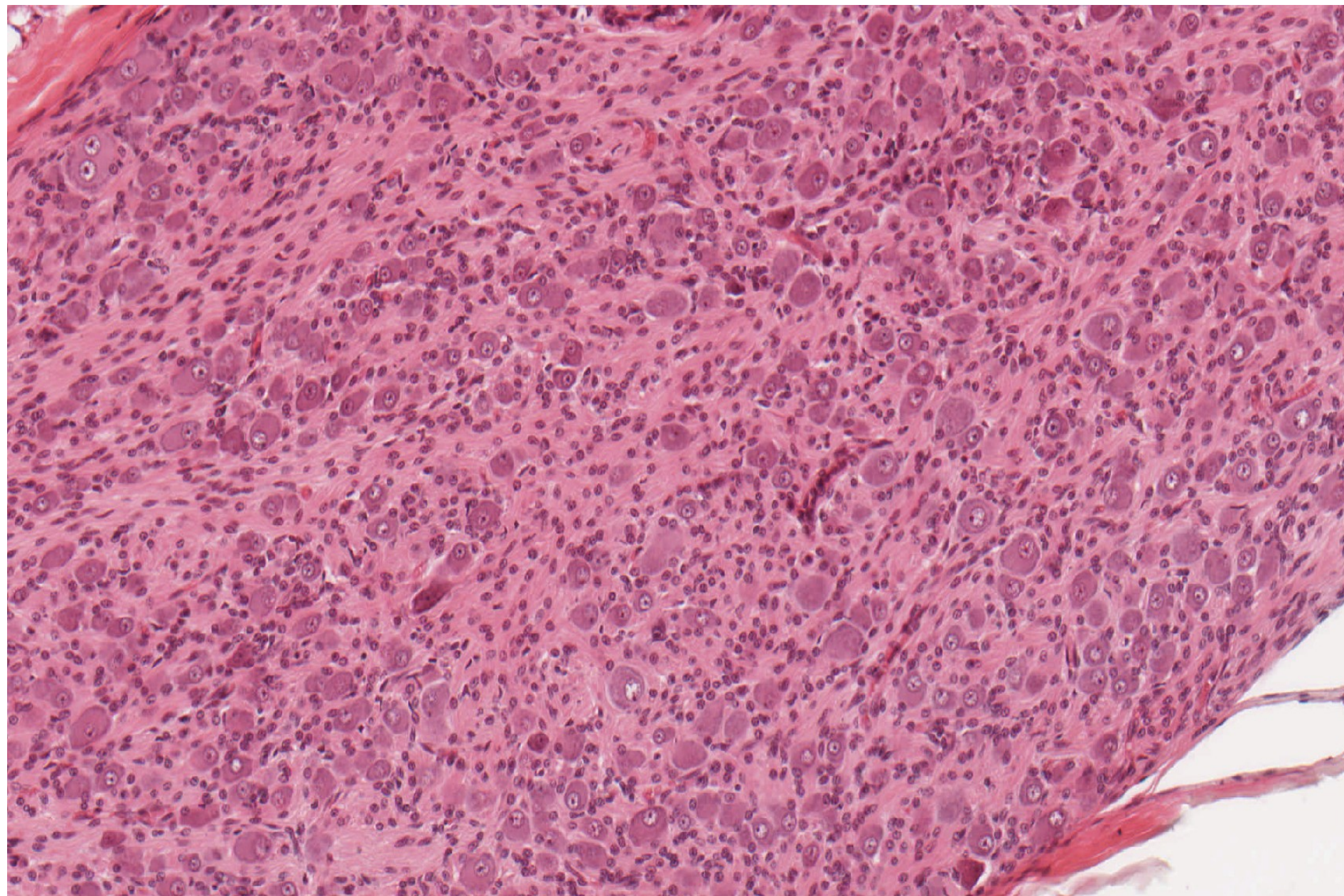


Pseudounipolární neurony

Satelitové buňky



Vegetativní ganglion – gangliové buňky (multipolární neurony), satelitové buňky



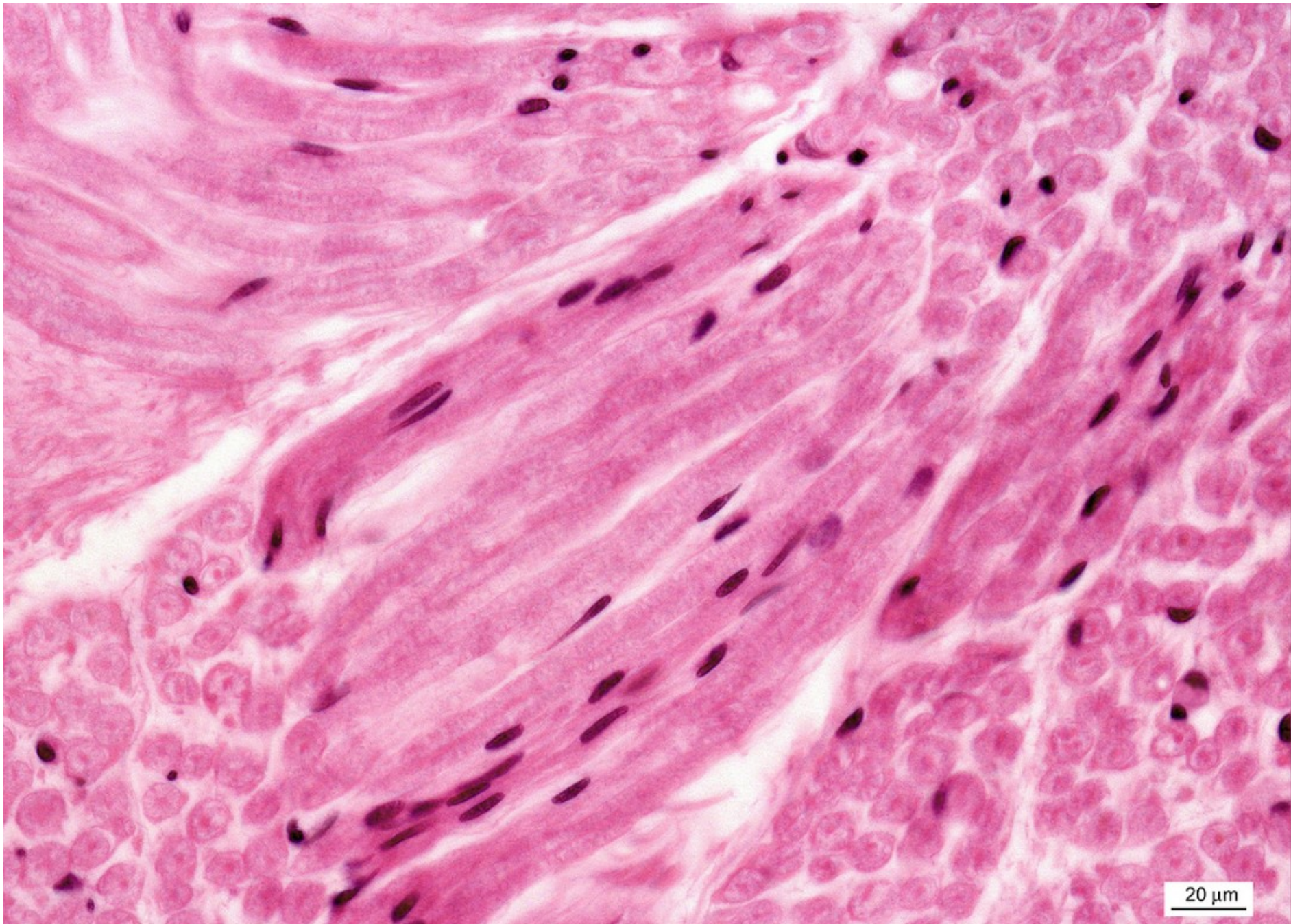


A histological micrograph showing a dense population of cells. Several large, rounded cells with prominent nuclei and granular cytoplasm are visible. These cells are identified as ganglion cells containing lipofuscin. The surrounding tissue consists of smaller, spindle-shaped cells and a fibrous matrix. Three black arrows point from a central text box to three of the larger ganglion cells. A scale bar in the bottom right corner indicates 20 micrometers.

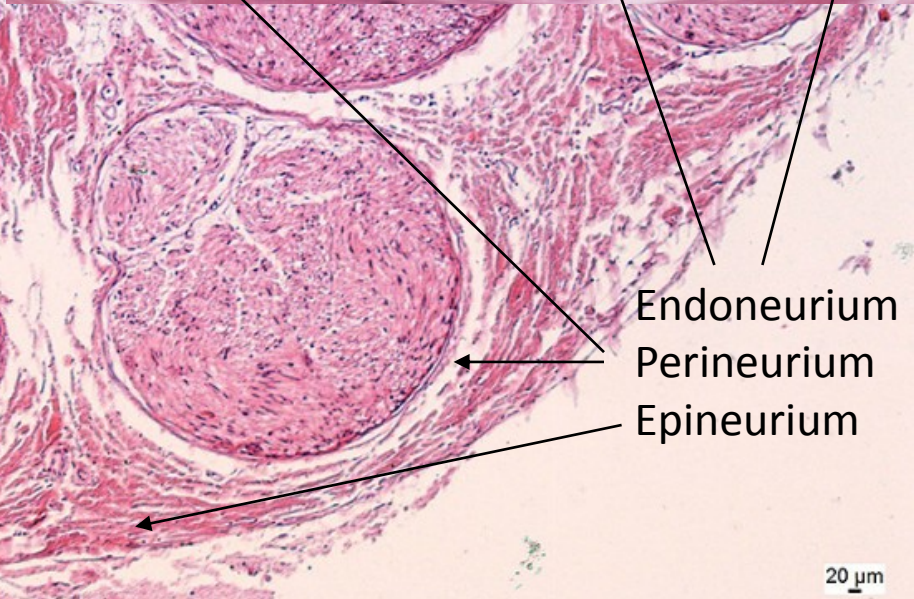
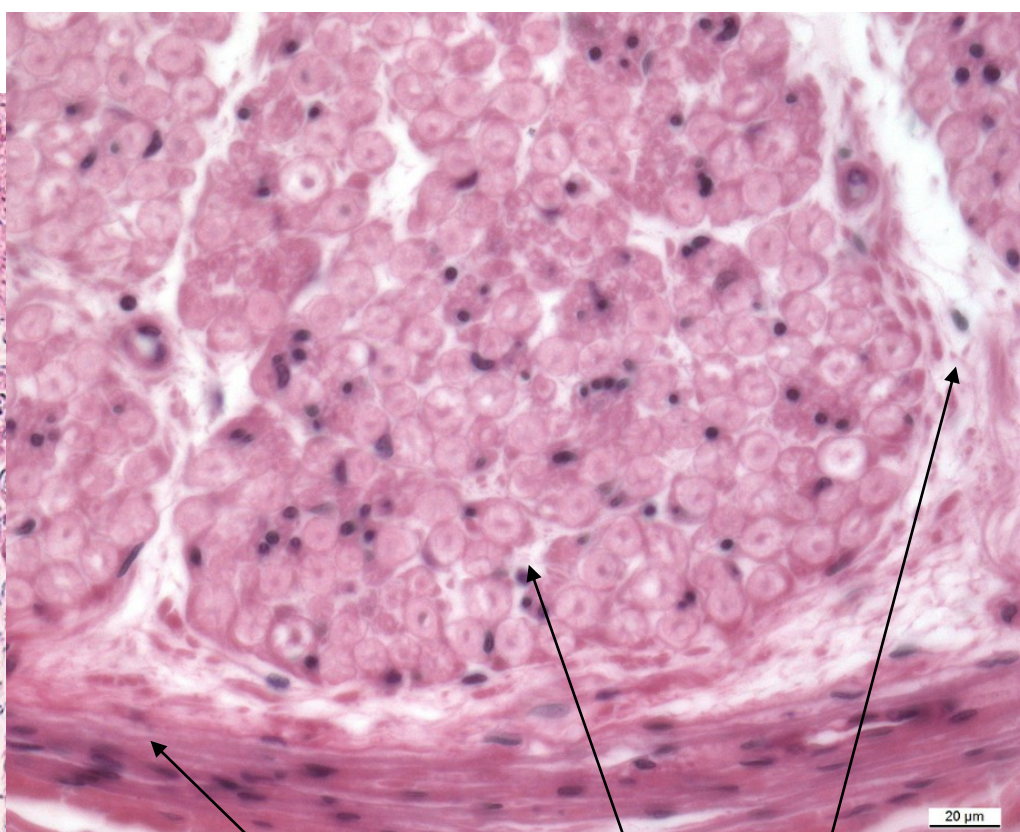
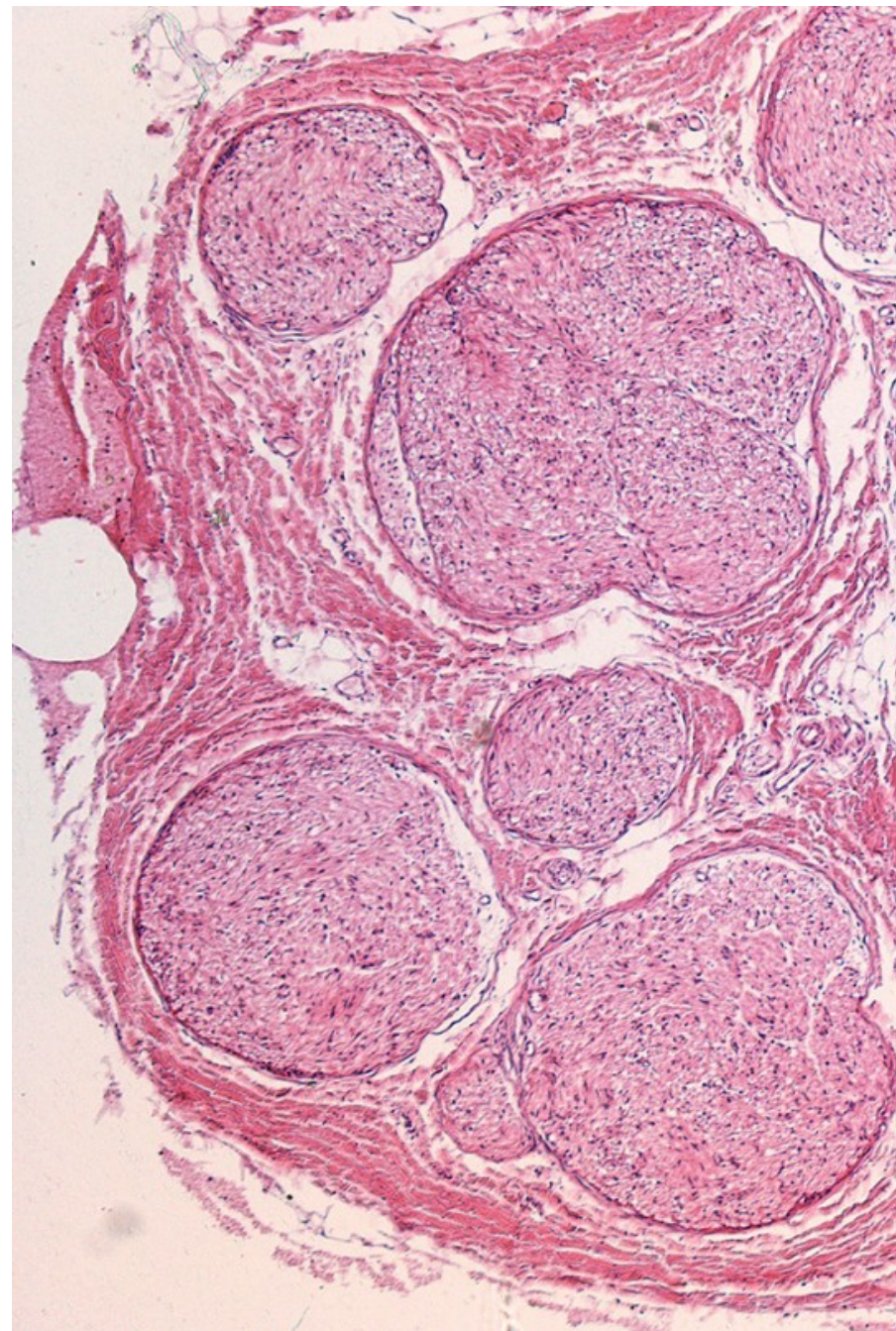
Gangliové buňky s lipofuscinem

20  $\mu$ m

# Periferní nerv



# Periferní nerv - vazivo

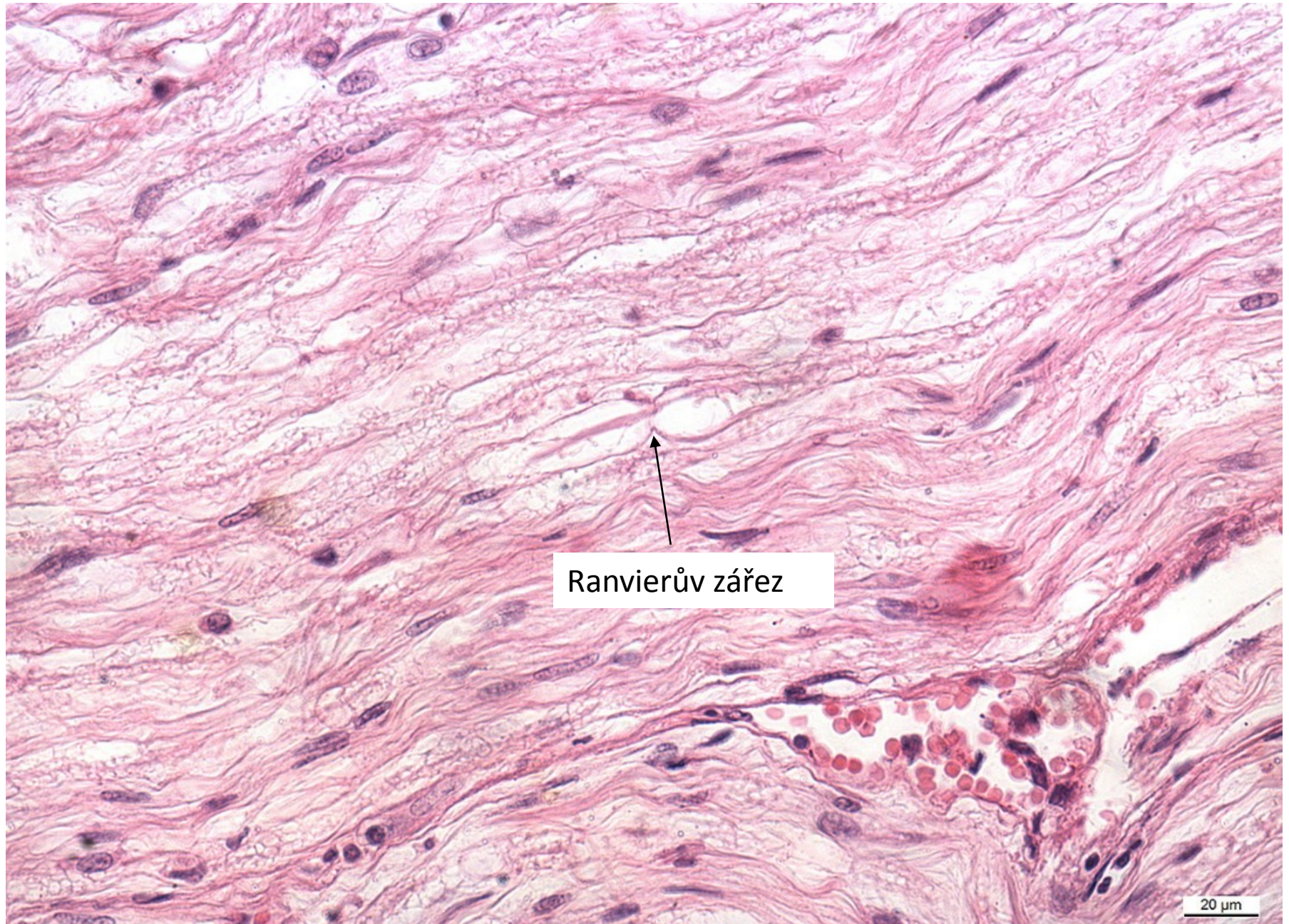


Endoneurium  
Perineurium  
Epineurium

20 μm



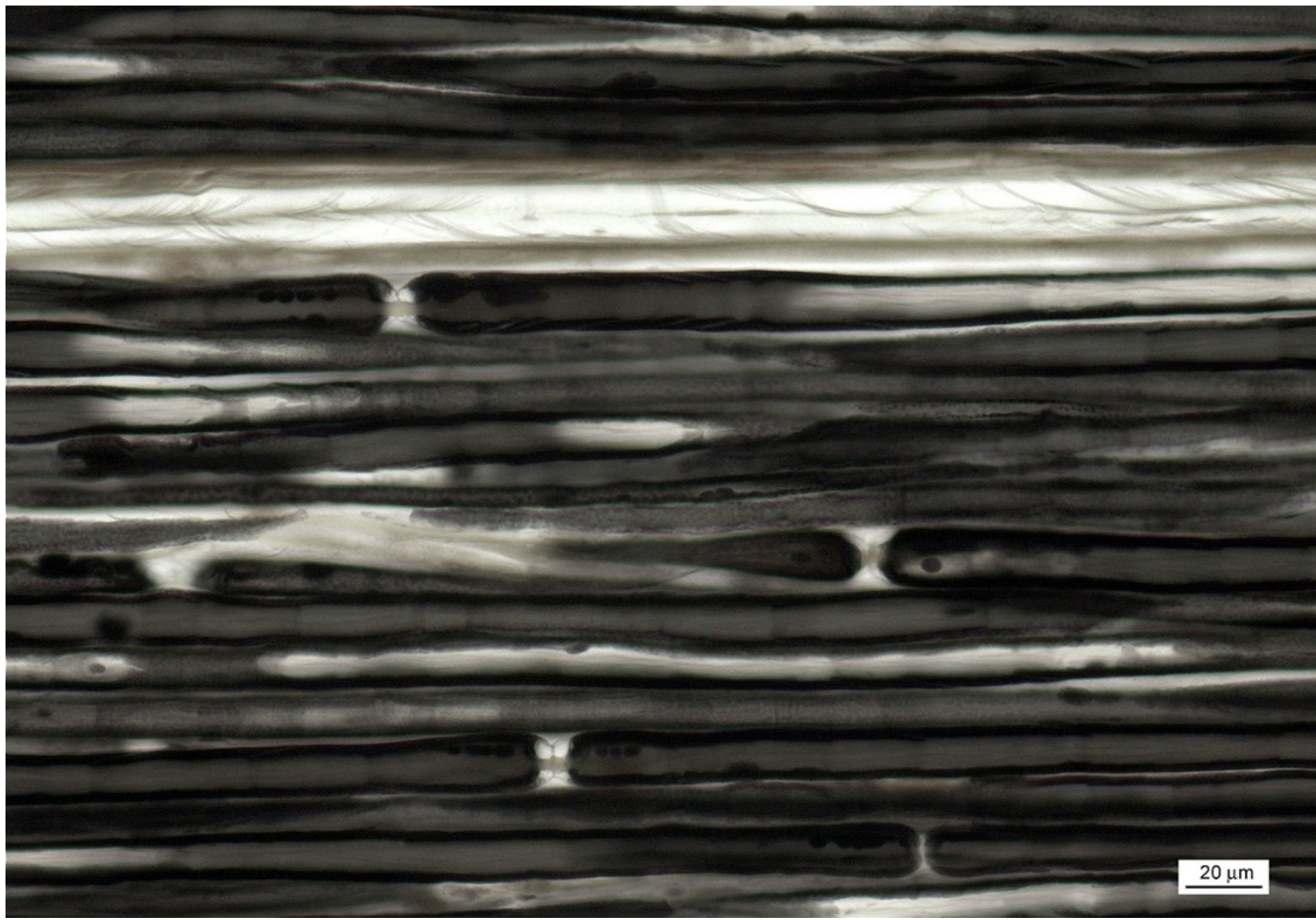
# Periferní nerv - podélně



Ranvierův zářez

20 μm

Myelinová pochva s Ranvierovými zářezy – periferní nerv (OsO<sub>4</sub>)



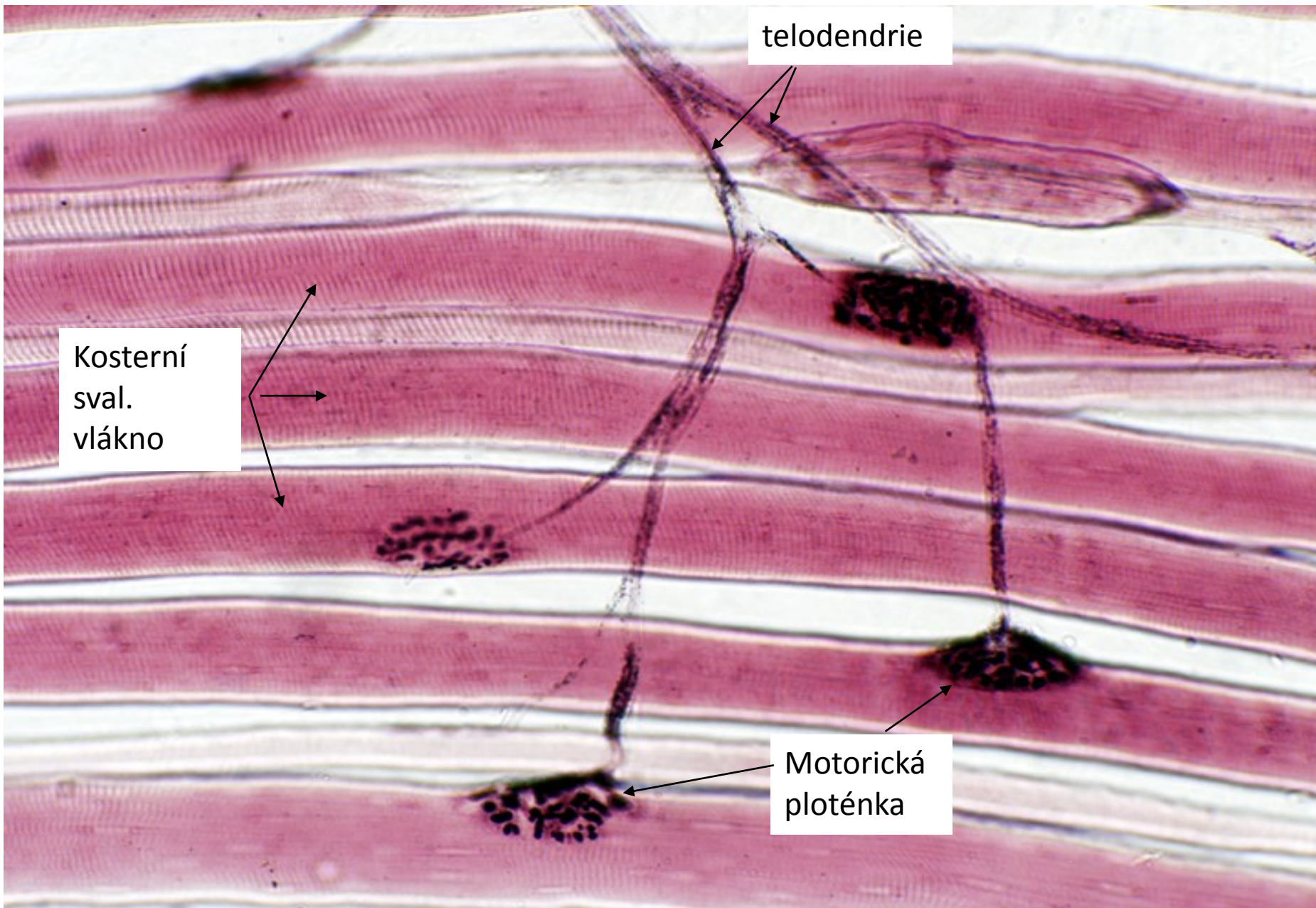
20  $\mu\text{m}$

# Motorické ploténky v motorické jednotce

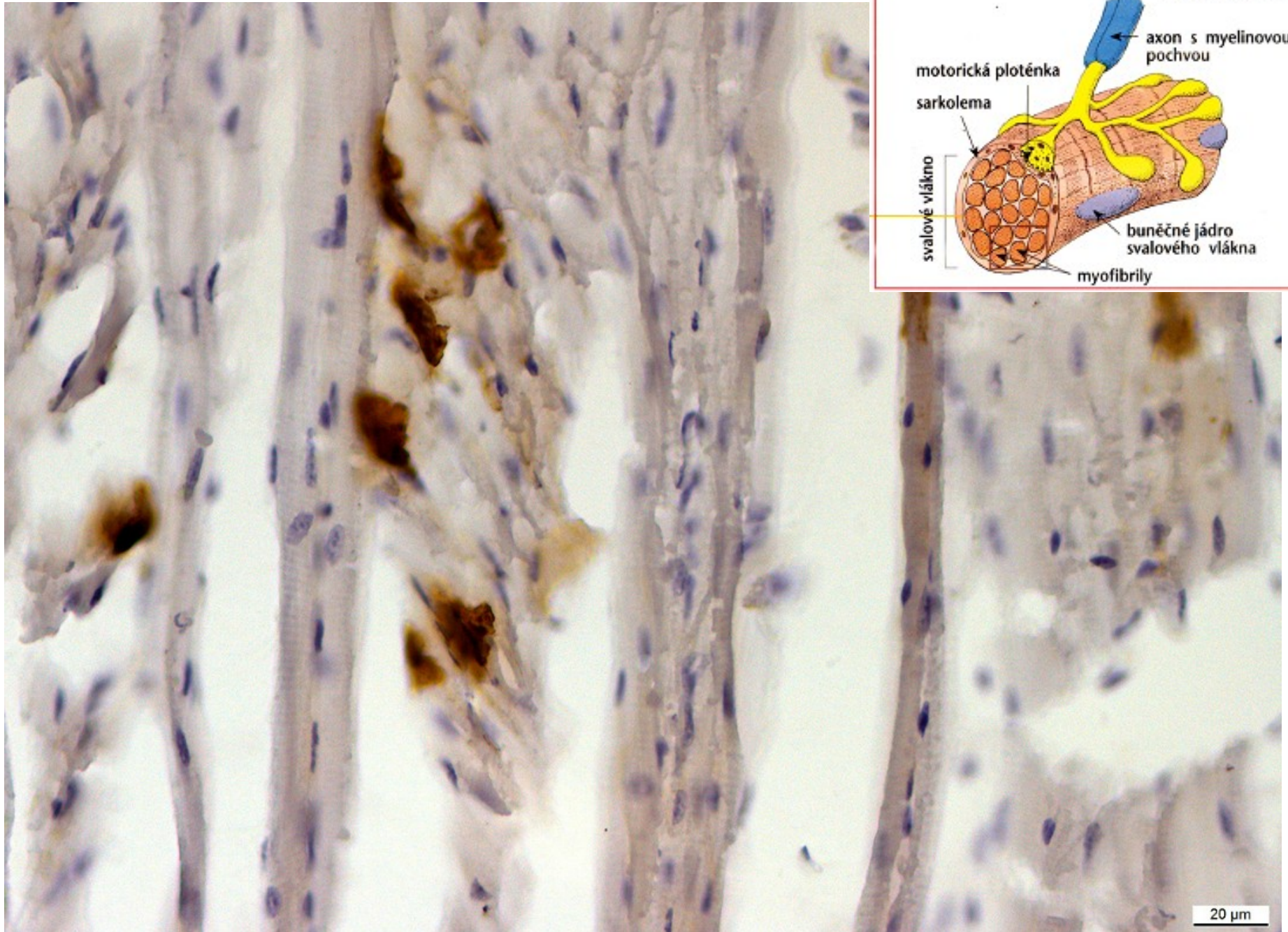
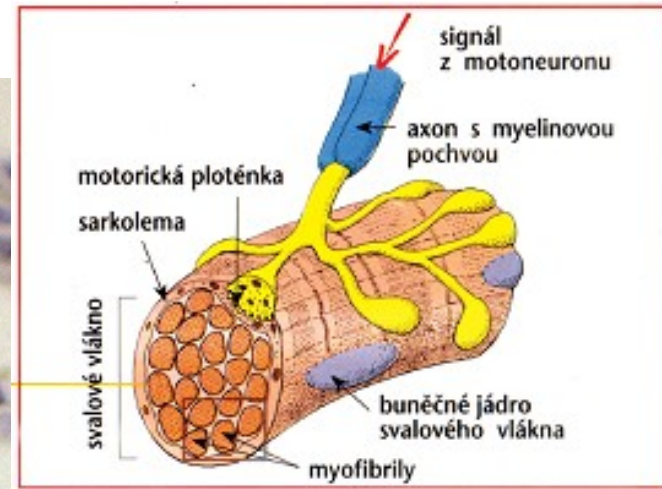
telodendrie

Kosterní  
sval.  
vlákno

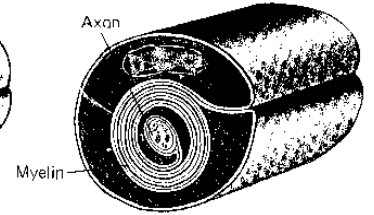
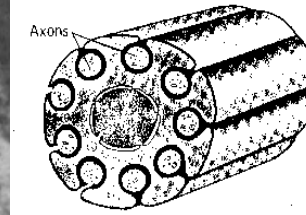
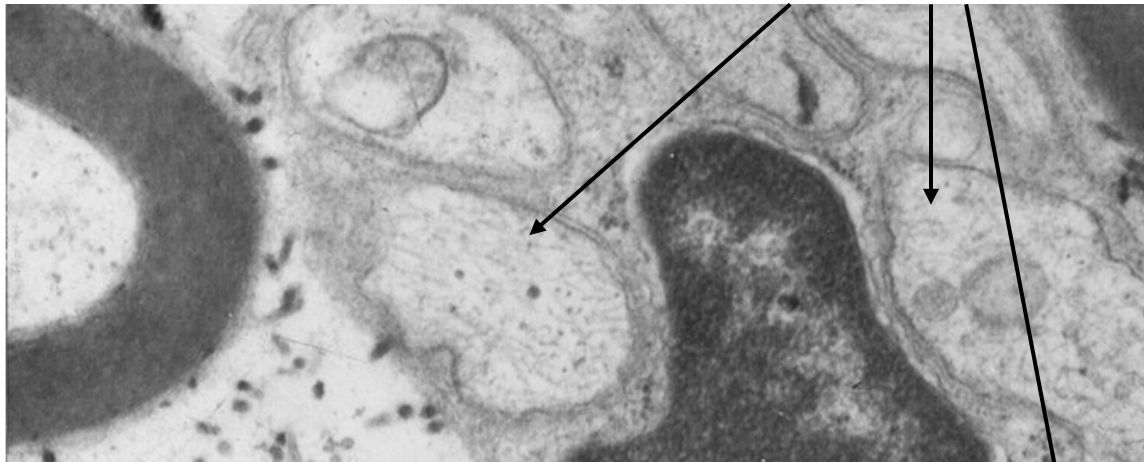
Motorická  
ploténka



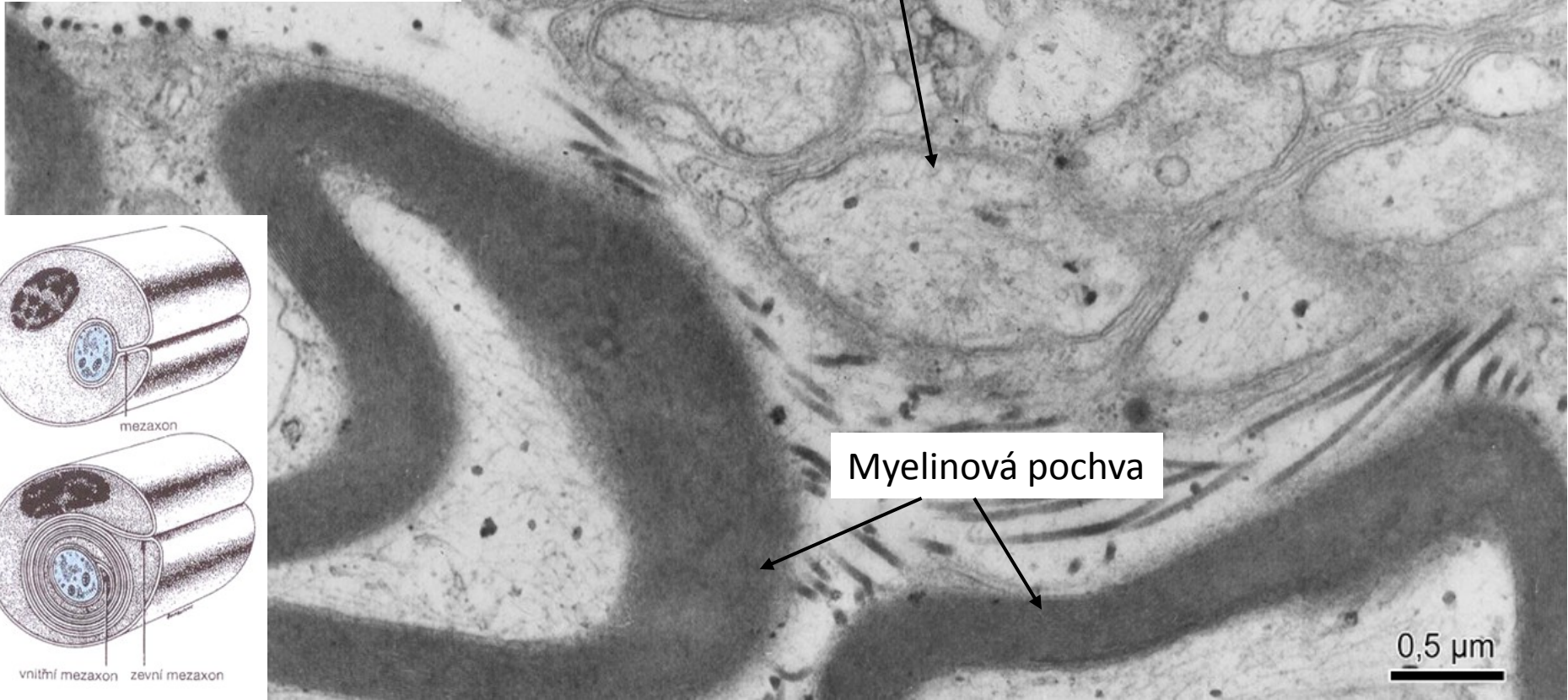
# Motorická ploténka (detekce acetylcholinesterázy)



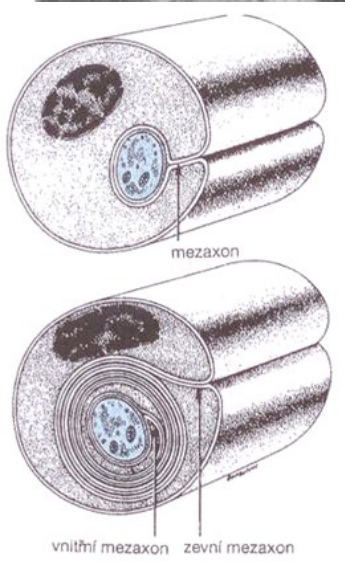
# Axony se Schwanovou pochvou



Jádro Schwannovy buňky



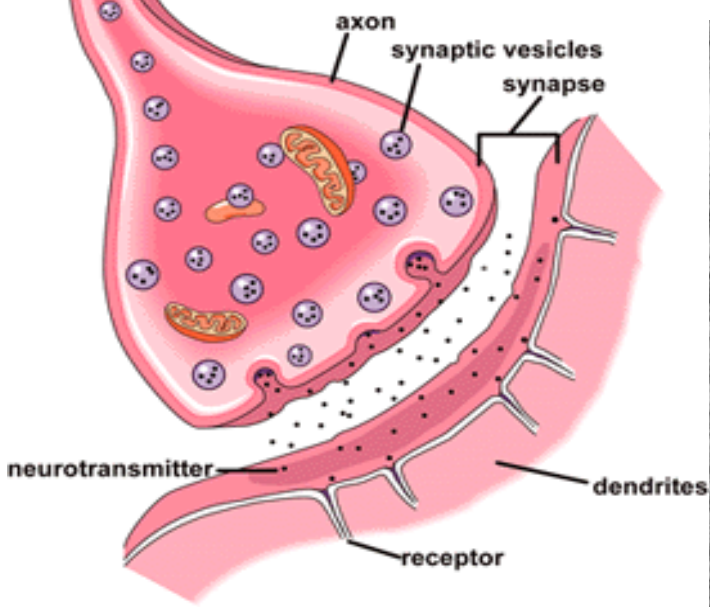
Myelinová pochva



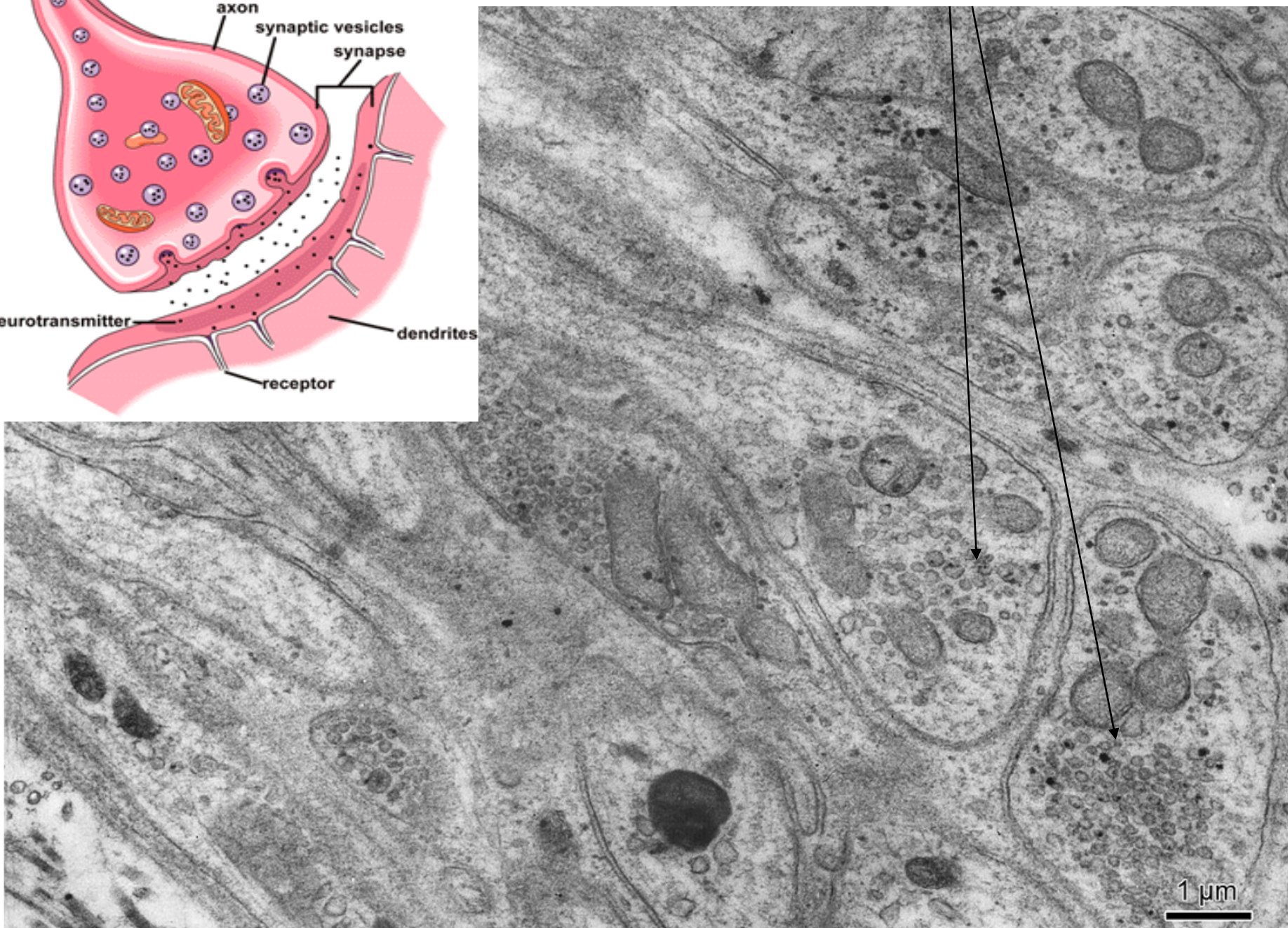
0,5 μm



# Synapse



# Presynaptické zakončení



# NERVOVÁ TKÁŇ

## Preparáty:

Pyramidová buňka (75, 76. Cortex cerebri)

Purkyňova buňka (77. Cerebellum)

Nisslova substance (78. Cerebellum)

Somatomotorický multipolární neuron (79. Medulla spinalis)

Pseudounipolární neuron (81. Ganglion spinale)

Axon s myelinovou a Schwannovou pochvou (84, 86. Periferní nerv)

Myelinová pochva (87. Periferní nerv)

Motorická ploténka (detekce acetylcholinesterázy)

## Atlas EM:

Jádro (3) a cytoplazma neuronu (55)

Axony s obaly (56, 58)

Presynaptické zakončení (57)