



Cartilage

- Chondrocytes
- Extracellular matrix

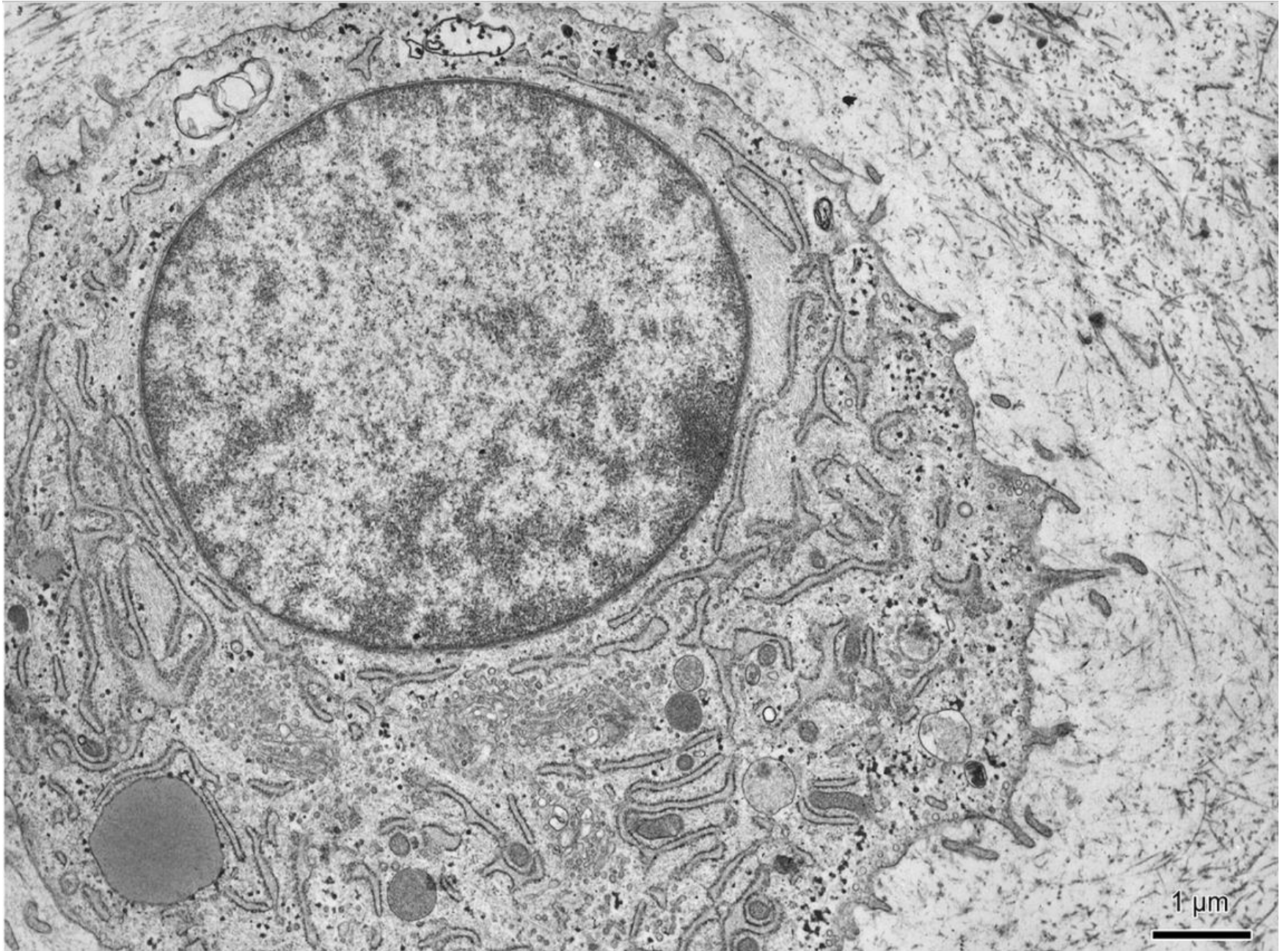
Hyaline, elastic and fibrocartilage

Bone

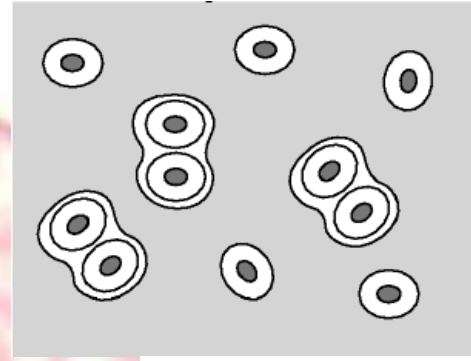
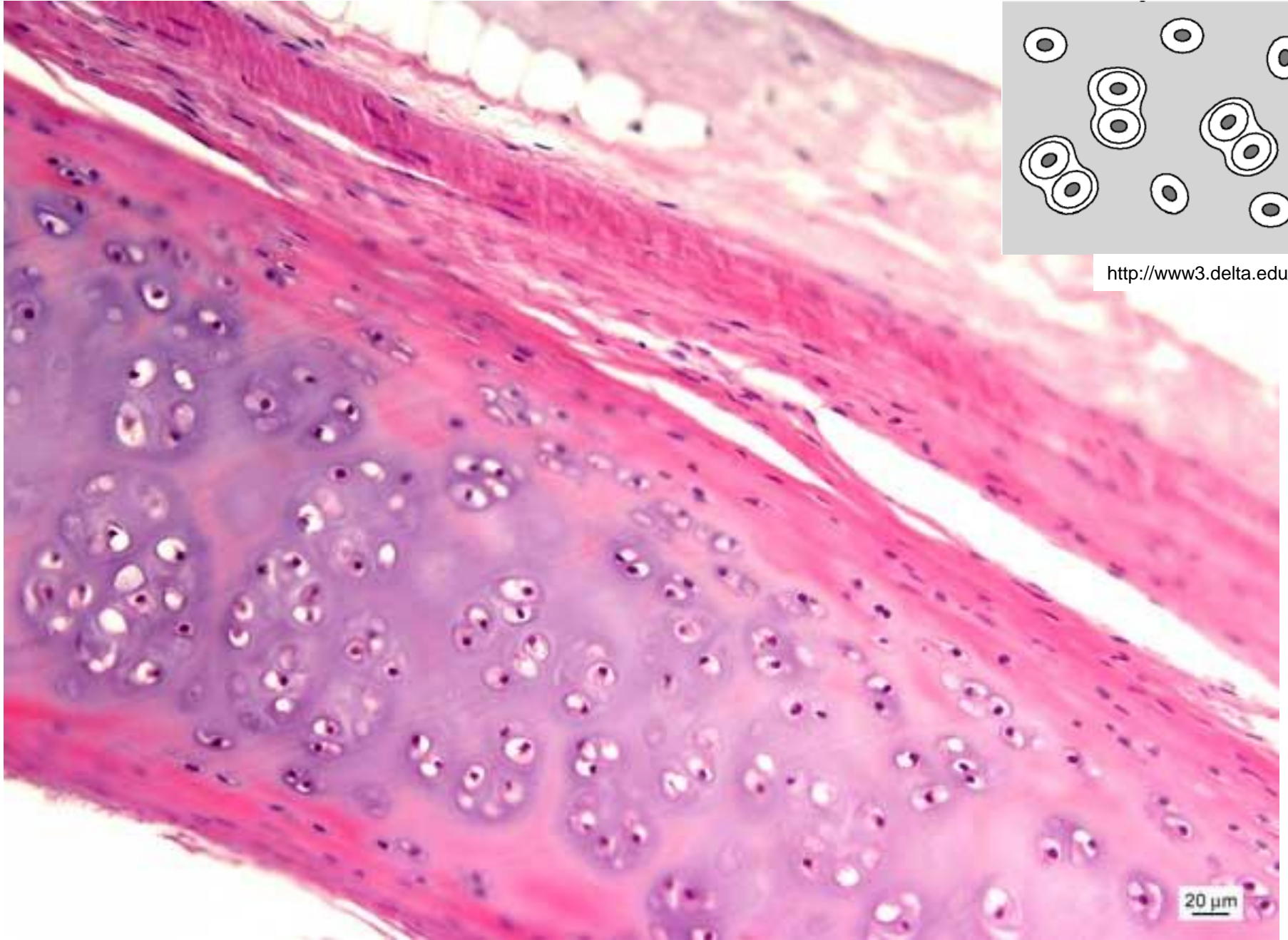
- Osteocytes, osteoblasts, osteoclasts, progenitors
- Extracellular matrix (mineralization)

Bone – fibrillar and lamellar (compact, sponge)

Chondrocyte



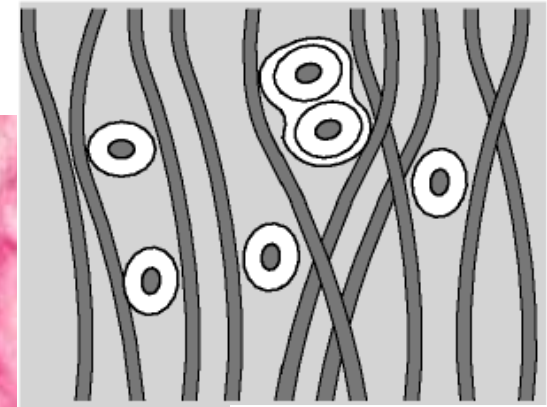
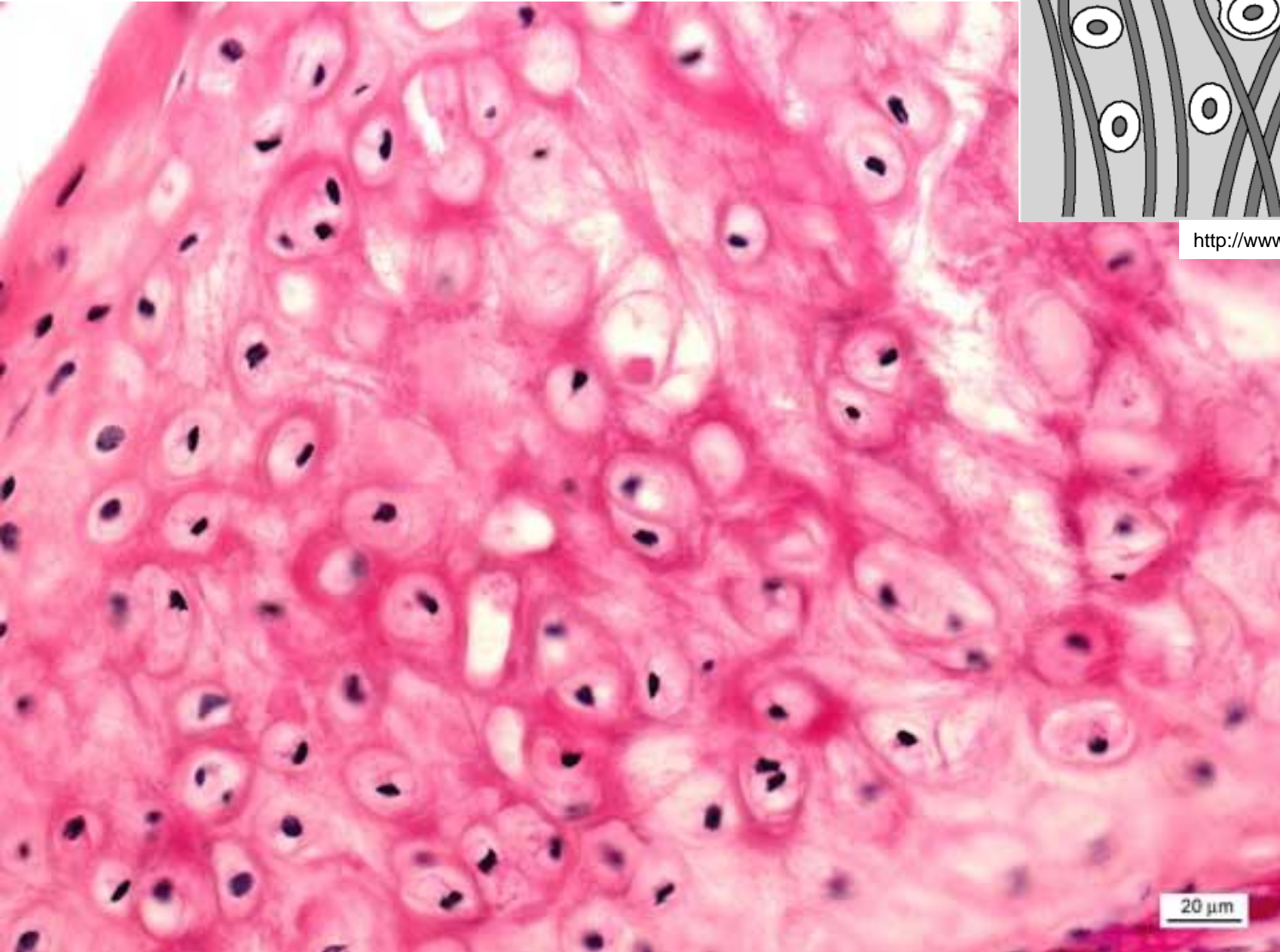
Hyaline cartilage - trachea (HE)



<http://www3.delta.edu/>

20 μm

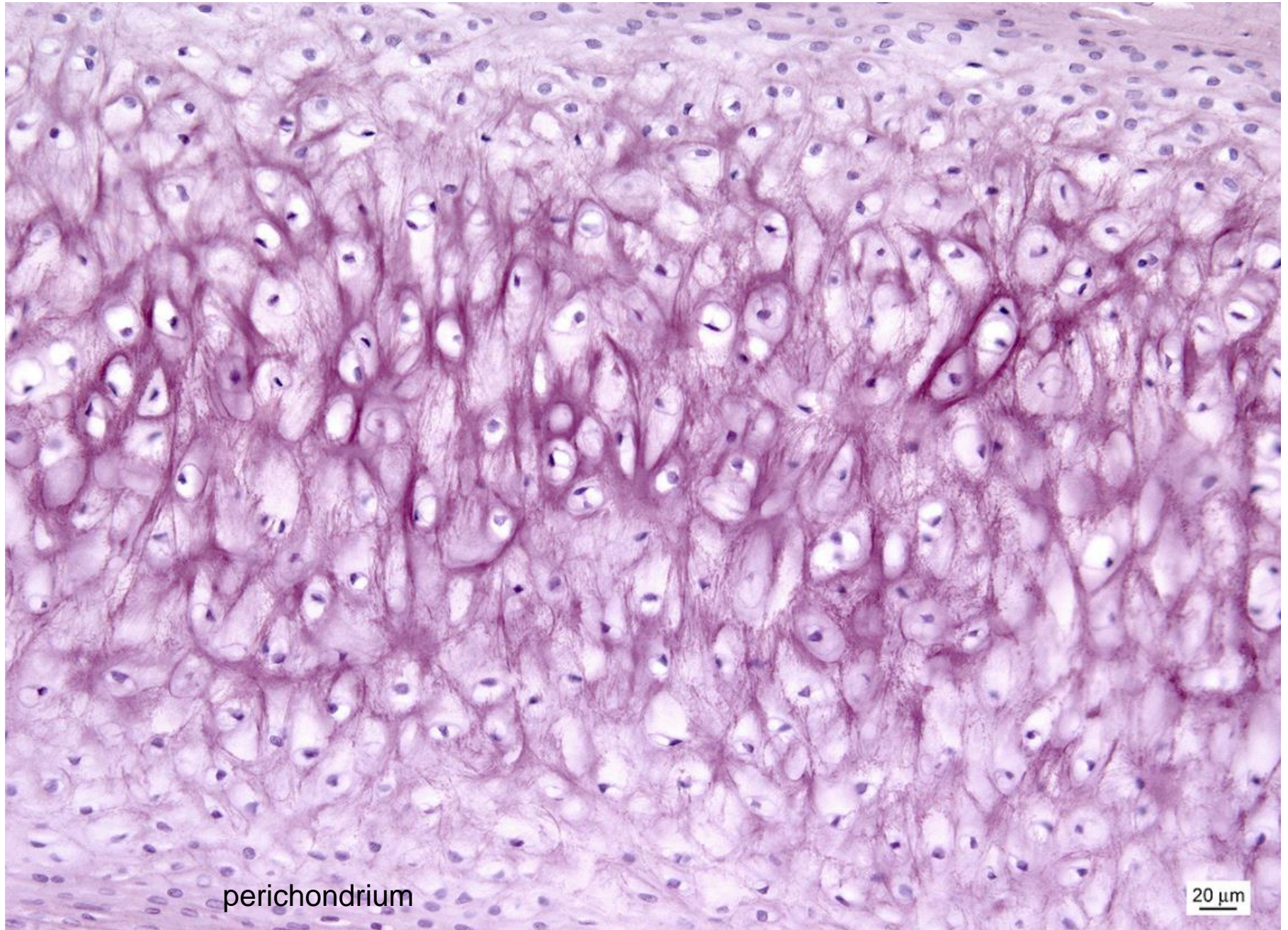
Elastic cartilage – auricula (HE)



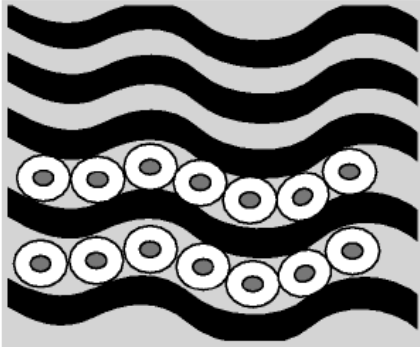
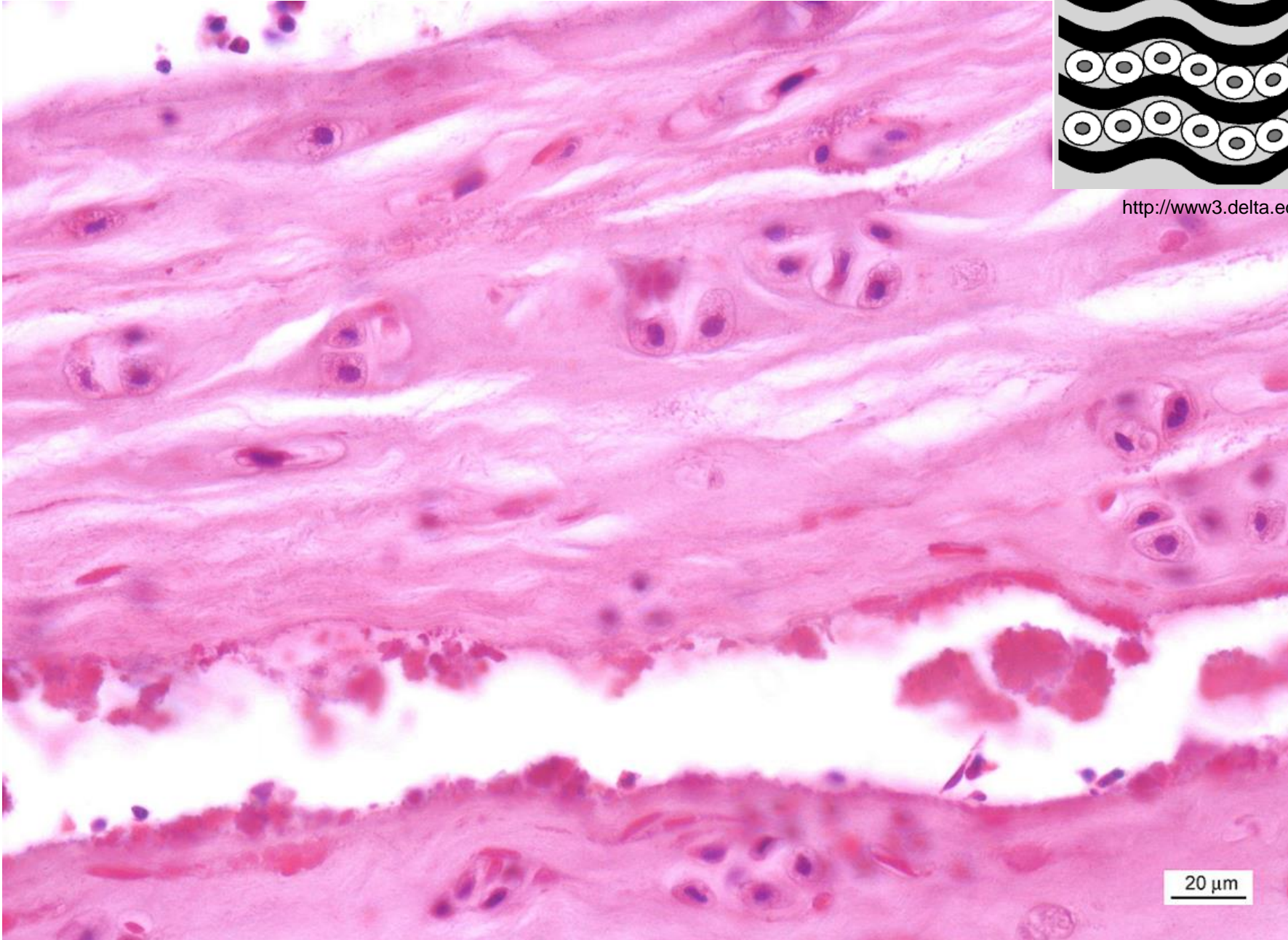
<http://www3.delta.edu/>

20 μ m

Elastic cartilage (fuchsin)



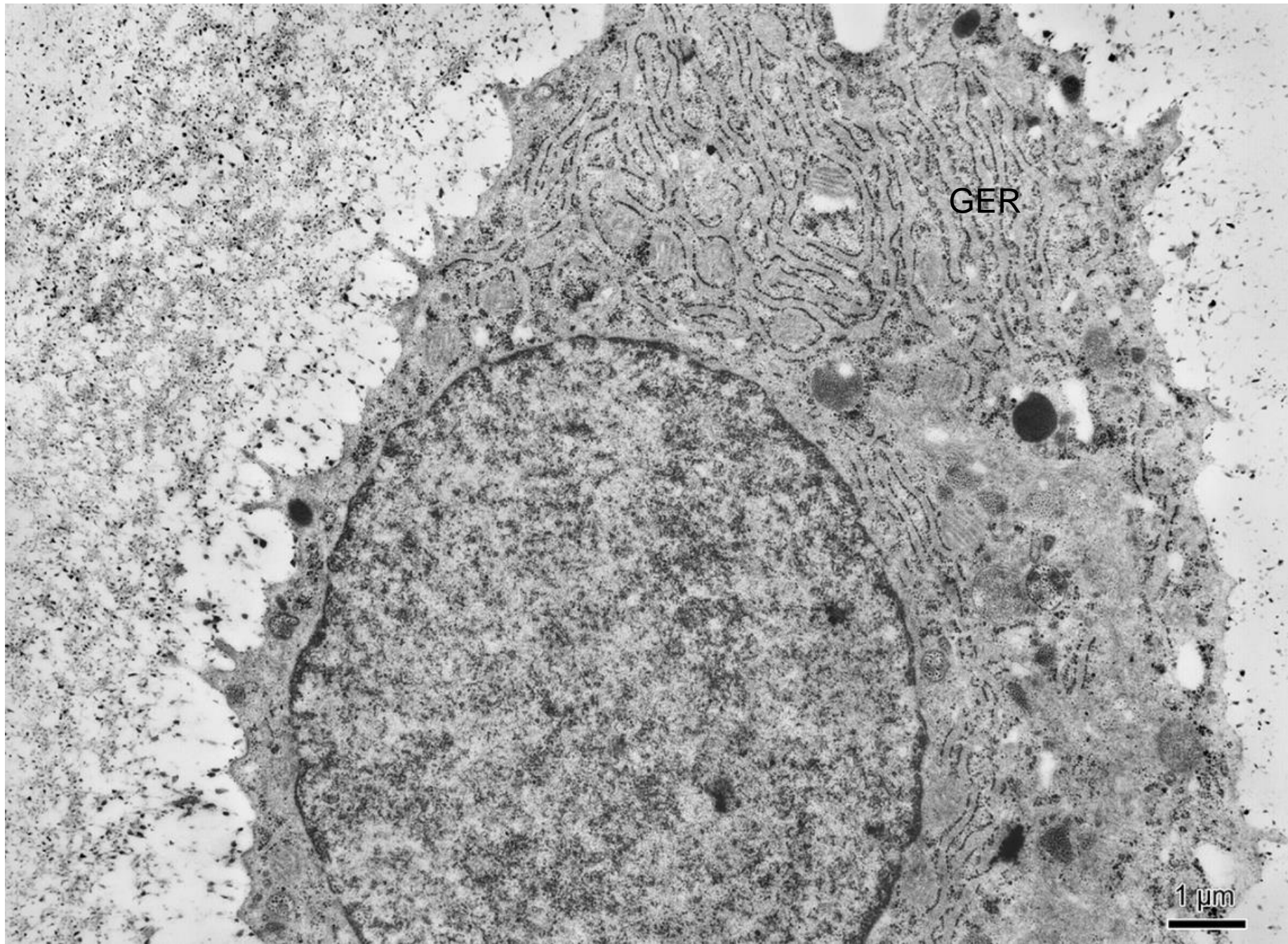
Fibrocartilage – intervertebral disc (HE)



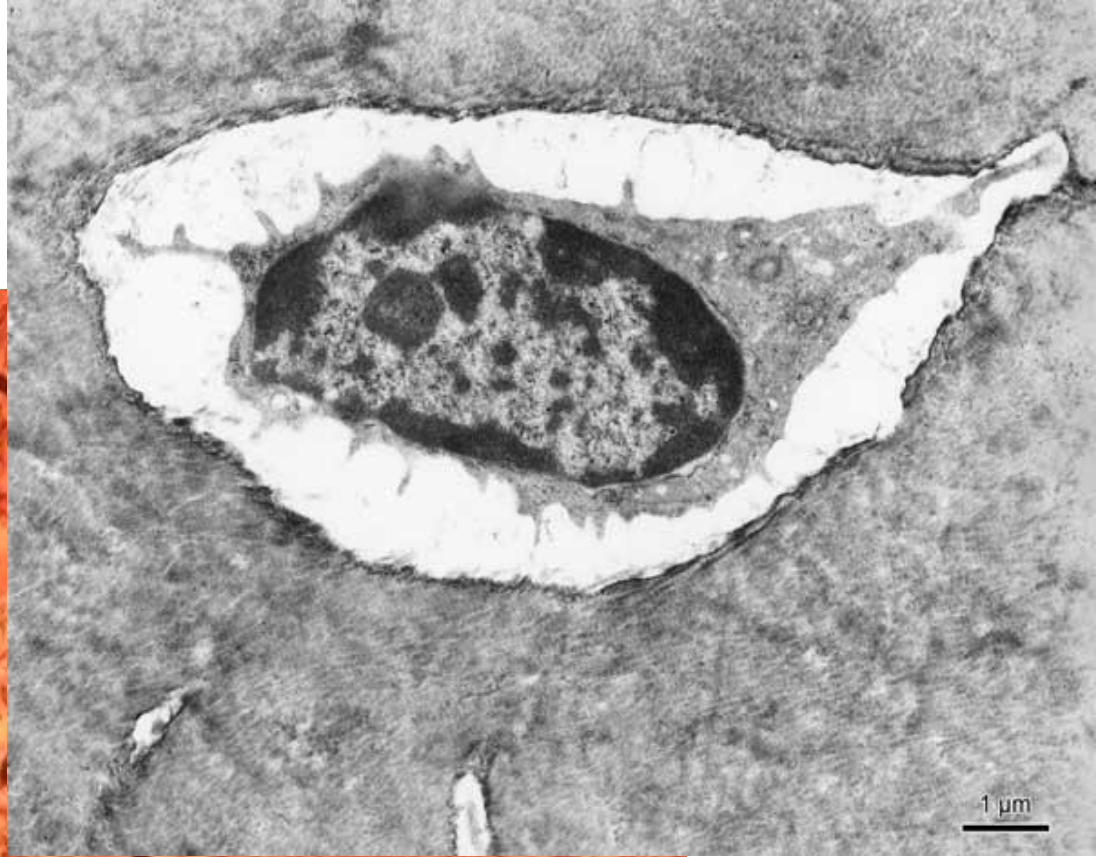
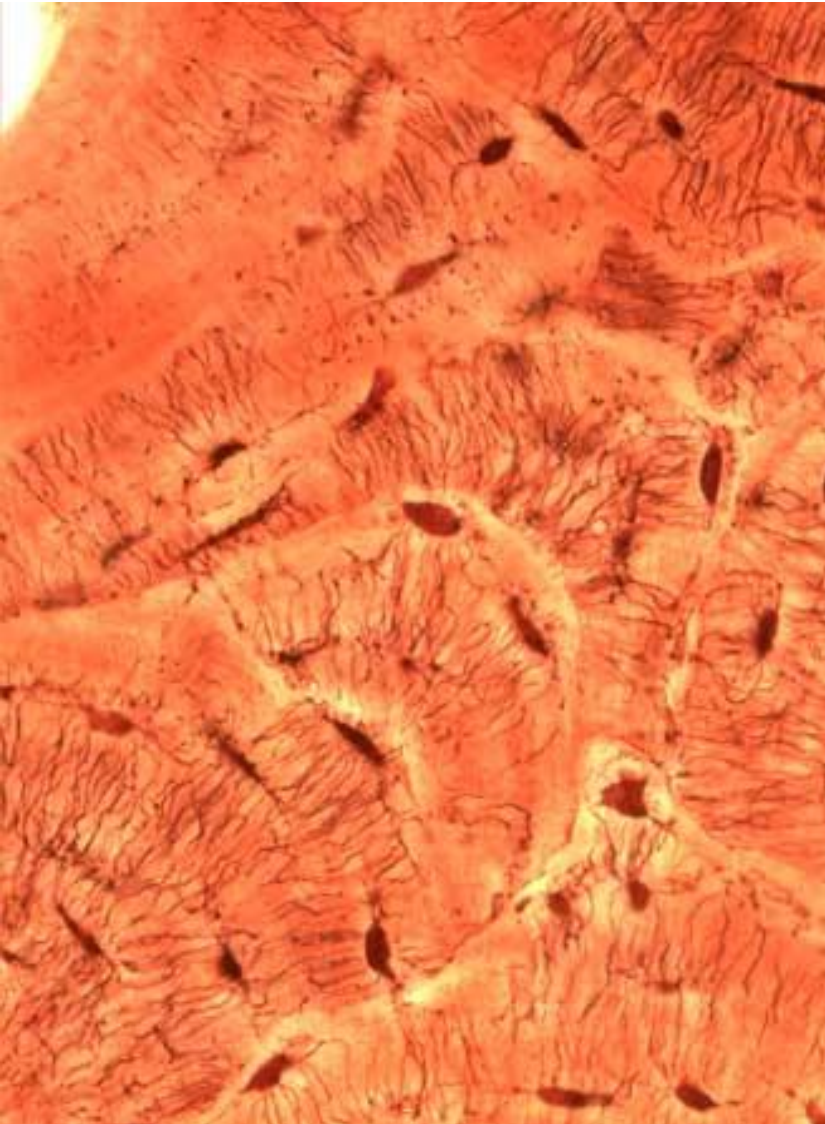
<http://www3.delta.edu/>

20 μ m

Osteoblast

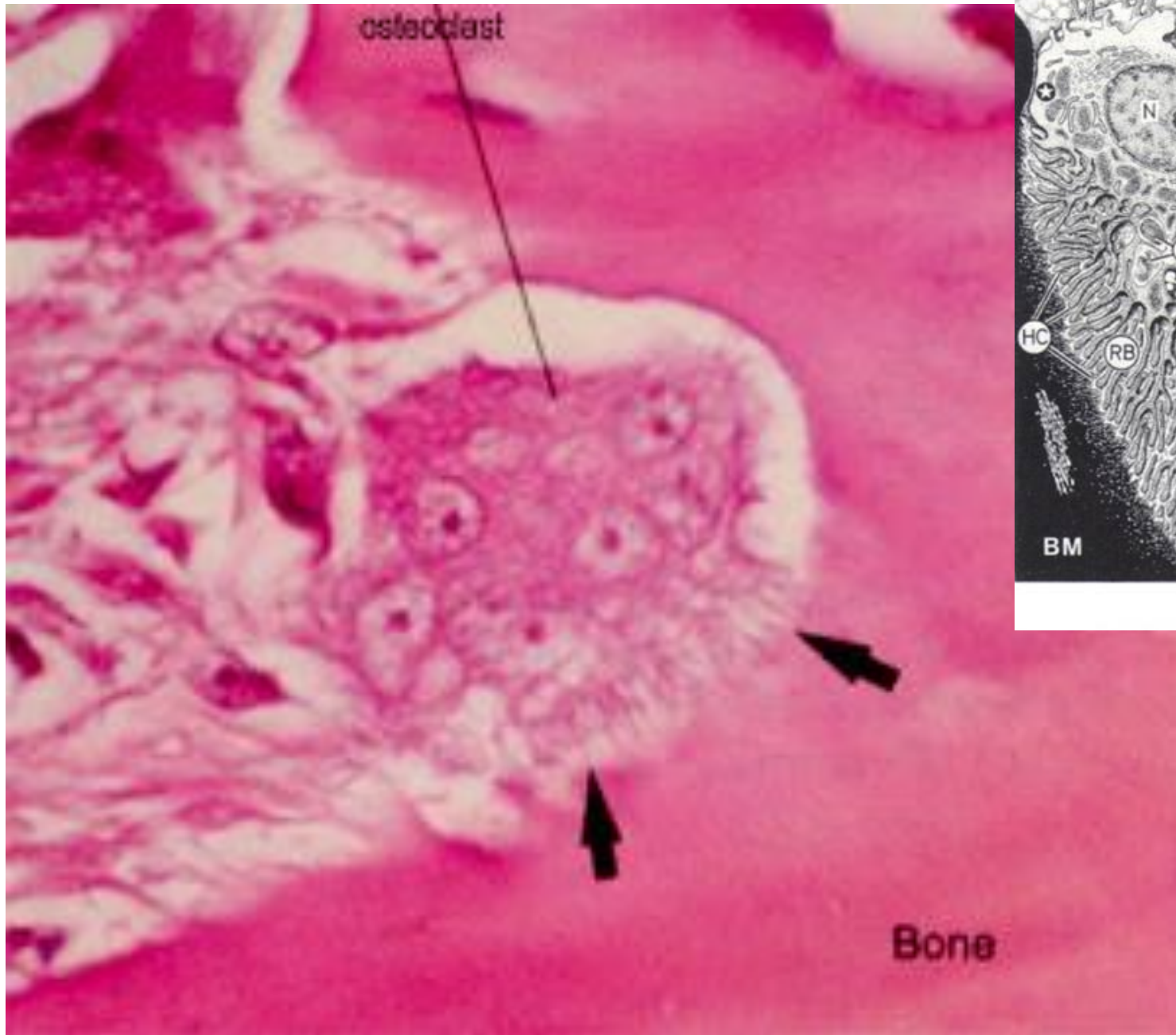


Osteocyte

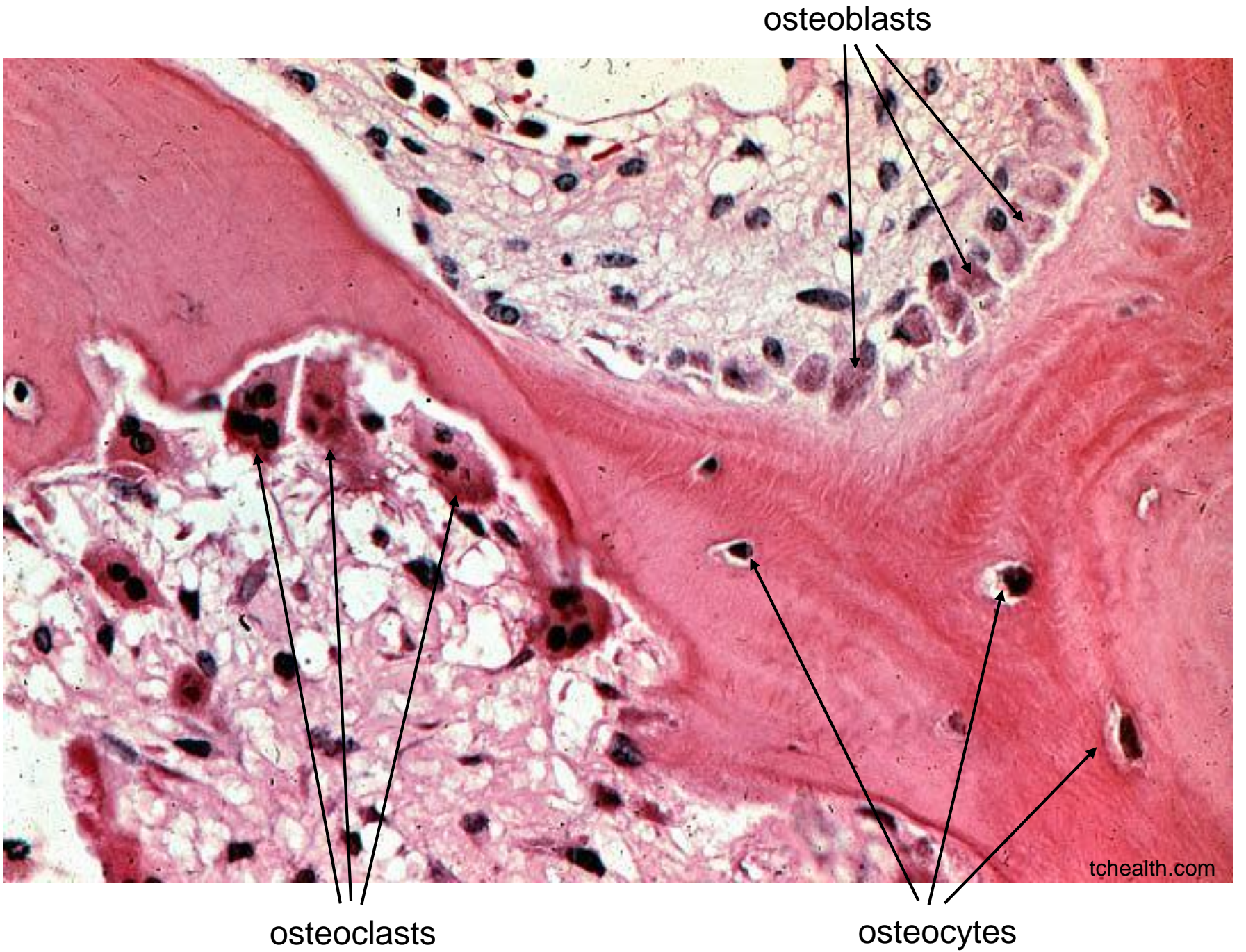


20 μm

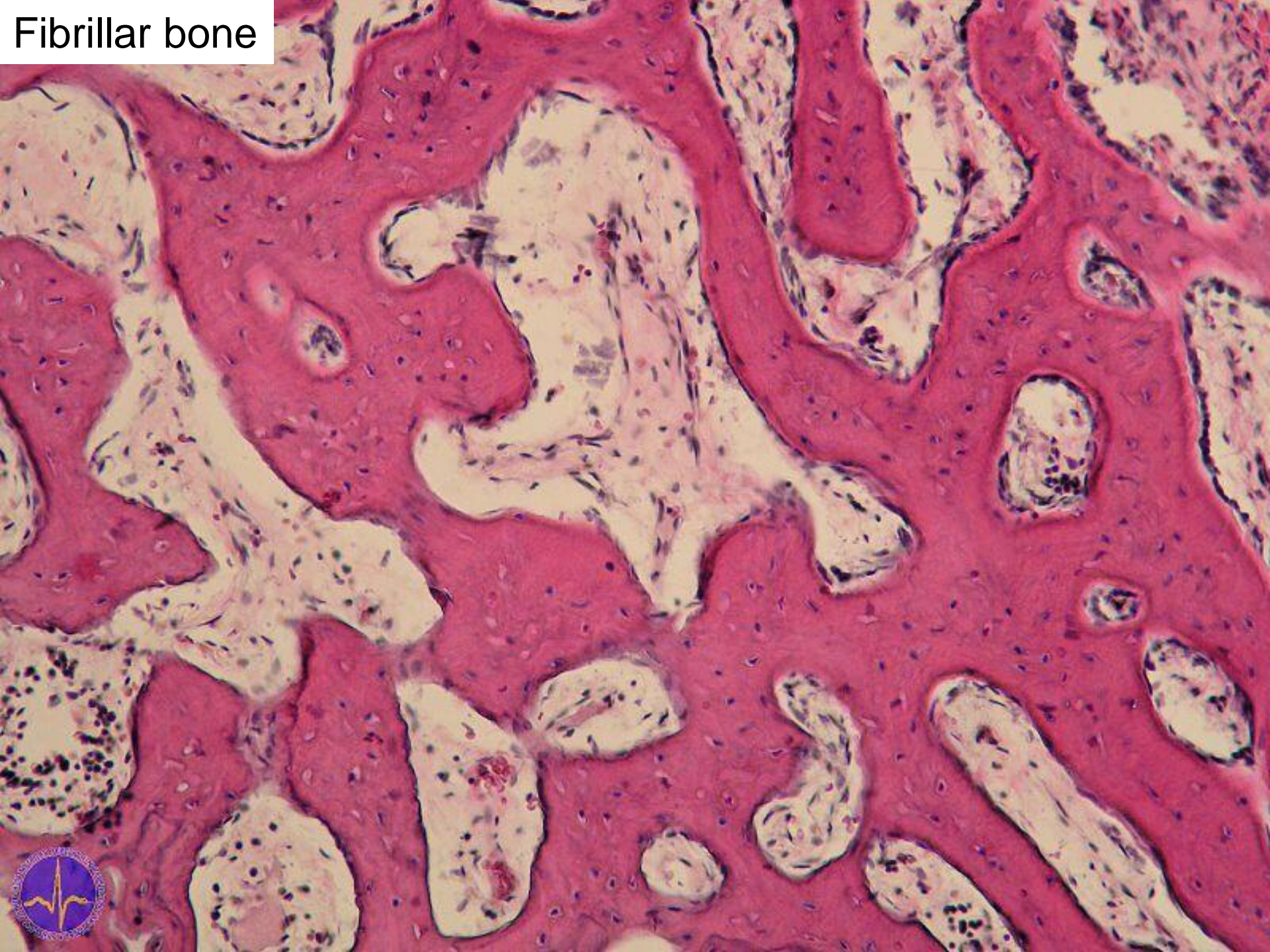
Osteoclast



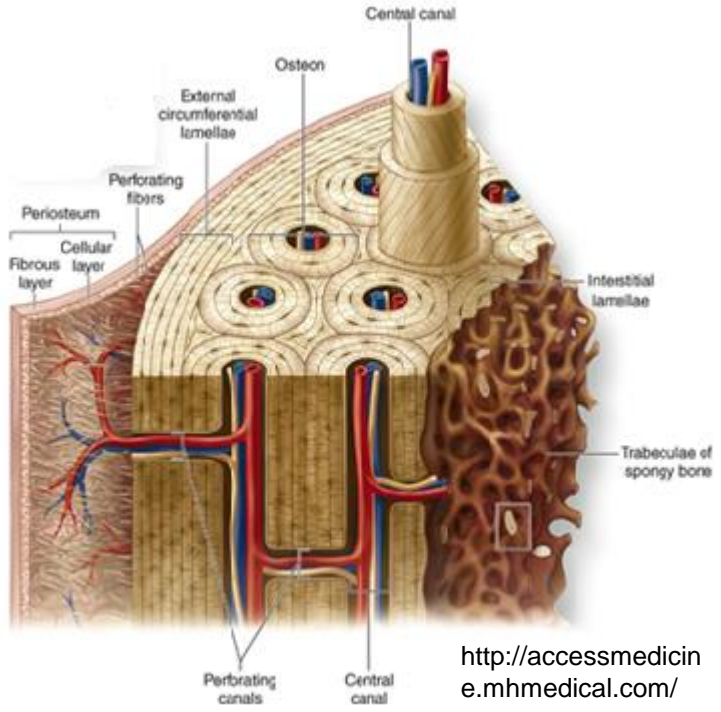
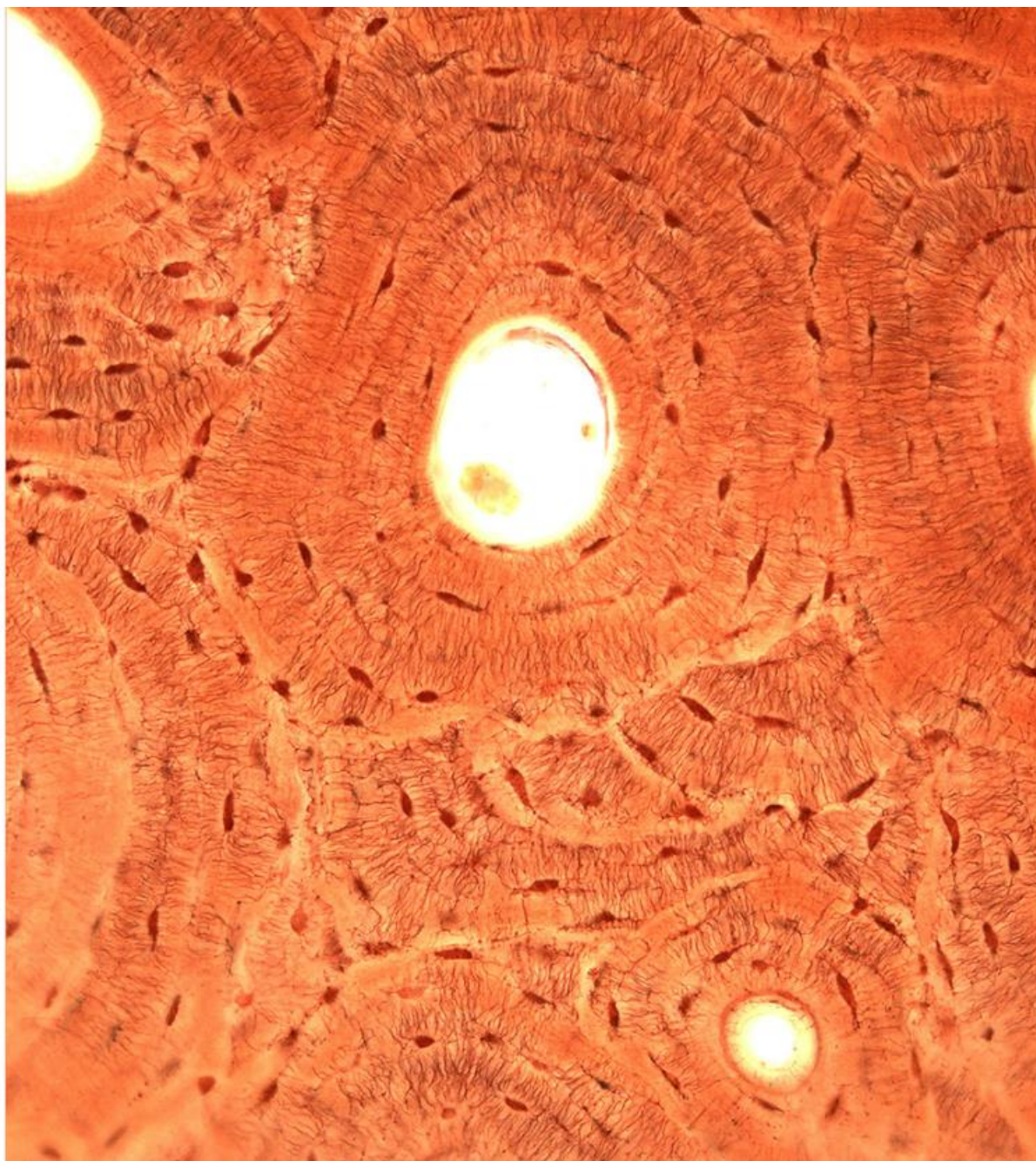
www.studyblue.com



Fibrillar bone



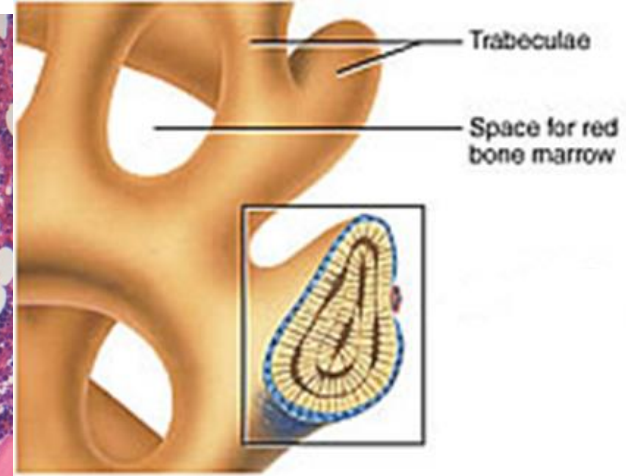
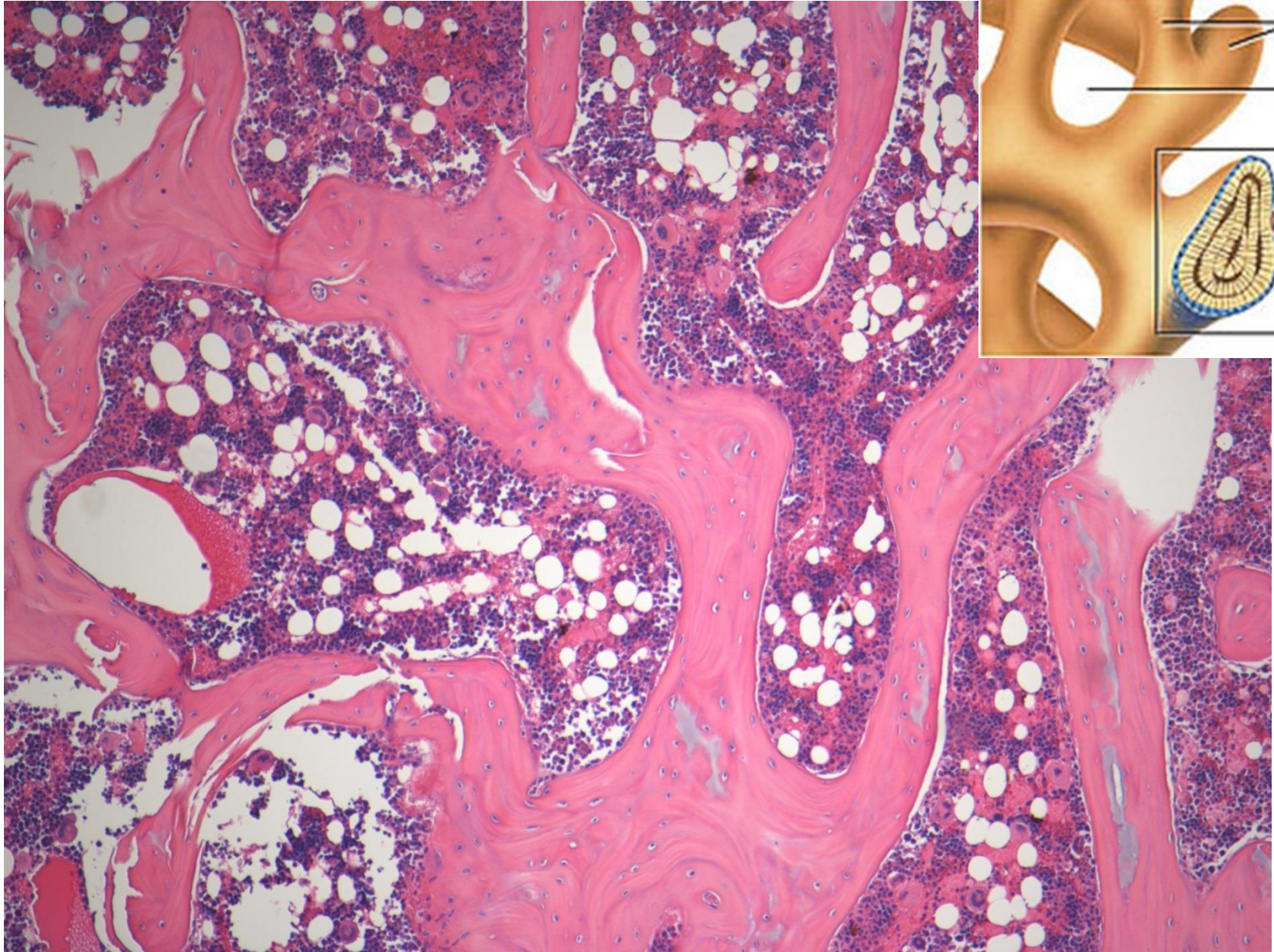
Lamellar compact bone (Schmorl)



<http://accessmedicine.mhmedical.com/>

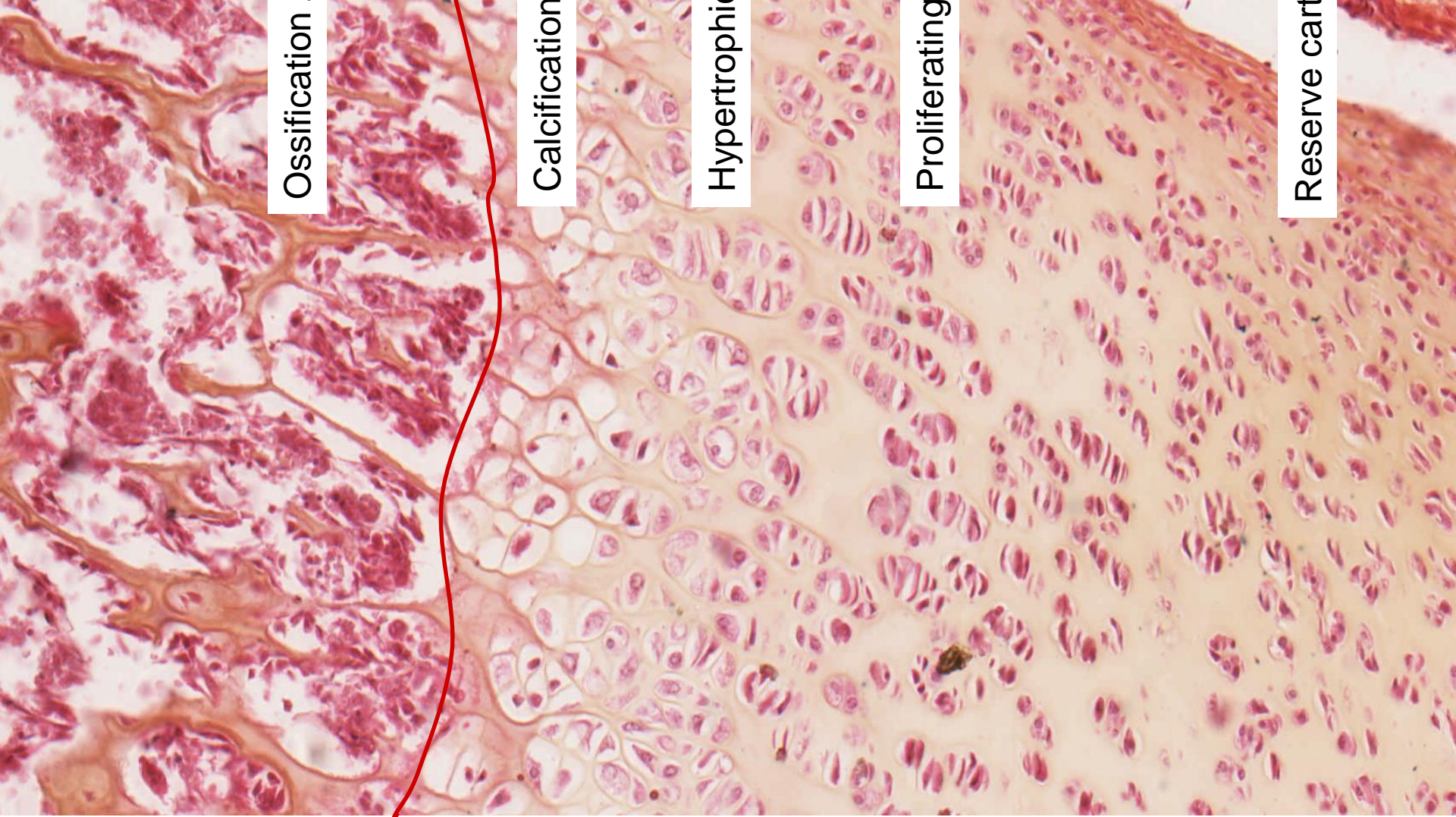
20 μ m

Lamellar sponge bone (HE)



studydroid.com

Intracartilaginous ossification (HES)



CONNECTIVE TISSUE – II: Cartilage and bone.

Slides:

Hyaline cartilage (27. Trachea)

Elastic cartilage (94. Auricula, 28. Elastic cartilage - orcein)

Lamellar bone (95. Bone – HE or Schmorl staining)

Endochondral ossification (96.)

Atlas EM:

Chondroblast (45)

Osteoblast (46)

Osteocyte (47)