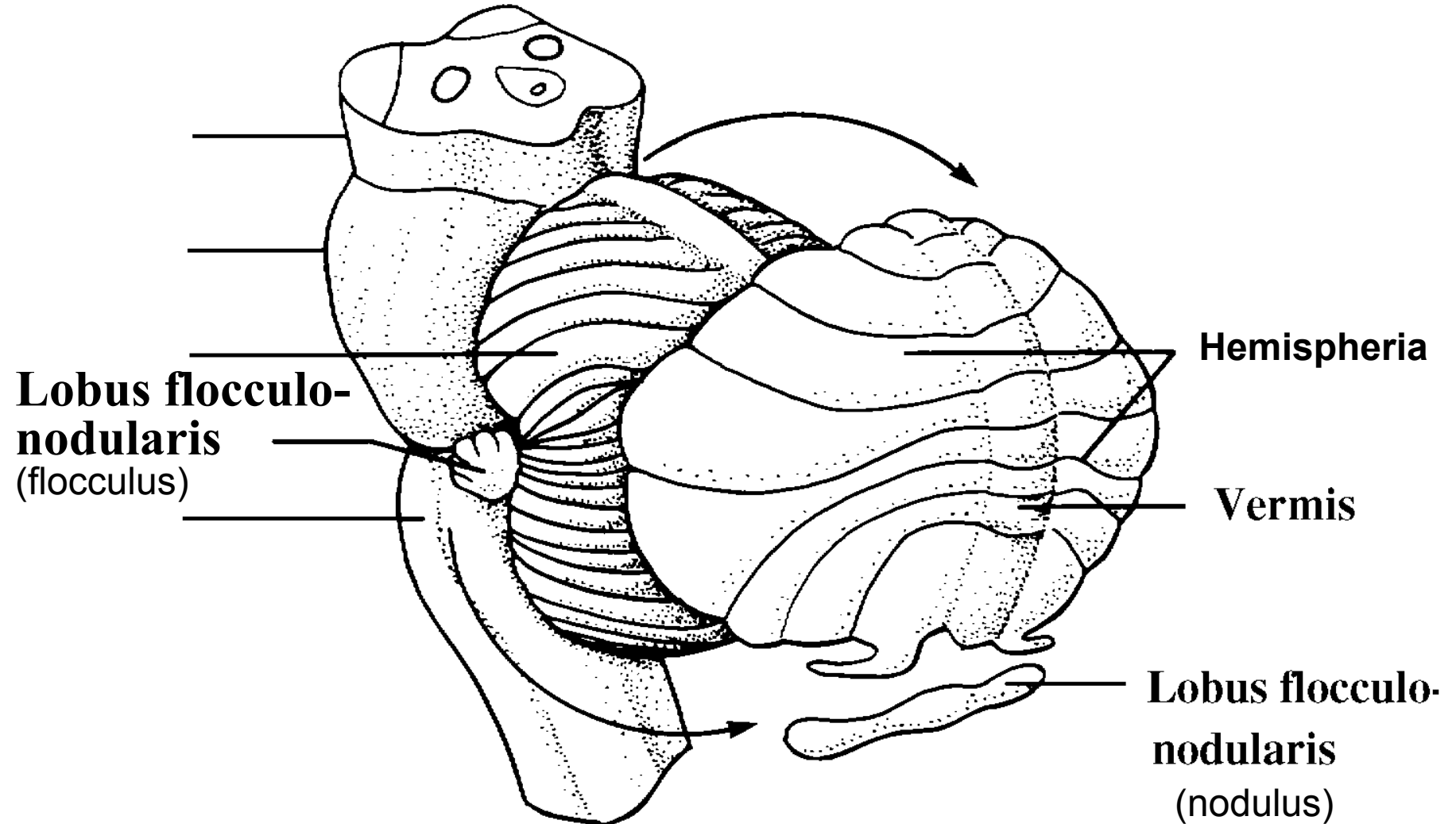


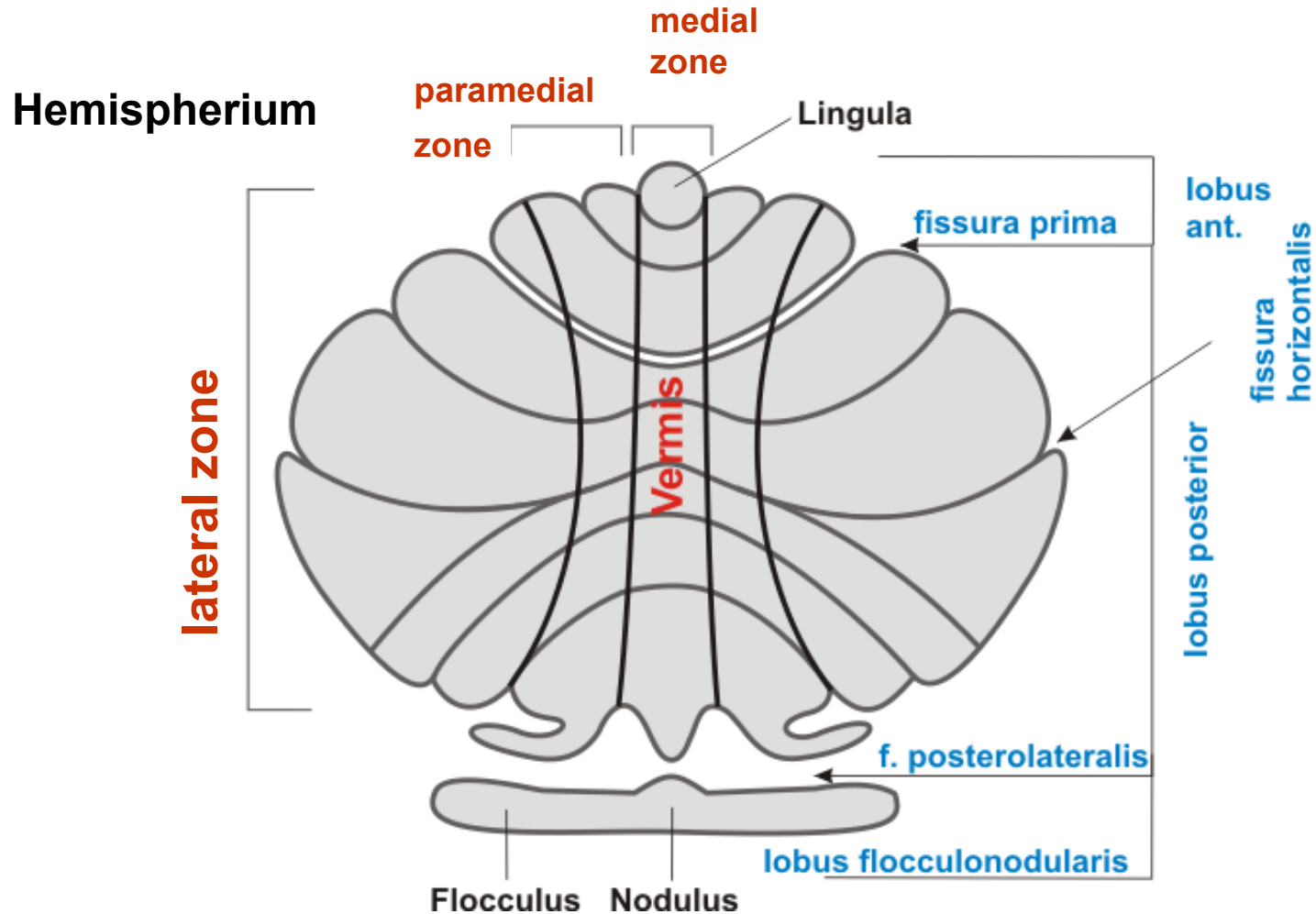
# CEREBELLUM

A



# CEREBELLUM

## basic horizontal and vertical arrangement



# CORTEX AND CEREBELLAR NUCLEI

Gray mater (cortex + ncl.) and white mater (including pedunculi cerebellares)

**Medial zone** - cortex covering vermis + ncl. fastigii

**Paramedial zone** - paramedial cortex + ncl. emboliformes et globosi

**Lateral zone** – lateral cortex + ncl. dentatus

trr. spinocerebellares

trr. spinocerebellares  
tr. cuneocerebellaris

lateral zone

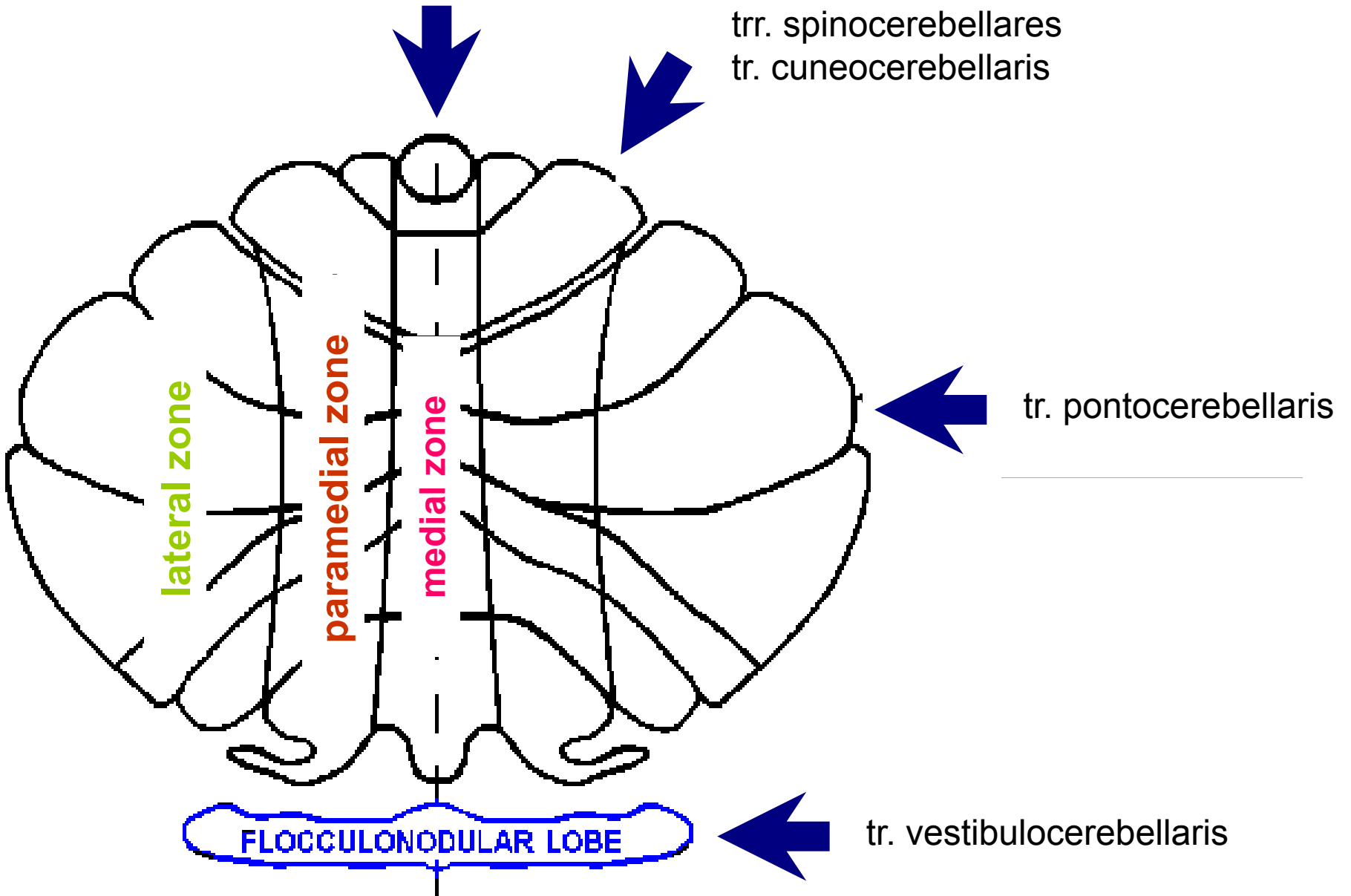
paramedial zone

medial zone

tr. pontocerebellaris

FLOCCULONODULAR LOBE

tr. vestibulocerebellaris



# CEREBELLUM

