



Nerve tissue

- Neurons

- Glial cells

CNS: oligodendrocytes, astrocytes,
ependymal cells, microglia

PNS: satellite cells, Schwann's
cells

Synapse

Myelin sheath

Cortex cerebri

pia mater

lamina molecularis

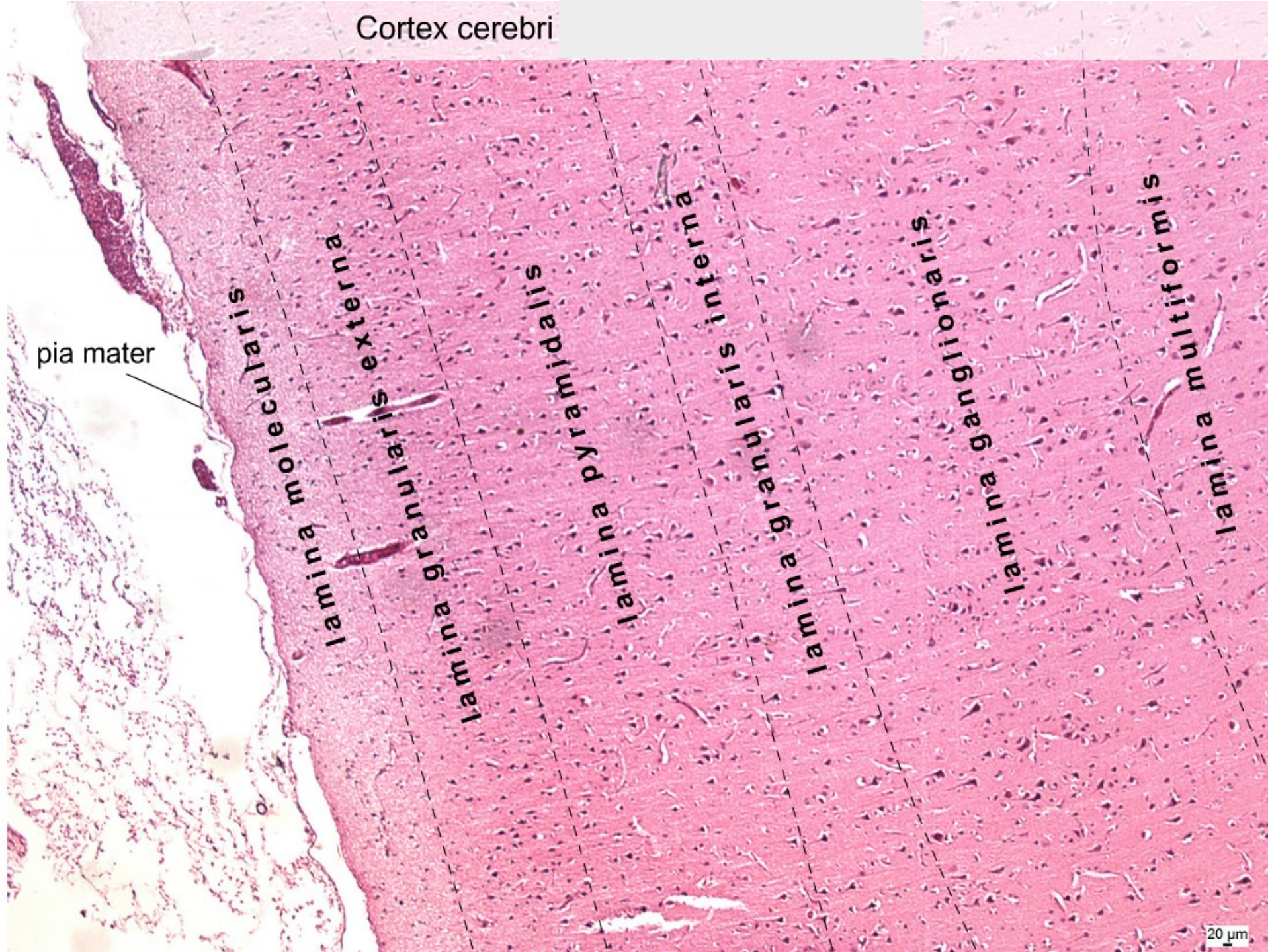
lamina granularis externa

lamina pyramidalis

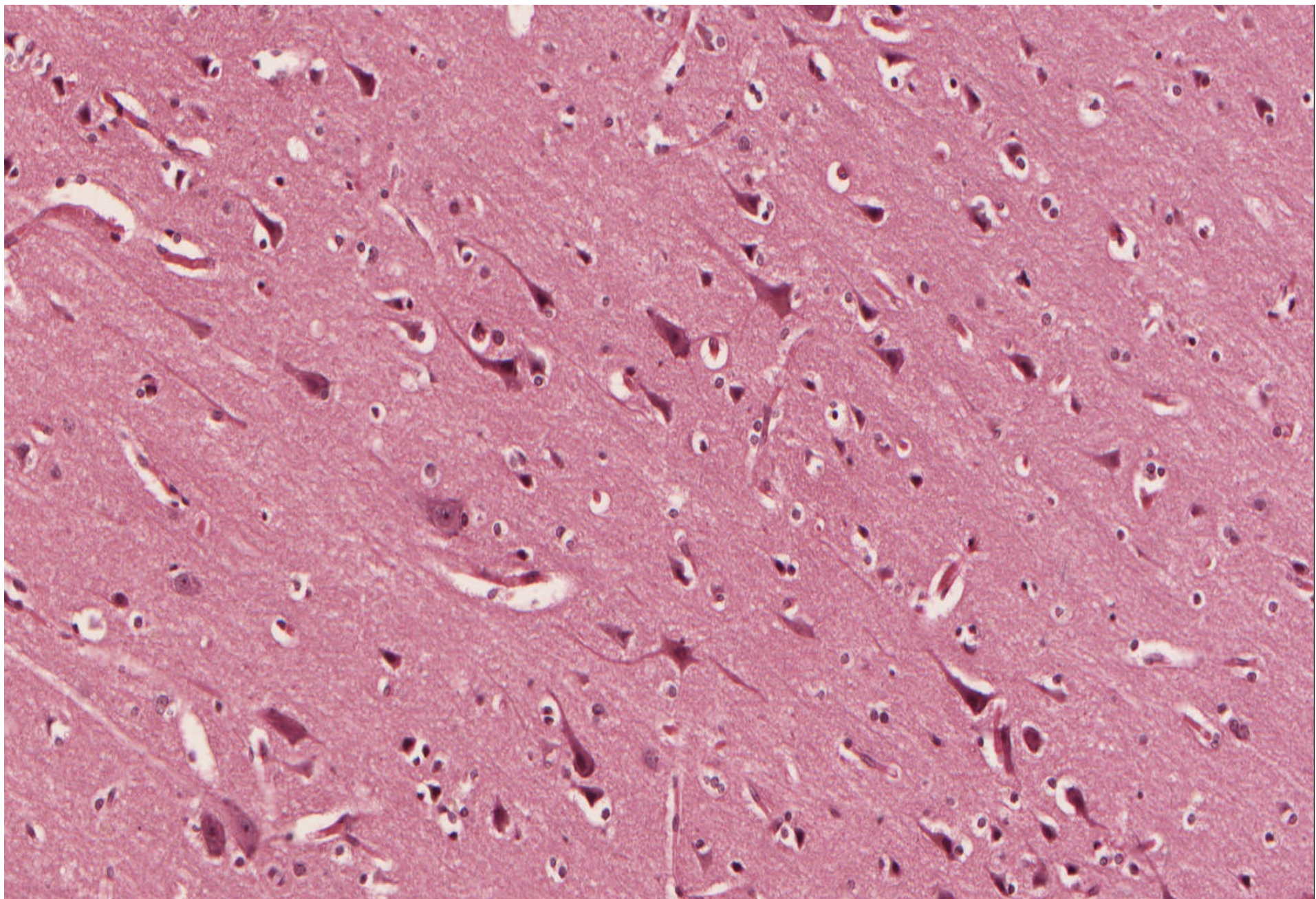
lamina granularis interna

lamina ganglionaris

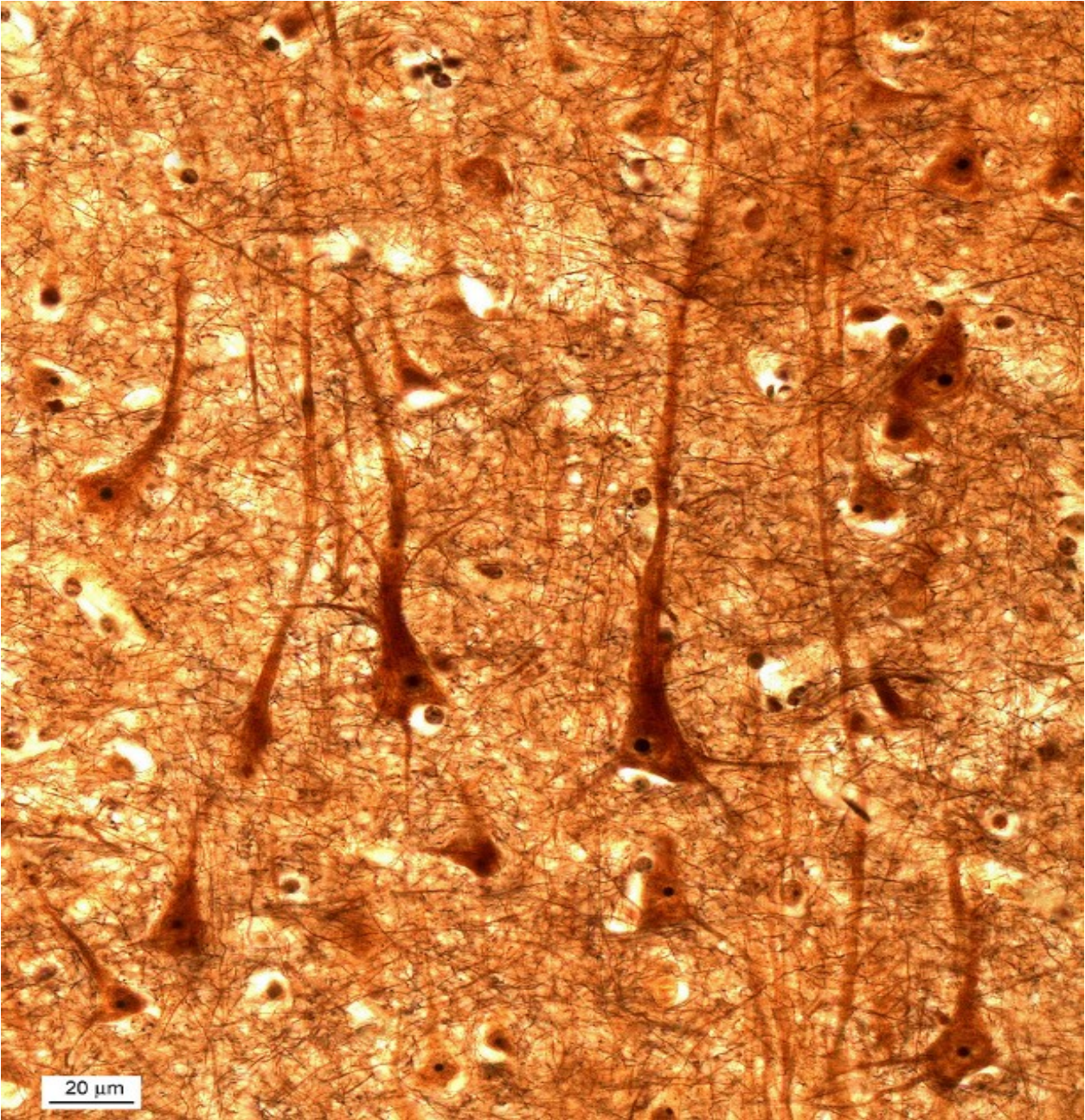
lamina multiformis



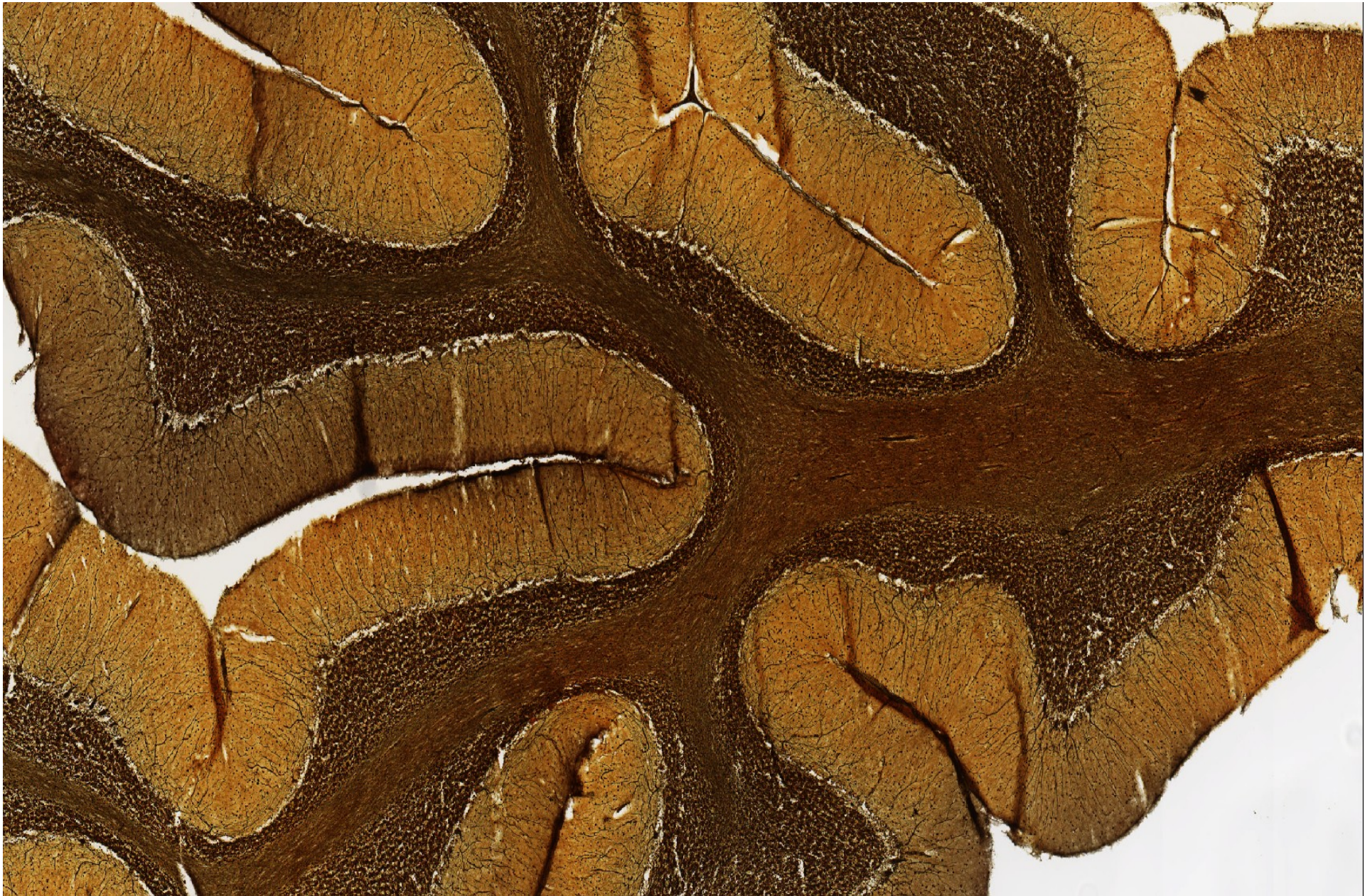
Cortex cerebri – Pyramidal cells – multipolar neurons



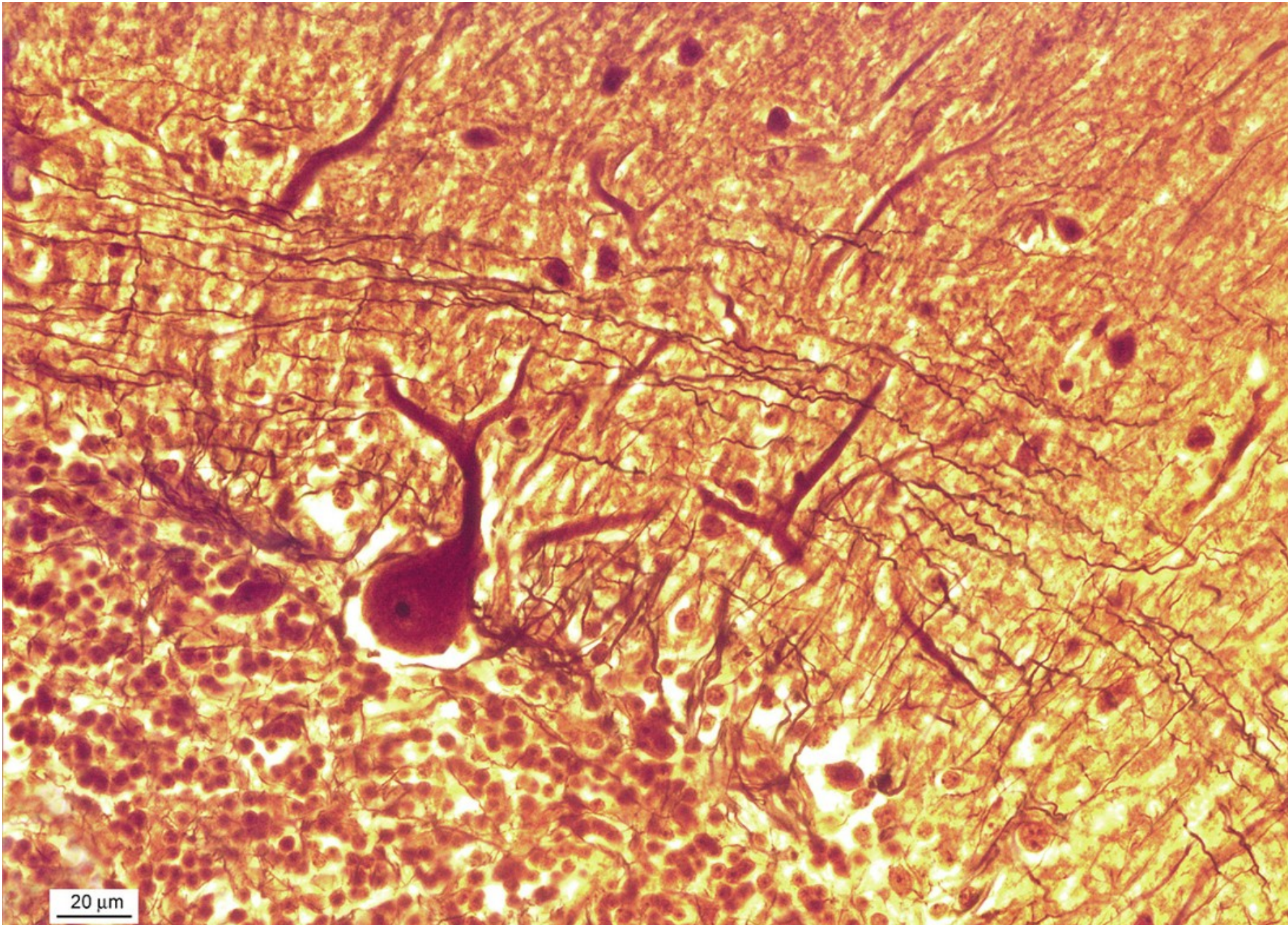
Cortex cerebri – Pyramidal cells – multipolar neurons



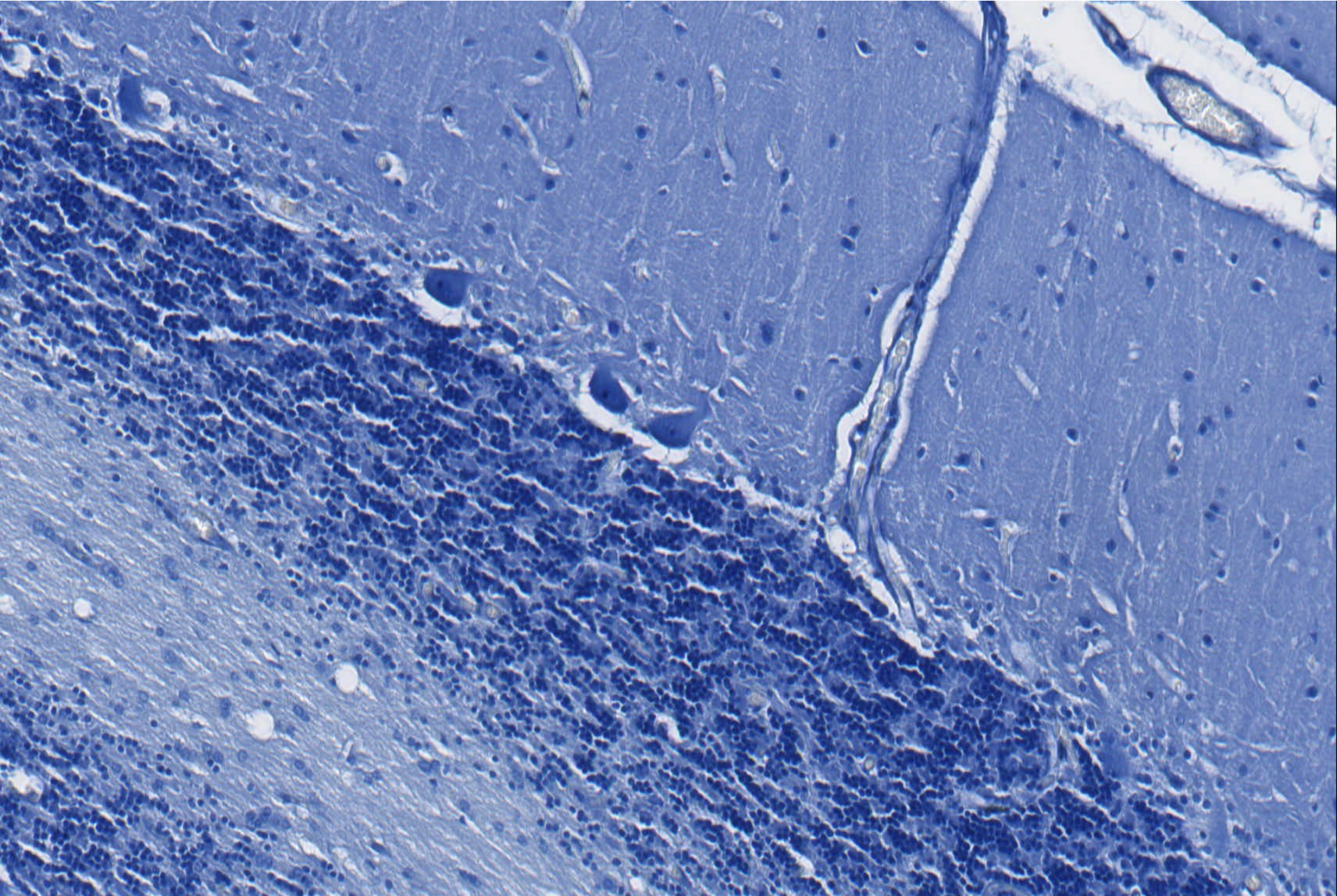
Cerebellum



Cerebellum – Purkinje cell



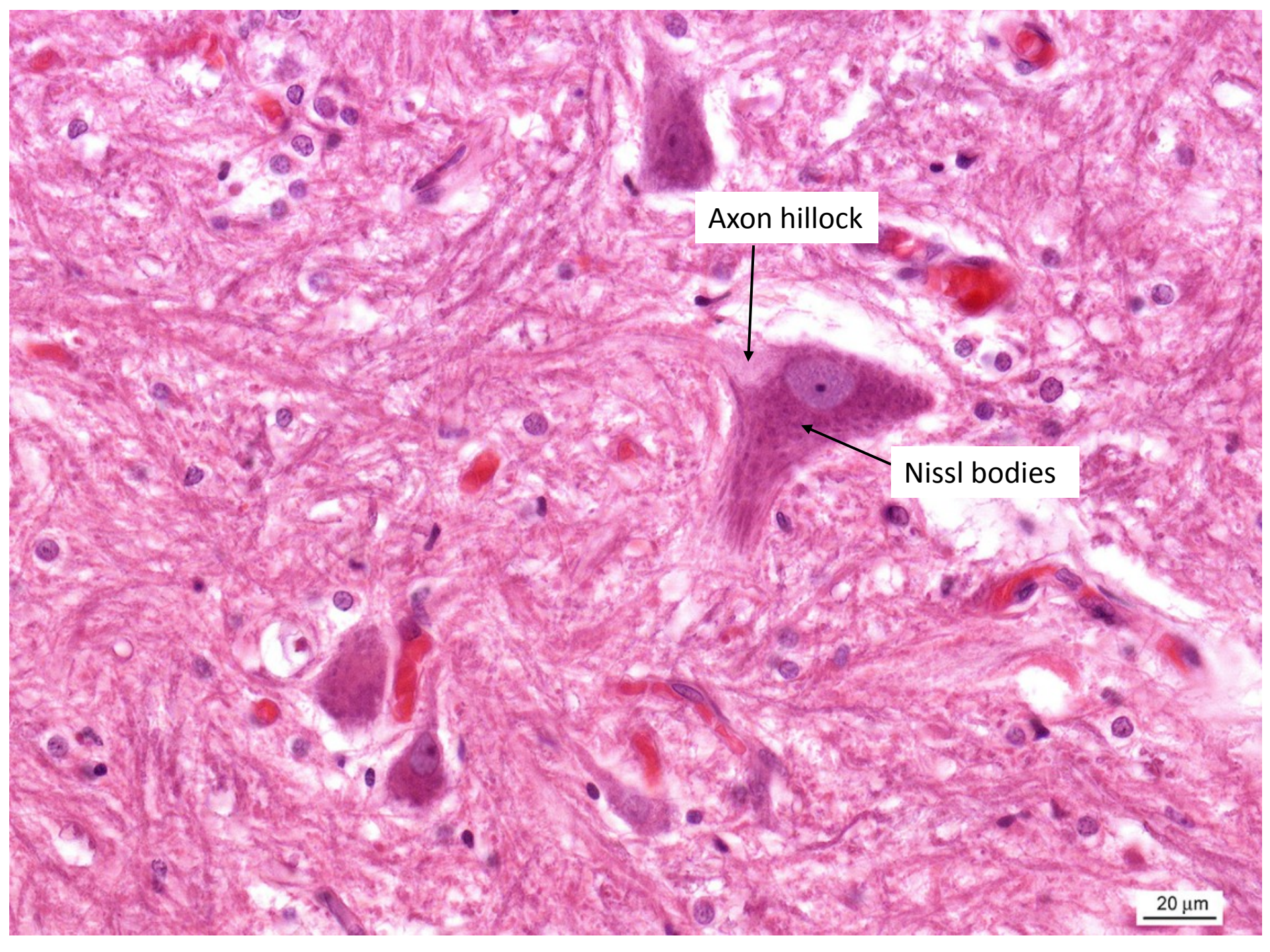
Cerebellum - Nissl bodies



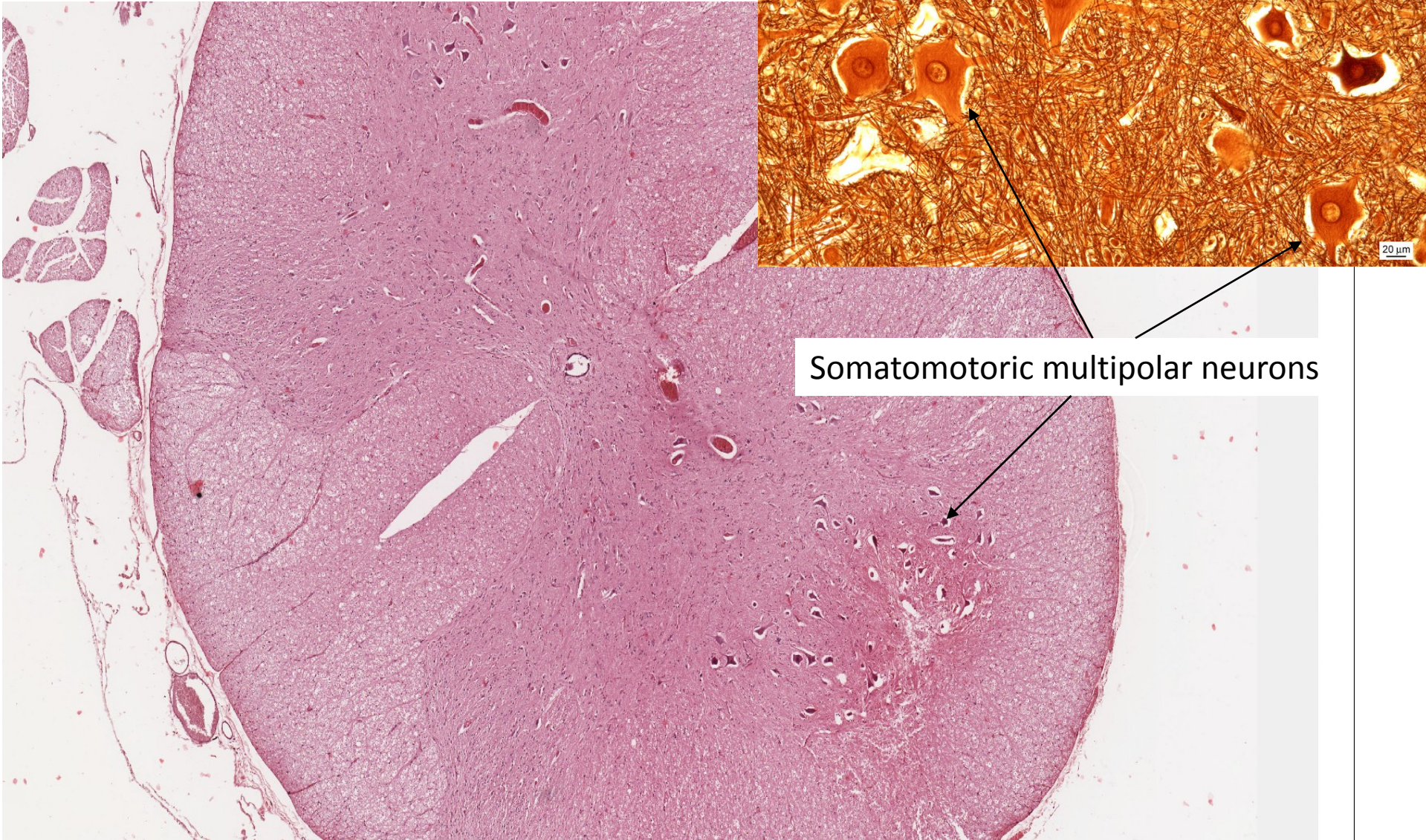
Axon hillock

Nissl bodies

20 μ m

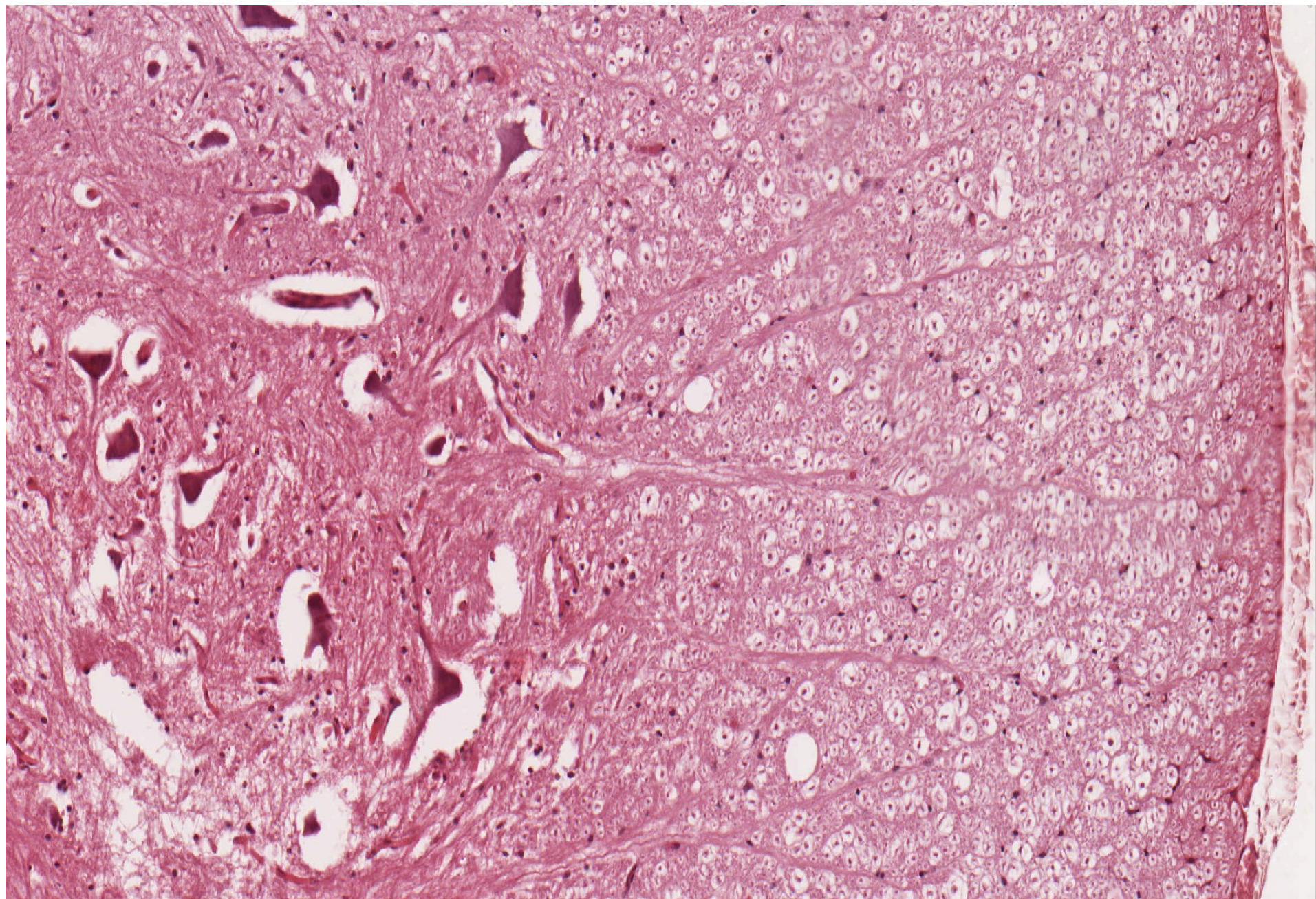


Medulla spinalis

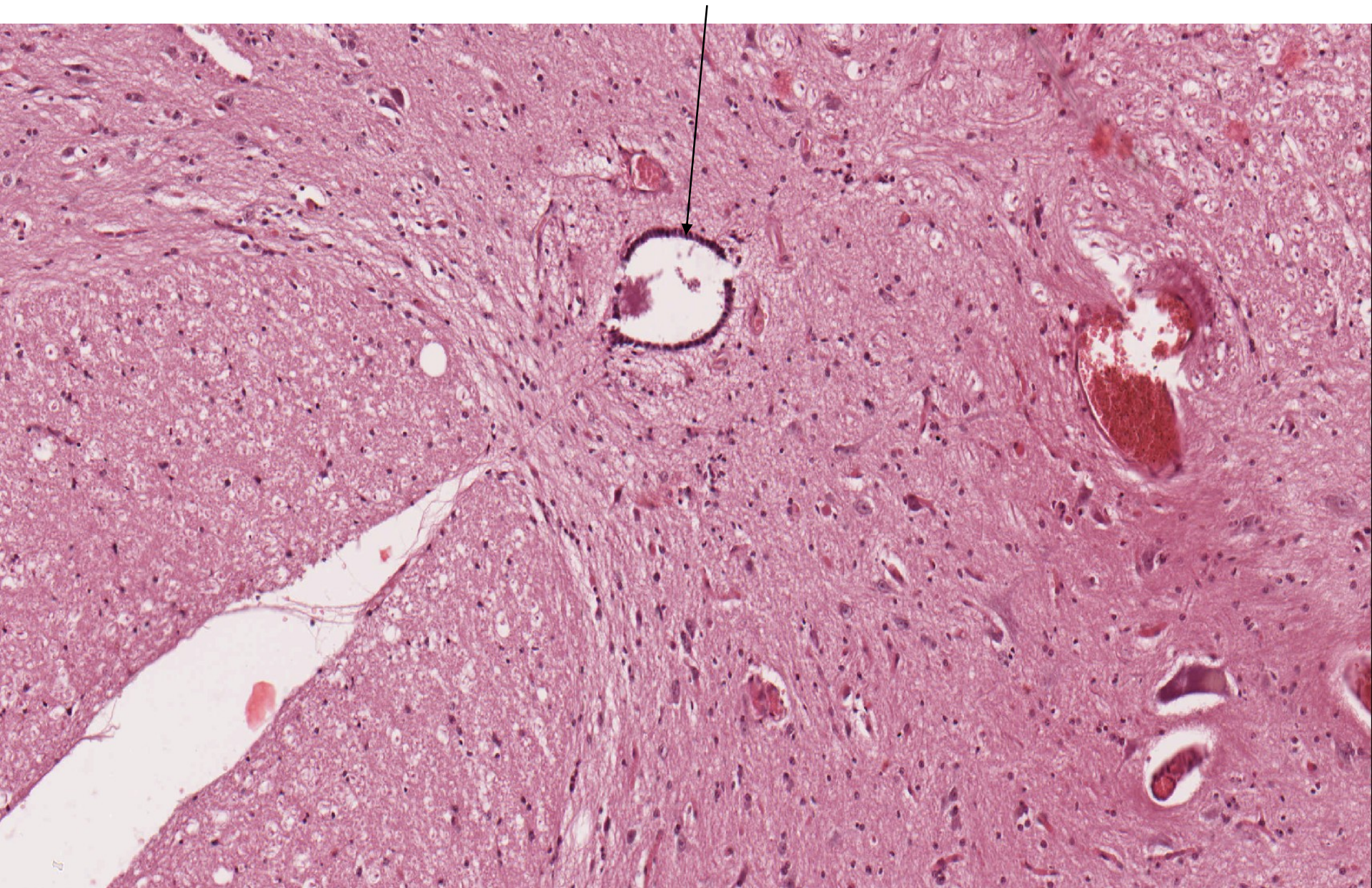


Somatomotoric multipolar neurons

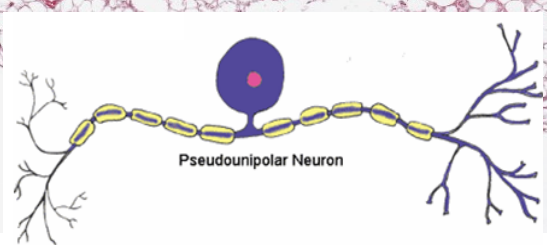
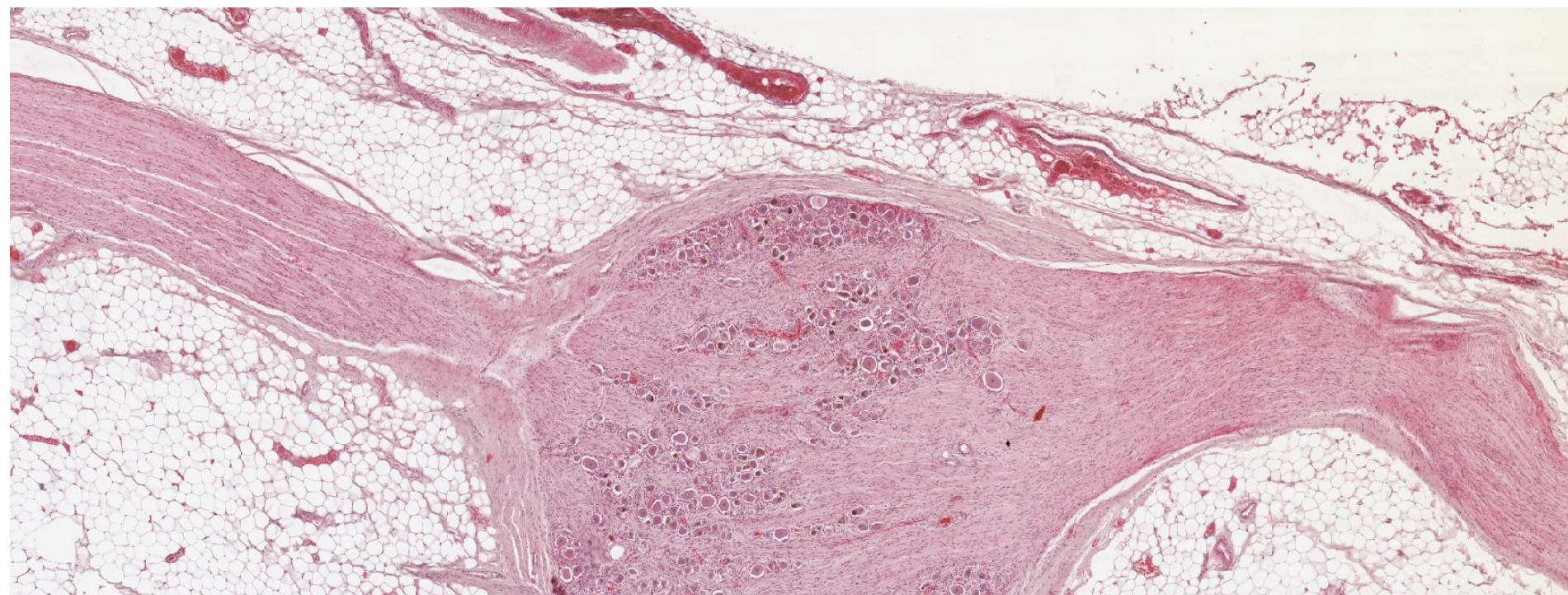
Myelinated axons



Medulla spinalis – ependymal cells

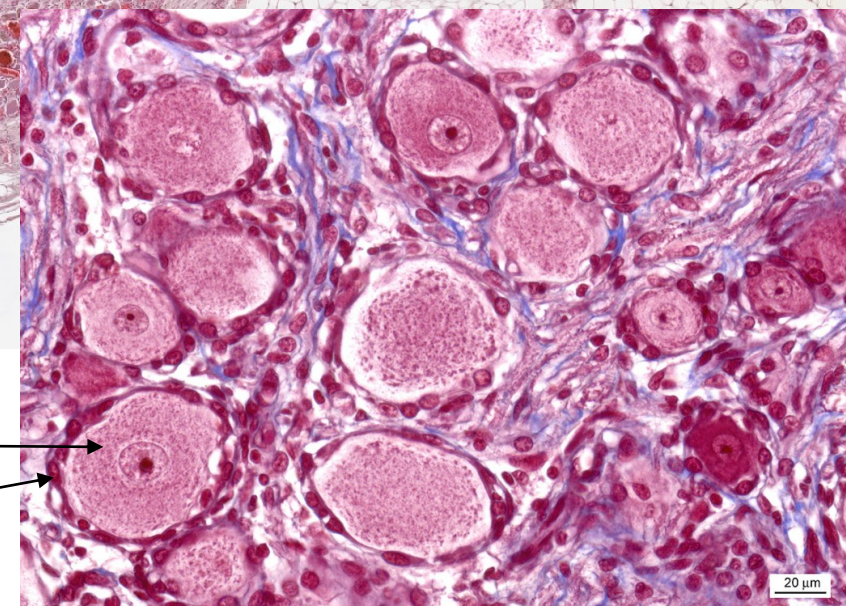


Ganglion spinale



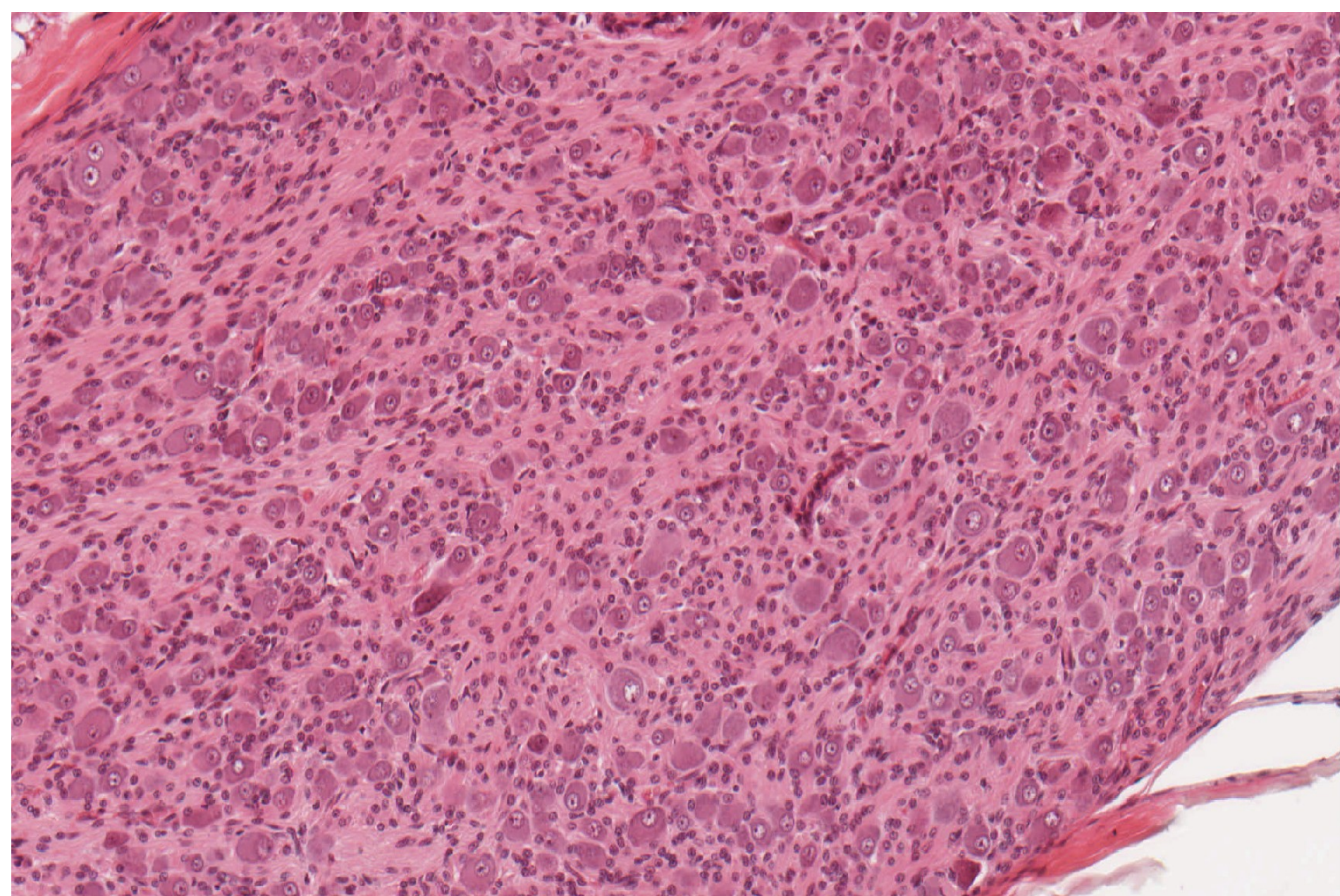
Pseudounipolar neurons

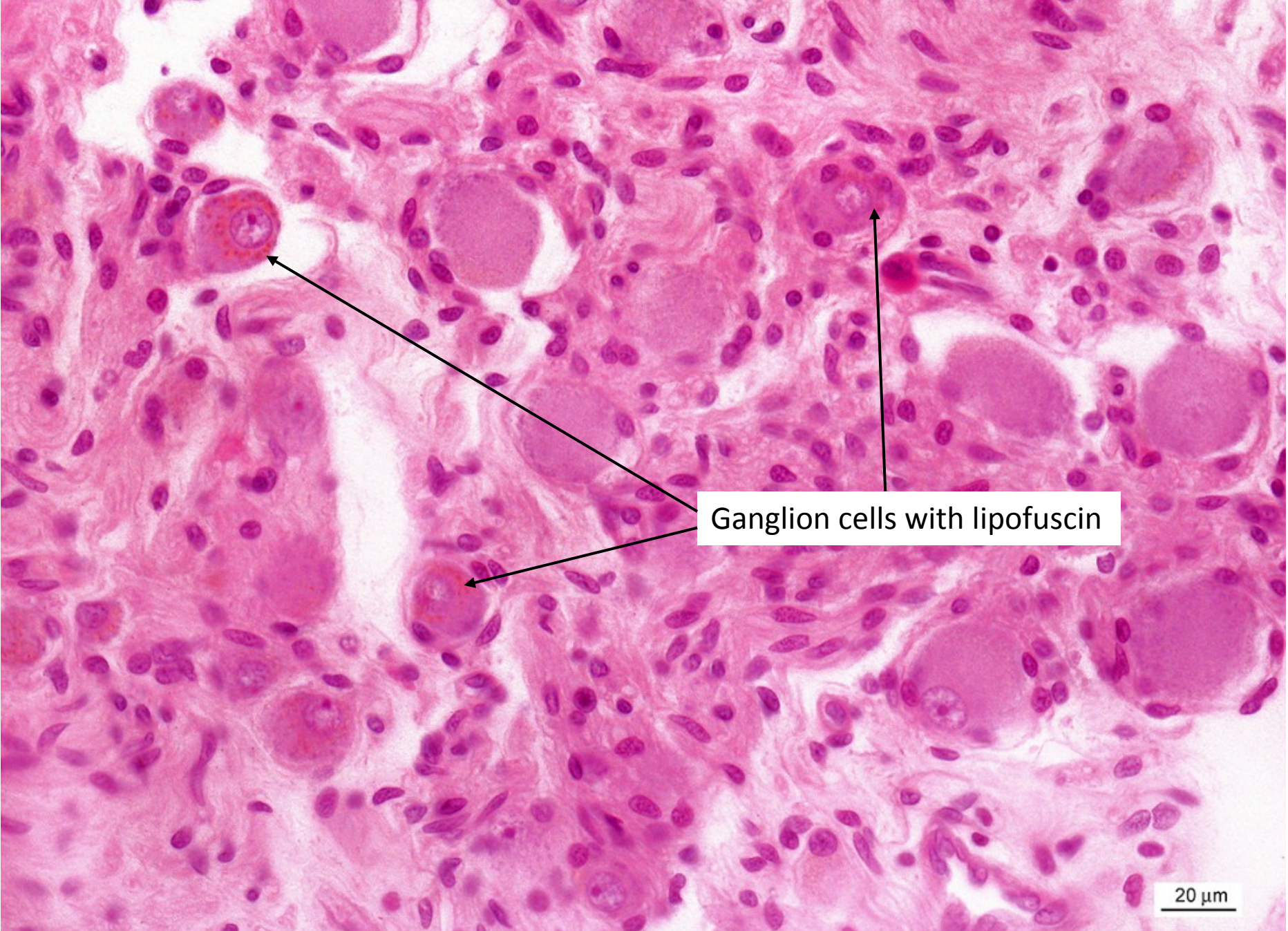
Satellite cells



20 μ m

Vegetative ganglion – ganglion cells (multipolar neurons), satellite cells

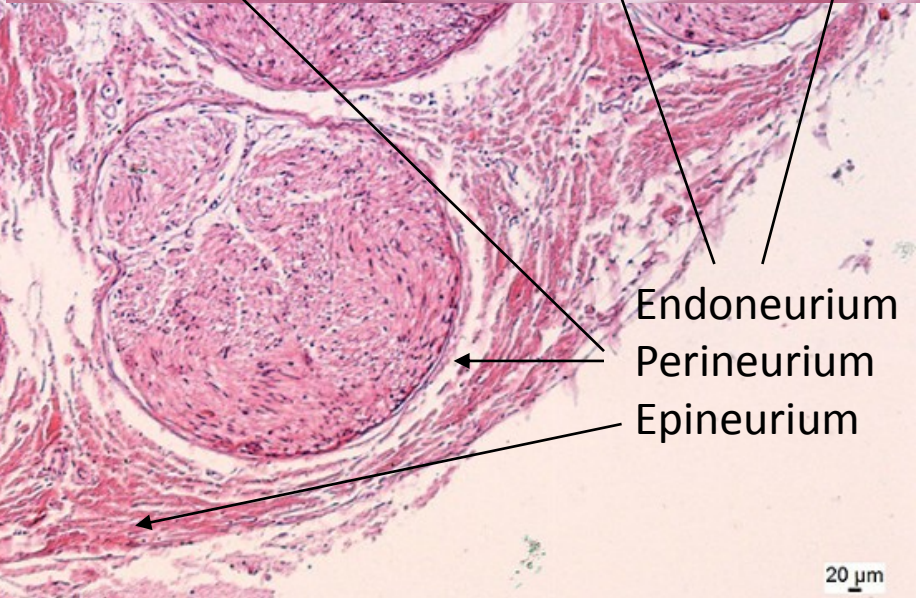
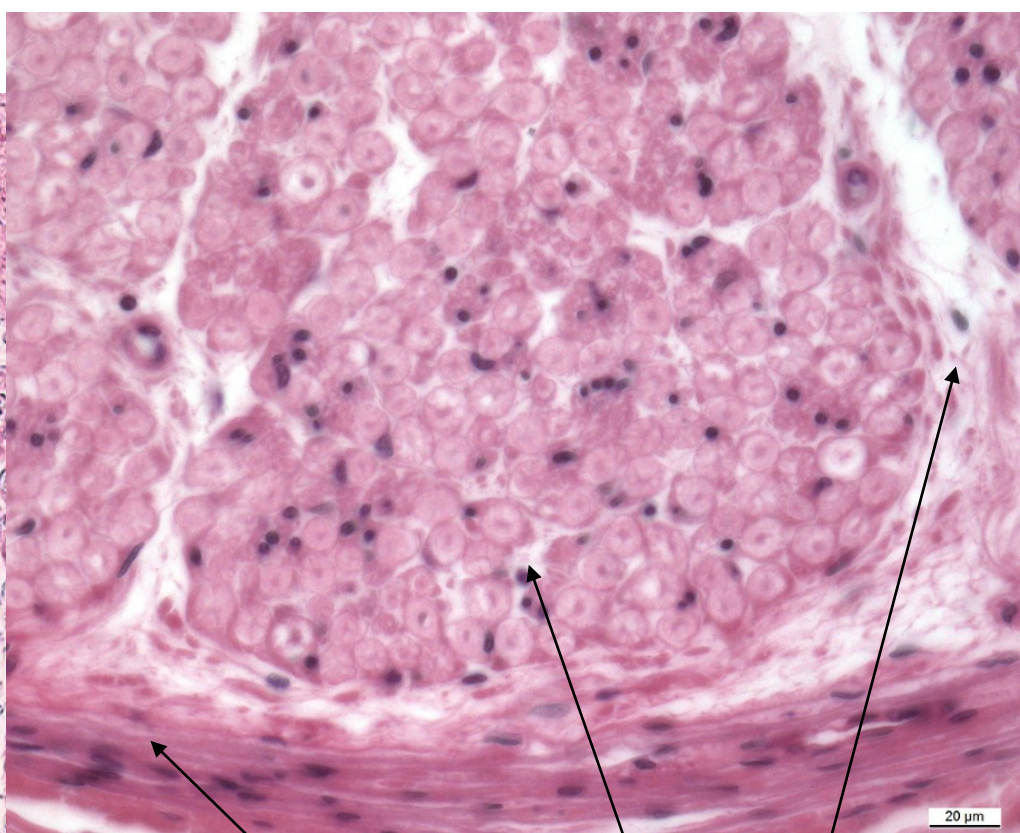
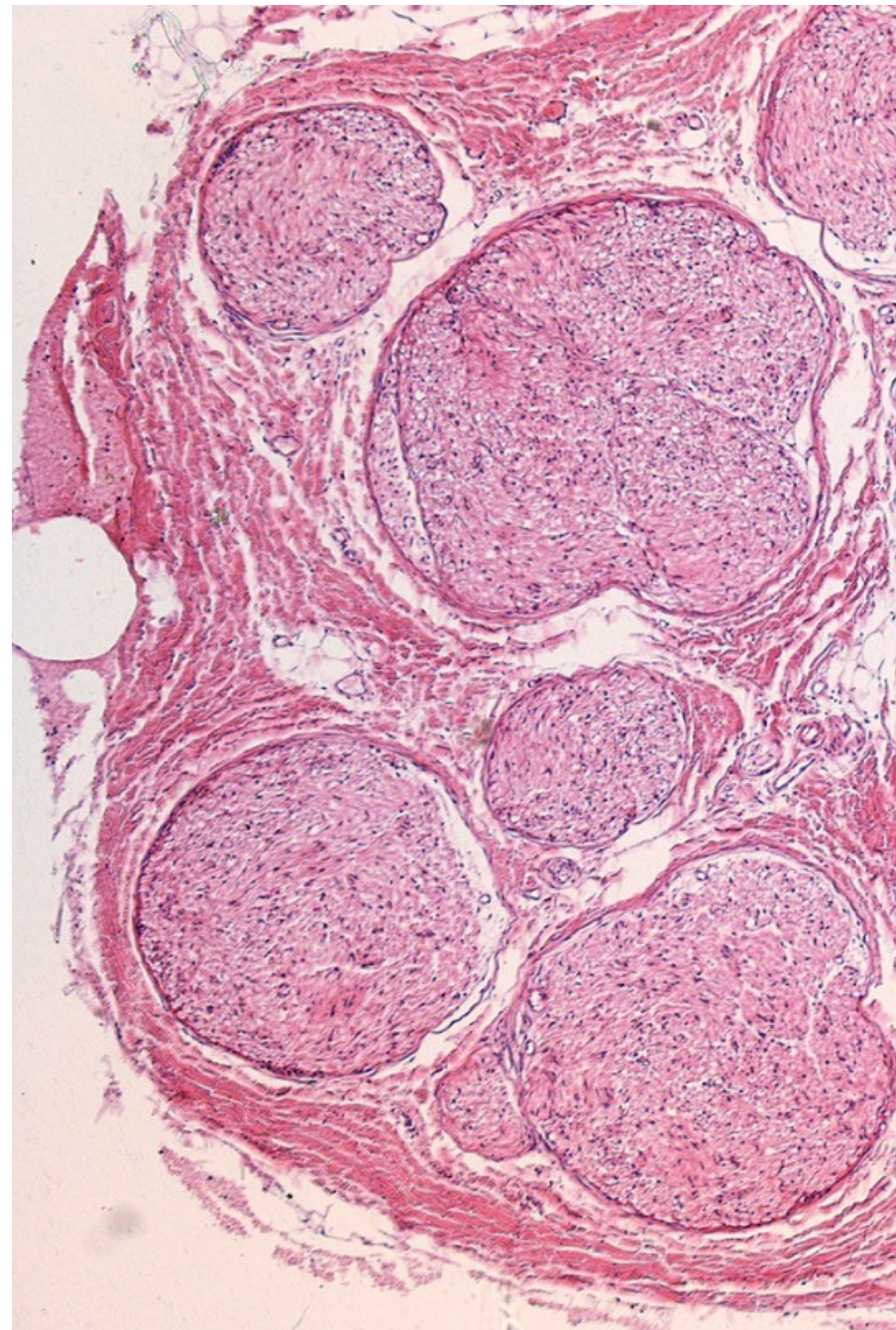




Ganglion cells with lipofuscin

20 μ m

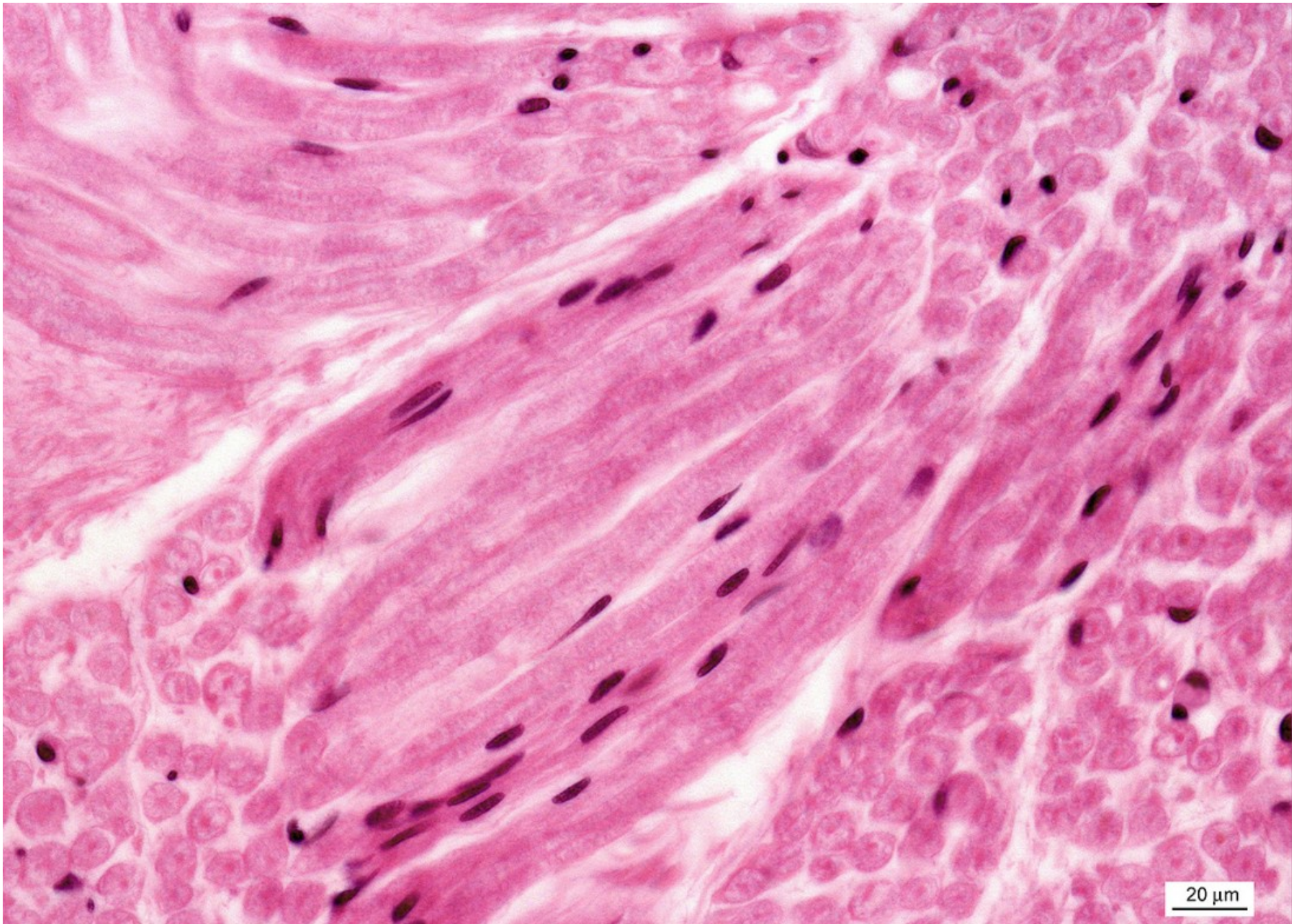
Peripheral nerve



Endoneurium
Perineurium
Epineurium

20 μm

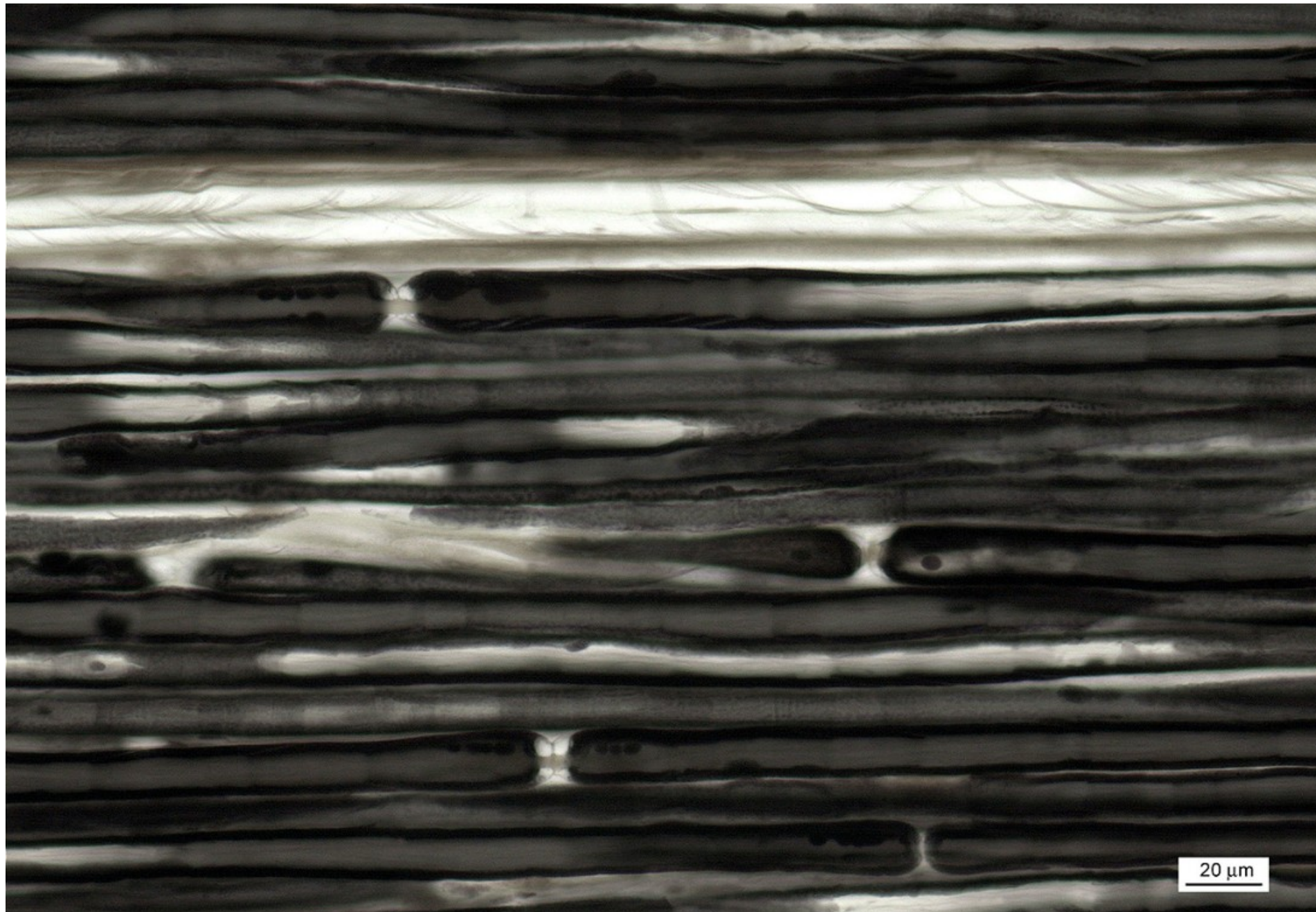
Peripheral nerve



Peripheral nerve – longitudinal section

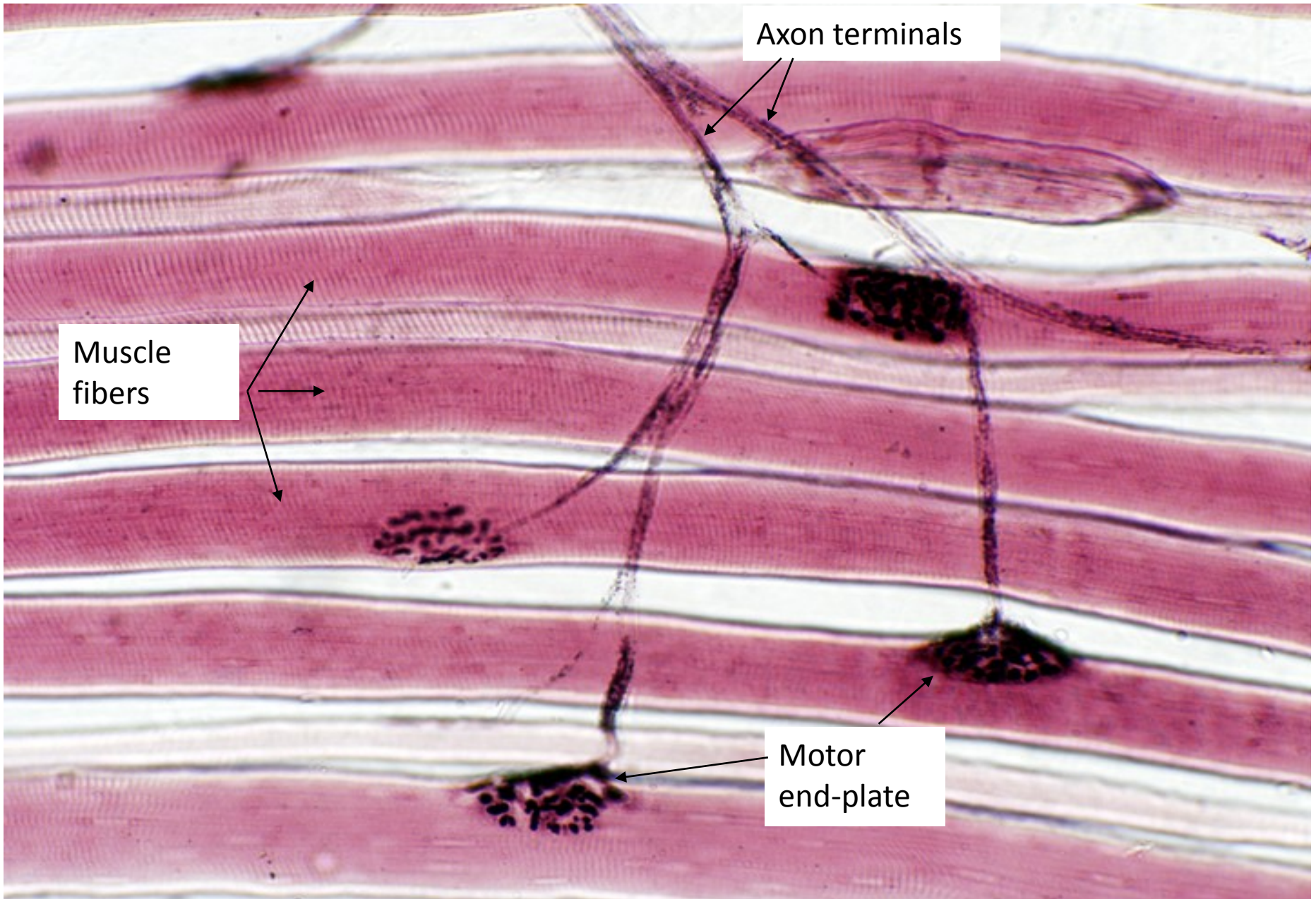


Myelin sheaths with nodes of Ranvier – peripheral nerve (OsO₄)

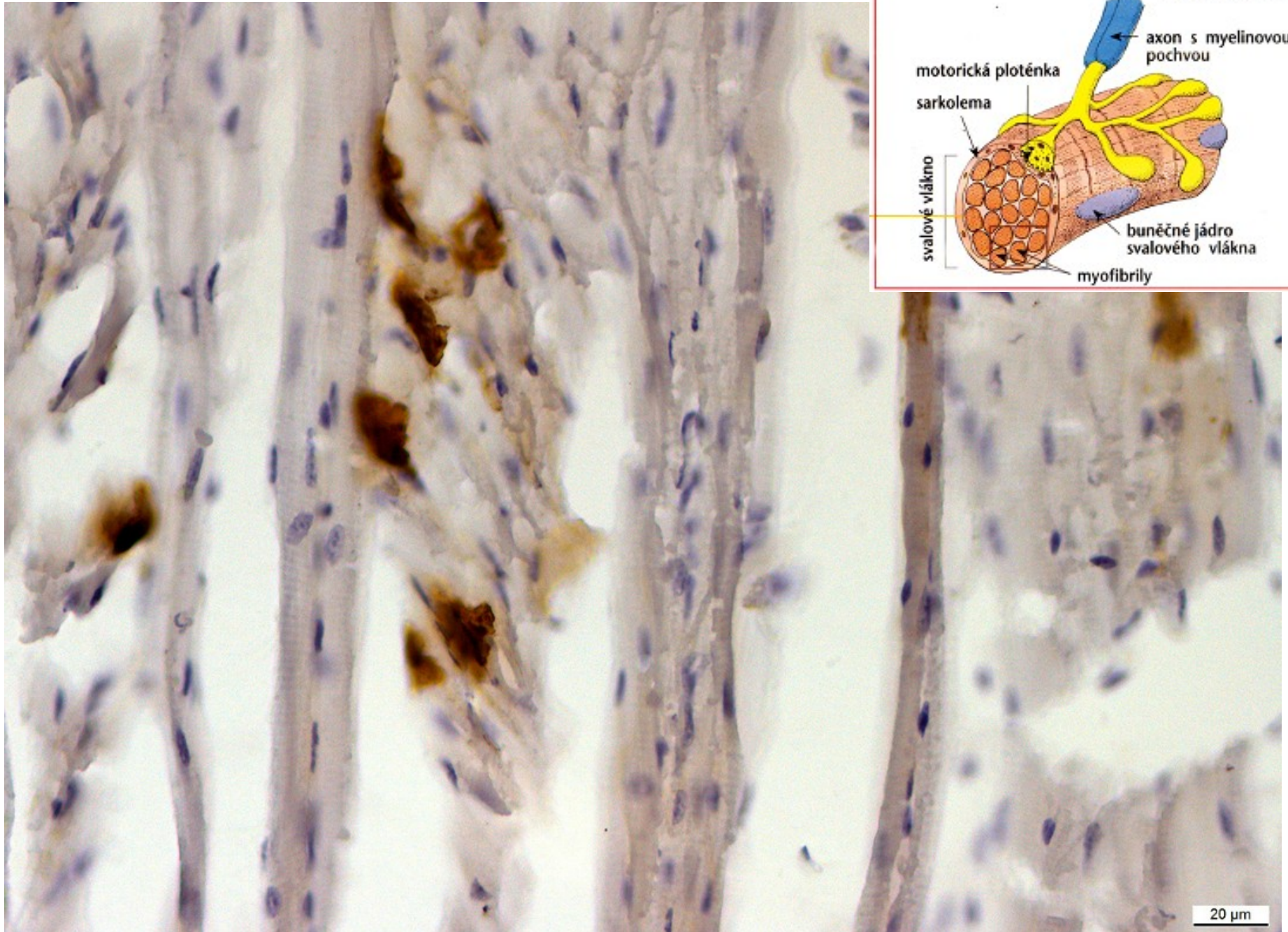
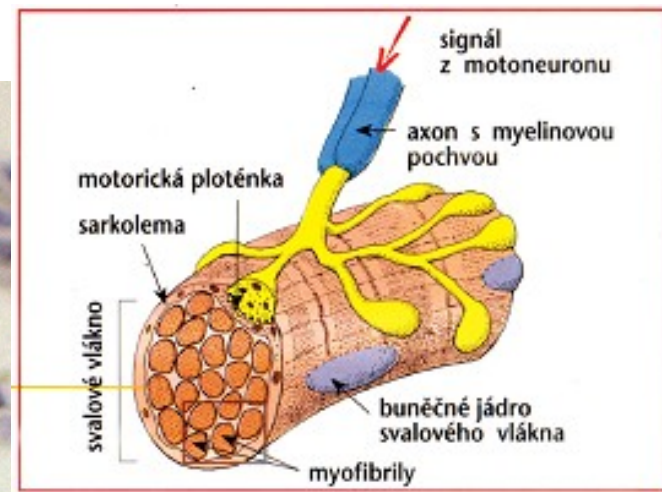


20 μm

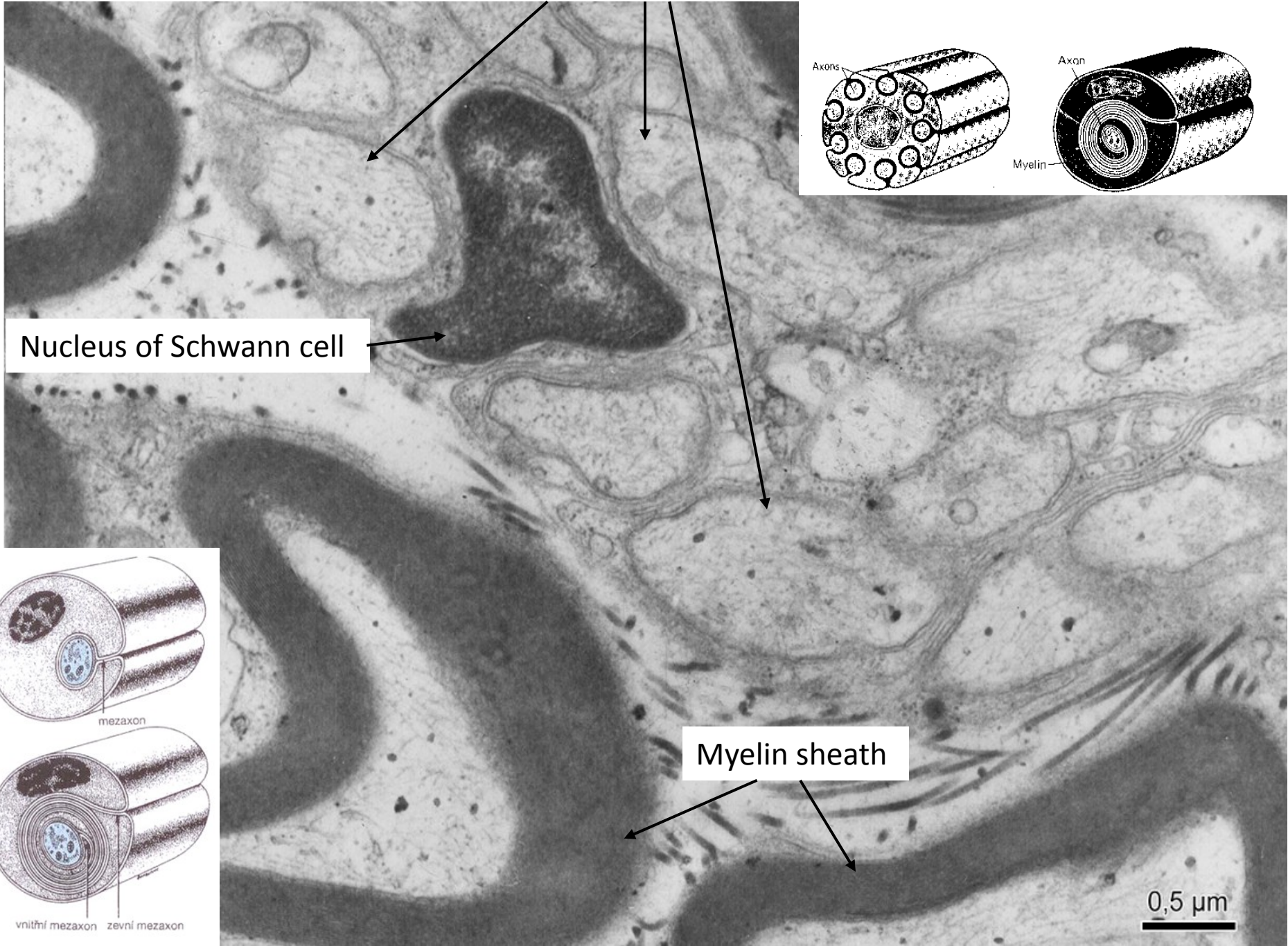
Motor end-plates in motor unit



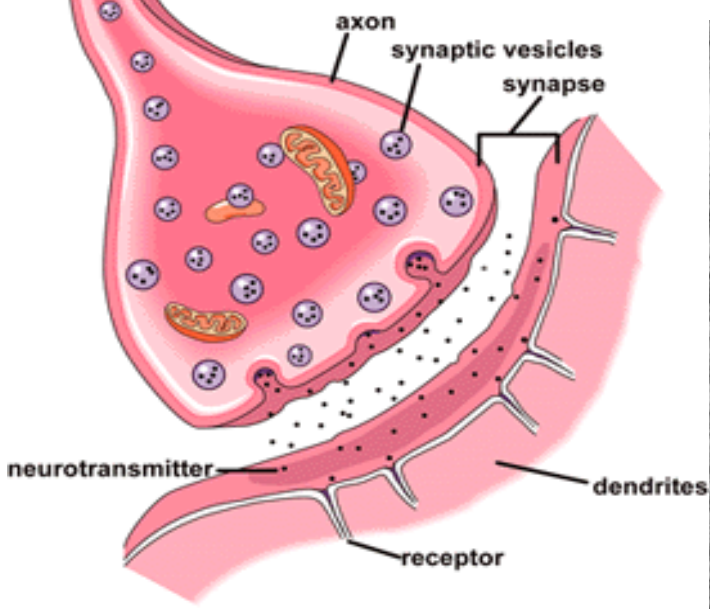
Motor end-plates (localization of acetylcholinesterase)



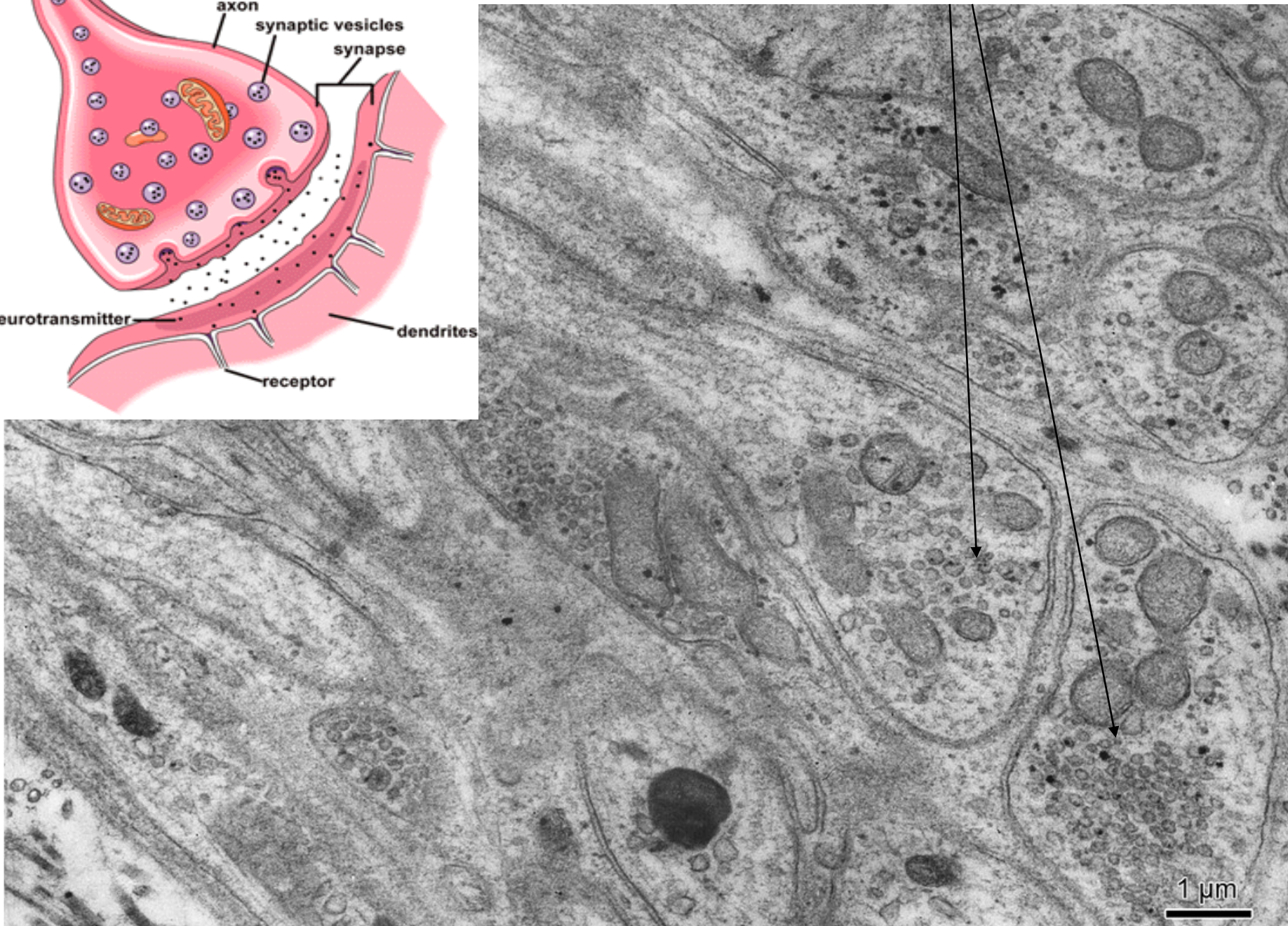
Axons with Schwann sheath



Synapse



Presynaptic ending



NERVE TISSUE

Slides:

Pyramidal cell (75, 76. Cortex cerebri)

Purkinje cell (77. Cerebellum)

Nissl substance (78. Cerebellum)

Somatomotoric multipolar neuron (79. Medulla spinalis)

Pseudounipolar neuron (81. Ganglion spinale)

Axon with myelin and Schwann sheath (84, 86. Peripheral nerve)

Myelin sheath (87. Peripheral nerve)

Motor end plate (acetylcholinesterase detection)

Atlas EM:

Nucleus (3) and cytoplasm of neuron (55)

Axons with sheaths (56, 58)

Presynaptic endings (57)