



Epithelium

- According to cell arrangement: sheet (membranous), trabecular, reticular
- According to a function: **covering**, secretory, absorptive, respiratory and sensory + myoepithelial cells

- Covering epithelium - classification

Covering epithelium - classification

- According to the number of cell layers and shape of cells in the most superficial layer

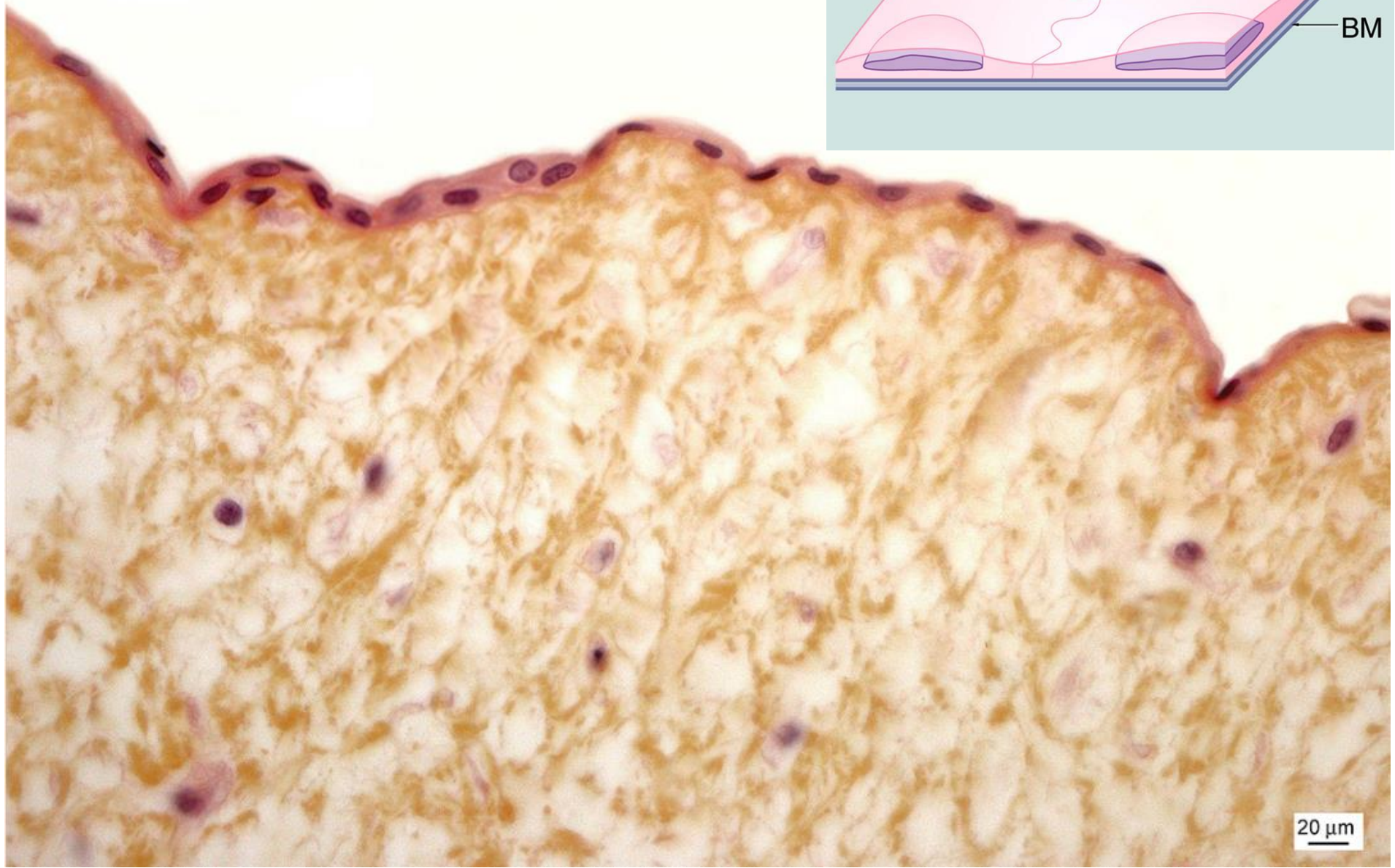
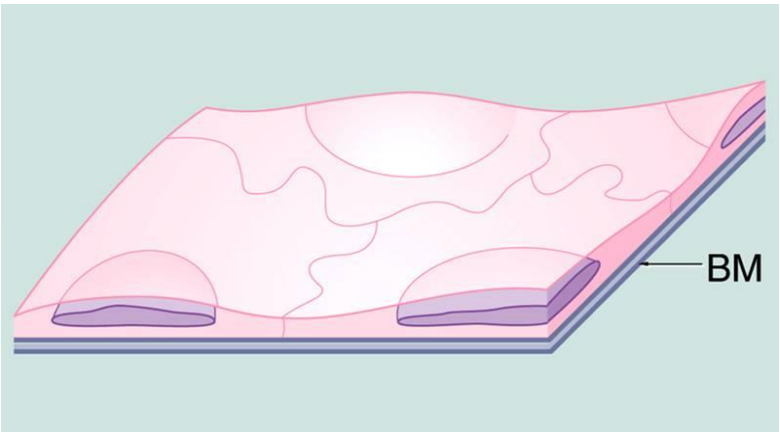
Simple

- Simple squamous
- Simple cuboidal
- Simple columnar
- Pseudostratified columnar

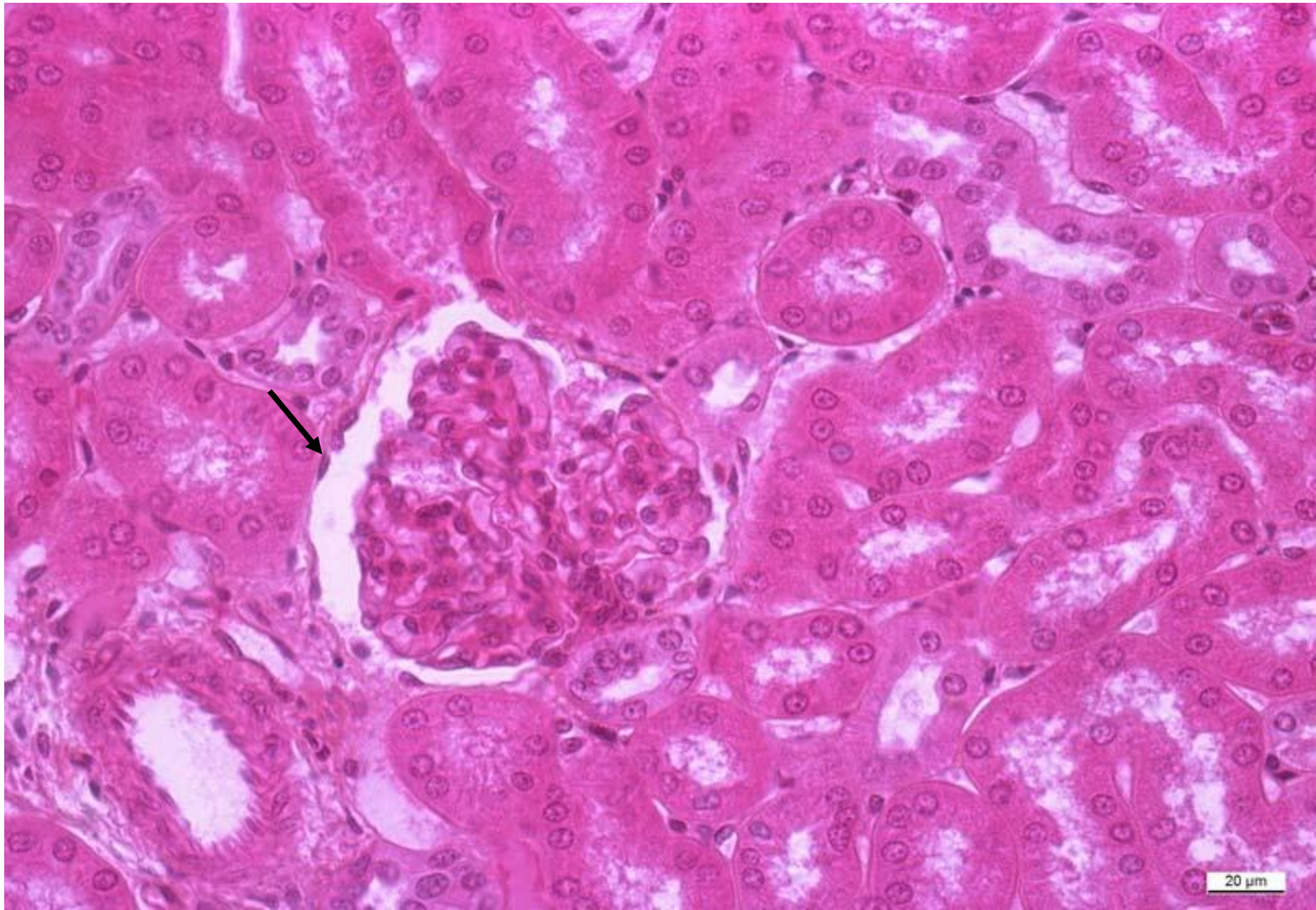
Stratified

- Stratified squamous
- Stratified squamous keratinized
- Stratified columnar
- Transitional

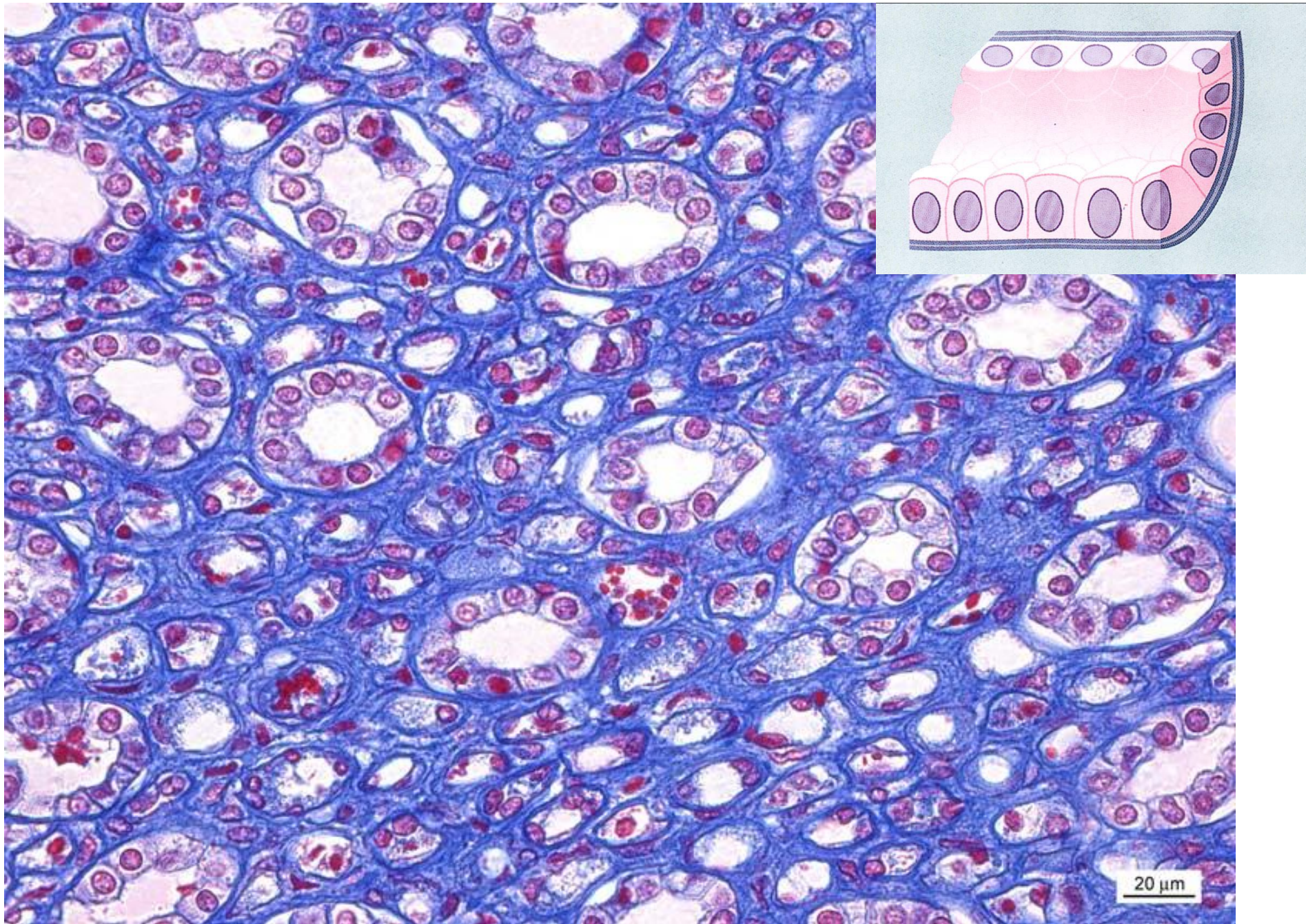
Simple squamous epithelium



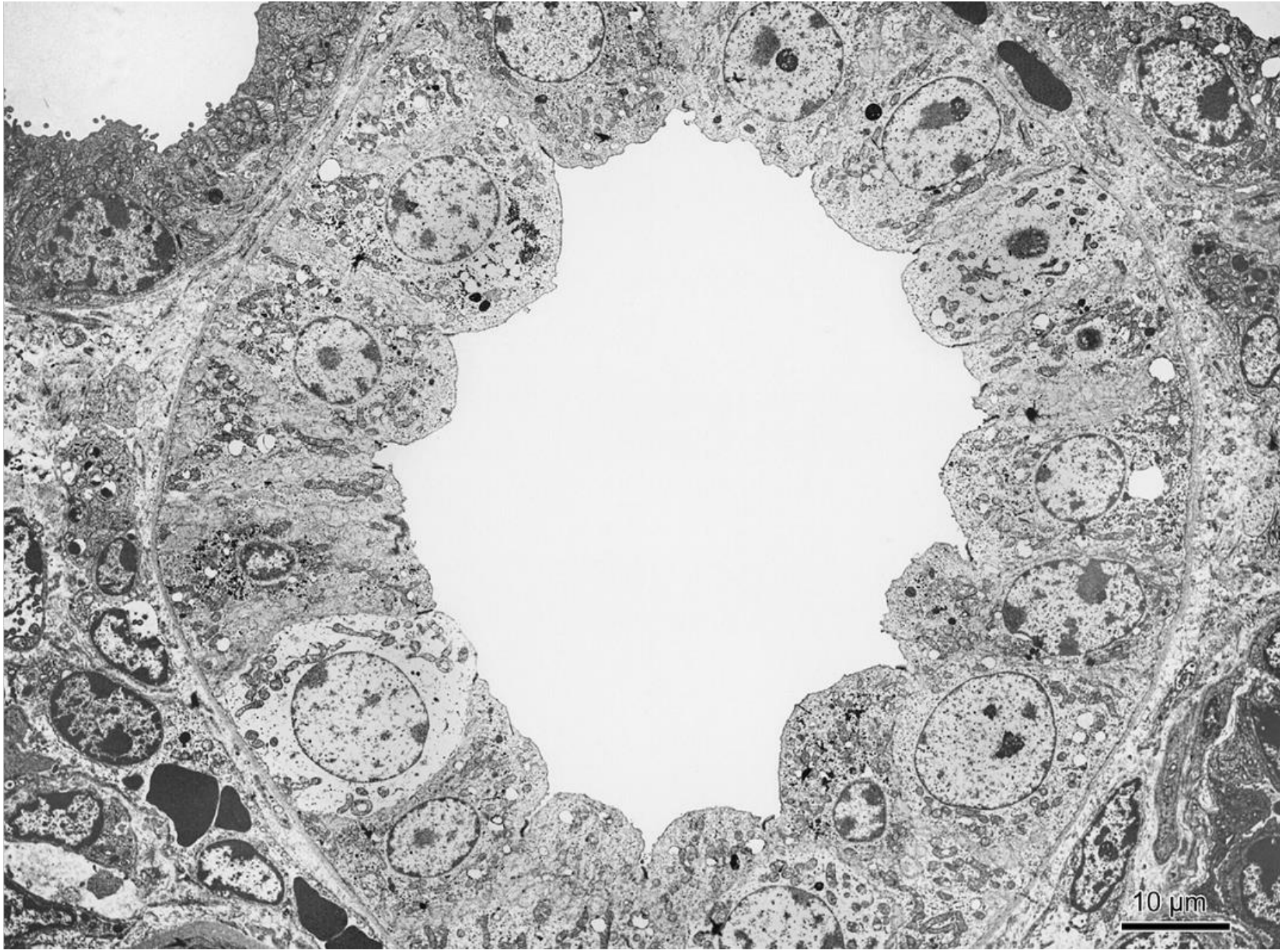
Simple squamous epithelium – Bowman's capsule



Simple cuboidal epithelium - Henle's loop (asc.)



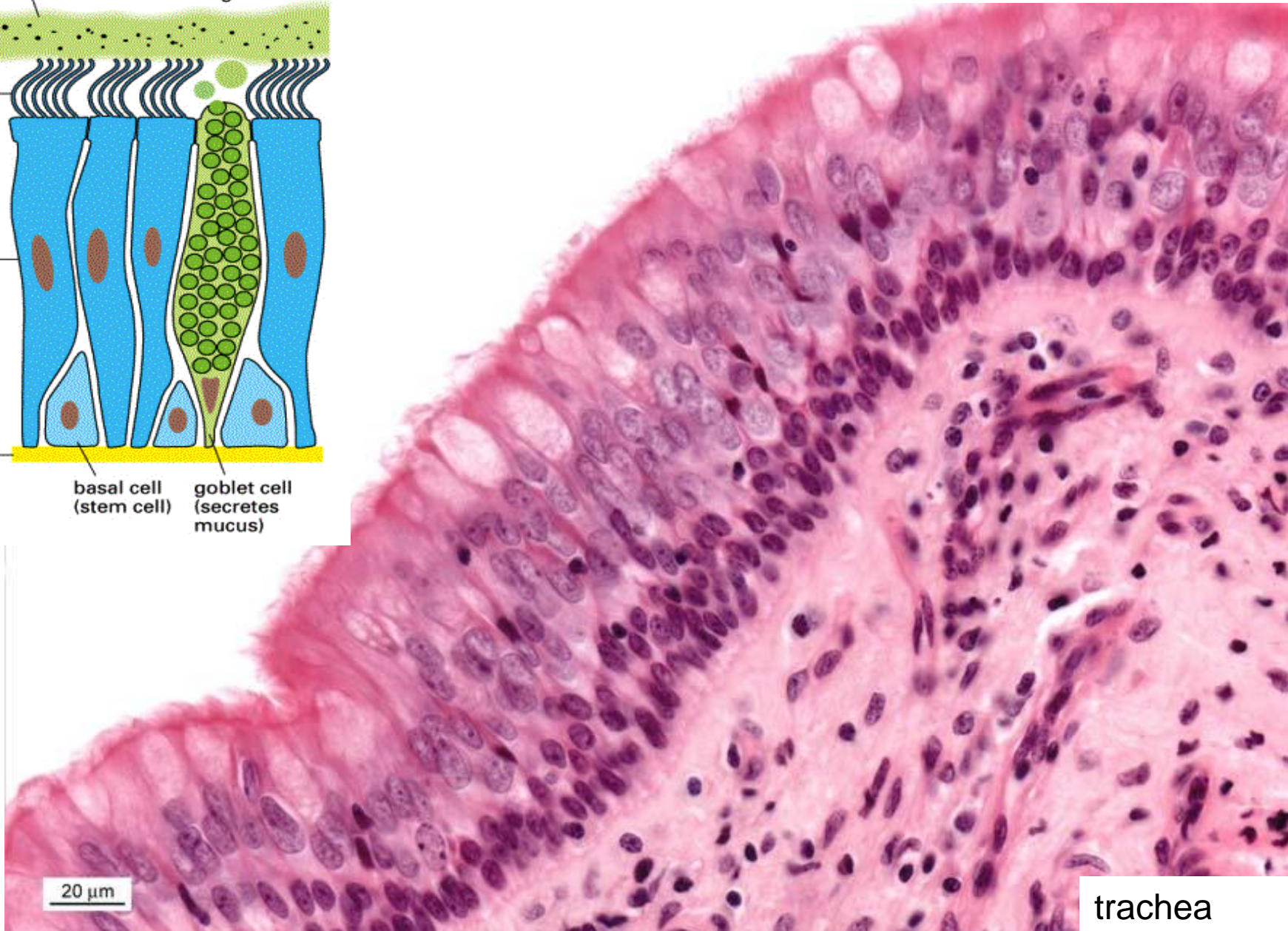
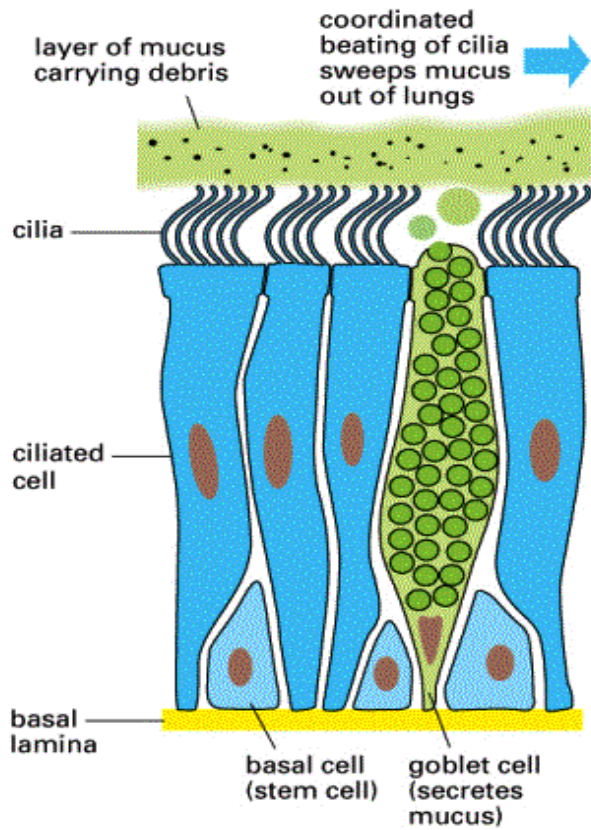
Simple low columnar epithelium



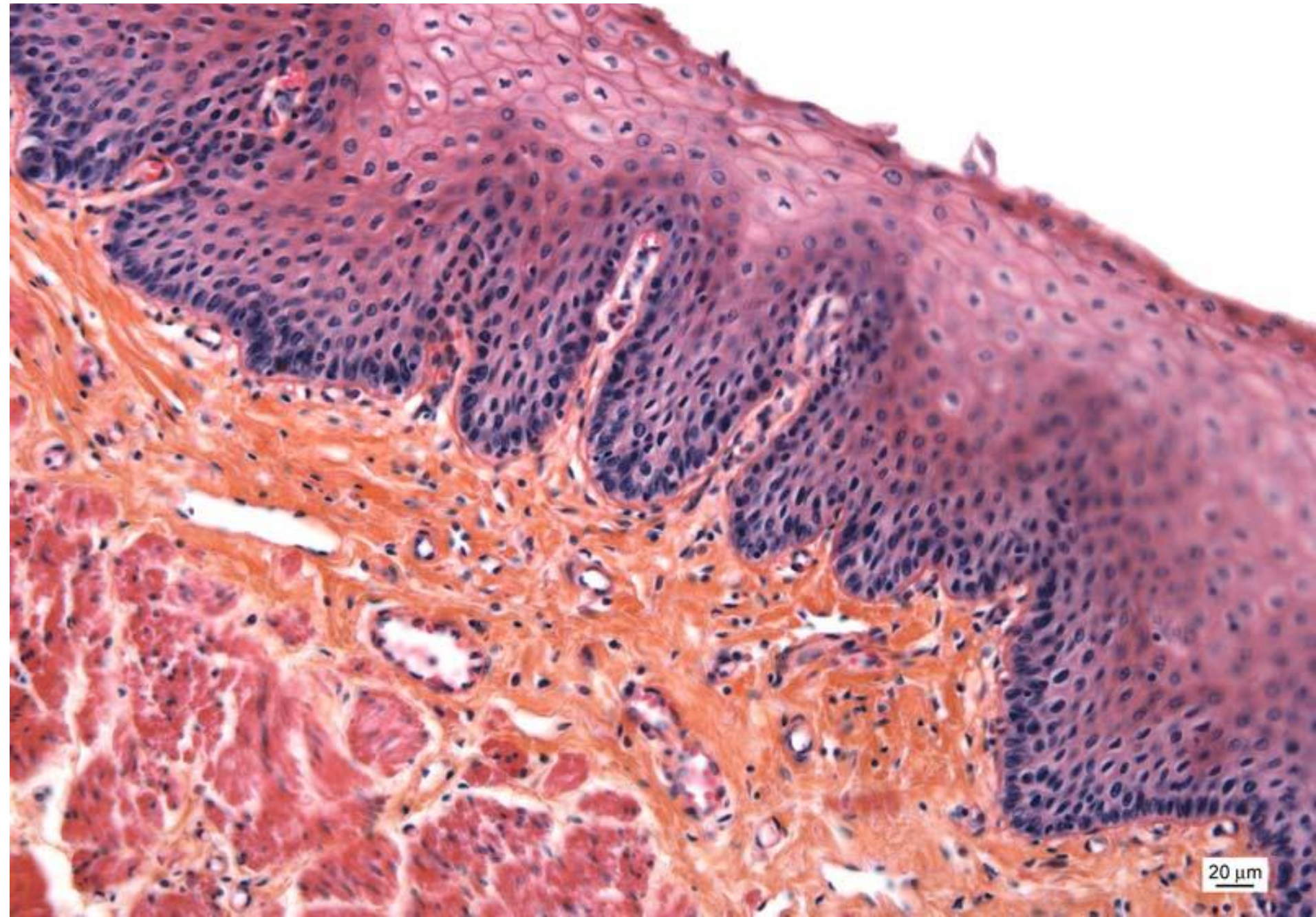
Simple columnar epithelium – vesica fellea



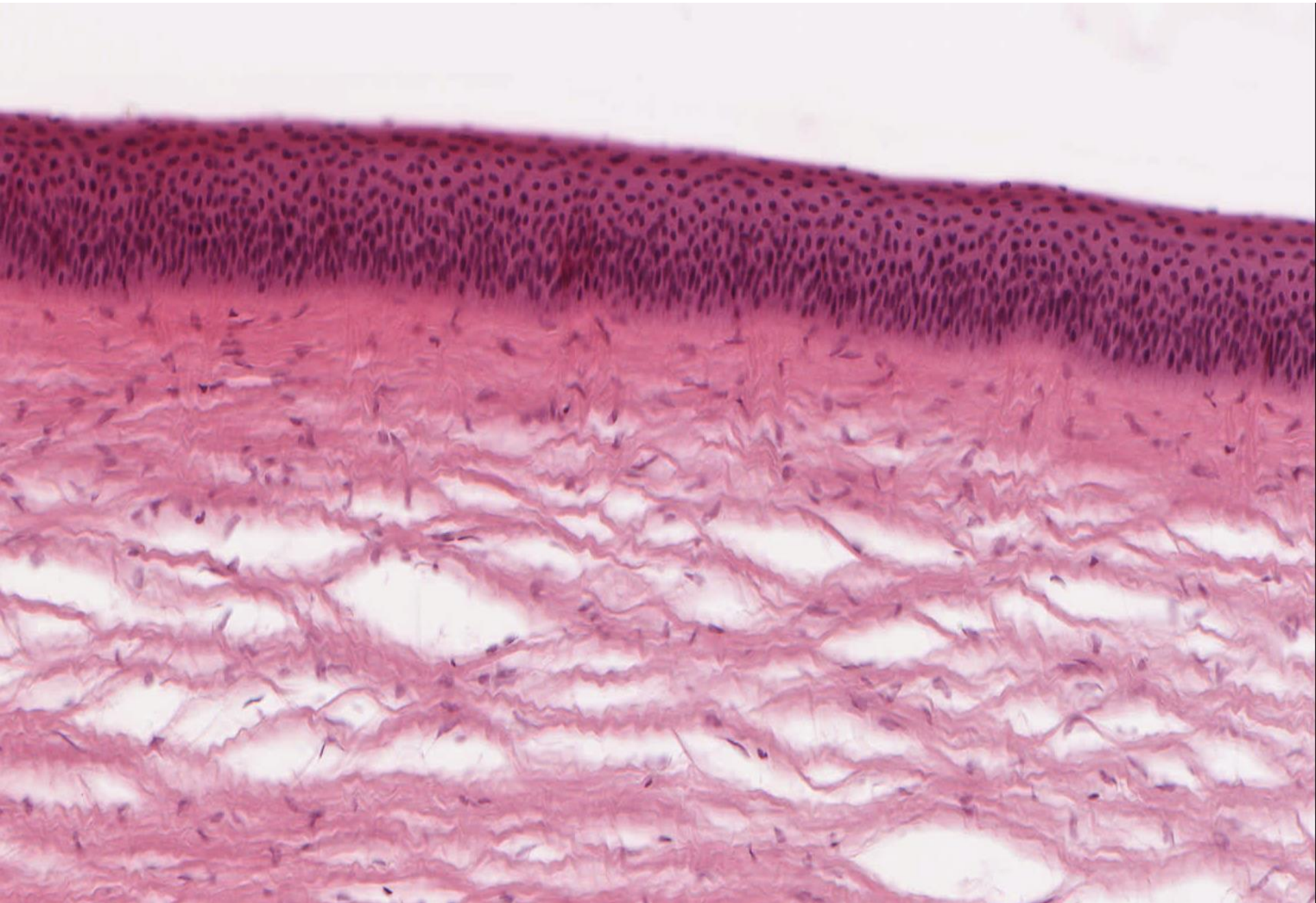
Pseudostratified columnar e. with cilia



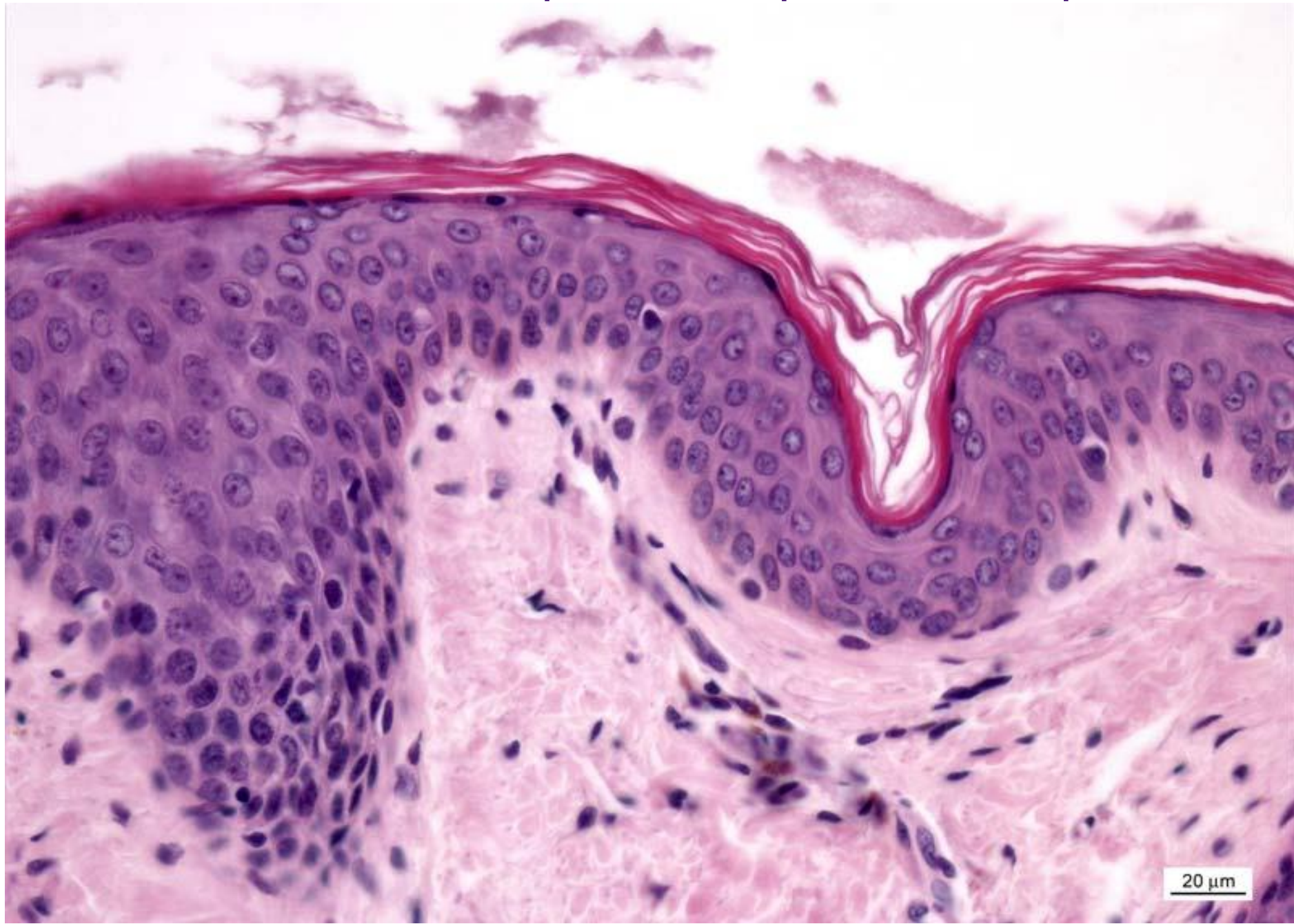
Stratified squamous epithelium



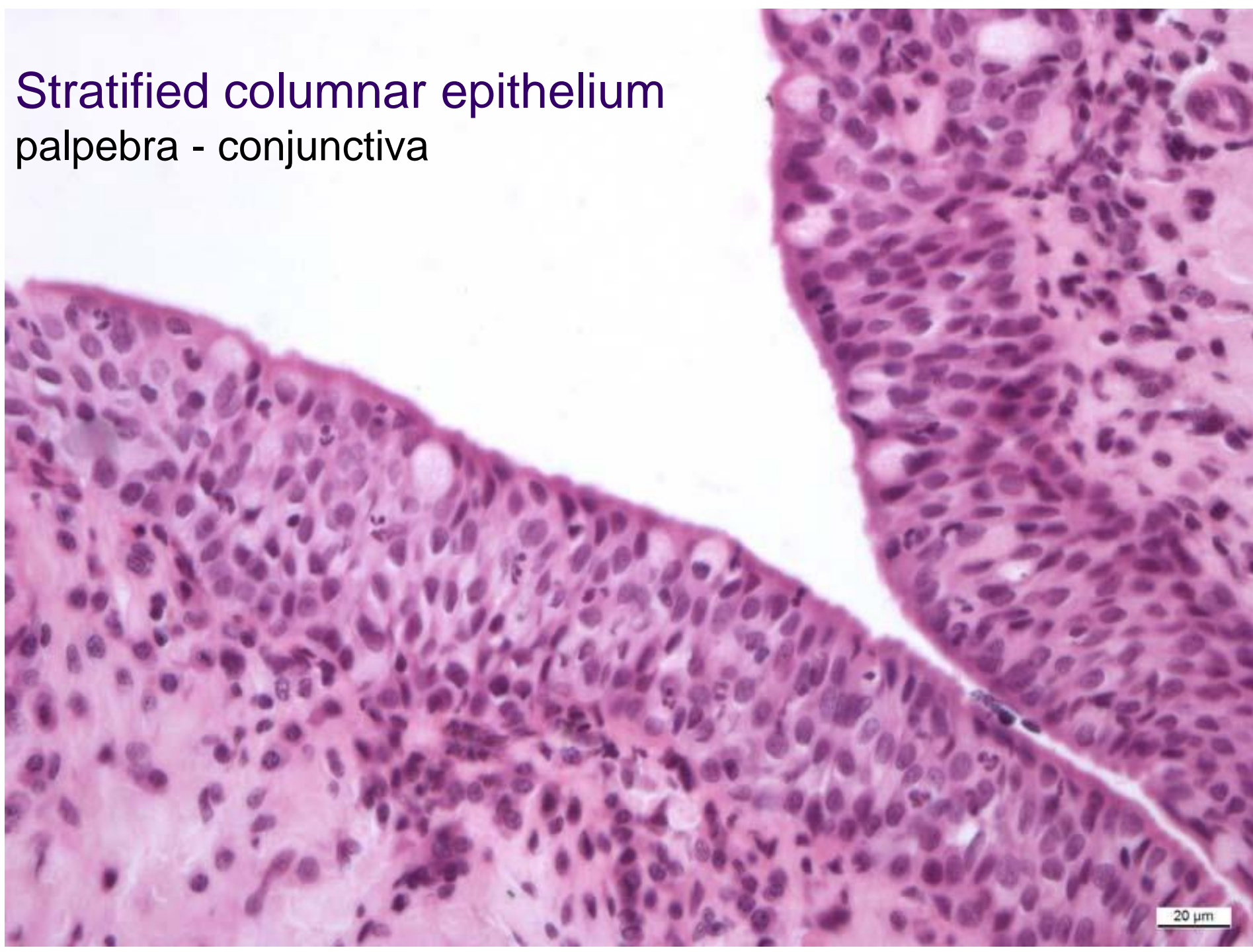
Stratified squamous epithelium - cornea



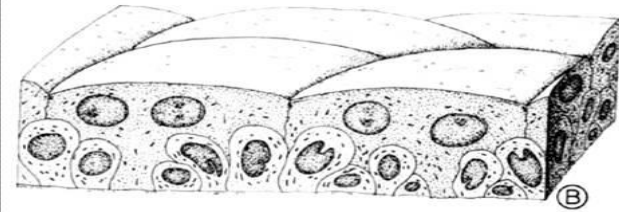
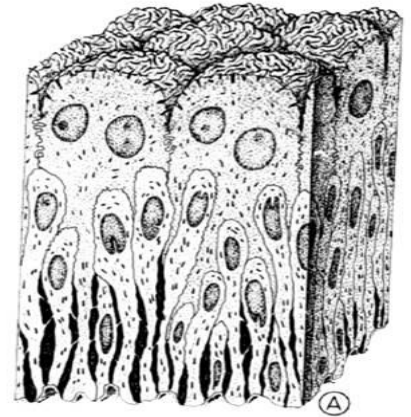
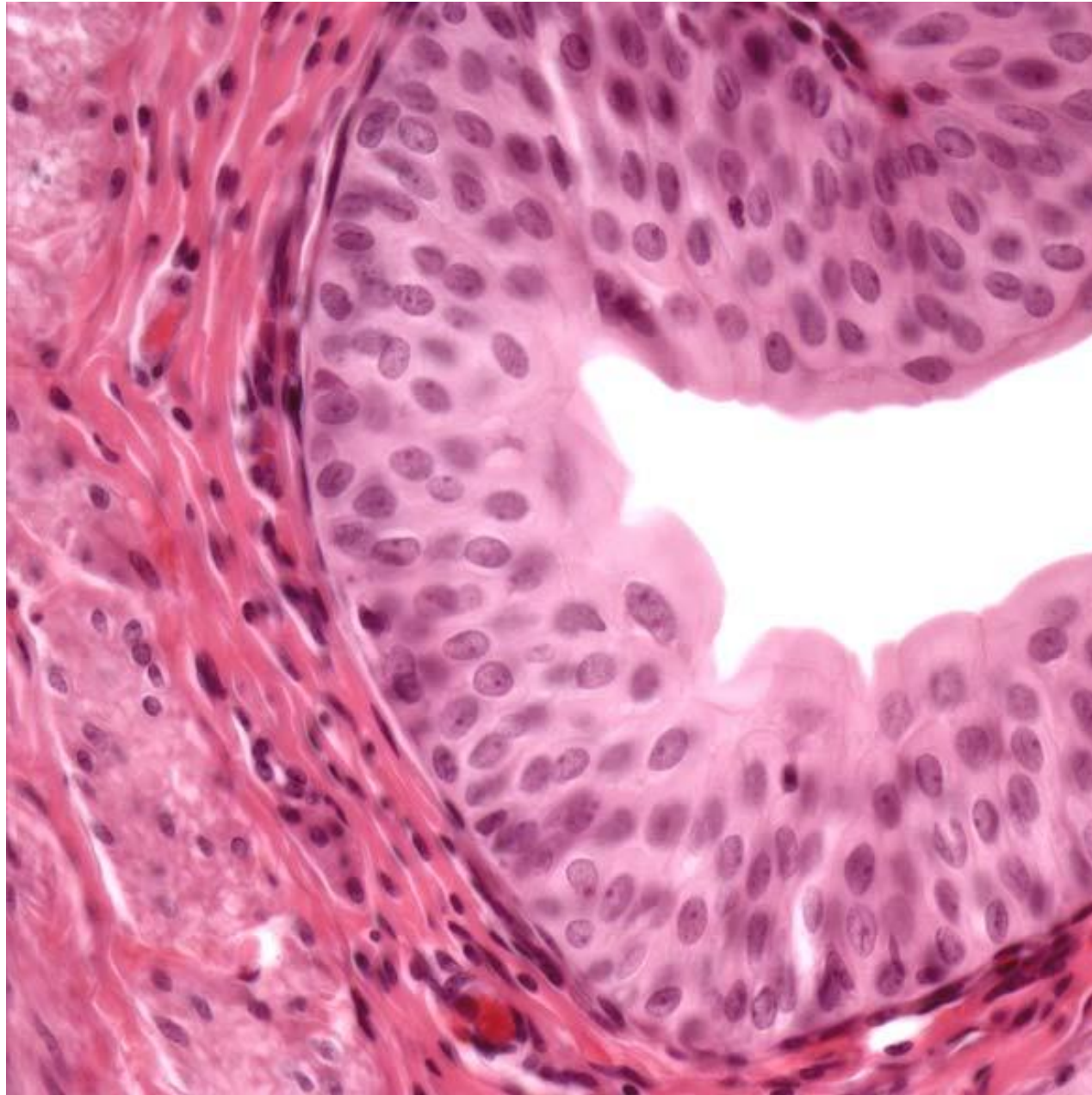
Stratified keratinized squamous epithelium - epidermis



Stratified columnar epithelium palpebra - conjunctiva

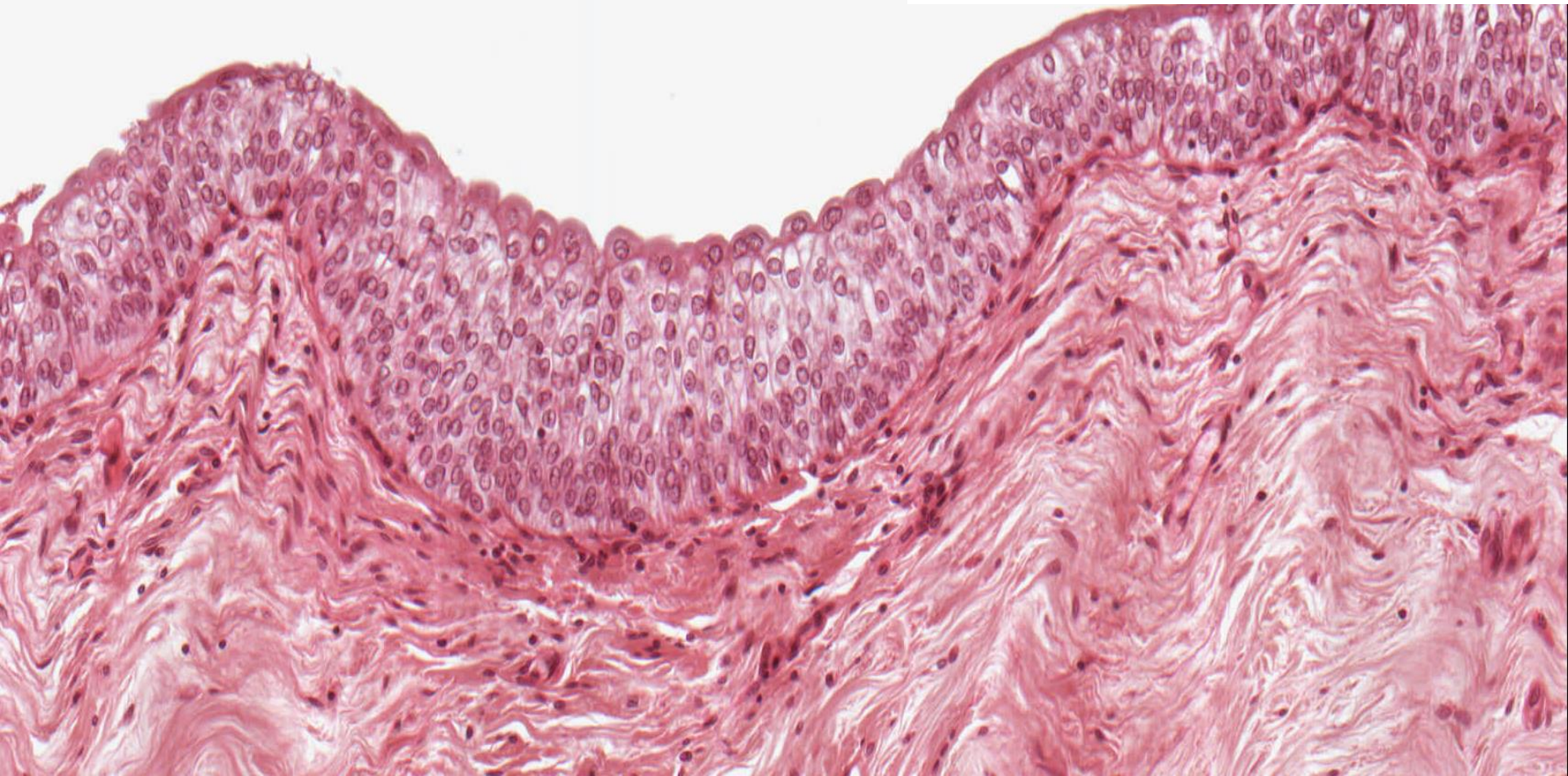
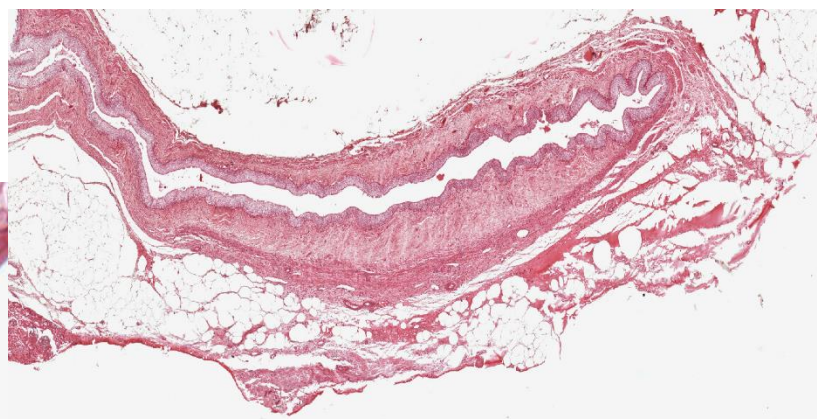


Transitional epithelium - ureter



20 μ m

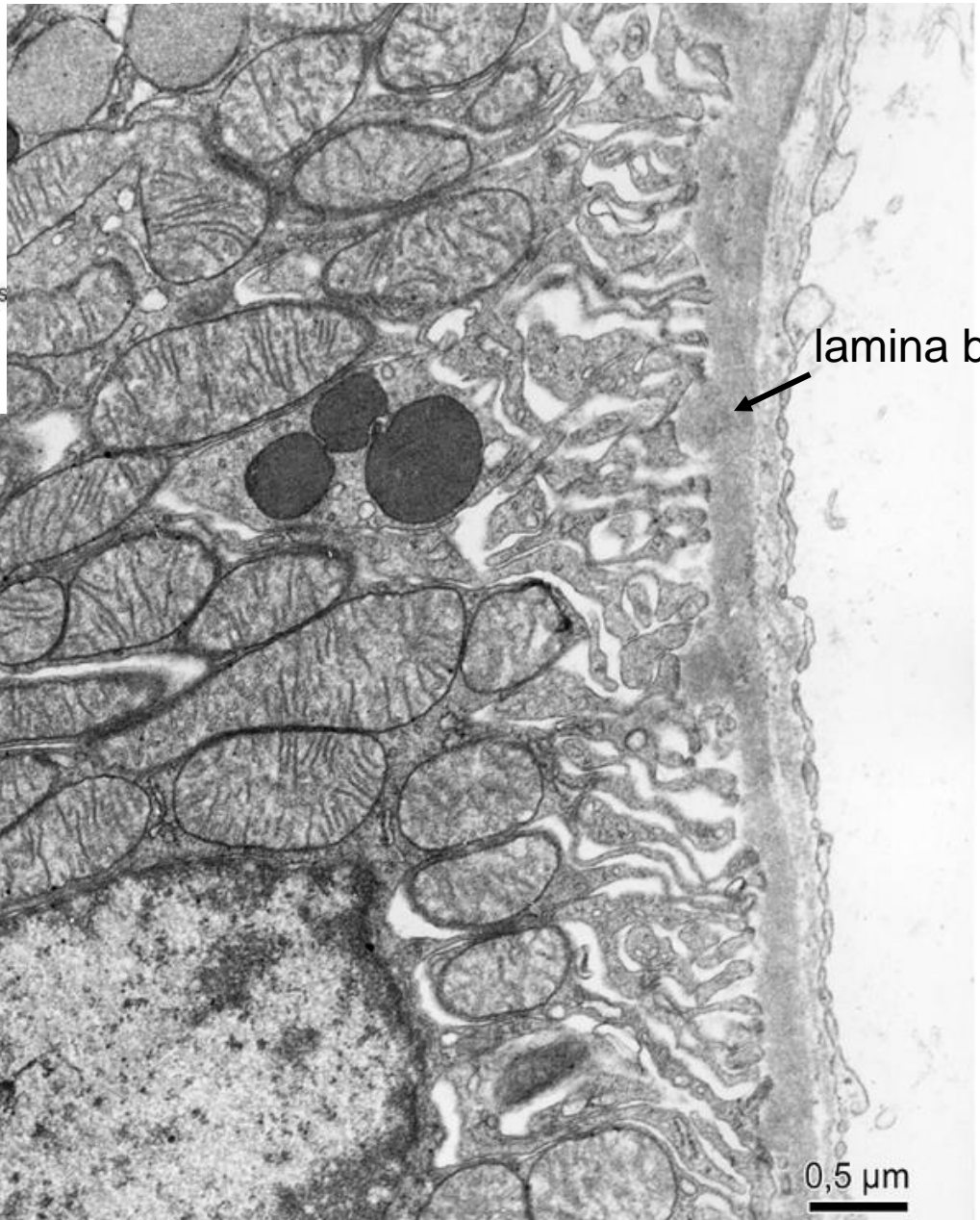
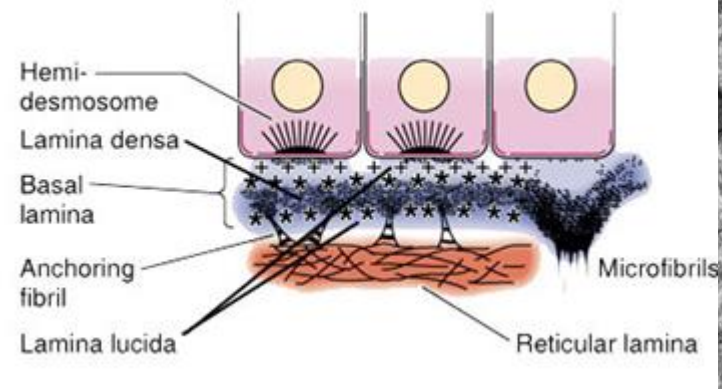
Transitional epithelium – calyx renalis



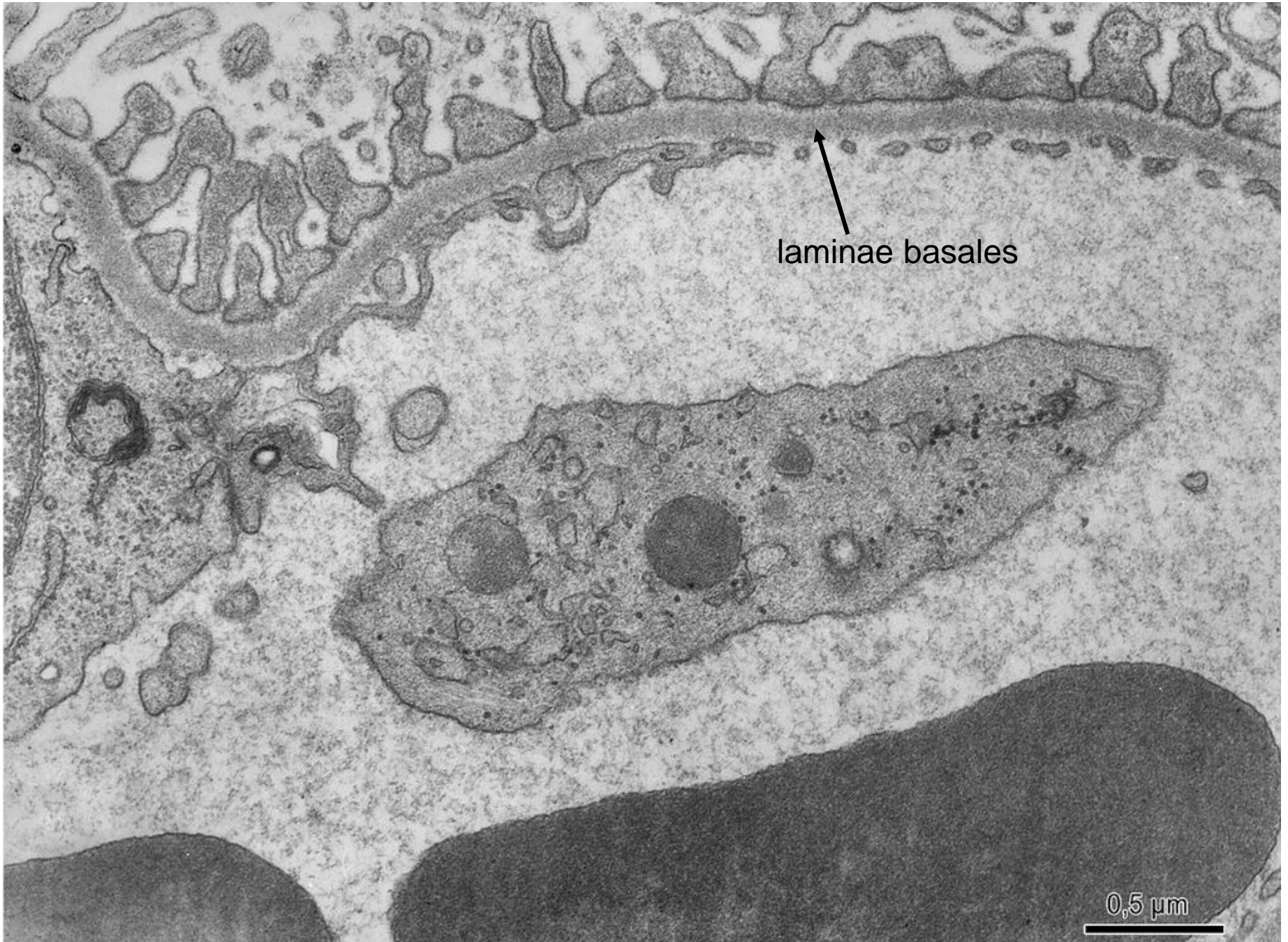
Basement membrane

(0,5 - 1 μm)

- Lamina basalis
- Lamina fibroreticularis



0,5 μm



laminae basales

0,5 µm

EPITHELIAL TISSUE

Slides:

Simple squamous and cuboidal epithelium (30, 31. Ren)

Simple columnar epithelium (22. Vesica fellea)

Pseudostratified columnar ep. with cilia (27. Trachea)

Stratified squamous epithelium (11. Esophagus)

Stratified keratinized squamous epithelium (69. Skin from finger tip)

Transitional epithelium (32. Renal calyx, 33. Ureter)

Stratified columnar epithelium (91. Palpebra)

Atlas EM:

Surface of epithelial cells – brush border (28)

Surface of epithelial cells – cilia, microvilli(26, 27, 29, 30)

Lamina basalis (41, 49), basal labyrinth (49)

Simple low columnar epithelium (48)

Respiratory epithelium (51)