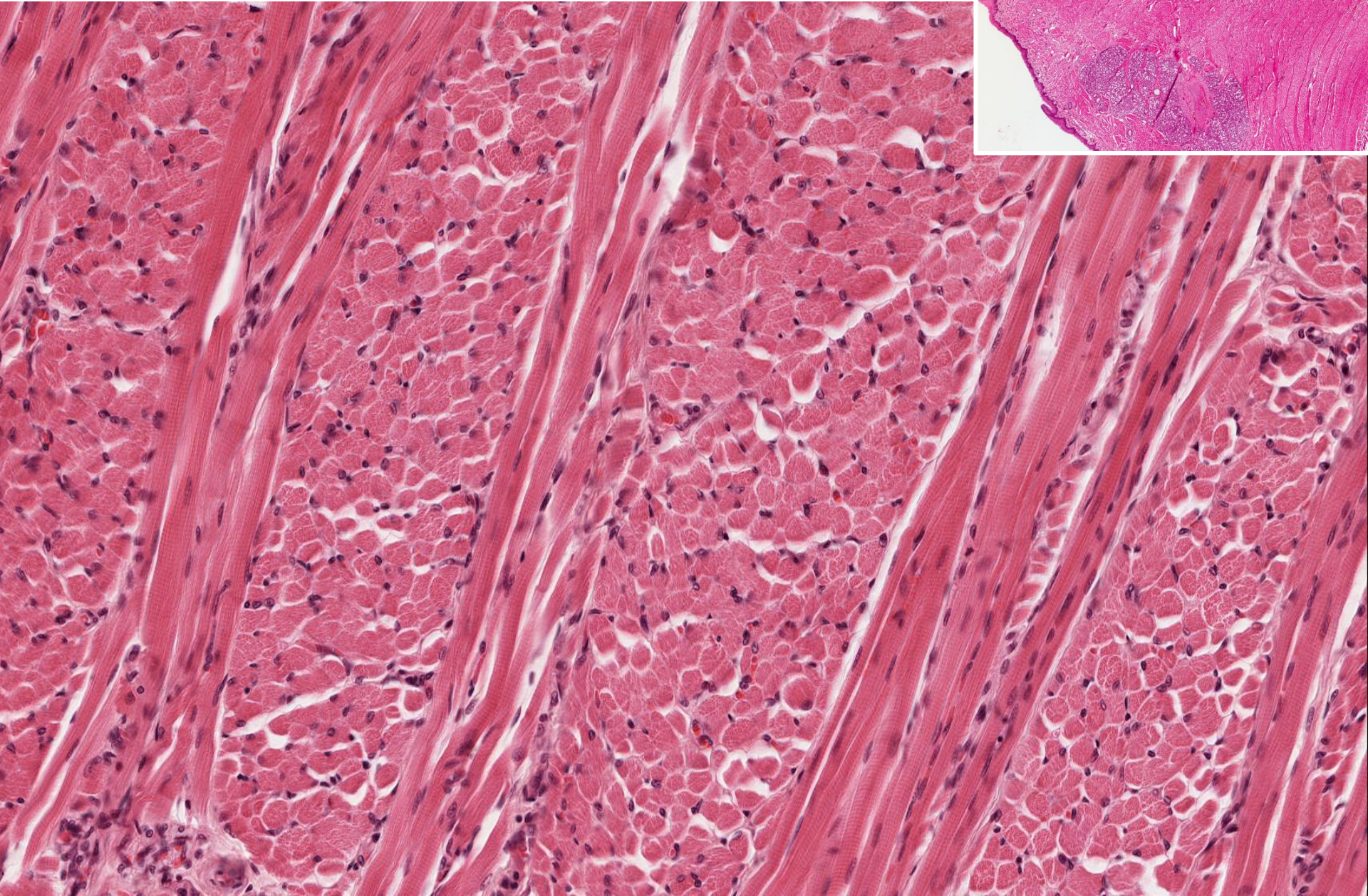




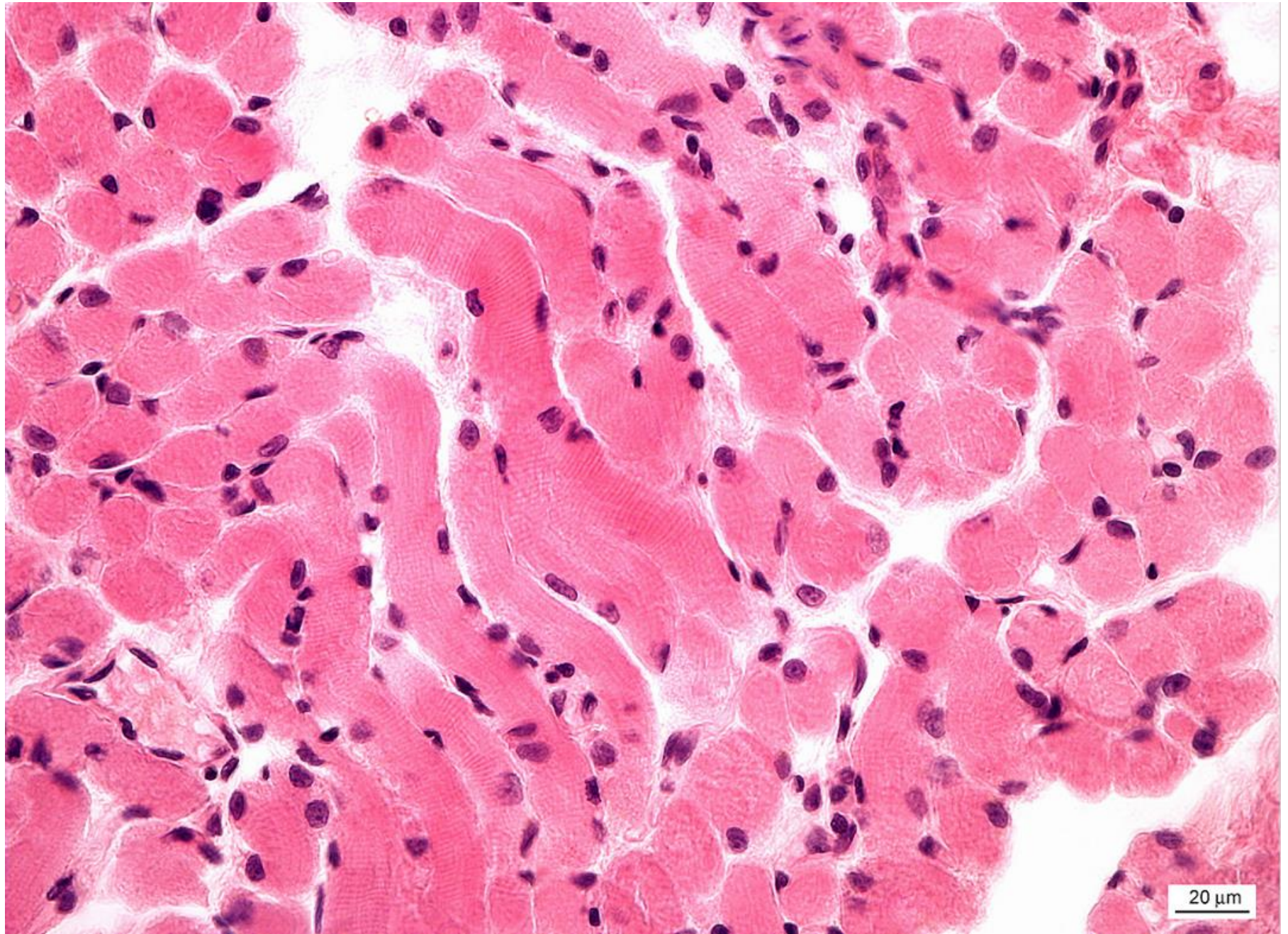
## **Muscle tissue**

- Skeletal muscle - rhabdomyocytes
- Smooth muscle - leiomyocytes
- Cardiac muscle - cardiomyocytes

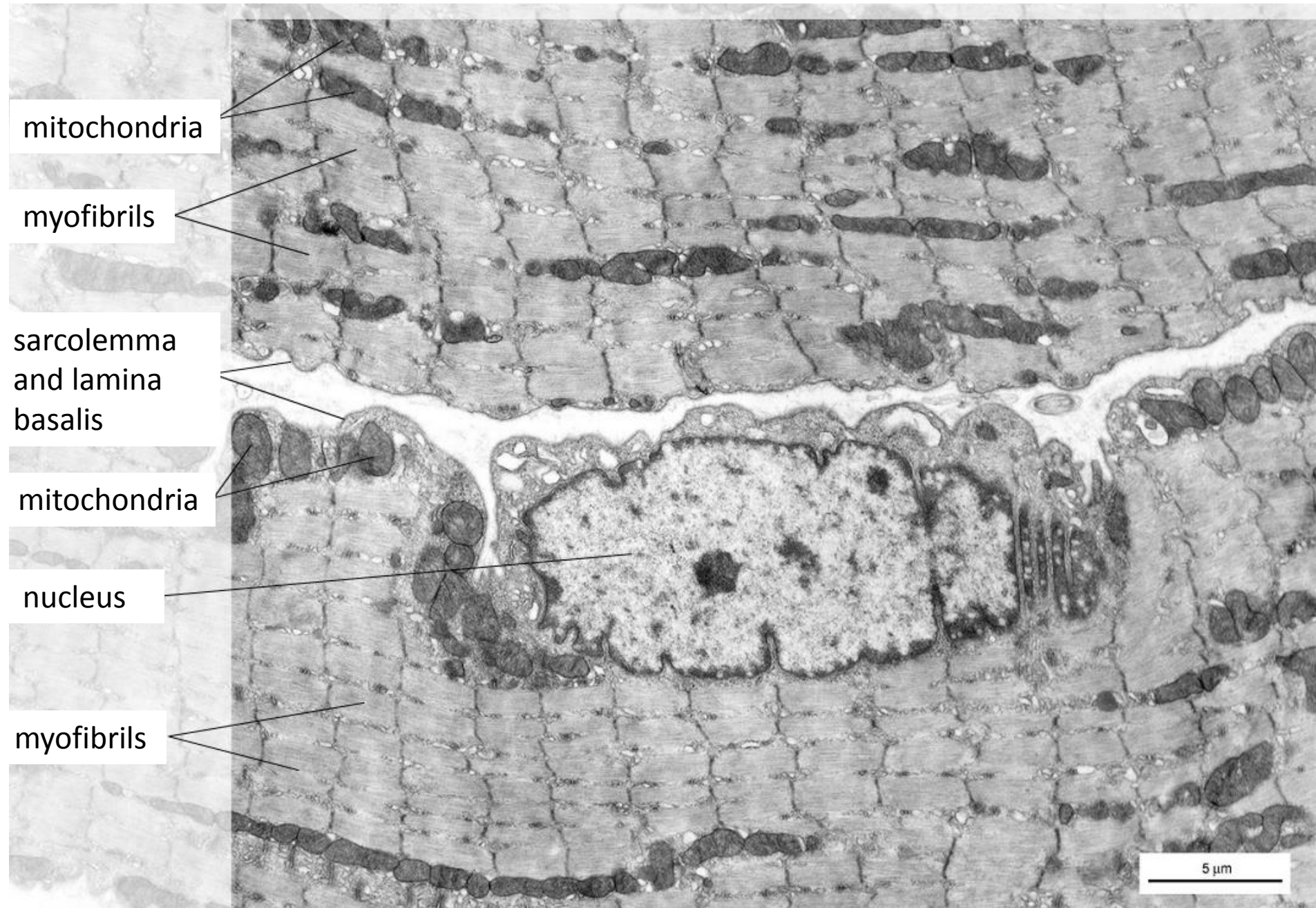
# Skeletal muscle tissue – Apex linguae



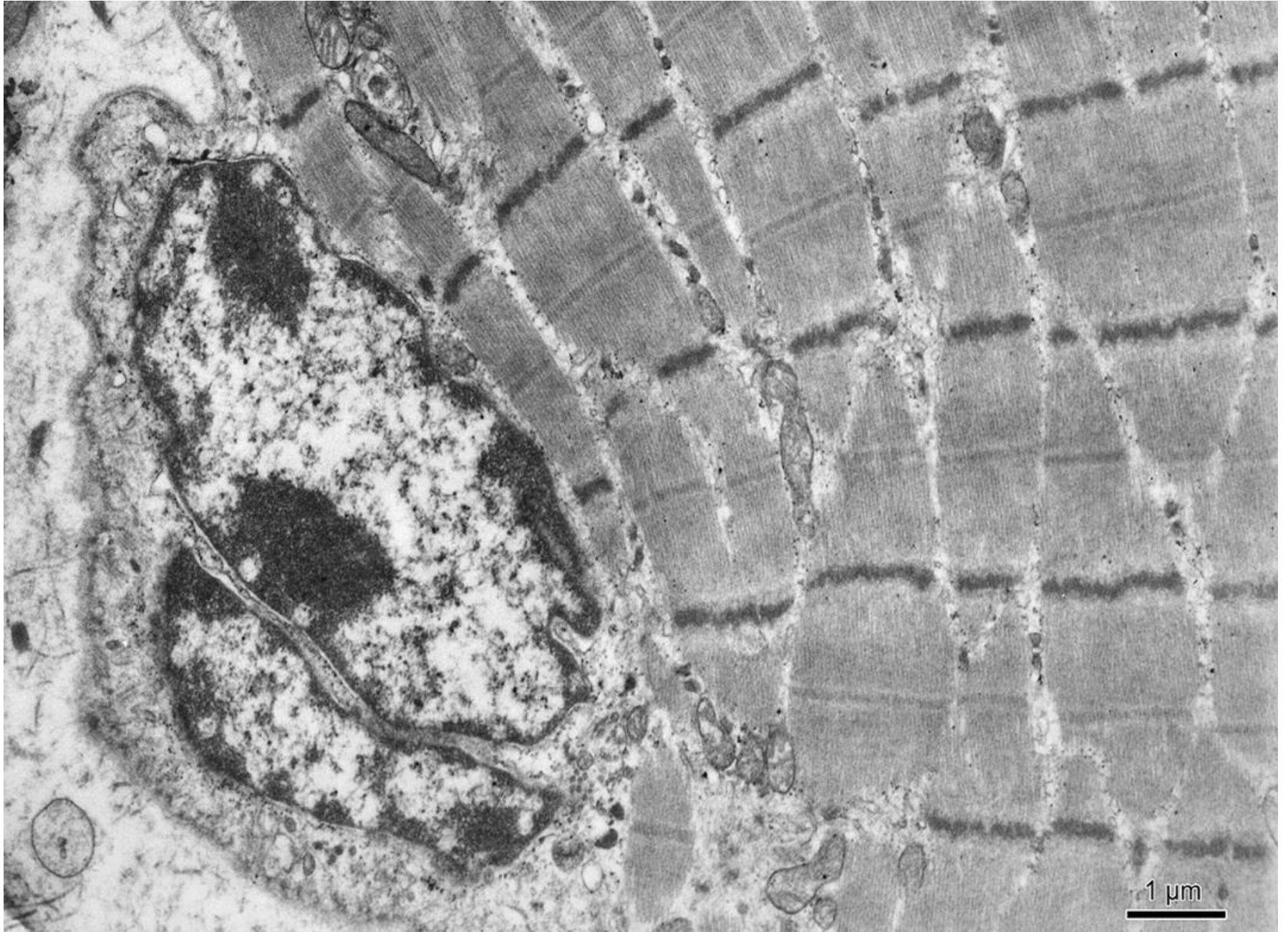
# Skeletal muscle tissue (striated)



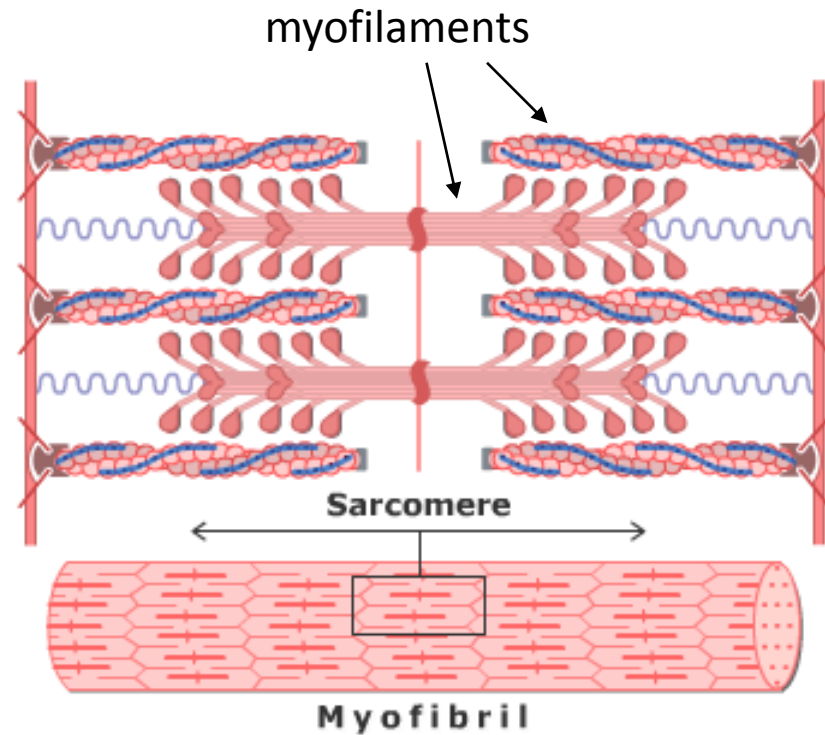
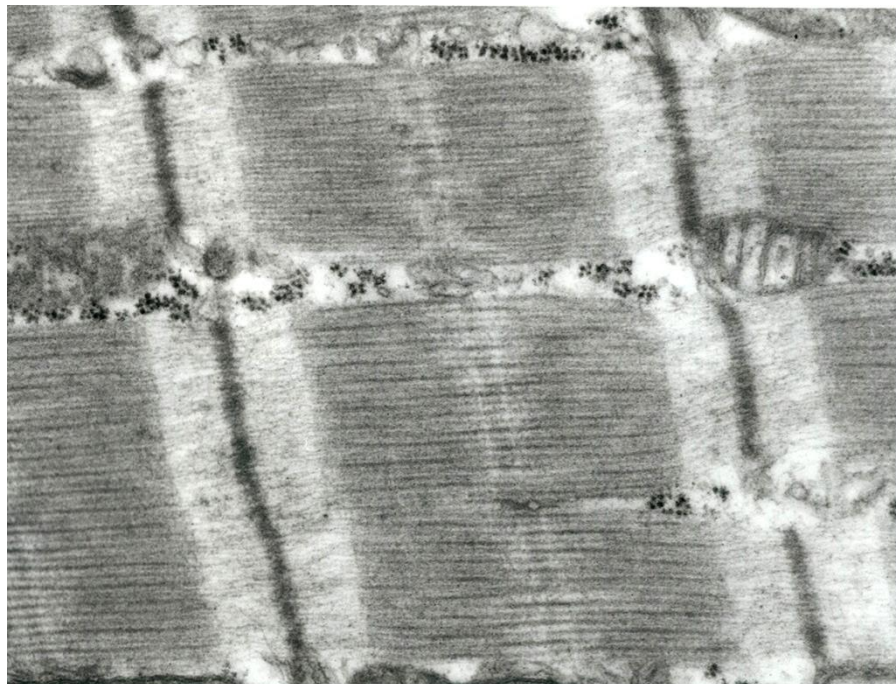
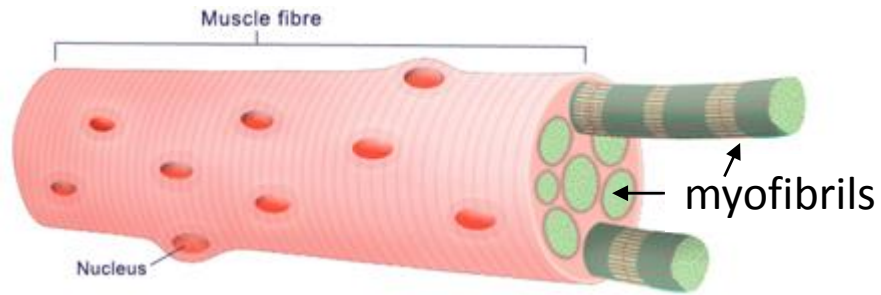
# Rhabdomyocytes – oculomotor muscles of rat (TEM)



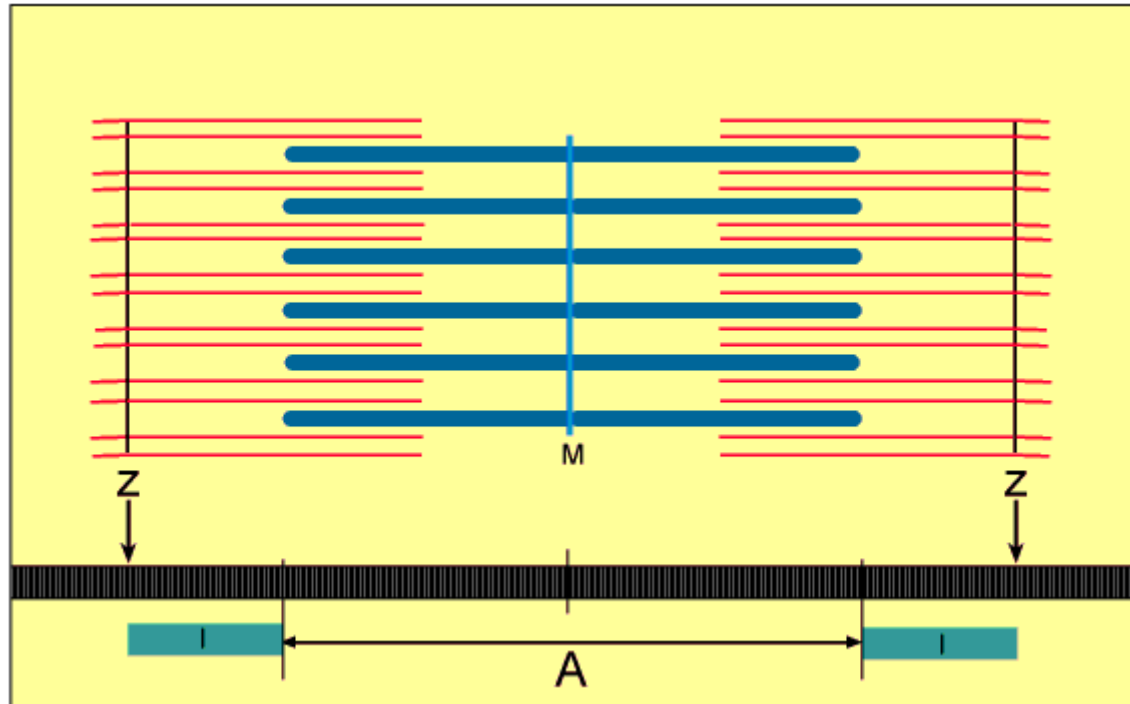
# Rhabdomyocyte (TEM)



# Rhabdomyocyte



# Rhabdomyocyte

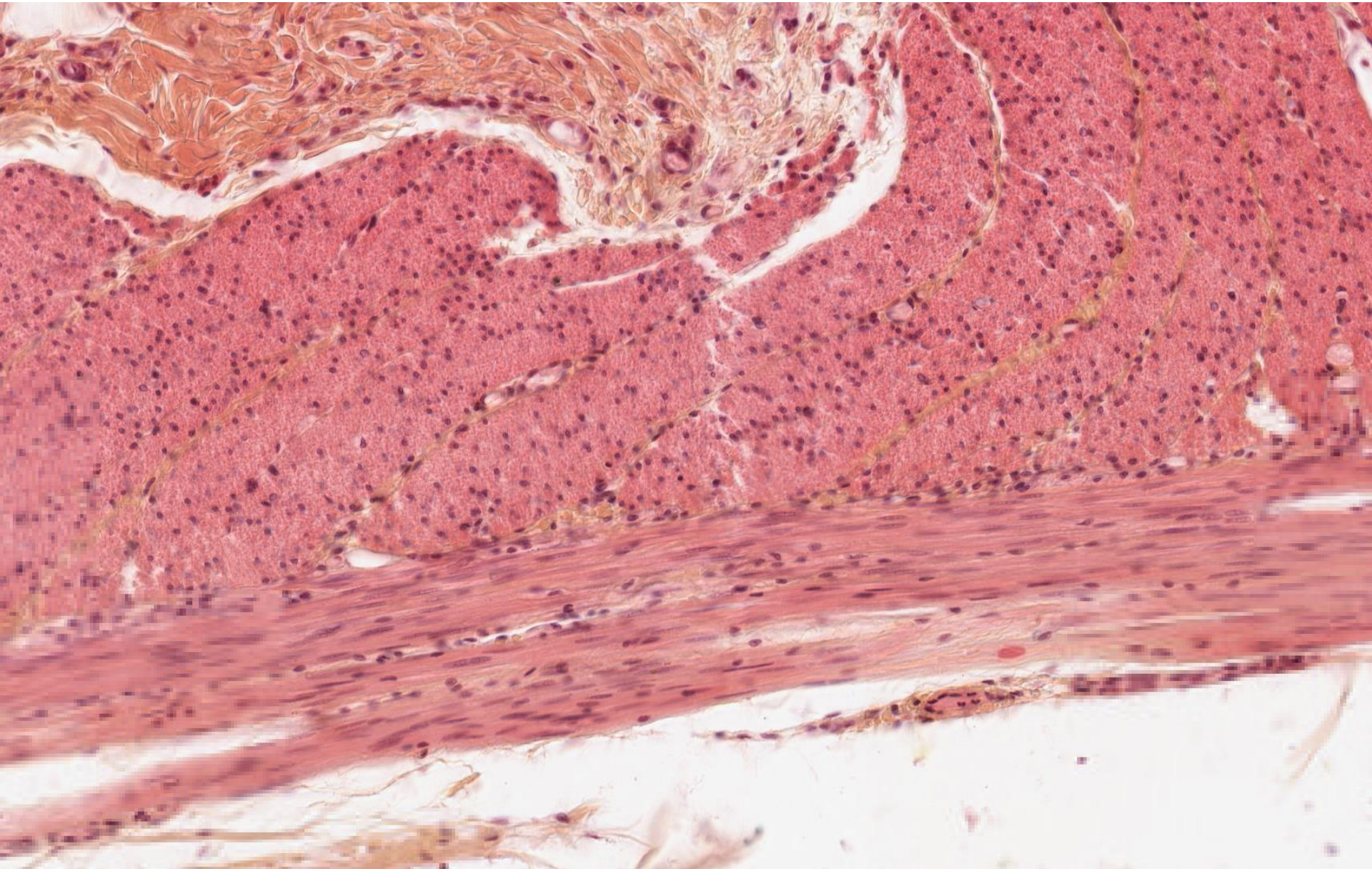


# Smooth muscle tissue – Intestinum tenue (HE)

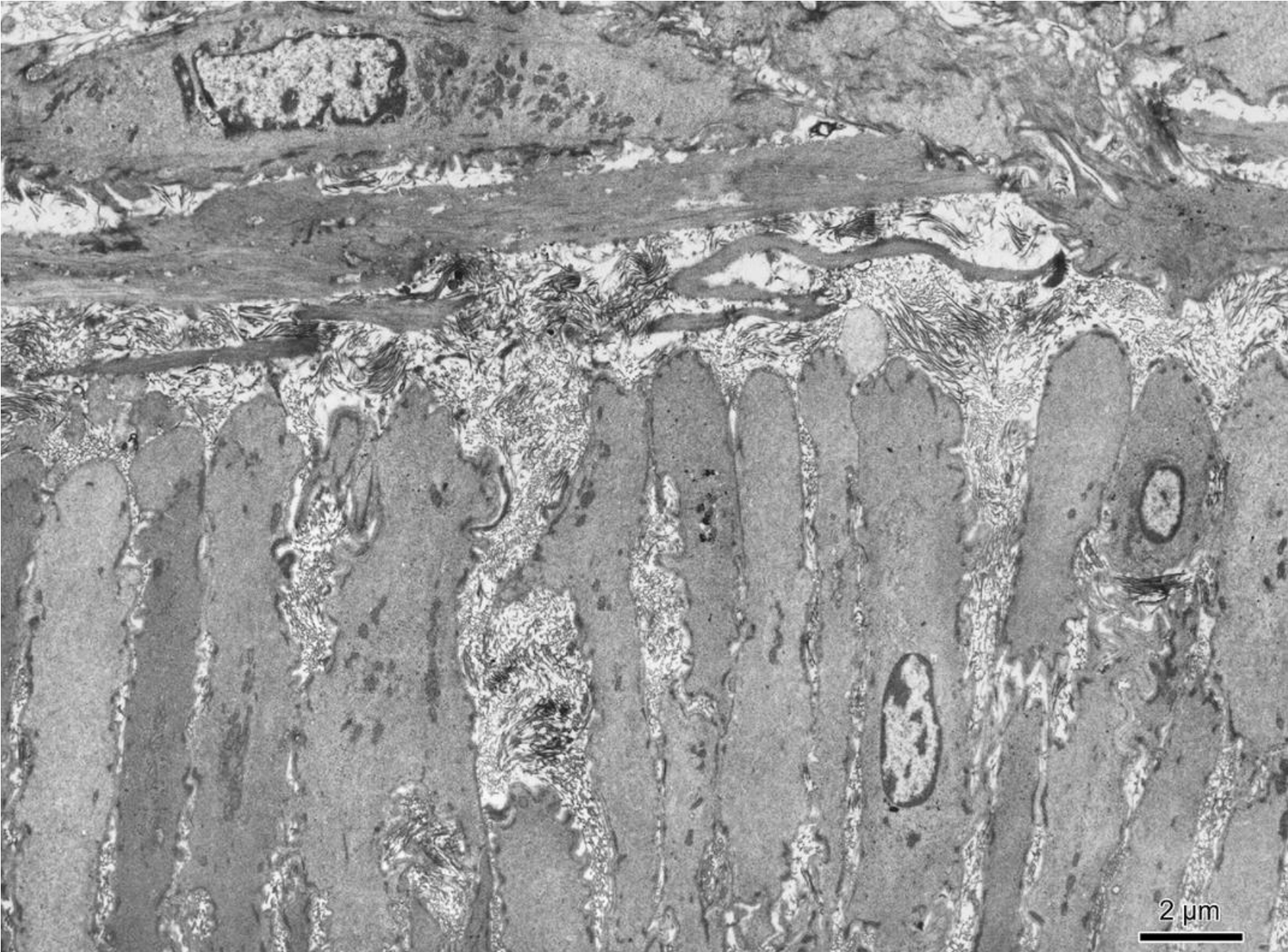




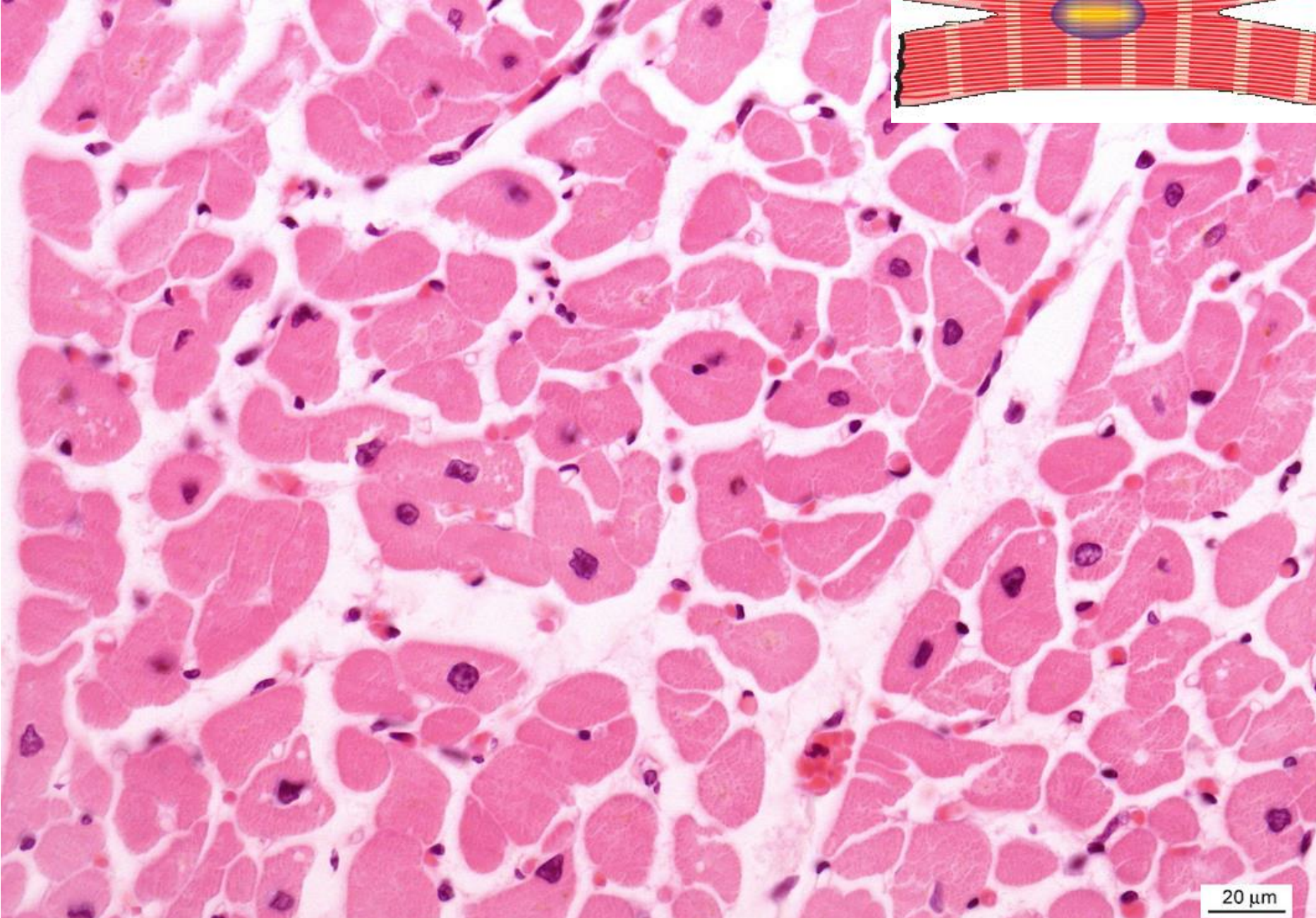
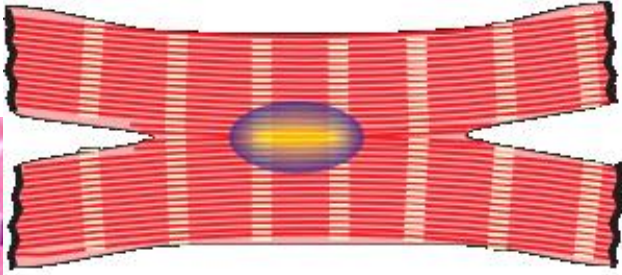
## Smooth muscle tissue – Intestinum tenue (HES)



Leiomyocyte (TEM)

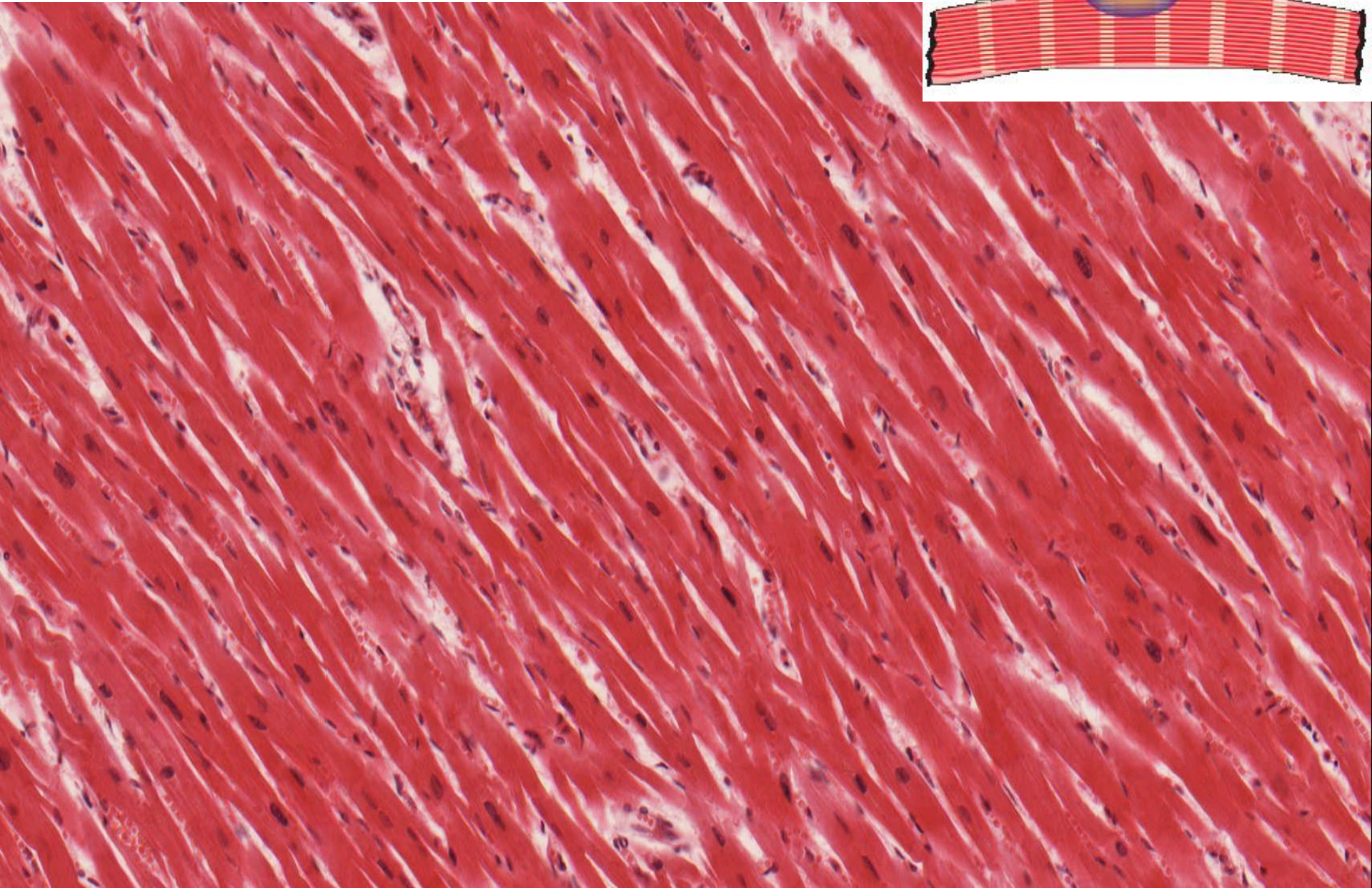
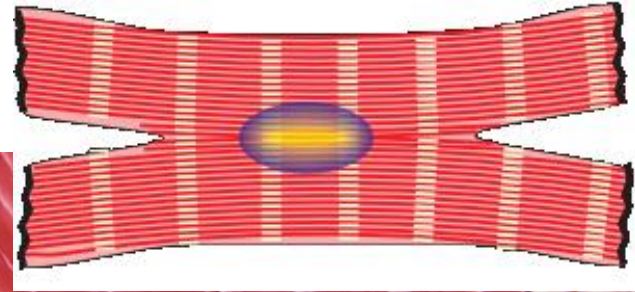


Cardiac muscle tissue (HE) – cross section

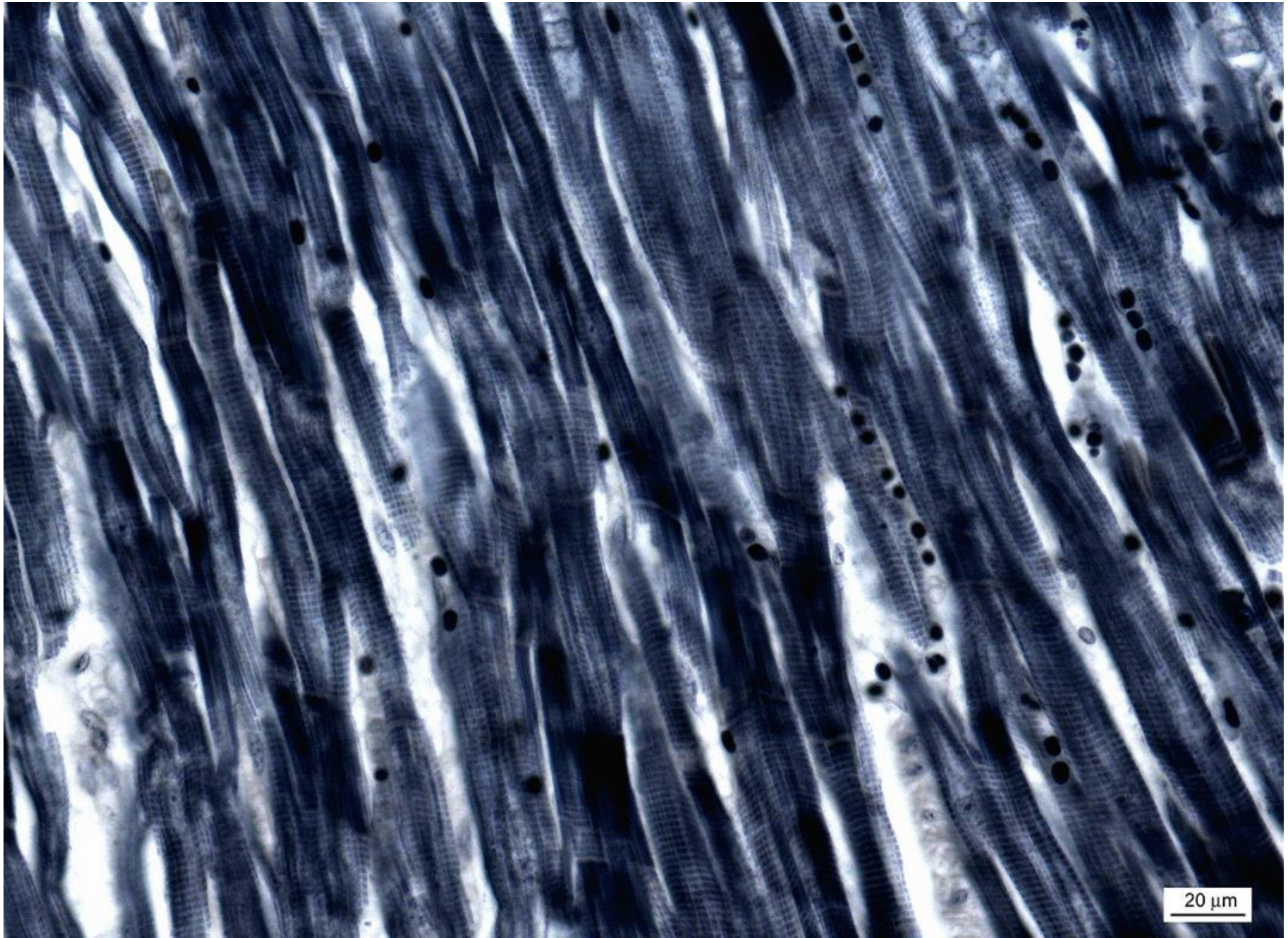


20  $\mu$ m

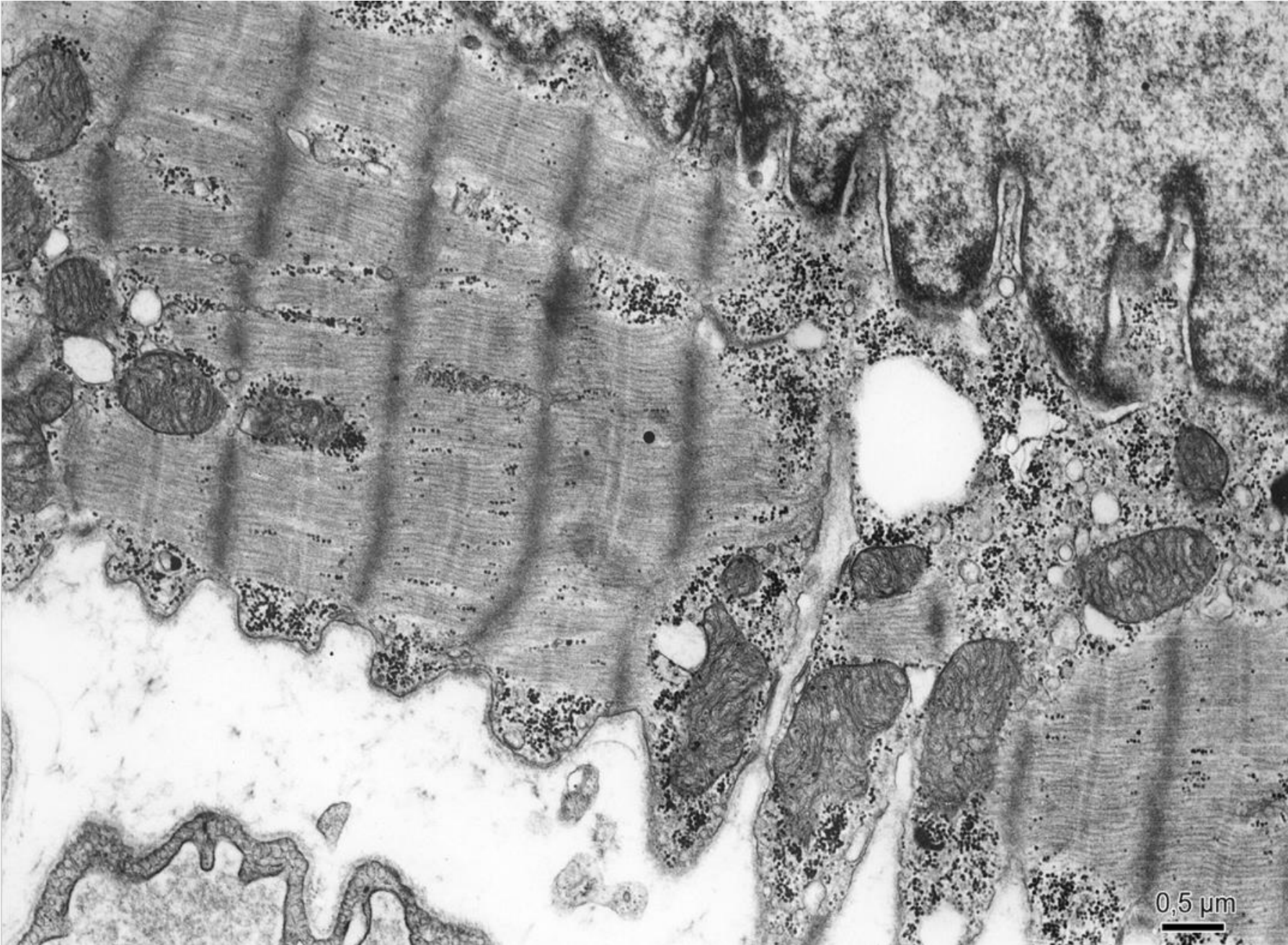
Cardiac muscle tissue (HE) – longitudinal section



# Cardiac muscle tissue (Heidenhein)



# Cardiomyocyte (TEM)



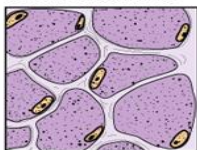
# Muscle tissue

## Muscle types

Skeletal muscle



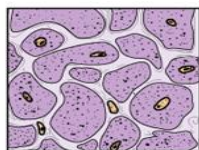
Cross sections



Cardiac muscle

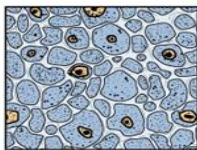
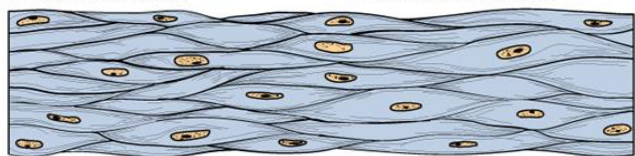


Nuclei



Smooth muscle

Intercalated disks



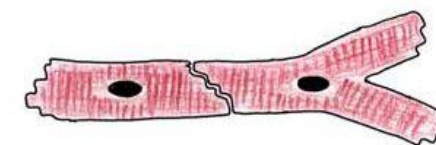
Podélný řez



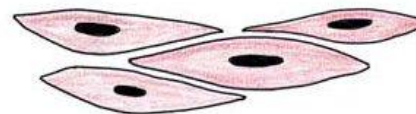
Příčný řez



A



B



C

## Muscle tissue

### Slides:

Skeletal muscle tissue (2. Apex linguae)

Smooth muscle tissue (16. Intestinum tenue, 17. Intestinum crassum)

Cardiac muscle tissue (64, 65. Myocardium)

### Atlas EM:

Rhabdomyocyte (52)

Leiomyocyte (54)

Cardiomyocyte (22, 53)