

ARTERIES

OF THE LOWER LIMB



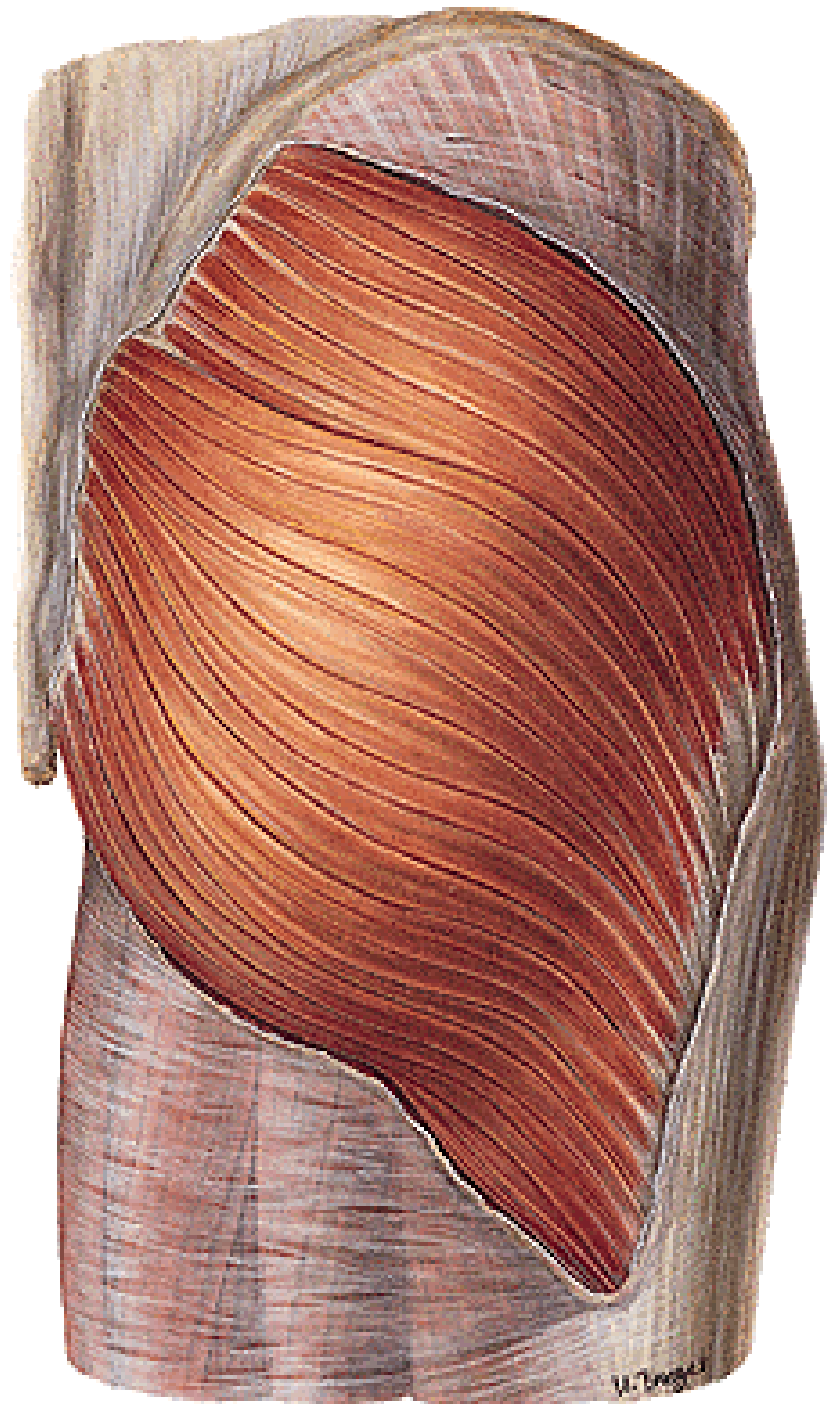
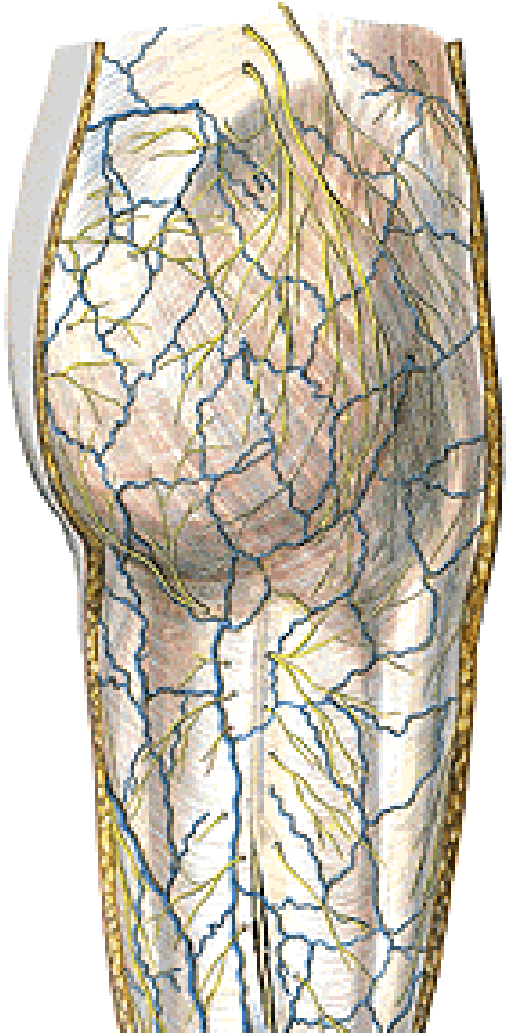
Regio femoris ant.
Reg. genus ant.
Reg. cruris ant.
Dorsum pedis



Regio glutea
Reg. femoris post.
Reg. genus post.
Reg. cruris post.
Planta pedis

REGIO GLUTEA

M. gluteus maximus



M. gluteus medius et minimus

M. piriformis →

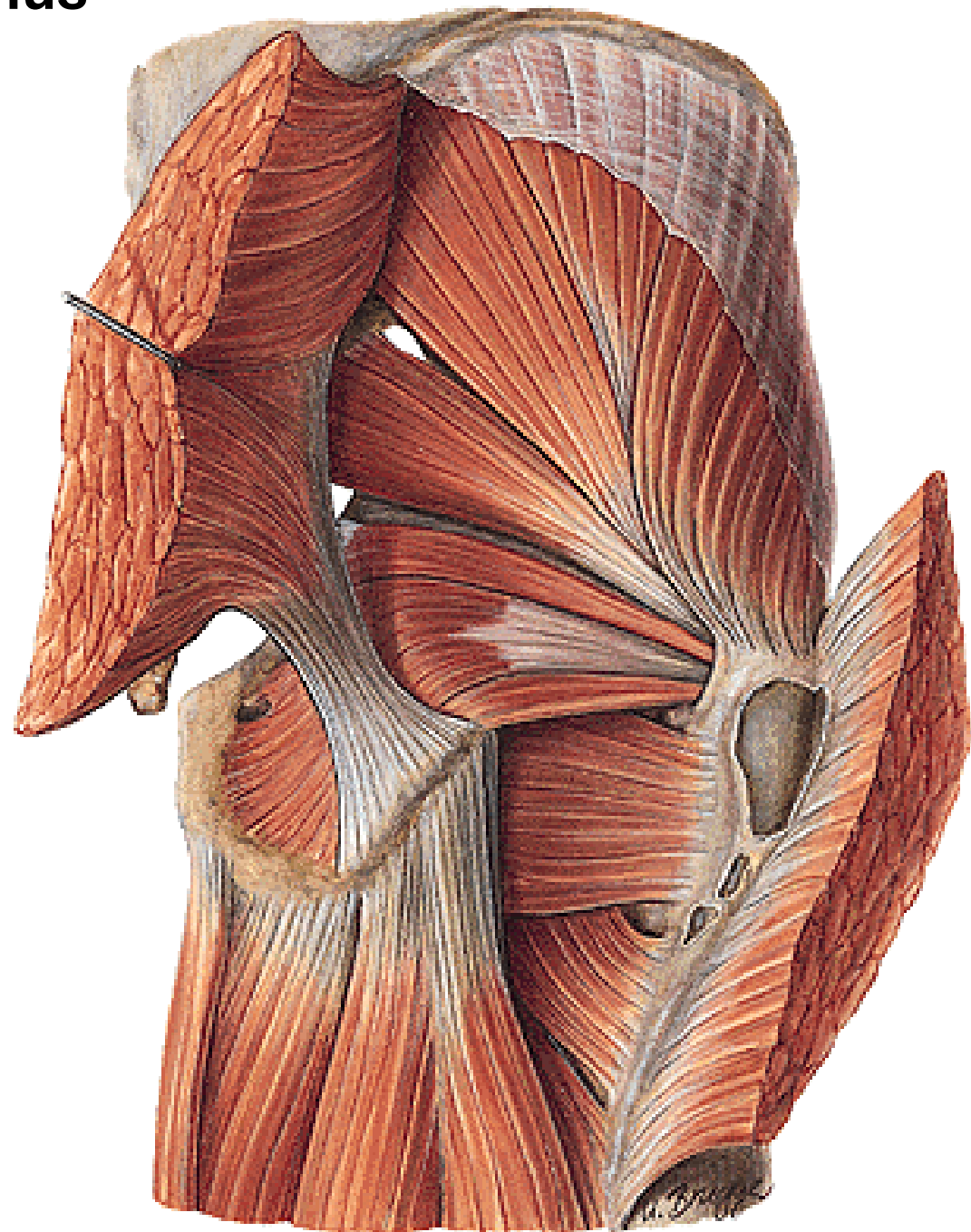
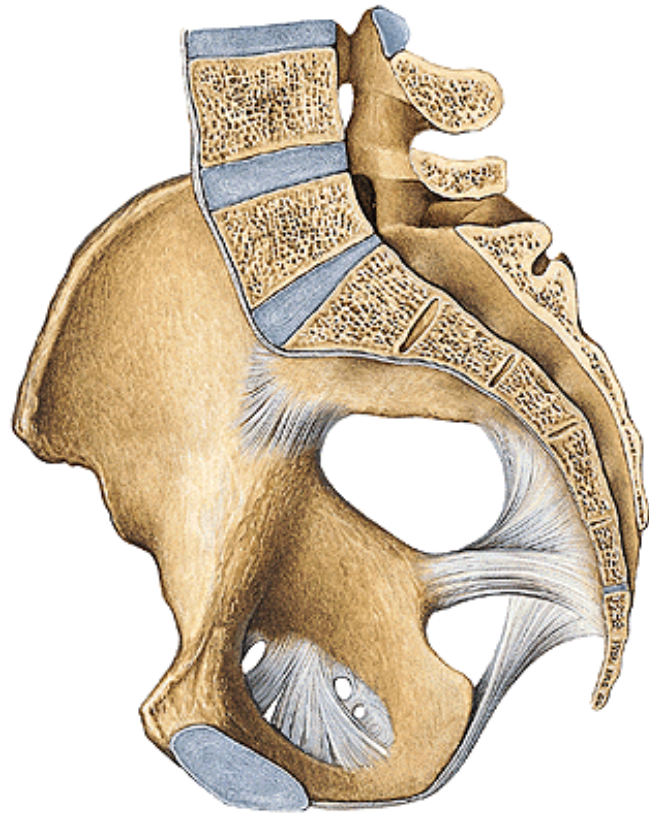
Foramen suprapiriforme

Foramen infrapiriforme

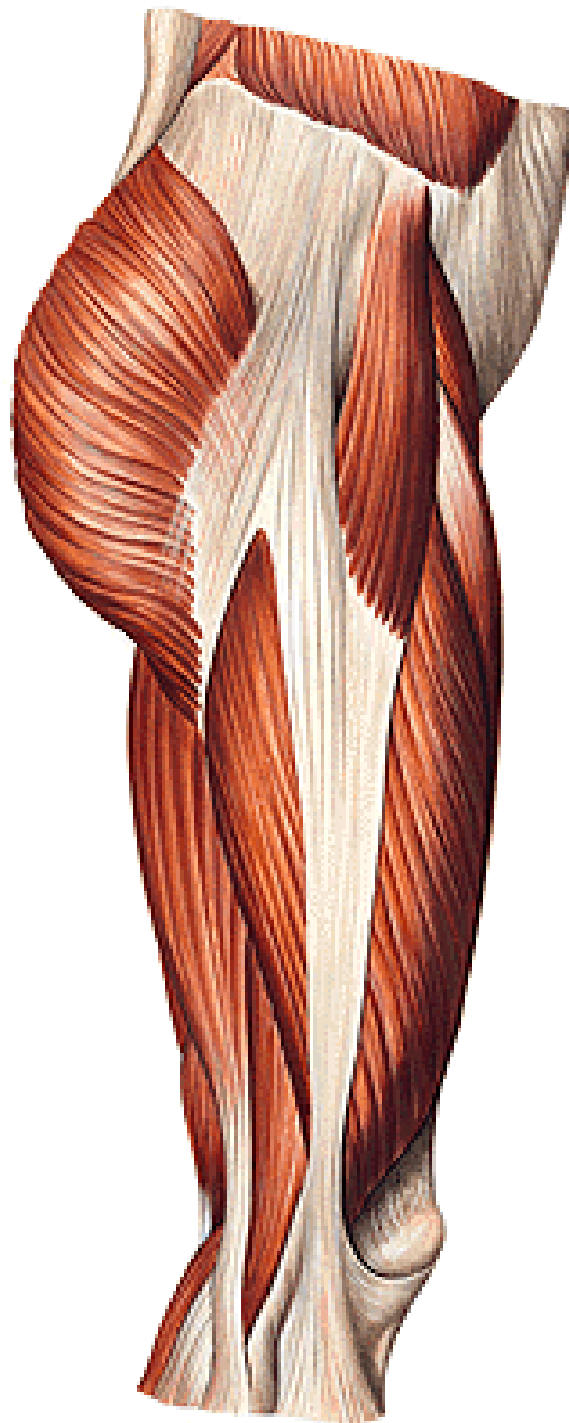
M. obturatorius internus

M. gemellus superior et inferior

M. quadratus femoris



M. tensor fasciae latae
Tractus iliotibialis

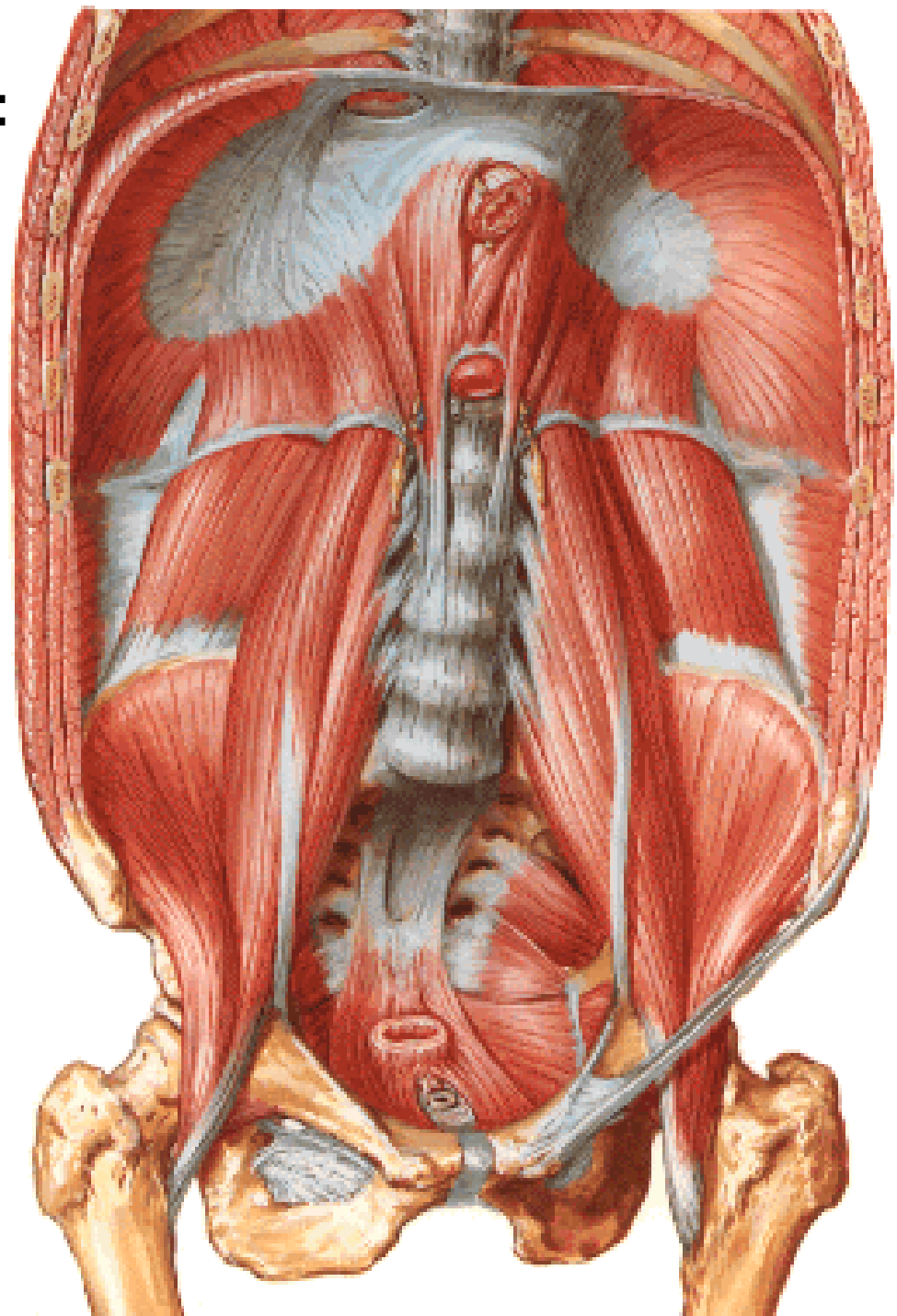


Muscles of the iliac region:

M. iliacus

M. psoas major

M. psoas minor



Anterior femoral muscles:

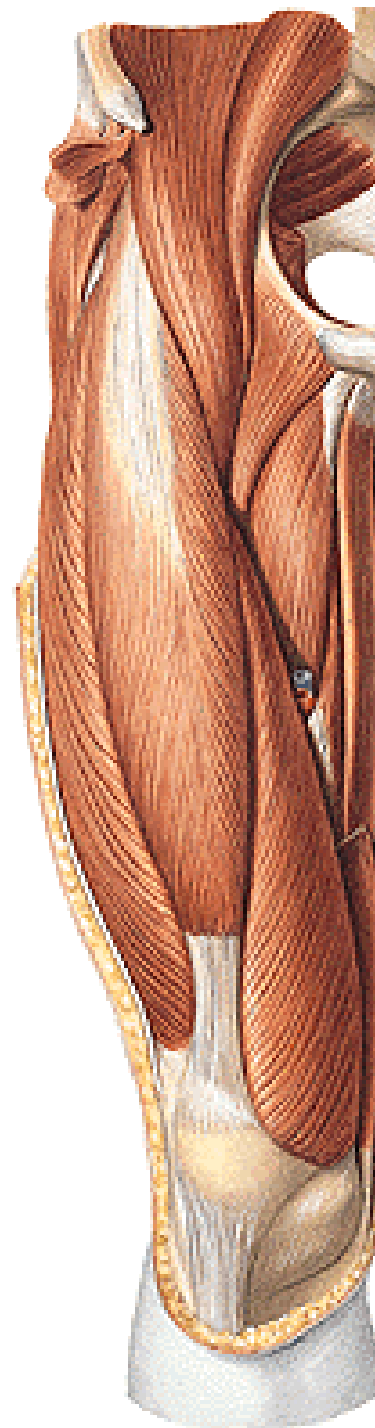
M. sartorius

M. quadriceps femoris:

m. rectus femoris

m. vastus med., lat.,

intermedius



Medial femoral muscles:

M. pectineus

M. adductor longus

M. adductor brevis

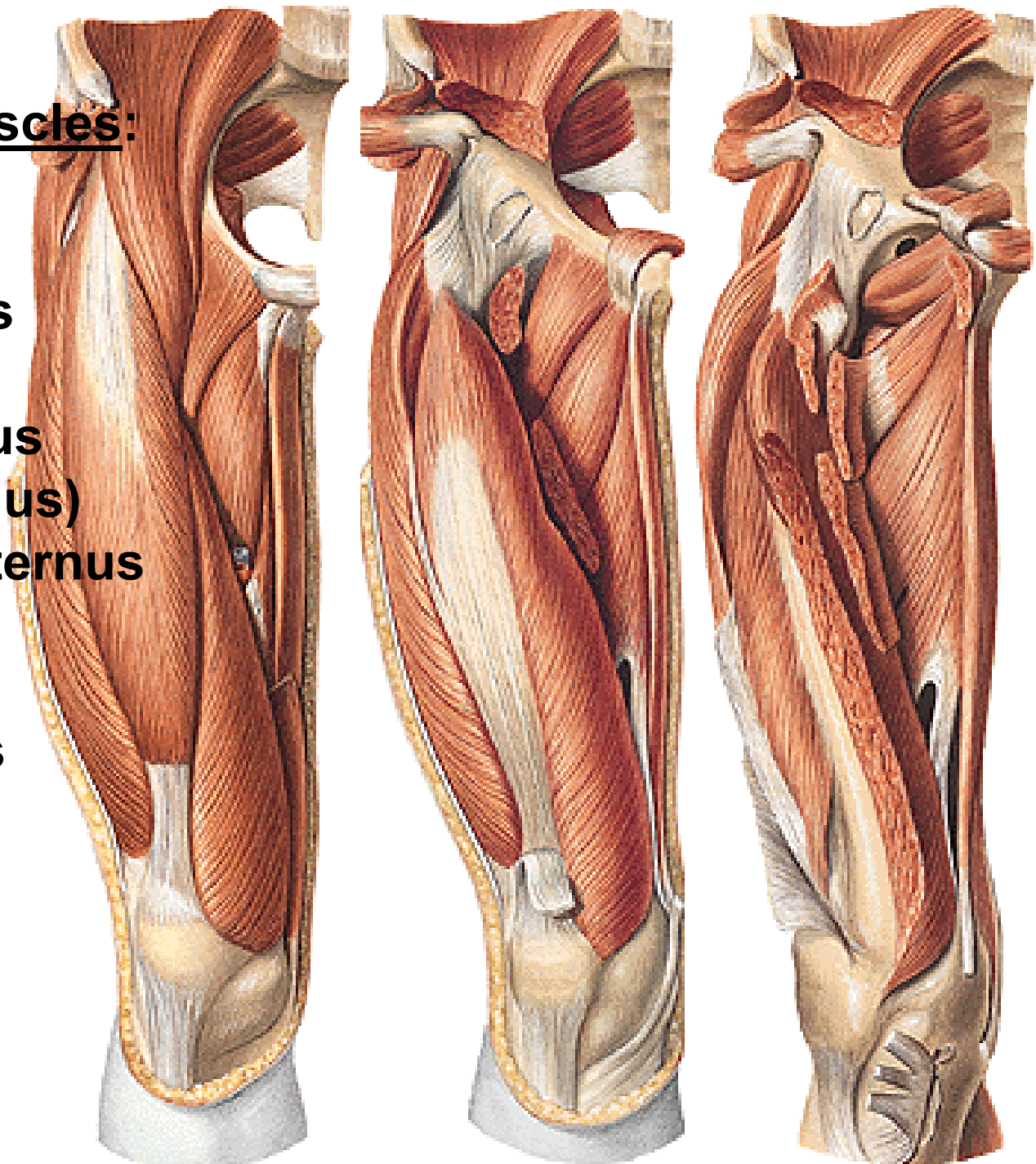
M. adductor magnus

(m.adductor minimus)

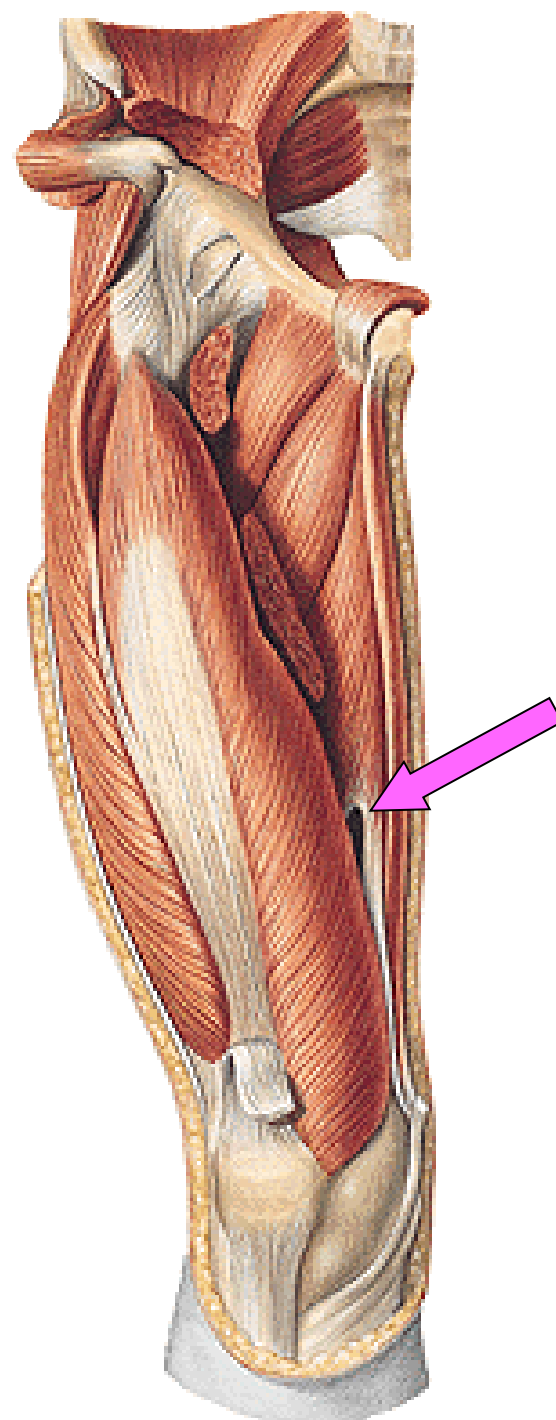
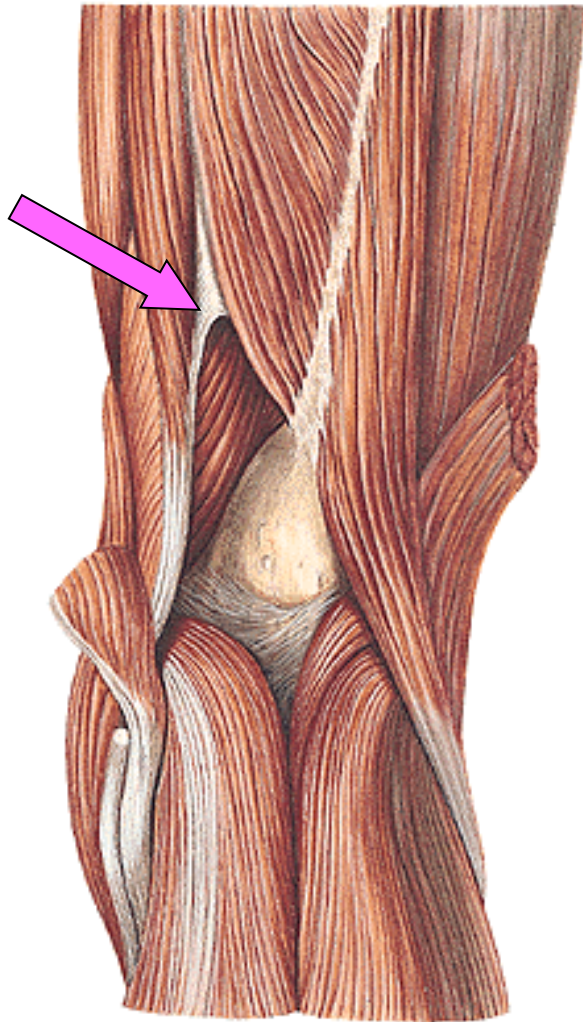
M. obturatorius externus

M. gracilis

Hiatus adductorius



Hiatus tendineus/adductorius (Hunter)

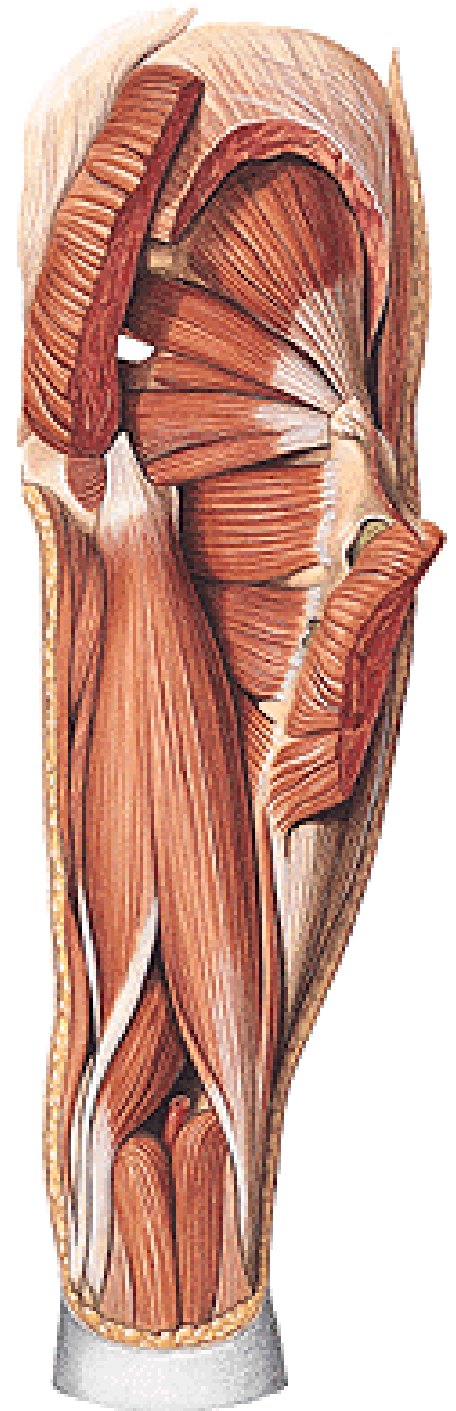
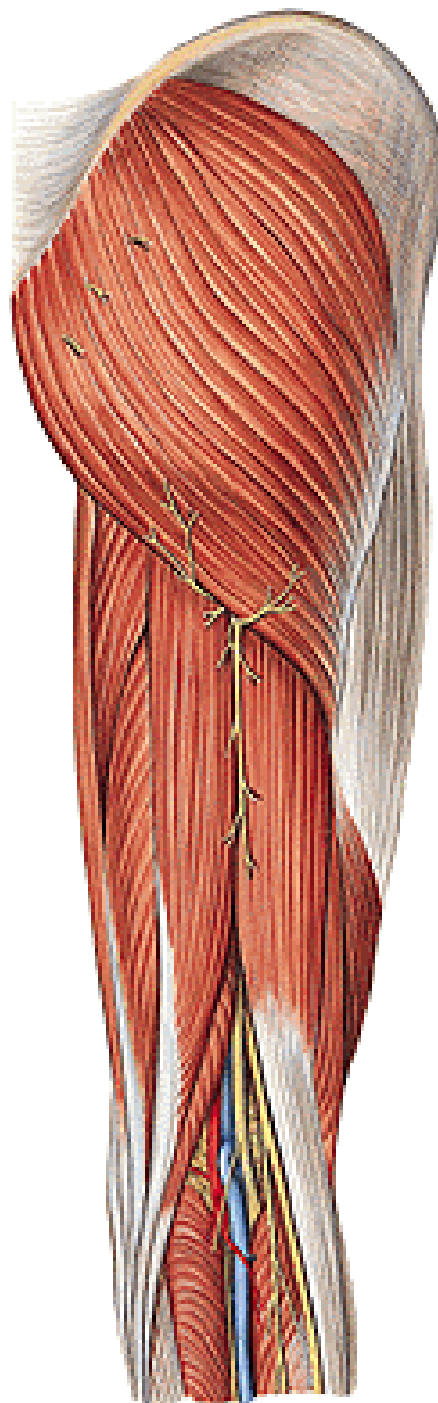


Posterior femoral muscles:
(“hamstrings”)

M. biceps

M. semitendinosus

M. semimembranosus

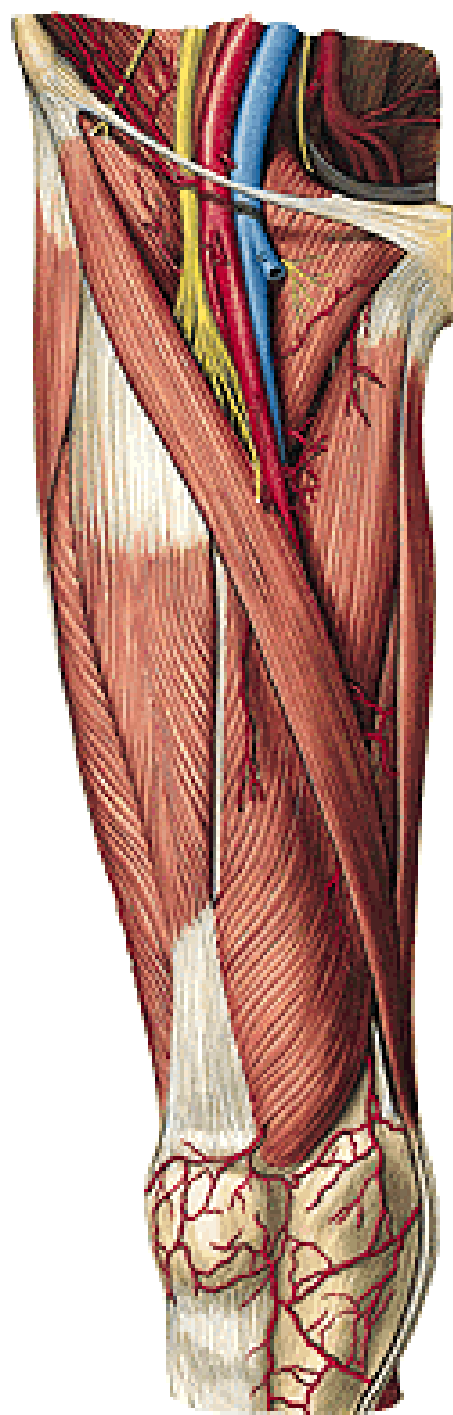


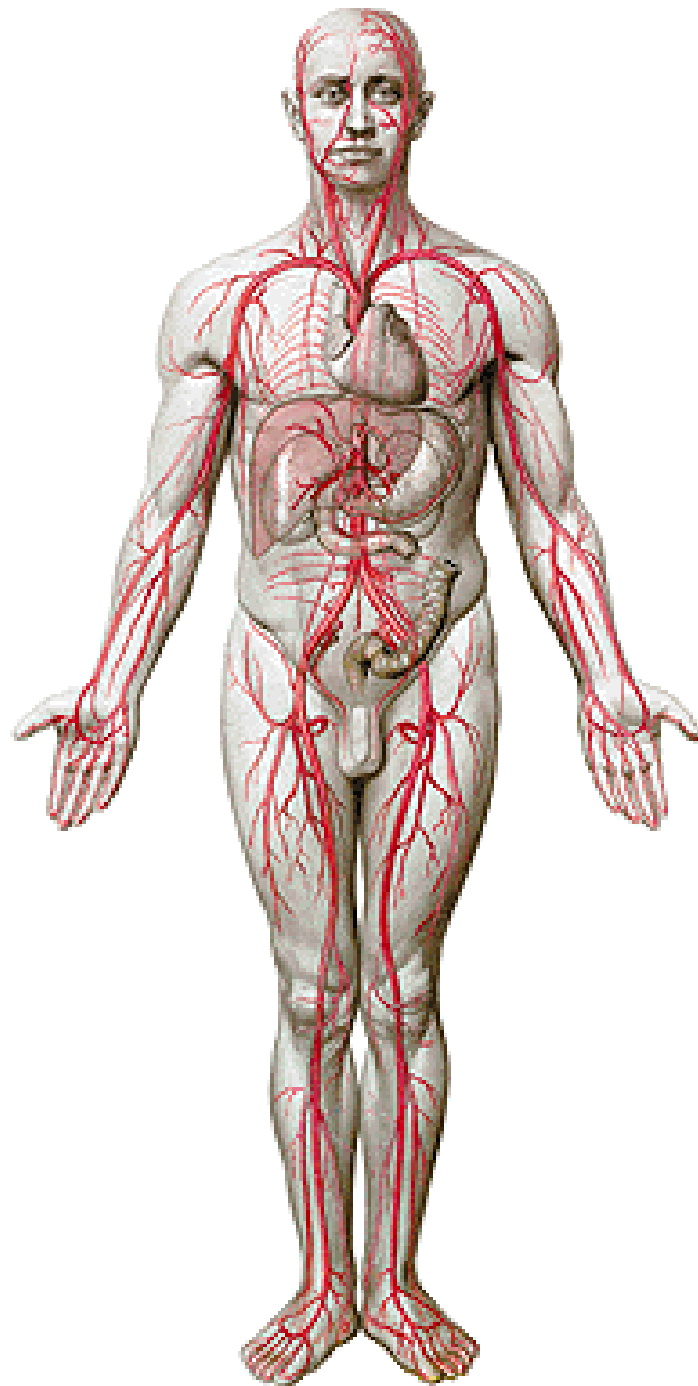
Pes anserinus



Trigonum femorale

Fossa iliopectinea

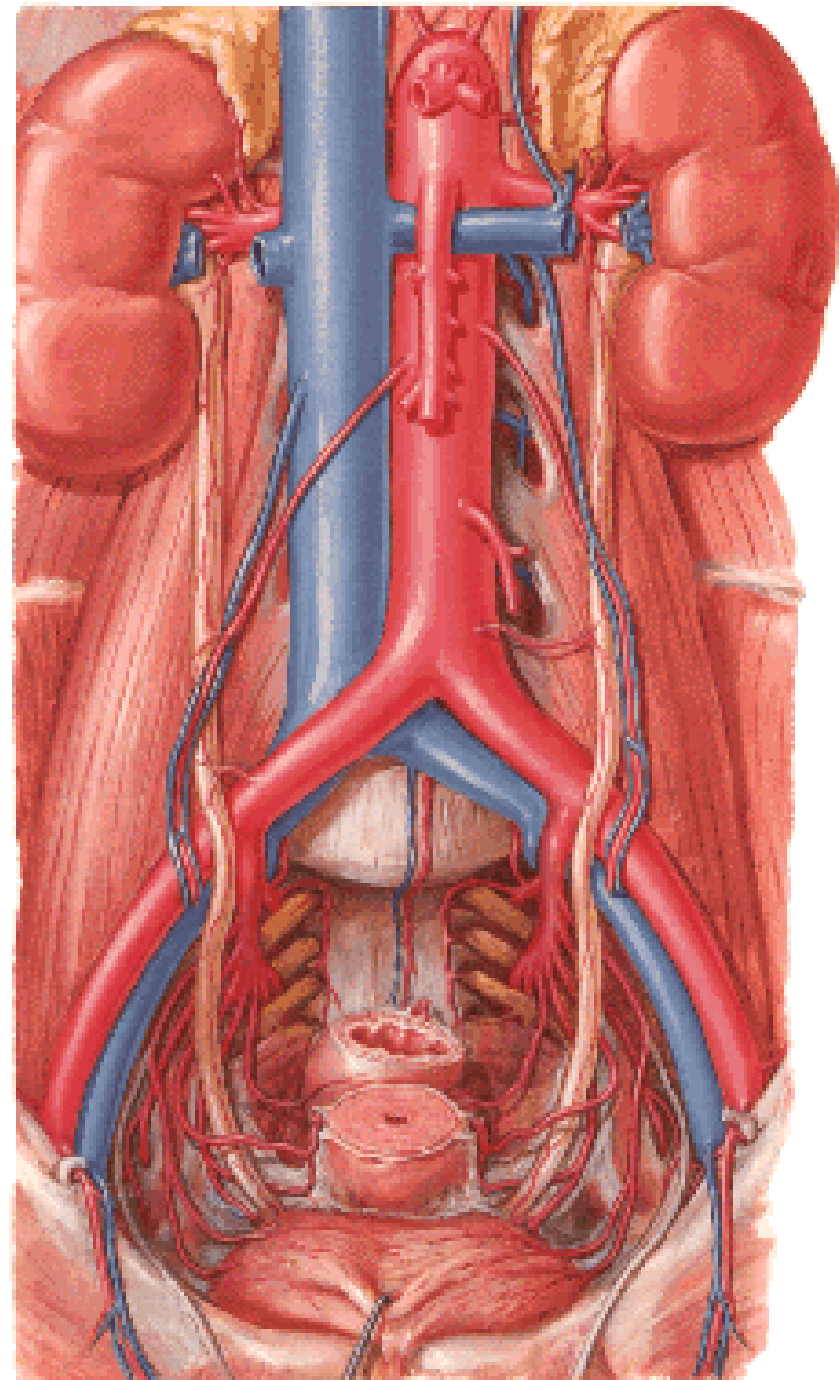




A. ILIACA COMMUNIS

A. iliaca externa

A. iliaca interna



A. ILIACA INTERNA

Parietal branches:

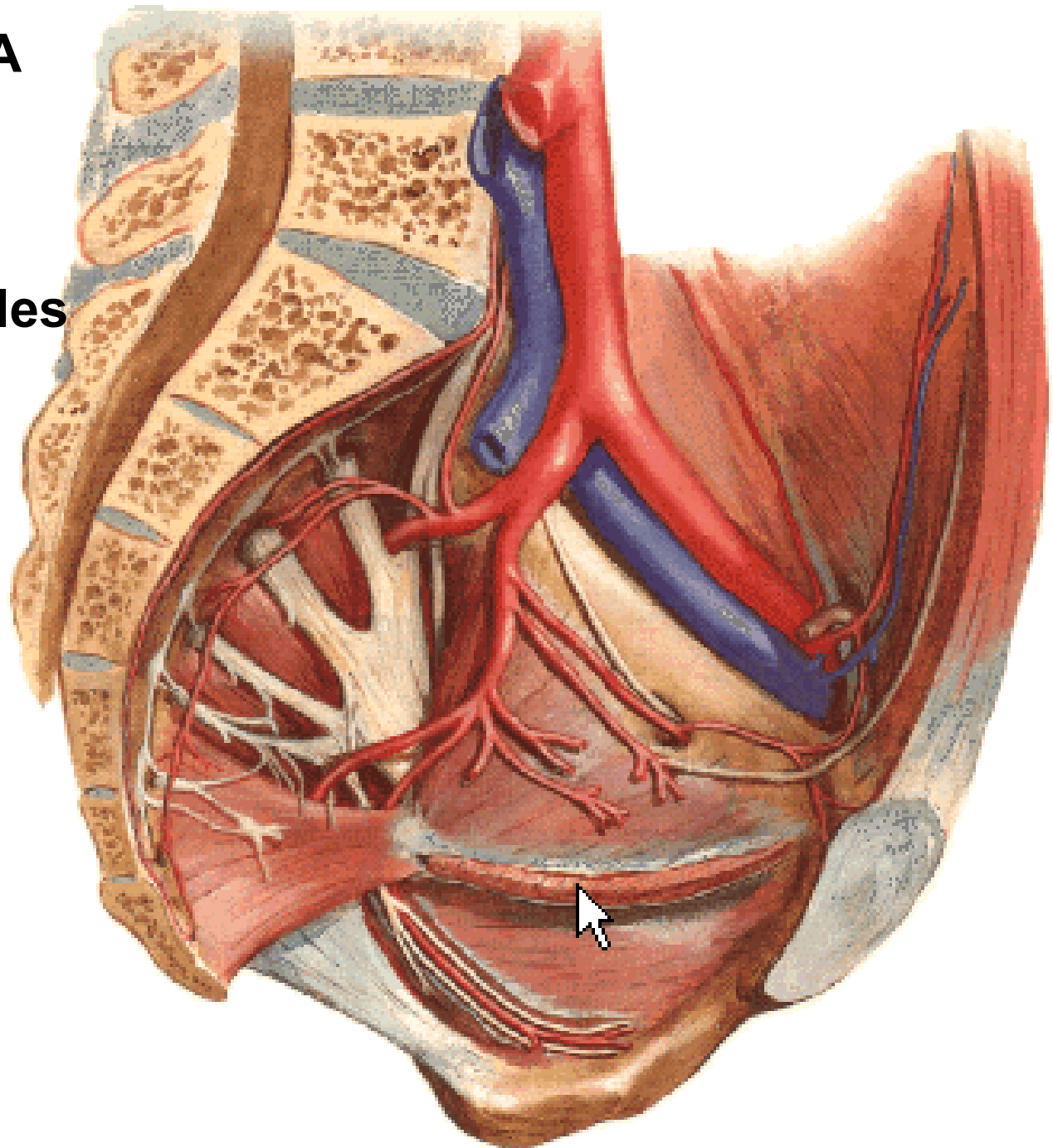
A. iliolumbalis

Aa. sacrales laterales

A. glutea sup.

A. glutea inf.

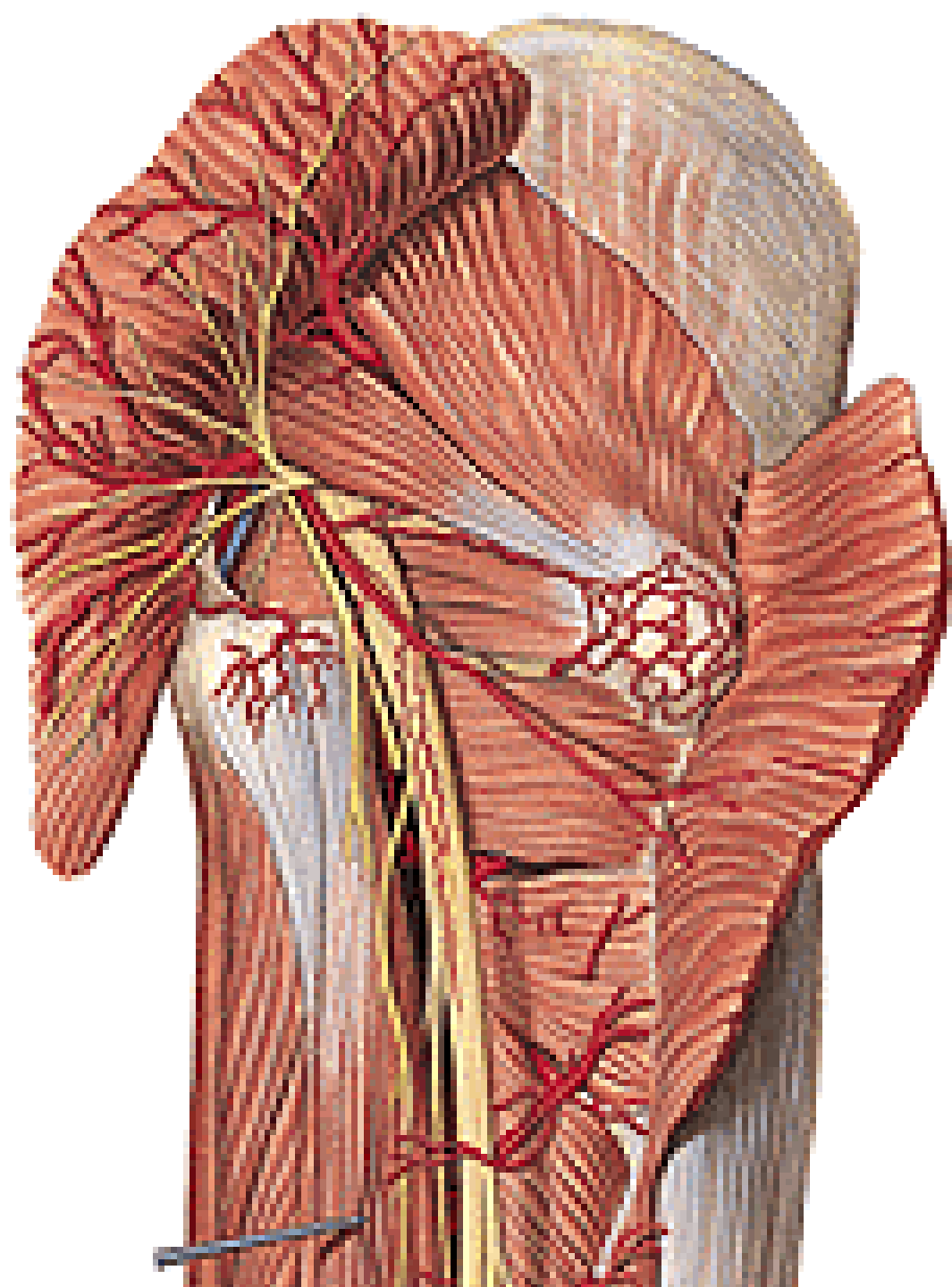
A. obturatoria



A. GLUTAEA SUP.

A. GLUTAEA INF.

- A. comitans n. ischiadici

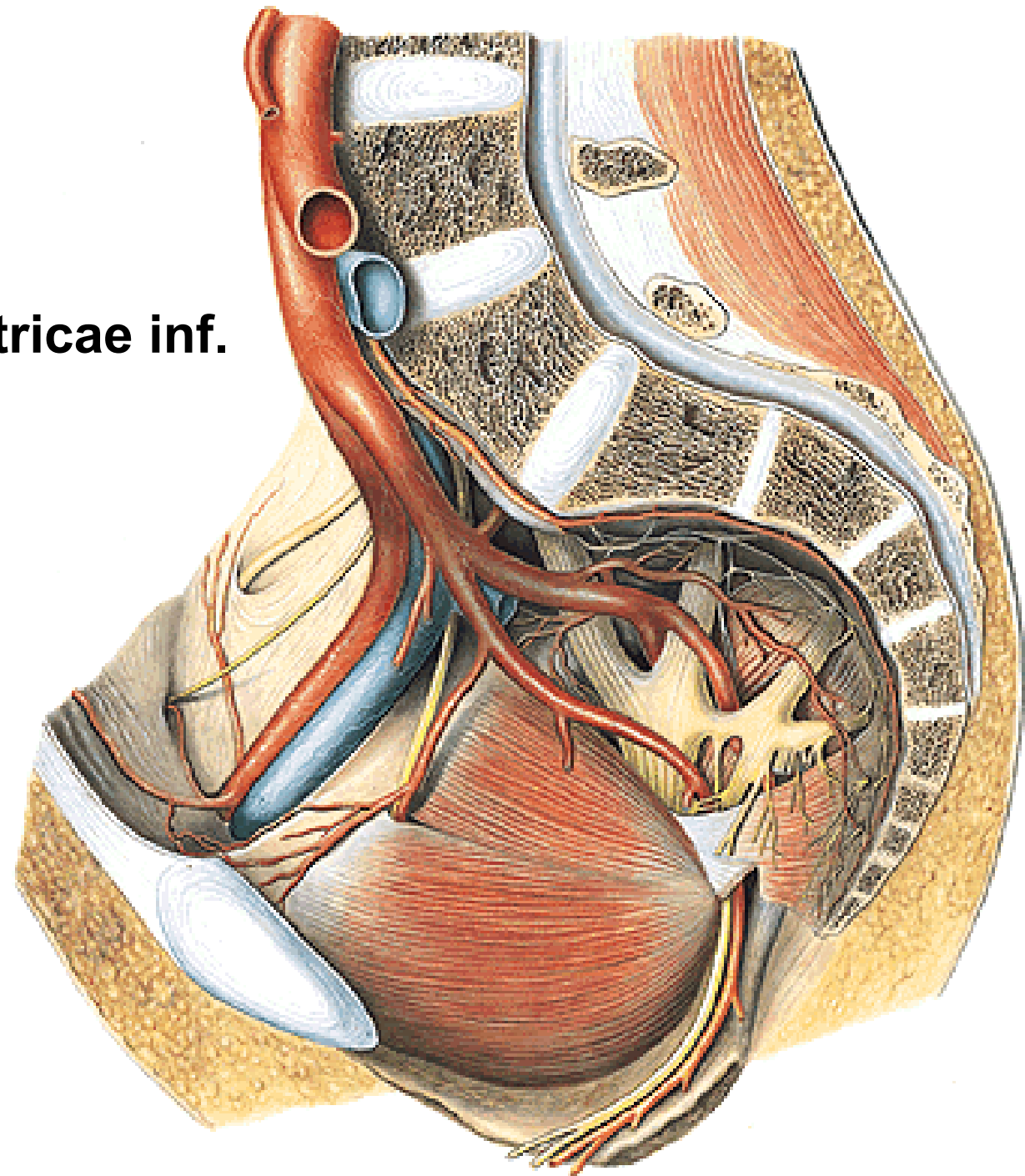
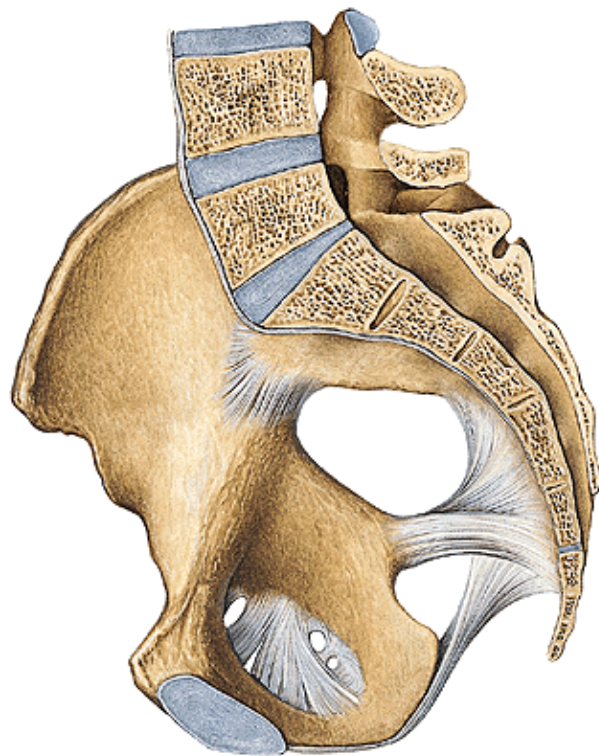


A. OBTURATORIA

- Ramus pubicus

+ r. pubicus a. epigastricae inf.

= CORONA MORTIS

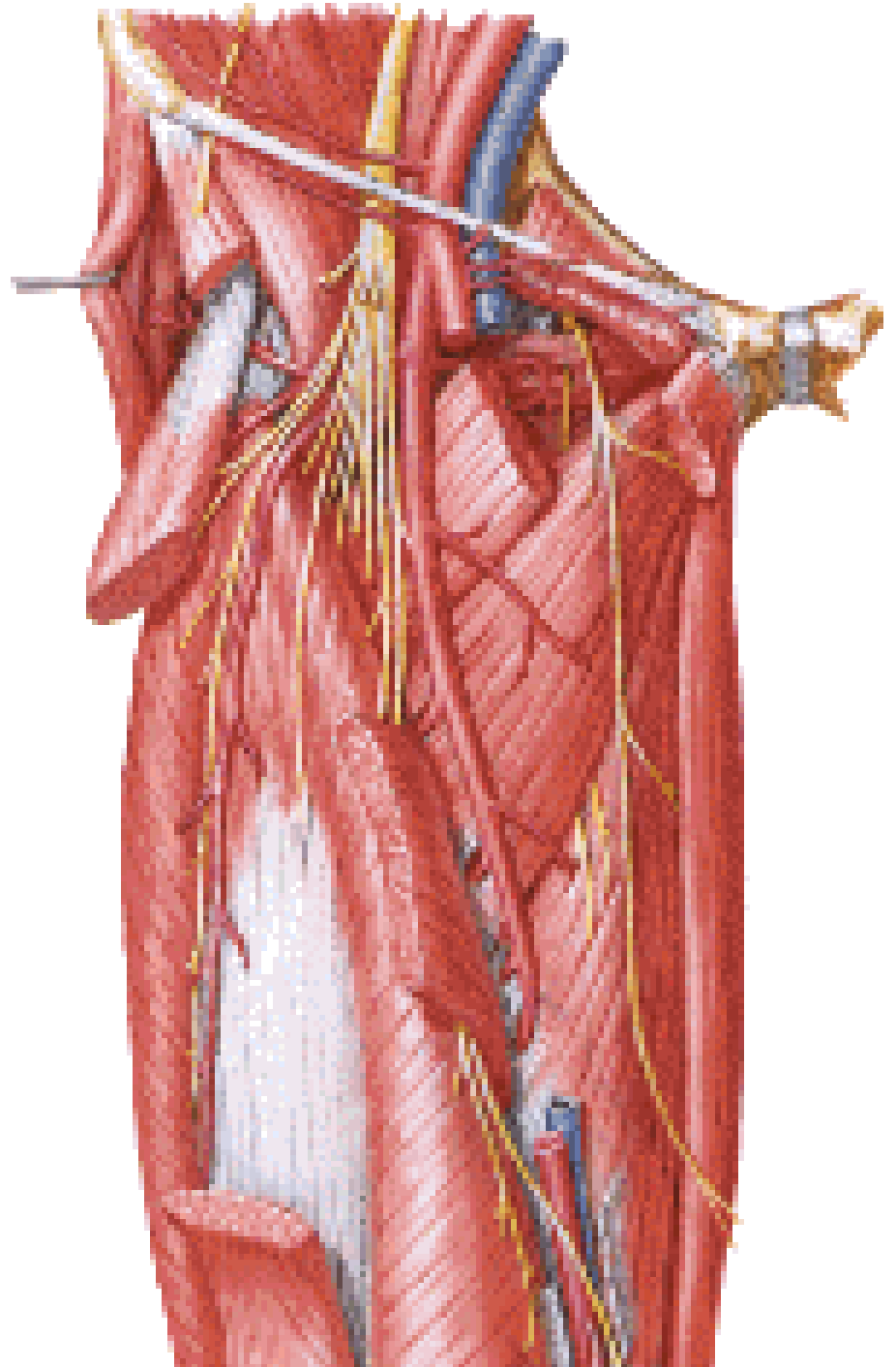
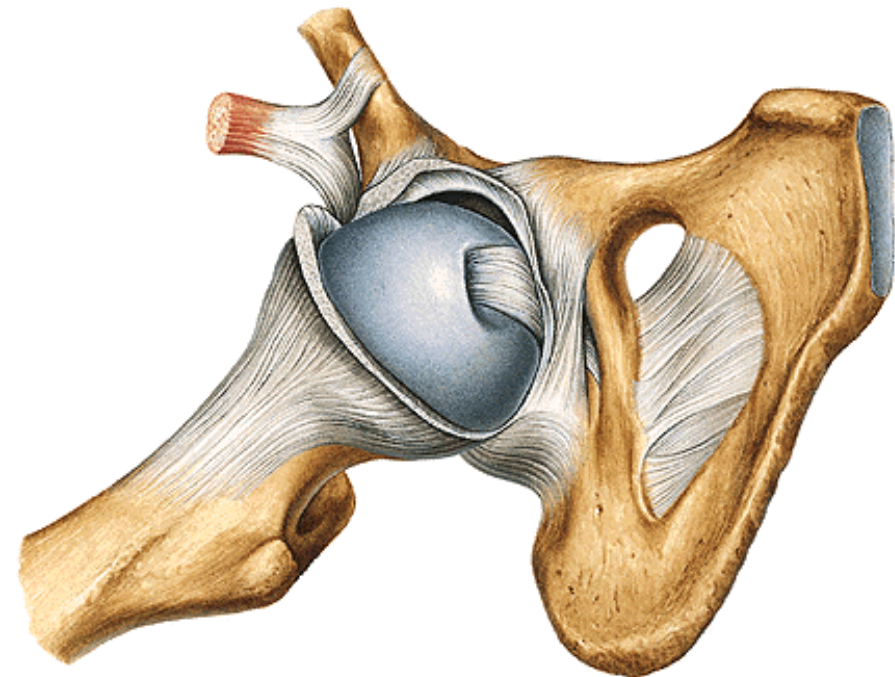


A. OBTURATORIA

R. anterior

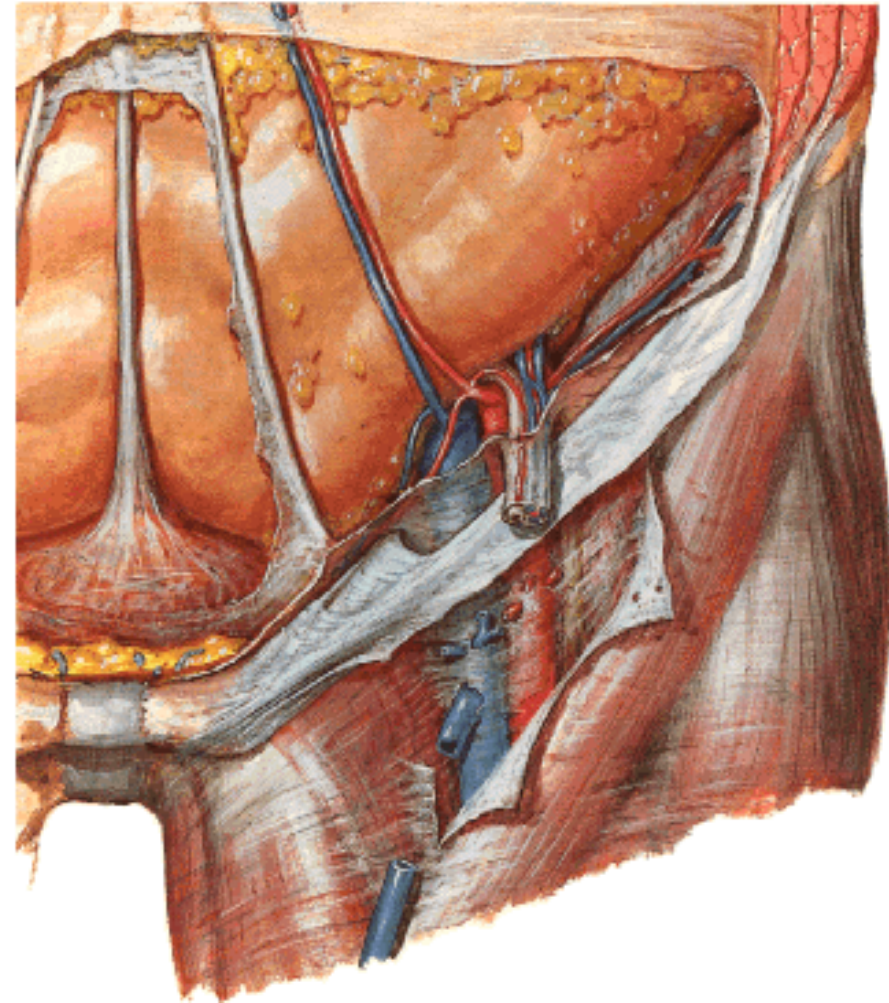
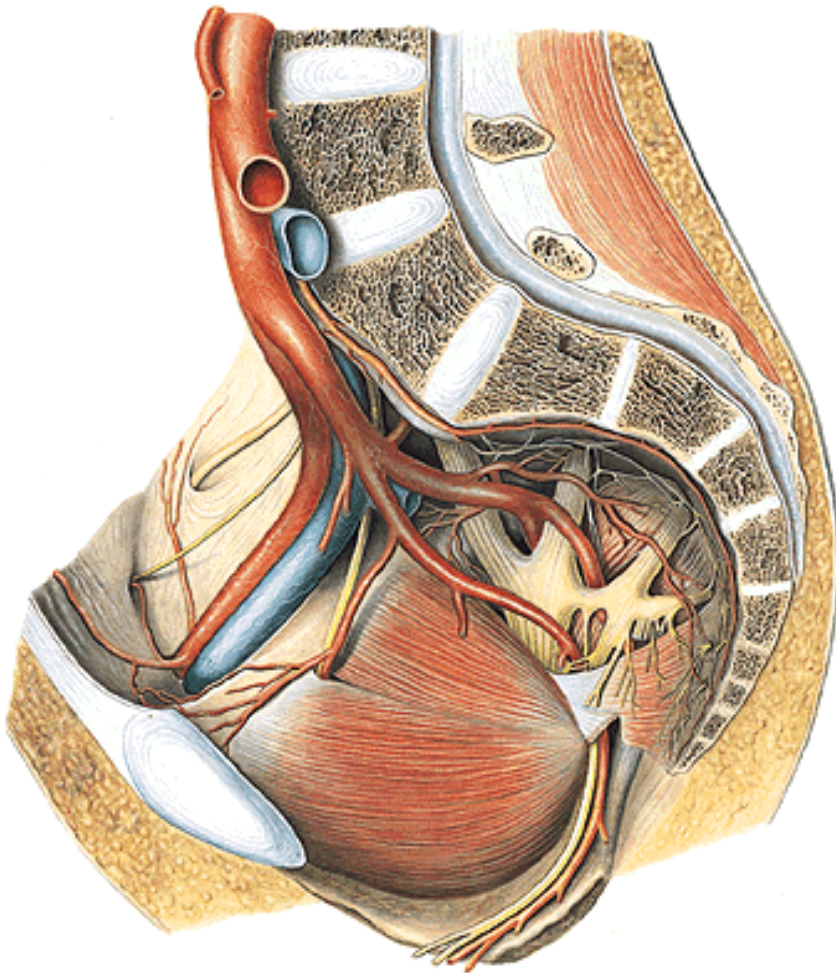
R. posterior

R. acetabularis

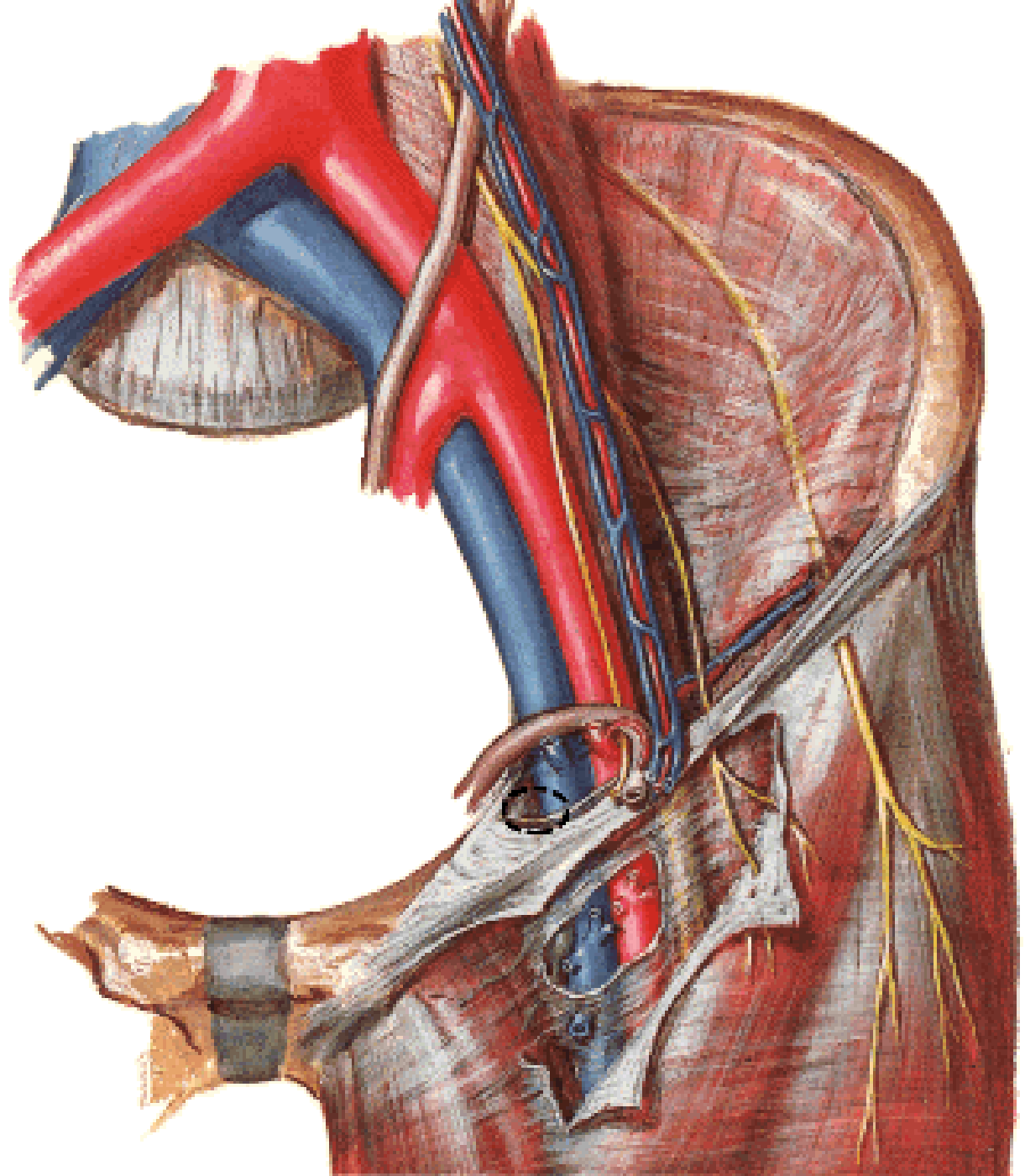


A. ILIACA EXTERNA

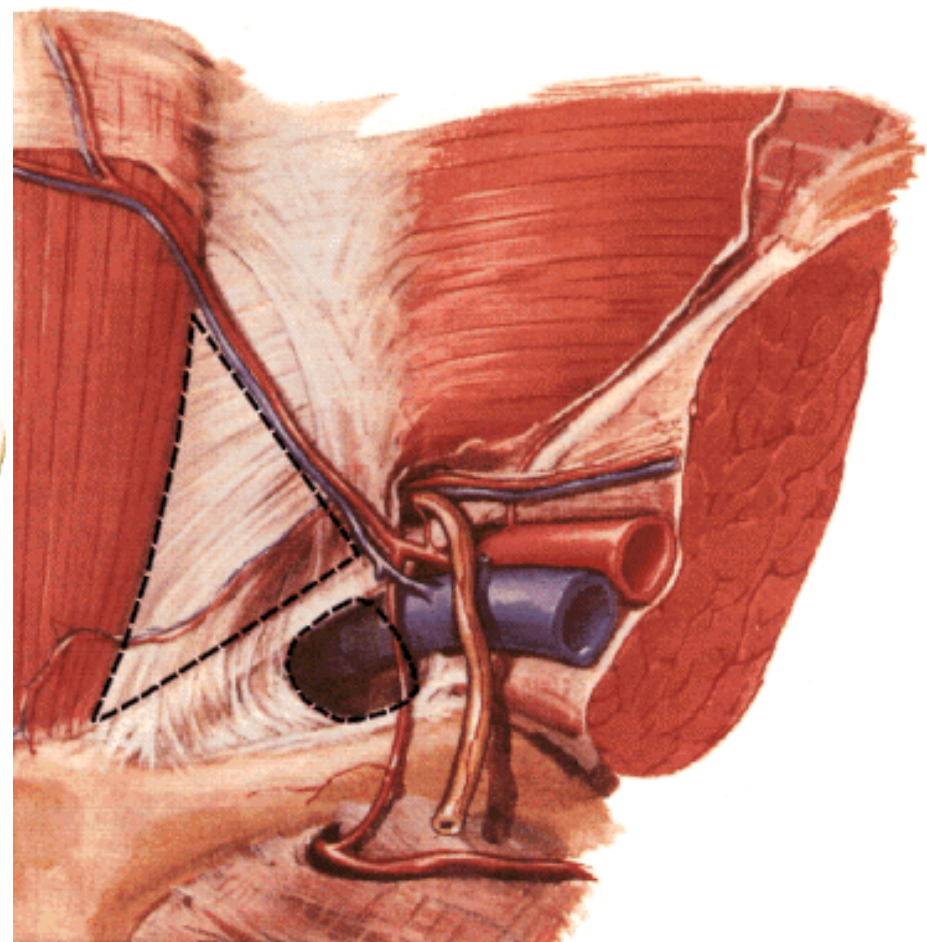
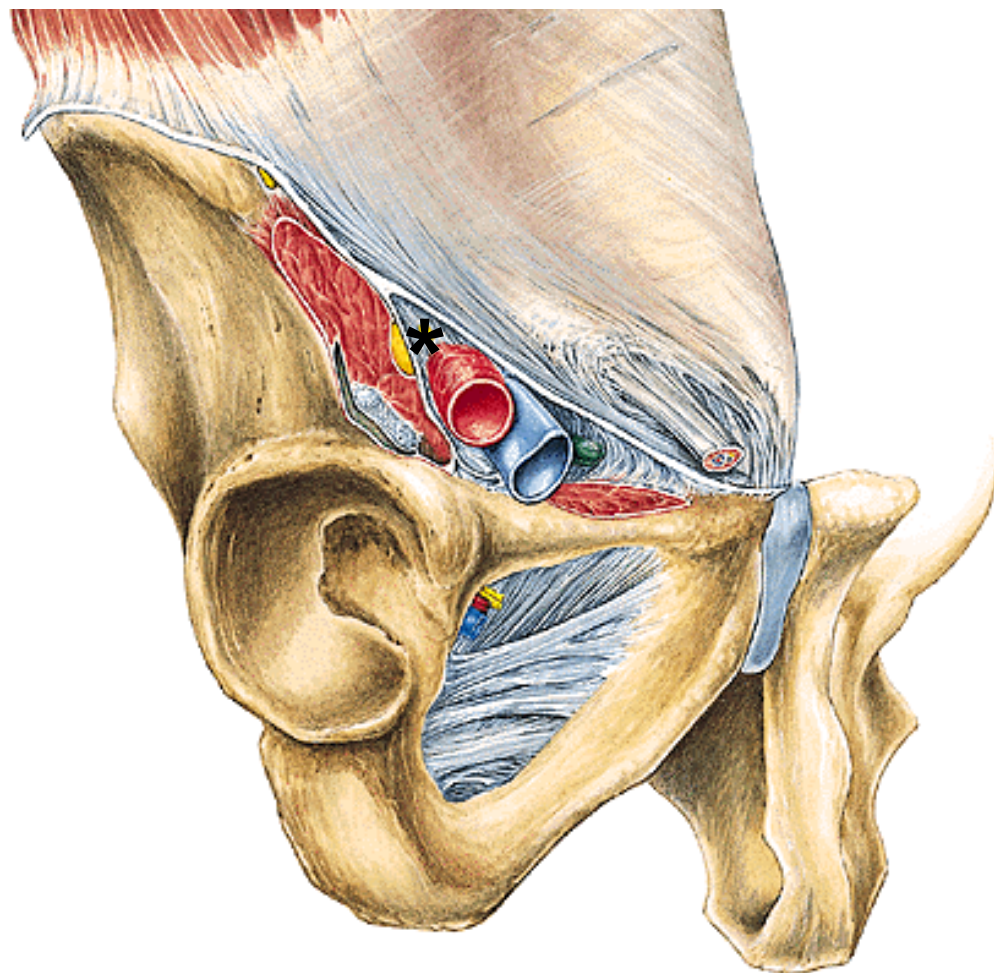
- A. epigastrica inf. (ligamentum interfoveolare)
 - r. pubicus
 - a. cremasterica (a. ligamenti teretis)
- A. circumflexa ilium profunda



A. iliaca ext.



***Lacuna vasorum – anulus femoralis**
Lacuna musculorum



Illustrations and photographs were copied from:
Atlas der Anatomie des Menschen/Sobotta.
Putz,R., und Pabst,R. 20. Auflage. München:
Urban & Schwarzenberg, 1993
Netter: Interactive Atlas of Human Anatomy.
Windows Version 2.0