

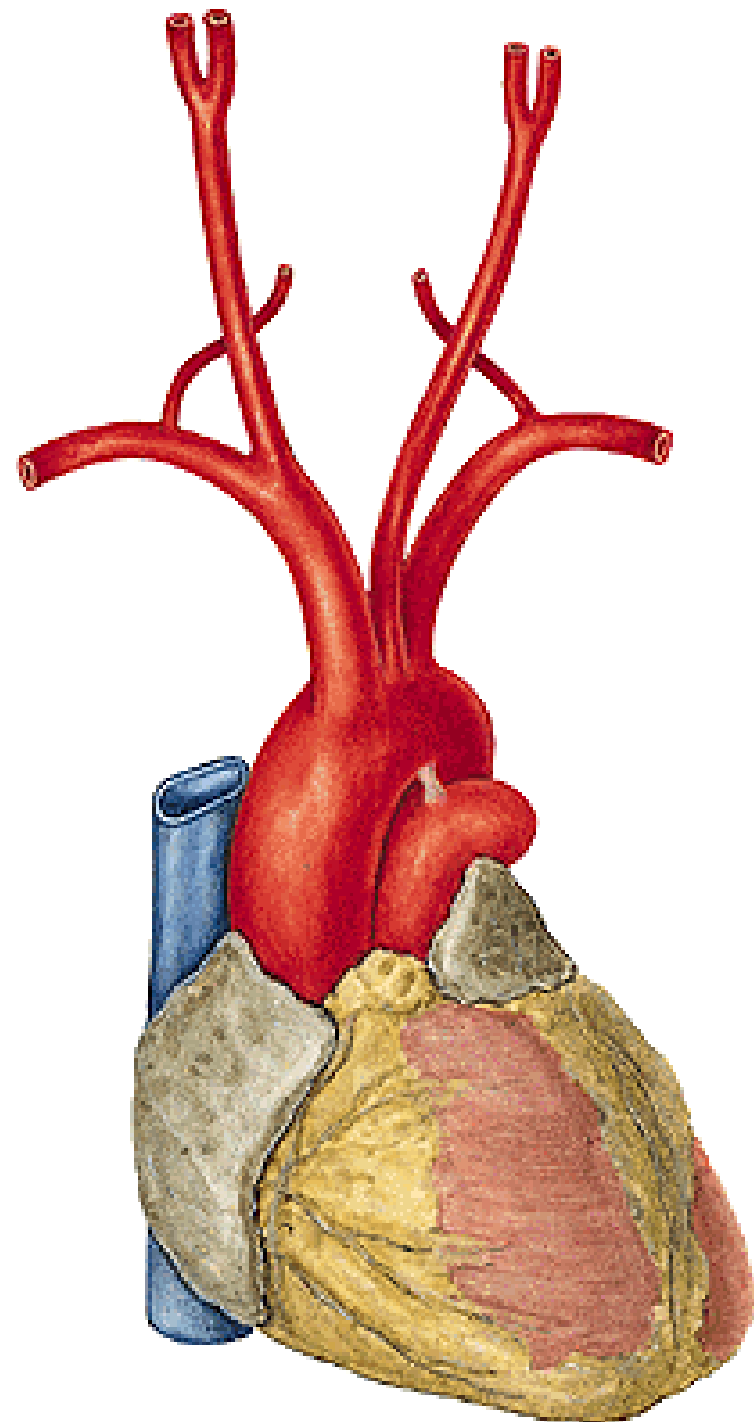
# **ARTERIES OF THE UPPER LIMB**

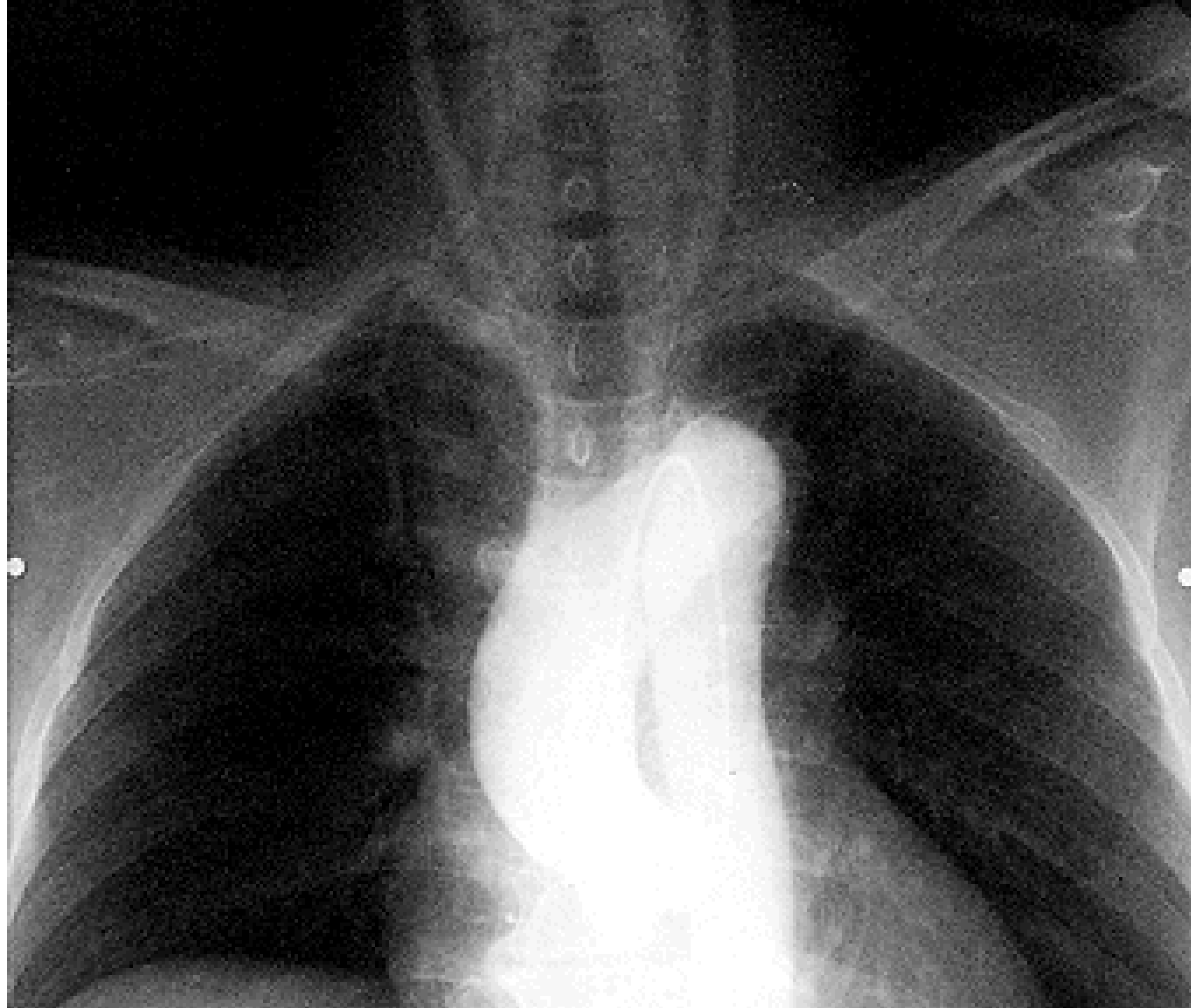
## **ARCUS AORTAE**

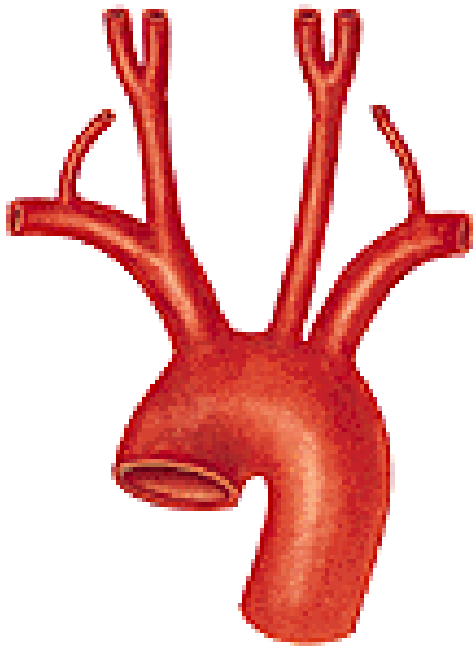
- **truncus brachiocephalicus**
- **a. carotis communis sinistra**
- **a. subclavia sinistra**

## **Truncus brachiocephalicus**

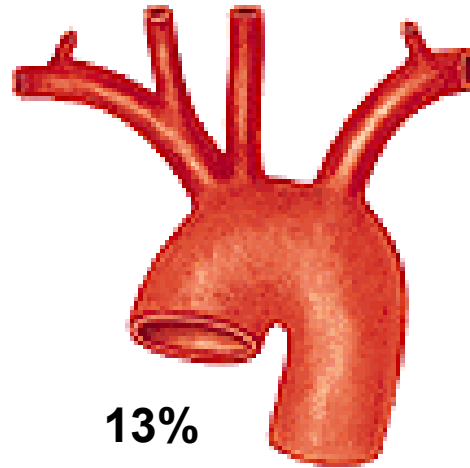
- **a. carotis communis dextra**
- **a. subclavia dextra**



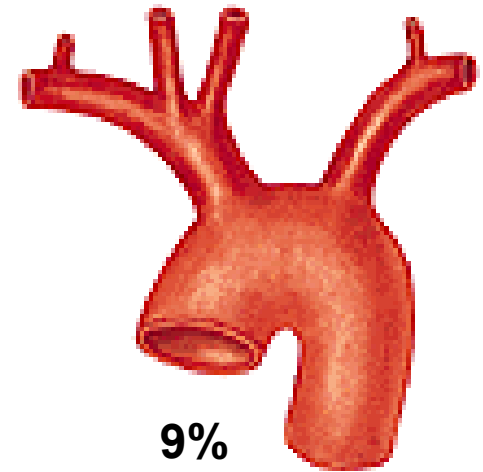




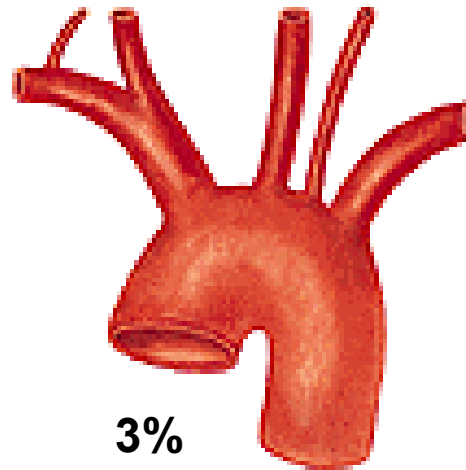
**70%**



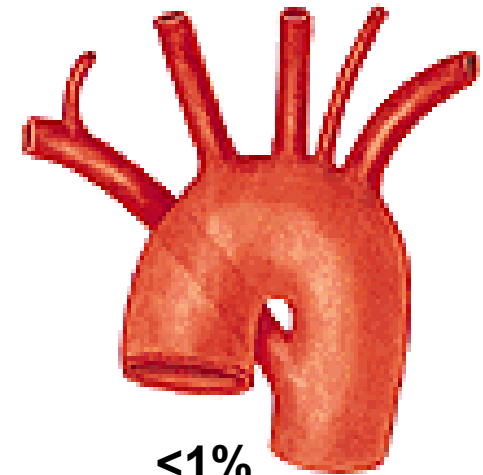
**13%**



**9%**

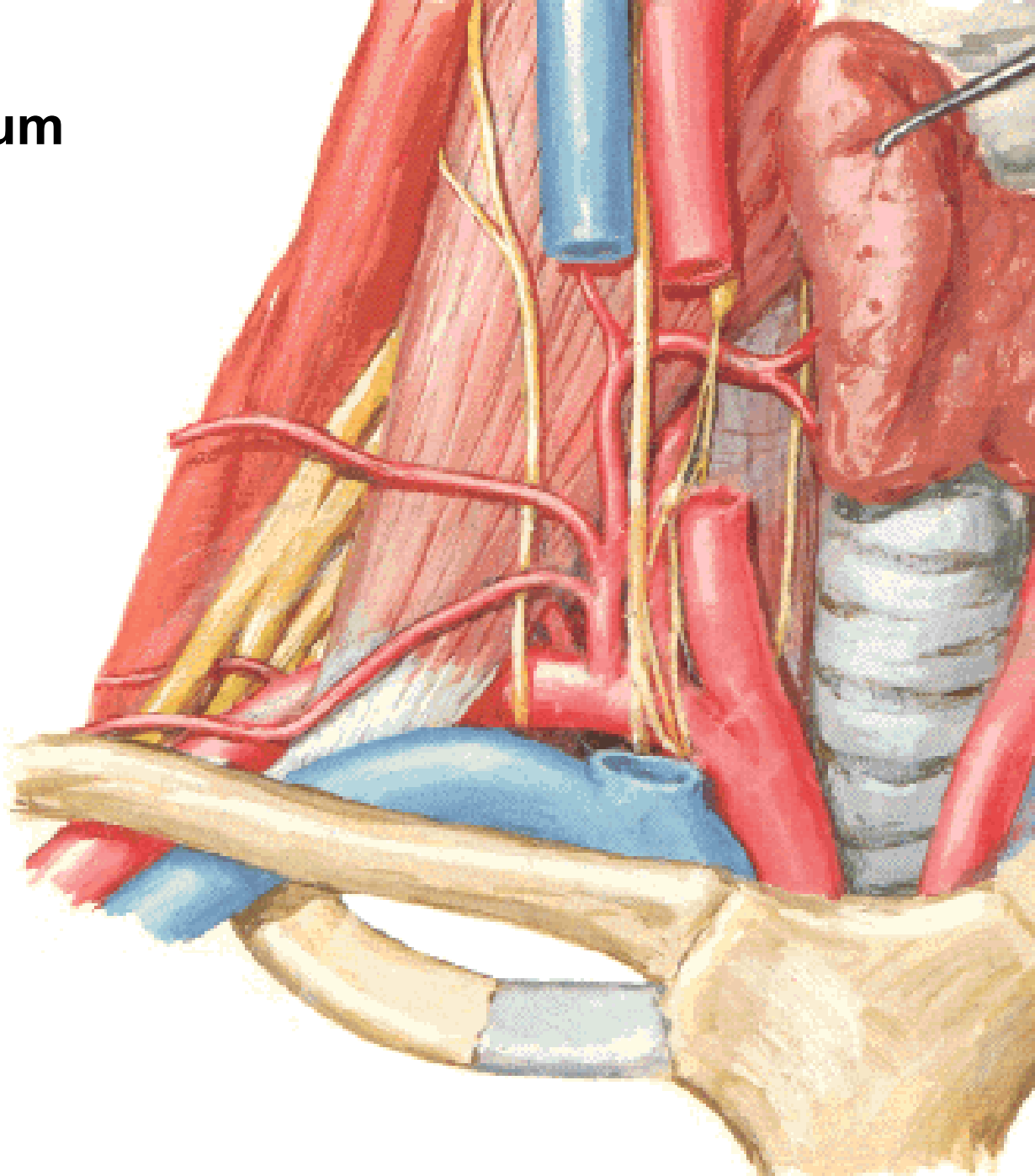


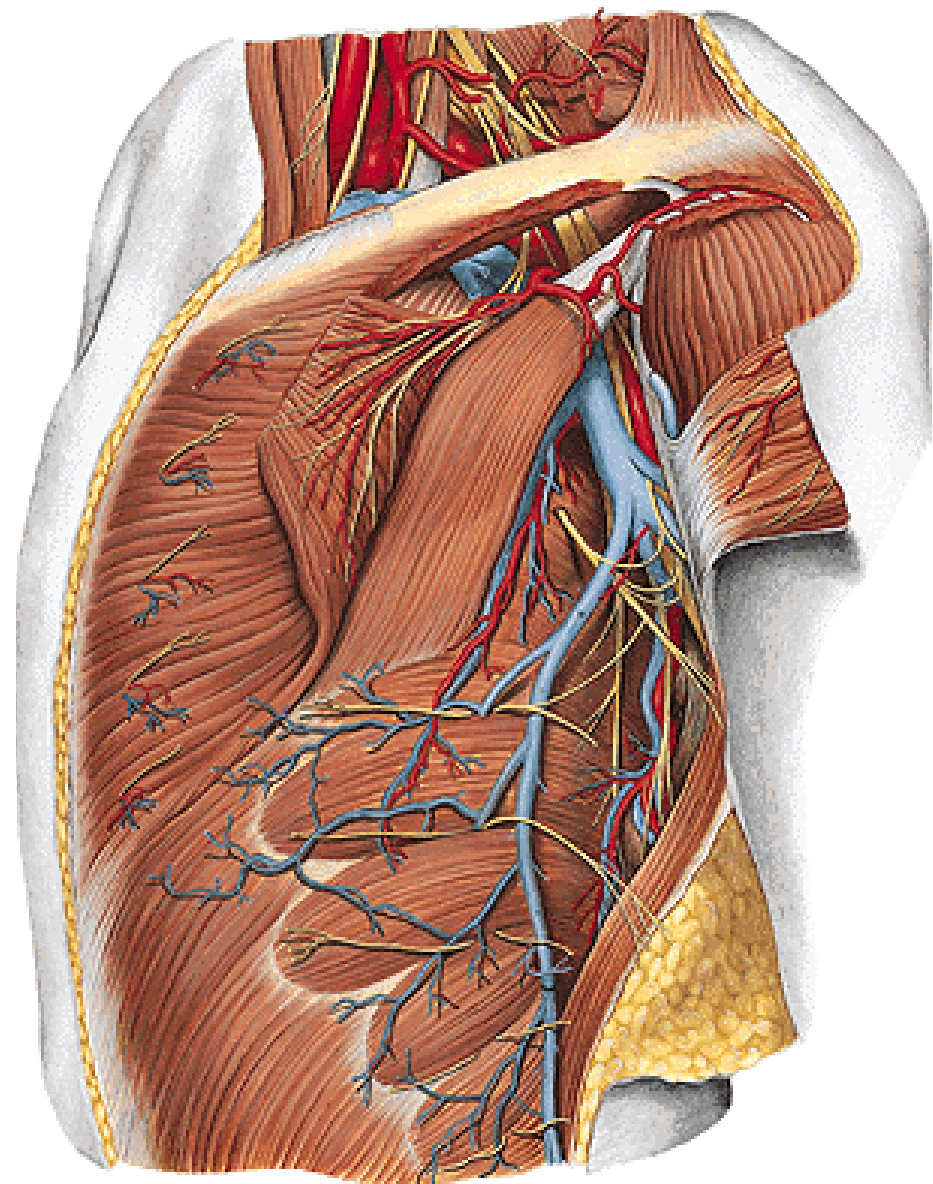
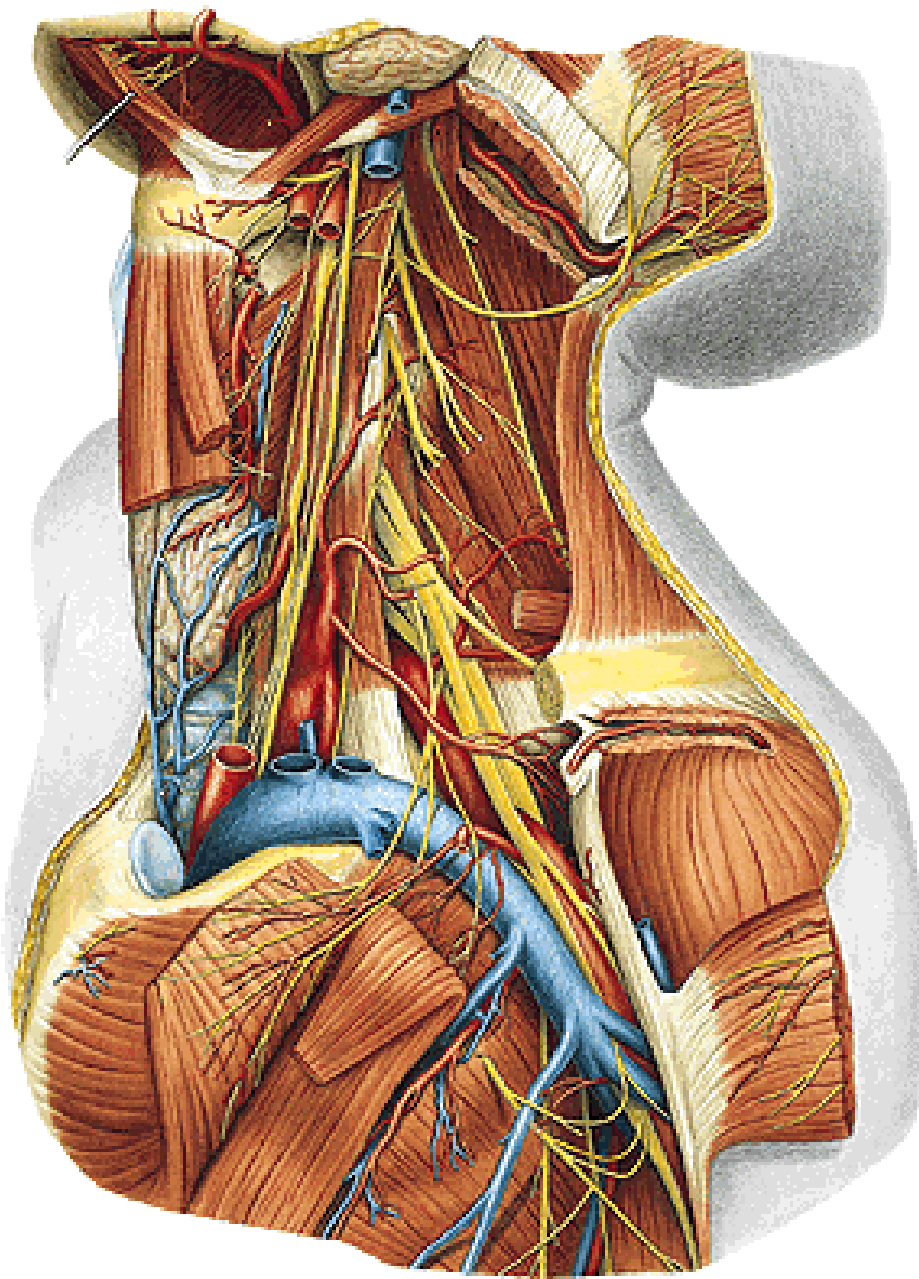
**3%**



**<1%**

**Cupula pleurae**  
**Fissura scalenorum**

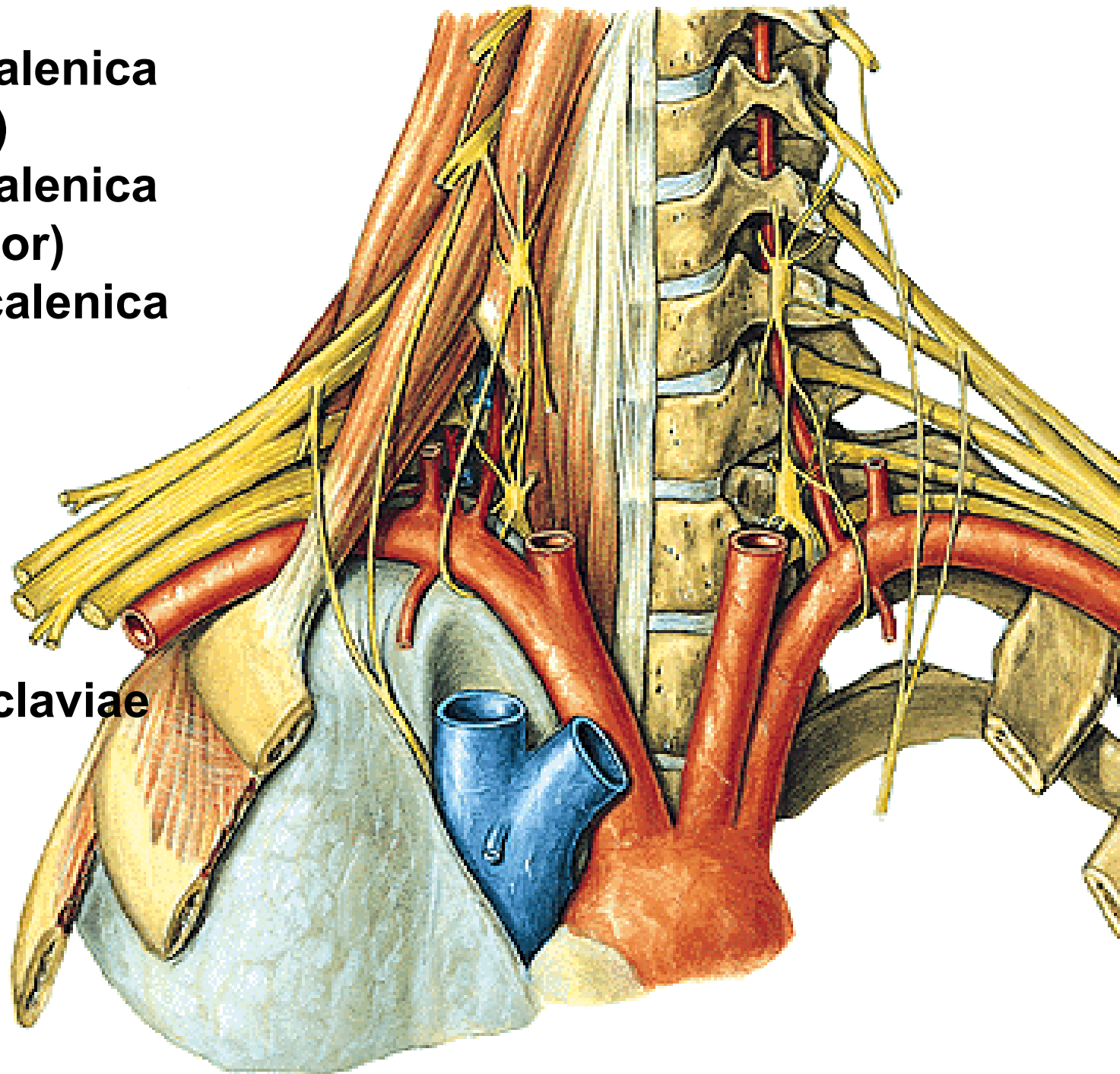




**Pars intrascalenica  
(medial)**

**Pars interscalenica  
(posterior)**

**Pars extrascalenica  
(lateral)**



**Sulcus a. subclaviae**

## A. SUBCLAVIA

### *Pars intrascalenica:*

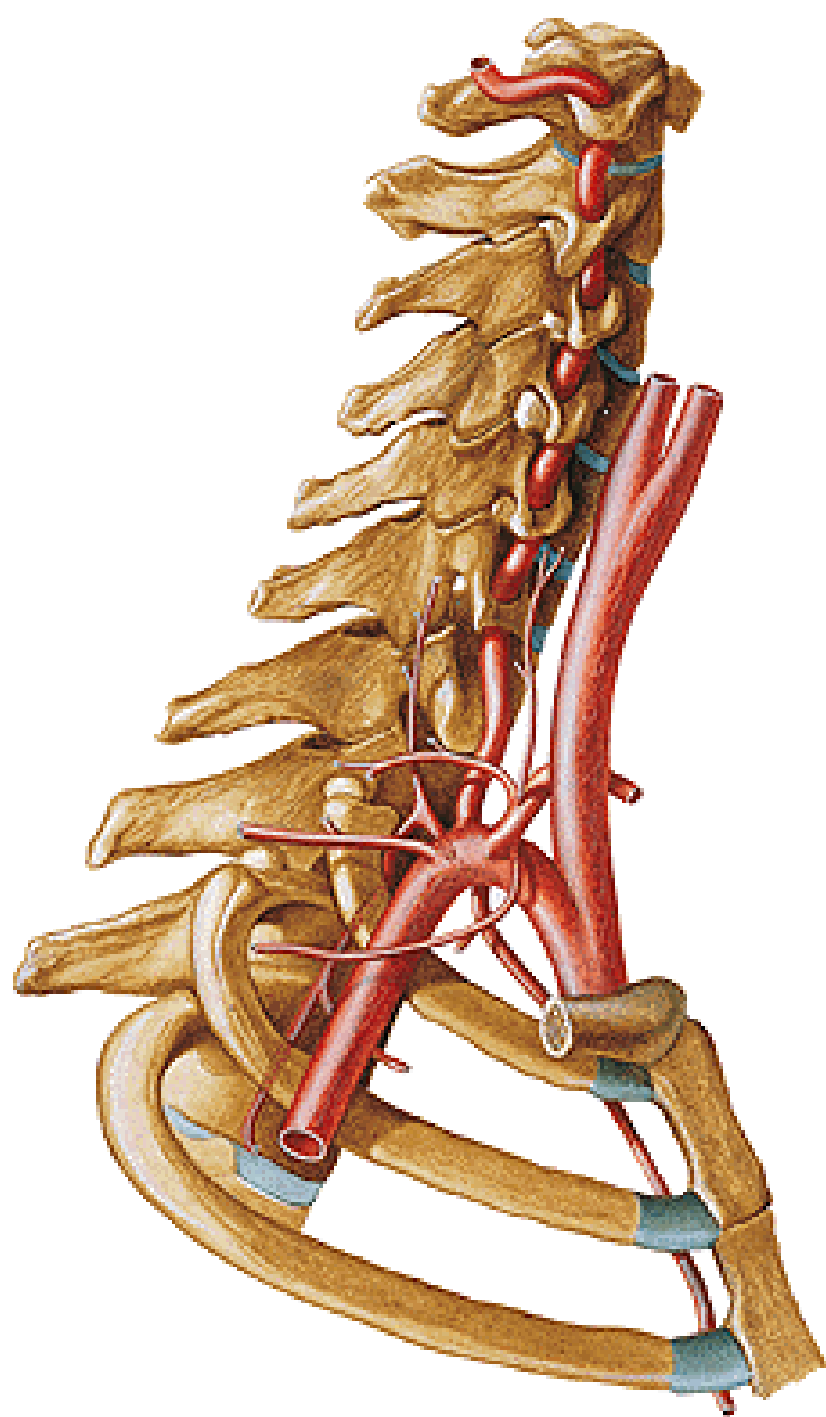
- a. vertebralis
- a. thoracica interna
- tr. thyreocervicalis

### *Pars interscalenica:*

- tr. costocervicalis

### *Pars extrascalenica:*

- a. transversa colli

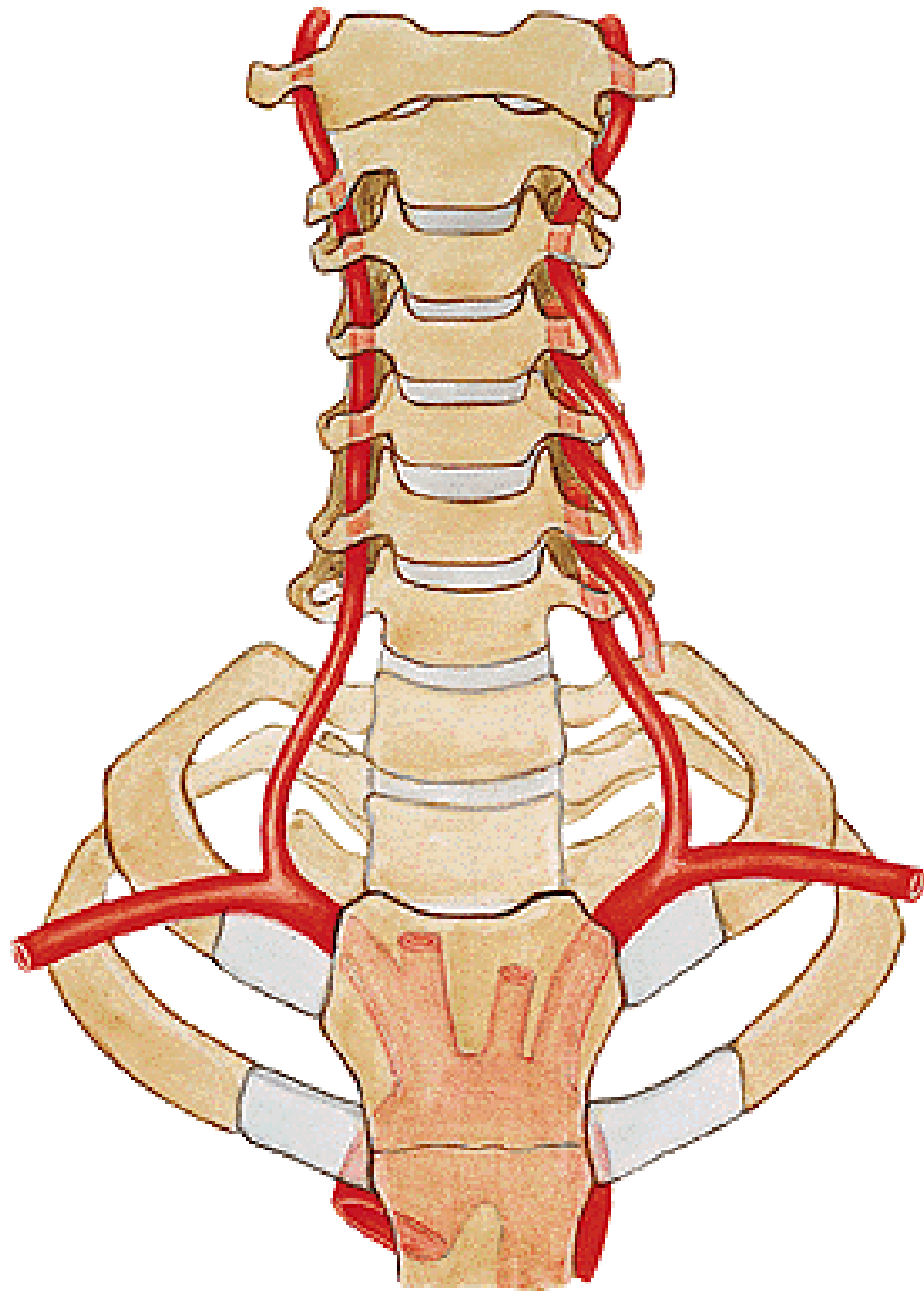
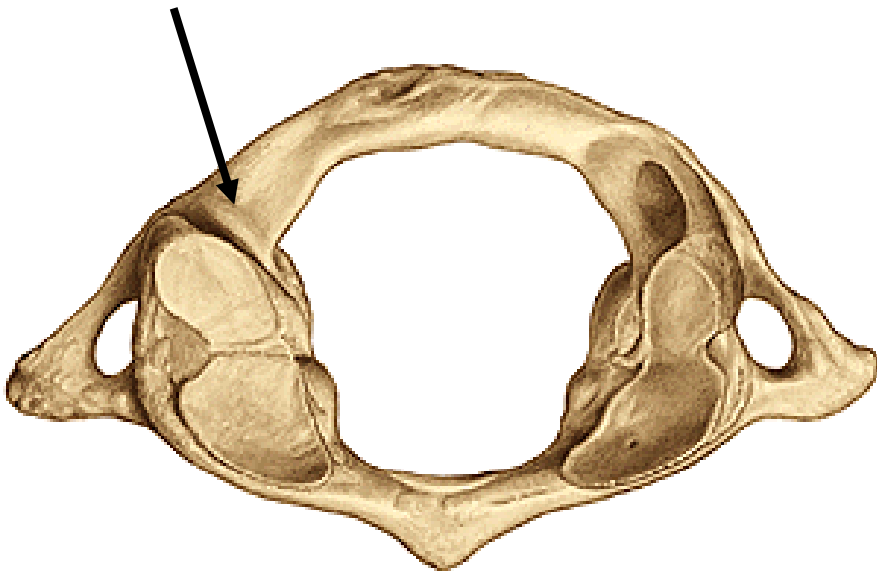




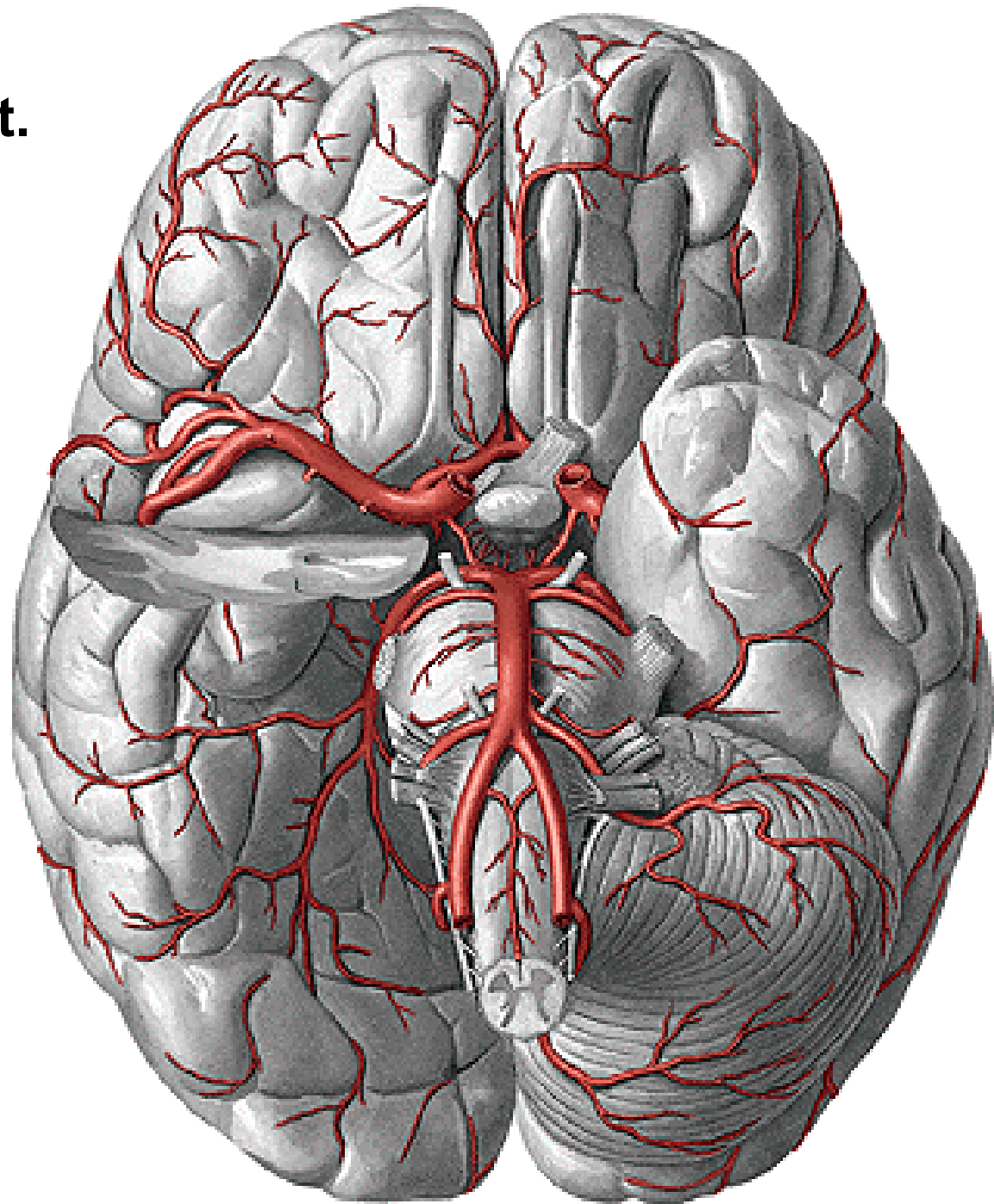
## A. VERTEBRALIS

- rr. spinales
- rr. musculares

**Sulcus a. vertebralis**

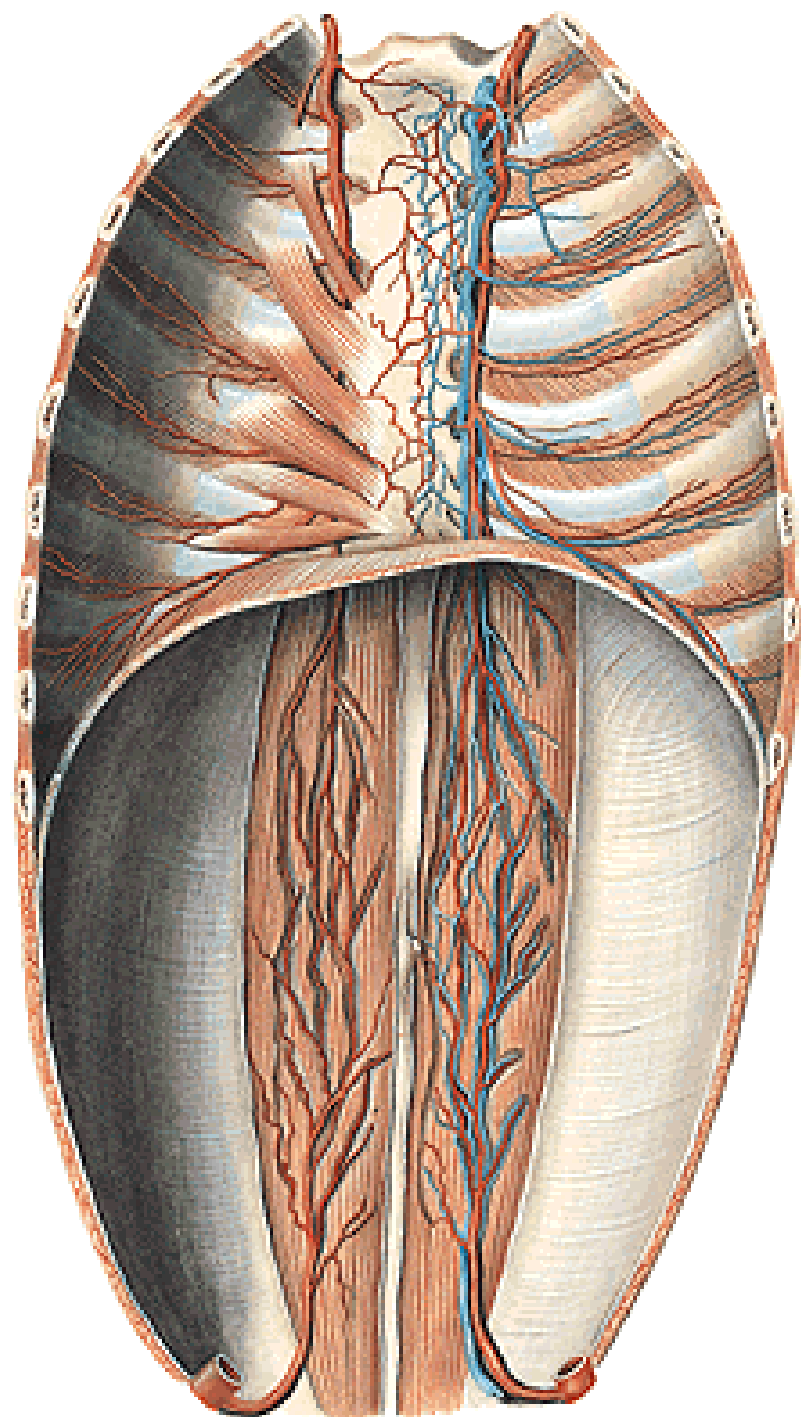


- a. cerebelli inf. post.
- a. basilaris

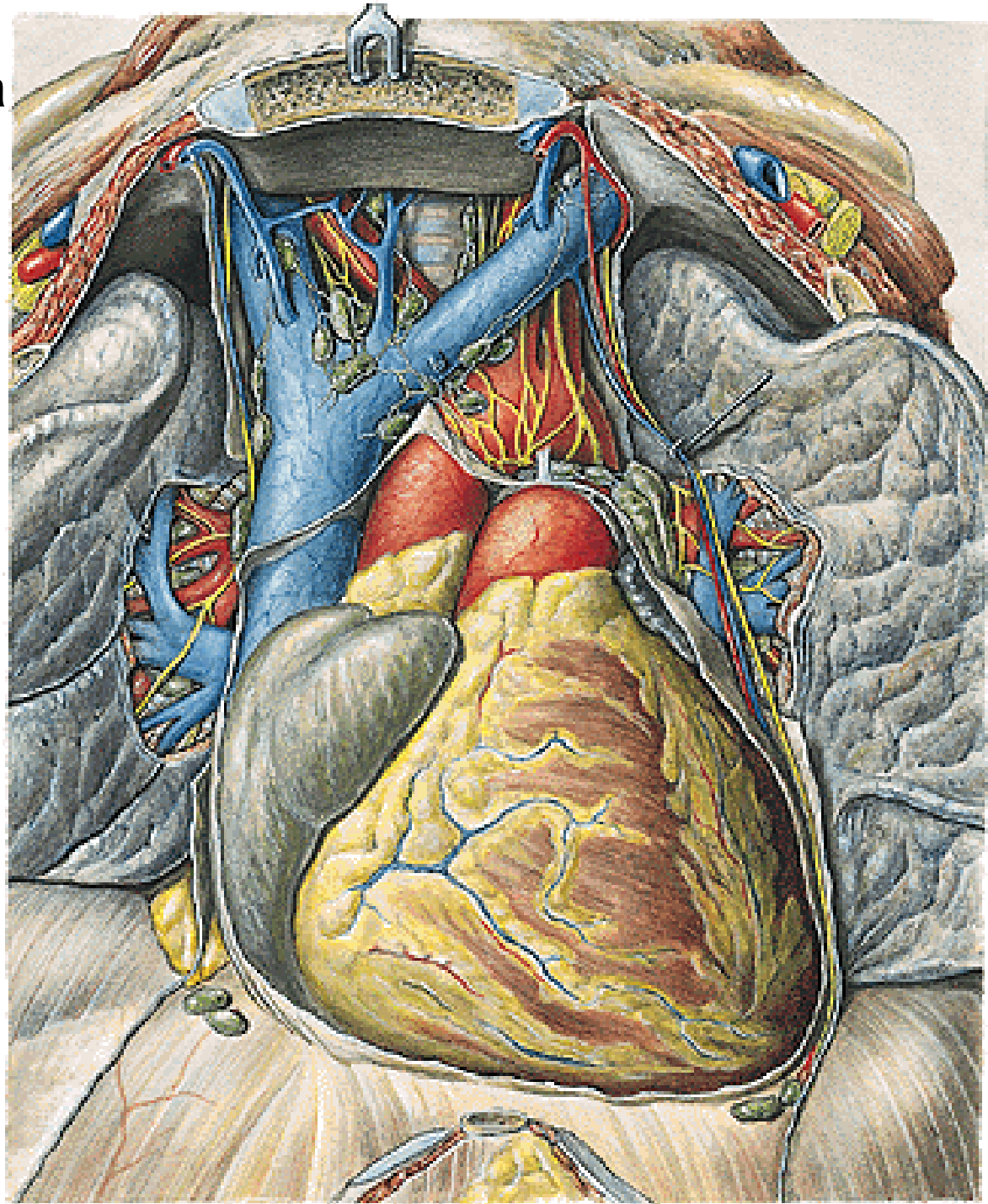


## A. THORACICA INTERNA

- rr. mediastinales
- rr. thymici
- rr. bronchiales
- a. pericardiophrenica
- rr. sternales
- rr. perforantes – rr. mammarii
- rr. intercostales ant.
- a. musculophrenica
  - rr. intercostales ant.
- a. epigastrica sup.

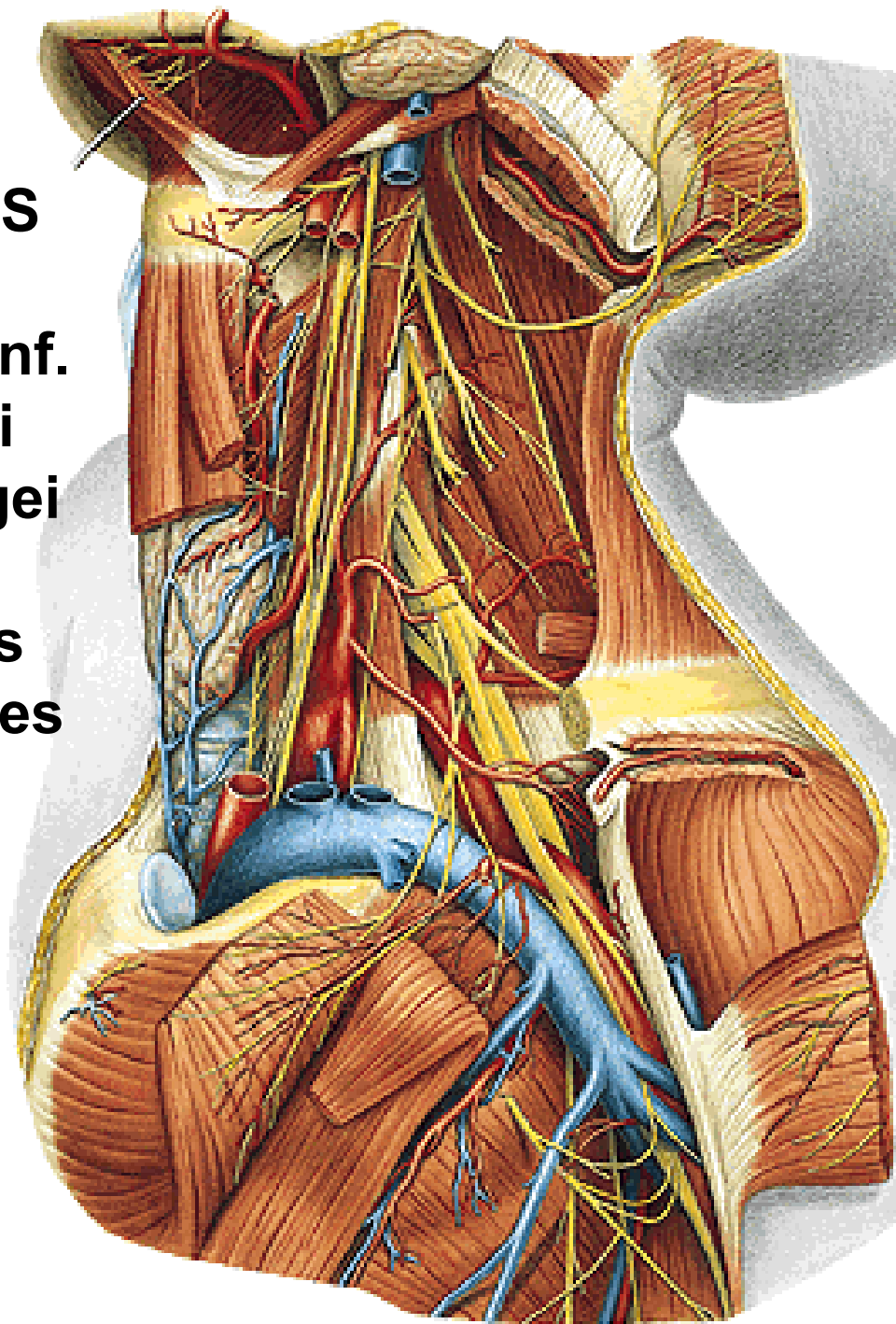


# A. pericardiacophrenica

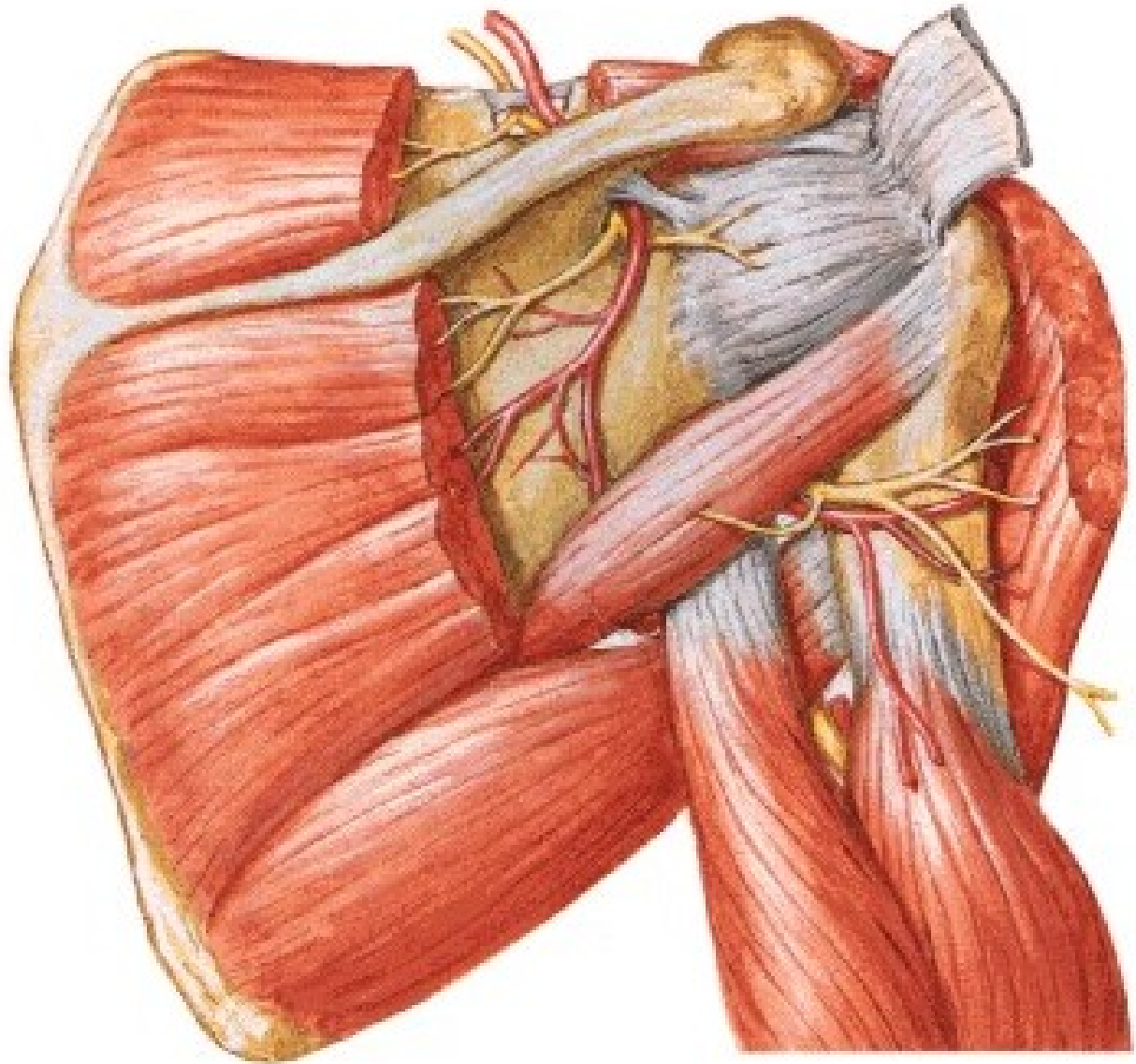


## TRUNCUS THYREOCERVICALIS

- a. thyroidea inf.
- a. laryngea inf.
- rr. pharyngei
- rr. oesophagei
- rr. thymici
- rr. tracheales
- rr. glandulares
- a. cervicalis ascendens
- a. cervicalis spf.
- a. suprascapularis

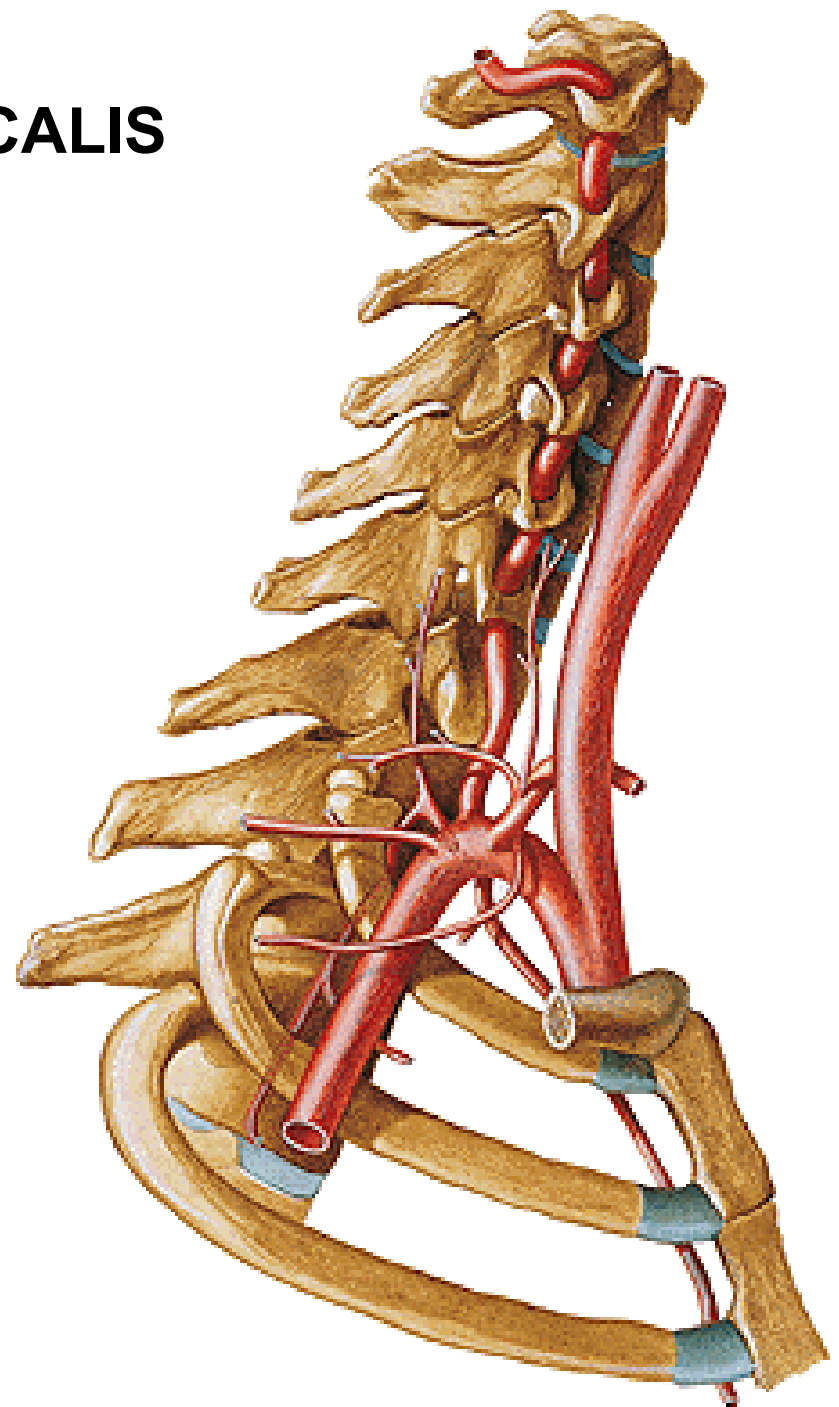


## A. suprascapularis



# TRUNCUS COSTOCERVICALIS

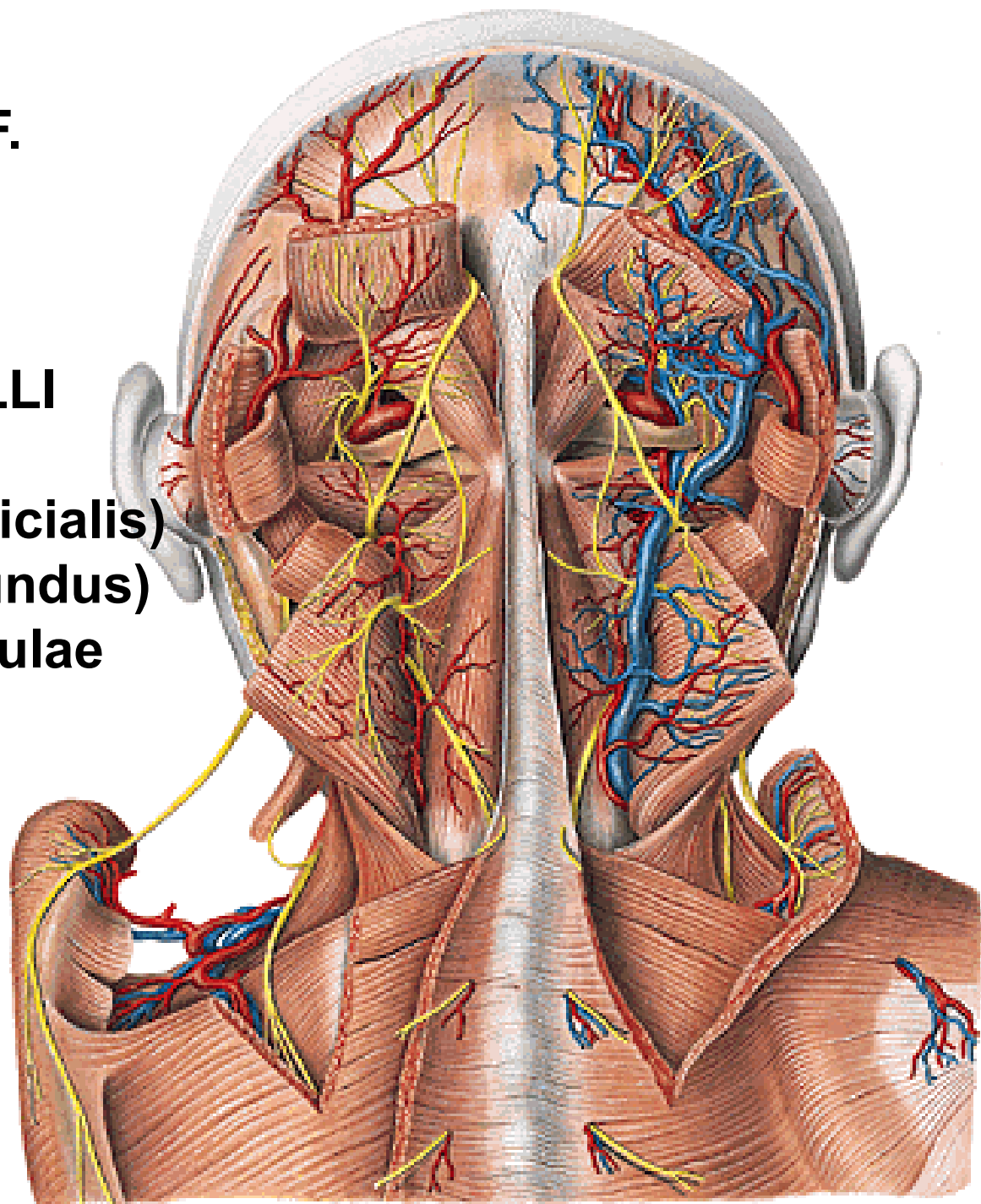
- a. cervicalis prof.
- a. intercostalis suprema



## A. CERVICALIS PROF.

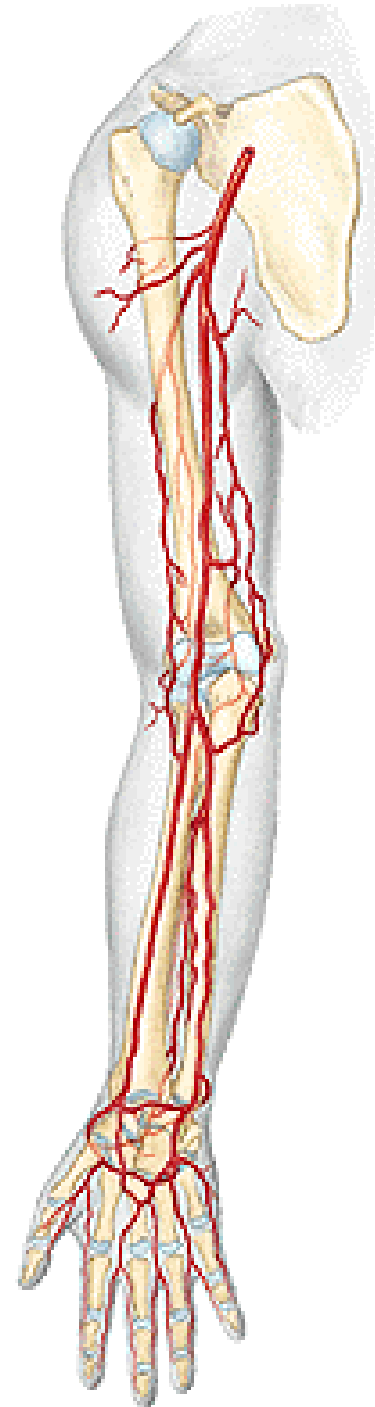
## A. TRANSVERSA COLLI

- r. ascendens (superficialis)
- r. descendens (profundus)  
= a. dorsalis scapulae



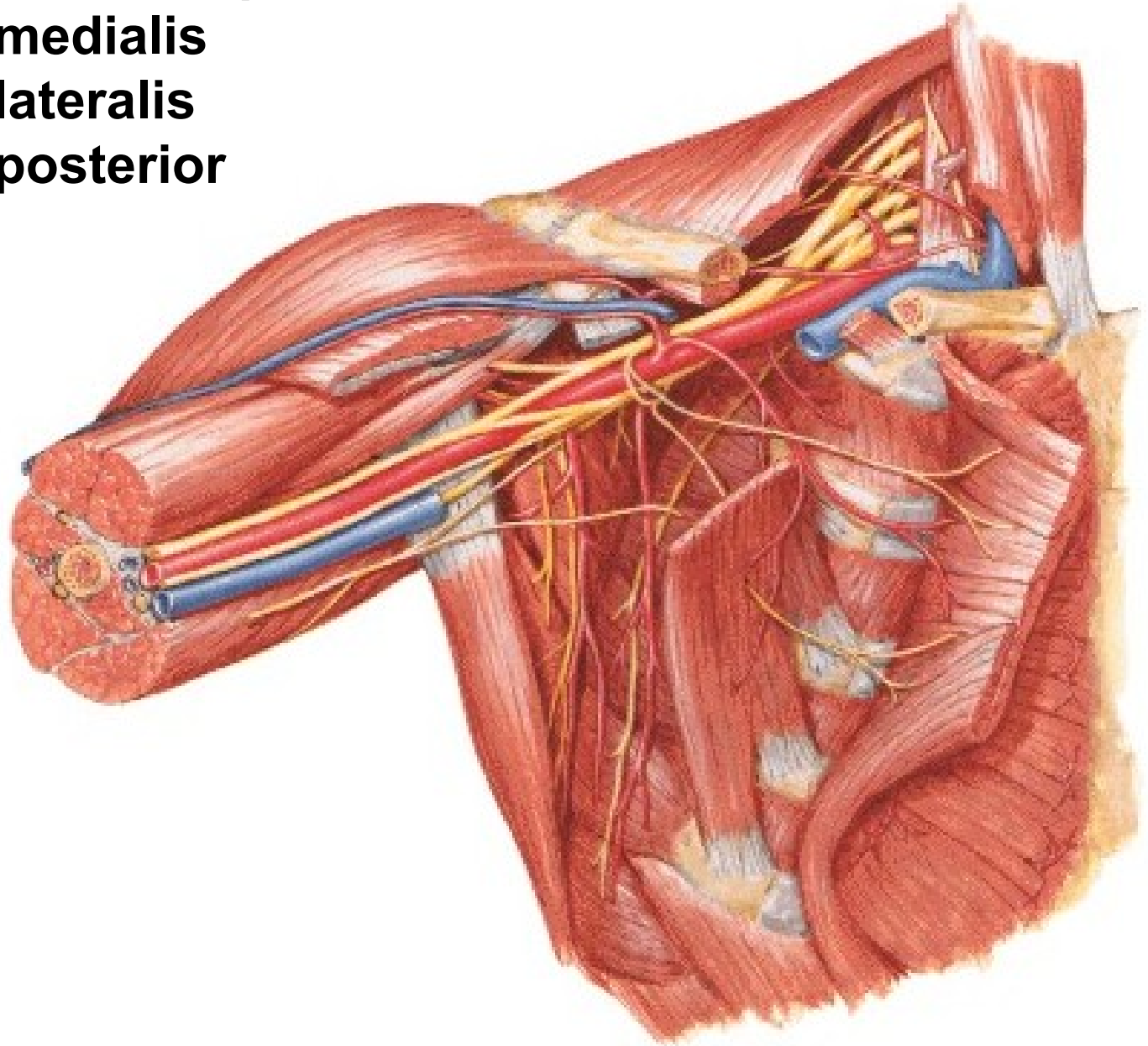


**A. axillaris – a. brachialis –  
a. radialis + a. ulnaris**



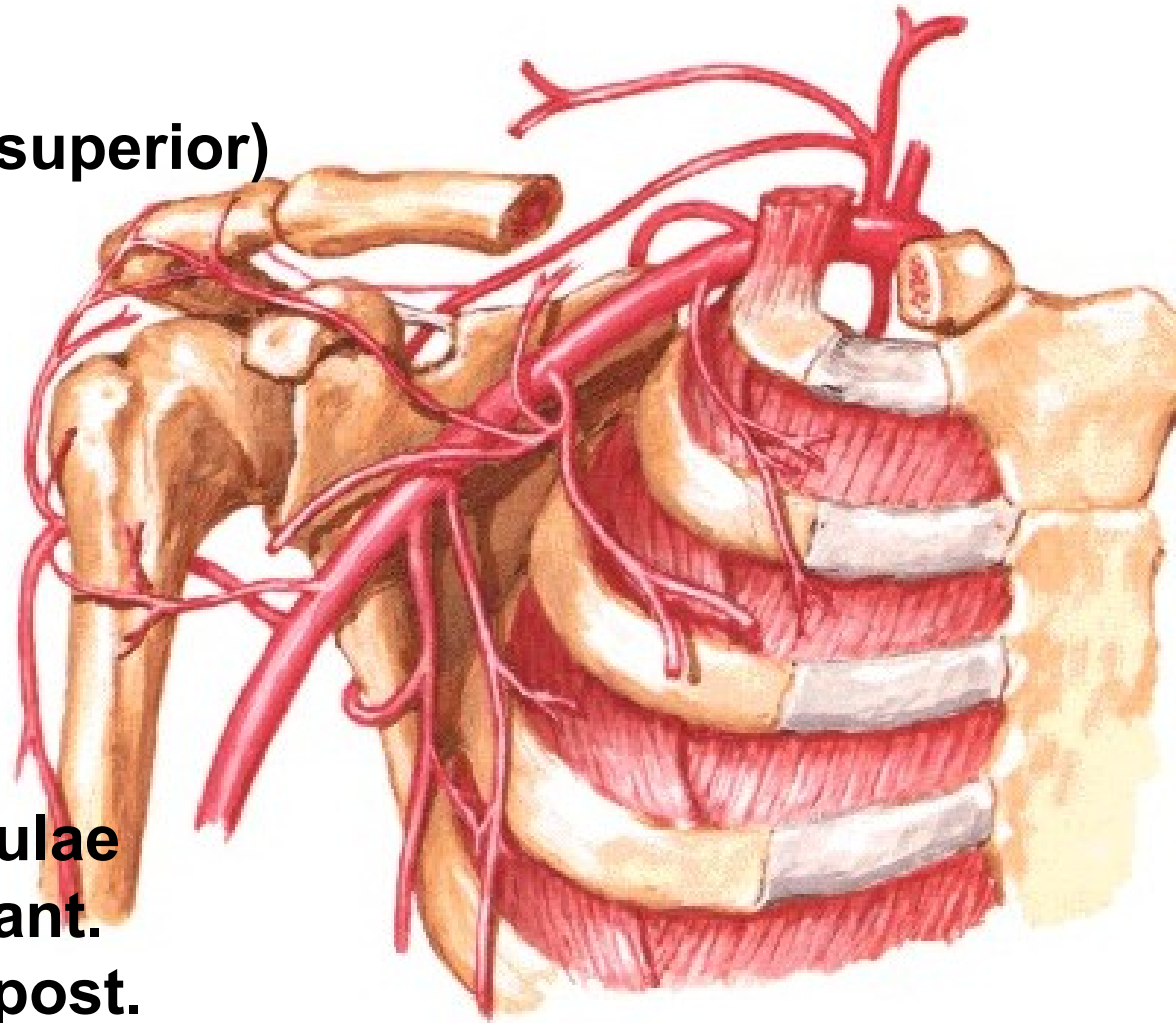
## **Pars infraclavicularis plexus brachialis**

- fasciculus medialis**
- fasciculus lateralis**
- fasciculus posterior**



# A. AXILLARIS

- rr. subscapulares
- a. thoracica suprema (superior)
- a. thoracoacromialis
  - r. deltoideus
  - r. acromialis
  - rr. pectorales
- a. thoracica lateralis
  - rr. mammarii lat.
- a. subscapularis
  - a. thoracodorsalis
  - a. circumflexa scapulae
- a. circumflexa humeri ant.
- a. circumflexa humeri post.

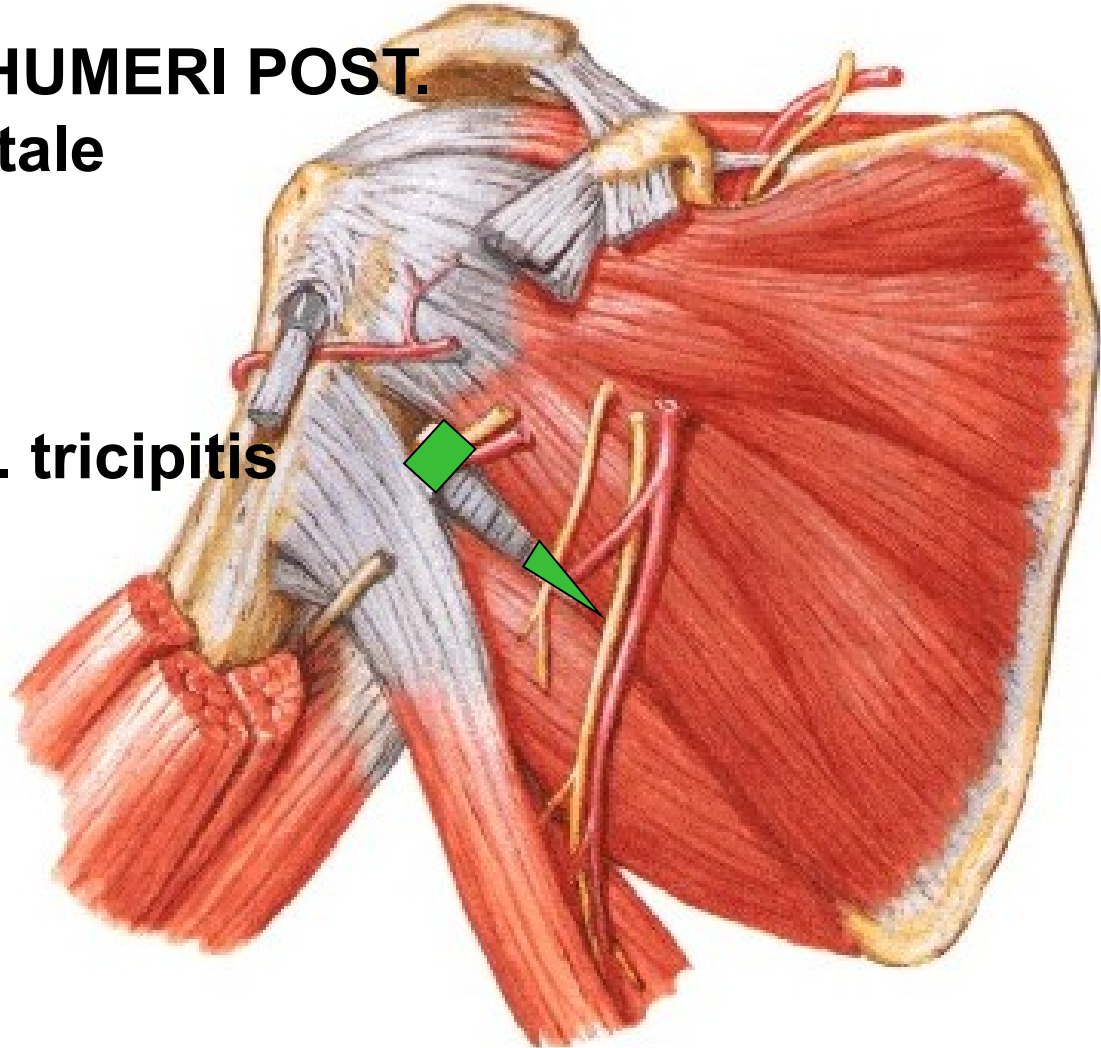


## **A. CIRCUMFLEXA SCAPULAE**

- foramen omotricipitale (trilaterum):** m. teres minor  
m. teres major  
caput longum m. tricipitis

## **A. CIRCUMFLEXA HUMERI POST.**

- for. humerotricipitale (quadrilaterum):**  
m. teres minor  
m. teres major  
caput longum m. tricipitis  
humerus

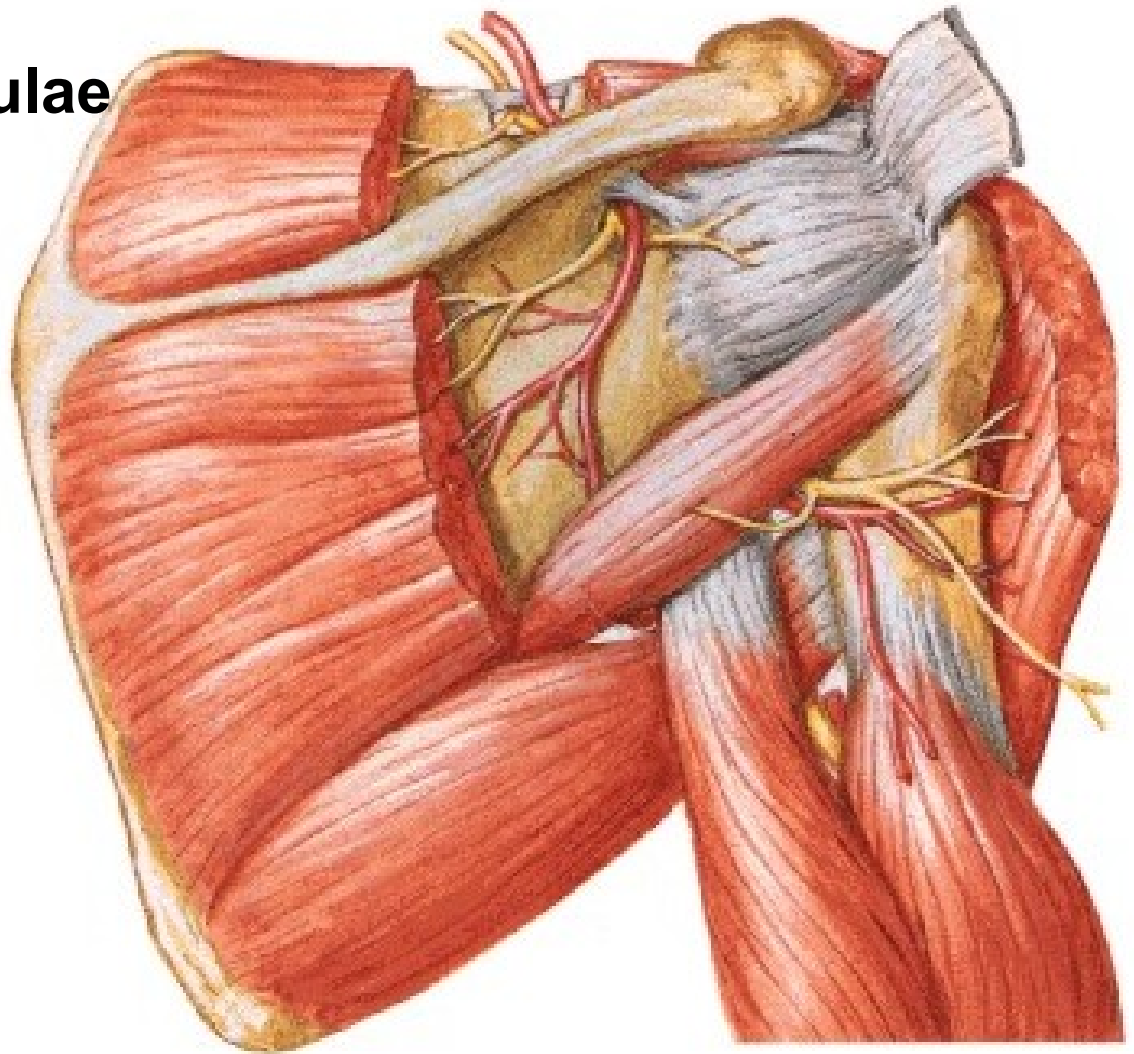


## **Fossa infraspinata:**

**anastomosis**

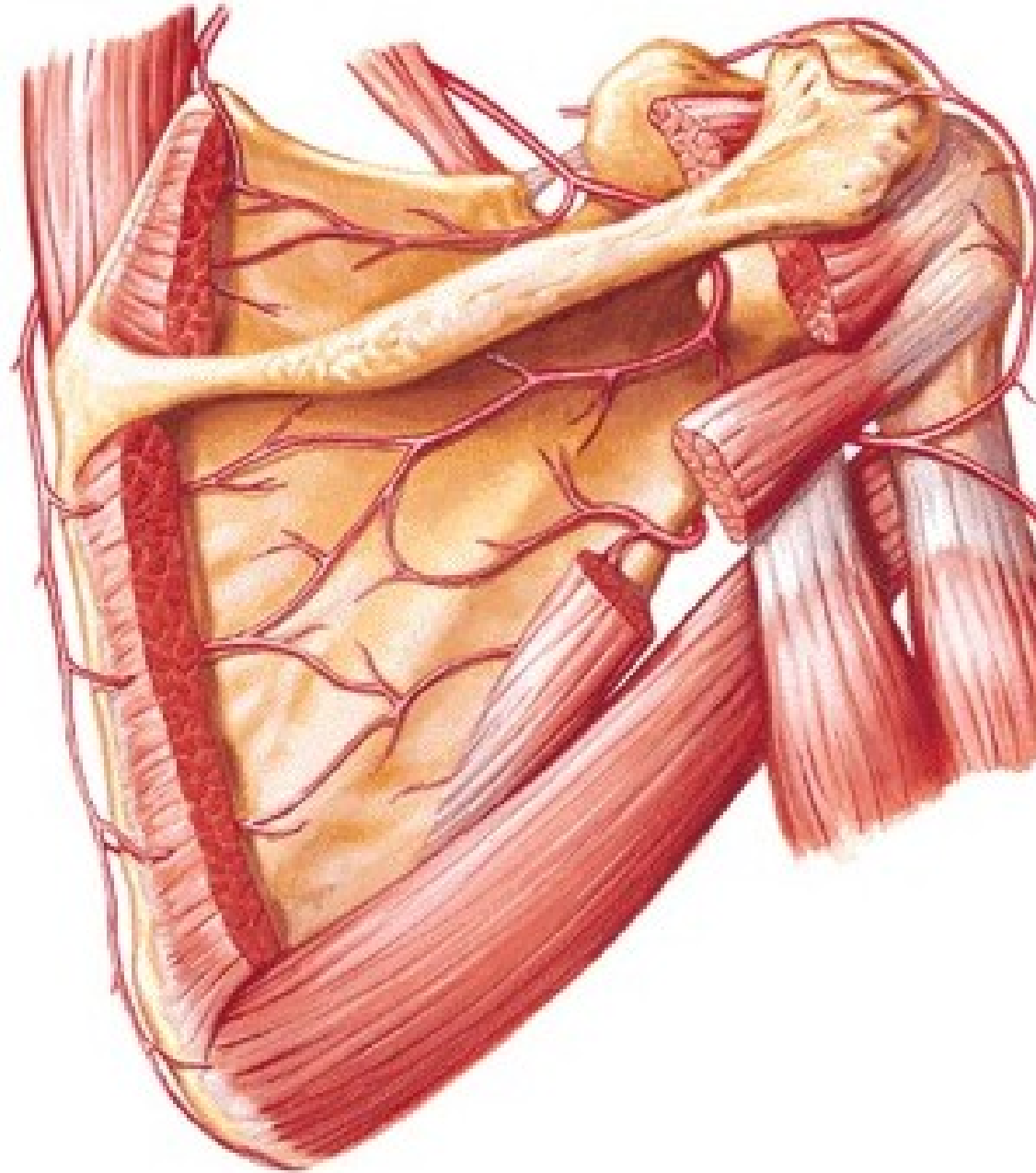
**a. suprascapularis**

**+ a. circumflexa scapulae**



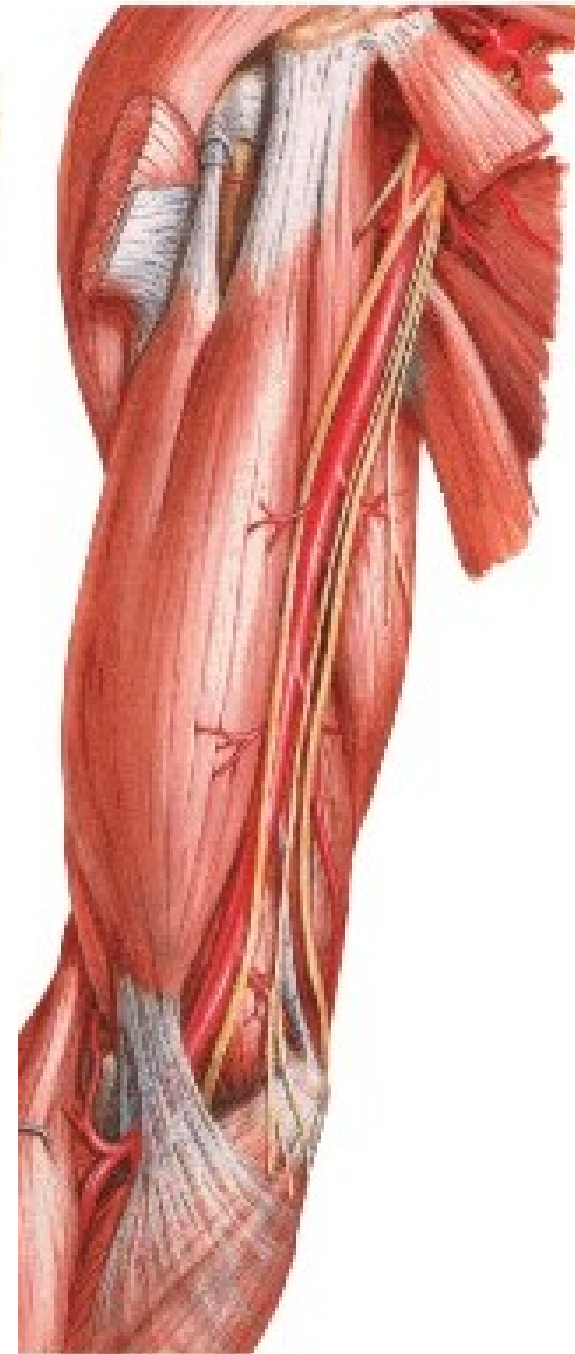
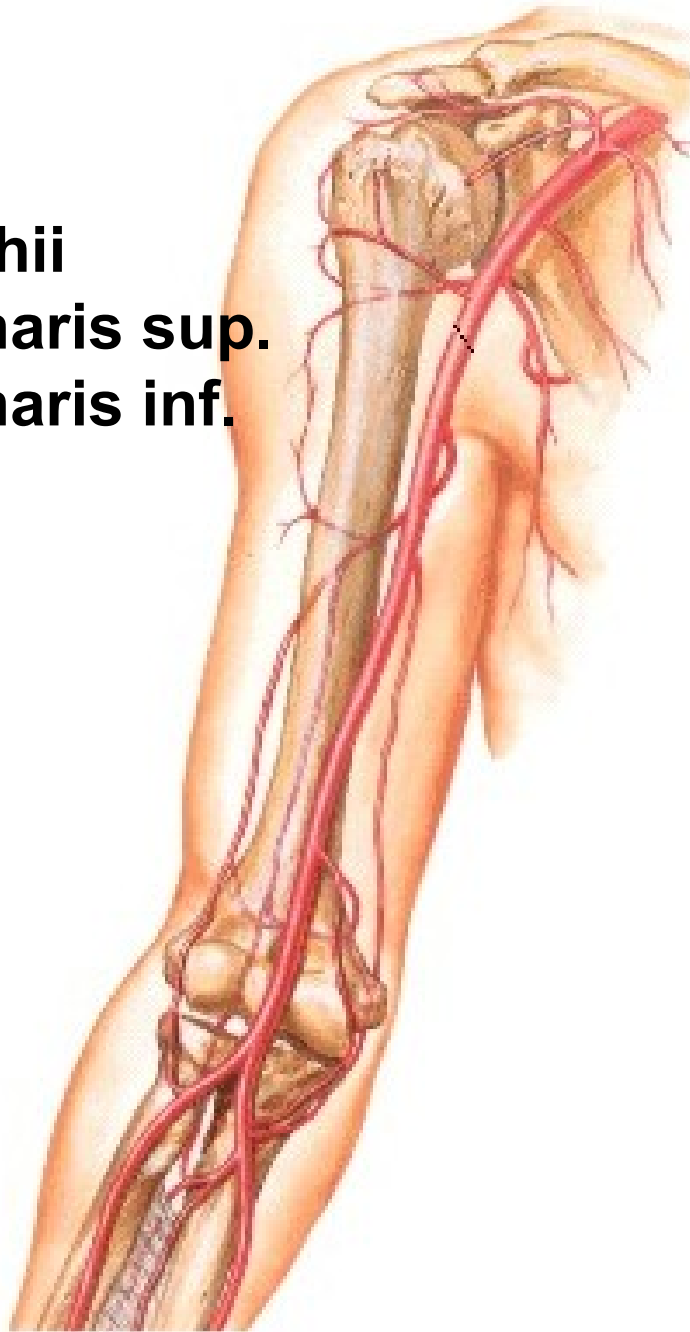
# ARTERIAL ANASTOMOSES AROUND THE SCAPULA

- A. transversa colli**
- A. suprascapularis**
- A. circumflexa scapulae**
- Aa. intercostales**



## A. BRACHIALIS

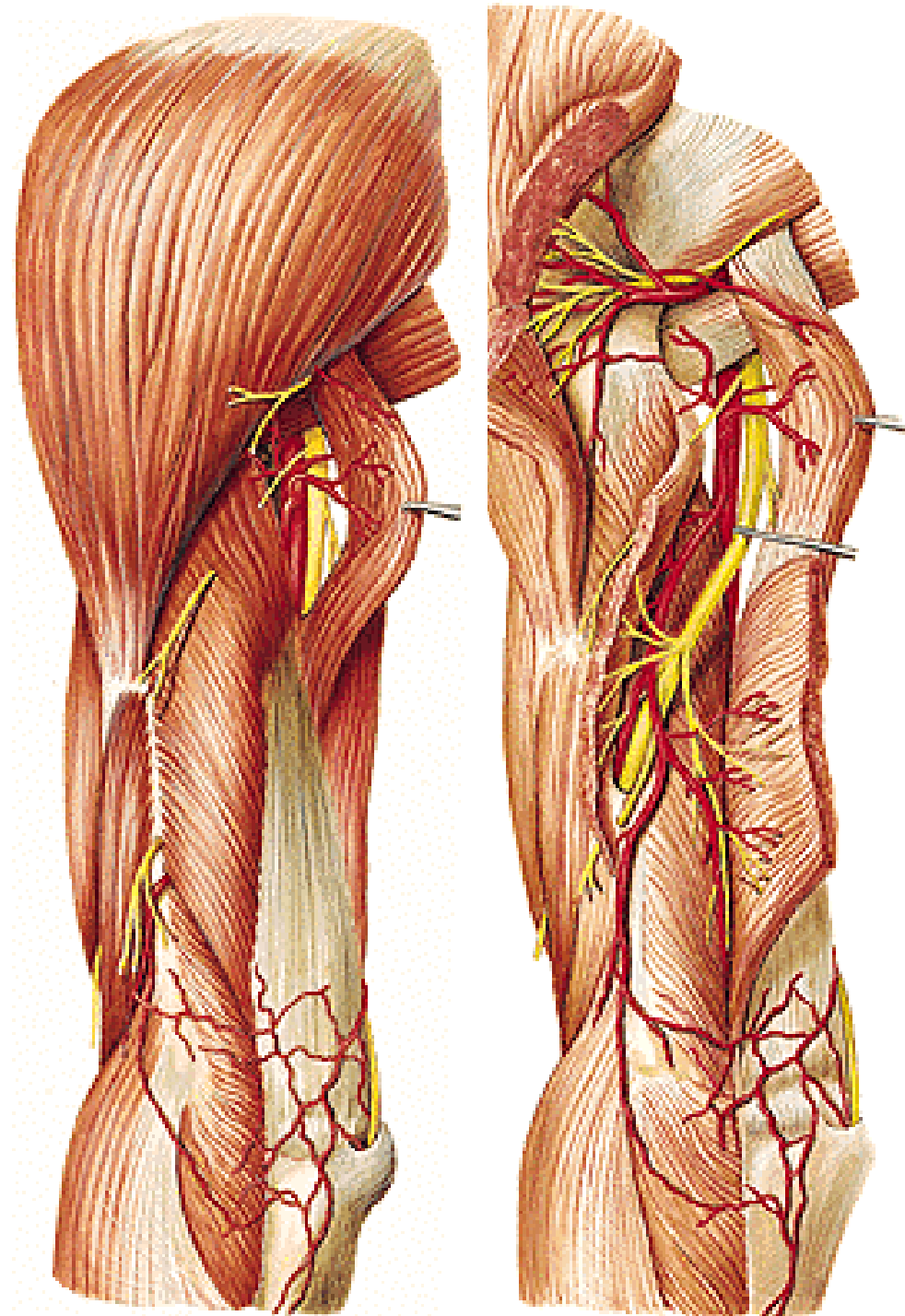
- a. profunda brachii
- a. collateralis ulnaris sup.
- a. collateralis ulnaris inf.
- a. radialis
- a. ulnaris



## **A. PROFUNDA BRACHII**

- r. deltoideus
- a. nutricia humeri
- a. collateralis media
- a. collateralis radialis

**Rete articulare cubiti**

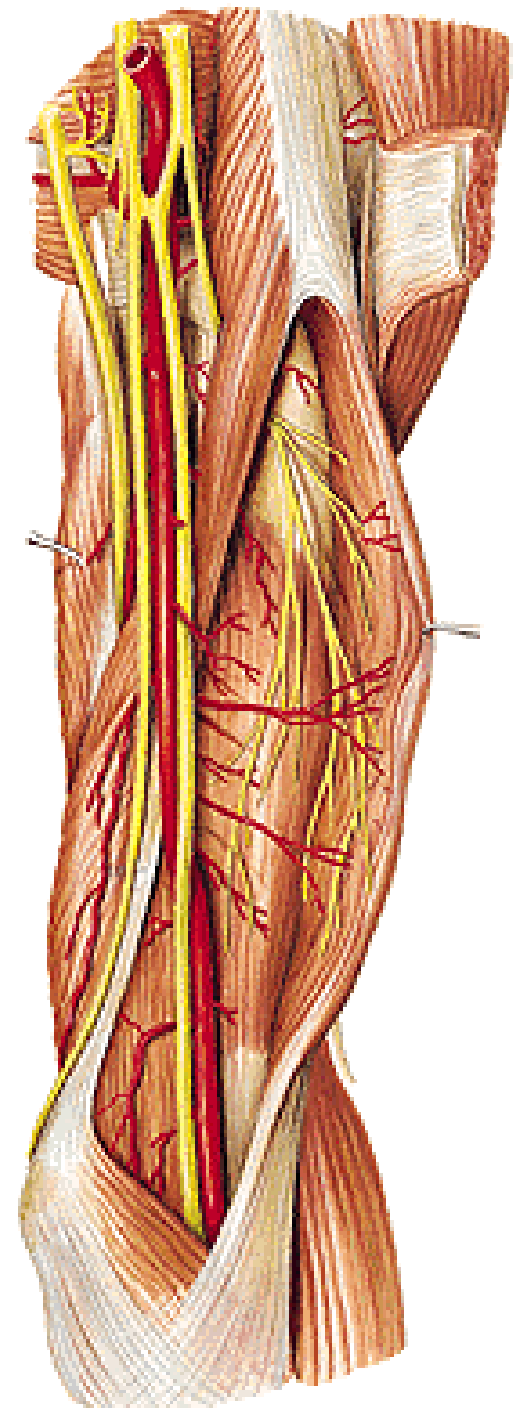




**A. collateralis ulnaris sup.**

**A. collateralis ulnaris inf.**

**Rete articulare cubiti**



## **Sulcus bicipitalis medialis**

- a. brachialis
- vv. brachiales
- n. medianus
- v. basilica
- n. cutaneus antebrachii med.
- a. collateralis ulnaris sup.
- vv. coll. ulnares sup.
- n. ulnaris

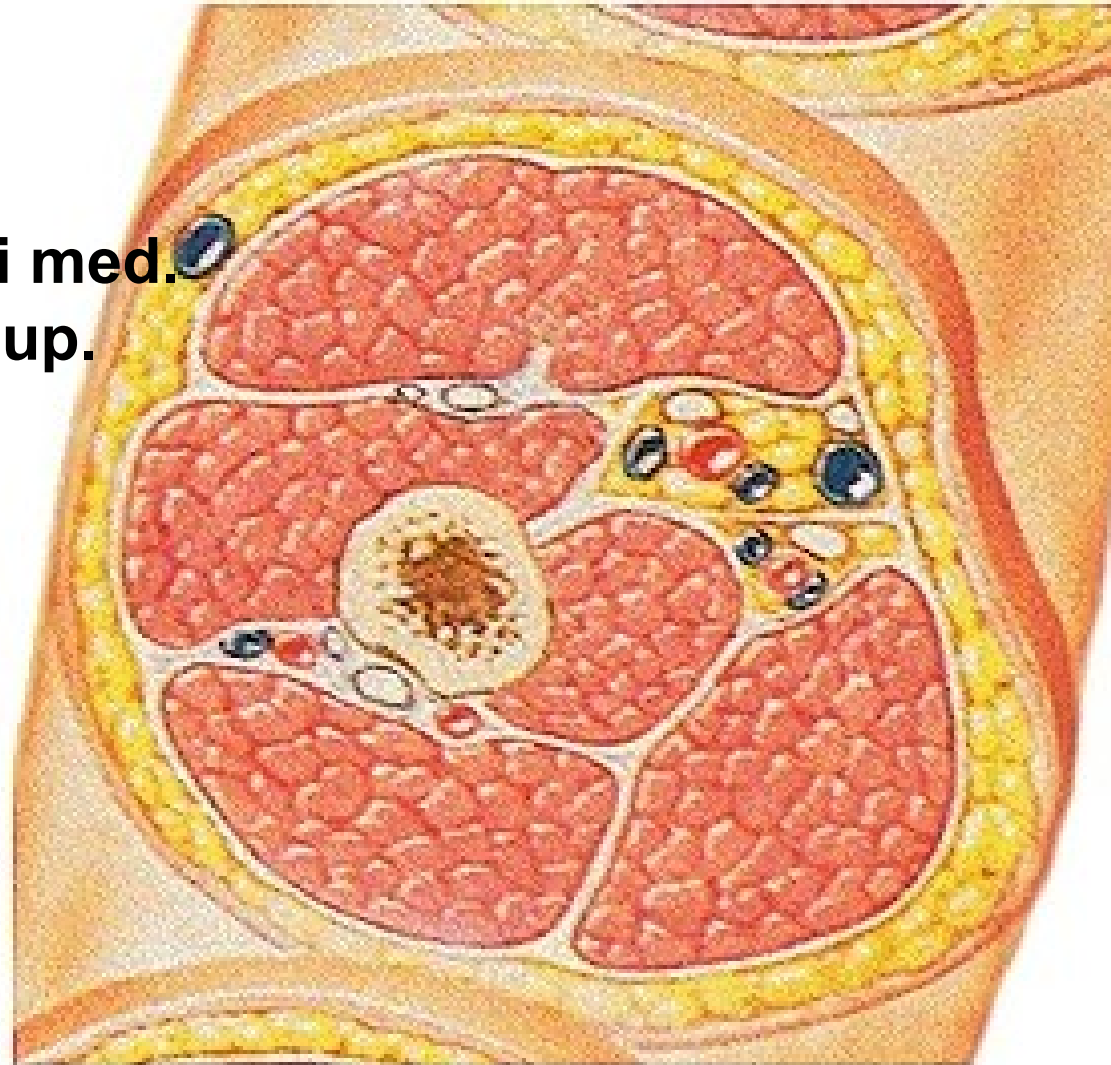
## **N. musculocutaneus**

### **N. radialis**

**A. profunda brachii**

**V. profunda brachii**

**A. coll. media**



Illustrations and photographs were copied from:  
**Atlas der Anatomie des Menschen/Sobotta.**  
**Putz,R., und Pabst,R. 20. Auflage. München:**  
**Urban & Schwarzenberg, 1993**