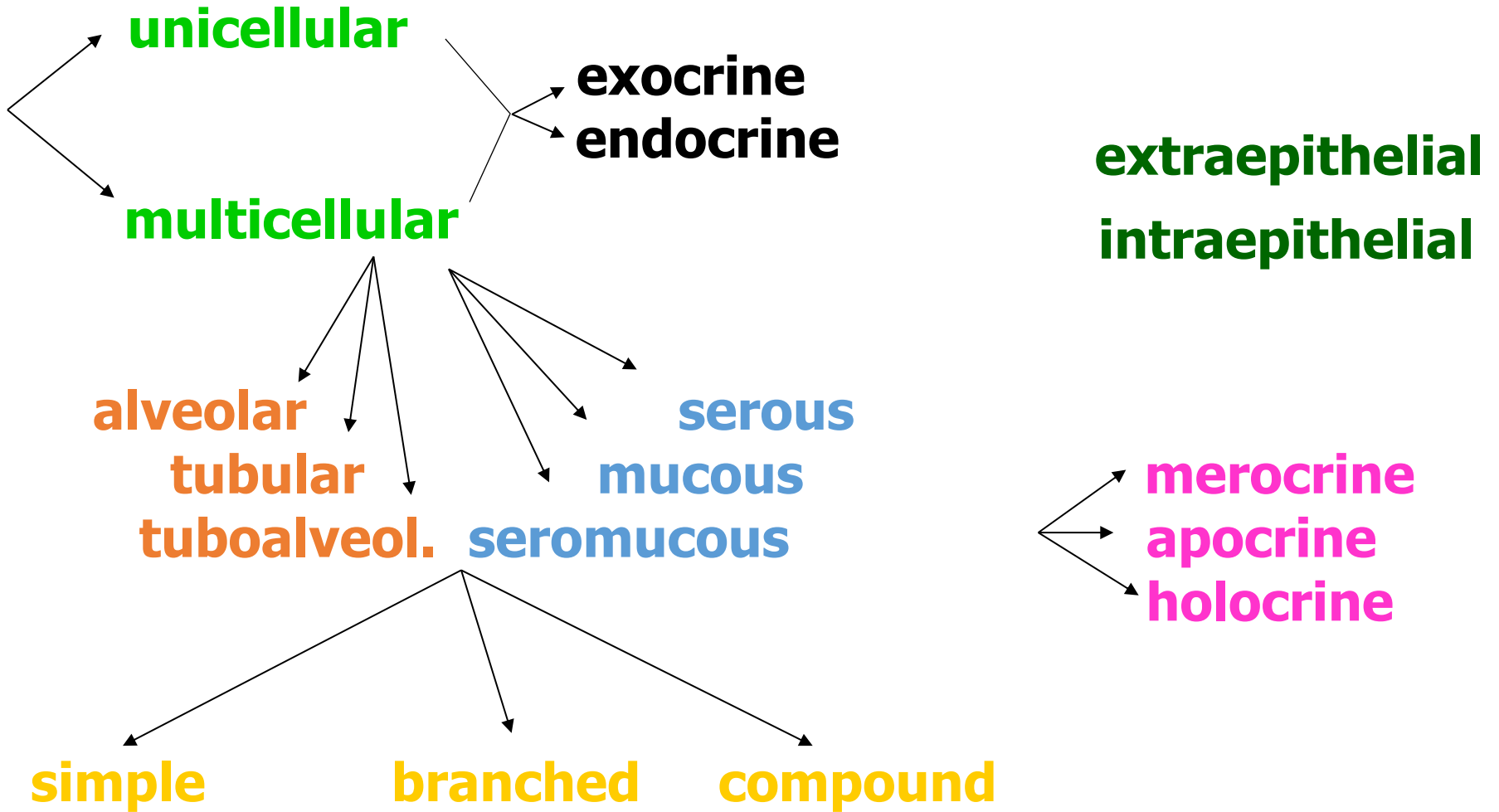




Glandular epithelium

- Unicellular
- Multicellular

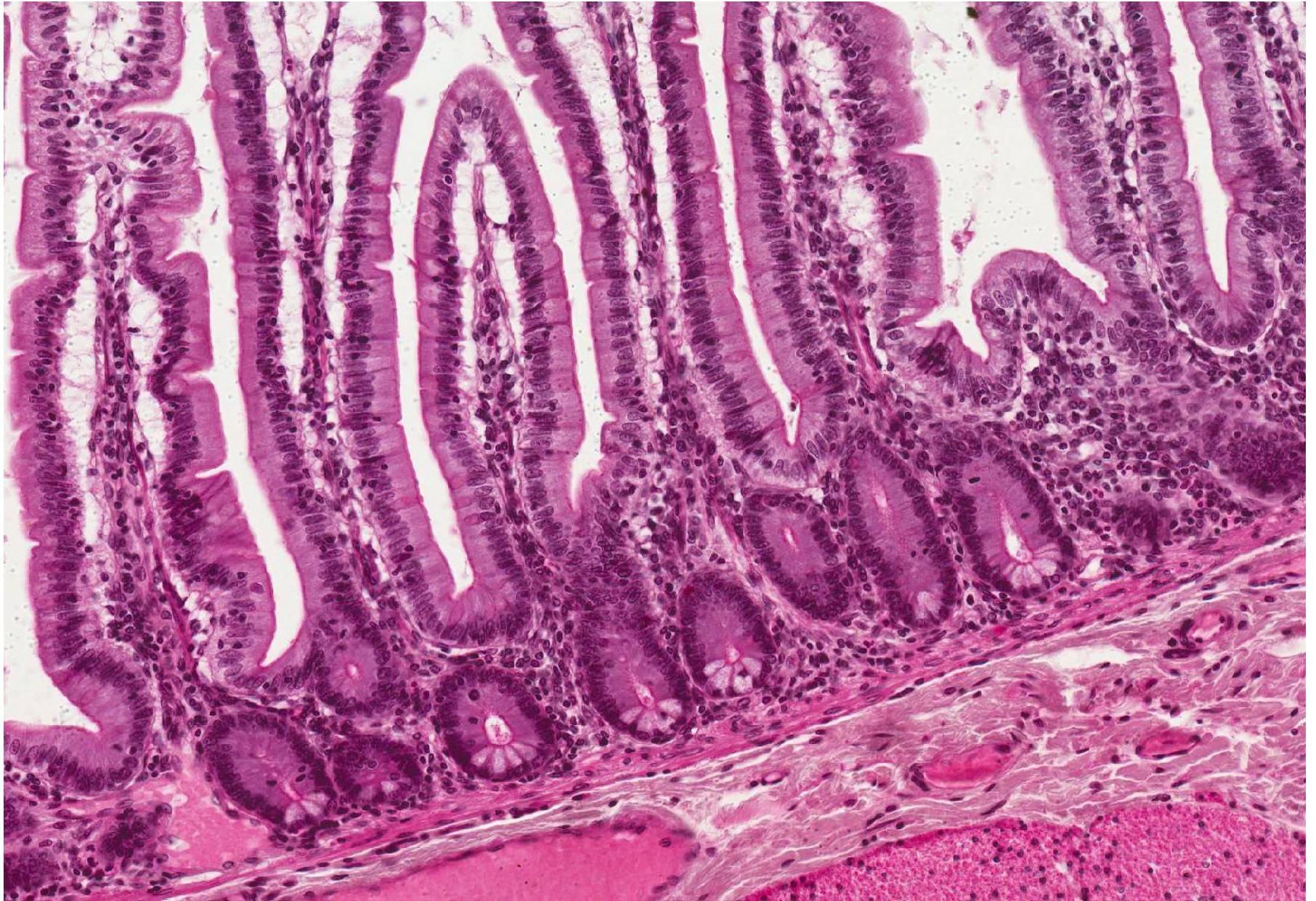
Classification of glands



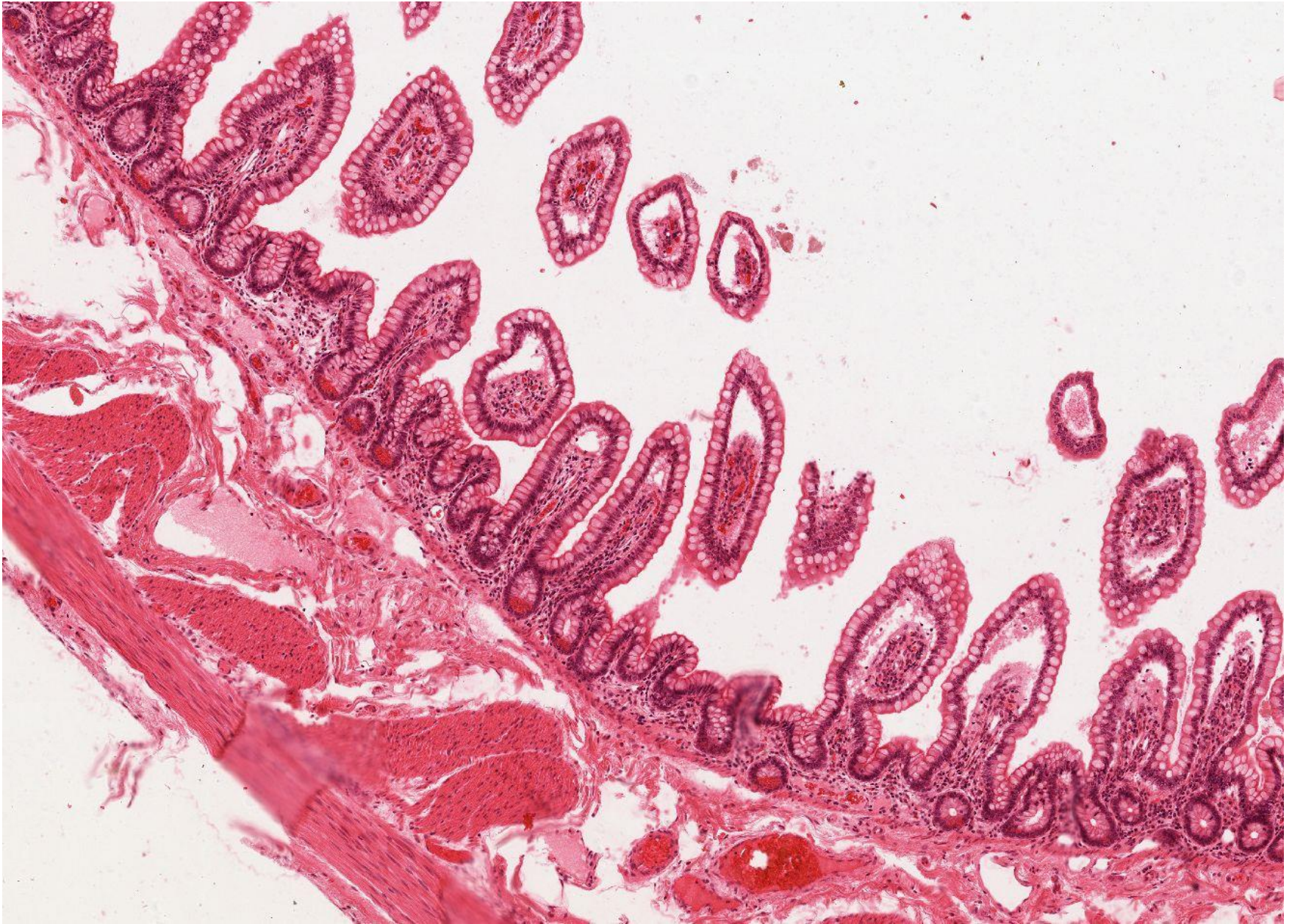
Unicellular glands intraepithelial – goblet cells (respiratory tract)



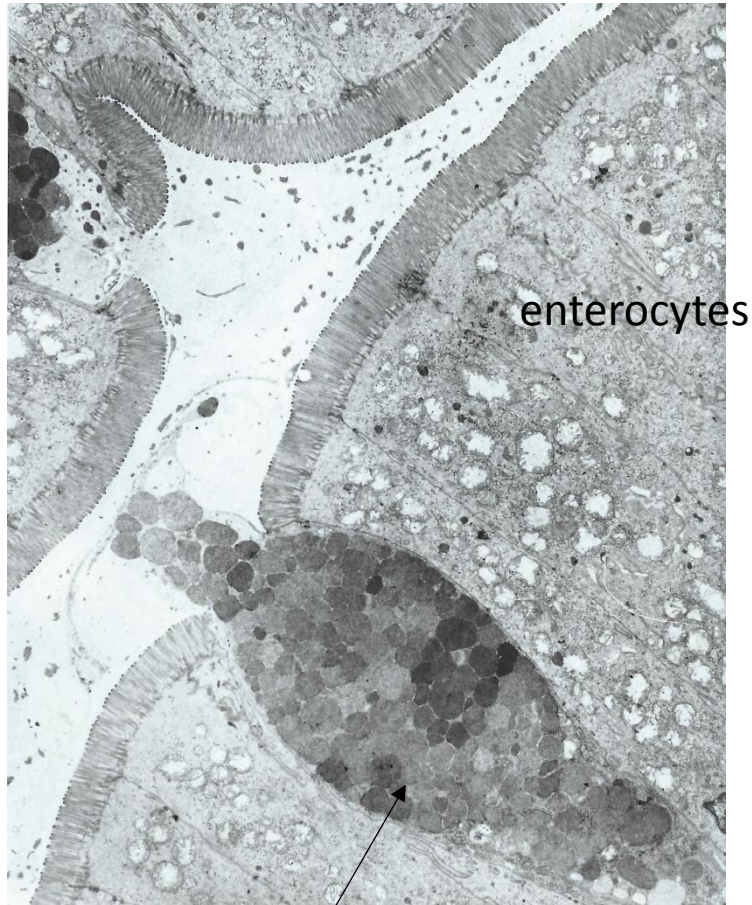
Unicellular glands intraepithelial (goblet cells and Paneth cells)
– Intestinum tenue (jejunum)



Unicellular glands intraepithelial (goblet cells and Paneth cells)
– Intestinum tenue (ileum)

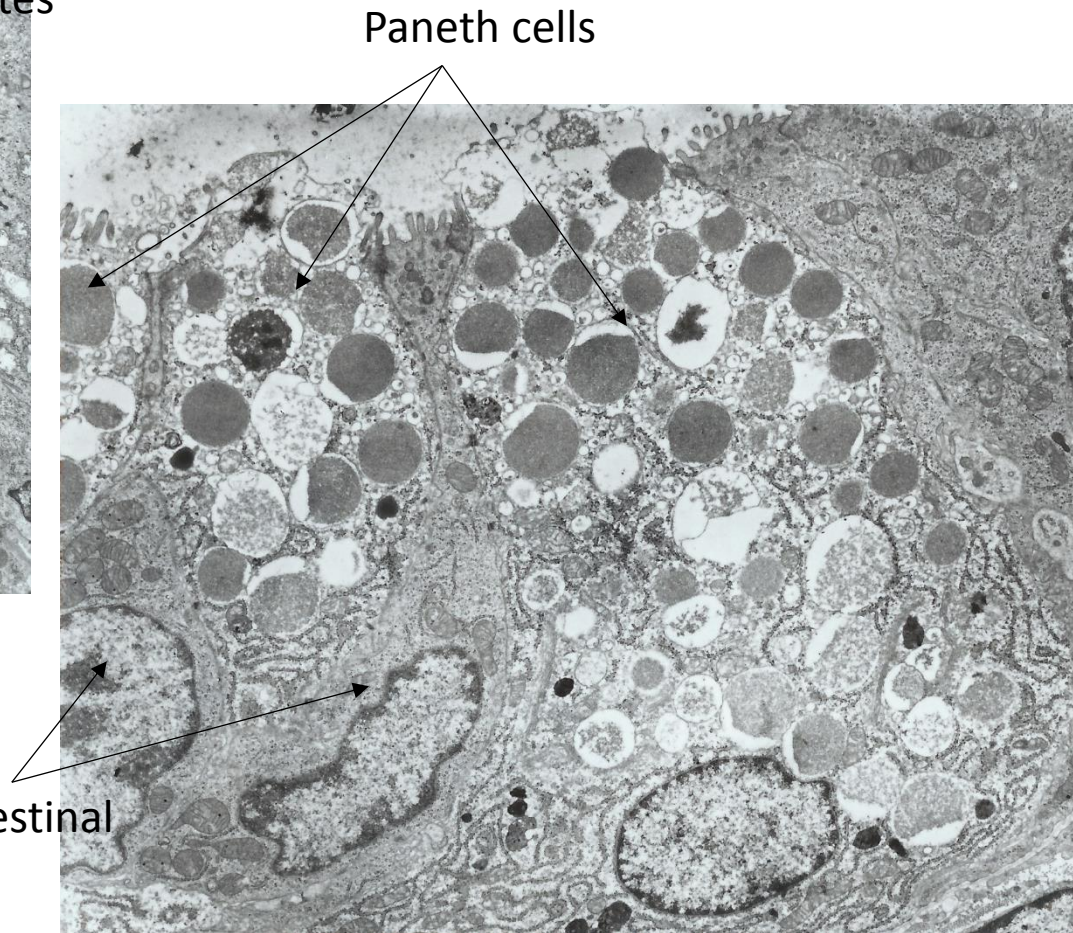


Goblet cells and Paneth cells - Intestinum tenue (TEM)



goblet cell

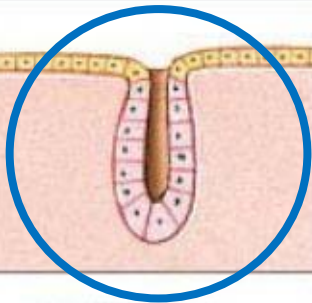
enterocytes



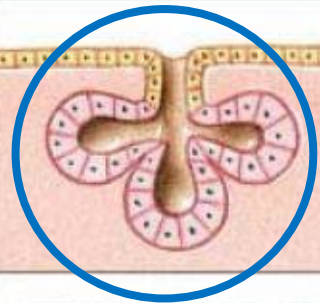
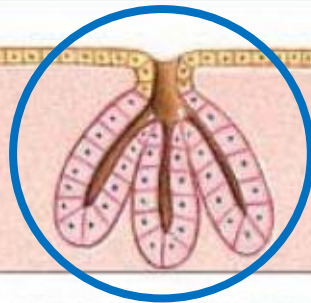
Paneth cells

stem cells of intestinal
epithelium

MULTICELLULAR SIMPLE GLANDS



Duct



Simple tubular

Examples:
Intestinal glands
(crypts of
Lieberkühn)

Simple coiled tubular

Examples:
Merocrine sweat
glands

Simple branched tubular

Examples:
Mucous glands of
esophagus, tongue,
duodenum

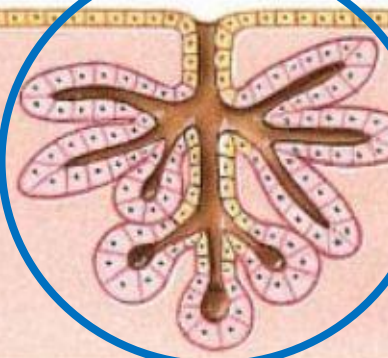
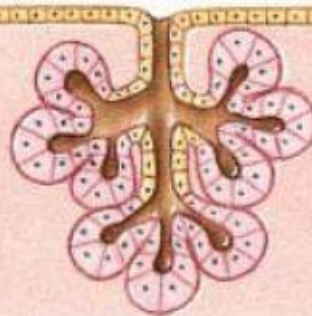
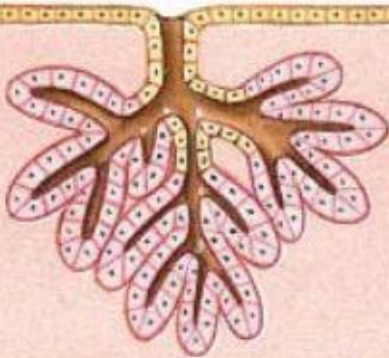
Simple alveolar (acinar)

Examples:
Not found in adult;
a stage in development
of simple branched
glands

Simple branched alveolar

Examples:
Sebaceous (oil)
glands

MULTICELLULAR COMPOUND GLANDS



Compound tubular

Examples:
Mucous glands (in mouth)
Gastric glands
Bulbourethral glands (in male
reproductive system)
Testes (seminiferous tubules)

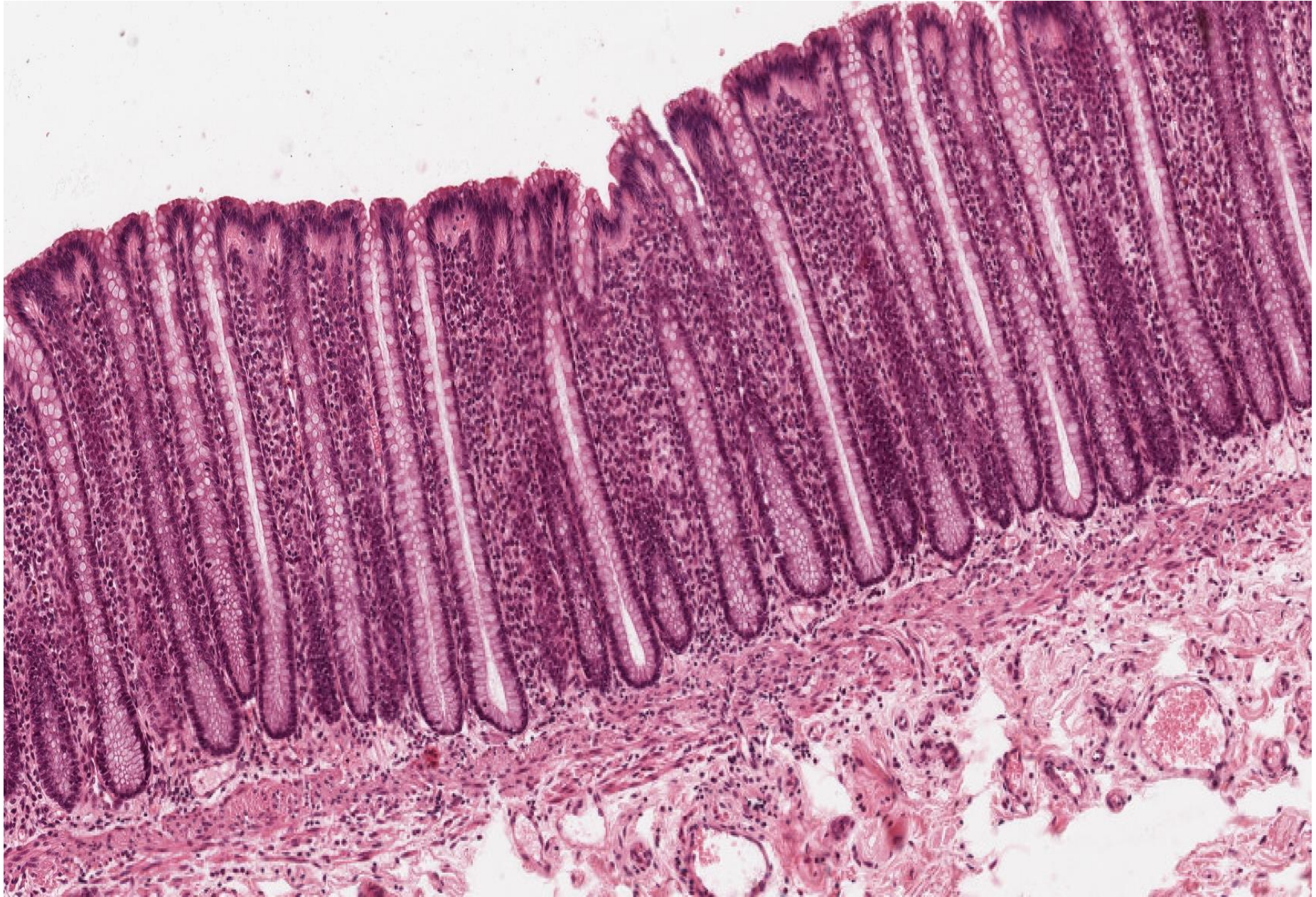
Compound alveolar (acinar)

Examples:
Mammary glands

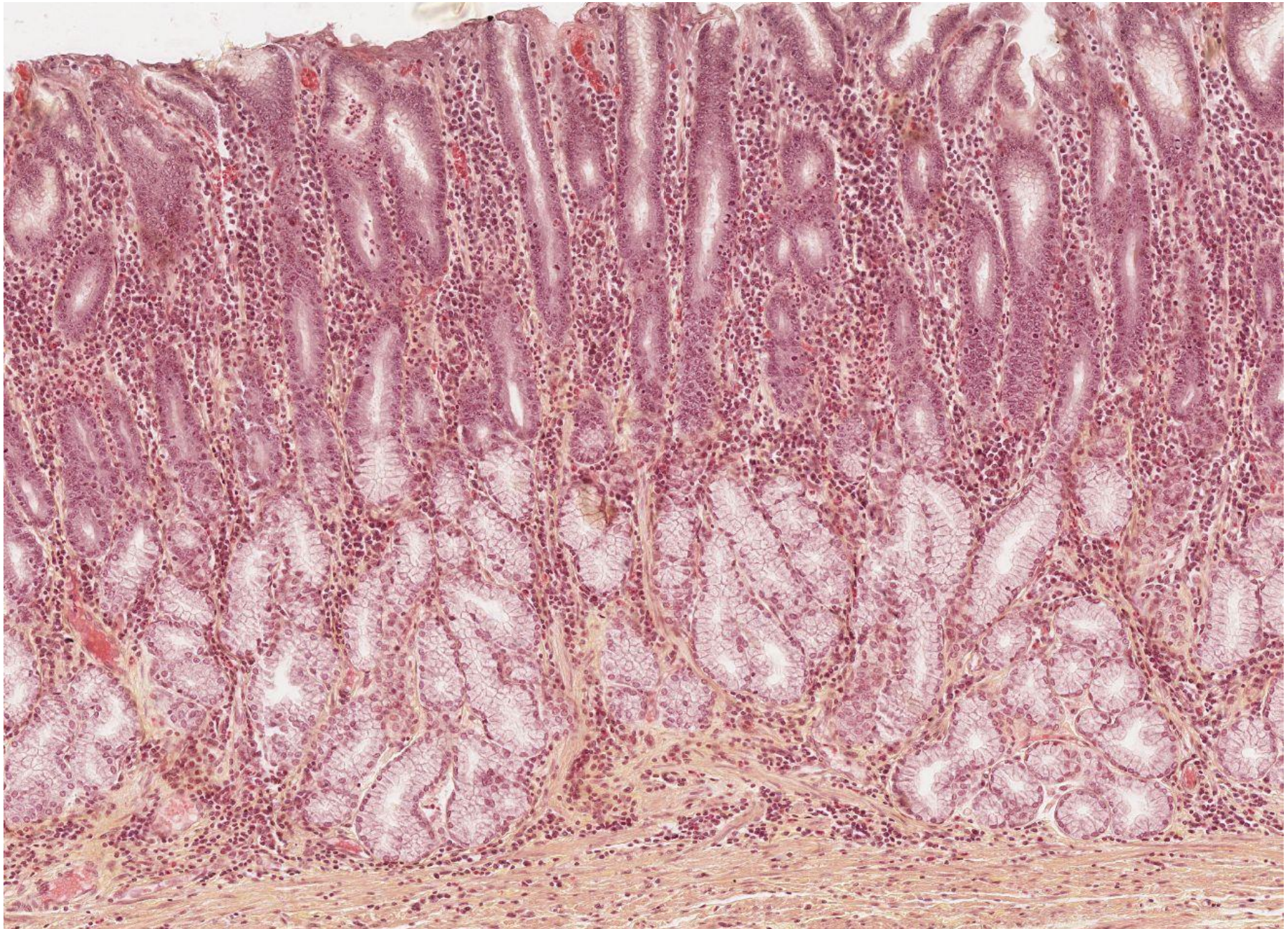
**Compound tubuloalveolar
(tubuloacinar)**

Examples:
Salivary glands
Glands of respiratory passages
Pancreas (excretory portion)

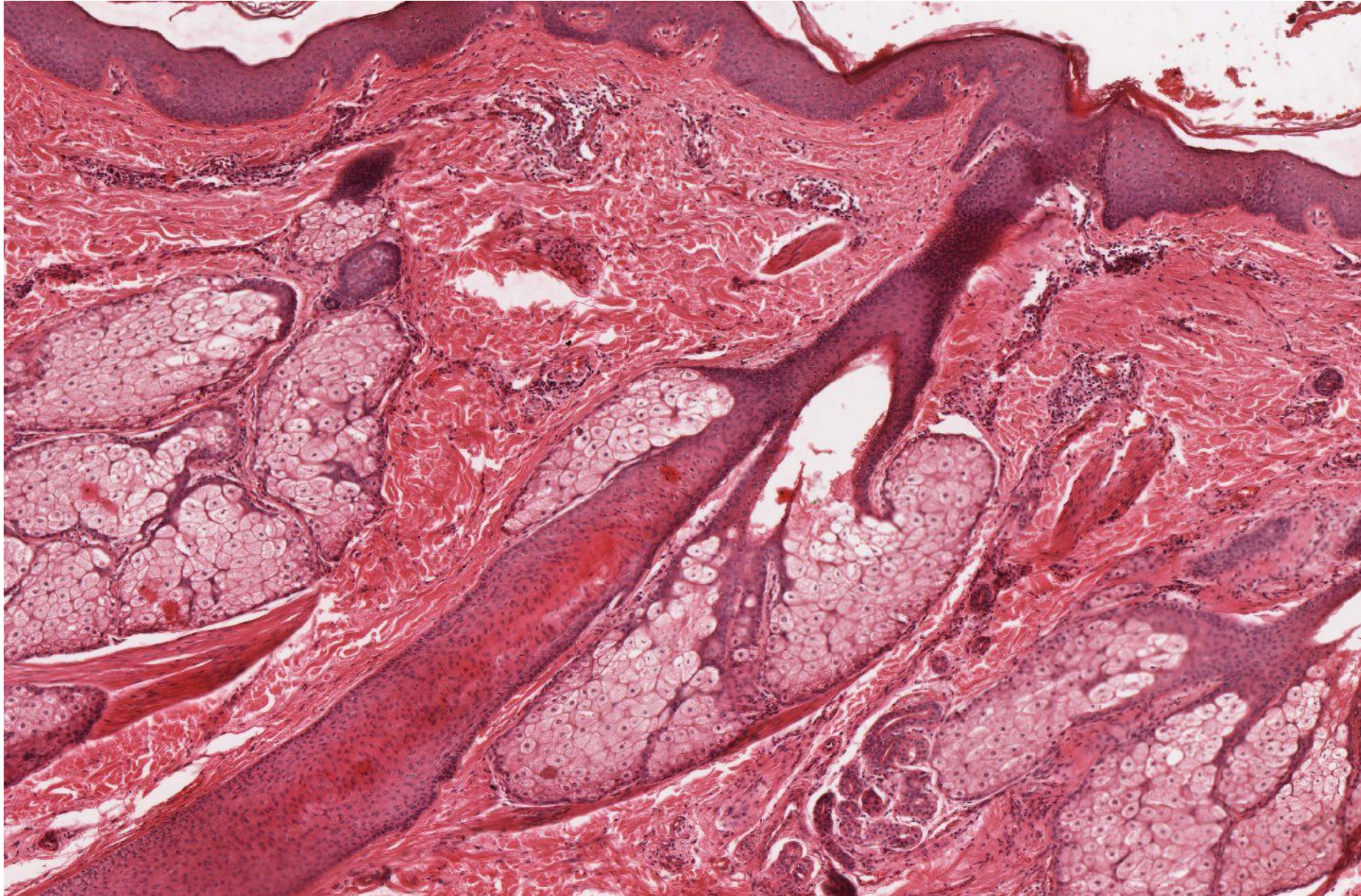
Simple tubular glands (crypts of Lieberkühn) with goblet cells
- Intestinum crassum



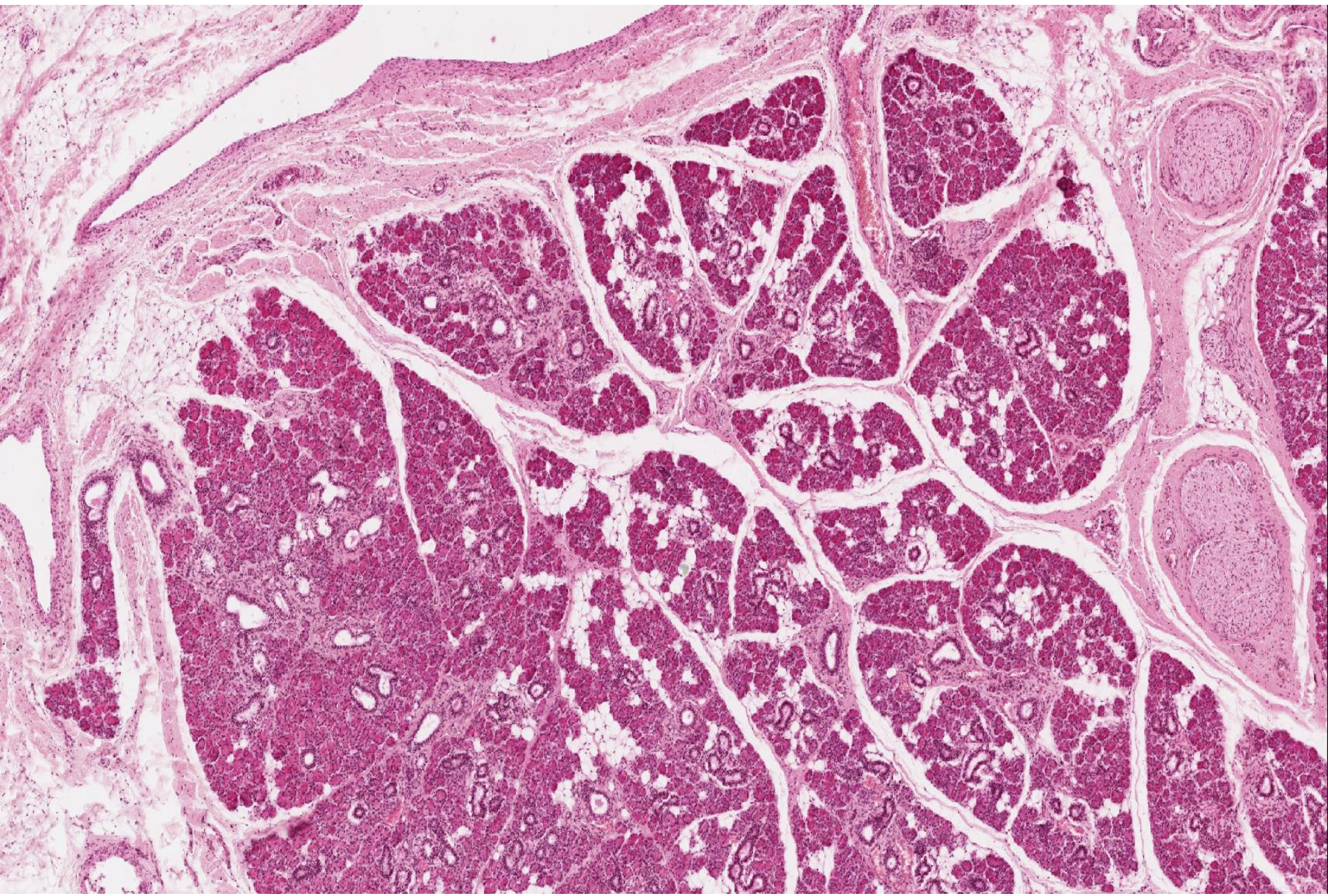
Branched tubular glands – Pylorus (HES)



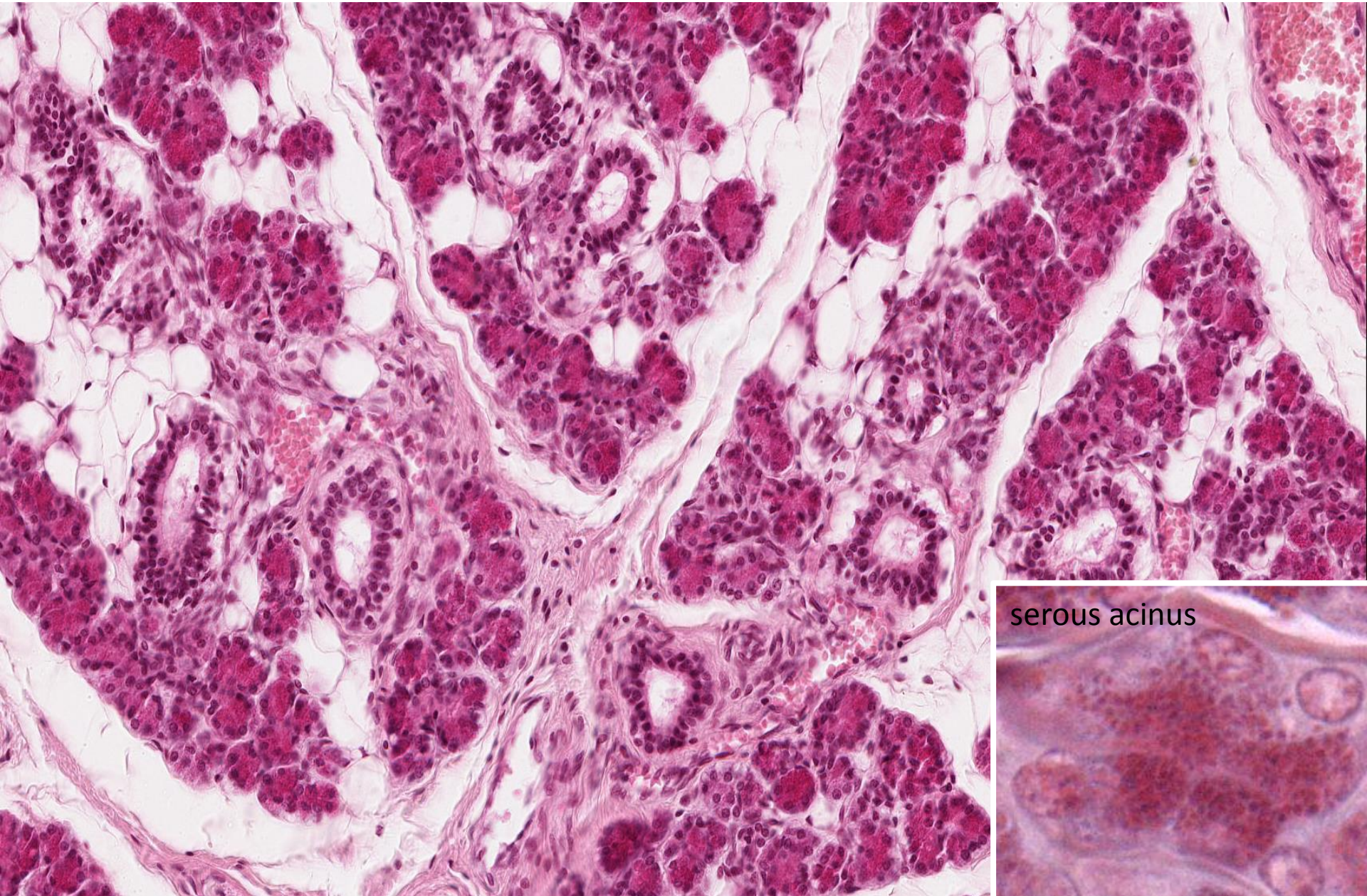
Branched alveolar (acinar) glands – sebaceous glands - Skin



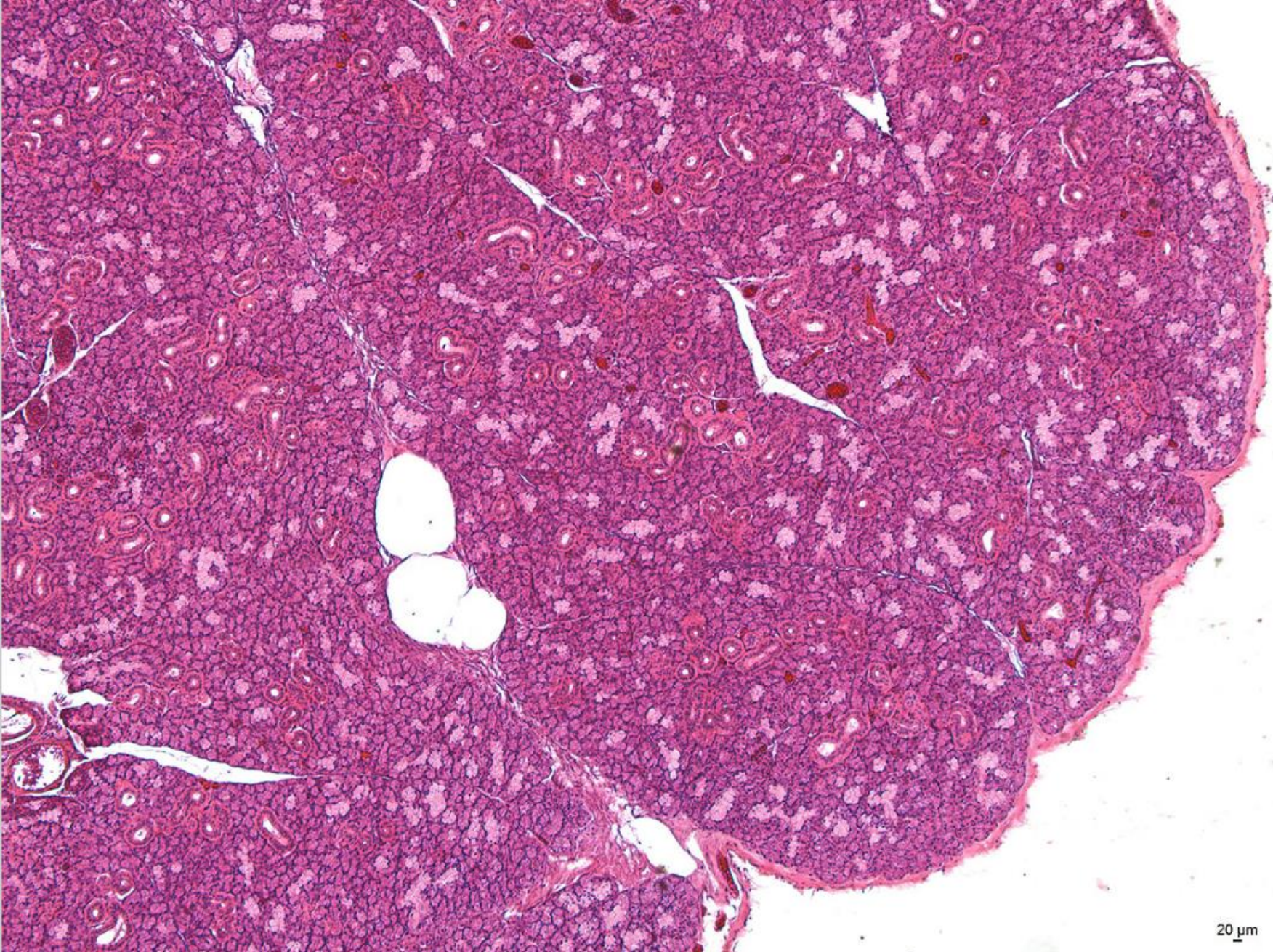
Compound alveolar (acinar) serous gland - Glandula parotis



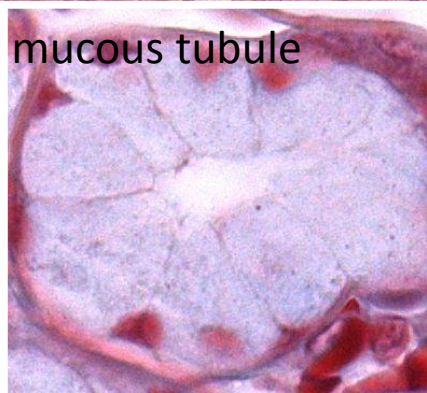
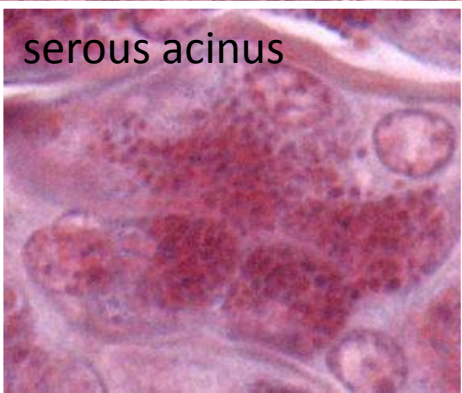
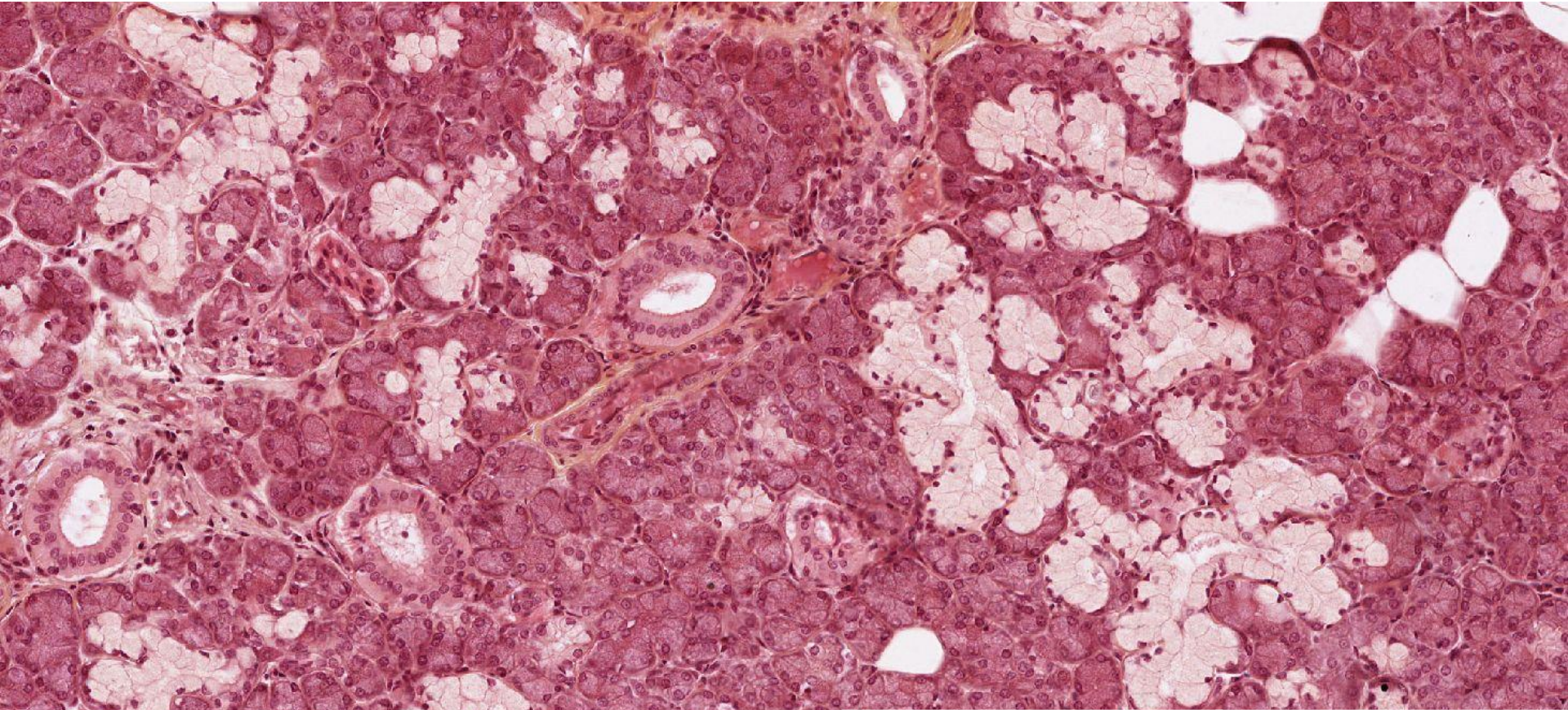
Compound alveolar (acinar) serous gland - Glandula parotis



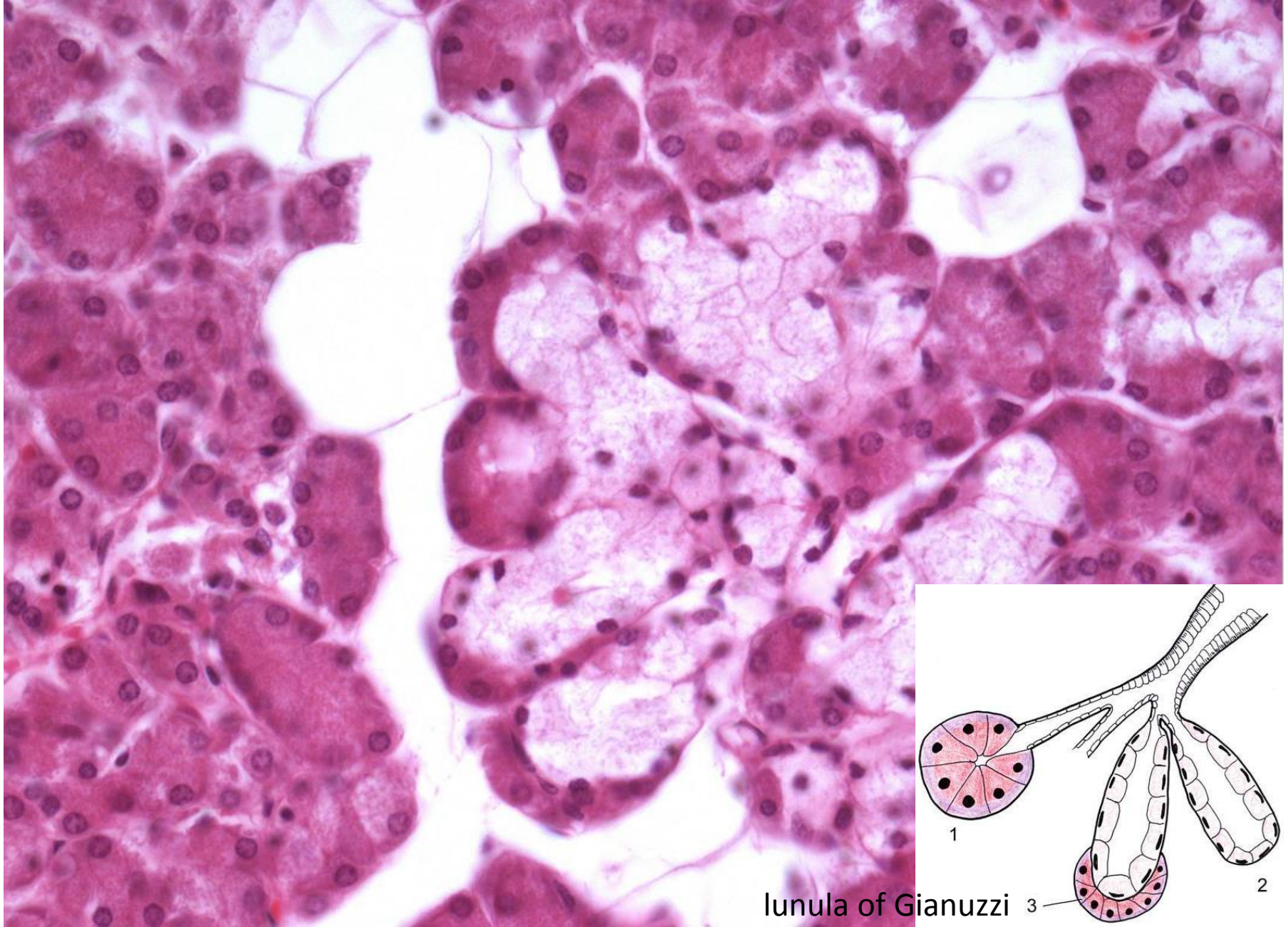
Compound tuboalveolar mixed gland - Glandula submandibularis



Compound tuboalveolar mixed gland - Glandula submandibularis

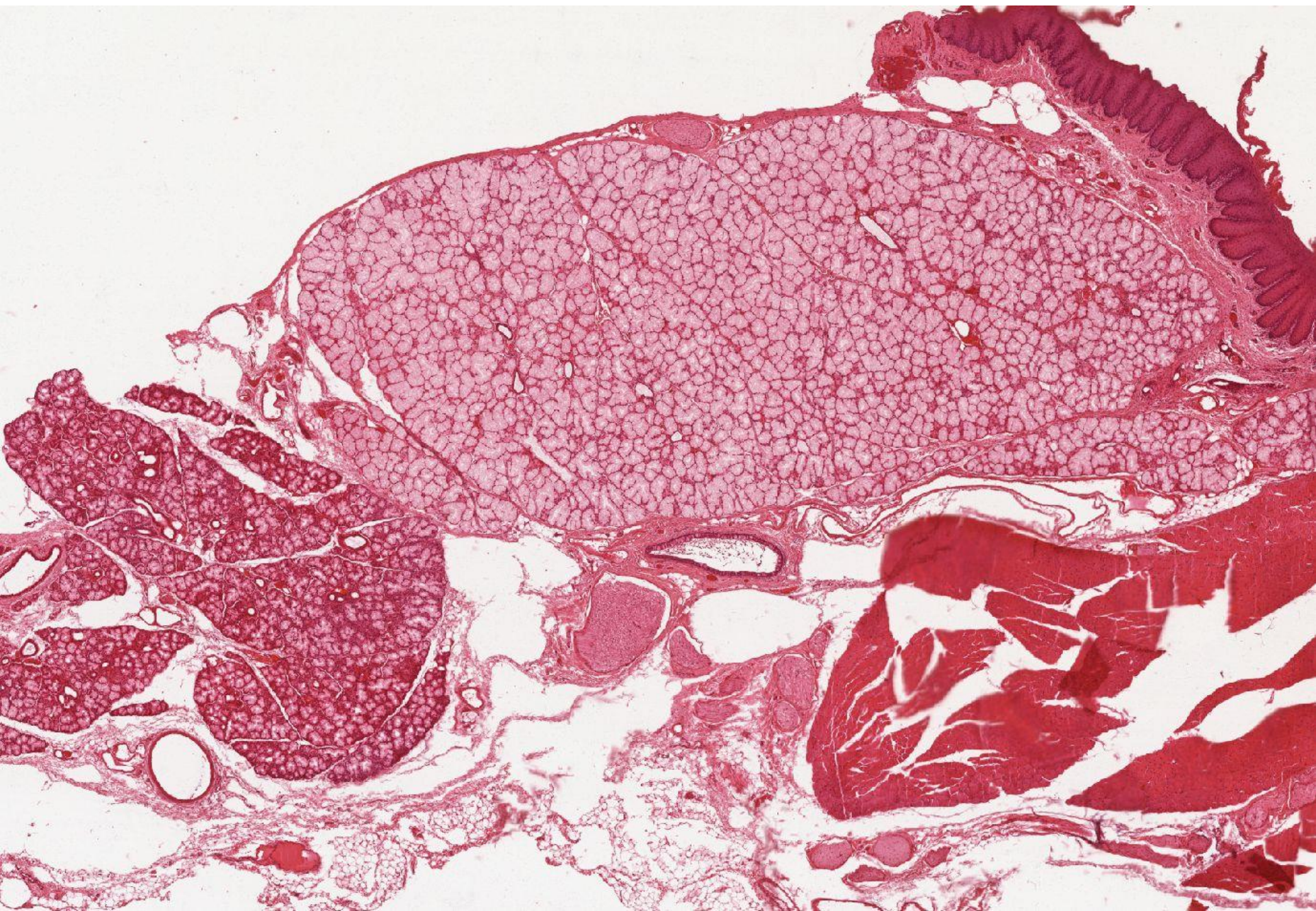


Compound tuboalveolar mixed gland - Glandula submandibularis



Lunula of Gianuzzi

Compound tuboalveolar mixed gland - Glandula sublingualis



Glandular epithelium

Slides:

Cells of Paneth and goblet cells (16. Intestinum tenue)

Simple tubular glands with goblet cells (17. Intestinum crassum)

Branched tubular glands (14. Pylorus)

Branched alveolar (acinar) glands – sebaceous glands (71. Skin with hair)

Compound alveolar (acinar) serous gland (8. Glandula parotis)

Compound tuboalveolar mixed gland (9. Glandula submandibularis)

Atlas EM:

Glandular cell (50)