

ORGANUM VISUS (ZRAKOVÉ ÚSTROJÍ)



ORGANUM VISUS (ZRAKOVÉ ÚSTROJÍ)

TUNICA FIBROSA BULBI

- bělima (sclera) zadní 5/6 oka
- rohovka (cornea) přední 1/6

Tunica

- fibrosa bulbi
- vasculosa bulbi
- interna bulbi

Sclera (poloměr 11-12 mm)

lamina cribrosa sclerae

fascia bulbi (Tenoni) → spatium episclerale

spatium perichoroideum

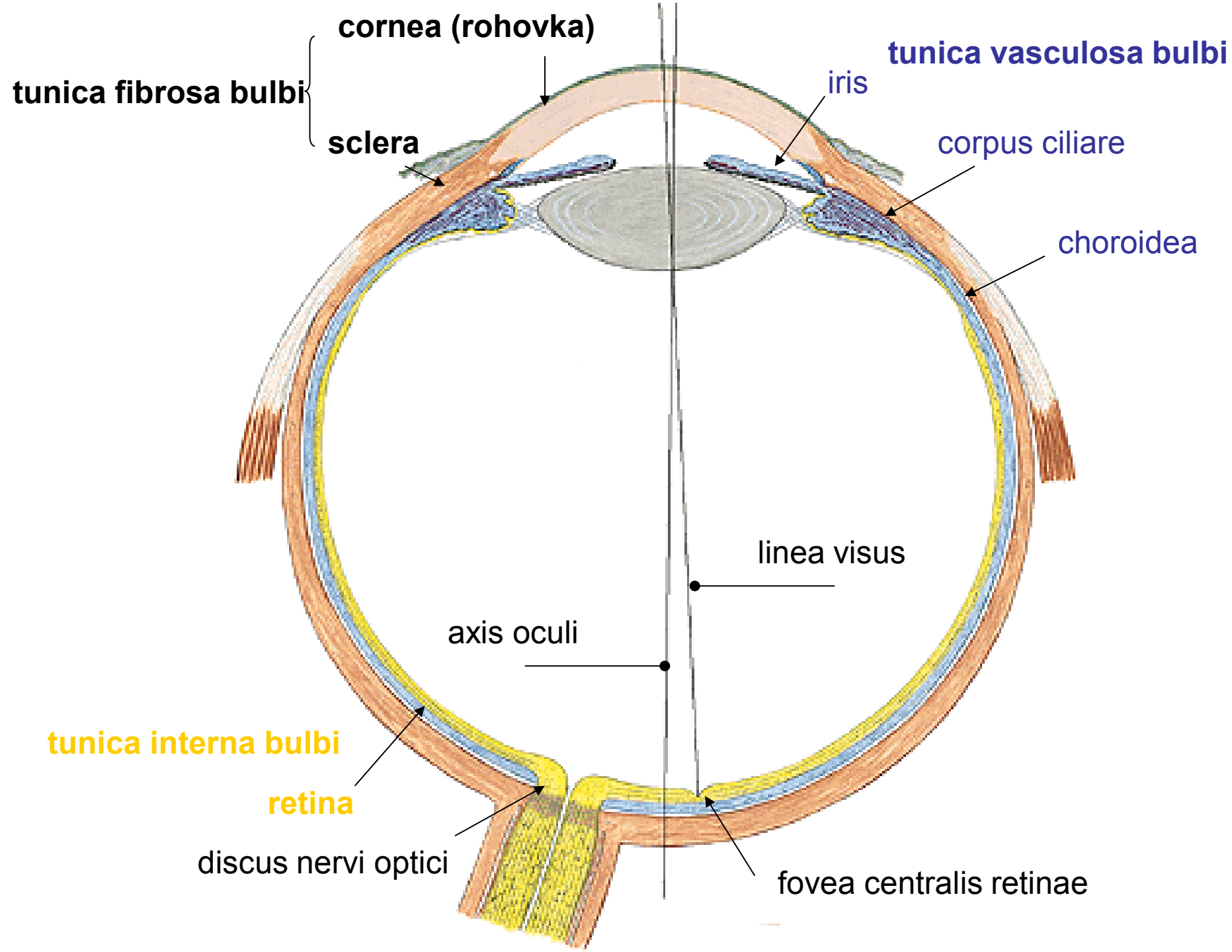
Cornea (poloměr 7-8 mm)

facies anterior et posterior corneae

limbus corneae

sklerokorneálního spojení - sulcus sclerae

- žilní splav sinus venosus sclerae (canalis Schlemmi)



TUNICA VASCULOSA BULBI

choroidea (cévnatka)

corpus ciliare (řasnaté těleso)

iris (duhovka)

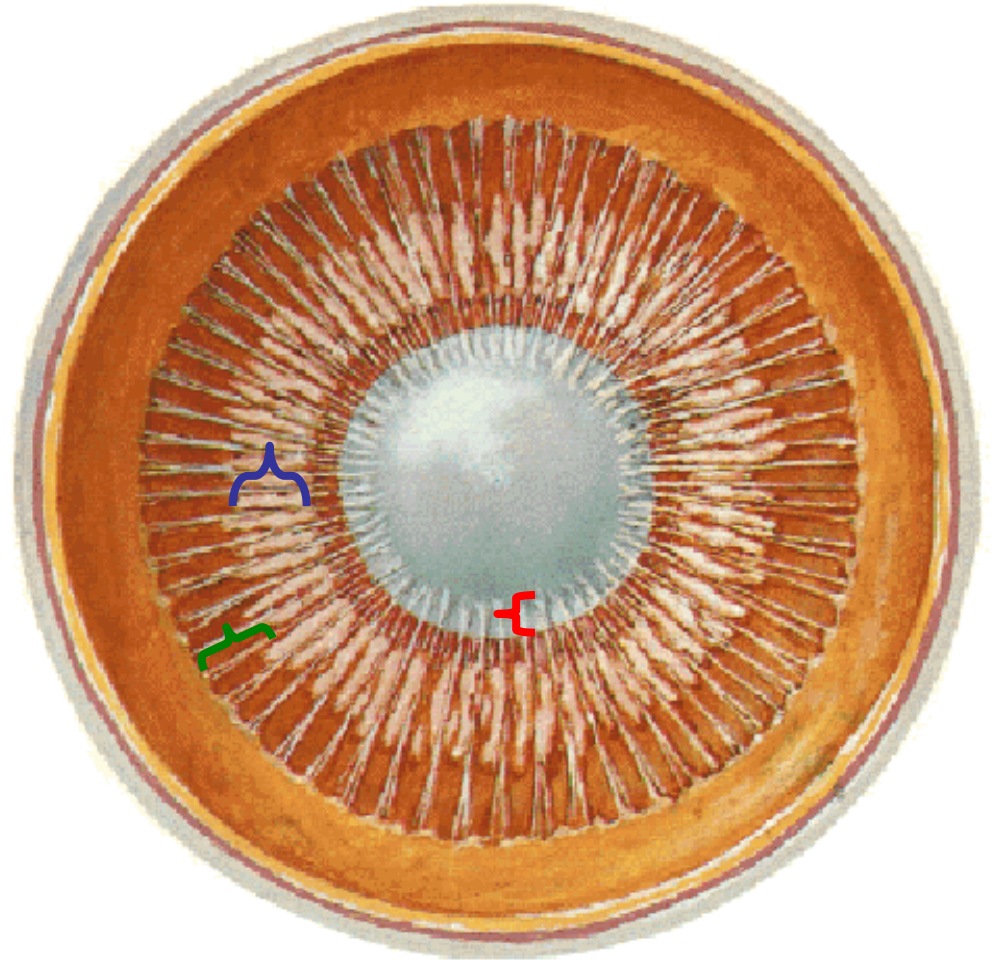
CORPUS CILIARE

m. ciliaris fibrae meridionales
 fibrae circulares

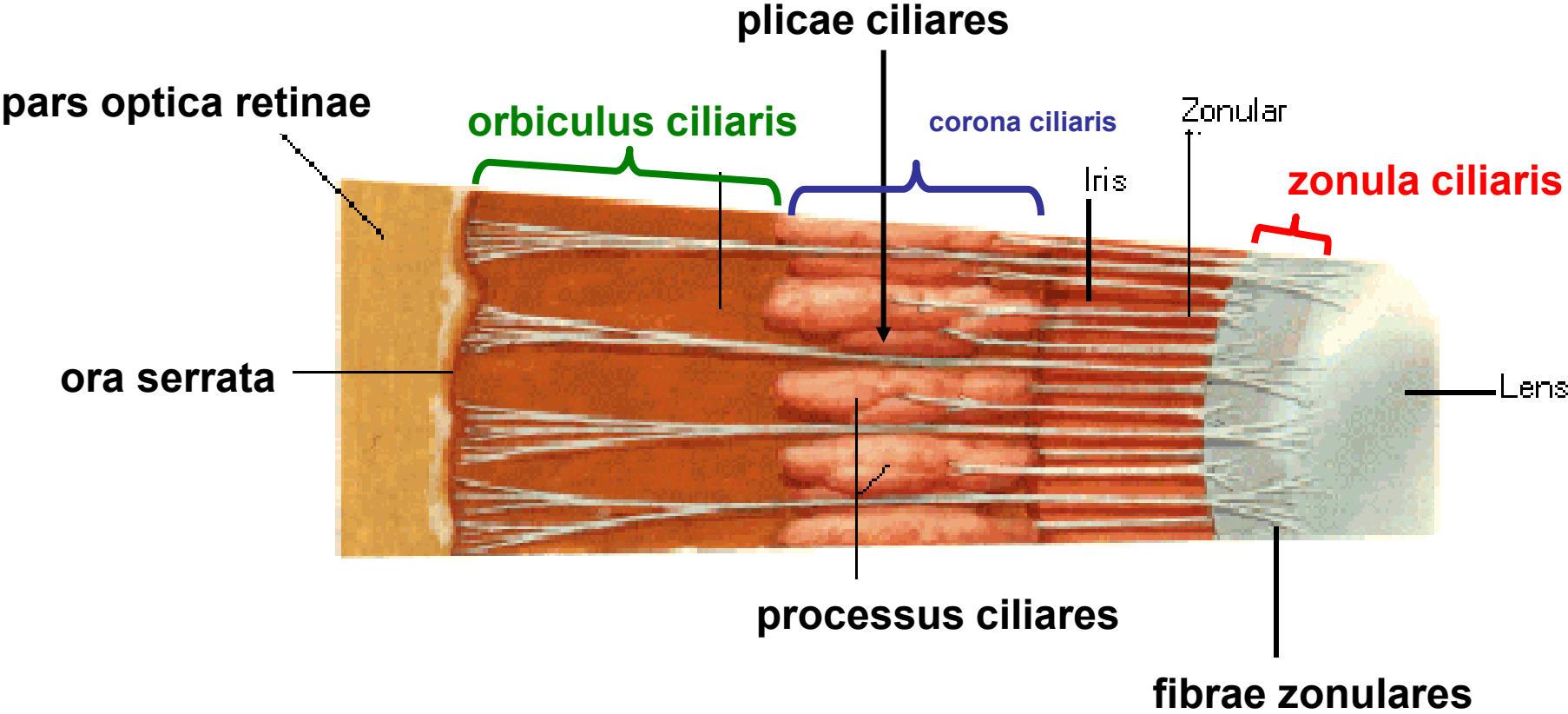
processus ciliares }
plicae ciliares } **corona ciliari**

orbiculus ciliar

fibrae zonulares **zonula ciliaris**



CORPUS CILIARE



IRIS (DUHOVKA)

margo pupillaris

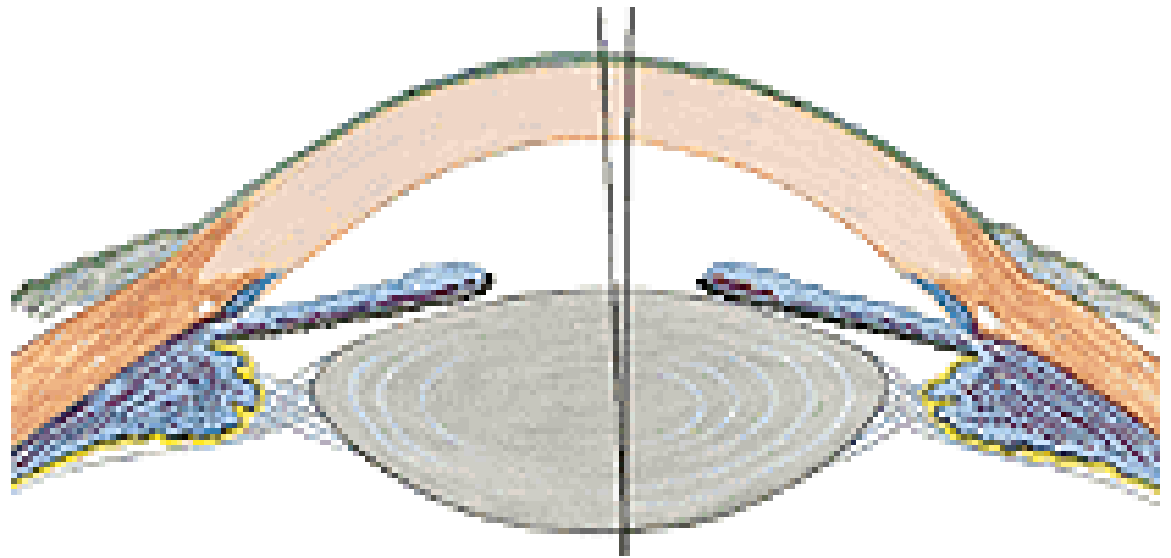
margo ciliaris

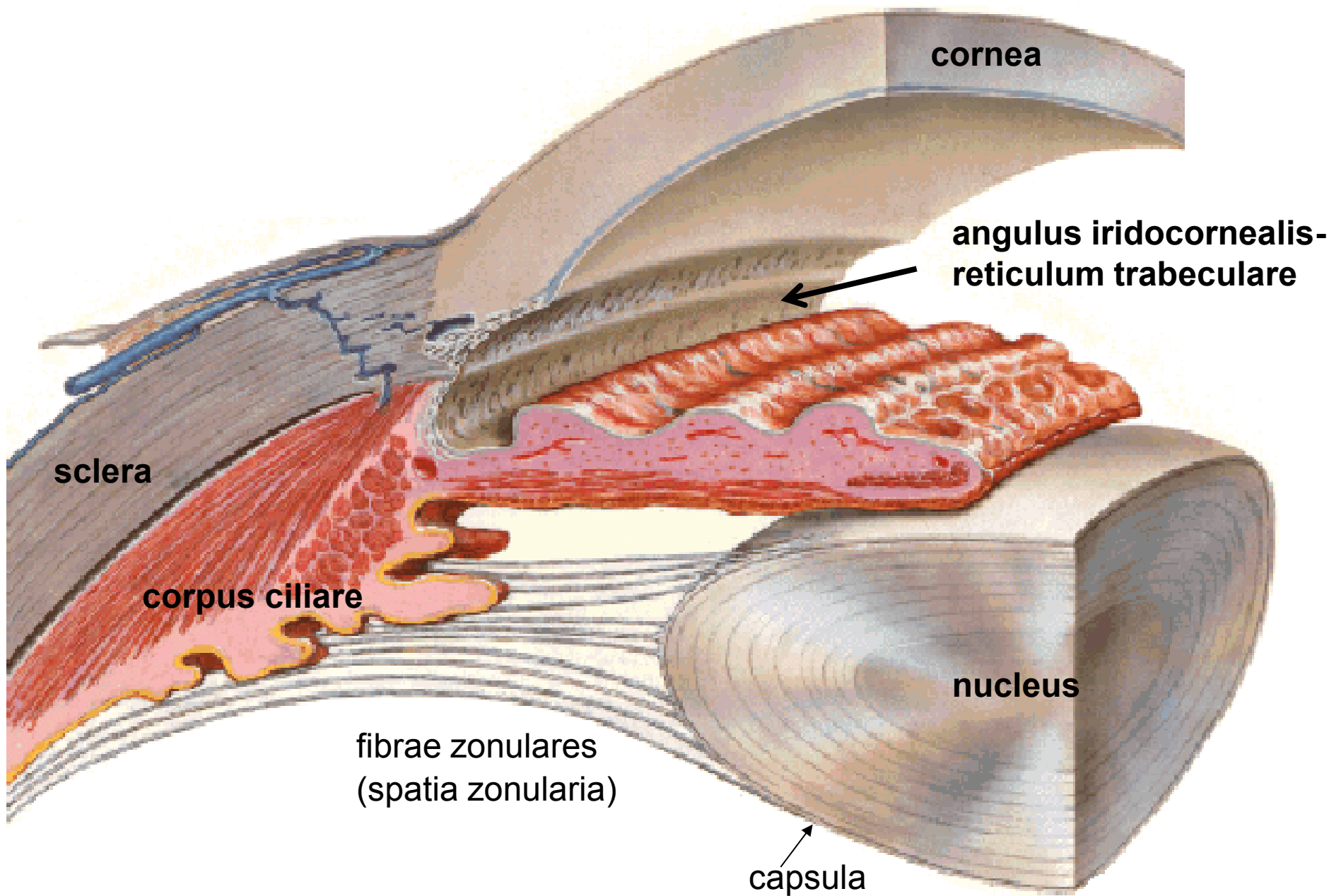
facies anterior et posterior iridis

m. sphincter pupillae - parasymphatikus - miosis

m. dilatator pupillae – symphatikus - mydriasis

angulus iridocornealis → reticulum trabeculare





cornea

angulus iridocornealis-
reticulum trabeculare

sclera

corpus ciliare

fibrae zonulares
(spatia zonularia)

nucleus

capsula

TUNICA INTERNA BULBI *RETINA*

pars optica retinae

pars caeca retinae (pars ciliaris retinae, pars iridica retinae)

ora serrata

pars optica retinae

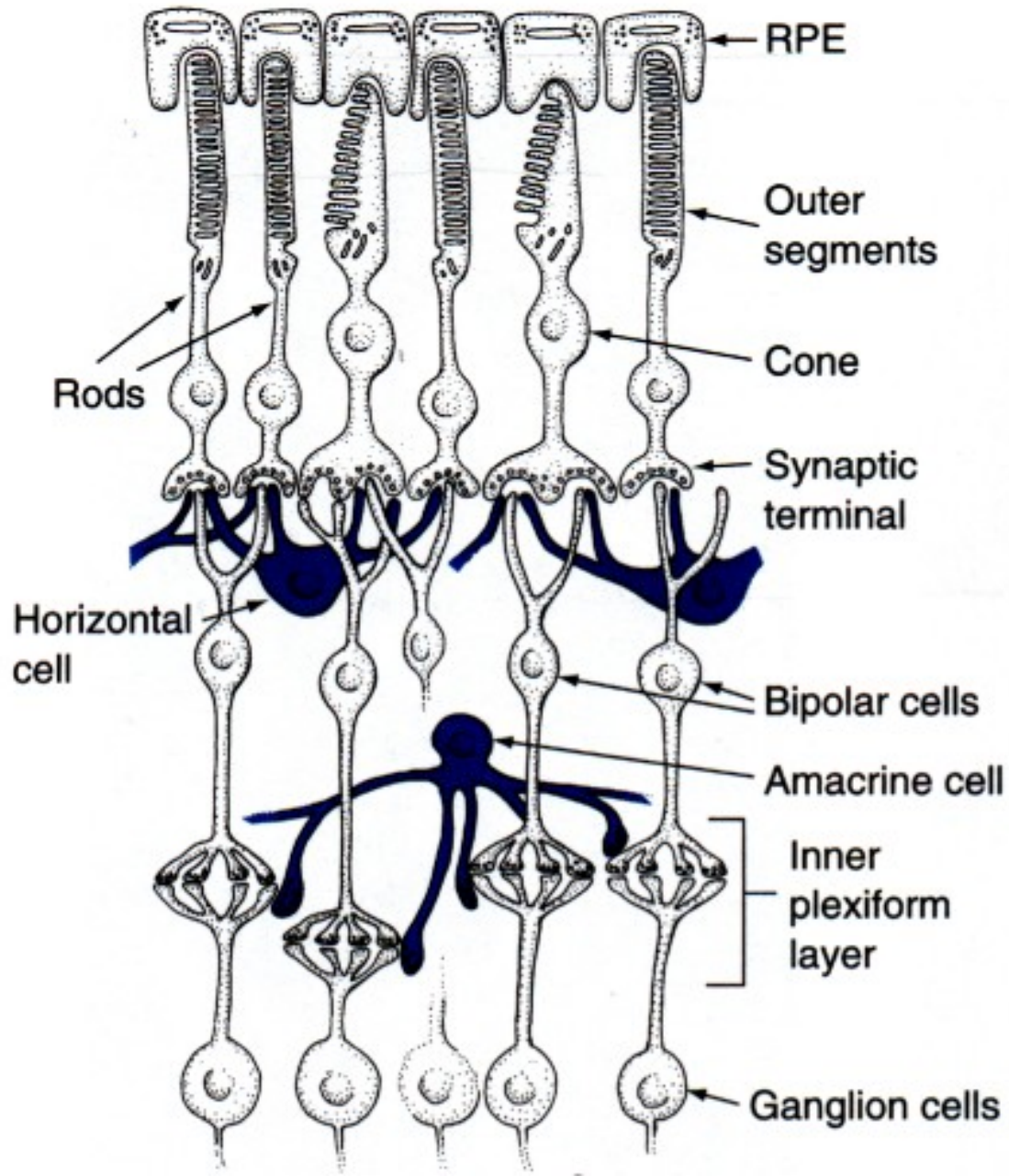
stratum pigmenti retinae

stratum neuroepitheliale (vrstva tyčinek/120mil a čípků/6mil)

stratum ganglionare retinae

stratum ganglionare nervi optici

NEURONY SÍTNICE



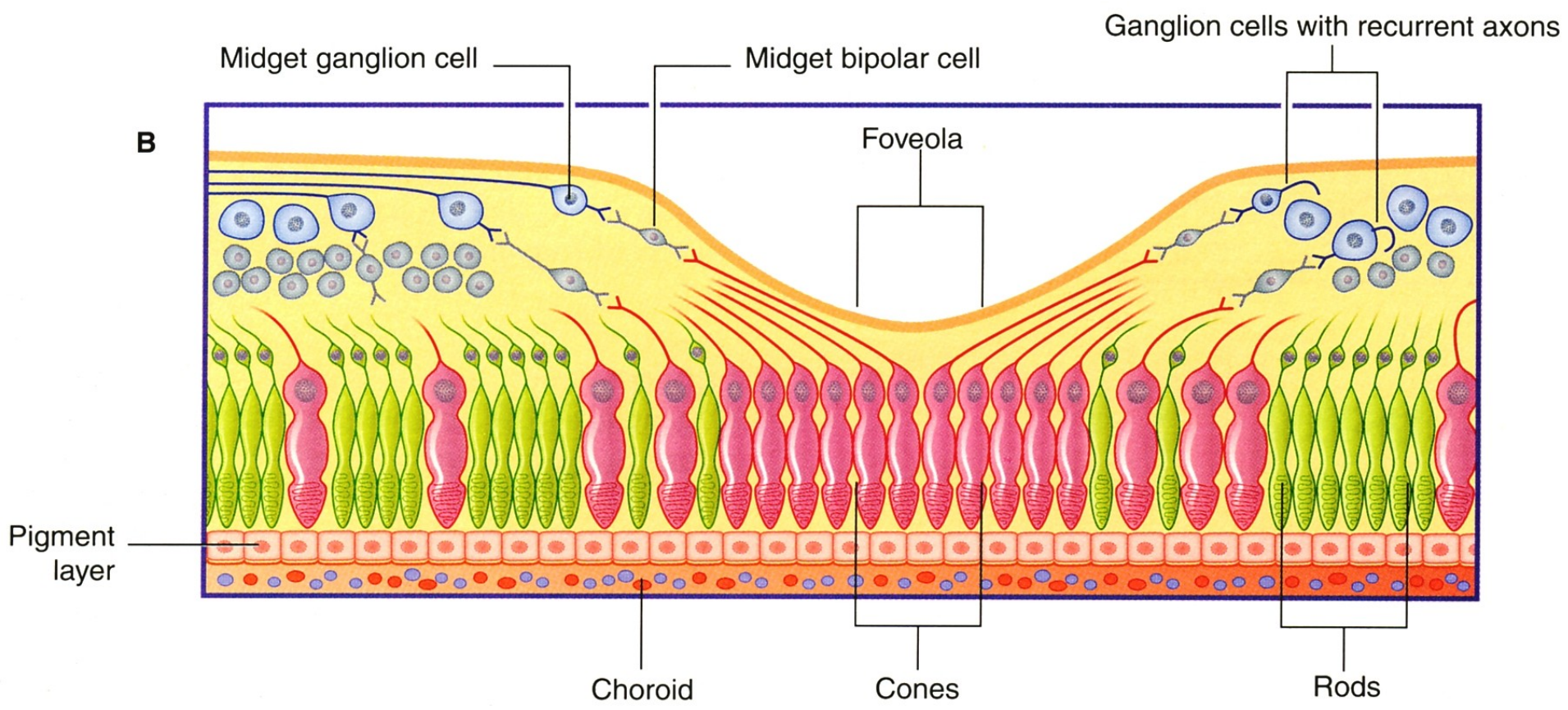
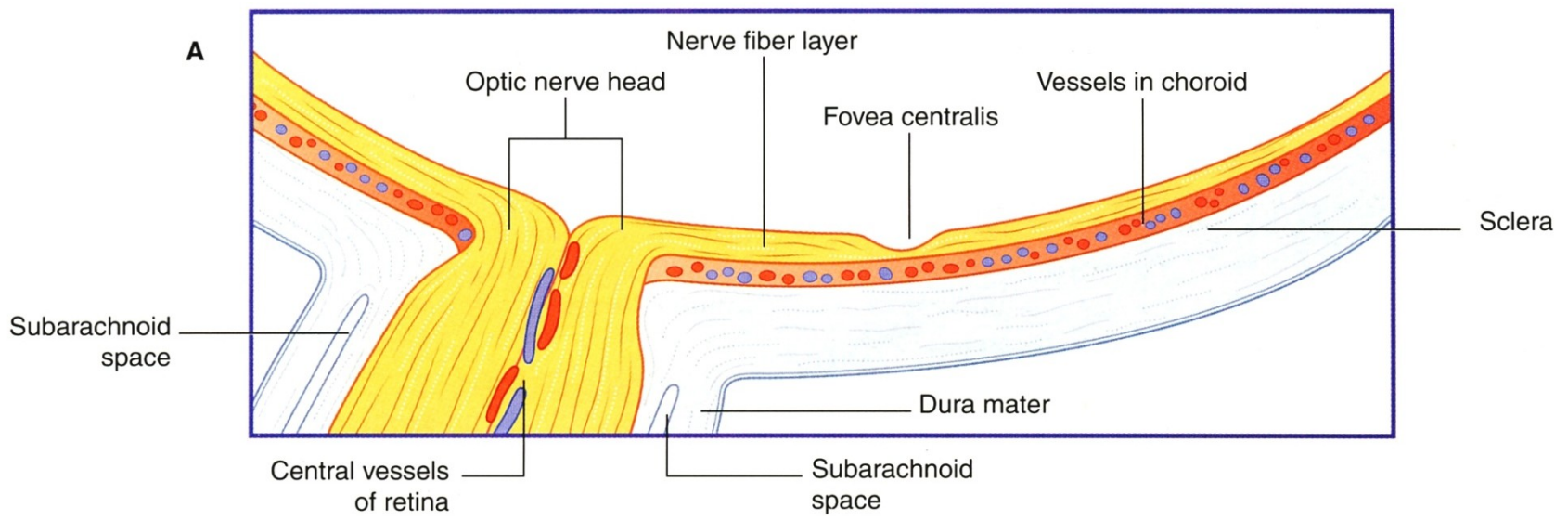
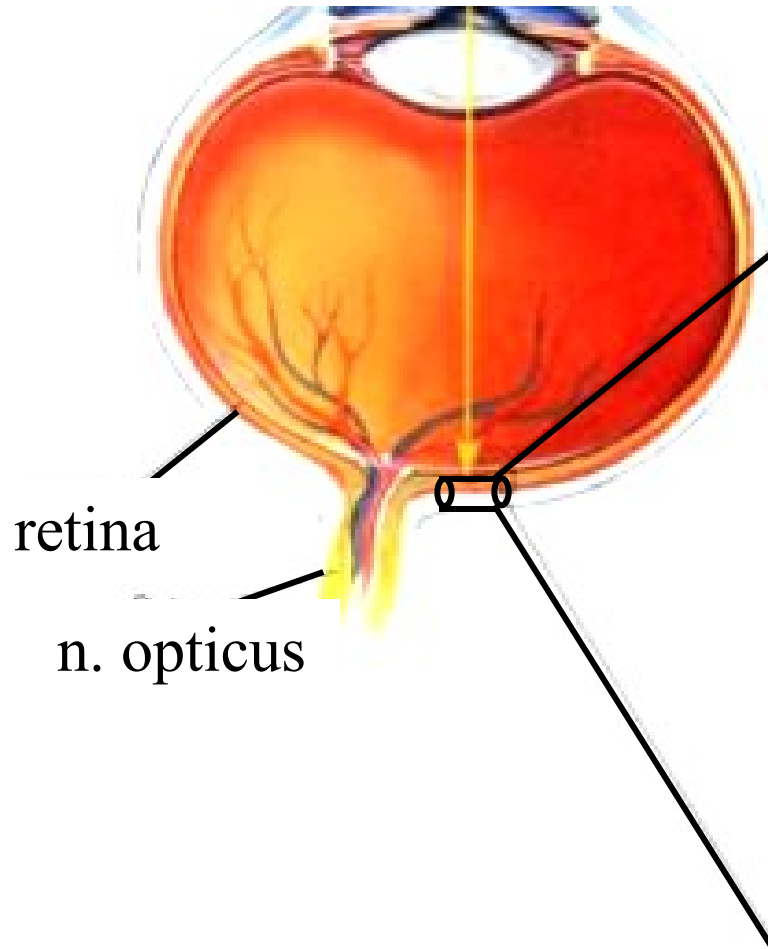


Schéma spojení neuronů sítnice



temporální retina

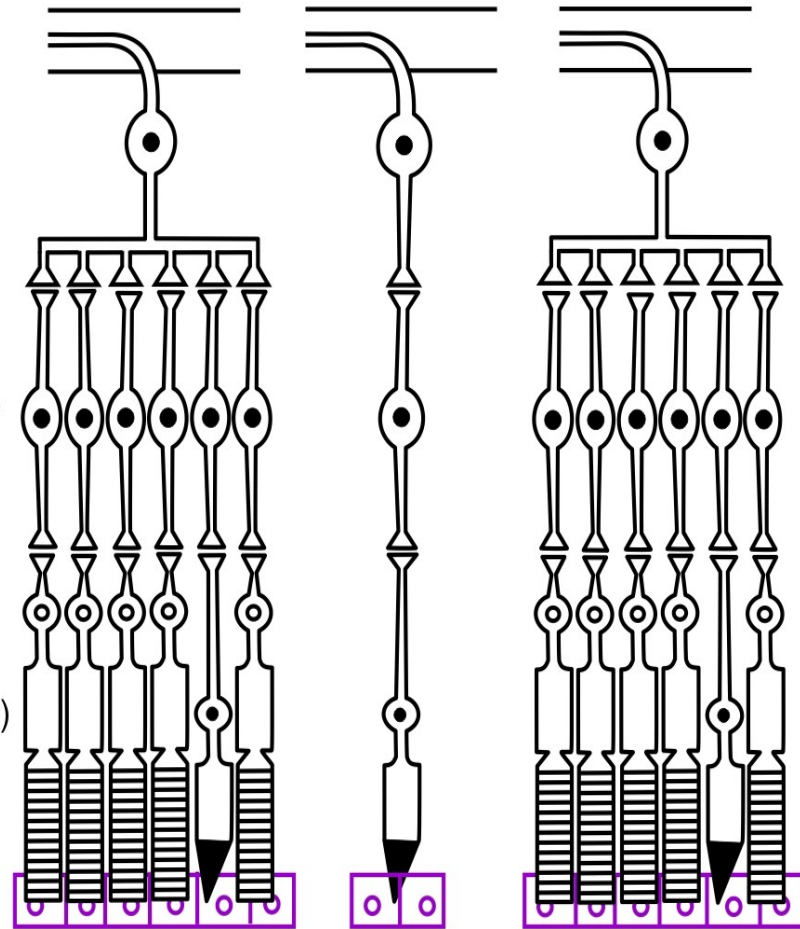
nazální retina

N. opticus

Multipolární neurony
(stratum ganglionare
n. optici)

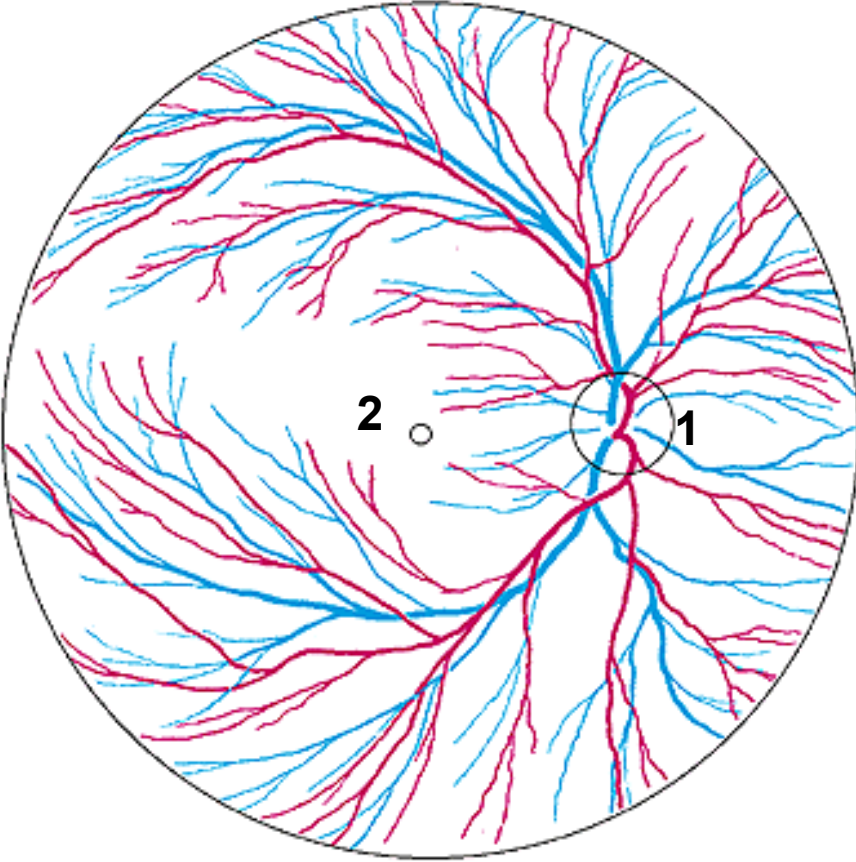
Bipolární neurony
(stratum ganglionare
retinae)

Fotoreceptory
(primární smyslové bb.)



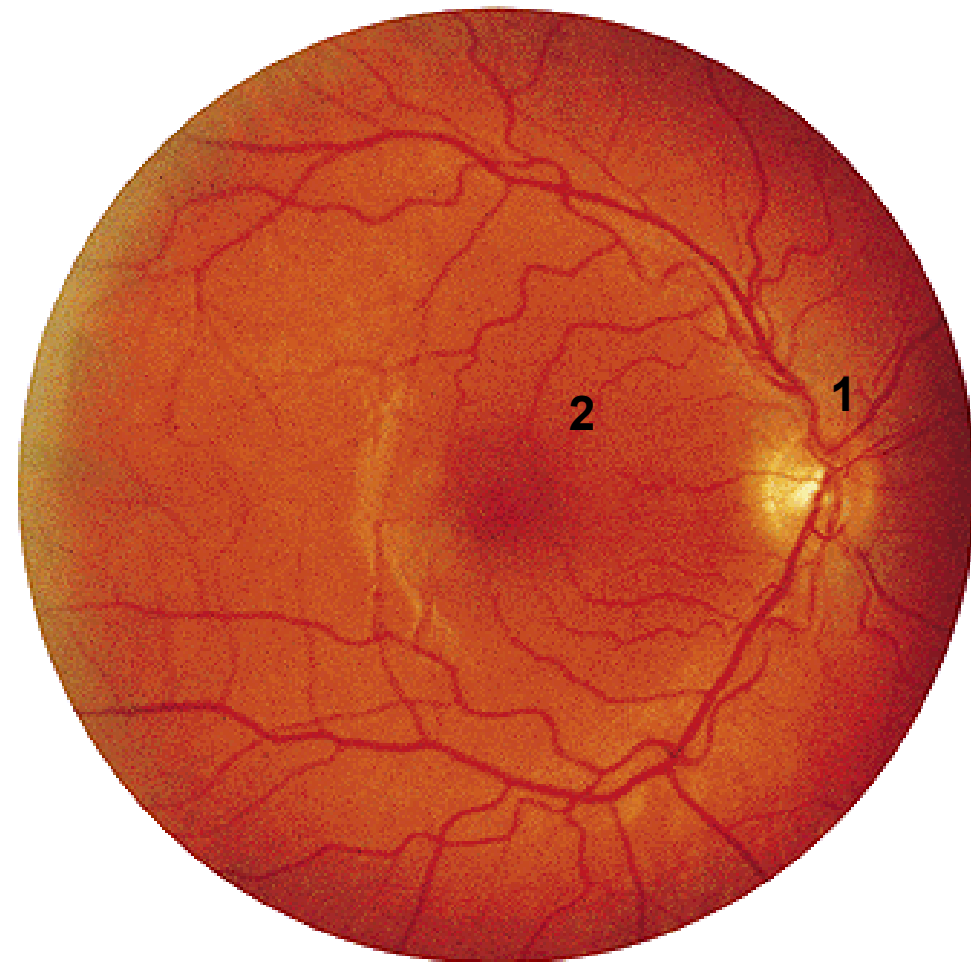
Fovea
centralis

větve
a. et v. centralis retinae



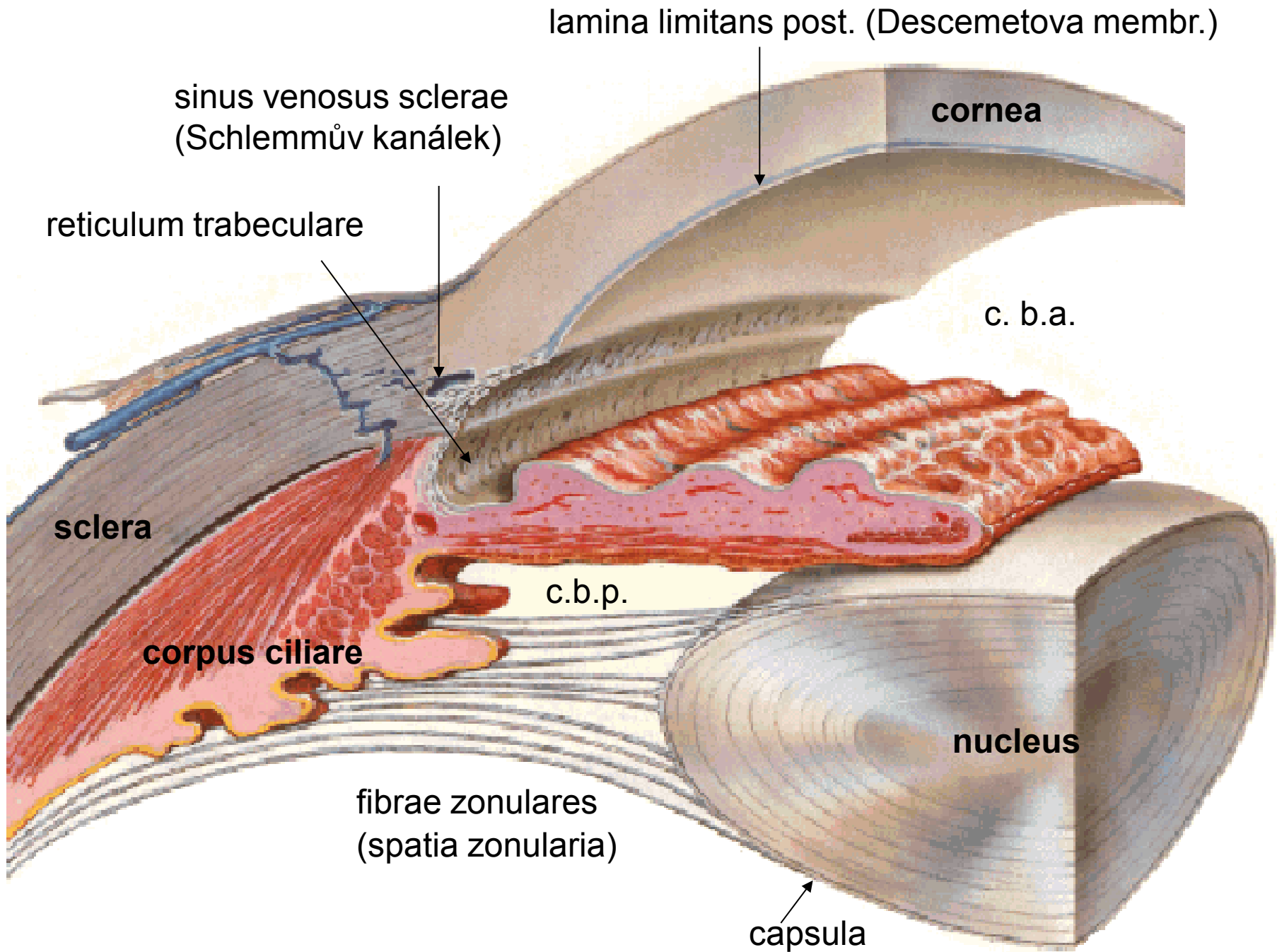
1. discus nervi optici - excavatio disci

2. macula lutea - fovea centralis



Diabetická retinopatie





lamina limitans post. (Descemetova membr.)

cornea

sinus venosus sclerae
(Schlemmův kanálek)

reticulum trabeculare

c. b.a.

sclera

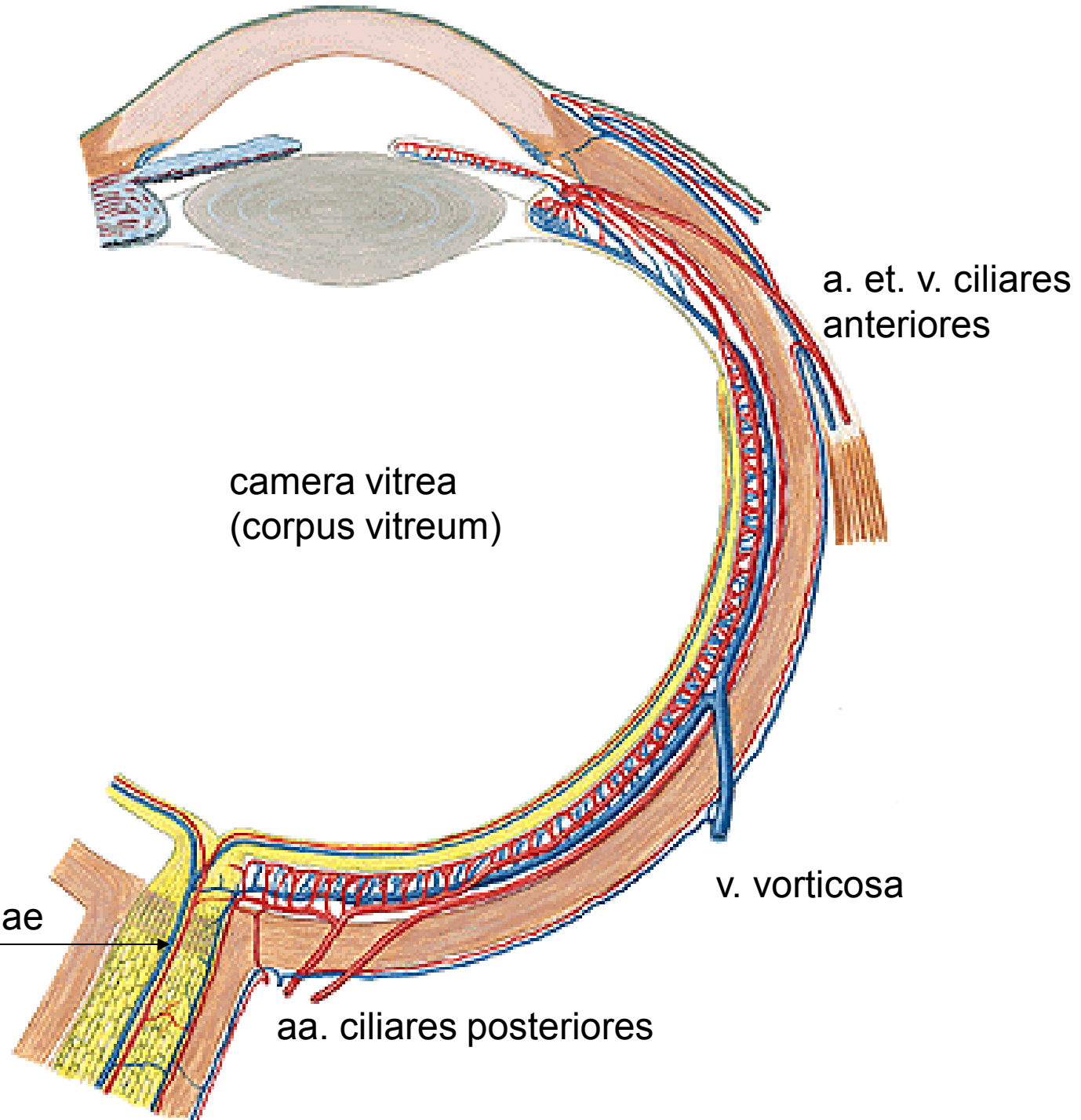
corpus ciliare

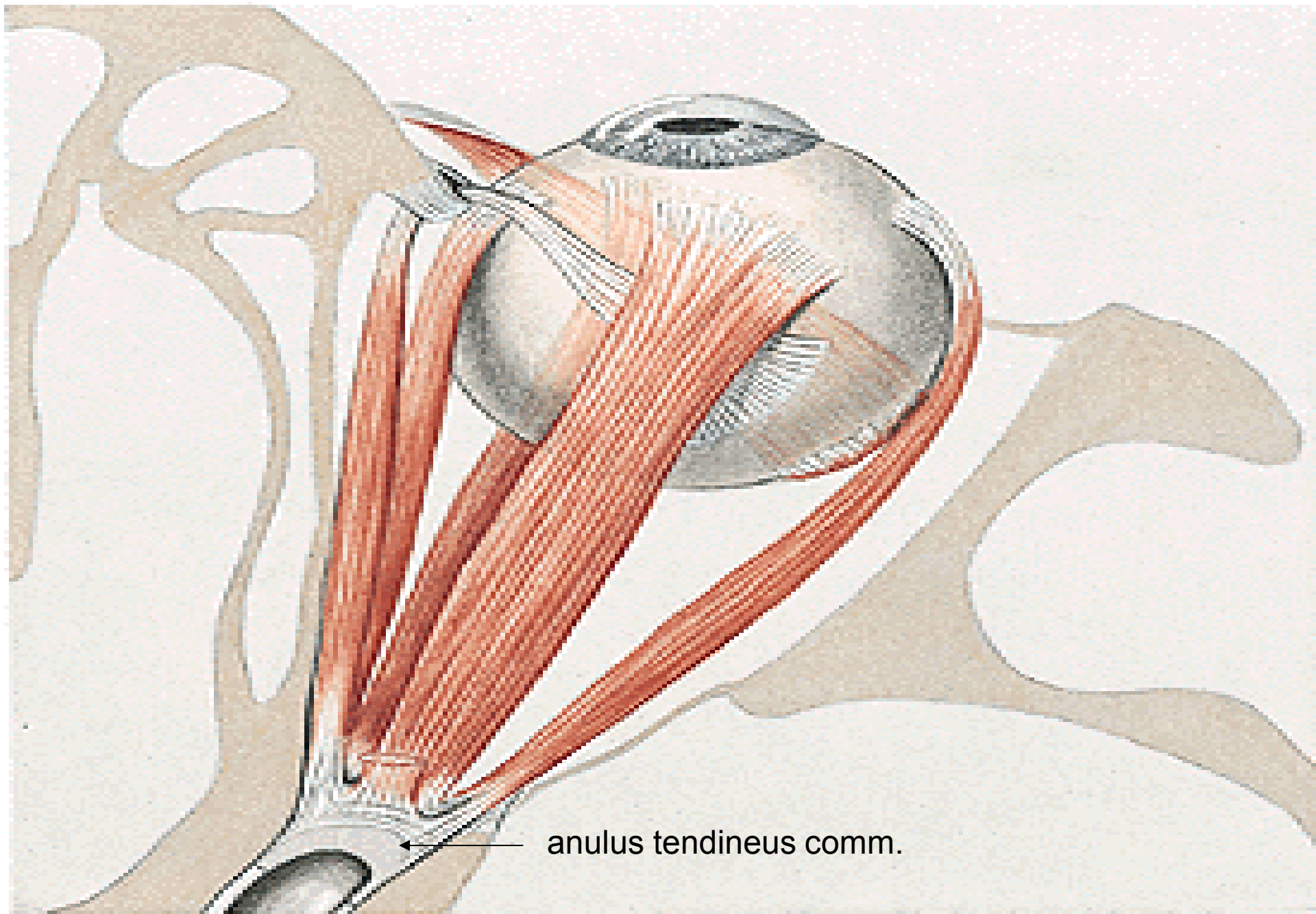
c.b.p.

fibrae zonulares
(spatia zonularia)

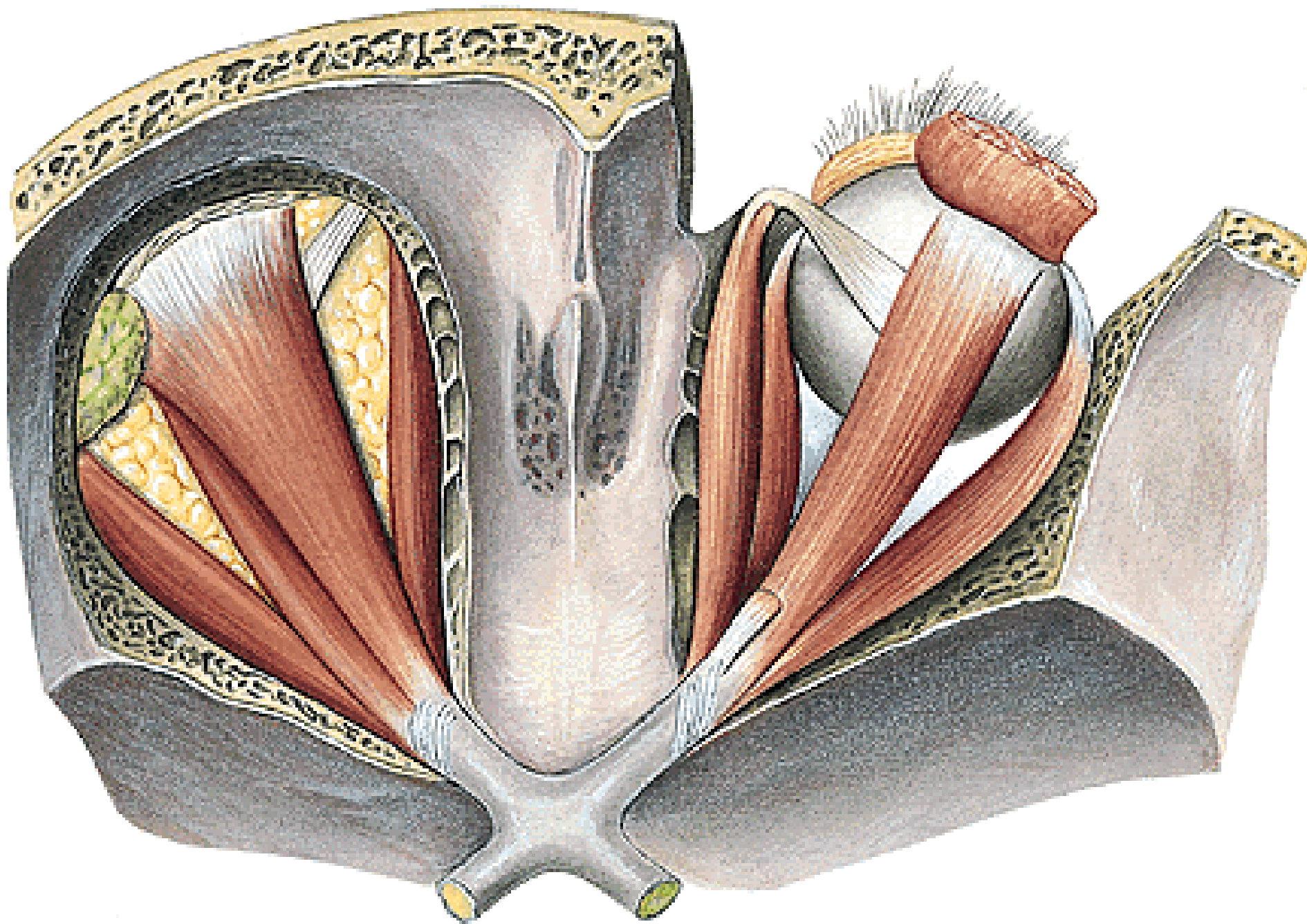
nucleus

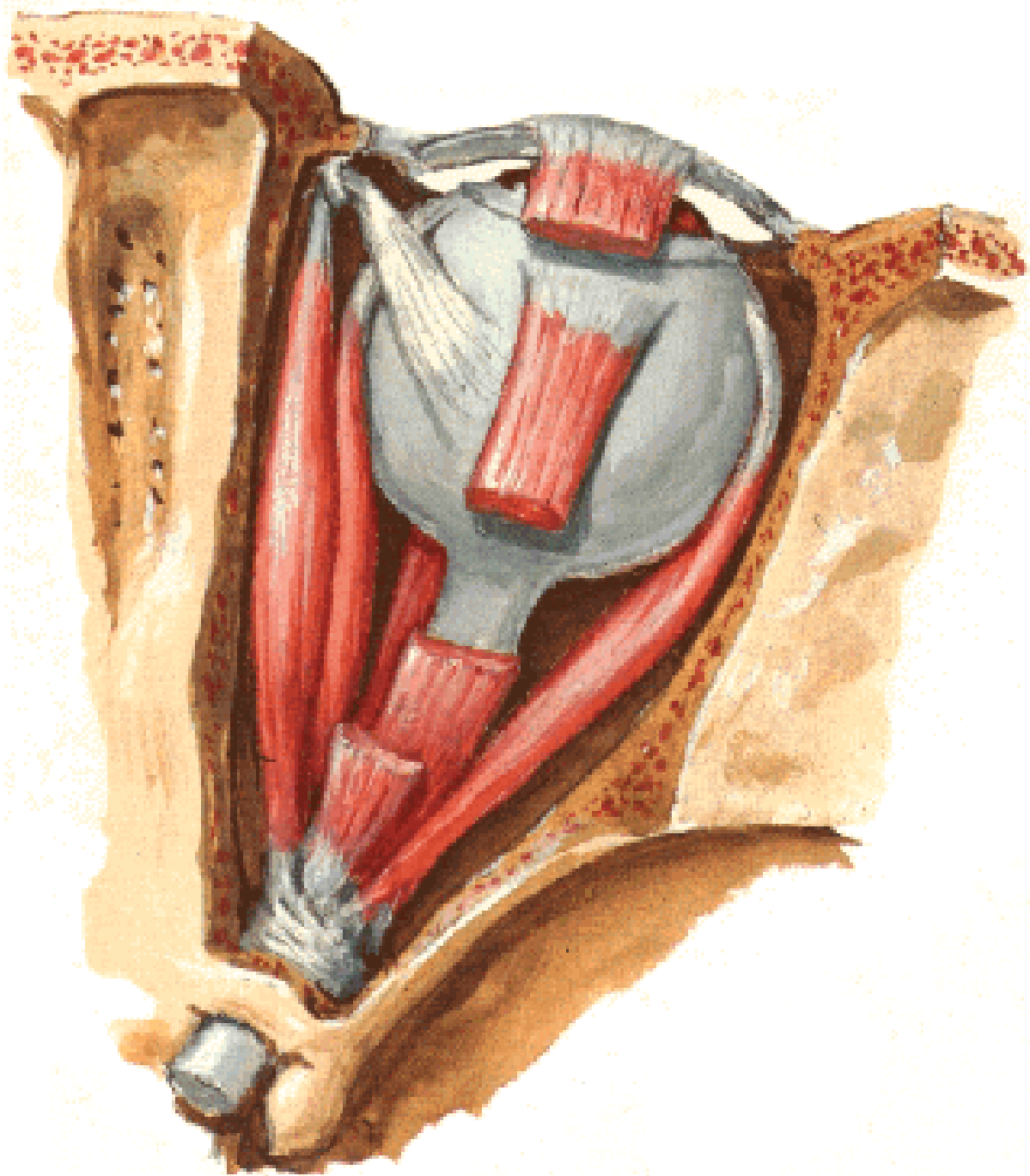
capsula

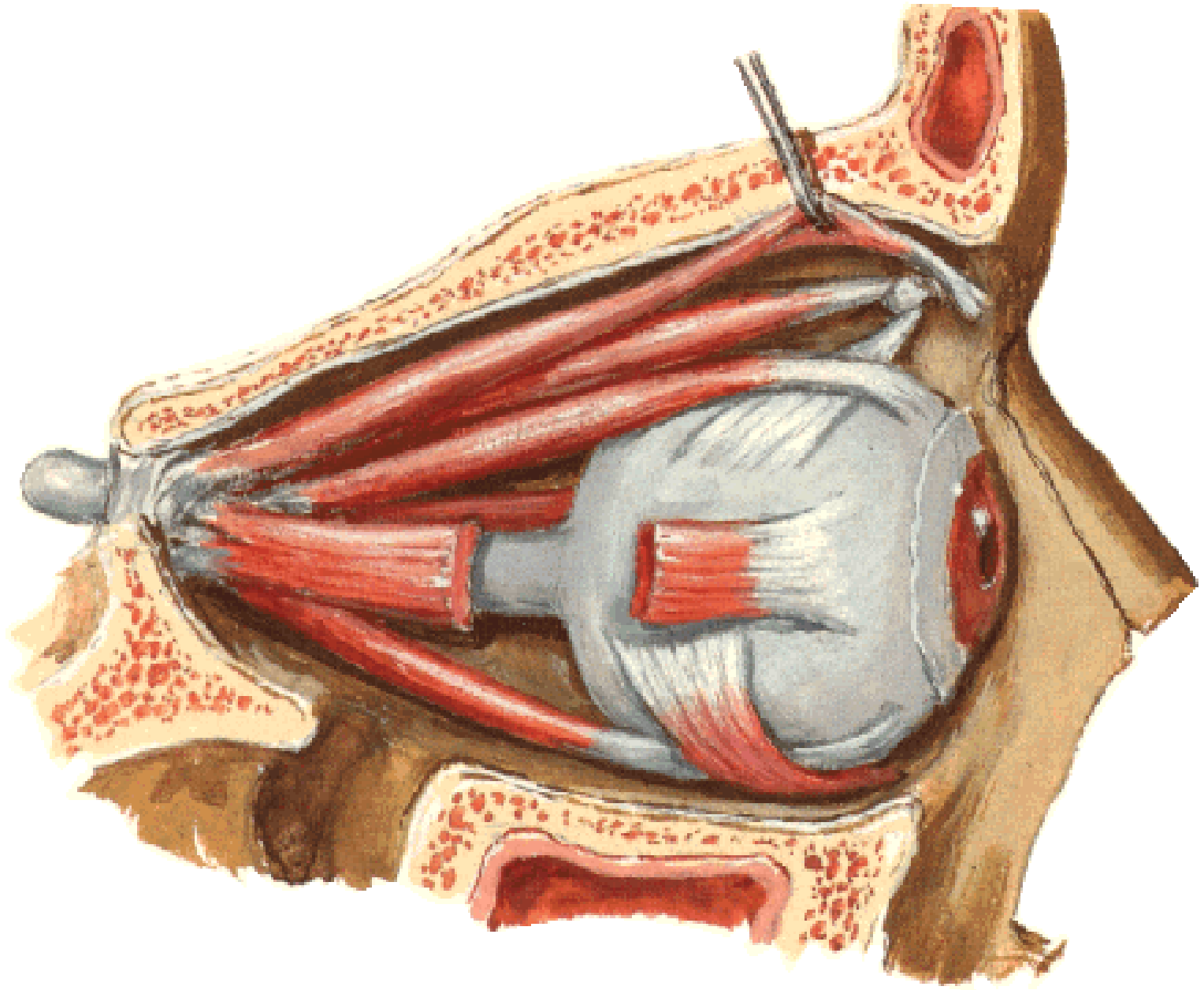




anulus tendineus comm.





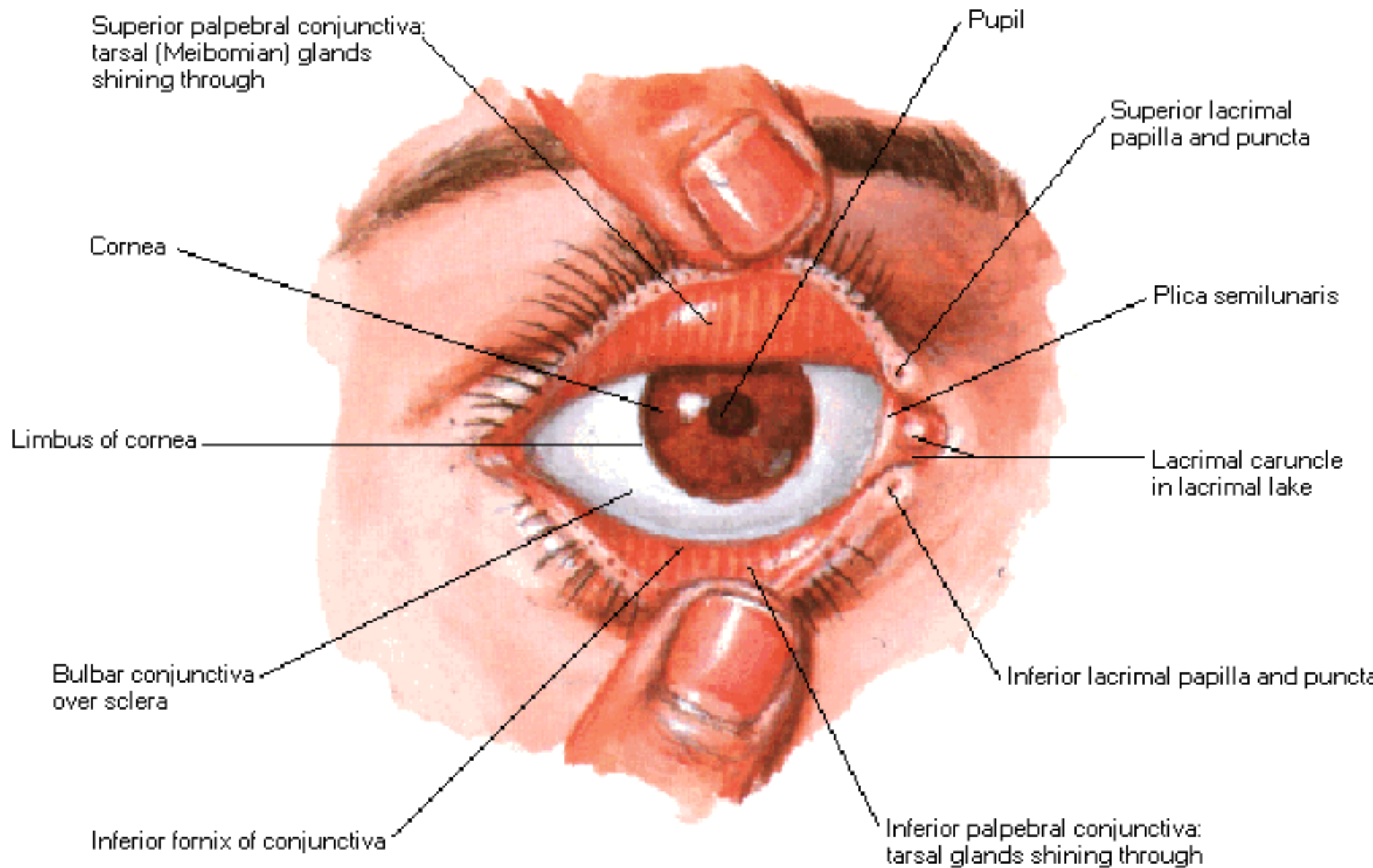


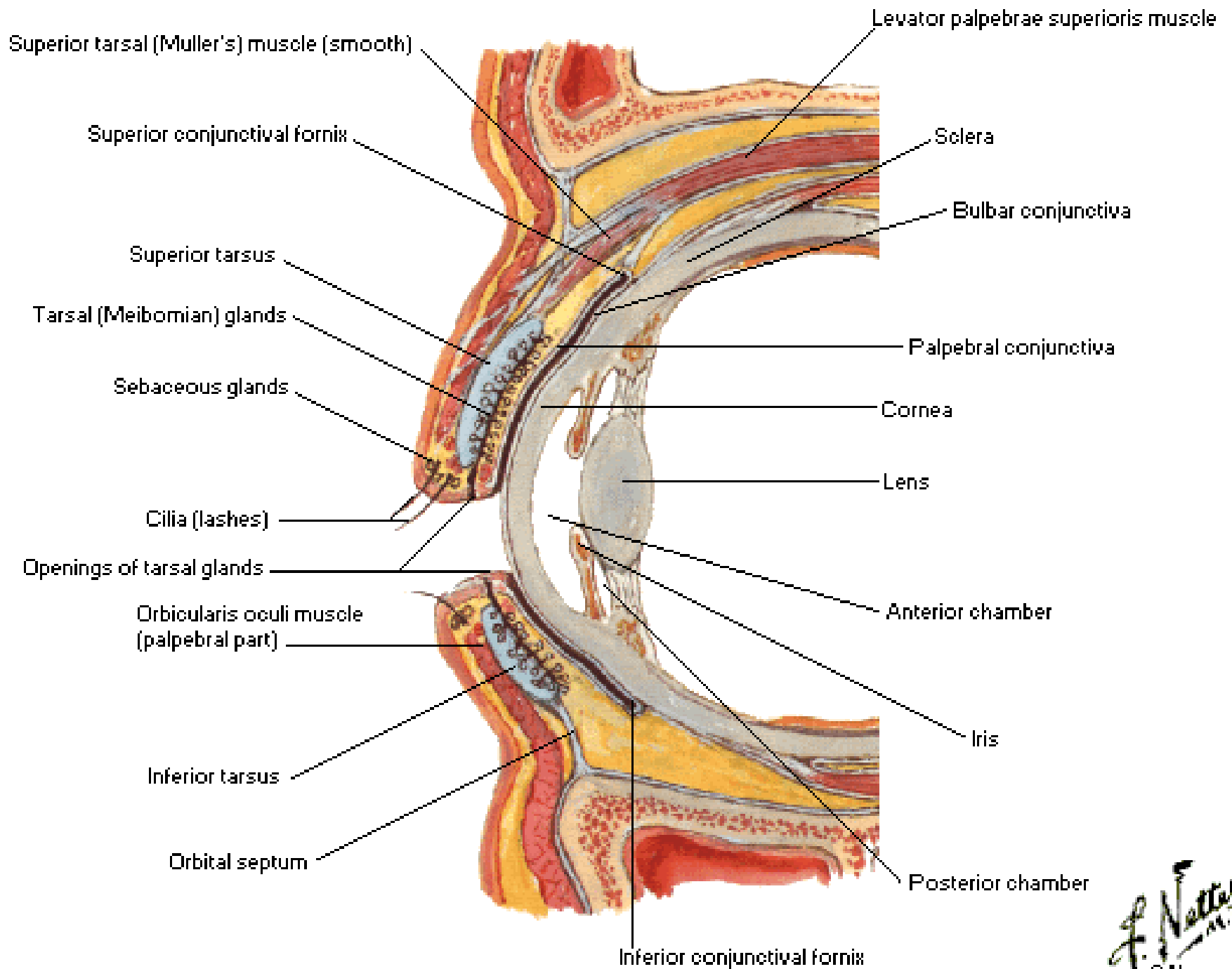
Tunica conjunctiva - spojivka

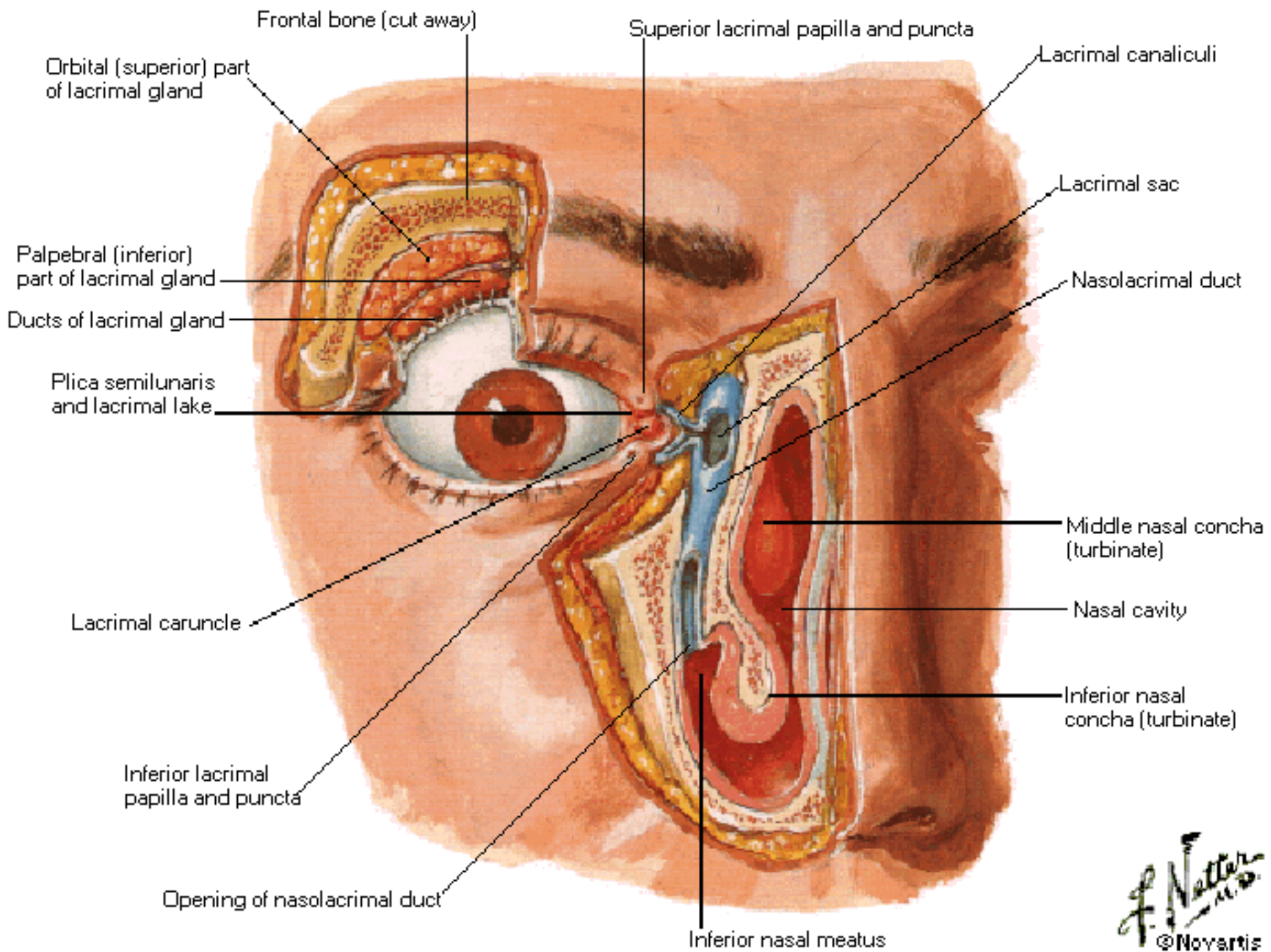
tunica conjunctiva bulbi et palpebrarum
fornix conjunctivae sup. et inf.

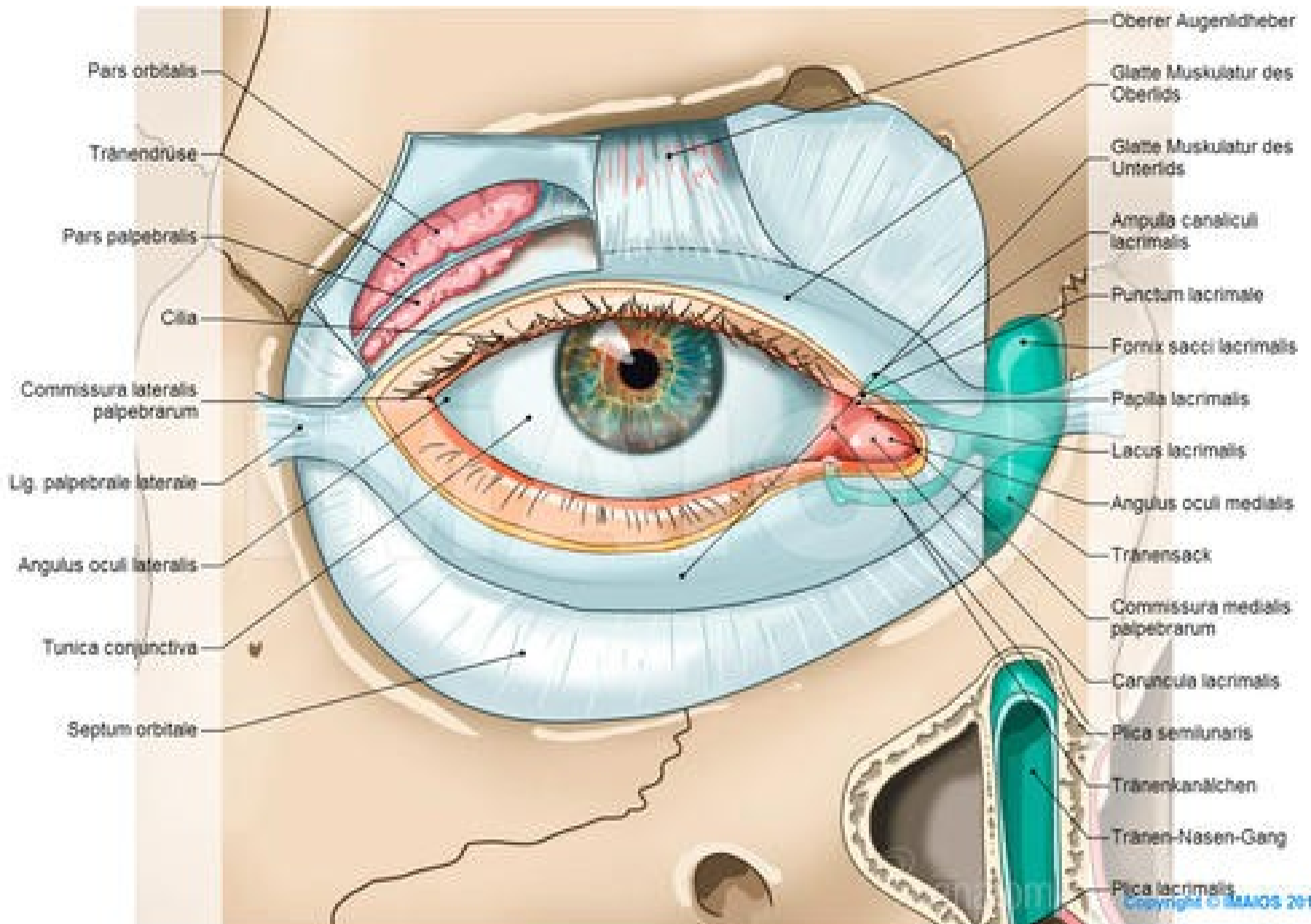
Palpebrae – oční víčka

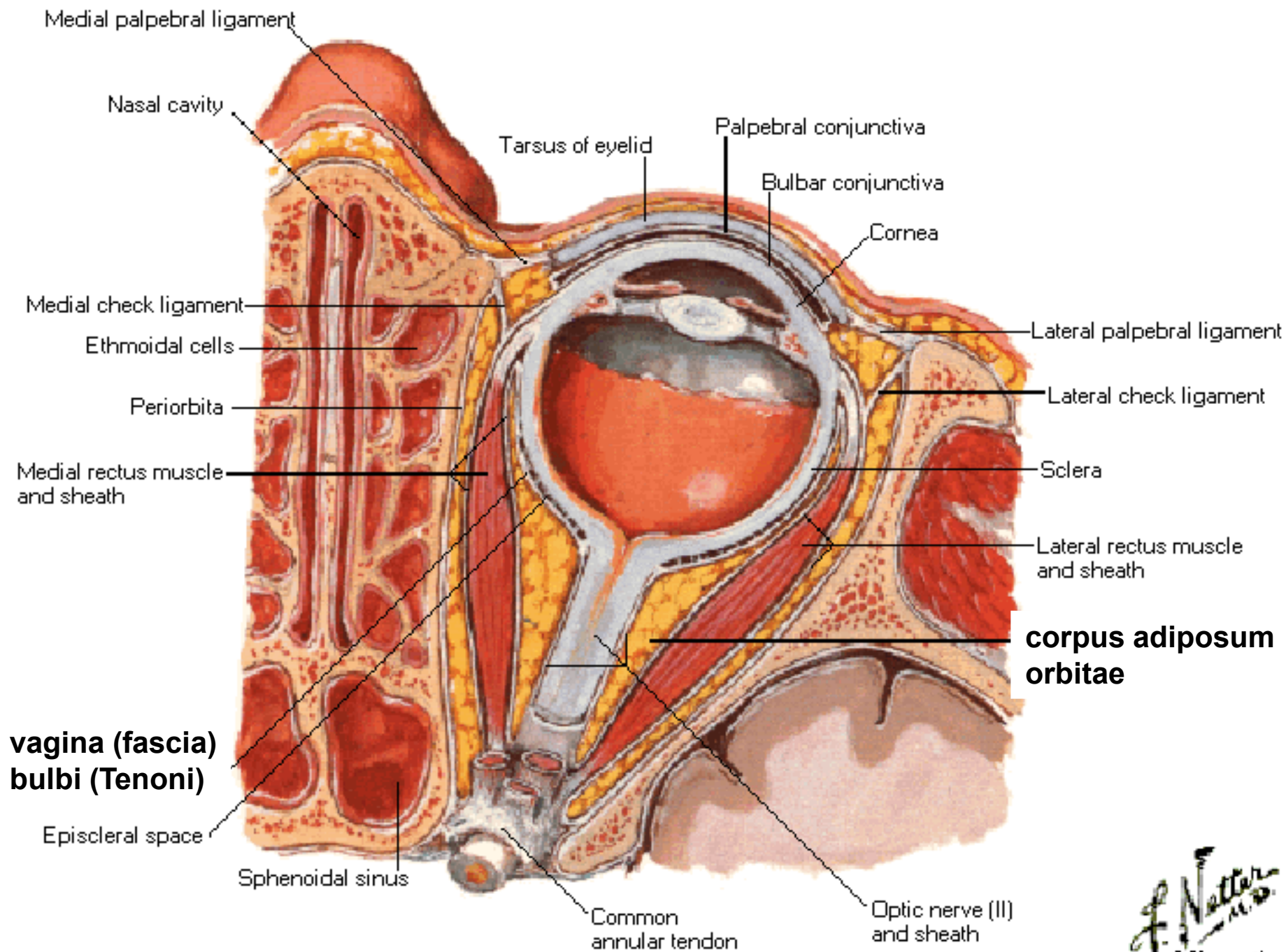
- tarsus sup. et inf.
- lig. palpebrale med. et lat.
- rima palpebrarum
- rivus lacrimalis
- angulus oculi medialis et lateralis
- gll. tarsales (Meibomi) – vyústění na rima (mazové)
- gll. ciliares (Molli) – vázány na rima et cilie (apokrinní potní)
- gll. sebaceae (Zeisi) – vázány na cilie (holokrinní mazové) - hordeolum

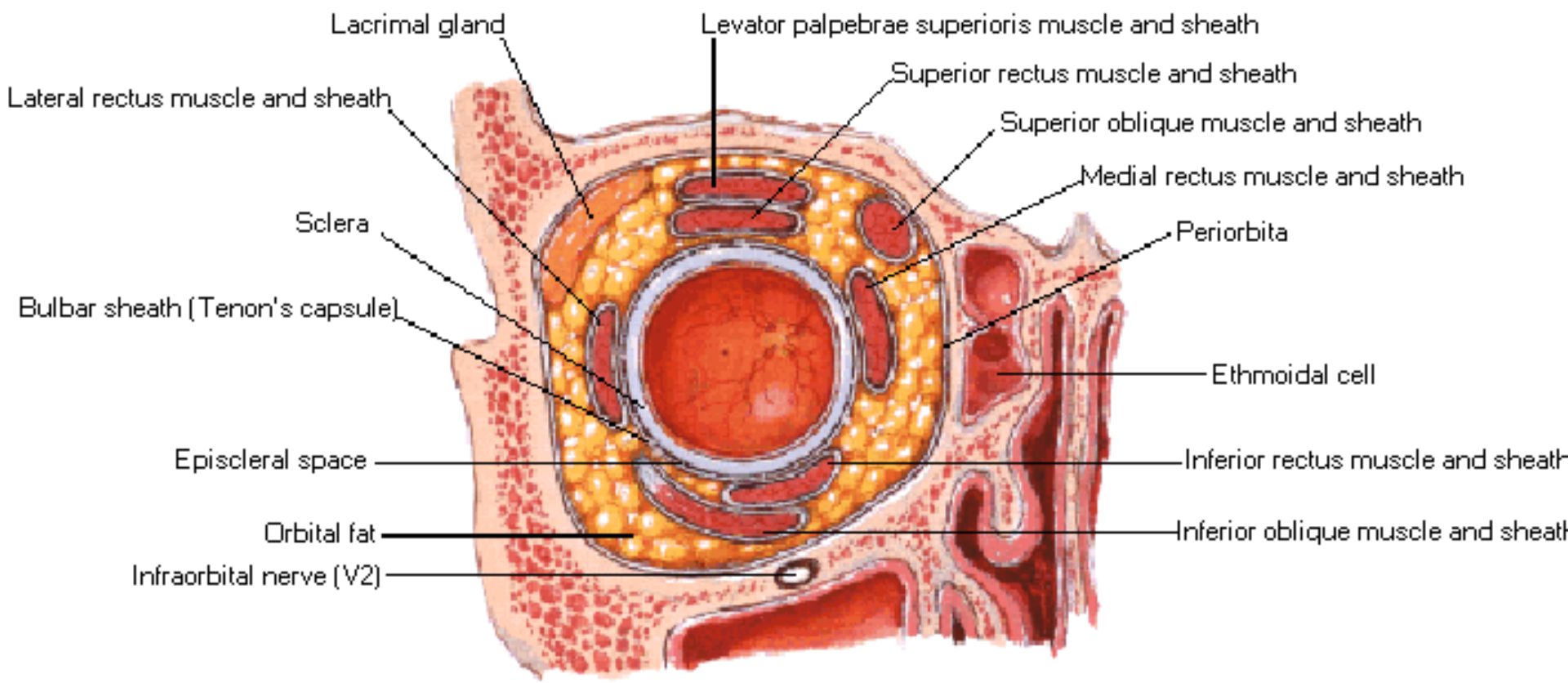


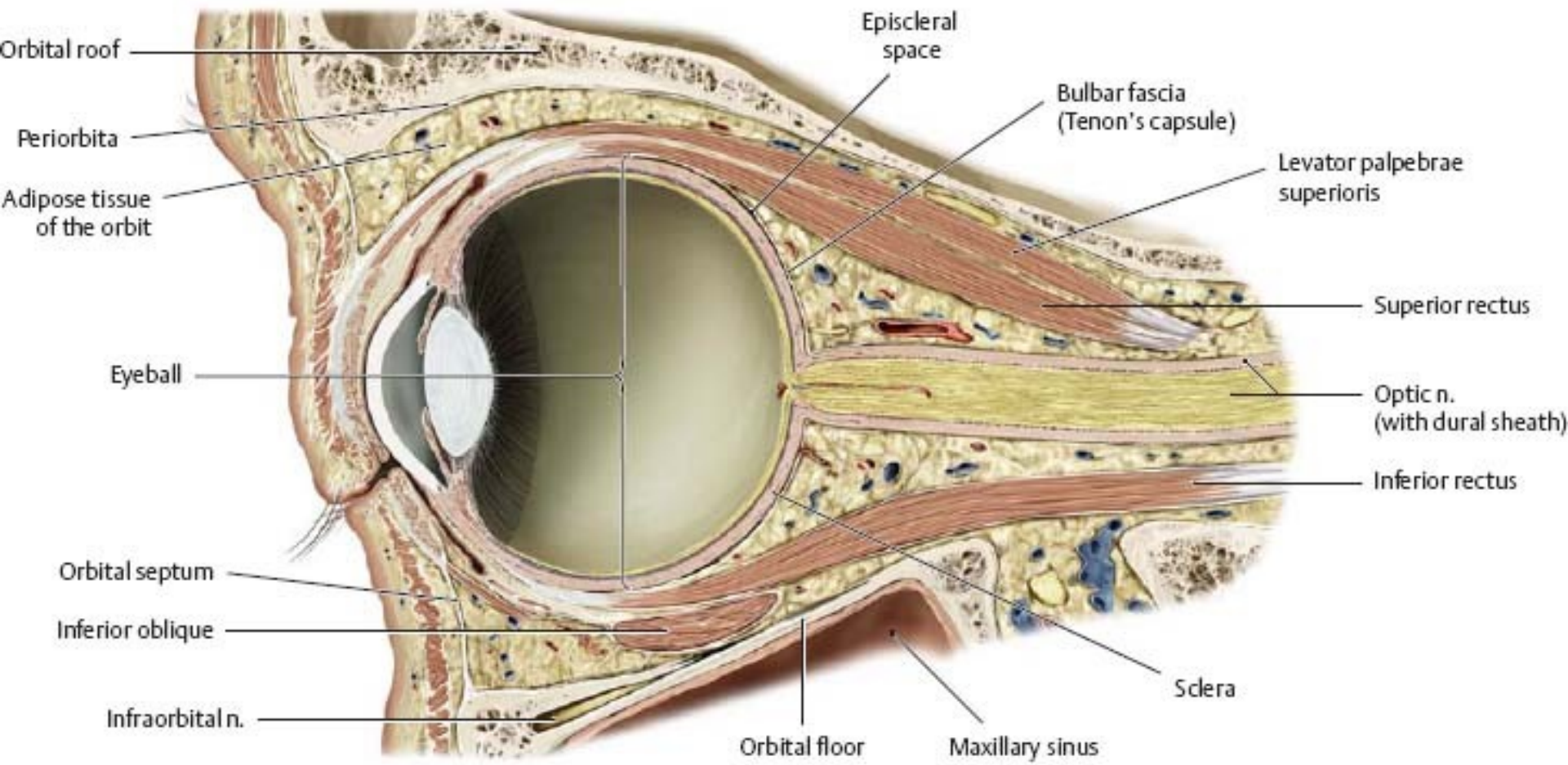




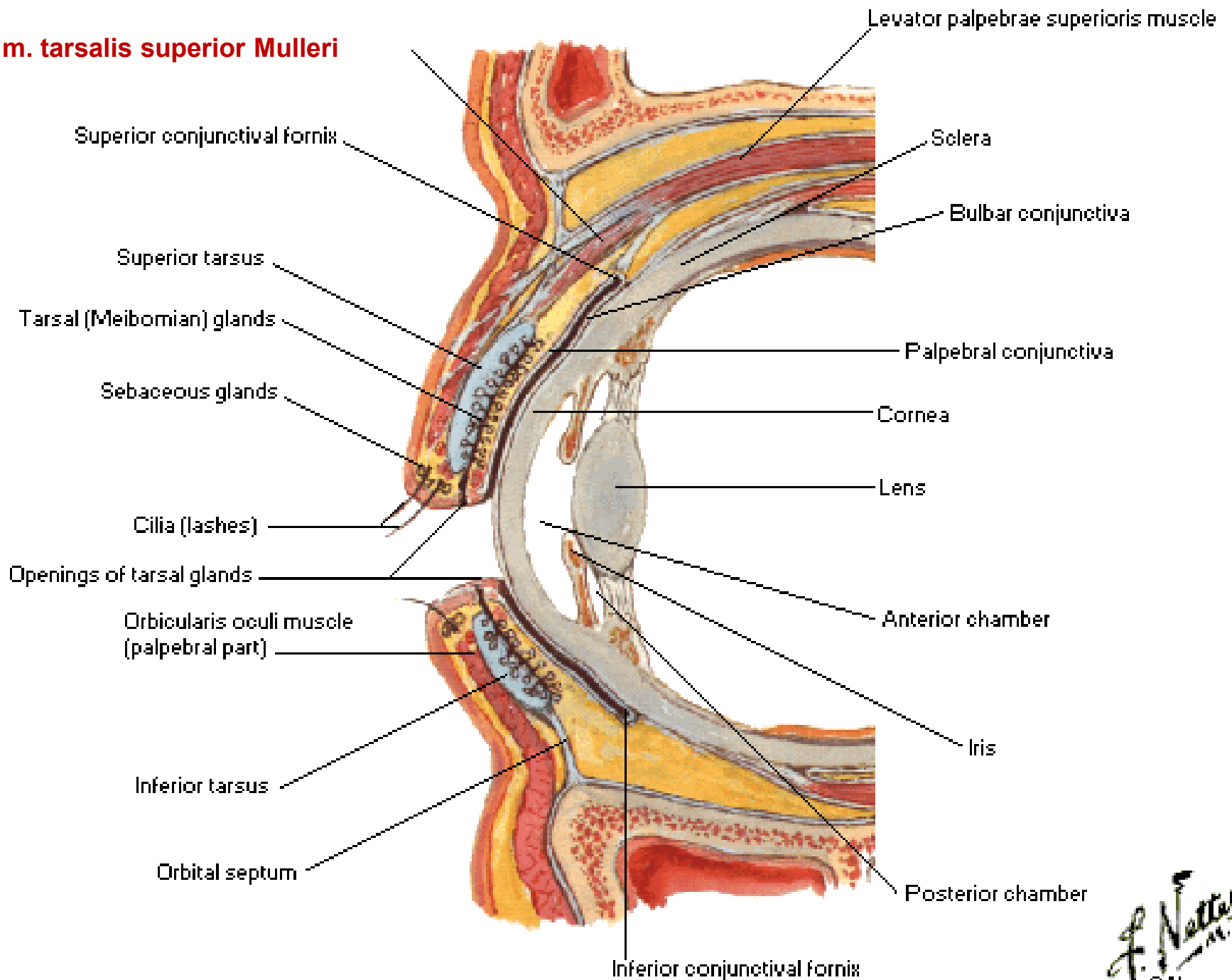




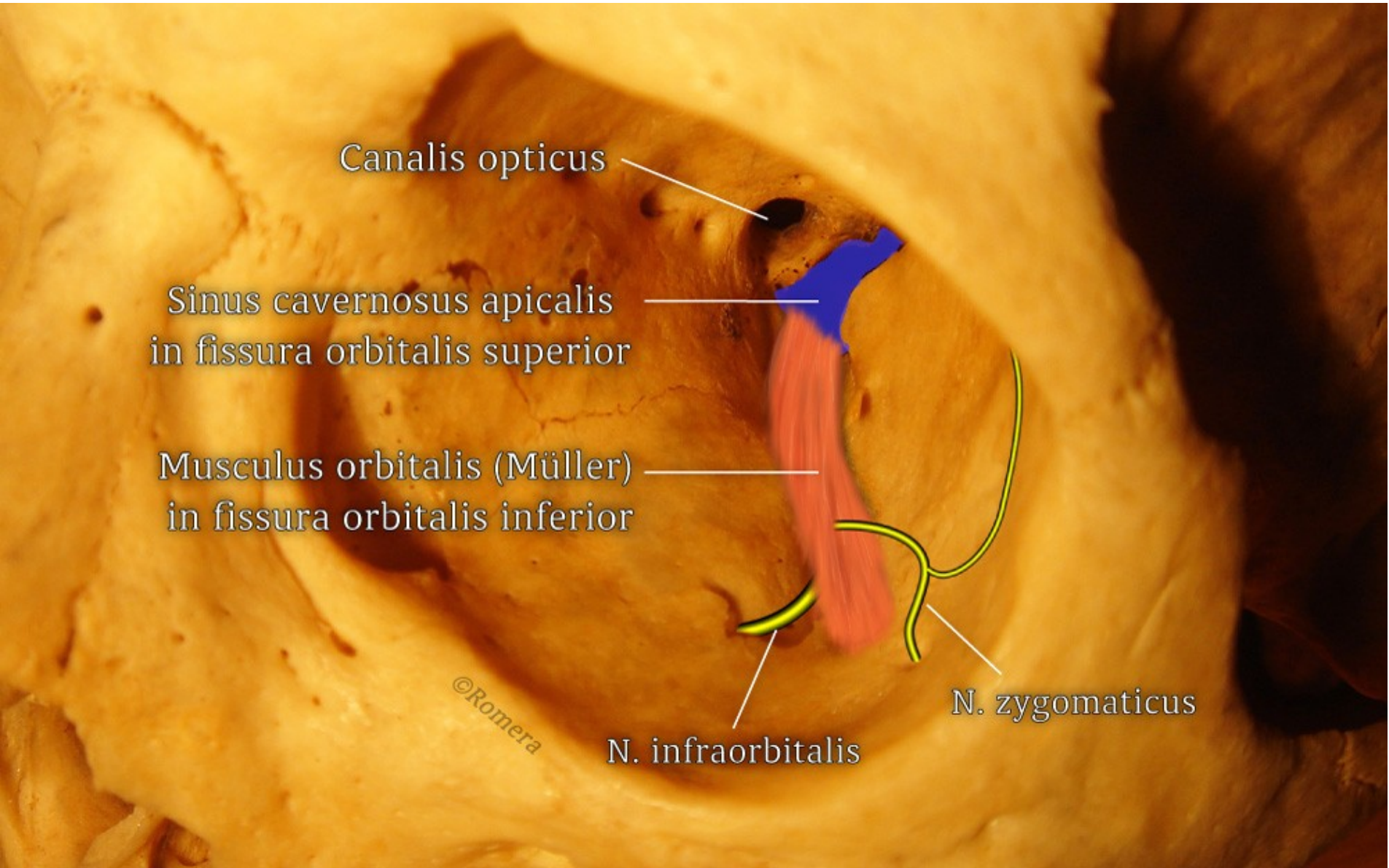




m. tarsalis superior Mulleri



M. orbitalis



Hornerův syndrom

Hornerova triáda: mióza, ptóza víčka, enoftalmus



Poškození/útlak - krčního sympatiku, pregangliového i postgangliového (plexus caroticus)
- Budgeova ciliospinálního centra