

# ORGANUM VESTIBULOCOCHLEARE

## Auris externa, media et interna

### Auris externa

Auricula  
Meatus acusticus externus  
Membrana tympani

### Auris media

Cavitas tympani  
Ossicula auditus  
Tuba auditiva

### Auris interna

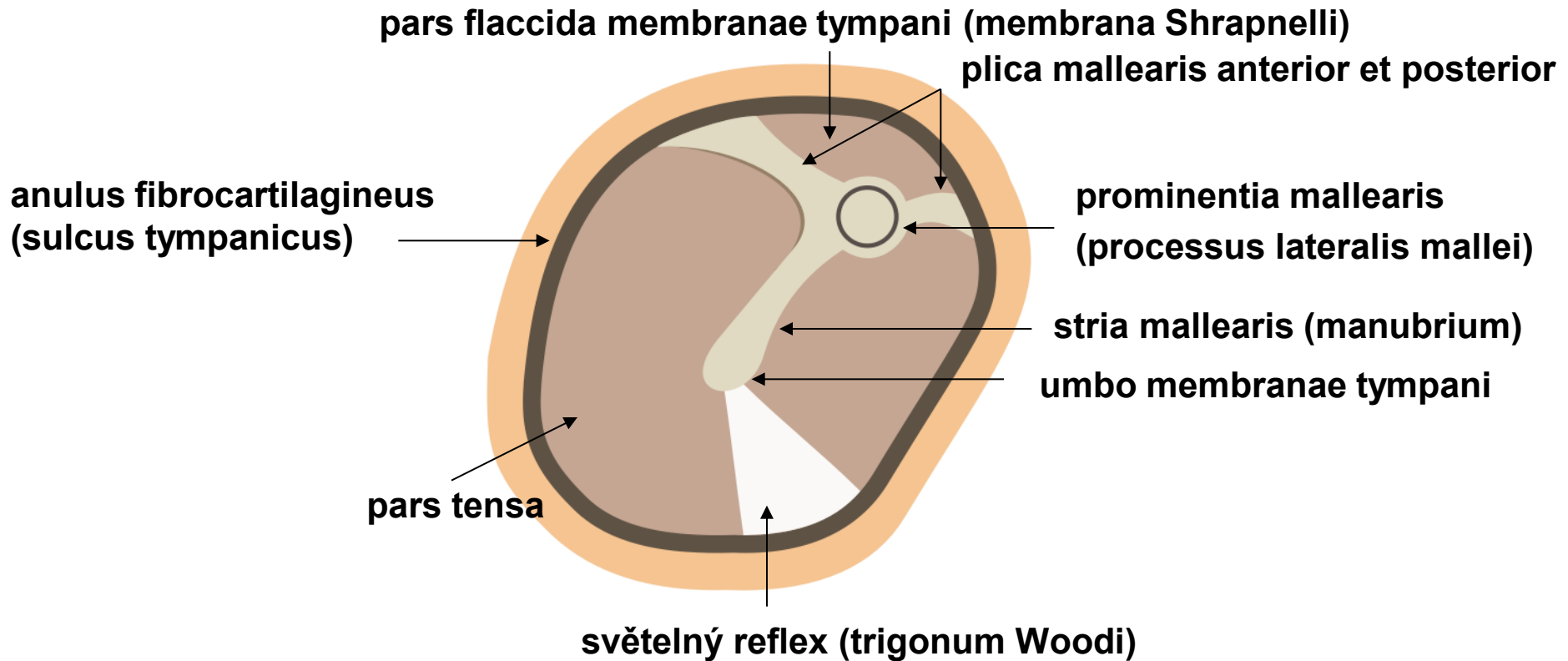
Labyrinthus osseus  
Labyrinthus membranaceus

# MEMBRANA TYMPANI

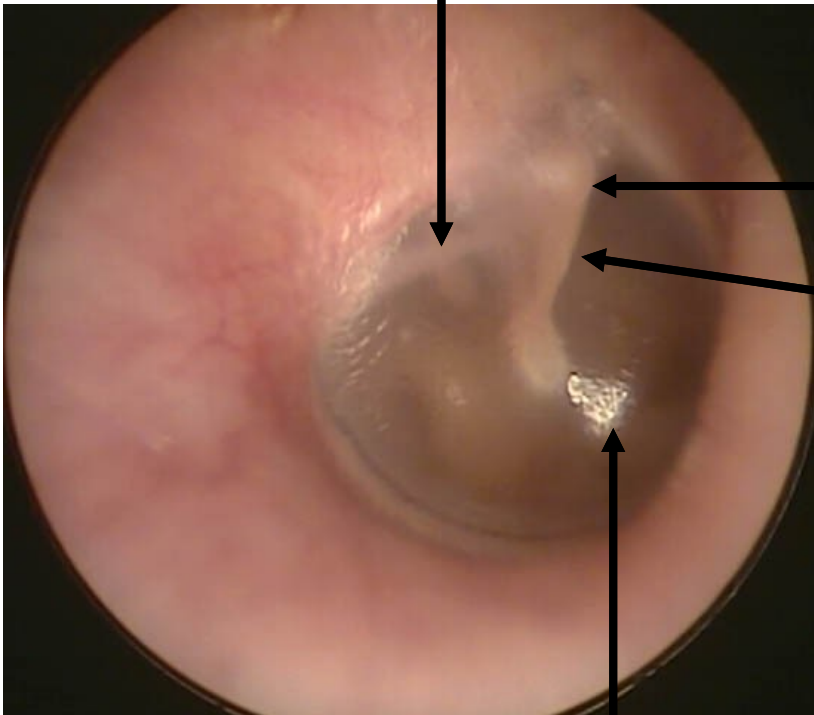
střední vazivová vrstva – stratum membranaceum

zevní vrstva - stratum cutaneum

vnitřní vrstva - stratum mucosum



**plica mallearis posterior**



**prominentia mallearis  
(processus lateralis mallei)**

**stria mallearis (manubrium)**

**světelný reflex (trigonum Woodi)**



# CAVITAS TYMPANI

## **paries membranaceus**

- bubínek

## **paries labyrinthicus**

- promontorium
- fenestra vestibuli
- fenestra cochleae

## **paries jugularis**

- apertura externa canaliculi tympanici

## **paries tegmentalis**

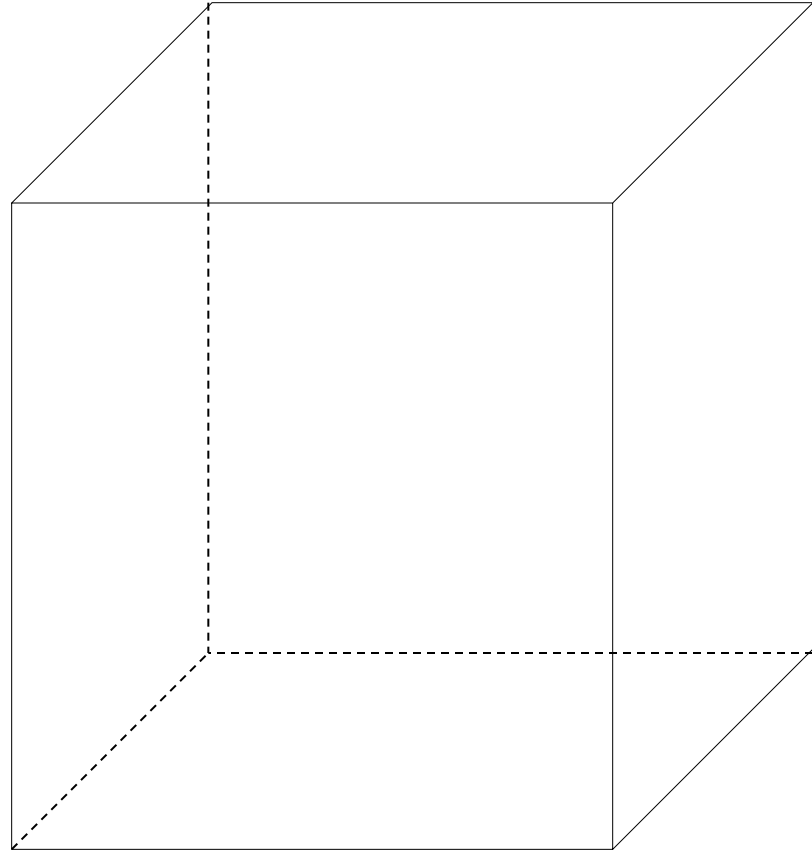
- hiatus canalis nervi petrosi minoris

## **paries caroticus**

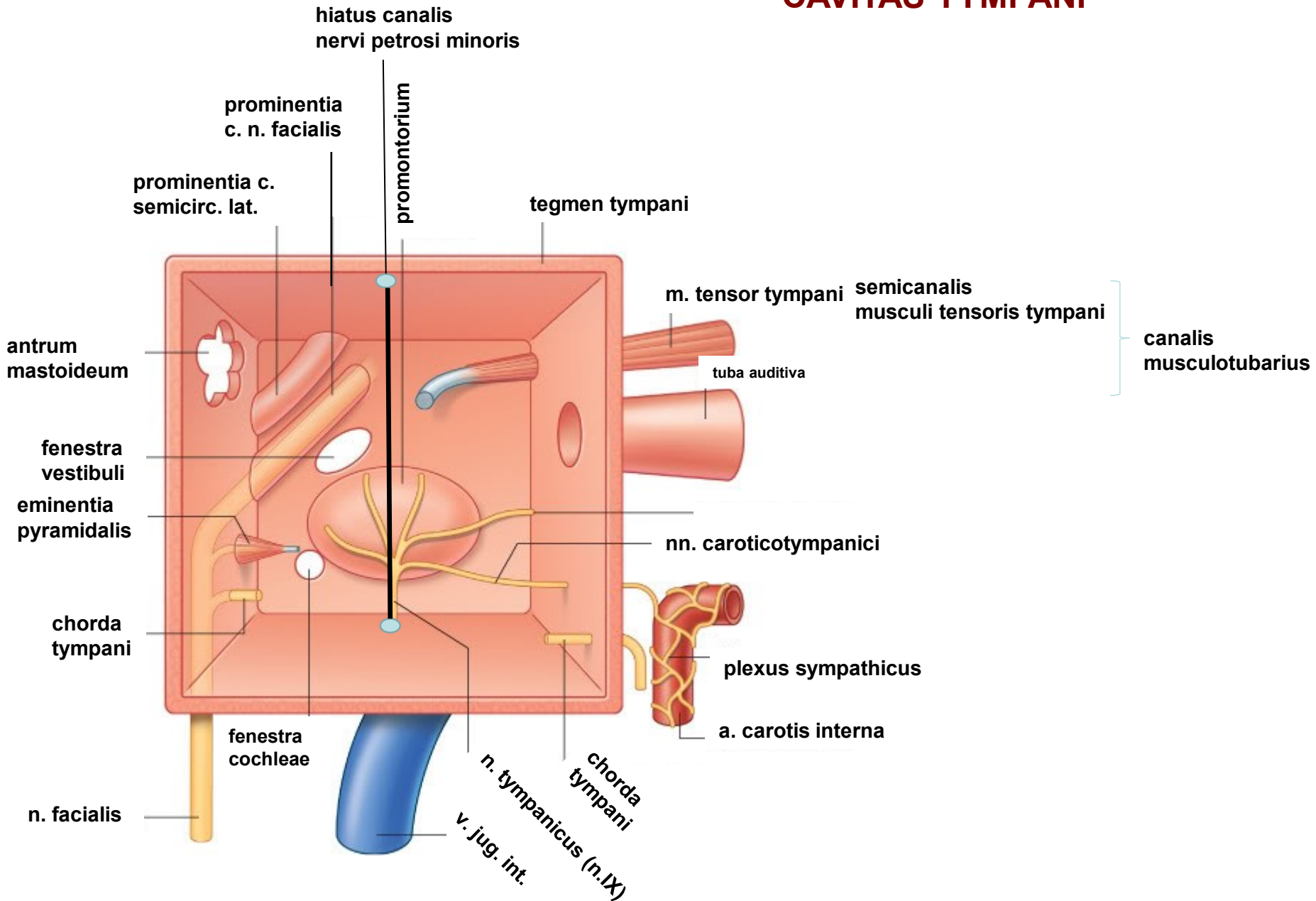
- canaliculi caroticotympanici
- canalis musculotubarius
  - semicanalis musculi tensori tympani*
  - semicanalis tubae auditivae*

## **paries mastoideus**

- antrum mastoideum



# CAVITAS TYMPANI



# OSSICULA AUDITUS

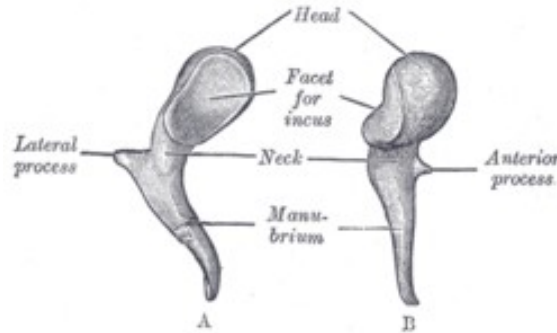
## Malleus

Caput mallei

Manubrium mallei

Processus lateralis

Processus anterior



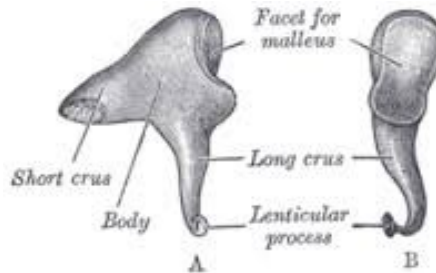
### Art. incudomallearis

## Incus

Corpus incudis

Crus longum

Crus breve



### Art. incudostapedialis

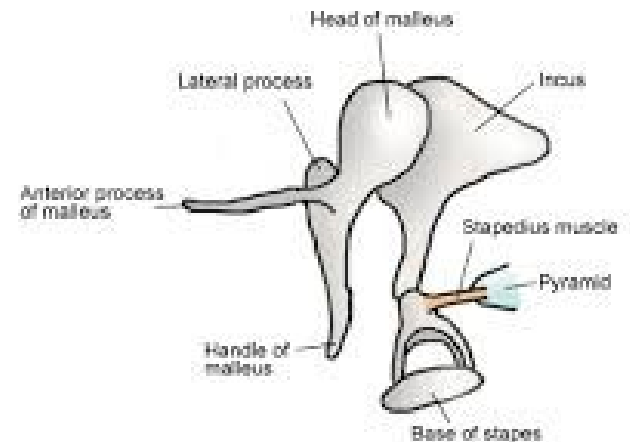
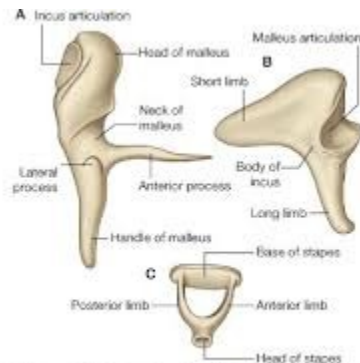
## Stapes

Caput stapedis

Crus anterius

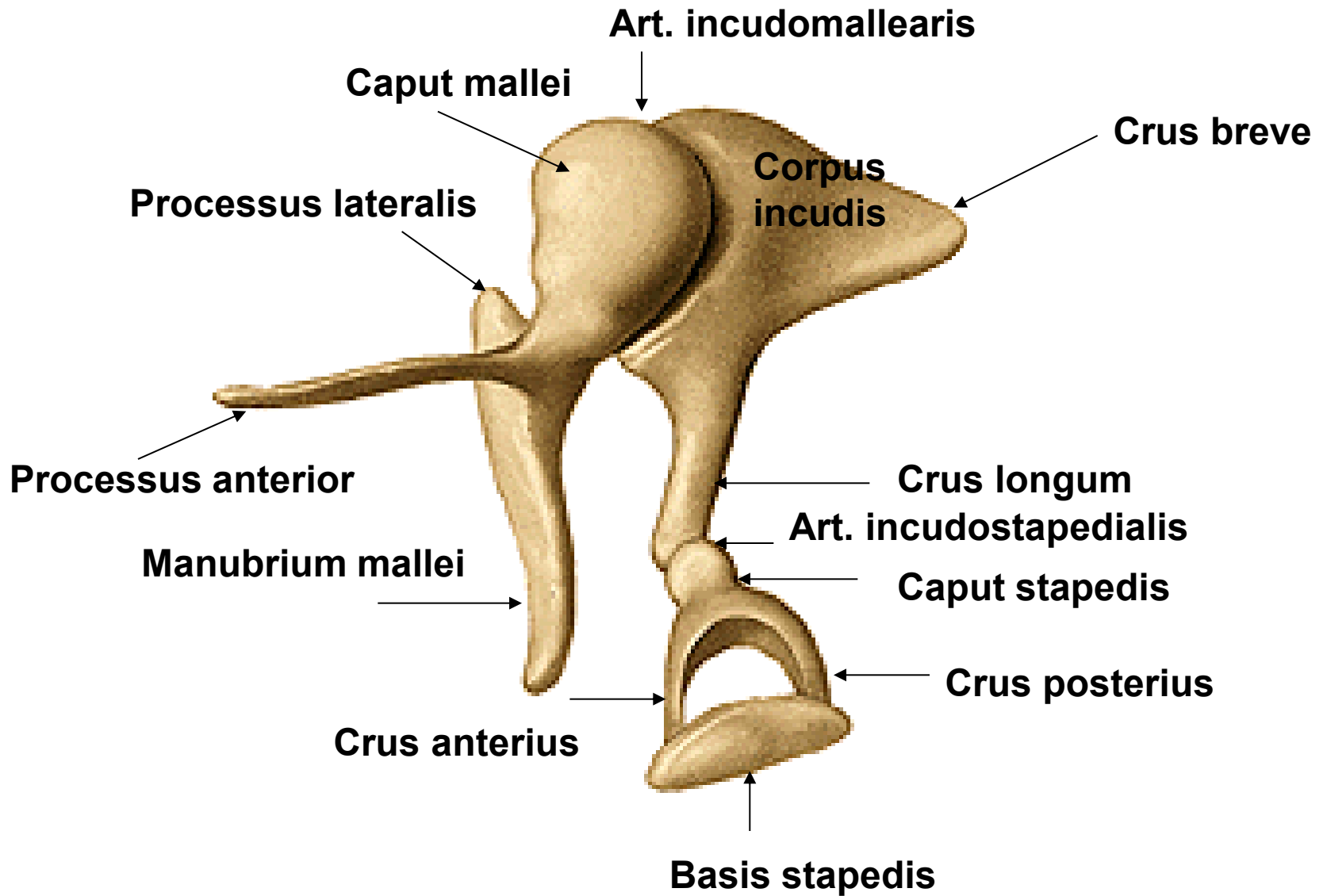
Crus posterius

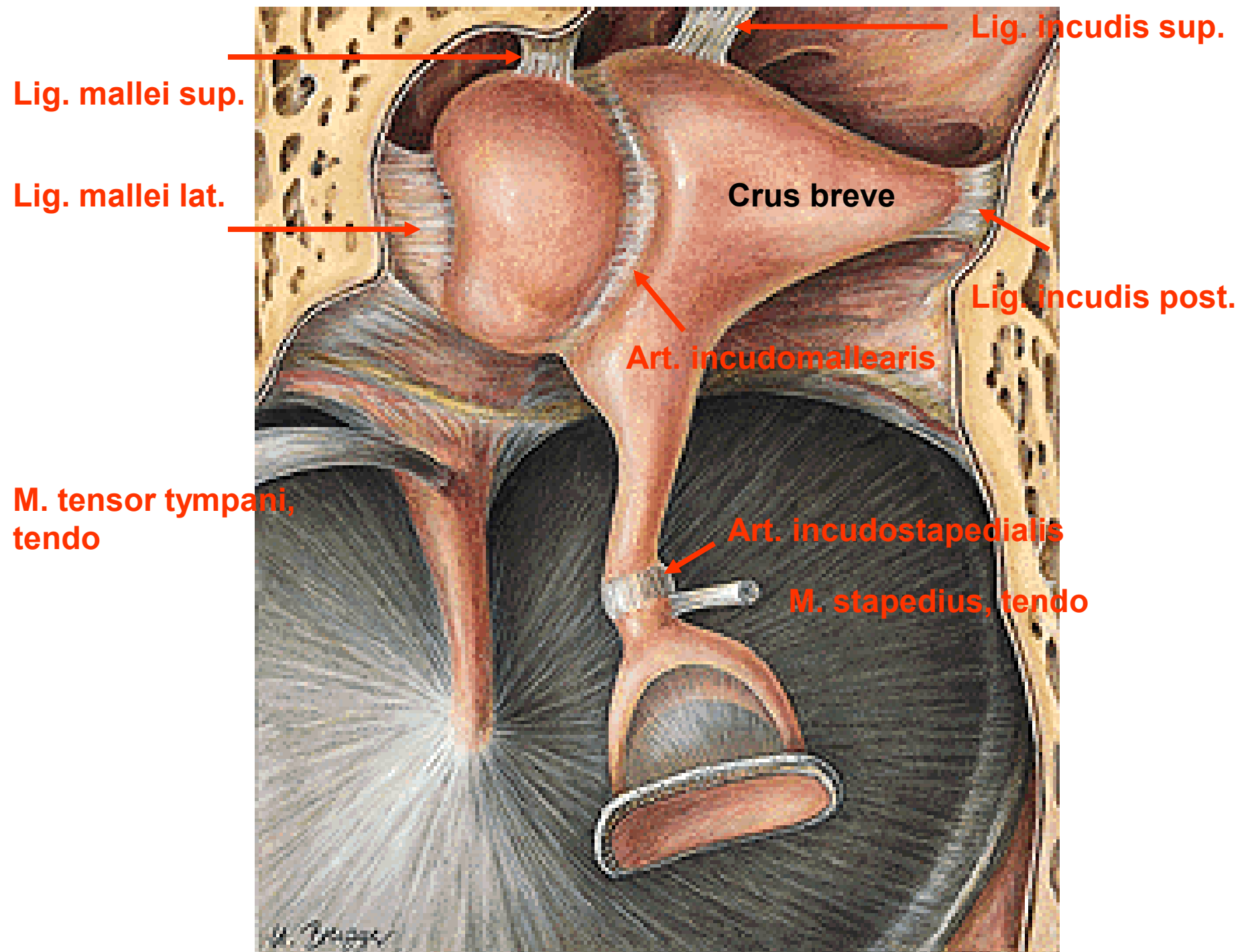
Basis stapedis



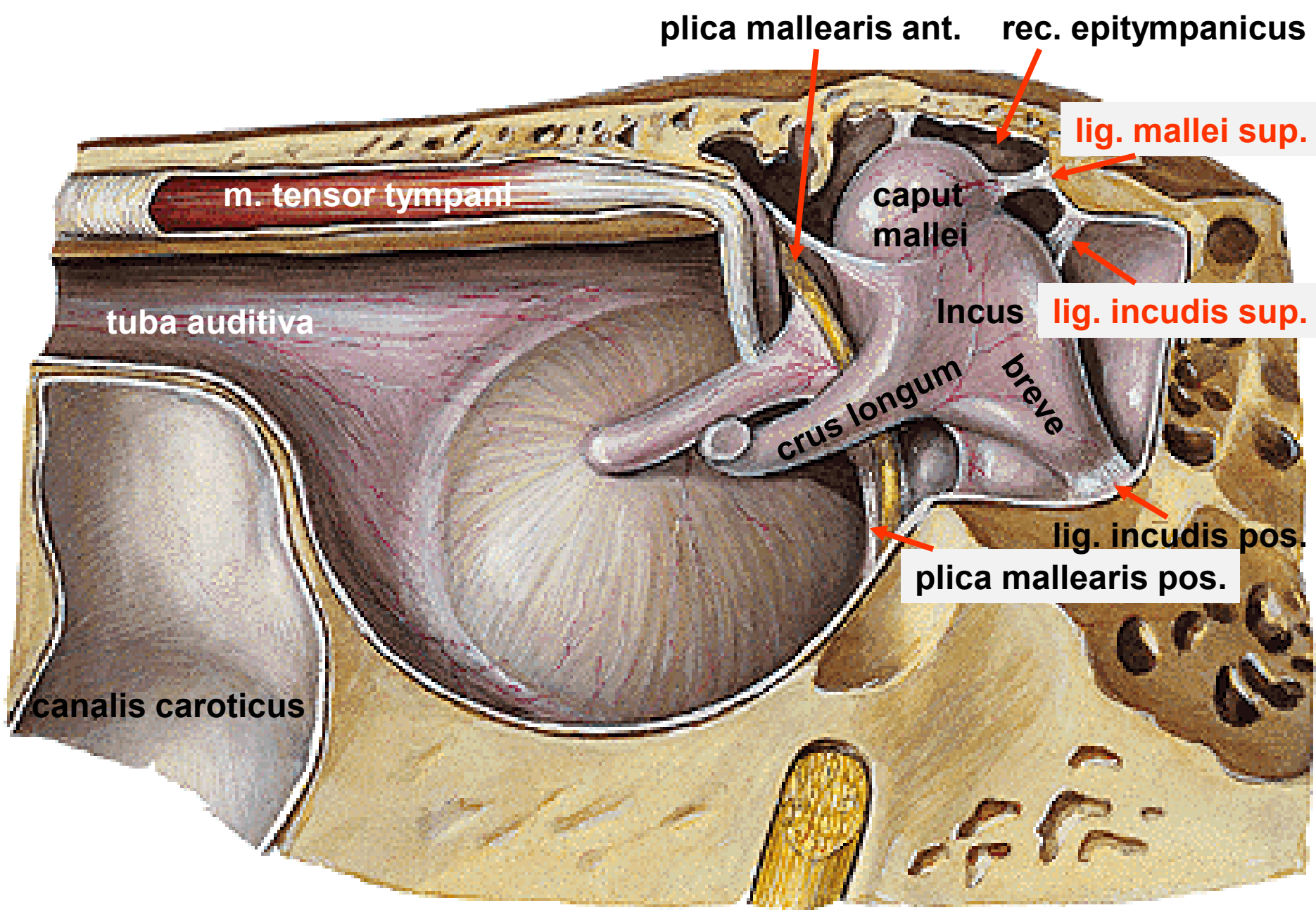
© 2008 St. George's, University of London

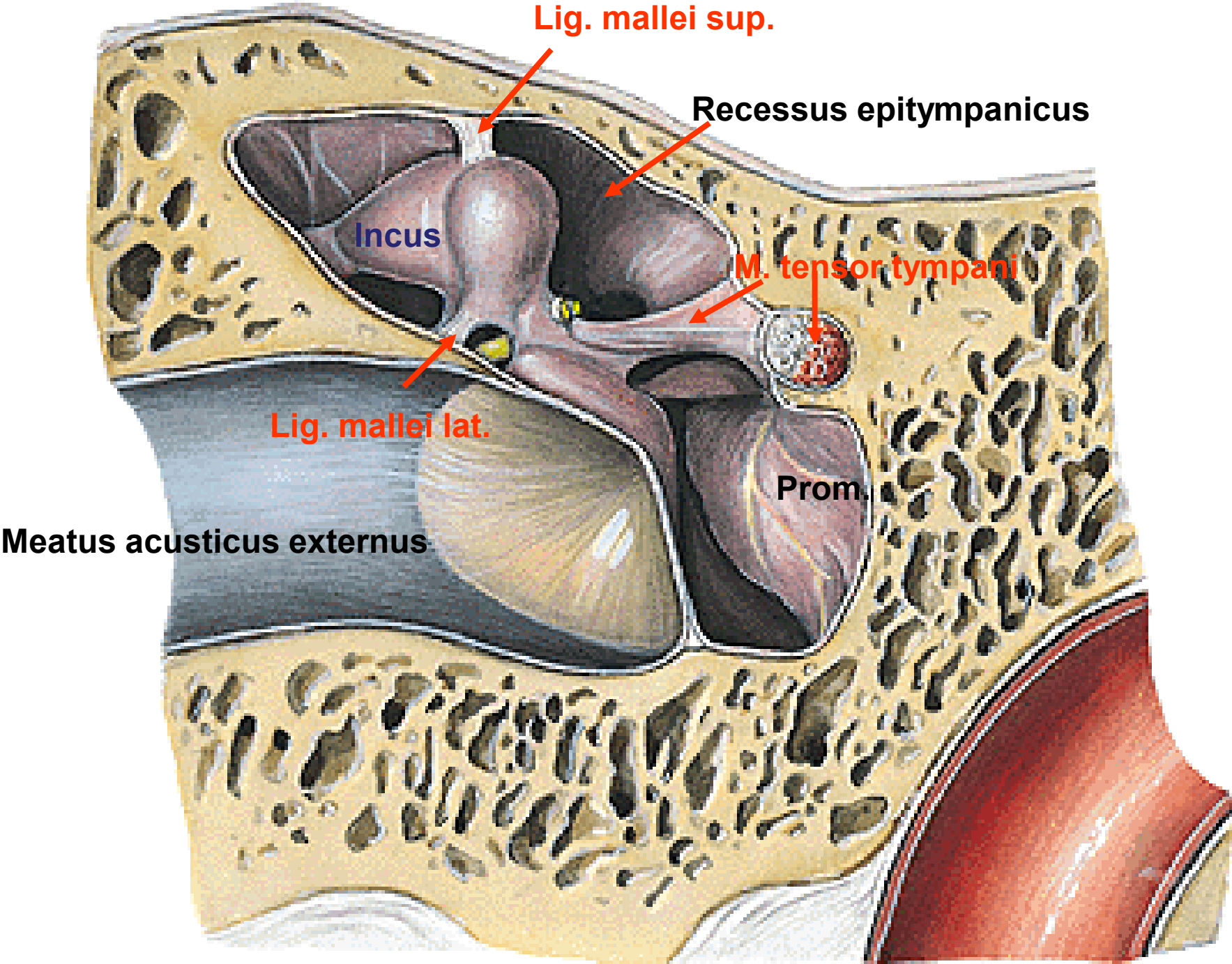
# OSSICULA AUDITUS











Lig. mallei sup.

Recessus epitympanicus

Incus

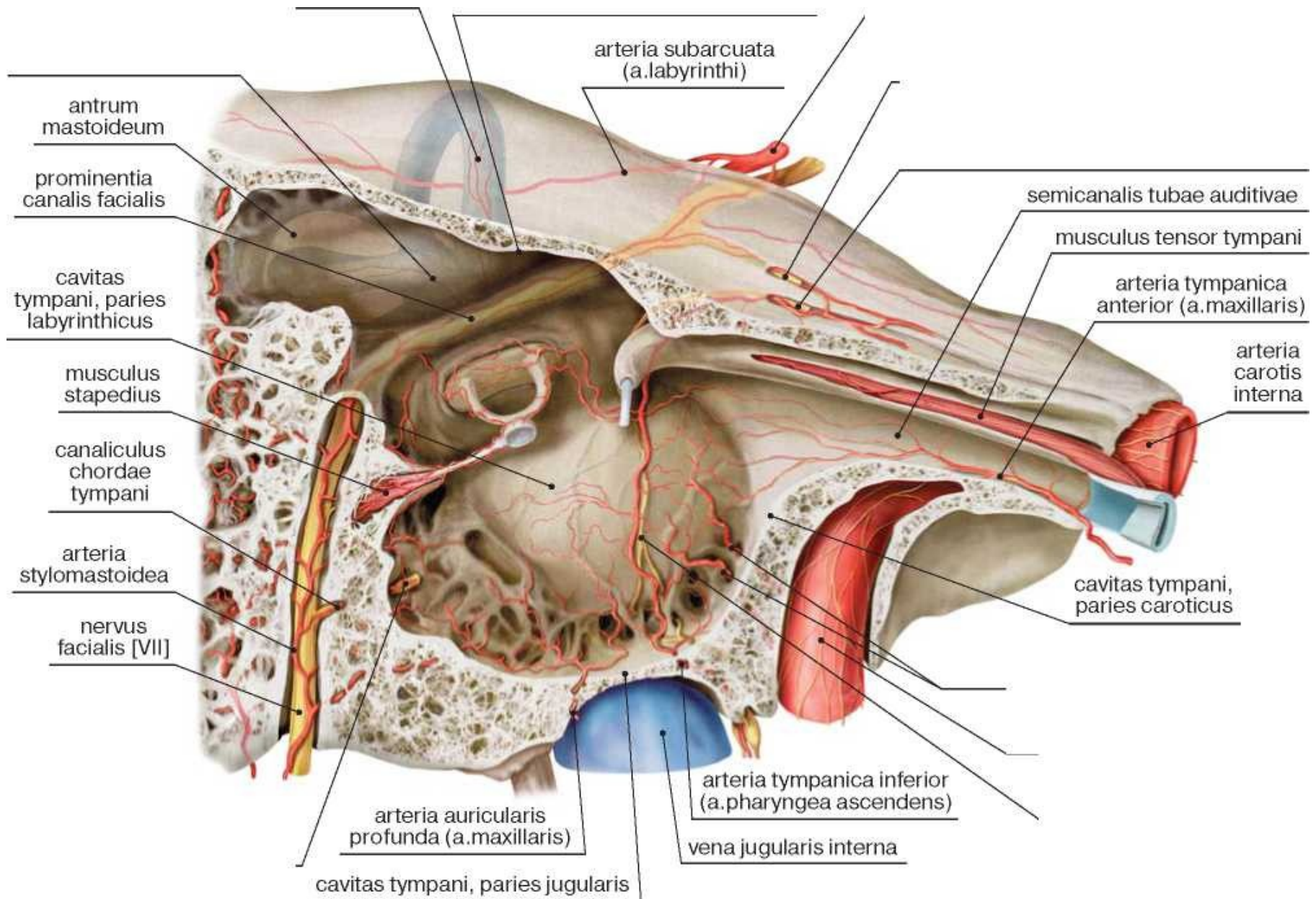
M. tensor tympani

Lig. mallei lat.

Prom.

Meatus acusticus externus





# TUBA AUDITIVA, SLUCHOVÁ (EUSTACHOVA) TRUBICE

**pars ossea tubae auditivae (10mm)**

**ostium tympanicum tubae auditivae**

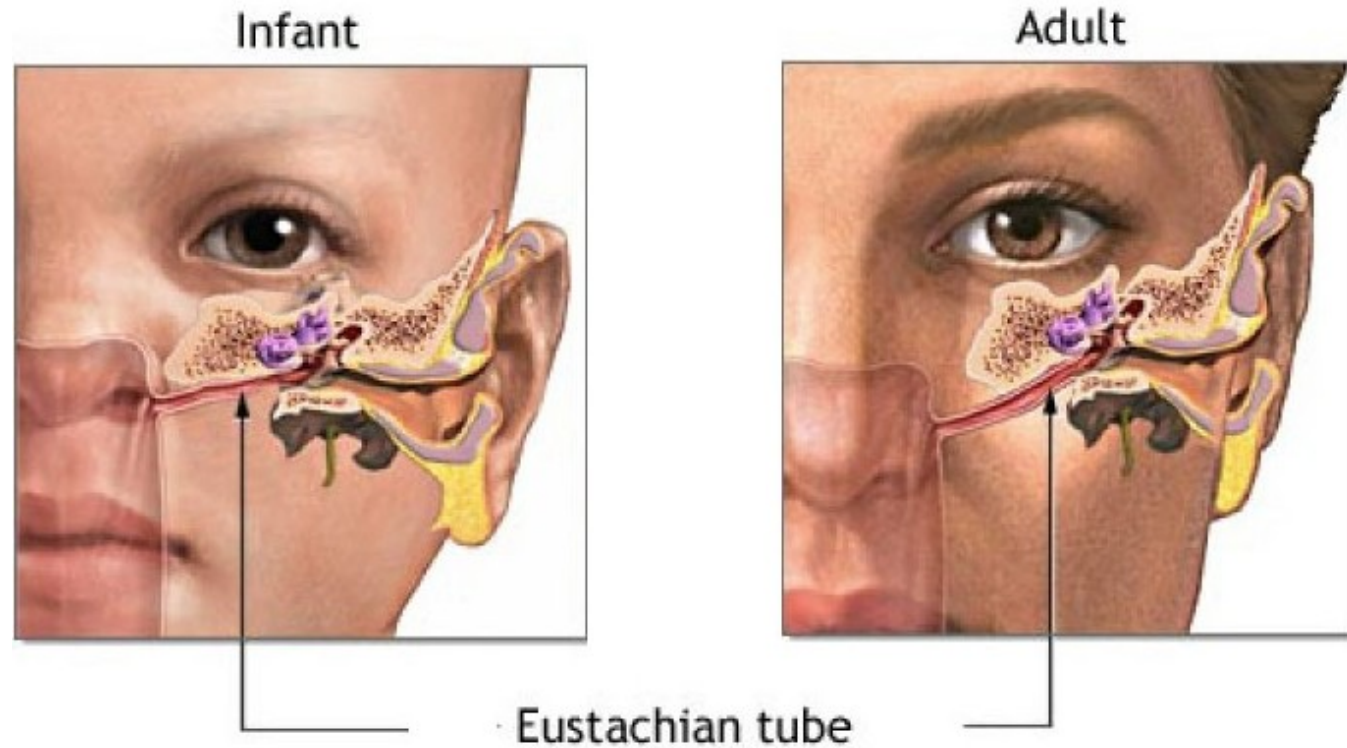
**pars cartilaginea tubae auditivae (25 mm)**

lamina medialis et lateralis

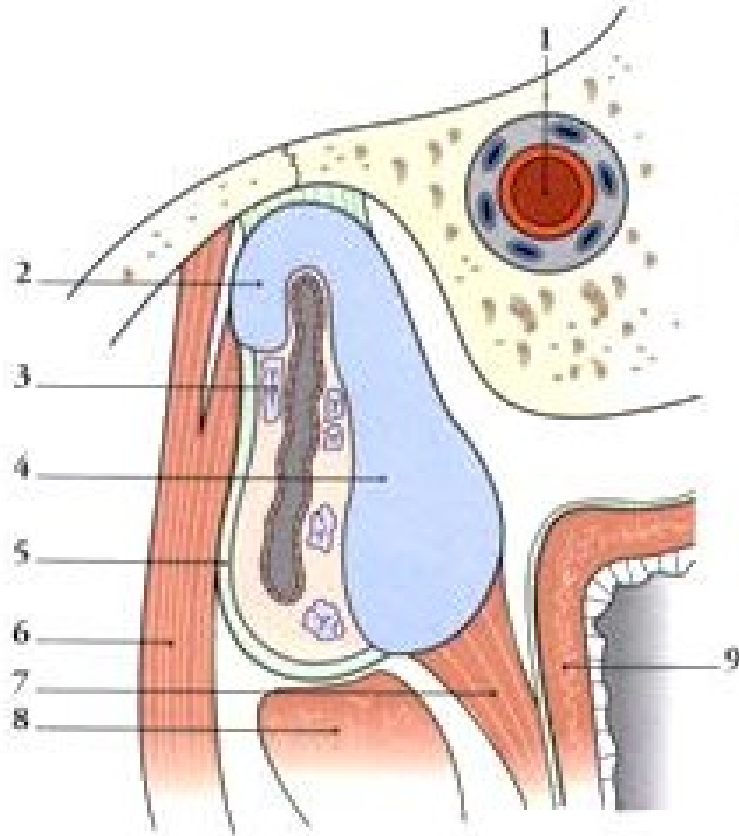
**ostium pharyngeum tubae auditivae**

**torus tubarius**

lymfatická tkáň (tonsilla tubaria)

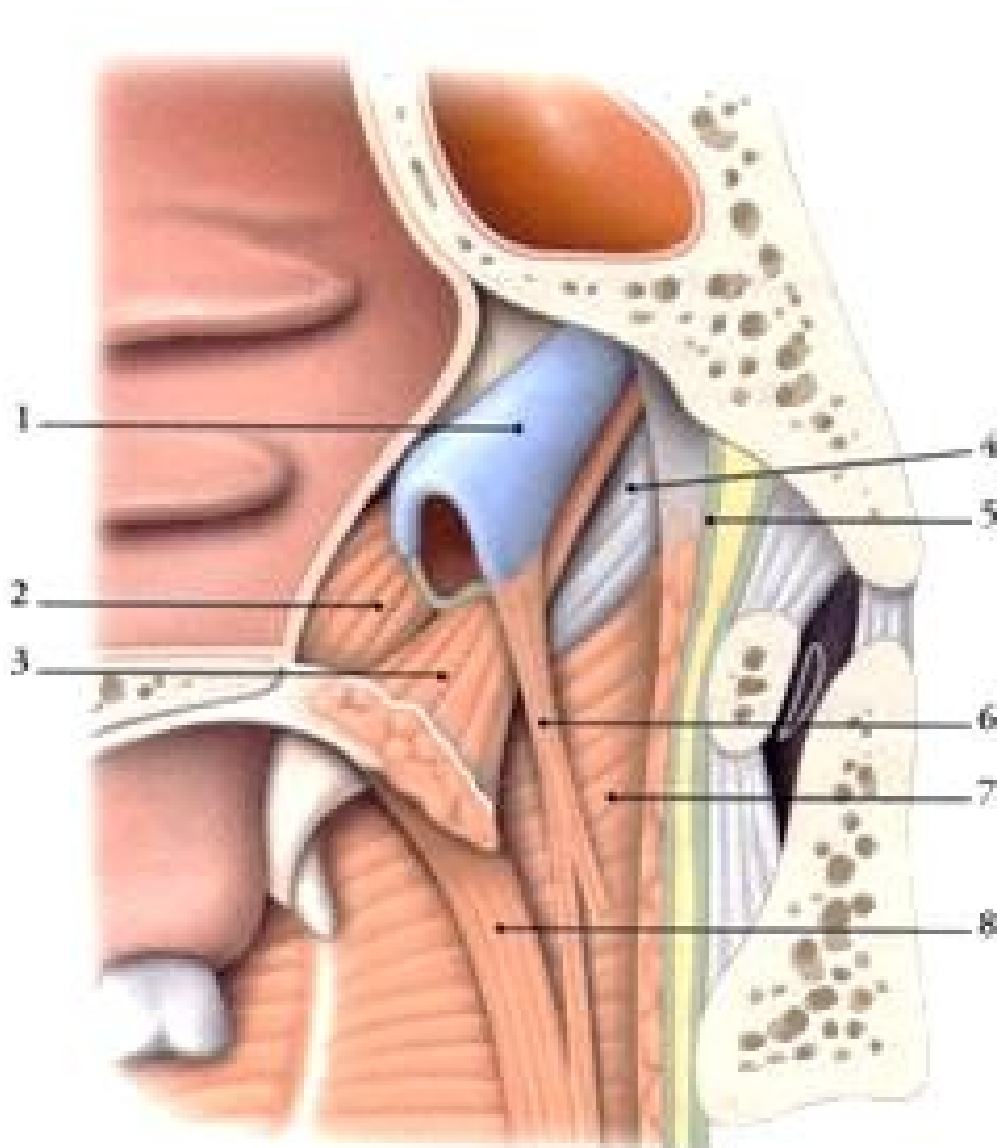


# TUBA AUDITIVA, SLUCHOVÁ (EUSTACHOVA) TRUBICE

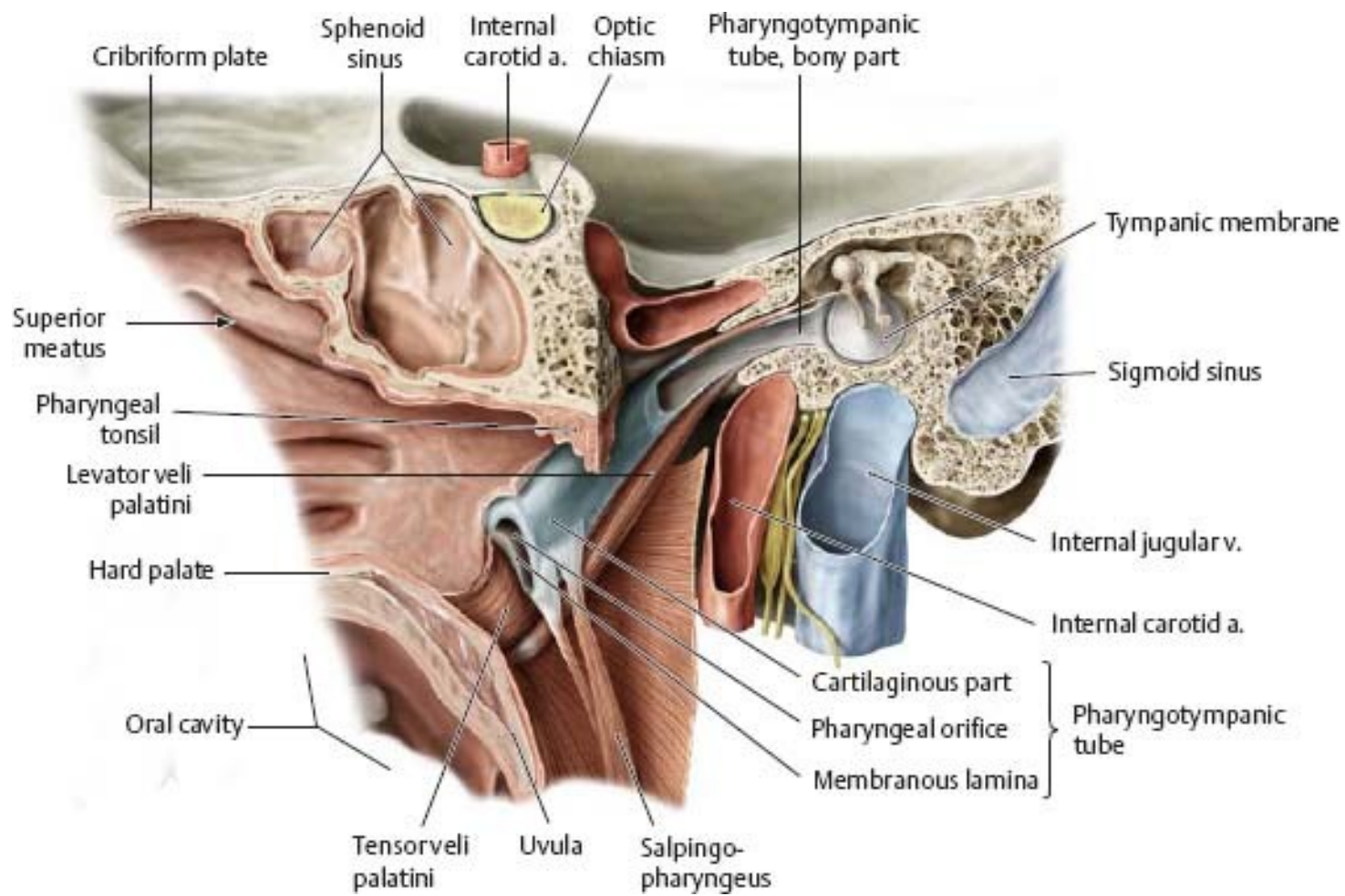


- 1- a. carotis int.;
- 2-lamina lateralis et 4-medialis;
- 6 – m. tensor veli palatini;
- 7- m. salpingopharyngeus;
- 8-m. levator veli palatini;
- 9-nasopharynx;

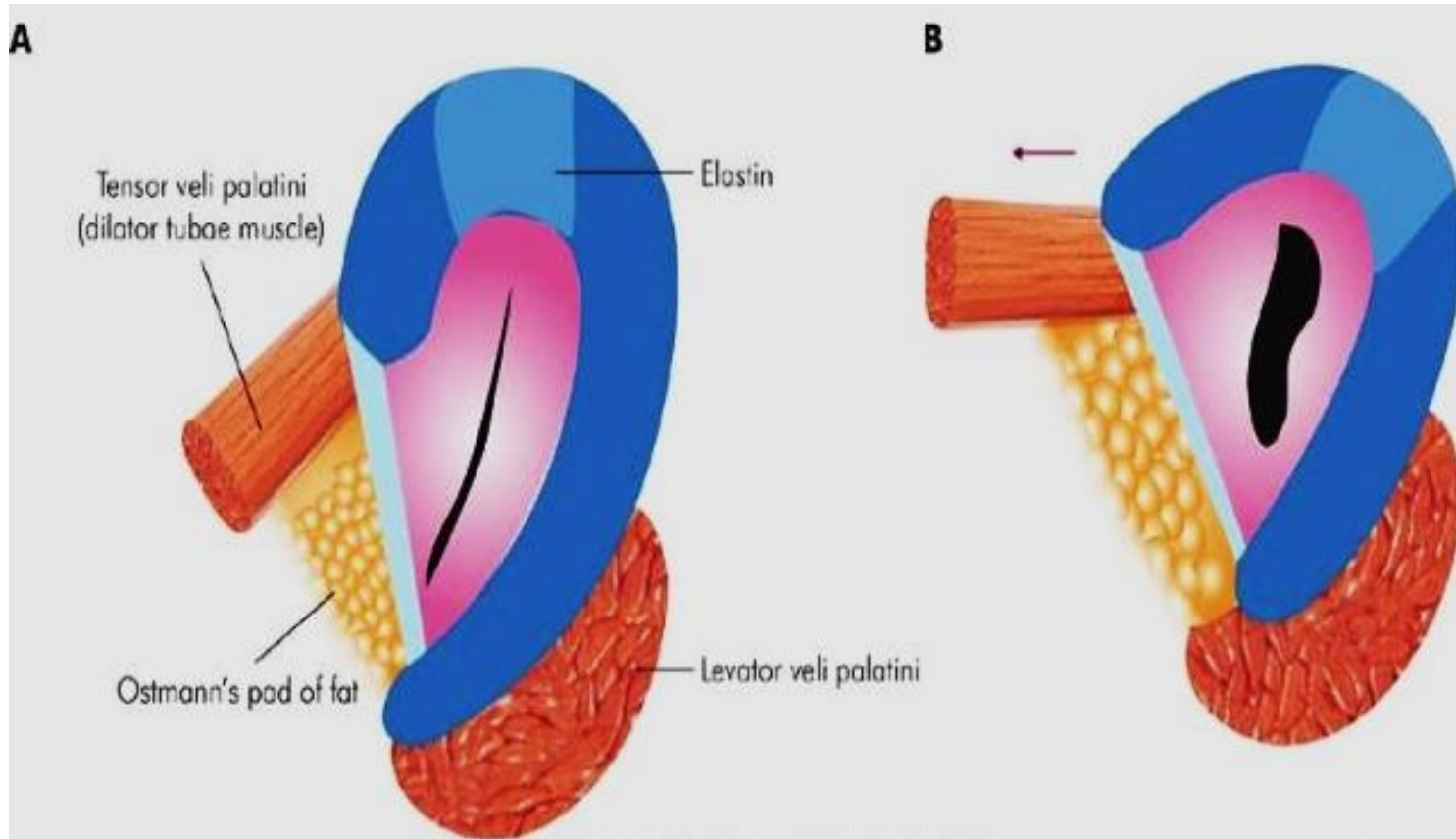
## TORUS TUBARIUS, torus levatorius, plica salpingopharyngea



2- m. tensor v.p.; 3- m. levator v.p;  
6- m. salpingopharyngeus

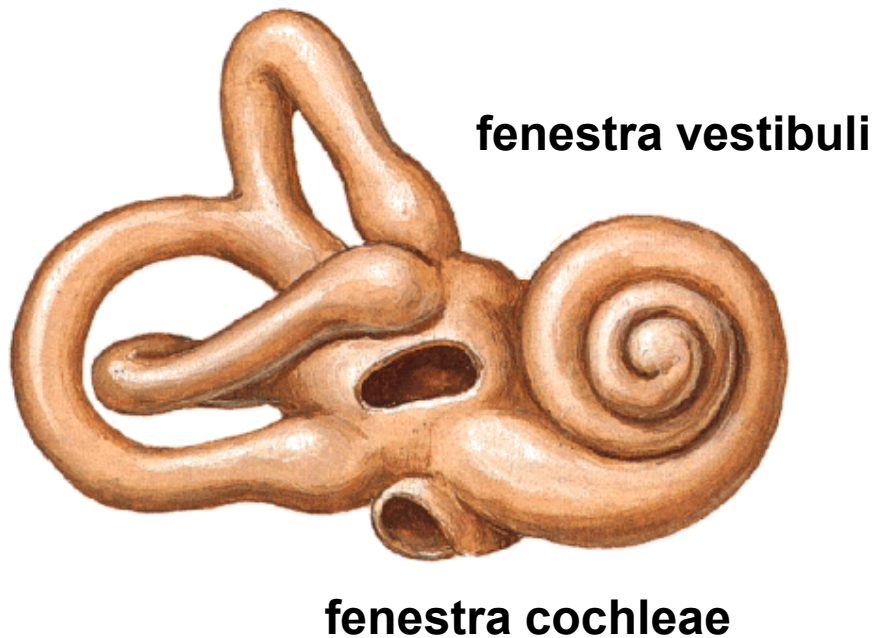






# AURIS INTERNA - LABYRINTHUS OSSEUS

Right Osseous Labyrinth  
Anterolateral View



- vestibulum

-canales semicirculares ossei

*anterior*

*posterior*

*crus communae*

*ampulla ossea*

**lateralis**

*crus simplex*

- cochlea

# **COCHLEA (KOSTĚNÝ HLEMÝŽĎ)**

**modiolus**

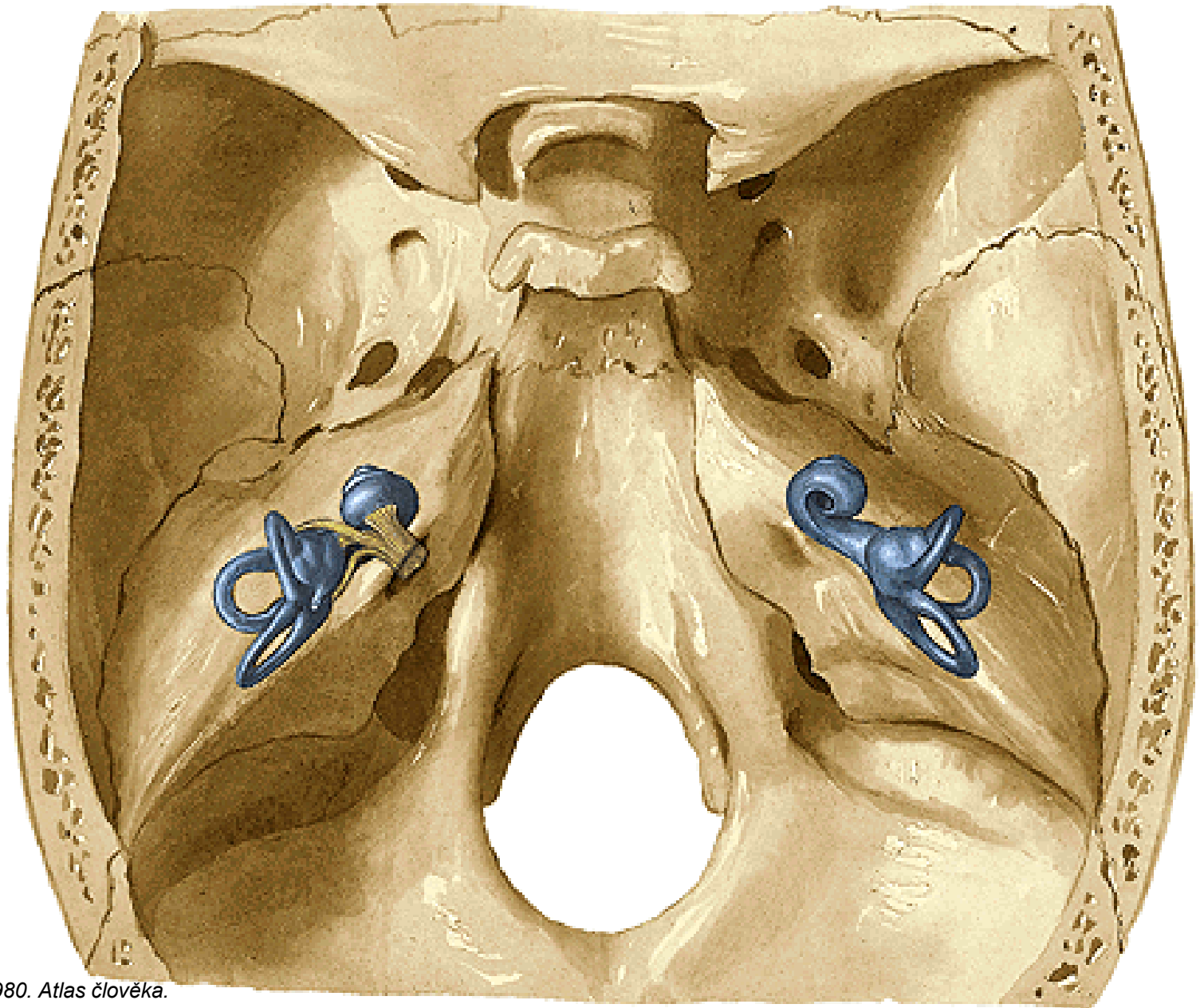
**lamina spiralis ossea**

**canalis spiralis osseus**

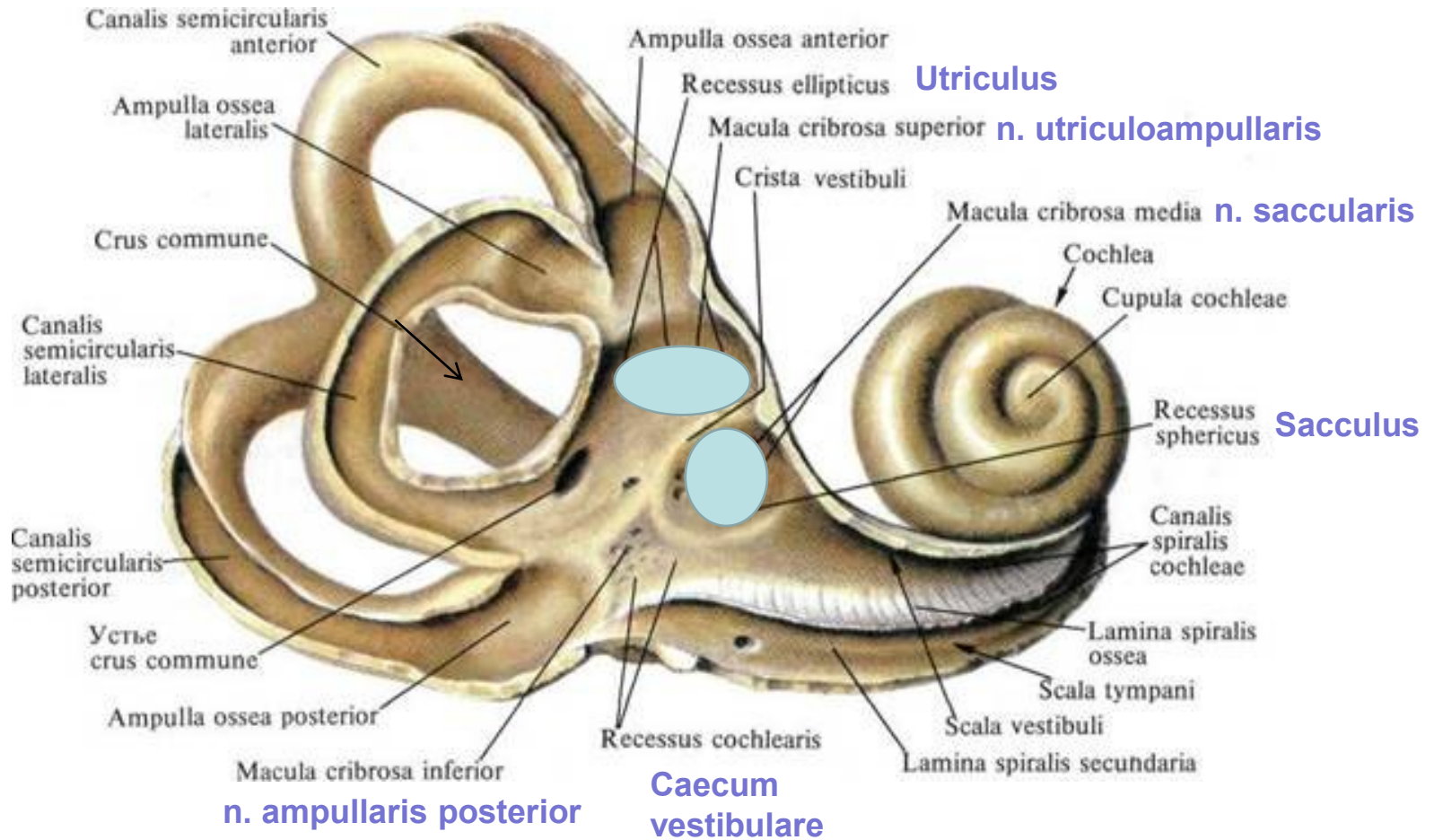
**canales longitudinales**

**tractus spiralis foraminosus**

# AURIS INTERNA



# VESTIBULUM



# LABYRINTHUS MEMBRANACEUS

## labyrinthus vestibularis

- utriculus et sacculus
- d. utriculosaccularis → d. endolymphaticus (aqueductus vestibuli) → saccus endolymph.
- ductus semicirculares

*macula statica utriculi et sacculi*

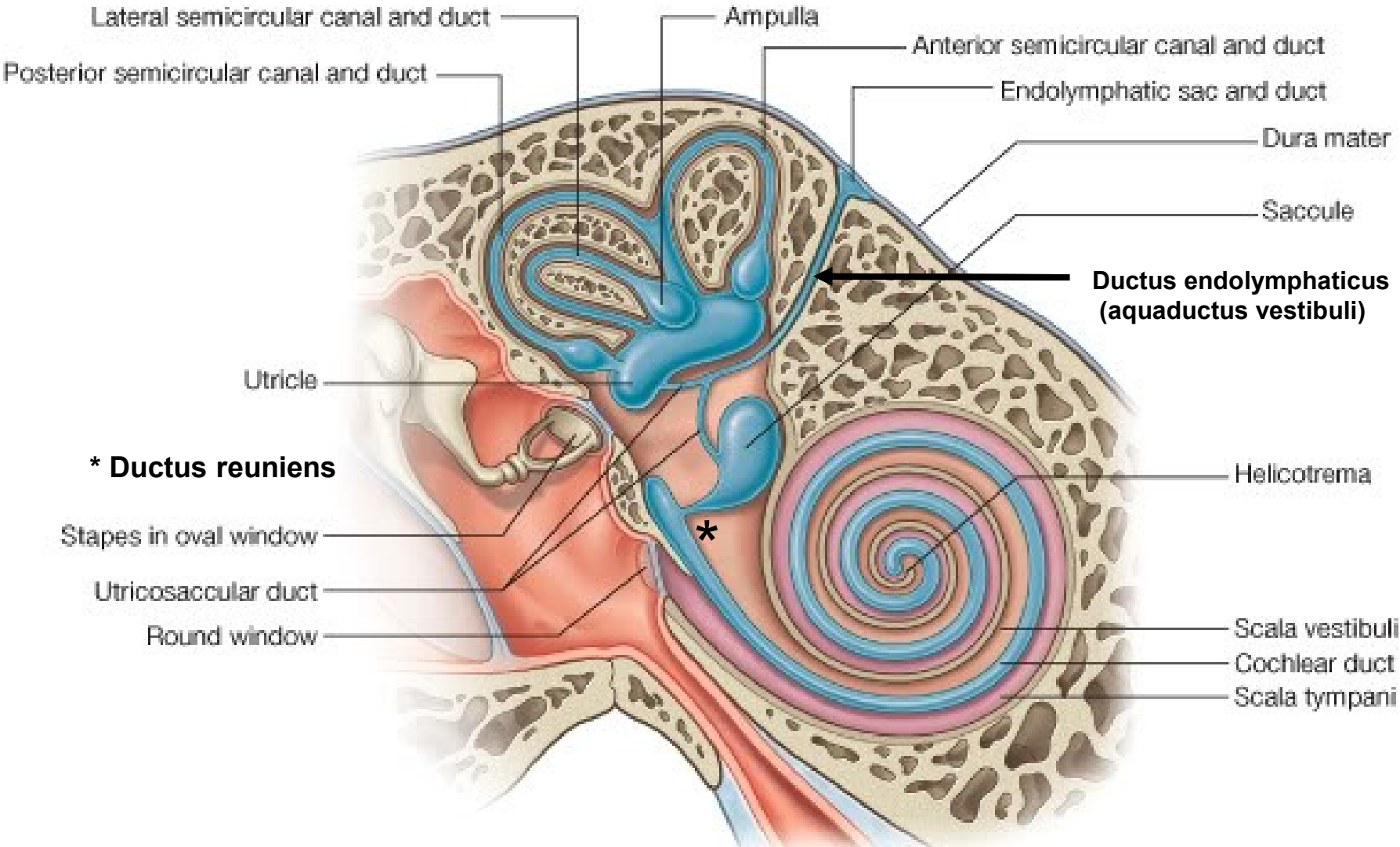
*cristae ampullares*

## labyrinthus cochlearis

- ductus cochlearis    *lamina basilaris*  
                              *membrana vestibularis Reissneri*  
                              *stěna kostěného kanálku*

*organum spirale Corti*    *membrana tectoria*

# LABYRINTHUS MEMBRANACEUS



# LABYRINTHUS MEMBRANACEUS

Saccus endolymphaticus (*fossa subarcuata*)

Ductus endolymphaticus  
(aquaductus vestibuli)

ant.

Ductus semicircularis

post.

lat.

Ductus cochlearis

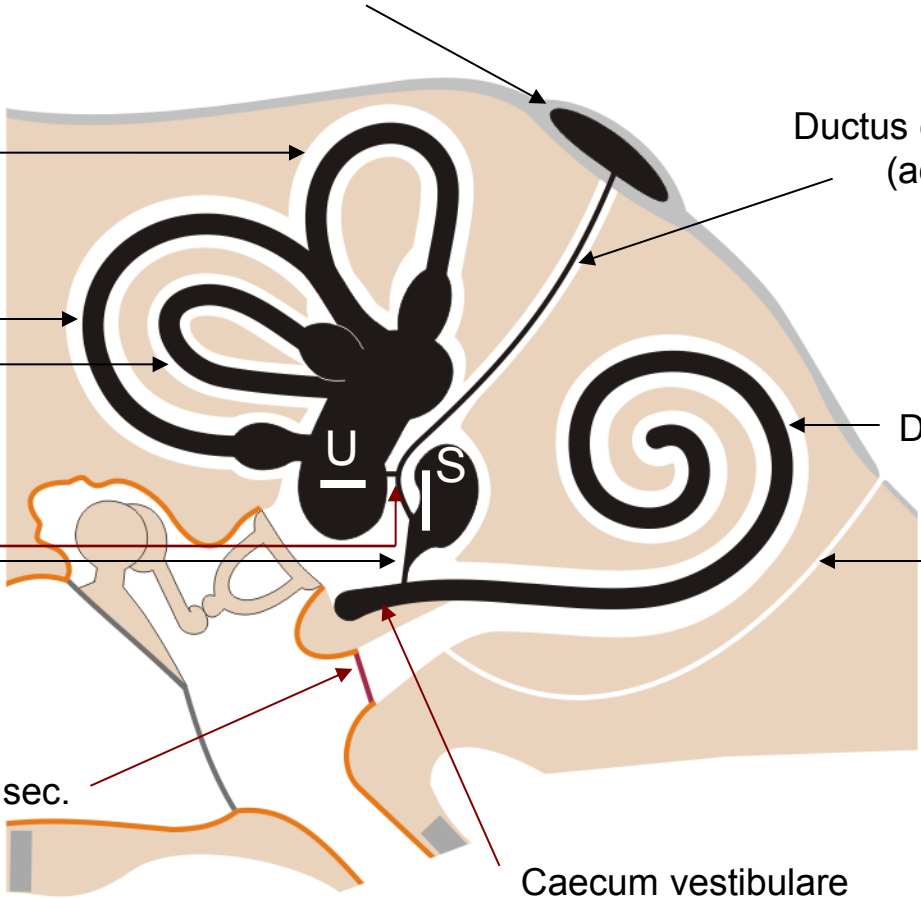
Ductus utriculosaccularis

Ductus reuniens

Canaliculus cochleae  
(*apertura externa  
canaliculi cochlae*)

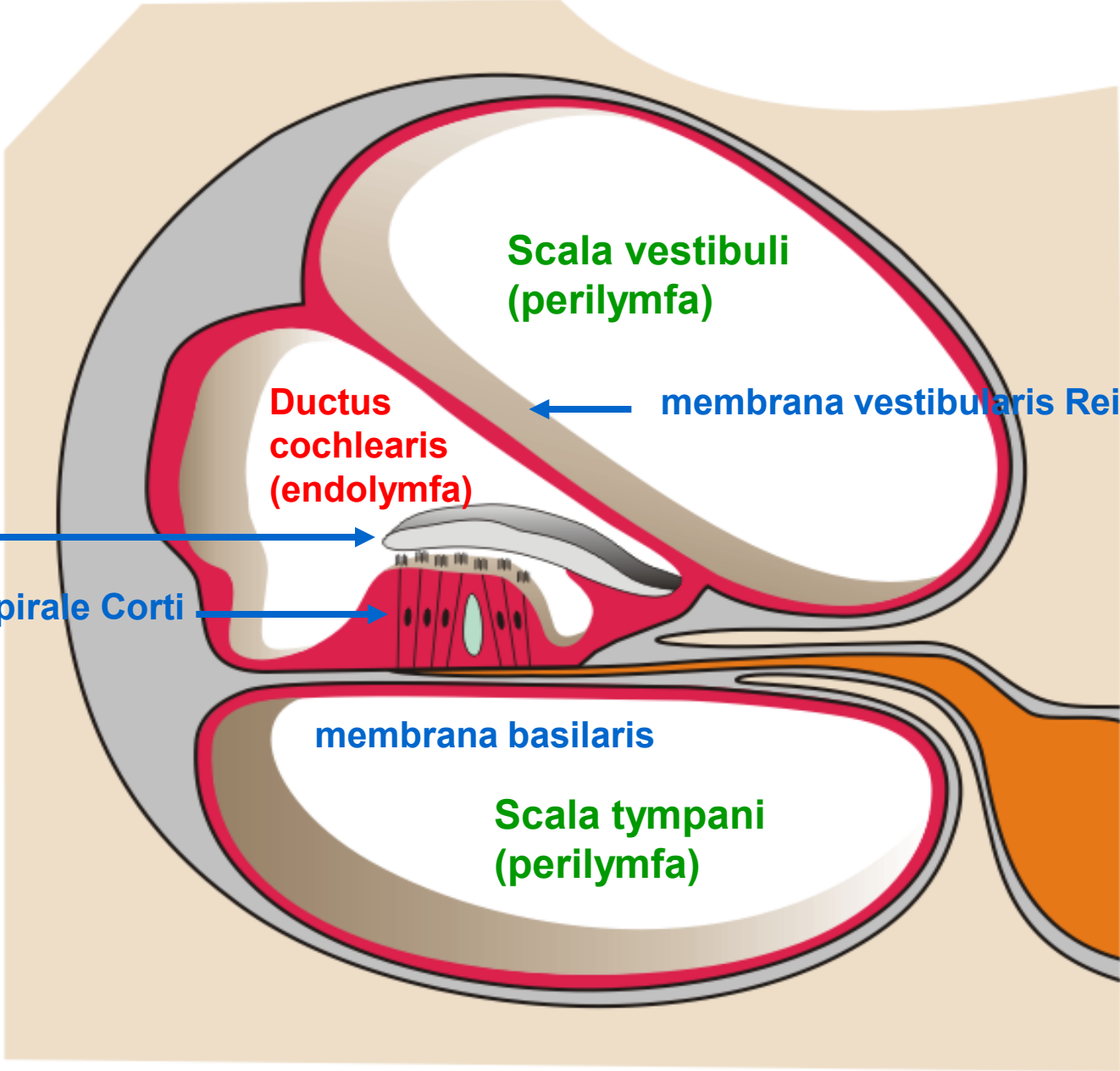
Membrana tympani sec.

Caecum vestibulare





# DUCTUS COCHLEARIS



membrana tectoria

organum spirale Corti

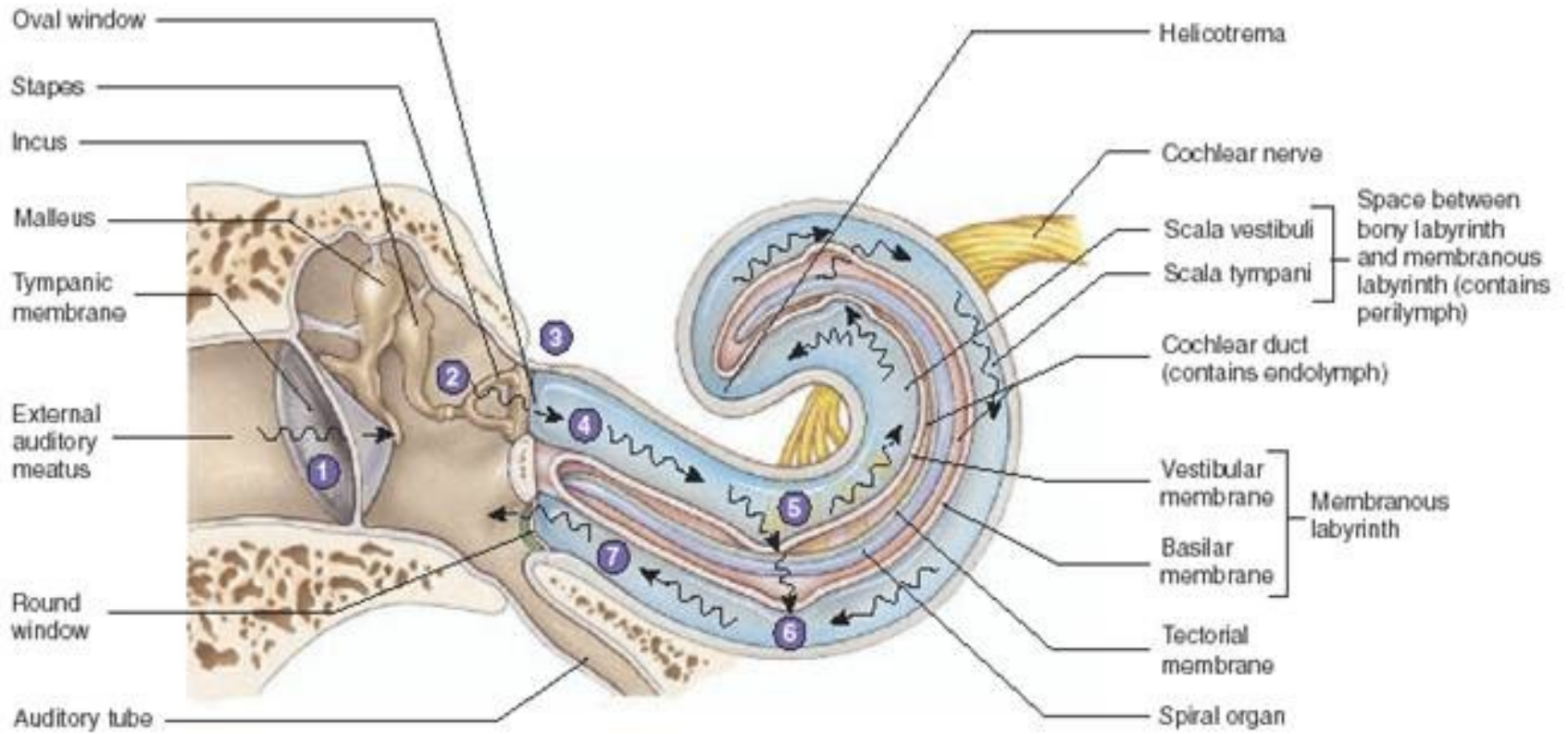
Ductus cochlearis (endolymfa)

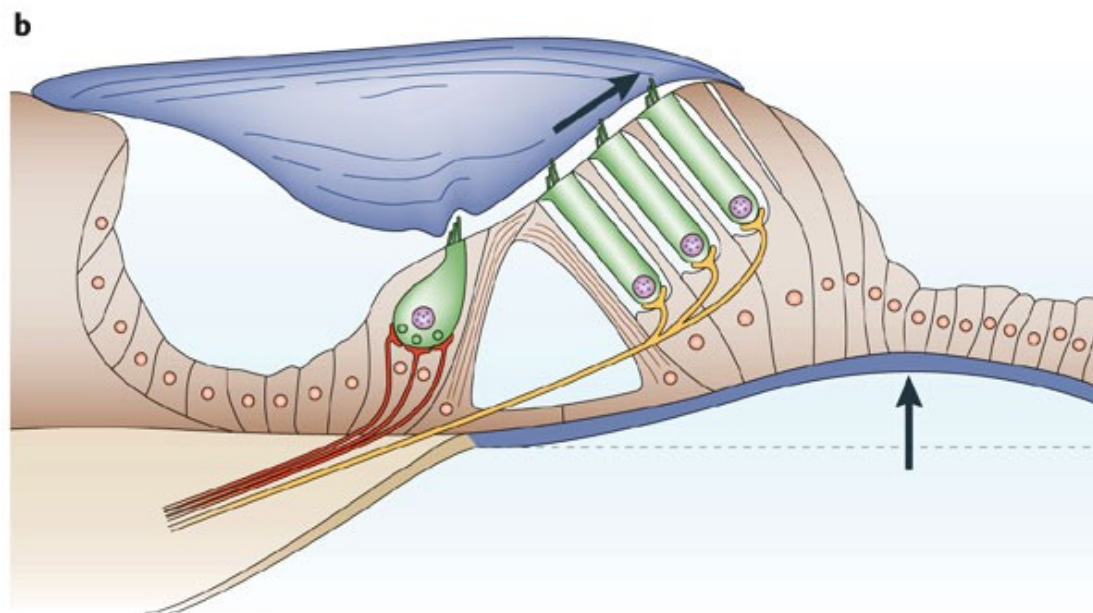
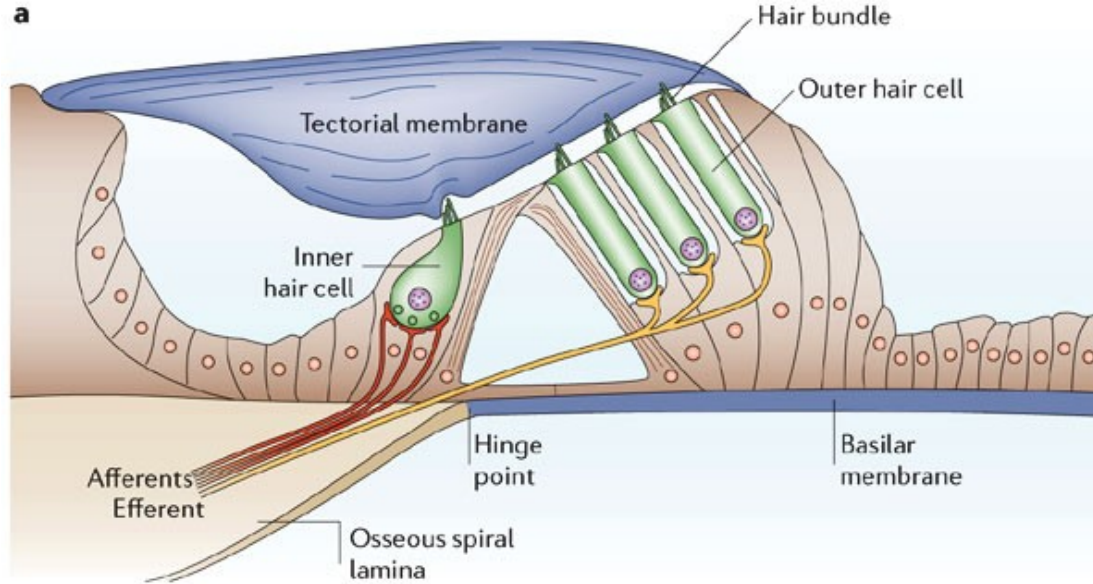
Scala vestibuli (perilymfa)

membrana basilaris

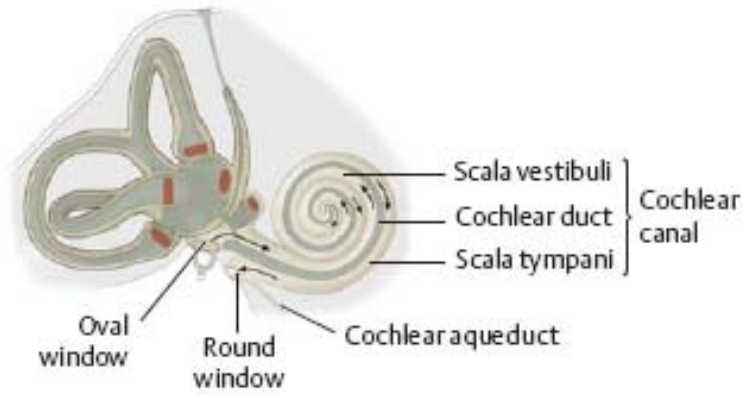
Scala tympani (perilymfa)

membrana vestibularis Reissneri

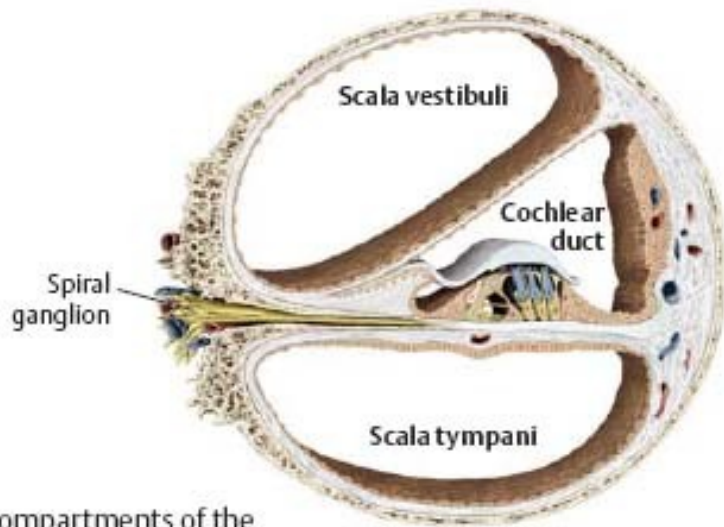




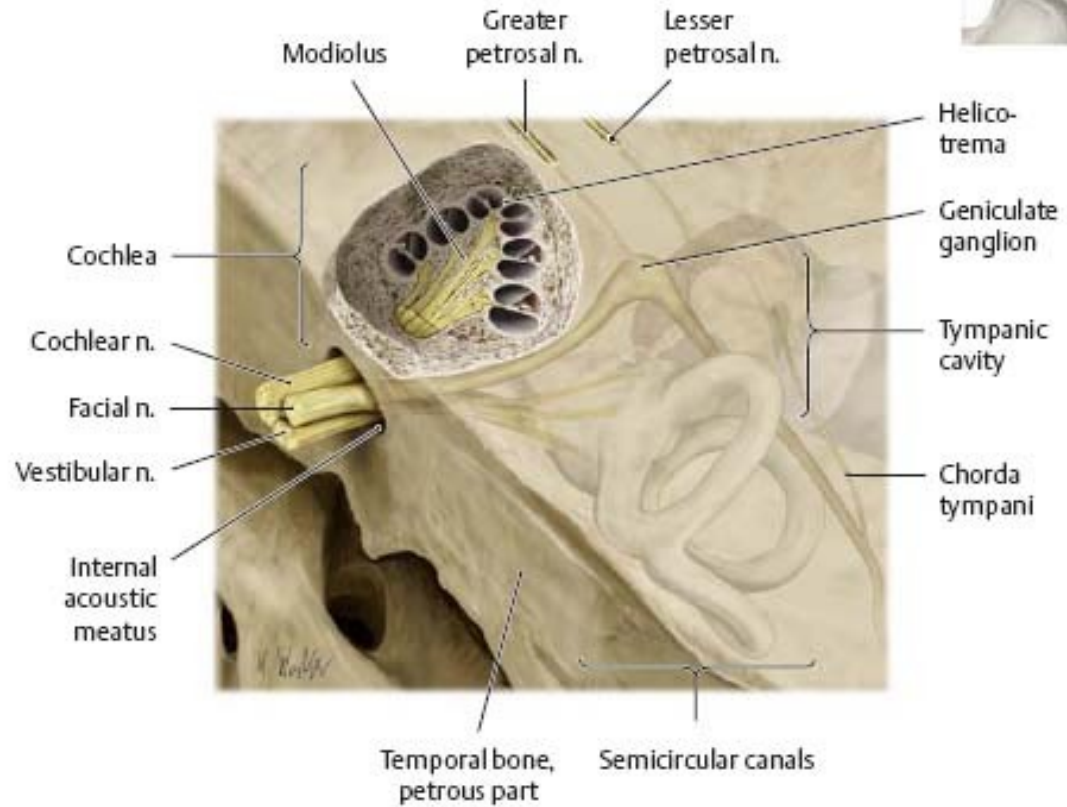
# NERVUS VESTIBULOCOCHLEARIS



A Schematic.

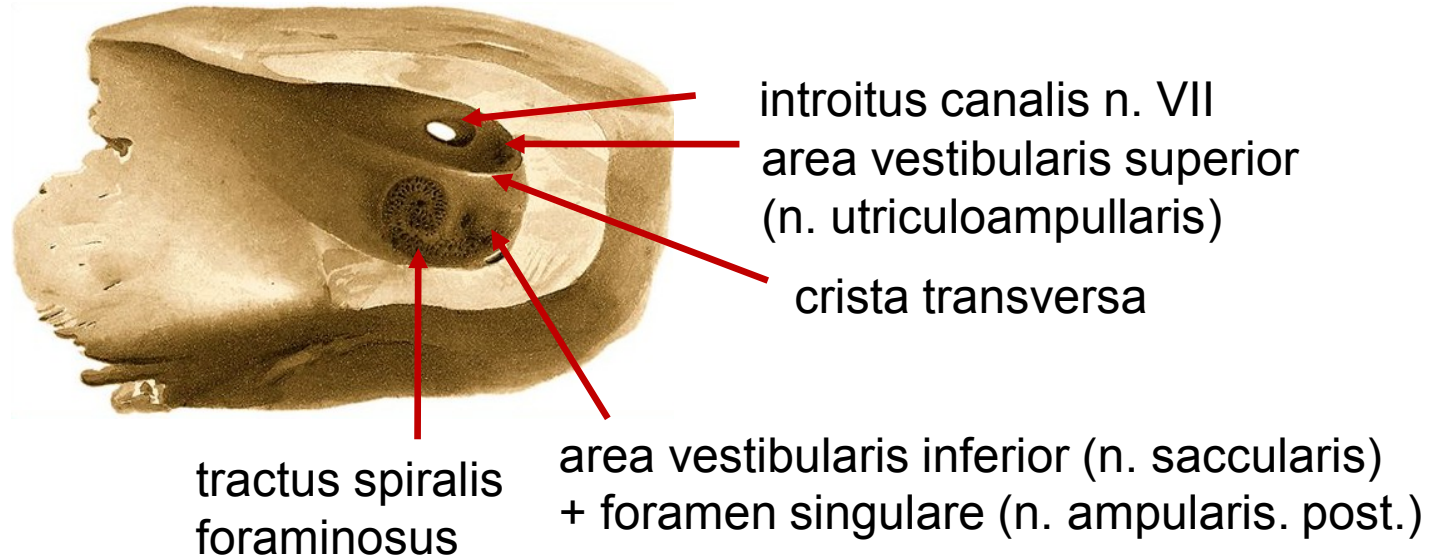
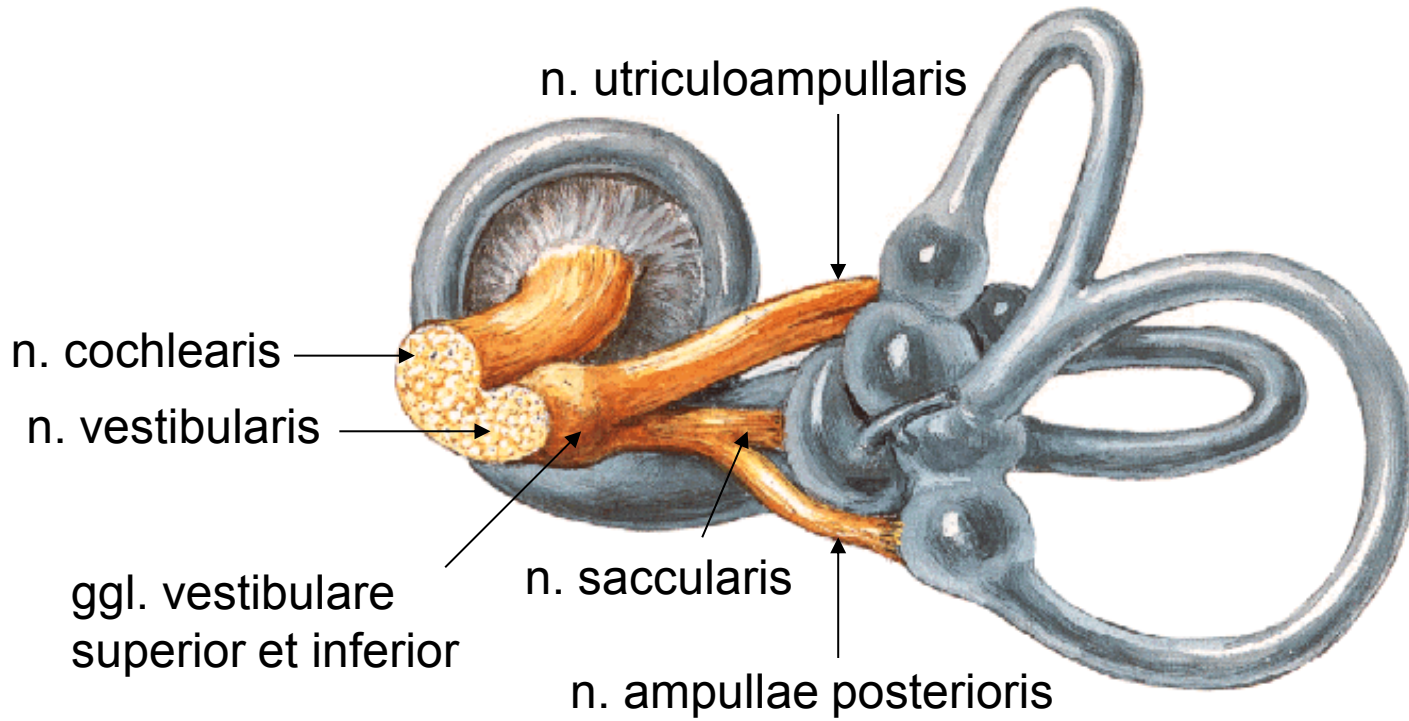


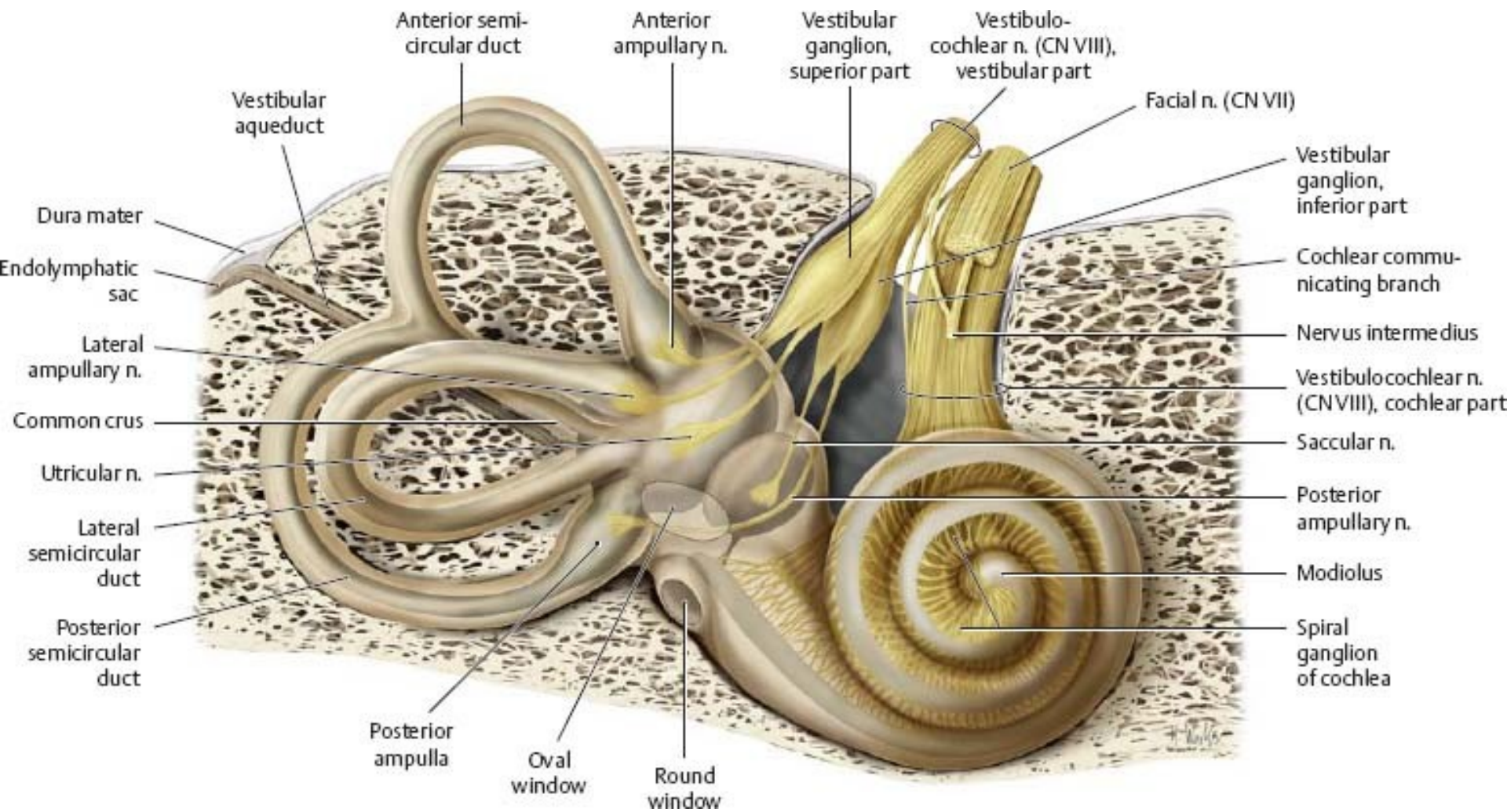
B Compartments of the cochlear canal, cross section.



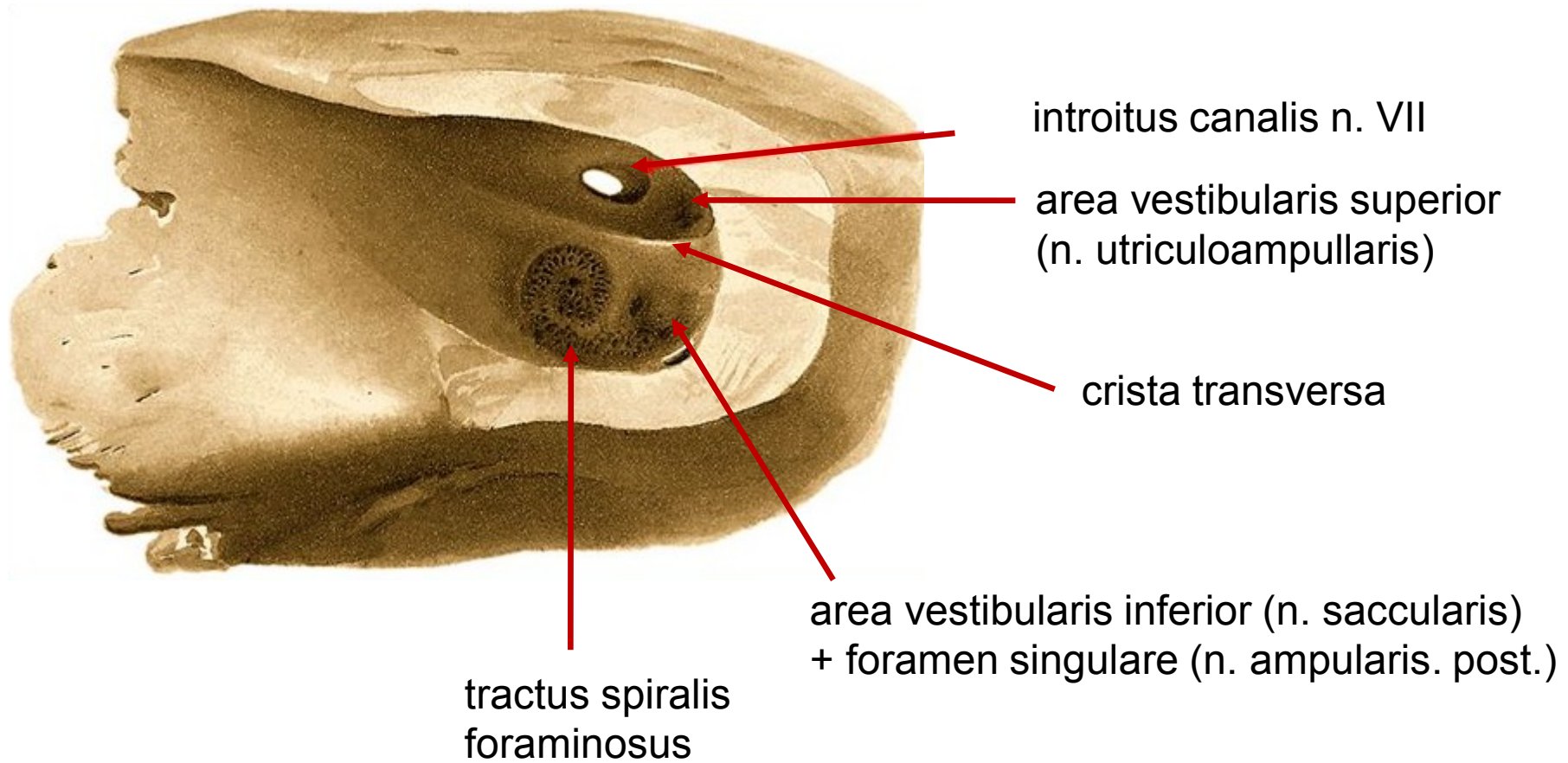
C Location of the cochlea. Superior view of the petrous part of the temporal bone with the cochlea sectioned transversely. The bony canal of the cochlea (spiral canal) makes 2.5 turns around its bony axis (modiolus).

# NERVUS VESTIBULOCOCHLEARIS





## Fundus meatus acustici interni



MedUniver.com  
все по медицине...

