

# **Autonomic nervous system (ANS)**

**central compartment**

**peripheral compartment**

**sympathicus (pars sympathica)**

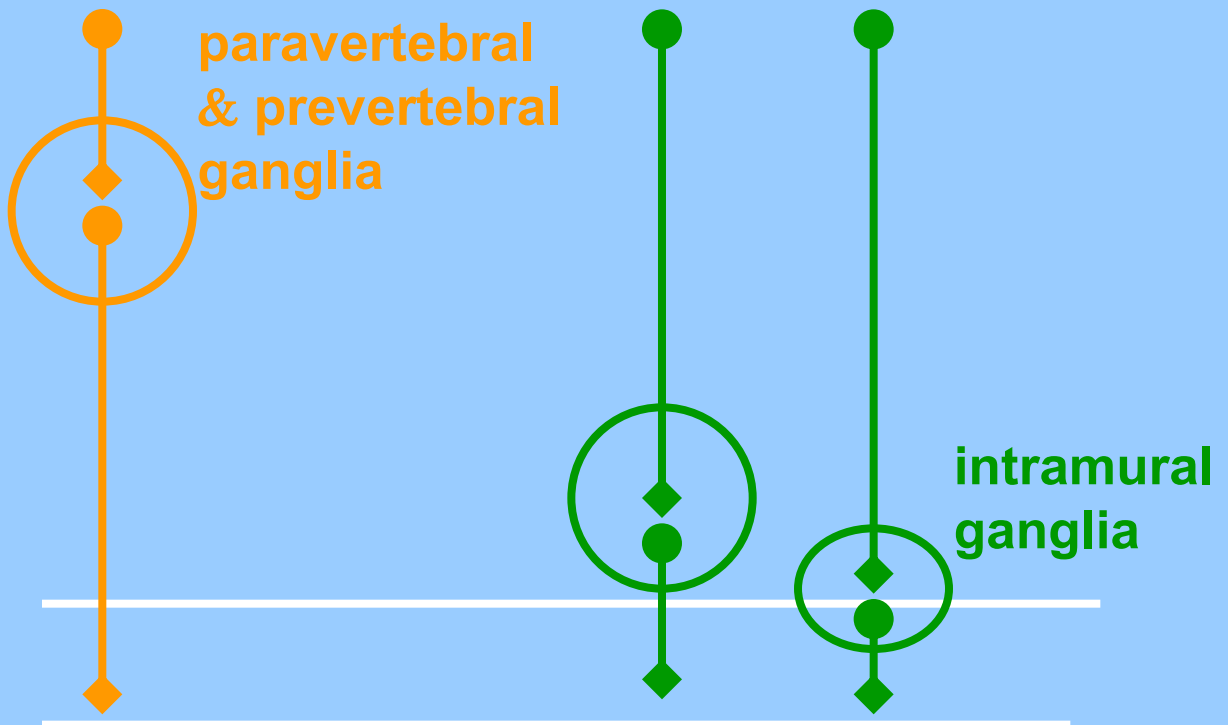
**parasympathicus (pars parasympathica)**

**enteric system**

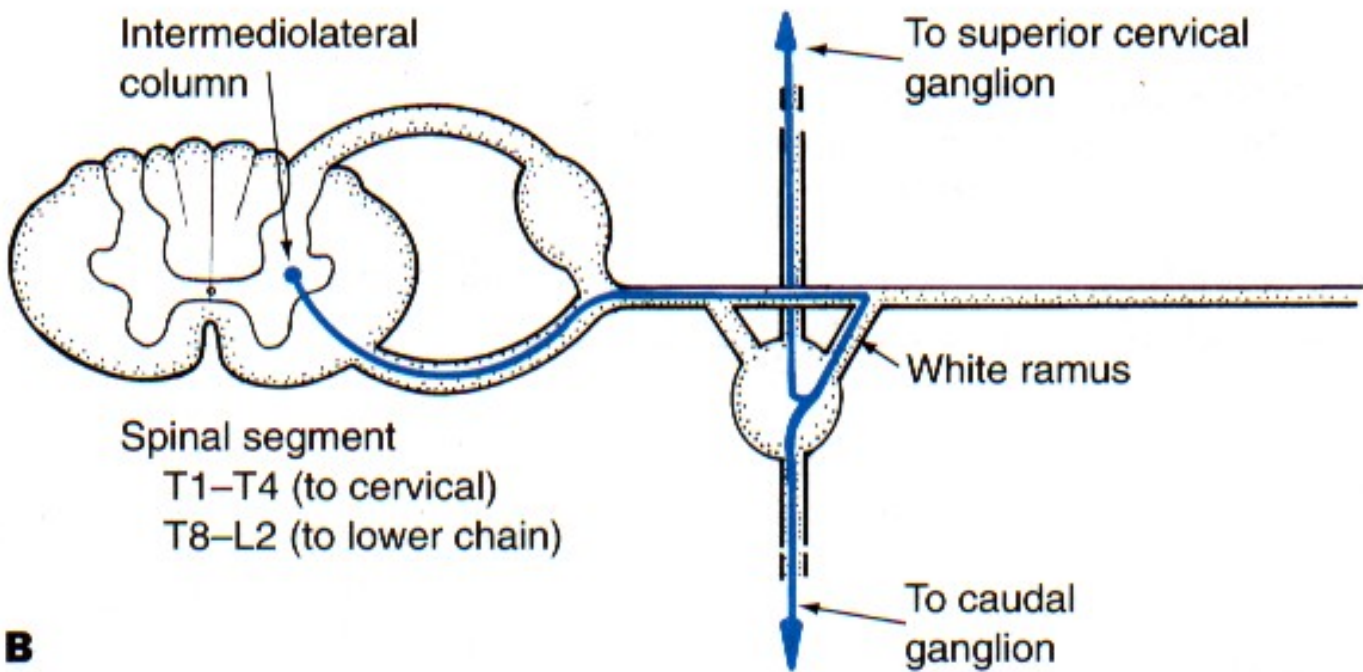
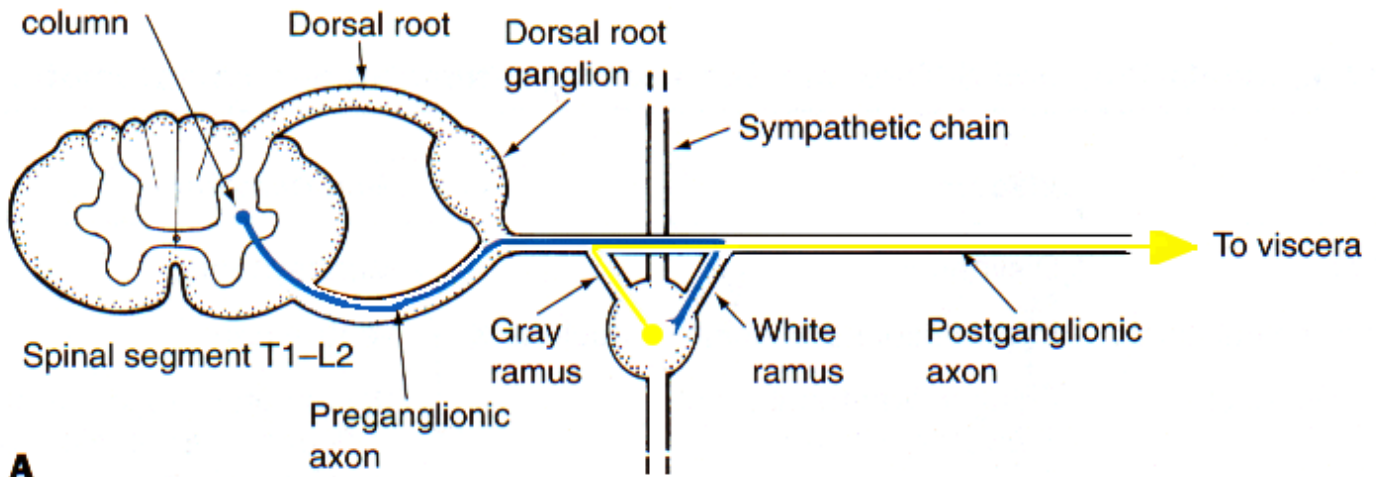
**cranio-sacral system (parasympathicus)**

**thoraco-lumbal system (sympathicus)**

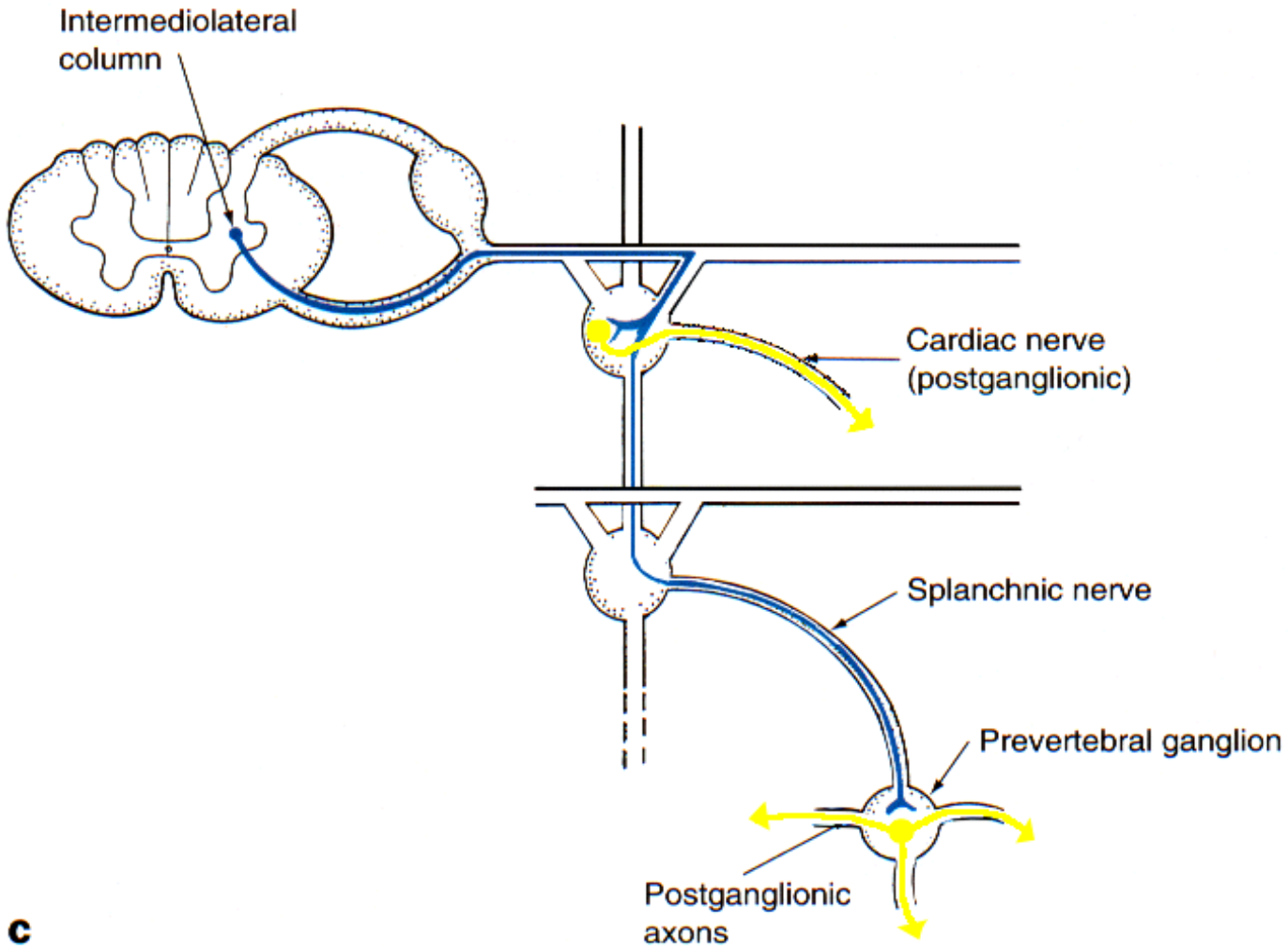
**cranio-sacral system (parasympathicus)**



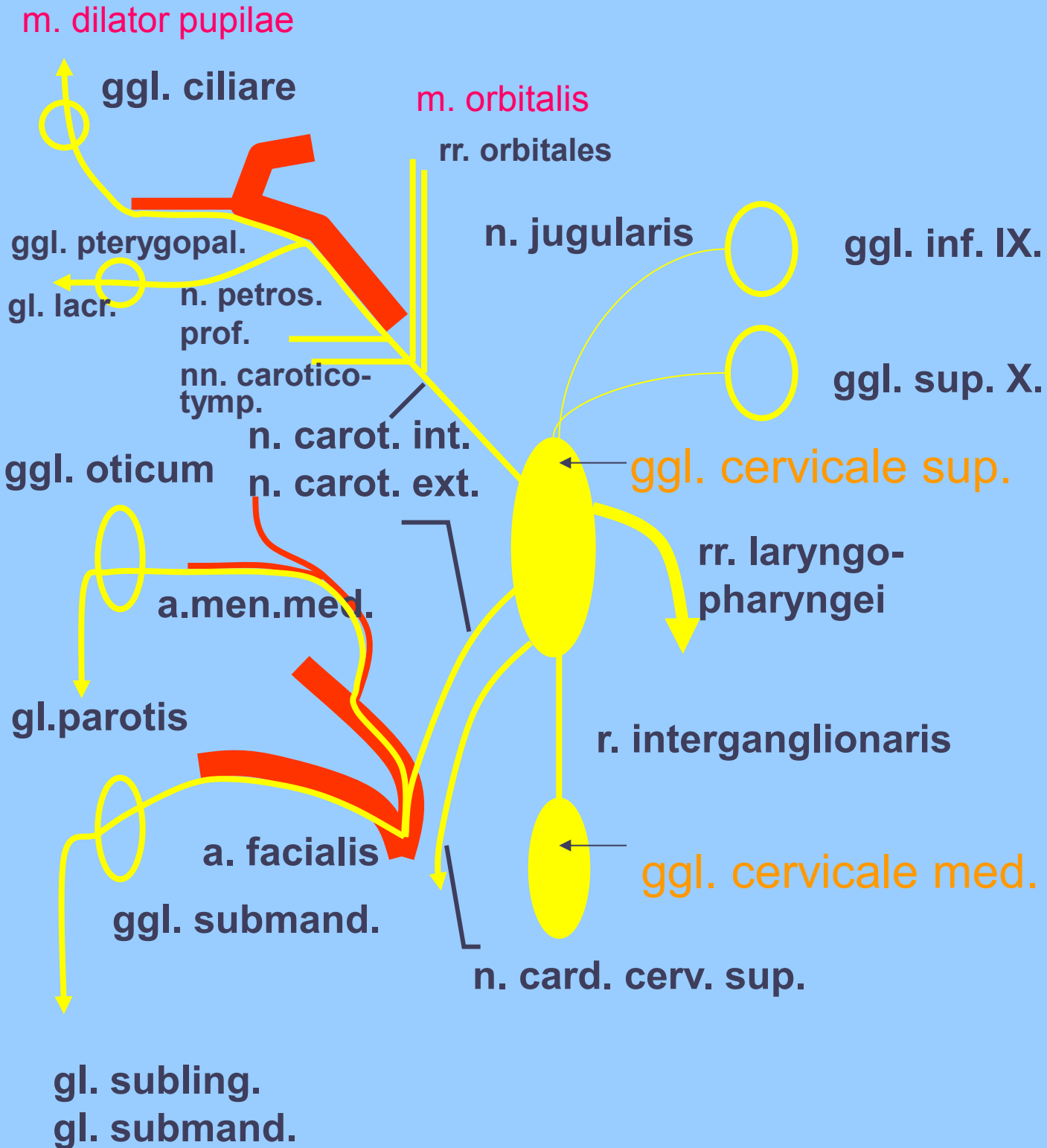
# A pattern of connections of sympathetic preganglionic axons I-II



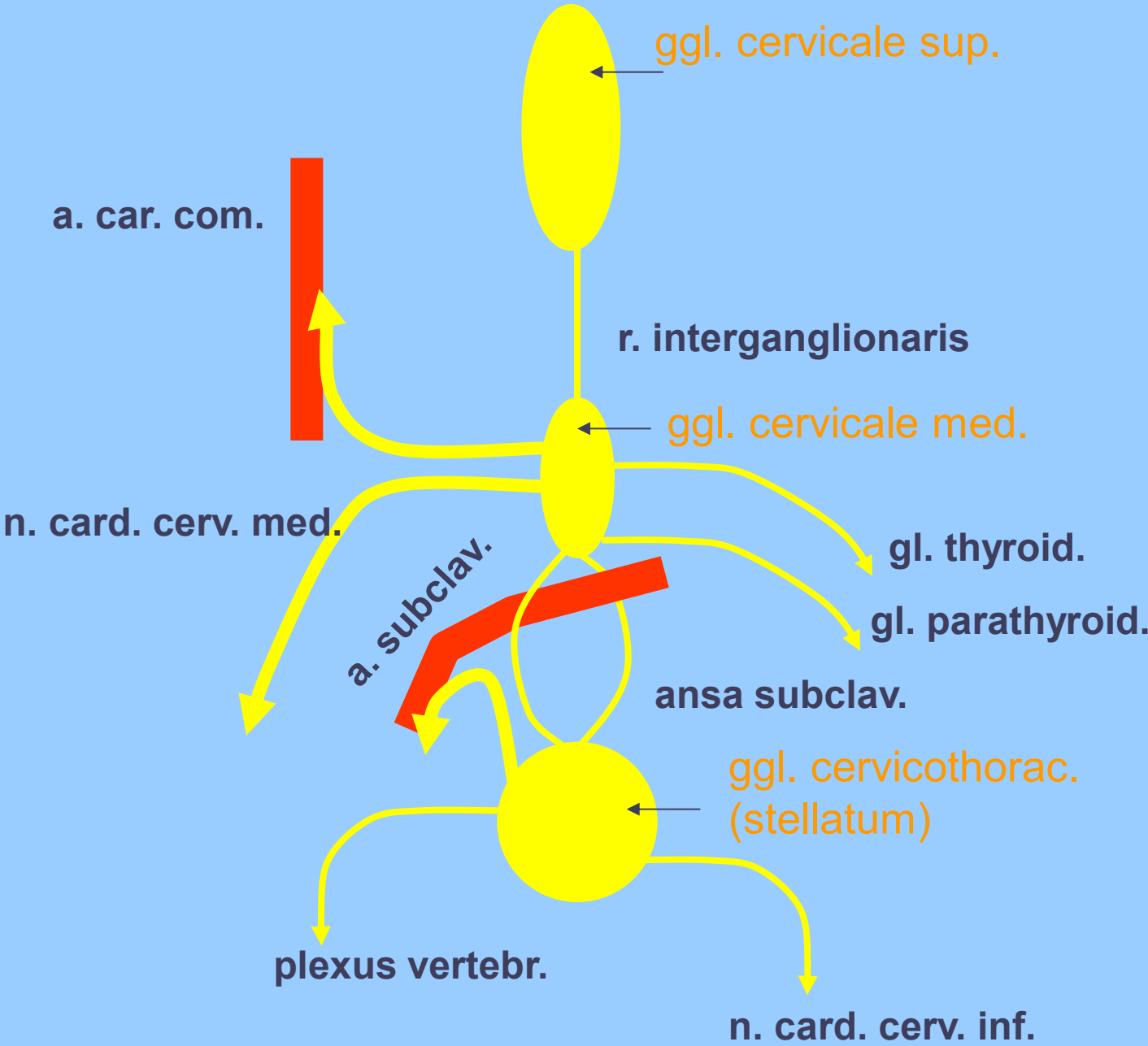
# A pattern of connections of sympathetic preganglionic axons III



# Ggl. cervicale sup.



# Ggl. cervicale med. et stellatum



**PARAVERTEBRAL GANGLIA**

**Th1**

**rr. vasculares  
- from all ganglia**

**nn. cardiaci th.  
rr. pulmonares th.  
rr. oesophagei**

**Th6**

**rr. comm. grisei  
- from all ganglia**

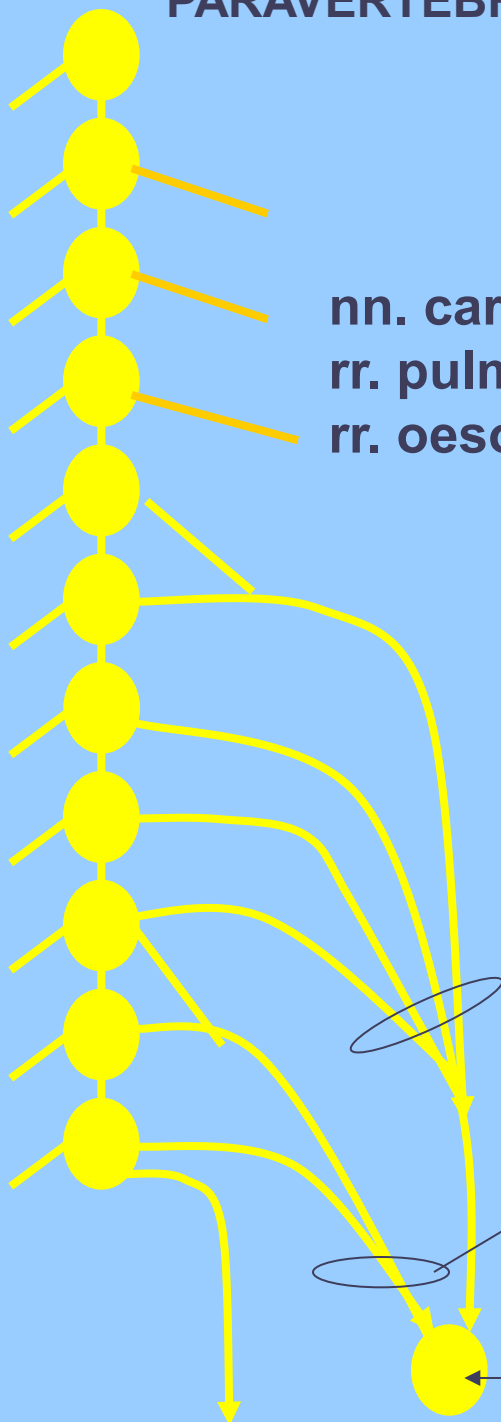
**Th9**

**n. splanchnicus  
major**

**n. splanchnicus  
minor**

**ggl. coeliacum  
(prevertebral ggl.)**

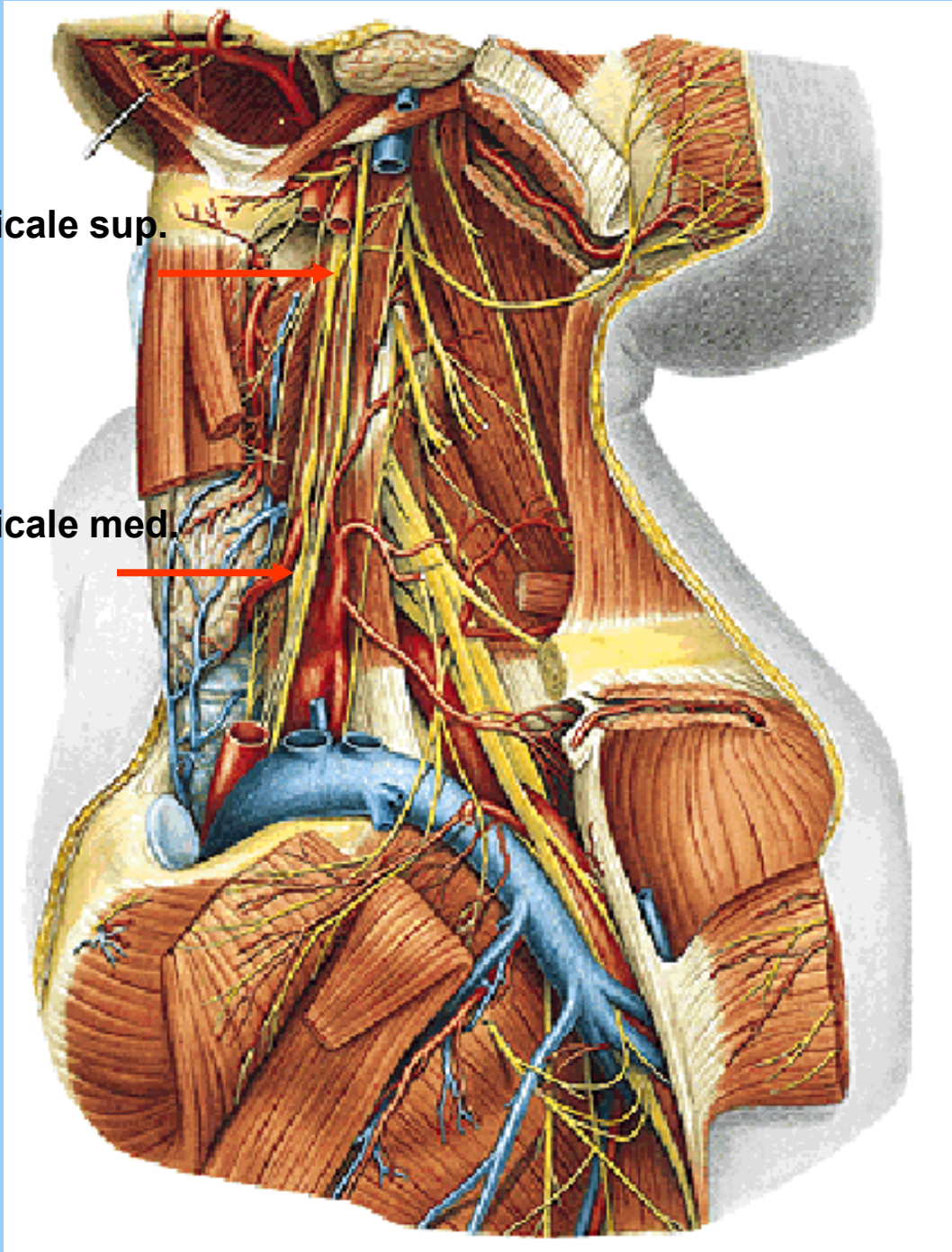
**n. splanchnicus  
imus (1/3)**



# Ganglion cervicale sup. et med.

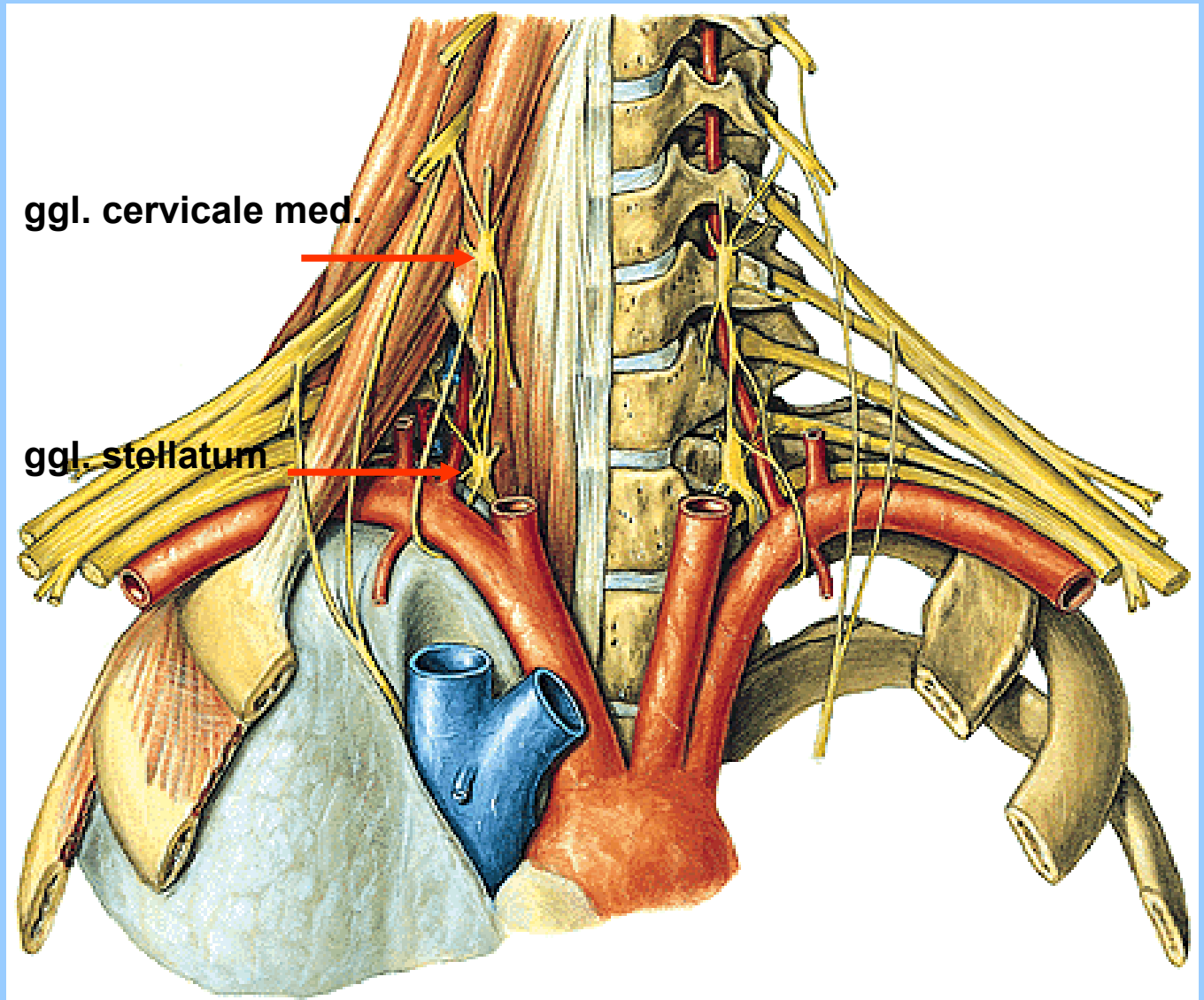
ggl. cervicale sup.

ggl. cervicale med.

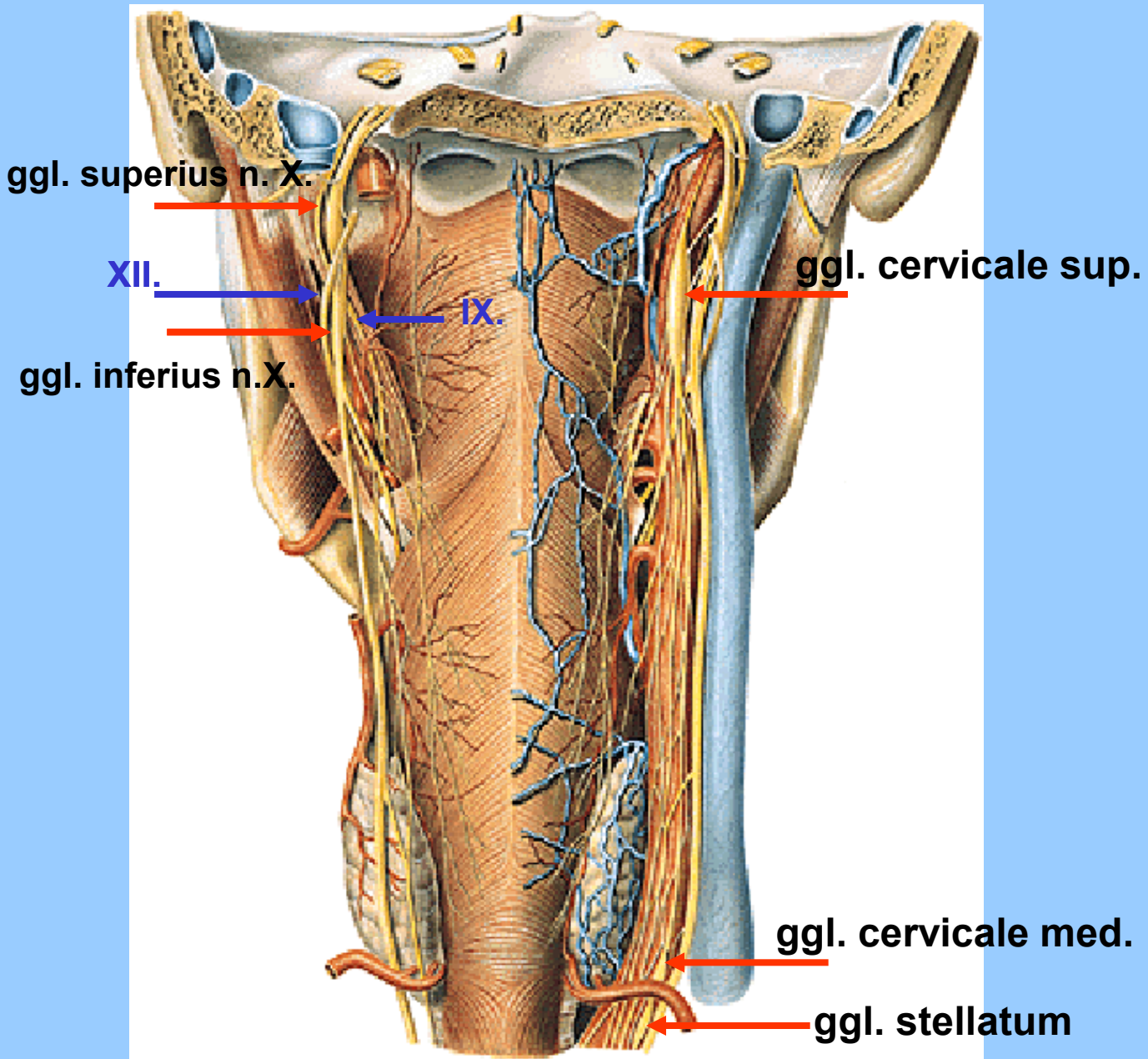




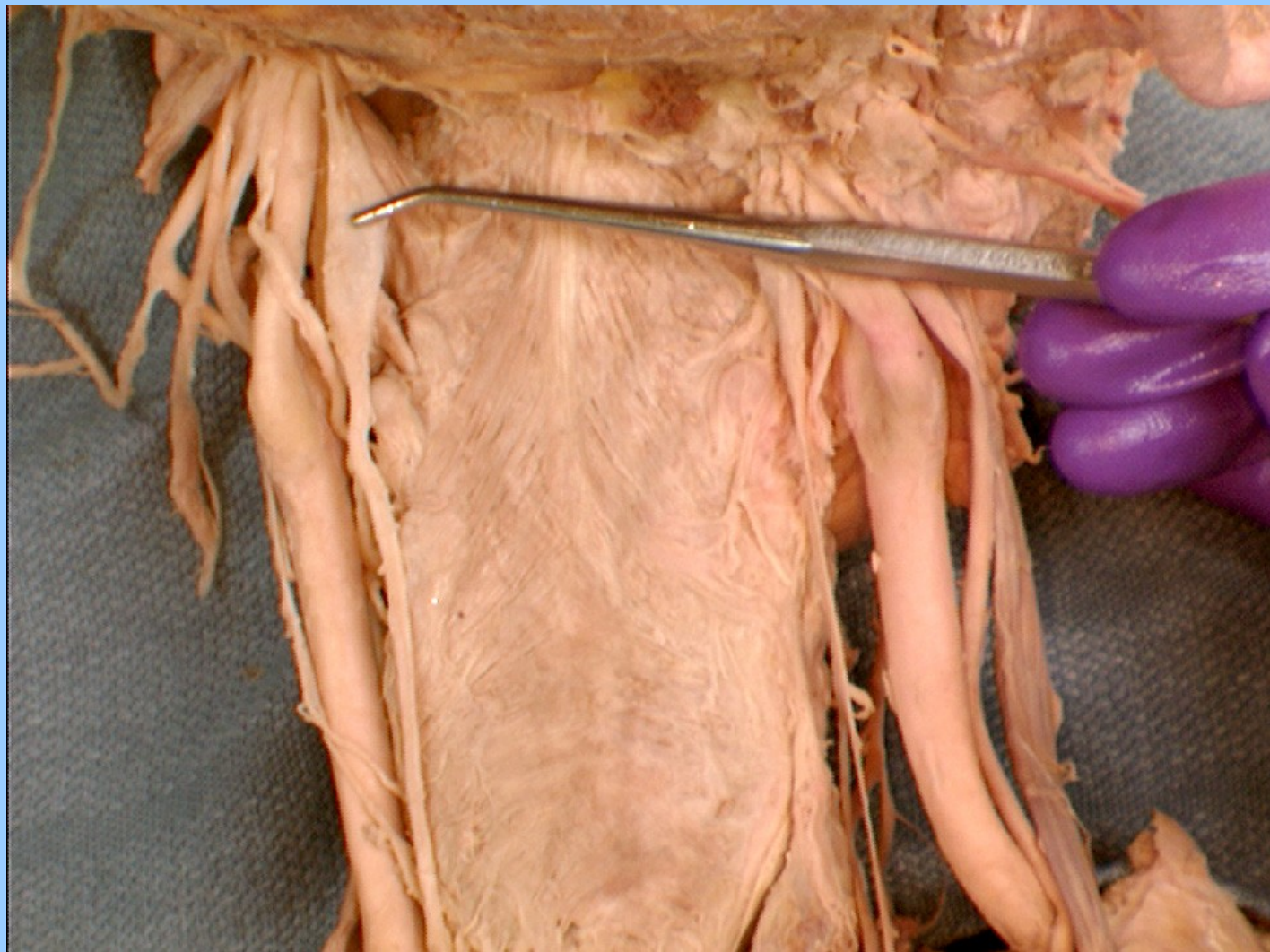
# Ganglion cervicale med. et stellatum



# Ganglion cervicale sup. et med.



## GANGLION CERVICALE SUP.



# INNERVATION OF THE HEART

ggl. cervicale sup.



ggl. cervicale med.



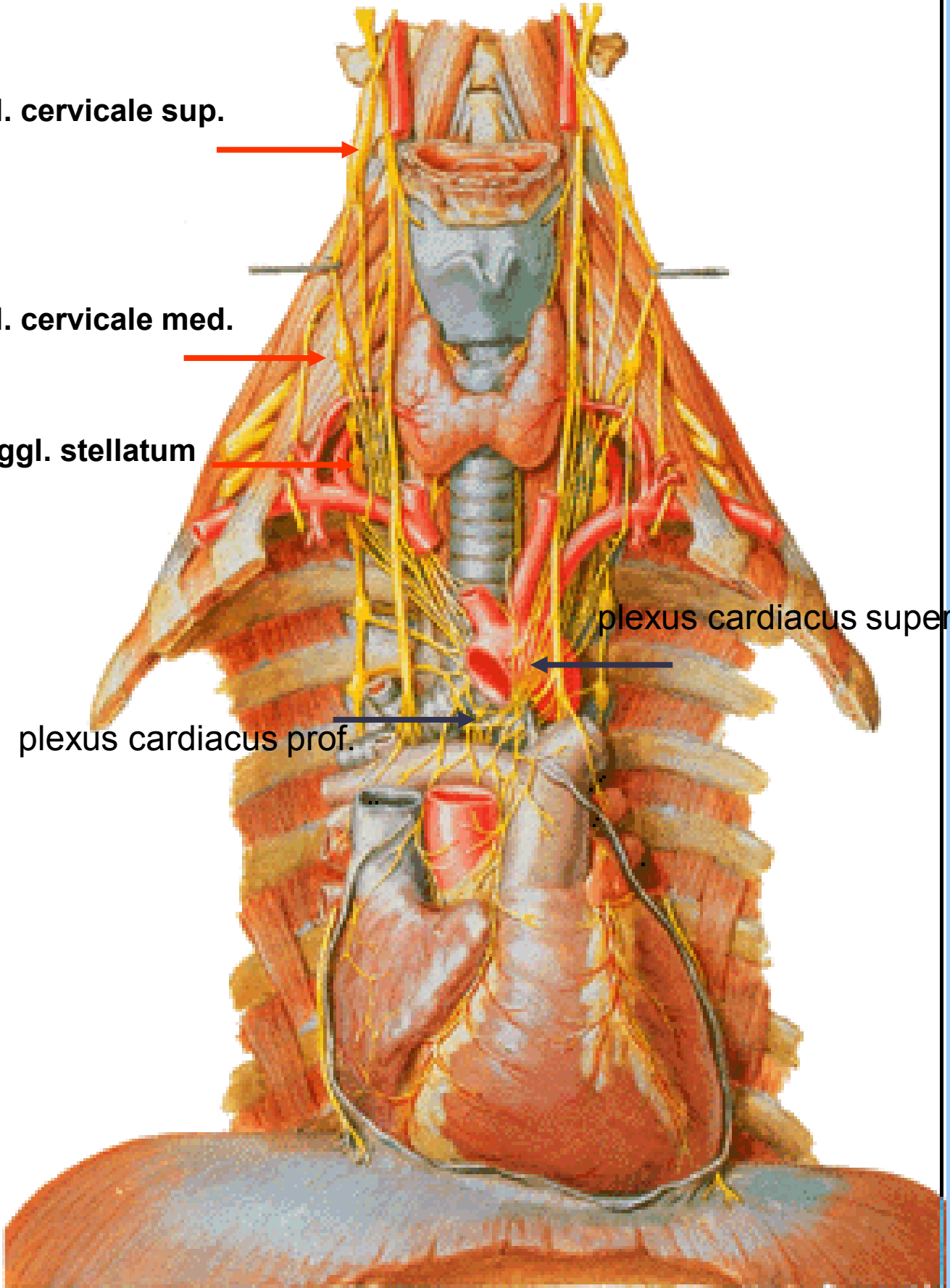
ggl. stellatum

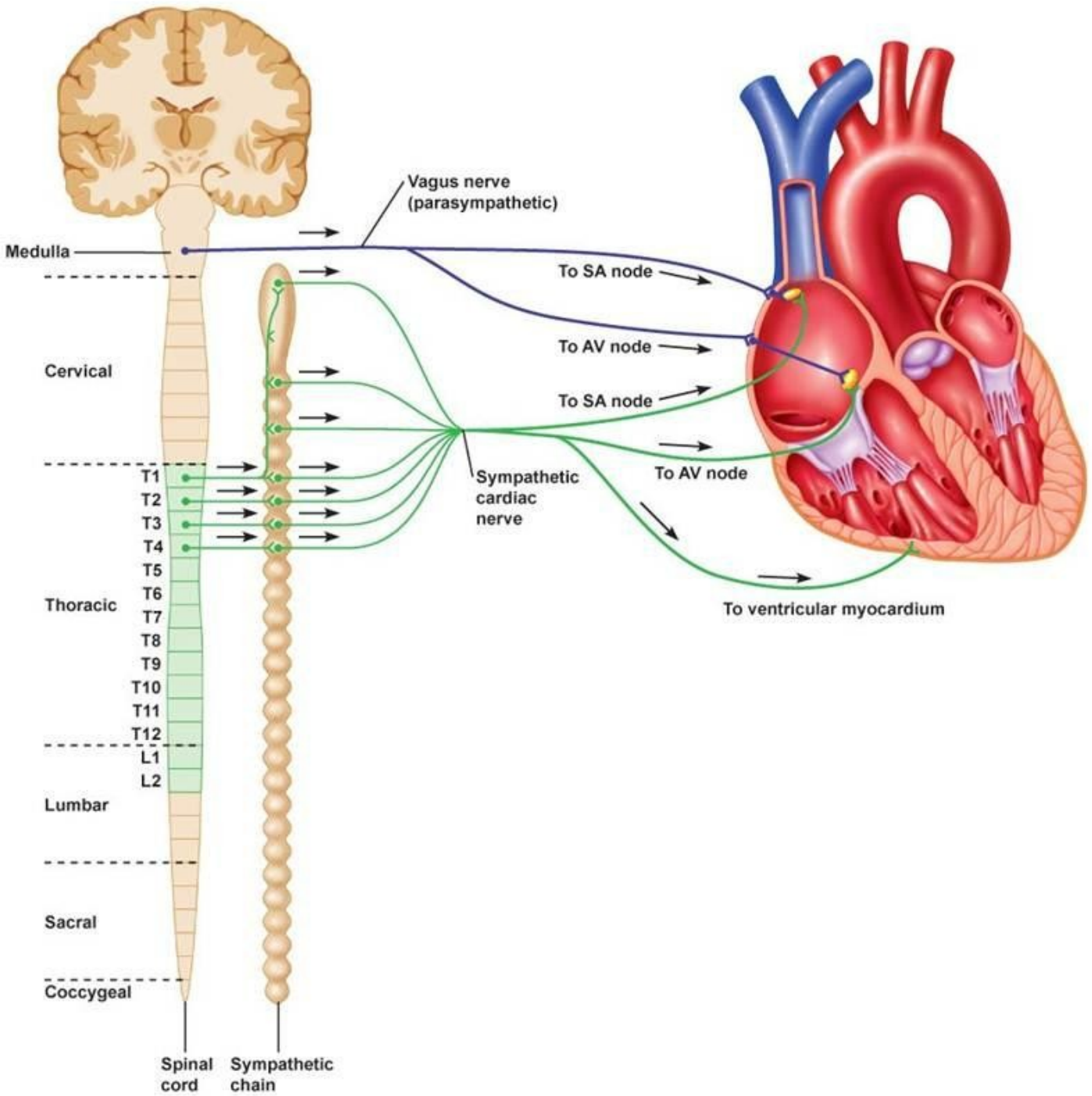


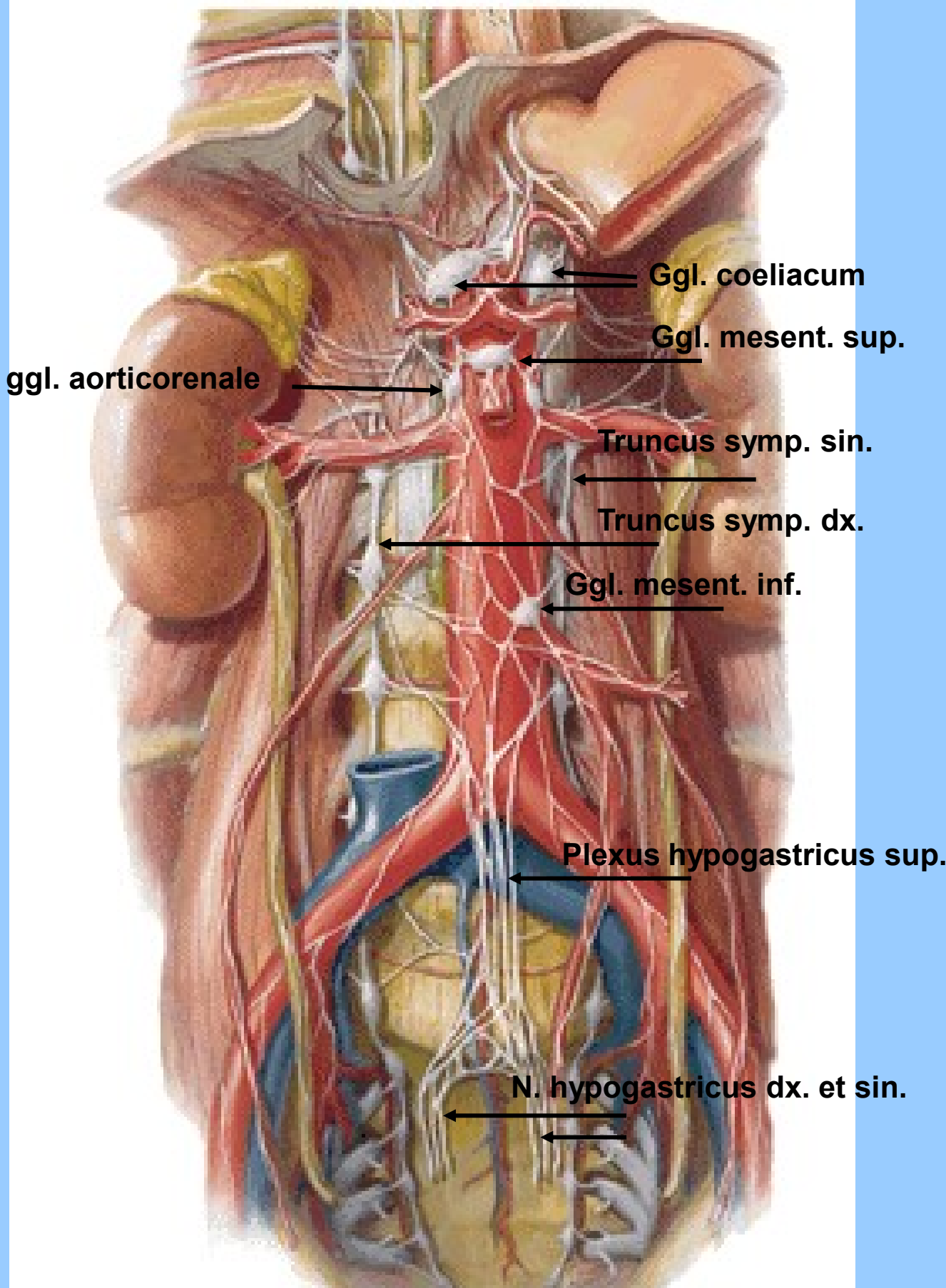
plexus cardiacus superf.



plexus cardiacus prof.







Ggl. coeliacum

Ggl. mesent. sup.

ggl. aorticorenale

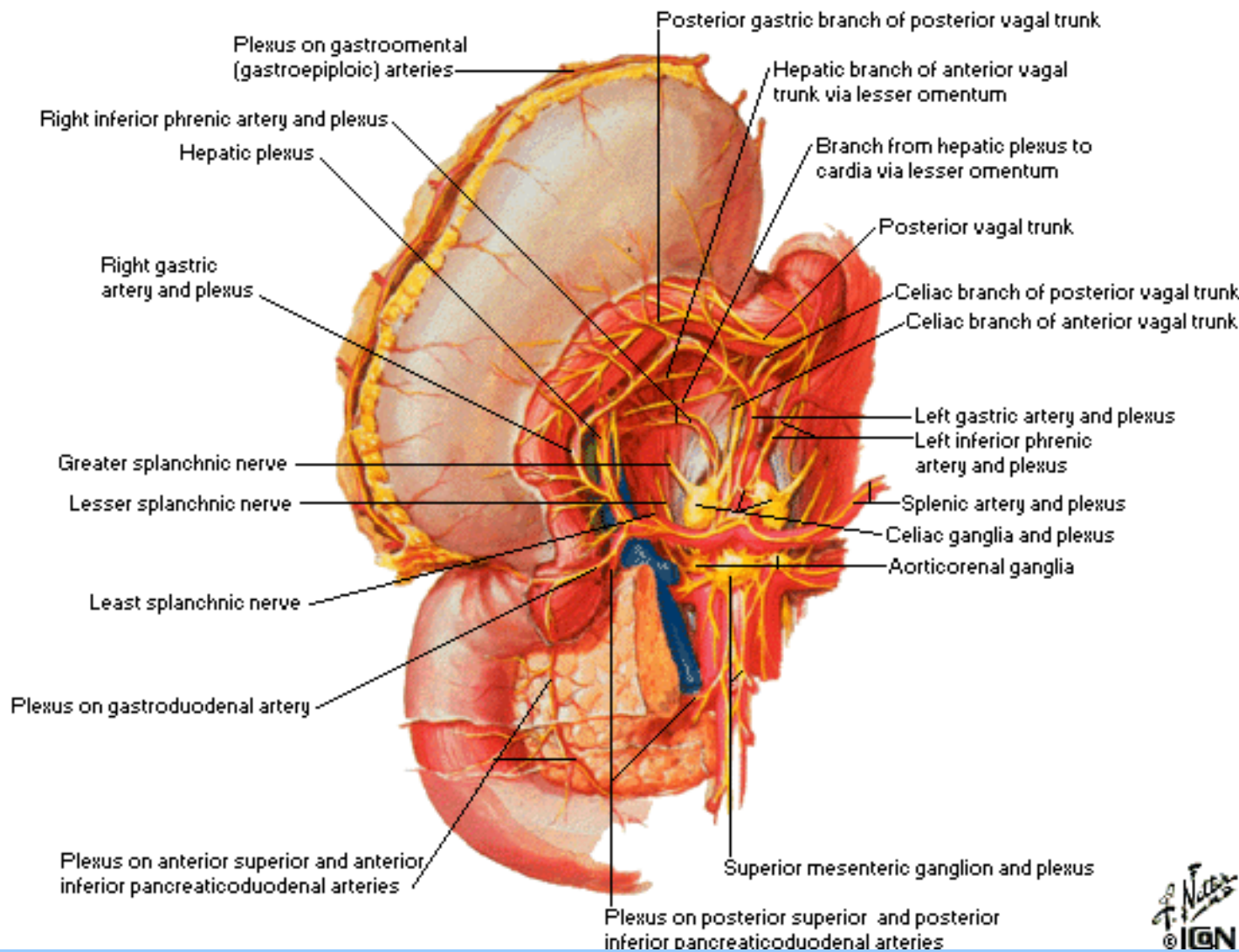
Truncus symp. sin.

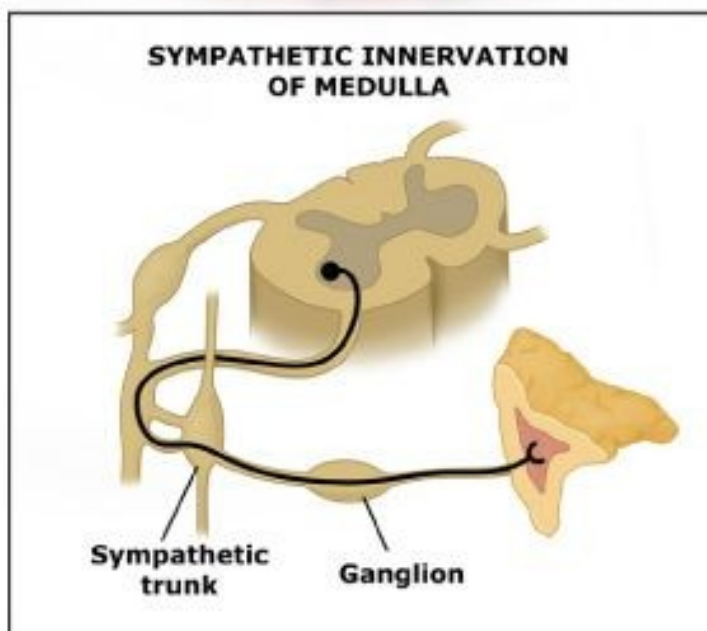
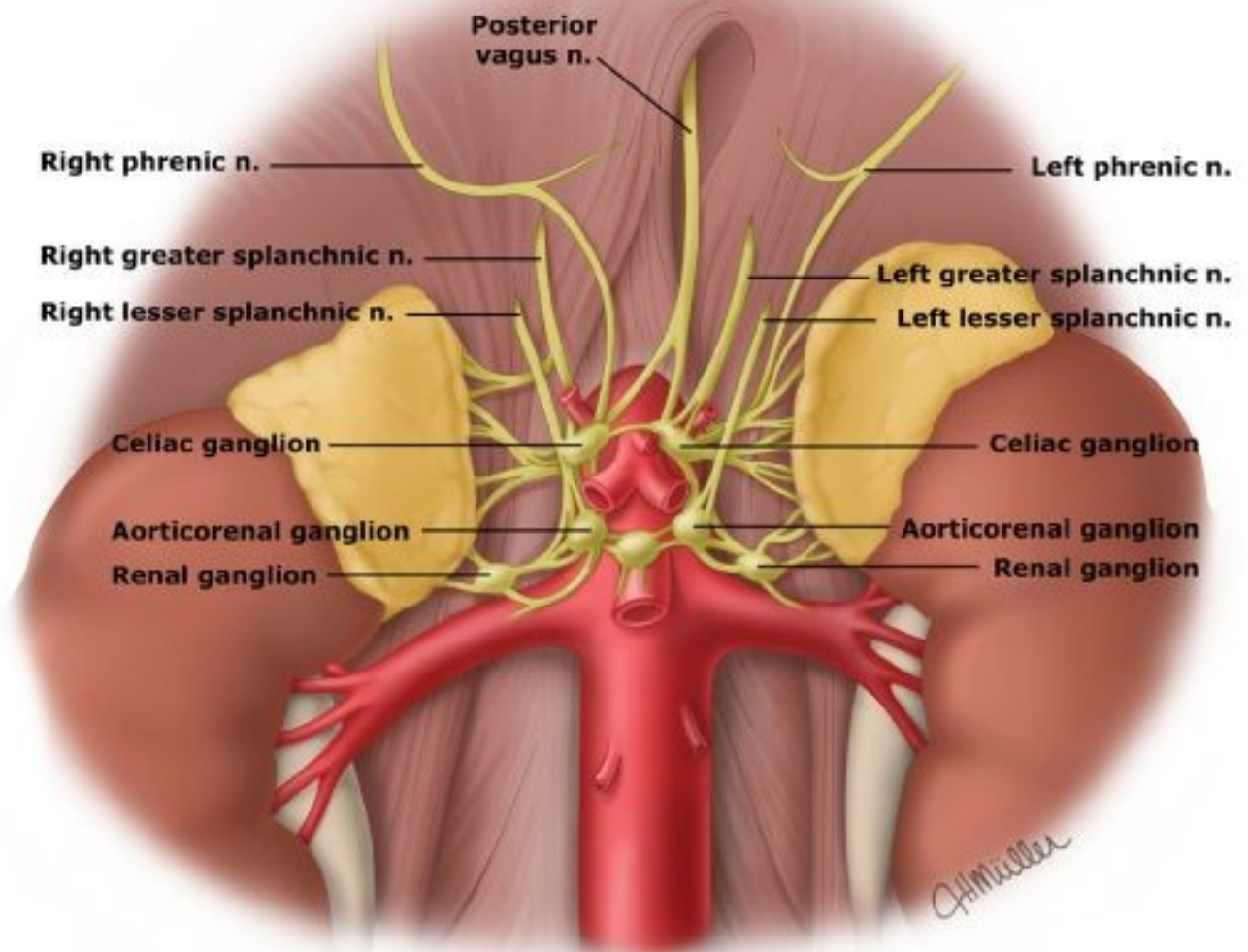
Truncus symp. dx.

Ggl. mesent. inf.

Plexus hypogastricus sup.

N. hypogastricus dx. et sin.







## **Prevertebral ganglia**

ggl. coeliacum

ggl. mesentericum superius

ggl. mesentericum inferius

ggl. aorticorenale

## **Plexus aorticus lumbalis**

### ***ggl./plexus coeliacus***

plexus gastricus dx., sn.

plexus hepaticus

plexus lienalis

plexus duodenalis

plexus pancreaticus

plexus uretericus

plexus testicularis/ovaricus

### ***ggl. mesentericum superius***

plexus mesentericus superior

### ***ggl. mesentericum inferius***

plexus mesentericus inferior

plexus rectalis superior

## **Plexus hypogastricus superior et inferior**

modulation by  
sympath. &  
parasympath.  
fibers

stratum longitudinale

Auerbach's  
network

stratum circulare

Meissner's  
network

I. muscularis

mucosae



enteric motor (parasympath.) neuron



enteric interneuron



enteric viscerosensory neuron

