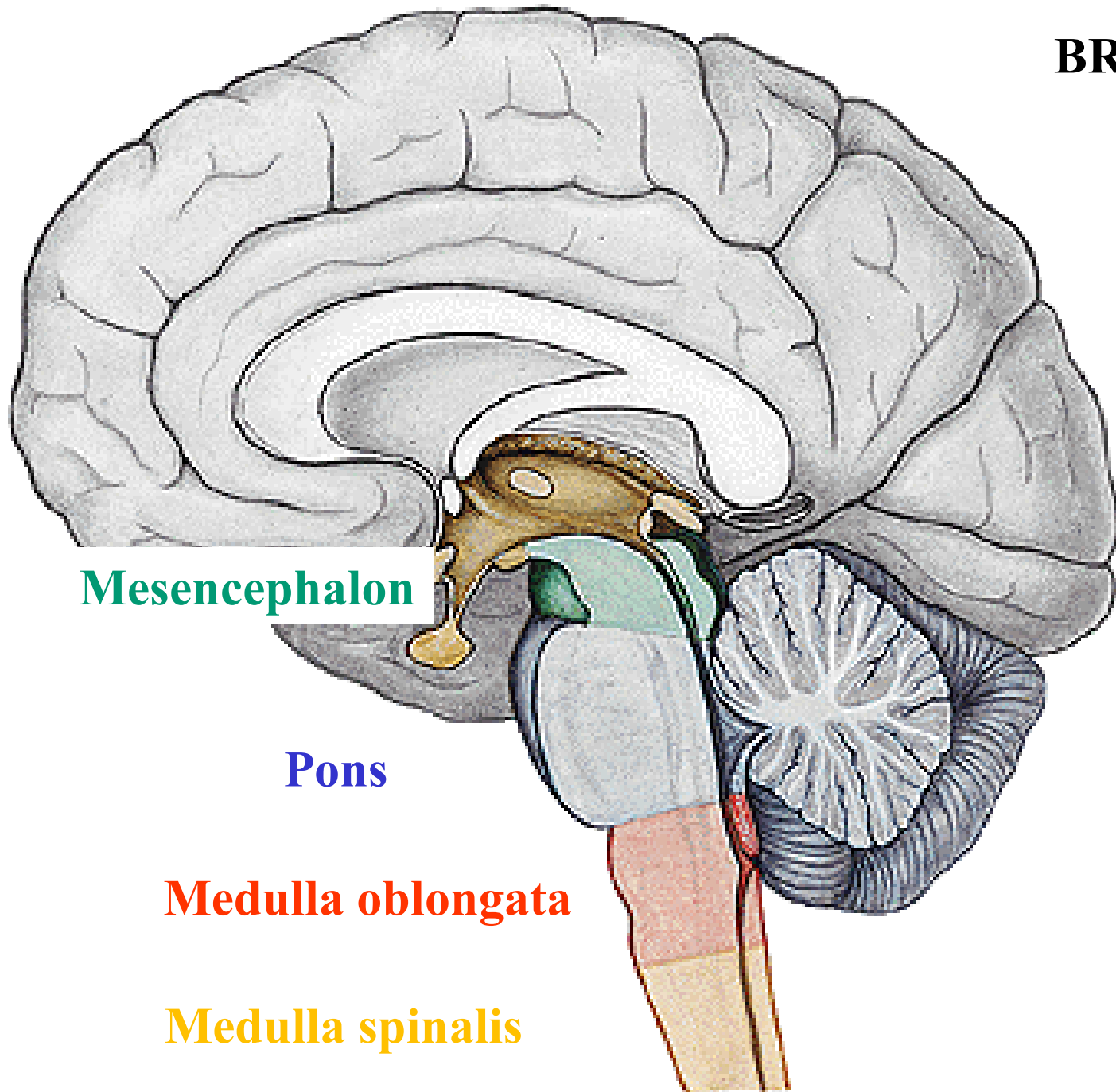


BRAINSTEM

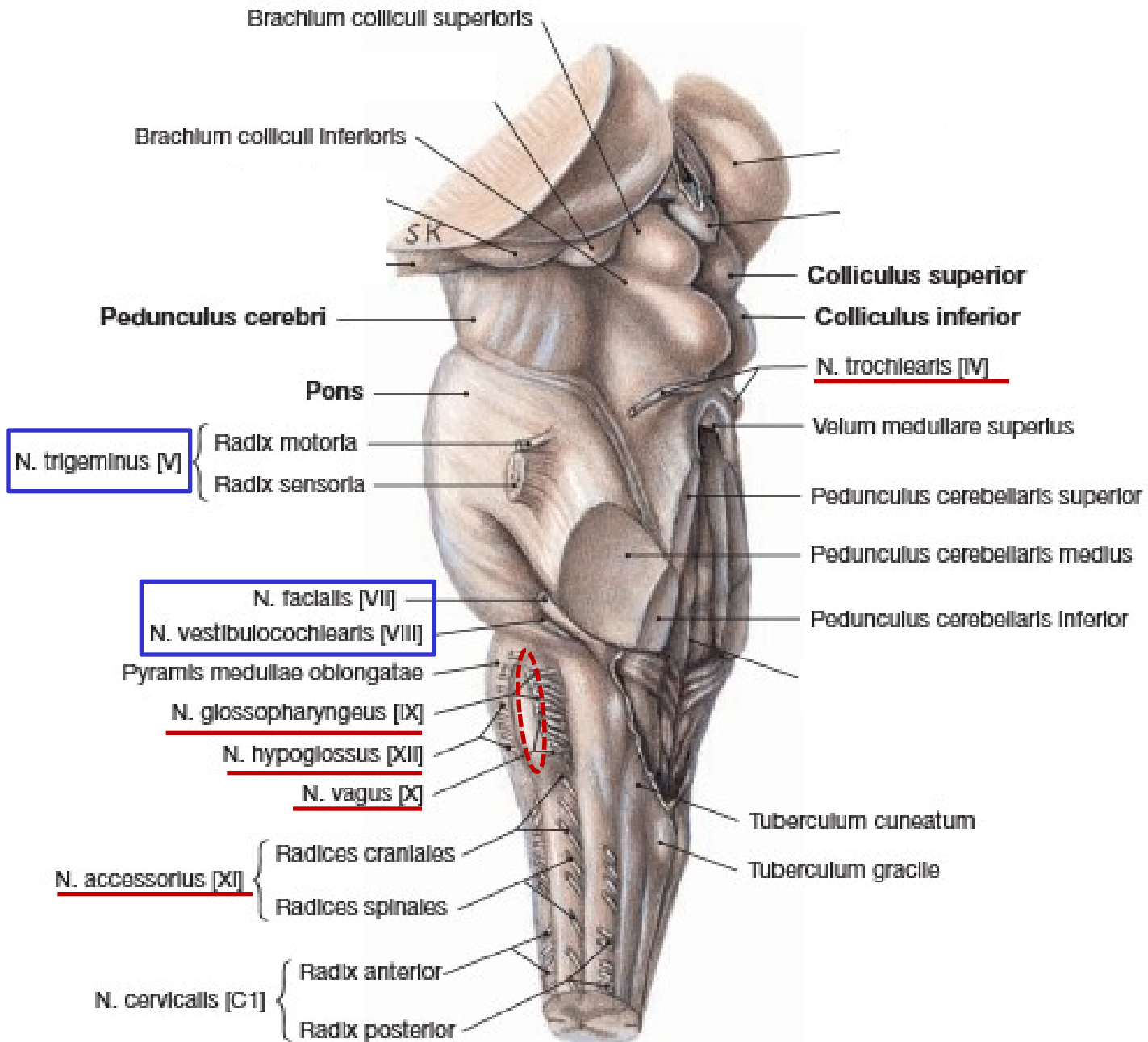


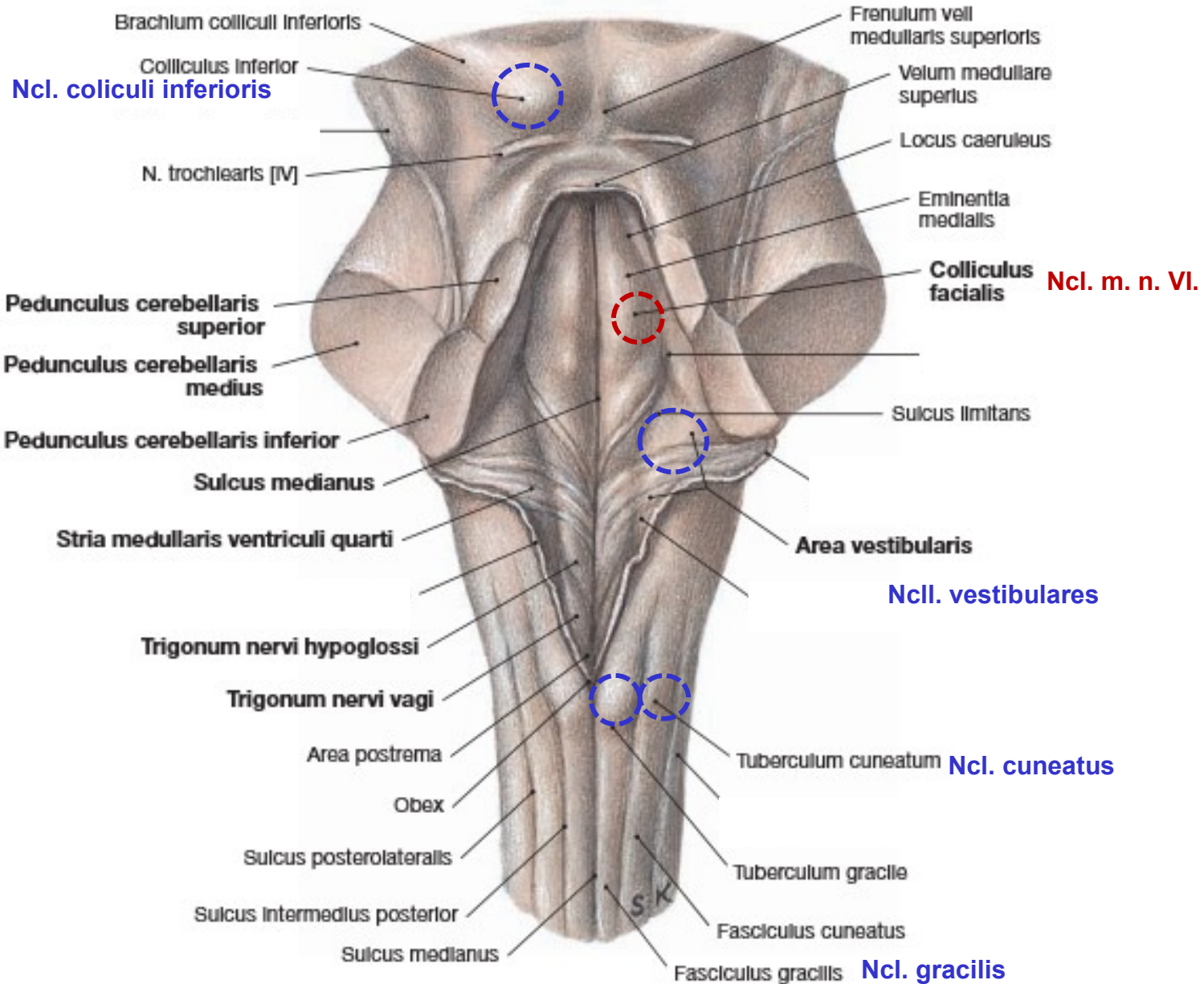
Mesencephalon

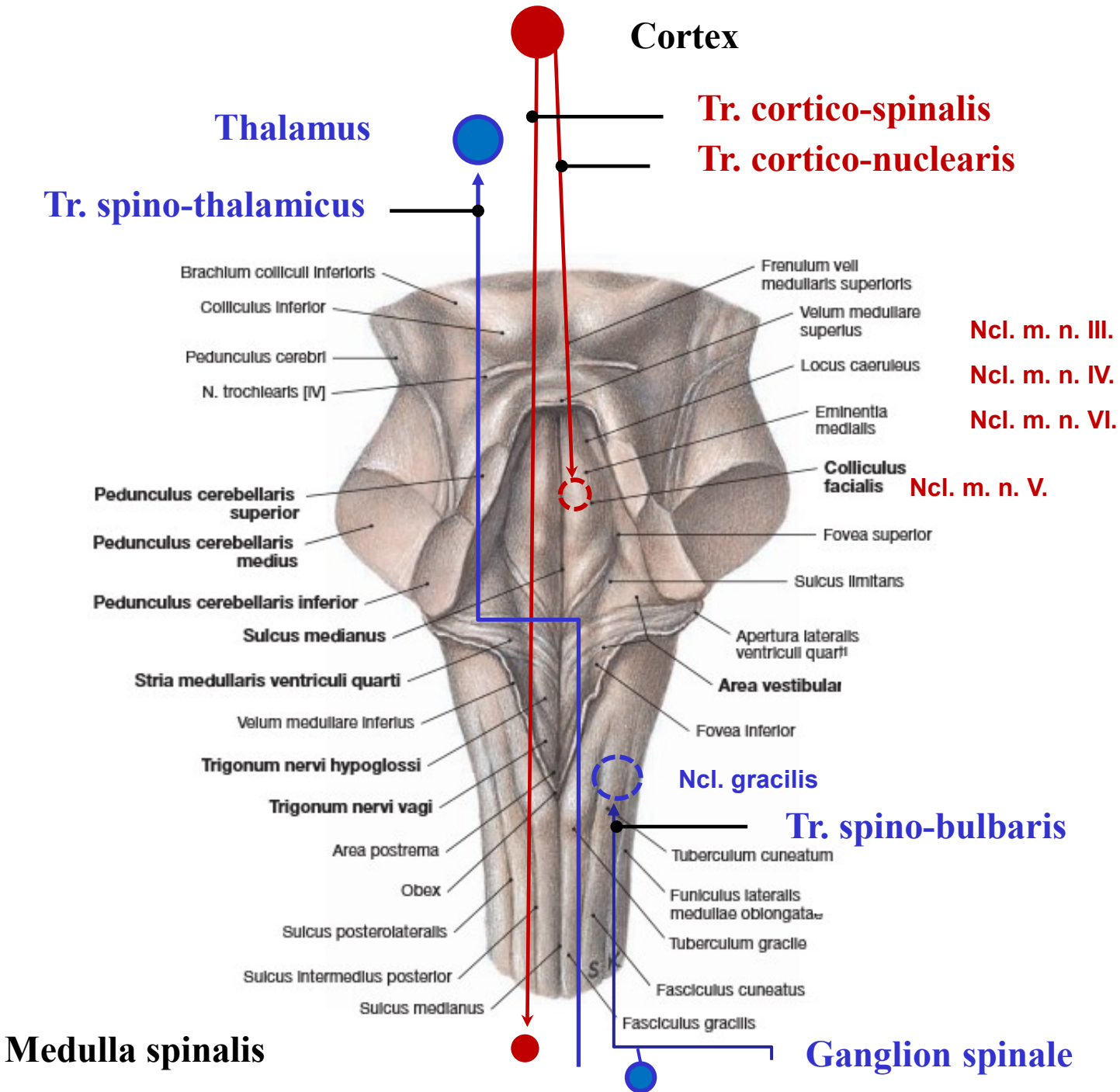
Pons

Medulla oblongata

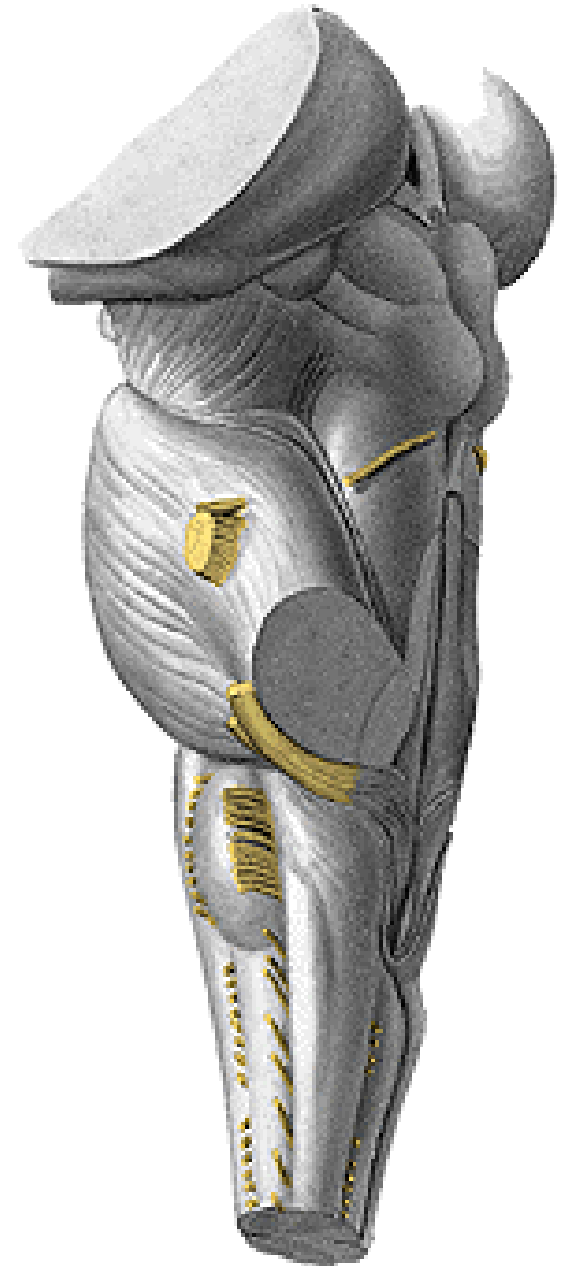
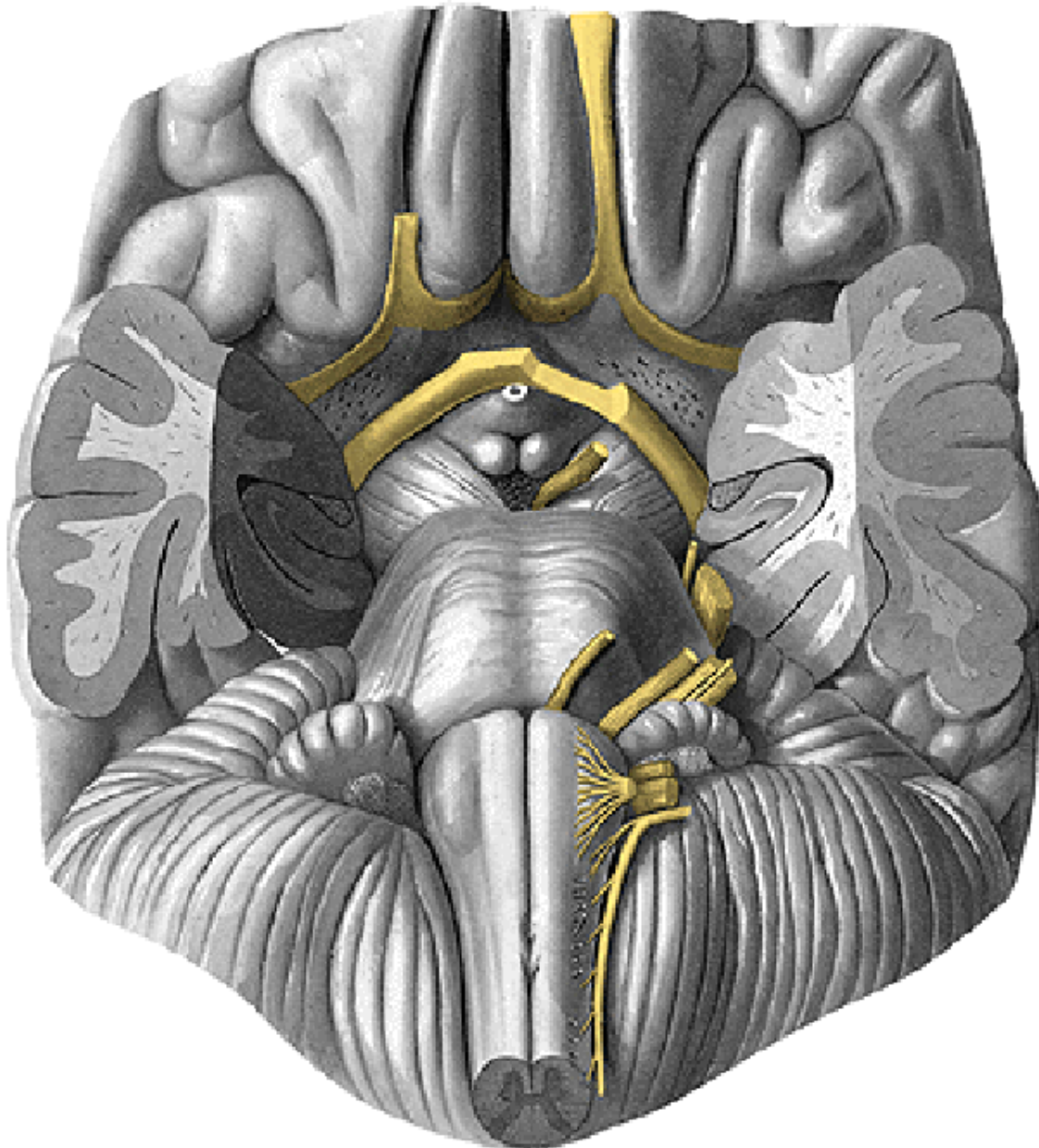
Medulla spinalis

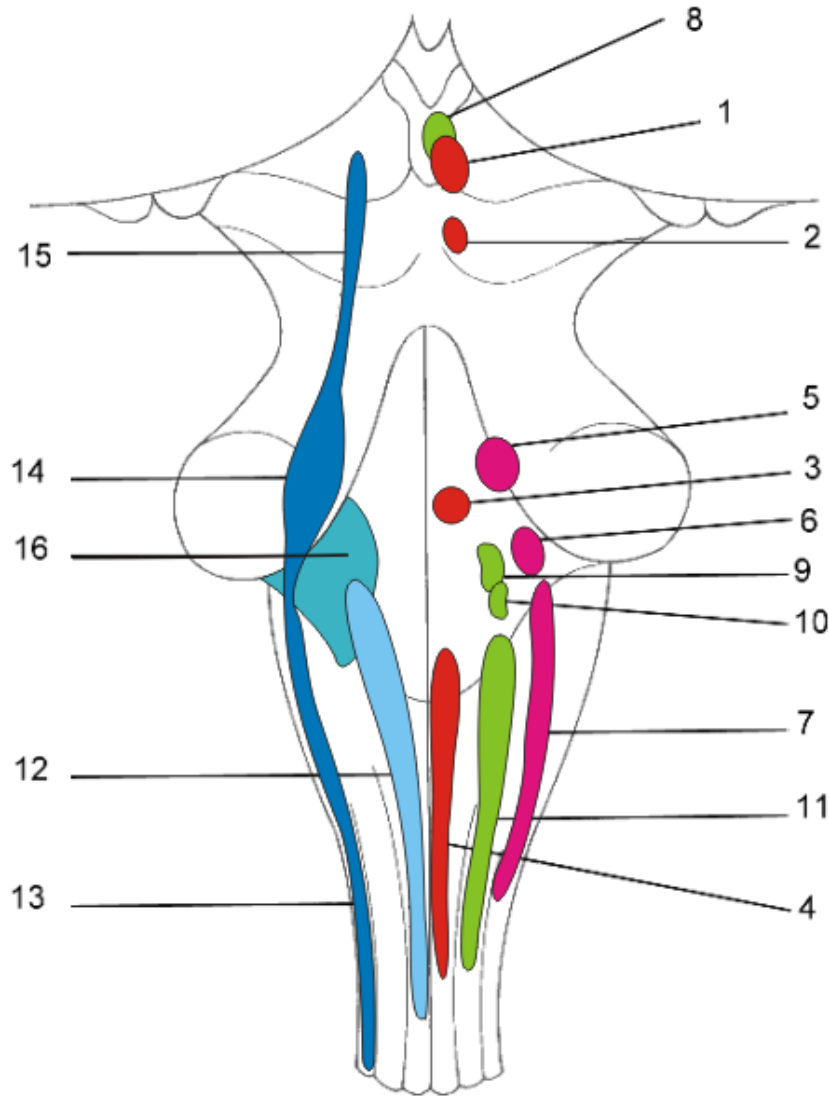






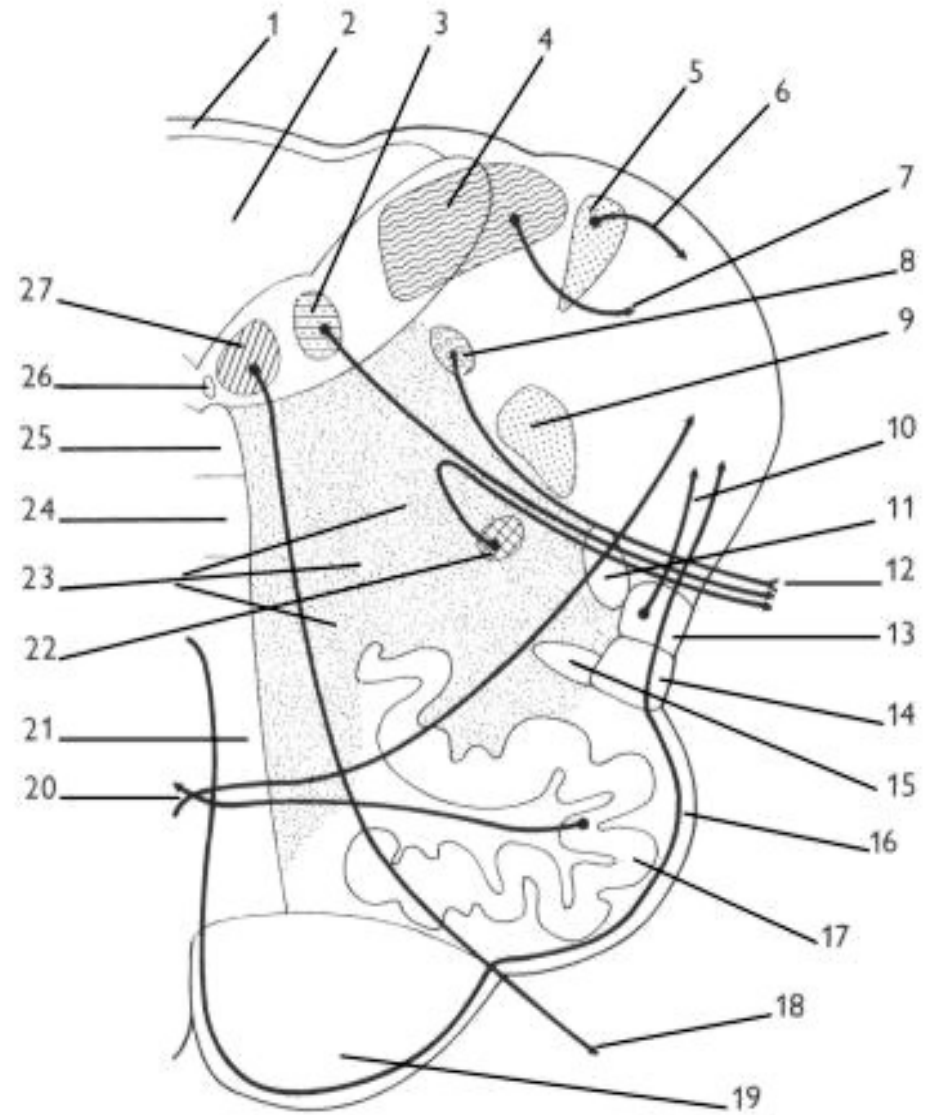
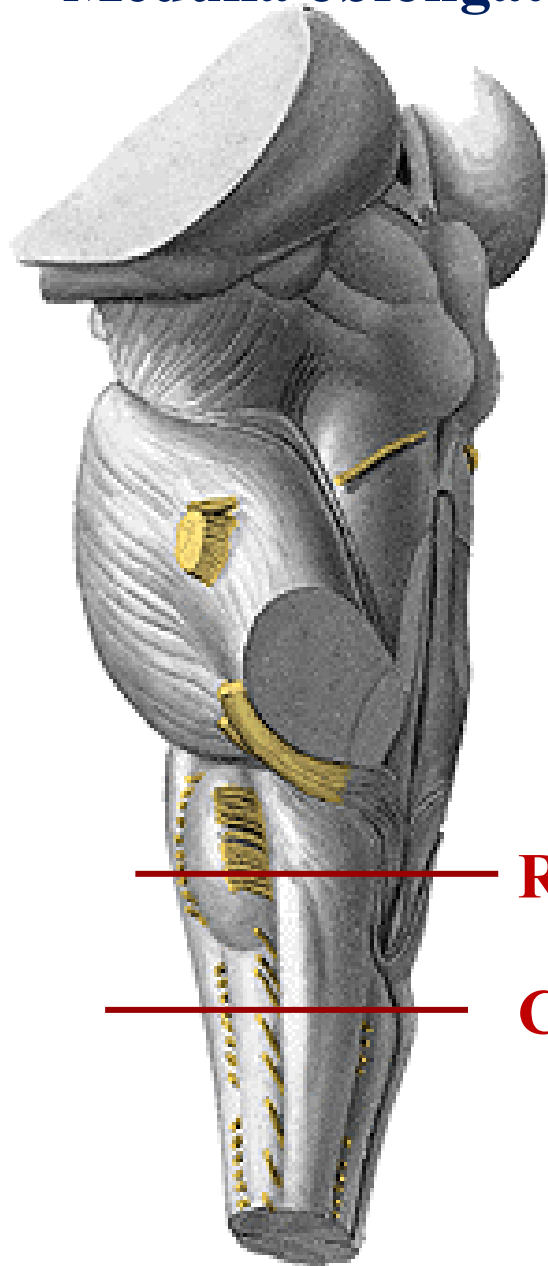
BRAINSTEM – appearance of cranial nerves

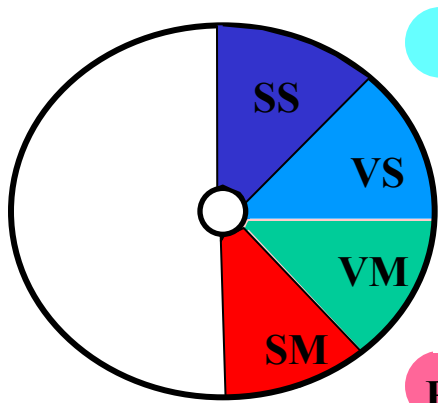




- 1 - ncl. motorius (originis) n. III.
- 2 - ncl. motorius (originis) n. IV.
- 3 - ncl. motorius (originis) n. VI.
- 4 - ncl. motorius (originis) n. XII.
- 5 - ncl. motorius (masticatorius) n. V.
- 6 - ncl. motorius (originis) n. VII.
- 7 - ncl. motorius (originis) n. IX., X., et XI.
(ncl. ambiguus)
- 8 - ncl. parasympathicus n. III (ncl. E.W.)
- 9 - ncl. parasympathicus n. VII.
- 10 - ncl. parasympathicus n. IX.
- 11 - ncl. parasympathicus n. X.
- 12 - ncl. solitarius
- 13 - ncl. spinalis n. V.
- 14 - ncl. principalis n. V.
- 15 - ncl. mesencephalicus n. V.
- 16 - ncll. cochleares et vestibulares

Medulla oblongata (oblongata) – representative sections





ncl. et tr. solitarius

ncl. parasymp. n. X

BM

ncl. originis n. XII

22

FR

18

16

ncl. originis n. XI

tr.tecto-spinalis

tr. spino-c.post.

tr.cortico-spinalis lat.

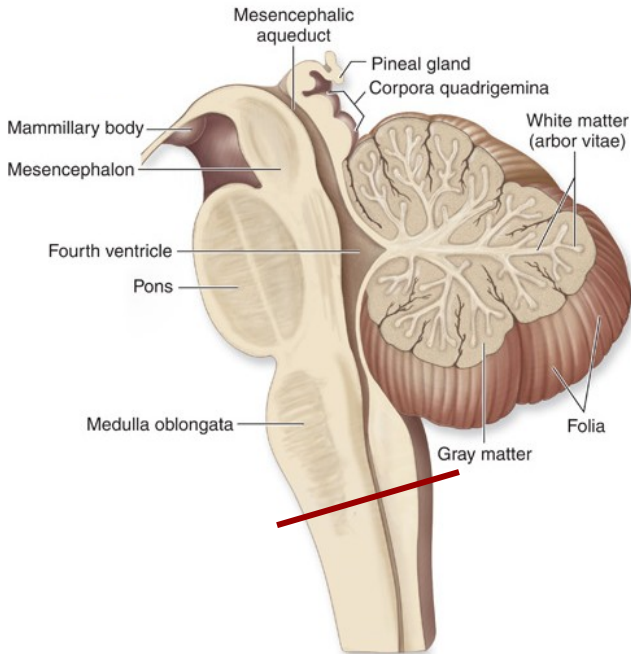
tr. spino-c.ant.

tr.rubro-spinalis

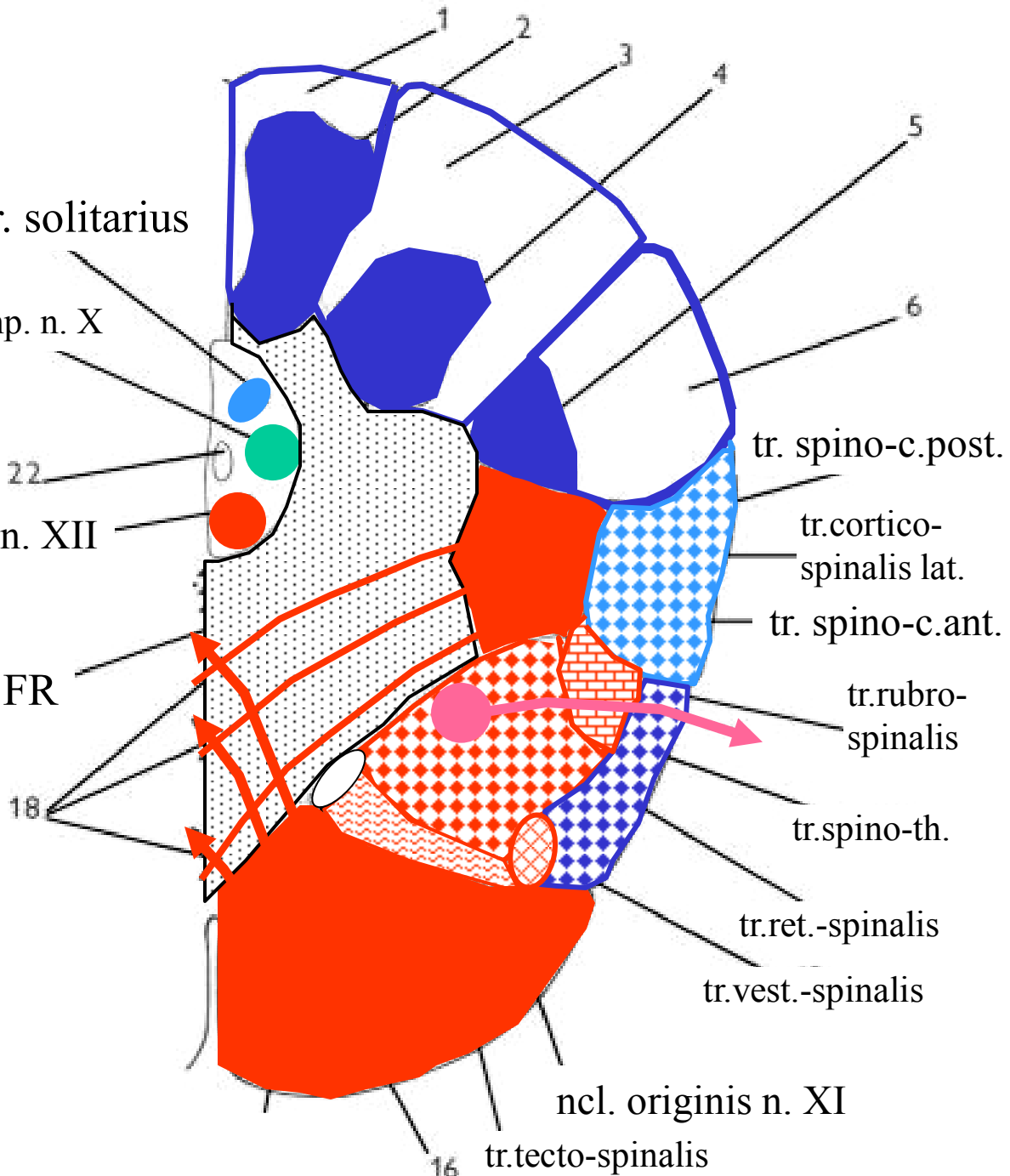
tr.spino-th.

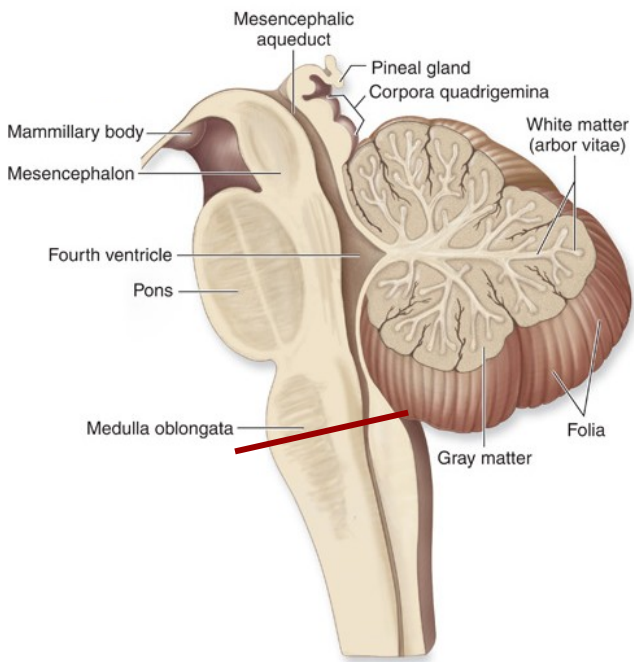
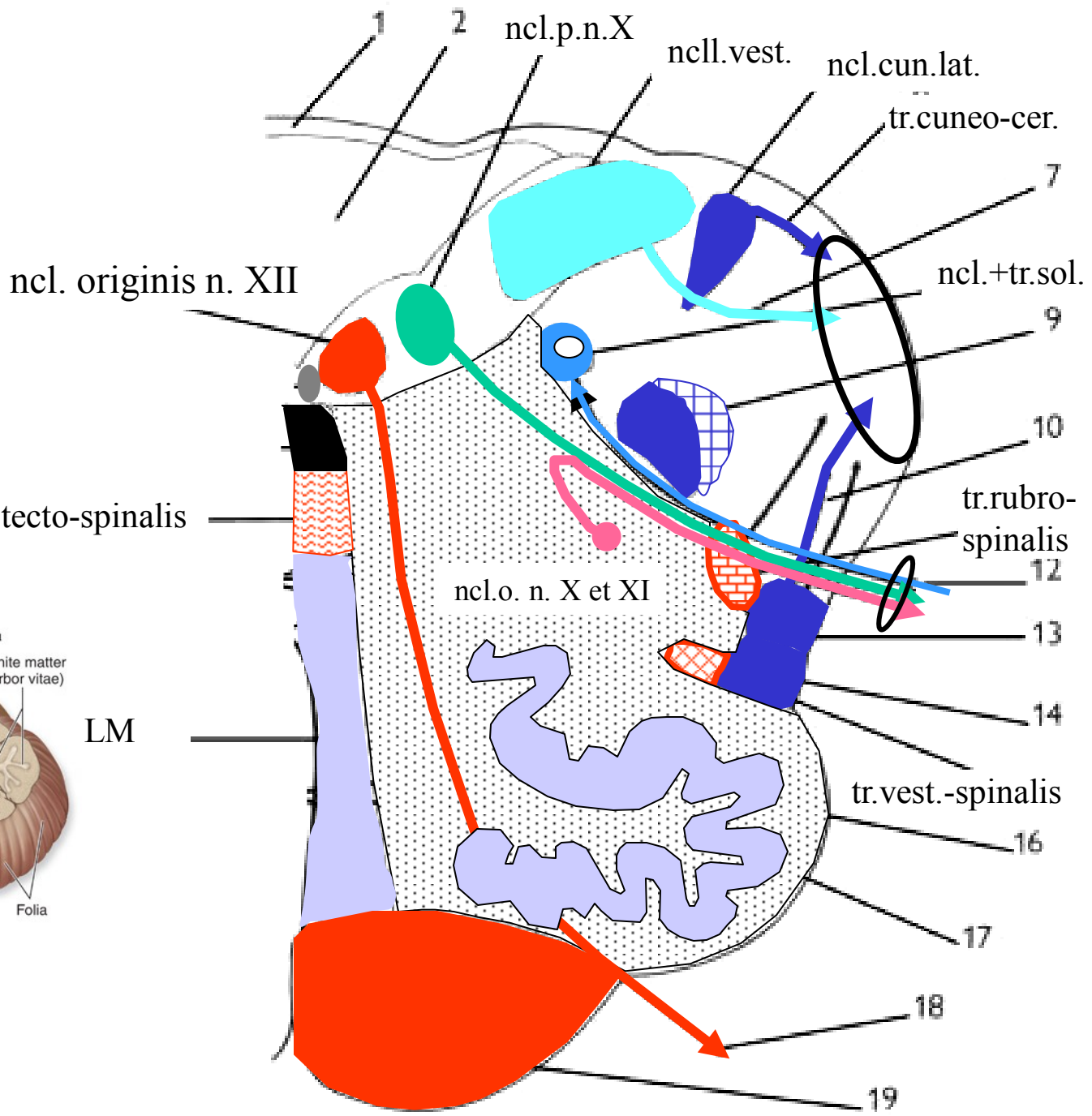
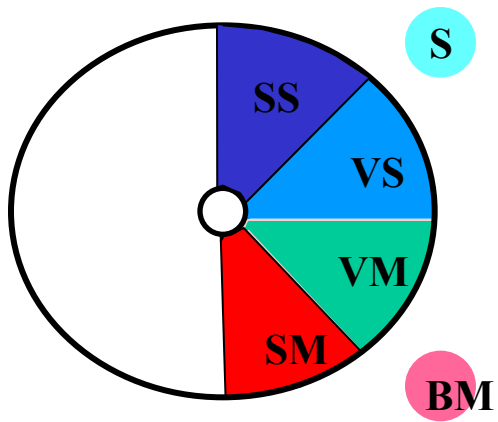
tr.ret.-spinalis

tr.vest.-spinalis



(a) Midsagittal section

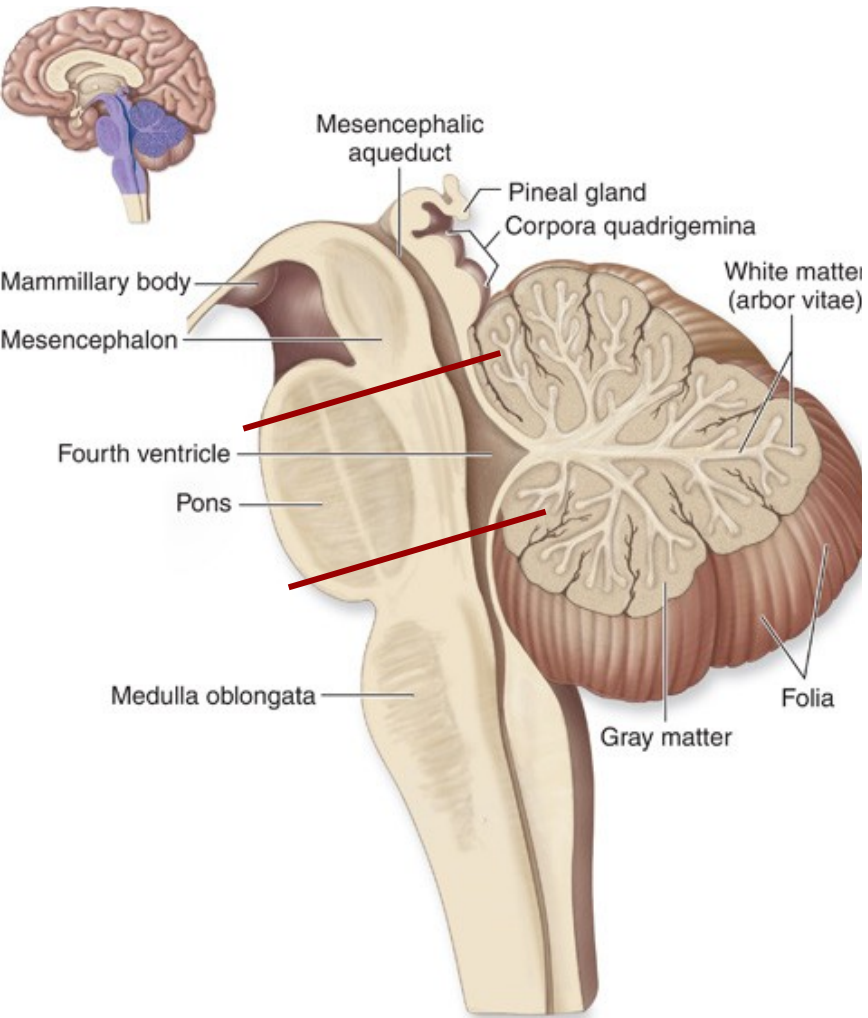




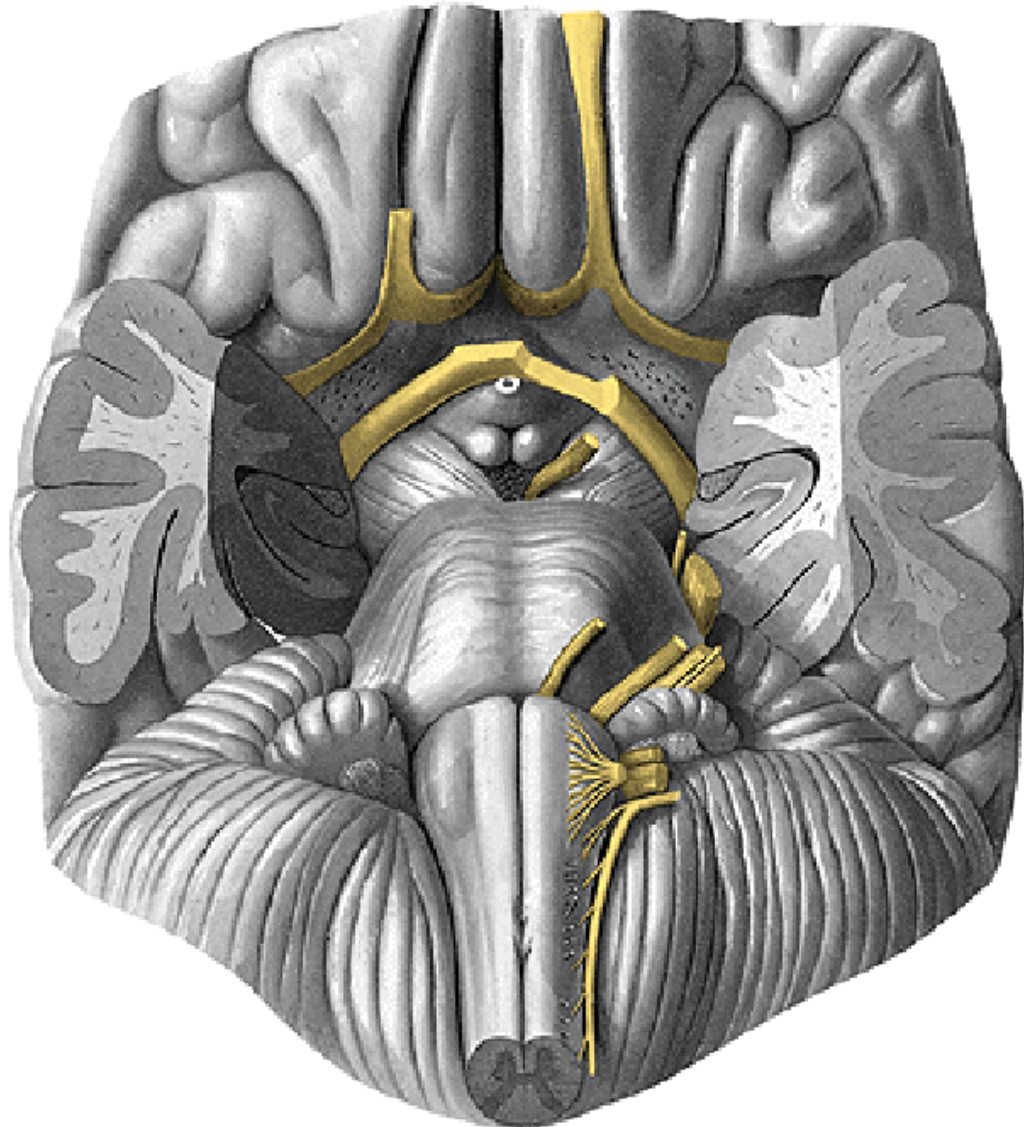
(a) Midsagittal section

LM

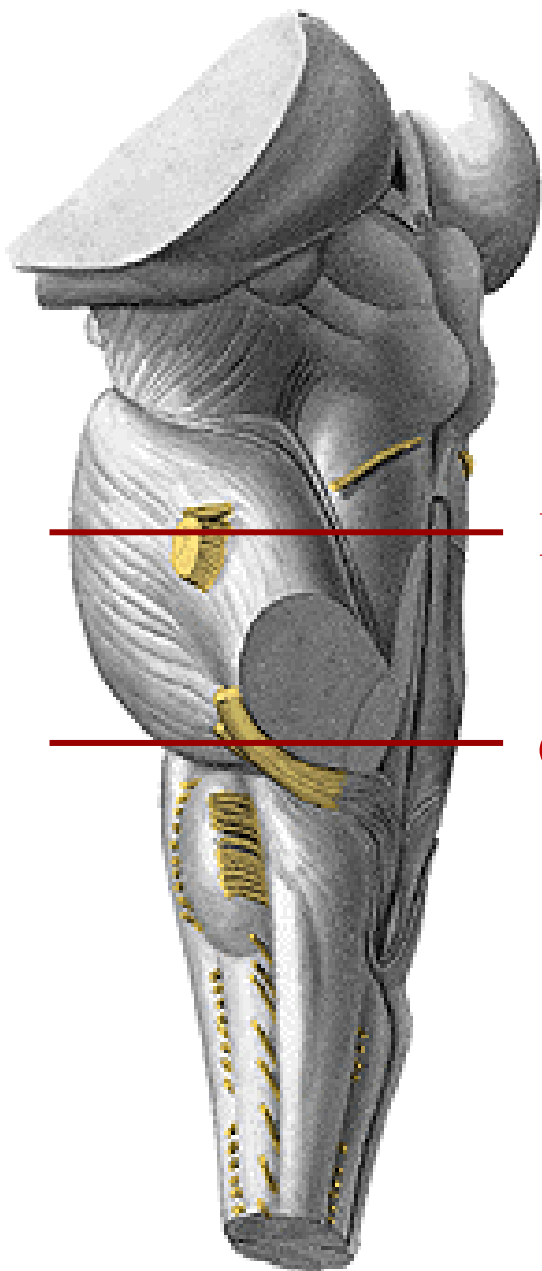
Pons



(a) Midsagittal section

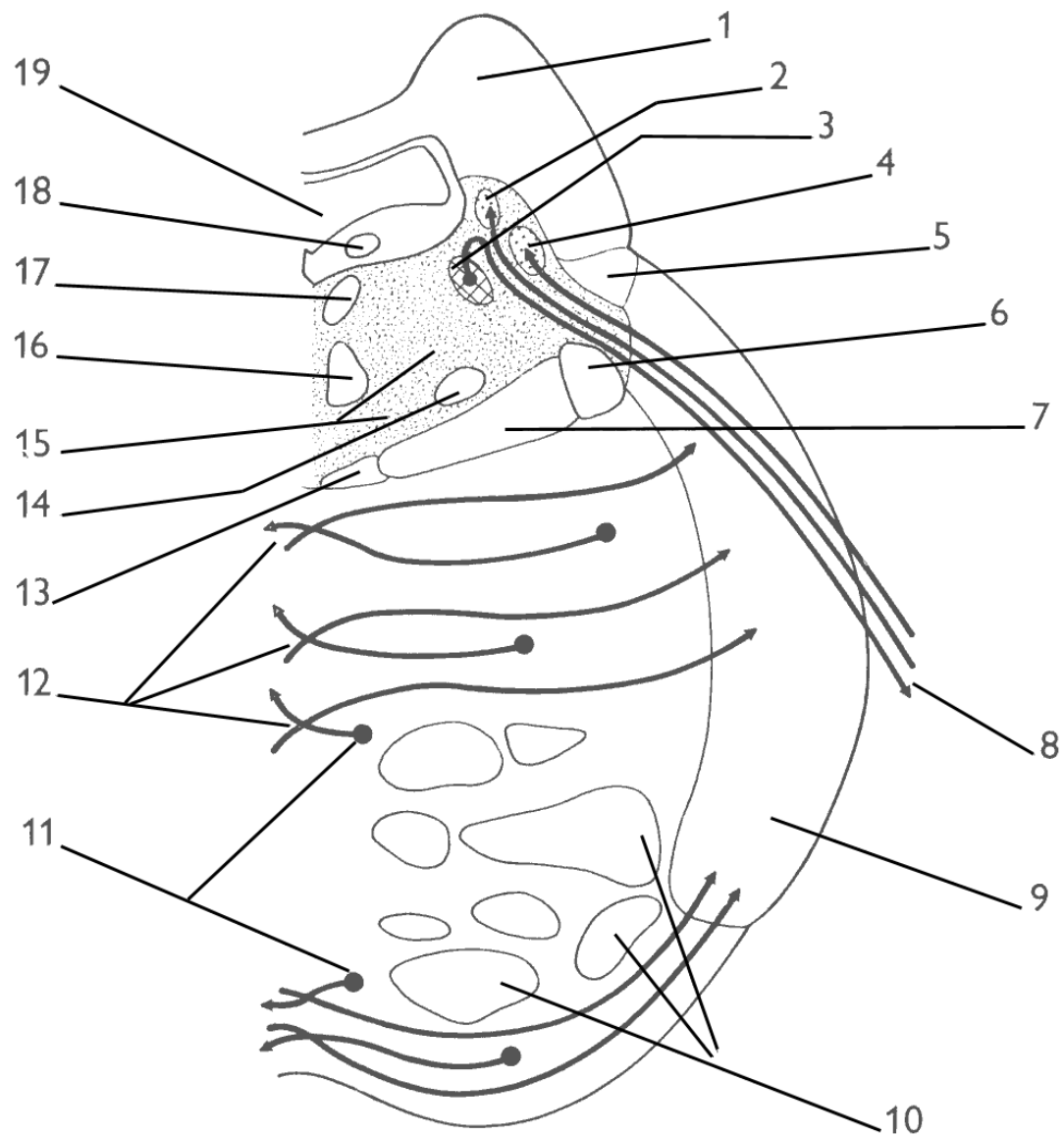


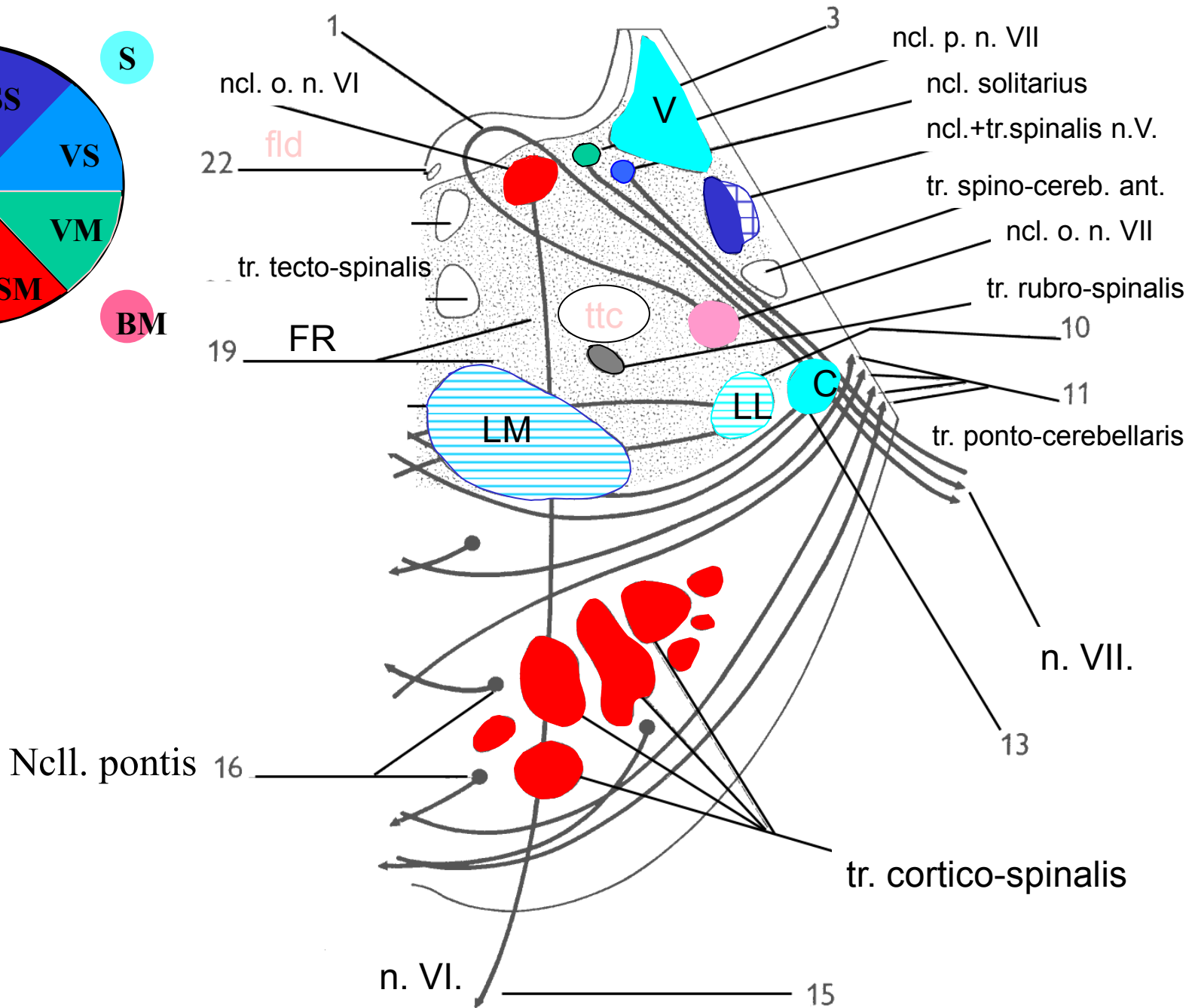
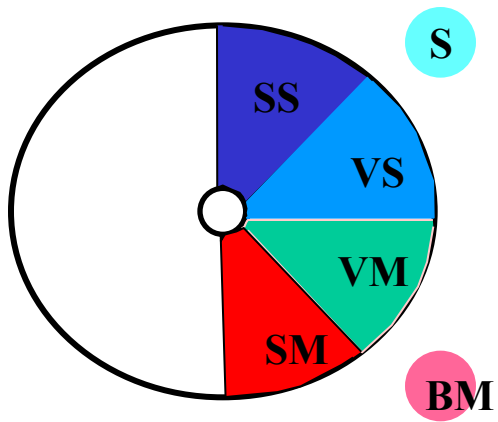
Pons – representative sections

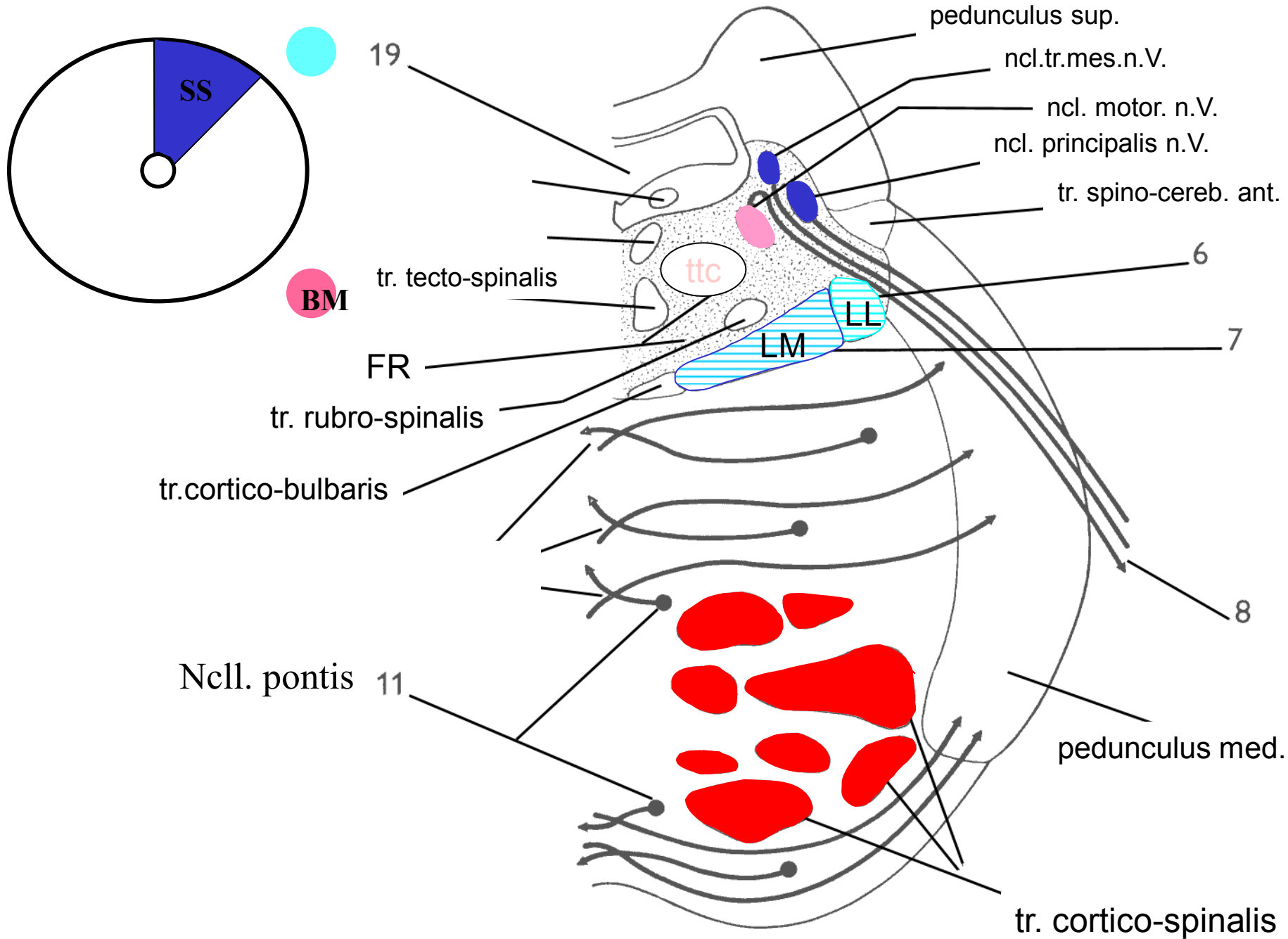


R

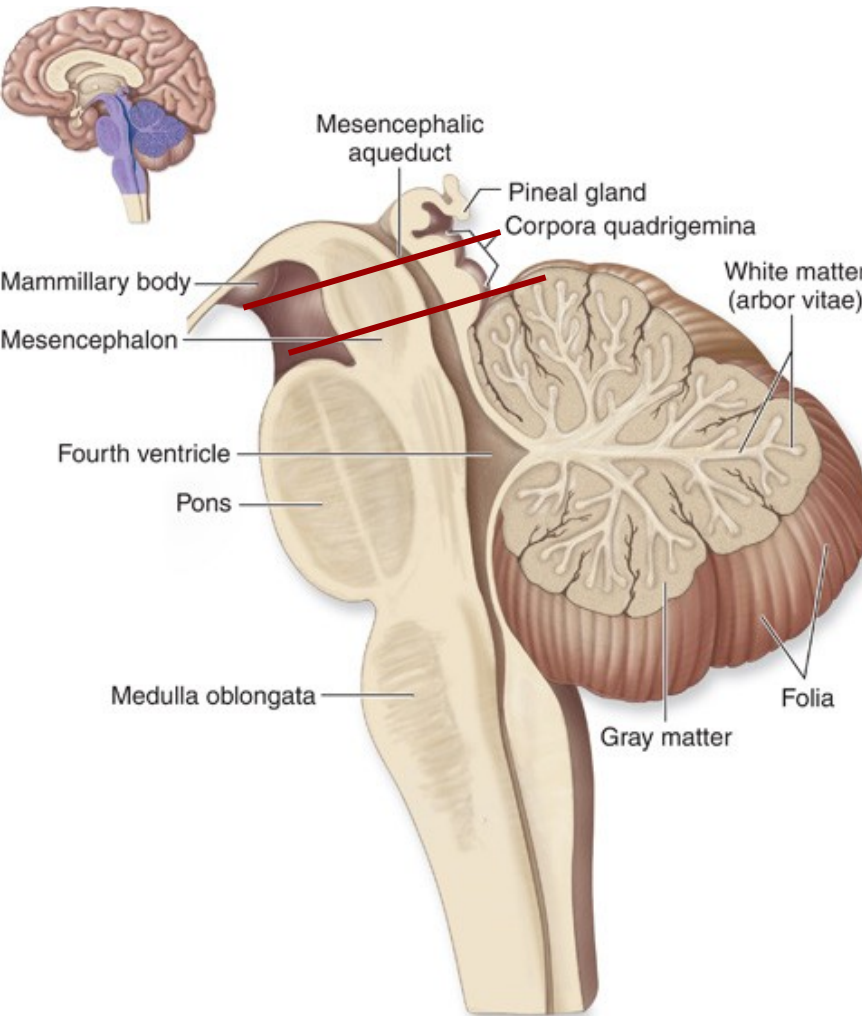
C



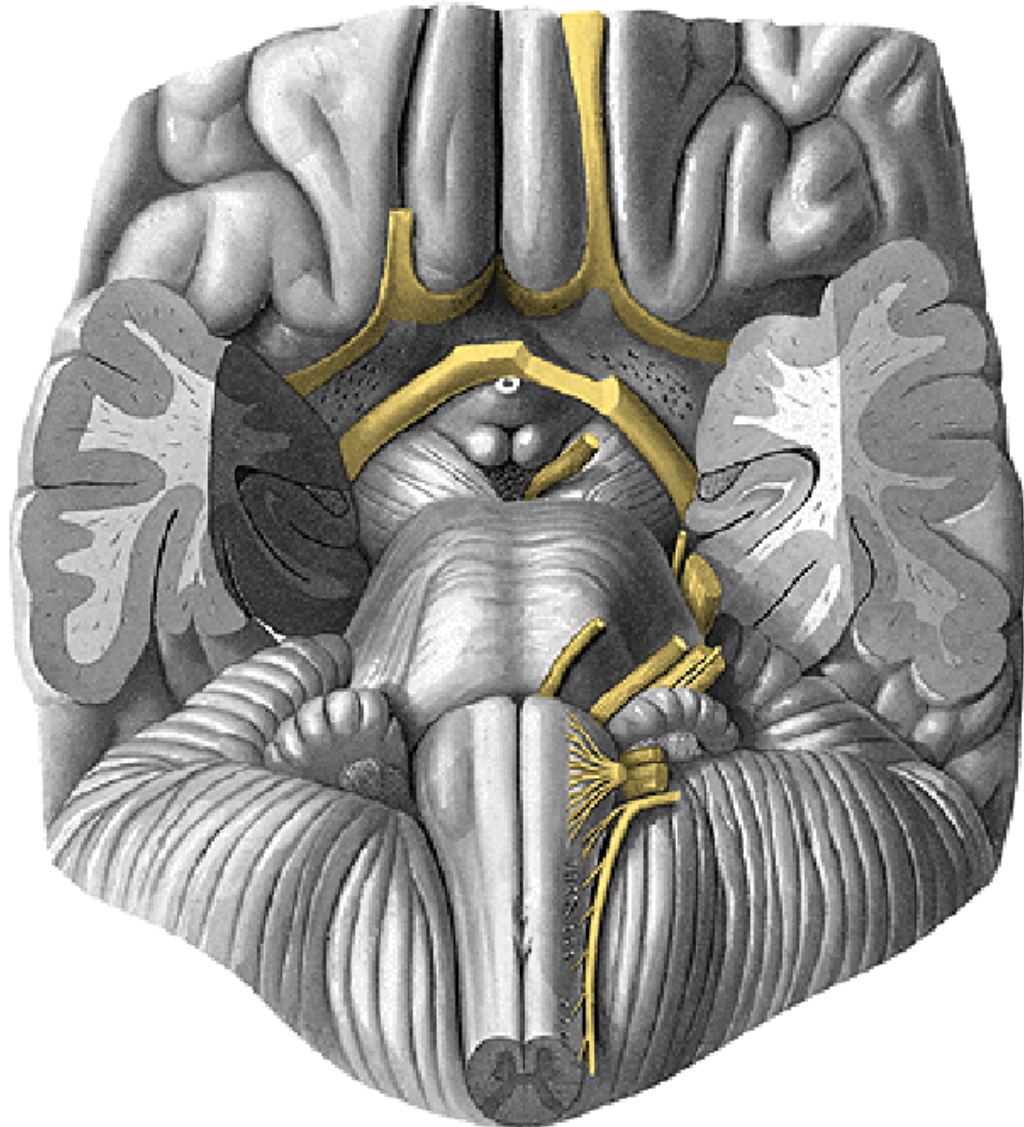




Mesencephalon



(a) Midsagittal section



Mesencephalon – representative sections

