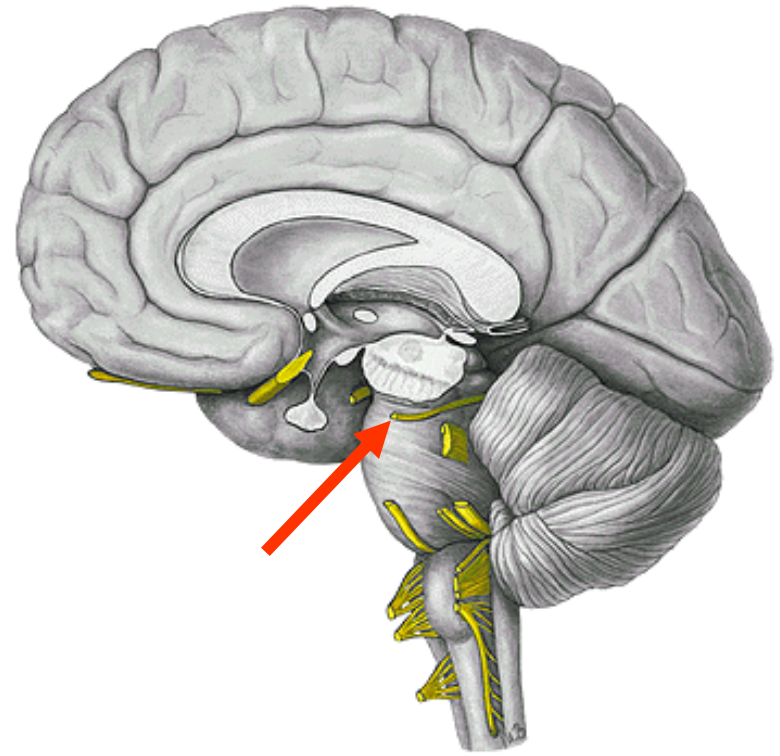
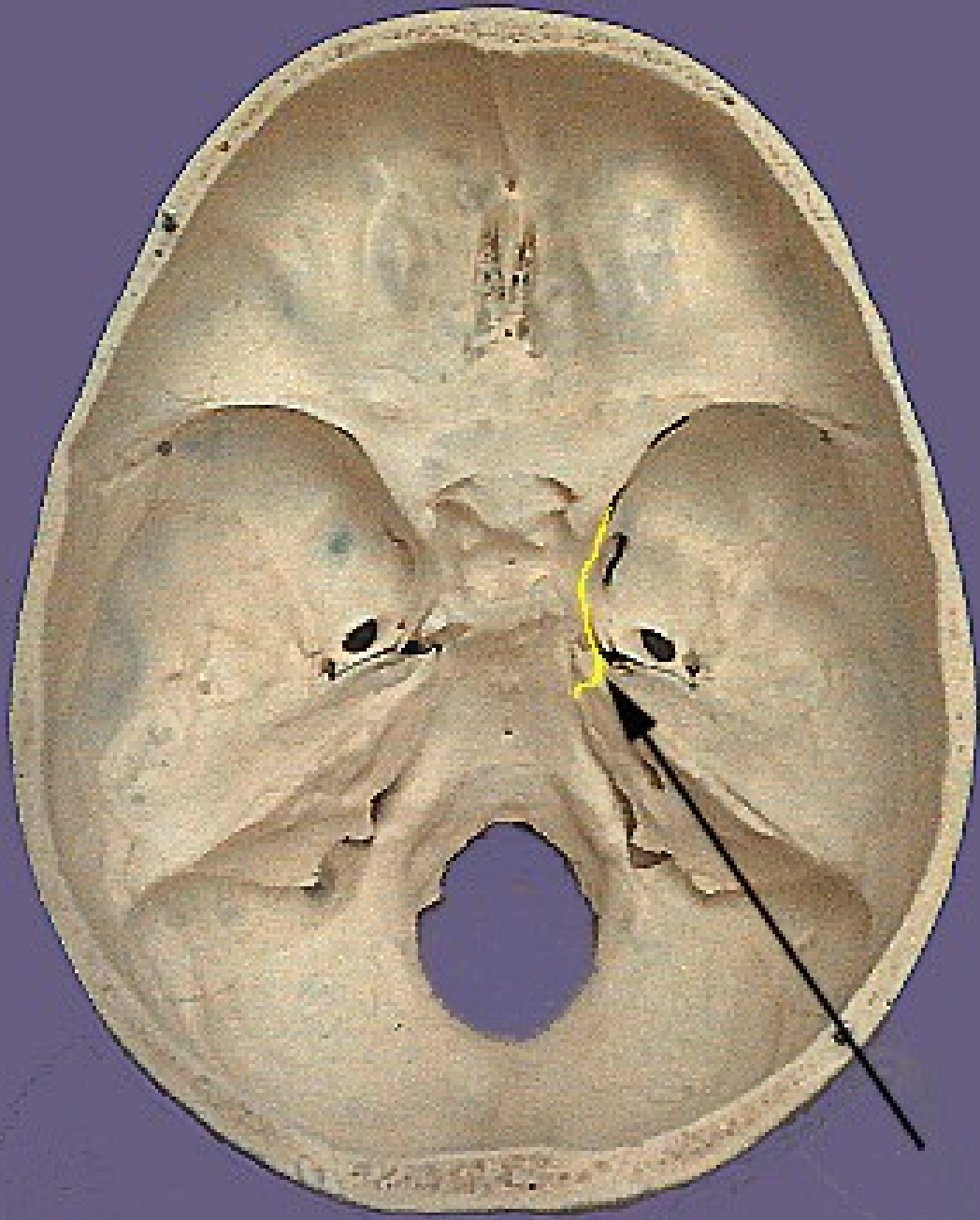
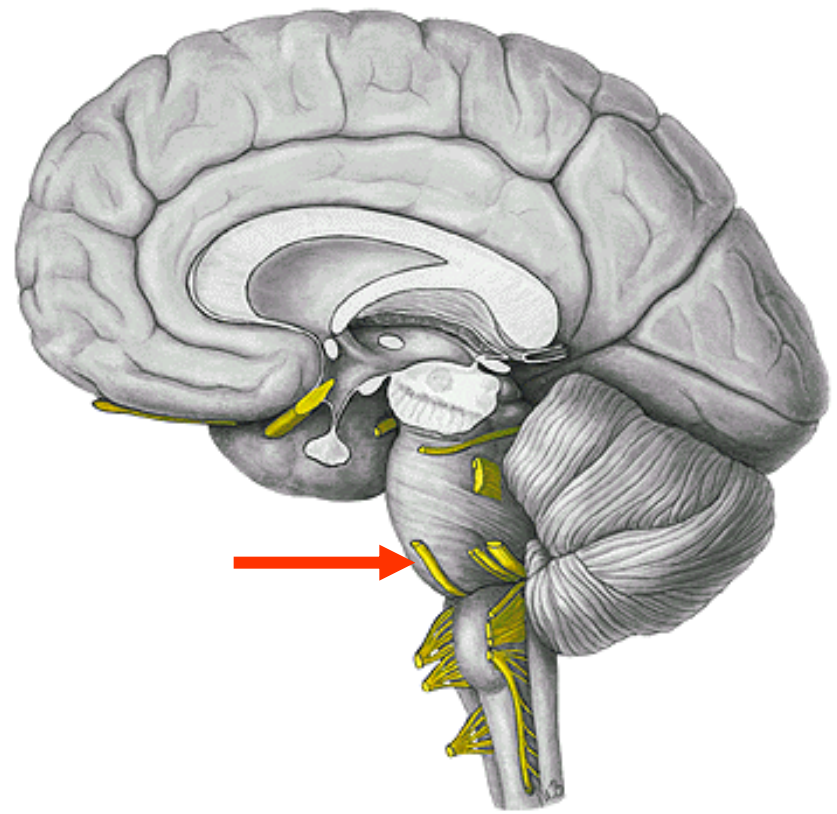
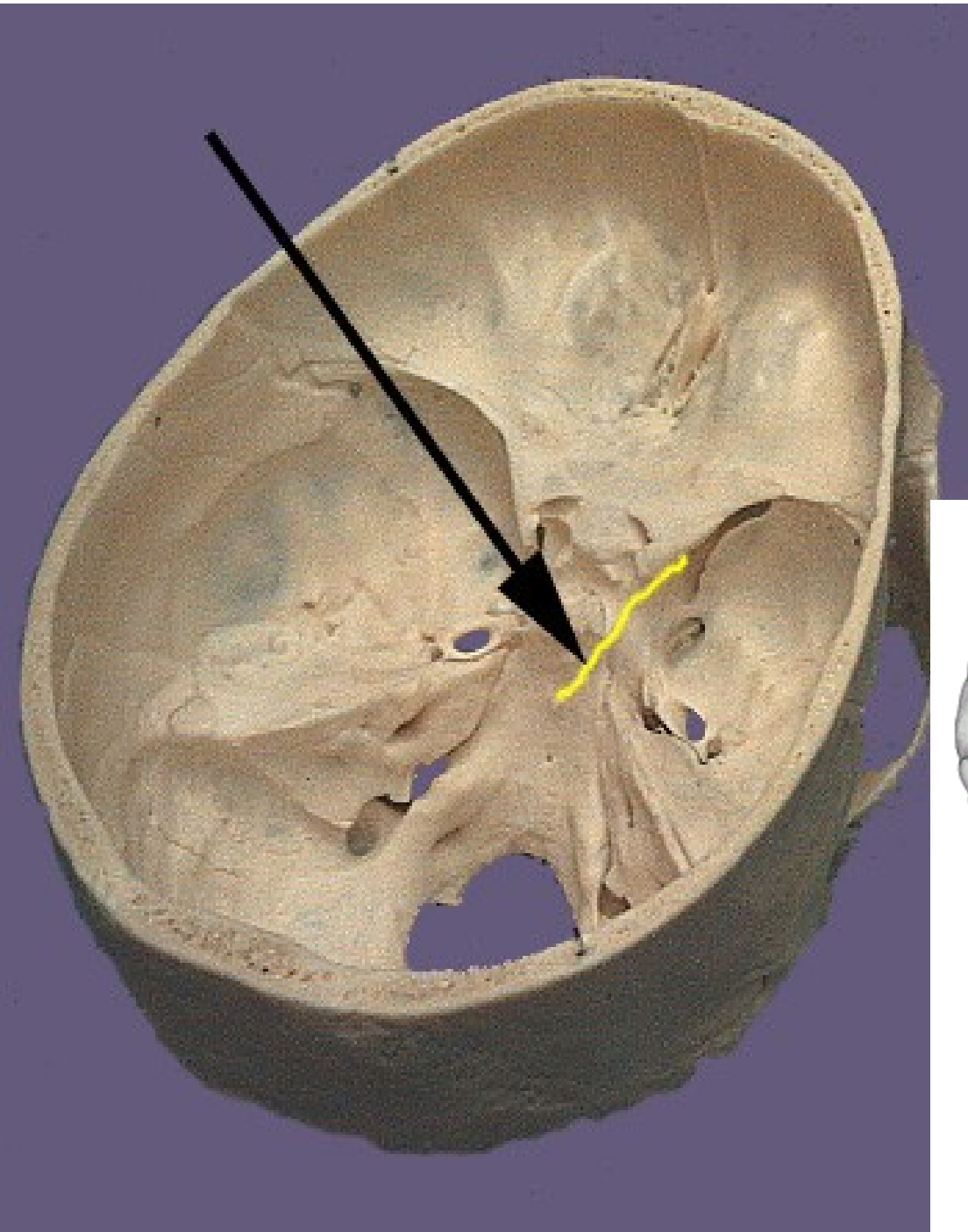


n.III.



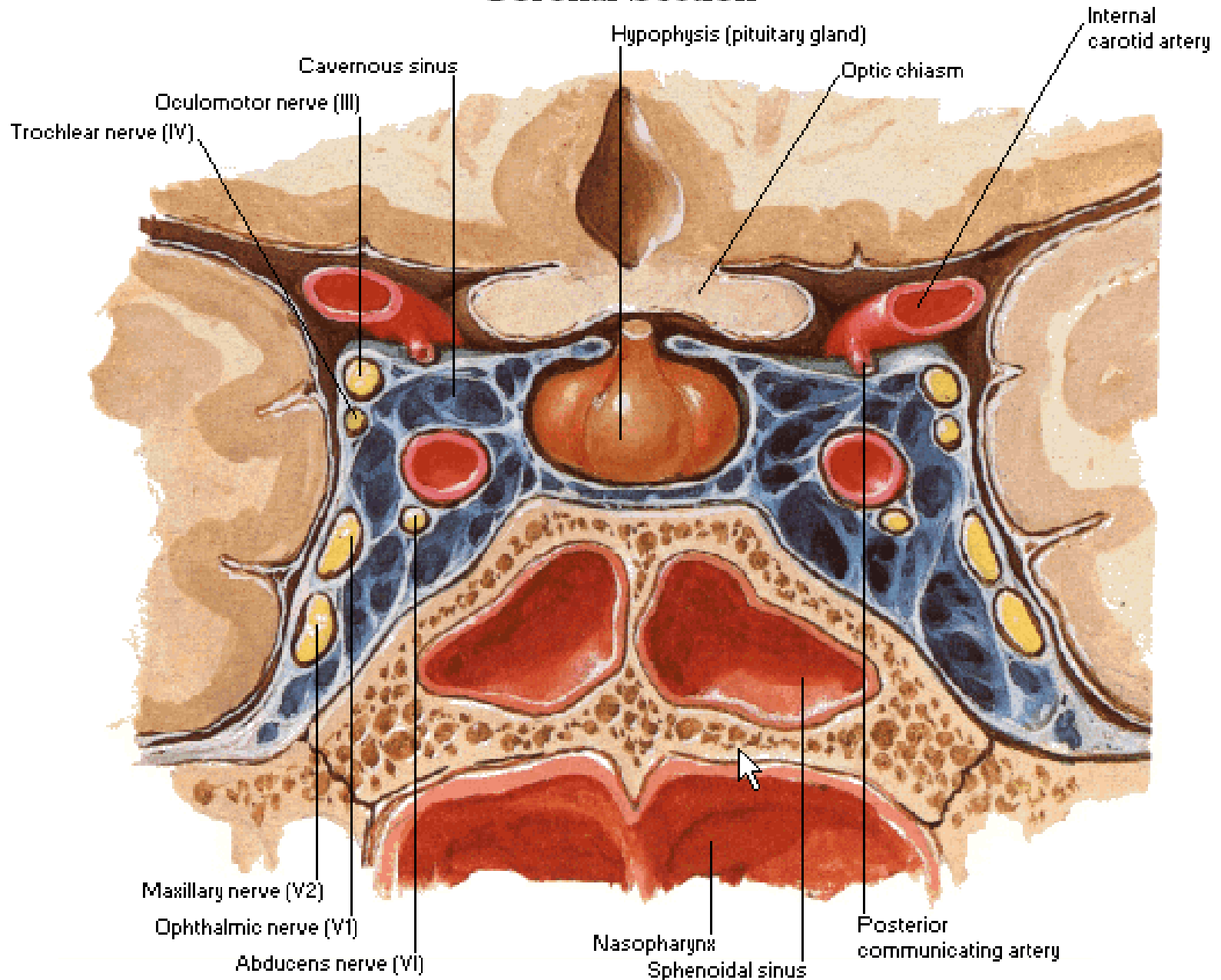
n.IV.

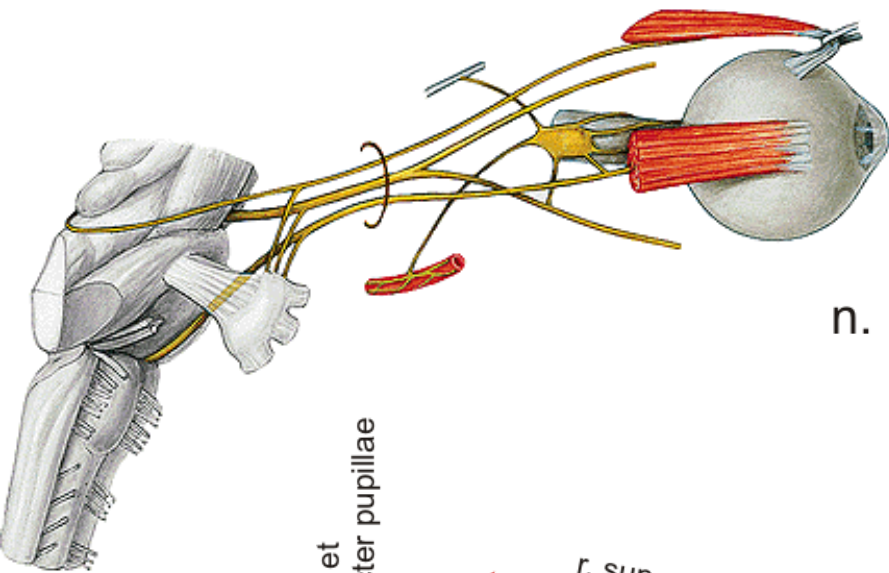
n.VI.



# Cavernous Sinus

## Coronal Section





n. III. et IV.

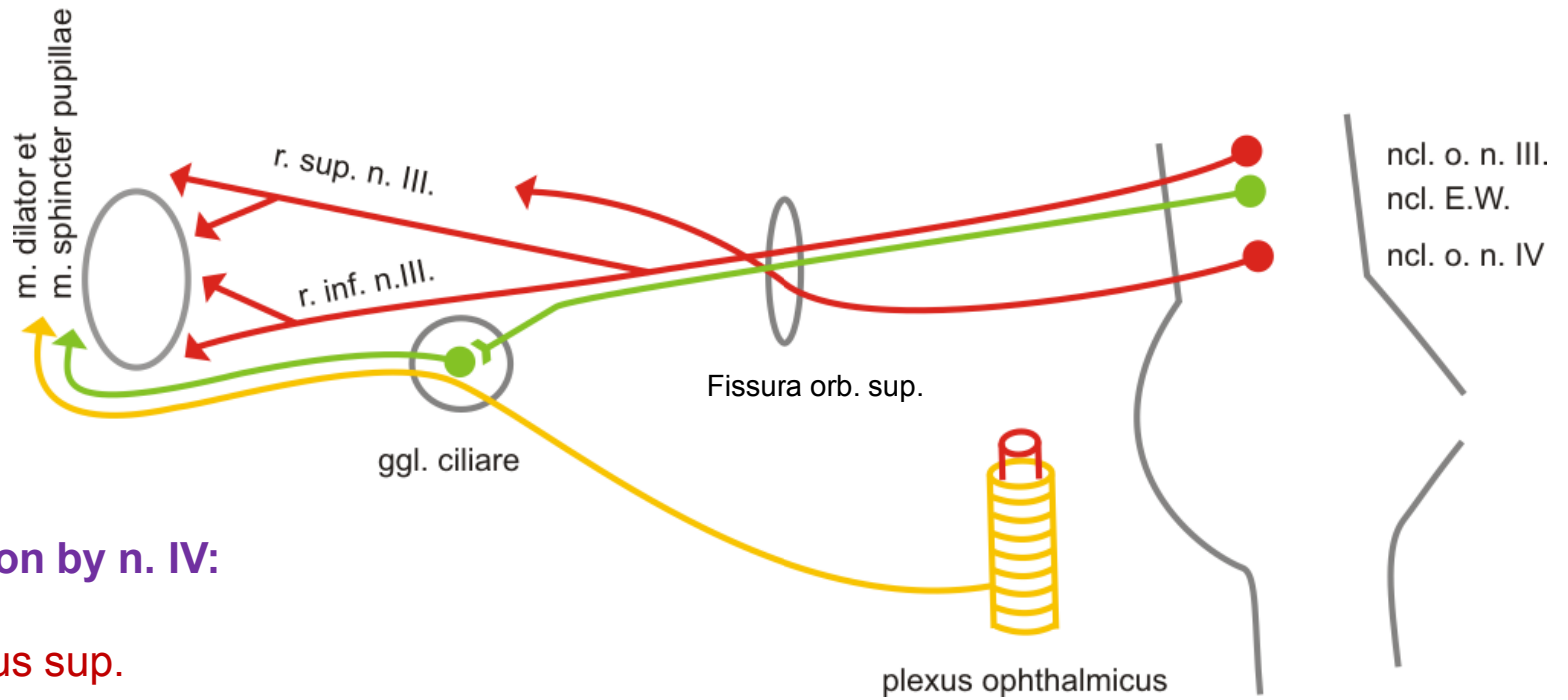
### Innervation by n. III:

mm. recti orbitales except  
m. rectus lat.

m. levator palpebrae sup.

m. obliquus inf.

m. dilator (symp.) et sphincter pupillae  
(parasymp.)



### Innervation by n. IV:

m. obliquus sup.

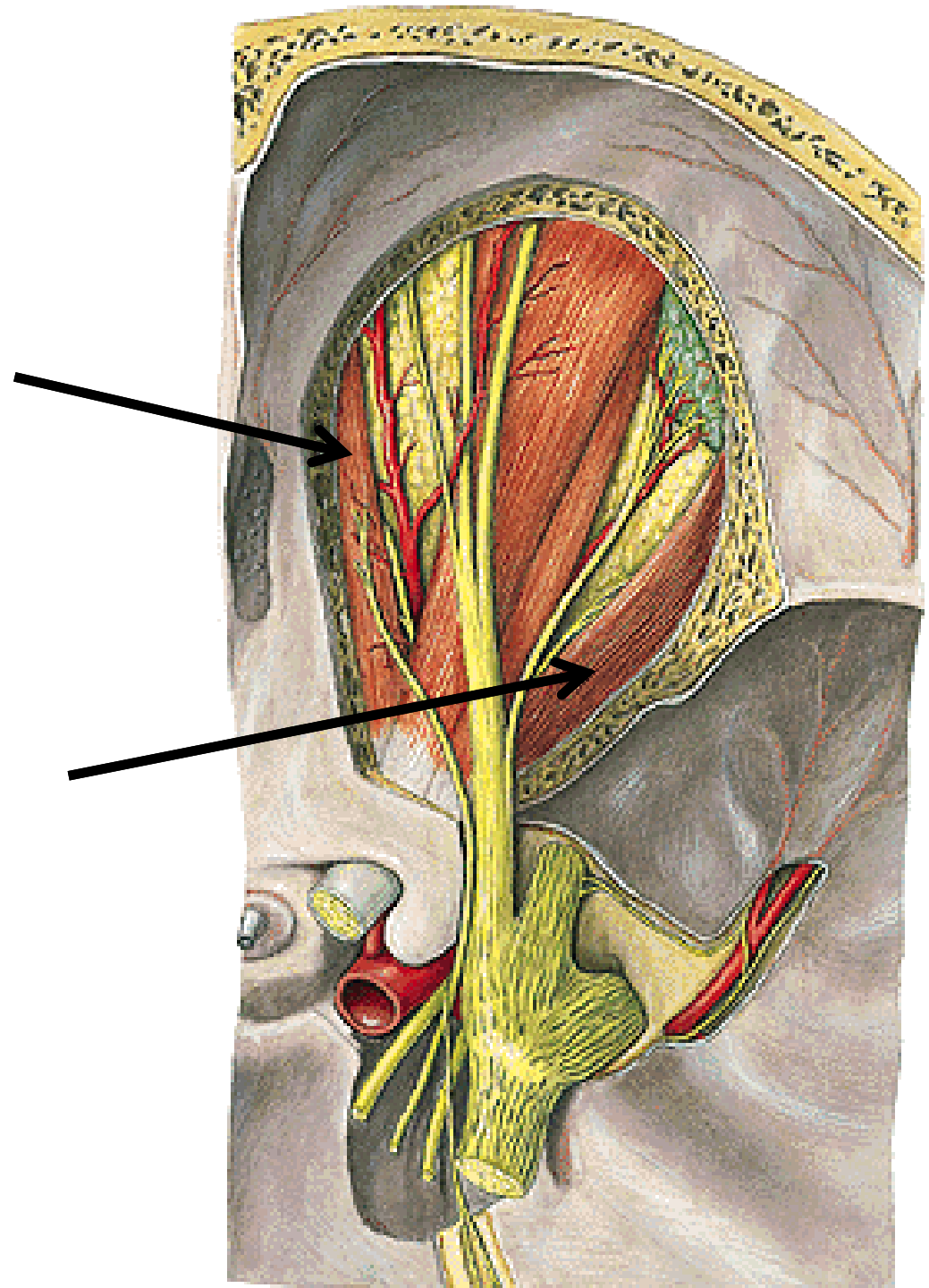
### Innervation by n. VI:

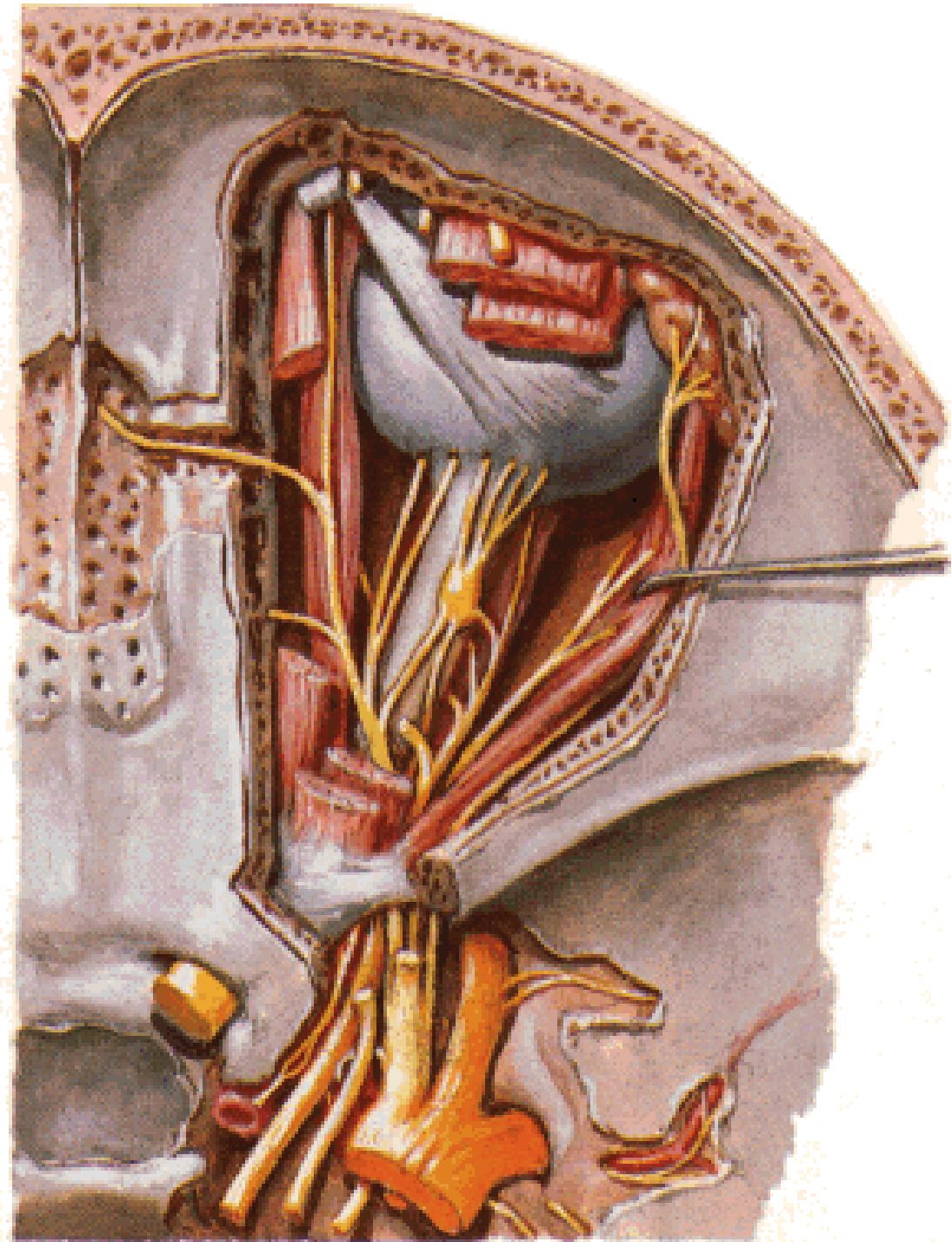
m. rectus lat.

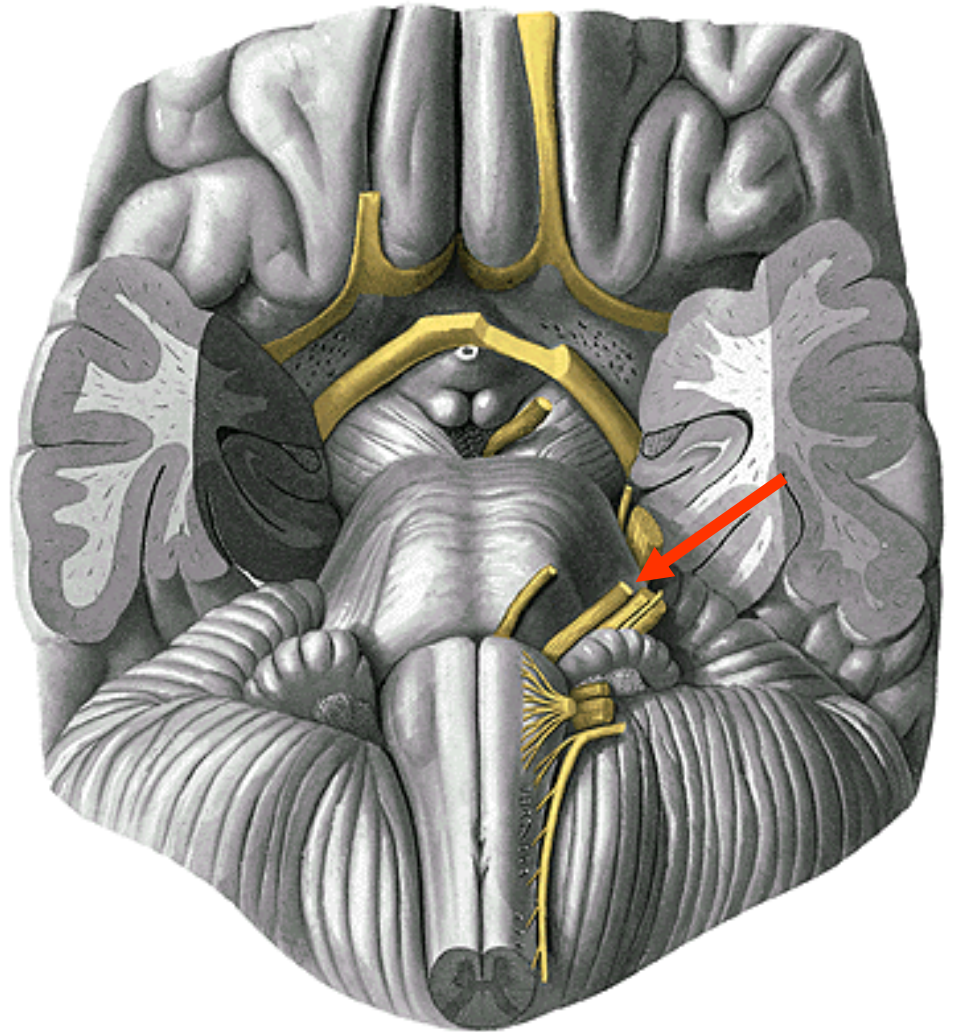
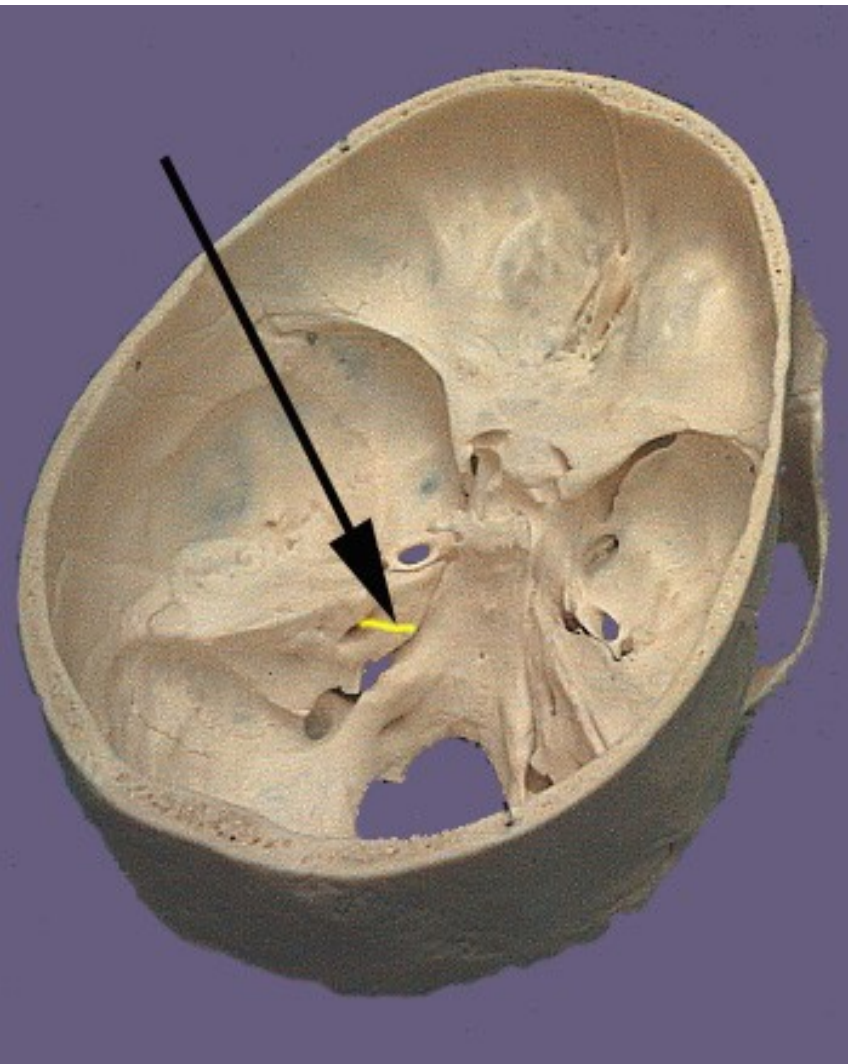


**Innervation by n. IV.**  
**m. obliquus sup.**

**Innervation by n. VI.**  
**m. rectus lat.**



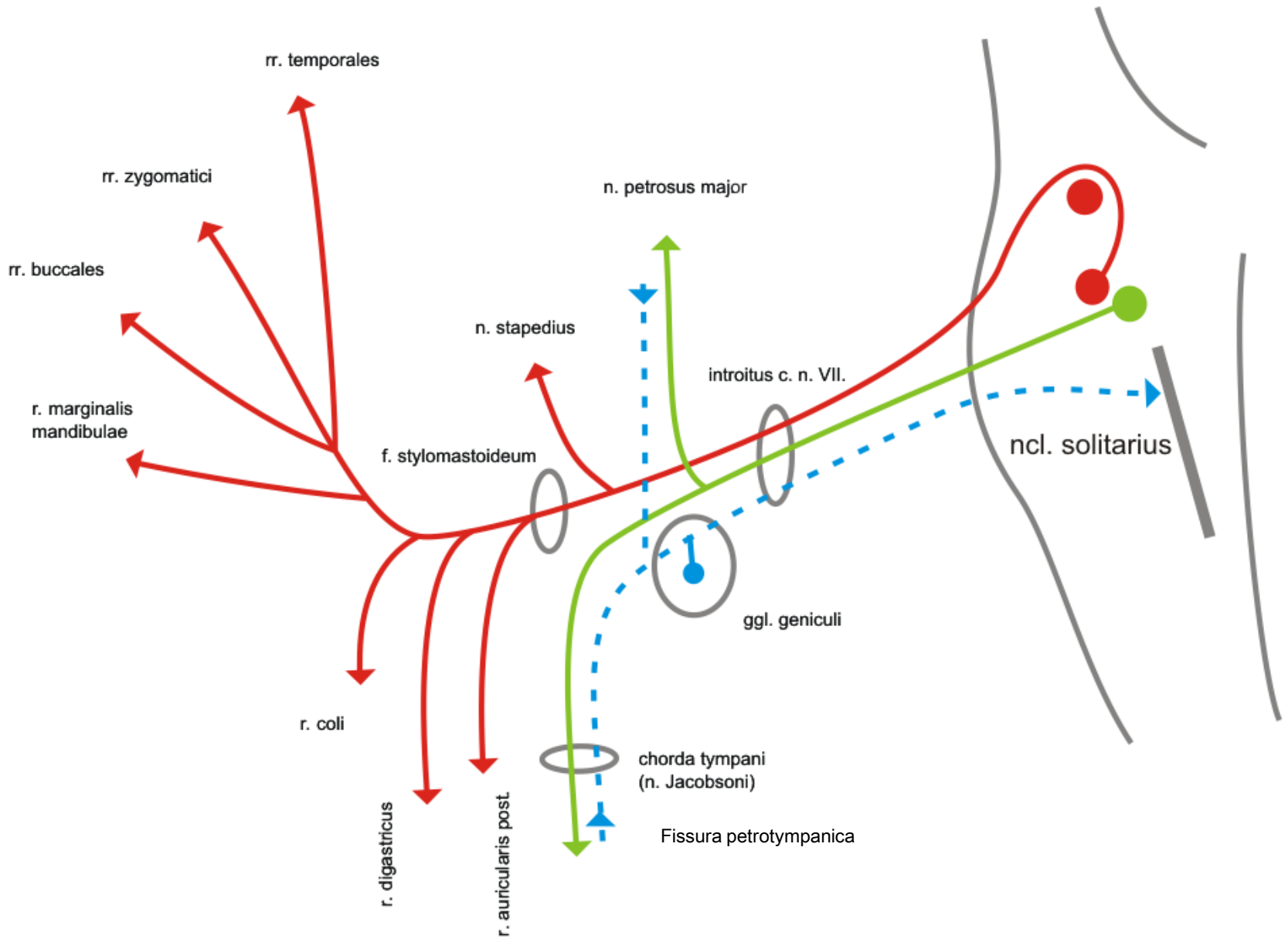




n. VII.



# n.VII.



Innervation by n. VII:

**Mimic muscles**

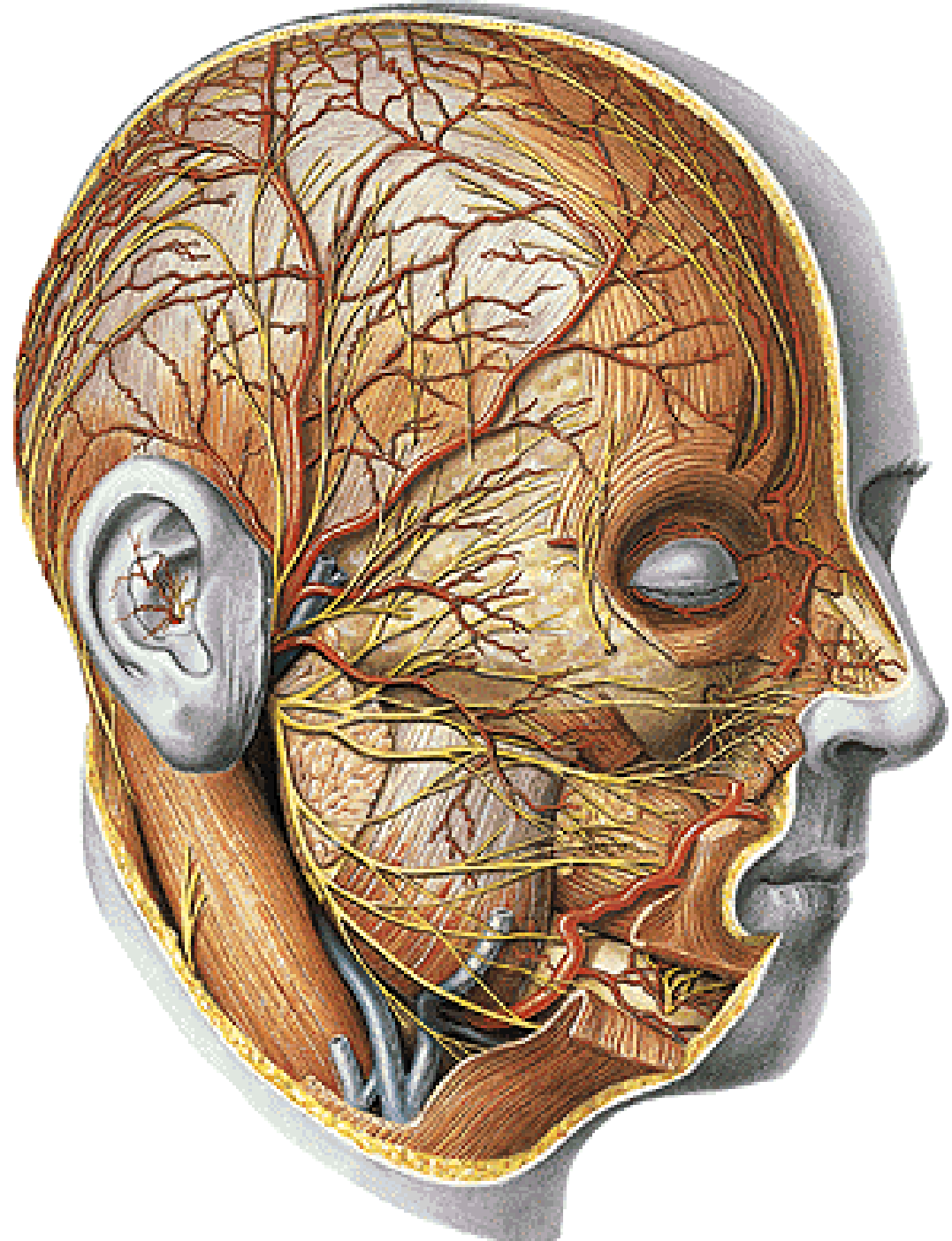
gl. lacrimalis

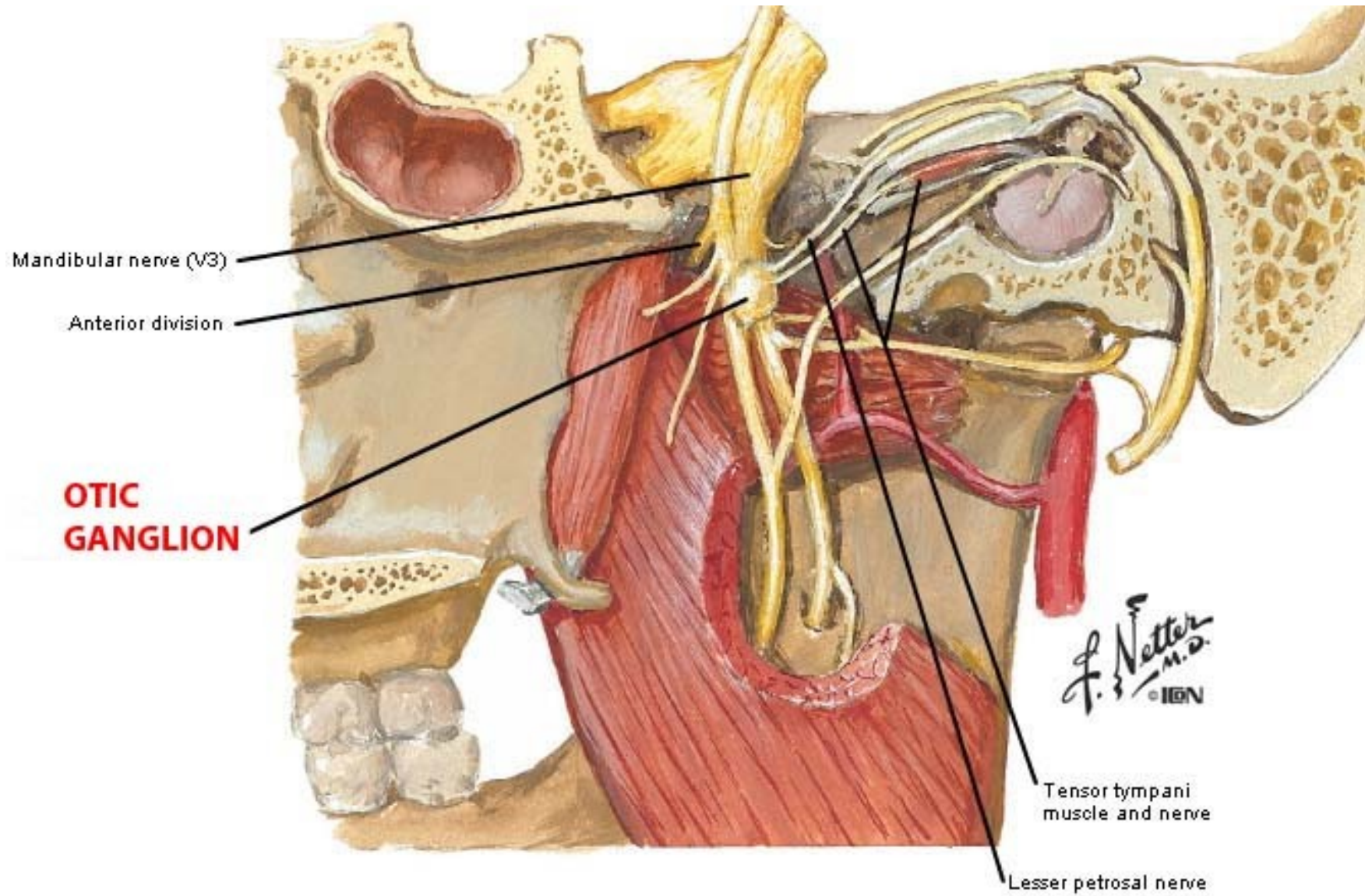
gl. submandibularis

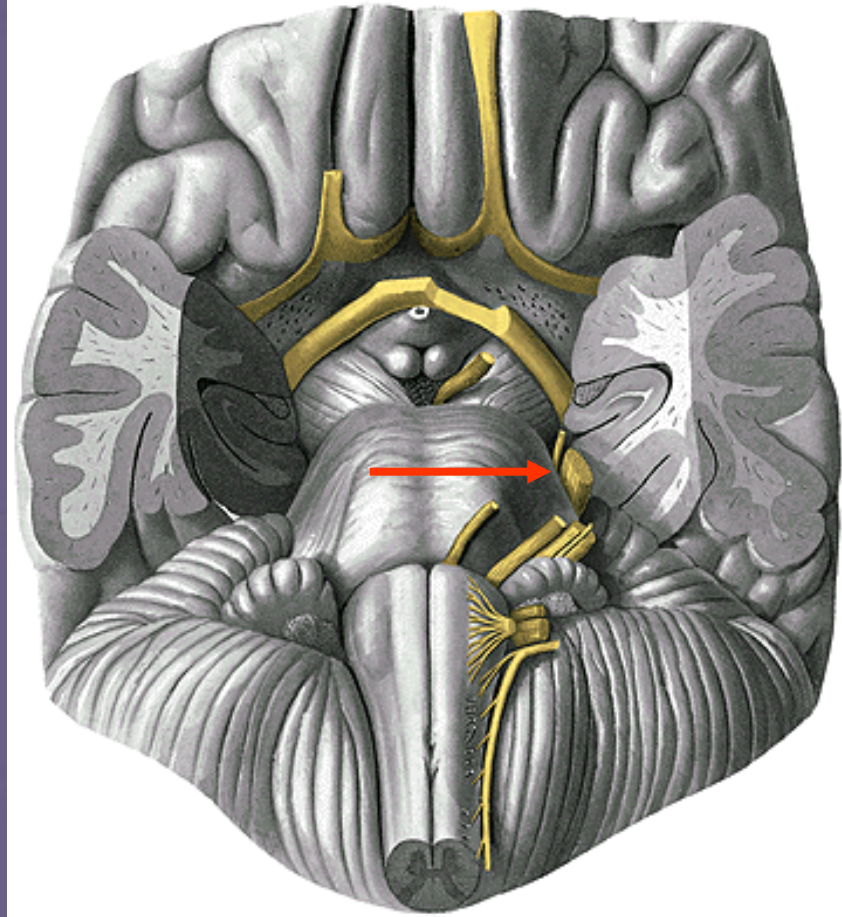
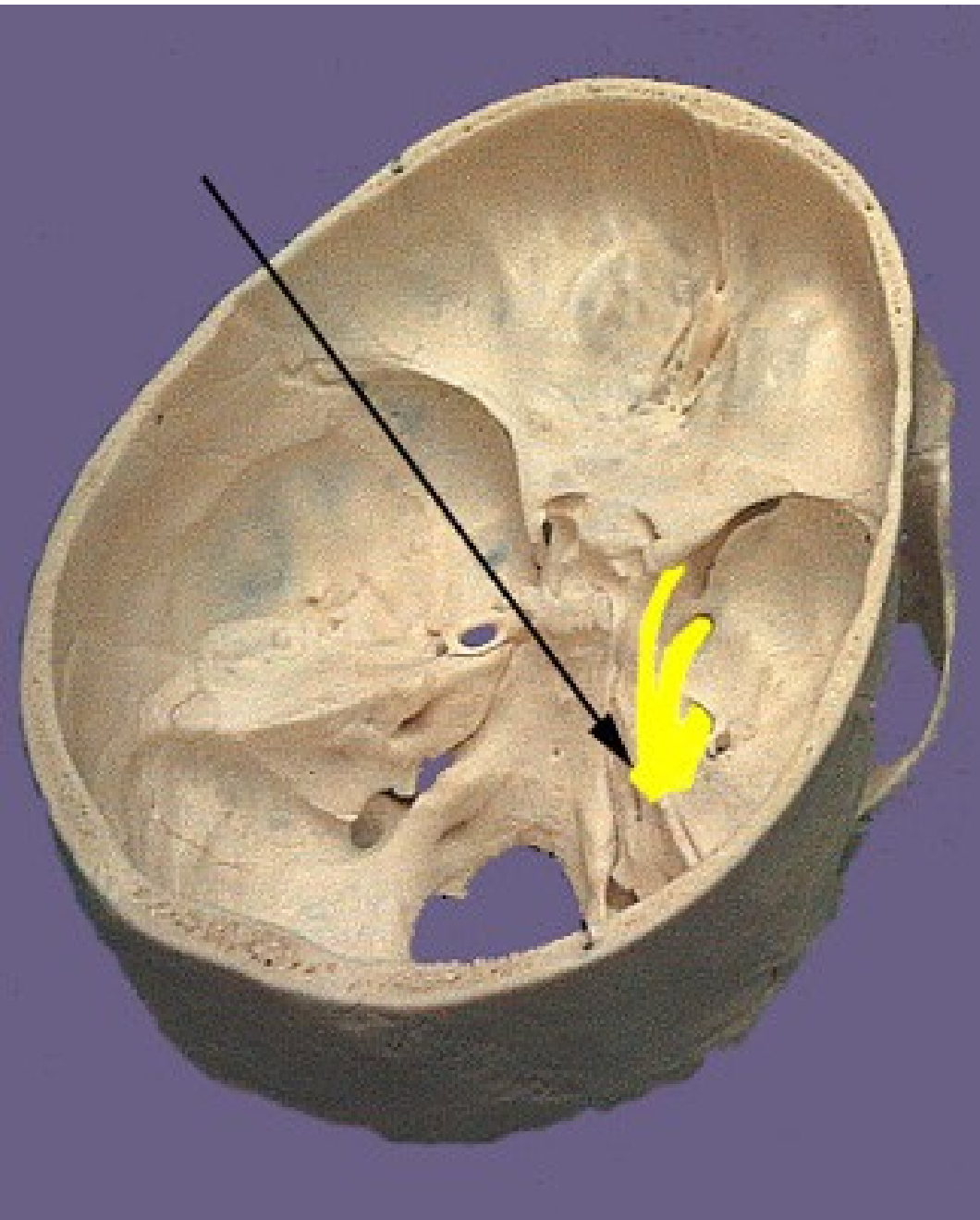
gl. sublingualis

small salivatory gl. in mucosa of  
soft and hard palatum

Taste buds in anterior 2/3 of tongue  
and in mucosa of soft and hard  
palate

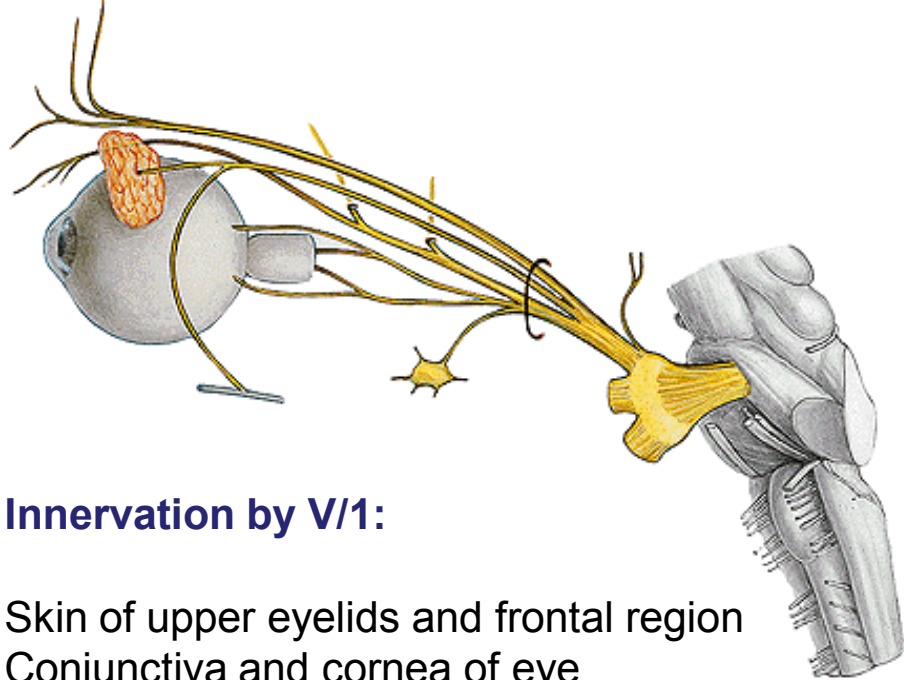




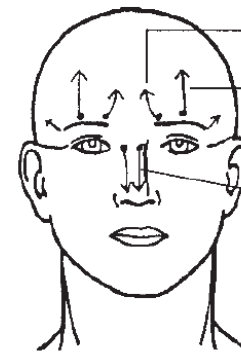
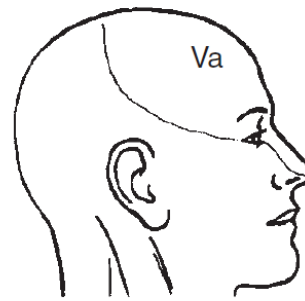


n.V.





Cutaneous distribution

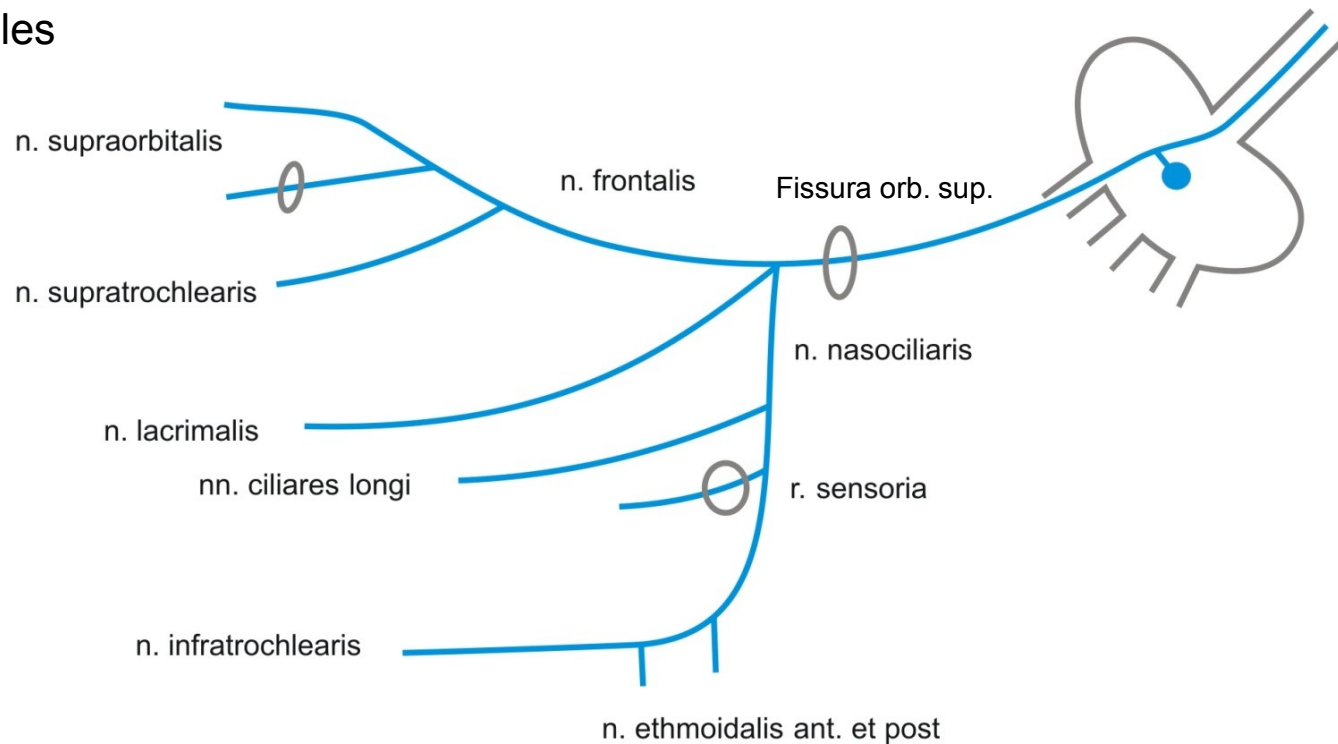


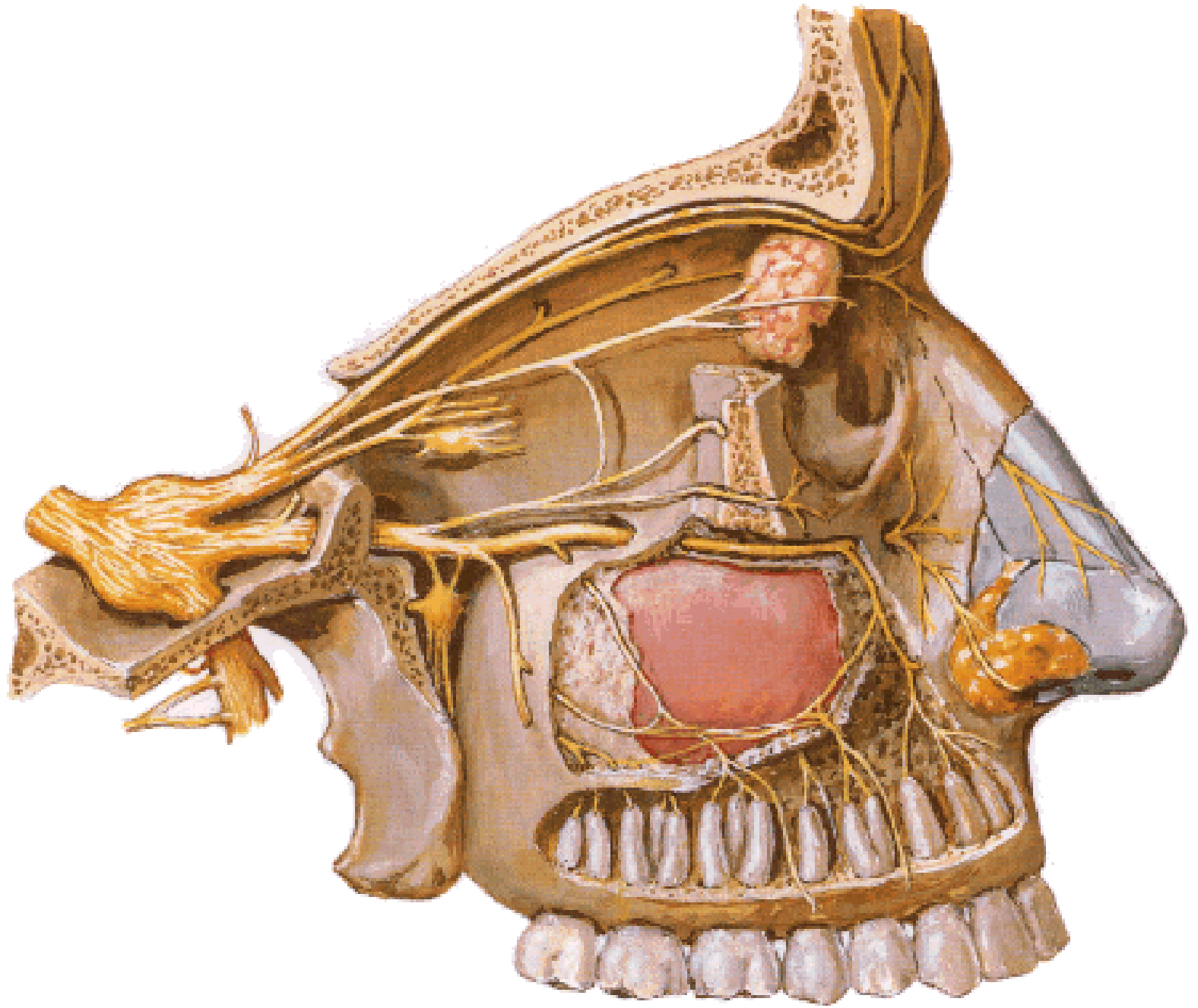
Sinus (broken circle)  
 Supratrochlear  
 (from frontal)  
 Supraorbital  
 (from frontal)  
 External nasal  
 (from nasociliary)

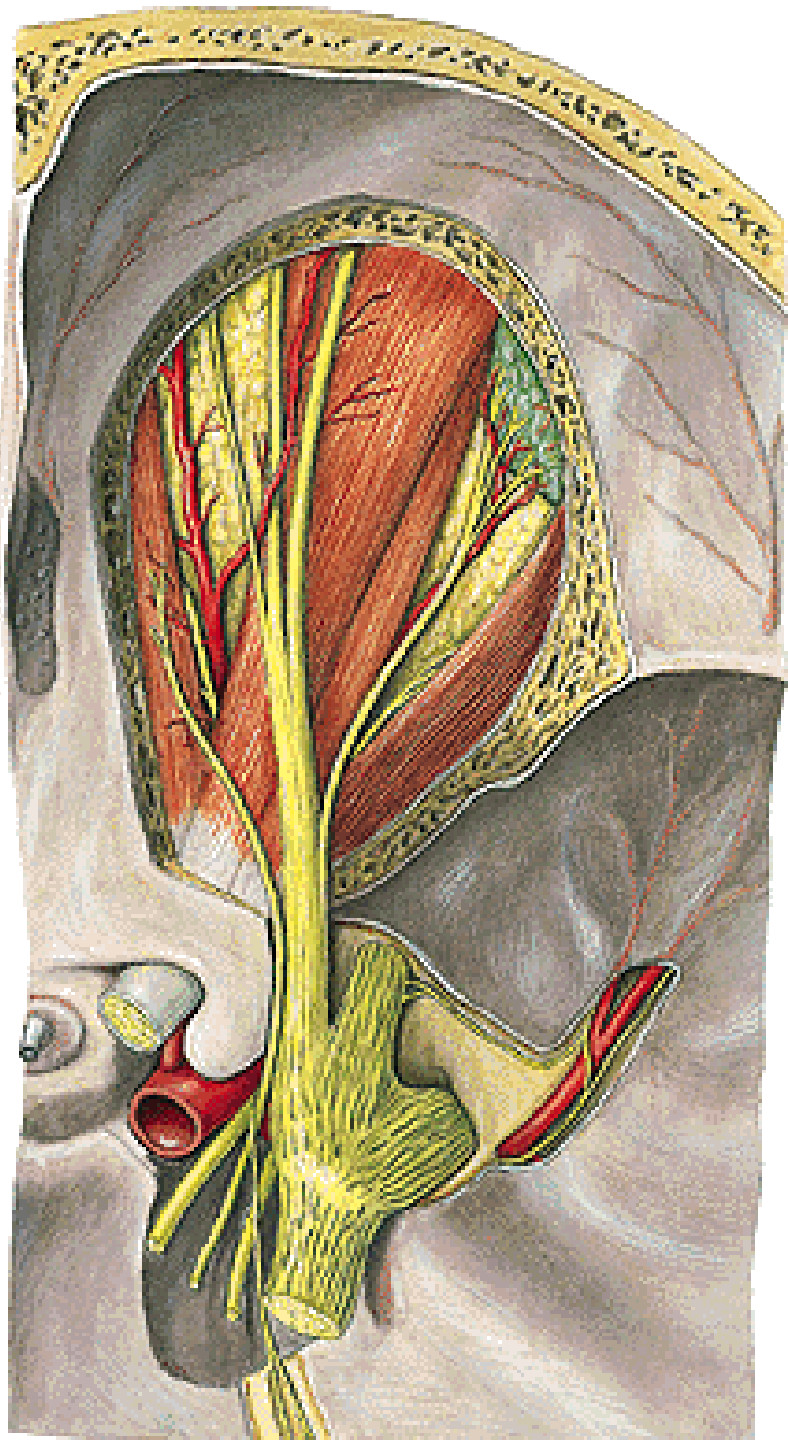
n. V/1 - n. ophthalmicus

### Innervation by V/1:

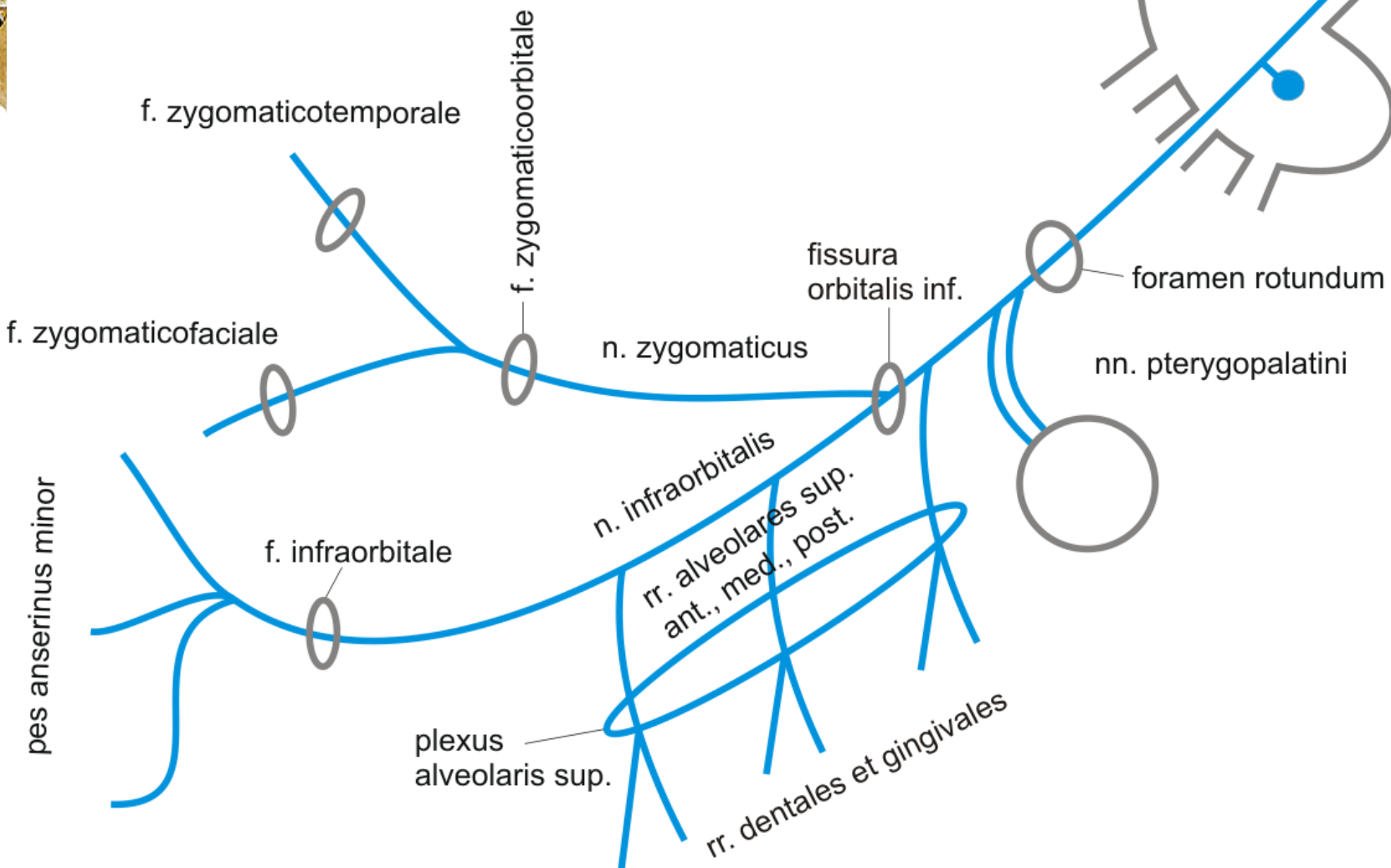
Skin of upper eyelids and frontal region  
 Conjunctiva and cornea of eye  
 Mucosa of celulae ethmoidales



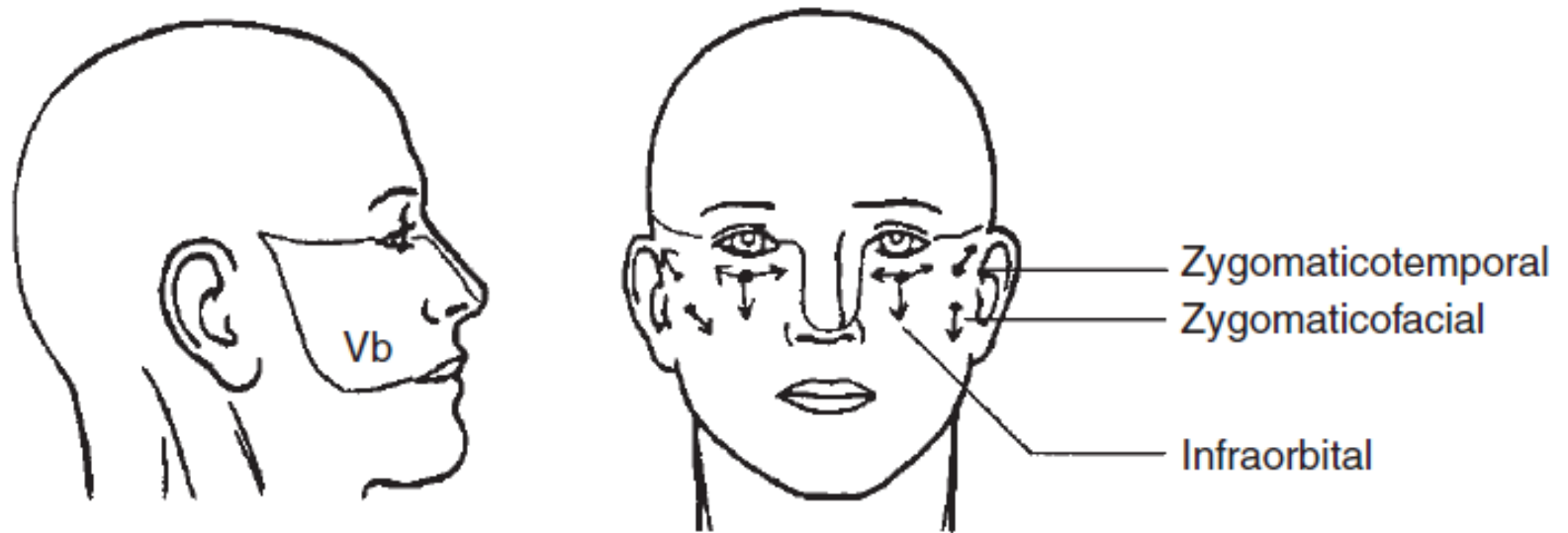




n. V/2 - n. maxillaris



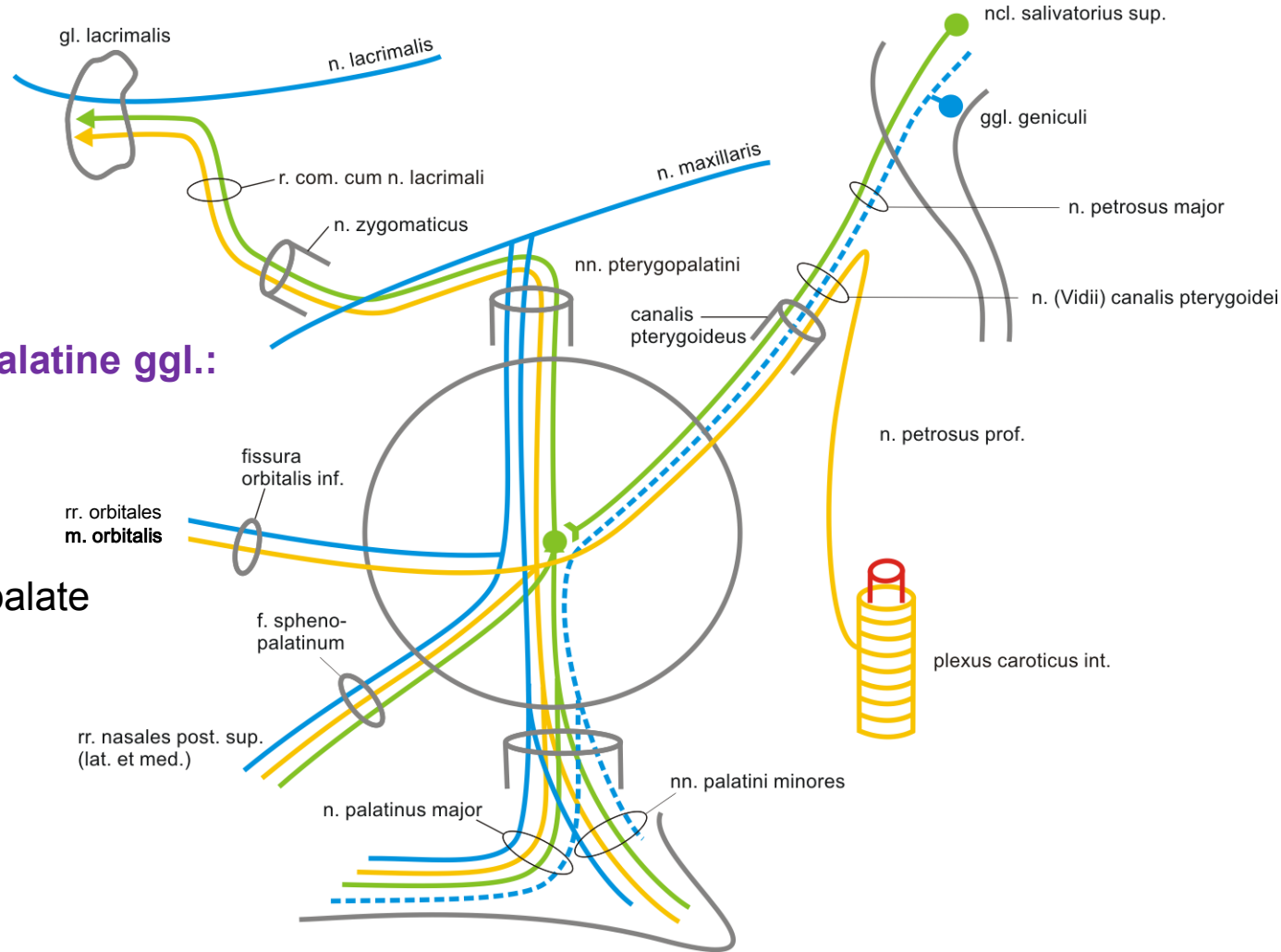




### **Somatosensory innervation by n. V/2:**

Skin of lower eyelids, nasal wings, cheek, gingiva and teeth of maxilla

# ggl. pterygopalatinum

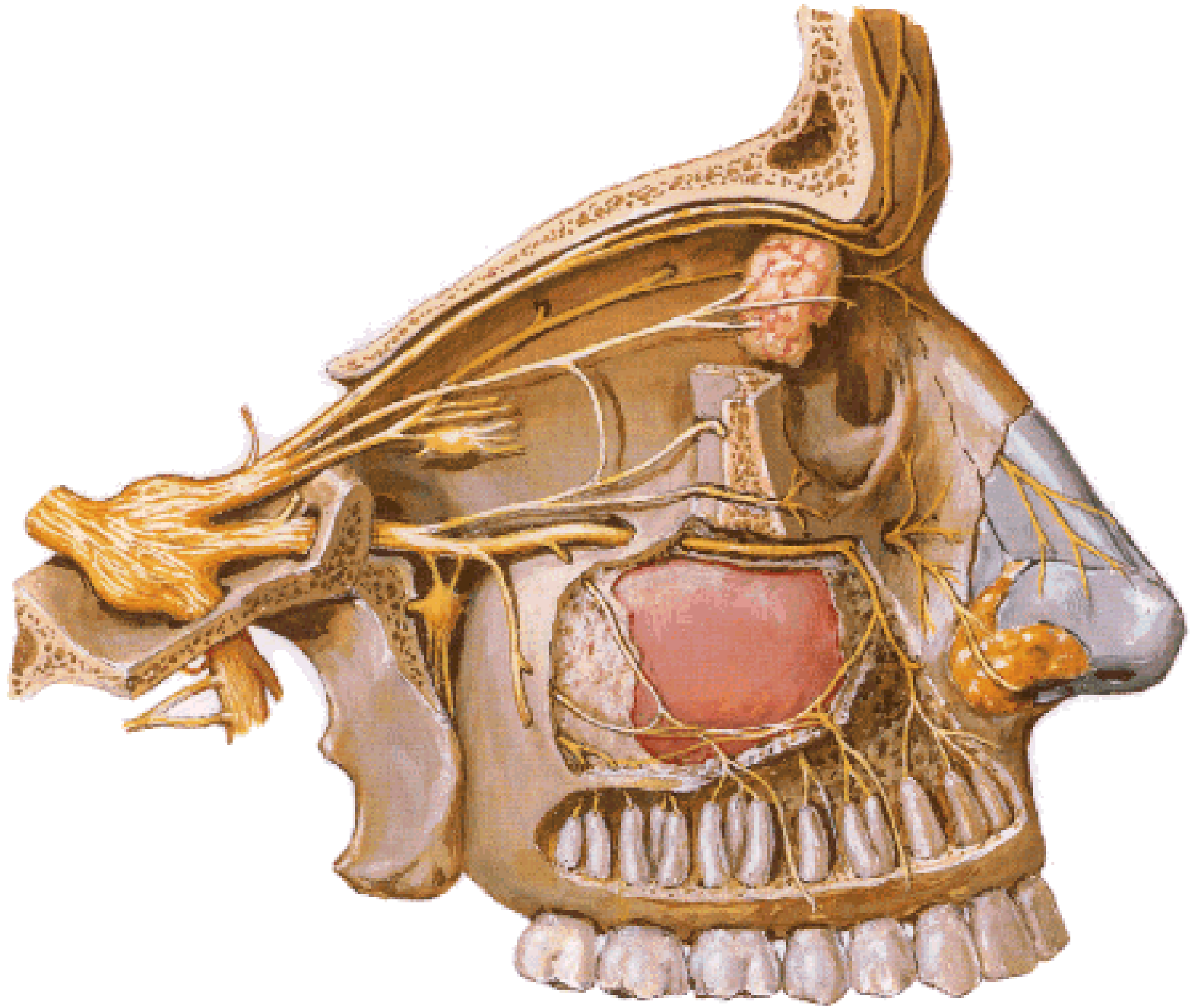


## Innervation by pterygopalatine ggl.:

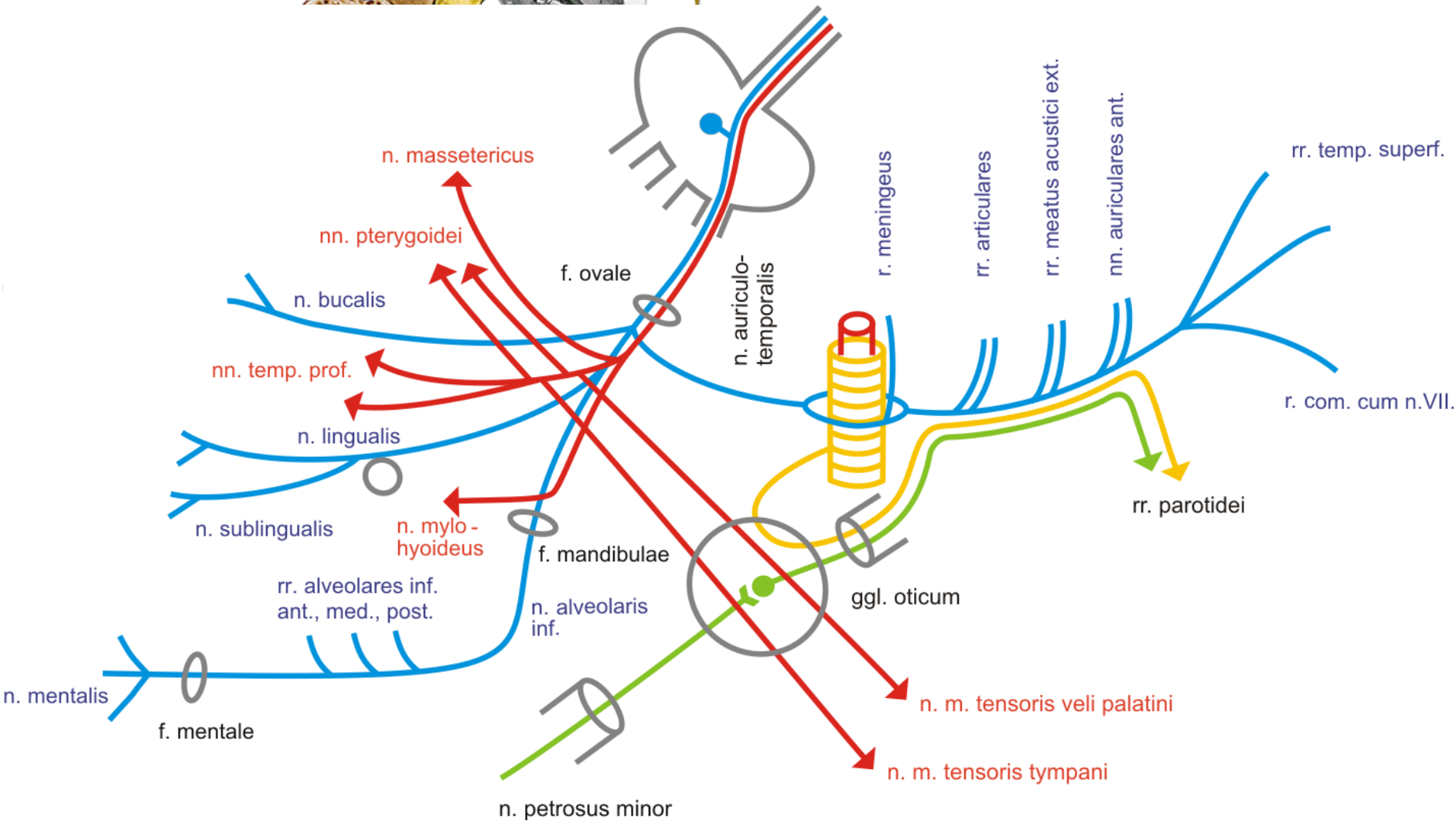
- gl. lacrimalis
- m. orbitalis
- mucosa of nasal cavity
- mucosa of soft and hard palate

### Typy nervových vláken

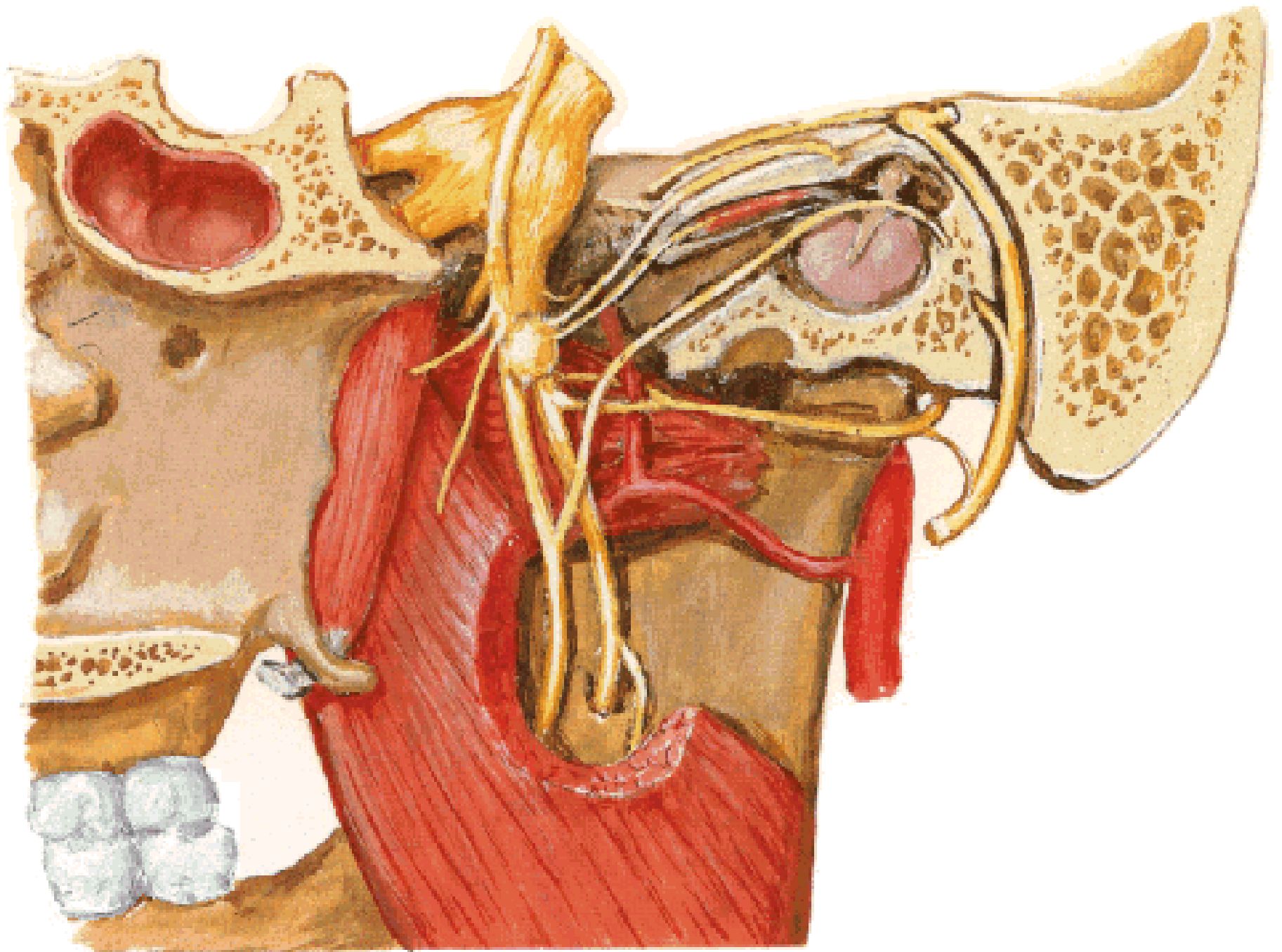
- senzorická
- somatosenzorická
- sympatická
- parasympatická

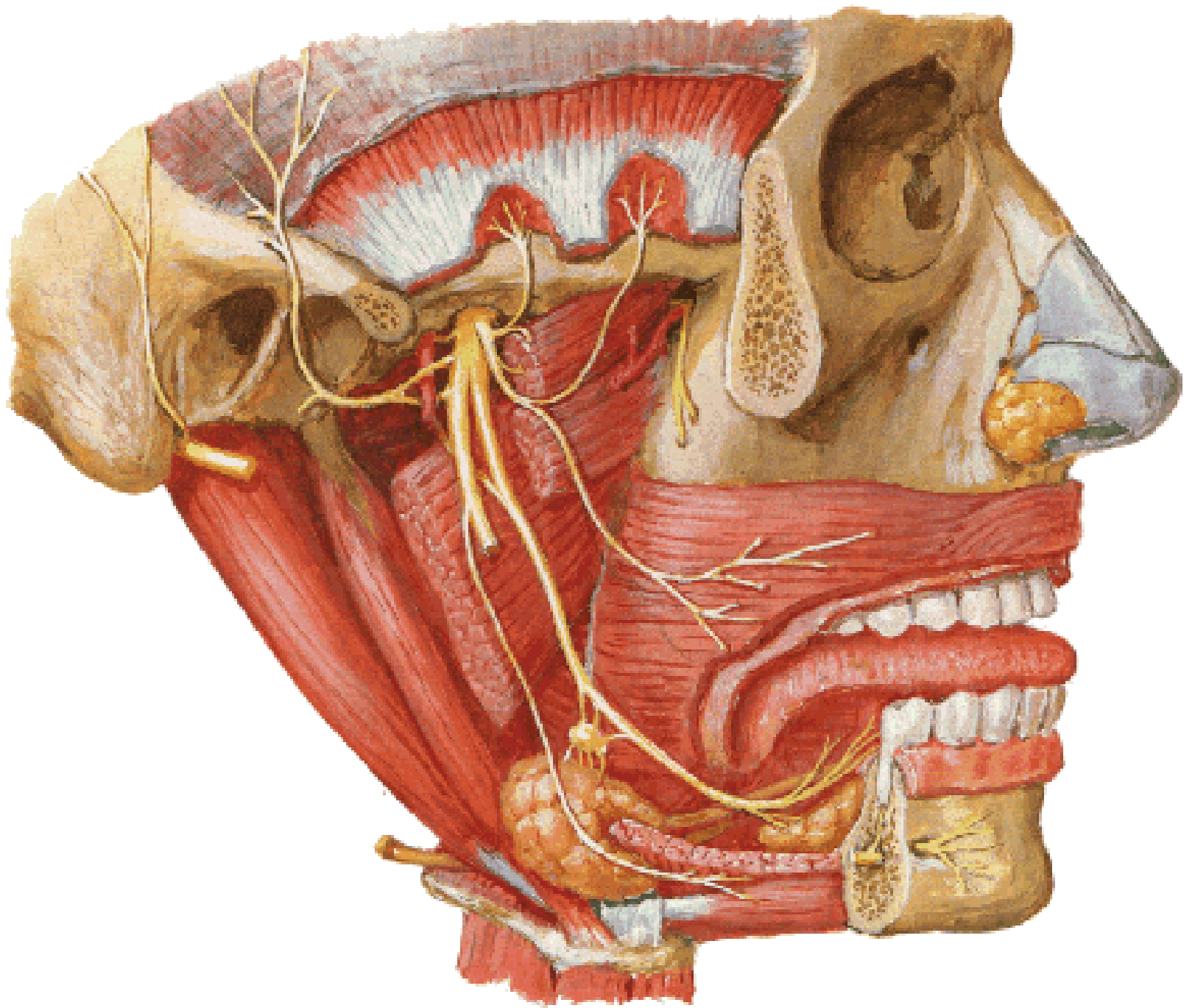


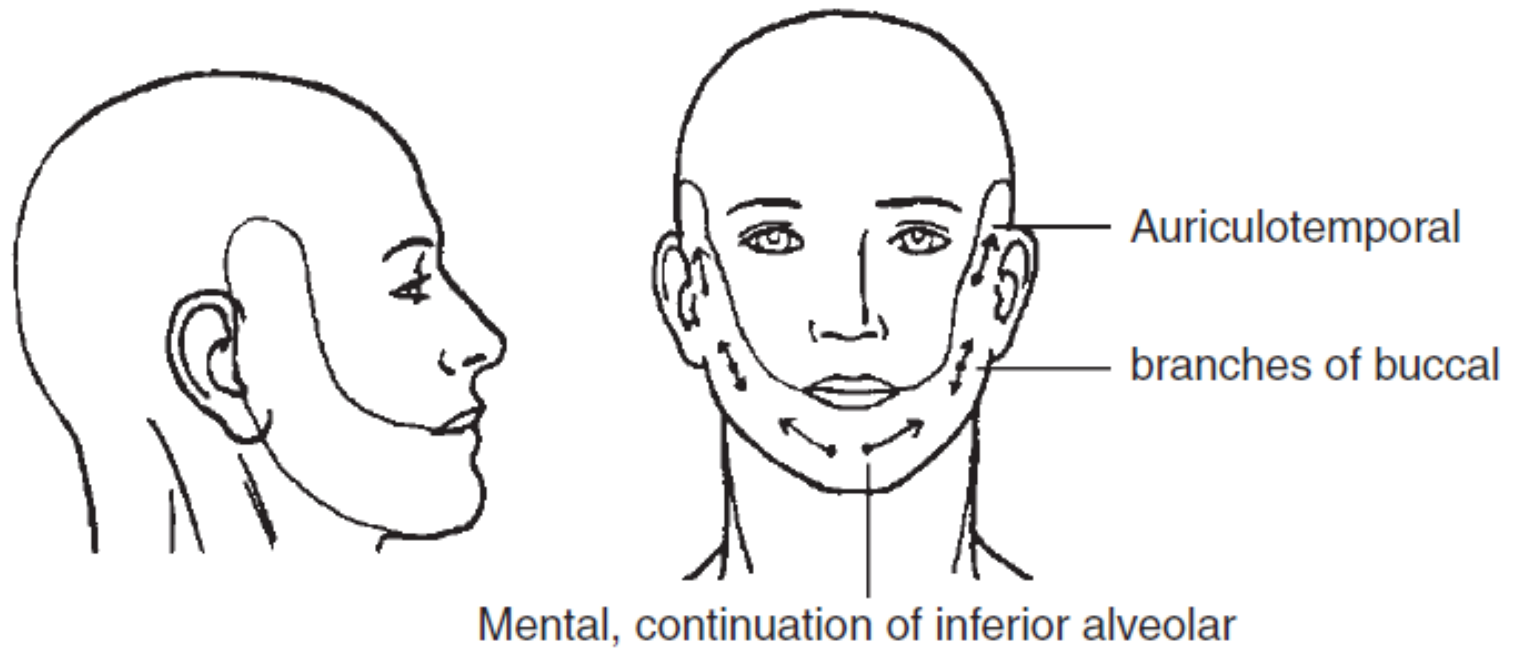
# n. V/3 - n. mandibularis









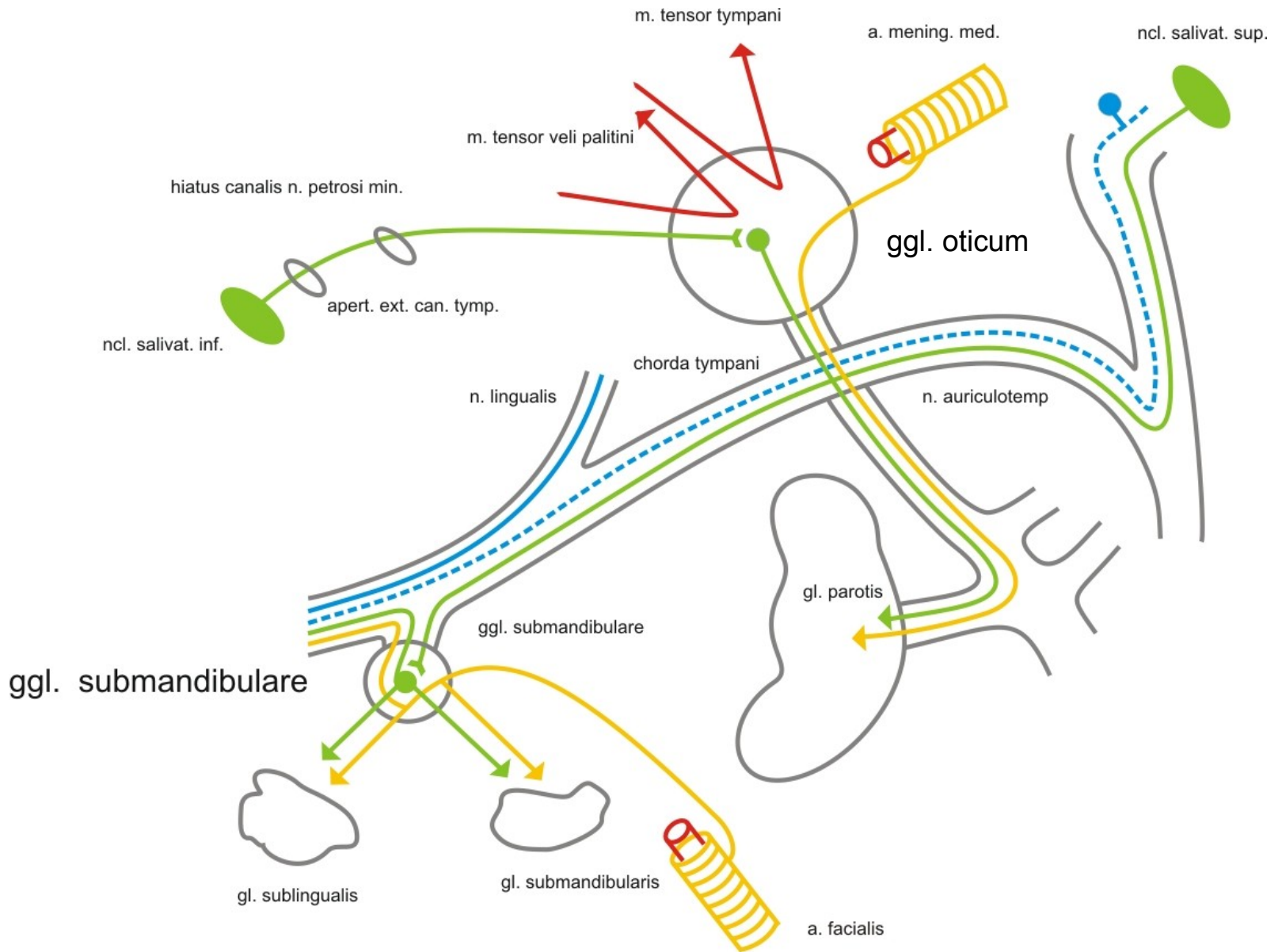


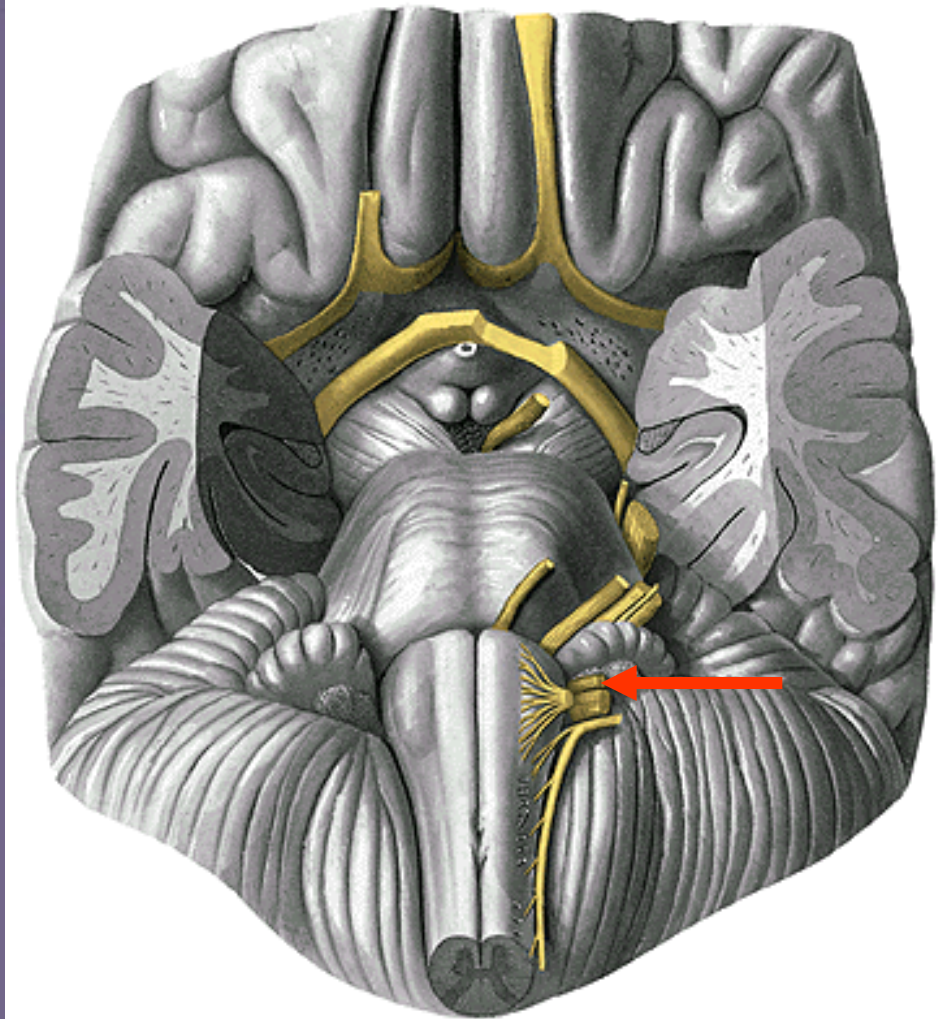
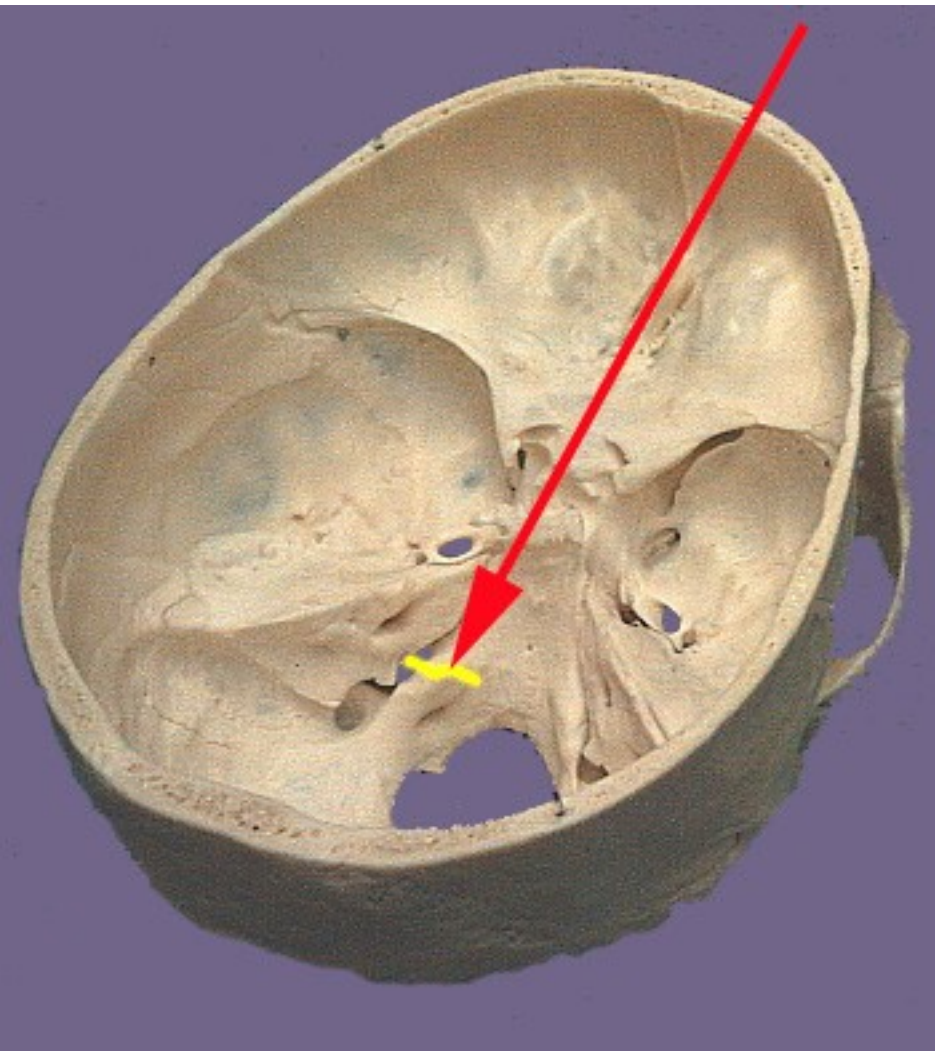
### **Somatosensory innervation by n. V/3:**

Skin of mandibula

Gingiva and teeth of mandibula

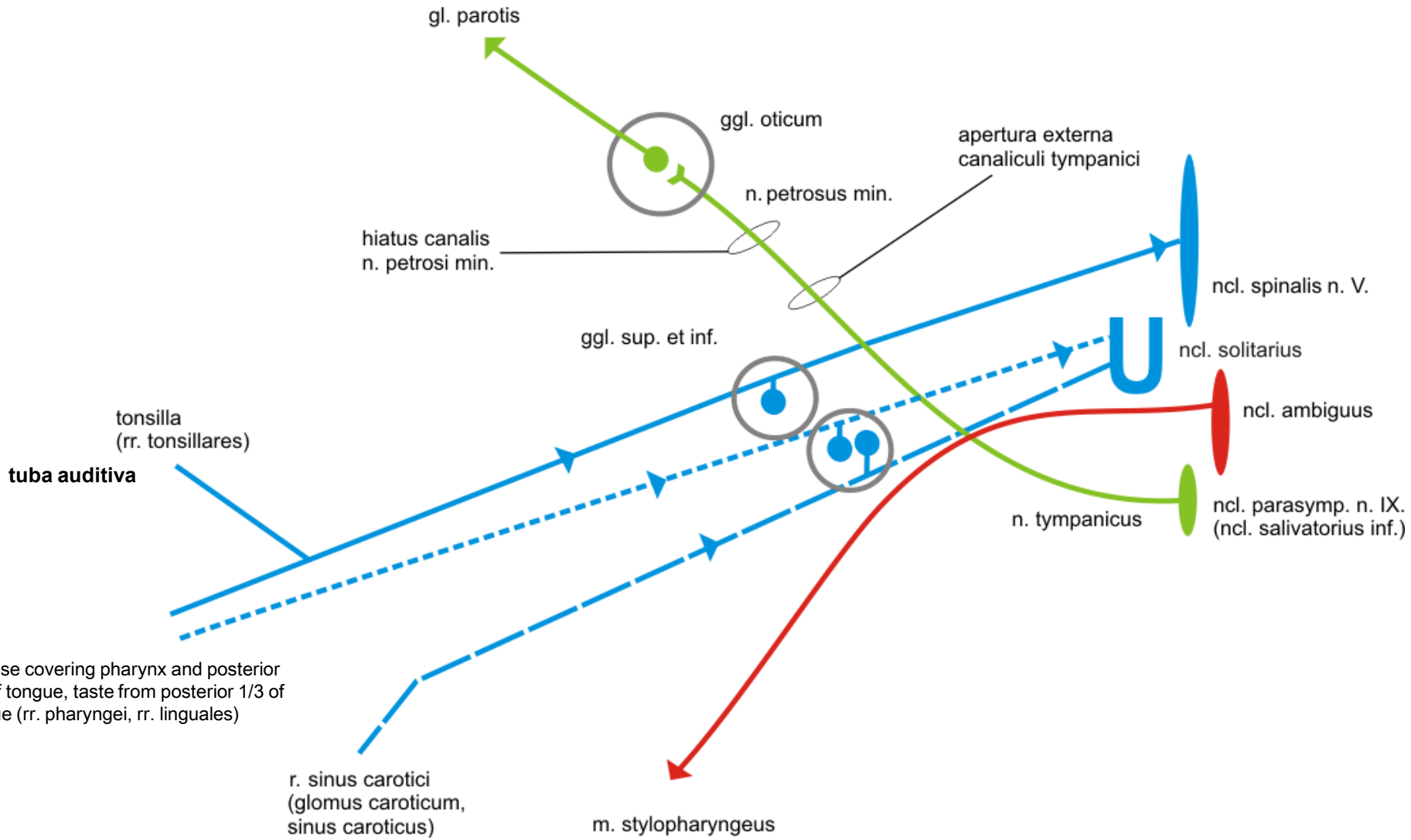
# Ggl. oticum et submandibulare





n. IX.

# n. IX.





**Innervation by n. IX:**

**Somatosensory**

- Pharyngeal mucosa
- Tonsilla palatina, tuba auditiva
- Mucosa of posterior 1/3 of tongue

**Sensory (taste)**

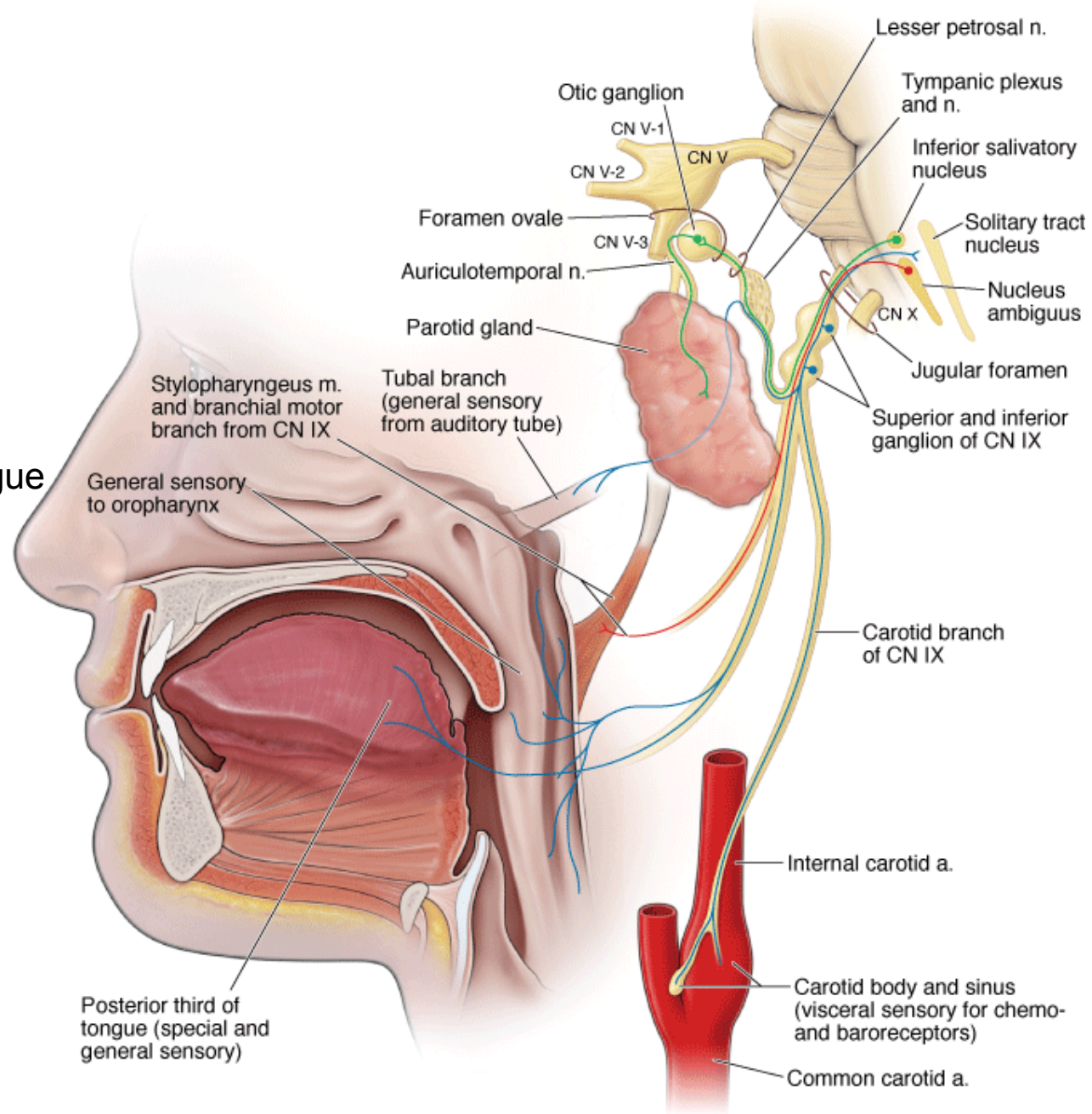
- Taste buds of posterior 1/3 of tongue

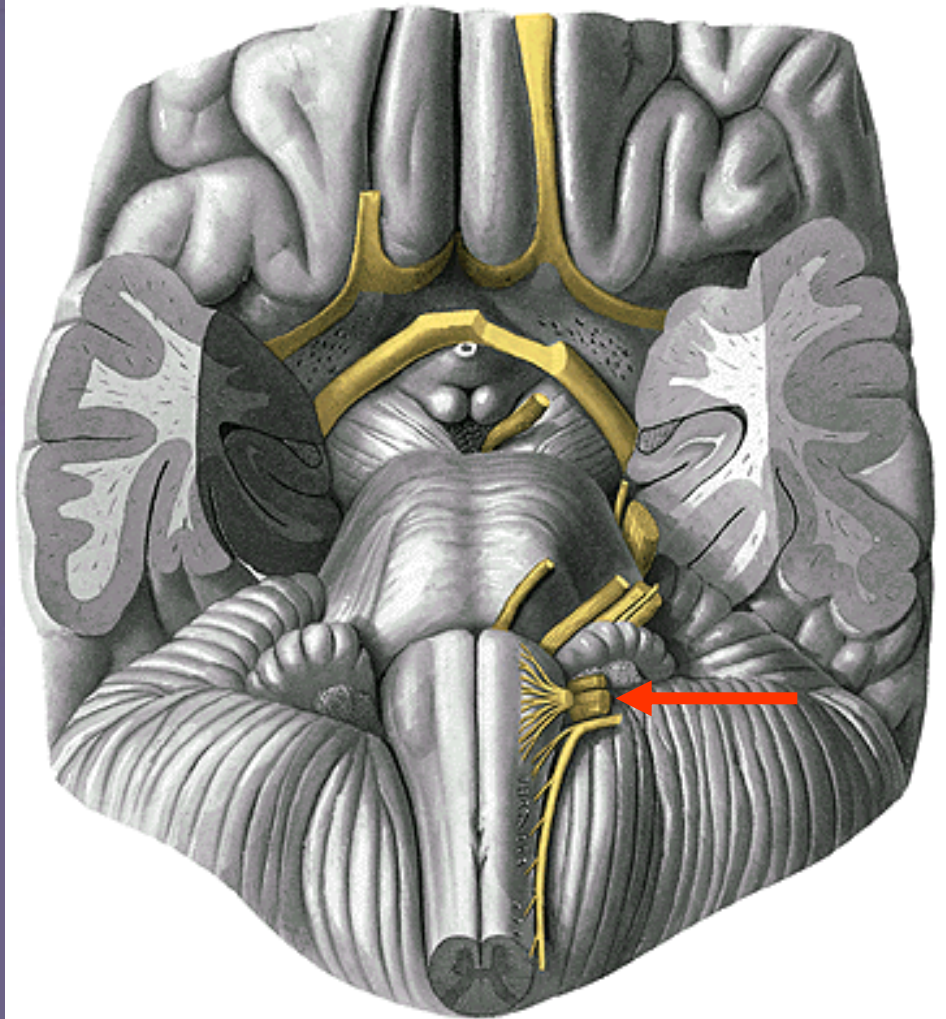
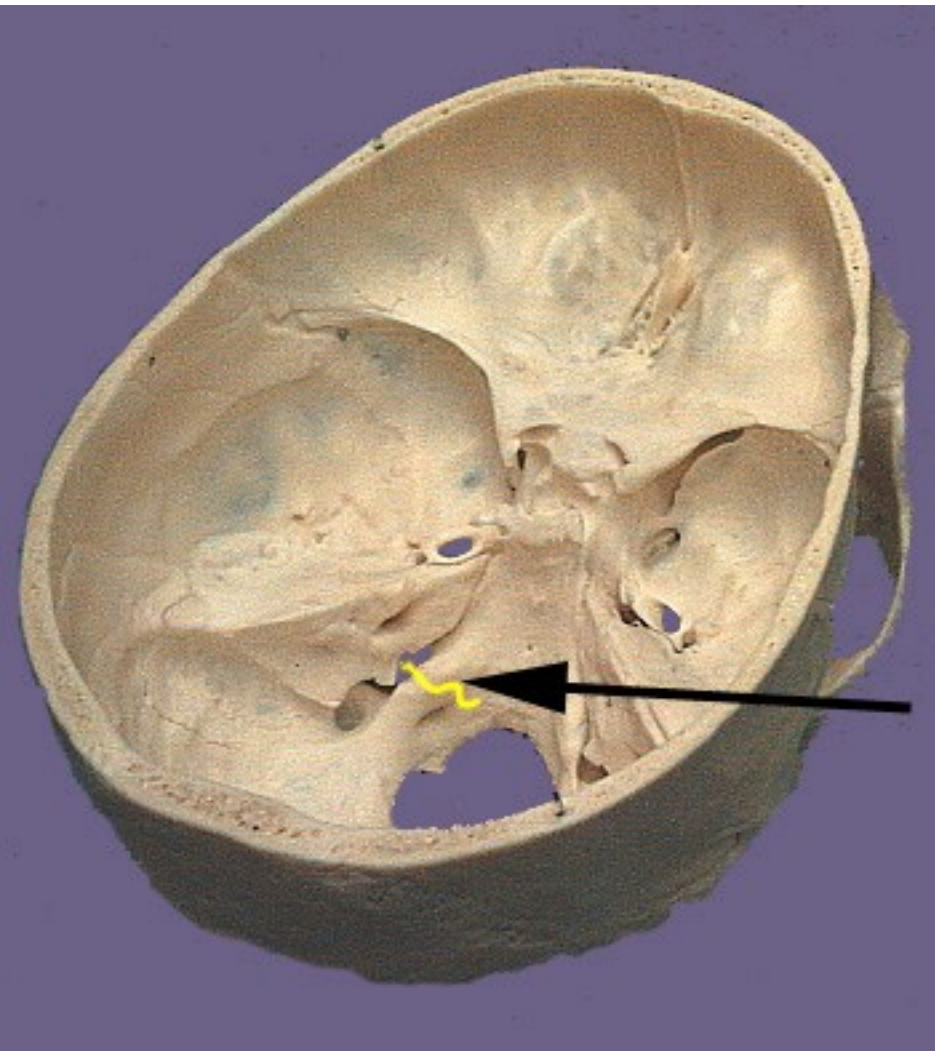
**Viscerosensory**

- Glomus caroticum
- Sinus caroticus

**Motor**  
**m. stylopharyngeus**

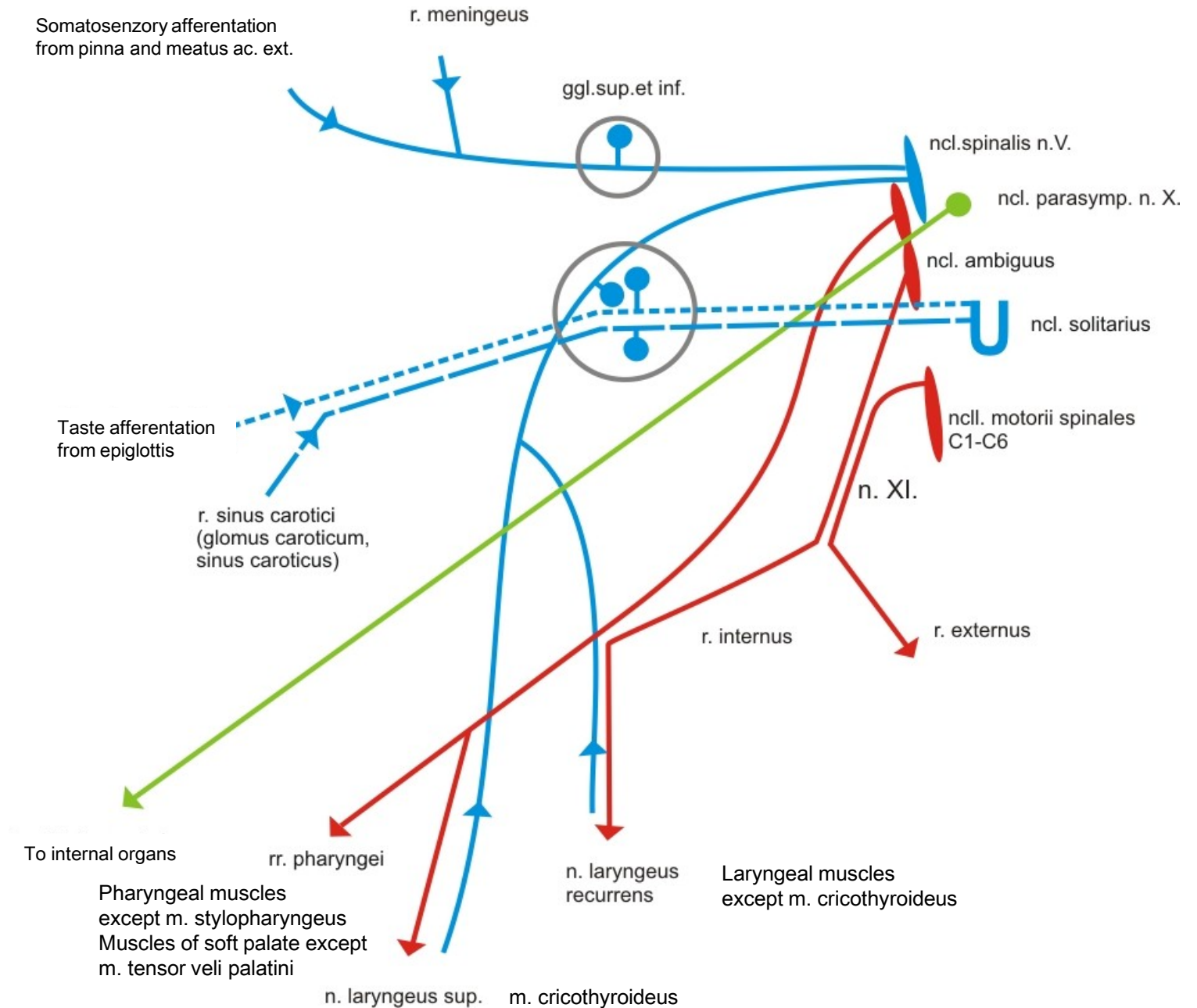
**Parasympathetic**  
**gl. parotis**





n. X.

# n. X.





## Vagus nerve branches

r. **m**eningeus

rr **a**uriculares

rr. **p**haryngei

rr. **l**aryngei sup.

rr. **c**ardiaci cervicales sup.

n. laryngeus **r**ecurrens n. lar. inf.

rr. **c**ardiaci cervicales inf.

rr. **c**ardiaci thoracici

rr. **b**ronchiales

rr. tracheales,

rr. **o**esophagei, plexus oesophageus,

plexus pulmonalis

truncus vagalis ant., post. -----rr. **g**astrici ant. post.,

rr. **c**oeliaci

rr. **h**epatici

rr. **r**enales

## Innervation by n. X:

### **Somatosensory**

Pinna and meatus acusticus ext.

Meninges, mucosa of larynx

### **Sensory (taste)**

Taste buds of epiglottis

### **Viscerosensory**

Glomus caroticum

Sinus caroticus

### **Branchiomotor**

**Pharyngeal muscles except m. stylopharyngeus**

**Muscles of soft palate except m. tensor veli palatini**

**Laryngeal muscles**

**m. cricothyroideus – n. laryngeus sup., r. externus**

**Rest laryngeal muscles – n. laryngeus recurrens (source r. internus n. XI.)**

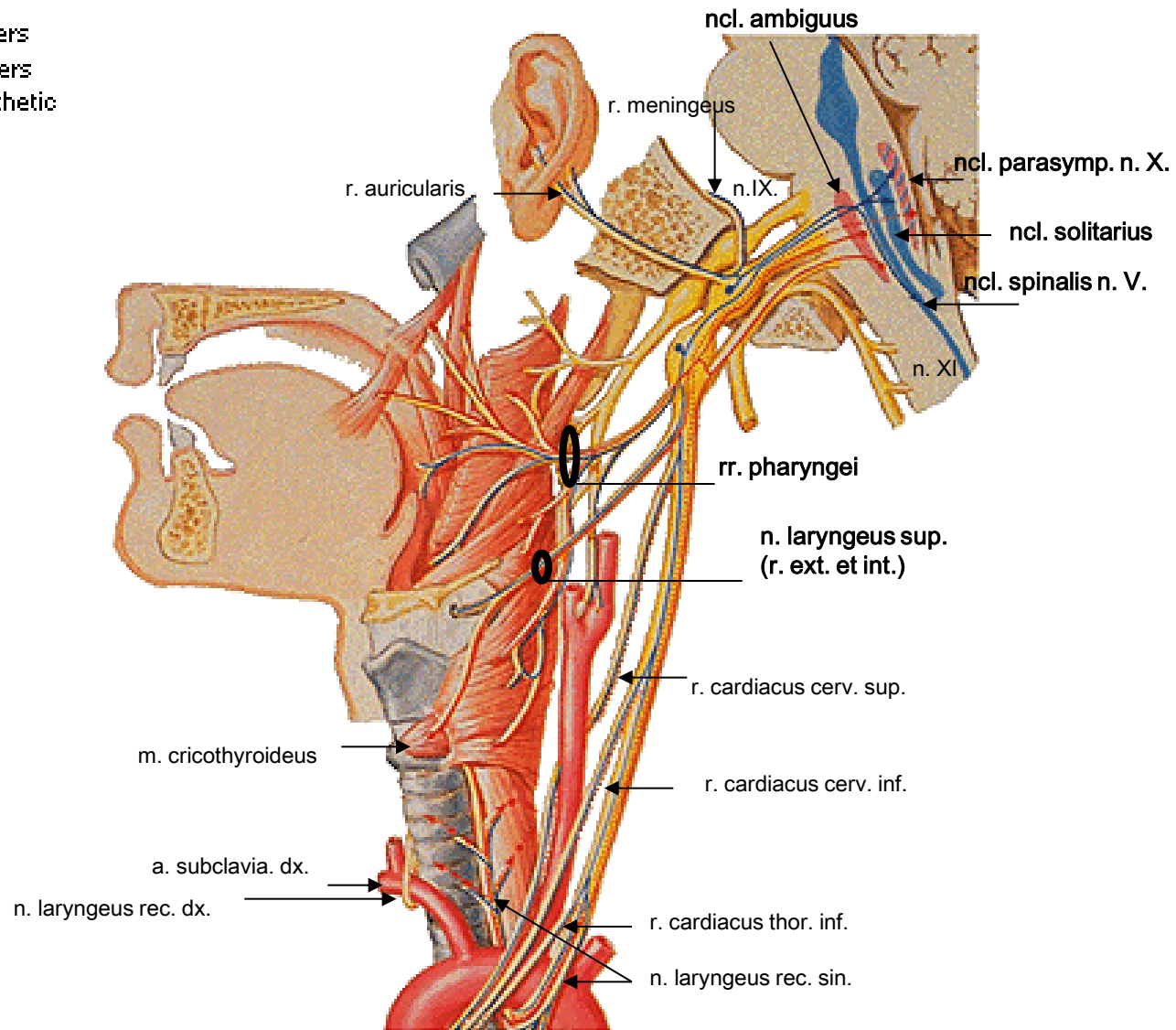
### **Visceromotor**

**Internal organs**

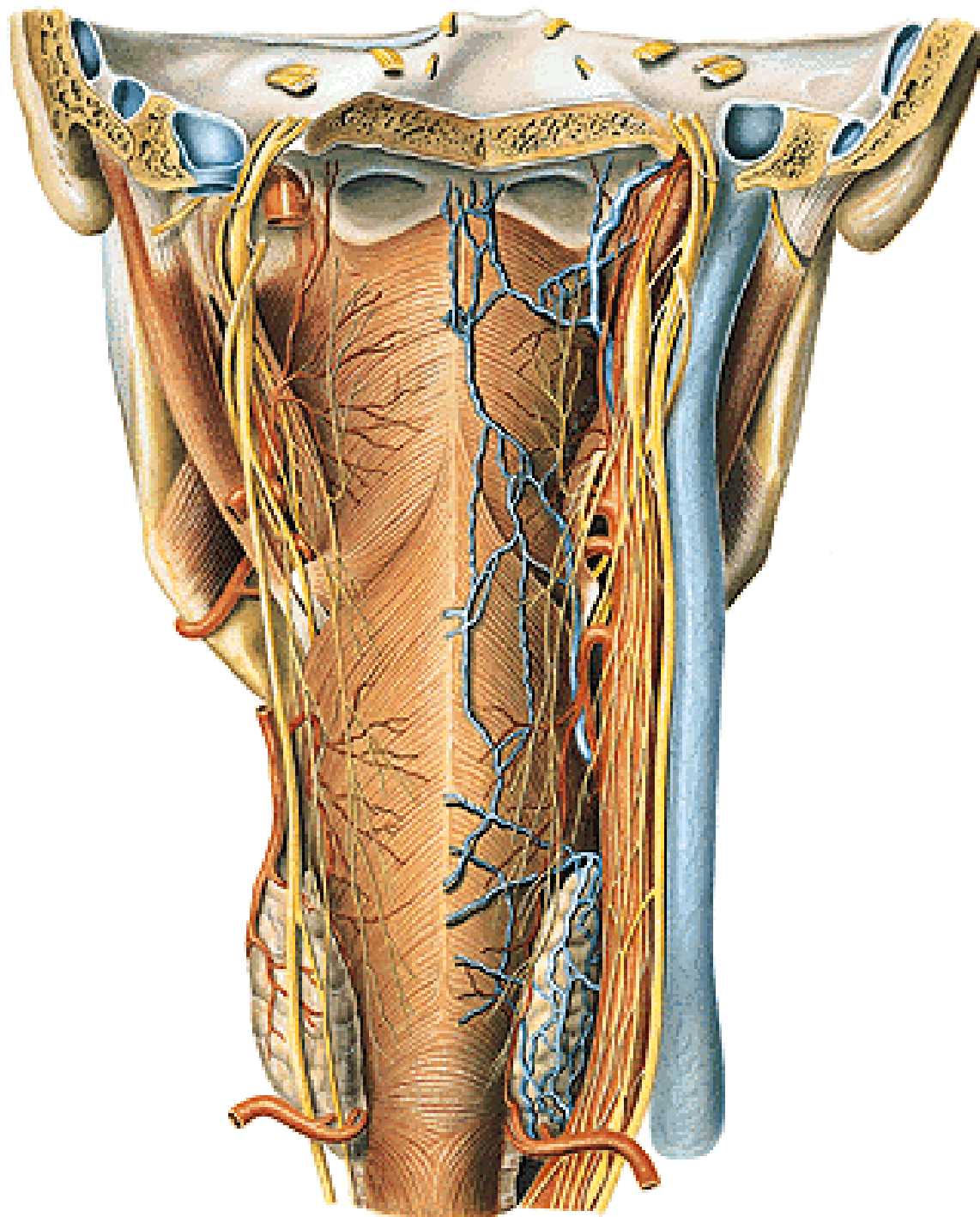
# Vagus Nerve

## Schema - Enlargement of Proximal Portions

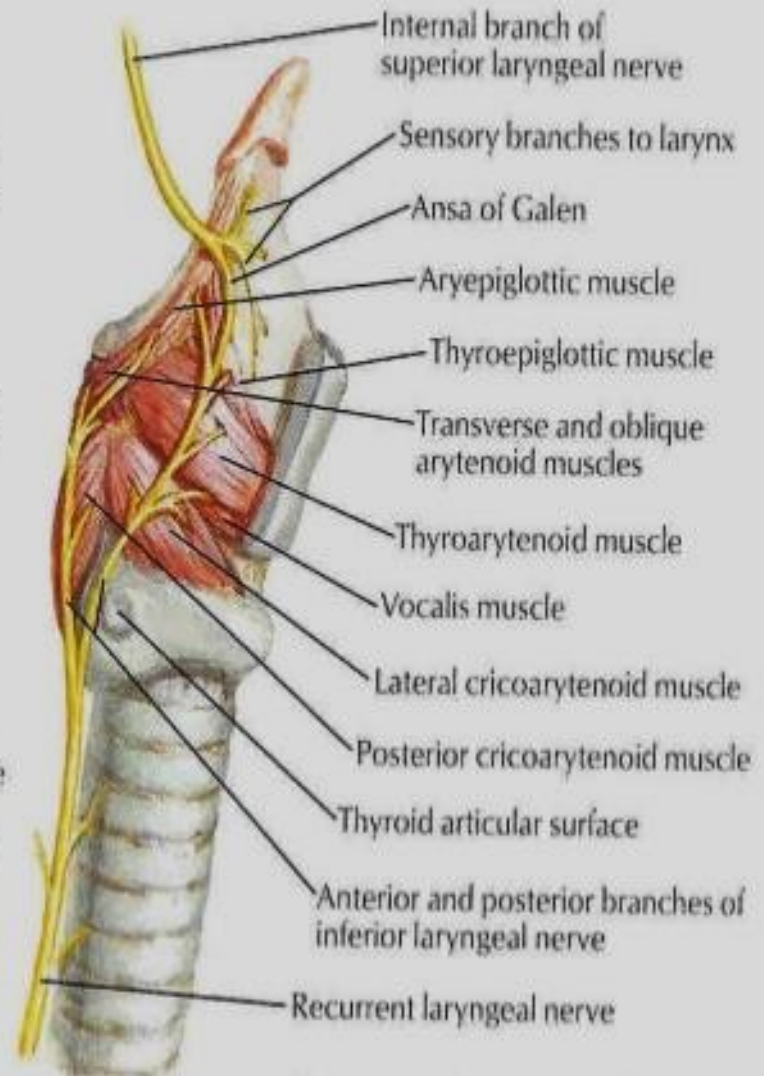
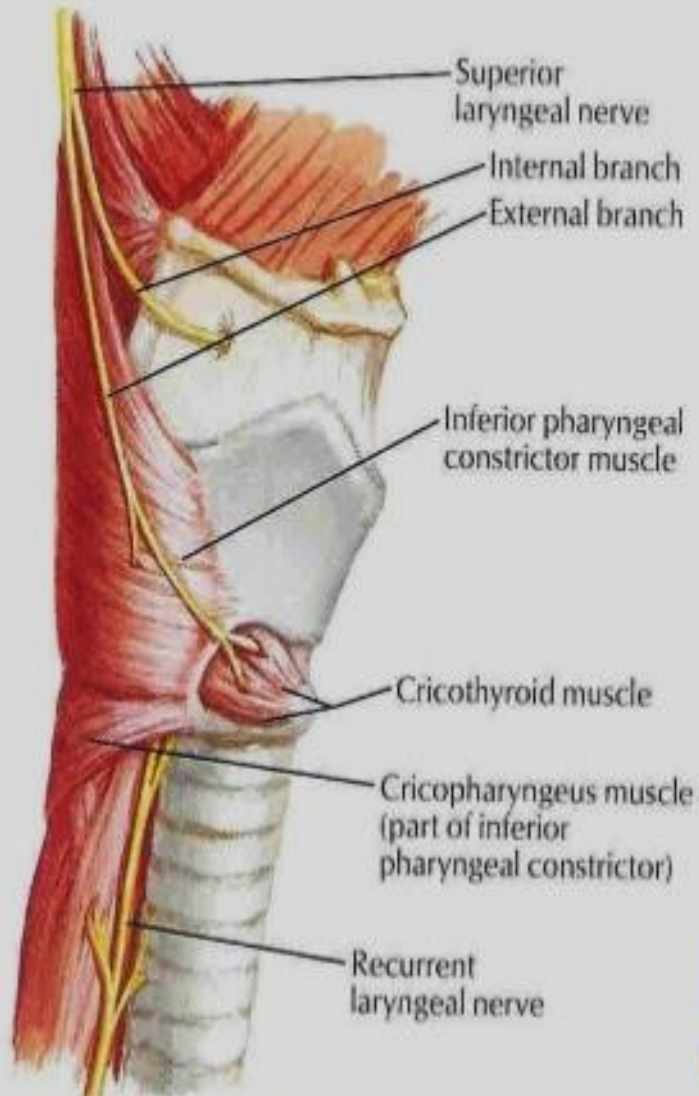
- Efferent fibers
- Afferent fibers
- ⋯ Parasympathetic fibers

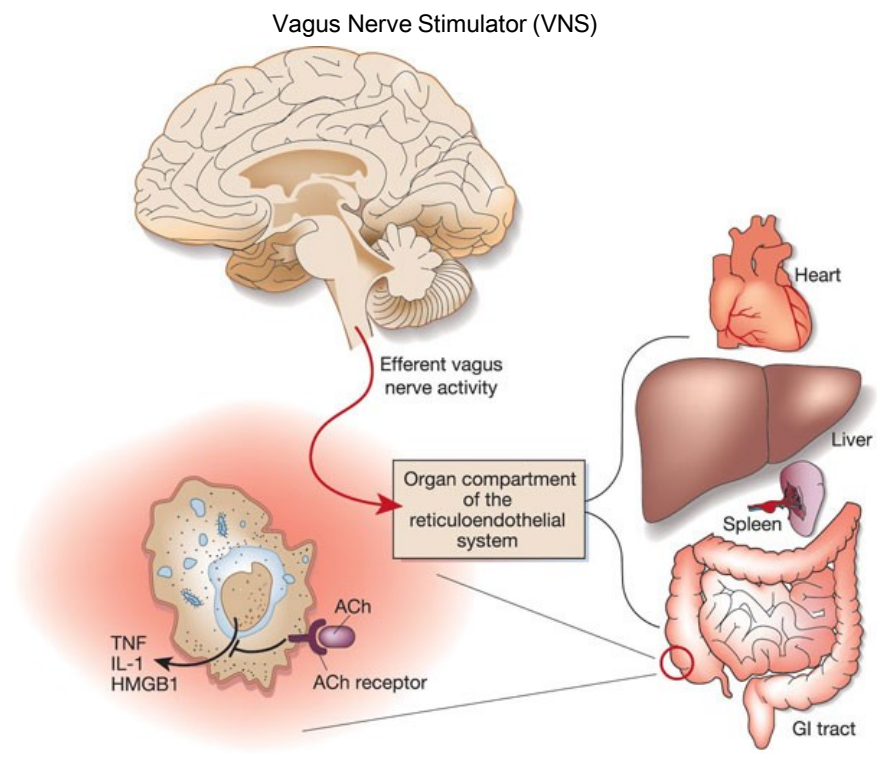
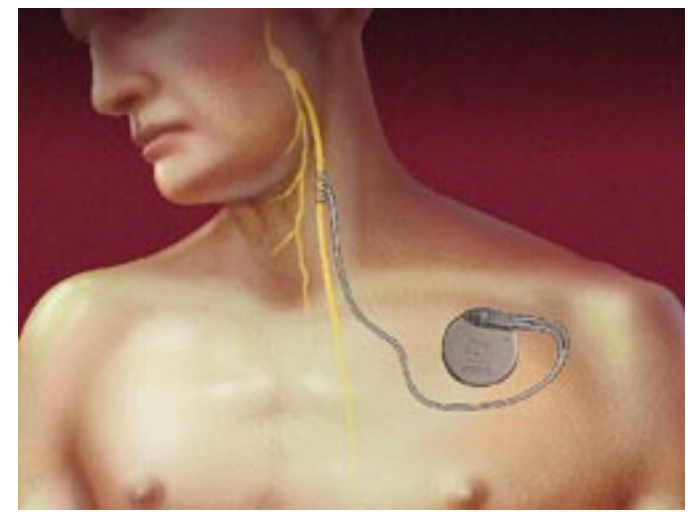
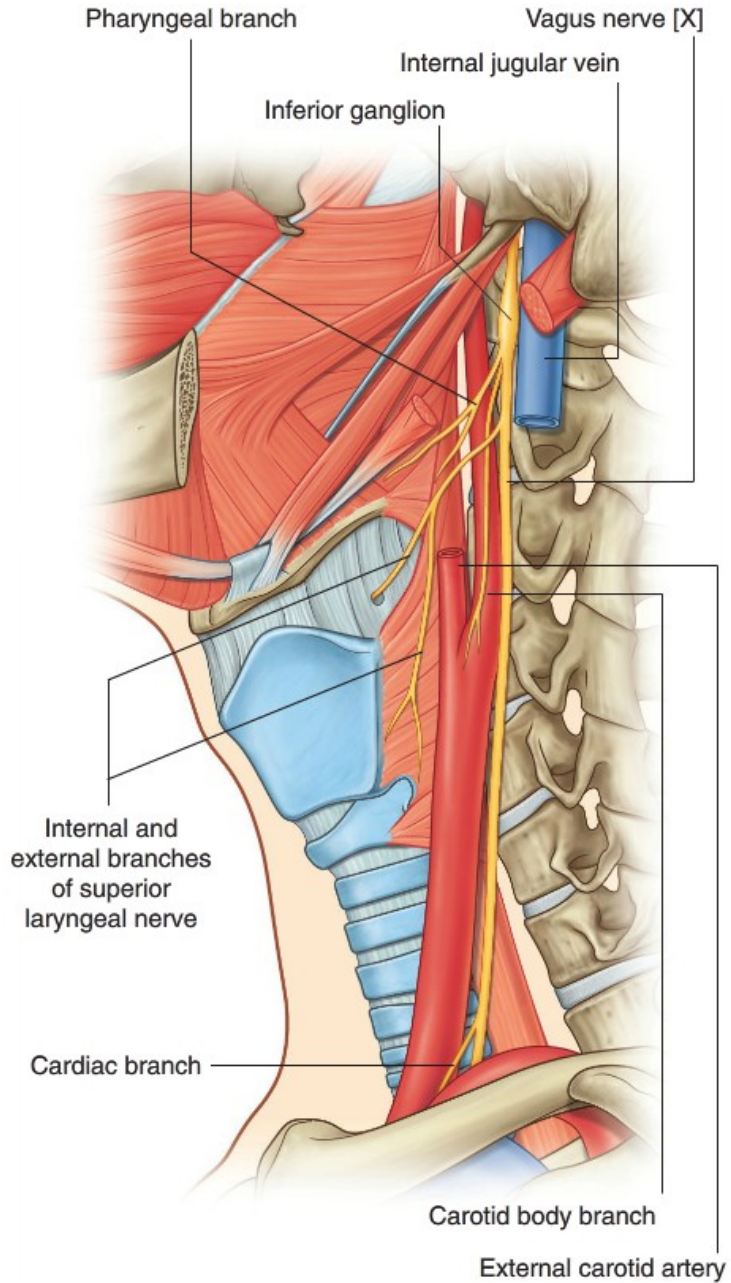




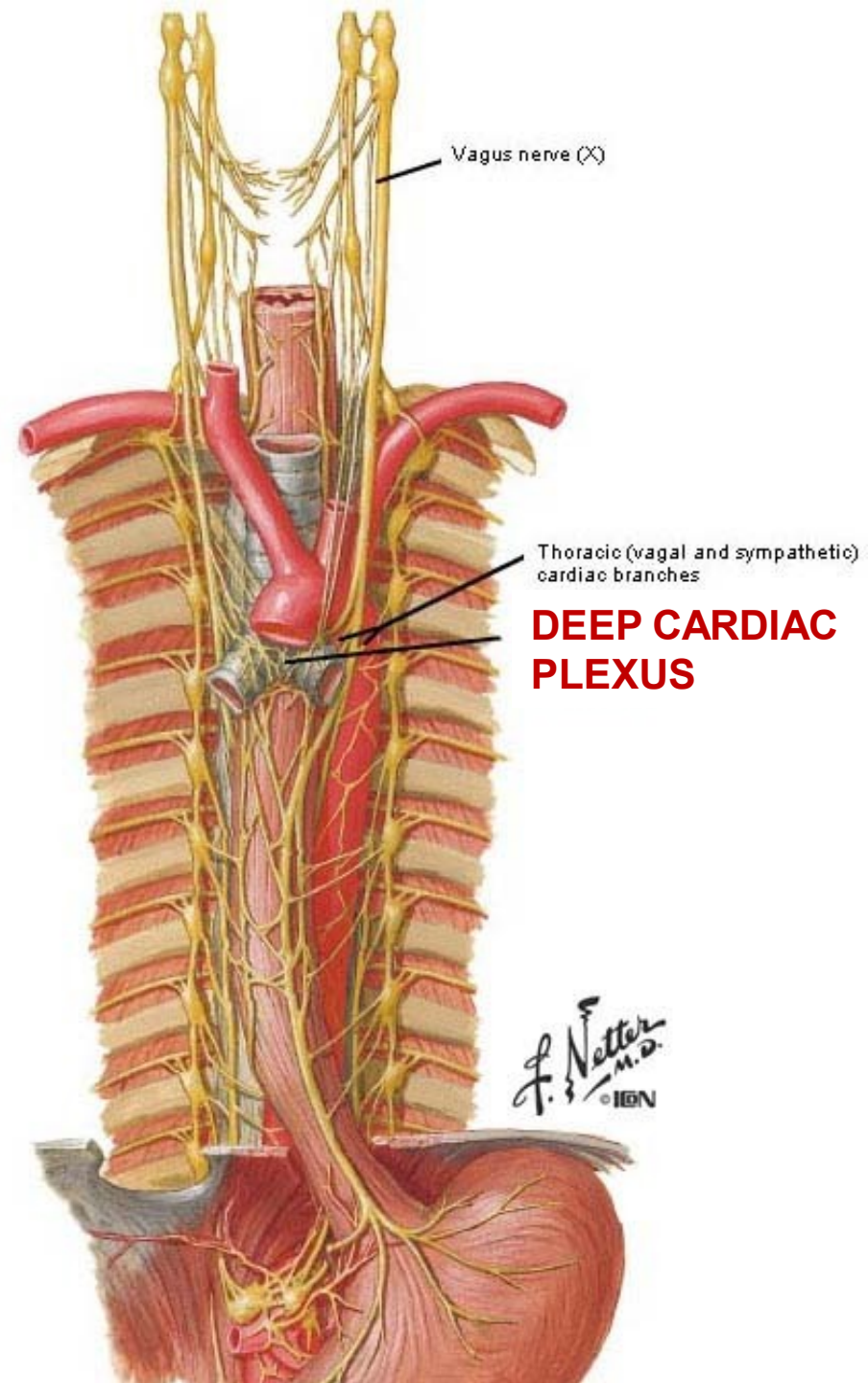
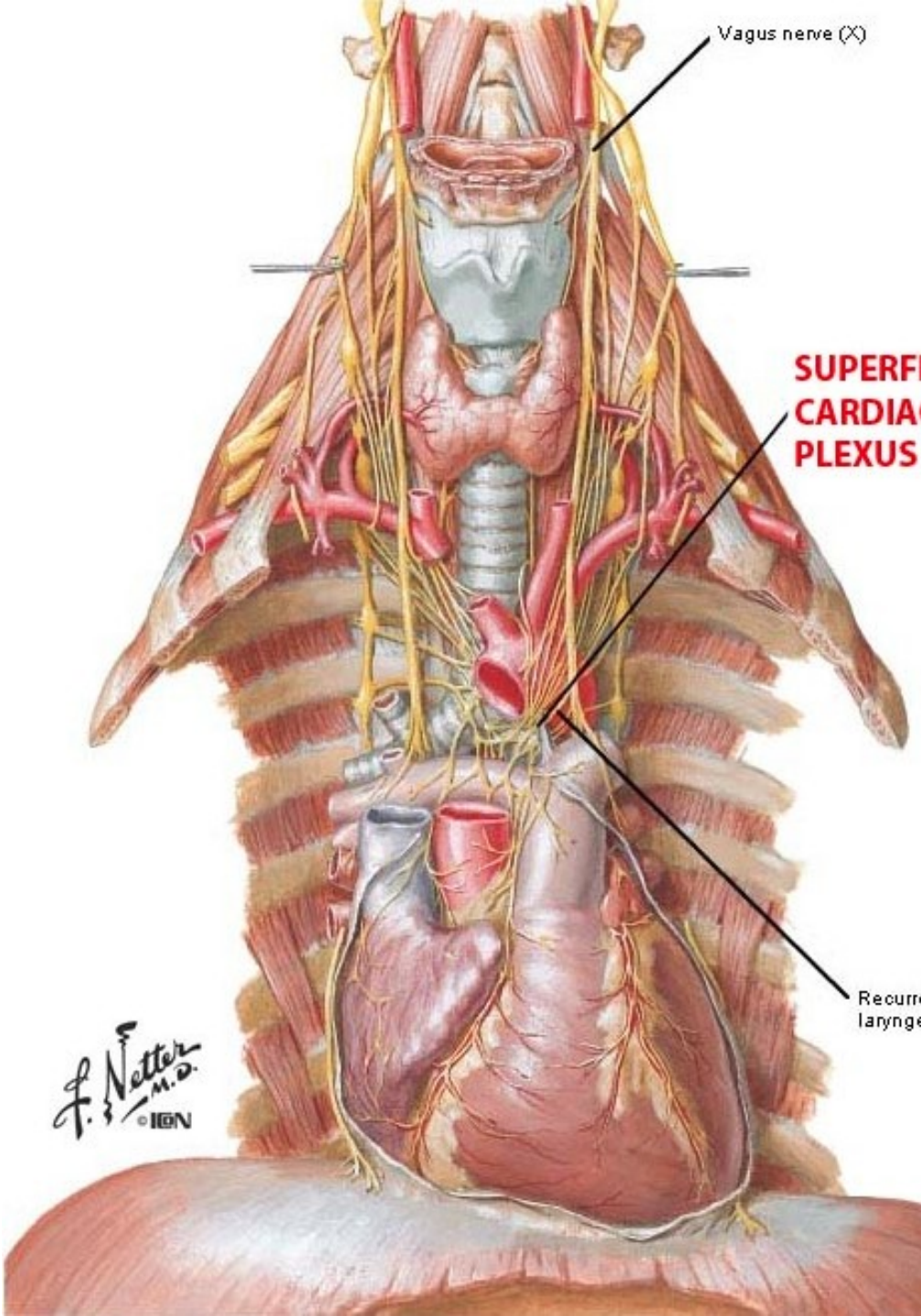


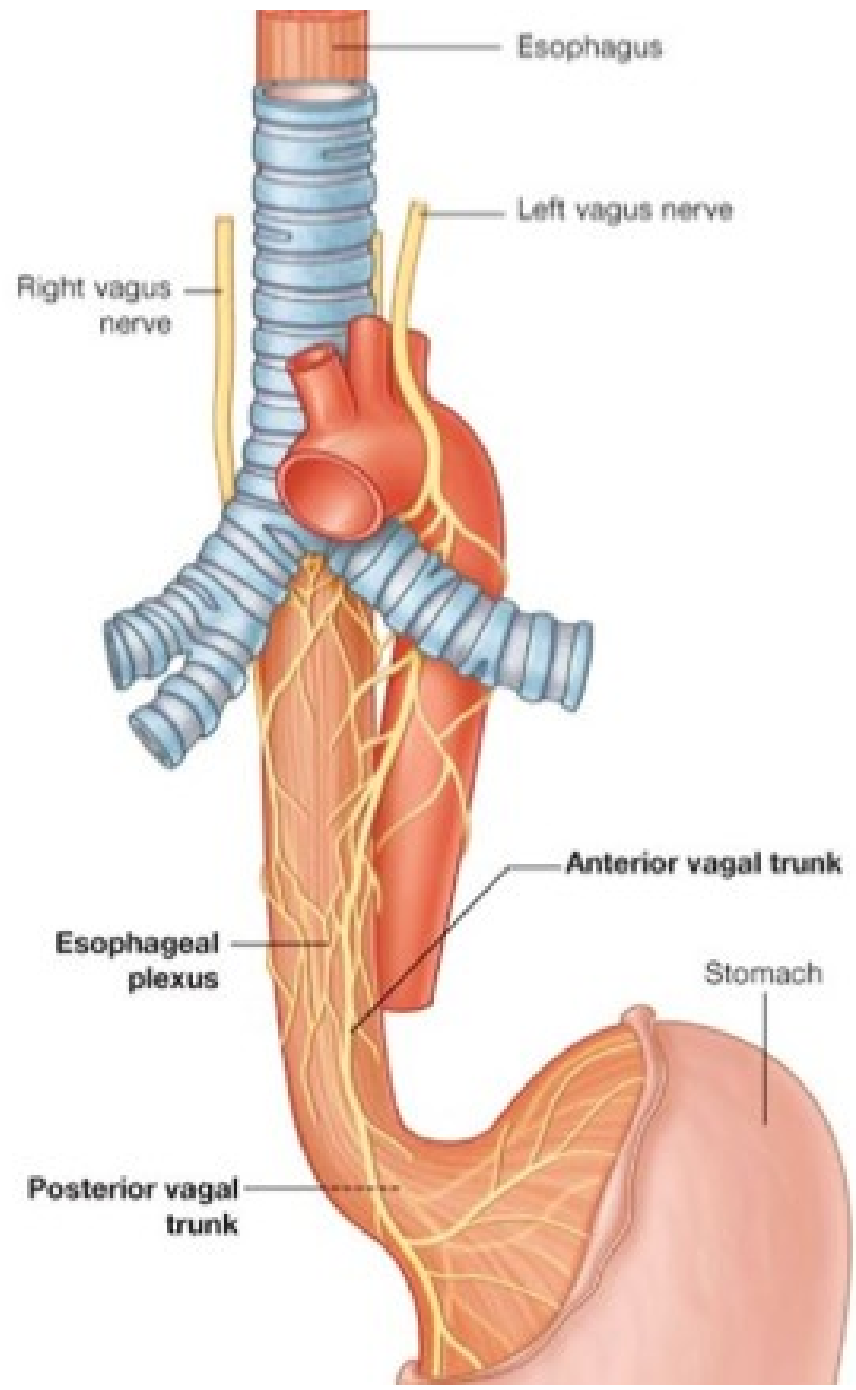
# NERVE SUPPLY OF LARYNX

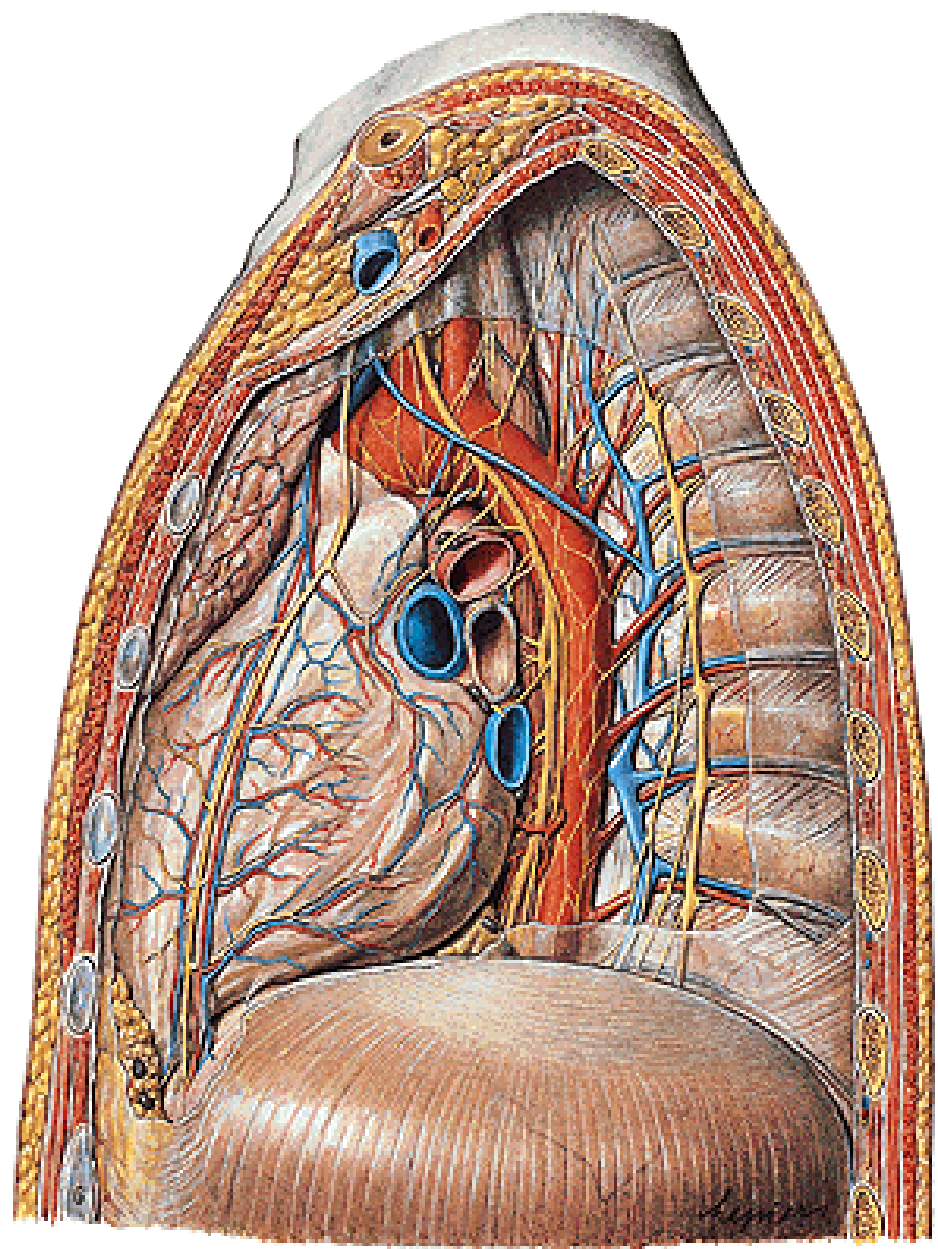
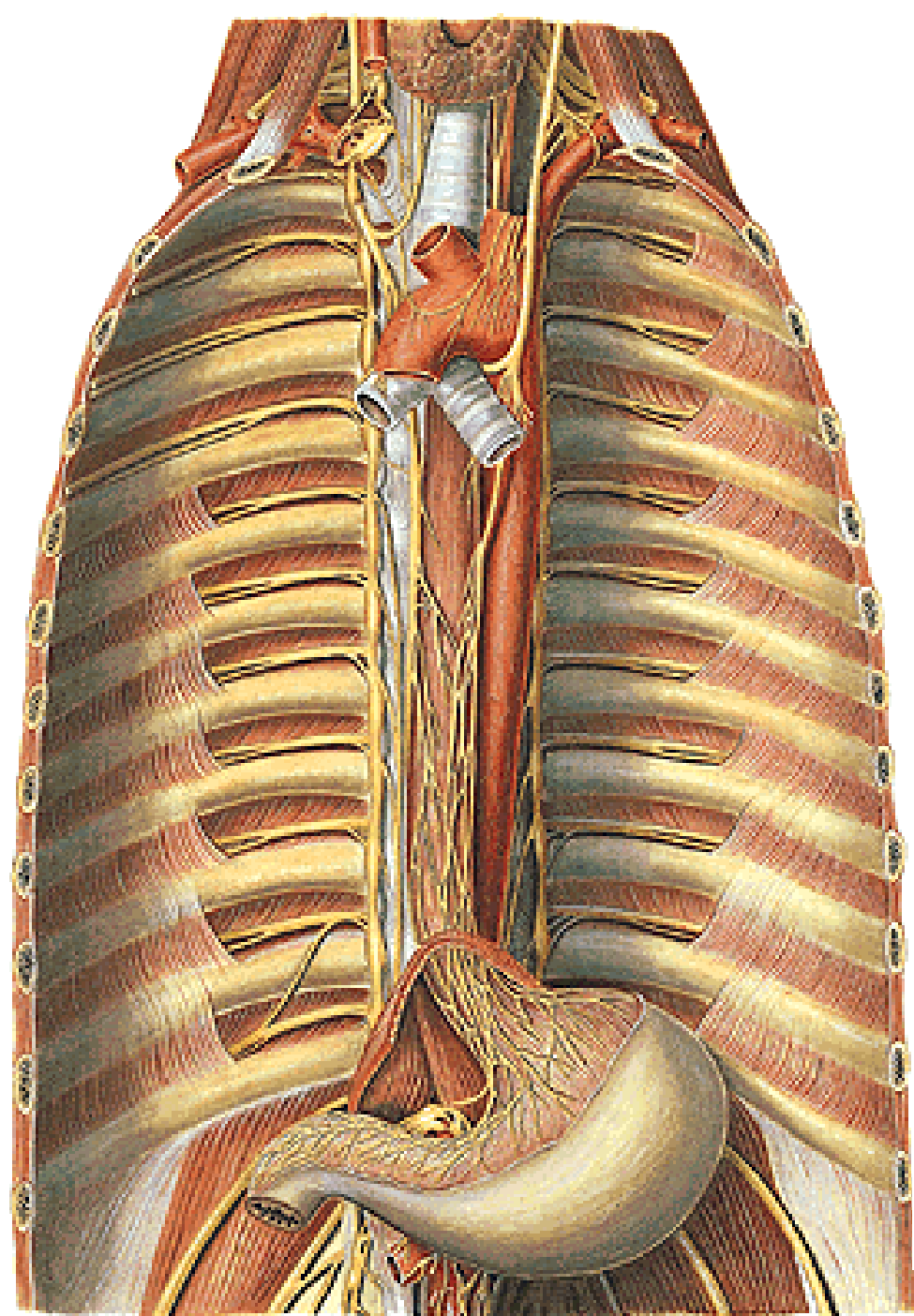




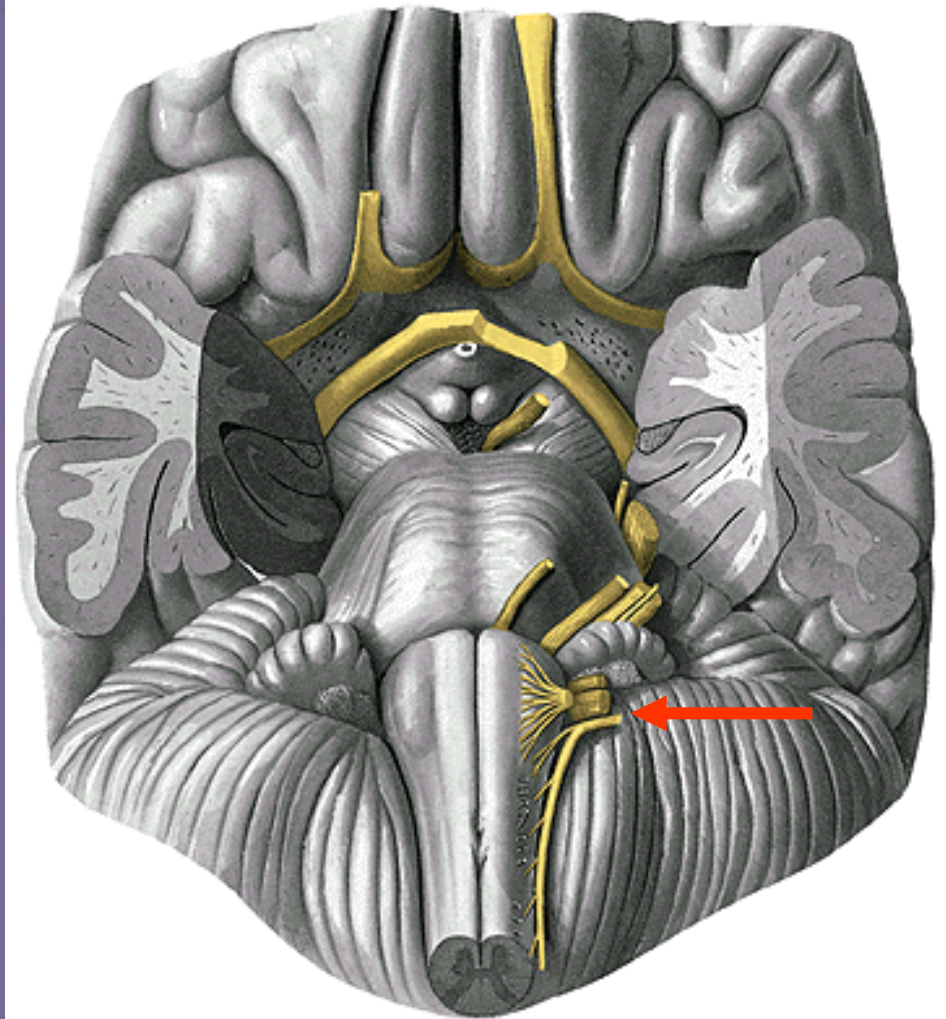
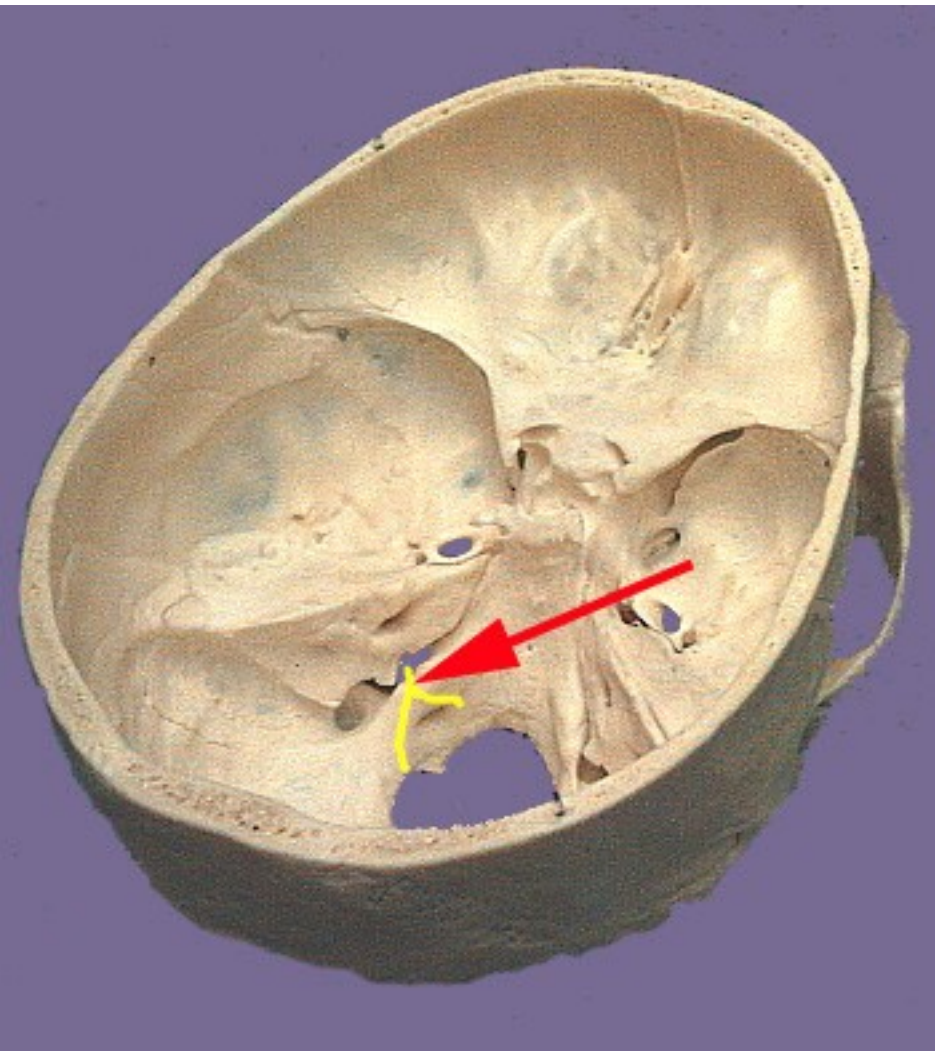






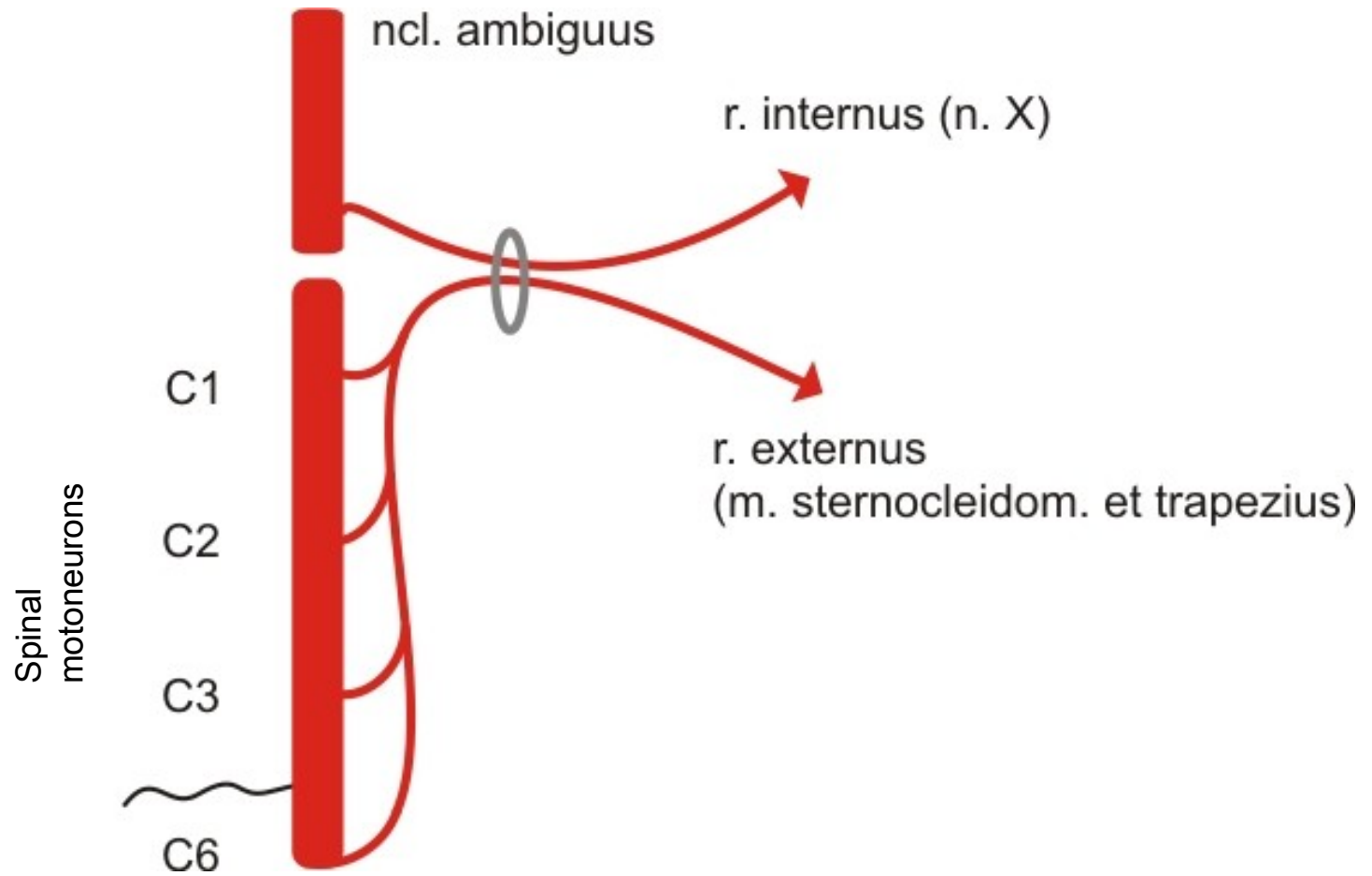






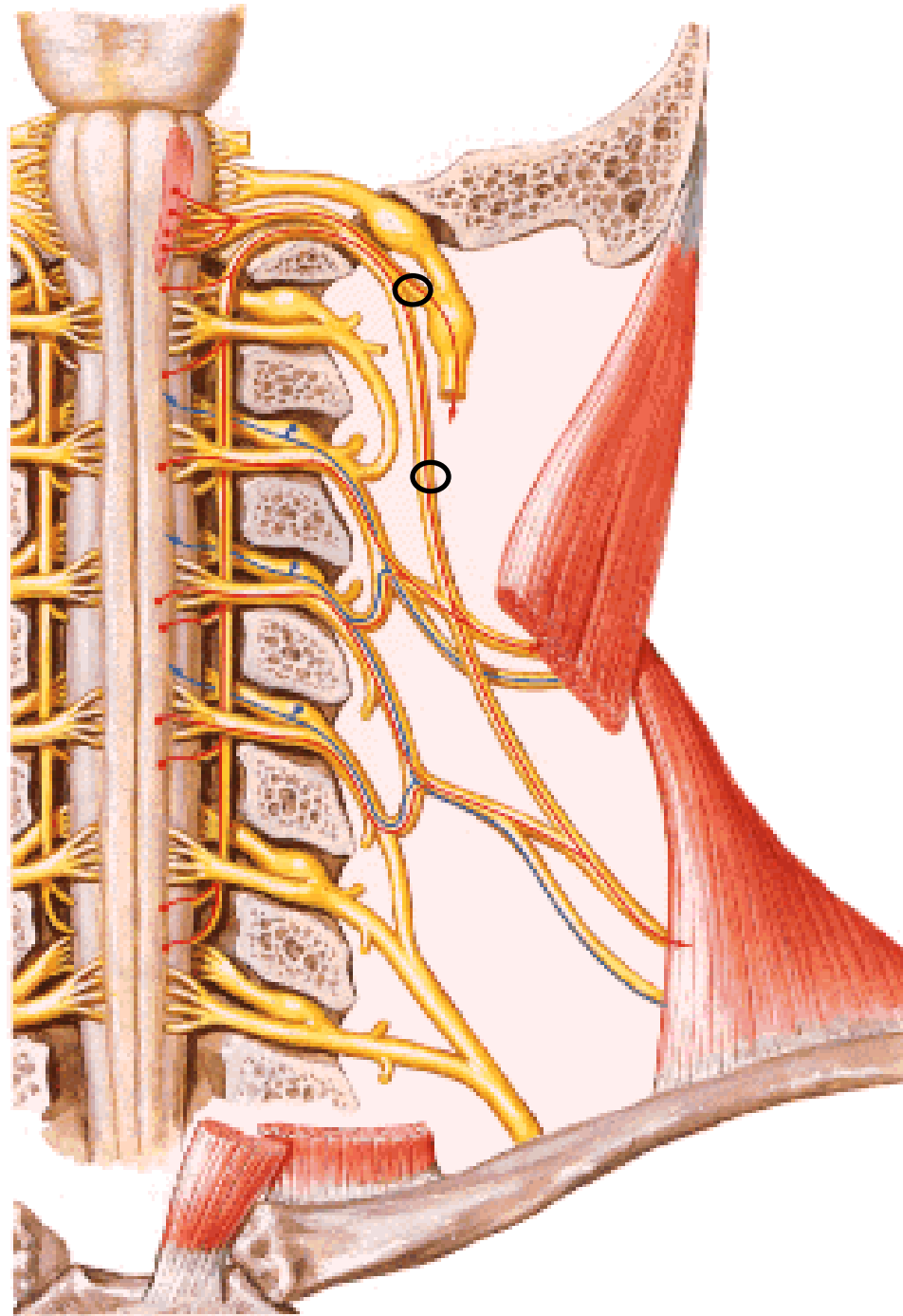
n. XI.

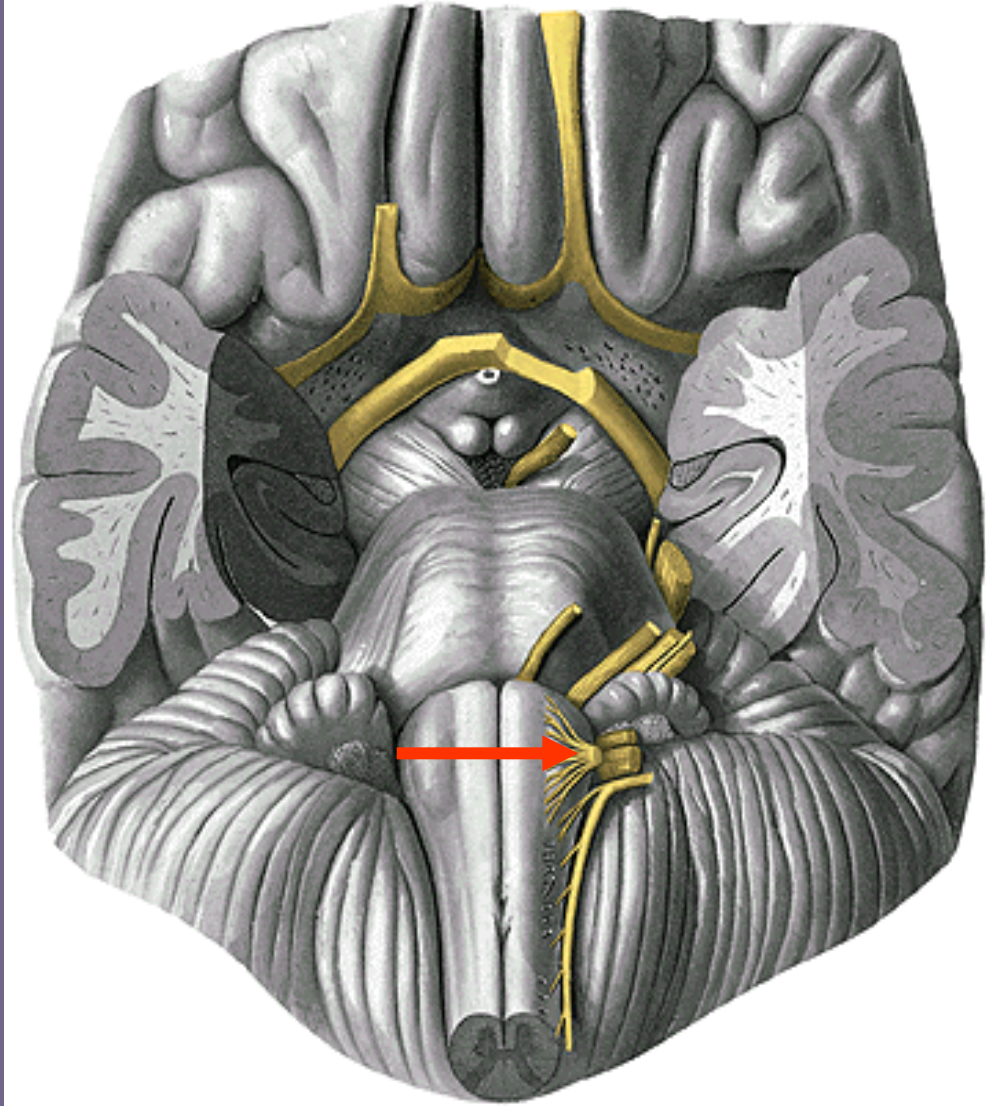
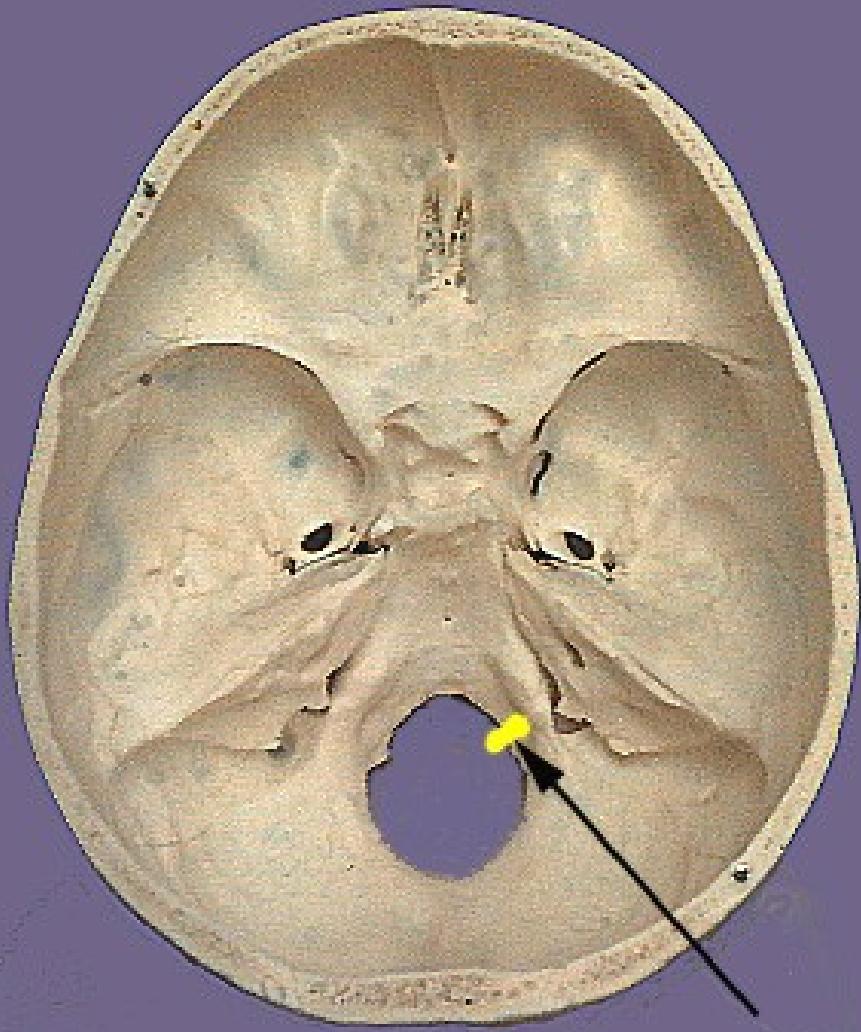
# n. XI.



C1

C6

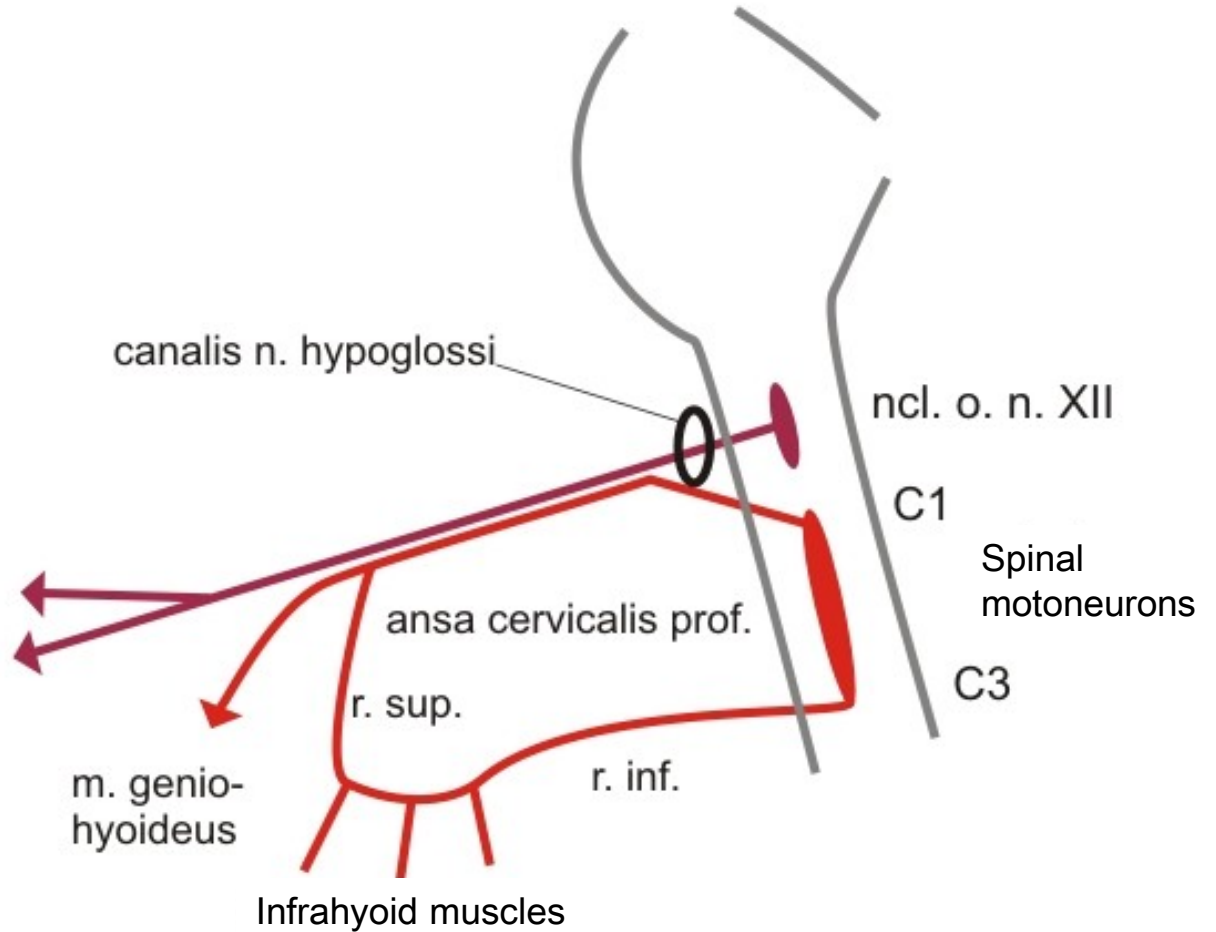




n. XII.



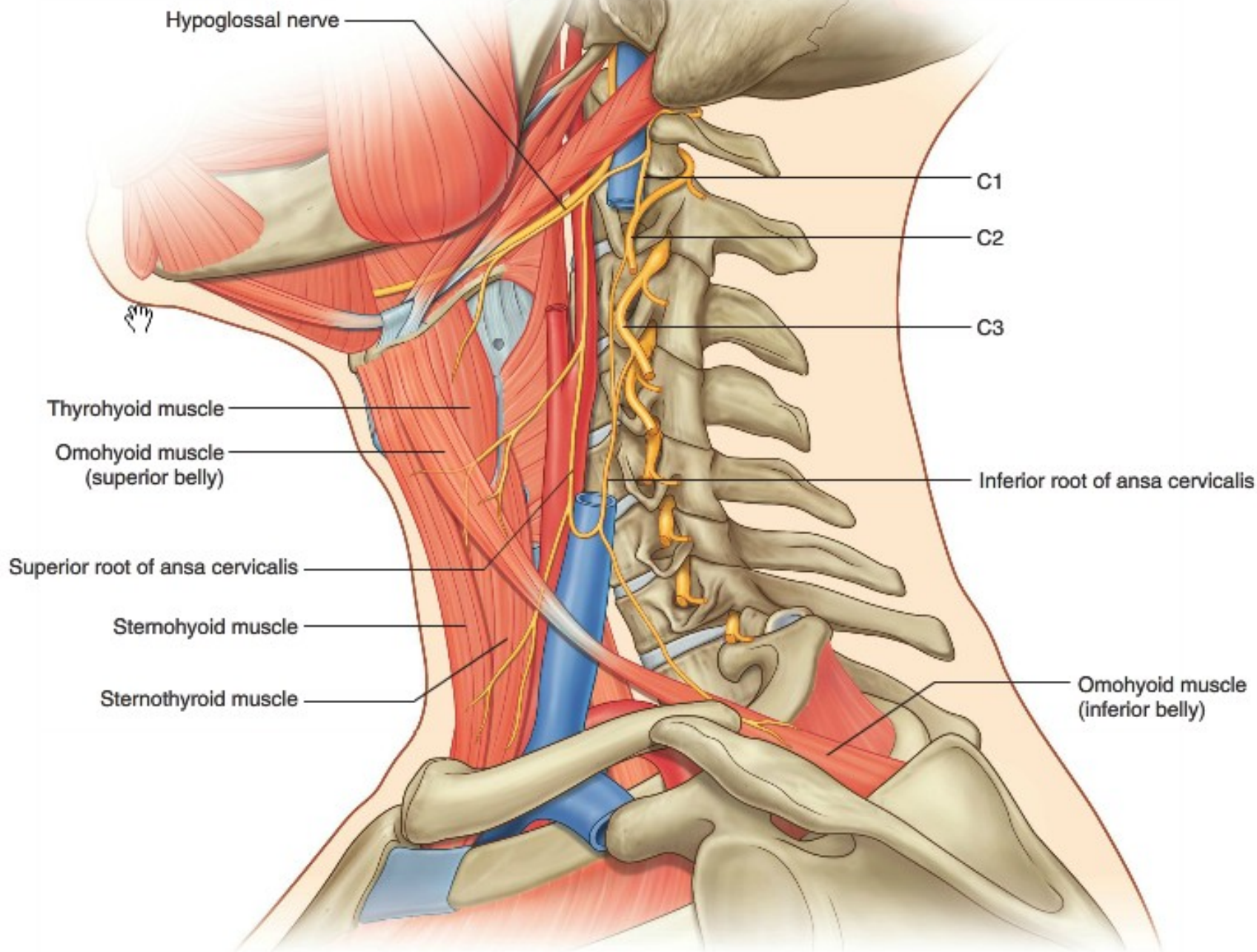
n. XII.



Intrinsic tongue muscles and  
m. genioglossus, hyoglossus et  
styloglossus

m. genio-  
hyoideus

Infrahyoid muscles





Lesion of the hypoglossal nerve – tongue turns to side of lesioned nerve

