

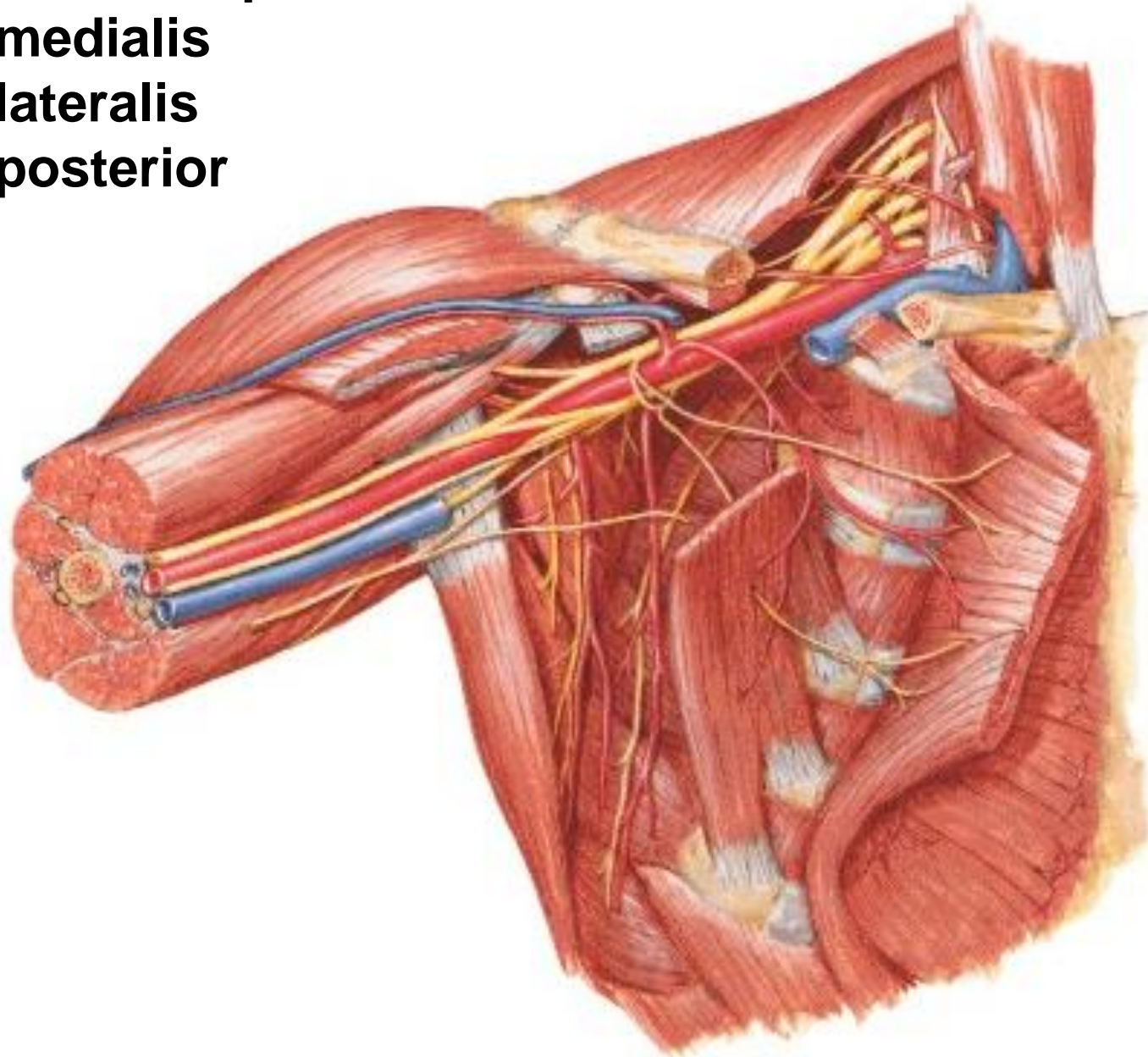
Arteries of the upper limb

**A. axillaris – a. brachialis –
a. radialis + a. ulnaris**



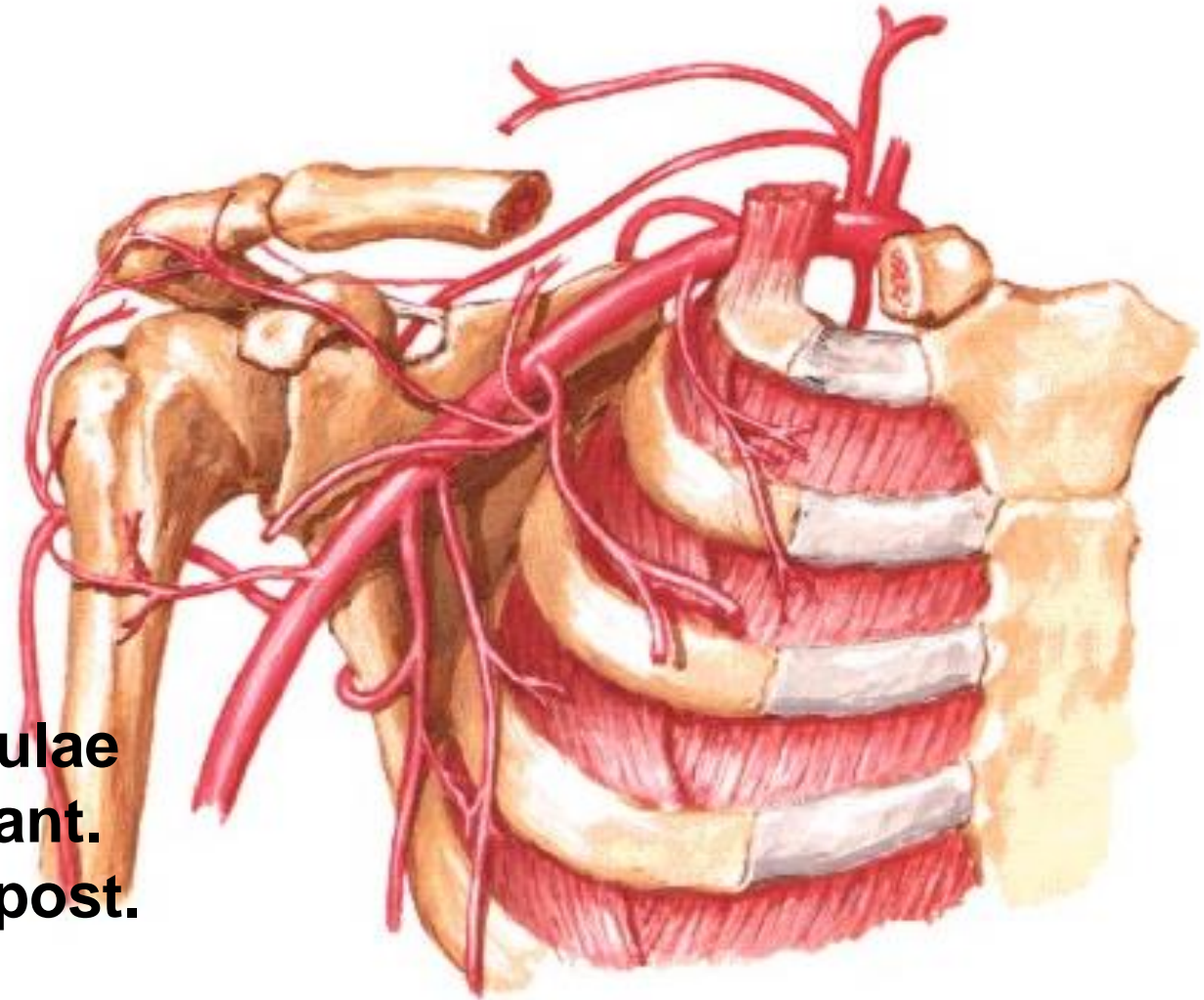
Pars infraclavicularis plexus brachialis

- fasciculus medialis**
- fasciculus lateralis**
- fasciculus posterior**



A. AXILLARIS

- a. thoracica superior
- a. thoracoacromialis
 - r. deltoideus
 - r. acromialis
 - rr. pectorales
- a. thoracica lateralis
 - rr. mammarii lat.
- a. subscapularis
 - a. thoracodorsalis
 - a. circumflexa scapulae
- a. circumflexa humeri ant.
- a. circumflexa humeri post.

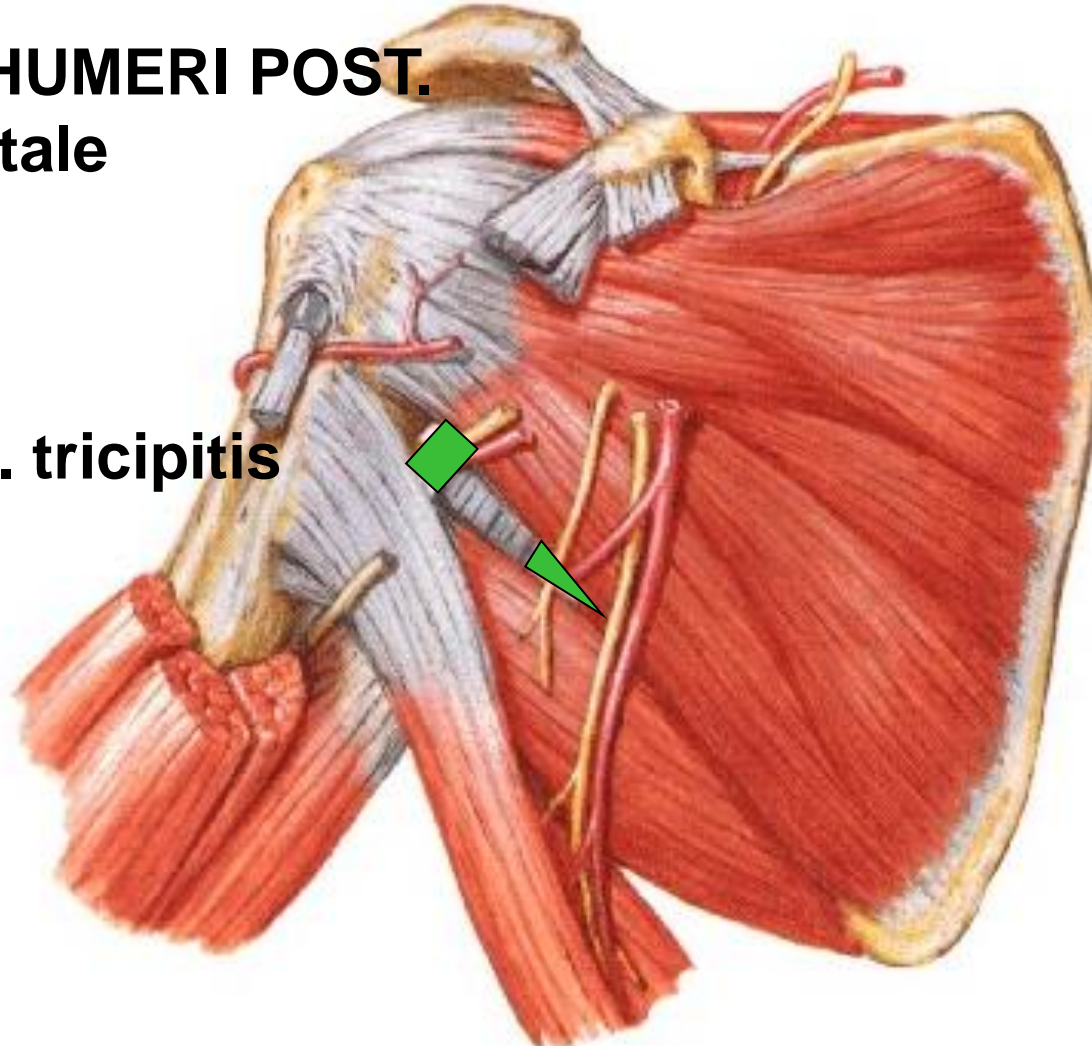


A. CIRCUMFLEXA SCAPULAE

- foramen omotricipitale (trilaterum):** m. teres minor
m. teres major
caput longum m. tricipitis

A. CIRCUMFLEXA HUMERI POST.

- for. humerotricipitale (quadrilaterum):**
m. teres minor
m. teres major
caput longum m. tricipitis
humerus

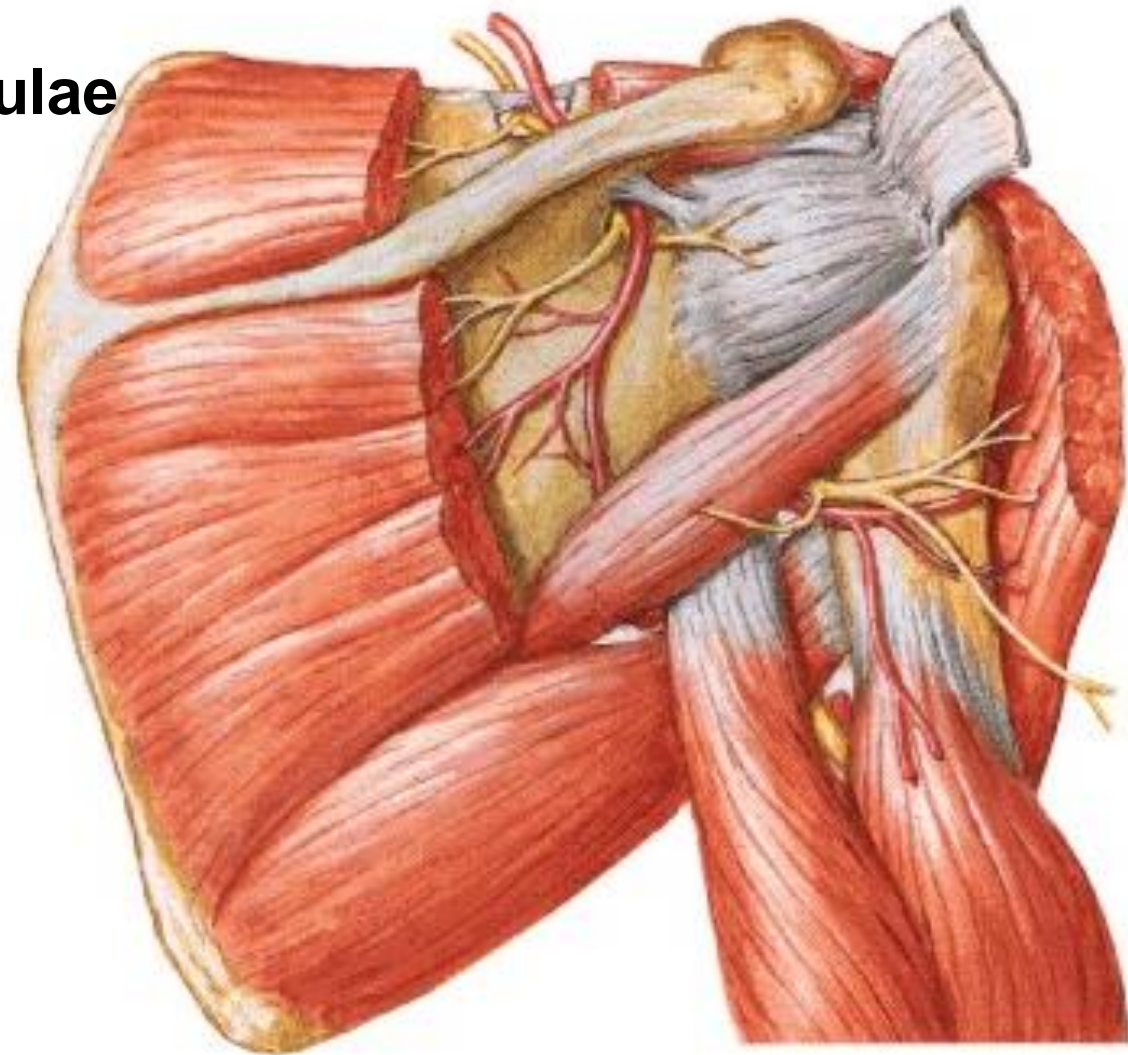


Fossa infraspinata:

anastomosis

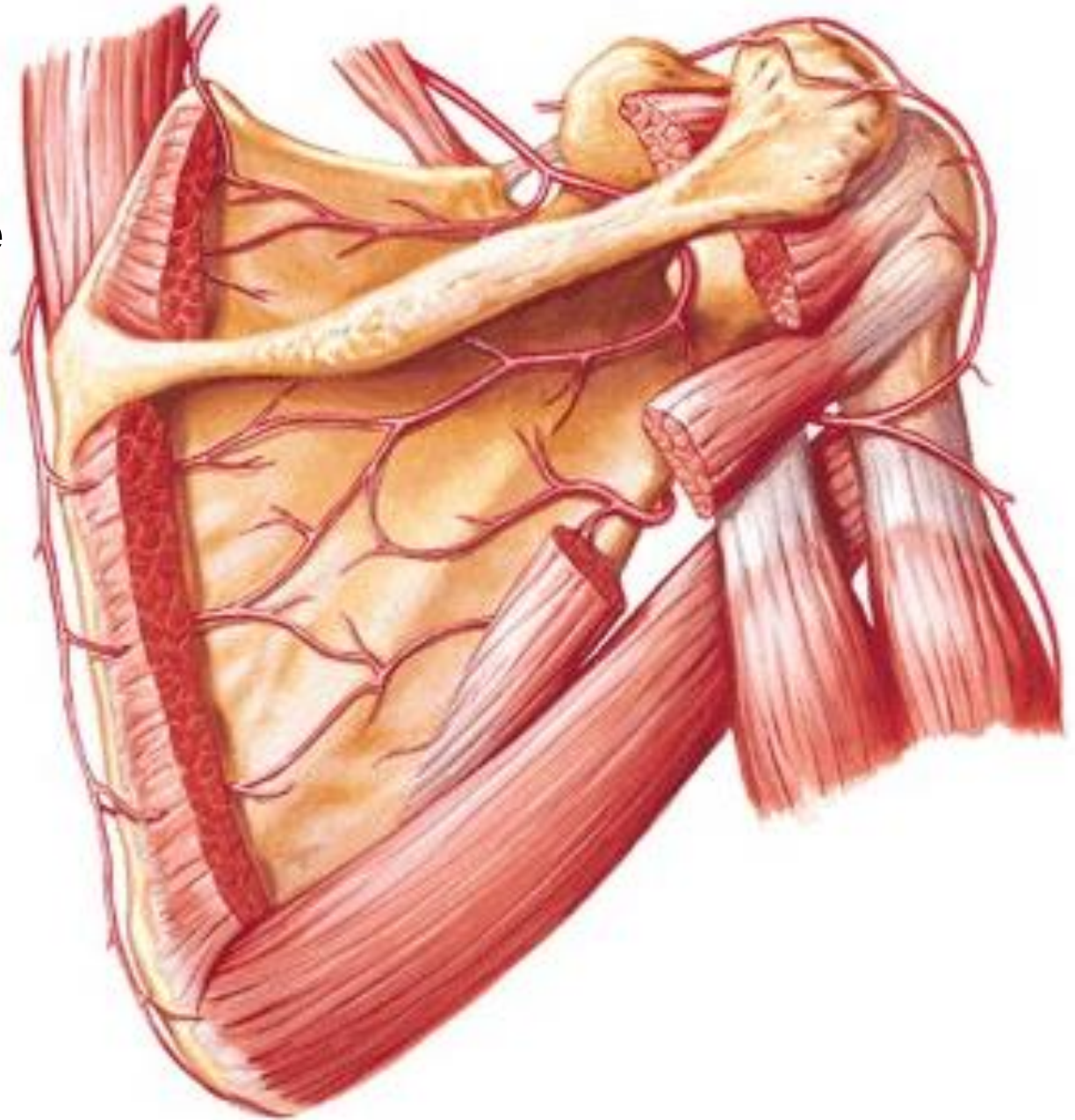
a. suprascapularis

+ a. circumflexa scapulae



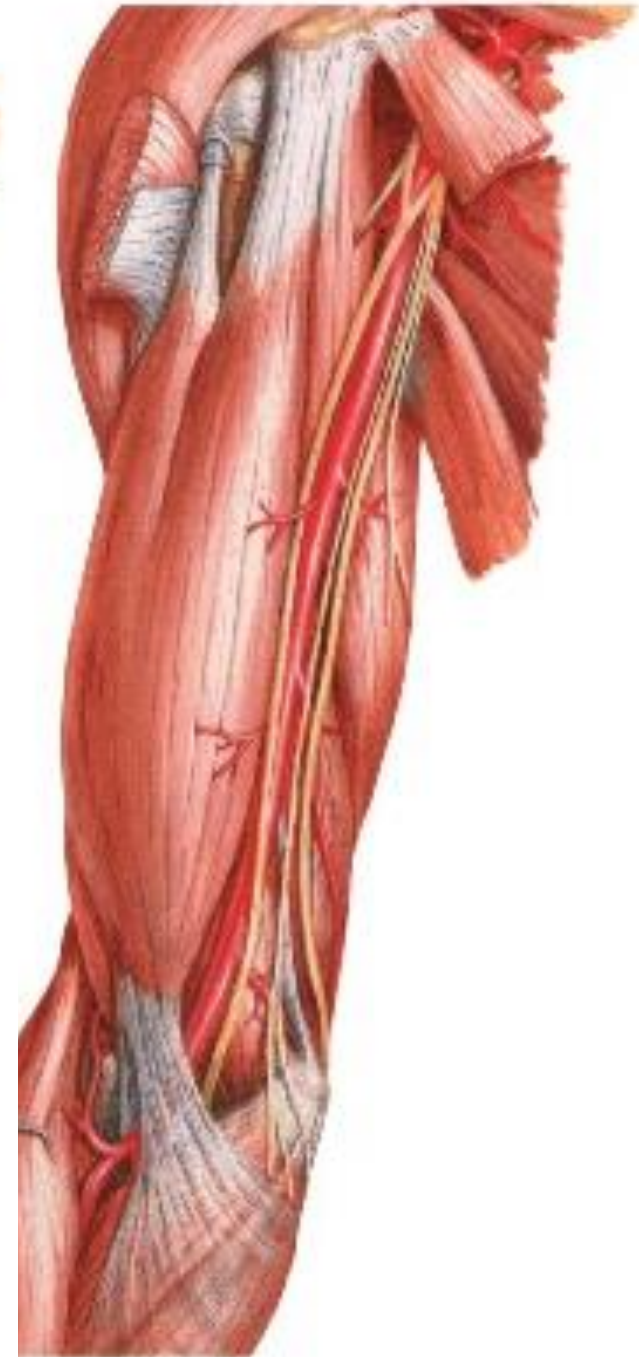
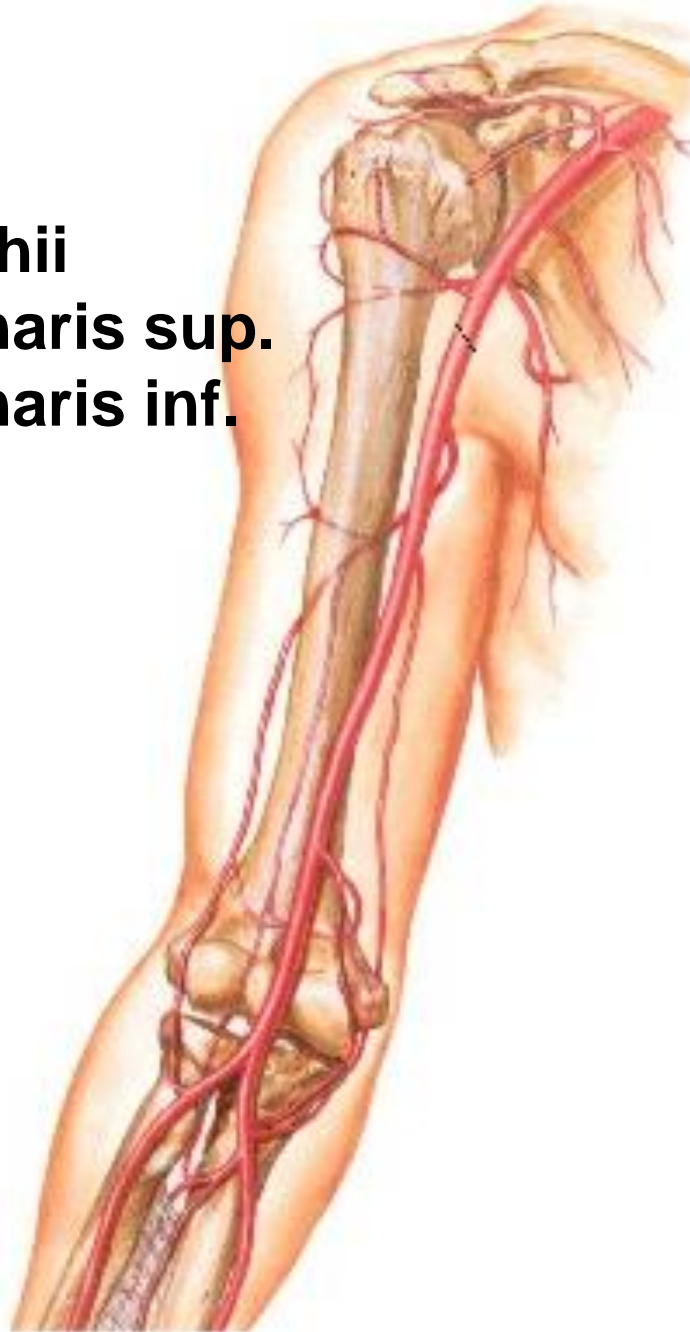
ARTERIAL ANASTOMOSES AROUND THE SCAPULA

- A. transversa colli**
- A. suprascapularis**
- A. circumflexa scapulae**
- Aa. intercostales**



A. BRACHIALIS

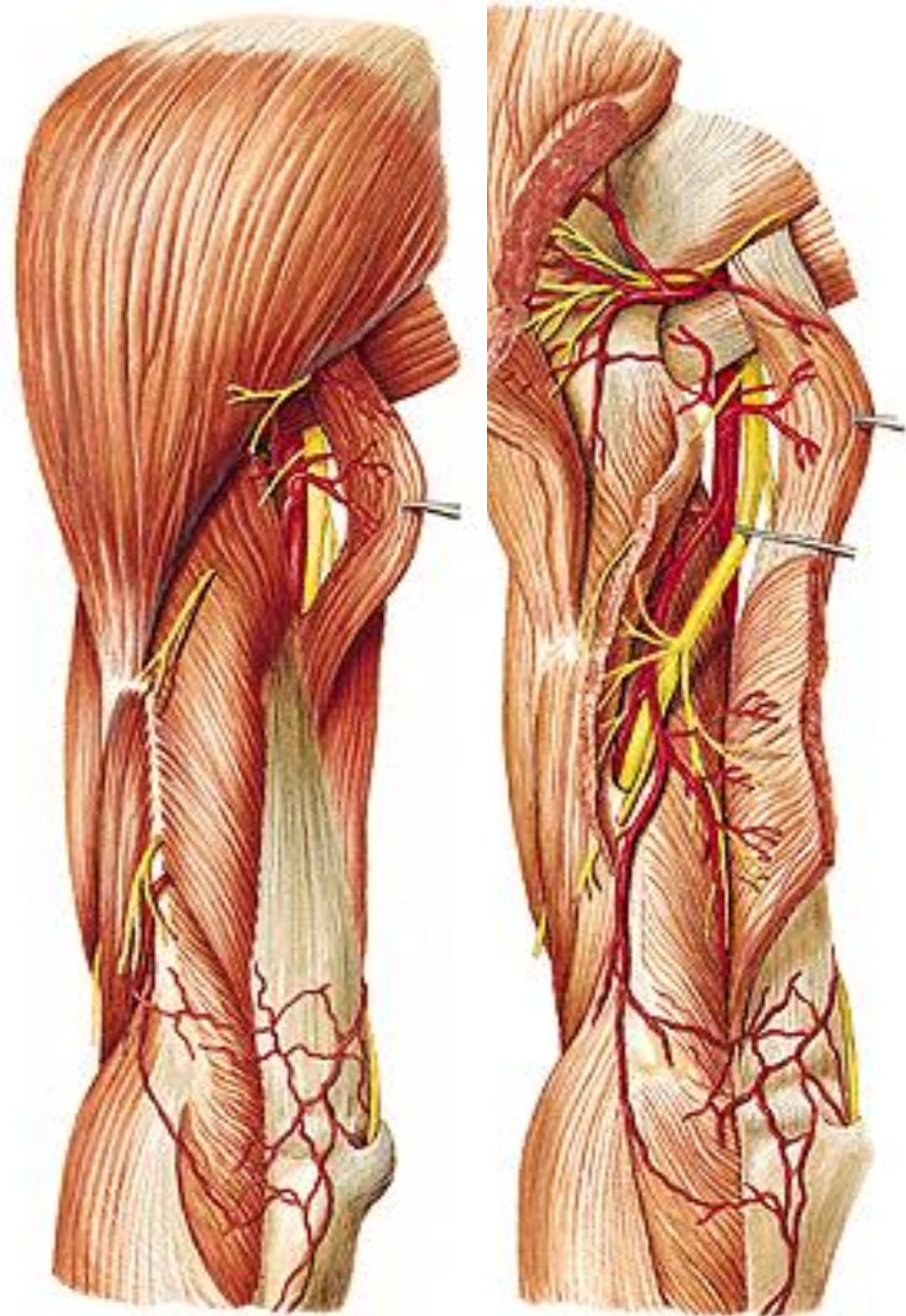
- a. profunda brachii
- a. collateralis ulnaris sup.
- a. collateralis ulnaris inf.
- a. radialis
- a. ulnaris



A. PROFUNDA BRACHII

- r. deltoideus
- a. nutricia humeri
- a. collateralis media
- a. collateralis radialis

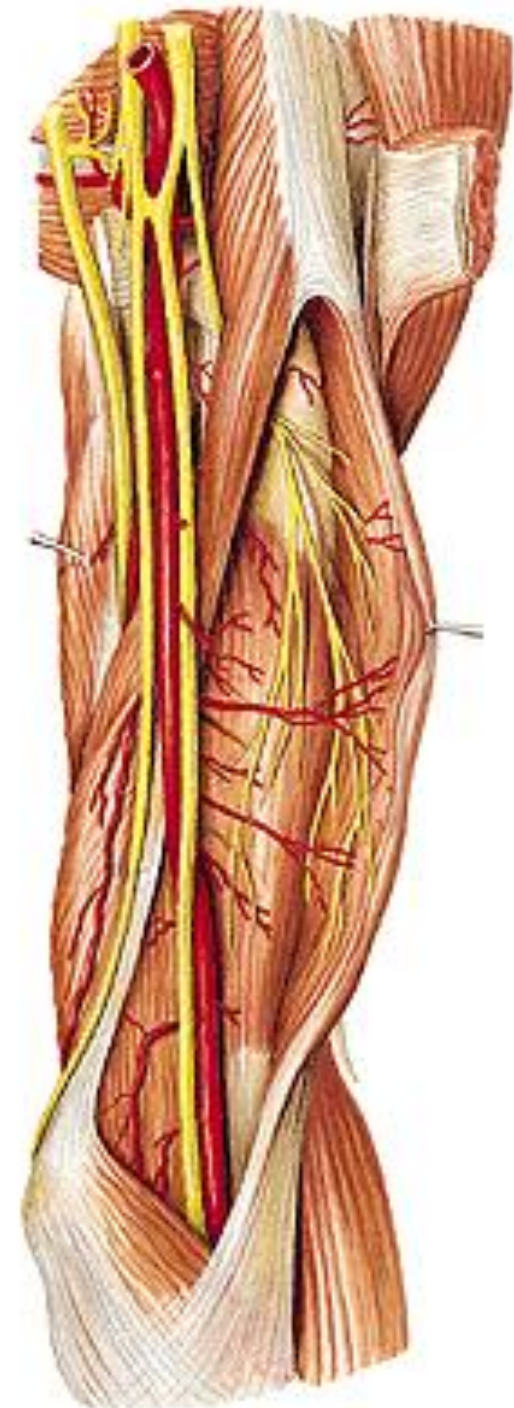
Rete articulare cubiti



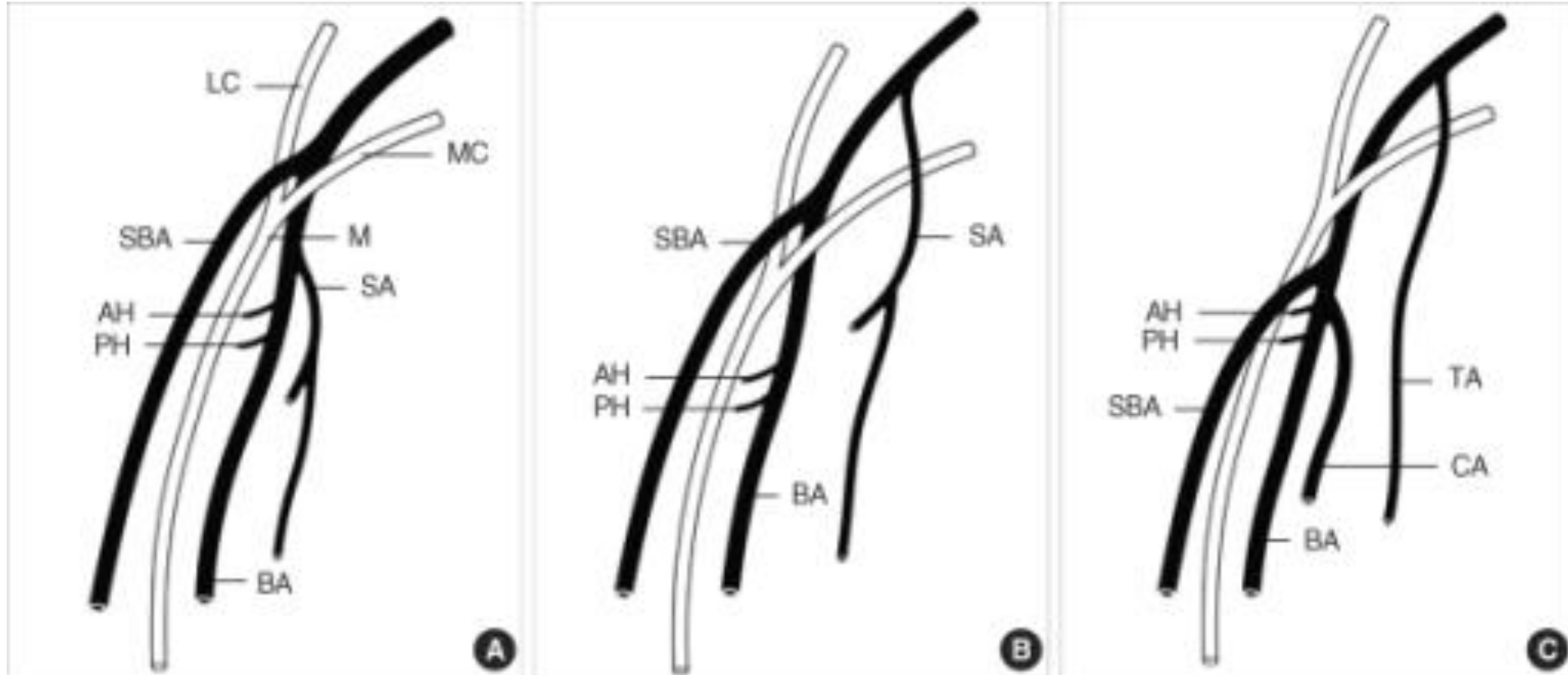
A. collateralis ulnaris sup.

A. collateralis ulnaris inf.

Rete articulare cubiti



A. brachialis superficialis (12%)





A. RADIALIS

- m. pronator teres**
- m. brachioradialis**
- m. flexor carpi radialis**



Posteriorly:

tendon of m. biceps brachii

m. supinator

insertion of m. pronator teres

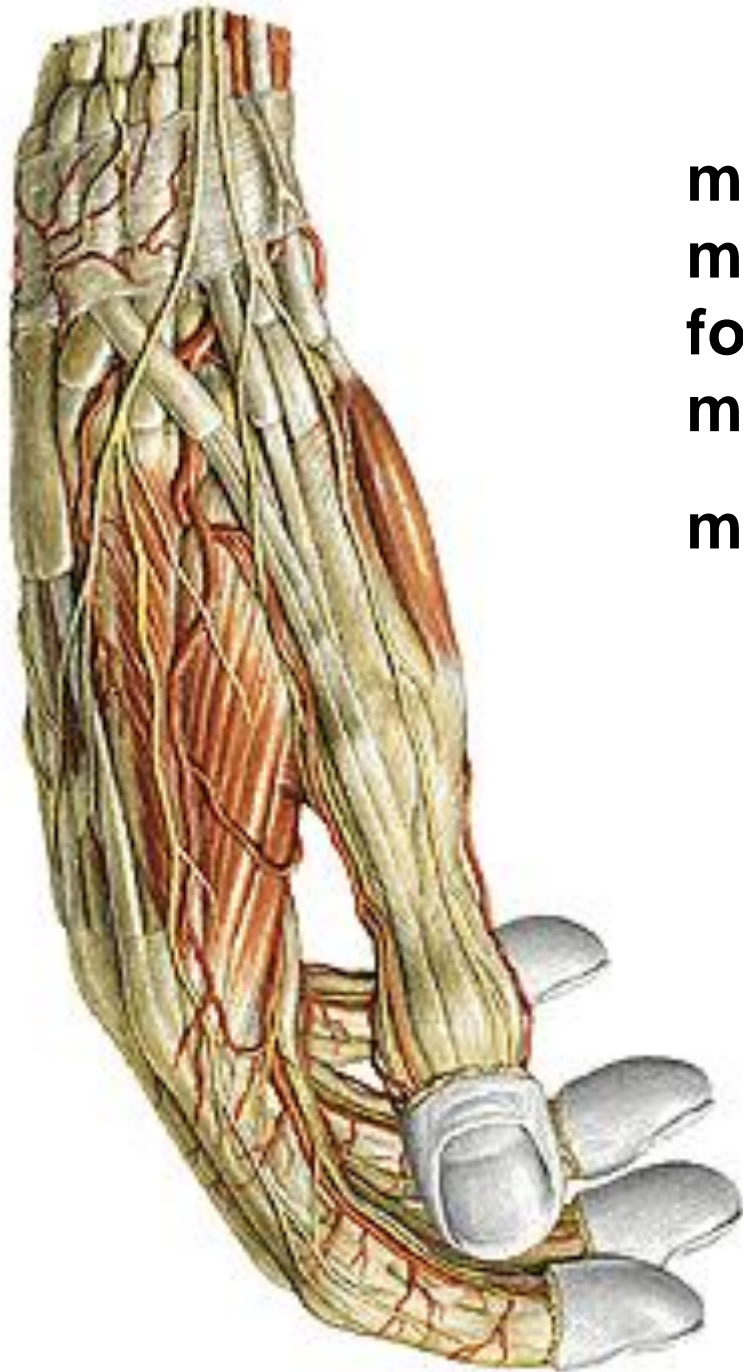
caput radiale m. flexoris digitorum spf.

m. flexor pollicis longus

m. pronator quadratus

distal end of the radius

r. superficialis n. radialis



m.abductor pollicis longus
m. extensor pollicis brevis
foveola radialis
m. extensor pollicis longus
m. interosseus dorsalis I.

A. RADIALIS - branches:

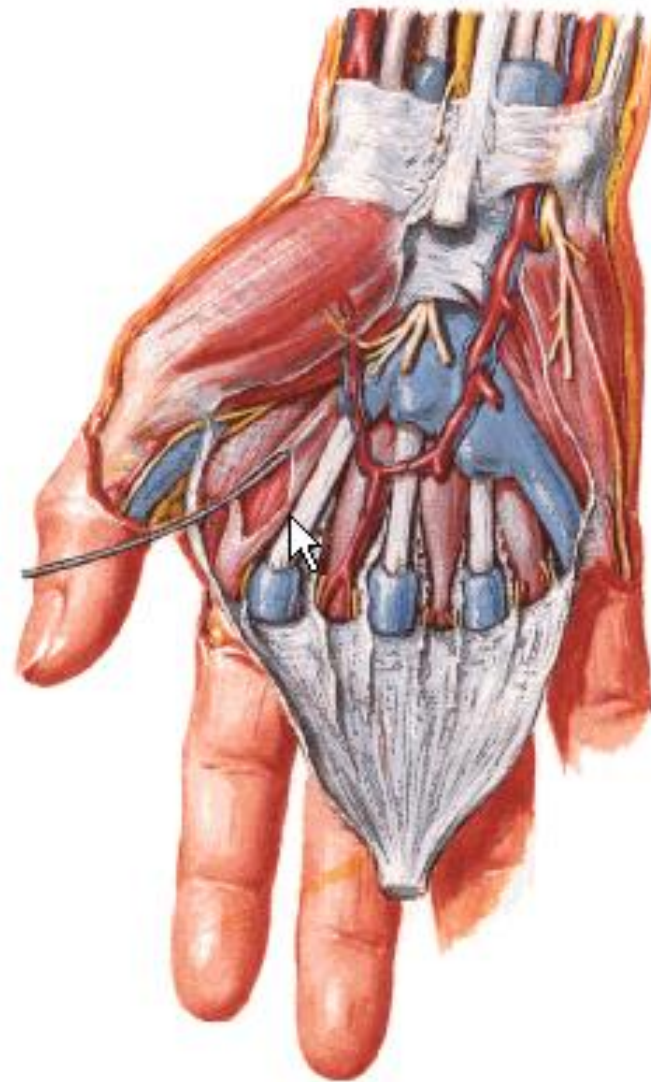
- **a. recurrens radialis
(rete articulare cubiti)**
- **rr. musculares**



A. RADIALIS – branches:

**-r. carpalis palmaris
(rete carpi palmare)**

**-r. palmaris spf.
(arcus palmaris spf.)**



A. RADIALIS – branches:

-r. carpalis dorsalis

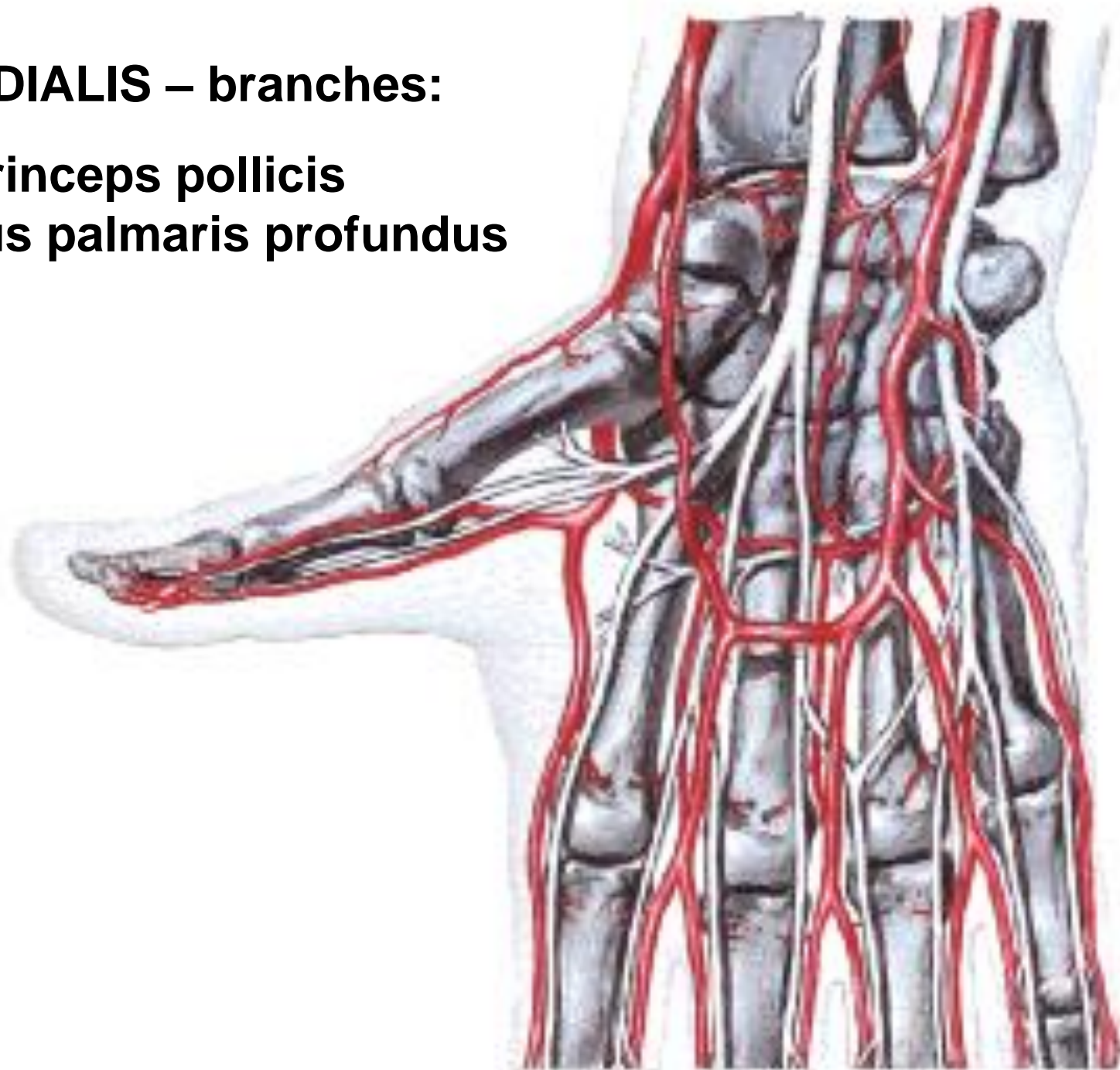
(rete carpi dorsale – 3 aa. metacarpales dorsales
– aa. digitales dorsales)

- a. metacarpalis dorsalis I.



A. RADIALIS – branches:

- a. princeps pollicis**
- arcus palmaris profundus**





A. ULNARIS

Anteriorly:

m. pronator teres

m. flexor carpi radialis

m. palmaris longus

m. flexor digitorum spf.

m. flexor carpi ulnaris

Posteriorly:

m. brachialis

m. flexor digitorum prof.

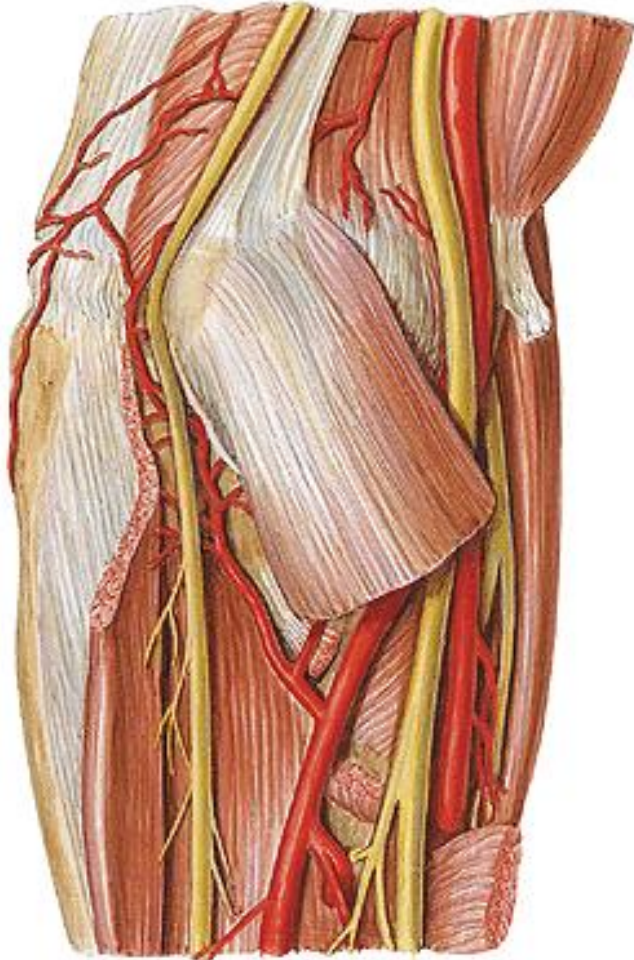
n. medianus

n. ulnaris



A. ULNARIS – branches:

-a. recurrens ulnaris
(rete articulare cubiti)

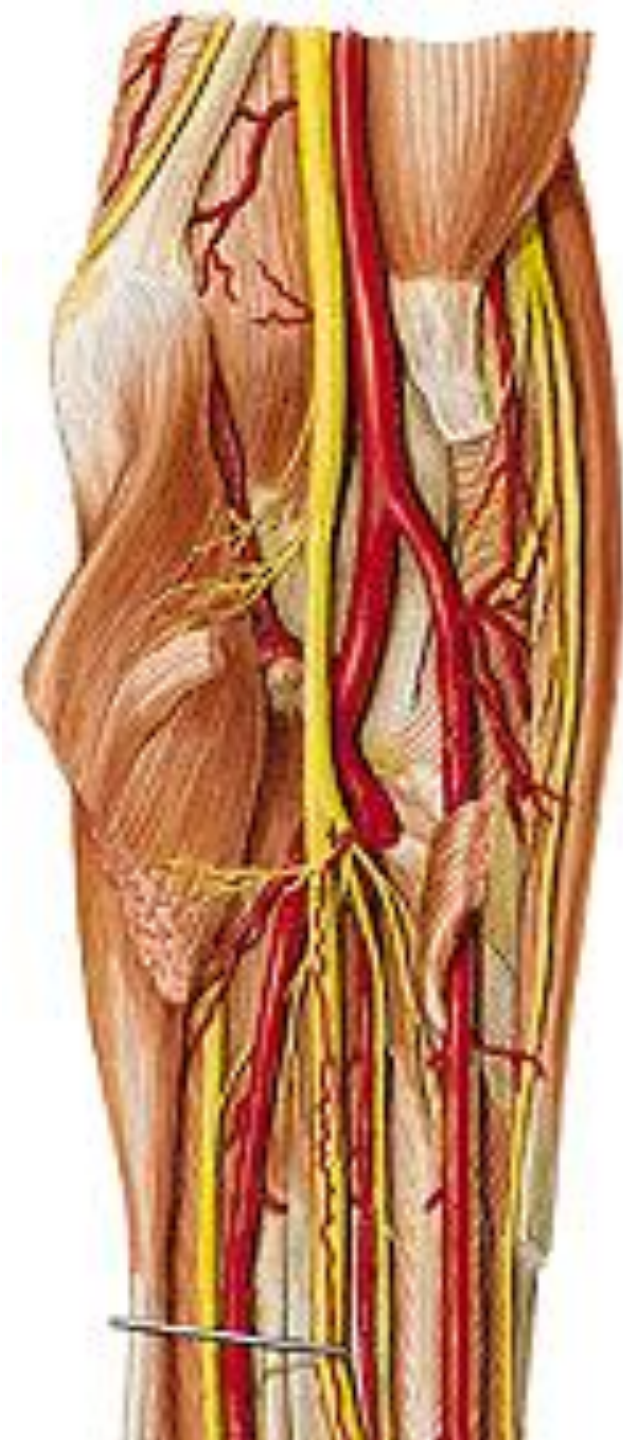


- rr. musculares



A. ULNARIS – branches:

- **a. interossea communis**
 - **a. interossea ant. (n. interosseus anterior)**
 - **a. mediana (n. medianus)**
 - **a. interossea post.**



A. ULNARIS – branches:

a. interossea post.

- a. recurrens interossea

m. supinator

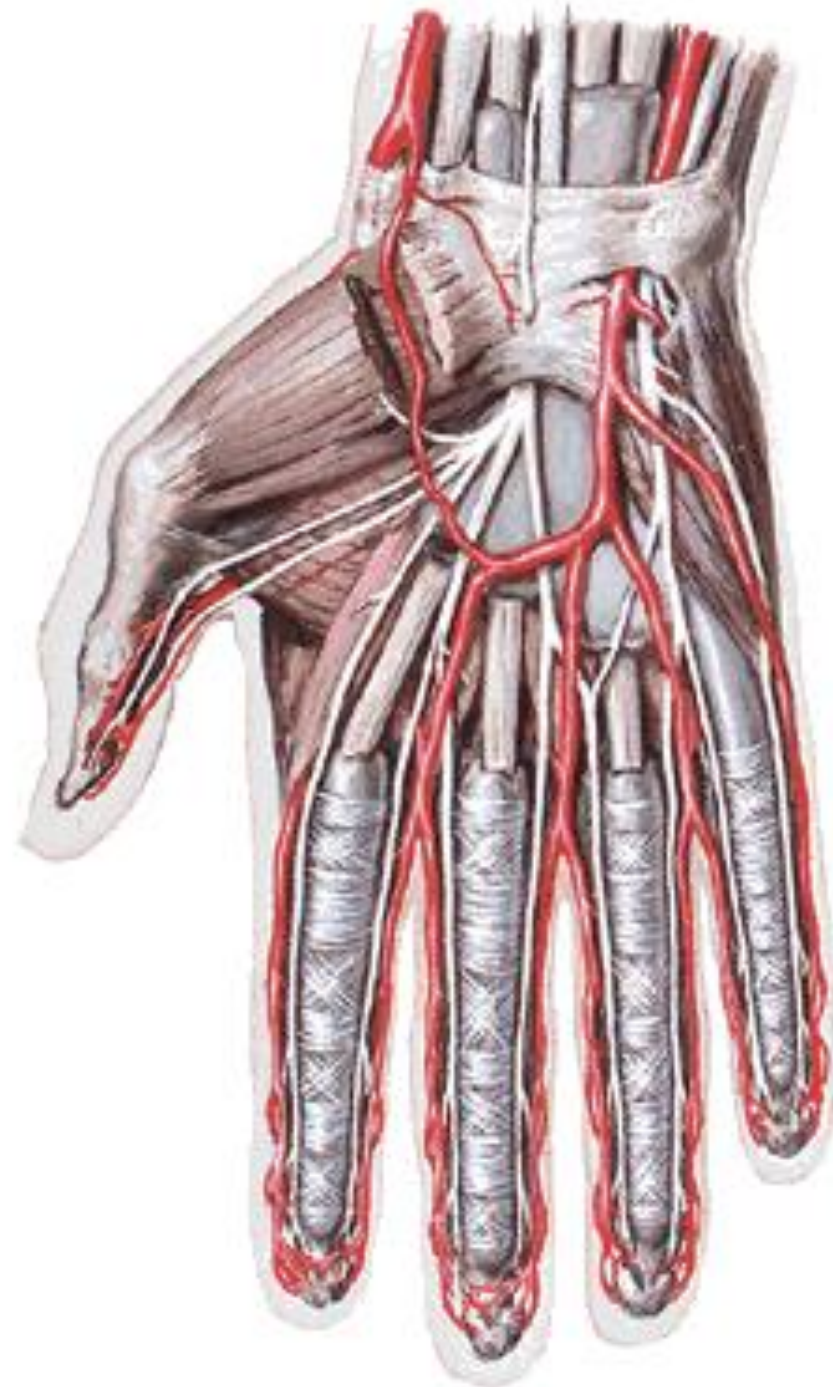
m. abductor pollicis longus

r. profundus n. radialis



A. ULNARIS

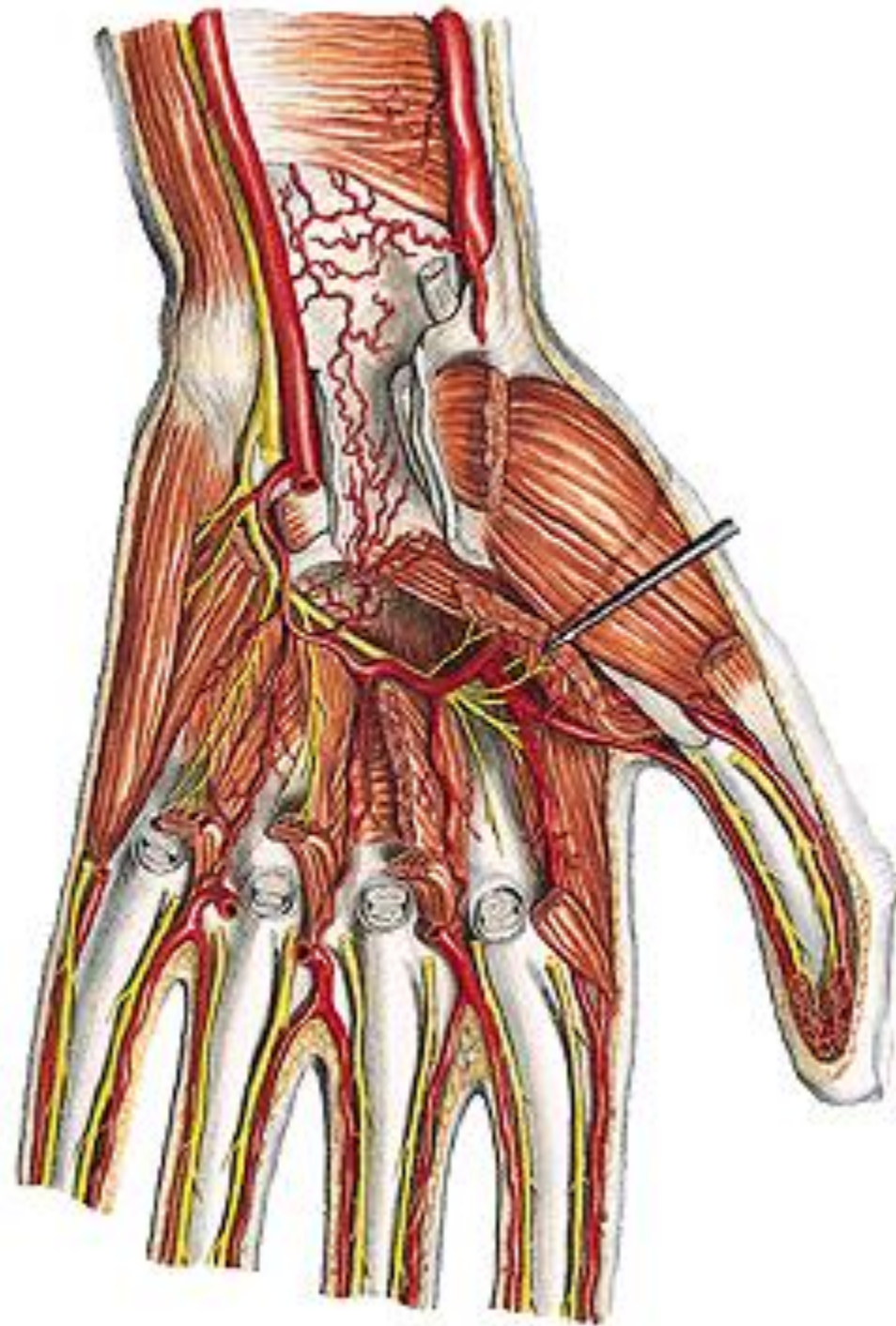
retinaculum flexorum



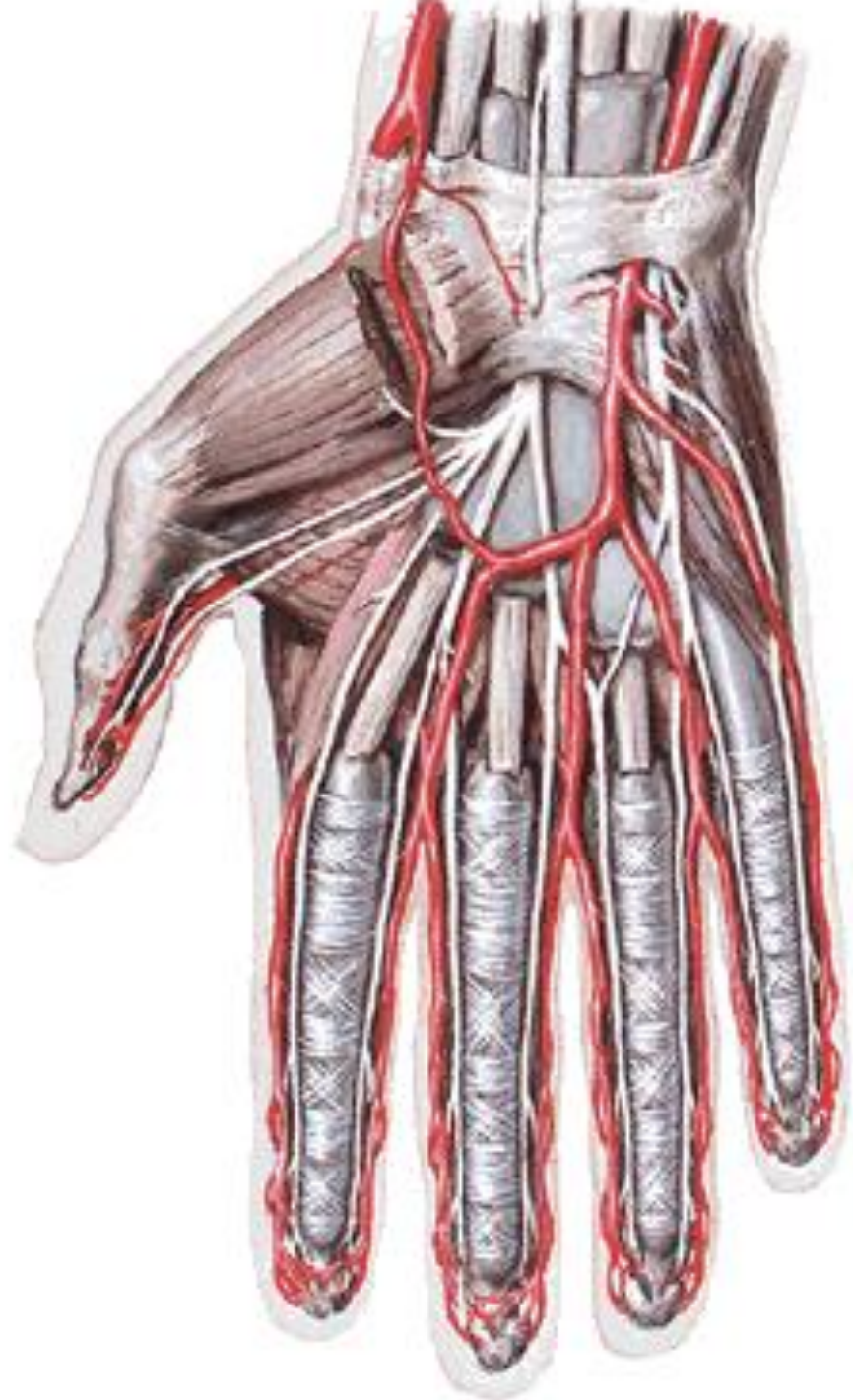
A. ULNARIS – branches:

- r. carpalis palmaris
(rete carpi palmare)**
- r. carpalis dorsalis
(rete carpi dorsale)**
- r. palmaris prof.**

- m. abductor digiti minimi**
- m. flexor digiti minimi**
- m. opponens digiti minimi**



A. ULNARIS – branches:
- arcus palmaris spf.

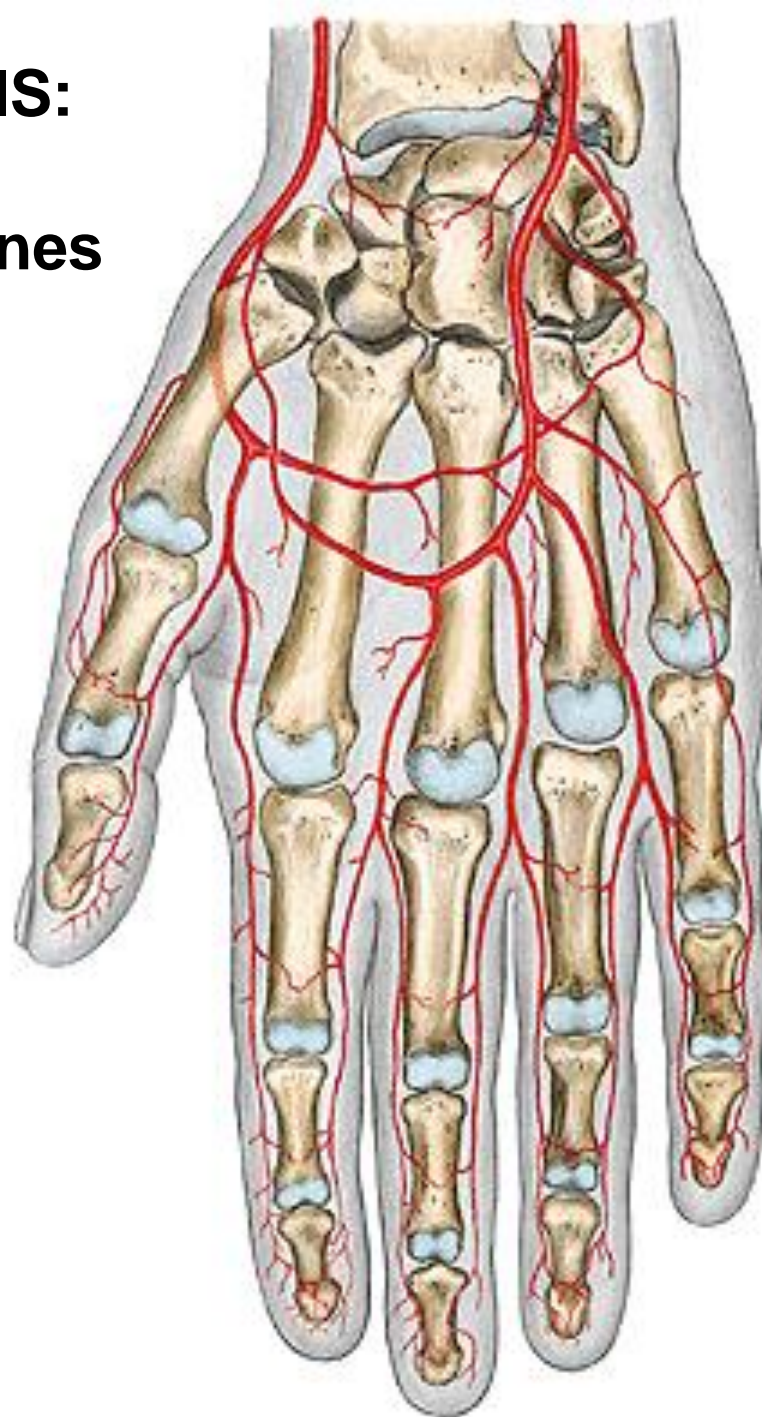


ARCUS PALMARIS SUPERFICIALIS:

- 3 aa. digitales palmares communes
 - 2 aa. dig. palmares propriae
- a. palmaris digiti quinti ulnaris

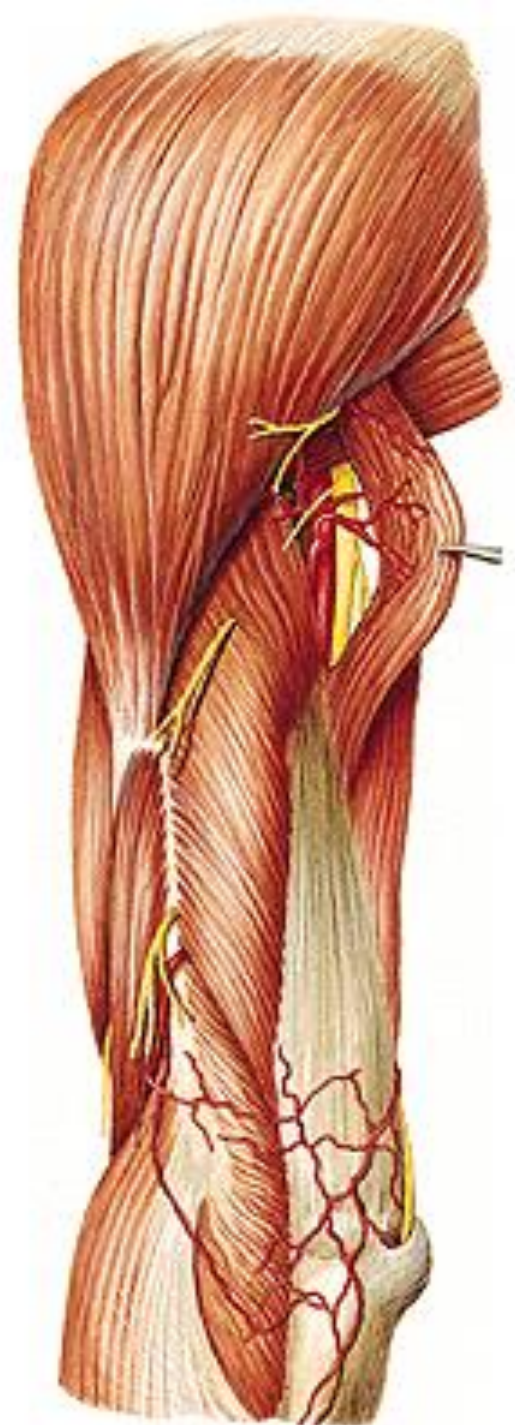
ARCUS PALMARIS PROFUNDUS:

- aa. metacarpales palmares
- rr. perforantes



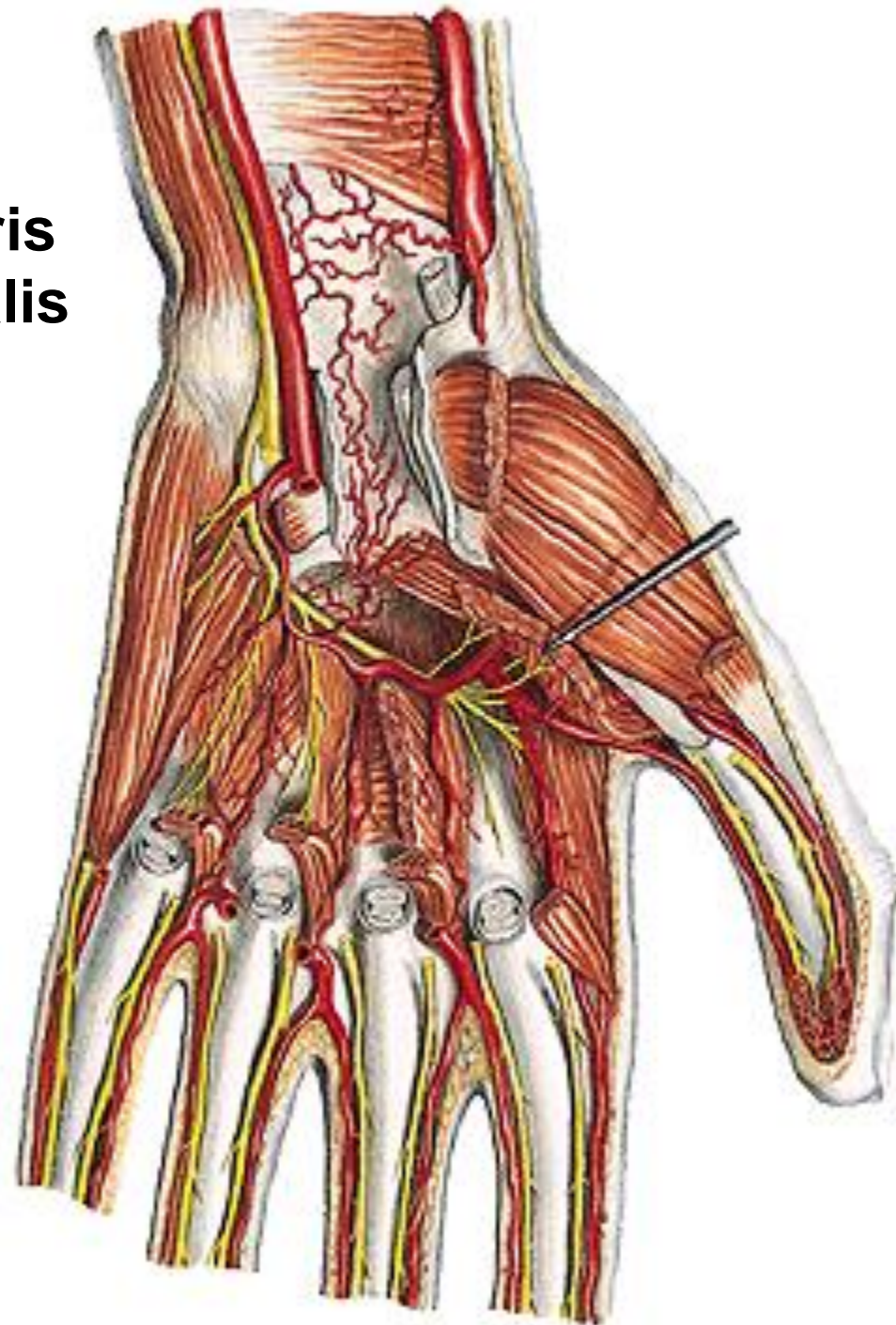
RETE ARTICULARE CUBITI:

- a. collateralis media et rad. (a. prof. brachii)
- a. collateralis ulnaris sup. (a. brachialis)
- a. collateralis ulnaris inf. (a. brachialis)
- a. recurrens radialis (a. radialis)
- a. recurrens interossea (a. interossea post.)
- a. recurrens ulnaris (a. ulnaris)



RETE CARPI PALMARE:

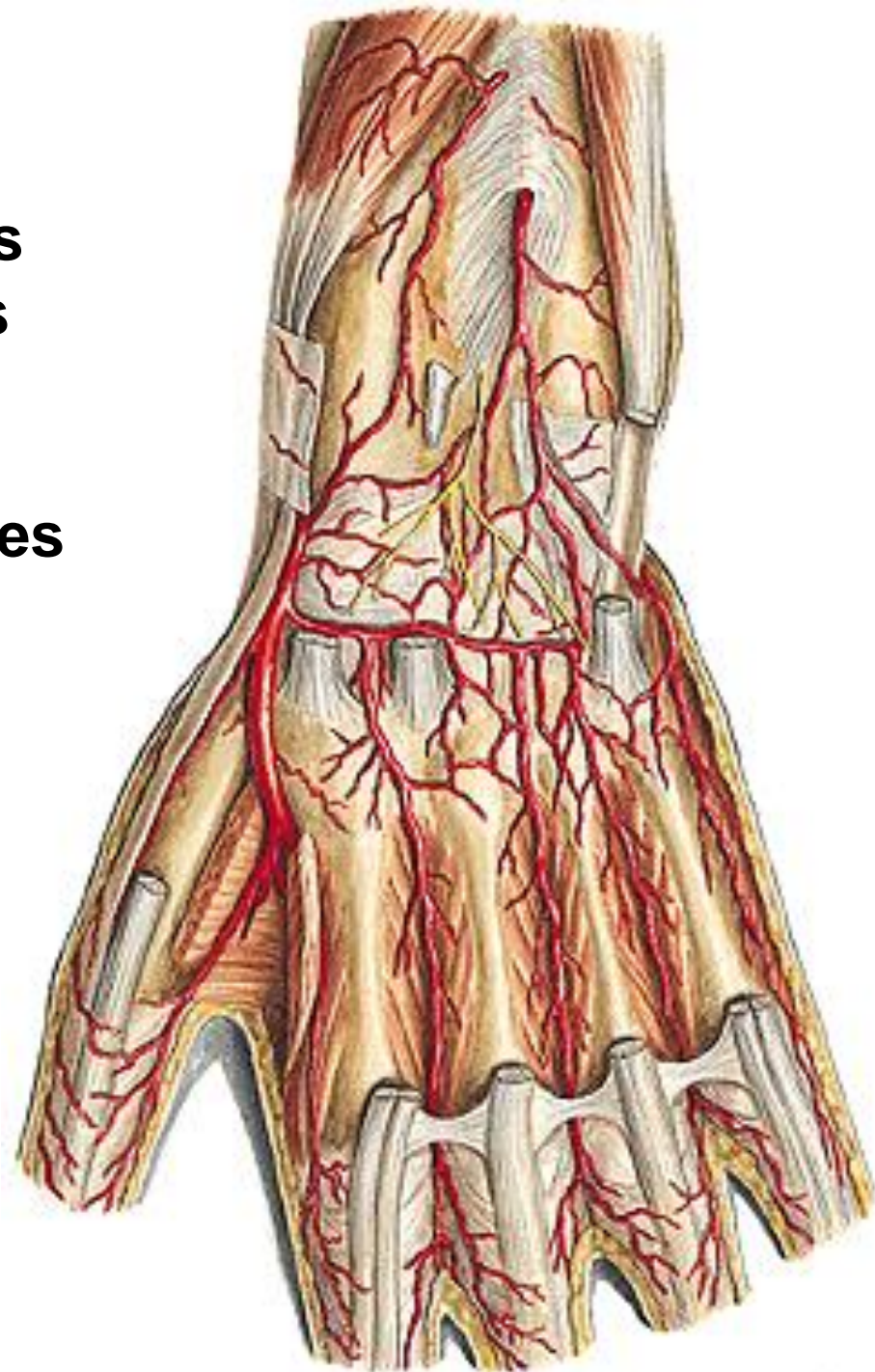
- r. carpalis palmaris a. ulnaris
- r. carpalis palmaris a. radialis
- a. interossea ant.
- arcus palmaris prof.



RETE CARPI DORSALE:

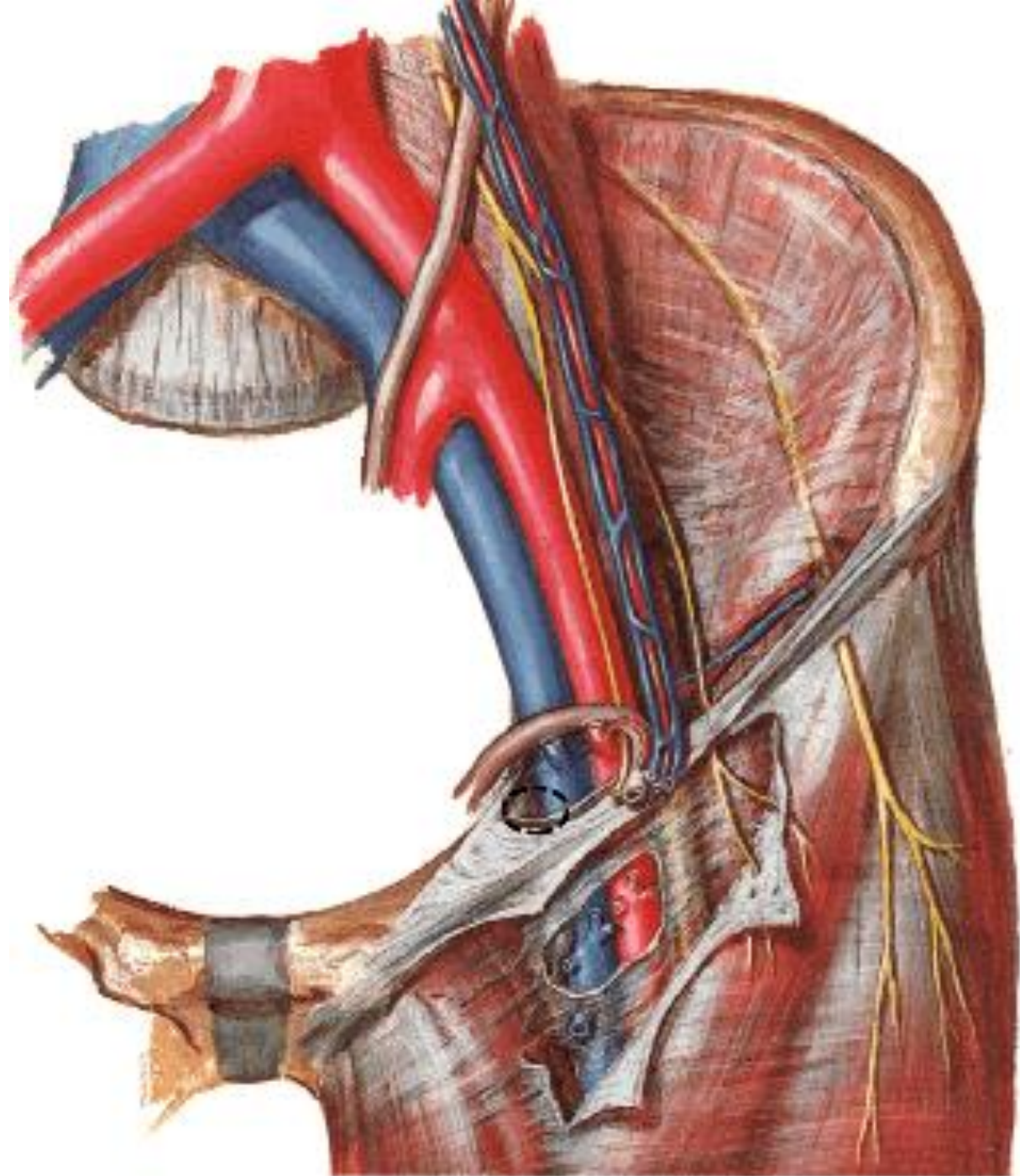
- r. carpalis dorsalis a. radialis
- r. carpalis dorsalis a. ulnaris
- a. interossea ant. et post.

→ 3 aa. metacarpales dorsales
2 aa. digitales dorsales

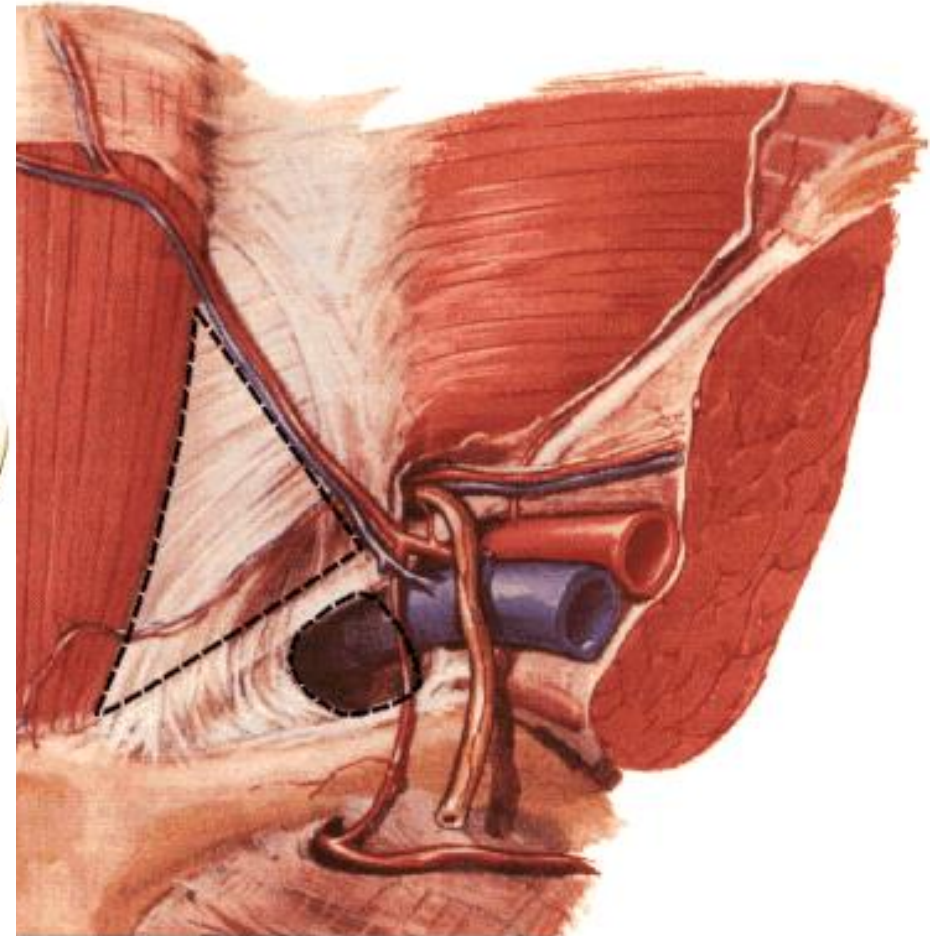
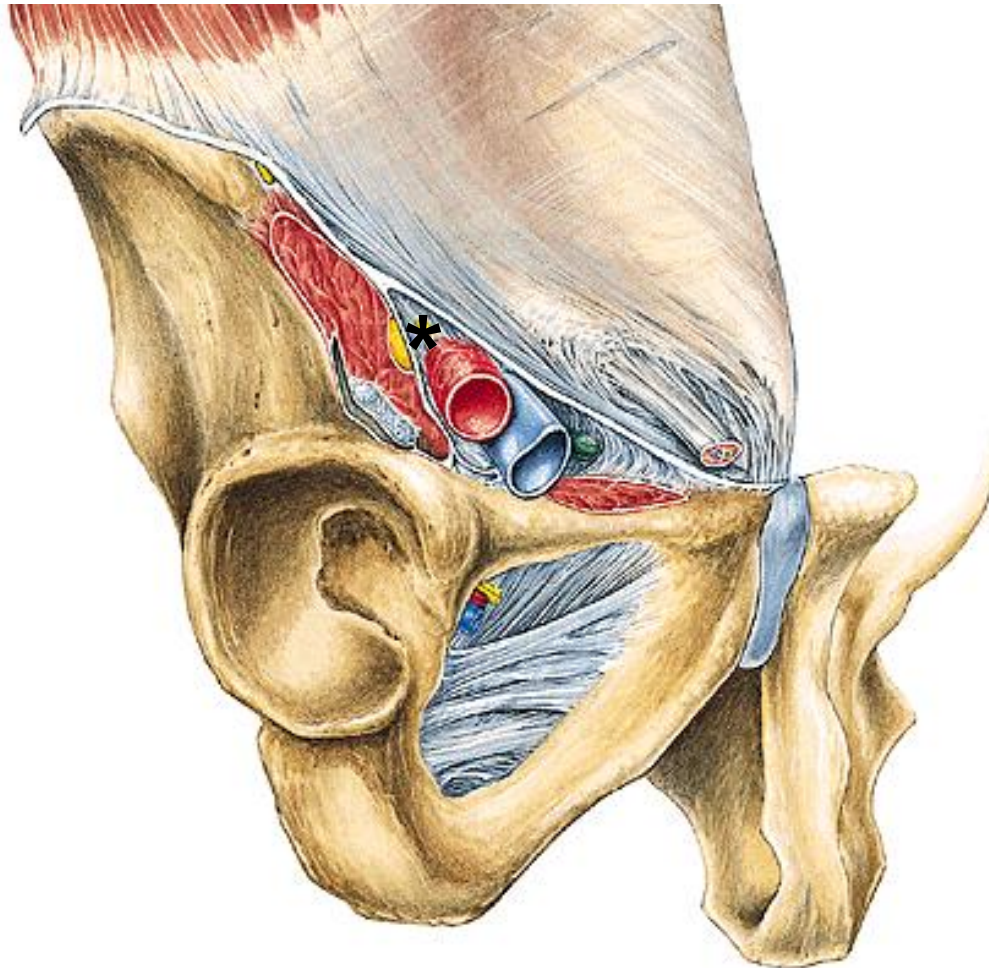


Arteries of the lower limb

A. iliaca ext.

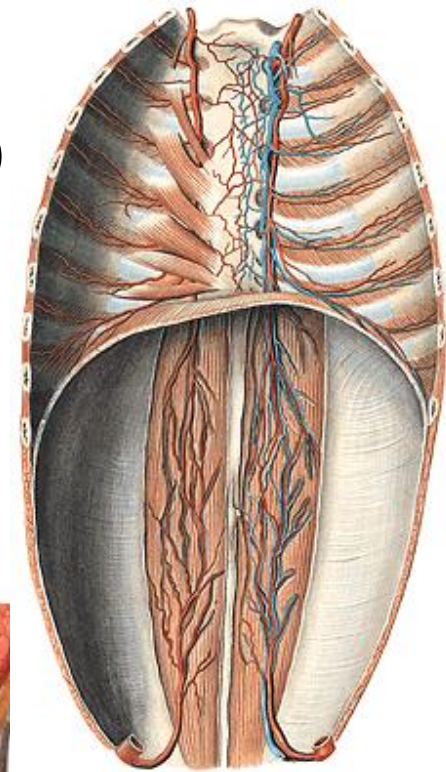
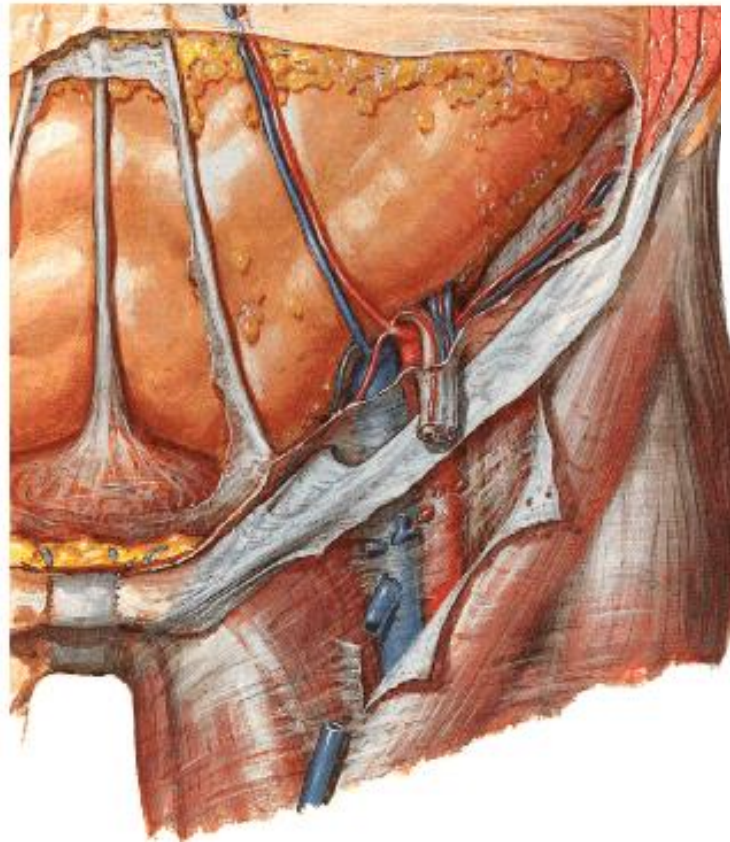
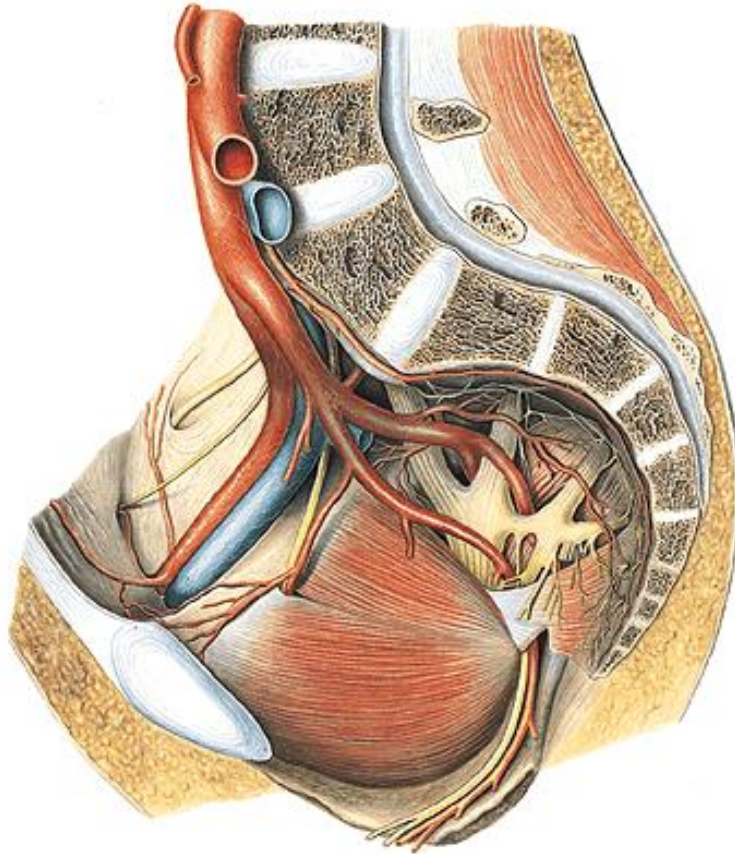


***Lacuna vasorum – anulus femoralis**
Lacuna musculorum



A. ILIACA EXTERNA

- A. epigastrica inf. (ligamentum interfoveolare)
 - r. pubicus
 - a. cremasterica (ligamenti teretis)
- A. circumflexa ilium profunda



A. FEMORALIS

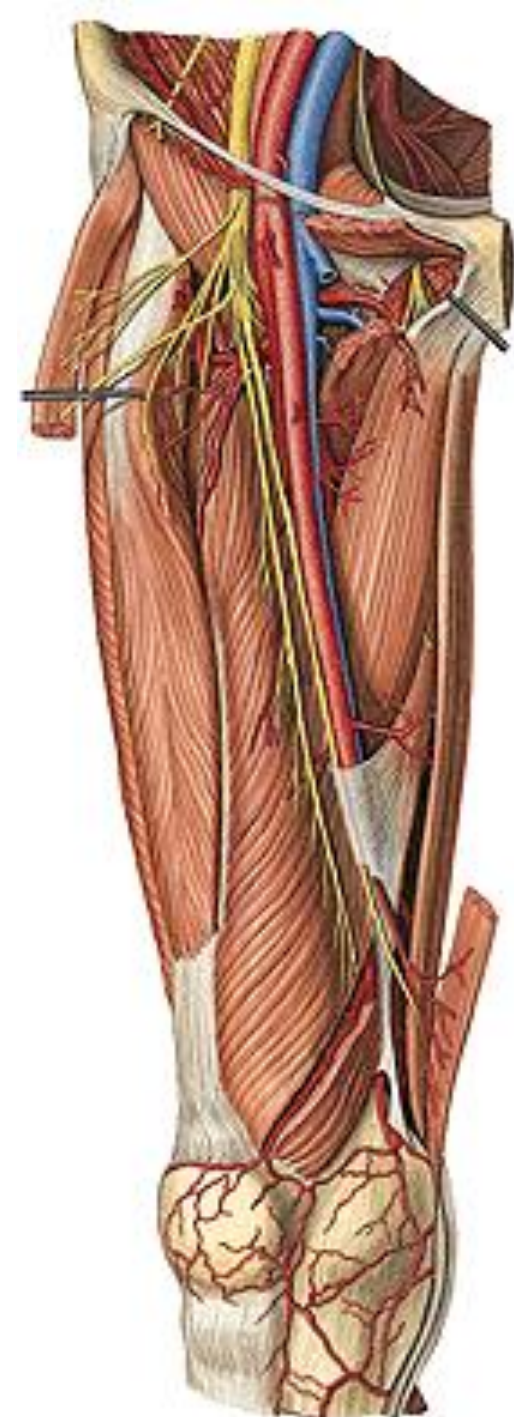
Trigonum femorale

Canalis adductorius

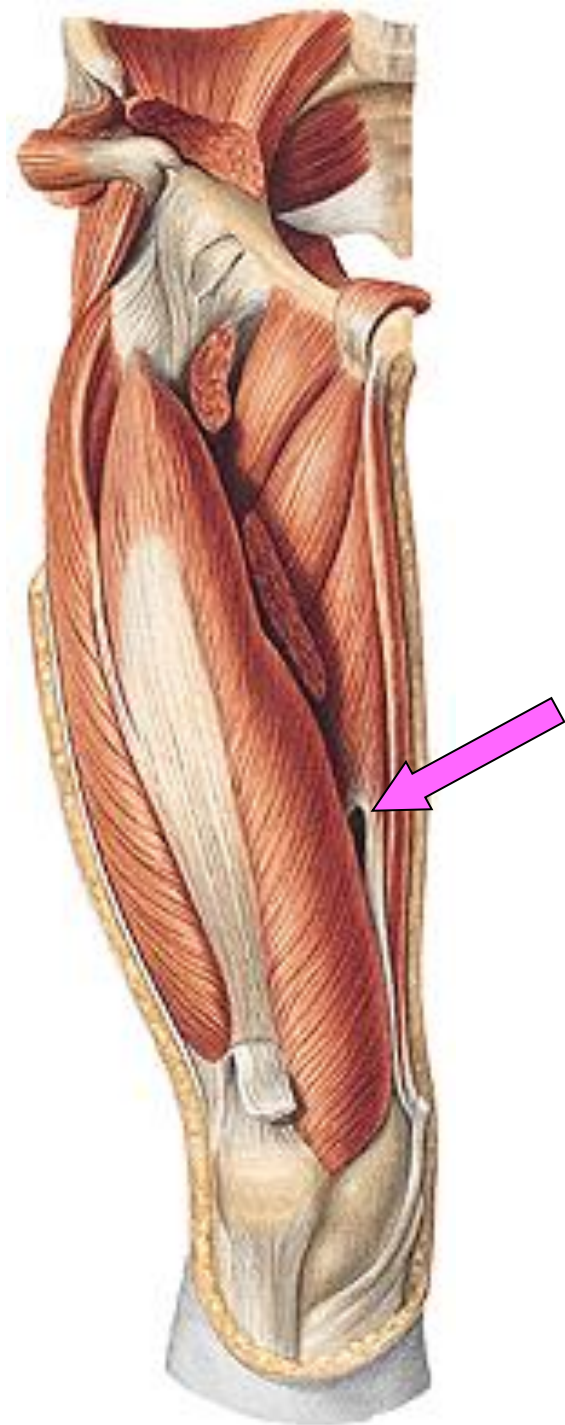
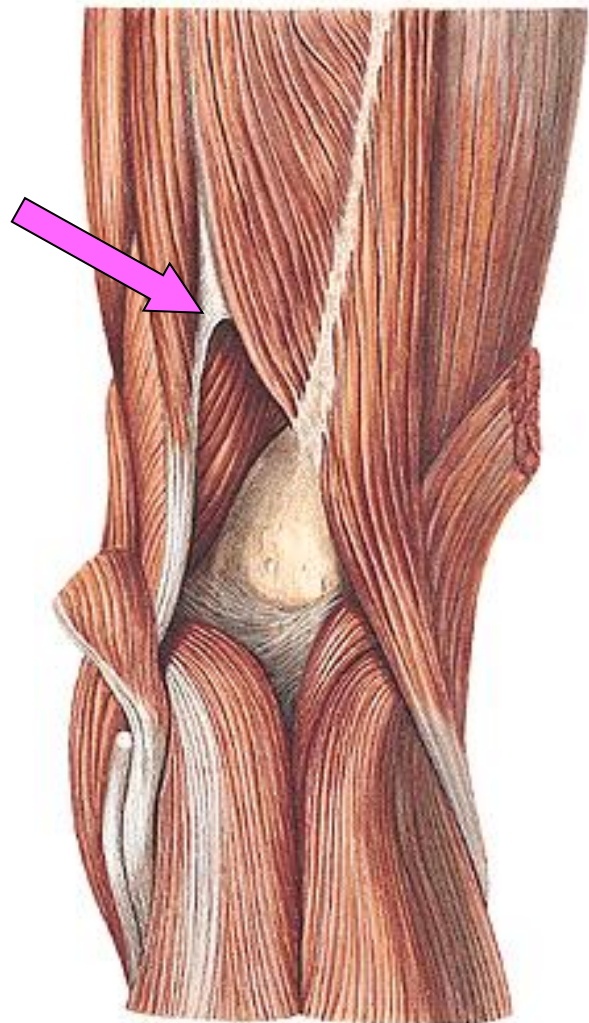
Lamina vastoadductoria

**Hiatus tendineus/
adductorius**

N. saphenus



Hiatus tendineus/adductorius (Hunter)



A. FEMORALIS

A. epigastrica superficialis

A. circumflexa ilium spf.

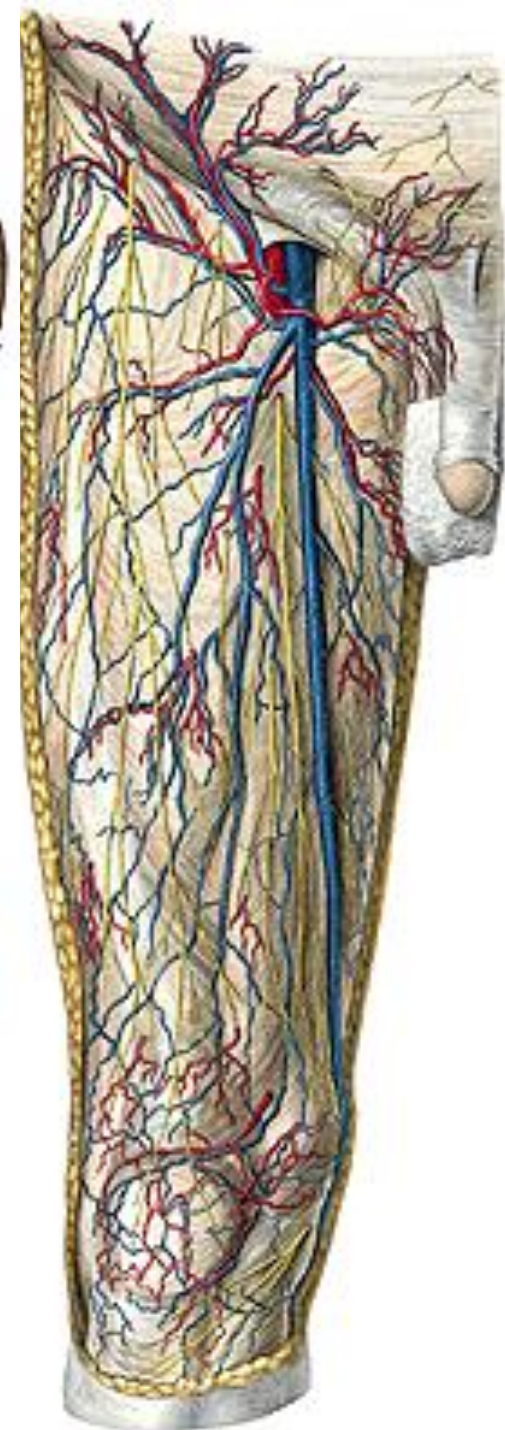
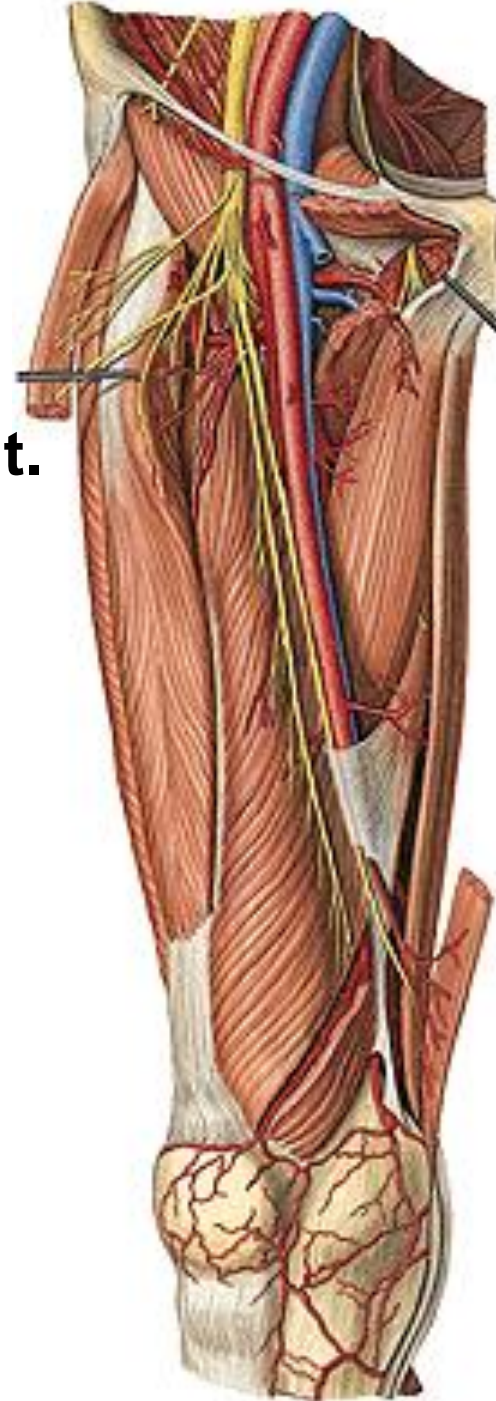
Aa. pudendae ext.

- rr. scrotales (labiales) ant.

A. profunda femoris

Rr. musculares

A. descendens genus



A. PROFUNDA FEMORIS

A. circumflexa femoris medialis

- r. spf.

- r. prof.

A. circumflexa femoris lat.

- r. ascendens

- r. descendens

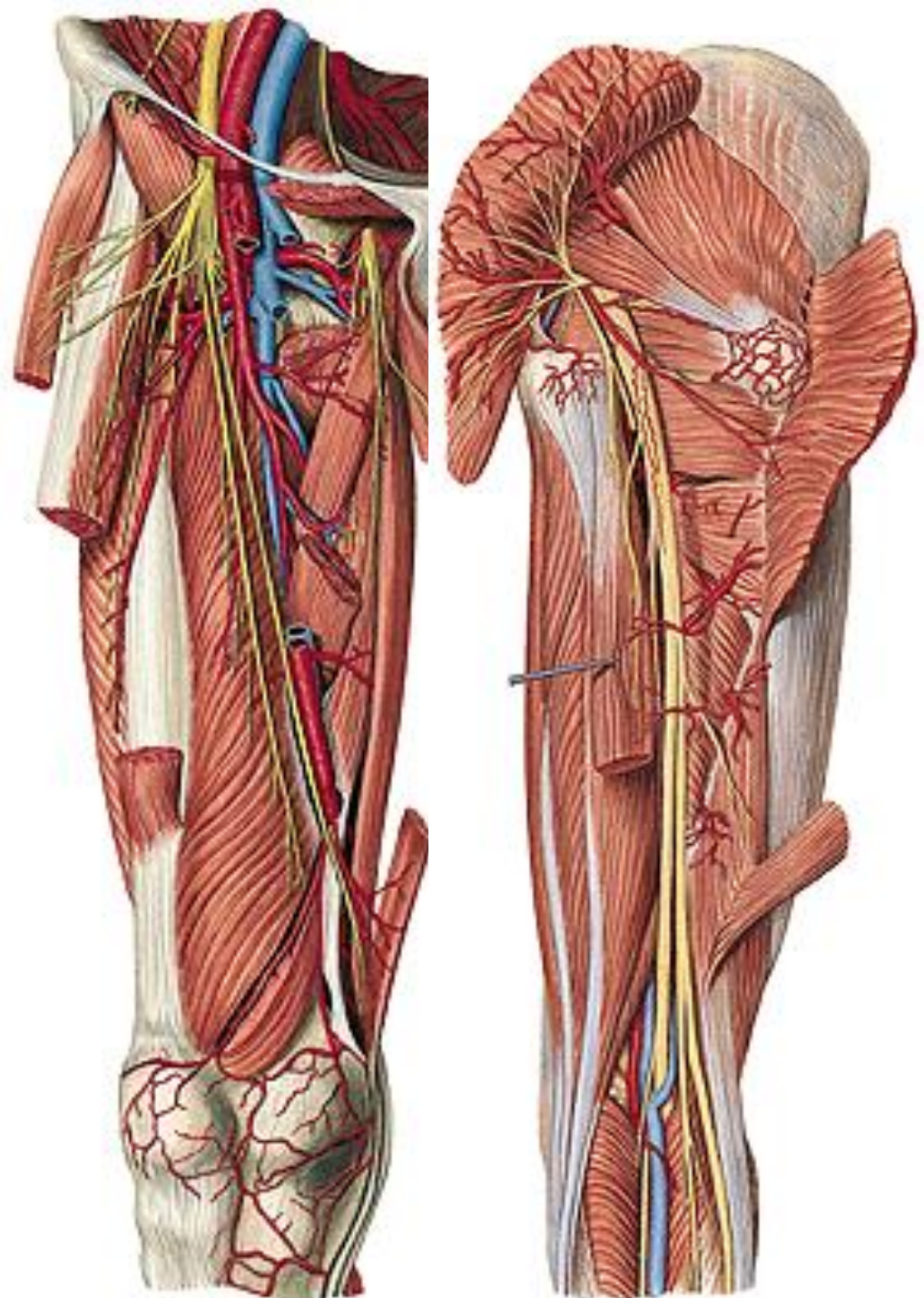
A. perforans prima

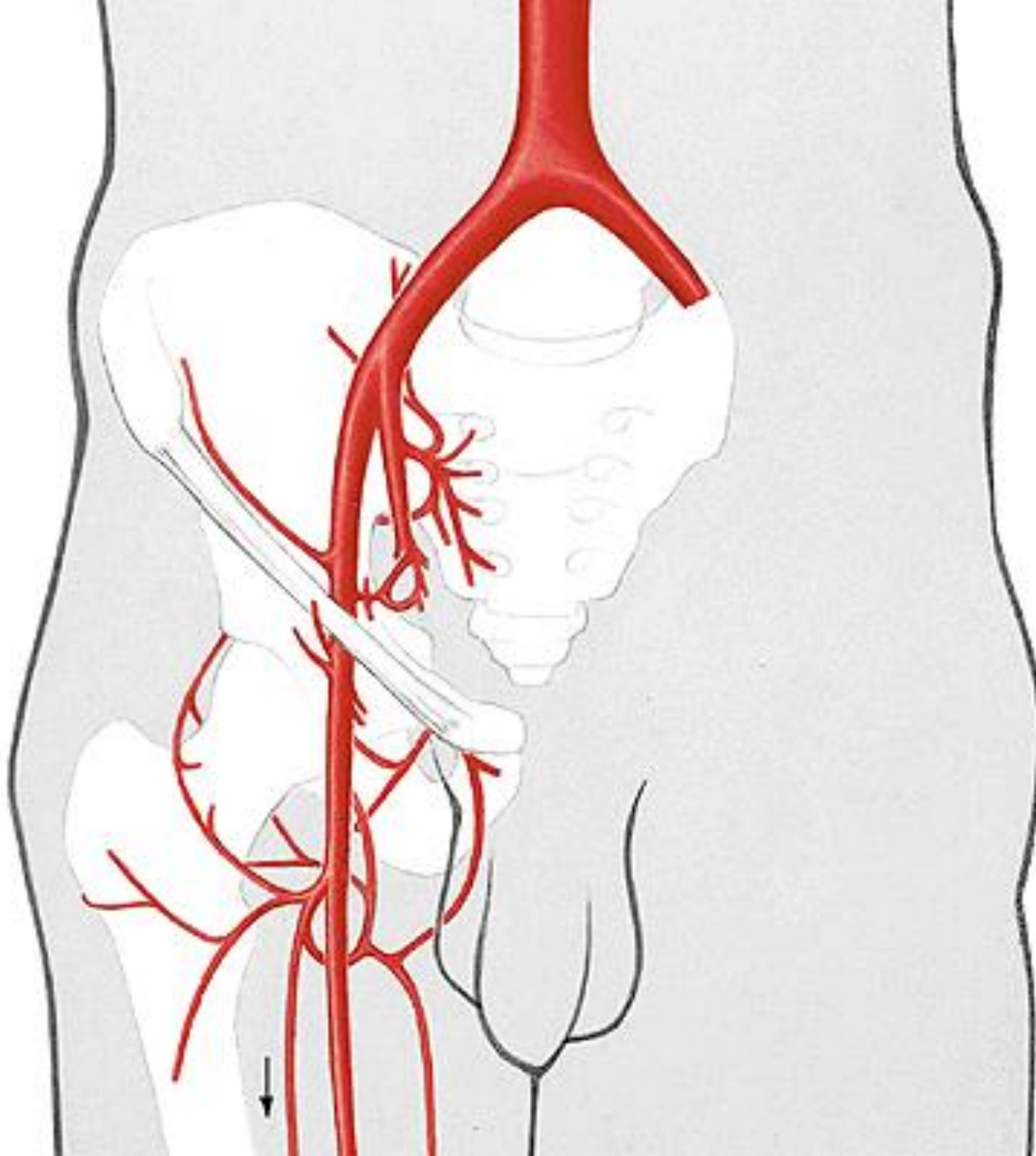
- a. nutricia femoris sup.

A. perforans secunda

A. perforans tertia

- a. nutricia femoris inf.





A. PROFUNDA FEMORIS

A. circumflexa femoris medialis

- r. spf.
- r. prof.

A. circumflexa femoris lat.

- r. ascendens
- r. descendens

A. perforans prima

- a. nutricia femoris sup.

A. perforans secunda

A. perforans tertia

- a. nutricia femoris inf.

A. POPLITEA

Aa. surales

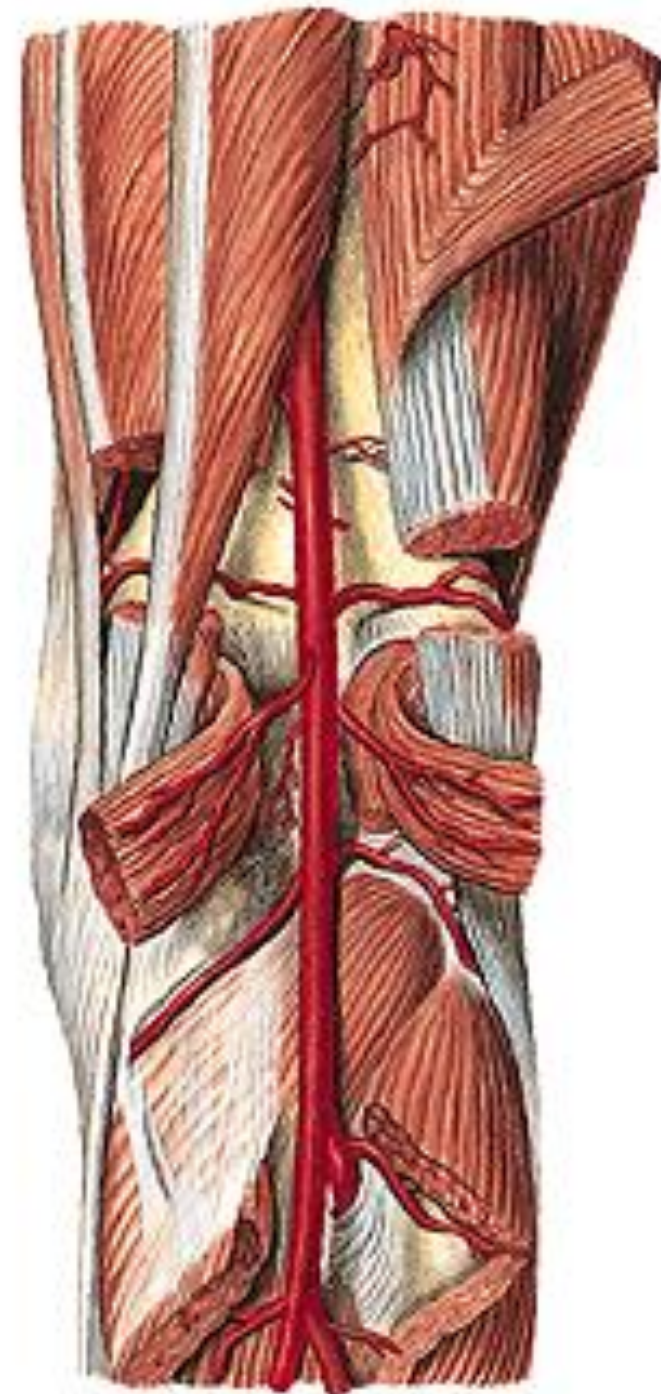
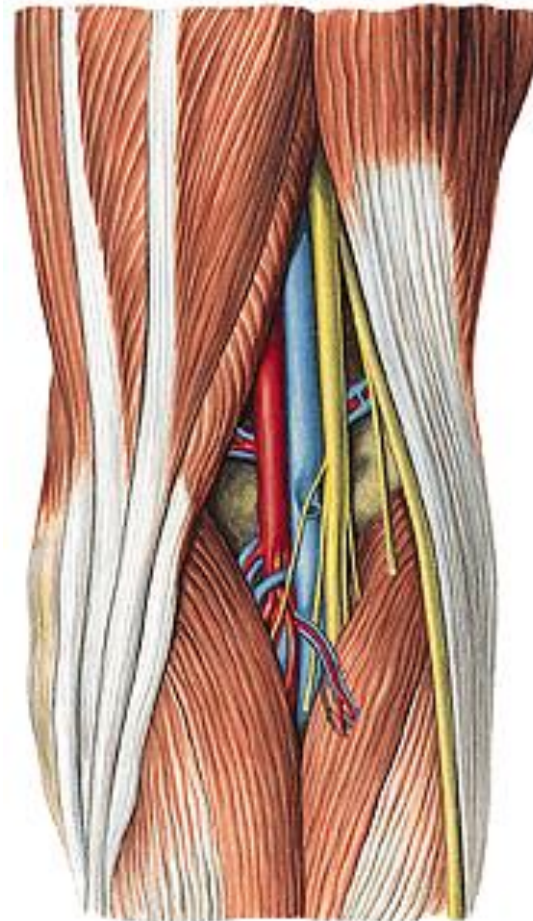
A. sup. med. et lat. genus

A. media genus

A. inf. med. et lat. genus

A. tibialis ant.

A. tibialis post.



Rete articulare genus



A. TIBIALIS ANT.

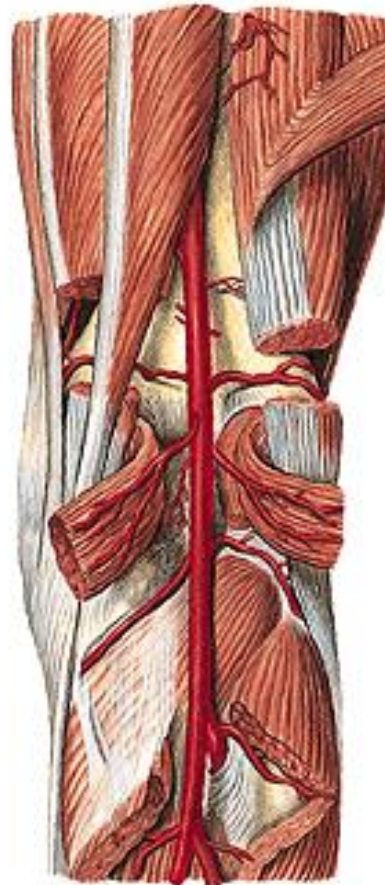
A. recurrens tibialis post.

A. recurrens tibialis ant.

Rr. musculares

A. malleolaris ant. med. et lat.

A. dorsalis pedis



A. DORSALIS PEDIS

A. tarsales med.

A. tarsalis lat.

A. arcuata

- 3 aa. metatarsales dorsales

- 2 aa. digitales dorsales

- a. digitalis dorsalis V.

A. metatarsalis dorsalis prima

- aa. digitales dorsales

A. plantaris prof.



A. TIBIALIS POST.

R. circumflexus fibularis

A. fibularis/peronea

Rr. musculares

A. nutricia tibiae

Rr. malleolares med.

Rr. calcanei

A. plantaris lat.

A. plantaris med.

A. FIBULARIS/PERONEA

Rr. musculares

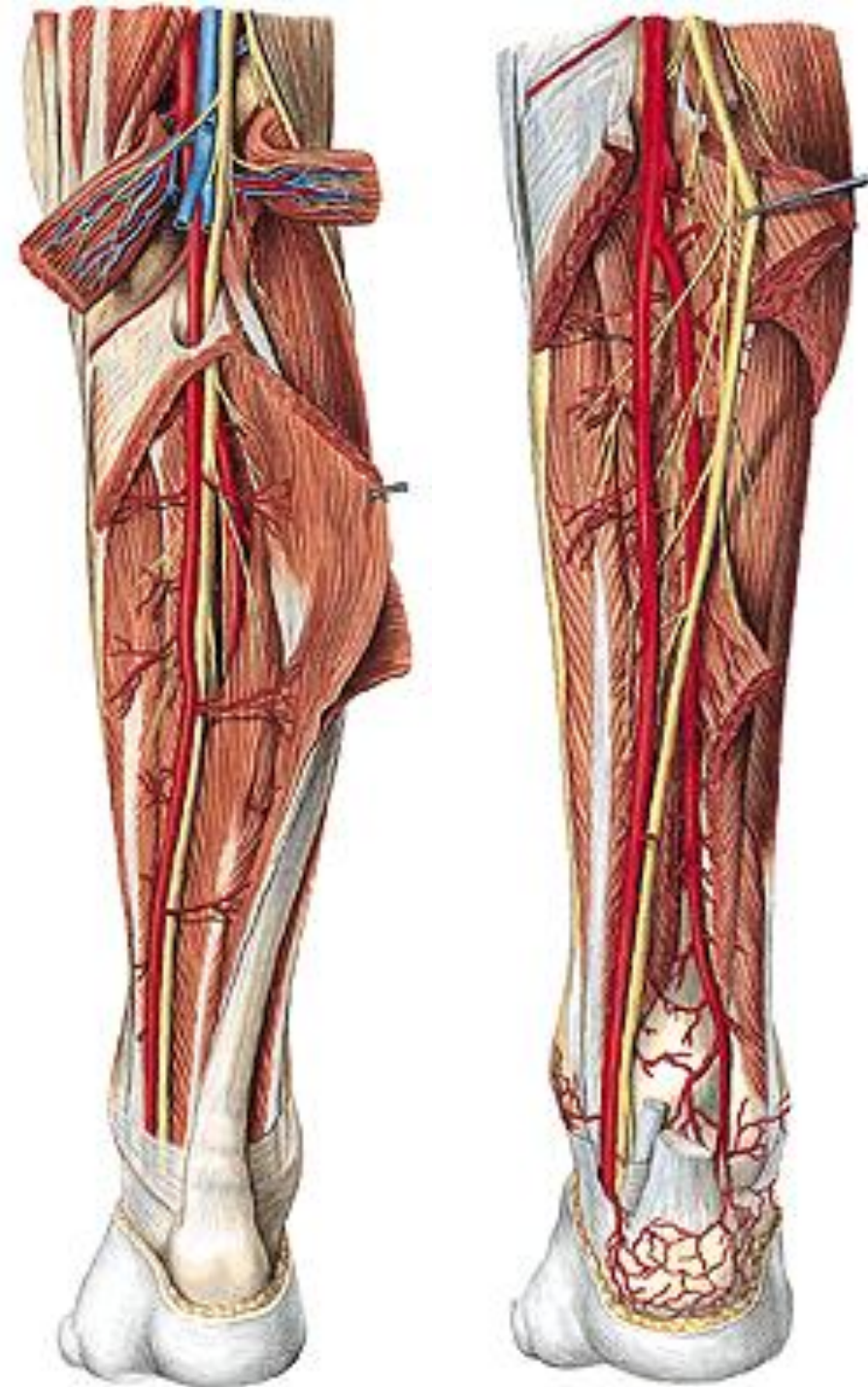
A. nutricia fibulae

R. communicans

R. perforans

Rr. malleolares lat.

Rr. calcanei

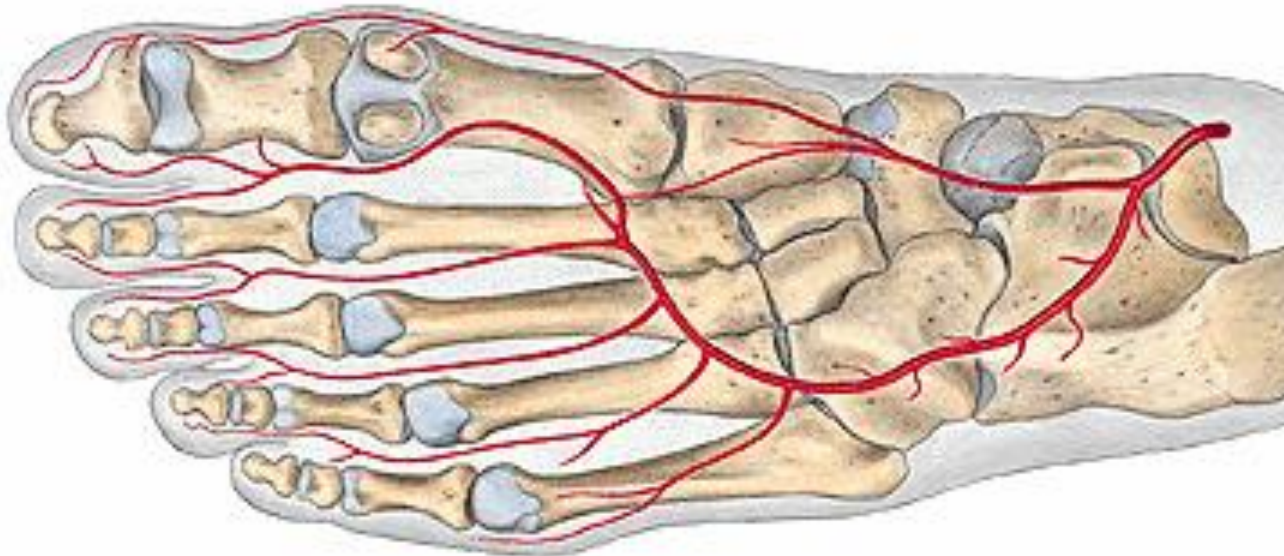


A. PLANTARIS LAT.

- arcus plantaris prof.
- 4 aa. metatarsales plantares
 - a. digitalis plantaris communis
 - 2 aa. digitales plantares propriae
- rr. perforantes

A. PLANTARIS MED.

- r. spf.
- r. prof.



- **Rete articulare genus**
- **Rete malleolare mediale**
- **Rete malleolare laterale**
- **Rete calcaneum**
- **Rete dorsale pedis**

Illustrations were copied from:

**Atlas der Anatomie des Menschen/Sobotta.
Putz,R., und Pabst,R. 20. Auflage. München:
Urban & Schwarzenberg, 1993)**

**Netter: Interactive Atlas of Human Anatomy.
Windows Version 2.0**

**Čihák R: Anatomie 2 (Splanchnologia). Avicenum,
zdravotnické nakladatelství, Praha, 1988.**