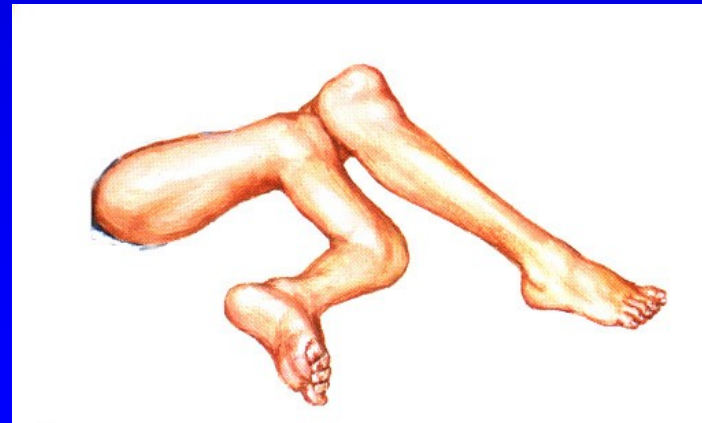


Axial deformities of lower limb

Rozkydal Z.

Causes

Congenital
Fractures
infections
Neurological diseases
Endocrine diseases
Metabolic diseases
Osteopathies



Basic items

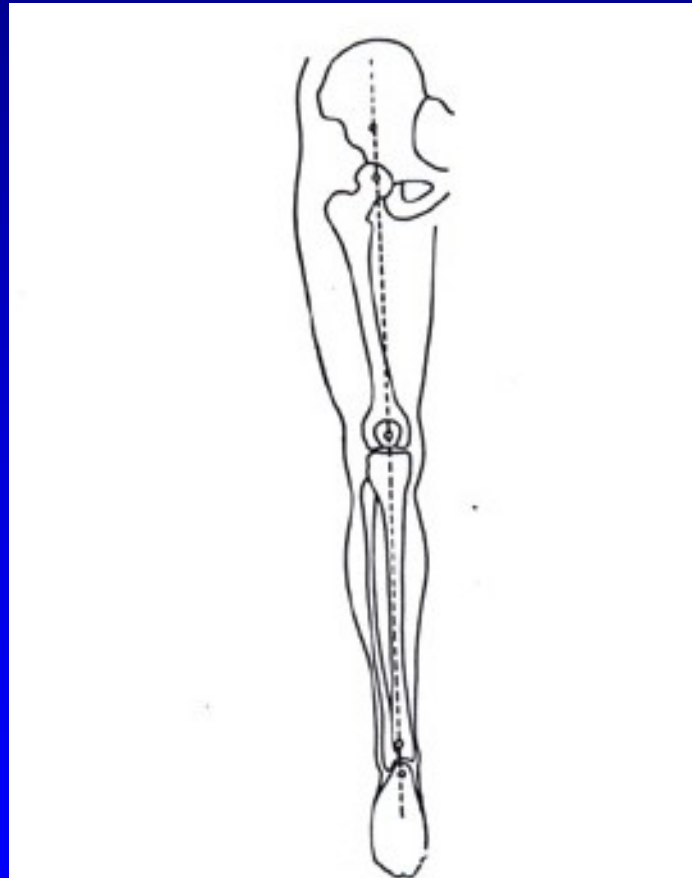
Valgus - distal part goes laterally

Varus - distal part goes medially

Recurvation - bowing dorsally

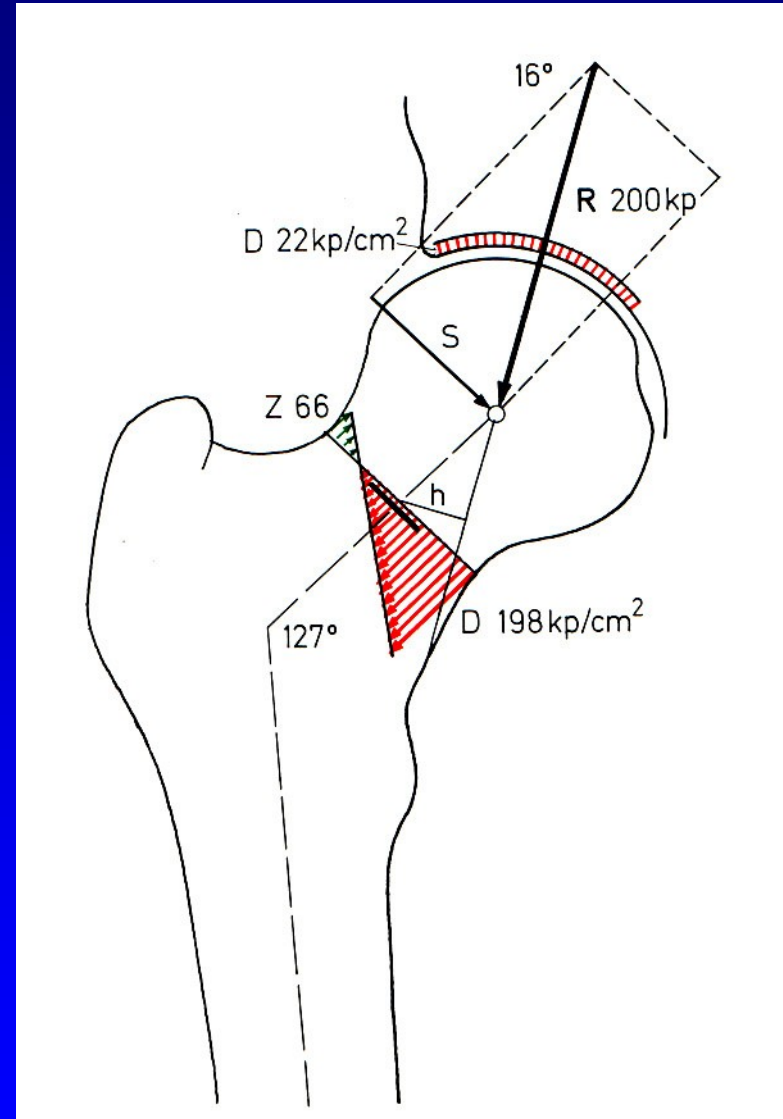
Antecurvation - bowing anteriorly

Mikulicz line

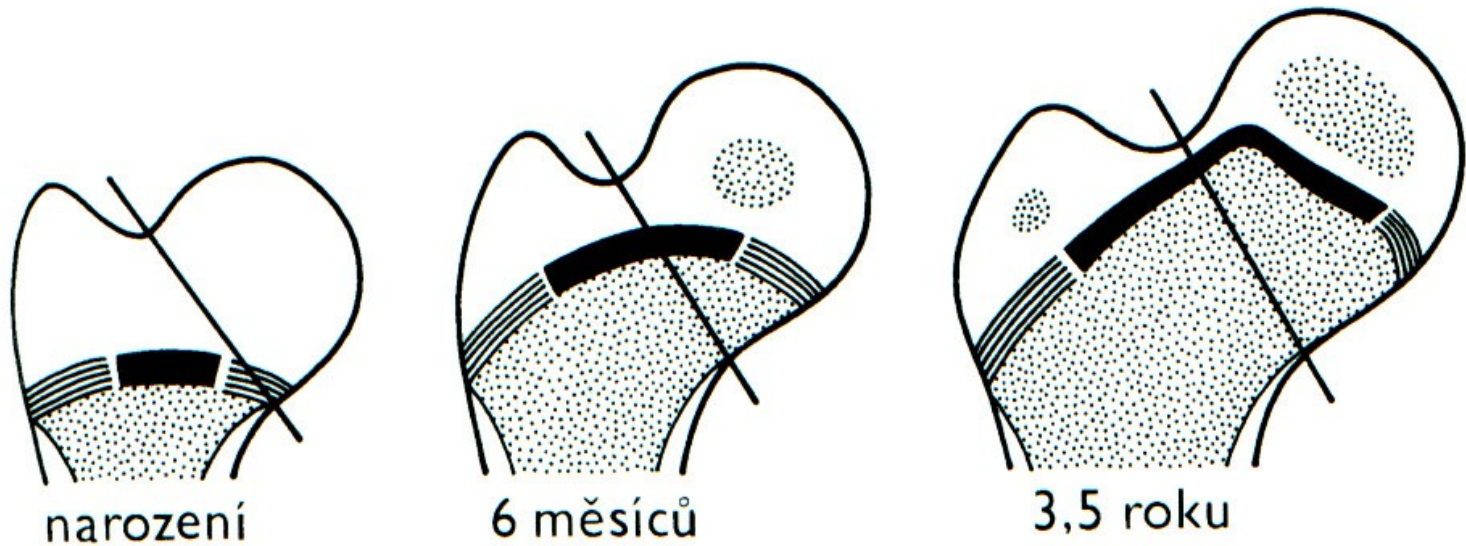


CCD angle

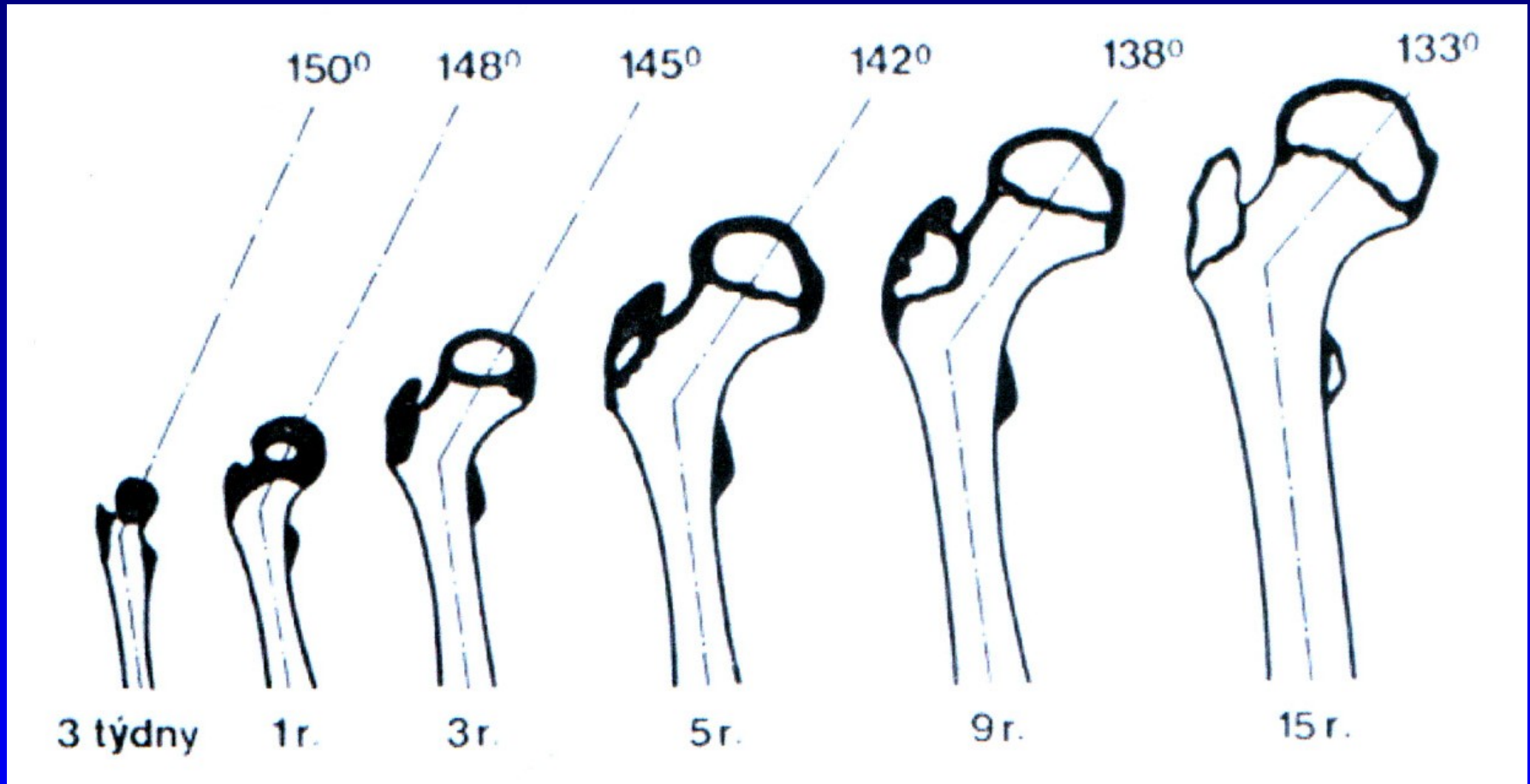
Normal 125 \pm 5



Chondroepiphysis of proximal femur



Changes of CCD angle



Change of anteversion of the femur: birth 40

puberty 10-15

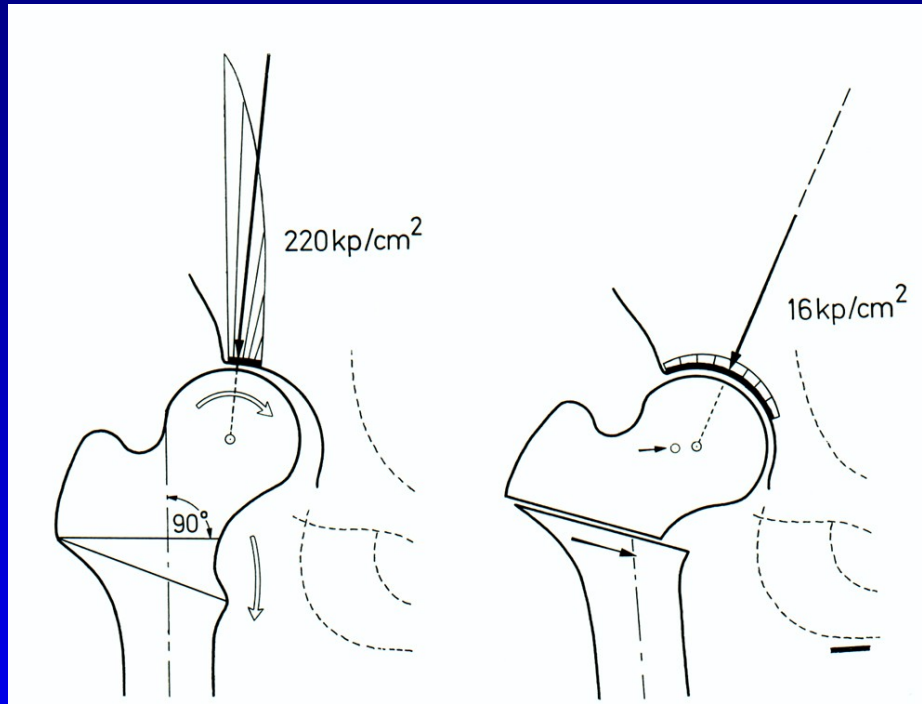
adult 11

Coxa valga

- Coxa valga
- Coxa valga subluxans
- Coxa valga anteverta
- Coxa valga in crebral palsy



Pauwels osteotomy



Varus osteotomy

Coxa vara

Coxa vara congenita

Coxa vara adolescentium

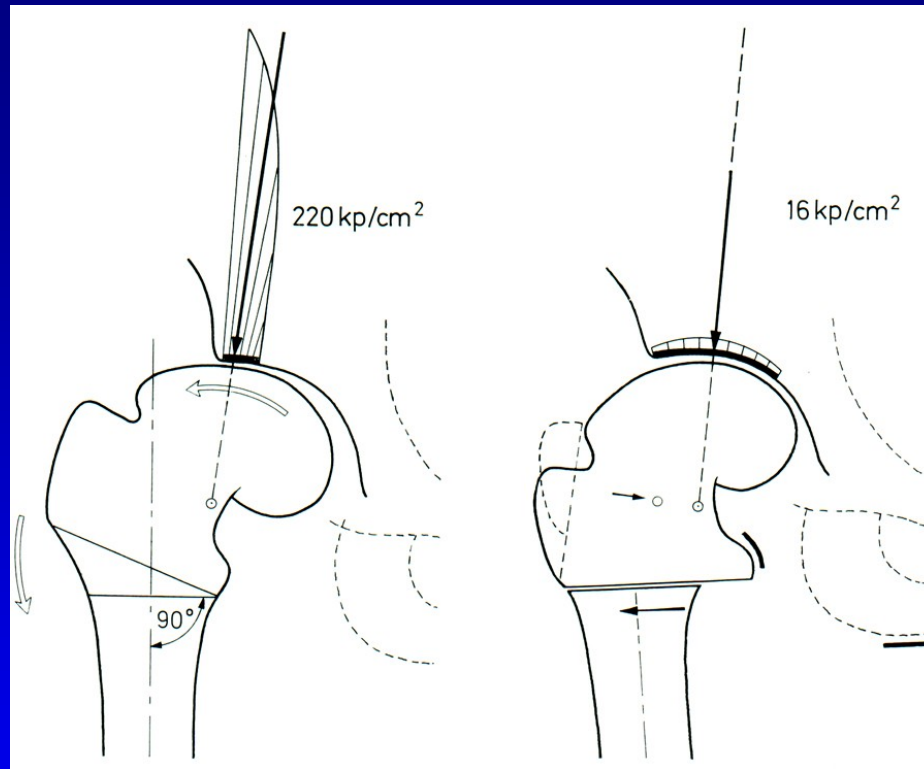
Coxa vara posttraumatica

Coxa vara after infection

Coxa vara in osteopathy

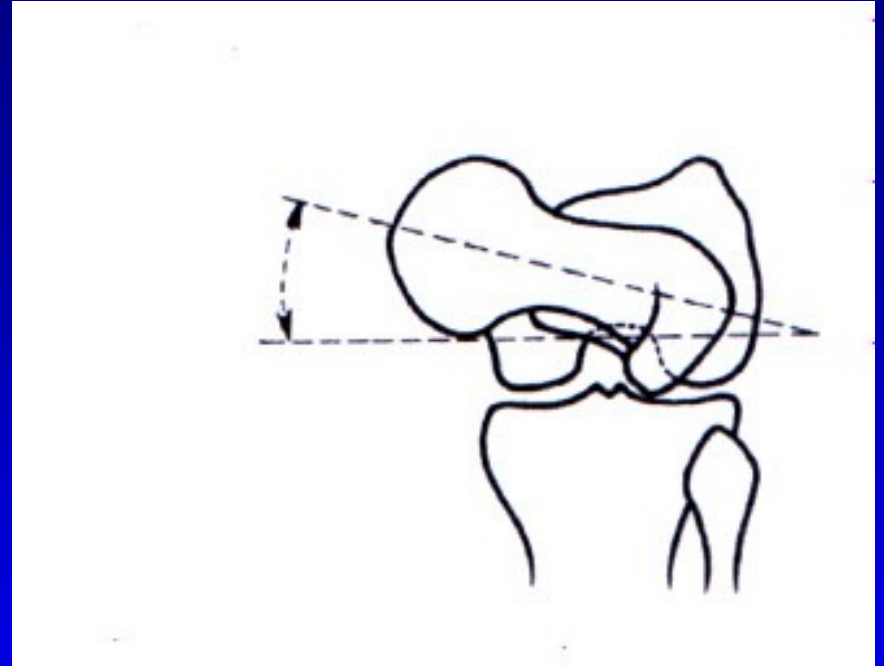
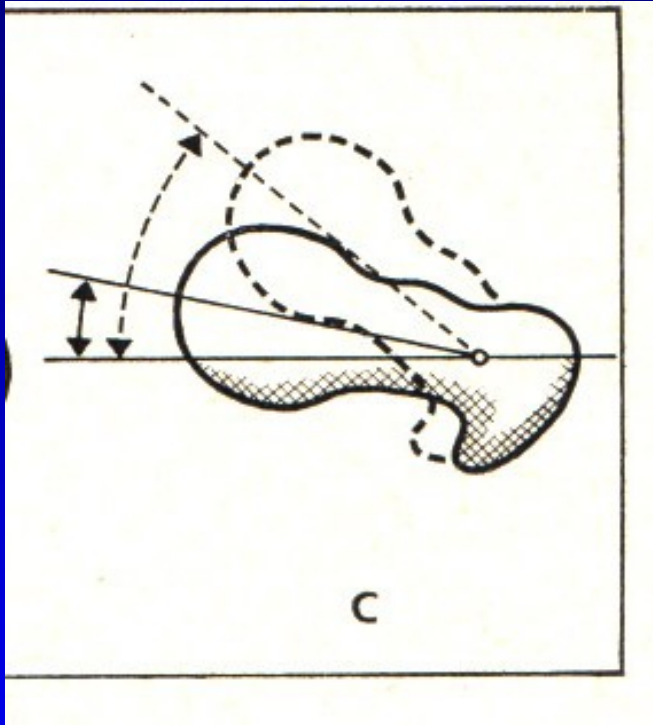


Pauwels osteotomy



Valgus osteotomy

Anteversión



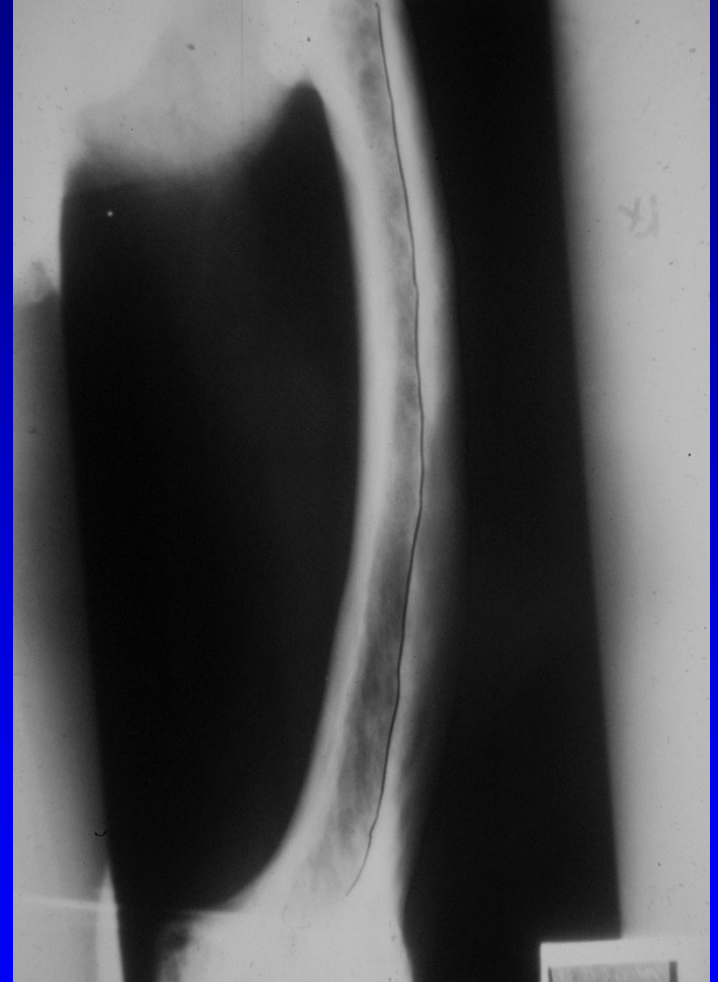
Deformity in femur

Varus

Valgus

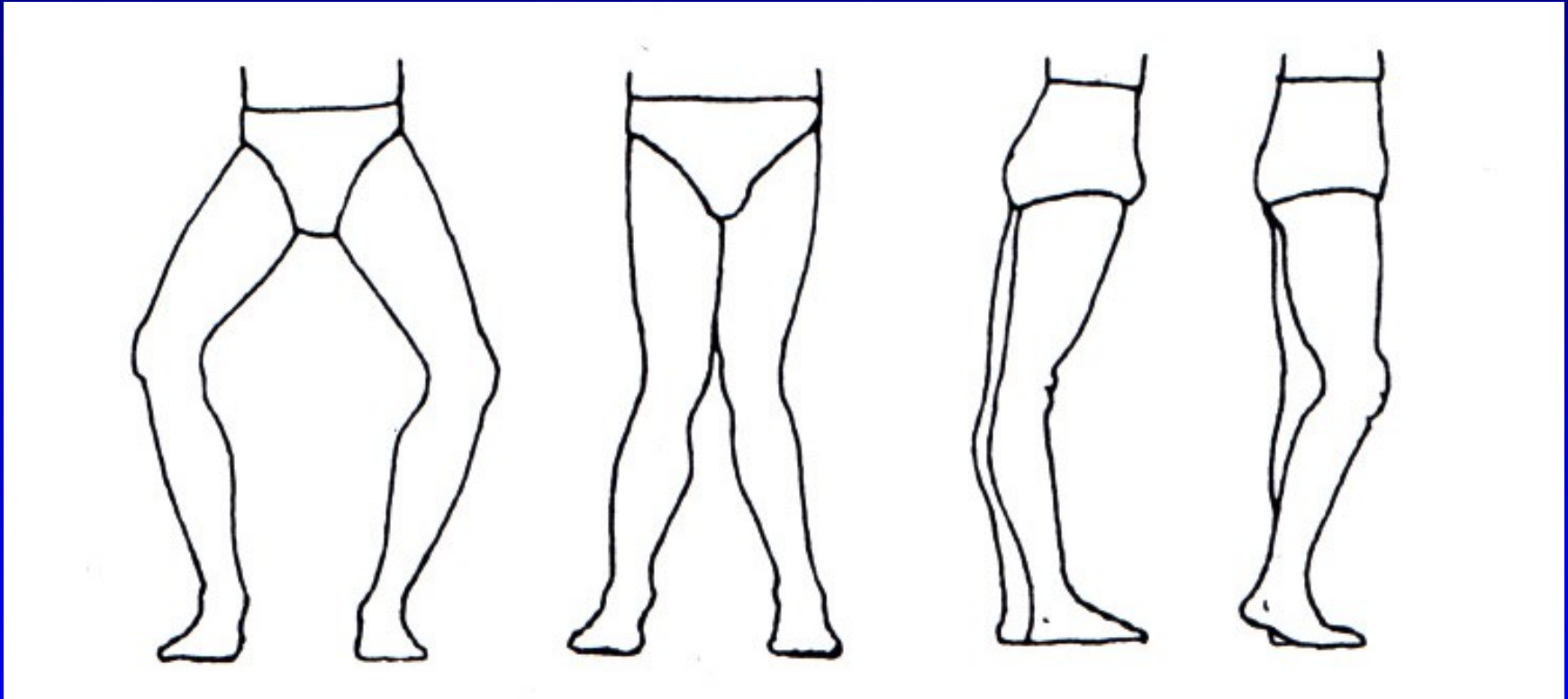
Antecurvation

Recurvation



Paget disease

The knee



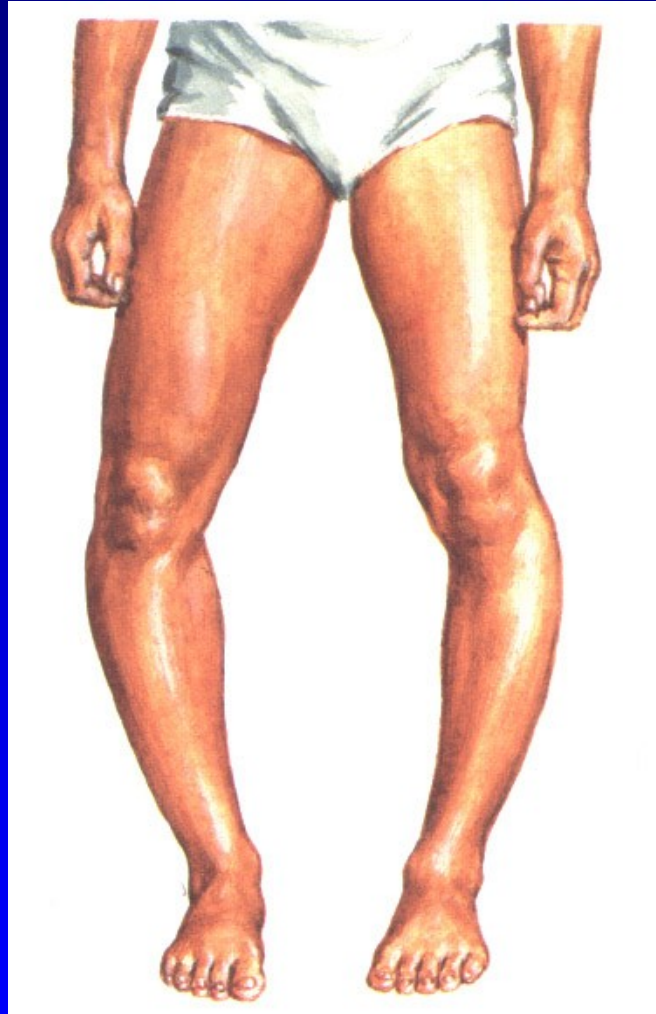
Genu varum

genu valgum

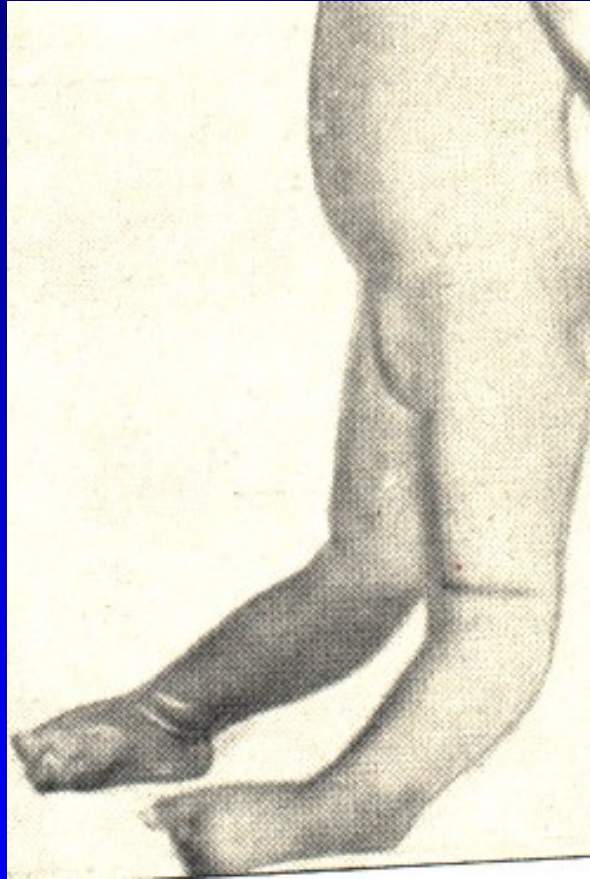
genu recurvatum

genu flectum

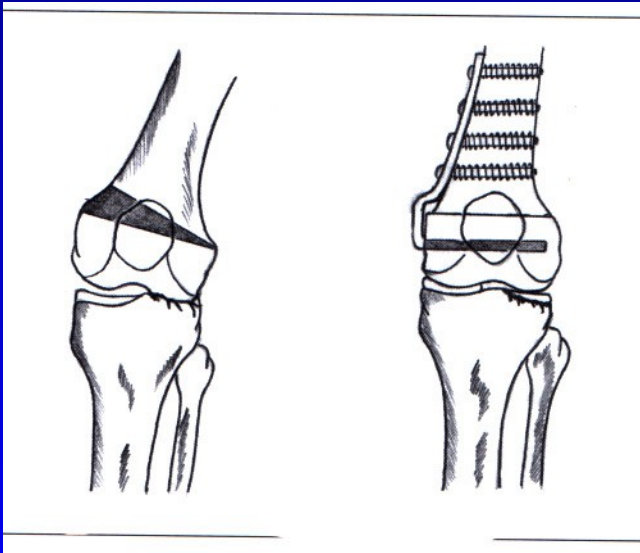
Tibia vara Blount



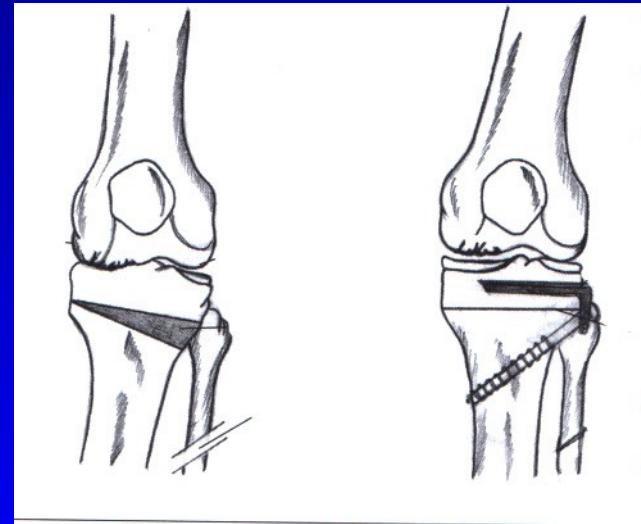
Genu recurvatum congenitum



Osteoarthritis of the knee

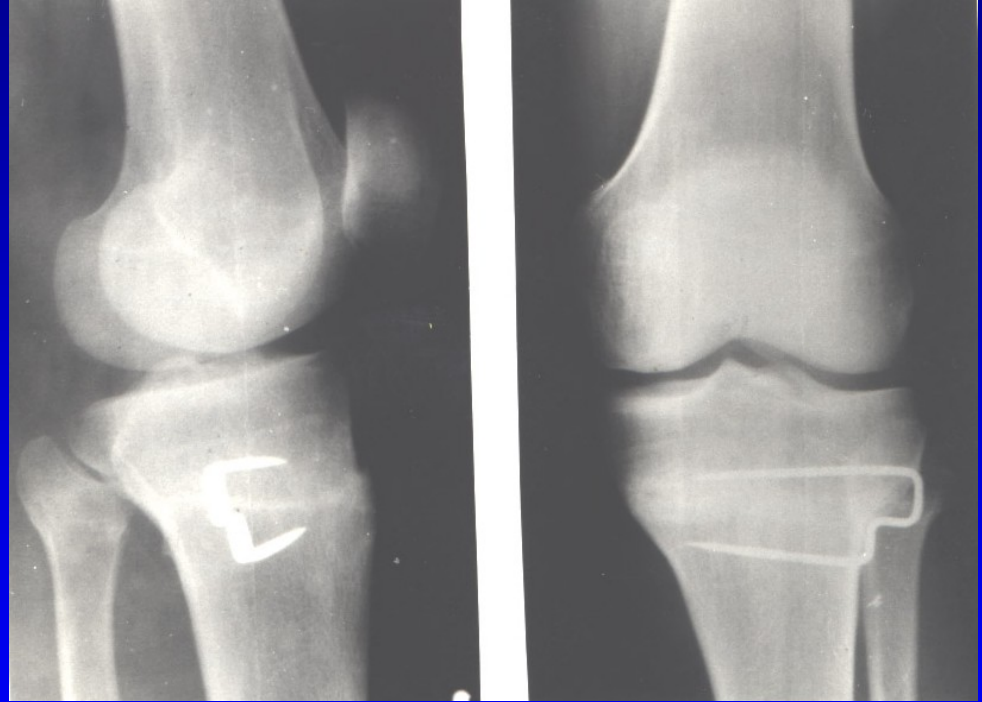
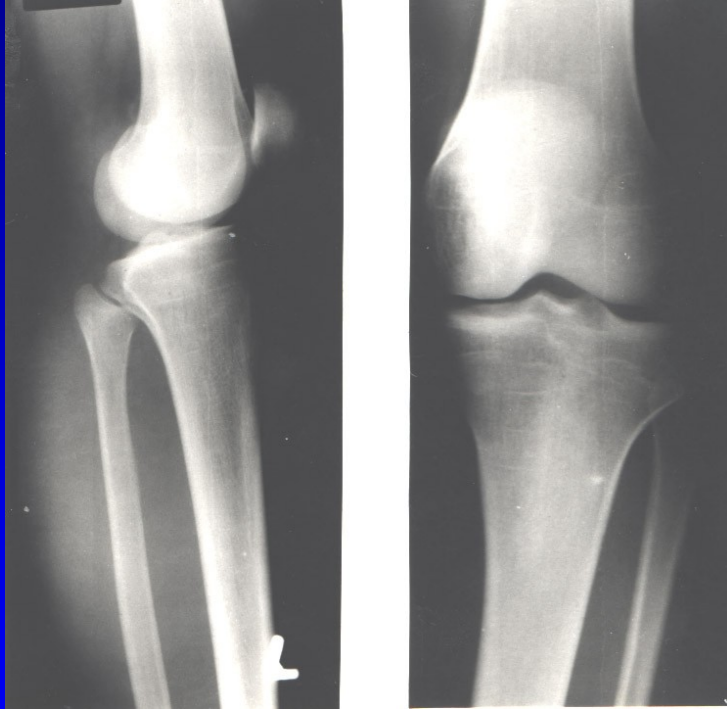


Obr. Genu valgum
Varus osteotomy



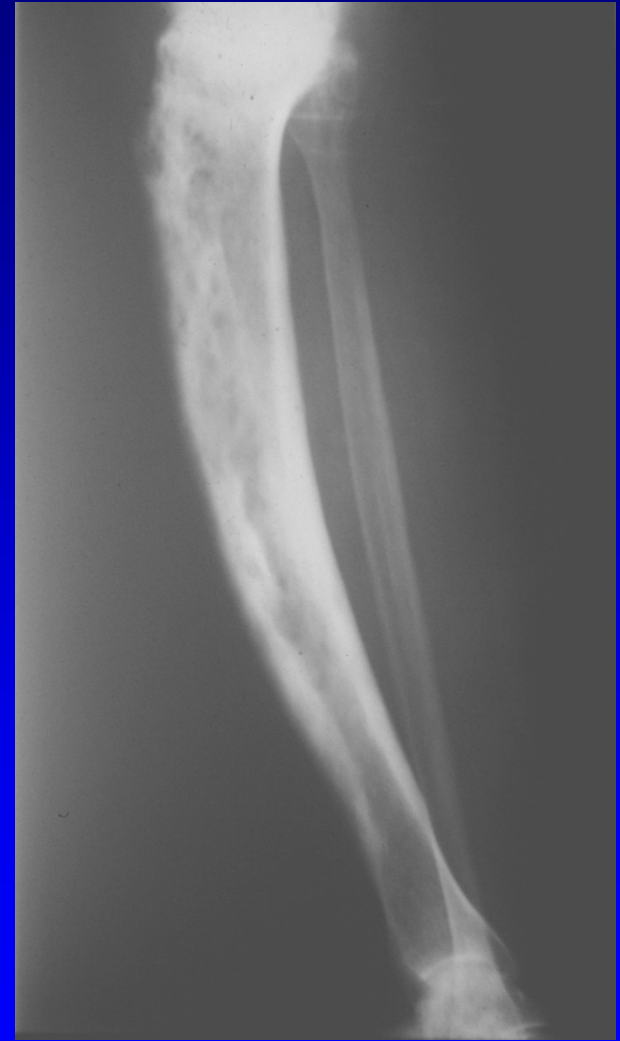
Obr. Genu varum
Valgus osteotomy

Coventry valgus osteotomy



Deformity of the leg

- Crus varum
- Crus valgum
- Crus antecurvatum
- Crus recurvatum
- External rotation deformity



Paget disease