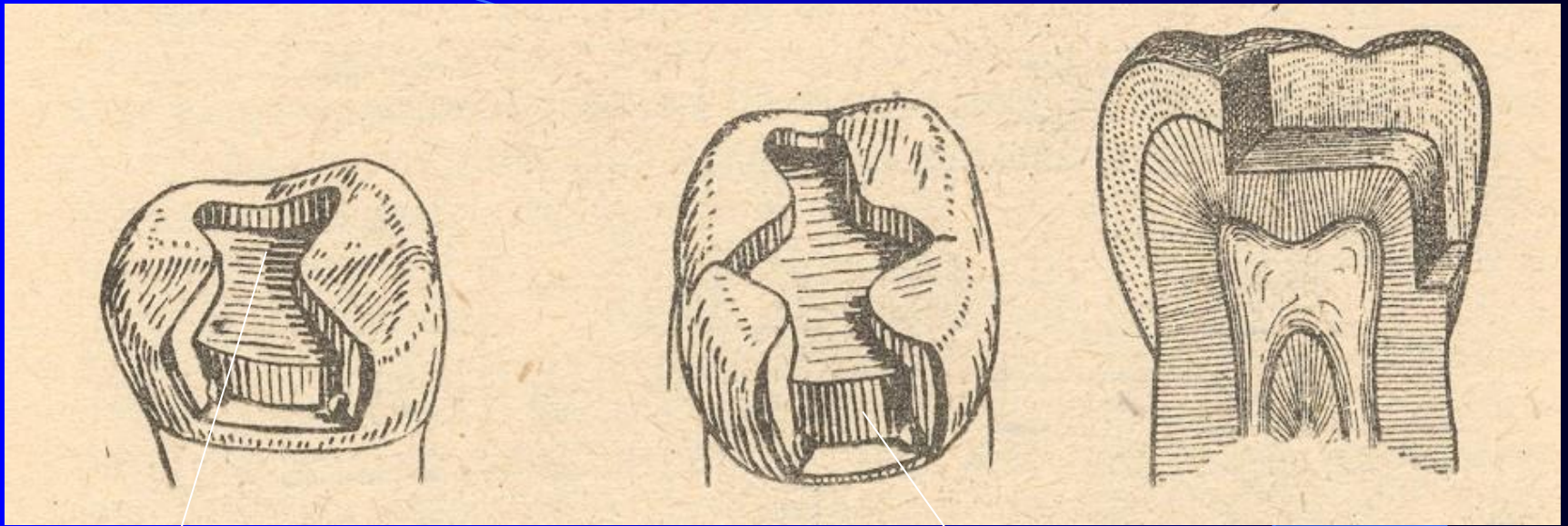


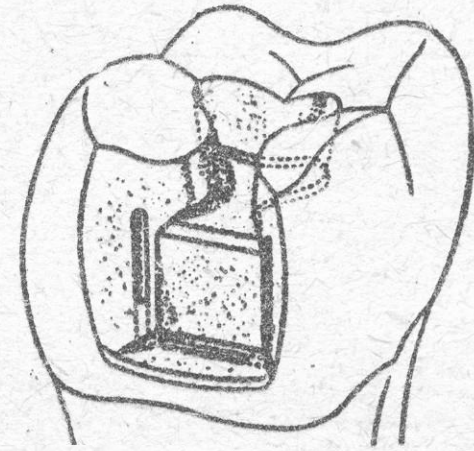
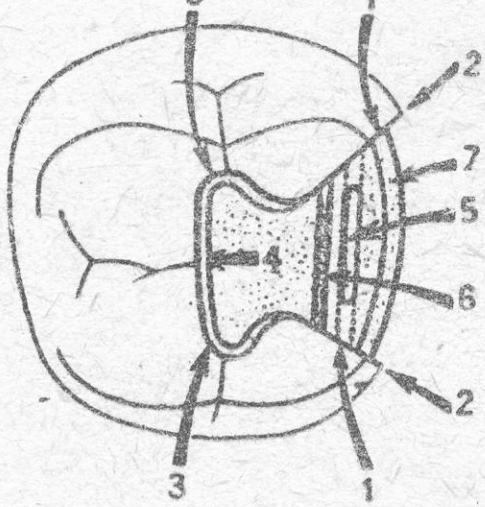
Class II. – modifications for amalgam

- Compound cavity
- Slot
- Large defects - restoration with the replacement of cusps

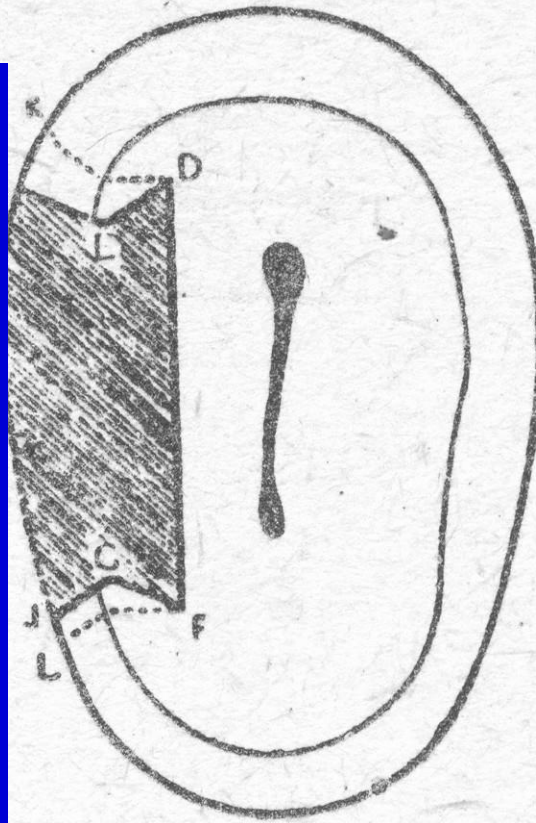


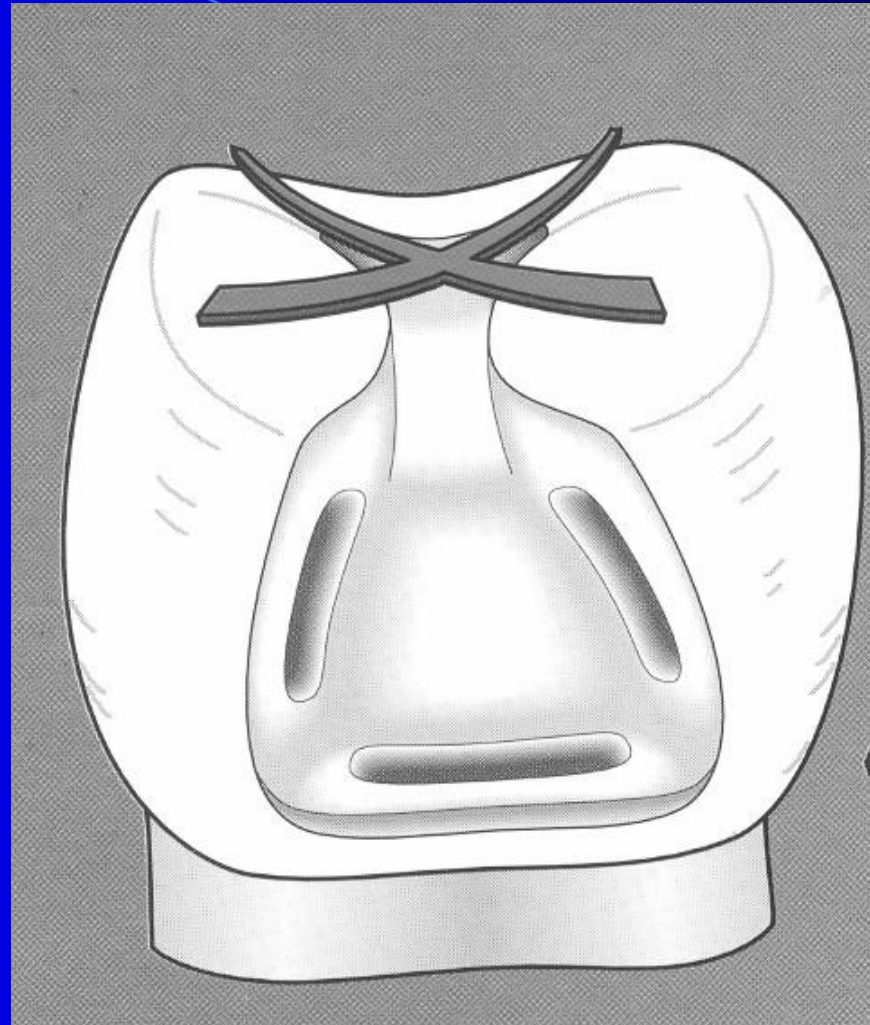
Occlusal cavity

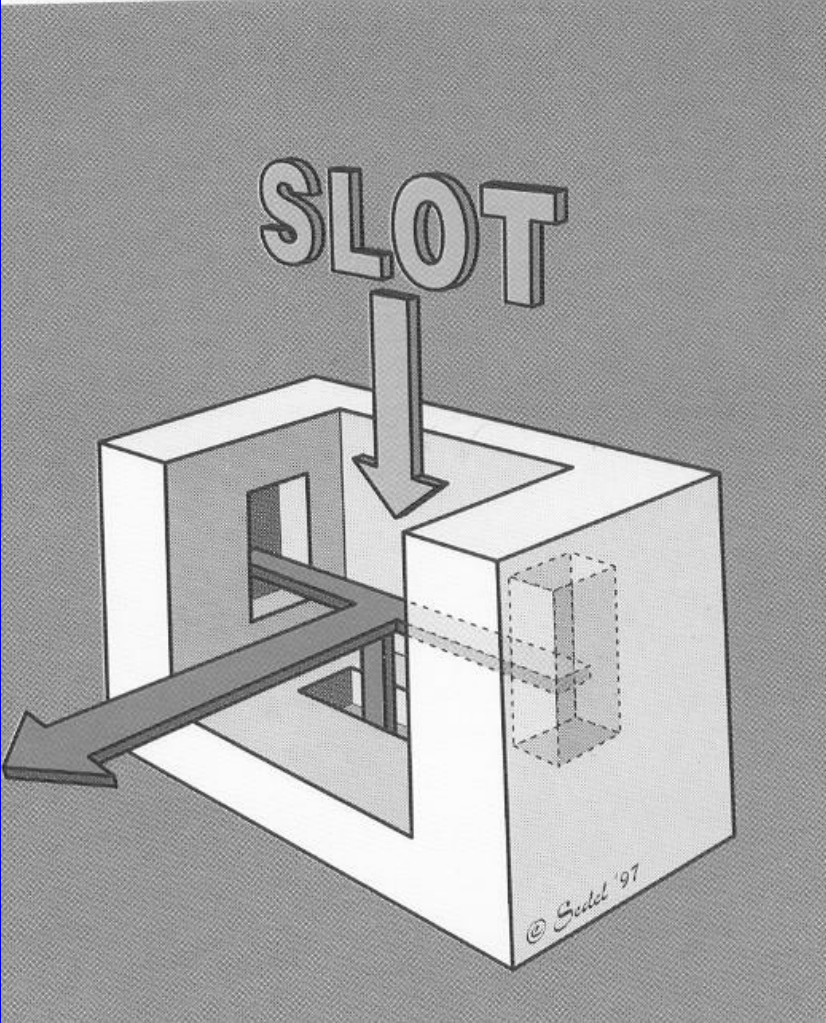
Proximal cavity



Obv. 114. W. 1







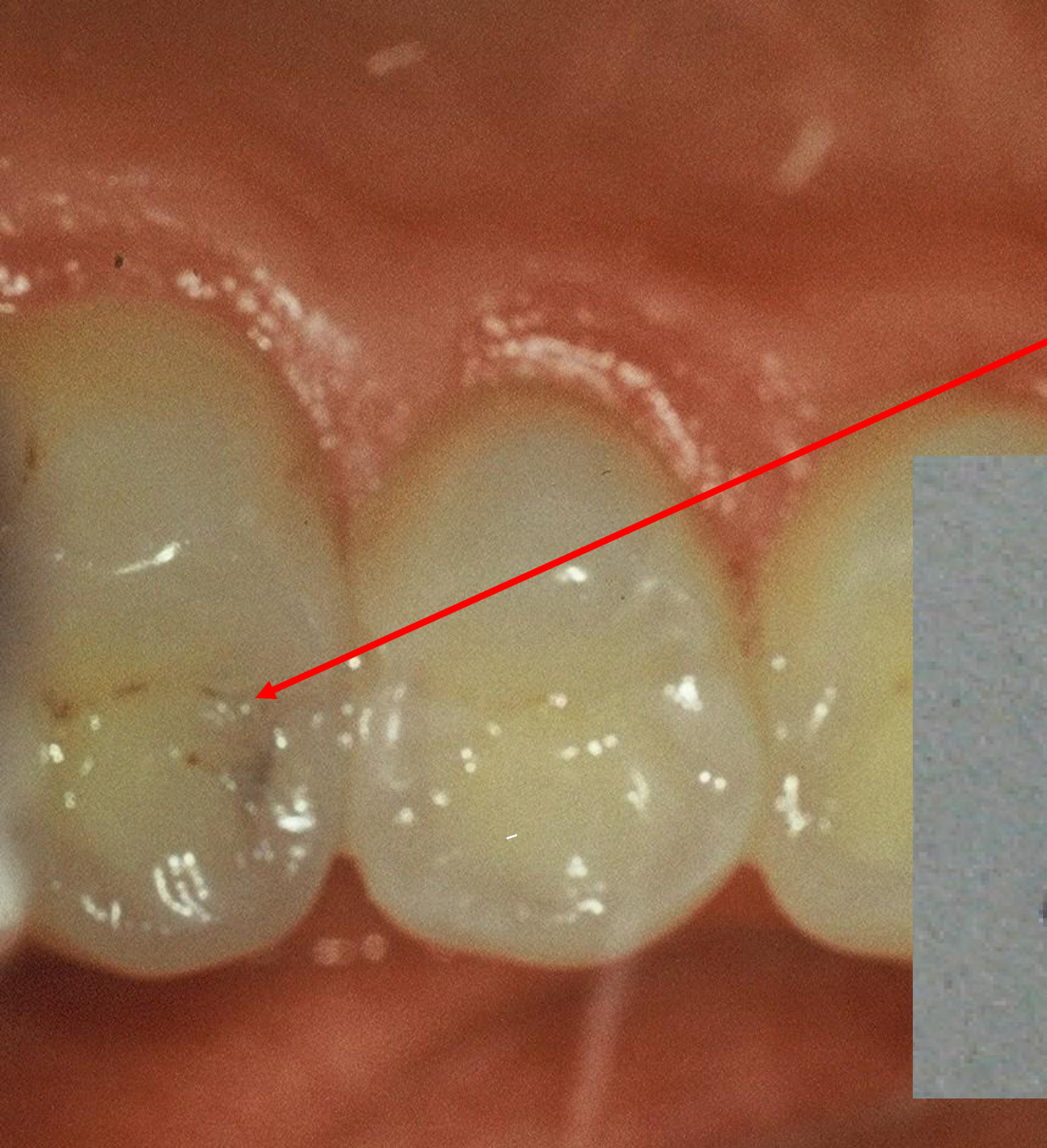
Slot is a cavity that is open on occlusal surface only in proximal ridge.

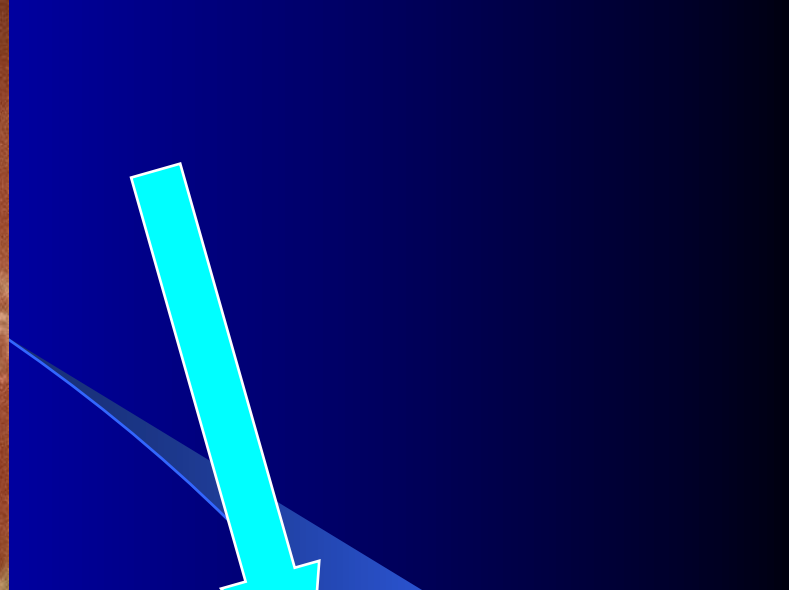


Slot for amalgam

- Access to the caries lesion
 - go through the enamel wall
 - breaking out of the enamel lamella
 - excavation of carious dentin

Pre op





Access to the cavity

lroubal@med.muni.cz



Slot for amalgam

- Autoretention
 - Grooves
 - Divergency towards gingiva
 - Convergency and divergency of axial walls in horizontal plane
- Rule of the gingival wall

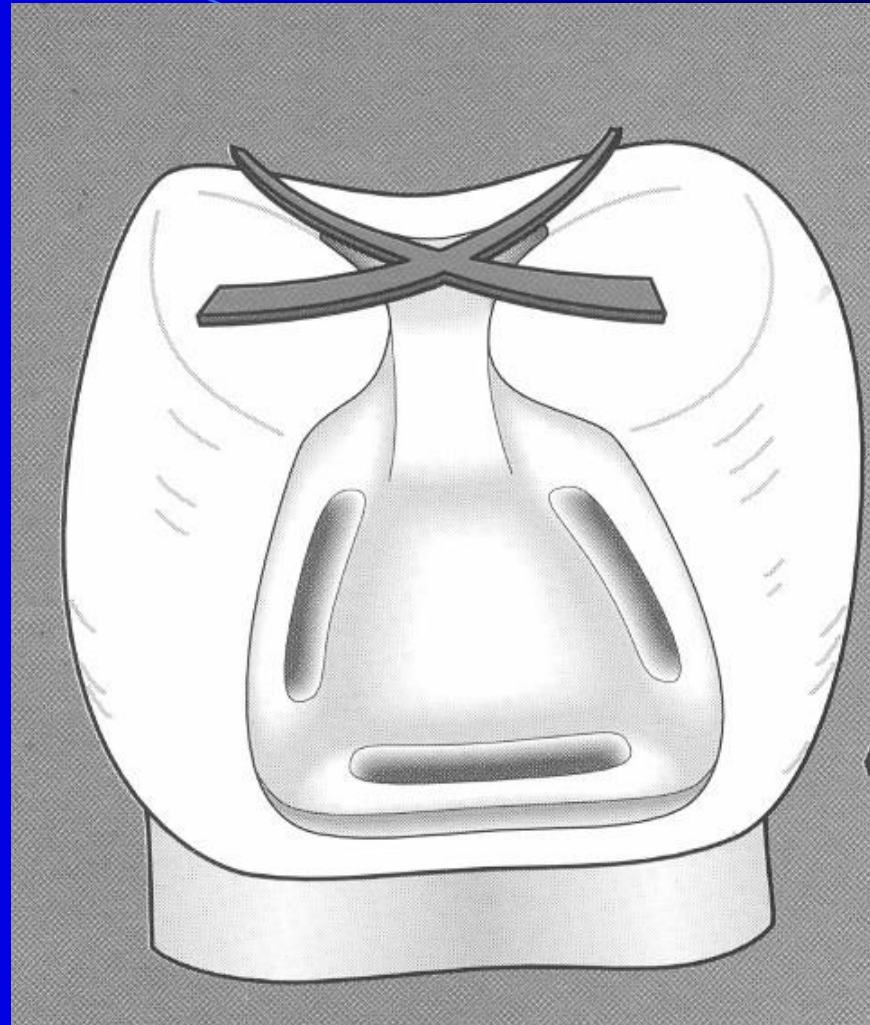
Slot for amalgam

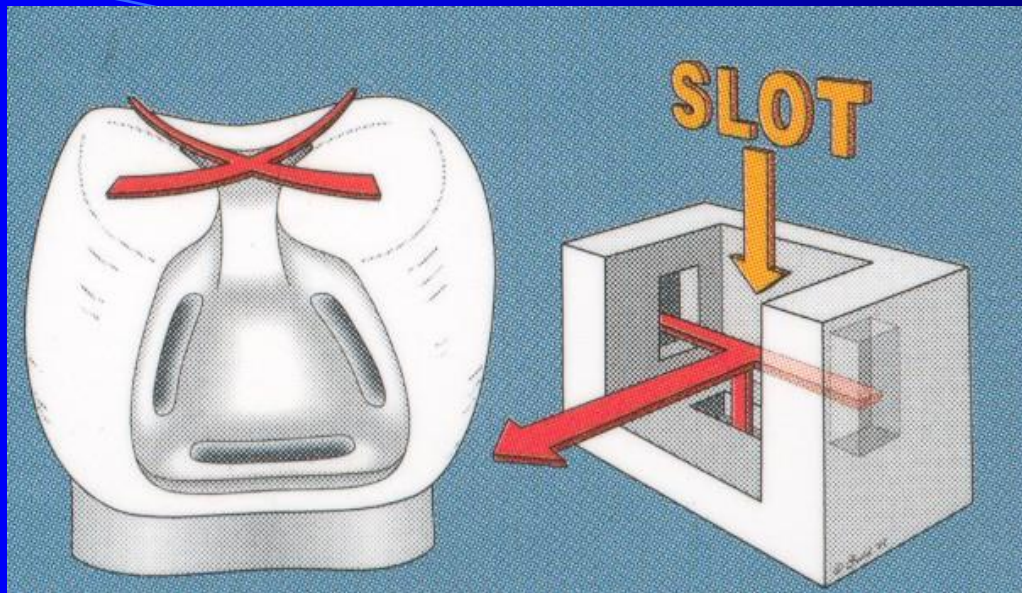
- Rule of the gingival wall

90° angle towards the pulpal wall

outer line beveled if in enamel

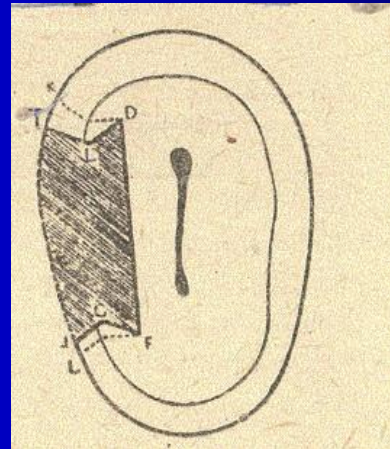
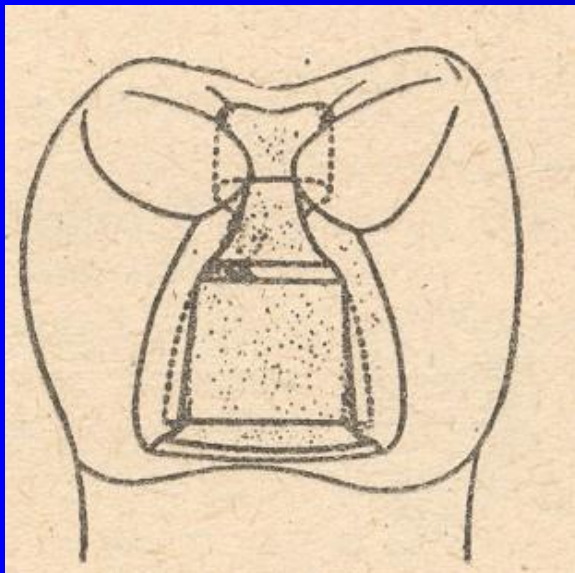
horizontal groove





Sedelmayer

*Sedelmayer J. Amalgám – zapomenuté řemeslo.
Brno, 2000.*



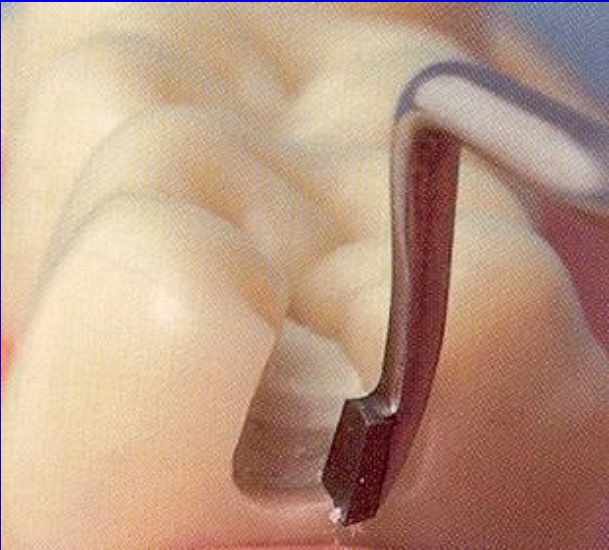
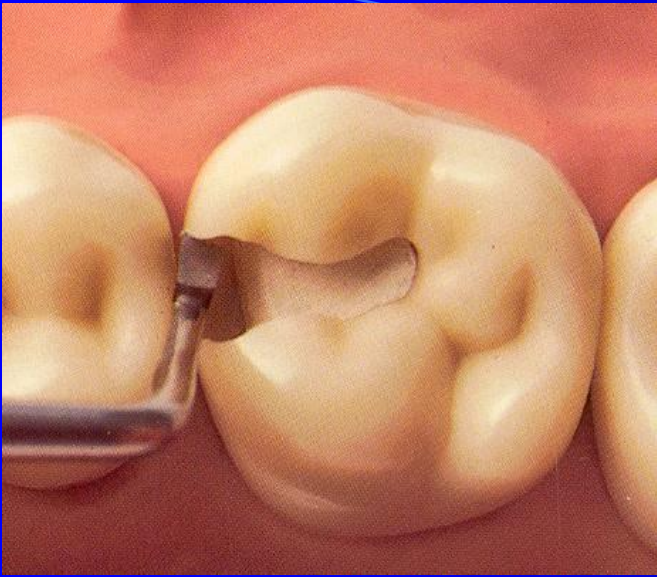
Bažant V.

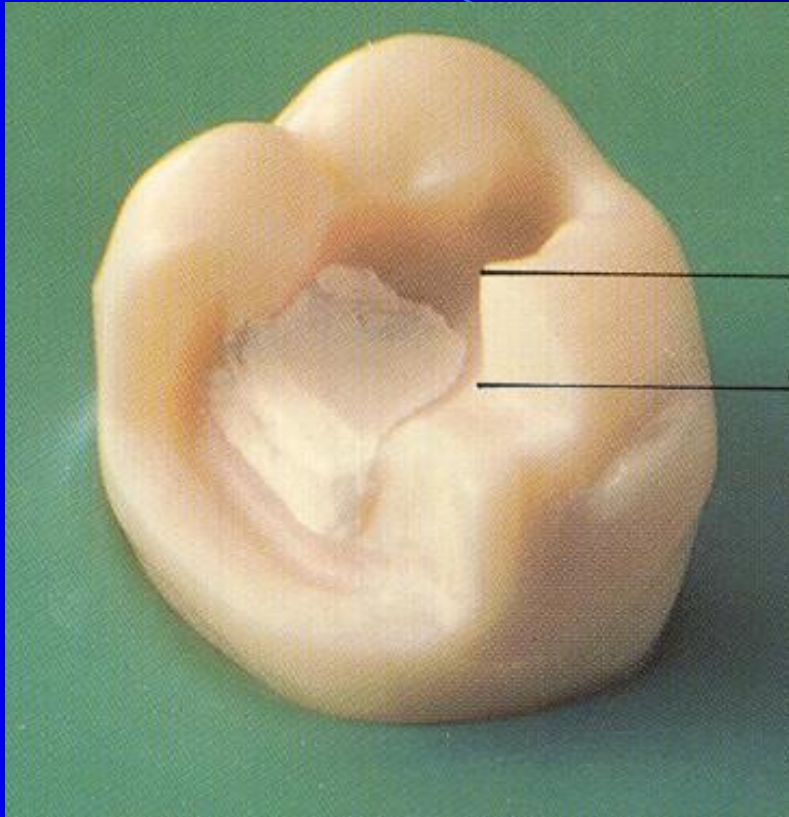
Konservační zubní lékařství, SPN Praha, 1962.

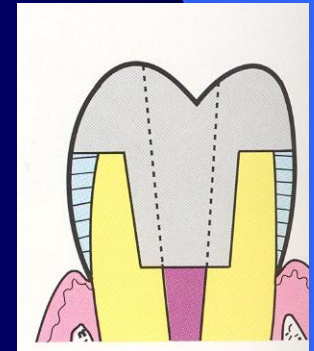
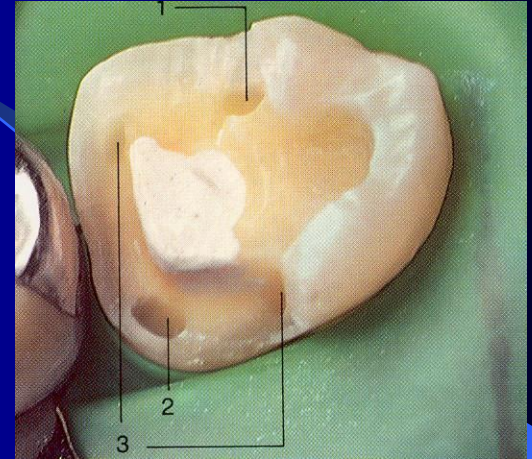
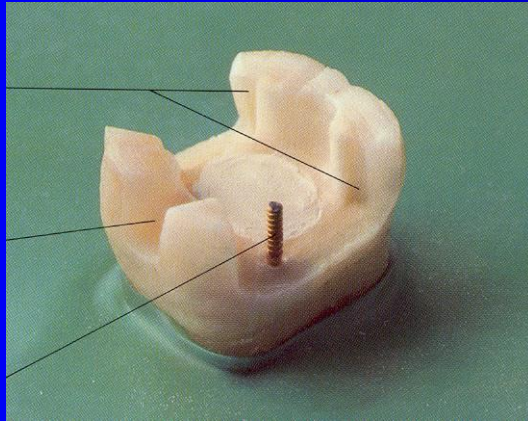
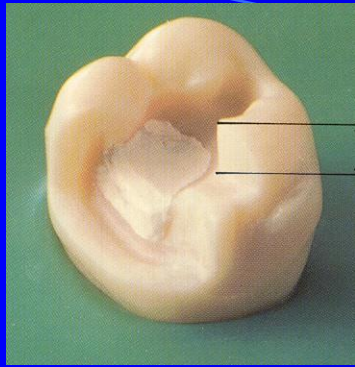
Slot cavity

- Limited on proximal ridge
- Axial walls are divergent towards gingiva
- The proximal box has a typical picture of fish tail
- There are grooves:
 - One horizontal in gingival wall
 - Two vertical in axial walls









Rules

- Clear and sharp outlines

- Autoretention
 - Cavities - pins
 - Grooves

Large amalgam restoration - overlays



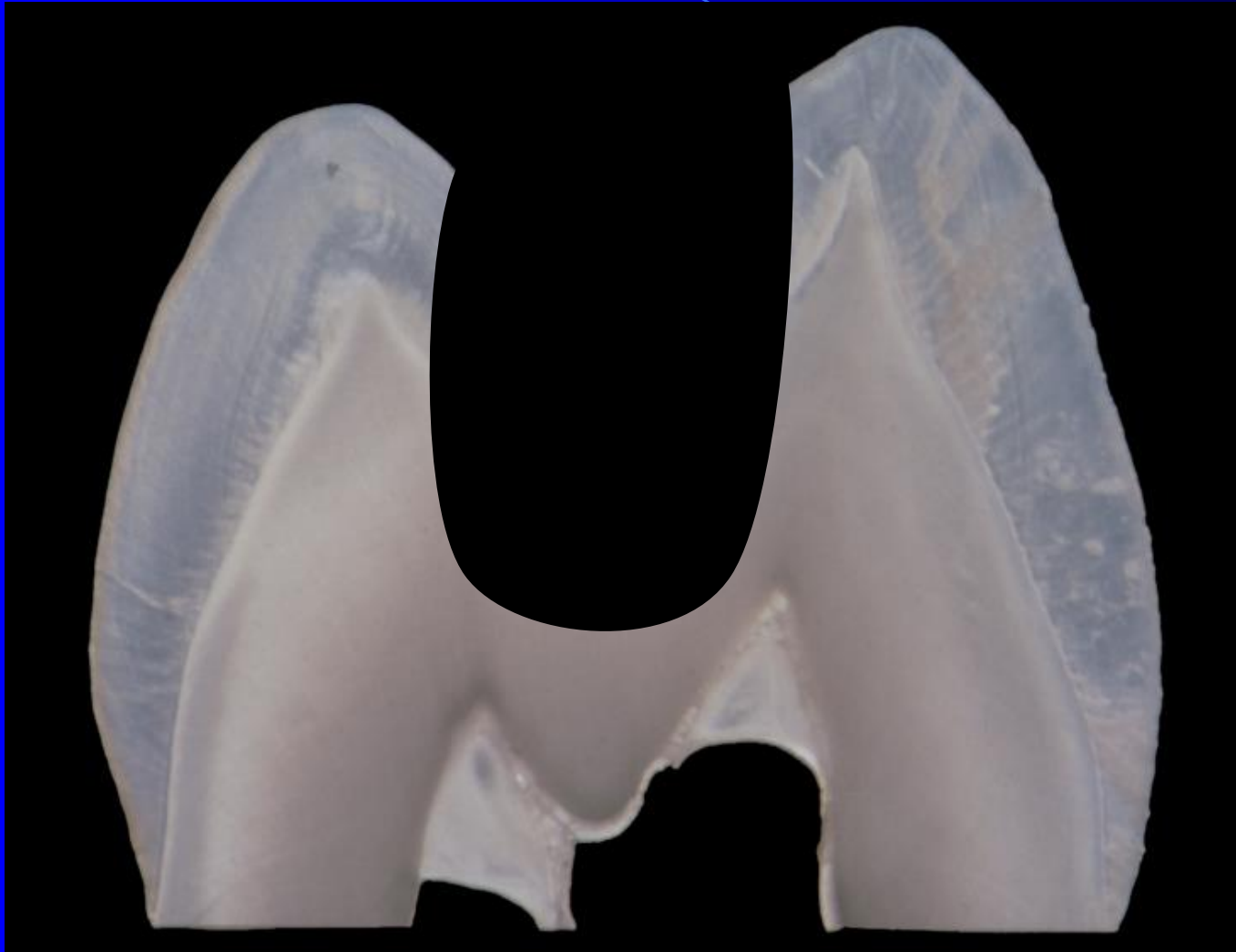
Preparation for adhesive materials

- No extension for prevention (adhesion)
- No grooves
- No undercuts
- Rounded box
- Acid etching
- Priming bonding
- Placement of the material using matrices.

Cavity for amalgam



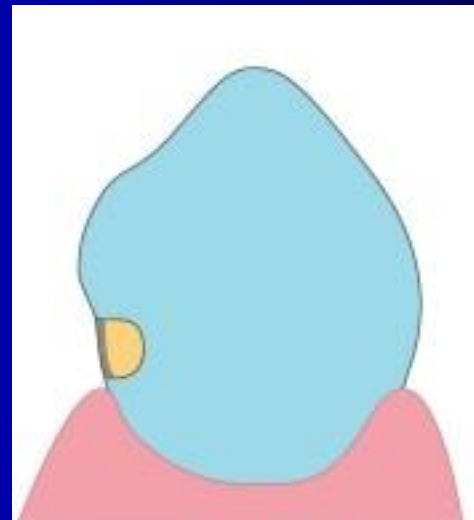
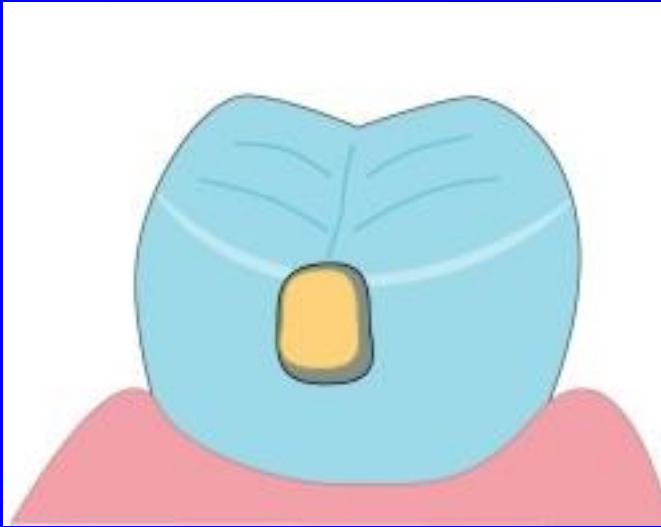
Cavity for composite

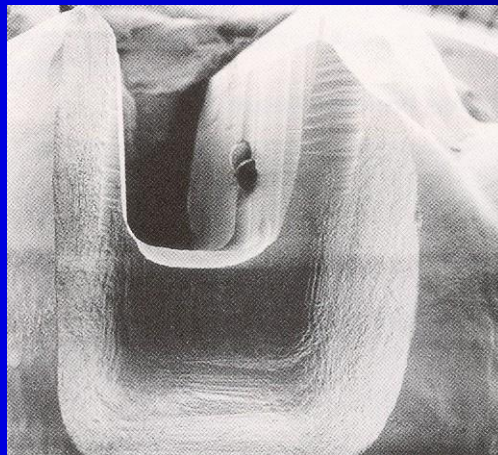






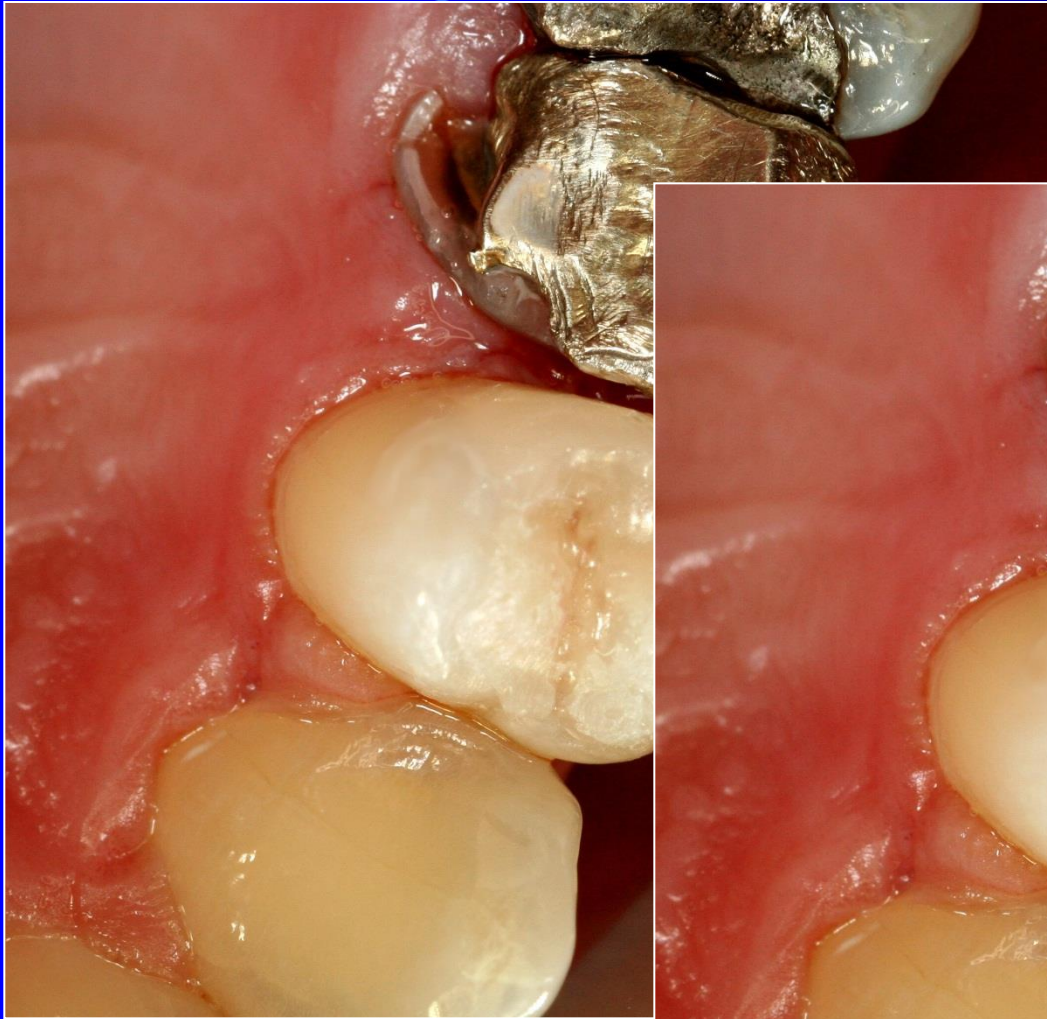
Alternative preparation - slot

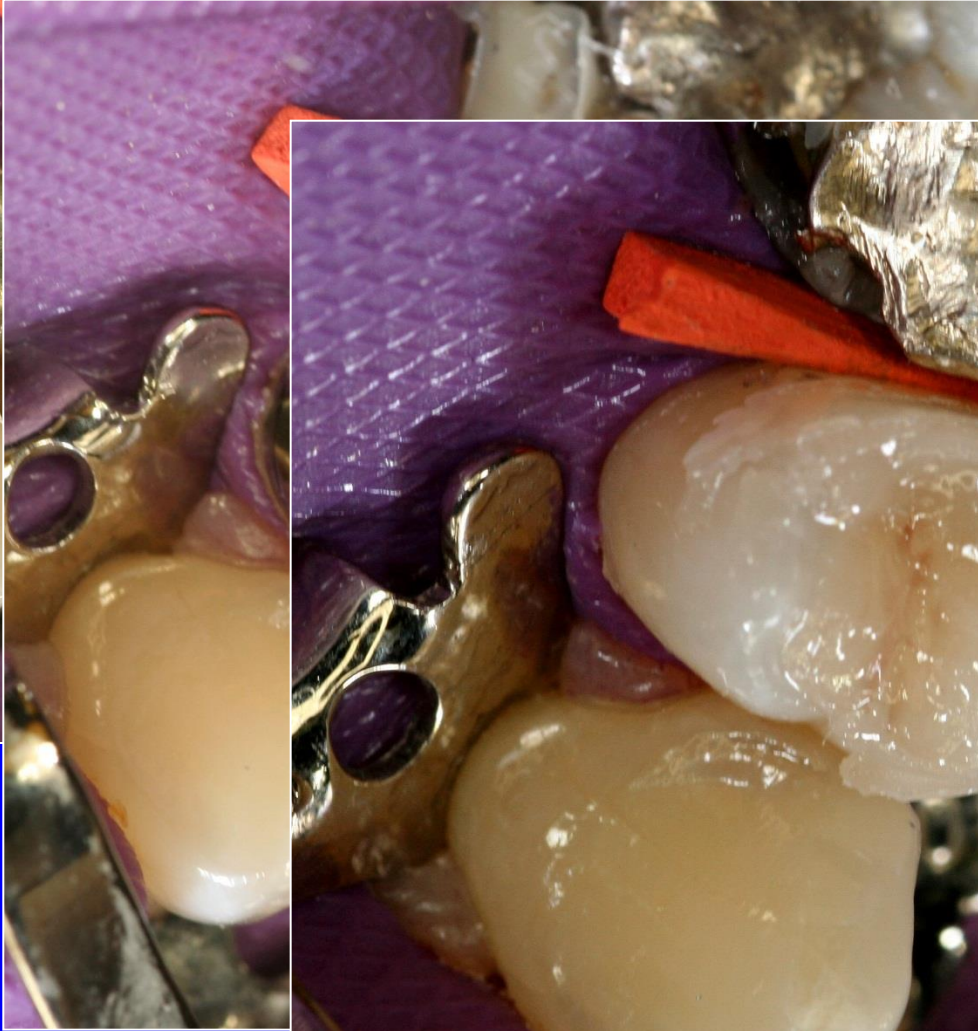






**Circular matrix, wedge.
Proximal wall is built first.**

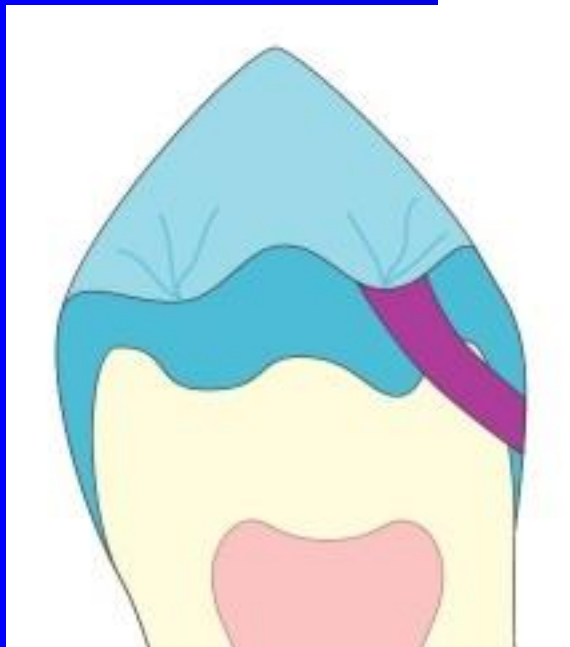
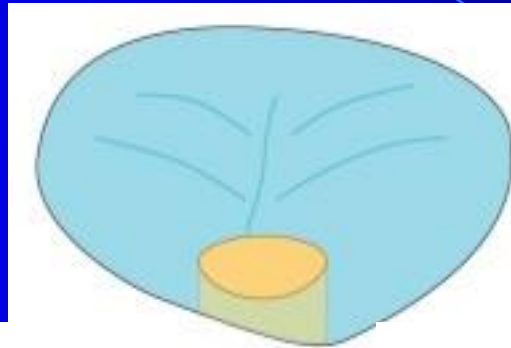






Sectional matrix, wedge, separator

Tunnel preparation



Glass ionomer
Composite
X-ray post op.

