

1. SUPERIOR OR SUPERIUS?**MAIOR OR MAIUS?****ANTERIOR OR ANTERIUS?**

Vena cava

superior

Cornu

maius

Arteria

anterior

Membrum

superius

Ductus

maior

Ductus

anterior

Extremitas

superior

Ala

maior

Segmentum

anterius

Palpebra

superior

Musculus

maior

Margo

anterior

Labium

superius

Curvatura

maior

Bronchus

anterior

Facies

superior

Flexura

maior

Nucleus

anterior

Meatus

superior

Fossa

maior

Cornu

anterius

Arteria

superior

Foramen

maius

Nodus

anterior

Plexus

superior

Tuberculum

maius

Tuberculum

anterius

Segmentum

superius

Circulatio

maior

Radix

anterior

Regio

superior

Pelvis

maior

Crus

anterius

2. PUT COMPARATIVES AND SUPERLATIVES INTO THE PLURAL

Musculi longi

longiores

longissimi

Cavitates parvae

minores

minimae

Radices latae

latiores

latissimae

Defectus magni

majores

maximi

Gradus parvi

minores

minimi

O-tiones acutae

acutiores

acutissimae

Foramina parva

minora

minima

Infarctus recentes

recentiores

recentissimi

Ossa brevia

breviora

brevissima

Partes molles

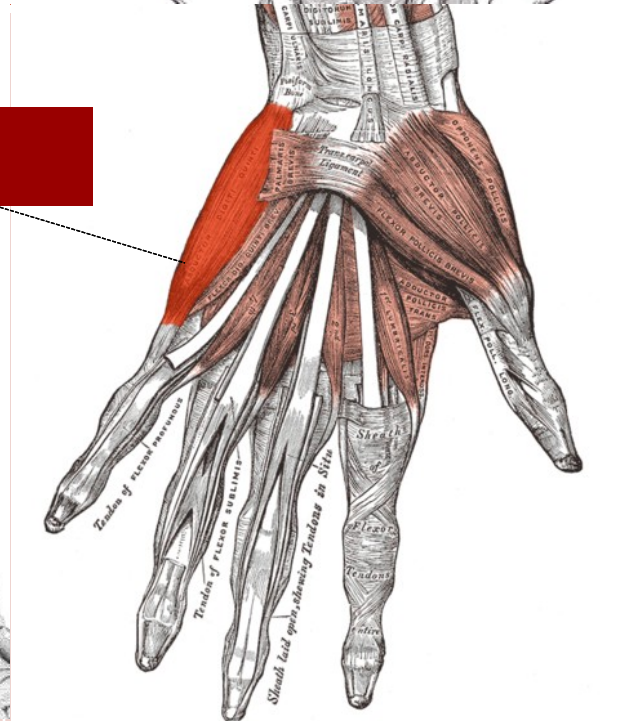
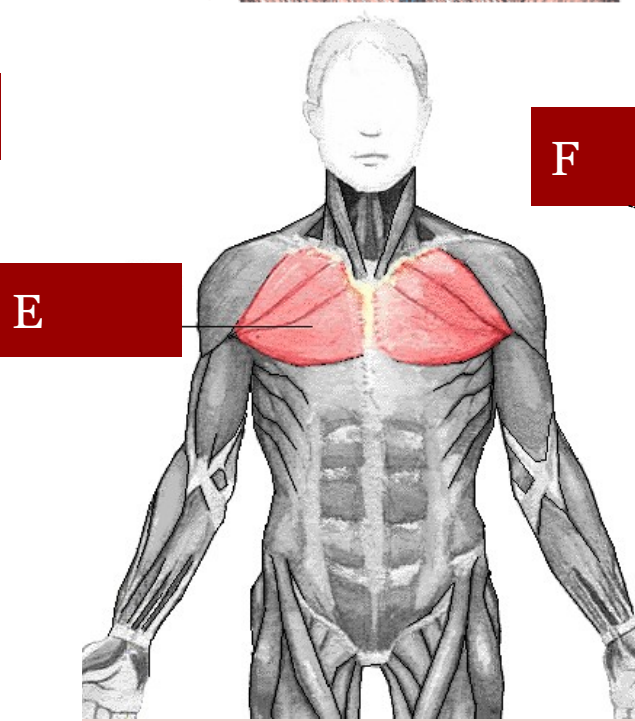
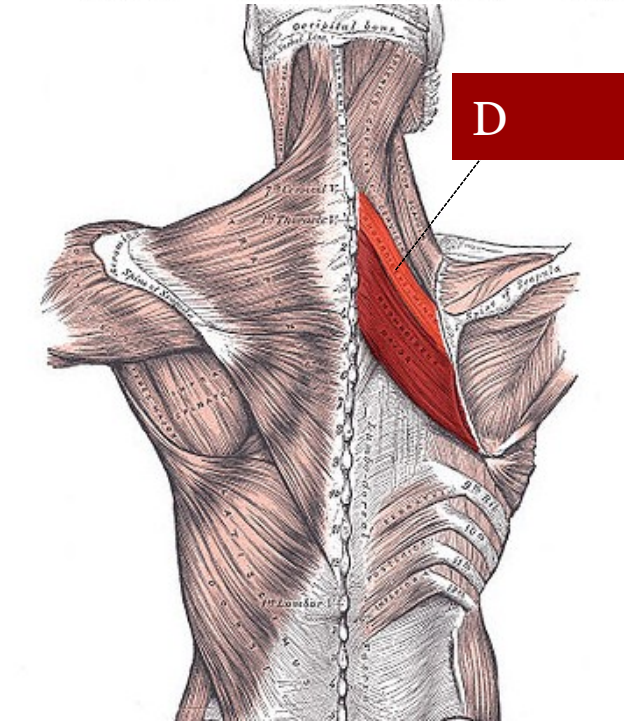
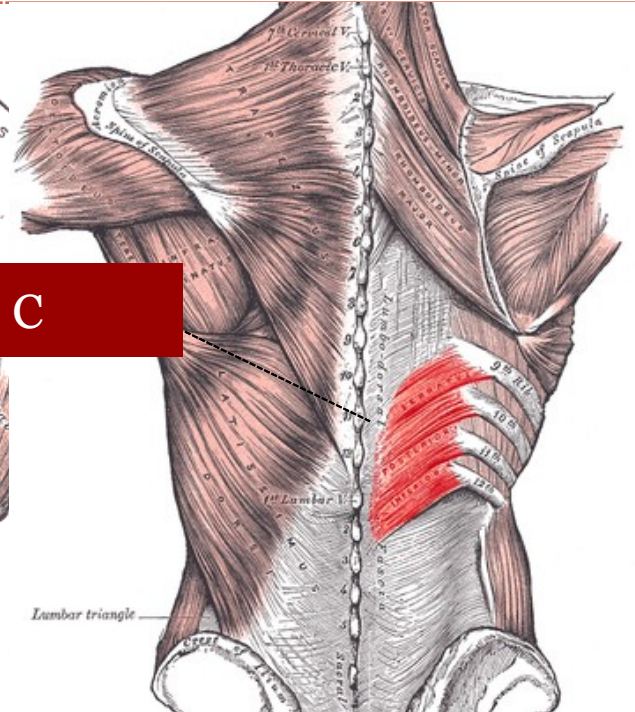
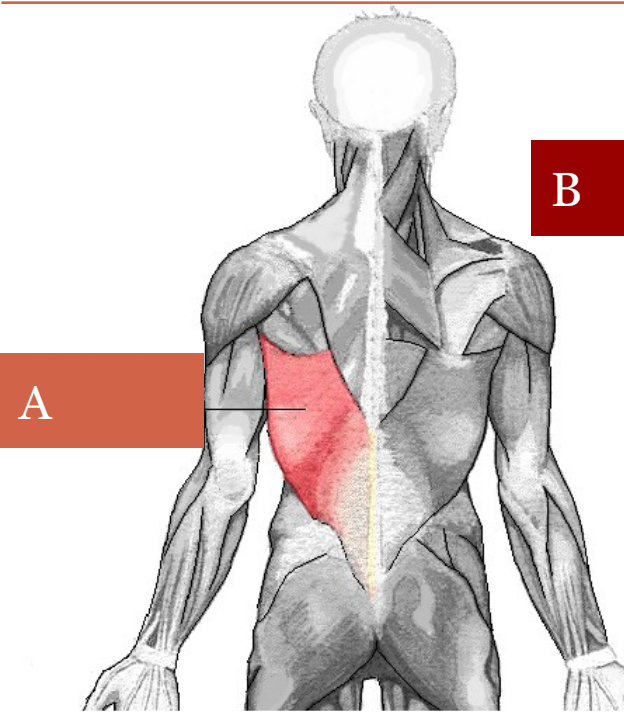
molliores

mollissimae

Therapiae longae

longiores

longissimae



EXPRESSING POSITION



- A) PREPOSITIONS**
- B) PREFIXES**
- C) COMPARATIVE FORMS**
- D) ADJECTIVES**

A) PREPOSITIONS



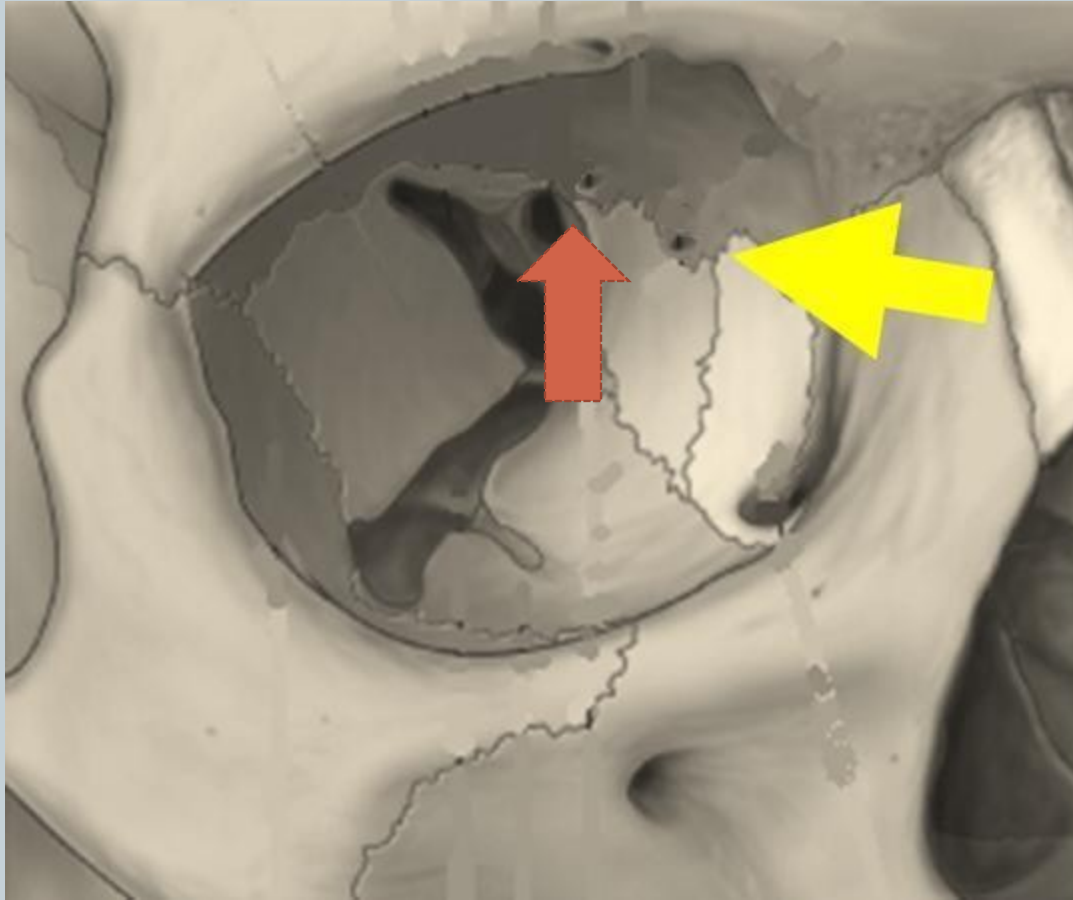
- **WITH ABLATIVE**

- corpus alienum in aure interna
- vulnus morsum sub genu l.dx.

- **WITH ACCUSATIVE**

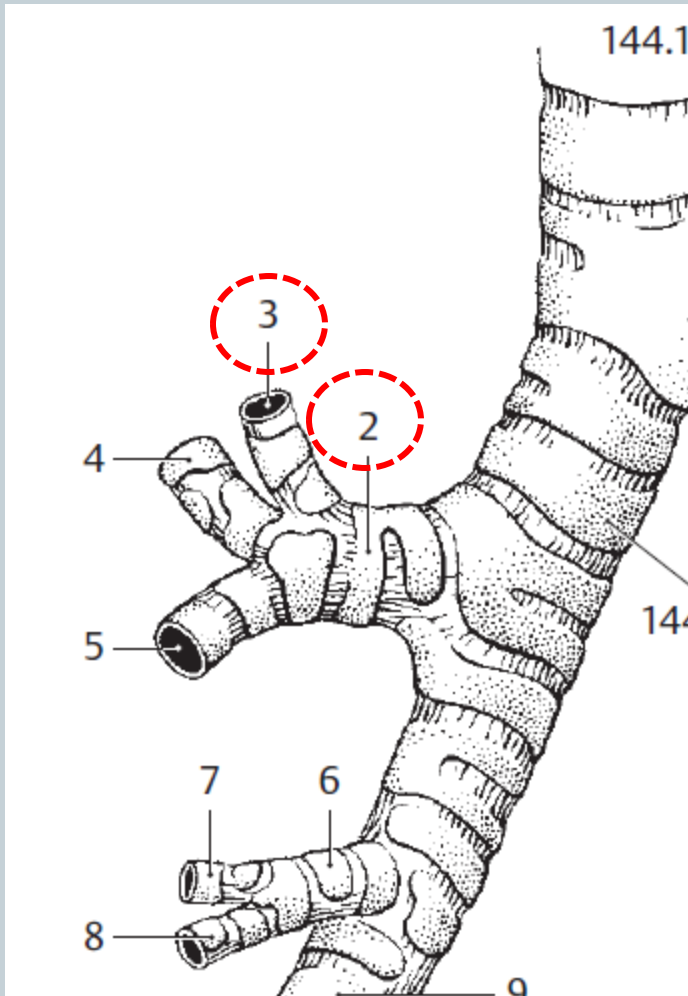
- funiculus umbilicalis circum collum fetus
- tumor ad hepar increscens

B) COMPARATIVE FORMS

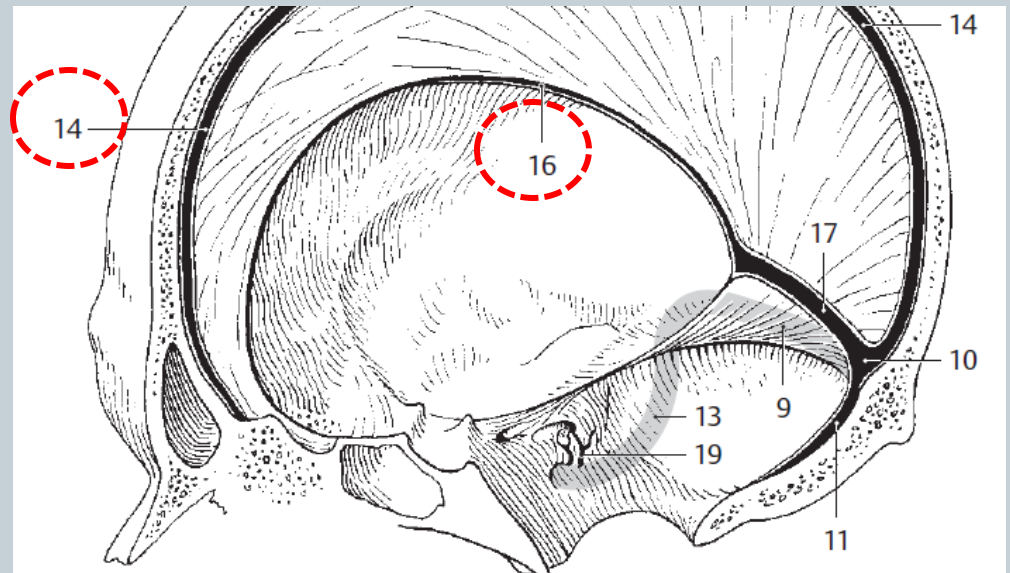


foramen ethmoidale
anterior / posterior

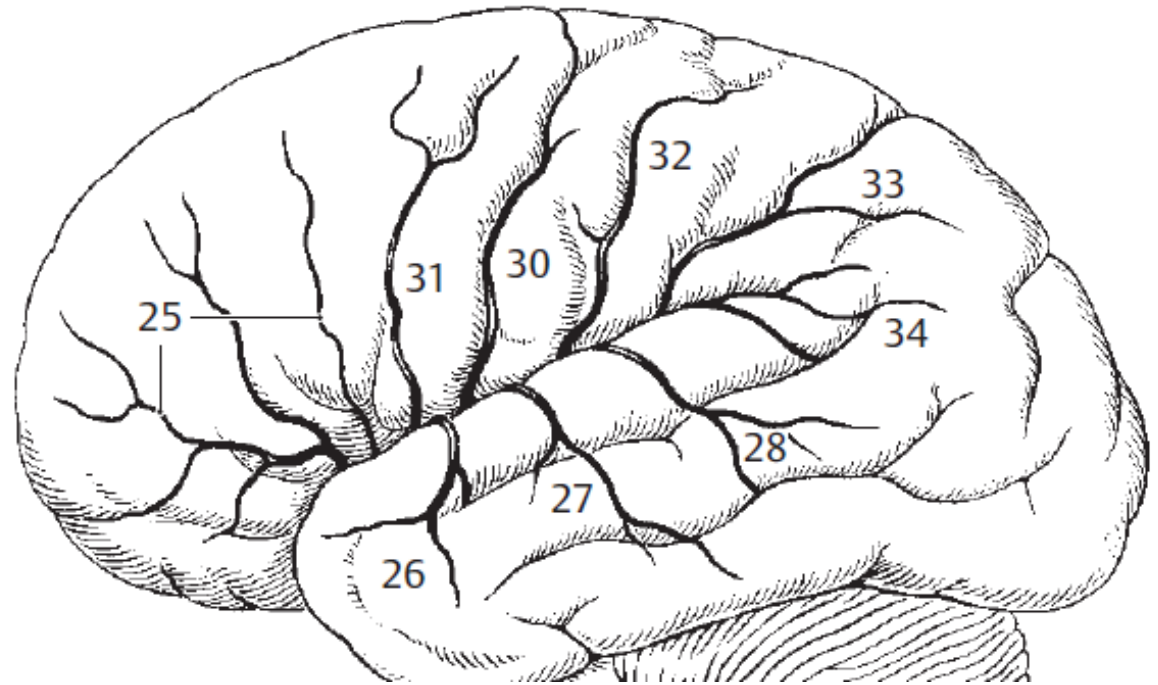
C) ADJECTIVES



bronchus segmentalis **apicalis**
bronchus **lobaris** superior dexter



sinus **sagittalis** superior / inferior



25 a. **frontobasalis lateralis**

26 a. temporalis **anterior**

27 a. temporalis **media**

28 a. temporalis **posterior**

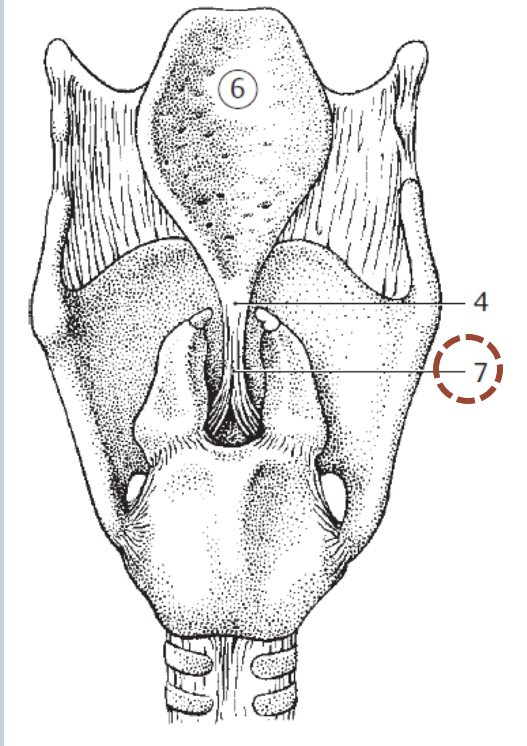
30 a. sulci centralis

31 a. sulci **precentralis**

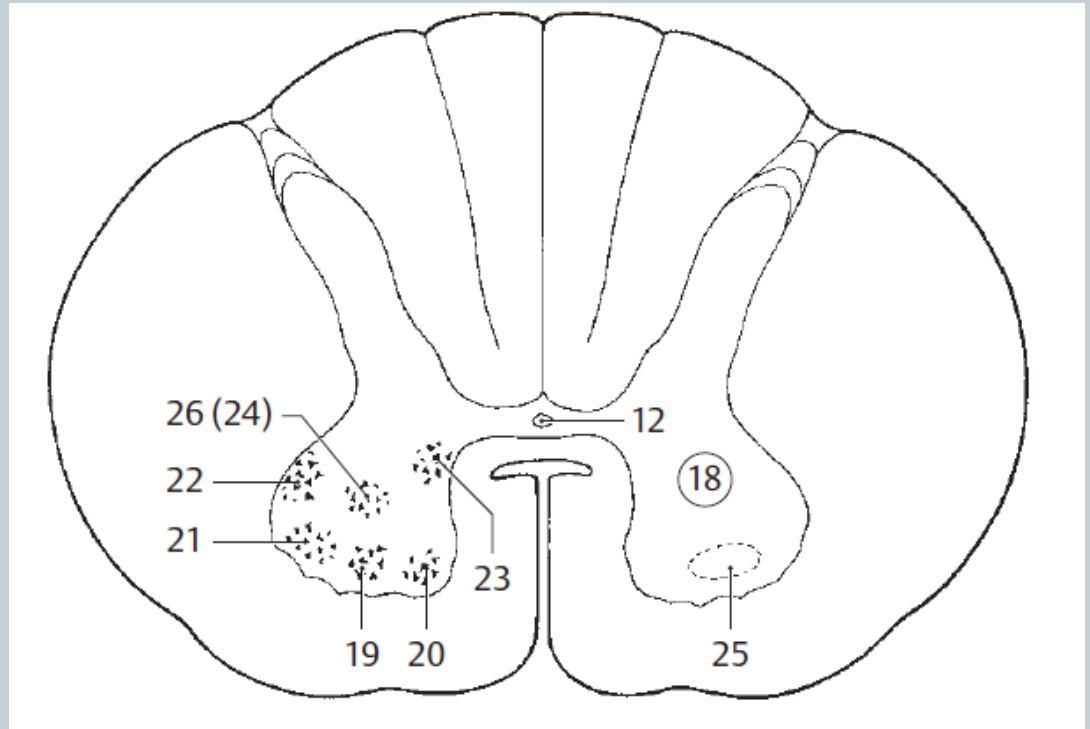
32 a. sulci **postcentralis**

33 aa. parietales **anterior** et **posterior**

D) COMBINED TERMS



lig. **thyroepiglotticum**



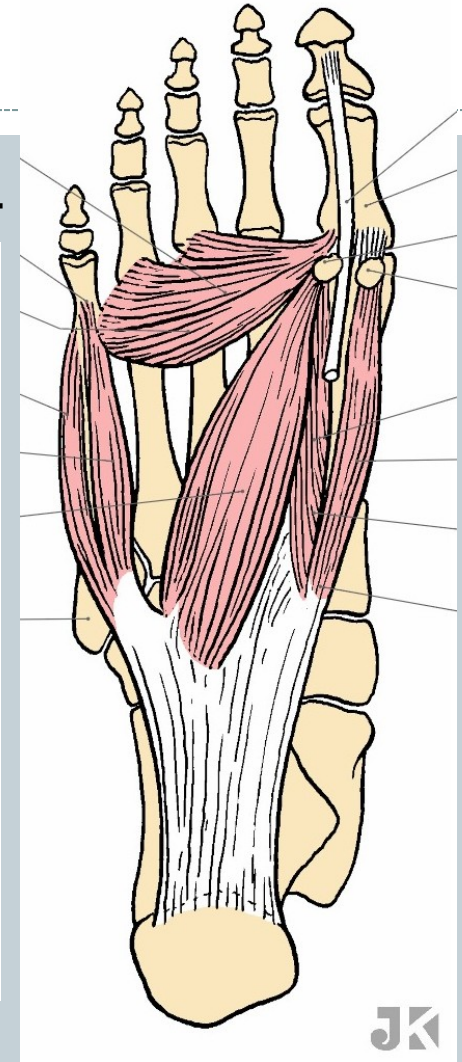
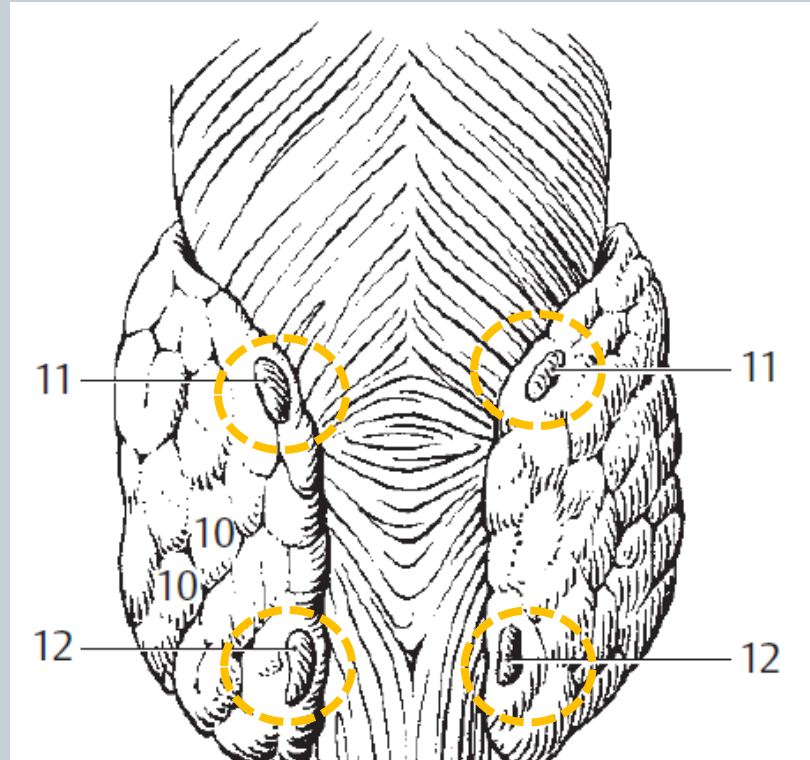
- | | |
|---------------------------------|----|
| nucleus anterolateralis | 19 |
| n. anteromedialis | 20 |
| n. posterolateralis | 21 |
| n. retroposterolateralis | 22 |
| n. posteromedialis | 23 |

E) PREFIXES



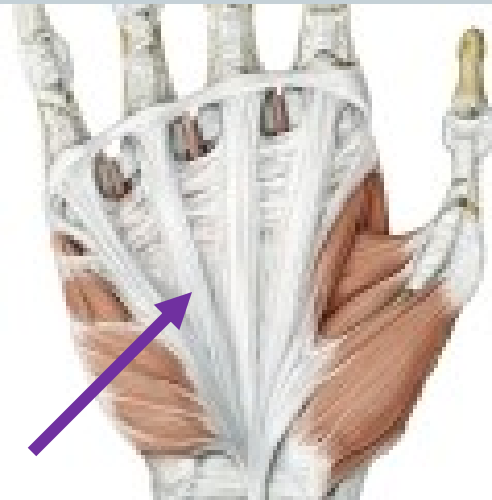
ab-

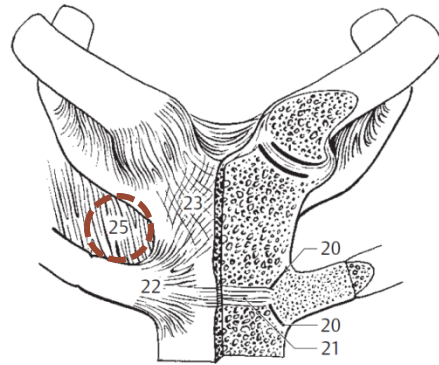
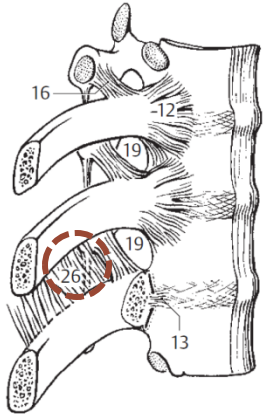
apo-



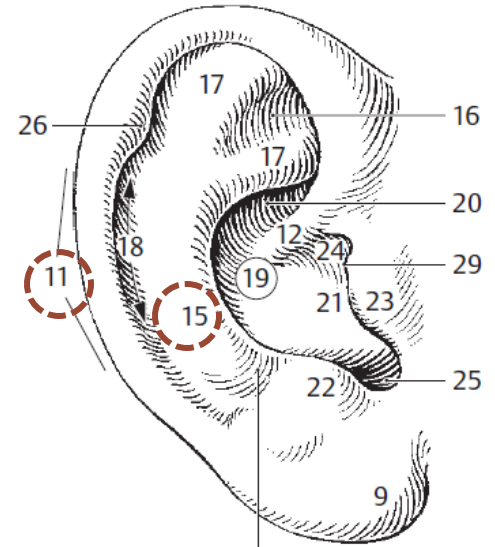
ad-

par(a)-

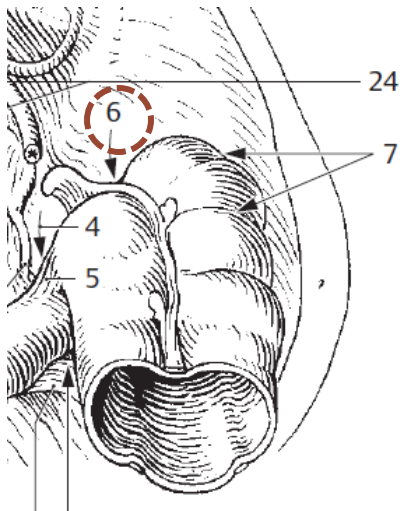




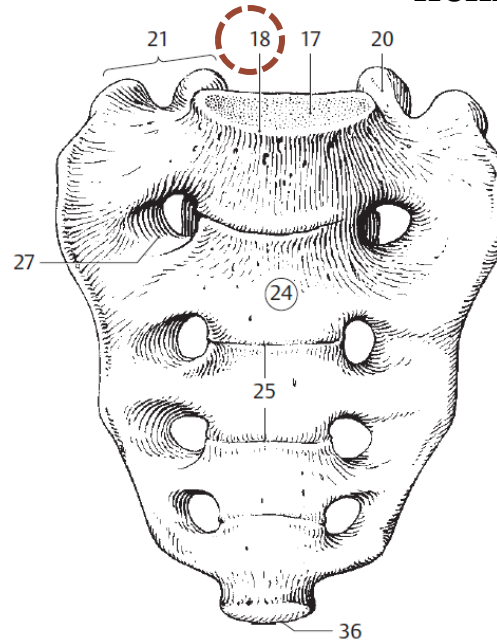
membrana **inter**costalis *interna* / *externa*



helix / **ant(i)**helix

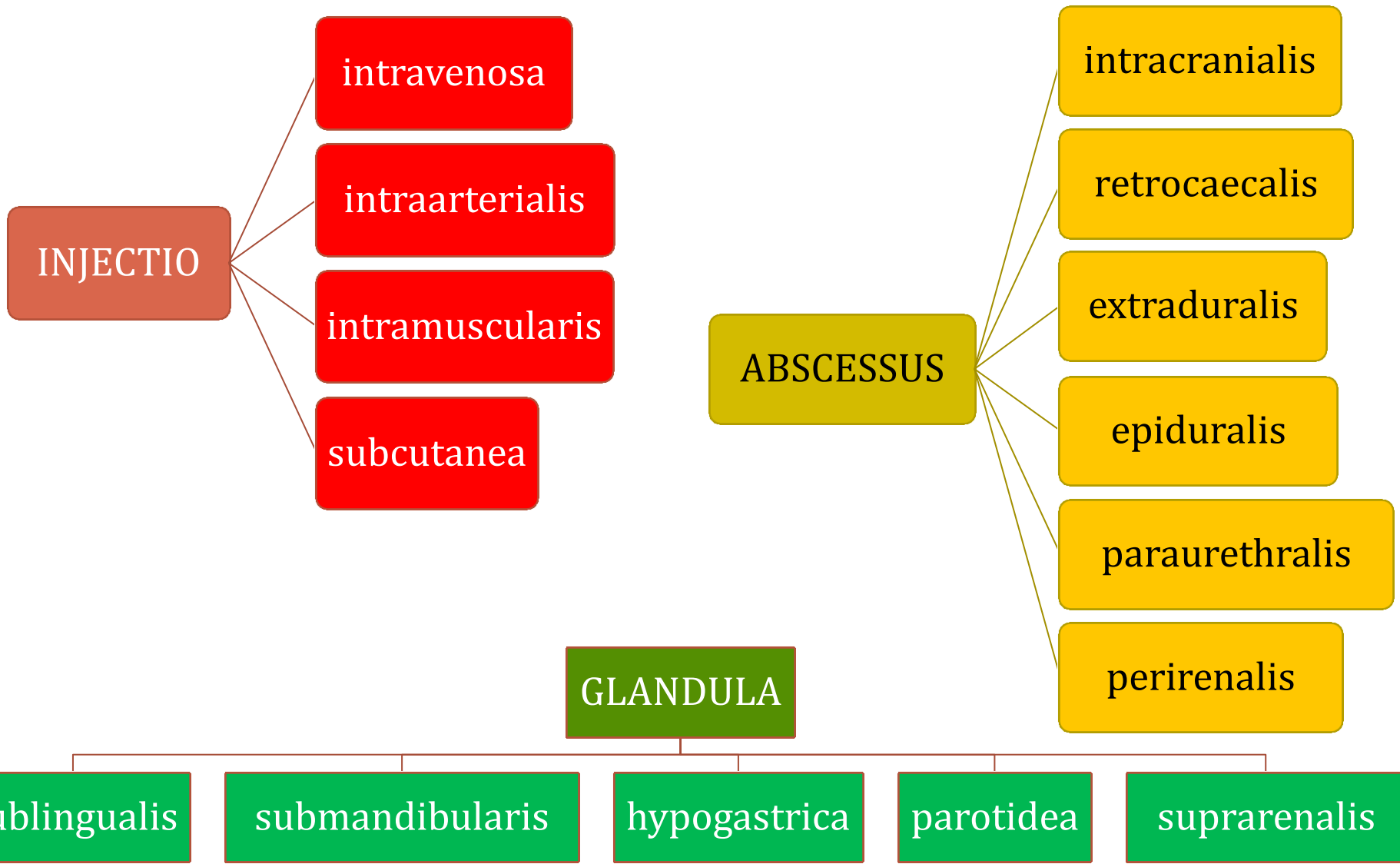


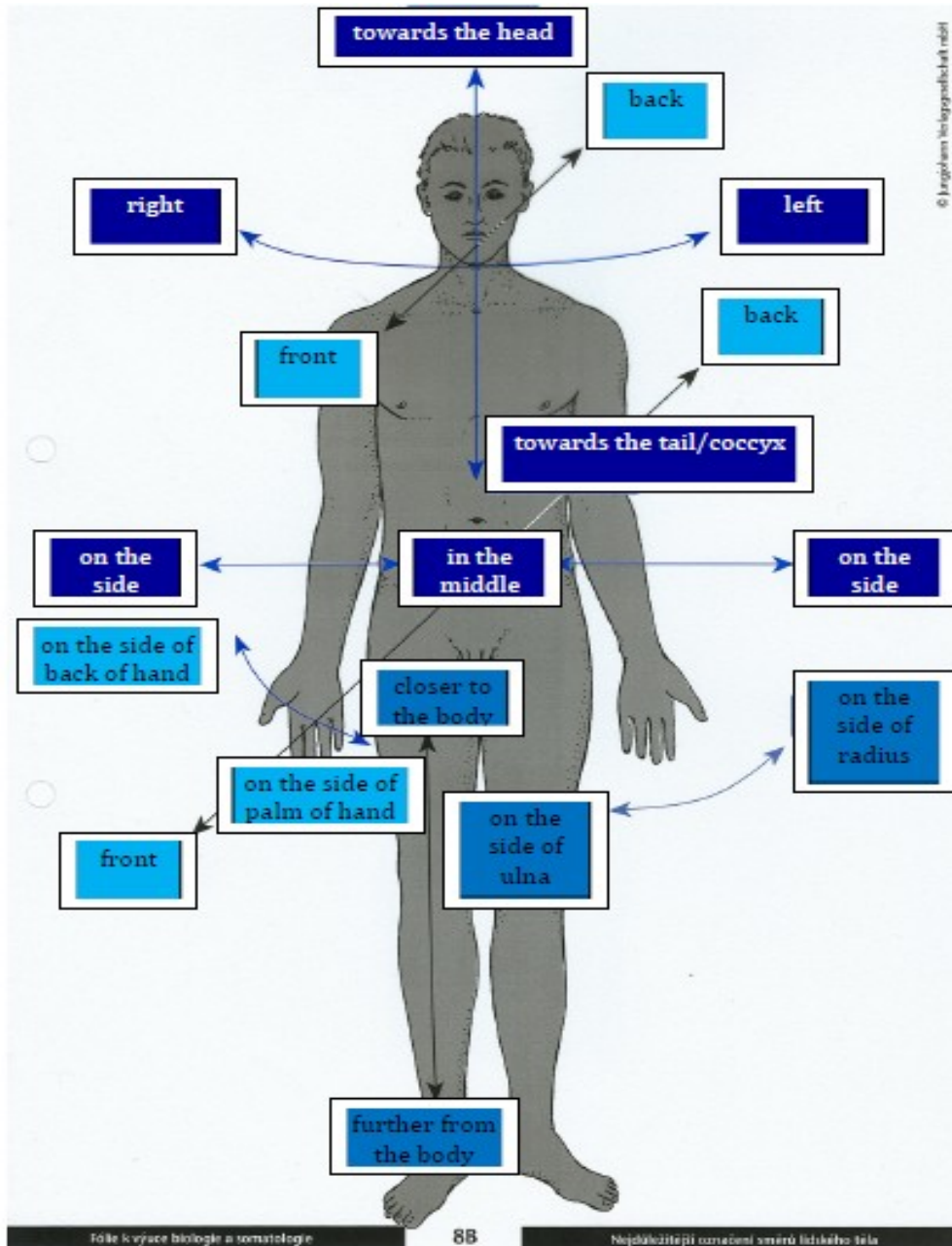
recessus
retrocaecalis



promontorium
ossis sacri

GUESS THE MEANING OF THE PREFIX AND ANALYZE THE TERMS





True or False?

| | YES | NO |
|---|-----|----|
| 1. In anatomical position the palmar surface is in <i>posterior</i> position. | | ✓ |
| 2. The sternum is <i>anterior</i> to the heart. | ✓ | |
| 3. The clavicles are <i>mediales</i> to the sternum. | | ✓ |
| 4. The elbow is <i>proximalis</i> to the wrist. | ✓ | |
| 5. The aorta is <i>ventralis</i> to the spinal column. | ✓ | |
| 6. The skin is <i>profundus</i> to the muscles. | | ✓ |
| 7. The blood drawn from a fingertip is <i>peripheralis</i> . | ✓ | |

FRACTURES OF TEETH



Name types of permanent teeth



4

3

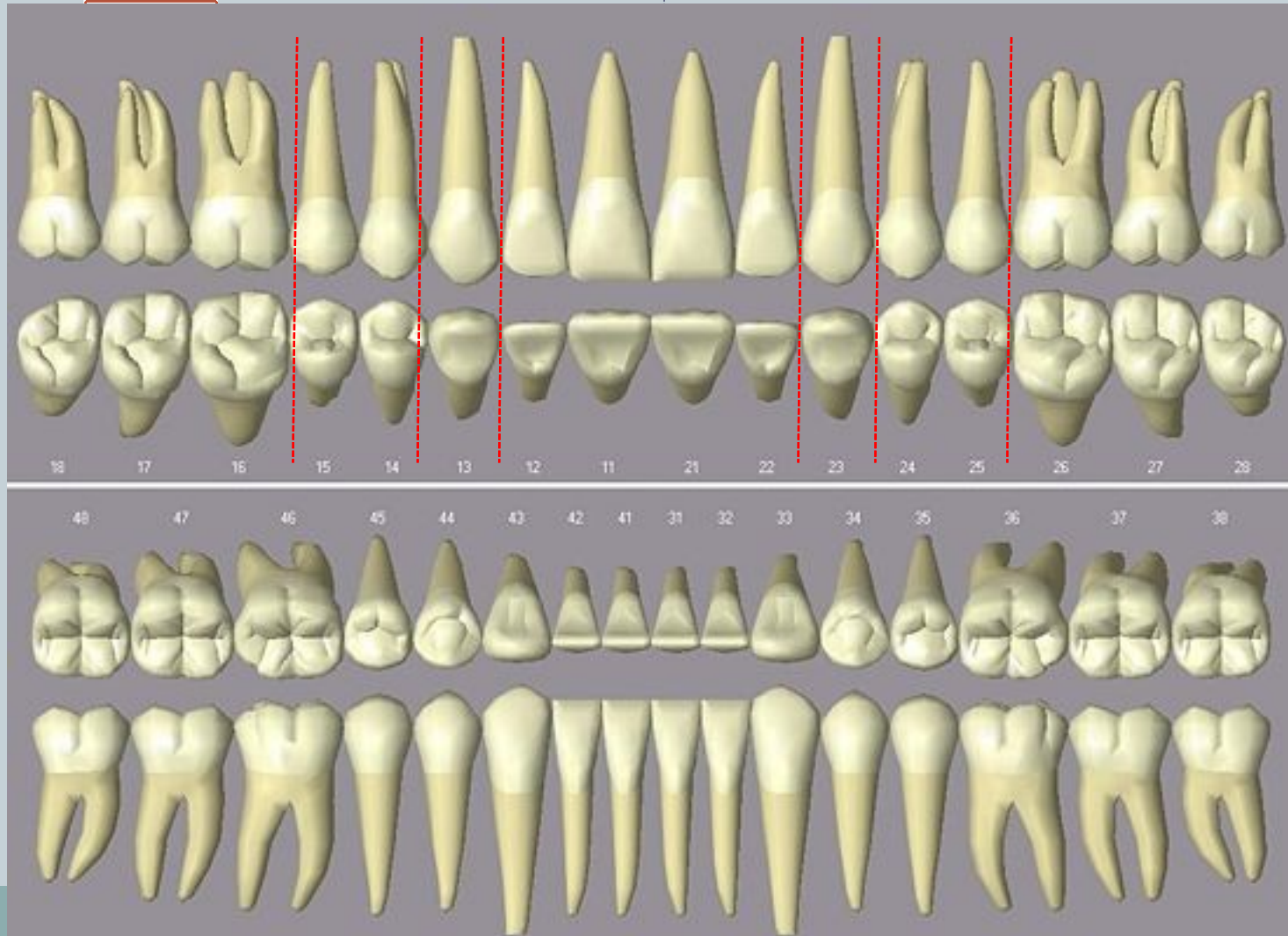
2

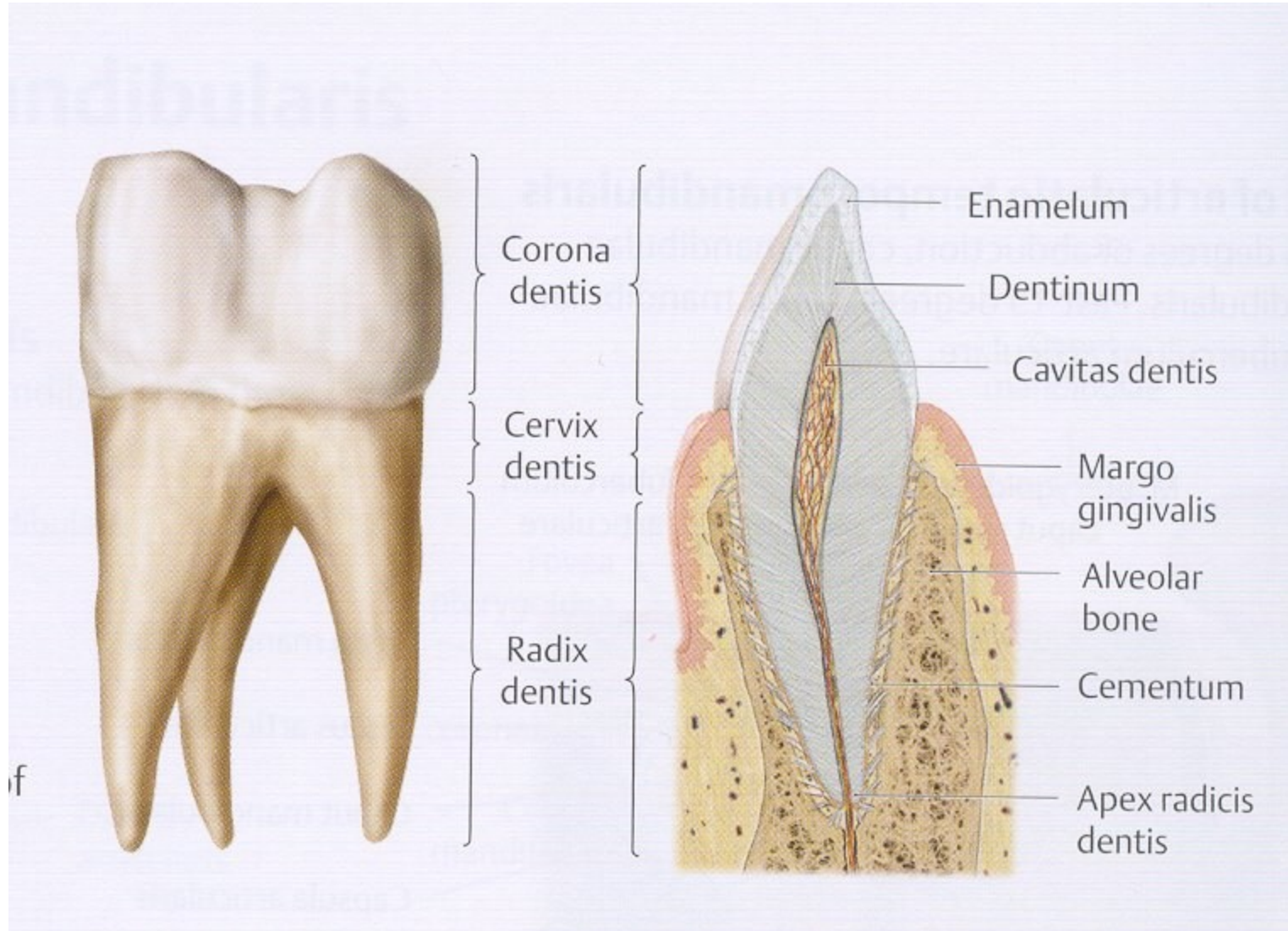
1

2

3

4





Translate types of tooth fractures : ICD S 02.50-54

18

Fracture of
tooth
enamel

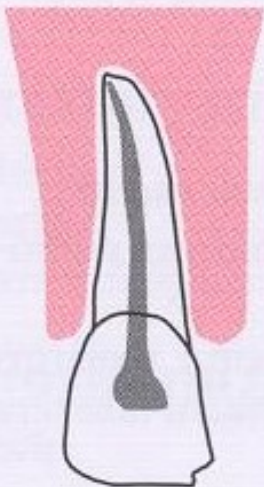
**Simple
fracture of
the tooth
crown not
penetrating
to the
dental pulp**

Complicated
fracture of
the tooth
crown
penetrating
to the dental
pulp

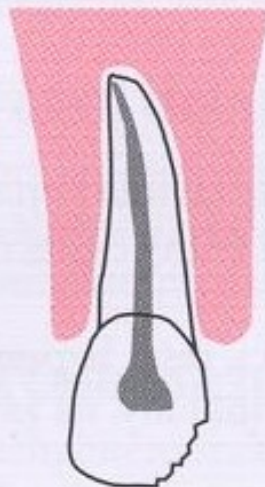
**Fracture of
the tooth
root**

Fracture of
the tooth
crown and
tooth root

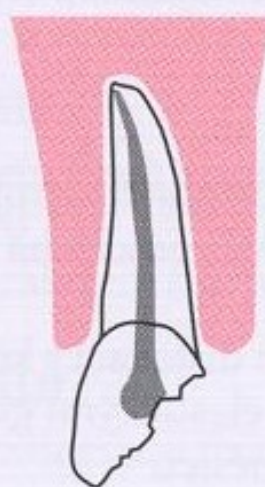
S02.50



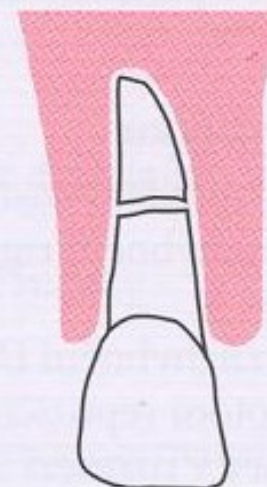
S02.51



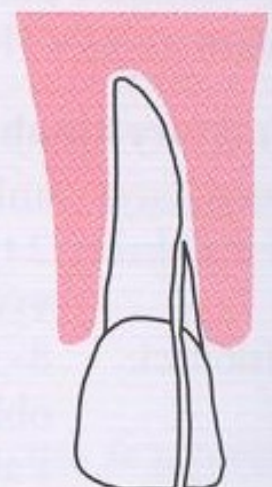
S02.52



S02.53



S02.54



1) Number types of tooth decay based on its severity, start from the simplest

2) Identify all adjectives, which declension are they?

- 4 A. *caries profunda simplex*
3 B. *caries media*
6 C. *caries ad pulpam penetrans*
2 D. *caries superficialis*
5 E. *caries profunda pulpa proxima*
1 F. *caries incipiens*

