

# Colors in Medical Terminology

Garrick LaBriola & Alan Ostadi

# General Terminology

- Color, oris, M (Latin)
- Chroma, chromatis N (Greek)



# Colors

- Albus, a, um (L) Leuko (G) – **White**
- Pallidus, a, um – **Pale**
- Flavus/leteus, a, um (L) Xantho/Cirrho (G) - **Yellow**
- Ruber, a, um (L) erythro (G) - **Red**
- Roseus, a, um (L) – **Pink**
- Caeruleus, a, um (L) Cyano (G) - **Blue/Black**
- Niger, a, um (L) Melano/anthraco (G) - **Black**
- Griseus, a, um (L) Polio (G) - **Grey**

# Colors cont.

- Lividus, a, um (L) – **discolored**
- Glaucos (G) – **Green/blue**
- Fuscus, a, um – **dark/brown**
- Versicolor, oris (L) Poikilos (G) - **multicolored**

# Albus/Leuko

- Albus, a, um



- Leuko/Leuco- leucocytus

# Pallidus

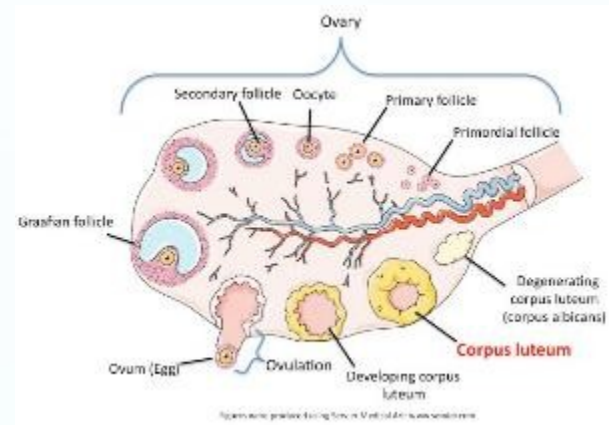
- Pallidus, a, um- Pale



Facies pallida

# Luteus/Xantho/Cirrho-

- Luteus, a, um
- Xantho- Xanthoderma
- Cirrho



# Ruber/Erythro-

- Ruber, a, um- Red gums  
Gingiva rubra



Nucleus ruber

- Erythro- Erythrocyte



# Roseus

- Roseus, a, um – Pink



Pityriasis rosea

# Caeruleus/Cyano

- Caeruleus, a, um- Blue/Blue-black



Naevus caeruleus

- Cyano-  
Cyanobacteria



Cyanosis

# Niger/Melano/Anthraco-

- Niger, a, um- Black

Lingua Villosa Nigra



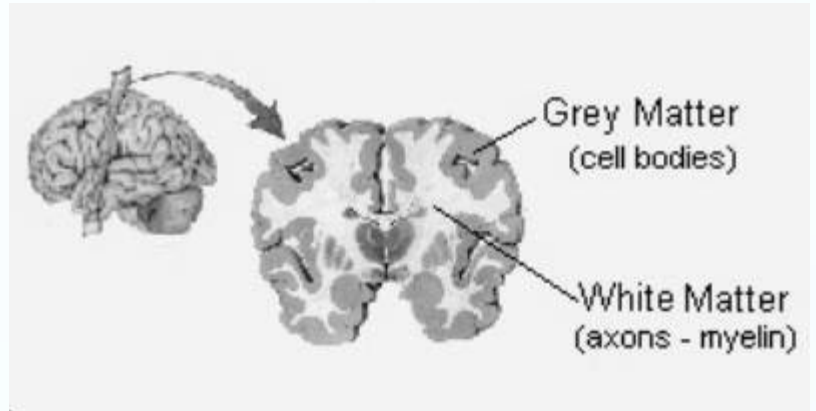
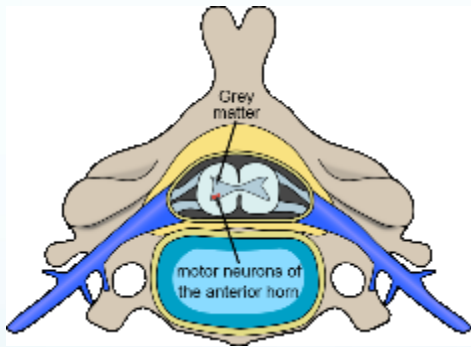
- Melano- Melanoma

Anthraco-



# Griseus/Polio-

- Griseus, a, um- Grey



Substantia grisea

- Polio- poliomyelitis  
Poliovirus

# Lividus

- Lividus, a, um – Discolored

Asphyxia livida

# Glauco-

- Glauco- green/blue



Glaucoma

# Fuscus

- Fuscus, a, um- Dark, brown
- Logoenā Fusca



# Versicolor/Poikilo

- Versicolor, oris- multicolored



Pityriasis versicolor

- Poikilo

Poikiloderma





# Quiz!

- What color are healthy teeth?
- What color are veins?
- What color are moles usually?