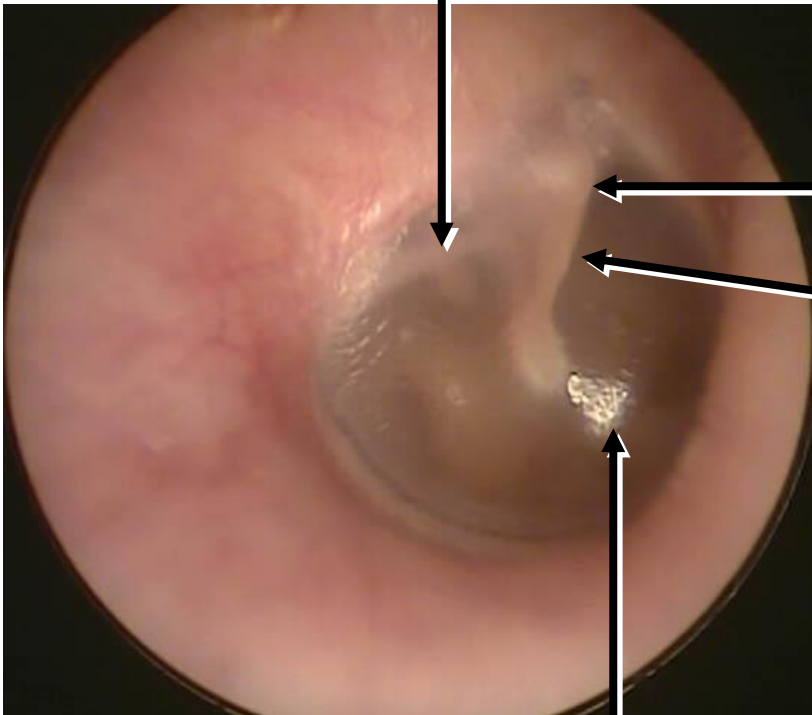


ORGANUM VESTIBULOCOCHLEARE

Auris externa, media et interna

| | |
|----------------------|---|
| Auris externa | Auricula Meatus acusticus externus Membrana tympani |
| Auris media | Cavitas tympani Ossicula auditus Tuba auditiva |
| Auris interna | Labyrinthus osseus Labyrinthus membranaceus |

plica mallearis posterior



**prominentia mallearis
(processus lateralis mallei)**

stria mallearis (manubrium)

světelný reflex (trigonum Woodi)



CAVITAS TYMPANI

paries membranaceus

- bubínek

paries labyrinthicus

- promontorium
- fenestra vestibuli
- fenestra cochleae

paries jugularis

- apertura externa canaliculi tympanici

paries tegmentalis

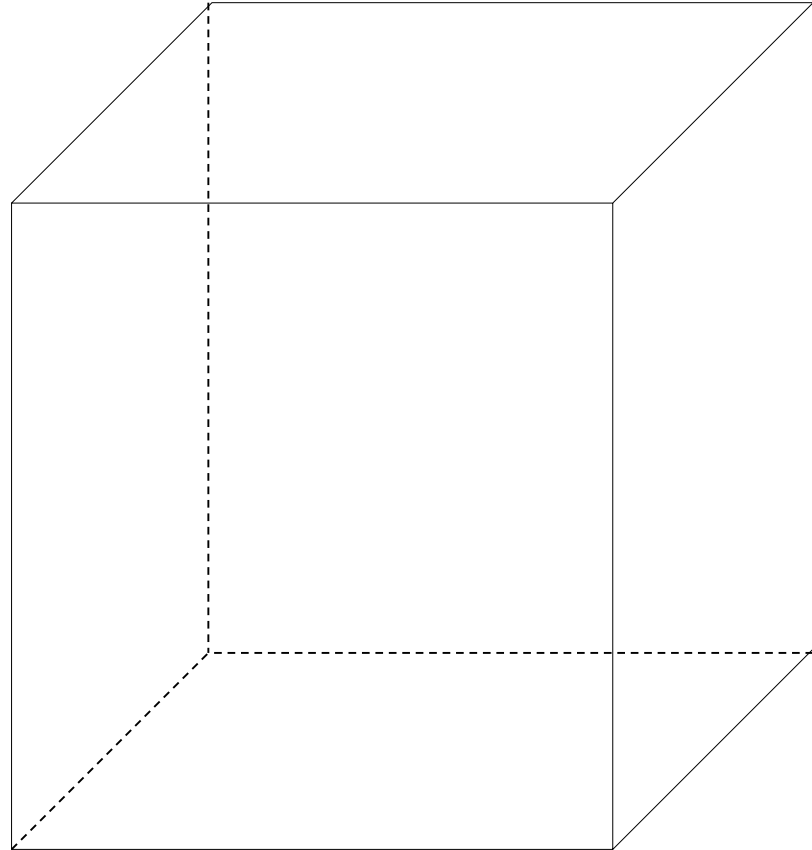
- hiatus canalis nervi petrosi minoris

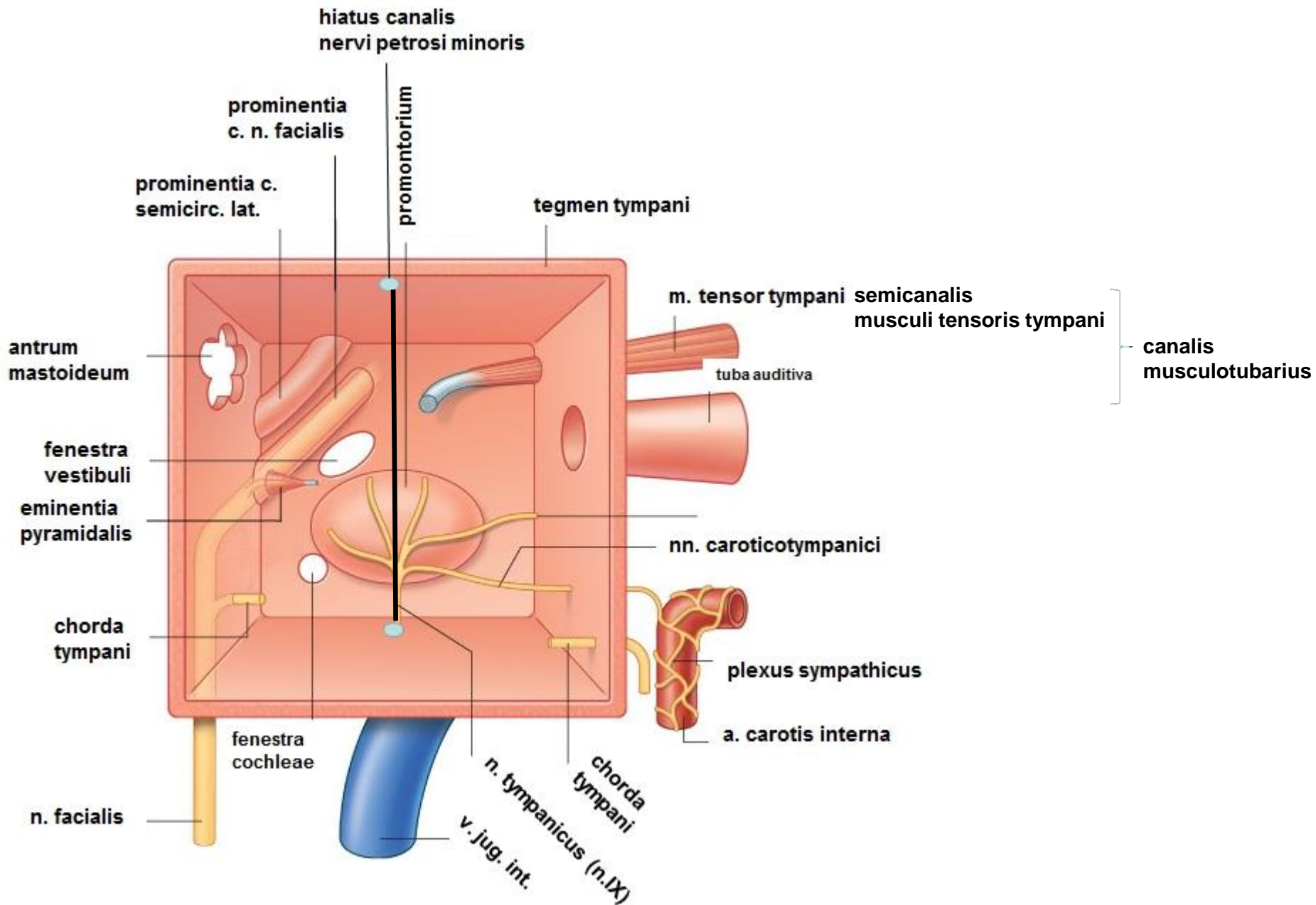
paries caroticus

- canaliculi caroticotympanici
- canalis musculotubarius
 - semicanalis musculi tensori tympani*
 - semicanalis tubae auditivae*

paries mastoideus

- antrum mastoideum





OSSICULA AUDITUS

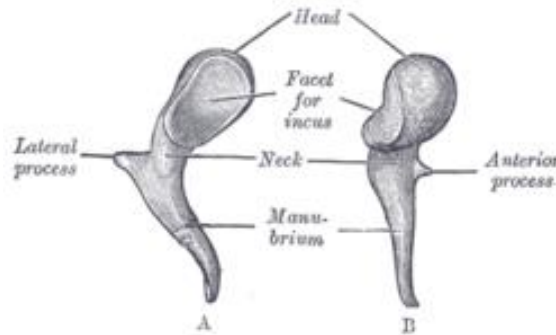
Malleus

Caput mallei

Manubrium mallei

Processus lateralis

Processus anterior



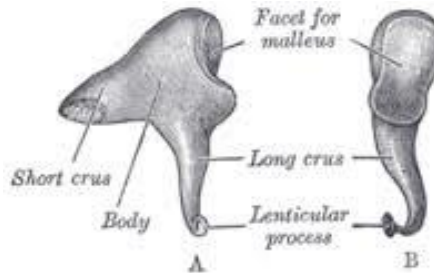
← Art. incudomallearis

Incus

Corpus incudis

Crus longum

Crus breve



← Art. incudostapedialis

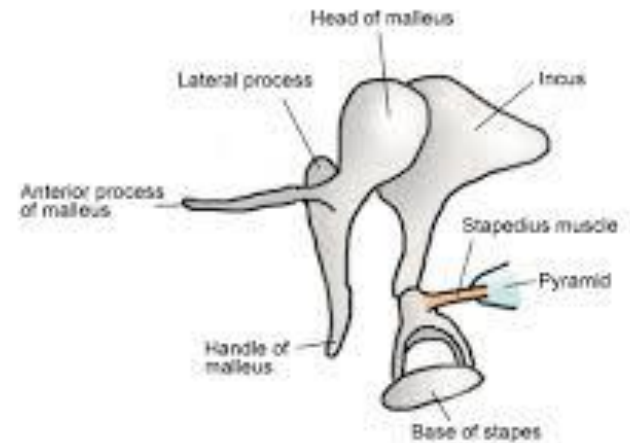
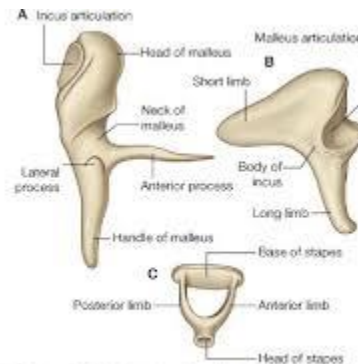
Stapes

Caput stapedis

Crus anterius

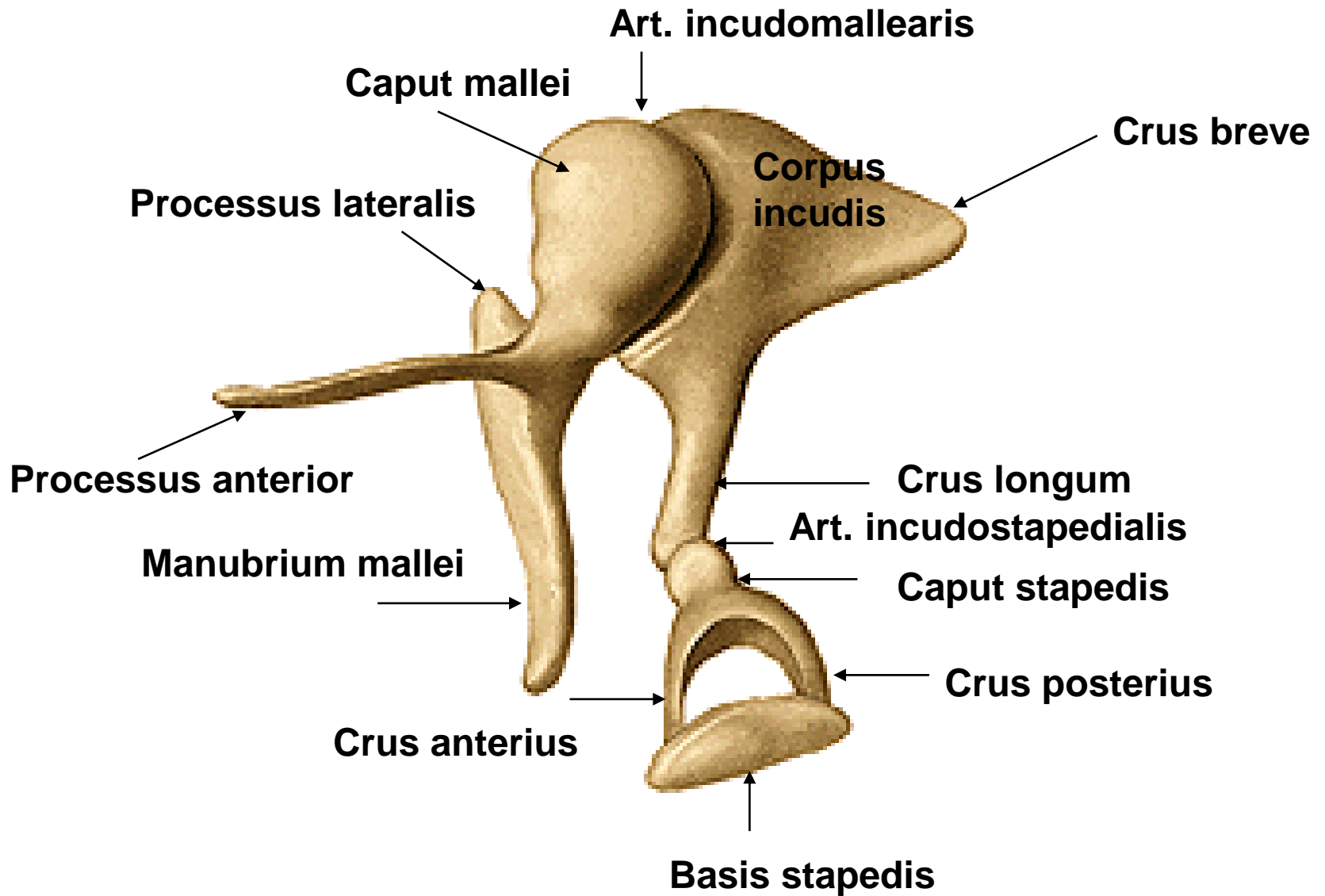
Crus posterius

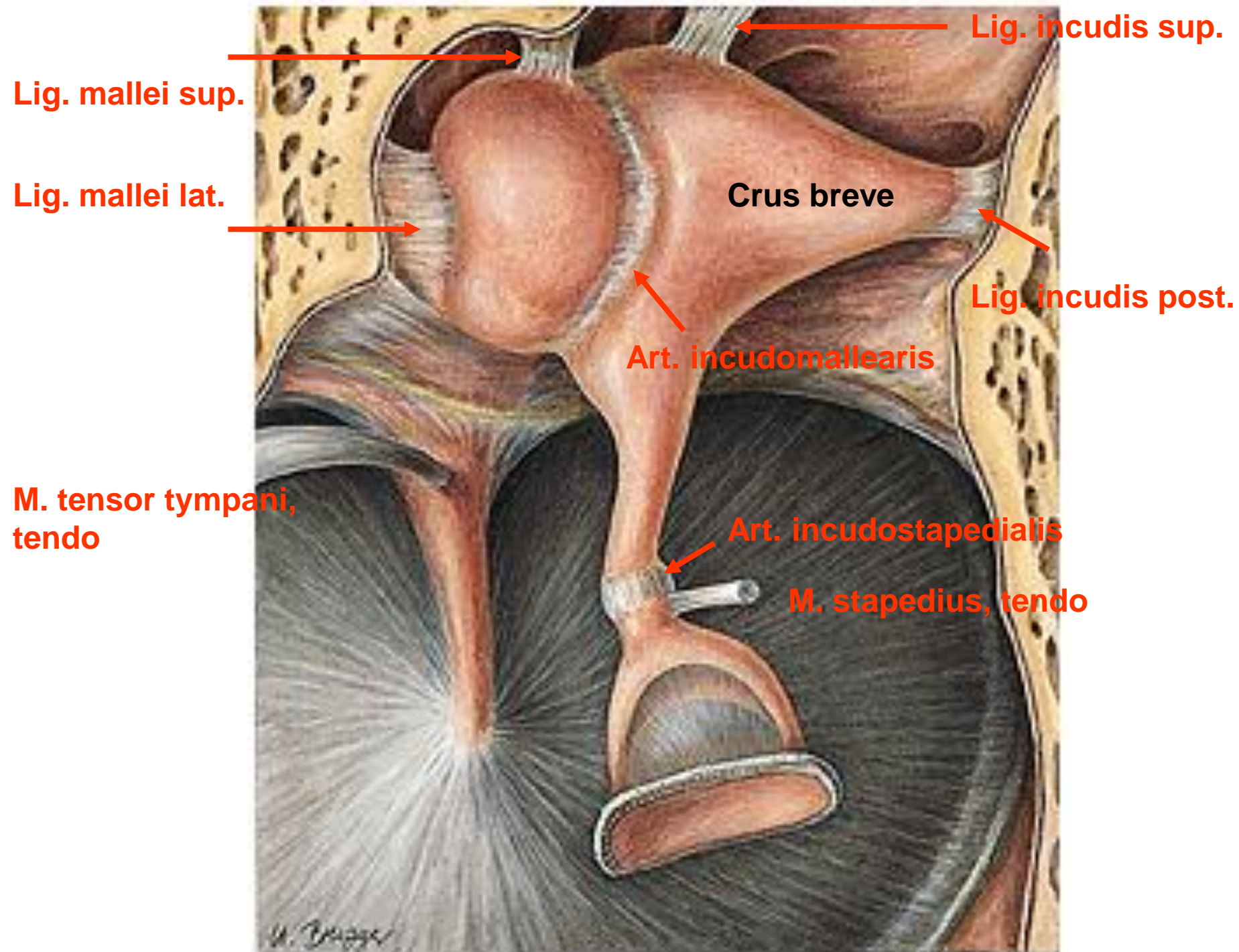
Basis stapedis

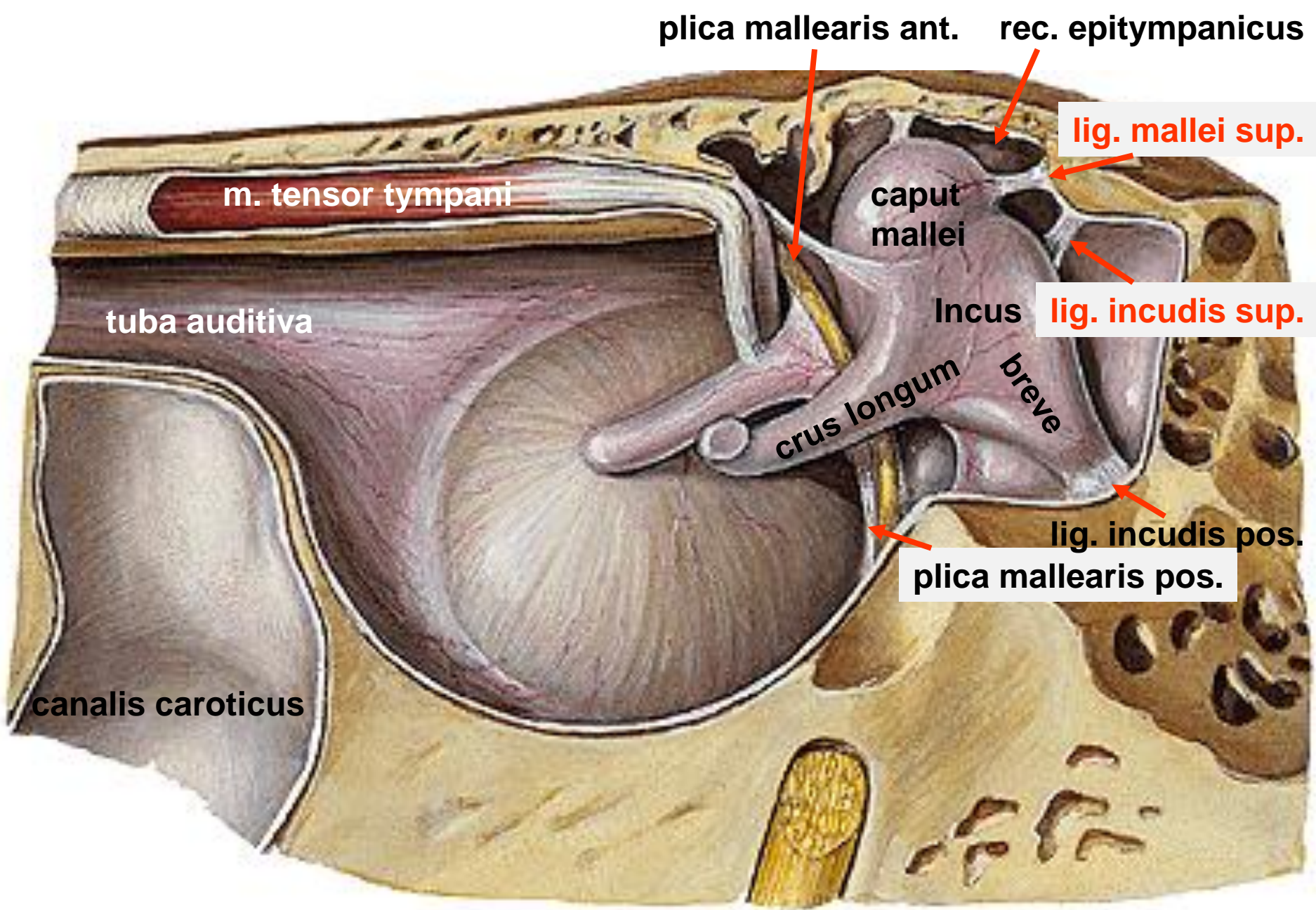


©2006 St. George's, University of London

OSSICULA AUDITUS







plica mallearis ant.

rec. epitympanicus

m. tensor tympani

lig. mallei sup.

caput mallei

tuba auditiva

Incus

lig. incudis sup.

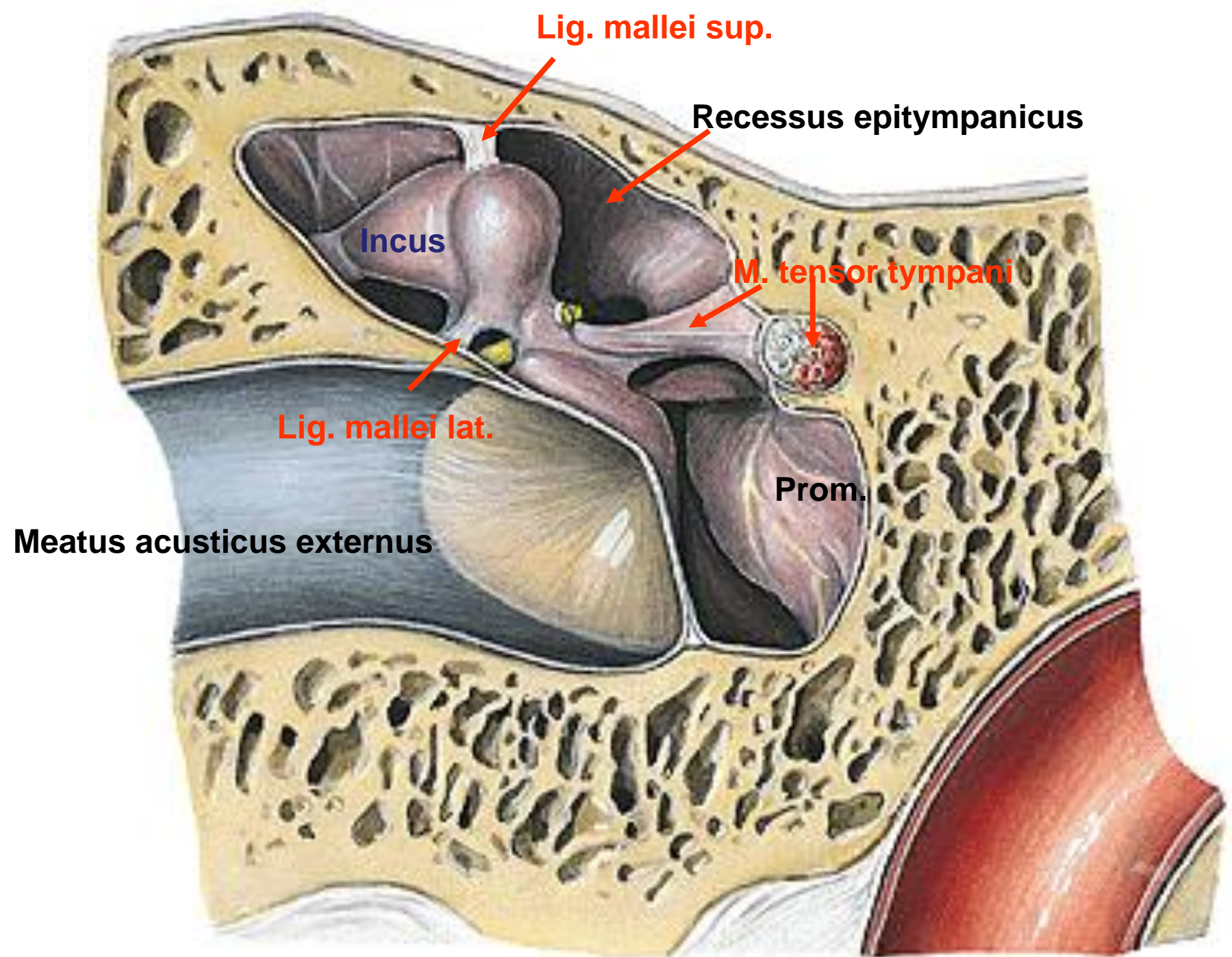
crus longum

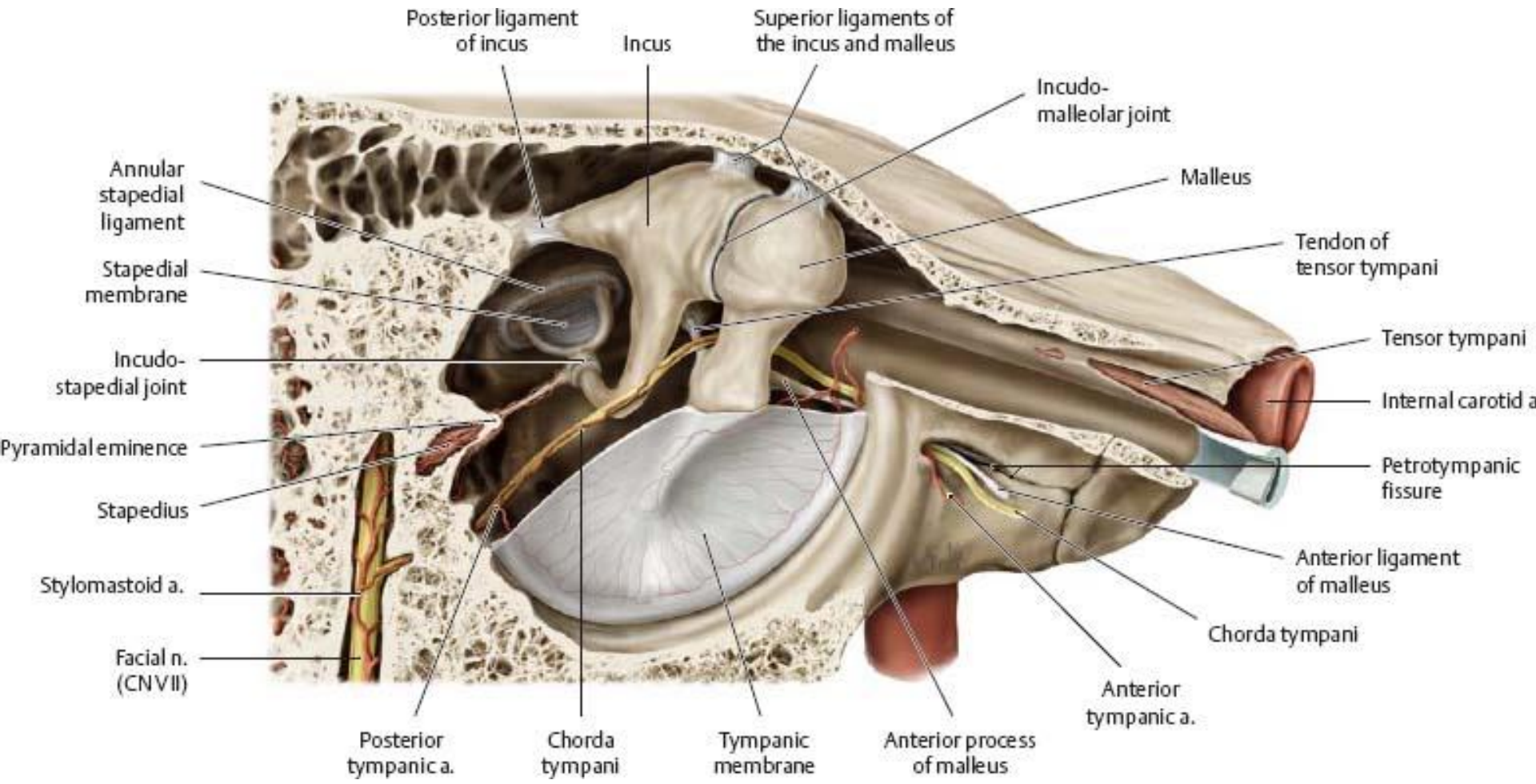
breve

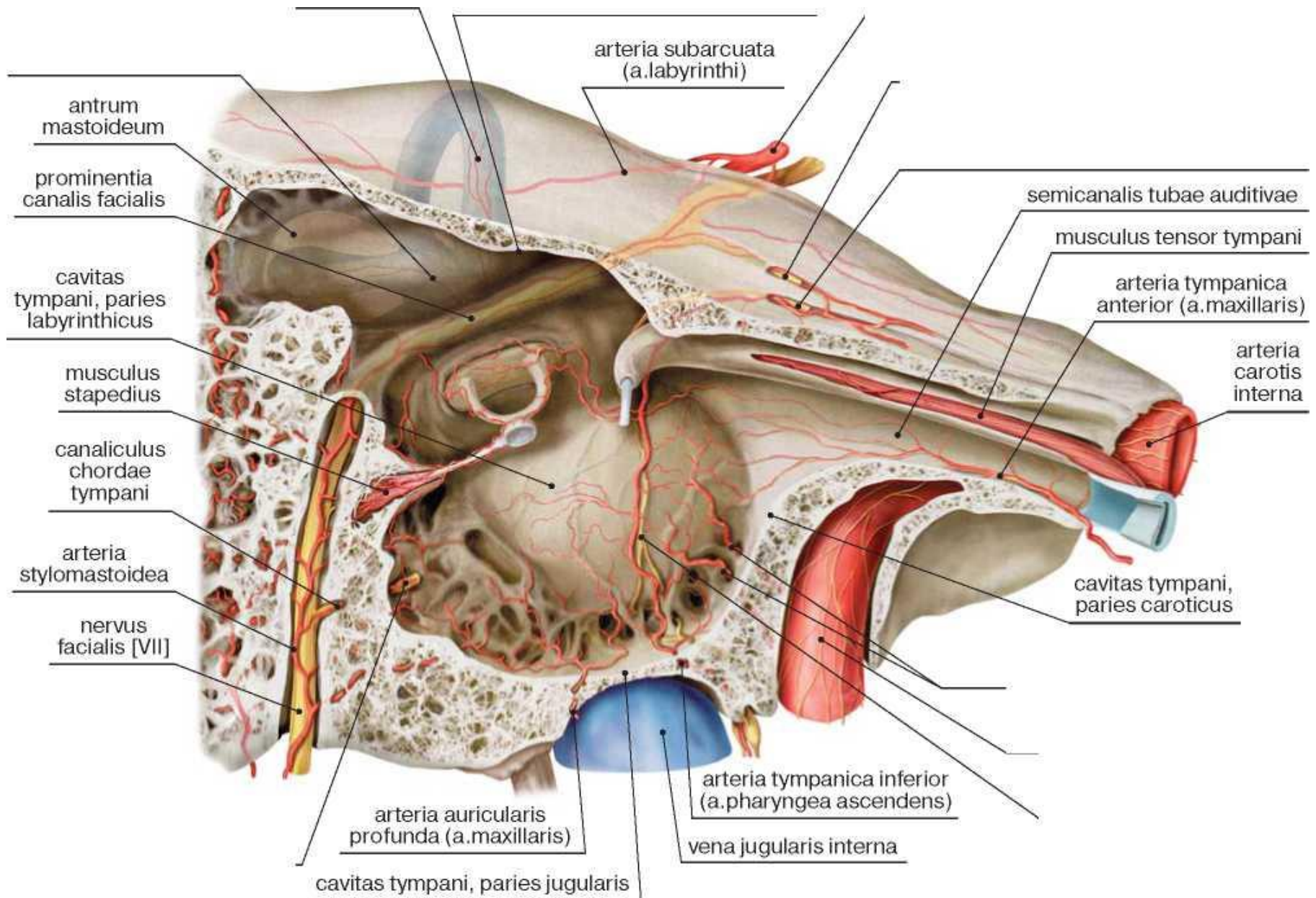
lig. incudis pos.

plica mallearis pos.

canalis caroticus







TUBA AUDITIVA, SLUCHOVÁ (EUSTACHOVA) TRUBICE

ostium tympanicum tubae auditivae

pars ossea tubae auditivae (10mm)

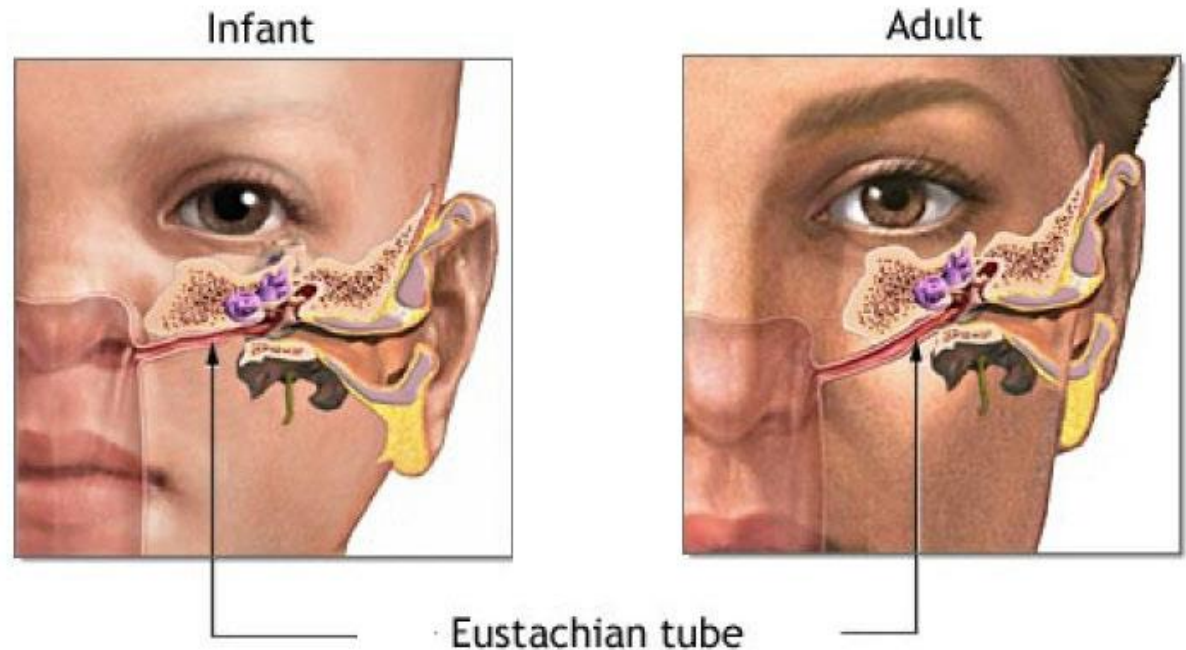
pars cartilaginea tubae auditivae (25 mm)

lamina medialis et lateralis

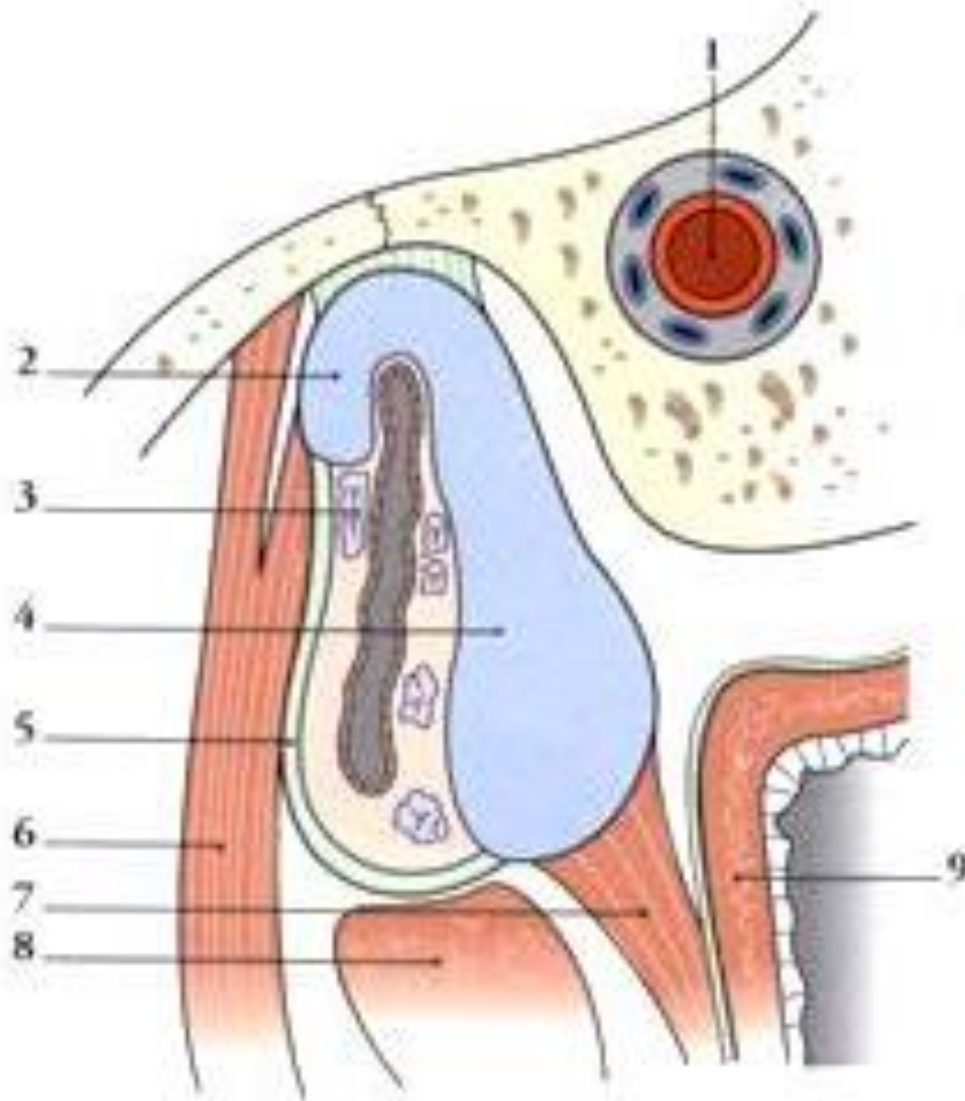
ostium pharyngeum tubae auditivae

torus tubarius

lymfatická tkáň (tonsilla tubaria)



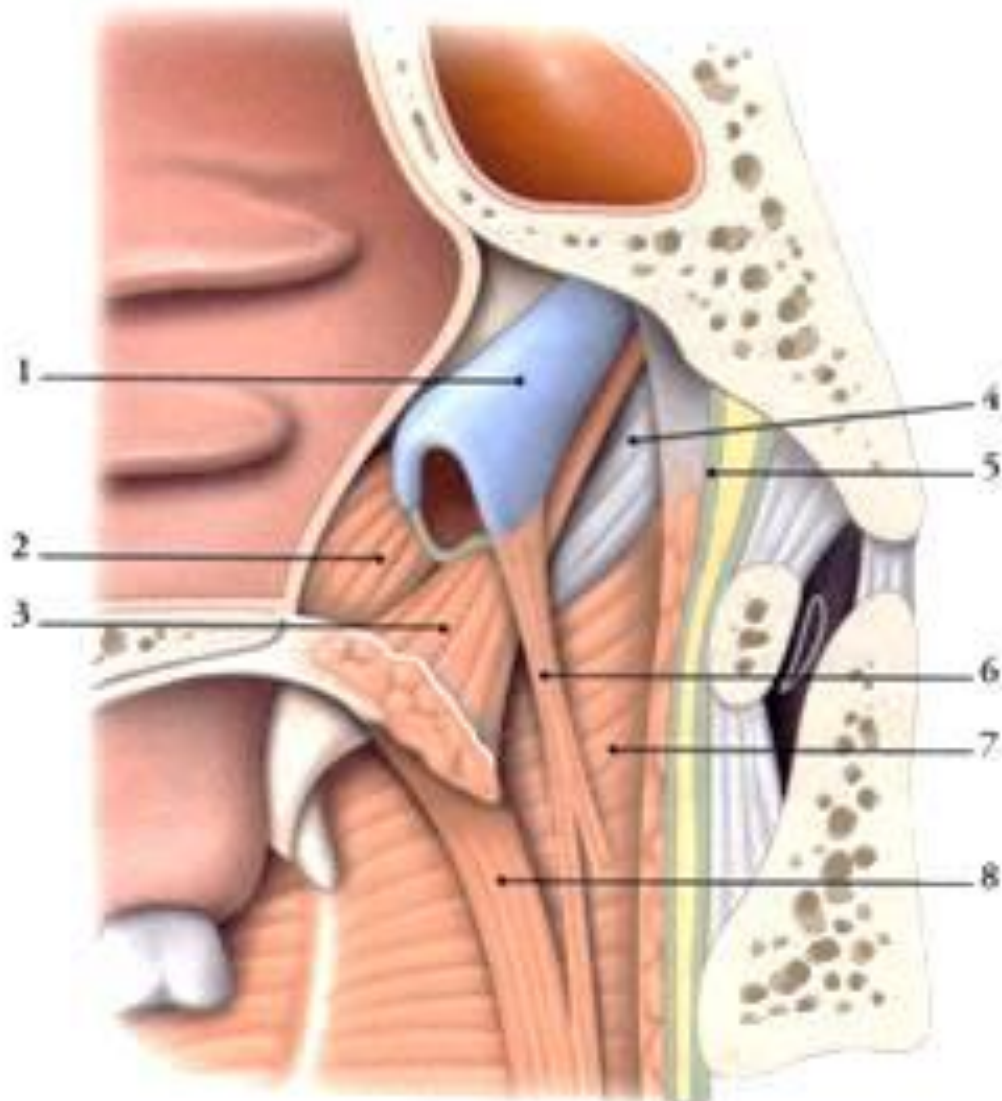
TUBA AUDITIVA, SLUCHOVÁ (EUSTACHOVA) TRUBICE



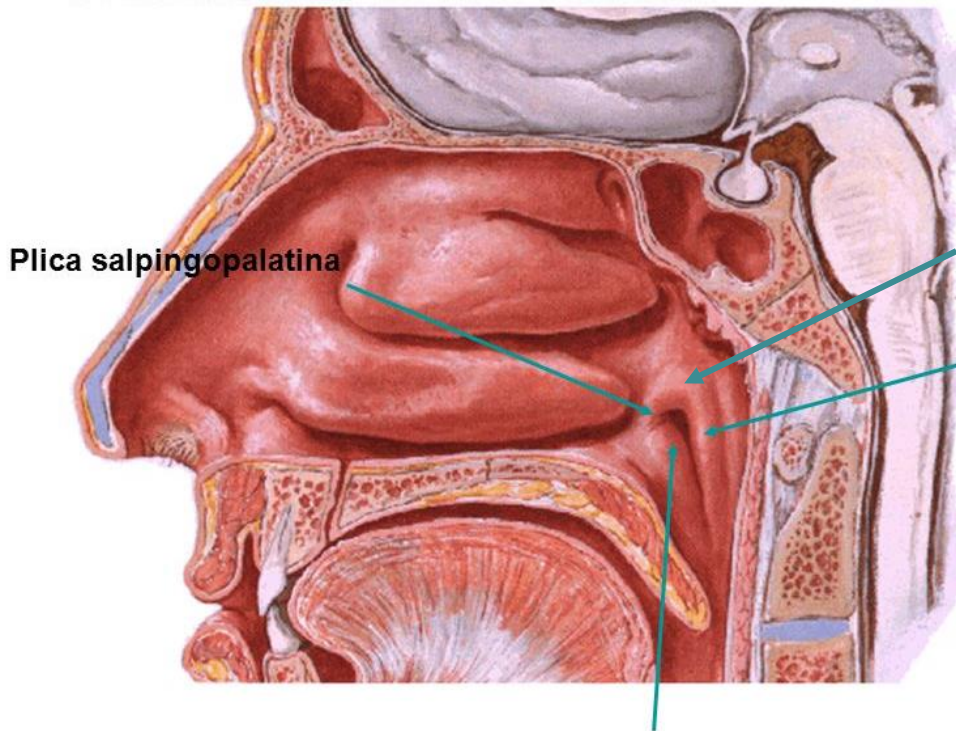
- 1- a. carotis int.;
- 2-lamina lateralis et 4-medialis;
- 6 – m. tensor veli palatini;
- 7- m. salpingopharyngeus;
- 8-m. levator veli palatini;
- 9-nasopharynx;

TORUS TUBARIUS, torus levatorius, plica salpingopharyngea

2- m. tensor v.p.; 3- m.levator v.p;
6- m. salpingopharyngeus; 8-m.palatopharyngeus

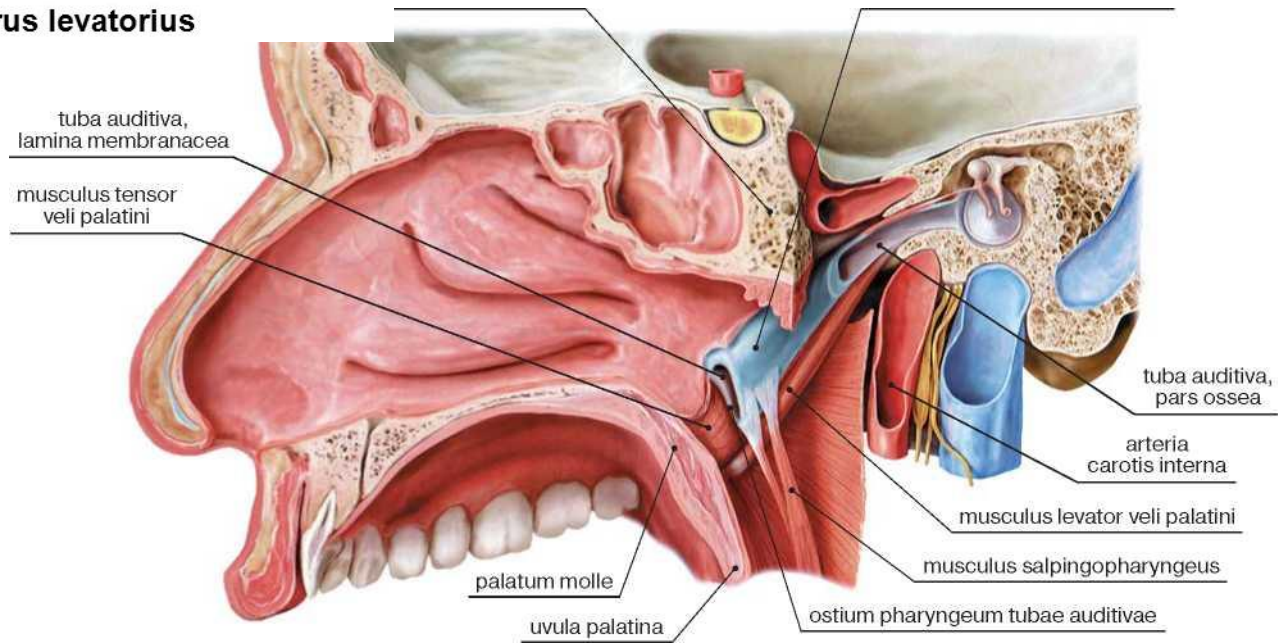


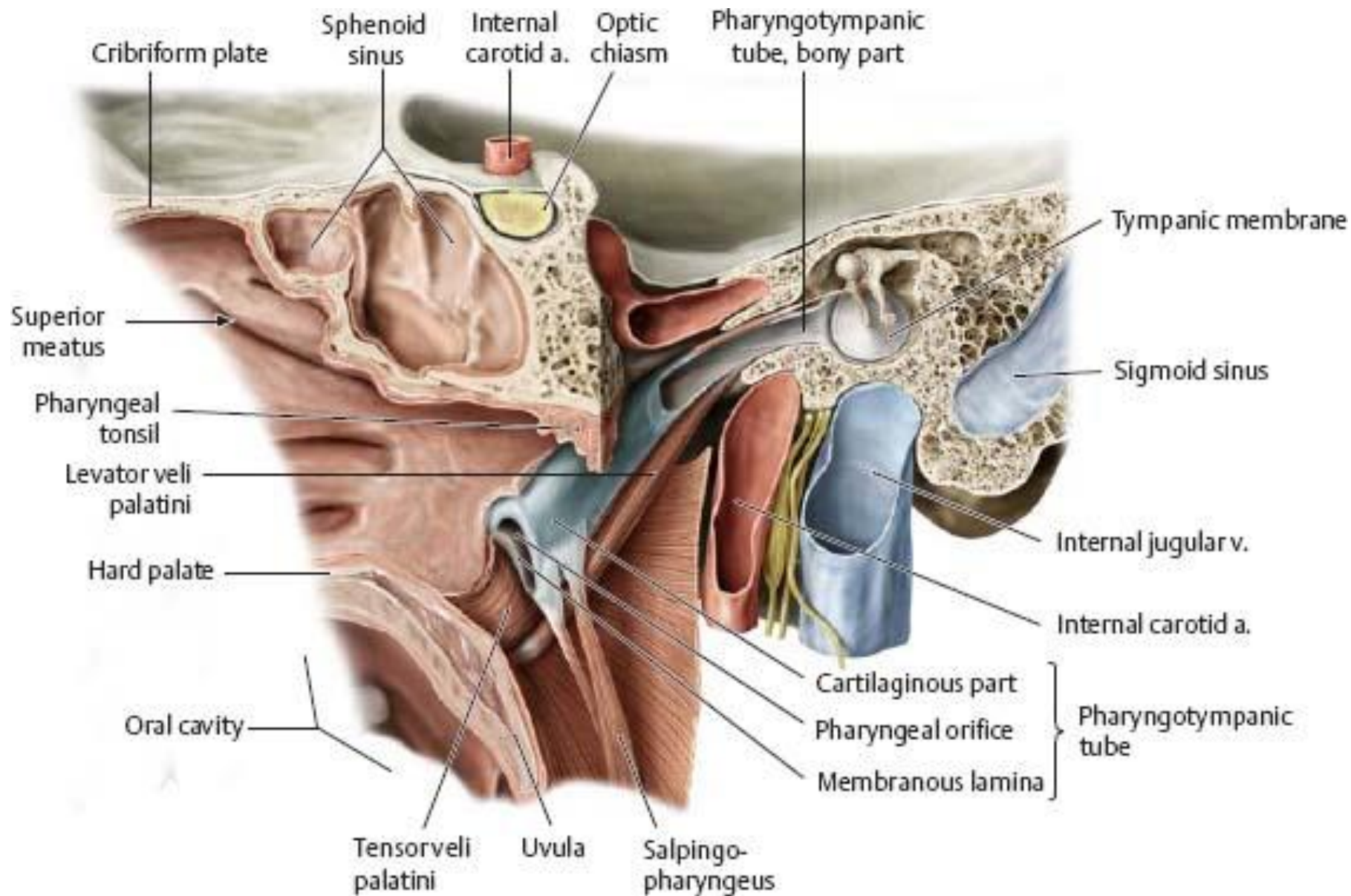
OSTIUM PHARYNGEUM TUBAE AUDITIVAE

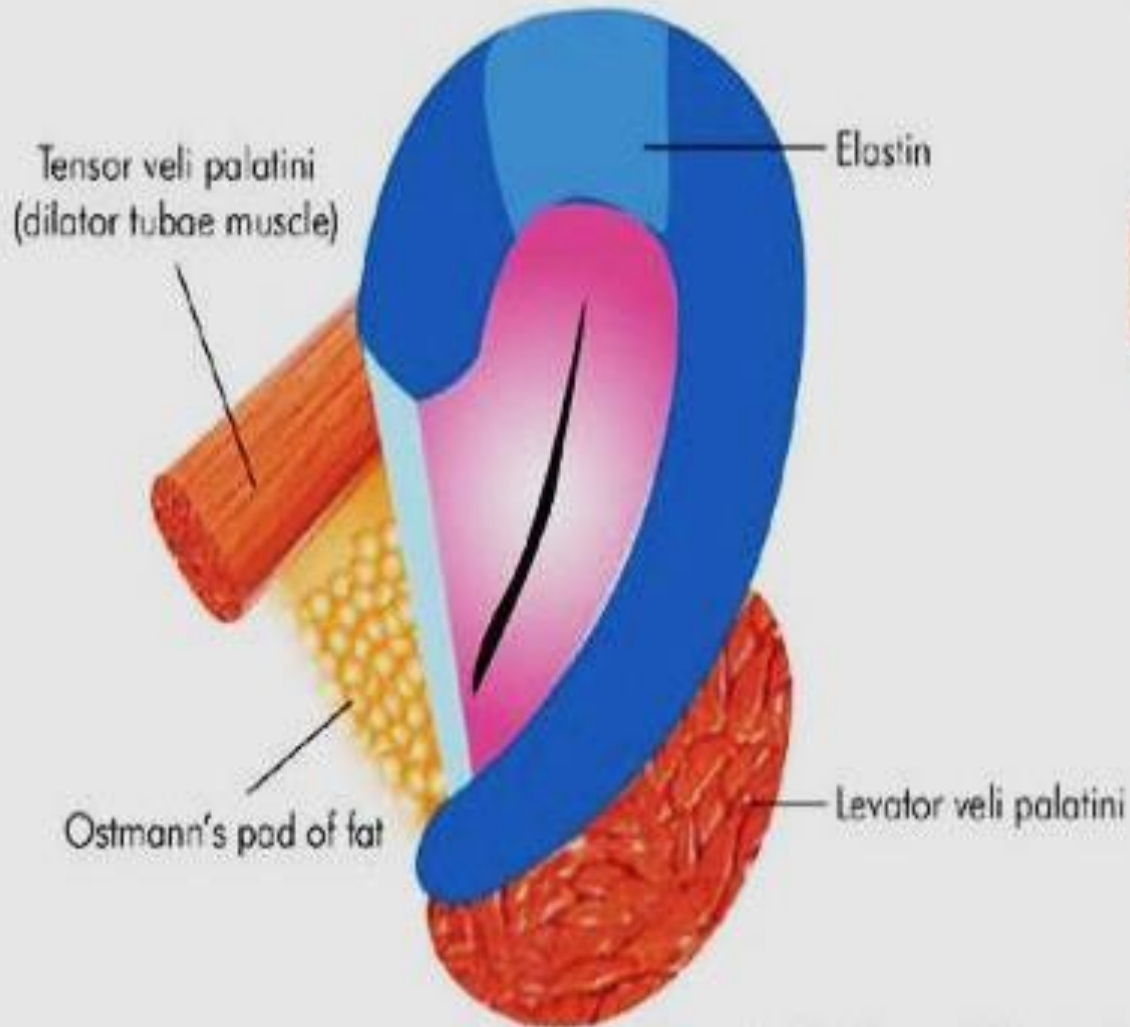


Tonsilla tubaria

Torus levatorius

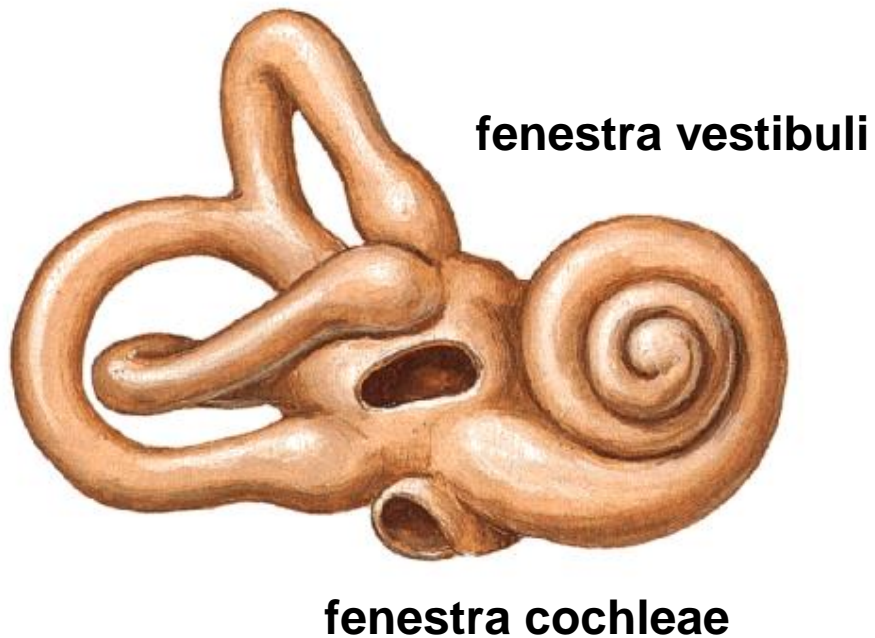




A**B**

AURIS INTERNA - LABYRINTHUS OSSEUS

Right Osseous Labyrinth
Anterolateral View



- vestibulum

-canales semicirculares ossei

anterior

posterior

crus communae
ampulla ossea

lateralis

crus simplex

- cochlea

COCHLEA (KOSTĚNÝ HLEMÝŽĎ)

modiolus

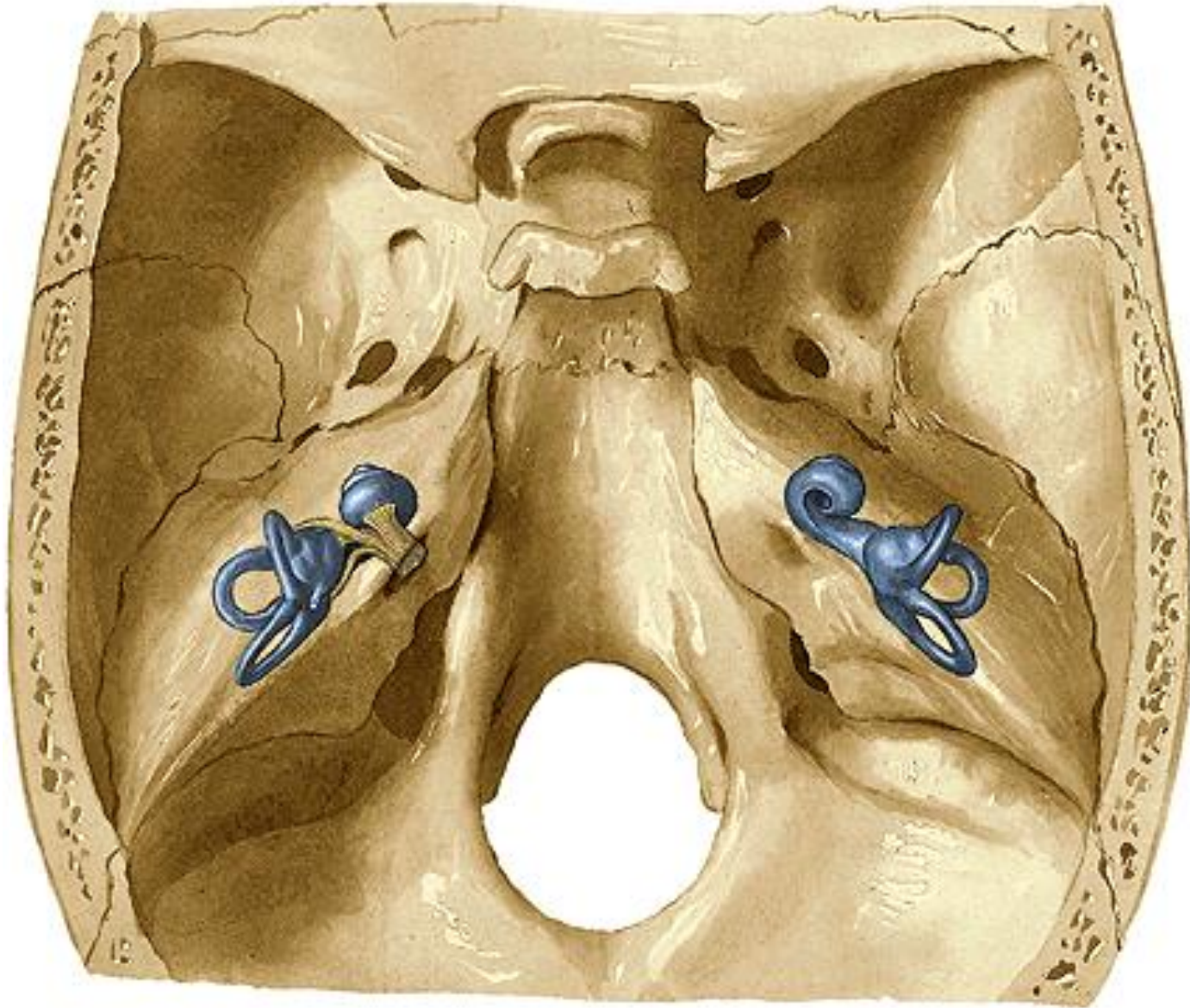
lamina spiralis ossea

canalis spiralis osseus

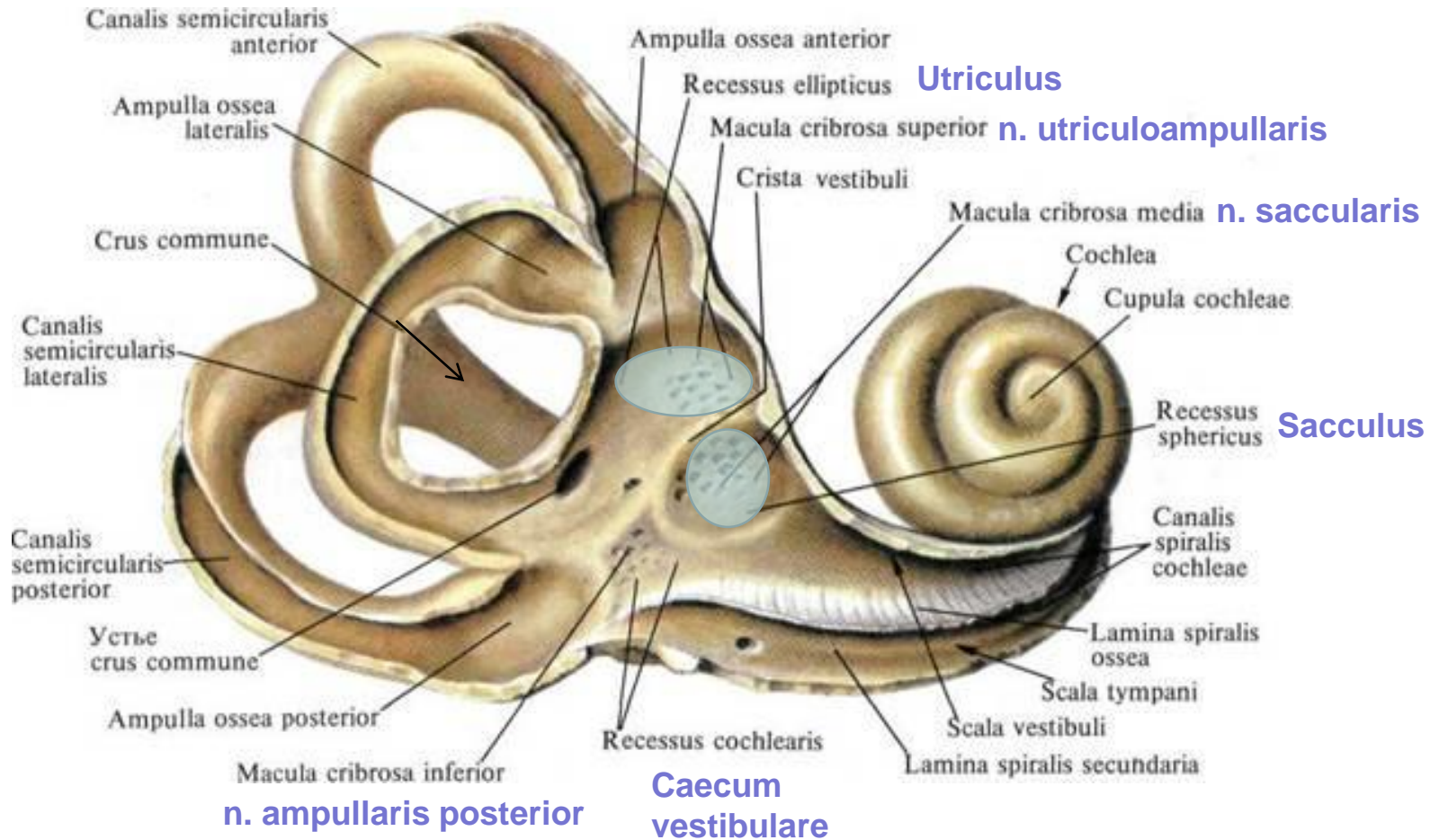
canales longitudinales

tractus spiralis foraminosus

AURIS INTERNA



VESTIBULUM



LABYRINTHUS MEMBRANACEUS

labyrinthus vestibularis

- utriculus et sacculus
- d. utriculosaccularis → d. endolymphaticus (aqueductus vestibuli) → saccus endolymph.
- ductus semicirculares

macula statica utriculi et sacculi

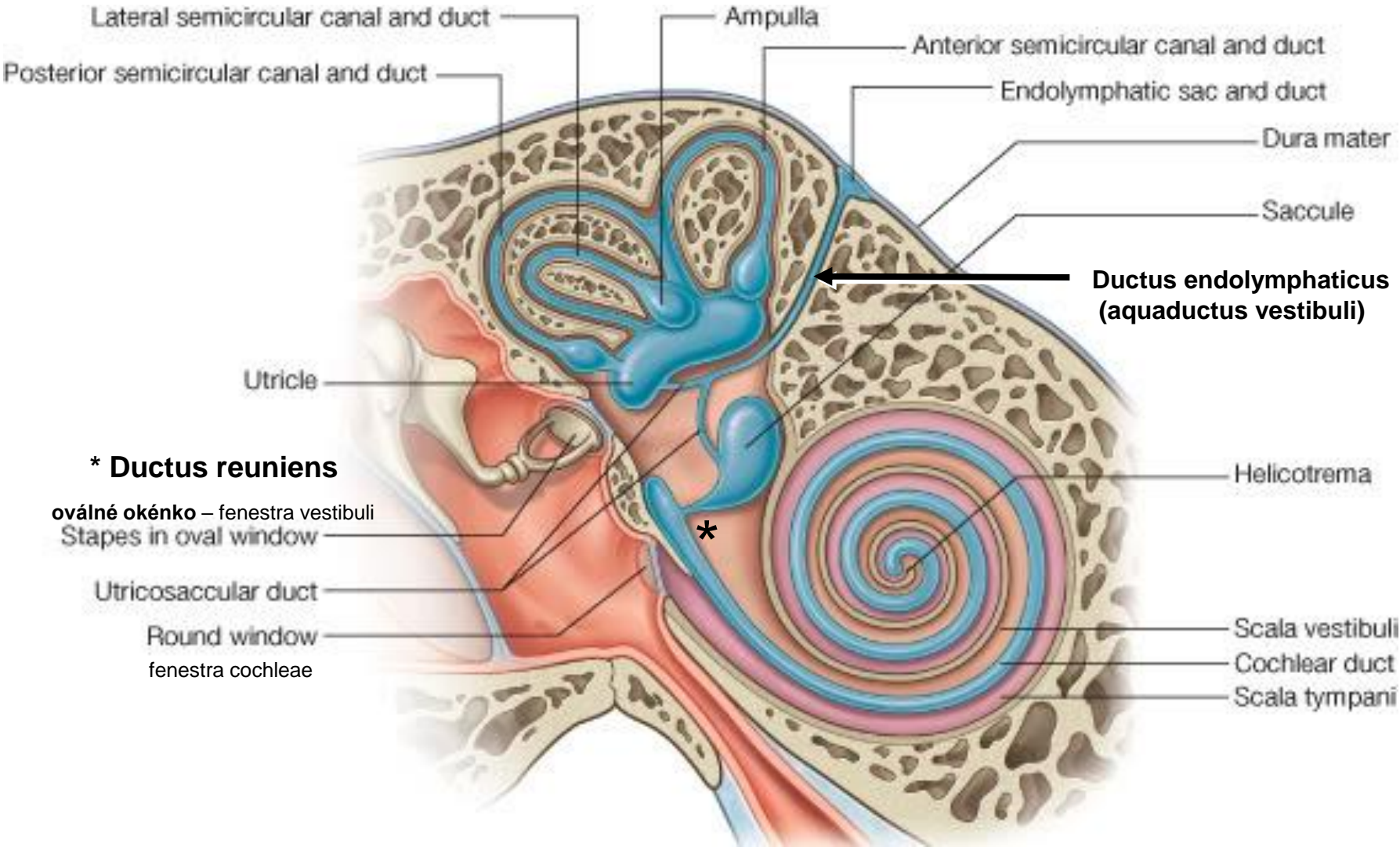
cristae ampullares

labyrinthus cochlearis

- ductus cochlearis *lamina basilaris*
 membrana vestibularis Reissneri
 stěna kostěného kanálku

organum spirale Corti *membrana tectoria*

LABYRINTHUS MEMBRANACEUS



Lateral semicircular canal and duct

Ampulla

Anterior semicircular canal and duct

Posterior semicircular canal and duct

Endolymphatic sac and duct

Dura mater

Sacculle

Ductus endolymphaticus (aqueductus vestibuli)

Utricle

* Ductus reuniens

oválné okénko – fenestra vestibuli
Stapes in oval window

Utricossaccular duct

Round window
fenestra cochleae

Helicotrema

Scala vestibuli
Cochlear duct
Scala tympani

LABYRINTHUS MEMBRANACEUS

Saccus endolymphaticus (*fossa subarcuata*)

Ductus endolymphaticus
(aquaductus vestibuli)

ant.

Ductus semicircularis

post.

lat.

Ductus cochlearis

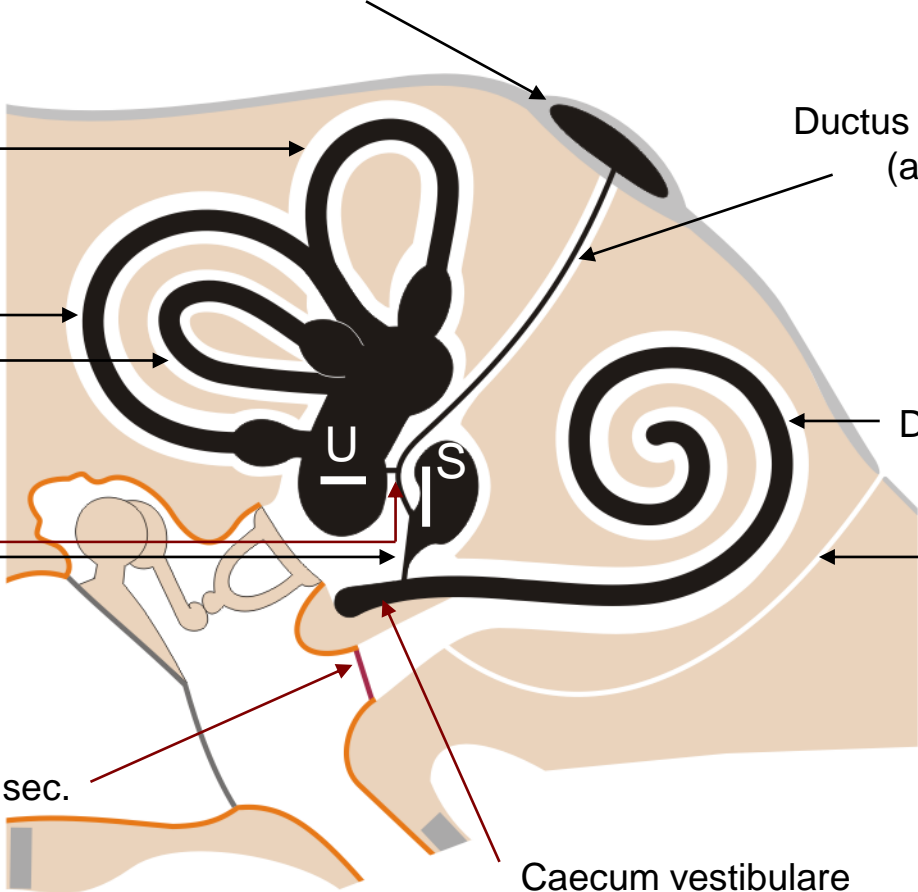
Ductus utriculosaccularis

Ductus reuniens

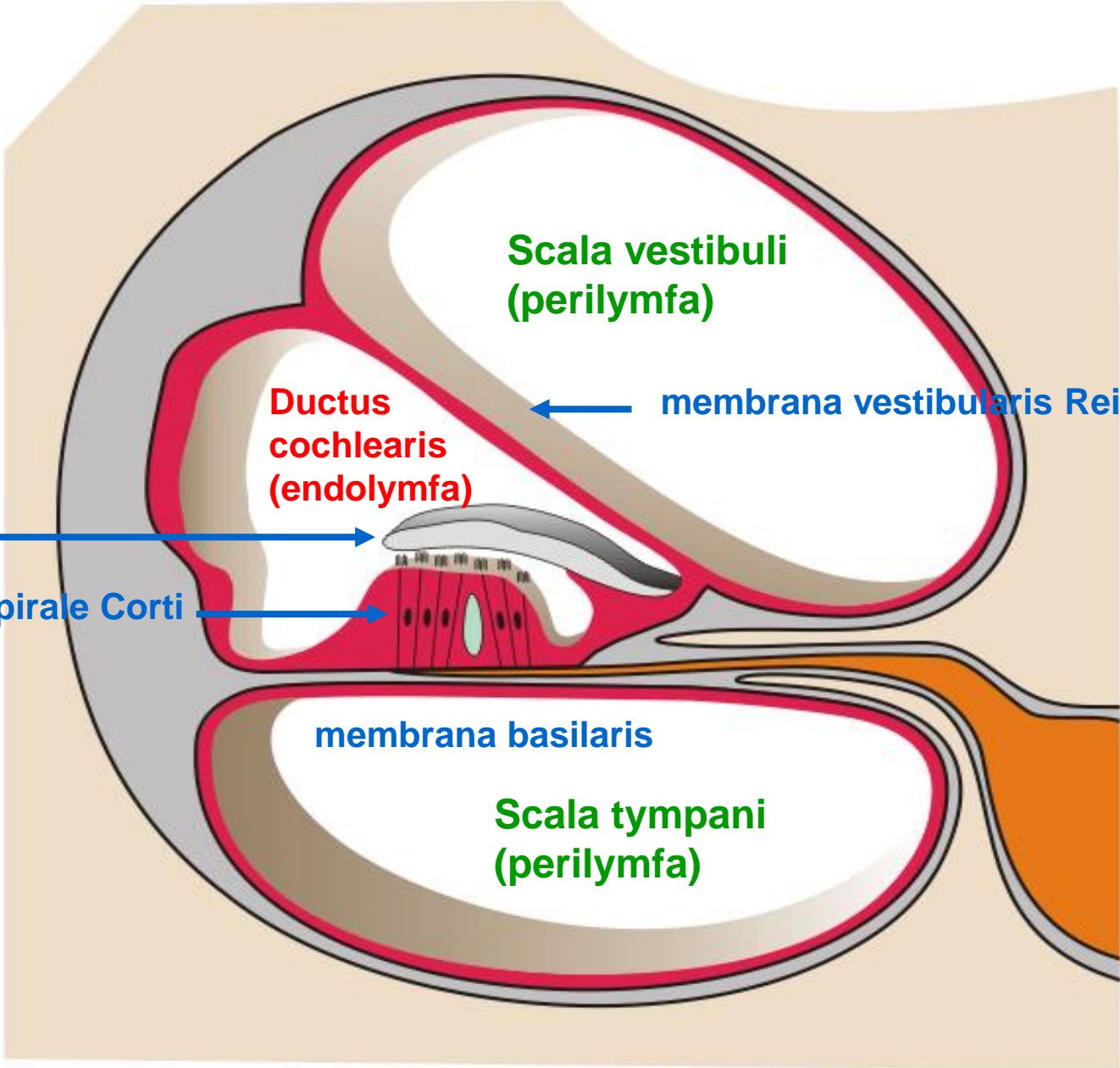
Canaliculus cochleae
(*apertura externa
canaliculi cochlae*)

Membrana tympani sec.

Caecum vestibulare



DUCTUS COCHLEARIS



membrana tectoria

organum spirale Corti

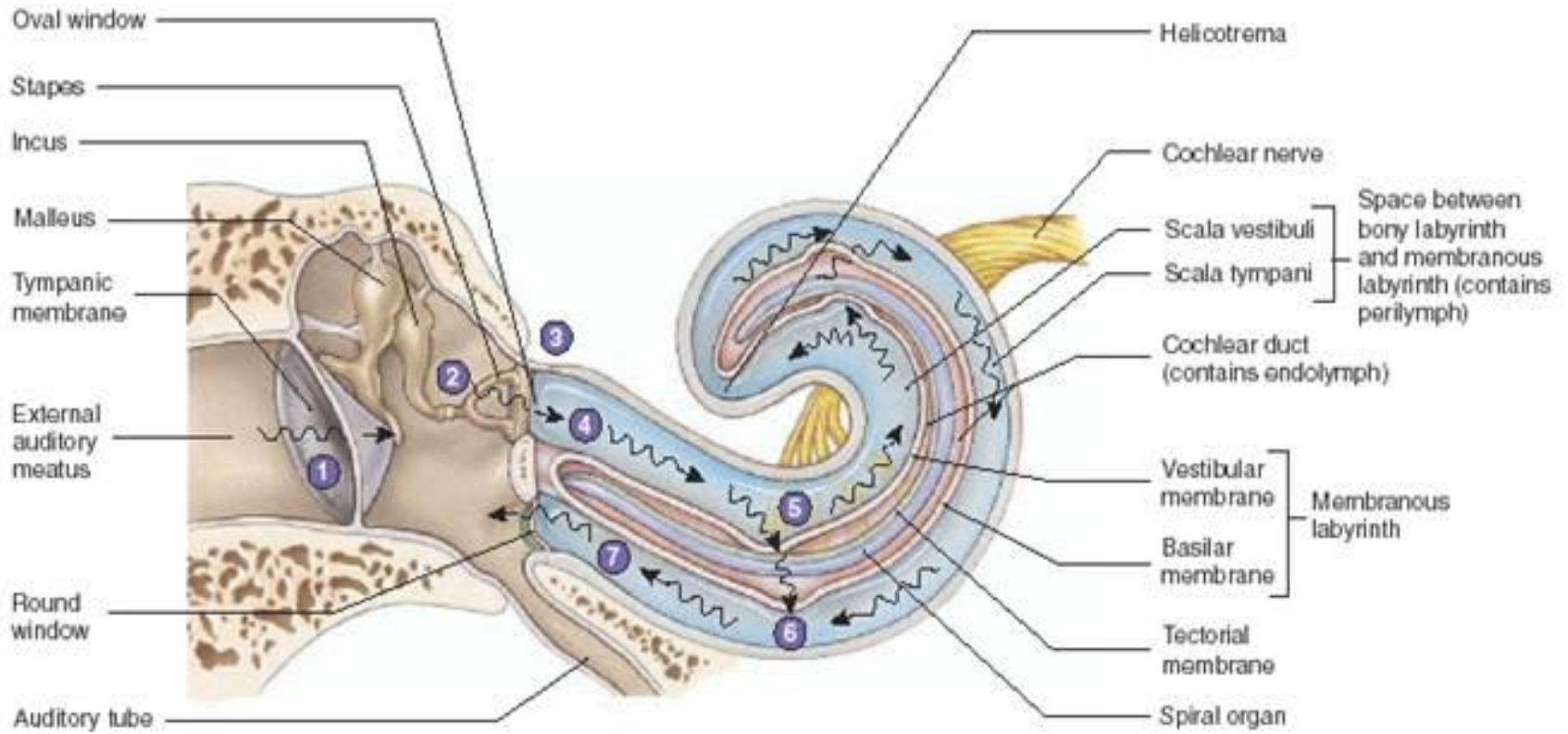
Ductus cochlearis (endolymfa)

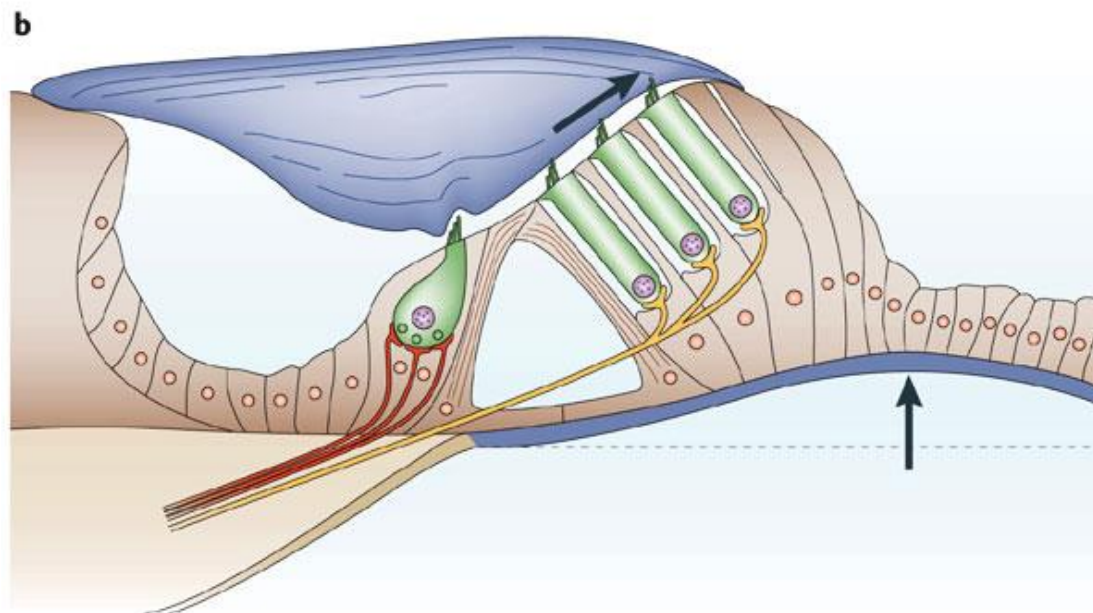
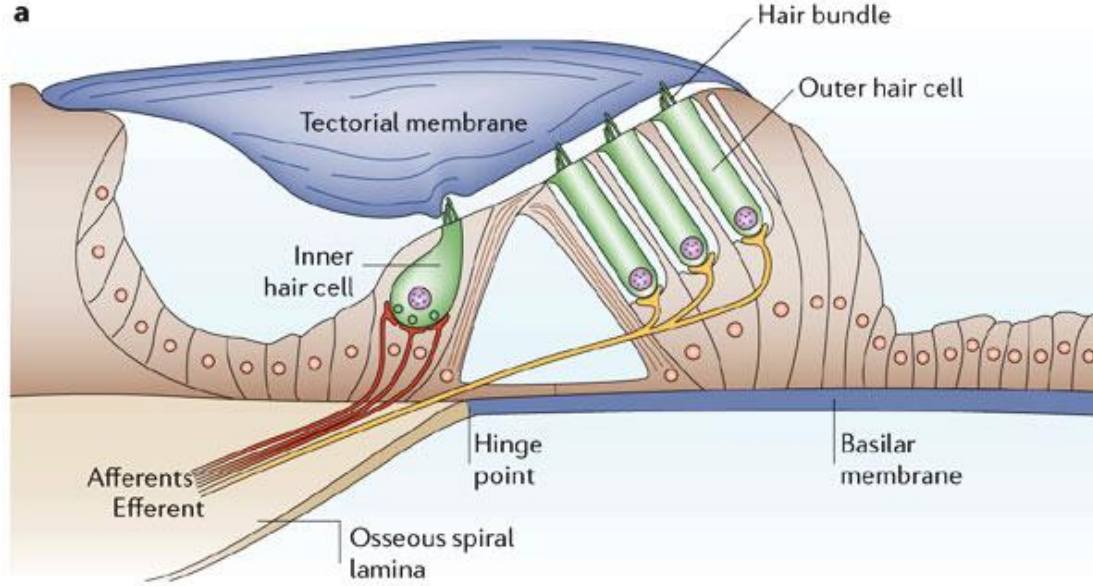
Scala vestibuli (perilymfa)

membrana vestibularis Reissneri

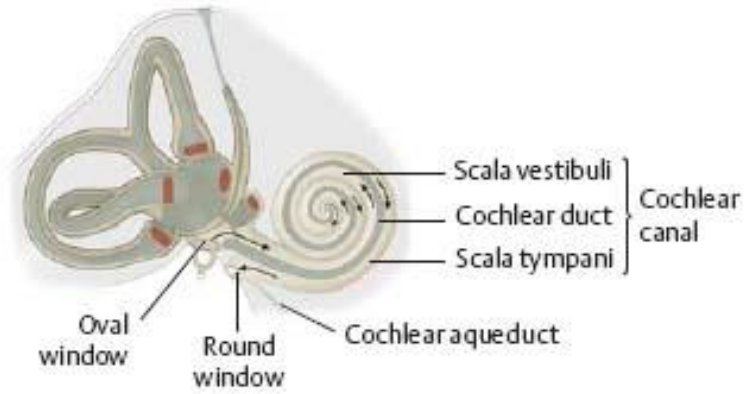
membrana basilaris

Scala tympani (perilymfa)

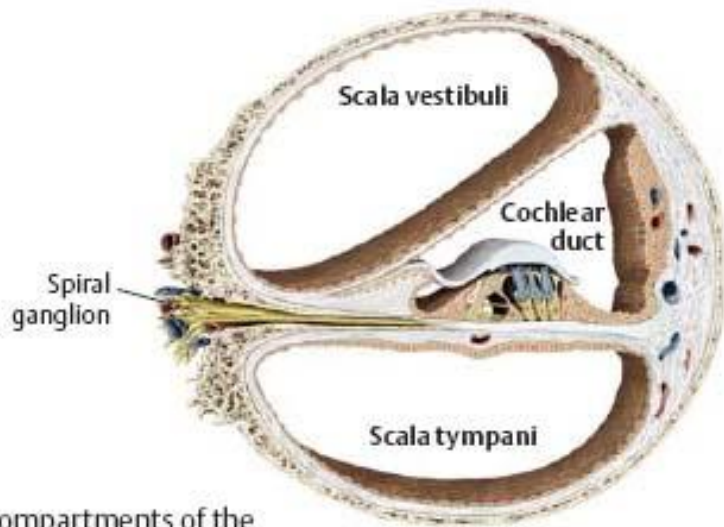




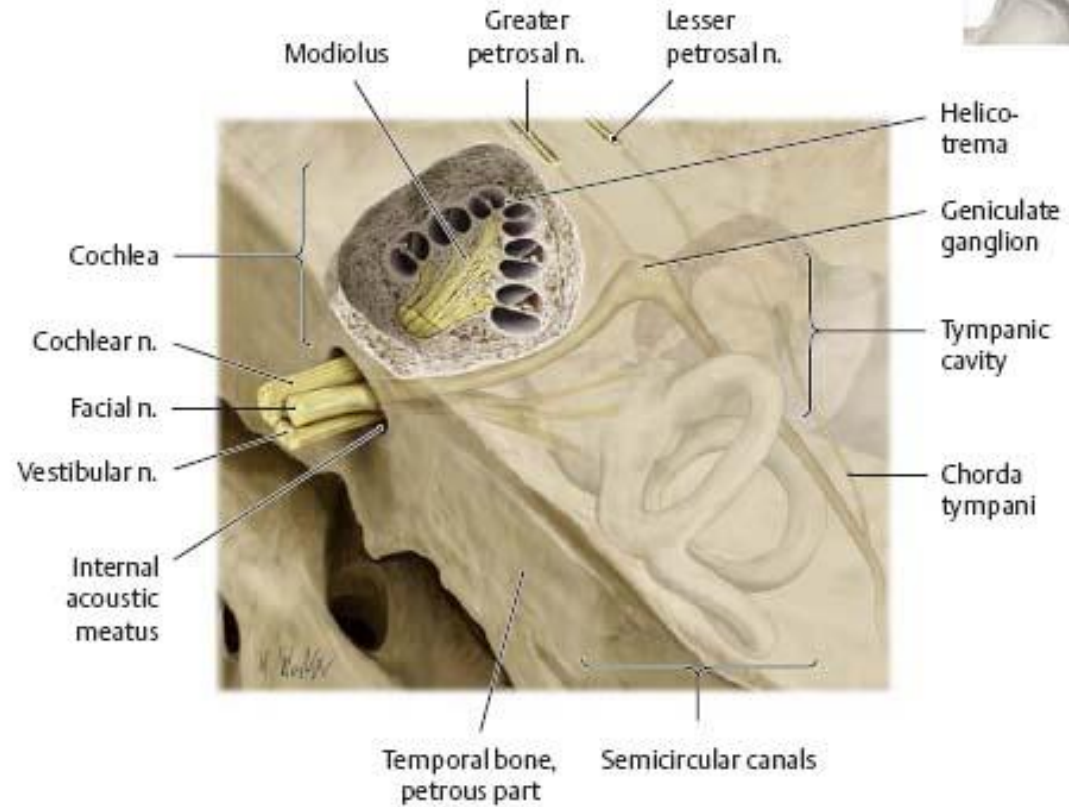
NERVUS VESTIBULOCOCHLEARIS



A Schematic.



B Compartments of the cochlear canal, cross section.



C Location of the cochlea. Superior view of the petrous part of the temporal bone with the cochlea sectioned transversely. The bony canal of the cochlea (spiral canal) makes 2.5 turns around its bony axis (modiolus).

NERVUS VESTIBULOCOCHLEARIS

